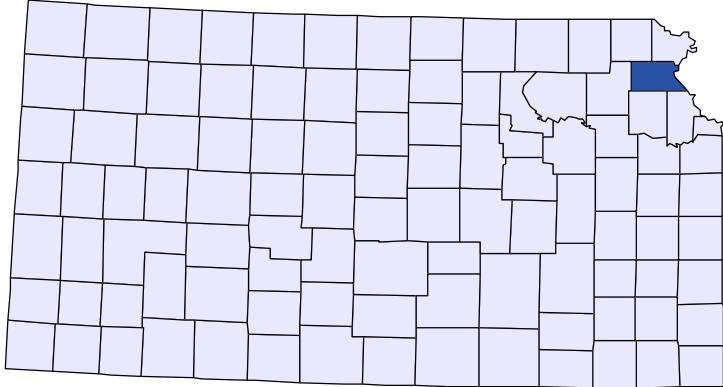




# Kansas County Profiles

## Atchison County



The University  
of Kansas

Institute for Policy  
& Social Research

**KU** INSTITUTE FOR POLICY  
& SOCIAL RESEARCH  

---

The University of Kansas

1541 Lilac Lane, Rm. 607  
Blake Hall  
Lawrence, KS 66045-3129

## Foreword

The Kansas County Profile Report is published by the Institute for Policy & Social Research (IPSR) at the University of Kansas with support from the KU University Center project.\* Special thanks to Xanthippe Wedel, senior research data engineer, who compiles and updates the county profiles and Genna Hurd, associate researcher, who provides editorial review.

County reports can be generated for any county in Kansas by simply clicking on the county from the web site:

<https://ipsr.ku.edu/ksdata/kcced/profiles/>

The Kansas County Profile Report contains 12 categories of information: Population, Vital Statistics and Health, Housing, Education, Social Environment, Business, Employment, Income, Banking, Government, Crime, and Agriculture. For more information about Kansas, please refer to the Kansas Statistical Abstract, available online at:

<https://ipsr.ku.edu/ksdata/ksah/>

We are always looking for ways to improve the Kansas County Profile Report and we welcome your suggestions and comments. Please address any correspondence to the Institute for Policy & Social Research, The University of Kansas, 607 Blake Hall, 1541 Lilac Lane, Lawrence, Kansas 66045-3129, e-mail [ipsr@ku.edu](mailto:ipsr@ku.edu) or call 785-864-3701.

*\*The KU University Center is a collaborative effort led by the Institute for Policy & Social Research at the University of Kansas. This project is supported by the Economic Development Administration, U.S. Department of Commerce, through its University Center Program.*

*The mission of EDA is to lead the federal economic development agenda by promoting innovation and competitiveness, preparing American regions for growth and success in the worldwide economy.*

## Kansas County Profiles Table of Contents

### Population

Total Population (Decennial Census)	1
Estimated Population (Current Population Reports)	2
Urban Population	2
Rural Population	3
Net Migration (Decade Ending...)	3
Median Age	3

### Population (Age Groups)

Population Under 18 (Decennial Census)	3
Population Age 18 and Over (Decennial Census)	4
Population Age 65 and Over (Decennial Census)	4
Population Age 85 and Over (Decennial Census)	4

### Vital Statistics and Health

Live Births	5
Deaths	5
Marriages	6
Divorces and Annulments	6
Physicians: M.D. Physicians	7
Physicians: D.O. Physicians	7
Dentists	8
Number of Hospitals	8
Number of Hospital Beds	9

### Housing

Housing Units (Decennial Census)	9
Housing Units (Estimated)	10
Occupied Housing Units	10
Owner Occupied Housing Units	10
Renter Occupied Housing Units	11
Vacant Housing Units	11
Median Value (\$): Owner Occupied Housing Units	11
Median Contract Rent (\$)	12
Fair Market Rent: 2 Bedrooms	12

### Education

Population Age 25 and Over	13
Percent of Population 25+ with High School or Higher Education	13
Percent of Population 25+ with Bachelors Degree or Higher Education	14
Public School Enrollment (FTE- School Year Beginning...)	14
Pupil/Teacher Ratio (School Year Beginning...)	15

## Kansas County Profiles Table of Contents

### Social Environment

Total Child Care Facilities	15
Preschools	16
Food Stamp Beneficiaries	16
Percent of Population Receiving Food Stamps	17
Estimated Number of People in Poverty	17
Estimated Percent of People in Poverty	18
Estimated Number of Related Children Age 5 to 17 in Families in Poverty	18
Estimated Percent of Related Children Age 5 to 17 in Families in Poverty	19
Estimated Number Under 18 in Poverty	19
Estimated Percent Under 18 in Poverty	20

### Business

Establishments: Total	21
Establishments: 1-19 Employees	22
Establishments: 20-99 Employees	22
Establishments: 100-499 Employees	23
Establishments: 500 or More Employees	23
Establishments: Forestry, Fishing, Hunting, and Ag Support	24
Establishments: Mining	24
Establishments: Utilities	25
Establishments: Construction	25
Establishments: Manufacturing	26
Establishments: Wholesale Trade	26
Establishments: Retail Trade	27
Establishments: Transportation and Warehousing	27
Establishments: Information	28
Establishments: Finance and Insurance	28
Establishments: Real Estate, Rental, and Leasing	29
Establishments: Professional, Scientific, and Technical Services	29
Establishments: Management of Companies and Enterprises	30
Establishments: Admin, Support, Waste Management, and Remediation	30
Establishments: Educational Services	31
Establishments: Health Care and Social Assistance	31
Establishments: Arts, Entertainment, and Recreation	32
Establishments: Accommodation and Food Services	32
Establishments: Other Services	33

## Kansas County Profiles Table of Contents

<b>Business</b>	
Total Annual Payroll (\$000)	34
Total Annual Payroll (\$000): Forestry, Fishing, Hunting, and Ag Support	35
Total Annual Payroll (\$000): Mining	35
Total Annual Payroll (\$000): Utilities	36
Total Annual Payroll (\$000): Construction	36
Total Annual Payroll (\$000): Manufacturing	37
Total Annual Payroll (\$000): Wholesale Trade	37
Total Annual Payroll (\$000): Retail Trade	38
Total Annual Payroll (\$000): Transportation and Warehousing	38
Total Annual Payroll (\$000): Information	39
Total Annual Payroll (\$000): Finance and Insurance	39
Total Annual Payroll (\$000): Real Estate, Rental, and Leasing	40
Total Annual Payroll (\$000): Professional, Scientific, and Technical Services	40
Total Annual Payroll (\$000): Management of Companies and Enterprises	41
Total Annual Payroll (\$000): Admin, Support, Waste Management, and Remediation	41
Total Annual Payroll (\$000): Educational Services	42
Total Annual Payroll (\$000): Health Care and Social Assistance	42
Total Annual Payroll (\$000): Arts, Entertainment, and Recreation	43
Total Annual Payroll (\$000): Accommodation and Food Services	43
Total Annual Payroll (\$000): Other Services	44
Nominal Taxable Retail Sales (Million\$)	44
Retail Pull Factor	45
<b>Employment</b>	
Civilian Labor Force (BLS - Place of Residence)	46
Employed (BLS - Place of Residence)	47
Unemployed (BLS - Place of Residence)	48
Unemployment Rate (BLS - Place of Residence)	49
BEA Employment: Total (Place of Work)	49
BEA Employment: Farm	50
BEA Employment: Non-Farm	50
Average Wage per Job (\$)	51
BEA Employment: Forestry, Fishing, Hunting, and Ag Support	51
BEA Employment: Mining	52
BEA Employment: Utilities	52
BEA Employment: Construction	53
BEA Employment: Manufacturing	53
BEA Employment: Wholesale Trade	54
BEA Employment: Retail Trade	54
BEA Employment: Transportation and Warehousing	55
BEA Employment: Information	55
BEA Employment: Finance and Insurance	56
BEA Employment: Real Estate, Rental, and Leasing	56
BEA Employment: Professional and Technical Services	57
BEA Employment: Management of Companies and Enterprises	57
BEA Employment: Administrative and Waste Services	58
BEA Employment: Educational Services	58
BEA Employment: Health Care and Social Assistance	59
BEA Employment: Arts, Entertainment, and Recreation	59
BEA Employment: Government and Government Enterprises	60
BEA Employment: Accommodation and Food Services	60
BEA Employment: Other Services, Except Public Administration	61

## Kansas County Profiles Table of Contents

### Income

BEA Per Capita Personal Income (\$)	61
Sources of Personal Income: Total Personal Income (\$000)	62
Sources of Personal Income: Wages And Salaries (\$000)	62
Sources of Personal Income: Proprietors-Farm (\$000)	63
Sources of Personal Income: Proprietors-Nonfarm (\$000)	63
Sources of Personal Income: Dividends, Interest, Rent (\$000)	64
Sources of Personal Income: Transfer Payments (\$000)	64
Sources of Personal Income: Less Social Insurance (\$000)	65
HUD Median Family Income	65
HUD 30% Low-To-Medium Income (LMI) Limit - 4 Persons	66
HUD 50% Low-To-Medium Income (LMI) Limit - 4 Persons	66
HUD 80% Low-To-Medium Income (LMI) Limit - 4 Persons	66

### Banking

Bank Deposits (\$000)	67
Number of Banks	67
Number of Banking Offices	68

### Government

Tangible Assessed Valuation (million\$)	68
Sales Tax Collections	69

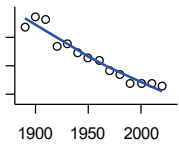
### Crime

Crime Index Offenses	69
Property Crimes	70
Violent Crimes	70

### Agriculture

Number of Farms	71
Total Acres Harvested	71
Value: Livestock and Poultry (\$000)	71
Value: Field Crops (\$000) Excluding Government Program Payments	72

**Population**



**DECENNIAL CENSUS:TOTAL POPULATION**

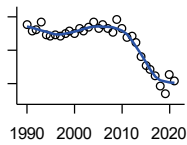
U.S. Census Bureau: Decennial Census

Year	County	State of Kansas	Non Metro Kansas	County Rank	Per 1000 or \$ Per Capita
1890	26,758	1,427,096	968,413	12	.
1900	28,606	1,470,495	981,206	10	.
1910	28,107	1,690,949	1,138,294	12	.
1920	23,411	1,769,257	1,153,525	19	.
1930	23,945	1,880,999	1,180,056	18	.
1940	22,222	1,801,028	1,097,216	20	.
1950	21,496	1,905,299	1,046,823	22	.
1960	20,898	2,178,611	1,021,510	25	.
1970	19,165	2,246,578	958,104	27	.
1980	18,397	2,363,679	980,085	29	.
1990	16,932	2,477,574	939,416	30	.
2000	16,774	2,688,418	959,507	32	.
2010	16,924	2,853,118	929,981	31	.
2020	16,348	2,937,880	892,006	31	.

County: county value. Kansas: state value. County Rank: highest county value ranked #1. (\$000): thousands of dollars. Nonmetro Kansas: Kansas total less Metropolitan Areas as defined by the Office of Management and Budget (OMB; released 3/6/2020). Per 1000: For nonmoney amounts, Per 1000=(county value / county population for the same year as the data) x 1000. \$ Per capita=(county value / county population for the same year as the data). Value= . indicates missing or suppressed data or value not calculated.

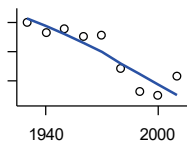
**Population**

**ESTIMATED POPULATION**



U.S. Census Bureau

Year	County	State of Kansas	Non Metro Kansas	County Rank	Per 1000 or \$ Per Capita
1990	16,904	2,481,349	938,607	30	.
1991	16,825	2,498,722	938,965	30	.
1992	16,838	2,532,394	942,759	30	.
1993	16,936	2,556,547	947,515	30	.
1994	16,780	2,580,513	952,178	32	.
1995	16,775	2,601,007	957,771	32	.
1996	16,786	2,614,554	959,455	32	.
1997	16,774	2,635,292	960,225	32	.
1998	16,797	2,660,598	960,569	32	.
1999	16,823	2,678,338	960,704	32	.
2000	16,796	2,693,681	959,230	32	.
2001	16,868	2,702,162	952,607	32	.
2002	16,823	2,713,535	945,985	31	.
2003	16,875	2,723,004	941,474	31	.
2004	16,937	2,734,373	937,623	31	.
2005	16,865	2,745,299	932,852	32	.
2006	16,902	2,762,931	928,809	31	.
2007	16,864	2,783,785	927,643	31	.
2008	16,820	2,808,076	926,248	31	.
2009	16,965	2,832,704	926,755	31	.
2010	16,857	2,858,190	930,028	31	.
2011	16,753	2,869,225	927,675	31	.
2012	16,774	2,885,257	925,152	31	.
2013	16,688	2,893,212	922,383	31	.
2014	16,523	2,900,475	917,854	31	.
2015	16,418	2,909,011	912,199	31	.
2016	16,376	2,910,844	905,099	31	.
2017	16,298	2,908,718	897,981	31	.
2018	16,173	2,911,359	892,656	31	.
2019	16,073	2,913,314	887,455	31	.
2020	16,305	2,935,880	889,750	31	.
2021	16,239	2,934,582	886,438	31	.



**URBAN POPULATION**

U.S. Census Bureau: Decennial Census

Year	County	State of Kansas	Non Metro Kansas	County Rank	Per 1000 or \$ Per Capita
1930	13,024	729,834	336,666	14	.
1940	12,648	753,941	349,228	16	.
1950	12,792	993,220	398,923	18	.
1960	12,529	1,328,741	457,447	22	.
1970	12,565	1,484,870	450,543	24	.
1980	11,407	1,575,899	474,769	25	.
1990	10,656	1,712,564	464,205	26	.
2000	10,487	1,920,081	488,011	27	.
2010	11,144	2,116,961	485,780	25	.

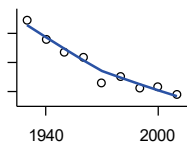
County: county value. Kansas: state value. County Rank: highest county value ranked #1. (\$000): thousands of dollars. Nonmetro Kansas: Kansas total less Metropolitan Areas as defined by the Office of Management and Budget (OMB; released 3/6/2020). Per 1000: For nonmoney amounts, Per 1000=(county value / county population for the same year as the data) x 1000. \$ Per capita=(county value / county population for the same year as the data). Value= . indicates missing or suppressed data or value not calculated.



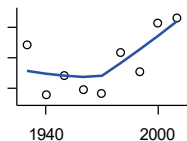
**Population**

**RURAL POPULATION**

Year	County	State of Kansas	Non Metro Kansas	County Rank	Per 1000 or \$ Per Capita
1930	10,921	1,151,165	843,390	47	.
1940	9,574	1,047,087	747,988	49	.
1950	8,704	912,079	647,900	44	.
1960	8,369	849,870	564,063	39	.
1970	6,600	761,708	509,972	42	.
1980	6,990	787,780	505,873	41	.
1990	6,276	765,010	475,211	44	.
2000	6,287	768,337	471,900	44	.
2010	5,780	736,157	444,201	48	.



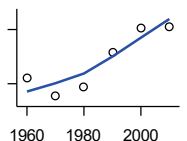
U.S. Census Bureau



**NET MIGRATION: DECADE ENDING...**

calculated by the Institute for Policy and Social Research, The University of Kansas

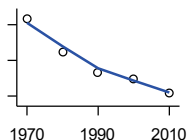
Year	County	State of Kansas	Non Metro Kansas	County Rank	Per 1000 or \$ Per Capita
1930	-1,092	-66,132	-101,869	54	-45.6
1940	-2,730	-192,649	-166,022	88	-122.9
1950	-2,100	-84,329	-158,379	66	-97.7
1960	-2,539	-38,999	-146,640	81	-121.5
1970	-2,674	-119,662	-105,116	96	-139.5
1980	-1,320	-21,983	-6,184	100	-71.8
1990	-1,978	-61,835	-79,274	91	-116.8
2000	-367	68,960	4,247	92	-21.9
2010	-190	5,578	-50,648	39	-11.2



**MEDIAN AGE**

U.S. Census Bureau: Decennial Census

Year	County	State of Kansas	Non Metro Kansas	County Rank	Per 1000 or \$ Per Capita
1960	30.6	26.9	.	65	.
1970	28.6	28.7	.	84	.
1980	29.7	30.1	.	85	.
1990	33.5	32.9	.	82	.
2000	36.2	35.2	.	80	.
2010	36.3	36.0	.	86	.



**POPULATION UNDER 18 (DECENNIAL CENSUS)**

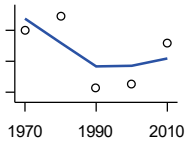
U.S. Census Bureau: Decennial Census

Year	County	State of Kansas	Non Metro Kansas	County Rank	Per 1000 or \$ Per Capita
1970	6,169	746,354	306,227	28	.
1980	5,232	649,035	263,919	29	.
1990	4,677	661,614	250,107	30	.
2000	4,473	712,993	250,757	32	.
2010	4,093	726,939	229,213	31	.

County: county value. Kansas: state value. County Rank: highest county value ranked #1. (\$000): thousands of dollars. Nonmetro Kansas: Kansas total less Metropolitan Areas as defined by the Office of Management and Budget (OMB; released 3/6/2020). Per 1000: For nonmoney amounts, Per 1000=(county value / county population for the same year as the data) x 1000. \$ Per capita=(county value / county population for the same year as the data). Value= . indicates missing or suppressed data or value not calculated.

**Population**

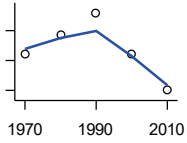
**POPULATION AGE 18 AND OVER  
(DECENNIAL CENSUS)**



U.S. Census Bureau: Decennial Census

Year	County	State of Kansas	Non Metro Kansas	County Rank	Per 1000 or \$ Per Capita
1970	12,996	1,500,224	654,288	26	.
1980	13,182	1,714,282	716,684	29	.
1990	12,255	1,815,960	689,309	30	.
2000	12,301	1,975,425	709,154	32	.
2010	12,831	2,126,179	700,768	31	.

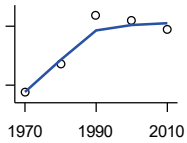
**POPULATION AGE 65 AND OVER  
(DECENNIAL CENSUS)**



U.S. Census Bureau: Decennial Census

Year	County	State of Kansas	Non Metro Kansas	County Rank	Per 1000 or \$ Per Capita
1970	2,722	266,201	149,049	27	.
1980	2,785	306,263	164,932	30	.
1990	2,859	342,571	168,579	29	.
2000	2,723	356,229	161,769	30	.
2010	2,601	376,116	154,214	34	.

**POPULATION AGE 85 AND OVER  
(DECENNIAL CENSUS)**



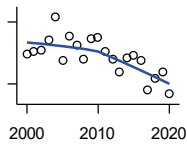
U.S. Census Bureau: Decennial Census

Year	County	State of Kansas	Non Metro Kansas	County Rank	Per 1000 or \$ Per Capita
1970	231	23,899	13,698	31	.
1980	305	33,455	18,804	32	.
1990	428	42,241	22,970	24	.
2000	416	51,770	26,644	33	.
2010	393	59,318	26,197	34	.

County: county value. Kansas: state value. County Rank: highest county value ranked #1. (\$000): thousands of dollars. Nonmetro Kansas: Kansas total less Metropolitan Areas as defined by the Office of Management and Budget (OMB; released 3/6/2020). Per 1000: For nonmoney amounts, Per 1000=(county value / county population for the same year as the data) x 1000. \$ Per capita=(county value / county population for the same year as the data). Value= . indicates missing or suppressed data or value not calculated.

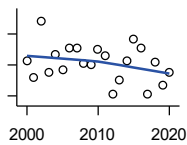
**Vital Statistics and Health**

**BIRTHS (LIVE)**



Kansas Department of Health and Environment

Year	County	State of Kansas	Non Metro Kansas	County Rank	Per 1000 or \$ Per Capita
2000	209	39,654	12,980	31	12.5
2001	212	38,832	12,527	31	12.6
2002	213	39,338	12,476	29	12.7
2003	222	39,353	12,342	30	13.2
2004	245	39,553	12,398	28	14.5
2005	203	39,701	12,382	31	12.0
2006	226	40,896	12,726	31	13.4
2007	218	41,951	12,990	33	12.9
2008	204	41,815	12,970	32	12.1
2009	224	41,388	12,949	30	13.2
2010	225	40,439	12,200	31	13.3
2011	212	39,628	12,098	31	12.7
2012	204	40,304	12,217	31	12.2
2013	191	38,805	11,877	33	11.4
2014	205	39,193	12,052	32	12.4
2015	208	39,126	11,836	31	12.7
2016	203	38,048	11,467	31	12.4
2017	174	36,464	10,968	34	10.7
2018	185	36,268	10,826	31	11.4
2019	192	35,395	10,506	32	11.9
2020	170	34,368	10,222	33	10.4



**DEATHS**

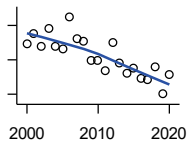
Kansas Department of Health and Environment

Year	County	State of Kansas	Non Metro Kansas	County Rank	Per 1000 or \$ Per Capita
2000	183	24,676	11,175	31	10.9
2001	172	24,590	10,807	32	10.2
2002	208	24,968	11,079	30	12.4
2003	175	24,417	10,615	32	10.4
2004	187	23,720	10,369	28	11.0
2005	177	24,632	10,599	33	10.5
2006	191	24,489	10,538	30	11.3
2007	191	24,413	10,601	27	11.3
2008	181	24,896	10,593	31	10.8
2009	180	23,997	9,938	30	10.6
2010	190	24,428	10,105	29	11.2
2011	186	25,114	10,520	30	11.1
2012	161	25,084	10,259	34	9.6
2013	170	25,347	10,249	33	10.2
2014	183	25,731	10,275	33	11.1
2015	197	26,611	10,539	31	12.0
2016	191	26,129	10,231	29	11.7
2017	161	26,725	10,452	36	9.9
2018	182	27,213	10,389	30	11.3
2019	167	27,312	10,569	35	10.4
2020	175	31,667	11,850	34	10.7

County: county value. Kansas: state value. County Rank: highest county value ranked #1. (\$000): thousands of dollars. Nonmetro Kansas: Kansas total less Metropolitan Areas as defined by the Office of Management and Budget (OMB; released 3/6/2020). Per 1000: For nonmoney amounts, Per 1000=(county value / county population for the same year as the data) x 1000. \$ Per capita=(county value / county population for the same year as the data). Value= . indicates missing or suppressed data or value not calculated.

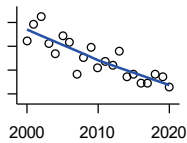
**Vital Statistics and Health**

**MARRIAGES**



Kansas Department of Health and Environment

Year	County	State of Kansas	Non Metro Kansas	County Rank	Per 1000 or \$ Per Capita
2000	118	20,426	7,333	31	7.0
2001	130	20,457	7,441	30	7.7
2002	116	19,783	6,794	31	6.9
2003	137	18,722	6,469	27	8.1
2004	116	19,174	6,756	29	6.8
2005	113	18,745	6,481	31	6.7
2006	150	18,836	6,433	26	8.9
2007	124	18,910	6,464	30	7.4
2008	121	18,717	6,283	28	7.2
2009	100	18,268	6,015	30	5.9
2010	100	18,150	5,925	31	5.9
2011	88	17,897	5,977	33	5.3
2012	120	18,154	5,752	28	7.2
2013	96	17,328	5,533	31	5.8
2014	84	17,655	5,535	35	5.1
2015	90	17,595	5,400	32	5.5
2016	79	17,948	5,340	33	4.8
2017	77	17,274	5,163	32	4.7
2018	92	16,362	4,999	30	5.7
2019	60	15,403	4,650	37	3.7
2020	83	14,038	4,066	31	5.1



**DIVORCES AND ANNULMENTS**

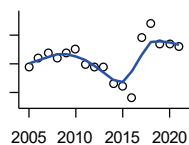
Kansas Department of Health and Environment

Year	County	State of Kansas	Non Metro Kansas	County Rank	Per 1000 or \$ Per Capita
2000	65	10,105	4,000	28	3.9
2001	78	9,885	3,818	26	4.6
2002	85	9,645	3,716	25	5.1
2003	62	8,644	3,464	28	3.7
2004	54	8,759	3,506	30	3.2
2005	69	8,476	3,311	26	4.1
2006	63	9,145	3,387	30	3.7
2007	37	9,347	3,402	37	2.2
2008	51	9,818	3,655	35	3.0
2009	59	10,333	3,463	33	3.5
2010	42	10,579	3,530	38	2.5
2011	47	10,445	3,347	35	2.8
2012	44	9,782	3,040	34	2.6
2013	56	9,085	2,973	31	3.4
2014	34	8,441	2,682	36	2.1
2015	36	8,036	2,704	37	2.2
2016	29	7,198	2,424	39	1.8
2017	29	6,494	2,315	36	1.8
2018	36	6,538	2,269	33	2.2
2019	34	6,398	2,357	33	2.1
2020	26	5,169	1,866	36	1.6

County: county value. Kansas: state value. County Rank: highest county value ranked #1. (\$000): thousands of dollars. Nonmetro Kansas: Kansas total less Metropolitan Areas as defined by the Office of Management and Budget (OMB; released 3/6/2020). Per 1000: For nonmoney amounts, Per 1000=(county value / county population for the same year as the data) x 1000. \$ Per capita=(county value / county population for the same year as the data). Value= . indicates missing or suppressed data or value not calculated.

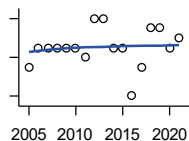
**Vital Statistics and Health**

**PHYSICIANS: M.D. PHYSICIANS**



Kansas Department of Health and Environment (1981-2005,2010-);Kansas Health Policy Authority (2006-2009)

Year	County	State of Kansas	Non Metro Kansas	County Rank	Per 1000 or \$ Per Capita
2005	19	4,241	912	24	1.1
2006	22	4,310	953	24	1.3
2007	24	5,309	1,046	23	1.4
2008	22	5,110	1,016	24	1.3
2009	24	5,249	996	23	1.4
2010	25	5,192	979	23	1.5
2011	20	5,243	983	25	1.2
2012	19	5,693	1,033	27	1.1
2013	19	6,106	1,071	29	1.1
2014	13	5,839	951	32	0.8
2015	12	5,703	855	33	0.7
2016	8	4,278	643	31	0.5
2017	29	6,332	1,047	20	1.8
2018	34	6,079	1,065	17	2.1
2019	27	6,435	1,036	22	1.7
2020	27	6,668	1,045	24	1.7
2021	26	6,745	1,042	24	1.6



**PHYSICIANS: D.O. PHYSICIANS**

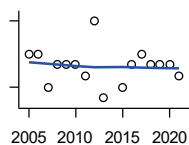
Kansas Department of Health and Environment (1981-2005,2010-);Kansas Health Policy Authority (2006-2009)

Year	County	State of Kansas	Non Metro Kansas	County Rank	Per 1000 or \$ Per Capita
2005	3	553	174	33	0.2
2006	5	508	171	23	0.3
2007	5	569	169	22	0.3
2008	5	558	166	22	0.3
2009	5	564	160	20	0.3
2010	5	583	169	22	0.3
2011	4	502	152	25	0.2
2012	8	718	200	16	0.5
2013	8	829	210	17	0.5
2014	5	817	189	22	0.3
2015	5	819	190	22	0.3
2016	0	632	136	105	0.0
2017	3	579	129	30	0.2
2018	7	871	164	16	0.4
2019	7	951	212	20	0.4
2020	5	1,018	204	22	0.3
2021	6	1,095	217	19	0.4

County: county value. Kansas: state value. County Rank: highest county value ranked #1. (\$000): thousands of dollars. Nonmetro Kansas: Kansas total less Metropolitan Areas as defined by the Office of Management and Budget (OMB; released 3/6/2020). Per 1000: For nonmoney amounts, Per 1000=(county value / county population for the same year as the data) x 1000. \$ Per capita=(county value / county population for the same year as the data). Value= . indicates missing or suppressed data or value not calculated.

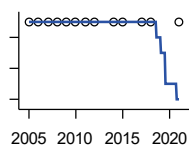
**Vital Statistics and Health**

**DENTISTS**



Kansas Department of Health and Environment (1981-2006,2010-); Kansas Health Policy Authority (2007-2009)

Year	County	State of Kansas	Non Metro Kansas	County Rank	Per 1000 or \$ Per Capita
2005	9	1,347	363	24	0.5
2006	9	1,381	361	24	0.5
2007	6	1,335	350	29	0.4
2008	8	1,392	353	24	0.5
2009	8	1,353	350	24	0.5
2010	8	1,401	365	23	0.5
2011	7	1,338	346	28	0.4
2012	12	1,434	392	22	0.7
2013	5	1,212	328	34	0.3
2015	6	1,240	327	27	0.4
2016	8	1,456	350	24	0.5
2017	9	1,467	350	22	0.6
2018	8	1,604	359	25	0.5
2019	8	1,646	355	26	0.5
2020	8	1,646	355	26	0.5
2021	7	1,688	362	29	0.4



**NUMBER OF HOSPITALS**

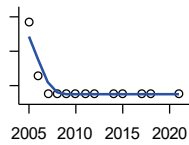
American Hospital Association, American Hospital Association Guide to the Health Care Field

Year	County	State of Kansas	Non Metro Kansas	County Rank	Per 1000 or \$ Per Capita
2005	1	158	105	96	.
2006	1	158	105	96	.
2007	1	159	104	95	.
2008	1	159	104	95	.
2009	1	158	105	96	.
2010	1	158	104	96	.
2011	1	158	103	96	.
2012	1	157	103	96	.
2014	1	156	.	96	.
2015	1	155	103	96	.
2017	1	157	102	96	.
2018	1	154	99	95	.
2021	1	151	.	95	.

County: county value. Kansas: state value. County Rank: highest county value ranked #1. (\$000): thousands of dollars. Nonmetro Kansas: Kansas total less Metropolitan Areas as defined by the Office of Management and Budget (OMB; released 3/6/2020). Per 1000: For nonmoney amounts, Per 1000=(county value / county population for the same year as the data) x 1000. \$ Per capita=(county value / county population for the same year as the data). Value= . indicates missing or suppressed data or value not calculated.

**Vital Statistics and Health**

**NUMBER OF HOSPITAL BEDS**

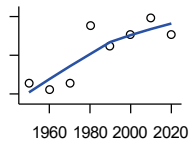


Kansas Department of Health and Environment

Year	County	State of Kansas	Non Metro Kansas	County Rank	Per 1000 or \$ Per Capita
2005	67	12,389	5,687	44	4.0
2006	36	11,992	5,514	69	2.1
2007	25	12,171	5,637	84	1.5
2008	25	12,332	5,700	85	1.5
2009	25	12,283	5,652	86	1.5
2010	25	12,218	5,521	86	1.5
2011	25	12,182	5,335	85	1.5
2012	25	12,002	5,355	85	1.5
2014	25	12,034	.	84	1.5
2015	25	11,926	5,330	85	1.5
2017	25	11,491	4,825	83	1.5
2018	25	11,448	4,583	82	1.5
2021	25	11,199	.	76	1.5

**Housing**

**HOUSING UNITS (DECENNIAL)**



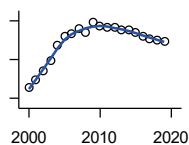
U.S. Census Bureau: Decennial Census

Year	County	State of Kansas	Non Metro Kansas	County Rank	Per 1000 or \$ Per Capita
1950	6,311	586,650	328,210	25	293.6
1960	6,251	672,899	329,380	26	299.1
1970	6,309	789,735	363,824	28	329.2
1980	6,910	955,207	416,877	30	375.6
1990	6,691	1,044,112	417,062	31	395.2
2000	6,818	1,131,395	422,218	34	406.5
2010	6,990	1,233,215	424,050	34	413.0
2020	6,814	1,275,689	413,120	33	416.8

County: county value. Kansas: state value. County Rank: highest county value ranked #1. (\$000): thousands of dollars. Nonmetro Kansas: Kansas total less Metropolitan Areas as defined by the Office of Management and Budget (OMB; released 3/6/2020). Per 1000: For nonmoney amounts, Per 1000=(county value / county population for the same year as the data) x 1000. \$ Per capita=(county value / county population for the same year as the data). Value= . indicates missing or suppressed data or value not calculated.

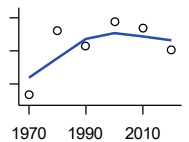
**Housing**

**HOUSING UNITS (ESTIMATED)**



U.S. Census Bureau

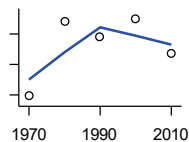
Year	County	State of Kansas	Non Metro Kansas	County Rank	Per 1000 or \$ Per Capita
2000	6,827	1,134,529	422,560	34	407.0
2001	6,848	1,146,858	423,876	34	406.0
2002	6,871	1,160,129	425,089	34	408.4
2003	6,896	1,171,620	425,936	34	408.7
2004	6,936	1,184,702	426,593	34	409.5
2005	6,960	1,195,791	426,964	34	412.7
2006	6,967	1,206,692	426,713	34	412.2
2007	6,979	1,217,608	426,090	34	413.8
2008	6,971	1,225,625	425,768	34	414.4
2009	6,997	1,230,552	424,776	34	412.4
2010	6,988	1,234,456	424,174	34	412.9
2011	6,984	1,238,052	424,549	34	416.9
2012	6,982	1,241,992	425,116	34	416.2
2013	6,978	1,246,675	425,699	34	418.1
2014	6,975	1,253,284	426,269	34	422.1
2015	6,970	1,258,999	426,844	34	424.5
2016	6,961	1,265,684	427,465	34	425.1
2017	6,955	1,273,536	427,746	34	426.7
2018	6,950	1,280,649	428,099	34	429.7
2019	6,947	1,288,401	428,495	34	432.2



**OCCUPIED HOUSING UNITS**

U.S. Census Bureau: Decennial Census

Year	County	State of Kansas	Non Metro Kansas	County Rank	Per 1000 or \$ Per Capita
1970	5,832	727,364	326,494	28	304.3
1980	6,225	872,239	371,693	30	338.4
1990	6,129	944,726	365,901	30	362.0
2000	6,275	1,037,891	375,313	33	374.1
2010	6,241	1,112,096	370,269	33	368.8
2020	6,109	1,151,360	356,330	33	373.7



**OWNER OCCUPIED HOUSING UNITS**

U.S. Census Bureau: Decennial Census

Year	County	State of Kansas	Non Metro Kansas	County Rank	Per 1000 or \$ Per Capita
1970	4,092	502,585	236,338	28	213.5
1980	4,580	612,433	277,096	32	249.0
1990	4,482	641,762	263,099	32	264.7
2000	4,599	718,703	271,350	33	274.2
2010	4,375	753,532	261,763	33	258.5

County: county value. Kansas: state value. County Rank: highest county value ranked #1. (\$000): thousands of dollars. Nonmetro Kansas: Kansas total less Metropolitan Areas as defined by the Office of Management and Budget (OMB; released 3/6/2020). Per 1000: For nonmoney amounts, Per 1000=(county value / county population for the same year as the data) x 1000. \$ Per capita=(county value / county population for the same year as the data). Value= . indicates missing or suppressed data or value not calculated.

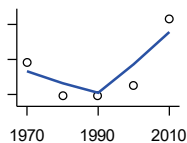


**Housing**

**RENTER OCCUPIED HOUSING UNITS**

Year	County	State of Kansas	Non Metro Kansas	County Rank	Per 1000 or \$ Per Capita
1970	1,740	224,779	90,156	28	90.8
1980	1,645	259,806	94,597	31	89.4
1990	1,647	302,964	102,802	30	97.3
2000	1,676	319,188	103,963	30	99.9
2010	1,866	358,564	108,506	29	110.3

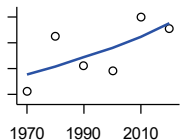
U.S. Census Bureau: Decennial Census



**VACANT HOUSING UNITS**

Year	County	State of Kansas	Non Metro Kansas	County Rank	Per 1000 or \$ Per Capita
1970	463	60,058	35,954	38	24.2
1980	674	77,912	41,584	30	36.6
1990	562	99,386	51,161	46	33.2
2000	543	93,309	46,904	45	32.4
2010	749	121,119	53,781	39	44.3
2020	705	124,329	56,790	42	43.1

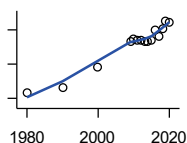
U.S. Census Bureau: Decennial Census



**MEDIAN VALUE (\$): OWNER OCCUPIED HOUSING UNITS**

Year	County	State of Kansas	Non Metro Kansas	County Rank	Per 1000 or \$ Per Capita
1980	26,600	37,800	.	54	.
1990	32,400	52,200	.	53	.
2000	56,500	83,500	.	44	.
2009	85,900	118,500	.	32	.
2010	89,200	122,600	.	28	.
2011	87,600	125,500	.	33	.
2012	87,800	127,400	.	35	.
2013	87,000	128,400	.	39	.
2014	85,800	129,400	.	44	.
2015	88,100	132,000	.	43	.
2016	100,300	135,300	.	32	.
2017	92,900	139,200	.	43	.
2018	101,600	145,400	.	35	.
2019	110,400	151,900	.	35	.
2020	108,700	157,600	.	37	.

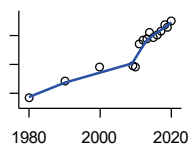
U.S. Census Bureau, Decennial Census (- 2000), (2009 -) American Community Survey five-year average ending in year shown.



County: county value. Kansas: state value. County Rank: highest county value ranked #1. (\$000): thousands of dollars. Nonmetro Kansas: Kansas total less Metropolitan Areas as defined by the Office of Management and Budget (OMB; released 3/6/2020). Per 1000: For nonmoney amounts, Per 1000=(county value / county population for the same year as the data) x 1000. \$ Per capita=(county value / county population for the same year as the data). Value= . indicates missing or suppressed data or value not calculated.

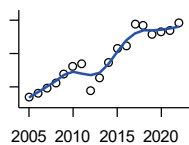
**Housing**

**MEDIAN CONTRACT RENT (\$)**



U.S. Census Bureau, Decennial Census (- 2000), (2009 -) American Community Survey five-year average ending in year shown.

Year	County	State of Kansas	Non Metro Kansas	County Rank	Per 1000 or \$ Per Capita
1980	166	219	.	48	.
1990	285	372	.	43	.
2000	378	498	.	51	.
2009	395	491	.	26	.
2010	386	507	.	37	.
2011	544	699	.	53	.
2012	570	715	.	49	.
2013	576	732	.	51	.
2014	622	748	.	42	.
2015	586	757	.	61	.
2016	600	775	.	57	.
2017	626	801	.	53	.
2018	675	831	.	35	.
2019	660	850	.	48	.
2020	702	863	.	31	.



**FAIR MARKET RENT: 2 BEDROOMS**

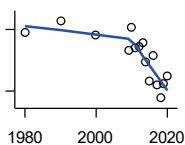
U.S. Department of Housing and Urban Development (HUD)

Year	County	State of Kansas	Non Metro Kansas	County Rank	Per 1000 or \$ Per Capita
2005	521	.	.	21	.
2006	532	.	.	23	.
2007	548	.	.	22	.
2008	563	628	.	23	.
2009	587	653	.	23	.
2010	611	678	.	22	.
2011	620	684	.	22	.
2012	540	660	.	105	.
2013	577	712	.	105	.
2014	622	746	.	105	.
2015	665	756	.	34	.
2016	674	781	.	37	.
2017	739	811	.	30	.
2018	733	815	.	34	.
2019	706	828	.	34	.
2020	714	855	.	105	.
2021	718	874	.	105	.
2022	742	879	.	105	.

County: county value. Kansas: state value. County Rank: highest county value ranked #1. (\$000): thousands of dollars. Nonmetro Kansas: Kansas total less Metropolitan Areas as defined by the Office of Management and Budget (OMB; released 3/6/2020). Per 1000: For nonmoney amounts, Per 1000=(county value / county population for the same year as the data) x 1000. \$ Per capita=(county value / county population for the same year as the data). Value= . indicates missing or suppressed data or value not calculated.

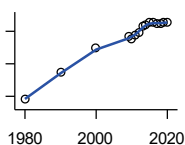
**Education**

**POPULATION AGE 25+**



U.S. Census Bureau, Decennial Census (- 2000), (2009 -) American Community Survey five-year average ending in year shown.

Year	County	State of Kansas	Non Metro Kansas	County Rank	Per 1000 or \$ Per Capita
1980	10,386	1,388,102	596,639	.	.
1990	10,442	1,565,936	608,745	.	.
2000	10,375	1,701,207	618,131	.	.
2009	10,297	1,775,427	600,188	.	.
2010	10,412	1,802,904	608,716	.	.
2011	10,312	1,822,400	610,386	.	.
2012	10,319	1,838,079	611,103	.	.
2013	10,335	1,850,010	610,374	.	.
2014	10,241	1,861,894	609,612	.	.
2015	10,150	1,869,698	606,967	.	.
2016	10,273	1,878,495	604,563	.	.
2017	10,127	1,886,741	601,076	.	.
2018	10,065	1,894,675	598,487	.	.
2019	10,135	1,902,279	595,501	.	.
2020	10,171	1,911,990	593,923	.	.



**PERCENT HS GRADUATE OR HIGHER AGE 25+**

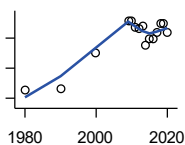
U.S. Census Bureau, Decennial Census (- 2000), (2009 -) American Community Survey five-year average ending in year shown.

Year	County	State of Kansas	Non Metro Kansas	County Rank	Per 1000 or \$ Per Capita
1980	69.0	73.3	.	52	.
1990	77.5	81.3	.	55	.
2000	84.7	86.0	.	54	.
2009	88.3	89.0	.	57	.
2010	87.8	89.2	.	68	.
2011	88.8	89.5	.	59	.
2012	89.7	89.7	.	51	.
2013	91.7	89.8	.	27	.
2014	91.8	90.0	.	32	.
2015	92.8	90.2	.	25	.
2016	92.6	90.3	.	29	.
2017	92.4	90.5	.	36	.
2018	92.4	90.7	.	37	.
2019	92.7	91.0	.	34	.
2020	92.7	91.4	.	45	.

County: county value. Kansas: state value. County Rank: highest county value ranked #1. (\$000): thousands of dollars. Nonmetro Kansas: Kansas total less Metropolitan Areas as defined by the Office of Management and Budget (OMB; released 3/6/2020). Per 1000: For nonmoney amounts, Per 1000=(county value / county population for the same year as the data) x 1000. \$ Per capita=(county value / county population for the same year as the data). Value= . indicates missing or suppressed data or value not calculated.

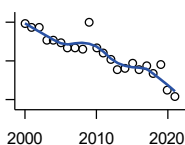
**Education**

**PERCENT BACHELORS DEGREE OR HIGHER AGE 25+**



U.S. Census Bureau, Decennial Census (- 2000), (2009 -) American Community Survey five-year average ending in year shown.

Year	County	State of Kansas	Non Metro Kansas	County Rank	Per 1000 or \$ Per Capita
1980	13.1	17.0	.	33	.
1990	13.3	21.1	.	57	.
2000	18.0	25.8	.	33	.
2009	22.3	28.8	.	20	.
2010	22.3	29.3	.	21	.
2011	21.4	29.7	.	31	.
2012	21.2	30.0	.	33	.
2013	21.6	30.3	.	36	.
2014	19.0	30.7	.	65	.
2015	19.9	31.0	.	62	.
2016	19.9	31.6	.	63	.
2017	20.7	32.3	.	59	.
2018	21.9	32.9	.	52	.
2019	22.0	33.4	.	54	.
2020	20.8	33.9	.	66	.



**PUBLIC SCHOOL ENROLLMENT (FTE) SCHOOL YEAR BEGINNING...**

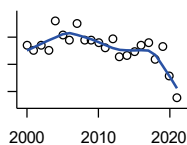
Kansas State Department of Education

Year	County	State of Kansas	Non Metro Kansas	County Rank	Per 1000 or \$ Per Capita
2000	2,392.1	448,150.8	166,722.5	37	142.6
2001	2,371.0	447,047.1	164,365.0	37	140.6
2002	2,370.1	444,860.3	161,555.4	36	140.9
2003	2,309.6	443,620.6	159,130.2	36	136.9
2004	2,306.1	441,957.2	156,566.3	36	136.2
2005	2,292.1	442,708.4	155,197.2	36	135.9
2006	2,268.6	444,878.7	153,842.3	35	134.2
2007	2,267.6	446,831.3	152,337.1	36	134.5
2008	2,263.6	447,730.0	150,572.7	35	134.6
2009	2,396.7	453,202.5	151,246.8	32	141.3
2010	2,269.6	455,405.0	151,023.8	35	134.1
2011	2,239.4	456,000.5	150,257.9	36	133.7
2012	2,206.9	458,496.4	150,463.0	36	131.6
2013	2,153.4	461,950.0	150,420.9	36	129.0
2014	2,163.0	464,395.4	150,499.4	36	130.9
2015	2,184.8	463,504.0	149,539.3	36	133.1
2016	2,156.0	459,920.3	147,293.5	36	131.7
2017	2,176.0	477,977.9	152,096.3	37	133.5
2018	2,133.2	476,481.7	150,456.8	36	131.9
2019	2,181.6	476,525.1	150,045.2	36	135.7
2020	2,046.1	462,088.0	146,369.6	37	125.2
2021	2,015.1	463,652.4	147,500.4	36	124.1

County: county value. Kansas: state value. County Rank: highest county value ranked #1. (\$000): thousands of dollars. Nonmetro Kansas: Kansas total less Metropolitan Areas as defined by the Office of Management and Budget (OMB; released 3/6/2020). Per 1000: For nonmoney amounts, Per 1000=(county value / county population for the same year as the data) x 1000. \$ Per capita=(county value / county population for the same year as the data). Value= . indicates missing or suppressed data or value not calculated.

**Education**

**PUPIL/TEACHER RATIO SCHOOL YEAR BEGINNING...**

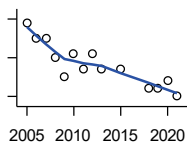


Kansas State Department of Education

Year	County	State of Kansas	Non Metro Kansas	County Rank	Per 1000 or \$ Per Capita
2000	14.7	15.4	13.9	28	.
2001	14.5	15.3	13.8	27	.
2002	14.7	15.4	13.9	27	.
2003	14.5	15.5	13.8	28	.
2004	15.6	15.3	13.6	15	.
2005	15.1	15.0	13.4	16	.
2006	14.9	14.7	13.2	16	.
2007	15.5	14.6	13.1	7	.
2008	14.9	14.4	12.9	11	.
2009	14.9	14.8	13.2	15	.
2010	14.8	15.2	13.6	23	.
2011	14.6	15.1	13.5	25	.
2012	14.9	15.1	13.5	20	.
2013	14.3	15.1	13.5	27	.
2014	14.3	15.0	13.6	29	.
2015	14.5	15.2	13.9	29	.
2016	14.7	15.1	13.7	22	.
2017	14.8	15.5	13.9	28	.
2018	14.2	15.3	13.8	30	.
2019	14.6	15.2	13.7	26	.
2020	13.6	14.7	13.4	32	.
2021	12.8	14.8	13.5	48	.

**Social Environment**

**CHILD CARE FACILITIES: TOTAL CHILD CARE FACILITIES**

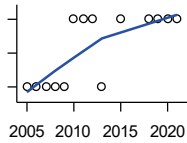


Kansas Department of Health and Environment, Bureau of Adult and Child Care

Year	County	State of Kansas	Non Metro Kansas	County Rank	Per 1000 or \$ Per Capita
2005	39	8,258	3,378	40	2.3
2006	35	8,442	3,429	45	2.1
2007	35	8,241	3,317	46	2.1
2008	30	8,011	3,150	46	1.8
2009	25	7,853	3,066	56	1.5
2010	31	7,354	2,858	46	1.8
2011	27	6,835	2,623	46	1.6
2012	31	6,346	2,409	41	1.8
2013	27	5,754	2,179	41	1.6
2015	27	5,289	2,146	44	1.6
2018	22	4,607	1,904	42	1.4
2019	22	4,287	1,774	41	1.4
2020	24	4,274	1,798	43	1.5
2021	20	4,002	1,700	43	1.2

County: county value. Kansas: state value. County Rank: highest county value ranked #1. (\$000): thousands of dollars. Nonmetro Kansas: Kansas total less Metropolitan Areas as defined by the Office of Management and Budget (OMB; released 3/6/2020). Per 1000: For nonmoney amounts, Per 1000=(county value / county population for the same year as the data) x 1000. \$ Per capita=(county value / county population for the same year as the data). Value= . indicates missing or suppressed data or value not calculated.

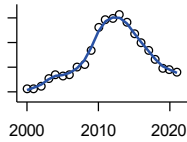
**Social Environment**



**CHILD CARE FACILITIES:  
PRESCHOOLS**

Kansas Department of Health and Environment, Bureau of Adult and Child Care

Year	County	State of Kansas	Non Metro Kansas	County Rank	Per 1000 or \$ Per Capita
2005	0	243	140	105	0.0
2006	0	221	127	105	0.0
2007	0	208	119	105	0.0
2008	0	204	114	105	0.0
2009	0	194	107	105	0.0
2010	1	194	112	73	0.1
2011	1	209	123	76	0.1
2012	1	201	121	74	0.1
2013	0	140	84	105	0.0
2015	1	185	113	71	0.1
2018	1	150	94	60	0.1
2019	1	134	83	56	0.1
2020	1	126	78	55	0.1
2021	1	120	74	53	0.1



**FOOD STAMP BENEFICIARIES**

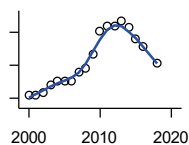
Kansas Social and Rehabilitation Services

Year	County	State of Kansas	Non Metro Kansas	County Rank	Per 1000 or \$ Per Capita
2000	1,056	110,619	44,825	27	63.0
2001	1,060	117,241	46,741	27	62.8
2002	1,124	131,726	52,342	28	66.8
2003	1,272	155,908	61,280	28	75.4
2004	1,354	167,971	65,852	28	79.9
2005	1,331	175,710	67,261	29	78.9
2006	1,342	182,821	67,487	29	79.4
2007	1,510	184,035	66,979	28	89.5
2008	1,566	187,377	67,160	27	93.1
2009	1,853	208,007	73,637	26	109.2
2010	2,306	259,609	90,919	26	136.3
2011	2,475	296,542	101,155	28	147.7
2012	2,489	303,257	102,478	27	148.4
2013	2,569	316,424	105,345	28	153.9
2014	2,406	301,377	100,761	27	145.6
2015	2,171	277,614	93,353	26	132.2
2016	2,004	258,412	88,343	28	122.4
2017	1,838	239,592	82,070	27	112.8
2018	1,650	219,738	75,208	27	102.0
2019	1,485	205,261	69,899	27	92.4
2020	1,440	198,457	66,721	27	88.1
2021	1,395	203,424	68,883	28	85.9

County: county value. Kansas: state value. County Rank: highest county value ranked #1. (\$000): thousands of dollars. Nonmetro Kansas: Kansas total less Metropolitan Areas as defined by the Office of Management and Budget (OMB; released 3/6/2020). Per 1000: For nonmoney amounts, Per 1000=(county value / county population for the same year as the data) x 1000. \$ Per capita=(county value / county population for the same year as the data). Value= . indicates missing or suppressed data or value not calculated.

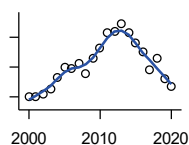
**Social Environment**

**PERCENT OF POPULATION RECEIVING FOOD STAMPS**



U.S. Dept. of Agriculture Food and Nutrition Service (1990-1997); Kansas Social and Rehabilitation Services (1998- )

Year	County	State of Kansas	Non Metro Kansas	County Rank	Per 1000 or \$ Per Capita
2000	6.3	4.1	.	14	.
2001	6.3	4.3	.	17	.
2002	6.7	4.9	.	21	.
2003	7.6	5.7	.	21	.
2004	8.1	6.2	.	19	.
2005	8.0	6.4	.	22	.
2006	8.1	6.6	.	19	.
2007	9.2	6.6	.	14	.
2008	9.6	6.7	.	12	.
2009	11.3	7.4	.	10	.
2010	14.1	9.1	.	7	.
2011	14.7	10.3	.	10	.
2012	14.8	10.5	.	11	.
2013	15.4	10.9	.	12	.
2014	14.6	10.4	.	12	.
2015	13.2	9.6	.	14	.
2016	12.2	8.9	.	14	.
2018	10.2	7.5	.	17	.



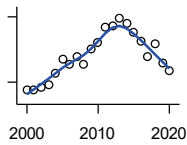
**ESTIMATED NUMBER OF PEOPLE IN POVERTY**

U.S. Census Bureau, Small Area Income and Poverty Estimates

Year	County	State of Kansas	Non Metro Kansas	County Rank	Per 1000 or \$ Per Capita
2000	1,802	235,087	98,984	30	107.4
2001	1,795	252,134	106,257	31	106.4
2002	1,841	265,673	107,542	31	109.4
2003	1,897	278,163	107,323	31	112.4
2004	2,056	297,733	111,534	30	121.4
2005	2,202	310,667	118,768	29	130.6
2006	2,173	327,102	123,700	30	128.6
2007	2,243	301,828	111,953	28	133.0
2008	2,114	307,804	113,015	30	125.7
2009	2,316	359,692	123,394	30	136.5
2010	2,451	374,677	131,502	29	144.8
2011	2,660	383,859	134,912	30	158.8
2012	2,681	392,095	133,800	29	159.8
2013	2,782	391,718	134,067	29	166.7
2014	2,666	381,506	130,213	28	161.4
2015	2,525	366,069	123,073	29	153.8
2016	2,398	343,773	121,314	30	146.4
2017	2,158	335,371	116,854	31	132.4
2018	2,326	336,892	114,490	28	143.8
2019	2,051	319,931	110,692	31	127.6
2020	1,945	300,931	100,998	30	119.0

County: county value. Kansas: state value. County Rank: highest county value ranked #1. (\$000): thousands of dollars. Nonmetro Kansas: Kansas total less Metropolitan Areas as defined by the Office of Management and Budget (OMB; released 3/6/2020). Per 1000: For nonmoney amounts, Per 1000=(county value / county population for the same year as the data) x 1000. \$ Per capita=(county value / county population for the same year as the data). Value= . indicates missing or suppressed data or value not calculated.

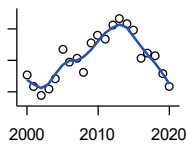
**Social Environment**



**ESTIMATED % OF PEOPLE IN POVERTY**

U.S. Census Bureau, Small Area Income and Poverty Estimates

Year	County	State of Kansas	Non Metro Kansas	County Rank	Per 1000 or \$ Per Capita
2000	11.3	8.9	.	35	.
2001	11.3	9.5	.	53	.
2002	11.5	10.0	.	46	.
2003	11.8	10.4	.	30	.
2004	12.8	11.1	.	25	.
2005	14.1	11.7	.	24	.
2006	13.7	12.2	.	36	.
2007	14.3	11.2	.	17	.
2008	13.6	11.3	.	22	.
2009	15.0	13.2	.	23	.
2010	15.6	13.5	.	24	.
2011	17.1	13.8	.	16	.
2012	17.2	14.0	.	17	.
2013	17.9	13.9	.	12	.
2014	17.4	13.5	.	16	.
2015	16.6	12.9	.	15	.
2016	15.8	12.2	.	16	.
2017	14.3	11.9	.	25	.
2018	15.5	11.9	.	15	.
2019	13.8	11.3	.	24	.
2020	13.1	10.6	.	19	.



**EST. NUMBER OF RELATED CHILDREN AGE 5 TO 17 IN FAMILIES IN POVERTY**

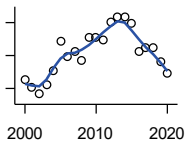
U.S. Census Bureau, Small Area Income and Poverty Estimates

Year	County	State of Kansas	Non Metro Kansas	County Rank	Per 1000 or \$ Per Capita
2000	402	50,388	21,854	26	24.0
2001	365	53,755	23,094	32	21.6
2002	337	52,453	21,423	31	20.0
2003	359	55,419	21,809	31	21.3
2004	390	59,392	22,313	30	23.0
2005	487	60,203	24,244	26	28.9
2006	443	64,427	25,326	28	26.2
2007	457	61,149	23,639	27	27.1
2008	411	59,842	22,661	28	24.4
2009	506	71,850	26,251	28	29.8
2010	528	81,077	29,804	29	31.2
2011	517	82,311	29,306	32	30.9
2012	564	87,594	29,781	28	33.6
2013	583	84,325	29,253	28	34.9
2014	568	83,873	29,354	28	34.4
2015	546	78,192	27,482	28	33.3
2016	455	67,810	25,074	30	27.8
2017	472	67,873	25,032	30	29.0
2018	464	68,153	24,928	31	28.7
2019	408	64,613	23,117	31	25.4
2020	368	59,792	21,143	30	22.5

County: county value. Kansas: state value. County Rank: highest county value ranked #1. (\$000): thousands of dollars. Nonmetro Kansas: Kansas total less Metropolitan Areas as defined by the Office of Management and Budget (OMB; released 3/6/2020). Per 1000: For nonmoney amounts, Per 1000=(county value / county population for the same year as the data) x 1000. \$ Per capita=(county value / county population for the same year as the data). Value= . indicates missing or suppressed data or value not calculated.



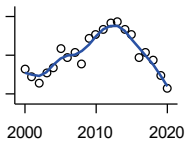
**Social Environment**



EST. % OF RELATED CHILDREN AGE 5 TO 17 IN FAMILIES IN POVERTY

U.S. Census Bureau, Small Area Income and Poverty Estimates

Year	County	State of Kansas	Non Metro Kansas	County Rank	Per 1000 or \$ Per Capita
2000	13.0	10.0	.	44	.
2001	12.2	10.8	.	64	.
2002	11.3	10.5	.	61	.
2003	12.4	11.3	.	54	.
2004	14.1	12.5	.	35	.
2005	17.7	12.8	.	17	.
2006	15.8	13.2	.	44	.
2007	16.5	12.6	.	23	.
2008	15.4	12.3	.	40	.
2009	18.2	14.7	.	25	.
2010	18.2	15.9	.	36	.
2011	17.9	16.2	.	35	.
2012	20.0	17.2	.	28	.
2013	20.7	16.5	.	20	.
2014	20.7	16.4	.	19	.
2015	19.9	15.3	.	18	.
2016	16.5	13.2	.	33	.
2017	17.0	13.4	.	36	.
2018	17.0	13.5	.	43	.
2019	15.2	12.9	.	48	.
2020	13.8	11.9	.	53	.



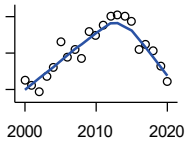
ESTIMATED NUMBER UNDER 18 IN POVERTY

U.S. Census Bureau, Small Area Income and Poverty Estimates

Year	County	State of Kansas	Non Metro Kansas	County Rank	Per 1000 or \$ Per Capita
2000	627	82,619	34,843	27	37.4
2001	591	87,487	36,724	30	35.0
2002	555	84,181	32,870	30	33.0
2003	607	93,896	36,004	31	36.0
2004	634	98,641	36,272	29	37.4
2005	735	100,254	39,118	26	43.6
2006	690	105,193	41,054	29	40.8
2007	714	100,242	37,881	28	42.3
2008	656	100,146	37,552	29	39.0
2009	785	118,187	42,682	28	46.3
2010	804	129,009	46,428	29	47.5
2011	836	133,478	46,832	30	49.9
2012	867	135,261	46,294	28	51.7
2013	872	131,251	44,952	28	52.3
2014	836	125,562	43,933	28	50.6
2015	807	119,994	41,828	28	49.2
2016	689	100,996	37,387	29	42.1
2017	713	102,858	37,955	30	43.7
2018	677	102,616	36,991	31	41.9
2019	596	97,920	34,797	32	37.1
2020	530	88,491	30,767	30	32.4

County: county value. Kansas: state value. County Rank: highest county value ranked #1. (\$000): thousands of dollars. Nonmetro Kansas: Kansas total less Metropolitan Areas as defined by the Office of Management and Budget (OMB; released 3/6/2020). Per 1000: For nonmoney amounts, Per 1000=(county value / county population for the same year as the data) x 1000. \$ Per capita=(county value / county population for the same year as the data). Value= . indicates missing or suppressed data or value not calculated.

**Social Environment**



**ESTIMATED PERCENT UNDER 18 IN POVERTY**

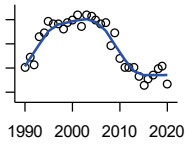
U.S. Census Bureau, Small Area Income and Poverty Estimates

Year	County	State of Kansas	Non Metro Kansas	County Rank	Per 1000 or \$ Per Capita
2000	15.0	11.9	.	45	.
2001	14.5	12.7	.	64	.
2002	13.7	12.1	.	48	.
2003	15.4	13.8	.	44	.
2004	16.4	14.6	.	35	.
2005	19.3	15.2	.	26	.
2006	17.5	15.4	.	48	.
2007	18.4	14.7	.	30	.
2008	17.4	14.6	.	46	.
2009	20.3	17.1	.	27	.
2010	20.0	18.1	.	37	.
2011	21.1	18.8	.	32	.
2012	22.1	19.0	.	27	.
2013	22.2	18.4	.	24	.
2014	22.0	17.6	.	19	.
2015	21.5	16.9	.	18	.
2016	18.4	14.3	.	27	.
2017	18.9	14.7	.	30	.
2018	18.3	14.8	.	40	.
2019	16.6	14.3	.	49	.
2020	14.9	13.0	.	54	.

County: county value. Kansas: state value. County Rank: highest county value ranked #1. (\$000): thousands of dollars. Nonmetro Kansas: Kansas total less Metropolitan Areas as defined by the Office of Management and Budget (OMB; released 3/6/2020). Per 1000: For nonmoney amounts, Per 1000=(county value / county population for the same year as the data) x 1000. \$ Per capita=(county value / county population for the same year as the data). Value= . indicates missing or suppressed data or value not calculated.

**Business**

**ESTABLISHMENTS TOTAL COUNTY BUSINESS PATTERNS**



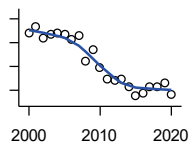
U.S. Census Bureau, County Business Patterns. Beginning with the 2017 data, any tabulation with fewer than 3 establishments were omitted from the release. Data for these establishments are included in the broader total.

Year	County	State of Kansas	Non Metro Kansas	County Rank	Per 1000 or \$ Per Capita
1990	361	65,858	26,802	32	21.3
1991	369	65,941	26,750	32	21.9
1992	363	67,630	27,229	36	21.6
1993	386	68,930	27,655	31	22.8
1994	389	69,822	27,763	33	23.2
1995	399	70,894	28,111	33	23.8
1996	397	72,017	28,353	33	23.7
1997	397	73,924	28,884	34	23.7
1998	392	74,019	28,749	34	23.3
1999	398	74,486	28,536	34	23.7
2000	400	74,939	28,475	33	23.8
2001	404	74,565	28,282	32	24.0
2002	394	75,077	28,183	33	23.4
2003	404	74,972	27,998	32	23.9
2004	403	75,827	28,009	32	23.8
2005	400	76,173	27,830	31	23.7
2006	397	76,446	27,653	30	23.5
2007	398	77,157	27,736	30	23.6
2008	379	76,096	27,314	34	22.5
2009	389	74,698	26,839	31	22.9
2010	368	74,301	26,739	35	21.7
2011	360	73,598	26,555	35	21.5
2012	360	73,944	26,534	34	21.5
2013	361	73,816	26,393	33	21.6
2014	353	74,055	26,292	34	21.4
2015	346	74,526	26,355	36	21.1
2016	351	74,884	26,172	34	21.4
2017	354	74,947	26,093	35	21.7
2018	359	74,559	25,802	34	22.2
2019	362	74,292	25,536	34	22.5
2020	347	73,982	25,178	34	21.2

County: county value. Kansas: state value. County Rank: highest county value ranked #1. (\$000): thousands of dollars. Nonmetro Kansas: Kansas total less Metropolitan Areas as defined by the Office of Management and Budget (OMB; released 3/6/2020). Per 1000: For nonmoney amounts, Per 1000=(county value / county population for the same year as the data) x 1000. \$ Per capita=(county value / county population for the same year as the data). Value= . indicates missing or suppressed data or value not calculated.

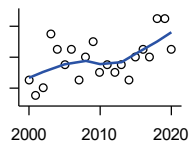
**Business**

**ESTABLISHMENTS: 1-19  
EMPLOYEES**



U.S. Census Bureau, County Business Patterns. Beginning with the 2017 data, any tabulation with fewer than 3 establishments were omitted from the release. Data for these establishments are included in the broader total.

Year	County	State of Kansas	Non Metro Kansas	County Rank	Per 1000 or \$ Per Capita
2000	348	64,527	25,381	36	20.7
2001	354	64,176	25,248	31	21.0
2002	344	64,886	25,208	34	20.4
2003	347	64,714	25,020	33	20.6
2004	348	65,554	24,995	34	20.5
2005	347	65,796	24,839	32	20.6
2006	343	65,764	24,589	32	20.3
2007	346	66,446	24,701	33	20.5
2008	324	65,322	24,257	36	19.3
2009	334	64,128	23,851	34	19.7
2010	319	64,015	23,857	35	18.8
2011	309	63,251	23,571	35	18.4
2012	308	63,519	23,575	36	18.4
2013	309	63,197	23,396	34	18.5
2014	303	63,113	23,229	35	18.3
2015	295	63,280	23,227	36	18.0
2016	298	63,630	23,117	36	18.2
2017	303	63,619	23,022	37	18.6
2018	303	63,233	22,745	35	18.7
2019	306	62,904	22,489	35	19.0
2020	296	62,634	22,173	36	18.1



**ESTABLISHMENTS: 20-99  
EMPLOYEES**

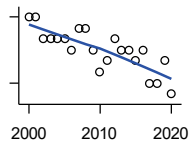
U.S. Census Bureau, County Business Patterns. Beginning with the 2017 data, any tabulation with fewer than 3 establishments were omitted from the release. Data for these establishments are included in the broader total.

Year	County	State of Kansas	Non Metro Kansas	County Rank	Per 1000 or \$ Per Capita
2000	41	8,714	2,653	33	2.4
2001	39	8,692	2,593	33	2.3
2002	40	8,582	2,554	32	2.4
2003	47	8,642	2,568	29	2.8
2004	45	8,658	2,590	29	2.7
2005	43	8,685	2,553	31	2.5
2006	45	8,922	2,612	29	2.7
2007	41	8,938	2,574	31	2.4
2008	44	8,939	2,587	29	2.6
2009	46	8,848	2,551	28	2.7
2010	42	8,612	2,454	28	2.5
2011	43	8,668	2,540	28	2.6
2012	42	8,700	2,500	29	2.5
2013	43	8,870	2,541	29	2.6
2014	41	9,121	2,590	30	2.5
2015	44	9,374	2,664	30	2.7
2016	45	9,412	2,596	29	2.7
2017	44	9,487	2,638	29	2.7
2018	49	9,485	2,621	29	3.0
2019	49	9,485	2,591	28	3.0
2020	45	9,471	2,545	29	2.8

County: county value. Kansas: state value. County Rank: highest county value ranked #1. (\$000): thousands of dollars. Nonmetro Kansas: Kansas total less Metropolitan Areas as defined by the Office of Management and Budget (OMB; released 3/6/2020). Per 1000: For nonmoney amounts, Per 1000=(county value / county population for the same year as the data) x 1000. \$ Per capita=(county value / county population for the same year as the data). Value= . indicates missing or suppressed data or value not calculated.

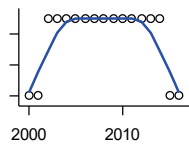
**Business**

**ESTABLISHMENTS: 100-499  
EMPLOYEES**



U.S. Census Bureau, County Business Patterns. Beginning with the 2017 data, any tabulation with fewer than 3 establishments were omitted from the release. Data for these establishments are included in the broader total.

Year	County	State of Kansas	Non Metro Kansas	County Rank	Per 1000 or \$ Per Capita
2000	10	1,555	409	27	0.6
2001	10	1,555	406	25	0.6
2002	8	1,464	386	29	0.5
2003	8	1,470	378	26	0.5
2004	8	1,463	388	30	0.5
2005	8	1,537	400	30	0.5
2006	7	1,598	407	31	0.4
2007	9	1,602	416	27	0.5
2008	9	1,653	421	29	0.5
2009	7	1,551	394	34	0.4
2010	5	1,513	382	35	0.3
2011	6	1,523	395	33	0.4
2012	8	1,567	410	30	0.5
2013	7	1,581	407	30	0.4
2014	7	1,641	421	31	0.4
2015	6	1,693	414	31	0.4
2016	7	1,671	406	30	0.4
2017	4	1,653	.	36	0.2
2018	4	1,650	.	36	0.2
2019	6	1,718	.	30	0.4
2020	3	1,692	.	43	0.2



**ESTABLISHMENTS: 500 OR MORE  
EMPLOYEES**

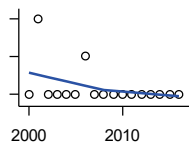
U.S. Census Bureau, County Business Patterns. Beginning with the 2017 data, any tabulation with fewer than 3 establishments were omitted from the release. Data for these establishments are included in the broader total.

Year	County	State of Kansas	Non Metro Kansas	County Rank	Per 1000 or \$ Per Capita
2000	1	143	32	31	0.1
2001	1	142	35	32	0.1
2002	2	145	35	15	0.1
2003	2	146	32	15	0.1
2004	2	152	36	19	0.1
2005	2	155	38	19	0.1
2006	2	162	45	21	0.1
2007	2	171	45	19	0.1
2008	2	182	49	21	0.1
2009	2	171	43	19	0.1
2010	2	161	46	19	0.1
2011	2	156	49	18	0.1
2012	2	158	49	19	0.1
2013	2	168	49	19	0.1
2014	2	180	52	20	0.1
2015	1	179	50	33	0.1
2016	1	171	53	33	0.1

County: county value. Kansas: state value. County Rank: highest county value ranked #1. (\$000): thousands of dollars. Nonmetro Kansas: Kansas total less Metropolitan Areas as defined by the Office of Management and Budget (OMB; released 3/6/2020). Per 1000: For nonmoney amounts, Per 1000=(county value / county population for the same year as the data) x 1000. \$ Per capita=(county value / county population for the same year as the data). Value= . indicates missing or suppressed data or value not calculated.

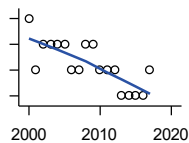
**Business**

**ESTABLISHMENTS: FORESTRY, FISHING, HUNTING, AND AG SUPPORT**



U.S. Census Bureau, County Business Patterns. Beginning with the 2017 data, any tabulation with fewer than 3 establishments were omitted from the release. Data for these establishments are included in the broader total.

Year	County	State of Kansas	Non Metro Kansas	County Rank	Per 1000 or \$ Per Capita
2000	0	190	149	105	0.0
2001	2	217	168	48	0.1
2002	0	224	176	105	0.0
2003	0	217	173	105	0.0
2004	0	211	165	105	0.0
2005	0	188	148	105	0.0
2006	1	193	158	76	0.1
2007	0	212	170	105	0.0
2008	0	197	158	105	0.0
2009	0	191	154	105	0.0
2010	0	192	161	105	0.0
2011	0	193	157	105	0.0
2012	0	204	164	105	0.0
2013	0	208	166	105	0.0
2014	0	194	152	105	0.0
2015	0	192	149	105	0.0
2016	0	181	142	105	0.0



**ESTABLISHMENTS: MINING**

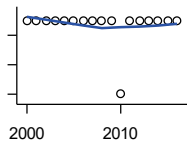
U.S. Census Bureau, County Business Patterns. Beginning with the 2017 data, any tabulation with fewer than 3 establishments were omitted from the release. Data for these establishments are included in the broader total.

Year	County	State of Kansas	Non Metro Kansas	County Rank	Per 1000 or \$ Per Capita
2000	5	868	619	37	0.3
2001	3	878	622	53	0.2
2002	4	847	615	44	0.2
2003	4	864	633	44	0.2
2004	4	880	647	47	0.2
2005	4	941	695	48	0.2
2006	3	991	734	59	0.2
2007	3	1,000	759	59	0.2
2008	4	1,047	799	49	0.2
2009	4	1,016	772	48	0.2
2010	3	1,009	762	56	0.2
2011	3	1,013	763	55	0.2
2012	3	1,048	789	63	0.2
2013	2	1,060	802	76	0.1
2014	2	1,102	828	76	0.1
2015	2	1,069	810	76	0.1
2016	2	990	747	77	0.1
2017	3	920	.	61	0.2

County: county value. Kansas: state value. County Rank: highest county value ranked #1. (\$000): thousands of dollars. Nonmetro Kansas: Kansas total less Metropolitan Areas as defined by the Office of Management and Budget (OMB; released 3/6/2020). Per 1000: For nonmoney amounts, Per 1000=(county value / county population for the same year as the data) x 1000. \$ Per capita=(county value / county population for the same year as the data). Value= . indicates missing or suppressed data or value not calculated.

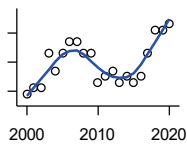
**Business**

**ESTABLISHMENTS: UTILITIES**



U.S. Census Bureau, County Business Patterns. Beginning with the 2017 data, any tabulation with fewer than 3 establishments were omitted from the release. Data for these establishments are included in the broader total.

Year	County	State of Kansas	Non Metro Kansas	County Rank	Per 1000 or \$ Per Capita
2000	2	274	192	68	0.1
2001	2	290	204	70	0.1
2002	2	278	195	64	0.1
2003	2	268	180	63	0.1
2004	2	247	164	59	0.1
2005	2	254	172	57	0.1
2006	2	248	169	58	0.1
2007	2	222	156	56	0.1
2008	2	244	166	61	0.1
2009	2	222	152	57	0.1
2010	1	197	129	82	0.1
2011	2	230	156	57	0.1
2012	2	232	156	57	0.1
2013	2	234	159	58	0.1
2014	2	232	160	58	0.1
2015	2	237	165	59	0.1
2016	2	245	171	60	0.1



**ESTABLISHMENTS: CONSTRUCTION**

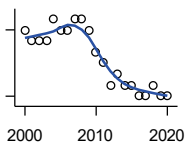
U.S. Census Bureau, County Business Patterns. Beginning with the 2017 data, any tabulation with fewer than 3 establishments were omitted from the release. Data for these establishments are included in the broader total.

Year	County	State of Kansas	Non Metro Kansas	County Rank	Per 1000 or \$ Per Capita
2000	37	7,703	2,616	32	2.2
2001	38	7,449	2,520	31	2.3
2002	38	7,519	2,482	30	2.3
2003	44	7,722	2,521	29	2.6
2004	41	7,887	2,518	32	2.4
2005	44	8,032	2,515	31	2.6
2006	46	8,031	2,494	28	2.7
2007	46	8,057	2,547	30	2.7
2008	44	7,831	2,522	29	2.6
2009	44	7,342	2,452	28	2.6
2010	39	7,064	2,394	30	2.3
2011	40	6,774	2,361	27	2.4
2012	41	6,741	2,393	28	2.4
2013	39	6,802	2,394	28	2.3
2014	40	6,920	2,383	31	2.4
2015	39	7,014	2,377	31	2.4
2016	40	6,988	2,343	29	2.4
2017	44	7,031	2,316	26	2.7
2018	48	7,124	2,285	26	3.0
2019	48	7,060	2,242	24	3.0
2020	49	7,089	2,249	24	3.0

County: county value. Kansas: state value. County Rank: highest county value ranked #1. (\$000): thousands of dollars. Nonmetro Kansas: Kansas total less Metropolitan Areas as defined by the Office of Management and Budget (OMB; released 3/6/2020). Per 1000: For nonmoney amounts, Per 1000=(county value / county population for the same year as the data) x 1000. \$ Per capita=(county value / county population for the same year as the data). Value= . indicates missing or suppressed data or value not calculated.

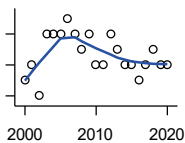
**Business**

**ESTABLISHMENTS:  
MANUFACTURING**



U.S. Census Bureau, County Business Patterns. Beginning with the 2017 data, any tabulation with fewer than 3 establishments were omitted from the release. Data for these establishments are included in the broader total.

Year	County	State of Kansas	Non Metro Kansas	County Rank	Per 1000 or \$ Per Capita
2000	24	3,229	1,316	30	1.4
2001	23	3,240	1,323	32	1.4
2002	23	3,181	1,289	33	1.4
2003	23	3,159	1,291	33	1.4
2004	25	3,179	1,313	31	1.5
2005	24	3,128	1,278	31	1.4
2006	24	3,165	1,290	32	1.4
2007	25	3,184	1,316	31	1.5
2008	25	3,171	1,297	30	1.5
2009	24	3,026	1,240	31	1.4
2010	22	2,955	1,222	32	1.3
2011	21	2,877	1,193	33	1.3
2012	19	2,889	1,197	34	1.1
2013	20	2,836	1,165	33	1.2
2014	19	2,831	1,168	32	1.1
2015	19	2,817	1,161	32	1.2
2016	18	2,791	1,150	34	1.1
2017	18	2,760	1,147	35	1.1
2018	19	2,725	1,126	35	1.2
2019	18	2,695	1,111	34	1.1
2020	18	2,673	1,103	34	1.1



**ESTABLISHMENTS: WHOLESALE  
TRADE**

U.S. Census Bureau, County Business Patterns. Beginning with the 2017 data, any tabulation with fewer than 3 establishments were omitted from the release. Data for these establishments are included in the broader total.

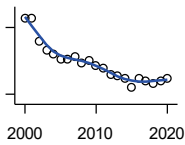
Year	County	State of Kansas	Non Metro Kansas	County Rank	Per 1000 or \$ Per Capita
2000	18	4,876	1,776	50	1.1
2001	19	4,811	1,769	46	1.1
2002	17	4,719	1,750	49	1.0
2003	21	4,590	1,637	37	1.2
2004	21	4,553	1,634	33	1.2
2005	21	4,541	1,618	32	1.2
2006	22	4,517	1,596	32	1.3
2007	21	4,555	1,629	37	1.2
2008	20	4,501	1,622	37	1.2
2009	21	4,437	1,614	34	1.2
2010	19	4,432	1,612	40	1.1
2011	19	4,400	1,660	38	1.1
2012	21	4,563	1,755	34	1.3
2013	20	4,501	1,741	37	1.2
2014	19	4,497	1,746	41	1.1
2015	19	4,459	1,755	41	1.2
2016	18	4,457	1,732	47	1.1
2017	19	4,436	1,774	42	1.2
2018	20	4,330	1,727	38	1.2
2019	19	4,291	1,713	39	1.2
2020	19	4,191	1,677	37	1.2

County: county value. Kansas: state value. County Rank: highest county value ranked #1. (\$000): thousands of dollars. Nonmetro Kansas: Kansas total less Metropolitan Areas as defined by the Office of Management and Budget (OMB; released 3/6/2020). Per 1000: For nonmoney amounts, Per 1000=(county value / county population for the same year as the data) x 1000. \$ Per capita=(county value / county population for the same year as the data). Value= . indicates missing or suppressed data or value not calculated.



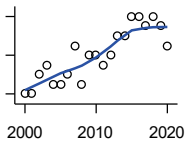
**Business**

**ESTABLISHMENTS: RETAIL TRADE**



U.S. Census Bureau, County Business Patterns. Beginning with the 2017 data, any tabulation with fewer than 3 establishments were omitted from the release. Data for these establishments are included in the broader total.

Year	County	State of Kansas	Non Metro Kansas	County Rank	Per 1000 or \$ Per Capita
2000	74	12,261	5,240	35	4.4
2001	74	12,206	5,207	33	4.4
2002	64	11,980	5,082	36	3.8
2003	60	11,834	5,049	39	3.6
2004	58	11,748	4,967	41	3.4
2005	56	11,562	4,834	41	3.3
2006	56	11,367	4,702	40	3.3
2007	57	11,306	4,653	38	3.4
2008	54	10,978	4,494	39	3.2
2009	55	10,760	4,372	38	3.2
2010	53	10,727	4,346	38	3.1
2011	52	10,655	4,289	39	3.1
2012	49	10,585	4,202	39	2.9
2013	48	10,433	4,147	41	2.9
2014	47	10,391	4,070	38	2.8
2015	43	10,327	4,061	43	2.6
2016	47	10,197	3,965	39	2.9
2017	46	10,074	3,885	38	2.8
2018	45	9,866	3,797	38	2.8
2019	46	9,762	3,750	37	2.9
2020	47	9,591	3,666	36	2.9



**ESTABLISHMENTS: TRANSPORTATION & WAREHOUSING**

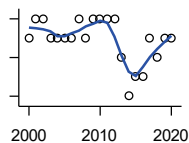
U.S. Census Bureau, County Business Patterns. Beginning with the 2017 data, any tabulation with fewer than 3 establishments were omitted from the release. Data for these establishments are included in the broader total.

Year	County	State of Kansas	Non Metro Kansas	County Rank	Per 1000 or \$ Per Capita
2000	6	2,474	1,293	88	0.4
2001	6	2,463	1,298	84	0.4
2002	8	2,461	1,278	76	0.5
2003	9	2,576	1,297	72	0.5
2004	7	2,651	1,324	75	0.4
2005	7	2,632	1,326	76	0.4
2006	8	2,626	1,295	74	0.5
2007	11	2,664	1,314	62	0.7
2008	7	2,675	1,329	80	0.4
2009	10	2,635	1,313	65	0.6
2010	10	2,615	1,313	64	0.6
2011	9	2,579	1,285	66	0.5
2012	10	2,519	1,243	59	0.6
2013	12	2,492	1,226	51	0.7
2014	12	2,518	1,240	51	0.7
2015	14	2,554	1,257	44	0.9
2016	14	2,567	1,241	46	0.9
2017	13	2,640	1,245	46	0.8
2018	14	2,627	1,238	44	0.9
2019	13	2,615	1,209	45	0.8
2020	11	2,589	1,179	52	0.7

County: county value. Kansas: state value. County Rank: highest county value ranked #1. (\$000): thousands of dollars. Nonmetro Kansas: Kansas total less Metropolitan Areas as defined by the Office of Management and Budget (OMB; released 3/6/2020). Per 1000: For nonmoney amounts, Per 1000=(county value / county population for the same year as the data) x 1000. \$ Per capita=(county value / county population for the same year as the data). Value= . indicates missing or suppressed data or value not calculated.

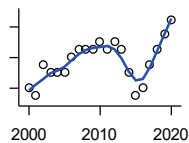
**Business**

**ESTABLISHMENTS: INFORMATION**



U.S. Census Bureau, County Business Patterns. Beginning with the 2017 data, any tabulation with fewer than 3 establishments were omitted from the release. Data for these establishments are included in the broader total.

Year	County	State of Kansas	Non Metro Kansas	County Rank	Per 1000 or \$ Per Capita
2000	7	1,542	578	47	0.4
2001	8	1,556	566	46	0.5
2002	8	1,517	551	42	0.5
2003	7	1,516	564	46	0.4
2004	7	1,518	556	41	0.4
2005	7	1,519	536	41	0.4
2006	7	1,549	559	40	0.4
2007	8	1,504	527	33	0.5
2008	7	1,468	522	40	0.4
2009	8	1,420	510	30	0.5
2010	8	1,437	527	31	0.5
2011	8	1,428	537	32	0.5
2012	8	1,387	515	34	0.5
2013	6	1,337	487	45	0.4
2014	4	1,335	496	61	0.2
2015	5	1,359	510	51	0.3
2016	5	1,431	537	52	0.3
2017	7	1,439	.	43	0.4
2018	6	1,407	.	48	0.4
2019	7	1,422	.	42	0.4
2020	7	1,424	.	41	0.4



**ESTABLISHMENTS: FINANCE & INSURANCE**

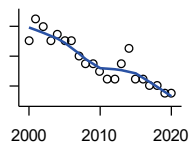
U.S. Census Bureau, County Business Patterns. Beginning with the 2017 data, any tabulation with fewer than 3 establishments were omitted from the release. Data for these establishments are included in the broader total.

Year	County	State of Kansas	Non Metro Kansas	County Rank	Per 1000 or \$ Per Capita
2000	24	5,209	1,848	36	1.4
2001	23	5,178	1,828	38	1.4
2002	27	5,496	1,911	32	1.6
2003	26	5,569	1,907	32	1.5
2004	26	5,572	1,913	32	1.5
2005	26	5,708	1,964	34	1.5
2006	28	5,877	1,976	31	1.7
2007	29	6,017	2,030	32	1.7
2008	29	6,010	2,023	31	1.7
2009	29	5,933	1,994	29	1.7
2010	30	5,872	1,975	28	1.8
2011	29	5,854	1,985	30	1.7
2012	30	5,993	2,024	30	1.8
2013	29	5,903	1,993	31	1.7
2014	26	5,894	2,000	33	1.6
2015	23	5,932	1,998	39	1.4
2016	24	6,022	2,021	35	1.5
2017	27	6,026	2,007	32	1.7
2018	29	6,023	1,997	31	1.8
2019	31	5,953	1,977	29	1.9
2020	33	5,926	1,969	27	2.0

County: county value. Kansas: state value. County Rank: highest county value ranked #1. (\$000): thousands of dollars. Nonmetro Kansas: Kansas total less Metropolitan Areas as defined by the Office of Management and Budget (OMB; released 3/6/2020). Per 1000: For nonmoney amounts, Per 1000=(county value / county population for the same year as the data) x 1000. \$ Per capita=(county value / county population for the same year as the data). Value= . indicates missing or suppressed data or value not calculated.

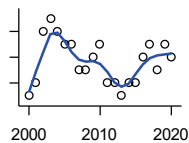
**Business**

**ESTABLISHMENTS: REAL ESTATE, RENTAL, AND LEASING**



U.S. Census Bureau, County Business Patterns. Beginning with the 2017 data, any tabulation with fewer than 3 establishments were omitted from the release. Data for these establishments are included in the broader total.

Year	County	State of Kansas	Non Metro Kansas	County Rank	Per 1000 or \$ Per Capita
2000	14	2,733	687	26	0.8
2001	17	2,849	724	25	1.0
2002	16	2,952	735	26	1.0
2003	14	3,007	727	28	0.8
2004	15	3,108	713	28	0.9
2005	14	3,203	727	30	0.8
2006	14	3,268	736	29	0.8
2007	12	3,286	721	32	0.7
2008	11	3,239	738	34	0.7
2009	11	3,122	723	34	0.6
2010	10	3,050	708	34	0.6
2011	9	3,002	692	34	0.5
2012	9	2,981	691	33	0.5
2013	11	3,046	717	33	0.7
2014	13	3,135	738	30	0.8
2015	9	3,179	744	35	0.5
2016	9	3,293	757	34	0.5
2017	8	3,389	.	36	0.5
2018	8	3,409	.	37	0.5
2019	7	3,464	.	41	0.4
2020	7	3,500	.	40	0.4



**ESTABLISHMENTS: PROFESSIONAL, SCIENTIFIC, AND TECHNICAL SERVICES**

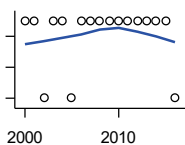
U.S. Census Bureau, County Business Patterns. Beginning with the 2017 data, any tabulation with fewer than 3 establishments were omitted from the release. Data for these establishments are included in the broader total.

Year	County	State of Kansas	Non Metro Kansas	County Rank	Per 1000 or \$ Per Capita
2000	19	6,424	1,690	39	1.1
2001	20	6,492	1,665	39	1.2
2002	24	6,719	1,704	35	1.4
2003	25	6,793	1,735	34	1.5
2004	24	7,025	1,730	37	1.4
2005	23	7,087	1,711	35	1.4
2006	23	7,231	1,736	36	1.4
2007	21	7,329	1,729	37	1.2
2008	21	7,133	1,671	37	1.2
2009	22	7,122	1,676	38	1.3
2010	23	7,172	1,680	38	1.4
2011	20	7,115	1,668	40	1.2
2012	20	7,122	1,681	40	1.2
2013	19	7,129	1,698	42	1.1
2014	20	7,206	1,682	40	1.2
2015	20	7,184	1,687	38	1.2
2016	22	7,146	1,659	37	1.3
2017	23	7,224	1,679	36	1.4
2018	21	7,138	1,655	37	1.3
2019	23	7,119	.	37	1.4
2020	22	7,117	.	36	1.3

County: county value. Kansas: state value. County Rank: highest county value ranked #1. (\$000): thousands of dollars. Nonmetro Kansas: Kansas total less Metropolitan Areas as defined by the Office of Management and Budget (OMB; released 3/6/2020). Per 1000: For nonmoney amounts, Per 1000=(county value / county population for the same year as the data) x 1000. \$ Per capita=(county value / county population for the same year as the data). Value= . indicates missing or suppressed data or value not calculated.

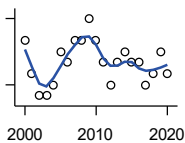
**Business**

**ESTABLISHMENTS: MANAGEMENT OF COMPANIES AND ENTERPRISES**



U.S. Census Bureau, County Business Patterns. Beginning with the 2017 data, any tabulation with fewer than 3 establishments were omitted from the release. Data for these establishments are included in the broader total.

Year	County	State of Kansas	Non Metro Kansas	County Rank	Per 1000 or \$ Per Capita
2000	3	622	145	28	0.2
2001	3	593	141	25	0.2
2002	2	597	152	41	0.1
2003	3	561	135	23	0.2
2004	3	569	133	25	0.2
2005	2	543	127	33	0.1
2006	3	542	131	26	0.2
2007	3	550	133	25	0.2
2008	3	553	139	27	0.2
2009	3	575	136	26	0.2
2010	3	567	131	26	0.2
2011	3	552	134	23	0.2
2012	3	593	135	24	0.2
2013	3	590	135	26	0.2
2014	3	603	136	27	0.2
2015	3	613	140	29	0.2
2016	2	655	171	39	0.1



**ESTABLISHMENTS: ADMIN, SUPPORT, WASTE MGMT., AND REMEDIATION**

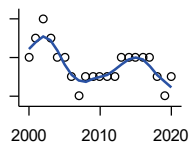
U.S. Census Bureau, County Business Patterns. Beginning with the 2017 data, any tabulation with fewer than 3 establishments were omitted from the release. Data for these establishments are included in the broader total.

Year	County	State of Kansas	Non Metro Kansas	County Rank	Per 1000 or \$ Per Capita
2000	14	3,307	871	28	0.8
2001	11	3,421	913	36	0.7
2002	9	3,232	882	41	0.5
2003	9	3,189	858	40	0.5
2004	10	3,301	891	39	0.6
2005	13	3,342	896	31	0.8
2006	12	3,395	886	33	0.7
2007	14	3,522	921	31	0.8
2008	14	3,587	932	30	0.8
2009	16	3,505	904	29	0.9
2010	14	3,494	897	30	0.8
2011	12	3,447	903	30	0.7
2012	10	3,462	891	37	0.6
2013	12	3,489	904	33	0.7
2014	13	3,569	933	30	0.8
2015	12	3,630	964	35	0.7
2016	12	3,705	987	34	0.7
2017	10	3,741	991	41	0.6
2018	11	3,740	983	36	0.7
2019	13	3,762	991	33	0.8
2020	11	3,807	989	38	0.7

County: county value. Kansas: state value. County Rank: highest county value ranked #1. (\$000): thousands of dollars. Nonmetro Kansas: Kansas total less Metropolitan Areas as defined by the Office of Management and Budget (OMB; released 3/6/2020). Per 1000: For nonmoney amounts, Per 1000=(county value / county population for the same year as the data) x 1000. \$ Per capita=(county value / county population for the same year as the data). Value= . indicates missing or suppressed data or value not calculated.

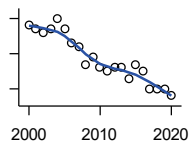
**Business**

**ESTABLISHMENTS: EDUCATIONAL SERVICES**



U.S. Census Bureau, County Business Patterns. Beginning with the 2017 data, any tabulation with fewer than 3 establishments were omitted from the release. Data for these establishments are included in the broader total.

Year	County	State of Kansas	Non Metro Kansas	County Rank	Per 1000 or \$ Per Capita
2000	6	604	155	17	0.4
2001	7	625	168	14	0.4
2002	8	666	165	13	0.5
2003	7	663	173	18	0.4
2004	6	690	173	20	0.4
2005	6	699	168	20	0.4
2006	5	698	175	20	0.3
2007	4	691	165	27	0.2
2008	5	692	158	22	0.3
2009	5	690	150	22	0.3
2010	5	700	149	20	0.3
2011	5	711	150	21	0.3
2012	5	724	145	22	0.3
2013	6	735	153	19	0.4
2014	6	722	152	18	0.4
2015	6	754	152	19	0.4
2016	6	728	150	19	0.4
2017	6	720	.	18	0.4
2018	5	744	.	21	0.3
2019	4	759	.	27	0.2
2020	5	736	.	20	0.3



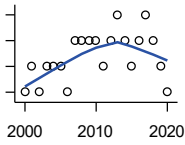
**ESTABLISHMENTS: HEALTH CARE AND SOCIAL ASSISTANCE**

U.S. Census Bureau, County Business Patterns. Beginning with the 2017 data, any tabulation with fewer than 3 establishments were omitted from the release. Data for these establishments are included in the broader total.

Year	County	State of Kansas	Non Metro Kansas	County Rank	Per 1000 or \$ Per Capita
2000	58	6,564	2,591	26	3.5
2001	57	6,636	2,590	26	3.4
2002	56	7,052	2,777	26	3.3
2003	57	7,129	2,792	26	3.4
2004	60	7,239	2,813	25	3.5
2005	57	7,412	2,855	26	3.4
2006	53	7,477	2,860	27	3.1
2007	52	7,661	2,864	27	3.1
2008	47	7,651	2,810	29	2.8
2009	49	7,696	2,787	28	2.9
2010	46	7,751	2,830	30	2.7
2011	45	7,804	2,817	30	2.7
2012	46	7,973	2,793	29	2.7
2013	46	7,877	2,729	29	2.8
2014	43	7,809	2,686	29	2.6
2015	47	8,103	2,692	28	2.9
2016	45	8,315	2,678	28	2.7
2017	40	8,136	2,646	31	2.5
2018	40	8,126	2,632	31	2.5
2019	40	8,184	2,587	31	2.5
2020	38	8,290	2,571	32	2.3

County: county value. Kansas: state value. County Rank: highest county value ranked #1. (\$000): thousands of dollars. Nonmetro Kansas: Kansas total less Metropolitan Areas as defined by the Office of Management and Budget (OMB; released 3/6/2020). Per 1000: For nonmoney amounts, Per 1000=(county value / county population for the same year as the data) x 1000. \$ Per capita=(county value / county population for the same year as the data). Value= . indicates missing or suppressed data or value not calculated.

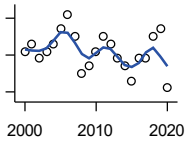
**Business**



**ESTABLISHMENTS: ARTS, ENTERTAINMENT, AND RECREATION**

U.S. Census Bureau, County Business Patterns. Beginning with the 2017 data, any tabulation with fewer than 3 establishments were omitted from the release. Data for these establishments are included in the broader total.

Year	County	State of Kansas	Non Metro Kansas	County Rank	Per 1000 or \$ Per Capita
2000	7	981	419	33	0.4
2001	8	1,009	433	29	0.5
2002	7	1,054	441	36	0.4
2003	8	1,045	443	27	0.5
2004	8	1,082	445	29	0.5
2005	8	1,109	446	30	0.5
2006	7	1,080	445	33	0.4
2007	9	1,092	444	24	0.5
2008	9	1,062	423	23	0.5
2009	9	1,063	421	24	0.5
2010	9	1,018	406	23	0.5
2011	8	997	387	24	0.5
2012	9	1,000	388	23	0.5
2013	10	1,009	377	19	0.6
2014	9	1,030	365	23	0.5
2015	8	1,031	357	26	0.5
2016	9	1,060	366	23	0.5
2017	10	1,096	.	22	0.6
2018	9	1,088	.	27	0.6
2019	8	1,087	.	26	0.5
2020	7	1,064	.	34	0.4



**ESTABLISHMENTS: ACCOMMODATION AND FOOD SERVICES**

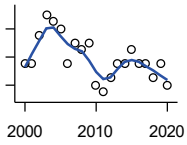
U.S. Census Bureau, County Business Patterns. Beginning with the 2017 data, any tabulation with fewer than 3 establishments were omitted from the release. Data for these establishments are included in the broader total.

Year	County	State of Kansas	Non Metro Kansas	County Rank	Per 1000 or \$ Per Capita
2000	33	5,536	2,213	33	2.0
2001	34	5,551	2,173	32	2.0
2002	32	5,610	2,174	35	1.9
2003	33	5,635	2,188	33	2.0
2004	34	5,681	2,160	32	2.0
2005	36	5,776	2,170	31	2.1
2006	38	5,745	2,132	29	2.2
2007	35	5,877	2,095	29	2.1
2008	30	5,843	2,052	32	1.8
2009	31	5,794	2,029	31	1.8
2010	33	5,898	2,046	30	1.9
2011	35	5,958	2,067	29	2.1
2012	34	5,951	2,046	29	2.0
2013	32	6,061	2,070	30	1.9
2014	31	5,985	2,024	32	1.9
2015	29	6,034	2,063	34	1.8
2016	32	6,126	2,094	32	2.0
2017	32	6,250	2,123	32	2.0
2018	35	6,256	2,128	30	2.2
2019	36	6,231	2,131	30	2.2
2020	28	6,206	2,131	34	1.7

County: county value. Kansas: state value. County Rank: highest county value ranked #1. (\$000): thousands of dollars. Nonmetro Kansas: Kansas total less Metropolitan Areas as defined by the Office of Management and Budget (OMB; released 3/6/2020). Per 1000: For nonmoney amounts, Per 1000=(county value / county population for the same year as the data) x 1000. \$ Per capita=(county value / county population for the same year as the data). Value= . indicates missing or suppressed data or value not calculated.

**Business**

**ESTABLISHMENTS: OTHER SERVICES**

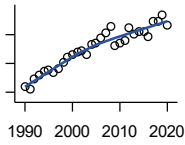


U.S. Census Bureau, County Business Patterns. Beginning with the 2017 data, any tabulation with fewer than 3 establishments were omitted from the release. Data for these establishments are included in the broader total.

Year	County	State of Kansas	Non Metro Kansas	County Rank	Per 1000 or \$ Per Capita
2000	43	8,423	3,636	41	2.6
2001	43	8,310	3,614	40	2.5
2002	47	8,552	3,658	38	2.8
2003	50	8,411	3,605	35	3.0
2004	49	8,343	3,597	35	2.9
2005	48	8,321	3,571	36	2.8
2006	43	8,225	3,490	39	2.5
2007	46	8,355	3,534	40	2.7
2008	45	8,104	3,406	37	2.7
2009	46	8,040	3,405	36	2.7
2010	40	7,998	3,379	41	2.4
2011	39	7,883	3,294	42	2.3
2012	41	7,913	3,303	40	2.4
2013	43	7,947	3,290	40	2.6
2014	43	7,943	3,285	41	2.6
2015	45	7,869	3,255	38	2.7
2016	43	7,839	3,204	39	2.6
2017	43	7,873	3,189	37	2.6
2018	41	7,853	3,176	38	2.5
2019	43	7,834	3,138	36	2.7
2020	40	7,787	3,073	39	2.4

County: county value. Kansas: state value. County Rank: highest county value ranked #1. (\$000): thousands of dollars. Nonmetro Kansas: Kansas total less Metropolitan Areas as defined by the Office of Management and Budget (OMB; released 3/6/2020). Per 1000: For nonmoney amounts, Per 1000=(county value / county population for the same year as the data) x 1000. \$ Per capita=(county value / county population for the same year as the data). Value= . indicates missing or suppressed data or value not calculated.

**Business**



**TOTAL ANNUAL PAYROLL (\$000)  
COUNTY BUSINESS PATTERNS**

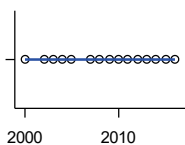
U.S. Census Bureau, County Business Patterns. Beginning with the 2017 data, any tabulation with fewer than 3 establishments were omitted from the release. Data for these establishments are included in the broader total.

Year	County	State of Kansas	Non Metro Kansas	County Rank	Per 1000 or \$ Per Capita
1990	85,376	17,487,316	4,442,429	25	5,042.3
1991	79,646	18,162,326	4,612,616	26	4,733.8
1992	97,713	19,244,346	4,882,060	24	5,803.1
1993	103,638	20,087,190	5,182,780	24	6,119.4
1994	110,573	21,201,652	5,541,423	24	6,589.6
1995	114,075	22,825,920	5,875,310	24	6,800.3
1996	108,710	24,613,884	6,198,398	29	6,476.2
1997	116,690	26,787,098	6,599,061	28	6,956.6
1998	127,675	28,747,576	6,871,794	28	7,601.1
1999	135,425	30,600,434	7,121,961	26	8,050.0
2000	140,515	31,990,762	7,520,424	27	8,377.0
2001	143,919	33,303,992	7,598,165	28	8,532.1
2002	147,644	33,152,962	7,572,002	26	8,776.3
2003	140,990	34,040,944	7,726,561	27	8,355.0
2004	157,979	35,725,812	8,303,779	26	9,327.4
2005	159,376	36,646,064	8,586,986	26	9,450.1
2006	168,999	39,251,388	9,178,947	27	9,998.8
2007	178,596	42,022,753	.	28	10,590.4
2008	189,453	43,984,689	.	27	11,263.6
2009	156,949	42,146,866	.	29	9,251.3
2010	160,733	42,686,303	10,294,015	28	9,497.3
2011	164,413	43,733,944	.	28	9,813.9
2012	187,537	45,608,072	11,222,183	28	11,180.2
2013	176,197	47,715,601	11,446,751	28	10,558.3
2014	180,493	49,712,832	11,957,931	29	10,923.7
2015	179,838	51,259,676	11,975,718	30	10,953.7
2016	172,429	51,016,318	12,148,646	30	10,529.4
2017	197,741	52,754,605	12,448,592	28	12,132.8
2018	199,223	55,087,460	12,810,270	29	12,318.2
2019	209,461	57,272,387	13,123,288	28	13,031.9
2020	192,208	58,374,388	14,007,955	28	11,757.3

County: county value. Kansas: state value. County Rank: highest county value ranked #1. (\$000): thousands of dollars. Nonmetro Kansas: Kansas total less Metropolitan Areas as defined by the Office of Management and Budget (OMB; released 3/6/2020). Per 1000: For nonmoney amounts, Per 1000=(county value / county population for the same year as the data) x 1000. \$ Per capita=(county value / county population for the same year as the data). Value= . indicates missing or suppressed data or value not calculated.



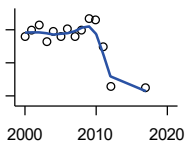
**Business**



**TOTAL ANNUAL PAYROLL(\$000):  
FORESTRY, FISHING, HUNTING, AND  
AG SUPPORT**

U.S. Census Bureau, County Business Patterns. Beginning with the 2017 data, any tabulation with fewer than 3 establishments were omitted from the release. Data for these establishments are included in the broader total.

Year	County	State of Kansas	Non Metro Kansas	County Rank	Per 1000 or \$ Per Capita
2000	0	13,551	.	.	0.0
2001	.	.	.	.	.
2002	0	16,528	.	.	0.0
2003	0	17,247	.	.	0.0
2004	0	17,552	.	.	0.0
2005	0	16,298	.	.	0.0
2006	.	17,908	.	.	.
2007	0	22,199	.	.	0.0
2008	0	21,359	.	.	0.0
2009	0	22,466	.	.	0.0
2010	0	22,753	.	.	0.0
2011	0	23,320	.	.	0.0
2012	0	27,492	.	.	0.0
2013	0	30,360	.	.	0.0
2014	0	34,862	.	.	0.0
2015	0	35,980	.	.	0.0
2016	0	31,488	.	.	0.0



**TOTAL ANNUAL PAYROLL(\$000):  
MINING**

U.S. Census Bureau, County Business Patterns. Beginning with the 2017 data, any tabulation with fewer than 3 establishments were omitted from the release. Data for these establishments are included in the broader total.

Year	County	State of Kansas	Non Metro Kansas	County Rank	Per 1000 or \$ Per Capita
2000	661	240,079	.	.	39.4
2001	701	273,838	.	.	41.6
2002	725	262,277	.	.	43.1
2003	627	290,652	.	.	37.2
2004	692	326,997	.	.	40.9
2005	656	381,069	.	.	38.9
2006	706	482,102	.	.	41.8
2007	661	551,751	.	.	39.2
2008	695	620,446	.	.	41.3
2009	768	465,070	.	.	45.3
2010	762	485,841	.	.	45.0
2011	598	541,536	.	.	35.7
2012	355	600,402	.	.	21.2
2013	.	599,788	.	.	.
2014	.	678,673	.	.	.
2015	.	552,658	.	.	.
2017	348	379,883	.	.	21.4

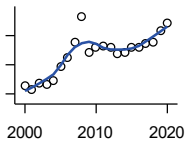
County: county value. Kansas: state value. County Rank: highest county value ranked #1. (\$000): thousands of dollars. Nonmetro Kansas: Kansas total less Metropolitan Areas as defined by the Office of Management and Budget (OMB; released 3/6/2020). Per 1000: For nonmoney amounts, Per 1000=(county value / county population for the same year as the data) x 1000. \$ Per capita=(county value / county population for the same year as the data). Value= . indicates missing or suppressed data or value not calculated.

**Business**

**TOTAL ANNUAL PAYROLL(\$000):  
UTILITIES**

U.S. Census Bureau, County Business Patterns. Beginning with the 2017 data, any tabulation with fewer than 3 establishments were omitted from the release. Data for these establishments are included in the broader total.

Year	County	State of Kansas	Non Metro Kansas	County Rank	Per 1000 or \$ Per Capita
2000	.	410,313	.	.	.
2001	.	452,057	.	.	.
2002	.	377,559	.	.	.
2003	.	378,157	.	.	.
2004	.	377,809	.	.	.
2005	.	429,864	.	.	.
2006	.	443,999	.	.	.
2007	.	480,068	.	.	.
2008	.	541,066	.	.	.
2009	.	563,373	.	.	.
2010	.	512,628	.	.	.
2011	.	653,229	.	.	.
2012	.	625,451	.	.	.
2013	.	625,347	.	.	.
2014	.	610,960	.	.	.
2015	.	668,559	.	.	.



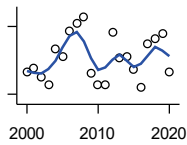
**TOTAL ANNUAL PAYROLL(\$000):  
CONSTRUCTION**

U.S. Census Bureau, County Business Patterns. Beginning with the 2017 data, any tabulation with fewer than 3 establishments were omitted from the release. Data for these establishments are included in the broader total.

Year	County	State of Kansas	Non Metro Kansas	County Rank	Per 1000 or \$ Per Capita
2000	5,048	2,256,057	.	.	300.9
2001	4,607	2,320,652	.	.	273.1
2002	5,493	2,302,229	.	.	326.5
2003	5,294	2,282,021	.	.	313.7
2004	5,843	2,302,854	.	.	345.0
2005	7,701	2,465,977	.	.	456.6
2006	8,975	2,700,351	.	.	531.0
2007	11,013	2,772,168	.	.	653.0
2008	14,620	2,950,073	.	.	869.2
2009	9,608	2,709,864	.	.	566.3
2010	10,354	2,553,555	.	.	611.8
2011	10,641	2,550,355	.	.	635.2
2012	10,346	2,733,284	.	.	616.8
2013	9,425	2,866,801	.	.	564.8
2014	9,706	3,135,814	.	.	587.4
2015	10,467	3,270,952	.	.	637.5
2016	10,437	3,328,610	.	.	637.3
2017	10,873	3,568,505	.	.	667.1
2018	11,180	3,806,196	.	.	691.3
2019	12,655	3,879,912	.	.	787.3
2020	13,740	3,983,029	.	.	840.5

County: county value. Kansas: state value. County Rank: highest county value ranked #1. (\$000): thousands of dollars. Nonmetro Kansas: Kansas total less Metropolitan Areas as defined by the Office of Management and Budget (OMB; released 3/6/2020). Per 1000: For nonmoney amounts, Per 1000=(county value / county population for the same year as the data) x 1000. \$ Per capita=(county value / county population for the same year as the data). Value= . indicates missing or suppressed data or value not calculated.

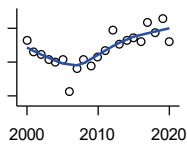
**Business**



**TOTAL ANNUAL PAYROLL(\$000):  
MANUFACTURING**

U.S. Census Bureau, County Business Patterns. Beginning with the 2017 data, any tabulation with fewer than 3 establishments were omitted from the release. Data for these establishments are included in the broader total.

Year	County	State of Kansas	Non Metro Kansas	County Rank	Per 1000 or \$ Per Capita
2000	59,855	7,015,414	.	.	3,568.3
2001	61,519	7,301,706	.	.	3,647.1
2002	57,417	6,802,605	.	.	3,413.0
2003	54,314	6,691,611	.	.	3,218.6
2004	70,060	6,985,656	.	.	4,136.5
2005	66,904	7,221,614	.	.	3,967.0
2006	78,152	7,621,873	.	.	4,623.8
2007	81,156	7,873,359	.	.	4,812.4
2008	84,258	8,441,541	.	.	5,009.4
2009	59,036	7,477,838	.	.	3,479.9
2010	53,952	7,556,955	.	.	3,187.9
2011	54,328	7,747,934	.	.	3,242.9
2012	77,621	7,704,851	.	.	4,627.5
2013	66,087	8,365,542	.	.	3,960.2
2014	66,764	8,787,306	.	.	4,040.7
2015	61,214	9,052,105	.	.	3,728.5
2016	52,783	8,868,744	.	.	3,223.2
2017	72,100	9,075,793	.	.	4,423.9
2018	74,625	9,481,652	.	.	4,614.2
2019	77,041	10,171,575	.	.	4,793.2
2020	59,916	9,744,825	.	.	3,665.0



**TOTAL ANNUAL PAYROLL(\$000):  
WHOLESALE TRADE**

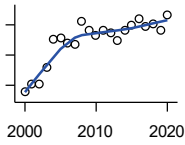
U.S. Census Bureau, County Business Patterns. Beginning with the 2017 data, any tabulation with fewer than 3 establishments were omitted from the release. Data for these establishments are included in the broader total.

Year	County	State of Kansas	Non Metro Kansas	County Rank	Per 1000 or \$ Per Capita
2000	12,538	2,332,755	.	.	747.5
2001	11,195	2,283,169	.	.	663.7
2002	10,866	2,107,653	.	.	645.9
2003	10,248	2,622,701	.	.	607.3
2004	10,003	2,663,196	.	.	590.6
2005	10,233	2,345,990	.	.	606.8
2006	6,580	2,592,211	.	.	389.3
2007	9,305	2,682,542	.	.	551.8
2008	10,279	3,078,655	.	.	611.1
2009	9,549	2,940,949	.	.	562.9
2010	10,609	3,097,628	.	.	626.9
2011	11,384	3,305,811	.	.	679.5
2012	13,817	3,339,997	.	.	823.7
2013	12,091	3,460,512	.	.	724.5
2014	12,515	3,712,075	.	.	757.4
2015	12,867	3,760,189	.	.	783.7
2016	12,449	3,738,207	.	.	760.2
2017	14,747	3,822,730	.	.	904.8
2018	13,520	3,814,353	.	.	836.0
2019	15,158	4,025,802	.	.	943.1
2020	12,488	4,224,666	.	.	763.9

County: county value. Kansas: state value. County Rank: highest county value ranked #1. (\$000): thousands of dollars. Nonmetro Kansas: Kansas total less Metropolitan Areas as defined by the Office of Management and Budget (OMB; released 3/6/2020). Per 1000: For nonmoney amounts, Per 1000=(county value / county population for the same year as the data) x 1000. \$ Per capita=(county value / county population for the same year as the data). Value= . indicates missing or suppressed data or value not calculated.

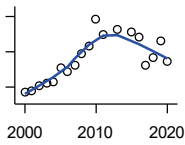
**Business**

**TOTAL ANNUAL PAYROLL(\$000):  
RETAIL TRADE**



U.S. Census Bureau, County Business Patterns. Beginning with the 2017 data, any tabulation with fewer than 3 establishments were omitted from the release. Data for these establishments are included in the broader total.

Year	County	State of Kansas	Non Metro Kansas	County Rank	Per 1000 or \$ Per Capita
2000	9,540	2,747,001	.	.	568.7
2001	10,044	2,813,226	.	.	595.4
2002	10,054	2,854,231	.	.	597.6
2003	11,161	2,773,674	.	.	661.4
2004	13,030	2,847,826	.	.	769.3
2005	13,157	2,952,196	.	.	780.1
2006	12,757	3,126,495	.	.	754.8
2007	12,697	3,201,169	.	.	752.9
2008	14,216	3,261,054	.	.	845.2
2009	13,680	3,232,246	.	.	806.4
2010	13,318	3,321,838	.	.	786.9
2011	13,605	3,384,607	.	.	812.1
2012	13,488	3,409,755	.	.	804.1
2013	12,965	3,483,752	.	.	776.9
2014	13,642	3,617,933	.	.	825.6
2015	13,996	3,712,165	.	.	852.5
2016	14,425	3,826,889	.	.	880.9
2017	13,867	3,797,849	.	.	850.8
2018	14,063	3,818,988	.	.	869.5
2019	13,623	3,908,994	.	.	847.6
2020	14,661	3,984,443	.	.	896.8



**TOTAL ANNUAL PAYROLL(\$000):  
TRANSPORTATION &  
WAREHOUSING**

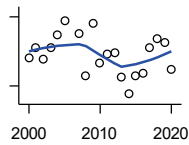
U.S. Census Bureau, County Business Patterns. Beginning with the 2017 data, any tabulation with fewer than 3 establishments were omitted from the release. Data for these establishments are included in the broader total.

Year	County	State of Kansas	Non Metro Kansas	County Rank	Per 1000 or \$ Per Capita
2000	1,731	1,044,835	.	.	103.2
2001	1,801	1,089,405	.	.	106.8
2002	2,107	1,094,636	.	.	125.2
2003	2,249	1,316,655	.	.	133.3
2004	2,309	1,439,800	.	.	136.3
2005	3,119	1,393,651	.	.	184.9
2006	2,884	1,528,551	.	.	170.6
2007	3,273	1,788,267	.	.	194.1
2008	3,859	1,722,697	.	.	229.4
2009	4,340	1,618,598	.	.	255.8
2010	5,875	1,735,761	.	.	347.1
2011	4,954	1,739,165	.	.	295.7
2012	.	1,984,976	.	.	.
2013	5,251	2,006,261	.	.	314.7
2014	.	2,097,377	.	.	.
2015	5,089	2,190,072	.	.	310.0
2016	4,806	2,202,859	.	.	293.5
2017	3,205	2,546,061	.	.	196.6
2018	3,670	2,663,188	.	.	226.9
2019	4,623	2,879,406	.	.	287.6
2020	3,479	2,962,461	.	.	212.8

County: county value. Kansas: state value. County Rank: highest county value ranked #1. (\$000): thousands of dollars. Nonmetro Kansas: Kansas total less Metropolitan Areas as defined by the Office of Management and Budget (OMB; released 3/6/2020). Per 1000: For nonmoney amounts, Per 1000=(county value / county population for the same year as the data) x 1000. \$ Per capita=(county value / county population for the same year as the data). Value= . indicates missing or suppressed data or value not calculated.

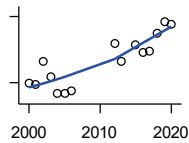
**Business**

**TOTAL ANNUAL PAYROLL(\$000):  
INFORMATION**



U.S. Census Bureau, County Business Patterns. Beginning with the 2017 data, any tabulation with fewer than 3 establishments were omitted from the release. Data for these establishments are included in the broader total.

Year	County	State of Kansas	Non Metro Kansas	County Rank	Per 1000 or \$ Per Capita
2000	1,038	1,923,381	.	.	61.9
2001	1,129	2,218,610	.	.	66.9
2002	1,036	2,298,108	.	.	61.6
2003	1,128	2,378,673	.	.	66.8
2004	1,246	2,392,990	.	.	73.6
2005	1,361	2,395,081	.	.	80.7
2006	.	2,586,483	.	.	.
2007	1,257	2,594,138	.	.	74.5
2008	888	3,043,244	.	.	52.8
2009	1,343	3,045,570	.	.	79.2
2010	997	2,481,580	.	.	58.9
2011	1,079	2,513,805	.	.	64.4
2012	1,083	2,535,555	.	.	64.6
2013	874	2,805,017	.	.	52.4
2014	728	2,393,609	.	.	44.1
2015	884	2,406,323	.	.	53.8
2016	911	2,080,211	.	.	55.6
2017	1,131	2,090,021	.	.	69.4
2018	1,215	2,341,543	.	.	75.1
2019	1,175	2,133,891	.	.	73.1
2020	947	2,245,204	.	.	57.9



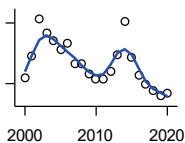
**TOTAL ANNUAL PAYROLL(\$000):  
FINANCE & INSURANCE**

U.S. Census Bureau, County Business Patterns. Beginning with the 2017 data, any tabulation with fewer than 3 establishments were omitted from the release. Data for these establishments are included in the broader total.

Year	County	State of Kansas	Non Metro Kansas	County Rank	Per 1000 or \$ Per Capita
2000	3,998	2,083,565	.	.	238.3
2001	3,960	2,129,587	.	.	234.8
2002	4,482	2,414,120	.	.	266.4
2003	4,124	2,608,579	.	.	244.4
2004	3,746	2,676,910	.	.	221.2
2005	3,767	2,786,136	.	.	223.4
2006	3,813	2,928,931	.	.	225.6
2007	.	3,096,017	.	.	.
2008	.	3,322,977	.	.	.
2009	.	3,206,839	.	.	.
2010	.	3,211,300	.	.	.
2011	.	3,404,633	.	.	.
2012	4,882	3,611,165	.	.	291.0
2013	4,481	3,896,051	.	.	268.5
2014	.	4,044,315	.	.	.
2015	4,868	4,113,060	.	.	296.5
2016	4,689	4,180,740	.	.	286.3
2017	4,725	4,258,057	.	.	289.9
2018	5,126	4,682,552	.	.	316.9
2019	5,371	4,814,201	.	.	334.2
2020	5,331	5,288,529	.	.	326.1

County: county value. Kansas: state value. County Rank: highest county value ranked #1. (\$000): thousands of dollars. Nonmetro Kansas: Kansas total less Metropolitan Areas as defined by the Office of Management and Budget (OMB; released 3/6/2020). Per 1000: For nonmoney amounts, Per 1000=(county value / county population for the same year as the data) x 1000. \$ Per capita=(county value / county population for the same year as the data). Value= . indicates missing or suppressed data or value not calculated.

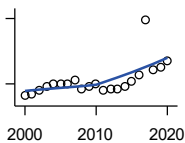
**Business**



**TOTAL ANNUAL PAYROLL(\$000):  
REAL ESTATE, RENTAL, AND  
LEASING**

U.S. Census Bureau, County Business Patterns. Beginning with the 2017 data, any tabulation with fewer than 3 establishments were omitted from the release. Data for these establishments are included in the broader total.

Year	County	State of Kansas	Non Metro Kansas	County Rank	Per 1000 or \$ Per Capita
2000	856	360,637	.	.	51.0
2001	1,073	397,371	.	.	63.6
2002	1,441	403,695	.	.	85.7
2003	1,304	437,786	.	.	77.3
2004	1,220	430,719	.	.	72.0
2005	1,133	465,149	.	.	67.2
2006	1,197	478,811	.	.	70.8
2007	999	452,969	.	.	59.2
2008	997	484,149	.	.	59.3
2009	899	450,884	.	.	53.0
2010	845	487,255	.	.	49.9
2011	841	535,120	.	.	50.2
2012	918	531,039	.	.	54.7
2013	1,088	538,796	.	.	65.2
2014	1,421	542,307	.	.	86.0
2015	1,065	595,030	.	.	64.9
2016	885	607,668	.	.	54.0
2017	798	590,373	.	.	49.0
2018	734	600,037	.	.	45.4
2019	675	622,881	.	.	42.0
2020	704	670,656	.	.	43.1



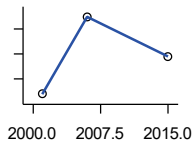
**TOTAL ANNUAL PAYROLL(\$000):  
PROFESSIONAL, SCIENTIFIC, AND  
TECHNICAL SERVICES**

U.S. Census Bureau, County Business Patterns. Beginning with the 2017 data, any tabulation with fewer than 3 establishments were omitted from the release. Data for these establishments are included in the broader total.

Year	County	State of Kansas	Non Metro Kansas	County Rank	Per 1000 or \$ Per Capita
2000	1,449	2,057,313	.	.	86.4
2001	1,508	2,152,937	.	.	89.4
2002	1,688	2,150,085	.	.	100.3
2003	1,884	2,052,712	.	.	111.6
2004	2,011	2,531,457	.	.	118.7
2005	1,983	2,418,500	.	.	117.6
2006	1,976	2,655,690	.	.	116.9
2007	2,174	2,901,544	.	.	128.9
2008	1,748	2,903,802	.	.	103.9
2009	1,877	3,071,611	.	.	110.6
2010	2,005	3,037,182	.	.	118.5
2011	1,690	3,132,082	.	.	100.9
2012	1,743	3,455,548	.	.	103.9
2013	1,784	3,777,729	.	.	106.9
2014	1,883	3,981,580	.	.	114.0
2015	2,146	4,039,074	.	.	130.7
2016	2,404	4,125,507	.	.	146.8
2017	4,953	4,158,858	.	.	303.9
2018	2,656	4,314,317	.	.	164.2
2019	2,773	4,646,644	.	.	172.5
2020	3,058	4,927,611	.	.	187.1

County: county value. Kansas: state value. County Rank: highest county value ranked #1. (\$000): thousands of dollars. Nonmetro Kansas: Kansas total less Metropolitan Areas as defined by the Office of Management and Budget (OMB; released 3/6/2020). Per 1000: For nonmoney amounts, Per 1000=(county value / county population for the same year as the data) x 1000. \$ Per capita=(county value / county population for the same year as the data). Value= . indicates missing or suppressed data or value not calculated.

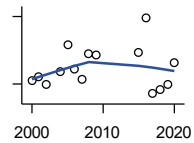
**Business**



**TOTAL ANNUAL PAYROLL(\$000):  
MANAGEMENT OF COMPANIES AND  
ENTERPRISES**

U.S. Census Bureau, County Business Patterns. Beginning with the 2017 data, any tabulation with fewer than 3 establishments were omitted from the release. Data for these establishments are included in the broader total.

Year	County	State of Kansas	Non Metro Kansas	County Rank	Per 1000 or \$ Per Capita
2000	.	1,362,735	.	.	.
2001	2,387	1,279,253	.	.	141.5
2002	.	1,311,368	.	.	.
2003	.	1,352,119	.	.	.
2004	.	1,378,891	.	.	.
2005	.	1,510,876	.	.	.
2006	5,486	1,626,320	.	.	324.6
2007	.	2,233,654	.	.	.
2008	.	1,848,656	.	.	.
2009	.	1,601,158	.	.	.
2010	.	2,003,048	.	.	.
2011	.	1,677,619	.	.	.
2012	.	1,834,430	.	.	.
2013	.	1,938,100	.	.	.
2014	.	2,117,232	.	.	.
2015	3,899	2,451,126	.	.	237.5



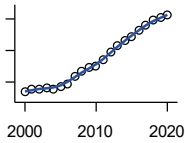
**TOTAL ANNUAL PAYROLL(\$000):  
ADMIN, SUPPORT, WASTE MGMT.,  
AND REMEDIATION**

U.S. Census Bureau, County Business Patterns. Beginning with the 2017 data, any tabulation with fewer than 3 establishments were omitted from the release. Data for these establishments are included in the broader total.

Year	County	State of Kansas	Non Metro Kansas	County Rank	Per 1000 or \$ Per Capita
2000	1,085	1,388,712	.	.	64.7
2001	1,161	1,416,480	.	.	68.8
2002	990	1,378,905	.	.	58.8
2003	.	1,387,061	.	.	.
2004	1,281	1,544,442	.	.	75.6
2005	1,884	1,694,687	.	.	111.7
2006	1,329	1,800,846	.	.	78.6
2007	1,098	1,978,025	.	.	65.1
2008	1,669	2,096,864	.	.	99.2
2009	1,656	1,832,540	.	.	97.6
2010	.	2,117,325	.	.	.
2011	.	2,114,970	.	.	.
2012	.	2,230,250	.	.	.
2013	.	2,214,320	.	.	.
2014	.	2,444,170	.	.	.
2015	1,713	2,577,592	.	.	104.3
2016	2,473	2,760,706	.	.	151.0
2017	780	3,026,927	.	.	47.9
2018	863	3,007,347	.	.	53.4
2019	994	3,075,485	.	.	61.8
2020	1,478	3,250,046	.	.	90.4

County: county value. Kansas: state value. County Rank: highest county value ranked #1. (\$000): thousands of dollars. Nonmetro Kansas: Kansas total less Metropolitan Areas as defined by the Office of Management and Budget (OMB; released 3/6/2020). Per 1000: For nonmoney amounts, Per 1000=(county value / county population for the same year as the data) x 1000. \$ Per capita=(county value / county population for the same year as the data). Value= . indicates missing or suppressed data or value not calculated.

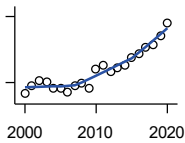
**Business**



**TOTAL ANNUAL PAYROLL(\$000):  
EDUCATIONAL SERVICES**

U.S. Census Bureau, County Business Patterns. Beginning with the 2017 data, any tabulation with fewer than 3 establishments were omitted from the release. Data for these establishments are included in the broader total.

Year	County	State of Kansas	Non Metro Kansas	County Rank	Per 1000 or \$ Per Capita
2000	8,386	299,843	.	.	499.9
2001	8,865	320,606	.	.	525.6
2002	8,939	353,531	.	.	531.4
2003	9,084	350,814	.	.	538.3
2004	8,904	361,644	.	.	525.7
2005	9,303	375,781	.	.	551.6
2006	9,778	400,565	.	.	578.5
2007	10,931	414,233	.	.	648.2
2008	11,655	463,210	.	.	692.9
2009	12,225	468,856	.	.	720.6
2010	12,564	487,670	.	.	742.4
2011	13,483	504,964	.	.	804.8
2012	14,686	508,448	.	.	875.5
2013	15,726	553,995	.	.	942.4
2014	16,547	612,073	.	.	1,001.5
2015	17,285	579,794	.	.	1,052.8
2016	18,270	571,582	.	.	1,115.7
2017	19,074	597,320	.	.	1,170.3
2018	19,836	618,864	.	.	1,226.5
2019	20,189	654,965	.	.	1,256.1
2020	20,563	652,468	.	.	1,257.8



**TOTAL ANNUAL PAYROLL(\$000):  
HEALTH CARE AND SOCIAL ASSISTANCE**

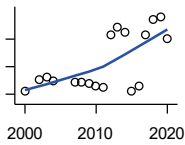
U.S. Census Bureau, County Business Patterns. Beginning with the 2017 data, any tabulation with fewer than 3 establishments were omitted from the release. Data for these establishments are included in the broader total.

Year	County	State of Kansas	Non Metro Kansas	County Rank	Per 1000 or \$ Per Capita
2000	22,426	4,120,595	.	.	1,337.0
2001	24,423	4,445,027	.	.	1,447.9
2002	25,304	4,705,220	.	.	1,504.1
2003	25,034	4,939,323	.	.	1,483.5
2004	23,799	5,232,394	.	.	1,405.1
2005	23,820	5,487,089	.	.	1,412.4
2006	22,748	5,814,218	.	.	1,345.9
2007	24,419	6,186,471	.	.	1,448.0
2008	24,983	6,490,627	.	.	1,485.3
2009	23,662	6,749,962	.	.	1,394.8
2010	27,945	6,871,727	.	.	1,651.2
2011	29,061	7,129,655	.	.	1,734.7
2012	27,467	7,614,853	.	.	1,637.5
2013	28,268	7,541,515	.	.	1,693.9
2014	28,889	7,733,621	.	.	1,748.4
2015	30,725	7,969,650	.	.	1,871.4
2016	31,486	8,018,706	.	.	1,922.7
2017	32,861	8,384,998	.	.	2,016.3
2018	33,489	8,637,619	.	.	2,070.7
2019	35,618	8,854,414	.	.	2,216.0
2020	38,636	9,309,269	.	.	2,363.3

County: county value. Kansas: state value. County Rank: highest county value ranked #1. (\$000): thousands of dollars. Nonmetro Kansas: Kansas total less Metropolitan Areas as defined by the Office of Management and Budget (OMB; released 3/6/2020). Per 1000: For nonmoney amounts, Per 1000=(county value / county population for the same year as the data) x 1000. \$ Per capita=(county value / county population for the same year as the data). Value= . indicates missing or suppressed data or value not calculated.



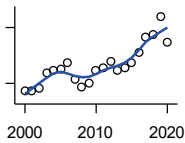
**Business**



**TOTAL ANNUAL PAYROLL(\$000):  
ARTS, ENTERTAINMENT, AND  
RECREATION**

U.S. Census Bureau, County Business Patterns. Beginning with the 2017 data, any tabulation with fewer than 3 establishments were omitted from the release. Data for these establishments are included in the broader total.

Year	County	State of Kansas	Non Metro Kansas	County Rank	Per 1000 or \$ Per Capita
2000	324	195,784	.	.	19.3
2001	.	203,511	.	.	.
2002	404	206,204	.	.	24.0
2003	425	185,049	.	.	25.2
2004	399	190,742	.	.	23.6
2005	.	196,594	.	.	.
2006	.	201,049	.	.	.
2007	390	220,435	.	.	23.1
2008	389	236,986	.	.	23.1
2009	378	237,116	.	.	22.3
2010	356	233,285	.	.	21.0
2011	352	234,351	.	.	21.0
2012	734	254,169	.	.	43.8
2013	785	278,474	.	.	47.0
2014	750	289,103	.	.	45.4
2015	326	300,253	.	.	19.9
2016	358	312,902	.	.	21.9
2017	729	323,153	.	.	44.7
2018	845	325,454	.	.	52.2
2019	862	335,362	.	.	53.6
2020	700	298,119	.	.	42.8



**TOTAL ANNUAL PAYROLL(\$000):  
ACCOMMODATION AND FOOD  
SERVICES**

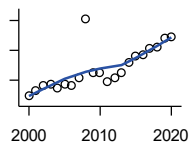
U.S. Census Bureau, County Business Patterns. Beginning with the 2017 data, any tabulation with fewer than 3 establishments were omitted from the release. Data for these establishments are included in the broader total.

Year	County	State of Kansas	Non Metro Kansas	County Rank	Per 1000 or \$ Per Capita
2000	3,589	926,831	.	.	214.0
2001	3,621	960,196	.	.	214.7
2002	3,703	930,510	.	.	220.1
2003	4,588	992,313	.	.	271.9
2004	4,670	1,046,901	.	.	275.7
2005	4,767	1,101,854	.	.	282.7
2006	5,085	1,185,280	.	.	300.9
2007	4,205	1,431,100	.	.	249.3
2008	3,789	1,271,594	.	.	225.3
2009	4,040	1,283,065	.	.	238.1
2010	4,690	1,296,556	.	.	277.1
2011	4,833	1,364,281	.	.	288.5
2012	5,154	1,388,337	.	.	307.3
2013	4,725	1,476,335	.	.	283.1
2014	4,819	1,572,021	.	.	291.7
2015	5,116	1,640,144	.	.	311.6
2016	5,690	1,709,193	.	.	347.5
2017	6,500	1,824,791	.	.	398.8
2018	6,644	1,880,364	.	.	410.8
2019	7,592	1,958,603	.	.	472.3
2020	6,197	1,745,238	.	.	379.1

County: county value. Kansas: state value. County Rank: highest county value ranked #1. (\$000): thousands of dollars. Nonmetro Kansas: Kansas total less Metropolitan Areas as defined by the Office of Management and Budget (OMB; released 3/6/2020). Per 1000: For nonmoney amounts, Per 1000=(county value / county population for the same year as the data) x 1000. \$ Per capita=(county value / county population for the same year as the data). Value= . indicates missing or suppressed data or value not calculated.

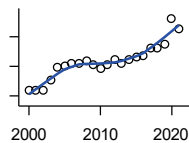
**Business**

**TOTAL ANNUAL PAYROLL(\$000):  
OTHER SERVICES**



U.S. Census Bureau, County Business Patterns. Beginning with the 2017 data, any tabulation with fewer than 3 establishments were omitted from the release. Data for these establishments are included in the broader total.

Year	County	State of Kansas	Non Metro Kansas	County Rank	Per 1000 or \$ Per Capita
2000	3,463	965,540	.	.	206.5
2001	3,631	996,716	.	.	215.3
2002	3,801	1,007,464	.	.	225.9
2003	3,850	979,466	.	.	228.1
2004	3,736	970,383	.	.	220.6
2005	3,856	1,005,537	.	.	228.6
2006	3,842	1,055,932	.	.	227.3
2007	4,082	1,141,551	.	.	242.1
2008	6,055	1,184,016	.	.	360.0
2009	4,265	1,167,154	.	.	251.4
2010	4,267	1,170,201	.	.	252.1
2011	3,938	1,173,775	.	.	235.1
2012	4,059	1,217,210	.	.	242.0
2013	4,272	1,254,933	.	.	256.0
2014	4,606	1,305,563	.	.	278.8
2015	4,817	1,341,075	.	.	293.4
2016	4,848	1,351,375	.	.	296.0
2017	5,051	1,344,179	.	.	309.9
2018	5,091	1,382,801	.	.	314.8
2019	5,390	1,427,711	.	.	335.3
2020	5,460	1,420,859	.	.	334.0



**NOMINAL TAXABLE RETAIL SALES  
(million\$)**

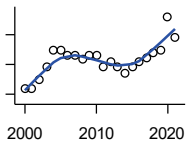
Kansas Department of Revenue

Year	County	State of Kansas	Non Metro Kansas	County Rank	Per 1000 or \$ Per Capita
2000	107.5	30,119.0	8,831.7	32	6.4
2001	107.5	30,202.2	8,700.3	32	6.4
2002	107.6	29,380.8	8,241.5	31	6.4
2003	121.6	30,694.0	8,710.6	31	7.2
2004	138.5	31,922.6	9,062.5	29	8.2
2005	140.8	32,924.2	9,386.6	29	8.3
2006	144.5	34,937.6	10,042.1	31	8.5
2007	144.2	36,180.1	10,553.2	31	8.6
2008	148.1	37,559.5	11,126.9	32	8.8
2009	142.5	35,211.8	10,351.5	32	8.4
2010	137.4	35,655.7	10,606.1	33	8.1
2011	142.8	37,257.0	11,153.5	33	8.5
2012	149.5	38,988.8	11,749.1	33	8.9
2013	143.1	40,009.0	11,993.8	34	8.6
2014	148.7	41,299.0	12,365.4	33	9.0
2015	153.4	41,635.8	11,747.6	33	9.3
2016	154.1	42,040.2	11,523.5	32	9.4
2017	164.6	41,940.1	11,449.9	31	10.1
2018	164.8	42,732.3	11,643.9	33	10.2
2019	169.6	43,732.5	12,062.7	32	10.6
2020	204.7	43,689.9	12,331.7	28	12.5
2021	191.4	48,532.8	13,413.0	31	11.8

County: county value. Kansas: state value. County Rank: highest county value ranked #1. (\$000): thousands of dollars. Nonmetro Kansas: Kansas total less Metropolitan Areas as defined by the Office of Management and Budget (OMB; released 3/6/2020). Per 1000: For nonmoney amounts, Per 1000=(county value / county population for the same year as the data) x 1000. \$ Per capita=(county value / county population for the same year as the data). Value= . indicates missing or suppressed data or value not calculated.

**Business**

RETAIL PULL FACTOR



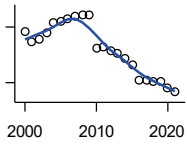
Kansas Direct Program, Kansas State University Cooperative Extension Service (1980-1999); Kansas Department of Revenue (2000- )

Year	County	State of Kansas	Non Metro Kansas	County Rank	Per 1000 or \$ Per Capita
2000	0.57	.	.	60	.
2001	0.57	.	.	59	.
2002	0.60	.	.	53	.
2003	0.64	.	.	50	.
2004	0.70	.	.	44	.
2005	0.70	.	.	47	.
2006	0.68	.	.	53	.
2007	0.68	.	.	54	.
2008	0.67	.	.	61	.
2009	0.68	.	.	68	.
2010	0.68	.	.	68	.
2011	0.64	.	.	73	.
2012	0.66	.	.	71	.
2013	0.64	.	.	78	.
2014	0.62	.	.	80	.
2015	0.64	.	.	77	.
2016	0.66	.	.	66	.
2017	0.67	.	.	65	.
2018	0.69	.	.	62	.
2019	0.70	.	.	59	.
2020	0.81	.	.	40	.
2021	0.74	.	.	52	.

County: county value. Kansas: state value. County Rank: highest county value ranked #1. (\$000): thousands of dollars. Nonmetro Kansas: Kansas total less Metropolitan Areas as defined by the Office of Management and Budget (OMB; released 3/6/2020). Per 1000: For nonmoney amounts, Per 1000=(county value / county population for the same year as the data) x 1000. \$ Per capita=(county value / county population for the same year as the data). Value= . indicates missing or suppressed data or value not calculated.

**Employment**

CIVILIAN LABOR FORCE (BLS-Place of Residence; 1990- )



U.S. Department of Labor, Bureau of Labor Statistics (BLS)

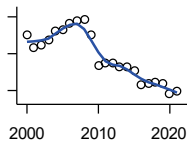
Year	County	State of Kansas	Non Metro Kansas	County Rank	Per 1000 or \$ Per Capita
2000	8,385	1,402,606	482,229	32	499.9
2001	8,093	1,398,521	475,280	34	479.8
2002	8,172	1,419,335	482,428	34	485.8
2003	8,338	1,441,065	490,161	34	494.1
2004	8,625	1,458,910	494,509	34	509.2
2005	8,637	1,458,767	490,047	34	512.1
2006	8,726	1,467,553	498,594	33	516.3
2007	8,793	1,485,414	497,048	33	521.4
2008	8,817	1,493,365	504,522	32	524.2
2009	8,829	1,512,572	516,311	31	520.4
2010	7,933	1,500,463	492,594	32	468.7
2011	7,960	1,498,000	492,563	32	475.1
2012	7,864	1,490,808	489,349	32	468.8
2013	7,794	1,489,395	485,484	32	467.0
2014	7,643	1,494,203	481,813	32	462.6
2015	7,490	1,493,782	477,546	32	456.2
2016	7,078	1,491,961	468,258	34	432.2
2017	7,074	1,488,346	461,063	33	434.0
2018	7,044	1,488,027	456,866	34	435.5
2019	7,035	1,497,517	455,858	33	437.7
2020	6,851	1,493,706	452,935	33	419.1
2021	6,742	1,495,665	453,398	33	415.2

County: county value. Kansas: state value. County Rank: highest county value ranked #1. (\$000): thousands of dollars. Nonmetro Kansas: Kansas total less Metropolitan Areas as defined by the Office of Management and Budget (OMB; released 3/6/2020). Per 1000: For nonmoney amounts, Per 1000=(county value / county population for the same year as the data) x 1000. \$ Per capita=(county value / county population for the same year as the data). Value= . indicates missing or suppressed data or value not calculated.

**Employment**

EMPLOYED (BLS-Place of Residence; 1990- )

U.S. Department of Labor, Bureau of Labor Statistics (BLS)



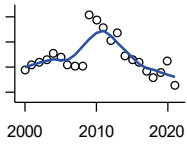
Year	County	State of Kansas	Non Metro Kansas	County Rank	Per 1000 or \$ Per Capita
2000	8,006	1,349,841	464,962	32	477.3
2001	7,677	1,338,775	455,154	34	455.1
2002	7,730	1,347,163	461,241	34	459.5
2003	7,876	1,361,115	467,622	34	466.7
2004	8,115	1,378,355	470,330	34	479.1
2005	8,158	1,384,654	467,722	34	483.7
2006	8,310	1,402,950	479,174	33	491.7
2007	8,386	1,422,109	477,983	33	497.3
2008	8,413	1,425,022	484,056	32	500.2
2009	8,013	1,408,142	485,797	32	472.3
2010	7,160	1,396,172	461,635	32	423.1
2011	7,251	1,402,198	463,723	32	432.8
2012	7,257	1,405,638	463,376	32	432.6
2013	7,126	1,410,470	461,405	32	427.0
2014	7,150	1,426,892	461,797	32	432.7
2015	7,031	1,431,533	457,899	32	428.2
2016	6,639	1,431,920	449,356	34	405.4
2017	6,708	1,434,516	445,003	34	411.6
2018	6,728	1,439,329	442,716	34	416.0
2019	6,676	1,450,705	442,108	33	415.4
2020	6,400	1,408,965	433,229	33	391.5
2021	6,485	1,447,323	441,159	33	399.3

County: county value. Kansas: state value. County Rank: highest county value ranked #1. (\$000): thousands of dollars. Nonmetro Kansas: Kansas total less Metropolitan Areas as defined by the Office of Management and Budget (OMB; released 3/6/2020). Per 1000: For nonmoney amounts, Per 1000=(county value / county population for the same year as the data) x 1000. \$ Per capita=(county value / county population for the same year as the data). Value= . indicates missing or suppressed data or value not calculated.

**Employment**

UNEMPLOYED (BLS-Place of Residence; 1990- )

U.S. Department of Labor, Bureau of Labor Statistics (BLS)

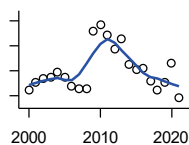


Year	County	State of Kansas	Non Metro Kansas	County Rank	Per 1000 or \$ Per Capita
2000	379	52,765	17,267	30	22.6
2001	416	59,746	20,126	30	24.7
2002	442	72,172	21,187	29	26.3
2003	462	79,950	22,539	30	27.4
2004	510	80,555	24,179	29	30.1
2005	479	74,113	22,325	29	28.4
2006	416	64,603	19,420	30	24.6
2007	407	63,305	19,065	30	24.1
2008	404	68,343	20,466	32	24.0
2009	816	104,430	30,514	25	48.1
2010	773	104,291	30,959	26	45.7
2011	709	95,802	28,840	27	42.3
2012	607	85,170	25,973	30	36.2
2013	668	78,925	24,079	23	40.0
2014	493	67,311	20,016	26	29.8
2015	459	62,249	19,647	29	28.0
2016	439	60,041	18,902	28	26.8
2017	366	53,830	16,060	28	22.5
2018	316	48,698	14,150	29	19.5
2019	359	46,812	13,750	26	22.3
2020	451	84,741	19,706	29	27.6
2021	257	48,342	12,239	32	15.8

County: county value. Kansas: state value. County Rank: highest county value ranked #1. (\$000): thousands of dollars. Nonmetro Kansas: Kansas total less Metropolitan Areas as defined by the Office of Management and Budget (OMB; released 3/6/2020). Per 1000: For nonmoney amounts, Per 1000=(county value / county population for the same year as the data) x 1000. \$ Per capita=(county value / county population for the same year as the data). Value= . indicates missing or suppressed data or value not calculated.

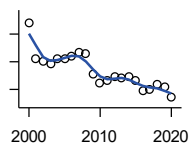
**Employment**

UNEMPLOYMENT RATE (BLS-Place of Residence; 1990- )



U.S. Department of Labor, Bureau of Labor Statistics (BLS)

Year	County	State of Kansas	Non Metro Kansas	County Rank	Per 1000 or \$ Per Capita
2000	4.5	3.8	3.6	19	.
2001	5.1	4.3	4.2	21	.
2002	5.4	5.1	4.4	22	.
2003	5.5	5.5	4.6	23	.
2004	5.9	5.5	4.9	21	.
2005	5.5	5.1	4.6	22	.
2006	4.8	4.4	3.9	19	.
2007	4.6	4.3	3.8	22	.
2008	4.6	4.6	4.1	30	.
2009	9.2	6.9	5.9	7	.
2010	9.7	7.0	6.3	6	.
2011	8.9	6.4	5.9	8	.
2012	7.7	5.7	5.3	9	.
2013	8.6	5.3	5.0	4	.
2014	6.5	4.5	4.2	6	.
2015	6.1	4.2	4.1	6	.
2016	6.2	4.0	4.0	4	.
2017	5.2	3.6	3.5	6	.
2018	4.5	3.3	3.1	6	.
2019	5.1	3.1	3.0	2	.
2020	6.6	5.7	4.4	8	.
2021	3.8	3.2	2.7	10	.



BEA EMPLOYMENT: TOTAL (Place of Work)

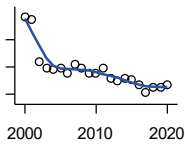
U.S. Bureau of Economic Analysis, Regional Economic Information System (REIS)

Year	County	State of Kansas	Non Metro Kansas	County Rank	Per 1000 or \$ Per Capita
2000	10,393	1,760,312	604,361	29	619.6
2001	9,112	1,767,601	592,672	32	540.2
2002	9,009	1,746,077	585,387	31	535.5
2003	8,947	1,733,694	577,860	31	530.2
2004	9,105	1,750,876	578,750	31	537.6
2005	9,094	1,765,650	577,562	31	539.2
2006	9,208	1,795,507	583,041	31	544.8
2007	9,350	1,844,355	591,924	31	554.4
2008	9,303	1,858,069	594,368	31	553.1
2009	8,555	1,813,184	580,972	32	504.3
2010	8,249	1,801,873	579,758	33	487.4
2011	8,311	1,819,044	583,725	33	496.1
2012	8,469	1,841,393	591,748	33	504.9
2013	8,402	1,869,054	597,236	33	503.5
2014	8,447	1,895,859	601,291	33	511.2
2015	8,330	1,910,954	598,589	33	507.4
2016	7,940	1,916,152	592,580	33	484.9
2017	7,989	1,914,179	584,337	33	490.2
2018	8,181	1,926,242	580,213	32	505.8
2019	8,100	1,925,204	574,496	33	504.0
2020	7,704	1,851,247	556,671	33	471.3

County: county value. Kansas: state value. County Rank: highest county value ranked #1. (\$000): thousands of dollars. Nonmetro Kansas: Kansas total less Metropolitan Areas as defined by the Office of Management and Budget (OMB; released 3/6/2020). Per 1000: For nonmoney amounts, Per 1000=(county value / county population for the same year as the data) x 1000. \$ Per capita=(county value / county population for the same year as the data). Value= . indicates missing or suppressed data or value not calculated.

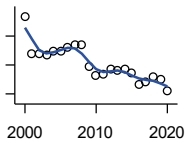
**Employment**

**BEA EMPLOYMENT: FARM**



U.S. Bureau of Economic Analysis,  
Regional Economic Information System  
(REIS)

Year	County	State of Kansas	Non Metro Kansas	County Rank	Per 1000 or \$ Per Capita
2000	717	77,477	59,088	40	42.7
2001	712	78,177	59,647	40	42.2
2002	635	70,532	53,893	44	37.7
2003	624	68,516	52,099	42	37.0
2004	620	67,586	51,246	42	36.6
2005	623	66,829	50,386	42	36.9
2006	613	64,910	48,728	42	36.3
2007	631	65,639	49,037	41	37.4
2008	622	63,820	47,682	41	37.0
2009	613	62,798	46,960	41	36.1
2010	614	63,882	47,984	42	36.3
2011	622	65,761	49,707	43	37.1
2012	605	63,753	48,167	43	36.1
2013	599	62,739	47,255	42	35.9
2014	605	64,308	48,722	43	36.6
2015	601	64,416	48,927	43	36.6
2016	593	63,840	48,539	44	36.2
2017	578	61,876	46,936	44	35.5
2018	588	63,233	48,069	44	36.4
2019	587	63,300	48,167	45	36.5
2020	593	64,281	49,038	46	36.3



**BEA EMPLOYMENT: NON-FARM**

U.S. Bureau of Economic Analysis,  
Regional Economic Information System  
(REIS)

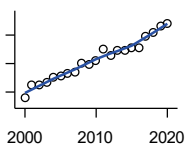
Year	County	State of Kansas	Non Metro Kansas	County Rank	Per 1000 or \$ Per Capita
2000	9,676	1,682,835	545,273	28	576.8
2001	8,400	1,689,424	533,025	32	498.0
2002	8,374	1,675,545	531,494	31	497.8
2003	8,323	1,665,178	525,761	31	493.2
2004	8,485	1,683,290	527,504	31	501.0
2005	8,471	1,698,821	527,176	31	502.3
2006	8,595	1,730,597	534,313	31	508.5
2007	8,719	1,778,716	542,887	31	517.0
2008	8,681	1,794,249	546,686	31	516.1
2009	7,942	1,750,386	534,012	32	468.1
2010	7,635	1,737,991	531,774	33	451.1
2011	7,689	1,753,283	534,018	33	459.0
2012	7,864	1,777,640	543,581	33	468.8
2013	7,803	1,806,315	549,981	33	467.6
2014	7,842	1,831,551	552,569	33	474.6
2015	7,729	1,846,538	549,662	33	470.8
2016	7,347	1,852,312	544,041	33	448.6
2017	7,411	1,852,303	537,401	33	454.7
2018	7,593	1,863,009	532,144	32	469.5
2019	7,513	1,861,904	526,329	33	467.4
2020	7,111	1,786,966	507,633	33	435.0

County: county value. Kansas: state value. County Rank: highest county value ranked #1. (\$000): thousands of dollars. Nonmetro Kansas: Kansas total less Metropolitan Areas as defined by the Office of Management and Budget (OMB; released 3/6/2020). Per 1000: For nonmoney amounts, Per 1000=(county value / county population for the same year as the data) x 1000. \$ Per capita=(county value / county population for the same year as the data). Value= . indicates missing or suppressed data or value not calculated.



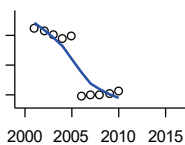
**Employment**

**AVERAGE WAGE PER JOB (\$)**



U.S. Bureau of Economic Analysis,  
Regional Economic Information System  
(REIS)

Year	County	State of Kansas	Non Metro Kansas	County Rank	Per 1000 or \$ Per Capita
2000	22,837	31,854	24,396	50	.
2001	27,524	32,859	26,379	30	.
2002	27,681	33,707	26,331	24	.
2003	28,293	35,078	28,911	44	.
2004	30,377	35,932	29,747	31	.
2005	30,714	37,467	31,646	46	.
2006	31,556	40,038	31,993	38	.
2007	32,194	41,500	33,484	51	.
2008	34,967	44,197	36,256	50	.
2009	34,572	43,860	35,739	48	.
2010	36,225	45,370	38,631	52	.
2011	40,101	48,280	42,324	56	.
2012	37,762	50,549	42,015	67	.
2013	39,805	52,629	46,073	72	.
2014	39,709	51,959	43,562	58	.
2015	40,723	52,250	42,320	46	.
2016	40,637	51,664	41,964	47	.
2017	44,626	53,007	42,137	30	.
2018	45,962	54,790	44,514	32	.
2019	48,097	56,956	45,336	29	.
2020	48,932	60,597	49,183	39	.



**BEA EMPLOYMENT: FORESTRY, FISHING, HUNTING, AND AG SUPPORT**

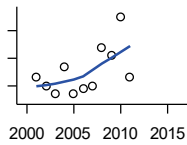
U.S. Bureau of Economic Analysis,  
Regional Economic Information System  
(REIS)

Year	County	State of Kansas	Non Metro Kansas	County Rank	Per 1000 or \$ Per Capita
2001	137	7,059	.	5	.
2002	133	8,045	.	6	.
2003	127	7,313	.	6	.
2004	120	7,623	.	5	.
2005	125	7,962	.	6	.
2006	23	7,748	.	21	.
2007	25	8,228	.	25	.
2008	26	8,646	.	23	.
2009	28	8,982	.	22	.
2010	32	9,251	.	20	.
2011	.	9,410	.	.	.
2012	.	9,691	.	.	.
2013	.	10,014	.	.	.
2014	.	10,708	.	.	.
2015	.	10,020	.	.	.
2016	.	10,383	.	.	.

County: county value. Kansas: state value. County Rank: highest county value ranked #1. (\$000): thousands of dollars. Nonmetro Kansas: Kansas total less Metropolitan Areas as defined by the Office of Management and Budget (OMB; released 3/6/2020). Per 1000: For nonmoney amounts, Per 1000=(county value / county population for the same year as the data) x 1000. \$ Per capita=(county value / county population for the same year as the data). Value= . indicates missing or suppressed data or value not calculated.

**Employment**

**BEA EMPLOYMENT: MINING**



U.S. Bureau of Economic Analysis,  
Regional Economic Information System  
(REIS)

Year	County	State of Kansas	Non Metro Kansas	County Rank	Per 1000 or \$ Per Capita
2001	48	19,592	.	41	.
2002	45	17,635	.	39	.
2003	42	19,869	.	41	.
2004	52	18,466	.	42	.
2005	42	19,489	.	45	.
2006	44	22,403	.	45	.
2007	45	24,043	.	43	.
2008	59	31,467	.	43	.
2009	56	29,941	.	41	.
2010	70	36,124	.	41	.
2011	48	31,658	.	41	.
2012	.	42,405	.	.	.
2013	.	46,585	.	.	.
2014	.	45,526	.	.	.
2015	.	46,460	.	.	.
2016	.	48,555	.	.	.

**BEA EMPLOYMENT: UTILITIES**

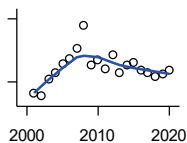
U.S. Bureau of Economic Analysis,  
Regional Economic Information System  
(REIS)

Year	County	State of Kansas	Non Metro Kansas	County Rank	Per 1000 or \$ Per Capita
2001	.	7,608	.	.	.
2002	.	7,087	.	.	.
2003	.	7,253	.	.	.
2004	.	7,356	.	.	.
2005	.	7,447	.	.	.
2006	.	7,478	.	.	.
2007	.	7,584	.	.	.
2008	.	7,855	.	.	.
2009	.	7,941	.	.	.
2010	.	8,028	.	.	.
2011	.	8,213	.	.	.
2012	.	8,155	.	.	.
2013	.	7,949	.	.	.
2014	.	7,985	.	.	.
2015	.	7,040	.	.	.
2016	.	7,133	.	.	.

County: county value. Kansas: state value. County Rank: highest county value ranked #1. (\$000): thousands of dollars. Nonmetro Kansas: Kansas total less Metropolitan Areas as defined by the Office of Management and Budget (OMB; released 3/6/2020). Per 1000: For nonmoney amounts, Per 1000=(county value / county population for the same year as the data) x 1000. \$ Per capita=(county value / county population for the same year as the data). Value= . indicates missing or suppressed data or value not calculated.

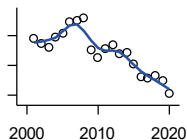
**Employment**

**BEA EMPLOYMENT:  
CONSTRUCTION**



U.S. Bureau of Economic Analysis,  
Regional Economic Information System  
(REIS)

Year	County	State of Kansas	Non Metro Kansas	County Rank	Per 1000 or \$ Per Capita
2001	373	92,647	27,972	35	.
2002	366	90,370	.	32	.
2003	408	91,725	26,681	32	.
2004	421	93,271	.	32	.
2005	443	94,836	.	31	.
2006	454	97,449	.	31	.
2007	481	99,119	29,179	33	.
2008	536	97,741	.	29	.
2009	440	90,165	28,077	31	.
2010	452	84,708	26,402	30	.
2011	431	83,332	25,999	30	.
2012	464	85,966	.	29	.
2013	422	88,094	.	33	.
2014	439	91,143	.	31	.
2015	446	91,458	27,583	27	.
2016	428	93,539	27,151	29	.
2017	423	92,046	25,579	29	.
2018	414	92,985	25,530	29	.
2019	420	94,858	25,701	30	.
2020	429	94,186	26,085	28	.



**BEA EMPLOYMENT:  
MANUFACTURING**

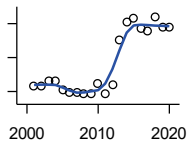
U.S. Bureau of Economic Analysis,  
Regional Economic Information System  
(REIS)

Year	County	State of Kansas	Non Metro Kansas	County Rank	Per 1000 or \$ Per Capita
2001	1,714	199,980	73,170	21	.
2002	1,612	188,905	70,691	21	.
2003	1,557	179,013	68,418	22	.
2004	1,718	181,738	69,669	20	.
2005	1,800	185,459	71,072	19	.
2006	1,979	188,047	71,704	17	.
2007	2,006	192,930	73,488	17	.
2008	2,049	193,116	72,235	19	.
2009	1,516	173,854	64,961	21	.
2010	1,387	166,000	62,884	21	.
2011	1,521	167,302	64,361	21	.
2012	1,591	169,308	65,944	20	.
2013	1,435	170,113	67,251	22	.
2014	1,462	169,307	68,299	22	.
2015	1,279	168,324	66,978	24	.
2016	1,061	167,723	65,796	30	.
2017	1,036	168,438	66,795	30	.
2018	1,071	171,778	68,181	30	.
2019	985	173,605	67,879	31	.
2020	780	165,228	65,658	33	.

County: county value. Kansas: state value. County Rank: highest county value ranked #1. (\$000): thousands of dollars. Nonmetro Kansas: Kansas total less Metropolitan Areas as defined by the Office of Management and Budget (OMB; released 3/6/2020). Per 1000: For nonmoney amounts, Per 1000=(county value / county population for the same year as the data) x 1000. \$ Per capita=(county value / county population for the same year as the data). Value= . indicates missing or suppressed data or value not calculated.

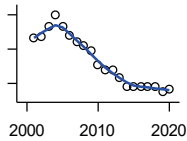
**Employment**

**BEA EMPLOYMENT: WHOLESALE TRADE**



U.S. Bureau of Economic Analysis,  
Regional Economic Information System  
(REIS)

Year	County	State of Kansas	Non Metro Kansas	County Rank	Per 1000 or \$ Per Capita
2001	108	65,698	.	65	.
2002	108	65,408	.	64	.
2003	115	63,504	.	56	.
2004	115	64,434	.	55	.
2005	103	64,587	.	58	.
2006	99	64,743	.	58	.
2007	99	65,993	.	56	.
2008	96	67,693	.	61	.
2009	96	65,954	.	63	.
2010	111	64,376	.	56	.
2011	97	64,712	.	66	.
2012	110	63,973	.	58	.
2013	176	64,999	.	39	.
2014	202	69,295	.	36	.
2015	208	68,444	.	36	.
2016	192	64,843	.	37	.
2017	190	65,014	.	36	.
2018	210	64,745	.	35	.
2019	194	63,324	.	37	.
2020	194	60,844	.	38	.



**BEA EMPLOYMENT: RETAIL TRADE**

U.S. Bureau of Economic Analysis,  
Regional Economic Information System  
(REIS)

Year	County	State of Kansas	Non Metro Kansas	County Rank	Per 1000 or \$ Per Capita
2001	966	198,069	.	29	.
2002	971	196,112	.	29	.
2003	1,029	194,545	64,173	29	.
2004	1,100	192,957	63,265	29	.
2005	1,032	191,656	62,506	29	.
2006	980	190,391	62,082	30	.
2007	940	190,643	61,716	31	.
2008	922	185,907	59,783	31	.
2009	888	181,262	58,714	31	.
2010	811	177,858	57,470	34	.
2011	775	180,548	57,734	34	.
2012	777	180,596	57,349	34	.
2013	737	183,245	57,556	35	.
2014	684	185,899	57,855	38	.
2015	685	188,421	58,516	37	.
2016	678	188,505	57,864	36	.
2017	678	186,633	56,715	35	.
2018	682	183,323	.	34	.
2019	649	177,240	53,427	36	.
2020	668	171,777	52,563	35	.

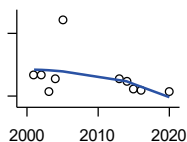
County: county value. Kansas: state value. County Rank: highest county value ranked #1. (\$000): thousands of dollars. Nonmetro Kansas: Kansas total less Metropolitan Areas as defined by the Office of Management and Budget (OMB; released 3/6/2020). Per 1000: For nonmoney amounts, Per 1000=(county value / county population for the same year as the data) x 1000. \$ Per capita=(county value / county population for the same year as the data). Value= . indicates missing or suppressed data or value not calculated.

**Employment**

**BEA EMPLOYMENT:  
TRANSPORTATION AND  
WAREHOUSING**

U.S. Bureau of Economic Analysis,  
Regional Economic Information System  
(REIS)

Year	County	State of Kansas	Non Metro Kansas	County Rank	Per 1000 or \$ Per Capita
2001	.	56,302	.	.	.
2002	.	55,319	.	.	.
2003	.	55,509	.	.	.
2004	.	55,479	.	.	.
2005	.	56,287	.	.	.
2006	.	57,506	.	.	.
2007	.	59,277	.	.	.
2008	.	58,725	.	.	.
2009	.	56,238	.	.	.
2010	.	55,179	.	.	.
2011	.	57,449	.	.	.
2012	.	59,756	.	.	.
2013	.	59,780	.	.	.
2014	.	60,565	.	.	.
2015	.	63,256	.	.	.
2016	.	65,705	.	.	.



**BEA EMPLOYMENT: INFORMATION**

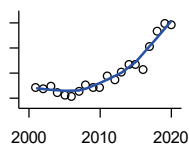
U.S. Bureau of Economic Analysis,  
Regional Economic Information System  
(REIS)

Year	County	State of Kansas	Non Metro Kansas	County Rank	Per 1000 or \$ Per Capita
2001	60	54,895	.	41	.
2002	60	50,728	.	38	.
2003	44	48,328	6,860	48	.
2004	56	45,617	.	44	.
2005	113	43,840	.	30	.
2006	.	43,925	.	.	.
2007	.	45,115	.	.	.
2008	.	42,958	.	.	.
2009	.	38,677	.	.	.
2010	.	33,432	.	.	.
2011	.	32,160	.	.	.
2012	.	31,829	.	.	.
2013	57	31,737	.	36	.
2014	54	32,316	.	36	.
2015	47	25,282	.	39	.
2016	45	24,998	.	42	.
2020	44	20,810	.	40	.

County: county value. Kansas: state value. County Rank: highest county value ranked #1. (\$000): thousands of dollars. Nonmetro Kansas: Kansas total less Metropolitan Areas as defined by the Office of Management and Budget (OMB; released 3/6/2020). Per 1000: For nonmoney amounts, Per 1000=(county value / county population for the same year as the data) x 1000. \$ Per capita=(county value / county population for the same year as the data). Value= . indicates missing or suppressed data or value not calculated.

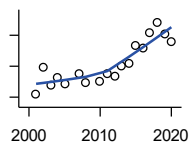
**Employment**

**BEA EMPLOYMENT: FINANCE AND INSURANCE**



U.S. Bureau of Economic Analysis,  
Regional Economic Information System  
(REIS)

Year	County	State of Kansas	Non Metro Kansas	County Rank	Per 1000 or \$ Per Capita
2001	244	76,118	.	34	.
2002	236	78,206	.	36	.
2003	249	78,441	.	35	.
2004	224	78,350	.	39	.
2005	212	78,952	.	40	.
2006	208	80,900	.	42	.
2007	225	86,094	.	36	.
2008	251	89,590	.	36	.
2009	245	93,573	.	38	.
2010	244	92,428	.	37	.
2011	287	99,495	.	34	.
2012	274	98,640	.	36	.
2013	302	99,998	.	34	.
2014	332	98,209	.	33	.
2015	333	100,534	.	32	.
2016	312	102,699	.	32	.
2017	408	101,563	.	25	.
2018	469	102,816	.	25	.
2019	498	100,276	.	24	.
2020	493	101,626	.	24	.



**BEA EMPLOYMENT: REAL ESTATE, RENTAL, AND LEASING**

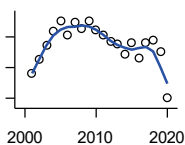
U.S. Bureau of Economic Analysis,  
Regional Economic Information System  
(REIS)

Year	County	State of Kansas	Non Metro Kansas	County Rank	Per 1000 or \$ Per Capita
2001	164	45,237	.	28	.
2002	198	44,970	.	26	.
2003	175	47,095	.	27	.
2004	186	50,181	.	27	.
2005	177	53,335	.	28	.
2006	.	55,342	.	.	.
2007	191	57,694	.	32	.
2008	178	57,933	.	32	.
2009	.	57,132	.	.	.
2010	181	59,578	.	32	.
2011	190	61,821	.	31	.
2012	187	60,432	.	31	.
2013	201	62,134	.	31	.
2014	203	64,705	.	30	.
2015	226	66,604	.	30	.
2016	223	68,395	.	29	.
2017	244	70,304	.	29	.
2018	256	72,631	.	29	.
2019	242	69,119	.	28	.
2020	232	68,452	.	29	.

County: county value. Kansas: state value. County Rank: highest county value ranked #1. (\$000): thousands of dollars. Nonmetro Kansas: Kansas total less Metropolitan Areas as defined by the Office of Management and Budget (OMB; released 3/6/2020). Per 1000: For nonmoney amounts, Per 1000=(county value / county population for the same year as the data) x 1000. \$ Per capita=(county value / county population for the same year as the data). Value= . indicates missing or suppressed data or value not calculated.

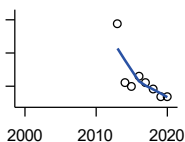
**Employment**

**BEA EMPLOYMENT: PROFESSIONAL AND TECHNICAL SERVICES**



U.S. Bureau of Economic Analysis, Regional Economic Information System (REIS)

Year	County	State of Kansas	Non Metro Kansas	County Rank	Per 1000 or \$ Per Capita
2001	232	81,396	.	26	.
2002	251	80,684	.	22	.
2003	269	80,311	.	19	.
2004	288	85,550	.	21	.
2005	301	85,003	.	20	.
2006	282	87,381	.	19	.
2007	300	92,717	.	23	.
2008	291	95,362	.	26	.
2009	301	93,232	.	25	.
2010	290	93,037	.	26	.
2011	282	93,237	.	25	.
2012	274	95,360	.	27	.
2013	270	100,795	.	27	.
2014	258	102,210	.	28	.
2015	273	105,625	.	27	.
2016	252	108,059	.	24	.
2017	272	109,041	.	23	.
2018	276	110,513	.	22	.
2019	261	109,637	.	24	.
2020	200	108,634	.	31	.



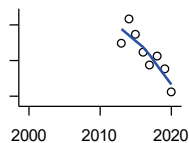
**BEA EMPLOYMENT: MANAGEMENT OF COMPANIES AND ENTERPRISES**

U.S. Bureau of Economic Analysis, Regional Economic Information System (REIS)

Year	County	State of Kansas	Non Metro Kansas	County Rank	Per 1000 or \$ Per Capita
2001	.	13,832	.	.	.
2002	.	12,576	.	.	.
2003	.	11,135	.	.	.
2004	.	10,614	.	.	.
2005	.	11,811	.	.	.
2006	.	13,061	.	.	.
2007	.	13,398	.	.	.
2008	.	15,234	.	.	.
2009	.	14,849	.	.	.
2010	.	16,579	.	.	.
2011	.	15,343	.	.	.
2012	.	15,075	.	.	.
2013	74	16,667	.	17	.
2014	56	20,441	.	20	.
2015	55	29,604	.	19	.
2016	58	27,824	.	20	.
2017	56	27,767	.	20	.
2018	54	28,862	.	20	.
2019	52	30,512	.	17	.
2020	52	25,648	.	19	.

County: county value. Kansas: state value. County Rank: highest county value ranked #1. (\$000): thousands of dollars. Nonmetro Kansas: Kansas total less Metropolitan Areas as defined by the Office of Management and Budget (OMB; released 3/6/2020). Per 1000: For nonmoney amounts, Per 1000=(county value / county population for the same year as the data) x 1000. \$ Per capita=(county value / county population for the same year as the data). Value= . indicates missing or suppressed data or value not calculated.

**Employment**



**BEA EMPLOYMENT:  
ADMINISTRATIVE AND WASTE  
SERVICES**

U.S. Bureau of Economic Analysis,  
Regional Economic Information System  
(REIS)

Year	County	State of Kansas	Non Metro Kansas	County Rank	Per 1000 or \$ Per Capita
2001	.	81,573	.	.	.
2002	.	82,992	.	.	.
2003	.	81,298	.	.	.
2004	.	85,721	.	.	.
2005	.	89,933	.	.	.
2006	.	93,688	.	.	.
2007	.	98,865	.	.	.
2008	.	97,440	.	.	.
2009	.	92,455	.	.	.
2010	.	93,675	.	.	.
2011	.	97,969	.	.	.
2012	.	100,490	.	.	.
2013	298	104,680	.	29	.
2014	367	107,218	18,836	26	.
2015	324	103,436	18,767	26	.
2016	275	103,233	18,428	28	.
2017	239	101,532	18,198	28	.
2018	264	102,062	.	27	.
2019	228	100,897	.	30	.
2020	162	95,361	.	35	.

**BEA EMPLOYMENT: EDUCATIONAL  
SERVICES**

U.S. Bureau of Economic Analysis,  
Regional Economic Information System  
(REIS)

Year	County	State of Kansas	Non Metro Kansas	County Rank	Per 1000 or \$ Per Capita
2001	.	21,169	.	.	.
2002	.	22,173	.	.	.
2003	.	22,651	.	.	.
2004	.	21,601	.	.	.
2005	.	22,177	.	.	.
2006	.	22,438	.	.	.
2007	.	23,647	.	.	.
2008	.	24,653	.	.	.
2009	.	25,120	.	.	.
2010	.	26,071	.	.	.
2011	.	26,080	.	.	.
2012	.	26,625	.	.	.
2013	.	27,508	.	.	.
2014	.	28,708	.	.	.
2015	.	28,794	.	.	.
2016	.	27,996	.	.	.

County: county value. Kansas: state value. County Rank: highest county value ranked #1. (\$000): thousands of dollars. Nonmetro Kansas: Kansas total less Metropolitan Areas as defined by the Office of Management and Budget (OMB; released 3/6/2020). Per 1000: For nonmoney amounts, Per 1000=(county value / county population for the same year as the data) x 1000. \$ Per capita=(county value / county population for the same year as the data). Value= . indicates missing or suppressed data or value not calculated.

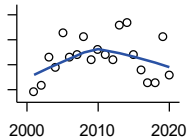


**Employment**

**BEA EMPLOYMENT: HEALTH CARE AND SOCIAL ASSISTANCE**

U.S. Bureau of Economic Analysis, Regional Economic Information System (REIS)

Year	County	State of Kansas	Non Metro Kansas	County Rank	Per 1000 or \$ Per Capita
2001	.	165,415	.	.	.
2002	.	168,198	.	.	.
2003	.	169,654	.	.	.
2004	.	172,796	.	.	.
2005	.	173,949	.	.	.
2006	.	176,919	.	.	.
2007	.	182,160	.	.	.
2008	.	186,051	.	.	.
2009	.	188,499	.	.	.
2010	.	188,383	.	.	.
2011	.	190,736	.	.	.
2012	.	192,991	.	.	.
2013	.	193,687	.	.	.
2014	.	194,632	.	.	.
2015	.	199,724	.	.	.
2016	.	201,830	.	.	.



**BEA EMPLOYMENT: ARTS, ENTERTAINMENT, AND RECREATION**

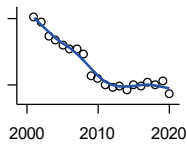
U.S. Bureau of Economic Analysis, Regional Economic Information System (REIS)

Year	County	State of Kansas	Non Metro Kansas	County Rank	Per 1000 or \$ Per Capita
2001	59	25,012	.	33	.
2002	62	25,668	.	32	.
2003	73	24,116	.	30	.
2004	69	25,355	.	33	.
2005	83	26,067	.	31	.
2006	73	26,505	.	37	.
2007	74	27,489	.	34	.
2008	81	27,501	.	32	.
2009	72	27,203	.	33	.
2010	76	27,479	.	32	.
2011	74	28,487	.	33	.
2012	72	30,729	.	33	.
2013	86	31,068	.	30	.
2014	87	32,154	.	30	.
2015	74	31,169	.	32	.
2016	68	32,373	.	35	.
2017	63	33,213	.	34	.
2018	63	33,837	.	33	.
2019	81	33,082	.	28	.
2020	66	26,644	.	28	.

County: county value. Kansas: state value. County Rank: highest county value ranked #1. (\$000): thousands of dollars. Nonmetro Kansas: Kansas total less Metropolitan Areas as defined by the Office of Management and Budget (OMB; released 3/6/2020). Per 1000: For nonmoney amounts, Per 1000=(county value / county population for the same year as the data) x 1000. \$ Per capita=(county value / county population for the same year as the data). Value= . indicates missing or suppressed data or value not calculated.

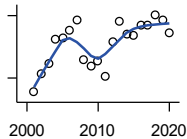
**Employment**

**BEA EMPLOYMENT: GOVERNMENT AND GOVERNMENT ENTERPRISES**



U.S. Bureau of Economic Analysis, Regional Economic Information System (REIS)

Year	County	State of Kansas	Non Metro Kansas	County Rank	Per 1000 or \$ Per Capita
2001	1,308	282,293	102,993	37	.
2002	1,285	281,427	103,581	39	.
2003	1,219	282,459	103,389	41	.
2004	1,206	283,877	103,946	41	.
2005	1,182	282,798	103,194	41	.
2006	1,165	288,372	104,103	42	.
2007	1,164	294,413	104,598	42	.
2008	1,142	298,580	104,718	42	.
2009	1,043	300,422	104,081	43	.
2010	1,029	303,875	103,382	44	.
2011	1,000	299,952	101,535	46	.
2012	989	298,068	101,180	45	.
2013	994	297,689	101,232	45	.
2014	979	296,956	100,634	46	.
2015	1,001	295,799	99,719	43	.
2016	994	291,536	98,520	43	.
2017	1,013	295,748	99,542	45	.
2018	1,001	298,105	99,499	45	.
2019	1,018	302,017	100,227	44	.
2020	958	292,583	96,477	45	.



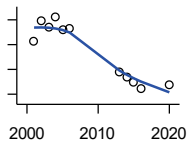
**BEA EMPLOYMENT: ACCOMMODATION AND FOOD SERVICES**

U.S. Bureau of Economic Analysis, Regional Economic Information System (REIS)

Year	County	State of Kansas	Non Metro Kansas	County Rank	Per 1000 or \$ Per Capita
2001	466	103,353	.	29	.
2002	509	103,692	.	29	.
2003	534	105,138	.	27	.
2004	594	106,694	.	28	.
2005	595	107,303	.	29	.
2006	614	109,888	.	29	.
2007	641	110,863	.	26	.
2008	544	111,092	.	26	.
2009	528	109,353	.	28	.
2010	542	108,628	.	27	.
2011	504	110,514	.	28	.
2012	588	112,574	.	25	.
2013	637	114,102	.	25	.
2014	607	115,768	.	27	.
2015	602	118,503	.	26	.
2016	627	119,764	.	26	.
2017	627	121,181	.	25	.
2018	652	121,900	.	26	.
2019	640	122,819	.	26	.
2020	609	106,561	.	25	.

County: county value. Kansas: state value. County Rank: highest county value ranked #1. (\$000): thousands of dollars. Nonmetro Kansas: Kansas total less Metropolitan Areas as defined by the Office of Management and Budget (OMB; released 3/6/2020). Per 1000: For nonmoney amounts, Per 1000=(county value / county population for the same year as the data) x 1000. \$ Per capita=(county value / county population for the same year as the data). Value= . indicates missing or suppressed data or value not calculated.

**Employment**

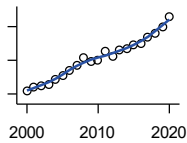


BEA EMPLOYMENT: OTHER SERVICES, EXCEPT PUBLIC ADMINISTRATION

U.S. Bureau of Economic Analysis, Regional Economic Information System (REIS)

Year	County	State of Kansas	Non Metro Kansas	County Rank	Per 1000 or \$ Per Capita
2001	458	92,176	.	33	.
2002	497	95,350	.	30	.
2003	485	95,821	32,629	31	.
2004	506	95,610	.	31	.
2005	479	95,930	32,555	33	.
2006	482	96,413	.	29	.
2007	.	98,444	.	.	.
2008	.	96,705	.	.	.
2009	.	95,534	.	.	.
2010	.	93,302	.	.	.
2011	.	94,865	.	.	.
2012	.	94,977	.	.	.
2013	395	95,471	.	35	.
2014	385	97,806	.	37	.
2015	374	98,041	.	35	.
2016	362	97,219	.	36	.
2020	368	92,245	.	32	.

**Income**



BEA PER CAPITA PERSONAL INCOME (\$)

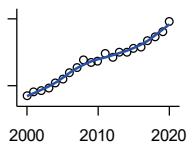
U.S. Bureau of Economic Analysis, Regional Economic Information System (REIS)

Year	County	State of Kansas	Non Metro Kansas	County Rank	Per 1000 or \$ Per Capita
2000	21,008	28,253	23,116	93	.
2001	22,175	29,112	24,576	96	.
2002	22,401	29,248	24,314	88	.
2003	22,957	30,074	26,017	98	.
2004	24,252	30,843	26,583	84	.
2005	25,524	32,545	28,356	93	.
2006	27,152	35,690	29,782	83	.
2007	28,608	38,057	32,034	96	.
2008	30,731	41,257	35,211	98	.
2009	29,705	39,431	33,876	97	.
2010	30,109	39,960	35,795	100	.
2011	32,496	43,015	39,041	101	.
2012	31,305	45,294	39,660	104	.
2013	32,927	46,174	41,747	104	.
2014	33,427	47,013	41,042	103	.
2015	34,683	47,332	40,638	99	.
2016	35,125	47,326	40,797	98	.
2017	36,893	48,756	41,314	94	.
2018	38,114	50,811	43,283	99	.
2019	39,743	52,820	44,491	95	.
2020	42,974	55,677	48,415	100	.

County: county value. Kansas: state value. County Rank: highest county value ranked #1. (\$000): thousands of dollars. Nonmetro Kansas: Kansas total less Metropolitan Areas as defined by the Office of Management and Budget (OMB; released 3/6/2020). Per 1000: For nonmoney amounts, Per 1000=(county value / county population for the same year as the data) x 1000. \$ Per capita=(county value / county population for the same year as the data). Value= . indicates missing or suppressed data or value not calculated.

**Income**

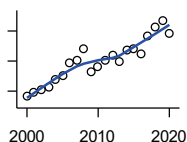
**SOURCES OF PERSONAL INCOME:  
TOTAL PERSONAL INCOME (\$000)**



U.S. Bureau of Economic Analysis,  
Regional Economic Information System  
(REIS)

Year	County	State of Kansas	Non Metro Kansas	County Rank	Per 1000 or \$ Per Capita
2000	352,849	76,105,125	22,273,838	33	21,035.5
2001	374,047	78,664,651	23,411,174	34	22,174.9
2002	376,850	79,365,190	23,000,314	34	22,400.9
2003	387,393	81,890,340	24,494,191	34	22,956.6
2004	410,751	84,335,940	24,924,467	34	24,251.7
2005	430,465	89,346,228	26,452,291	33	25,524.2
2006	458,918	98,610,188	27,661,596	32	27,151.7
2007	482,447	105,943,199	29,715,946	32	28,608.1
2008	516,889	115,852,478	32,614,565	32	30,730.6
2009	503,953	111,697,350	31,394,702	32	29,705.5
2010	507,481	114,239,828	33,291,419	33	29,985.9
2011	544,496	123,558,772	36,221,488	32	32,501.4
2012	525,268	130,948,127	36,696,759	34	31,314.4
2013	549,790	133,979,908	38,513,959	33	32,945.2
2014	552,683	136,878,718	37,680,598	34	33,449.3
2015	569,802	138,336,768	37,081,851	34	34,705.9
2016	575,209	138,533,890	36,930,885	33	35,125.1
2017	602,050	142,729,689	37,104,963	32	36,940.1
2018	617,531	148,955,739	38,589,364	34	38,182.8
2019	641,377	154,961,001	39,424,148	33	39,904.0
2020	688,233	163,462,179	42,618,591	33	42,098.9

**SOURCES OF PERSONAL INCOME:  
WAGES AND SALARIES (\$000)**



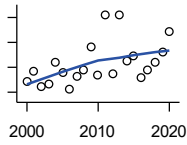
U.S. Bureau of Economic Analysis,  
Regional Economic Information System  
(REIS)

Year	County	State of Kansas	Non Metro Kansas	County Rank	Per 1000 or \$ Per Capita
2000	173,118	41,766,878	10,254,250	28	10,320.6
2001	179,103	43,269,734	10,518,206	28	10,617.9
2002	181,620	43,875,159	10,696,876	28	10,795.9
2003	184,921	44,488,560	10,894,971	28	10,958.3
2004	194,917	46,702,068	11,333,617	28	11,508.4
2005	200,860	48,537,956	11,614,130	28	11,909.9
2006	217,903	52,083,584	12,299,340	28	12,892.1
2007	221,636	55,442,368	13,093,908	28	13,142.6
2008	236,791	57,623,385	13,647,143	28	14,077.9
2009	206,052	55,605,578	13,199,674	31	12,145.7
2010	213,231	56,089,711	13,345,291	30	12,599.3
2011	221,071	58,104,706	13,856,458	30	13,195.9
2012	228,162	60,616,457	14,473,599	30	13,602.1
2013	218,839	61,872,023	14,781,792	33	13,113.6
2014	235,495	64,457,652	15,385,500	31	14,252.6
2015	235,912	66,729,598	15,454,485	32	14,369.1
2016	229,014	67,253,399	15,422,058	32	13,984.7
2017	253,256	68,830,861	15,731,853	28	15,539.1
2018	264,863	71,580,544	16,311,725	28	16,376.9
2019	273,941	74,404,771	16,882,299	28	17,043.6
2020	257,409	75,798,310	17,251,300	31	15,745.6

County: county value. Kansas: state value. County Rank: highest county value ranked #1. (\$000): thousands of dollars. Nonmetro Kansas: Kansas total less Metropolitan Areas as defined by the Office of Management and Budget (OMB; released 3/6/2020). Per 1000: For nonmoney amounts, Per 1000=(county value / county population for the same year as the data) x 1000. \$ Per capita=(county value / county population for the same year as the data). Value= . indicates missing or suppressed data or value not calculated.

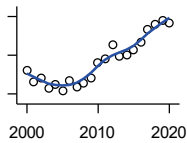
**Income**

**SOURCES OF PERSONAL INCOME:  
PROPRIETORS-FARM (\$000)**



U.S. Bureau of Economic Analysis,  
Regional Economic Information System  
(REIS)

Year	County	State of Kansas	Non Metro Kansas	County Rank	Per 1000 or \$ Per Capita
2000	4,126	668,539	673,707	57	246.0
2001	8,493	779,473	769,336	39	503.5
2002	2,355	145,064	187,033	39	140.0
2003	3,146	1,281,076	1,195,298	88	186.4
2004	12,151	1,149,425	938,524	41	717.4
2005	7,927	1,609,604	1,469,139	74	470.0
2006	992	766,047	663,735	72	58.7
2007	6,524	1,131,607	1,040,350	70	386.9
2008	9,096	1,582,092	1,404,900	73	540.8
2009	18,418	1,585,995	1,390,349	33	1,085.6
2010	7,079	2,149,482	2,029,067	75	418.3
2011	30,905	3,188,519	2,989,880	45	1,844.7
2012	7,417	2,519,555	2,296,875	87	442.2
2013	31,055	4,499,190	4,158,419	56	1,860.9
2014	12,446	2,231,181	2,157,992	55	753.3
2015	14,570	1,300,733	1,294,370	29	887.4
2016	5,877	1,577,060	1,564,511	49	358.9
2017	8,874	838,480	838,290	33	544.5
2018	11,984	1,050,662	971,690	36	741.0
2019	15,945	998,038	878,247	22	992.0
2020	24,125	2,151,349	1,887,881	31	1,475.7



**SOURCES OF PERSONAL INCOME:  
PROPRIETORS-NONFARM (\$000)**

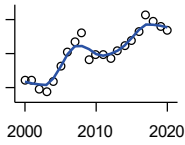
U.S. Bureau of Economic Analysis,  
Regional Economic Information System  
(REIS)

Year	County	State of Kansas	Non Metro Kansas	County Rank	Per 1000 or \$ Per Capita
2000	21,097	4,580,476	1,493,470	30	1,257.7
2001	18,257	4,510,530	1,855,621	40	1,082.3
2002	19,142	5,036,100	1,966,784	41	1,137.8
2003	16,450	4,719,377	1,916,735	49	974.8
2004	17,476	4,003,922	2,073,898	46	1,031.8
2005	15,842	4,455,294	2,200,971	55	939.3
2006	18,458	7,343,524	2,694,895	56	1,092.1
2007	16,876	7,280,197	2,436,574	55	1,000.7
2008	17,906	9,255,953	2,971,923	61	1,064.6
2009	19,258	9,323,551	2,858,848	55	1,135.2
2010	23,222	9,658,261	3,498,040	56	1,372.1
2011	24,077	12,196,566	4,186,007	61	1,437.2
2012	27,856	15,773,140	4,446,004	58	1,660.7
2013	24,803	16,441,660	4,492,127	64	1,486.3
2014	25,089	15,954,254	4,455,081	64	1,518.4
2015	26,534	15,536,116	4,386,172	62	1,616.2
2016	28,459	14,075,310	3,783,829	56	1,737.8
2017	31,736	15,371,957	3,908,254	49	1,947.2
2018	32,987	15,716,877	4,238,775	49	2,039.6
2019	34,127	16,705,488	3,921,051	50	2,123.3
2020	33,345	16,718,952	3,823,329	49	2,039.7

County: county value. Kansas: state value. County Rank: highest county value ranked #1. (\$000): thousands of dollars. Nonmetro Kansas: Kansas total less Metropolitan Areas as defined by the Office of Management and Budget (OMB; released 3/6/2020). Per 1000: For nonmoney amounts, Per 1000=(county value / county population for the same year as the data) x 1000. \$ Per capita=(county value / county population for the same year as the data). Value= . indicates missing or suppressed data or value not calculated.

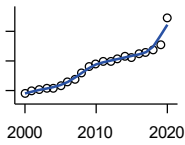
**Income**

**SOURCES OF PERSONAL INCOME:  
DIVIDENDS,INTEREST,RENT(\$000)**



U.S. Bureau of Economic Analysis,  
Regional Economic Information System  
(REIS)

Year	County	State of Kansas	Non Metro Kansas	County Rank	Per 1000 or \$ Per Capita
2000	74,124	15,916,201	4,736,921	29	4,419.0
2001	74,323	15,770,830	4,699,417	31	4,406.2
2002	69,145	15,111,563	4,316,887	30	4,110.1
2003	67,276	15,370,764	4,360,311	31	3,986.7
2004	73,331	15,820,469	4,251,925	28	4,329.6
2005	82,547	17,147,069	4,485,387	28	4,894.6
2006	90,862	20,117,848	4,945,184	28	5,375.8
2007	97,116	22,269,186	5,526,219	28	5,758.8
2008	102,333	24,972,485	6,180,979	30	6,084.0
2009	86,166	21,453,879	5,308,474	30	5,079.0
2010	89,645	20,861,351	5,414,285	30	5,296.9
2011	89,211	23,387,567	5,781,075	31	5,325.1
2012	87,313	25,689,368	6,389,505	35	5,205.3
2013	91,471	24,832,212	5,984,811	30	5,481.2
2014	94,929	27,412,684	6,403,356	31	5,745.3
2015	97,496	27,244,414	6,423,685	30	5,938.4
2016	103,196	27,293,441	6,389,161	30	6,301.7
2017	112,785	28,385,472	6,700,156	30	6,920.2
2018	108,716	29,953,419	6,772,504	30	6,722.1
2019	106,064	30,820,276	6,957,987	31	6,598.9
2020	103,782	30,283,520	6,844,745	32	6,348.3



**SOURCES OF PERSONAL INCOME:  
TRANSFER PAYMENTS (\$000)**

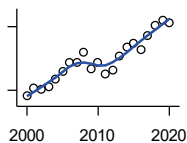
U.S. Bureau of Economic Analysis,  
Regional Economic Information System  
(REIS)

Year	County	State of Kansas	Non Metro Kansas	County Rank	Per 1000 or \$ Per Capita
2000	69,368	9,650,835	4,036,781	30	4,135.4
2001	74,012	10,549,124	4,355,457	30	4,387.7
2002	76,467	11,208,997	4,553,978	31	4,545.4
2003	79,394	11,709,049	4,702,911	31	4,704.8
2004	78,677	12,040,452	4,802,536	34	4,645.3
2005	82,944	12,696,735	5,059,314	32	4,918.1
2006	90,072	13,642,787	5,455,207	31	5,329.1
2007	93,532	14,686,821	5,775,024	33	5,546.3
2008	104,494	16,552,460	6,322,722	33	6,212.5
2009	116,621	18,025,603	6,790,962	33	6,874.2
2010	120,364	19,189,749	7,089,258	33	7,112.0
2011	124,356	19,625,770	7,255,825	33	7,422.9
2012	123,805	19,354,458	7,148,177	33	7,380.8
2013	127,518	19,639,358	7,185,636	32	7,641.3
2014	133,338	20,380,970	7,399,809	32	8,069.8
2015	131,644	21,116,856	7,623,577	33	8,018.3
2016	136,445	21,884,629	7,886,000	32	8,332.0
2017	138,259	22,559,744	8,062,517	33	8,483.2
2018	143,448	23,628,033	8,393,617	33	8,869.6
2019	151,869	25,050,174	8,845,371	32	9,448.7
2020	198,692	32,319,421	11,074,190	32	12,153.9

County: county value. Kansas: state value. County Rank: highest county value ranked #1. (\$000): thousands of dollars. Nonmetro Kansas: Kansas total less Metropolitan Areas as defined by the Office of Management and Budget (OMB; released 3/6/2020). Per 1000: For nonmoney amounts, Per 1000=(county value / county population for the same year as the data) x 1000. \$ Per capita=(county value / county population for the same year as the data). Value= . indicates missing or suppressed data or value not calculated.

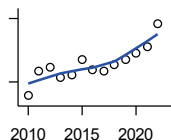
**Income**

**SOURCES OF PERSONAL INCOME:  
LESS SOCIAL INSURANCE (\$000)**



U.S. Bureau of Economic Analysis,  
Regional Economic Information System  
(REIS)

Year	County	State of Kansas	Non Metro Kansas	County Rank	Per 1000 or \$ Per Capita
2000	28,631	6,655,813	1,663,044	29	1,706.9
2001	30,484	6,869,934	1,740,915	29	1,807.2
2002	30,287	7,008,361	1,778,636	31	1,800.3
2003	30,899	7,172,781	1,821,858	31	1,831.1
2004	32,772	7,556,560	1,904,014	31	1,934.9
2005	34,367	7,911,241	1,986,907	31	2,037.8
2006	36,692	8,406,937	2,090,313	29	2,170.9
2007	36,455	8,806,941	2,180,587	31	2,161.7
2008	38,912	9,207,010	2,299,399	30	2,313.4
2009	35,037	9,002,859	2,248,703	32	2,065.3
2010	36,654	9,235,760	2,321,191	32	2,165.8
2011	33,829	8,515,986	2,139,991	31	2,019.3
2012	34,806	8,816,128	2,195,919	30	2,075.0
2013	37,959	10,225,399	2,540,439	34	2,274.6
2014	40,323	10,609,601	2,635,009	32	2,440.4
2015	40,946	11,028,204	2,663,038	32	2,494.0
2016	39,585	10,915,915	2,604,579	32	2,417.3
2017	42,786	11,224,218	2,669,954	31	2,625.2
2018	45,189	11,749,229	2,797,106	31	2,794.1
2019	46,645	12,245,451	2,889,336	30	2,902.1
2020	45,810	12,715,152	3,027,656	32	2,802.2



**HUD MEDIAN FAMILY INCOME**

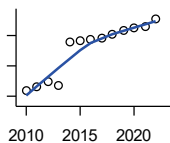
U.S. Department of Housing and Urban  
Development (HUD)

Year	County	State of Kansas	Non Metro Kansas	County Rank	Per 1000 or \$ Per Capita
2010	51,700	63,100	.	57	.
2011	57,600	64,300	.	41	.
2012	58,400	65,200	.	41	.
2013	56,200	64,800	.	56	.
2014	56,800	64,400	.	62	.
2015	60,300	66,300	.	47	.
2016	57,800	66,700	.	55	.
2017	57,500	68,500	.	72	.
2018	59,100	73,100	.	72	.
2019	60,300	75,200	.	75	.
2020	61,900	76,500	.	73	.
2021	63,400	77,400	.	70	.
2022	68,900	87,800	.	72	.

County: county value. Kansas: state value. County Rank: highest county value ranked #1. (\$000): thousands of dollars. Nonmetro Kansas: Kansas total less Metropolitan Areas as defined by the Office of Management and Budget (OMB; released 3/6/2020). Per 1000: For nonmoney amounts, Per 1000=(county value / county population for the same year as the data) x 1000. \$ Per capita=(county value / county population for the same year as the data). Value= . indicates missing or suppressed data or value not calculated.

**Income**

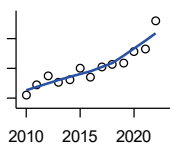
**HUD 30% LOW-TO-MEDIUM INCOME (LMI) LIMIT - 4 PERSONS**



U.S. Department of Housing and Urban Development (HUD)

Year	County	State of Kansas	Non Metro Kansas	County Rank	Per 1000 or \$ Per Capita
2010	15,850	.	.	105	.
2011	16,600	.	.	52	.
2012	17,450	.	.	42	.
2013	16,850	.	.	56	.
2014	23,850	.	.	105	.
2015	24,250	.	.	105	.
2016	24,300	.	.	105	.
2017	24,600	.	.	105	.
2018	25,100	21,950	.	105	.
2019	25,750	22,550	.	105	.
2020	26,200	22,950	.	105	.
2021	26,500	23,200	.	105	.
2022	27,750	25,950	.	105	.

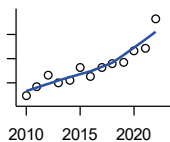
**HUD 50% LOW-TO-MEDIUM INCOME (LMI) LIMIT - 4 PERSONS**



U.S. Department of Housing and Urban Development (HUD)

Year	County	State of Kansas	Non Metro Kansas	County Rank	Per 1000 or \$ Per Capita
2010	26,400	.	.	105	.
2011	27,700	.	.	52	.
2012	29,050	.	.	42	.
2013	28,100	.	.	56	.
2014	28,400	.	.	63	.
2015	30,050	.	.	50	.
2016	28,900	.	.	58	.
2017	30,150	.	.	105	.
2018	30,550	36,550	.	105	.
2019	30,750	37,600	.	105	.
2020	32,300	38,250	.	104	.
2021	32,550	38,700	.	105	.
2022	36,400	43,300	.	105	.

**HUD 80% LOW-TO-MEDIUM INCOME (LMI) LIMIT - 4 PERSONS**



U.S. Department of Housing and Urban Development (HUD)

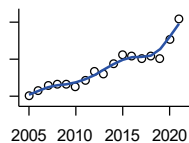
Year	County	State of Kansas	Non Metro Kansas	County Rank	Per 1000 or \$ Per Capita
2010	42,250	.	.	105	.
2011	44,300	.	.	52	.
2012	46,500	.	.	42	.
2013	44,950	.	.	56	.
2014	45,450	.	.	63	.
2015	48,100	.	.	50	.
2016	46,250	.	.	58	.
2017	48,250	.	.	105	.
2018	48,900	58,500	.	105	.
2019	49,200	60,150	.	105	.
2020	51,700	61,200	.	104	.
2021	52,100	61,900	.	105	.
2022	58,250	69,250	.	105	.

County: county value. Kansas: state value. County Rank: highest county value ranked #1. (\$000): thousands of dollars. Nonmetro Kansas: Kansas total less Metropolitan Areas as defined by the Office of Management and Budget (OMB; released 3/6/2020). Per 1000: For nonmoney amounts, Per 1000=(county value / county population for the same year as the data) x 1000. \$ Per capita=(county value / county population for the same year as the data). Value= . indicates missing or suppressed data or value not calculated.



**Banking**

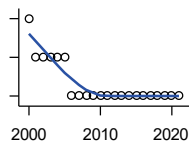
**BANK DEPOSITS** (1984-2004 in thousands; 2005- in millions)



Federal Deposit Insurance Corporation, Data Book, Operating Banks and Branches

Year	County	State of Kansas	Non Metro Kansas	County Rank	Per 1000 or \$ Per Capita
2005	302	48,304	17,000	29	17.9
2006	315	50,668	17,586	30	18.6
2007	328	54,057	18,517	31	19.4
2008	333	57,869	19,628	31	19.8
2009	334	57,763	20,031	32	19.7
2010	327	60,031	20,678	32	19.3
2011	343	61,094	21,347	32	20.5
2012	367	62,910	22,481	32	21.9
2013	360	64,547	22,795	32	21.6
2014	387	66,538	23,338	31	23.4
2015	411	68,160	23,367	30	25.0
2016	409	70,381	23,420	31	25.0
2017	402	73,329	23,928	31	24.7
2018	408	74,623	24,100	30	25.2
2019	402	76,436	24,488	31	25.0
2020	453	88,563	27,547	32	27.7
2021	509	97,055	30,122	31	31.3

**NUMBER OF BANKS**



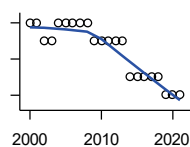
Federal Deposit Insurance Corporation, Data Book, Operating Banks and Branches

Year	County	State of Kansas	Non Metro Kansas	County Rank	Per 1000 or \$ Per Capita
2000	7	410	145	40	.
2001	6	410	136	53	.
2002	6	404	129	52	.
2003	6	397	121	52	.
2004	6	394	112	52	.
2005	6	388	101	51	.
2006	5	385	94	60	.
2007	5	382	91	60	.
2008	5	378	82	60	.
2009	5	374	79	60	.
2010	5	367	70	59	.
2011	5	359	61	59	.
2012	5	348	57	58	.
2013	5	332	45	58	.
2014	5	329	41	58	.
2015	5	320	31	55	.
2016	5	314	24	55	.
2017	5	301	13	55	.
2018	5	289	7	55	.
2019	5	279	3	55	.
2020	5	271	-1	55	.
2021	5	270	-6	55	.

County: county value. Kansas: state value. County Rank: highest county value ranked #1. (\$000): thousands of dollars. Nonmetro Kansas: Kansas total less Metropolitan Areas as defined by the Office of Management and Budget (OMB; released 3/6/2020). Per 1000: For nonmoney amounts, Per 1000=(county value / county population for the same year as the data) x 1000. \$ Per capita=(county value / county population for the same year as the data). Value= . indicates missing or suppressed data or value not calculated.

**Banking**

**NUMBER OF BANKING OFFICES**

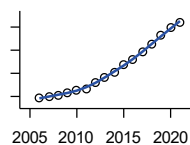


Federal Deposit Insurance Corporation, Data Book, Operating Banks and Branches

Year	County	State of Kansas	Non Metro Kansas	County Rank	Per 1000 or \$ Per Capita
2000	11	1,398	703	37	.
2001	11	1,424	708	37	.
2002	10	1,447	704	39	.
2003	10	1,461	708	38	.
2004	11	1,485	708	39	.
2005	11	1,505	711	37	.
2006	11	1,518	711	36	.
2007	11	1,543	717	37	.
2008	11	1,556	717	37	.
2009	10	1,569	716	39	.
2010	10	1,561	710	39	.
2011	10	1,559	707	39	.
2012	10	1,533	702	38	.
2013	10	1,518	696	38	.
2014	8	1,491	685	50	.
2015	8	1,472	675	49	.
2016	8	1,465	668	49	.
2017	8	1,452	666	49	.
2018	8	1,439	660	49	.
2019	7	1,439	663	56	.
2020	7	1,416	653	56	.
2021	7	1,392	641	55	.

**Government**

**TANGIBLE ASSESSED VALUATION (KDoR, million\$; 2006-)**



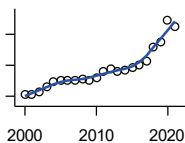
Kansas Department of Revenue, Division of Property Valuation, Statistical Report of Property Assessment and Taxation

Year	County	State of Kansas	Non Metro Kansas	County Rank	Per 1000 or \$ Per Capita
2006	118.3	28,964.3	10,316.9	41	7.0
2007	120.2	30,086.9	10,335.9	39	7.1
2008	121.2	31,000.3	10,856.9	40	7.2
2009	122.8	30,312.3	10,555.6	41	7.2
2010	125.0	29,450.2	10,158.7	38	7.4
2011	126.3	29,963.6	10,572.3	39	7.5
2012	131.6	30,382.9	10,876.2	39	7.8
2013	136.6	30,850.2	11,044.4	39	8.2
2014	141.2	31,783.0	11,388.9	39	8.5
2015	147.1	32,335.7	11,037.8	36	9.0
2016	151.4	33,156.3	10,889.6	36	9.2
2017	158.2	34,754.5	11,439.0	37	9.7
2018	165.7	36,566.1	11,907.1	37	10.2
2019	172.5	38,255.2	12,336.7	36	10.7
2020	179.8	39,333.9	12,219.3	35	11.0
2021	184.2	40,812.0	12,601.5	34	11.3

County: county value. Kansas: state value. County Rank: highest county value ranked #1. (\$000): thousands of dollars. Nonmetro Kansas: Kansas total less Metropolitan Areas as defined by the Office of Management and Budget (OMB; released 3/6/2020). Per 1000: For nonmoney amounts, Per 1000=(county value / county population for the same year as the data) x 1000. \$ Per capita=(county value / county population for the same year as the data). Value= . indicates missing or suppressed data or value not calculated.

**Government**

**SALES TAX COLLECTIONS (\$)**

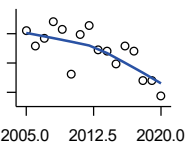


Kansas Department of Revenue. Use tax collections included beginning in calendar year 2018.

Year	County	State of Kansas	Non Metro Kansas	County Rank	Per 1000 or \$ Per Capita
2000	5,267,668	1,475,831,808	432,761,608	32	314,037.7
2001	5,269,937	1,481,026,688	426,316,284	32	312,422.2
2002	5,781,644	1,561,316,864	443,986,950	32	343,675.0
2003	6,442,484	1,626,782,976	461,658,700	31	381,776.8
2004	7,340,591	1,691,899,008	480,309,725	29	433,405.6
2005	7,460,485	1,744,980,352	497,494,867	29	442,365.0
2006	7,658,879	1,851,694,720	532,233,047	31	453,134.5
2007	7,644,384	1,917,546,752	559,319,583	31	453,296.0
2008	7,851,888	1,990,655,744	589,725,773	32	466,818.5
2009	7,553,769	1,866,223,078	548,627,132	32	445,256.1
2010	7,983,526	2,075,193,413	617,409,982	33	471,728.1
2011	8,995,187	2,347,193,367	702,671,534	33	536,929.9
2012	9,420,153	2,456,292,294	740,196,106	33	561,592.5
2013	8,903,856	2,489,204,048	746,226,565	34	533,548.4
2014	9,144,021	2,539,886,774	760,474,019	33	553,411.7
2015	9,706,273	2,642,374,740	750,090,163	33	591,197.0
2016	10,016,436	2,732,611,350	749,030,133	32	611,653.4
2017	10,698,512	2,726,104,521	744,246,491	31	656,431.0
2018	12,938,910	3,277,299,125	893,564,480	33	800,031.5
2019	13,759,505	3,395,631,405	939,607,762	32	856,063.3
2020	17,307,677	3,489,306,791	984,218,931	28	1,058,703.0
2021	16,284,674	3,981,293,227	1,098,391,422	30	1,002,812.6

**Crime**

**CRIME INDEX OFFENSES**



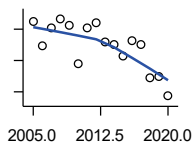
Kansas Bureau of Investigation, Note: Data are aggregated from reports by individual police departments and subject to be incomplete.

Year	County	State of Kansas	Non Metro Kansas	County Rank	Per 1000 or \$ Per Capita
2005	510	111,856	31,630	27	30.2
2006	456	110,032	.	29	27.0
2007	486	111,035	29,921	29	28.8
2008	541	93,996	27,342	29	32.2
2009	514	98,757	27,620	29	30.3
2010	363	98,354	26,909	33	21.4
2011	497	96,638	25,765	29	29.7
2012	526	98,914	26,963	29	31.4
2013	445	93,054	24,488	30	26.7
2014	439	86,323	23,341	29	26.6
2015	398	88,590	21,580	30	24.2
2016	457	90,589	21,565	26	27.9
2017	442	93,091	22,622	28	27.1
2018	339	92,062	20,325	30	21.0
2019	339	87,008	18,547	27	21.1
2020	286	87,346	17,762	29	17.5

County: county value. Kansas: state value. County Rank: highest county value ranked #1. (\$000): thousands of dollars. Nonmetro Kansas: Kansas total less Metropolitan Areas as defined by the Office of Management and Budget (OMB; released 3/6/2020). Per 1000: For nonmoney amounts, Per 1000=(county value / county population for the same year as the data) x 1000. \$ Per capita=(county value / county population for the same year as the data). Value= . indicates missing or suppressed data or value not calculated.

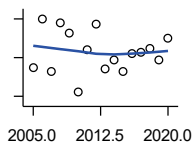
**Crime**

**PROPERTY CRIMES**



Kansas Bureau of Investigation, Note: Data are aggregated from reports by individual police departments and subject to be incomplete.

Year	County	State of Kansas	Non Metro Kansas	County Rank	Per 1000 or \$ Per Capita
2005	475	101,414	29,042	27	28.2
2006	396	99,110	.	29	23.4
2007	453	99,632	26,856	29	26.9
2008	483	83,964	24,367	29	28.7
2009	461	87,658	24,825	28	27.2
2010	341	87,926	24,133	32	20.1
2011	453	86,547	23,274	29	27.0
2012	469	88,707	24,220	30	28.0
2013	411	83,551	22,028	30	24.6
2014	400	76,794	20,858	29	24.2
2015	365	77,997	19,138	30	22.2
2016	415	79,549	19,207	25	25.3
2017	399	81,349	19,981	28	24.5
2018	294	79,695	17,769	30	18.2
2019	300	74,314	15,892	27	18.7
2020	236	73,450	15,100	29	14.4



**VIOLENT CRIMES**

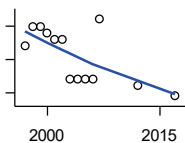
Kansas Bureau of Investigation, Note: Data are aggregated from reports by individual police departments and subject to be incomplete.

Year	County	State of Kansas	Non Metro Kansas	County Rank	Per 1000 or \$ Per Capita
2005	35	10,442	2,588	31	2.1
2006	60	10,922	.	22	3.5
2007	33	11,403	3,065	37	2.0
2008	58	10,032	2,975	26	3.4
2009	53	11,099	2,795	26	3.1
2010	22	10,428	2,776	42	1.3
2011	44	10,091	2,491	29	2.6
2012	57	10,207	2,743	28	3.4
2013	34	9,503	2,460	32	2.0
2014	39	9,529	2,483	31	2.4
2015	33	10,593	2,442	36	2.0
2016	42	11,040	2,358	31	2.6
2017	43	11,742	2,641	30	2.6
2018	45	12,367	2,556	31	2.8
2019	39	12,694	2,655	33	2.4
2020	50	13,896	2,662	29	3.1

County: county value. Kansas: state value. County Rank: highest county value ranked #1. (\$000): thousands of dollars. Nonmetro Kansas: Kansas total less Metropolitan Areas as defined by the Office of Management and Budget (OMB; released 3/6/2020). Per 1000: For nonmoney amounts, Per 1000=(county value / county population for the same year as the data) x 1000. \$ Per capita=(county value / county population for the same year as the data). Value= . indicates missing or suppressed data or value not calculated.

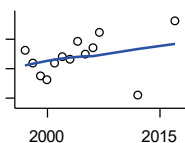
**Agriculture**

**NUMBER OF FARMS**



Kansas Agricultural Statistics, Kansas Farm Facts

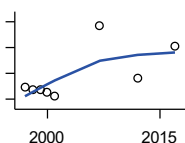
Year	County	State of Kansas	Non Metro Kansas	County Rank	Per 1000 or \$ Per Capita
1997	670	64,000	47,900	39	39.9
1998	700	65,000	48,850	36	41.7
1999	700	65,000	48,850	36	41.6
2000	690	64,000	48,030	37	41.1
2001	680	63,000	47,200	37	40.3
2002	680	63,000	47,200	37	40.4
2003	620	64,500	48,150	40	36.7
2004	620	64,500	48,150	40	36.6
2005	620	64,500	48,150	40	36.8
2006	620	64,000	47,650	39	36.7
2007	711	65,531	48,179	33	42.2
2012	611	61,773	45,655	39	36.4
2017	595	58,569	42,404	37	36.5



**TOTAL ACRES HARVESTED**

Kansas Agricultural Statistics, Kansas Farm Facts

Year	County	State of Kansas	Non Metro Kansas	County Rank	Per 1000 or \$ Per Capita
1997	151,300	22,846,000	19,430,580	82	9,019.9
1998	146,900	22,143,500	18,943,650	83	8,745.6
1999	142,700	21,708,900	18,581,750	81	8,482.4
2000	141,300	21,639,000	18,528,870	84	8,423.8
2001	146,900	21,847,900	18,689,750	83	8,708.8
2002	149,000	20,230,400	17,089,120	74	8,856.9
2003	148,200	21,827,700	18,661,920	84	8,782.2
2004	154,300	20,876,900	17,721,500	74	9,110.2
2005	150,100	21,936,500	18,807,930	80	8,900.1
2006	152,300	21,412,700	18,291,120	78	9,010.8
2007	157,253	19,886,655	17,164,743	65	9,324.8
2012	135,865	21,043,596	17,966,843	82	8,099.7
2017	161,279	21,837,465	18,543,057	73	9,895.6



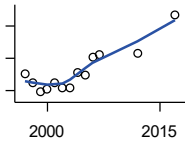
**VALUE: LIVESTOCK AND POULTRY (\$000)**

Kansas Agricultural Statistics, Kansas Farm Facts

Year	County	State of Kansas	Non Metro Kansas	County Rank	Per 1000 or \$ Per Capita
1997	11,914	2,806,445	2,500,305	85	710.3
1998	11,497	2,670,432	2,378,007	84	684.5
1999	11,461	2,849,061	2,554,528	88	681.3
2000	11,113	2,901,469	2,609,032	90	662.5
2001	10,390	2,693,274	2,437,187	86	616.0
2007	21,446	9,525,971	.	81	1,271.7
2012	13,242	11,476,571	10,883,216	96	789.4
2017	18,291	12,322,289	.	91	1,122.3

County: county value. Kansas: state value. County Rank: highest county value ranked #1. (\$000): thousands of dollars. Nonmetro Kansas: Kansas total less Metropolitan Areas as defined by the Office of Management and Budget (OMB; released 3/6/2020). Per 1000: For nonmoney amounts, Per 1000=(county value / county population for the same year as the data) x 1000. \$ Per capita=(county value / county population for the same year as the data). Value= . indicates missing or suppressed data or value not calculated.

**Agriculture**



VALUE:FIELD CROPS (\$000)  
EXCLUDING GOVERNMENT  
PROGRAM PAYMENTS

Kansas Agricultural Statistics, Kansas  
Farm Facts

Year	County	State of Kansas	Non Metro Kansas	County Rank	Per 1000 or \$ Per Capita
1997	30,298	4,474,942	3,800,365	71	1,806.2
1998	25,175	3,594,319	3,124,409	68	1,498.8
1999	18,990	3,118,193	2,728,319	70	1,128.8
2000	21,014	2,915,660	2,540,052	62	1,252.8
2001	24,979	3,283,117	2,857,136	59	1,480.9
2002	21,494	3,011,855	2,560,580	58	1,277.7
2003	21,715	3,623,255	3,150,629	78	1,286.8
2004	31,377	3,445,688	2,896,603	45	1,852.6
2005	29,425	3,678,123	3,182,677	53	1,744.7
2006	40,824	4,308,716	3,684,132	44	2,415.3
2007	42,536	4,887,212	.	51	2,522.3
2012	43,294	6,983,993	6,044,551	71	2,581.0
2017	66,913	6,460,437	.	45	4,105.6

County: county value. Kansas: state value. County Rank: highest county value ranked #1. (\$000): thousands of dollars. Nonmetro Kansas: Kansas total less Metropolitan Areas as defined by the Office of Management and Budget (OMB; released 3/6/2020). Per 1000: For nonmoney amounts, Per 1000=(county value / county population for the same year as the data) x 1000. \$ Per capita=(county value / county population for the same year as the data). Value= . indicates missing or suppressed data or value not calculated.