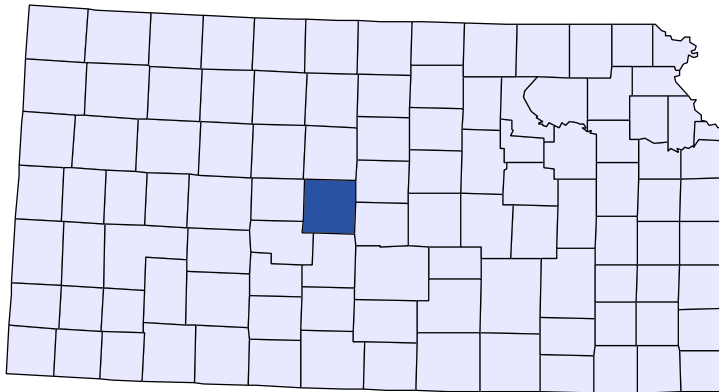




# Kansas County Profiles

## Barton County



The University  
of Kansas

Institute for Policy  
& Social Research

**KU** INSTITUTE FOR POLICY  
& SOCIAL RESEARCH  
The University of Kansas

1541 Lilac Lane, Rm. 607  
Blake Hall  
Lawrence, KS 66045-3129

## Foreword

The Kansas County Profile Report is published by the Institute for Policy & Social Research (IPSR) at the University of Kansas with support from the KU University Center project.\* Special thanks to Xanthippe Wedel, senior research data engineer, who compiles and updates the county profiles and Genna Hurd, associate researcher, who provides editorial review.

County reports can be generated for any county in Kansas by simply clicking on the county from the web site:

<https://ipsr.ku.edu/ksdata/kcced/profiles/>

The Kansas County Profile Report contains 12 categories of information: Population, Vital Statistics and Health, Housing, Education, Social Environment, Business, Employment, Income, Banking, Government, Crime, and Agriculture. For more information about Kansas, please refer to the Kansas Statistical Abstract, available online at:

<https://ipsr.ku.edu/ksdata/ksah/>

We are always looking for ways to improve the Kansas County Profile Report and we welcome your suggestions and comments. Please address any correspondence to the Institute for Policy & Social Research, The University of Kansas, 607 Blake Hall, 1541 Lilac Lane, Lawrence, Kansas 66045-3129, e-mail [ipsr@ku.edu](mailto:ipsr@ku.edu) or call 785-864-3701.

*\*The KU University Center is a collaborative effort led by the Institute for Policy & Social Research at the University of Kansas. This project is supported by the Economic Development Administration, U.S. Department of Commerce, through its University Center Program.*

*The mission of EDA is to lead the federal economic development agenda by promoting innovation and competitiveness, preparing American regions for growth and success in the worldwide economy.*

## Kansas County Profiles Table of Contents

### Population

Total Population (Decennial Census)	1
Estimated Population (Current Population Reports)	2
Urban Population	2
Rural Population	3
Net Migration (Decade Ending...)	3
Median Age	3

### Population (Age Groups)

Population Under 18 (Decennial Census)	3
Population Age 18 and Over (Decennial Census)	4
Population Age 65 and Over (Decennial Census)	4
Population Age 85 and Over (Decennial Census)	4

### Vital Statistics and Health

Live Births	5
Deaths	5
Marriages	6
Divorces and Annulments	6
Physicians: M.D. Physicians	7
Physicians: D.O. Physicians	7
Dentists	8
Number of Hospitals	8
Number of Hospital Beds	9

### Housing

Housing Units (Decennial Census)	9
Housing Units (Estimated)	10
Occupied Housing Units	10
Owner Occupied Housing Units	10
Renter Occupied Housing Units	11
Vacant Housing Units	11
Median Value (\$): Owner Occupied Housing Units	11
Median Contract Rent (\$)	12
Fair Market Rent: 2 Bedrooms	12

### Education

Population Age 25 and Over	13
Percent of Population 25+ with High School or Higher Education	13
Percent of Population 25+ with Bachelors Degree or Higher Education	14
Public School Enrollment (FTE- School Year Beginning...)	14
Pupil/Teacher Ratio (School Year Beginning...)	15

## Kansas County Profiles Table of Contents

### Social Environment

Total Child Care Facilities	15
Preschools	16
Food Stamp Beneficiaries	16
Percent of Population Receiving Food Stamps	17
Estimated Number of People in Poverty	17
Estimated Percent of People in Poverty	18
Estimated Number of Related Children Age 5 to 17 in Families in Poverty	18
Estimated Percent of Related Children Age 5 to 17 in Families in Poverty	19
Estimated Number Under 18 in Poverty	19
Estimated Percent Under 18 in Poverty	20

### Business

Establishments: Total	21
Establishments: 1-19 Employees	22
Establishments: 20-99 Employees	22
Establishments: 100-499 Employees	23
Establishments: 500 or More Employees	23
Establishments: Forestry, Fishing, Hunting, and Ag Support	24
Establishments: Mining	24
Establishments: Utilities	25
Establishments: Construction	25
Establishments: Manufacturing	26
Establishments: Wholesale Trade	26
Establishments: Retail Trade	27
Establishments: Transportation and Warehousing	27
Establishments: Information	28
Establishments: Finance and Insurance	28
Establishments: Real Estate, Rental, and Leasing	29
Establishments: Professional, Scientific, and Technical Services	29
Establishments: Management of Companies and Enterprises	30
Establishments: Admin, Support, Waste Management, and Remediation	30
Establishments: Educational Services	31
Establishments: Health Care and Social Assistance	31
Establishments: Arts, Entertainment, and Recreation	32
Establishments: Accommodation and Food Services	32
Establishments: Other Services	33

## Kansas County Profiles Table of Contents

<b>Business</b>	
Total Annual Payroll (\$000)	34
Total Annual Payroll (\$000): Forestry, Fishing, Hunting, and Ag Support	35
Total Annual Payroll (\$000): Mining	35
Total Annual Payroll (\$000): Utilities	36
Total Annual Payroll (\$000): Construction	36
Total Annual Payroll (\$000): Manufacturing	37
Total Annual Payroll (\$000): Wholesale Trade	37
Total Annual Payroll (\$000): Retail Trade	38
Total Annual Payroll (\$000): Transportation and Warehousing	38
Total Annual Payroll (\$000): Information	39
Total Annual Payroll (\$000): Finance and Insurance	39
Total Annual Payroll (\$000): Real Estate, Rental, and Leasing	40
Total Annual Payroll (\$000): Professional, Scientific, and Technical Services	40
Total Annual Payroll (\$000): Management of Companies and Enterprises	41
Total Annual Payroll (\$000): Admin, Support, Waste Management, and Remediation	41
Total Annual Payroll (\$000): Educational Services	42
Total Annual Payroll (\$000): Health Care and Social Assistance	42
Total Annual Payroll (\$000): Arts, Entertainment, and Recreation	43
Total Annual Payroll (\$000): Accommodation and Food Services	43
Total Annual Payroll (\$000): Other Services	44
Nominal Taxable Retail Sales (Million\$)	44
Retail Pull Factor	45
<b>Employment</b>	
Civilian Labor Force (BLS - Place of Residence)	46
Employed (BLS - Place of Residence)	47
Unemployed (BLS - Place of Residence)	48
Unemployment Rate (BLS - Place of Residence)	49
BEA Employment: Total (Place of Work)	49
BEA Employment: Farm	50
BEA Employment: Non-Farm	50
Average Wage per Job (\$)	51
BEA Employment: Forestry, Fishing, Hunting, and Ag Support	51
BEA Employment: Mining	52
BEA Employment: Utilities	52
BEA Employment: Construction	53
BEA Employment: Manufacturing	53
BEA Employment: Wholesale Trade	54
BEA Employment: Retail Trade	54
BEA Employment: Transportation and Warehousing	55
BEA Employment: Information	55
BEA Employment: Finance and Insurance	56
BEA Employment: Real Estate, Rental, and Leasing	56
BEA Employment: Professional and Technical Services	57
BEA Employment: Management of Companies and Enterprises	57
BEA Employment: Administrative and Waste Services	58
BEA Employment: Educational Services	58
BEA Employment: Health Care and Social Assistance	59
BEA Employment: Arts, Entertainment, and Recreation	59
BEA Employment: Government and Government Enterprises	60
BEA Employment: Accommodation and Food Services	60
BEA Employment: Other Services, Except Public Administration	61

## Kansas County Profiles Table of Contents

### Income

BEA Per Capita Personal Income (\$)	61
Sources of Personal Income: Total Personal Income (\$000)	62
Sources of Personal Income: Wages And Salaries (\$000)	62
Sources of Personal Income: Proprietors-Farm (\$000)	63
Sources of Personal Income: Proprietors-Nonfarm (\$000)	63
Sources of Personal Income: Dividends, Interest, Rent (\$000)	64
Sources of Personal Income: Transfer Payments (\$000)	64
Sources of Personal Income: Less Social Insurance (\$000)	65
HUD Median Family Income	65
HUD 30% Low-To-Medium Income (LMI) Limit - 4 Persons	66
HUD 50% Low-To-Medium Income (LMI) Limit - 4 Persons	66
HUD 80% Low-To-Medium Income (LMI) Limit - 4 Persons	66

### Banking

Bank Deposits (\$000)	67
Number of Banks	67
Number of Banking Offices	68

### Government

Tangible Assessed Valuation (million\$)	68
Sales Tax Collections	69

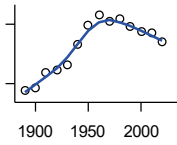
### Crime

Crime Index Offenses	69
Property Crimes	70
Violent Crimes	70

### Agriculture

Number of Farms	71
Total Acres Harvested	71
Value: Livestock and Poultry (\$000)	71
Value: Field Crops (\$000) Excluding Government Program Payments	72

**Population**



**DECENNIAL CENSUS:TOTAL POPULATION**

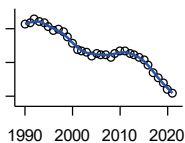
U.S. Census Bureau: Decennial Census

Year	County	State of Kansas	Non Metro Kansas	County Rank	Per 1000 or \$ Per Capita
1890	13,172	1,427,096	968,413	51	.
1900	13,784	1,470,495	981,206	50	.
1910	17,876	1,690,949	1,138,294	35	.
1920	18,422	1,769,257	1,153,525	32	.
1930	19,776	1,880,999	1,180,056	31	.
1940	25,010	1,801,028	1,097,216	17	.
1950	29,909	1,905,299	1,046,823	14	.
1960	32,368	2,178,611	1,021,510	14	.
1970	30,663	2,246,578	958,104	15	.
1980	31,343	2,363,679	980,085	15	.
1990	29,382	2,477,574	939,416	18	.
2000	28,205	2,688,418	959,507	20	.
2010	27,674	2,853,118	929,981	22	.
2020	25,493	2,937,880	892,006	23	.

County: county value. Kansas: state value. County Rank: highest county value ranked #1. (\$000): thousands of dollars. Nonmetro Kansas: Kansas total less Metropolitan Areas as defined by the Office of Management and Budget (OMB; released 3/6/2020). Per 1000: For nonmoney amounts, Per 1000=(county value / county population for the same year as the data) x 1000. \$ Per capita=(county value / county population for the same year as the data). Value= . indicates missing or suppressed data or value not calculated.

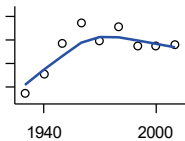
Population

ESTIMATED POPULATION



U.S. Census Bureau

Year	County	State of Kansas	Non Metro Kansas	County Rank	Per 1000 or \$ Per Capita
1990	29,270	2,481,349	938,607	18	.
1991	29,344	2,498,722	938,965	18	.
1992	29,586	2,532,394	942,759	18	.
1993	29,436	2,556,547	947,515	18	.
1994	29,363	2,580,513	952,178	19	.
1995	29,132	2,601,007	957,771	19	.
1996	28,915	2,614,554	959,455	18	.
1997	28,950	2,635,292	960,225	19	.
1998	28,790	2,660,598	960,569	19	.
1999	28,501	2,678,338	960,704	19	.
2000	28,163	2,693,681	959,230	20	.
2001	27,771	2,702,162	952,607	21	.
2002	27,684	2,713,535	945,985	20	.
2003	27,581	2,723,004	941,474	20	.
2004	27,390	2,734,373	937,623	21	.
2005	27,536	2,745,299	932,852	20	.
2006	27,460	2,762,931	928,809	22	.
2007	27,492	2,783,785	927,643	22	.
2008	27,314	2,808,076	926,248	22	.
2009	27,526	2,832,704	926,755	22	.
2010	27,674	2,858,190	930,028	22	.
2011	27,697	2,869,225	927,675	22	.
2012	27,520	2,885,257	925,152	22	.
2013	27,443	2,893,212	922,383	22	.
2014	27,334	2,900,475	917,854	22	.
2015	27,159	2,909,011	912,199	22	.
2016	26,878	2,910,844	905,099	22	.
2017	26,394	2,908,718	897,981	22	.
2018	26,057	2,911,359	892,656	22	.
2019	25,779	2,913,314	887,455	22	.
2020	25,419	2,935,880	889,750	23	.
2021	25,216	2,934,582	886,438	24	.



URBAN POPULATION

U.S. Census Bureau: Decennial Census

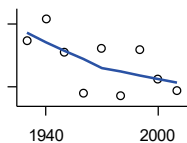
Year	County	State of Kansas	Non Metro Kansas	County Rank	Per 1000 or \$ Per Capita
1930	8,549	729,834	336,666	24	.
1940	12,763	753,941	349,228	14	.
1950	19,246	993,220	398,923	12	.
1960	23,647	1,328,741	457,447	10	.
1970	19,843	1,484,870	450,543	15	.
1980	22,794	1,575,899	474,769	14	.
1990	18,609	1,712,564	464,205	19	.
2000	18,812	1,920,081	488,011	21	.
2010	18,886	2,116,961	485,780	21	.

County: county value. Kansas: state value. County Rank: highest county value ranked #1. (\$000): thousands of dollars. Nonmetro Kansas: Kansas total less Metropolitan Areas as defined by the Office of Management and Budget (OMB; released 3/6/2020). Per 1000: For nonmoney amounts, Per 1000=(county value / county population for the same year as the data) x 1000. \$ Per capita=(county value / county population for the same year as the data). Value= . indicates missing or suppressed data or value not calculated.



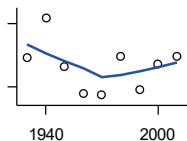
**Population**

**RURAL POPULATION**



U.S. Census Bureau

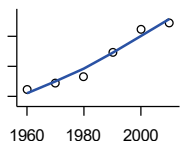
Year	County	State of Kansas	Non Metro Kansas	County Rank	Per 1000 or \$ Per Capita
1930	11,227	1,151,165	843,390	44	.
1940	12,247	1,047,087	747,988	29	.
1950	10,663	912,079	647,900	30	.
1960	8,721	849,870	564,063	35	.
1970	10,820	761,708	509,972	18	.
1980	8,549	787,780	505,873	30	.
1990	10,773	765,010	475,211	20	.
2000	9,393	768,337	471,900	25	.
2010	8,788	736,157	444,201	28	.



**NET MIGRATION: DECADE ENDING...**

calculated by the Institute for Policy and Social Research, The University of Kansas

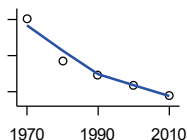
Year	County	State of Kansas	Non Metro Kansas	County Rank	Per 1000 or \$ Per Capita
1930	-1,278	-66,132	-101,869	62	-64.6
1940	2,543	-192,649	-166,022	3	101.7
1950	-2,057	-84,329	-158,379	64	-68.8
1960	-4,581	-38,999	-146,640	101	-141.5
1970	-4,798	-119,662	-105,116	99	-156.5
1980	-1,053	-21,983	-6,184	98	-33.6
1990	-4,293	-61,835	-79,274	99	-146.1
2000	-1,846	68,960	4,247	101	-65.4
2010	-1,123	5,578	-50,648	97	-40.6



**MEDIAN AGE**

U.S. Census Bureau: Decennial Census

Year	County	State of Kansas	Non Metro Kansas	County Rank	Per 1000 or \$ Per Capita
1960	28.6	26.9	.	80	.
1970	29.8	28.7	.	77	.
1980	30.8	30.1	.	77	.
1990	34.8	32.9	.	71	.
2000	38.6	35.2	.	60	.
2010	39.7	36.0	.	70	.



**POPULATION UNDER 18 (DECENNIAL CENSUS)**

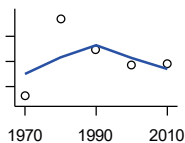
U.S. Census Bureau: Decennial Census

Year	County	State of Kansas	Non Metro Kansas	County Rank	Per 1000 or \$ Per Capita
1970	11,046	746,354	306,227	12	.
1980	8,678	649,035	263,919	15	.
1990	7,925	661,614	250,107	19	.
2000	7,330	712,993	250,757	22	.
2010	6,784	726,939	229,213	22	.

County: county value. Kansas: state value. County Rank: highest county value ranked #1. (\$000): thousands of dollars. Nonmetro Kansas: Kansas total less Metropolitan Areas as defined by the Office of Management and Budget (OMB; released 3/6/2020). Per 1000: For nonmoney amounts, Per 1000=(county value / county population for the same year as the data) x 1000. \$ Per capita=(county value / county population for the same year as the data). Value= . indicates missing or suppressed data or value not calculated.

**Population**

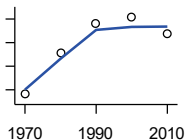
**POPULATION AGE 18 AND OVER  
(DECENNIAL CENSUS)**



U.S. Census Bureau: Decennial Census

Year	County	State of Kansas	Non Metro Kansas	County Rank	Per 1000 or \$ Per Capita
1970	19,617	1,500,224	654,288	16	.
1980	22,695	1,714,282	716,684	15	.
1990	21,457	1,815,960	689,309	18	.
2000	20,875	1,975,425	709,154	20	.
2010	20,890	2,126,179	700,768	22	.

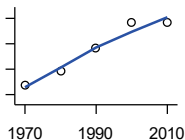
**POPULATION AGE 65 AND OVER  
(DECENNIAL CENSUS)**



U.S. Census Bureau: Decennial Census

Year	County	State of Kansas	Non Metro Kansas	County Rank	Per 1000 or \$ Per Capita
1970	3,403	266,201	149,049	19	.
1980	4,282	306,263	164,932	16	.
1990	4,913	342,571	168,579	14	.
2000	5,043	356,229	161,769	15	.
2010	4,688	376,116	154,214	16	.

**POPULATION AGE 85 AND OVER  
(DECENNIAL CENSUS)**



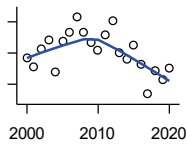
U.S. Census Bureau: Decennial Census

Year	County	State of Kansas	Non Metro Kansas	County Rank	Per 1000 or \$ Per Capita
1970	274	23,899	13,698	25	.
1980	387	33,455	18,804	23	.
1990	565	42,241	22,970	18	.
2000	764	51,770	26,644	15	.
2010	768	59,318	26,197	16	.

County: county value. Kansas: state value. County Rank: highest county value ranked #1. (\$000): thousands of dollars. Nonmetro Kansas: Kansas total less Metropolitan Areas as defined by the Office of Management and Budget (OMB; released 3/6/2020). Per 1000: For nonmoney amounts, Per 1000=(county value / county population for the same year as the data) x 1000. \$ Per capita=(county value / county population for the same year as the data). Value= . indicates missing or suppressed data or value not calculated.

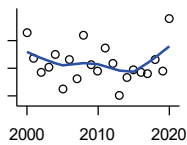
**Vital Statistics and Health**

**BIRTHS (LIVE)**



Kansas Department of Health and Environment

Year	County	State of Kansas	Non Metro Kansas	County Rank	Per 1000 or \$ Per Capita
2000	343	39,654	12,980	23	12.2
2001	328	38,832	12,527	25	11.8
2002	357	39,338	12,476	21	12.9
2003	371	39,353	12,342	21	13.5
2004	319	39,553	12,398	24	11.6
2005	368	39,701	12,382	22	13.4
2006	384	40,896	12,726	21	14.0
2007	408	41,951	12,990	20	14.8
2008	383	41,815	12,970	22	14.0
2009	366	41,388	12,949	22	13.3
2010	355	40,439	12,200	23	12.8
2011	379	39,628	12,098	22	13.7
2012	401	40,304	12,217	21	14.6
2013	350	38,805	11,877	22	12.8
2014	340	39,193	12,052	23	12.4
2015	362	39,126	11,836	22	13.3
2016	331	38,048	11,467	23	12.3
2017	284	36,464	10,968	25	10.8
2018	321	36,268	10,826	22	12.3
2019	307	35,395	10,506	22	11.9
2020	326	34,368	10,222	22	12.8



**DEATHS**

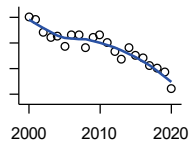
Kansas Department of Health and Environment

Year	County	State of Kansas	Non Metro Kansas	County Rank	Per 1000 or \$ Per Capita
2000	351	24,676	11,175	14	12.4
2001	315	24,590	10,807	16	11.3
2002	294	24,968	11,079	17	10.6
2003	302	24,417	10,615	15	10.9
2004	320	23,720	10,369	16	11.7
2005	270	24,632	10,599	20	9.8
2006	313	24,489	10,538	15	11.4
2007	285	24,413	10,601	18	10.4
2008	348	24,896	10,593	15	12.7
2009	305	23,997	9,938	16	11.1
2010	295	24,428	10,105	16	10.7
2011	330	25,114	10,520	17	11.9
2012	307	25,084	10,259	16	11.2
2013	261	25,347	10,249	17	9.5
2014	287	25,731	10,275	17	10.5
2015	298	26,611	10,539	18	11.0
2016	294	26,129	10,231	18	10.9
2017	293	26,725	10,452	18	11.1
2018	312	27,213	10,389	16	12.0
2019	296	27,312	10,569	19	11.5
2020	372	31,667	11,850	16	14.6

County: county value. Kansas: state value. County Rank: highest county value ranked #1. (\$000): thousands of dollars. Nonmetro Kansas: Kansas total less Metropolitan Areas as defined by the Office of Management and Budget (OMB; released 3/6/2020). Per 1000: For nonmoney amounts, Per 1000=(county value / county population for the same year as the data) x 1000. \$ Per capita=(county value / county population for the same year as the data). Value= . indicates missing or suppressed data or value not calculated.

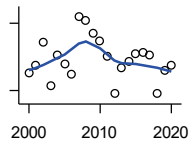
**Vital Statistics and Health**

**MARRIAGES**



Kansas Department of Health and Environment

Year	County	State of Kansas	Non Metro Kansas	County Rank	Per 1000 or \$ Per Capita
2000	251	20,426	7,333	18	8.9
2001	246	20,457	7,441	19	8.9
2002	220	19,783	6,794	20	7.9
2003	212	18,722	6,469	20	7.7
2004	213	19,174	6,756	20	7.8
2005	194	18,745	6,481	21	7.0
2006	216	18,836	6,433	20	7.9
2007	216	18,910	6,464	22	7.9
2008	191	18,717	6,283	23	7.0
2009	212	18,268	6,015	19	7.7
2010	216	18,150	5,925	19	7.8
2011	202	17,897	5,977	19	7.3
2012	183	18,154	5,752	21	6.6
2013	168	17,328	5,533	24	6.1
2014	192	17,655	5,535	20	7.0
2015	176	17,595	5,400	21	6.5
2016	171	17,948	5,340	22	6.4
2017	156	17,274	5,163	23	5.9
2018	150	16,362	4,999	23	5.8
2019	144	15,403	4,650	24	5.6
2020	111	14,038	4,066	24	4.4



**DIVORCES AND ANNULMENTS**

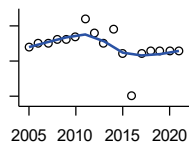
Kansas Department of Health and Environment

Year	County	State of Kansas	Non Metro Kansas	County Rank	Per 1000 or \$ Per Capita
2000	56	10,105	4,000	32	2.0
2001	62	9,885	3,818	28	2.2
2002	83	9,645	3,716	26	3.0
2003	44	8,644	3,464	36	1.6
2004	72	8,759	3,506	25	2.6
2005	64	8,476	3,311	28	2.3
2006	54	9,145	3,387	32	2.0
2007	106	9,347	3,402	18	3.9
2008	102	9,818	3,655	23	3.7
2009	91	10,333	3,463	25	3.3
2010	84	10,579	3,530	28	3.0
2011	70	10,445	3,347	28	2.5
2012	37	9,782	3,040	39	1.3
2013	60	9,085	2,973	30	2.2
2014	66	8,441	2,682	25	2.4
2015	73	8,036	2,704	24	2.7
2016	74	7,198	2,424	21	2.8
2017	72	6,494	2,315	22	2.7
2018	37	6,538	2,269	32	1.4
2019	58	6,398	2,357	26	2.2
2020	62	5,169	1,866	19	2.4

County: county value. Kansas: state value. County Rank: highest county value ranked #1. (\$000): thousands of dollars. Nonmetro Kansas: Kansas total less Metropolitan Areas as defined by the Office of Management and Budget (OMB; released 3/6/2020). Per 1000: For nonmoney amounts, Per 1000=(county value / county population for the same year as the data) x 1000. \$ Per capita=(county value / county population for the same year as the data). Value= . indicates missing or suppressed data or value not calculated.

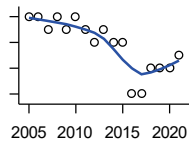
**Vital Statistics and Health**

**PHYSICIANS: M.D. PHYSICIANS**



Kansas Department of Health and Environment (1981-2005,2010-);Kansas Health Policy Authority (2006-2009)

Year	County	State of Kansas	Non Metro Kansas	County Rank	Per 1000 or \$ Per Capita
2005	29	4,241	912	18	1.1
2006	30	4,310	953	19	1.1
2007	30	5,309	1,046	21	1.1
2008	31	5,110	1,016	20	1.1
2009	31	5,249	996	19	1.1
2010	32	5,192	979	17	1.2
2011	37	5,243	983	16	1.3
2012	33	5,693	1,033	18	1.2
2013	30	6,106	1,071	18	1.1
2014	34	5,839	951	15	1.2
2015	27	5,703	855	19	1.0
2016	15	4,278	643	20	0.6
2017	27	6,332	1,047	22	1.0
2018	28	6,079	1,065	23	1.1
2019	28	6,435	1,036	21	1.1
2020	28	6,668	1,045	22	1.1
2021	28	6,745	1,042	21	1.1



**PHYSICIANS: D.O. PHYSICIANS**

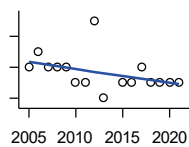
Kansas Department of Health and Environment (1981-2005,2010-);Kansas Health Policy Authority (2006-2009)

Year	County	State of Kansas	Non Metro Kansas	County Rank	Per 1000 or \$ Per Capita
2005	7	553	174	15	0.3
2006	7	508	171	13	0.3
2007	6	569	169	18	0.2
2008	7	558	166	16	0.3
2009	6	564	160	17	0.2
2010	7	583	169	14	0.3
2011	6	502	152	15	0.2
2012	5	718	200	25	0.2
2013	6	829	210	22	0.2
2014	5	817	189	22	0.2
2015	5	819	190	22	0.2
2016	1	632	136	58	0.0
2017	1	579	129	57	0.0
2018	3	871	164	30	0.1
2019	3	951	212	26	0.1
2020	3	1,018	204	26	0.1
2021	4	1,095	217	26	0.2

County: county value. Kansas: state value. County Rank: highest county value ranked #1. (\$000): thousands of dollars. Nonmetro Kansas: Kansas total less Metropolitan Areas as defined by the Office of Management and Budget (OMB; released 3/6/2020). Per 1000: For nonmoney amounts, Per 1000=(county value / county population for the same year as the data) x 1000. \$ Per capita=(county value / county population for the same year as the data). Value= . indicates missing or suppressed data or value not calculated.

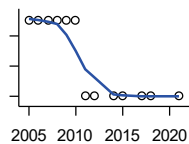
**Vital Statistics and Health**

**DENTISTS**



Kansas Department of Health and Environment (1981-2006,2010-);Kansas Health Policy Authority (2007-2009)

Year	County	State of Kansas	Non Metro Kansas	County Rank	Per 1000 or \$ Per Capita
2005	12	1,347	363	21	0.4
2006	13	1,381	361	18	0.5
2007	12	1,335	350	21	0.4
2008	12	1,392	353	22	0.4
2009	12	1,353	350	22	0.4
2010	11	1,401	365	21	0.4
2011	11	1,338	346	20	0.4
2012	15	1,434	392	17	0.5
2013	10	1,212	328	21	0.4
2015	11	1,240	327	21	0.4
2016	11	1,456	350	21	0.4
2017	12	1,467	350	20	0.5
2018	11	1,604	359	22	0.4
2019	11	1,646	355	22	0.4
2020	11	1,646	355	22	0.4
2021	11	1,688	362	23	0.4



**NUMBER OF HOSPITALS**

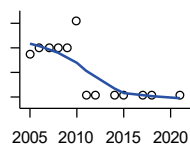
American Hospital Association, American Hospital Association Guide to the Health Care Field

Year	County	State of Kansas	Non Metro Kansas	County Rank	Per 1000 or \$ Per Capita
2005	4	158	105	4	.
2006	4	158	105	4	.
2007	4	159	104	4	.
2008	4	159	104	4	.
2009	4	158	105	4	.
2010	4	158	104	5	.
2011	3	158	103	7	.
2012	3	157	103	7	.
2014	3	156	.	7	.
2015	3	155	103	6	.
2017	3	157	102	7	.
2018	3	154	99	6	.
2021	3	151	.	6	.

County: county value. Kansas: state value. County Rank: highest county value ranked #1. (\$000): thousands of dollars. Nonmetro Kansas: Kansas total less Metropolitan Areas as defined by the Office of Management and Budget (OMB; released 3/6/2020). Per 1000: For nonmoney amounts, Per 1000=(county value / county population for the same year as the data) x 1000. \$ Per capita=(county value / county population for the same year as the data). Value= . indicates missing or suppressed data or value not calculated.

**Vital Statistics and Health**

**NUMBER OF HOSPITAL BEDS**

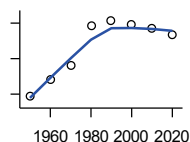


Kansas Department of Health and Environment

Year	County	State of Kansas	Non Metro Kansas	County Rank	Per 1000 or \$ Per Capita
2005	115	12,389	5,687	22	4.2
2006	120	11,992	5,514	20	4.4
2007	120	12,171	5,637	21	4.4
2008	120	12,332	5,700	21	4.4
2009	120	12,283	5,652	19	4.4
2010	142	12,218	5,521	15	5.1
2011	81	12,182	5,335	33	2.9
2012	81	12,002	5,355	32	2.9
2014	81	12,034	.	33	3.0
2015	81	11,926	5,330	29	3.0
2017	81	11,491	4,825	26	3.1
2018	81	11,448	4,583	28	3.1
2021	81	11,199	.	23	3.2

**Housing**

**HOUSING UNITS (DECENNIAL)**



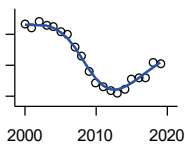
U.S. Census Bureau: Decennial Census

Year	County	State of Kansas	Non Metro Kansas	County Rank	Per 1000 or \$ Per Capita
1950	8,853	586,650	328,210	14	296.0
1960	9,846	672,899	329,380	14	304.2
1970	10,636	789,735	363,824	15	346.9
1980	12,871	955,207	416,877	15	410.6
1990	13,144	1,044,112	417,062	15	447.3
2000	12,888	1,131,395	422,218	17	456.9
2010	12,696	1,233,215	424,050	21	458.8
2020	12,370	1,275,689	413,120	22	485.2

County: county value. Kansas: state value. County Rank: highest county value ranked #1. (\$000): thousands of dollars. Nonmetro Kansas: Kansas total less Metropolitan Areas as defined by the Office of Management and Budget (OMB; released 3/6/2020). Per 1000: For nonmoney amounts, Per 1000=(county value / county population for the same year as the data) x 1000. \$ Per capita=(county value / county population for the same year as the data). Value= . indicates missing or suppressed data or value not calculated.

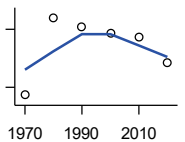
**Housing**

**HOUSING UNITS (ESTIMATED)**



U.S. Census Bureau

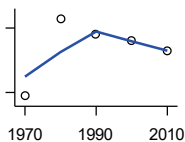
Year	County	State of Kansas	Non Metro Kansas	County Rank	Per 1000 or \$ Per Capita
2000	12,882	1,134,529	422,560	17	456.7
2001	12,871	1,146,858	423,876	17	463.5
2002	12,891	1,160,129	425,089	17	465.6
2003	12,880	1,171,620	425,936	17	467.0
2004	12,874	1,184,702	426,593	17	470.0
2005	12,858	1,195,791	426,964	17	467.0
2006	12,849	1,206,692	426,713	17	467.9
2007	12,807	1,217,608	426,090	19	465.8
2008	12,781	1,225,625	425,768	19	467.9
2009	12,730	1,230,552	424,776	20	462.5
2010	12,693	1,234,456	424,174	21	458.7
2011	12,680	1,238,052	424,549	21	457.8
2012	12,670	1,241,992	425,116	21	460.4
2013	12,659	1,246,675	425,699	21	461.3
2014	12,671	1,253,284	426,269	21	463.6
2015	12,705	1,258,999	426,844	21	467.8
2016	12,709	1,265,684	427,465	21	472.8
2017	12,709	1,273,536	427,746	21	481.5
2018	12,761	1,280,649	428,099	21	489.7
2019	12,754	1,288,401	428,495	21	494.7



**OCCUPIED HOUSING UNITS**

U.S. Census Bureau: Decennial Census

Year	County	State of Kansas	Non Metro Kansas	County Rank	Per 1000 or \$ Per Capita
1970	9,796	727,364	326,494	15	319.5
1980	11,797	872,239	371,693	15	376.4
1990	11,561	944,726	365,901	16	393.5
2000	11,393	1,037,891	375,313	17	403.9
2010	11,283	1,112,096	370,269	21	407.7
2020	10,640	1,151,360	356,330	22	417.4



**OWNER OCCUPIED HOUSING UNITS**

U.S. Census Bureau: Decennial Census

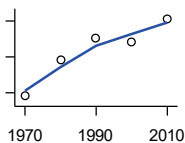
Year	County	State of Kansas	Non Metro Kansas	County Rank	Per 1000 or \$ Per Capita
1970	6,915	502,585	236,338	13	225.5
1980	8,716	612,433	277,096	14	278.1
1990	8,357	641,762	263,099	14	284.4
2000	8,212	718,703	271,350	18	291.2
2010	7,971	753,532	261,763	18	288.0

County: county value. Kansas: state value. County Rank: highest county value ranked #1. (\$000): thousands of dollars. Nonmetro Kansas: Kansas total less Metropolitan Areas as defined by the Office of Management and Budget (OMB; released 3/6/2020). Per 1000: For nonmoney amounts, Per 1000=(county value / county population for the same year as the data) x 1000. \$ Per capita=(county value / county population for the same year as the data). Value= . indicates missing or suppressed data or value not calculated.



**Housing**

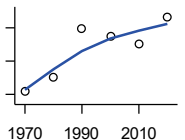
**RENTER OCCUPIED HOUSING UNITS**



U.S. Census Bureau: Decennial Census

Year	County	State of Kansas	Non Metro Kansas	County Rank	Per 1000 or \$ Per Capita
1970	2,881	224,779	90,156	16	94.0
1980	3,081	259,806	94,597	17	98.3
1990	3,204	302,964	102,802	20	109.0
2000	3,181	319,188	103,963	20	112.8
2010	3,312	358,564	108,506	20	119.7

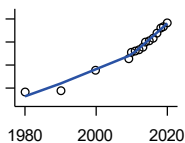
**VACANT HOUSING UNITS**



U.S. Census Bureau: Decennial Census

Year	County	State of Kansas	Non Metro Kansas	County Rank	Per 1000 or \$ Per Capita
1970	831	60,058	35,954	16	27.1
1980	1,007	77,912	41,584	17	32.1
1990	1,583	99,386	51,161	12	53.9
2000	1,495	93,309	46,904	12	53.0
2010	1,413	121,119	53,781	17	51.1
2020	1,730	124,329	56,790	16	67.9

**MEDIAN VALUE (\$): OWNER OCCUPIED HOUSING UNITS**



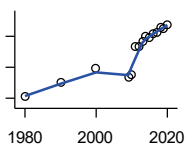
U.S. Census Bureau, Decennial Census (- 2000), (2009 -) American Community Survey five-year average ending in year shown.

Year	County	State of Kansas	Non Metro Kansas	County Rank	Per 1000 or \$ Per Capita
1980	37,000	37,800	.	15	.
1990	37,700	52,200	.	38	.
2000	55,500	83,500	.	48	.
2009	65,900	118,500	.	68	.
2010	71,000	122,600	.	62	.
2011	72,500	125,500	.	60	.
2012	73,600	127,400	.	60	.
2013	75,300	128,400	.	61	.
2014	79,800	129,400	.	59	.
2015	81,200	132,000	.	63	.
2016	83,700	135,300	.	60	.
2017	87,600	139,200	.	53	.
2018	92,300	145,400	.	56	.
2019	93,300	151,900	.	55	.
2020	97,100	157,600	.	54	.

County: county value. Kansas: state value. County Rank: highest county value ranked #1. (\$000): thousands of dollars. Nonmetro Kansas: Kansas total less Metropolitan Areas as defined by the Office of Management and Budget (OMB; released 3/6/2020). Per 1000: For nonmoney amounts, Per 1000=(county value / county population for the same year as the data) x 1000. \$ Per capita=(county value / county population for the same year as the data). Value= . indicates missing or suppressed data or value not calculated.

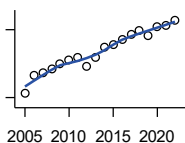
**Housing**

**MEDIAN CONTRACT RENT (\$)**



U.S. Census Bureau, Decennial Census (- 2000), (2009 -) American Community Survey five-year average ending in year shown.

Year	County	State of Kansas	Non Metro Kansas	County Rank	Per 1000 or \$ Per Capita
1980	208	219	.	14	.
1990	299	372	.	31	.
2000	390	498	.	43	.
2009	335	491	.	53	.
2010	350	507	.	48	.
2011	531	699	.	58	.
2012	538	715	.	60	.
2013	564	732	.	54	.
2014	603	748	.	48	.
2015	591	757	.	57	.
2016	615	775	.	51	.
2017	626	801	.	53	.
2018	658	831	.	45	.
2019	648	850	.	54	.
2020	676	863	.	44	.



**FAIR MARKET RENT: 2 BEDROOMS**

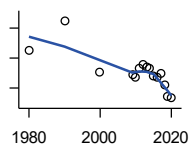
U.S. Department of Housing and Urban Development (HUD)

Year	County	State of Kansas	Non Metro Kansas	County Rank	Per 1000 or \$ Per Capita
2005	419	.	.	105	.
2006	497	.	.	105	.
2007	512	.	.	105	.
2008	525	628	.	105	.
2009	547	653	.	105	.
2010	566	678	.	105	.
2011	575	684	.	105	.
2012	540	660	.	105	.
2013	577	712	.	105	.
2014	622	746	.	105	.
2015	634	756	.	105	.
2016	658	781	.	105	.
2017	681	811	.	105	.
2018	697	815	.	105	.
2019	672	828	.	105	.
2020	714	855	.	105	.
2021	718	874	.	105	.
2022	742	879	.	105	.

County: county value. Kansas: state value. County Rank: highest county value ranked #1. (\$000): thousands of dollars. Nonmetro Kansas: Kansas total less Metropolitan Areas as defined by the Office of Management and Budget (OMB; released 3/6/2020). Per 1000: For nonmoney amounts, Per 1000=(county value / county population for the same year as the data) x 1000. \$ Per capita=(county value / county population for the same year as the data). Value= . indicates missing or suppressed data or value not calculated.

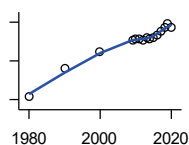
**Education**

**POPULATION AGE 25+**



U.S. Census Bureau, Decennial Census (- 2000), (2009 -) American Community Survey five-year average ending in year shown.

Year	County	State of Kansas	Non Metro Kansas	County Rank	Per 1000 or \$ Per Capita
1980	18,636	1,388,102	596,639	.	.
1990	19,121	1,565,936	608,745	.	.
2000	18,265	1,701,207	618,131	.	.
2009	18,213	1,775,427	600,188	.	.
2010	18,170	1,802,904	608,716	.	.
2011	18,326	1,822,400	610,386	.	.
2012	18,389	1,838,079	611,103	.	.
2013	18,360	1,850,010	610,374	.	.
2014	18,326	1,861,894	609,612	.	.
2015	18,207	1,869,698	606,967	.	.
2016	18,177	1,878,495	604,563	.	.
2017	18,253	1,886,741	601,076	.	.
2018	18,049	1,894,675	598,487	.	.
2019	17,859	1,902,279	595,501	.	.
2020	17,830	1,911,990	593,923	.	.



**PERCENT HS GRADUATE OR HIGHER AGE 25+**

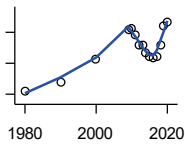
U.S. Census Bureau, Decennial Census (- 2000), (2009 -) American Community Survey five-year average ending in year shown.

Year	County	State of Kansas	Non Metro Kansas	County Rank	Per 1000 or \$ Per Capita
1980	70.8	73.3	.	46	.
1990	78.0	81.3	.	47	.
2000	82.3	86.0	.	79	.
2009	85.3	89.0	.	85	.
2010	85.6	89.2	.	90	.
2011	85.6	89.5	.	90	.
2012	85.4	89.7	.	90	.
2013	86.0	89.8	.	89	.
2014	85.8	90.0	.	90	.
2015	86.1	90.2	.	88	.
2016	86.8	90.3	.	89	.
2017	87.6	90.5	.	88	.
2018	88.6	90.7	.	80	.
2019	89.5	91.0	.	78	.
2020	88.7	91.4	.	83	.

County: county value. Kansas: state value. County Rank: highest county value ranked #1. (\$000): thousands of dollars. Nonmetro Kansas: Kansas total less Metropolitan Areas as defined by the Office of Management and Budget (OMB; released 3/6/2020). Per 1000: For nonmoney amounts, Per 1000=(county value / county population for the same year as the data) x 1000. \$ Per capita=(county value / county population for the same year as the data). Value= . indicates missing or suppressed data or value not calculated.

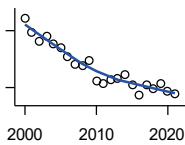
**Education**

**PERCENT BACHELORS DEGREE OR HIGHER AGE 25+**



U.S. Census Bureau, Decennial Census (- 2000), (2009 -) American Community Survey five-year average ending in year shown.

Year	County	State of Kansas	Non Metro Kansas	County Rank	Per 1000 or \$ Per Capita
1980	12.4	17.0	.	42	.
1990	13.6	21.1	.	50	.
2000	16.6	25.8	.	56	.
2009	20.4	28.8	.	36	.
2010	20.5	29.3	.	34	.
2011	19.6	29.7	.	50	.
2012	18.4	30.0	.	68	.
2013	18.3	30.3	.	69	.
2014	17.3	30.7	.	86	.
2015	16.9	31.0	.	90	.
2016	16.7	31.6	.	93	.
2017	16.9	32.3	.	92	.
2018	18.4	32.9	.	81	.
2019	20.9	33.4	.	63	.
2020	21.3	33.9	.	60	.



**PUBLIC SCHOOL ENROLLMENT (FTE) SCHOOL YEAR BEGINNING...**

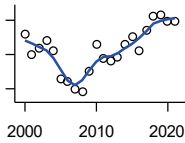
Kansas State Department of Education

Year	County	State of Kansas	Non Metro Kansas	County Rank	Per 1000 or \$ Per Capita
2000	4,731.8	448,150.8	166,722.5	21	167.8
2001	4,586.5	447,047.1	164,365.0	23	165.2
2002	4,492.5	444,860.3	161,555.4	23	162.3
2003	4,537.2	443,620.6	159,130.2	23	164.5
2004	4,464.1	441,957.2	156,566.3	23	163.0
2005	4,424.2	442,708.4	155,197.2	23	160.7
2006	4,326.4	444,878.7	153,842.3	23	157.6
2007	4,249.3	446,831.3	152,337.1	23	154.6
2008	4,228.1	447,730.0	150,572.7	23	154.8
2009	4,278.8	453,202.5	151,246.8	23	155.4
2010	4,075.8	455,405.0	151,023.8	23	147.3
2011	4,048.2	456,000.5	150,257.9	23	146.2
2012	4,087.7	458,496.4	150,463.0	23	148.5
2013	4,101.9	461,950.0	150,420.9	23	149.5
2014	4,137.9	464,395.4	150,499.4	23	151.4
2015	4,032.8	463,504.0	149,539.3	23	148.5
2016	3,915.5	459,920.3	147,293.5	23	145.7
2017	4,024.8	477,977.9	152,096.3	23	152.5
2018	3,982.9	476,481.7	150,456.8	24	152.9
2019	4,039.8	476,525.1	150,045.2	24	156.7
2020	3,956.6	462,088.0	146,369.6	24	155.2
2021	3,928.7	463,652.4	147,500.4	24	155.8

County: county value. Kansas: state value. County Rank: highest county value ranked #1. (\$000): thousands of dollars. Nonmetro Kansas: Kansas total less Metropolitan Areas as defined by the Office of Management and Budget (OMB; released 3/6/2020). Per 1000: For nonmoney amounts, Per 1000=(county value / county population for the same year as the data) x 1000. \$ Per capita=(county value / county population for the same year as the data). Value= . indicates missing or suppressed data or value not calculated.

**Education**

**PUPIL/TEACHER RATIO SCHOOL YEAR BEGINNING...**

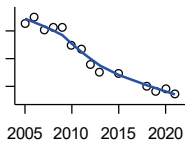


Kansas State Department of Education

Year	County	State of Kansas	Non Metro Kansas	County Rank	Per 1000 or \$ Per Capita
2000	15.1	15.4	13.9	18	.
2001	14.5	15.3	13.8	27	.
2002	14.7	15.4	13.9	27	.
2003	14.9	15.5	13.8	24	.
2004	14.6	15.3	13.6	24	.
2005	13.8	15.0	13.4	32	.
2006	13.7	14.7	13.2	30	.
2007	13.5	14.6	13.1	31	.
2008	13.4	14.4	12.9	26	.
2009	14.0	14.8	13.2	28	.
2010	14.8	15.2	13.6	23	.
2011	14.4	15.1	13.5	29	.
2012	14.3	15.1	13.5	28	.
2013	14.4	15.1	13.5	24	.
2014	14.8	15.0	13.6	19	.
2015	15.0	15.2	13.9	18	.
2016	14.6	15.1	13.7	25	.
2017	15.2	15.5	13.9	22	.
2018	15.6	15.3	13.8	12	.
2019	15.7	15.2	13.7	13	.
2020	15.5	14.7	13.4	12	.
2021	15.5	14.8	13.5	15	.

**Social Environment**

**CHILD CARE FACILITIES: TOTAL CHILD CARE FACILITIES**

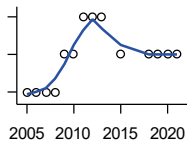


Kansas Department of Health and Environment, Bureau of Adult and Child Care

Year	County	State of Kansas	Non Metro Kansas	County Rank	Per 1000 or \$ Per Capita
2005	105	8,258	3,378	17	3.8
2006	110	8,442	3,429	17	4.0
2007	101	8,241	3,317	19	3.7
2008	103	8,011	3,150	16	3.8
2009	103	7,853	3,066	15	3.7
2010	90	7,354	2,858	17	3.3
2011	87	6,835	2,623	16	3.1
2012	76	6,346	2,409	17	2.8
2013	70	5,754	2,179	17	2.6
2015	69	5,289	2,146	17	2.5
2018	60	4,607	1,904	16	2.3
2019	56	4,287	1,774	16	2.2
2020	58	4,274	1,798	16	2.3
2021	55	4,002	1,700	15	2.2

County: county value. Kansas: state value. County Rank: highest county value ranked #1. (\$000): thousands of dollars. Nonmetro Kansas: Kansas total less Metropolitan Areas as defined by the Office of Management and Budget (OMB; released 3/6/2020). Per 1000: For nonmoney amounts, Per 1000=(county value / county population for the same year as the data) x 1000. \$ Per capita=(county value / county population for the same year as the data). Value= . indicates missing or suppressed data or value not calculated.

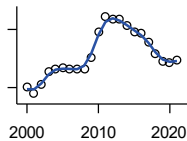
**Social Environment**



**CHILD CARE FACILITIES: PRESCHOOLS**

Kansas Department of Health and Environment, Bureau of Adult and Child Care

Year	County	State of Kansas	Non Metro Kansas	County Rank	Per 1000 or \$ Per Capita
2005	2	243	140	46	0.1
2006	2	221	127	42	0.1
2007	2	208	119	42	0.1
2008	2	204	114	46	0.1
2009	3	194	107	27	0.1
2010	3	194	112	27	0.1
2011	4	209	123	17	0.1
2012	4	201	121	14	0.1
2013	4	140	84	8	0.1
2015	3	185	113	25	0.1
2018	3	150	94	19	0.1
2019	3	134	83	17	0.1
2020	3	126	78	13	0.1
2021	3	120	74	13	0.1



**FOOD STAMP BENEFICIARIES**

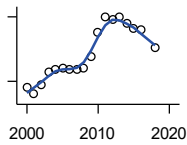
Kansas Social and Rehabilitation Services

Year	County	State of Kansas	Non Metro Kansas	County Rank	Per 1000 or \$ Per Capita
2000	1,508	110,619	44,825	17	53.5
2001	1,338	117,241	46,741	19	48.2
2002	1,579	131,726	52,342	18	57.0
2003	1,912	155,908	61,280	18	69.3
2004	1,968	167,971	65,852	19	71.9
2005	2,006	175,710	67,261	19	72.9
2006	1,977	182,821	67,487	20	72.0
2007	1,962	184,035	66,979	20	71.4
2008	1,986	187,377	67,160	20	72.7
2009	2,276	208,007	73,637	19	82.7
2010	2,928	259,609	90,919	19	105.8
2011	3,334	296,542	101,155	18	120.4
2012	3,262	303,257	102,478	21	118.5
2013	3,279	316,424	105,345	21	119.5
2014	3,105	301,377	100,761	22	113.6
2015	2,944	277,614	93,353	21	108.4
2016	2,904	258,412	88,343	19	108.0
2017	2,672	239,592	82,070	19	101.2
2018	2,388	219,738	75,208	21	91.6
2019	2,174	205,261	69,899	21	84.3
2020	2,136	198,457	66,721	21	83.8
2021	2,197	203,424	68,883	21	87.1

County: county value. Kansas: state value. County Rank: highest county value ranked #1. (\$000): thousands of dollars. Nonmetro Kansas: Kansas total less Metropolitan Areas as defined by the Office of Management and Budget (OMB; released 3/6/2020). Per 1000: For nonmoney amounts, Per 1000=(county value / county population for the same year as the data) x 1000. \$ Per capita=(county value / county population for the same year as the data). Value= . indicates missing or suppressed data or value not calculated.

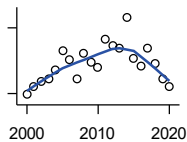
**Social Environment**

**PERCENT OF POPULATION RECEIVING FOOD STAMPS**



U.S. Dept. of Agriculture Food and Nutrition Service (1990-1997); Kansas Social and Rehabilitation Services (1998- )

Year	County	State of Kansas	Non Metro Kansas	County Rank	Per 1000 or \$ Per Capita
2000	5.4	4.1	.	24	.
2001	4.8	4.3	.	32	.
2002	5.7	4.9	.	27	.
2003	6.9	5.7	.	27	.
2004	7.1	6.2	.	28	.
2005	7.2	6.4	.	31	.
2006	7.1	6.6	.	31	.
2007	7.1	6.6	.	28	.
2008	7.2	6.7	.	27	.
2009	8.3	7.4	.	26	.
2010	10.6	9.1	.	26	.
2011	12.0	10.3	.	23	.
2012	11.8	10.5	.	23	.
2013	12.0	10.9	.	24	.
2014	11.4	10.4	.	25	.
2015	10.9	9.6	.	26	.
2016	10.8	8.9	.	20	.
2018	9.1	7.5	.	23	.



**ESTIMATED NUMBER OF PEOPLE IN POVERTY**

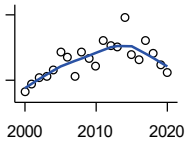
U.S. Census Bureau, Small Area Income and Poverty Estimates

Year	County	State of Kansas	Non Metro Kansas	County Rank	Per 1000 or \$ Per Capita
2000	2,973	235,087	98,984	18	105.4
2001	3,159	252,134	106,257	17	113.8
2002	3,282	265,673	107,542	17	118.6
2003	3,320	278,163	107,323	17	120.4
2004	3,539	297,733	111,534	17	129.2
2005	3,973	310,667	118,768	17	144.3
2006	3,769	327,102	123,700	19	137.3
2007	3,340	301,828	111,953	18	121.5
2008	3,923	307,804	113,015	17	143.6
2009	3,720	359,692	123,394	18	135.1
2010	3,587	374,677	131,502	21	129.6
2011	4,245	383,859	134,912	21	153.3
2012	4,088	392,095	133,800	19	148.5
2013	4,028	391,718	134,067	19	146.8
2014	4,739	381,506	130,213	18	173.4
2015	3,804	366,069	123,073	18	140.1
2016	3,621	343,773	121,314	19	134.7
2017	4,027	335,371	116,854	18	152.6
2018	3,673	336,892	114,490	17	141.0
2019	3,345	319,931	110,692	19	129.8
2020	3,159	300,931	100,998	19	123.9

County: county value. Kansas: state value. County Rank: highest county value ranked #1. (\$000): thousands of dollars. Nonmetro Kansas: Kansas total less Metropolitan Areas as defined by the Office of Management and Budget (OMB; released 3/6/2020). Per 1000: For nonmoney amounts, Per 1000=(county value / county population for the same year as the data) x 1000. \$ Per capita=(county value / county population for the same year as the data). Value= . indicates missing or suppressed data or value not calculated.

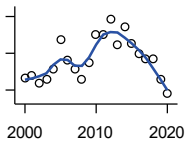
**Social Environment**

**ESTIMATED % OF PEOPLE IN POVERTY**



U.S. Census Bureau, Small Area Income and Poverty Estimates

Year	County	State of Kansas	Non Metro Kansas	County Rank	Per 1000 or \$ Per Capita
2000	10.9	8.9	.	43	.
2001	11.7	9.5	.	42	.
2002	12.2	10.0	.	33	.
2003	12.4	10.4	.	26	.
2004	12.9	11.1	.	24	.
2005	14.6	11.7	.	19	.
2006	14.1	12.2	.	32	.
2007	12.4	11.2	.	35	.
2008	14.6	11.3	.	15	.
2009	14.0	13.2	.	32	.
2010	13.3	13.5	.	43	.
2011	15.7	13.8	.	24	.
2012	15.2	14.0	.	27	.
2013	15.0	13.9	.	29	.
2014	17.8	13.5	.	12	.
2015	14.4	12.9	.	25	.
2016	13.9	12.2	.	30	.
2017	15.6	11.9	.	14	.
2018	14.5	11.9	.	23	.
2019	13.4	11.3	.	31	.
2020	12.7	10.6	.	29	.



**EST. NUMBER OF RELATED CHILDREN AGE 5 TO 17 IN FAMILIES IN POVERTY**

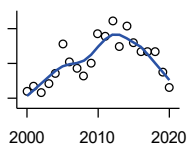
U.S. Census Bureau, Small Area Income and Poverty Estimates

Year	County	State of Kansas	Non Metro Kansas	County Rank	Per 1000 or \$ Per Capita
2000	667	50,388	21,854	20	23.6
2001	682	53,755	23,094	20	24.6
2002	637	52,453	21,423	20	23.0
2003	657	55,419	21,809	20	23.8
2004	714	59,392	22,313	19	26.1
2005	874	60,203	24,244	17	31.7
2006	762	64,427	25,326	19	27.7
2007	714	61,149	23,639	20	26.0
2008	660	59,842	22,661	20	24.2
2009	752	71,850	26,251	21	27.3
2010	899	81,077	29,804	20	32.5
2011	904	82,311	29,306	22	32.6
2012	984	87,594	29,781	19	35.8
2013	844	84,325	29,253	20	30.8
2014	946	83,873	29,354	19	34.6
2015	854	78,192	27,482	19	31.4
2016	796	67,810	25,074	19	29.6
2017	773	67,873	25,032	19	29.3
2018	767	68,153	24,928	18	29.4
2019	657	64,613	23,117	19	25.5
2020	579	59,792	21,143	21	22.7

County: county value. Kansas: state value. County Rank: highest county value ranked #1. (\$000): thousands of dollars. Nonmetro Kansas: Kansas total less Metropolitan Areas as defined by the Office of Management and Budget (OMB; released 3/6/2020). Per 1000: For nonmoney amounts, Per 1000=(county value / county population for the same year as the data) x 1000. \$ Per capita=(county value / county population for the same year as the data). Value= . indicates missing or suppressed data or value not calculated.



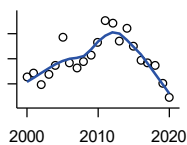
**Social Environment**



EST. % OF RELATED CHILDREN AGE 5 TO 17 IN FAMILIES IN POVERTY

U.S. Census Bureau, Small Area Income and Poverty Estimates

Year	County	State of Kansas	Non Metro Kansas	County Rank	Per 1000 or \$ Per Capita
2000	12.8	10.0	.	47	.
2001	13.4	10.8	.	53	.
2002	12.6	10.5	.	44	.
2003	13.7	11.3	.	32	.
2004	14.8	12.5	.	24	.
2005	18.3	12.8	.	13	.
2006	16.2	13.2	.	36	.
2007	15.4	12.6	.	38	.
2008	14.5	12.3	.	46	.
2009	16.1	14.7	.	41	.
2010	19.4	15.9	.	28	.
2011	19.1	16.2	.	24	.
2012	20.9	17.2	.	22	.
2013	17.9	16.5	.	36	.
2014	20.3	16.4	.	22	.
2015	18.4	15.3	.	28	.
2016	17.3	13.2	.	24	.
2017	17.3	13.4	.	32	.
2018	17.4	13.5	.	36	.
2019	15.0	12.9	.	50	.
2020	13.3	11.9	.	57	.



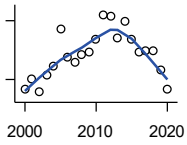
ESTIMATED NUMBER UNDER 18 IN POVERTY

U.S. Census Bureau, Small Area Income and Poverty Estimates

Year	County	State of Kansas	Non Metro Kansas	County Rank	Per 1000 or \$ Per Capita
2000	1,052	82,619	34,843	20	37.3
2001	1,089	87,487	36,724	20	39.2
2002	994	84,181	32,870	20	35.9
2003	1,073	93,896	36,004	20	38.9
2004	1,148	98,641	36,272	19	41.9
2005	1,372	100,254	39,118	18	49.8
2006	1,169	105,193	41,054	19	42.6
2007	1,130	100,242	37,881	20	41.1
2008	1,180	100,146	37,552	20	43.2
2009	1,233	118,187	42,682	21	44.8
2010	1,328	129,009	46,428	20	48.0
2011	1,505	133,478	46,832	21	54.3
2012	1,482	135,261	46,294	19	53.9
2013	1,336	131,251	44,952	20	48.7
2014	1,443	125,562	43,933	20	52.8
2015	1,298	119,994	41,828	20	47.8
2016	1,190	100,996	37,387	19	44.3
2017	1,164	102,858	37,955	19	44.1
2018	1,142	102,616	36,991	18	43.8
2019	1,004	97,920	34,797	19	38.9
2020	888	88,491	30,767	20	34.8

County: county value. Kansas: state value. County Rank: highest county value ranked #1. (\$000): thousands of dollars. Nonmetro Kansas: Kansas total less Metropolitan Areas as defined by the Office of Management and Budget (OMB; released 3/6/2020). Per 1000: For nonmoney amounts, Per 1000=(county value / county population for the same year as the data) x 1000. \$ Per capita=(county value / county population for the same year as the data). Value= . indicates missing or suppressed data or value not calculated.

**Social Environment**



**ESTIMATED PERCENT UNDER 18 IN POVERTY**

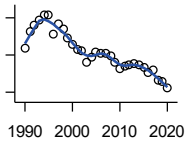
U.S. Census Bureau, Small Area Income and Poverty Estimates

Year	County	State of Kansas	Non Metro Kansas	County Rank	Per 1000 or \$ Per Capita
2000	15.0	11.9	.	45	.
2001	16.0	12.7	.	45	.
2002	14.7	12.1	.	34	.
2003	16.5	13.8	.	30	.
2004	17.4	14.6	.	25	.
2005	21.2	15.2	.	16	.
2006	18.3	15.4	.	39	.
2007	17.7	14.7	.	36	.
2008	18.6	14.6	.	29	.
2009	18.8	17.1	.	40	.
2010	20.1	18.1	.	34	.
2011	22.6	18.8	.	22	.
2012	22.5	19.0	.	24	.
2013	20.3	18.4	.	32	.
2014	22.0	17.6	.	19	.
2015	20.1	16.9	.	27	.
2016	18.8	14.3	.	24	.
2017	18.9	14.7	.	30	.
2018	18.9	14.8	.	31	.
2019	17.0	14.3	.	43	.
2020	15.0	13.0	.	53	.

County: county value. Kansas: state value. County Rank: highest county value ranked #1. (\$000): thousands of dollars. Nonmetro Kansas: Kansas total less Metropolitan Areas as defined by the Office of Management and Budget (OMB; released 3/6/2020). Per 1000: For nonmoney amounts, Per 1000=(county value / county population for the same year as the data) x 1000. \$ Per capita=(county value / county population for the same year as the data). Value= . indicates missing or suppressed data or value not calculated.

**Business**

**ESTABLISHMENTS TOTAL COUNTY BUSINESS PATTERNS**



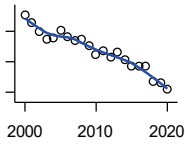
U.S. Census Bureau, County Business Patterns. Beginning with the 2017 data, any tabulation with fewer than 3 establishments were omitted from the release. Data for these establishments are included in the broader total.

Year	County	State of Kansas	Non Metro Kansas	County Rank	Per 1000 or \$ Per Capita
1990	1,019	65,858	26,802	10	34.7
1991	1,063	65,941	26,750	9	36.2
1992	1,080	67,630	27,229	9	36.5
1993	1,093	68,930	27,655	9	37.1
1994	1,108	69,822	27,763	10	37.7
1995	1,107	70,894	28,111	10	38.0
1996	1,057	72,017	28,353	11	36.6
1997	1,082	73,924	28,884	12	37.4
1998	1,070	74,019	28,749	11	37.2
1999	1,046	74,486	28,536	11	36.7
2000	1,029	74,939	28,475	12	36.5
2001	1,016	74,565	28,282	12	36.6
2002	1,012	75,077	28,183	13	36.6
2003	982	74,972	27,998	14	35.6
2004	994	75,827	28,009	13	36.3
2005	1,008	76,173	27,830	12	36.6
2006	1,004	76,446	27,653	13	36.6
2007	1,006	77,157	27,736	13	36.6
2008	999	76,096	27,314	12	36.6
2009	982	74,698	26,839	13	35.7
2010	962	74,301	26,739	13	34.8
2011	970	73,598	26,555	13	35.0
2012	975	73,944	26,534	13	35.4
2013	976	73,816	26,393	13	35.6
2014	975	74,055	26,292	13	35.7
2015	966	74,526	26,355	13	35.6
2016	954	74,884	26,172	13	35.5
2017	959	74,947	26,093	13	36.3
2018	933	74,559	25,802	13	35.8
2019	928	74,292	25,536	14	36.0
2020	912	73,982	25,178	14	35.8

County: county value. Kansas: state value. County Rank: highest county value ranked #1. (\$000): thousands of dollars. Nonmetro Kansas: Kansas total less Metropolitan Areas as defined by the Office of Management and Budget (OMB; released 3/6/2020). Per 1000: For nonmoney amounts, Per 1000=(county value / county population for the same year as the data) x 1000. \$ Per capita=(county value / county population for the same year as the data). Value= . indicates missing or suppressed data or value not calculated.

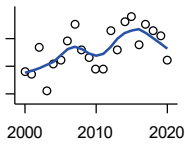
**Business**

**ESTABLISHMENTS: 1-19  
EMPLOYEES**



U.S. Census Bureau, County Business Patterns. Beginning with the 2017 data, any tabulation with fewer than 3 establishments were omitted from the release. Data for these establishments are included in the broader total.

Year	County	State of Kansas	Non Metro Kansas	County Rank	Per 1000 or \$ Per Capita
2000	927	64,527	25,381	12	32.9
2001	914	64,176	25,248	12	32.9
2002	900	64,886	25,208	13	32.5
2003	886	64,714	25,020	12	32.1
2004	888	65,554	24,995	12	32.4
2005	902	65,796	24,839	12	32.8
2006	891	65,764	24,589	12	32.4
2007	885	66,446	24,701	12	32.2
2008	886	65,322	24,257	12	32.4
2009	876	64,128	23,851	12	31.8
2010	861	64,015	23,857	13	31.1
2011	868	63,251	23,571	13	31.3
2012	857	63,519	23,575	13	31.1
2013	865	63,197	23,396	12	31.5
2014	853	63,113	23,229	13	31.2
2015	843	63,280	23,227	13	31.0
2016	843	63,630	23,117	13	31.4
2017	842	63,619	23,022	13	31.9
2018	818	63,233	22,745	13	31.4
2019	815	62,904	22,489	13	31.6
2020	806	62,634	22,173	13	31.6



**ESTABLISHMENTS: 20-99  
EMPLOYEES**

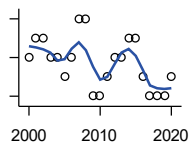
U.S. Census Bureau, County Business Patterns. Beginning with the 2017 data, any tabulation with fewer than 3 establishments were omitted from the release. Data for these establishments are included in the broader total.

Year	County	State of Kansas	Non Metro Kansas	County Rank	Per 1000 or \$ Per Capita
2000	88	8,714	2,653	19	3.1
2001	87	8,692	2,593	19	3.1
2002	97	8,582	2,554	15	3.5
2003	81	8,642	2,568	19	2.9
2004	91	8,658	2,590	17	3.3
2005	92	8,685	2,553	17	3.3
2006	99	8,922	2,612	16	3.6
2007	105	8,938	2,574	11	3.8
2008	96	8,939	2,587	17	3.5
2009	93	8,848	2,551	16	3.4
2010	89	8,612	2,454	18	3.2
2011	89	8,668	2,540	17	3.2
2012	103	8,700	2,500	14	3.7
2013	96	8,870	2,541	15	3.5
2014	106	9,121	2,590	14	3.9
2015	108	9,374	2,664	14	4.0
2016	98	9,412	2,596	14	3.6
2017	105	9,487	2,638	15	4.0
2018	103	9,485	2,621	15	4.0
2019	101	9,485	2,591	15	3.9
2020	92	9,471	2,545	17	3.6

County: county value. Kansas: state value. County Rank: highest county value ranked #1. (\$000): thousands of dollars. Nonmetro Kansas: Kansas total less Metropolitan Areas as defined by the Office of Management and Budget (OMB; released 3/6/2020). Per 1000: For nonmoney amounts, Per 1000=(county value / county population for the same year as the data) x 1000. \$ Per capita=(county value / county population for the same year as the data). Value= . indicates missing or suppressed data or value not calculated.

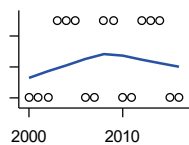
**Business**

**ESTABLISHMENTS: 100-499 EMPLOYEES**



U.S. Census Bureau, County Business Patterns. Beginning with the 2017 data, any tabulation with fewer than 3 establishments were omitted from the release. Data for these establishments are included in the broader total.

Year	County	State of Kansas	Non Metro Kansas	County Rank	Per 1000 or \$ Per Capita
2000	14	1,555	409	18	0.5
2001	15	1,555	406	16	0.5
2002	15	1,464	386	15	0.5
2003	14	1,470	378	17	0.5
2004	14	1,463	388	17	0.5
2005	13	1,537	400	19	0.5
2006	14	1,598	407	19	0.5
2007	16	1,602	416	14	0.6
2008	16	1,653	421	13	0.6
2009	12	1,551	394	21	0.4
2010	12	1,513	382	19	0.4
2011	13	1,523	395	19	0.5
2012	14	1,567	410	17	0.5
2013	14	1,581	407	19	0.5
2014	15	1,641	421	16	0.5
2015	15	1,693	414	17	0.6
2016	13	1,671	406	20	0.5
2017	12	1,653	.	19	0.5
2018	12	1,650	.	15	0.5
2019	12	1,718	.	18	0.5
2020	13	1,692	.	18	0.5



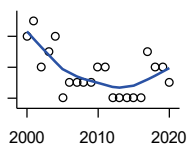
**ESTABLISHMENTS: 500 OR MORE EMPLOYEES**

U.S. Census Bureau, County Business Patterns. Beginning with the 2017 data, any tabulation with fewer than 3 establishments were omitted from the release. Data for these establishments are included in the broader total.

Year	County	State of Kansas	Non Metro Kansas	County Rank	Per 1000 or \$ Per Capita
2000	0	143	32	105	0.0
2001	0	142	35	105	0.0
2002	0	145	35	105	0.0
2003	1	146	32	29	0.0
2004	1	152	36	29	0.0
2005	1	155	38	31	0.0
2006	0	162	45	105	0.0
2007	0	171	45	105	0.0
2008	1	182	49	33	0.0
2009	1	171	43	33	0.0
2010	0	161	46	105	0.0
2011	0	156	49	105	0.0
2012	1	158	49	34	0.0
2013	1	168	49	33	0.0
2014	1	180	52	34	0.0
2015	0	179	50	105	0.0
2016	0	171	53	105	0.0

County: county value. Kansas: state value. County Rank: highest county value ranked #1. (\$000): thousands of dollars. Nonmetro Kansas: Kansas total less Metropolitan Areas as defined by the Office of Management and Budget (OMB; released 3/6/2020). Per 1000: For nonmoney amounts, Per 1000=(county value / county population for the same year as the data) x 1000. \$ Per capita=(county value / county population for the same year as the data). Value= . indicates missing or suppressed data or value not calculated.

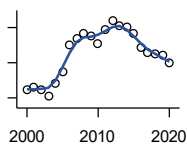
**Business**



**ESTABLISHMENTS: FORESTRY, FISHING, HUNTING, AND AG SUPPORT**

U.S. Census Bureau, County Business Patterns. Beginning with the 2017 data, any tabulation with fewer than 3 establishments were omitted from the release. Data for these establishments are included in the broader total.

Year	County	State of Kansas	Non Metro Kansas	County Rank	Per 1000 or \$ Per Capita
2000	8	190	149	3	0.3
2001	9	217	168	4	0.3
2002	6	224	176	6	0.2
2003	7	217	173	6	0.3
2004	8	211	165	5	0.3
2005	4	188	148	13	0.1
2006	5	193	158	12	0.2
2007	5	212	170	12	0.2
2008	5	197	158	9	0.2
2009	5	191	154	8	0.2
2010	6	192	161	6	0.2
2011	6	193	157	6	0.2
2012	4	204	164	18	0.1
2013	4	208	166	16	0.1
2014	4	194	152	14	0.1
2015	4	192	149	14	0.1
2016	4	181	142	13	0.1
2017	7	194	.	3	0.3
2018	6	195	.	5	0.2
2019	6	185	.	4	0.2
2020	5	181	.	9	0.2



**ESTABLISHMENTS: MINING**

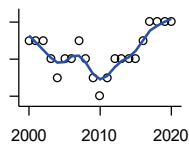
U.S. Census Bureau, County Business Patterns. Beginning with the 2017 data, any tabulation with fewer than 3 establishments were omitted from the release. Data for these establishments are included in the broader total.

Year	County	State of Kansas	Non Metro Kansas	County Rank	Per 1000 or \$ Per Capita
2000	55	868	619	2	2.0
2001	56	878	622	2	2.0
2002	55	847	615	2	2.0
2003	51	864	633	2	1.8
2004	58	880	647	2	2.1
2005	65	941	695	2	2.4
2006	80	991	734	2	2.9
2007	84	1,000	759	2	3.1
2008	87	1,047	799	2	3.2
2009	85	1,016	772	2	3.1
2010	81	1,009	762	2	2.9
2011	89	1,013	763	2	3.2
2012	94	1,048	789	2	3.4
2013	91	1,060	802	2	3.3
2014	90	1,102	828	2	3.3
2015	87	1,069	810	2	3.2
2016	79	990	747	2	2.9
2017	76	920	.	2	2.9
2018	75	900	.	3	2.9
2019	74	864	.	3	2.9
2020	70	825	.	3	2.7

County: county value. Kansas: state value. County Rank: highest county value ranked #1. (\$000): thousands of dollars. Nonmetro Kansas: Kansas total less Metropolitan Areas as defined by the Office of Management and Budget (OMB; released 3/6/2020). Per 1000: For nonmoney amounts, Per 1000=(county value / county population for the same year as the data) x 1000. \$ Per capita=(county value / county population for the same year as the data). Value= . indicates missing or suppressed data or value not calculated.

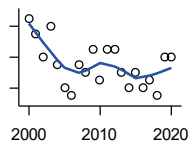
**Business**

**ESTABLISHMENTS: UTILITIES**



U.S. Census Bureau, County Business Patterns. Beginning with the 2017 data, any tabulation with fewer than 3 establishments were omitted from the release. Data for these establishments are included in the broader total.

Year	County	State of Kansas	Non Metro Kansas	County Rank	Per 1000 or \$ Per Capita
2000	7	274	192	4	0.2
2001	7	290	204	8	0.3
2002	7	278	195	8	0.3
2003	6	268	180	9	0.2
2004	5	247	164	13	0.2
2005	6	254	172	9	0.2
2006	6	248	169	9	0.2
2007	7	222	156	5	0.3
2008	6	244	166	7	0.2
2009	5	222	152	10	0.2
2010	4	197	129	12	0.1
2011	5	230	156	11	0.2
2012	6	232	156	6	0.2
2013	6	234	159	6	0.2
2014	6	232	160	6	0.2
2015	6	237	165	7	0.2
2016	7	245	171	5	0.3
2017	8	246	.	5	0.3
2018	8	252	.	5	0.3
2019	8	256	.	5	0.3
2020	8	255	.	5	0.3



**ESTABLISHMENTS: CONSTRUCTION**

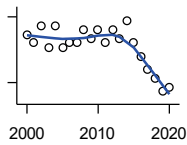
U.S. Census Bureau, County Business Patterns. Beginning with the 2017 data, any tabulation with fewer than 3 establishments were omitted from the release. Data for these establishments are included in the broader total.

Year	County	State of Kansas	Non Metro Kansas	County Rank	Per 1000 or \$ Per Capita
2000	97	7,703	2,616	15	3.4
2001	95	7,449	2,520	14	3.4
2002	92	7,519	2,482	15	3.3
2003	96	7,722	2,521	15	3.5
2004	91	7,887	2,518	16	3.3
2005	88	8,032	2,515	19	3.2
2006	87	8,031	2,494	17	3.2
2007	91	8,057	2,547	16	3.3
2008	90	7,831	2,522	16	3.3
2009	93	7,342	2,452	15	3.4
2010	89	7,064	2,394	15	3.2
2011	93	6,774	2,361	15	3.4
2012	93	6,741	2,393	15	3.4
2013	90	6,802	2,394	15	3.3
2014	88	6,920	2,383	16	3.2
2015	90	7,014	2,377	16	3.3
2016	88	6,988	2,343	16	3.3
2017	89	7,031	2,316	15	3.4
2018	87	7,124	2,285	15	3.3
2019	92	7,060	2,242	15	3.6
2020	92	7,089	2,249	15	3.6

County: county value. Kansas: state value. County Rank: highest county value ranked #1. (\$000): thousands of dollars. Nonmetro Kansas: Kansas total less Metropolitan Areas as defined by the Office of Management and Budget (OMB; released 3/6/2020). Per 1000: For nonmoney amounts, Per 1000=(county value / county population for the same year as the data) x 1000. \$ Per capita=(county value / county population for the same year as the data). Value= . indicates missing or suppressed data or value not calculated.

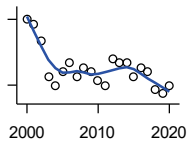
**Business**

**ESTABLISHMENTS:  
MANUFACTURING**



U.S. Census Bureau, County Business Patterns. Beginning with the 2017 data, any tabulation with fewer than 3 establishments were omitted from the release. Data for these establishments are included in the broader total.

Year	County	State of Kansas	Non Metro Kansas	County Rank	Per 1000 or \$ Per Capita
2000	46	3,229	1,316	14	1.6
2001	44	3,240	1,323	15	1.6
2002	48	3,181	1,289	14	1.7
2003	43	3,159	1,291	15	1.6
2004	48	3,179	1,313	14	1.8
2005	43	3,128	1,278	15	1.6
2006	44	3,165	1,290	15	1.6
2007	44	3,184	1,316	14	1.6
2008	47	3,171	1,297	13	1.7
2009	45	3,026	1,240	13	1.6
2010	47	2,955	1,222	12	1.7
2011	44	2,877	1,193	13	1.6
2012	47	2,889	1,197	12	1.7
2013	45	2,836	1,165	13	1.6
2014	49	2,831	1,168	11	1.8
2015	44	2,817	1,161	13	1.6
2016	41	2,791	1,150	13	1.5
2017	38	2,760	1,147	15	1.4
2018	36	2,725	1,126	16	1.4
2019	33	2,695	1,111	17	1.3
2020	34	2,673	1,103	17	1.3



**ESTABLISHMENTS: WHOLESALE  
TRADE**

U.S. Census Bureau, County Business Patterns. Beginning with the 2017 data, any tabulation with fewer than 3 establishments were omitted from the release. Data for these establishments are included in the broader total.

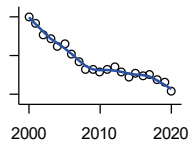
Year	County	State of Kansas	Non Metro Kansas	County Rank	Per 1000 or \$ Per Capita
2000	80	4,876	1,776	9	2.8
2001	79	4,811	1,769	9	2.8
2002	75	4,719	1,750	9	2.7
2003	67	4,590	1,637	9	2.4
2004	65	4,553	1,634	9	2.4
2005	68	4,541	1,618	9	2.5
2006	70	4,517	1,596	8	2.5
2007	67	4,555	1,629	9	2.4
2008	69	4,501	1,622	9	2.5
2009	68	4,437	1,614	9	2.5
2010	66	4,432	1,612	10	2.4
2011	65	4,400	1,660	10	2.3
2012	71	4,563	1,755	9	2.6
2013	70	4,501	1,741	10	2.6
2014	70	4,497	1,746	9	2.6
2015	67	4,459	1,755	10	2.5
2016	69	4,457	1,732	9	2.6
2017	68	4,436	1,774	10	2.6
2018	64	4,330	1,727	11	2.5
2019	63	4,291	1,713	11	2.4
2020	65	4,191	1,677	10	2.5

County: county value. Kansas: state value. County Rank: highest county value ranked #1. (\$000): thousands of dollars. Nonmetro Kansas: Kansas total less Metropolitan Areas as defined by the Office of Management and Budget (OMB; released 3/6/2020). Per 1000: For nonmoney amounts, Per 1000=(county value / county population for the same year as the data) x 1000. \$ Per capita=(county value / county population for the same year as the data). Value= . indicates missing or suppressed data or value not calculated.



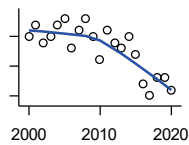
**Business**

**ESTABLISHMENTS: RETAIL TRADE**



U.S. Census Bureau, County Business Patterns. Beginning with the 2017 data, any tabulation with fewer than 3 establishments were omitted from the release. Data for these establishments are included in the broader total.

Year	County	State of Kansas	Non Metro Kansas	County Rank	Per 1000 or \$ Per Capita
2000	180	12,261	5,240	15	6.4
2001	173	12,206	5,207	16	6.2
2002	162	11,980	5,082	16	5.9
2003	158	11,834	5,049	17	5.7
2004	149	11,748	4,967	19	5.4
2005	152	11,562	4,834	18	5.5
2006	142	11,367	4,702	19	5.2
2007	134	11,306	4,653	18	4.9
2008	126	10,978	4,494	20	4.6
2009	125	10,760	4,372	19	4.5
2010	123	10,727	4,346	19	4.4
2011	125	10,655	4,289	17	4.5
2012	128	10,585	4,202	17	4.7
2013	123	10,433	4,147	17	4.5
2014	118	10,391	4,070	19	4.3
2015	122	10,327	4,061	17	4.5
2016	119	10,197	3,965	17	4.4
2017	121	10,074	3,885	16	4.6
2018	115	9,866	3,797	19	4.4
2019	112	9,762	3,750	17	4.3
2020	103	9,591	3,666	19	4.0



**ESTABLISHMENTS: TRANSPORTATION & WAREHOUSING**

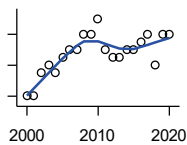
U.S. Census Bureau, County Business Patterns. Beginning with the 2017 data, any tabulation with fewer than 3 establishments were omitted from the release. Data for these establishments are included in the broader total.

Year	County	State of Kansas	Non Metro Kansas	County Rank	Per 1000 or \$ Per Capita
2000	40	2,474	1,293	14	1.4
2001	42	2,463	1,298	15	1.5
2002	39	2,461	1,278	13	1.4
2003	40	2,576	1,297	16	1.5
2004	42	2,651	1,324	15	1.5
2005	43	2,632	1,326	13	1.6
2006	38	2,626	1,295	17	1.4
2007	41	2,664	1,314	12	1.5
2008	43	2,675	1,329	13	1.6
2009	40	2,635	1,313	12	1.5
2010	36	2,615	1,313	17	1.3
2011	41	2,579	1,285	12	1.5
2012	39	2,519	1,243	12	1.4
2013	38	2,492	1,226	13	1.4
2014	40	2,518	1,240	11	1.5
2015	37	2,554	1,257	15	1.4
2016	32	2,567	1,241	20	1.2
2017	30	2,640	1,245	21	1.1
2018	33	2,627	1,238	19	1.3
2019	33	2,615	1,209	17	1.3
2020	31	2,589	1,179	18	1.2

County: county value. Kansas: state value. County Rank: highest county value ranked #1. (\$000): thousands of dollars. Nonmetro Kansas: Kansas total less Metropolitan Areas as defined by the Office of Management and Budget (OMB; released 3/6/2020). Per 1000: For nonmoney amounts, Per 1000=(county value / county population for the same year as the data) x 1000. \$ Per capita=(county value / county population for the same year as the data). Value= . indicates missing or suppressed data or value not calculated.

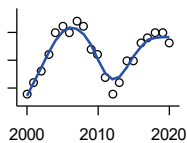
**Business**

**ESTABLISHMENTS: INFORMATION**



U.S. Census Bureau, County Business Patterns. Beginning with the 2017 data, any tabulation with fewer than 3 establishments were omitted from the release. Data for these establishments are included in the broader total.

Year	County	State of Kansas	Non Metro Kansas	County Rank	Per 1000 or \$ Per Capita
2000	10	1,542	578	32	0.4
2001	10	1,556	566	31	0.4
2002	13	1,517	551	22	0.5
2003	14	1,516	564	24	0.5
2004	13	1,518	556	22	0.5
2005	15	1,519	536	19	0.5
2006	16	1,549	559	20	0.6
2007	16	1,504	527	18	0.6
2008	18	1,468	522	14	0.7
2009	18	1,420	510	12	0.7
2010	20	1,437	527	12	0.7
2011	16	1,428	537	18	0.6
2012	15	1,387	515	18	0.5
2013	15	1,337	487	15	0.5
2014	16	1,335	496	13	0.6
2015	16	1,359	510	13	0.6
2016	17	1,431	537	14	0.6
2017	18	1,439	.	13	0.7
2018	14	1,407	.	17	0.5
2019	18	1,422	.	14	0.7
2020	18	1,424	.	14	0.7



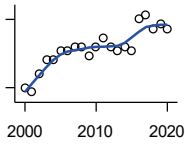
**ESTABLISHMENTS: FINANCE & INSURANCE**

U.S. Census Bureau, County Business Patterns. Beginning with the 2017 data, any tabulation with fewer than 3 establishments were omitted from the release. Data for these establishments are included in the broader total.

Year	County	State of Kansas	Non Metro Kansas	County Rank	Per 1000 or \$ Per Capita
2000	59	5,209	1,848	15	2.1
2001	61	5,178	1,828	13	2.2
2002	63	5,496	1,911	13	2.3
2003	66	5,569	1,907	13	2.4
2004	70	5,572	1,913	11	2.6
2005	71	5,708	1,964	13	2.6
2006	70	5,877	1,976	12	2.5
2007	72	6,017	2,030	13	2.6
2008	71	6,010	2,023	13	2.6
2009	67	5,933	1,994	14	2.4
2010	66	5,872	1,975	14	2.4
2011	62	5,854	1,985	16	2.2
2012	59	5,993	2,024	16	2.1
2013	61	5,903	1,993	15	2.2
2014	65	5,894	2,000	12	2.4
2015	65	5,932	1,998	12	2.4
2016	68	6,022	2,021	13	2.5
2017	69	6,026	2,007	12	2.6
2018	70	6,023	1,997	11	2.7
2019	70	5,953	1,977	12	2.7
2020	68	5,926	1,969	12	2.7

County: county value. Kansas: state value. County Rank: highest county value ranked #1. (\$000): thousands of dollars. Nonmetro Kansas: Kansas total less Metropolitan Areas as defined by the Office of Management and Budget (OMB; released 3/6/2020). Per 1000: For nonmoney amounts, Per 1000=(county value / county population for the same year as the data) x 1000. \$ Per capita=(county value / county population for the same year as the data). Value= . indicates missing or suppressed data or value not calculated.

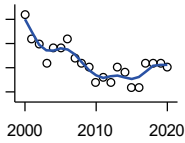
**Business**



**ESTABLISHMENTS: REAL ESTATE, RENTAL, AND LEASING**

U.S. Census Bureau, County Business Patterns. Beginning with the 2017 data, any tabulation with fewer than 3 establishments were omitted from the release. Data for these establishments are included in the broader total.

Year	County	State of Kansas	Non Metro Kansas	County Rank	Per 1000 or \$ Per Capita
2000	20	2,733	687	24	0.7
2001	19	2,849	724	24	0.7
2002	23	2,952	735	21	0.8
2003	26	3,007	727	19	0.9
2004	26	3,108	713	21	0.9
2005	28	3,203	727	20	1.0
2006	28	3,268	736	21	1.0
2007	29	3,286	721	20	1.1
2008	29	3,239	738	20	1.1
2009	27	3,122	723	20	1.0
2010	29	3,050	708	19	1.0
2011	31	3,002	692	17	1.1
2012	29	2,981	691	17	1.1
2013	28	3,046	717	18	1.0
2014	29	3,135	738	18	1.1
2015	28	3,179	744	18	1.0
2016	35	3,293	757	16	1.3
2017	36	3,389	.	16	1.4
2018	33	3,409	.	16	1.3
2019	34	3,464	.	16	1.3
2020	33	3,500	.	16	1.3



**ESTABLISHMENTS: PROFESSIONAL, SCIENTIFIC, AND TECHNICAL SERVICES**

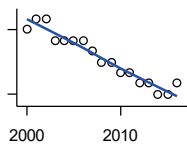
U.S. Census Bureau, County Business Patterns. Beginning with the 2017 data, any tabulation with fewer than 3 establishments were omitted from the release. Data for these establishments are included in the broader total.

Year	County	State of Kansas	Non Metro Kansas	County Rank	Per 1000 or \$ Per Capita
2000	71	6,424	1,690	11	2.5
2001	66	6,492	1,665	13	2.4
2002	65	6,719	1,704	13	2.3
2003	61	6,793	1,735	15	2.2
2004	64	7,025	1,730	15	2.3
2005	64	7,087	1,711	14	2.3
2006	66	7,231	1,736	13	2.4
2007	62	7,329	1,729	15	2.3
2008	61	7,133	1,671	15	2.2
2009	60	7,122	1,676	14	2.2
2010	57	7,172	1,680	15	2.1
2011	58	7,115	1,668	15	2.1
2012	57	7,122	1,681	16	2.1
2013	60	7,129	1,698	16	2.2
2014	59	7,206	1,682	16	2.2
2015	56	7,184	1,687	16	2.1
2016	56	7,146	1,659	16	2.1
2017	61	7,224	1,679	14	2.3
2018	61	7,138	1,655	15	2.3
2019	61	7,119	.	13	2.4
2020	60	7,117	.	13	2.4

County: county value. Kansas: state value. County Rank: highest county value ranked #1. (\$000): thousands of dollars. Nonmetro Kansas: Kansas total less Metropolitan Areas as defined by the Office of Management and Budget (OMB; released 3/6/2020). Per 1000: For nonmoney amounts, Per 1000=(county value / county population for the same year as the data) x 1000. \$ Per capita=(county value / county population for the same year as the data). Value= . indicates missing or suppressed data or value not calculated.

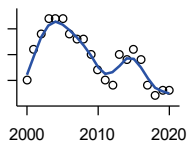
**Business**

**ESTABLISHMENTS: MANAGEMENT OF COMPANIES AND ENTERPRISES**



U.S. Census Bureau, County Business Patterns. Beginning with the 2017 data, any tabulation with fewer than 3 establishments were omitted from the release. Data for these establishments are included in the broader total.

Year	County	State of Kansas	Non Metro Kansas	County Rank	Per 1000 or \$ Per Capita
2000	6	622	145	12	0.2
2001	7	593	141	12	0.3
2002	7	597	152	11	0.3
2003	5	561	135	15	0.2
2004	5	569	133	15	0.2
2005	5	543	127	15	0.2
2006	5	542	131	15	0.2
2007	4	550	133	18	0.1
2008	3	553	139	27	0.1
2009	3	575	136	26	0.1
2010	2	567	131	40	0.1
2011	2	552	134	39	0.1
2012	1	593	135	56	0.0
2013	1	590	135	57	0.0
2014	0	603	136	105	0.0
2015	0	613	140	105	0.0
2016	1	655	171	60	0.0



**ESTABLISHMENTS: ADMIN, SUPPORT, WASTE MGMT., AND REMEDIATION**

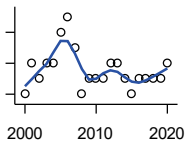
U.S. Census Bureau, County Business Patterns. Beginning with the 2017 data, any tabulation with fewer than 3 establishments were omitted from the release. Data for these establishments are included in the broader total.

Year	County	State of Kansas	Non Metro Kansas	County Rank	Per 1000 or \$ Per Capita
2000	30	3,307	871	19	1.1
2001	36	3,421	913	16	1.3
2002	39	3,232	882	13	1.4
2003	42	3,189	858	10	1.5
2004	42	3,301	891	11	1.5
2005	42	3,342	896	12	1.5
2006	39	3,395	886	12	1.4
2007	38	3,522	921	14	1.4
2008	38	3,587	932	17	1.4
2009	35	3,505	904	15	1.3
2010	32	3,494	897	20	1.2
2011	30	3,447	903	21	1.1
2012	29	3,462	891	20	1.1
2013	35	3,489	904	16	1.3
2014	34	3,569	933	16	1.2
2015	36	3,630	964	16	1.3
2016	34	3,705	987	16	1.3
2017	29	3,741	991	20	1.1
2018	27	3,740	983	20	1.0
2019	28	3,762	991	21	1.1
2020	28	3,807	989	20	1.1

County: county value. Kansas: state value. County Rank: highest county value ranked #1. (\$000): thousands of dollars. Nonmetro Kansas: Kansas total less Metropolitan Areas as defined by the Office of Management and Budget (OMB; released 3/6/2020). Per 1000: For nonmoney amounts, Per 1000=(county value / county population for the same year as the data) x 1000. \$ Per capita=(county value / county population for the same year as the data). Value= . indicates missing or suppressed data or value not calculated.

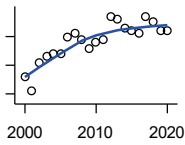
**Business**

**ESTABLISHMENTS: EDUCATIONAL SERVICES**



U.S. Census Bureau, County Business Patterns. Beginning with the 2017 data, any tabulation with fewer than 3 establishments were omitted from the release. Data for these establishments are included in the broader total.

Year	County	State of Kansas	Non Metro Kansas	County Rank	Per 1000 or \$ Per Capita
2000	4	604	155	25	0.1
2001	6	625	168	18	0.2
2002	5	666	165	21	0.2
2003	6	663	173	20	0.2
2004	6	690	173	20	0.2
2005	8	699	168	15	0.3
2006	9	698	175	14	0.3
2007	7	691	165	16	0.3
2008	4	692	158	28	0.1
2009	5	690	150	22	0.2
2010	5	700	149	20	0.2
2011	5	711	150	21	0.2
2012	6	724	145	19	0.2
2013	6	735	153	19	0.2
2014	5	722	152	21	0.2
2015	4	754	152	25	0.1
2016	5	728	150	22	0.2
2017	5	720	.	21	0.2
2018	5	744	.	21	0.2
2019	5	759	.	21	0.2
2020	6	736	.	16	0.2



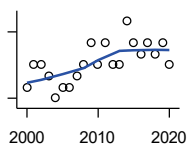
**ESTABLISHMENTS: HEALTH CARE AND SOCIAL ASSISTANCE**

U.S. Census Bureau, County Business Patterns. Beginning with the 2017 data, any tabulation with fewer than 3 establishments were omitted from the release. Data for these establishments are included in the broader total.

Year	County	State of Kansas	Non Metro Kansas	County Rank	Per 1000 or \$ Per Capita
2000	91	6,564	2,591	16	3.2
2001	86	6,636	2,590	16	3.1
2002	96	7,052	2,777	16	3.5
2003	98	7,129	2,792	16	3.6
2004	99	7,239	2,813	16	3.6
2005	99	7,412	2,855	16	3.6
2006	105	7,477	2,860	15	3.8
2007	106	7,661	2,864	15	3.9
2008	104	7,651	2,810	17	3.8
2009	101	7,696	2,787	17	3.7
2010	103	7,751	2,830	17	3.7
2011	104	7,804	2,817	15	3.8
2012	112	7,973	2,793	15	4.1
2013	111	7,877	2,729	15	4.0
2014	108	7,809	2,686	15	4.0
2015	107	8,103	2,692	14	3.9
2016	106	8,315	2,678	14	3.9
2017	112	8,136	2,646	13	4.2
2018	110	8,126	2,632	13	4.2
2019	107	8,184	2,587	15	4.2
2020	107	8,290	2,571	15	4.2

County: county value. Kansas: state value. County Rank: highest county value ranked #1. (\$000): thousands of dollars. Nonmetro Kansas: Kansas total less Metropolitan Areas as defined by the Office of Management and Budget (OMB; released 3/6/2020). Per 1000: For nonmoney amounts, Per 1000=(county value / county population for the same year as the data) x 1000. \$ Per capita=(county value / county population for the same year as the data). Value= . indicates missing or suppressed data or value not calculated.

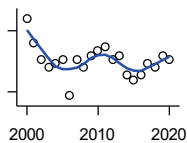
**Business**



**ESTABLISHMENTS: ARTS, ENTERTAINMENT, AND RECREATION**

U.S. Census Bureau, County Business Patterns. Beginning with the 2017 data, any tabulation with fewer than 3 establishments were omitted from the release. Data for these establishments are included in the broader total.

Year	County	State of Kansas	Non Metro Kansas	County Rank	Per 1000 or \$ Per Capita
2000	11	981	419	18	0.4
2001	13	1,009	433	14	0.5
2002	13	1,054	441	17	0.5
2003	12	1,045	443	19	0.4
2004	10	1,082	445	23	0.4
2005	11	1,109	446	21	0.4
2006	11	1,080	445	21	0.4
2007	12	1,092	444	18	0.4
2008	13	1,062	423	14	0.5
2009	15	1,063	421	13	0.5
2010	13	1,018	406	15	0.5
2011	15	997	387	12	0.5
2012	13	1,000	388	13	0.5
2013	13	1,009	377	14	0.5
2014	17	1,030	365	9	0.6
2015	15	1,031	357	10	0.6
2016	14	1,060	366	10	0.5
2017	15	1,096	.	11	0.6
2018	14	1,088	.	12	0.5
2019	15	1,087	.	11	0.6
2020	13	1,064	.	11	0.5



**ESTABLISHMENTS: ACCOMMODATION AND FOOD SERVICES**

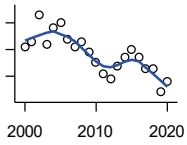
U.S. Census Bureau, County Business Patterns. Beginning with the 2017 data, any tabulation with fewer than 3 establishments were omitted from the release. Data for these establishments are included in the broader total.

Year	County	State of Kansas	Non Metro Kansas	County Rank	Per 1000 or \$ Per Capita
2000	73	5,536	2,213	15	2.6
2001	67	5,551	2,173	18	2.4
2002	63	5,610	2,174	19	2.3
2003	61	5,635	2,188	20	2.2
2004	62	5,681	2,160	20	2.3
2005	63	5,776	2,170	20	2.3
2006	54	5,745	2,132	23	2.0
2007	63	5,877	2,095	21	2.3
2008	61	5,843	2,052	21	2.2
2009	64	5,794	2,029	19	2.3
2010	65	5,898	2,046	20	2.3
2011	66	5,958	2,067	19	2.4
2012	63	5,951	2,046	19	2.3
2013	64	6,061	2,070	20	2.3
2014	59	5,985	2,024	21	2.2
2015	58	6,034	2,063	21	2.1
2016	59	6,126	2,094	21	2.2
2017	62	6,250	2,123	21	2.3
2018	61	6,256	2,128	21	2.3
2019	64	6,231	2,131	20	2.5
2020	63	6,206	2,131	20	2.5

County: county value. Kansas: state value. County Rank: highest county value ranked #1. (\$000): thousands of dollars. Nonmetro Kansas: Kansas total less Metropolitan Areas as defined by the Office of Management and Budget (OMB; released 3/6/2020). Per 1000: For nonmoney amounts, Per 1000=(county value / county population for the same year as the data) x 1000. \$ Per capita=(county value / county population for the same year as the data). Value= . indicates missing or suppressed data or value not calculated.

**Business**

**ESTABLISHMENTS: OTHER SERVICES**

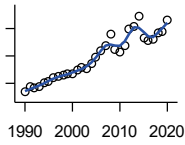


U.S. Census Bureau, County Business Patterns. Beginning with the 2017 data, any tabulation with fewer than 3 establishments were omitted from the release. Data for these establishments are included in the broader total.

Year	County	State of Kansas	Non Metro Kansas	County Rank	Per 1000 or \$ Per Capita
2000	121	8,423	3,636	15	4.3
2001	123	8,310	3,614	15	4.4
2002	133	8,552	3,658	12	4.8
2003	122	8,411	3,605	14	4.4
2004	128	8,343	3,597	13	4.7
2005	130	8,321	3,571	12	4.7
2006	124	8,225	3,490	13	4.5
2007	121	8,355	3,534	13	4.4
2008	123	8,104	3,406	12	4.5
2009	119	8,040	3,405	14	4.3
2010	115	7,998	3,379	14	4.2
2011	111	7,883	3,294	13	4.0
2012	109	7,913	3,303	14	4.0
2013	114	7,947	3,290	12	4.2
2014	117	7,943	3,285	12	4.3
2015	120	7,869	3,255	12	4.4
2016	117	7,839	3,204	12	4.4
2017	113	7,873	3,189	12	4.3
2018	113	7,853	3,176	12	4.3
2019	104	7,834	3,138	14	4.0
2020	108	7,787	3,073	14	4.2

County: county value. Kansas: state value. County Rank: highest county value ranked #1. (\$000): thousands of dollars. Nonmetro Kansas: Kansas total less Metropolitan Areas as defined by the Office of Management and Budget (OMB; released 3/6/2020). Per 1000: For nonmoney amounts, Per 1000=(county value / county population for the same year as the data) x 1000. \$ Per capita=(county value / county population for the same year as the data). Value= . indicates missing or suppressed data or value not calculated.

**Business**



**TOTAL ANNUAL PAYROLL (\$000)  
COUNTY BUSINESS PATTERNS**

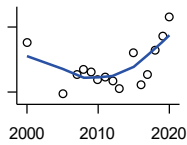
U.S. Census Bureau, County Business Patterns. Beginning with the 2017 data, any tabulation with fewer than 3 establishments were omitted from the release. Data for these establishments are included in the broader total.

Year	County	State of Kansas	Non Metro Kansas	County Rank	Per 1000 or \$ Per Capita
1990	167,534	17,487,316	4,442,429	18	5,701.9
1991	185,803	18,162,326	4,612,616	16	6,331.9
1992	184,251	19,244,346	4,882,060	18	6,227.6
1993	186,267	20,087,190	5,182,780	19	6,327.9
1994	202,311	21,201,652	5,541,423	18	6,890.0
1995	208,034	22,825,920	5,875,310	18	7,141.1
1996	220,286	24,613,884	6,198,398	18	7,618.4
1997	224,796	26,787,098	6,599,061	19	7,765.0
1998	227,968	28,747,576	6,871,794	20	7,918.3
1999	233,537	30,600,434	7,121,961	20	8,194.0
2000	236,187	31,990,762	7,520,424	21	8,373.9
2001	247,369	33,303,992	7,598,165	20	8,907.5
2002	256,353	33,152,962	7,572,002	20	9,260.0
2003	251,829	34,040,944	7,726,561	20	9,130.5
2004	273,376	35,725,812	8,303,779	20	9,980.9
2005	293,781	36,646,064	8,586,986	19	10,669.0
2006	319,516	39,251,388	9,178,947	19	11,635.7
2007	338,762	42,022,753	.	20	12,322.2
2008	378,280	43,984,689	.	18	13,849.3
2009	322,893	42,146,866	.	20	11,730.5
2010	313,465	42,686,303	10,294,015	21	11,327.1
2011	336,564	43,733,944	.	19	12,151.6
2012	400,123	45,608,072	11,222,183	18	14,539.4
2013	409,333	47,715,601	11,446,751	17	14,915.8
2014	447,293	49,712,832	11,957,931	14	16,364.0
2015	364,276	51,259,676	11,975,718	20	13,412.7
2016	356,514	51,016,318	12,148,646	20	13,264.2
2017	359,138	52,754,605	12,448,592	21	13,606.8
2018	385,792	55,087,460	12,810,270	21	14,805.7
2019	388,614	57,272,387	13,123,288	20	15,074.8
2020	432,542	58,374,388	14,007,955	21	16,967.1

County: county value. Kansas: state value. County Rank: highest county value ranked #1. (\$000): thousands of dollars. Nonmetro Kansas: Kansas total less Metropolitan Areas as defined by the Office of Management and Budget (OMB; released 3/6/2020). Per 1000: For nonmoney amounts, Per 1000=(county value / county population for the same year as the data) x 1000. \$ Per capita=(county value / county population for the same year as the data). Value= . indicates missing or suppressed data or value not calculated.



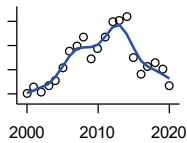
**Business**



**TOTAL ANNUAL PAYROLL(\$000):  
FORESTRY, FISHING, HUNTING, AND  
AG SUPPORT**

U.S. Census Bureau, County Business Patterns. Beginning with the 2017 data, any tabulation with fewer than 3 establishments were omitted from the release. Data for these establishments are included in the broader total.

Year	County	State of Kansas	Non Metro Kansas	County Rank	Per 1000 or \$ Per Capita
2000	529	13,551	.	.	18.8
2001	.	.	.	.	.
2002	.	16,528	.	.	.
2003	.	17,247	.	.	.
2004	.	17,552	.	.	.
2005	290	16,298	.	.	10.5
2006	.	17,908	.	.	.
2007	378	22,199	.	.	13.7
2008	407	21,359	.	.	14.9
2009	393	22,466	.	.	14.3
2010	356	22,753	.	.	12.9
2011	369	23,320	.	.	13.3
2012	351	27,492	.	.	12.8
2013	315	30,360	.	.	11.5
2014	.	34,862	.	.	.
2015	479	35,980	.	.	17.6
2016	332	31,488	.	.	12.4
2017	382	34,117	.	.	14.5
2018	493	37,960	.	.	18.9
2019	558	39,558	.	.	21.6
2020	647	44,008	.	.	25.4



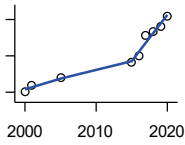
**TOTAL ANNUAL PAYROLL(\$000):  
MINING**

U.S. Census Bureau, County Business Patterns. Beginning with the 2017 data, any tabulation with fewer than 3 establishments were omitted from the release. Data for these establishments are included in the broader total.

Year	County	State of Kansas	Non Metro Kansas	County Rank	Per 1000 or \$ Per Capita
2000	10,216	240,079	.	.	362.2
2001	12,898	273,838	.	.	464.4
2002	10,973	262,277	.	.	396.4
2003	13,522	290,652	.	.	490.3
2004	15,636	326,997	.	.	570.9
2005	20,681	381,069	.	.	751.1
2006	27,402	482,102	.	.	997.9
2007	29,666	551,751	.	.	1,079.1
2008	33,686	620,446	.	.	1,233.3
2009	24,746	465,070	.	.	899.0
2010	28,559	485,841	.	.	1,032.0
2011	33,317	541,536	.	.	1,202.9
2012	40,041	600,402	.	.	1,455.0
2013	40,445	599,788	.	.	1,473.8
2014	41,996	678,673	.	.	1,536.4
2015	25,257	552,658	.	.	930.0
2016	18,327	428,767	.	.	681.9
2017	21,436	379,883	.	.	812.2
2018	22,707	431,367	.	.	871.4
2019	20,347	349,270	.	.	789.3
2020	13,441	302,795	.	.	527.2

County: county value. Kansas: state value. County Rank: highest county value ranked #1. (\$000): thousands of dollars. Nonmetro Kansas: Kansas total less Metropolitan Areas as defined by the Office of Management and Budget (OMB; released 3/6/2020). Per 1000: For nonmoney amounts, Per 1000=(county value / county population for the same year as the data) x 1000. \$ Per capita=(county value / county population for the same year as the data). Value= . indicates missing or suppressed data or value not calculated.

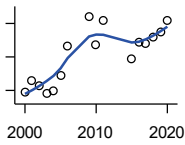
**Business**



**TOTAL ANNUAL PAYROLL(\$000):  
UTILITIES**

U.S. Census Bureau, County Business Patterns. Beginning with the 2017 data, any tabulation with fewer than 3 establishments were omitted from the release. Data for these establishments are included in the broader total.

Year	County	State of Kansas	Non Metro Kansas	County Rank	Per 1000 or \$ Per Capita
2000	6,087	410,313	.	.	215.8
2001	6,706	452,057	.	.	241.5
2002	.	377,559	.	.	.
2003	.	378,157	.	.	.
2004	.	377,809	.	.	.
2005	7,647	429,864	.	.	277.7
2006	.	443,999	.	.	.
2007	.	480,068	.	.	.
2008	.	541,066	.	.	.
2009	.	563,373	.	.	.
2010	.	512,628	.	.	.
2011	.	653,229	.	.	.
2012	.	625,451	.	.	.
2013	.	625,347	.	.	.
2014	.	610,960	.	.	.
2015	9,319	668,559	.	.	343.1
2016	9,943	700,926	.	.	369.9
2017	12,301	705,199	.	.	466.1
2018	12,700	770,542	.	.	487.4
2019	13,208	733,878	.	.	512.4
2020	14,399	738,521	.	.	564.8



**TOTAL ANNUAL PAYROLL(\$000):  
CONSTRUCTION**

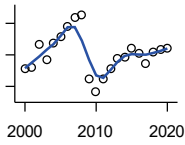
U.S. Census Bureau, County Business Patterns. Beginning with the 2017 data, any tabulation with fewer than 3 establishments were omitted from the release. Data for these establishments are included in the broader total.

Year	County	State of Kansas	Non Metro Kansas	County Rank	Per 1000 or \$ Per Capita
2000	29,509	2,256,057	.	.	1,046.2
2001	32,977	2,320,652	.	.	1,187.5
2002	31,490	2,302,229	.	.	1,137.5
2003	28,960	2,282,021	.	.	1,050.0
2004	29,865	2,302,854	.	.	1,090.4
2005	34,325	2,465,977	.	.	1,246.5
2006	43,171	2,700,351	.	.	1,572.1
2007	.	2,772,168	.	.	.
2008	.	2,950,073	.	.	.
2009	52,067	2,709,864	.	.	1,891.6
2010	43,457	2,553,555	.	.	1,570.3
2011	51,052	2,550,355	.	.	1,843.2
2012	.	2,733,284	.	.	.
2013	.	2,866,801	.	.	.
2014	.	3,135,814	.	.	.
2015	39,503	3,270,952	.	.	1,454.5
2016	44,562	3,328,610	.	.	1,657.9
2017	44,045	3,568,505	.	.	1,668.8
2018	45,920	3,806,196	.	.	1,762.3
2019	47,368	3,879,912	.	.	1,837.5
2020	51,018	3,983,029	.	.	2,001.3

County: county value. Kansas: state value. County Rank: highest county value ranked #1. (\$000): thousands of dollars. Nonmetro Kansas: Kansas total less Metropolitan Areas as defined by the Office of Management and Budget (OMB; released 3/6/2020). Per 1000: For nonmoney amounts, Per 1000=(county value / county population for the same year as the data) x 1000. \$ Per capita=(county value / county population for the same year as the data). Value= . indicates missing or suppressed data or value not calculated.

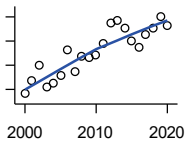
**Business**

**TOTAL ANNUAL PAYROLL(\$000):  
MANUFACTURING**



U.S. Census Bureau, County Business Patterns. Beginning with the 2017 data, any tabulation with fewer than 3 establishments were omitted from the release. Data for these establishments are included in the broader total.

Year	County	State of Kansas	Non Metro Kansas	County Rank	Per 1000 or \$ Per Capita
2000	40,813	7,015,414	.	.	1,447.0
2001	41,026	7,301,706	.	.	1,477.3
2002	48,197	6,802,605	.	.	1,741.0
2003	43,389	6,691,611	.	.	1,573.1
2004	48,894	6,985,656	.	.	1,785.1
2005	50,702	7,221,614	.	.	1,841.3
2006	54,089	7,621,873	.	.	1,969.7
2007	56,860	7,873,359	.	.	2,068.2
2008	57,697	8,441,541	.	.	2,112.4
2009	37,390	7,477,838	.	.	1,358.4
2010	33,157	7,556,955	.	.	1,198.1
2011	37,289	7,747,934	.	.	1,346.3
2012	40,483	7,704,851	.	.	1,471.0
2013	43,745	8,365,542	.	.	1,594.0
2014	44,347	8,787,306	.	.	1,622.4
2015	47,144	9,052,105	.	.	1,735.9
2016	45,665	8,868,744	.	.	1,699.0
2017	42,337	9,075,793	.	.	1,604.0
2018	46,075	9,481,652	.	.	1,768.2
2019	46,705	10,171,575	.	.	1,811.7
2020	46,960	9,744,825	.	.	1,842.1



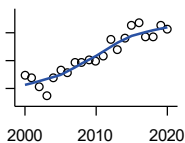
**TOTAL ANNUAL PAYROLL(\$000):  
WHOLESALE TRADE**

U.S. Census Bureau, County Business Patterns. Beginning with the 2017 data, any tabulation with fewer than 3 establishments were omitted from the release. Data for these establishments are included in the broader total.

Year	County	State of Kansas	Non Metro Kansas	County Rank	Per 1000 or \$ Per Capita
2000	19,069	2,332,755	.	.	676.1
2001	21,700	2,283,169	.	.	781.4
2002	25,071	2,107,653	.	.	905.6
2003	20,546	2,622,701	.	.	744.9
2004	21,340	2,663,196	.	.	779.1
2005	22,864	2,345,990	.	.	830.3
2006	28,299	2,592,211	.	.	1,030.6
2007	23,698	2,682,542	.	.	862.0
2008	26,763	3,078,655	.	.	979.8
2009	26,565	2,940,949	.	.	965.1
2010	27,069	3,097,628	.	.	978.1
2011	29,489	3,305,811	.	.	1,064.7
2012	33,774	3,339,997	.	.	1,227.3
2013	34,332	3,460,512	.	.	1,251.0
2014	32,788	3,712,075	.	.	1,199.5
2015	30,065	3,760,189	.	.	1,107.0
2016	28,798	3,738,207	.	.	1,071.4
2017	31,238	3,822,730	.	.	1,183.5
2018	32,699	3,814,353	.	.	1,254.9
2019	35,075	4,025,802	.	.	1,360.6
2020	33,271	4,224,666	.	.	1,305.1

County: county value. Kansas: state value. County Rank: highest county value ranked #1. (\$000): thousands of dollars. Nonmetro Kansas: Kansas total less Metropolitan Areas as defined by the Office of Management and Budget (OMB; released 3/6/2020). Per 1000: For nonmoney amounts, Per 1000=(county value / county population for the same year as the data) x 1000. \$ Per capita=(county value / county population for the same year as the data). Value= . indicates missing or suppressed data or value not calculated.

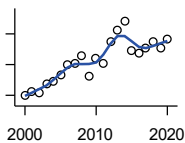
**Business**



**TOTAL ANNUAL PAYROLL(\$000):  
RETAIL TRADE**

U.S. Census Bureau, County Business Patterns. Beginning with the 2017 data, any tabulation with fewer than 3 establishments were omitted from the release. Data for these establishments are included in the broader total.

Year	County	State of Kansas	Non Metro Kansas	County Rank	Per 1000 or \$ Per Capita
2000	32,411	2,747,001	.	.	1,149.1
2001	31,800	2,813,226	.	.	1,145.1
2002	30,199	2,854,231	.	.	1,090.8
2003	28,612	2,773,674	.	.	1,037.4
2004	31,818	2,847,826	.	.	1,161.7
2005	33,262	2,952,196	.	.	1,207.9
2006	32,916	3,126,495	.	.	1,198.7
2007	34,626	3,201,169	.	.	1,259.5
2008	34,582	3,261,054	.	.	1,266.1
2009	35,017	3,232,246	.	.	1,272.1
2010	34,927	3,321,838	.	.	1,262.1
2011	35,828	3,384,607	.	.	1,293.6
2012	38,797	3,409,755	.	.	1,409.8
2013	36,967	3,483,752	.	.	1,347.0
2014	39,104	3,617,933	.	.	1,430.6
2015	41,278	3,712,165	.	.	1,519.9
2016	41,833	3,826,889	.	.	1,556.4
2017	39,158	3,797,849	.	.	1,483.6
2018	39,294	3,818,988	.	.	1,508.0
2019	41,370	3,908,994	.	.	1,604.8
2020	40,544	3,984,443	.	.	1,590.4



**TOTAL ANNUAL PAYROLL(\$000):  
TRANSPORTATION &  
WAREHOUSING**

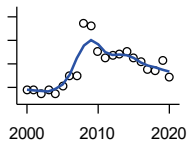
U.S. Census Bureau, County Business Patterns. Beginning with the 2017 data, any tabulation with fewer than 3 establishments were omitted from the release. Data for these establishments are included in the broader total.

Year	County	State of Kansas	Non Metro Kansas	County Rank	Per 1000 or \$ Per Capita
2000	7,561	1,044,835	.	.	268.1
2001	8,112	1,089,405	.	.	292.1
2002	7,818	1,094,636	.	.	282.4
2003	9,297	1,316,655	.	.	337.1
2004	9,801	1,439,800	.	.	357.8
2005	10,880	1,393,651	.	.	395.1
2006	12,534	1,528,551	.	.	456.4
2007	12,765	1,788,267	.	.	464.3
2008	13,882	1,722,697	.	.	508.2
2009	10,621	1,618,598	.	.	385.9
2010	13,434	1,735,761	.	.	485.4
2011	12,699	1,739,165	.	.	458.5
2012	16,178	1,984,976	.	.	587.9
2013	18,167	2,006,261	.	.	662.0
2014	19,632	2,097,377	.	.	718.2
2015	14,822	2,190,072	.	.	545.7
2016	14,287	2,202,859	.	.	531.5
2017	15,129	2,546,061	.	.	573.2
2018	16,307	2,663,188	.	.	625.8
2019	15,132	2,879,406	.	.	587.0
2020	16,627	2,962,461	.	.	652.2

County: county value. Kansas: state value. County Rank: highest county value ranked #1. (\$000): thousands of dollars. Nonmetro Kansas: Kansas total less Metropolitan Areas as defined by the Office of Management and Budget (OMB; released 3/6/2020). Per 1000: For nonmoney amounts, Per 1000=(county value / county population for the same year as the data) x 1000. \$ Per capita=(county value / county population for the same year as the data). Value= . indicates missing or suppressed data or value not calculated.

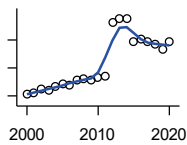
**Business**

**TOTAL ANNUAL PAYROLL(\$000):  
INFORMATION**



U.S. Census Bureau, County Business Patterns. Beginning with the 2017 data, any tabulation with fewer than 3 establishments were omitted from the release. Data for these establishments are included in the broader total.

Year	County	State of Kansas	Non Metro Kansas	County Rank	Per 1000 or \$ Per Capita
2000	2,918	1,923,381	.	.	103.5
2001	2,918	2,218,610	.	.	105.1
2002	2,716	2,298,108	.	.	98.1
2003	2,908	2,378,673	.	.	105.4
2004	2,710	2,392,990	.	.	98.9
2005	3,084	2,395,081	.	.	112.0
2006	3,519	2,586,483	.	.	128.2
2007	3,479	2,594,138	.	.	126.5
2008	5,742	3,043,244	.	.	210.2
2009	5,598	3,045,570	.	.	203.4
2010	4,506	2,481,580	.	.	162.8
2011	4,272	2,513,805	.	.	154.2
2012	4,338	2,535,555	.	.	157.6
2013	4,436	2,805,017	.	.	161.6
2014	4,503	2,393,609	.	.	164.7
2015	4,265	2,406,323	.	.	157.0
2016	4,108	2,080,211	.	.	152.8
2017	3,755	2,090,021	.	.	142.3
2018	3,711	2,341,543	.	.	142.4
2019	4,157	2,133,891	.	.	161.3
2020	3,465	2,245,204	.	.	135.9



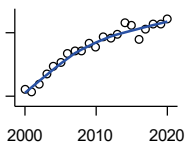
**TOTAL ANNUAL PAYROLL(\$000):  
FINANCE & INSURANCE**

U.S. Census Bureau, County Business Patterns. Beginning with the 2017 data, any tabulation with fewer than 3 establishments were omitted from the release. Data for these establishments are included in the broader total.

Year	County	State of Kansas	Non Metro Kansas	County Rank	Per 1000 or \$ Per Capita
2000	10,647	2,083,565	.	.	377.5
2001	10,983	2,129,587	.	.	395.5
2002	12,349	2,414,120	.	.	446.1
2003	11,801	2,608,579	.	.	427.9
2004	13,298	2,676,910	.	.	485.5
2005	14,141	2,786,136	.	.	513.5
2006	13,736	2,928,931	.	.	500.2
2007	15,719	3,096,017	.	.	571.8
2008	16,176	3,322,977	.	.	592.2
2009	15,872	3,206,839	.	.	576.6
2010	16,606	3,211,300	.	.	600.1
2011	16,992	3,404,633	.	.	613.5
2012	36,304	3,611,165	.	.	1,319.2
2013	37,468	3,896,051	.	.	1,365.3
2014	37,680	4,044,315	.	.	1,378.5
2015	29,354	4,113,060	.	.	1,080.8
2016	30,097	4,180,740	.	.	1,119.8
2017	29,265	4,258,057	.	.	1,108.8
2018	28,441	4,682,552	.	.	1,091.5
2019	26,836	4,814,201	.	.	1,041.0
2020	29,217	5,288,529	.	.	1,146.1

County: county value. Kansas: state value. County Rank: highest county value ranked #1. (\$000): thousands of dollars. Nonmetro Kansas: Kansas total less Metropolitan Areas as defined by the Office of Management and Budget (OMB; released 3/6/2020). Per 1000: For nonmoney amounts, Per 1000=(county value / county population for the same year as the data) x 1000. \$ Per capita=(county value / county population for the same year as the data). Value= . indicates missing or suppressed data or value not calculated.

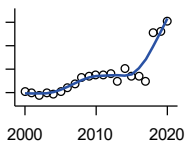
**Business**



**TOTAL ANNUAL PAYROLL(\$000):  
REAL ESTATE, RENTAL, AND  
LEASING**

U.S. Census Bureau, County Business Patterns. Beginning with the 2017 data, any tabulation with fewer than 3 establishments were omitted from the release. Data for these establishments are included in the broader total.

Year	County	State of Kansas	Non Metro Kansas	County Rank	Per 1000 or \$ Per Capita
2000	1,297	360,637	.	.	46.0
2001	1,186	397,371	.	.	42.7
2002	1,568	403,695	.	.	56.6
2003	2,057	437,786	.	.	74.6
2004	2,437	430,719	.	.	89.0
2005	2,609	465,149	.	.	94.7
2006	3,044	478,811	.	.	110.9
2007	3,160	452,969	.	.	114.9
2008	3,157	484,149	.	.	115.6
2009	3,506	450,884	.	.	127.4
2010	3,351	487,255	.	.	121.1
2011	3,784	535,120	.	.	136.6
2012	3,771	531,039	.	.	137.0
2013	3,911	538,796	.	.	142.5
2014	4,469	542,307	.	.	163.5
2015	4,334	595,030	.	.	159.6
2016	3,701	607,668	.	.	137.7
2017	4,159	590,373	.	.	157.6
2018	4,401	600,037	.	.	168.9
2019	4,423	622,881	.	.	171.6
2020	4,657	670,656	.	.	182.7



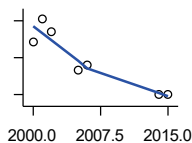
**TOTAL ANNUAL PAYROLL(\$000):  
PROFESSIONAL, SCIENTIFIC, AND  
TECHNICAL SERVICES**

U.S. Census Bureau, County Business Patterns. Beginning with the 2017 data, any tabulation with fewer than 3 establishments were omitted from the release. Data for these establishments are included in the broader total.

Year	County	State of Kansas	Non Metro Kansas	County Rank	Per 1000 or \$ Per Capita
2000	10,127	2,057,313	.	.	359.0
2001	9,837	2,152,937	.	.	354.2
2002	9,299	2,150,085	.	.	335.9
2003	9,877	2,052,712	.	.	358.1
2004	9,775	2,531,457	.	.	356.9
2005	10,253	2,418,500	.	.	372.3
2006	11,103	2,655,690	.	.	404.3
2007	11,889	2,901,544	.	.	432.5
2008	13,185	2,903,802	.	.	482.7
2009	13,482	3,071,611	.	.	489.8
2010	13,815	3,037,182	.	.	499.2
2011	13,835	3,132,082	.	.	499.5
2012	13,911	3,455,548	.	.	505.5
2013	12,344	3,777,729	.	.	449.8
2014	15,015	3,981,580	.	.	549.3
2015	13,575	4,039,074	.	.	499.8
2016	13,362	4,125,507	.	.	497.1
2017	12,426	4,158,858	.	.	470.8
2018	22,898	4,314,317	.	.	878.8
2019	23,174	4,646,644	.	.	898.9
2020	25,338	4,927,611	.	.	993.9

County: county value. Kansas: state value. County Rank: highest county value ranked #1. (\$000): thousands of dollars. Nonmetro Kansas: Kansas total less Metropolitan Areas as defined by the Office of Management and Budget (OMB; released 3/6/2020). Per 1000: For nonmoney amounts, Per 1000=(county value / county population for the same year as the data) x 1000. \$ Per capita=(county value / county population for the same year as the data). Value= . indicates missing or suppressed data or value not calculated.

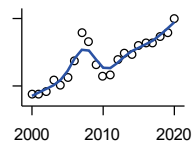
**Business**



**TOTAL ANNUAL PAYROLL(\$000):  
MANAGEMENT OF COMPANIES AND  
ENTERPRISES**

U.S. Census Bureau, County Business Patterns. Beginning with the 2017 data, any tabulation with fewer than 3 establishments were omitted from the release. Data for these establishments are included in the broader total.

Year	County	State of Kansas	Non Metro Kansas	County Rank	Per 1000 or \$ Per Capita
2000	1,422	1,362,735	.	.	50.4
2001	2,053	1,279,253	.	.	73.9
2002	1,713	1,311,368	.	.	61.9
2003	.	1,352,119	.	.	.
2004	.	1,378,891	.	.	.
2005	650	1,510,876	.	.	23.6
2006	792	1,626,320	.	.	28.8
2007	.	2,233,654	.	.	.
2008	.	1,848,656	.	.	.
2009	.	1,601,158	.	.	.
2010	.	2,003,048	.	.	.
2011	.	1,677,619	.	.	.
2012	.	1,834,430	.	.	.
2013	.	1,938,100	.	.	.
2014	0	2,117,232	.	.	0.0
2015	0	2,451,126	.	.	0.0



**TOTAL ANNUAL PAYROLL(\$000):  
ADMIN, SUPPORT, WASTE MGMT.,  
AND REMEDIATION**

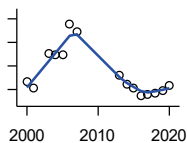
U.S. Census Bureau, County Business Patterns. Beginning with the 2017 data, any tabulation with fewer than 3 establishments were omitted from the release. Data for these establishments are included in the broader total.

Year	County	State of Kansas	Non Metro Kansas	County Rank	Per 1000 or \$ Per Capita
2000	3,267	1,388,712	.	.	115.8
2001	3,251	1,416,480	.	.	117.1
2002	3,525	1,378,905	.	.	127.3
2003	4,537	1,387,061	.	.	164.5
2004	4,067	1,544,442	.	.	148.5
2005	4,755	1,694,687	.	.	172.7
2006	6,218	1,800,846	.	.	226.4
2007	8,757	1,978,025	.	.	318.5
2008	7,966	2,096,864	.	.	291.6
2009	5,896	1,832,540	.	.	214.2
2010	4,826	2,117,325	.	.	174.4
2011	5,033	2,114,970	.	.	181.7
2012	6,328	2,230,250	.	.	229.9
2013	6,946	2,214,320	.	.	253.1
2014	6,760	2,444,170	.	.	247.3
2015	7,623	2,577,592	.	.	280.7
2016	7,814	2,760,706	.	.	290.7
2017	7,795	3,026,927	.	.	295.3
2018	8,433	3,007,347	.	.	323.6
2019	8,788	3,075,485	.	.	340.9
2020	10,001	3,250,046	.	.	392.3

County: county value. Kansas: state value. County Rank: highest county value ranked #1. (\$000): thousands of dollars. Nonmetro Kansas: Kansas total less Metropolitan Areas as defined by the Office of Management and Budget (OMB; released 3/6/2020). Per 1000: For nonmoney amounts, Per 1000=(county value / county population for the same year as the data) x 1000. \$ Per capita=(county value / county population for the same year as the data). Value= . indicates missing or suppressed data or value not calculated.

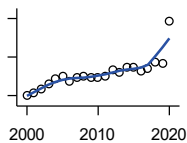
**Business**

**TOTAL ANNUAL PAYROLL(\$000):  
EDUCATIONAL SERVICES**



U.S. Census Bureau, County Business Patterns. Beginning with the 2017 data, any tabulation with fewer than 3 establishments were omitted from the release. Data for these establishments are included in the broader total.

Year	County	State of Kansas	Non Metro Kansas	County Rank	Per 1000 or \$ Per Capita
2000	665	299,843	.	.	23.6
2001	607	320,606	.	.	21.9
2002	.	353,531	.	.	.
2003	909	350,814	.	.	33.0
2004	893	361,644	.	.	32.6
2005	898	375,781	.	.	32.6
2006	1,160	400,565	.	.	42.2
2007	1,089	414,233	.	.	39.6
2008	.	463,210	.	.	.
2009	.	468,856	.	.	.
2010	.	487,670	.	.	.
2011	.	504,964	.	.	.
2012	.	508,448	.	.	.
2013	721	553,995	.	.	26.3
2014	650	612,073	.	.	23.8
2015	609	579,794	.	.	22.4
2016	543	571,582	.	.	20.2
2017	555	597,320	.	.	21.0
2018	565	618,864	.	.	21.7
2019	591	654,965	.	.	22.9
2020	636	652,468	.	.	24.9



**TOTAL ANNUAL PAYROLL(\$000):  
HEALTH CARE AND SOCIAL ASSISTANCE**

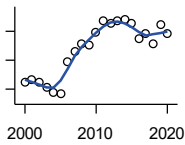
U.S. Census Bureau, County Business Patterns. Beginning with the 2017 data, any tabulation with fewer than 3 establishments were omitted from the release. Data for these establishments are included in the broader total.

Year	County	State of Kansas	Non Metro Kansas	County Rank	Per 1000 or \$ Per Capita
2000	40,758	4,120,595	.	.	1,445.1
2001	42,381	4,445,027	.	.	1,526.1
2002	46,193	4,705,220	.	.	1,668.6
2003	52,408	4,939,323	.	.	1,900.1
2004	56,891	5,232,394	.	.	2,077.1
2005	59,660	5,487,089	.	.	2,166.6
2006	54,636	5,814,218	.	.	1,989.7
2007	58,530	6,186,471	.	.	2,129.0
2008	60,196	6,490,627	.	.	2,203.9
2009	59,060	6,749,962	.	.	2,145.6
2010	59,023	6,871,727	.	.	2,132.8
2011	59,878	7,129,655	.	.	2,161.9
2012	67,345	7,614,853	.	.	2,447.1
2013	63,658	7,541,515	.	.	2,319.6
2014	69,407	7,733,621	.	.	2,539.2
2015	69,445	7,969,650	.	.	2,557.0
2016	65,762	8,018,706	.	.	2,446.7
2017	68,172	8,384,998	.	.	2,582.9
2018	74,340	8,637,619	.	.	2,853.0
2019	73,781	8,854,414	.	.	2,862.1
2020	117,019	9,309,269	.	.	4,590.2

County: county value. Kansas: state value. County Rank: highest county value ranked #1. (\$000): thousands of dollars. Nonmetro Kansas: Kansas total less Metropolitan Areas as defined by the Office of Management and Budget (OMB; released 3/6/2020). Per 1000: For nonmoney amounts, Per 1000=(county value / county population for the same year as the data) x 1000. \$ Per capita=(county value / county population for the same year as the data). Value= . indicates missing or suppressed data or value not calculated.



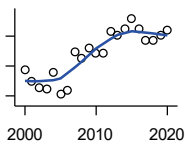
**Business**



**TOTAL ANNUAL PAYROLL(\$000):  
ARTS, ENTERTAINMENT, AND  
RECREATION**

U.S. Census Bureau, County Business Patterns. Beginning with the 2017 data, any tabulation with fewer than 3 establishments were omitted from the release. Data for these establishments are included in the broader total.

Year	County	State of Kansas	Non Metro Kansas	County Rank	Per 1000 or \$ Per Capita
2000	1,111	195,784	.	.	39.4
2001	1,167	203,511	.	.	42.0
2002	1,122	206,204	.	.	40.5
2003	1,020	185,049	.	.	37.0
2004	942	190,742	.	.	34.4
2005	912	196,594	.	.	33.1
2006	1,470	201,049	.	.	53.5
2007	1,651	220,435	.	.	60.1
2008	1,777	236,986	.	.	65.1
2009	1,766	237,116	.	.	64.2
2010	1,989	233,285	.	.	71.9
2011	2,191	234,351	.	.	79.1
2012	2,140	254,169	.	.	77.8
2013	2,174	278,474	.	.	79.2
2014	2,194	289,103	.	.	80.3
2015	2,138	300,253	.	.	78.7
2016	1,874	312,902	.	.	69.7
2017	1,965	323,153	.	.	74.4
2018	1,778	325,454	.	.	68.2
2019	2,113	335,362	.	.	82.0
2020	1,963	298,119	.	.	77.0



**TOTAL ANNUAL PAYROLL(\$000):  
ACCOMMODATION AND FOOD  
SERVICES**

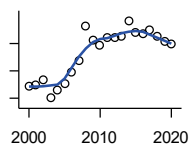
U.S. Census Bureau, County Business Patterns. Beginning with the 2017 data, any tabulation with fewer than 3 establishments were omitted from the release. Data for these establishments are included in the broader total.

Year	County	State of Kansas	Non Metro Kansas	County Rank	Per 1000 or \$ Per Capita
2000	8,725	926,831	.	.	309.3
2001	7,953	960,196	.	.	286.4
2002	7,533	930,510	.	.	272.1
2003	7,479	992,313	.	.	271.2
2004	8,601	1,046,901	.	.	314.0
2005	7,080	1,101,854	.	.	257.1
2006	7,366	1,185,280	.	.	268.2
2007	9,942	1,431,100	.	.	361.6
2008	9,525	1,271,594	.	.	348.7
2009	10,241	1,283,065	.	.	372.0
2010	9,888	1,296,556	.	.	357.3
2011	9,859	1,364,281	.	.	356.0
2012	11,346	1,388,337	.	.	412.3
2013	11,050	1,476,335	.	.	402.7
2014	11,495	1,572,021	.	.	420.5
2015	12,180	1,640,144	.	.	448.5
2016	11,505	1,709,193	.	.	428.0
2017	10,726	1,824,791	.	.	406.4
2018	10,756	1,880,364	.	.	412.8
2019	11,087	1,958,603	.	.	430.1
2020	11,392	1,745,238	.	.	446.9

County: county value. Kansas: state value. County Rank: highest county value ranked #1. (\$000): thousands of dollars. Nonmetro Kansas: Kansas total less Metropolitan Areas as defined by the Office of Management and Budget (OMB; released 3/6/2020). Per 1000: For nonmoney amounts, Per 1000=(county value / county population for the same year as the data) x 1000. \$ Per capita=(county value / county population for the same year as the data). Value= . indicates missing or suppressed data or value not calculated.

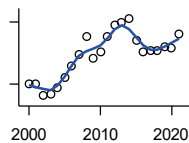
**Business**

**TOTAL ANNUAL PAYROLL(\$000):  
OTHER SERVICES**



U.S. Census Bureau, County Business Patterns. Beginning with the 2017 data, any tabulation with fewer than 3 establishments were omitted from the release. Data for these establishments are included in the broader total.

Year	County	State of Kansas	Non Metro Kansas	County Rank	Per 1000 or \$ Per Capita
2000	8,868	965,540	.	.	314.4
2001	8,992	996,716	.	.	323.8
2002	9,376	1,007,464	.	.	338.7
2003	8,020	979,466	.	.	290.8
2004	8,642	970,383	.	.	315.5
2005	9,076	1,005,537	.	.	329.6
2006	9,897	1,055,932	.	.	360.4
2007	10,769	1,141,551	.	.	391.7
2008	13,273	1,184,016	.	.	485.9
2009	12,238	1,167,154	.	.	444.6
2010	11,876	1,170,201	.	.	429.1
2011	12,422	1,173,775	.	.	448.5
2012	12,471	1,217,210	.	.	453.2
2013	12,514	1,254,933	.	.	456.0
2014	13,659	1,305,563	.	.	499.7
2015	12,835	1,341,075	.	.	472.6
2016	12,689	1,351,375	.	.	472.1
2017	12,970	1,344,179	.	.	491.4
2018	12,488	1,382,801	.	.	479.3
2019	12,108	1,427,711	.	.	469.7
2020	11,947	1,420,859	.	.	468.6



**NOMINAL TAXABLE RETAIL SALES  
(million\$)**

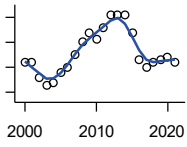
Kansas Department of Revenue

Year	County	State of Kansas	Non Metro Kansas	County Rank	Per 1000 or \$ Per Capita
2000	350.9	30,119.0	8,831.7	15	12.4
2001	350.9	30,202.2	8,700.3	15	12.6
2002	321.5	29,380.8	8,241.5	16	11.6
2003	325.9	30,694.0	8,710.6	17	11.8
2004	341.5	31,922.6	9,062.5	16	12.5
2005	364.4	32,924.2	9,386.6	16	13.2
2006	394.5	34,937.6	10,042.1	15	14.4
2007	420.3	36,180.1	10,553.2	14	15.3
2008	464.8	37,559.5	11,126.9	13	17.0
2009	411.5	35,211.8	10,351.5	14	14.9
2010	428.3	35,655.7	10,606.1	14	15.5
2011	464.1	37,257.0	11,153.5	14	16.8
2012	494.0	38,988.8	11,749.1	14	18.0
2013	498.3	40,009.0	11,993.8	14	18.2
2014	508.4	41,299.0	12,365.4	14	18.6
2015	456.1	41,635.8	11,747.6	15	16.8
2016	426.3	42,040.2	11,523.5	17	15.9
2017	430.0	41,940.1	11,449.9	17	16.3
2018	431.0	42,732.3	11,643.9	18	16.5
2019	440.4	43,732.5	12,062.7	18	17.1
2020	435.7	43,689.9	12,331.7	18	17.1
2021	471.0	48,532.8	13,413.0	18	18.7

County: county value. Kansas: state value. County Rank: highest county value ranked #1. (\$000): thousands of dollars. Nonmetro Kansas: Kansas total less Metropolitan Areas as defined by the Office of Management and Budget (OMB; released 3/6/2020). Per 1000: For nonmoney amounts, Per 1000=(county value / county population for the same year as the data) x 1000. \$ Per capita=(county value / county population for the same year as the data). Value= . indicates missing or suppressed data or value not calculated.

**Business**

RETAIL PULL FACTOR



Kansas Direct Program, Kansas State University Cooperative Extension Service (1980-1999); Kansas Department of Revenue (2000- )

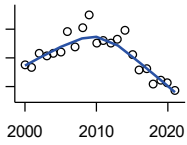
Year	County	State of Kansas	Non Metro Kansas	County Rank	Per 1000 or \$ Per Capita
2000	1.12	.	.	10	.
2001	1.12	.	.	10	.
2002	1.06	.	.	11	.
2003	1.03	.	.	13	.
2004	1.04	.	.	12	.
2005	1.08	.	.	12	.
2006	1.10	.	.	12	.
2007	1.15	.	.	10	.
2008	1.20	.	.	10	.
2009	1.24	.	.	9	.
2010	1.21	.	.	10	.
2011	1.26	.	.	10	.
2012	1.31	.	.	9	.
2013	1.31	.	.	10	.
2014	1.31	.	.	12	.
2015	1.24	.	.	13	.
2016	1.13	.	.	12	.
2017	1.10	.	.	10	.
2018	1.12	.	.	11	.
2019	1.13	.	.	11	.
2020	1.14	.	.	13	.
2021	1.12	.	.	14	.

County: county value. Kansas: state value. County Rank: highest county value ranked #1. (\$000): thousands of dollars. Nonmetro Kansas: Kansas total less Metropolitan Areas as defined by the Office of Management and Budget (OMB; released 3/6/2020). Per 1000: For nonmoney amounts, Per 1000=(county value / county population for the same year as the data) x 1000. \$ Per capita=(county value / county population for the same year as the data). Value= . indicates missing or suppressed data or value not calculated.

**Employment**

CIVILIAN LABOR FORCE (BLS-Place of Residence; 1990- )

U.S. Department of Labor, Bureau of Labor Statistics (BLS)



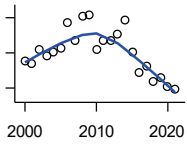
Year	County	State of Kansas	Non Metro Kansas	County Rank	Per 1000 or \$ Per Capita
2000	14,277	1,402,606	482,229	21	506.2
2001	14,168	1,398,521	475,280	21	510.2
2002	14,679	1,419,335	482,428	21	530.2
2003	14,562	1,441,065	490,161	21	528.0
2004	14,677	1,458,910	494,509	21	535.9
2005	14,721	1,458,767	490,047	21	534.6
2006	15,410	1,467,553	498,594	21	561.2
2007	14,888	1,485,414	497,048	21	541.5
2008	15,560	1,493,365	504,522	21	569.7
2009	15,987	1,512,572	516,311	21	580.8
2010	15,002	1,500,463	492,594	21	542.1
2011	15,110	1,498,000	492,563	21	545.5
2012	15,020	1,490,808	489,349	21	545.8
2013	15,133	1,489,395	485,484	21	551.4
2014	15,482	1,494,203	481,813	21	566.4
2015	14,629	1,493,782	477,546	21	538.6
2016	14,087	1,491,961	468,258	22	524.1
2017	14,132	1,488,346	461,063	22	535.4
2018	13,602	1,488,027	456,866	22	522.0
2019	13,707	1,497,517	455,858	22	531.7
2020	13,638	1,493,706	452,935	22	535.0
2021	13,371	1,495,665	453,398	22	530.3

County: county value. Kansas: state value. County Rank: highest county value ranked #1. (\$000): thousands of dollars. Nonmetro Kansas: Kansas total less Metropolitan Areas as defined by the Office of Management and Budget (OMB; released 3/6/2020). Per 1000: For nonmoney amounts, Per 1000=(county value / county population for the same year as the data) x 1000. \$ Per capita=(county value / county population for the same year as the data). Value= . indicates missing or suppressed data or value not calculated.

**Employment**

EMPLOYED (BLS-Place of Residence; 1990- )

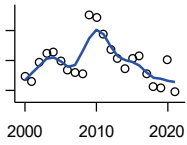
U.S. Department of Labor, Bureau of Labor Statistics (BLS)



Year	County	State of Kansas	Non Metro Kansas	County Rank	Per 1000 or \$ Per Capita
2000	13,784	1,349,841	464,962	21	488.7
2001	13,709	1,338,775	455,154	21	493.6
2002	14,091	1,347,163	461,241	21	509.0
2003	13,916	1,361,115	467,622	21	504.6
2004	14,017	1,378,355	470,330	21	511.8
2005	14,124	1,384,654	467,722	21	512.9
2006	14,873	1,402,950	479,174	21	541.6
2007	14,367	1,422,109	477,983	21	522.6
2008	15,047	1,425,022	484,056	21	550.9
2009	15,082	1,408,142	485,797	20	547.9
2010	14,113	1,396,172	461,635	21	510.0
2011	14,335	1,402,198	463,723	21	517.6
2012	14,345	1,405,638	463,376	21	521.3
2013	14,519	1,410,470	461,405	21	529.1
2014	14,936	1,426,892	461,797	21	546.4
2015	14,013	1,431,533	457,899	21	516.0
2016	13,457	1,431,920	449,356	22	500.7
2017	13,624	1,434,516	445,003	22	516.2
2018	13,173	1,439,329	442,716	22	505.5
2019	13,288	1,450,705	442,108	22	515.5
2020	13,032	1,408,965	433,229	22	511.2
2021	12,983	1,447,323	441,159	22	514.9

County: county value. Kansas: state value. County Rank: highest county value ranked #1. (\$000): thousands of dollars. Nonmetro Kansas: Kansas total less Metropolitan Areas as defined by the Office of Management and Budget (OMB; released 3/6/2020). Per 1000: For nonmoney amounts, Per 1000=(county value / county population for the same year as the data) x 1000. \$ Per capita=(county value / county population for the same year as the data). Value= . indicates missing or suppressed data or value not calculated.

**Employment**



UNEMPLOYED (BLS-Place of Residence; 1990- )

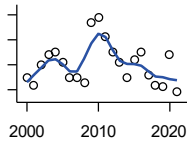
U.S. Department of Labor, Bureau of Labor Statistics (BLS)

Year	County	State of Kansas	Non Metro Kansas	County Rank	Per 1000 or \$ Per Capita
2000	493	52,765	17,267	23	17.5
2001	459	59,746	20,126	25	16.5
2002	588	72,172	21,187	23	21.2
2003	646	79,950	22,539	23	23.4
2004	660	80,555	24,179	24	24.1
2005	597	74,113	22,325	25	21.7
2006	537	64,603	19,420	25	19.6
2007	521	63,305	19,065	25	19.0
2008	513	68,343	20,466	26	18.8
2009	905	104,430	30,514	22	32.9
2010	889	104,291	30,959	23	32.1
2011	775	95,802	28,840	24	28.0
2012	675	85,170	25,973	25	24.5
2013	614	78,925	24,079	26	22.4
2014	546	67,311	20,016	22	20.0
2015	616	62,249	19,647	21	22.7
2016	630	60,041	18,902	18	23.4
2017	508	53,830	16,060	20	19.2
2018	429	48,698	14,150	20	16.5
2019	419	46,812	13,750	21	16.3
2020	606	84,741	19,706	21	23.8
2021	388	48,342	12,239	21	15.4

County: county value. Kansas: state value. County Rank: highest county value ranked #1. (\$000): thousands of dollars. Nonmetro Kansas: Kansas total less Metropolitan Areas as defined by the Office of Management and Budget (OMB; released 3/6/2020). Per 1000: For nonmoney amounts, Per 1000=(county value / county population for the same year as the data) x 1000. \$ Per capita=(county value / county population for the same year as the data). Value= . indicates missing or suppressed data or value not calculated.

**Employment**

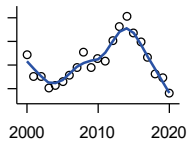
UNEMPLOYMENT RATE (BLS-Place of Residence; 1990- )



U.S. Department of Labor, Bureau of Labor Statistics (BLS)

Year	County	State of Kansas	Non Metro Kansas	County Rank	Per 1000 or \$ Per Capita
2000	3.5	3.8	3.6	45	.
2001	3.2	4.3	4.2	78	.
2002	4.0	5.1	4.4	51	.
2003	4.4	5.5	4.6	45	.
2004	4.5	5.5	4.9	54	.
2005	4.1	5.1	4.6	57	.
2006	3.5	4.4	3.9	61	.
2007	3.5	4.3	3.8	60	.
2008	3.3	4.6	4.1	77	.
2009	5.7	6.9	5.9	44	.
2010	5.9	7.0	6.3	47	.
2011	5.1	6.4	5.9	52	.
2012	4.5	5.7	5.3	57	.
2013	4.1	5.3	5.0	60	.
2014	3.5	4.5	4.2	64	.
2015	4.2	4.2	4.1	41	.
2016	4.5	4.0	4.0	19	.
2017	3.6	3.6	3.5	40	.
2018	3.2	3.3	3.1	35	.
2019	3.1	3.1	3.0	38	.
2020	4.4	5.7	4.4	41	.
2021	2.9	3.2	2.7	34	.

BEA EMPLOYMENT: TOTAL (Place of Work)



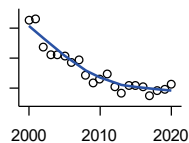
U.S. Bureau of Economic Analysis, Regional Economic Information System (REIS)

Year	County	State of Kansas	Non Metro Kansas	County Rank	Per 1000 or \$ Per Capita
2000	19,432	1,760,312	604,361	21	689.0
2001	18,535	1,767,601	592,672	21	667.4
2002	18,500	1,746,077	585,387	21	668.3
2003	18,041	1,733,694	577,860	21	654.1
2004	18,148	1,750,876	578,750	21	662.6
2005	18,297	1,765,650	577,562	21	664.5
2006	18,579	1,795,507	583,041	21	676.6
2007	18,894	1,844,355	591,924	21	687.3
2008	19,556	1,858,069	594,368	21	716.0
2009	18,889	1,813,184	580,972	21	686.2
2010	19,277	1,801,873	579,758	19	696.6
2011	19,145	1,819,044	583,725	21	691.2
2012	20,005	1,841,393	591,748	19	726.9
2013	20,651	1,869,054	597,236	18	752.5
2014	21,065	1,895,859	601,291	18	770.7
2015	20,331	1,910,954	598,589	20	748.6
2016	19,952	1,916,152	592,580	21	742.3
2017	19,336	1,914,179	584,337	20	732.6
2018	18,650	1,926,242	580,213	21	715.7
2019	18,460	1,925,204	574,496	21	716.1
2020	17,791	1,851,247	556,671	21	697.9

County: county value. Kansas: state value. County Rank: highest county value ranked #1. (\$000): thousands of dollars. Nonmetro Kansas: Kansas total less Metropolitan Areas as defined by the Office of Management and Budget (OMB; released 3/6/2020). Per 1000: For nonmoney amounts, Per 1000=(county value / county population for the same year as the data) x 1000. \$ Per capita=(county value / county population for the same year as the data). Value= . indicates missing or suppressed data or value not calculated.

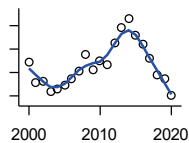
**Employment**

**BEA EMPLOYMENT: FARM**



U.S. Bureau of Economic Analysis, Regional Economic Information System (REIS)

Year	County	State of Kansas	Non Metro Kansas	County Rank	Per 1000 or \$ Per Capita
2000	976	77,477	59,088	24	34.6
2001	981	78,177	59,647	26	35.3
2002	886	70,532	53,893	25	32.0
2003	862	68,516	52,099	24	31.3
2004	863	67,586	51,246	24	31.5
2005	855	66,829	50,386	23	31.1
2006	834	64,910	48,728	23	30.4
2007	846	65,639	49,037	23	30.8
2008	792	63,820	47,682	27	29.0
2009	766	62,798	46,960	28	27.8
2010	778	63,882	47,984	27	28.1
2011	799	65,761	49,707	25	28.8
2012	755	63,753	48,167	28	27.4
2013	735	62,739	47,255	28	26.8
2014	760	64,308	48,722	27	27.8
2015	759	64,416	48,927	27	27.9
2016	753	63,840	48,539	27	28.0
2017	723	61,876	46,936	28	27.4
2018	743	63,233	48,069	27	28.5
2019	746	63,300	48,167	27	28.9
2020	761	64,281	49,038	28	29.9



**BEA EMPLOYMENT: NON-FARM**

U.S. Bureau of Economic Analysis, Regional Economic Information System (REIS)

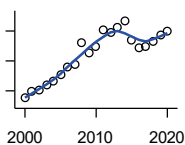
Year	County	State of Kansas	Non Metro Kansas	County Rank	Per 1000 or \$ Per Capita
2000	18,456	1,682,835	545,273	21	654.4
2001	17,554	1,689,424	533,025	21	632.1
2002	17,614	1,675,545	531,494	21	636.3
2003	17,179	1,665,178	525,761	21	622.9
2004	17,285	1,683,290	527,504	21	631.1
2005	17,442	1,698,821	527,176	21	633.4
2006	17,745	1,730,597	534,313	21	646.2
2007	18,048	1,778,716	542,887	21	656.5
2008	18,764	1,794,249	546,686	21	687.0
2009	18,123	1,750,386	534,012	21	658.4
2010	18,499	1,737,991	531,774	19	668.5
2011	18,346	1,753,283	534,018	21	662.4
2012	19,250	1,777,640	543,581	19	699.5
2013	19,916	1,806,315	549,981	18	725.7
2014	20,305	1,831,551	552,569	18	742.8
2015	19,572	1,846,538	549,662	20	720.6
2016	19,199	1,852,312	544,041	19	714.3
2017	18,613	1,852,303	537,401	20	705.2
2018	17,907	1,863,009	532,144	21	687.2
2019	17,714	1,861,904	526,329	21	687.1
2020	17,030	1,786,966	507,633	21	668.0

County: county value. Kansas: state value. County Rank: highest county value ranked #1. (\$000): thousands of dollars. Nonmetro Kansas: Kansas total less Metropolitan Areas as defined by the Office of Management and Budget (OMB; released 3/6/2020). Per 1000: For nonmoney amounts, Per 1000=(county value / county population for the same year as the data) x 1000. \$ Per capita=(county value / county population for the same year as the data). Value= . indicates missing or suppressed data or value not calculated.



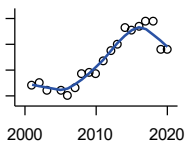
**Employment**

**AVERAGE WAGE PER JOB (\$)**



U.S. Bureau of Economic Analysis,  
Regional Economic Information System  
(REIS)

Year	County	State of Kansas	Non Metro Kansas	County Rank	Per 1000 or \$ Per Capita
2000	22,532	31,854	24,396	53	.
2001	24,732	32,859	26,379	54	.
2002	25,329	33,707	26,331	42	.
2003	26,841	35,078	28,911	62	.
2004	28,220	35,932	29,747	50	.
2005	30,494	37,467	31,646	48	.
2006	32,904	40,038	31,993	28	.
2007	33,693	41,500	33,484	36	.
2008	41,206	44,197	36,256	19	.
2009	37,771	43,860	35,739	25	.
2010	39,965	45,370	38,631	38	.
2011	45,218	48,280	42,324	36	.
2012	44,477	50,549	42,015	37	.
2013	46,323	52,629	46,073	45	.
2014	48,394	51,959	43,562	27	.
2015	41,758	52,250	42,320	40	.
2016	39,377	51,664	41,964	55	.
2017	39,771	53,007	42,137	54	.
2018	41,506	54,790	44,514	52	.
2019	43,859	56,956	45,336	45	.
2020	44,946	60,597	49,183	66	.



**BEA EMPLOYMENT: FORESTRY, FISHING, HUNTING, AND AG SUPPORT**

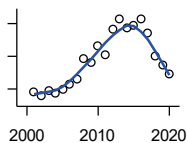
U.S. Bureau of Economic Analysis,  
Regional Economic Information System  
(REIS)

Year	County	State of Kansas	Non Metro Kansas	County Rank	Per 1000 or \$ Per Capita
2001	121	7,059	.	7	.
2002	126	8,045	.	7	.
2003	110	7,313	.	7	.
2004	.	7,623	.	.	.
2005	110	7,962	.	9	.
2006	102	7,748	.	11	.
2007	117	8,228	.	10	.
2008	143	8,646	.	8	.
2009	145	8,982	.	7	.
2010	143	9,251	.	9	.
2011	169	9,410	.	4	.
2012	187	9,691	.	4	.
2013	200	10,014	.	3	.
2014	233	10,708	.	5	.
2015	227	10,020	.	4	.
2016	234	10,383	.	5	.
2017	244	10,693	.	5	.
2018	246	11,103	.	4	.
2019	190	10,768	.	8	.
2020	190	10,529	.	7	.

County: county value. Kansas: state value. County Rank: highest county value ranked #1. (\$000): thousands of dollars. Nonmetro Kansas: Kansas total less Metropolitan Areas as defined by the Office of Management and Budget (OMB; released 3/6/2020). Per 1000: For nonmoney amounts, Per 1000=(county value / county population for the same year as the data) x 1000. \$ Per capita=(county value / county population for the same year as the data). Value= . indicates missing or suppressed data or value not calculated.

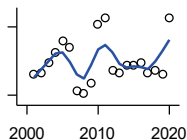
**Employment**

**BEA EMPLOYMENT: MINING**



U.S. Bureau of Economic Analysis,  
Regional Economic Information System  
(REIS)

Year	County	State of Kansas	Non Metro Kansas	County Rank	Per 1000 or \$ Per Capita
2001	1,425	19,592	.	2	.
2002	1,280	17,635	.	2	.
2003	1,464	19,869	.	2	.
2004	1,359	18,466	.	2	.
2005	1,479	19,489	.	2	.
2006	1,652	22,403	.	2	.
2007	1,818	24,043	.	1	.
2008	2,416	31,467	.	2	.
2009	2,302	29,941	.	3	.
2010	2,801	36,124	.	3	.
2011	2,545	31,658	.	1	.
2012	3,336	42,405	.	2	.
2013	3,645	46,585	.	3	.
2014	3,378	45,526	.	3	.
2015	3,442	46,460	.	3	.
2016	3,636	48,555	.	3	.
2017	3,230	40,710	.	2	.
2018	2,513	32,021	.	3	.
2019	2,251	29,101	.	3	.
2020	1,948	26,272	.	3	.



**BEA EMPLOYMENT: UTILITIES**

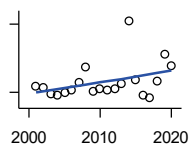
U.S. Bureau of Economic Analysis,  
Regional Economic Information System  
(REIS)

Year	County	State of Kansas	Non Metro Kansas	County Rank	Per 1000 or \$ Per Capita
2001	99	7,608	.	5	.
2002	100	7,087	.	5	.
2003	104	7,253	.	4	.
2004	109	7,356	.	4	.
2005	114	7,447	.	4	.
2006	111	7,478	.	5	.
2007	92	7,584	.	6	.
2008	91	7,855	.	7	.
2009	95	7,941	.	7	.
2010	121	8,028	.	7	.
2011	124	8,213	.	6	.
2012	101	8,155	.	5	.
2013	100	7,949	.	5	.
2014	103	7,985	.	6	.
2015	103	7,040	.	7	.
2016	104	7,133	.	6	.
2017	100	6,838	.	8	.
2018	101	6,639	.	7	.
2019	99	6,492	.	8	.
2020	124	6,573	.	10	.

County: county value. Kansas: state value. County Rank: highest county value ranked #1. (\$000): thousands of dollars. Nonmetro Kansas: Kansas total less Metropolitan Areas as defined by the Office of Management and Budget (OMB; released 3/6/2020). Per 1000: For nonmoney amounts, Per 1000=(county value / county population for the same year as the data) x 1000. \$ Per capita=(county value / county population for the same year as the data). Value= . indicates missing or suppressed data or value not calculated.

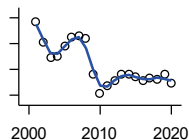
**Employment**

**BEA EMPLOYMENT:  
CONSTRUCTION**



U.S. Bureau of Economic Analysis,  
Regional Economic Information System  
(REIS)

Year	County	State of Kansas	Non Metro Kansas	County Rank	Per 1000 or \$ Per Capita
2001	1,053	92,647	27,972	14	.
2002	1,044	90,370	.	13	.
2003	982	91,725	26,681	16	.
2004	975	93,271	.	18	.
2005	998	94,836	.	16	.
2006	1,017	97,449	.	18	.
2007	1,091	99,119	29,179	17	.
2008	1,218	97,741	.	15	.
2009	1,010	90,165	28,077	19	.
2010	1,029	84,708	26,402	17	.
2011	1,020	83,332	25,999	17	.
2012	1,032	85,966	.	17	.
2013	1,072	88,094	.	16	.
2014	1,629	91,143	.	12	.
2015	1,107	91,458	27,583	14	.
2016	972	93,539	27,151	19	.
2017	948	92,046	25,579	17	.
2018	1,094	92,985	25,530	16	.
2019	1,332	94,858	25,701	12	.
2020	1,236	94,186	26,085	13	.



**BEA EMPLOYMENT:  
MANUFACTURING**

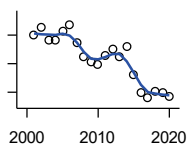
U.S. Bureau of Economic Analysis,  
Regional Economic Information System  
(REIS)

Year	County	State of Kansas	Non Metro Kansas	County Rank	Per 1000 or \$ Per Capita
2001	1,571	199,980	73,170	22	.
2002	1,411	188,905	70,691	25	.
2003	1,287	179,013	68,418	27	.
2004	1,304	181,738	69,669	27	.
2005	1,378	185,459	71,072	25	.
2006	1,452	188,047	71,704	25	.
2007	1,457	192,930	73,488	25	.
2008	1,438	193,116	72,235	25	.
2009	1,167	173,854	64,961	26	.
2010	1,012	166,000	62,884	29	.
2011	1,073	167,302	64,361	26	.
2012	1,111	169,308	65,944	28	.
2013	1,161	170,113	67,251	27	.
2014	1,165	169,307	68,299	27	.
2015	1,142	168,324	66,978	28	.
2016	1,112	167,723	65,796	29	.
2017	1,128	168,438	66,795	29	.
2018	1,127	171,778	68,181	29	.
2019	1,159	173,605	67,879	28	.
2020	1,095	165,228	65,658	29	.

County: county value. Kansas: state value. County Rank: highest county value ranked #1. (\$000): thousands of dollars. Nonmetro Kansas: Kansas total less Metropolitan Areas as defined by the Office of Management and Budget (OMB; released 3/6/2020). Per 1000: For nonmoney amounts, Per 1000=(county value / county population for the same year as the data) x 1000. \$ Per capita=(county value / county population for the same year as the data). Value= . indicates missing or suppressed data or value not calculated.

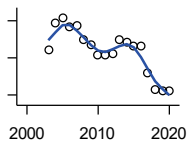
**Employment**

**BEA EMPLOYMENT: WHOLESALE TRADE**



U.S. Bureau of Economic Analysis, Regional Economic Information System (REIS)

Year	County	State of Kansas	Non Metro Kansas	County Rank	Per 1000 or \$ Per Capita
2001	750	65,698	.	11	.
2002	777	65,408	.	9	.
2003	732	63,504	.	8	.
2004	734	64,434	.	8	.
2005	763	64,587	.	5	.
2006	788	64,743	.	5	.
2007	724	65,993	.	9	.
2008	674	67,693	.	11	.
2009	655	65,954	.	12	.
2010	648	64,376	.	11	.
2011	678	64,712	.	11	.
2012	699	63,973	.	9	.
2013	676	64,999	.	8	.
2014	708	69,295	.	9	.
2015	613	68,444	.	10	.
2016	548	64,843	.	12	.
2017	529	65,014	.	12	.
2018	552	64,745	.	11	.
2019	548	63,324	.	11	.
2020	536	60,844	.	11	.



**BEA EMPLOYMENT: RETAIL TRADE**

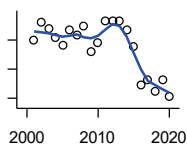
U.S. Bureau of Economic Analysis, Regional Economic Information System (REIS)

Year	County	State of Kansas	Non Metro Kansas	County Rank	Per 1000 or \$ Per Capita
2001	.	198,069	.	.	.
2002	.	196,112	.	.	.
2003	2,146	194,545	64,173	18	.
2004	2,291	192,957	63,265	16	.
2005	2,316	191,656	62,506	15	.
2006	2,269	190,391	62,082	16	.
2007	2,274	190,643	61,716	16	.
2008	2,195	185,907	59,783	15	.
2009	2,174	181,262	58,714	15	.
2010	2,115	177,858	57,470	15	.
2011	2,115	180,548	57,734	17	.
2012	2,123	180,596	57,349	16	.
2013	2,201	183,245	57,556	15	.
2014	2,181	185,899	57,855	15	.
2015	2,164	188,421	58,516	16	.
2016	2,161	188,505	57,864	15	.
2017	2,021	186,633	56,715	17	.
2018	1,929	183,323	.	16	.
2019	1,925	177,240	53,427	17	.
2020	1,921	171,777	52,563	17	.

County: county value. Kansas: state value. County Rank: highest county value ranked #1. (\$000): thousands of dollars. Nonmetro Kansas: Kansas total less Metropolitan Areas as defined by the Office of Management and Budget (OMB; released 3/6/2020). Per 1000: For nonmoney amounts, Per 1000=(county value / county population for the same year as the data) x 1000. \$ Per capita=(county value / county population for the same year as the data). Value= . indicates missing or suppressed data or value not calculated.

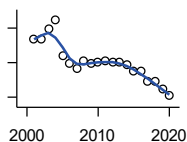
**Employment**

**BEA EMPLOYMENT:  
TRANSPORTATION AND  
WAREHOUSING**



U.S. Bureau of Economic Analysis,  
Regional Economic Information System  
(REIS)

Year	County	State of Kansas	Non Metro Kansas	County Rank	Per 1000 or \$ Per Capita
2001	500	56,302	.	13	.
2002	530	55,319	.	12	.
2003	519	55,509	.	10	.
2004	505	55,479	.	12	.
2005	491	56,287	.	12	.
2006	517	57,506	.	11	.
2007	508	59,277	.	13	.
2008	523	58,725	.	11	.
2009	480	56,238	.	13	.
2010	495	55,179	.	13	.
2011	533	57,449	.	12	.
2012	533	59,756	.	10	.
2013	532	59,780	.	12	.
2014	517	60,565	.	15	.
2015	489	63,256	.	17	.
2016	422	65,705	.	17	.
2017	431	70,641	.	18	.
2018	411	75,308	.	20	.
2019	432	81,209	.	20	.
2020	403	80,543	.	23	.



**BEA EMPLOYMENT: INFORMATION**

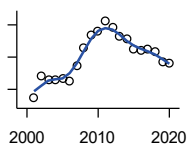
U.S. Bureau of Economic Analysis,  
Regional Economic Information System  
(REIS)

Year	County	State of Kansas	Non Metro Kansas	County Rank	Per 1000 or \$ Per Capita
2001	159	54,895	.	20	.
2002	159	50,728	.	18	.
2003	174	48,328	6,860	19	.
2004	187	45,617	.	19	.
2005	135	43,840	.	23	.
2006	123	43,925	.	25	.
2007	116	45,115	.	28	.
2008	127	42,958	.	23	.
2009	123	38,677	.	24	.
2010	125	33,432	.	25	.
2011	128	32,160	.	20	.
2012	125	31,829	.	21	.
2013	126	31,737	.	19	.
2014	122	32,316	.	20	.
2015	113	25,282	.	23	.
2016	113	24,998	.	22	.
2017	97	24,004	.	25	.
2018	97	23,165	.	23	.
2019	86	22,078	.	25	.
2020	78	20,810	.	26	.

County: county value. Kansas: state value. County Rank: highest county value ranked #1. (\$000): thousands of dollars. Nonmetro Kansas: Kansas total less Metropolitan Areas as defined by the Office of Management and Budget (OMB; released 3/6/2020). Per 1000: For nonmoney amounts, Per 1000=(county value / county population for the same year as the data) x 1000. \$ Per capita=(county value / county population for the same year as the data). Value= . indicates missing or suppressed data or value not calculated.

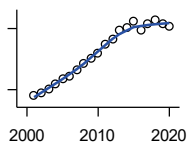
**Employment**

**BEA EMPLOYMENT: FINANCE AND INSURANCE**



U.S. Bureau of Economic Analysis, Regional Economic Information System (REIS)

Year	County	State of Kansas	Non Metro Kansas	County Rank	Per 1000 or \$ Per Capita
2001	945	76,118	.	12	.
2002	1,082	78,206	.	11	.
2003	1,061	78,441	.	11	.
2004	1,057	78,350	.	10	.
2005	1,067	78,952	.	11	.
2006	1,052	80,900	.	11	.
2007	1,145	86,094	.	11	.
2008	1,258	89,590	.	11	.
2009	1,335	93,573	.	11	.
2010	1,363	92,428	.	11	.
2011	1,425	99,495	.	11	.
2012	1,382	98,640	.	10	.
2013	1,331	99,998	.	11	.
2014	1,311	98,209	.	11	.
2015	1,252	100,534	.	11	.
2016	1,239	102,699	.	11	.
2017	1,250	101,563	.	11	.
2018	1,233	102,816	.	11	.
2019	1,174	100,276	.	11	.
2020	1,162	101,626	.	11	.



**BEA EMPLOYMENT: REAL ESTATE, RENTAL, AND LEASING**

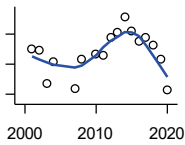
U.S. Bureau of Economic Analysis, Regional Economic Information System (REIS)

Year	County	State of Kansas	Non Metro Kansas	County Rank	Per 1000 or \$ Per Capita
2001	269	45,237	.	22	.
2002	282	44,970	.	21	.
2003	306	47,095	.	20	.
2004	331	50,181	.	20	.
2005	351	53,335	.	19	.
2006	364	55,342	.	20	.
2007	396	57,694	.	21	.
2008	431	57,933	.	20	.
2009	453	57,132	.	19	.
2010	482	59,578	.	18	.
2011	522	61,821	.	19	.
2012	550	60,432	.	17	.
2013	594	62,134	.	14	.
2014	607	64,705	.	16	.
2015	639	66,604	.	14	.
2016	590	68,395	.	16	.
2017	625	70,304	.	16	.
2018	643	72,631	.	15	.
2019	625	69,119	.	14	.
2020	608	68,452	.	16	.

County: county value. Kansas: state value. County Rank: highest county value ranked #1. (\$000): thousands of dollars. Nonmetro Kansas: Kansas total less Metropolitan Areas as defined by the Office of Management and Budget (OMB; released 3/6/2020). Per 1000: For nonmoney amounts, Per 1000=(county value / county population for the same year as the data) x 1000. \$ Per capita=(county value / county population for the same year as the data). Value= . indicates missing or suppressed data or value not calculated.

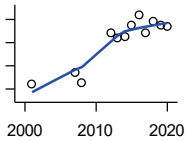
**Employment**

**BEA EMPLOYMENT: PROFESSIONAL AND TECHNICAL SERVICES**



U.S. Bureau of Economic Analysis,  
Regional Economic Information System  
(REIS)

Year	County	State of Kansas	Non Metro Kansas	County Rank	Per 1000 or \$ Per Capita
2001	561	81,396	.	13	.
2002	558	80,684	.	13	.
2003	514	80,311	.	13	.
2004	544	85,550	.	16	.
2005	.	85,003	.	.	.
2006	.	87,381	.	.	.
2007	507	92,717	.	16	.
2008	547	95,362	.	16	.
2009	.	93,232	.	.	.
2010	553	93,037	.	15	.
2011	552	93,237	.	16	.
2012	575	95,360	.	15	.
2013	582	100,795	.	15	.
2014	603	102,210	.	15	.
2015	584	105,625	.	15	.
2016	570	108,059	.	15	.
2017	575	109,041	.	14	.
2018	565	110,513	.	16	.
2019	546	109,637	.	16	.
2020	505	108,634	.	17	.



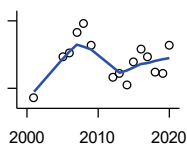
**BEA EMPLOYMENT: MANAGEMENT OF COMPANIES AND ENTERPRISES**

U.S. Bureau of Economic Analysis,  
Regional Economic Information System  
(REIS)

Year	County	State of Kansas	Non Metro Kansas	County Rank	Per 1000 or \$ Per Capita
2001	44	13,832	.	16	.
2002	.	12,576	.	.	.
2003	.	11,135	.	.	.
2004	.	10,614	.	.	.
2005	.	11,811	.	.	.
2006	.	13,061	.	.	.
2007	54	13,398	.	14	.
2008	45	15,234	.	19	.
2009	.	14,849	.	.	.
2010	.	16,579	.	.	.
2011	.	15,343	.	.	.
2012	88	15,075	.	13	.
2013	84	16,667	.	14	.
2014	85	20,441	.	13	.
2015	95	29,604	.	13	.
2016	104	27,824	.	13	.
2017	88	27,767	.	16	.
2018	98	28,862	.	15	.
2019	95	30,512	.	13	.
2020	94	25,648	.	13	.

County: county value. Kansas: state value. County Rank: highest county value ranked #1. (\$000): thousands of dollars. Nonmetro Kansas: Kansas total less Metropolitan Areas as defined by the Office of Management and Budget (OMB; released 3/6/2020). Per 1000: For nonmoney amounts, Per 1000=(county value / county population for the same year as the data) x 1000. \$ Per capita=(county value / county population for the same year as the data). Value= . indicates missing or suppressed data or value not calculated.

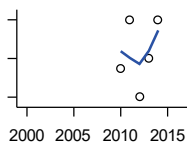
**Employment**



**BEA EMPLOYMENT:  
ADMINISTRATIVE AND WASTE  
SERVICES**

U.S. Bureau of Economic Analysis,  
Regional Economic Information System  
(REIS)

Year	County	State of Kansas	Non Metro Kansas	County Rank	Per 1000 or \$ Per Capita
2001	478	81,573	.	21	.
2002	.	82,992	.	.	.
2003	.	81,298	.	.	.
2004	.	85,721	.	.	.
2005	570	89,933	.	17	.
2006	579	93,688	.	18	.
2007	623	98,865	.	18	.
2008	645	97,440	.	16	.
2009	597	92,455	.	19	.
2010	.	93,675	.	.	.
2011	.	97,969	.	.	.
2012	525	100,490	.	18	.
2013	534	104,680	.	19	.
2014	507	107,218	18,836	21	.
2015	559	103,436	18,767	19	.
2016	586	103,233	18,428	20	.
2017	569	101,532	18,198	20	.
2018	537	102,062	.	22	.
2019	533	100,897	.	21	.
2020	596	95,361	.	20	.



**BEA EMPLOYMENT: EDUCATIONAL  
SERVICES**

U.S. Bureau of Economic Analysis,  
Regional Economic Information System  
(REIS)

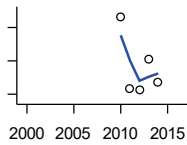
Year	County	State of Kansas	Non Metro Kansas	County Rank	Per 1000 or \$ Per Capita
2001	.	21,169	.	.	.
2002	.	22,173	.	.	.
2003	.	22,651	.	.	.
2004	.	21,601	.	.	.
2005	.	22,177	.	.	.
2006	.	22,438	.	.	.
2007	.	23,647	.	.	.
2008	.	24,653	.	.	.
2009	.	25,120	.	.	.
2010	101	26,071	.	17	.
2011	106	26,080	.	17	.
2012	98	26,625	.	17	.
2013	102	27,508	.	18	.
2014	106	28,708	.	19	.
2015	.	28,794	.	.	.
2016	.	27,996	.	.	.

County: county value. Kansas: state value. County Rank: highest county value ranked #1. (\$000): thousands of dollars. Nonmetro Kansas: Kansas total less Metropolitan Areas as defined by the Office of Management and Budget (OMB; released 3/6/2020). Per 1000: For nonmoney amounts, Per 1000=(county value / county population for the same year as the data) x 1000. \$ Per capita=(county value / county population for the same year as the data). Value= . indicates missing or suppressed data or value not calculated.



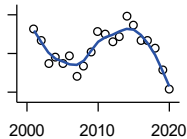
**Employment**

**BEA EMPLOYMENT: HEALTH CARE AND SOCIAL ASSISTANCE**



U.S. Bureau of Economic Analysis,  
Regional Economic Information System  
(REIS)

Year	County	State of Kansas	Non Metro Kansas	County Rank	Per 1000 or \$ Per Capita
2001	.	165,415	.	.	.
2002	.	168,198	.	.	.
2003	.	169,654	.	.	.
2004	.	172,796	.	.	.
2005	.	173,949	.	.	.
2006	.	176,919	.	.	.
2007	.	182,160	.	.	.
2008	.	186,051	.	.	.
2009	.	188,499	.	.	.
2010	2,366	188,383	.	14	.
2011	2,258	190,736	.	15	.
2012	2,257	192,991	.	15	.
2013	2,302	193,687	.	15	.
2014	2,268	194,632	.	14	.
2015	.	199,724	.	.	.
2016	.	201,830	.	.	.



**BEA EMPLOYMENT: ARTS, ENTERTAINMENT, AND RECREATION**

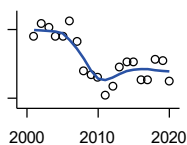
U.S. Bureau of Economic Analysis,  
Regional Economic Information System  
(REIS)

Year	County	State of Kansas	Non Metro Kansas	County Rank	Per 1000 or \$ Per Capita
2001	206	25,012	.	17	.
2002	194	25,668	.	20	.
2003	169	24,116	.	21	.
2004	176	25,355	.	20	.
2005	170	26,067	.	20	.
2006	177	26,505	.	19	.
2007	156	27,489	.	24	.
2008	167	27,501	.	23	.
2009	182	27,203	.	20	.
2010	203	27,479	.	18	.
2011	200	28,487	.	20	.
2012	192	30,729	.	21	.
2013	198	31,068	.	20	.
2014	218	32,154	.	18	.
2015	209	31,169	.	19	.
2016	193	32,373	.	22	.
2017	194	33,213	.	23	.
2018	186	33,837	.	22	.
2019	163	33,082	.	24	.
2020	143	26,644	.	23	.

County: county value. Kansas: state value. County Rank: highest county value ranked #1. (\$000): thousands of dollars. Nonmetro Kansas: Kansas total less Metropolitan Areas as defined by the Office of Management and Budget (OMB; released 3/6/2020). Per 1000: For nonmoney amounts, Per 1000=(county value / county population for the same year as the data) x 1000. \$ Per capita=(county value / county population for the same year as the data). Value= . indicates missing or suppressed data or value not calculated.

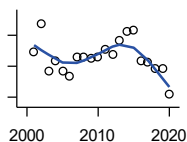
**Employment**

**BEA EMPLOYMENT: GOVERNMENT AND GOVERNMENT ENTERPRISES**



U.S. Bureau of Economic Analysis, Regional Economic Information System (REIS)

Year	County	State of Kansas	Non Metro Kansas	County Rank	Per 1000 or \$ Per Capita
2001	2,668	282,293	102,993	20	.
2002	2,727	281,427	103,581	20	.
2003	2,710	282,459	103,389	20	.
2004	2,673	283,877	103,946	20	.
2005	2,671	282,798	103,194	20	.
2006	2,738	288,372	104,103	20	.
2007	2,649	294,413	104,598	20	.
2008	2,521	298,580	104,718	20	.
2009	2,500	300,422	104,081	21	.
2010	2,494	303,875	103,382	21	.
2011	2,416	299,952	101,535	21	.
2012	2,451	298,068	101,180	21	.
2013	2,537	297,689	101,232	20	.
2014	2,559	296,956	100,634	20	.
2015	2,559	295,799	99,719	21	.
2016	2,482	291,536	98,520	21	.
2017	2,480	295,748	99,542	21	.
2018	2,571	298,105	99,499	20	.
2019	2,564	302,017	100,227	21	.
2020	2,476	292,583	96,477	21	.



**BEA EMPLOYMENT: ACCOMMODATION AND FOOD SERVICES**

U.S. Bureau of Economic Analysis, Regional Economic Information System (REIS)

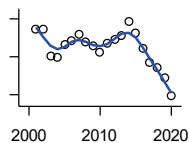
Year	County	State of Kansas	Non Metro Kansas	County Rank	Per 1000 or \$ Per Capita
2001	947	103,353	.	21	.
2002	1,039	103,692	.	20	.
2003	883	105,138	.	21	.
2004	916	106,694	.	21	.
2005	884	107,303	.	21	.
2006	868	109,888	.	22	.
2007	931	110,863	.	21	.
2008	929	111,092	.	21	.
2009	925	109,353	.	21	.
2010	930	108,628	.	21	.
2011	956	110,514	.	21	.
2012	939	112,574	.	21	.
2013	983	114,102	.	21	.
2014	1,013	115,768	.	21	.
2015	1,018	118,503	.	21	.
2016	918	119,764	.	21	.
2017	913	121,181	.	21	.
2018	894	121,900	.	21	.
2019	891	122,819	.	21	.
2020	809	106,561	.	21	.

County: county value. Kansas: state value. County Rank: highest county value ranked #1. (\$000): thousands of dollars. Nonmetro Kansas: Kansas total less Metropolitan Areas as defined by the Office of Management and Budget (OMB; released 3/6/2020). Per 1000: For nonmoney amounts, Per 1000=(county value / county population for the same year as the data) x 1000. \$ Per capita=(county value / county population for the same year as the data). Value= . indicates missing or suppressed data or value not calculated.

**Employment**

BEA EMPLOYMENT: OTHER SERVICES, EXCEPT PUBLIC ADMINISTRATION

U.S. Bureau of Economic Analysis, Regional Economic Information System (REIS)

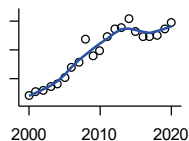


Year	County	State of Kansas	Non Metro Kansas	County Rank	Per 1000 or \$ Per Capita
2001	973	92,176	.	20	.
2002	973	95,350	.	20	.
2003	903	95,821	32,629	19	.
2004	898	95,610	.	21	.
2005	931	95,930	32,555	20	.
2006	944	96,413	.	18	.
2007	960	98,444	.	21	.
2008	938	96,705	.	20	.
2009	929	95,534	.	21	.
2010	912	93,302	.	21	.
2011	935	94,865	.	18	.
2012	946	94,977	.	18	.
2013	956	95,471	.	18	.
2014	992	97,806	.	18	.
2015	961	98,041	.	20	.
2016	921	97,219	.	20	.
2017	885	96,568	.	20	.
2018	871	98,645	.	21	.
2019	845	98,638	.	21	.
2020	796	92,245	.	22	.

**Income**

BEA PER CAPITA PERSONAL INCOME (\$)

U.S. Bureau of Economic Analysis, Regional Economic Information System (REIS)

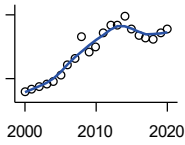


Year	County	State of Kansas	Non Metro Kansas	County Rank	Per 1000 or \$ Per Capita
2000	24,033	28,253	23,116	52	.
2001	25,406	29,112	24,576	47	.
2002	26,044	29,248	24,314	25	.
2003	27,243	30,074	26,017	45	.
2004	28,188	30,843	26,583	34	.
2005	30,262	32,545	28,356	40	.
2006	33,816	35,690	29,782	16	.
2007	35,788	38,057	32,034	28	.
2008	43,900	41,257	35,211	12	.
2009	38,091	39,431	33,876	26	.
2010	39,826	39,960	35,795	36	.
2011	44,427	43,015	39,041	39	.
2012	47,455	45,294	39,660	31	.
2013	47,519	46,174	41,747	44	.
2014	50,877	47,013	41,042	24	.
2015	46,566	47,332	40,638	27	.
2016	44,836	47,326	40,797	33	.
2017	44,652	48,756	41,314	31	.
2018	45,018	50,811	43,283	48	.
2019	47,429	52,820	44,491	41	.
2020	49,436	55,677	48,415	53	.

County: county value. Kansas: state value. County Rank: highest county value ranked #1. (\$000): thousands of dollars. Nonmetro Kansas: Kansas total less Metropolitan Areas as defined by the Office of Management and Budget (OMB; released 3/6/2020). Per 1000: For nonmoney amounts, Per 1000=(county value / county population for the same year as the data) x 1000. \$ Per capita=(county value / county population for the same year as the data). Value= . indicates missing or suppressed data or value not calculated.

**Income**

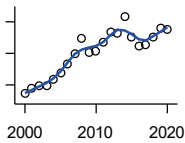
**SOURCES OF PERSONAL INCOME:  
TOTAL PERSONAL INCOME (\$000)**



U.S. Bureau of Economic Analysis,  
Regional Economic Information System  
(REIS)

Year	County	State of Kansas	Non Metro Kansas	County Rank	Per 1000 or \$ Per Capita
2000	676,839	76,105,125	22,273,838	21	23,997.1
2001	705,551	78,664,651	23,411,174	22	25,406.0
2002	720,997	79,365,190	23,000,314	22	26,043.8
2003	751,399	81,890,340	24,494,191	22	27,243.4
2004	772,082	84,335,940	24,924,467	22	28,188.5
2005	833,307	89,346,228	26,452,291	21	30,262.5
2006	928,589	98,610,188	27,661,596	19	33,816.1
2007	983,892	105,943,199	29,715,946	19	35,788.3
2008	1,199,089	115,852,478	32,614,565	15	43,900.2
2009	1,048,500	111,697,350	31,394,702	19	38,091.3
2010	1,102,194	114,239,828	33,291,419	20	39,827.8
2011	1,230,633	123,558,772	36,221,488	18	44,432.0
2012	1,306,056	130,948,127	36,696,759	15	47,458.4
2013	1,304,265	133,979,908	38,513,959	18	47,526.3
2014	1,390,930	136,878,718	37,680,598	13	50,886.4
2015	1,264,911	138,336,768	37,081,851	19	46,574.3
2016	1,206,258	138,533,890	36,930,885	21	44,879.0
2017	1,180,009	142,729,689	37,104,963	22	44,707.5
2018	1,175,870	148,955,739	38,589,364	23	45,126.8
2019	1,230,207	154,961,001	39,424,148	22	47,721.3
2020	1,268,418	163,462,179	42,618,591	23	49,755.5

**SOURCES OF PERSONAL INCOME:  
WAGES AND SALARIES (\$000)**



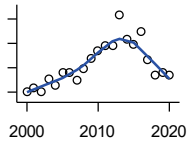
U.S. Bureau of Economic Analysis,  
Regional Economic Information System  
(REIS)

Year	County	State of Kansas	Non Metro Kansas	County Rank	Per 1000 or \$ Per Capita
2000	321,531	41,766,878	10,254,250	22	11,399.8
2001	338,635	43,269,734	10,518,206	21	12,193.8
2002	347,281	43,875,159	10,696,876	21	12,544.5
2003	348,071	44,488,560	10,894,971	21	12,620.0
2004	368,120	46,702,068	11,333,617	21	13,439.9
2005	387,434	48,537,956	11,614,130	21	14,070.1
2006	418,270	52,083,584	12,299,340	21	15,232.0
2007	449,211	55,442,368	13,093,908	21	16,339.7
2008	498,201	57,623,385	13,647,143	21	18,239.8
2009	453,513	55,605,578	13,199,674	21	16,475.8
2010	456,072	56,089,711	13,345,291	21	16,480.2
2011	486,491	58,104,706	13,856,458	21	17,564.8
2012	516,738	60,616,457	14,473,599	19	18,776.8
2013	515,414	61,872,023	14,781,792	19	18,781.3
2014	566,789	64,457,652	15,385,500	18	20,735.7
2015	501,787	66,729,598	15,454,485	21	18,475.9
2016	474,316	67,253,399	15,422,058	21	17,647.0
2017	479,251	68,830,861	15,731,853	21	18,157.6
2018	501,592	71,580,544	16,311,725	21	19,249.8
2019	530,329	74,404,771	16,882,299	21	20,572.1
2020	527,375	75,798,310	17,251,300	22	20,687.1

County: county value. Kansas: state value. County Rank: highest county value ranked #1. (\$000): thousands of dollars. Nonmetro Kansas: Kansas total less Metropolitan Areas as defined by the Office of Management and Budget (OMB; released 3/6/2020). Per 1000: For nonmoney amounts, Per 1000=(county value / county population for the same year as the data) x 1000. \$ Per capita=(county value / county population for the same year as the data). Value= . indicates missing or suppressed data or value not calculated.

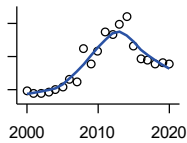
**Income**

**SOURCES OF PERSONAL INCOME:  
PROPRIETORS-FARM (\$000)**



U.S. Bureau of Economic Analysis,  
Regional Economic Information System  
(REIS)

Year	County	State of Kansas	Non Metro Kansas	County Rank	Per 1000 or \$ Per Capita
2000	73	668,539	673,707	79	2.6
2001	3,968	779,473	769,336	65	142.9
2002	164	145,064	187,033	59	5.9
2003	10,757	1,281,076	1,195,298	57	390.0
2004	5,194	1,149,425	938,524	72	189.6
2005	16,278	1,609,604	1,469,139	40	591.2
2006	15,728	766,047	663,735	17	572.8
2007	10,159	1,131,607	1,040,350	56	369.5
2008	19,245	1,582,092	1,404,900	38	704.6
2009	27,826	1,585,995	1,390,349	16	1,010.9
2010	34,392	2,149,482	2,029,067	18	1,242.8
2011	38,368	3,188,519	2,989,880	33	1,385.3
2012	38,104	2,519,555	2,296,875	21	1,384.6
2013	63,418	4,499,190	4,158,419	21	2,310.9
2014	43,338	2,231,181	2,157,992	16	1,585.5
2015	38,811	1,300,733	1,294,370	10	1,429.0
2016	49,612	1,577,060	1,564,511	10	1,845.8
2017	26,573	838,480	838,290	12	1,006.8
2018	14,375	1,050,662	971,690	29	551.7
2019	15,814	998,038	878,247	24	613.4
2020	14,250	2,151,349	1,887,881	76	559.0



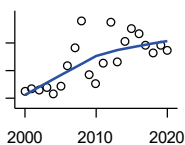
**SOURCES OF PERSONAL INCOME:  
PROPRIETORS-NONFARM (\$000)**

U.S. Bureau of Economic Analysis,  
Regional Economic Information System  
(REIS)

Year	County	State of Kansas	Non Metro Kansas	County Rank	Per 1000 or \$ Per Capita
2000	45,435	4,580,476	1,493,470	16	1,610.9
2001	38,434	4,510,530	1,855,621	25	1,384.0
2002	40,545	5,036,100	1,966,784	25	1,464.6
2003	41,885	4,719,377	1,916,735	25	1,518.6
2004	49,406	4,003,922	2,073,898	19	1,803.8
2005	59,502	4,455,294	2,200,971	18	2,160.9
2006	81,771	7,343,524	2,694,895	15	2,977.8
2007	74,996	7,280,197	2,436,574	15	2,727.9
2008	173,431	9,255,953	2,971,923	7	6,349.5
2009	127,889	9,323,551	2,858,848	13	4,646.1
2010	168,127	9,658,261	3,498,040	11	6,075.3
2011	223,067	12,196,566	4,186,007	8	8,053.8
2012	217,681	15,773,140	4,446,004	9	7,909.9
2013	246,801	16,441,660	4,492,127	7	8,993.2
2014	270,831	15,954,254	4,455,081	7	9,908.2
2015	180,880	15,536,116	4,386,172	14	6,660.0
2016	141,787	14,075,310	3,783,829	14	5,275.2
2017	140,986	15,371,957	3,908,254	14	5,341.6
2018	128,949	15,716,877	4,238,775	16	4,948.7
2019	130,444	16,705,488	3,921,051	16	5,060.1
2020	126,947	16,718,952	3,823,329	16	4,979.7

County: county value. Kansas: state value. County Rank: highest county value ranked #1. (\$000): thousands of dollars. Nonmetro Kansas: Kansas total less Metropolitan Areas as defined by the Office of Management and Budget (OMB; released 3/6/2020). Per 1000: For nonmoney amounts, Per 1000=(county value / county population for the same year as the data) x 1000. \$ Per capita=(county value / county population for the same year as the data). Value= . indicates missing or suppressed data or value not calculated.

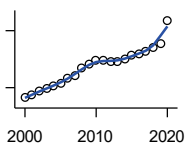
**Income**



**SOURCES OF PERSONAL INCOME:  
DIVIDENDS,INTEREST,RENT(\$000)**

U.S. Bureau of Economic Analysis,  
Regional Economic Information System  
(REIS)

Year	County	State of Kansas	Non Metro Kansas	County Rank	Per 1000 or \$ Per Capita
2000	170,516	15,916,201	4,736,921	13	6,045.6
2001	173,495	15,770,830	4,699,417	13	6,247.3
2002	171,237	15,111,563	4,316,887	13	6,185.4
2003	176,300	15,370,764	4,360,311	13	6,392.1
2004	165,498	15,820,469	4,251,925	13	6,042.3
2005	177,806	17,147,069	4,485,387	13	6,457.2
2006	207,943	20,117,848	4,945,184	13	7,572.6
2007	232,964	22,269,186	5,526,219	13	8,473.9
2008	272,072	24,972,485	6,180,979	12	9,960.9
2009	193,458	21,453,879	5,308,474	13	7,028.2
2010	181,529	20,861,351	5,414,285	17	6,559.6
2011	210,863	23,387,567	5,781,075	14	7,613.2
2012	269,517	25,689,368	6,389,505	12	9,793.5
2013	212,652	24,832,212	5,984,811	15	7,748.9
2014	242,333	27,412,684	6,403,356	13	8,865.6
2015	260,076	27,244,414	6,423,685	13	9,576.1
2016	253,422	27,293,441	6,389,161	13	9,428.6
2017	236,332	28,385,472	6,700,156	15	8,954.0
2018	225,147	29,953,419	6,772,504	18	8,640.6
2019	236,494	30,820,276	6,957,987	18	9,173.9
2020	228,796	30,283,520	6,844,745	18	8,974.9



**SOURCES OF PERSONAL INCOME:  
TRANSFER PAYMENTS (\$000)**

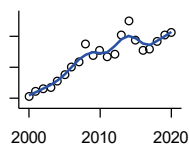
U.S. Bureau of Economic Analysis,  
Regional Economic Information System  
(REIS)

Year	County	State of Kansas	Non Metro Kansas	County Rank	Per 1000 or \$ Per Capita
2000	123,142	9,650,835	4,036,781	16	4,366.0
2001	131,238	10,549,124	4,355,457	18	4,725.7
2002	140,177	11,208,997	4,553,978	16	5,063.5
2003	148,951	11,709,049	4,702,911	16	5,400.5
2004	154,365	12,040,452	4,802,536	16	5,635.8
2005	161,198	12,696,735	5,059,314	16	5,854.1
2006	175,149	13,642,787	5,455,207	15	6,378.3
2007	182,273	14,686,821	5,775,024	16	6,630.0
2008	200,284	16,552,460	6,322,722	16	7,332.6
2009	212,223	18,025,603	6,790,962	16	7,709.9
2010	223,256	19,189,749	7,089,258	16	8,067.4
2011	222,483	19,625,770	7,255,825	16	8,032.7
2012	218,116	19,354,458	7,148,177	17	7,925.7
2013	218,518	19,639,358	7,185,636	17	7,962.6
2014	224,691	20,380,970	7,399,809	18	8,220.2
2015	234,114	21,116,856	7,623,577	18	8,620.1
2016	239,338	21,884,629	7,886,000	18	8,904.6
2017	246,512	22,559,744	8,062,517	18	9,339.7
2018	254,348	23,628,033	8,393,617	18	9,761.2
2019	266,903	25,050,174	8,845,371	18	10,353.5
2020	326,744	32,319,421	11,074,190	21	12,817.0

County: county value. Kansas: state value. County Rank: highest county value ranked #1. (\$000): thousands of dollars. Nonmetro Kansas: Kansas total less Metropolitan Areas as defined by the Office of Management and Budget (OMB; released 3/6/2020). Per 1000: For nonmoney amounts, Per 1000=(county value / county population for the same year as the data) x 1000. \$ Per capita=(county value / county population for the same year as the data). Value= . indicates missing or suppressed data or value not calculated.

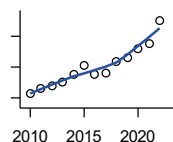
**Income**

**SOURCES OF PERSONAL INCOME:  
LESS SOCIAL INSURANCE (\$000)**



U.S. Bureau of Economic Analysis,  
Regional Economic Information System  
(REIS)

Year	County	State of Kansas	Non Metro Kansas	County Rank	Per 1000 or \$ Per Capita
2000	51,506	6,655,813	1,663,044	22	1,826.1
2001	54,645	6,869,934	1,740,915	21	1,967.7
2002	56,373	7,008,361	1,778,636	21	2,036.3
2003	57,093	7,172,781	1,821,858	21	2,070.0
2004	60,967	7,556,560	1,904,014	21	2,225.9
2005	65,084	7,911,241	1,986,907	21	2,363.6
2006	69,868	8,406,937	2,090,313	21	2,544.4
2007	73,272	8,806,941	2,180,587	21	2,665.2
2008	84,950	9,207,010	2,299,399	20	3,110.1
2009	77,578	9,002,859	2,248,703	21	2,818.4
2010	80,730	9,235,760	2,321,191	21	2,917.2
2011	76,582	8,515,986	2,139,991	20	2,765.0
2012	78,643	8,816,128	2,195,919	20	2,857.7
2013	90,663	10,225,399	2,540,439	20	3,303.7
2014	99,664	10,609,601	2,635,009	19	3,646.2
2015	87,329	11,028,204	2,663,038	21	3,215.5
2016	81,119	10,915,915	2,604,579	21	3,018.0
2017	82,123	11,224,218	2,669,954	21	3,111.4
2018	86,515	11,749,229	2,797,106	21	3,320.2
2019	91,223	12,245,451	2,889,336	21	3,538.7
2020	92,551	12,715,152	3,027,656	21	3,630.4



**HUD MEDIAN FAMILY INCOME**

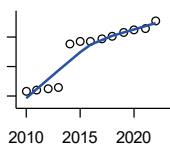
U.S. Department of Housing and Urban  
Development (HUD)

Year	County	State of Kansas	Non Metro Kansas	County Rank	Per 1000 or \$ Per Capita
2010	51,400	63,100	.	62	.
2011	53,200	64,300	.	59	.
2012	53,900	65,200	.	59	.
2013	55,000	64,800	.	60	.
2014	57,600	64,400	.	53	.
2015	60,500	66,300	.	46	.
2016	57,700	66,700	.	56	.
2017	58,100	68,500	.	67	.
2018	61,700	73,100	.	59	.
2019	63,100	75,200	.	61	.
2020	66,100	76,500	.	53	.
2021	67,700	77,400	.	49	.
2022	75,100	87,800	.	43	.

County: county value. Kansas: state value. County Rank: highest county value ranked #1. (\$000): thousands of dollars. Nonmetro Kansas: Kansas total less Metropolitan Areas as defined by the Office of Management and Budget (OMB; released 3/6/2020). Per 1000: For nonmoney amounts, Per 1000=(county value / county population for the same year as the data) x 1000. \$ Per capita=(county value / county population for the same year as the data). Value= . indicates missing or suppressed data or value not calculated.

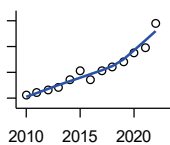
**Income**

**HUD 30% LOW-TO-MEDIUM INCOME (LMI) LIMIT - 4 PERSONS**



U.S. Department of Housing and Urban Development (HUD)

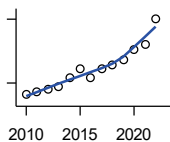
Year	County	State of Kansas	Non Metro Kansas	County Rank	Per 1000 or \$ Per Capita
2010	15,850	.	.	105	.
2011	16,100	.	.	105	.
2012	16,300	.	.	105	.
2013	16,550	.	.	105	.
2014	23,850	.	.	105	.
2015	24,250	.	.	105	.
2016	24,300	.	.	105	.
2017	24,600	.	.	105	.
2018	25,100	21,950	.	105	.
2019	25,750	22,550	.	105	.
2020	26,200	22,950	.	105	.
2021	26,500	23,200	.	105	.
2022	27,750	25,950	.	105	.



**HUD 50% LOW-TO-MEDIUM INCOME (LMI) LIMIT - 4 PERSONS**

U.S. Department of Housing and Urban Development (HUD)

Year	County	State of Kansas	Non Metro Kansas	County Rank	Per 1000 or \$ Per Capita
2010	26,400	.	.	105	.
2011	26,850	.	.	105	.
2012	27,200	.	.	105	.
2013	27,600	.	.	105	.
2014	28,800	.	.	54	.
2015	30,250	.	.	44	.
2016	28,850	.	.	60	.
2017	30,150	.	.	105	.
2018	30,850	36,550	.	59	.
2019	31,550	37,600	.	61	.
2020	33,050	38,250	.	53	.
2021	33,850	38,700	.	48	.
2022	37,550	43,300	.	42	.



**HUD 80% LOW-TO-MEDIUM INCOME (LMI) LIMIT - 4 PERSONS**

U.S. Department of Housing and Urban Development (HUD)

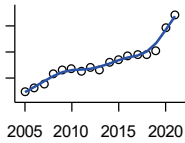
Year	County	State of Kansas	Non Metro Kansas	County Rank	Per 1000 or \$ Per Capita
2010	42,250	.	.	105	.
2011	42,950	.	.	105	.
2012	43,500	.	.	105	.
2013	44,150	.	.	105	.
2014	46,100	.	.	54	.
2015	48,400	.	.	44	.
2016	46,150	.	.	60	.
2017	48,250	.	.	105	.
2018	49,350	58,500	.	59	.
2019	50,500	60,150	.	61	.
2020	52,900	61,200	.	53	.
2021	54,150	61,900	.	48	.
2022	60,100	69,250	.	42	.

County: county value. Kansas: state value. County Rank: highest county value ranked #1. (\$000): thousands of dollars. Nonmetro Kansas: Kansas total less Metropolitan Areas as defined by the Office of Management and Budget (OMB; released 3/6/2020). Per 1000: For nonmoney amounts, Per 1000=(county value / county population for the same year as the data) x 1000. \$ Per capita=(county value / county population for the same year as the data). Value= . indicates missing or suppressed data or value not calculated.



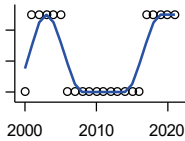
**Banking**

**BANK DEPOSITS** (1984-2004 in thousands; 2005- in millions)



Federal Deposit Insurance Corporation, Data Book, Operating Banks and Branches

Year	County	State of Kansas	Non Metro Kansas	County Rank	Per 1000 or \$ Per Capita
2005	699	48,304	17,000	10	25.4
2006	727	50,668	17,586	10	26.5
2007	758	54,057	18,517	11	27.6
2008	832	57,869	19,628	10	30.5
2009	863	57,763	20,031	10	31.4
2010	869	60,031	20,678	11	31.4
2011	853	61,094	21,347	11	30.8
2012	879	62,910	22,481	11	31.9
2013	859	64,547	22,795	12	31.3
2014	924	66,538	23,338	12	33.8
2015	938	68,160	23,367	11	34.5
2016	966	70,381	23,420	11	35.9
2017	975	73,329	23,928	11	36.9
2018	976	74,623	24,100	11	37.5
2019	1,006	76,436	24,488	11	39.0
2020	1,185	88,563	27,547	11	46.5
2021	1,285	97,055	30,122	11	51.0



**NUMBER OF BANKS**

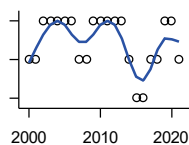
Federal Deposit Insurance Corporation, Data Book, Operating Banks and Branches

Year	County	State of Kansas	Non Metro Kansas	County Rank	Per 1000 or \$ Per Capita
2000	9	410	145	27	.
2001	10	410	136	22	.
2002	10	404	129	22	.
2003	10	397	121	22	.
2004	10	394	112	22	.
2005	10	388	101	23	.
2006	9	385	94	27	.
2007	9	382	91	27	.
2008	9	378	82	27	.
2009	9	374	79	27	.
2010	9	367	70	27	.
2011	9	359	61	27	.
2012	9	348	57	26	.
2013	9	332	45	26	.
2014	9	329	41	25	.
2015	9	320	31	22	.
2016	9	314	24	23	.
2017	10	301	13	16	.
2018	10	289	7	16	.
2019	10	279	3	17	.
2020	10	271	-1	16	.
2021	10	270	-6	18	.

County: county value. Kansas: state value. County Rank: highest county value ranked #1. (\$000): thousands of dollars. Nonmetro Kansas: Kansas total less Metropolitan Areas as defined by the Office of Management and Budget (OMB; released 3/6/2020). Per 1000: For nonmoney amounts, Per 1000=(county value / county population for the same year as the data) x 1000. \$ Per capita=(county value / county population for the same year as the data). Value= . indicates missing or suppressed data or value not calculated.

**Banking**

**NUMBER OF BANKING OFFICES**

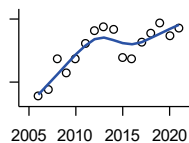


Federal Deposit Insurance Corporation, Data Book, Operating Banks and Branches

Year	County	State of Kansas	Non Metro Kansas	County Rank	Per 1000 or \$ Per Capita
2000	20	1,398	703	15	.
2001	20	1,424	708	15	.
2002	21	1,447	704	13	.
2003	21	1,461	708	14	.
2004	21	1,485	708	14	.
2005	21	1,505	711	15	.
2006	21	1,518	711	15	.
2007	20	1,543	717	16	.
2008	20	1,556	717	16	.
2009	21	1,569	716	15	.
2010	21	1,561	710	14	.
2011	21	1,559	707	15	.
2012	21	1,533	702	15	.
2013	21	1,518	696	15	.
2014	20	1,491	685	15	.
2015	19	1,472	675	15	.
2016	19	1,465	668	15	.
2017	20	1,452	666	15	.
2018	20	1,439	660	15	.
2019	21	1,439	663	14	.
2020	21	1,416	653	14	.
2021	20	1,392	641	15	.

**Government**

**TANGIBLE ASSESSED VALUATION (KDoR, million\$; 2006-)**



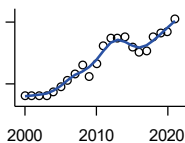
Kansas Department of Revenue, Division of Property Valuation, Statistical Report of Property Assessment and Taxation

Year	County	State of Kansas	Non Metro Kansas	County Rank	Per 1000 or \$ Per Capita
2006	206.4	28,964.3	10,316.9	28	7.5
2007	213.3	30,086.9	10,335.9	29	7.8
2008	242.0	31,000.3	10,856.9	25	8.9
2009	228.6	30,312.3	10,555.6	27	8.3
2010	242.3	29,450.2	10,158.7	23	8.8
2011	257.3	29,963.6	10,572.3	21	9.3
2012	268.7	30,382.9	10,876.2	20	9.8
2013	272.8	30,850.2	11,044.4	19	9.9
2014	270.1	31,783.0	11,388.9	21	9.9
2015	243.5	32,335.7	11,037.8	23	9.0
2016	242.7	33,156.3	10,889.6	25	9.0
2017	257.8	34,754.5	11,439.0	24	9.8
2018	266.3	36,566.1	11,907.1	23	10.2
2019	276.7	38,255.2	12,336.7	23	10.7
2020	264.6	39,333.9	12,219.3	26	10.4
2021	271.7	40,812.0	12,601.5	26	10.8

County: county value. Kansas: state value. County Rank: highest county value ranked #1. (\$000): thousands of dollars. Nonmetro Kansas: Kansas total less Metropolitan Areas as defined by the Office of Management and Budget (OMB; released 3/6/2020). Per 1000: For nonmoney amounts, Per 1000=(county value / county population for the same year as the data) x 1000. \$ Per capita=(county value / county population for the same year as the data). Value= . indicates missing or suppressed data or value not calculated.

**Government**

**SALES TAX COLLECTIONS (\$)**

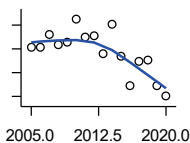


Kansas Department of Revenue. Use tax collections included beginning in calendar year 2018.

Year	County	State of Kansas	Non Metro Kansas	County Rank	Per 1000 or \$ Per Capita
2000	17,194,110	1,475,831,808	432,761,608	15	609,612.1
2001	17,196,042	1,481,026,688	426,316,284	15	619,208.6
2002	17,116,484	1,561,316,864	443,986,950	17	618,280.7
2003	17,272,080	1,626,782,976	461,658,700	17	626,231.1
2004	18,099,672	1,691,899,008	480,309,725	16	660,813.1
2005	19,313,204	1,744,980,352	497,494,867	16	701,380.2
2006	20,906,272	1,851,694,720	532,233,047	15	761,335.5
2007	22,275,056	1,917,546,752	559,319,583	14	810,237.7
2008	24,636,058	1,990,655,744	589,725,773	13	901,957.2
2009	21,808,365	1,866,223,078	548,627,132	14	792,282.4
2010	24,935,630	2,075,193,413	617,409,982	14	901,049.0
2011	29,238,272	2,347,193,367	702,671,534	14	1,055,647.6
2012	31,123,111	2,456,292,294	740,196,106	14	1,130,927.0
2013	31,002,998	2,489,204,048	746,226,565	14	1,129,723.3
2014	31,264,205	2,539,886,774	760,474,019	14	1,143,784.5
2015	28,857,981	2,642,374,740	750,090,163	15	1,062,556.8
2016	27,711,697	2,732,611,350	749,030,133	17	1,031,017.8
2017	27,953,131	2,726,104,521	744,246,491	17	1,059,071.4
2018	31,519,404	3,277,299,125	893,564,480	18	1,209,632.9
2019	32,453,721	3,395,631,405	939,607,762	18	1,258,920.9
2020	32,635,341	3,489,306,791	984,218,931	20	1,280,168.7
2021	35,790,184	3,981,293,227	1,098,391,422	19	1,419,344.2

**Crime**

**CRIME INDEX OFFENSES**



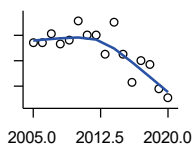
Kansas Bureau of Investigation, Note: Data are aggregated from reports by individual police departments and subject to be incomplete.

Year	County	State of Kansas	Non Metro Kansas	County Rank	Per 1000 or \$ Per Capita
2005	1,013	111,856	31,630	19	36.8
2006	1,014	110,032	.	18	36.9
2007	1,118	111,035	29,921	18	40.7
2008	1,033	93,996	27,342	17	37.8
2009	1,052	98,757	27,620	17	38.2
2010	1,251	98,354	26,909	14	45.2
2011	1,098	96,638	25,765	17	39.6
2012	1,110	98,914	26,963	16	40.3
2013	956	93,054	24,488	17	34.8
2014	1,203	86,323	23,341	13	44.0
2015	939	88,590	21,580	15	34.6
2016	693	90,589	21,565	20	25.8
2017	899	93,091	22,622	18	34.1
2018	909	92,062	20,325	15	34.9
2019	691	87,008	18,547	17	26.8
2020	608	87,346	17,762	20	23.8

County: county value. Kansas: state value. County Rank: highest county value ranked #1. (\$000): thousands of dollars. Nonmetro Kansas: Kansas total less Metropolitan Areas as defined by the Office of Management and Budget (OMB; released 3/6/2020). Per 1000: For nonmoney amounts, Per 1000=(county value / county population for the same year as the data) x 1000. \$ Per capita=(county value / county population for the same year as the data). Value= . indicates missing or suppressed data or value not calculated.

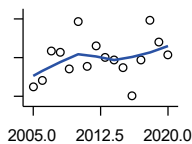
**Crime**

**PROPERTY CRIMES**



Kansas Bureau of Investigation, Note: Data are aggregated from reports by individual police departments and subject to be incomplete.

Year	County	State of Kansas	Non Metro Kansas	County Rank	Per 1000 or \$ Per Capita
2005	943	101,414	29,042	19	34.2
2006	938	99,110	.	18	34.2
2007	1,011	99,632	26,856	18	36.8
2008	928	83,964	24,367	17	34.0
2009	964	87,658	24,825	17	35.0
2010	1,114	87,926	24,133	14	40.3
2011	1,007	86,547	23,274	17	36.4
2012	998	88,707	24,220	16	36.3
2013	856	83,551	22,028	16	31.2
2014	1,105	76,794	20,858	12	40.4
2015	849	77,997	19,138	14	31.3
2016	632	79,549	19,207	19	23.5
2017	802	81,349	19,981	19	30.4
2018	771	79,695	17,769	15	29.6
2019	575	74,314	15,892	18	22.3
2020	505	73,450	15,100	20	19.8



**VIOLENT CRIMES**

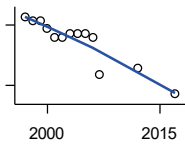
Kansas Bureau of Investigation, Note: Data are aggregated from reports by individual police departments and subject to be incomplete.

Year	County	State of Kansas	Non Metro Kansas	County Rank	Per 1000 or \$ Per Capita
2005	70	10,442	2,588	22	2.5
2006	76	10,922	.	21	2.8
2007	107	11,403	3,065	22	3.9
2008	105	10,032	2,975	19	3.8
2009	88	11,099	2,795	22	3.2
2010	137	10,428	2,776	15	5.0
2011	91	10,091	2,491	19	3.3
2012	112	10,207	2,743	19	4.1
2013	100	9,503	2,460	17	3.6
2014	98	9,529	2,483	18	3.6
2015	90	10,593	2,442	19	3.3
2016	61	11,040	2,358	25	2.3
2017	97	11,742	2,641	19	3.7
2018	138	12,367	2,556	13	5.3
2019	116	12,694	2,655	17	4.5
2020	103	13,896	2,662	18	4.0

County: county value. Kansas: state value. County Rank: highest county value ranked #1. (\$000): thousands of dollars. Nonmetro Kansas: Kansas total less Metropolitan Areas as defined by the Office of Management and Budget (OMB; released 3/6/2020). Per 1000: For nonmoney amounts, Per 1000=(county value / county population for the same year as the data) x 1000. \$ Per capita=(county value / county population for the same year as the data). Value= . indicates missing or suppressed data or value not calculated.

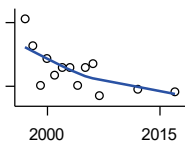
**Agriculture**

**NUMBER OF FARMS**



Kansas Agricultural Statistics, Kansas Farm Facts

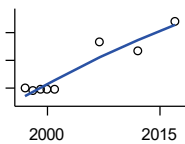
Year	County	State of Kansas	Non Metro Kansas	County Rank	Per 1000 or \$ Per Capita
1997	820	64,000	47,900	24	28.3
1998	810	65,000	48,850	26	28.1
1999	810	65,000	48,850	26	28.4
2000	790	64,000	48,030	26	28.0
2001	770	63,000	47,200	29	27.7
2002	770	63,000	47,200	29	27.8
2003	780	64,500	48,150	29	28.3
2004	780	64,500	48,150	29	28.5
2005	780	64,500	48,150	29	28.3
2006	770	64,000	47,650	29	28.0
2007	678	65,531	48,179	37	24.7
2012	694	61,773	45,655	32	25.2
2017	628	58,569	42,404	33	23.8



**TOTAL ACRES HARVESTED**

Kansas Agricultural Statistics, Kansas Farm Facts

Year	County	State of Kansas	Non Metro Kansas	County Rank	Per 1000 or \$ Per Capita
1997	383,620	22,846,000	19,430,580	6	13,251.1
1998	358,300	22,143,500	18,943,650	7	12,445.3
1999	320,460	21,708,900	18,581,750	12	11,243.8
2000	345,620	21,639,000	18,528,870	8	12,253.9
2001	330,620	21,847,900	18,689,750	9	11,905.2
2002	337,550	20,230,400	17,089,120	6	12,193.0
2003	338,140	21,827,700	18,661,920	8	12,259.9
2004	320,800	20,876,900	17,721,500	7	11,712.3
2005	338,130	21,936,500	18,807,930	7	12,279.6
2006	341,520	21,412,700	18,291,120	7	12,437.0
2007	310,717	19,886,655	17,164,743	8	11,302.1
2012	317,667	21,043,596	17,966,843	9	11,543.1
2017	315,051	21,837,465	18,543,057	10	11,936.5



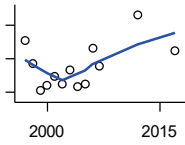
**VALUE: LIVESTOCK AND POULTRY (\$000)**

Kansas Agricultural Statistics, Kansas Farm Facts

Year	County	State of Kansas	Non Metro Kansas	County Rank	Per 1000 or \$ Per Capita
1997	48,193	2,806,445	2,500,305	15	1,664.7
1998	39,110	2,670,432	2,378,007	16	1,358.5
1999	46,506	2,849,061	2,554,528	14	1,631.7
2000	46,158	2,901,469	2,609,032	15	1,636.5
2001	43,683	2,693,274	2,437,187	11	1,573.0
2007	217,537	9,525,971	.	9	7,912.7
2012	182,757	11,476,571	10,883,216	15	6,640.9
2017	290,561	12,322,289	.	10	11,008.6

County: county value. Kansas: state value. County Rank: highest county value ranked #1. (\$000): thousands of dollars. Nonmetro Kansas: Kansas total less Metropolitan Areas as defined by the Office of Management and Budget (OMB; released 3/6/2020). Per 1000: For nonmoney amounts, Per 1000=(county value / county population for the same year as the data) x 1000. \$ Per capita=(county value / county population for the same year as the data). Value= . indicates missing or suppressed data or value not calculated.

**Agriculture**



VALUE:FIELD CROPS (\$000)  
EXCLUDING GOVERNMENT  
PROGRAM PAYMENTS

Kansas Agricultural Statistics, Kansas  
Farm Facts

Year	County	State of Kansas	Non Metro Kansas	County Rank	Per 1000 or \$ Per Capita
1997	81,031	4,474,942	3,800,365	8	2,799.0
1998	67,431	3,594,319	3,124,409	5	2,342.2
1999	51,073	3,118,193	2,728,319	13	1,792.0
2000	54,426	2,915,660	2,540,052	8	1,929.7
2001	59,554	3,283,117	2,857,136	6	2,144.5
2002	54,949	3,011,855	2,560,580	10	1,984.9
2003	62,934	3,623,255	3,150,629	10	2,281.8
2004	53,428	3,445,688	2,896,603	16	1,950.6
2005	55,208	3,678,123	3,182,677	15	2,004.9
2006	76,621	4,308,716	3,684,132	8	2,790.3
2007	65,249	4,887,212	.	24	2,373.4
2012	96,206	6,983,993	6,044,551	24	3,495.9
2017	75,111	6,460,437	.	37	2,845.8

County: county value. Kansas: state value. County Rank: highest county value ranked #1. (\$000): thousands of dollars. Nonmetro Kansas: Kansas total less Metropolitan Areas as defined by the Office of Management and Budget (OMB; released 3/6/2020). Per 1000: For nonmoney amounts, Per 1000=(county value / county population for the same year as the data) x 1000. \$ Per capita=(county value / county population for the same year as the data). Value= . indicates missing or suppressed data or value not calculated.