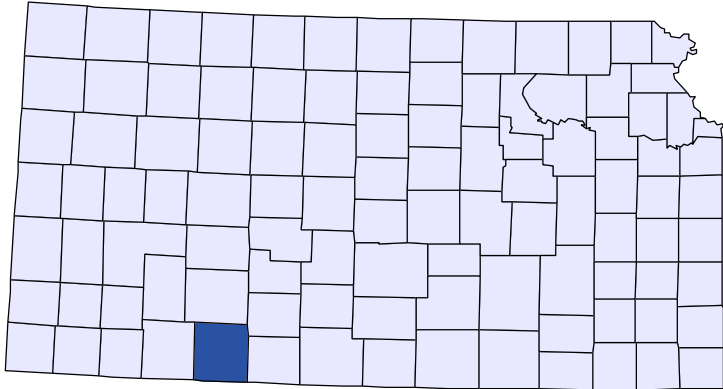




Kansas County Profiles

Clark County



The University
of Kansas

Institute for Policy
& Social Research

KU INSTITUTE FOR POLICY
& SOCIAL RESEARCH

The University of Kansas

1541 Lilac Lane, Rm. 607
Blake Hall
Lawrence, KS 66045-3129

Foreword

The Kansas County Profile Report is published by the Institute for Policy & Social Research (IPSR) at the University of Kansas with support from the KU University Center project.* Special thanks to Xanthippe Wedel, senior research data engineer, who compiles and updates the county profiles and Genna Hurd, associate researcher, who provides editorial review.

County reports can be generated for any county in Kansas by simply clicking on the county from the web site:

<https://ipsr.ku.edu/ksdata/kcced/profiles/>

The Kansas County Profile Report contains 12 categories of information: Population, Vital Statistics and Health, Housing, Education, Social Environment, Business, Employment, Income, Banking, Government, Crime, and Agriculture. For more information about Kansas, please refer to the Kansas Statistical Abstract, available online at:

<https://ipsr.ku.edu/ksdata/ksah/>

We are always looking for ways to improve the Kansas County Profile Report and we welcome your suggestions and comments. Please address any correspondence to the Institute for Policy & Social Research, The University of Kansas, 607 Blake Hall, 1541 Lilac Lane, Lawrence, Kansas 66045-3129, e-mail ipsr@ku.edu or call 785-864-3701.

**The KU University Center is a collaborative effort led by the Institute for Policy & Social Research at the University of Kansas. This project is supported by the Economic Development Administration, U.S. Department of Commerce, through its University Center Program.*

The mission of EDA is to lead the federal economic development agenda by promoting innovation and competitiveness, preparing American regions for growth and success in the worldwide economy.

Kansas County Profiles Table of Contents

Population

Total Population (Decennial Census)	1
Estimated Population (Current Population Reports)	2
Urban Population	2
Rural Population	3
Net Migration (Decade Ending...)	3
Median Age	3

Population (Age Groups)

Population Under 18 (Decennial Census)	3
Population Age 18 and Over (Decennial Census)	4
Population Age 65 and Over (Decennial Census)	4
Population Age 85 and Over (Decennial Census)	4

Vital Statistics and Health

Live Births	5
Deaths	5
Marriages	6
Divorces and Annulments	6
Physicians: M.D. Physicians	7
Physicians: D.O. Physicians	7
Dentists	8
Number of Hospitals	8
Number of Hospital Beds	9

Housing

Housing Units (Decennial Census)	9
Housing Units (Estimated)	10
Occupied Housing Units	10
Owner Occupied Housing Units	10
Renter Occupied Housing Units	11
Vacant Housing Units	11
Median Value (\$): Owner Occupied Housing Units	11
Median Contract Rent (\$)	12
Fair Market Rent: 2 Bedrooms	12

Education

Population Age 25 and Over	13
Percent of Population 25+ with High School or Higher Education	13
Percent of Population 25+ with Bachelors Degree or Higher Education	14
Public School Enrollment (FTE- School Year Beginning...)	14
Pupil/Teacher Ratio (School Year Beginning...)	15

Kansas County Profiles Table of Contents

Social Environment

Total Child Care Facilities	15
Preschools	16
Food Stamp Beneficiaries	16
Percent of Population Receiving Food Stamps	17
Estimated Number of People in Poverty	17
Estimated Percent of People in Poverty	18
Estimated Number of Related Children Age 5 to 17 in Families in Poverty	18
Estimated Percent of Related Children Age 5 to 17 in Families in Poverty	19
Estimated Number Under 18 in Poverty	19
Estimated Percent Under 18 in Poverty	20

Business

Establishments: Total	21
Establishments: 1-19 Employees	22
Establishments: 20-99 Employees	22
Establishments: 100-499 Employees	23
Establishments: 500 or More Employees	23
Establishments: Forestry, Fishing, Hunting, and Ag Support	24
Establishments: Mining	24
Establishments: Utilities	25
Establishments: Construction	25
Establishments: Manufacturing	26
Establishments: Wholesale Trade	26
Establishments: Retail Trade	27
Establishments: Transportation and Warehousing	27
Establishments: Information	28
Establishments: Finance and Insurance	28
Establishments: Real Estate, Rental, and Leasing	29
Establishments: Professional, Scientific, and Technical Services	29
Establishments: Management of Companies and Enterprises	30
Establishments: Admin, Support, Waste Management, and Remediation	30
Establishments: Educational Services	31
Establishments: Health Care and Social Assistance	31
Establishments: Arts, Entertainment, and Recreation	32
Establishments: Accommodation and Food Services	32
Establishments: Other Services	33

Kansas County Profiles Table of Contents

Business	
Total Annual Payroll (\$000)	34
Total Annual Payroll (\$000): Forestry, Fishing, Hunting, and Ag Support	35
Total Annual Payroll (\$000): Mining	35
Total Annual Payroll (\$000): Utilities	36
Total Annual Payroll (\$000): Construction	36
Total Annual Payroll (\$000): Manufacturing	37
Total Annual Payroll (\$000): Wholesale Trade	37
Total Annual Payroll (\$000): Retail Trade	38
Total Annual Payroll (\$000): Transportation and Warehousing	38
Total Annual Payroll (\$000): Information	39
Total Annual Payroll (\$000): Finance and Insurance	39
Total Annual Payroll (\$000): Real Estate, Rental, and Leasing	40
Total Annual Payroll (\$000): Professional, Scientific, and Technical Services	40
Total Annual Payroll (\$000): Management of Companies and Enterprises	41
Total Annual Payroll (\$000): Admin, Support, Waste Management, and Remediation	41
Total Annual Payroll (\$000): Educational Services	42
Total Annual Payroll (\$000): Health Care and Social Assistance	42
Total Annual Payroll (\$000): Arts, Entertainment, and Recreation	43
Total Annual Payroll (\$000): Accommodation and Food Services	43
Total Annual Payroll (\$000): Other Services	44
Nominal Taxable Retail Sales (Million\$)	44
Retail Pull Factor	45
Employment	
Civilian Labor Force (BLS - Place of Residence)	46
Employed (BLS - Place of Residence)	47
Unemployed (BLS - Place of Residence)	48
Unemployment Rate (BLS - Place of Residence)	49
BEA Employment: Total (Place of Work)	49
BEA Employment: Farm	50
BEA Employment: Non-Farm	50
Average Wage per Job (\$)	51
BEA Employment: Forestry, Fishing, Hunting, and Ag Support	51
BEA Employment: Mining	52
BEA Employment: Utilities	52
BEA Employment: Construction	53
BEA Employment: Manufacturing	53
BEA Employment: Wholesale Trade	54
BEA Employment: Retail Trade	54
BEA Employment: Transportation and Warehousing	55
BEA Employment: Information	55
BEA Employment: Finance and Insurance	56
BEA Employment: Real Estate, Rental, and Leasing	56
BEA Employment: Professional and Technical Services	57
BEA Employment: Management of Companies and Enterprises	57
BEA Employment: Administrative and Waste Services	58
BEA Employment: Educational Services	58
BEA Employment: Health Care and Social Assistance	59
BEA Employment: Arts, Entertainment, and Recreation	59
BEA Employment: Government and Government Enterprises	60
BEA Employment: Accommodation and Food Services	60
BEA Employment: Other Services, Except Public Administration	61

Kansas County Profiles Table of Contents

Income

BEA Per Capita Personal Income (\$)	61
Sources of Personal Income: Total Personal Income (\$000)	62
Sources of Personal Income: Wages And Salaries (\$000)	62
Sources of Personal Income: Proprietors-Farm (\$000)	63
Sources of Personal Income: Proprietors-Nonfarm (\$000)	63
Sources of Personal Income: Dividends, Interest, Rent (\$000)	64
Sources of Personal Income: Transfer Payments (\$000)	64
Sources of Personal Income: Less Social Insurance (\$000)	65
HUD Median Family Income	65
HUD 30% Low-To-Medium Income (LMI) Limit - 4 Persons	66
HUD 50% Low-To-Medium Income (LMI) Limit - 4 Persons	66
HUD 80% Low-To-Medium Income (LMI) Limit - 4 Persons	66

Banking

Bank Deposits (\$000)	67
Number of Banks	67
Number of Banking Offices	68

Government

Tangible Assessed Valuation (million\$)	68
Sales Tax Collections	69

Crime

Crime Index Offenses	69
Property Crimes	70
Violent Crimes	70

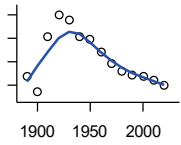
Agriculture

Number of Farms	71
Total Acres Harvested	71
Value: Livestock and Poultry (\$000)	71
Value: Field Crops (\$000) Excluding Government Program Payments	72

Population

DECENNIAL CENSUS:TOTAL POPULATION

U.S. Census Bureau: Decennial Census

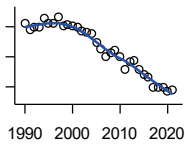


Year	County	State of Kansas	Non Metro Kansas	County Rank	Per 1000 or \$ Per Capita
1890	2,357	1,427,096	968,413	93	.
1900	1,701	1,470,495	981,206	89	.
1910	4,093	1,690,949	1,138,294	89	.
1920	4,989	1,769,257	1,153,525	89	.
1930	4,796	1,880,999	1,180,056	91	.
1940	4,081	1,801,028	1,097,216	91	.
1950	3,946	1,905,299	1,046,823	94	.
1960	3,396	2,178,611	1,021,510	94	.
1970	2,896	2,246,578	958,104	98	.
1980	2,599	2,363,679	980,085	98	.
1990	2,418	2,477,574	939,416	98	.
2000	2,390	2,688,418	959,507	100	.
2010	2,215	2,853,118	929,981	100	.
2020	1,991	2,937,880	892,006	100	.

County: county value. Kansas: state value. County Rank: highest county value ranked #1. (\$000): thousands of dollars. Nonmetro Kansas: Kansas total less Metropolitan Areas as defined by the Office of Management and Budget (OMB; released 3/6/2020). Per 1000: For nonmoney amounts, Per 1000=(county value / county population for the same year as the data) x 1000. \$ Per capita=(county value / county population for the same year as the data). Value= . indicates missing or suppressed data or value not calculated.

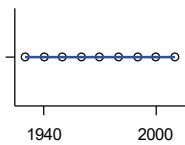
Population

ESTIMATED POPULATION



U.S. Census Bureau

Year	County	State of Kansas	Non Metro Kansas	County Rank	Per 1000 or \$ Per Capita
1990	2,420	2,481,349	938,607	98	.
1991	2,376	2,498,722	938,965	99	.
1992	2,398	2,532,394	942,759	98	.
1993	2,399	2,556,547	947,515	99	.
1994	2,461	2,580,513	952,178	98	.
1995	2,424	2,601,007	957,771	99	.
1996	2,425	2,614,554	959,455	99	.
1997	2,466	2,635,292	960,225	99	.
1998	2,403	2,660,598	960,569	99	.
1999	2,413	2,678,338	960,704	99	.
2000	2,402	2,693,681	959,230	99	.
2001	2,393	2,702,162	952,607	100	.
2002	2,372	2,713,535	945,985	100	.
2003	2,364	2,723,004	941,474	100	.
2004	2,358	2,734,373	937,623	98	.
2005	2,298	2,745,299	932,852	99	.
2006	2,252	2,762,931	928,809	99	.
2007	2,200	2,783,785	927,643	99	.
2008	2,225	2,808,076	926,248	98	.
2009	2,242	2,832,704	926,755	98	.
2010	2,199	2,858,190	930,028	100	.
2011	2,120	2,869,225	927,675	100	.
2012	2,165	2,885,257	925,152	99	.
2013	2,178	2,893,212	922,383	100	.
2014	2,114	2,900,475	917,854	100	.
2015	2,081	2,909,011	912,199	99	.
2016	2,065	2,910,844	905,099	100	.
2017	1,995	2,908,718	897,981	100	.
2018	1,994	2,911,359	892,656	100	.
2019	1,994	2,913,314	887,455	100	.
2020	1,973	2,935,880	889,750	100	.
2021	1,977	2,934,582	886,438	100	.



URBAN POPULATION

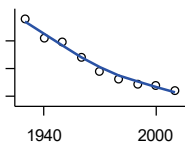
U.S. Census Bureau: Decennial Census

Year	County	State of Kansas	Non Metro Kansas	County Rank	Per 1000 or \$ Per Capita
1930	0	729,834	336,666	105	.
1940	0	753,941	349,228	105	.
1950	0	993,220	398,923	105	.
1960	0	1,328,741	457,447	105	.
1970	0	1,484,870	450,543	105	.
1980	0	1,575,899	474,769	105	.
1990	0	1,712,564	464,205	105	.
2000	0	1,920,081	488,011	105	.
2010	0	2,116,961	485,780	105	.

County: county value. Kansas: state value. County Rank: highest county value ranked #1. (\$000): thousands of dollars. Nonmetro Kansas: Kansas total less Metropolitan Areas as defined by the Office of Management and Budget (OMB; released 3/6/2020). Per 1000: For nonmoney amounts, Per 1000=(county value / county population for the same year as the data) x 1000. \$ Per capita=(county value / county population for the same year as the data). Value= . indicates missing or suppressed data or value not calculated.

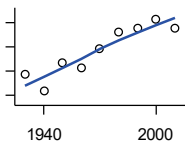
Population

RURAL POPULATION



U.S. Census Bureau

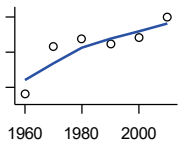
Year	County	State of Kansas	Non Metro Kansas	County Rank	Per 1000 or \$ Per Capita
1930	4,796	1,151,165	843,390	89	.
1940	4,081	1,047,087	747,988	88	.
1950	3,946	912,079	647,900	89	.
1960	3,396	849,870	564,063	87	.
1970	2,896	761,708	509,972	92	.
1980	2,599	787,780	505,873	92	.
1990	2,418	765,010	475,211	92	.
2000	2,390	768,337	471,900	94	.
2010	2,215	736,157	444,201	95	.



NET MIGRATION: DECADE ENDING...

calculated by the Institute for Policy and Social Research, The University of Kansas

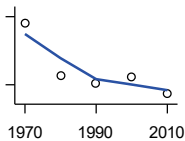
Year	County	State of Kansas	Non Metro Kansas	County Rank	Per 1000 or \$ Per Capita
1930	-1,059	-66,132	-101,869	53	-220.8
1940	-1,420	-192,649	-166,022	35	-348.0
1950	-832	-84,329	-158,379	35	-210.8
1960	-938	-38,999	-146,640	32	-276.2
1970	-528	-119,662	-105,116	33	-182.3
1980	-199	-21,983	-6,184	56	-76.6
1990	-127	-61,835	-79,274	15	-52.5
2000	83	68,960	4,247	45	34.7
2010	-120	5,578	-50,648	27	-54.2



MEDIAN AGE

U.S. Census Bureau: Decennial Census

Year	County	State of Kansas	Non Metro Kansas	County Rank	Per 1000 or \$ Per Capita
1960	34.0	26.9	.	50	.
1970	40.8	28.7	.	21	.
1980	41.9	30.1	.	8	.
1990	41.1	32.9	.	14	.
2000	42.1	35.2	.	25	.
2010	44.9	36.0	.	34	.



POPULATION UNDER 18 (DECENNIAL CENSUS)

U.S. Census Bureau: Decennial Census

Year	County	State of Kansas	Non Metro Kansas	County Rank	Per 1000 or \$ Per Capita
1970	872	746,354	306,227	102	.
1980	642	649,035	263,919	101	.
1990	606	661,614	250,107	102	.
2000	635	712,993	250,757	100	.
2010	559	726,939	229,213	96	.

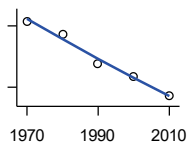
County: county value. Kansas: state value. County Rank: highest county value ranked #1. (\$000): thousands of dollars. Nonmetro Kansas: Kansas total less Metropolitan Areas as defined by the Office of Management and Budget (OMB; released 3/6/2020). Per 1000: For nonmoney amounts, Per 1000=(county value / county population for the same year as the data) x 1000. \$ Per capita=(county value / county population for the same year as the data). Value= . indicates missing or suppressed data or value not calculated.

Population

**POPULATION AGE 18 AND OVER
(DECENNIAL CENSUS)**

U.S. Census Bureau: Decennial Census

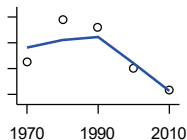
Year	County	State of Kansas	Non Metro Kansas	County Rank	Per 1000 or \$ Per Capita
1970	2,024	1,500,224	654,288	96	.
1980	1,961	1,714,282	716,684	98	.
1990	1,812	1,815,960	689,309	98	.
2000	1,755	1,975,425	709,154	99	.
2010	1,656	2,126,179	700,768	98	.



**POPULATION AGE 65 AND OVER
(DECENNIAL CENSUS)**

U.S. Census Bureau: Decennial Census

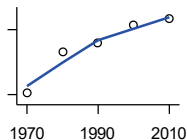
Year	County	State of Kansas	Non Metro Kansas	County Rank	Per 1000 or \$ Per Capita
1970	531	266,201	149,049	89	.
1980	596	306,263	164,932	90	.
1990	583	342,571	168,579	94	.
2000	521	356,229	161,769	94	.
2010	487	376,116	154,214	95	.



**POPULATION AGE 85 AND OVER
(DECENNIAL CENSUS)**

U.S. Census Bureau: Decennial Census

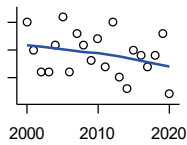
Year	County	State of Kansas	Non Metro Kansas	County Rank	Per 1000 or \$ Per Capita
1970	42	23,899	13,698	93	.
1980	80	33,455	18,804	84	.
1990	88	42,241	22,970	91	.
2000	104	51,770	26,644	88	.
2010	110	59,318	26,197	88	.



County: county value. Kansas: state value. County Rank: highest county value ranked #1. (\$000): thousands of dollars. Nonmetro Kansas: Kansas total less Metropolitan Areas as defined by the Office of Management and Budget (OMB; released 3/6/2020). Per 1000: For nonmoney amounts, Per 1000=(county value / county population for the same year as the data) x 1000. \$ Per capita=(county value / county population for the same year as the data). Value= . indicates missing or suppressed data or value not calculated.

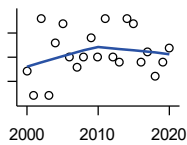
Vital Statistics and Health

BIRTHS (LIVE)



Kansas Department of Health and Environment

Year	County	State of Kansas	Non Metro Kansas	County Rank	Per 1000 or \$ Per Capita
2000	30	39,654	12,980	94	12.6
2001	25	38,832	12,527	96	10.4
2002	21	39,338	12,476	100	8.9
2003	21	39,353	12,342	102	8.9
2004	26	39,553	12,398	96	11.0
2005	31	39,701	12,382	89	13.5
2006	21	40,896	12,726	99	9.3
2007	28	41,951	12,990	94	12.7
2008	26	41,815	12,970	92	11.7
2009	23	41,388	12,949	100	10.3
2010	27	40,439	12,200	93	12.2
2011	22	39,628	12,098	99	10.4
2012	30	40,304	12,217	92	13.9
2013	20	38,805	11,877	105	9.2
2014	18	39,193	12,052	104	8.5
2015	25	39,126	11,836	95	12.0
2016	24	38,048	11,467	98	11.6
2017	22	36,464	10,968	98	11.0
2018	24	36,268	10,826	97	12.0
2019	28	35,395	10,506	90	14.0
2020	17	34,368	10,222	102	8.5



DEATHS

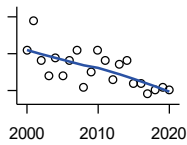
Kansas Department of Health and Environment

Year	County	State of Kansas	Non Metro Kansas	County Rank	Per 1000 or \$ Per Capita
2000	27	24,676	11,175	99	11.3
2001	22	24,590	10,807	100	9.2
2002	38	24,968	11,079	93	16.0
2003	22	24,417	10,615	101	9.3
2004	33	23,720	10,369	93	14.0
2005	37	24,632	10,599	91	16.1
2006	30	24,489	10,538	98	13.3
2007	28	24,413	10,601	99	12.7
2008	30	24,896	10,593	99	13.5
2009	34	23,997	9,938	91	15.2
2010	30	24,428	10,105	94	13.5
2011	38	25,114	10,520	90	17.9
2012	30	25,084	10,259	94	13.9
2013	29	25,347	10,249	97	13.3
2014	38	25,731	10,275	87	18.0
2015	37	26,611	10,539	89	17.8
2016	29	26,129	10,231	95	14.0
2017	31	26,725	10,452	91	15.5
2018	26	27,213	10,389	99	13.0
2019	29	27,312	10,569	94	14.5
2020	32	31,667	11,850	96	16.1

County: county value. Kansas: state value. County Rank: highest county value ranked #1. (\$000): thousands of dollars. Nonmetro Kansas: Kansas total less Metropolitan Areas as defined by the Office of Management and Budget (OMB; released 3/6/2020). Per 1000: For nonmoney amounts, Per 1000=(county value / county population for the same year as the data) x 1000. \$ Per capita=(county value / county population for the same year as the data). Value= . indicates missing or suppressed data or value not calculated.

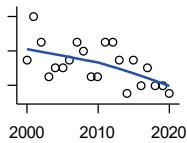
Vital Statistics and Health

MARRIAGES



Kansas Department of Health and Environment

Year	County	State of Kansas	Non Metro Kansas	County Rank	Per 1000 or \$ Per Capita
2000	16	20,426	7,333	100	6.7
2001	24	20,457	7,441	86	10.0
2002	13	19,783	6,794	103	5.5
2003	9	18,722	6,469	104	3.8
2004	14	19,174	6,756	97	5.9
2005	9	18,745	6,481	105	3.9
2006	13	18,836	6,433	97	5.8
2007	16	18,910	6,464	92	7.3
2008	6	18,717	6,283	103	2.7
2009	10	18,268	6,015	104	4.5
2010	16	18,150	5,925	88	7.2
2011	13	17,897	5,977	97	6.1
2012	8	18,154	5,752	105	3.7
2013	12	17,328	5,533	100	5.5
2014	13	17,655	5,535	93	6.1
2015	7	17,595	5,400	103	3.4
2016	7	17,948	5,340	102	3.4
2017	4	17,274	5,163	104	2.0
2018	5	16,362	4,999	104	2.5
2019	6	15,403	4,650	103	3.0
2020	5	14,038	4,066	103	2.5



DIVORCES AND ANNULMENTS

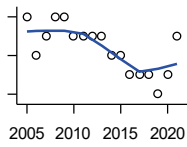
Kansas Department of Health and Environment

Year	County	State of Kansas	Non Metro Kansas	County Rank	Per 1000 or \$ Per Capita
2000	5	10,105	4,000	99	2.1
2001	10	9,885	3,818	83	4.2
2002	7	9,645	3,716	96	3.0
2003	3	8,644	3,464	102	1.3
2004	4	8,759	3,506	103	1.7
2005	4	8,476	3,311	103	1.7
2006	5	9,145	3,387	101	2.2
2007	7	9,347	3,402	93	3.2
2008	6	9,818	3,655	101	2.7
2009	3	10,333	3,463	102	1.3
2010	3	10,579	3,530	103	1.4
2011	7	10,445	3,347	94	3.3
2012	7	9,782	3,040	91	3.2
2013	5	9,085	2,973	98	2.3
2014	1	8,441	2,682	105	0.5
2015	5	8,036	2,704	95	2.4
2016	2	7,198	2,424	103	1.0
2017	4	6,494	2,315	101	2.0
2018	2	6,538	2,269	105	1.0
2019	2	6,398	2,357	105	1.0
2020	1	5,169	1,866	103	0.5

County: county value. Kansas: state value. County Rank: highest county value ranked #1. (\$000): thousands of dollars. Nonmetro Kansas: Kansas total less Metropolitan Areas as defined by the Office of Management and Budget (OMB; released 3/6/2020). Per 1000: For nonmoney amounts, Per 1000=(county value / county population for the same year as the data) x 1000. \$ Per capita=(county value / county population for the same year as the data). Value= . indicates missing or suppressed data or value not calculated.

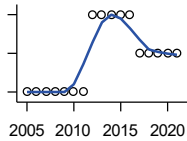
Vital Statistics and Health

PHYSICIANS: M.D. PHYSICIANS



Kansas Department of Health and Environment (1981-2005,2010-);Kansas Health Policy Authority (2006-2009)

Year	County	State of Kansas	Non Metro Kansas	County Rank	Per 1000 or \$ Per Capita
2005	4	4,241	912	58	1.7
2006	2	4,310	953	86	0.9
2007	3	5,309	1,046	74	1.4
2008	4	5,110	1,016	61	1.8
2009	4	5,249	996	62	1.8
2010	3	5,192	979	73	1.4
2011	3	5,243	983	73	1.4
2012	3	5,693	1,033	72	1.4
2013	3	6,106	1,071	71	1.4
2014	2	5,839	951	78	0.9
2015	2	5,703	855	77	1.0
2016	1	4,278	643	85	0.5
2017	1	6,332	1,047	99	0.5
2018	1	6,079	1,065	98	0.5
2019	0	6,435	1,036	105	0.0
2020	1	6,668	1,045	98	0.5
2021	3	6,745	1,042	72	1.5



PHYSICIANS: D.O. PHYSICIANS

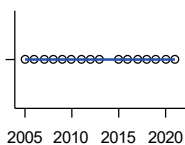
Kansas Department of Health and Environment (1981-2005,2010-);Kansas Health Policy Authority (2006-2009)

Year	County	State of Kansas	Non Metro Kansas	County Rank	Per 1000 or \$ Per Capita
2005	0	553	174	105	0.0
2006	0	508	171	105	0.0
2007	0	569	169	105	0.0
2008	0	558	166	105	0.0
2009	0	564	160	105	0.0
2010	0	583	169	105	0.0
2011	0	502	152	105	0.0
2012	2	718	200	46	0.9
2013	2	829	210	44	0.9
2014	2	817	189	47	0.9
2015	2	819	190	47	1.0
2016	2	632	136	34	1.0
2017	1	579	129	57	0.5
2018	1	871	164	64	0.5
2019	1	951	212	65	0.5
2020	1	1,018	204	66	0.5
2021	1	1,095	217	74	0.5

County: county value. Kansas: state value. County Rank: highest county value ranked #1. (\$000): thousands of dollars. Nonmetro Kansas: Kansas total less Metropolitan Areas as defined by the Office of Management and Budget (OMB; released 3/6/2020). Per 1000: For nonmoney amounts, Per 1000=(county value / county population for the same year as the data) x 1000. \$ Per capita=(county value / county population for the same year as the data). Value= . indicates missing or suppressed data or value not calculated.

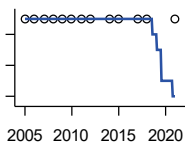
Vital Statistics and Health

DENTISTS



Kansas Department of Health and Environment (1981-2006,2010-); Kansas Health Policy Authority (2007-2009)

Year	County	State of Kansas	Non Metro Kansas	County Rank	Per 1000 or \$ Per Capita
2005	0	1,347	363	105	0.0
2006	0	1,381	361	105	0.0
2007	0	1,335	350	105	0.0
2008	0	1,392	353	105	0.0
2009	0	1,353	350	105	0.0
2010	0	1,401	365	105	0.0
2011	0	1,338	346	105	0.0
2012	0	1,434	392	105	0.0
2013	0	1,212	328	105	0.0
2015	0	1,240	327	105	0.0
2016	0	1,456	350	105	0.0
2017	0	1,467	350	105	0.0
2018	0	1,604	359	105	0.0
2019	0	1,646	355	105	0.0
2020	0	1,646	355	105	0.0
2021	0	1,688	362	105	0.0



NUMBER OF HOSPITALS

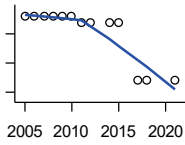
American Hospital Association, American Hospital Association Guide to the Health Care Field

Year	County	State of Kansas	Non Metro Kansas	County Rank	Per 1000 or \$ Per Capita
2005	2	158	105	31	.
2006	2	158	105	31	.
2007	2	159	104	32	.
2008	2	159	104	32	.
2009	2	158	105	32	.
2010	2	158	104	31	.
2011	2	158	103	31	.
2012	2	157	103	31	.
2014	2	156	.	31	.
2015	2	155	103	32	.
2017	2	157	102	30	.
2018	2	154	99	29	.
2021	2	151	.	27	.

County: county value. Kansas: state value. County Rank: highest county value ranked #1. (\$000): thousands of dollars. Nonmetro Kansas: Kansas total less Metropolitan Areas as defined by the Office of Management and Budget (OMB; released 3/6/2020). Per 1000: For nonmoney amounts, Per 1000=(county value / county population for the same year as the data) x 1000. \$ Per capita=(county value / county population for the same year as the data). Value= . indicates missing or suppressed data or value not calculated.

Vital Statistics and Health

NUMBER OF HOSPITAL BEDS

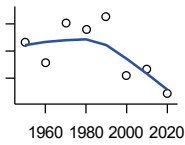


Kansas Department of Health and Environment

Year	County	State of Kansas	Non Metro Kansas	County Rank	Per 1000 or \$ Per Capita
2005	101	12,389	5,687	25	44.0
2006	101	11,992	5,514	26	44.8
2007	101	12,171	5,637	27	45.9
2008	101	12,332	5,700	27	45.4
2009	101	12,283	5,652	27	45.0
2010	101	12,218	5,521	25	45.6
2011	99	12,182	5,335	26	46.7
2012	99	12,002	5,355	26	45.7
2014	99	12,034	.	26	46.8
2015	99	11,926	5,330	26	47.6
2017	79	11,491	4,825	28	39.6
2018	79	11,448	4,583	30	39.6
2021	79	11,199	.	26	40.0

Housing

HOUSING UNITS (DECENNIAL)



U.S. Census Bureau: Decennial Census

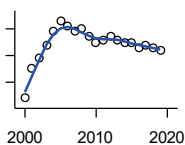
Year	County	State of Kansas	Non Metro Kansas	County Rank	Per 1000 or \$ Per Capita
1950	1,230	586,650	328,210	93	311.7
1960	1,156	672,899	329,380	94	340.4
1970	1,301	789,735	363,824	94	449.2
1980	1,278	955,207	416,877	98	491.7
1990	1,327	1,044,112	417,062	96	548.8
2000	1,111	1,131,395	422,218	99	464.9
2010	1,135	1,233,215	424,050	98	512.4
2020	1,042	1,275,689	413,120	98	523.4

County: county value. Kansas: state value. County Rank: highest county value ranked #1. (\$000): thousands of dollars. Nonmetro Kansas: Kansas total less Metropolitan Areas as defined by the Office of Management and Budget (OMB; released 3/6/2020). Per 1000: For nonmoney amounts, Per 1000=(county value / county population for the same year as the data) x 1000. \$ Per capita=(county value / county population for the same year as the data). Value= . indicates missing or suppressed data or value not calculated.

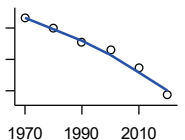
Housing

HOUSING UNITS (ESTIMATED)

Year	County	State of Kansas	Non Metro Kansas	County Rank	Per 1000 or \$ Per Capita
2000	1,114	1,134,529	422,560	99	466.1
2001	1,125	1,146,858	423,876	98	470.1
2002	1,129	1,160,129	425,089	98	476.0
2003	1,134	1,171,620	425,936	98	479.7
2004	1,139	1,184,702	426,593	98	483.0
2005	1,143	1,195,791	426,964	98	497.4
2006	1,141	1,206,692	426,713	98	506.7
2007	1,139	1,217,608	426,090	98	517.7
2008	1,140	1,225,625	425,768	98	512.4
2009	1,137	1,230,552	424,776	98	507.1
2010	1,135	1,234,456	424,174	98	512.4
2011	1,136	1,238,052	424,549	98	535.8
2012	1,137	1,241,992	425,116	98	525.2
2013	1,136	1,246,675	425,699	98	521.6
2014	1,135	1,253,284	426,269	98	536.9
2015	1,135	1,258,999	426,844	98	545.4
2016	1,133	1,265,684	427,465	98	548.7
2017	1,134	1,273,536	427,746	98	568.4
2018	1,133	1,280,649	428,099	98	568.2
2019	1,132	1,288,401	428,495	98	567.7



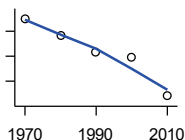
U.S. Census Bureau



OCCUPIED HOUSING UNITS

Year	County	State of Kansas	Non Metro Kansas	County Rank	Per 1000 or \$ Per Capita
1970	1,081	727,364	326,494	96	373.3
1980	1,049	872,239	371,693	98	403.6
1990	1,006	944,726	365,901	97	416.0
2000	979	1,037,891	375,313	98	409.6
2010	923	1,112,096	370,269	98	416.7
2020	836	1,151,360	356,330	99	419.9

U.S. Census Bureau: Decennial Census



OWNER OCCUPIED HOUSING UNITS

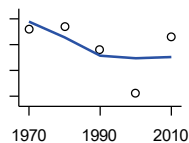
Year	County	State of Kansas	Non Metro Kansas	County Rank	Per 1000 or \$ Per Capita
1970	825	502,585	236,338	94	284.9
1980	792	612,433	277,096	97	304.7
1990	758	641,762	263,099	97	313.5
2000	748	718,703	271,350	97	313.0
2010	670	753,532	261,763	99	302.5

U.S. Census Bureau: Decennial Census

County: county value. Kansas: state value. County Rank: highest county value ranked #1. (\$000): thousands of dollars. Nonmetro Kansas: Kansas total less Metropolitan Areas as defined by the Office of Management and Budget (OMB; released 3/6/2020). Per 1000: For nonmoney amounts, Per 1000=(county value / county population for the same year as the data) x 1000. \$ Per capita=(county value / county population for the same year as the data). Value= . indicates missing or suppressed data or value not calculated.

Housing

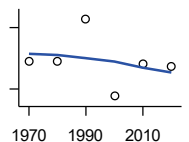
RENTER OCCUPIED HOUSING UNITS



U.S. Census Bureau: Decennial Census

Year	County	State of Kansas	Non Metro Kansas	County Rank	Per 1000 or \$ Per Capita
1970	256	224,779	90,156	100	88.4
1980	257	259,806	94,597	97	98.9
1990	248	302,964	102,802	100	102.6
2000	231	319,188	103,963	99	96.7
2010	253	358,564	108,506	96	114.2

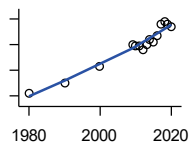
VACANT HOUSING UNITS



U.S. Census Bureau: Decennial Census

Year	County	State of Kansas	Non Metro Kansas	County Rank	Per 1000 or \$ Per Capita
1970	219	60,058	35,954	84	75.6
1980	219	77,912	41,584	90	84.3
1990	321	99,386	51,161	80	132.8
2000	132	93,309	46,904	102	55.2
2010	212	121,119	53,781	92	95.7
2020	206	124,329	56,790	91	103.5

MEDIAN VALUE (\$): OWNER OCCUPIED HOUSING UNITS



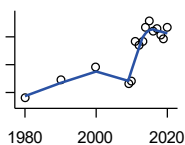
U.S. Census Bureau, Decennial Census (- 2000), (2009 -) American Community Survey five-year average ending in year shown.

Year	County	State of Kansas	Non Metro Kansas	County Rank	Per 1000 or \$ Per Capita
1980	21,600	37,800	.	92	.
1990	29,500	52,200	.	62	.
2000	42,600	83,500	.	80	.
2009	59,800	118,500	.	82	.
2010	59,100	122,600	.	84	.
2011	59,100	125,500	.	88	.
2012	56,400	127,400	.	92	.
2013	59,800	128,400	.	91	.
2014	63,500	129,400	.	89	.
2015	62,200	132,000	.	93	.
2016	67,300	135,300	.	90	.
2017	76,400	139,200	.	77	.
2018	77,700	145,400	.	81	.
2019	75,900	151,900	.	84	.
2020	74,300	157,600	.	91	.

County: county value. Kansas: state value. County Rank: highest county value ranked #1. (\$000): thousands of dollars. Nonmetro Kansas: Kansas total less Metropolitan Areas as defined by the Office of Management and Budget (OMB; released 3/6/2020). Per 1000: For nonmoney amounts, Per 1000=(county value / county population for the same year as the data) x 1000. \$ Per capita=(county value / county population for the same year as the data). Value= . indicates missing or suppressed data or value not calculated.

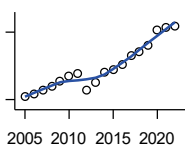
Housing

MEDIAN CONTRACT RENT (\$)



U.S. Census Bureau, Decennial Census (- 2000), (2009 -) American Community Survey five-year average ending in year shown.

Year	County	State of Kansas	Non Metro Kansas	County Rank	Per 1000 or \$ Per Capita
1980	159	219	.	63	.
1990	288	372	.	39	.
2000	386	498	.	45	.
2009	268	491	.	87	.
2010	286	507	.	82	.
2011	565	699	.	42	.
2012	539	715	.	59	.
2013	563	732	.	55	.
2014	670	748	.	24	.
2015	715	757	.	16	.
2016	643	775	.	39	.
2017	655	801	.	40	.
2018	614	831	.	69	.
2019	589	850	.	84	.
2020	671	863	.	47	.



FAIR MARKET RENT: 2 BEDROOMS

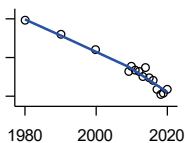
U.S. Department of Housing and Urban Development (HUD)

Year	County	State of Kansas	Non Metro Kansas	County Rank	Per 1000 or \$ Per Capita
2005	516	.	.	39	.
2006	527	.	.	41	.
2007	543	.	.	40	.
2008	558	628	.	41	.
2009	582	653	.	41	.
2010	606	678	.	43	.
2011	616	684	.	43	.
2012	540	660	.	105	.
2013	577	712	.	105	.
2014	622	746	.	105	.
2015	634	756	.	105	.
2016	658	781	.	105	.
2017	694	811	.	37	.
2018	712	815	.	37	.
2019	744	828	.	24	.
2020	812	855	.	13	.
2021	820	874	.	13	.
2022	828	879	.	20	.

County: county value. Kansas: state value. County Rank: highest county value ranked #1. (\$000): thousands of dollars. Nonmetro Kansas: Kansas total less Metropolitan Areas as defined by the Office of Management and Budget (OMB; released 3/6/2020). Per 1000: For nonmoney amounts, Per 1000=(county value / county population for the same year as the data) x 1000. \$ Per capita=(county value / county population for the same year as the data). Value= . indicates missing or suppressed data or value not calculated.

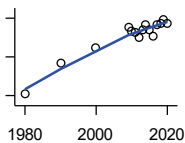
Education

POPULATION AGE 25+



U.S. Census Bureau, Decennial Census (- 2000), (2009 -) American Community Survey five-year average ending in year shown.

Year	County	State of Kansas	Non Metro Kansas	County Rank	Per 1000 or \$ Per Capita
1980	1,793	1,388,102	596,639	.	.
1990	1,717	1,565,936	608,745	.	.
2000	1,640	1,701,207	618,131	.	.
2009	1,527	1,775,427	600,188	.	.
2010	1,557	1,802,904	608,716	.	.
2011	1,538	1,822,400	610,386	.	.
2012	1,526	1,838,079	611,103	.	.
2013	1,502	1,850,010	610,374	.	.
2014	1,548	1,861,894	609,612	.	.
2015	1,492	1,869,698	606,967	.	.
2016	1,485	1,878,495	604,563	.	.
2017	1,433	1,886,741	601,076	.	.
2018	1,412	1,894,675	598,487	.	.
2019	1,413	1,902,279	595,501	.	.
2020	1,433	1,911,990	593,923	.	.



PERCENT HS GRADUATE OR HIGHER AGE 25+

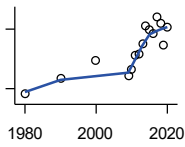
U.S. Census Bureau, Decennial Census (- 2000), (2009 -) American Community Survey five-year average ending in year shown.

Year	County	State of Kansas	Non Metro Kansas	County Rank	Per 1000 or \$ Per Capita
1980	75.3	73.3	.	10	.
1990	83.5	81.3	.	9	.
2000	87.4	86.0	.	17	.
2009	92.7	89.0	.	12	.
2010	91.7	89.2	.	17	.
2011	91.4	89.5	.	21	.
2012	90.1	89.7	.	42	.
2013	92.1	89.8	.	21	.
2014	93.2	90.0	.	14	.
2015	91.9	90.2	.	35	.
2016	90.4	90.3	.	63	.
2017	93.4	90.5	.	17	.
2018	93.6	90.7	.	19	.
2019	94.8	91.0	.	11	.
2020	93.7	91.4	.	28	.

County: county value. Kansas: state value. County Rank: highest county value ranked #1. (\$000): thousands of dollars. Nonmetro Kansas: Kansas total less Metropolitan Areas as defined by the Office of Management and Budget (OMB; released 3/6/2020). Per 1000: For nonmoney amounts, Per 1000=(county value / county population for the same year as the data) x 1000. \$ Per capita=(county value / county population for the same year as the data). Value= . indicates missing or suppressed data or value not calculated.

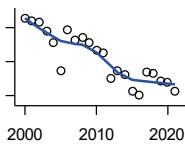
Education

PERCENT BACHELORS DEGREE OR HIGHER AGE 25+



U.S. Census Bureau, Decennial Census (- 2000), (2009 -) American Community Survey five-year average ending in year shown.

Year	County	State of Kansas	Non Metro Kansas	County Rank	Per 1000 or \$ Per Capita
1980	13.6	17.0	.	28	.
1990	17.5	21.1	.	16	.
2000	22.1	25.8	.	15	.
2009	18.3	28.8	.	59	.
2010	19.7	29.3	.	45	.
2011	23.3	29.7	.	18	.
2012	23.6	30.0	.	20	.
2013	26.2	30.3	.	13	.
2014	30.7	30.7	.	6	.
2015	29.7	31.0	.	6	.
2016	28.8	31.6	.	10	.
2017	33.1	32.3	.	6	.
2018	31.5	32.9	.	7	.
2019	26.1	33.4	.	24	.
2020	30.4	33.9	.	13	.



PUBLIC SCHOOL ENROLLMENT (FTE) SCHOOL YEAR BEGINNING...

Kansas State Department of Education

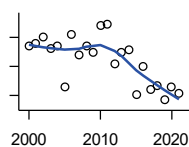
Year	County	State of Kansas	Non Metro Kansas	County Rank	Per 1000 or \$ Per Capita
2000	511.1	448,150.8	166,722.5	92	213.8
2001	507.3	447,047.1	164,365.0	92	212.0
2002	507.0	444,860.3	161,555.4	90	213.7
2003	495.5	443,620.6	159,130.2	89	209.6
2004	482.5	441,957.2	156,566.3	88	204.6
2005	448.5	442,708.4	155,197.2	92	195.2
2006	496.8	444,878.7	153,842.3	84	220.6
2007	485.5	446,831.3	152,337.1	84	220.7
2008	488.2	447,730.0	150,572.7	81	219.4
2009	482.1	453,202.5	151,246.8	82	215.0
2010	473.3	455,405.0	151,023.8	83	213.7
2011	470.9	456,000.5	150,257.9	82	222.1
2012	440.7	458,496.4	150,463.0	89	203.6
2013	449.0	461,950.0	150,420.9	86	206.2
2014	445.0	464,395.4	150,499.4	83	210.5
2015	425.6	463,504.0	149,539.3	88	204.5
2016	421.1	459,920.3	147,293.5	88	203.9
2017	447.0	477,977.9	152,096.3	86	224.1
2018	446.3	476,481.7	150,456.8	85	223.8
2019	437.2	476,525.1	150,045.2	86	219.3
2020	435.3	462,088.0	146,369.6	85	218.6
2021	425.3	463,652.4	147,500.4	87	215.1

County: county value. Kansas: state value. County Rank: highest county value ranked #1. (\$000): thousands of dollars. Nonmetro Kansas: Kansas total less Metropolitan Areas as defined by the Office of Management and Budget (OMB; released 3/6/2020). Per 1000: For nonmoney amounts, Per 1000=(county value / county population for the same year as the data) x 1000. \$ Per capita=(county value / county population for the same year as the data). Value= . indicates missing or suppressed data or value not calculated.

Education

PUPIL/TEACHER RATIO SCHOOL YEAR BEGINNING...

Kansas State Department of Education

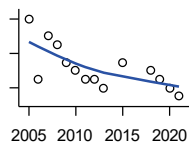


Year	County	State of Kansas	Non Metro Kansas	County Rank	Per 1000 or \$ Per Capita
2000	12.2	15.4	13.9	72	.
2001	12.3	15.3	13.8	70	.
2002	12.5	15.4	13.9	65	.
2003	12.1	15.5	13.8	75	.
2004	12.2	15.3	13.6	71	.
2005	10.8	15.0	13.4	93	.
2006	12.6	14.7	13.2	45	.
2007	11.9	14.6	13.1	63	.
2008	12.2	14.4	12.9	49	.
2009	12.0	14.8	13.2	65	.
2010	12.9	15.2	13.6	49	.
2011	13.0	15.1	13.5	49	.
2012	11.6	15.1	13.5	76	.
2013	12.0	15.1	13.5	71	.
2014	12.1	15.0	13.6	64	.
2015	10.5	15.2	13.9	96	.
2016	11.5	15.1	13.7	77	.
2017	10.7	15.5	13.9	92	.
2018	10.8	15.3	13.8	90	.
2019	10.3	15.2	13.7	96	.
2020	10.8	14.7	13.4	84	.
2021	10.6	14.8	13.5	88	.

Social Environment

CHILD CARE FACILITIES: TOTAL CHILD CARE FACILITIES

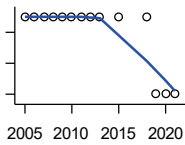
Kansas Department of Health and Environment, Bureau of Adult and Child Care



Year	County	State of Kansas	Non Metro Kansas	County Rank	Per 1000 or \$ Per Capita
2005	12	8,258	3,378	84	5.2
2006	5	8,442	3,429	104	2.2
2007	10	8,241	3,317	87	4.5
2008	9	8,011	3,150	92	4.0
2009	7	7,853	3,066	95	3.1
2010	6	7,354	2,858	98	2.7
2011	5	6,835	2,623	100	2.4
2012	5	6,346	2,409	98	2.3
2013	4	5,754	2,179	100	1.8
2015	7	5,289	2,146	87	3.4
2018	6	4,607	1,904	90	3.0
2019	5	4,287	1,774	92	2.5
2020	4	4,274	1,798	96	2.0
2021	3	4,002	1,700	99	1.5

County: county value. Kansas: state value. County Rank: highest county value ranked #1. (\$000): thousands of dollars. Nonmetro Kansas: Kansas total less Metropolitan Areas as defined by the Office of Management and Budget (OMB; released 3/6/2020). Per 1000: For nonmoney amounts, Per 1000=(county value / county population for the same year as the data) x 1000. \$ Per capita=(county value / county population for the same year as the data). Value= . indicates missing or suppressed data or value not calculated.

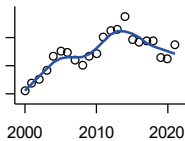
Social Environment



**CHILD CARE FACILITIES:
PRESCHOOLS**

Kansas Department of Health and Environment, Bureau of Adult and Child Care

Year	County	State of Kansas	Non Metro Kansas	County Rank	Per 1000 or \$ Per Capita
2005	2	243	140	46	0.9
2006	2	221	127	42	0.9
2007	2	208	119	42	0.9
2008	2	204	114	46	0.9
2009	2	194	107	42	0.9
2010	2	194	112	44	0.9
2011	2	209	123	47	0.9
2012	2	201	121	47	0.9
2013	2	140	84	35	0.9
2015	2	185	113	42	1.0
2018	2	150	94	41	1.0
2019	1	134	83	56	0.5
2020	1	126	78	55	0.5
2021	1	120	74	53	0.5



FOOD STAMP BENEFICIARIES

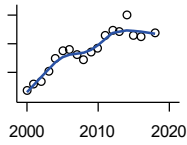
Kansas Social and Rehabilitation Services

Year	County	State of Kansas	Non Metro Kansas	County Rank	Per 1000 or \$ Per Capita
2000	65	110,619	44,825	96	27.2
2001	76	117,241	46,741	96	31.8
2002	80	131,726	52,342	95	33.7
2003	94	155,908	61,280	93	39.8
2004	113	167,971	65,852	91	47.9
2005	120	175,710	67,261	90	52.2
2006	119	182,821	67,487	90	52.8
2007	108	184,035	66,979	92	49.1
2008	101	187,377	67,160	95	45.4
2009	113	208,007	73,637	90	50.4
2010	117	259,609	90,919	96	52.8
2011	141	296,542	101,155	94	66.5
2012	150	303,257	102,478	92	69.3
2013	151	316,424	105,345	91	69.3
2014	170	301,377	100,761	90	80.4
2015	138	277,614	93,353	94	66.3
2016	134	258,412	88,343	94	64.9
2017	135	239,592	82,070	94	67.7
2018	136	219,738	75,208	88	68.2
2019	111	205,261	69,899	94	55.7
2020	110	198,457	66,721	91	55.2
2021	130	203,424	68,883	90	65.8

County: county value. Kansas: state value. County Rank: highest county value ranked #1. (\$000): thousands of dollars. Nonmetro Kansas: Kansas total less Metropolitan Areas as defined by the Office of Management and Budget (OMB; released 3/6/2020). Per 1000: For nonmoney amounts, Per 1000=(county value / county population for the same year as the data) x 1000. \$ Per capita=(county value / county population for the same year as the data). Value= . indicates missing or suppressed data or value not calculated.

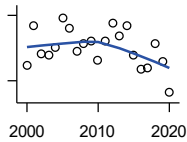
Social Environment

PERCENT OF POPULATION RECEIVING FOOD STAMPS



U.S. Dept. of Agriculture Food and Nutrition Service (1990-1997); Kansas Social and Rehabilitation Services (1998-)

Year	County	State of Kansas	Non Metro Kansas	County Rank	Per 1000 or \$ Per Capita
2000	2.7	4.1	.	81	.
2001	3.2	4.3	.	68	.
2002	3.4	4.9	.	74	.
2003	4.1	5.7	.	68	.
2004	5.0	6.2	.	58	.
2005	5.5	6.4	.	53	.
2006	5.6	6.6	.	52	.
2007	5.2	6.6	.	54	.
2008	4.9	6.7	.	59	.
2009	5.4	7.4	.	55	.
2010	5.7	9.1	.	82	.
2011	6.6	10.3	.	70	.
2012	6.9	10.5	.	64	.
2013	6.9	10.9	.	64	.
2014	8.0	10.4	.	46	.
2015	6.6	9.6	.	63	.
2016	6.5	8.9	.	58	.
2018	6.8	7.5	.	43	.



ESTIMATED NUMBER OF PEOPLE IN POVERTY

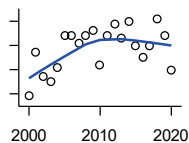
U.S. Census Bureau, Small Area Income and Poverty Estimates

Year	County	State of Kansas	Non Metro Kansas	County Rank	Per 1000 or \$ Per Capita
2000	234	235,087	98,984	100	97.9
2001	271	252,134	106,257	99	113.2
2002	245	265,673	107,542	100	103.3
2003	243	278,163	107,323	100	102.8
2004	250	297,733	111,534	98	106.0
2005	277	310,667	118,768	99	120.5
2006	268	327,102	123,700	100	119.0
2007	247	301,828	111,953	100	112.3
2008	254	307,804	113,015	96	114.2
2009	256	359,692	123,394	99	114.2
2010	239	374,677	131,502	100	107.9
2011	257	383,859	134,912	100	121.2
2012	273	392,095	133,800	97	126.1
2013	261	391,718	134,067	99	119.8
2014	270	381,506	130,213	97	127.7
2015	243	366,069	123,073	98	116.8
2016	231	343,773	121,314	99	111.9
2017	232	335,371	116,854	99	116.3
2018	254	336,892	114,490	97	127.4
2019	238	319,931	110,692	98	119.4
2020	209	300,931	100,998	99	105.0

County: county value. Kansas: state value. County Rank: highest county value ranked #1. (\$000): thousands of dollars. Nonmetro Kansas: Kansas total less Metropolitan Areas as defined by the Office of Management and Budget (OMB; released 3/6/2020). Per 1000: For nonmoney amounts, Per 1000=(county value / county population for the same year as the data) x 1000. \$ Per capita=(county value / county population for the same year as the data). Value= . indicates missing or suppressed data or value not calculated.

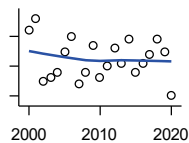
Social Environment

ESTIMATED % OF PEOPLE IN POVERTY



U.S. Census Bureau, Small Area Income and Poverty Estimates

Year	County	State of Kansas	Non Metro Kansas	County Rank	Per 1000 or \$ Per Capita
2000	9.9	8.9	.	60	.
2001	11.7	9.5	.	42	.
2002	10.7	10.0	.	63	.
2003	10.5	10.4	.	60	.
2004	11.1	11.1	.	47	.
2005	12.4	11.7	.	46	.
2006	12.4	12.2	.	56	.
2007	12.1	11.2	.	45	.
2008	12.4	11.3	.	39	.
2009	12.6	13.2	.	50	.
2010	11.2	13.5	.	77	.
2011	12.4	13.8	.	62	.
2012	12.9	14.0	.	51	.
2013	12.3	13.9	.	62	.
2014	13.0	13.5	.	46	.
2015	12.0	12.9	.	53	.
2016	11.5	12.2	.	65	.
2017	12.0	11.9	.	51	.
2018	13.1	11.9	.	41	.
2019	12.4	11.3	.	41	.
2020	11.0	10.6	.	50	.



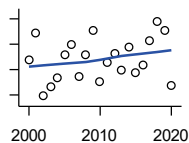
EST. NUMBER OF RELATED CHILDREN AGE 5 TO 17 IN FAMILIES IN POVERTY

U.S. Census Bureau, Small Area Income and Poverty Estimates

Year	County	State of Kansas	Non Metro Kansas	County Rank	Per 1000 or \$ Per Capita
2000	67	50,388	21,854	94	28.0
2001	71	53,755	23,094	94	29.7
2002	50	52,453	21,423	100	21.1
2003	51	55,419	21,809	97	21.6
2004	53	59,392	22,313	94	22.5
2005	60	60,203	24,244	96	26.1
2006	65	64,427	25,326	96	28.9
2007	49	61,149	23,639	99	22.3
2008	53	59,842	22,661	97	23.8
2009	62	71,850	26,251	94	27.7
2010	51	81,077	29,804	100	23.0
2011	55	82,311	29,306	97	25.9
2012	61	87,594	29,781	93	28.2
2013	56	84,325	29,253	96	25.7
2014	64	83,873	29,354	94	30.3
2015	53	78,192	27,482	100	25.5
2016	56	67,810	25,074	99	27.1
2017	59	67,873	25,032	96	29.6
2018	64	68,153	24,928	94	32.1
2019	60	64,613	23,117	94	30.1
2020	45	59,792	21,143	101	22.6

County: county value. Kansas: state value. County Rank: highest county value ranked #1. (\$000): thousands of dollars. Nonmetro Kansas: Kansas total less Metropolitan Areas as defined by the Office of Management and Budget (OMB; released 3/6/2020). Per 1000: For nonmoney amounts, Per 1000=(county value / county population for the same year as the data) x 1000. \$ Per capita=(county value / county population for the same year as the data). Value= . indicates missing or suppressed data or value not calculated.

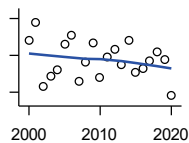
Social Environment



EST. % OF RELATED CHILDREN AGE 5 TO 17 IN FAMILIES IN POVERTY

U.S. Census Bureau, Small Area Income and Poverty Estimates

Year	County	State of Kansas	Non Metro Kansas	County Rank	Per 1000 or \$ Per Capita
2000	14.8	10.0	.	19	.
2001	16.9	10.8	.	13	.
2002	11.9	10.5	.	54	.
2003	12.6	11.3	.	48	.
2004	13.3	12.5	.	45	.
2005	15.2	12.8	.	40	.
2006	16.0	13.2	.	38	.
2007	13.5	12.6	.	62	.
2008	15.2	12.3	.	42	.
2009	17.1	14.7	.	34	.
2010	13.0	15.9	.	87	.
2011	14.6	16.2	.	70	.
2012	15.3	17.2	.	66	.
2013	14.0	16.5	.	75	.
2014	15.8	16.4	.	59	.
2015	13.8	15.3	.	73	.
2016	14.4	13.2	.	63	.
2017	16.3	13.4	.	42	.
2018	17.8	13.5	.	35	.
2019	17.1	12.9	.	28	.
2020	12.7	11.9	.	65	.



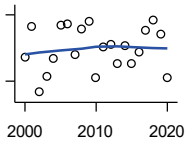
ESTIMATED NUMBER UNDER 18 IN POVERTY

U.S. Census Bureau, Small Area Income and Poverty Estimates

Year	County	State of Kansas	Non Metro Kansas	County Rank	Per 1000 or \$ Per Capita
2000	98	82,619	34,843	96	41.0
2001	108	87,487	36,724	94	45.1
2002	73	84,181	32,870	100	30.8
2003	79	93,896	36,004	97	33.4
2004	82	98,641	36,272	95	34.8
2005	96	100,254	39,118	94	41.8
2006	101	105,193	41,054	95	44.8
2007	76	100,242	37,881	98	34.5
2008	86	100,146	37,552	95	38.7
2009	97	118,187	42,682	94	43.3
2010	78	129,009	46,428	100	35.2
2011	89	133,478	46,832	97	42.0
2012	93	135,261	46,294	92	43.0
2013	85	131,251	44,952	96	39.0
2014	98	125,562	43,933	92	46.4
2015	81	119,994	41,828	99	38.9
2016	83	100,996	37,387	98	40.2
2017	87	102,858	37,955	96	43.6
2018	92	102,616	36,991	94	46.1
2019	88	97,920	34,797	95	44.1
2020	68	88,491	30,767	100	34.2

County: county value. Kansas: state value. County Rank: highest county value ranked #1. (\$000): thousands of dollars. Nonmetro Kansas: Kansas total less Metropolitan Areas as defined by the Office of Management and Budget (OMB; released 3/6/2020). Per 1000: For nonmoney amounts, Per 1000=(county value / county population for the same year as the data) x 1000. \$ Per capita=(county value / county population for the same year as the data). Value= . indicates missing or suppressed data or value not calculated.

Social Environment



ESTIMATED PERCENT UNDER 18 IN POVERTY

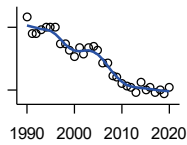
U.S. Census Bureau, Small Area Income and Poverty Estimates

Year	County	State of Kansas	Non Metro Kansas	County Rank	Per 1000 or \$ Per Capita
2000	16.2	11.9	.	30	.
2001	19.0	12.7	.	17	.
2002	13.0	12.1	.	58	.
2003	14.4	13.8	.	60	.
2004	16.1	14.6	.	37	.
2005	19.1	15.2	.	28	.
2006	19.2	15.4	.	31	.
2007	16.4	14.7	.	54	.
2008	18.7	14.6	.	28	.
2009	19.4	17.1	.	37	.
2010	14.3	18.1	.	86	.
2011	17.1	18.8	.	66	.
2012	17.3	19.0	.	58	.
2013	15.6	18.4	.	74	.
2014	17.2	17.6	.	55	.
2015	15.6	16.9	.	68	.
2016	16.6	14.3	.	50	.
2017	18.6	14.7	.	34	.
2018	19.5	14.8	.	27	.
2019	18.3	14.3	.	29	.
2020	14.3	13.0	.	59	.

County: county value. Kansas: state value. County Rank: highest county value ranked #1. (\$000): thousands of dollars. Nonmetro Kansas: Kansas total less Metropolitan Areas as defined by the Office of Management and Budget (OMB; released 3/6/2020). Per 1000: For nonmoney amounts, Per 1000=(county value / county population for the same year as the data) x 1000. \$ Per capita=(county value / county population for the same year as the data). Value= . indicates missing or suppressed data or value not calculated.

Business

ESTABLISHMENTS TOTAL COUNTY BUSINESS PATTERNS



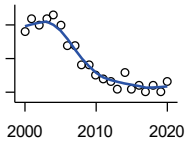
U.S. Census Bureau, County Business Patterns. Beginning with the 2017 data, any tabulation with fewer than 3 establishments were omitted from the release. Data for these establishments are included in the broader total.

Year	County	State of Kansas	Non Metro Kansas	County Rank	Per 1000 or \$ Per Capita
1990	95	65,858	26,802	91	39.3
1991	87	65,941	26,750	94	36.6
1992	87	67,630	27,229	95	36.3
1993	89	68,930	27,655	95	37.1
1994	90	69,822	27,763	95	36.6
1995	90	70,894	28,111	94	37.1
1996	90	72,017	28,353	95	37.1
1997	82	73,924	28,884	99	33.3
1998	82	74,019	28,749	98	34.1
1999	79	74,486	28,536	98	32.7
2000	76	74,939	28,475	98	31.8
2001	80	74,565	28,282	98	33.4
2002	77	75,077	28,183	99	32.5
2003	80	74,972	27,998	97	33.8
2004	81	75,827	28,009	97	34.4
2005	79	76,173	27,830	98	34.4
2006	73	76,446	27,653	99	32.4
2007	73	77,157	27,736	99	33.2
2008	67	76,096	27,314	102	30.1
2009	66	74,698	26,839	102	29.4
2010	63	74,301	26,739	102	28.4
2011	62	73,598	26,555	102	29.2
2012	61	73,944	26,534	101	28.2
2013	59	73,816	26,393	103	27.1
2014	64	74,055	26,292	102	30.3
2015	60	74,526	26,355	102	28.8
2016	61	74,884	26,172	102	29.5
2017	59	74,947	26,093	102	29.6
2018	60	74,559	25,802	102	30.1
2019	58	74,292	25,536	102	29.1
2020	61	73,982	25,178	99	30.6

County: county value. Kansas: state value. County Rank: highest county value ranked #1. (\$000): thousands of dollars. Nonmetro Kansas: Kansas total less Metropolitan Areas as defined by the Office of Management and Budget (OMB; released 3/6/2020). Per 1000: For nonmoney amounts, Per 1000=(county value / county population for the same year as the data) x 1000. \$ Per capita=(county value / county population for the same year as the data). Value= . indicates missing or suppressed data or value not calculated.

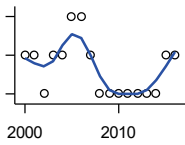
Business

**ESTABLISHMENTS: 1-19
EMPLOYEES**



U.S. Census Bureau, County Business Patterns. Beginning with the 2017 data, any tabulation with fewer than 3 establishments were omitted from the release. Data for these establishments are included in the broader total.

Year	County	State of Kansas	Non Metro Kansas	County Rank	Per 1000 or \$ Per Capita
2000	73	64,527	25,381	98	30.5
2001	77	64,176	25,248	97	32.2
2002	75	64,886	25,208	97	31.6
2003	77	64,714	25,020	97	32.6
2004	78	65,554	24,995	97	33.1
2005	75	65,796	24,839	97	32.6
2006	69	65,764	24,589	100	30.6
2007	69	66,446	24,701	100	31.4
2008	63	65,322	24,257	102	28.3
2009	63	64,128	23,851	102	28.1
2010	60	64,015	23,857	102	27.1
2011	59	63,251	23,571	102	27.8
2012	58	63,519	23,575	101	26.8
2013	56	63,197	23,396	102	25.7
2014	61	63,113	23,229	101	28.9
2015	56	63,280	23,227	103	26.9
2016	57	63,630	23,117	102	27.6
2017	55	63,619	23,022	102	27.6
2018	57	63,233	22,745	101	28.6
2019	55	62,904	22,489	102	27.6
2020	58	62,634	22,173	99	29.1



**ESTABLISHMENTS: 20-99
EMPLOYEES**

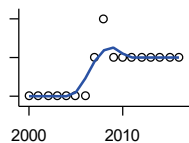
U.S. Census Bureau, County Business Patterns. Beginning with the 2017 data, any tabulation with fewer than 3 establishments were omitted from the release. Data for these establishments are included in the broader total.

Year	County	State of Kansas	Non Metro Kansas	County Rank	Per 1000 or \$ Per Capita
2000	3	8,714	2,653	101	1.3
2001	3	8,692	2,593	100	1.3
2002	2	8,582	2,554	103	0.8
2003	3	8,642	2,568	101	1.3
2004	3	8,658	2,590	100	1.3
2005	4	8,685	2,553	96	1.7
2006	4	8,922	2,612	96	1.8
2007	3	8,938	2,574	100	1.4
2008	2	8,939	2,587	104	0.9
2009	2	8,848	2,551	104	0.9
2010	2	8,612	2,454	105	0.9
2011	2	8,668	2,540	104	0.9
2012	2	8,700	2,500	103	0.9
2013	2	8,870	2,541	104	0.9
2014	2	9,121	2,590	104	0.9
2015	3	9,374	2,664	101	1.4
2016	3	9,412	2,596	102	1.5

County: county value. Kansas: state value. County Rank: highest county value ranked #1. (\$000): thousands of dollars. Nonmetro Kansas: Kansas total less Metropolitan Areas as defined by the Office of Management and Budget (OMB; released 3/6/2020). Per 1000: For nonmoney amounts, Per 1000=(county value / county population for the same year as the data) x 1000. \$ Per capita=(county value / county population for the same year as the data). Value= . indicates missing or suppressed data or value not calculated.

Business

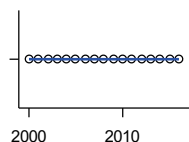
ESTABLISHMENTS: 100-499 EMPLOYEES



U.S. Census Bureau, County Business Patterns. Beginning with the 2017 data, any tabulation with fewer than 3 establishments were omitted from the release. Data for these establishments are included in the broader total.

Year	County	State of Kansas	Non Metro Kansas	County Rank	Per 1000 or \$ Per Capita
2000	0	1,555	409	105	0.0
2001	0	1,555	406	105	0.0
2002	0	1,464	386	105	0.0
2003	0	1,470	378	105	0.0
2004	0	1,463	388	105	0.0
2005	0	1,537	400	105	0.0
2006	0	1,598	407	105	0.0
2007	1	1,602	416	87	0.5
2008	2	1,653	421	63	0.9
2009	1	1,551	394	86	0.4
2010	1	1,513	382	85	0.5
2011	1	1,523	395	86	0.5
2012	1	1,567	410	85	0.5
2013	1	1,581	407	85	0.5
2014	1	1,641	421	86	0.5
2015	1	1,693	414	86	0.5
2016	1	1,671	406	84	0.5

ESTABLISHMENTS: 500 OR MORE EMPLOYEES

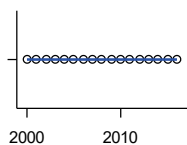


U.S. Census Bureau, County Business Patterns. Beginning with the 2017 data, any tabulation with fewer than 3 establishments were omitted from the release. Data for these establishments are included in the broader total.

Year	County	State of Kansas	Non Metro Kansas	County Rank	Per 1000 or \$ Per Capita
2000	0	143	32	105	0.0
2001	0	142	35	105	0.0
2002	0	145	35	105	0.0
2003	0	146	32	105	0.0
2004	0	152	36	105	0.0
2005	0	155	38	105	0.0
2006	0	162	45	105	0.0
2007	0	171	45	105	0.0
2008	0	182	49	105	0.0
2009	0	171	43	105	0.0
2010	0	161	46	105	0.0
2011	0	156	49	105	0.0
2012	0	158	49	105	0.0
2013	0	168	49	105	0.0
2014	0	180	52	105	0.0
2015	0	179	50	105	0.0
2016	0	171	53	105	0.0

County: county value. Kansas: state value. County Rank: highest county value ranked #1. (\$000): thousands of dollars. Nonmetro Kansas: Kansas total less Metropolitan Areas as defined by the Office of Management and Budget (OMB; released 3/6/2020). Per 1000: For nonmoney amounts, Per 1000=(county value / county population for the same year as the data) x 1000. \$ Per capita=(county value / county population for the same year as the data). Value= . indicates missing or suppressed data or value not calculated.

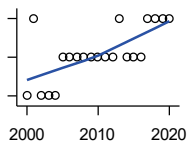
Business



ESTABLISHMENTS: FORESTRY, FISHING, HUNTING, AND AG SUPPORT

U.S. Census Bureau, County Business Patterns. Beginning with the 2017 data, any tabulation with fewer than 3 establishments were omitted from the release. Data for these establishments are included in the broader total.

Year	County	State of Kansas	Non Metro Kansas	County Rank	Per 1000 or \$ Per Capita
2000	0	190	149	105	0.0
2001	0	217	168	105	0.0
2002	0	224	176	105	0.0
2003	0	217	173	105	0.0
2004	0	211	165	105	0.0
2005	0	188	148	105	0.0
2006	0	193	158	105	0.0
2007	0	212	170	105	0.0
2008	0	197	158	105	0.0
2009	0	191	154	105	0.0
2010	0	192	161	105	0.0
2011	0	193	157	105	0.0
2012	0	204	164	105	0.0
2013	0	208	166	105	0.0
2014	0	194	152	105	0.0
2015	0	192	149	105	0.0
2016	0	181	142	105	0.0



ESTABLISHMENTS: MINING

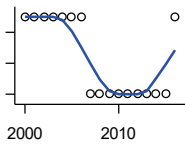
U.S. Census Bureau, County Business Patterns. Beginning with the 2017 data, any tabulation with fewer than 3 establishments were omitted from the release. Data for these establishments are included in the broader total.

Year	County	State of Kansas	Non Metro Kansas	County Rank	Per 1000 or \$ Per Capita
2000	2	868	619	70	0.8
2001	4	878	622	45	1.7
2002	2	847	615	68	0.8
2003	2	864	633	66	0.8
2004	2	880	647	67	0.8
2005	3	941	695	56	1.3
2006	3	991	734	59	1.3
2007	3	1,000	759	59	1.4
2008	3	1,047	799	60	1.3
2009	3	1,016	772	58	1.3
2010	3	1,009	762	56	1.4
2011	3	1,013	763	55	1.4
2012	3	1,048	789	63	1.4
2013	4	1,060	802	51	1.8
2014	3	1,102	828	63	1.4
2015	3	1,069	810	62	1.4
2016	3	990	747	59	1.5
2017	4	920	.	47	2.0
2018	4	900	.	47	2.0
2019	4	864	.	46	2.0
2020	4	825	.	45	2.0

County: county value. Kansas: state value. County Rank: highest county value ranked #1. (\$000): thousands of dollars. Nonmetro Kansas: Kansas total less Metropolitan Areas as defined by the Office of Management and Budget (OMB; released 3/6/2020). Per 1000: For nonmoney amounts, Per 1000=(county value / county population for the same year as the data) x 1000. \$ Per capita=(county value / county population for the same year as the data). Value= . indicates missing or suppressed data or value not calculated.

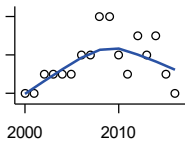
Business

ESTABLISHMENTS: UTILITIES



U.S. Census Bureau, County Business Patterns. Beginning with the 2017 data, any tabulation with fewer than 3 establishments were omitted from the release. Data for these establishments are included in the broader total.

Year	County	State of Kansas	Non Metro Kansas	County Rank	Per 1000 or \$ Per Capita
2000	1	274	192	96	0.4
2001	1	290	204	96	0.4
2002	1	278	195	93	0.4
2003	1	268	180	90	0.4
2004	1	247	164	90	0.4
2005	1	254	172	91	0.4
2006	1	248	169	92	0.4
2007	0	222	156	105	0.0
2008	0	244	166	105	0.0
2009	0	222	152	105	0.0
2010	0	197	129	105	0.0
2011	0	230	156	105	0.0
2012	0	232	156	105	0.0
2013	0	234	159	105	0.0
2014	0	232	160	105	0.0
2015	0	237	165	105	0.0
2016	1	245	171	90	0.5



ESTABLISHMENTS: CONSTRUCTION

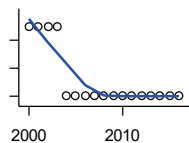
U.S. Census Bureau, County Business Patterns. Beginning with the 2017 data, any tabulation with fewer than 3 establishments were omitted from the release. Data for these establishments are included in the broader total.

Year	County	State of Kansas	Non Metro Kansas	County Rank	Per 1000 or \$ Per Capita
2000	2	7,703	2,616	105	0.8
2001	2	7,449	2,520	105	0.8
2002	3	7,519	2,482	102	1.3
2003	3	7,722	2,521	102	1.3
2004	3	7,887	2,518	102	1.3
2005	3	8,032	2,515	102	1.3
2006	4	8,031	2,494	98	1.8
2007	4	8,057	2,547	102	1.8
2008	6	7,831	2,522	95	2.7
2009	6	7,342	2,452	93	2.7
2010	4	7,064	2,394	102	1.8
2011	3	6,774	2,361	103	1.4
2012	5	6,741	2,393	98	2.3
2013	4	6,802	2,394	101	1.8
2014	5	6,920	2,383	100	2.4
2015	3	7,014	2,377	103	1.4
2016	2	6,988	2,343	104	1.0

County: county value. Kansas: state value. County Rank: highest county value ranked #1. (\$000): thousands of dollars. Nonmetro Kansas: Kansas total less Metropolitan Areas as defined by the Office of Management and Budget (OMB; released 3/6/2020). Per 1000: For nonmoney amounts, Per 1000=(county value / county population for the same year as the data) x 1000. \$ Per capita=(county value / county population for the same year as the data). Value= . indicates missing or suppressed data or value not calculated.

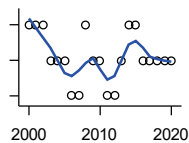
Business

**ESTABLISHMENTS:
MANUFACTURING**



U.S. Census Bureau, County Business Patterns. Beginning with the 2017 data, any tabulation with fewer than 3 establishments were omitted from the release. Data for these establishments are included in the broader total.

Year	County	State of Kansas	Non Metro Kansas	County Rank	Per 1000 or \$ Per Capita
2000	2	3,229	1,316	98	0.8
2001	2	3,240	1,323	99	0.8
2002	2	3,181	1,289	99	0.8
2003	2	3,159	1,291	99	0.8
2004	1	3,179	1,313	103	0.4
2005	1	3,128	1,278	104	0.4
2006	1	3,165	1,290	105	0.4
2007	1	3,184	1,316	103	0.5
2008	1	3,171	1,297	101	0.4
2009	1	3,026	1,240	101	0.4
2010	1	2,955	1,222	101	0.5
2011	1	2,877	1,193	101	0.5
2012	1	2,889	1,197	102	0.5
2013	1	2,836	1,165	100	0.5
2014	1	2,831	1,168	101	0.5
2015	1	2,817	1,161	101	0.5
2016	1	2,791	1,150	100	0.5



**ESTABLISHMENTS: WHOLESALE
TRADE**

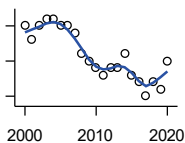
U.S. Census Bureau, County Business Patterns. Beginning with the 2017 data, any tabulation with fewer than 3 establishments were omitted from the release. Data for these establishments are included in the broader total.

Year	County	State of Kansas	Non Metro Kansas	County Rank	Per 1000 or \$ Per Capita
2000	4	4,876	1,776	102	1.7
2001	4	4,811	1,769	102	1.7
2002	4	4,719	1,750	101	1.7
2003	3	4,590	1,637	102	1.3
2004	3	4,553	1,634	102	1.3
2005	3	4,541	1,618	103	1.3
2006	2	4,517	1,596	103	0.9
2007	2	4,555	1,629	103	0.9
2008	4	4,501	1,622	98	1.8
2009	3	4,437	1,614	100	1.3
2010	3	4,432	1,612	100	1.4
2011	2	4,400	1,660	105	0.9
2012	2	4,563	1,755	105	0.9
2013	3	4,501	1,741	102	1.4
2014	4	4,497	1,746	102	1.9
2015	4	4,459	1,755	102	1.9
2016	3	4,457	1,732	102	1.5
2017	3	4,436	1,774	102	1.5
2018	3	4,330	1,727	101	1.5
2019	3	4,291	1,713	102	1.5
2020	3	4,191	1,677	100	1.5

County: county value. Kansas: state value. County Rank: highest county value ranked #1. (\$000): thousands of dollars. Nonmetro Kansas: Kansas total less Metropolitan Areas as defined by the Office of Management and Budget (OMB; released 3/6/2020). Per 1000: For nonmoney amounts, Per 1000=(county value / county population for the same year as the data) x 1000. \$ Per capita=(county value / county population for the same year as the data). Value= . indicates missing or suppressed data or value not calculated.

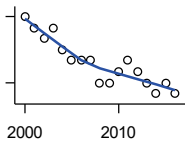
Business

ESTABLISHMENTS: RETAIL TRADE



U.S. Census Bureau, County Business Patterns. Beginning with the 2017 data, any tabulation with fewer than 3 establishments were omitted from the release. Data for these establishments are included in the broader total.

Year	County	State of Kansas	Non Metro Kansas	County Rank	Per 1000 or \$ Per Capita
2000	15	12,261	5,240	97	6.3
2001	13	12,206	5,207	100	5.4
2002	15	11,980	5,082	97	6.3
2003	16	11,834	5,049	95	6.8
2004	16	11,748	4,967	96	6.8
2005	15	11,562	4,834	94	6.5
2006	15	11,367	4,702	93	6.7
2007	14	11,306	4,653	94	6.4
2008	11	10,978	4,494	99	4.9
2009	10	10,760	4,372	102	4.5
2010	9	10,727	4,346	101	4.1
2011	8	10,655	4,289	102	3.8
2012	9	10,585	4,202	101	4.2
2013	9	10,433	4,147	100	4.1
2014	11	10,391	4,070	97	5.2
2015	8	10,327	4,061	103	3.8
2016	7	10,197	3,965	105	3.4
2017	5	10,074	3,885	105	2.5
2018	7	9,866	3,797	103	3.5
2019	6	9,762	3,750	105	3.0
2020	10	9,591	3,666	98	5.0



ESTABLISHMENTS: TRANSPORTATION & WAREHOUSING

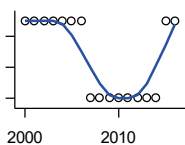
U.S. Census Bureau, County Business Patterns. Beginning with the 2017 data, any tabulation with fewer than 3 establishments were omitted from the release. Data for these establishments are included in the broader total.

Year	County	State of Kansas	Non Metro Kansas	County Rank	Per 1000 or \$ Per Capita
2000	8	2,474	1,293	78	3.3
2001	7	2,463	1,298	79	2.9
2002	6	2,461	1,278	82	2.5
2003	7	2,576	1,297	77	3.0
2004	5	2,651	1,324	90	2.1
2005	4	2,632	1,326	98	1.7
2006	4	2,626	1,295	95	1.8
2007	4	2,664	1,314	97	1.8
2008	2	2,675	1,329	102	0.9
2009	2	2,635	1,313	99	0.9
2010	3	2,615	1,313	98	1.4
2011	4	2,579	1,285	96	1.9
2012	3	2,519	1,243	99	1.4
2013	2	2,492	1,226	102	0.9
2014	1	2,518	1,240	104	0.5
2015	2	2,554	1,257	102	1.0
2016	1	2,567	1,241	104	0.5

County: county value. Kansas: state value. County Rank: highest county value ranked #1. (\$000): thousands of dollars. Nonmetro Kansas: Kansas total less Metropolitan Areas as defined by the Office of Management and Budget (OMB; released 3/6/2020). Per 1000: For nonmoney amounts, Per 1000=(county value / county population for the same year as the data) x 1000. \$ Per capita=(county value / county population for the same year as the data). Value= . indicates missing or suppressed data or value not calculated.

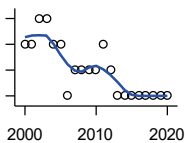
Business

ESTABLISHMENTS: INFORMATION



U.S. Census Bureau, County Business Patterns. Beginning with the 2017 data, any tabulation with fewer than 3 establishments were omitted from the release. Data for these establishments are included in the broader total.

Year	County	State of Kansas	Non Metro Kansas	County Rank	Per 1000 or \$ Per Capita
2000	1	1,542	578	103	0.4
2001	1	1,556	566	102	0.4
2002	1	1,517	551	100	0.4
2003	1	1,516	564	100	0.4
2004	1	1,518	556	101	0.4
2005	1	1,519	536	100	0.4
2006	1	1,549	559	102	0.4
2007	0	1,504	527	105	0.0
2008	0	1,468	522	105	0.0
2009	0	1,420	510	105	0.0
2010	0	1,437	527	105	0.0
2011	0	1,428	537	105	0.0
2012	0	1,387	515	105	0.0
2013	0	1,337	487	105	0.0
2014	0	1,335	496	105	0.0
2015	1	1,359	510	103	0.5
2016	1	1,431	537	103	0.5



ESTABLISHMENTS: FINANCE & INSURANCE

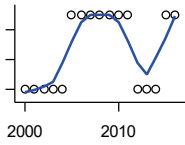
U.S. Census Bureau, County Business Patterns. Beginning with the 2017 data, any tabulation with fewer than 3 establishments were omitted from the release. Data for these establishments are included in the broader total.

Year	County	State of Kansas	Non Metro Kansas	County Rank	Per 1000 or \$ Per Capita
2000	7	5,209	1,848	91	2.9
2001	7	5,178	1,828	89	2.9
2002	8	5,496	1,911	87	3.4
2003	8	5,569	1,907	90	3.4
2004	7	5,572	1,913	92	3.0
2005	7	5,708	1,964	94	3.0
2006	5	5,877	1,976	100	2.2
2007	6	6,017	2,030	100	2.7
2008	6	6,010	2,023	98	2.7
2009	6	5,933	1,994	98	2.7
2010	6	5,872	1,975	100	2.7
2011	7	5,854	1,985	93	3.3
2012	6	5,993	2,024	100	2.8
2013	5	5,903	1,993	102	2.3
2014	5	5,894	2,000	103	2.4
2015	5	5,932	1,998	102	2.4
2016	5	6,022	2,021	103	2.4
2017	5	6,026	2,007	103	2.5
2018	5	6,023	1,997	101	2.5
2019	5	5,953	1,977	100	2.5
2020	5	5,926	1,969	101	2.5

County: county value. Kansas: state value. County Rank: highest county value ranked #1. (\$000): thousands of dollars. Nonmetro Kansas: Kansas total less Metropolitan Areas as defined by the Office of Management and Budget (OMB; released 3/6/2020). Per 1000: For nonmoney amounts, Per 1000=(county value / county population for the same year as the data) x 1000. \$ Per capita=(county value / county population for the same year as the data). Value= . indicates missing or suppressed data or value not calculated.

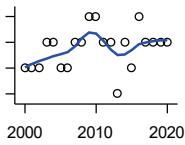
Business

ESTABLISHMENTS: REAL ESTATE, RENTAL, AND LEASING



U.S. Census Bureau, County Business Patterns. Beginning with the 2017 data, any tabulation with fewer than 3 establishments were omitted from the release. Data for these establishments are included in the broader total.

Year	County	State of Kansas	Non Metro Kansas	County Rank	Per 1000 or \$ Per Capita
2000	0	2,733	687	105	0.0
2001	0	2,849	724	105	0.0
2002	0	2,952	735	105	0.0
2003	0	3,007	727	105	0.0
2004	0	3,108	713	105	0.0
2005	1	3,203	727	90	0.4
2006	1	3,268	736	91	0.4
2007	1	3,286	721	91	0.5
2008	1	3,239	738	90	0.4
2009	1	3,122	723	89	0.4
2010	1	3,050	708	90	0.5
2011	1	3,002	692	89	0.5
2012	0	2,981	691	105	0.0
2013	0	3,046	717	105	0.0
2014	0	3,135	738	105	0.0
2015	1	3,179	744	91	0.5
2016	1	3,293	757	90	0.5



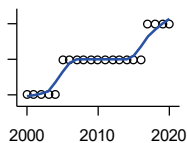
ESTABLISHMENTS: PROFESSIONAL, SCIENTIFIC, AND TECHNICAL SERVICES

U.S. Census Bureau, County Business Patterns. Beginning with the 2017 data, any tabulation with fewer than 3 establishments were omitted from the release. Data for these establishments are included in the broader total.

Year	County	State of Kansas	Non Metro Kansas	County Rank	Per 1000 or \$ Per Capita
2000	5	6,424	1,690	95	2.1
2001	5	6,492	1,665	92	2.1
2002	5	6,719	1,704	93	2.1
2003	6	6,793	1,735	86	2.5
2004	6	7,025	1,730	89	2.5
2005	5	7,087	1,711	97	2.2
2006	5	7,231	1,736	97	2.2
2007	6	7,329	1,729	89	2.7
2008	6	7,133	1,671	89	2.7
2009	7	7,122	1,676	83	3.1
2010	7	7,172	1,680	81	3.2
2011	6	7,115	1,668	89	2.8
2012	6	7,122	1,681	91	2.8
2013	4	7,129	1,698	97	1.8
2014	6	7,206	1,682	87	2.8
2015	5	7,184	1,687	93	2.4
2016	7	7,146	1,659	81	3.4
2017	6	7,224	1,679	87	3.0
2018	6	7,138	1,655	87	3.0
2019	6	7,119	.	86	3.0
2020	6	7,117	.	85	3.0

County: county value. Kansas: state value. County Rank: highest county value ranked #1. (\$000): thousands of dollars. Nonmetro Kansas: Kansas total less Metropolitan Areas as defined by the Office of Management and Budget (OMB; released 3/6/2020). Per 1000: For nonmoney amounts, Per 1000=(county value / county population for the same year as the data) x 1000. \$ Per capita=(county value / county population for the same year as the data). Value= . indicates missing or suppressed data or value not calculated.

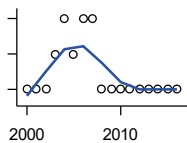
Business



ESTABLISHMENTS: MANAGEMENT OF COMPANIES AND ENTERPRISES

U.S. Census Bureau, County Business Patterns. Beginning with the 2017 data, any tabulation with fewer than 3 establishments were omitted from the release. Data for these establishments are included in the broader total.

Year	County	State of Kansas	Non Metro Kansas	County Rank	Per 1000 or \$ Per Capita
2000	1	622	145	68	0.4
2001	1	593	141	62	0.4
2002	1	597	152	63	0.4
2003	1	561	135	59	0.4
2004	1	569	133	57	0.4
2005	2	543	127	33	0.9
2006	2	542	131	34	0.9
2007	2	550	133	39	0.9
2008	2	553	139	42	0.9
2009	2	575	136	41	0.9
2010	2	567	131	40	0.9
2011	2	552	134	39	0.9
2012	2	593	135	38	0.9
2013	2	590	135	37	0.9
2014	2	603	136	38	0.9
2015	2	613	140	39	1.0
2016	2	655	171	39	1.0
2017	3	675	.	30	1.5
2018	3	647	.	28	1.5
2019	3	650	.	28	1.5
2020	3	627	.	27	1.5



ESTABLISHMENTS: ADMIN, SUPPORT, WASTE MGMT., AND REMEDIATION

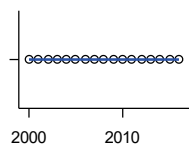
U.S. Census Bureau, County Business Patterns. Beginning with the 2017 data, any tabulation with fewer than 3 establishments were omitted from the release. Data for these establishments are included in the broader total.

Year	County	State of Kansas	Non Metro Kansas	County Rank	Per 1000 or \$ Per Capita
2000	1	3,307	871	101	0.4
2001	1	3,421	913	99	0.4
2002	1	3,232	882	99	0.4
2003	2	3,189	858	88	0.8
2004	3	3,301	891	79	1.3
2005	2	3,342	896	91	0.9
2006	3	3,395	886	83	1.3
2007	3	3,522	921	85	1.4
2008	1	3,587	932	100	0.4
2009	1	3,505	904	101	0.4
2010	1	3,494	897	99	0.5
2011	1	3,447	903	98	0.5
2012	1	3,462	891	99	0.5
2013	1	3,489	904	100	0.5
2014	1	3,569	933	98	0.5
2015	1	3,630	964	97	0.5
2016	1	3,705	987	99	0.5

County: county value. Kansas: state value. County Rank: highest county value ranked #1. (\$000): thousands of dollars. Nonmetro Kansas: Kansas total less Metropolitan Areas as defined by the Office of Management and Budget (OMB; released 3/6/2020). Per 1000: For nonmoney amounts, Per 1000=(county value / county population for the same year as the data) x 1000. \$ Per capita=(county value / county population for the same year as the data). Value= . indicates missing or suppressed data or value not calculated.

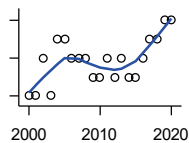
Business

ESTABLISHMENTS: EDUCATIONAL SERVICES



U.S. Census Bureau, County Business Patterns. Beginning with the 2017 data, any tabulation with fewer than 3 establishments were omitted from the release. Data for these establishments are included in the broader total.

Year	County	State of Kansas	Non Metro Kansas	County Rank	Per 1000 or \$ Per Capita
2000	0	604	155	105	0.0
2001	0	625	168	105	0.0
2002	0	666	165	105	0.0
2003	0	663	173	105	0.0
2004	0	690	173	105	0.0
2005	0	699	168	105	0.0
2006	0	698	175	105	0.0
2007	0	691	165	105	0.0
2008	0	692	158	105	0.0
2009	0	690	150	105	0.0
2010	0	700	149	105	0.0
2011	0	711	150	105	0.0
2012	0	724	145	105	0.0
2013	0	735	153	105	0.0
2014	0	722	152	105	0.0
2015	0	754	152	105	0.0
2016	0	728	150	105	0.0



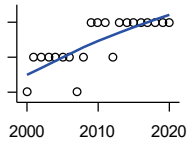
ESTABLISHMENTS: HEALTH CARE AND SOCIAL ASSISTANCE

U.S. Census Bureau, County Business Patterns. Beginning with the 2017 data, any tabulation with fewer than 3 establishments were omitted from the release. Data for these establishments are included in the broader total.

Year	County	State of Kansas	Non Metro Kansas	County Rank	Per 1000 or \$ Per Capita
2000	6	6,564	2,591	96	2.5
2001	6	6,636	2,590	95	2.5
2002	8	7,052	2,777	89	3.4
2003	6	7,129	2,792	97	2.5
2004	9	7,239	2,813	81	3.8
2005	9	7,412	2,855	85	3.9
2006	8	7,477	2,860	89	3.6
2007	8	7,661	2,864	86	3.6
2008	8	7,651	2,810	86	3.6
2009	7	7,696	2,787	93	3.1
2010	7	7,751	2,830	94	3.2
2011	8	7,804	2,817	85	3.8
2012	7	7,973	2,793	95	3.2
2013	8	7,877	2,729	83	3.7
2014	7	7,809	2,686	91	3.3
2015	7	8,103	2,692	88	3.4
2016	8	8,315	2,678	85	3.9
2017	9	8,136	2,646	79	4.5
2018	9	8,126	2,632	79	4.5
2019	10	8,184	2,587	75	5.0
2020	10	8,290	2,571	76	5.0

County: county value. Kansas: state value. County Rank: highest county value ranked #1. (\$000): thousands of dollars. Nonmetro Kansas: Kansas total less Metropolitan Areas as defined by the Office of Management and Budget (OMB; released 3/6/2020). Per 1000: For nonmoney amounts, Per 1000=(county value / county population for the same year as the data) x 1000. \$ Per capita=(county value / county population for the same year as the data). Value= . indicates missing or suppressed data or value not calculated.

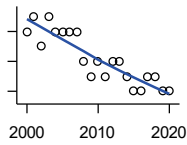
Business



ESTABLISHMENTS: ARTS, ENTERTAINMENT, AND RECREATION

U.S. Census Bureau, County Business Patterns. Beginning with the 2017 data, any tabulation with fewer than 3 establishments were omitted from the release. Data for these establishments are included in the broader total.

Year	County	State of Kansas	Non Metro Kansas	County Rank	Per 1000 or \$ Per Capita
2000	1	981	419	98	0.4
2001	2	1,009	433	87	0.8
2002	2	1,054	441	89	0.8
2003	2	1,045	443	89	0.8
2004	2	1,082	445	85	0.8
2005	2	1,109	446	86	0.9
2006	2	1,080	445	86	0.9
2007	1	1,092	444	100	0.5
2008	2	1,062	423	83	0.9
2009	3	1,063	421	67	1.3
2010	3	1,018	406	65	1.4
2011	3	997	387	67	1.4
2012	2	1,000	388	86	0.9
2013	3	1,009	377	64	1.4
2014	3	1,030	365	60	1.4
2015	3	1,031	357	62	1.4
2016	3	1,060	366	64	1.5
2017	3	1,096	.	62	1.5
2018	3	1,088	.	61	1.5
2019	3	1,087	.	60	1.5
2020	3	1,064	.	61	1.5



ESTABLISHMENTS: ACCOMMODATION AND FOOD SERVICES

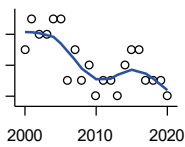
U.S. Census Bureau, County Business Patterns. Beginning with the 2017 data, any tabulation with fewer than 3 establishments were omitted from the release. Data for these establishments are included in the broader total.

Year	County	State of Kansas	Non Metro Kansas	County Rank	Per 1000 or \$ Per Capita
2000	7	5,536	2,213	94	2.9
2001	8	5,551	2,173	92	3.3
2002	6	5,610	2,174	98	2.5
2003	8	5,635	2,188	90	3.4
2004	7	5,681	2,160	93	3.0
2005	7	5,776	2,170	92	3.0
2006	7	5,745	2,132	92	3.1
2007	7	5,877	2,095	88	3.2
2008	5	5,843	2,052	100	2.2
2009	4	5,794	2,029	102	1.8
2010	5	5,898	2,046	96	2.3
2011	4	5,958	2,067	101	1.9
2012	5	5,951	2,046	99	2.3
2013	5	6,061	2,070	96	2.3
2014	4	5,985	2,024	98	1.9
2015	3	6,034	2,063	101	1.4
2016	3	6,126	2,094	100	1.5
2017	4	6,250	2,123	98	2.0
2018	4	6,256	2,128	98	2.0
2019	3	6,231	2,131	102	1.5
2020	3	6,206	2,131	103	1.5

County: county value. Kansas: state value. County Rank: highest county value ranked #1. (\$000): thousands of dollars. Nonmetro Kansas: Kansas total less Metropolitan Areas as defined by the Office of Management and Budget (OMB; released 3/6/2020). Per 1000: For nonmoney amounts, Per 1000=(county value / county population for the same year as the data) x 1000. \$ Per capita=(county value / county population for the same year as the data). Value= . indicates missing or suppressed data or value not calculated.

Business

ESTABLISHMENTS: OTHER SERVICES

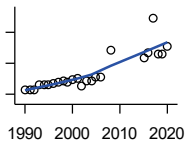


U.S. Census Bureau, County Business Patterns. Beginning with the 2017 data, any tabulation with fewer than 3 establishments were omitted from the release. Data for these establishments are included in the broader total.

Year	County	State of Kansas	Non Metro Kansas	County Rank	Per 1000 or \$ Per Capita
2000	11	8,423	3,636	96	4.6
2001	13	8,310	3,614	93	5.4
2002	12	8,552	3,658	95	5.1
2003	12	8,411	3,605	97	5.1
2004	13	8,343	3,597	92	5.5
2005	13	8,321	3,571	91	5.7
2006	9	8,225	3,490	105	4.0
2007	11	8,355	3,534	99	5.0
2008	9	8,104	3,406	104	4.0
2009	10	8,040	3,405	100	4.5
2010	8	7,998	3,379	105	3.6
2011	9	7,883	3,294	101	4.2
2012	9	7,913	3,303	102	4.2
2013	8	7,947	3,290	104	3.7
2014	10	7,943	3,285	100	4.7
2015	11	7,869	3,255	97	5.3
2016	11	7,839	3,204	96	5.3
2017	9	7,873	3,189	100	4.5
2018	9	7,853	3,176	101	4.5
2019	9	7,834	3,138	100	4.5
2020	8	7,787	3,073	101	4.0

County: county value. Kansas: state value. County Rank: highest county value ranked #1. (\$000): thousands of dollars. Nonmetro Kansas: Kansas total less Metropolitan Areas as defined by the Office of Management and Budget (OMB; released 3/6/2020). Per 1000: For nonmoney amounts, Per 1000=(county value / county population for the same year as the data) x 1000. \$ Per capita=(county value / county population for the same year as the data). Value= . indicates missing or suppressed data or value not calculated.

Business



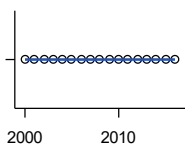
**TOTAL ANNUAL PAYROLL (\$000)
COUNTY BUSINESS PATTERNS**

U.S. Census Bureau, County Business Patterns. Beginning with the 2017 data, any tabulation with fewer than 3 establishments were omitted from the release. Data for these establishments are included in the broader total.

Year	County	State of Kansas	Non Metro Kansas	County Rank	Per 1000 or \$ Per Capita
1990	6,351	17,487,316	4,442,429	91	2,626.6
1991	6,549	18,162,326	4,612,616	93	2,756.3
1992	6,555	19,244,346	4,882,060	92	2,733.5
1993	7,982	20,087,190	5,182,780	89	3,327.2
1994	8,068	21,201,652	5,541,423	91	3,278.3
1995	8,176	22,825,920	5,875,310	93	3,372.9
1996	8,446	24,613,884	6,198,398	90	3,482.9
1997	8,802	26,787,098	6,599,061	92	3,569.3
1998	9,358	28,747,576	6,871,794	92	3,894.3
1999	9,025	30,600,434	7,121,961	94	3,740.2
2000	9,556	31,990,762	7,520,424	92	3,998.3
2001	10,199	33,303,992	7,598,165	92	4,262.0
2002	7,813	33,152,962	7,572,002	98	3,293.8
2003	9,241	34,040,944	7,726,561	96	3,909.1
2004	9,278	35,725,812	8,303,779	97	3,934.7
2005	10,585	36,646,064	8,586,986	94	4,606.2
2006	10,467	39,251,388	9,178,947	97	4,647.9
2007	.	42,022,753	.	.	.
2008	19,188	43,984,689	.	81	8,623.8
2009	.	42,146,866	.	.	.
2010	.	42,686,303	10,294,015	.	.
2011	.	43,733,944	.	.	.
2012	.	45,608,072	11,222,183	.	.
2013	.	47,715,601	11,446,751	.	.
2014	.	49,712,832	11,957,931	.	.
2015	16,750	51,259,676	11,975,718	94	8,049.0
2016	18,553	51,016,318	12,148,646	93	8,984.5
2017	29,458	52,754,605	12,448,592	75	14,765.9
2018	17,815	55,087,460	12,810,270	93	8,934.3
2019	17,960	57,272,387	13,123,288	94	9,007.0
2020	20,491	58,374,388	14,007,955	90	10,291.8

County: county value. Kansas: state value. County Rank: highest county value ranked #1. (\$000): thousands of dollars. Nonmetro Kansas: Kansas total less Metropolitan Areas as defined by the Office of Management and Budget (OMB; released 3/6/2020). Per 1000: For nonmoney amounts, Per 1000=(county value / county population for the same year as the data) x 1000. \$ Per capita=(county value / county population for the same year as the data). Value= . indicates missing or suppressed data or value not calculated.

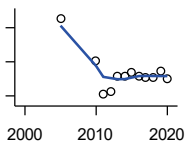
Business



**TOTAL ANNUAL PAYROLL(\$000):
FORESTRY, FISHING, HUNTING, AND
AG SUPPORT**

U.S. Census Bureau, County Business Patterns. Beginning with the 2017 data, any tabulation with fewer than 3 establishments were omitted from the release. Data for these establishments are included in the broader total.

Year	County	State of Kansas	Non Metro Kansas	County Rank	Per 1000 or \$ Per Capita
2000	0	13,551	.	.	0.0
2001	0	.	.	.	0.0
2002	0	16,528	.	.	0.0
2003	0	17,247	.	.	0.0
2004	0	17,552	.	.	0.0
2005	0	16,298	.	.	0.0
2006	0	17,908	.	.	0.0
2007	0	22,199	.	.	0.0
2008	0	21,359	.	.	0.0
2009	0	22,466	.	.	0.0
2010	0	22,753	.	.	0.0
2011	0	23,320	.	.	0.0
2012	0	27,492	.	.	0.0
2013	0	30,360	.	.	0.0
2014	0	34,862	.	.	0.0
2015	0	35,980	.	.	0.0
2016	0	31,488	.	.	0.0



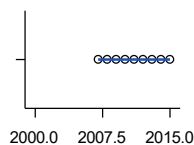
**TOTAL ANNUAL PAYROLL(\$000):
MINING**

U.S. Census Bureau, County Business Patterns. Beginning with the 2017 data, any tabulation with fewer than 3 establishments were omitted from the release. Data for these establishments are included in the broader total.

Year	County	State of Kansas	Non Metro Kansas	County Rank	Per 1000 or \$ Per Capita
2000	.	240,079	.	.	.
2001	.	273,838	.	.	.
2002	.	262,277	.	.	.
2003	.	290,652	.	.	.
2004	.	326,997	.	.	.
2005	327	381,069	.	.	142.3
2006	.	482,102	.	.	.
2007	.	551,751	.	.	.
2008	.	620,446	.	.	.
2009	.	465,070	.	.	.
2010	204	485,841	.	.	92.1
2011	105	541,536	.	.	49.5
2012	114	600,402	.	.	52.7
2013	158	599,788	.	.	72.5
2014	156	678,673	.	.	73.8
2015	168	552,658	.	.	80.7
2016	159	428,767	.	.	77.0
2017	153	379,883	.	.	76.7
2018	153	431,367	.	.	76.7
2019	172	349,270	.	.	86.3
2020	151	302,795	.	.	75.8

County: county value. Kansas: state value. County Rank: highest county value ranked #1. (\$000): thousands of dollars. Nonmetro Kansas: Kansas total less Metropolitan Areas as defined by the Office of Management and Budget (OMB; released 3/6/2020). Per 1000: For nonmoney amounts, Per 1000=(county value / county population for the same year as the data) x 1000. \$ Per capita=(county value / county population for the same year as the data). Value= . indicates missing or suppressed data or value not calculated.

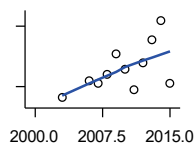
Business



**TOTAL ANNUAL PAYROLL(\$000):
UTILITIES**

U.S. Census Bureau, County Business Patterns. Beginning with the 2017 data, any tabulation with fewer than 3 establishments were omitted from the release. Data for these establishments are included in the broader total.

Year	County	State of Kansas	Non Metro Kansas	County Rank	Per 1000 or \$ Per Capita
2000	.	410,313	.	.	.
2001	.	452,057	.	.	.
2002	.	377,559	.	.	.
2003	.	378,157	.	.	.
2004	.	377,809	.	.	.
2005	.	429,864	.	.	.
2006	.	443,999	.	.	.
2007	0	480,068	.	.	0.0
2008	0	541,066	.	.	0.0
2009	0	563,373	.	.	0.0
2010	0	512,628	.	.	0.0
2011	0	653,229	.	.	0.0
2012	0	625,451	.	.	0.0
2013	0	625,347	.	.	0.0
2014	0	610,960	.	.	0.0
2015	0	668,559	.	.	0.0



**TOTAL ANNUAL PAYROLL(\$000):
CONSTRUCTION**

U.S. Census Bureau, County Business Patterns. Beginning with the 2017 data, any tabulation with fewer than 3 establishments were omitted from the release. Data for these establishments are included in the broader total.

Year	County	State of Kansas	Non Metro Kansas	County Rank	Per 1000 or \$ Per Capita
2000	.	2,256,057	.	.	.
2001	.	2,320,652	.	.	.
2002	.	2,302,229	.	.	.
2003	122	2,282,021	.	.	51.6
2004	.	2,302,854	.	.	.
2005	.	2,465,977	.	.	.
2006	163	2,700,351	.	.	72.4
2007	157	2,772,168	.	.	71.4
2008	179	2,950,073	.	.	80.4
2009	230	2,709,864	.	.	102.6
2010	194	2,553,555	.	.	87.6
2011	142	2,550,355	.	.	67.0
2012	209	2,733,284	.	.	96.5
2013	265	2,866,801	.	.	121.7
2014	314	3,135,814	.	.	148.5
2015	158	3,270,952	.	.	75.9

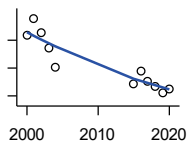
County: county value. Kansas: state value. County Rank: highest county value ranked #1. (\$000): thousands of dollars. Nonmetro Kansas: Kansas total less Metropolitan Areas as defined by the Office of Management and Budget (OMB; released 3/6/2020). Per 1000: For nonmoney amounts, Per 1000=(county value / county population for the same year as the data) x 1000. \$ Per capita=(county value / county population for the same year as the data). Value= . indicates missing or suppressed data or value not calculated.

Business

**TOTAL ANNUAL PAYROLL(\$000):
MANUFACTURING**

U.S. Census Bureau, County Business Patterns. Beginning with the 2017 data, any tabulation with fewer than 3 establishments were omitted from the release. Data for these establishments are included in the broader total.

Year	County	State of Kansas	Non Metro Kansas	County Rank	Per 1000 or \$ Per Capita
2000	.	7,015,414	.	.	.
2001	.	7,301,706	.	.	.
2002	.	6,802,605	.	.	.
2003	.	6,691,611	.	.	.
2004	.	6,985,656	.	.	.
2005	.	7,221,614	.	.	.
2006	.	7,621,873	.	.	.
2007	.	7,873,359	.	.	.
2008	.	8,441,541	.	.	.
2009	.	7,477,838	.	.	.
2010	.	7,556,955	.	.	.
2011	.	7,747,934	.	.	.
2012	.	7,704,851	.	.	.
2013	.	8,365,542	.	.	.
2014	.	8,787,306	.	.	.
2015	.	9,052,105	.	.	.



**TOTAL ANNUAL PAYROLL(\$000):
WHOLESALE TRADE**

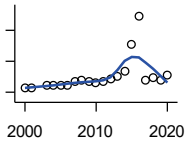
U.S. Census Bureau, County Business Patterns. Beginning with the 2017 data, any tabulation with fewer than 3 establishments were omitted from the release. Data for these establishments are included in the broader total.

Year	County	State of Kansas	Non Metro Kansas	County Rank	Per 1000 or \$ Per Capita
2000	916	2,332,755	.	.	383.3
2001	978	2,283,169	.	.	408.7
2002	925	2,107,653	.	.	390.0
2003	874	2,622,701	.	.	369.7
2004	804	2,663,196	.	.	341.0
2005	.	2,345,990	.	.	.
2006	.	2,592,211	.	.	.
2007	.	2,682,542	.	.	.
2008	.	3,078,655	.	.	.
2009	.	2,940,949	.	.	.
2010	.	3,097,628	.	.	.
2011	.	3,305,811	.	.	.
2012	.	3,339,997	.	.	.
2013	.	3,460,512	.	.	.
2014	.	3,712,075	.	.	.
2015	742	3,760,189	.	.	356.6
2016	789	3,738,207	.	.	382.1
2017	751	3,822,730	.	.	376.4
2018	735	3,814,353	.	.	368.6
2019	713	4,025,802	.	.	357.6
2020	727	4,224,666	.	.	365.1

County: county value. Kansas: state value. County Rank: highest county value ranked #1. (\$000): thousands of dollars. Nonmetro Kansas: Kansas total less Metropolitan Areas as defined by the Office of Management and Budget (OMB; released 3/6/2020). Per 1000: For nonmoney amounts, Per 1000=(county value / county population for the same year as the data) x 1000. \$ Per capita=(county value / county population for the same year as the data). Value= . indicates missing or suppressed data or value not calculated.

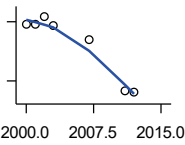
Business

**TOTAL ANNUAL PAYROLL(\$000):
RETAIL TRADE**



U.S. Census Bureau, County Business Patterns. Beginning with the 2017 data, any tabulation with fewer than 3 establishments were omitted from the release. Data for these establishments are included in the broader total.

Year	County	State of Kansas	Non Metro Kansas	County Rank	Per 1000 or \$ Per Capita
2000	643	2,747,001	.	.	269.0
2001	649	2,813,226	.	.	271.2
2002	.	2,854,231	.	.	.
2003	722	2,773,674	.	.	305.4
2004	715	2,847,826	.	.	303.2
2005	726	2,952,196	.	.	315.9
2006	719	3,126,495	.	.	319.3
2007	856	3,201,169	.	.	389.1
2008	885	3,261,054	.	.	397.8
2009	826	3,232,246	.	.	368.4
2010	805	3,321,838	.	.	363.4
2011	828	3,384,607	.	.	390.6
2012	931	3,409,755	.	.	430.0
2013	1,007	3,483,752	.	.	462.4
2014	1,159	3,617,933	.	.	548.2
2015	2,051	3,712,165	.	.	985.6
2016	2,955	3,826,889	.	.	1,431.0
2017	867	3,797,849	.	.	434.6
2018	960	3,818,988	.	.	481.4
2019	893	3,908,994	.	.	447.8
2020	1,064	3,984,443	.	.	534.4



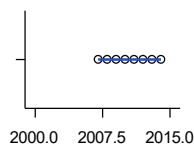
**TOTAL ANNUAL PAYROLL(\$000):
TRANSPORTATION &
WAREHOUSING**

U.S. Census Bureau, County Business Patterns. Beginning with the 2017 data, any tabulation with fewer than 3 establishments were omitted from the release. Data for these establishments are included in the broader total.

Year	County	State of Kansas	Non Metro Kansas	County Rank	Per 1000 or \$ Per Capita
2000	772	1,044,835	.	.	323.0
2001	768	1,089,405	.	.	320.9
2002	853	1,094,636	.	.	359.6
2003	765	1,316,655	.	.	323.6
2004	.	1,439,800	.	.	.
2005	.	1,393,651	.	.	.
2006	.	1,528,551	.	.	.
2007	613	1,788,267	.	.	278.6
2008	.	1,722,697	.	.	.
2009	.	1,618,598	.	.	.
2010	.	1,735,761	.	.	.
2011	96	1,739,165	.	.	45.3
2012	88	1,984,976	.	.	40.6
2013	.	2,006,261	.	.	.
2014	.	2,097,377	.	.	.
2015	.	2,190,072	.	.	.

County: county value. Kansas: state value. County Rank: highest county value ranked #1. (\$000): thousands of dollars. Nonmetro Kansas: Kansas total less Metropolitan Areas as defined by the Office of Management and Budget (OMB; released 3/6/2020). Per 1000: For nonmoney amounts, Per 1000=(county value / county population for the same year as the data) x 1000. \$ Per capita=(county value / county population for the same year as the data). Value= . indicates missing or suppressed data or value not calculated.

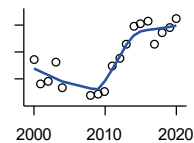
Business



**TOTAL ANNUAL PAYROLL(\$000):
INFORMATION**

U.S. Census Bureau, County Business Patterns. Beginning with the 2017 data, any tabulation with fewer than 3 establishments were omitted from the release. Data for these establishments are included in the broader total.

Year	County	State of Kansas	Non Metro Kansas	County Rank	Per 1000 or \$ Per Capita
2000	.	1,923,381	.	.	.
2001	.	2,218,610	.	.	.
2002	.	2,298,108	.	.	.
2003	.	2,378,673	.	.	.
2004	.	2,392,990	.	.	.
2005	.	2,395,081	.	.	.
2006	.	2,586,483	.	.	.
2007	0	2,594,138	.	.	0.0
2008	0	3,043,244	.	.	0.0
2009	0	3,045,570	.	.	0.0
2010	0	2,481,580	.	.	0.0
2011	0	2,513,805	.	.	0.0
2012	0	2,535,555	.	.	0.0
2013	0	2,805,017	.	.	0.0
2014	0	2,393,609	.	.	0.0
2015	.	2,406,323	.	.	.



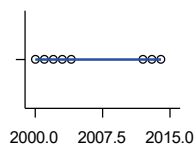
**TOTAL ANNUAL PAYROLL(\$000):
FINANCE & INSURANCE**

U.S. Census Bureau, County Business Patterns. Beginning with the 2017 data, any tabulation with fewer than 3 establishments were omitted from the release. Data for these establishments are included in the broader total.

Year	County	State of Kansas	Non Metro Kansas	County Rank	Per 1000 or \$ Per Capita
2000	1,542	2,083,565	.	.	645.2
2001	1,362	2,129,587	.	.	569.2
2002	1,383	2,414,120	.	.	583.1
2003	1,521	2,608,579	.	.	643.4
2004	1,330	2,676,910	.	.	564.0
2005	.	2,786,136	.	.	.
2006	.	2,928,931	.	.	.
2007	.	3,096,017	.	.	.
2008	1,273	3,322,977	.	.	572.1
2009	1,286	3,206,839	.	.	573.6
2010	1,302	3,211,300	.	.	587.8
2011	1,499	3,404,633	.	.	707.1
2012	1,555	3,611,165	.	.	718.2
2013	1,655	3,896,051	.	.	759.9
2014	1,794	4,044,315	.	.	848.6
2015	1,814	4,113,060	.	.	871.7
2016	1,828	4,180,740	.	.	885.2
2017	1,660	4,258,057	.	.	832.1
2018	1,741	4,682,552	.	.	873.1
2019	1,785	4,814,201	.	.	895.2
2020	1,849	5,288,529	.	.	928.7

County: county value. Kansas: state value. County Rank: highest county value ranked #1. (\$000): thousands of dollars. Nonmetro Kansas: Kansas total less Metropolitan Areas as defined by the Office of Management and Budget (OMB; released 3/6/2020). Per 1000: For nonmoney amounts, Per 1000=(county value / county population for the same year as the data) x 1000. \$ Per capita=(county value / county population for the same year as the data). Value= . indicates missing or suppressed data or value not calculated.

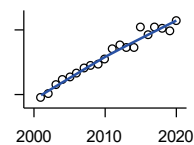
Business



**TOTAL ANNUAL PAYROLL(\$000):
REAL ESTATE, RENTAL, AND
LEASING**

U.S. Census Bureau, County Business Patterns. Beginning with the 2017 data, any tabulation with fewer than 3 establishments were omitted from the release. Data for these establishments are included in the broader total.

Year	County	State of Kansas	Non Metro Kansas	County Rank	Per 1000 or \$ Per Capita
2000	0	360,637	.	.	0.0
2001	0	397,371	.	.	0.0
2002	0	403,695	.	.	0.0
2003	0	437,786	.	.	0.0
2004	0	430,719	.	.	0.0
2005	.	465,149	.	.	.
2006	.	478,811	.	.	.
2007	.	452,969	.	.	.
2008	.	484,149	.	.	.
2009	.	450,884	.	.	.
2010	.	487,255	.	.	.
2011	.	535,120	.	.	.
2012	0	531,039	.	.	0.0
2013	0	538,796	.	.	0.0
2014	0	542,307	.	.	0.0
2015	.	595,030	.	.	.



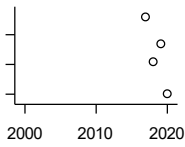
**TOTAL ANNUAL PAYROLL(\$000):
PROFESSIONAL, SCIENTIFIC, AND
TECHNICAL SERVICES**

U.S. Census Bureau, County Business Patterns. Beginning with the 2017 data, any tabulation with fewer than 3 establishments were omitted from the release. Data for these establishments are included in the broader total.

Year	County	State of Kansas	Non Metro Kansas	County Rank	Per 1000 or \$ Per Capita
2000	.	2,057,313	.	.	.
2001	369	2,152,937	.	.	154.2
2002	409	2,150,085	.	.	172.4
2003	490	2,052,712	.	.	207.3
2004	543	2,531,457	.	.	230.3
2005	561	2,418,500	.	.	244.1
2006	594	2,655,690	.	.	263.8
2007	652	2,901,544	.	.	296.4
2008	666	2,903,802	.	.	299.3
2009	688	3,071,611	.	.	306.9
2010	729	3,037,182	.	.	329.1
2011	827	3,132,082	.	.	390.1
2012	860	3,455,548	.	.	397.2
2013	839	3,777,729	.	.	385.2
2014	833	3,981,580	.	.	394.0
2015	1,024	4,039,074	.	.	492.1
2016	953	4,125,507	.	.	461.5
2017	1,021	4,158,858	.	.	511.8
2018	1,009	4,314,317	.	.	506.0
2019	988	4,646,644	.	.	495.5
2020	1,087	4,927,611	.	.	546.0

County: county value. Kansas: state value. County Rank: highest county value ranked #1. (\$000): thousands of dollars. Nonmetro Kansas: Kansas total less Metropolitan Areas as defined by the Office of Management and Budget (OMB; released 3/6/2020). Per 1000: For nonmoney amounts, Per 1000=(county value / county population for the same year as the data) x 1000. \$ Per capita=(county value / county population for the same year as the data). Value= . indicates missing or suppressed data or value not calculated.

Business



**TOTAL ANNUAL PAYROLL(\$000):
MANAGEMENT OF COMPANIES AND
ENTERPRISES**

U.S. Census Bureau, County Business Patterns. Beginning with the 2017 data, any tabulation with fewer than 3 establishments were omitted from the release. Data for these establishments are included in the broader total.

Year	County	State of Kansas	Non Metro Kansas	County Rank	Per 1000 or \$ Per Capita
2000	.	1,362,735	.	.	.
2001	.	1,279,253	.	.	.
2002	.	1,311,368	.	.	.
2003	.	1,352,119	.	.	.
2004	.	1,378,891	.	.	.
2005	.	1,510,876	.	.	.
2006	.	1,626,320	.	.	.
2007	.	2,233,654	.	.	.
2008	.	1,848,656	.	.	.
2009	.	1,601,158	.	.	.
2010	.	2,003,048	.	.	.
2011	.	1,677,619	.	.	.
2012	.	1,834,430	.	.	.
2013	.	1,938,100	.	.	.
2014	.	2,117,232	.	.	.
2015	.	2,451,126	.	.	.
2017	642	2,224,567	.	.	321.8
2018	612	2,470,094	.	.	306.9
2019	624	2,757,300	.	.	312.9
2020	590	2,578,116	.	.	296.3

**TOTAL ANNUAL PAYROLL(\$000):
ADMIN, SUPPORT, WASTE MGMT.,
AND REMEDIATION**

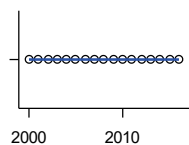
U.S. Census Bureau, County Business Patterns. Beginning with the 2017 data, any tabulation with fewer than 3 establishments were omitted from the release. Data for these establishments are included in the broader total.

Year	County	State of Kansas	Non Metro Kansas	County Rank	Per 1000 or \$ Per Capita
2000	.	1,388,712	.	.	.
2001	.	1,416,480	.	.	.
2002	.	1,378,905	.	.	.
2003	.	1,387,061	.	.	.
2004	.	1,544,442	.	.	.
2005	.	1,694,687	.	.	.
2006	.	1,800,846	.	.	.
2007	.	1,978,025	.	.	.
2008	.	2,096,864	.	.	.
2009	.	1,832,540	.	.	.
2010	.	2,117,325	.	.	.
2011	.	2,114,970	.	.	.
2012	.	2,230,250	.	.	.
2013	.	2,214,320	.	.	.
2014	.	2,444,170	.	.	.
2015	.	2,577,592	.	.	.

County: county value. Kansas: state value. County Rank: highest county value ranked #1. (\$000): thousands of dollars. Nonmetro Kansas: Kansas total less Metropolitan Areas as defined by the Office of Management and Budget (OMB; released 3/6/2020). Per 1000: For nonmoney amounts, Per 1000=(county value / county population for the same year as the data) x 1000. \$ Per capita=(county value / county population for the same year as the data). Value= . indicates missing or suppressed data or value not calculated.

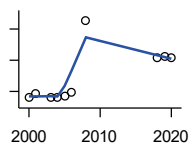
Business

**TOTAL ANNUAL PAYROLL(\$000):
EDUCATIONAL SERVICES**



U.S. Census Bureau, County Business Patterns. Beginning with the 2017 data, any tabulation with fewer than 3 establishments were omitted from the release. Data for these establishments are included in the broader total.

Year	County	State of Kansas	Non Metro Kansas	County Rank	Per 1000 or \$ Per Capita
2000	0	299,843	.	.	0.0
2001	0	320,606	.	.	0.0
2002	0	353,531	.	.	0.0
2003	0	350,814	.	.	0.0
2004	0	361,644	.	.	0.0
2005	0	375,781	.	.	0.0
2006	0	400,565	.	.	0.0
2007	0	414,233	.	.	0.0
2008	0	463,210	.	.	0.0
2009	0	468,856	.	.	0.0
2010	0	487,670	.	.	0.0
2011	0	504,964	.	.	0.0
2012	0	508,448	.	.	0.0
2013	0	553,995	.	.	0.0
2014	0	612,073	.	.	0.0
2015	0	579,794	.	.	0.0
2016	0	571,582	.	.	0.0



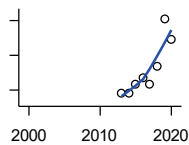
**TOTAL ANNUAL PAYROLL(\$000):
HEALTH CARE AND SOCIAL ASSISTANCE**

U.S. Census Bureau, County Business Patterns. Beginning with the 2017 data, any tabulation with fewer than 3 establishments were omitted from the release. Data for these establishments are included in the broader total.

Year	County	State of Kansas	Non Metro Kansas	County Rank	Per 1000 or \$ Per Capita
2000	3,173	4,120,595	.	.	1,327.6
2001	3,746	4,445,027	.	.	1,565.4
2002	.	4,705,220	.	.	.
2003	3,202	4,939,323	.	.	1,354.5
2004	3,179	5,232,394	.	.	1,348.2
2005	3,358	5,487,089	.	.	1,461.3
2006	3,870	5,814,218	.	.	1,718.5
2007	.	6,186,471	.	.	.
2008	13,091	6,490,627	.	.	5,883.6
2009	.	6,749,962	.	.	.
2010	.	6,871,727	.	.	.
2011	.	7,129,655	.	.	.
2012	.	7,614,853	.	.	.
2013	.	7,541,515	.	.	.
2014	.	7,733,621	.	.	.
2015	.	7,969,650	.	.	.
2018	8,343	8,637,619	.	.	4,184.1
2019	8,452	8,854,414	.	.	4,238.7
2020	8,340	9,309,269	.	.	4,188.8

County: county value. Kansas: state value. County Rank: highest county value ranked #1. (\$000): thousands of dollars. Nonmetro Kansas: Kansas total less Metropolitan Areas as defined by the Office of Management and Budget (OMB; released 3/6/2020). Per 1000: For nonmoney amounts, Per 1000=(county value / county population for the same year as the data) x 1000. \$ Per capita=(county value / county population for the same year as the data). Value= . indicates missing or suppressed data or value not calculated.

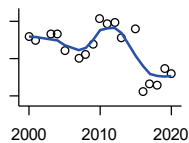
Business



**TOTAL ANNUAL PAYROLL(\$000):
ARTS, ENTERTAINMENT, AND
RECREATION**

U.S. Census Bureau, County Business Patterns. Beginning with the 2017 data, any tabulation with fewer than 3 establishments were omitted from the release. Data for these establishments are included in the broader total.

Year	County	State of Kansas	Non Metro Kansas	County Rank	Per 1000 or \$ Per Capita
2000	.	195,784	.	.	.
2001	.	203,511	.	.	.
2002	.	206,204	.	.	.
2003	.	185,049	.	.	.
2004	.	190,742	.	.	.
2005	.	196,594	.	.	.
2006	.	201,049	.	.	.
2007	.	220,435	.	.	.
2008	.	236,986	.	.	.
2009	.	237,116	.	.	.
2010	.	233,285	.	.	.
2011	.	234,351	.	.	.
2012	.	254,169	.	.	.
2013	98	278,474	.	.	45.0
2014	98	289,103	.	.	46.4
2015	103	300,253	.	.	49.5
2016	107	312,902	.	.	51.8
2017	103	323,153	.	.	51.6
2018	114	325,454	.	.	57.2
2019	141	335,362	.	.	70.7
2020	129	298,119	.	.	64.8



**TOTAL ANNUAL PAYROLL(\$000):
ACCOMMODATION AND FOOD
SERVICES**

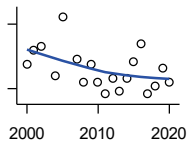
U.S. Census Bureau, County Business Patterns. Beginning with the 2017 data, any tabulation with fewer than 3 establishments were omitted from the release. Data for these establishments are included in the broader total.

Year	County	State of Kansas	Non Metro Kansas	County Rank	Per 1000 or \$ Per Capita
2000	103	926,831	.	.	43.1
2001	100	960,196	.	.	41.8
2002	.	930,510	.	.	.
2003	107	992,313	.	.	45.3
2004	106	1,046,901	.	.	45.0
2005	89	1,101,854	.	.	38.7
2006	.	1,185,280	.	.	.
2007	80	1,431,100	.	.	36.4
2008	85	1,271,594	.	.	38.2
2009	96	1,283,065	.	.	42.8
2010	123	1,296,556	.	.	55.5
2011	118	1,364,281	.	.	55.7
2012	119	1,388,337	.	.	55.0
2013	102	1,476,335	.	.	46.8
2014	.	1,572,021	.	.	.
2015	112	1,640,144	.	.	53.8
2016	44	1,709,193	.	.	21.3
2017	53	1,824,791	.	.	26.6
2018	52	1,880,364	.	.	26.1
2019	70	1,958,603	.	.	35.1
2020	64	1,745,238	.	.	32.1

County: county value. Kansas: state value. County Rank: highest county value ranked #1. (\$000): thousands of dollars. Nonmetro Kansas: Kansas total less Metropolitan Areas as defined by the Office of Management and Budget (OMB; released 3/6/2020). Per 1000: For nonmoney amounts, Per 1000=(county value / county population for the same year as the data) x 1000. \$ Per capita=(county value / county population for the same year as the data). Value= . indicates missing or suppressed data or value not calculated.

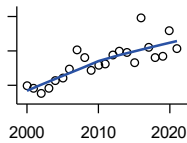
Business

**TOTAL ANNUAL PAYROLL(\$000):
OTHER SERVICES**



U.S. Census Bureau, County Business Patterns. Beginning with the 2017 data, any tabulation with fewer than 3 establishments were omitted from the release. Data for these establishments are included in the broader total.

Year	County	State of Kansas	Non Metro Kansas	County Rank	Per 1000 or \$ Per Capita
2000	306	965,540	.	.	128.0
2001	338	996,716	.	.	141.2
2002	347	1,007,464	.	.	146.3
2003	.	979,466	.	.	.
2004	280	970,383	.	.	118.7
2005	417	1,005,537	.	.	181.5
2006	.	1,055,932	.	.	.
2007	320	1,141,551	.	.	145.5
2008	265	1,184,016	.	.	119.1
2009	307	1,167,154	.	.	136.9
2010	264	1,170,201	.	.	119.2
2011	237	1,173,775	.	.	111.8
2012	274	1,217,210	.	.	126.6
2013	243	1,254,933	.	.	111.6
2014	274	1,305,563	.	.	129.6
2015	313	1,341,075	.	.	150.4
2016	353	1,351,375	.	.	170.9
2017	237	1,344,179	.	.	118.8
2018	257	1,382,801	.	.	128.9
2019	297	1,427,711	.	.	148.9
2020	266	1,420,859	.	.	133.6



**NOMINAL TAXABLE RETAIL SALES
(million\$)**

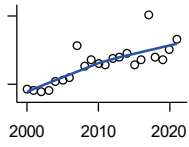
Kansas Department of Revenue

Year	County	State of Kansas	Non Metro Kansas	County Rank	Per 1000 or \$ Per Capita
2000	9.7	30,119.0	8,831.7	104	4.1
2001	9.0	30,202.2	8,700.3	103	3.8
2002	7.5	29,380.8	8,241.5	103	3.2
2003	9.3	30,694.0	8,710.6	104	3.9
2004	11.4	31,922.6	9,062.5	102	4.8
2005	12.1	32,924.2	9,386.6	101	5.3
2006	14.7	34,937.6	10,042.1	100	6.5
2007	20.3	36,180.1	10,553.2	90	9.2
2008	18.0	37,559.5	11,126.9	100	8.1
2009	14.5	35,211.8	10,351.5	102	6.5
2010	15.8	35,655.7	10,606.1	101	7.1
2011	16.1	37,257.0	11,153.5	103	7.6
2012	19.0	38,988.8	11,749.1	100	8.8
2013	19.8	40,009.0	11,993.8	99	9.1
2014	19.4	41,299.0	12,365.4	100	9.2
2015	16.8	41,635.8	11,747.6	102	8.1
2016	29.6	42,040.2	11,523.5	83	14.3
2017	21.2	41,940.1	11,449.9	93	10.6
2018	18.1	42,732.3	11,643.9	99	9.1
2019	18.4	43,732.5	12,062.7	101	9.3
2020	25.7	43,689.9	12,331.7	88	12.9
2021	20.8	48,532.8	13,413.0	100	10.5

County: county value. Kansas: state value. County Rank: highest county value ranked #1. (\$000): thousands of dollars. Nonmetro Kansas: Kansas total less Metropolitan Areas as defined by the Office of Management and Budget (OMB; released 3/6/2020). Per 1000: For nonmoney amounts, Per 1000=(county value / county population for the same year as the data) x 1000. \$ Per capita=(county value / county population for the same year as the data). Value= . indicates missing or suppressed data or value not calculated.

Business

RETAIL PULL FACTOR



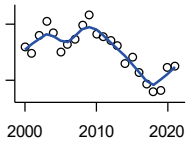
Kansas Direct Program, Kansas State University Cooperative Extension Service (1980-1999); Kansas Department of Revenue (2000-)

Year	County	State of Kansas	Non Metro Kansas	County Rank	Per 1000 or \$ Per Capita
2000	0.36	.	.	99	.
2001	0.34	.	.	99	.
2002	0.33	.	.	98	.
2003	0.35	.	.	97	.
2004	0.42	.	.	90	.
2005	0.44	.	.	89	.
2006	0.46	.	.	88	.
2007	0.74	.	.	48	.
2008	0.55	.	.	80	.
2009	0.62	.	.	78	.
2010	0.58	.	.	80	.
2011	0.57	.	.	84	.
2012	0.63	.	.	78	.
2013	0.64	.	.	78	.
2014	0.67	.	.	72	.
2015	0.57	.	.	85	.
2016	0.62	.	.	74	.
2017	1.01	.	.	16	.
2018	0.64	.	.	70	.
2019	0.62	.	.	77	.
2020	0.70	.	.	64	.
2021	0.80	.	.	42	.

County: county value. Kansas: state value. County Rank: highest county value ranked #1. (\$000): thousands of dollars. Nonmetro Kansas: Kansas total less Metropolitan Areas as defined by the Office of Management and Budget (OMB; released 3/6/2020). Per 1000: For nonmoney amounts, Per 1000=(county value / county population for the same year as the data) x 1000. \$ Per capita=(county value / county population for the same year as the data). Value= . indicates missing or suppressed data or value not calculated.

Employment

CIVILIAN LABOR FORCE (BLS-Place of Residence; 1990-)



U.S. Department of Labor, Bureau of Labor Statistics (BLS)

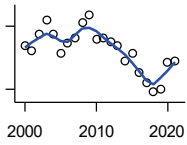
Year	County	State of Kansas	Non Metro Kansas	County Rank	Per 1000 or \$ Per Capita
2000	1,190	1,402,606	482,229	100	497.9
2001	1,172	1,398,521	475,280	100	489.8
2002	1,220	1,419,335	482,428	99	514.3
2003	1,256	1,441,065	490,161	99	531.3
2004	1,228	1,458,910	494,509	99	520.8
2005	1,175	1,458,767	490,047	99	511.3
2006	1,197	1,467,553	498,594	99	531.5
2007	1,208	1,485,414	497,048	99	549.1
2008	1,246	1,493,365	504,522	98	560.0
2009	1,275	1,512,572	516,311	99	568.7
2010	1,224	1,500,463	492,594	99	552.6
2011	1,218	1,498,000	492,563	99	574.5
2012	1,205	1,490,808	489,349	99	556.6
2013	1,191	1,489,395	485,484	99	546.8
2014	1,146	1,494,203	481,813	99	542.1
2015	1,162	1,493,782	477,546	99	558.4
2016	1,121	1,491,961	468,258	99	542.9
2017	1,091	1,488,346	461,063	99	546.9
2018	1,068	1,488,027	456,866	99	535.6
2019	1,074	1,497,517	455,858	99	538.6
2020	1,135	1,493,706	452,935	97	570.1
2021	1,139	1,495,665	453,398	97	576.1

County: county value. Kansas: state value. County Rank: highest county value ranked #1. (\$000): thousands of dollars. Nonmetro Kansas: Kansas total less Metropolitan Areas as defined by the Office of Management and Budget (OMB; released 3/6/2020). Per 1000: For nonmoney amounts, Per 1000=(county value / county population for the same year as the data) x 1000. \$ Per capita=(county value / county population for the same year as the data). Value= . indicates missing or suppressed data or value not calculated.

Employment

EMPLOYED (BLS-Place of Residence; 1990-)

U.S. Department of Labor, Bureau of Labor Statistics (BLS)



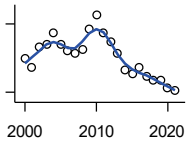
Year	County	State of Kansas	Non Metro Kansas	County Rank	Per 1000 or \$ Per Capita
2000	1,155	1,349,841	464,962	100	483.3
2001	1,141	1,338,775	455,154	100	476.8
2002	1,180	1,347,163	461,241	99	497.5
2003	1,215	1,361,115	467,622	99	514.0
2004	1,182	1,378,355	470,330	99	501.3
2005	1,134	1,384,654	467,722	99	493.5
2006	1,159	1,402,950	479,174	99	514.7
2007	1,171	1,422,109	477,983	99	532.3
2008	1,207	1,425,022	484,056	98	542.5
2009	1,227	1,408,142	485,797	99	547.3
2010	1,170	1,396,172	461,635	99	528.2
2011	1,172	1,402,198	463,723	99	552.8
2012	1,163	1,405,638	463,376	99	537.2
2013	1,154	1,410,470	461,405	99	529.8
2014	1,116	1,426,892	461,797	99	527.9
2015	1,134	1,431,533	457,899	99	544.9
2016	1,090	1,431,920	449,356	99	527.8
2017	1,064	1,434,516	445,003	99	533.3
2018	1,043	1,439,329	442,716	99	523.1
2019	1,049	1,450,705	442,108	99	526.1
2020	1,113	1,408,965	433,229	96	559.0
2021	1,118	1,447,323	441,159	97	565.5

County: county value. Kansas: state value. County Rank: highest county value ranked #1. (\$000): thousands of dollars. Nonmetro Kansas: Kansas total less Metropolitan Areas as defined by the Office of Management and Budget (OMB; released 3/6/2020). Per 1000: For nonmoney amounts, Per 1000=(county value / county population for the same year as the data) x 1000. \$ Per capita=(county value / county population for the same year as the data). Value= . indicates missing or suppressed data or value not calculated.

Employment

UNEMPLOYED (BLS-Place of Residence; 1990-)

U.S. Department of Labor, Bureau of Labor Statistics (BLS)

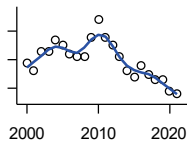


Year	County	State of Kansas	Non Metro Kansas	County Rank	Per 1000 or \$ Per Capita
2000	35	52,765	17,267	99	14.6
2001	31	59,746	20,126	102	13.0
2002	40	72,172	21,187	100	16.9
2003	41	79,950	22,539	99	17.3
2004	46	80,555	24,179	99	19.5
2005	41	74,113	22,325	99	17.8
2006	38	64,603	19,420	99	16.9
2007	37	63,305	19,065	100	16.8
2008	39	68,343	20,466	101	17.5
2009	48	104,430	30,514	98	21.4
2010	54	104,291	30,959	95	24.4
2011	46	95,802	28,840	100	21.7
2012	42	85,170	25,973	100	19.4
2013	37	78,925	24,079	101	17.0
2014	30	67,311	20,016	102	14.2
2015	28	62,249	19,647	103	13.5
2016	31	60,041	18,902	98	15.0
2017	27	53,830	16,060	100	13.5
2018	25	48,698	14,150	100	12.5
2019	25	46,812	13,750	100	12.5
2020	22	84,741	19,706	102	11.0
2021	21	48,342	12,239	100	10.6

County: county value. Kansas: state value. County Rank: highest county value ranked #1. (\$000): thousands of dollars. Nonmetro Kansas: Kansas total less Metropolitan Areas as defined by the Office of Management and Budget (OMB; released 3/6/2020). Per 1000: For nonmoney amounts, Per 1000=(county value / county population for the same year as the data) x 1000. \$ Per capita=(county value / county population for the same year as the data). Value= . indicates missing or suppressed data or value not calculated.

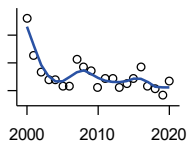
Employment

UNEMPLOYMENT RATE (BLS-Place of Residence; 1990-)



U.S. Department of Labor, Bureau of Labor Statistics (BLS)

Year	County	State of Kansas	Non Metro Kansas	County Rank	Per 1000 or \$ Per Capita
2000	2.9	3.8	3.6	79	.
2001	2.6	4.3	4.2	103	.
2002	3.3	5.1	4.4	81	.
2003	3.3	5.5	4.6	85	.
2004	3.7	5.5	4.9	85	.
2005	3.5	5.1	4.6	88	.
2006	3.2	4.4	3.9	82	.
2007	3.1	4.3	3.8	86	.
2008	3.1	4.6	4.1	91	.
2009	3.8	6.9	5.9	90	.
2010	4.4	7.0	6.3	79	.
2011	3.8	6.4	5.9	89	.
2012	3.5	5.7	5.3	88	.
2013	3.1	5.3	5.0	94	.
2014	2.6	4.5	4.2	99	.
2015	2.4	4.2	4.1	100	.
2016	2.8	4.0	4.0	87	.
2017	2.5	3.6	3.5	93	.
2018	2.3	3.3	3.1	91	.
2019	2.3	3.1	3.0	89	.
2020	1.9	5.7	4.4	103	.
2021	1.8	3.2	2.7	95	.



BEA EMPLOYMENT: TOTAL (Place of Work)

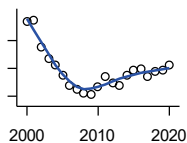
U.S. Bureau of Economic Analysis, Regional Economic Information System (REIS)

Year	County	State of Kansas	Non Metro Kansas	County Rank	Per 1000 or \$ Per Capita
2000	1,661	1,760,312	604,361	98	695.0
2001	1,528	1,767,601	592,672	100	638.5
2002	1,469	1,746,077	585,387	101	619.3
2003	1,438	1,733,694	577,860	100	608.3
2004	1,439	1,750,876	578,750	100	610.3
2005	1,415	1,765,650	577,562	101	615.8
2006	1,417	1,795,507	583,041	101	629.2
2007	1,511	1,844,355	591,924	98	686.8
2008	1,483	1,858,069	594,368	99	666.5
2009	1,471	1,813,184	580,972	99	656.1
2010	1,410	1,801,873	579,758	101	636.6
2011	1,446	1,819,044	583,725	100	682.1
2012	1,445	1,841,393	591,748	99	667.4
2013	1,412	1,869,054	597,236	100	648.3
2014	1,427	1,895,859	601,291	99	675.0
2015	1,442	1,910,954	598,589	99	692.9
2016	1,483	1,916,152	592,580	99	718.2
2017	1,417	1,914,179	584,337	99	710.3
2018	1,409	1,926,242	580,213	100	706.6
2019	1,382	1,925,204	574,496	99	693.1
2020	1,435	1,851,247	556,671	98	720.7

County: county value. Kansas: state value. County Rank: highest county value ranked #1. (\$000): thousands of dollars. Nonmetro Kansas: Kansas total less Metropolitan Areas as defined by the Office of Management and Budget (OMB; released 3/6/2020). Per 1000: For nonmoney amounts, Per 1000=(county value / county population for the same year as the data) x 1000. \$ Per capita=(county value / county population for the same year as the data). Value= . indicates missing or suppressed data or value not calculated.

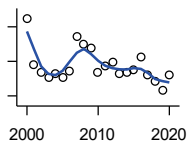
Employment

BEA EMPLOYMENT: FARM



U.S. Bureau of Economic Analysis,
Regional Economic Information System
(REIS)

Year	County	State of Kansas	Non Metro Kansas	County Rank	Per 1000 or \$ Per Capita
2000	387	77,477	59,088	98	161.9
2001	389	78,177	59,647	98	162.6
2002	350	70,532	53,893	98	147.6
2003	334	68,516	52,099	98	141.3
2004	325	67,586	51,246	98	137.8
2005	311	66,829	50,386	99	135.3
2006	296	64,910	48,728	99	131.4
2007	290	65,639	49,037	99	131.8
2008	284	63,820	47,682	99	127.6
2009	282	62,798	46,960	99	125.8
2010	293	63,882	47,984	99	132.3
2011	309	65,761	49,707	100	145.8
2012	299	63,753	48,167	99	138.1
2013	296	62,739	47,255	99	135.9
2014	310	64,308	48,722	98	146.6
2015	317	64,416	48,927	96	152.3
2016	319	63,840	48,539	95	154.5
2017	308	61,876	46,936	95	154.4
2018	316	63,233	48,069	95	158.5
2019	317	63,300	48,167	95	159.0
2020	324	64,281	49,038	95	162.7



BEA EMPLOYMENT: NON-FARM

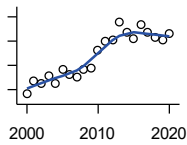
U.S. Bureau of Economic Analysis,
Regional Economic Information System
(REIS)

Year	County	State of Kansas	Non Metro Kansas	County Rank	Per 1000 or \$ Per Capita
2000	1,274	1,682,835	545,273	95	533.1
2001	1,139	1,689,424	533,025	99	476.0
2002	1,119	1,675,545	531,494	100	471.8
2003	1,104	1,665,178	525,761	99	467.0
2004	1,114	1,683,290	527,504	99	472.4
2005	1,104	1,698,821	527,176	99	480.4
2006	1,121	1,730,597	534,313	98	497.8
2007	1,221	1,778,716	542,887	97	555.0
2008	1,199	1,794,249	546,686	98	538.9
2009	1,189	1,750,386	534,012	98	530.3
2010	1,117	1,737,991	531,774	98	504.3
2011	1,137	1,753,283	534,018	98	536.3
2012	1,146	1,777,640	543,581	98	529.3
2013	1,116	1,806,315	549,981	100	512.4
2014	1,117	1,831,551	552,569	99	528.4
2015	1,125	1,846,538	549,662	99	540.6
2016	1,164	1,852,312	544,041	99	563.7
2017	1,109	1,852,303	537,401	99	555.9
2018	1,093	1,863,009	532,144	100	548.1
2019	1,065	1,861,904	526,329	100	534.1
2020	1,111	1,786,966	507,633	98	558.0

County: county value. Kansas: state value. County Rank: highest county value ranked #1. (\$000): thousands of dollars. Nonmetro Kansas: Kansas total less Metropolitan Areas as defined by the Office of Management and Budget (OMB; released 3/6/2020). Per 1000: For nonmoney amounts, Per 1000=(county value / county population for the same year as the data) x 1000. \$ Per capita=(county value / county population for the same year as the data). Value= . indicates missing or suppressed data or value not calculated.

Employment

AVERAGE WAGE PER JOB (\$)



U.S. Bureau of Economic Analysis,
Regional Economic Information System
(REIS)

Year	County	State of Kansas	Non Metro Kansas	County Rank	Per 1000 or \$ Per Capita
2000	18,104	31,854	24,396	83	.
2001	23,360	32,859	26,379	63	.
2002	22,740	33,707	26,331	59	.
2003	25,640	35,078	28,911	71	.
2004	22,685	35,932	29,747	88	.
2005	28,172	37,467	31,646	69	.
2006	26,371	40,038	31,993	70	.
2007	25,220	41,500	33,484	94	.
2008	28,438	44,197	36,256	95	.
2009	28,879	43,860	35,739	86	.
2010	36,161	45,370	38,631	53	.
2011	39,868	48,280	42,324	59	.
2012	40,340	50,549	42,015	52	.
2013	47,760	52,629	46,073	42	.
2014	43,514	51,959	43,562	44	.
2015	40,755	52,250	42,320	45	.
2016	47,005	51,664	41,964	26	.
2017	43,545	53,007	42,137	33	.
2018	41,383	54,790	44,514	53	.
2019	40,687	56,956	45,336	65	.
2020	43,118	60,597	49,183	81	.

BEA EMPLOYMENT: FORESTRY, FISHING, HUNTING, AND AG SUPPORT

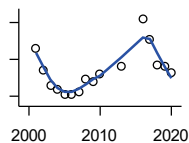
U.S. Bureau of Economic Analysis,
Regional Economic Information System
(REIS)

Year	County	State of Kansas	Non Metro Kansas	County Rank	Per 1000 or \$ Per Capita
2001	.	7,059	.	.	.
2002	.	8,045	.	.	.
2003	.	7,313	.	.	.
2004	.	7,623	.	.	.
2005	.	7,962	.	.	.
2006	.	7,748	.	.	.
2007	.	8,228	.	.	.
2008	.	8,646	.	.	.
2009	.	8,982	.	.	.
2010	.	9,251	.	.	.
2011	.	9,410	.	.	.
2012	.	9,691	.	.	.
2013	.	10,014	.	.	.
2014	.	10,708	.	.	.
2015	.	10,020	.	.	.
2016	.	10,383	.	.	.

County: county value. Kansas: state value. County Rank: highest county value ranked #1. (\$000): thousands of dollars. Nonmetro Kansas: Kansas total less Metropolitan Areas as defined by the Office of Management and Budget (OMB; released 3/6/2020). Per 1000: For nonmoney amounts, Per 1000=(county value / county population for the same year as the data) x 1000. \$ Per capita=(county value / county population for the same year as the data). Value= . indicates missing or suppressed data or value not calculated.

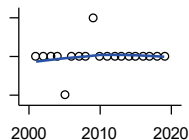
Employment

BEA EMPLOYMENT: MINING



U.S. Bureau of Economic Analysis,
Regional Economic Information System
(REIS)

Year	County	State of Kansas	Non Metro Kansas	County Rank	Per 1000 or \$ Per Capita
2001	46	19,592	.	43	.
2002	34	17,635	.	40	.
2003	26	19,869	.	44	.
2004	24	18,466	.	49	.
2005	21	19,489	.	50	.
2006	21	22,403	.	53	.
2007	22	24,043	.	50	.
2008	29	31,467	.	48	.
2009	28	29,941	.	46	.
2010	32	36,124	.	46	.
2011	.	31,658	.	.	.
2012	.	42,405	.	.	.
2013	36	46,585	.	54	.
2014	.	45,526	.	.	.
2015	.	46,460	.	.	.
2016	62	48,555	.	54	.
2017	51	40,710	.	51	.
2018	37	32,021	.	56	.
2019	36	29,101	.	57	.
2020	33	26,272	.	53	.



BEA EMPLOYMENT: UTILITIES

U.S. Bureau of Economic Analysis,
Regional Economic Information System
(REIS)

Year	County	State of Kansas	Non Metro Kansas	County Rank	Per 1000 or \$ Per Capita
2001	1	7,608	.	31	.
2002	1	7,087	.	33	.
2003	1	7,253	.	31	.
2004	1	7,356	.	31	.
2005	0	7,447	.	32	.
2006	1	7,478	.	31	.
2007	1	7,584	.	33	.
2008	1	7,855	.	33	.
2009	2	7,941	.	26	.
2010	1	8,028	.	30	.
2011	1	8,213	.	28	.
2012	1	8,155	.	24	.
2013	1	7,949	.	24	.
2014	1	7,985	.	26	.
2015	1	7,040	.	28	.
2016	1	7,133	.	27	.
2017	1	6,838	.	30	.
2018	1	6,639	.	29	.
2019	1	6,492	.	33	.

County: county value. Kansas: state value. County Rank: highest county value ranked #1. (\$000): thousands of dollars. Nonmetro Kansas: Kansas total less Metropolitan Areas as defined by the Office of Management and Budget (OMB; released 3/6/2020). Per 1000: For nonmoney amounts, Per 1000=(county value / county population for the same year as the data) x 1000. \$ Per capita=(county value / county population for the same year as the data). Value= . indicates missing or suppressed data or value not calculated.

Employment

**BEA EMPLOYMENT:
CONSTRUCTION**

U.S. Bureau of Economic Analysis,
Regional Economic Information System
(REIS)

Year	County	State of Kansas	Non Metro Kansas	County Rank	Per 1000 or \$ Per Capita
2001	.	92,647	27,972	.	.
2002	.	90,370	.	.	.
2003	.	91,725	26,681	.	.
2004	.	93,271	.	.	.
2005	.	94,836	.	.	.
2006	.	97,449	.	.	.
2007	.	99,119	29,179	.	.
2008	.	97,741	.	.	.
2009	.	90,165	28,077	.	.
2010	.	84,708	26,402	.	.
2011	.	83,332	25,999	.	.
2012	.	85,966	.	.	.
2013	.	88,094	.	.	.
2014	.	91,143	.	.	.
2015	.	91,458	27,583	.	.
2016	.	93,539	27,151	.	.

**BEA EMPLOYMENT:
MANUFACTURING**

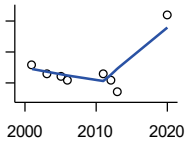
U.S. Bureau of Economic Analysis,
Regional Economic Information System
(REIS)

Year	County	State of Kansas	Non Metro Kansas	County Rank	Per 1000 or \$ Per Capita
2001	.	199,980	73,170	.	.
2002	.	188,905	70,691	.	.
2003	.	179,013	68,418	.	.
2004	.	181,738	69,669	.	.
2005	.	185,459	71,072	.	.
2006	.	188,047	71,704	.	.
2007	.	192,930	73,488	.	.
2008	.	193,116	72,235	.	.
2009	.	173,854	64,961	.	.
2010	.	166,000	62,884	.	.
2011	.	167,302	64,361	.	.
2012	.	169,308	65,944	.	.
2013	.	170,113	67,251	.	.
2014	.	169,307	68,299	.	.
2015	.	168,324	66,978	.	.
2016	.	167,723	65,796	.	.

County: county value. Kansas: state value. County Rank: highest county value ranked #1. (\$000): thousands of dollars. Nonmetro Kansas: Kansas total less Metropolitan Areas as defined by the Office of Management and Budget (OMB; released 3/6/2020). Per 1000: For nonmoney amounts, Per 1000=(county value / county population for the same year as the data) x 1000. \$ Per capita=(county value / county population for the same year as the data). Value= . indicates missing or suppressed data or value not calculated.

Employment

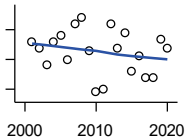
BEA EMPLOYMENT: WHOLESALE TRADE



U.S. Bureau of Economic Analysis,
Regional Economic Information System
(REIS)

Year	County	State of Kansas	Non Metro Kansas	County Rank	Per 1000 or \$ Per Capita
2001	31	65,698	.	86	.
2002	.	65,408	.	.	.
2003	28	63,504	.	85	.
2004	.	64,434	.	.	.
2005	27	64,587	.	81	.
2006	26	64,743	.	84	.
2007	.	65,993	.	.	.
2008	.	67,693	.	.	.
2009	.	65,954	.	.	.
2010	.	64,376	.	.	.
2011	28	64,712	.	85	.
2012	26	63,973	.	82	.
2013	22	64,999	.	81	.
2014	.	69,295	.	.	.
2015	.	68,444	.	.	.
2016	.	64,843	.	.	.
2020	47	60,844	.	83	.

BEA EMPLOYMENT: RETAIL TRADE

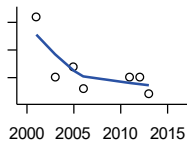


U.S. Bureau of Economic Analysis,
Regional Economic Information System
(REIS)

Year	County	State of Kansas	Non Metro Kansas	County Rank	Per 1000 or \$ Per Capita
2001	116	198,069	.	96	.
2002	114	196,112	.	97	.
2003	108	194,545	64,173	99	.
2004	116	192,957	63,265	96	.
2005	118	191,656	62,506	96	.
2006	110	190,391	62,082	95	.
2007	122	190,643	61,716	93	.
2008	124	185,907	59,783	92	.
2009	113	181,262	58,714	95	.
2010	99	177,858	57,470	98	.
2011	100	180,548	57,734	97	.
2012	122	180,596	57,349	91	.
2013	114	183,245	57,556	94	.
2014	119	185,899	57,855	92	.
2015	106	188,421	58,516	99	.
2016	111	188,505	57,864	96	.
2017	104	186,633	56,715	98	.
2018	104	183,323	.	96	.
2019	117	177,240	53,427	93	.
2020	114	171,777	52,563	93	.

County: county value. Kansas: state value. County Rank: highest county value ranked #1. (\$000): thousands of dollars. Nonmetro Kansas: Kansas total less Metropolitan Areas as defined by the Office of Management and Budget (OMB; released 3/6/2020). Per 1000: For nonmoney amounts, Per 1000=(county value / county population for the same year as the data) x 1000. \$ Per capita=(county value / county population for the same year as the data). Value= . indicates missing or suppressed data or value not calculated.

Employment



**BEA EMPLOYMENT:
TRANSPORTATION AND
WAREHOUSING**

U.S. Bureau of Economic Analysis,
Regional Economic Information System
(REIS)

Year	County	State of Kansas	Non Metro Kansas	County Rank	Per 1000 or \$ Per Capita
2001	41	56,302	.	40	.
2002	.	55,319	.	.	.
2003	30	55,509	.	45	.
2004	.	55,479	.	.	.
2005	32	56,287	.	47	.
2006	28	57,506	.	48	.
2007	.	59,277	.	.	.
2008	.	58,725	.	.	.
2009	.	56,238	.	.	.
2010	.	55,179	.	.	.
2011	30	57,449	.	40	.
2012	30	59,756	.	38	.
2013	27	59,780	.	42	.
2014	.	60,565	.	.	.
2015	.	63,256	.	.	.
2016	.	65,705	.	.	.

BEA EMPLOYMENT: INFORMATION

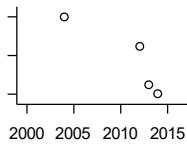
U.S. Bureau of Economic Analysis,
Regional Economic Information System
(REIS)

Year	County	State of Kansas	Non Metro Kansas	County Rank	Per 1000 or \$ Per Capita
2001	.	54,895	.	.	.
2002	.	50,728	.	.	.
2003	.	48,328	6,860	.	.
2004	.	45,617	.	.	.
2005	.	43,840	.	.	.
2006	.	43,925	.	.	.
2007	.	45,115	.	.	.
2008	.	42,958	.	.	.
2009	.	38,677	.	.	.
2010	.	33,432	.	.	.
2011	.	32,160	.	.	.
2012	.	31,829	.	.	.
2013	.	31,737	.	.	.
2014	.	32,316	.	.	.
2015	.	25,282	.	.	.
2016	.	24,998	.	.	.

County: county value. Kansas: state value. County Rank: highest county value ranked #1. (\$000): thousands of dollars. Nonmetro Kansas: Kansas total less Metropolitan Areas as defined by the Office of Management and Budget (OMB; released 3/6/2020). Per 1000: For nonmoney amounts, Per 1000=(county value / county population for the same year as the data) x 1000. \$ Per capita=(county value / county population for the same year as the data). Value= . indicates missing or suppressed data or value not calculated.

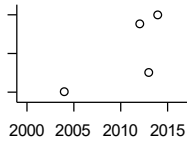
Employment

BEA EMPLOYMENT: FINANCE AND INSURANCE



U.S. Bureau of Economic Analysis,
Regional Economic Information System
(REIS)

Year	County	State of Kansas	Non Metro Kansas	County Rank	Per 1000 or \$ Per Capita
2001	.	76,118	.	.	.
2002	.	78,206	.	.	.
2003	.	78,441	.	.	.
2004	70	78,350	.	65	.
2005	.	78,952	.	.	.
2006	.	80,900	.	.	.
2007	.	86,094	.	.	.
2008	.	89,590	.	.	.
2009	.	93,573	.	.	.
2010	.	92,428	.	.	.
2011	.	99,495	.	.	.
2012	67	98,640	.	65	.
2013	63	99,998	.	70	.
2014	62	98,209	.	73	.
2015	.	100,534	.	.	.
2016	.	102,699	.	.	.



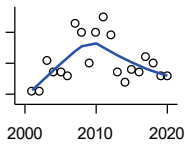
BEA EMPLOYMENT: REAL ESTATE, RENTAL, AND LEASING

U.S. Bureau of Economic Analysis,
Regional Economic Information System
(REIS)

Year	County	State of Kansas	Non Metro Kansas	County Rank	Per 1000 or \$ Per Capita
2001	.	45,237	.	.	.
2002	.	44,970	.	.	.
2003	.	47,095	.	.	.
2004	18	50,181	.	66	.
2005	.	53,335	.	.	.
2006	.	55,342	.	.	.
2007	.	57,694	.	.	.
2008	.	57,933	.	.	.
2009	.	57,132	.	.	.
2010	.	59,578	.	.	.
2011	.	61,821	.	.	.
2012	25	60,432	.	58	.
2013	20	62,134	.	73	.
2014	26	64,705	.	66	.
2015	.	66,604	.	.	.
2016	.	68,395	.	.	.

County: county value. Kansas: state value. County Rank: highest county value ranked #1. (\$000): thousands of dollars. Nonmetro Kansas: Kansas total less Metropolitan Areas as defined by the Office of Management and Budget (OMB; released 3/6/2020). Per 1000: For nonmoney amounts, Per 1000=(county value / county population for the same year as the data) x 1000. \$ Per capita=(county value / county population for the same year as the data). Value= . indicates missing or suppressed data or value not calculated.

Employment



BEA EMPLOYMENT: PROFESSIONAL AND TECHNICAL SERVICES

U.S. Bureau of Economic Analysis, Regional Economic Information System (REIS)

Year	County	State of Kansas	Non Metro Kansas	County Rank	Per 1000 or \$ Per Capita
2001	36	81,396	.	74	.
2002	36	80,684	.	66	.
2003	46	80,311	.	61	.
2004	42	85,550	.	63	.
2005	42	85,003	.	66	.
2006	41	87,381	.	70	.
2007	58	92,717	.	65	.
2008	55	95,362	.	67	.
2009	45	93,232	.	66	.
2010	55	93,037	.	64	.
2011	60	93,237	.	66	.
2012	54	95,360	.	69	.
2013	42	100,795	.	73	.
2014	39	102,210	.	75	.
2015	43	105,625	.	74	.
2016	42	108,059	.	71	.
2017	47	109,041	.	68	.
2018	45	110,513	.	71	.
2019	41	109,637	.	69	.
2020	41	108,634	.	68	.

BEA EMPLOYMENT: MANAGEMENT OF COMPANIES AND ENTERPRISES

U.S. Bureau of Economic Analysis, Regional Economic Information System (REIS)

Year	County	State of Kansas	Non Metro Kansas	County Rank	Per 1000 or \$ Per Capita
2001	.	13,832	.	.	.
2002	.	12,576	.	.	.
2003	.	11,135	.	.	.
2004	.	10,614	.	.	.
2005	.	11,811	.	.	.
2006	.	13,061	.	.	.
2007	.	13,398	.	.	.
2008	.	15,234	.	.	.
2009	.	14,849	.	.	.
2010	.	16,579	.	.	.
2011	.	15,343	.	.	.
2012	.	15,075	.	.	.
2013	.	16,667	.	.	.
2014	.	20,441	.	.	.
2015	.	29,604	.	.	.
2016	.	27,824	.	.	.

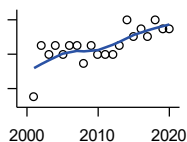
County: county value. Kansas: state value. County Rank: highest county value ranked #1. (\$000): thousands of dollars. Nonmetro Kansas: Kansas total less Metropolitan Areas as defined by the Office of Management and Budget (OMB; released 3/6/2020). Per 1000: For nonmoney amounts, Per 1000=(county value / county population for the same year as the data) x 1000. \$ Per capita=(county value / county population for the same year as the data). Value= . indicates missing or suppressed data or value not calculated.

Employment

**BEA EMPLOYMENT:
ADMINISTRATIVE AND WASTE
SERVICES**

U.S. Bureau of Economic Analysis,
Regional Economic Information System
(REIS)

Year	County	State of Kansas	Non Metro Kansas	County Rank	Per 1000 or \$ Per Capita
2001	.	81,573	.	.	.
2002	.	82,992	.	.	.
2003	.	81,298	.	.	.
2004	.	85,721	.	.	.
2005	.	89,933	.	.	.
2006	.	93,688	.	.	.
2007	.	98,865	.	.	.
2008	.	97,440	.	.	.
2009	.	92,455	.	.	.
2010	.	93,675	.	.	.
2011	.	97,969	.	.	.
2012	.	100,490	.	.	.
2013	.	104,680	.	.	.
2014	.	107,218	18,836	.	.
2015	.	103,436	18,767	.	.
2016	.	103,233	18,428	.	.



**BEA EMPLOYMENT: EDUCATIONAL
SERVICES**

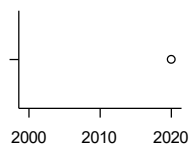
U.S. Bureau of Economic Analysis,
Regional Economic Information System
(REIS)

Year	County	State of Kansas	Non Metro Kansas	County Rank	Per 1000 or \$ Per Capita
2001	1	21,169	.	75	.
2002	7	22,173	.	51	.
2003	6	22,651	.	75	.
2004	7	21,601	.	54	.
2005	6	22,177	.	76	.
2006	7	22,438	.	60	.
2007	7	23,647	.	59	.
2008	5	24,653	.	70	.
2009	7	25,120	.	46	.
2010	6	26,071	.	61	.
2011	6	26,080	.	60	.
2012	6	26,625	.	56	.
2013	7	27,508	.	66	.
2014	10	28,708	.	53	.
2015	8	28,794	.	65	.
2016	9	27,996	.	45	.
2017	8	28,459	.	53	.
2018	10	28,560	.	40	.
2019	9	29,586	.	58	.
2020	9	27,508	.	58	.

County: county value. Kansas: state value. County Rank: highest county value ranked #1. (\$000): thousands of dollars. Nonmetro Kansas: Kansas total less Metropolitan Areas as defined by the Office of Management and Budget (OMB; released 3/6/2020). Per 1000: For nonmoney amounts, Per 1000=(county value / county population for the same year as the data) x 1000. \$ Per capita=(county value / county population for the same year as the data). Value= . indicates missing or suppressed data or value not calculated.

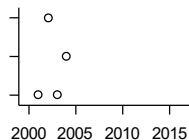
Employment

BEA EMPLOYMENT: HEALTH CARE AND SOCIAL ASSISTANCE



U.S. Bureau of Economic Analysis, Regional Economic Information System (REIS)

Year	County	State of Kansas	Non Metro Kansas	County Rank	Per 1000 or \$ Per Capita
2001	.	165,415	.	.	.
2002	.	168,198	.	.	.
2003	.	169,654	.	.	.
2004	.	172,796	.	.	.
2005	.	173,949	.	.	.
2006	.	176,919	.	.	.
2007	.	182,160	.	.	.
2008	.	186,051	.	.	.
2009	.	188,499	.	.	.
2010	.	188,383	.	.	.
2011	.	190,736	.	.	.
2012	.	192,991	.	.	.
2013	.	193,687	.	.	.
2014	.	194,632	.	.	.
2015	.	199,724	.	.	.
2016	.	201,830	.	.	.
2020	20	204,942	.	56	.



BEA EMPLOYMENT: ARTS, ENTERTAINMENT, AND RECREATION

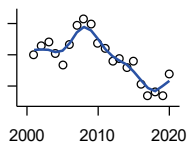
U.S. Bureau of Economic Analysis, Regional Economic Information System (REIS)

Year	County	State of Kansas	Non Metro Kansas	County Rank	Per 1000 or \$ Per Capita
2001	11	25,012	.	59	.
2002	13	25,668	.	57	.
2003	11	24,116	.	63	.
2004	12	25,355	.	59	.
2005	.	26,067	.	.	.
2006	.	26,505	.	.	.
2007	.	27,489	.	.	.
2008	.	27,501	.	.	.
2009	.	27,203	.	.	.
2010	.	27,479	.	.	.
2011	.	28,487	.	.	.
2012	.	30,729	.	.	.
2013	.	31,068	.	.	.
2014	.	32,154	.	.	.
2015	.	31,169	.	.	.
2016	.	32,373	.	.	.

County: county value. Kansas: state value. County Rank: highest county value ranked #1. (\$000): thousands of dollars. Nonmetro Kansas: Kansas total less Metropolitan Areas as defined by the Office of Management and Budget (OMB; released 3/6/2020). Per 1000: For nonmoney amounts, Per 1000=(county value / county population for the same year as the data) x 1000. \$ Per capita=(county value / county population for the same year as the data). Value= . indicates missing or suppressed data or value not calculated.

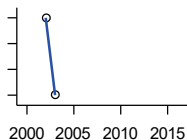
Employment

BEA EMPLOYMENT: GOVERNMENT AND GOVERNMENT ENTERPRISES



U.S. Bureau of Economic Analysis, Regional Economic Information System (REIS)

Year	County	State of Kansas	Non Metro Kansas	County Rank	Per 1000 or \$ Per Capita
2001	460	282,293	102,993	83	.
2002	471	281,427	103,581	81	.
2003	476	282,459	103,389	80	.
2004	461	283,877	103,946	81	.
2005	447	282,798	103,194	82	.
2006	473	288,372	104,103	80	.
2007	498	294,413	104,598	76	.
2008	506	298,580	104,718	76	.
2009	499	300,422	104,081	76	.
2010	474	303,875	103,382	79	.
2011	468	299,952	101,535	79	.
2012	452	298,068	101,180	80	.
2013	455	297,689	101,232	80	.
2014	444	296,956	100,634	82	.
2015	452	295,799	99,719	81	.
2016	423	291,536	98,520	82	.
2017	408	295,748	99,542	82	.
2018	413	298,105	99,499	83	.
2019	407	302,017	100,227	82	.
2020	436	292,583	96,477	80	.



BEA EMPLOYMENT: ACCOMMODATION AND FOOD SERVICES

U.S. Bureau of Economic Analysis, Regional Economic Information System (REIS)

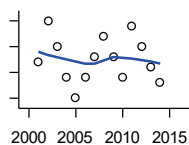
Year	County	State of Kansas	Non Metro Kansas	County Rank	Per 1000 or \$ Per Capita
2001	.	103,353	.	.	.
2002	51	103,692	.	62	.
2003	48	105,138	.	62	.
2004	.	106,694	.	.	.
2005	.	107,303	.	.	.
2006	.	109,888	.	.	.
2007	.	110,863	.	.	.
2008	.	111,092	.	.	.
2009	.	109,353	.	.	.
2010	.	108,628	.	.	.
2011	.	110,514	.	.	.
2012	.	112,574	.	.	.
2013	.	114,102	.	.	.
2014	.	115,768	.	.	.
2015	.	118,503	.	.	.
2016	.	119,764	.	.	.

County: county value. Kansas: state value. County Rank: highest county value ranked #1. (\$000): thousands of dollars. Nonmetro Kansas: Kansas total less Metropolitan Areas as defined by the Office of Management and Budget (OMB; released 3/6/2020). Per 1000: For nonmoney amounts, Per 1000=(county value / county population for the same year as the data) x 1000. \$ Per capita=(county value / county population for the same year as the data). Value= . indicates missing or suppressed data or value not calculated.

Employment

BEA EMPLOYMENT: OTHER SERVICES, EXCEPT PUBLIC ADMINISTRATION

U.S. Bureau of Economic Analysis, Regional Economic Information System (REIS)

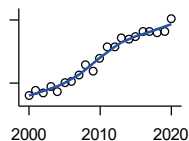


Year	County	State of Kansas	Non Metro Kansas	County Rank	Per 1000 or \$ Per Capita
2001	62	92,176	.	92	.
2002	70	95,350	.	90	.
2003	65	95,821	32,629	93	.
2004	59	95,610	.	90	.
2005	55	95,930	32,555	91	.
2006	59	96,413	.	87	.
2007	63	98,444	.	90	.
2008	67	96,705	.	84	.
2009	63	95,534	.	84	.
2010	59	93,302	.	84	.
2011	69	94,865	.	80	.
2012	65	94,977	.	80	.
2013	61	95,471	.	84	.
2014	58	97,806	.	83	.
2015	.	98,041	.	.	.
2016	.	97,219	.	.	.

Income

BEA PER CAPITA PERSONAL INCOME (\$)

U.S. Bureau of Economic Analysis, Regional Economic Information System (REIS)

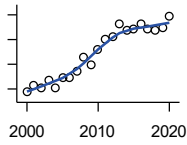


Year	County	State of Kansas	Non Metro Kansas	County Rank	Per 1000 or \$ Per Capita
2000	23,887	28,253	23,116	53	.
2001	26,256	29,112	24,576	34	.
2002	25,579	29,248	24,314	28	.
2003	28,303	30,074	26,017	32	.
2004	25,651	30,843	26,583	71	.
2005	30,161	32,545	28,356	43	.
2006	30,657	35,690	29,782	44	.
2007	33,742	38,057	32,034	46	.
2008	38,609	41,257	35,211	39	.
2009	35,590	39,431	33,876	48	.
2010	41,727	39,960	35,795	26	.
2011	47,468	43,015	39,041	28	.
2012	47,441	45,294	39,660	32	.
2013	51,594	46,174	41,747	30	.
2014	50,607	47,013	41,042	25	.
2015	52,010	47,332	40,638	15	.
2016	54,623	47,326	40,797	13	.
2017	54,337	48,756	41,314	10	.
2018	54,118	50,811	43,283	14	.
2019	54,420	52,820	44,491	14	.
2020	60,647	55,677	48,415	14	.

County: county value. Kansas: state value. County Rank: highest county value ranked #1. (\$000): thousands of dollars. Nonmetro Kansas: Kansas total less Metropolitan Areas as defined by the Office of Management and Budget (OMB; released 3/6/2020). Per 1000: For nonmoney amounts, Per 1000=(county value / county population for the same year as the data) x 1000. \$ Per capita=(county value / county population for the same year as the data). Value= . indicates missing or suppressed data or value not calculated.

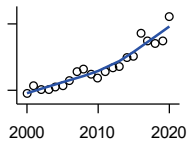
Income

**SOURCES OF PERSONAL INCOME:
TOTAL PERSONAL INCOME (\$000)**



U.S. Bureau of Economic Analysis,
Regional Economic Information System
(REIS)

Year	County	State of Kansas	Non Metro Kansas	County Rank	Per 1000 or \$ Per Capita
2000	57,376	76,105,125	22,273,838	100	24,006.7
2001	62,831	78,664,651	23,411,174	100	26,256.2
2002	60,673	79,365,190	23,000,314	99	25,578.8
2003	66,909	81,890,340	24,494,191	99	28,303.3
2004	60,486	84,335,940	24,924,467	98	25,651.4
2005	69,310	89,346,228	26,452,291	99	30,161.0
2006	69,040	98,610,188	27,661,596	97	30,657.2
2007	74,232	105,943,199	29,715,946	100	33,741.8
2008	85,904	115,852,478	32,614,565	99	38,608.5
2009	79,792	111,697,350	31,394,702	99	35,589.7
2010	91,758	114,239,828	33,291,419	99	41,425.7
2011	100,680	123,558,772	36,221,488	100	47,490.6
2012	102,757	130,948,127	36,696,759	100	47,462.8
2013	112,423	133,979,908	38,513,959	101	51,617.5
2014	107,034	136,878,718	37,680,598	99	50,631.0
2015	108,285	138,336,768	37,081,851	98	52,035.1
2016	112,960	138,533,890	36,930,885	94	54,702.2
2017	108,456	142,729,689	37,104,963	96	54,363.9
2018	107,965	148,955,739	38,589,364	98	54,144.9
2019	109,167	154,961,001	39,424,148	98	54,747.7
2020	119,051	163,462,179	42,618,591	98	59,794.6



**SOURCES OF PERSONAL INCOME:
WAGES AND SALARIES (\$000)**

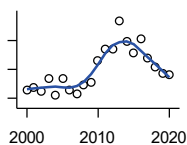
U.S. Bureau of Economic Analysis,
Regional Economic Information System
(REIS)

Year	County	State of Kansas	Non Metro Kansas	County Rank	Per 1000 or \$ Per Capita
2000	19,185	41,766,878	10,254,250	95	8,027.2
2001	21,036	43,269,734	10,518,206	94	8,790.6
2002	20,045	43,875,159	10,696,876	95	8,450.7
2003	20,177	44,488,560	10,894,971	96	8,535.1
2004	20,666	46,702,068	11,333,617	95	8,764.2
2005	21,137	48,537,956	11,614,130	95	9,198.0
2006	22,262	52,083,584	12,299,340	95	9,885.4
2007	24,258	55,442,368	13,093,908	93	11,026.4
2008	24,779	57,623,385	13,647,143	96	11,136.6
2009	23,596	55,605,578	13,199,674	98	10,524.5
2010	22,816	56,089,711	13,345,291	99	10,300.7
2011	24,164	58,104,706	13,856,458	97	11,398.1
2012	25,038	60,616,457	14,473,599	99	11,564.9
2013	25,415	61,872,023	14,781,792	98	11,669.0
2014	27,381	64,457,652	15,385,500	97	12,952.2
2015	27,607	66,729,598	15,454,485	96	13,266.2
2016	32,982	67,253,399	15,422,058	92	15,971.9
2017	31,023	68,830,861	15,731,853	95	15,550.4
2018	30,458	71,580,544	16,311,725	95	15,274.8
2019	31,234	74,404,771	16,882,299	95	15,664.0
2020	36,666	75,798,310	17,251,300	93	18,415.9

County: county value. Kansas: state value. County Rank: highest county value ranked #1. (\$000): thousands of dollars. Nonmetro Kansas: Kansas total less Metropolitan Areas as defined by the Office of Management and Budget (OMB; released 3/6/2020). Per 1000: For nonmoney amounts, Per 1000=(county value / county population for the same year as the data) x 1000. \$ Per capita=(county value / county population for the same year as the data). Value= . indicates missing or suppressed data or value not calculated.

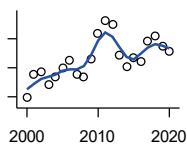
Income

**SOURCES OF PERSONAL INCOME:
PROPRIETORS-FARM (\$000)**



U.S. Bureau of Economic Analysis,
Regional Economic Information System
(REIS)

Year	County	State of Kansas	Non Metro Kansas	County Rank	Per 1000 or \$ Per Capita
2000	2,698	668,539	673,707	65	1,128.9
2001	3,880	779,473	769,336	66	1,621.4
2002	2,568	145,064	187,033	36	1,082.6
2003	6,650	1,281,076	1,195,298	74	2,813.0
2004	1,069	1,149,425	938,524	95	453.4
2005	7,041	1,609,604	1,469,139	80	3,064.0
2006	2,629	766,047	663,735	61	1,167.4
2007	1,492	1,131,607	1,040,350	86	678.2
2008	4,580	1,582,092	1,404,900	79	2,058.4
2009	5,469	1,585,995	1,390,349	83	2,439.3
2010	13,225	2,149,482	2,029,067	61	5,970.7
2011	16,947	3,188,519	2,989,880	61	7,993.9
2012	16,978	2,519,555	2,296,875	58	7,842.0
2013	26,838	4,499,190	4,158,419	59	12,322.3
2014	19,626	2,231,181	2,157,992	37	9,283.8
2015	15,549	1,300,733	1,294,370	27	7,471.9
2016	20,782	1,577,060	1,564,511	27	10,063.9
2017	13,905	838,480	838,290	25	6,969.9
2018	10,957	1,050,662	971,690	41	5,495.0
2019	8,736	998,038	878,247	49	4,381.1
2020	7,947	2,151,349	1,887,881	92	3,991.5



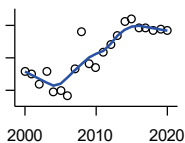
**SOURCES OF PERSONAL INCOME:
PROPRIETORS-NONFARM (\$000)**

U.S. Bureau of Economic Analysis,
Regional Economic Information System
(REIS)

Year	County	State of Kansas	Non Metro Kansas	County Rank	Per 1000 or \$ Per Capita
2000	3,923	4,580,476	1,493,470	97	1,641.4
2001	5,561	4,510,530	1,855,621	97	2,323.9
2002	5,716	5,036,100	1,966,784	97	2,409.8
2003	4,829	4,719,377	1,916,735	100	2,042.7
2004	5,355	4,003,922	2,073,898	95	2,271.0
2005	5,945	4,455,294	2,200,971	94	2,587.0
2006	6,539	7,343,524	2,694,895	99	2,903.6
2007	5,537	7,280,197	2,436,574	99	2,516.8
2008	5,331	9,255,953	2,971,923	98	2,396.0
2009	6,574	9,323,551	2,858,848	99	2,932.2
2010	8,330	9,658,261	3,498,040	100	3,760.7
2011	9,258	12,196,566	4,186,007	100	4,367.0
2012	8,966	15,773,140	4,446,004	100	4,141.3
2013	6,842	16,441,660	4,492,127	102	3,141.4
2014	6,035	15,954,254	4,455,081	102	2,854.8
2015	6,702	15,536,116	4,386,172	101	3,220.6
2016	6,389	14,075,310	3,783,829	101	3,093.9
2017	7,821	15,371,957	3,908,254	103	3,920.3
2018	8,187	15,716,877	4,238,775	104	4,105.8
2019	7,481	16,705,488	3,921,051	101	3,751.8
2020	7,155	16,718,952	3,823,329	101	3,593.7

County: county value. Kansas: state value. County Rank: highest county value ranked #1. (\$000): thousands of dollars. Nonmetro Kansas: Kansas total less Metropolitan Areas as defined by the Office of Management and Budget (OMB; released 3/6/2020). Per 1000: For nonmoney amounts, Per 1000=(county value / county population for the same year as the data) x 1000. \$ Per capita=(county value / county population for the same year as the data). Value= . indicates missing or suppressed data or value not calculated.

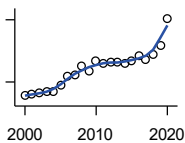
Income



**SOURCES OF PERSONAL INCOME:
DIVIDENDS,INTEREST,RENT(\$000)**

U.S. Bureau of Economic Analysis,
Regional Economic Information System
(REIS)

Year	County	State of Kansas	Non Metro Kansas	County Rank	Per 1000 or \$ Per Capita
2000	16,367	15,916,201	4,736,921	95	6,848.1
2001	15,941	15,770,830	4,699,417	94	6,661.5
2002	14,678	15,111,563	4,316,887	94	6,188.0
2003	16,287	15,370,764	4,360,311	92	6,889.6
2004	13,744	15,820,469	4,251,925	92	5,828.7
2005	13,887	17,147,069	4,485,387	92	6,043.1
2006	13,272	20,117,848	4,945,184	96	5,893.4
2007	16,601	22,269,186	5,526,219	95	7,545.9
2008	21,240	24,972,485	6,180,979	91	9,546.1
2009	17,327	21,453,879	5,308,474	96	7,728.4
2010	16,763	20,861,351	5,414,285	99	7,567.9
2011	18,763	23,387,567	5,781,075	98	8,850.5
2012	19,589	25,689,368	6,389,505	97	9,048.0
2013	20,739	24,832,212	5,984,811	92	9,522.0
2014	22,405	27,412,684	6,403,356	92	10,598.4
2015	22,808	27,244,414	6,423,685	90	10,960.1
2016	21,687	27,293,441	6,389,161	91	10,502.2
2017	21,758	28,385,472	6,700,156	93	10,906.3
2018	21,395	29,953,419	6,772,504	95	10,729.7
2019	21,589	30,820,276	6,957,987	95	10,827.0
2020	21,447	30,283,520	6,844,745	95	10,772.0



**SOURCES OF PERSONAL INCOME:
TRANSFER PAYMENTS (\$000)**

U.S. Bureau of Economic Analysis,
Regional Economic Information System
(REIS)

Year	County	State of Kansas	Non Metro Kansas	County Rank	Per 1000 or \$ Per Capita
2000	11,650	9,650,835	4,036,781	95	4,874.5
2001	12,058	10,549,124	4,355,457	98	5,038.9
2002	12,355	11,208,997	4,553,978	97	5,208.7
2003	12,554	11,709,049	4,702,911	97	5,310.5
2004	12,622	12,040,452	4,802,536	97	5,352.8
2005	14,162	12,696,735	5,059,314	97	6,162.8
2006	16,365	13,642,787	5,455,207	95	7,266.9
2007	16,725	14,686,821	5,775,024	96	7,602.3
2008	18,750	16,552,460	6,322,722	94	8,427.0
2009	17,523	18,025,603	6,790,962	97	7,815.8
2010	20,031	19,189,749	7,089,258	95	9,043.3
2011	19,493	19,625,770	7,255,825	96	9,194.8
2012	19,737	19,354,458	7,148,177	96	9,116.4
2013	19,795	19,639,358	7,185,636	95	9,088.6
2014	19,453	20,380,970	7,399,809	97	9,202.0
2015	20,125	21,116,856	7,623,577	97	9,670.8
2016	21,427	21,884,629	7,886,000	96	10,376.3
2017	20,550	22,559,744	8,062,517	97	10,300.8
2018	21,684	23,628,033	8,393,617	97	10,874.6
2019	23,818	25,050,174	8,845,371	96	11,944.8
2020	30,303	32,319,421	11,074,190	94	15,220.0

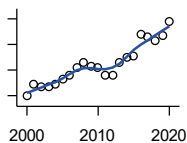
County: county value. Kansas: state value. County Rank: highest county value ranked #1. (\$000): thousands of dollars. Nonmetro Kansas: Kansas total less Metropolitan Areas as defined by the Office of Management and Budget (OMB; released 3/6/2020). Per 1000: For nonmoney amounts, Per 1000=(county value / county population for the same year as the data) x 1000. \$ Per capita=(county value / county population for the same year as the data). Value= . indicates missing or suppressed data or value not calculated.

Income

**SOURCES OF PERSONAL INCOME:
LESS SOCIAL INSURANCE (\$000)**

U.S. Bureau of Economic Analysis,
Regional Economic Information System
(REIS)

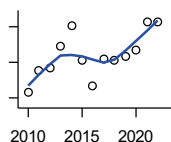
Year	County	State of Kansas	Non Metro Kansas	County Rank	Per 1000 or \$ Per Capita
2000	2,978	6,655,813	1,663,044	99	1,246.0
2001	3,426	6,869,934	1,740,915	98	1,431.7
2002	3,332	7,008,361	1,778,636	98	1,404.7
2003	3,324	7,172,781	1,821,858	98	1,406.1
2004	3,453	7,556,560	1,904,014	98	1,464.4
2005	3,654	7,911,241	1,986,907	99	1,590.1
2006	3,805	8,406,937	2,090,313	100	1,689.6
2007	4,093	8,806,941	2,180,587	98	1,860.5
2008	4,282	9,207,010	2,299,399	99	1,924.5
2009	4,166	9,002,859	2,248,703	100	1,858.2
2010	4,075	9,235,760	2,321,191	101	1,839.7
2011	3,793	8,515,986	2,139,991	100	1,789.2
2012	3,810	8,816,128	2,195,919	100	1,759.8
2013	4,307	10,225,399	2,540,439	101	1,977.5
2014	4,520	10,609,601	2,635,009	100	2,138.1
2015	4,551	11,028,204	2,663,038	99	2,186.9
2016	5,410	10,915,915	2,604,579	95	2,619.9
2017	5,306	11,224,218	2,669,954	98	2,659.6
2018	5,146	11,749,229	2,797,106	99	2,580.7
2019	5,322	12,245,451	2,889,336	99	2,669.0
2020	5,892	12,715,152	3,027,656	98	2,959.3



HUD MEDIAN FAMILY INCOME

U.S. Department of Housing and Urban
Development (HUD)

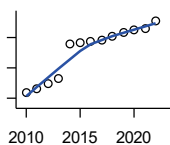
Year	County	State of Kansas	Non Metro Kansas	County Rank	Per 1000 or \$ Per Capita
2010	51,500	63,100	.	60	.
2011	57,700	64,300	.	40	.
2012	58,500	65,200	.	40	.
2013	64,700	64,800	.	14	.
2014	70,100	64,400	.	3	.
2015	60,600	66,300	.	45	.
2016	53,500	66,700	.	81	.
2017	61,000	68,500	.	50	.
2018	60,700	73,100	.	62	.
2019	61,700	75,200	.	70	.
2020	63,500	76,500	.	67	.
2021	71,400	77,400	.	34	.
2022	71,500	87,800	.	57	.



County: county value. Kansas: state value. County Rank: highest county value ranked #1. (\$000): thousands of dollars. Nonmetro Kansas: Kansas total less Metropolitan Areas as defined by the Office of Management and Budget (OMB; released 3/6/2020). Per 1000: For nonmoney amounts, Per 1000=(county value / county population for the same year as the data) x 1000. \$ Per capita=(county value / county population for the same year as the data). Value= . indicates missing or suppressed data or value not calculated.

Income

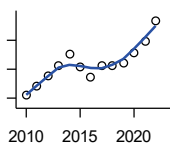
HUD 30% LOW-TO-MEDIUM INCOME (LMI) LIMIT - 4 PERSONS



U.S. Department of Housing and Urban Development (HUD)

Year	County	State of Kansas	Non Metro Kansas	County Rank	Per 1000 or \$ Per Capita
2010	15,850	.	.	105	.
2011	16,600	.	.	52	.
2012	17,450	.	.	42	.
2013	18,300	.	.	31	.
2014	23,850	.	.	105	.
2015	24,250	.	.	105	.
2016	24,300	.	.	105	.
2017	24,600	.	.	105	.
2018	25,100	21,950	.	105	.
2019	25,750	22,550	.	105	.
2020	26,200	22,950	.	105	.
2021	26,500	23,200	.	105	.
2022	27,750	25,950	.	105	.

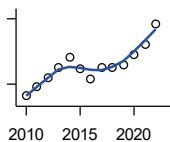
HUD 50% LOW-TO-MEDIUM INCOME (LMI) LIMIT - 4 PERSONS



U.S. Department of Housing and Urban Development (HUD)

Year	County	State of Kansas	Non Metro Kansas	County Rank	Per 1000 or \$ Per Capita
2010	26,400	.	.	105	.
2011	27,700	.	.	52	.
2012	29,050	.	.	42	.
2013	30,500	.	.	31	.
2014	32,000	.	.	23	.
2015	30,400	.	.	42	.
2016	28,900	.	.	58	.
2017	30,500	.	.	50	.
2018	30,550	36,550	.	105	.
2019	30,850	37,600	.	70	.
2020	32,300	38,250	.	104	.
2021	33,900	38,700	.	47	.
2022	36,700	43,300	.	57	.

HUD 80% LOW-TO-MEDIUM INCOME (LMI) LIMIT - 4 PERSONS



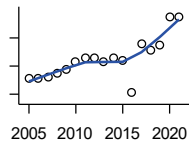
U.S. Department of Housing and Urban Development (HUD)

Year	County	State of Kansas	Non Metro Kansas	County Rank	Per 1000 or \$ Per Capita
2010	42,250	.	.	105	.
2011	44,300	.	.	52	.
2012	46,500	.	.	42	.
2013	48,800	.	.	31	.
2014	51,200	.	.	23	.
2015	48,650	.	.	41	.
2016	46,250	.	.	58	.
2017	48,800	.	.	50	.
2018	48,900	58,500	.	105	.
2019	49,350	60,150	.	70	.
2020	51,700	61,200	.	104	.
2021	54,250	61,900	.	47	.
2022	58,700	69,250	.	57	.

County: county value. Kansas: state value. County Rank: highest county value ranked #1. (\$000): thousands of dollars. Nonmetro Kansas: Kansas total less Metropolitan Areas as defined by the Office of Management and Budget (OMB; released 3/6/2020). Per 1000: For nonmoney amounts, Per 1000=(county value / county population for the same year as the data) x 1000. \$ Per capita=(county value / county population for the same year as the data). Value= . indicates missing or suppressed data or value not calculated.

Banking

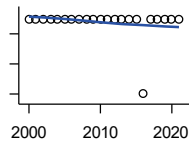
BANK DEPOSITS (1984-2004 in thousands; 2005- in millions)



Federal Deposit Insurance Corporation, Data Book, Operating Banks and Branches

Year	County	State of Kansas	Non Metro Kansas	County Rank	Per 1000 or \$ Per Capita
2005	81	48,304	17,000	82	35.2
2006	81	50,668	17,586	84	36.0
2007	82	54,057	18,517	85	37.3
2008	85	57,869	19,628	88	38.2
2009	88	57,763	20,031	88	39.3
2010	93	60,031	20,678	87	42.0
2011	96	61,094	21,347	88	45.3
2012	96	62,910	22,481	91	44.3
2013	93	64,547	22,795	93	42.7
2014	96	66,538	23,338	92	45.4
2015	94	68,160	23,367	91	45.2
2016	71	70,381	23,420	97	34.4
2017	106	73,329	23,928	85	53.1
2018	101	74,623	24,100	90	50.7
2019	105	76,436	24,488	88	52.7
2020	125	88,563	27,547	86	62.8
2021	125	97,055	30,122	86	63.2

NUMBER OF BANKS



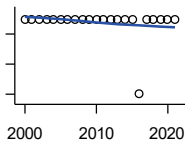
Federal Deposit Insurance Corporation, Data Book, Operating Banks and Branches

Year	County	State of Kansas	Non Metro Kansas	County Rank	Per 1000 or \$ Per Capita
2000	3	410	145	92	.
2001	3	410	136	93	.
2002	3	404	129	92	.
2003	3	397	121	91	.
2004	3	394	112	89	.
2005	3	388	101	91	.
2006	3	385	94	91	.
2007	3	382	91	91	.
2008	3	378	82	92	.
2009	3	374	79	92	.
2010	3	367	70	92	.
2011	3	359	61	92	.
2012	3	348	57	92	.
2013	3	332	45	92	.
2014	3	329	41	91	.
2015	3	320	31	90	.
2016	2	314	24	101	.
2017	3	301	13	88	.
2018	3	289	7	88	.
2019	3	279	3	88	.
2020	3	271	-1	88	.
2021	3	270	-6	88	.

County: county value. Kansas: state value. County Rank: highest county value ranked #1. (\$000): thousands of dollars. Nonmetro Kansas: Kansas total less Metropolitan Areas as defined by the Office of Management and Budget (OMB; released 3/6/2020). Per 1000: For nonmoney amounts, Per 1000=(county value / county population for the same year as the data) x 1000. \$ Per capita=(county value / county population for the same year as the data). Value= . indicates missing or suppressed data or value not calculated.

Banking

NUMBER OF BANKING OFFICES

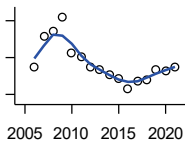


Federal Deposit Insurance Corporation, Data Book, Operating Banks and Branches

Year	County	State of Kansas	Non Metro Kansas	County Rank	Per 1000 or \$ Per Capita
2000	3	1,398	703	96	.
2001	3	1,424	708	98	.
2002	3	1,447	704	98	.
2003	3	1,461	708	98	.
2004	3	1,485	708	96	.
2005	3	1,505	711	97	.
2006	3	1,518	711	97	.
2007	3	1,543	717	97	.
2008	3	1,556	717	97	.
2009	3	1,569	716	97	.
2010	3	1,561	710	96	.
2011	3	1,559	707	97	.
2012	3	1,533	702	97	.
2013	3	1,518	696	97	.
2014	3	1,491	685	97	.
2015	3	1,472	675	97	.
2016	2	1,465	668	103	.
2017	3	1,452	666	95	.
2018	3	1,439	660	95	.
2019	3	1,439	663	95	.
2020	3	1,416	653	95	.
2021	3	1,392	641	95	.

Government

TANGIBLE ASSESSED VALUATION (KDoR, million\$; 2006-)



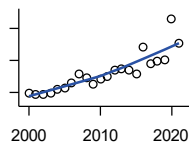
Kansas Department of Revenue, Division of Property Valuation, Statistical Report of Property Assessment and Taxation

Year	County	State of Kansas	Non Metro Kansas	County Rank	Per 1000 or \$ Per Capita
2006	42.3	28,964.3	10,316.9	85	18.8
2007	50.9	30,086.9	10,335.9	79	23.1
2008	52.0	31,000.3	10,856.9	80	23.4
2009	56.0	30,312.3	10,555.6	76	25.0
2010	46.4	29,450.2	10,158.7	82	20.9
2011	45.3	29,963.6	10,572.3	86	21.4
2012	42.3	30,382.9	10,876.2	91	19.6
2013	41.8	30,850.2	11,044.4	92	19.2
2014	40.4	31,783.0	11,388.9	96	19.1
2015	39.3	32,335.7	11,037.8	101	18.9
2016	36.5	33,156.3	10,889.6	100	17.7
2017	38.6	34,754.5	11,439.0	99	19.4
2018	39.1	36,566.1	11,907.1	99	19.6
2019	41.6	38,255.2	12,336.7	99	20.9
2020	41.3	39,333.9	12,219.3	98	20.7
2021	42.4	40,812.0	12,601.5	96	21.5

County: county value. Kansas: state value. County Rank: highest county value ranked #1. (\$000): thousands of dollars. Nonmetro Kansas: Kansas total less Metropolitan Areas as defined by the Office of Management and Budget (OMB; released 3/6/2020). Per 1000: For nonmoney amounts, Per 1000=(county value / county population for the same year as the data) x 1000. \$ Per capita=(county value / county population for the same year as the data). Value= . indicates missing or suppressed data or value not calculated.

Government

SALES TAX COLLECTIONS (\$)

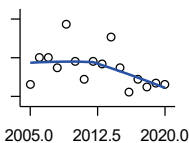


Kansas Department of Revenue. Use tax collections included beginning in calendar year 2018.

Year	County	State of Kansas	Non Metro Kansas	County Rank	Per 1000 or \$ Per Capita
2000	473,548	1,475,831,808	432,761,608	104	198,137.2
2001	440,709	1,481,026,688	426,316,284	103	184,165.9
2002	446,878	1,561,316,864	443,986,950	103	188,397.1
2003	492,596	1,626,782,976	461,658,700	104	208,373.9
2004	603,508	1,691,899,008	480,309,725	102	255,940.6
2005	639,351	1,744,980,352	497,494,867	101	278,220.6
2006	778,188	1,851,694,720	532,233,047	100	345,554.2
2007	1,078,541	1,917,546,752	559,319,583	90	490,245.7
2008	953,486	1,990,655,744	589,725,773	100	428,532.8
2009	767,304	1,866,223,078	548,627,132	102	342,240.9
2010	922,609	2,075,193,413	617,409,982	101	416,527.8
2011	1,015,715	2,347,193,367	702,671,534	103	479,110.8
2012	1,194,445	2,456,292,294	740,196,106	100	551,706.7
2013	1,232,540	2,489,204,048	746,226,565	99	565,904.6
2014	1,192,232	2,539,886,774	760,474,019	100	563,969.9
2015	1,059,882	2,642,374,740	750,090,163	102	509,313.6
2016	1,923,458	2,732,611,350	749,030,133	83	931,456.5
2017	1,376,649	2,726,104,521	744,246,491	93	690,049.6
2018	1,492,754	3,277,299,125	893,564,480	99	748,622.7
2019	1,518,389	3,395,631,405	939,607,762	101	761,478.8
2020	2,798,901	3,489,306,791	984,218,931	79	1,405,776.5
2021	2,016,798	3,981,293,227	1,098,391,422	96	1,020,130.5

Crime

CRIME INDEX OFFENSES



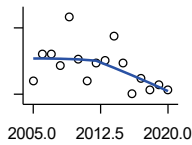
Kansas Bureau of Investigation, Note: Data are aggregated from reports by individual police departments and subject to be incomplete.

Year	County	State of Kansas	Non Metro Kansas	County Rank	Per 1000 or \$ Per Capita
2005	16	111,856	31,630	95	7.0
2006	30	110,032	.	86	13.3
2007	30	111,035	29,921	82	13.6
2008	25	93,996	27,342	89	11.2
2009	47	98,757	27,620	70	21.0
2010	28	98,354	26,909	83	12.6
2011	19	96,638	25,765	89	9.0
2012	28	98,914	26,963	90	12.9
2013	27	93,054	24,488	87	12.4
2014	41	86,323	23,341	78	19.4
2015	25	88,590	21,580	84	12.0
2016	12	90,589	21,565	94	5.8
2017	19	93,091	22,622	90	9.5
2018	15	92,062	20,325	86	7.5
2019	17	87,008	18,547	88	8.5
2020	16	87,346	17,762	88	8.0

County: county value. Kansas: state value. County Rank: highest county value ranked #1. (\$000): thousands of dollars. Nonmetro Kansas: Kansas total less Metropolitan Areas as defined by the Office of Management and Budget (OMB; released 3/6/2020). Per 1000: For nonmoney amounts, Per 1000=(county value / county population for the same year as the data) x 1000. \$ Per capita=(county value / county population for the same year as the data). Value= . indicates missing or suppressed data or value not calculated.

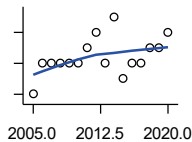
Crime

PROPERTY CRIMES



Kansas Bureau of Investigation, Note: Data are aggregated from reports by individual police departments and subject to be incomplete.

Year	County	State of Kansas	Non Metro Kansas	County Rank	Per 1000 or \$ Per Capita
2005	16	101,414	29,042	93	7.0
2006	28	99,110	.	84	12.4
2007	28	99,632	26,856	81	12.7
2008	23	83,964	24,367	87	10.3
2009	45	87,658	24,825	70	20.1
2010	26	87,926	24,133	82	11.7
2011	16	86,547	23,274	88	7.5
2012	24	88,707	24,220	90	11.1
2013	25	83,551	22,028	85	11.5
2014	36	76,794	20,858	77	17.0
2015	24	77,997	19,138	80	11.5
2016	10	79,549	19,207	94	4.8
2017	17	81,349	19,981	90	8.5
2018	12	79,695	17,769	89	6.0
2019	14	74,314	15,892	88	7.0
2020	12	73,450	15,100	89	6.0



VIOLENT CRIMES

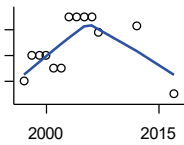
Kansas Bureau of Investigation, Note: Data are aggregated from reports by individual police departments and subject to be incomplete.

Year	County	State of Kansas	Non Metro Kansas	County Rank	Per 1000 or \$ Per Capita
2005	0	10,442	2,588	102	0.0
2006	2	10,922	.	90	0.9
2007	2	11,403	3,065	90	0.9
2008	2	10,032	2,975	95	0.9
2009	2	11,099	2,795	89	0.9
2010	2	10,428	2,776	93	0.9
2011	3	10,091	2,491	84	1.4
2012	4	10,207	2,743	85	1.8
2013	2	9,503	2,460	93	0.9
2014	5	9,529	2,483	78	2.4
2015	1	10,593	2,442	95	0.5
2016	2	11,040	2,358	89	1.0
2017	2	11,742	2,641	87	1.0
2018	3	12,367	2,556	89	1.5
2019	3	12,694	2,655	89	1.5
2020	4	13,896	2,662	85	2.0

County: county value. Kansas: state value. County Rank: highest county value ranked #1. (\$000): thousands of dollars. Nonmetro Kansas: Kansas total less Metropolitan Areas as defined by the Office of Management and Budget (OMB; released 3/6/2020). Per 1000: For nonmoney amounts, Per 1000=(county value / county population for the same year as the data) x 1000. \$ Per capita=(county value / county population for the same year as the data). Value= . indicates missing or suppressed data or value not calculated.

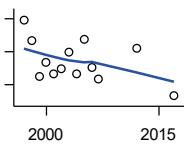
Agriculture

NUMBER OF FARMS



Kansas Agricultural Statistics, Kansas Farm Facts

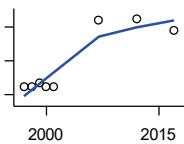
Year	County	State of Kansas	Non Metro Kansas	County Rank	Per 1000 or \$ Per Capita
1997	240	64,000	47,900	103	97.3
1998	260	65,000	48,850	99	108.2
1999	260	65,000	48,850	99	107.7
2000	260	64,000	48,030	100	108.8
2001	250	63,000	47,200	100	104.5
2002	250	63,000	47,200	100	105.4
2003	290	64,500	48,150	100	122.7
2004	290	64,500	48,150	100	123.0
2005	290	64,500	48,150	100	126.2
2006	290	64,000	47,650	100	128.8
2007	278	65,531	48,179	99	126.4
2012	283	61,773	45,655	96	130.7
2017	230	58,569	42,404	99	115.3



TOTAL ACRES HARVESTED

Kansas Agricultural Statistics, Kansas Farm Facts

Year	County	State of Kansas	Non Metro Kansas	County Rank	Per 1000 or \$ Per Capita
1997	99,500	22,846,000	19,430,580	98	40,348.7
1998	93,450	22,143,500	18,943,650	97	38,888.9
1999	82,650	21,708,900	18,581,750	99	34,252.0
2000	86,720	21,639,000	18,528,870	98	36,284.5
2001	83,110	21,847,900	18,689,750	99	34,730.5
2002	84,900	20,230,400	17,089,120	98	35,792.6
2003	89,800	21,827,700	18,661,920	99	37,986.5
2004	83,300	20,876,900	17,721,500	99	35,326.5
2005	93,900	21,936,500	18,807,930	98	40,861.6
2006	85,300	21,412,700	18,291,120	99	37,877.4
2007	81,879	19,886,655	17,164,743	97	37,217.7
2012	91,138	21,043,596	17,966,843	96	42,096.1
2017	76,526	21,837,465	18,543,057	99	38,358.9



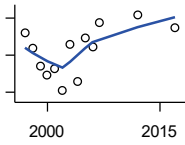
VALUE: LIVESTOCK AND POULTRY (\$000)

Kansas Agricultural Statistics, Kansas Farm Facts

Year	County	State of Kansas	Non Metro Kansas	County Rank	Per 1000 or \$ Per Capita
1997	28,673	2,806,445	2,500,305	29	11,627.3
1998	29,772	2,670,432	2,378,007	24	12,389.5
1999	33,437	2,849,061	2,554,528	25	13,857.0
2000	29,759	2,901,469	2,609,032	30	12,451.5
2001	29,028	2,693,274	2,437,187	23	12,130.4
2007	108,081	9,525,971	.	20	49,127.7
2012	109,801	11,476,571	10,883,216	24	50,716.4
2017	96,434	12,322,289	.	30	48,337.8

County: county value. Kansas: state value. County Rank: highest county value ranked #1. (\$000): thousands of dollars. Nonmetro Kansas: Kansas total less Metropolitan Areas as defined by the Office of Management and Budget (OMB; released 3/6/2020). Per 1000: For nonmoney amounts, Per 1000=(county value / county population for the same year as the data) x 1000. \$ Per capita=(county value / county population for the same year as the data). Value= . indicates missing or suppressed data or value not calculated.

Agriculture



VALUE:FIELD CROPS (\$000)
EXCLUDING GOVERNMENT
PROGRAM PAYMENTS

Kansas Agricultural Statistics, Kansas
Farm Facts

Year	County	State of Kansas	Non Metro Kansas	County Rank	Per 1000 or \$ Per Capita
1997	14,338	4,474,942	3,800,365	100	5,814.3
1998	12,738	3,594,319	3,124,409	96	5,300.9
1999	10,876	3,118,193	2,728,319	97	4,507.3
2000	9,835	2,915,660	2,540,052	97	4,115.1
2001	10,478	3,283,117	2,857,136	99	4,378.6
2002	8,156	3,011,855	2,560,580	99	3,438.4
2003	13,159	3,623,255	3,150,629	97	5,566.4
2004	9,143	3,445,688	2,896,603	102	3,877.4
2005	13,842	3,678,123	3,182,677	95	6,023.5
2006	12,822	4,308,716	3,684,132	99	5,693.6
2007	15,466	4,887,212	.	93	7,030.0
2012	16,351	6,983,993	6,044,551	97	7,552.4
2017	14,987	6,460,437	.	99	7,512.3

County: county value. Kansas: state value. County Rank: highest county value ranked #1. (\$000): thousands of dollars. Nonmetro Kansas: Kansas total less Metropolitan Areas as defined by the Office of Management and Budget (OMB; released 3/6/2020). Per 1000: For nonmoney amounts, Per 1000=(county value / county population for the same year as the data) x 1000. \$ Per capita=(county value / county population for the same year as the data). Value= . indicates missing or suppressed data or value not calculated.