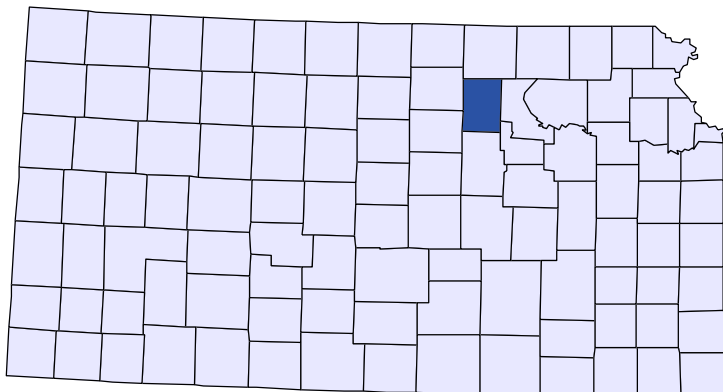




Kansas County Profiles

Clay County



The University
of Kansas

Institute for Policy
& Social Research

KU INSTITUTE FOR POLICY
& SOCIAL RESEARCH
The University of Kansas

1541 Lilac Lane, Rm. 607
Blake Hall
Lawrence, KS 66045-3129

Foreword

The Kansas County Profile Report is published by the Institute for Policy & Social Research (IPSR) at the University of Kansas with support from the KU University Center project.* Special thanks to Xanthippe Wedel, senior research data engineer, who compiles and updates the county profiles and Genna Hurd, associate researcher, who provides editorial review.

County reports can be generated for any county in Kansas by simply clicking on the county from the web site:

<https://ipsr.ku.edu/ksdata/kcced/profiles/>

The Kansas County Profile Report contains 12 categories of information: Population, Vital Statistics and Health, Housing, Education, Social Environment, Business, Employment, Income, Banking, Government, Crime, and Agriculture. For more information about Kansas, please refer to the Kansas Statistical Abstract, available online at:

<https://ipsr.ku.edu/ksdata/ksah/>

We are always looking for ways to improve the Kansas County Profile Report and we welcome your suggestions and comments. Please address any correspondence to the Institute for Policy & Social Research, The University of Kansas, 607 Blake Hall, 1541 Lilac Lane, Lawrence, Kansas 66045-3129, e-mail ipsr@ku.edu or call 785-864-3701.

**The KU University Center is a collaborative effort led by the Institute for Policy & Social Research at the University of Kansas. This project is supported by the Economic Development Administration, U.S. Department of Commerce, through its University Center Program.*

The mission of EDA is to lead the federal economic development agenda by promoting innovation and competitiveness, preparing American regions for growth and success in the worldwide economy.

Kansas County Profiles Table of Contents

Population

Total Population (Decennial Census)	1
Estimated Population (Current Population Reports)	2
Urban Population	2
Rural Population	3
Net Migration (Decade Ending...)	3
Median Age	3

Population (Age Groups)

Population Under 18 (Decennial Census)	3
Population Age 18 and Over (Decennial Census)	4
Population Age 65 and Over (Decennial Census)	4
Population Age 85 and Over (Decennial Census)	4

Vital Statistics and Health

Live Births	5
Deaths	5
Marriages	6
Divorces and Annulments	6
Physicians: M.D. Physicians	7
Physicians: D.O. Physicians	7
Dentists	8
Number of Hospitals	8
Number of Hospital Beds	9

Housing

Housing Units (Decennial Census)	9
Housing Units (Estimated)	10
Occupied Housing Units	10
Owner Occupied Housing Units	10
Renter Occupied Housing Units	11
Vacant Housing Units	11
Median Value (\$): Owner Occupied Housing Units	11
Median Contract Rent (\$)	12
Fair Market Rent: 2 Bedrooms	12

Education

Population Age 25 and Over	13
Percent of Population 25+ with High School or Higher Education	13
Percent of Population 25+ with Bachelors Degree or Higher Education	14
Public School Enrollment (FTE- School Year Beginning...)	14
Pupil/Teacher Ratio (School Year Beginning...)	15

Kansas County Profiles Table of Contents

Social Environment

Total Child Care Facilities	15
Preschools	16
Food Stamp Beneficiaries	16
Percent of Population Receiving Food Stamps	17
Estimated Number of People in Poverty	17
Estimated Percent of People in Poverty	18
Estimated Number of Related Children Age 5 to 17 in Families in Poverty	18
Estimated Percent of Related Children Age 5 to 17 in Families in Poverty	19
Estimated Number Under 18 in Poverty	19
Estimated Percent Under 18 in Poverty	20

Business

Establishments: Total	21
Establishments: 1-19 Employees	22
Establishments: 20-99 Employees	22
Establishments: 100-499 Employees	23
Establishments: 500 or More Employees	23
Establishments: Forestry, Fishing, Hunting, and Ag Support	24
Establishments: Mining	24
Establishments: Utilities	25
Establishments: Construction	25
Establishments: Manufacturing	26
Establishments: Wholesale Trade	26
Establishments: Retail Trade	27
Establishments: Transportation and Warehousing	27
Establishments: Information	28
Establishments: Finance and Insurance	28
Establishments: Real Estate, Rental, and Leasing	29
Establishments: Professional, Scientific, and Technical Services	29
Establishments: Management of Companies and Enterprises	30
Establishments: Admin, Support, Waste Management, and Remediation	30
Establishments: Educational Services	31
Establishments: Health Care and Social Assistance	31
Establishments: Arts, Entertainment, and Recreation	32
Establishments: Accommodation and Food Services	32
Establishments: Other Services	33

Kansas County Profiles Table of Contents

Business	
Total Annual Payroll (\$000)	34
Total Annual Payroll (\$000): Forestry, Fishing, Hunting, and Ag Support	35
Total Annual Payroll (\$000): Mining	35
Total Annual Payroll (\$000): Utilities	36
Total Annual Payroll (\$000): Construction	36
Total Annual Payroll (\$000): Manufacturing	37
Total Annual Payroll (\$000): Wholesale Trade	37
Total Annual Payroll (\$000): Retail Trade	38
Total Annual Payroll (\$000): Transportation and Warehousing	38
Total Annual Payroll (\$000): Information	39
Total Annual Payroll (\$000): Finance and Insurance	39
Total Annual Payroll (\$000): Real Estate, Rental, and Leasing	40
Total Annual Payroll (\$000): Professional, Scientific, and Technical Services	40
Total Annual Payroll (\$000): Management of Companies and Enterprises	41
Total Annual Payroll (\$000): Admin, Support, Waste Management, and Remediation	41
Total Annual Payroll (\$000): Educational Services	42
Total Annual Payroll (\$000): Health Care and Social Assistance	42
Total Annual Payroll (\$000): Arts, Entertainment, and Recreation	43
Total Annual Payroll (\$000): Accommodation and Food Services	43
Total Annual Payroll (\$000): Other Services	44
Nominal Taxable Retail Sales (Million\$)	44
Retail Pull Factor	45
Employment	
Civilian Labor Force (BLS - Place of Residence)	46
Employed (BLS - Place of Residence)	47
Unemployed (BLS - Place of Residence)	48
Unemployment Rate (BLS - Place of Residence)	49
BEA Employment: Total (Place of Work)	49
BEA Employment: Farm	50
BEA Employment: Non-Farm	50
Average Wage per Job (\$)	51
BEA Employment: Forestry, Fishing, Hunting, and Ag Support	51
BEA Employment: Mining	52
BEA Employment: Utilities	52
BEA Employment: Construction	53
BEA Employment: Manufacturing	53
BEA Employment: Wholesale Trade	54
BEA Employment: Retail Trade	54
BEA Employment: Transportation and Warehousing	55
BEA Employment: Information	55
BEA Employment: Finance and Insurance	56
BEA Employment: Real Estate, Rental, and Leasing	56
BEA Employment: Professional and Technical Services	57
BEA Employment: Management of Companies and Enterprises	57
BEA Employment: Administrative and Waste Services	58
BEA Employment: Educational Services	58
BEA Employment: Health Care and Social Assistance	59
BEA Employment: Arts, Entertainment, and Recreation	59
BEA Employment: Government and Government Enterprises	60
BEA Employment: Accommodation and Food Services	60
BEA Employment: Other Services, Except Public Administration	61

Kansas County Profiles Table of Contents

Income

BEA Per Capita Personal Income (\$)	61
Sources of Personal Income: Total Personal Income (\$000)	62
Sources of Personal Income: Wages And Salaries (\$000)	62
Sources of Personal Income: Proprietors-Farm (\$000)	63
Sources of Personal Income: Proprietors-Nonfarm (\$000)	63
Sources of Personal Income: Dividends, Interest, Rent (\$000)	64
Sources of Personal Income: Transfer Payments (\$000)	64
Sources of Personal Income: Less Social Insurance (\$000)	65
HUD Median Family Income	65
HUD 30% Low-To-Medium Income (LMI) Limit - 4 Persons	66
HUD 50% Low-To-Medium Income (LMI) Limit - 4 Persons	66
HUD 80% Low-To-Medium Income (LMI) Limit - 4 Persons	66

Banking

Bank Deposits (\$000)	67
Number of Banks	67
Number of Banking Offices	68

Government

Tangible Assessed Valuation (million\$)	68
Sales Tax Collections	69

Crime

Crime Index Offenses	69
Property Crimes	70
Violent Crimes	70

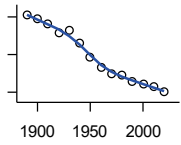
Agriculture

Number of Farms	71
Total Acres Harvested	71
Value: Livestock and Poultry (\$000)	71
Value: Field Crops (\$000) Excluding Government Program Payments	72

Population

DECENNIAL CENSUS:TOTAL POPULATION

U.S. Census Bureau: Decennial Census

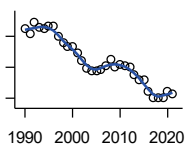


Year	County	State of Kansas	Non Metro Kansas	County Rank	Per 1000 or \$ Per Capita
1890	16,146	1,427,096	968,413	38	.
1900	15,833	1,470,495	981,206	42	.
1910	15,251	1,690,949	1,138,294	43	.
1920	14,365	1,769,257	1,153,525	44	.
1930	14,556	1,880,999	1,180,056	42	.
1940	13,281	1,801,028	1,097,216	44	.
1950	11,697	1,905,299	1,046,823	45	.
1960	10,675	2,178,611	1,021,510	47	.
1970	9,890	2,246,578	958,104	45	.
1980	9,802	2,363,679	980,085	45	.
1990	9,158	2,477,574	939,416	45	.
2000	8,822	2,688,418	959,507	47	.
2010	8,535	2,853,118	929,981	47	.
2020	8,117	2,937,880	892,006	47	.

County: county value. Kansas: state value. County Rank: highest county value ranked #1. (\$000): thousands of dollars. Nonmetro Kansas: Kansas total less Metropolitan Areas as defined by the Office of Management and Budget (OMB; released 3/6/2020). Per 1000: For nonmoney amounts, Per 1000=(county value / county population for the same year as the data) x 1000. \$ Per capita=(county value / county population for the same year as the data). Value= . indicates missing or suppressed data or value not calculated.

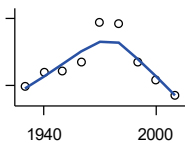
Population

ESTIMATED POPULATION



U.S. Census Bureau

Year	County	State of Kansas	Non Metro Kansas	County Rank	Per 1000 or \$ Per Capita
1990	9,126	2,481,349	938,607	45	.
1991	9,040	2,498,722	938,965	45	.
1992	9,222	2,532,394	942,759	45	.
1993	9,147	2,556,547	947,515	45	.
1994	9,125	2,580,513	952,178	45	.
1995	9,156	2,601,007	957,771	45	.
1996	9,164	2,614,554	959,455	45	.
1997	9,005	2,635,292	960,225	46	.
1998	8,905	2,660,598	960,569	46	.
1999	8,829	2,678,338	960,704	47	.
2000	8,827	2,693,681	959,230	47	.
2001	8,730	2,702,162	952,607	47	.
2002	8,607	2,713,535	945,985	47	.
2003	8,493	2,723,004	941,474	48	.
2004	8,447	2,734,373	937,623	47	.
2005	8,444	2,745,299	932,852	47	.
2006	8,458	2,762,931	928,809	47	.
2007	8,527	2,783,785	927,643	47	.
2008	8,618	2,808,076	926,248	46	.
2009	8,500	2,832,704	926,755	47	.
2010	8,550	2,858,190	930,028	47	.
2011	8,529	2,869,225	927,675	46	.
2012	8,504	2,885,257	925,152	46	.
2013	8,388	2,893,212	922,383	46	.
2014	8,301	2,900,475	917,854	47	.
2015	8,293	2,909,011	912,199	46	.
2016	8,105	2,910,844	905,099	47	.
2017	8,006	2,908,718	897,981	47	.
2018	8,003	2,911,359	892,656	47	.
2019	8,002	2,913,314	887,455	47	.
2020	8,112	2,935,880	889,750	47	.
2021	8,077	2,934,582	886,438	47	.



URBAN POPULATION

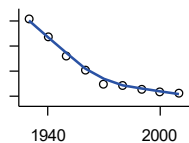
U.S. Census Bureau: Decennial Census

Year	County	State of Kansas	Non Metro Kansas	County Rank	Per 1000 or \$ Per Capita
1930	4,386	729,834	336,666	36	.
1940	4,518	753,941	349,228	36	.
1950	4,528	993,220	398,923	39	.
1960	4,613	1,328,741	457,447	38	.
1970	4,963	1,484,870	450,543	38	.
1980	4,948	1,575,899	474,769	39	.
1990	4,613	1,712,564	464,205	40	.
2000	4,454	1,920,081	488,011	40	.
2010	4,307	2,116,961	485,780	40	.

County: county value. Kansas: state value. County Rank: highest county value ranked #1. (\$000): thousands of dollars. Nonmetro Kansas: Kansas total less Metropolitan Areas as defined by the Office of Management and Budget (OMB; released 3/6/2020). Per 1000: For nonmoney amounts, Per 1000=(county value / county population for the same year as the data) x 1000. \$ Per capita=(county value / county population for the same year as the data). Value= . indicates missing or suppressed data or value not calculated.

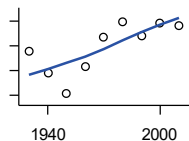
Population

RURAL POPULATION



U.S. Census Bureau

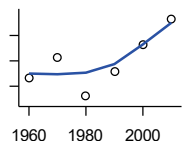
Year	County	State of Kansas	Non Metro Kansas	County Rank	Per 1000 or \$ Per Capita
1930	10,170	1,151,165	843,390	55	.
1940	8,763	1,047,087	747,988	59	.
1950	7,169	912,079	647,900	61	.
1960	6,062	849,870	564,063	59	.
1970	4,927	761,708	509,972	61	.
1980	4,854	787,780	505,873	62	.
1990	4,545	765,010	475,211	60	.
2000	4,368	768,337	471,900	62	.
2010	4,228	736,157	444,201	58	.



NET MIGRATION: DECADE ENDING...

calculated by the Institute for Policy and Social Research, The University of Kansas

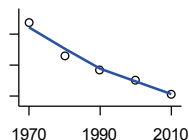
Year	County	State of Kansas	Non Metro Kansas	County Rank	Per 1000 or \$ Per Capita
1960	38.7	26.9	.	9	.
1970	40.3	28.7	.	25	.
1980	37.2	30.1	.	30	.
1990	39.2	32.9	.	24	.
2000	41.3	35.2	.	32	.
2010	43.3	36.0	.	43	.



MEDIAN AGE

U.S. Census Bureau: Decennial Census

Year	County	State of Kansas	Non Metro Kansas	County Rank	Per 1000 or \$ Per Capita
1970	2,942	746,354	306,227	48	.
1980	2,527	649,035	263,919	46	.
1990	2,340	661,614	250,107	46	.
2000	2,200	712,993	250,757	49	.
2010	2,021	726,939	229,213	49	.



POPULATION UNDER 18 (DECENNIAL CENSUS)

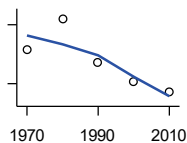
U.S. Census Bureau: Decennial Census

Year	County	State of Kansas	Non Metro Kansas	County Rank	Per 1000 or \$ Per Capita
1970	2,942	746,354	306,227	48	.
1980	2,527	649,035	263,919	46	.
1990	2,340	661,614	250,107	46	.
2000	2,200	712,993	250,757	49	.
2010	2,021	726,939	229,213	49	.

County: county value. Kansas: state value. County Rank: highest county value ranked #1. (\$000): thousands of dollars. Nonmetro Kansas: Kansas total less Metropolitan Areas as defined by the Office of Management and Budget (OMB; released 3/6/2020). Per 1000: For nonmoney amounts, Per 1000=(county value / county population for the same year as the data) x 1000. \$ Per capita=(county value / county population for the same year as the data). Value= . indicates missing or suppressed data or value not calculated.

Population

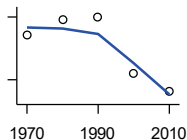
**POPULATION AGE 18 AND OVER
(DECENNIAL CENSUS)**



U.S. Census Bureau: Decennial Census

Year	County	State of Kansas	Non Metro Kansas	County Rank	Per 1000 or \$ Per Capita
1970	6,948	1,500,224	654,288	44	.
1980	7,260	1,714,282	716,684	45	.
1990	6,818	1,815,960	689,309	45	.
2000	6,622	1,975,425	709,154	46	.
2010	6,514	2,126,179	700,768	47	.

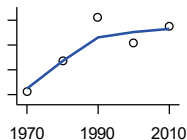
**POPULATION AGE 65 AND OVER
(DECENNIAL CENSUS)**



U.S. Census Bureau: Decennial Census

Year	County	State of Kansas	Non Metro Kansas	County Rank	Per 1000 or \$ Per Capita
1970	2,011	266,201	149,049	37	.
1980	2,085	306,263	164,932	41	.
1990	2,100	342,571	168,579	42	.
2000	1,831	356,229	161,769	45	.
2010	1,744	376,116	154,214	46	.

**POPULATION AGE 85 AND OVER
(DECENNIAL CENSUS)**



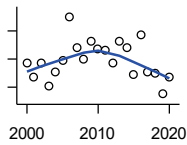
U.S. Census Bureau: Decennial Census

Year	County	State of Kansas	Non Metro Kansas	County Rank	Per 1000 or \$ Per Capita
1970	205	23,899	13,698	37	.
1980	267	33,455	18,804	37	.
1990	356	42,241	22,970	35	.
2000	303	51,770	26,644	43	.
2010	339	59,318	26,197	39	.

County: county value. Kansas: state value. County Rank: highest county value ranked #1. (\$000): thousands of dollars. Nonmetro Kansas: Kansas total less Metropolitan Areas as defined by the Office of Management and Budget (OMB; released 3/6/2020). Per 1000: For nonmoney amounts, Per 1000=(county value / county population for the same year as the data) x 1000. \$ Per capita=(county value / county population for the same year as the data). Value= . indicates missing or suppressed data or value not calculated.

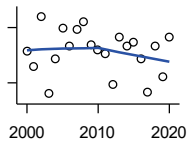
Vital Statistics and Health

BIRTHS (LIVE)



Kansas Department of Health and Environment

Year	County	State of Kansas	Non Metro Kansas	County Rank	Per 1000 or \$ Per Capita
2000	97	39,654	12,980	53	11.0
2001	87	38,832	12,527	53	10.0
2002	97	39,338	12,476	50	11.3
2003	81	39,353	12,342	54	9.5
2004	91	39,553	12,398	51	10.8
2005	99	39,701	12,382	49	11.7
2006	130	40,896	12,726	41	15.4
2007	108	41,951	12,990	49	12.7
2008	100	41,815	12,970	49	11.6
2009	113	41,388	12,949	44	13.3
2010	107	40,439	12,200	47	12.5
2011	106	39,628	12,098	47	12.4
2012	97	40,304	12,217	49	11.4
2013	113	38,805	11,877	43	13.5
2014	108	39,193	12,052	47	13.0
2015	89	39,126	11,836	51	10.7
2016	117	38,048	11,467	42	14.4
2017	91	36,464	10,968	50	11.4
2018	90	36,268	10,826	50	11.2
2019	75	35,395	10,506	55	9.4
2020	87	34,368	10,222	48	10.7



DEATHS

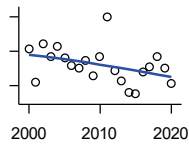
Kansas Department of Health and Environment

Year	County	State of Kansas	Non Metro Kansas	County Rank	Per 1000 or \$ Per Capita
2000	107	24,676	11,175	51	12.1
2001	99	24,590	10,807	52	11.3
2002	126	24,968	11,079	44	14.6
2003	84	24,417	10,615	60	9.9
2004	103	23,720	10,369	49	12.2
2005	120	24,632	10,599	46	14.2
2006	110	24,489	10,538	48	13.0
2007	119	24,413	10,601	44	14.0
2008	123	24,896	10,593	43	14.3
2009	111	23,997	9,938	44	13.1
2010	108	24,428	10,105	46	12.7
2011	106	25,114	10,520	48	12.4
2012	89	25,084	10,259	53	10.5
2013	115	25,347	10,249	45	13.7
2014	110	25,731	10,275	45	13.3
2015	112	26,611	10,539	44	13.5
2016	103	26,129	10,231	47	12.7
2017	85	26,725	10,452	57	10.6
2018	110	27,213	10,389	46	13.7
2019	93	27,312	10,569	53	11.6
2020	115	31,667	11,850	47	14.2

County: county value. Kansas: state value. County Rank: highest county value ranked #1. (\$000): thousands of dollars. Nonmetro Kansas: Kansas total less Metropolitan Areas as defined by the Office of Management and Budget (OMB; released 3/6/2020). Per 1000: For nonmoney amounts, Per 1000=(county value / county population for the same year as the data) x 1000. \$ Per capita=(county value / county population for the same year as the data). Value= . indicates missing or suppressed data or value not calculated.

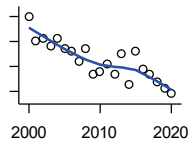
Vital Statistics and Health

MARRIAGES



Kansas Department of Health and Environment

Year	County	State of Kansas	Non Metro Kansas	County Rank	Per 1000 or \$ Per Capita
2000	71	20,426	7,333	46	8.0
2001	52	20,457	7,441	57	6.0
2002	74	19,783	6,794	40	8.6
2003	67	18,722	6,469	42	7.9
2004	73	19,174	6,756	41	8.6
2005	66	18,745	6,481	41	7.8
2006	62	18,836	6,433	45	7.3
2007	60	18,910	6,464	44	7.0
2008	65	18,717	6,283	41	7.5
2009	56	18,268	6,015	45	6.6
2010	67	18,150	5,925	41	7.9
2011	90	17,897	5,977	32	10.6
2012	59	18,154	5,752	41	6.9
2013	53	17,328	5,533	46	6.3
2014	46	17,655	5,535	48	5.5
2015	45	17,595	5,400	48	5.4
2016	58	17,948	5,340	41	7.2
2017	61	17,274	5,163	36	7.6
2018	67	16,362	4,999	37	8.4
2019	60	15,403	4,650	37	7.5
2020	51	14,038	4,066	39	6.3



DIVORCES AND ANNULMENTS

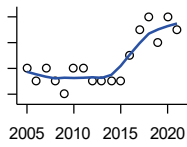
Kansas Department of Health and Environment

Year	County	State of Kansas	Non Metro Kansas	County Rank	Per 1000 or \$ Per Capita
2000	40	10,105	4,000	41	4.5
2001	30	9,885	3,818	53	3.4
2002	31	9,645	3,716	48	3.6
2003	28	8,644	3,464	50	3.3
2004	31	8,759	3,506	46	3.7
2005	27	8,476	3,311	50	3.2
2006	26	9,145	3,387	53	3.1
2007	22	9,347	3,402	57	2.6
2008	27	9,818	3,655	54	3.1
2009	17	10,333	3,463	67	2.0
2010	18	10,579	3,530	63	2.1
2011	21	10,445	3,347	58	2.5
2012	17	9,782	3,040	65	2.0
2013	25	9,085	2,973	49	3.0
2014	13	8,441	2,682	70	1.6
2015	26	8,036	2,704	45	3.1
2016	19	7,198	2,424	51	2.3
2017	17	6,494	2,315	48	2.1
2018	14	6,538	2,269	57	1.7
2019	11	6,398	2,357	67	1.4
2020	9	5,169	1,866	69	1.1

County: county value. Kansas: state value. County Rank: highest county value ranked #1. (\$000): thousands of dollars. Nonmetro Kansas: Kansas total less Metropolitan Areas as defined by the Office of Management and Budget (OMB; released 3/6/2020). Per 1000: For nonmoney amounts, Per 1000=(county value / county population for the same year as the data) x 1000. \$ Per capita=(county value / county population for the same year as the data). Value= . indicates missing or suppressed data or value not calculated.

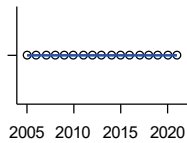
Vital Statistics and Health

PHYSICIANS: M.D. PHYSICIANS



Kansas Department of Health and Environment (1981-2005,2010-);Kansas Health Policy Authority (2006-2009)

Year	County	State of Kansas	Non Metro Kansas	County Rank	Per 1000 or \$ Per Capita
2005	8	4,241	912	42	0.9
2006	7	4,310	953	43	0.8
2007	8	5,309	1,046	41	0.9
2008	7	5,110	1,016	42	0.8
2009	6	5,249	996	49	0.7
2010	8	5,192	979	42	0.9
2011	8	5,243	983	39	0.9
2012	7	5,693	1,033	45	0.8
2013	7	6,106	1,071	44	0.8
2014	7	5,839	951	43	0.8
2015	7	5,703	855	38	0.8
2016	9	4,278	643	30	1.1
2017	11	6,332	1,047	36	1.4
2018	12	6,079	1,065	34	1.5
2019	10	6,435	1,036	38	1.2
2020	12	6,668	1,045	33	1.5
2021	11	6,745	1,042	35	1.4



PHYSICIANS: D.O. PHYSICIANS

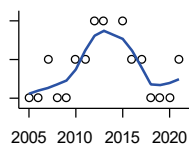
Kansas Department of Health and Environment (1981-2005,2010-);Kansas Health Policy Authority (2006-2009)

Year	County	State of Kansas	Non Metro Kansas	County Rank	Per 1000 or \$ Per Capita
2005	0	553	174	105	0.0
2006	0	508	171	105	0.0
2007	0	569	169	105	0.0
2008	0	558	166	105	0.0
2009	0	564	160	105	0.0
2010	0	583	169	105	0.0
2011	0	502	152	105	0.0
2012	0	718	200	105	0.0
2013	0	829	210	105	0.0
2014	0	817	189	105	0.0
2015	0	819	190	105	0.0
2016	0	632	136	105	0.0
2017	0	579	129	105	0.0
2018	0	871	164	105	0.0
2019	0	951	212	105	0.0
2020	0	1,018	204	105	0.0
2021	0	1,095	217	105	0.0

County: county value. Kansas: state value. County Rank: highest county value ranked #1. (\$000): thousands of dollars. Nonmetro Kansas: Kansas total less Metropolitan Areas as defined by the Office of Management and Budget (OMB; released 3/6/2020). Per 1000: For nonmoney amounts, Per 1000=(county value / county population for the same year as the data) x 1000. \$ Per capita=(county value / county population for the same year as the data). Value= . indicates missing or suppressed data or value not calculated.

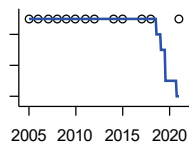
Vital Statistics and Health

DENTISTS



Kansas Department of Health and Environment (1981-2006,2010-);Kansas Health Policy Authority (2007-2009)

Year	County	State of Kansas	Non Metro Kansas	County Rank	Per 1000 or \$ Per Capita
2005	2	1,347	363	69	0.2
2006	2	1,381	361	68	0.2
2007	3	1,335	350	48	0.4
2008	2	1,392	353	67	0.2
2009	2	1,353	350	67	0.2
2010	3	1,401	365	53	0.4
2011	3	1,338	346	50	0.4
2012	4	1,434	392	46	0.5
2013	4	1,212	328	40	0.5
2015	4	1,240	327	40	0.5
2016	3	1,456	350	52	0.4
2017	3	1,467	350	48	0.4
2018	2	1,604	359	64	0.2
2019	2	1,646	355	66	0.2
2020	2	1,646	355	66	0.2
2021	3	1,688	362	49	0.4



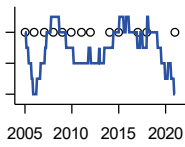
NUMBER OF HOSPITALS

American Hospital Association, American Hospital Association Guide to the Health Care Field

Year	County	State of Kansas	Non Metro Kansas	County Rank	Per 1000 or \$ Per Capita
2005	1	158	105	96	.
2006	1	158	105	96	.
2007	1	159	104	95	.
2008	1	159	104	95	.
2009	1	158	105	96	.
2010	1	158	104	96	.
2011	1	158	103	96	.
2012	1	157	103	96	.
2014	1	156	.	96	.
2015	1	155	103	96	.
2017	1	157	102	96	.
2018	1	154	99	95	.
2021	1	151	.	95	.

County: county value. Kansas: state value. County Rank: highest county value ranked #1. (\$000): thousands of dollars. Nonmetro Kansas: Kansas total less Metropolitan Areas as defined by the Office of Management and Budget (OMB; released 3/6/2020). Per 1000: For nonmoney amounts, Per 1000=(county value / county population for the same year as the data) x 1000. \$ Per capita=(county value / county population for the same year as the data). Value= . indicates missing or suppressed data or value not calculated.

Vital Statistics and Health

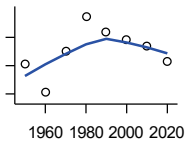


NUMBER OF HOSPITAL BEDS

Kansas Department of Health and Environment

Year	County	State of Kansas	Non Metro Kansas	County Rank	Per 1000 or \$ Per Capita
2005	25	12,389	5,687	85	3.0
2006	25	11,992	5,514	85	3.0
2007	25	12,171	5,637	84	2.9
2008	25	12,332	5,700	85	2.9
2009	25	12,283	5,652	86	2.9
2010	25	12,218	5,521	86	2.9
2011	25	12,182	5,335	85	2.9
2012	25	12,002	5,355	85	2.9
2014	25	12,034	.	84	3.0
2015	25	11,926	5,330	85	3.0
2017	25	11,491	4,825	83	3.1
2018	25	11,448	4,583	82	3.1
2021	25	11,199	.	76	3.1

Housing



HOUSING UNITS (DECENNIAL)

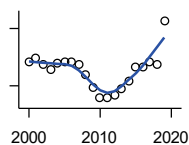
U.S. Census Bureau: Decennial Census

Year	County	State of Kansas	Non Metro Kansas	County Rank	Per 1000 or \$ Per Capita
1950	3,914	586,650	328,210	43	334.6
1960	3,708	672,899	329,380	44	347.4
1970	4,004	789,735	363,824	45	404.9
1980	4,247	955,207	416,877	46	433.3
1990	4,138	1,044,112	417,062	47	451.8
2000	4,084	1,131,395	422,218	47	462.9
2010	4,042	1,233,215	424,050	47	473.6
2020	3,933	1,275,689	413,120	47	484.5

County: county value. Kansas: state value. County Rank: highest county value ranked #1. (\$000): thousands of dollars. Nonmetro Kansas: Kansas total less Metropolitan Areas as defined by the Office of Management and Budget (OMB; released 3/6/2020). Per 1000: For nonmoney amounts, Per 1000=(county value / county population for the same year as the data) x 1000. \$ Per capita=(county value / county population for the same year as the data). Value= . indicates missing or suppressed data or value not calculated.

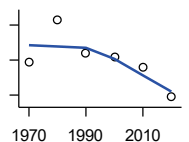
Housing

HOUSING UNITS (ESTIMATED)



U.S. Census Bureau

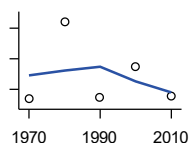
Year	County	State of Kansas	Non Metro Kansas	County Rank	Per 1000 or \$ Per Capita
2000	4,085	1,134,529	422,560	47	463.0
2001	4,089	1,146,858	423,876	47	468.4
2002	4,083	1,160,129	425,089	47	474.4
2003	4,077	1,171,620	425,936	47	480.0
2004	4,084	1,184,702	426,593	47	483.5
2005	4,085	1,195,791	426,964	47	483.8
2006	4,085	1,206,692	426,713	47	483.0
2007	4,083	1,217,608	426,090	47	478.8
2008	4,071	1,225,625	425,768	47	472.4
2009	4,058	1,230,552	424,776	47	477.4
2010	4,048	1,234,456	424,174	47	474.3
2011	4,047	1,238,052	424,549	47	474.5
2012	4,050	1,241,992	425,116	47	476.2
2013	4,057	1,246,675	425,699	46	483.7
2014	4,065	1,253,284	426,269	46	489.7
2015	4,079	1,258,999	426,844	46	491.9
2016	4,080	1,265,684	427,465	46	503.4
2017	4,085	1,273,536	427,746	47	510.2
2018	4,083	1,280,649	428,099	47	510.2
2019	4,128	1,288,401	428,495	47	515.9



OCCUPIED HOUSING UNITS

U.S. Census Bureau: Decennial Census

Year	County	State of Kansas	Non Metro Kansas	County Rank	Per 1000 or \$ Per Capita
1970	3,589	727,364	326,494	44	362.9
1980	3,830	872,239	371,693	45	390.7
1990	3,641	944,726	365,901	45	397.6
2000	3,617	1,037,891	375,313	46	410.0
2010	3,559	1,112,096	370,269	46	417.0
2020	3,388	1,151,360	356,330	47	417.4



OWNER OCCUPIED HOUSING UNITS

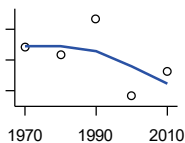
U.S. Census Bureau: Decennial Census

Year	County	State of Kansas	Non Metro Kansas	County Rank	Per 1000 or \$ Per Capita
1970	2,668	502,585	236,338	44	269.8
1980	2,921	612,433	277,096	45	298.0
1990	2,674	641,762	263,099	45	292.0
2000	2,776	718,703	271,350	46	314.7
2010	2,678	753,532	261,763	47	313.8

County: county value. Kansas: state value. County Rank: highest county value ranked #1. (\$000): thousands of dollars. Nonmetro Kansas: Kansas total less Metropolitan Areas as defined by the Office of Management and Budget (OMB; released 3/6/2020). Per 1000: For nonmoney amounts, Per 1000=(county value / county population for the same year as the data) x 1000. \$ Per capita=(county value / county population for the same year as the data). Value= . indicates missing or suppressed data or value not calculated.

Housing

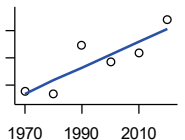
RENTER OCCUPIED HOUSING UNITS



U.S. Census Bureau: Decennial Census

Year	County	State of Kansas	Non Metro Kansas	County Rank	Per 1000 or \$ Per Capita
1970	921	224,779	90,156	41	93.1
1980	909	259,806	94,597	42	92.7
1990	967	302,964	102,802	42	105.6
2000	841	319,188	103,963	46	95.3
2010	881	358,564	108,506	46	103.2

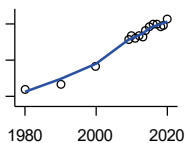
VACANT HOUSING UNITS



U.S. Census Bureau: Decennial Census

Year	County	State of Kansas	Non Metro Kansas	County Rank	Per 1000 or \$ Per Capita
1970	414	60,058	35,954	47	41.9
1980	408	77,912	41,584	48	41.6
1990	497	99,386	51,161	55	54.3
2000	467	93,309	46,904	56	52.9
2010	483	121,119	53,781	63	56.6
2020	545	124,329	56,790	55	67.1

MEDIAN VALUE (\$): OWNER OCCUPIED HOUSING UNITS



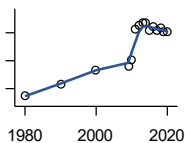
U.S. Census Bureau, Decennial Census (- 2000), (2009 -) American Community Survey five-year average ending in year shown.

Year	County	State of Kansas	Non Metro Kansas	County Rank	Per 1000 or \$ Per Capita
1980	28,300	37,800	.	49	.
1990	33,800	52,200	.	49	.
2000	52,900	83,500	.	56	.
2009	82,200	118,500	.	39	.
2010	86,500	122,600	.	32	.
2011	84,000	125,500	.	39	.
2012	87,200	127,400	.	39	.
2013	85,700	128,400	.	42	.
2014	93,100	129,400	.	32	.
2015	96,500	132,000	.	32	.
2016	99,400	135,300	.	33	.
2017	100,200	139,200	.	33	.
2018	97,300	145,400	.	44	.
2019	98,000	151,900	.	50	.
2020	105,500	157,600	.	42	.

County: county value. Kansas: state value. County Rank: highest county value ranked #1. (\$000): thousands of dollars. Nonmetro Kansas: Kansas total less Metropolitan Areas as defined by the Office of Management and Budget (OMB; released 3/6/2020). Per 1000: For nonmoney amounts, Per 1000=(county value / county population for the same year as the data) x 1000. \$ Per capita=(county value / county population for the same year as the data). Value= . indicates missing or suppressed data or value not calculated.

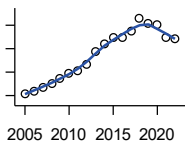
Housing

MEDIAN CONTRACT RENT (\$)



U.S. Census Bureau, Decennial Census (- 2000), (2009 -) American Community Survey five-year average ending in year shown.

Year	County	State of Kansas	Non Metro Kansas	County Rank	Per 1000 or \$ Per Capita
1980	148	219	.	80	.
1990	231	372	.	94	.
2000	333	498	.	80	.
2009	362	491	.	40	.
2010	410	507	.	28	.
2011	623	699	.	21	.
2012	649	715	.	25	.
2013	676	732	.	21	.
2014	674	748	.	23	.
2015	613	757	.	46	.
2016	641	775	.	40	.
2017	619	801	.	57	.
2018	639	831	.	52	.
2019	607	850	.	76	.
2020	608	863	.	77	.



FAIR MARKET RENT: 2 BEDROOMS

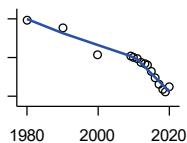
U.S. Department of Housing and Urban Development (HUD)

Year	County	State of Kansas	Non Metro Kansas	County Rank	Per 1000 or \$ Per Capita
2005	509	.	.	42	.
2006	520	.	.	44	.
2007	536	.	.	44	.
2008	550	628	.	45	.
2009	573	653	.	44	.
2010	596	678	.	46	.
2011	605	684	.	46	.
2012	632	660	.	25	.
2013	687	712	.	21	.
2014	719	746	.	17	.
2015	747	756	.	12	.
2016	749	781	.	14	.
2017	777	811	.	15	.
2018	830	815	.	11	.
2019	808	828	.	11	.
2020	803	855	.	14	.
2021	750	874	.	28	.
2022	742	879	.	105	.

County: county value. Kansas: state value. County Rank: highest county value ranked #1. (\$000): thousands of dollars. Nonmetro Kansas: Kansas total less Metropolitan Areas as defined by the Office of Management and Budget (OMB; released 3/6/2020). Per 1000: For nonmoney amounts, Per 1000=(county value / county population for the same year as the data) x 1000. \$ Per capita=(county value / county population for the same year as the data). Value= . indicates missing or suppressed data or value not calculated.

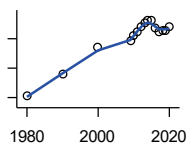
Education

POPULATION AGE 25+



U.S. Census Bureau, Decennial Census (- 2000), (2009 -) American Community Survey five-year average ending in year shown.

Year	County	State of Kansas	Non Metro Kansas	County Rank	Per 1000 or \$ Per Capita
1980	6,380	1,388,102	596,639	.	.
1990	6,309	1,565,936	608,745	.	.
2000	6,026	1,701,207	618,131	.	.
2009	6,015	1,775,427	600,188	.	.
2010	6,001	1,802,904	608,716	.	.
2011	5,988	1,822,400	610,386	.	.
2012	5,944	1,838,079	611,103	.	.
2013	5,941	1,850,010	610,374	.	.
2014	5,922	1,861,894	609,612	.	.
2015	5,854	1,869,698	606,967	.	.
2016	5,792	1,878,495	604,563	.	.
2017	5,730	1,886,741	601,076	.	.
2018	5,671	1,894,675	598,487	.	.
2019	5,642	1,902,279	595,501	.	.
2020	5,704	1,911,990	593,923	.	.



PERCENT HS GRADUATE OR HIGHER AGE 25+

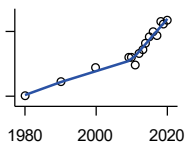
U.S. Census Bureau, Decennial Census (- 2000), (2009 -) American Community Survey five-year average ending in year shown.

Year	County	State of Kansas	Non Metro Kansas	County Rank	Per 1000 or \$ Per Capita
1980	70.4	73.3	.	47	.
1990	77.8	81.3	.	50	.
2000	87.0	86.0	.	23	.
2009	89.4	89.0	.	40	.
2010	91.2	89.2	.	22	.
2011	92.4	89.5	.	11	.
2012	94.3	89.7	.	6	.
2013	95.2	89.8	.	4	.
2014	96.1	90.0	.	1	.
2015	96.3	90.2	.	1	.
2016	93.8	90.3	.	18	.
2017	92.2	90.5	.	38	.
2018	93.0	90.7	.	27	.
2019	92.9	91.0	.	32	.
2020	93.9	91.4	.	26	.

County: county value. Kansas: state value. County Rank: highest county value ranked #1. (\$000): thousands of dollars. Nonmetro Kansas: Kansas total less Metropolitan Areas as defined by the Office of Management and Budget (OMB; released 3/6/2020). Per 1000: For nonmoney amounts, Per 1000=(county value / county population for the same year as the data) x 1000. \$ Per capita=(county value / county population for the same year as the data). Value= . indicates missing or suppressed data or value not calculated.

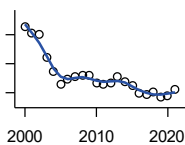
Education

PERCENT BACHELORS DEGREE OR HIGHER AGE 25+



U.S. Census Bureau, Decennial Census (- 2000), (2009 -) American Community Survey five-year average ending in year shown.

Year	County	State of Kansas	Non Metro Kansas	County Rank	Per 1000 or \$ Per Capita
1980	10.2	17.0	.	79	.
1990	13.3	21.1	.	57	.
2000	16.5	25.8	.	58	.
2009	18.9	28.8	.	56	.
2010	18.9	29.3	.	55	.
2011	17.3	29.7	.	78	.
2012	20.0	30.0	.	46	.
2013	20.7	30.3	.	45	.
2014	22.3	30.7	.	31	.
2015	23.7	31.0	.	29	.
2016	25.0	31.6	.	25	.
2017	23.9	32.3	.	34	.
2018	27.2	32.9	.	21	.
2019	26.7	33.4	.	22	.
2020	27.6	33.9	.	21	.



PUBLIC SCHOOL ENROLLMENT (FTE) SCHOOL YEAR BEGINNING...

Kansas State Department of Education

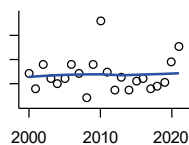
Year	County	State of Kansas	Non Metro Kansas	County Rank	Per 1000 or \$ Per Capita
2000	1,526.0	448,150.8	166,722.5	48	173.0
2001	1,506.7	447,047.1	164,365.0	48	172.6
2002	1,500.2	444,860.3	161,555.4	48	174.3
2003	1,422.8	443,620.6	159,130.2	48	167.5
2004	1,371.3	441,957.2	156,566.3	48	162.3
2005	1,327.2	442,708.4	155,197.2	49	157.2
2006	1,344.5	444,878.7	153,842.3	49	159.0
2007	1,354.7	446,831.3	152,337.1	48	158.9
2008	1,358.4	447,730.0	150,572.7	48	157.6
2009	1,359.3	453,202.5	151,246.8	48	159.9
2010	1,333.2	455,405.0	151,023.8	48	156.2
2011	1,329.1	456,000.5	150,257.9	48	155.8
2012	1,334.7	458,496.4	150,463.0	47	156.9
2013	1,357.6	461,950.0	150,420.9	47	161.9
2014	1,337.4	464,395.4	150,499.4	47	161.1
2015	1,324.5	463,504.0	149,539.3	47	159.7
2016	1,298.9	459,920.3	147,293.5	47	160.3
2017	1,295.1	477,977.9	152,096.3	48	161.8
2018	1,301.8	476,481.7	150,456.8	48	162.7
2019	1,283.2	476,525.1	150,045.2	48	160.4
2020	1,289.5	462,088.0	146,369.6	48	158.9
2021	1,309.2	463,652.4	147,500.4	49	162.1

County: county value. Kansas: state value. County Rank: highest county value ranked #1. (\$000): thousands of dollars. Nonmetro Kansas: Kansas total less Metropolitan Areas as defined by the Office of Management and Budget (OMB; released 3/6/2020). Per 1000: For nonmoney amounts, Per 1000=(county value / county population for the same year as the data) x 1000. \$ Per capita=(county value / county population for the same year as the data). Value= . indicates missing or suppressed data or value not calculated.

Education

PUPIL/TEACHER RATIO SCHOOL YEAR BEGINNING...

Kansas State Department of Education

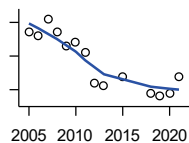


Year	County	State of Kansas	Non Metro Kansas	County Rank	Per 1000 or \$ Per Capita
2000	13.7	15.4	13.9	46	.
2001	13.4	15.3	13.8	47	.
2002	13.9	15.4	13.9	36	.
2003	13.6	15.5	13.8	40	.
2004	13.5	15.3	13.6	39	.
2005	13.6	15.0	13.4	35	.
2006	13.9	14.7	13.2	28	.
2007	13.7	14.6	13.1	29	.
2008	13.2	14.4	12.9	30	.
2009	13.9	14.8	13.2	29	.
2010	14.8	15.2	13.6	23	.
2011	13.7	15.1	13.5	40	.
2012	13.4	15.1	13.5	40	.
2013	13.6	15.1	13.5	36	.
2014	13.4	15.0	13.6	40	.
2015	13.6	15.2	13.9	41	.
2016	13.6	15.1	13.7	36	.
2017	13.4	15.5	13.9	46	.
2018	13.4	15.3	13.8	42	.
2019	13.5	15.2	13.7	34	.
2020	13.9	14.7	13.4	28	.
2021	14.3	14.8	13.5	26	.

Social Environment

CHILD CARE FACILITIES: TOTAL CHILD CARE FACILITIES

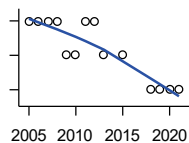
Kansas Department of Health and Environment, Bureau of Adult and Child Care



Year	County	State of Kansas	Non Metro Kansas	County Rank	Per 1000 or \$ Per Capita
2005	42	8,258	3,378	37	5.0
2006	41	8,442	3,429	39	4.8
2007	46	8,241	3,317	37	5.4
2008	42	8,011	3,150	38	4.9
2009	38	7,853	3,066	42	4.5
2010	39	7,354	2,858	39	4.6
2011	36	6,835	2,623	39	4.2
2012	27	6,346	2,409	44	3.2
2013	26	5,754	2,179	43	3.1
2015	29	5,289	2,146	39	3.5
2018	24	4,607	1,904	40	3.0
2019	23	4,287	1,774	40	2.9
2020	24	4,274	1,798	43	3.0
2021	29	4,002	1,700	34	3.6

County: county value. Kansas: state value. County Rank: highest county value ranked #1. (\$000): thousands of dollars. Nonmetro Kansas: Kansas total less Metropolitan Areas as defined by the Office of Management and Budget (OMB; released 3/6/2020). Per 1000: For nonmoney amounts, Per 1000=(county value / county population for the same year as the data) x 1000. \$ Per capita=(county value / county population for the same year as the data). Value= . indicates missing or suppressed data or value not calculated.

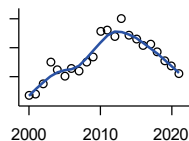
Social Environment



**CHILD CARE FACILITIES:
PRESCHOOLS**

Kansas Department of Health and Environment, Bureau of Adult and Child Care

Year	County	State of Kansas	Non Metro Kansas	County Rank	Per 1000 or \$ Per Capita
2005	4	243	140	22	0.5
2006	4	221	127	17	0.5
2007	4	208	119	16	0.5
2008	4	204	114	16	0.5
2009	3	194	107	27	0.4
2010	3	194	112	27	0.4
2011	4	209	123	17	0.5
2012	4	201	121	14	0.5
2013	3	140	84	16	0.4
2015	3	185	113	25	0.4
2018	2	150	94	41	0.2
2019	2	134	83	35	0.2
2020	2	126	78	34	0.2
2021	2	120	74	29	0.2



FOOD STAMP BENEFICIARIES

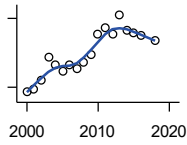
Kansas Social and Rehabilitation Services

Year	County	State of Kansas	Non Metro Kansas	County Rank	Per 1000 or \$ Per Capita
2000	336	110,619	44,825	51	38.1
2001	340	117,241	46,741	52	38.9
2002	374	131,726	52,342	50	43.5
2003	451	155,908	61,280	48	53.1
2004	426	167,971	65,852	52	50.4
2005	401	175,710	67,261	52	47.5
2006	428	182,821	67,487	52	50.6
2007	418	184,035	66,979	51	49.0
2008	451	187,377	67,160	49	52.3
2009	467	208,007	73,637	49	54.9
2010	557	259,609	90,919	51	65.3
2011	562	296,542	101,155	53	65.9
2012	538	303,257	102,478	53	63.3
2013	601	316,424	105,345	51	71.6
2014	541	301,377	100,761	52	65.2
2015	529	277,614	93,353	52	63.8
2016	509	258,412	88,343	53	62.8
2017	512	239,592	82,070	51	64.0
2018	484	219,738	75,208	51	60.5
2019	455	205,261	69,899	51	56.9
2020	435	198,457	66,721	52	53.6
2021	412	203,424	68,883	52	51.0

County: county value. Kansas: state value. County Rank: highest county value ranked #1. (\$000): thousands of dollars. Nonmetro Kansas: Kansas total less Metropolitan Areas as defined by the Office of Management and Budget (OMB; released 3/6/2020). Per 1000: For nonmoney amounts, Per 1000=(county value / county population for the same year as the data) x 1000. \$ Per capita=(county value / county population for the same year as the data). Value= . indicates missing or suppressed data or value not calculated.

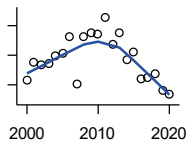
Social Environment

PERCENT OF POPULATION RECEIVING FOOD STAMPS



U.S. Dept. of Agriculture Food and Nutrition Service (1990-1997); Kansas Social and Rehabilitation Services (1998-)

Year	County	State of Kansas	Non Metro Kansas	County Rank	Per 1000 or \$ Per Capita
2000	3.8	4.1	.	47	.
2001	3.9	4.3	.	53	.
2002	4.3	4.9	.	50	.
2003	5.3	5.7	.	48	.
2004	5.0	6.2	.	58	.
2005	4.7	6.4	.	67	.
2006	5.0	6.6	.	59	.
2007	4.8	6.6	.	64	.
2008	5.1	6.7	.	53	.
2009	5.4	7.4	.	55	.
2010	6.3	9.1	.	58	.
2011	6.6	10.3	.	70	.
2012	6.3	10.5	.	73	.
2013	7.2	10.9	.	60	.
2014	6.5	10.4	.	66	.
2015	6.3	9.6	.	67	.
2016	6.3	8.9	.	62	.
2018	6.1	7.5	.	54	.



ESTIMATED NUMBER OF PEOPLE IN POVERTY

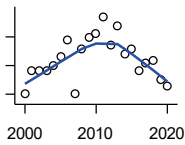
U.S. Census Bureau, Small Area Income and Poverty Estimates

Year	County	State of Kansas	Non Metro Kansas	County Rank	Per 1000 or \$ Per Capita
2000	814	235,087	98,984	50	92.3
2001	875	252,134	106,257	50	100.2
2002	867	265,673	107,542	50	100.7
2003	874	278,163	107,323	49	102.9
2004	896	297,733	111,534	48	106.1
2005	905	310,667	118,768	51	107.2
2006	964	327,102	123,700	49	114.0
2007	801	301,828	111,953	51	93.9
2008	962	307,804	113,015	47	111.6
2009	976	359,692	123,394	48	114.8
2010	970	374,677	131,502	51	113.6
2011	1,028	383,859	134,912	48	120.5
2012	935	392,095	133,800	51	109.9
2013	976	391,718	134,067	49	116.4
2014	887	381,506	130,213	52	106.9
2015	910	366,069	123,073	50	109.7
2016	819	343,773	121,314	54	101.0
2017	825	335,371	116,854	52	103.0
2018	839	336,892	114,490	51	104.8
2019	780	319,931	110,692	52	97.5
2020	767	300,931	100,998	51	94.5

County: county value. Kansas: state value. County Rank: highest county value ranked #1. (\$000): thousands of dollars. Nonmetro Kansas: Kansas total less Metropolitan Areas as defined by the Office of Management and Budget (OMB; released 3/6/2020). Per 1000: For nonmoney amounts, Per 1000=(county value / county population for the same year as the data) x 1000. \$ Per capita=(county value / county population for the same year as the data). Value= . indicates missing or suppressed data or value not calculated.

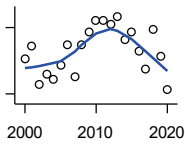
Social Environment

ESTIMATED % OF PEOPLE IN POVERTY



U.S. Census Bureau, Small Area Income and Poverty Estimates

Year	County	State of Kansas	Non Metro Kansas	County Rank	Per 1000 or \$ Per Capita
2000	9.5	8.9	.	71	.
2001	10.3	9.5	.	67	.
2002	10.3	10.0	.	71	.
2003	10.3	10.4	.	68	.
2004	10.5	11.1	.	64	.
2005	10.8	11.7	.	76	.
2006	11.4	12.2	.	74	.
2007	9.5	11.2	.	88	.
2008	11.1	11.3	.	62	.
2009	11.5	13.2	.	69	.
2010	11.6	13.5	.	69	.
2011	12.2	13.8	.	66	.
2012	11.2	14.0	.	73	.
2013	11.9	13.9	.	68	.
2014	10.9	13.5	.	83	.
2015	11.1	12.9	.	70	.
2016	10.3	12.2	.	87	.
2017	10.6	11.9	.	81	.
2018	10.7	11.9	.	81	.
2019	10.0	11.3	.	82	.
2020	9.8	10.6	.	79	.



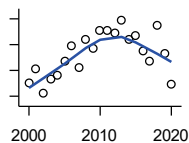
EST. NUMBER OF RELATED CHILDREN AGE 5 TO 17 IN FAMILIES IN POVERTY

U.S. Census Bureau, Small Area Income and Poverty Estimates

Year	County	State of Kansas	Non Metro Kansas	County Rank	Per 1000 or \$ Per Capita
2000	192	50,388	21,854	48	21.8
2001	203	53,755	23,094	46	23.3
2002	169	52,453	21,423	51	19.6
2003	178	55,419	21,809	49	21.0
2004	173	59,392	22,313	52	20.5
2005	186	60,203	24,244	51	22.0
2006	205	64,427	25,326	46	24.2
2007	176	61,149	23,639	50	20.6
2008	204	59,842	22,661	42	23.7
2009	216	71,850	26,251	48	25.4
2010	227	81,077	29,804	47	26.6
2011	226	82,311	29,306	47	26.5
2012	223	87,594	29,781	48	26.2
2013	230	84,325	29,253	45	27.4
2014	209	83,873	29,354	50	25.2
2015	216	78,192	27,482	48	26.0
2016	199	67,810	25,074	47	24.6
2017	183	67,873	25,032	54	22.9
2018	218	68,153	24,928	46	27.2
2019	194	64,613	23,117	48	24.2
2020	164	59,792	21,143	51	20.2

County: county value. Kansas: state value. County Rank: highest county value ranked #1. (\$000): thousands of dollars. Nonmetro Kansas: Kansas total less Metropolitan Areas as defined by the Office of Management and Budget (OMB; released 3/6/2020). Per 1000: For nonmoney amounts, Per 1000=(county value / county population for the same year as the data) x 1000. \$ Per capita=(county value / county population for the same year as the data). Value= . indicates missing or suppressed data or value not calculated.

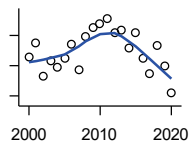
Social Environment



EST. % OF RELATED CHILDREN AGE 5 TO 17 IN FAMILIES IN POVERTY

U.S. Census Bureau, Small Area Income and Poverty Estimates

Year	County	State of Kansas	Non Metro Kansas	County Rank	Per 1000 or \$ Per Capita
2000	12.0	10.0	.	61	.
2001	13.1	10.8	.	56	.
2002	11.2	10.5	.	63	.
2003	12.3	11.3	.	56	.
2004	12.6	12.5	.	55	.
2005	13.7	12.8	.	58	.
2006	14.9	13.2	.	51	.
2007	13.2	12.6	.	69	.
2008	15.4	12.3	.	40	.
2009	14.7	14.7	.	64	.
2010	16.1	15.9	.	57	.
2011	16.1	16.2	.	55	.
2012	15.9	17.2	.	58	.
2013	16.9	16.5	.	47	.
2014	15.4	16.4	.	64	.
2015	15.7	15.3	.	48	.
2016	14.5	13.2	.	62	.
2017	13.7	13.4	.	73	.
2018	16.5	13.5	.	48	.
2019	14.3	12.9	.	61	.
2020	11.9	11.9	.	76	.



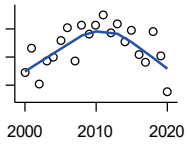
ESTIMATED NUMBER UNDER 18 IN POVERTY

U.S. Census Bureau, Small Area Income and Poverty Estimates

Year	County	State of Kansas	Non Metro Kansas	County Rank	Per 1000 or \$ Per Capita
2000	289	82,619	34,843	51	32.8
2001	313	87,487	36,724	46	35.9
2002	258	84,181	32,870	50	30.0
2003	282	93,896	36,004	49	33.2
2004	272	98,641	36,272	52	32.2
2005	288	100,254	39,118	51	34.1
2006	311	105,193	41,054	48	36.8
2007	269	100,242	37,881	49	31.5
2008	323	100,146	37,552	43	37.5
2009	338	118,187	42,682	48	39.8
2010	344	129,009	46,428	48	40.3
2011	353	133,478	46,832	47	41.4
2012	329	135,261	46,294	49	38.7
2013	333	131,251	44,952	48	39.7
2014	305	125,562	43,933	50	36.7
2015	329	119,994	41,828	47	39.7
2016	288	100,996	37,387	48	35.5
2017	262	102,858	37,955	54	32.7
2018	309	102,616	36,991	46	38.6
2019	275	97,920	34,797	48	34.4
2020	231	88,491	30,767	52	28.5

County: county value. Kansas: state value. County Rank: highest county value ranked #1. (\$000): thousands of dollars. Nonmetro Kansas: Kansas total less Metropolitan Areas as defined by the Office of Management and Budget (OMB; released 3/6/2020). Per 1000: For nonmoney amounts, Per 1000=(county value / county population for the same year as the data) x 1000. \$ Per capita=(county value / county population for the same year as the data). Value= . indicates missing or suppressed data or value not calculated.

Social Environment



ESTIMATED PERCENT UNDER 18 IN POVERTY

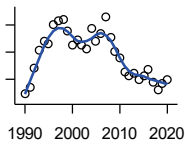
U.S. Census Bureau, Small Area Income and Poverty Estimates

Year	County	State of Kansas	Non Metro Kansas	County Rank	Per 1000 or \$ Per Capita
2000	13.9	11.9	.	63	.
2001	15.6	12.7	.	51	.
2002	13.1	12.1	.	57	.
2003	14.7	13.8	.	53	.
2004	15.0	14.6	.	53	.
2005	16.2	15.2	.	59	.
2006	17.1	15.4	.	52	.
2007	14.7	14.7	.	76	.
2008	17.3	14.6	.	47	.
2009	16.6	17.1	.	66	.
2010	17.3	18.1	.	63	.
2011	18.0	18.8	.	58	.
2012	16.7	19.0	.	66	.
2013	17.4	18.4	.	60	.
2014	16.1	17.6	.	66	.
2015	16.9	16.9	.	56	.
2016	15.2	14.3	.	67	.
2017	14.6	14.7	.	74	.
2018	16.8	14.8	.	55	.
2019	15.1	14.3	.	65	.
2020	12.5	13.0	.	79	.

County: county value. Kansas: state value. County Rank: highest county value ranked #1. (\$000): thousands of dollars. Nonmetro Kansas: Kansas total less Metropolitan Areas as defined by the Office of Management and Budget (OMB; released 3/6/2020). Per 1000: For nonmoney amounts, Per 1000=(county value / county population for the same year as the data) x 1000. \$ Per capita=(county value / county population for the same year as the data). Value= . indicates missing or suppressed data or value not calculated.

Business

ESTABLISHMENTS TOTAL COUNTY BUSINESS PATTERNS



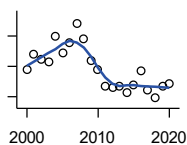
U.S. Census Bureau, County Business Patterns. Beginning with the 2017 data, any tabulation with fewer than 3 establishments were omitted from the release. Data for these establishments are included in the broader total.

Year	County	State of Kansas	Non Metro Kansas	County Rank	Per 1000 or \$ Per Capita
1990	249	65,858	26,802	48	27.2
1991	254	65,941	26,750	47	28.1
1992	268	67,630	27,229	45	29.1
1993	281	68,930	27,655	43	30.7
1994	288	69,822	27,763	44	31.6
1995	286	70,894	28,111	44	31.2
1996	300	72,017	28,353	43	32.7
1997	303	73,924	28,884	43	33.6
1998	304	74,019	28,749	43	34.1
1999	296	74,486	28,536	43	33.5
2000	285	74,939	28,475	45	32.3
2001	289	74,565	28,282	43	33.1
2002	285	75,077	28,183	43	33.1
2003	282	74,972	27,998	44	33.2
2004	297	75,827	28,009	42	35.2
2005	288	76,173	27,830	42	34.1
2006	294	76,446	27,653	41	34.8
2007	306	77,157	27,736	41	35.9
2008	291	76,096	27,314	41	33.8
2009	280	74,698	26,839	42	32.9
2010	276	74,301	26,739	43	32.3
2011	265	73,598	26,555	44	31.1
2012	263	73,944	26,534	44	30.9
2013	264	73,816	26,393	45	31.5
2014	260	74,055	26,292	45	31.3
2015	263	74,526	26,355	43	31.7
2016	267	74,884	26,172	42	32.9
2017	258	74,947	26,093	43	32.2
2018	252	74,559	25,802	45	31.5
2019	257	74,292	25,536	45	32.1
2020	260	73,982	25,178	42	32.0

County: county value. Kansas: state value. County Rank: highest county value ranked #1. (\$000): thousands of dollars. Nonmetro Kansas: Kansas total less Metropolitan Areas as defined by the Office of Management and Budget (OMB; released 3/6/2020). Per 1000: For nonmoney amounts, Per 1000=(county value / county population for the same year as the data) x 1000. \$ Per capita=(county value / county population for the same year as the data). Value= . indicates missing or suppressed data or value not calculated.

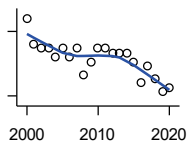
Business

**ESTABLISHMENTS: 1-19
EMPLOYEES**



U.S. Census Bureau, County Business Patterns. Beginning with the 2017 data, any tabulation with fewer than 3 establishments were omitted from the release. Data for these establishments are included in the broader total.

Year	County	State of Kansas	Non Metro Kansas	County Rank	Per 1000 or \$ Per Capita
2000	248	64,527	25,381	47	28.1
2001	258	64,176	25,248	44	29.6
2002	255	64,886	25,208	45	29.6
2003	253	64,714	25,020	45	29.8
2004	270	65,554	24,995	42	32.0
2005	259	65,796	24,839	43	30.7
2006	266	65,764	24,589	43	31.4
2007	278	66,446	24,701	41	32.6
2008	268	65,322	24,257	41	31.1
2009	254	64,128	23,851	42	29.9
2010	248	64,015	23,857	45	29.1
2011	237	63,251	23,571	46	27.8
2012	236	63,519	23,575	46	27.8
2013	237	63,197	23,396	45	28.3
2014	233	63,113	23,229	45	28.1
2015	238	63,280	23,227	43	28.7
2016	247	63,630	23,117	42	30.5
2017	234	63,619	23,022	43	29.2
2018	229	63,233	22,745	46	28.6
2019	237	62,904	22,489	43	29.6
2020	239	62,634	22,173	42	29.4



**ESTABLISHMENTS: 20-99
EMPLOYEES**

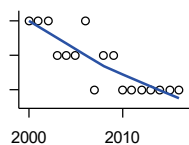
U.S. Census Bureau, County Business Patterns. Beginning with the 2017 data, any tabulation with fewer than 3 establishments were omitted from the release. Data for these establishments are included in the broader total.

Year	County	State of Kansas	Non Metro Kansas	County Rank	Per 1000 or \$ Per Capita
2000	33	8,714	2,653	35	3.7
2001	27	8,692	2,593	40	3.1
2002	26	8,582	2,554	41	3.0
2003	26	8,642	2,568	40	3.1
2004	24	8,658	2,590	42	2.8
2005	26	8,685	2,553	39	3.1
2006	24	8,922	2,612	43	2.8
2007	26	8,938	2,574	40	3.0
2008	20	8,939	2,587	51	2.3
2009	23	8,848	2,551	43	2.7
2010	26	8,612	2,454	41	3.0
2011	26	8,668	2,540	41	3.0
2012	25	8,700	2,500	40	2.9
2013	25	8,870	2,541	41	3.0
2014	25	9,121	2,590	41	3.0
2015	23	9,374	2,664	43	2.8
2016	18	9,412	2,596	52	2.2
2017	22	9,487	2,638	45	2.7
2018	19	9,485	2,621	47	2.4
2019	16	9,485	2,591	51	2.0
2020	17	9,471	2,545	51	2.1

County: county value. Kansas: state value. County Rank: highest county value ranked #1. (\$000): thousands of dollars. Nonmetro Kansas: Kansas total less Metropolitan Areas as defined by the Office of Management and Budget (OMB; released 3/6/2020). Per 1000: For nonmoney amounts, Per 1000=(county value / county population for the same year as the data) x 1000. \$ Per capita=(county value / county population for the same year as the data). Value= . indicates missing or suppressed data or value not calculated.

Business

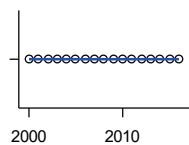
ESTABLISHMENTS: 100-499 EMPLOYEES



U.S. Census Bureau, County Business Patterns. Beginning with the 2017 data, any tabulation with fewer than 3 establishments were omitted from the release. Data for these establishments are included in the broader total.

Year	County	State of Kansas	Non Metro Kansas	County Rank	Per 1000 or \$ Per Capita
2000	4	1,555	409	40	0.5
2001	4	1,555	406	40	0.5
2002	4	1,464	386	39	0.5
2003	3	1,470	378	46	0.4
2004	3	1,463	388	47	0.4
2005	3	1,537	400	46	0.4
2006	4	1,598	407	42	0.5
2007	2	1,602	416	63	0.2
2008	3	1,653	421	48	0.3
2009	3	1,551	394	48	0.4
2010	2	1,513	382	58	0.2
2011	2	1,523	395	58	0.2
2012	2	1,567	410	56	0.2
2013	2	1,581	407	59	0.2
2014	2	1,641	421	62	0.2
2015	2	1,693	414	61	0.2
2016	2	1,671	406	60	0.2

ESTABLISHMENTS: 500 OR MORE EMPLOYEES

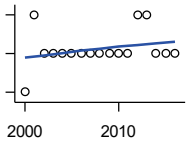


U.S. Census Bureau, County Business Patterns. Beginning with the 2017 data, any tabulation with fewer than 3 establishments were omitted from the release. Data for these establishments are included in the broader total.

Year	County	State of Kansas	Non Metro Kansas	County Rank	Per 1000 or \$ Per Capita
2000	0	143	32	105	0.0
2001	0	142	35	105	0.0
2002	0	145	35	105	0.0
2003	0	146	32	105	0.0
2004	0	152	36	105	0.0
2005	0	155	38	105	0.0
2006	0	162	45	105	0.0
2007	0	171	45	105	0.0
2008	0	182	49	105	0.0
2009	0	171	43	105	0.0
2010	0	161	46	105	0.0
2011	0	156	49	105	0.0
2012	0	158	49	105	0.0
2013	0	168	49	105	0.0
2014	0	180	52	105	0.0
2015	0	179	50	105	0.0
2016	0	171	53	105	0.0

County: county value. Kansas: state value. County Rank: highest county value ranked #1. (\$000): thousands of dollars. Nonmetro Kansas: Kansas total less Metropolitan Areas as defined by the Office of Management and Budget (OMB; released 3/6/2020). Per 1000: For nonmoney amounts, Per 1000=(county value / county population for the same year as the data) x 1000. \$ Per capita=(county value / county population for the same year as the data). Value= . indicates missing or suppressed data or value not calculated.

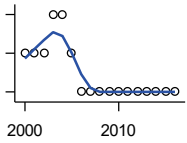
Business



ESTABLISHMENTS: FORESTRY, FISHING, HUNTING, AND AG SUPPORT

U.S. Census Bureau, County Business Patterns. Beginning with the 2017 data, any tabulation with fewer than 3 establishments were omitted from the release. Data for these establishments are included in the broader total.

Year	County	State of Kansas	Non Metro Kansas	County Rank	Per 1000 or \$ Per Capita
2000	0	190	149	105	0.0
2001	2	217	168	48	0.2
2002	1	224	176	84	0.1
2003	1	217	173	84	0.1
2004	1	211	165	77	0.1
2005	1	188	148	76	0.1
2006	1	193	158	76	0.1
2007	1	212	170	78	0.1
2008	1	197	158	81	0.1
2009	1	191	154	79	0.1
2010	1	192	161	79	0.1
2011	1	193	157	77	0.1
2012	2	204	164	50	0.2
2013	2	208	166	54	0.2
2014	1	194	152	83	0.1
2015	1	192	149	81	0.1
2016	1	181	142	80	0.1



ESTABLISHMENTS: MINING

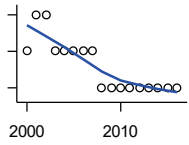
U.S. Census Bureau, County Business Patterns. Beginning with the 2017 data, any tabulation with fewer than 3 establishments were omitted from the release. Data for these establishments are included in the broader total.

Year	County	State of Kansas	Non Metro Kansas	County Rank	Per 1000 or \$ Per Capita
2000	1	868	619	88	0.1
2001	1	878	622	88	0.1
2002	1	847	615	89	0.1
2003	2	864	633	66	0.2
2004	2	880	647	67	0.2
2005	1	941	695	88	0.1
2006	0	991	734	105	0.0
2007	0	1,000	759	105	0.0
2008	0	1,047	799	105	0.0
2009	0	1,016	772	105	0.0
2010	0	1,009	762	105	0.0
2011	0	1,013	763	105	0.0
2012	0	1,048	789	105	0.0
2013	0	1,060	802	105	0.0
2014	0	1,102	828	105	0.0
2015	0	1,069	810	105	0.0
2016	0	990	747	105	0.0

County: county value. Kansas: state value. County Rank: highest county value ranked #1. (\$000): thousands of dollars. Nonmetro Kansas: Kansas total less Metropolitan Areas as defined by the Office of Management and Budget (OMB; released 3/6/2020). Per 1000: For nonmoney amounts, Per 1000=(county value / county population for the same year as the data) x 1000. \$ Per capita=(county value / county population for the same year as the data). Value= . indicates missing or suppressed data or value not calculated.

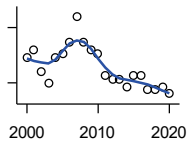
Business

ESTABLISHMENTS: UTILITIES



U.S. Census Bureau, County Business Patterns. Beginning with the 2017 data, any tabulation with fewer than 3 establishments were omitted from the release. Data for these establishments are included in the broader total.

Year	County	State of Kansas	Non Metro Kansas	County Rank	Per 1000 or \$ Per Capita
2000	3	274	192	37	0.3
2001	4	290	204	27	0.5
2002	4	278	195	25	0.5
2003	3	268	180	36	0.4
2004	3	247	164	32	0.4
2005	3	254	172	34	0.4
2006	3	248	169	32	0.4
2007	3	222	156	33	0.4
2008	2	244	166	61	0.2
2009	2	222	152	57	0.2
2010	2	197	129	49	0.2
2011	2	230	156	57	0.2
2012	2	232	156	57	0.2
2013	2	234	159	58	0.2
2014	2	232	160	58	0.2
2015	2	237	165	59	0.2
2016	2	245	171	60	0.2



ESTABLISHMENTS: CONSTRUCTION

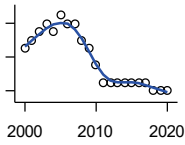
U.S. Census Bureau, County Business Patterns. Beginning with the 2017 data, any tabulation with fewer than 3 establishments were omitted from the release. Data for these establishments are included in the broader total.

Year	County	State of Kansas	Non Metro Kansas	County Rank	Per 1000 or \$ Per Capita
2000	37	7,703	2,616	32	4.2
2001	39	7,449	2,520	30	4.5
2002	33	7,519	2,482	40	3.8
2003	30	7,722	2,521	43	3.5
2004	37	7,887	2,518	35	4.4
2005	38	8,032	2,515	32	4.5
2006	41	8,031	2,494	32	4.8
2007	48	8,057	2,547	29	5.6
2008	41	7,831	2,522	33	4.8
2009	39	7,342	2,452	33	4.6
2010	38	7,064	2,394	32	4.5
2011	32	6,774	2,361	39	3.8
2012	31	6,741	2,393	38	3.6
2013	31	6,802	2,394	40	3.7
2014	29	6,920	2,383	40	3.5
2015	32	7,014	2,377	34	3.9
2016	32	6,988	2,343	33	3.9
2017	28	7,031	2,316	38	3.5
2018	28	7,124	2,285	39	3.5
2019	29	7,060	2,242	39	3.6
2020	27	7,089	2,249	41	3.3

County: county value. Kansas: state value. County Rank: highest county value ranked #1. (\$000): thousands of dollars. Nonmetro Kansas: Kansas total less Metropolitan Areas as defined by the Office of Management and Budget (OMB; released 3/6/2020). Per 1000: For nonmoney amounts, Per 1000=(county value / county population for the same year as the data) x 1000. \$ Per capita=(county value / county population for the same year as the data). Value= . indicates missing or suppressed data or value not calculated.

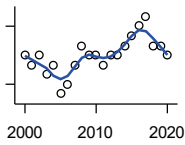
Business

**ESTABLISHMENTS:
MANUFACTURING**



U.S. Census Bureau, County Business Patterns. Beginning with the 2017 data, any tabulation with fewer than 3 establishments were omitted from the release. Data for these establishments are included in the broader total.

Year	County	State of Kansas	Non Metro Kansas	County Rank	Per 1000 or \$ Per Capita
2000	15	3,229	1,316	38	1.7
2001	16	3,240	1,323	38	1.8
2002	17	3,181	1,289	37	2.0
2003	18	3,159	1,291	36	2.1
2004	17	3,179	1,313	37	2.0
2005	19	3,128	1,278	36	2.3
2006	18	3,165	1,290	37	2.1
2007	18	3,184	1,316	38	2.1
2008	16	3,171	1,297	38	1.9
2009	15	3,026	1,240	39	1.8
2010	13	2,955	1,222	41	1.5
2011	11	2,877	1,193	44	1.3
2012	11	2,889	1,197	43	1.3
2013	11	2,836	1,165	44	1.3
2014	11	2,831	1,168	44	1.3
2015	11	2,817	1,161	46	1.3
2016	11	2,791	1,150	44	1.4
2017	11	2,760	1,147	44	1.4
2018	10	2,725	1,126	46	1.2
2019	10	2,695	1,111	46	1.2
2020	10	2,673	1,103	47	1.2



**ESTABLISHMENTS: WHOLESALE
TRADE**

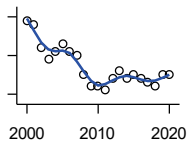
U.S. Census Bureau, County Business Patterns. Beginning with the 2017 data, any tabulation with fewer than 3 establishments were omitted from the release. Data for these establishments are included in the broader total.

Year	County	State of Kansas	Non Metro Kansas	County Rank	Per 1000 or \$ Per Capita
2000	15	4,876	1,776	57	1.7
2001	14	4,811	1,769	58	1.6
2002	15	4,719	1,750	58	1.7
2003	13	4,590	1,637	61	1.5
2004	14	4,553	1,634	57	1.7
2005	11	4,541	1,618	72	1.3
2006	12	4,517	1,596	58	1.4
2007	14	4,555	1,629	55	1.6
2008	16	4,501	1,622	48	1.9
2009	15	4,437	1,614	51	1.8
2010	15	4,432	1,612	50	1.8
2011	14	4,400	1,660	56	1.6
2012	15	4,563	1,755	58	1.8
2013	15	4,501	1,741	54	1.8
2014	16	4,497	1,746	49	1.9
2015	17	4,459	1,755	48	2.0
2016	18	4,457	1,732	47	2.2
2017	19	4,436	1,774	42	2.4
2018	16	4,330	1,727	49	2.0
2019	16	4,291	1,713	48	2.0
2020	15	4,191	1,677	50	1.8

County: county value. Kansas: state value. County Rank: highest county value ranked #1. (\$000): thousands of dollars. Nonmetro Kansas: Kansas total less Metropolitan Areas as defined by the Office of Management and Budget (OMB; released 3/6/2020). Per 1000: For nonmoney amounts, Per 1000=(county value / county population for the same year as the data) x 1000. \$ Per capita=(county value / county population for the same year as the data). Value= . indicates missing or suppressed data or value not calculated.

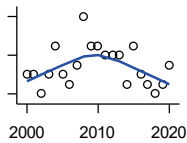
Business

ESTABLISHMENTS: RETAIL TRADE



U.S. Census Bureau, County Business Patterns. Beginning with the 2017 data, any tabulation with fewer than 3 establishments were omitted from the release. Data for these establishments are included in the broader total.

Year	County	State of Kansas	Non Metro Kansas	County Rank	Per 1000 or \$ Per Capita
2000	54	12,261	5,240	45	6.1
2001	53	12,206	5,207	45	6.1
2002	47	11,980	5,082	48	5.5
2003	44	11,834	5,049	47	5.2
2004	46	11,748	4,967	45	5.4
2005	48	11,562	4,834	46	5.7
2006	46	11,367	4,702	45	5.4
2007	45	11,306	4,653	46	5.3
2008	40	10,978	4,494	50	4.6
2009	37	10,760	4,372	53	4.4
2010	37	10,727	4,346	52	4.3
2011	36	10,655	4,289	54	4.2
2012	39	10,585	4,202	48	4.6
2013	41	10,433	4,147	44	4.9
2014	39	10,391	4,070	46	4.7
2015	40	10,327	4,061	45	4.8
2016	39	10,197	3,965	44	4.8
2017	38	10,074	3,885	49	4.7
2018	37	9,866	3,797	48	4.6
2019	40	9,762	3,750	43	5.0
2020	40	9,591	3,666	44	4.9



ESTABLISHMENTS: TRANSPORTATION & WAREHOUSING

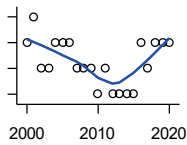
U.S. Census Bureau, County Business Patterns. Beginning with the 2017 data, any tabulation with fewer than 3 establishments were omitted from the release. Data for these establishments are included in the broader total.

Year	County	State of Kansas	Non Metro Kansas	County Rank	Per 1000 or \$ Per Capita
2000	18	2,474	1,293	37	2.0
2001	18	2,463	1,298	32	2.1
2002	16	2,461	1,278	40	1.9
2003	18	2,576	1,297	33	2.1
2004	21	2,651	1,324	28	2.5
2005	18	2,632	1,326	34	2.1
2006	17	2,626	1,295	38	2.0
2007	19	2,664	1,314	38	2.2
2008	24	2,675	1,329	29	2.8
2009	21	2,635	1,313	30	2.5
2010	21	2,615	1,313	31	2.5
2011	20	2,579	1,285	34	2.3
2012	20	2,519	1,243	32	2.4
2013	20	2,492	1,226	32	2.4
2014	17	2,518	1,240	37	2.0
2015	21	2,554	1,257	29	2.5
2016	18	2,567	1,241	34	2.2
2017	17	2,640	1,245	38	2.1
2018	16	2,627	1,238	38	2.0
2019	17	2,615	1,209	35	2.1
2020	19	2,589	1,179	32	2.3

County: county value. Kansas: state value. County Rank: highest county value ranked #1. (\$000): thousands of dollars. Nonmetro Kansas: Kansas total less Metropolitan Areas as defined by the Office of Management and Budget (OMB; released 3/6/2020). Per 1000: For nonmoney amounts, Per 1000=(county value / county population for the same year as the data) x 1000. \$ Per capita=(county value / county population for the same year as the data). Value= . indicates missing or suppressed data or value not calculated.

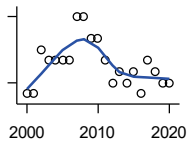
Business

ESTABLISHMENTS: INFORMATION



U.S. Census Bureau, County Business Patterns. Beginning with the 2017 data, any tabulation with fewer than 3 establishments were omitted from the release. Data for these establishments are included in the broader total.

Year	County	State of Kansas	Non Metro Kansas	County Rank	Per 1000 or \$ Per Capita
2000	6	1,542	578	58	0.7
2001	7	1,556	566	49	0.8
2002	5	1,517	551	59	0.6
2003	5	1,516	564	58	0.6
2004	6	1,518	556	52	0.7
2005	6	1,519	536	46	0.7
2006	6	1,549	559	50	0.7
2007	5	1,504	527	52	0.6
2008	5	1,468	522	51	0.6
2009	5	1,420	510	50	0.6
2010	4	1,437	527	61	0.5
2011	5	1,428	537	53	0.6
2012	4	1,387	515	61	0.5
2013	4	1,337	487	61	0.5
2014	4	1,335	496	61	0.5
2015	4	1,359	510	61	0.5
2016	6	1,431	537	47	0.7
2017	5	1,439	.	55	0.6
2018	6	1,407	.	48	0.7
2019	6	1,422	.	49	0.7
2020	6	1,424	.	49	0.7



ESTABLISHMENTS: FINANCE & INSURANCE

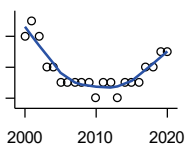
U.S. Census Bureau, County Business Patterns. Beginning with the 2017 data, any tabulation with fewer than 3 establishments were omitted from the release. Data for these establishments are included in the broader total.

Year	County	State of Kansas	Non Metro Kansas	County Rank	Per 1000 or \$ Per Capita
2000	21	5,209	1,848	46	2.4
2001	21	5,178	1,828	43	2.4
2002	25	5,496	1,911	38	2.9
2003	24	5,569	1,907	39	2.8
2004	24	5,572	1,913	36	2.8
2005	24	5,708	1,964	36	2.8
2006	24	5,877	1,976	37	2.8
2007	28	6,017	2,030	34	3.3
2008	28	6,010	2,023	33	3.2
2009	26	5,933	1,994	34	3.1
2010	26	5,872	1,975	35	3.0
2011	24	5,854	1,985	38	2.8
2012	22	5,993	2,024	43	2.6
2013	23	5,903	1,993	39	2.7
2014	22	5,894	2,000	43	2.7
2015	23	5,932	1,998	39	2.8
2016	21	6,022	2,021	42	2.6
2017	24	6,026	2,007	38	3.0
2018	23	6,023	1,997	37	2.9
2019	22	5,953	1,977	41	2.7
2020	22	5,926	1,969	41	2.7

County: county value. Kansas: state value. County Rank: highest county value ranked #1. (\$000): thousands of dollars. Nonmetro Kansas: Kansas total less Metropolitan Areas as defined by the Office of Management and Budget (OMB; released 3/6/2020). Per 1000: For nonmoney amounts, Per 1000=(county value / county population for the same year as the data) x 1000. \$ Per capita=(county value / county population for the same year as the data). Value= . indicates missing or suppressed data or value not calculated.

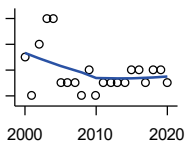
Business

ESTABLISHMENTS: REAL ESTATE, RENTAL, AND LEASING



U.S. Census Bureau, County Business Patterns. Beginning with the 2017 data, any tabulation with fewer than 3 establishments were omitted from the release. Data for these establishments are included in the broader total.

Year	County	State of Kansas	Non Metro Kansas	County Rank	Per 1000 or \$ Per Capita
2000	6	2,733	687	46	0.7
2001	7	2,849	724	45	0.8
2002	6	2,952	735	45	0.7
2003	4	3,007	727	56	0.5
2004	4	3,108	713	56	0.5
2005	3	3,203	727	61	0.4
2006	3	3,268	736	62	0.4
2007	3	3,286	721	60	0.4
2008	3	3,239	738	61	0.3
2009	3	3,122	723	58	0.4
2010	2	3,050	708	75	0.2
2011	3	3,002	692	58	0.4
2012	3	2,981	691	63	0.4
2013	2	3,046	717	76	0.2
2014	3	3,135	738	65	0.4
2015	3	3,179	744	65	0.4
2016	3	3,293	757	64	0.4
2017	4	3,389	.	57	0.5
2018	4	3,409	.	55	0.5
2019	5	3,464	.	49	0.6
2020	5	3,500	.	50	0.6



ESTABLISHMENTS: PROFESSIONAL, SCIENTIFIC, AND TECHNICAL SERVICES

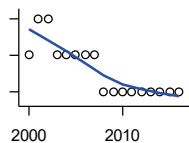
U.S. Census Bureau, County Business Patterns. Beginning with the 2017 data, any tabulation with fewer than 3 establishments were omitted from the release. Data for these establishments are included in the broader total.

Year	County	State of Kansas	Non Metro Kansas	County Rank	Per 1000 or \$ Per Capita
2000	17	6,424	1,690	44	1.9
2001	14	6,492	1,665	55	1.6
2002	18	6,719	1,704	43	2.1
2003	20	6,793	1,735	39	2.4
2004	20	7,025	1,730	39	2.4
2005	15	7,087	1,711	55	1.8
2006	15	7,231	1,736	55	1.8
2007	15	7,329	1,729	54	1.8
2008	14	7,133	1,671	55	1.6
2009	16	7,122	1,676	46	1.9
2010	14	7,172	1,680	51	1.6
2011	15	7,115	1,668	50	1.8
2012	15	7,122	1,681	48	1.8
2013	15	7,129	1,698	50	1.8
2014	15	7,206	1,682	51	1.8
2015	16	7,184	1,687	47	1.9
2016	16	7,146	1,659	46	2.0
2017	15	7,224	1,679	50	1.9
2018	16	7,138	1,655	46	2.0
2019	16	7,119	.	46	2.0
2020	15	7,117	.	47	1.8

County: county value. Kansas: state value. County Rank: highest county value ranked #1. (\$000): thousands of dollars. Nonmetro Kansas: Kansas total less Metropolitan Areas as defined by the Office of Management and Budget (OMB; released 3/6/2020). Per 1000: For nonmoney amounts, Per 1000=(county value / county population for the same year as the data) x 1000. \$ Per capita=(county value / county population for the same year as the data). Value= . indicates missing or suppressed data or value not calculated.

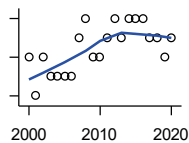
Business

ESTABLISHMENTS: MANAGEMENT OF COMPANIES AND ENTERPRISES



U.S. Census Bureau, County Business Patterns. Beginning with the 2017 data, any tabulation with fewer than 3 establishments were omitted from the release. Data for these establishments are included in the broader total.

Year	County	State of Kansas	Non Metro Kansas	County Rank	Per 1000 or \$ Per Capita
2000	1	622	145	68	0.1
2001	2	593	141	38	0.2
2002	2	597	152	41	0.2
2003	1	561	135	59	0.1
2004	1	569	133	57	0.1
2005	1	543	127	56	0.1
2006	1	542	131	57	0.1
2007	1	550	133	60	0.1
2008	0	553	139	105	0.0
2009	0	575	136	105	0.0
2010	0	567	131	105	0.0
2011	0	552	134	105	0.0
2012	0	593	135	105	0.0
2013	0	590	135	105	0.0
2014	0	603	136	105	0.0
2015	0	613	140	105	0.0
2016	0	655	171	105	0.0



ESTABLISHMENTS: ADMIN, SUPPORT, WASTE MGMT., AND REMEDIATION

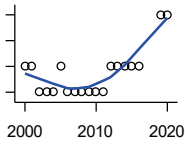
U.S. Census Bureau, County Business Patterns. Beginning with the 2017 data, any tabulation with fewer than 3 establishments were omitted from the release. Data for these establishments are included in the broader total.

Year	County	State of Kansas	Non Metro Kansas	County Rank	Per 1000 or \$ Per Capita
2000	7	3,307	871	49	0.8
2001	5	3,421	913	64	0.6
2002	7	3,232	882	53	0.8
2003	6	3,189	858	54	0.7
2004	6	3,301	891	53	0.7
2005	6	3,342	896	53	0.7
2006	6	3,395	886	54	0.7
2007	8	3,522	921	45	0.9
2008	9	3,587	932	41	1.0
2009	7	3,505	904	47	0.8
2010	7	3,494	897	51	0.8
2011	8	3,447	903	42	0.9
2012	9	3,462	891	38	1.1
2013	8	3,489	904	42	1.0
2014	9	3,569	933	40	1.1
2015	9	3,630	964	40	1.1
2016	9	3,705	987	40	1.1
2017	8	3,741	991	45	1.0
2018	8	3,740	983	48	1.0
2019	7	3,762	991	52	0.9
2020	8	3,807	989	49	1.0

County: county value. Kansas: state value. County Rank: highest county value ranked #1. (\$000): thousands of dollars. Nonmetro Kansas: Kansas total less Metropolitan Areas as defined by the Office of Management and Budget (OMB; released 3/6/2020). Per 1000: For nonmoney amounts, Per 1000=(county value / county population for the same year as the data) x 1000. \$ Per capita=(county value / county population for the same year as the data). Value= . indicates missing or suppressed data or value not calculated.

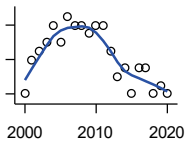
Business

ESTABLISHMENTS: EDUCATIONAL SERVICES



U.S. Census Bureau, County Business Patterns. Beginning with the 2017 data, any tabulation with fewer than 3 establishments were omitted from the release. Data for these establishments are included in the broader total.

Year	County	State of Kansas	Non Metro Kansas	County Rank	Per 1000 or \$ Per Capita
2000	1	604	155	70	0.1
2001	1	625	168	71	0.1
2002	0	666	165	105	0.0
2003	0	663	173	105	0.0
2004	0	690	173	105	0.0
2005	1	699	168	69	0.1
2006	0	698	175	105	0.0
2007	0	691	165	105	0.0
2008	0	692	158	105	0.0
2009	0	690	150	105	0.0
2010	0	700	149	105	0.0
2011	0	711	150	105	0.0
2012	1	724	145	67	0.1
2013	1	735	153	68	0.1
2014	1	722	152	66	0.1
2015	1	754	152	66	0.1
2016	1	728	150	66	0.1
2019	3	759	.	32	0.4
2020	3	736	.	31	0.4



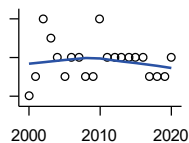
ESTABLISHMENTS: HEALTH CARE AND SOCIAL ASSISTANCE

U.S. Census Bureau, County Business Patterns. Beginning with the 2017 data, any tabulation with fewer than 3 establishments were omitted from the release. Data for these establishments are included in the broader total.

Year	County	State of Kansas	Non Metro Kansas	County Rank	Per 1000 or \$ Per Capita
2000	20	6,564	2,591	55	2.3
2001	24	6,636	2,590	47	2.7
2002	25	7,052	2,777	47	2.9
2003	26	7,129	2,792	46	3.1
2004	28	7,239	2,813	46	3.3
2005	26	7,412	2,855	47	3.1
2006	29	7,477	2,860	44	3.4
2007	28	7,661	2,864	47	3.3
2008	28	7,651	2,810	45	3.2
2009	27	7,696	2,787	46	3.2
2010	28	7,751	2,830	46	3.3
2011	28	7,804	2,817	47	3.3
2012	25	7,973	2,793	48	2.9
2013	22	7,877	2,729	50	2.6
2014	23	7,809	2,686	49	2.8
2015	20	8,103	2,692	53	2.4
2016	23	8,315	2,678	48	2.8
2017	23	8,136	2,646	48	2.9
2018	20	8,126	2,632	53	2.5
2019	21	8,184	2,587	51	2.6
2020	20	8,290	2,571	50	2.5

County: county value. Kansas: state value. County Rank: highest county value ranked #1. (\$000): thousands of dollars. Nonmetro Kansas: Kansas total less Metropolitan Areas as defined by the Office of Management and Budget (OMB; released 3/6/2020). Per 1000: For nonmoney amounts, Per 1000=(county value / county population for the same year as the data) x 1000. \$ Per capita=(county value / county population for the same year as the data). Value= . indicates missing or suppressed data or value not calculated.

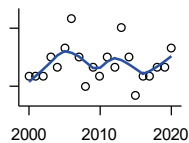
Business



ESTABLISHMENTS: ARTS, ENTERTAINMENT, AND RECREATION

U.S. Census Bureau, County Business Patterns. Beginning with the 2017 data, any tabulation with fewer than 3 establishments were omitted from the release. Data for these establishments are included in the broader total.

Year	County	State of Kansas	Non Metro Kansas	County Rank	Per 1000 or \$ Per Capita
2000	3	981	419	69	0.3
2001	4	1,009	433	52	0.5
2002	7	1,054	441	36	0.8
2003	6	1,045	443	42	0.7
2004	5	1,082	445	45	0.6
2005	4	1,109	446	61	0.5
2006	5	1,080	445	45	0.6
2007	5	1,092	444	49	0.6
2008	4	1,062	423	56	0.5
2009	4	1,063	421	56	0.5
2010	7	1,018	406	31	0.8
2011	5	997	387	40	0.6
2012	5	1,000	388	44	0.6
2013	5	1,009	377	42	0.6
2014	5	1,030	365	44	0.6
2015	5	1,031	357	42	0.6
2016	5	1,060	366	42	0.6
2017	4	1,096	.	49	0.5
2018	4	1,088	.	47	0.5
2019	4	1,087	.	48	0.5
2020	5	1,064	.	40	0.6



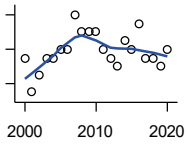
ESTABLISHMENTS: ACCOMMODATION AND FOOD SERVICES

U.S. Census Bureau, County Business Patterns. Beginning with the 2017 data, any tabulation with fewer than 3 establishments were omitted from the release. Data for these establishments are included in the broader total.

Year	County	State of Kansas	Non Metro Kansas	County Rank	Per 1000 or \$ Per Capita
2000	17	5,536	2,213	57	1.9
2001	17	5,551	2,173	56	1.9
2002	17	5,610	2,174	54	2.0
2003	19	5,635	2,188	51	2.2
2004	18	5,681	2,160	52	2.1
2005	20	5,776	2,170	44	2.4
2006	23	5,745	2,132	40	2.7
2007	19	5,877	2,095	46	2.2
2008	16	5,843	2,052	54	1.9
2009	18	5,794	2,029	51	2.1
2010	17	5,898	2,046	52	2.0
2011	19	5,958	2,067	48	2.2
2012	18	5,951	2,046	51	2.1
2013	22	6,061	2,070	44	2.6
2014	19	5,985	2,024	47	2.3
2015	15	6,034	2,063	56	1.8
2016	17	6,126	2,094	51	2.1
2017	17	6,250	2,123	51	2.1
2018	18	6,256	2,128	47	2.2
2019	18	6,231	2,131	47	2.2
2020	20	6,206	2,131	46	2.5

County: county value. Kansas: state value. County Rank: highest county value ranked #1. (\$000): thousands of dollars. Nonmetro Kansas: Kansas total less Metropolitan Areas as defined by the Office of Management and Budget (OMB; released 3/6/2020). Per 1000: For nonmoney amounts, Per 1000=(county value / county population for the same year as the data) x 1000. \$ Per capita=(county value / county population for the same year as the data). Value= . indicates missing or suppressed data or value not calculated.

Business



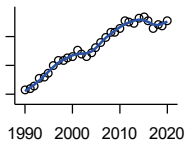
ESTABLISHMENTS: OTHER SERVICES

U.S. Census Bureau, County Business Patterns. Beginning with the 2017 data, any tabulation with fewer than 3 establishments were omitted from the release. Data for these establishments are included in the broader total.

Year	County	State of Kansas	Non Metro Kansas	County Rank	Per 1000 or \$ Per Capita
2000	41	8,423	3,636	43	4.6
2001	37	8,310	3,614	48	4.2
2002	39	8,552	3,658	45	4.5
2003	41	8,411	3,605	42	4.8
2004	41	8,343	3,597	42	4.9
2005	42	8,321	3,571	41	5.0
2006	42	8,225	3,490	41	5.0
2007	46	8,355	3,534	40	5.4
2008	44	8,104	3,406	39	5.1
2009	44	8,040	3,405	38	5.2
2010	44	7,998	3,379	36	5.2
2011	42	7,883	3,294	39	4.9
2012	41	7,913	3,303	40	4.8
2013	40	7,947	3,290	41	4.8
2014	43	7,943	3,285	41	5.2
2015	42	7,869	3,255	40	5.1
2016	45	7,839	3,204	37	5.6
2017	41	7,873	3,189	39	5.1
2018	41	7,853	3,176	38	5.1
2019	40	7,834	3,138	38	5.0
2020	42	7,787	3,073	34	5.2

County: county value. Kansas: state value. County Rank: highest county value ranked #1. (\$000): thousands of dollars. Nonmetro Kansas: Kansas total less Metropolitan Areas as defined by the Office of Management and Budget (OMB; released 3/6/2020). Per 1000: For nonmoney amounts, Per 1000=(county value / county population for the same year as the data) x 1000. \$ Per capita=(county value / county population for the same year as the data). Value= . indicates missing or suppressed data or value not calculated.

Business



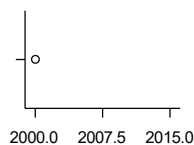
**TOTAL ANNUAL PAYROLL (\$000)
COUNTY BUSINESS PATTERNS**

U.S. Census Bureau, County Business Patterns. Beginning with the 2017 data, any tabulation with fewer than 3 establishments were omitted from the release. Data for these establishments are included in the broader total.

Year	County	State of Kansas	Non Metro Kansas	County Rank	Per 1000 or \$ Per Capita
1990	23,060	17,487,316	4,442,429	53	2,518.0
1991	23,502	18,162,326	4,612,616	55	2,599.8
1992	25,476	19,244,346	4,882,060	56	2,762.5
1993	30,761	20,087,190	5,182,780	50	3,363.0
1994	32,162	21,201,652	5,541,423	49	3,524.6
1995	34,899	22,825,920	5,875,310	49	3,811.6
1996	39,485	24,613,884	6,198,398	49	4,308.7
1997	43,508	26,787,098	6,599,061	45	4,831.5
1998	43,731	28,747,576	6,871,794	49	4,910.8
1999	44,848	30,600,434	7,121,961	49	5,079.6
2000	46,238	31,990,762	7,520,424	50	5,241.2
2001	50,770	33,303,992	7,598,165	48	5,815.6
2002	48,246	33,152,962	7,572,002	48	5,605.4
2003	46,168	34,040,944	7,726,561	49	5,436.0
2004	48,536	35,725,812	8,303,779	49	5,745.9
2005	52,420	36,646,064	8,586,986	49	6,208.0
2006	55,651	39,251,388	9,178,947	48	6,579.7
2007	59,127	42,022,753	.	49	6,934.1
2008	63,312	43,984,689	.	47	7,346.5
2009	63,375	42,146,866	.	47	7,455.9
2010	65,626	42,686,303	10,294,015	47	7,689.0
2011	70,594	43,733,944	.	46	8,276.9
2012	70,335	45,608,072	11,222,183	46	8,270.8
2013	69,506	47,715,601	11,446,751	47	8,286.4
2014	72,764	49,712,832	11,957,931	47	8,765.7
2015	73,695	51,259,676	11,975,718	49	8,886.4
2016	70,877	51,016,318	12,148,646	50	8,744.8
2017	65,302	52,754,605	12,448,592	51	8,156.6
2018	67,977	55,087,460	12,810,270	52	8,493.9
2019	67,816	57,272,387	13,123,288	53	8,474.9
2020	71,378	58,374,388	14,007,955	53	8,793.6

County: county value. Kansas: state value. County Rank: highest county value ranked #1. (\$000): thousands of dollars. Nonmetro Kansas: Kansas total less Metropolitan Areas as defined by the Office of Management and Budget (OMB; released 3/6/2020). Per 1000: For nonmoney amounts, Per 1000=(county value / county population for the same year as the data) x 1000. \$ Per capita=(county value / county population for the same year as the data). Value= . indicates missing or suppressed data or value not calculated.

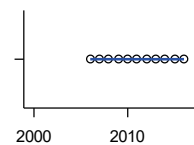
Business



**TOTAL ANNUAL PAYROLL(\$000):
FORESTRY, FISHING, HUNTING, AND
AG SUPPORT**

U.S. Census Bureau, County Business Patterns. Beginning with the 2017 data, any tabulation with fewer than 3 establishments were omitted from the release. Data for these establishments are included in the broader total.

Year	County	State of Kansas	Non Metro Kansas	County Rank	Per 1000 or \$ Per Capita
2000	0	13,551	.	.	0.0
2001
2002	.	16,528	.	.	.
2003	.	17,247	.	.	.
2004	.	17,552	.	.	.
2005	.	16,298	.	.	.
2006	.	17,908	.	.	.
2007	.	22,199	.	.	.
2008	.	21,359	.	.	.
2009	.	22,466	.	.	.
2010	.	22,753	.	.	.
2011	.	23,320	.	.	.
2012	.	27,492	.	.	.
2013	.	30,360	.	.	.
2014	.	34,862	.	.	.
2015	.	35,980	.	.	.



**TOTAL ANNUAL PAYROLL(\$000):
MINING**

U.S. Census Bureau, County Business Patterns. Beginning with the 2017 data, any tabulation with fewer than 3 establishments were omitted from the release. Data for these establishments are included in the broader total.

Year	County	State of Kansas	Non Metro Kansas	County Rank	Per 1000 or \$ Per Capita
2000	.	240,079	.	.	.
2001	.	273,838	.	.	.
2002	.	262,277	.	.	.
2003	.	290,652	.	.	.
2004	.	326,997	.	.	.
2005	.	381,069	.	.	.
2006	0	482,102	.	.	0.0
2007	0	551,751	.	.	0.0
2008	0	620,446	.	.	0.0
2009	0	465,070	.	.	0.0
2010	0	485,841	.	.	0.0
2011	0	541,536	.	.	0.0
2012	0	600,402	.	.	0.0
2013	0	599,788	.	.	0.0
2014	0	678,673	.	.	0.0
2015	0	552,658	.	.	0.0
2016	0	428,767	.	.	0.0

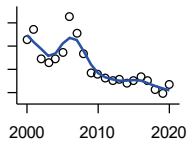
County: county value. Kansas: state value. County Rank: highest county value ranked #1. (\$000): thousands of dollars. Nonmetro Kansas: Kansas total less Metropolitan Areas as defined by the Office of Management and Budget (OMB; released 3/6/2020). Per 1000: For nonmoney amounts, Per 1000=(county value / county population for the same year as the data) x 1000. \$ Per capita=(county value / county population for the same year as the data). Value= . indicates missing or suppressed data or value not calculated.

Business

**TOTAL ANNUAL PAYROLL(\$000):
UTILITIES**

U.S. Census Bureau, County Business Patterns. Beginning with the 2017 data, any tabulation with fewer than 3 establishments were omitted from the release. Data for these establishments are included in the broader total.

Year	County	State of Kansas	Non Metro Kansas	County Rank	Per 1000 or \$ Per Capita
2000	.	410,313	.	.	.
2001	.	452,057	.	.	.
2002	.	377,559	.	.	.
2003	.	378,157	.	.	.
2004	.	377,809	.	.	.
2005	.	429,864	.	.	.
2006	.	443,999	.	.	.
2007	.	480,068	.	.	.
2008	.	541,066	.	.	.
2009	.	563,373	.	.	.
2010	.	512,628	.	.	.
2011	.	653,229	.	.	.
2012	.	625,451	.	.	.
2013	.	625,347	.	.	.
2014	.	610,960	.	.	.
2015	.	668,559	.	.	.



**TOTAL ANNUAL PAYROLL(\$000):
CONSTRUCTION**

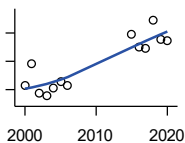
U.S. Census Bureau, County Business Patterns. Beginning with the 2017 data, any tabulation with fewer than 3 establishments were omitted from the release. Data for these establishments are included in the broader total.

Year	County	State of Kansas	Non Metro Kansas	County Rank	Per 1000 or \$ Per Capita
2000	6,300	2,256,057	.	.	714.1
2001	6,708	2,320,652	.	.	768.4
2002	5,479	2,302,229	.	.	636.6
2003	5,303	2,282,021	.	.	624.4
2004	5,478	2,302,854	.	.	648.5
2005	5,753	2,465,977	.	.	681.3
2006	7,273	2,700,351	.	.	859.9
2007	6,535	2,772,168	.	.	766.4
2008	5,682	2,950,073	.	.	659.3
2009	4,867	2,709,864	.	.	572.6
2010	4,813	2,553,555	.	.	563.9
2011	4,629	2,550,355	.	.	542.7
2012	4,493	2,733,284	.	.	528.3
2013	4,562	2,866,801	.	.	543.9
2014	4,411	3,135,814	.	.	531.4
2015	4,536	3,270,952	.	.	547.0
2016	4,666	3,328,610	.	.	575.7
2017	4,524	3,568,505	.	.	565.1
2018	4,122	3,806,196	.	.	515.1
2019	3,944	3,879,912	.	.	492.9
2020	4,323	3,983,029	.	.	532.6

County: county value. Kansas: state value. County Rank: highest county value ranked #1. (\$000): thousands of dollars. Nonmetro Kansas: Kansas total less Metropolitan Areas as defined by the Office of Management and Budget (OMB; released 3/6/2020). Per 1000: For nonmoney amounts, Per 1000=(county value / county population for the same year as the data) x 1000. \$ Per capita=(county value / county population for the same year as the data). Value= . indicates missing or suppressed data or value not calculated.

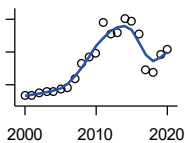
Business

**TOTAL ANNUAL PAYROLL(\$000):
MANUFACTURING**



U.S. Census Bureau, County Business Patterns. Beginning with the 2017 data, any tabulation with fewer than 3 establishments were omitted from the release. Data for these establishments are included in the broader total.

Year	County	State of Kansas	Non Metro Kansas	County Rank	Per 1000 or \$ Per Capita
2000	8,511	7,015,414	.	.	964.7
2001	11,602	7,301,706	.	.	1,329.0
2002	7,508	6,802,605	.	.	872.3
2003	7,066	6,691,611	.	.	832.0
2004	8,144	6,985,656	.	.	964.1
2005	9,155	7,221,614	.	.	1,084.2
2006	8,568	7,621,873	.	.	1,013.0
2007	.	7,873,359	.	.	.
2008	.	8,441,541	.	.	.
2009	.	7,477,838	.	.	.
2010	.	7,556,955	.	.	.
2011	.	7,747,934	.	.	.
2012	.	7,704,851	.	.	.
2013	.	8,365,542	.	.	.
2014	.	8,787,306	.	.	.
2015	15,858	9,052,105	.	.	1,912.2
2016	13,940	8,868,744	.	.	1,719.9
2017	13,852	9,075,793	.	.	1,730.2
2018	17,731	9,481,652	.	.	2,215.5
2019	15,041	10,171,575	.	.	1,879.7
2020	14,869	9,744,825	.	.	1,831.8



**TOTAL ANNUAL PAYROLL(\$000):
WHOLESALE TRADE**

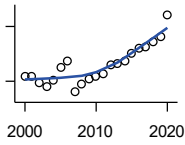
U.S. Census Bureau, County Business Patterns. Beginning with the 2017 data, any tabulation with fewer than 3 establishments were omitted from the release. Data for these establishments are included in the broader total.

Year	County	State of Kansas	Non Metro Kansas	County Rank	Per 1000 or \$ Per Capita
2000	2,725	2,332,755	.	.	308.9
2001	2,654	2,283,169	.	.	304.0
2002	2,955	2,107,653	.	.	343.3
2003	3,154	2,622,701	.	.	371.4
2004	3,194	2,663,196	.	.	378.1
2005	3,526	2,345,990	.	.	417.6
2006	3,618	2,592,211	.	.	427.8
2007	4,693	2,682,542	.	.	550.4
2008	6,539	3,078,655	.	.	758.8
2009	7,321	2,940,949	.	.	861.3
2010	7,819	3,097,628	.	.	916.1
2011	11,549	3,305,811	.	.	1,354.1
2012	10,181	3,339,997	.	.	1,197.2
2013	10,387	3,460,512	.	.	1,238.3
2014	12,088	3,712,075	.	.	1,456.2
2015	11,697	3,760,189	.	.	1,410.5
2016	10,144	3,738,207	.	.	1,251.6
2017	5,898	3,822,730	.	.	736.7
2018	5,478	3,814,353	.	.	684.5
2019	7,637	4,025,802	.	.	954.4
2020	8,334	4,224,666	.	.	1,026.7

County: county value. Kansas: state value. County Rank: highest county value ranked #1. (\$000): thousands of dollars. Nonmetro Kansas: Kansas total less Metropolitan Areas as defined by the Office of Management and Budget (OMB; released 3/6/2020). Per 1000: For nonmoney amounts, Per 1000=(county value / county population for the same year as the data) x 1000. \$ Per capita=(county value / county population for the same year as the data). Value= . indicates missing or suppressed data or value not calculated.

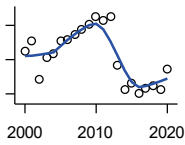
Business

**TOTAL ANNUAL PAYROLL(\$000):
RETAIL TRADE**



U.S. Census Bureau, County Business Patterns. Beginning with the 2017 data, any tabulation with fewer than 3 establishments were omitted from the release. Data for these establishments are included in the broader total.

Year	County	State of Kansas	Non Metro Kansas	County Rank	Per 1000 or \$ Per Capita
2000	7,284	2,747,001	.	.	825.7
2001	7,274	2,813,226	.	.	833.2
2002	6,898	2,854,231	.	.	801.4
2003	6,724	2,773,674	.	.	791.7
2004	7,052	2,847,826	.	.	834.9
2005	7,725	2,952,196	.	.	914.9
2006	8,095	3,126,495	.	.	957.1
2007	6,399	3,201,169	.	.	750.4
2008	6,822	3,261,054	.	.	791.6
2009	7,092	3,232,246	.	.	834.4
2010	7,268	3,321,838	.	.	851.6
2011	7,393	3,384,607	.	.	866.8
2012	7,884	3,409,755	.	.	927.1
2013	7,982	3,483,752	.	.	951.6
2014	8,110	3,617,933	.	.	977.0
2015	8,498	3,712,165	.	.	1,024.7
2016	8,784	3,826,889	.	.	1,083.8
2017	8,849	3,797,849	.	.	1,105.3
2018	9,173	3,818,988	.	.	1,146.2
2019	9,407	3,908,994	.	.	1,175.6
2020	10,636	3,984,443	.	.	1,310.3



**TOTAL ANNUAL PAYROLL(\$000):
TRANSPORTATION &
WAREHOUSING**

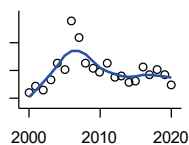
U.S. Census Bureau, County Business Patterns. Beginning with the 2017 data, any tabulation with fewer than 3 establishments were omitted from the release. Data for these establishments are included in the broader total.

Year	County	State of Kansas	Non Metro Kansas	County Rank	Per 1000 or \$ Per Capita
2000	2,751	1,044,835	.	.	311.8
2001	3,037	1,089,405	.	.	347.9
2002	1,925	1,094,636	.	.	223.7
2003	2,554	1,316,655	.	.	300.7
2004	2,669	1,439,800	.	.	316.0
2005	3,049	1,393,651	.	.	361.1
2006	3,068	1,528,551	.	.	362.7
2007	3,217	1,788,267	.	.	377.3
2008	3,387	1,722,697	.	.	393.0
2009	3,524	1,618,598	.	.	414.6
2010	3,758	1,735,761	.	.	440.3
2011	3,633	1,739,165	.	.	426.0
2012	3,746	1,984,976	.	.	440.5
2013	2,319	2,006,261	.	.	276.5
2014	1,630	2,097,377	.	.	196.4
2015	1,831	2,190,072	.	.	220.8
2016	1,510	2,202,859	.	.	186.3
2017	1,668	2,546,061	.	.	208.3
2018	1,739	2,663,188	.	.	217.3
2019	1,627	2,879,406	.	.	203.3
2020	2,238	2,962,461	.	.	275.7

County: county value. Kansas: state value. County Rank: highest county value ranked #1. (\$000): thousands of dollars. Nonmetro Kansas: Kansas total less Metropolitan Areas as defined by the Office of Management and Budget (OMB; released 3/6/2020). Per 1000: For nonmoney amounts, Per 1000=(county value / county population for the same year as the data) x 1000. \$ Per capita=(county value / county population for the same year as the data). Value= . indicates missing or suppressed data or value not calculated.

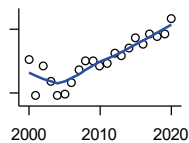
Business

**TOTAL ANNUAL PAYROLL(\$000):
INFORMATION**



U.S. Census Bureau, County Business Patterns. Beginning with the 2017 data, any tabulation with fewer than 3 establishments were omitted from the release. Data for these establishments are included in the broader total.

Year	County	State of Kansas	Non Metro Kansas	County Rank	Per 1000 or \$ Per Capita
2000	1,080	1,923,381	.	.	122.4
2001	1,172	2,218,610	.	.	134.2
2002	1,118	2,298,108	.	.	129.9
2003	1,259	2,378,673	.	.	148.2
2004	1,497	2,392,990	.	.	177.2
2005	1,420	2,395,081	.	.	168.2
2006	2,115	2,586,483	.	.	250.1
2007	1,875	2,594,138	.	.	219.9
2008	1,502	3,043,244	.	.	174.3
2009	1,432	3,045,570	.	.	168.5
2010	1,370	2,481,580	.	.	160.5
2011	1,498	2,513,805	.	.	175.6
2012	1,304	2,535,555	.	.	153.3
2013	1,324	2,805,017	.	.	157.8
2014	1,226	2,393,609	.	.	147.7
2015	1,239	2,406,323	.	.	149.4
2016	1,441	2,080,211	.	.	177.8
2017	1,343	2,090,021	.	.	167.7
2018	1,413	2,341,543	.	.	176.6
2019	1,344	2,133,891	.	.	168.0
2020	1,198	2,245,204	.	.	147.6



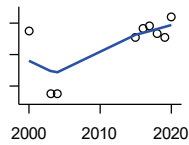
**TOTAL ANNUAL PAYROLL(\$000):
FINANCE & INSURANCE**

U.S. Census Bureau, County Business Patterns. Beginning with the 2017 data, any tabulation with fewer than 3 establishments were omitted from the release. Data for these establishments are included in the broader total.

Year	County	State of Kansas	Non Metro Kansas	County Rank	Per 1000 or \$ Per Capita
2000	3,275	2,083,565	.	.	371.2
2001	2,450	2,129,587	.	.	280.6
2002	3,123	2,414,120	.	.	362.8
2003	2,776	2,608,579	.	.	326.9
2004	2,431	2,676,910	.	.	287.8
2005	2,481	2,786,136	.	.	293.8
2006	2,741	2,928,931	.	.	324.1
2007	3,046	3,096,017	.	.	357.2
2008	3,251	3,322,977	.	.	377.2
2009	3,262	3,206,839	.	.	383.8
2010	3,142	3,211,300	.	.	368.1
2011	3,194	3,404,633	.	.	374.5
2012	3,435	3,611,165	.	.	403.9
2013	3,381	3,896,051	.	.	403.1
2014	3,563	4,044,315	.	.	429.2
2015	3,785	4,113,060	.	.	456.4
2016	3,639	4,180,740	.	.	449.0
2017	3,886	4,258,057	.	.	485.4
2018	3,819	4,682,552	.	.	477.2
2019	3,894	4,814,201	.	.	486.6
2020	4,252	5,288,529	.	.	523.8

County: county value. Kansas: state value. County Rank: highest county value ranked #1. (\$000): thousands of dollars. Nonmetro Kansas: Kansas total less Metropolitan Areas as defined by the Office of Management and Budget (OMB; released 3/6/2020). Per 1000: For nonmoney amounts, Per 1000=(county value / county population for the same year as the data) x 1000. \$ Per capita=(county value / county population for the same year as the data). Value= . indicates missing or suppressed data or value not calculated.

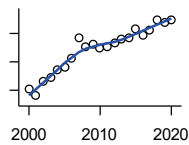
Business



**TOTAL ANNUAL PAYROLL(\$000):
REAL ESTATE, RENTAL, AND
LEASING**

U.S. Census Bureau, County Business Patterns. Beginning with the 2017 data, any tabulation with fewer than 3 establishments were omitted from the release. Data for these establishments are included in the broader total.

Year	County	State of Kansas	Non Metro Kansas	County Rank	Per 1000 or \$ Per Capita
2000	276	360,637	.	.	31.3
2001	.	397,371	.	.	.
2002	.	403,695	.	.	.
2003	77	437,786	.	.	9.1
2004	74	430,719	.	.	8.8
2005	.	465,149	.	.	.
2006	.	478,811	.	.	.
2007	.	452,969	.	.	.
2008	.	484,149	.	.	.
2009	.	450,884	.	.	.
2010	.	487,255	.	.	.
2011	.	535,120	.	.	.
2012	.	531,039	.	.	.
2013	.	538,796	.	.	.
2014	.	542,307	.	.	.
2015	255	595,030	.	.	30.7
2016	282	607,668	.	.	34.8
2017	290	590,373	.	.	36.2
2018	266	600,037	.	.	33.2
2019	256	622,881	.	.	32.0
2020	320	670,656	.	.	39.4



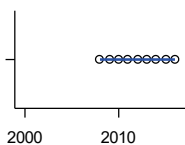
**TOTAL ANNUAL PAYROLL(\$000):
PROFESSIONAL, SCIENTIFIC, AND
TECHNICAL SERVICES**

U.S. Census Bureau, County Business Patterns. Beginning with the 2017 data, any tabulation with fewer than 3 establishments were omitted from the release. Data for these establishments are included in the broader total.

Year	County	State of Kansas	Non Metro Kansas	County Rank	Per 1000 or \$ Per Capita
2000	1,021	2,057,313	.	.	115.7
2001	901	2,152,937	.	.	103.2
2002	1,160	2,150,085	.	.	134.8
2003	1,231	2,052,712	.	.	144.9
2004	1,356	2,531,457	.	.	160.5
2005	1,397	2,418,500	.	.	165.4
2006	1,568	2,655,690	.	.	185.4
2007	1,927	2,901,544	.	.	226.0
2008	1,775	2,903,802	.	.	206.0
2009	1,817	3,071,611	.	.	213.8
2010	1,739	3,037,182	.	.	203.7
2011	1,758	3,132,082	.	.	206.1
2012	1,824	3,455,548	.	.	214.5
2013	1,901	3,777,729	.	.	226.6
2014	1,927	3,981,580	.	.	232.1
2015	2,073	4,039,074	.	.	250.0
2016	1,960	4,125,507	.	.	241.8
2017	2,061	4,158,858	.	.	257.4
2018	2,249	4,314,317	.	.	281.0
2019	2,193	4,646,644	.	.	274.1
2020	2,250	4,927,611	.	.	277.2

County: county value. Kansas: state value. County Rank: highest county value ranked #1. (\$000): thousands of dollars. Nonmetro Kansas: Kansas total less Metropolitan Areas as defined by the Office of Management and Budget (OMB; released 3/6/2020). Per 1000: For nonmoney amounts, Per 1000=(county value / county population for the same year as the data) x 1000. \$ Per capita=(county value / county population for the same year as the data). Value= . indicates missing or suppressed data or value not calculated.

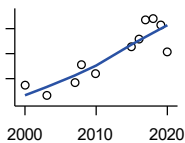
Business



**TOTAL ANNUAL PAYROLL(\$000):
MANAGEMENT OF COMPANIES AND
ENTERPRISES**

U.S. Census Bureau, County Business Patterns. Beginning with the 2017 data, any tabulation with fewer than 3 establishments were omitted from the release. Data for these establishments are included in the broader total.

Year	County	State of Kansas	Non Metro Kansas	County Rank	Per 1000 or \$ Per Capita
2000	.	1,362,735	.	.	.
2001	.	1,279,253	.	.	.
2002	.	1,311,368	.	.	.
2003	.	1,352,119	.	.	.
2004	.	1,378,891	.	.	.
2005	.	1,510,876	.	.	.
2006	.	1,626,320	.	.	.
2007	.	2,233,654	.	.	.
2008	0	1,848,656	.	.	0.0
2009	0	1,601,158	.	.	0.0
2010	0	2,003,048	.	.	0.0
2011	0	1,677,619	.	.	0.0
2012	0	1,834,430	.	.	0.0
2013	0	1,938,100	.	.	0.0
2014	0	2,117,232	.	.	0.0
2015	0	2,451,126	.	.	0.0
2016	0	2,167,620	.	.	0.0



**TOTAL ANNUAL PAYROLL(\$000):
ADMIN, SUPPORT, WASTE MGMT.,
AND REMEDIATION**

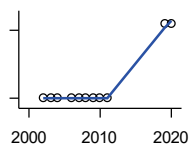
U.S. Census Bureau, County Business Patterns. Beginning with the 2017 data, any tabulation with fewer than 3 establishments were omitted from the release. Data for these establishments are included in the broader total.

Year	County	State of Kansas	Non Metro Kansas	County Rank	Per 1000 or \$ Per Capita
2000	146	1,388,712	.	.	16.5
2001	.	1,416,480	.	.	.
2002	.	1,378,905	.	.	.
2003	62	1,387,061	.	.	7.3
2004	.	1,544,442	.	.	.
2005	.	1,694,687	.	.	.
2006	.	1,800,846	.	.	.
2007	169	1,978,025	.	.	19.8
2008	308	2,096,864	.	.	35.7
2009	.	1,832,540	.	.	.
2010	235	2,117,325	.	.	27.5
2011	.	2,114,970	.	.	.
2012	.	2,230,250	.	.	.
2013	.	2,214,320	.	.	.
2014	.	2,444,170	.	.	.
2015	458	2,577,592	.	.	55.2
2016	520	2,760,706	.	.	64.2
2017	666	3,026,927	.	.	83.2
2018	681	3,007,347	.	.	85.1
2019	624	3,075,485	.	.	78.0
2020	416	3,250,046	.	.	51.3

County: county value. Kansas: state value. County Rank: highest county value ranked #1. (\$000): thousands of dollars. Nonmetro Kansas: Kansas total less Metropolitan Areas as defined by the Office of Management and Budget (OMB; released 3/6/2020). Per 1000: For nonmoney amounts, Per 1000=(county value / county population for the same year as the data) x 1000. \$ Per capita=(county value / county population for the same year as the data). Value= . indicates missing or suppressed data or value not calculated.

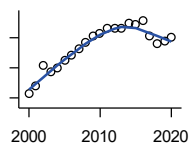
Business

**TOTAL ANNUAL PAYROLL(\$000):
EDUCATIONAL SERVICES**



U.S. Census Bureau, County Business Patterns. Beginning with the 2017 data, any tabulation with fewer than 3 establishments were omitted from the release. Data for these establishments are included in the broader total.

Year	County	State of Kansas	Non Metro Kansas	County Rank	Per 1000 or \$ Per Capita
2000	.	299,843	.	.	.
2001	.	320,606	.	.	.
2002	0	353,531	.	.	0.0
2003	0	350,814	.	.	0.0
2004	0	361,644	.	.	0.0
2005	.	375,781	.	.	.
2006	0	400,565	.	.	0.0
2007	0	414,233	.	.	0.0
2008	0	463,210	.	.	0.0
2009	0	468,856	.	.	0.0
2010	0	487,670	.	.	0.0
2011	0	504,964	.	.	0.0
2012	.	508,448	.	.	.
2013	.	553,995	.	.	.
2014	.	612,073	.	.	.
2015	.	579,794	.	.	.
2019	165	654,965	.	.	20.6
2020	166	652,468	.	.	20.5



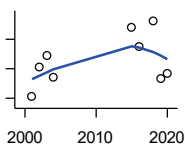
**TOTAL ANNUAL PAYROLL(\$000):
HEALTH CARE AND SOCIAL ASSISTANCE**

U.S. Census Bureau, County Business Patterns. Beginning with the 2017 data, any tabulation with fewer than 3 establishments were omitted from the release. Data for these establishments are included in the broader total.

Year	County	State of Kansas	Non Metro Kansas	County Rank	Per 1000 or \$ Per Capita
2000	8,491	4,120,595	.	.	962.5
2001	9,517	4,445,027	.	.	1,090.1
2002	12,247	4,705,220	.	.	1,422.9
2003	11,517	4,939,323	.	.	1,356.1
2004	12,015	5,232,394	.	.	1,422.4
2005	13,067	5,487,089	.	.	1,547.5
2006	13,752	5,814,218	.	.	1,625.9
2007	14,467	6,186,471	.	.	1,696.6
2008	15,349	6,490,627	.	.	1,781.0
2009	16,253	6,749,962	.	.	1,912.1
2010	16,598	6,871,727	.	.	1,944.7
2011	17,197	7,129,655	.	.	2,016.3
2012	17,227	7,614,853	.	.	2,025.8
2013	17,254	7,541,515	.	.	2,057.0
2014	17,997	7,733,621	.	.	2,168.1
2015	17,821	7,969,650	.	.	2,148.9
2016	18,292	8,018,706	.	.	2,256.9
2017	16,166	8,384,998	.	.	2,019.2
2018	15,185	8,637,619	.	.	1,897.4
2019	15,540	8,854,414	.	.	1,942.0
2020	16,115	9,309,269	.	.	1,985.3

County: county value. Kansas: state value. County Rank: highest county value ranked #1. (\$000): thousands of dollars. Nonmetro Kansas: Kansas total less Metropolitan Areas as defined by the Office of Management and Budget (OMB; released 3/6/2020). Per 1000: For nonmoney amounts, Per 1000=(county value / county population for the same year as the data) x 1000. \$ Per capita=(county value / county population for the same year as the data). Value= . indicates missing or suppressed data or value not calculated.

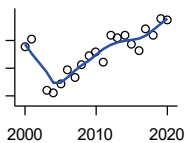
Business



**TOTAL ANNUAL PAYROLL(\$000):
ARTS, ENTERTAINMENT, AND
RECREATION**

U.S. Census Bureau, County Business Patterns. Beginning with the 2017 data, any tabulation with fewer than 3 establishments were omitted from the release. Data for these establishments are included in the broader total.

Year	County	State of Kansas	Non Metro Kansas	County Rank	Per 1000 or \$ Per Capita
2000	.	195,784	.	.	.
2001	182	203,511	.	.	20.8
2002	223	206,204	.	.	25.9
2003	238	185,049	.	.	28.0
2004	209	190,742	.	.	24.7
2005	.	196,594	.	.	.
2006	.	201,049	.	.	.
2007	.	220,435	.	.	.
2008	.	236,986	.	.	.
2009	.	237,116	.	.	.
2010	.	233,285	.	.	.
2011	.	234,351	.	.	.
2012	.	254,169	.	.	.
2013	.	278,474	.	.	.
2014	.	289,103	.	.	.
2015	276	300,253	.	.	33.3
2016	250	312,902	.	.	30.8
2018	285	325,454	.	.	35.6
2019	207	335,362	.	.	25.9
2020	213	298,119	.	.	26.2



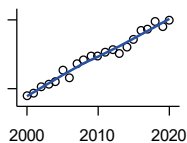
**TOTAL ANNUAL PAYROLL(\$000):
ACCOMMODATION AND FOOD
SERVICES**

U.S. Census Bureau, County Business Patterns. Beginning with the 2017 data, any tabulation with fewer than 3 establishments were omitted from the release. Data for these establishments are included in the broader total.

Year	County	State of Kansas	Non Metro Kansas	County Rank	Per 1000 or \$ Per Capita
2000	1,709	926,831	.	.	193.7
2001	1,821	960,196	.	.	208.6
2002	.	930,510	.	.	.
2003	1,089	992,313	.	.	128.2
2004	1,045	1,046,901	.	.	123.7
2005	1,165	1,101,854	.	.	138.0
2006	1,372	1,185,280	.	.	162.2
2007	1,270	1,431,100	.	.	148.9
2008	1,448	1,271,594	.	.	168.0
2009	1,580	1,283,065	.	.	185.9
2010	1,640	1,296,556	.	.	192.1
2011	1,486	1,364,281	.	.	174.2
2012	1,876	1,388,337	.	.	220.6
2013	1,835	1,476,335	.	.	218.8
2014	1,877	1,572,021	.	.	226.1
2015	1,741	1,640,144	.	.	209.9
2016	1,658	1,709,193	.	.	204.6
2017	1,969	1,824,791	.	.	245.9
2018	1,867	1,880,364	.	.	233.3
2019	2,109	1,958,603	.	.	263.6
2020	2,091	1,745,238	.	.	257.6

County: county value. Kansas: state value. County Rank: highest county value ranked #1. (\$000): thousands of dollars. Nonmetro Kansas: Kansas total less Metropolitan Areas as defined by the Office of Management and Budget (OMB; released 3/6/2020). Per 1000: For nonmoney amounts, Per 1000=(county value / county population for the same year as the data) x 1000. \$ Per capita=(county value / county population for the same year as the data). Value= . indicates missing or suppressed data or value not calculated.

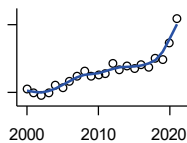
Business



**TOTAL ANNUAL PAYROLL(\$000):
OTHER SERVICES**

U.S. Census Bureau, County Business Patterns. Beginning with the 2017 data, any tabulation with fewer than 3 establishments were omitted from the release. Data for these establishments are included in the broader total.

Year	County	State of Kansas	Non Metro Kansas	County Rank	Per 1000 or \$ Per Capita
2000	1,347	965,540	.	.	152.7
2001	1,415	996,716	.	.	162.1
2002	1,533	1,007,464	.	.	178.1
2003	1,604	979,466	.	.	188.9
2004	1,654	970,383	.	.	195.8
2005	1,908	1,005,537	.	.	226.0
2006	1,730	1,055,932	.	.	204.5
2007	2,056	1,141,551	.	.	241.1
2008	2,121	1,184,016	.	.	246.1
2009	2,220	1,167,154	.	.	261.2
2010	2,206	1,170,201	.	.	258.5
2011	2,290	1,173,775	.	.	268.5
2012	2,350	1,217,210	.	.	276.3
2013	2,268	1,254,933	.	.	270.4
2014	2,401	1,305,563	.	.	289.2
2015	2,581	1,341,075	.	.	311.2
2016	2,774	1,351,375	.	.	342.3
2017	2,806	1,344,179	.	.	350.5
2018	2,957	1,382,801	.	.	369.5
2019	2,867	1,427,711	.	.	358.3
2020	2,989	1,420,859	.	.	368.2



**NOMINAL TAXABLE RETAIL SALES
(million\$)**

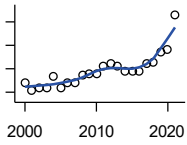
Kansas Department of Revenue

Year	County	State of Kansas	Non Metro Kansas	County Rank	Per 1000 or \$ Per Capita
2000	63.3	30,119.0	8,831.7	47	7.2
2001	59.5	30,202.2	8,700.3	47	6.8
2002	56.9	29,380.8	8,241.5	46	6.6
2003	59.8	30,694.0	8,710.6	48	7.0
2004	66.6	31,922.6	9,062.5	48	7.9
2005	63.6	32,924.2	9,386.6	50	7.5
2006	69.8	34,937.6	10,042.1	49	8.3
2007	74.7	36,180.1	10,553.2	49	8.8
2008	78.8	37,559.5	11,126.9	49	9.1
2009	74.6	35,211.8	10,351.5	49	8.8
2010	75.8	35,655.7	10,606.1	50	8.9
2011	76.8	37,257.0	11,153.5	51	9.0
2012	85.2	38,988.8	11,749.1	49	10.0
2013	80.5	40,009.0	11,993.8	54	9.6
2014	83.8	41,299.0	12,365.4	55	10.1
2015	81.5	41,635.8	11,747.6	50	9.8
2016	84.9	42,040.2	11,523.5	47	10.5
2017	82.8	41,940.1	11,449.9	47	10.3
2018	89.7	42,732.3	11,643.9	45	11.2
2019	89.1	43,732.5	12,062.7	50	11.1
2020	103.7	43,689.9	12,331.7	45	12.8
2021	125.5	48,532.8	13,413.0	42	15.5

County: county value. Kansas: state value. County Rank: highest county value ranked #1. (\$000): thousands of dollars. Nonmetro Kansas: Kansas total less Metropolitan Areas as defined by the Office of Management and Budget (OMB; released 3/6/2020). Per 1000: For nonmoney amounts, Per 1000=(county value / county population for the same year as the data) x 1000. \$ Per capita=(county value / county population for the same year as the data). Value= . indicates missing or suppressed data or value not calculated.

Business

RETAIL PULL FACTOR



Kansas Direct Program, Kansas State University Cooperative Extension Service (1980-1999); Kansas Department of Revenue (2000-)

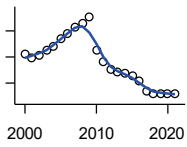
Year	County	State of Kansas	Non Metro Kansas	County Rank	Per 1000 or \$ Per Capita
2000	0.64	.	.	47	.
2001	0.61	.	.	49	.
2002	0.62	.	.	51	.
2003	0.62	.	.	56	.
2004	0.67	.	.	49	.
2005	0.62	.	.	61	.
2006	0.64	.	.	60	.
2007	0.64	.	.	63	.
2008	0.67	.	.	60	.
2009	0.68	.	.	68	.
2010	0.68	.	.	68	.
2011	0.71	.	.	59	.
2012	0.72	.	.	63	.
2013	0.71	.	.	67	.
2014	0.69	.	.	66	.
2015	0.69	.	.	65	.
2016	0.69	.	.	59	.
2017	0.72	.	.	52	.
2018	0.73	.	.	50	.
2019	0.77	.	.	48	.
2020	0.78	.	.	42	.
2021	0.93	.	.	23	.

County: county value. Kansas: state value. County Rank: highest county value ranked #1. (\$000): thousands of dollars. Nonmetro Kansas: Kansas total less Metropolitan Areas as defined by the Office of Management and Budget (OMB; released 3/6/2020). Per 1000: For nonmoney amounts, Per 1000=(county value / county population for the same year as the data) x 1000. \$ Per capita=(county value / county population for the same year as the data). Value= . indicates missing or suppressed data or value not calculated.

Employment

CIVILIAN LABOR FORCE (BLS-Place of Residence; 1990-)

U.S. Department of Labor, Bureau of Labor Statistics (BLS)



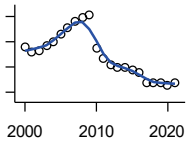
Year	County	State of Kansas	Non Metro Kansas	County Rank	Per 1000 or \$ Per Capita
2000	4,544	1,402,606	482,229	47	515.1
2001	4,477	1,398,521	475,280	47	512.8
2002	4,524	1,419,335	482,428	47	525.6
2003	4,625	1,441,065	490,161	47	544.6
2004	4,714	1,458,910	494,509	47	558.1
2005	4,849	1,458,767	490,047	47	574.3
2006	4,959	1,467,553	498,594	46	586.3
2007	5,074	1,485,414	497,048	46	595.1
2008	5,149	1,493,365	504,522	46	597.5
2009	5,269	1,512,572	516,311	46	619.9
2010	4,632	1,500,463	492,594	45	542.7
2011	4,410	1,498,000	492,563	49	517.1
2012	4,263	1,490,808	489,349	49	501.3
2013	4,204	1,489,395	485,484	49	501.2
2014	4,176	1,494,203	481,813	49	503.1
2015	4,128	1,493,782	477,546	49	497.8
2016	4,053	1,491,961	468,258	50	500.1
2017	3,834	1,488,346	461,063	50	478.9
2018	3,805	1,488,027	456,866	50	475.4
2019	3,800	1,497,517	455,858	50	474.9
2020	3,808	1,493,706	452,935	50	469.1
2021	3,795	1,495,665	453,398	50	469.9

County: county value. Kansas: state value. County Rank: highest county value ranked #1. (\$000): thousands of dollars. Nonmetro Kansas: Kansas total less Metropolitan Areas as defined by the Office of Management and Budget (OMB; released 3/6/2020). Per 1000: For nonmoney amounts, Per 1000=(county value / county population for the same year as the data) x 1000. \$ Per capita=(county value / county population for the same year as the data). Value= . indicates missing or suppressed data or value not calculated.

Employment

EMPLOYED (BLS-Place of Residence; 1990-)

U.S. Department of Labor, Bureau of Labor Statistics (BLS)



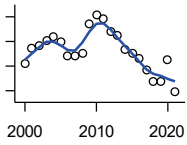
Year	County	State of Kansas	Non Metro Kansas	County Rank	Per 1000 or \$ Per Capita
2000	4,390	1,349,841	464,962	47	497.6
2001	4,292	1,338,775	455,154	47	491.6
2002	4,333	1,347,163	461,241	47	503.4
2003	4,422	1,361,115	467,622	46	520.7
2004	4,505	1,378,355	470,330	46	533.3
2005	4,649	1,384,654	467,722	46	550.6
2006	4,789	1,402,950	479,174	46	566.2
2007	4,903	1,422,109	477,983	45	575.0
2008	4,973	1,425,022	484,056	46	577.0
2009	5,033	1,408,142	485,797	45	592.1
2010	4,378	1,396,172	461,635	45	512.9
2011	4,165	1,402,198	463,723	47	488.3
2012	4,043	1,405,638	463,376	47	475.4
2013	3,992	1,410,470	461,405	48	475.9
2014	3,993	1,426,892	461,797	48	481.0
2015	3,951	1,431,533	457,899	48	476.4
2016	3,888	1,431,920	449,356	49	479.7
2017	3,692	1,434,516	445,003	50	461.2
2018	3,686	1,439,329	442,716	49	460.6
2019	3,681	1,450,705	442,108	50	460.0
2020	3,644	1,408,965	433,229	49	448.9
2021	3,698	1,447,323	441,159	49	457.8

County: county value. Kansas: state value. County Rank: highest county value ranked #1. (\$000): thousands of dollars. Nonmetro Kansas: Kansas total less Metropolitan Areas as defined by the Office of Management and Budget (OMB; released 3/6/2020). Per 1000: For nonmoney amounts, Per 1000=(county value / county population for the same year as the data) x 1000. \$ Per capita=(county value / county population for the same year as the data). Value= . indicates missing or suppressed data or value not calculated.

Employment

UNEMPLOYED (BLS-Place of Residence; 1990-)

U.S. Department of Labor, Bureau of Labor Statistics (BLS)

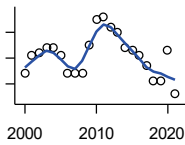


Year	County	State of Kansas	Non Metro Kansas	County Rank	Per 1000 or \$ Per Capita
2000	154	52,765	17,267	50	17.5
2001	185	59,746	20,126	47	21.2
2002	191	72,172	21,187	49	22.2
2003	203	79,950	22,539	49	23.9
2004	209	80,555	24,179	48	24.7
2005	200	74,113	22,325	47	23.7
2006	170	64,603	19,420	48	20.1
2007	171	63,305	19,065	49	20.1
2008	176	68,343	20,466	50	20.4
2009	236	104,430	30,514	52	27.8
2010	254	104,291	30,959	50	29.8
2011	245	95,802	28,840	48	28.7
2012	220	85,170	25,973	49	25.9
2013	212	78,925	24,079	47	25.3
2014	183	67,311	20,016	47	22.0
2015	177	62,249	19,647	46	21.3
2016	165	60,041	18,902	48	20.4
2017	142	53,830	16,060	48	17.7
2018	119	48,698	14,150	49	14.9
2019	119	46,812	13,750	49	14.9
2020	164	84,741	19,706	47	20.2
2021	97	48,342	12,239	50	12.0

County: county value. Kansas: state value. County Rank: highest county value ranked #1. (\$000): thousands of dollars. Nonmetro Kansas: Kansas total less Metropolitan Areas as defined by the Office of Management and Budget (OMB; released 3/6/2020). Per 1000: For nonmoney amounts, Per 1000=(county value / county population for the same year as the data) x 1000. \$ Per capita=(county value / county population for the same year as the data). Value= . indicates missing or suppressed data or value not calculated.

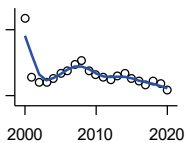
Employment

UNEMPLOYMENT RATE (BLS-Place of Residence; 1990-)



U.S. Department of Labor, Bureau of Labor Statistics (BLS)

Year	County	State of Kansas	Non Metro Kansas	County Rank	Per 1000 or \$ Per Capita
2000	3.4	3.8	3.6	50	.
2001	4.1	4.3	4.2	35	.
2002	4.2	5.1	4.4	43	.
2003	4.4	5.5	4.6	45	.
2004	4.4	5.5	4.9	58	.
2005	4.1	5.1	4.6	57	.
2006	3.4	4.4	3.9	68	.
2007	3.4	4.3	3.8	67	.
2008	3.4	4.6	4.1	70	.
2009	4.5	6.9	5.9	68	.
2010	5.5	7.0	6.3	52	.
2011	5.6	6.4	5.9	44	.
2012	5.2	5.7	5.3	43	.
2013	5.0	5.3	5.0	40	.
2014	4.4	4.5	4.2	34	.
2015	4.3	4.2	4.1	36	.
2016	4.1	4.0	4.0	40	.
2017	3.7	3.6	3.5	36	.
2018	3.1	3.3	3.1	43	.
2019	3.1	3.1	3.0	38	.
2020	4.3	5.7	4.4	44	.
2021	2.6	3.2	2.7	49	.



BEA EMPLOYMENT: TOTAL (Place of Work)

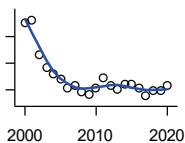
U.S. Bureau of Economic Analysis, Regional Economic Information System (REIS)

Year	County	State of Kansas	Non Metro Kansas	County Rank	Per 1000 or \$ Per Capita
2000	6,261	1,760,312	604,361	42	709.7
2001	4,925	1,767,601	592,672	47	564.1
2002	4,791	1,746,077	585,387	48	556.6
2003	4,791	1,733,694	577,860	48	564.1
2004	4,878	1,750,876	578,750	48	577.5
2005	5,011	1,765,650	577,562	47	593.4
2006	5,068	1,795,507	583,041	47	599.2
2007	5,213	1,844,355	591,924	47	611.4
2008	5,303	1,858,069	594,368	47	615.3
2009	5,058	1,813,184	580,972	48	595.1
2010	4,972	1,801,873	579,758	49	582.5
2011	4,924	1,819,044	583,725	51	577.3
2012	4,866	1,841,393	591,748	51	572.2
2013	4,939	1,869,054	597,236	50	588.8
2014	5,007	1,895,859	601,291	51	603.2
2015	4,879	1,910,954	598,589	51	588.3
2016	4,843	1,916,152	592,580	51	597.5
2017	4,740	1,914,179	584,337	51	592.1
2018	4,822	1,926,242	580,213	50	602.5
2019	4,764	1,925,204	574,496	49	595.4
2020	4,622	1,851,247	556,671	50	569.4

County: county value. Kansas: state value. County Rank: highest county value ranked #1. (\$000): thousands of dollars. Nonmetro Kansas: Kansas total less Metropolitan Areas as defined by the Office of Management and Budget (OMB; released 3/6/2020). Per 1000: For nonmoney amounts, Per 1000=(county value / county population for the same year as the data) x 1000. \$ Per capita=(county value / county population for the same year as the data). Value= . indicates missing or suppressed data or value not calculated.

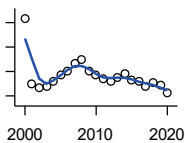
Employment

BEA EMPLOYMENT: FARM



U.S. Bureau of Economic Analysis,
Regional Economic Information System
(REIS)

Year	County	State of Kansas	Non Metro Kansas	County Rank	Per 1000 or \$ Per Capita
2000	677	77,477	59,088	46	76.7
2001	681	78,177	59,647	47	78.0
2002	615	70,532	53,893	46	71.5
2003	592	68,516	52,099	48	69.7
2004	579	67,586	51,246	49	68.5
2005	570	66,829	50,386	47	67.5
2006	553	64,910	48,728	47	65.4
2007	558	65,639	49,037	47	65.4
2008	547	63,820	47,682	47	63.5
2009	542	62,798	46,960	47	63.8
2010	553	63,882	47,984	47	64.8
2011	572	65,761	49,707	49	67.1
2012	559	63,753	48,167	48	65.7
2013	551	62,739	47,255	48	65.7
2014	561	64,308	48,722	50	67.6
2015	560	64,416	48,927	51	67.5
2016	554	63,840	48,539	53	68.4
2017	538	61,876	46,936	51	67.2
2018	548	63,233	48,069	53	68.5
2019	548	63,300	48,167	53	68.5
2020	557	64,281	49,038	53	68.6



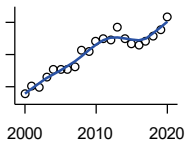
BEA EMPLOYMENT: NON-FARM

U.S. Bureau of Economic Analysis,
Regional Economic Information System
(REIS)

Year	County	State of Kansas	Non Metro Kansas	County Rank	Per 1000 or \$ Per Capita
2000	5,584	1,682,835	545,273	41	633.0
2001	4,244	1,689,424	533,025	49	486.1
2002	4,176	1,675,545	531,494	49	485.2
2003	4,199	1,665,178	525,761	48	494.4
2004	4,299	1,683,290	527,504	48	508.9
2005	4,441	1,698,821	527,176	48	525.9
2006	4,515	1,730,597	534,313	47	533.8
2007	4,655	1,778,716	542,887	47	545.9
2008	4,756	1,794,249	546,686	47	551.9
2009	4,516	1,750,386	534,012	49	531.3
2010	4,419	1,737,991	531,774	50	517.8
2011	4,352	1,753,283	534,018	49	510.3
2012	4,307	1,777,640	543,581	50	506.5
2013	4,388	1,806,315	549,981	50	523.1
2014	4,446	1,831,551	552,569	49	535.6
2015	4,319	1,846,538	549,662	50	520.8
2016	4,289	1,852,312	544,041	49	529.2
2017	4,202	1,852,303	537,401	50	524.9
2018	4,274	1,863,009	532,144	50	534.0
2019	4,216	1,861,904	526,329	49	526.9
2020	4,065	1,786,966	507,633	50	500.8

County: county value. Kansas: state value. County Rank: highest county value ranked #1. (\$000): thousands of dollars. Nonmetro Kansas: Kansas total less Metropolitan Areas as defined by the Office of Management and Budget (OMB; released 3/6/2020). Per 1000: For nonmoney amounts, Per 1000=(county value / county population for the same year as the data) x 1000. \$ Per capita=(county value / county population for the same year as the data). Value= . indicates missing or suppressed data or value not calculated.

Employment



AVERAGE WAGE PER JOB (\$)

U.S. Bureau of Economic Analysis,
Regional Economic Information System
(REIS)

Year	County	State of Kansas	Non Metro Kansas	County Rank	Per 1000 or \$ Per Capita
2000	17,674	31,854	24,396	85	.
2001	20,191	32,859	26,379	87	.
2002	19,930	33,707	26,331	80	.
2003	23,001	35,078	28,911	86	.
2004	25,396	35,932	29,747	70	.
2005	25,201	37,467	31,646	90	.
2006	25,188	40,038	31,993	81	.
2007	26,166	41,500	33,484	91	.
2008	31,322	44,197	36,256	85	.
2009	30,761	43,860	35,739	79	.
2010	34,134	45,370	38,631	69	.
2011	34,762	48,280	42,324	81	.
2012	34,652	50,549	42,015	86	.
2013	38,603	52,629	46,073	78	.
2014	34,921	51,959	43,562	83	.
2015	33,398	52,250	42,320	82	.
2016	33,045	51,664	41,964	82	.
2017	34,077	53,007	42,137	75	.
2018	35,809	54,790	44,514	82	.
2019	37,517	56,956	45,336	78	.
2020	41,713	60,597	49,183	85	.

BEA EMPLOYMENT: FORESTRY, FISHING, HUNTING, AND AG SUPPORT

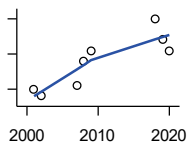
U.S. Bureau of Economic Analysis,
Regional Economic Information System
(REIS)

Year	County	State of Kansas	Non Metro Kansas	County Rank	Per 1000 or \$ Per Capita
2001	.	7,059	.	.	.
2002	.	8,045	.	.	.
2003	.	7,313	.	.	.
2004	.	7,623	.	.	.
2005	.	7,962	.	.	.
2006	.	7,748	.	.	.
2007	.	8,228	.	.	.
2008	.	8,646	.	.	.
2009	.	8,982	.	.	.
2010	.	9,251	.	.	.
2011	.	9,410	.	.	.
2012	.	9,691	.	.	.
2013	.	10,014	.	.	.
2014	.	10,708	.	.	.
2015	.	10,020	.	.	.
2016	.	10,383	.	.	.

County: county value. Kansas: state value. County Rank: highest county value ranked #1. (\$000): thousands of dollars. Nonmetro Kansas: Kansas total less Metropolitan Areas as defined by the Office of Management and Budget (OMB; released 3/6/2020). Per 1000: For nonmoney amounts, Per 1000=(county value / county population for the same year as the data) x 1000. \$ Per capita=(county value / county population for the same year as the data). Value= . indicates missing or suppressed data or value not calculated.

Employment

BEA EMPLOYMENT: MINING



U.S. Bureau of Economic Analysis,
Regional Economic Information System
(REIS)

Year	County	State of Kansas	Non Metro Kansas	County Rank	Per 1000 or \$ Per Capita
2001	15	19,592	.	54	.
2002	13	17,635	.	50	.
2003	.	19,869	.	.	.
2004	.	18,466	.	.	.
2005	.	19,489	.	.	.
2006	.	22,403	.	.	.
2007	16	24,043	.	53	.
2008	23	31,467	.	52	.
2009	26	29,941	.	47	.
2010	.	36,124	.	.	.
2011	.	31,658	.	.	.
2012	.	42,405	.	.	.
2013	.	46,585	.	.	.
2014	.	45,526	.	.	.
2015	.	46,460	.	.	.
2016	.	48,555	.	.	.
2018	35	32,021	.	57	.
2019	29	29,101	.	61	.
2020	26	26,272	.	56	.

BEA EMPLOYMENT: UTILITIES

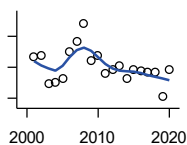
U.S. Bureau of Economic Analysis,
Regional Economic Information System
(REIS)

Year	County	State of Kansas	Non Metro Kansas	County Rank	Per 1000 or \$ Per Capita
2001	.	7,608	.	.	.
2002	.	7,087	.	.	.
2003	.	7,253	.	.	.
2004	.	7,356	.	.	.
2005	.	7,447	.	.	.
2006	.	7,478	.	.	.
2007	.	7,584	.	.	.
2008	.	7,855	.	.	.
2009	.	7,941	.	.	.
2010	.	8,028	.	.	.
2011	.	8,213	.	.	.
2012	.	8,155	.	.	.
2013	.	7,949	.	.	.
2014	.	7,985	.	.	.
2015	.	7,040	.	.	.
2016	.	7,133	.	.	.

County: county value. Kansas: state value. County Rank: highest county value ranked #1. (\$000): thousands of dollars. Nonmetro Kansas: Kansas total less Metropolitan Areas as defined by the Office of Management and Budget (OMB; released 3/6/2020). Per 1000: For nonmoney amounts, Per 1000=(county value / county population for the same year as the data) x 1000. \$ Per capita=(county value / county population for the same year as the data). Value= . indicates missing or suppressed data or value not calculated.

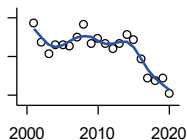
Employment

**BEA EMPLOYMENT:
CONSTRUCTION**



U.S. Bureau of Economic Analysis,
Regional Economic Information System
(REIS)

Year	County	State of Kansas	Non Metro Kansas	County Rank	Per 1000 or \$ Per Capita
2001	294	92,647	27,972	43	.
2002	296	90,370	.	41	.
2003	258	91,725	26,681	46	.
2004	261	93,271	.	45	.
2005	265	94,836	.	44	.
2006	301	97,449	.	43	.
2007	313	99,119	29,179	45	.
2008	337	97,741	.	42	.
2009	289	90,165	28,077	45	.
2010	296	84,708	26,402	43	.
2011	272	83,332	25,999	46	.
2012	277	85,966	.	48	.
2013	282	88,094	.	48	.
2014	265	91,143	.	51	.
2015	277	91,458	27,583	47	.
2016	275	93,539	27,151	48	.
2017	274	92,046	25,579	48	.
2018	274	92,985	25,530	47	.
2019	242	94,858	25,701	50	.
2020	277	94,186	26,085	46	.



**BEA EMPLOYMENT:
MANUFACTURING**

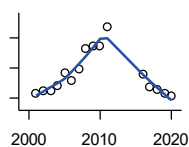
U.S. Bureau of Economic Analysis,
Regional Economic Information System
(REIS)

Year	County	State of Kansas	Non Metro Kansas	County Rank	Per 1000 or \$ Per Capita
2001	488	199,980	73,170	38	.
2002	437	188,905	70,691	37	.
2003	407	179,013	68,418	39	.
2004	430	181,738	69,669	40	.
2005	430	185,459	71,072	40	.
2006	428	188,047	71,704	40	.
2007	449	192,930	73,488	40	.
2008	484	193,116	72,235	41	.
2009	433	173,854	64,961	40	.
2010	446	166,000	62,884	38	.
2011	432	167,302	64,361	40	.
2012	420	169,308	65,944	39	.
2013	434	170,113	67,251	41	.
2014	458	169,307	68,299	41	.
2015	445	168,324	66,978	40	.
2016	393	167,723	65,796	42	.
2017	345	168,438	66,795	43	.
2018	339	171,778	68,181	42	.
2019	343	173,605	67,879	43	.
2020	306	165,228	65,658	45	.

County: county value. Kansas: state value. County Rank: highest county value ranked #1. (\$000): thousands of dollars. Nonmetro Kansas: Kansas total less Metropolitan Areas as defined by the Office of Management and Budget (OMB; released 3/6/2020). Per 1000: For nonmoney amounts, Per 1000=(county value / county population for the same year as the data) x 1000. \$ Per capita=(county value / county population for the same year as the data). Value= . indicates missing or suppressed data or value not calculated.

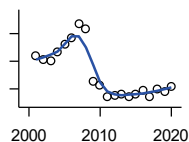
Employment

BEA EMPLOYMENT: WHOLESALE TRADE



U.S. Bureau of Economic Analysis,
Regional Economic Information System
(REIS)

Year	County	State of Kansas	Non Metro Kansas	County Rank	Per 1000 or \$ Per Capita
2001	166	65,698	.	42	.
2002	169	65,408	.	39	.
2003	170	63,504	.	35	.
2004	176	64,434	.	38	.
2005	194	64,587	.	33	.
2006	184	64,743	.	36	.
2007	198	65,993	.	33	.
2008	226	67,693	.	31	.
2009	230	65,954	.	30	.
2010	229	64,376	.	30	.
2011	254	64,712	.	32	.
2012	.	63,973	.	.	.
2013	.	64,999	.	.	.
2014	.	69,295	.	.	.
2015	.	68,444	.	.	.
2016	191	64,843	.	38	.
2017	174	65,014	.	41	.
2018	171	64,745	.	39	.
2019	167	63,324	.	39	.
2020	163	60,844	.	44	.



BEA EMPLOYMENT: RETAIL TRADE

U.S. Bureau of Economic Analysis,
Regional Economic Information System
(REIS)

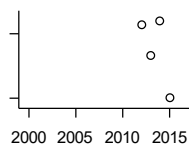
Year	County	State of Kansas	Non Metro Kansas	County Rank	Per 1000 or \$ Per Capita
2001	672	198,069	.	39	.
2002	657	196,112	.	40	.
2003	651	194,545	64,173	42	.
2004	682	192,957	63,265	42	.
2005	713	191,656	62,506	40	.
2006	734	190,391	62,082	37	.
2007	787	190,643	61,716	35	.
2008	767	185,907	59,783	35	.
2009	579	181,262	58,714	43	.
2010	564	177,858	57,470	44	.
2011	521	180,548	57,734	46	.
2012	528	180,596	57,349	46	.
2013	533	183,245	57,556	46	.
2014	520	185,899	57,855	47	.
2015	530	188,421	58,516	46	.
2016	545	188,505	57,864	46	.
2017	522	186,633	56,715	46	.
2018	551	183,323	.	41	.
2019	541	177,240	53,427	44	.
2020	560	171,777	52,563	42	.

County: county value. Kansas: state value. County Rank: highest county value ranked #1. (\$000): thousands of dollars. Nonmetro Kansas: Kansas total less Metropolitan Areas as defined by the Office of Management and Budget (OMB; released 3/6/2020). Per 1000: For nonmoney amounts, Per 1000=(county value / county population for the same year as the data) x 1000. \$ Per capita=(county value / county population for the same year as the data). Value= . indicates missing or suppressed data or value not calculated.

Employment

**BEA EMPLOYMENT:
TRANSPORTATION AND
WAREHOUSING**

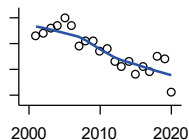
U.S. Bureau of Economic Analysis,
Regional Economic Information System
(REIS)



Year	County	State of Kansas	Non Metro Kansas	County Rank	Per 1000 or \$ Per Capita
2001	.	56,302	.	.	.
2002	.	55,319	.	.	.
2003	.	55,509	.	.	.
2004	.	55,479	.	.	.
2005	.	56,287	.	.	.
2006	.	57,506	.	.	.
2007	.	59,277	.	.	.
2008	.	58,725	.	.	.
2009	.	56,238	.	.	.
2010	.	55,179	.	.	.
2011	.	57,449	.	.	.
2012	232	59,756	.	17	.
2013	225	59,780	.	21	.
2014	233	60,565	.	22	.
2015	215	63,256	.	23	.
2016	.	65,705	.	.	.

BEA EMPLOYMENT: INFORMATION

U.S. Bureau of Economic Analysis,
Regional Economic Information System
(REIS)

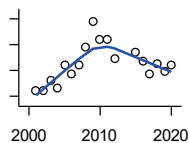


Year	County	State of Kansas	Non Metro Kansas	County Rank	Per 1000 or \$ Per Capita
2001	58	54,895	.	42	.
2002	59	50,728	.	40	.
2003	61	48,328	6,860	42	.
2004	62	45,617	.	41	.
2005	65	43,840	.	37	.
2006	62	43,925	.	36	.
2007	54	45,115	.	42	.
2008	56	42,958	.	39	.
2009	56	38,677	.	40	.
2010	52	33,432	.	39	.
2011	53	32,160	.	40	.
2012	48	31,829	.	43	.
2013	46	31,737	.	42	.
2014	48	32,316	.	40	.
2015	43	25,282	.	42	.
2016	46	24,998	.	40	.
2017	44	24,004	.	38	.
2018	50	23,165	.	35	.
2019	49	22,078	.	35	.
2020	36	20,810	.	42	.

County: county value. Kansas: state value. County Rank: highest county value ranked #1. (\$000): thousands of dollars. Nonmetro Kansas: Kansas total less Metropolitan Areas as defined by the Office of Management and Budget (OMB; released 3/6/2020). Per 1000: For nonmoney amounts, Per 1000=(county value / county population for the same year as the data) x 1000. \$ Per capita=(county value / county population for the same year as the data). Value= . indicates missing or suppressed data or value not calculated.

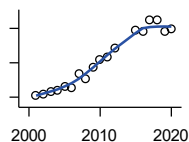
Employment

BEA EMPLOYMENT: FINANCE AND INSURANCE



U.S. Bureau of Economic Analysis, Regional Economic Information System (REIS)

Year	County	State of Kansas	Non Metro Kansas	County Rank	Per 1000 or \$ Per Capita
2001	169	76,118	.	50	.
2002	169	78,206	.	51	.
2003	185	78,441	.	48	.
2004	173	78,350	.	50	.
2005	208	78,952	.	43	.
2006	194	80,900	.	46	.
2007	208	86,094	.	43	.
2008	237	89,590	.	37	.
2009	276	93,573	.	35	.
2010	248	92,428	.	36	.
2011	249	99,495	.	38	.
2012	219	98,640	.	43	.
2013	.	99,998	.	.	.
2014	.	98,209	.	.	.
2015	229	100,534	.	37	.
2016	215	102,699	.	43	.
2017	194	101,563	.	46	.
2018	210	102,816	.	45	.
2019	199	100,276	.	47	.
2020	208	101,626	.	43	.



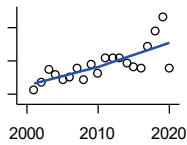
BEA EMPLOYMENT: REAL ESTATE, RENTAL, AND LEASING

U.S. Bureau of Economic Analysis, Regional Economic Information System (REIS)

Year	County	State of Kansas	Non Metro Kansas	County Rank	Per 1000 or \$ Per Capita
2001	102	45,237	.	37	.
2002	104	44,970	.	36	.
2003	107	47,095	.	38	.
2004	108	50,181	.	41	.
2005	112	53,335	.	40	.
2006	111	55,342	.	42	.
2007	127	57,694	.	40	.
2008	121	57,933	.	39	.
2009	135	57,132	.	38	.
2010	144	59,578	.	38	.
2011	147	61,821	.	37	.
2012	157	60,432	.	34	.
2013	.	62,134	.	.	.
2014	.	64,705	.	.	.
2015	178	66,604	.	35	.
2016	177	68,395	.	35	.
2017	190	70,304	.	35	.
2018	190	72,631	.	33	.
2019	177	69,119	.	33	.
2020	179	68,452	.	33	.

County: county value. Kansas: state value. County Rank: highest county value ranked #1. (\$000): thousands of dollars. Nonmetro Kansas: Kansas total less Metropolitan Areas as defined by the Office of Management and Budget (OMB; released 3/6/2020). Per 1000: For nonmoney amounts, Per 1000=(county value / county population for the same year as the data) x 1000. \$ Per capita=(county value / county population for the same year as the data). Value= . indicates missing or suppressed data or value not calculated.

Employment



BEA EMPLOYMENT: PROFESSIONAL AND TECHNICAL SERVICES

U.S. Bureau of Economic Analysis,
Regional Economic Information System
(REIS)

Year	County	State of Kansas	Non Metro Kansas	County Rank	Per 1000 or \$ Per Capita
2001	105	81,396	.	44	.
2002	114	80,684	.	40	.
2003	130	80,311	.	32	.
2004	123	85,550	.	36	.
2005	118	85,003	.	40	.
2006	120	87,381	.	40	.
2007	131	92,717	.	39	.
2008	118	95,362	.	45	.
2009	136	93,232	.	39	.
2010	125	93,037	.	42	.
2011	143	93,237	.	40	.
2012	144	95,360	.	41	.
2013	143	100,795	.	41	.
2014	138	102,210	.	44	.
2015	133	105,625	.	44	.
2016	132	108,059	.	41	.
2017	157	109,041	.	37	.
2018	176	110,513	.	35	.
2019	193	109,637	.	33	.
2020	131	108,634	.	39	.

BEA EMPLOYMENT: MANAGEMENT OF COMPANIES AND ENTERPRISES

U.S. Bureau of Economic Analysis,
Regional Economic Information System
(REIS)

Year	County	State of Kansas	Non Metro Kansas	County Rank	Per 1000 or \$ Per Capita
2001	.	13,832	.	.	.
2002	.	12,576	.	.	.
2003	.	11,135	.	.	.
2004	.	10,614	.	.	.
2005	.	11,811	.	.	.
2006	.	13,061	.	.	.
2007	.	13,398	.	.	.
2008	.	15,234	.	.	.
2009	.	14,849	.	.	.
2010	.	16,579	.	.	.
2011	.	15,343	.	.	.
2012	.	15,075	.	.	.
2013	.	16,667	.	.	.
2014	.	20,441	.	.	.
2015	.	29,604	.	.	.
2016	.	27,824	.	.	.

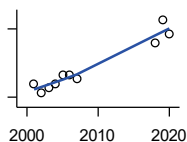
County: county value. Kansas: state value. County Rank: highest county value ranked #1. (\$000): thousands of dollars. Nonmetro Kansas: Kansas total less Metropolitan Areas as defined by the Office of Management and Budget (OMB; released 3/6/2020). Per 1000: For nonmoney amounts, Per 1000=(county value / county population for the same year as the data) x 1000. \$ Per capita=(county value / county population for the same year as the data). Value= . indicates missing or suppressed data or value not calculated.

Employment

**BEA EMPLOYMENT:
ADMINISTRATIVE AND WASTE
SERVICES**

U.S. Bureau of Economic Analysis,
Regional Economic Information System
(REIS)

Year	County	State of Kansas	Non Metro Kansas	County Rank	Per 1000 or \$ Per Capita
2001	.	81,573	.	.	.
2002	.	82,992	.	.	.
2003	.	81,298	.	.	.
2004	.	85,721	.	.	.
2005	.	89,933	.	.	.
2006	.	93,688	.	.	.
2007	.	98,865	.	.	.
2008	.	97,440	.	.	.
2009	.	92,455	.	.	.
2010	.	93,675	.	.	.
2011	.	97,969	.	.	.
2012	.	100,490	.	.	.
2013	.	104,680	.	.	.
2014	.	107,218	18,836	.	.
2015	.	103,436	18,767	.	.
2016	.	103,233	18,428	.	.



**BEA EMPLOYMENT: EDUCATIONAL
SERVICES**

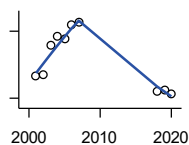
U.S. Bureau of Economic Analysis,
Regional Economic Information System
(REIS)

Year	County	State of Kansas	Non Metro Kansas	County Rank	Per 1000 or \$ Per Capita
2001	8	21,169	.	41	.
2002	6	22,173	.	69	.
2003	7	22,651	.	55	.
2004	8	21,601	.	47	.
2005	10	22,177	.	36	.
2006	10	22,438	.	35	.
2007	9	23,647	.	33	.
2008	.	24,653	.	.	.
2009	.	25,120	.	.	.
2010	.	26,071	.	.	.
2011	.	26,080	.	.	.
2012	.	26,625	.	.	.
2013	.	27,508	.	.	.
2014	.	28,708	.	.	.
2015	.	28,794	.	.	.
2016	.	27,996	.	.	.
2018	17	28,560	.	30	.
2019	22	29,586	.	32	.
2020	19	27,508	.	28	.

County: county value. Kansas: state value. County Rank: highest county value ranked #1. (\$000): thousands of dollars. Nonmetro Kansas: Kansas total less Metropolitan Areas as defined by the Office of Management and Budget (OMB; released 3/6/2020). Per 1000: For nonmoney amounts, Per 1000=(county value / county population for the same year as the data) x 1000. \$ Per capita=(county value / county population for the same year as the data). Value= . indicates missing or suppressed data or value not calculated.

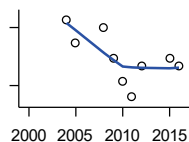
Employment

BEA EMPLOYMENT: HEALTH CARE AND SOCIAL ASSISTANCE



U.S. Bureau of Economic Analysis, Regional Economic Information System (REIS)

Year	County	State of Kansas	Non Metro Kansas	County Rank	Per 1000 or \$ Per Capita
2001	401	165,415	.	25	.
2002	402	168,198	.	26	.
2003	469	169,654	.	28	.
2004	488	172,796	.	28	.
2005	484	173,949	.	24	.
2006	515	176,919	.	22	.
2007	519	182,160	.	22	.
2008	.	186,051	.	.	.
2009	.	188,499	.	.	.
2010	.	188,383	.	.	.
2011	.	190,736	.	.	.
2012	.	192,991	.	.	.
2013	.	193,687	.	.	.
2014	.	194,632	.	.	.
2015	.	199,724	.	.	.
2016	.	201,830	.	.	.
2018	364	204,011	.	32	.
2019	369	206,646	.	31	.
2020	360	204,942	.	26	.



BEA EMPLOYMENT: ARTS, ENTERTAINMENT, AND RECREATION

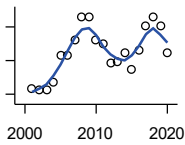
U.S. Bureau of Economic Analysis, Regional Economic Information System (REIS)

Year	County	State of Kansas	Non Metro Kansas	County Rank	Per 1000 or \$ Per Capita
2001	.	25,012	.	.	.
2002	.	25,668	.	.	.
2003	.	24,116	.	.	.
2004	46	25,355	.	39	.
2005	43	26,067	.	40	.
2006	.	26,505	.	.	.
2007	.	27,489	.	.	.
2008	45	27,501	.	39	.
2009	41	27,203	.	40	.
2010	38	27,479	.	41	.
2011	36	28,487	.	42	.
2012	40	30,729	.	40	.
2013	.	31,068	.	.	.
2014	.	32,154	.	.	.
2015	41	31,169	.	39	.
2016	40	32,373	.	37	.

County: county value. Kansas: state value. County Rank: highest county value ranked #1. (\$000): thousands of dollars. Nonmetro Kansas: Kansas total less Metropolitan Areas as defined by the Office of Management and Budget (OMB; released 3/6/2020). Per 1000: For nonmoney amounts, Per 1000=(county value / county population for the same year as the data) x 1000. \$ Per capita=(county value / county population for the same year as the data). Value= . indicates missing or suppressed data or value not calculated.

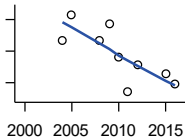
Employment

BEA EMPLOYMENT: GOVERNMENT AND GOVERNMENT ENTERPRISES



U.S. Bureau of Economic Analysis, Regional Economic Information System (REIS)

Year	County	State of Kansas	Non Metro Kansas	County Rank	Per 1000 or \$ Per Capita
2001	933	282,293	102,993	50	.
2002	931	281,427	103,581	51	.
2003	932	282,459	103,389	52	.
2004	942	283,877	103,946	51	.
2005	982	282,798	103,194	47	.
2006	982	288,372	104,103	50	.
2007	1,005	294,413	104,598	48	.
2008	1,039	298,580	104,718	45	.
2009	1,039	300,422	104,081	45	.
2010	1,006	303,875	103,382	47	.
2011	1,000	299,952	101,535	46	.
2012	972	298,068	101,180	47	.
2013	973	297,689	101,232	47	.
2014	986	296,956	100,634	44	.
2015	961	295,799	99,719	47	.
2016	990	291,536	98,520	45	.
2017	1,027	295,748	99,542	43	.
2018	1,040	298,105	99,499	43	.
2019	1,027	302,017	100,227	43	.
2020	986	292,583	96,477	43	.



BEA EMPLOYMENT: ACCOMMODATION AND FOOD SERVICES

U.S. Bureau of Economic Analysis, Regional Economic Information System (REIS)

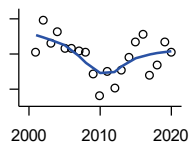
Year	County	State of Kansas	Non Metro Kansas	County Rank	Per 1000 or \$ Per Capita
2001	.	103,353	.	.	.
2002	.	103,692	.	.	.
2003	.	105,138	.	.	.
2004	177	106,694	.	48	.
2005	193	107,303	.	46	.
2006	.	109,888	.	.	.
2007	.	110,863	.	.	.
2008	177	111,092	.	44	.
2009	187	109,353	.	45	.
2010	166	108,628	.	40	.
2011	144	110,514	.	46	.
2012	161	112,574	.	43	.
2013	.	114,102	.	.	.
2014	.	115,768	.	.	.
2015	156	118,503	.	41	.
2016	149	119,764	.	43	.

County: county value. Kansas: state value. County Rank: highest county value ranked #1. (\$000): thousands of dollars. Nonmetro Kansas: Kansas total less Metropolitan Areas as defined by the Office of Management and Budget (OMB; released 3/6/2020). Per 1000: For nonmoney amounts, Per 1000=(county value / county population for the same year as the data) x 1000. \$ Per capita=(county value / county population for the same year as the data). Value= . indicates missing or suppressed data or value not calculated.

Employment

BEA EMPLOYMENT: OTHER SERVICES, EXCEPT PUBLIC ADMINISTRATION

U.S. Bureau of Economic Analysis, Regional Economic Information System (REIS)

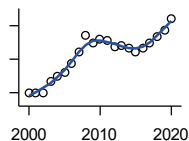


Year	County	State of Kansas	Non Metro Kansas	County Rank	Per 1000 or \$ Per Capita
2001	261	92,176	.	49	.
2002	279	95,350	.	47	.
2003	266	95,821	32,629	50	.
2004	273	95,610	.	48	.
2005	263	95,930	32,555	50	.
2006	263	96,413	.	48	.
2007	262	98,444	.	48	.
2008	261	96,705	.	47	.
2009	249	95,534	.	48	.
2010	236	93,302	.	49	.
2011	250	94,865	.	45	.
2012	241	94,977	.	48	.
2013	251	95,471	.	49	.
2014	258	97,806	.	49	.
2015	267	98,041	.	44	.
2016	271	97,219	.	44	.
2017	248	96,568	.	46	.
2018	254	98,645	.	46	.
2019	267	98,638	.	42	.
2020	261	92,245	.	41	.

Income

BEA PER CAPITA PERSONAL INCOME (\$)

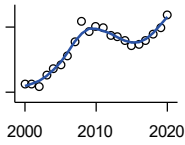
U.S. Bureau of Economic Analysis, Regional Economic Information System (REIS)



Year	County	State of Kansas	Non Metro Kansas	County Rank	Per 1000 or \$ Per Capita
2000	24,846	28,253	23,116	38	.
2001	24,931	29,112	24,576	55	.
2002	24,905	29,248	24,314	40	.
2003	28,302	30,074	26,017	33	.
2004	29,916	30,843	26,583	16	.
2005	31,158	32,545	28,356	31	.
2006	33,622	35,690	29,782	18	.
2007	37,083	38,057	32,034	20	.
2008	42,003	41,257	35,211	17	.
2009	39,886	39,431	33,876	18	.
2010	41,083	39,960	35,795	29	.
2011	40,724	43,015	39,041	55	.
2012	38,874	45,294	39,660	66	.
2013	39,185	46,174	41,747	71	.
2014	38,470	47,013	41,042	75	.
2015	37,120	47,332	40,638	86	.
2016	38,142	47,326	40,797	78	.
2017	39,991	48,756	41,314	70	.
2018	41,849	50,811	43,283	73	.
2019	43,526	52,820	44,491	66	.
2020	47,126	55,677	48,415	67	.

County: county value. Kansas: state value. County Rank: highest county value ranked #1. (\$000): thousands of dollars. Nonmetro Kansas: Kansas total less Metropolitan Areas as defined by the Office of Management and Budget (OMB; released 3/6/2020). Per 1000: For nonmoney amounts, Per 1000=(county value / county population for the same year as the data) x 1000. \$ Per capita=(county value / county population for the same year as the data). Value= . indicates missing or suppressed data or value not calculated.

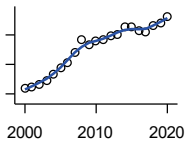
Income



**SOURCES OF PERSONAL INCOME:
TOTAL PERSONAL INCOME (\$000)**

U.S. Bureau of Economic Analysis,
Regional Economic Information System
(REIS)

Year	County	State of Kansas	Non Metro Kansas	County Rank	Per 1000 or \$ Per Capita
2000	219,316	76,105,125	22,273,838	44	24,860.1
2001	217,650	78,664,651	23,411,174	47	24,931.3
2002	214,359	79,365,190	23,000,314	47	24,905.2
2003	240,371	81,890,340	24,494,191	44	28,302.2
2004	252,698	84,335,940	24,924,467	44	29,915.7
2005	263,094	89,346,228	26,452,291	44	31,157.5
2006	284,375	98,610,188	27,661,596	43	33,622.0
2007	316,203	105,943,199	29,715,946	42	37,082.6
2008	361,978	115,852,478	32,614,565	41	42,002.6
2009	339,035	111,697,350	31,394,702	42	39,886.5
2010	351,009	114,239,828	33,291,419	43	41,125.8
2011	347,214	123,558,772	36,221,488	47	40,709.8
2012	330,392	130,948,127	36,696,759	49	38,851.4
2013	328,530	133,979,908	38,513,959	52	39,166.7
2014	319,225	136,878,718	37,680,598	52	38,456.2
2015	307,758	138,336,768	37,081,851	54	37,110.6
2016	309,180	138,533,890	36,930,885	54	38,146.8
2017	320,047	142,729,689	37,104,963	50	39,975.9
2018	335,126	148,955,739	38,589,364	51	41,875.0
2019	348,603	154,961,001	39,424,148	50	43,564.5
2020	378,189	163,462,179	42,618,591	48	46,592.2



**SOURCES OF PERSONAL INCOME:
WAGES AND SALARIES (\$000)**

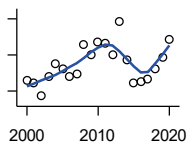
U.S. Bureau of Economic Analysis,
Regional Economic Information System
(REIS)

Year	County	State of Kansas	Non Metro Kansas	County Rank	Per 1000 or \$ Per Capita
2000	63,973	41,766,878	10,254,250	52	7,251.5
2001	64,699	43,269,734	10,518,206	51	7,411.1
2002	66,695	43,875,159	10,696,876	50	7,748.9
2003	69,132	44,488,560	10,894,971	50	8,139.9
2004	73,722	46,702,068	11,333,617	50	8,727.6
2005	78,053	48,537,956	11,614,130	49	9,243.6
2006	81,397	52,083,584	12,299,340	50	9,623.7
2007	88,194	55,442,368	13,093,908	50	10,342.9
2008	96,807	57,623,385	13,647,143	49	11,233.1
2009	92,888	55,605,578	13,199,674	50	10,928.0
2010	96,101	56,089,711	13,345,291	49	11,259.6
2011	97,186	58,104,706	13,856,458	50	11,394.8
2012	99,669	60,616,457	14,473,599	54	11,720.2
2013	100,403	61,872,023	14,781,792	53	11,969.8
2014	105,461	64,457,652	15,385,500	53	12,704.6
2015	105,527	66,729,598	15,454,485	51	12,724.8
2016	102,826	67,253,399	15,422,058	51	12,686.7
2017	101,981	68,830,861	15,731,853	51	12,738.1
2018	105,900	71,580,544	16,311,725	50	13,232.5
2019	108,215	74,404,771	16,882,299	51	13,523.5
2020	112,471	75,798,310	17,251,300	52	13,856.2

County: county value. Kansas: state value. County Rank: highest county value ranked #1. (\$000): thousands of dollars. Nonmetro Kansas: Kansas total less Metropolitan Areas as defined by the Office of Management and Budget (OMB; released 3/6/2020). Per 1000: For nonmoney amounts, Per 1000=(county value / county population for the same year as the data) x 1000. \$ Per capita=(county value / county population for the same year as the data). Value= . indicates missing or suppressed data or value not calculated.

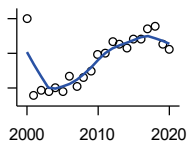
Income

**SOURCES OF PERSONAL INCOME:
PROPRIETORS-FARM (\$000)**



U.S. Bureau of Economic Analysis,
Regional Economic Information System
(REIS)

Year	County	State of Kansas	Non Metro Kansas	County Rank	Per 1000 or \$ Per Capita
2000	6,228	668,539	673,707	47	706.0
2001	4,588	779,473	769,336	62	525.5
2002	-2,865	145,064	187,033	90	-332.9
2003	8,292	1,281,076	1,195,298	68	976.3
2004	15,384	1,149,425	938,524	24	1,821.2
2005	12,210	1,609,604	1,469,139	54	1,446.0
2006	8,338	766,047	663,735	40	985.8
2007	9,233	1,131,607	1,040,350	63	1,082.8
2008	25,715	1,582,092	1,404,900	18	2,983.9
2009	20,293	1,585,995	1,390,349	28	2,387.4
2010	26,920	2,149,482	2,029,067	26	3,154.1
2011	26,368	3,188,519	2,989,880	51	3,091.6
2012	20,321	2,519,555	2,296,875	48	2,389.6
2013	38,742	4,499,190	4,158,419	48	4,618.7
2014	17,457	2,231,181	2,157,992	42	2,103.0
2015	4,635	1,300,733	1,294,370	58	558.9
2016	5,542	1,577,060	1,564,511	51	683.8
2017	6,811	838,480	838,290	38	850.7
2018	12,596	1,050,662	971,690	34	1,573.9
2019	19,008	998,038	878,247	16	2,375.4
2020	28,933	2,151,349	1,887,881	20	3,564.5



**SOURCES OF PERSONAL INCOME:
PROPRIETORS-NONFARM (\$000)**

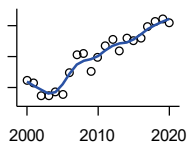
U.S. Bureau of Economic Analysis,
Regional Economic Information System
(REIS)

Year	County	State of Kansas	Non Metro Kansas	County Rank	Per 1000 or \$ Per Capita
2000	25,018	4,580,476	1,493,470	25	2,835.9
2001	13,860	4,510,530	1,855,621	53	1,587.6
2002	14,627	5,036,100	1,966,784	53	1,699.4
2003	14,458	4,719,377	1,916,735	56	1,702.3
2004	14,948	4,003,922	2,073,898	55	1,769.6
2005	14,457	4,455,294	2,200,971	61	1,712.1
2006	16,650	7,343,524	2,694,895	59	1,968.6
2007	15,233	7,280,197	2,436,574	59	1,786.4
2008	16,549	9,255,953	2,971,923	66	1,920.3
2009	17,449	9,323,551	2,858,848	60	2,052.8
2010	19,855	9,658,261	3,498,040	61	2,326.3
2011	19,974	12,196,566	4,186,007	70	2,341.9
2012	21,715	15,773,140	4,446,004	70	2,553.5
2013	21,391	16,441,660	4,492,127	69	2,550.2
2014	20,673	15,954,254	4,455,081	73	2,490.4
2015	21,993	15,536,116	4,386,172	71	2,652.0
2016	21,966	14,075,310	3,783,829	65	2,710.2
2017	23,457	15,371,957	3,908,254	68	2,929.9
2018	23,928	15,716,877	4,238,775	67	2,989.9
2019	21,289	16,705,488	3,921,051	67	2,660.5
2020	20,573	16,718,952	3,823,329	67	2,534.6

County: county value. Kansas: state value. County Rank: highest county value ranked #1. (\$000): thousands of dollars. Nonmetro Kansas: Kansas total less Metropolitan Areas as defined by the Office of Management and Budget (OMB; released 3/6/2020). Per 1000: For nonmoney amounts, Per 1000=(county value / county population for the same year as the data) x 1000. \$ Per capita=(county value / county population for the same year as the data). Value= . indicates missing or suppressed data or value not calculated.

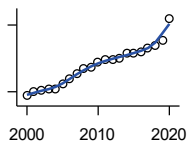
Income

**SOURCES OF PERSONAL INCOME:
DIVIDENDS,INTEREST,RENT(\$000)**



U.S. Bureau of Economic Analysis,
Regional Economic Information System
(REIS)

Year	County	State of Kansas	Non Metro Kansas	County Rank	Per 1000 or \$ Per Capita
2000	57,143	15,916,201	4,736,921	42	6,477.3
2001	56,591	15,770,830	4,699,417	43	6,482.4
2002	52,337	15,111,563	4,316,887	41	6,080.7
2003	52,185	15,370,764	4,360,311	41	6,144.5
2004	53,449	15,820,469	4,251,925	39	6,327.6
2005	52,869	17,147,069	4,485,387	40	6,261.1
2006	59,892	20,117,848	4,945,184	40	7,081.1
2007	65,593	22,269,186	5,526,219	41	7,692.4
2008	66,058	24,972,485	6,180,979	44	7,665.1
2009	60,128	21,453,879	5,308,474	43	7,073.9
2010	64,620	20,861,351	5,414,285	42	7,571.2
2011	68,433	23,387,567	5,781,075	42	8,023.6
2012	70,566	25,689,368	6,389,505	42	8,298.0
2013	66,651	24,832,212	5,984,811	42	7,946.0
2014	70,919	27,412,684	6,403,356	42	8,543.4
2015	70,019	27,244,414	6,423,685	43	8,443.1
2016	70,846	27,293,441	6,389,161	43	8,741.0
2017	74,703	28,385,472	6,700,156	43	9,330.9
2018	76,487	29,953,419	6,772,504	43	9,557.3
2019	77,156	30,820,276	6,957,987	43	9,642.1
2020	75,821	30,283,520	6,844,745	43	9,341.0



**SOURCES OF PERSONAL INCOME:
TRANSFER PAYMENTS (\$000)**

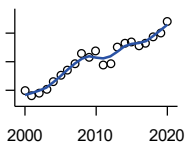
U.S. Bureau of Economic Analysis,
Regional Economic Information System
(REIS)

Year	County	State of Kansas	Non Metro Kansas	County Rank	Per 1000 or \$ Per Capita
2000	36,263	9,650,835	4,036,781	51	4,110.5
2001	40,365	10,549,124	4,355,457	49	4,623.7
2002	40,868	11,208,997	4,553,978	51	4,748.2
2003	42,320	11,709,049	4,702,911	50	4,982.9
2004	42,658	12,040,452	4,802,536	51	5,050.1
2005	46,542	12,696,735	5,059,314	50	5,511.8
2006	52,155	13,642,787	5,455,207	49	6,166.4
2007	55,767	14,686,821	5,775,024	48	6,540.0
2008	60,311	16,552,460	6,322,722	49	6,998.3
2009	62,215	18,025,603	6,790,962	50	7,319.4
2010	66,156	19,189,749	7,089,258	49	7,751.1
2011	68,705	19,625,770	7,255,825	48	8,055.5
2012	69,465	19,354,458	7,148,177	47	8,168.5
2013	70,155	19,639,358	7,185,636	48	8,363.7
2014	74,199	20,380,970	7,399,809	47	8,938.6
2015	74,286	21,116,856	7,623,577	48	8,957.7
2016	76,156	21,884,629	7,886,000	48	9,396.2
2017	79,023	22,559,744	8,062,517	47	9,870.5
2018	81,787	23,628,033	8,393,617	47	10,219.5
2019	86,517	25,050,174	8,845,371	47	10,811.9
2020	105,858	32,319,421	11,074,190	47	13,041.5

County: county value. Kansas: state value. County Rank: highest county value ranked #1. (\$000): thousands of dollars. Nonmetro Kansas: Kansas total less Metropolitan Areas as defined by the Office of Management and Budget (OMB; released 3/6/2020). Per 1000: For nonmoney amounts, Per 1000=(county value / county population for the same year as the data) x 1000. \$ Per capita=(county value / county population for the same year as the data). Value= . indicates missing or suppressed data or value not calculated.

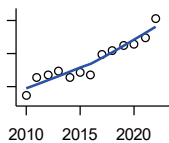
Income

**SOURCES OF PERSONAL INCOME:
LESS SOCIAL INSURANCE (\$000)**



U.S. Bureau of Economic Analysis,
Regional Economic Information System
(REIS)

Year	County	State of Kansas	Non Metro Kansas	County Rank	Per 1000 or \$ Per Capita
2000	11,868	6,655,813	1,663,044	50	1,345.3
2001	11,171	6,869,934	1,740,915	51	1,279.6
2002	11,625	7,008,361	1,778,636	50	1,350.6
2003	12,183	7,172,781	1,821,858	50	1,434.5
2004	13,122	7,556,560	1,904,014	50	1,553.5
2005	14,109	7,911,241	1,986,907	50	1,670.9
2006	14,740	8,406,937	2,090,313	51	1,742.7
2007	15,714	8,806,941	2,180,587	51	1,842.9
2008	17,068	9,207,010	2,299,399	50	1,980.5
2009	16,633	9,002,859	2,248,703	51	1,956.8
2010	17,485	9,235,760	2,321,191	50	2,048.6
2011	15,599	8,515,986	2,139,991	50	1,828.9
2012	15,745	8,816,128	2,195,919	52	1,851.5
2013	18,012	10,225,399	2,540,439	53	2,147.4
2014	18,646	10,609,601	2,635,009	52	2,246.2
2015	18,694	11,028,204	2,663,038	51	2,254.2
2016	18,303	10,915,915	2,604,579	53	2,258.2
2017	18,530	11,224,218	2,669,954	51	2,314.5
2018	19,497	11,749,229	2,797,106	50	2,436.2
2019	19,996	12,245,451	2,889,336	51	2,498.9
2020	21,588	12,715,152	3,027,656	51	2,659.6



HUD MEDIAN FAMILY INCOME

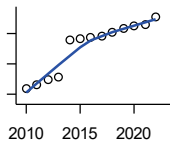
U.S. Department of Housing and Urban
Development (HUD)

Year	County	State of Kansas	Non Metro Kansas	County Rank	Per 1000 or \$ Per Capita
2010	52,200	63,100	.	53	.
2011	57,800	64,300	.	39	.
2012	58,600	65,200	.	39	.
2013	59,700	64,800	.	42	.
2014	57,700	64,400	.	52	.
2015	59,200	66,300	.	56	.
2016	58,700	66,700	.	51	.
2017	64,700	68,500	.	31	.
2018	66,000	73,100	.	38	.
2019	67,300	75,200	.	36	.
2020	67,800	76,500	.	42	.
2021	69,700	77,400	.	42	.
2022	75,600	87,800	.	42	.

County: county value. Kansas: state value. County Rank: highest county value ranked #1. (\$000): thousands of dollars. Nonmetro Kansas: Kansas total less Metropolitan Areas as defined by the Office of Management and Budget (OMB; released 3/6/2020). Per 1000: For nonmoney amounts, Per 1000=(county value / county population for the same year as the data) x 1000. \$ Per capita=(county value / county population for the same year as the data). Value= . indicates missing or suppressed data or value not calculated.

Income

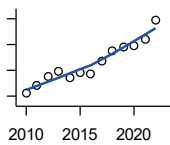
HUD 30% LOW-TO-MEDIUM INCOME (LMI) LIMIT - 4 PERSONS



U.S. Department of Housing and Urban Development (HUD)

Year	County	State of Kansas	Non Metro Kansas	County Rank	Per 1000 or \$ Per Capita
2010	15,850	.	.	105	.
2011	16,600	.	.	52	.
2012	17,450	.	.	42	.
2013	17,900	.	.	38	.
2014	23,850	.	.	105	.
2015	24,250	.	.	105	.
2016	24,300	.	.	105	.
2017	24,600	.	.	105	.
2018	25,100	21,950	.	105	.
2019	25,750	22,550	.	105	.
2020	26,200	22,950	.	105	.
2021	26,500	23,200	.	105	.
2022	27,750	25,950	.	105	.

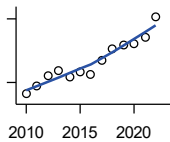
HUD 50% LOW-TO-MEDIUM INCOME (LMI) LIMIT - 4 PERSONS



U.S. Department of Housing and Urban Development (HUD)

Year	County	State of Kansas	Non Metro Kansas	County Rank	Per 1000 or \$ Per Capita
2010	26,400	.	.	105	.
2011	27,700	.	.	52	.
2012	29,050	.	.	42	.
2013	29,850	.	.	38	.
2014	28,850	.	.	53	.
2015	29,600	.	.	56	.
2016	29,350	.	.	53	.
2017	31,400	.	.	38	.
2018	33,000	36,550	.	38	.
2019	33,650	37,600	.	36	.
2020	33,900	38,250	.	41	.
2021	34,850	38,700	.	39	.
2022	37,800	43,300	.	41	.

HUD 80% LOW-TO-MEDIUM INCOME (LMI) LIMIT - 4 PERSONS



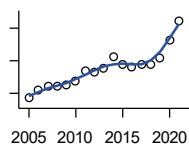
U.S. Department of Housing and Urban Development (HUD)

Year	County	State of Kansas	Non Metro Kansas	County Rank	Per 1000 or \$ Per Capita
2010	42,250	.	.	105	.
2011	44,300	.	.	52	.
2012	46,500	.	.	42	.
2013	47,750	.	.	38	.
2014	46,150	.	.	53	.
2015	47,350	.	.	56	.
2016	46,950	.	.	53	.
2017	50,200	.	.	38	.
2018	52,800	58,500	.	38	.
2019	53,850	60,150	.	36	.
2020	54,250	61,200	.	41	.
2021	55,750	61,900	.	39	.
2022	60,500	69,250	.	41	.

County: county value. Kansas: state value. County Rank: highest county value ranked #1. (\$000): thousands of dollars. Nonmetro Kansas: Kansas total less Metropolitan Areas as defined by the Office of Management and Budget (OMB; released 3/6/2020). Per 1000: For nonmoney amounts, Per 1000=(county value / county population for the same year as the data) x 1000. \$ Per capita=(county value / county population for the same year as the data). Value= . indicates missing or suppressed data or value not calculated.

Banking

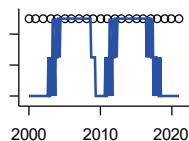
BANK DEPOSITS (1984-2004 in thousands; 2005- in millions)



Federal Deposit Insurance Corporation, Data Book, Operating Banks and Branches

Year	County	State of Kansas	Non Metro Kansas	County Rank	Per 1000 or \$ Per Capita
2005	174	48,304	17,000	47	20.6
2006	184	50,668	17,586	45	21.8
2007	189	54,057	18,517	48	22.2
2008	188	57,869	19,628	49	21.8
2009	191	57,763	20,031	48	22.5
2010	195	60,031	20,678	49	22.8
2011	208	61,094	21,347	49	24.4
2012	206	62,910	22,481	53	24.2
2013	210	64,547	22,795	54	25.0
2014	225	66,538	23,338	52	27.1
2015	215	68,160	23,367	54	25.9
2016	213	70,381	23,420	54	26.3
2017	215	73,329	23,928	53	26.9
2018	216	74,623	24,100	54	27.0
2019	224	76,436	24,488	53	28.0
2020	246	88,563	27,547	51	30.3
2021	269	97,055	30,122	51	33.3

NUMBER OF BANKS



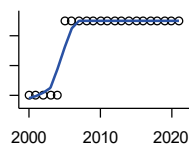
Federal Deposit Insurance Corporation, Data Book, Operating Banks and Branches

Year	County	State of Kansas	Non Metro Kansas	County Rank	Per 1000 or \$ Per Capita
2000	5	410	145	65	.
2001	5	410	136	66	.
2002	5	404	129	65	.
2003	5	397	121	63	.
2004	5	394	112	62	.
2005	5	388	101	60	.
2006	5	385	94	60	.
2007	5	382	91	60	.
2008	5	378	82	60	.
2009	5	374	79	60	.
2010	5	367	70	59	.
2011	5	359	61	59	.
2012	5	348	57	58	.
2013	5	332	45	58	.
2014	5	329	41	58	.
2015	5	320	31	55	.
2016	5	314	24	55	.
2017	5	301	13	55	.
2018	5	289	7	55	.
2019	5	279	3	55	.
2020	5	271	-1	55	.
2021	5	270	-6	55	.

County: county value. Kansas: state value. County Rank: highest county value ranked #1. (\$000): thousands of dollars. Nonmetro Kansas: Kansas total less Metropolitan Areas as defined by the Office of Management and Budget (OMB; released 3/6/2020). Per 1000: For nonmoney amounts, Per 1000=(county value / county population for the same year as the data) x 1000. \$ Per capita=(county value / county population for the same year as the data). Value= . indicates missing or suppressed data or value not calculated.

Banking

NUMBER OF BANKING OFFICES

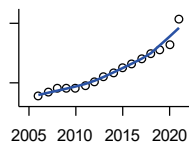


Federal Deposit Insurance Corporation, Data Book, Operating Banks and Branches

Year	County	State of Kansas	Non Metro Kansas	County Rank	Per 1000 or \$ Per Capita
2000	7	1,398	703	61	.
2001	7	1,424	708	59	.
2002	7	1,447	704	59	.
2003	7	1,461	708	60	.
2004	7	1,485	708	60	.
2005	8	1,505	711	54	.
2006	8	1,518	711	54	.
2007	8	1,543	717	55	.
2008	8	1,556	717	55	.
2009	8	1,569	716	55	.
2010	8	1,561	710	53	.
2011	8	1,559	707	52	.
2012	8	1,533	702	51	.
2013	8	1,518	696	52	.
2014	8	1,491	685	50	.
2015	8	1,472	675	49	.
2016	8	1,465	668	49	.
2017	8	1,452	666	49	.
2018	8	1,439	660	49	.
2019	8	1,439	663	48	.
2020	8	1,416	653	48	.
2021	8	1,392	641	48	.

Government

TANGIBLE ASSESSED VALUATION (KDoR, million\$; 2006-)



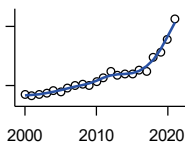
Kansas Department of Revenue, Division of Property Valuation, Statistical Report of Property Assessment and Taxation

Year	County	State of Kansas	Non Metro Kansas	County Rank	Per 1000 or \$ Per Capita
2006	66.3	28,964.3	10,316.9	67	7.8
2007	70.2	30,086.9	10,335.9	65	8.2
2008	74.5	31,000.3	10,856.9	64	8.6
2009	74.2	30,312.3	10,555.6	60	8.7
2010	74.7	29,450.2	10,158.7	62	8.8
2011	77.1	29,963.6	10,572.3	65	9.0
2012	81.5	30,382.9	10,876.2	62	9.6
2013	86.5	30,850.2	11,044.4	62	10.3
2014	89.9	31,783.0	11,388.9	63	10.8
2015	94.9	32,335.7	11,037.8	57	11.4
2016	99.6	33,156.3	10,889.6	50	12.3
2017	103.8	34,754.5	11,439.0	52	13.0
2018	109.1	36,566.1	11,907.1	51	13.6
2019	113.6	38,255.2	12,336.7	53	14.2
2020	118.9	39,333.9	12,219.3	49	14.7
2021	144.3	40,812.0	12,601.5	43	17.9

County: county value. Kansas: state value. County Rank: highest county value ranked #1. (\$000): thousands of dollars. Nonmetro Kansas: Kansas total less Metropolitan Areas as defined by the Office of Management and Budget (OMB; released 3/6/2020). Per 1000: For nonmoney amounts, Per 1000=(county value / county population for the same year as the data) x 1000. \$ Per capita=(county value / county population for the same year as the data). Value= . indicates missing or suppressed data or value not calculated.

Government

SALES TAX COLLECTIONS (\$)

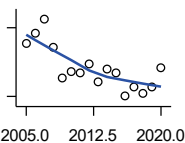


Kansas Department of Revenue. Use tax collections included beginning in calendar year 2018.

Year	County	State of Kansas	Non Metro Kansas	County Rank	Per 1000 or \$ Per Capita
2000	3,101,493	1,475,831,808	432,761,608	47	351,563.5
2001	2,916,113	1,481,026,688	426,316,284	47	334,033.6
2002	3,094,888	1,561,316,864	443,986,950	48	359,578.0
2003	3,168,112	1,626,782,976	461,658,700	48	373,026.3
2004	3,527,716	1,691,899,008	480,309,725	48	417,629.5
2005	3,370,260	1,744,980,352	497,494,867	50	399,130.7
2006	3,698,322	1,851,694,720	532,233,047	49	437,257.3
2007	3,957,135	1,917,546,752	559,319,583	49	464,071.1
2008	4,179,047	1,990,655,744	589,725,773	49	484,920.8
2009	3,955,046	1,866,223,078	548,627,132	49	465,299.5
2010	4,421,478	2,075,193,413	617,409,982	50	518,040.8
2011	4,838,257	2,347,193,367	702,671,534	51	567,271.3
2012	5,369,946	2,456,292,294	740,196,106	49	631,461.1
2013	5,008,725	2,489,204,048	746,226,565	54	597,129.9
2014	5,154,624	2,539,886,774	760,474,019	55	620,964.2
2015	5,159,756	2,642,374,740	750,090,163	50	622,182.0
2016	5,515,730	2,732,611,350	749,030,133	47	680,534.2
2017	5,379,129	2,726,104,521	744,246,491	47	671,887.2
2018	6,806,892	3,277,299,125	893,564,480	47	850,542.5
2019	7,356,859	3,395,631,405	939,607,762	48	919,377.6
2020	8,651,587	3,489,306,791	984,218,931	44	1,065,860.2
2021	10,767,956	3,981,293,227	1,098,391,422	41	1,333,162.8

Crime

CRIME INDEX OFFENSES



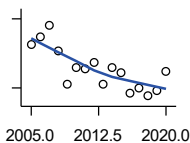
Kansas Bureau of Investigation, Note: Data are aggregated from reports by individual police departments and subject to be incomplete.

Year	County	State of Kansas	Non Metro Kansas	County Rank	Per 1000 or \$ Per Capita
2005	215	111,856	31,630	41	25.5
2006	237	110,032	.	35	28.0
2007	269	111,035	29,921	39	31.5
2008	208	93,996	27,342	38	24.1
2009	140	98,757	27,620	47	16.5
2010	154	98,354	26,909	43	18.0
2011	152	96,638	25,765	44	17.8
2012	170	98,914	26,963	43	20.0
2013	131	93,054	24,488	48	15.6
2014	160	86,323	23,341	44	19.3
2015	150	88,590	21,580	43	18.1
2016	101	90,589	21,565	53	12.5
2017	121	93,091	22,622	49	15.1
2018	106	92,062	20,325	52	13.2
2019	120	87,008	18,547	46	15.0
2020	163	87,346	17,762	37	20.1

County: county value. Kansas: state value. County Rank: highest county value ranked #1. (\$000): thousands of dollars. Nonmetro Kansas: Kansas total less Metropolitan Areas as defined by the Office of Management and Budget (OMB; released 3/6/2020). Per 1000: For nonmoney amounts, Per 1000=(county value / county population for the same year as the data) x 1000. \$ Per capita=(county value / county population for the same year as the data). Value= . indicates missing or suppressed data or value not calculated.

Crime

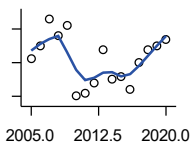
PROPERTY CRIMES



Kansas Bureau of Investigation, Note: Data are aggregated from reports by individual police departments and subject to be incomplete.

Year	County	State of Kansas	Non Metro Kansas	County Rank	Per 1000 or \$ Per Capita
2005	194	101,414	29,042	42	23.0
2006	212	99,110	.	35	25.1
2007	236	99,632	26,856	38	27.7
2008	180	83,964	24,367	39	20.9
2009	109	87,658	24,825	52	12.8
2010	144	87,926	24,133	41	16.9
2011	141	86,547	23,274	43	16.5
2012	156	88,707	24,220	42	18.3
2013	107	83,551	22,028	52	12.8
2014	145	76,794	20,858	44	17.5
2015	134	77,997	19,138	42	16.2
2016	89	79,549	19,207	53	11.0
2017	101	81,349	19,981	48	12.6
2018	82	79,695	17,769	52	10.2
2019	95	74,314	15,892	47	11.9
2020	136	73,450	15,100	39	16.8

VIOLENT CRIMES



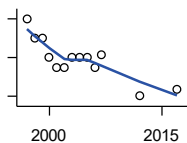
Kansas Bureau of Investigation, Note: Data are aggregated from reports by individual police departments and subject to be incomplete.

Year	County	State of Kansas	Non Metro Kansas	County Rank	Per 1000 or \$ Per Capita
2005	21	10,442	2,588	43	2.5
2006	25	10,922	.	37	3.0
2007	33	11,403	3,065	37	3.9
2008	28	10,032	2,975	37	3.2
2009	31	11,099	2,795	41	3.6
2010	10	10,428	2,776	58	1.2
2011	11	10,091	2,491	58	1.3
2012	14	10,207	2,743	53	1.6
2013	24	9,503	2,460	38	2.9
2014	15	9,529	2,483	51	1.8
2015	16	10,593	2,442	49	1.9
2016	12	11,040	2,358	51	1.5
2017	20	11,742	2,641	41	2.5
2018	24	12,367	2,556	41	3.0
2019	25	12,694	2,655	38	3.1
2020	27	13,896	2,662	38	3.3

County: county value. Kansas: state value. County Rank: highest county value ranked #1. (\$000): thousands of dollars. Nonmetro Kansas: Kansas total less Metropolitan Areas as defined by the Office of Management and Budget (OMB; released 3/6/2020). Per 1000: For nonmoney amounts, Per 1000=(county value / county population for the same year as the data) x 1000. \$ Per capita=(county value / county population for the same year as the data). Value= . indicates missing or suppressed data or value not calculated.

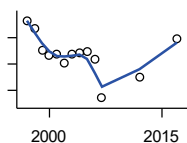
Agriculture

NUMBER OF FARMS



Kansas Agricultural Statistics, Kansas Farm Facts

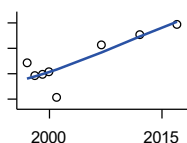
Year	County	State of Kansas	Non Metro Kansas	County Rank	Per 1000 or \$ Per Capita
1997	620	64,000	47,900	44	68.9
1998	600	65,000	48,850	44	67.4
1999	600	65,000	48,850	44	68.0
2000	580	64,000	48,030	46	65.7
2001	570	63,000	47,200	46	65.3
2002	570	63,000	47,200	46	66.2
2003	580	64,500	48,150	46	68.3
2004	580	64,500	48,150	46	68.7
2005	580	64,500	48,150	46	68.7
2006	570	64,000	47,650	46	67.4
2007	583	65,531	48,179	43	68.4
2012	541	61,773	45,655	45	63.6
2017	547	58,569	42,404	40	68.3



TOTAL ACRES HARVESTED

Kansas Agricultural Statistics, Kansas Farm Facts

Year	County	State of Kansas	Non Metro Kansas	County Rank	Per 1000 or \$ Per Capita
1997	252,500	22,846,000	19,430,580	30	28,040.0
1998	247,200	22,143,500	18,943,650	32	27,759.7
1999	230,900	21,708,900	18,581,750	37	26,152.5
2000	226,610	21,639,000	18,528,870	40	25,686.9
2001	227,800	21,847,900	18,689,750	41	26,093.9
2002	220,720	20,230,400	17,089,120	33	25,644.2
2003	227,900	21,827,700	18,661,920	42	26,833.9
2004	228,310	20,876,900	17,721,500	35	27,028.5
2005	229,000	21,936,500	18,807,930	40	27,119.8
2006	223,700	21,412,700	18,291,120	40	26,448.3
2007	194,071	19,886,655	17,164,743	47	22,759.6
2012	209,664	21,043,596	17,966,843	45	24,654.8
2017	239,122	21,837,465	18,543,057	32	29,867.8



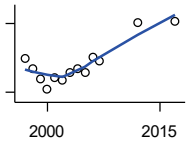
VALUE: LIVESTOCK AND POULTRY (\$000)

Kansas Agricultural Statistics, Kansas Farm Facts

Year	County	State of Kansas	Non Metro Kansas	County Rank	Per 1000 or \$ Per Capita
1997	24,417	2,806,445	2,500,305	34	2,711.5
1998	19,325	2,670,432	2,378,007	47	2,170.1
1999	19,687	2,849,061	2,554,528	49	2,229.8
2000	20,955	2,901,469	2,609,032	44	2,375.3
2001	10,626	2,693,274	2,437,187	82	1,217.2
2007	31,121	9,525,971	.	60	3,649.7
2012	35,366	11,476,571	10,883,216	56	4,158.7
2017	39,334	12,322,289	.	55	4,913.1

County: county value. Kansas: state value. County Rank: highest county value ranked #1. (\$000): thousands of dollars. Nonmetro Kansas: Kansas total less Metropolitan Areas as defined by the Office of Management and Budget (OMB; released 3/6/2020). Per 1000: For nonmoney amounts, Per 1000=(county value / county population for the same year as the data) x 1000. \$ Per capita=(county value / county population for the same year as the data). Value= . indicates missing or suppressed data or value not calculated.

Agriculture



VALUE:FIELD CROPS (\$000)
EXCLUDING GOVERNMENT
PROGRAM PAYMENTS

Kansas Agricultural Statistics, Kansas
Farm Facts

Year	County	State of Kansas	Non Metro Kansas	County Rank	Per 1000 or \$ Per Capita
1997	49,113	4,474,942	3,800,365	35	5,454.0
1998	39,994	3,594,319	3,124,409	35	4,491.2
1999	31,305	3,118,193	2,728,319	42	3,545.7
2000	22,957	2,915,660	2,540,052	52	2,602.2
2001	32,982	3,283,117	2,857,136	40	3,778.0
2002	29,965	3,011,855	2,560,580	42	3,481.5
2003	36,741	3,623,255	3,150,629	41	4,326.0
2004	40,117	3,445,688	2,896,603	33	4,749.3
2005	37,284	3,678,123	3,182,677	39	4,415.4
2006	50,043	4,308,716	3,684,132	38	5,916.6
2007	47,769	4,887,212	.	44	5,602.1
2012	80,502	6,983,993	6,044,551	31	9,466.4
2017	81,842	6,460,437	.	24	10,222.6

County: county value. Kansas: state value. County Rank: highest county value ranked #1. (\$000): thousands of dollars. Nonmetro Kansas: Kansas total less Metropolitan Areas as defined by the Office of Management and Budget (OMB; released 3/6/2020). Per 1000: For nonmoney amounts, Per 1000=(county value / county population for the same year as the data) x 1000. \$ Per capita=(county value / county population for the same year as the data). Value= . indicates missing or suppressed data or value not calculated.