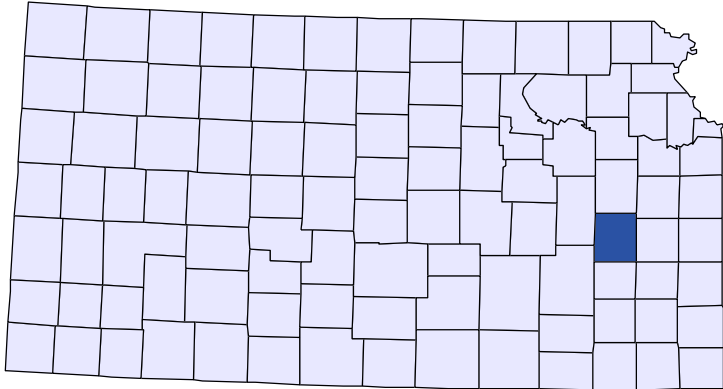




# Kansas County Profiles

## Coffey County



The University  
of Kansas

Institute for Policy  
& Social Research

**KU** INSTITUTE FOR POLICY  
& SOCIAL RESEARCH  

---

The University of Kansas

1541 Lilac Lane, Rm. 607  
Blake Hall  
Lawrence, KS 66045-3129

## Foreword

The Kansas County Profile Report is published by the Institute for Policy & Social Research (IPSR) at the University of Kansas with support from the KU University Center project.\* Special thanks to Xanthippe Wedel, senior research data engineer, who compiles and updates the county profiles and Genna Hurd, associate researcher, who provides editorial review.

County reports can be generated for any county in Kansas by simply clicking on the county from the web site:

<https://ipsr.ku.edu/ksdata/kcced/profiles/>

The Kansas County Profile Report contains 12 categories of information: Population, Vital Statistics and Health, Housing, Education, Social Environment, Business, Employment, Income, Banking, Government, Crime, and Agriculture. For more information about Kansas, please refer to the Kansas Statistical Abstract, available online at:

<https://ipsr.ku.edu/ksdata/ksah/>

We are always looking for ways to improve the Kansas County Profile Report and we welcome your suggestions and comments. Please address any correspondence to the Institute for Policy & Social Research, The University of Kansas, 607 Blake Hall, 1541 Lilac Lane, Lawrence, Kansas 66045-3129, e-mail [ipsr@ku.edu](mailto:ipsr@ku.edu) or call 785-864-3701.

*\*The KU University Center is a collaborative effort led by the Institute for Policy & Social Research at the University of Kansas. This project is supported by the Economic Development Administration, U.S. Department of Commerce, through its University Center Program.*

*The mission of EDA is to lead the federal economic development agenda by promoting innovation and competitiveness, preparing American regions for growth and success in the worldwide economy.*

## Kansas County Profiles Table of Contents

<b>Population</b>	
Total Population (Decennial Census)	1
Estimated Population (Current Population Reports)	2
Urban Population	2
Rural Population	3
Net Migration (Decade Ending...)	3
Median Age	3
<b>Population (Age Groups)</b>	
Population Under 18 (Decennial Census)	3
Population Age 18 and Over (Decennial Census)	4
Population Age 65 and Over (Decennial Census)	4
Population Age 85 and Over (Decennial Census)	4
<b>Vital Statistics and Health</b>	
Live Births	5
Deaths	5
Marriages	6
Divorces and Annulments	6
Physicians: M.D. Physicians	7
Physicians: D.O. Physicians	7
Dentists	8
Number of Hospitals	8
Number of Hospital Beds	9
<b>Housing</b>	
Housing Units (Decennial Census)	9
Housing Units (Estimated)	10
Occupied Housing Units	10
Owner Occupied Housing Units	10
Renter Occupied Housing Units	11
Vacant Housing Units	11
Median Value (\$): Owner Occupied Housing Units	11
Median Contract Rent (\$)	12
Fair Market Rent: 2 Bedrooms	12
<b>Education</b>	
Population Age 25 and Over	13
Percent of Population 25+ with High School or Higher Education	13
Percent of Population 25+ with Bachelors Degree or Higher Education	14
Public School Enrollment (FTE- School Year Beginning...)	14
Pupil/Teacher Ratio (School Year Beginning...)	15

## Kansas County Profiles Table of Contents

### Social Environment

Total Child Care Facilities	15
Preschools	16
Food Stamp Beneficiaries	16
Percent of Population Receiving Food Stamps	17
Estimated Number of People in Poverty	17
Estimated Percent of People in Poverty	18
Estimated Number of Related Children Age 5 to 17 in Families in Poverty	18
Estimated Percent of Related Children Age 5 to 17 in Families in Poverty	19
Estimated Number Under 18 in Poverty	19
Estimated Percent Under 18 in Poverty	20

### Business

Establishments: Total	21
Establishments: 1-19 Employees	22
Establishments: 20-99 Employees	22
Establishments: 100-499 Employees	23
Establishments: 500 or More Employees	23
Establishments: Forestry, Fishing, Hunting, and Ag Support	24
Establishments: Mining	24
Establishments: Utilities	25
Establishments: Construction	25
Establishments: Manufacturing	26
Establishments: Wholesale Trade	26
Establishments: Retail Trade	27
Establishments: Transportation and Warehousing	27
Establishments: Information	28
Establishments: Finance and Insurance	28
Establishments: Real Estate, Rental, and Leasing	29
Establishments: Professional, Scientific, and Technical Services	29
Establishments: Management of Companies and Enterprises	30
Establishments: Admin, Support, Waste Management, and Remediation	30
Establishments: Educational Services	31
Establishments: Health Care and Social Assistance	31
Establishments: Arts, Entertainment, and Recreation	32
Establishments: Accommodation and Food Services	32
Establishments: Other Services	33

## Kansas County Profiles Table of Contents

<b>Business</b>	
Total Annual Payroll (\$000)	34
Total Annual Payroll (\$000): Forestry, Fishing, Hunting, and Ag Support	35
Total Annual Payroll (\$000): Mining	35
Total Annual Payroll (\$000): Utilities	36
Total Annual Payroll (\$000): Construction	36
Total Annual Payroll (\$000): Manufacturing	37
Total Annual Payroll (\$000): Wholesale Trade	37
Total Annual Payroll (\$000): Retail Trade	38
Total Annual Payroll (\$000): Transportation and Warehousing	38
Total Annual Payroll (\$000): Information	39
Total Annual Payroll (\$000): Finance and Insurance	39
Total Annual Payroll (\$000): Real Estate, Rental, and Leasing	40
Total Annual Payroll (\$000): Professional, Scientific, and Technical Services	40
Total Annual Payroll (\$000): Management of Companies and Enterprises	41
Total Annual Payroll (\$000): Admin, Support, Waste Management, and Remediation	41
Total Annual Payroll (\$000): Educational Services	42
Total Annual Payroll (\$000): Health Care and Social Assistance	42
Total Annual Payroll (\$000): Arts, Entertainment, and Recreation	43
Total Annual Payroll (\$000): Accommodation and Food Services	43
Total Annual Payroll (\$000): Other Services	44
Nominal Taxable Retail Sales (Million\$)	44
Retail Pull Factor	45
<b>Employment</b>	
Civilian Labor Force (BLS - Place of Residence)	46
Employed (BLS - Place of Residence)	47
Unemployed (BLS - Place of Residence)	48
Unemployment Rate (BLS - Place of Residence)	49
BEA Employment: Total (Place of Work)	49
BEA Employment: Farm	50
BEA Employment: Non-Farm	50
Average Wage per Job (\$)	51
BEA Employment: Forestry, Fishing, Hunting, and Ag Support	51
BEA Employment: Mining	52
BEA Employment: Utilities	52
BEA Employment: Construction	53
BEA Employment: Manufacturing	53
BEA Employment: Wholesale Trade	54
BEA Employment: Retail Trade	54
BEA Employment: Transportation and Warehousing	55
BEA Employment: Information	55
BEA Employment: Finance and Insurance	56
BEA Employment: Real Estate, Rental, and Leasing	56
BEA Employment: Professional and Technical Services	57
BEA Employment: Management of Companies and Enterprises	57
BEA Employment: Administrative and Waste Services	58
BEA Employment: Educational Services	58
BEA Employment: Health Care and Social Assistance	59
BEA Employment: Arts, Entertainment, and Recreation	59
BEA Employment: Government and Government Enterprises	60
BEA Employment: Accommodation and Food Services	60
BEA Employment: Other Services, Except Public Administration	61

## Kansas County Profiles Table of Contents

### Income

BEA Per Capita Personal Income (\$)	61
Sources of Personal Income: Total Personal Income (\$000)	62
Sources of Personal Income: Wages And Salaries (\$000)	62
Sources of Personal Income: Proprietors-Farm (\$000)	63
Sources of Personal Income: Proprietors-Nonfarm (\$000)	63
Sources of Personal Income: Dividends, Interest, Rent (\$000)	64
Sources of Personal Income: Transfer Payments (\$000)	64
Sources of Personal Income: Less Social Insurance (\$000)	65
HUD Median Family Income	65
HUD 30% Low-To-Medium Income (LMI) Limit - 4 Persons	66
HUD 50% Low-To-Medium Income (LMI) Limit - 4 Persons	66
HUD 80% Low-To-Medium Income (LMI) Limit - 4 Persons	66

### Banking

Bank Deposits (\$000)	67
Number of Banks	67
Number of Banking Offices	68

### Government

Tangible Assessed Valuation (million\$)	68
Sales Tax Collections	69

### Crime

Crime Index Offenses	69
Property Crimes	70
Violent Crimes	70

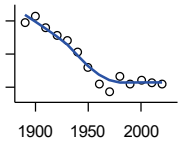
### Agriculture

Number of Farms	71
Total Acres Harvested	71
Value: Livestock and Poultry (\$000)	71
Value: Field Crops (\$000) Excluding Government Program Payments	72

**Population**

**DECENNIAL CENSUS:TOTAL POPULATION**

U.S. Census Bureau: Decennial Census

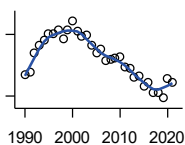


Year	County	State of Kansas	Non Metro Kansas	County Rank	Per 1000 or \$ Per Capita
1890	15,856	1,427,096	968,413	39	.
1900	16,643	1,470,495	981,206	39	.
1910	15,205	1,690,949	1,138,294	44	.
1920	14,254	1,769,257	1,153,525	46	.
1930	13,653	1,880,999	1,180,056	48	.
1940	12,278	1,801,028	1,097,216	49	.
1950	10,408	1,905,299	1,046,823	51	.
1960	8,403	2,178,611	1,021,510	59	.
1970	7,397	2,246,578	958,104	61	.
1980	9,370	2,363,679	980,085	46	.
1990	8,404	2,477,574	939,416	46	.
2000	8,865	2,688,418	959,507	46	.
2010	8,601	2,853,118	929,981	46	.
2020	8,360	2,937,880	892,006	46	.

County: county value. Kansas: state value. County Rank: highest county value ranked #1. (\$000): thousands of dollars. Nonmetro Kansas: Kansas total less Metropolitan Areas as defined by the Office of Management and Budget (OMB; released 3/6/2020). Per 1000: For nonmoney amounts, Per 1000=(county value / county population for the same year as the data) x 1000. \$ Per capita=(county value / county population for the same year as the data). Value= . indicates missing or suppressed data or value not calculated.

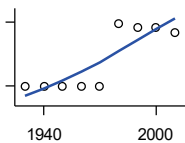
Population

ESTIMATED POPULATION



U.S. Census Bureau

Year	County	State of Kansas	Non Metro Kansas	County Rank	Per 1000 or \$ Per Capita
1990	8,408	2,481,349	938,607	46	.
1991	8,428	2,498,722	938,965	46	.
1992	8,616	2,532,394	942,759	46	.
1993	8,697	2,556,547	947,515	46	.
1994	8,740	2,580,513	952,178	46	.
1995	8,812	2,601,007	957,771	46	.
1996	8,808	2,614,554	959,455	47	.
1997	8,841	2,635,292	960,225	47	.
1998	8,762	2,660,598	960,569	47	.
1999	8,839	2,678,338	960,704	46	.
2000	8,932	2,693,681	959,230	46	.
2001	8,828	2,702,162	952,607	46	.
2002	8,784	2,713,535	945,985	46	.
2003	8,795	2,723,004	941,474	46	.
2004	8,694	2,734,373	937,623	46	.
2005	8,622	2,745,299	932,852	46	.
2006	8,652	2,762,931	928,809	46	.
2007	8,542	2,783,785	927,643	46	.
2008	8,563	2,808,076	926,248	47	.
2009	8,566	2,832,704	926,755	46	.
2010	8,585	2,858,190	930,028	46	.
2011	8,487	2,869,225	927,675	47	.
2012	8,467	2,885,257	925,152	47	.
2013	8,377	2,893,212	922,383	47	.
2014	8,394	2,900,475	917,854	46	.
2015	8,291	2,909,011	912,199	47	.
2016	8,339	2,910,844	905,099	46	.
2017	8,228	2,908,718	897,981	46	.
2018	8,232	2,911,359	892,656	46	.
2019	8,179	2,913,314	887,455	46	.
2020	8,370	2,935,880	889,750	46	.
2021	8,338	2,934,582	886,438	46	.



URBAN POPULATION

U.S. Census Bureau: Decennial Census

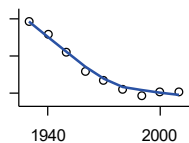
Year	County	State of Kansas	Non Metro Kansas	County Rank	Per 1000 or \$ Per Capita
1930	0	729,834	336,666	105	.
1940	0	753,941	349,228	105	.
1950	0	993,220	398,923	105	.
1960	0	1,328,741	457,447	105	.
1970	0	1,484,870	450,543	105	.
1980	2,901	1,575,899	474,769	55	.
1990	2,735	1,712,564	464,205	55	.
2000	2,739	1,920,081	488,011	56	.
2010	2,503	2,116,961	485,780	59	.

County: county value. Kansas: state value. County Rank: highest county value ranked #1. (\$000): thousands of dollars. Nonmetro Kansas: Kansas total less Metropolitan Areas as defined by the Office of Management and Budget (OMB; released 3/6/2020). Per 1000: For nonmoney amounts, Per 1000=(county value / county population for the same year as the data) x 1000. \$ Per capita=(county value / county population for the same year as the data). Value= . indicates missing or suppressed data or value not calculated.



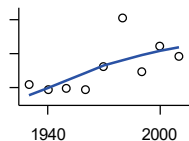
**Population**

**RURAL POPULATION**



U.S. Census Bureau

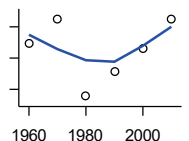
Year	County	State of Kansas	Non Metro Kansas	County Rank	Per 1000 or \$ Per Capita
1930	13,653	1,151,165	843,390	28	.
1940	12,278	1,047,087	747,988	28	.
1950	10,408	912,079	647,900	31	.
1960	8,403	849,870	564,063	37	.
1970	7,397	761,708	509,972	39	.
1980	6,469	787,780	505,873	45	.
1990	5,669	765,010	475,211	48	.
2000	6,126	768,337	471,900	46	.
2010	6,098	736,157	444,201	42	.



**NET MIGRATION: DECADE ENDING...**

calculated by the Institute for Policy and Social Research, The University of Kansas

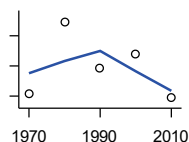
Year	County	State of Kansas	Non Metro Kansas	County Rank	Per 1000 or \$ Per Capita
1930	-1,806	-66,132	-101,869	72	-132.3
1940	-2,145	-192,649	-166,022	69	-174.7
1950	-2,037	-84,329	-158,379	63	-195.7
1960	-2,103	-38,999	-146,640	76	-250.3
1970	-782	-119,662	-105,116	49	-105.7
1980	2,107	-21,983	-6,184	7	224.9
1990	-1,101	-61,835	-79,274	77	-131.0
2000	457	68,960	4,247	28	51.6
2010	-164	5,578	-50,648	33	-19.1



**MEDIAN AGE**

U.S. Census Bureau: Decennial Census

Year	County	State of Kansas	Non Metro Kansas	County Rank	Per 1000 or \$ Per Capita
1960	39.9	26.9	.	6	.
1970	43.0	28.7	.	7	.
1980	33.1	30.1	.	61	.
1990	36.2	32.9	.	58	.
2000	39.2	35.2	.	54	.
2010	43.0	36.0	.	46	.



**POPULATION UNDER 18 (DECENNIAL CENSUS)**

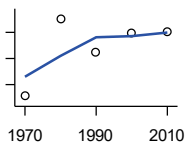
U.S. Census Bureau: Decennial Census

Year	County	State of Kansas	Non Metro Kansas	County Rank	Per 1000 or \$ Per Capita
1970	2,119	746,354	306,227	65	.
1980	2,587	649,035	263,919	45	.
1990	2,288	661,614	250,107	49	.
2000	2,378	712,993	250,757	46	.
2010	2,087	726,939	229,213	47	.

County: county value. Kansas: state value. County Rank: highest county value ranked #1. (\$000): thousands of dollars. Nonmetro Kansas: Kansas total less Metropolitan Areas as defined by the Office of Management and Budget (OMB; released 3/6/2020). Per 1000: For nonmoney amounts, Per 1000=(county value / county population for the same year as the data) x 1000. \$ Per capita=(county value / county population for the same year as the data). Value= . indicates missing or suppressed data or value not calculated.

**Population**

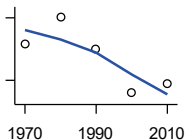
**POPULATION AGE 18 AND OVER  
(DECENNIAL CENSUS)**



U.S. Census Bureau: Decennial Census

Year	County	State of Kansas	Non Metro Kansas	County Rank	Per 1000 or \$ Per Capita
1970	5,278	1,500,224	654,288	58	.
1980	6,759	1,714,282	716,684	46	.
1990	6,116	1,815,960	689,309	47	.
2000	6,487	1,975,425	709,154	47	.
2010	6,514	2,126,179	700,768	47	.

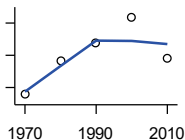
**POPULATION AGE 65 AND OVER  
(DECENNIAL CENSUS)**



U.S. Census Bureau: Decennial Census

Year	County	State of Kansas	Non Metro Kansas	County Rank	Per 1000 or \$ Per Capita
1970	1,674	266,201	149,049	48	.
1980	1,804	306,263	164,932	49	.
1990	1,648	342,571	168,579	53	.
2000	1,439	356,229	161,769	55	.
2010	1,483	376,116	154,214	51	.

**POPULATION AGE 85 AND OVER  
(DECENNIAL CENSUS)**



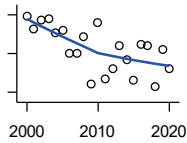
U.S. Census Bureau: Decennial Census

Year	County	State of Kansas	Non Metro Kansas	County Rank	Per 1000 or \$ Per Capita
1970	164	23,899	13,698	47	.
1980	217	33,455	18,804	47	.
1990	244	42,241	22,970	53	.
2000	284	51,770	26,644	52	.
2010	221	59,318	26,197	56	.

County: county value. Kansas: state value. County Rank: highest county value ranked #1. (\$000): thousands of dollars. Nonmetro Kansas: Kansas total less Metropolitan Areas as defined by the Office of Management and Budget (OMB; released 3/6/2020). Per 1000: For nonmoney amounts, Per 1000=(county value / county population for the same year as the data) x 1000. \$ Per capita=(county value / county population for the same year as the data). Value= . indicates missing or suppressed data or value not calculated.

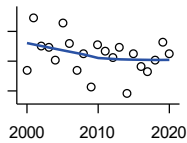
**Vital Statistics and Health**

**BIRTHS (LIVE)**



Kansas Department of Health and Environment

Year	County	State of Kansas	Non Metro Kansas	County Rank	Per 1000 or \$ Per Capita
2000	109	39,654	12,980	46	12.3
2001	103	38,832	12,527	46	11.7
2002	107	39,338	12,476	46	12.2
2003	108	39,353	12,342	45	12.3
2004	101	39,553	12,398	47	11.6
2005	102	39,701	12,382	48	11.8
2006	90	40,896	12,726	52	10.4
2007	90	41,951	12,990	56	10.5
2008	99	41,815	12,970	50	11.6
2009	74	41,388	12,949	62	8.6
2010	106	40,439	12,200	49	12.3
2011	77	39,628	12,098	56	9.1
2012	82	40,304	12,217	56	9.7
2013	94	38,805	11,877	53	11.2
2014	87	39,193	12,052	51	10.4
2015	76	39,126	11,836	59	9.2
2016	95	38,048	11,467	49	11.4
2017	94	36,464	10,968	49	11.4
2018	73	36,268	10,826	55	8.9
2019	92	35,395	10,506	49	11.2
2020	82	34,368	10,222	51	9.8



**DEATHS**

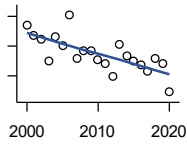
Kansas Department of Health and Environment

Year	County	State of Kansas	Non Metro Kansas	County Rank	Per 1000 or \$ Per Capita
2000	94	24,676	11,175	58	10.6
2001	129	24,590	10,807	47	14.6
2002	110	24,968	11,079	49	12.5
2003	109	24,417	10,615	46	12.4
2004	101	23,720	10,369	50	11.6
2005	126	24,632	10,599	44	14.6
2006	112	24,489	10,538	47	12.9
2007	94	24,413	10,601	51	11.0
2008	105	24,896	10,593	47	12.3
2009	83	23,997	9,938	54	9.7
2010	111	24,428	10,105	44	12.9
2011	107	25,114	10,520	46	12.6
2012	102	25,084	10,259	49	12.0
2013	109	25,347	10,249	47	13.0
2014	78	25,731	10,275	54	9.3
2015	105	26,611	10,539	45	12.7
2016	96	26,129	10,231	50	11.5
2017	93	26,725	10,452	54	11.3
2018	101	27,213	10,389	49	12.3
2019	113	27,312	10,569	46	13.8
2020	105	31,667	11,850	51	12.6

County: county value. Kansas: state value. County Rank: highest county value ranked #1. (\$000): thousands of dollars. Nonmetro Kansas: Kansas total less Metropolitan Areas as defined by the Office of Management and Budget (OMB; released 3/6/2020). Per 1000: For nonmoney amounts, Per 1000=(county value / county population for the same year as the data) x 1000. \$ Per capita=(county value / county population for the same year as the data). Value= . indicates missing or suppressed data or value not calculated.

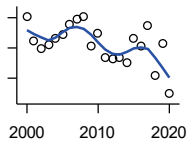
**Vital Statistics and Health**

**MARRIAGES**



Kansas Department of Health and Environment

Year	County	State of Kansas	Non Metro Kansas	County Rank	Per 1000 or \$ Per Capita
2000	74	20,426	7,333	45	8.3
2001	67	20,457	7,441	44	7.6
2002	65	19,783	6,794	49	7.4
2003	50	18,722	6,469	49	5.7
2004	66	19,174	6,756	43	7.6
2005	60	18,745	6,481	47	7.0
2006	81	18,836	6,433	38	9.4
2007	52	18,910	6,464	50	6.1
2008	57	18,717	6,283	47	6.7
2009	57	18,268	6,015	43	6.7
2010	51	18,150	5,925	46	5.9
2011	48	17,897	5,977	48	5.7
2012	40	18,154	5,752	57	4.7
2013	61	17,328	5,533	41	7.3
2014	53	17,655	5,535	46	6.3
2015	50	17,595	5,400	43	6.0
2016	47	17,948	5,340	47	5.6
2017	43	17,274	5,163	48	5.2
2018	52	16,362	4,999	43	6.3
2019	48	15,403	4,650	46	5.9
2020	29	14,038	4,066	55	3.5



**DIVORCES AND ANNULMENTS**

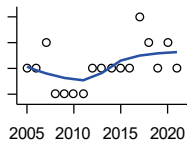
Kansas Department of Health and Environment

Year	County	State of Kansas	Non Metro Kansas	County Rank	Per 1000 or \$ Per Capita
2000	151	10,105	4,000	15	17.0
2001	112	9,885	3,818	19	12.7
2002	98	9,645	3,716	22	11.2
2003	105	8,644	3,464	20	11.9
2004	116	8,759	3,506	17	13.3
2005	122	8,476	3,311	15	14.1
2006	140	9,145	3,387	14	16.2
2007	148	9,347	3,402	13	17.3
2008	152	9,818	3,655	15	17.8
2009	104	10,333	3,463	19	12.1
2010	124	10,579	3,530	18	14.4
2011	84	10,445	3,347	25	9.9
2012	82	9,782	3,040	21	9.7
2013	85	9,085	2,973	20	10.1
2014	75	8,441	2,682	22	8.9
2015	115	8,036	2,704	14	13.9
2016	103	7,198	2,424	14	12.4
2017	137	6,494	2,315	11	16.7
2018	54	6,538	2,269	27	6.6
2019	108	6,398	2,357	14	13.2
2020	24	5,169	1,866	38	2.9

County: county value. Kansas: state value. County Rank: highest county value ranked #1. (\$000): thousands of dollars. Nonmetro Kansas: Kansas total less Metropolitan Areas as defined by the Office of Management and Budget (OMB; released 3/6/2020). Per 1000: For nonmoney amounts, Per 1000=(county value / county population for the same year as the data) x 1000. \$ Per capita=(county value / county population for the same year as the data). Value= . indicates missing or suppressed data or value not calculated.

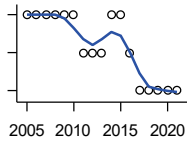
**Vital Statistics and Health**

**PHYSICIANS: M.D. PHYSICIANS**



Kansas Department of Health and Environment (1981-2005,2010-);Kansas Health Policy Authority (2006-2009)

Year	County	State of Kansas	Non Metro Kansas	County Rank	Per 1000 or \$ Per Capita
2005	7	4,241	912	45	0.8
2006	7	4,310	953	43	0.8
2007	8	5,309	1,046	41	0.9
2008	6	5,110	1,016	48	0.7
2009	6	5,249	996	49	0.7
2010	6	5,192	979	48	0.7
2011	6	5,243	983	46	0.7
2012	7	5,693	1,033	45	0.8
2013	7	6,106	1,071	44	0.8
2014	7	5,839	951	43	0.8
2015	7	5,703	855	38	0.8
2016	7	4,278	643	37	0.8
2017	9	6,332	1,047	41	1.1
2018	8	6,079	1,065	43	1.0
2019	7	6,435	1,036	44	0.9
2020	8	6,668	1,045	42	1.0
2021	7	6,745	1,042	45	0.8



**PHYSICIANS: D.O. PHYSICIANS**

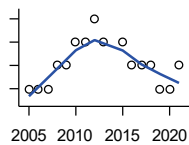
Kansas Department of Health and Environment (1981-2005,2010-);Kansas Health Policy Authority (2006-2009)

Year	County	State of Kansas	Non Metro Kansas	County Rank	Per 1000 or \$ Per Capita
2005	2	553	174	48	0.2
2006	2	508	171	45	0.2
2007	2	569	169	48	0.2
2008	2	558	166	48	0.2
2009	2	564	160	48	0.2
2010	2	583	169	45	0.2
2011	1	502	152	62	0.1
2012	1	718	200	67	0.1
2013	1	829	210	65	0.1
2014	2	817	189	47	0.2
2015	2	819	190	47	0.2
2016	1	632	136	58	0.1
2017	0	579	129	105	0.0
2018	0	871	164	105	0.0
2019	0	951	212	105	0.0
2020	0	1,018	204	105	0.0
2021	0	1,095	217	105	0.0

County: county value. Kansas: state value. County Rank: highest county value ranked #1. (\$000): thousands of dollars. Nonmetro Kansas: Kansas total less Metropolitan Areas as defined by the Office of Management and Budget (OMB; released 3/6/2020). Per 1000: For nonmoney amounts, Per 1000=(county value / county population for the same year as the data) x 1000. \$ Per capita=(county value / county population for the same year as the data). Value= . indicates missing or suppressed data or value not calculated.

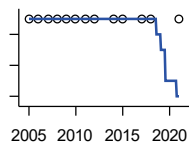
**Vital Statistics and Health**

**DENTISTS**



Kansas Department of Health and Environment (1981-2006,2010-);Kansas Health Policy Authority (2007-2009)

Year	County	State of Kansas	Non Metro Kansas	County Rank	Per 1000 or \$ Per Capita
2005	3	1,347	363	48	0.3
2006	3	1,381	361	48	0.3
2007	3	1,335	350	48	0.4
2008	4	1,392	353	39	0.5
2009	4	1,353	350	39	0.5
2010	5	1,401	365	36	0.6
2011	5	1,338	346	35	0.6
2012	6	1,434	392	33	0.7
2013	5	1,212	328	34	0.6
2015	5	1,240	327	32	0.6
2016	4	1,456	350	39	0.5
2017	4	1,467	350	40	0.5
2018	4	1,604	359	39	0.5
2019	3	1,646	355	48	0.4
2020	3	1,646	355	48	0.4
2021	4	1,688	362	39	0.5



**NUMBER OF HOSPITALS**

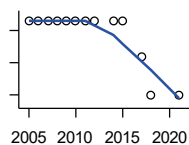
American Hospital Association, American Hospital Association Guide to the Health Care Field

Year	County	State of Kansas	Non Metro Kansas	County Rank	Per 1000 or \$ Per Capita
2005	1	158	105	96	.
2006	1	158	105	96	.
2007	1	159	104	95	.
2008	1	159	104	95	.
2009	1	158	105	96	.
2010	1	158	104	96	.
2011	1	158	103	96	.
2012	1	157	103	96	.
2014	1	156	.	96	.
2015	1	155	103	96	.
2017	1	157	102	96	.
2018	1	154	99	95	.
2021	1	151	.	95	.

County: county value. Kansas: state value. County Rank: highest county value ranked #1. (\$000): thousands of dollars. Nonmetro Kansas: Kansas total less Metropolitan Areas as defined by the Office of Management and Budget (OMB; released 3/6/2020). Per 1000: For nonmoney amounts, Per 1000=(county value / county population for the same year as the data) x 1000. \$ Per capita=(county value / county population for the same year as the data). Value= . indicates missing or suppressed data or value not calculated.

**Vital Statistics and Health**

**NUMBER OF HOSPITAL BEDS**

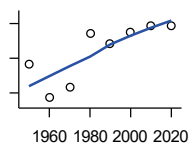


Kansas Department of Health and Environment

Year	County	State of Kansas	Non Metro Kansas	County Rank	Per 1000 or \$ Per Capita
2005	78	12,389	5,687	39	9.0
2006	78	11,992	5,514	37	9.0
2007	78	12,171	5,637	37	9.1
2008	78	12,332	5,700	38	9.1
2009	78	12,283	5,652	36	9.1
2010	78	12,218	5,521	32	9.1
2011	78	12,182	5,335	35	9.2
2012	78	12,002	5,355	34	9.2
2014	78	12,034	.	35	9.3
2015	78	11,926	5,330	31	9.4
2017	67	11,491	4,825	35	8.1
2018	55	11,448	4,583	40	6.7
2021	55	11,199	.	38	6.6

**Housing**

**HOUSING UNITS (DECENNIAL)**



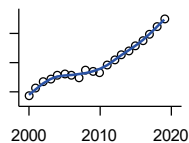
U.S. Census Bureau: Decennial Census

Year	County	State of Kansas	Non Metro Kansas	County Rank	Per 1000 or \$ Per Capita
1950	3,414	586,650	328,210	49	328.0
1960	2,928	672,899	329,380	58	348.4
1970	3,083	789,735	363,824	58	416.8
1980	3,861	955,207	416,877	49	412.1
1990	3,712	1,044,112	417,062	49	441.7
2000	3,876	1,131,395	422,218	48	437.2
2010	3,964	1,233,215	424,050	48	460.9
2020	3,959	1,275,689	413,120	46	473.6

County: county value. Kansas: state value. County Rank: highest county value ranked #1. (\$000): thousands of dollars. Nonmetro Kansas: Kansas total less Metropolitan Areas as defined by the Office of Management and Budget (OMB; released 3/6/2020). Per 1000: For nonmoney amounts, Per 1000=(county value / county population for the same year as the data) x 1000. \$ Per capita=(county value / county population for the same year as the data). Value= . indicates missing or suppressed data or value not calculated.

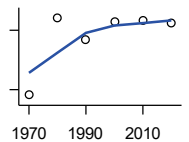
**Housing**

**HOUSING UNITS (ESTIMATED)**



U.S. Census Bureau

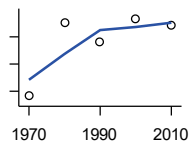
Year	County	State of Kansas	Non Metro Kansas	County Rank	Per 1000 or \$ Per Capita
2000	3,885	1,134,529	422,560	48	438.2
2001	3,914	1,146,858	423,876	48	443.4
2002	3,934	1,160,129	425,089	48	447.9
2003	3,945	1,171,620	425,936	48	448.6
2004	3,956	1,184,702	426,593	48	455.0
2005	3,962	1,195,791	426,964	48	459.5
2006	3,956	1,206,692	426,713	48	457.2
2007	3,949	1,217,608	426,090	48	462.3
2008	3,975	1,225,625	425,768	48	464.2
2009	3,970	1,230,552	424,776	48	463.5
2010	3,967	1,234,456	424,174	48	461.2
2011	3,991	1,238,052	424,549	48	470.2
2012	4,010	1,241,992	425,116	48	473.6
2013	4,029	1,246,675	425,699	48	481.0
2014	4,041	1,253,284	426,269	48	481.4
2015	4,056	1,258,999	426,844	47	489.2
2016	4,077	1,265,684	427,465	47	488.9
2017	4,096	1,273,536	427,746	46	497.8
2018	4,124	1,280,649	428,099	46	501.0
2019	4,148	1,288,401	428,495	46	507.2



**OCCUPIED HOUSING UNITS**

U.S. Census Bureau: Decennial Census

Year	County	State of Kansas	Non Metro Kansas	County Rank	Per 1000 or \$ Per Capita
1970	2,744	727,364	326,494	58	371.0
1980	3,526	872,239	371,693	48	376.3
1990	3,311	944,726	365,901	47	394.0
2000	3,489	1,037,891	375,313	47	393.6
2010	3,497	1,112,096	370,269	47	406.6
2020	3,477	1,151,360	356,330	46	415.9



**OWNER OCCUPIED HOUSING UNITS**

U.S. Census Bureau: Decennial Census

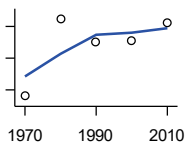
Year	County	State of Kansas	Non Metro Kansas	County Rank	Per 1000 or \$ Per Capita
1970	2,164	502,585	236,338	54	292.6
1980	2,702	612,433	277,096	48	288.4
1990	2,559	641,762	263,099	47	304.5
2000	2,733	718,703	271,350	47	308.3
2010	2,684	753,532	261,763	46	312.1

County: county value. Kansas: state value. County Rank: highest county value ranked #1. (\$000): thousands of dollars. Nonmetro Kansas: Kansas total less Metropolitan Areas as defined by the Office of Management and Budget (OMB; released 3/6/2020). Per 1000: For nonmoney amounts, Per 1000=(county value / county population for the same year as the data) x 1000. \$ Per capita=(county value / county population for the same year as the data). Value= . indicates missing or suppressed data or value not calculated.



**Housing**

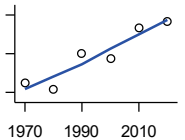
**RENTER OCCUPIED HOUSING UNITS**



U.S. Census Bureau: Decennial Census

Year	County	State of Kansas	Non Metro Kansas	County Rank	Per 1000 or \$ Per Capita
1970	580	224,779	90,156	61	78.4
1980	824	259,806	94,597	48	87.9
1990	752	302,964	102,802	54	89.5
2000	756	319,188	103,963	51	85.3
2010	813	358,564	108,506	51	94.5

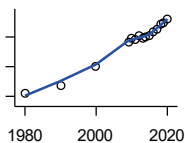
**VACANT HOUSING UNITS**



U.S. Census Bureau: Decennial Census

Year	County	State of Kansas	Non Metro Kansas	County Rank	Per 1000 or \$ Per Capita
1970	323	60,058	35,954	64	43.7
1980	309	77,912	41,584	69	33.0
1990	401	99,386	51,161	69	47.7
2000	387	93,309	46,904	65	43.7
2010	467	121,119	53,781	66	54.3
2020	482	124,329	56,790	60	57.7

**MEDIAN VALUE (\$): OWNER OCCUPIED HOUSING UNITS**



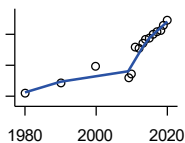
U.S. Census Bureau, Decennial Census (- 2000), (2009 -) American Community Survey five-year average ending in year shown.

Year	County	State of Kansas	Non Metro Kansas	County Rank	Per 1000 or \$ Per Capita
1980	24,300	37,800	.	75	.
1990	34,800	52,200	.	45	.
2000	60,700	83,500	.	37	.
2009	92,500	118,500	.	24	.
2010	98,500	122,600	.	23	.
2011	97,400	125,500	.	23	.
2012	102,200	127,400	.	22	.
2013	98,200	128,400	.	26	.
2014	100,000	129,400	.	26	.
2015	102,000	132,000	.	27	.
2016	107,300	135,300	.	27	.
2017	111,000	139,200	.	25	.
2018	117,700	145,400	.	25	.
2019	119,100	151,900	.	24	.
2020	124,300	157,600	.	26	.

County: county value. Kansas: state value. County Rank: highest county value ranked #1. (\$000): thousands of dollars. Nonmetro Kansas: Kansas total less Metropolitan Areas as defined by the Office of Management and Budget (OMB; released 3/6/2020). Per 1000: For nonmoney amounts, Per 1000=(county value / county population for the same year as the data) x 1000. \$ Per capita=(county value / county population for the same year as the data). Value= . indicates missing or suppressed data or value not calculated.

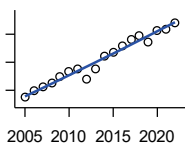
**Housing**

**MEDIAN CONTRACT RENT (\$)**



U.S. Census Bureau, Decennial Census (- 2000), (2009 -) American Community Survey five-year average ending in year shown.

Year	County	State of Kansas	Non Metro Kansas	County Rank	Per 1000 or \$ Per Capita
1980	223	219	.	8	.
1990	288	372	.	39	.
2000	394	498	.	42	.
2009	316	491	.	59	.
2010	341	507	.	53	.
2011	515	699	.	63	.
2012	512	715	.	77	.
2013	540	732	.	69	.
2014	565	748	.	64	.
2015	578	757	.	64	.
2016	600	775	.	57	.
2017	620	801	.	55	.
2018	625	831	.	63	.
2019	658	850	.	51	.
2020	694	863	.	36	.



**FAIR MARKET RENT: 2 BEDROOMS**

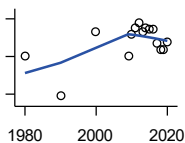
U.S. Department of Housing and Urban Development (HUD)

Year	County	State of Kansas	Non Metro Kansas	County Rank	Per 1000 or \$ Per Capita
2005	474	.	.	63	.
2006	497	.	.	105	.
2007	512	.	.	105	.
2008	525	628	.	105	.
2009	547	653	.	105	.
2010	566	678	.	105	.
2011	575	684	.	105	.
2012	540	660	.	105	.
2013	577	712	.	105	.
2014	622	746	.	105	.
2015	634	756	.	105	.
2016	658	781	.	105	.
2017	681	811	.	105	.
2018	697	815	.	105	.
2019	672	828	.	105	.
2020	714	855	.	105	.
2021	718	874	.	105	.
2022	742	879	.	105	.

County: county value. Kansas: state value. County Rank: highest county value ranked #1. (\$000): thousands of dollars. Nonmetro Kansas: Kansas total less Metropolitan Areas as defined by the Office of Management and Budget (OMB; released 3/6/2020). Per 1000: For nonmoney amounts, Per 1000=(county value / county population for the same year as the data) x 1000. \$ Per capita=(county value / county population for the same year as the data). Value= . indicates missing or suppressed data or value not calculated.

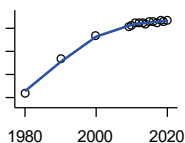
**Education**

**POPULATION AGE 25+**



U.S. Census Bureau, Decennial Census (- 2000), (2009 -) American Community Survey five-year average ending in year shown.

Year	County	State of Kansas	Non Metro Kansas	County Rank	Per 1000 or \$ Per Capita
1980	5,805	1,388,102	596,639	.	.
1990	5,589	1,565,936	608,745	.	.
2000	5,932	1,701,207	618,131	.	.
2009	5,801	1,775,427	600,188	.	.
2010	5,917	1,802,904	608,716	.	.
2011	5,949	1,822,400	610,386	.	.
2012	5,978	1,838,079	611,103	.	.
2013	5,930	1,850,010	610,374	.	.
2014	5,950	1,861,894	609,612	.	.
2015	5,948	1,869,698	606,967	.	.
2016	5,946	1,878,495	604,563	.	.
2017	5,869	1,886,741	601,076	.	.
2018	5,839	1,894,675	598,487	.	.
2019	5,833	1,902,279	595,501	.	.
2020	5,880	1,911,990	593,923	.	.



**PERCENT HS GRADUATE OR HIGHER AGE 25+**

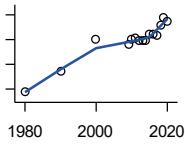
U.S. Census Bureau, Decennial Census (- 2000), (2009 -) American Community Survey five-year average ending in year shown.

Year	County	State of Kansas	Non Metro Kansas	County Rank	Per 1000 or \$ Per Capita
1980	62.1	73.3	.	98	.
1990	76.9	81.3	.	65	.
2000	86.9	86.0	.	25	.
2009	90.9	89.0	.	27	.
2010	91.5	89.2	.	19	.
2011	92.3	89.5	.	12	.
2012	92.2	89.7	.	15	.
2013	92.1	89.8	.	21	.
2014	92.0	90.0	.	27	.
2015	92.8	90.2	.	25	.
2016	92.7	90.3	.	28	.
2017	92.6	90.5	.	32	.
2018	93.3	90.7	.	26	.
2019	92.7	91.0	.	34	.
2020	93.5	91.4	.	30	.

County: county value. Kansas: state value. County Rank: highest county value ranked #1. (\$000): thousands of dollars. Nonmetro Kansas: Kansas total less Metropolitan Areas as defined by the Office of Management and Budget (OMB; released 3/6/2020). Per 1000: For nonmoney amounts, Per 1000=(county value / county population for the same year as the data) x 1000. \$ Per capita=(county value / county population for the same year as the data). Value= . indicates missing or suppressed data or value not calculated.

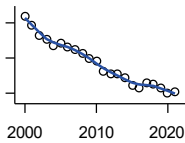
**Education**

**PERCENT BACHELORS DEGREE OR HIGHER AGE 25+**



U.S. Census Bureau, Decennial Census (- 2000), (2009 -) American Community Survey five-year average ending in year shown.

Year	County	State of Kansas	Non Metro Kansas	County Rank	Per 1000 or \$ Per Capita
1980	9.4	17.0	.	89	.
1990	13.5	21.1	.	52	.
2000	20.1	25.8	.	21	.
2009	19.1	28.8	.	53	.
2010	20.0	29.3	.	40	.
2011	20.2	29.7	.	39	.
2012	19.8	30.0	.	49	.
2013	19.9	30.3	.	55	.
2014	19.7	30.7	.	60	.
2015	21.0	31.0	.	51	.
2016	21.1	31.6	.	51	.
2017	20.9	32.3	.	55	.
2018	22.9	32.9	.	42	.
2019	24.5	33.4	.	34	.
2020	23.6	33.9	.	46	.



**PUBLIC SCHOOL ENROLLMENT (FTE) SCHOOL YEAR BEGINNING...**

Kansas State Department of Education

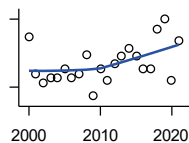
Year	County	State of Kansas	Non Metro Kansas	County Rank	Per 1000 or \$ Per Capita
2000	1,837.9	448,150.8	166,722.5	42	207.3
2001	1,785.3	447,047.1	164,365.0	42	202.2
2002	1,730.0	444,860.3	161,555.4	42	196.9
2003	1,705.0	443,620.6	159,130.2	43	193.9
2004	1,670.4	441,957.2	156,566.3	43	192.1
2005	1,684.6	442,708.4	155,197.2	42	195.4
2006	1,664.5	444,878.7	153,842.3	42	192.4
2007	1,648.2	446,831.3	152,337.1	42	193.0
2008	1,626.9	447,730.0	150,572.7	42	190.0
2009	1,595.5	453,202.5	151,246.8	43	186.3
2010	1,582.0	455,405.0	151,023.8	43	183.9
2011	1,527.9	456,000.5	150,257.9	44	180.0
2012	1,508.0	458,496.4	150,463.0	45	178.1
2013	1,510.0	461,950.0	150,420.9	45	180.3
2014	1,489.3	464,395.4	150,499.4	45	177.4
2015	1,442.2	463,504.0	149,539.3	45	173.9
2016	1,431.0	459,920.3	147,293.5	46	171.6
2017	1,461.0	477,977.9	152,096.3	46	177.6
2018	1,451.0	476,481.7	150,456.8	46	176.3
2019	1,431.7	476,525.1	150,045.2	46	175.0
2020	1,398.0	462,088.0	146,369.6	47	167.2
2021	1,404.6	463,652.4	147,500.4	48	168.5

County: county value. Kansas: state value. County Rank: highest county value ranked #1. (\$000): thousands of dollars. Nonmetro Kansas: Kansas total less Metropolitan Areas as defined by the Office of Management and Budget (OMB; released 3/6/2020). Per 1000: For nonmoney amounts, Per 1000=(county value / county population for the same year as the data) x 1000. \$ Per capita=(county value / county population for the same year as the data). Value= . indicates missing or suppressed data or value not calculated.

**Education**

**PUPIL/TEACHER RATIO SCHOOL YEAR BEGINNING...**

Kansas State Department of Education

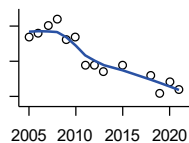


Year	County	State of Kansas	Non Metro Kansas	County Rank	Per 1000 or \$ Per Capita
2000	13.1	15.4	13.9	56	.
2001	12.3	15.3	13.8	70	.
2002	12.1	15.4	13.9	77	.
2003	12.2	15.5	13.8	71	.
2004	12.2	15.3	13.6	71	.
2005	12.4	15.0	13.4	57	.
2006	12.2	14.7	13.2	57	.
2007	12.3	14.6	13.1	52	.
2008	12.7	14.4	12.9	42	.
2009	11.8	14.8	13.2	70	.
2010	12.4	15.2	13.6	61	.
2011	12.2	15.1	13.5	60	.
2012	12.5	15.1	13.5	58	.
2013	12.7	15.1	13.5	51	.
2014	12.8	15.0	13.6	49	.
2015	12.7	15.2	13.9	57	.
2016	12.4	15.1	13.7	64	.
2017	12.4	15.5	13.9	63	.
2018	13.3	15.3	13.8	44	.
2019	13.5	15.2	13.7	36	.
2020	12.1	14.7	13.4	57	.
2021	13.0	14.8	13.5	42	.

**Social Environment**

**CHILD CARE FACILITIES: TOTAL CHILD CARE FACILITIES**

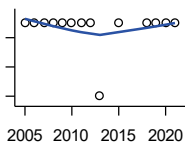
Kansas Department of Health and Environment, Bureau of Adult and Child Care



Year	County	State of Kansas	Non Metro Kansas	County Rank	Per 1000 or \$ Per Capita
2005	32	8,258	3,378	48	3.7
2006	33	8,442	3,429	47	3.8
2007	35	8,241	3,317	46	4.1
2008	37	8,011	3,150	42	4.3
2009	31	7,853	3,066	47	3.6
2010	32	7,354	2,858	45	3.7
2011	24	6,835	2,623	51	2.8
2012	24	6,346	2,409	49	2.8
2013	22	5,754	2,179	48	2.6
2015	24	5,289	2,146	47	2.9
2018	21	4,607	1,904	44	2.6
2019	16	4,287	1,774	52	2.0
2020	19	4,274	1,798	49	2.3
2021	17	4,002	1,700	51	2.0

County: county value. Kansas: state value. County Rank: highest county value ranked #1. (\$000): thousands of dollars. Nonmetro Kansas: Kansas total less Metropolitan Areas as defined by the Office of Management and Budget (OMB; released 3/6/2020). Per 1000: For nonmoney amounts, Per 1000=(county value / county population for the same year as the data) x 1000. \$ Per capita=(county value / county population for the same year as the data). Value= . indicates missing or suppressed data or value not calculated.

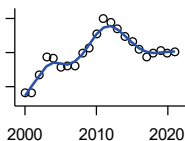
**Social Environment**



**CHILD CARE FACILITIES:  
PRESCHOOLS**

Kansas Department of Health and Environment, Bureau of Adult and Child Care

Year	County	State of Kansas	Non Metro Kansas	County Rank	Per 1000 or \$ Per Capita
2005	2	243	140	46	0.2
2006	2	221	127	42	0.2
2007	2	208	119	42	0.2
2008	2	204	114	46	0.2
2009	2	194	107	42	0.2
2010	2	194	112	44	0.2
2011	2	209	123	47	0.2
2012	2	201	121	47	0.2
2013	1	140	84	64	0.1
2015	2	185	113	42	0.2
2018	2	150	94	41	0.2
2019	2	134	83	35	0.2
2020	2	126	78	34	0.2
2021	2	120	74	29	0.2



**FOOD STAMP BENEFICIARIES**

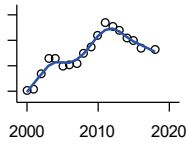
Kansas Social and Rehabilitation Services

Year	County	State of Kansas	Non Metro Kansas	County Rank	Per 1000 or \$ Per Capita
2000	364	110,619	44,825	49	41.1
2001	365	117,241	46,741	48	41.3
2002	467	131,726	52,342	43	53.2
2003	577	155,908	61,280	43	65.6
2004	570	167,971	65,852	43	65.6
2005	511	175,710	67,261	46	59.3
2006	518	182,821	67,487	46	59.9
2007	521	184,035	66,979	46	61.0
2008	593	187,377	67,160	41	69.3
2009	630	208,007	73,637	44	73.5
2010	711	259,609	90,919	46	82.7
2011	798	296,542	101,155	44	94.0
2012	774	303,257	102,478	45	91.4
2013	736	316,424	105,345	46	87.9
2014	694	301,377	100,761	48	82.7
2015	664	277,614	93,353	49	80.1
2016	620	258,412	88,343	47	74.3
2017	575	239,592	82,070	49	69.9
2018	597	219,738	75,208	45	72.5
2019	611	205,261	69,899	45	74.7
2020	599	198,457	66,721	42	71.7
2021	606	203,424	68,883	42	72.7

County: county value. Kansas: state value. County Rank: highest county value ranked #1. (\$000): thousands of dollars. Nonmetro Kansas: Kansas total less Metropolitan Areas as defined by the Office of Management and Budget (OMB; released 3/6/2020). Per 1000: For nonmoney amounts, Per 1000=(county value / county population for the same year as the data) x 1000. \$ Per capita=(county value / county population for the same year as the data). Value= . indicates missing or suppressed data or value not calculated.

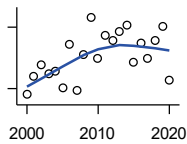
**Social Environment**

**PERCENT OF POPULATION RECEIVING FOOD STAMPS**



U.S. Dept. of Agriculture Food and Nutrition Service (1990-1997); Kansas Social and Rehabilitation Services (1998- )

Year	County	State of Kansas	Non Metro Kansas	County Rank	Per 1000 or \$ Per Capita
2000	4.1	4.1	.	40	.
2001	4.2	4.3	.	45	.
2002	5.4	4.9	.	34	.
2003	6.6	5.7	.	30	.
2004	6.6	6.2	.	36	.
2005	6.0	6.4	.	42	.
2006	6.1	6.6	.	42	.
2007	6.2	6.6	.	41	.
2008	7.0	6.7	.	30	.
2009	7.5	7.4	.	30	.
2010	8.4	9.1	.	36	.
2011	9.4	10.3	.	34	.
2012	9.1	10.5	.	36	.
2013	8.7	10.9	.	42	.
2014	8.2	10.4	.	43	.
2015	7.9	9.6	.	41	.
2016	7.4	8.9	.	44	.
2018	7.3	7.5	.	41	.



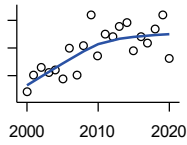
**ESTIMATED NUMBER OF PEOPLE IN POVERTY**

U.S. Census Bureau, Small Area Income and Poverty Estimates

Year	County	State of Kansas	Non Metro Kansas	County Rank	Per 1000 or \$ Per Capita
2000	735	235,087	98,984	54	82.9
2001	779	252,134	106,257	55	88.2
2002	809	265,673	107,542	54	92.1
2003	786	278,163	107,323	52	89.4
2004	792	297,733	111,534	53	91.1
2005	753	310,667	118,768	55	87.3
2006	857	327,102	123,700	52	99.1
2007	747	301,828	111,953	56	87.5
2008	832	307,804	113,015	50	97.2
2009	924	359,692	123,394	51	107.9
2010	823	374,677	131,502	56	95.7
2011	879	383,859	134,912	56	103.6
2012	867	392,095	133,800	55	102.4
2013	890	391,718	134,067	54	106.2
2014	905	381,506	130,213	51	107.8
2015	813	366,069	123,073	55	98.1
2016	861	343,773	121,314	51	103.2
2017	824	335,371	116,854	53	100.1
2018	868	336,892	114,490	49	105.4
2019	903	319,931	110,692	46	110.4
2020	770	300,931	100,998	50	92.1

County: county value. Kansas: state value. County Rank: highest county value ranked #1. (\$000): thousands of dollars. Nonmetro Kansas: Kansas total less Metropolitan Areas as defined by the Office of Management and Budget (OMB; released 3/6/2020). Per 1000: For nonmoney amounts, Per 1000=(county value / county population for the same year as the data) x 1000. \$ Per capita=(county value / county population for the same year as the data). Value= . indicates missing or suppressed data or value not calculated.

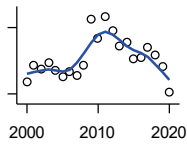
**Social Environment**



ESTIMATED % OF PEOPLE IN POVERTY

U.S. Census Bureau, Small Area Income and Poverty Estimates

Year	County	State of Kansas	Non Metro Kansas	County Rank	Per 1000 or \$ Per Capita
2000	8.4	8.9	.	90	.
2001	9.0	9.5	.	92	.
2002	9.3	10.0	.	88	.
2003	9.1	10.4	.	90	.
2004	9.2	11.1	.	91	.
2005	8.9	11.7	.	96	.
2006	10.0	12.2	.	93	.
2007	9.0	11.2	.	92	.
2008	10.1	11.3	.	78	.
2009	11.2	13.2	.	77	.
2010	9.7	13.5	.	95	.
2011	10.5	13.8	.	92	.
2012	10.4	14.0	.	85	.
2013	10.8	13.9	.	85	.
2014	10.9	13.5	.	83	.
2015	9.9	12.9	.	90	.
2016	10.4	12.2	.	85	.
2017	10.2	11.9	.	87	.
2018	10.7	11.9	.	81	.
2019	11.2	11.3	.	64	.
2020	9.6	10.6	.	85	.



EST. NUMBER OF RELATED CHILDREN AGE 5 TO 17 IN FAMILIES IN POVERTY

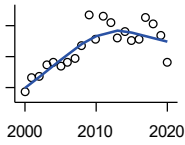
U.S. Census Bureau, Small Area Income and Poverty Estimates

Year	County	State of Kansas	Non Metro Kansas	County Rank	Per 1000 or \$ Per Capita
2000	131	50,388	21,854	62	14.8
2001	146	53,755	23,094	59	16.5
2002	142	52,453	21,423	56	16.2
2003	148	55,419	21,809	55	16.8
2004	141	59,392	22,313	54	16.2
2005	135	60,203	24,244	59	15.7
2006	140	64,427	25,326	60	16.2
2007	137	61,149	23,639	56	16.0
2008	146	59,842	22,661	54	17.1
2009	188	71,850	26,251	51	21.9
2010	170	81,077	29,804	56	19.8
2011	190	82,311	29,306	54	22.4
2012	177	87,594	29,781	55	20.9
2013	163	84,325	29,253	56	19.5
2014	167	83,873	29,354	57	19.9
2015	152	78,192	27,482	56	18.3
2016	153	67,810	25,074	55	18.3
2017	162	67,873	25,032	57	19.7
2018	155	68,153	24,928	57	18.8
2019	145	64,613	23,117	56	17.7
2020	122	59,792	21,143	60	14.6

County: county value. Kansas: state value. County Rank: highest county value ranked #1. (\$000): thousands of dollars. Nonmetro Kansas: Kansas total less Metropolitan Areas as defined by the Office of Management and Budget (OMB; released 3/6/2020). Per 1000: For nonmoney amounts, Per 1000=(county value / county population for the same year as the data) x 1000. \$ Per capita=(county value / county population for the same year as the data). Value= . indicates missing or suppressed data or value not calculated.



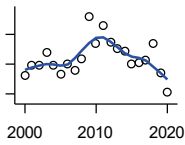
**Social Environment**



EST. % OF RELATED CHILDREN AGE 5 TO 17 IN FAMILIES IN POVERTY

U.S. Census Bureau, Small Area Income and Poverty Estimates

Year	County	State of Kansas	Non Metro Kansas	County Rank	Per 1000 or \$ Per Capita
2000	7.7	10.0	.	98	.
2001	8.6	10.8	.	98	.
2002	8.7	10.5	.	94	.
2003	9.5	11.3	.	91	.
2004	9.6	12.5	.	94	.
2005	9.4	12.8	.	97	.
2006	9.6	13.2	.	98	.
2007	9.9	12.6	.	94	.
2008	10.7	12.3	.	87	.
2009	12.7	14.7	.	80	.
2010	11.1	15.9	.	99	.
2011	12.6	16.2	.	88	.
2012	12.2	17.2	.	93	.
2013	11.2	16.5	.	100	.
2014	11.6	16.4	.	96	.
2015	11.0	15.3	.	97	.
2016	11.1	13.2	.	87	.
2017	12.5	13.4	.	85	.
2018	12.1	13.5	.	88	.
2019	11.4	12.9	.	84	.
2020	9.6	11.9	.	89	.



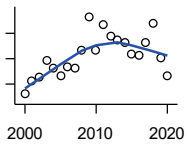
ESTIMATED NUMBER UNDER 18 IN POVERTY

U.S. Census Bureau, Small Area Income and Poverty Estimates

Year	County	State of Kansas	Non Metro Kansas	County Rank	Per 1000 or \$ Per Capita
2000	206	82,619	34,843	59	23.2
2001	223	87,487	36,724	59	25.3
2002	224	84,181	32,870	55	25.5
2003	245	93,896	36,004	53	27.9
2004	223	98,641	36,272	55	25.6
2005	207	100,254	39,118	61	24.0
2006	226	105,193	41,054	59	26.1
2007	214	100,242	37,881	55	25.1
2008	233	100,146	37,552	56	27.2
2009	305	118,187	42,682	50	35.6
2010	260	129,009	46,428	56	30.2
2011	289	133,478	46,832	55	34.1
2012	261	135,261	46,294	56	30.8
2013	251	131,251	44,952	56	30.0
2014	246	125,562	43,933	56	29.3
2015	226	119,994	41,828	56	27.3
2016	227	100,996	37,387	55	27.2
2017	231	102,858	37,955	56	28.1
2018	260	102,616	36,991	55	31.6
2019	211	97,920	34,797	56	25.8
2020	178	88,491	30,767	58	21.3

County: county value. Kansas: state value. County Rank: highest county value ranked #1. (\$000): thousands of dollars. Nonmetro Kansas: Kansas total less Metropolitan Areas as defined by the Office of Management and Budget (OMB; released 3/6/2020). Per 1000: For nonmoney amounts, Per 1000=(county value / county population for the same year as the data) x 1000. \$ Per capita=(county value / county population for the same year as the data). Value= . indicates missing or suppressed data or value not calculated.

**Social Environment**



**ESTIMATED PERCENT UNDER 18 IN POVERTY**

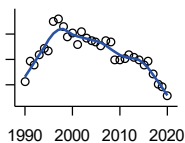
U.S. Census Bureau, Small Area Income and Poverty Estimates

Year	County	State of Kansas	Non Metro Kansas	County Rank	Per 1000 or \$ Per Capita
2000	9.2	11.9	.	99	.
2001	10.2	12.7	.	98	.
2002	10.5	12.1	.	86	.
2003	11.9	13.8	.	89	.
2004	11.3	14.6	.	94	.
2005	10.7	15.2	.	97	.
2006	11.4	15.4	.	98	.
2007	11.3	14.7	.	94	.
2008	12.7	14.6	.	90	.
2009	15.3	17.1	.	77	.
2010	12.7	18.1	.	97	.
2011	14.7	18.8	.	86	.
2012	13.8	19.0	.	92	.
2013	13.5	18.4	.	94	.
2014	13.3	17.6	.	92	.
2015	12.4	16.9	.	94	.
2016	12.3	14.3	.	87	.
2017	13.3	14.7	.	89	.
2018	14.8	14.8	.	78	.
2019	12.1	14.3	.	90	.
2020	10.6	13.0	.	89	.

County: county value. Kansas: state value. County Rank: highest county value ranked #1. (\$000): thousands of dollars. Nonmetro Kansas: Kansas total less Metropolitan Areas as defined by the Office of Management and Budget (OMB; released 3/6/2020). Per 1000: For nonmoney amounts, Per 1000=(county value / county population for the same year as the data) x 1000. \$ Per capita=(county value / county population for the same year as the data). Value= . indicates missing or suppressed data or value not calculated.

**Business**

**ESTABLISHMENTS TOTAL COUNTY BUSINESS PATTERNS**



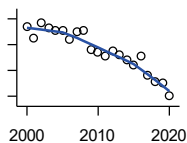
U.S. Census Bureau, County Business Patterns. Beginning with the 2017 data, any tabulation with fewer than 3 establishments were omitted from the release. Data for these establishments are included in the broader total.

Year	County	State of Kansas	Non Metro Kansas	County Rank	Per 1000 or \$ Per Capita
1990	222	65,858	26,802	55	26.4
1991	239	65,941	26,750	51	28.4
1992	236	67,630	27,229	52	27.4
1993	244	68,930	27,655	50	28.1
1994	249	69,822	27,763	50	28.5
1995	247	70,894	28,111	51	28.0
1996	270	72,017	28,353	48	30.7
1997	272	73,924	28,884	48	30.8
1998	266	74,019	28,749	50	30.4
1999	258	74,486	28,536	51	29.2
2000	261	74,939	28,475	49	29.4
2001	252	74,565	28,282	50	28.5
2002	262	75,077	28,183	47	29.8
2003	257	74,972	27,998	48	29.2
2004	255	75,827	28,009	48	29.3
2005	254	76,173	27,830	50	29.5
2006	251	76,446	27,653	50	29.0
2007	255	77,157	27,736	49	29.9
2008	254	76,096	27,314	48	29.7
2009	240	74,698	26,839	50	28.0
2010	240	74,301	26,739	49	27.9
2011	241	73,598	26,555	49	28.4
2012	244	73,944	26,534	49	28.8
2013	242	73,816	26,393	51	28.9
2014	240	74,055	26,292	51	28.6
2015	236	74,526	26,355	49	28.5
2016	239	74,884	26,172	49	28.7
2017	229	74,947	26,093	50	27.8
2018	220	74,559	25,802	51	26.7
2019	218	74,292	25,536	52	26.7
2020	211	73,982	25,178	53	25.2

County: county value. Kansas: state value. County Rank: highest county value ranked #1. (\$000): thousands of dollars. Nonmetro Kansas: Kansas total less Metropolitan Areas as defined by the Office of Management and Budget (OMB; released 3/6/2020). Per 1000: For nonmoney amounts, Per 1000=(county value / county population for the same year as the data) x 1000. \$ Per capita=(county value / county population for the same year as the data). Value= . indicates missing or suppressed data or value not calculated.

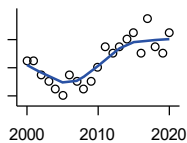
**Business**

**ESTABLISHMENTS: 1-19  
EMPLOYEES**



U.S. Census Bureau, County Business Patterns. Beginning with the 2017 data, any tabulation with fewer than 3 establishments were omitted from the release. Data for these establishments are included in the broader total.

Year	County	State of Kansas	Non Metro Kansas	County Rank	Per 1000 or \$ Per Capita
2000	244	64,527	25,381	48	27.5
2001	235	64,176	25,248	49	26.6
2002	247	64,886	25,208	47	28.1
2003	243	64,714	25,020	47	27.6
2004	241	65,554	24,995	48	27.7
2005	241	65,796	24,839	48	28.0
2006	234	65,764	24,589	48	27.0
2007	240	66,446	24,701	47	28.1
2008	241	65,322	24,257	47	28.1
2009	226	64,128	23,851	48	26.4
2010	224	64,015	23,857	48	26.0
2011	221	63,251	23,571	49	26.0
2012	225	63,519	23,575	50	26.6
2013	222	63,197	23,396	49	26.5
2014	218	63,113	23,229	50	26.0
2015	214	63,280	23,227	50	25.8
2016	221	63,630	23,117	49	26.5
2017	206	63,619	23,022	51	25.0
2018	201	63,233	22,745	51	24.4
2019	200	62,904	22,489	51	24.5
2020	190	62,634	22,173	53	22.7



**ESTABLISHMENTS: 20-99  
EMPLOYEES**

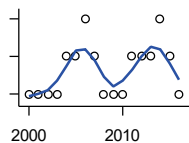
U.S. Census Bureau, County Business Patterns. Beginning with the 2017 data, any tabulation with fewer than 3 establishments were omitted from the release. Data for these establishments are included in the broader total.

Year	County	State of Kansas	Non Metro Kansas	County Rank	Per 1000 or \$ Per Capita
2000	15	8,714	2,653	58	1.7
2001	15	8,692	2,593	57	1.7
2002	13	8,582	2,554	60	1.5
2003	12	8,642	2,568	63	1.4
2004	11	8,658	2,590	65	1.3
2005	10	8,685	2,553	66	1.2
2006	13	8,922	2,612	62	1.5
2007	12	8,938	2,574	64	1.4
2008	11	8,939	2,587	66	1.3
2009	12	8,848	2,551	64	1.4
2010	14	8,612	2,454	56	1.6
2011	17	8,668	2,540	53	2.0
2012	16	8,700	2,500	54	1.9
2013	17	8,870	2,541	53	2.0
2014	18	9,121	2,590	51	2.1
2015	19	9,374	2,664	51	2.3
2016	16	9,412	2,596	55	1.9
2017	21	9,487	2,638	46	2.6
2018	17	9,485	2,621	51	2.1
2019	16	9,485	2,591	51	2.0
2020	19	9,471	2,545	47	2.3

County: county value. Kansas: state value. County Rank: highest county value ranked #1. (\$000): thousands of dollars. Nonmetro Kansas: Kansas total less Metropolitan Areas as defined by the Office of Management and Budget (OMB; released 3/6/2020). Per 1000: For nonmoney amounts, Per 1000=(county value / county population for the same year as the data) x 1000. \$ Per capita=(county value / county population for the same year as the data). Value= . indicates missing or suppressed data or value not calculated.

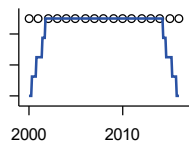
**Business**

**ESTABLISHMENTS: 100-499  
EMPLOYEES**



U.S. Census Bureau, County Business Patterns. Beginning with the 2017 data, any tabulation with fewer than 3 establishments were omitted from the release. Data for these establishments are included in the broader total.

Year	County	State of Kansas	Non Metro Kansas	County Rank	Per 1000 or \$ Per Capita
2000	1	1,555	409	82	0.1
2001	1	1,555	406	86	0.1
2002	1	1,464	386	81	0.1
2003	1	1,470	378	83	0.1
2004	2	1,463	388	57	0.2
2005	2	1,537	400	59	0.2
2006	3	1,598	407	50	0.3
2007	2	1,602	416	63	0.2
2008	1	1,653	421	86	0.1
2009	1	1,551	394	86	0.1
2010	1	1,513	382	85	0.1
2011	2	1,523	395	58	0.2
2012	2	1,567	410	56	0.2
2013	2	1,581	407	59	0.2
2014	3	1,641	421	52	0.4
2015	2	1,693	414	61	0.2
2016	1	1,671	406	84	0.1



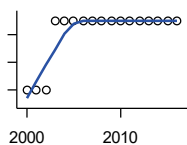
**ESTABLISHMENTS: 500 OR MORE  
EMPLOYEES**

U.S. Census Bureau, County Business Patterns. Beginning with the 2017 data, any tabulation with fewer than 3 establishments were omitted from the release. Data for these establishments are included in the broader total.

Year	County	State of Kansas	Non Metro Kansas	County Rank	Per 1000 or \$ Per Capita
2000	1	143	32	31	0.1
2001	1	142	35	32	0.1
2002	1	145	35	29	0.1
2003	1	146	32	29	0.1
2004	1	152	36	29	0.1
2005	1	155	38	31	0.1
2006	1	162	45	31	0.1
2007	1	171	45	32	0.1
2008	1	182	49	33	0.1
2009	1	171	43	33	0.1
2010	1	161	46	33	0.1
2011	1	156	49	33	0.1
2012	1	158	49	34	0.1
2013	1	168	49	33	0.1
2014	1	180	52	34	0.1
2015	1	179	50	33	0.1
2016	1	171	53	33	0.1

County: county value. Kansas: state value. County Rank: highest county value ranked #1. (\$000): thousands of dollars. Nonmetro Kansas: Kansas total less Metropolitan Areas as defined by the Office of Management and Budget (OMB; released 3/6/2020). Per 1000: For nonmoney amounts, Per 1000=(county value / county population for the same year as the data) x 1000. \$ Per capita=(county value / county population for the same year as the data). Value= . indicates missing or suppressed data or value not calculated.

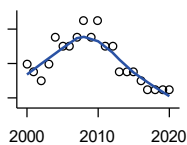
**Business**



**ESTABLISHMENTS: FORESTRY, FISHING, HUNTING, AND AG SUPPORT**

U.S. Census Bureau, County Business Patterns. Beginning with the 2017 data, any tabulation with fewer than 3 establishments were omitted from the release. Data for these establishments are included in the broader total.

Year	County	State of Kansas	Non Metro Kansas	County Rank	Per 1000 or \$ Per Capita
2000	0	190	149	105	0.0
2001	0	217	168	105	0.0
2002	0	224	176	105	0.0
2003	1	217	173	84	0.1
2004	1	211	165	77	0.1
2005	1	188	148	76	0.1
2006	1	193	158	76	0.1
2007	1	212	170	78	0.1
2008	1	197	158	81	0.1
2009	1	191	154	79	0.1
2010	1	192	161	79	0.1
2011	1	193	157	77	0.1
2012	1	204	164	85	0.1
2013	1	208	166	85	0.1
2014	1	194	152	83	0.1
2015	1	192	149	81	0.1
2016	1	181	142	80	0.1



**ESTABLISHMENTS: MINING**

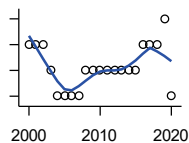
U.S. Census Bureau, County Business Patterns. Beginning with the 2017 data, any tabulation with fewer than 3 establishments were omitted from the release. Data for these establishments are included in the broader total.

Year	County	State of Kansas	Non Metro Kansas	County Rank	Per 1000 or \$ Per Capita
2000	10	868	619	29	1.1
2001	9	878	622	29	1.0
2002	8	847	615	29	0.9
2003	10	864	633	22	1.1
2004	13	880	647	21	1.5
2005	12	941	695	23	1.4
2006	12	991	734	24	1.4
2007	13	1,000	759	22	1.5
2008	15	1,047	799	19	1.8
2009	13	1,016	772	25	1.5
2010	15	1,009	762	17	1.7
2011	12	1,013	763	24	1.4
2012	12	1,048	789	25	1.4
2013	9	1,060	802	31	1.1
2014	9	1,102	828	32	1.1
2015	9	1,069	810	32	1.1
2016	8	990	747	31	1.0
2017	7	920	.	35	0.9
2018	7	900	.	32	0.9
2019	7	864	.	32	0.9
2020	7	825	.	33	0.8

County: county value. Kansas: state value. County Rank: highest county value ranked #1. (\$000): thousands of dollars. Nonmetro Kansas: Kansas total less Metropolitan Areas as defined by the Office of Management and Budget (OMB; released 3/6/2020). Per 1000: For nonmoney amounts, Per 1000=(county value / county population for the same year as the data) x 1000. \$ Per capita=(county value / county population for the same year as the data). Value= . indicates missing or suppressed data or value not calculated.

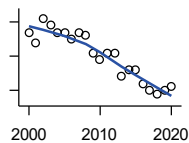
**Business**

**ESTABLISHMENTS: UTILITIES**



U.S. Census Bureau, County Business Patterns. Beginning with the 2017 data, any tabulation with fewer than 3 establishments were omitted from the release. Data for these establishments are included in the broader total.

Year	County	State of Kansas	Non Metro Kansas	County Rank	Per 1000 or \$ Per Capita
2000	5	274	192	17	0.6
2001	5	290	204	18	0.6
2002	5	278	195	19	0.6
2003	4	268	180	22	0.5
2004	3	247	164	32	0.3
2005	3	254	172	34	0.3
2006	3	248	169	32	0.3
2007	3	222	156	33	0.4
2008	4	244	166	20	0.5
2009	4	222	152	16	0.5
2010	4	197	129	12	0.5
2011	4	230	156	17	0.5
2012	4	232	156	17	0.5
2013	4	234	159	17	0.5
2014	4	232	160	17	0.5
2015	4	237	165	18	0.5
2016	5	245	171	12	0.6
2017	5	246	.	13	0.6
2018	5	252	.	13	0.6
2019	6	256	.	8	0.7
2020	3	255	.	33	0.4



**ESTABLISHMENTS: CONSTRUCTION**

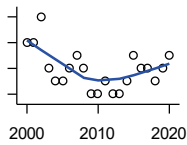
U.S. Census Bureau, County Business Patterns. Beginning with the 2017 data, any tabulation with fewer than 3 establishments were omitted from the release. Data for these establishments are included in the broader total.

Year	County	State of Kansas	Non Metro Kansas	County Rank	Per 1000 or \$ Per Capita
2000	32	7,703	2,616	43	3.6
2001	29	7,449	2,520	46	3.3
2002	36	7,519	2,482	34	4.1
2003	34	7,722	2,521	36	3.9
2004	32	7,887	2,518	41	3.7
2005	32	8,032	2,515	42	3.7
2006	30	8,031	2,494	43	3.5
2007	32	8,057	2,547	41	3.7
2008	31	7,831	2,522	43	3.6
2009	26	7,342	2,452	49	3.0
2010	24	7,064	2,394	49	2.8
2011	26	6,774	2,361	46	3.1
2012	26	6,741	2,393	47	3.1
2013	19	6,802	2,394	61	2.3
2014	21	6,920	2,383	56	2.5
2015	21	7,014	2,377	57	2.5
2016	17	6,988	2,343	64	2.0
2017	15	7,031	2,316	66	1.8
2018	14	7,124	2,285	66	1.7
2019	15	7,060	2,242	65	1.8
2020	16	7,089	2,249	61	1.9

County: county value. Kansas: state value. County Rank: highest county value ranked #1. (\$000): thousands of dollars. Nonmetro Kansas: Kansas total less Metropolitan Areas as defined by the Office of Management and Budget (OMB; released 3/6/2020). Per 1000: For nonmoney amounts, Per 1000=(county value / county population for the same year as the data) x 1000. \$ Per capita=(county value / county population for the same year as the data). Value= . indicates missing or suppressed data or value not calculated.

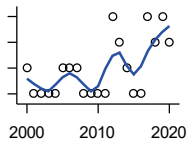
**Business**

**ESTABLISHMENTS:  
MANUFACTURING**



U.S. Census Bureau, County Business Patterns. Beginning with the 2017 data, any tabulation with fewer than 3 establishments were omitted from the release. Data for these establishments are included in the broader total.

Year	County	State of Kansas	Non Metro Kansas	County Rank	Per 1000 or \$ Per Capita
2000	10	3,229	1,316	50	1.1
2001	10	3,240	1,323	48	1.1
2002	12	3,181	1,289	42	1.4
2003	8	3,159	1,291	59	0.9
2004	7	3,179	1,313	68	0.8
2005	7	3,128	1,278	65	0.8
2006	8	3,165	1,290	65	0.9
2007	9	3,184	1,316	55	1.1
2008	8	3,171	1,297	62	0.9
2009	6	3,026	1,240	73	0.7
2010	6	2,955	1,222	73	0.7
2011	7	2,877	1,193	64	0.8
2012	6	2,889	1,197	74	0.7
2013	6	2,836	1,165	72	0.7
2014	7	2,831	1,168	63	0.8
2015	9	2,817	1,161	54	1.1
2016	8	2,791	1,150	56	1.0
2017	8	2,760	1,147	55	1.0
2018	7	2,725	1,126	62	0.9
2019	8	2,695	1,111	56	1.0
2020	9	2,673	1,103	52	1.1



**ESTABLISHMENTS: WHOLESALE  
TRADE**

U.S. Census Bureau, County Business Patterns. Beginning with the 2017 data, any tabulation with fewer than 3 establishments were omitted from the release. Data for these establishments are included in the broader total.

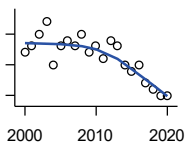
Year	County	State of Kansas	Non Metro Kansas	County Rank	Per 1000 or \$ Per Capita
2000	11	4,876	1,776	72	1.2
2001	10	4,811	1,769	77	1.1
2002	10	4,719	1,750	77	1.1
2003	10	4,590	1,637	75	1.1
2004	10	4,553	1,634	75	1.2
2005	11	4,541	1,618	72	1.3
2006	11	4,517	1,596	67	1.3
2007	11	4,555	1,629	70	1.3
2008	10	4,501	1,622	76	1.2
2009	10	4,437	1,614	77	1.2
2010	10	4,432	1,612	74	1.2
2011	10	4,400	1,660	71	1.2
2012	13	4,563	1,755	64	1.5
2013	12	4,501	1,741	66	1.4
2014	11	4,497	1,746	74	1.3
2015	10	4,459	1,755	77	1.2
2016	10	4,457	1,732	78	1.2
2017	13	4,436	1,774	64	1.6
2018	12	4,330	1,727	68	1.5
2019	13	4,291	1,713	64	1.6
2020	12	4,191	1,677	66	1.4

County: county value. Kansas: state value. County Rank: highest county value ranked #1. (\$000): thousands of dollars. Nonmetro Kansas: Kansas total less Metropolitan Areas as defined by the Office of Management and Budget (OMB; released 3/6/2020). Per 1000: For nonmoney amounts, Per 1000=(county value / county population for the same year as the data) x 1000. \$ Per capita=(county value / county population for the same year as the data). Value= . indicates missing or suppressed data or value not calculated.



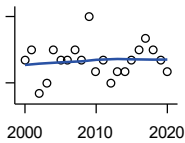
**Business**

**ESTABLISHMENTS: RETAIL TRADE**



U.S. Census Bureau, County Business Patterns. Beginning with the 2017 data, any tabulation with fewer than 3 establishments were omitted from the release. Data for these establishments are included in the broader total.

Year	County	State of Kansas	Non Metro Kansas	County Rank	Per 1000 or \$ Per Capita
2000	47	12,261	5,240	49	5.3
2001	48	12,206	5,207	48	5.4
2002	50	11,980	5,082	45	5.7
2003	52	11,834	5,049	45	5.9
2004	45	11,748	4,967	47	5.2
2005	48	11,562	4,834	46	5.6
2006	49	11,367	4,702	43	5.7
2007	48	11,306	4,653	43	5.6
2008	50	10,978	4,494	43	5.8
2009	47	10,760	4,372	42	5.5
2010	48	10,727	4,346	43	5.6
2011	46	10,655	4,289	41	5.4
2012	49	10,585	4,202	39	5.8
2013	48	10,433	4,147	41	5.7
2014	45	10,391	4,070	41	5.4
2015	44	10,327	4,061	42	5.3
2016	45	10,197	3,965	42	5.4
2017	42	10,074	3,885	42	5.1
2018	41	9,866	3,797	42	5.0
2019	40	9,762	3,750	43	4.9
2020	40	9,591	3,666	44	4.8



**ESTABLISHMENTS: TRANSPORTATION & WAREHOUSING**

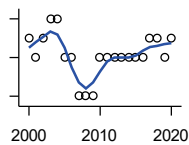
U.S. Census Bureau, County Business Patterns. Beginning with the 2017 data, any tabulation with fewer than 3 establishments were omitted from the release. Data for these establishments are included in the broader total.

Year	County	State of Kansas	Non Metro Kansas	County Rank	Per 1000 or \$ Per Capita
2000	14	2,474	1,293	47	1.6
2001	15	2,463	1,298	42	1.7
2002	11	2,461	1,278	61	1.3
2003	12	2,576	1,297	57	1.4
2004	15	2,651	1,324	46	1.7
2005	14	2,632	1,326	44	1.6
2006	14	2,626	1,295	51	1.6
2007	15	2,664	1,314	45	1.8
2008	14	2,675	1,329	48	1.6
2009	18	2,635	1,313	37	2.1
2010	13	2,615	1,313	51	1.5
2011	14	2,579	1,285	45	1.6
2012	12	2,519	1,243	52	1.4
2013	13	2,492	1,226	47	1.6
2014	13	2,518	1,240	48	1.5
2015	14	2,554	1,257	44	1.7
2016	15	2,567	1,241	43	1.8
2017	16	2,640	1,245	39	1.9
2018	15	2,627	1,238	41	1.8
2019	14	2,615	1,209	44	1.7
2020	13	2,589	1,179	45	1.6

County: county value. Kansas: state value. County Rank: highest county value ranked #1. (\$000): thousands of dollars. Nonmetro Kansas: Kansas total less Metropolitan Areas as defined by the Office of Management and Budget (OMB; released 3/6/2020). Per 1000: For nonmoney amounts, Per 1000=(county value / county population for the same year as the data) x 1000. \$ Per capita=(county value / county population for the same year as the data). Value= . indicates missing or suppressed data or value not calculated.

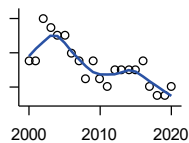
**Business**

**ESTABLISHMENTS: INFORMATION**



U.S. Census Bureau, County Business Patterns. Beginning with the 2017 data, any tabulation with fewer than 3 establishments were omitted from the release. Data for these establishments are included in the broader total.

Year	County	State of Kansas	Non Metro Kansas	County Rank	Per 1000 or \$ Per Capita
2000	5	1,542	578	62	0.6
2001	4	1,556	566	73	0.5
2002	5	1,517	551	59	0.6
2003	6	1,516	564	50	0.7
2004	6	1,518	556	52	0.7
2005	4	1,519	536	64	0.5
2006	4	1,549	559	68	0.5
2007	2	1,504	527	87	0.2
2008	2	1,468	522	87	0.2
2009	2	1,420	510	87	0.2
2010	4	1,437	527	61	0.5
2011	4	1,428	537	63	0.5
2012	4	1,387	515	61	0.5
2013	4	1,337	487	61	0.5
2014	4	1,335	496	61	0.5
2015	4	1,359	510	61	0.5
2016	4	1,431	537	60	0.5
2017	5	1,439	.	55	0.6
2018	5	1,407	.	54	0.6
2019	4	1,422	.	64	0.5
2020	5	1,424	.	55	0.6



**ESTABLISHMENTS: FINANCE & INSURANCE**

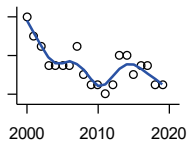
U.S. Census Bureau, County Business Patterns. Beginning with the 2017 data, any tabulation with fewer than 3 establishments were omitted from the release. Data for these establishments are included in the broader total.

Year	County	State of Kansas	Non Metro Kansas	County Rank	Per 1000 or \$ Per Capita
2000	19	5,209	1,848	49	2.1
2001	19	5,178	1,828	45	2.2
2002	24	5,496	1,911	41	2.7
2003	23	5,569	1,907	42	2.6
2004	22	5,572	1,913	43	2.5
2005	22	5,708	1,964	44	2.6
2006	20	5,877	1,976	46	2.3
2007	19	6,017	2,030	47	2.2
2008	17	6,010	2,023	51	2.0
2009	19	5,933	1,994	47	2.2
2010	17	5,872	1,975	51	2.0
2011	16	5,854	1,985	53	1.9
2012	18	5,993	2,024	50	2.1
2013	18	5,903	1,993	51	2.1
2014	18	5,894	2,000	49	2.1
2015	18	5,932	1,998	49	2.2
2016	19	6,022	2,021	47	2.3
2017	16	6,026	2,007	58	1.9
2018	15	6,023	1,997	59	1.8
2019	15	5,953	1,977	59	1.8
2020	16	5,926	1,969	54	1.9

County: county value. Kansas: state value. County Rank: highest county value ranked #1. (\$000): thousands of dollars. Nonmetro Kansas: Kansas total less Metropolitan Areas as defined by the Office of Management and Budget (OMB; released 3/6/2020). Per 1000: For nonmoney amounts, Per 1000=(county value / county population for the same year as the data) x 1000. \$ Per capita=(county value / county population for the same year as the data). Value= . indicates missing or suppressed data or value not calculated.

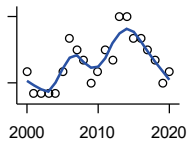
**Business**

**ESTABLISHMENTS: REAL ESTATE, RENTAL, AND LEASING**



U.S. Census Bureau, County Business Patterns. Beginning with the 2017 data, any tabulation with fewer than 3 establishments were omitted from the release. Data for these establishments are included in the broader total.

Year	County	State of Kansas	Non Metro Kansas	County Rank	Per 1000 or \$ Per Capita
2000	10	2,733	687	33	1.1
2001	8	2,849	724	38	0.9
2002	7	2,952	735	41	0.8
2003	5	3,007	727	50	0.6
2004	5	3,108	713	51	0.6
2005	5	3,203	727	52	0.6
2006	5	3,268	736	50	0.6
2007	7	3,286	721	40	0.8
2008	4	3,239	738	49	0.5
2009	3	3,122	723	58	0.4
2010	3	3,050	708	59	0.3
2011	2	3,002	692	74	0.2
2012	3	2,981	691	63	0.4
2013	6	3,046	717	43	0.7
2014	6	3,135	738	44	0.7
2015	4	3,179	744	57	0.5
2016	5	3,293	757	49	0.6
2017	5	3,389	.	50	0.6
2018	3	3,409	.	67	0.4
2019	3	3,464	.	65	0.4



**ESTABLISHMENTS: PROFESSIONAL, SCIENTIFIC, AND TECHNICAL SERVICES**

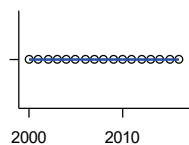
U.S. Census Bureau, County Business Patterns. Beginning with the 2017 data, any tabulation with fewer than 3 establishments were omitted from the release. Data for these establishments are included in the broader total.

Year	County	State of Kansas	Non Metro Kansas	County Rank	Per 1000 or \$ Per Capita
2000	13	6,424	1,690	59	1.5
2001	11	6,492	1,665	64	1.2
2002	11	6,719	1,704	67	1.3
2003	11	6,793	1,735	64	1.3
2004	11	7,025	1,730	66	1.3
2005	13	7,087	1,711	60	1.5
2006	16	7,231	1,736	49	1.8
2007	15	7,329	1,729	54	1.8
2008	14	7,133	1,671	55	1.6
2009	12	7,122	1,676	60	1.4
2010	13	7,172	1,680	57	1.5
2011	15	7,115	1,668	50	1.8
2012	14	7,122	1,681	53	1.7
2013	18	7,129	1,698	43	2.1
2014	18	7,206	1,682	42	2.1
2015	16	7,184	1,687	47	1.9
2016	16	7,146	1,659	46	1.9
2017	15	7,224	1,679	50	1.8
2018	14	7,138	1,655	52	1.7
2019	12	7,119	.	60	1.5
2020	13	7,117	.	57	1.6

County: county value. Kansas: state value. County Rank: highest county value ranked #1. (\$000): thousands of dollars. Nonmetro Kansas: Kansas total less Metropolitan Areas as defined by the Office of Management and Budget (OMB; released 3/6/2020). Per 1000: For nonmoney amounts, Per 1000=(county value / county population for the same year as the data) x 1000. \$ Per capita=(county value / county population for the same year as the data). Value= . indicates missing or suppressed data or value not calculated.

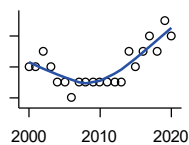
**Business**

**ESTABLISHMENTS: MANAGEMENT OF COMPANIES AND ENTERPRISES**



U.S. Census Bureau, County Business Patterns. Beginning with the 2017 data, any tabulation with fewer than 3 establishments were omitted from the release. Data for these establishments are included in the broader total.

Year	County	State of Kansas	Non Metro Kansas	County Rank	Per 1000 or \$ Per Capita
2000	0	622	145	105	0.0
2001	0	593	141	105	0.0
2002	0	597	152	105	0.0
2003	0	561	135	105	0.0
2004	0	569	133	105	0.0
2005	0	543	127	105	0.0
2006	0	542	131	105	0.0
2007	0	550	133	105	0.0
2008	0	553	139	105	0.0
2009	0	575	136	105	0.0
2010	0	567	131	105	0.0
2011	0	552	134	105	0.0
2012	0	593	135	105	0.0
2013	0	590	135	105	0.0
2014	0	603	136	105	0.0
2015	0	613	140	105	0.0
2016	0	655	171	105	0.0



**ESTABLISHMENTS: ADMIN, SUPPORT, WASTE MGMT., AND REMEDIATION**

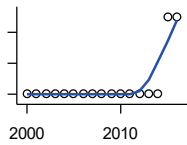
U.S. Census Bureau, County Business Patterns. Beginning with the 2017 data, any tabulation with fewer than 3 establishments were omitted from the release. Data for these establishments are included in the broader total.

Year	County	State of Kansas	Non Metro Kansas	County Rank	Per 1000 or \$ Per Capita
2000	5	3,307	871	65	0.6
2001	5	3,421	913	64	0.6
2002	6	3,232	882	58	0.7
2003	5	3,189	858	68	0.6
2004	4	3,301	891	73	0.5
2005	4	3,342	896	73	0.5
2006	3	3,395	886	83	0.3
2007	4	3,522	921	73	0.5
2008	4	3,587	932	75	0.5
2009	4	3,505	904	71	0.5
2010	4	3,494	897	78	0.5
2011	4	3,447	903	75	0.5
2012	4	3,462	891	74	0.5
2013	4	3,489	904	77	0.5
2014	6	3,569	933	58	0.7
2015	5	3,630	964	66	0.6
2016	6	3,705	987	60	0.7
2017	7	3,741	991	53	0.9
2018	6	3,740	983	59	0.7
2019	8	3,762	991	47	1.0
2020	7	3,807	989	52	0.8

County: county value. Kansas: state value. County Rank: highest county value ranked #1. (\$000): thousands of dollars. Nonmetro Kansas: Kansas total less Metropolitan Areas as defined by the Office of Management and Budget (OMB; released 3/6/2020). Per 1000: For nonmoney amounts, Per 1000=(county value / county population for the same year as the data) x 1000. \$ Per capita=(county value / county population for the same year as the data). Value= . indicates missing or suppressed data or value not calculated.

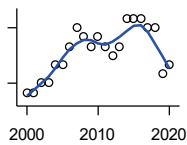
**Business**

**ESTABLISHMENTS: EDUCATIONAL SERVICES**



U.S. Census Bureau, County Business Patterns. Beginning with the 2017 data, any tabulation with fewer than 3 establishments were omitted from the release. Data for these establishments are included in the broader total.

Year	County	State of Kansas	Non Metro Kansas	County Rank	Per 1000 or \$ Per Capita
2000	0	604	155	105	0.0
2001	0	625	168	105	0.0
2002	0	666	165	105	0.0
2003	0	663	173	105	0.0
2004	0	690	173	105	0.0
2005	0	699	168	105	0.0
2006	0	698	175	105	0.0
2007	0	691	165	105	0.0
2008	0	692	158	105	0.0
2009	0	690	150	105	0.0
2010	0	700	149	105	0.0
2011	0	711	150	105	0.0
2012	0	724	145	105	0.0
2013	0	735	153	105	0.0
2014	0	722	152	105	0.0
2015	1	754	152	66	0.1
2016	1	728	150	66	0.1



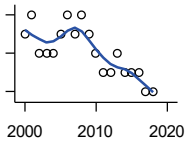
**ESTABLISHMENTS: HEALTH CARE AND SOCIAL ASSISTANCE**

U.S. Census Bureau, County Business Patterns. Beginning with the 2017 data, any tabulation with fewer than 3 establishments were omitted from the release. Data for these establishments are included in the broader total.

Year	County	State of Kansas	Non Metro Kansas	County Rank	Per 1000 or \$ Per Capita
2000	23	6,564	2,591	49	2.6
2001	23	6,636	2,590	50	2.6
2002	24	7,052	2,777	48	2.7
2003	24	7,129	2,792	49	2.7
2004	26	7,239	2,813	47	3.0
2005	26	7,412	2,855	47	3.0
2006	28	7,477	2,860	45	3.2
2007	30	7,661	2,864	43	3.5
2008	29	7,651	2,810	44	3.4
2009	28	7,696	2,787	44	3.3
2010	29	7,751	2,830	45	3.4
2011	28	7,804	2,817	47	3.3
2012	27	7,973	2,793	45	3.2
2013	28	7,877	2,729	45	3.3
2014	31	7,809	2,686	42	3.7
2015	31	8,103	2,692	40	3.7
2016	31	8,315	2,678	41	3.7
2017	30	8,136	2,646	43	3.6
2018	30	8,126	2,632	41	3.6
2019	25	8,184	2,587	44	3.1
2020	26	8,290	2,571	44	3.1

County: county value. Kansas: state value. County Rank: highest county value ranked #1. (\$000): thousands of dollars. Nonmetro Kansas: Kansas total less Metropolitan Areas as defined by the Office of Management and Budget (OMB; released 3/6/2020). Per 1000: For nonmoney amounts, Per 1000=(county value / county population for the same year as the data) x 1000. \$ Per capita=(county value / county population for the same year as the data). Value= . indicates missing or suppressed data or value not calculated.

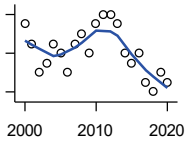
**Business**



**ESTABLISHMENTS: ARTS, ENTERTAINMENT, AND RECREATION**

U.S. Census Bureau, County Business Patterns. Beginning with the 2017 data, any tabulation with fewer than 3 establishments were omitted from the release. Data for these establishments are included in the broader total.

Year	County	State of Kansas	Non Metro Kansas	County Rank	Per 1000 or \$ Per Capita
2000	7	981	419	33	0.8
2001	8	1,009	433	29	0.9
2002	6	1,054	441	42	0.7
2003	6	1,045	443	42	0.7
2004	6	1,082	445	38	0.7
2005	7	1,109	446	35	0.8
2006	8	1,080	445	31	0.9
2007	7	1,092	444	36	0.8
2008	8	1,062	423	28	0.9
2009	7	1,063	421	33	0.8
2010	6	1,018	406	38	0.7
2011	5	997	387	40	0.6
2012	5	1,000	388	44	0.6
2013	6	1,009	377	37	0.7
2014	5	1,030	365	44	0.6
2015	5	1,031	357	42	0.6
2016	5	1,060	366	42	0.6
2017	4	1,096	.	49	0.5
2018	4	1,088	.	47	0.5



**ESTABLISHMENTS: ACCOMMODATION AND FOOD SERVICES**

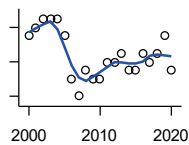
U.S. Census Bureau, County Business Patterns. Beginning with the 2017 data, any tabulation with fewer than 3 establishments were omitted from the release. Data for these establishments are included in the broader total.

Year	County	State of Kansas	Non Metro Kansas	County Rank	Per 1000 or \$ Per Capita
2000	21	5,536	2,213	50	2.4
2001	19	5,551	2,173	49	2.2
2002	16	5,610	2,174	56	1.8
2003	17	5,635	2,188	56	1.9
2004	19	5,681	2,160	50	2.2
2005	18	5,776	2,170	52	2.1
2006	16	5,745	2,132	58	1.8
2007	19	5,877	2,095	46	2.2
2008	20	5,843	2,052	44	2.3
2009	18	5,794	2,029	51	2.1
2010	21	5,898	2,046	44	2.4
2011	22	5,958	2,067	42	2.6
2012	22	5,951	2,046	44	2.6
2013	21	6,061	2,070	46	2.5
2014	18	5,985	2,024	48	2.1
2015	17	6,034	2,063	50	2.1
2016	18	6,126	2,094	49	2.2
2017	15	6,250	2,123	60	1.8
2018	14	6,256	2,128	60	1.7
2019	16	6,231	2,131	53	2.0
2020	15	6,206	2,131	54	1.8

County: county value. Kansas: state value. County Rank: highest county value ranked #1. (\$000): thousands of dollars. Nonmetro Kansas: Kansas total less Metropolitan Areas as defined by the Office of Management and Budget (OMB; released 3/6/2020). Per 1000: For nonmoney amounts, Per 1000=(county value / county population for the same year as the data) x 1000. \$ Per capita=(county value / county population for the same year as the data). Value= . indicates missing or suppressed data or value not calculated.

**Business**

**ESTABLISHMENTS: OTHER SERVICES**

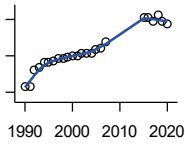


U.S. Census Bureau, County Business Patterns. Beginning with the 2017 data, any tabulation with fewer than 3 establishments were omitted from the release. Data for these establishments are included in the broader total.

Year	County	State of Kansas	Non Metro Kansas	County Rank	Per 1000 or \$ Per Capita
2000	27	8,423	3,636	59	3.0
2001	28	8,310	3,614	58	3.2
2002	29	8,552	3,658	57	3.3
2003	29	8,411	3,605	54	3.3
2004	29	8,343	3,597	56	3.3
2005	27	8,321	3,571	59	3.1
2006	22	8,225	3,490	69	2.5
2007	20	8,355	3,534	74	2.3
2008	23	8,104	3,406	65	2.7
2009	22	8,040	3,405	68	2.6
2010	22	7,998	3,379	66	2.6
2011	24	7,883	3,294	61	2.8
2012	24	7,913	3,303	64	2.8
2013	25	7,947	3,290	62	3.0
2014	23	7,943	3,285	67	2.7
2015	23	7,869	3,255	64	2.8
2016	25	7,839	3,204	60	3.0
2017	24	7,873	3,189	60	2.9
2018	25	7,853	3,176	60	3.0
2019	27	7,834	3,138	58	3.3
2020	23	7,787	3,073	61	2.8

County: county value. Kansas: state value. County Rank: highest county value ranked #1. (\$000): thousands of dollars. Nonmetro Kansas: Kansas total less Metropolitan Areas as defined by the Office of Management and Budget (OMB; released 3/6/2020). Per 1000: For nonmoney amounts, Per 1000=(county value / county population for the same year as the data) x 1000. \$ Per capita=(county value / county population for the same year as the data). Value= . indicates missing or suppressed data or value not calculated.

**Business**



**TOTAL ANNUAL PAYROLL (\$000)  
COUNTY BUSINESS PATTERNS**

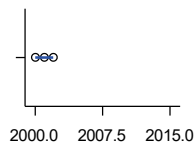
U.S. Census Bureau, County Business Patterns. Beginning with the 2017 data, any tabulation with fewer than 3 establishments were omitted from the release. Data for these establishments are included in the broader total.

Year	County	State of Kansas	Non Metro Kansas	County Rank	Per 1000 or \$ Per Capita
1990	14,109	17,487,316	4,442,429	68	1,678.8
1991	15,207	18,162,326	4,612,616	69	1,804.3
1992	62,202	19,244,346	4,882,060	34	7,219.4
1993	68,258	20,087,190	5,182,780	34	7,848.5
1994	80,674	21,201,652	5,541,423	32	9,230.4
1995	80,876	22,825,920	5,875,310	35	9,177.9
1996	85,901	24,613,884	6,198,398	34	9,752.6
1997	91,662	26,787,098	6,599,061	34	10,367.8
1998	93,496	28,747,576	6,871,794	34	10,670.6
1999	96,725	30,600,434	7,121,961	34	10,943.0
2000	100,988	31,990,762	7,520,424	34	11,391.8
2001	100,570	33,303,992	7,598,165	34	11,392.2
2002	107,043	33,152,962	7,572,002	32	12,186.1
2003	107,989	34,040,944	7,726,561	32	12,278.5
2004	107,278	35,725,812	8,303,779	33	12,339.3
2005	116,804	36,646,064	8,586,986	33	13,547.2
2006	120,170	39,251,388	9,178,947	34	13,889.3
2007	138,743	42,022,753	.	33	16,242.4
2008	.	43,984,689	.	.	.
2009	.	42,146,866	.	.	.
2010	.	42,686,303	10,294,015	.	.
2011	.	43,733,944	.	.	.
2012	.	45,608,072	11,222,183	.	.
2013	.	47,715,601	11,446,751	.	.
2014	.	49,712,832	11,957,931	.	.
2015	204,431	51,259,676	11,975,718	28	24,657.0
2016	205,883	51,016,318	12,148,646	28	24,689.2
2017	194,007	52,754,605	12,448,592	29	23,578.9
2018	212,645	55,087,460	12,810,270	28	25,831.5
2019	194,861	57,272,387	13,123,288	29	23,824.6
2020	188,170	58,374,388	14,007,955	30	22,508.4

County: county value. Kansas: state value. County Rank: highest county value ranked #1. (\$000): thousands of dollars. Nonmetro Kansas: Kansas total less Metropolitan Areas as defined by the Office of Management and Budget (OMB; released 3/6/2020). Per 1000: For nonmoney amounts, Per 1000=(county value / county population for the same year as the data) x 1000. \$ Per capita=(county value / county population for the same year as the data). Value= . indicates missing or suppressed data or value not calculated.



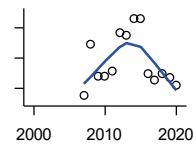
**Business**



**TOTAL ANNUAL PAYROLL(\$000):  
FORESTRY, FISHING, HUNTING, AND  
AG SUPPORT**

U.S. Census Bureau, County Business Patterns. Beginning with the 2017 data, any tabulation with fewer than 3 establishments were omitted from the release. Data for these establishments are included in the broader total.

Year	County	State of Kansas	Non Metro Kansas	County Rank	Per 1000 or \$ Per Capita
2000	0	13,551	.	.	0.0
2001	0	.	.	.	0.0
2002	0	16,528	.	.	0.0
2003	.	17,247	.	.	.
2004	.	17,552	.	.	.
2005	.	16,298	.	.	.
2006	.	17,908	.	.	.
2007	.	22,199	.	.	.
2008	.	21,359	.	.	.
2009	.	22,466	.	.	.
2010	.	22,753	.	.	.
2011	.	23,320	.	.	.
2012	.	27,492	.	.	.
2013	.	30,360	.	.	.
2014	.	34,862	.	.	.
2015	.	35,980	.	.	.



**TOTAL ANNUAL PAYROLL(\$000):  
MINING**

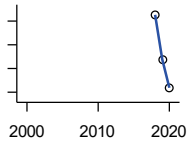
U.S. Census Bureau, County Business Patterns. Beginning with the 2017 data, any tabulation with fewer than 3 establishments were omitted from the release. Data for these establishments are included in the broader total.

Year	County	State of Kansas	Non Metro Kansas	County Rank	Per 1000 or \$ Per Capita
2000	.	240,079	.	.	.
2001	.	273,838	.	.	.
2002	.	262,277	.	.	.
2003	.	290,652	.	.	.
2004	.	326,997	.	.	.
2005	.	381,069	.	.	.
2006	.	482,102	.	.	.
2007	1,375	551,751	.	.	161.0
2008	2,235	620,446	.	.	261.0
2009	1,700	465,070	.	.	198.5
2010	1,701	485,841	.	.	197.8
2011	1,780	541,536	.	.	209.7
2012	2,419	600,402	.	.	285.7
2013	2,378	599,788	.	.	283.9
2014	2,654	678,673	.	.	316.2
2015	2,649	552,658	.	.	319.5
2016	1,745	428,767	.	.	209.3
2017	1,644	379,883	.	.	199.8
2018	1,739	431,367	.	.	211.2
2019	1,686	349,270	.	.	206.1
2020	1,550	302,795	.	.	185.4

County: county value. Kansas: state value. County Rank: highest county value ranked #1. (\$000): thousands of dollars. Nonmetro Kansas: Kansas total less Metropolitan Areas as defined by the Office of Management and Budget (OMB; released 3/6/2020). Per 1000: For nonmoney amounts, Per 1000=(county value / county population for the same year as the data) x 1000. \$ Per capita=(county value / county population for the same year as the data). Value= . indicates missing or suppressed data or value not calculated.

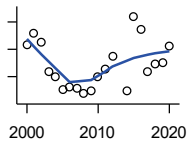
**Business**

**TOTAL ANNUAL PAYROLL(\$000):  
UTILITIES**



U.S. Census Bureau, County Business Patterns. Beginning with the 2017 data, any tabulation with fewer than 3 establishments were omitted from the release. Data for these establishments are included in the broader total.

Year	County	State of Kansas	Non Metro Kansas	County Rank	Per 1000 or \$ Per Capita
2000	.	410,313	.	.	.
2001	.	452,057	.	.	.
2002	.	377,559	.	.	.
2003	.	378,157	.	.	.
2004	.	377,809	.	.	.
2005	.	429,864	.	.	.
2006	.	443,999	.	.	.
2007	.	480,068	.	.	.
2008	.	541,066	.	.	.
2009	.	563,373	.	.	.
2010	.	512,628	.	.	.
2011	.	653,229	.	.	.
2012	.	625,451	.	.	.
2013	.	625,347	.	.	.
2014	.	610,960	.	.	.
2015	.	668,559	.	.	.
2018	152,633	770,542	.	.	18,541.4
2019	133,889	733,878	.	.	16,369.8
2020	121,873	738,521	.	.	14,578.1



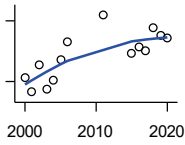
**TOTAL ANNUAL PAYROLL(\$000):  
CONSTRUCTION**

U.S. Census Bureau, County Business Patterns. Beginning with the 2017 data, any tabulation with fewer than 3 establishments were omitted from the release. Data for these establishments are included in the broader total.

Year	County	State of Kansas	Non Metro Kansas	County Rank	Per 1000 or \$ Per Capita
2000	3,179	2,256,057	.	.	358.6
2001	3,610	2,320,652	.	.	408.9
2002	3,248	2,302,229	.	.	369.8
2003	2,198	2,282,021	.	.	249.9
2004	2,007	2,302,854	.	.	230.8
2005	1,549	2,465,977	.	.	179.7
2006	1,636	2,700,351	.	.	189.1
2007	1,590	2,772,168	.	.	186.1
2008	1,368	2,950,073	.	.	159.8
2009	1,496	2,709,864	.	.	174.6
2010	2,014	2,553,555	.	.	234.2
2011	2,281	2,550,355	.	.	268.8
2012	2,748	2,733,284	.	.	324.6
2013	.	2,866,801	.	.	.
2014	1,472	3,135,814	.	.	175.4
2015	4,199	3,270,952	.	.	506.5
2016	3,749	3,328,610	.	.	449.6
2017	2,197	3,568,505	.	.	267.0
2018	2,467	3,806,196	.	.	299.7
2019	2,524	3,879,912	.	.	308.6
2020	3,127	3,983,029	.	.	374.0

County: county value. Kansas: state value. County Rank: highest county value ranked #1. (\$000): thousands of dollars. Nonmetro Kansas: Kansas total less Metropolitan Areas as defined by the Office of Management and Budget (OMB; released 3/6/2020). Per 1000: For nonmoney amounts, Per 1000=(county value / county population for the same year as the data) x 1000. \$ Per capita=(county value / county population for the same year as the data). Value= . indicates missing or suppressed data or value not calculated.

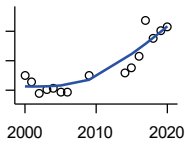
**Business**



**TOTAL ANNUAL PAYROLL(\$000):  
MANUFACTURING**

U.S. Census Bureau, County Business Patterns. Beginning with the 2017 data, any tabulation with fewer than 3 establishments were omitted from the release. Data for these establishments are included in the broader total.

Year	County	State of Kansas	Non Metro Kansas	County Rank	Per 1000 or \$ Per Capita
2000	3,170	7,015,414	.	.	357.6
2001	2,471	7,301,706	.	.	279.9
2002	3,841	6,802,605	.	.	437.3
2003	2,638	6,691,611	.	.	299.9
2004	3,043	6,985,656	.	.	350.0
2005	4,083	7,221,614	.	.	473.6
2006	4,952	7,621,873	.	.	572.4
2007	.	7,873,359	.	.	.
2008	.	8,441,541	.	.	.
2009	.	7,477,838	.	.	.
2010	.	7,556,955	.	.	.
2011	6,297	7,747,934	.	.	742.0
2012	.	7,704,851	.	.	.
2013	.	8,365,542	.	.	.
2014	.	8,787,306	.	.	.
2015	4,424	9,052,105	.	.	533.6
2016	4,693	8,868,744	.	.	562.8
2017	4,508	9,075,793	.	.	547.9
2018	5,677	9,481,652	.	.	689.6
2019	5,285	10,171,575	.	.	646.2
2020	5,129	9,744,825	.	.	613.5



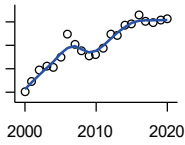
**TOTAL ANNUAL PAYROLL(\$000):  
WHOLESALE TRADE**

U.S. Census Bureau, County Business Patterns. Beginning with the 2017 data, any tabulation with fewer than 3 establishments were omitted from the release. Data for these establishments are included in the broader total.

Year	County	State of Kansas	Non Metro Kansas	County Rank	Per 1000 or \$ Per Capita
2000	2,480	2,332,755	.	.	279.8
2001	2,282	2,283,169	.	.	258.5
2002	1,875	2,107,653	.	.	213.5
2003	2,017	2,622,701	.	.	229.3
2004	2,060	2,663,196	.	.	236.9
2005	1,955	2,345,990	.	.	226.7
2006	1,932	2,592,211	.	.	223.3
2007	.	2,682,542	.	.	.
2008	.	3,078,655	.	.	.
2009	2,512	2,940,949	.	.	293.3
2010	.	3,097,628	.	.	.
2011	.	3,305,811	.	.	.
2012	.	3,339,997	.	.	.
2013	.	3,460,512	.	.	.
2014	2,565	3,712,075	.	.	305.6
2015	2,746	3,760,189	.	.	331.2
2016	3,172	3,738,207	.	.	380.4
2017	4,376	3,822,730	.	.	531.8
2018	3,769	3,814,353	.	.	457.8
2019	4,004	4,025,802	.	.	489.5
2020	4,154	4,224,666	.	.	496.9

County: county value. Kansas: state value. County Rank: highest county value ranked #1. (\$000): thousands of dollars. Nonmetro Kansas: Kansas total less Metropolitan Areas as defined by the Office of Management and Budget (OMB; released 3/6/2020). Per 1000: For nonmoney amounts, Per 1000=(county value / county population for the same year as the data) x 1000. \$ Per capita=(county value / county population for the same year as the data). Value= . indicates missing or suppressed data or value not calculated.

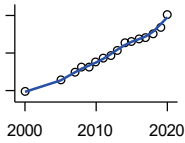
**Business**



**TOTAL ANNUAL PAYROLL(\$000):  
RETAIL TRADE**

U.S. Census Bureau, County Business Patterns. Beginning with the 2017 data, any tabulation with fewer than 3 establishments were omitted from the release. Data for these establishments are included in the broader total.

Year	County	State of Kansas	Non Metro Kansas	County Rank	Per 1000 or \$ Per Capita
2000	5,002	2,747,001	.	.	564.2
2001	5,465	2,813,226	.	.	619.1
2002	5,941	2,854,231	.	.	676.3
2003	6,089	2,773,674	.	.	692.3
2004	6,049	2,847,826	.	.	695.8
2005	6,500	2,952,196	.	.	753.9
2006	7,459	3,126,495	.	.	862.1
2007	7,024	3,201,169	.	.	822.3
2008	6,755	3,261,054	.	.	788.9
2009	6,538	3,232,246	.	.	763.3
2010	6,617	3,321,838	.	.	769.3
2011	6,893	3,384,607	.	.	812.2
2012	7,473	3,409,755	.	.	882.6
2013	7,436	3,483,752	.	.	887.7
2014	7,862	3,617,933	.	.	936.6
2015	7,908	3,712,165	.	.	953.8
2016	8,300	3,826,889	.	.	995.3
2017	8,013	3,797,849	.	.	973.9
2018	7,943	3,818,988	.	.	964.9
2019	8,081	3,908,994	.	.	988.0
2020	8,135	3,984,443	.	.	973.1



**TOTAL ANNUAL PAYROLL(\$000):  
TRANSPORTATION &  
WAREHOUSING**

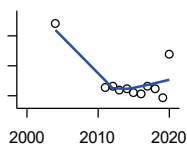
U.S. Census Bureau, County Business Patterns. Beginning with the 2017 data, any tabulation with fewer than 3 establishments were omitted from the release. Data for these establishments are included in the broader total.

Year	County	State of Kansas	Non Metro Kansas	County Rank	Per 1000 or \$ Per Capita
2000	952	1,044,835	.	.	107.4
2001	.	1,089,405	.	.	.
2002	.	1,094,636	.	.	.
2003	.	1,316,655	.	.	.
2004	.	1,439,800	.	.	.
2005	1,536	1,393,651	.	.	178.1
2006	.	1,528,551	.	.	.
2007	1,971	1,788,267	.	.	230.7
2008	2,271	1,722,697	.	.	265.2
2009	2,249	1,618,598	.	.	262.5
2010	2,490	1,735,761	.	.	289.5
2011	2,699	1,739,165	.	.	318.0
2012	2,870	1,984,976	.	.	339.0
2013	3,169	2,006,261	.	.	378.3
2014	3,539	2,097,377	.	.	421.6
2015	3,620	2,190,072	.	.	436.6
2016	3,720	2,202,859	.	.	446.1
2017	3,840	2,546,061	.	.	466.7
2018	4,055	2,663,188	.	.	492.6
2019	4,347	2,879,406	.	.	531.5
2020	5,051	2,962,461	.	.	604.2

County: county value. Kansas: state value. County Rank: highest county value ranked #1. (\$000): thousands of dollars. Nonmetro Kansas: Kansas total less Metropolitan Areas as defined by the Office of Management and Budget (OMB; released 3/6/2020). Per 1000: For nonmoney amounts, Per 1000=(county value / county population for the same year as the data) x 1000. \$ Per capita=(county value / county population for the same year as the data). Value= . indicates missing or suppressed data or value not calculated.

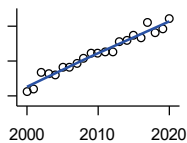
**Business**

**TOTAL ANNUAL PAYROLL(\$000):  
INFORMATION**



U.S. Census Bureau, County Business Patterns. Beginning with the 2017 data, any tabulation with fewer than 3 establishments were omitted from the release. Data for these establishments are included in the broader total.

Year	County	State of Kansas	Non Metro Kansas	County Rank	Per 1000 or \$ Per Capita
2000	.	1,923,381	.	.	.
2001	.	2,218,610	.	.	.
2002	.	2,298,108	.	.	.
2003	.	2,378,673	.	.	.
2004	1,698	2,392,990	.	.	195.3
2005	.	2,395,081	.	.	.
2006	.	2,586,483	.	.	.
2007	.	2,594,138	.	.	.
2008	.	3,043,244	.	.	.
2009	.	3,045,570	.	.	.
2010	.	2,481,580	.	.	.
2011	629	2,513,805	.	.	74.1
2012	664	2,535,555	.	.	78.4
2013	598	2,805,017	.	.	71.4
2014	616	2,393,609	.	.	73.4
2015	560	2,406,323	.	.	67.5
2016	528	2,080,211	.	.	63.3
2017	662	2,090,021	.	.	80.5
2018	607	2,341,543	.	.	73.7
2019	459	2,133,891	.	.	56.1
2020	1,193	2,245,204	.	.	142.7



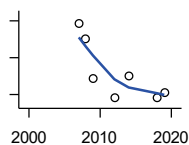
**TOTAL ANNUAL PAYROLL(\$000):  
FINANCE & INSURANCE**

U.S. Census Bureau, County Business Patterns. Beginning with the 2017 data, any tabulation with fewer than 3 establishments were omitted from the release. Data for these establishments are included in the broader total.

Year	County	State of Kansas	Non Metro Kansas	County Rank	Per 1000 or \$ Per Capita
2000	2,259	2,083,565	.	.	254.8
2001	2,410	2,129,587	.	.	273.0
2002	3,353	2,414,120	.	.	381.7
2003	3,256	2,608,579	.	.	370.2
2004	3,191	2,676,910	.	.	367.0
2005	3,647	2,786,136	.	.	423.0
2006	3,679	2,928,931	.	.	425.2
2007	3,892	3,096,017	.	.	455.6
2008	4,126	3,322,977	.	.	481.8
2009	4,461	3,206,839	.	.	520.8
2010	4,458	3,211,300	.	.	518.3
2011	4,538	3,404,633	.	.	534.7
2012	4,497	3,611,165	.	.	531.1
2013	5,085	3,896,051	.	.	607.0
2014	5,216	4,044,315	.	.	621.4
2015	5,448	4,113,060	.	.	657.1
2016	5,338	4,180,740	.	.	640.1
2017	6,251	4,258,057	.	.	759.7
2018	5,651	4,682,552	.	.	686.5
2019	5,877	4,814,201	.	.	718.5
2020	6,440	5,288,529	.	.	770.3

County: county value. Kansas: state value. County Rank: highest county value ranked #1. (\$000): thousands of dollars. Nonmetro Kansas: Kansas total less Metropolitan Areas as defined by the Office of Management and Budget (OMB; released 3/6/2020). Per 1000: For nonmoney amounts, Per 1000=(county value / county population for the same year as the data) x 1000. \$ Per capita=(county value / county population for the same year as the data). Value= . indicates missing or suppressed data or value not calculated.

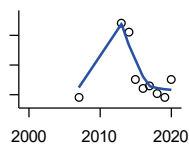
**Business**



**TOTAL ANNUAL PAYROLL(\$000):  
REAL ESTATE, RENTAL, AND  
LEASING**

U.S. Census Bureau, County Business Patterns. Beginning with the 2017 data, any tabulation with fewer than 3 establishments were omitted from the release. Data for these establishments are included in the broader total.

Year	County	State of Kansas	Non Metro Kansas	County Rank	Per 1000 or \$ Per Capita
2000	.	360,637	.	.	.
2001	.	397,371	.	.	.
2002	.	403,695	.	.	.
2003	.	437,786	.	.	.
2004	.	430,719	.	.	.
2005	.	465,149	.	.	.
2006	.	478,811	.	.	.
2007	242	452,969	.	.	28.3
2008	200	484,149	.	.	23.4
2009	94	450,884	.	.	11.0
2010	.	487,255	.	.	.
2011	.	535,120	.	.	.
2012	41	531,039	.	.	4.8
2013	.	538,796	.	.	.
2014	102	542,307	.	.	12.2
2015	.	595,030	.	.	.
2018	40	600,037	.	.	4.9
2019	54	622,881	.	.	6.6



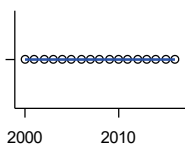
**TOTAL ANNUAL PAYROLL(\$000):  
PROFESSIONAL, SCIENTIFIC, AND  
TECHNICAL SERVICES**

U.S. Census Bureau, County Business Patterns. Beginning with the 2017 data, any tabulation with fewer than 3 establishments were omitted from the release. Data for these establishments are included in the broader total.

Year	County	State of Kansas	Non Metro Kansas	County Rank	Per 1000 or \$ Per Capita
2000	.	2,057,313	.	.	.
2001	.	2,152,937	.	.	.
2002	.	2,150,085	.	.	.
2003	.	2,052,712	.	.	.
2004	.	2,531,457	.	.	.
2005	.	2,418,500	.	.	.
2006	.	2,655,690	.	.	.
2007	846	2,901,544	.	.	99.0
2008	.	2,903,802	.	.	.
2009	.	3,071,611	.	.	.
2010	.	3,037,182	.	.	.
2011	.	3,132,082	.	.	.
2012	.	3,455,548	.	.	.
2013	5,829	3,777,729	.	.	695.8
2014	5,199	3,981,580	.	.	619.4
2015	2,048	4,039,074	.	.	247.0
2016	1,385	4,125,507	.	.	166.1
2017	1,591	4,158,858	.	.	193.4
2018	1,099	4,314,317	.	.	133.5
2019	785	4,646,644	.	.	96.0
2020	2,047	4,927,611	.	.	244.9

County: county value. Kansas: state value. County Rank: highest county value ranked #1. (\$000): thousands of dollars. Nonmetro Kansas: Kansas total less Metropolitan Areas as defined by the Office of Management and Budget (OMB; released 3/6/2020). Per 1000: For nonmoney amounts, Per 1000=(county value / county population for the same year as the data) x 1000. \$ Per capita=(county value / county population for the same year as the data). Value= . indicates missing or suppressed data or value not calculated.

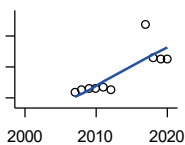
**Business**



**TOTAL ANNUAL PAYROLL(\$000):  
MANAGEMENT OF COMPANIES AND  
ENTERPRISES**

U.S. Census Bureau, County Business Patterns. Beginning with the 2017 data, any tabulation with fewer than 3 establishments were omitted from the release. Data for these establishments are included in the broader total.

Year	County	State of Kansas	Non Metro Kansas	County Rank	Per 1000 or \$ Per Capita
2000	0	1,362,735	.	.	0.0
2001	0	1,279,253	.	.	0.0
2002	0	1,311,368	.	.	0.0
2003	0	1,352,119	.	.	0.0
2004	0	1,378,891	.	.	0.0
2005	0	1,510,876	.	.	0.0
2006	0	1,626,320	.	.	0.0
2007	0	2,233,654	.	.	0.0
2008	0	1,848,656	.	.	0.0
2009	0	1,601,158	.	.	0.0
2010	0	2,003,048	.	.	0.0
2011	0	1,677,619	.	.	0.0
2012	0	1,834,430	.	.	0.0
2013	0	1,938,100	.	.	0.0
2014	0	2,117,232	.	.	0.0
2015	0	2,451,126	.	.	0.0
2016	0	2,167,620	.	.	0.0



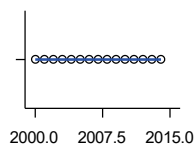
**TOTAL ANNUAL PAYROLL(\$000):  
ADMIN, SUPPORT, WASTE MGMT.,  
AND REMEDIATION**

U.S. Census Bureau, County Business Patterns. Beginning with the 2017 data, any tabulation with fewer than 3 establishments were omitted from the release. Data for these establishments are included in the broader total.

Year	County	State of Kansas	Non Metro Kansas	County Rank	Per 1000 or \$ Per Capita
2000	.	1,388,712	.	.	.
2001	.	1,416,480	.	.	.
2002	.	1,378,905	.	.	.
2003	.	1,387,061	.	.	.
2004	.	1,544,442	.	.	.
2005	.	1,694,687	.	.	.
2006	.	1,800,846	.	.	.
2007	172	1,978,025	.	.	20.1
2008	257	2,096,864	.	.	30.0
2009	299	1,832,540	.	.	34.9
2010	298	2,117,325	.	.	34.6
2011	327	2,114,970	.	.	38.5
2012	273	2,230,250	.	.	32.2
2013	.	2,214,320	.	.	.
2014	.	2,444,170	.	.	.
2015	.	2,577,592	.	.	.
2017	2,379	3,026,927	.	.	289.1
2018	1,295	3,007,347	.	.	157.3
2019	1,263	3,075,485	.	.	154.4
2020	1,252	3,250,046	.	.	149.8

County: county value. Kansas: state value. County Rank: highest county value ranked #1. (\$000): thousands of dollars. Nonmetro Kansas: Kansas total less Metropolitan Areas as defined by the Office of Management and Budget (OMB; released 3/6/2020). Per 1000: For nonmoney amounts, Per 1000=(county value / county population for the same year as the data) x 1000. \$ Per capita=(county value / county population for the same year as the data). Value= . indicates missing or suppressed data or value not calculated.

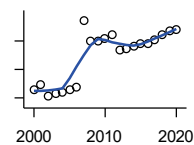
**Business**



**TOTAL ANNUAL PAYROLL(\$000):  
EDUCATIONAL SERVICES**

U.S. Census Bureau, County Business Patterns. Beginning with the 2017 data, any tabulation with fewer than 3 establishments were omitted from the release. Data for these establishments are included in the broader total.

Year	County	State of Kansas	Non Metro Kansas	County Rank	Per 1000 or \$ Per Capita
2000	0	299,843	.	.	0.0
2001	0	320,606	.	.	0.0
2002	0	353,531	.	.	0.0
2003	0	350,814	.	.	0.0
2004	0	361,644	.	.	0.0
2005	0	375,781	.	.	0.0
2006	0	400,565	.	.	0.0
2007	0	414,233	.	.	0.0
2008	0	463,210	.	.	0.0
2009	0	468,856	.	.	0.0
2010	0	487,670	.	.	0.0
2011	0	504,964	.	.	0.0
2012	0	508,448	.	.	0.0
2013	0	553,995	.	.	0.0
2014	0	612,073	.	.	0.0
2015	.	579,794	.	.	.



**TOTAL ANNUAL PAYROLL(\$000):  
HEALTH CARE AND SOCIAL ASSISTANCE**

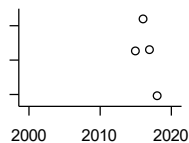
U.S. Census Bureau, County Business Patterns. Beginning with the 2017 data, any tabulation with fewer than 3 establishments were omitted from the release. Data for these establishments are included in the broader total.

Year	County	State of Kansas	Non Metro Kansas	County Rank	Per 1000 or \$ Per Capita
2000	8,839	4,120,595	.	.	997.1
2001	9,880	4,445,027	.	.	1,119.2
2002	7,913	4,705,220	.	.	900.8
2003	8,251	4,939,323	.	.	938.1
2004	8,556	5,232,394	.	.	984.1
2005	8,847	5,487,089	.	.	1,026.1
2006	9,472	5,814,218	.	.	1,094.8
2007	21,095	6,186,471	.	.	2,469.6
2008	17,512	6,490,627	.	.	2,045.1
2009	17,451	6,749,962	.	.	2,037.2
2010	17,896	6,871,727	.	.	2,080.7
2011	18,595	7,129,655	.	.	2,191.0
2012	15,952	7,614,853	.	.	1,884.0
2013	16,130	7,541,515	.	.	1,925.5
2014	16,688	7,733,621	.	.	1,988.1
2015	16,970	7,969,650	.	.	2,046.8
2016	16,937	8,018,706	.	.	2,031.1
2017	17,793	8,384,998	.	.	2,162.5
2018	18,694	8,637,619	.	.	2,270.9
2019	19,315	8,854,414	.	.	2,361.5
2020	19,405	9,309,269	.	.	2,321.2

County: county value. Kansas: state value. County Rank: highest county value ranked #1. (\$000): thousands of dollars. Nonmetro Kansas: Kansas total less Metropolitan Areas as defined by the Office of Management and Budget (OMB; released 3/6/2020). Per 1000: For nonmoney amounts, Per 1000=(county value / county population for the same year as the data) x 1000. \$ Per capita=(county value / county population for the same year as the data). Value= . indicates missing or suppressed data or value not calculated.



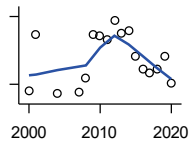
**Business**



**TOTAL ANNUAL PAYROLL(\$000):  
ARTS, ENTERTAINMENT, AND  
RECREATION**

U.S. Census Bureau, County Business Patterns. Beginning with the 2017 data, any tabulation with fewer than 3 establishments were omitted from the release. Data for these establishments are included in the broader total.

Year	County	State of Kansas	Non Metro Kansas	County Rank	Per 1000 or \$ Per Capita
2000	.	195,784	.	.	.
2001	.	203,511	.	.	.
2002	.	206,204	.	.	.
2003	.	185,049	.	.	.
2004	.	190,742	.	.	.
2005	.	196,594	.	.	.
2006	.	201,049	.	.	.
2007	.	220,435	.	.	.
2008	.	236,986	.	.	.
2009	.	237,116	.	.	.
2010	.	233,285	.	.	.
2011	.	234,351	.	.	.
2012	.	254,169	.	.	.
2013	.	278,474	.	.	.
2014	.	289,103	.	.	.
2015	155	300,253	.	.	18.7
2016	174	312,902	.	.	20.9
2017	156	323,153	.	.	19.0
2018	129	325,454	.	.	15.7



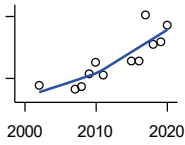
**TOTAL ANNUAL PAYROLL(\$000):  
ACCOMMODATION AND FOOD  
SERVICES**

U.S. Census Bureau, County Business Patterns. Beginning with the 2017 data, any tabulation with fewer than 3 establishments were omitted from the release. Data for these establishments are included in the broader total.

Year	County	State of Kansas	Non Metro Kansas	County Rank	Per 1000 or \$ Per Capita
2000	1,343	926,831	.	.	151.5
2001	1,836	960,196	.	.	208.0
2002	.	930,510	.	.	.
2003	.	992,313	.	.	.
2004	1,315	1,046,901	.	.	151.3
2005	.	1,101,854	.	.	.
2006	.	1,185,280	.	.	.
2007	1,332	1,431,100	.	.	155.9
2008	1,450	1,271,594	.	.	169.3
2009	1,839	1,283,065	.	.	214.7
2010	1,834	1,296,556	.	.	213.2
2011	1,797	1,364,281	.	.	211.7
2012	1,966	1,388,337	.	.	232.2
2013	1,849	1,476,335	.	.	220.7
2014	1,873	1,572,021	.	.	223.1
2015	1,650	1,640,144	.	.	199.0
2016	1,540	1,709,193	.	.	184.7
2017	1,506	1,824,791	.	.	183.0
2018	1,535	1,880,364	.	.	186.5
2019	1,647	1,958,603	.	.	201.4
2020	1,406	1,745,238	.	.	168.2

County: county value. Kansas: state value. County Rank: highest county value ranked #1. (\$000): thousands of dollars. Nonmetro Kansas: Kansas total less Metropolitan Areas as defined by the Office of Management and Budget (OMB; released 3/6/2020). Per 1000: For nonmoney amounts, Per 1000=(county value / county population for the same year as the data) x 1000. \$ Per capita=(county value / county population for the same year as the data). Value= . indicates missing or suppressed data or value not calculated.

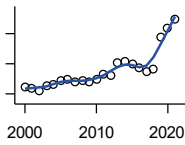
**Business**



**TOTAL ANNUAL PAYROLL(\$000):  
OTHER SERVICES**

U.S. Census Bureau, County Business Patterns. Beginning with the 2017 data, any tabulation with fewer than 3 establishments were omitted from the release. Data for these establishments are included in the broader total.

Year	County	State of Kansas	Non Metro Kansas	County Rank	Per 1000 or \$ Per Capita
2000	.	965,540	.	.	.
2001	.	996,716	.	.	.
2002	1,374	1,007,464	.	.	156.4
2003	.	979,466	.	.	.
2004	.	970,383	.	.	.
2005	.	1,005,537	.	.	.
2006	.	1,055,932	.	.	.
2007	909	1,141,551	.	.	106.4
2008	1,213	1,184,016	.	.	141.7
2009	2,490	1,167,154	.	.	290.7
2010	3,621	1,170,201	.	.	421.0
2011	2,313	1,173,775	.	.	272.5
2012	.	1,217,210	.	.	.
2013	.	1,254,933	.	.	.
2014	.	1,305,563	.	.	.
2015	3,639	1,341,075	.	.	438.9
2016	3,705	1,351,375	.	.	444.3
2017	8,161	1,344,179	.	.	991.9
2018	5,283	1,382,801	.	.	641.8
2019	5,505	1,427,711	.	.	673.1
2020	7,215	1,420,859	.	.	863.0



**NOMINAL TAXABLE RETAIL SALES  
(million\$)**

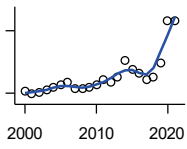
Kansas Department of Revenue

Year	County	State of Kansas	Non Metro Kansas	County Rank	Per 1000 or \$ Per Capita
2000	61.8	30,119.0	8,831.7	48	7.0
2001	58.5	30,202.2	8,700.3	48	6.6
2002	56.1	29,380.8	8,241.5	48	6.4
2003	62.5	30,694.0	8,710.6	47	7.1
2004	66.7	31,922.6	9,062.5	47	7.7
2005	71.1	32,924.2	9,386.6	46	8.2
2006	74.2	34,937.6	10,042.1	46	8.6
2007	70.8	36,180.1	10,553.2	52	8.3
2008	71.5	37,559.5	11,126.9	53	8.3
2009	70.8	35,211.8	10,351.5	50	8.3
2010	75.0	35,655.7	10,606.1	51	8.7
2011	82.4	37,257.0	11,153.5	49	9.7
2012	80.6	38,988.8	11,749.1	52	9.5
2013	101.4	40,009.0	11,993.8	44	12.1
2014	104.3	41,299.0	12,365.4	43	12.4
2015	98.8	41,635.8	11,747.6	42	11.9
2016	93.1	42,040.2	11,523.5	43	11.2
2017	87.6	41,940.1	11,449.9	45	10.7
2018	91.7	42,732.3	11,643.9	43	11.1
2019	144.2	43,732.5	12,062.7	35	17.6
2020	159.0	43,689.9	12,331.7	34	19.0
2021	174.2	48,532.8	13,413.0	35	20.9

County: county value. Kansas: state value. County Rank: highest county value ranked #1. (\$000): thousands of dollars. Nonmetro Kansas: Kansas total less Metropolitan Areas as defined by the Office of Management and Budget (OMB; released 3/6/2020). Per 1000: For nonmoney amounts, Per 1000=(county value / county population for the same year as the data) x 1000. \$ Per capita=(county value / county population for the same year as the data). Value= . indicates missing or suppressed data or value not calculated.

**Business**

RETAIL PULL FACTOR



Kansas Direct Program, Kansas State University Cooperative Extension Service (1980-1999); Kansas Department of Revenue (2000- )

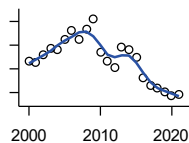
Year	County	State of Kansas	Non Metro Kansas	County Rank	Per 1000 or \$ Per Capita
2000	0.62	.	.	50	.
2001	0.59	.	.	53	.
2002	0.61	.	.	52	.
2003	0.63	.	.	52	.
2004	0.65	.	.	54	.
2005	0.68	.	.	49	.
2006	0.70	.	.	50	.
2007	0.64	.	.	63	.
2008	0.64	.	.	67	.
2009	0.65	.	.	73	.
2010	0.68	.	.	68	.
2011	0.73	.	.	55	.
2012	0.71	.	.	65	.
2013	0.76	.	.	56	.
2014	0.91	.	.	37	.
2015	0.83	.	.	42	.
2016	0.79	.	.	42	.
2017	0.73	.	.	48	.
2018	0.76	.	.	44	.
2019	0.89	.	.	30	.
2020	1.30	.	.	7	.
2021	1.30	.	.	6	.

County: county value. Kansas: state value. County Rank: highest county value ranked #1. (\$000): thousands of dollars. Nonmetro Kansas: Kansas total less Metropolitan Areas as defined by the Office of Management and Budget (OMB; released 3/6/2020). Per 1000: For nonmoney amounts, Per 1000=(county value / county population for the same year as the data) x 1000. \$ Per capita=(county value / county population for the same year as the data). Value= . indicates missing or suppressed data or value not calculated.

**Employment**

CIVILIAN LABOR FORCE (BLS-Place of Residence; 1990- )

U.S. Department of Labor, Bureau of Labor Statistics (BLS)



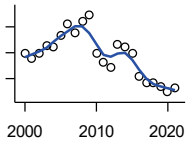
Year	County	State of Kansas	Non Metro Kansas	County Rank	Per 1000 or \$ Per Capita
2000	4,662	1,402,606	482,229	46	525.9
2001	4,624	1,398,521	475,280	46	523.8
2002	4,787	1,419,335	482,428	45	545.0
2003	4,934	1,441,065	490,161	45	561.0
2004	4,893	1,458,910	494,509	45	562.8
2005	5,130	1,458,767	490,047	45	595.0
2006	5,316	1,467,553	498,594	45	614.4
2007	5,108	1,485,414	497,048	45	598.0
2008	5,350	1,493,365	504,522	45	624.8
2009	5,555	1,512,572	516,311	44	648.5
2010	4,846	1,500,463	492,594	43	563.4
2011	4,670	1,498,000	492,563	43	550.3
2012	4,538	1,490,808	489,349	45	536.0
2013	4,954	1,489,395	485,484	43	591.4
2014	4,902	1,494,203	481,813	43	584.0
2015	4,753	1,493,782	477,546	43	573.3
2016	4,303	1,491,961	468,258	45	516.0
2017	4,136	1,488,346	461,063	47	502.7
2018	4,107	1,488,027	456,866	47	498.9
2019	4,020	1,497,517	455,858	47	491.5
2020	3,934	1,493,706	452,935	47	470.6
2021	3,960	1,495,665	453,398	47	474.9

County: county value. Kansas: state value. County Rank: highest county value ranked #1. (\$000): thousands of dollars. Nonmetro Kansas: Kansas total less Metropolitan Areas as defined by the Office of Management and Budget (OMB; released 3/6/2020). Per 1000: For nonmoney amounts, Per 1000=(county value / county population for the same year as the data) x 1000. \$ Per capita=(county value / county population for the same year as the data). Value= . indicates missing or suppressed data or value not calculated.

**Employment**

EMPLOYED (BLS-Place of Residence; 1990- )

U.S. Department of Labor, Bureau of Labor Statistics (BLS)



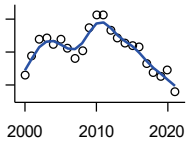
Year	County	State of Kansas	Non Metro Kansas	County Rank	Per 1000 or \$ Per Capita
2000	4,481	1,349,841	464,962	46	505.5
2001	4,385	1,338,775	455,154	46	496.7
2002	4,499	1,347,163	461,241	45	512.2
2003	4,640	1,361,115	467,622	45	527.6
2004	4,618	1,378,355	470,330	45	531.2
2005	4,841	1,384,654	467,722	45	561.5
2006	5,056	1,402,950	479,174	45	584.4
2007	4,877	1,422,109	477,983	46	570.9
2008	5,098	1,425,022	484,056	45	595.4
2009	5,232	1,408,142	485,797	44	610.8
2010	4,483	1,396,172	461,635	43	521.2
2011	4,309	1,402,198	463,723	44	507.7
2012	4,220	1,405,638	463,376	45	498.4
2013	4,661	1,410,470	461,405	43	556.4
2014	4,624	1,426,892	461,797	43	550.9
2015	4,482	1,431,533	457,899	43	540.6
2016	4,037	1,431,920	449,356	47	484.1
2017	3,920	1,434,516	445,003	47	476.4
2018	3,919	1,439,329	442,716	47	476.1
2019	3,842	1,450,705	442,108	47	469.7
2020	3,737	1,408,965	433,229	47	447.0
2021	3,832	1,447,323	441,159	47	459.6

County: county value. Kansas: state value. County Rank: highest county value ranked #1. (\$000): thousands of dollars. Nonmetro Kansas: Kansas total less Metropolitan Areas as defined by the Office of Management and Budget (OMB; released 3/6/2020). Per 1000: For nonmoney amounts, Per 1000=(county value / county population for the same year as the data) x 1000. \$ Per capita=(county value / county population for the same year as the data). Value= . indicates missing or suppressed data or value not calculated.

**Employment**

UNEMPLOYED (BLS-Place of Residence; 1990- )

U.S. Department of Labor, Bureau of Labor Statistics (BLS)

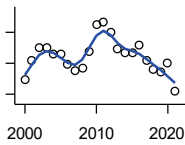


Year	County	State of Kansas	Non Metro Kansas	County Rank	Per 1000 or \$ Per Capita
2000	181	52,765	17,267	46	20.4
2001	239	59,746	20,126	41	27.1
2002	288	72,172	21,187	39	32.8
2003	294	79,950	22,539	40	33.4
2004	275	80,555	24,179	42	31.6
2005	289	74,113	22,325	38	33.5
2006	260	64,603	19,420	39	30.1
2007	231	63,305	19,065	39	27.0
2008	252	68,343	20,466	39	29.4
2009	323	104,430	30,514	44	37.7
2010	363	104,291	30,959	41	42.2
2011	361	95,802	28,840	40	42.5
2012	318	85,170	25,973	40	37.6
2013	293	78,925	24,079	39	35.0
2014	278	67,311	20,016	39	33.1
2015	271	62,249	19,647	37	32.7
2016	266	60,041	18,902	37	31.9
2017	216	53,830	16,060	39	26.3
2018	188	48,698	14,150	38	22.8
2019	178	46,812	13,750	38	21.8
2020	197	84,741	19,706	42	23.6
2021	128	48,342	12,239	42	15.4

County: county value. Kansas: state value. County Rank: highest county value ranked #1. (\$000): thousands of dollars. Nonmetro Kansas: Kansas total less Metropolitan Areas as defined by the Office of Management and Budget (OMB; released 3/6/2020). Per 1000: For nonmoney amounts, Per 1000=(county value / county population for the same year as the data) x 1000. \$ Per capita=(county value / county population for the same year as the data). Value= . indicates missing or suppressed data or value not calculated.

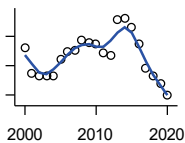
**Employment**

UNEMPLOYMENT RATE (BLS-Place of Residence; 1990- )



U.S. Department of Labor, Bureau of Labor Statistics (BLS)

Year	County	State of Kansas	Non Metro Kansas	County Rank	Per 1000 or \$ Per Capita
2000	3.9	3.8	3.6	31	.
2001	5.2	4.3	4.2	17	.
2002	6.0	5.1	4.4	11	.
2003	6.0	5.5	4.6	16	.
2004	5.6	5.5	4.9	27	.
2005	5.6	5.1	4.6	19	.
2006	4.9	4.4	3.9	15	.
2007	4.5	4.3	3.8	23	.
2008	4.7	4.6	4.1	26	.
2009	5.8	6.9	5.9	39	.
2010	7.5	7.0	6.3	26	.
2011	7.7	6.4	5.9	18	.
2012	7.0	5.7	5.3	14	.
2013	5.9	5.3	5.0	21	.
2014	5.7	4.5	4.2	9	.
2015	5.7	4.2	4.1	10	.
2016	6.2	4.0	4.0	4	.
2017	5.2	3.6	3.5	6	.
2018	4.6	3.3	3.1	5	.
2019	4.4	3.1	3.0	4	.
2020	5.0	5.7	4.4	31	.
2021	3.2	3.2	2.7	19	.



BEA EMPLOYMENT: TOTAL (Place of Work)

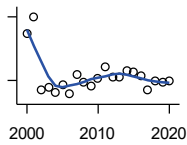
U.S. Bureau of Economic Analysis, Regional Economic Information System (REIS)

Year	County	State of Kansas	Non Metro Kansas	County Rank	Per 1000 or \$ Per Capita
2000	6,316	1,760,312	604,361	41	712.5
2001	5,858	1,767,601	592,672	44	663.6
2002	5,823	1,746,077	585,387	44	662.9
2003	5,826	1,733,694	577,860	44	662.4
2004	5,815	1,750,876	578,750	45	668.9
2005	6,116	1,765,650	577,562	43	709.3
2006	6,237	1,795,507	583,041	42	720.9
2007	6,258	1,844,355	591,924	42	732.6
2008	6,439	1,858,069	594,368	42	752.0
2009	6,387	1,813,184	580,972	42	745.6
2010	6,375	1,801,873	579,758	41	741.2
2011	6,214	1,819,044	583,725	42	732.2
2012	6,181	1,841,393	591,748	41	730.0
2013	6,776	1,869,054	597,236	39	808.9
2014	6,809	1,895,859	601,291	39	811.2
2015	6,656	1,910,954	598,589	40	802.8
2016	6,367	1,916,152	592,580	41	763.5
2017	5,945	1,914,179	584,337	43	722.5
2018	5,831	1,926,242	580,213	43	708.3
2019	5,695	1,925,204	574,496	43	696.3
2020	5,489	1,851,247	556,671	43	656.6

County: county value. Kansas: state value. County Rank: highest county value ranked #1. (\$000): thousands of dollars. Nonmetro Kansas: Kansas total less Metropolitan Areas as defined by the Office of Management and Budget (OMB; released 3/6/2020). Per 1000: For nonmoney amounts, Per 1000=(county value / county population for the same year as the data) x 1000. \$ Per capita=(county value / county population for the same year as the data). Value= . indicates missing or suppressed data or value not calculated.

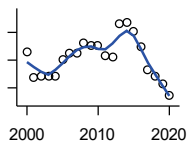
**Employment**

**BEA EMPLOYMENT: FARM**



U.S. Bureau of Economic Analysis,  
Regional Economic Information System  
(REIS)

Year	County	State of Kansas	Non Metro Kansas	County Rank	Per 1000 or \$ Per Capita
2000	664	77,477	59,088	52	74.9
2001	680	78,177	59,647	48	77.0
2002	611	70,532	53,893	49	69.6
2003	613	68,516	52,099	44	69.7
2004	609	67,586	51,246	44	70.0
2005	616	66,829	50,386	43	71.4
2006	607	64,910	48,728	43	70.2
2007	626	65,639	49,037	42	73.3
2008	618	63,820	47,682	42	72.2
2009	615	62,798	46,960	40	71.8
2010	622	63,882	47,984	40	72.3
2011	633	65,761	49,707	41	74.6
2012	623	63,753	48,167	41	73.6
2013	623	62,739	47,255	38	74.4
2014	629	64,308	48,722	41	74.9
2015	628	64,416	48,927	41	75.7
2016	624	63,840	48,539	41	74.8
2017	611	61,876	46,936	41	74.3
2018	620	63,233	48,069	41	75.3
2019	618	63,300	48,167	41	75.6
2020	620	64,281	49,038	41	74.2



**BEA EMPLOYMENT: NON-FARM**

U.S. Bureau of Economic Analysis,  
Regional Economic Information System  
(REIS)

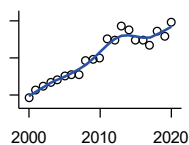
Year	County	State of Kansas	Non Metro Kansas	County Rank	Per 1000 or \$ Per Capita
2000	5,652	1,682,835	545,273	40	637.6
2001	5,178	1,689,424	533,025	43	586.5
2002	5,212	1,675,545	531,494	44	593.4
2003	5,213	1,665,178	525,761	44	592.7
2004	5,206	1,683,290	527,504	45	598.8
2005	5,500	1,698,821	527,176	42	637.9
2006	5,630	1,730,597	534,313	41	650.7
2007	5,632	1,778,716	542,887	42	659.3
2008	5,821	1,794,249	546,686	40	679.8
2009	5,772	1,750,386	534,012	39	673.8
2010	5,753	1,737,991	531,774	39	668.9
2011	5,581	1,753,283	534,018	42	657.6
2012	5,558	1,777,640	543,581	41	656.4
2013	6,153	1,806,315	549,981	38	734.5
2014	6,180	1,831,551	552,569	38	736.2
2015	6,028	1,846,538	549,662	39	727.1
2016	5,743	1,852,312	544,041	40	688.7
2017	5,334	1,852,303	537,401	43	648.3
2018	5,211	1,863,009	532,144	43	633.0
2019	5,077	1,861,904	526,329	43	620.7
2020	4,869	1,786,966	507,633	42	582.4

County: county value. Kansas: state value. County Rank: highest county value ranked #1. (\$000): thousands of dollars. Nonmetro Kansas: Kansas total less Metropolitan Areas as defined by the Office of Management and Budget (OMB; released 3/6/2020). Per 1000: For nonmoney amounts, Per 1000=(county value / county population for the same year as the data) x 1000. \$ Per capita=(county value / county population for the same year as the data). Value= . indicates missing or suppressed data or value not calculated.



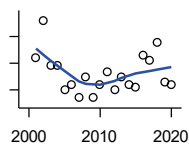
**Employment**

**AVERAGE WAGE PER JOB (\$)**



U.S. Bureau of Economic Analysis,  
Regional Economic Information System  
(REIS)

Year	County	State of Kansas	Non Metro Kansas	County Rank	Per 1000 or \$ Per Capita
2000	28,262	31,854	24,396	19	.
2001	32,765	32,859	26,379	13	.
2002	34,464	33,707	26,331	9	.
2003	36,910	35,078	28,911	11	.
2004	38,513	35,932	29,747	8	.
2005	40,466	37,467	31,646	10	.
2006	41,232	40,038	31,993	8	.
2007	40,841	41,500	33,484	13	.
2008	48,437	44,197	36,256	9	.
2009	49,015	43,860	35,739	7	.
2010	49,848	45,370	38,631	17	.
2011	59,941	48,280	42,324	15	.
2012	59,404	50,549	42,015	13	.
2013	67,248	52,629	46,073	18	.
2014	64,814	51,959	43,562	9	.
2015	59,630	52,250	42,320	13	.
2016	59,793	51,664	41,964	11	.
2017	56,632	53,007	42,137	12	.
2018	64,458	54,790	44,514	5	.
2019	61,977	56,956	45,336	6	.
2020	69,396	60,597	49,183	6	.



**BEA EMPLOYMENT: FORESTRY, FISHING, HUNTING, AND AG SUPPORT**

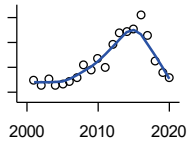
U.S. Bureau of Economic Analysis,  
Regional Economic Information System  
(REIS)

Year	County	State of Kansas	Non Metro Kansas	County Rank	Per 1000 or \$ Per Capita
2001	52	7,059	.	17	.
2002	66	8,045	.	19	.
2003	49	7,313	.	20	.
2004	49	7,623	.	18	.
2005	40	7,962	.	22	.
2006	42	7,748	.	20	.
2007	37	8,228	.	24	.
2008	45	8,646	.	21	.
2009	37	8,982	.	21	.
2010	42	9,251	.	19	.
2011	47	9,410	.	17	.
2012	40	9,691	.	16	.
2013	45	10,014	.	21	.
2014	42	10,708	.	27	.
2015	41	10,020	.	27	.
2016	53	10,383	.	25	.
2017	51	10,693	.	24	.
2018	58	11,103	.	21	.
2019	43	10,768	.	27	.
2020	42	10,529	.	26	.

County: county value. Kansas: state value. County Rank: highest county value ranked #1. (\$000): thousands of dollars. Nonmetro Kansas: Kansas total less Metropolitan Areas as defined by the Office of Management and Budget (OMB; released 3/6/2020). Per 1000: For nonmoney amounts, Per 1000=(county value / county population for the same year as the data) x 1000. \$ Per capita=(county value / county population for the same year as the data). Value= . indicates missing or suppressed data or value not calculated.

**Employment**

**BEA EMPLOYMENT: MINING**



U.S. Bureau of Economic Analysis,  
Regional Economic Information System  
(REIS)

Year	County	State of Kansas	Non Metro Kansas	County Rank	Per 1000 or \$ Per Capita
2001	150	19,592	.	27	.
2002	129	17,635	.	28	.
2003	152	19,869	.	29	.
2004	126	18,466	.	31	.
2005	135	19,489	.	29	.
2006	144	22,403	.	31	.
2007	156	24,043	.	30	.
2008	208	31,467	.	26	.
2009	190	29,941	.	27	.
2010	238	36,124	.	28	.
2011	200	31,658	.	27	.
2012	293	42,405	.	28	.
2013	340	46,585	.	27	.
2014	346	45,526	.	27	.
2015	355	46,460	.	29	.
2016	411	48,555	.	27	.
2017	327	40,710	.	25	.
2018	223	32,021	.	33	.
2019	178	29,101	.	34	.
2020	159	26,272	.	32	.

**BEA EMPLOYMENT: UTILITIES**

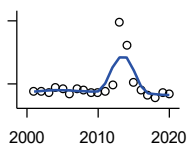
U.S. Bureau of Economic Analysis,  
Regional Economic Information System  
(REIS)

Year	County	State of Kansas	Non Metro Kansas	County Rank	Per 1000 or \$ Per Capita
2001	.	7,608	.	.	.
2002	.	7,087	.	.	.
2003	.	7,253	.	.	.
2004	.	7,356	.	.	.
2005	.	7,447	.	.	.
2006	.	7,478	.	.	.
2007	.	7,584	.	.	.
2008	.	7,855	.	.	.
2009	.	7,941	.	.	.
2010	.	8,028	.	.	.
2011	.	8,213	.	.	.
2012	.	8,155	.	.	.
2013	.	7,949	.	.	.
2014	.	7,985	.	.	.
2015	.	7,040	.	.	.
2016	.	7,133	.	.	.

County: county value. Kansas: state value. County Rank: highest county value ranked #1. (\$000): thousands of dollars. Nonmetro Kansas: Kansas total less Metropolitan Areas as defined by the Office of Management and Budget (OMB; released 3/6/2020). Per 1000: For nonmoney amounts, Per 1000=(county value / county population for the same year as the data) x 1000. \$ Per capita=(county value / county population for the same year as the data). Value= . indicates missing or suppressed data or value not calculated.

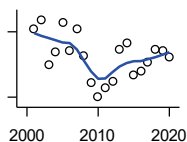
**Employment**

**BEA EMPLOYMENT:  
CONSTRUCTION**



U.S. Bureau of Economic Analysis,  
Regional Economic Information System  
(REIS)

Year	County	State of Kansas	Non Metro Kansas	County Rank	Per 1000 or \$ Per Capita
2001	264	92,647	27,972	48	.
2002	267	90,370	.	43	.
2003	261	91,725	26,681	45	.
2004	283	93,271	.	44	.
2005	274	94,836	.	43	.
2006	253	97,449	.	46	.
2007	276	99,119	29,179	47	.
2008	269	97,741	.	49	.
2009	257	90,165	28,077	50	.
2010	261	84,708	26,402	47	.
2011	262	83,332	25,999	48	.
2012	294	85,966	.	44	.
2013	593	88,094	.	27	.
2014	481	91,143	.	27	.
2015	309	91,458	27,583	44	.
2016	268	93,539	27,151	49	.
2017	244	92,046	25,579	50	.
2018	232	92,985	25,530	50	.
2019	259	94,858	25,701	47	.
2020	250	94,186	26,085	50	.



**BEA EMPLOYMENT:  
MANUFACTURING**

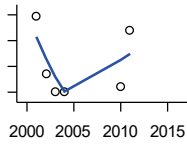
U.S. Bureau of Economic Analysis,  
Regional Economic Information System  
(REIS)

Year	County	State of Kansas	Non Metro Kansas	County Rank	Per 1000 or \$ Per Capita
2001	183	199,980	73,170	59	.
2002	191	188,905	70,691	58	.
2003	150	179,013	68,418	63	.
2004	161	181,738	69,669	62	.
2005	189	185,459	71,072	58	.
2006	163	188,047	71,704	63	.
2007	183	192,930	73,488	59	.
2008	158	193,116	72,235	64	.
2009	133	173,854	64,961	63	.
2010	121	166,000	62,884	67	.
2011	129	167,302	64,361	66	.
2012	135	169,308	65,944	64	.
2013	164	170,113	67,251	61	.
2014	170	169,307	68,299	59	.
2015	140	168,324	66,978	66	.
2016	144	167,723	65,796	65	.
2017	152	168,438	66,795	62	.
2018	164	171,778	68,181	61	.
2019	163	173,605	67,879	62	.
2020	157	165,228	65,658	62	.

County: county value. Kansas: state value. County Rank: highest county value ranked #1. (\$000): thousands of dollars. Nonmetro Kansas: Kansas total less Metropolitan Areas as defined by the Office of Management and Budget (OMB; released 3/6/2020). Per 1000: For nonmoney amounts, Per 1000=(county value / county population for the same year as the data) x 1000. \$ Per capita=(county value / county population for the same year as the data). Value= . indicates missing or suppressed data or value not calculated.

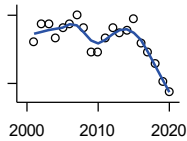
**Employment**

**BEA EMPLOYMENT: WHOLESALE TRADE**



U.S. Bureau of Economic Analysis,  
Regional Economic Information System  
(REIS)

Year	County	State of Kansas	Non Metro Kansas	County Rank	Per 1000 or \$ Per Capita
2001	218	65,698	.	33	.
2002	129	65,408	.	53	.
2003	100	63,504	.	62	.
2004	101	64,434	.	64	.
2005	.	64,587	.	.	.
2006	.	64,743	.	.	.
2007	.	65,993	.	.	.
2008	.	67,693	.	.	.
2009	.	65,954	.	.	.
2010	108	64,376	.	58	.
2011	196	64,712	.	36	.
2012	.	63,973	.	.	.
2013	.	64,999	.	.	.
2014	.	69,295	.	.	.
2015	.	68,444	.	.	.
2016	.	64,843	.	.	.



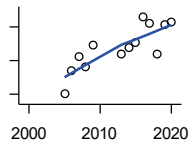
**BEA EMPLOYMENT: RETAIL TRADE**

U.S. Bureau of Economic Analysis,  
Regional Economic Information System  
(REIS)

Year	County	State of Kansas	Non Metro Kansas	County Rank	Per 1000 or \$ Per Capita
2001	593	198,069	.	44	.
2002	632	196,112	.	42	.
2003	630	194,545	64,173	44	.
2004	600	192,957	63,265	44	.
2005	624	191,656	62,506	44	.
2006	630	190,391	62,082	44	.
2007	651	190,643	61,716	41	.
2008	624	185,907	59,783	42	.
2009	569	181,262	58,714	45	.
2010	569	177,858	57,470	43	.
2011	601	180,548	57,734	43	.
2012	622	180,596	57,349	40	.
2013	611	183,245	57,556	40	.
2014	616	185,899	57,855	41	.
2015	642	188,421	58,516	41	.
2016	589	188,505	57,864	43	.
2017	570	186,633	56,715	43	.
2018	544	183,323	.	44	.
2019	504	177,240	53,427	46	.
2020	483	171,777	52,563	47	.

County: county value. Kansas: state value. County Rank: highest county value ranked #1. (\$000): thousands of dollars. Nonmetro Kansas: Kansas total less Metropolitan Areas as defined by the Office of Management and Budget (OMB; released 3/6/2020). Per 1000: For nonmoney amounts, Per 1000=(county value / county population for the same year as the data) x 1000. \$ Per capita=(county value / county population for the same year as the data). Value= . indicates missing or suppressed data or value not calculated.

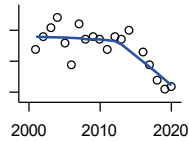
**Employment**



**BEA EMPLOYMENT:  
TRANSPORTATION AND  
WAREHOUSING**

U.S. Bureau of Economic Analysis,  
Regional Economic Information System  
(REIS)

Year	County	State of Kansas	Non Metro Kansas	County Rank	Per 1000 or \$ Per Capita
2001	.	56,302	.	.	.
2002	.	55,319	.	.	.
2003	.	55,509	.	.	.
2004	.	55,479	.	.	.
2005	150	56,287	.	27	.
2006	164	57,506	.	28	.
2007	172	59,277	.	28	.
2008	166	58,725	.	27	.
2009	179	56,238	.	25	.
2010	.	55,179	.	.	.
2011	.	57,449	.	.	.
2012	.	59,756	.	.	.
2013	174	59,780	.	23	.
2014	178	60,565	.	26	.
2015	181	63,256	.	25	.
2016	196	65,705	.	21	.
2017	192	70,641	.	24	.
2018	174	75,308	.	27	.
2019	191	81,209	.	25	.
2020	193	80,543	.	30	.



**BEA EMPLOYMENT: INFORMATION**

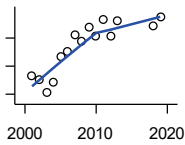
U.S. Bureau of Economic Analysis,  
Regional Economic Information System  
(REIS)

Year	County	State of Kansas	Non Metro Kansas	County Rank	Per 1000 or \$ Per Capita
2001	39	54,895	.	49	.
2002	43	50,728	.	46	.
2003	46	48,328	6,860	47	.
2004	49	45,617	.	48	.
2005	41	43,840	.	47	.
2006	34	43,925	.	47	.
2007	47	45,115	.	45	.
2008	42	42,958	.	43	.
2009	43	38,677	.	45	.
2010	42	33,432	.	46	.
2011	39	32,160	.	44	.
2012	43	31,829	.	46	.
2013	42	31,737	.	45	.
2014	45	32,316	.	42	.
2015	.	25,282	.	.	.
2016	38	24,998	.	45	.
2017	34	24,004	.	42	.
2018	29	23,165	.	48	.
2019	26	22,078	.	49	.
2020	27	20,810	.	47	.

County: county value. Kansas: state value. County Rank: highest county value ranked #1. (\$000): thousands of dollars. Nonmetro Kansas: Kansas total less Metropolitan Areas as defined by the Office of Management and Budget (OMB; released 3/6/2020). Per 1000: For nonmoney amounts, Per 1000=(county value / county population for the same year as the data) x 1000. \$ Per capita=(county value / county population for the same year as the data). Value= . indicates missing or suppressed data or value not calculated.

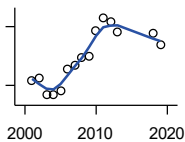
**Employment**

**BEA EMPLOYMENT: FINANCE AND INSURANCE**



U.S. Bureau of Economic Analysis,  
Regional Economic Information System  
(REIS)

Year	County	State of Kansas	Non Metro Kansas	County Rank	Per 1000 or \$ Per Capita
2001	193	76,118	.	45	.
2002	190	78,206	.	46	.
2003	181	78,441	.	51	.
2004	189	78,350	.	47	.
2005	207	78,952	.	44	.
2006	210	80,900	.	39	.
2007	222	86,094	.	37	.
2008	218	89,590	.	42	.
2009	228	93,573	.	41	.
2010	221	92,428	.	44	.
2011	233	99,495	.	41	.
2012	221	98,640	.	42	.
2013	232	99,998	.	43	.
2014	.	98,209	.	.	.
2015	.	100,534	.	.	.
2016	.	102,699	.	.	.
2018	229	102,816	.	41	.
2019	235	100,276	.	38	.



**BEA EMPLOYMENT: REAL ESTATE, RENTAL, AND LEASING**

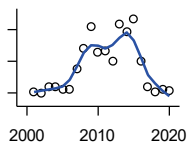
U.S. Bureau of Economic Analysis,  
Regional Economic Information System  
(REIS)

Year	County	State of Kansas	Non Metro Kansas	County Rank	Per 1000 or \$ Per Capita
2001	85	45,237	.	40	.
2002	87	44,970	.	41	.
2003	70	47,095	.	49	.
2004	71	50,181	.	51	.
2005	75	53,335	.	44	.
2006	96	55,342	.	44	.
2007	100	57,694	.	43	.
2008	108	57,933	.	41	.
2009	110	57,132	.	41	.
2010	136	59,578	.	40	.
2011	149	61,821	.	36	.
2012	145	60,432	.	37	.
2013	135	62,134	.	38	.
2014	.	64,705	.	.	.
2015	.	66,604	.	.	.
2016	.	68,395	.	.	.
2018	133	72,631	.	45	.
2019	121	69,119	.	47	.

County: county value. Kansas: state value. County Rank: highest county value ranked #1. (\$000): thousands of dollars. Nonmetro Kansas: Kansas total less Metropolitan Areas as defined by the Office of Management and Budget (OMB; released 3/6/2020). Per 1000: For nonmoney amounts, Per 1000=(county value / county population for the same year as the data) x 1000. \$ Per capita=(county value / county population for the same year as the data). Value= . indicates missing or suppressed data or value not calculated.

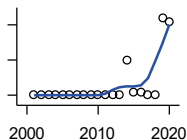
**Employment**

**BEA EMPLOYMENT: PROFESSIONAL AND TECHNICAL SERVICES**



U.S. Bureau of Economic Analysis, Regional Economic Information System (REIS)

Year	County	State of Kansas	Non Metro Kansas	County Rank	Per 1000 or \$ Per Capita
2001	102	81,396	.	48	.
2002	99	80,684	.	49	.
2003	110	80,311	.	38	.
2004	110	85,550	.	43	.
2005	105	85,003	.	45	.
2006	105	87,381	.	46	.
2007	138	92,717	.	38	.
2008	171	95,362	.	38	.
2009	204	93,232	.	31	.
2010	165	93,037	.	36	.
2011	167	93,237	.	36	.
2012	150	95,360	.	40	.
2013	209	100,795	.	35	.
2014	196	102,210	.	36	.
2015	217	105,625	.	33	.
2016	150	108,059	.	37	.
2017	109	109,041	.	50	.
2018	102	110,513	.	50	.
2019	106	109,637	.	48	.
2020	103	108,634	.	49	.



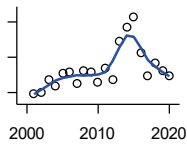
**BEA EMPLOYMENT: MANAGEMENT OF COMPANIES AND ENTERPRISES**

U.S. Bureau of Economic Analysis, Regional Economic Information System (REIS)

Year	County	State of Kansas	Non Metro Kansas	County Rank	Per 1000 or \$ Per Capita
2001	0	13,832	.	70	.
2002	0	12,576	.	69	.
2003	0	11,135	.	67	.
2004	0	10,614	.	67	.
2005	0	11,811	.	66	.
2006	0	13,061	.	66	.
2007	0	13,398	.	69	.
2008	0	15,234	.	72	.
2009	0	14,849	.	75	.
2010	0	16,579	.	75	.
2011	0	15,343	.	75	.
2012	0	15,075	.	82	.
2013	0	16,667	.	81	.
2014	10	20,441	.	35	.
2015	1	29,604	.	39	.
2016	1	27,824	.	40	.
2017	0	27,767	.	77	.
2018	0	28,862	.	75	.
2019	22	30,512	.	24	.
2020	21	25,648	.	25	.

County: county value. Kansas: state value. County Rank: highest county value ranked #1. (\$000): thousands of dollars. Nonmetro Kansas: Kansas total less Metropolitan Areas as defined by the Office of Management and Budget (OMB; released 3/6/2020). Per 1000: For nonmoney amounts, Per 1000=(county value / county population for the same year as the data) x 1000. \$ Per capita=(county value / county population for the same year as the data). Value= . indicates missing or suppressed data or value not calculated.

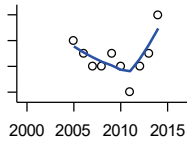
**Employment**



**BEA EMPLOYMENT:  
ADMINISTRATIVE AND WASTE  
SERVICES**

U.S. Bureau of Economic Analysis,  
Regional Economic Information System  
(REIS)

Year	County	State of Kansas	Non Metro Kansas	County Rank	Per 1000 or \$ Per Capita
2001	92	81,573	.	36	.
2002	103	82,992	.	37	.
2003	170	81,298	.	27	.
2004	137	85,721	.	33	.
2005	207	89,933	.	28	.
2006	215	93,688	.	28	.
2007	153	98,865	.	33	.
2008	222	97,440	.	29	.
2009	217	92,455	.	32	.
2010	156	93,675	.	36	.
2011	241	97,969	.	29	.
2012	176	100,490	.	35	.
2013	394	104,680	.	25	.
2014	474	107,218	18,836	23	.
2015	529	103,436	18,767	20	.
2016	325	103,233	18,428	25	.
2017	195	101,532	18,198	34	.
2018	266	102,062	.	26	.
2019	227	100,897	.	31	.
2020	194	95,361	.	32	.



**BEA EMPLOYMENT: EDUCATIONAL  
SERVICES**

U.S. Bureau of Economic Analysis,  
Regional Economic Information System  
(REIS)

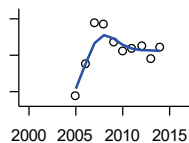
Year	County	State of Kansas	Non Metro Kansas	County Rank	Per 1000 or \$ Per Capita
2001	.	21,169	.	.	.
2002	.	22,173	.	.	.
2003	.	22,651	.	.	.
2004	.	21,601	.	.	.
2005	10	22,177	.	36	.
2006	9	22,438	.	41	.
2007	8	23,647	.	44	.
2008	8	24,653	.	43	.
2009	9	25,120	.	33	.
2010	8	26,071	.	44	.
2011	6	26,080	.	60	.
2012	8	26,625	.	43	.
2013	9	27,508	.	46	.
2014	12	28,708	.	40	.
2015	.	28,794	.	.	.
2016	.	27,996	.	.	.

County: county value. Kansas: state value. County Rank: highest county value ranked #1. (\$000): thousands of dollars. Nonmetro Kansas: Kansas total less Metropolitan Areas as defined by the Office of Management and Budget (OMB; released 3/6/2020). Per 1000: For nonmoney amounts, Per 1000=(county value / county population for the same year as the data) x 1000. \$ Per capita=(county value / county population for the same year as the data). Value= . indicates missing or suppressed data or value not calculated.



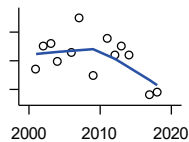
**Employment**

**BEA EMPLOYMENT: HEALTH CARE AND SOCIAL ASSISTANCE**



U.S. Bureau of Economic Analysis, Regional Economic Information System (REIS)

Year	County	State of Kansas	Non Metro Kansas	County Rank	Per 1000 or \$ Per Capita
2001	.	165,415	.	.	.
2002	.	168,198	.	.	.
2003	.	169,654	.	.	.
2004	.	172,796	.	.	.
2005	215	173,949	.	39	.
2006	250	176,919	.	33	.
2007	296	182,160	.	32	.
2008	294	186,051	.	33	.
2009	274	188,499	.	33	.
2010	265	188,383	.	32	.
2011	268	190,736	.	34	.
2012	270	192,991	.	34	.
2013	257	193,687	.	34	.
2014	269	194,632	.	34	.
2015	.	199,724	.	.	.
2016	.	201,830	.	.	.



**BEA EMPLOYMENT: ARTS, ENTERTAINMENT, AND RECREATION**

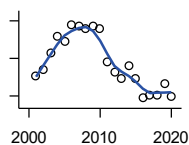
U.S. Bureau of Economic Analysis, Regional Economic Information System (REIS)

Year	County	State of Kansas	Non Metro Kansas	County Rank	Per 1000 or \$ Per Capita
2001	32	25,012	.	40	.
2002	40	25,668	.	37	.
2003	41	24,116	.	36	.
2004	35	25,355	.	46	.
2005	.	26,067	.	.	.
2006	38	26,505	.	44	.
2007	50	27,489	.	38	.
2008	.	27,501	.	.	.
2009	30	27,203	.	46	.
2010	.	27,479	.	.	.
2011	43	28,487	.	40	.
2012	37	30,729	.	43	.
2013	40	31,068	.	40	.
2014	37	32,154	.	41	.
2015	.	31,169	.	.	.
2016	.	32,373	.	.	.
2017	23	33,213	.	43	.
2018	24	33,837	.	42	.

County: county value. Kansas: state value. County Rank: highest county value ranked #1. (\$000): thousands of dollars. Nonmetro Kansas: Kansas total less Metropolitan Areas as defined by the Office of Management and Budget (OMB; released 3/6/2020). Per 1000: For nonmoney amounts, Per 1000=(county value / county population for the same year as the data) x 1000. \$ Per capita=(county value / county population for the same year as the data). Value= . indicates missing or suppressed data or value not calculated.

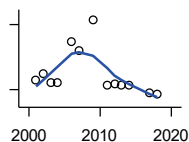
**Employment**

**BEA EMPLOYMENT: GOVERNMENT AND GOVERNMENT ENTERPRISES**



U.S. Bureau of Economic Analysis, Regional Economic Information System (REIS)

Year	County	State of Kansas	Non Metro Kansas	County Rank	Per 1000 or \$ Per Capita
2001	1,204	282,293	102,993	41	.
2002	1,219	281,427	103,581	41	.
2003	1,265	282,459	103,389	38	.
2004	1,308	283,877	103,946	38	.
2005	1,295	282,798	103,194	38	.
2006	1,341	288,372	104,103	37	.
2007	1,335	294,413	104,598	37	.
2008	1,328	298,580	104,718	36	.
2009	1,337	300,422	104,081	36	.
2010	1,329	303,875	103,382	36	.
2011	1,242	299,952	101,535	37	.
2012	1,213	298,068	101,180	38	.
2013	1,198	297,689	101,232	38	.
2014	1,231	296,956	100,634	39	.
2015	1,197	295,799	99,719	38	.
2016	1,144	291,536	98,520	39	.
2017	1,153	295,748	99,542	38	.
2018	1,151	298,105	99,499	38	.
2019	1,183	302,017	100,227	38	.
2020	1,147	292,583	96,477	38	.



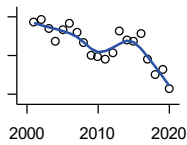
**BEA EMPLOYMENT: ACCOMMODATION AND FOOD SERVICES**

U.S. Bureau of Economic Analysis, Regional Economic Information System (REIS)

Year	County	State of Kansas	Non Metro Kansas	County Rank	Per 1000 or \$ Per Capita
2001	245	103,353	.	39	.
2002	274	103,692	.	38	.
2003	235	105,138	.	38	.
2004	233	106,694	.	40	.
2005	.	107,303	.	.	.
2006	422	109,888	.	35	.
2007	382	110,863	.	35	.
2008	.	111,092	.	.	.
2009	522	109,353	.	29	.
2010	.	108,628	.	.	.
2011	219	110,514	.	38	.
2012	225	112,574	.	40	.
2013	223	114,102	.	39	.
2014	220	115,768	.	41	.
2015	.	118,503	.	.	.
2016	.	119,764	.	.	.
2017	187	121,181	.	39	.
2018	181	121,900	.	40	.

County: county value. Kansas: state value. County Rank: highest county value ranked #1. (\$000): thousands of dollars. Nonmetro Kansas: Kansas total less Metropolitan Areas as defined by the Office of Management and Budget (OMB; released 3/6/2020). Per 1000: For nonmoney amounts, Per 1000=(county value / county population for the same year as the data) x 1000. \$ Per capita=(county value / county population for the same year as the data). Value= . indicates missing or suppressed data or value not calculated.

**Employment**

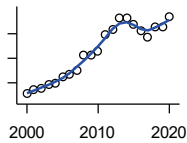


BEA EMPLOYMENT: OTHER SERVICES, EXCEPT PUBLIC ADMINISTRATION

U.S. Bureau of Economic Analysis, Regional Economic Information System (REIS)

Year	County	State of Kansas	Non Metro Kansas	County Rank	Per 1000 or \$ Per Capita
2001	354	92,176	.	39	.
2002	357	95,350	.	40	.
2003	348	95,821	32,629	41	.
2004	335	95,610	.	42	.
2005	347	95,930	32,555	41	.
2006	353	96,413	.	38	.
2007	344	98,444	.	39	.
2008	334	96,705	.	38	.
2009	320	95,534	.	39	.
2010	319	93,302	.	39	.
2011	316	94,865	.	38	.
2012	323	94,977	.	39	.
2013	346	95,471	.	40	.
2014	336	97,806	.	41	.
2015	335	98,041	.	39	.
2016	343	97,219	.	37	.
2017	316	96,568	.	39	.
2018	301	98,645	.	40	.
2019	305	98,638	.	39	.
2020	286	92,245	.	38	.

**Income**



BEA PER CAPITA PERSONAL INCOME (\$)

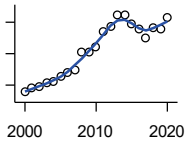
U.S. Bureau of Economic Analysis, Regional Economic Information System (REIS)

Year	County	State of Kansas	Non Metro Kansas	County Rank	Per 1000 or \$ Per Capita
2000	25,456	28,253	23,116	23	.
2001	27,473	29,112	24,576	22	.
2002	27,688	29,248	24,314	13	.
2003	29,242	30,074	26,017	24	.
2004	29,930	30,843	26,583	15	.
2005	32,308	32,545	28,356	24	.
2006	33,451	35,690	29,782	21	.
2007	34,831	38,057	32,034	36	.
2008	41,408	41,257	35,211	21	.
2009	41,232	39,431	33,876	15	.
2010	43,075	39,960	35,795	23	.
2011	49,560	43,015	39,041	23	.
2012	51,513	45,294	39,660	20	.
2013	56,494	46,174	41,747	21	.
2014	56,235	47,013	41,042	12	.
2015	53,699	47,332	40,638	13	.
2016	51,417	47,326	40,797	17	.
2017	48,697	48,756	41,314	21	.
2018	52,834	50,811	43,283	17	.
2019	52,701	52,820	44,491	21	.
2020	56,988	55,677	48,415	24	.

County: county value. Kansas: state value. County Rank: highest county value ranked #1. (\$000): thousands of dollars. Nonmetro Kansas: Kansas total less Metropolitan Areas as defined by the Office of Management and Budget (OMB; released 3/6/2020). Per 1000: For nonmoney amounts, Per 1000=(county value / county population for the same year as the data) x 1000. \$ Per capita=(county value / county population for the same year as the data). Value= . indicates missing or suppressed data or value not calculated.

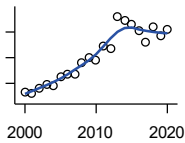
**Income**

**SOURCES OF PERSONAL INCOME:  
TOTAL PERSONAL INCOME (\$000)**



U.S. Bureau of Economic Analysis,  
Regional Economic Information System  
(REIS)

Year	County	State of Kansas	Non Metro Kansas	County Rank	Per 1000 or \$ Per Capita
2000	227,371	76,105,125	22,273,838	43	25,648.2
2001	242,528	78,664,651	23,411,174	42	27,472.6
2002	243,211	79,365,190	23,000,314	42	27,688.0
2003	257,179	81,890,340	24,494,191	42	29,241.5
2004	260,212	84,335,940	24,924,467	42	29,930.1
2005	278,561	89,346,228	26,452,291	42	32,308.2
2006	289,416	98,610,188	27,661,596	42	33,450.8
2007	297,526	105,943,199	29,715,946	44	34,831.0
2008	354,577	115,852,478	32,614,565	43	41,408.0
2009	353,191	111,697,350	31,394,702	41	41,231.7
2010	369,803	114,239,828	33,291,419	39	42,995.3
2011	420,715	123,558,772	36,221,488	40	49,571.7
2012	436,316	130,948,127	36,696,759	39	51,531.4
2013	473,475	133,979,908	38,513,959	38	56,520.8
2014	472,263	136,878,718	37,680,598	37	56,262.0
2015	445,381	138,336,768	37,081,851	40	53,718.6
2016	429,130	138,533,890	36,930,885	41	51,460.6
2017	400,823	142,729,689	37,104,963	41	48,714.5
2018	433,873	148,955,739	38,589,364	40	52,705.7
2019	429,089	154,961,001	39,424,148	41	52,462.3
2020	464,906	163,462,179	42,618,591	41	55,610.8



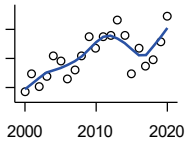
**SOURCES OF PERSONAL INCOME:  
WAGES AND SALARIES (\$000)**

U.S. Bureau of Economic Analysis,  
Regional Economic Information System  
(REIS)

Year	County	State of Kansas	Non Metro Kansas	County Rank	Per 1000 or \$ Per Capita
2000	133,660	41,766,878	10,254,250	34	15,077.3
2001	130,537	43,269,734	10,518,206	34	14,786.7
2002	140,269	43,875,159	10,696,876	34	15,968.7
2003	148,660	44,488,560	10,894,971	34	16,902.8
2004	145,105	46,702,068	11,333,617	35	16,690.2
2005	163,251	48,537,956	11,614,130	33	18,934.2
2006	168,420	52,083,584	12,299,340	34	19,466.0
2007	168,074	55,442,368	13,093,908	36	19,676.2
2008	190,068	57,623,385	13,647,143	33	22,196.4
2009	200,722	55,605,578	13,199,674	33	23,432.4
2010	194,023	56,089,711	13,345,291	32	22,558.2
2011	223,707	58,104,706	13,856,458	29	26,358.8
2012	217,322	60,616,457	14,473,599	31	25,666.9
2013	280,173	61,872,023	14,781,792	27	33,445.5
2014	272,437	64,457,652	15,385,500	27	32,456.2
2015	263,878	66,729,598	15,454,485	28	31,827.0
2016	253,633	67,253,399	15,422,058	28	30,415.3
2017	229,084	68,830,861	15,731,853	33	27,842.0
2018	260,151	71,580,544	16,311,725	31	31,602.4
2019	242,402	74,404,771	16,882,299	33	29,637.1
2020	255,649	75,798,310	17,251,300	33	30,580.0

County: county value. Kansas: state value. County Rank: highest county value ranked #1. (\$000): thousands of dollars. Nonmetro Kansas: Kansas total less Metropolitan Areas as defined by the Office of Management and Budget (OMB; released 3/6/2020). Per 1000: For nonmoney amounts, Per 1000=(county value / county population for the same year as the data) x 1000. \$ Per capita=(county value / county population for the same year as the data). Value= . indicates missing or suppressed data or value not calculated.

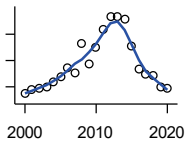
**Income**



SOURCES OF PERSONAL INCOME:  
PROPRIETORS-FARM (\$000)

U.S. Bureau of Economic Analysis,  
Regional Economic Information System  
(REIS)

Year	County	State of Kansas	Non Metro Kansas	County Rank	Per 1000 or \$ Per Capita
2000	-1,614	668,539	673,707	91	-182.1
2001	4,647	779,473	769,336	61	526.4
2002	248	145,064	187,033	57	28.2
2003	3,811	1,281,076	1,195,298	84	433.3
2004	10,875	1,149,425	938,524	46	1,250.9
2005	8,934	1,609,604	1,469,139	68	1,036.2
2006	3,112	766,047	663,735	58	359.7
2007	6,078	1,131,607	1,040,350	71	711.5
2008	10,804	1,582,092	1,404,900	68	1,261.7
2009	17,682	1,585,995	1,390,349	37	2,064.2
2010	13,636	2,149,482	2,029,067	59	1,585.4
2011	17,633	3,188,519	2,989,880	60	2,077.6
2012	17,978	2,519,555	2,296,875	53	2,123.3
2013	23,301	4,499,190	4,158,419	66	2,781.5
2014	18,126	2,231,181	2,157,992	40	2,159.4
2015	4,766	1,300,733	1,294,370	57	574.8
2016	13,521	1,577,060	1,564,511	33	1,621.4
2017	7,537	838,480	838,290	36	916.0
2018	9,623	1,050,662	971,690	46	1,169.0
2019	15,874	998,038	878,247	23	1,940.8
2020	24,732	2,151,349	1,887,881	30	2,958.4



SOURCES OF PERSONAL INCOME:  
PROPRIETORS-NONFARM (\$000)

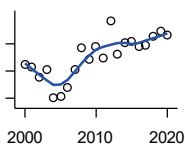
U.S. Bureau of Economic Analysis,  
Regional Economic Information System  
(REIS)

Year	County	State of Kansas	Non Metro Kansas	County Rank	Per 1000 or \$ Per Capita
2000	14,620	4,580,476	1,493,470	39	1,649.2
2001	18,218	4,510,530	1,855,621	41	2,063.7
2002	18,570	5,036,100	1,966,784	43	2,114.1
2003	20,115	4,719,377	1,916,735	38	2,287.1
2004	23,927	4,003,922	2,073,898	33	2,752.1
2005	27,669	4,455,294	2,200,971	33	3,209.1
2006	34,503	7,343,524	2,694,895	36	3,987.9
2007	30,211	7,280,197	2,436,574	38	3,536.8
2008	52,868	9,255,953	2,971,923	25	6,174.0
2009	37,065	9,323,551	2,858,848	36	4,327.0
2010	49,819	9,658,261	3,498,040	32	5,792.2
2011	63,772	12,196,566	4,186,007	28	7,514.1
2012	73,114	15,773,140	4,446,004	27	8,635.2
2013	73,480	16,441,660	4,492,127	26	8,771.6
2014	71,650	15,954,254	4,455,081	27	8,535.9
2015	51,135	15,536,116	4,386,172	37	6,167.5
2016	33,593	14,075,310	3,783,829	48	4,028.4
2017	29,610	15,371,957	3,908,254	53	3,598.7
2018	28,903	15,716,877	4,238,775	57	3,511.1
2019	19,828	16,705,488	3,921,051	68	2,424.3
2020	18,865	16,718,952	3,823,329	69	2,256.6

County: county value. Kansas: state value. County Rank: highest county value ranked #1. (\$000): thousands of dollars. Nonmetro Kansas: Kansas total less Metropolitan Areas as defined by the Office of Management and Budget (OMB; released 3/6/2020). Per 1000: For nonmoney amounts, Per 1000=(county value / county population for the same year as the data) x 1000. \$ Per capita=(county value / county population for the same year as the data). Value= . indicates missing or suppressed data or value not calculated.

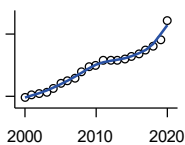
**Income**

**SOURCES OF PERSONAL INCOME:  
DIVIDENDS,INTEREST,RENT(\$000)**



U.S. Bureau of Economic Analysis,  
Regional Economic Information System  
(REIS)

Year	County	State of Kansas	Non Metro Kansas	County Rank	Per 1000 or \$ Per Capita
2000	52,286	15,916,201	4,736,921	45	5,898.0
2001	51,509	15,770,830	4,699,417	45	5,834.7
2002	47,904	15,111,563	4,316,887	45	5,453.6
2003	50,491	15,370,764	4,360,311	43	5,740.9
2004	40,062	15,820,469	4,251,925	47	4,608.0
2005	40,416	17,147,069	4,485,387	49	4,687.5
2006	43,991	20,117,848	4,945,184	48	5,084.5
2007	50,354	22,269,186	5,526,219	48	5,894.9
2008	58,332	24,972,485	6,180,979	48	6,812.1
2009	54,312	21,453,879	5,308,474	44	6,340.4
2010	58,772	20,861,351	5,414,285	44	6,833.2
2011	54,679	23,387,567	5,781,075	47	6,442.7
2012	68,451	25,689,368	6,389,505	44	8,084.4
2013	56,188	24,832,212	5,984,811	49	6,707.4
2014	60,373	27,412,684	6,403,356	48	7,192.4
2015	61,097	27,244,414	6,423,685	47	7,369.1
2016	58,947	27,293,441	6,389,161	48	7,068.8
2017	59,239	28,385,472	6,700,156	47	7,199.7
2018	62,800	29,953,419	6,772,504	46	7,628.8
2019	64,474	30,820,276	6,957,987	45	7,882.9
2020	63,055	30,283,520	6,844,745	47	7,542.5



**SOURCES OF PERSONAL INCOME:  
TRANSFER PAYMENTS (\$000)**

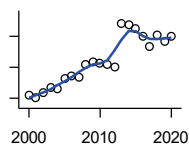
U.S. Bureau of Economic Analysis,  
Regional Economic Information System  
(REIS)

Year	County	State of Kansas	Non Metro Kansas	County Rank	Per 1000 or \$ Per Capita
2000	38,468	9,650,835	4,036,781	48	4,339.3
2001	41,430	10,549,124	4,355,457	48	4,693.0
2002	43,130	11,208,997	4,553,978	48	4,910.1
2003	44,406	11,709,049	4,702,911	48	5,049.0
2004	47,835	12,040,452	4,802,536	48	5,502.1
2005	52,707	12,696,735	5,059,314	44	6,113.1
2006	54,806	13,642,787	5,455,207	47	6,334.5
2007	57,320	14,686,821	5,775,024	46	6,710.4
2008	63,565	16,552,460	6,322,722	46	7,423.2
2009	68,019	18,025,603	6,790,962	47	7,940.6
2010	70,175	19,189,749	7,089,258	46	8,158.9
2011	74,764	19,625,770	7,255,825	45	8,809.2
2012	74,515	19,354,458	7,148,177	44	8,800.6
2013	74,207	19,639,358	7,185,636	44	8,858.4
2014	76,053	20,380,970	7,399,809	44	9,060.4
2015	78,945	21,116,856	7,623,577	44	9,521.8
2016	80,785	21,884,629	7,886,000	45	9,687.6
2017	84,443	22,559,744	8,062,517	44	10,262.9
2018	88,054	23,628,033	8,393,617	43	10,696.6
2019	94,170	25,050,174	8,845,371	43	11,513.6
2020	113,061	32,319,421	11,074,190	45	13,524.0

County: county value. Kansas: state value. County Rank: highest county value ranked #1. (\$000): thousands of dollars. Nonmetro Kansas: Kansas total less Metropolitan Areas as defined by the Office of Management and Budget (OMB; released 3/6/2020). Per 1000: For nonmoney amounts, Per 1000=(county value / county population for the same year as the data) x 1000. \$ Per capita=(county value / county population for the same year as the data). Value= . indicates missing or suppressed data or value not calculated.

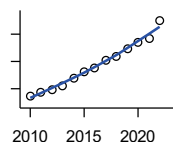
**Income**

**SOURCES OF PERSONAL INCOME:  
LESS SOCIAL INSURANCE (\$000)**



U.S. Bureau of Economic Analysis,  
Regional Economic Information System  
(REIS)

Year	County	State of Kansas	Non Metro Kansas	County Rank	Per 1000 or \$ Per Capita
2000	20,857	6,655,813	1,663,044	35	2,352.7
2001	20,020	6,869,934	1,740,915	35	2,267.8
2002	21,744	7,008,361	1,778,636	35	2,475.4
2003	23,401	7,172,781	1,821,858	35	2,660.7
2004	23,032	7,556,560	1,904,014	35	2,649.2
2005	26,216	7,911,241	1,986,907	35	3,040.6
2006	27,243	8,406,937	2,090,313	35	3,148.8
2007	26,796	8,806,941	2,180,587	36	3,137.0
2008	31,080	9,207,010	2,299,399	35	3,629.6
2009	31,854	9,002,859	2,248,703	33	3,718.7
2010	31,310	9,235,760	2,321,191	34	3,640.3
2011	30,993	8,515,986	2,139,991	33	3,651.8
2012	30,139	8,816,128	2,195,919	35	3,559.6
2013	44,041	10,225,399	2,540,439	28	5,257.4
2014	43,766	10,609,601	2,635,009	28	5,214.0
2015	42,286	11,028,204	2,663,038	31	5,100.2
2016	39,863	10,915,915	2,604,579	31	4,780.3
2017	36,546	11,224,218	2,669,954	33	4,441.7
2018	40,353	11,749,229	2,797,106	33	4,902.0
2019	38,512	12,245,451	2,889,336	35	4,708.6
2020	40,058	12,715,152	3,027,656	35	4,791.6



**HUD MEDIAN FAMILY INCOME**

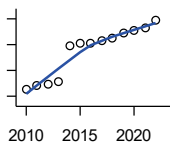
U.S. Department of Housing and Urban  
Development (HUD)

Year	County	State of Kansas	Non Metro Kansas	County Rank	Per 1000 or \$ Per Capita
2010	57,100	63,100	.	28	.
2011	58,900	64,300	.	32	.
2012	59,700	65,200	.	32	.
2013	60,900	64,800	.	33	.
2014	64,000	64,400	.	25	.
2015	66,100	66,300	.	14	.
2016	67,800	66,700	.	11	.
2017	70,500	68,500	.	8	.
2018	71,800	73,100	.	13	.
2019	74,500	75,200	.	18	.
2020	76,900	76,500	.	15	.
2021	78,400	77,400	.	10	.
2022	84,800	87,800	.	19	.

County: county value. Kansas: state value. County Rank: highest county value ranked #1. (\$000): thousands of dollars. Nonmetro Kansas: Kansas total less Metropolitan Areas as defined by the Office of Management and Budget (OMB; released 3/6/2020). Per 1000: For nonmoney amounts, Per 1000=(county value / county population for the same year as the data) x 1000. \$ Per capita=(county value / county population for the same year as the data). Value= . indicates missing or suppressed data or value not calculated.

**Income**

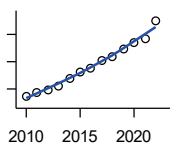
**HUD 30% LOW-TO-MEDIUM INCOME (LMI) LIMIT - 4 PERSONS**



U.S. Department of Housing and Urban Development (HUD)

Year	County	State of Kansas	Non Metro Kansas	County Rank	Per 1000 or \$ Per Capita
2010	17,150	.	.	28	.
2011	17,650	.	.	30	.
2012	17,900	.	.	31	.
2013	18,250	.	.	32	.
2014	23,850	.	.	105	.
2015	24,250	.	.	105	.
2016	24,300	.	.	105	.
2017	24,600	.	.	105	.
2018	25,100	21,950	.	105	.
2019	25,750	22,550	.	105	.
2020	26,200	22,950	.	105	.
2021	26,500	23,200	.	105	.
2022	27,750	25,950	.	105	.

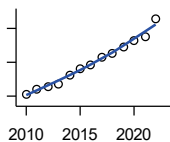
**HUD 50% LOW-TO-MEDIUM INCOME (LMI) LIMIT - 4 PERSONS**



U.S. Department of Housing and Urban Development (HUD)

Year	County	State of Kansas	Non Metro Kansas	County Rank	Per 1000 or \$ Per Capita
2010	28,550	.	.	28	.
2011	29,450	.	.	30	.
2012	29,850	.	.	31	.
2013	30,450	.	.	32	.
2014	31,950	.	.	24	.
2015	33,050	.	.	12	.
2016	33,900	.	.	10	.
2017	35,250	.	.	8	.
2018	35,900	36,550	.	13	.
2019	37,250	37,600	.	18	.
2020	38,450	38,250	.	15	.
2021	39,200	38,700	.	9	.
2022	42,400	43,300	.	15	.

**HUD 80% LOW-TO-MEDIUM INCOME (LMI) LIMIT - 4 PERSONS**



U.S. Department of Housing and Urban Development (HUD)

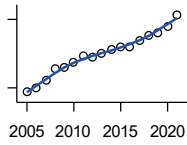
Year	County	State of Kansas	Non Metro Kansas	County Rank	Per 1000 or \$ Per Capita
2010	45,700	.	.	28	.
2011	47,100	.	.	30	.
2012	47,750	.	.	31	.
2013	48,700	.	.	32	.
2014	51,100	.	.	24	.
2015	52,900	.	.	12	.
2016	54,250	.	.	10	.
2017	56,400	.	.	8	.
2018	57,450	58,500	.	13	.
2019	59,600	60,150	.	18	.
2020	61,500	61,200	.	15	.
2021	62,700	61,900	.	9	.
2022	67,850	69,250	.	15	.

County: county value. Kansas: state value. County Rank: highest county value ranked #1. (\$000): thousands of dollars. Nonmetro Kansas: Kansas total less Metropolitan Areas as defined by the Office of Management and Budget (OMB; released 3/6/2020). Per 1000: For nonmoney amounts, Per 1000=(county value / county population for the same year as the data) x 1000. \$ Per capita=(county value / county population for the same year as the data). Value= . indicates missing or suppressed data or value not calculated.



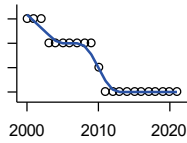
**Banking**

**BANK DEPOSITS** (1984-2004 in thousands; 2005- in millions)



Federal Deposit Insurance Corporation, Data Book, Operating Banks and Branches

Year	County	State of Kansas	Non Metro Kansas	County Rank	Per 1000 or \$ Per Capita
2005	192	48,304	17,000	42	22.3
2006	201	50,668	17,586	41	23.2
2007	216	54,057	18,517	41	25.3
2008	242	57,869	19,628	38	28.3
2009	244	57,763	20,031	36	28.5
2010	256	60,031	20,678	35	29.8
2011	270	61,094	21,347	35	31.8
2012	267	62,910	22,481	37	31.5
2013	276	64,547	22,795	36	32.9
2014	283	66,538	23,338	36	33.7
2015	289	68,160	23,367	35	34.9
2016	290	70,381	23,420	35	34.8
2017	305	73,329	23,928	35	37.1
2018	315	74,623	24,100	35	38.3
2019	320	76,436	24,488	35	39.1
2020	335	88,563	27,547	38	40.1
2021	360	97,055	30,122	40	43.2



**NUMBER OF BANKS**

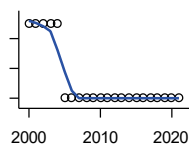
Federal Deposit Insurance Corporation, Data Book, Operating Banks and Branches

Year	County	State of Kansas	Non Metro Kansas	County Rank	Per 1000 or \$ Per Capita
2000	7	410	145	40	.
2001	7	410	136	39	.
2002	7	404	129	39	.
2003	6	397	121	52	.
2004	6	394	112	52	.
2005	6	388	101	51	.
2006	6	385	94	49	.
2007	6	382	91	47	.
2008	6	378	82	46	.
2009	6	374	79	46	.
2010	5	367	70	59	.
2011	4	359	61	74	.
2012	4	348	57	74	.
2013	4	332	45	73	.
2014	4	329	41	73	.
2015	4	320	31	72	.
2016	4	314	24	73	.
2017	4	301	13	73	.
2018	4	289	7	73	.
2019	4	279	3	72	.
2020	4	271	-1	72	.
2021	4	270	-6	71	.

County: county value. Kansas: state value. County Rank: highest county value ranked #1. (\$000): thousands of dollars. Nonmetro Kansas: Kansas total less Metropolitan Areas as defined by the Office of Management and Budget (OMB; released 3/6/2020). Per 1000: For nonmoney amounts, Per 1000=(county value / county population for the same year as the data) x 1000. \$ Per capita=(county value / county population for the same year as the data). Value= . indicates missing or suppressed data or value not calculated.

**Banking**

**NUMBER OF BANKING OFFICES**

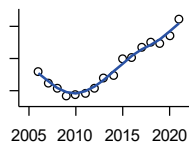


Federal Deposit Insurance Corporation, Data Book, Operating Banks and Branches

Year	County	State of Kansas	Non Metro Kansas	County Rank	Per 1000 or \$ Per Capita
2000	11	1,398	703	37	.
2001	11	1,424	708	37	.
2002	11	1,447	704	37	.
2003	11	1,461	708	37	.
2004	11	1,485	708	39	.
2005	10	1,505	711	40	.
2006	10	1,518	711	39	.
2007	10	1,543	717	39	.
2008	10	1,556	717	39	.
2009	10	1,569	716	39	.
2010	10	1,561	710	39	.
2011	10	1,559	707	39	.
2012	10	1,533	702	38	.
2013	10	1,518	696	38	.
2014	10	1,491	685	37	.
2015	10	1,472	675	36	.
2016	10	1,465	668	36	.
2017	10	1,452	666	36	.
2018	10	1,439	660	37	.
2019	10	1,439	663	37	.
2020	10	1,416	653	37	.
2021	10	1,392	641	37	.

**Government**

**TANGIBLE ASSESSED VALUATION (KDoR, million\$; 2006-)**



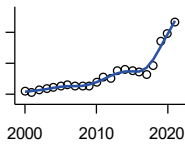
Kansas Department of Revenue, Division of Property Valuation, Statistical Report of Property Assessment and Taxation

Year	County	State of Kansas	Non Metro Kansas	County Rank	Per 1000 or \$ Per Capita
2006	460.6	28,964.3	10,316.9	11	53.2
2007	422.7	30,086.9	10,335.9	12	49.5
2008	408.6	31,000.3	10,856.9	13	47.7
2009	382.2	30,312.3	10,555.6	13	44.6
2010	388.9	29,450.2	10,158.7	13	45.2
2011	390.4	29,963.6	10,572.3	13	46.0
2012	408.0	30,382.9	10,876.2	13	48.2
2013	438.5	30,850.2	11,044.4	13	52.3
2014	445.8	31,783.0	11,388.9	13	53.1
2015	499.9	32,335.7	11,037.8	12	60.3
2016	501.4	33,156.3	10,889.6	12	60.1
2017	534.1	34,754.5	11,439.0	12	64.9
2018	552.2	36,566.1	11,907.1	12	67.1
2019	545.3	38,255.2	12,336.7	12	66.7
2020	571.7	39,333.9	12,219.3	12	68.4
2021	622.7	40,812.0	12,601.5	12	74.7

County: county value. Kansas: state value. County Rank: highest county value ranked #1. (\$000): thousands of dollars. Nonmetro Kansas: Kansas total less Metropolitan Areas as defined by the Office of Management and Budget (OMB; released 3/6/2020). Per 1000: For nonmoney amounts, Per 1000=(county value / county population for the same year as the data) x 1000. \$ Per capita=(county value / county population for the same year as the data). Value= . indicates missing or suppressed data or value not calculated.

**Government**

**SALES TAX COLLECTIONS (\$)**

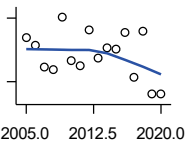


Kansas Department of Revenue. Use tax collections included beginning in calendar year 2018.

Year	County	State of Kansas	Non Metro Kansas	County Rank	Per 1000 or \$ Per Capita
2000	3,029,817	1,475,831,808	432,761,608	48	341,772.9
2001	2,868,830	1,481,026,688	426,316,284	48	324,969.4
2002	3,108,849	1,561,316,864	443,986,950	47	353,921.8
2003	3,314,064	1,626,782,976	461,658,700	47	376,812.3
2004	3,537,000	1,691,899,008	480,309,725	47	406,832.3
2005	3,770,296	1,744,980,352	497,494,867	46	437,287.9
2006	3,935,086	1,851,694,720	532,233,047	46	454,818.1
2007	3,753,268	1,917,546,752	559,319,583	52	439,389.9
2008	3,789,127	1,990,655,744	589,725,773	53	442,500.0
2009	3,750,687	1,866,223,078	548,627,132	50	437,857.5
2010	4,374,377	2,075,193,413	617,409,982	51	508,589.4
2011	5,188,286	2,347,193,367	702,671,534	49	611,321.6
2012	5,079,556	2,456,292,294	740,196,106	52	599,924.0
2013	6,309,194	2,489,204,048	746,226,565	44	753,156.7
2014	6,412,012	2,539,886,774	760,474,019	43	763,880.4
2015	6,247,416	2,642,374,740	750,090,163	42	753,517.8
2016	6,052,649	2,732,611,350	749,030,133	43	725,824.3
2017	5,696,405	2,726,104,521	744,246,491	45	692,319.6
2018	7,176,041	3,277,299,125	893,564,480	45	871,725.0
2019	11,003,443	3,395,631,405	939,607,762	36	1,345,328.7
2020	12,276,622	3,489,306,791	984,218,931	36	1,468,495.5
2021	14,177,591	3,981,293,227	1,098,391,422	36	1,700,358.7

**Crime**

**CRIME INDEX OFFENSES**



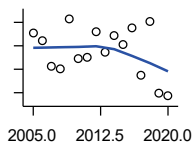
Kansas Bureau of Investigation, Note: Data are aggregated from reports by individual police departments and subject to be incomplete.

Year	County	State of Kansas	Non Metro Kansas	County Rank	Per 1000 or \$ Per Capita
2005	102	111,856	31,630	61	11.8
2006	94	110,032	.	61	10.9
2007	74	111,035	29,921	67	8.7
2008	72	93,996	27,342	67	8.4
2009	121	98,757	27,620	53	14.1
2010	80	98,354	26,909	61	9.3
2011	75	96,638	25,765	62	8.8
2012	109	98,914	26,963	53	12.9
2013	82	93,054	24,488	65	9.8
2014	92	86,323	23,341	62	11.0
2015	91	88,590	21,580	59	11.0
2016	106	90,589	21,565	50	12.7
2017	64	93,091	22,622	63	7.8
2018	108	92,062	20,325	51	13.1
2019	48	87,008	18,547	63	5.9
2020	49	87,346	17,762	67	5.9

County: county value. Kansas: state value. County Rank: highest county value ranked #1. (\$000): thousands of dollars. Nonmetro Kansas: Kansas total less Metropolitan Areas as defined by the Office of Management and Budget (OMB; released 3/6/2020). Per 1000: For nonmoney amounts, Per 1000=(county value / county population for the same year as the data) x 1000. \$ Per capita=(county value / county population for the same year as the data). Value= . indicates missing or suppressed data or value not calculated.

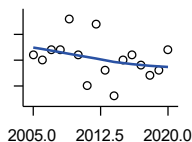
**Crime**

**PROPERTY CRIMES**



Kansas Bureau of Investigation, Note: Data are aggregated from reports by individual police departments and subject to be incomplete.

Year	County	State of Kansas	Non Metro Kansas	County Rank	Per 1000 or \$ Per Capita
2005	91	101,414	29,042	59	10.6
2006	84	99,110	.	61	9.7
2007	62	99,632	26,856	69	7.3
2008	60	83,964	24,367	68	7.0
2009	103	87,658	24,825	55	12.0
2010	69	87,926	24,133	61	8.0
2011	70	86,547	23,274	60	8.2
2012	92	88,707	24,220	57	10.9
2013	74	83,551	22,028	62	8.8
2014	89	76,794	20,858	58	10.6
2015	81	77,997	19,138	57	9.8
2016	95	79,549	19,207	51	11.4
2017	55	81,349	19,981	65	6.7
2018	101	79,695	17,769	49	12.3
2019	40	74,314	15,892	63	4.9
2020	37	73,450	15,100	69	4.4



**VIOLENT CRIMES**

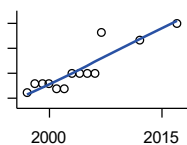
Kansas Bureau of Investigation, Note: Data are aggregated from reports by individual police departments and subject to be incomplete.

Year	County	State of Kansas	Non Metro Kansas	County Rank	Per 1000 or \$ Per Capita
2005	11	10,442	2,588	58	1.3
2006	10	10,922	.	59	1.2
2007	12	11,403	3,065	59	1.4
2008	12	10,032	2,975	63	1.4
2009	18	11,099	2,795	46	2.1
2010	11	10,428	2,776	57	1.3
2011	5	10,091	2,491	72	0.6
2012	17	10,207	2,743	49	2.0
2013	8	9,503	2,460	65	1.0
2014	3	9,529	2,483	90	0.4
2015	10	10,593	2,442	62	1.2
2016	11	11,040	2,358	55	1.3
2017	9	11,742	2,641	62	1.1
2018	7	12,367	2,556	64	0.9
2019	8	12,694	2,655	67	1.0
2020	12	13,896	2,662	62	1.4

County: county value. Kansas: state value. County Rank: highest county value ranked #1. (\$000): thousands of dollars. Nonmetro Kansas: Kansas total less Metropolitan Areas as defined by the Office of Management and Budget (OMB; released 3/6/2020). Per 1000: For nonmoney amounts, Per 1000=(county value / county population for the same year as the data) x 1000. \$ Per capita=(county value / county population for the same year as the data). Value= . indicates missing or suppressed data or value not calculated.

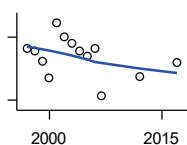
**Agriculture**

**NUMBER OF FARMS**



Kansas Agricultural Statistics, Kansas Farm Facts

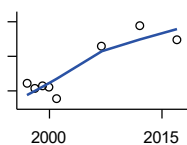
Year	County	State of Kansas	Non Metro Kansas	County Rank	Per 1000 or \$ Per Capita
1997	560	64,000	47,900	49	63.3
1998	580	65,000	48,850	48	66.2
1999	580	65,000	48,850	48	65.6
2000	580	64,000	48,030	46	65.4
2001	570	63,000	47,200	46	64.6
2002	570	63,000	47,200	46	64.9
2003	600	64,500	48,150	43	68.2
2004	600	64,500	48,150	43	69.0
2005	600	64,500	48,150	43	69.6
2006	600	64,000	47,650	43	69.3
2007	681	65,531	48,179	36	79.7
2012	667	61,773	45,655	34	78.8
2017	699	58,569	42,404	29	85.0



**TOTAL ACRES HARVESTED**

Kansas Agricultural Statistics, Kansas Farm Facts

Year	County	State of Kansas	Non Metro Kansas	County Rank	Per 1000 or \$ Per Capita
1997	188,800	22,846,000	19,430,580	61	21,355.1
1998	187,100	22,143,500	18,943,650	60	21,353.6
1999	177,300	21,708,900	18,581,750	62	20,058.8
2000	160,840	21,639,000	18,528,870	72	18,143.3
2001	213,760	21,847,900	18,689,750	46	24,213.9
2002	199,860	20,230,400	17,089,120	44	22,752.7
2003	194,520	21,827,700	18,661,920	54	22,117.1
2004	186,820	20,876,900	17,721,500	53	21,488.4
2005	182,050	21,936,500	18,807,930	60	21,114.6
2006	189,130	21,412,700	18,291,120	55	21,859.7
2007	143,798	19,886,655	17,164,743	71	16,834.2
2012	162,128	21,043,596	17,966,843	70	19,148.2
2017	176,298	21,837,465	18,543,057	66	21,426.6



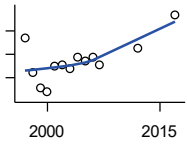
**VALUE: LIVESTOCK AND POULTRY (\$000)**

Kansas Agricultural Statistics, Kansas Farm Facts

Year	County	State of Kansas	Non Metro Kansas	County Rank	Per 1000 or \$ Per Capita
1997	12,112	2,806,445	2,500,305	83	1,370.0
1998	10,860	2,670,432	2,378,007	90	1,239.4
1999	11,588	2,849,061	2,554,528	87	1,311.0
2000	11,083	2,901,469	2,609,032	91	1,250.2
2001	7,613	2,693,274	2,437,187	96	862.4
2007	22,997	9,525,971	.	76	2,692.2
2012	28,982	11,476,571	10,883,216	64	3,422.9
2017	24,818	12,322,289	.	75	3,016.3

County: county value. Kansas: state value. County Rank: highest county value ranked #1. (\$000): thousands of dollars. Nonmetro Kansas: Kansas total less Metropolitan Areas as defined by the Office of Management and Budget (OMB; released 3/6/2020). Per 1000: For nonmoney amounts, Per 1000=(county value / county population for the same year as the data) x 1000. \$ Per capita=(county value / county population for the same year as the data). Value= . indicates missing or suppressed data or value not calculated.

**Agriculture**



VALUE:FIELD CROPS (\$000)  
EXCLUDING GOVERNMENT  
PROGRAM PAYMENTS

Kansas Agricultural Statistics, Kansas  
Farm Facts

Year	County	State of Kansas	Non Metro Kansas	County Rank	Per 1000 or \$ Per Capita
1997	36,740	4,474,942	3,800,365	52	4,155.6
1998	22,022	3,594,319	3,124,409	80	2,513.4
1999	15,882	3,118,193	2,728,319	82	1,796.8
2000	13,793	2,915,660	2,540,052	84	1,555.9
2001	24,938	3,283,117	2,857,136	61	2,824.9
2002	25,462	3,011,855	2,560,580	48	2,898.7
2003	23,756	3,623,255	3,150,629	70	2,701.1
2004	28,740	3,445,688	2,896,603	52	3,305.7
2005	27,341	3,678,123	3,182,677	60	3,171.1
2006	28,638	4,308,716	3,684,132	65	3,310.0
2007	25,497	4,887,212	.	78	2,984.9
2012	32,713	6,983,993	6,044,551	85	3,863.6
2017	46,874	6,460,437	.	67	5,696.9

County: county value. Kansas: state value. County Rank: highest county value ranked #1. (\$000): thousands of dollars. Nonmetro Kansas: Kansas total less Metropolitan Areas as defined by the Office of Management and Budget (OMB; released 3/6/2020). Per 1000: For nonmoney amounts, Per 1000=(county value / county population for the same year as the data) x 1000. \$ Per capita=(county value / county population for the same year as the data). Value= . indicates missing or suppressed data or value not calculated.