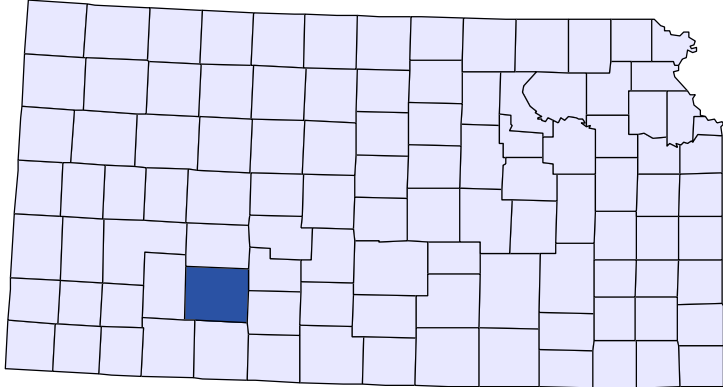




Kansas County Profiles

Ford County



The University
of Kansas

Institute for Policy
& Social Research

KU INSTITUTE FOR POLICY
& SOCIAL RESEARCH

The University of Kansas

1541 Lilac Lane, Rm. 607
Blake Hall
Lawrence, KS 66045-3129

Foreword

The Kansas County Profile Report is published by the Institute for Policy & Social Research (IPSR) at the University of Kansas with support from the KU University Center project.* Special thanks to Xanthippe Wedel, senior research data engineer, who compiles and updates the county profiles and Genna Hurd, associate researcher, who provides editorial review.

County reports can be generated for any county in Kansas by simply clicking on the county from the web site:

<https://ipsr.ku.edu/ksdata/kcced/profiles/>

The Kansas County Profile Report contains 12 categories of information: Population, Vital Statistics and Health, Housing, Education, Social Environment, Business, Employment, Income, Banking, Government, Crime, and Agriculture. For more information about Kansas, please refer to the Kansas Statistical Abstract, available online at:

<https://ipsr.ku.edu/ksdata/ksah/>

We are always looking for ways to improve the Kansas County Profile Report and we welcome your suggestions and comments. Please address any correspondence to the Institute for Policy & Social Research, The University of Kansas, 607 Blake Hall, 1541 Lilac Lane, Lawrence, Kansas 66045-3129, e-mail ipsr@ku.edu or call 785-864-3701.

**The KU University Center is a collaborative effort led by the Institute for Policy & Social Research at the University of Kansas. This project is supported by the Economic Development Administration, U.S. Department of Commerce, through its University Center Program.*

The mission of EDA is to lead the federal economic development agenda by promoting innovation and competitiveness, preparing American regions for growth and success in the worldwide economy.

Kansas County Profiles Table of Contents

Population

Total Population (Decennial Census)	1
Estimated Population (Current Population Reports)	2
Urban Population	2
Rural Population	3
Net Migration (Decade Ending...)	3
Median Age	3

Population (Age Groups)

Population Under 18 (Decennial Census)	3
Population Age 18 and Over (Decennial Census)	4
Population Age 65 and Over (Decennial Census)	4
Population Age 85 and Over (Decennial Census)	4

Vital Statistics and Health

Live Births	5
Deaths	5
Marriages	6
Divorces and Annulments	6
Physicians: M.D. Physicians	7
Physicians: D.O. Physicians	7
Dentists	8
Number of Hospitals	8
Number of Hospital Beds	9

Housing

Housing Units (Decennial Census)	9
Housing Units (Estimated)	10
Occupied Housing Units	10
Owner Occupied Housing Units	10
Renter Occupied Housing Units	11
Vacant Housing Units	11
Median Value (\$): Owner Occupied Housing Units	11
Median Contract Rent (\$)	12
Fair Market Rent: 2 Bedrooms	12

Education

Population Age 25 and Over	13
Percent of Population 25+ with High School or Higher Education	13
Percent of Population 25+ with Bachelors Degree or Higher Education	14
Public School Enrollment (FTE- School Year Beginning...)	14
Pupil/Teacher Ratio (School Year Beginning...)	15

Kansas County Profiles Table of Contents

Social Environment

Total Child Care Facilities	15
Preschools	16
Food Stamp Beneficiaries	16
Percent of Population Receiving Food Stamps	17
Estimated Number of People in Poverty	17
Estimated Percent of People in Poverty	18
Estimated Number of Related Children Age 5 to 17 in Families in Poverty	18
Estimated Percent of Related Children Age 5 to 17 in Families in Poverty	19
Estimated Number Under 18 in Poverty	19
Estimated Percent Under 18 in Poverty	20

Business

Establishments: Total	21
Establishments: 1-19 Employees	22
Establishments: 20-99 Employees	22
Establishments: 100-499 Employees	23
Establishments: 500 or More Employees	23
Establishments: Forestry, Fishing, Hunting, and Ag Support	24
Establishments: Mining	24
Establishments: Utilities	25
Establishments: Construction	25
Establishments: Manufacturing	26
Establishments: Wholesale Trade	26
Establishments: Retail Trade	27
Establishments: Transportation and Warehousing	27
Establishments: Information	28
Establishments: Finance and Insurance	28
Establishments: Real Estate, Rental, and Leasing	29
Establishments: Professional, Scientific, and Technical Services	29
Establishments: Management of Companies and Enterprises	30
Establishments: Admin, Support, Waste Management, and Remediation	30
Establishments: Educational Services	31
Establishments: Health Care and Social Assistance	31
Establishments: Arts, Entertainment, and Recreation	32
Establishments: Accommodation and Food Services	32
Establishments: Other Services	33

Kansas County Profiles Table of Contents

Business	
Total Annual Payroll (\$000)	34
Total Annual Payroll (\$000): Forestry, Fishing, Hunting, and Ag Support	35
Total Annual Payroll (\$000): Mining	35
Total Annual Payroll (\$000): Utilities	36
Total Annual Payroll (\$000): Construction	36
Total Annual Payroll (\$000): Manufacturing	37
Total Annual Payroll (\$000): Wholesale Trade	37
Total Annual Payroll (\$000): Retail Trade	38
Total Annual Payroll (\$000): Transportation and Warehousing	38
Total Annual Payroll (\$000): Information	39
Total Annual Payroll (\$000): Finance and Insurance	39
Total Annual Payroll (\$000): Real Estate, Rental, and Leasing	40
Total Annual Payroll (\$000): Professional, Scientific, and Technical Services	40
Total Annual Payroll (\$000): Management of Companies and Enterprises	41
Total Annual Payroll (\$000): Admin, Support, Waste Management, and Remediation	41
Total Annual Payroll (\$000): Educational Services	42
Total Annual Payroll (\$000): Health Care and Social Assistance	42
Total Annual Payroll (\$000): Arts, Entertainment, and Recreation	43
Total Annual Payroll (\$000): Accommodation and Food Services	43
Total Annual Payroll (\$000): Other Services	44
Nominal Taxable Retail Sales (Million\$)	44
Retail Pull Factor	45
Employment	
Civilian Labor Force (BLS - Place of Residence)	46
Employed (BLS - Place of Residence)	47
Unemployed (BLS - Place of Residence)	48
Unemployment Rate (BLS - Place of Residence)	49
BEA Employment: Total (Place of Work)	49
BEA Employment: Farm	50
BEA Employment: Non-Farm	50
Average Wage per Job (\$)	51
BEA Employment: Forestry, Fishing, Hunting, and Ag Support	51
BEA Employment: Mining	52
BEA Employment: Utilities	52
BEA Employment: Construction	53
BEA Employment: Manufacturing	53
BEA Employment: Wholesale Trade	54
BEA Employment: Retail Trade	54
BEA Employment: Transportation and Warehousing	55
BEA Employment: Information	55
BEA Employment: Finance and Insurance	56
BEA Employment: Real Estate, Rental, and Leasing	56
BEA Employment: Professional and Technical Services	57
BEA Employment: Management of Companies and Enterprises	57
BEA Employment: Administrative and Waste Services	58
BEA Employment: Educational Services	58
BEA Employment: Health Care and Social Assistance	59
BEA Employment: Arts, Entertainment, and Recreation	59
BEA Employment: Government and Government Enterprises	60
BEA Employment: Accommodation and Food Services	60
BEA Employment: Other Services, Except Public Administration	61

Kansas County Profiles Table of Contents

Income

BEA Per Capita Personal Income (\$)	61
Sources of Personal Income: Total Personal Income (\$000)	62
Sources of Personal Income: Wages And Salaries (\$000)	62
Sources of Personal Income: Proprietors-Farm (\$000)	63
Sources of Personal Income: Proprietors-Nonfarm (\$000)	63
Sources of Personal Income: Dividends, Interest, Rent (\$000)	64
Sources of Personal Income: Transfer Payments (\$000)	64
Sources of Personal Income: Less Social Insurance (\$000)	65
HUD Median Family Income	65
HUD 30% Low-To-Medium Income (LMI) Limit - 4 Persons	66
HUD 50% Low-To-Medium Income (LMI) Limit - 4 Persons	66
HUD 80% Low-To-Medium Income (LMI) Limit - 4 Persons	66

Banking

Bank Deposits (\$000)	67
Number of Banks	67
Number of Banking Offices	68

Government

Tangible Assessed Valuation (million\$)	68
Sales Tax Collections	69

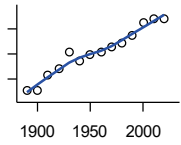
Crime

Crime Index Offenses	69
Property Crimes	70
Violent Crimes	70

Agriculture

Number of Farms	71
Total Acres Harvested	71
Value: Livestock and Poultry (\$000)	71
Value: Field Crops (\$000) Excluding Government Program Payments	72

Population



DECENNIAL CENSUS:TOTAL POPULATION

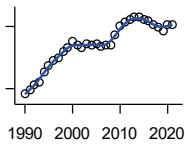
U.S. Census Bureau: Decennial Census

Year	County	State of Kansas	Non Metro Kansas	County Rank	Per 1000 or \$ Per Capita
1890	5,308	1,427,096	968,413	74	.
1900	5,497	1,470,495	981,206	73	.
1910	11,393	1,690,949	1,138,294	62	.
1920	14,273	1,769,257	1,153,525	45	.
1930	20,647	1,880,999	1,180,056	28	.
1940	17,254	1,801,028	1,097,216	33	.
1950	19,670	1,905,299	1,046,823	27	.
1960	20,938	2,178,611	1,021,510	24	.
1970	22,587	2,246,578	958,104	22	.
1980	24,315	2,363,679	980,085	22	.
1990	27,463	2,477,574	939,416	19	.
2000	32,458	2,688,418	959,507	17	.
2010	33,848	2,853,118	929,981	17	.
2020	34,287	2,937,880	892,006	15	.

County: county value. Kansas: state value. County Rank: highest county value ranked #1. (\$000): thousands of dollars. Nonmetro Kansas: Kansas total less Metropolitan Areas as defined by the Office of Management and Budget (OMB; released 3/6/2020). Per 1000: For nonmoney amounts, Per 1000=(county value / county population for the same year as the data) x 1000. \$ Per capita=(county value / county population for the same year as the data). Value= . indicates missing or suppressed data or value not calculated.

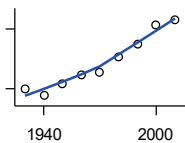
Population

ESTIMATED POPULATION



U.S. Census Bureau

Year	County	State of Kansas	Non Metro Kansas	County Rank	Per 1000 or \$ Per Capita
1990	27,505	2,481,349	938,607	19	.
1991	27,835	2,498,722	938,965	19	.
1992	28,413	2,532,394	942,759	19	.
1993	28,599	2,556,547	947,515	19	.
1994	29,653	2,580,513	952,178	18	.
1995	30,282	2,601,007	957,771	18	.
1996	30,750	2,614,554	959,455	17	.
1997	30,917	2,635,292	960,225	17	.
1998	31,580	2,660,598	960,569	17	.
1999	31,992	2,678,338	960,704	17	.
2000	32,544	2,693,681	959,230	17	.
2001	32,182	2,702,162	952,607	17	.
2002	31,981	2,713,535	945,985	17	.
2003	32,285	2,723,004	941,474	17	.
2004	32,265	2,734,373	937,623	17	.
2005	32,354	2,745,299	932,852	17	.
2006	32,029	2,762,931	928,809	17	.
2007	32,168	2,783,785	927,643	17	.
2008	32,187	2,808,076	926,248	17	.
2009	33,158	2,832,704	926,755	17	.
2010	34,009	2,858,190	930,028	17	.
2011	34,372	2,869,225	927,675	17	.
2012	34,665	2,885,257	925,152	16	.
2013	34,879	2,893,212	922,383	15	.
2014	34,930	2,900,475	917,854	15	.
2015	34,629	2,909,011	912,199	16	.
2016	34,552	2,910,844	905,099	16	.
2017	34,218	2,908,718	897,981	15	.
2018	33,877	2,911,359	892,656	15	.
2019	33,619	2,913,314	887,455	16	.
2020	34,206	2,935,880	889,750	15	.
2021	34,159	2,934,582	886,438	16	.



URBAN POPULATION

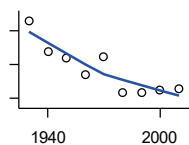
U.S. Census Bureau: Decennial Census

Year	County	State of Kansas	Non Metro Kansas	County Rank	Per 1000 or \$ Per Capita
1930	10,059	729,834	336,666	21	.
1940	8,487	753,941	349,228	24	.
1950	11,262	993,220	398,923	22	.
1960	13,520	1,328,741	457,447	20	.
1970	14,127	1,484,870	450,543	20	.
1980	18,001	1,575,899	474,769	19	.
1990	21,129	1,712,564	464,205	17	.
2000	25,973	1,920,081	488,011	13	.
2010	27,316	2,116,961	485,780	13	.

County: county value. Kansas: state value. County Rank: highest county value ranked #1. (\$000): thousands of dollars. Nonmetro Kansas: Kansas total less Metropolitan Areas as defined by the Office of Management and Budget (OMB; released 3/6/2020). Per 1000: For nonmoney amounts, Per 1000=(county value / county population for the same year as the data) x 1000. \$ Per capita=(county value / county population for the same year as the data). Value= . indicates missing or suppressed data or value not calculated.

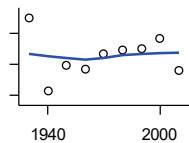
Population

RURAL POPULATION



U.S. Census Bureau

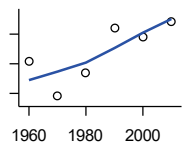
Year	County	State of Kansas	Non Metro Kansas	County Rank	Per 1000 or \$ Per Capita
1930	10,588	1,151,165	843,390	50	.
1940	8,767	1,047,087	747,988	58	.
1950	8,408	912,079	647,900	49	.
1960	7,418	849,870	564,063	45	.
1970	8,460	761,708	509,972	34	.
1980	6,314	787,780	505,873	47	.
1990	6,334	765,010	475,211	43	.
2000	6,485	768,337	471,900	42	.
2010	6,532	736,157	444,201	40	.



NET MIGRATION: DECADE ENDING...

calculated by the Institute for Policy and Social Research, The University of Kansas

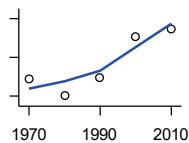
Year	County	State of Kansas	Non Metro Kansas	County Rank	Per 1000 or \$ Per Capita
1930	3,985	-66,132	-101,869	6	193.0
1940	-5,510	-192,649	-166,022	103	-319.3
1950	-2,074	-84,329	-158,379	65	-105.4
1960	-2,609	-38,999	-146,640	85	-124.6
1970	-578	-119,662	-105,116	35	-25.6
1980	-199	-21,983	-6,184	56	-8.2
1990	-24	-61,835	-79,274	13	-0.9
2000	1,374	68,960	4,247	13	42.3
2010	-2,808	5,578	-50,648	101	-83.0



MEDIAN AGE

U.S. Census Bureau: Decennial Census

Year	County	State of Kansas	Non Metro Kansas	County Rank	Per 1000 or \$ Per Capita
1960	29.1	26.9	.	76	.
1970	27.9	28.7	.	89	.
1980	28.7	30.1	.	93	.
1990	30.2	32.9	.	98	.
2000	29.9	35.2	.	100	.
2010	30.4	36.0	.	100	.



POPULATION UNDER 18 (DECENNIAL CENSUS)

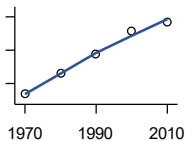
U.S. Census Bureau: Decennial Census

Year	County	State of Kansas	Non Metro Kansas	County Rank	Per 1000 or \$ Per Capita
1970	7,870	746,354	306,227	20	.
1980	7,056	649,035	263,919	20	.
1990	7,955	661,614	250,107	18	.
2000	10,094	712,993	250,757	12	.
2010	10,470	726,939	229,213	13	.

County: county value. Kansas: state value. County Rank: highest county value ranked #1. (\$000): thousands of dollars. Nonmetro Kansas: Kansas total less Metropolitan Areas as defined by the Office of Management and Budget (OMB; released 3/6/2020). Per 1000: For nonmoney amounts, Per 1000=(county value / county population for the same year as the data) x 1000. \$ Per capita=(county value / county population for the same year as the data). Value= . indicates missing or suppressed data or value not calculated.

Population

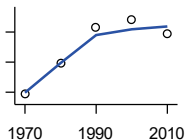
**POPULATION AGE 18 AND OVER
(DECENNIAL CENSUS)**



U.S. Census Bureau: Decennial Census

Year	County	State of Kansas	Non Metro Kansas	County Rank	Per 1000 or \$ Per Capita
1970	14,717	1,500,224	654,288	23	.
1980	17,258	1,714,282	716,684	22	.
1990	19,508	1,815,960	689,309	20	.
2000	22,364	1,975,425	709,154	17	.
2010	23,378	2,126,179	700,768	19	.

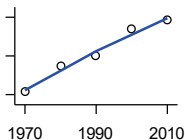
**POPULATION AGE 65 AND OVER
(DECENNIAL CENSUS)**



U.S. Census Bureau: Decennial Census

Year	County	State of Kansas	Non Metro Kansas	County Rank	Per 1000 or \$ Per Capita
1970	2,571	266,201	149,049	31	.
1980	2,992	306,263	164,932	27	.
1990	3,468	342,571	168,579	23	.
2000	3,566	356,229	161,769	22	.
2010	3,377	376,116	154,214	25	.

**POPULATION AGE 85 AND OVER
(DECENNIAL CENSUS)**



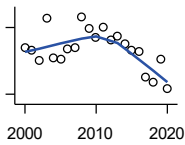
U.S. Census Bureau: Decennial Census

Year	County	State of Kansas	Non Metro Kansas	County Rank	Per 1000 or \$ Per Capita
1970	213	23,899	13,698	35	.
1980	346	33,455	18,804	26	.
1990	402	42,241	22,970	31	.
2000	537	51,770	26,644	25	.
2010	583	59,318	26,197	22	.

County: county value. Kansas: state value. County Rank: highest county value ranked #1. (\$000): thousands of dollars. Nonmetro Kansas: Kansas total less Metropolitan Areas as defined by the Office of Management and Budget (OMB; released 3/6/2020). Per 1000: For nonmoney amounts, Per 1000=(county value / county population for the same year as the data) x 1000. \$ Per capita=(county value / county population for the same year as the data). Value= . indicates missing or suppressed data or value not calculated.

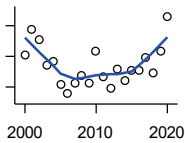
Vital Statistics and Health

BIRTHS (LIVE)



Kansas Department of Health and Environment

Year	County	State of Kansas	Non Metro Kansas	County Rank	Per 1000 or \$ Per Capita
2000	655	39,654	12,980	12	20.2
2001	649	38,832	12,527	12	20.2
2002	627	39,338	12,476	12	19.6
2003	721	39,353	12,342	11	22.3
2004	631	39,553	12,398	12	19.6
2005	630	39,701	12,382	12	19.5
2006	651	40,896	12,726	12	20.3
2007	654	41,951	12,990	13	20.3
2008	724	41,815	12,970	13	22.5
2009	698	41,388	12,949	13	21.1
2010	677	40,439	12,200	13	20.0
2011	700	39,628	12,098	13	20.4
2012	673	40,304	12,217	13	19.4
2013	681	38,805	11,877	12	19.5
2014	663	39,193	12,052	13	19.0
2015	649	39,126	11,836	13	18.7
2016	646	38,048	11,467	13	18.7
2017	589	36,464	10,968	13	17.2
2018	576	36,268	10,826	13	17.0
2019	628	35,395	10,506	12	18.7
2020	563	34,368	10,222	12	16.4



DEATHS

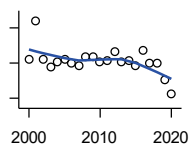
Kansas Department of Health and Environment

Year	County	State of Kansas	Non Metro Kansas	County Rank	Per 1000 or \$ Per Capita
2000	262	24,676	11,175	22	8.1
2001	295	24,590	10,807	18	9.2
2002	282	24,968	11,079	20	8.8
2003	248	24,417	10,615	22	7.7
2004	253	23,720	10,369	21	7.8
2005	224	24,632	10,599	25	6.9
2006	211	24,489	10,538	24	6.6
2007	225	24,413	10,601	25	7.0
2008	235	24,896	10,593	25	7.3
2009	225	23,997	9,938	24	6.8
2010	266	24,428	10,105	20	7.9
2011	234	25,114	10,520	23	6.8
2012	218	25,084	10,259	25	6.3
2013	244	25,347	10,249	24	7.0
2014	229	25,731	10,275	24	6.6
2015	241	26,611	10,539	25	7.0
2016	241	26,129	10,231	25	7.0
2017	259	26,725	10,452	22	7.6
2018	239	27,213	10,389	23	7.1
2019	267	27,312	10,569	23	7.9
2020	312	31,667	11,850	22	9.1

County: county value. Kansas: state value. County Rank: highest county value ranked #1. (\$000): thousands of dollars. Nonmetro Kansas: Kansas total less Metropolitan Areas as defined by the Office of Management and Budget (OMB; released 3/6/2020). Per 1000: For nonmoney amounts, Per 1000=(county value / county population for the same year as the data) x 1000. \$ Per capita=(county value / county population for the same year as the data). Value= . indicates missing or suppressed data or value not calculated.

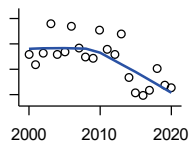
Vital Statistics and Health

MARRIAGES



Kansas Department of Health and Environment

Year	County	State of Kansas	Non Metro Kansas	County Rank	Per 1000 or \$ Per Capita
2000	259	20,426	7,333	16	8.0
2001	370	20,457	7,441	13	11.5
2002	261	19,783	6,794	16	8.2
2003	238	18,722	6,469	15	7.4
2004	253	19,174	6,756	15	7.8
2005	261	18,745	6,481	13	8.1
2006	251	18,836	6,433	16	7.8
2007	244	18,910	6,464	14	7.6
2008	267	18,717	6,283	13	8.3
2009	268	18,268	6,015	13	8.1
2010	252	18,150	5,925	12	7.4
2011	258	17,897	5,977	12	7.5
2012	284	18,154	5,752	12	8.2
2013	253	17,328	5,533	12	7.3
2014	256	17,655	5,535	12	7.3
2015	244	17,595	5,400	12	7.0
2016	286	17,948	5,340	13	8.3
2017	249	17,274	5,163	13	7.3
2018	251	16,362	4,999	12	7.4
2019	203	15,403	4,650	13	6.0
2020	163	14,038	4,066	16	4.8



DIVORCES AND ANNULMENTS

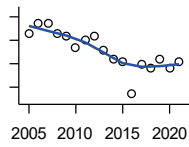
Kansas Department of Health and Environment

Year	County	State of Kansas	Non Metro Kansas	County Rank	Per 1000 or \$ Per Capita
2000	112	10,105	4,000	20	3.5
2001	104	9,885	3,818	22	3.2
2002	113	9,645	3,716	18	3.5
2003	136	8,644	3,464	15	4.2
2004	112	8,759	3,506	18	3.5
2005	114	8,476	3,311	17	3.5
2006	134	9,145	3,387	15	4.2
2007	117	9,347	3,402	17	3.6
2008	110	9,818	3,655	19	3.4
2009	109	10,333	3,463	18	3.3
2010	131	10,579	3,530	17	3.9
2011	116	10,445	3,347	17	3.4
2012	112	9,782	3,040	17	3.2
2013	128	9,085	2,973	14	3.7
2014	94	8,441	2,682	17	2.7
2015	81	8,036	2,704	21	2.3
2016	79	7,198	2,424	18	2.3
2017	83	6,494	2,315	17	2.4
2018	101	6,538	2,269	15	3.0
2019	87	6,398	2,357	17	2.6
2020	85	5,169	1,866	14	2.5

County: county value. Kansas: state value. County Rank: highest county value ranked #1. (\$000): thousands of dollars. Nonmetro Kansas: Kansas total less Metropolitan Areas as defined by the Office of Management and Budget (OMB; released 3/6/2020). Per 1000: For nonmoney amounts, Per 1000=(county value / county population for the same year as the data) x 1000. \$ Per capita=(county value / county population for the same year as the data). Value= . indicates missing or suppressed data or value not calculated.

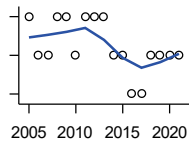
Vital Statistics and Health

PHYSICIANS: M.D. PHYSICIANS



Kansas Department of Health and Environment (1981-2005,2010-);Kansas Health Policy Authority (2006-2009)

Year	County	State of Kansas	Non Metro Kansas	County Rank	Per 1000 or \$ Per Capita
2005	43	4,241	912	13	1.3
2006	47	4,310	953	13	1.5
2007	47	5,309	1,046	14	1.5
2008	43	5,110	1,016	14	1.3
2009	42	5,249	996	15	1.3
2010	37	5,192	979	15	1.1
2011	40	5,243	983	15	1.2
2012	42	5,693	1,033	15	1.2
2013	36	6,106	1,071	17	1.0
2014	32	5,839	951	18	0.9
2015	31	5,703	855	15	0.9
2016	17	4,278	643	17	0.5
2017	30	6,332	1,047	19	0.9
2018	28	6,079	1,065	23	0.8
2019	32	6,435	1,036	19	1.0
2020	28	6,668	1,045	22	0.8
2021	31	6,745	1,042	16	0.9



PHYSICIANS: D.O. PHYSICIANS

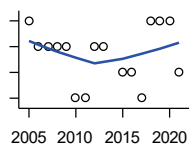
Kansas Department of Health and Environment (1981-2005,2010-);Kansas Health Policy Authority (2006-2009)

Year	County	State of Kansas	Non Metro Kansas	County Rank	Per 1000 or \$ Per Capita
2005	3	553	174	33	0.1
2006	2	508	171	45	0.1
2007	2	569	169	48	0.1
2008	3	558	166	31	0.1
2009	3	564	160	32	0.1
2010	2	583	169	45	0.1
2011	3	502	152	30	0.1
2012	3	718	200	36	0.1
2013	3	829	210	34	0.1
2014	2	817	189	47	0.1
2015	2	819	190	47	0.1
2016	1	632	136	58	0.0
2017	1	579	129	57	0.0
2018	2	871	164	40	0.1
2019	2	951	212	42	0.1
2020	2	1,018	204	42	0.1
2021	2	1,095	217	47	0.1

County: county value. Kansas: state value. County Rank: highest county value ranked #1. (\$000): thousands of dollars. Nonmetro Kansas: Kansas total less Metropolitan Areas as defined by the Office of Management and Budget (OMB; released 3/6/2020). Per 1000: For nonmoney amounts, Per 1000=(county value / county population for the same year as the data) x 1000. \$ Per capita=(county value / county population for the same year as the data). Value= . indicates missing or suppressed data or value not calculated.

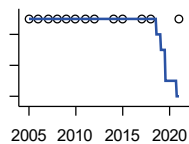
Vital Statistics and Health

DENTISTS



Kansas Department of Health and Environment (1981-2006,2010-); Kansas Health Policy Authority (2007-2009)

Year	County	State of Kansas	Non Metro Kansas	County Rank	Per 1000 or \$ Per Capita
2005	13	1,347	363	18	0.4
2006	12	1,381	361	21	0.4
2007	12	1,335	350	21	0.4
2008	12	1,392	353	22	0.4
2009	12	1,353	350	22	0.4
2010	10	1,401	365	22	0.3
2011	10	1,338	346	21	0.3
2012	12	1,434	392	22	0.3
2013	12	1,212	328	19	0.3
2015	11	1,240	327	21	0.3
2016	11	1,456	350	21	0.3
2017	10	1,467	350	21	0.3
2018	13	1,604	359	20	0.4
2019	13	1,646	355	20	0.4
2020	13	1,646	355	20	0.4
2021	11	1,688	362	23	0.3



NUMBER OF HOSPITALS

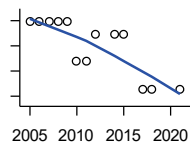
American Hospital Association, American Hospital Association Guide to the Health Care Field

Year	County	State of Kansas	Non Metro Kansas	County Rank	Per 1000 or \$ Per Capita
2005	1	158	105	96	.
2006	1	158	105	96	.
2007	1	159	104	95	.
2008	1	159	104	95	.
2009	1	158	105	96	.
2010	1	158	104	96	.
2011	1	158	103	96	.
2012	1	157	103	96	.
2014	1	156	.	96	.
2015	1	155	103	96	.
2017	1	157	102	96	.
2018	1	154	99	95	.
2021	1	151	.	95	.

County: county value. Kansas: state value. County Rank: highest county value ranked #1. (\$000): thousands of dollars. Nonmetro Kansas: Kansas total less Metropolitan Areas as defined by the Office of Management and Budget (OMB; released 3/6/2020). Per 1000: For nonmoney amounts, Per 1000=(county value / county population for the same year as the data) x 1000. \$ Per capita=(county value / county population for the same year as the data). Value= . indicates missing or suppressed data or value not calculated.

Vital Statistics and Health

NUMBER OF HOSPITAL BEDS

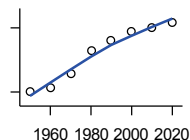


Kansas Department of Health and Environment

Year	County	State of Kansas	Non Metro Kansas	County Rank	Per 1000 or \$ Per Capita
2005	99	12,389	5,687	27	3.1
2006	99	11,992	5,514	27	3.1
2007	99	12,171	5,637	28	3.1
2008	99	12,332	5,700	29	3.1
2009	99	12,283	5,652	29	3.0
2010	68	12,218	5,521	41	2.0
2011	68	12,182	5,335	40	2.0
2012	89	12,002	5,355	28	2.6
2014	89	12,034	.	28	2.5
2015	89	11,926	5,330	27	2.6
2017	45	11,491	4,825	54	1.3
2018	45	11,448	4,583	47	1.3
2021	45	11,199	.	44	1.3

Housing

HOUSING UNITS (DECENNIAL)



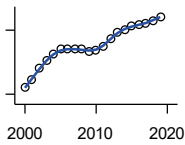
U.S. Census Bureau: Decennial Census

Year	County	State of Kansas	Non Metro Kansas	County Rank	Per 1000 or \$ Per Capita
1950	6,027	586,650	328,210	27	306.4
1960	6,386	672,899	329,380	25	305.0
1970	7,752	789,735	363,824	24	343.2
1980	9,832	955,207	416,877	22	404.4
1990	10,842	1,044,112	417,062	21	394.8
2000	11,650	1,131,395	422,218	21	358.9
2010	12,005	1,233,215	424,050	22	354.7
2020	12,550	1,275,689	413,120	21	366.0

County: county value. Kansas: state value. County Rank: highest county value ranked #1. (\$000): thousands of dollars. Nonmetro Kansas: Kansas total less Metropolitan Areas as defined by the Office of Management and Budget (OMB; released 3/6/2020). Per 1000: For nonmoney amounts, Per 1000=(county value / county population for the same year as the data) x 1000. \$ Per capita=(county value / county population for the same year as the data). Value= . indicates missing or suppressed data or value not calculated.

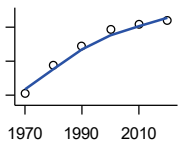
Housing

HOUSING UNITS (ESTIMATED)



U.S. Census Bureau

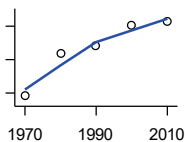
Year	County	State of Kansas	Non Metro Kansas	County Rank	Per 1000 or \$ Per Capita
2000	11,662	1,134,529	422,560	21	359.3
2001	11,740	1,146,858	423,876	21	364.8
2002	11,844	1,160,129	425,089	21	370.3
2003	11,913	1,171,620	425,936	20	369.0
2004	11,982	1,184,702	426,593	20	371.4
2005	12,021	1,195,791	426,964	21	371.5
2006	12,020	1,206,692	426,713	21	375.3
2007	12,025	1,217,608	426,090	22	373.8
2008	12,019	1,225,625	425,768	22	373.4
2009	12,002	1,230,552	424,776	22	362.0
2010	12,009	1,234,456	424,174	22	354.8
2011	12,046	1,238,052	424,549	22	350.5
2012	12,116	1,241,992	425,116	22	349.5
2013	12,186	1,246,675	425,699	22	349.4
2014	12,210	1,253,284	426,269	22	349.6
2015	12,237	1,258,999	426,844	22	353.4
2016	12,253	1,265,684	427,465	22	354.6
2017	12,260	1,273,536	427,746	22	358.3
2018	12,293	1,280,649	428,099	22	362.9
2019	12,325	1,288,401	428,495	22	366.6



OCCUPIED HOUSING UNITS

U.S. Census Bureau: Decennial Census

Year	County	State of Kansas	Non Metro Kansas	County Rank	Per 1000 or \$ Per Capita
1970	7,098	727,364	326,494	23	314.3
1980	8,776	872,239	371,693	22	360.9
1990	9,872	944,726	365,901	21	359.5
2000	10,852	1,037,891	375,313	20	334.3
2010	11,145	1,112,096	370,269	22	329.3
2020	11,376	1,151,360	356,330	21	331.8



OWNER OCCUPIED HOUSING UNITS

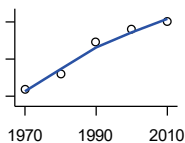
U.S. Census Bureau: Decennial Census

Year	County	State of Kansas	Non Metro Kansas	County Rank	Per 1000 or \$ Per Capita
1970	4,907	502,585	236,338	23	217.2
1980	6,192	612,433	277,096	23	254.7
1990	6,407	641,762	263,099	24	233.3
2000	7,034	718,703	271,350	22	216.7
2010	7,148	753,532	261,763	22	211.2

County: county value. Kansas: state value. County Rank: highest county value ranked #1. (\$000): thousands of dollars. Nonmetro Kansas: Kansas total less Metropolitan Areas as defined by the Office of Management and Budget (OMB; released 3/6/2020). Per 1000: For nonmoney amounts, Per 1000=(county value / county population for the same year as the data) x 1000. \$ Per capita=(county value / county population for the same year as the data). Value= . indicates missing or suppressed data or value not calculated.

Housing

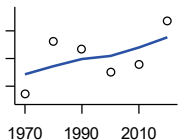
RENTER OCCUPIED HOUSING UNITS



U.S. Census Bureau: Decennial Census

Year	County	State of Kansas	Non Metro Kansas	County Rank	Per 1000 or \$ Per Capita
1970	2,191	224,779	90,156	21	97.0
1980	2,584	259,806	94,597	19	106.3
1990	3,465	302,964	102,802	19	126.2
2000	3,818	319,188	103,963	18	117.6
2010	3,997	358,564	108,506	18	118.1

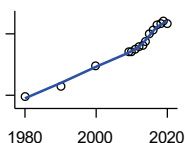
VACANT HOUSING UNITS



U.S. Census Bureau: Decennial Census

Year	County	State of Kansas	Non Metro Kansas	County Rank	Per 1000 or \$ Per Capita
1970	641	60,058	35,954	20	28.4
1980	1,026	77,912	41,584	15	42.2
1990	970	99,386	51,161	24	35.3
2000	798	93,309	46,904	25	24.6
2010	860	121,119	53,781	33	25.4
2020	1,174	124,329	56,790	22	34.2

MEDIAN VALUE (\$): OWNER OCCUPIED HOUSING UNITS



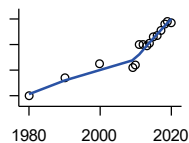
U.S. Census Bureau, Decennial Census (- 2000), (2009 -) American Community Survey five-year average ending in year shown.

Year	County	State of Kansas	Non Metro Kansas	County Rank	Per 1000 or \$ Per Capita
1980	38,400	37,800	.	12	.
1990	48,900	52,200	.	12	.
2000	69,200	83,500	.	28	.
2009	82,300	118,500	.	37	.
2010	82,700	122,600	.	41	.
2011	85,000	125,500	.	37	.
2012	87,300	127,400	.	38	.
2013	88,800	128,400	.	38	.
2014	92,200	129,400	.	35	.
2015	99,500	132,000	.	28	.
2016	103,600	135,300	.	29	.
2017	108,400	139,200	.	28	.
2018	109,900	145,400	.	28	.
2019	112,500	151,900	.	32	.
2020	109,800	157,600	.	36	.

County: county value. Kansas: state value. County Rank: highest county value ranked #1. (\$000): thousands of dollars. Nonmetro Kansas: Kansas total less Metropolitan Areas as defined by the Office of Management and Budget (OMB; released 3/6/2020). Per 1000: For nonmoney amounts, Per 1000=(county value / county population for the same year as the data) x 1000. \$ Per capita=(county value / county population for the same year as the data). Value= . indicates missing or suppressed data or value not calculated.

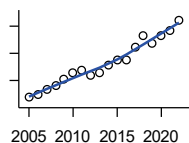
Housing

MEDIAN CONTRACT RENT (\$)



U.S. Census Bureau, Decennial Census (- 2000), (2009 -) American Community Survey five-year average ending in year shown.

Year	County	State of Kansas	Non Metro Kansas	County Rank	Per 1000 or \$ Per Capita
1980	196	219	.	23	.
1990	337	372	.	13	.
2000	450	498	.	21	.
2009	419	491	.	20	.
2010	438	507	.	19	.
2011	598	699	.	26	.
2012	600	715	.	38	.
2013	589	732	.	46	.
2014	614	748	.	45	.
2015	661	757	.	27	.
2016	675	775	.	26	.
2017	709	801	.	21	.
2018	756	831	.	16	.
2019	778	850	.	17	.
2020	770	863	.	17	.



FAIR MARKET RENT: 2 BEDROOMS

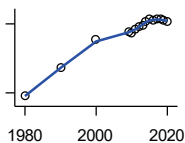
U.S. Department of Housing and Urban Development (HUD)

Year	County	State of Kansas	Non Metro Kansas	County Rank	Per 1000 or \$ Per Capita
2005	537	.	.	11	.
2006	549	.	.	16	.
2007	566	.	.	16	.
2008	580	628	.	17	.
2009	604	653	.	17	.
2010	628	678	.	17	.
2011	638	684	.	14	.
2012	617	660	.	27	.
2013	630	712	.	28	.
2014	655	746	.	33	.
2015	676	756	.	28	.
2016	677	781	.	36	.
2017	721	811	.	33	.
2018	763	815	.	26	.
2019	737	828	.	26	.
2020	766	855	.	26	.
2021	786	874	.	23	.
2022	822	879	.	25	.

County: county value. Kansas: state value. County Rank: highest county value ranked #1. (\$000): thousands of dollars. Nonmetro Kansas: Kansas total less Metropolitan Areas as defined by the Office of Management and Budget (OMB; released 3/6/2020). Per 1000: For nonmoney amounts, Per 1000=(county value / county population for the same year as the data) x 1000. \$ Per capita=(county value / county population for the same year as the data). Value= . indicates missing or suppressed data or value not calculated.

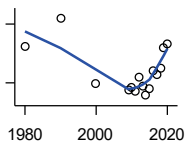
Education

POPULATION AGE 25+



U.S. Census Bureau, Decennial Census (- 2000), (2009 -) American Community Survey five-year average ending in year shown.

Year	County	State of Kansas	Non Metro Kansas	County Rank	Per 1000 or \$ Per Capita
1980	13,710	1,388,102	596,639	.	.
1990	16,197	1,565,936	608,745	.	.
2000	18,632	1,701,207	618,131	.	.
2009	19,359	1,775,427	600,188	.	.
2010	19,233	1,802,904	608,716	.	.
2011	19,543	1,822,400	610,386	.	.
2012	19,724	1,838,079	611,103	.	.
2013	19,888	1,850,010	610,374	.	.
2014	20,243	1,861,894	609,612	.	.
2015	20,386	1,869,698	606,967	.	.
2016	20,281	1,878,495	604,563	.	.
2017	20,419	1,886,741	601,076	.	.
2018	20,438	1,894,675	598,487	.	.
2019	20,338	1,902,279	595,501	.	.
2020	20,199	1,911,990	593,923	.	.



PERCENT HS GRADUATE OR HIGHER AGE 25+

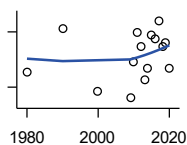
U.S. Census Bureau, Decennial Census (- 2000), (2009 -) American Community Survey five-year average ending in year shown.

Year	County	State of Kansas	Non Metro Kansas	County Rank	Per 1000 or \$ Per Capita
1980	73.7	73.3	.	18	.
1990	76.6	81.3	.	67	.
2000	69.9	86.0	.	103	.
2009	69.3	89.0	.	104	.
2010	69.5	89.2	.	104	.
2011	69.1	89.5	.	104	.
2012	70.6	89.7	.	104	.
2013	69.7	89.8	.	104	.
2014	68.7	90.0	.	104	.
2015	69.4	90.2	.	104	.
2016	71.2	90.3	.	102	.
2017	70.8	90.5	.	103	.
2018	71.5	90.7	.	102	.
2019	73.6	91.0	.	102	.
2020	74.0	91.4	.	102	.

County: county value. Kansas: state value. County Rank: highest county value ranked #1. (\$000): thousands of dollars. Nonmetro Kansas: Kansas total less Metropolitan Areas as defined by the Office of Management and Budget (OMB; released 3/6/2020). Per 1000: For nonmoney amounts, Per 1000=(county value / county population for the same year as the data) x 1000. \$ Per capita=(county value / county population for the same year as the data). Value= . indicates missing or suppressed data or value not calculated.

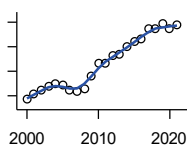
Education

PERCENT BACHELORS DEGREE OR HIGHER AGE 25+



U.S. Census Bureau, Decennial Census (- 2000), (2009 -) American Community Survey five-year average ending in year shown.

Year	County	State of Kansas	Non Metro Kansas	County Rank	Per 1000 or \$ Per Capita
1980	16.9	17.0	.	9	.
1990	18.1	21.1	.	13	.
2000	16.4	25.8	.	61	.
2009	16.2	28.8	.	80	.
2010	17.2	29.3	.	72	.
2011	18.0	29.7	.	72	.
2012	17.6	30.0	.	78	.
2013	16.7	30.3	.	87	.
2014	17.0	30.7	.	89	.
2015	17.9	31.0	.	79	.
2016	17.8	31.6	.	86	.
2017	18.3	32.3	.	82	.
2018	17.6	32.9	.	88	.
2019	17.7	33.4	.	90	.
2020	17.0	33.9	.	99	.



PUBLIC SCHOOL ENROLLMENT (FTE) SCHOOL YEAR BEGINNING...

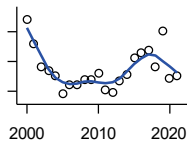
Kansas State Department of Education

Year	County	State of Kansas	Non Metro Kansas	County Rank	Per 1000 or \$ Per Capita
2000	5,922.7	448,150.8	166,722.5	15	182.5
2001	6,041.0	447,047.1	164,365.0	13	187.7
2002	6,113.7	444,860.3	161,555.4	12	191.2
2003	6,189.4	443,620.6	159,130.2	12	191.7
2004	6,248.8	441,957.2	156,566.3	11	193.7
2005	6,218.5	442,708.4	155,197.2	11	192.2
2006	6,112.8	444,878.7	153,842.3	13	190.9
2007	6,079.3	446,831.3	152,337.1	13	189.0
2008	6,135.6	447,730.0	150,572.7	13	190.6
2009	6,411.2	453,202.5	151,246.8	13	193.4
2010	6,652.4	455,405.0	151,023.8	13	196.5
2011	6,665.6	456,000.5	150,257.9	13	193.9
2012	6,826.1	458,496.4	150,463.0	13	196.9
2013	6,848.6	461,950.0	150,420.9	13	196.4
2014	7,005.7	464,395.4	150,499.4	12	200.6
2015	7,098.8	463,504.0	149,539.3	12	205.0
2016	7,156.4	459,920.3	147,293.5	12	207.1
2017	7,366.3	477,977.9	152,096.3	13	215.3
2018	7,367.9	476,481.7	150,456.8	13	217.5
2019	7,472.9	476,525.1	150,045.2	12	222.3
2020	7,360.5	462,088.0	146,369.6	12	214.7
2021	7,434.6	463,652.4	147,500.4	12	217.6

County: county value. Kansas: state value. County Rank: highest county value ranked #1. (\$000): thousands of dollars. Nonmetro Kansas: Kansas total less Metropolitan Areas as defined by the Office of Management and Budget (OMB; released 3/6/2020). Per 1000: For nonmoney amounts, Per 1000=(county value / county population for the same year as the data) x 1000. \$ Per capita=(county value / county population for the same year as the data). Value= . indicates missing or suppressed data or value not calculated.

Education

PUPIL/TEACHER RATIO SCHOOL YEAR BEGINNING...

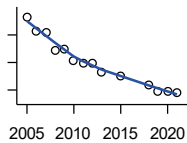


Kansas State Department of Education

Year	County	State of Kansas	Non Metro Kansas	County Rank	Per 1000 or \$ Per Capita
2000	17.9	15.4	13.9	1	.
2001	17.1	15.3	13.8	3	.
2002	16.3	15.4	13.9	7	.
2003	16.2	15.5	13.8	9	.
2004	16.0	15.3	13.6	9	.
2005	15.4	15.0	13.4	10	.
2006	15.7	14.7	13.2	6	.
2007	15.7	14.6	13.1	6	.
2008	15.9	14.4	12.9	5	.
2009	15.9	14.8	13.2	6	.
2010	16.1	15.2	13.6	10	.
2011	15.5	15.1	13.5	11	.
2012	15.5	15.1	13.5	13	.
2013	15.8	15.1	13.5	10	.
2014	16.1	15.0	13.6	8	.
2015	16.6	15.2	13.9	6	.
2016	16.8	15.1	13.7	5	.
2017	16.9	15.5	13.9	9	.
2018	16.3	15.3	13.8	9	.
2019	17.5	15.2	13.7	2	.
2020	15.9	14.7	13.4	8	.
2021	16.0	14.8	13.5	11	.

Social Environment

CHILD CARE FACILITIES: TOTAL CHILD CARE FACILITIES

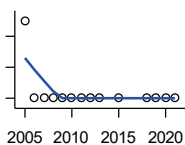


Kansas Department of Health and Environment, Bureau of Adult and Child Care

Year	County	State of Kansas	Non Metro Kansas	County Rank	Per 1000 or \$ Per Capita
2005	93	8,258	3,378	21	2.9
2006	83	8,442	3,429	26	2.6
2007	82	8,241	3,317	25	2.5
2008	69	8,011	3,150	27	2.1
2009	70	7,853	3,066	25	2.1
2010	61	7,354	2,858	26	1.8
2011	59	6,835	2,623	26	1.7
2012	59	6,346	2,409	24	1.7
2013	53	5,754	2,179	24	1.5
2015	50	5,289	2,146	24	1.4
2018	44	4,607	1,904	23	1.3
2019	39	4,287	1,774	26	1.2
2020	39	4,274	1,798	27	1.1
2021	38	4,002	1,700	25	1.1

County: county value. Kansas: state value. County Rank: highest county value ranked #1. (\$000): thousands of dollars. Nonmetro Kansas: Kansas total less Metropolitan Areas as defined by the Office of Management and Budget (OMB; released 3/6/2020). Per 1000: For nonmoney amounts, Per 1000=(county value / county population for the same year as the data) x 1000. \$ Per capita=(county value / county population for the same year as the data). Value= . indicates missing or suppressed data or value not calculated.

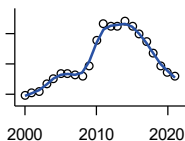
Social Environment



**CHILD CARE FACILITIES:
PRESCHOOLS**

Kansas Department of Health and Environment, Bureau of Adult and Child Care

Year	County	State of Kansas	Non Metro Kansas	County Rank	Per 1000 or \$ Per Capita
2005	1	243	140	79	0.0
2006	0	221	127	105	0.0
2007	0	208	119	105	0.0
2008	0	204	114	105	0.0
2009	0	194	107	105	0.0
2010	0	194	112	105	0.0
2011	0	209	123	105	0.0
2012	0	201	121	105	0.0
2013	0	140	84	105	0.0
2015	0	185	113	105	0.0
2018	0	150	94	105	0.0
2019	0	134	83	105	0.0
2020	0	126	78	105	0.0
2021	0	120	74	105	0.0



FOOD STAMP BENEFICIARIES

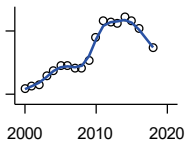
Kansas Social and Rehabilitation Services

Year	County	State of Kansas	Non Metro Kansas	County Rank	Per 1000 or \$ Per Capita
2000	1,460	110,619	44,825	18	45.0
2001	1,534	117,241	46,741	18	47.7
2002	1,569	131,726	52,342	19	49.1
2003	1,846	155,908	61,280	19	57.2
2004	2,019	167,971	65,852	18	62.6
2005	2,195	175,710	67,261	18	67.8
2006	2,180	182,821	67,487	18	68.1
2007	2,129	184,035	66,979	17	66.2
2008	2,116	187,377	67,160	18	65.7
2009	2,432	208,007	73,637	17	73.3
2010	3,275	259,609	90,919	16	96.8
2011	3,814	296,542	101,155	15	111.0
2012	3,744	303,257	102,478	15	108.0
2013	3,729	316,424	105,345	16	106.9
2014	3,932	301,377	100,761	15	112.6
2015	3,750	277,614	93,353	14	108.3
2016	3,497	258,412	88,343	14	101.2
2017	3,227	239,592	82,070	14	94.3
2018	2,838	219,738	75,208	15	83.8
2019	2,451	205,261	69,899	16	72.9
2020	2,209	198,457	66,721	19	64.4
2021	2,083	203,424	68,883	22	61.0

County: county value. Kansas: state value. County Rank: highest county value ranked #1. (\$000): thousands of dollars. Nonmetro Kansas: Kansas total less Metropolitan Areas as defined by the Office of Management and Budget (OMB; released 3/6/2020). Per 1000: For nonmoney amounts, Per 1000=(county value / county population for the same year as the data) x 1000. \$ Per capita=(county value / county population for the same year as the data). Value= . indicates missing or suppressed data or value not calculated.

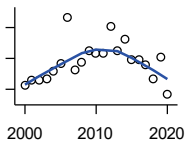
Social Environment

PERCENT OF POPULATION RECEIVING FOOD STAMPS



U.S. Dept. of Agriculture Food and Nutrition Service (1990-1997); Kansas Social and Rehabilitation Services (1998-)

Year	County	State of Kansas	Non Metro Kansas	County Rank	Per 1000 or \$ Per Capita
2000	4.5	4.1	.	31	.
2001	4.8	4.3	.	32	.
2002	4.9	4.9	.	39	.
2003	5.7	5.7	.	41	.
2004	6.2	6.2	.	40	.
2005	6.7	6.4	.	33	.
2006	6.7	6.6	.	35	.
2007	6.5	6.6	.	38	.
2008	6.5	6.7	.	34	.
2009	7.2	7.4	.	34	.
2010	9.4	9.1	.	30	.
2011	11.0	10.3	.	27	.
2012	10.8	10.5	.	30	.
2013	10.7	10.9	.	31	.
2014	11.3	10.4	.	26	.
2015	10.9	9.6	.	24	.
2016	10.3	8.9	.	26	.
2018	8.4	7.5	.	28	.



ESTIMATED NUMBER OF PEOPLE IN POVERTY

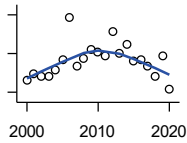
U.S. Census Bureau, Small Area Income and Poverty Estimates

Year	County	State of Kansas	Non Metro Kansas	County Rank	Per 1000 or \$ Per Capita
2000	3,615	235,087	98,984	16	111.4
2001	3,791	252,134	106,257	16	117.8
2002	3,804	265,673	107,542	16	118.9
2003	3,829	278,163	107,323	16	118.6
2004	4,093	297,733	111,534	16	126.9
2005	4,352	310,667	118,768	16	134.5
2006	5,830	327,102	123,700	13	182.0
2007	4,122	301,828	111,953	16	128.1
2008	4,368	307,804	113,015	15	135.7
2009	4,738	359,692	123,394	16	142.9
2010	4,684	374,677	131,502	16	138.4
2011	4,666	383,859	134,912	18	135.8
2012	5,537	392,095	133,800	15	159.7
2013	4,756	391,718	134,067	17	136.4
2014	5,106	381,506	130,213	15	146.2
2015	4,471	366,069	123,073	16	129.1
2016	4,453	343,773	121,314	16	128.9
2017	4,273	335,371	116,854	16	124.9
2018	3,818	336,892	114,490	16	112.7
2019	4,522	319,931	110,692	15	134.5
2020	3,323	300,931	100,998	18	96.9

County: county value. Kansas: state value. County Rank: highest county value ranked #1. (\$000): thousands of dollars. Nonmetro Kansas: Kansas total less Metropolitan Areas as defined by the Office of Management and Budget (OMB; released 3/6/2020). Per 1000: For nonmoney amounts, Per 1000=(county value / county population for the same year as the data) x 1000. \$ Per capita=(county value / county population for the same year as the data). Value= . indicates missing or suppressed data or value not calculated.

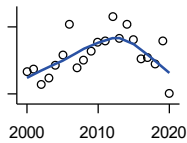
Social Environment

ESTIMATED % OF PEOPLE IN POVERTY



U.S. Census Bureau, Small Area Income and Poverty Estimates

Year	County	State of Kansas	Non Metro Kansas	County Rank	Per 1000 or \$ Per Capita
2000	11.3	8.9	.	35	.
2001	11.9	9.5	.	39	.
2002	11.7	10.0	.	41	.
2003	11.7	10.4	.	34	.
2004	12.3	11.1	.	31	.
2005	13.3	11.7	.	32	.
2006	17.7	12.2	.	9	.
2007	12.7	11.2	.	27	.
2008	13.5	11.3	.	23	.
2009	14.4	13.2	.	28	.
2010	14.1	13.5	.	35	.
2011	13.8	13.8	.	41	.
2012	16.3	14.0	.	22	.
2013	14.0	13.9	.	41	.
2014	15.0	13.5	.	27	.
2015	13.2	12.9	.	35	.
2016	13.4	12.2	.	36	.
2017	12.7	11.9	.	40	.
2018	11.6	11.9	.	63	.
2019	13.8	11.3	.	24	.
2020	10.3	10.6	.	63	.



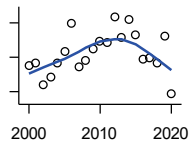
EST. NUMBER OF RELATED CHILDREN AGE 5 TO 17 IN FAMILIES IN POVERTY

U.S. Census Bureau, Small Area Income and Poverty Estimates

Year	County	State of Kansas	Non Metro Kansas	County Rank	Per 1000 or \$ Per Capita
2000	1,000	50,388	21,854	8	30.8
2001	1,020	53,755	23,094	10	31.7
2002	889	52,453	21,423	13	27.8
2003	946	55,419	21,809	14	29.3
2004	1,057	59,392	22,313	11	32.8
2005	1,146	60,203	24,244	11	35.4
2006	1,428	64,427	25,326	8	44.6
2007	1,034	61,149	23,639	12	32.1
2008	1,097	59,842	22,661	12	34.1
2009	1,184	71,850	26,251	14	35.7
2010	1,262	81,077	29,804	14	37.3
2011	1,276	82,311	29,306	16	37.1
2012	1,493	87,594	29,781	13	43.1
2013	1,297	84,325	29,253	14	37.2
2014	1,426	83,873	29,354	12	40.8
2015	1,290	78,192	27,482	14	37.3
2016	1,116	67,810	25,074	14	32.3
2017	1,126	67,873	25,032	14	32.9
2018	1,069	68,153	24,928	15	31.6
2019	1,279	64,613	23,117	8	38.0
2020	803	59,792	21,143	16	23.4

County: county value. Kansas: state value. County Rank: highest county value ranked #1. (\$000): thousands of dollars. Nonmetro Kansas: Kansas total less Metropolitan Areas as defined by the Office of Management and Budget (OMB; released 3/6/2020). Per 1000: For nonmoney amounts, Per 1000=(county value / county population for the same year as the data) x 1000. \$ Per capita=(county value / county population for the same year as the data). Value= . indicates missing or suppressed data or value not calculated.

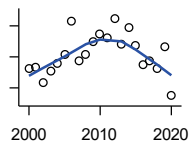
Social Environment



EST. % OF RELATED CHILDREN AGE 5 TO 17 IN FAMILIES IN POVERTY

U.S. Census Bureau, Small Area Income and Poverty Estimates

Year	County	State of Kansas	Non Metro Kansas	County Rank	Per 1000 or \$ Per Capita
2000	15.0	10.0	.	17	.
2001	15.3	10.8	.	25	.
2002	12.8	10.5	.	39	.
2003	13.7	11.3	.	32	.
2004	15.3	12.5	.	20	.
2005	16.7	12.8	.	24	.
2006	19.9	13.2	.	10	.
2007	14.9	12.6	.	44	.
2008	15.7	12.3	.	33	.
2009	17.0	14.7	.	35	.
2010	17.9	15.9	.	38	.
2011	17.7	16.2	.	38	.
2012	20.7	17.2	.	24	.
2013	18.3	16.5	.	31	.
2014	20.4	16.4	.	21	.
2015	18.6	15.3	.	26	.
2016	15.8	13.2	.	42	.
2017	15.9	13.4	.	49	.
2018	15.3	13.5	.	63	.
2019	18.4	12.9	.	21	.
2020	11.7	11.9	.	82	.



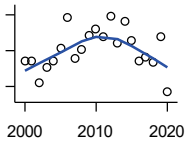
ESTIMATED NUMBER UNDER 18 IN POVERTY

U.S. Census Bureau, Small Area Income and Poverty Estimates

Year	County	State of Kansas	Non Metro Kansas	County Rank	Per 1000 or \$ Per Capita
2000	1,555	82,619	34,843	10	47.9
2001	1,579	87,487	36,724	11	49.1
2002	1,332	84,181	32,870	15	41.6
2003	1,528	93,896	36,004	14	47.3
2004	1,652	98,641	36,272	12	51.2
2005	1,794	100,254	39,118	13	55.4
2006	2,322	105,193	41,054	8	72.5
2007	1,686	100,242	37,881	15	52.4
2008	1,789	100,146	37,552	12	55.6
2009	2,004	118,187	42,682	13	60.4
2010	2,121	129,009	46,428	13	62.7
2011	2,057	133,478	46,832	16	59.8
2012	2,368	135,261	46,294	12	68.3
2013	1,949	131,251	44,952	16	55.9
2014	2,230	125,562	43,933	11	63.8
2015	1,939	119,994	41,828	15	56.0
2016	1,632	100,996	37,387	14	47.2
2017	1,680	102,858	37,955	16	49.1
2018	1,572	102,616	36,991	14	46.4
2019	1,906	97,920	34,797	8	56.7
2020	1,121	88,491	30,767	16	32.7

County: county value. Kansas: state value. County Rank: highest county value ranked #1. (\$000): thousands of dollars. Nonmetro Kansas: Kansas total less Metropolitan Areas as defined by the Office of Management and Budget (OMB; released 3/6/2020). Per 1000: For nonmoney amounts, Per 1000=(county value / county population for the same year as the data) x 1000. \$ Per capita=(county value / county population for the same year as the data). Value= . indicates missing or suppressed data or value not calculated.

Social Environment



ESTIMATED PERCENT UNDER 18 IN POVERTY

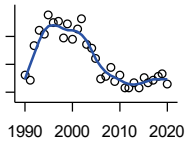
U.S. Census Bureau, Small Area Income and Poverty Estimates

Year	County	State of Kansas	Non Metro Kansas	County Rank	Per 1000 or \$ Per Capita
2000	16.0	11.9	.	33	.
2001	16.1	12.7	.	44	.
2002	13.1	12.1	.	57	.
2003	15.2	13.8	.	46	.
2004	16.0	14.6	.	41	.
2005	17.8	15.2	.	42	.
2006	22.1	15.4	.	13	.
2007	16.5	14.7	.	52	.
2008	17.6	14.6	.	42	.
2009	19.6	17.1	.	35	.
2010	20.6	18.1	.	31	.
2011	19.5	18.8	.	46	.
2012	22.3	19.0	.	26	.
2013	18.6	18.4	.	47	.
2014	21.6	17.6	.	20	.
2015	18.9	16.9	.	38	.
2016	16.1	14.3	.	57	.
2017	16.6	14.7	.	55	.
2018	15.8	14.8	.	67	.
2019	19.5	14.3	.	21	.
2020	11.7	13.0	.	86	.

County: county value. Kansas: state value. County Rank: highest county value ranked #1. (\$000): thousands of dollars. Nonmetro Kansas: Kansas total less Metropolitan Areas as defined by the Office of Management and Budget (OMB; released 3/6/2020). Per 1000: For nonmoney amounts, Per 1000=(county value / county population for the same year as the data) x 1000. \$ Per capita=(county value / county population for the same year as the data). Value= . indicates missing or suppressed data or value not calculated.

Business

ESTABLISHMENTS TOTAL COUNTY BUSINESS PATTERNS



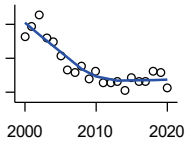
U.S. Census Bureau, County Business Patterns. Beginning with the 2017 data, any tabulation with fewer than 3 establishments were omitted from the release. Data for these establishments are included in the broader total.

Year	County	State of Kansas	Non Metro Kansas	County Rank	Per 1000 or \$ Per Capita
1990	785	65,858	26,802	19	28.6
1991	778	65,941	26,750	19	28.0
1992	826	67,630	27,229	18	29.1
1993	849	68,930	27,655	18	29.7
1994	844	69,822	27,763	18	28.5
1995	871	70,894	28,111	18	28.8
1996	859	72,017	28,353	18	27.9
1997	861	73,924	28,884	18	27.8
1998	837	74,019	28,749	19	26.5
1999	858	74,486	28,536	18	26.8
2000	836	74,939	28,475	19	25.8
2001	851	74,565	28,282	18	26.4
2002	866	75,077	28,183	18	27.1
2003	828	74,972	27,998	18	25.6
2004	824	75,827	28,009	19	25.5
2005	809	76,173	27,830	20	25.0
2006	779	76,446	27,653	20	24.3
2007	782	77,157	27,736	21	24.3
2008	796	76,096	27,314	19	24.7
2009	776	74,698	26,839	20	23.4
2010	784	74,301	26,739	19	23.2
2011	767	73,598	26,555	19	22.3
2012	766	73,944	26,534	20	22.1
2013	774	73,816	26,393	19	22.2
2014	766	74,055	26,292	18	21.9
2015	780	74,526	26,355	18	22.5
2016	773	74,884	26,172	18	22.4
2017	777	74,947	26,093	18	22.7
2018	783	74,559	25,802	17	23.1
2019	786	74,292	25,536	17	23.4
2020	771	73,982	25,178	17	22.5

County: county value. Kansas: state value. County Rank: highest county value ranked #1. (\$000): thousands of dollars. Nonmetro Kansas: Kansas total less Metropolitan Areas as defined by the Office of Management and Budget (OMB; released 3/6/2020). Per 1000: For nonmoney amounts, Per 1000=(county value / county population for the same year as the data) x 1000. \$ Per capita=(county value / county population for the same year as the data). Value= . indicates missing or suppressed data or value not calculated.

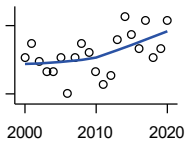
Business

**ESTABLISHMENTS: 1-19
EMPLOYEES**



U.S. Census Bureau, County Business Patterns. Beginning with the 2017 data, any tabulation with fewer than 3 establishments were omitted from the release. Data for these establishments are included in the broader total.

Year	County	State of Kansas	Non Metro Kansas	County Rank	Per 1000 or \$ Per Capita
2000	732	64,527	25,381	18	22.6
2001	746	64,176	25,248	18	23.2
2002	764	64,886	25,208	18	23.9
2003	729	64,714	25,020	18	22.6
2004	724	65,554	24,995	19	22.4
2005	704	65,796	24,839	21	21.8
2006	682	65,764	24,589	21	21.3
2007	679	66,446	24,701	21	21.1
2008	688	65,322	24,257	21	21.4
2009	670	64,128	23,851	21	20.2
2010	680	64,015	23,857	20	20.1
2011	664	63,251	23,571	19	19.3
2012	663	63,519	23,575	20	19.1
2013	665	63,197	23,396	20	19.1
2014	652	63,113	23,229	20	18.7
2015	671	63,280	23,227	18	19.4
2016	666	63,630	23,117	18	19.3
2017	665	63,619	23,022	19	19.4
2018	680	63,233	22,745	17	20.1
2019	679	62,904	22,489	17	20.2
2020	656	62,634	22,173	18	19.1



**ESTABLISHMENTS: 20-99
EMPLOYEES**

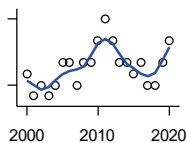
U.S. Census Bureau, County Business Patterns. Beginning with the 2017 data, any tabulation with fewer than 3 establishments were omitted from the release. Data for these establishments are included in the broader total.

Year	County	State of Kansas	Non Metro Kansas	County Rank	Per 1000 or \$ Per Capita
2000	93	8,714	2,653	17	2.9
2001	96	8,692	2,593	15	3.0
2002	92	8,582	2,554	16	2.9
2003	90	8,642	2,568	17	2.8
2004	90	8,658	2,590	18	2.8
2005	93	8,685	2,553	16	2.9
2006	85	8,922	2,612	19	2.7
2007	93	8,938	2,574	18	2.9
2008	96	8,939	2,587	17	3.0
2009	94	8,848	2,551	15	2.8
2010	90	8,612	2,454	16	2.7
2011	87	8,668	2,540	18	2.5
2012	89	8,700	2,500	17	2.6
2013	97	8,870	2,541	14	2.8
2014	102	9,121	2,590	15	2.9
2015	98	9,374	2,664	15	2.8
2016	95	9,412	2,596	16	2.7
2017	101	9,487	2,638	16	3.0
2018	93	9,485	2,621	17	2.7
2019	95	9,485	2,591	17	2.8
2020	101	9,471	2,545	15	2.9

County: county value. Kansas: state value. County Rank: highest county value ranked #1. (\$000): thousands of dollars. Nonmetro Kansas: Kansas total less Metropolitan Areas as defined by the Office of Management and Budget (OMB; released 3/6/2020). Per 1000: For nonmoney amounts, Per 1000=(county value / county population for the same year as the data) x 1000. \$ Per capita=(county value / county population for the same year as the data). Value= . indicates missing or suppressed data or value not calculated.

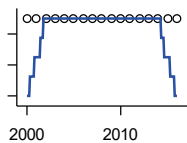
Business

ESTABLISHMENTS: 100-499 EMPLOYEES



U.S. Census Bureau, County Business Patterns. Beginning with the 2017 data, any tabulation with fewer than 3 establishments were omitted from the release. Data for these establishments are included in the broader total.

Year	County	State of Kansas	Non Metro Kansas	County Rank	Per 1000 or \$ Per Capita
2000	9	1,555	409	28	0.3
2001	7	1,555	406	31	0.2
2002	8	1,464	386	29	0.3
2003	7	1,470	378	30	0.2
2004	8	1,463	388	30	0.2
2005	10	1,537	400	24	0.3
2006	10	1,598	407	23	0.3
2007	8	1,602	416	29	0.2
2008	10	1,653	421	27	0.3
2009	10	1,551	394	25	0.3
2010	12	1,513	382	19	0.4
2011	14	1,523	395	17	0.4
2012	12	1,567	410	21	0.3
2013	10	1,581	407	24	0.3
2014	10	1,641	421	25	0.3
2015	9	1,693	414	27	0.3
2016	10	1,671	406	24	0.3
2017	8	1,653	.	25	0.2
2018	8	1,650	.	24	0.2
2019	10	1,718	.	21	0.3
2020	12	1,692	.	19	0.3



ESTABLISHMENTS: 500 OR MORE EMPLOYEES

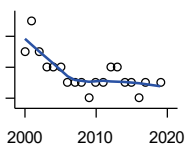
U.S. Census Bureau, County Business Patterns. Beginning with the 2017 data, any tabulation with fewer than 3 establishments were omitted from the release. Data for these establishments are included in the broader total.

Year	County	State of Kansas	Non Metro Kansas	County Rank	Per 1000 or \$ Per Capita
2000	2	143	32	13	0.1
2001	2	142	35	17	0.1
2002	2	145	35	15	0.1
2003	2	146	32	15	0.1
2004	2	152	36	19	0.1
2005	2	155	38	19	0.1
2006	2	162	45	21	0.1
2007	2	171	45	19	0.1
2008	2	182	49	21	0.1
2009	2	171	43	19	0.1
2010	2	161	46	19	0.1
2011	2	156	49	18	0.1
2012	2	158	49	19	0.1
2013	2	168	49	19	0.1
2014	2	180	52	20	0.1
2015	2	179	50	20	0.1
2016	2	171	53	18	0.1

County: county value. Kansas: state value. County Rank: highest county value ranked #1. (\$000): thousands of dollars. Nonmetro Kansas: Kansas total less Metropolitan Areas as defined by the Office of Management and Budget (OMB; released 3/6/2020). Per 1000: For nonmoney amounts, Per 1000=(county value / county population for the same year as the data) x 1000. \$ Per capita=(county value / county population for the same year as the data). Value= . indicates missing or suppressed data or value not calculated.

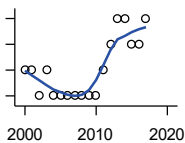
Business

ESTABLISHMENTS: FORESTRY, FISHING, HUNTING, AND AG SUPPORT



U.S. Census Bureau, County Business Patterns. Beginning with the 2017 data, any tabulation with fewer than 3 establishments were omitted from the release. Data for these establishments are included in the broader total.

Year	County	State of Kansas	Non Metro Kansas	County Rank	Per 1000 or \$ Per Capita
2000	5	190	149	13	0.2
2001	7	217	168	7	0.2
2002	5	224	176	11	0.2
2003	4	217	173	19	0.1
2004	4	211	165	17	0.1
2005	4	188	148	13	0.1
2006	3	193	158	24	0.1
2007	3	212	170	29	0.1
2008	3	197	158	29	0.1
2009	2	191	154	52	0.1
2010	3	192	161	26	0.1
2011	3	193	157	26	0.1
2012	4	204	164	18	0.1
2013	4	208	166	16	0.1
2014	3	194	152	22	0.1
2015	3	192	149	26	0.1
2016	2	181	142	48	0.1
2017	3	194	.	26	0.1
2019	3	185	.	26	0.1



ESTABLISHMENTS: MINING

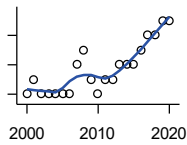
U.S. Census Bureau, County Business Patterns. Beginning with the 2017 data, any tabulation with fewer than 3 establishments were omitted from the release. Data for these establishments are included in the broader total.

Year	County	State of Kansas	Non Metro Kansas	County Rank	Per 1000 or \$ Per Capita
2000	1	868	619	88	0.0
2001	1	878	622	88	0.0
2002	0	847	615	105	0.0
2003	1	864	633	88	0.0
2004	0	880	647	105	0.0
2005	0	941	695	105	0.0
2006	0	991	734	105	0.0
2007	0	1,000	759	105	0.0
2008	0	1,047	799	105	0.0
2009	0	1,016	772	105	0.0
2010	0	1,009	762	105	0.0
2011	1	1,013	763	92	0.0
2012	2	1,048	789	74	0.1
2013	3	1,060	802	60	0.1
2014	3	1,102	828	63	0.1
2015	2	1,069	810	76	0.1
2016	2	990	747	77	0.1
2017	3	920	.	61	0.1

County: county value. Kansas: state value. County Rank: highest county value ranked #1. (\$000): thousands of dollars. Nonmetro Kansas: Kansas total less Metropolitan Areas as defined by the Office of Management and Budget (OMB; released 3/6/2020). Per 1000: For nonmoney amounts, Per 1000=(county value / county population for the same year as the data) x 1000. \$ Per capita=(county value / county population for the same year as the data). Value= . indicates missing or suppressed data or value not calculated.

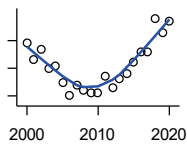
Business

ESTABLISHMENTS: UTILITIES



U.S. Census Bureau, County Business Patterns. Beginning with the 2017 data, any tabulation with fewer than 3 establishments were omitted from the release. Data for these establishments are included in the broader total.

Year	County	State of Kansas	Non Metro Kansas	County Rank	Per 1000 or \$ Per Capita
2000	5	274	192	17	0.2
2001	6	290	204	13	0.2
2002	5	278	195	19	0.2
2003	5	268	180	14	0.2
2004	5	247	164	13	0.2
2005	5	254	172	13	0.2
2006	5	248	169	11	0.2
2007	7	222	156	5	0.2
2008	8	244	166	4	0.2
2009	6	222	152	6	0.2
2010	5	197	129	7	0.1
2011	6	230	156	6	0.2
2012	6	232	156	6	0.2
2013	7	234	159	4	0.2
2014	7	232	160	4	0.2
2015	7	237	165	4	0.2
2016	8	245	171	4	0.2
2017	9	246	.	4	0.3
2018	9	252	.	4	0.3
2019	10	256	.	4	0.3
2020	10	255	.	4	0.3



ESTABLISHMENTS: CONSTRUCTION

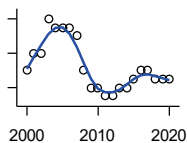
U.S. Census Bureau, County Business Patterns. Beginning with the 2017 data, any tabulation with fewer than 3 establishments were omitted from the release. Data for these establishments are included in the broader total.

Year	County	State of Kansas	Non Metro Kansas	County Rank	Per 1000 or \$ Per Capita
2000	64	7,703	2,616	24	2.0
2001	58	7,449	2,520	24	1.8
2002	62	7,519	2,482	23	1.9
2003	55	7,722	2,521	24	1.7
2004	56	7,887	2,518	24	1.7
2005	50	8,032	2,515	27	1.5
2006	45	8,031	2,494	29	1.4
2007	49	8,057	2,547	28	1.5
2008	47	7,831	2,522	28	1.5
2009	46	7,342	2,452	27	1.4
2010	46	7,064	2,394	26	1.4
2011	52	6,774	2,361	24	1.5
2012	48	6,741	2,393	26	1.4
2013	51	6,802	2,394	24	1.5
2014	53	6,920	2,383	24	1.5
2015	57	7,014	2,377	23	1.6
2016	61	6,988	2,343	20	1.8
2017	61	7,031	2,316	20	1.8
2018	73	7,124	2,285	18	2.2
2019	68	7,060	2,242	20	2.0
2020	72	7,089	2,249	19	2.1

County: county value. Kansas: state value. County Rank: highest county value ranked #1. (\$000): thousands of dollars. Nonmetro Kansas: Kansas total less Metropolitan Areas as defined by the Office of Management and Budget (OMB; released 3/6/2020). Per 1000: For nonmoney amounts, Per 1000=(county value / county population for the same year as the data) x 1000. \$ Per capita=(county value / county population for the same year as the data). Value= . indicates missing or suppressed data or value not calculated.

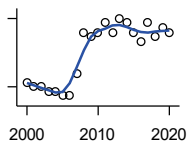
Business

**ESTABLISHMENTS:
MANUFACTURING**



U.S. Census Bureau, County Business Patterns. Beginning with the 2017 data, any tabulation with fewer than 3 establishments were omitted from the release. Data for these establishments are included in the broader total.

Year	County	State of Kansas	Non Metro Kansas	County Rank	Per 1000 or \$ Per Capita
2000	26	3,229	1,316	28	0.8
2001	28	3,240	1,323	27	0.9
2002	28	3,181	1,289	26	0.9
2003	32	3,159	1,291	23	1.0
2004	31	3,179	1,313	23	1.0
2005	31	3,128	1,278	21	1.0
2006	31	3,165	1,290	25	1.0
2007	30	3,184	1,316	27	0.9
2008	26	3,171	1,297	29	0.8
2009	24	3,026	1,240	31	0.7
2010	24	2,955	1,222	30	0.7
2011	23	2,877	1,193	30	0.7
2012	23	2,889	1,197	31	0.7
2013	24	2,836	1,165	29	0.7
2014	24	2,831	1,168	29	0.7
2015	25	2,817	1,161	26	0.7
2016	26	2,791	1,150	24	0.8
2017	26	2,760	1,147	26	0.8
2018	25	2,725	1,126	25	0.7
2019	25	2,695	1,111	24	0.7
2020	25	2,673	1,103	25	0.7



**ESTABLISHMENTS: WHOLESALE
TRADE**

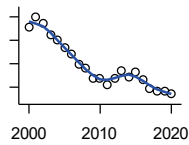
U.S. Census Bureau, County Business Patterns. Beginning with the 2017 data, any tabulation with fewer than 3 establishments were omitted from the release. Data for these establishments are included in the broader total.

Year	County	State of Kansas	Non Metro Kansas	County Rank	Per 1000 or \$ Per Capita
2000	56	4,876	1,776	11	1.7
2001	55	4,811	1,769	11	1.7
2002	55	4,719	1,750	10	1.7
2003	54	4,590	1,637	10	1.7
2004	54	4,553	1,634	10	1.7
2005	53	4,541	1,618	10	1.6
2006	53	4,517	1,596	10	1.7
2007	58	4,555	1,629	10	1.8
2008	67	4,501	1,622	10	2.1
2009	66	4,437	1,614	10	2.0
2010	67	4,432	1,612	9	2.0
2011	69	4,400	1,660	9	2.0
2012	67	4,563	1,755	10	1.9
2013	70	4,501	1,741	10	2.0
2014	69	4,497	1,746	10	2.0
2015	67	4,459	1,755	10	1.9
2016	65	4,457	1,732	10	1.9
2017	69	4,436	1,774	9	2.0
2018	66	4,330	1,727	9	1.9
2019	68	4,291	1,713	9	2.0
2020	67	4,191	1,677	9	2.0

County: county value. Kansas: state value. County Rank: highest county value ranked #1. (\$000): thousands of dollars. Nonmetro Kansas: Kansas total less Metropolitan Areas as defined by the Office of Management and Budget (OMB; released 3/6/2020). Per 1000: For nonmoney amounts, Per 1000=(county value / county population for the same year as the data) x 1000. \$ Per capita=(county value / county population for the same year as the data). Value= . indicates missing or suppressed data or value not calculated.

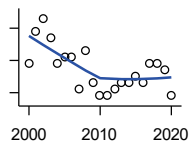
Business

ESTABLISHMENTS: RETAIL TRADE



U.S. Census Bureau, County Business Patterns. Beginning with the 2017 data, any tabulation with fewer than 3 establishments were omitted from the release. Data for these establishments are included in the broader total.

Year	County	State of Kansas	Non Metro Kansas	County Rank	Per 1000 or \$ Per Capita
2000	171	12,261	5,240	16	5.3
2001	180	12,206	5,207	15	5.6
2002	175	11,980	5,082	14	5.5
2003	165	11,834	5,049	16	5.1
2004	160	11,748	4,967	15	5.0
2005	154	11,562	4,834	17	4.8
2006	148	11,367	4,702	17	4.6
2007	140	11,306	4,653	17	4.4
2008	136	10,978	4,494	17	4.2
2009	127	10,760	4,372	18	3.8
2010	127	10,727	4,346	17	3.8
2011	122	10,655	4,289	18	3.5
2012	127	10,585	4,202	18	3.7
2013	134	10,433	4,147	15	3.8
2014	129	10,391	4,070	16	3.7
2015	133	10,327	4,061	15	3.8
2016	126	10,197	3,965	16	3.6
2017	119	10,074	3,885	17	3.5
2018	117	9,866	3,797	17	3.5
2019	117	9,762	3,750	16	3.5
2020	114	9,591	3,666	16	3.3



ESTABLISHMENTS: TRANSPORTATION & WAREHOUSING

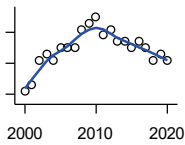
U.S. Census Bureau, County Business Patterns. Beginning with the 2017 data, any tabulation with fewer than 3 establishments were omitted from the release. Data for these establishments are included in the broader total.

Year	County	State of Kansas	Non Metro Kansas	County Rank	Per 1000 or \$ Per Capita
2000	42	2,474	1,293	11	1.3
2001	47	2,463	1,298	10	1.5
2002	49	2,461	1,278	8	1.5
2003	46	2,576	1,297	10	1.4
2004	42	2,651	1,324	15	1.3
2005	43	2,632	1,326	13	1.3
2006	43	2,626	1,295	11	1.3
2007	38	2,664	1,314	13	1.2
2008	44	2,675	1,329	11	1.4
2009	39	2,635	1,313	16	1.2
2010	37	2,615	1,313	16	1.1
2011	37	2,579	1,285	14	1.1
2012	38	2,519	1,243	13	1.1
2013	39	2,492	1,226	12	1.1
2014	39	2,518	1,240	12	1.1
2015	40	2,554	1,257	12	1.2
2016	39	2,567	1,241	14	1.1
2017	42	2,640	1,245	12	1.2
2018	42	2,627	1,238	12	1.2
2019	41	2,615	1,209	12	1.2
2020	37	2,589	1,179	15	1.1

County: county value. Kansas: state value. County Rank: highest county value ranked #1. (\$000): thousands of dollars. Nonmetro Kansas: Kansas total less Metropolitan Areas as defined by the Office of Management and Budget (OMB; released 3/6/2020). Per 1000: For nonmoney amounts, Per 1000=(county value / county population for the same year as the data) x 1000. \$ Per capita=(county value / county population for the same year as the data). Value= . indicates missing or suppressed data or value not calculated.

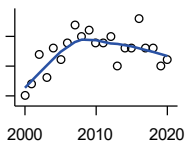
Business

ESTABLISHMENTS: INFORMATION



U.S. Census Bureau, County Business Patterns. Beginning with the 2017 data, any tabulation with fewer than 3 establishments were omitted from the release. Data for these establishments are included in the broader total.

Year	County	State of Kansas	Non Metro Kansas	County Rank	Per 1000 or \$ Per Capita
2000	13	1,542	578	21	0.4
2001	14	1,556	566	18	0.4
2002	18	1,517	551	14	0.6
2003	19	1,516	564	13	0.6
2004	18	1,518	556	15	0.6
2005	20	1,519	536	12	0.6
2006	20	1,549	559	14	0.6
2007	20	1,504	527	12	0.6
2008	23	1,468	522	9	0.7
2009	24	1,420	510	8	0.7
2010	25	1,437	527	8	0.7
2011	22	1,428	537	9	0.6
2012	23	1,387	515	9	0.7
2013	21	1,337	487	9	0.6
2014	21	1,335	496	10	0.6
2015	20	1,359	510	9	0.6
2016	21	1,431	537	9	0.6
2017	20	1,439	.	12	0.6
2018	18	1,407	.	13	0.5
2019	19	1,422	.	13	0.6
2020	18	1,424	.	14	0.5



ESTABLISHMENTS: FINANCE & INSURANCE

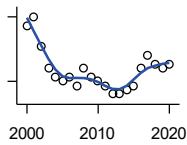
U.S. Census Bureau, County Business Patterns. Beginning with the 2017 data, any tabulation with fewer than 3 establishments were omitted from the release. Data for these establishments are included in the broader total.

Year	County	State of Kansas	Non Metro Kansas	County Rank	Per 1000 or \$ Per Capita
2000	55	5,209	1,848	17	1.7
2001	57	5,178	1,828	15	1.8
2002	62	5,496	1,911	14	1.9
2003	58	5,569	1,907	17	1.8
2004	63	5,572	1,913	14	2.0
2005	61	5,708	1,964	15	1.9
2006	64	5,877	1,976	15	2.0
2007	67	6,017	2,030	16	2.1
2008	65	6,010	2,023	16	2.0
2009	66	5,933	1,994	15	2.0
2010	64	5,872	1,975	16	1.9
2011	64	5,854	1,985	13	1.9
2012	65	5,993	2,024	14	1.9
2013	60	5,903	1,993	17	1.7
2014	63	5,894	2,000	14	1.8
2015	63	5,932	1,998	16	1.8
2016	68	6,022	2,021	13	2.0
2017	63	6,026	2,007	15	1.8
2018	63	6,023	1,997	15	1.9
2019	60	5,953	1,977	18	1.8
2020	61	5,926	1,969	16	1.8

County: county value. Kansas: state value. County Rank: highest county value ranked #1. (\$000): thousands of dollars. Nonmetro Kansas: Kansas total less Metropolitan Areas as defined by the Office of Management and Budget (OMB; released 3/6/2020). Per 1000: For nonmoney amounts, Per 1000=(county value / county population for the same year as the data) x 1000. \$ Per capita=(county value / county population for the same year as the data). Value= . indicates missing or suppressed data or value not calculated.

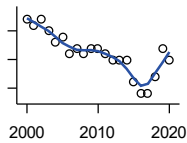
Business

ESTABLISHMENTS: REAL ESTATE, RENTAL, AND LEASING



U.S. Census Bureau, County Business Patterns. Beginning with the 2017 data, any tabulation with fewer than 3 establishments were omitted from the release. Data for these establishments are included in the broader total.

Year	County	State of Kansas	Non Metro Kansas	County Rank	Per 1000 or \$ Per Capita
2000	38	2,733	687	12	1.2
2001	40	2,849	724	10	1.2
2002	33	2,952	735	16	1.0
2003	28	3,007	727	18	0.9
2004	26	3,108	713	21	0.8
2005	25	3,203	727	22	0.8
2006	26	3,268	736	22	0.8
2007	24	3,286	721	22	0.7
2008	28	3,239	738	21	0.9
2009	26	3,122	723	21	0.8
2010	25	3,050	708	21	0.7
2011	24	3,002	692	20	0.7
2012	22	2,981	691	21	0.6
2013	22	3,046	717	22	0.6
2014	23	3,135	738	22	0.7
2015	24	3,179	744	23	0.7
2016	28	3,293	757	19	0.8
2017	31	3,389	.	18	0.9
2018	29	3,409	.	21	0.9
2019	28	3,464	.	20	0.8
2020	29	3,500	.	18	0.8



ESTABLISHMENTS: PROFESSIONAL, SCIENTIFIC, AND TECHNICAL SERVICES

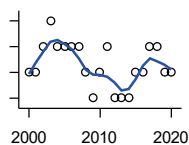
U.S. Census Bureau, County Business Patterns. Beginning with the 2017 data, any tabulation with fewer than 3 establishments were omitted from the release. Data for these establishments are included in the broader total.

Year	County	State of Kansas	Non Metro Kansas	County Rank	Per 1000 or \$ Per Capita
2000	52	6,424	1,690	17	1.6
2001	51	6,492	1,665	19	1.6
2002	52	6,719	1,704	17	1.6
2003	50	6,793	1,735	17	1.5
2004	48	7,025	1,730	20	1.5
2005	49	7,087	1,711	18	1.5
2006	46	7,231	1,736	20	1.4
2007	47	7,329	1,729	20	1.5
2008	46	7,133	1,671	20	1.4
2009	47	7,122	1,676	22	1.4
2010	47	7,172	1,680	20	1.4
2011	46	7,115	1,668	21	1.3
2012	45	7,122	1,681	22	1.3
2013	45	7,129	1,698	22	1.3
2014	45	7,206	1,682	23	1.3
2015	41	7,184	1,687	22	1.2
2016	39	7,146	1,659	23	1.1
2017	39	7,224	1,679	23	1.1
2018	42	7,138	1,655	20	1.2
2019	47	7,119	.	20	1.4
2020	45	7,117	.	19	1.3

County: county value. Kansas: state value. County Rank: highest county value ranked #1. (\$000): thousands of dollars. Nonmetro Kansas: Kansas total less Metropolitan Areas as defined by the Office of Management and Budget (OMB; released 3/6/2020). Per 1000: For nonmoney amounts, Per 1000=(county value / county population for the same year as the data) x 1000. \$ Per capita=(county value / county population for the same year as the data). Value= . indicates missing or suppressed data or value not calculated.

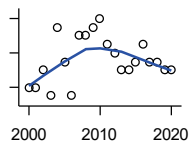
Business

ESTABLISHMENTS: MANAGEMENT OF COMPANIES AND ENTERPRISES



U.S. Census Bureau, County Business Patterns. Beginning with the 2017 data, any tabulation with fewer than 3 establishments were omitted from the release. Data for these establishments are included in the broader total.

Year	County	State of Kansas	Non Metro Kansas	County Rank	Per 1000 or \$ Per Capita
2000	4	622	145	20	0.1
2001	4	593	141	19	0.1
2002	5	597	152	15	0.2
2003	6	561	135	10	0.2
2004	5	569	133	15	0.2
2005	5	543	127	15	0.2
2006	5	542	131	15	0.2
2007	5	550	133	13	0.2
2008	4	553	139	16	0.1
2009	3	575	136	26	0.1
2010	4	567	131	18	0.1
2011	5	552	134	13	0.1
2012	3	593	135	24	0.1
2013	3	590	135	26	0.1
2014	3	603	136	27	0.1
2015	4	613	140	21	0.1
2016	4	655	171	21	0.1
2017	5	675	.	16	0.1
2018	5	647	.	15	0.1
2019	4	650	.	19	0.1
2020	4	627	.	19	0.1



ESTABLISHMENTS: ADMIN, SUPPORT, WASTE MGMT., AND REMEDIATION

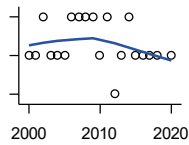
U.S. Census Bureau, County Business Patterns. Beginning with the 2017 data, any tabulation with fewer than 3 establishments were omitted from the release. Data for these establishments are included in the broader total.

Year	County	State of Kansas	Non Metro Kansas	County Rank	Per 1000 or \$ Per Capita
2000	28	3,307	871	20	0.9
2001	28	3,421	913	22	0.9
2002	30	3,232	882	19	0.9
2003	27	3,189	858	19	0.8
2004	35	3,301	891	16	1.1
2005	31	3,342	896	19	1.0
2006	27	3,395	886	21	0.8
2007	34	3,522	921	19	1.1
2008	34	3,587	932	20	1.1
2009	35	3,505	904	15	1.1
2010	36	3,494	897	13	1.1
2011	33	3,447	903	19	1.0
2012	32	3,462	891	18	0.9
2013	30	3,489	904	19	0.9
2014	30	3,569	933	20	0.9
2015	31	3,630	964	18	0.9
2016	33	3,705	987	17	1.0
2017	31	3,741	991	18	0.9
2018	31	3,740	983	18	0.9
2019	30	3,762	991	19	0.9
2020	30	3,807	989	19	0.9

County: county value. Kansas: state value. County Rank: highest county value ranked #1. (\$000): thousands of dollars. Nonmetro Kansas: Kansas total less Metropolitan Areas as defined by the Office of Management and Budget (OMB; released 3/6/2020). Per 1000: For nonmoney amounts, Per 1000=(county value / county population for the same year as the data) x 1000. \$ Per capita=(county value / county population for the same year as the data). Value= . indicates missing or suppressed data or value not calculated.

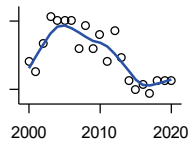
Business

ESTABLISHMENTS: EDUCATIONAL SERVICES



U.S. Census Bureau, County Business Patterns. Beginning with the 2017 data, any tabulation with fewer than 3 establishments were omitted from the release. Data for these establishments are included in the broader total.

Year	County	State of Kansas	Non Metro Kansas	County Rank	Per 1000 or \$ Per Capita
2000	3	604	155	37	0.1
2001	3	625	168	37	0.1
2002	4	666	165	26	0.1
2003	3	663	173	35	0.1
2004	3	690	173	35	0.1
2005	3	699	168	35	0.1
2006	4	698	175	28	0.1
2007	4	691	165	27	0.1
2008	4	692	158	28	0.1
2009	4	690	150	27	0.1
2010	3	700	149	35	0.1
2011	4	711	150	26	0.1
2012	2	724	145	44	0.1
2013	3	735	153	33	0.1
2014	4	722	152	26	0.1
2015	3	754	152	33	0.1
2016	3	728	150	31	0.1
2017	3	720	.	30	0.1
2018	3	744	.	31	0.1
2020	3	736	.	31	0.1



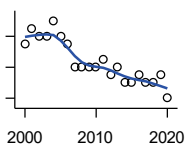
ESTABLISHMENTS: HEALTH CARE AND SOCIAL ASSISTANCE

U.S. Census Bureau, County Business Patterns. Beginning with the 2017 data, any tabulation with fewer than 3 establishments were omitted from the release. Data for these establishments are included in the broader total.

Year	County	State of Kansas	Non Metro Kansas	County Rank	Per 1000 or \$ Per Capita
2000	86	6,564	2,591	17	2.6
2001	84	6,636	2,590	17	2.6
2002	90	7,052	2,777	17	2.8
2003	96	7,129	2,792	17	3.0
2004	95	7,239	2,813	17	2.9
2005	95	7,412	2,855	17	2.9
2006	95	7,477	2,860	17	3.0
2007	89	7,661	2,864	19	2.8
2008	94	7,651	2,810	18	2.9
2009	89	7,696	2,787	19	2.7
2010	92	7,751	2,830	19	2.7
2011	86	7,804	2,817	20	2.5
2012	93	7,973	2,793	20	2.7
2013	87	7,877	2,729	20	2.5
2014	82	7,809	2,686	20	2.3
2015	80	8,103	2,692	20	2.3
2016	81	8,315	2,678	20	2.3
2017	79	8,136	2,646	20	2.3
2018	82	8,126	2,632	20	2.4
2019	82	8,184	2,587	20	2.4
2020	82	8,290	2,571	20	2.4

County: county value. Kansas: state value. County Rank: highest county value ranked #1. (\$000): thousands of dollars. Nonmetro Kansas: Kansas total less Metropolitan Areas as defined by the Office of Management and Budget (OMB; released 3/6/2020). Per 1000: For nonmoney amounts, Per 1000=(county value / county population for the same year as the data) x 1000. \$ Per capita=(county value / county population for the same year as the data). Value= . indicates missing or suppressed data or value not calculated.

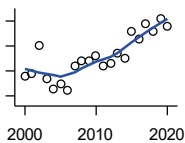
Business



ESTABLISHMENTS: ARTS, ENTERTAINMENT, AND RECREATION

U.S. Census Bureau, County Business Patterns. Beginning with the 2017 data, any tabulation with fewer than 3 establishments were omitted from the release. Data for these establishments are included in the broader total.

Year	County	State of Kansas	Non Metro Kansas	County Rank	Per 1000 or \$ Per Capita
2000	17	981	419	12	0.5
2001	19	1,009	433	11	0.6
2002	18	1,054	441	11	0.6
2003	18	1,045	443	11	0.6
2004	20	1,082	445	11	0.6
2005	18	1,109	446	11	0.6
2006	17	1,080	445	13	0.5
2007	14	1,092	444	14	0.4
2008	14	1,062	423	13	0.4
2009	14	1,063	421	15	0.4
2010	14	1,018	406	12	0.4
2011	15	997	387	12	0.4
2012	13	1,000	388	13	0.4
2013	14	1,009	377	11	0.4
2014	12	1,030	365	15	0.3
2015	12	1,031	357	14	0.3
2016	13	1,060	366	13	0.4
2017	12	1,096	.	18	0.4
2018	12	1,088	.	18	0.4
2019	13	1,087	.	13	0.4
2020	10	1,064	.	21	0.3



ESTABLISHMENTS: ACCOMMODATION AND FOOD SERVICES

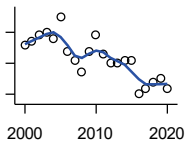
U.S. Census Bureau, County Business Patterns. Beginning with the 2017 data, any tabulation with fewer than 3 establishments were omitted from the release. Data for these establishments are included in the broader total.

Year	County	State of Kansas	Non Metro Kansas	County Rank	Per 1000 or \$ Per Capita
2000	68	5,536	2,213	17	2.1
2001	69	5,551	2,173	16	2.1
2002	80	5,610	2,174	14	2.5
2003	67	5,635	2,188	17	2.1
2004	63	5,681	2,160	18	2.0
2005	65	5,776	2,170	19	2.0
2006	62	5,745	2,132	20	1.9
2007	72	5,877	2,095	17	2.2
2008	74	5,843	2,052	15	2.3
2009	74	5,794	2,029	17	2.2
2010	76	5,898	2,046	16	2.2
2011	72	5,958	2,067	17	2.1
2012	73	5,951	2,046	17	2.1
2013	77	6,061	2,070	17	2.2
2014	75	5,985	2,024	17	2.1
2015	86	6,034	2,063	13	2.5
2016	83	6,126	2,094	15	2.4
2017	89	6,250	2,123	14	2.6
2018	86	6,256	2,128	15	2.5
2019	91	6,231	2,131	15	2.7
2020	88	6,206	2,131	15	2.6

County: county value. Kansas: state value. County Rank: highest county value ranked #1. (\$000): thousands of dollars. Nonmetro Kansas: Kansas total less Metropolitan Areas as defined by the Office of Management and Budget (OMB; released 3/6/2020). Per 1000: For nonmoney amounts, Per 1000=(county value / county population for the same year as the data) x 1000. \$ Per capita=(county value / county population for the same year as the data). Value= . indicates missing or suppressed data or value not calculated.

Business

ESTABLISHMENTS: OTHER SERVICES

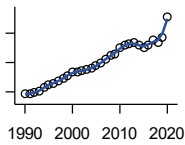


U.S. Census Bureau, County Business Patterns. Beginning with the 2017 data, any tabulation with fewer than 3 establishments were omitted from the release. Data for these establishments are included in the broader total.

Year	County	State of Kansas	Non Metro Kansas	County Rank	Per 1000 or \$ Per Capita
2000	86	8,423	3,636	20	2.6
2001	87	8,310	3,614	21	2.7
2002	89	8,552	3,658	20	2.8
2003	90	8,411	3,605	20	2.8
2004	88	8,343	3,597	20	2.7
2005	95	8,321	3,571	20	2.9
2006	84	8,225	3,490	20	2.6
2007	81	8,355	3,534	22	2.5
2008	77	8,104	3,406	22	2.4
2009	84	8,040	3,405	20	2.5
2010	89	7,998	3,379	20	2.6
2011	83	7,883	3,294	21	2.4
2012	80	7,913	3,303	21	2.3
2013	80	7,947	3,290	20	2.3
2014	81	7,943	3,285	21	2.3
2015	81	7,869	3,255	21	2.3
2016	70	7,839	3,204	25	2.0
2017	72	7,873	3,189	23	2.1
2018	74	7,853	3,176	22	2.2
2019	75	7,834	3,138	21	2.2
2020	72	7,787	3,073	23	2.1

County: county value. Kansas: state value. County Rank: highest county value ranked #1. (\$000): thousands of dollars. Nonmetro Kansas: Kansas total less Metropolitan Areas as defined by the Office of Management and Budget (OMB; released 3/6/2020). Per 1000: For nonmoney amounts, Per 1000=(county value / county population for the same year as the data) x 1000. \$ Per capita=(county value / county population for the same year as the data). Value= . indicates missing or suppressed data or value not calculated.

Business



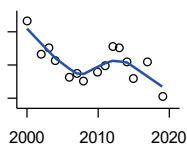
**TOTAL ANNUAL PAYROLL (\$000)
COUNTY BUSINESS PATTERNS**

U.S. Census Bureau, County Business Patterns. Beginning with the 2017 data, any tabulation with fewer than 3 establishments were omitted from the release. Data for these establishments are included in the broader total.

Year	County	State of Kansas	Non Metro Kansas	County Rank	Per 1000 or \$ Per Capita
1990	184,012	17,487,316	4,442,429	14	6,700.4
1991	188,749	18,162,326	4,612,616	14	6,781.0
1992	194,015	19,244,346	4,882,060	14	6,828.4
1993	201,015	20,087,190	5,182,780	17	7,028.7
1994	231,830	21,201,652	5,541,423	13	7,818.1
1995	251,784	22,825,920	5,875,310	14	8,314.6
1996	256,209	24,613,884	6,198,398	14	8,332.0
1997	272,947	26,787,098	6,599,061	14	8,828.4
1998	292,434	28,747,576	6,871,794	13	9,260.1
1999	307,790	30,600,434	7,121,961	14	9,620.8
2000	337,768	31,990,762	7,520,424	13	10,406.3
2001	335,839	33,303,992	7,598,165	11	10,435.6
2002	344,796	33,152,962	7,572,002	13	10,781.3
2003	349,620	34,040,944	7,726,561	14	10,829.2
2004	358,600	35,725,812	8,303,779	14	11,114.2
2005	377,001	36,646,064	8,586,986	13	11,652.4
2006	393,303	39,251,388	9,178,947	13	12,279.6
2007	426,724	42,022,753	.	12	13,265.5
2008	445,899	43,984,689	.	11	13,853.4
2009	457,528	42,146,866	.	9	13,798.4
2010	501,498	42,686,303	10,294,015	10	14,816.2
2011	519,977	43,733,944	.	10	15,127.9
2012	531,100	45,608,072	11,222,183	10	15,320.9
2013	532,722	47,715,601	11,446,751	10	15,273.4
2014	516,153	49,712,832	11,957,931	10	14,776.8
2015	505,291	51,259,676	11,975,718	12	14,591.6
2016	514,994	51,016,318	12,148,646	12	14,904.9
2017	556,595	52,754,605	12,448,592	11	16,266.1
2018	539,102	55,087,460	12,810,270	12	15,913.5
2019	570,451	57,272,387	13,123,288	12	16,968.1
2020	711,347	58,374,388	14,007,955	8	20,746.8

County: county value. Kansas: state value. County Rank: highest county value ranked #1. (\$000): thousands of dollars. Nonmetro Kansas: Kansas total less Metropolitan Areas as defined by the Office of Management and Budget (OMB; released 3/6/2020). Per 1000: For nonmoney amounts, Per 1000=(county value / county population for the same year as the data) x 1000. \$ Per capita=(county value / county population for the same year as the data). Value= . indicates missing or suppressed data or value not calculated.

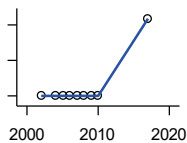
Business



**TOTAL ANNUAL PAYROLL(\$000):
FORESTRY, FISHING, HUNTING, AND
AG SUPPORT**

U.S. Census Bureau, County Business Patterns. Beginning with the 2017 data, any tabulation with fewer than 3 establishments were omitted from the release. Data for these establishments are included in the broader total.

Year	County	State of Kansas	Non Metro Kansas	County Rank	Per 1000 or \$ Per Capita
2000	283	13,551	.	.	8.7
2001
2002	183	16,528	.	.	5.7
2003	200	17,247	.	.	6.2
2004	165	17,552	.	.	5.1
2005	.	16,298	.	.	.
2006	112	17,908	.	.	3.5
2007	126	22,199	.	.	3.9
2008	101	21,359	.	.	3.1
2009	.	22,466	.	.	.
2010	129	22,753	.	.	3.8
2011	148	23,320	.	.	4.3
2012	205	27,492	.	.	5.9
2013	202	30,360	.	.	5.8
2014	159	34,862	.	.	4.6
2015	110	35,980	.	.	3.2
2017	161	34,117	.	.	4.7
2019	56	39,558	.	.	1.7



**TOTAL ANNUAL PAYROLL(\$000):
MINING**

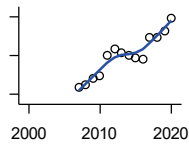
U.S. Census Bureau, County Business Patterns. Beginning with the 2017 data, any tabulation with fewer than 3 establishments were omitted from the release. Data for these establishments are included in the broader total.

Year	County	State of Kansas	Non Metro Kansas	County Rank	Per 1000 or \$ Per Capita
2000	.	240,079	.	.	.
2001	.	273,838	.	.	.
2002	0	262,277	.	.	0.0
2003	.	290,652	.	.	.
2004	0	326,997	.	.	0.0
2005	0	381,069	.	.	0.0
2006	0	482,102	.	.	0.0
2007	0	551,751	.	.	0.0
2008	0	620,446	.	.	0.0
2009	0	465,070	.	.	0.0
2010	0	485,841	.	.	0.0
2011	.	541,536	.	.	.
2012	.	600,402	.	.	.
2013	.	599,788	.	.	.
2014	.	678,673	.	.	.
2015	.	552,658	.	.	.
2017	872	379,883	.	.	25.5

County: county value. Kansas: state value. County Rank: highest county value ranked #1. (\$000): thousands of dollars. Nonmetro Kansas: Kansas total less Metropolitan Areas as defined by the Office of Management and Budget (OMB; released 3/6/2020). Per 1000: For nonmoney amounts, Per 1000=(county value / county population for the same year as the data) x 1000. \$ Per capita=(county value / county population for the same year as the data). Value= . indicates missing or suppressed data or value not calculated.

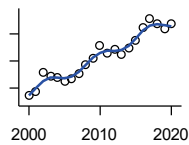
Business

**TOTAL ANNUAL PAYROLL(\$000):
UTILITIES**



U.S. Census Bureau, County Business Patterns. Beginning with the 2017 data, any tabulation with fewer than 3 establishments were omitted from the release. Data for these establishments are included in the broader total.

Year	County	State of Kansas	Non Metro Kansas	County Rank	Per 1000 or \$ Per Capita
2000	.	410,313	.	.	.
2001	.	452,057	.	.	.
2002	.	377,559	.	.	.
2003	.	378,157	.	.	.
2004	.	377,809	.	.	.
2005	.	429,864	.	.	.
2006	.	443,999	.	.	.
2007	6,697	480,068	.	.	208.2
2008	6,953	541,066	.	.	216.0
2009	7,660	563,373	.	.	231.0
2010	7,897	512,628	.	.	233.3
2011	9,957	653,229	.	.	289.7
2012	10,622	625,451	.	.	306.4
2013	10,339	625,347	.	.	296.4
2014	10,037	610,960	.	.	287.3
2015	9,795	668,559	.	.	282.9
2016	9,574	700,926	.	.	277.1
2017	11,869	705,199	.	.	346.9
2018	11,935	770,542	.	.	352.3
2019	12,600	733,878	.	.	374.8
2020	13,916	738,521	.	.	405.9



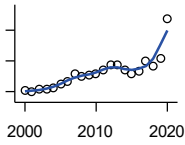
**TOTAL ANNUAL PAYROLL(\$000):
CONSTRUCTION**

U.S. Census Bureau, County Business Patterns. Beginning with the 2017 data, any tabulation with fewer than 3 establishments were omitted from the release. Data for these establishments are included in the broader total.

Year	County	State of Kansas	Non Metro Kansas	County Rank	Per 1000 or \$ Per Capita
2000	8,555	2,256,057	.	.	263.6
2001	9,411	2,320,652	.	.	292.4
2002	12,815	2,302,229	.	.	400.7
2003	12,239	2,282,021	.	.	379.1
2004	11,996	2,302,854	.	.	371.8
2005	11,309	2,465,977	.	.	349.5
2006	11,638	2,700,351	.	.	363.4
2007	12,682	2,772,168	.	.	394.2
2008	14,342	2,950,073	.	.	445.6
2009	15,537	2,709,864	.	.	468.6
2010	17,934	2,553,555	.	.	529.8
2011	16,429	2,550,355	.	.	478.0
2012	17,193	2,733,284	.	.	496.0
2013	16,244	2,866,801	.	.	465.7
2014	17,374	3,135,814	.	.	497.4
2015	18,704	3,270,952	.	.	540.1
2016	21,073	3,328,610	.	.	609.9
2017	22,841	3,568,505	.	.	667.5
2018	21,909	3,806,196	.	.	646.7
2019	20,921	3,879,912	.	.	622.3
2020	21,774	3,983,029	.	.	635.1

County: county value. Kansas: state value. County Rank: highest county value ranked #1. (\$000): thousands of dollars. Nonmetro Kansas: Kansas total less Metropolitan Areas as defined by the Office of Management and Budget (OMB; released 3/6/2020). Per 1000: For nonmoney amounts, Per 1000=(county value / county population for the same year as the data) x 1000. \$ Per capita=(county value / county population for the same year as the data). Value= . indicates missing or suppressed data or value not calculated.

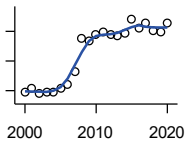
Business



**TOTAL ANNUAL PAYROLL(\$000):
MANUFACTURING**

U.S. Census Bureau, County Business Patterns. Beginning with the 2017 data, any tabulation with fewer than 3 establishments were omitted from the release. Data for these establishments are included in the broader total.

Year	County	State of Kansas	Non Metro Kansas	County Rank	Per 1000 or \$ Per Capita
2000	154,070	7,015,414	.	.	4,746.7
2001	147,999	7,301,706	.	.	4,598.8
2002	156,396	6,802,605	.	.	4,890.3
2003	158,510	6,691,611	.	.	4,909.7
2004	162,388	6,985,656	.	.	5,032.9
2005	174,114	7,221,614	.	.	5,381.5
2006	183,680	7,621,873	.	.	5,734.8
2007	206,704	7,873,359	.	.	6,425.8
2008	200,536	8,441,541	.	.	6,230.3
2009	203,952	7,477,838	.	.	6,150.9
2010	207,541	7,556,955	.	.	6,131.6
2011	222,082	7,747,934	.	.	6,461.1
2012	237,016	7,704,851	.	.	6,837.3
2013	238,723	8,365,542	.	.	6,844.3
2014	219,755	8,787,306	.	.	6,291.3
2015	209,411	9,052,105	.	.	6,047.3
2016	215,686	8,868,744	.	.	6,242.4
2017	249,414	9,075,793	.	.	7,289.0
2018	232,049	9,481,652	.	.	6,849.8
2019	258,417	10,171,575	.	.	7,686.6
2020	386,475	9,744,825	.	.	11,271.8



**TOTAL ANNUAL PAYROLL(\$000):
WHOLESALE TRADE**

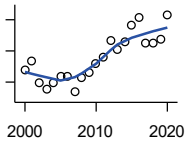
U.S. Census Bureau, County Business Patterns. Beginning with the 2017 data, any tabulation with fewer than 3 establishments were omitted from the release. Data for these establishments are included in the broader total.

Year	County	State of Kansas	Non Metro Kansas	County Rank	Per 1000 or \$ Per Capita
2000	19,347	2,332,755	.	.	596.1
2001	20,760	2,283,169	.	.	645.1
2002	18,909	2,107,653	.	.	591.3
2003	19,398	2,622,701	.	.	600.8
2004	19,546	2,663,196	.	.	605.8
2005	20,680	2,345,990	.	.	639.2
2006	22,040	2,592,211	.	.	688.1
2007	26,354	2,682,542	.	.	819.3
2008	37,490	3,078,655	.	.	1,164.8
2009	36,933	2,940,949	.	.	1,113.8
2010	38,718	3,097,628	.	.	1,143.9
2011	39,841	3,305,811	.	.	1,159.1
2012	38,794	3,339,997	.	.	1,119.1
2013	38,449	3,460,512	.	.	1,102.4
2014	39,539	3,712,075	.	.	1,131.9
2015	43,906	3,760,189	.	.	1,267.9
2016	41,291	3,738,207	.	.	1,195.0
2017	42,618	3,822,730	.	.	1,245.5
2018	40,412	3,814,353	.	.	1,192.9
2019	39,613	4,025,802	.	.	1,178.3
2020	42,809	4,224,666	.	.	1,248.5

County: county value. Kansas: state value. County Rank: highest county value ranked #1. (\$000): thousands of dollars. Nonmetro Kansas: Kansas total less Metropolitan Areas as defined by the Office of Management and Budget (OMB; released 3/6/2020). Per 1000: For nonmoney amounts, Per 1000=(county value / county population for the same year as the data) x 1000. \$ Per capita=(county value / county population for the same year as the data). Value= . indicates missing or suppressed data or value not calculated.

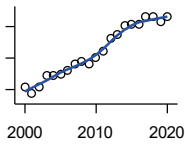
Business

**TOTAL ANNUAL PAYROLL(\$000):
RETAIL TRADE**



U.S. Census Bureau, County Business Patterns. Beginning with the 2017 data, any tabulation with fewer than 3 establishments were omitted from the release. Data for these establishments are included in the broader total.

Year	County	State of Kansas	Non Metro Kansas	County Rank	Per 1000 or \$ Per Capita
2000	37,490	2,747,001	.	.	1,155.0
2001	38,681	2,813,226	.	.	1,201.9
2002	35,921	2,854,231	.	.	1,123.2
2003	35,114	2,773,674	.	.	1,087.6
2004	35,909	2,847,826	.	.	1,112.9
2005	36,814	2,952,196	.	.	1,137.9
2006	36,662	3,126,495	.	.	1,144.7
2007	34,701	3,201,169	.	.	1,078.7
2008	36,519	3,261,054	.	.	1,134.6
2009	37,224	3,232,246	.	.	1,122.6
2010	38,353	3,321,838	.	.	1,133.1
2011	39,128	3,384,607	.	.	1,138.4
2012	41,391	3,409,755	.	.	1,194.0
2013	40,109	3,483,752	.	.	1,149.9
2014	41,206	3,617,933	.	.	1,179.7
2015	43,245	3,712,165	.	.	1,248.8
2016	44,274	3,826,889	.	.	1,281.4
2017	41,037	3,797,849	.	.	1,199.3
2018	41,064	3,818,988	.	.	1,212.1
2019	41,431	3,908,994	.	.	1,232.4
2020	44,631	3,984,443	.	.	1,301.7



**TOTAL ANNUAL PAYROLL(\$000):
TRANSPORTATION &
WAREHOUSING**

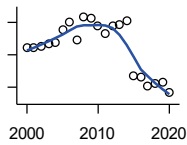
U.S. Census Bureau, County Business Patterns. Beginning with the 2017 data, any tabulation with fewer than 3 establishments were omitted from the release. Data for these establishments are included in the broader total.

Year	County	State of Kansas	Non Metro Kansas	County Rank	Per 1000 or \$ Per Capita
2000	7,976	1,044,835	.	.	245.7
2001	6,812	1,089,405	.	.	211.7
2002	7,859	1,094,636	.	.	245.7
2003	9,729	1,316,655	.	.	301.3
2004	9,652	1,439,800	.	.	299.1
2005	10,020	1,393,651	.	.	309.7
2006	10,468	1,528,551	.	.	326.8
2007	11,562	1,788,267	.	.	359.4
2008	11,986	1,722,697	.	.	372.4
2009	11,633	1,618,598	.	.	350.8
2010	12,515	1,735,761	.	.	369.7
2011	13,531	1,739,165	.	.	393.7
2012	15,641	1,984,976	.	.	451.2
2013	16,190	2,006,261	.	.	464.2
2014	17,567	2,097,377	.	.	502.9
2015	17,915	2,190,072	.	.	517.3
2016	17,811	2,202,859	.	.	515.5
2017	19,042	2,546,061	.	.	556.5
2018	19,098	2,663,188	.	.	563.7
2019	18,302	2,879,406	.	.	544.4
2020	19,089	2,962,461	.	.	556.7

County: county value. Kansas: state value. County Rank: highest county value ranked #1. (\$000): thousands of dollars. Nonmetro Kansas: Kansas total less Metropolitan Areas as defined by the Office of Management and Budget (OMB; released 3/6/2020). Per 1000: For nonmoney amounts, Per 1000=(county value / county population for the same year as the data) x 1000. \$ Per capita=(county value / county population for the same year as the data). Value= . indicates missing or suppressed data or value not calculated.

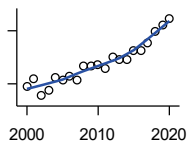
Business

**TOTAL ANNUAL PAYROLL(\$000):
INFORMATION**



U.S. Census Bureau, County Business Patterns. Beginning with the 2017 data, any tabulation with fewer than 3 establishments were omitted from the release. Data for these establishments are included in the broader total.

Year	County	State of Kansas	Non Metro Kansas	County Rank	Per 1000 or \$ Per Capita
2000	11,166	1,923,381	.	.	344.0
2001	11,031	2,218,610	.	.	342.8
2002	11,252	2,298,108	.	.	351.8
2003	11,712	2,378,673	.	.	362.8
2004	11,842	2,392,990	.	.	367.0
2005	13,854	2,395,081	.	.	428.2
2006	15,022	2,586,483	.	.	469.0
2007	12,248	2,594,138	.	.	380.8
2008	15,854	3,043,244	.	.	492.6
2009	15,589	3,045,570	.	.	470.1
2010	14,535	2,481,580	.	.	429.4
2011	13,325	2,513,805	.	.	387.7
2012	14,456	2,535,555	.	.	417.0
2013	14,693	2,805,017	.	.	421.3
2014	15,286	2,393,609	.	.	437.6
2015	6,712	2,406,323	.	.	193.8
2016	6,584	2,080,211	.	.	190.6
2017	5,235	2,090,021	.	.	153.0
2018	5,495	2,341,543	.	.	162.2
2019	5,772	2,133,891	.	.	171.7
2020	4,089	2,245,204	.	.	119.3



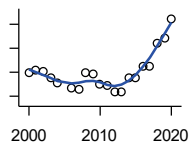
**TOTAL ANNUAL PAYROLL(\$000):
FINANCE & INSURANCE**

U.S. Census Bureau, County Business Patterns. Beginning with the 2017 data, any tabulation with fewer than 3 establishments were omitted from the release. Data for these establishments are included in the broader total.

Year	County	State of Kansas	Non Metro Kansas	County Rank	Per 1000 or \$ Per Capita
2000	9,752	2,083,565	.	.	300.4
2001	10,601	2,129,587	.	.	329.4
2002	8,638	2,414,120	.	.	270.1
2003	9,222	2,608,579	.	.	285.6
2004	10,786	2,676,910	.	.	334.3
2005	10,460	2,786,136	.	.	323.3
2006	10,885	2,928,931	.	.	339.8
2007	10,490	3,096,017	.	.	326.1
2008	11,970	3,322,977	.	.	371.9
2009	12,064	3,206,839	.	.	363.8
2010	12,157	3,211,300	.	.	359.2
2011	11,668	3,404,633	.	.	339.5
2012	13,025	3,611,165	.	.	375.7
2013	12,743	3,896,051	.	.	365.3
2014	12,778	4,044,315	.	.	365.8
2015	13,722	4,113,060	.	.	396.3
2016	13,800	4,180,740	.	.	399.4
2017	14,670	4,258,057	.	.	428.7
2018	15,975	4,682,552	.	.	471.6
2019	16,598	4,814,201	.	.	493.7
2020	17,382	5,288,529	.	.	507.0

County: county value. Kansas: state value. County Rank: highest county value ranked #1. (\$000): thousands of dollars. Nonmetro Kansas: Kansas total less Metropolitan Areas as defined by the Office of Management and Budget (OMB; released 3/6/2020). Per 1000: For nonmoney amounts, Per 1000=(county value / county population for the same year as the data) x 1000. \$ Per capita=(county value / county population for the same year as the data). Value= . indicates missing or suppressed data or value not calculated.

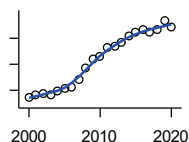
Business



**TOTAL ANNUAL PAYROLL(\$000):
REAL ESTATE, RENTAL, AND
LEASING**

U.S. Census Bureau, County Business Patterns. Beginning with the 2017 data, any tabulation with fewer than 3 establishments were omitted from the release. Data for these establishments are included in the broader total.

Year	County	State of Kansas	Non Metro Kansas	County Rank	Per 1000 or \$ Per Capita
2000	2,980	360,637	.	.	91.8
2001	3,079	397,371	.	.	95.7
2002	3,018	403,695	.	.	94.4
2003	2,761	437,786	.	.	85.5
2004	2,577	430,719	.	.	79.9
2005	.	465,149	.	.	.
2006	2,329	478,811	.	.	72.7
2007	2,307	452,969	.	.	71.7
2008	3,005	484,149	.	.	93.4
2009	2,946	450,884	.	.	88.8
2010	2,482	487,255	.	.	73.3
2011	2,429	535,120	.	.	70.7
2012	2,201	531,039	.	.	63.5
2013	2,177	538,796	.	.	62.4
2014	2,781	542,307	.	.	79.6
2015	2,773	595,030	.	.	80.1
2016	3,245	607,668	.	.	93.9
2017	3,261	590,373	.	.	95.3
2018	4,231	600,037	.	.	124.9
2019	4,427	622,881	.	.	131.7
2020	5,227	670,656	.	.	152.4



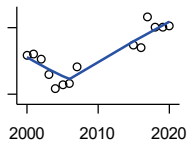
**TOTAL ANNUAL PAYROLL(\$000):
PROFESSIONAL, SCIENTIFIC, AND
TECHNICAL SERVICES**

U.S. Census Bureau, County Business Patterns. Beginning with the 2017 data, any tabulation with fewer than 3 establishments were omitted from the release. Data for these establishments are included in the broader total.

Year	County	State of Kansas	Non Metro Kansas	County Rank	Per 1000 or \$ Per Capita
2000	13,543	2,057,313	.	.	417.2
2001	13,992	2,152,937	.	.	434.8
2002	14,257	2,150,085	.	.	445.8
2003	14,139	2,052,712	.	.	437.9
2004	14,852	2,531,457	.	.	460.3
2005	15,400	2,418,500	.	.	476.0
2006	15,561	2,655,690	.	.	485.8
2007	16,962	2,901,544	.	.	527.3
2008	19,278	2,903,802	.	.	598.9
2009	20,914	3,071,611	.	.	630.7
2010	21,516	3,037,182	.	.	635.7
2011	23,227	3,132,082	.	.	675.8
2012	23,487	3,455,548	.	.	677.5
2013	24,309	3,777,729	.	.	697.0
2014	25,328	3,981,580	.	.	725.1
2015	26,289	4,039,074	.	.	759.2
2016	26,716	4,125,507	.	.	773.2
2017	26,150	4,158,858	.	.	764.2
2018	26,783	4,314,317	.	.	790.6
2019	28,417	4,646,644	.	.	845.3
2020	27,052	4,927,611	.	.	789.0

County: county value. Kansas: state value. County Rank: highest county value ranked #1. (\$000): thousands of dollars. Nonmetro Kansas: Kansas total less Metropolitan Areas as defined by the Office of Management and Budget (OMB; released 3/6/2020). Per 1000: For nonmoney amounts, Per 1000=(county value / county population for the same year as the data) x 1000. \$ Per capita=(county value / county population for the same year as the data). Value= . indicates missing or suppressed data or value not calculated.

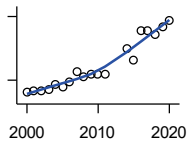
Business



**TOTAL ANNUAL PAYROLL(\$000):
MANAGEMENT OF COMPANIES AND
ENTERPRISES**

U.S. Census Bureau, County Business Patterns. Beginning with the 2017 data, any tabulation with fewer than 3 establishments were omitted from the release. Data for these establishments are included in the broader total.

Year	County	State of Kansas	Non Metro Kansas	County Rank	Per 1000 or \$ Per Capita
2000	5,526	1,362,735	.	.	170.3
2001	5,576	1,279,253	.	.	173.3
2002	5,124	1,311,368	.	.	160.2
2003	3,830	1,352,119	.	.	118.6
2004	2,511	1,378,891	.	.	77.8
2005	2,881	1,510,876	.	.	89.0
2006	2,990	1,626,320	.	.	93.4
2007	4,421	2,233,654	.	.	137.4
2008	.	1,848,656	.	.	.
2009	.	1,601,158	.	.	.
2010	.	2,003,048	.	.	.
2011	.	1,677,619	.	.	.
2012	.	1,834,430	.	.	.
2013	.	1,938,100	.	.	.
2014	.	2,117,232	.	.	.
2015	6,427	2,451,126	.	.	185.6
2016	6,242	2,167,620	.	.	180.7
2017	8,976	2,224,567	.	.	262.3
2018	8,076	2,470,094	.	.	238.4
2019	8,004	2,757,300	.	.	238.1
2020	8,151	2,578,116	.	.	237.7



**TOTAL ANNUAL PAYROLL(\$000):
ADMIN, SUPPORT, WASTE MGMT.,
AND REMEDIATION**

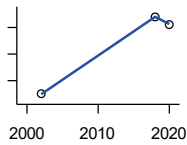
U.S. Census Bureau, County Business Patterns. Beginning with the 2017 data, any tabulation with fewer than 3 establishments were omitted from the release. Data for these establishments are included in the broader total.

Year	County	State of Kansas	Non Metro Kansas	County Rank	Per 1000 or \$ Per Capita
2000	7,073	1,388,712	.	.	217.9
2001	7,431	1,416,480	.	.	230.9
2002	7,595	1,378,905	.	.	237.5
2003	7,910	1,387,061	.	.	245.0
2004	8,844	1,544,442	.	.	274.1
2005	8,418	1,694,687	.	.	260.2
2006	9,720	1,800,846	.	.	303.5
2007	12,042	1,978,025	.	.	374.3
2008	10,686	2,096,864	.	.	332.0
2009	11,364	1,832,540	.	.	342.7
2010	11,486	2,117,325	.	.	339.3
2011	11,403	2,114,970	.	.	331.8
2012	.	2,230,250	.	.	.
2013	.	2,214,320	.	.	.
2014	17,343	2,444,170	.	.	496.5
2015	14,718	2,577,592	.	.	425.0
2016	21,636	2,760,706	.	.	626.2
2017	21,791	3,026,927	.	.	636.8
2018	20,686	3,007,347	.	.	610.6
2019	22,521	3,075,485	.	.	669.9
2020	24,125	3,250,046	.	.	703.6

County: county value. Kansas: state value. County Rank: highest county value ranked #1. (\$000): thousands of dollars. Nonmetro Kansas: Kansas total less Metropolitan Areas as defined by the Office of Management and Budget (OMB; released 3/6/2020). Per 1000: For nonmoney amounts, Per 1000=(county value / county population for the same year as the data) x 1000. \$ Per capita=(county value / county population for the same year as the data). Value= . indicates missing or suppressed data or value not calculated.

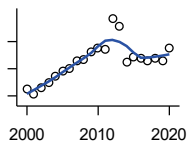
Business

**TOTAL ANNUAL PAYROLL(\$000):
EDUCATIONAL SERVICES**



U.S. Census Bureau, County Business Patterns. Beginning with the 2017 data, any tabulation with fewer than 3 establishments were omitted from the release. Data for these establishments are included in the broader total.

Year	County	State of Kansas	Non Metro Kansas	County Rank	Per 1000 or \$ Per Capita
2000	.	299,843	.	.	.
2001	.	320,606	.	.	.
2002	849	353,531	.	.	26.5
2003	.	350,814	.	.	.
2004	.	361,644	.	.	.
2005	.	375,781	.	.	.
2006	.	400,565	.	.	.
2007	.	414,233	.	.	.
2008	.	463,210	.	.	.
2009	.	468,856	.	.	.
2010	.	487,670	.	.	.
2011	.	504,964	.	.	.
2012	.	508,448	.	.	.
2013	.	553,995	.	.	.
2014	.	612,073	.	.	.
2015	.	579,794	.	.	.
2018	1,140	618,864	.	.	33.7
2020	1,113	652,468	.	.	32.5



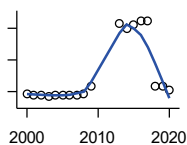
**TOTAL ANNUAL PAYROLL(\$000):
HEALTH CARE AND SOCIAL ASSISTANCE**

U.S. Census Bureau, County Business Patterns. Beginning with the 2017 data, any tabulation with fewer than 3 establishments were omitted from the release. Data for these establishments are included in the broader total.

Year	County	State of Kansas	Non Metro Kansas	County Rank	Per 1000 or \$ Per Capita
2000	37,326	4,120,595	.	.	1,150.0
2001	35,771	4,445,027	.	.	1,111.5
2002	38,143	4,705,220	.	.	1,192.7
2003	39,989	4,939,323	.	.	1,238.6
2004	42,178	5,232,394	.	.	1,307.2
2005	43,979	5,487,089	.	.	1,359.3
2006	44,987	5,814,218	.	.	1,404.6
2007	47,679	6,186,471	.	.	1,482.2
2008	48,545	6,490,627	.	.	1,508.2
2009	50,989	6,749,962	.	.	1,537.8
2010	52,741	6,871,727	.	.	1,558.2
2011	52,062	7,129,655	.	.	1,514.7
2012	63,494	7,614,853	.	.	1,831.6
2013	60,754	7,541,515	.	.	1,741.9
2014	47,559	7,733,621	.	.	1,361.6
2015	49,539	7,969,650	.	.	1,430.6
2016	48,638	8,018,706	.	.	1,407.7
2017	47,840	8,384,998	.	.	1,398.1
2018	49,003	8,637,619	.	.	1,446.5
2019	48,063	8,854,414	.	.	1,429.6
2020	52,640	9,309,269	.	.	1,535.3

County: county value. Kansas: state value. County Rank: highest county value ranked #1. (\$000): thousands of dollars. Nonmetro Kansas: Kansas total less Metropolitan Areas as defined by the Office of Management and Budget (OMB; released 3/6/2020). Per 1000: For nonmoney amounts, Per 1000=(county value / county population for the same year as the data) x 1000. \$ Per capita=(county value / county population for the same year as the data). Value= . indicates missing or suppressed data or value not calculated.

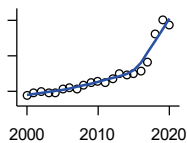
Business



**TOTAL ANNUAL PAYROLL(\$000):
ARTS, ENTERTAINMENT, AND
RECREATION**

U.S. Census Bureau, County Business Patterns. Beginning with the 2017 data, any tabulation with fewer than 3 establishments were omitted from the release. Data for these establishments are included in the broader total.

Year	County	State of Kansas	Non Metro Kansas	County Rank	Per 1000 or \$ Per Capita
2000	1,754	195,784	.	.	54.0
2001	1,623	203,511	.	.	50.4
2002	1,524	206,204	.	.	47.7
2003	1,464	185,049	.	.	45.3
2004	1,615	190,742	.	.	50.1
2005	1,485	196,594	.	.	45.9
2006	1,552	201,049	.	.	48.5
2007	1,495	220,435	.	.	46.5
2008	1,667	236,986	.	.	51.8
2009	2,614	237,116	.	.	78.8
2010	.	233,285	.	.	.
2011	.	234,351	.	.	.
2012	.	254,169	.	.	.
2013	10,634	278,474	.	.	304.9
2014	9,920	289,103	.	.	284.0
2015	10,478	300,253	.	.	302.6
2016	10,941	312,902	.	.	316.7
2017	10,942	323,153	.	.	319.8
2018	2,747	325,454	.	.	81.1
2019	2,630	335,362	.	.	78.2
2020	2,181	298,119	.	.	63.6



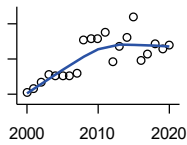
**TOTAL ANNUAL PAYROLL(\$000):
ACCOMMODATION AND FOOD
SERVICES**

U.S. Census Bureau, County Business Patterns. Beginning with the 2017 data, any tabulation with fewer than 3 establishments were omitted from the release. Data for these establishments are included in the broader total.

Year	County	State of Kansas	Non Metro Kansas	County Rank	Per 1000 or \$ Per Capita
2000	8,713	926,831	.	.	268.4
2001	9,518	960,196	.	.	295.8
2002	9,924	930,510	.	.	310.3
2003	9,599	992,313	.	.	297.3
2004	9,722	1,046,901	.	.	301.3
2005	10,515	1,101,854	.	.	325.0
2006	11,070	1,185,280	.	.	345.6
2007	10,812	1,431,100	.	.	336.1
2008	11,604	1,271,594	.	.	360.5
2009	12,534	1,283,065	.	.	378.0
2010	12,986	1,296,556	.	.	383.7
2011	12,375	1,364,281	.	.	360.0
2012	13,693	1,388,337	.	.	395.0
2013	15,139	1,476,335	.	.	434.0
2014	14,609	1,572,021	.	.	418.2
2015	15,033	1,640,144	.	.	434.1
2016	15,682	1,709,193	.	.	453.9
2017	18,203	1,824,791	.	.	532.0
2018	26,204	1,880,364	.	.	773.5
2019	30,121	1,958,603	.	.	896.0
2020	28,584	1,745,238	.	.	833.7

County: county value. Kansas: state value. County Rank: highest county value ranked #1. (\$000): thousands of dollars. Nonmetro Kansas: Kansas total less Metropolitan Areas as defined by the Office of Management and Budget (OMB; released 3/6/2020). Per 1000: For nonmoney amounts, Per 1000=(county value / county population for the same year as the data) x 1000. \$ Per capita=(county value / county population for the same year as the data). Value= . indicates missing or suppressed data or value not calculated.

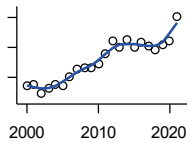
Business



**TOTAL ANNUAL PAYROLL(\$000):
OTHER SERVICES**

U.S. Census Bureau, County Business Patterns. Beginning with the 2017 data, any tabulation with fewer than 3 establishments were omitted from the release. Data for these establishments are included in the broader total.

Year	County	State of Kansas	Non Metro Kansas	County Rank	Per 1000 or \$ Per Capita
2000	6,157	965,540	.	.	189.7
2001	6,612	996,716	.	.	205.5
2002	7,369	1,007,464	.	.	230.4
2003	8,302	979,466	.	.	257.1
2004	8,115	970,383	.	.	251.5
2005	8,107	1,005,537	.	.	250.6
2006	8,048	1,055,932	.	.	251.3
2007	8,383	1,141,551	.	.	260.6
2008	12,117	1,184,016	.	.	376.5
2009	12,327	1,167,154	.	.	371.8
2010	12,309	1,170,201	.	.	363.7
2011	13,015	1,173,775	.	.	378.7
2012	9,640	1,217,210	.	.	278.1
2013	11,406	1,254,933	.	.	327.0
2014	12,456	1,305,563	.	.	356.6
2015	14,790	1,341,075	.	.	427.1
2016	9,773	1,351,375	.	.	282.8
2017	10,510	1,344,179	.	.	307.1
2018	11,685	1,382,801	.	.	344.9
2019	11,215	1,427,711	.	.	333.6
2020	11,630	1,420,859	.	.	339.2



**NOMINAL TAXABLE RETAIL SALES
(million\$)**

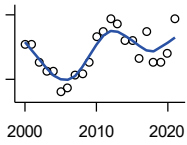
Kansas Department of Revenue

Year	County	State of Kansas	Non Metro Kansas	County Rank	Per 1000 or \$ Per Capita
2000	373.8	30,119.0	8,831.7	13	11.5
2001	374.6	30,202.2	8,700.3	13	11.6
2002	344.8	29,380.8	8,241.5	13	10.8
2003	362.0	30,694.0	8,710.6	13	11.2
2004	377.7	31,922.6	9,062.5	13	11.7
2005	373.5	32,924.2	9,386.6	13	11.5
2006	400.4	34,937.6	10,042.1	14	12.5
2007	427.6	36,180.1	10,553.2	13	13.3
2008	432.6	37,559.5	11,126.9	14	13.4
2009	433.0	35,211.8	10,351.5	13	13.1
2010	445.2	35,655.7	10,606.1	13	13.2
2011	477.6	37,257.0	11,153.5	13	13.9
2012	523.1	38,988.8	11,749.1	13	15.1
2013	499.8	40,009.0	11,993.8	13	14.3
2014	524.4	41,299.0	12,365.4	13	15.0
2015	498.6	41,635.8	11,747.6	13	14.4
2016	518.6	42,040.2	11,523.5	13	15.0
2017	504.2	41,940.1	11,449.9	13	14.7
2018	492.7	42,732.3	11,643.9	14	14.5
2019	509.5	43,732.5	12,062.7	14	15.2
2020	523.2	43,689.9	12,331.7	14	15.3
2021	603.1	48,532.8	13,413.0	14	17.7

County: county value. Kansas: state value. County Rank: highest county value ranked #1. (\$000): thousands of dollars. Nonmetro Kansas: Kansas total less Metropolitan Areas as defined by the Office of Management and Budget (OMB; released 3/6/2020). Per 1000: For nonmoney amounts, Per 1000=(county value / county population for the same year as the data) x 1000. \$ Per capita=(county value / county population for the same year as the data). Value= . indicates missing or suppressed data or value not calculated.

Business

RETAIL PULL FACTOR



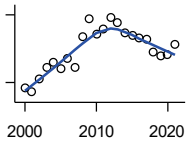
Kansas Direct Program, Kansas State University Cooperative Extension Service (1980-1999); Kansas Department of Revenue (2000-)

Year	County	State of Kansas	Non Metro Kansas	County Rank	Per 1000 or \$ Per Capita
2000	1.03	.	.	13	.
2001	1.03	.	.	14	.
2002	0.99	.	.	14	.
2003	0.97	.	.	17	.
2004	0.97	.	.	16	.
2005	0.92	.	.	20	.
2006	0.93	.	.	21	.
2007	0.96	.	.	20	.
2008	0.96	.	.	23	.
2009	0.99	.	.	24	.
2010	1.05	.	.	20	.
2011	1.06	.	.	18	.
2012	1.09	.	.	20	.
2013	1.08	.	.	20	.
2014	1.04	.	.	26	.
2015	1.04	.	.	23	.
2016	1.00	.	.	22	.
2017	1.06	.	.	13	.
2018	0.99	.	.	17	.
2019	0.99	.	.	19	.
2020	1.01	.	.	18	.
2021	1.09	.	.	15	.

County: county value. Kansas: state value. County Rank: highest county value ranked #1. (\$000): thousands of dollars. Nonmetro Kansas: Kansas total less Metropolitan Areas as defined by the Office of Management and Budget (OMB; released 3/6/2020). Per 1000: For nonmoney amounts, Per 1000=(county value / county population for the same year as the data) x 1000. \$ Per capita=(county value / county population for the same year as the data). Value= . indicates missing or suppressed data or value not calculated.

Employment

CIVILIAN LABOR FORCE (BLS-Place of Residence; 1990-)



U.S. Department of Labor, Bureau of Labor Statistics (BLS)

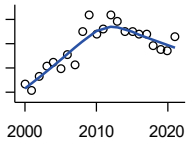
Year	County	State of Kansas	Non Metro Kansas	County Rank	Per 1000 or \$ Per Capita
2000	15,784	1,402,606	482,229	17	486.3
2001	15,569	1,398,521	475,280	17	483.8
2002	16,161	1,419,335	482,428	17	505.3
2003	16,657	1,441,065	490,161	17	515.9
2004	16,873	1,458,910	494,509	18	523.0
2005	16,595	1,458,767	490,047	18	512.9
2006	17,084	1,467,553	498,594	19	533.4
2007	16,669	1,485,414	497,048	19	518.2
2008	18,019	1,493,365	504,522	15	559.8
2009	18,851	1,512,572	516,311	13	568.5
2010	18,120	1,500,463	492,594	13	535.3
2011	18,365	1,498,000	492,563	13	534.3
2012	18,896	1,490,808	489,349	13	545.1
2013	18,672	1,489,395	485,484	13	535.3
2014	18,206	1,494,203	481,813	13	521.2
2015	18,110	1,493,782	477,546	13	523.0
2016	17,966	1,491,961	468,258	13	520.0
2017	17,901	1,488,346	461,063	13	523.1
2018	17,348	1,488,027	456,866	14	512.1
2019	17,200	1,497,517	455,858	16	511.6
2020	17,256	1,493,706	452,935	14	503.3
2021	17,686	1,495,665	453,398	14	517.8

County: county value. Kansas: state value. County Rank: highest county value ranked #1. (\$000): thousands of dollars. Nonmetro Kansas: Kansas total less Metropolitan Areas as defined by the Office of Management and Budget (OMB; released 3/6/2020). Per 1000: For nonmoney amounts, Per 1000=(county value / county population for the same year as the data) x 1000. \$ Per capita=(county value / county population for the same year as the data). Value= . indicates missing or suppressed data or value not calculated.

Employment

EMPLOYED (BLS-Place of Residence; 1990-)

U.S. Department of Labor, Bureau of Labor Statistics (BLS)



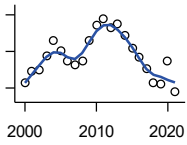
Year	County	State of Kansas	Non Metro Kansas	County Rank	Per 1000 or \$ Per Capita
2000	15,356	1,349,841	464,962	17	473.1
2001	15,079	1,338,775	455,154	17	468.6
2002	15,665	1,347,163	461,241	16	489.8
2003	16,081	1,361,115	467,622	17	498.1
2004	16,216	1,378,355	470,330	17	502.6
2005	15,993	1,384,654	467,722	17	494.3
2006	16,537	1,402,950	479,174	19	516.3
2007	16,140	1,422,109	477,983	19	501.7
2008	17,474	1,425,022	484,056	14	542.9
2009	18,189	1,408,142	485,797	13	548.6
2010	17,376	1,396,172	461,635	13	513.4
2011	17,585	1,402,198	463,723	13	511.6
2012	18,167	1,405,638	463,376	12	524.1
2013	17,924	1,410,470	461,405	13	513.9
2014	17,519	1,426,892	461,797	13	501.5
2015	17,495	1,431,533	457,899	13	505.2
2016	17,399	1,431,920	449,356	13	503.6
2017	17,397	1,434,516	445,003	13	508.4
2018	16,920	1,439,329	442,716	13	499.5
2019	16,778	1,450,705	442,108	15	499.1
2020	16,706	1,408,965	433,229	14	487.2
2021	17,309	1,447,323	441,159	13	506.7

County: county value. Kansas: state value. County Rank: highest county value ranked #1. (\$000): thousands of dollars. Nonmetro Kansas: Kansas total less Metropolitan Areas as defined by the Office of Management and Budget (OMB; released 3/6/2020). Per 1000: For nonmoney amounts, Per 1000=(county value / county population for the same year as the data) x 1000. \$ Per capita=(county value / county population for the same year as the data). Value= . indicates missing or suppressed data or value not calculated.

Employment

UNEMPLOYED (BLS-Place of Residence; 1990-)

U.S. Department of Labor, Bureau of Labor Statistics (BLS)

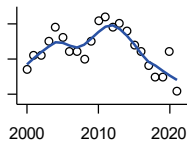


Year	County	State of Kansas	Non Metro Kansas	County Rank	Per 1000 or \$ Per Capita
2000	428	52,765	17,267	25	13.2
2001	490	59,746	20,126	24	15.2
2002	496	72,172	21,187	25	15.5
2003	576	79,950	22,539	25	17.8
2004	657	80,555	24,179	25	20.4
2005	602	74,113	22,325	24	18.6
2006	547	64,603	19,420	24	17.1
2007	529	63,305	19,065	22	16.4
2008	545	68,343	20,466	23	16.9
2009	662	104,430	30,514	30	20.0
2010	744	104,291	30,959	28	22.0
2011	780	95,802	28,840	23	22.7
2012	729	85,170	25,973	22	21.0
2013	748	78,925	24,079	21	21.4
2014	687	67,311	20,016	20	19.7
2015	615	62,249	19,647	22	17.8
2016	567	60,041	18,902	22	16.4
2017	504	53,830	16,060	21	14.7
2018	428	48,698	14,150	21	12.6
2019	422	46,812	13,750	20	12.6
2020	550	84,741	19,706	24	16.0
2021	377	48,342	12,239	22	11.0

County: county value. Kansas: state value. County Rank: highest county value ranked #1. (\$000): thousands of dollars. Nonmetro Kansas: Kansas total less Metropolitan Areas as defined by the Office of Management and Budget (OMB; released 3/6/2020). Per 1000: For nonmoney amounts, Per 1000=(county value / county population for the same year as the data) x 1000. \$ Per capita=(county value / county population for the same year as the data). Value= . indicates missing or suppressed data or value not calculated.

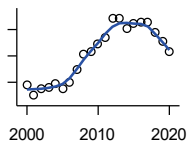
Employment

UNEMPLOYMENT RATE (BLS-Place of Residence; 1990-)



U.S. Department of Labor, Bureau of Labor Statistics (BLS)

Year	County	State of Kansas	Non Metro Kansas	County Rank	Per 1000 or \$ Per Capita
2000	2.7	3.8	3.6	94	.
2001	3.1	4.3	4.2	82	.
2002	3.1	5.1	4.4	92	.
2003	3.5	5.5	4.6	77	.
2004	3.9	5.5	4.9	77	.
2005	3.6	5.1	4.6	84	.
2006	3.2	4.4	3.9	82	.
2007	3.2	4.3	3.8	78	.
2008	3.0	4.6	4.1	95	.
2009	3.5	6.9	5.9	96	.
2010	4.1	7.0	6.3	88	.
2011	4.2	6.4	5.9	76	.
2012	3.9	5.7	5.3	78	.
2013	4.0	5.3	5.0	67	.
2014	3.8	4.5	4.2	52	.
2015	3.4	4.2	4.1	72	.
2016	3.2	4.0	4.0	75	.
2017	2.8	3.6	3.5	79	.
2018	2.5	3.3	3.1	78	.
2019	2.5	3.1	3.0	80	.
2020	3.2	5.7	4.4	70	.
2021	2.1	3.2	2.7	78	.



BEA EMPLOYMENT: TOTAL (Place of Work)

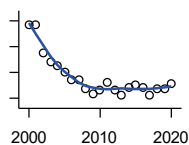
U.S. Bureau of Economic Analysis, Regional Economic Information System (REIS)

Year	County	State of Kansas	Non Metro Kansas	County Rank	Per 1000 or \$ Per Capita
2000	19,903	1,760,312	604,361	20	613.2
2001	19,494	1,767,601	592,672	19	605.7
2002	19,753	1,746,077	585,387	19	617.6
2003	19,807	1,733,694	577,860	19	613.5
2004	19,936	1,750,876	578,750	19	617.9
2005	19,734	1,765,650	577,562	19	609.9
2006	19,988	1,795,507	583,041	19	624.1
2007	20,505	1,844,355	591,924	19	637.4
2008	21,044	1,858,069	594,368	17	653.8
2009	21,164	1,813,184	580,972	16	638.3
2010	21,443	1,801,873	579,758	16	633.5
2011	21,695	1,819,044	583,725	16	631.2
2012	22,429	1,841,393	591,748	16	647.0
2013	22,428	1,869,054	597,236	15	643.0
2014	22,057	1,895,859	601,291	16	631.5
2015	22,214	1,910,954	598,589	16	641.5
2016	22,299	1,916,152	592,580	15	645.4
2017	22,301	1,914,179	584,337	15	651.7
2018	21,895	1,926,242	580,213	15	646.3
2019	21,556	1,925,204	574,496	16	641.2
2020	21,144	1,851,247	556,671	16	616.7

County: county value. Kansas: state value. County Rank: highest county value ranked #1. (\$000): thousands of dollars. Nonmetro Kansas: Kansas total less Metropolitan Areas as defined by the Office of Management and Budget (OMB; released 3/6/2020). Per 1000: For nonmoney amounts, Per 1000=(county value / county population for the same year as the data) x 1000. \$ Per capita=(county value / county population for the same year as the data). Value= . indicates missing or suppressed data or value not calculated.

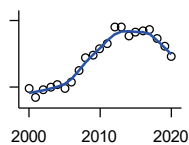
Employment

BEA EMPLOYMENT: FARM



U.S. Bureau of Economic Analysis,
Regional Economic Information System
(REIS)

Year	County	State of Kansas	Non Metro Kansas	County Rank	Per 1000 or \$ Per Capita
2000	987	77,477	59,088	23	30.4
2001	983	78,177	59,647	25	30.5
2002	874	70,532	53,893	27	27.3
2003	841	68,516	52,099	29	26.0
2004	828	67,586	51,246	29	25.7
2005	803	66,829	50,386	31	24.8
2006	773	64,910	48,728	31	24.1
2007	770	65,639	49,037	31	23.9
2008	735	63,820	47,682	31	22.8
2009	715	62,798	46,960	31	21.6
2010	733	63,882	47,984	31	21.7
2011	763	65,761	49,707	29	22.2
2012	733	63,753	48,167	30	21.1
2013	714	62,739	47,255	31	20.5
2014	743	64,308	48,722	29	21.3
2015	750	64,416	48,927	29	21.7
2016	743	63,840	48,539	28	21.5
2017	714	61,876	46,936	29	20.9
2018	736	63,233	48,069	29	21.7
2019	739	63,300	48,167	29	22.0
2020	756	64,281	49,038	29	22.0



BEA EMPLOYMENT: NON-FARM

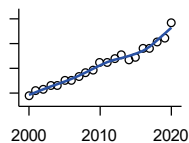
U.S. Bureau of Economic Analysis,
Regional Economic Information System
(REIS)

Year	County	State of Kansas	Non Metro Kansas	County Rank	Per 1000 or \$ Per Capita
2000	18,916	1,682,835	545,273	20	582.8
2001	18,511	1,689,424	533,025	19	575.2
2002	18,879	1,675,545	531,494	19	590.3
2003	18,966	1,665,178	525,761	19	587.5
2004	19,108	1,683,290	527,504	19	592.2
2005	18,931	1,698,821	527,176	19	585.1
2006	19,215	1,730,597	534,313	19	599.9
2007	19,735	1,778,716	542,887	19	613.5
2008	20,309	1,794,249	546,686	17	631.0
2009	20,449	1,750,386	534,012	16	616.7
2010	20,710	1,737,991	531,774	16	611.9
2011	20,932	1,753,283	534,018	15	609.0
2012	21,696	1,777,640	543,581	15	625.9
2013	21,714	1,806,315	549,981	15	622.6
2014	21,314	1,831,551	552,569	15	610.2
2015	21,464	1,846,538	549,662	15	619.8
2016	21,556	1,852,312	544,041	15	623.9
2017	21,587	1,852,303	537,401	15	630.9
2018	21,159	1,863,009	532,144	15	624.6
2019	20,817	1,861,904	526,329	16	619.2
2020	20,388	1,786,966	507,633	15	594.6

County: county value. Kansas: state value. County Rank: highest county value ranked #1. (\$000): thousands of dollars. Nonmetro Kansas: Kansas total less Metropolitan Areas as defined by the Office of Management and Budget (OMB; released 3/6/2020). Per 1000: For nonmoney amounts, Per 1000=(county value / county population for the same year as the data) x 1000. \$ Per capita=(county value / county population for the same year as the data). Value= . indicates missing or suppressed data or value not calculated.

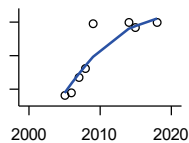
Employment

AVERAGE WAGE PER JOB (\$)



U.S. Bureau of Economic Analysis,
Regional Economic Information System
(REIS)

Year	County	State of Kansas	Non Metro Kansas	County Rank	Per 1000 or \$ Per Capita
2000	28,739	31,854	24,396	16	.
2001	30,992	32,859	26,379	18	.
2002	31,544	33,707	26,331	12	.
2003	32,930	35,078	28,911	17	.
2004	33,029	35,932	29,747	18	.
2005	35,087	37,467	31,646	25	.
2006	35,275	40,038	31,993	19	.
2007	36,929	41,500	33,484	21	.
2008	38,475	44,197	36,256	28	.
2009	39,025	43,860	35,739	23	.
2010	42,303	45,370	38,631	29	.
2011	42,476	48,280	42,324	53	.
2012	43,707	50,549	42,015	41	.
2013	45,637	52,629	46,073	50	.
2014	43,529	51,959	43,562	43	.
2015	44,546	52,250	42,320	32	.
2016	47,867	51,664	41,964	24	.
2017	48,077	53,007	42,137	24	.
2018	50,462	54,790	44,514	26	.
2019	52,094	56,956	45,336	22	.
2020	58,452	60,597	49,183	18	.



BEA EMPLOYMENT: FORESTRY, FISHING, HUNTING, AND AG SUPPORT

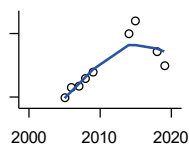
U.S. Bureau of Economic Analysis,
Regional Economic Information System
(REIS)

Year	County	State of Kansas	Non Metro Kansas	County Rank	Per 1000 or \$ Per Capita
2001	.	7,059	.	.	.
2002	.	8,045	.	.	.
2003	.	7,313	.	.	.
2004	.	7,623	.	.	.
2005	86	7,962	.	14	.
2006	88	7,748	.	12	.
2007	97	8,228	.	13	.
2008	102	8,646	.	12	.
2009	129	8,982	.	11	.
2010	.	9,251	.	.	.
2011	.	9,410	.	.	.
2012	.	9,691	.	.	.
2013	.	10,014	.	.	.
2014	130	10,708	.	17	.
2015	127	10,020	.	14	.
2016	.	10,383	.	.	.
2018	130	11,103	.	12	.

County: county value. Kansas: state value. County Rank: highest county value ranked #1. (\$000): thousands of dollars. Nonmetro Kansas: Kansas total less Metropolitan Areas as defined by the Office of Management and Budget (OMB; released 3/6/2020). Per 1000: For nonmoney amounts, Per 1000=(county value / county population for the same year as the data) x 1000. \$ Per capita=(county value / county population for the same year as the data). Value= . indicates missing or suppressed data or value not calculated.

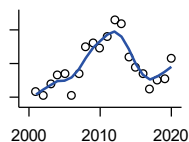
Employment

BEA EMPLOYMENT: MINING



U.S. Bureau of Economic Analysis,
Regional Economic Information System
(REIS)

Year	County	State of Kansas	Non Metro Kansas	County Rank	Per 1000 or \$ Per Capita
2001	.	19,592	.	.	.
2002	.	17,635	.	.	.
2003	.	19,869	.	.	.
2004	.	18,466	.	.	.
2005	48	19,489	.	43	.
2006	73	22,403	.	40	.
2007	76	24,043	.	39	.
2008	94	31,467	.	38	.
2009	110	29,941	.	35	.
2010	.	36,124	.	.	.
2011	.	31,658	.	.	.
2012	.	42,405	.	.	.
2013	.	46,585	.	.	.
2014	201	45,526	.	37	.
2015	230	46,460	.	36	.
2016	.	48,555	.	.	.
2018	158	32,021	.	36	.
2019	125	29,101	.	40	.



BEA EMPLOYMENT: UTILITIES

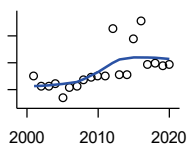
U.S. Bureau of Economic Analysis,
Regional Economic Information System
(REIS)

Year	County	State of Kansas	Non Metro Kansas	County Rank	Per 1000 or \$ Per Capita
2001	113	7,608	.	4	.
2002	111	7,087	.	4	.
2003	118	7,253	.	3	.
2004	123	7,356	.	3	.
2005	124	7,447	.	3	.
2006	111	7,478	.	5	.
2007	124	7,584	.	4	.
2008	140	7,855	.	5	.
2009	142	7,941	.	6	.
2010	139	8,028	.	6	.
2011	146	8,213	.	5	.
2012	156	8,155	.	4	.
2013	154	7,949	.	4	.
2014	134	7,985	.	5	.
2015	128	7,040	.	6	.
2016	124	7,133	.	5	.
2017	115	6,838	.	7	.
2018	120	6,639	.	6	.
2019	121	6,492	.	7	.
2020	133	6,573	.	8	.

County: county value. Kansas: state value. County Rank: highest county value ranked #1. (\$000): thousands of dollars. Nonmetro Kansas: Kansas total less Metropolitan Areas as defined by the Office of Management and Budget (OMB; released 3/6/2020). Per 1000: For nonmoney amounts, Per 1000=(county value / county population for the same year as the data) x 1000. \$ Per capita=(county value / county population for the same year as the data). Value= . indicates missing or suppressed data or value not calculated.

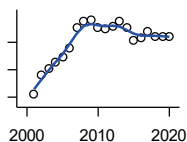
Employment

**BEA EMPLOYMENT:
CONSTRUCTION**



U.S. Bureau of Economic Analysis,
Regional Economic Information System
(REIS)

Year	County	State of Kansas	Non Metro Kansas	County Rank	Per 1000 or \$ Per Capita
2001	704	92,647	27,972	25	.
2002	623	90,370	.	25	.
2003	630	91,725	26,681	26	.
2004	649	93,271	.	25	.
2005	536	94,836	.	27	.
2006	612	97,449	.	27	.
2007	624	99,119	29,179	27	.
2008	677	97,741	.	27	.
2009	691	90,165	28,077	26	.
2010	703	84,708	26,402	24	.
2011	700	83,332	25,999	22	.
2012	1,050	85,966	.	16	.
2013	709	88,094	.	23	.
2014	710	91,143	.	22	.
2015	974	91,458	27,583	19	.
2016	1,112	93,539	27,151	15	.
2017	791	92,046	25,579	22	.
2018	793	92,985	25,530	22	.
2019	774	94,858	25,701	21	.
2020	789	94,186	26,085	22	.



**BEA EMPLOYMENT:
MANUFACTURING**

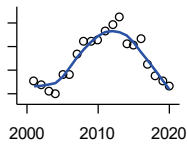
U.S. Bureau of Economic Analysis,
Regional Economic Information System
(REIS)

Year	County	State of Kansas	Non Metro Kansas	County Rank	Per 1000 or \$ Per Capita
2001	5,056	199,980	73,170	6	.
2002	5,411	188,905	70,691	6	.
2003	5,519	179,013	68,418	6	.
2004	5,638	181,738	69,669	6	.
2005	5,738	185,459	71,072	6	.
2006	5,890	188,047	71,704	6	.
2007	6,265	192,930	73,488	5	.
2008	6,382	193,116	72,235	5	.
2009	6,410	173,854	64,961	5	.
2010	6,259	166,000	62,884	5	.
2011	6,242	167,302	64,361	5	.
2012	6,300	169,308	65,944	5	.
2013	6,396	170,113	67,251	5	.
2014	6,269	169,307	68,299	5	.
2015	6,024	168,324	66,978	5	.
2016	6,085	167,723	65,796	5	.
2017	6,208	168,438	66,795	5	.
2018	6,104	171,778	68,181	5	.
2019	6,096	173,605	67,879	5	.
2020	6,101	165,228	65,658	5	.

County: county value. Kansas: state value. County Rank: highest county value ranked #1. (\$000): thousands of dollars. Nonmetro Kansas: Kansas total less Metropolitan Areas as defined by the Office of Management and Budget (OMB; released 3/6/2020). Per 1000: For nonmoney amounts, Per 1000=(county value / county population for the same year as the data) x 1000. \$ Per capita=(county value / county population for the same year as the data). Value= . indicates missing or suppressed data or value not calculated.

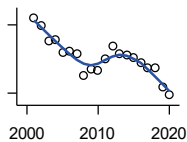
Employment

BEA EMPLOYMENT: WHOLESALE TRADE



U.S. Bureau of Economic Analysis,
Regional Economic Information System
(REIS)

Year	County	State of Kansas	Non Metro Kansas	County Rank	Per 1000 or \$ Per Capita
2001	656	65,698	.	12	.
2002	638	65,408	.	12	.
2003	611	63,504	.	11	.
2004	598	64,434	.	12	.
2005	680	64,587	.	9	.
2006	682	64,743	.	9	.
2007	769	65,993	.	6	.
2008	825	67,693	.	7	.
2009	822	65,954	.	7	.
2010	830	64,376	.	7	.
2011	864	64,712	.	8	.
2012	891	63,973	.	6	.
2013	926	64,999	.	6	.
2014	809	69,295	.	7	.
2015	807	68,444	.	7	.
2016	836	64,843	.	6	.
2017	726	65,014	.	7	.
2018	678	64,745	.	7	.
2019	654	63,324	.	8	.
2020	633	60,844	.	8	.



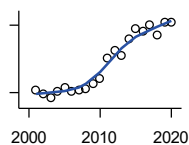
BEA EMPLOYMENT: RETAIL TRADE

U.S. Bureau of Economic Analysis,
Regional Economic Information System
(REIS)

Year	County	State of Kansas	Non Metro Kansas	County Rank	Per 1000 or \$ Per Capita
2001	2,331	198,069	.	15	.
2002	2,296	196,112	.	15	.
2003	2,231	194,545	64,173	17	.
2004	2,237	192,957	63,265	18	.
2005	2,176	191,656	62,506	18	.
2006	2,185	190,391	62,082	18	.
2007	2,175	190,643	61,716	18	.
2008	2,076	185,907	59,783	18	.
2009	2,106	181,262	58,714	17	.
2010	2,099	177,858	57,470	16	.
2011	2,150	180,548	57,734	15	.
2012	2,207	180,596	57,349	15	.
2013	2,174	183,245	57,556	16	.
2014	2,167	185,899	57,855	16	.
2015	2,157	188,421	58,516	17	.
2016	2,134	188,505	57,864	16	.
2017	2,110	186,633	56,715	15	.
2018	2,113	183,323	.	14	.
2019	2,028	177,240	53,427	15	.
2020	1,991	171,777	52,563	15	.

County: county value. Kansas: state value. County Rank: highest county value ranked #1. (\$000): thousands of dollars. Nonmetro Kansas: Kansas total less Metropolitan Areas as defined by the Office of Management and Budget (OMB; released 3/6/2020). Per 1000: For nonmoney amounts, Per 1000=(county value / county population for the same year as the data) x 1000. \$ Per capita=(county value / county population for the same year as the data). Value= . indicates missing or suppressed data or value not calculated.

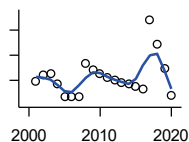
Employment



**BEA EMPLOYMENT:
TRANSPORTATION AND
WAREHOUSING**

U.S. Bureau of Economic Analysis,
Regional Economic Information System
(REIS)

Year	County	State of Kansas	Non Metro Kansas	County Rank	Per 1000 or \$ Per Capita
2001	512	56,302	.	11	.
2002	493	55,319	.	14	.
2003	475	55,509	.	13	.
2004	505	55,479	.	12	.
2005	520	56,287	.	11	.
2006	506	57,506	.	12	.
2007	513	59,277	.	12	.
2008	516	58,725	.	12	.
2009	539	56,238	.	11	.
2010	562	55,179	.	11	.
2011	654	57,449	.	9	.
2012	686	59,756	.	7	.
2013	665	59,780	.	9	.
2014	742	60,565	.	10	.
2015	784	63,256	.	12	.
2016	772	65,705	.	11	.
2017	803	70,641	.	11	.
2018	756	75,308	.	13	.
2019	813	81,209	.	13	.
2020	816	80,543	.	12	.



BEA EMPLOYMENT: INFORMATION

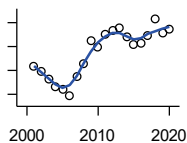
U.S. Bureau of Economic Analysis,
Regional Economic Information System
(REIS)

Year	County	State of Kansas	Non Metro Kansas	County Rank	Per 1000 or \$ Per Capita
2001	298	54,895	.	15	.
2002	321	50,728	.	13	.
2003	328	48,328	6,860	13	.
2004	287	45,617	.	15	.
2005	233	43,840	.	17	.
2006	234	43,925	.	15	.
2007	236	45,115	.	14	.
2008	369	42,958	.	10	.
2009	343	38,677	.	11	.
2010	327	33,432	.	11	.
2011	313	32,160	.	10	.
2012	300	31,829	.	11	.
2013	292	31,737	.	11	.
2014	288	32,316	.	11	.
2015	278	25,282	.	12	.
2016	267	24,998	.	12	.
2017	541	24,004	.	7	.
2018	442	23,165	.	8	.
2019	348	22,078	.	9	.
2020	241	20,810	.	11	.

County: county value. Kansas: state value. County Rank: highest county value ranked #1. (\$000): thousands of dollars. Nonmetro Kansas: Kansas total less Metropolitan Areas as defined by the Office of Management and Budget (OMB; released 3/6/2020). Per 1000: For nonmoney amounts, Per 1000=(county value / county population for the same year as the data) x 1000. \$ Per capita=(county value / county population for the same year as the data). Value= . indicates missing or suppressed data or value not calculated.

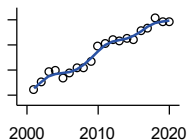
Employment

BEA EMPLOYMENT: FINANCE AND INSURANCE



U.S. Bureau of Economic Analysis,
Regional Economic Information System
(REIS)

Year	County	State of Kansas	Non Metro Kansas	County Rank	Per 1000 or \$ Per Capita
2001	508	76,118	.	19	.
2002	499	78,206	.	21	.
2003	483	78,441	.	22	.
2004	467	78,350	.	21	.
2005	461	78,952	.	22	.
2006	446	80,900	.	22	.
2007	487	86,094	.	22	.
2008	514	89,590	.	22	.
2009	561	93,573	.	22	.
2010	549	92,428	.	22	.
2011	576	99,495	.	22	.
2012	585	98,640	.	22	.
2013	588	99,998	.	21	.
2014	571	98,209	.	21	.
2015	555	100,534	.	22	.
2016	558	102,699	.	22	.
2017	573	101,563	.	22	.
2018	608	102,816	.	20	.
2019	578	100,276	.	20	.
2020	587	101,626	.	20	.



BEA EMPLOYMENT: REAL ESTATE, RENTAL, AND LEASING

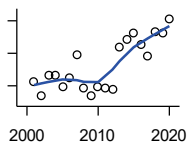
U.S. Bureau of Economic Analysis,
Regional Economic Information System
(REIS)

Year	County	State of Kansas	Non Metro Kansas	County Rank	Per 1000 or \$ Per Capita
2001	260	45,237	.	23	.
2002	276	44,970	.	22	.
2003	297	47,095	.	21	.
2004	299	50,181	.	23	.
2005	285	53,335	.	24	.
2006	294	55,342	.	24	.
2007	305	57,694	.	24	.
2008	305	57,933	.	24	.
2009	316	57,132	.	24	.
2010	347	59,578	.	23	.
2011	352	61,821	.	24	.
2012	361	60,432	.	24	.
2013	357	62,134	.	24	.
2014	364	64,705	.	25	.
2015	361	66,604	.	25	.
2016	379	68,395	.	24	.
2017	384	70,304	.	24	.
2018	404	72,631	.	24	.
2019	397	69,119	.	23	.
2020	395	68,452	.	24	.

County: county value. Kansas: state value. County Rank: highest county value ranked #1. (\$000): thousands of dollars. Nonmetro Kansas: Kansas total less Metropolitan Areas as defined by the Office of Management and Budget (OMB; released 3/6/2020). Per 1000: For nonmoney amounts, Per 1000=(county value / county population for the same year as the data) x 1000. \$ Per capita=(county value / county population for the same year as the data). Value= . indicates missing or suppressed data or value not calculated.

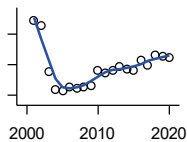
Employment

BEA EMPLOYMENT: PROFESSIONAL AND TECHNICAL SERVICES



U.S. Bureau of Economic Analysis, Regional Economic Information System (REIS)

Year	County	State of Kansas	Non Metro Kansas	County Rank	Per 1000 or \$ Per Capita
2001	407	81,396	.	19	.
2002	384	80,684	.	18	.
2003	417	80,311	.	15	.
2004	416	85,550	.	19	.
2005	398	85,003	.	19	.
2006	413	87,381	.	18	.
2007	447	92,717	.	20	.
2008	396	95,362	.	24	.
2009	385	93,232	.	22	.
2010	398	93,037	.	23	.
2011	397	93,237	.	23	.
2012	394	95,360	.	24	.
2013	459	100,795	.	20	.
2014	471	102,210	.	22	.
2015	481	105,625	.	21	.
2016	463	108,059	.	19	.
2017	446	109,041	.	19	.
2018	483	110,513	.	19	.
2019	481	109,637	.	19	.
2020	503	108,634	.	19	.



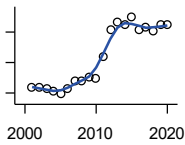
BEA EMPLOYMENT: MANAGEMENT OF COMPANIES AND ENTERPRISES

U.S. Bureau of Economic Analysis, Regional Economic Information System (REIS)

Year	County	State of Kansas	Non Metro Kansas	County Rank	Per 1000 or \$ Per Capita
2001	148	13,832	.	12	.
2002	140	12,576	.	12	.
2003	63	11,135	.	13	.
2004	34	10,614	.	15	.
2005	32	11,811	.	13	.
2006	39	13,061	.	12	.
2007	37	13,398	.	16	.
2008	39	15,234	.	21	.
2009	40	14,849	.	19	.
2010	66	16,579	.	15	.
2011	62	15,343	.	15	.
2012	65	15,075	.	19	.
2013	72	16,667	.	19	.
2014	68	20,441	.	17	.
2015	66	29,604	.	17	.
2016	83	27,824	.	17	.
2017	74	27,767	.	18	.
2018	91	28,862	.	16	.
2019	89	30,512	.	15	.
2020	87	25,648	.	16	.

County: county value. Kansas: state value. County Rank: highest county value ranked #1. (\$000): thousands of dollars. Nonmetro Kansas: Kansas total less Metropolitan Areas as defined by the Office of Management and Budget (OMB; released 3/6/2020). Per 1000: For nonmoney amounts, Per 1000=(county value / county population for the same year as the data) x 1000. \$ Per capita=(county value / county population for the same year as the data). Value= . indicates missing or suppressed data or value not calculated.

Employment



**BEA EMPLOYMENT:
ADMINISTRATIVE AND WASTE
SERVICES**

U.S. Bureau of Economic Analysis,
Regional Economic Information System
(REIS)

Year	County	State of Kansas	Non Metro Kansas	County Rank	Per 1000 or \$ Per Capita
2001	534	81,573	.	19	.
2002	537	82,992	.	18	.
2003	526	81,298	.	18	.
2004	508	85,721	.	17	.
2005	492	89,933	.	19	.
2006	529	93,688	.	19	.
2007	577	98,865	.	20	.
2008	577	97,440	.	19	.
2009	606	92,455	.	17	.
2010	600	93,675	.	17	.
2011	741	97,969	.	15	.
2012	917	100,490	.	13	.
2013	965	104,680	.	12	.
2014	950	107,218	18,836	12	.
2015	996	103,436	18,767	12	.
2016	914	103,233	18,428	14	.
2017	928	101,532	18,198	14	.
2018	908	102,062	.	15	.
2019	947	100,897	.	14	.
2020	947	95,361	.	12	.

**BEA EMPLOYMENT: EDUCATIONAL
SERVICES**

U.S. Bureau of Economic Analysis,
Regional Economic Information System
(REIS)

Year	County	State of Kansas	Non Metro Kansas	County Rank	Per 1000 or \$ Per Capita
2001	.	21,169	.	.	.
2002	.	22,173	.	.	.
2003	.	22,651	.	.	.
2004	.	21,601	.	.	.
2005	.	22,177	.	.	.
2006	.	22,438	.	.	.
2007	.	23,647	.	.	.
2008	.	24,653	.	.	.
2009	.	25,120	.	.	.
2010	.	26,071	.	.	.
2011	.	26,080	.	.	.
2012	.	26,625	.	.	.
2013	.	27,508	.	.	.
2014	.	28,708	.	.	.
2015	.	28,794	.	.	.
2016	.	27,996	.	.	.

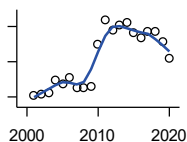
County: county value. Kansas: state value. County Rank: highest county value ranked #1. (\$000): thousands of dollars. Nonmetro Kansas: Kansas total less Metropolitan Areas as defined by the Office of Management and Budget (OMB; released 3/6/2020). Per 1000: For nonmoney amounts, Per 1000=(county value / county population for the same year as the data) x 1000. \$ Per capita=(county value / county population for the same year as the data). Value= . indicates missing or suppressed data or value not calculated.

Employment

BEA EMPLOYMENT: HEALTH CARE AND SOCIAL ASSISTANCE

U.S. Bureau of Economic Analysis, Regional Economic Information System (REIS)

Year	County	State of Kansas	Non Metro Kansas	County Rank	Per 1000 or \$ Per Capita
2001	.	165,415	.	.	.
2002	.	168,198	.	.	.
2003	.	169,654	.	.	.
2004	.	172,796	.	.	.
2005	.	173,949	.	.	.
2006	.	176,919	.	.	.
2007	.	182,160	.	.	.
2008	.	186,051	.	.	.
2009	.	188,499	.	.	.
2010	.	188,383	.	.	.
2011	.	190,736	.	.	.
2012	.	192,991	.	.	.
2013	.	193,687	.	.	.
2014	.	194,632	.	.	.
2015	.	199,724	.	.	.
2016	.	201,830	.	.	.



BEA EMPLOYMENT: ARTS, ENTERTAINMENT, AND RECREATION

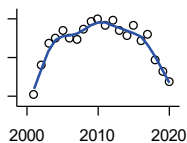
U.S. Bureau of Economic Analysis, Regional Economic Information System (REIS)

Year	County	State of Kansas	Non Metro Kansas	County Rank	Per 1000 or \$ Per Capita
2001	208	25,012	.	16	.
2002	213	25,668	.	16	.
2003	226	24,116	.	14	.
2004	297	25,355	.	12	.
2005	276	26,067	.	12	.
2006	313	26,505	.	12	.
2007	253	27,489	.	12	.
2008	250	27,501	.	14	.
2009	263	27,203	.	13	.
2010	500	27,479	.	8	.
2011	638	28,487	.	8	.
2012	578	30,729	.	8	.
2013	607	31,068	.	8	.
2014	620	32,154	.	8	.
2015	566	31,169	.	8	.
2016	538	32,373	.	8	.
2017	575	33,213	.	8	.
2018	574	33,837	.	8	.
2019	514	33,082	.	9	.
2020	421	26,644	.	10	.

County: county value. Kansas: state value. County Rank: highest county value ranked #1. (\$000): thousands of dollars. Nonmetro Kansas: Kansas total less Metropolitan Areas as defined by the Office of Management and Budget (OMB; released 3/6/2020). Per 1000: For nonmoney amounts, Per 1000=(county value / county population for the same year as the data) x 1000. \$ Per capita=(county value / county population for the same year as the data). Value= . indicates missing or suppressed data or value not calculated.

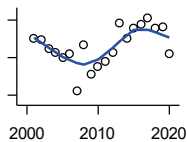
Employment

BEA EMPLOYMENT: GOVERNMENT AND GOVERNMENT ENTERPRISES



U.S. Bureau of Economic Analysis, Regional Economic Information System (REIS)

Year	County	State of Kansas	Non Metro Kansas	County Rank	Per 1000 or \$ Per Capita
2001	2,707	282,293	102,993	19	.
2002	2,862	281,427	103,581	19	.
2003	2,974	282,459	103,389	18	.
2004	3,001	283,877	103,946	17	.
2005	3,041	282,798	103,194	17	.
2006	3,001	288,372	104,103	18	.
2007	2,996	294,413	104,598	18	.
2008	3,045	298,580	104,718	18	.
2009	3,084	300,422	104,081	19	.
2010	3,099	303,875	103,382	17	.
2011	3,066	299,952	101,535	17	.
2012	3,096	298,068	101,180	17	.
2013	3,039	297,689	101,232	17	.
2014	3,014	296,956	100,634	17	.
2015	3,067	295,799	99,719	17	.
2016	2,985	291,536	98,520	18	.
2017	3,022	295,748	99,542	17	.
2018	2,886	298,105	99,499	18	.
2019	2,829	302,017	100,227	19	.
2020	2,778	292,583	96,477	18	.



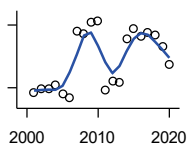
BEA EMPLOYMENT: ACCOMMODATION AND FOOD SERVICES

U.S. Bureau of Economic Analysis, Regional Economic Information System (REIS)

Year	County	State of Kansas	Non Metro Kansas	County Rank	Per 1000 or \$ Per Capita
2001	1,300	103,353	.	14	.
2002	1,294	103,692	.	14	.
2003	1,245	105,138	.	15	.
2004	1,227	106,694	.	16	.
2005	1,203	107,303	.	16	.
2006	1,223	109,888	.	17	.
2007	1,022	110,863	.	20	.
2008	1,265	111,092	.	16	.
2009	1,115	109,353	.	18	.
2010	1,151	108,628	.	17	.
2011	1,182	110,514	.	17	.
2012	1,225	112,574	.	17	.
2013	1,382	114,102	.	16	.
2014	1,303	115,768	.	17	.
2015	1,356	118,503	.	16	.
2016	1,375	119,764	.	16	.
2017	1,412	121,181	.	15	.
2018	1,356	121,900	.	16	.
2019	1,364	122,819	.	16	.
2020	1,224	106,561	.	16	.

County: county value. Kansas: state value. County Rank: highest county value ranked #1. (\$000): thousands of dollars. Nonmetro Kansas: Kansas total less Metropolitan Areas as defined by the Office of Management and Budget (OMB; released 3/6/2020). Per 1000: For nonmoney amounts, Per 1000=(county value / county population for the same year as the data) x 1000. \$ Per capita=(county value / county population for the same year as the data). Value= . indicates missing or suppressed data or value not calculated.

Employment

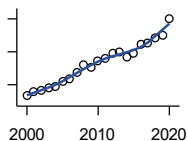


BEA EMPLOYMENT: OTHER SERVICES, EXCEPT PUBLIC ADMINISTRATION

U.S. Bureau of Economic Analysis, Regional Economic Information System (REIS)

Year	County	State of Kansas	Non Metro Kansas	County Rank	Per 1000 or \$ Per Capita
2001	888	92,176	.	21	.
2002	897	95,350	.	22	.
2003	898	95,821	32,629	20	.
2004	907	95,610	.	20	.
2005	886	95,930	32,555	21	.
2006	875	96,413	.	19	.
2007	1,034	98,444	.	20	.
2008	1,028	96,705	.	16	.
2009	1,057	95,534	.	16	.
2010	1,060	93,302	.	16	.
2011	896	94,865	.	19	.
2012	916	94,977	.	21	.
2013	914	95,471	.	21	.
2014	1,017	97,806	.	17	.
2015	1,042	98,041	.	16	.
2016	1,024	97,219	.	16	.
2017	1,033	96,568	.	15	.
2018	1,027	98,645	.	15	.
2019	999	98,638	.	15	.
2020	957	92,245	.	15	.

Income



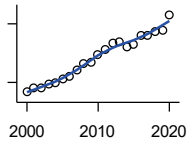
BEA PER CAPITA PERSONAL INCOME (\$)

U.S. Bureau of Economic Analysis, Regional Economic Information System (REIS)

Year	County	State of Kansas	Non Metro Kansas	County Rank	Per 1000 or \$ Per Capita
2000	21,579	28,253	23,116	80	.
2001	22,924	29,112	24,576	88	.
2002	23,305	29,248	24,314	70	.
2003	24,072	30,074	26,017	90	.
2004	24,571	30,843	26,583	81	.
2005	25,809	32,545	28,356	88	.
2006	26,869	35,690	29,782	86	.
2007	28,723	38,057	32,034	95	.
2008	30,961	41,257	35,211	97	.
2009	30,157	39,431	33,876	95	.
2010	32,088	39,960	35,795	88	.
2011	32,910	43,015	39,041	98	.
2012	34,635	45,294	39,660	95	.
2013	35,046	46,174	41,747	97	.
2014	33,491	47,013	41,042	102	.
2015	34,510	47,332	40,638	101	.
2016	37,087	47,326	40,797	85	.
2017	37,547	48,756	41,314	86	.
2018	39,188	50,811	43,283	90	.
2019	40,145	52,820	44,491	93	.
2020	45,081	55,677	48,415	84	.

County: county value. Kansas: state value. County Rank: highest county value ranked #1. (\$000): thousands of dollars. Nonmetro Kansas: Kansas total less Metropolitan Areas as defined by the Office of Management and Budget (OMB; released 3/6/2020). Per 1000: For nonmoney amounts, Per 1000=(county value / county population for the same year as the data) x 1000. \$ Per capita=(county value / county population for the same year as the data). Value= . indicates missing or suppressed data or value not calculated.

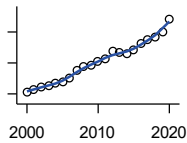
Income



**SOURCES OF PERSONAL INCOME:
TOTAL PERSONAL INCOME (\$000)**

U.S. Bureau of Economic Analysis,
Regional Economic Information System
(REIS)

Year	County	State of Kansas	Non Metro Kansas	County Rank	Per 1000 or \$ Per Capita
2000	702,265	76,105,125	22,273,838	20	21,636.1
2001	737,742	78,664,651	23,411,174	20	22,924.1
2002	745,306	79,365,190	23,000,314	20	23,304.6
2003	777,164	81,890,340	24,494,191	20	24,072.0
2004	792,777	84,335,940	24,924,467	20	24,570.8
2005	835,018	89,346,228	26,452,291	20	25,808.8
2006	860,581	98,610,188	27,661,596	22	26,868.8
2007	923,960	105,943,199	29,715,946	22	28,723.0
2008	996,549	115,852,478	32,614,565	22	30,961.2
2009	999,949	111,697,350	31,394,702	21	30,157.1
2010	1,091,199	114,239,828	33,291,419	21	32,238.2
2011	1,131,152	123,558,772	36,221,488	21	32,909.1
2012	1,200,496	130,948,127	36,696,759	20	34,631.4
2013	1,222,135	133,979,908	38,513,959	20	35,039.3
2014	1,169,589	136,878,718	37,680,598	21	33,483.8
2015	1,194,628	138,336,768	37,081,851	20	34,497.9
2016	1,277,502	138,533,890	36,930,885	18	36,973.3
2017	1,279,680	142,729,689	37,104,963	18	37,397.9
2018	1,317,609	148,955,739	38,589,364	18	38,893.9
2019	1,338,681	154,961,001	39,424,148	19	39,819.2
2020	1,491,919	163,462,179	42,618,591	17	43,512.7



**SOURCES OF PERSONAL INCOME:
WAGES AND SALARIES (\$000)**

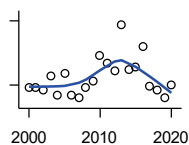
U.S. Bureau of Economic Analysis,
Regional Economic Information System
(REIS)

Year	County	State of Kansas	Non Metro Kansas	County Rank	Per 1000 or \$ Per Capita
2000	414,933	41,766,878	10,254,250	15	12,783.7
2001	430,463	43,269,734	10,518,206	16	13,375.9
2002	443,890	43,875,159	10,696,876	15	13,879.8
2003	454,159	44,488,560	10,894,971	14	14,067.2
2004	465,225	46,702,068	11,333,617	15	14,418.9
2005	477,162	48,537,956	11,614,130	16	14,748.2
2006	501,478	52,083,584	12,299,340	17	15,657.0
2007	550,289	55,442,368	13,093,908	14	17,106.7
2008	577,461	57,623,385	13,647,143	13	17,940.8
2009	582,749	55,605,578	13,199,674	13	17,574.9
2010	609,400	56,089,711	13,345,291	13	18,004.0
2011	624,026	58,104,706	13,856,458	13	18,155.1
2012	672,418	60,616,457	14,473,599	12	19,397.6
2013	665,965	61,872,023	14,781,792	13	19,093.6
2014	655,556	64,457,652	15,385,500	14	18,767.7
2015	682,469	66,729,598	15,454,485	14	19,708.0
2016	728,714	67,253,399	15,422,058	13	21,090.4
2017	749,414	68,830,861	15,731,853	13	21,901.2
2018	766,251	71,580,544	16,311,725	13	22,618.6
2019	801,310	74,404,771	16,882,299	14	23,835.0
2020	886,603	75,798,310	17,251,300	12	25,858.3

County: county value. Kansas: state value. County Rank: highest county value ranked #1. (\$000): thousands of dollars. Nonmetro Kansas: Kansas total less Metropolitan Areas as defined by the Office of Management and Budget (OMB; released 3/6/2020). Per 1000: For nonmoney amounts, Per 1000=(county value / county population for the same year as the data) x 1000. \$ Per capita=(county value / county population for the same year as the data). Value= . indicates missing or suppressed data or value not calculated.

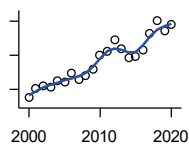
Income

**SOURCES OF PERSONAL INCOME:
PROPRIETORS-FARM (\$000)**



U.S. Bureau of Economic Analysis,
Regional Economic Information System
(REIS)

Year	County	State of Kansas	Non Metro Kansas	County Rank	Per 1000 or \$ Per Capita
2000	18,085	668,539	673,707	10	557.2
2001	18,099	779,473	769,336	13	562.4
2002	15,172	145,064	187,033	2	474.4
2003	28,476	1,281,076	1,195,298	8	882.0
2004	11,021	1,149,425	938,524	45	341.6
2005	31,437	1,609,604	1,469,139	10	971.7
2006	10,904	766,047	663,735	28	340.4
2007	8,301	1,131,607	1,040,350	67	258.1
2008	17,494	1,582,092	1,404,900	44	543.5
2009	24,304	1,585,995	1,390,349	22	733.0
2010	48,048	2,149,482	2,029,067	12	1,419.5
2011	40,694	3,188,519	2,989,880	30	1,183.9
2012	33,367	2,519,555	2,296,875	28	962.6
2013	76,498	4,499,190	4,158,419	16	2,193.2
2014	34,077	2,231,181	2,157,992	18	975.6
2015	37,144	1,300,733	1,294,370	11	1,072.6
2016	56,184	1,577,060	1,564,511	8	1,626.1
2017	19,098	838,480	838,290	20	558.1
2018	15,796	1,050,662	971,690	24	466.3
2019	7,717	998,038	878,247	57	229.5
2020	20,157	2,151,349	1,887,881	52	587.9



**SOURCES OF PERSONAL INCOME:
PROPRIETORS-NONFARM (\$000)**

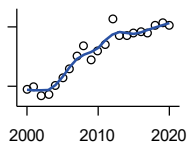
U.S. Bureau of Economic Analysis,
Regional Economic Information System
(REIS)

Year	County	State of Kansas	Non Metro Kansas	County Rank	Per 1000 or \$ Per Capita
2000	50,018	4,580,476	1,493,470	15	1,541.0
2001	61,736	4,510,530	1,855,621	13	1,918.3
2002	64,317	5,036,100	1,966,784	14	2,011.1
2003	62,425	4,719,377	1,916,735	14	1,933.6
2004	69,535	4,003,922	2,073,898	14	2,155.1
2005	67,964	4,455,294	2,200,971	16	2,100.6
2006	78,365	7,343,524	2,694,895	17	2,446.7
2007	71,223	7,280,197	2,436,574	18	2,214.1
2008	76,534	9,255,953	2,971,923	17	2,377.8
2009	83,495	9,323,551	2,858,848	17	2,518.1
2010	99,502	9,658,261	3,498,040	16	2,939.7
2011	104,545	12,196,566	4,186,007	17	3,041.6
2012	117,483	15,773,140	4,446,004	17	3,389.1
2013	107,619	16,441,660	4,492,127	19	3,085.5
2014	97,829	15,954,254	4,455,081	20	2,800.7
2015	98,445	15,536,116	4,386,172	19	2,842.8
2016	106,021	14,075,310	3,783,829	17	3,068.4
2017	125,126	15,371,957	3,908,254	15	3,656.7
2018	140,752	15,716,877	4,238,775	14	4,154.8
2019	129,325	16,705,488	3,921,051	17	3,846.8
2020	136,421	16,718,952	3,823,329	15	3,978.8

County: county value. Kansas: state value. County Rank: highest county value ranked #1. (\$000): thousands of dollars. Nonmetro Kansas: Kansas total less Metropolitan Areas as defined by the Office of Management and Budget (OMB; released 3/6/2020). Per 1000: For nonmoney amounts, Per 1000=(county value / county population for the same year as the data) x 1000. \$ Per capita=(county value / county population for the same year as the data). Value= . indicates missing or suppressed data or value not calculated.

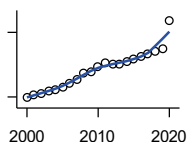
Income

**SOURCES OF PERSONAL INCOME:
DIVIDENDS,INTEREST,RENT(\$000)**



U.S. Bureau of Economic Analysis,
Regional Economic Information System
(REIS)

Year	County	State of Kansas	Non Metro Kansas	County Rank	Per 1000 or \$ Per Capita
2000	117,491	15,916,201	4,736,921	21	3,619.8
2001	119,196	15,770,830	4,699,417	21	3,703.8
2002	109,922	15,111,563	4,316,887	20	3,437.1
2003	112,230	15,370,764	4,360,311	21	3,476.2
2004	121,136	15,820,469	4,251,925	22	3,754.4
2005	127,923	17,147,069	4,485,387	22	3,953.9
2006	137,946	20,117,848	4,945,184	22	4,306.9
2007	150,885	22,269,186	5,526,219	22	4,690.5
2008	161,321	24,972,485	6,180,979	22	5,012.0
2009	146,182	21,453,879	5,308,474	22	4,408.6
2010	155,813	20,861,351	5,414,285	22	4,603.3
2011	161,917	23,387,567	5,781,075	22	4,710.7
2012	188,144	25,689,368	6,389,505	20	5,427.5
2013	171,694	24,832,212	5,984,811	21	4,922.6
2014	170,592	27,412,684	6,403,356	22	4,883.8
2015	173,554	27,244,414	6,423,685	21	5,011.8
2016	174,766	27,293,441	6,389,161	22	5,058.1
2017	173,636	28,385,472	6,700,156	23	5,074.4
2018	181,666	29,953,419	6,772,504	21	5,362.5
2019	184,358	30,820,276	6,957,987	22	5,483.7
2020	181,438	30,283,520	6,844,745	22	5,291.7



**SOURCES OF PERSONAL INCOME:
TRANSFER PAYMENTS (\$000)**

U.S. Bureau of Economic Analysis,
Regional Economic Information System
(REIS)

Year	County	State of Kansas	Non Metro Kansas	County Rank	Per 1000 or \$ Per Capita
2000	97,789	9,650,835	4,036,781	24	3,012.8
2001	105,396	10,549,124	4,355,457	25	3,275.0
2002	109,108	11,208,997	4,553,978	25	3,411.7
2003	113,666	11,709,049	4,702,911	25	3,520.7
2004	117,373	12,040,452	4,802,536	24	3,637.8
2005	122,926	12,696,735	5,059,314	25	3,799.4
2006	131,798	13,642,787	5,455,207	25	4,115.0
2007	140,370	14,686,821	5,775,024	25	4,363.7
2008	156,632	16,552,460	6,322,722	25	4,866.3
2009	159,199	18,025,603	6,790,962	26	4,801.2
2010	170,214	19,189,749	7,089,258	26	5,028.8
2011	179,323	19,625,770	7,255,825	25	5,217.1
2012	175,145	19,354,458	7,148,177	25	5,052.5
2013	175,045	19,639,358	7,185,636	25	5,018.6
2014	182,471	20,380,970	7,399,809	25	5,223.9
2015	187,380	21,116,856	7,623,577	25	5,411.1
2016	195,495	21,884,629	7,886,000	25	5,658.0
2017	198,529	22,559,744	8,062,517	26	5,801.9
2018	205,022	23,628,033	8,393,617	26	6,052.0
2019	212,197	25,050,174	8,845,371	26	6,311.8
2020	277,531	32,319,421	11,074,190	24	8,094.4

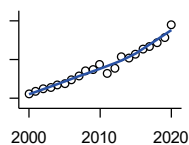
County: county value. Kansas: state value. County Rank: highest county value ranked #1. (\$000): thousands of dollars. Nonmetro Kansas: Kansas total less Metropolitan Areas as defined by the Office of Management and Budget (OMB; released 3/6/2020). Per 1000: For nonmoney amounts, Per 1000=(county value / county population for the same year as the data) x 1000. \$ Per capita=(county value / county population for the same year as the data). Value= . indicates missing or suppressed data or value not calculated.

Income

**SOURCES OF PERSONAL INCOME:
LESS SOCIAL INSURANCE (\$000)**

U.S. Bureau of Economic Analysis,
Regional Economic Information System
(REIS)

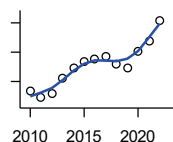
Year	County	State of Kansas	Non Metro Kansas	County Rank	Per 1000 or \$ Per Capita
2000	63,987	6,655,813	1,663,044	17	1,971.4
2001	67,618	6,869,934	1,740,915	17	2,101.1
2002	69,939	7,008,361	1,778,636	18	2,186.9
2003	71,653	7,172,781	1,821,858	18	2,219.4
2004	73,676	7,556,560	1,904,014	17	2,283.5
2005	75,516	7,911,241	1,986,907	18	2,334.1
2006	78,481	8,406,937	2,090,313	18	2,450.3
2007	83,649	8,806,941	2,180,587	18	2,600.4
2008	88,011	9,207,010	2,299,399	16	2,734.4
2009	89,585	9,002,859	2,248,703	15	2,701.8
2010	94,650	9,235,760	2,321,191	14	2,796.3
2011	85,393	8,515,986	2,139,991	15	2,484.4
2012	91,535	8,816,128	2,195,919	14	2,640.6
2013	102,975	10,225,399	2,540,439	16	2,952.3
2014	101,143	10,609,601	2,635,009	17	2,895.6
2015	106,088	11,028,204	2,663,038	16	3,063.6
2016	110,582	10,915,915	2,604,579	13	3,200.5
2017	113,255	11,224,218	2,669,954	13	3,309.8
2018	117,424	11,749,229	2,797,106	14	3,466.2
2019	123,306	12,245,451	2,889,336	14	3,667.7
2020	136,404	12,715,152	3,027,656	14	3,978.3



HUD MEDIAN FAMILY INCOME

U.S. Department of Housing and Urban
Development (HUD)

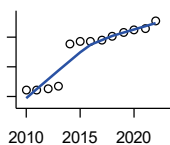
Year	County	State of Kansas	Non Metro Kansas	County Rank	Per 1000 or \$ Per Capita
2010	53,400	63,100	.	44	.
2011	52,200	64,300	.	64	.
2012	52,900	65,200	.	64	.
2013	55,500	64,800	.	58	.
2014	57,200	64,400	.	55	.
2015	58,400	66,300	.	58	.
2016	58,900	66,700	.	47	.
2017	59,300	68,500	.	62	.
2018	57,900	73,100	.	78	.
2019	57,400	75,200	.	88	.
2020	60,200	76,500	.	87	.
2021	61,800	77,400	.	77	.
2022	65,400	87,800	.	84	.



County: county value. Kansas: state value. County Rank: highest county value ranked #1. (\$000): thousands of dollars. Nonmetro Kansas: Kansas total less Metropolitan Areas as defined by the Office of Management and Budget (OMB; released 3/6/2020). Per 1000: For nonmoney amounts, Per 1000=(county value / county population for the same year as the data) x 1000. \$ Per capita=(county value / county population for the same year as the data). Value= . indicates missing or suppressed data or value not calculated.

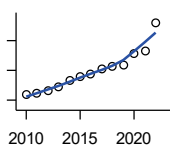
Income

HUD 30% LOW-TO-MEDIUM INCOME (LMI) LIMIT - 4 PERSONS



U.S. Department of Housing and Urban Development (HUD)

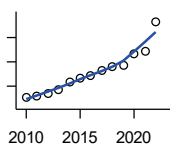
Year	County	State of Kansas	Non Metro Kansas	County Rank	Per 1000 or \$ Per Capita
2010	16,000	.	.	45	.
2011	16,100	.	.	105	.
2012	16,300	.	.	105	.
2013	16,650	.	.	58	.
2014	23,850	.	.	105	.
2015	24,250	.	.	105	.
2016	24,300	.	.	105	.
2017	24,600	.	.	105	.
2018	25,100	21,950	.	105	.
2019	25,750	22,550	.	105	.
2020	26,200	22,950	.	105	.
2021	26,500	23,200	.	105	.
2022	27,750	25,950	.	105	.



HUD 50% LOW-TO-MEDIUM INCOME (LMI) LIMIT - 4 PERSONS

U.S. Department of Housing and Urban Development (HUD)

Year	County	State of Kansas	Non Metro Kansas	County Rank	Per 1000 or \$ Per Capita
2010	26,700	.	.	44	.
2011	26,850	.	.	105	.
2012	27,200	.	.	105	.
2013	27,750	.	.	58	.
2014	28,600	.	.	56	.
2015	29,200	.	.	58	.
2016	29,450	.	.	49	.
2017	30,150	.	.	105	.
2018	30,550	36,550	.	105	.
2019	30,750	37,600	.	105	.
2020	32,300	38,250	.	104	.
2021	32,550	38,700	.	105	.
2022	36,400	43,300	.	105	.



HUD 80% LOW-TO-MEDIUM INCOME (LMI) LIMIT - 4 PERSONS

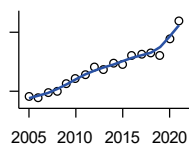
U.S. Department of Housing and Urban Development (HUD)

Year	County	State of Kansas	Non Metro Kansas	County Rank	Per 1000 or \$ Per Capita
2010	42,700	.	.	44	.
2011	42,950	.	.	105	.
2012	43,500	.	.	105	.
2013	44,400	.	.	58	.
2014	45,750	.	.	56	.
2015	46,700	.	.	58	.
2016	47,100	.	.	49	.
2017	48,250	.	.	105	.
2018	48,900	58,500	.	105	.
2019	49,200	60,150	.	105	.
2020	51,700	61,200	.	104	.
2021	52,100	61,900	.	105	.
2022	58,250	69,250	.	105	.

County: county value. Kansas: state value. County Rank: highest county value ranked #1. (\$000): thousands of dollars. Nonmetro Kansas: Kansas total less Metropolitan Areas as defined by the Office of Management and Budget (OMB; released 3/6/2020). Per 1000: For nonmoney amounts, Per 1000=(county value / county population for the same year as the data) x 1000. \$ Per capita=(county value / county population for the same year as the data). Value= . indicates missing or suppressed data or value not calculated.

Banking

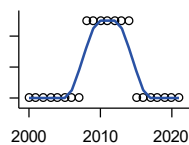
BANK DEPOSITS (1984-2004 in thousands; 2005- in millions)



Federal Deposit Insurance Corporation, Data Book, Operating Banks and Branches

Year	County	State of Kansas	Non Metro Kansas	County Rank	Per 1000 or \$ Per Capita
2005	371	48,304	17,000	22	11.5
2006	368	50,668	17,586	24	11.5
2007	393	54,057	18,517	24	12.2
2008	401	57,869	19,628	26	12.5
2009	437	57,763	20,031	21	13.2
2010	464	60,031	20,678	21	13.7
2011	481	61,094	21,347	21	14.0
2012	521	62,910	22,481	21	15.0
2013	513	64,547	22,795	21	14.7
2014	541	66,538	23,338	20	15.5
2015	539	68,160	23,367	20	15.6
2016	583	70,381	23,420	19	16.9
2017	589	73,329	23,928	19	17.2
2018	592	74,623	24,100	19	17.5
2019	585	76,436	24,488	21	17.4
2020	665	88,563	27,547	21	19.4
2021	758	97,055	30,122	19	22.2

NUMBER OF BANKS



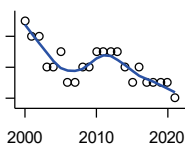
Federal Deposit Insurance Corporation, Data Book, Operating Banks and Branches

Year	County	State of Kansas	Non Metro Kansas	County Rank	Per 1000 or \$ Per Capita
2000	10	410	145	20	.
2001	10	410	136	22	.
2002	10	404	129	22	.
2003	10	397	121	22	.
2004	10	394	112	22	.
2005	10	388	101	23	.
2006	10	385	94	22	.
2007	10	382	91	22	.
2008	11	378	82	14	.
2009	11	374	79	13	.
2010	11	367	70	13	.
2011	11	359	61	12	.
2012	11	348	57	13	.
2013	11	332	45	12	.
2014	11	329	41	12	.
2015	10	320	31	16	.
2016	10	314	24	16	.
2017	10	301	13	16	.
2018	10	289	7	16	.
2019	10	279	3	17	.
2020	10	271	-1	16	.
2021	10	270	-6	18	.

County: county value. Kansas: state value. County Rank: highest county value ranked #1. (\$000): thousands of dollars. Nonmetro Kansas: Kansas total less Metropolitan Areas as defined by the Office of Management and Budget (OMB; released 3/6/2020). Per 1000: For nonmoney amounts, Per 1000=(county value / county population for the same year as the data) x 1000. \$ Per capita=(county value / county population for the same year as the data). Value= . indicates missing or suppressed data or value not calculated.

Banking

NUMBER OF BANKING OFFICES

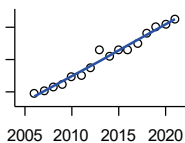


Federal Deposit Insurance Corporation, Data Book, Operating Banks and Branches

Year	County	State of Kansas	Non Metro Kansas	County Rank	Per 1000 or \$ Per Capita
2000	18	1,398	703	18	.
2001	17	1,424	708	19	.
2002	17	1,447	704	18	.
2003	15	1,461	708	24	.
2004	15	1,485	708	24	.
2005	16	1,505	711	23	.
2006	14	1,518	711	28	.
2007	14	1,543	717	28	.
2008	15	1,556	717	27	.
2009	15	1,569	716	27	.
2010	16	1,561	710	26	.
2011	16	1,559	707	25	.
2012	16	1,533	702	24	.
2013	16	1,518	696	23	.
2014	15	1,491	685	24	.
2015	14	1,472	675	27	.
2016	15	1,465	668	22	.
2017	14	1,452	666	24	.
2018	14	1,439	660	24	.
2019	14	1,439	663	25	.
2020	14	1,416	653	25	.
2021	13	1,392	641	29	.

Government

TANGIBLE ASSESSED VALUATION (KDoR, million\$; 2006-)



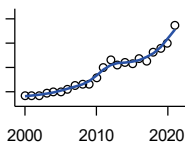
Kansas Department of Revenue, Division of Property Valuation, Statistical Report of Property Assessment and Taxation

Year	County	State of Kansas	Non Metro Kansas	County Rank	Per 1000 or \$ Per Capita
2006	222.6	28,964.3	10,316.9	25	6.9
2007	226.3	30,086.9	10,335.9	26	7.0
2008	232.7	31,000.3	10,856.9	27	7.2
2009	236.2	30,312.3	10,555.6	24	7.1
2010	248.1	29,450.2	10,158.7	21	7.3
2011	251.4	29,963.6	10,572.3	23	7.3
2012	263.1	30,382.9	10,876.2	22	7.6
2013	289.2	30,850.2	11,044.4	18	8.3
2014	279.9	31,783.0	11,388.9	19	8.0
2015	290.8	32,335.7	11,037.8	19	8.4
2016	289.7	33,156.3	10,889.6	20	8.4
2017	300.0	34,754.5	11,439.0	19	8.8
2018	315.6	36,566.1	11,907.1	19	9.3
2019	325.3	38,255.2	12,336.7	19	9.7
2020	329.0	39,333.9	12,219.3	18	9.6
2021	337.7	40,812.0	12,601.5	18	9.9

County: county value. Kansas: state value. County Rank: highest county value ranked #1. (\$000): thousands of dollars. Nonmetro Kansas: Kansas total less Metropolitan Areas as defined by the Office of Management and Budget (OMB; released 3/6/2020). Per 1000: For nonmoney amounts, Per 1000=(county value / county population for the same year as the data) x 1000. \$ Per capita=(county value / county population for the same year as the data). Value= . indicates missing or suppressed data or value not calculated.

Government

SALES TAX COLLECTIONS (\$)

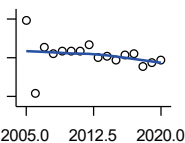


Kansas Department of Revenue. Use tax collections included beginning in calendar year 2018.

Year	County	State of Kansas	Non Metro Kansas	County Rank	Per 1000 or \$ Per Capita
2000	18,317,992	1,475,831,808	432,761,608	13	564,359.8
2001	18,357,196	1,481,026,688	426,316,284	13	570,418.1
2002	18,522,764	1,561,316,864	443,986,950	13	579,180.3
2003	19,184,672	1,626,782,976	461,658,700	13	594,228.7
2004	20,018,516	1,691,899,008	480,309,725	13	620,440.6
2005	19,792,950	1,744,980,352	497,494,867	13	611,762.1
2006	21,218,828	1,851,694,720	532,233,047	14	662,488.0
2007	22,660,672	1,917,546,752	559,319,583	13	704,447.6
2008	22,928,946	1,990,655,744	589,725,773	14	712,366.7
2009	22,949,688	1,866,223,078	548,627,132	13	692,131.3
2010	25,915,668	2,075,193,413	617,409,982	13	765,648.4
2011	30,089,536	2,347,193,367	702,671,534	13	875,408.4
2012	32,957,763	2,456,292,294	740,196,106	13	950,750.4
2013	31,099,957	2,489,204,048	746,226,565	13	891,652.8
2014	32,248,287	2,539,886,774	760,474,019	13	923,226.1
2015	31,554,417	2,642,374,740	750,090,163	13	911,213.6
2016	33,712,099	2,732,611,350	749,030,133	13	975,691.7
2017	32,776,246	2,726,104,521	744,246,491	13	957,865.6
2018	36,142,153	3,277,299,125	893,564,480	15	1,066,864.0
2019	37,998,854	3,395,631,405	939,607,762	14	1,130,279.1
2020	39,720,432	3,489,306,791	984,218,931	14	1,158,469.2
2021	47,240,038	3,981,293,227	1,098,391,422	13	1,382,945.6

Crime

CRIME INDEX OFFENSES



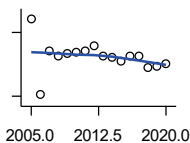
Kansas Bureau of Investigation, Note: Data are aggregated from reports by individual police departments and subject to be incomplete.

Year	County	State of Kansas	Non Metro Kansas	County Rank	Per 1000 or \$ Per Capita
2005	1,961	111,856	31,630	10	60.6
2006	67	110,032	.	64	2.1
2007	1,256	111,035	29,921	16	39.0
2008	1,115	93,996	27,342	15	34.6
2009	1,182	98,757	27,620	15	35.6
2010	1,186	98,354	26,909	16	35.0
2011	1,184	96,638	25,765	16	34.4
2012	1,323	98,914	26,963	13	38.2
2013	1,016	93,054	24,488	15	29.1
2014	1,039	86,323	23,341	16	29.7
2015	931	88,590	21,580	16	26.9
2016	1,071	90,589	21,565	15	31.0
2017	1,119	93,091	22,622	15	32.7
2018	778	92,062	20,325	17	23.0
2019	861	87,008	18,547	16	25.6
2020	923	87,346	17,762	14	26.9

County: county value. Kansas: state value. County Rank: highest county value ranked #1. (\$000): thousands of dollars. Nonmetro Kansas: Kansas total less Metropolitan Areas as defined by the Office of Management and Budget (OMB; released 3/6/2020). Per 1000: For nonmoney amounts, Per 1000=(county value / county population for the same year as the data) x 1000. \$ Per capita=(county value / county population for the same year as the data). Value= . indicates missing or suppressed data or value not calculated.

Crime

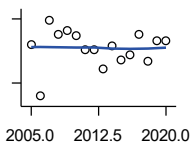
PROPERTY CRIMES



Kansas Bureau of Investigation, Note: Data are aggregated from reports by individual police departments and subject to be incomplete.

Year	County	State of Kansas	Non Metro Kansas	County Rank	Per 1000 or \$ Per Capita
2005	1,820	101,414	29,042	9	56.3
2006	48	99,110	.	69	1.5
2007	1,060	99,632	26,856	16	33.0
2008	952	83,964	24,367	16	29.6
2009	1,009	87,658	24,825	16	30.4
2010	1,025	87,926	24,133	17	30.3
2011	1,057	86,547	23,274	16	30.8
2012	1,194	88,707	24,220	13	34.4
2013	932	83,551	22,028	14	26.7
2014	903	76,794	20,858	16	25.9
2015	826	77,997	19,138	16	23.9
2016	956	79,549	19,207	15	27.7
2017	956	81,349	19,981	15	27.9
2018	677	79,695	17,769	18	20.0
2019	712	74,314	15,892	15	21.2
2020	773	73,450	15,100	14	22.5

VIOLENT CRIMES



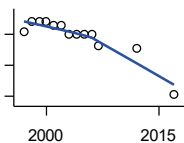
Kansas Bureau of Investigation, Note: Data are aggregated from reports by individual police departments and subject to be incomplete.

Year	County	State of Kansas	Non Metro Kansas	County Rank	Per 1000 or \$ Per Capita
2005	141	10,442	2,588	14	4.4
2006	19	10,922	.	42	0.6
2007	196	11,403	3,065	11	6.1
2008	163	10,032	2,975	12	5.1
2009	173	11,099	2,795	11	5.2
2010	161	10,428	2,776	11	4.8
2011	127	10,091	2,491	16	3.7
2012	129	10,207	2,743	17	3.7
2013	84	9,503	2,460	19	2.4
2014	136	9,529	2,483	13	3.9
2015	105	10,593	2,442	15	3.0
2016	115	11,040	2,358	17	3.3
2017	163	11,742	2,641	12	4.8
2018	101	12,367	2,556	19	3.0
2019	149	12,694	2,655	13	4.4
2020	150	13,896	2,662	13	4.4

County: county value. Kansas: state value. County Rank: highest county value ranked #1. (\$000): thousands of dollars. Nonmetro Kansas: Kansas total less Metropolitan Areas as defined by the Office of Management and Budget (OMB; released 3/6/2020). Per 1000: For nonmoney amounts, Per 1000=(county value / county population for the same year as the data) x 1000. \$ Per capita=(county value / county population for the same year as the data). Value= . indicates missing or suppressed data or value not calculated.

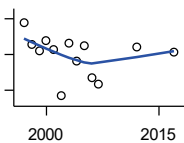
Agriculture

NUMBER OF FARMS



Kansas Agricultural Statistics, Kansas Farm Facts

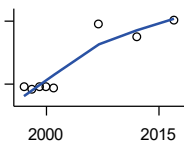
Year	County	State of Kansas	Non Metro Kansas	County Rank	Per 1000 or \$ Per Capita
1997	710	64,000	47,900	34	23.0
1998	740	65,000	48,850	30	23.4
1999	740	65,000	48,850	30	23.1
2000	740	64,000	48,030	31	22.8
2001	730	63,000	47,200	31	22.7
2002	730	63,000	47,200	31	22.8
2003	700	64,500	48,150	34	21.7
2004	700	64,500	48,150	34	21.7
2005	700	64,500	48,150	34	21.6
2006	700	64,000	47,650	34	21.9
2007	664	65,531	48,179	38	20.6
2012	655	61,773	45,655	35	18.9
2017	505	58,569	42,404	45	14.8



TOTAL ACRES HARVESTED

Kansas Agricultural Statistics, Kansas Farm Facts

Year	County	State of Kansas	Non Metro Kansas	County Rank	Per 1000 or \$ Per Capita
1997	355,510	22,846,000	19,430,580	9	11,498.9
1998	330,970	22,143,500	18,943,650	11	10,480.4
1999	323,920	21,708,900	18,581,750	10	10,125.0
2000	335,870	21,639,000	18,528,870	10	10,347.8
2001	325,490	21,847,900	18,689,750	11	10,114.0
2002	273,390	20,230,400	17,089,120	16	8,548.5
2003	332,520	21,827,700	18,661,920	9	10,299.5
2004	312,270	20,876,900	17,721,500	11	9,678.3
2005	330,190	21,936,500	18,807,930	9	10,205.5
2006	293,990	21,412,700	18,291,120	15	9,178.9
2007	286,263	19,886,655	17,164,743	15	8,899.0
2012	328,125	21,043,596	17,966,843	7	9,465.6
2017	323,270	21,837,465	18,543,057	8	9,447.4



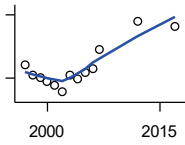
VALUE: LIVESTOCK AND POULTRY (\$000)

Kansas Agricultural Statistics, Kansas Farm Facts

Year	County	State of Kansas	Non Metro Kansas	County Rank	Per 1000 or \$ Per Capita
1997	89,529	2,806,445	2,500,305	5	2,895.8
1998	76,307	2,670,432	2,378,007	6	2,416.3
1999	87,943	2,849,061	2,554,528	4	2,748.9
2000	85,286	2,901,469	2,609,032	5	2,627.6
2001	81,980	2,693,274	2,437,187	7	2,547.4
2007	387,072	9,525,971	.	6	12,032.8
2012	327,537	11,476,571	10,883,216	7	9,448.6
2017	406,481	12,322,289	.	7	11,879.2

County: county value. Kansas: state value. County Rank: highest county value ranked #1. (\$000): thousands of dollars. Nonmetro Kansas: Kansas total less Metropolitan Areas as defined by the Office of Management and Budget (OMB; released 3/6/2020). Per 1000: For nonmoney amounts, Per 1000=(county value / county population for the same year as the data) x 1000. \$ Per capita=(county value / county population for the same year as the data). Value= . indicates missing or suppressed data or value not calculated.

Agriculture



VALUE:FIELD CROPS (\$000)
EXCLUDING GOVERNMENT
PROGRAM PAYMENTS

Kansas Agricultural Statistics, Kansas
Farm Facts

Year	County	State of Kansas	Non Metro Kansas	County Rank	Per 1000 or \$ Per Capita
1997	72,620	4,474,942	3,800,365	9	2,348.9
1998	62,565	3,594,319	3,124,409	6	1,981.2
1999	60,596	3,118,193	2,728,319	6	1,894.1
2000	56,404	2,915,660	2,540,052	7	1,737.8
2001	53,384	3,283,117	2,857,136	9	1,658.8
2002	46,595	3,011,855	2,560,580	16	1,457.0
2003	63,312	3,623,255	3,150,629	9	1,961.0
2004	58,945	3,445,688	2,896,603	12	1,826.9
2005	65,049	3,678,123	3,182,677	8	2,010.5
2006	69,375	4,308,716	3,684,132	16	2,166.0
2007	87,004	4,887,212	.	9	2,704.7
2012	114,300	6,983,993	6,044,551	16	3,297.3
2017	108,771	6,460,437	.	8	3,178.8

County: county value. Kansas: state value. County Rank: highest county value ranked #1. (\$000): thousands of dollars. Nonmetro Kansas: Kansas total less Metropolitan Areas as defined by the Office of Management and Budget (OMB; released 3/6/2020). Per 1000: For nonmoney amounts, Per 1000=(county value / county population for the same year as the data) x 1000. \$ Per capita=(county value / county population for the same year as the data). Value= . indicates missing or suppressed data or value not calculated.