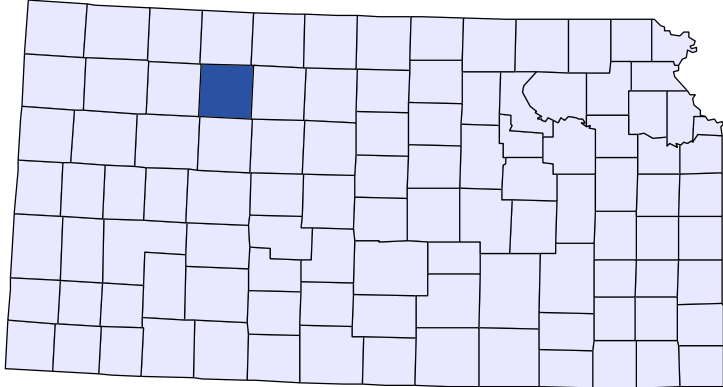




Kansas County Profiles

Graham County



The University
of Kansas

Institute for Policy
& Social Research

KU INSTITUTE FOR POLICY
& SOCIAL RESEARCH

The University of Kansas

1541 Lilac Lane, Rm. 607
Blake Hall
Lawrence, KS 66045-3129

Foreword

The Kansas County Profile Report is published by the Institute for Policy & Social Research (IPSR) at the University of Kansas with support from the KU University Center project.* Special thanks to Xanthippe Wedel, senior research data engineer, who compiles and updates the county profiles and Genna Hurd, associate researcher, who provides editorial review.

County reports can be generated for any county in Kansas by simply clicking on the county from the web site:

<https://ipsr.ku.edu/ksdata/kcced/profiles/>

The Kansas County Profile Report contains 12 categories of information: Population, Vital Statistics and Health, Housing, Education, Social Environment, Business, Employment, Income, Banking, Government, Crime, and Agriculture. For more information about Kansas, please refer to the Kansas Statistical Abstract, available online at:

<https://ipsr.ku.edu/ksdata/ksah/>

We are always looking for ways to improve the Kansas County Profile Report and we welcome your suggestions and comments. Please address any correspondence to the Institute for Policy & Social Research, The University of Kansas, 607 Blake Hall, 1541 Lilac Lane, Lawrence, Kansas 66045-3129, e-mail ipsr@ku.edu or call 785-864-3701.

**The KU University Center is a collaborative effort led by the Institute for Policy & Social Research at the University of Kansas. This project is supported by the Economic Development Administration, U.S. Department of Commerce, through its University Center Program.*

The mission of EDA is to lead the federal economic development agenda by promoting innovation and competitiveness, preparing American regions for growth and success in the worldwide economy.

Kansas County Profiles Table of Contents

Population	
Total Population (Decennial Census)	1
Estimated Population (Current Population Reports)	2
Urban Population	2
Rural Population	3
Net Migration (Decade Ending...)	3
Median Age	3
Population (Age Groups)	
Population Under 18 (Decennial Census)	3
Population Age 18 and Over (Decennial Census)	4
Population Age 65 and Over (Decennial Census)	4
Population Age 85 and Over (Decennial Census)	4
Vital Statistics and Health	
Live Births	5
Deaths	5
Marriages	6
Divorces and Annulments	6
Physicians: M.D. Physicians	7
Physicians: D.O. Physicians	7
Dentists	8
Number of Hospitals	8
Number of Hospital Beds	9
Housing	
Housing Units (Decennial Census)	9
Housing Units (Estimated)	10
Occupied Housing Units	10
Owner Occupied Housing Units	10
Renter Occupied Housing Units	11
Vacant Housing Units	11
Median Value (\$): Owner Occupied Housing Units	11
Median Contract Rent (\$)	12
Fair Market Rent: 2 Bedrooms	12
Education	
Population Age 25 and Over	13
Percent of Population 25+ with High School or Higher Education	13
Percent of Population 25+ with Bachelors Degree or Higher Education	14
Public School Enrollment (FTE- School Year Beginning...)	14
Pupil/Teacher Ratio (School Year Beginning...)	15

Kansas County Profiles Table of Contents

Social Environment

Total Child Care Facilities	15
Preschools	16
Food Stamp Beneficiaries	16
Percent of Population Receiving Food Stamps	17
Estimated Number of People in Poverty	17
Estimated Percent of People in Poverty	18
Estimated Number of Related Children Age 5 to 17 in Families in Poverty	18
Estimated Percent of Related Children Age 5 to 17 in Families in Poverty	19
Estimated Number Under 18 in Poverty	19
Estimated Percent Under 18 in Poverty	20

Business

Establishments: Total	21
Establishments: 1-19 Employees	22
Establishments: 20-99 Employees	22
Establishments: 100-499 Employees	23
Establishments: 500 or More Employees	23
Establishments: Forestry, Fishing, Hunting, and Ag Support	24
Establishments: Mining	24
Establishments: Utilities	25
Establishments: Construction	25
Establishments: Manufacturing	26
Establishments: Wholesale Trade	26
Establishments: Retail Trade	27
Establishments: Transportation and Warehousing	27
Establishments: Information	28
Establishments: Finance and Insurance	28
Establishments: Real Estate, Rental, and Leasing	29
Establishments: Professional, Scientific, and Technical Services	29
Establishments: Management of Companies and Enterprises	30
Establishments: Admin, Support, Waste Management, and Remediation	30
Establishments: Educational Services	31
Establishments: Health Care and Social Assistance	31
Establishments: Arts, Entertainment, and Recreation	32
Establishments: Accommodation and Food Services	32
Establishments: Other Services	33

Kansas County Profiles Table of Contents

Business	
Total Annual Payroll (\$000)	34
Total Annual Payroll (\$000): Forestry, Fishing, Hunting, and Ag Support	35
Total Annual Payroll (\$000): Mining	35
Total Annual Payroll (\$000): Utilities	36
Total Annual Payroll (\$000): Construction	36
Total Annual Payroll (\$000): Manufacturing	37
Total Annual Payroll (\$000): Wholesale Trade	37
Total Annual Payroll (\$000): Retail Trade	38
Total Annual Payroll (\$000): Transportation and Warehousing	38
Total Annual Payroll (\$000): Information	39
Total Annual Payroll (\$000): Finance and Insurance	39
Total Annual Payroll (\$000): Real Estate, Rental, and Leasing	40
Total Annual Payroll (\$000): Professional, Scientific, and Technical Services	40
Total Annual Payroll (\$000): Management of Companies and Enterprises	41
Total Annual Payroll (\$000): Admin, Support, Waste Management, and Remediation	41
Total Annual Payroll (\$000): Educational Services	42
Total Annual Payroll (\$000): Health Care and Social Assistance	42
Total Annual Payroll (\$000): Arts, Entertainment, and Recreation	43
Total Annual Payroll (\$000): Accommodation and Food Services	43
Total Annual Payroll (\$000): Other Services	44
Nominal Taxable Retail Sales (Million\$)	44
Retail Pull Factor	45
Employment	
Civilian Labor Force (BLS - Place of Residence)	46
Employed (BLS - Place of Residence)	47
Unemployed (BLS - Place of Residence)	48
Unemployment Rate (BLS - Place of Residence)	49
BEA Employment: Total (Place of Work)	49
BEA Employment: Farm	50
BEA Employment: Non-Farm	50
Average Wage per Job (\$)	51
BEA Employment: Forestry, Fishing, Hunting, and Ag Support	51
BEA Employment: Mining	52
BEA Employment: Utilities	52
BEA Employment: Construction	53
BEA Employment: Manufacturing	53
BEA Employment: Wholesale Trade	54
BEA Employment: Retail Trade	54
BEA Employment: Transportation and Warehousing	55
BEA Employment: Information	55
BEA Employment: Finance and Insurance	56
BEA Employment: Real Estate, Rental, and Leasing	56
BEA Employment: Professional and Technical Services	57
BEA Employment: Management of Companies and Enterprises	57
BEA Employment: Administrative and Waste Services	58
BEA Employment: Educational Services	58
BEA Employment: Health Care and Social Assistance	59
BEA Employment: Arts, Entertainment, and Recreation	59
BEA Employment: Government and Government Enterprises	60
BEA Employment: Accommodation and Food Services	60
BEA Employment: Other Services, Except Public Administration	61

Kansas County Profiles Table of Contents

Income

BEA Per Capita Personal Income (\$)	61
Sources of Personal Income: Total Personal Income (\$000)	62
Sources of Personal Income: Wages And Salaries (\$000)	62
Sources of Personal Income: Proprietors-Farm (\$000)	63
Sources of Personal Income: Proprietors-Nonfarm (\$000)	63
Sources of Personal Income: Dividends, Interest, Rent (\$000)	64
Sources of Personal Income: Transfer Payments (\$000)	64
Sources of Personal Income: Less Social Insurance (\$000)	65
HUD Median Family Income	65
HUD 30% Low-To-Medium Income (LMI) Limit - 4 Persons	66
HUD 50% Low-To-Medium Income (LMI) Limit - 4 Persons	66
HUD 80% Low-To-Medium Income (LMI) Limit - 4 Persons	66

Banking

Bank Deposits (\$000)	67
Number of Banks	67
Number of Banking Offices	68

Government

Tangible Assessed Valuation (million\$)	68
Sales Tax Collections	69

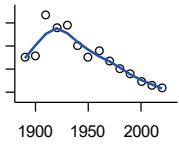
Crime

Crime Index Offenses	69
Property Crimes	70
Violent Crimes	70

Agriculture

Number of Farms	71
Total Acres Harvested	71
Value: Livestock and Poultry (\$000)	71
Value: Field Crops (\$000) Excluding Government Program Payments	72

Population



DECENNIAL CENSUS:TOTAL POPULATION

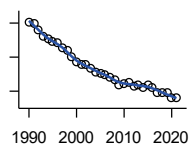
U.S. Census Bureau: Decennial Census

Year	County	State of Kansas	Non Metro Kansas	County Rank	Per 1000 or \$ Per Capita
1890	5,029	1,427,096	968,413	78	.
1900	5,173	1,470,495	981,206	75	.
1910	8,700	1,690,949	1,138,294	73	.
1920	7,624	1,769,257	1,153,525	75	.
1930	7,772	1,880,999	1,180,056	77	.
1940	6,071	1,801,028	1,097,216	83	.
1950	5,020	1,905,299	1,046,823	84	.
1960	5,586	2,178,611	1,021,510	75	.
1970	4,751	2,246,578	958,104	79	.
1980	3,995	2,363,679	980,085	87	.
1990	3,543	2,477,574	939,416	88	.
2000	2,946	2,688,418	959,507	95	.
2010	2,597	2,853,118	929,981	94	.
2020	2,415	2,937,880	892,006	97	.

County: county value. Kansas: state value. County Rank: highest county value ranked #1. (\$000): thousands of dollars. Nonmetro Kansas: Kansas total less Metropolitan Areas as defined by the Office of Management and Budget (OMB; released 3/6/2020). Per 1000: For nonmoney amounts, Per 1000=(county value / county population for the same year as the data) x 1000. \$ Per capita=(county value / county population for the same year as the data). Value= . indicates missing or suppressed data or value not calculated.

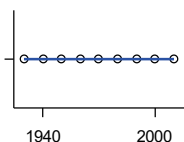
Population

ESTIMATED POPULATION



U.S. Census Bureau

Year	County	State of Kansas	Non Metro Kansas	County Rank	Per 1000 or \$ Per Capita
1990	3,518	2,481,349	938,607	88	.
1991	3,487	2,498,722	938,965	88	.
1992	3,406	2,532,394	942,759	89	.
1993	3,311	2,556,547	947,515	89	.
1994	3,265	2,580,513	952,178	90	.
1995	3,224	2,601,007	957,771	90	.
1996	3,212	2,614,554	959,455	91	.
1997	3,145	2,635,292	960,225	93	.
1998	3,092	2,660,598	960,569	93	.
1999	3,001	2,678,338	960,704	94	.
2000	2,925	2,693,681	959,230	95	.
2001	2,896	2,702,162	952,607	95	.
2002	2,886	2,713,535	945,985	95	.
2003	2,842	2,723,004	941,474	94	.
2004	2,786	2,734,373	937,623	94	.
2005	2,762	2,745,299	932,852	94	.
2006	2,751	2,762,931	928,809	94	.
2007	2,707	2,783,785	927,643	94	.
2008	2,669	2,808,076	926,248	92	.
2009	2,592	2,832,704	926,755	94	.
2010	2,602	2,858,190	930,028	94	.
2011	2,635	2,869,225	927,675	94	.
2012	2,581	2,885,257	925,152	94	.
2013	2,588	2,893,212	922,383	94	.
2014	2,557	2,900,475	917,854	94	.
2015	2,591	2,909,011	912,199	92	.
2016	2,562	2,910,844	905,099	93	.
2017	2,485	2,908,718	897,981	96	.
2018	2,475	2,911,359	892,656	97	.
2019	2,482	2,913,314	887,455	96	.
2020	2,405	2,935,880	889,750	97	.
2021	2,400	2,934,582	886,438	96	.



URBAN POPULATION

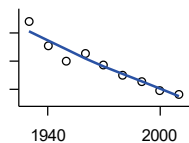
U.S. Census Bureau: Decennial Census

Year	County	State of Kansas	Non Metro Kansas	County Rank	Per 1000 or \$ Per Capita
1930	0	729,834	336,666	105	.
1940	0	753,941	349,228	105	.
1950	0	993,220	398,923	105	.
1960	0	1,328,741	457,447	105	.
1970	0	1,484,870	450,543	105	.
1980	0	1,575,899	474,769	105	.
1990	0	1,712,564	464,205	105	.
2000	0	1,920,081	488,011	105	.
2010	0	2,116,961	485,780	105	.

County: county value. Kansas: state value. County Rank: highest county value ranked #1. (\$000): thousands of dollars. Nonmetro Kansas: Kansas total less Metropolitan Areas as defined by the Office of Management and Budget (OMB; released 3/6/2020). Per 1000: For nonmoney amounts, Per 1000=(county value / county population for the same year as the data) x 1000. \$ Per capita=(county value / county population for the same year as the data). Value= . indicates missing or suppressed data or value not calculated.

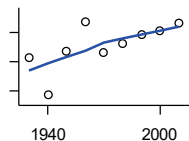
Population

RURAL POPULATION



U.S. Census Bureau

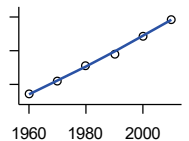
Year	County	State of Kansas	Non Metro Kansas	County Rank	Per 1000 or \$ Per Capita
1930	7,772	1,151,165	843,390	72	.
1940	6,071	1,047,087	747,988	79	.
1950	5,020	912,079	647,900	79	.
1960	5,586	849,870	564,063	64	.
1970	4,751	761,708	509,972	65	.
1980	3,995	787,780	505,873	75	.
1990	3,543	765,010	475,211	76	.
2000	2,946	768,337	471,900	88	.
2010	2,597	736,157	444,201	88	.



NET MIGRATION: DECADE ENDING...

calculated by the Institute for Policy and Social Research, The University of Kansas

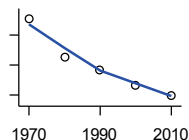
Year	County	State of Kansas	Non Metro Kansas	County Rank	Per 1000 or \$ Per Capita
1930	-1,347	-66,132	-101,869	64	-173.3
1940	-2,649	-192,649	-166,022	84	-436.3
1950	-1,142	-84,329	-158,379	39	-227.5
1960	-132	-38,999	-146,640	14	-23.6
1970	-1,205	-119,662	-105,116	70	-253.6
1980	-878	-21,983	-6,184	96	-219.8
1990	-575	-61,835	-79,274	46	-162.3
2000	-453	68,960	4,247	97	-153.8
2010	-198	5,578	-50,648	41	-76.2



MEDIAN AGE

U.S. Census Bureau: Decennial Census

Year	County	State of Kansas	Non Metro Kansas	County Rank	Per 1000 or \$ Per Capita
1960	27.2	26.9	.	87	.
1970	30.9	28.7	.	71	.
1980	35.5	30.1	.	42	.
1990	39.1	32.9	.	27	.
2000	44.4	35.2	.	9	.
2010	49.4	36.0	.	7	.



POPULATION UNDER 18 (DECENNIAL CENSUS)

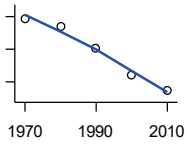
U.S. Census Bureau: Decennial Census

Year	County	State of Kansas	Non Metro Kansas	County Rank	Per 1000 or \$ Per Capita
1970	1,773	746,354	306,227	73	.
1980	1,121	649,035	263,919	85	.
1990	927	661,614	250,107	87	.
2000	664	712,993	250,757	99	.
2010	497	726,939	229,213	99	.

County: county value. Kansas: state value. County Rank: highest county value ranked #1. (\$000): thousands of dollars. Nonmetro Kansas: Kansas total less Metropolitan Areas as defined by the Office of Management and Budget (OMB; released 3/6/2020). Per 1000: For nonmoney amounts, Per 1000=(county value / county population for the same year as the data) x 1000. \$ Per capita=(county value / county population for the same year as the data). Value= . indicates missing or suppressed data or value not calculated.

Population

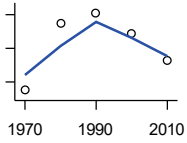
**POPULATION AGE 18 AND OVER
(DECENNIAL CENSUS)**



U.S. Census Bureau: Decennial Census

Year	County	State of Kansas	Non Metro Kansas	County Rank	Per 1000 or \$ Per Capita
1970	2,978	1,500,224	654,288	82	.
1980	2,882	1,714,282	716,684	88	.
1990	2,616	1,815,960	689,309	88	.
2000	2,282	1,975,425	709,154	92	.
2010	2,100	2,126,179	700,768	92	.

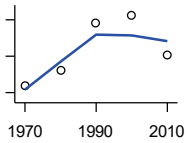
**POPULATION AGE 65 AND OVER
(DECENNIAL CENSUS)**



U.S. Census Bureau: Decennial Census

Year	County	State of Kansas	Non Metro Kansas	County Rank	Per 1000 or \$ Per Capita
1970	630	266,201	149,049	86	.
1980	710	306,263	164,932	87	.
1990	722	342,571	168,579	86	.
2000	697	356,229	161,769	89	.
2010	666	376,116	154,214	86	.

**POPULATION AGE 85 AND OVER
(DECENNIAL CENSUS)**



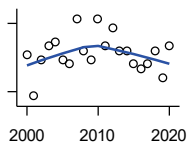
U.S. Census Bureau: Decennial Census

Year	County	State of Kansas	Non Metro Kansas	County Rank	Per 1000 or \$ Per Capita
1970	47	23,899	13,698	89	.
1980	64	33,455	18,804	92	.
1990	116	42,241	22,970	81	.
2000	125	51,770	26,644	84	.
2010	81	59,318	26,197	96	.

County: county value. Kansas: state value. County Rank: highest county value ranked #1. (\$000): thousands of dollars. Nonmetro Kansas: Kansas total less Metropolitan Areas as defined by the Office of Management and Budget (OMB; released 3/6/2020). Per 1000: For nonmoney amounts, Per 1000=(county value / county population for the same year as the data) x 1000. \$ Per capita=(county value / county population for the same year as the data). Value= . indicates missing or suppressed data or value not calculated.

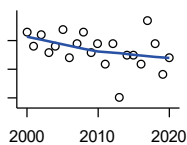
Vital Statistics and Health

BIRTHS (LIVE)



Kansas Department of Health and Environment

Year	County	State of Kansas	Non Metro Kansas	County Rank	Per 1000 or \$ Per Capita
2000	23	39,654	12,980	100	7.8
2001	14	38,832	12,527	105	4.8
2002	22	39,338	12,476	98	7.6
2003	25	39,353	12,342	97	8.8
2004	26	39,553	12,398	96	9.3
2005	22	39,701	12,382	99	8.0
2006	21	40,896	12,726	99	7.6
2007	31	41,951	12,990	90	11.5
2008	24	41,815	12,970	95	9.0
2009	22	41,388	12,949	102	8.5
2010	31	40,439	12,200	87	11.9
2011	25	39,628	12,098	95	9.5
2012	29	40,304	12,217	94	11.2
2013	24	38,805	11,877	99	9.3
2014	24	39,193	12,052	100	9.4
2015	21	39,126	11,836	100	8.1
2016	20	38,048	11,467	102	7.8
2017	21	36,464	10,968	99	8.5
2018	24	36,268	10,826	97	9.7
2019	18	35,395	10,506	100	7.3
2020	25	34,368	10,222	94	10.4



DEATHS

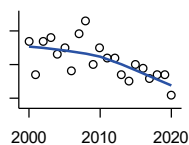
Kansas Department of Health and Environment

Year	County	State of Kansas	Non Metro Kansas	County Rank	Per 1000 or \$ Per Capita
2000	43	24,676	11,175	89	14.6
2001	38	24,590	10,807	93	13.1
2002	42	24,968	11,079	87	14.6
2003	36	24,417	10,615	92	12.7
2004	38	23,720	10,369	88	13.6
2005	44	24,632	10,599	85	15.9
2006	34	24,489	10,538	93	12.4
2007	39	24,413	10,601	89	14.4
2008	43	24,896	10,593	84	16.1
2009	36	23,997	9,938	89	13.9
2010	39	24,428	10,105	85	15.0
2011	32	25,114	10,520	97	12.1
2012	39	25,084	10,259	86	15.1
2013	20	25,347	10,249	101	7.7
2014	35	25,731	10,275	94	13.7
2015	35	26,611	10,539	93	13.5
2016	32	26,129	10,231	91	12.5
2017	47	26,725	10,452	78	18.9
2018	39	27,213	10,389	87	15.8
2019	28	27,312	10,569	96	11.3
2020	34	31,667	11,850	94	14.1

County: county value. Kansas: state value. County Rank: highest county value ranked #1. (\$000): thousands of dollars. Nonmetro Kansas: Kansas total less Metropolitan Areas as defined by the Office of Management and Budget (OMB; released 3/6/2020). Per 1000: For nonmoney amounts, Per 1000=(county value / county population for the same year as the data) x 1000. \$ Per capita=(county value / county population for the same year as the data). Value= . indicates missing or suppressed data or value not calculated.

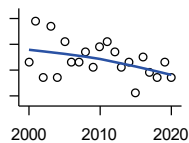
Vital Statistics and Health

MARRIAGES



Kansas Department of Health and Environment

Year	County	State of Kansas	Non Metro Kansas	County Rank	Per 1000 or \$ Per Capita
2000	22	20,426	7,333	90	7.5
2001	12	20,457	7,441	102	4.1
2002	22	19,783	6,794	89	7.6
2003	23	18,722	6,469	85	8.1
2004	18	19,174	6,756	93	6.5
2005	20	18,745	6,481	87	7.2
2006	13	18,836	6,433	97	4.7
2007	24	18,910	6,464	81	8.9
2008	28	18,717	6,283	72	10.5
2009	15	18,268	6,015	94	5.8
2010	20	18,150	5,925	84	7.7
2011	17	17,897	5,977	93	6.5
2012	17	18,154	5,752	87	6.6
2013	12	17,328	5,533	100	4.6
2014	10	17,655	5,535	98	3.9
2015	15	17,595	5,400	88	5.8
2016	14	17,948	5,340	91	5.5
2017	11	17,274	5,163	98	4.4
2018	12	16,362	4,999	92	4.8
2019	12	15,403	4,650	90	4.8
2020	6	14,038	4,066	100	2.5



DIVORCES AND ANNULMENTS

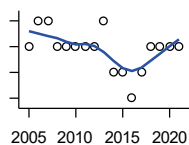
Kansas Department of Health and Environment

Year	County	State of Kansas	Non Metro Kansas	County Rank	Per 1000 or \$ Per Capita
2000	9	10,105	4,000	90	3.1
2001	17	9,885	3,818	69	5.9
2002	6	9,645	3,716	98	2.1
2003	16	8,644	3,464	68	5.6
2004	6	8,759	3,506	97	2.2
2005	13	8,476	3,311	75	4.7
2006	9	9,145	3,387	84	3.3
2007	9	9,347	3,402	88	3.3
2008	11	9,818	3,655	80	4.1
2009	8	10,333	3,463	88	3.1
2010	12	10,579	3,530	82	4.6
2011	13	10,445	3,347	73	4.9
2012	11	9,782	3,040	77	4.3
2013	8	9,085	2,973	87	3.1
2014	9	8,441	2,682	84	3.5
2015	3	8,036	2,704	104	1.2
2016	10	7,198	2,424	72	3.9
2017	7	6,494	2,315	86	2.8
2018	6	6,538	2,269	83	2.4
2019	9	6,398	2,357	74	3.6
2020	6	5,169	1,866	80	2.5

County: county value. Kansas: state value. County Rank: highest county value ranked #1. (\$000): thousands of dollars. Nonmetro Kansas: Kansas total less Metropolitan Areas as defined by the Office of Management and Budget (OMB; released 3/6/2020). Per 1000: For nonmoney amounts, Per 1000=(county value / county population for the same year as the data) x 1000. \$ Per capita=(county value / county population for the same year as the data). Value= . indicates missing or suppressed data or value not calculated.

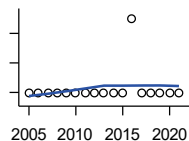
Vital Statistics and Health

PHYSICIANS: M.D. PHYSICIANS



Kansas Department of Health and Environment (1981-2005,2010-);Kansas Health Policy Authority (2006-2009)

Year	County	State of Kansas	Non Metro Kansas	County Rank	Per 1000 or \$ Per Capita
2005	2	4,241	912	81	0.7
2006	3	4,310	953	70	1.1
2007	3	5,309	1,046	74	1.1
2008	2	5,110	1,016	85	0.7
2009	2	5,249	996	79	0.8
2010	2	5,192	979	84	0.8
2011	2	5,243	983	83	0.8
2012	2	5,693	1,033	84	0.8
2013	3	6,106	1,071	71	1.2
2014	1	5,839	951	97	0.4
2015	1	5,703	855	96	0.4
2016	0	4,278	643	105	0.0
2017	1	6,332	1,047	99	0.4
2018	2	6,079	1,065	87	0.8
2019	2	6,435	1,036	86	0.8
2020	2	6,668	1,045	87	0.8
2021	2	6,745	1,042	87	0.8



PHYSICIANS: D.O. PHYSICIANS

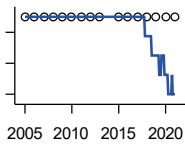
Kansas Department of Health and Environment (1981-2005,2010-);Kansas Health Policy Authority (2006-2009)

Year	County	State of Kansas	Non Metro Kansas	County Rank	Per 1000 or \$ Per Capita
2005	0	553	174	105	0.0
2006	0	508	171	105	0.0
2007	0	569	169	105	0.0
2008	0	558	166	105	0.0
2009	0	564	160	105	0.0
2010	0	583	169	105	0.0
2011	0	502	152	105	0.0
2012	0	718	200	105	0.0
2013	0	829	210	105	0.0
2014	0	817	189	105	0.0
2015	0	819	190	105	0.0
2016	1	632	136	58	0.4
2017	0	579	129	105	0.0
2018	0	871	164	105	0.0
2019	0	951	212	105	0.0
2020	0	1,018	204	105	0.0
2021	0	1,095	217	105	0.0

County: county value. Kansas: state value. County Rank: highest county value ranked #1. (\$000): thousands of dollars. Nonmetro Kansas: Kansas total less Metropolitan Areas as defined by the Office of Management and Budget (OMB; released 3/6/2020). Per 1000: For nonmoney amounts, Per 1000=(county value / county population for the same year as the data) x 1000. \$ Per capita=(county value / county population for the same year as the data). Value= . indicates missing or suppressed data or value not calculated.

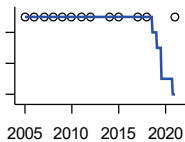
Vital Statistics and Health

DENTISTS



Kansas Department of Health and Environment (1981-2006,2010-);Kansas Health Policy Authority (2007-2009)

Year	County	State of Kansas	Non Metro Kansas	County Rank	Per 1000 or \$ Per Capita
2005	1	1,347	363	92	0.4
2006	1	1,381	361	92	0.4
2007	1	1,335	350	91	0.4
2008	1	1,392	353	90	0.4
2009	1	1,353	350	90	0.4
2010	1	1,401	365	91	0.4
2011	1	1,338	346	88	0.4
2012	1	1,434	392	86	0.4
2013	1	1,212	328	87	0.4
2015	1	1,240	327	89	0.4
2016	1	1,456	350	87	0.4
2017	1	1,467	350	87	0.4
2018	1	1,604	359	86	0.4
2019	1	1,646	355	86	0.4
2020	1	1,646	355	86	0.4
2021	1	1,688	362	85	0.4



NUMBER OF HOSPITALS

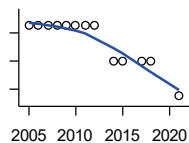
American Hospital Association, American Hospital Association Guide to the Health Care Field

Year	County	State of Kansas	Non Metro Kansas	County Rank	Per 1000 or \$ Per Capita
2005	1	158	105	96	.
2006	1	158	105	96	.
2007	1	159	104	95	.
2008	1	159	104	95	.
2009	1	158	105	96	.
2010	1	158	104	96	.
2011	1	158	103	96	.
2012	1	157	103	96	.
2014	1	156	.	96	.
2015	1	155	103	96	.
2017	1	157	102	96	.
2018	1	154	99	95	.
2021	1	151	.	95	.

County: county value. Kansas: state value. County Rank: highest county value ranked #1. (\$000): thousands of dollars. Nonmetro Kansas: Kansas total less Metropolitan Areas as defined by the Office of Management and Budget (OMB; released 3/6/2020). Per 1000: For nonmoney amounts, Per 1000=(county value / county population for the same year as the data) x 1000. \$ Per capita=(county value / county population for the same year as the data). Value= . indicates missing or suppressed data or value not calculated.

Vital Statistics and Health

NUMBER OF HOSPITAL BEDS

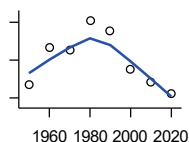


Kansas Department of Health and Environment

Year	County	State of Kansas	Non Metro Kansas	County Rank	Per 1000 or \$ Per Capita
2005	25	12,389	5,687	85	9.1
2006	25	11,992	5,514	85	9.1
2007	25	12,171	5,637	84	9.2
2008	25	12,332	5,700	85	9.4
2009	25	12,283	5,652	86	9.6
2010	25	12,218	5,521	86	9.6
2011	25	12,182	5,335	85	9.5
2012	25	12,002	5,355	85	9.7
2014	20	12,034	.	90	7.8
2015	20	11,926	5,330	91	7.7
2017	20	11,491	4,825	91	8.0
2018	20	11,448	4,583	87	8.1
2021	15	11,199	.	90	6.3

Housing

HOUSING UNITS (DECENNIAL)



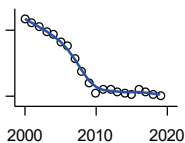
U.S. Census Bureau: Decennial Census

Year	County	State of Kansas	Non Metro Kansas	County Rank	Per 1000 or \$ Per Capita
1950	1,470	586,650	328,210	86	292.8
1960	1,664	672,899	329,380	82	297.9
1970	1,655	789,735	363,824	87	348.3
1980	1,809	955,207	416,877	87	452.8
1990	1,753	1,044,112	417,062	85	494.8
2000	1,553	1,131,395	422,218	91	527.2
2010	1,484	1,233,215	424,050	90	571.4
2020	1,422	1,275,689	413,120	89	588.8

County: county value. Kansas: state value. County Rank: highest county value ranked #1. (\$000): thousands of dollars. Nonmetro Kansas: Kansas total less Metropolitan Areas as defined by the Office of Management and Budget (OMB; released 3/6/2020). Per 1000: For nonmoney amounts, Per 1000=(county value / county population for the same year as the data) x 1000. \$ Per capita=(county value / county population for the same year as the data). Value= . indicates missing or suppressed data or value not calculated.

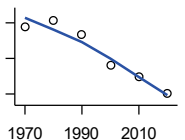
Housing

HOUSING UNITS (ESTIMATED)



U.S. Census Bureau

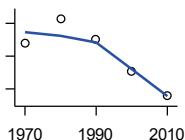
Year	County	State of Kansas	Non Metro Kansas	County Rank	Per 1000 or \$ Per Capita
2000	1,550	1,134,529	422,560	91	526.1
2001	1,547	1,146,858	423,876	91	534.2
2002	1,543	1,160,129	425,089	90	534.7
2003	1,539	1,171,620	425,936	90	541.5
2004	1,536	1,184,702	426,593	90	551.3
2005	1,529	1,195,791	426,964	90	553.6
2006	1,526	1,206,692	426,713	90	554.7
2007	1,514	1,217,608	426,090	90	559.3
2008	1,503	1,225,625	425,768	90	563.1
2009	1,492	1,230,552	424,776	90	575.6
2010	1,483	1,234,456	424,174	90	571.0
2011	1,486	1,238,052	424,549	90	563.9
2012	1,486	1,241,992	425,116	90	575.7
2013	1,484	1,246,675	425,699	90	573.4
2014	1,483	1,253,284	426,269	90	580.0
2015	1,482	1,258,999	426,844	90	572.0
2016	1,486	1,265,684	427,465	90	580.0
2017	1,484	1,273,536	427,746	90	597.2
2018	1,482	1,280,649	428,099	90	598.8
2019	1,481	1,288,401	428,495	91	596.7



OCCUPIED HOUSING UNITS

U.S. Census Bureau: Decennial Census

Year	County	State of Kansas	Non Metro Kansas	County Rank	Per 1000 or \$ Per Capita
1970	1,480	727,364	326,494	83	311.5
1980	1,514	872,239	371,693	89	379.0
1990	1,435	944,726	365,901	87	405.0
2000	1,263	1,037,891	375,313	92	428.7
2010	1,196	1,112,096	370,269	91	460.5
2020	1,103	1,151,360	356,330	91	456.7



OWNER OCCUPIED HOUSING UNITS

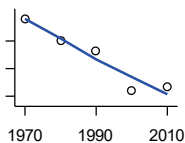
U.S. Census Bureau: Decennial Census

Year	County	State of Kansas	Non Metro Kansas	County Rank	Per 1000 or \$ Per Capita
1970	1,090	502,585	236,338	85	229.4
1980	1,164	612,433	277,096	89	291.4
1990	1,102	641,762	263,099	86	311.0
2000	1,004	718,703	271,350	89	340.8
2010	930	753,532	261,763	89	358.1

County: county value. Kansas: state value. County Rank: highest county value ranked #1. (\$000): thousands of dollars. Nonmetro Kansas: Kansas total less Metropolitan Areas as defined by the Office of Management and Budget (OMB; released 3/6/2020). Per 1000: For nonmoney amounts, Per 1000=(county value / county population for the same year as the data) x 1000. \$ Per capita=(county value / county population for the same year as the data). Value= . indicates missing or suppressed data or value not calculated.

Housing

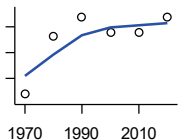
RENTER OCCUPIED HOUSING UNITS



U.S. Census Bureau: Decennial Census

Year	County	State of Kansas	Non Metro Kansas	County Rank	Per 1000 or \$ Per Capita
1970	390	224,779	90,156	79	82.1
1980	350	259,806	94,597	85	87.6
1990	333	302,964	102,802	87	94.0
2000	259	319,188	103,963	96	87.9
2010	266	358,564	108,506	93	102.4

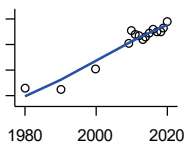
VACANT HOUSING UNITS



U.S. Census Bureau: Decennial Census

Year	County	State of Kansas	Non Metro Kansas	County Rank	Per 1000 or \$ Per Capita
1970	169	60,058	35,954	90	35.6
1980	282	77,912	41,584	74	70.6
1990	318	99,386	51,161	81	89.8
2000	290	93,309	46,904	82	98.4
2010	288	121,119	53,781	82	110.9
2020	319	124,329	56,790	82	132.1

MEDIAN VALUE (\$): OWNER OCCUPIED HOUSING UNITS



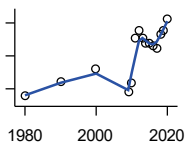
U.S. Census Bureau, Decennial Census (- 2000), (2009 -) American Community Survey five-year average ending in year shown.

Year	County	State of Kansas	Non Metro Kansas	County Rank	Per 1000 or \$ Per Capita
1980	25,400	37,800	.	64	.
1990	24,900	52,200	.	90	.
2000	41,300	83,500	.	83	.
2009	61,300	118,500	.	78	.
2010	71,200	122,600	.	60	.
2011	67,500	125,500	.	74	.
2012	67,400	127,400	.	74	.
2013	63,800	128,400	.	82	.
2014	66,000	129,400	.	85	.
2015	68,600	132,000	.	84	.
2016	72,000	135,300	.	85	.
2017	69,600	139,200	.	91	.
2018	70,100	145,400	.	92	.
2019	72,500	151,900	.	92	.
2020	77,500	157,600	.	82	.

County: county value. Kansas: state value. County Rank: highest county value ranked #1. (\$000): thousands of dollars. Nonmetro Kansas: Kansas total less Metropolitan Areas as defined by the Office of Management and Budget (OMB; released 3/6/2020). Per 1000: For nonmoney amounts, Per 1000=(county value / county population for the same year as the data) x 1000. \$ Per capita=(county value / county population for the same year as the data). Value= . indicates missing or suppressed data or value not calculated.

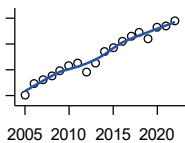
Housing

MEDIAN CONTRACT RENT (\$)



U.S. Census Bureau, Decennial Census (- 2000), (2009 -) American Community Survey five-year average ending in year shown.

Year	County	State of Kansas	Non Metro Kansas	County Rank	Per 1000 or \$ Per Capita
1980	155	219	.	71	.
1990	245	372	.	83	.
2000	320	498	.	93	.
2009	179	491	.	105	.
2010	233	507	.	104	.
2011	506	699	.	71	.
2012	551	715	.	55	.
2013	508	732	.	82	.
2014	480	748	.	97	.
2015	474	757	.	98	.
2016	465	775	.	100	.
2017	446	801	.	105	.
2018	529	831	.	95	.
2019	554	850	.	95	.
2020	625	863	.	68	.



FAIR MARKET RENT: 2 BEDROOMS

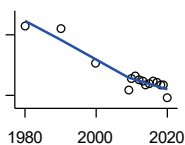
U.S. Department of Housing and Urban Development (HUD)

Year	County	State of Kansas	Non Metro Kansas	County Rank	Per 1000 or \$ Per Capita
2005	454	.	.	83	.
2006	497	.	.	105	.
2007	512	.	.	105	.
2008	525	628	.	105	.
2009	547	653	.	105	.
2010	566	678	.	105	.
2011	575	684	.	105	.
2012	540	660	.	105	.
2013	577	712	.	105	.
2014	622	746	.	105	.
2015	634	756	.	105	.
2016	658	781	.	105	.
2017	681	811	.	105	.
2018	697	815	.	105	.
2019	672	828	.	105	.
2020	714	855	.	105	.
2021	718	874	.	105	.
2022	742	879	.	105	.

County: county value. Kansas: state value. County Rank: highest county value ranked #1. (\$000): thousands of dollars. Nonmetro Kansas: Kansas total less Metropolitan Areas as defined by the Office of Management and Budget (OMB; released 3/6/2020). Per 1000: For nonmoney amounts, Per 1000=(county value / county population for the same year as the data) x 1000. \$ Per capita=(county value / county population for the same year as the data). Value= . indicates missing or suppressed data or value not calculated.

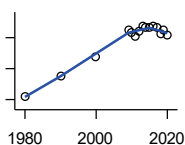
Education

POPULATION AGE 25+



U.S. Census Bureau, Decennial Census (- 2000), (2009 -) American Community Survey five-year average ending in year shown.

Year	County	State of Kansas	Non Metro Kansas	County Rank	Per 1000 or \$ Per Capita
1980	2,481	1,388,102	596,639	.	.
1990	2,456	1,565,936	608,745	.	.
2000	2,125	1,701,207	618,131	.	.
2009	1,853	1,775,427	600,188	.	.
2010	1,968	1,802,904	608,716	.	.
2011	1,998	1,822,400	610,386	.	.
2012	1,956	1,838,079	611,103	.	.
2013	1,937	1,850,010	610,374	.	.
2014	1,903	1,861,894	609,612	.	.
2015	1,917	1,869,698	606,967	.	.
2016	1,941	1,878,495	604,563	.	.
2017	1,934	1,886,741	601,076	.	.
2018	1,901	1,894,675	598,487	.	.
2019	1,899	1,902,279	595,501	.	.
2020	1,772	1,911,990	593,923	.	.



PERCENT HS GRADUATE OR HIGHER AGE 25+

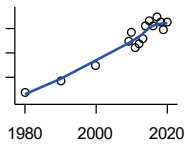
U.S. Census Bureau, Decennial Census (- 2000), (2009 -) American Community Survey five-year average ending in year shown.

Year	County	State of Kansas	Non Metro Kansas	County Rank	Per 1000 or \$ Per Capita
1980	71.0	73.3	.	42	.
1990	77.5	81.3	.	55	.
2000	83.6	86.0	.	69	.
2009	92.6	89.0	.	13	.
2010	91.6	89.2	.	18	.
2011	90.6	89.5	.	34	.
2012	92.0	89.7	.	19	.
2013	93.9	89.8	.	9	.
2014	93.4	90.0	.	12	.
2015	93.3	90.2	.	15	.
2016	93.8	90.3	.	18	.
2017	93.3	90.5	.	20	.
2018	91.2	90.7	.	55	.
2019	92.6	91.0	.	35	.
2020	90.7	91.4	.	71	.

County: county value. Kansas: state value. County Rank: highest county value ranked #1. (\$000): thousands of dollars. Nonmetro Kansas: Kansas total less Metropolitan Areas as defined by the Office of Management and Budget (OMB; released 3/6/2020). Per 1000: For nonmoney amounts, Per 1000=(county value / county population for the same year as the data) x 1000. \$ Per capita=(county value / county population for the same year as the data). Value= . indicates missing or suppressed data or value not calculated.

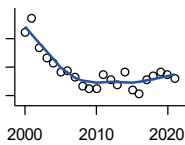
Education

PERCENT BACHELORS DEGREE OR HIGHER AGE 25+



U.S. Census Bureau, Decennial Census (- 2000), (2009 -) American Community Survey five-year average ending in year shown.

Year	County	State of Kansas	Non Metro Kansas	County Rank	Per 1000 or \$ Per Capita
1980	11.9	17.0	.	52	.
1990	14.2	21.1	.	38	.
2000	17.4	25.8	.	47	.
2009	22.4	28.8	.	19	.
2010	24.2	29.3	.	13	.
2011	21.1	29.7	.	32	.
2012	21.9	30.0	.	28	.
2013	22.9	30.3	.	27	.
2014	25.6	30.7	.	16	.
2015	26.5	31.0	.	17	.
2016	25.5	31.6	.	24	.
2017	27.4	32.3	.	16	.
2018	26.2	32.9	.	24	.
2019	24.7	33.4	.	32	.
2020	26.3	33.9	.	28	.



PUBLIC SCHOOL ENROLLMENT (FTE) SCHOOL YEAR BEGINNING...

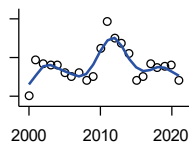
Kansas State Department of Education

Year	County	State of Kansas	Non Metro Kansas	County Rank	Per 1000 or \$ Per Capita
2000	462.0	448,150.8	166,722.5	99	156.8
2001	486.0	447,047.1	164,365.0	93	167.8
2002	433.4	444,860.3	161,555.4	98	150.2
2003	416.6	443,620.6	159,130.2	96	146.6
2004	407.1	441,957.2	156,566.3	96	146.1
2005	390.6	442,708.4	155,197.2	97	141.4
2006	394.7	444,878.7	153,842.3	96	143.5
2007	381.7	446,831.3	152,337.1	97	141.0
2008	365.6	447,730.0	150,572.7	96	137.0
2009	363.1	453,202.5	151,246.8	95	140.1
2010	362.0	455,405.0	151,023.8	95	139.4
2011	387.6	456,000.5	150,257.9	93	147.1
2012	377.5	458,496.4	150,463.0	93	146.3
2013	368.5	461,950.0	150,420.9	94	142.4
2014	392.0	464,395.4	150,499.4	92	153.3
2015	359.8	463,504.0	149,539.3	94	138.9
2016	352.5	459,920.3	147,293.5	95	137.6
2017	378.5	477,977.9	152,096.3	94	152.3
2018	385.5	476,481.7	150,456.8	94	155.8
2019	391.5	476,525.1	150,045.2	92	157.7
2020	386.9	462,088.0	146,369.6	92	160.2
2021	379.0	463,652.4	147,500.4	94	157.9

County: county value. Kansas: state value. County Rank: highest county value ranked #1. (\$000): thousands of dollars. Nonmetro Kansas: Kansas total less Metropolitan Areas as defined by the Office of Management and Budget (OMB; released 3/6/2020). Per 1000: For nonmoney amounts, Per 1000=(county value / county population for the same year as the data) x 1000. \$ Per capita=(county value / county population for the same year as the data). Value= . indicates missing or suppressed data or value not calculated.

Education

PUPIL/TEACHER RATIO SCHOOL YEAR BEGINNING...

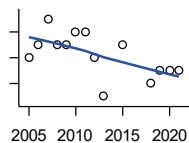


Kansas State Department of Education

Year	County	State of Kansas	Non Metro Kansas	County Rank	Per 1000 or \$ Per Capita
2000	10.0	15.4	13.9	100	.
2001	11.9	15.3	13.8	76	.
2002	11.7	15.4	13.9	83	.
2003	11.6	15.5	13.8	81	.
2004	11.6	15.3	13.6	79	.
2005	11.2	15.0	13.4	83	.
2006	11.0	14.7	13.2	85	.
2007	11.2	14.6	13.1	74	.
2008	10.8	14.4	12.9	84	.
2009	11.0	14.8	13.2	88	.
2010	12.5	15.2	13.6	59	.
2011	13.8	15.1	13.5	37	.
2012	13.0	15.1	13.5	48	.
2013	12.7	15.1	13.5	50	.
2014	12.2	15.0	13.6	60	.
2015	10.8	15.2	13.9	89	.
2016	11.0	15.1	13.7	86	.
2017	11.7	15.5	13.9	77	.
2018	11.5	15.3	13.8	79	.
2019	11.5	15.2	13.7	72	.
2020	11.6	14.7	13.4	66	.
2021	10.8	14.8	13.5	84	.

Social Environment

CHILD CARE FACILITIES: TOTAL CHILD CARE FACILITIES

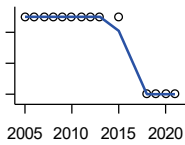


Kansas Department of Health and Environment, Bureau of Adult and Child Care

Year	County	State of Kansas	Non Metro Kansas	County Rank	Per 1000 or \$ Per Capita
2005	8	8,258	3,378	99	2.9
2006	9	8,442	3,429	91	3.3
2007	11	8,241	3,317	85	4.1
2008	9	8,011	3,150	92	3.4
2009	9	7,853	3,066	91	3.5
2010	10	7,354	2,858	80	3.9
2011	10	6,835	2,623	80	3.8
2012	8	6,346	2,409	84	3.1
2013	5	5,754	2,179	95	1.9
2015	9	5,289	2,146	78	3.5
2018	6	4,607	1,904	90	2.4
2019	7	4,287	1,774	80	2.8
2020	7	4,274	1,798	76	2.9
2021	7	4,002	1,700	82	2.9

County: county value. Kansas: state value. County Rank: highest county value ranked #1. (\$000): thousands of dollars. Nonmetro Kansas: Kansas total less Metropolitan Areas as defined by the Office of Management and Budget (OMB; released 3/6/2020). Per 1000: For nonmoney amounts, Per 1000=(county value / county population for the same year as the data) x 1000. \$ Per capita=(county value / county population for the same year as the data). Value= . indicates missing or suppressed data or value not calculated.

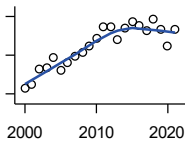
Social Environment



**CHILD CARE FACILITIES:
PRESCHOOLS**

Kansas Department of Health and Environment, Bureau of Adult and Child Care

Year	County	State of Kansas	Non Metro Kansas	County Rank	Per 1000 or \$ Per Capita
2005	1	243	140	79	0.4
2006	1	221	127	76	0.4
2007	1	208	119	76	0.4
2008	1	204	114	73	0.4
2009	1	194	107	72	0.4
2010	1	194	112	73	0.4
2011	1	209	123	76	0.4
2012	1	201	121	74	0.4
2013	1	140	84	64	0.4
2015	1	185	113	71	0.4
2018	0	150	94	105	0.0
2019	0	134	83	105	0.0
2020	0	126	78	105	0.0
2021	0	120	74	105	0.0



FOOD STAMP BENEFICIARIES

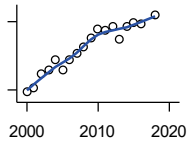
Kansas Social and Rehabilitation Services

Year	County	State of Kansas	Non Metro Kansas	County Rank	Per 1000 or \$ Per Capita
2000	86	110,619	44,825	89	29.2
2001	90	117,241	46,741	90	31.1
2002	105	131,726	52,342	88	36.4
2003	107	155,908	61,280	90	37.6
2004	117	167,971	65,852	90	42.0
2005	104	175,710	67,261	91	37.7
2006	112	182,821	67,487	91	40.7
2007	119	184,035	66,979	89	44.0
2008	123	187,377	67,160	87	46.1
2009	129	208,007	73,637	88	49.8
2010	138	259,609	90,919	92	53.1
2011	149	296,542	101,155	93	56.5
2012	149	303,257	102,478	93	57.7
2013	136	316,424	105,345	95	52.6
2014	148	301,377	100,761	92	57.9
2015	154	277,614	93,353	90	59.4
2016	151	258,412	88,343	92	58.9
2017	146	239,592	82,070	89	58.8
2018	157	219,738	75,208	84	63.4
2019	147	205,261	69,899	87	59.2
2020	129	198,457	66,721	88	53.4
2021	147	203,424	68,883	85	61.3

County: county value. Kansas: state value. County Rank: highest county value ranked #1. (\$000): thousands of dollars. Nonmetro Kansas: Kansas total less Metropolitan Areas as defined by the Office of Management and Budget (OMB; released 3/6/2020). Per 1000: For nonmoney amounts, Per 1000=(county value / county population for the same year as the data) x 1000. \$ Per capita=(county value / county population for the same year as the data). Value= . indicates missing or suppressed data or value not calculated.

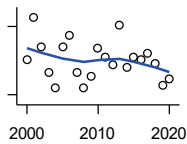
Social Environment

PERCENT OF POPULATION RECEIVING FOOD STAMPS



U.S. Dept. of Agriculture Food and Nutrition Service (1990-1997); Kansas Social and Rehabilitation Services (1998-)

Year	County	State of Kansas	Non Metro Kansas	County Rank	Per 1000 or \$ Per Capita
2000	2.9	4.1	.	75	.
2001	3.1	4.3	.	75	.
2002	3.7	4.9	.	63	.
2003	3.9	5.7	.	75	.
2004	4.3	6.2	.	69	.
2005	3.9	6.4	.	81	.
2006	4.3	6.6	.	76	.
2007	4.6	6.6	.	67	.
2008	4.9	6.7	.	59	.
2009	5.3	7.4	.	57	.
2010	5.7	9.1	.	82	.
2011	5.6	10.3	.	86	.
2012	5.8	10.5	.	82	.
2013	5.2	10.9	.	85	.
2014	5.8	10.4	.	79	.
2015	5.9	9.6	.	71	.
2016	5.9	8.9	.	70	.
2018	6.3	7.5	.	49	.



ESTIMATED NUMBER OF PEOPLE IN POVERTY

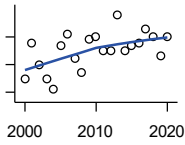
U.S. Census Bureau, Small Area Income and Poverty Estimates

Year	County	State of Kansas	Non Metro Kansas	County Rank	Per 1000 or \$ Per Capita
2000	311	235,087	98,984	92	105.6
2001	348	252,134	106,257	91	120.2
2002	322	265,673	107,542	93	111.6
2003	300	278,163	107,323	92	105.6
2004	286	297,733	111,534	92	102.7
2005	322	310,667	118,768	92	116.6
2006	332	327,102	123,700	93	120.7
2007	300	301,828	111,953	92	110.8
2008	286	307,804	113,015	92	107.2
2009	296	359,692	123,394	93	114.2
2010	321	374,677	131,502	92	123.6
2011	313	383,859	134,912	93	118.8
2012	306	392,095	133,800	92	118.6
2013	341	391,718	134,067	88	131.8
2014	304	381,506	130,213	89	118.9
2015	313	366,069	123,073	88	120.8
2016	311	343,773	121,314	89	121.4
2017	316	335,371	116,854	89	127.2
2018	307	336,892	114,490	90	124.0
2019	288	319,931	110,692	92	116.0
2020	294	300,931	100,998	87	121.7

County: county value. Kansas: state value. County Rank: highest county value ranked #1. (\$000): thousands of dollars. Nonmetro Kansas: Kansas total less Metropolitan Areas as defined by the Office of Management and Budget (OMB; released 3/6/2020). Per 1000: For nonmoney amounts, Per 1000=(county value / county population for the same year as the data) x 1000. \$ Per capita=(county value / county population for the same year as the data). Value= . indicates missing or suppressed data or value not calculated.

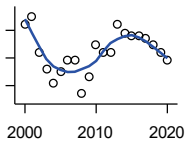
Social Environment

ESTIMATED % OF PEOPLE IN POVERTY



U.S. Census Bureau, Small Area Income and Poverty Estimates

Year	County	State of Kansas	Non Metro Kansas	County Rank	Per 1000 or \$ Per Capita
2000	11.0	8.9	.	39	.
2001	12.3	9.5	.	30	.
2002	11.5	10.0	.	46	.
2003	11.0	10.4	.	49	.
2004	10.6	11.1	.	59	.
2005	12.2	11.7	.	51	.
2006	12.6	12.2	.	55	.
2007	11.7	11.2	.	51	.
2008	11.2	11.3	.	61	.
2009	12.4	13.2	.	55	.
2010	12.5	13.5	.	56	.
2011	12.0	13.8	.	70	.
2012	12.0	14.0	.	64	.
2013	13.3	13.9	.	48	.
2014	12.0	13.5	.	62	.
2015	12.2	12.9	.	51	.
2016	12.3	12.2	.	49	.
2017	12.8	11.9	.	39	.
2018	12.5	11.9	.	48	.
2019	11.8	11.3	.	51	.
2020	12.5	10.6	.	34	.



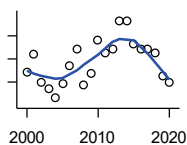
EST. NUMBER OF RELATED CHILDREN AGE 5 TO 17 IN FAMILIES IN POVERTY

U.S. Census Bureau, Small Area Income and Poverty Estimates

Year	County	State of Kansas	Non Metro Kansas	County Rank	Per 1000 or \$ Per Capita
2000	62	50,388	21,854	98	21.0
2001	65	53,755	23,094	98	22.4
2002	52	52,453	21,423	99	18.0
2003	46	55,419	21,809	100	16.2
2004	41	59,392	22,313	101	14.7
2005	45	60,203	24,244	101	16.3
2006	49	64,427	25,326	100	17.8
2007	49	61,149	23,639	99	18.1
2008	37	59,842	22,661	101	13.9
2009	43	71,850	26,251	101	16.6
2010	55	81,077	29,804	99	21.2
2011	52	82,311	29,306	98	19.7
2012	52	87,594	29,781	99	20.1
2013	62	84,325	29,253	95	24.0
2014	59	83,873	29,354	95	23.1
2015	58	78,192	27,482	97	22.4
2016	58	67,810	25,074	96	22.6
2017	57	67,873	25,032	98	22.9
2018	55	68,153	24,928	99	22.2
2019	52	64,613	23,117	97	21.0
2020	49	59,792	21,143	99	20.3

County: county value. Kansas: state value. County Rank: highest county value ranked #1. (\$000): thousands of dollars. Nonmetro Kansas: Kansas total less Metropolitan Areas as defined by the Office of Management and Budget (OMB; released 3/6/2020). Per 1000: For nonmoney amounts, Per 1000=(county value / county population for the same year as the data) x 1000. \$ Per capita=(county value / county population for the same year as the data). Value= . indicates missing or suppressed data or value not calculated.

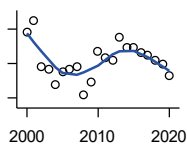
Social Environment



EST. % OF RELATED CHILDREN AGE 5 TO 17 IN FAMILIES IN POVERTY

U.S. Census Bureau, Small Area Income and Poverty Estimates

Year	County	State of Kansas	Non Metro Kansas	County Rank	Per 1000 or \$ Per Capita
2000	12.9	10.0	.	46	.
2001	14.4	10.8	.	40	.
2002	12.0	10.5	.	52	.
2003	11.4	11.3	.	65	.
2004	10.6	12.5	.	83	.
2005	11.9	12.8	.	77	.
2006	13.4	13.2	.	66	.
2007	14.8	12.6	.	46	.
2008	11.8	12.3	.	76	.
2009	12.8	14.7	.	79	.
2010	15.6	15.9	.	63	.
2011	14.5	16.2	.	74	.
2012	14.9	17.2	.	72	.
2013	17.3	16.5	.	43	.
2014	17.3	16.4	.	44	.
2015	15.3	15.3	.	55	.
2016	14.8	13.2	.	59	.
2017	14.9	13.4	.	60	.
2018	14.5	13.5	.	73	.
2019	12.5	12.9	.	76	.
2020	12.0	11.9	.	74	.



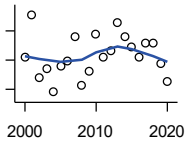
ESTIMATED NUMBER UNDER 18 IN POVERTY

U.S. Census Bureau, Small Area Income and Poverty Estimates

Year	County	State of Kansas	Non Metro Kansas	County Rank	Per 1000 or \$ Per Capita
2000	98	82,619	34,843	96	33.3
2001	105	87,487	36,724	96	36.3
2002	78	84,181	32,870	96	27.0
2003	77	93,896	36,004	98	27.1
2004	68	98,641	36,272	100	24.4
2005	75	100,254	39,118	100	27.2
2006	77	105,193	41,054	100	28.0
2007	78	100,242	37,881	97	28.8
2008	62	100,146	37,552	101	23.2
2009	69	118,187	42,682	101	26.6
2010	87	129,009	46,428	99	33.5
2011	83	133,478	46,832	98	31.5
2012	82	135,261	46,294	99	31.8
2013	95	131,251	44,952	95	36.7
2014	89	125,562	43,933	95	34.8
2015	89	119,994	41,828	97	34.3
2016	86	100,996	37,387	94	33.6
2017	85	102,858	37,955	97	34.2
2018	82	102,616	36,991	98	33.1
2019	80	97,920	34,797	97	32.2
2020	73	88,491	30,767	99	30.2

County: county value. Kansas: state value. County Rank: highest county value ranked #1. (\$000): thousands of dollars. Nonmetro Kansas: Kansas total less Metropolitan Areas as defined by the Office of Management and Budget (OMB; released 3/6/2020). Per 1000: For nonmoney amounts, Per 1000=(county value / county population for the same year as the data) x 1000. \$ Per capita=(county value / county population for the same year as the data). Value= . indicates missing or suppressed data or value not calculated.

Social Environment



ESTIMATED PERCENT UNDER 18 IN POVERTY

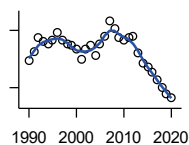
U.S. Census Bureau, Small Area Income and Poverty Estimates

Year	County	State of Kansas	Non Metro Kansas	County Rank	Per 1000 or \$ Per Capita
2000	16.2	11.9	.	30	.
2001	19.1	12.7	.	16	.
2002	14.8	12.1	.	32	.
2003	15.4	13.8	.	44	.
2004	13.8	14.6	.	69	.
2005	15.6	15.2	.	69	.
2006	15.9	15.4	.	65	.
2007	17.6	14.7	.	41	.
2008	14.3	14.6	.	74	.
2009	15.2	17.1	.	80	.
2010	17.8	18.1	.	57	.
2011	16.2	18.8	.	78	.
2012	16.6	19.0	.	68	.
2013	18.6	18.4	.	47	.
2014	17.6	17.6	.	52	.
2015	16.9	16.9	.	56	.
2016	16.2	14.3	.	55	.
2017	17.2	14.7	.	45	.
2018	17.2	14.8	.	51	.
2019	15.8	14.3	.	59	.
2020	14.5	13.0	.	56	.

County: county value. Kansas: state value. County Rank: highest county value ranked #1. (\$000): thousands of dollars. Nonmetro Kansas: Kansas total less Metropolitan Areas as defined by the Office of Management and Budget (OMB; released 3/6/2020). Per 1000: For nonmoney amounts, Per 1000=(county value / county population for the same year as the data) x 1000. \$ Per capita=(county value / county population for the same year as the data). Value= . indicates missing or suppressed data or value not calculated.

Business

ESTABLISHMENTS TOTAL COUNTY BUSINESS PATTERNS

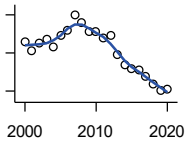


U.S. Census Bureau, County Business Patterns. Beginning with the 2017 data, any tabulation with fewer than 3 establishments were omitted from the release. Data for these establishments are included in the broader total.

Year	County	State of Kansas	Non Metro Kansas	County Rank	Per 1000 or \$ Per Capita
1990	104	65,858	26,802	87	29.4
1991	109	65,941	26,750	84	31.3
1992	116	67,630	27,229	81	34.1
1993	114	68,930	27,655	83	34.4
1994	113	69,822	27,763	83	34.6
1995	115	70,894	28,111	83	35.7
1996	119	72,017	28,353	83	37.0
1997	115	73,924	28,884	84	36.6
1998	113	74,019	28,749	86	36.5
1999	112	74,486	28,536	86	37.3
2000	110	74,939	28,475	85	37.3
2001	105	74,565	28,282	89	36.3
2002	110	75,077	28,183	87	38.1
2003	112	74,972	27,998	83	39.4
2004	107	75,827	28,009	85	38.4
2005	113	76,173	27,830	80	40.9
2006	117	76,446	27,653	80	42.5
2007	125	77,157	27,736	80	46.2
2008	121	76,096	27,314	80	45.3
2009	116	74,698	26,839	81	44.8
2010	115	74,301	26,739	81	44.3
2011	116	73,598	26,555	81	44.0
2012	117	73,944	26,534	79	45.3
2013	108	73,816	26,393	82	41.7
2014	103	74,055	26,292	85	40.3
2015	101	74,526	26,355	87	39.0
2016	98	74,884	26,172	87	38.3
2017	94	74,947	26,093	86	37.8
2018	90	74,559	25,802	87	36.4
2019	87	74,292	25,536	87	35.1
2020	85	73,982	25,178	88	35.2

County: county value. Kansas: state value. County Rank: highest county value ranked #1. (\$000): thousands of dollars. Nonmetro Kansas: Kansas total less Metropolitan Areas as defined by the Office of Management and Budget (OMB; released 3/6/2020). Per 1000: For nonmoney amounts, Per 1000=(county value / county population for the same year as the data) x 1000. \$ Per capita=(county value / county population for the same year as the data). Value= . indicates missing or suppressed data or value not calculated.

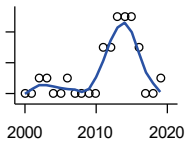
Business



ESTABLISHMENTS: 1-19 EMPLOYEES

U.S. Census Bureau, County Business Patterns. Beginning with the 2017 data, any tabulation with fewer than 3 establishments were omitted from the release. Data for these establishments are included in the broader total.

Year	County	State of Kansas	Non Metro Kansas	County Rank	Per 1000 or \$ Per Capita
2000	106	64,527	25,381	85	36.0
2001	101	64,176	25,248	88	34.9
2002	105	64,886	25,208	87	36.4
2003	107	64,714	25,020	81	37.6
2004	103	65,554	24,995	84	37.0
2005	109	65,796	24,839	80	39.5
2006	112	65,764	24,589	80	40.7
2007	120	66,446	24,701	79	44.3
2008	116	65,322	24,257	79	43.5
2009	111	64,128	23,851	81	42.8
2010	111	64,015	23,857	81	42.7
2011	108	63,251	23,571	81	41.0
2012	109	63,519	23,575	80	42.2
2013	99	63,197	23,396	84	38.3
2014	94	63,113	23,229	86	36.8
2015	92	63,280	23,227	86	35.5
2016	91	63,630	23,117	85	35.5
2017	88	63,619	23,022	85	35.4
2018	84	63,233	22,745	86	33.9
2019	80	62,904	22,489	89	32.2
2020	81	62,634	22,173	87	33.5



ESTABLISHMENTS: 20-99 EMPLOYEES

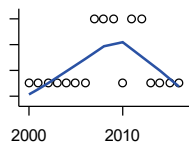
U.S. Census Bureau, County Business Patterns. Beginning with the 2017 data, any tabulation with fewer than 3 establishments were omitted from the release. Data for these establishments are included in the broader total.

Year	County	State of Kansas	Non Metro Kansas	County Rank	Per 1000 or \$ Per Capita
2000	4	8,714	2,653	94	1.4
2001	4	8,692	2,593	95	1.4
2002	5	8,582	2,554	88	1.7
2003	5	8,642	2,568	88	1.8
2004	4	8,658	2,590	95	1.4
2005	4	8,685	2,553	96	1.4
2006	5	8,922	2,612	89	1.8
2007	4	8,938	2,574	94	1.5
2008	4	8,939	2,587	95	1.5
2009	4	8,848	2,551	93	1.5
2010	4	8,612	2,454	94	1.5
2011	7	8,668	2,540	79	2.7
2012	7	8,700	2,500	83	2.7
2013	9	8,870	2,541	72	3.5
2014	9	9,121	2,590	73	3.5
2015	9	9,374	2,664	74	3.5
2016	7	9,412	2,596	80	2.7
2017	4	9,487	2,638	93	1.6
2018	4	9,485	2,621	92	1.6
2019	5	9,485	2,591	85	2.0

County: county value. Kansas: state value. County Rank: highest county value ranked #1. (\$000): thousands of dollars. Nonmetro Kansas: Kansas total less Metropolitan Areas as defined by the Office of Management and Budget (OMB; released 3/6/2020). Per 1000: For nonmoney amounts, Per 1000=(county value / county population for the same year as the data) x 1000. \$ Per capita=(county value / county population for the same year as the data). Value= . indicates missing or suppressed data or value not calculated.

Business

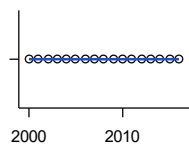
ESTABLISHMENTS: 100-499 EMPLOYEES



U.S. Census Bureau, County Business Patterns. Beginning with the 2017 data, any tabulation with fewer than 3 establishments were omitted from the release. Data for these establishments are included in the broader total.

Year	County	State of Kansas	Non Metro Kansas	County Rank	Per 1000 or \$ Per Capita
2000	0	1,555	409	105	0.0
2001	0	1,555	406	105	0.0
2002	0	1,464	386	105	0.0
2003	0	1,470	378	105	0.0
2004	0	1,463	388	105	0.0
2005	0	1,537	400	105	0.0
2006	0	1,598	407	105	0.0
2007	1	1,602	416	87	0.4
2008	1	1,653	421	86	0.4
2009	1	1,551	394	86	0.4
2010	0	1,513	382	105	0.0
2011	1	1,523	395	86	0.4
2012	1	1,567	410	85	0.4
2013	0	1,581	407	105	0.0
2014	0	1,641	421	105	0.0
2015	0	1,693	414	105	0.0
2016	0	1,671	406	105	0.0

ESTABLISHMENTS: 500 OR MORE EMPLOYEES

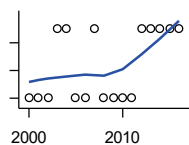


U.S. Census Bureau, County Business Patterns. Beginning with the 2017 data, any tabulation with fewer than 3 establishments were omitted from the release. Data for these establishments are included in the broader total.

Year	County	State of Kansas	Non Metro Kansas	County Rank	Per 1000 or \$ Per Capita
2000	0	143	32	105	0.0
2001	0	142	35	105	0.0
2002	0	145	35	105	0.0
2003	0	146	32	105	0.0
2004	0	152	36	105	0.0
2005	0	155	38	105	0.0
2006	0	162	45	105	0.0
2007	0	171	45	105	0.0
2008	0	182	49	105	0.0
2009	0	171	43	105	0.0
2010	0	161	46	105	0.0
2011	0	156	49	105	0.0
2012	0	158	49	105	0.0
2013	0	168	49	105	0.0
2014	0	180	52	105	0.0
2015	0	179	50	105	0.0
2016	0	171	53	105	0.0

County: county value. Kansas: state value. County Rank: highest county value ranked #1. (\$000): thousands of dollars. Nonmetro Kansas: Kansas total less Metropolitan Areas as defined by the Office of Management and Budget (OMB; released 3/6/2020). Per 1000: For nonmoney amounts, Per 1000=(county value / county population for the same year as the data) x 1000. \$ Per capita=(county value / county population for the same year as the data). Value= . indicates missing or suppressed data or value not calculated.

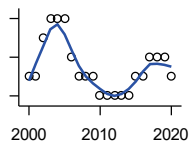
Business



ESTABLISHMENTS: FORESTRY, FISHING, HUNTING, AND AG SUPPORT

U.S. Census Bureau, County Business Patterns. Beginning with the 2017 data, any tabulation with fewer than 3 establishments were omitted from the release. Data for these establishments are included in the broader total.

Year	County	State of Kansas	Non Metro Kansas	County Rank	Per 1000 or \$ Per Capita
2000	1	190	149	74	0.3
2001	1	217	168	80	0.3
2002	1	224	176	84	0.3
2003	2	217	173	54	0.7
2004	2	211	165	53	0.7
2005	1	188	148	76	0.4
2006	1	193	158	76	0.4
2007	2	212	170	52	0.7
2008	1	197	158	81	0.4
2009	1	191	154	79	0.4
2010	1	192	161	79	0.4
2011	1	193	157	77	0.4
2012	2	204	164	50	0.8
2013	2	208	166	54	0.8
2014	2	194	152	55	0.8
2015	2	192	149	51	0.8
2016	2	181	142	48	0.8



ESTABLISHMENTS: MINING

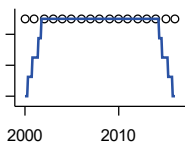
U.S. Census Bureau, County Business Patterns. Beginning with the 2017 data, any tabulation with fewer than 3 establishments were omitted from the release. Data for these establishments are included in the broader total.

Year	County	State of Kansas	Non Metro Kansas	County Rank	Per 1000 or \$ Per Capita
2000	4	868	619	44	1.4
2001	4	878	622	45	1.4
2002	6	847	615	36	2.1
2003	7	864	633	33	2.5
2004	7	880	647	34	2.5
2005	7	941	695	33	2.5
2006	5	991	734	43	1.8
2007	4	1,000	759	48	1.5
2008	4	1,047	799	49	1.5
2009	4	1,016	772	48	1.5
2010	3	1,009	762	56	1.2
2011	3	1,013	763	55	1.1
2012	3	1,048	789	63	1.2
2013	3	1,060	802	60	1.2
2014	3	1,102	828	63	1.2
2015	4	1,069	810	52	1.5
2016	4	990	747	52	1.6
2017	5	920	.	44	2.0
2018	5	900	.	43	2.0
2019	5	864	.	41	2.0
2020	4	825	.	45	1.7

County: county value. Kansas: state value. County Rank: highest county value ranked #1. (\$000): thousands of dollars. Nonmetro Kansas: Kansas total less Metropolitan Areas as defined by the Office of Management and Budget (OMB; released 3/6/2020). Per 1000: For nonmoney amounts, Per 1000=(county value / county population for the same year as the data) x 1000. \$ Per capita=(county value / county population for the same year as the data). Value= . indicates missing or suppressed data or value not calculated.

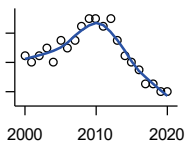
Business

ESTABLISHMENTS: UTILITIES



U.S. Census Bureau, County Business Patterns. Beginning with the 2017 data, any tabulation with fewer than 3 establishments were omitted from the release. Data for these establishments are included in the broader total.

Year	County	State of Kansas	Non Metro Kansas	County Rank	Per 1000 or \$ Per Capita
2000	1	274	192	96	0.3
2001	1	290	204	96	0.3
2002	1	278	195	93	0.3
2003	1	268	180	90	0.4
2004	1	247	164	90	0.4
2005	1	254	172	91	0.4
2006	1	248	169	92	0.4
2007	1	222	156	87	0.4
2008	1	244	166	87	0.4
2009	1	222	152	86	0.4
2010	1	197	129	82	0.4
2011	1	230	156	87	0.4
2012	1	232	156	86	0.4
2013	1	234	159	87	0.4
2014	1	232	160	89	0.4
2015	1	237	165	88	0.4
2016	1	245	171	90	0.4



ESTABLISHMENTS: CONSTRUCTION

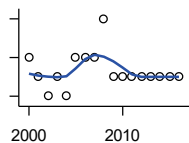
U.S. Census Bureau, County Business Patterns. Beginning with the 2017 data, any tabulation with fewer than 3 establishments were omitted from the release. Data for these establishments are included in the broader total.

Year	County	State of Kansas	Non Metro Kansas	County Rank	Per 1000 or \$ Per Capita
2000	13	7,703	2,616	73	4.4
2001	12	7,449	2,520	73	4.1
2002	13	7,519	2,482	71	4.5
2003	14	7,722	2,521	70	4.9
2004	12	7,887	2,518	72	4.3
2005	15	8,032	2,515	70	5.4
2006	14	8,031	2,494	71	5.1
2007	15	8,057	2,547	69	5.5
2008	17	7,831	2,522	63	6.4
2009	18	7,342	2,452	62	6.9
2010	18	7,064	2,394	62	6.9
2011	17	6,774	2,361	64	6.5
2012	18	6,741	2,393	62	7.0
2013	15	6,802	2,394	68	5.8
2014	13	6,920	2,383	75	5.1
2015	12	7,014	2,377	78	4.6
2016	11	6,988	2,343	81	4.3
2017	9	7,031	2,316	84	3.6
2018	9	7,124	2,285	83	3.6
2019	8	7,060	2,242	87	3.2
2020	8	7,089	2,249	85	3.3

County: county value. Kansas: state value. County Rank: highest county value ranked #1. (\$000): thousands of dollars. Nonmetro Kansas: Kansas total less Metropolitan Areas as defined by the Office of Management and Budget (OMB; released 3/6/2020). Per 1000: For nonmoney amounts, Per 1000=(county value / county population for the same year as the data) x 1000. \$ Per capita=(county value / county population for the same year as the data). Value= . indicates missing or suppressed data or value not calculated.

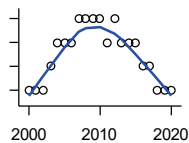
Business

**ESTABLISHMENTS:
MANUFACTURING**



U.S. Census Bureau, County Business Patterns. Beginning with the 2017 data, any tabulation with fewer than 3 establishments were omitted from the release. Data for these establishments are included in the broader total.

Year	County	State of Kansas	Non Metro Kansas	County Rank	Per 1000 or \$ Per Capita
2000	2	3,229	1,316	98	0.7
2001	1	3,240	1,323	102	0.3
2002	0	3,181	1,289	105	0.0
2003	1	3,159	1,291	104	0.4
2004	0	3,179	1,313	105	0.0
2005	2	3,128	1,278	97	0.7
2006	2	3,165	1,290	98	0.7
2007	2	3,184	1,316	98	0.7
2008	4	3,171	1,297	86	1.5
2009	1	3,026	1,240	101	0.4
2010	1	2,955	1,222	101	0.4
2011	1	2,877	1,193	101	0.4
2012	1	2,889	1,197	102	0.4
2013	1	2,836	1,165	100	0.4
2014	1	2,831	1,168	101	0.4
2015	1	2,817	1,161	101	0.4
2016	1	2,791	1,150	100	0.4



**ESTABLISHMENTS: WHOLESALE
TRADE**

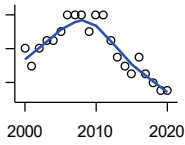
U.S. Census Bureau, County Business Patterns. Beginning with the 2017 data, any tabulation with fewer than 3 establishments were omitted from the release. Data for these establishments are included in the broader total.

Year	County	State of Kansas	Non Metro Kansas	County Rank	Per 1000 or \$ Per Capita
2000	7	4,876	1,776	98	2.4
2001	7	4,811	1,769	94	2.4
2002	7	4,719	1,750	91	2.4
2003	8	4,590	1,637	87	2.8
2004	9	4,553	1,634	78	3.2
2005	9	4,541	1,618	81	3.3
2006	9	4,517	1,596	79	3.3
2007	10	4,555	1,629	80	3.7
2008	10	4,501	1,622	76	3.7
2009	10	4,437	1,614	77	3.9
2010	10	4,432	1,612	74	3.9
2011	9	4,400	1,660	79	3.4
2012	10	4,563	1,755	79	3.9
2013	9	4,501	1,741	85	3.5
2014	9	4,497	1,746	83	3.5
2015	9	4,459	1,755	84	3.5
2016	8	4,457	1,732	88	3.1
2017	8	4,436	1,774	87	3.2
2018	7	4,330	1,727	88	2.8
2019	7	4,291	1,713	87	2.8
2020	7	4,191	1,677	87	2.9

County: county value. Kansas: state value. County Rank: highest county value ranked #1. (\$000): thousands of dollars. Nonmetro Kansas: Kansas total less Metropolitan Areas as defined by the Office of Management and Budget (OMB; released 3/6/2020). Per 1000: For nonmoney amounts, Per 1000=(county value / county population for the same year as the data) x 1000. \$ Per capita=(county value / county population for the same year as the data). Value= . indicates missing or suppressed data or value not calculated.

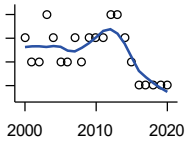
Business

ESTABLISHMENTS: RETAIL TRADE



U.S. Census Bureau, County Business Patterns. Beginning with the 2017 data, any tabulation with fewer than 3 establishments were omitted from the release. Data for these establishments are included in the broader total.

Year	County	State of Kansas	Non Metro Kansas	County Rank	Per 1000 or \$ Per Capita
2000	20	12,261	5,240	86	6.8
2001	18	12,206	5,207	93	6.2
2002	20	11,980	5,082	87	6.9
2003	21	11,834	5,049	83	7.4
2004	21	11,748	4,967	83	7.5
2005	22	11,562	4,834	77	8.0
2006	24	11,367	4,702	72	8.7
2007	24	11,306	4,653	72	8.9
2008	24	10,978	4,494	71	9.0
2009	22	10,760	4,372	73	8.5
2010	24	10,727	4,346	72	9.2
2011	24	10,655	4,289	71	9.1
2012	21	10,585	4,202	75	8.1
2013	19	10,433	4,147	77	7.3
2014	18	10,391	4,070	78	7.0
2015	17	10,327	4,061	79	6.6
2016	19	10,197	3,965	76	7.4
2017	17	10,074	3,885	79	6.8
2018	16	9,866	3,797	78	6.5
2019	15	9,762	3,750	83	6.0
2020	15	9,591	3,666	80	6.2



ESTABLISHMENTS: TRANSPORTATION & WAREHOUSING

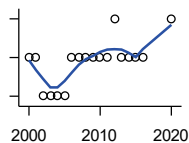
U.S. Census Bureau, County Business Patterns. Beginning with the 2017 data, any tabulation with fewer than 3 establishments were omitted from the release. Data for these establishments are included in the broader total.

Year	County	State of Kansas	Non Metro Kansas	County Rank	Per 1000 or \$ Per Capita
2000	6	2,474	1,293	88	2.0
2001	5	2,463	1,298	90	1.7
2002	5	2,461	1,278	91	1.7
2003	7	2,576	1,297	77	2.5
2004	6	2,651	1,324	82	2.2
2005	5	2,632	1,326	93	1.8
2006	5	2,626	1,295	88	1.8
2007	6	2,664	1,314	85	2.2
2008	5	2,675	1,329	88	1.9
2009	6	2,635	1,313	87	2.3
2010	6	2,615	1,313	85	2.3
2011	6	2,579	1,285	85	2.3
2012	7	2,519	1,243	75	2.7
2013	7	2,492	1,226	78	2.7
2014	6	2,518	1,240	84	2.3
2015	5	2,554	1,257	89	1.9
2016	4	2,567	1,241	93	1.6
2017	4	2,640	1,245	94	1.6
2018	4	2,627	1,238	94	1.6
2019	4	2,615	1,209	92	1.6
2020	4	2,589	1,179	89	1.7

County: county value. Kansas: state value. County Rank: highest county value ranked #1. (\$000): thousands of dollars. Nonmetro Kansas: Kansas total less Metropolitan Areas as defined by the Office of Management and Budget (OMB; released 3/6/2020). Per 1000: For nonmoney amounts, Per 1000=(county value / county population for the same year as the data) x 1000. \$ Per capita=(county value / county population for the same year as the data). Value= . indicates missing or suppressed data or value not calculated.

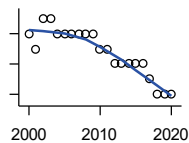
Business

ESTABLISHMENTS: INFORMATION



U.S. Census Bureau, County Business Patterns. Beginning with the 2017 data, any tabulation with fewer than 3 establishments were omitted from the release. Data for these establishments are included in the broader total.

Year	County	State of Kansas	Non Metro Kansas	County Rank	Per 1000 or \$ Per Capita
2000	2	1,542	578	98	0.7
2001	2	1,556	566	96	0.7
2002	1	1,517	551	100	0.3
2003	1	1,516	564	100	0.4
2004	1	1,518	556	101	0.4
2005	1	1,519	536	100	0.4
2006	2	1,549	559	93	0.7
2007	2	1,504	527	87	0.7
2008	2	1,468	522	87	0.7
2009	2	1,420	510	87	0.8
2010	2	1,437	527	91	0.8
2011	2	1,428	537	91	0.8
2012	3	1,387	515	71	1.2
2013	2	1,337	487	84	0.8
2014	2	1,335	496	85	0.8
2015	2	1,359	510	85	0.8
2016	2	1,431	537	85	0.8
2020	3	1,424	.	73	1.2



ESTABLISHMENTS: FINANCE & INSURANCE

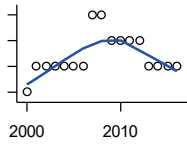
U.S. Census Bureau, County Business Patterns. Beginning with the 2017 data, any tabulation with fewer than 3 establishments were omitted from the release. Data for these establishments are included in the broader total.

Year	County	State of Kansas	Non Metro Kansas	County Rank	Per 1000 or \$ Per Capita
2000	8	5,209	1,848	87	2.7
2001	7	5,178	1,828	89	2.4
2002	9	5,496	1,911	84	3.1
2003	9	5,569	1,907	83	3.2
2004	8	5,572	1,913	86	2.9
2005	8	5,708	1,964	86	2.9
2006	8	5,877	1,976	87	2.9
2007	8	6,017	2,030	89	3.0
2008	8	6,010	2,023	89	3.0
2009	8	5,933	1,994	89	3.1
2010	7	5,872	1,975	94	2.7
2011	7	5,854	1,985	93	2.7
2012	6	5,993	2,024	100	2.3
2013	6	5,903	1,993	99	2.3
2014	6	5,894	2,000	99	2.3
2015	6	5,932	1,998	100	2.3
2016	6	6,022	2,021	98	2.3
2017	5	6,026	2,007	103	2.0
2018	4	6,023	1,997	105	1.6
2019	4	5,953	1,977	105	1.6
2020	4	5,926	1,969	105	1.7

County: county value. Kansas: state value. County Rank: highest county value ranked #1. (\$000): thousands of dollars. Nonmetro Kansas: Kansas total less Metropolitan Areas as defined by the Office of Management and Budget (OMB; released 3/6/2020). Per 1000: For nonmoney amounts, Per 1000=(county value / county population for the same year as the data) x 1000. \$ Per capita=(county value / county population for the same year as the data). Value= . indicates missing or suppressed data or value not calculated.

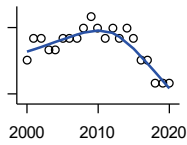
Business

ESTABLISHMENTS: REAL ESTATE, RENTAL, AND LEASING



U.S. Census Bureau, County Business Patterns. Beginning with the 2017 data, any tabulation with fewer than 3 establishments were omitted from the release. Data for these establishments are included in the broader total.

Year	County	State of Kansas	Non Metro Kansas	County Rank	Per 1000 or \$ Per Capita
2000	0	2,733	687	105	0.0
2001	1	2,849	724	92	0.3
2002	1	2,952	735	95	0.3
2003	1	3,007	727	93	0.4
2004	1	3,108	713	93	0.4
2005	1	3,203	727	90	0.4
2006	1	3,268	736	91	0.4
2007	3	3,286	721	60	1.1
2008	3	3,239	738	61	1.1
2009	2	3,122	723	70	0.8
2010	2	3,050	708	75	0.8
2011	2	3,002	692	74	0.8
2012	2	2,981	691	74	0.8
2013	1	3,046	717	87	0.4
2014	1	3,135	738	92	0.4
2015	1	3,179	744	91	0.4
2016	1	3,293	757	90	0.4



ESTABLISHMENTS: PROFESSIONAL, SCIENTIFIC, AND TECHNICAL SERVICES

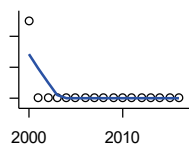
U.S. Census Bureau, County Business Patterns. Beginning with the 2017 data, any tabulation with fewer than 3 establishments were omitted from the release. Data for these establishments are included in the broader total.

Year	County	State of Kansas	Non Metro Kansas	County Rank	Per 1000 or \$ Per Capita
2000	5	6,424	1,690	95	1.7
2001	7	6,492	1,665	81	2.4
2002	7	6,719	1,704	80	2.4
2003	6	6,793	1,735	86	2.1
2004	6	7,025	1,730	89	2.2
2005	7	7,087	1,711	79	2.5
2006	7	7,231	1,736	81	2.5
2007	7	7,329	1,729	83	2.6
2008	8	7,133	1,671	77	3.0
2009	9	7,122	1,676	67	3.5
2010	8	7,172	1,680	76	3.1
2011	7	7,115	1,668	82	2.7
2012	8	7,122	1,681	77	3.1
2013	7	7,129	1,698	83	2.7
2014	8	7,206	1,682	79	3.1
2015	7	7,184	1,687	83	2.7
2016	5	7,146	1,659	90	2.0
2017	5	7,224	1,679	92	2.0
2018	3	7,138	1,655	103	1.2
2019	3	7,119	.	101	1.2
2020	3	7,117	.	100	1.2

County: county value. Kansas: state value. County Rank: highest county value ranked #1. (\$000): thousands of dollars. Nonmetro Kansas: Kansas total less Metropolitan Areas as defined by the Office of Management and Budget (OMB; released 3/6/2020). Per 1000: For nonmoney amounts, Per 1000=(county value / county population for the same year as the data) x 1000. \$ Per capita=(county value / county population for the same year as the data). Value= . indicates missing or suppressed data or value not calculated.

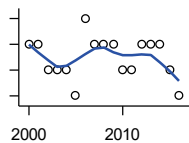
Business

ESTABLISHMENTS: MANAGEMENT OF COMPANIES AND ENTERPRISES



U.S. Census Bureau, County Business Patterns. Beginning with the 2017 data, any tabulation with fewer than 3 establishments were omitted from the release. Data for these establishments are included in the broader total.

Year	County	State of Kansas	Non Metro Kansas	County Rank	Per 1000 or \$ Per Capita
2000	1	622	145	68	0.3
2001	0	593	141	105	0.0
2002	0	597	152	105	0.0
2003	0	561	135	105	0.0
2004	0	569	133	105	0.0
2005	0	543	127	105	0.0
2006	0	542	131	105	0.0
2007	0	550	133	105	0.0
2008	0	553	139	105	0.0
2009	0	575	136	105	0.0
2010	0	567	131	105	0.0
2011	0	552	134	105	0.0
2012	0	593	135	105	0.0
2013	0	590	135	105	0.0
2014	0	603	136	105	0.0
2015	0	613	140	105	0.0
2016	0	655	171	105	0.0



ESTABLISHMENTS: ADMIN, SUPPORT, WASTE MGMT., AND REMEDIATION

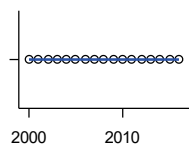
U.S. Census Bureau, County Business Patterns. Beginning with the 2017 data, any tabulation with fewer than 3 establishments were omitted from the release. Data for these establishments are included in the broader total.

Year	County	State of Kansas	Non Metro Kansas	County Rank	Per 1000 or \$ Per Capita
2000	3	3,307	871	81	1.0
2001	3	3,421	913	82	1.0
2002	2	3,232	882	89	0.7
2003	2	3,189	858	88	0.7
2004	2	3,301	891	92	0.7
2005	1	3,342	896	100	0.4
2006	4	3,395	886	74	1.5
2007	3	3,522	921	85	1.1
2008	3	3,587	932	85	1.1
2009	3	3,505	904	85	1.2
2010	2	3,494	897	89	0.8
2011	2	3,447	903	90	0.8
2012	3	3,462	891	84	1.2
2013	3	3,489	904	83	1.2
2014	3	3,569	933	82	1.2
2015	2	3,630	964	91	0.8
2016	1	3,705	987	99	0.4

County: county value. Kansas: state value. County Rank: highest county value ranked #1. (\$000): thousands of dollars. Nonmetro Kansas: Kansas total less Metropolitan Areas as defined by the Office of Management and Budget (OMB; released 3/6/2020). Per 1000: For nonmoney amounts, Per 1000=(county value / county population for the same year as the data) x 1000. \$ Per capita=(county value / county population for the same year as the data). Value= . indicates missing or suppressed data or value not calculated.

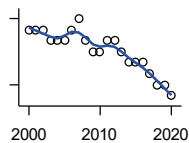
Business

ESTABLISHMENTS: EDUCATIONAL SERVICES



U.S. Census Bureau, County Business Patterns. Beginning with the 2017 data, any tabulation with fewer than 3 establishments were omitted from the release. Data for these establishments are included in the broader total.

Year	County	State of Kansas	Non Metro Kansas	County Rank	Per 1000 or \$ Per Capita
2000	0	604	155	105	0.0
2001	0	625	168	105	0.0
2002	0	666	165	105	0.0
2003	0	663	173	105	0.0
2004	0	690	173	105	0.0
2005	0	699	168	105	0.0
2006	0	698	175	105	0.0
2007	0	691	165	105	0.0
2008	0	692	158	105	0.0
2009	0	690	150	105	0.0
2010	0	700	149	105	0.0
2011	0	711	150	105	0.0
2012	0	724	145	105	0.0
2013	0	735	153	105	0.0
2014	0	722	152	105	0.0
2015	0	754	152	105	0.0
2016	0	728	150	105	0.0



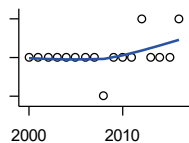
ESTABLISHMENTS: HEALTH CARE AND SOCIAL ASSISTANCE

U.S. Census Bureau, County Business Patterns. Beginning with the 2017 data, any tabulation with fewer than 3 establishments were omitted from the release. Data for these establishments are included in the broader total.

Year	County	State of Kansas	Non Metro Kansas	County Rank	Per 1000 or \$ Per Capita
2000	13	6,564	2,591	64	4.4
2001	13	6,636	2,590	64	4.5
2002	13	7,052	2,777	65	4.5
2003	12	7,129	2,792	73	4.2
2004	12	7,239	2,813	70	4.3
2005	12	7,412	2,855	70	4.3
2006	13	7,477	2,860	68	4.7
2007	14	7,661	2,864	65	5.2
2008	12	7,651	2,810	71	4.5
2009	11	7,696	2,787	72	4.2
2010	11	7,751	2,830	72	4.2
2011	12	7,804	2,817	68	4.6
2012	12	7,973	2,793	68	4.6
2013	11	7,877	2,729	70	4.3
2014	10	7,809	2,686	77	3.9
2015	10	8,103	2,692	80	3.9
2016	10	8,315	2,678	78	3.9
2017	9	8,136	2,646	79	3.6
2018	8	8,126	2,632	81	3.2
2019	8	8,184	2,587	81	3.2
2020	7	8,290	2,571	88	2.9

County: county value. Kansas: state value. County Rank: highest county value ranked #1. (\$000): thousands of dollars. Nonmetro Kansas: Kansas total less Metropolitan Areas as defined by the Office of Management and Budget (OMB; released 3/6/2020). Per 1000: For nonmoney amounts, Per 1000=(county value / county population for the same year as the data) x 1000. \$ Per capita=(county value / county population for the same year as the data). Value= . indicates missing or suppressed data or value not calculated.

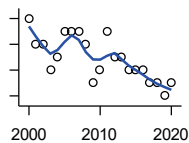
Business



ESTABLISHMENTS: ARTS, ENTERTAINMENT, AND RECREATION

U.S. Census Bureau, County Business Patterns. Beginning with the 2017 data, any tabulation with fewer than 3 establishments were omitted from the release. Data for these establishments are included in the broader total.

Year	County	State of Kansas	Non Metro Kansas	County Rank	Per 1000 or \$ Per Capita
2000	1	981	419	98	0.3
2001	1	1,009	433	97	0.3
2002	1	1,054	441	100	0.3
2003	1	1,045	443	101	0.4
2004	1	1,082	445	101	0.4
2005	1	1,109	446	100	0.4
2006	1	1,080	445	101	0.4
2007	1	1,092	444	100	0.4
2008	0	1,062	423	105	0.0
2009	1	1,063	421	98	0.4
2010	1	1,018	406	99	0.4
2011	1	997	387	100	0.4
2012	2	1,000	388	86	0.8
2013	1	1,009	377	100	0.4
2014	1	1,030	365	101	0.4
2015	1	1,031	357	101	0.4
2016	2	1,060	366	82	0.8



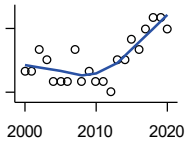
ESTABLISHMENTS: ACCOMMODATION AND FOOD SERVICES

U.S. Census Bureau, County Business Patterns. Beginning with the 2017 data, any tabulation with fewer than 3 establishments were omitted from the release. Data for these establishments are included in the broader total.

Year	County	State of Kansas	Non Metro Kansas	County Rank	Per 1000 or \$ Per Capita
2000	10	5,536	2,213	80	3.4
2001	8	5,551	2,173	92	2.8
2002	8	5,610	2,174	88	2.8
2003	6	5,635	2,188	98	2.1
2004	7	5,681	2,160	93	2.5
2005	9	5,776	2,170	84	3.3
2006	9	5,745	2,132	81	3.3
2007	9	5,877	2,095	80	3.3
2008	8	5,843	2,052	83	3.0
2009	5	5,794	2,029	95	1.9
2010	6	5,898	2,046	92	2.3
2011	9	5,958	2,067	75	3.4
2012	7	5,951	2,046	87	2.7
2013	7	6,061	2,070	88	2.7
2014	6	5,985	2,024	92	2.3
2015	6	6,034	2,063	94	2.3
2016	6	6,126	2,094	95	2.3
2017	5	6,250	2,123	95	2.0
2018	5	6,256	2,128	95	2.0
2019	4	6,231	2,131	97	1.6
2020	5	6,206	2,131	94	2.1

County: county value. Kansas: state value. County Rank: highest county value ranked #1. (\$000): thousands of dollars. Nonmetro Kansas: Kansas total less Metropolitan Areas as defined by the Office of Management and Budget (OMB; released 3/6/2020). Per 1000: For nonmoney amounts, Per 1000=(county value / county population for the same year as the data) x 1000. \$ Per capita=(county value / county population for the same year as the data). Value= . indicates missing or suppressed data or value not calculated.

Business



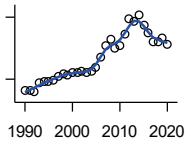
ESTABLISHMENTS: OTHER SERVICES

U.S. Census Bureau, County Business Patterns. Beginning with the 2017 data, any tabulation with fewer than 3 establishments were omitted from the release. Data for these establishments are included in the broader total.

Year	County	State of Kansas	Non Metro Kansas	County Rank	Per 1000 or \$ Per Capita
2000	12	8,423	3,636	94	4.1
2001	12	8,310	3,614	94	4.1
2002	14	8,552	3,658	91	4.9
2003	13	8,411	3,605	92	4.6
2004	11	8,343	3,597	100	3.9
2005	11	8,321	3,571	97	4.0
2006	11	8,225	3,490	95	4.0
2007	14	8,355	3,534	91	5.2
2008	11	8,104	3,406	97	4.1
2009	12	8,040	3,405	96	4.6
2010	11	7,998	3,379	99	4.2
2011	11	7,883	3,294	99	4.2
2012	10	7,913	3,303	98	3.9
2013	13	7,947	3,290	91	5.0
2014	13	7,943	3,285	90	5.1
2015	15	7,869	3,255	85	5.8
2016	14	7,839	3,204	85	5.5
2017	16	7,873	3,189	83	6.4
2018	17	7,853	3,176	82	6.9
2019	17	7,834	3,138	83	6.8
2020	16	7,787	3,073	83	6.6

County: county value. Kansas: state value. County Rank: highest county value ranked #1. (\$000): thousands of dollars. Nonmetro Kansas: Kansas total less Metropolitan Areas as defined by the Office of Management and Budget (OMB; released 3/6/2020). Per 1000: For nonmoney amounts, Per 1000=(county value / county population for the same year as the data) x 1000. \$ Per capita=(county value / county population for the same year as the data). Value= . indicates missing or suppressed data or value not calculated.

Business



**TOTAL ANNUAL PAYROLL (\$000)
COUNTY BUSINESS PATTERNS**

U.S. Census Bureau, County Business Patterns. Beginning with the 2017 data, any tabulation with fewer than 3 establishments were omitted from the release. Data for these establishments are included in the broader total.

Year	County	State of Kansas	Non Metro Kansas	County Rank	Per 1000 or \$ Per Capita
1990	7,199	17,487,316	4,442,429	88	2,031.9
1991	7,369	18,162,326	4,612,616	87	2,113.3
1992	7,004	19,244,346	4,882,060	90	2,056.4
1993	9,129	20,087,190	5,182,780	86	2,757.2
1994	9,541	21,201,652	5,541,423	86	2,922.2
1995	9,327	22,825,920	5,875,310	88	2,893.0
1996	9,892	24,613,884	6,198,398	88	3,079.7
1997	10,722	26,787,098	6,599,061	86	3,409.2
1998	11,202	28,747,576	6,871,794	88	3,622.9
1999	11,092	30,600,434	7,121,961	89	3,696.1
2000	11,609	31,990,762	7,520,424	89	3,940.6
2001	11,463	33,303,992	7,598,165	90	3,958.2
2002	11,841	33,152,962	7,572,002	86	4,102.9
2003	11,749	34,040,944	7,726,561	89	4,134.1
2004	11,836	35,725,812	8,303,779	90	4,248.4
2005	12,876	36,646,064	8,586,986	87	4,661.8
2006	15,427	39,251,388	9,178,947	85	5,607.8
2007	18,073	42,022,753	.	81	6,676.4
2008	19,575	43,984,689	.	80	7,334.2
2009	17,596	42,146,866	.	83	6,788.6
2010	18,190	42,686,303	10,294,015	85	7,004.2
2011	20,945	43,733,944	.	82	7,948.8
2012	24,499	45,608,072	11,222,183	78	9,492.1
2013	23,970	47,715,601	11,446,751	80	9,262.0
2014	25,568	49,712,832	11,957,931	78	9,999.2
2015	23,071	51,259,676	11,975,718	83	8,904.3
2016	21,199	51,016,318	12,148,646	87	8,274.4
2017	18,948	52,754,605	12,448,592	89	7,624.9
2018	19,149	55,087,460	12,810,270	90	7,737.0
2019	19,972	57,272,387	13,123,288	90	8,046.7
2020	18,563	58,374,388	14,007,955	93	7,686.5

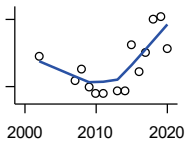
County: county value. Kansas: state value. County Rank: highest county value ranked #1. (\$000): thousands of dollars. Nonmetro Kansas: Kansas total less Metropolitan Areas as defined by the Office of Management and Budget (OMB; released 3/6/2020). Per 1000: For nonmoney amounts, Per 1000=(county value / county population for the same year as the data) x 1000. \$ Per capita=(county value / county population for the same year as the data). Value= . indicates missing or suppressed data or value not calculated.

Business

**TOTAL ANNUAL PAYROLL(\$000):
FORESTRY, FISHING, HUNTING, AND
AG SUPPORT**

U.S. Census Bureau, County Business Patterns. Beginning with the 2017 data, any tabulation with fewer than 3 establishments were omitted from the release. Data for these establishments are included in the broader total.

Year	County	State of Kansas	Non Metro Kansas	County Rank	Per 1000 or \$ Per Capita
2000	.	13,551	.	.	.
2001
2002	.	16,528	.	.	.
2003	.	17,247	.	.	.
2004	.	17,552	.	.	.
2005	.	16,298	.	.	.
2006	.	17,908	.	.	.
2007	.	22,199	.	.	.
2008	.	21,359	.	.	.
2009	.	22,466	.	.	.
2010	.	22,753	.	.	.
2011	.	23,320	.	.	.
2012	.	27,492	.	.	.
2013	.	30,360	.	.	.
2014	.	34,862	.	.	.
2015	.	35,980	.	.	.



**TOTAL ANNUAL PAYROLL(\$000):
MINING**

U.S. Census Bureau, County Business Patterns. Beginning with the 2017 data, any tabulation with fewer than 3 establishments were omitted from the release. Data for these establishments are included in the broader total.

Year	County	State of Kansas	Non Metro Kansas	County Rank	Per 1000 or \$ Per Capita
2000	.	240,079	.	.	.
2001	.	273,838	.	.	.
2002	469	262,277	.	.	162.5
2003	.	290,652	.	.	.
2004	.	326,997	.	.	.
2005	.	381,069	.	.	.
2006	.	482,102	.	.	.
2007	254	551,751	.	.	93.8
2008	362	620,446	.	.	135.6
2009	196	465,070	.	.	75.6
2010	141	485,841	.	.	54.3
2011	135	541,536	.	.	51.2
2012	.	600,402	.	.	.
2013	166	599,788	.	.	64.1
2014	163	678,673	.	.	63.7
2015	571	552,658	.	.	220.4
2016	339	428,767	.	.	132.3
2017	505	379,883	.	.	203.2
2018	806	431,367	.	.	325.7
2019	826	349,270	.	.	332.8
2020	539	302,795	.	.	223.2

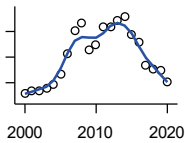
County: county value. Kansas: state value. County Rank: highest county value ranked #1. (\$000): thousands of dollars. Nonmetro Kansas: Kansas total less Metropolitan Areas as defined by the Office of Management and Budget (OMB; released 3/6/2020). Per 1000: For nonmoney amounts, Per 1000=(county value / county population for the same year as the data) x 1000. \$ Per capita=(county value / county population for the same year as the data). Value= . indicates missing or suppressed data or value not calculated.

Business

**TOTAL ANNUAL PAYROLL(\$000):
UTILITIES**

U.S. Census Bureau, County Business Patterns. Beginning with the 2017 data, any tabulation with fewer than 3 establishments were omitted from the release. Data for these establishments are included in the broader total.

Year	County	State of Kansas	Non Metro Kansas	County Rank	Per 1000 or \$ Per Capita
2000	.	410,313	.	.	.
2001	.	452,057	.	.	.
2002	.	377,559	.	.	.
2003	.	378,157	.	.	.
2004	.	377,809	.	.	.
2005	.	429,864	.	.	.
2006	.	443,999	.	.	.
2007	.	480,068	.	.	.
2008	.	541,066	.	.	.
2009	.	563,373	.	.	.
2010	.	512,628	.	.	.
2011	.	653,229	.	.	.
2012	.	625,451	.	.	.
2013	.	625,347	.	.	.
2014	.	610,960	.	.	.
2015	.	668,559	.	.	.



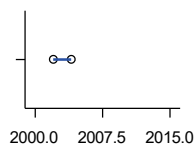
**TOTAL ANNUAL PAYROLL(\$000):
CONSTRUCTION**

U.S. Census Bureau, County Business Patterns. Beginning with the 2017 data, any tabulation with fewer than 3 establishments were omitted from the release. Data for these establishments are included in the broader total.

Year	County	State of Kansas	Non Metro Kansas	County Rank	Per 1000 or \$ Per Capita
2000	565	2,256,057	.	.	191.8
2001	705	2,320,652	.	.	243.4
2002	698	2,302,229	.	.	241.9
2003	781	2,282,021	.	.	274.8
2004	911	2,302,854	.	.	327.0
2005	1,346	2,465,977	.	.	487.3
2006	2,131	2,700,351	.	.	774.6
2007	3,053	2,772,168	.	.	1,127.8
2008	3,319	2,950,073	.	.	1,243.5
2009	2,286	2,709,864	.	.	881.9
2010	2,460	2,553,555	.	.	947.2
2011	3,178	2,550,355	.	.	1,206.1
2012	3,194	2,733,284	.	.	1,237.5
2013	3,440	2,866,801	.	.	1,329.2
2014	3,584	3,135,814	.	.	1,401.6
2015	2,895	3,270,952	.	.	1,117.3
2016	2,574	3,328,610	.	.	1,004.7
2017	1,673	3,568,505	.	.	673.2
2018	1,524	3,806,196	.	.	615.8
2019	1,488	3,879,912	.	.	599.5
2020	1,009	3,983,029	.	.	417.8

County: county value. Kansas: state value. County Rank: highest county value ranked #1. (\$000): thousands of dollars. Nonmetro Kansas: Kansas total less Metropolitan Areas as defined by the Office of Management and Budget (OMB; released 3/6/2020). Per 1000: For nonmoney amounts, Per 1000=(county value / county population for the same year as the data) x 1000. \$ Per capita=(county value / county population for the same year as the data). Value= . indicates missing or suppressed data or value not calculated.

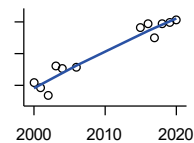
Business



**TOTAL ANNUAL PAYROLL(\$000):
MANUFACTURING**

U.S. Census Bureau, County Business Patterns. Beginning with the 2017 data, any tabulation with fewer than 3 establishments were omitted from the release. Data for these establishments are included in the broader total.

Year	County	State of Kansas	Non Metro Kansas	County Rank	Per 1000 or \$ Per Capita
2000	.	7,015,414	.	.	.
2001	.	7,301,706	.	.	.
2002	0	6,802,605	.	.	0.0
2003	.	6,691,611	.	.	.
2004	0	6,985,656	.	.	0.0
2005	.	7,221,614	.	.	.
2006	.	7,621,873	.	.	.
2007	.	7,873,359	.	.	.
2008	.	8,441,541	.	.	.
2009	.	7,477,838	.	.	.
2010	.	7,556,955	.	.	.
2011	.	7,747,934	.	.	.
2012	.	7,704,851	.	.	.
2013	.	8,365,542	.	.	.
2014	.	8,787,306	.	.	.
2015	.	9,052,105	.	.	.



**TOTAL ANNUAL PAYROLL(\$000):
WHOLESALE TRADE**

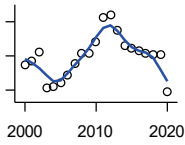
U.S. Census Bureau, County Business Patterns. Beginning with the 2017 data, any tabulation with fewer than 3 establishments were omitted from the release. Data for these establishments are included in the broader total.

Year	County	State of Kansas	Non Metro Kansas	County Rank	Per 1000 or \$ Per Capita
2000	839	2,332,755	.	.	284.8
2001	773	2,283,169	.	.	266.9
2002	667	2,107,653	.	.	231.1
2003	1,043	2,622,701	.	.	367.0
2004	1,006	2,663,196	.	.	361.1
2005	.	2,345,990	.	.	.
2006	1,021	2,592,211	.	.	371.1
2007	.	2,682,542	.	.	.
2008	.	3,078,655	.	.	.
2009	.	2,940,949	.	.	.
2010	.	3,097,628	.	.	.
2011	.	3,305,811	.	.	.
2012	.	3,339,997	.	.	.
2013	.	3,460,512	.	.	.
2014	.	3,712,075	.	.	.
2015	1,525	3,760,189	.	.	588.6
2016	1,579	3,738,207	.	.	616.3
2017	1,398	3,822,730	.	.	562.6
2018	1,582	3,814,353	.	.	639.2
2019	1,599	4,025,802	.	.	644.2
2020	1,619	4,224,666	.	.	670.4

County: county value. Kansas: state value. County Rank: highest county value ranked #1. (\$000): thousands of dollars. Nonmetro Kansas: Kansas total less Metropolitan Areas as defined by the Office of Management and Budget (OMB; released 3/6/2020). Per 1000: For nonmoney amounts, Per 1000=(county value / county population for the same year as the data) x 1000. \$ Per capita=(county value / county population for the same year as the data). Value= . indicates missing or suppressed data or value not calculated.

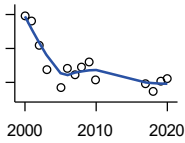
Business

**TOTAL ANNUAL PAYROLL(\$000):
RETAIL TRADE**



U.S. Census Bureau, County Business Patterns. Beginning with the 2017 data, any tabulation with fewer than 3 establishments were omitted from the release. Data for these establishments are included in the broader total.

Year	County	State of Kansas	Non Metro Kansas	County Rank	Per 1000 or \$ Per Capita
2000	2,115	2,747,001	.	.	717.9
2001	2,178	2,813,226	.	.	752.1
2002	2,310	2,854,231	.	.	800.4
2003	1,788	2,773,674	.	.	629.1
2004	1,797	2,847,826	.	.	645.0
2005	1,853	2,952,196	.	.	670.9
2006	1,976	3,126,495	.	.	718.3
2007	2,134	3,201,169	.	.	788.3
2008	2,279	3,261,054	.	.	853.9
2009	2,292	3,232,246	.	.	884.3
2010	2,455	3,321,838	.	.	945.3
2011	2,811	3,384,607	.	.	1,066.8
2012	2,851	3,409,755	.	.	1,104.6
2013	2,621	3,483,752	.	.	1,012.8
2014	2,396	3,617,933	.	.	937.0
2015	2,359	3,712,165	.	.	910.5
2016	2,320	3,826,889	.	.	905.5
2017	2,286	3,797,849	.	.	919.9
2018	2,277	3,818,988	.	.	920.0
2019	2,262	3,908,994	.	.	911.4
2020	1,719	3,984,443	.	.	711.8



**TOTAL ANNUAL PAYROLL(\$000):
TRANSPORTATION &
WAREHOUSING**

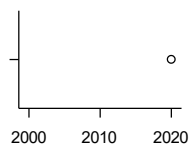
U.S. Census Bureau, County Business Patterns. Beginning with the 2017 data, any tabulation with fewer than 3 establishments were omitted from the release. Data for these establishments are included in the broader total.

Year	County	State of Kansas	Non Metro Kansas	County Rank	Per 1000 or \$ Per Capita
2000	589	1,044,835	.	.	199.9
2001	565	1,089,405	.	.	195.1
2002	422	1,094,636	.	.	146.2
2003	275	1,316,655	.	.	96.8
2004	.	1,439,800	.	.	.
2005	171	1,393,651	.	.	61.9
2006	281	1,528,551	.	.	102.1
2007	247	1,788,267	.	.	91.2
2008	293	1,722,697	.	.	109.8
2009	324	1,618,598	.	.	125.0
2010	218	1,735,761	.	.	83.9
2011	.	1,739,165	.	.	.
2012	.	1,984,976	.	.	.
2013	.	2,006,261	.	.	.
2014	.	2,097,377	.	.	.
2015	.	2,190,072	.	.	.
2017	192	2,546,061	.	.	77.3
2018	144	2,663,188	.	.	58.2
2019	206	2,879,406	.	.	83.0
2020	225	2,962,461	.	.	93.2

County: county value. Kansas: state value. County Rank: highest county value ranked #1. (\$000): thousands of dollars. Nonmetro Kansas: Kansas total less Metropolitan Areas as defined by the Office of Management and Budget (OMB; released 3/6/2020). Per 1000: For nonmoney amounts, Per 1000=(county value / county population for the same year as the data) x 1000. \$ Per capita=(county value / county population for the same year as the data). Value= . indicates missing or suppressed data or value not calculated.

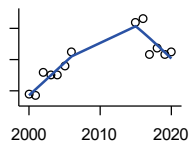
Business

**TOTAL ANNUAL PAYROLL(\$000):
INFORMATION**



U.S. Census Bureau, County Business Patterns. Beginning with the 2017 data, any tabulation with fewer than 3 establishments were omitted from the release. Data for these establishments are included in the broader total.

Year	County	State of Kansas	Non Metro Kansas	County Rank	Per 1000 or \$ Per Capita
2000	.	1,923,381	.	.	.
2001	.	2,218,610	.	.	.
2002	.	2,298,108	.	.	.
2003	.	2,378,673	.	.	.
2004	.	2,392,990	.	.	.
2005	.	2,395,081	.	.	.
2006	.	2,586,483	.	.	.
2007	.	2,594,138	.	.	.
2008	.	3,043,244	.	.	.
2009	.	3,045,570	.	.	.
2010	.	2,481,580	.	.	.
2011	.	2,513,805	.	.	.
2012	.	2,535,555	.	.	.
2013	.	2,805,017	.	.	.
2014	.	2,393,609	.	.	.
2015	.	2,406,323	.	.	.
2020	1,349	2,245,204	.	.	558.6



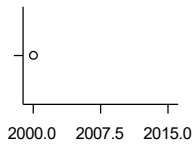
**TOTAL ANNUAL PAYROLL(\$000):
FINANCE & INSURANCE**

U.S. Census Bureau, County Business Patterns. Beginning with the 2017 data, any tabulation with fewer than 3 establishments were omitted from the release. Data for these establishments are included in the broader total.

Year	County	State of Kansas	Non Metro Kansas	County Rank	Per 1000 or \$ Per Capita
2000	960	2,083,565	.	.	325.9
2001	935	2,129,587	.	.	322.9
2002	1,229	2,414,120	.	.	425.8
2003	1,203	2,608,579	.	.	423.3
2004	1,204	2,676,910	.	.	432.2
2005	1,316	2,786,136	.	.	476.5
2006	1,496	2,928,931	.	.	543.8
2007	.	3,096,017	.	.	.
2008	.	3,322,977	.	.	.
2009	.	3,206,839	.	.	.
2010	.	3,211,300	.	.	.
2011	.	3,404,633	.	.	.
2012	.	3,611,165	.	.	.
2013	.	3,896,051	.	.	.
2014	.	4,044,315	.	.	.
2015	1,875	4,113,060	.	.	723.7
2016	1,926	4,180,740	.	.	751.8
2017	1,472	4,258,057	.	.	592.4
2018	1,551	4,682,552	.	.	626.7
2019	1,468	4,814,201	.	.	591.5
2020	1,492	5,288,529	.	.	617.8

County: county value. Kansas: state value. County Rank: highest county value ranked #1. (\$000): thousands of dollars. Nonmetro Kansas: Kansas total less Metropolitan Areas as defined by the Office of Management and Budget (OMB; released 3/6/2020). Per 1000: For nonmoney amounts, Per 1000=(county value / county population for the same year as the data) x 1000. \$ Per capita=(county value / county population for the same year as the data). Value= . indicates missing or suppressed data or value not calculated.

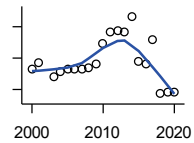
Business



**TOTAL ANNUAL PAYROLL(\$000):
REAL ESTATE, RENTAL, AND
LEASING**

U.S. Census Bureau, County Business Patterns. Beginning with the 2017 data, any tabulation with fewer than 3 establishments were omitted from the release. Data for these establishments are included in the broader total.

Year	County	State of Kansas	Non Metro Kansas	County Rank	Per 1000 or \$ Per Capita
2000	0	360,637	.	.	0.0
2001	.	397,371	.	.	.
2002	.	403,695	.	.	.
2003	.	437,786	.	.	.
2004	.	430,719	.	.	.
2005	.	465,149	.	.	.
2006	.	478,811	.	.	.
2007	.	452,969	.	.	.
2008	.	484,149	.	.	.
2009	.	450,884	.	.	.
2010	.	487,255	.	.	.
2011	.	535,120	.	.	.
2012	.	531,039	.	.	.
2013	.	538,796	.	.	.
2014	.	542,307	.	.	.
2015	.	595,030	.	.	.



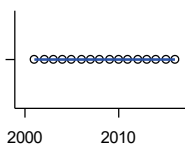
**TOTAL ANNUAL PAYROLL(\$000):
PROFESSIONAL, SCIENTIFIC, AND
TECHNICAL SERVICES**

U.S. Census Bureau, County Business Patterns. Beginning with the 2017 data, any tabulation with fewer than 3 establishments were omitted from the release. Data for these establishments are included in the broader total.

Year	County	State of Kansas	Non Metro Kansas	County Rank	Per 1000 or \$ Per Capita
2000	230	2,057,313	.	.	78.1
2001	271	2,152,937	.	.	93.6
2002	.	2,150,085	.	.	.
2003	182	2,052,712	.	.	64.0
2004	217	2,531,457	.	.	77.9
2005	229	2,418,500	.	.	82.9
2006	229	2,655,690	.	.	83.2
2007	230	2,901,544	.	.	85.0
2008	236	2,903,802	.	.	88.4
2009	264	3,071,611	.	.	101.9
2010	395	3,037,182	.	.	152.1
2011	470	3,132,082	.	.	178.4
2012	475	3,455,548	.	.	184.0
2013	464	3,777,729	.	.	179.3
2014	565	3,981,580	.	.	221.0
2015	279	4,039,074	.	.	107.7
2016	266	4,125,507	.	.	103.8
2017	417	4,158,858	.	.	167.8
2018	75	4,314,317	.	.	30.3
2019	80	4,646,644	.	.	32.2
2020	85	4,927,611	.	.	35.2

County: county value. Kansas: state value. County Rank: highest county value ranked #1. (\$000): thousands of dollars. Nonmetro Kansas: Kansas total less Metropolitan Areas as defined by the Office of Management and Budget (OMB; released 3/6/2020). Per 1000: For nonmoney amounts, Per 1000=(county value / county population for the same year as the data) x 1000. \$ Per capita=(county value / county population for the same year as the data). Value= . indicates missing or suppressed data or value not calculated.

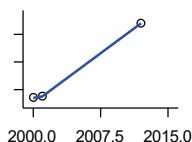
Business



**TOTAL ANNUAL PAYROLL(\$000):
MANAGEMENT OF COMPANIES AND
ENTERPRISES**

U.S. Census Bureau, County Business Patterns. Beginning with the 2017 data, any tabulation with fewer than 3 establishments were omitted from the release. Data for these establishments are included in the broader total.

Year	County	State of Kansas	Non Metro Kansas	County Rank	Per 1000 or \$ Per Capita
2000	.	1,362,735	.	.	.
2001	0	1,279,253	.	.	0.0
2002	0	1,311,368	.	.	0.0
2003	0	1,352,119	.	.	0.0
2004	0	1,378,891	.	.	0.0
2005	0	1,510,876	.	.	0.0
2006	0	1,626,320	.	.	0.0
2007	0	2,233,654	.	.	0.0
2008	0	1,848,656	.	.	0.0
2009	0	1,601,158	.	.	0.0
2010	0	2,003,048	.	.	0.0
2011	0	1,677,619	.	.	0.0
2012	0	1,834,430	.	.	0.0
2013	0	1,938,100	.	.	0.0
2014	0	2,117,232	.	.	0.0
2015	0	2,451,126	.	.	0.0
2016	0	2,167,620	.	.	0.0



**TOTAL ANNUAL PAYROLL(\$000):
ADMIN, SUPPORT, WASTE MGMT.,
AND REMEDIATION**

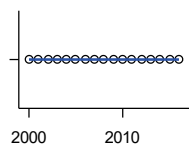
U.S. Census Bureau, County Business Patterns. Beginning with the 2017 data, any tabulation with fewer than 3 establishments were omitted from the release. Data for these establishments are included in the broader total.

Year	County	State of Kansas	Non Metro Kansas	County Rank	Per 1000 or \$ Per Capita
2000	28	1,388,712	.	.	9.5
2001	30	1,416,480	.	.	10.4
2002	.	1,378,905	.	.	.
2003	.	1,387,061	.	.	.
2004	.	1,544,442	.	.	.
2005	.	1,694,687	.	.	.
2006	.	1,800,846	.	.	.
2007	.	1,978,025	.	.	.
2008	.	2,096,864	.	.	.
2009	.	1,832,540	.	.	.
2010	.	2,117,325	.	.	.
2011	.	2,114,970	.	.	.
2012	136	2,230,250	.	.	52.7
2013	.	2,214,320	.	.	.
2014	.	2,444,170	.	.	.
2015	.	2,577,592	.	.	.

County: county value. Kansas: state value. County Rank: highest county value ranked #1. (\$000): thousands of dollars. Nonmetro Kansas: Kansas total less Metropolitan Areas as defined by the Office of Management and Budget (OMB; released 3/6/2020). Per 1000: For nonmoney amounts, Per 1000=(county value / county population for the same year as the data) x 1000. \$ Per capita=(county value / county population for the same year as the data). Value= . indicates missing or suppressed data or value not calculated.

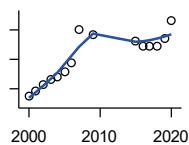
Business

**TOTAL ANNUAL PAYROLL(\$000):
EDUCATIONAL SERVICES**



U.S. Census Bureau, County Business Patterns. Beginning with the 2017 data, any tabulation with fewer than 3 establishments were omitted from the release. Data for these establishments are included in the broader total.

Year	County	State of Kansas	Non Metro Kansas	County Rank	Per 1000 or \$ Per Capita
2000	0	299,843	.	.	0.0
2001	0	320,606	.	.	0.0
2002	0	353,531	.	.	0.0
2003	0	350,814	.	.	0.0
2004	0	361,644	.	.	0.0
2005	0	375,781	.	.	0.0
2006	0	400,565	.	.	0.0
2007	0	414,233	.	.	0.0
2008	0	463,210	.	.	0.0
2009	0	468,856	.	.	0.0
2010	0	487,670	.	.	0.0
2011	0	504,964	.	.	0.0
2012	0	508,448	.	.	0.0
2013	0	553,995	.	.	0.0
2014	0	612,073	.	.	0.0
2015	0	579,794	.	.	0.0
2016	0	571,582	.	.	0.0



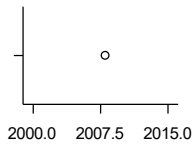
**TOTAL ANNUAL PAYROLL(\$000):
HEALTH CARE AND SOCIAL ASSISTANCE**

U.S. Census Bureau, County Business Patterns. Beginning with the 2017 data, any tabulation with fewer than 3 establishments were omitted from the release. Data for these establishments are included in the broader total.

Year	County	State of Kansas	Non Metro Kansas	County Rank	Per 1000 or \$ Per Capita
2000	4,233	4,120,595	.	.	1,436.9
2001	4,410	4,445,027	.	.	1,522.8
2002	4,627	4,705,220	.	.	1,603.3
2003	4,825	4,939,323	.	.	1,697.7
2004	4,900	5,232,394	.	.	1,758.8
2005	5,080	5,487,089	.	.	1,839.2
2006	5,367	5,814,218	.	.	1,950.9
2007	6,521	6,186,471	.	.	2,408.9
2008	.	6,490,627	.	.	.
2009	6,330	6,749,962	.	.	2,442.1
2010	.	6,871,727	.	.	.
2011	.	7,129,655	.	.	.
2012	.	7,614,853	.	.	.
2013	.	7,541,515	.	.	.
2014	.	7,733,621	.	.	.
2015	6,126	7,969,650	.	.	2,364.3
2016	5,925	8,018,706	.	.	2,312.6
2017	5,951	8,384,998	.	.	2,394.8
2018	5,927	8,637,619	.	.	2,394.7
2019	6,202	8,854,414	.	.	2,498.8
2020	6,819	9,309,269	.	.	2,823.6

County: county value. Kansas: state value. County Rank: highest county value ranked #1. (\$000): thousands of dollars. Nonmetro Kansas: Kansas total less Metropolitan Areas as defined by the Office of Management and Budget (OMB; released 3/6/2020). Per 1000: For nonmoney amounts, Per 1000=(county value / county population for the same year as the data) x 1000. \$ Per capita=(county value / county population for the same year as the data). Value= . indicates missing or suppressed data or value not calculated.

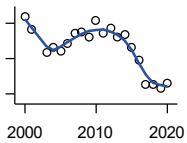
Business



**TOTAL ANNUAL PAYROLL(\$000):
ARTS, ENTERTAINMENT, AND
RECREATION**

U.S. Census Bureau, County Business Patterns. Beginning with the 2017 data, any tabulation with fewer than 3 establishments were omitted from the release. Data for these establishments are included in the broader total.

Year	County	State of Kansas	Non Metro Kansas	County Rank	Per 1000 or \$ Per Capita
2000	.	195,784	.	.	.
2001	.	203,511	.	.	.
2002	.	206,204	.	.	.
2003	.	185,049	.	.	.
2004	.	190,742	.	.	.
2005	.	196,594	.	.	.
2006	.	201,049	.	.	.
2007	.	220,435	.	.	.
2008	0	236,986	.	.	0.0
2009	.	237,116	.	.	.
2010	.	233,285	.	.	.
2011	.	234,351	.	.	.
2012	.	254,169	.	.	.
2013	.	278,474	.	.	.
2014	.	289,103	.	.	.
2015	.	300,253	.	.	.



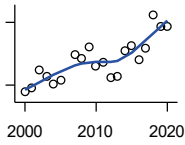
**TOTAL ANNUAL PAYROLL(\$000):
ACCOMMODATION AND FOOD
SERVICES**

U.S. Census Bureau, County Business Patterns. Beginning with the 2017 data, any tabulation with fewer than 3 establishments were omitted from the release. Data for these establishments are included in the broader total.

Year	County	State of Kansas	Non Metro Kansas	County Rank	Per 1000 or \$ Per Capita
2000	369	926,831	.	.	125.3
2001	331	960,196	.	.	114.3
2002	.	930,510	.	.	.
2003	266	992,313	.	.	93.6
2004	281	1,046,901	.	.	100.9
2005	270	1,101,854	.	.	97.8
2006	294	1,185,280	.	.	106.9
2007	322	1,431,100	.	.	119.0
2008	324	1,271,594	.	.	121.4
2009	309	1,283,065	.	.	119.2
2010	359	1,296,556	.	.	138.2
2011	322	1,364,281	.	.	122.2
2012	335	1,388,337	.	.	129.8
2013	311	1,476,335	.	.	120.2
2014	318	1,572,021	.	.	124.4
2015	280	1,640,144	.	.	108.1
2016	247	1,709,193	.	.	96.4
2017	175	1,824,791	.	.	70.4
2018	178	1,880,364	.	.	71.9
2019	165	1,958,603	.	.	66.5
2020	181	1,745,238	.	.	74.9

County: county value. Kansas: state value. County Rank: highest county value ranked #1. (\$000): thousands of dollars. Nonmetro Kansas: Kansas total less Metropolitan Areas as defined by the Office of Management and Budget (OMB; released 3/6/2020). Per 1000: For nonmoney amounts, Per 1000=(county value / county population for the same year as the data) x 1000. \$ Per capita=(county value / county population for the same year as the data). Value= . indicates missing or suppressed data or value not calculated.

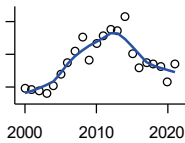
Business



**TOTAL ANNUAL PAYROLL(\$000):
OTHER SERVICES**

U.S. Census Bureau, County Business Patterns. Beginning with the 2017 data, any tabulation with fewer than 3 establishments were omitted from the release. Data for these establishments are included in the broader total.

Year	County	State of Kansas	Non Metro Kansas	County Rank	Per 1000 or \$ Per Capita
2000	466	965,540	.	.	158.2
2001	487	996,716	.	.	168.2
2002	570	1,007,464	.	.	197.5
2003	541	979,466	.	.	190.4
2004	506	970,383	.	.	181.6
2005	523	1,005,537	.	.	189.4
2006	.	1,055,932	.	.	.
2007	643	1,141,551	.	.	237.5
2008	629	1,184,016	.	.	235.7
2009	680	1,167,154	.	.	262.3
2010	590	1,170,201	.	.	227.2
2011	609	1,173,775	.	.	231.1
2012	537	1,217,210	.	.	208.1
2013	541	1,254,933	.	.	209.0
2014	664	1,305,563	.	.	259.7
2015	687	1,341,075	.	.	265.1
2016	621	1,351,375	.	.	242.4
2017	677	1,344,179	.	.	272.4
2018	836	1,382,801	.	.	337.8
2019	781	1,427,711	.	.	314.7
2020	779	1,420,859	.	.	322.6



**NOMINAL TAXABLE RETAIL SALES
(million\$)**

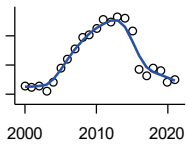
Kansas Department of Revenue

Year	County	State of Kansas	Non Metro Kansas	County Rank	Per 1000 or \$ Per Capita
2000	24.8	30,119.0	8,831.7	77	8.4
2001	24.2	30,202.2	8,700.3	73	8.4
2002	23.8	29,380.8	8,241.5	73	8.2
2003	22.9	30,694.0	8,710.6	80	8.1
2004	25.2	31,922.6	9,062.5	79	9.0
2005	28.8	32,924.2	9,386.6	74	10.4
2006	32.5	34,937.6	10,042.1	75	11.8
2007	36.1	36,180.1	10,553.2	70	13.3
2008	40.4	37,559.5	11,126.9	69	15.1
2009	33.3	35,211.8	10,351.5	77	12.8
2010	38.4	35,655.7	10,606.1	72	14.8
2011	40.7	37,257.0	11,153.5	72	15.4
2012	42.8	38,988.8	11,749.1	74	16.6
2013	42.3	40,009.0	11,993.8	75	16.3
2014	46.6	41,299.0	12,365.4	72	18.2
2015	35.3	41,635.8	11,747.6	78	13.6
2016	30.7	42,040.2	11,523.5	81	12.0
2017	32.4	41,940.1	11,449.9	80	13.0
2018	32.2	42,732.3	11,643.9	80	13.0
2019	31.4	43,732.5	12,062.7	81	12.6
2020	26.7	43,689.9	12,331.7	87	11.1
2021	32.0	48,532.8	13,413.0	81	13.3

County: county value. Kansas: state value. County Rank: highest county value ranked #1. (\$000): thousands of dollars. Nonmetro Kansas: Kansas total less Metropolitan Areas as defined by the Office of Management and Budget (OMB; released 3/6/2020). Per 1000: For nonmoney amounts, Per 1000=(county value / county population for the same year as the data) x 1000. \$ Per capita=(county value / county population for the same year as the data). Value= . indicates missing or suppressed data or value not calculated.

Business

RETAIL PULL FACTOR



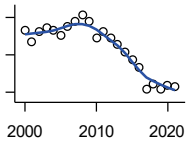
Kansas Direct Program, Kansas State University Cooperative Extension Service (1980-1999); Kansas Department of Revenue (2000-)

Year	County	State of Kansas	Non Metro Kansas	County Rank	Per 1000 or \$ Per Capita
2000	0.76	.	.	31	.
2001	0.75	.	.	30	.
2002	0.76	.	.	28	.
2003	0.72	.	.	35	.
2004	0.78	.	.	31	.
2005	0.88	.	.	25	.
2006	0.94	.	.	20	.
2007	1.01	.	.	18	.
2008	1.09	.	.	17	.
2009	1.11	.	.	14	.
2010	1.15	.	.	12	.
2011	1.21	.	.	12	.
2012	1.19	.	.	15	.
2013	1.23	.	.	15	.
2014	1.22	.	.	16	.
2015	1.13	.	.	17	.
2016	0.87	.	.	29	.
2017	0.83	.	.	30	.
2018	0.88	.	.	28	.
2019	0.86	.	.	31	.
2020	0.78	.	.	42	.
2021	0.80	.	.	42	.

County: county value. Kansas: state value. County Rank: highest county value ranked #1. (\$000): thousands of dollars. Nonmetro Kansas: Kansas total less Metropolitan Areas as defined by the Office of Management and Budget (OMB; released 3/6/2020). Per 1000: For nonmoney amounts, Per 1000=(county value / county population for the same year as the data) x 1000. \$ Per capita=(county value / county population for the same year as the data). Value= . indicates missing or suppressed data or value not calculated.

Employment

CIVILIAN LABOR FORCE (BLS-Place of Residence; 1990-)



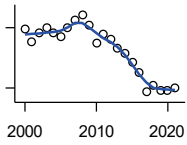
U.S. Department of Labor, Bureau of Labor Statistics (BLS)

Year	County	State of Kansas	Non Metro Kansas	County Rank	Per 1000 or \$ Per Capita
2000	1,433	1,402,606	482,229	95	486.4
2001	1,373	1,398,521	475,280	95	474.1
2002	1,423	1,419,335	482,428	95	493.1
2003	1,445	1,441,065	490,161	95	508.4
2004	1,434	1,458,910	494,509	95	514.7
2005	1,405	1,458,767	490,047	95	508.7
2006	1,449	1,467,553	498,594	95	526.7
2007	1,482	1,485,414	497,048	93	547.5
2008	1,514	1,493,365	504,522	90	567.3
2009	1,479	1,512,572	516,311	95	570.6
2010	1,389	1,500,463	492,594	97	534.8
2011	1,423	1,498,000	492,563	93	540.0
2012	1,391	1,490,808	489,349	94	538.9
2013	1,355	1,489,395	485,484	94	523.6
2014	1,314	1,494,203	481,813	95	513.9
2015	1,276	1,493,782	477,546	96	492.5
2016	1,230	1,491,961	468,258	96	480.1
2017	1,119	1,488,346	461,063	98	450.3
2018	1,146	1,488,027	456,866	98	463.0
2019	1,119	1,497,517	455,858	98	450.8
2020	1,134	1,493,706	452,935	98	469.6
2021	1,132	1,495,665	453,398	99	471.7

County: county value. Kansas: state value. County Rank: highest county value ranked #1. (\$000): thousands of dollars. Nonmetro Kansas: Kansas total less Metropolitan Areas as defined by the Office of Management and Budget (OMB; released 3/6/2020). Per 1000: For nonmoney amounts, Per 1000=(county value / county population for the same year as the data) x 1000. \$ Per capita=(county value / county population for the same year as the data). Value= . indicates missing or suppressed data or value not calculated.

Employment

EMPLOYED (BLS-Place of Residence; 1990-)



U.S. Department of Labor, Bureau of Labor Statistics (BLS)

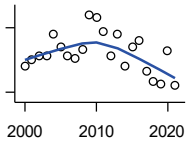
Year	County	State of Kansas	Non Metro Kansas	County Rank	Per 1000 or \$ Per Capita
2000	1,391	1,349,841	464,962	95	472.2
2001	1,328	1,338,775	455,154	95	458.6
2002	1,376	1,347,163	461,241	94	476.8
2003	1,398	1,361,115	467,622	94	491.9
2004	1,377	1,378,355	470,330	95	494.3
2005	1,354	1,384,654	467,722	95	490.2
2006	1,402	1,402,950	479,174	94	509.6
2007	1,436	1,422,109	477,983	92	530.5
2008	1,464	1,425,022	484,056	91	548.5
2009	1,413	1,408,142	485,797	94	545.1
2010	1,324	1,396,172	461,635	96	509.8
2011	1,365	1,402,198	463,723	92	518.0
2012	1,344	1,405,638	463,376	94	520.7
2013	1,298	1,410,470	461,405	94	501.5
2014	1,272	1,426,892	461,797	95	497.5
2015	1,225	1,431,533	457,899	95	472.8
2016	1,176	1,431,920	449,356	97	459.0
2017	1,079	1,434,516	445,003	98	434.2
2018	1,111	1,439,329	442,716	98	448.9
2019	1,085	1,450,705	442,108	98	437.1
2020	1,085	1,408,965	433,229	99	449.3
2021	1,099	1,447,323	441,159	99	457.9

County: county value. Kansas: state value. County Rank: highest county value ranked #1. (\$000): thousands of dollars. Nonmetro Kansas: Kansas total less Metropolitan Areas as defined by the Office of Management and Budget (OMB; released 3/6/2020). Per 1000: For nonmoney amounts, Per 1000=(county value / county population for the same year as the data) x 1000. \$ Per capita=(county value / county population for the same year as the data). Value= . indicates missing or suppressed data or value not calculated.

Employment

UNEMPLOYED (BLS-Place of Residence; 1990-)

U.S. Department of Labor, Bureau of Labor Statistics (BLS)

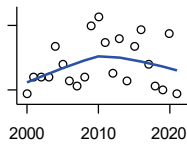


Year	County	State of Kansas	Non Metro Kansas	County Rank	Per 1000 or \$ Per Capita
2000	42	52,765	17,267	94	14.3
2001	45	59,746	20,126	94	15.5
2002	47	72,172	21,187	95	16.3
2003	47	79,950	22,539	94	16.5
2004	57	80,555	24,179	93	20.5
2005	51	74,113	22,325	94	18.5
2006	47	64,603	19,420	93	17.1
2007	46	63,305	19,065	93	17.0
2008	50	68,343	20,466	88	18.7
2009	66	104,430	30,514	90	25.5
2010	65	104,291	30,959	90	25.0
2011	58	95,802	28,840	90	22.0
2012	47	85,170	25,973	95	18.2
2013	57	78,925	24,079	86	22.0
2014	42	67,311	20,016	91	16.4
2015	51	62,249	19,647	88	19.7
2016	54	60,041	18,902	85	21.1
2017	40	53,830	16,060	88	16.1
2018	35	48,698	14,150	90	14.1
2019	34	46,812	13,750	88	13.7
2020	49	84,741	19,706	83	20.3
2021	33	48,342	12,239	84	13.8

County: county value. Kansas: state value. County Rank: highest county value ranked #1. (\$000): thousands of dollars. Nonmetro Kansas: Kansas total less Metropolitan Areas as defined by the Office of Management and Budget (OMB; released 3/6/2020). Per 1000: For nonmoney amounts, Per 1000=(county value / county population for the same year as the data) x 1000. \$ Per capita=(county value / county population for the same year as the data). Value= . indicates missing or suppressed data or value not calculated.

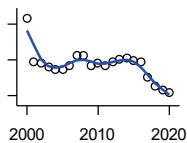
Employment

UNEMPLOYMENT RATE (BLS-Place of Residence; 1990-)



U.S. Department of Labor, Bureau of Labor Statistics (BLS)

Year	County	State of Kansas	Non Metro Kansas	County Rank	Per 1000 or \$ Per Capita
2000	2.9	3.8	3.6	79	.
2001	3.3	4.3	4.2	75	.
2002	3.3	5.1	4.4	81	.
2003	3.3	5.5	4.6	85	.
2004	4.0	5.5	4.9	71	.
2005	3.6	5.1	4.6	84	.
2006	3.2	4.4	3.9	82	.
2007	3.1	4.3	3.8	86	.
2008	3.3	4.6	4.1	77	.
2009	4.5	6.9	5.9	68	.
2010	4.7	7.0	6.3	72	.
2011	4.1	6.4	5.9	78	.
2012	3.4	5.7	5.3	93	.
2013	4.2	5.3	5.0	58	.
2014	3.2	4.5	4.2	78	.
2015	4.0	4.2	4.1	45	.
2016	4.4	4.0	4.0	26	.
2017	3.6	3.6	3.5	40	.
2018	3.1	3.3	3.1	43	.
2019	3.0	3.1	3.0	42	.
2020	4.3	5.7	4.4	44	.
2021	2.9	3.2	2.7	34	.



BEA EMPLOYMENT: TOTAL (Place of Work)

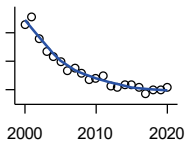
U.S. Bureau of Economic Analysis, Regional Economic Information System (REIS)

Year	County	State of Kansas	Non Metro Kansas	County Rank	Per 1000 or \$ Per Capita
2000	2,666	1,760,312	604,361	77	905.0
2001	2,178	1,767,601	592,672	82	752.1
2002	2,169	1,746,077	585,387	81	751.6
2003	2,124	1,733,694	577,860	82	747.4
2004	2,090	1,750,876	578,750	83	750.2
2005	2,093	1,765,650	577,562	83	757.8
2006	2,142	1,795,507	583,041	81	778.6
2007	2,253	1,844,355	591,924	78	832.3
2008	2,249	1,858,069	594,368	80	842.6
2009	2,134	1,813,184	580,972	84	823.3
2010	2,157	1,801,873	579,758	84	830.6
2011	2,136	1,819,044	583,725	84	810.6
2012	2,176	1,841,393	591,748	83	843.1
2013	2,207	1,869,054	597,236	84	852.8
2014	2,214	1,895,859	601,291	83	865.9
2015	2,198	1,910,954	598,589	84	848.3
2016	2,182	1,916,152	592,580	85	851.7
2017	2,006	1,914,179	584,337	85	807.2
2018	1,903	1,926,242	580,213	85	768.9
2019	1,857	1,925,204	574,496	85	748.2
2020	1,833	1,851,247	556,671	85	759.0

County: county value. Kansas: state value. County Rank: highest county value ranked #1. (\$000): thousands of dollars. Nonmetro Kansas: Kansas total less Metropolitan Areas as defined by the Office of Management and Budget (OMB; released 3/6/2020). Per 1000: For nonmoney amounts, Per 1000=(county value / county population for the same year as the data) x 1000. \$ Per capita=(county value / county population for the same year as the data). Value= . indicates missing or suppressed data or value not calculated.

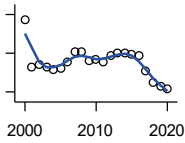
Employment

BEA EMPLOYMENT: FARM



U.S. Bureau of Economic Analysis,
Regional Economic Information System
(REIS)

Year	County	State of Kansas	Non Metro Kansas	County Rank	Per 1000 or \$ Per Capita
2000	514	77,477	59,088	81	174.5
2001	528	78,177	59,647	80	182.3
2002	490	70,532	53,893	76	169.8
2003	466	68,516	52,099	77	164.0
2004	457	67,586	51,246	78	164.0
2005	448	66,829	50,386	77	162.2
2006	433	64,910	48,728	76	157.4
2007	437	65,639	49,037	75	161.4
2008	428	63,820	47,682	74	160.4
2009	418	62,798	46,960	75	161.3
2010	420	63,882	47,984	77	161.7
2011	424	65,761	49,707	82	160.9
2012	407	63,753	48,167	82	157.7
2013	404	62,739	47,255	79	156.1
2014	408	64,308	48,722	81	159.6
2015	408	64,416	48,927	81	157.5
2016	403	63,840	48,539	81	157.3
2017	392	61,876	46,936	81	157.7
2018	400	63,233	48,069	81	161.6
2019	399	63,300	48,167	81	160.8
2020	403	64,281	49,038	81	166.9



BEA EMPLOYMENT: NON-FARM

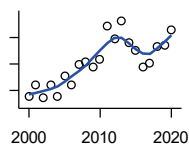
U.S. Bureau of Economic Analysis,
Regional Economic Information System
(REIS)

Year	County	State of Kansas	Non Metro Kansas	County Rank	Per 1000 or \$ Per Capita
2000	2,152	1,682,835	545,273	74	730.5
2001	1,650	1,689,424	533,025	85	569.8
2002	1,679	1,675,545	531,494	83	581.8
2003	1,658	1,665,178	525,761	83	583.4
2004	1,633	1,683,290	527,504	84	586.1
2005	1,645	1,698,821	527,176	84	595.6
2006	1,709	1,730,597	534,313	83	621.2
2007	1,816	1,778,716	542,887	79	670.9
2008	1,821	1,794,249	546,686	80	682.3
2009	1,716	1,750,386	534,012	83	662.0
2010	1,737	1,737,991	531,774	83	668.8
2011	1,712	1,753,283	534,018	83	649.7
2012	1,769	1,777,640	543,581	82	685.4
2013	1,803	1,806,315	549,981	84	696.7
2014	1,806	1,831,551	552,569	83	706.3
2015	1,790	1,846,538	549,662	84	690.9
2016	1,779	1,852,312	544,041	84	694.4
2017	1,614	1,852,303	537,401	85	649.5
2018	1,503	1,863,009	532,144	85	607.3
2019	1,458	1,861,904	526,329	86	587.4
2020	1,430	1,786,966	507,633	86	592.1

County: county value. Kansas: state value. County Rank: highest county value ranked #1. (\$000): thousands of dollars. Nonmetro Kansas: Kansas total less Metropolitan Areas as defined by the Office of Management and Budget (OMB; released 3/6/2020). Per 1000: For nonmoney amounts, Per 1000=(county value / county population for the same year as the data) x 1000. \$ Per capita=(county value / county population for the same year as the data). Value= . indicates missing or suppressed data or value not calculated.

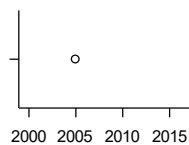
Employment

AVERAGE WAGE PER JOB (\$)



U.S. Bureau of Economic Analysis,
Regional Economic Information System
(REIS)

Year	County	State of Kansas	Non Metro Kansas	County Rank	Per 1000 or \$ Per Capita
2000	17,575	31,854	24,396	87	.
2001	21,851	32,859	26,379	75	.
2002	17,059	33,707	26,331	100	.
2003	22,265	35,078	28,911	94	.
2004	17,812	35,932	29,747	103	.
2005	25,602	37,467	31,646	88	.
2006	21,952	40,038	31,993	93	.
2007	29,991	41,500	33,484	69	.
2008	30,828	44,197	36,256	86	.
2009	28,943	43,860	35,739	85	.
2010	31,586	45,370	38,631	82	.
2011	44,255	48,280	42,324	42	.
2012	39,278	50,549	42,015	59	.
2013	46,316	52,629	46,073	46	.
2014	37,983	51,959	43,562	72	.
2015	35,202	52,250	42,320	76	.
2016	28,679	51,664	41,964	92	.
2017	30,347	53,007	42,137	87	.
2018	36,671	54,790	44,514	78	.
2019	37,079	56,956	45,336	83	.
2020	42,824	60,597	49,183	83	.



BEA EMPLOYMENT: FORESTRY, FISHING, HUNTING, AND AG SUPPORT

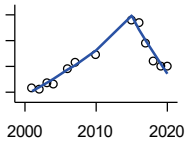
U.S. Bureau of Economic Analysis,
Regional Economic Information System
(REIS)

Year	County	State of Kansas	Non Metro Kansas	County Rank	Per 1000 or \$ Per Capita
2001	.	7,059	.	.	.
2002	.	8,045	.	.	.
2003	.	7,313	.	.	.
2004	.	7,623	.	.	.
2005	41	7,962	.	21	.
2006	.	7,748	.	.	.
2007	.	8,228	.	.	.
2008	.	8,646	.	.	.
2009	.	8,982	.	.	.
2010	.	9,251	.	.	.
2011	.	9,410	.	.	.
2012	.	9,691	.	.	.
2013	.	10,014	.	.	.
2014	.	10,708	.	.	.
2015	.	10,020	.	.	.
2016	.	10,383	.	.	.

County: county value. Kansas: state value. County Rank: highest county value ranked #1. (\$000): thousands of dollars. Nonmetro Kansas: Kansas total less Metropolitan Areas as defined by the Office of Management and Budget (OMB; released 3/6/2020). Per 1000: For nonmoney amounts, Per 1000=(county value / county population for the same year as the data) x 1000. \$ Per capita=(county value / county population for the same year as the data). Value= . indicates missing or suppressed data or value not calculated.

Employment

BEA EMPLOYMENT: MINING



U.S. Bureau of Economic Analysis,
Regional Economic Information System
(REIS)

Year	County	State of Kansas	Non Metro Kansas	County Rank	Per 1000 or \$ Per Capita
2001	169	19,592	.	25	.
2002	161	17,635	.	21	.
2003	186	19,869	.	22	.
2004	181	18,466	.	22	.
2005	.	19,489	.	.	.
2006	239	22,403	.	20	.
2007	267	24,043	.	18	.
2008	.	31,467	.	.	.
2009	.	29,941	.	.	.
2010	297	36,124	.	25	.
2011	.	31,658	.	.	.
2012	.	42,405	.	.	.
2013	.	46,585	.	.	.
2014	.	45,526	.	.	.
2015	431	46,460	.	25	.
2016	421	48,555	.	25	.
2017	342	40,710	.	24	.
2018	273	32,021	.	25	.
2019	250	29,101	.	26	.
2020	249	26,272	.	22	.

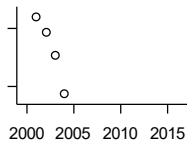
BEA EMPLOYMENT: UTILITIES

U.S. Bureau of Economic Analysis,
Regional Economic Information System
(REIS)

Year	County	State of Kansas	Non Metro Kansas	County Rank	Per 1000 or \$ Per Capita
2001	.	7,608	.	.	.
2002	.	7,087	.	.	.
2003	.	7,253	.	.	.
2004	.	7,356	.	.	.
2005	.	7,447	.	.	.
2006	.	7,478	.	.	.
2007	.	7,584	.	.	.
2008	.	7,855	.	.	.
2009	.	7,941	.	.	.
2010	.	8,028	.	.	.
2011	.	8,213	.	.	.
2012	.	8,155	.	.	.
2013	.	7,949	.	.	.
2014	.	7,985	.	.	.
2015	.	7,040	.	.	.
2016	.	7,133	.	.	.

County: county value. Kansas: state value. County Rank: highest county value ranked #1. (\$000): thousands of dollars. Nonmetro Kansas: Kansas total less Metropolitan Areas as defined by the Office of Management and Budget (OMB; released 3/6/2020). Per 1000: For nonmoney amounts, Per 1000=(county value / county population for the same year as the data) x 1000. \$ Per capita=(county value / county population for the same year as the data). Value= . indicates missing or suppressed data or value not calculated.

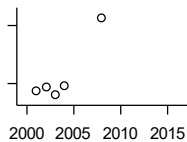
Employment



**BEA EMPLOYMENT:
CONSTRUCTION**

U.S. Bureau of Economic Analysis,
Regional Economic Information System
(REIS)

Year	County	State of Kansas	Non Metro Kansas	County Rank	Per 1000 or \$ Per Capita
2001	94	92,647	27,972	74	.
2002	92	90,370	.	71	.
2003	89	91,725	26,681	72	.
2004	84	93,271	.	70	.
2005	.	94,836	.	.	.
2006	.	97,449	.	.	.
2007	.	99,119	29,179	.	.
2008	.	97,741	.	.	.
2009	.	90,165	28,077	.	.
2010	.	84,708	26,402	.	.
2011	.	83,332	25,999	.	.
2012	.	85,966	.	.	.
2013	.	88,094	.	.	.
2014	.	91,143	.	.	.
2015	.	91,458	27,583	.	.
2016	.	93,539	27,151	.	.



**BEA EMPLOYMENT:
MANUFACTURING**

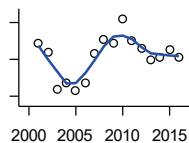
U.S. Bureau of Economic Analysis,
Regional Economic Information System
(REIS)

Year	County	State of Kansas	Non Metro Kansas	County Rank	Per 1000 or \$ Per Capita
2001	16	199,980	73,170	85	.
2002	18	188,905	70,691	85	.
2003	14	179,013	68,418	85	.
2004	19	181,738	69,669	83	.
2005	.	185,459	71,072	.	.
2006	.	188,047	71,704	.	.
2007	.	192,930	73,488	.	.
2008	54	193,116	72,235	82	.
2009	.	173,854	64,961	.	.
2010	.	166,000	62,884	.	.
2011	.	167,302	64,361	.	.
2012	.	169,308	65,944	.	.
2013	.	170,113	67,251	.	.
2014	.	169,307	68,299	.	.
2015	.	168,324	66,978	.	.
2016	.	167,723	65,796	.	.

County: county value. Kansas: state value. County Rank: highest county value ranked #1. (\$000): thousands of dollars. Nonmetro Kansas: Kansas total less Metropolitan Areas as defined by the Office of Management and Budget (OMB; released 3/6/2020). Per 1000: For nonmoney amounts, Per 1000=(county value / county population for the same year as the data) x 1000. \$ Per capita=(county value / county population for the same year as the data). Value= . indicates missing or suppressed data or value not calculated.

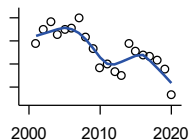
Employment

BEA EMPLOYMENT: WHOLESALE TRADE



U.S. Bureau of Economic Analysis,
Regional Economic Information System
(REIS)

Year	County	State of Kansas	Non Metro Kansas	County Rank	Per 1000 or \$ Per Capita
2001	79	65,698	.	72	.
2002	74	65,408	.	75	.
2003	54	63,504	.	79	.
2004	57	64,434	.	80	.
2005	53	64,587	.	76	.
2006	57	64,743	.	78	.
2007	73	65,993	.	69	.
2008	81	67,693	.	66	.
2009	79	65,954	.	71	.
2010	92	64,376	.	68	.
2011	80	64,712	.	73	.
2012	76	63,973	.	71	.
2013	70	64,999	.	73	.
2014	71	69,295	.	71	.
2015	75	68,444	.	73	.
2016	71	64,843	.	74	.



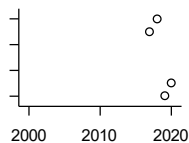
BEA EMPLOYMENT: RETAIL TRADE

U.S. Bureau of Economic Analysis,
Regional Economic Information System
(REIS)

Year	County	State of Kansas	Non Metro Kansas	County Rank	Per 1000 or \$ Per Capita
2001	178	198,069	.	84	.
2002	190	196,112	.	79	.
2003	197	194,545	64,173	79	.
2004	185	192,957	63,265	80	.
2005	190	191,656	62,506	79	.
2006	191	190,391	62,082	79	.
2007	200	190,643	61,716	77	.
2008	183	185,907	59,783	79	.
2009	173	181,262	58,714	80	.
2010	157	177,858	57,470	83	.
2011	160	180,548	57,734	81	.
2012	153	180,596	57,349	83	.
2013	150	183,245	57,556	83	.
2014	178	185,899	57,855	79	.
2015	171	188,421	58,516	79	.
2016	168	188,505	57,864	79	.
2017	167	186,633	56,715	80	.
2018	163	183,323	.	79	.
2019	156	177,240	53,427	79	.
2020	133	171,777	52,563	86	.

County: county value. Kansas: state value. County Rank: highest county value ranked #1. (\$000): thousands of dollars. Nonmetro Kansas: Kansas total less Metropolitan Areas as defined by the Office of Management and Budget (OMB; released 3/6/2020). Per 1000: For nonmoney amounts, Per 1000=(county value / county population for the same year as the data) x 1000. \$ Per capita=(county value / county population for the same year as the data). Value= . indicates missing or suppressed data or value not calculated.

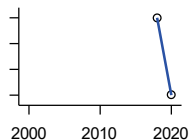
Employment



**BEA EMPLOYMENT:
TRANSPORTATION AND
WAREHOUSING**

U.S. Bureau of Economic Analysis,
Regional Economic Information System
(REIS)

Year	County	State of Kansas	Non Metro Kansas	County Rank	Per 1000 or \$ Per Capita
2001	.	56,302	.	.	.
2002	.	55,319	.	.	.
2003	.	55,509	.	.	.
2004	.	55,479	.	.	.
2005	.	56,287	.	.	.
2006	.	57,506	.	.	.
2007	.	59,277	.	.	.
2008	.	58,725	.	.	.
2009	.	56,238	.	.	.
2010	.	55,179	.	.	.
2011	.	57,449	.	.	.
2012	.	59,756	.	.	.
2013	.	59,780	.	.	.
2014	.	60,565	.	.	.
2015	.	63,256	.	.	.
2016	.	65,705	.	.	.
2017	72	70,641	.	42	.
2018	73	75,308	.	39	.
2019	67	81,209	.	44	.
2020	68	80,543	.	52	.



BEA EMPLOYMENT: INFORMATION

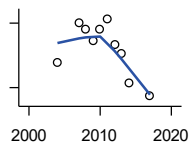
U.S. Bureau of Economic Analysis,
Regional Economic Information System
(REIS)

Year	County	State of Kansas	Non Metro Kansas	County Rank	Per 1000 or \$ Per Capita
2001	.	54,895	.	.	.
2002	.	50,728	.	.	.
2003	.	48,328	6,860	.	.
2004	.	45,617	.	.	.
2005	.	43,840	.	.	.
2006	.	43,925	.	.	.
2007	.	45,115	.	.	.
2008	.	42,958	.	.	.
2009	.	38,677	.	.	.
2010	.	33,432	.	.	.
2011	.	32,160	.	.	.
2012	.	31,829	.	.	.
2013	.	31,737	.	.	.
2014	.	32,316	.	.	.
2015	.	25,282	.	.	.
2016	.	24,998	.	.	.
2018	34	23,165	.	43	.
2020	31	20,810	.	45	.

County: county value. Kansas: state value. County Rank: highest county value ranked #1. (\$000): thousands of dollars. Nonmetro Kansas: Kansas total less Metropolitan Areas as defined by the Office of Management and Budget (OMB; released 3/6/2020). Per 1000: For nonmoney amounts, Per 1000=(county value / county population for the same year as the data) x 1000. \$ Per capita=(county value / county population for the same year as the data). Value= . indicates missing or suppressed data or value not calculated.

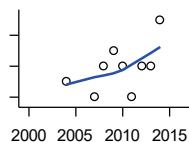
Employment

BEA EMPLOYMENT: FINANCE AND INSURANCE



U.S. Bureau of Economic Analysis,
Regional Economic Information System
(REIS)

Year	County	State of Kansas	Non Metro Kansas	County Rank	Per 1000 or \$ Per Capita
2001	.	76,118	.	.	.
2002	.	78,206	.	.	.
2003	.	78,441	.	.	.
2004	72	78,350	.	64	.
2005	.	78,952	.	.	.
2006	.	80,900	.	.	.
2007	90	86,094	.	58	.
2008	87	89,590	.	58	.
2009	82	93,573	.	61	.
2010	87	92,428	.	61	.
2011	92	99,495	.	59	.
2012	80	98,640	.	61	.
2013	76	99,998	.	66	.
2014	62	98,209	.	73	.
2015	.	100,534	.	.	.
2016	.	102,699	.	.	.
2017	56	101,563	.	74	.



BEA EMPLOYMENT: REAL ESTATE, RENTAL, AND LEASING

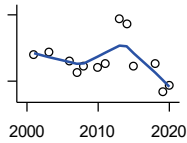
U.S. Bureau of Economic Analysis,
Regional Economic Information System
(REIS)

Year	County	State of Kansas	Non Metro Kansas	County Rank	Per 1000 or \$ Per Capita
2001	.	45,237	.	.	.
2002	.	44,970	.	.	.
2003	.	47,095	.	.	.
2004	22	50,181	.	63	.
2005	.	53,335	.	.	.
2006	.	55,342	.	.	.
2007	21	57,694	.	62	.
2008	23	57,933	.	56	.
2009	24	57,132	.	57	.
2010	23	59,578	.	59	.
2011	21	61,821	.	68	.
2012	23	60,432	.	63	.
2013	23	62,134	.	67	.
2014	26	64,705	.	66	.
2015	.	66,604	.	.	.
2016	.	68,395	.	.	.

County: county value. Kansas: state value. County Rank: highest county value ranked #1. (\$000): thousands of dollars. Nonmetro Kansas: Kansas total less Metropolitan Areas as defined by the Office of Management and Budget (OMB; released 3/6/2020). Per 1000: For nonmoney amounts, Per 1000=(county value / county population for the same year as the data) x 1000. \$ Per capita=(county value / county population for the same year as the data). Value= . indicates missing or suppressed data or value not calculated.

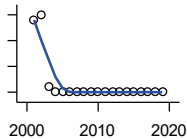
Employment

BEA EMPLOYMENT: PROFESSIONAL AND TECHNICAL SERVICES



U.S. Bureau of Economic Analysis, Regional Economic Information System (REIS)

Year	County	State of Kansas	Non Metro Kansas	County Rank	Per 1000 or \$ Per Capita
2001	42	81,396	.	68	.
2002	.	80,684	.	.	.
2003	43	80,311	.	63	.
2004	.	85,550	.	.	.
2005	.	85,003	.	.	.
2006	39	87,381	.	71	.
2007	34	92,717	.	73	.
2008	37	95,362	.	70	.
2009	.	93,232	.	.	.
2010	36	93,037	.	72	.
2011	38	93,237	.	73	.
2012	.	95,360	.	.	.
2013	58	100,795	.	69	.
2014	56	102,210	.	70	.
2015	37	105,625	.	76	.
2016	.	108,059	.	.	.
2018	38	110,513	.	75	.
2019	25	109,637	.	76	.
2020	28	108,634	.	73	.



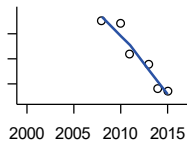
BEA EMPLOYMENT: MANAGEMENT OF COMPANIES AND ENTERPRISES

U.S. Bureau of Economic Analysis, Regional Economic Information System (REIS)

Year	County	State of Kansas	Non Metro Kansas	County Rank	Per 1000 or \$ Per Capita
2001	14	13,832	.	26	.
2002	15	12,576	.	26	.
2003	1	11,135	.	26	.
2004	0	10,614	.	67	.
2005	0	11,811	.	66	.
2006	0	13,061	.	66	.
2007	0	13,398	.	69	.
2008	0	15,234	.	72	.
2009	0	14,849	.	75	.
2010	0	16,579	.	75	.
2011	0	15,343	.	75	.
2012	0	15,075	.	82	.
2013	0	16,667	.	81	.
2014	0	20,441	.	79	.
2015	0	29,604	.	78	.
2016	0	27,824	.	77	.
2017	0	27,767	.	77	.
2018	0	28,862	.	75	.
2019	0	30,512	.	74	.

County: county value. Kansas: state value. County Rank: highest county value ranked #1. (\$000): thousands of dollars. Nonmetro Kansas: Kansas total less Metropolitan Areas as defined by the Office of Management and Budget (OMB; released 3/6/2020). Per 1000: For nonmoney amounts, Per 1000=(county value / county population for the same year as the data) x 1000. \$ Per capita=(county value / county population for the same year as the data). Value= . indicates missing or suppressed data or value not calculated.

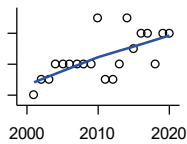
Employment



**BEA EMPLOYMENT:
ADMINISTRATIVE AND WASTE
SERVICES**

U.S. Bureau of Economic Analysis,
Regional Economic Information System
(REIS)

Year	County	State of Kansas	Non Metro Kansas	County Rank	Per 1000 or \$ Per Capita
2001	.	81,573	.	.	.
2002	.	82,992	.	.	.
2003	.	81,298	.	.	.
2004	.	85,721	.	.	.
2005	.	89,933	.	.	.
2006	.	93,688	.	.	.
2007	.	98,865	.	.	.
2008	65	97,440	.	45	.
2009	.	92,455	.	.	.
2010	64	93,675	.	51	.
2011	52	97,969	.	59	.
2012	.	100,490	.	.	.
2013	48	104,680	.	57	.
2014	38	107,218	18,836	58	.
2015	37	103,436	18,767	58	.
2016	.	103,233	18,428	.	.



**BEA EMPLOYMENT: EDUCATIONAL
SERVICES**

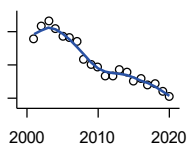
U.S. Bureau of Economic Analysis,
Regional Economic Information System
(REIS)

Year	County	State of Kansas	Non Metro Kansas	County Rank	Per 1000 or \$ Per Capita
2001	5	21,169	.	66	.
2002	6	22,173	.	69	.
2003	6	22,651	.	75	.
2004	7	21,601	.	54	.
2005	7	22,177	.	68	.
2006	7	22,438	.	60	.
2007	7	23,647	.	59	.
2008	7	24,653	.	59	.
2009	7	25,120	.	46	.
2010	10	26,071	.	35	.
2011	6	26,080	.	60	.
2012	6	26,625	.	56	.
2013	7	27,508	.	66	.
2014	10	28,708	.	53	.
2015	8	28,794	.	65	.
2016	9	27,996	.	45	.
2017	9	28,459	.	37	.
2018	7	28,560	.	64	.
2019	9	29,586	.	58	.
2020	9	27,508	.	58	.

County: county value. Kansas: state value. County Rank: highest county value ranked #1. (\$000): thousands of dollars. Nonmetro Kansas: Kansas total less Metropolitan Areas as defined by the Office of Management and Budget (OMB; released 3/6/2020). Per 1000: For nonmoney amounts, Per 1000=(county value / county population for the same year as the data) x 1000. \$ Per capita=(county value / county population for the same year as the data). Value= . indicates missing or suppressed data or value not calculated.

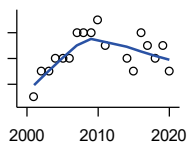
Employment

BEA EMPLOYMENT: HEALTH CARE AND SOCIAL ASSISTANCE



U.S. Bureau of Economic Analysis, Regional Economic Information System (REIS)

Year	County	State of Kansas	Non Metro Kansas	County Rank	Per 1000 or \$ Per Capita
2001	171	165,415	.	43	.
2002	186	168,198	.	41	.
2003	193	169,654	.	44	.
2004	184	172,796	.	47	.
2005	174	173,949	.	43	.
2006	173	176,919	.	38	.
2007	168	182,160	.	40	.
2008	147	186,051	.	44	.
2009	141	188,499	.	43	.
2010	138	188,383	.	43	.
2011	127	190,736	.	45	.
2012	127	192,991	.	46	.
2013	134	193,687	.	47	.
2014	131	194,632	.	45	.
2015	120	199,724	.	44	.
2016	124	201,830	.	45	.
2017	116	201,910	.	42	.
2018	118	204,011	.	48	.
2019	108	206,646	.	49	.
2020	102	204,942	.	49	.



BEA EMPLOYMENT: ARTS, ENTERTAINMENT, AND RECREATION

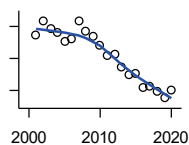
U.S. Bureau of Economic Analysis, Regional Economic Information System (REIS)

Year	County	State of Kansas	Non Metro Kansas	County Rank	Per 1000 or \$ Per Capita
2001	9	25,012	.	65	.
2002	11	25,668	.	63	.
2003	11	24,116	.	63	.
2004	12	25,355	.	59	.
2005	12	26,067	.	58	.
2006	12	26,505	.	62	.
2007	14	27,489	.	57	.
2008	14	27,501	.	59	.
2009	14	27,203	.	58	.
2010	15	27,479	.	56	.
2011	13	28,487	.	61	.
2012	.	30,729	.	.	.
2013	.	31,068	.	.	.
2014	12	32,154	.	61	.
2015	11	31,169	.	60	.
2016	14	32,373	.	48	.
2017	13	33,213	.	50	.
2018	12	33,837	.	56	.
2019	13	33,082	.	54	.
2020	11	26,644	.	50	.

County: county value. Kansas: state value. County Rank: highest county value ranked #1. (\$000): thousands of dollars. Nonmetro Kansas: Kansas total less Metropolitan Areas as defined by the Office of Management and Budget (OMB; released 3/6/2020). Per 1000: For nonmoney amounts, Per 1000=(county value / county population for the same year as the data) x 1000. \$ Per capita=(county value / county population for the same year as the data). Value= . indicates missing or suppressed data or value not calculated.

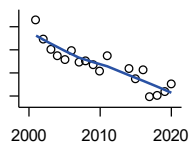
Employment

BEA EMPLOYMENT: GOVERNMENT AND GOVERNMENT ENTERPRISES



U.S. Bureau of Economic Analysis, Regional Economic Information System (REIS)

Year	County	State of Kansas	Non Metro Kansas	County Rank	Per 1000 or \$ Per Capita
2001	409	282,293	102,993	87	.
2002	427	281,427	103,581	86	.
2003	417	282,459	103,389	86	.
2004	412	283,877	103,946	87	.
2005	402	282,798	103,194	88	.
2006	404	288,372	104,103	87	.
2007	427	294,413	104,598	84	.
2008	414	298,580	104,718	86	.
2009	407	300,422	104,081	88	.
2010	397	303,875	103,382	88	.
2011	384	299,952	101,535	86	.
2012	386	298,068	101,180	86	.
2013	370	297,689	101,232	90	.
2014	360	296,956	100,634	88	.
2015	361	295,799	99,719	88	.
2016	344	291,536	98,520	90	.
2017	346	295,748	99,542	89	.
2018	339	298,105	99,499	91	.
2019	331	302,017	100,227	91	.
2020	341	292,583	96,477	88	.



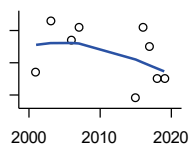
BEA EMPLOYMENT: ACCOMMODATION AND FOOD SERVICES

U.S. Bureau of Economic Analysis, Regional Economic Information System (REIS)

Year	County	State of Kansas	Non Metro Kansas	County Rank	Per 1000 or \$ Per Capita
2001	106	103,353	.	50	.
2002	89	103,692	.	57	.
2003	80	105,138	.	54	.
2004	75	106,694	.	58	.
2005	72	107,303	.	60	.
2006	79	109,888	.	58	.
2007	69	110,863	.	56	.
2008	71	111,092	.	58	.
2009	67	109,353	.	61	.
2010	62	108,628	.	57	.
2011	75	110,514	.	55	.
2012	.	112,574	.	.	.
2013	.	114,102	.	.	.
2014	64	115,768	.	55	.
2015	55	118,503	.	57	.
2016	63	119,764	.	52	.
2017	39	121,181	.	56	.
2018	40	121,900	.	58	.
2019	44	122,819	.	60	.
2020	51	106,561	.	57	.

County: county value. Kansas: state value. County Rank: highest county value ranked #1. (\$000): thousands of dollars. Nonmetro Kansas: Kansas total less Metropolitan Areas as defined by the Office of Management and Budget (OMB; released 3/6/2020). Per 1000: For nonmoney amounts, Per 1000=(county value / county population for the same year as the data) x 1000. \$ Per capita=(county value / county population for the same year as the data). Value= . indicates missing or suppressed data or value not calculated.

Employment

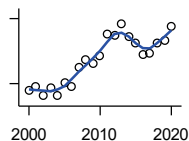


BEA EMPLOYMENT: OTHER SERVICES, EXCEPT PUBLIC ADMINISTRATION

U.S. Bureau of Economic Analysis, Regional Economic Information System (REIS)

Year	County	State of Kansas	Non Metro Kansas	County Rank	Per 1000 or \$ Per Capita
2001	91	92,176	.	86	.
2002	.	95,350	.	.	.
2003	99	95,821	32,629	85	.
2004	.	95,610	.	.	.
2005	.	95,930	32,555	.	.
2006	96	96,413	.	82	.
2007	98	98,444	.	80	.
2008	.	96,705	.	.	.
2009	.	95,534	.	.	.
2010	.	93,302	.	.	.
2011	.	94,865	.	.	.
2012	.	94,977	.	.	.
2013	.	95,471	.	.	.
2014	.	97,806	.	.	.
2015	87	98,041	.	73	.
2016	98	97,219	.	68	.
2017	95	96,568	.	71	.
2018	90	98,645	.	75	.
2019	90	98,638	.	70	.

Income



BEA PER CAPITA PERSONAL INCOME (\$)

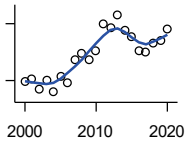
U.S. Bureau of Economic Analysis, Regional Economic Information System (REIS)

Year	County	State of Kansas	Non Metro Kansas	County Rank	Per 1000 or \$ Per Capita
2000	27,101	28,253	23,116	14	.
2001	28,411	29,112	24,576	16	.
2002	24,397	29,248	24,314	54	.
2003	28,251	30,074	26,017	34	.
2004	24,293	30,843	26,583	83	.
2005	30,373	32,545	28,356	37	.
2006	28,400	35,690	29,782	68	.
2007	37,505	38,057	32,034	14	.
2008	40,867	41,257	35,211	25	.
2009	39,337	39,431	33,876	20	.
2010	42,587	39,960	35,795	25	.
2011	52,907	43,015	39,041	17	.
2012	52,446	45,294	39,660	17	.
2013	57,712	46,174	41,747	20	.
2014	51,904	47,013	41,042	19	.
2015	48,488	47,332	40,638	20	.
2016	43,679	47,326	40,797	41	.
2017	44,061	48,756	41,314	35	.
2018	48,953	50,811	43,283	31	.
2019	49,939	52,820	44,491	32	.
2020	56,190	55,677	48,415	30	.

County: county value. Kansas: state value. County Rank: highest county value ranked #1. (\$000): thousands of dollars. Nonmetro Kansas: Kansas total less Metropolitan Areas as defined by the Office of Management and Budget (OMB; released 3/6/2020). Per 1000: For nonmoney amounts, Per 1000=(county value / county population for the same year as the data) x 1000. \$ Per capita=(county value / county population for the same year as the data). Value= . indicates missing or suppressed data or value not calculated.

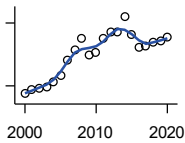
Income

**SOURCES OF PERSONAL INCOME:
TOTAL PERSONAL INCOME (\$000)**



U.S. Bureau of Economic Analysis,
Regional Economic Information System
(REIS)

Year	County	State of Kansas	Non Metro Kansas	County Rank	Per 1000 or \$ Per Capita
2000	79,270	76,105,125	22,273,838	87	26,907.7
2001	82,277	78,664,651	23,411,174	89	28,410.6
2002	70,411	79,365,190	23,000,314	92	24,397.4
2003	80,289	81,890,340	24,494,191	90	28,250.9
2004	67,680	84,335,940	24,924,467	95	24,292.9
2005	83,891	89,346,228	26,452,291	93	30,373.3
2006	78,129	98,610,188	27,661,596	93	28,400.2
2007	101,527	105,943,199	29,715,946	89	37,505.4
2008	109,074	115,852,478	32,614,565	91	40,867.0
2009	101,961	111,697,350	31,394,702	92	39,336.8
2010	110,812	114,239,828	33,291,419	92	42,669.2
2011	139,411	123,558,772	36,221,488	89	52,907.4
2012	135,363	130,948,127	36,696,759	88	52,446.0
2013	149,358	133,979,908	38,513,959	90	57,711.7
2014	132,718	136,878,718	37,680,598	91	51,903.8
2015	125,633	138,336,768	37,081,851	92	48,488.2
2016	111,732	138,533,890	36,930,885	96	43,611.2
2017	109,491	142,729,689	37,104,963	95	44,060.8
2018	119,836	148,955,739	38,589,364	94	48,418.6
2019	121,901	154,961,001	39,424,148	93	49,114.0
2020	134,238	163,462,179	42,618,591	94	55,585.1



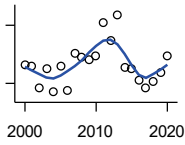
**SOURCES OF PERSONAL INCOME:
WAGES AND SALARIES (\$000)**

U.S. Bureau of Economic Analysis,
Regional Economic Information System
(REIS)

Year	County	State of Kansas	Non Metro Kansas	County Rank	Per 1000 or \$ Per Capita
2000	23,079	41,766,878	10,254,250	88	7,834.0
2001	24,232	43,269,734	10,518,206	87	8,367.4
2002	24,484	43,875,159	10,696,876	87	8,483.7
2003	24,811	44,488,560	10,894,971	87	8,730.1
2004	26,062	46,702,068	11,333,617	87	9,354.6
2005	27,495	48,537,956	11,614,130	87	9,954.7
2006	31,028	52,083,584	12,299,340	84	11,278.8
2007	33,558	55,442,368	13,093,908	83	12,396.7
2008	36,440	57,623,385	13,647,143	82	13,653.1
2009	32,384	55,605,578	13,199,674	86	12,493.8
2010	32,864	56,089,711	13,345,291	86	12,654.6
2011	36,185	58,104,706	13,856,458	85	13,732.4
2012	37,902	60,616,457	14,473,599	86	14,685.0
2013	37,872	61,872,023	14,781,792	86	14,633.7
2014	41,545	64,457,652	15,385,500	83	16,247.6
2015	37,118	66,729,598	15,454,485	88	14,325.7
2016	34,276	67,253,399	15,422,058	90	13,378.6
2017	34,401	68,830,861	15,731,853	91	13,843.5
2018	35,351	71,580,544	16,311,725	93	14,283.2
2019	35,754	74,404,771	16,882,299	94	14,405.3
2020	36,550	75,798,310	17,251,300	94	15,134.6

County: county value. Kansas: state value. County Rank: highest county value ranked #1. (\$000): thousands of dollars. Nonmetro Kansas: Kansas total less Metropolitan Areas as defined by the Office of Management and Budget (OMB; released 3/6/2020). Per 1000: For nonmoney amounts, Per 1000=(county value / county population for the same year as the data) x 1000. \$ Per capita=(county value / county population for the same year as the data). Value= . indicates missing or suppressed data or value not calculated.

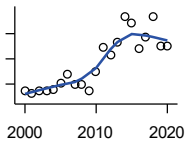
Income



**SOURCES OF PERSONAL INCOME:
PROPRIETORS-FARM (\$000)**

U.S. Bureau of Economic Analysis,
Regional Economic Information System
(REIS)

Year	County	State of Kansas	Non Metro Kansas	County Rank	Per 1000 or \$ Per Capita
2000	9,764	668,539	673,707	29	3,314.3
2001	9,155	779,473	769,336	33	3,161.3
2002	-2,347	145,064	187,033	87	-813.2
2003	7,437	1,281,076	1,195,298	70	2,616.8
2004	-4,562	1,149,425	938,524	102	-1,637.5
2005	8,674	1,609,604	1,469,139	71	3,140.5
2006	-3,572	766,047	663,735	97	-1,298.4
2007	15,785	1,131,607	1,040,350	29	5,831.2
2008	13,697	1,582,092	1,404,900	63	5,131.9
2009	12,354	1,585,995	1,390,349	56	4,766.2
2010	14,113	2,149,482	2,029,067	58	5,434.3
2011	31,447	3,188,519	2,989,880	43	11,934.3
2012	22,147	2,519,555	2,296,875	43	8,580.8
2013	35,383	4,499,190	4,158,419	50	13,671.9
2014	7,944	2,231,181	2,157,992	67	3,106.8
2015	7,542	1,300,733	1,294,370	44	2,910.8
2016	1,519	1,577,060	1,564,511	63	592.9
2017	-2,647	838,480	838,290	82	-1,065.2
2018	1,187	1,050,662	971,690	82	479.6
2019	5,735	998,038	878,247	61	2,310.6
2020	14,355	2,151,349	1,887,881	74	5,944.1



**SOURCES OF PERSONAL INCOME:
PROPRIETORS-NONFARM (\$000)**

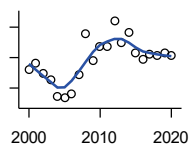
U.S. Bureau of Economic Analysis,
Regional Economic Information System
(REIS)

Year	County	State of Kansas	Non Metro Kansas	County Rank	Per 1000 or \$ Per Capita
2000	8,551	4,580,476	1,493,470	66	2,902.6
2001	8,181	4,510,530	1,855,621	84	2,824.9
2002	8,738	5,036,100	1,966,784	83	3,027.7
2003	8,638	4,719,377	1,916,735	80	3,039.4
2004	8,844	4,003,922	2,073,898	77	3,174.4
2005	10,303	4,455,294	2,200,971	73	3,730.3
2006	12,052	7,343,524	2,694,895	72	4,381.0
2007	9,925	7,280,197	2,436,574	76	3,666.4
2008	9,969	9,255,953	2,971,923	81	3,735.1
2009	8,677	9,323,551	2,858,848	89	3,347.6
2010	12,348	9,658,261	3,498,040	82	4,754.7
2011	17,272	12,196,566	4,186,007	75	6,554.8
2012	15,650	15,773,140	4,446,004	83	6,063.5
2013	18,336	16,441,660	4,492,127	76	7,085.0
2014	23,402	15,954,254	4,455,081	65	9,152.1
2015	22,095	15,536,116	4,386,172	70	8,527.6
2016	17,020	14,075,310	3,783,829	77	6,643.2
2017	19,412	15,371,957	3,908,254	76	7,811.7
2018	23,345	15,716,877	4,238,775	68	9,432.3
2019	17,573	16,705,488	3,921,051	74	7,080.2
2020	17,463	16,718,952	3,823,329	72	7,231.1

County: county value. Kansas: state value. County Rank: highest county value ranked #1. (\$000): thousands of dollars. Nonmetro Kansas: Kansas total less Metropolitan Areas as defined by the Office of Management and Budget (OMB; released 3/6/2020). Per 1000: For nonmoney amounts, Per 1000=(county value / county population for the same year as the data) x 1000. \$ Per capita=(county value / county population for the same year as the data). Value= . indicates missing or suppressed data or value not calculated.

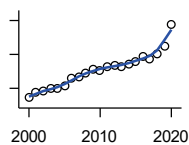
Income

**SOURCES OF PERSONAL INCOME:
DIVIDENDS,INTEREST,RENT(\$000)**



U.S. Bureau of Economic Analysis,
Regional Economic Information System
(REIS)

Year	County	State of Kansas	Non Metro Kansas	County Rank	Per 1000 or \$ Per Capita
2000	16,440	15,916,201	4,736,921	93	5,580.4
2001	17,293	15,770,830	4,699,417	92	5,971.3
2002	15,891	15,111,563	4,316,887	92	5,506.2
2003	15,027	15,370,764	4,360,311	93	5,287.5
2004	12,855	15,820,469	4,251,925	98	4,614.1
2005	12,662	17,147,069	4,485,387	99	4,584.4
2006	13,257	20,117,848	4,945,184	97	4,819.0
2007	15,690	22,269,186	5,526,219	97	5,796.1
2008	21,069	24,972,485	6,180,979	94	7,894.0
2009	17,632	21,453,879	5,308,474	95	6,802.5
2010	19,489	20,861,351	5,414,285	90	7,504.4
2011	19,498	23,387,567	5,781,075	94	7,399.6
2012	22,829	25,689,368	6,389,505	92	8,845.0
2013	19,944	24,832,212	5,984,811	95	7,706.3
2014	21,238	27,412,684	6,403,356	96	8,305.8
2015	18,664	27,244,414	6,423,685	99	7,203.4
2016	17,751	27,293,441	6,389,161	99	6,928.6
2017	18,510	28,385,472	6,700,156	100	7,448.7
2018	18,302	29,953,419	6,772,504	99	7,394.7
2019	18,607	30,820,276	6,957,987	100	7,496.8
2020	18,270	30,283,520	6,844,745	100	7,565.2



**SOURCES OF PERSONAL INCOME:
TRANSFER PAYMENTS (\$000)**

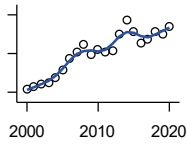
U.S. Bureau of Economic Analysis,
Regional Economic Information System
(REIS)

Year	County	State of Kansas	Non Metro Kansas	County Rank	Per 1000 or \$ Per Capita
2000	17,168	9,650,835	4,036,781	84	5,827.6
2001	18,871	10,549,124	4,355,457	81	6,516.2
2002	19,230	11,208,997	4,553,978	82	6,663.2
2003	19,938	11,709,049	4,702,911	81	7,015.5
2004	19,855	12,040,452	4,802,536	81	7,126.7
2005	20,764	12,696,735	5,059,314	82	7,517.7
2006	22,846	13,642,787	5,455,207	81	8,304.6
2007	23,480	14,686,821	5,775,024	83	8,673.8
2008	24,447	16,552,460	6,322,722	84	9,159.6
2009	25,575	18,025,603	6,790,962	86	9,866.9
2010	25,249	19,189,749	7,089,258	85	9,722.4
2011	26,562	19,625,770	7,255,825	86	10,080.5
2012	26,736	19,354,458	7,148,177	85	10,358.8
2013	26,501	19,639,358	7,185,636	86	10,240.0
2014	27,215	20,380,970	7,399,809	85	10,643.3
2015	28,052	21,116,856	7,623,577	86	10,826.7
2016	29,547	21,884,629	7,886,000	84	11,532.8
2017	28,645	22,559,744	8,062,517	86	11,527.2
2018	30,199	23,628,033	8,393,617	85	12,201.6
2019	32,590	25,050,174	8,845,371	86	13,130.5
2020	38,755	32,319,421	11,074,190	87	16,047.6

County: county value. Kansas: state value. County Rank: highest county value ranked #1. (\$000): thousands of dollars. Nonmetro Kansas: Kansas total less Metropolitan Areas as defined by the Office of Management and Budget (OMB; released 3/6/2020). Per 1000: For nonmoney amounts, Per 1000=(county value / county population for the same year as the data) x 1000. \$ Per capita=(county value / county population for the same year as the data). Value= . indicates missing or suppressed data or value not calculated.

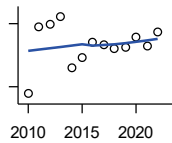
Income

**SOURCES OF PERSONAL INCOME:
LESS SOCIAL INSURANCE (\$000)**



U.S. Bureau of Economic Analysis,
Regional Economic Information System
(REIS)

Year	County	State of Kansas	Non Metro Kansas	County Rank	Per 1000 or \$ Per Capita
2000	4,126	6,655,813	1,663,044	86	1,400.5
2001	4,284	6,869,934	1,740,915	85	1,479.3
2002	4,395	7,008,361	1,778,636	85	1,522.9
2003	4,500	7,172,781	1,821,858	85	1,583.4
2004	4,742	7,556,560	1,904,014	85	1,702.1
2005	5,129	7,911,241	1,986,907	85	1,857.0
2006	5,714	8,406,937	2,090,313	82	2,077.1
2007	6,063	8,806,941	2,180,587	82	2,239.7
2008	6,500	9,207,010	2,299,399	83	2,435.4
2009	5,918	9,002,859	2,248,703	85	2,283.2
2010	6,178	9,235,760	2,321,191	85	2,378.9
2011	6,062	8,515,986	2,139,991	84	2,300.6
2012	6,117	8,816,128	2,195,919	85	2,370.0
2013	7,016	10,225,399	2,540,439	84	2,711.0
2014	7,740	10,609,601	2,635,009	83	3,027.0
2015	7,113	11,028,204	2,663,038	86	2,745.3
2016	6,516	10,915,915	2,604,579	88	2,543.3
2017	6,711	11,224,218	2,669,954	88	2,700.6
2018	7,122	11,749,229	2,797,106	87	2,877.6
2019	7,000	12,245,451	2,889,336	91	2,820.3
2020	7,426	12,715,152	3,027,656	91	3,074.9



HUD MEDIAN FAMILY INCOME

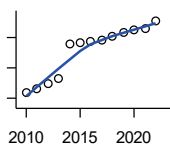
U.S. Department of Housing and Urban
Development (HUD)

Year	County	State of Kansas	Non Metro Kansas	County Rank	Per 1000 or \$ Per Capita
2010	48,300	63,100	.	90	.
2011	64,100	64,300	.	16	.
2012	65,000	65,200	.	16	.
2013	66,700	64,800	.	11	.
2014	54,400	64,400	.	71	.
2015	57,000	66,300	.	66	.
2016	60,600	66,700	.	38	.
2017	60,000	68,500	.	57	.
2018	59,000	73,100	.	73	.
2019	59,400	75,200	.	80	.
2020	61,800	76,500	.	74	.
2021	59,700	77,400	.	87	.
2022	63,100	87,800	.	96	.

County: county value. Kansas: state value. County Rank: highest county value ranked #1. (\$000): thousands of dollars. Nonmetro Kansas: Kansas total less Metropolitan Areas as defined by the Office of Management and Budget (OMB; released 3/6/2020). Per 1000: For nonmoney amounts, Per 1000=(county value / county population for the same year as the data) x 1000. \$ Per capita=(county value / county population for the same year as the data). Value= . indicates missing or suppressed data or value not calculated.

Income

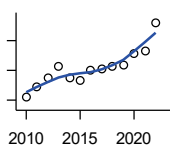
HUD 30% LOW-TO-MEDIUM INCOME (LMI) LIMIT - 4 PERSONS



U.S. Department of Housing and Urban Development (HUD)

Year	County	State of Kansas	Non Metro Kansas	County Rank	Per 1000 or \$ Per Capita
2010	15,850	.	.	105	.
2011	16,600	.	.	52	.
2012	17,450	.	.	42	.
2013	18,300	.	.	31	.
2014	23,850	.	.	105	.
2015	24,250	.	.	105	.
2016	24,300	.	.	105	.
2017	24,600	.	.	105	.
2018	25,100	21,950	.	105	.
2019	25,750	22,550	.	105	.
2020	26,200	22,950	.	105	.
2021	26,500	23,200	.	105	.
2022	27,750	25,950	.	105	.

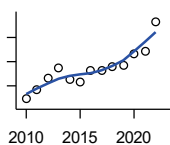
HUD 50% LOW-TO-MEDIUM INCOME (LMI) LIMIT - 4 PERSONS



U.S. Department of Housing and Urban Development (HUD)

Year	County	State of Kansas	Non Metro Kansas	County Rank	Per 1000 or \$ Per Capita
2010	26,400	.	.	105	.
2011	27,700	.	.	52	.
2012	29,050	.	.	42	.
2013	30,500	.	.	31	.
2014	29,000	.	.	46	.
2015	28,700	.	.	105	.
2016	30,100	.	.	42	.
2017	30,150	.	.	105	.
2018	30,550	36,550	.	105	.
2019	30,750	37,600	.	105	.
2020	32,300	38,250	.	104	.
2021	32,550	38,700	.	105	.
2022	36,400	43,300	.	105	.

HUD 80% LOW-TO-MEDIUM INCOME (LMI) LIMIT - 4 PERSONS



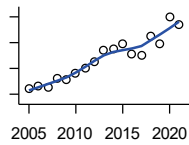
U.S. Department of Housing and Urban Development (HUD)

Year	County	State of Kansas	Non Metro Kansas	County Rank	Per 1000 or \$ Per Capita
2010	42,250	.	.	105	.
2011	44,300	.	.	52	.
2012	46,500	.	.	42	.
2013	48,800	.	.	31	.
2014	46,400	.	.	46	.
2015	45,900	.	.	105	.
2016	48,150	.	.	42	.
2017	48,250	.	.	105	.
2018	48,900	58,500	.	105	.
2019	49,200	60,150	.	105	.
2020	51,700	61,200	.	104	.
2021	52,100	61,900	.	105	.
2022	58,250	69,250	.	105	.

County: county value. Kansas: state value. County Rank: highest county value ranked #1. (\$000): thousands of dollars. Nonmetro Kansas: Kansas total less Metropolitan Areas as defined by the Office of Management and Budget (OMB; released 3/6/2020). Per 1000: For nonmoney amounts, Per 1000=(county value / county population for the same year as the data) x 1000. \$ Per capita=(county value / county population for the same year as the data). Value= . indicates missing or suppressed data or value not calculated.

Banking

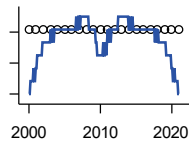
BANK DEPOSITS (1984-2004 in thousands; 2005- in millions)



Federal Deposit Insurance Corporation, Data Book, Operating Banks and Branches

Year	County	State of Kansas	Non Metro Kansas	County Rank	Per 1000 or \$ Per Capita
2005	74	48,304	17,000	87	26.8
2006	76	50,668	17,586	87	27.6
2007	75	54,057	18,517	91	27.7
2008	82	57,869	19,628	90	30.7
2009	81	57,763	20,031	91	31.3
2010	86	60,031	20,678	91	33.1
2011	90	61,094	21,347	91	34.2
2012	95	62,910	22,481	93	36.8
2013	104	64,547	22,795	86	40.2
2014	105	66,538	23,338	87	41.1
2015	109	68,160	23,367	84	42.1
2016	101	70,381	23,420	90	39.4
2017	100	73,329	23,928	89	40.2
2018	115	74,623	24,100	82	46.5
2019	109	76,436	24,488	84	43.9
2020	130	88,563	27,547	84	53.8
2021	124	97,055	30,122	87	51.7

NUMBER OF BANKS



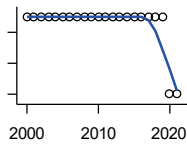
Federal Deposit Insurance Corporation, Data Book, Operating Banks and Branches

Year	County	State of Kansas	Non Metro Kansas	County Rank	Per 1000 or \$ Per Capita
2000	3	410	145	92	.
2001	3	410	136	93	.
2002	3	404	129	92	.
2003	3	397	121	91	.
2004	3	394	112	89	.
2005	3	388	101	91	.
2006	3	385	94	91	.
2007	3	382	91	91	.
2008	3	378	82	92	.
2009	3	374	79	92	.
2010	3	367	70	92	.
2011	3	359	61	92	.
2012	3	348	57	92	.
2013	3	332	45	92	.
2014	3	329	41	91	.
2015	3	320	31	90	.
2016	3	314	24	88	.
2017	3	301	13	88	.
2018	3	289	7	88	.
2019	3	279	3	88	.
2020	3	271	-1	88	.
2021	3	270	-6	88	.

County: county value. Kansas: state value. County Rank: highest county value ranked #1. (\$000): thousands of dollars. Nonmetro Kansas: Kansas total less Metropolitan Areas as defined by the Office of Management and Budget (OMB; released 3/6/2020). Per 1000: For nonmoney amounts, Per 1000=(county value / county population for the same year as the data) x 1000. \$ Per capita=(county value / county population for the same year as the data). Value= . indicates missing or suppressed data or value not calculated.

Banking

NUMBER OF BANKING OFFICES

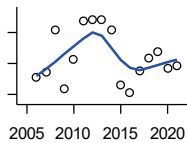


Federal Deposit Insurance Corporation, Data Book, Operating Banks and Branches

Year	County	State of Kansas	Non Metro Kansas	County Rank	Per 1000 or \$ Per Capita
2000	5	1,398	703	75	.
2001	5	1,424	708	77	.
2002	5	1,447	704	77	.
2003	5	1,461	708	76	.
2004	5	1,485	708	76	.
2005	5	1,505	711	76	.
2006	5	1,518	711	77	.
2007	5	1,543	717	76	.
2008	5	1,556	717	75	.
2009	5	1,569	716	76	.
2010	5	1,561	710	76	.
2011	5	1,559	707	77	.
2012	5	1,533	702	77	.
2013	5	1,518	696	77	.
2014	5	1,491	685	77	.
2015	5	1,472	675	77	.
2016	5	1,465	668	74	.
2017	5	1,452	666	74	.
2018	5	1,439	660	74	.
2019	5	1,439	663	74	.
2020	4	1,416	653	85	.
2021	4	1,392	641	85	.

Government

TANGIBLE ASSESSED VALUATION (KDoR, million\$; 2006-)



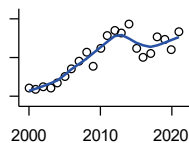
Kansas Department of Revenue, Division of Property Valuation, Statistical Report of Property Assessment and Taxation

Year	County	State of Kansas	Non Metro Kansas	County Rank	Per 1000 or \$ Per Capita
2006	55.5	28,964.3	10,316.9	77	20.2
2007	57.1	30,086.9	10,335.9	75	21.1
2008	70.7	31,000.3	10,856.9	67	26.5
2009	51.8	30,312.3	10,555.6	79	20.0
2010	61.4	29,450.2	10,158.7	73	23.6
2011	73.9	29,963.6	10,572.3	66	28.0
2012	74.3	30,382.9	10,876.2	68	28.8
2013	74.2	30,850.2	11,044.4	70	28.7
2014	70.8	31,783.0	11,388.9	75	27.7
2015	53.2	32,335.7	11,037.8	82	20.5
2016	50.4	33,156.3	10,889.6	88	19.7
2017	57.4	34,754.5	11,439.0	84	23.1
2018	61.9	36,566.1	11,907.1	84	25.0
2019	64.0	38,255.2	12,336.7	87	25.8
2020	58.4	39,333.9	12,219.3	89	24.2
2021	59.3	40,812.0	12,601.5	90	24.7

County: county value. Kansas: state value. County Rank: highest county value ranked #1. (\$000): thousands of dollars. Nonmetro Kansas: Kansas total less Metropolitan Areas as defined by the Office of Management and Budget (OMB; released 3/6/2020). Per 1000: For nonmoney amounts, Per 1000=(county value / county population for the same year as the data) x 1000. \$ Per capita=(county value / county population for the same year as the data). Value= . indicates missing or suppressed data or value not calculated.

Government

SALES TAX COLLECTIONS (\$)

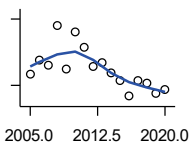


Kansas Department of Revenue. Use tax collections included beginning in calendar year 2018.

Year	County	State of Kansas	Non Metro Kansas	County Rank	Per 1000 or \$ Per Capita
2000	1,217,179	1,475,831,808	432,761,608	76	413,163.3
2001	1,186,115	1,481,026,688	426,316,284	73	409,570.1
2002	1,250,470	1,561,316,864	443,986,950	74	433,288.3
2003	1,213,175	1,626,782,976	461,658,700	80	426,873.7
2004	1,334,862	1,691,899,008	480,309,725	79	479,132.1
2005	1,524,623	1,744,980,352	497,494,867	74	551,999.6
2006	1,721,578	1,851,694,720	532,233,047	74	625,800.8
2007	1,911,050	1,917,546,752	559,319,583	70	705,966.1
2008	2,140,056	1,990,655,744	589,725,773	69	801,819.2
2009	1,764,374	1,866,223,078	548,627,132	77	680,699.8
2010	2,244,142	2,075,193,413	617,409,982	72	864,128.6
2011	2,561,344	2,347,193,367	702,671,534	72	972,047.1
2012	2,693,515	2,456,292,294	740,196,106	74	1,043,593.6
2013	2,631,218	2,489,204,048	746,226,565	75	1,016,699.2
2014	2,862,892	2,539,886,774	760,474,019	72	1,119,629.2
2015	2,228,928	2,642,374,740	750,090,163	78	860,257.9
2016	1,994,612	2,732,611,350	749,030,133	81	778,537.0
2017	2,103,765	2,726,104,521	744,246,491	80	846,585.4
2018	2,534,838	3,277,299,125	893,564,480	82	1,024,177.1
2019	2,455,615	3,395,631,405	939,607,762	83	989,369.3
2020	2,204,560	3,489,306,791	984,218,931	91	912,861.3
2021	2,653,881	3,981,293,227	1,098,391,422	86	1,105,783.8

Crime

CRIME INDEX OFFENSES



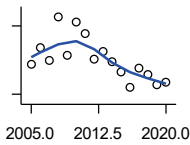
Kansas Bureau of Investigation, Note: Data are aggregated from reports by individual police departments and subject to be incomplete.

Year	County	State of Kansas	Non Metro Kansas	County Rank	Per 1000 or \$ Per Capita
2005	30	111,856	31,630	84	10.9
2006	43	110,032	.	75	15.6
2007	38	111,035	29,921	80	14.0
2008	74	93,996	27,342	66	27.7
2009	35	98,757	27,620	79	13.5
2010	68	98,354	26,909	65	26.2
2011	54	96,638	25,765	69	20.5
2012	37	98,914	26,963	80	14.3
2013	41	93,054	24,488	75	15.8
2014	31	86,323	23,341	83	12.1
2015	24	88,590	21,580	86	9.3
2016	10	90,589	21,565	97	3.9
2017	24	93,091	22,622	85	9.7
2018	22	92,062	20,325	82	8.9
2019	13	87,008	18,547	90	5.2
2020	16	87,346	17,762	88	6.6

County: county value. Kansas: state value. County Rank: highest county value ranked #1. (\$000): thousands of dollars. Nonmetro Kansas: Kansas total less Metropolitan Areas as defined by the Office of Management and Budget (OMB; released 3/6/2020). Per 1000: For nonmoney amounts, Per 1000=(county value / county population for the same year as the data) x 1000. \$ Per capita=(county value / county population for the same year as the data). Value= . indicates missing or suppressed data or value not calculated.

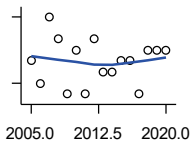
Crime

PROPERTY CRIMES



Kansas Bureau of Investigation, Note: Data are aggregated from reports by individual police departments and subject to be incomplete.

Year	County	State of Kansas	Non Metro Kansas	County Rank	Per 1000 or \$ Per Capita
2005	26	101,414	29,042	84	9.4
2006	41	99,110	.	74	14.9
2007	30	99,632	26,856	80	11.1
2008	68	83,964	24,367	63	25.5
2009	34	87,658	24,825	76	13.1
2010	63	87,926	24,133	63	24.3
2011	53	86,547	23,274	69	20.1
2012	31	88,707	24,220	83	12.0
2013	38	83,551	22,028	72	14.7
2014	28	76,794	20,858	84	11.0
2015	20	77,997	19,138	87	7.7
2016	6	79,549	19,207	100	2.3
2017	23	81,349	19,981	85	9.3
2018	17	79,695	17,769	82	6.9
2019	8	74,314	15,892	96	3.2
2020	11	73,450	15,100	91	4.6



VIOLENT CRIMES

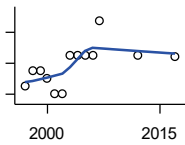
Kansas Bureau of Investigation, Note: Data are aggregated from reports by individual police departments and subject to be incomplete.

Year	County	State of Kansas	Non Metro Kansas	County Rank	Per 1000 or \$ Per Capita
2005	4	10,442	2,588	82	1.4
2006	2	10,922	.	90	0.7
2007	8	11,403	3,065	66	3.0
2008	6	10,032	2,975	74	2.2
2009	1	11,099	2,795	96	0.4
2010	5	10,428	2,776	75	1.9
2011	1	10,091	2,491	98	0.4
2012	6	10,207	2,743	75	2.3
2013	3	9,503	2,460	85	1.2
2014	3	9,529	2,483	90	1.2
2015	4	10,593	2,442	82	1.5
2016	4	11,040	2,358	78	1.6
2017	1	11,742	2,641	99	0.4
2018	5	12,367	2,556	72	2.0
2019	5	12,694	2,655	74	2.0
2020	5	13,896	2,662	81	2.1

County: county value. Kansas: state value. County Rank: highest county value ranked #1. (\$000): thousands of dollars. Nonmetro Kansas: Kansas total less Metropolitan Areas as defined by the Office of Management and Budget (OMB; released 3/6/2020). Per 1000: For nonmoney amounts, Per 1000=(county value / county population for the same year as the data) x 1000. \$ Per capita=(county value / county population for the same year as the data). Value= . indicates missing or suppressed data or value not calculated.

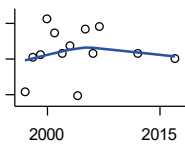
Agriculture

NUMBER OF FARMS



Kansas Agricultural Statistics, Kansas Farm Facts

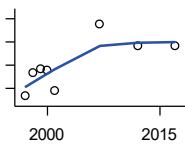
Year	County	State of Kansas	Non Metro Kansas	County Rank	Per 1000 or \$ Per Capita
1997	390	64,000	47,900	80	124.0
1998	410	65,000	48,850	80	132.6
1999	410	65,000	48,850	80	136.6
2000	400	64,000	48,030	80	135.8
2001	380	63,000	47,200	82	131.2
2002	380	63,000	47,200	82	131.7
2003	430	64,500	48,150	76	151.3
2004	430	64,500	48,150	76	154.3
2005	430	64,500	48,150	76	155.7
2006	430	64,000	47,650	75	156.3
2007	475	65,531	48,179	61	175.5
2012	431	61,773	45,655	65	167.0
2017	429	58,569	42,404	58	172.6



TOTAL ACRES HARVESTED

Kansas Agricultural Statistics, Kansas Farm Facts

Year	County	State of Kansas	Non Metro Kansas	County Rank	Per 1000 or \$ Per Capita
1997	141,410	22,846,000	19,430,580	88	44,963.4
1998	160,900	22,143,500	18,943,650	73	52,037.5
1999	162,600	21,708,900	18,581,750	71	54,181.9
2000	182,600	21,639,000	18,528,870	60	61,982.3
2001	174,890	21,847,900	18,689,750	64	60,390.2
2002	163,330	20,230,400	17,089,120	64	56,593.9
2003	167,230	21,827,700	18,661,920	72	58,842.4
2004	139,200	20,876,900	17,721,500	81	49,964.1
2005	176,720	21,936,500	18,807,930	66	63,982.6
2006	163,230	21,412,700	18,291,120	71	59,334.8
2007	178,441	19,886,655	17,164,743	58	65,918.4
2012	162,827	21,043,596	17,966,843	69	63,086.8
2017	159,984	21,837,465	18,543,057	74	64,379.9



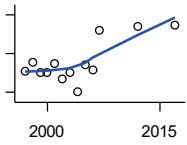
VALUE: LIVESTOCK AND POULTRY (\$000)

Kansas Agricultural Statistics, Kansas Farm Facts

Year	County	State of Kansas	Non Metro Kansas	County Rank	Per 1000 or \$ Per Capita
1997	9,331	2,806,445	2,500,305	97	2,966.9
1998	11,368	2,670,432	2,378,007	85	3,676.6
1999	11,643	2,849,061	2,554,528	86	3,879.7
2000	11,609	2,901,469	2,609,032	85	3,940.6
2001	9,799	2,693,274	2,437,187	91	3,383.6
2007	15,548	9,525,971	.	90	5,743.6
2012	13,690	11,476,571	10,883,216	95	5,304.1
2017	13,696	12,322,289	.	98	5,511.5

County: county value. Kansas: state value. County Rank: highest county value ranked #1. (\$000): thousands of dollars. Nonmetro Kansas: Kansas total less Metropolitan Areas as defined by the Office of Management and Budget (OMB; released 3/6/2020). Per 1000: For nonmoney amounts, Per 1000=(county value / county population for the same year as the data) x 1000. \$ Per capita=(county value / county population for the same year as the data). Value= . indicates missing or suppressed data or value not calculated.

Agriculture



VALUE:FIELD CROPS (\$000)
EXCLUDING GOVERNMENT
PROGRAM PAYMENTS

Kansas Agricultural Statistics, Kansas
Farm Facts

Year	County	State of Kansas	Non Metro Kansas	County Rank	Per 1000 or \$ Per Capita
1997	20,938	4,474,942	3,800,365	95	6,657.6
1998	25,428	3,594,319	3,124,409	67	8,223.8
1999	20,192	3,118,193	2,728,319	67	6,728.4
2000	20,409	2,915,660	2,540,052	64	6,927.7
2001	24,952	3,283,117	2,857,136	60	8,616.0
2002	16,942	3,011,855	2,560,580	78	5,870.4
2003	20,363	3,623,255	3,150,629	82	7,165.0
2004	10,509	3,445,688	2,896,603	97	3,772.1
2005	24,359	3,678,123	3,182,677	70	8,819.3
2006	21,737	4,308,716	3,684,132	83	7,901.5
2007	42,105	4,887,212	.	52	15,554.1
2012	44,179	6,983,993	6,044,551	70	17,117.0
2017	44,509	6,460,437	.	72	17,911.1

County: county value. Kansas: state value. County Rank: highest county value ranked #1. (\$000): thousands of dollars. Nonmetro Kansas: Kansas total less Metropolitan Areas as defined by the Office of Management and Budget (OMB; released 3/6/2020). Per 1000: For nonmoney amounts, Per 1000=(county value / county population for the same year as the data) x 1000. \$ Per capita=(county value / county population for the same year as the data). Value= . indicates missing or suppressed data or value not calculated.