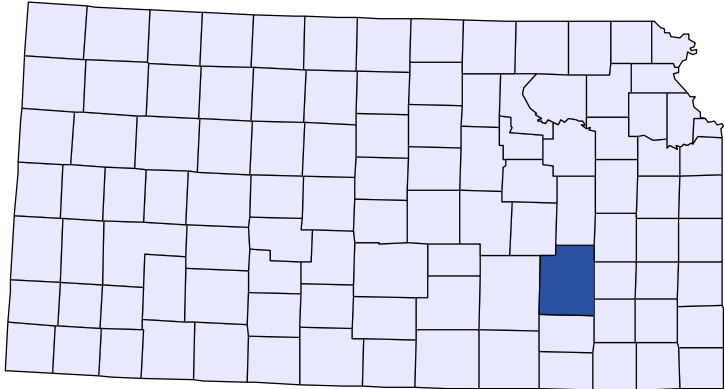




Kansas County Profiles

Greenwood County



The University
of Kansas

Institute for Policy
& Social Research

KU INSTITUTE FOR POLICY
& SOCIAL RESEARCH
The University of Kansas

1541 Lilac Lane, Rm. 607
Blake Hall
Lawrence, KS 66045-3129

Foreword

The Kansas County Profile Report is published by the Institute for Policy & Social Research (IPSR) at the University of Kansas with support from the KU University Center project.* Special thanks to Xanthippe Wedel, senior research data engineer, who compiles and updates the county profiles and Genna Hurd, associate researcher, who provides editorial review.

County reports can be generated for any county in Kansas by simply clicking on the county from the web site:

<https://ipsr.ku.edu/ksdata/kcced/profiles/>

The Kansas County Profile Report contains 12 categories of information: Population, Vital Statistics and Health, Housing, Education, Social Environment, Business, Employment, Income, Banking, Government, Crime, and Agriculture. For more information about Kansas, please refer to the Kansas Statistical Abstract, available online at:

<https://ipsr.ku.edu/ksdata/ksah/>

We are always looking for ways to improve the Kansas County Profile Report and we welcome your suggestions and comments. Please address any correspondence to the Institute for Policy & Social Research, The University of Kansas, 607 Blake Hall, 1541 Lilac Lane, Lawrence, Kansas 66045-3129, e-mail ipsr@ku.edu or call 785-864-3701.

**The KU University Center is a collaborative effort led by the Institute for Policy & Social Research at the University of Kansas. This project is supported by the Economic Development Administration, U.S. Department of Commerce, through its University Center Program.*

The mission of EDA is to lead the federal economic development agenda by promoting innovation and competitiveness, preparing American regions for growth and success in the worldwide economy.

Kansas County Profiles Table of Contents

Population

Total Population (Decennial Census)	1
Estimated Population (Current Population Reports)	2
Urban Population	2
Rural Population	3
Net Migration (Decade Ending...)	3
Median Age	3

Population (Age Groups)

Population Under 18 (Decennial Census)	3
Population Age 18 and Over (Decennial Census)	4
Population Age 65 and Over (Decennial Census)	4
Population Age 85 and Over (Decennial Census)	4

Vital Statistics and Health

Live Births	5
Deaths	5
Marriages	6
Divorces and Annulments	6
Physicians: M.D. Physicians	7
Physicians: D.O. Physicians	7
Dentists	8
Number of Hospitals	8
Number of Hospital Beds	9

Housing

Housing Units (Decennial Census)	9
Housing Units (Estimated)	10
Occupied Housing Units	10
Owner Occupied Housing Units	10
Renter Occupied Housing Units	11
Vacant Housing Units	11
Median Value (\$): Owner Occupied Housing Units	11
Median Contract Rent (\$)	12
Fair Market Rent: 2 Bedrooms	12

Education

Population Age 25 and Over	13
Percent of Population 25+ with High School or Higher Education	13
Percent of Population 25+ with Bachelors Degree or Higher Education	14
Public School Enrollment (FTE- School Year Beginning...)	14
Pupil/Teacher Ratio (School Year Beginning...)	15

Kansas County Profiles Table of Contents

Social Environment

Total Child Care Facilities	15
Preschools	16
Food Stamp Beneficiaries	16
Percent of Population Receiving Food Stamps	17
Estimated Number of People in Poverty	17
Estimated Percent of People in Poverty	18
Estimated Number of Related Children Age 5 to 17 in Families in Poverty	18
Estimated Percent of Related Children Age 5 to 17 in Families in Poverty	19
Estimated Number Under 18 in Poverty	19
Estimated Percent Under 18 in Poverty	20

Business

Establishments: Total	21
Establishments: 1-19 Employees	22
Establishments: 20-99 Employees	22
Establishments: 100-499 Employees	23
Establishments: 500 or More Employees	23
Establishments: Forestry, Fishing, Hunting, and Ag Support	24
Establishments: Mining	24
Establishments: Utilities	25
Establishments: Construction	25
Establishments: Manufacturing	26
Establishments: Wholesale Trade	26
Establishments: Retail Trade	27
Establishments: Transportation and Warehousing	27
Establishments: Information	28
Establishments: Finance and Insurance	28
Establishments: Real Estate, Rental, and Leasing	29
Establishments: Professional, Scientific, and Technical Services	29
Establishments: Management of Companies and Enterprises	30
Establishments: Admin, Support, Waste Management, and Remediation	30
Establishments: Educational Services	31
Establishments: Health Care and Social Assistance	31
Establishments: Arts, Entertainment, and Recreation	32
Establishments: Accommodation and Food Services	32
Establishments: Other Services	33

Kansas County Profiles Table of Contents

Business	
Total Annual Payroll (\$000)	34
Total Annual Payroll (\$000): Forestry, Fishing, Hunting, and Ag Support	35
Total Annual Payroll (\$000): Mining	35
Total Annual Payroll (\$000): Utilities	36
Total Annual Payroll (\$000): Construction	36
Total Annual Payroll (\$000): Manufacturing	37
Total Annual Payroll (\$000): Wholesale Trade	37
Total Annual Payroll (\$000): Retail Trade	38
Total Annual Payroll (\$000): Transportation and Warehousing	38
Total Annual Payroll (\$000): Information	39
Total Annual Payroll (\$000): Finance and Insurance	39
Total Annual Payroll (\$000): Real Estate, Rental, and Leasing	40
Total Annual Payroll (\$000): Professional, Scientific, and Technical Services	40
Total Annual Payroll (\$000): Management of Companies and Enterprises	41
Total Annual Payroll (\$000): Admin, Support, Waste Management, and Remediation	41
Total Annual Payroll (\$000): Educational Services	42
Total Annual Payroll (\$000): Health Care and Social Assistance	42
Total Annual Payroll (\$000): Arts, Entertainment, and Recreation	43
Total Annual Payroll (\$000): Accommodation and Food Services	43
Total Annual Payroll (\$000): Other Services	44
Nominal Taxable Retail Sales (Million\$)	44
Retail Pull Factor	45
Employment	
Civilian Labor Force (BLS - Place of Residence)	46
Employed (BLS - Place of Residence)	47
Unemployed (BLS - Place of Residence)	48
Unemployment Rate (BLS - Place of Residence)	49
BEA Employment: Total (Place of Work)	49
BEA Employment: Farm	50
BEA Employment: Non-Farm	50
Average Wage per Job (\$)	51
BEA Employment: Forestry, Fishing, Hunting, and Ag Support	51
BEA Employment: Mining	52
BEA Employment: Utilities	52
BEA Employment: Construction	53
BEA Employment: Manufacturing	53
BEA Employment: Wholesale Trade	54
BEA Employment: Retail Trade	54
BEA Employment: Transportation and Warehousing	55
BEA Employment: Information	55
BEA Employment: Finance and Insurance	56
BEA Employment: Real Estate, Rental, and Leasing	56
BEA Employment: Professional and Technical Services	57
BEA Employment: Management of Companies and Enterprises	57
BEA Employment: Administrative and Waste Services	58
BEA Employment: Educational Services	58
BEA Employment: Health Care and Social Assistance	59
BEA Employment: Arts, Entertainment, and Recreation	59
BEA Employment: Government and Government Enterprises	60
BEA Employment: Accommodation and Food Services	60
BEA Employment: Other Services, Except Public Administration	61

Kansas County Profiles Table of Contents

Income

BEA Per Capita Personal Income (\$)	61
Sources of Personal Income: Total Personal Income (\$000)	62
Sources of Personal Income: Wages And Salaries (\$000)	62
Sources of Personal Income: Proprietors-Farm (\$000)	63
Sources of Personal Income: Proprietors-Nonfarm (\$000)	63
Sources of Personal Income: Dividends, Interest, Rent (\$000)	64
Sources of Personal Income: Transfer Payments (\$000)	64
Sources of Personal Income: Less Social Insurance (\$000)	65
HUD Median Family Income	65
HUD 30% Low-To-Medium Income (LMI) Limit - 4 Persons	66
HUD 50% Low-To-Medium Income (LMI) Limit - 4 Persons	66
HUD 80% Low-To-Medium Income (LMI) Limit - 4 Persons	66

Banking

Bank Deposits (\$000)	67
Number of Banks	67
Number of Banking Offices	68

Government

Tangible Assessed Valuation (million\$)	68
Sales Tax Collections	69

Crime

Crime Index Offenses	69
Property Crimes	70
Violent Crimes	70

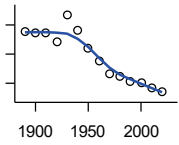
Agriculture

Number of Farms	71
Total Acres Harvested	71
Value: Livestock and Poultry (\$000)	71
Value: Field Crops (\$000) Excluding Government Program Payments	72

Population

DECENNIAL CENSUS:TOTAL POPULATION

U.S. Census Bureau: Decennial Census

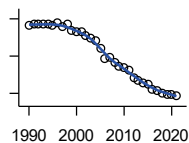


Year	County	State of Kansas	Non Metro Kansas	County Rank	Per 1000 or \$ Per Capita
1890	16,309	1,427,096	968,413	37	.
1900	16,196	1,470,495	981,206	41	.
1910	16,060	1,690,949	1,138,294	39	.
1920	14,715	1,769,257	1,153,525	43	.
1930	19,235	1,880,999	1,180,056	32	.
1940	16,495	1,801,028	1,097,216	37	.
1950	13,574	1,905,299	1,046,823	39	.
1960	11,253	2,178,611	1,021,510	44	.
1970	9,141	2,246,578	958,104	48	.
1980	8,764	2,363,679	980,085	50	.
1990	7,847	2,477,574	939,416	51	.
2000	7,673	2,688,418	959,507	53	.
2010	6,689	2,853,118	929,981	56	.
2020	6,016	2,937,880	892,006	57	.

County: county value. Kansas: state value. County Rank: highest county value ranked #1. (\$000): thousands of dollars. Nonmetro Kansas: Kansas total less Metropolitan Areas as defined by the Office of Management and Budget (OMB; released 3/6/2020). Per 1000: For nonmoney amounts, Per 1000=(county value / county population for the same year as the data) x 1000. \$ Per capita=(county value / county population for the same year as the data). Value= . indicates missing or suppressed data or value not calculated.

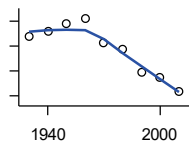
Population

ESTIMATED POPULATION



U.S. Census Bureau

Year	County	State of Kansas	Non Metro Kansas	County Rank	Per 1000 or \$ Per Capita
1990	7,832	2,481,349	938,607	51	.
1991	7,852	2,498,722	938,965	51	.
1992	7,855	2,532,394	942,759	52	.
1993	7,869	2,556,547	947,515	51	.
1994	7,849	2,580,513	952,178	50	.
1995	7,821	2,601,007	957,771	51	.
1996	7,898	2,614,554	959,455	51	.
1997	7,805	2,635,292	960,225	53	.
1998	7,845	2,660,598	960,569	53	.
1999	7,702	2,678,338	960,704	53	.
2000	7,647	2,693,681	959,230	53	.
2001	7,653	2,702,162	952,607	53	.
2002	7,567	2,713,535	945,985	53	.
2003	7,493	2,723,004	941,474	53	.
2004	7,415	2,734,373	937,623	53	.
2005	7,222	2,745,299	932,852	53	.
2006	6,944	2,762,931	928,809	53	.
2007	6,957	2,783,785	927,643	54	.
2008	6,817	2,808,076	926,248	56	.
2009	6,724	2,832,704	926,755	56	.
2010	6,680	2,858,190	930,028	56	.
2011	6,611	2,869,225	927,675	56	.
2012	6,426	2,885,257	925,152	57	.
2013	6,358	2,893,212	922,383	57	.
2014	6,288	2,900,475	917,854	57	.
2015	6,233	2,909,011	912,199	58	.
2016	6,112	2,910,844	905,099	58	.
2017	6,067	2,908,718	897,981	58	.
2018	6,011	2,911,359	892,656	59	.
2019	5,982	2,913,314	887,455	58	.
2020	5,972	2,935,880	889,750	57	.
2021	5,939	2,934,582	886,438	57	.



URBAN POPULATION

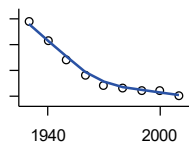
U.S. Census Bureau: Decennial Census

Year	County	State of Kansas	Non Metro Kansas	County Rank	Per 1000 or \$ Per Capita
1930	3,698	729,834	336,666	38	.
1940	3,803	753,941	349,228	41	.
1950	3,958	993,220	398,923	42	.
1960	4,055	1,328,741	457,447	43	.
1970	3,576	1,484,870	450,543	48	.
1980	3,425	1,575,899	474,769	48	.
1990	2,974	1,712,564	464,205	53	.
2000	2,873	1,920,081	488,011	53	.
2010	2,591	2,116,961	485,780	56	.

County: county value. Kansas: state value. County Rank: highest county value ranked #1. (\$000): thousands of dollars. Nonmetro Kansas: Kansas total less Metropolitan Areas as defined by the Office of Management and Budget (OMB; released 3/6/2020). Per 1000: For nonmoney amounts, Per 1000=(county value / county population for the same year as the data) x 1000. \$ Per capita=(county value / county population for the same year as the data). Value= . indicates missing or suppressed data or value not calculated.

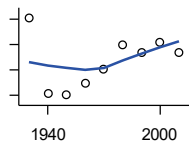
Population

RURAL POPULATION



U.S. Census Bureau

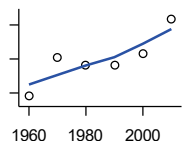
Year	County	State of Kansas	Non Metro Kansas	County Rank	Per 1000 or \$ Per Capita
1930	15,537	1,151,165	843,390	21	.
1940	12,692	1,047,087	747,988	26	.
1950	9,616	912,079	647,900	37	.
1960	7,198	849,870	564,063	49	.
1970	5,565	761,708	509,972	52	.
1980	5,339	787,780	505,873	57	.
1990	4,873	765,010	475,211	54	.
2000	4,800	768,337	471,900	53	.
2010	4,098	736,157	444,201	60	.



NET MIGRATION: DECADE ENDING...

calculated by the Institute for Policy and Social Research, The University of Kansas

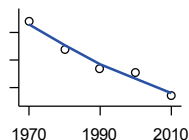
Year	County	State of Kansas	Non Metro Kansas	County Rank	Per 1000 or \$ Per Capita
1930	2,102	-66,132	-101,869	8	109.3
1940	-3,896	-192,649	-166,022	96	-236.2
1950	-3,916	-84,329	-158,379	95	-288.5
1960	-3,051	-38,999	-146,640	93	-271.1
1970	-1,895	-119,662	-105,116	86	-207.3
1980	-9	-21,983	-6,184	43	-1.0
1990	-628	-61,835	-79,274	53	-80.0
2000	221	68,960	4,247	40	28.8
2010	-623	5,578	-50,648	83	-93.1



MEDIAN AGE

U.S. Census Bureau: Decennial Census

Year	County	State of Kansas	Non Metro Kansas	County Rank	Per 1000 or \$ Per Capita
1960	37.6	26.9	.	20	.
1970	42.2	28.7	.	12	.
1980	41.2	30.1	.	10	.
1990	41.2	32.9	.	13	.
2000	42.6	35.2	.	22	.
2010	46.7	36.0	.	19	.



POPULATION UNDER 18 (DECENNIAL CENSUS)

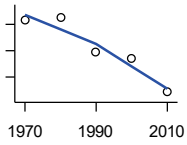
U.S. Census Bureau: Decennial Census

Year	County	State of Kansas	Non Metro Kansas	County Rank	Per 1000 or \$ Per Capita
1970	2,563	746,354	306,227	53	.
1980	2,162	649,035	263,919	57	.
1990	1,866	661,614	250,107	55	.
2000	1,820	712,993	250,757	55	.
2010	1,477	726,939	229,213	59	.

County: county value. Kansas: state value. County Rank: highest county value ranked #1. (\$000): thousands of dollars. Nonmetro Kansas: Kansas total less Metropolitan Areas as defined by the Office of Management and Budget (OMB; released 3/6/2020). Per 1000: For nonmoney amounts, Per 1000=(county value / county population for the same year as the data) x 1000. \$ Per capita=(county value / county population for the same year as the data). Value= . indicates missing or suppressed data or value not calculated.

Population

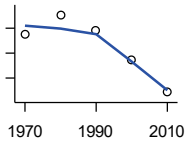
**POPULATION AGE 18 AND OVER
(DECENNIAL CENSUS)**



U.S. Census Bureau: Decennial Census

Year	County	State of Kansas	Non Metro Kansas	County Rank	Per 1000 or \$ Per Capita
1970	6,578	1,500,224	654,288	46	.
1980	6,621	1,714,282	716,684	49	.
1990	5,981	1,815,960	689,309	51	.
2000	5,853	1,975,425	709,154	52	.
2010	5,212	2,126,179	700,768	57	.

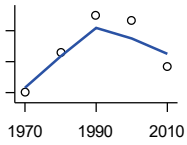
**POPULATION AGE 65 AND OVER
(DECENNIAL CENSUS)**



U.S. Census Bureau: Decennial Census

Year	County	State of Kansas	Non Metro Kansas	County Rank	Per 1000 or \$ Per Capita
1970	1,949	266,201	149,049	40	.
1980	2,106	306,263	164,932	40	.
1990	1,984	342,571	168,579	43	.
2000	1,750	356,229	161,769	48	.
2010	1,485	376,116	154,214	50	.

**POPULATION AGE 85 AND OVER
(DECENNIAL CENSUS)**



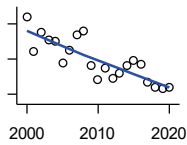
U.S. Census Bureau: Decennial Census

Year	County	State of Kansas	Non Metro Kansas	County Rank	Per 1000 or \$ Per Capita
1970	176	23,899	13,698	43	.
1980	239	33,455	18,804	41	.
1990	299	42,241	22,970	38	.
2000	291	51,770	26,644	49	.
2010	217	59,318	26,197	59	.

County: county value. Kansas: state value. County Rank: highest county value ranked #1. (\$000): thousands of dollars. Nonmetro Kansas: Kansas total less Metropolitan Areas as defined by the Office of Management and Budget (OMB; released 3/6/2020). Per 1000: For nonmoney amounts, Per 1000=(county value / county population for the same year as the data) x 1000. \$ Per capita=(county value / county population for the same year as the data). Value= . indicates missing or suppressed data or value not calculated.

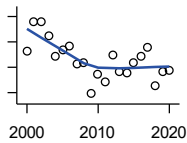
Vital Statistics and Health

BIRTHS (LIVE)



Kansas Department of Health and Environment

Year	County	State of Kansas	Non Metro Kansas	County Rank	Per 1000 or \$ Per Capita
2000	94	39,654	12,980	55	12.3
2001	74	38,832	12,527	60	9.7
2002	85	39,338	12,476	54	11.2
2003	81	39,353	12,342	54	10.8
2004	80	39,553	12,398	55	10.8
2005	68	39,701	12,382	57	9.4
2006	75	40,896	12,726	58	10.8
2007	84	41,951	12,990	58	12.1
2008	86	41,815	12,970	55	12.6
2009	66	41,388	12,949	65	9.8
2010	58	40,439	12,200	66	8.7
2011	65	39,628	12,098	65	9.8
2012	59	40,304	12,217	69	9.2
2013	62	38,805	11,877	65	9.8
2014	66	39,193	12,052	62	10.5
2015	69	39,126	11,836	61	11.1
2016	67	38,048	11,467	62	11.0
2017	57	36,464	10,968	67	9.4
2018	54	36,268	10,826	71	9.0
2019	53	35,395	10,506	69	8.9
2020	54	34,368	10,222	67	9.0



DEATHS

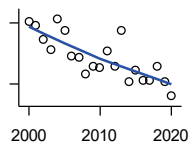
Kansas Department of Health and Environment

Year	County	State of Kansas	Non Metro Kansas	County Rank	Per 1000 or \$ Per Capita
2000	113	24,676	11,175	46	14.7
2001	136	24,590	10,807	42	17.8
2002	136	24,968	11,079	39	18.0
2003	125	24,417	10,615	43	16.7
2004	109	23,720	10,369	46	14.7
2005	114	24,632	10,599	48	15.8
2006	117	24,489	10,538	44	16.8
2007	103	24,413	10,601	49	14.8
2008	104	24,896	10,593	48	15.3
2009	79	23,997	9,938	59	11.7
2010	95	24,428	10,105	53	14.2
2011	88	25,114	10,520	55	13.3
2012	110	25,084	10,259	46	17.1
2013	97	25,347	10,249	49	15.3
2014	96	25,731	10,275	49	15.3
2015	104	26,611	10,539	47	16.7
2016	109	26,129	10,231	46	17.8
2017	116	26,725	10,452	43	19.1
2018	85	27,213	10,389	56	14.1
2019	97	27,312	10,569	49	16.2
2020	98	31,667	11,850	54	16.3

County: county value. Kansas: state value. County Rank: highest county value ranked #1. (\$000): thousands of dollars. Nonmetro Kansas: Kansas total less Metropolitan Areas as defined by the Office of Management and Budget (OMB; released 3/6/2020). Per 1000: For nonmoney amounts, Per 1000=(county value / county population for the same year as the data) x 1000. \$ Per capita=(county value / county population for the same year as the data). Value= . indicates missing or suppressed data or value not calculated.

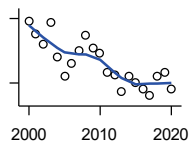
Vital Statistics and Health

MARRIAGES



Kansas Department of Health and Environment

Year	County	State of Kansas	Non Metro Kansas	County Rank	Per 1000 or \$ Per Capita
2000	61	20,426	7,333	51	7.9
2001	59	20,457	7,441	50	7.7
2002	52	19,783	6,794	53	6.9
2003	47	18,722	6,469	52	6.3
2004	62	19,174	6,756	48	8.4
2005	56	18,745	6,481	48	7.8
2006	44	18,836	6,433	53	6.3
2007	43	18,910	6,464	57	6.2
2008	35	18,717	6,283	66	5.1
2009	39	18,268	6,015	61	5.8
2010	38	18,150	5,925	60	5.7
2011	46	17,897	5,977	52	7.0
2012	39	18,154	5,752	58	6.1
2013	56	17,328	5,533	44	8.8
2014	31	17,655	5,535	65	4.9
2015	37	17,595	5,400	56	5.9
2016	32	17,948	5,340	55	5.2
2017	32	17,274	5,163	61	5.3
2018	39	16,362	4,999	52	6.5
2019	31	15,403	4,650	60	5.2
2020	24	14,038	4,066	63	4.0



DIVORCES AND ANNULMENTS

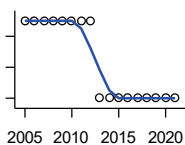
Kansas Department of Health and Environment

Year	County	State of Kansas	Non Metro Kansas	County Rank	Per 1000 or \$ Per Capita
2000	39	10,105	4,000	43	5.1
2001	33	9,885	3,818	51	4.3
2002	28	9,645	3,716	54	3.7
2003	38	8,644	3,464	38	5.1
2004	22	8,759	3,506	56	3.0
2005	13	8,476	3,311	75	1.8
2006	19	9,145	3,387	64	2.7
2007	25	9,347	3,402	54	3.6
2008	32	9,818	3,655	47	4.7
2009	26	10,333	3,463	55	3.9
2010	24	10,579	3,530	56	3.6
2011	15	10,445	3,347	69	2.3
2012	14	9,782	3,040	71	2.2
2013	6	9,085	2,973	94	0.9
2014	13	8,441	2,682	70	2.1
2015	10	8,036	2,704	73	1.6
2016	7	7,198	2,424	83	1.1
2017	4	6,494	2,315	101	0.7
2018	13	6,538	2,269	58	2.2
2019	15	6,398	2,357	54	2.5
2020	7	5,169	1,866	76	1.2

County: county value. Kansas: state value. County Rank: highest county value ranked #1. (\$000): thousands of dollars. Nonmetro Kansas: Kansas total less Metropolitan Areas as defined by the Office of Management and Budget (OMB; released 3/6/2020). Per 1000: For nonmoney amounts, Per 1000=(county value / county population for the same year as the data) x 1000. \$ Per capita=(county value / county population for the same year as the data). Value= . indicates missing or suppressed data or value not calculated.

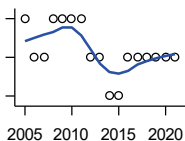
Vital Statistics and Health

PHYSICIANS: M.D. PHYSICIANS



Kansas Department of Health and Environment (1981-2005,2010-);Kansas Health Policy Authority (2006-2009)

Year	County	State of Kansas	Non Metro Kansas	County Rank	Per 1000 or \$ Per Capita
2005	2	4,241	912	81	0.3
2006	2	4,310	953	86	0.3
2007	2	5,309	1,046	86	0.3
2008	2	5,110	1,016	85	0.3
2009	2	5,249	996	79	0.3
2010	2	5,192	979	84	0.3
2011	2	5,243	983	83	0.3
2012	2	5,693	1,033	84	0.3
2013	1	6,106	1,071	100	0.2
2014	1	5,839	951	97	0.2
2015	1	5,703	855	96	0.2
2016	1	4,278	643	85	0.2
2017	1	6,332	1,047	99	0.2
2018	1	6,079	1,065	98	0.2
2019	1	6,435	1,036	97	0.2
2020	1	6,668	1,045	98	0.2
2021	1	6,745	1,042	99	0.2



PHYSICIANS: D.O. PHYSICIANS

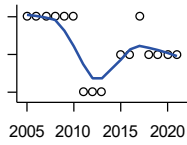
Kansas Department of Health and Environment (1981-2005,2010-);Kansas Health Policy Authority (2006-2009)

Year	County	State of Kansas	Non Metro Kansas	County Rank	Per 1000 or \$ Per Capita
2005	2	553	174	48	0.3
2006	1	508	171	66	0.1
2007	1	569	169	66	0.1
2008	2	558	166	48	0.3
2009	2	564	160	48	0.3
2010	2	583	169	45	0.3
2011	2	502	152	42	0.3
2012	1	718	200	67	0.2
2013	1	829	210	65	0.2
2014	0	817	189	105	0.0
2015	0	819	190	105	0.0
2016	1	632	136	58	0.2
2017	1	579	129	57	0.2
2018	1	871	164	64	0.2
2019	1	951	212	65	0.2
2020	1	1,018	204	66	0.2
2021	1	1,095	217	74	0.2

County: county value. Kansas: state value. County Rank: highest county value ranked #1. (\$000): thousands of dollars. Nonmetro Kansas: Kansas total less Metropolitan Areas as defined by the Office of Management and Budget (OMB; released 3/6/2020). Per 1000: For nonmoney amounts, Per 1000=(county value / county population for the same year as the data) x 1000. \$ Per capita=(county value / county population for the same year as the data). Value= . indicates missing or suppressed data or value not calculated.

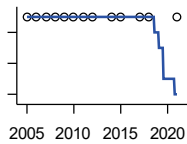
Vital Statistics and Health

DENTISTS



Kansas Department of Health and Environment (1981-2006,2010-);Kansas Health Policy Authority (2007-2009)

Year	County	State of Kansas	Non Metro Kansas	County Rank	Per 1000 or \$ Per Capita
2005	2	1,347	363	69	0.3
2006	2	1,381	361	68	0.3
2007	2	1,335	350	68	0.3
2008	2	1,392	353	67	0.3
2009	2	1,353	350	67	0.3
2010	2	1,401	365	70	0.3
2011	0	1,338	346	105	0.0
2012	0	1,434	392	105	0.0
2013	0	1,212	328	105	0.0
2015	1	1,240	327	89	0.2
2016	1	1,456	350	87	0.2
2017	2	1,467	350	65	0.3
2018	1	1,604	359	86	0.2
2019	1	1,646	355	86	0.2
2020	1	1,646	355	86	0.2
2021	1	1,688	362	85	0.2



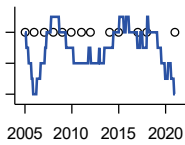
NUMBER OF HOSPITALS

American Hospital Association, American Hospital Association Guide to the Health Care Field

Year	County	State of Kansas	Non Metro Kansas	County Rank	Per 1000 or \$ Per Capita
2005	1	158	105	96	.
2006	1	158	105	96	.
2007	1	159	104	95	.
2008	1	159	104	95	.
2009	1	158	105	96	.
2010	1	158	104	96	.
2011	1	158	103	96	.
2012	1	157	103	96	.
2014	1	156	.	96	.
2015	1	155	103	96	.
2017	1	157	102	96	.
2018	1	154	99	95	.
2021	1	151	.	95	.

County: county value. Kansas: state value. County Rank: highest county value ranked #1. (\$000): thousands of dollars. Nonmetro Kansas: Kansas total less Metropolitan Areas as defined by the Office of Management and Budget (OMB; released 3/6/2020). Per 1000: For nonmoney amounts, Per 1000=(county value / county population for the same year as the data) x 1000. \$ Per capita=(county value / county population for the same year as the data). Value= . indicates missing or suppressed data or value not calculated.

Vital Statistics and Health

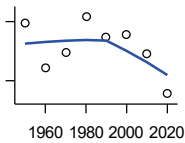


NUMBER OF HOSPITAL BEDS

Kansas Department of Health and Environment

Year	County	State of Kansas	Non Metro Kansas	County Rank	Per 1000 or \$ Per Capita
2005	25	12,389	5,687	85	3.5
2006	25	11,992	5,514	85	3.6
2007	25	12,171	5,637	84	3.6
2008	25	12,332	5,700	85	3.7
2009	25	12,283	5,652	86	3.7
2010	25	12,218	5,521	86	3.7
2011	25	12,182	5,335	85	3.8
2012	25	12,002	5,355	85	3.9
2014	25	12,034	.	84	4.0
2015	25	11,926	5,330	85	4.0
2017	25	11,491	4,825	83	4.1
2018	25	11,448	4,583	82	4.2
2021	25	11,199	.	76	4.2

Housing



HOUSING UNITS (DECENNIAL)

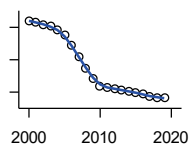
U.S. Census Bureau: Decennial Census

Year	County	State of Kansas	Non Metro Kansas	County Rank	Per 1000 or \$ Per Capita
1950	4,382	586,650	328,210	37	322.8
1960	3,927	672,899	329,380	41	349.0
1970	4,088	789,735	363,824	43	447.2
1980	4,451	955,207	416,877	43	507.9
1990	4,243	1,044,112	417,062	46	540.7
2000	4,273	1,131,395	422,218	46	556.9
2010	4,068	1,233,215	424,050	46	608.2
2020	3,666	1,275,689	413,120	49	609.4

County: county value. Kansas: state value. County Rank: highest county value ranked #1. (\$000): thousands of dollars. Nonmetro Kansas: Kansas total less Metropolitan Areas as defined by the Office of Management and Budget (OMB; released 3/6/2020). Per 1000: For nonmoney amounts, Per 1000=(county value / county population for the same year as the data) x 1000. \$ Per capita=(county value / county population for the same year as the data). Value= . indicates missing or suppressed data or value not calculated.

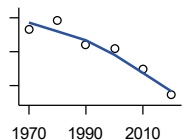
Housing

HOUSING UNITS (ESTIMATED)



U.S. Census Bureau

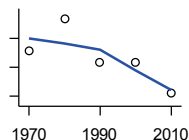
Year	County	State of Kansas	Non Metro Kansas	County Rank	Per 1000 or \$ Per Capita
2000	4,269	1,134,529	422,560	46	556.4
2001	4,267	1,146,858	423,876	46	557.6
2002	4,259	1,160,129	425,089	46	562.8
2003	4,253	1,171,620	425,936	46	567.6
2004	4,244	1,184,702	426,593	46	572.4
2005	4,227	1,195,791	426,964	46	585.3
2006	4,193	1,206,692	426,713	46	603.8
2007	4,158	1,217,608	426,090	46	597.7
2008	4,125	1,225,625	425,768	46	605.1
2009	4,092	1,230,552	424,776	46	608.6
2010	4,068	1,234,456	424,174	46	608.2
2011	4,064	1,238,052	424,549	46	614.7
2012	4,061	1,241,992	425,116	46	632.0
2013	4,056	1,246,675	425,699	47	637.9
2014	4,052	1,253,284	426,269	47	644.4
2015	4,049	1,258,999	426,844	48	649.6
2016	4,043	1,265,684	427,465	48	661.5
2017	4,037	1,273,536	427,746	48	665.4
2018	4,033	1,280,649	428,099	48	670.9
2019	4,032	1,288,401	428,495	48	674.0



OCCUPIED HOUSING UNITS

U.S. Census Bureau: Decennial Census

Year	County	State of Kansas	Non Metro Kansas	County Rank	Per 1000 or \$ Per Capita
1970	3,462	727,364	326,494	46	378.7
1980	3,576	872,239	371,693	47	408.0
1990	3,285	944,726	365,901	48	418.6
2000	3,234	1,037,891	375,313	49	421.5
2010	2,988	1,112,096	370,269	53	446.7
2020	2,687	1,151,360	356,330	53	446.6



OWNER OCCUPIED HOUSING UNITS

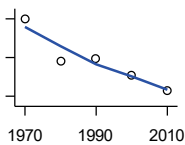
U.S. Census Bureau: Decennial Census

Year	County	State of Kansas	Non Metro Kansas	County Rank	Per 1000 or \$ Per Capita
1970	2,512	502,585	236,338	47	274.8
1980	2,736	612,433	277,096	47	312.2
1990	2,438	641,762	263,099	49	310.7
2000	2,431	718,703	271,350	50	316.8
2010	2,225	753,532	261,763	53	332.6

County: county value. Kansas: state value. County Rank: highest county value ranked #1. (\$000): thousands of dollars. Nonmetro Kansas: Kansas total less Metropolitan Areas as defined by the Office of Management and Budget (OMB; released 3/6/2020). Per 1000: For nonmoney amounts, Per 1000=(county value / county population for the same year as the data) x 1000. \$ Per capita=(county value / county population for the same year as the data). Value= . indicates missing or suppressed data or value not calculated.

Housing

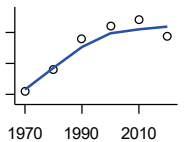
RENTER OCCUPIED HOUSING UNITS



U.S. Census Bureau: Decennial Census

Year	County	State of Kansas	Non Metro Kansas	County Rank	Per 1000 or \$ Per Capita
1970	950	224,779	90,156	40	103.9
1980	840	259,806	94,597	45	95.8
1990	847	302,964	102,802	45	107.9
2000	803	319,188	103,963	48	104.7
2010	763	358,564	108,506	54	114.1

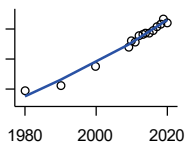
VACANT HOUSING UNITS



U.S. Census Bureau: Decennial Census

Year	County	State of Kansas	Non Metro Kansas	County Rank	Per 1000 or \$ Per Capita
1970	622	60,058	35,954	21	68.0
1980	757	77,912	41,584	25	86.4
1990	958	99,386	51,161	26	122.1
2000	1,039	93,309	46,904	19	135.4
2010	1,080	121,119	53,781	23	161.5
2020	979	124,329	56,790	28	162.7

MEDIAN VALUE (\$): OWNER OCCUPIED HOUSING UNITS



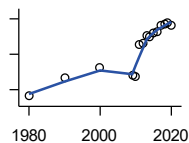
U.S. Census Bureau, Decennial Census (- 2000), (2009 -) American Community Survey five-year average ending in year shown.

Year	County	State of Kansas	Non Metro Kansas	County Rank	Per 1000 or \$ Per Capita
1980	18,700	37,800	.	98	.
1990	21,900	52,200	.	95	.
2000	35,300	83,500	.	94	.
2009	48,100	118,500	.	96	.
2010	52,400	122,600	.	95	.
2011	51,400	125,500	.	98	.
2012	55,700	127,400	.	94	.
2013	56,800	128,400	.	96	.
2014	57,100	129,400	.	97	.
2015	57,200	132,000	.	98	.
2016	59,300	135,300	.	99	.
2017	61,100	139,200	.	101	.
2018	63,500	145,400	.	98	.
2019	66,700	151,900	.	99	.
2020	64,500	157,600	.	100	.

County: county value. Kansas: state value. County Rank: highest county value ranked #1. (\$000): thousands of dollars. Nonmetro Kansas: Kansas total less Metropolitan Areas as defined by the Office of Management and Budget (OMB; released 3/6/2020). Per 1000: For nonmoney amounts, Per 1000=(county value / county population for the same year as the data) x 1000. \$ Per capita=(county value / county population for the same year as the data). Value= . indicates missing or suppressed data or value not calculated.

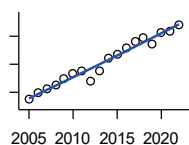
Housing

MEDIAN CONTRACT RENT (\$)



U.S. Census Bureau, Decennial Census (- 2000), (2009 -) American Community Survey five-year average ending in year shown.

Year	County	State of Kansas	Non Metro Kansas	County Rank	Per 1000 or \$ Per Capita
1980	163	219	.	54	.
1990	265	372	.	54	.
2000	322	498	.	90	.
2009	282	491	.	82	.
2010	276	507	.	92	.
2011	454	699	.	97	.
2012	462	715	.	98	.
2013	503	732	.	83	.
2014	496	748	.	93	.
2015	522	757	.	87	.
2016	530	775	.	86	.
2017	563	801	.	82	.
2018	574	831	.	86	.
2019	578	850	.	90	.
2020	566	863	.	94	.



FAIR MARKET RENT: 2 BEDROOMS

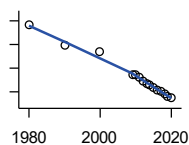
U.S. Department of Housing and Urban Development (HUD)

Year	County	State of Kansas	Non Metro Kansas	County Rank	Per 1000 or \$ Per Capita
2005	474	.	.	63	.
2006	497	.	.	105	.
2007	512	.	.	105	.
2008	525	628	.	105	.
2009	547	653	.	105	.
2010	566	678	.	105	.
2011	575	684	.	105	.
2012	540	660	.	105	.
2013	577	712	.	105	.
2014	622	746	.	105	.
2015	634	756	.	105	.
2016	658	781	.	105	.
2017	681	811	.	105	.
2018	697	815	.	105	.
2019	672	828	.	105	.
2020	714	855	.	105	.
2021	718	874	.	105	.
2022	742	879	.	105	.

County: county value. Kansas: state value. County Rank: highest county value ranked #1. (\$000): thousands of dollars. Nonmetro Kansas: Kansas total less Metropolitan Areas as defined by the Office of Management and Budget (OMB; released 3/6/2020). Per 1000: For nonmoney amounts, Per 1000=(county value / county population for the same year as the data) x 1000. \$ Per capita=(county value / county population for the same year as the data). Value= . indicates missing or suppressed data or value not calculated.

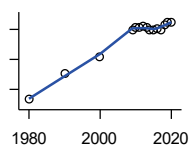
Education

POPULATION AGE 25+



U.S. Census Bureau, Decennial Census (- 2000), (2009 -) American Community Survey five-year average ending in year shown.

Year	County	State of Kansas	Non Metro Kansas	County Rank	Per 1000 or \$ Per Capita
1980	5,908	1,388,102	596,639	.	.
1990	5,490	1,565,936	608,745	.	.
2000	5,343	1,701,207	618,131	.	.
2009	4,861	1,775,427	600,188	.	.
2010	4,856	1,802,904	608,716	.	.
2011	4,807	1,822,400	610,386	.	.
2012	4,730	1,838,079	611,103	.	.
2013	4,677	1,850,010	610,374	.	.
2014	4,645	1,861,894	609,612	.	.
2015	4,596	1,869,698	606,967	.	.
2016	4,546	1,878,495	604,563	.	.
2017	4,521	1,886,741	601,076	.	.
2018	4,466	1,894,675	598,487	.	.
2019	4,415	1,902,279	595,501	.	.
2020	4,372	1,911,990	593,923	.	.



PERCENT HS GRADUATE OR HIGHER AGE 25+

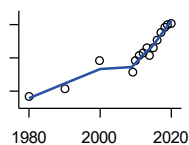
U.S. Census Bureau, Decennial Census (- 2000), (2009 -) American Community Survey five-year average ending in year shown.

Year	County	State of Kansas	Non Metro Kansas	County Rank	Per 1000 or \$ Per Capita
1980	66.6	73.3	.	76	.
1990	75.1	81.3	.	75	.
2000	80.9	86.0	.	89	.
2009	89.8	89.0	.	37	.
2010	90.5	89.2	.	33	.
2011	90.8	89.5	.	32	.
2012	90.9	89.7	.	32	.
2013	90.6	89.8	.	46	.
2014	89.8	90.0	.	57	.
2015	89.9	90.2	.	63	.
2016	90.2	90.3	.	65	.
2017	89.9	90.5	.	72	.
2018	91.6	90.7	.	44	.
2019	92.4	91.0	.	38	.
2020	92.2	91.4	.	53	.

County: county value. Kansas: state value. County Rank: highest county value ranked #1. (\$000): thousands of dollars. Nonmetro Kansas: Kansas total less Metropolitan Areas as defined by the Office of Management and Budget (OMB; released 3/6/2020). Per 1000: For nonmoney amounts, Per 1000=(county value / county population for the same year as the data) x 1000. \$ Per capita=(county value / county population for the same year as the data). Value= . indicates missing or suppressed data or value not calculated.

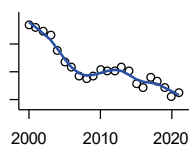
Education

PERCENT BACHELORS DEGREE OR HIGHER AGE 25+



U.S. Census Bureau, Decennial Census (- 2000), (2009 -) American Community Survey five-year average ending in year shown.

Year	County	State of Kansas	Non Metro Kansas	County Rank	Per 1000 or \$ Per Capita
1980	9.2	17.0	.	91	.
1990	10.4	21.1	.	96	.
2000	14.5	25.8	.	90	.
2009	12.8	28.8	.	102	.
2010	14.6	29.3	.	96	.
2011	15.4	29.7	.	93	.
2012	15.8	30.0	.	91	.
2013	16.5	30.3	.	90	.
2014	15.4	30.7	.	99	.
2015	16.5	31.0	.	94	.
2016	17.7	31.6	.	88	.
2017	18.9	32.3	.	76	.
2018	19.6	32.9	.	69	.
2019	19.9	33.4	.	72	.
2020	20.1	33.9	.	75	.



PUBLIC SCHOOL ENROLLMENT (FTE) SCHOOL YEAR BEGINNING...

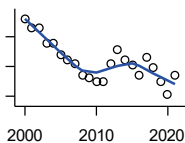
Kansas State Department of Education

Year	County	State of Kansas	Non Metro Kansas	County Rank	Per 1000 or \$ Per Capita
2000	1,119.5	448,150.8	166,722.5	63	145.9
2001	1,111.5	447,047.1	164,365.0	62	145.2
2002	1,096.4	444,860.3	161,555.4	61	144.9
2003	1,082.7	443,620.6	159,130.2	62	144.5
2004	1,027.0	441,957.2	156,566.3	61	138.5
2005	986.9	442,708.4	155,197.2	62	136.7
2006	965.5	444,878.7	153,842.3	63	139.0
2007	933.5	446,831.3	152,337.1	65	134.2
2008	924.5	447,730.0	150,572.7	66	135.6
2009	932.7	453,202.5	151,246.8	64	138.7
2010	956.6	455,405.0	151,023.8	64	143.0
2011	952.2	456,000.5	150,257.9	64	144.0
2012	952.0	458,496.4	150,463.0	64	148.1
2013	968.5	461,950.0	150,420.9	64	152.3
2014	954.5	464,395.4	150,499.4	64	151.8
2015	905.0	463,504.0	149,539.3	65	145.2
2016	891.5	459,920.3	147,293.5	66	145.9
2017	931.0	477,977.9	152,096.3	66	153.5
2018	916.0	476,481.7	150,456.8	66	152.4
2019	893.5	476,525.1	150,045.2	66	149.4
2020	861.5	462,088.0	146,369.6	66	143.2
2021	876.9	463,652.4	147,500.4	65	147.7

County: county value. Kansas: state value. County Rank: highest county value ranked #1. (\$000): thousands of dollars. Nonmetro Kansas: Kansas total less Metropolitan Areas as defined by the Office of Management and Budget (OMB; released 3/6/2020). Per 1000: For nonmoney amounts, Per 1000=(county value / county population for the same year as the data) x 1000. \$ Per capita=(county value / county population for the same year as the data). Value= . indicates missing or suppressed data or value not calculated.

Education

PUPIL/TEACHER RATIO SCHOOL YEAR BEGINNING...

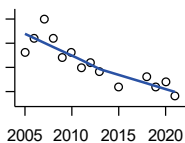


Kansas State Department of Education

Year	County	State of Kansas	Non Metro Kansas	County Rank	Per 1000 or \$ Per Capita
2000	12.6	15.4	13.9	62	.
2001	12.3	15.3	13.8	70	.
2002	12.3	15.4	13.9	69	.
2003	11.8	15.5	13.8	79	.
2004	11.8	15.3	13.6	77	.
2005	11.4	15.0	13.4	79	.
2006	11.2	14.7	13.2	78	.
2007	11.1	14.6	13.1	79	.
2008	10.7	14.4	12.9	87	.
2009	10.6	14.8	13.2	92	.
2010	10.5	15.2	13.6	96	.
2011	10.5	15.1	13.5	93	.
2012	11.1	15.1	13.5	85	.
2013	11.6	15.1	13.5	77	.
2014	11.2	15.0	13.6	82	.
2015	11.1	15.2	13.9	82	.
2016	10.7	15.1	13.7	93	.
2017	11.3	15.5	13.9	85	.
2018	11.0	15.3	13.8	87	.
2019	10.5	15.2	13.7	92	.
2020	10.1	14.7	13.4	94	.
2021	10.7	14.8	13.5	86	.

Social Environment

CHILD CARE FACILITIES: TOTAL CHILD CARE FACILITIES

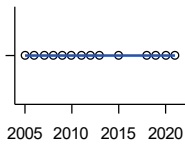


Kansas Department of Health and Environment, Bureau of Adult and Child Care

Year	County	State of Kansas	Non Metro Kansas	County Rank	Per 1000 or \$ Per Capita
2005	18	8,258	3,378	68	2.5
2006	21	8,442	3,429	66	3.0
2007	25	8,241	3,317	59	3.6
2008	21	8,011	3,150	64	3.1
2009	17	7,853	3,066	69	2.5
2010	18	7,354	2,858	65	2.7
2011	15	6,835	2,623	66	2.3
2012	16	6,346	2,409	64	2.5
2013	14	5,754	2,179	64	2.2
2015	11	5,289	2,146	70	1.8
2018	13	4,607	1,904	66	2.2
2019	11	4,287	1,774	67	1.8
2020	12	4,274	1,798	67	2.0
2021	9	4,002	1,700	73	1.5

County: county value. Kansas: state value. County Rank: highest county value ranked #1. (\$000): thousands of dollars. Nonmetro Kansas: Kansas total less Metropolitan Areas as defined by the Office of Management and Budget (OMB; released 3/6/2020). Per 1000: For nonmoney amounts, Per 1000=(county value / county population for the same year as the data) x 1000. \$ Per capita=(county value / county population for the same year as the data). Value= . indicates missing or suppressed data or value not calculated.

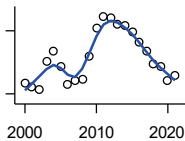
Social Environment



**CHILD CARE FACILITIES:
PRESCHOOLS**

Kansas Department of Health and Environment, Bureau of Adult and Child Care

Year	County	State of Kansas	Non Metro Kansas	County Rank	Per 1000 or \$ Per Capita
2005	0	243	140	105	0.0
2006	0	221	127	105	0.0
2007	0	208	119	105	0.0
2008	0	204	114	105	0.0
2009	0	194	107	105	0.0
2010	0	194	112	105	0.0
2011	0	209	123	105	0.0
2012	0	201	121	105	0.0
2013	0	140	84	105	0.0
2015	0	185	113	105	0.0
2018	0	150	94	105	0.0
2019	0	134	83	105	0.0
2020	0	126	78	105	0.0
2021	0	120	74	105	0.0



FOOD STAMP BENEFICIARIES

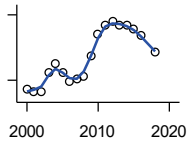
Kansas Social and Rehabilitation Services

Year	County	State of Kansas	Non Metro Kansas	County Rank	Per 1000 or \$ Per Capita
2000	552	110,619	44,825	35	71.9
2001	530	117,241	46,741	38	69.3
2002	521	131,726	52,342	41	68.9
2003	652	155,908	61,280	39	87.0
2004	704	167,971	65,852	39	94.9
2005	629	175,710	67,261	42	87.1
2006	546	182,821	67,487	45	78.6
2007	565	184,035	66,979	44	81.2
2008	572	187,377	67,160	43	83.9
2009	677	208,007	73,637	41	100.7
2010	813	259,609	90,919	41	121.5
2011	868	296,542	101,155	42	131.3
2012	864	303,257	102,478	43	134.5
2013	831	316,424	105,345	43	130.7
2014	827	301,377	100,761	42	131.5
2015	792	277,614	93,353	42	127.1
2016	746	258,412	88,343	42	122.1
2017	701	239,592	82,070	43	115.5
2018	642	219,738	75,208	43	106.8
2019	633	205,261	69,899	42	105.8
2020	562	198,457	66,721	43	93.4
2021	586	203,424	68,883	44	98.7

County: county value. Kansas: state value. County Rank: highest county value ranked #1. (\$000): thousands of dollars. Nonmetro Kansas: Kansas total less Metropolitan Areas as defined by the Office of Management and Budget (OMB; released 3/6/2020). Per 1000: For nonmoney amounts, Per 1000=(county value / county population for the same year as the data) x 1000. \$ Per capita=(county value / county population for the same year as the data). Value= . indicates missing or suppressed data or value not calculated.

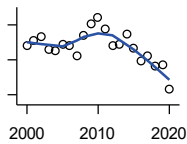
Social Environment

PERCENT OF POPULATION RECEIVING FOOD STAMPS



U.S. Dept. of Agriculture Food and Nutrition Service (1990-1997); Kansas Social and Rehabilitation Services (1998-)

Year	County	State of Kansas	Non Metro Kansas	County Rank	Per 1000 or \$ Per Capita
2000	7.2	4.1	.	7	.
2001	6.9	4.3	.	13	.
2002	6.9	4.9	.	18	.
2003	8.7	5.7	.	16	.
2004	9.5	6.2	.	13	.
2005	8.7	6.4	.	17	.
2006	7.9	6.6	.	23	.
2007	8.1	6.6	.	21	.
2008	8.4	6.7	.	19	.
2009	10.2	7.4	.	14	.
2010	12.2	9.1	.	16	.
2011	13.1	10.3	.	16	.
2012	13.4	10.5	.	17	.
2013	13.0	10.9	.	20	.
2014	13.1	10.4	.	18	.
2015	12.7	9.6	.	17	.
2016	12.1	8.9	.	17	.
2018	10.6	7.5	.	15	.



ESTIMATED NUMBER OF PEOPLE IN POVERTY

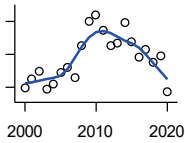
U.S. Census Bureau, Small Area Income and Poverty Estimates

Year	County	State of Kansas	Non Metro Kansas	County Rank	Per 1000 or \$ Per Capita
2000	984	235,087	98,984	44	128.2
2001	1,011	252,134	106,257	45	132.1
2002	1,029	265,673	107,542	44	136.0
2003	958	278,163	107,323	46	127.9
2004	953	297,733	111,534	46	128.5
2005	986	310,667	118,768	47	136.5
2006	978	327,102	123,700	47	140.8
2007	921	301,828	111,953	45	132.4
2008	1,037	307,804	113,015	45	152.1
2009	1,103	359,692	123,394	44	164.0
2010	1,143	374,677	131,502	45	170.9
2011	1,076	383,859	134,912	46	162.8
2012	984	392,095	133,800	47	153.1
2013	992	391,718	134,067	48	156.0
2014	1,048	381,506	130,213	46	166.7
2015	967	366,069	123,073	48	155.1
2016	895	343,773	121,314	50	146.4
2017	921	335,371	116,854	48	151.8
2018	861	336,892	114,490	50	143.2
2019	873	319,931	110,692	48	145.9
2020	730	300,931	100,998	53	121.3

County: county value. Kansas: state value. County Rank: highest county value ranked #1. (\$000): thousands of dollars. Nonmetro Kansas: Kansas total less Metropolitan Areas as defined by the Office of Management and Budget (OMB; released 3/6/2020). Per 1000: For nonmoney amounts, Per 1000=(county value / county population for the same year as the data) x 1000. \$ Per capita=(county value / county population for the same year as the data). Value= . indicates missing or suppressed data or value not calculated.

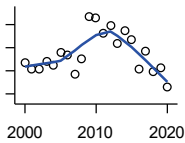
Social Environment

ESTIMATED % OF PEOPLE IN POVERTY



U.S. Census Bureau, Small Area Income and Poverty Estimates

Year	County	State of Kansas	Non Metro Kansas	County Rank	Per 1000 or \$ Per Capita
2000	13.0	8.9	.	7	.
2001	13.5	9.5	.	15	.
2002	14.0	10.0	.	9	.
2003	12.9	10.4	.	19	.
2004	13.2	11.1	.	22	.
2005	13.9	11.7	.	27	.
2006	14.2	12.2	.	30	.
2007	13.6	11.2	.	21	.
2008	15.5	11.3	.	12	.
2009	17.0	13.2	.	13	.
2010	17.4	13.5	.	11	.
2011	16.5	13.8	.	21	.
2012	15.5	14.0	.	24	.
2013	15.7	13.9	.	24	.
2014	16.9	13.5	.	18	.
2015	15.8	12.9	.	17	.
2016	14.8	12.2	.	20	.
2017	15.3	11.9	.	18	.
2018	14.5	11.9	.	23	.
2019	14.9	11.3	.	15	.
2020	12.7	10.6	.	29	.



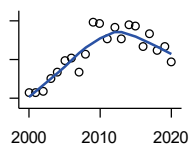
EST. NUMBER OF RELATED CHILDREN AGE 5 TO 17 IN FAMILIES IN POVERTY

U.S. Census Bureau, Small Area Income and Poverty Estimates

Year	County	State of Kansas	Non Metro Kansas	County Rank	Per 1000 or \$ Per Capita
2000	187	50,388	21,854	49	24.4
2001	182	53,755	23,094	50	23.8
2002	182	52,453	21,423	47	24.1
2003	188	55,419	21,809	45	25.1
2004	185	59,392	22,313	45	24.9
2005	196	60,203	24,244	48	27.1
2006	194	64,427	25,326	50	27.9
2007	177	61,149	23,639	49	25.4
2008	190	59,842	22,661	45	27.9
2009	227	71,850	26,251	44	33.8
2010	226	81,077	29,804	48	33.8
2011	212	82,311	29,306	49	32.1
2012	219	87,594	29,781	49	34.1
2013	204	84,325	29,253	52	32.1
2014	215	83,873	29,354	49	34.2
2015	207	78,192	27,482	51	33.2
2016	181	67,810	25,074	52	29.6
2017	197	67,873	25,032	52	32.5
2018	179	68,153	24,928	54	29.8
2019	183	64,613	23,117	51	30.6
2020	166	59,792	21,143	50	27.6

County: county value. Kansas: state value. County Rank: highest county value ranked #1. (\$000): thousands of dollars. Nonmetro Kansas: Kansas total less Metropolitan Areas as defined by the Office of Management and Budget (OMB; released 3/6/2020). Per 1000: For nonmoney amounts, Per 1000=(county value / county population for the same year as the data) x 1000. \$ Per capita=(county value / county population for the same year as the data). Value= . indicates missing or suppressed data or value not calculated.

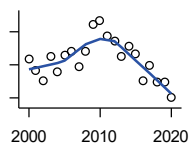
Social Environment



EST. % OF RELATED CHILDREN AGE 5 TO 17 IN FAMILIES IN POVERTY

U.S. Census Bureau, Small Area Income and Poverty Estimates

Year	County	State of Kansas	Non Metro Kansas	County Rank	Per 1000 or \$ Per Capita
2000	14.6	10.0	.	20	.
2001	14.6	10.8	.	36	.
2002	14.7	10.5	.	19	.
2003	16.0	11.3	.	14	.
2004	16.7	12.5	.	10	.
2005	17.9	12.8	.	15	.
2006	18.2	13.2	.	20	.
2007	16.7	12.6	.	22	.
2008	18.6	12.3	.	12	.
2009	21.8	14.7	.	11	.
2010	21.7	15.9	.	15	.
2011	20.2	16.2	.	20	.
2012	21.3	17.2	.	18	.
2013	20.1	16.5	.	24	.
2014	21.6	16.4	.	17	.
2015	21.4	15.3	.	16	.
2016	19.4	13.2	.	15	.
2017	20.7	13.4	.	12	.
2018	18.9	13.5	.	25	.
2019	19.4	12.9	.	13	.
2020	17.7	11.9	.	17	.



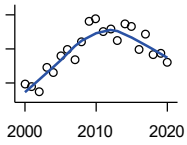
ESTIMATED NUMBER UNDER 18 IN POVERTY

U.S. Census Bureau, Small Area Income and Poverty Estimates

Year	County	State of Kansas	Non Metro Kansas	County Rank	Per 1000 or \$ Per Capita
2000	309	82,619	34,843	48	40.3
2001	291	87,487	36,724	51	38.0
2002	275	84,181	32,870	46	36.3
2003	313	93,896	36,004	44	41.8
2004	290	98,641	36,272	46	39.1
2005	314	100,254	39,118	48	43.5
2006	321	105,193	41,054	47	46.2
2007	297	100,242	37,881	46	42.7
2008	320	100,146	37,552	44	46.9
2009	362	118,187	42,682	43	53.8
2010	367	129,009	46,428	47	54.9
2011	344	133,478	46,832	48	52.0
2012	336	135,261	46,294	47	52.3
2013	312	131,251	44,952	51	49.1
2014	329	125,562	43,933	48	52.3
2015	317	119,994	41,828	51	50.9
2016	275	100,996	37,387	52	45.0
2017	300	102,858	37,955	49	49.4
2018	273	102,616	36,991	53	45.4
2019	273	97,920	34,797	49	45.6
2020	251	88,491	30,767	47	41.7

County: county value. Kansas: state value. County Rank: highest county value ranked #1. (\$000): thousands of dollars. Nonmetro Kansas: Kansas total less Metropolitan Areas as defined by the Office of Management and Budget (OMB; released 3/6/2020). Per 1000: For nonmoney amounts, Per 1000=(county value / county population for the same year as the data) x 1000. \$ Per capita=(county value / county population for the same year as the data). Value= . indicates missing or suppressed data or value not calculated.

Social Environment



ESTIMATED PERCENT UNDER 18 IN POVERTY

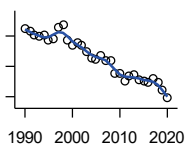
U.S. Census Bureau, Small Area Income and Poverty Estimates

Year	County	State of Kansas	Non Metro Kansas	County Rank	Per 1000 or \$ Per Capita
2000	17.9	11.9	.	13	.
2001	17.5	12.7	.	30	.
2002	17.0	12.1	.	15	.
2003	19.8	13.8	.	10	.
2004	19.2	14.6	.	14	.
2005	21.2	15.2	.	16	.
2006	22.0	15.4	.	16	.
2007	20.8	14.7	.	13	.
2008	22.9	14.6	.	8	.
2009	25.3	17.1	.	10	.
2010	25.6	18.1	.	13	.
2011	24.1	18.8	.	19	.
2012	24.3	19.0	.	17	.
2013	23.0	18.4	.	20	.
2014	24.9	17.6	.	13	.
2015	24.6	16.9	.	11	.
2016	22.0	14.3	.	12	.
2017	23.7	14.7	.	7	.
2018	21.3	14.8	.	16	.
2019	21.5	14.3	.	11	.
2020	20.5	13.0	.	9	.

County: county value. Kansas: state value. County Rank: highest county value ranked #1. (\$000): thousands of dollars. Nonmetro Kansas: Kansas total less Metropolitan Areas as defined by the Office of Management and Budget (OMB; released 3/6/2020). Per 1000: For nonmoney amounts, Per 1000=(county value / county population for the same year as the data) x 1000. \$ Per capita=(county value / county population for the same year as the data). Value= . indicates missing or suppressed data or value not calculated.

Business

ESTABLISHMENTS TOTAL COUNTY BUSINESS PATTERNS



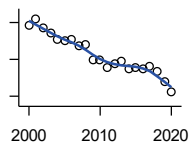
U.S. Census Bureau, County Business Patterns. Beginning with the 2017 data, any tabulation with fewer than 3 establishments were omitted from the release. Data for these establishments are included in the broader total.

Year	County	State of Kansas	Non Metro Kansas	County Rank	Per 1000 or \$ Per Capita
1990	249	65,858	26,802	48	31.7
1991	246	65,941	26,750	48	31.3
1992	241	67,630	27,229	50	30.7
1993	239	68,930	27,655	52	30.4
1994	241	69,822	27,763	53	30.7
1995	234	70,894	28,111	54	29.9
1996	236	72,017	28,353	54	29.9
1997	252	73,924	28,884	50	32.3
1998	255	74,019	28,749	51	32.5
1999	234	74,486	28,536	55	30.4
2000	228	74,939	28,475	56	29.7
2001	231	74,565	28,282	55	30.2
2002	227	75,077	28,183	57	30.0
2003	220	74,972	27,998	57	29.4
2004	211	75,827	28,009	59	28.5
2005	210	76,173	27,830	59	29.1
2006	215	76,446	27,653	58	31.0
2007	207	77,157	27,736	59	29.8
2008	208	76,096	27,314	58	30.5
2009	190	74,698	26,839	61	28.3
2010	190	74,301	26,739	62	28.4
2011	181	73,598	26,555	63	27.4
2012	187	73,944	26,534	61	29.1
2013	189	73,816	26,393	62	29.7
2014	183	74,055	26,292	63	29.1
2015	181	74,526	26,355	63	29.0
2016	179	74,884	26,172	64	29.3
2017	184	74,947	26,093	63	30.3
2018	179	74,559	25,802	63	29.8
2019	169	74,292	25,536	64	28.3
2020	158	73,982	25,178	65	26.3

County: county value. Kansas: state value. County Rank: highest county value ranked #1. (\$000): thousands of dollars. Nonmetro Kansas: Kansas total less Metropolitan Areas as defined by the Office of Management and Budget (OMB; released 3/6/2020). Per 1000: For nonmoney amounts, Per 1000=(county value / county population for the same year as the data) x 1000. \$ Per capita=(county value / county population for the same year as the data). Value= . indicates missing or suppressed data or value not calculated.

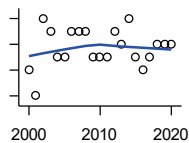
Business

**ESTABLISHMENTS: 1-19
EMPLOYEES**



U.S. Census Bureau, County Business Patterns. Beginning with the 2017 data, any tabulation with fewer than 3 establishments were omitted from the release. Data for these establishments are included in the broader total.

Year	County	State of Kansas	Non Metro Kansas	County Rank	Per 1000 or \$ Per Capita
2000	217	64,527	25,381	55	28.3
2001	224	64,176	25,248	52	29.3
2002	214	64,886	25,208	56	28.3
2003	208	64,714	25,020	55	27.8
2004	201	65,554	24,995	56	27.1
2005	200	65,796	24,839	58	27.7
2006	202	65,764	24,589	58	29.1
2007	195	66,446	24,701	58	28.0
2008	196	65,322	24,257	56	28.8
2009	180	64,128	23,851	61	26.8
2010	180	64,015	23,857	61	26.9
2011	171	63,251	23,571	62	25.9
2012	175	63,519	23,575	62	27.2
2013	178	63,197	23,396	62	28.0
2014	170	63,113	23,229	63	27.0
2015	171	63,280	23,227	63	27.4
2016	170	63,630	23,117	63	27.8
2017	173	63,619	23,022	61	28.5
2018	167	63,233	22,745	62	27.8
2019	156	62,904	22,489	63	26.1
2020	145	62,634	22,173	64	24.1



**ESTABLISHMENTS: 20-99
EMPLOYEES**

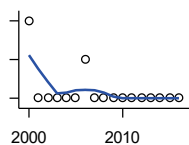
U.S. Census Bureau, County Business Patterns. Beginning with the 2017 data, any tabulation with fewer than 3 establishments were omitted from the release. Data for these establishments are included in the broader total.

Year	County	State of Kansas	Non Metro Kansas	County Rank	Per 1000 or \$ Per Capita
2000	8	8,714	2,653	75	1.0
2001	6	8,692	2,593	81	0.8
2002	12	8,582	2,554	65	1.6
2003	11	8,642	2,568	66	1.5
2004	9	8,658	2,590	70	1.2
2005	9	8,685	2,553	72	1.2
2006	11	8,922	2,612	68	1.6
2007	11	8,938	2,574	70	1.6
2008	11	8,939	2,587	66	1.6
2009	9	8,848	2,551	72	1.3
2010	9	8,612	2,454	72	1.3
2011	9	8,668	2,540	72	1.4
2012	11	8,700	2,500	65	1.7
2013	10	8,870	2,541	69	1.6
2014	12	9,121	2,590	66	1.9
2015	9	9,374	2,664	74	1.4
2016	8	9,412	2,596	76	1.3
2017	9	9,487	2,638	68	1.5
2018	10	9,485	2,621	67	1.7
2019	10	9,485	2,591	66	1.7
2020	10	9,471	2,545	64	1.7

County: county value. Kansas: state value. County Rank: highest county value ranked #1. (\$000): thousands of dollars. Nonmetro Kansas: Kansas total less Metropolitan Areas as defined by the Office of Management and Budget (OMB; released 3/6/2020). Per 1000: For nonmoney amounts, Per 1000=(county value / county population for the same year as the data) x 1000. \$ Per capita=(county value / county population for the same year as the data). Value= . indicates missing or suppressed data or value not calculated.

Business

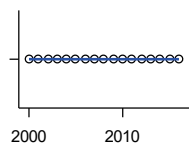
**ESTABLISHMENTS: 100-499
EMPLOYEES**



U.S. Census Bureau, County Business Patterns. Beginning with the 2017 data, any tabulation with fewer than 3 establishments were omitted from the release. Data for these establishments are included in the broader total.

Year	County	State of Kansas	Non Metro Kansas	County Rank	Per 1000 or \$ Per Capita
2000	3	1,555	409	47	0.4
2001	1	1,555	406	86	0.1
2002	1	1,464	386	81	0.1
2003	1	1,470	378	83	0.1
2004	1	1,463	388	82	0.1
2005	1	1,537	400	82	0.1
2006	2	1,598	407	64	0.3
2007	1	1,602	416	87	0.1
2008	1	1,653	421	86	0.1
2009	1	1,551	394	86	0.1
2010	1	1,513	382	85	0.1
2011	1	1,523	395	86	0.2
2012	1	1,567	410	85	0.2
2013	1	1,581	407	85	0.2
2014	1	1,641	421	86	0.2
2015	1	1,693	414	86	0.2
2016	1	1,671	406	84	0.2

**ESTABLISHMENTS: 500 OR MORE
EMPLOYEES**

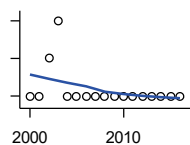


U.S. Census Bureau, County Business Patterns. Beginning with the 2017 data, any tabulation with fewer than 3 establishments were omitted from the release. Data for these establishments are included in the broader total.

Year	County	State of Kansas	Non Metro Kansas	County Rank	Per 1000 or \$ Per Capita
2000	0	143	32	105	0.0
2001	0	142	35	105	0.0
2002	0	145	35	105	0.0
2003	0	146	32	105	0.0
2004	0	152	36	105	0.0
2005	0	155	38	105	0.0
2006	0	162	45	105	0.0
2007	0	171	45	105	0.0
2008	0	182	49	105	0.0
2009	0	171	43	105	0.0
2010	0	161	46	105	0.0
2011	0	156	49	105	0.0
2012	0	158	49	105	0.0
2013	0	168	49	105	0.0
2014	0	180	52	105	0.0
2015	0	179	50	105	0.0
2016	0	171	53	105	0.0

County: county value. Kansas: state value. County Rank: highest county value ranked #1. (\$000): thousands of dollars. Nonmetro Kansas: Kansas total less Metropolitan Areas as defined by the Office of Management and Budget (OMB; released 3/6/2020). Per 1000: For nonmoney amounts, Per 1000=(county value / county population for the same year as the data) x 1000. \$ Per capita=(county value / county population for the same year as the data). Value= . indicates missing or suppressed data or value not calculated.

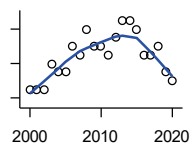
Business



ESTABLISHMENTS: FORESTRY, FISHING, HUNTING, AND AG SUPPORT

U.S. Census Bureau, County Business Patterns. Beginning with the 2017 data, any tabulation with fewer than 3 establishments were omitted from the release. Data for these establishments are included in the broader total.

Year	County	State of Kansas	Non Metro Kansas	County Rank	Per 1000 or \$ Per Capita
2000	0	190	149	105	0.0
2001	0	217	168	105	0.0
2002	1	224	176	84	0.1
2003	2	217	173	54	0.3
2004	0	211	165	105	0.0
2005	0	188	148	105	0.0
2006	0	193	158	105	0.0
2007	0	212	170	105	0.0
2008	0	197	158	105	0.0
2009	0	191	154	105	0.0
2010	0	192	161	105	0.0
2011	0	193	157	105	0.0
2012	0	204	164	105	0.0
2013	0	208	166	105	0.0
2014	0	194	152	105	0.0
2015	0	192	149	105	0.0
2016	0	181	142	105	0.0



ESTABLISHMENTS: MINING

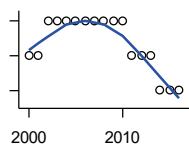
U.S. Census Bureau, County Business Patterns. Beginning with the 2017 data, any tabulation with fewer than 3 establishments were omitted from the release. Data for these establishments are included in the broader total.

Year	County	State of Kansas	Non Metro Kansas	County Rank	Per 1000 or \$ Per Capita
2000	17	868	619	13	2.2
2001	17	878	622	14	2.2
2002	17	847	615	11	2.2
2003	20	864	633	8	2.7
2004	19	880	647	11	2.6
2005	19	941	695	12	2.6
2006	22	991	734	12	3.2
2007	21	1,000	759	12	3.0
2008	24	1,047	799	10	3.5
2009	22	1,016	772	12	3.3
2010	22	1,009	762	13	3.3
2011	21	1,013	763	13	3.2
2012	23	1,048	789	12	3.6
2013	25	1,060	802	10	3.9
2014	25	1,102	828	12	4.0
2015	24	1,069	810	12	3.9
2016	21	990	747	11	3.4
2017	21	920	.	10	3.5
2018	22	900	.	10	3.7
2019	19	864	.	12	3.2
2020	18	825	.	12	3.0

County: county value. Kansas: state value. County Rank: highest county value ranked #1. (\$000): thousands of dollars. Nonmetro Kansas: Kansas total less Metropolitan Areas as defined by the Office of Management and Budget (OMB; released 3/6/2020). Per 1000: For nonmoney amounts, Per 1000=(county value / county population for the same year as the data) x 1000. \$ Per capita=(county value / county population for the same year as the data). Value= . indicates missing or suppressed data or value not calculated.

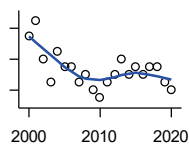
Business

ESTABLISHMENTS: UTILITIES



U.S. Census Bureau, County Business Patterns. Beginning with the 2017 data, any tabulation with fewer than 3 establishments were omitted from the release. Data for these establishments are included in the broader total.

Year	County	State of Kansas	Non Metro Kansas	County Rank	Per 1000 or \$ Per Capita
2000	2	274	192	68	0.3
2001	2	290	204	70	0.3
2002	3	278	195	38	0.4
2003	3	268	180	36	0.4
2004	3	247	164	32	0.4
2005	3	254	172	34	0.4
2006	3	248	169	32	0.4
2007	3	222	156	33	0.4
2008	3	244	166	35	0.4
2009	3	222	152	32	0.4
2010	3	197	129	25	0.4
2011	2	230	156	57	0.3
2012	2	232	156	57	0.3
2013	2	234	159	58	0.3
2014	1	232	160	89	0.2
2015	1	237	165	88	0.2
2016	1	245	171	90	0.2



ESTABLISHMENTS: CONSTRUCTION

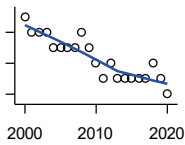
U.S. Census Bureau, County Business Patterns. Beginning with the 2017 data, any tabulation with fewer than 3 establishments were omitted from the release. Data for these establishments are included in the broader total.

Year	County	State of Kansas	Non Metro Kansas	County Rank	Per 1000 or \$ Per Capita
2000	25	7,703	2,616	54	3.3
2001	27	7,449	2,520	48	3.5
2002	22	7,519	2,482	59	2.9
2003	19	7,722	2,521	61	2.5
2004	23	7,887	2,518	56	3.1
2005	21	8,032	2,515	58	2.9
2006	21	8,031	2,494	59	3.0
2007	19	8,057	2,547	61	2.7
2008	20	7,831	2,522	60	2.9
2009	18	7,342	2,452	62	2.7
2010	17	7,064	2,394	63	2.5
2011	19	6,774	2,361	61	2.9
2012	20	6,741	2,393	61	3.1
2013	22	6,802	2,394	56	3.5
2014	20	6,920	2,383	58	3.2
2015	21	7,014	2,377	57	3.4
2016	20	6,988	2,343	58	3.3
2017	21	7,031	2,316	54	3.5
2018	21	7,124	2,285	54	3.5
2019	19	7,060	2,242	57	3.2
2020	18	7,089	2,249	57	3.0

County: county value. Kansas: state value. County Rank: highest county value ranked #1. (\$000): thousands of dollars. Nonmetro Kansas: Kansas total less Metropolitan Areas as defined by the Office of Management and Budget (OMB; released 3/6/2020). Per 1000: For nonmoney amounts, Per 1000=(county value / county population for the same year as the data) x 1000. \$ Per capita=(county value / county population for the same year as the data). Value= . indicates missing or suppressed data or value not calculated.

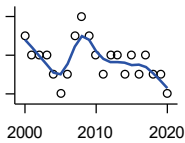
Business

**ESTABLISHMENTS:
MANUFACTURING**



U.S. Census Bureau, County Business Patterns. Beginning with the 2017 data, any tabulation with fewer than 3 establishments were omitted from the release. Data for these establishments are included in the broader total.

Year	County	State of Kansas	Non Metro Kansas	County Rank	Per 1000 or \$ Per Capita
2000	10	3,229	1,316	50	1.3
2001	9	3,240	1,323	56	1.2
2002	9	3,181	1,289	54	1.2
2003	9	3,159	1,291	54	1.2
2004	8	3,179	1,313	62	1.1
2005	8	3,128	1,278	61	1.1
2006	8	3,165	1,290	65	1.2
2007	8	3,184	1,316	61	1.1
2008	9	3,171	1,297	58	1.3
2009	8	3,026	1,240	60	1.2
2010	7	2,955	1,222	65	1.0
2011	6	2,877	1,193	74	0.9
2012	7	2,889	1,197	65	1.1
2013	6	2,836	1,165	72	0.9
2014	6	2,831	1,168	71	1.0
2015	6	2,817	1,161	68	1.0
2016	6	2,791	1,150	69	1.0
2017	6	2,760	1,147	70	1.0
2018	7	2,725	1,126	62	1.2
2019	6	2,695	1,111	71	1.0
2020	5	2,673	1,103	77	0.8



**ESTABLISHMENTS: WHOLESALE
TRADE**

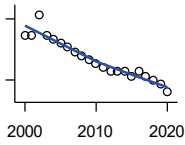
U.S. Census Bureau, County Business Patterns. Beginning with the 2017 data, any tabulation with fewer than 3 establishments were omitted from the release. Data for these establishments are included in the broader total.

Year	County	State of Kansas	Non Metro Kansas	County Rank	Per 1000 or \$ Per Capita
2000	10	4,876	1,776	79	1.3
2001	9	4,811	1,769	84	1.2
2002	9	4,719	1,750	84	1.2
2003	9	4,590	1,637	78	1.2
2004	8	4,553	1,634	88	1.1
2005	7	4,541	1,618	90	1.0
2006	8	4,517	1,596	83	1.2
2007	10	4,555	1,629	80	1.4
2008	11	4,501	1,622	67	1.6
2009	10	4,437	1,614	77	1.5
2010	9	4,432	1,612	79	1.3
2011	8	4,400	1,660	88	1.2
2012	9	4,563	1,755	86	1.4
2013	9	4,501	1,741	85	1.4
2014	8	4,497	1,746	88	1.3
2015	9	4,459	1,755	84	1.4
2016	8	4,457	1,732	88	1.3
2017	9	4,436	1,774	83	1.5
2018	8	4,330	1,727	85	1.3
2019	8	4,291	1,713	85	1.3
2020	7	4,191	1,677	87	1.2

County: county value. Kansas: state value. County Rank: highest county value ranked #1. (\$000): thousands of dollars. Nonmetro Kansas: Kansas total less Metropolitan Areas as defined by the Office of Management and Budget (OMB; released 3/6/2020). Per 1000: For nonmoney amounts, Per 1000=(county value / county population for the same year as the data) x 1000. \$ Per capita=(county value / county population for the same year as the data). Value= . indicates missing or suppressed data or value not calculated.

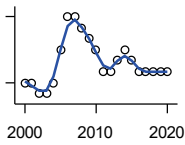
Business

ESTABLISHMENTS: RETAIL TRADE



U.S. Census Bureau, County Business Patterns. Beginning with the 2017 data, any tabulation with fewer than 3 establishments were omitted from the release. Data for these establishments are included in the broader total.

Year	County	State of Kansas	Non Metro Kansas	County Rank	Per 1000 or \$ Per Capita
2000	41	12,261	5,240	56	5.3
2001	41	12,206	5,207	56	5.4
2002	46	11,980	5,082	50	6.1
2003	41	11,834	5,049	55	5.5
2004	40	11,748	4,967	55	5.4
2005	39	11,562	4,834	56	5.4
2006	38	11,367	4,702	54	5.5
2007	37	11,306	4,653	56	5.3
2008	36	10,978	4,494	55	5.3
2009	35	10,760	4,372	56	5.2
2010	34	10,727	4,346	58	5.1
2011	33	10,655	4,289	59	5.0
2012	32	10,585	4,202	60	5.0
2013	32	10,433	4,147	58	5.0
2014	32	10,391	4,070	59	5.1
2015	31	10,327	4,061	58	5.0
2016	32	10,197	3,965	57	5.2
2017	31	10,074	3,885	58	5.1
2018	30	9,866	3,797	55	5.0
2019	29	9,762	3,750	57	4.8
2020	27	9,591	3,666	61	4.5



ESTABLISHMENTS: TRANSPORTATION & WAREHOUSING

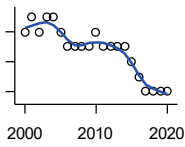
U.S. Census Bureau, County Business Patterns. Beginning with the 2017 data, any tabulation with fewer than 3 establishments were omitted from the release. Data for these establishments are included in the broader total.

Year	County	State of Kansas	Non Metro Kansas	County Rank	Per 1000 or \$ Per Capita
2000	6	2,474	1,293	88	0.8
2001	6	2,463	1,298	84	0.8
2002	5	2,461	1,278	91	0.7
2003	5	2,576	1,297	88	0.7
2004	6	2,651	1,324	82	0.8
2005	9	2,632	1,326	70	1.2
2006	12	2,626	1,295	58	1.7
2007	12	2,664	1,314	56	1.7
2008	11	2,675	1,329	57	1.6
2009	10	2,635	1,313	65	1.5
2010	9	2,615	1,313	67	1.3
2011	7	2,579	1,285	78	1.1
2012	7	2,519	1,243	75	1.1
2013	8	2,492	1,226	70	1.3
2014	9	2,518	1,240	63	1.4
2015	8	2,554	1,257	68	1.3
2016	7	2,567	1,241	71	1.1
2017	7	2,640	1,245	73	1.2
2018	7	2,627	1,238	72	1.2
2019	7	2,615	1,209	75	1.2
2020	7	2,589	1,179	72	1.2

County: county value. Kansas: state value. County Rank: highest county value ranked #1. (\$000): thousands of dollars. Nonmetro Kansas: Kansas total less Metropolitan Areas as defined by the Office of Management and Budget (OMB; released 3/6/2020). Per 1000: For nonmoney amounts, Per 1000=(county value / county population for the same year as the data) x 1000. \$ Per capita=(county value / county population for the same year as the data). Value= . indicates missing or suppressed data or value not calculated.

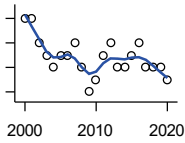
Business

ESTABLISHMENTS: INFORMATION



U.S. Census Bureau, County Business Patterns. Beginning with the 2017 data, any tabulation with fewer than 3 establishments were omitted from the release. Data for these establishments are included in the broader total.

Year	County	State of Kansas	Non Metro Kansas	County Rank	Per 1000 or \$ Per Capita
2000	8	1,542	578	43	1.0
2001	9	1,556	566	35	1.2
2002	8	1,517	551	42	1.1
2003	9	1,516	564	32	1.2
2004	9	1,518	556	34	1.2
2005	8	1,519	536	36	1.1
2006	7	1,549	559	40	1.0
2007	7	1,504	527	39	1.0
2008	7	1,468	522	40	1.0
2009	7	1,420	510	38	1.0
2010	8	1,437	527	31	1.2
2011	7	1,428	537	43	1.1
2012	7	1,387	515	39	1.1
2013	7	1,337	487	37	1.1
2014	7	1,335	496	39	1.1
2015	6	1,359	510	45	1.0
2016	5	1,431	537	52	0.8
2017	4	1,439	.	65	0.7
2018	4	1,407	.	64	0.7
2019	4	1,422	.	64	0.7
2020	4	1,424	.	64	0.7



ESTABLISHMENTS: FINANCE & INSURANCE

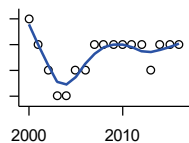
U.S. Census Bureau, County Business Patterns. Beginning with the 2017 data, any tabulation with fewer than 3 establishments were omitted from the release. Data for these establishments are included in the broader total.

Year	County	State of Kansas	Non Metro Kansas	County Rank	Per 1000 or \$ Per Capita
2000	18	5,209	1,848	50	2.3
2001	18	5,178	1,828	49	2.4
2002	16	5,496	1,911	57	2.1
2003	15	5,569	1,907	60	2.0
2004	14	5,572	1,913	64	1.9
2005	15	5,708	1,964	61	2.1
2006	15	5,877	1,976	63	2.2
2007	16	6,017	2,030	55	2.3
2008	14	6,010	2,023	63	2.1
2009	12	5,933	1,994	72	1.8
2010	13	5,872	1,975	67	1.9
2011	15	5,854	1,985	59	2.3
2012	16	5,993	2,024	56	2.5
2013	14	5,903	1,993	64	2.2
2014	14	5,894	2,000	66	2.2
2015	15	5,932	1,998	61	2.4
2016	16	6,022	2,021	59	2.6
2017	14	6,026	2,007	64	2.3
2018	14	6,023	1,997	62	2.3
2019	14	5,953	1,977	62	2.3
2020	13	5,926	1,969	65	2.2

County: county value. Kansas: state value. County Rank: highest county value ranked #1. (\$000): thousands of dollars. Nonmetro Kansas: Kansas total less Metropolitan Areas as defined by the Office of Management and Budget (OMB; released 3/6/2020). Per 1000: For nonmoney amounts, Per 1000=(county value / county population for the same year as the data) x 1000. \$ Per capita=(county value / county population for the same year as the data). Value= . indicates missing or suppressed data or value not calculated.

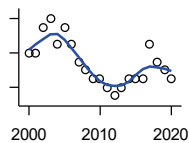
Business

ESTABLISHMENTS: REAL ESTATE, RENTAL, AND LEASING



U.S. Census Bureau, County Business Patterns. Beginning with the 2017 data, any tabulation with fewer than 3 establishments were omitted from the release. Data for these establishments are included in the broader total.

Year	County	State of Kansas	Non Metro Kansas	County Rank	Per 1000 or \$ Per Capita
2000	3	2,733	687	68	0.4
2001	2	2,849	724	73	0.3
2002	1	2,952	735	95	0.1
2003	0	3,007	727	105	0.0
2004	0	3,108	713	105	0.0
2005	1	3,203	727	90	0.1
2006	1	3,268	736	91	0.1
2007	2	3,286	721	71	0.3
2008	2	3,239	738	73	0.3
2009	2	3,122	723	70	0.3
2010	2	3,050	708	75	0.3
2011	2	3,002	692	74	0.3
2012	2	2,981	691	74	0.3
2013	1	3,046	717	87	0.2
2014	2	3,135	738	79	0.3
2015	2	3,179	744	79	0.3
2016	2	3,293	757	77	0.3



ESTABLISHMENTS: PROFESSIONAL, SCIENTIFIC, AND TECHNICAL SERVICES

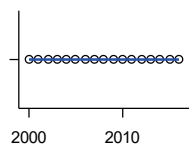
U.S. Census Bureau, County Business Patterns. Beginning with the 2017 data, any tabulation with fewer than 3 establishments were omitted from the release. Data for these establishments are included in the broader total.

Year	County	State of Kansas	Non Metro Kansas	County Rank	Per 1000 or \$ Per Capita
2000	14	6,424	1,690	54	1.8
2001	14	6,492	1,665	55	1.8
2002	17	6,719	1,704	48	2.2
2003	18	6,793	1,735	42	2.4
2004	15	7,025	1,730	55	2.0
2005	17	7,087	1,711	46	2.4
2006	15	7,231	1,736	55	2.2
2007	13	7,329	1,729	61	1.9
2008	12	7,133	1,671	61	1.8
2009	11	7,122	1,676	64	1.6
2010	11	7,172	1,680	65	1.6
2011	10	7,115	1,668	69	1.5
2012	9	7,122	1,681	71	1.4
2013	10	7,129	1,698	68	1.6
2014	11	7,206	1,682	66	1.7
2015	11	7,184	1,687	64	1.8
2016	11	7,146	1,659	64	1.8
2017	15	7,224	1,679	50	2.5
2018	13	7,138	1,655	56	2.2
2019	12	7,119	.	60	2.0
2020	11	7,117	.	60	1.8

County: county value. Kansas: state value. County Rank: highest county value ranked #1. (\$000): thousands of dollars. Nonmetro Kansas: Kansas total less Metropolitan Areas as defined by the Office of Management and Budget (OMB; released 3/6/2020). Per 1000: For nonmoney amounts, Per 1000=(county value / county population for the same year as the data) x 1000. \$ Per capita=(county value / county population for the same year as the data). Value= . indicates missing or suppressed data or value not calculated.

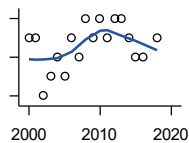
Business

ESTABLISHMENTS: MANAGEMENT OF COMPANIES AND ENTERPRISES



U.S. Census Bureau, County Business Patterns. Beginning with the 2017 data, any tabulation with fewer than 3 establishments were omitted from the release. Data for these establishments are included in the broader total.

Year	County	State of Kansas	Non Metro Kansas	County Rank	Per 1000 or \$ Per Capita
2000	0	622	145	105	0.0
2001	0	593	141	105	0.0
2002	0	597	152	105	0.0
2003	0	561	135	105	0.0
2004	0	569	133	105	0.0
2005	0	543	127	105	0.0
2006	0	542	131	105	0.0
2007	0	550	133	105	0.0
2008	0	553	139	105	0.0
2009	0	575	136	105	0.0
2010	0	567	131	105	0.0
2011	0	552	134	105	0.0
2012	0	593	135	105	0.0
2013	0	590	135	105	0.0
2014	0	603	136	105	0.0
2015	0	613	140	105	0.0
2016	0	655	171	105	0.0



ESTABLISHMENTS: ADMIN, SUPPORT, WASTE MGMT., AND REMEDIATION

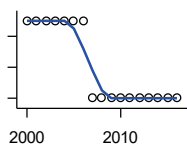
U.S. Census Bureau, County Business Patterns. Beginning with the 2017 data, any tabulation with fewer than 3 establishments were omitted from the release. Data for these establishments are included in the broader total.

Year	County	State of Kansas	Non Metro Kansas	County Rank	Per 1000 or \$ Per Capita
2000	3	3,307	871	81	0.4
2001	3	3,421	913	82	0.4
2002	0	3,232	882	105	0.0
2003	1	3,189	858	99	0.1
2004	2	3,301	891	92	0.3
2005	1	3,342	896	100	0.1
2006	3	3,395	886	83	0.4
2007	2	3,522	921	94	0.3
2008	4	3,587	932	75	0.6
2009	3	3,505	904	85	0.4
2010	4	3,494	897	78	0.6
2011	3	3,447	903	81	0.5
2012	4	3,462	891	74	0.6
2013	4	3,489	904	77	0.6
2014	3	3,569	933	82	0.5
2015	2	3,630	964	91	0.3
2016	2	3,705	987	90	0.3
2018	3	3,740	983	84	0.5

County: county value. Kansas: state value. County Rank: highest county value ranked #1. (\$000): thousands of dollars. Nonmetro Kansas: Kansas total less Metropolitan Areas as defined by the Office of Management and Budget (OMB; released 3/6/2020). Per 1000: For nonmoney amounts, Per 1000=(county value / county population for the same year as the data) x 1000. \$ Per capita=(county value / county population for the same year as the data). Value= . indicates missing or suppressed data or value not calculated.

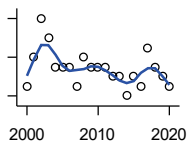
Business

ESTABLISHMENTS: EDUCATIONAL SERVICES



U.S. Census Bureau, County Business Patterns. Beginning with the 2017 data, any tabulation with fewer than 3 establishments were omitted from the release. Data for these establishments are included in the broader total.

Year	County	State of Kansas	Non Metro Kansas	County Rank	Per 1000 or \$ Per Capita
2000	1	604	155	70	0.1
2001	1	625	168	71	0.1
2002	1	666	165	70	0.1
2003	1	663	173	73	0.1
2004	1	690	173	72	0.1
2005	1	699	168	69	0.1
2006	1	698	175	68	0.1
2007	0	691	165	105	0.0
2008	0	692	158	105	0.0
2009	0	690	150	105	0.0
2010	0	700	149	105	0.0
2011	0	711	150	105	0.0
2012	0	724	145	105	0.0
2013	0	735	153	105	0.0
2014	0	722	152	105	0.0
2015	0	754	152	105	0.0
2016	0	728	150	105	0.0



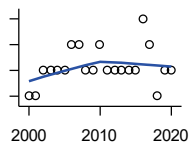
ESTABLISHMENTS: HEALTH CARE AND SOCIAL ASSISTANCE

U.S. Census Bureau, County Business Patterns. Beginning with the 2017 data, any tabulation with fewer than 3 establishments were omitted from the release. Data for these establishments are included in the broader total.

Year	County	State of Kansas	Non Metro Kansas	County Rank	Per 1000 or \$ Per Capita
2000	13	6,564	2,591	64	1.7
2001	16	6,636	2,590	58	2.1
2002	20	7,052	2,777	55	2.6
2003	18	7,129	2,792	59	2.4
2004	15	7,239	2,813	60	2.0
2005	15	7,412	2,855	61	2.1
2006	15	7,477	2,860	61	2.2
2007	13	7,661	2,864	67	1.9
2008	16	7,651	2,810	59	2.3
2009	15	7,696	2,787	60	2.2
2010	15	7,751	2,830	60	2.2
2011	15	7,804	2,817	62	2.3
2012	14	7,973	2,793	63	2.2
2013	14	7,877	2,729	65	2.2
2014	12	7,809	2,686	66	1.9
2015	14	8,103	2,692	65	2.2
2016	13	8,315	2,678	67	2.1
2017	17	8,136	2,646	59	2.8
2018	15	8,126	2,632	64	2.5
2019	14	8,184	2,587	62	2.3
2020	13	8,290	2,571	68	2.2

County: county value. Kansas: state value. County Rank: highest county value ranked #1. (\$000): thousands of dollars. Nonmetro Kansas: Kansas total less Metropolitan Areas as defined by the Office of Management and Budget (OMB; released 3/6/2020). Per 1000: For nonmoney amounts, Per 1000=(county value / county population for the same year as the data) x 1000. \$ Per capita=(county value / county population for the same year as the data). Value= . indicates missing or suppressed data or value not calculated.

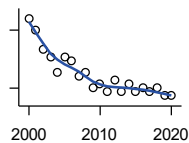
Business



ESTABLISHMENTS: ARTS, ENTERTAINMENT, AND RECREATION

U.S. Census Bureau, County Business Patterns. Beginning with the 2017 data, any tabulation with fewer than 3 establishments were omitted from the release. Data for these establishments are included in the broader total.

Year	County	State of Kansas	Non Metro Kansas	County Rank	Per 1000 or \$ Per Capita
2000	3	981	419	69	0.4
2001	3	1,009	433	71	0.4
2002	4	1,054	441	55	0.5
2003	4	1,045	443	55	0.5
2004	4	1,082	445	57	0.5
2005	4	1,109	446	61	0.6
2006	5	1,080	445	45	0.7
2007	5	1,092	444	49	0.7
2008	4	1,062	423	56	0.6
2009	4	1,063	421	56	0.6
2010	5	1,018	406	44	0.7
2011	4	997	387	49	0.6
2012	4	1,000	388	53	0.6
2013	4	1,009	377	52	0.6
2014	4	1,030	365	53	0.6
2015	4	1,031	357	50	0.6
2016	6	1,060	366	35	1.0
2017	5	1,096	.	40	0.8
2018	3	1,088	.	61	0.5
2019	4	1,087	.	48	0.7
2020	4	1,064	.	48	0.7



ESTABLISHMENTS: ACCOMMODATION AND FOOD SERVICES

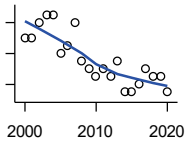
U.S. Census Bureau, County Business Patterns. Beginning with the 2017 data, any tabulation with fewer than 3 establishments were omitted from the release. Data for these establishments are included in the broader total.

Year	County	State of Kansas	Non Metro Kansas	County Rank	Per 1000 or \$ Per Capita
2000	28	5,536	2,213	41	3.6
2001	25	5,551	2,173	42	3.3
2002	20	5,610	2,174	48	2.6
2003	18	5,635	2,188	53	2.4
2004	14	5,681	2,160	62	1.9
2005	18	5,776	2,170	52	2.5
2006	17	5,745	2,132	55	2.4
2007	13	5,877	2,095	62	1.9
2008	14	5,843	2,052	61	2.1
2009	10	5,794	2,029	73	1.5
2010	11	5,898	2,046	69	1.6
2011	9	5,958	2,067	75	1.4
2012	12	5,951	2,046	66	1.9
2013	9	6,061	2,070	77	1.4
2014	11	5,985	2,024	68	1.7
2015	9	6,034	2,063	75	1.4
2016	10	6,126	2,094	72	1.6
2017	9	6,250	2,123	77	1.5
2018	10	6,256	2,128	75	1.7
2019	8	6,231	2,131	81	1.3
2020	8	6,206	2,131	82	1.3

County: county value. Kansas: state value. County Rank: highest county value ranked #1. (\$000): thousands of dollars. Nonmetro Kansas: Kansas total less Metropolitan Areas as defined by the Office of Management and Budget (OMB; released 3/6/2020). Per 1000: For nonmoney amounts, Per 1000=(county value / county population for the same year as the data) x 1000. \$ Per capita=(county value / county population for the same year as the data). Value= . indicates missing or suppressed data or value not calculated.

Business

ESTABLISHMENTS: OTHER SERVICES

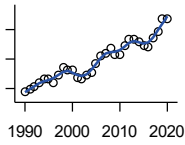


U.S. Census Bureau, County Business Patterns. Beginning with the 2017 data, any tabulation with fewer than 3 establishments were omitted from the release. Data for these establishments are included in the broader total.

Year	County	State of Kansas	Non Metro Kansas	County Rank	Per 1000 or \$ Per Capita
2000	24	8,423	3,636	69	3.1
2001	24	8,310	3,614	68	3.1
2002	26	8,552	3,658	64	3.4
2003	27	8,411	3,605	60	3.6
2004	27	8,343	3,597	59	3.6
2005	22	8,321	3,571	68	3.0
2006	23	8,225	3,490	64	3.3
2007	26	8,355	3,534	61	3.7
2008	21	8,104	3,406	71	3.1
2009	20	8,040	3,405	71	3.0
2010	19	7,998	3,379	72	2.8
2011	20	7,883	3,294	71	3.0
2012	19	7,913	3,303	74	3.0
2013	21	7,947	3,290	68	3.3
2014	17	7,943	3,285	79	2.7
2015	17	7,869	3,255	79	2.7
2016	18	7,839	3,204	78	2.9
2017	20	7,873	3,189	73	3.3
2018	19	7,853	3,176	75	3.2
2019	19	7,834	3,138	75	3.2
2020	17	7,787	3,073	79	2.8

County: county value. Kansas: state value. County Rank: highest county value ranked #1. (\$000): thousands of dollars. Nonmetro Kansas: Kansas total less Metropolitan Areas as defined by the Office of Management and Budget (OMB; released 3/6/2020). Per 1000: For nonmoney amounts, Per 1000=(county value / county population for the same year as the data) x 1000. \$ Per capita=(county value / county population for the same year as the data). Value= . indicates missing or suppressed data or value not calculated.

Business



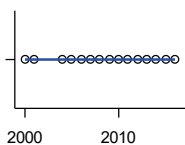
**TOTAL ANNUAL PAYROLL (\$000)
COUNTY BUSINESS PATTERNS**

U.S. Census Bureau, County Business Patterns. Beginning with the 2017 data, any tabulation with fewer than 3 establishments were omitted from the release. Data for these establishments are included in the broader total.

Year	County	State of Kansas	Non Metro Kansas	County Rank	Per 1000 or \$ Per Capita
1990	18,870	17,487,316	4,442,429	60	2,404.7
1991	19,614	18,162,326	4,612,616	61	2,498.0
1992	20,764	19,244,346	4,882,060	60	2,643.4
1993	21,812	20,087,190	5,182,780	63	2,771.9
1994	23,204	21,201,652	5,541,423	63	2,956.3
1995	23,112	22,825,920	5,875,310	64	2,955.1
1996	22,009	24,613,884	6,198,398	65	2,786.7
1997	24,501	26,787,098	6,599,061	65	3,139.1
1998	27,063	28,747,576	6,871,794	63	3,449.7
1999	26,260	30,600,434	7,121,961	64	3,409.5
2000	26,156	31,990,762	7,520,424	67	3,408.8
2001	23,780	33,303,992	7,598,165	68	3,107.3
2002	23,270	33,152,962	7,572,002	69	3,075.2
2003	24,615	34,040,944	7,726,561	68	3,285.1
2004	25,554	35,725,812	8,303,779	68	3,446.3
2005	28,444	36,646,064	8,586,986	67	3,938.5
2006	31,145	39,251,388	9,178,947	65	4,485.2
2007	32,146	42,022,753	.	67	4,620.7
2008	33,830	43,984,689	.	64	4,962.6
2009	31,595	42,146,866	.	66	4,698.8
2010	31,505	42,686,303	10,294,015	71	4,710.0
2011	34,552	43,733,944	.	66	5,226.4
2012	36,662	45,608,072	11,222,183	67	5,705.3
2013	36,822	47,715,601	11,446,751	67	5,791.4
2014	36,056	49,712,832	11,957,931	71	5,734.1
2015	34,397	51,259,676	11,975,718	72	5,518.5
2016	33,982	51,016,318	12,148,646	70	5,559.9
2017	37,298	52,754,605	12,448,592	68	6,147.7
2018	39,290	55,087,460	12,810,270	68	6,536.4
2019	43,821	57,272,387	13,123,288	66	7,325.5
2020	43,534	58,374,388	14,007,955	68	7,236.4

County: county value. Kansas: state value. County Rank: highest county value ranked #1. (\$000): thousands of dollars. Nonmetro Kansas: Kansas total less Metropolitan Areas as defined by the Office of Management and Budget (OMB; released 3/6/2020). Per 1000: For nonmoney amounts, Per 1000=(county value / county population for the same year as the data) x 1000. \$ Per capita=(county value / county population for the same year as the data). Value= . indicates missing or suppressed data or value not calculated.

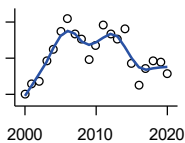
Business



**TOTAL ANNUAL PAYROLL(\$000):
FORESTRY, FISHING, HUNTING, AND
AG SUPPORT**

U.S. Census Bureau, County Business Patterns. Beginning with the 2017 data, any tabulation with fewer than 3 establishments were omitted from the release. Data for these establishments are included in the broader total.

Year	County	State of Kansas	Non Metro Kansas	County Rank	Per 1000 or \$ Per Capita
2000	0	13,551	.	.	0.0
2001	0	.	.	.	0.0
2002	.	16,528	.	.	.
2003	.	17,247	.	.	.
2004	0	17,552	.	.	0.0
2005	0	16,298	.	.	0.0
2006	0	17,908	.	.	0.0
2007	0	22,199	.	.	0.0
2008	0	21,359	.	.	0.0
2009	0	22,466	.	.	0.0
2010	0	22,753	.	.	0.0
2011	0	23,320	.	.	0.0
2012	0	27,492	.	.	0.0
2013	0	30,360	.	.	0.0
2014	0	34,862	.	.	0.0
2015	0	35,980	.	.	0.0
2016	0	31,488	.	.	0.0



**TOTAL ANNUAL PAYROLL(\$000):
MINING**

U.S. Census Bureau, County Business Patterns. Beginning with the 2017 data, any tabulation with fewer than 3 establishments were omitted from the release. Data for these establishments are included in the broader total.

Year	County	State of Kansas	Non Metro Kansas	County Rank	Per 1000 or \$ Per Capita
2000	2,040	240,079	.	.	265.9
2001	2,567	273,838	.	.	335.4
2002	2,745	262,277	.	.	362.8
2003	3,864	290,652	.	.	515.7
2004	4,484	326,997	.	.	604.7
2005	5,473	381,069	.	.	757.8
2006	6,194	482,102	.	.	892.0
2007	5,345	551,751	.	.	768.3
2008	5,047	620,446	.	.	740.4
2009	3,902	465,070	.	.	580.3
2010	4,704	485,841	.	.	703.2
2011	5,817	541,536	.	.	879.9
2012	5,331	600,402	.	.	829.6
2013	5,031	599,788	.	.	791.3
2014	5,602	678,673	.	.	890.9
2015	3,723	552,658	.	.	597.3
2016	2,489	428,767	.	.	407.2
2017	3,447	379,883	.	.	568.2
2018	3,832	431,367	.	.	637.5
2019	3,779	349,270	.	.	631.7
2020	3,122	302,795	.	.	518.9

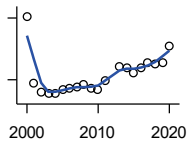
County: county value. Kansas: state value. County Rank: highest county value ranked #1. (\$000): thousands of dollars. Nonmetro Kansas: Kansas total less Metropolitan Areas as defined by the Office of Management and Budget (OMB; released 3/6/2020). Per 1000: For nonmoney amounts, Per 1000=(county value / county population for the same year as the data) x 1000. \$ Per capita=(county value / county population for the same year as the data). Value= . indicates missing or suppressed data or value not calculated.

Business

**TOTAL ANNUAL PAYROLL(\$000):
UTILITIES**

U.S. Census Bureau, County Business Patterns. Beginning with the 2017 data, any tabulation with fewer than 3 establishments were omitted from the release. Data for these establishments are included in the broader total.

Year	County	State of Kansas	Non Metro Kansas	County Rank	Per 1000 or \$ Per Capita
2000	.	410,313	.	.	.
2001	.	452,057	.	.	.
2002	.	377,559	.	.	.
2003	.	378,157	.	.	.
2004	.	377,809	.	.	.
2005	.	429,864	.	.	.
2006	.	443,999	.	.	.
2007	.	480,068	.	.	.
2008	.	541,066	.	.	.
2009	.	563,373	.	.	.
2010	.	512,628	.	.	.
2011	.	653,229	.	.	.
2012	.	625,451	.	.	.
2013	.	625,347	.	.	.
2014	.	610,960	.	.	.
2015	.	668,559	.	.	.



**TOTAL ANNUAL PAYROLL(\$000):
CONSTRUCTION**

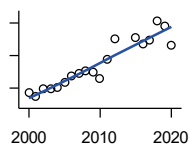
U.S. Census Bureau, County Business Patterns. Beginning with the 2017 data, any tabulation with fewer than 3 establishments were omitted from the release. Data for these establishments are included in the broader total.

Year	County	State of Kansas	Non Metro Kansas	County Rank	Per 1000 or \$ Per Capita
2000	5,073	2,256,057	.	.	661.1
2001	1,844	2,320,652	.	.	241.0
2002	1,369	2,302,229	.	.	180.9
2003	1,312	2,282,021	.	.	175.1
2004	1,357	2,302,854	.	.	183.0
2005	1,539	2,465,977	.	.	213.1
2006	1,590	2,700,351	.	.	229.0
2007	1,620	2,772,168	.	.	232.9
2008	1,769	2,950,073	.	.	259.5
2009	1,574	2,709,864	.	.	234.1
2010	1,539	2,553,555	.	.	230.1
2011	1,973	2,550,355	.	.	298.4
2012	.	2,733,284	.	.	.
2013	2,640	2,866,801	.	.	415.2
2014	2,574	3,135,814	.	.	409.4
2015	2,319	3,270,952	.	.	372.1
2016	2,586	3,328,610	.	.	423.1
2017	2,802	3,568,505	.	.	461.8
2018	2,790	3,806,196	.	.	464.1
2019	2,805	3,879,912	.	.	468.9
2020	3,659	3,983,029	.	.	608.2

County: county value. Kansas: state value. County Rank: highest county value ranked #1. (\$000): thousands of dollars. Nonmetro Kansas: Kansas total less Metropolitan Areas as defined by the Office of Management and Budget (OMB; released 3/6/2020). Per 1000: For nonmoney amounts, Per 1000=(county value / county population for the same year as the data) x 1000. \$ Per capita=(county value / county population for the same year as the data). Value= . indicates missing or suppressed data or value not calculated.

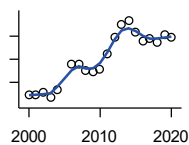
Business

**TOTAL ANNUAL PAYROLL(\$000):
MANUFACTURING**



U.S. Census Bureau, County Business Patterns. Beginning with the 2017 data, any tabulation with fewer than 3 establishments were omitted from the release. Data for these establishments are included in the broader total.

Year	County	State of Kansas	Non Metro Kansas	County Rank	Per 1000 or \$ Per Capita
2000	1,730	7,015,414	.	.	225.5
2001	1,496	7,301,706	.	.	195.5
2002	1,941	6,802,605	.	.	256.5
2003	1,964	6,691,611	.	.	262.1
2004	2,007	6,985,656	.	.	270.7
2005	2,314	7,221,614	.	.	320.4
2006	2,738	7,621,873	.	.	394.3
2007	2,871	7,873,359	.	.	412.7
2008	3,073	8,441,541	.	.	450.8
2009	2,949	7,477,838	.	.	438.6
2010	2,584	7,556,955	.	.	386.3
2011	3,791	7,747,934	.	.	573.4
2012	5,035	7,704,851	.	.	783.5
2013	.	8,365,542	.	.	.
2014	.	8,787,306	.	.	.
2015	5,106	9,052,105	.	.	819.2
2016	4,710	8,868,744	.	.	770.6
2017	4,919	9,075,793	.	.	810.8
2018	6,133	9,481,652	.	.	1,020.3
2019	5,832	10,171,575	.	.	974.9
2020	4,646	9,744,825	.	.	772.3



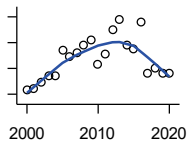
**TOTAL ANNUAL PAYROLL(\$000):
WHOLESALE TRADE**

U.S. Census Bureau, County Business Patterns. Beginning with the 2017 data, any tabulation with fewer than 3 establishments were omitted from the release. Data for these establishments are included in the broader total.

Year	County	State of Kansas	Non Metro Kansas	County Rank	Per 1000 or \$ Per Capita
2000	727	2,332,755	.	.	94.7
2001	721	2,283,169	.	.	94.2
2002	785	2,107,653	.	.	103.7
2003	663	2,622,701	.	.	88.5
2004	846	2,663,196	.	.	114.1
2005	.	2,345,990	.	.	.
2006	1,395	2,592,211	.	.	200.9
2007	1,382	2,682,542	.	.	198.6
2008	1,262	3,078,655	.	.	185.1
2009	1,224	2,940,949	.	.	182.0
2010	1,273	3,097,628	.	.	190.3
2011	1,629	3,305,811	.	.	246.4
2012	1,978	3,339,997	.	.	307.8
2013	2,240	3,460,512	.	.	352.3
2014	2,339	3,712,075	.	.	372.0
2015	2,092	3,760,189	.	.	335.6
2016	1,906	3,738,207	.	.	311.8
2017	1,959	3,822,730	.	.	322.9
2018	1,874	3,814,353	.	.	311.8
2019	2,042	4,025,802	.	.	341.4
2020	1,963	4,224,666	.	.	326.3

County: county value. Kansas: state value. County Rank: highest county value ranked #1. (\$000): thousands of dollars. Nonmetro Kansas: Kansas total less Metropolitan Areas as defined by the Office of Management and Budget (OMB; released 3/6/2020). Per 1000: For nonmoney amounts, Per 1000=(county value / county population for the same year as the data) x 1000. \$ Per capita=(county value / county population for the same year as the data). Value= . indicates missing or suppressed data or value not calculated.

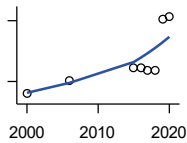
Business



**TOTAL ANNUAL PAYROLL(\$000):
RETAIL TRADE**

U.S. Census Bureau, County Business Patterns. Beginning with the 2017 data, any tabulation with fewer than 3 establishments were omitted from the release. Data for these establishments are included in the broader total.

Year	County	State of Kansas	Non Metro Kansas	County Rank	Per 1000 or \$ Per Capita
2000	3,271	2,747,001	.	.	426.3
2001	3,278	2,813,226	.	.	428.3
2002	3,385	2,854,231	.	.	447.3
2003	3,483	2,773,674	.	.	464.8
2004	3,493	2,847,826	.	.	471.1
2005	3,891	2,952,196	.	.	538.8
2006	3,781	3,126,495	.	.	544.5
2007	3,844	3,201,169	.	.	552.5
2008	3,965	3,261,054	.	.	581.6
2009	4,038	3,232,246	.	.	600.5
2010	3,659	3,321,838	.	.	547.0
2011	3,813	3,384,607	.	.	576.8
2012	4,195	3,409,755	.	.	652.8
2013	4,355	3,483,752	.	.	685.0
2014	3,964	3,617,933	.	.	630.4
2015	3,906	3,712,165	.	.	626.7
2016	4,322	3,826,889	.	.	707.1
2017	3,521	3,797,849	.	.	580.4
2018	3,596	3,818,988	.	.	598.2
2019	3,527	3,908,994	.	.	589.6
2020	3,522	3,984,443	.	.	585.4



**TOTAL ANNUAL PAYROLL(\$000):
TRANSPORTATION &
WAREHOUSING**

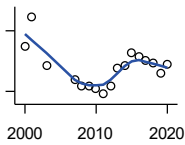
U.S. Census Bureau, County Business Patterns. Beginning with the 2017 data, any tabulation with fewer than 3 establishments were omitted from the release. Data for these establishments are included in the broader total.

Year	County	State of Kansas	Non Metro Kansas	County Rank	Per 1000 or \$ Per Capita
2000	776	1,044,835	.	.	101.1
2001	.	1,089,405	.	.	.
2002	.	1,094,636	.	.	.
2003	.	1,316,655	.	.	.
2004	.	1,439,800	.	.	.
2005	.	1,393,651	.	.	.
2006	2,057	1,528,551	.	.	296.2
2007	.	1,788,267	.	.	.
2008	.	1,722,697	.	.	.
2009	.	1,618,598	.	.	.
2010	.	1,735,761	.	.	.
2011	.	1,739,165	.	.	.
2012	.	1,984,976	.	.	.
2013	.	2,006,261	.	.	.
2014	.	2,097,377	.	.	.
2015	3,358	2,190,072	.	.	538.7
2016	3,322	2,202,859	.	.	543.5
2017	3,092	2,546,061	.	.	509.6
2018	3,103	2,663,188	.	.	516.2
2019	8,119	2,879,406	.	.	1,357.2
2020	8,413	2,962,461	.	.	1,398.4

County: county value. Kansas: state value. County Rank: highest county value ranked #1. (\$000): thousands of dollars. Nonmetro Kansas: Kansas total less Metropolitan Areas as defined by the Office of Management and Budget (OMB; released 3/6/2020). Per 1000: For nonmoney amounts, Per 1000=(county value / county population for the same year as the data) x 1000. \$ Per capita=(county value / county population for the same year as the data). Value= . indicates missing or suppressed data or value not calculated.

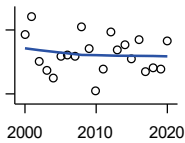
Business

**TOTAL ANNUAL PAYROLL(\$000):
INFORMATION**



U.S. Census Bureau, County Business Patterns. Beginning with the 2017 data, any tabulation with fewer than 3 establishments were omitted from the release. Data for these establishments are included in the broader total.

Year	County	State of Kansas	Non Metro Kansas	County Rank	Per 1000 or \$ Per Capita
2000	820	1,923,381	.	.	106.9
2001	969	2,218,610	.	.	126.6
2002	.	2,298,108	.	.	.
2003	729	2,378,673	.	.	97.3
2004	.	2,392,990	.	.	.
2005	.	2,395,081	.	.	.
2006	.	2,586,483	.	.	.
2007	661	2,594,138	.	.	95.0
2008	627	3,043,244	.	.	92.0
2009	627	3,045,570	.	.	93.2
2010	615	2,481,580	.	.	91.9
2011	586	2,513,805	.	.	88.6
2012	627	2,535,555	.	.	97.6
2013	718	2,805,017	.	.	112.9
2014	727	2,393,609	.	.	115.6
2015	788	2,406,323	.	.	126.4
2016	772	2,080,211	.	.	126.3
2017	756	2,090,021	.	.	124.6
2018	741	2,341,543	.	.	123.3
2019	689	2,133,891	.	.	115.2
2020	737	2,245,204	.	.	122.5



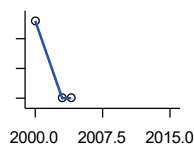
**TOTAL ANNUAL PAYROLL(\$000):
FINANCE & INSURANCE**

U.S. Census Bureau, County Business Patterns. Beginning with the 2017 data, any tabulation with fewer than 3 establishments were omitted from the release. Data for these establishments are included in the broader total.

Year	County	State of Kansas	Non Metro Kansas	County Rank	Per 1000 or \$ Per Capita
2000	2,151	2,083,565	.	.	280.3
2001	2,326	2,129,587	.	.	303.9
2002	1,910	2,414,120	.	.	252.4
2003	1,816	2,608,579	.	.	242.4
2004	1,743	2,676,910	.	.	235.1
2005	1,952	2,786,136	.	.	270.3
2006	1,966	2,928,931	.	.	283.1
2007	1,953	3,096,017	.	.	280.7
2008	2,226	3,322,977	.	.	326.5
2009	2,019	3,206,839	.	.	300.3
2010	1,623	3,211,300	.	.	242.6
2011	1,828	3,404,633	.	.	276.5
2012	2,181	3,611,165	.	.	339.4
2013	2,011	3,896,051	.	.	316.3
2014	2,065	4,044,315	.	.	328.4
2015	1,928	4,113,060	.	.	309.3
2016	2,114	4,180,740	.	.	345.9
2017	1,804	4,258,057	.	.	297.3
2018	1,845	4,682,552	.	.	306.9
2019	1,833	4,814,201	.	.	306.4
2020	2,099	5,288,529	.	.	348.9

County: county value. Kansas: state value. County Rank: highest county value ranked #1. (\$000): thousands of dollars. Nonmetro Kansas: Kansas total less Metropolitan Areas as defined by the Office of Management and Budget (OMB; released 3/6/2020). Per 1000: For nonmoney amounts, Per 1000=(county value / county population for the same year as the data) x 1000. \$ Per capita=(county value / county population for the same year as the data). Value= . indicates missing or suppressed data or value not calculated.

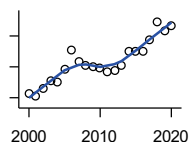
Business



**TOTAL ANNUAL PAYROLL(\$000):
REAL ESTATE, RENTAL, AND
LEASING**

U.S. Census Bureau, County Business Patterns. Beginning with the 2017 data, any tabulation with fewer than 3 establishments were omitted from the release. Data for these establishments are included in the broader total.

Year	County	State of Kansas	Non Metro Kansas	County Rank	Per 1000 or \$ Per Capita
2000	52	360,637	.	.	6.8
2001	.	397,371	.	.	.
2002	.	403,695	.	.	.
2003	0	437,786	.	.	0.0
2004	0	430,719	.	.	0.0
2005	.	465,149	.	.	.
2006	.	478,811	.	.	.
2007	.	452,969	.	.	.
2008	.	484,149	.	.	.
2009	.	450,884	.	.	.
2010	.	487,255	.	.	.
2011	.	535,120	.	.	.
2012	.	531,039	.	.	.
2013	.	538,796	.	.	.
2014	.	542,307	.	.	.
2015	.	595,030	.	.	.



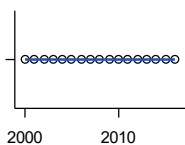
**TOTAL ANNUAL PAYROLL(\$000):
PROFESSIONAL, SCIENTIFIC, AND
TECHNICAL SERVICES**

U.S. Census Bureau, County Business Patterns. Beginning with the 2017 data, any tabulation with fewer than 3 establishments were omitted from the release. Data for these establishments are included in the broader total.

Year	County	State of Kansas	Non Metro Kansas	County Rank	Per 1000 or \$ Per Capita
2000	453	2,057,313	.	.	59.0
2001	425	2,152,937	.	.	55.5
2002	526	2,150,085	.	.	69.5
2003	622	2,052,712	.	.	83.0
2004	606	2,531,457	.	.	81.7
2005	776	2,418,500	.	.	107.4
2006	1,010	2,655,690	.	.	145.4
2007	876	2,901,544	.	.	125.9
2008	819	2,903,802	.	.	120.1
2009	796	3,071,611	.	.	118.4
2010	785	3,037,182	.	.	117.4
2011	737	3,132,082	.	.	111.5
2012	756	3,455,548	.	.	117.6
2013	826	3,777,729	.	.	129.9
2014	1,004	3,981,580	.	.	159.7
2015	1,006	4,039,074	.	.	161.4
2016	1,004	4,125,507	.	.	164.3
2017	1,150	4,158,858	.	.	189.6
2018	1,378	4,314,317	.	.	229.2
2019	1,272	4,646,644	.	.	212.6
2020	1,325	4,927,611	.	.	220.2

County: county value. Kansas: state value. County Rank: highest county value ranked #1. (\$000): thousands of dollars. Nonmetro Kansas: Kansas total less Metropolitan Areas as defined by the Office of Management and Budget (OMB; released 3/6/2020). Per 1000: For nonmoney amounts, Per 1000=(county value / county population for the same year as the data) x 1000. \$ Per capita=(county value / county population for the same year as the data). Value= . indicates missing or suppressed data or value not calculated.

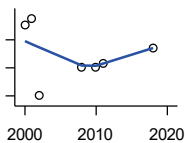
Business



**TOTAL ANNUAL PAYROLL(\$000):
MANAGEMENT OF COMPANIES AND
ENTERPRISES**

U.S. Census Bureau, County Business Patterns. Beginning with the 2017 data, any tabulation with fewer than 3 establishments were omitted from the release. Data for these establishments are included in the broader total.

Year	County	State of Kansas	Non Metro Kansas	County Rank	Per 1000 or \$ Per Capita
2000	0	1,362,735	.	.	0.0
2001	0	1,279,253	.	.	0.0
2002	0	1,311,368	.	.	0.0
2003	0	1,352,119	.	.	0.0
2004	0	1,378,891	.	.	0.0
2005	0	1,510,876	.	.	0.0
2006	0	1,626,320	.	.	0.0
2007	0	2,233,654	.	.	0.0
2008	0	1,848,656	.	.	0.0
2009	0	1,601,158	.	.	0.0
2010	0	2,003,048	.	.	0.0
2011	0	1,677,619	.	.	0.0
2012	0	1,834,430	.	.	0.0
2013	0	1,938,100	.	.	0.0
2014	0	2,117,232	.	.	0.0
2015	0	2,451,126	.	.	0.0
2016	0	2,167,620	.	.	0.0



**TOTAL ANNUAL PAYROLL(\$000):
ADMIN, SUPPORT, WASTE MGMT.,
AND REMEDIATION**

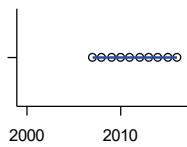
U.S. Census Bureau, County Business Patterns. Beginning with the 2017 data, any tabulation with fewer than 3 establishments were omitted from the release. Data for these establishments are included in the broader total.

Year	County	State of Kansas	Non Metro Kansas	County Rank	Per 1000 or \$ Per Capita
2000	127	1,388,712	.	.	16.6
2001	138	1,416,480	.	.	18.0
2002	0	1,378,905	.	.	0.0
2003	.	1,387,061	.	.	.
2004	.	1,544,442	.	.	.
2005	.	1,694,687	.	.	.
2006	.	1,800,846	.	.	.
2007	.	1,978,025	.	.	.
2008	50	2,096,864	.	.	7.3
2009	.	1,832,540	.	.	.
2010	51	2,117,325	.	.	7.6
2011	57	2,114,970	.	.	8.6
2012	.	2,230,250	.	.	.
2013	.	2,214,320	.	.	.
2014	.	2,444,170	.	.	.
2015	.	2,577,592	.	.	.
2018	86	3,007,347	.	.	14.3

County: county value. Kansas: state value. County Rank: highest county value ranked #1. (\$000): thousands of dollars. Nonmetro Kansas: Kansas total less Metropolitan Areas as defined by the Office of Management and Budget (OMB; released 3/6/2020). Per 1000: For nonmoney amounts, Per 1000=(county value / county population for the same year as the data) x 1000. \$ Per capita=(county value / county population for the same year as the data). Value= . indicates missing or suppressed data or value not calculated.

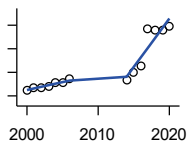
Business

**TOTAL ANNUAL PAYROLL(\$000):
EDUCATIONAL SERVICES**



U.S. Census Bureau, County Business Patterns. Beginning with the 2017 data, any tabulation with fewer than 3 establishments were omitted from the release. Data for these establishments are included in the broader total.

Year	County	State of Kansas	Non Metro Kansas	County Rank	Per 1000 or \$ Per Capita
2000	.	299,843	.	.	.
2001	.	320,606	.	.	.
2002	.	353,531	.	.	.
2003	.	350,814	.	.	.
2004	.	361,644	.	.	.
2005	.	375,781	.	.	.
2006	.	400,565	.	.	.
2007	0	414,233	.	.	0.0
2008	0	463,210	.	.	0.0
2009	0	468,856	.	.	0.0
2010	0	487,670	.	.	0.0
2011	0	504,964	.	.	0.0
2012	0	508,448	.	.	0.0
2013	0	553,995	.	.	0.0
2014	0	612,073	.	.	0.0
2015	0	579,794	.	.	0.0
2016	0	571,582	.	.	0.0



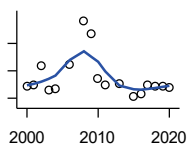
**TOTAL ANNUAL PAYROLL(\$000):
HEALTH CARE AND SOCIAL ASSISTANCE**

U.S. Census Bureau, County Business Patterns. Beginning with the 2017 data, any tabulation with fewer than 3 establishments were omitted from the release. Data for these establishments are included in the broader total.

Year	County	State of Kansas	Non Metro Kansas	County Rank	Per 1000 or \$ Per Capita
2000	6,524	4,120,595	.	.	850.3
2001	6,700	4,445,027	.	.	875.5
2002	6,682	4,705,220	.	.	883.0
2003	6,838	4,939,323	.	.	912.6
2004	7,085	5,232,394	.	.	955.5
2005	7,090	5,487,089	.	.	981.7
2006	7,435	5,814,218	.	.	1,070.7
2007	.	6,186,471	.	.	.
2008	.	6,490,627	.	.	.
2009	.	6,749,962	.	.	.
2010	.	6,871,727	.	.	.
2011	.	7,129,655	.	.	.
2012	.	7,614,853	.	.	.
2013	.	7,541,515	.	.	.
2014	7,337	7,733,621	.	.	1,166.8
2015	7,977	7,969,650	.	.	1,279.8
2016	8,519	8,018,706	.	.	1,393.8
2017	11,637	8,384,998	.	.	1,918.1
2018	11,577	8,637,619	.	.	1,926.0
2019	11,532	8,854,414	.	.	1,927.8
2020	11,907	9,309,269	.	.	1,979.2

County: county value. Kansas: state value. County Rank: highest county value ranked #1. (\$000): thousands of dollars. Nonmetro Kansas: Kansas total less Metropolitan Areas as defined by the Office of Management and Budget (OMB; released 3/6/2020). Per 1000: For nonmoney amounts, Per 1000=(county value / county population for the same year as the data) x 1000. \$ Per capita=(county value / county population for the same year as the data). Value= . indicates missing or suppressed data or value not calculated.

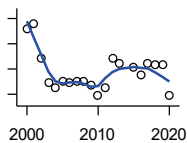
Business



**TOTAL ANNUAL PAYROLL(\$000):
ARTS, ENTERTAINMENT, AND
RECREATION**

U.S. Census Bureau, County Business Patterns. Beginning with the 2017 data, any tabulation with fewer than 3 establishments were omitted from the release. Data for these establishments are included in the broader total.

Year	County	State of Kansas	Non Metro Kansas	County Rank	Per 1000 or \$ Per Capita
2000	97	195,784	.	.	12.6
2001	100	203,511	.	.	13.1
2002	127	206,204	.	.	16.8
2003	91	185,049	.	.	12.1
2004	94	190,742	.	.	12.7
2005	.	196,594	.	.	.
2006	130	201,049	.	.	18.7
2007	.	220,435	.	.	.
2008	193	236,986	.	.	28.3
2009	175	237,116	.	.	26.0
2010	108	233,285	.	.	16.1
2011	100	234,351	.	.	15.1
2012	.	254,169	.	.	.
2013	102	278,474	.	.	16.0
2014	.	289,103	.	.	.
2015	83	300,253	.	.	13.3
2016	86	312,902	.	.	14.1
2017	99	323,153	.	.	16.3
2018	98	325,454	.	.	16.3
2019	98	335,362	.	.	16.4
2020	95	298,119	.	.	15.8



**TOTAL ANNUAL PAYROLL(\$000):
ACCOMMODATION AND FOOD
SERVICES**

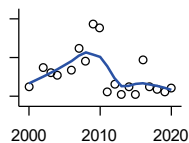
U.S. Census Bureau, County Business Patterns. Beginning with the 2017 data, any tabulation with fewer than 3 establishments were omitted from the release. Data for these establishments are included in the broader total.

Year	County	State of Kansas	Non Metro Kansas	County Rank	Per 1000 or \$ Per Capita
2000	1,122	926,831	.	.	146.2
2001	1,158	960,196	.	.	151.3
2002	885	930,510	.	.	117.0
2003	695	992,313	.	.	92.8
2004	653	1,046,901	.	.	88.1
2005	701	1,101,854	.	.	97.1
2006	688	1,185,280	.	.	99.1
2007	704	1,431,100	.	.	101.2
2008	705	1,271,594	.	.	103.4
2009	671	1,283,065	.	.	99.8
2010	587	1,296,556	.	.	87.8
2011	648	1,364,281	.	.	98.0
2012	880	1,388,337	.	.	136.9
2013	848	1,476,335	.	.	133.4
2014	.	1,572,021	.	.	.
2015	814	1,640,144	.	.	130.6
2016	750	1,709,193	.	.	122.7
2017	842	1,824,791	.	.	138.8
2018	836	1,880,364	.	.	139.1
2019	831	1,958,603	.	.	138.9
2020	590	1,745,238	.	.	98.1

County: county value. Kansas: state value. County Rank: highest county value ranked #1. (\$000): thousands of dollars. Nonmetro Kansas: Kansas total less Metropolitan Areas as defined by the Office of Management and Budget (OMB; released 3/6/2020). Per 1000: For nonmoney amounts, Per 1000=(county value / county population for the same year as the data) x 1000. \$ Per capita=(county value / county population for the same year as the data). Value= . indicates missing or suppressed data or value not calculated.

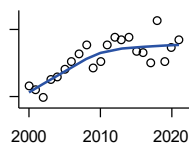
Business

**TOTAL ANNUAL PAYROLL(\$000):
OTHER SERVICES**



U.S. Census Bureau, County Business Patterns. Beginning with the 2017 data, any tabulation with fewer than 3 establishments were omitted from the release. Data for these establishments are included in the broader total.

Year	County	State of Kansas	Non Metro Kansas	County Rank	Per 1000 or \$ Per Capita
2000	547	965,540	.	.	71.3
2001	.	996,716	.	.	.
2002	647	1,007,464	.	.	85.5
2003	621	979,466	.	.	82.9
2004	608	970,383	.	.	82.0
2005	.	1,005,537	.	.	.
2006	632	1,055,932	.	.	91.0
2007	750	1,141,551	.	.	107.8
2008	680	1,184,016	.	.	99.8
2009	870	1,167,154	.	.	129.4
2010	855	1,170,201	.	.	127.8
2011	524	1,173,775	.	.	79.3
2012	559	1,217,210	.	.	87.0
2013	510	1,254,933	.	.	80.2
2014	549	1,305,563	.	.	87.3
2015	508	1,341,075	.	.	81.5
2016	691	1,351,375	.	.	113.1
2017	550	1,344,179	.	.	90.7
2018	536	1,382,801	.	.	89.2
2019	525	1,427,711	.	.	87.8
2020	542	1,420,859	.	.	90.1



**NOMINAL TAXABLE RETAIL SALES
(million\$)**

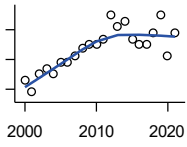
Kansas Department of Revenue

Year	County	State of Kansas	Non Metro Kansas	County Rank	Per 1000 or \$ Per Capita
2000	37.4	30,119.0	8,831.7	64	4.9
2001	36.5	30,202.2	8,700.3	65	4.8
2002	34.7	29,380.8	8,241.5	62	4.6
2003	38.9	30,694.0	8,710.6	62	5.2
2004	39.3	31,922.6	9,062.5	63	5.3
2005	41.0	32,924.2	9,386.6	64	5.7
2006	42.8	34,937.6	10,042.1	65	6.2
2007	44.6	36,180.1	10,553.2	67	6.4
2008	46.4	37,559.5	11,126.9	66	6.8
2009	41.5	35,211.8	10,351.5	68	6.2
2010	42.8	35,655.7	10,606.1	68	6.4
2011	46.4	37,257.0	11,153.5	67	7.0
2012	48.3	38,988.8	11,749.1	68	7.5
2013	47.6	40,009.0	11,993.8	68	7.5
2014	48.2	41,299.0	12,365.4	70	7.7
2015	45.1	41,635.8	11,747.6	70	7.2
2016	44.9	42,040.2	11,523.5	70	7.4
2017	42.4	41,940.1	11,449.9	69	7.0
2018	52.0	42,732.3	11,643.9	66	8.7
2019	42.9	43,732.5	12,062.7	72	7.2
2020	46.0	43,689.9	12,331.7	71	7.6
2021	47.6	48,532.8	13,413.0	70	8.0

County: county value. Kansas: state value. County Rank: highest county value ranked #1. (\$000): thousands of dollars. Nonmetro Kansas: Kansas total less Metropolitan Areas as defined by the Office of Management and Budget (OMB; released 3/6/2020). Per 1000: For nonmoney amounts, Per 1000=(county value / county population for the same year as the data) x 1000. \$ Per capita=(county value / county population for the same year as the data). Value= . indicates missing or suppressed data or value not calculated.

Business

RETAIL PULL FACTOR



Kansas Direct Program, Kansas State University Cooperative Extension Service (1980-1999); Kansas Department of Revenue (2000-)

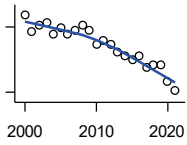
Year	County	State of Kansas	Non Metro Kansas	County Rank	Per 1000 or \$ Per Capita
2000	0.44	.	.	84	.
2001	0.42	.	.	82	.
2002	0.45	.	.	79	.
2003	0.46	.	.	82	.
2004	0.45	.	.	84	.
2005	0.47	.	.	87	.
2006	0.47	.	.	84	.
2007	0.48	.	.	85	.
2008	0.49	.	.	86	.
2009	0.50	.	.	89	.
2010	0.50	.	.	91	.
2011	0.51	.	.	93	.
2012	0.55	.	.	84	.
2013	0.53	.	.	90	.
2014	0.54	.	.	92	.
2015	0.51	.	.	94	.
2016	0.50	.	.	92	.
2017	0.50	.	.	91	.
2018	0.52	.	.	88	.
2019	0.55	.	.	85	.
2020	0.48	.	.	96	.
2021	0.52	.	.	94	.

County: county value. Kansas: state value. County Rank: highest county value ranked #1. (\$000): thousands of dollars. Nonmetro Kansas: Kansas total less Metropolitan Areas as defined by the Office of Management and Budget (OMB; released 3/6/2020). Per 1000: For nonmoney amounts, Per 1000=(county value / county population for the same year as the data) x 1000. \$ Per capita=(county value / county population for the same year as the data). Value= . indicates missing or suppressed data or value not calculated.

Employment

CIVILIAN LABOR FORCE (BLS-Place of Residence; 1990-)

U.S. Department of Labor, Bureau of Labor Statistics (BLS)



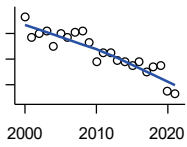
Year	County	State of Kansas	Non Metro Kansas	County Rank	Per 1000 or \$ Per Capita
2000	3,712	1,402,606	482,229	53	483.8
2001	3,556	1,398,521	475,280	55	464.7
2002	3,616	1,419,335	482,428	55	477.9
2003	3,635	1,441,065	490,161	55	485.1
2004	3,529	1,458,910	494,509	56	475.9
2005	3,596	1,458,767	490,047	55	497.9
2006	3,530	1,467,553	498,594	57	508.4
2007	3,575	1,485,414	497,048	57	513.9
2008	3,613	1,493,365	504,522	57	530.0
2009	3,566	1,512,572	516,311	59	530.3
2010	3,440	1,500,463	492,594	58	514.3
2011	3,481	1,498,000	492,563	59	526.5
2012	3,439	1,490,808	489,349	58	535.2
2013	3,366	1,489,395	485,484	59	529.4
2014	3,332	1,494,203	481,813	60	529.9
2015	3,298	1,493,782	477,546	58	529.1
2016	3,337	1,491,961	468,258	57	546.0
2017	3,231	1,488,346	461,063	57	532.6
2018	3,250	1,488,027	456,866	57	540.7
2019	3,246	1,497,517	455,858	56	542.6
2020	3,103	1,493,706	452,935	56	515.8
2021	3,011	1,495,665	453,398	58	507.0

County: county value. Kansas: state value. County Rank: highest county value ranked #1. (\$000): thousands of dollars. Nonmetro Kansas: Kansas total less Metropolitan Areas as defined by the Office of Management and Budget (OMB; released 3/6/2020). Per 1000: For nonmoney amounts, Per 1000=(county value / county population for the same year as the data) x 1000. \$ Per capita=(county value / county population for the same year as the data). Value= . indicates missing or suppressed data or value not calculated.

Employment

EMPLOYED (BLS-Place of Residence; 1990-)

U.S. Department of Labor, Bureau of Labor Statistics (BLS)



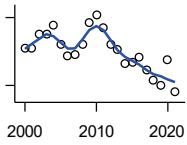
Year	County	State of Kansas	Non Metro Kansas	County Rank	Per 1000 or \$ Per Capita
2000	3,530	1,349,841	464,962	54	460.1
2001	3,373	1,338,775	455,154	55	440.7
2002	3,402	1,347,163	461,241	55	449.6
2003	3,422	1,361,115	467,622	55	456.7
2004	3,296	1,378,355	470,330	58	444.5
2005	3,404	1,384,654	467,722	56	471.3
2006	3,366	1,402,950	479,174	57	484.7
2007	3,408	1,422,109	477,983	57	489.9
2008	3,423	1,425,022	484,056	59	502.1
2009	3,327	1,408,142	485,797	60	494.8
2010	3,184	1,396,172	461,635	60	476.0
2011	3,254	1,402,198	463,723	59	492.2
2012	3,247	1,405,638	463,376	59	505.3
2013	3,186	1,410,470	461,405	60	501.1
2014	3,183	1,426,892	461,797	60	506.2
2015	3,147	1,431,533	457,899	58	504.9
2016	3,175	1,431,920	449,356	57	519.5
2017	3,096	1,434,516	445,003	57	510.3
2018	3,138	1,439,329	442,716	57	522.0
2019	3,145	1,450,705	442,108	56	525.7
2020	2,945	1,408,965	433,229	59	489.5
2021	2,926	1,447,323	441,159	58	492.7

County: county value. Kansas: state value. County Rank: highest county value ranked #1. (\$000): thousands of dollars. Nonmetro Kansas: Kansas total less Metropolitan Areas as defined by the Office of Management and Budget (OMB; released 3/6/2020). Per 1000: For nonmoney amounts, Per 1000=(county value / county population for the same year as the data) x 1000. \$ Per capita=(county value / county population for the same year as the data). Value= . indicates missing or suppressed data or value not calculated.

Employment

UNEMPLOYED (BLS-Place of Residence; 1990-)

U.S. Department of Labor, Bureau of Labor Statistics (BLS)

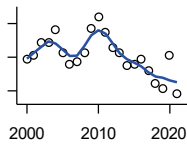


Year	County	State of Kansas	Non Metro Kansas	County Rank	Per 1000 or \$ Per Capita
2000	182	52,765	17,267	45	23.7
2001	183	59,746	20,126	48	23.9
2002	214	72,172	21,187	46	28.3
2003	213	79,950	22,539	46	28.4
2004	233	80,555	24,179	45	31.4
2005	192	74,113	22,325	50	26.6
2006	164	64,603	19,420	50	23.6
2007	167	63,305	19,065	50	24.0
2008	190	68,343	20,466	48	27.9
2009	239	104,430	30,514	51	35.5
2010	256	104,291	30,959	49	38.3
2011	227	95,802	28,840	51	34.3
2012	192	85,170	25,973	53	29.9
2013	180	78,925	24,079	52	28.3
2014	149	67,311	20,016	51	23.7
2015	151	62,249	19,647	51	24.2
2016	162	60,041	18,902	49	26.5
2017	135	53,830	16,060	49	22.3
2018	112	48,698	14,150	51	18.6
2019	101	46,812	13,750	52	16.9
2020	158	84,741	19,706	49	26.3
2021	85	48,342	12,239	53	14.3

County: county value. Kansas: state value. County Rank: highest county value ranked #1. (\$000): thousands of dollars. Nonmetro Kansas: Kansas total less Metropolitan Areas as defined by the Office of Management and Budget (OMB; released 3/6/2020). Per 1000: For nonmoney amounts, Per 1000=(county value / county population for the same year as the data) x 1000. \$ Per capita=(county value / county population for the same year as the data). Value= . indicates missing or suppressed data or value not calculated.

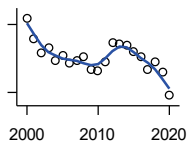
Employment

UNEMPLOYMENT RATE (BLS-Place of Residence; 1990-)



U.S. Department of Labor, Bureau of Labor Statistics (BLS)

Year	County	State of Kansas	Non Metro Kansas	County Rank	Per 1000 or \$ Per Capita
2000	4.9	3.8	3.6	11	.
2001	5.1	4.3	4.2	21	.
2002	5.9	5.1	4.4	14	.
2003	5.9	5.5	4.6	18	.
2004	6.6	5.5	4.9	9	.
2005	5.3	5.1	4.6	25	.
2006	4.6	4.4	3.9	25	.
2007	4.7	4.3	3.8	21	.
2008	5.3	4.6	4.1	15	.
2009	6.7	6.9	5.9	32	.
2010	7.4	7.0	6.3	28	.
2011	6.5	6.4	5.9	31	.
2012	5.6	5.7	5.3	35	.
2013	5.3	5.3	5.0	35	.
2014	4.5	4.5	4.2	31	.
2015	4.6	4.2	4.1	23	.
2016	4.9	4.0	4.0	14	.
2017	4.2	3.6	3.5	18	.
2018	3.4	3.3	3.1	30	.
2019	3.1	3.1	3.0	38	.
2020	5.1	5.7	4.4	29	.
2021	2.8	3.2	2.7	41	.



BEA EMPLOYMENT: TOTAL (Place of Work)

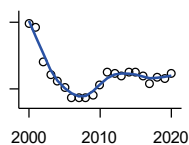
U.S. Bureau of Economic Analysis, Regional Economic Information System (REIS)

Year	County	State of Kansas	Non Metro Kansas	County Rank	Per 1000 or \$ Per Capita
2000	3,855	1,760,312	604,361	64	502.4
2001	3,679	1,767,601	592,672	65	480.7
2002	3,547	1,746,077	585,387	65	468.7
2003	3,599	1,733,694	577,860	61	480.3
2004	3,481	1,750,876	578,750	64	469.5
2005	3,521	1,765,650	577,562	63	487.5
2006	3,462	1,795,507	583,041	65	498.6
2007	3,478	1,844,355	591,924	65	499.9
2008	3,510	1,858,069	594,368	65	514.9
2009	3,397	1,813,184	580,972	66	505.2
2010	3,396	1,801,873	579,758	66	507.7
2011	3,467	1,819,044	583,725	65	524.4
2012	3,637	1,841,393	591,748	62	566.0
2013	3,626	1,869,054	597,236	63	570.3
2014	3,619	1,895,859	601,291	65	575.5
2015	3,565	1,910,954	598,589	65	572.0
2016	3,512	1,916,152	592,580	65	574.6
2017	3,400	1,914,179	584,337	66	560.4
2018	3,468	1,926,242	580,213	64	576.9
2019	3,383	1,925,204	574,496	64	565.5
2020	3,172	1,851,247	556,671	67	527.3

County: county value. Kansas: state value. County Rank: highest county value ranked #1. (\$000): thousands of dollars. Nonmetro Kansas: Kansas total less Metropolitan Areas as defined by the Office of Management and Budget (OMB; released 3/6/2020). Per 1000: For nonmoney amounts, Per 1000=(county value / county population for the same year as the data) x 1000. \$ Per capita=(county value / county population for the same year as the data). Value= . indicates missing or suppressed data or value not calculated.

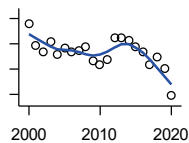
Employment

BEA EMPLOYMENT: FARM



U.S. Bureau of Economic Analysis,
Regional Economic Information System
(REIS)

Year	County	State of Kansas	Non Metro Kansas	County Rank	Per 1000 or \$ Per Capita
2000	697	77,477	59,088	43	90.8
2001	689	78,177	59,647	46	90.0
2002	610	70,532	53,893	50	80.6
2003	583	68,516	52,099	50	77.8
2004	567	67,586	51,246	50	76.5
2005	554	66,829	50,386	49	76.7
2006	531	64,910	48,728	49	76.5
2007	529	65,639	49,037	50	76.0
2008	531	63,820	47,682	48	77.9
2009	535	62,798	46,960	48	79.6
2010	559	63,882	47,984	46	83.6
2011	589	65,761	49,707	46	89.1
2012	586	63,753	48,167	46	91.2
2013	578	62,739	47,255	45	90.9
2014	588	64,308	48,722	46	93.5
2015	587	64,416	48,927	47	94.2
2016	580	63,840	48,539	48	94.9
2017	563	61,876	46,936	46	92.8
2018	575	63,233	48,069	47	95.7
2019	574	63,300	48,167	48	96.0
2020	584	64,281	49,038	48	97.1



BEA EMPLOYMENT: NON-FARM

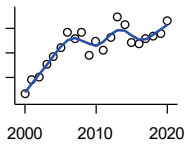
U.S. Bureau of Economic Analysis,
Regional Economic Information System
(REIS)

Year	County	State of Kansas	Non Metro Kansas	County Rank	Per 1000 or \$ Per Capita
2000	3,158	1,682,835	545,273	61	411.6
2001	2,990	1,689,424	533,025	65	390.7
2002	2,937	1,675,545	531,494	65	388.1
2003	3,016	1,665,178	525,761	62	402.5
2004	2,914	1,683,290	527,504	64	393.0
2005	2,967	1,698,821	527,176	63	410.8
2006	2,931	1,730,597	534,313	64	422.1
2007	2,949	1,778,716	542,887	64	423.9
2008	2,979	1,794,249	546,686	64	437.0
2009	2,862	1,750,386	534,012	65	425.6
2010	2,837	1,737,991	531,774	65	424.1
2011	2,878	1,753,283	534,018	64	435.3
2012	3,051	1,777,640	543,581	64	474.8
2013	3,048	1,806,315	549,981	65	479.4
2014	3,031	1,831,551	552,569	65	482.0
2015	2,978	1,846,538	549,662	65	477.8
2016	2,932	1,852,312	544,041	65	479.7
2017	2,837	1,852,303	537,401	66	467.6
2018	2,893	1,863,009	532,144	65	481.3
2019	2,809	1,861,904	526,329	65	469.6
2020	2,588	1,786,966	507,633	67	430.2

County: county value. Kansas: state value. County Rank: highest county value ranked #1. (\$000): thousands of dollars. Nonmetro Kansas: Kansas total less Metropolitan Areas as defined by the Office of Management and Budget (OMB; released 3/6/2020). Per 1000: For nonmoney amounts, Per 1000=(county value / county population for the same year as the data) x 1000. \$ Per capita=(county value / county population for the same year as the data). Value= . indicates missing or suppressed data or value not calculated.

Employment

AVERAGE WAGE PER JOB (\$)



U.S. Bureau of Economic Analysis,
Regional Economic Information System
(REIS)

Year	County	State of Kansas	Non Metro Kansas	County Rank	Per 1000 or \$ Per Capita
2000	16,582	31,854	24,396	94	.
2001	19,637	32,859	26,379	91	.
2002	19,951	33,707	26,331	79	.
2003	22,659	35,078	28,911	90	.
2004	24,281	35,932	29,747	74	.
2005	26,046	37,467	31,646	83	.
2006	29,197	40,038	31,993	56	.
2007	27,976	41,500	33,484	83	.
2008	29,152	44,197	36,256	92	.
2009	24,506	43,860	35,739	101	.
2010	27,353	45,370	38,631	99	.
2011	25,658	48,280	42,324	102	.
2012	28,053	50,549	42,015	103	.
2013	32,356	52,629	46,073	100	.
2014	30,713	51,959	43,562	97	.
2015	27,092	52,250	42,320	101	.
2016	26,802	51,664	41,964	99	.
2017	27,904	53,007	42,137	94	.
2018	28,523	54,790	44,514	102	.
2019	28,828	56,956	45,336	101	.
2020	31,482	60,597	49,183	100	.

BEA EMPLOYMENT: FORESTRY, FISHING, HUNTING, AND AG SUPPORT

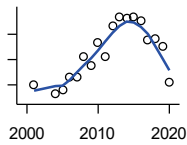
U.S. Bureau of Economic Analysis,
Regional Economic Information System
(REIS)

Year	County	State of Kansas	Non Metro Kansas	County Rank	Per 1000 or \$ Per Capita
2001	.	7,059	.	.	.
2002	.	8,045	.	.	.
2003	.	7,313	.	.	.
2004	.	7,623	.	.	.
2005	.	7,962	.	.	.
2006	.	7,748	.	.	.
2007	.	8,228	.	.	.
2008	.	8,646	.	.	.
2009	.	8,982	.	.	.
2010	.	9,251	.	.	.
2011	.	9,410	.	.	.
2012	.	9,691	.	.	.
2013	.	10,014	.	.	.
2014	.	10,708	.	.	.
2015	.	10,020	.	.	.
2016	.	10,383	.	.	.

County: county value. Kansas: state value. County Rank: highest county value ranked #1. (\$000): thousands of dollars. Nonmetro Kansas: Kansas total less Metropolitan Areas as defined by the Office of Management and Budget (OMB; released 3/6/2020). Per 1000: For nonmoney amounts, Per 1000=(county value / county population for the same year as the data) x 1000. \$ Per capita=(county value / county population for the same year as the data). Value= . indicates missing or suppressed data or value not calculated.

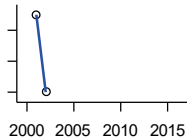
Employment

BEA EMPLOYMENT: MINING



U.S. Bureau of Economic Analysis,
Regional Economic Information System
(REIS)

Year	County	State of Kansas	Non Metro Kansas	County Rank	Per 1000 or \$ Per Capita
2001	300	19,592	.	14	.
2002	.	17,635	.	.	.
2003	.	19,869	.	.	.
2004	263	18,466	.	17	.
2005	278	19,489	.	18	.
2006	332	22,403	.	17	.
2007	330	24,043	.	16	.
2008	410	31,467	.	15	.
2009	377	29,941	.	17	.
2010	465	36,124	.	15	.
2011	412	31,658	.	16	.
2012	535	42,405	.	15	.
2013	568	46,585	.	19	.
2014	564	45,526	.	18	.
2015	569	46,460	.	17	.
2016	553	48,555	.	19	.
2017	480	40,710	.	18	.
2018	485	32,021	.	16	.
2019	450	29,101	.	14	.
2020	310	26,272	.	19	.



BEA EMPLOYMENT: UTILITIES

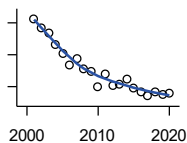
U.S. Bureau of Economic Analysis,
Regional Economic Information System
(REIS)

Year	County	State of Kansas	Non Metro Kansas	County Rank	Per 1000 or \$ Per Capita
2001	12	7,608	.	13	.
2002	11	7,087	.	15	.
2003	.	7,253	.	.	.
2004	.	7,356	.	.	.
2005	.	7,447	.	.	.
2006	.	7,478	.	.	.
2007	.	7,584	.	.	.
2008	.	7,855	.	.	.
2009	.	7,941	.	.	.
2010	.	8,028	.	.	.
2011	.	8,213	.	.	.
2012	.	8,155	.	.	.
2013	.	7,949	.	.	.
2014	.	7,985	.	.	.
2015	.	7,040	.	.	.
2016	.	7,133	.	.	.

County: county value. Kansas: state value. County Rank: highest county value ranked #1. (\$000): thousands of dollars. Nonmetro Kansas: Kansas total less Metropolitan Areas as defined by the Office of Management and Budget (OMB; released 3/6/2020). Per 1000: For nonmoney amounts, Per 1000=(county value / county population for the same year as the data) x 1000. \$ Per capita=(county value / county population for the same year as the data). Value= . indicates missing or suppressed data or value not calculated.

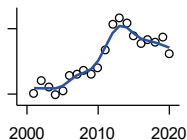
Employment

**BEA EMPLOYMENT:
CONSTRUCTION**



U.S. Bureau of Economic Analysis,
Regional Economic Information System
(REIS)

Year	County	State of Kansas	Non Metro Kansas	County Rank	Per 1000 or \$ Per Capita
2001	225	92,647	27,972	51	.
2002	214	90,370	.	50	.
2003	207	91,725	26,681	51	.
2004	193	93,271	.	51	.
2005	181	94,836	.	55	.
2006	167	97,449	.	57	.
2007	175	99,119	29,179	59	.
2008	162	97,741	.	59	.
2009	159	90,165	28,077	61	.
2010	140	84,708	26,402	64	.
2011	156	83,332	25,999	60	.
2012	142	85,966	.	67	.
2013	143	88,094	.	67	.
2014	149	91,143	.	67	.
2015	138	91,458	27,583	69	.
2016	134	93,539	27,151	69	.
2017	128	92,046	25,579	68	.
2018	133	92,985	25,530	64	.
2019	131	94,858	25,701	65	.
2020	132	94,186	26,085	62	.



**BEA EMPLOYMENT:
MANUFACTURING**

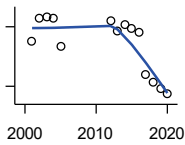
U.S. Bureau of Economic Analysis,
Regional Economic Information System
(REIS)

Year	County	State of Kansas	Non Metro Kansas	County Rank	Per 1000 or \$ Per Capita
2001	101	199,980	73,170	70	.
2002	112	188,905	70,691	68	.
2003	107	179,013	68,418	67	.
2004	99	181,738	69,669	68	.
2005	103	185,459	71,072	69	.
2006	117	188,047	71,704	69	.
2007	118	192,930	73,488	68	.
2008	122	193,116	72,235	70	.
2009	118	173,854	64,961	69	.
2010	124	166,000	62,884	66	.
2011	141	167,302	64,361	63	.
2012	164	169,308	65,944	59	.
2013	170	170,113	67,251	59	.
2014	165	169,307	68,299	62	.
2015	153	168,324	66,978	63	.
2016	146	167,723	65,796	64	.
2017	150	168,438	66,795	64	.
2018	148	171,778	68,181	65	.
2019	152	173,605	67,879	64	.
2020	137	165,228	65,658	66	.

County: county value. Kansas: state value. County Rank: highest county value ranked #1. (\$000): thousands of dollars. Nonmetro Kansas: Kansas total less Metropolitan Areas as defined by the Office of Management and Budget (OMB; released 3/6/2020). Per 1000: For nonmoney amounts, Per 1000=(county value / county population for the same year as the data) x 1000. \$ Per capita=(county value / county population for the same year as the data). Value= . indicates missing or suppressed data or value not calculated.

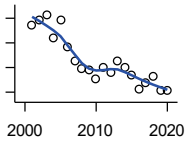
Employment

BEA EMPLOYMENT: WHOLESALE TRADE



U.S. Bureau of Economic Analysis,
Regional Economic Information System
(REIS)

Year	County	State of Kansas	Non Metro Kansas	County Rank	Per 1000 or \$ Per Capita
2001	73	65,698	.	76	.
2002	84	65,408	.	69	.
2003	85	63,504	.	66	.
2004	84	64,434	.	67	.
2005	70	64,587	.	70	.
2006	.	64,743	.	.	.
2007	.	65,993	.	.	.
2008	.	67,693	.	.	.
2009	.	65,954	.	.	.
2010	.	64,376	.	.	.
2011	.	64,712	.	.	.
2012	83	63,973	.	69	.
2013	78	64,999	.	69	.
2014	81	69,295	.	69	.
2015	79	68,444	.	71	.
2016	77	64,843	.	71	.
2017	56	65,014	.	77	.
2018	52	64,745	.	78	.
2019	49	63,324	.	77	.
2020	46	60,844	.	84	.



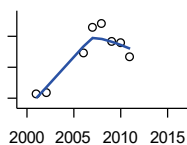
BEA EMPLOYMENT: RETAIL TRADE

U.S. Bureau of Economic Analysis,
Regional Economic Information System
(REIS)

Year	County	State of Kansas	Non Metro Kansas	County Rank	Per 1000 or \$ Per Capita
2001	387	198,069	.	55	.
2002	397	196,112	.	53	.
2003	407	194,545	64,173	54	.
2004	361	192,957	63,265	58	.
2005	396	191,656	62,506	55	.
2006	342	190,391	62,082	61	.
2007	314	190,643	61,716	64	.
2008	299	185,907	59,783	67	.
2009	296	181,262	58,714	66	.
2010	277	177,858	57,470	68	.
2011	301	180,548	57,734	64	.
2012	290	180,596	57,349	68	.
2013	313	183,245	57,556	64	.
2014	301	185,899	57,855	64	.
2015	286	188,421	58,516	66	.
2016	255	188,505	57,864	71	.
2017	269	186,633	56,715	67	.
2018	283	183,323	.	63	.
2019	254	177,240	53,427	66	.
2020	254	171,777	52,563	65	.

County: county value. Kansas: state value. County Rank: highest county value ranked #1. (\$000): thousands of dollars. Nonmetro Kansas: Kansas total less Metropolitan Areas as defined by the Office of Management and Budget (OMB; released 3/6/2020). Per 1000: For nonmoney amounts, Per 1000=(county value / county population for the same year as the data) x 1000. \$ Per capita=(county value / county population for the same year as the data). Value= . indicates missing or suppressed data or value not calculated.

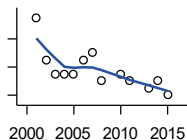
Employment



**BEA EMPLOYMENT:
TRANSPORTATION AND
WAREHOUSING**

U.S. Bureau of Economic Analysis,
Regional Economic Information System
(REIS)

Year	County	State of Kansas	Non Metro Kansas	County Rank	Per 1000 or \$ Per Capita
2001	66	56,302	.	35	.
2002	67	55,319	.	37	.
2003	.	55,509	.	.	.
2004	.	55,479	.	.	.
2005	.	56,287	.	.	.
2006	118	57,506	.	35	.
2007	152	59,277	.	31	.
2008	156	58,725	.	28	.
2009	133	56,238	.	30	.
2010	131	55,179	.	27	.
2011	114	57,449	.	29	.
2012	.	59,756	.	.	.
2013	.	59,780	.	.	.
2014	.	60,565	.	.	.
2015	.	63,256	.	.	.
2016	.	65,705	.	.	.



BEA EMPLOYMENT: INFORMATION

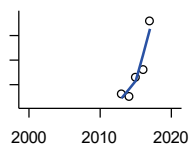
U.S. Bureau of Economic Analysis,
Regional Economic Information System
(REIS)

Year	County	State of Kansas	Non Metro Kansas	County Rank	Per 1000 or \$ Per Capita
2001	33	54,895	.	52	.
2002	27	50,728	.	59	.
2003	25	48,328	6,860	63	.
2004	25	45,617	.	62	.
2005	25	43,840	.	58	.
2006	27	43,925	.	53	.
2007	28	45,115	.	53	.
2008	24	42,958	.	53	.
2009	.	38,677	.	.	.
2010	25	33,432	.	57	.
2011	24	32,160	.	55	.
2012	.	31,829	.	.	.
2013	23	31,737	.	54	.
2014	24	32,316	.	55	.
2015	22	25,282	.	51	.
2016	.	24,998	.	.	.

County: county value. Kansas: state value. County Rank: highest county value ranked #1. (\$000): thousands of dollars. Nonmetro Kansas: Kansas total less Metropolitan Areas as defined by the Office of Management and Budget (OMB; released 3/6/2020). Per 1000: For nonmoney amounts, Per 1000=(county value / county population for the same year as the data) x 1000. \$ Per capita=(county value / county population for the same year as the data). Value= . indicates missing or suppressed data or value not calculated.

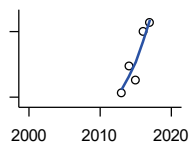
Employment

BEA EMPLOYMENT: FINANCE AND INSURANCE



U.S. Bureau of Economic Analysis,
Regional Economic Information System
(REIS)

Year	County	State of Kansas	Non Metro Kansas	County Rank	Per 1000 or \$ Per Capita
2001	.	76,118	.	.	.
2002	.	78,206	.	.	.
2003	.	78,441	.	.	.
2004	.	78,350	.	.	.
2005	.	78,952	.	.	.
2006	.	80,900	.	.	.
2007	.	86,094	.	.	.
2008	.	89,590	.	.	.
2009	.	93,573	.	.	.
2010	.	92,428	.	.	.
2011	.	99,495	.	.	.
2012	.	98,640	.	.	.
2013	86	99,998	.	61	.
2014	85	98,209	.	67	.
2015	93	100,534	.	62	.
2016	96	102,699	.	62	.
2017	116	101,563	.	61	.



BEA EMPLOYMENT: REAL ESTATE, RENTAL, AND LEASING

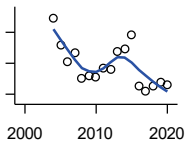
U.S. Bureau of Economic Analysis,
Regional Economic Information System
(REIS)

Year	County	State of Kansas	Non Metro Kansas	County Rank	Per 1000 or \$ Per Capita
2001	.	45,237	.	.	.
2002	.	44,970	.	.	.
2003	.	47,095	.	.	.
2004	.	50,181	.	.	.
2005	.	53,335	.	.	.
2006	.	55,342	.	.	.
2007	.	57,694	.	.	.
2008	.	57,933	.	.	.
2009	.	57,132	.	.	.
2010	.	59,578	.	.	.
2011	.	61,821	.	.	.
2012	.	60,432	.	.	.
2013	66	62,134	.	52	.
2014	72	64,705	.	55	.
2015	69	66,604	.	56	.
2016	80	68,395	.	52	.
2017	82	70,304	.	55	.

County: county value. Kansas: state value. County Rank: highest county value ranked #1. (\$000): thousands of dollars. Nonmetro Kansas: Kansas total less Metropolitan Areas as defined by the Office of Management and Budget (OMB; released 3/6/2020). Per 1000: For nonmoney amounts, Per 1000=(county value / county population for the same year as the data) x 1000. \$ Per capita=(county value / county population for the same year as the data). Value= . indicates missing or suppressed data or value not calculated.

Employment

BEA EMPLOYMENT: PROFESSIONAL AND TECHNICAL SERVICES



U.S. Bureau of Economic Analysis,
Regional Economic Information System
(REIS)

Year	County	State of Kansas	Non Metro Kansas	County Rank	Per 1000 or \$ Per Capita
2001	.	81,396	.	.	.
2002	.	80,684	.	.	.
2003	.	80,311	.	.	.
2004	119	85,550	.	39	.
2005	102	85,003	.	47	.
2006	91	87,381	.	49	.
2007	97	92,717	.	50	.
2008	80	95,362	.	60	.
2009	82	93,232	.	56	.
2010	81	93,037	.	59	.
2011	87	93,237	.	60	.
2012	86	95,360	.	60	.
2013	98	100,795	.	58	.
2014	99	102,210	.	57	.
2015	108	105,625	.	56	.
2016	75	108,059	.	64	.
2017	72	109,041	.	63	.
2018	75	110,513	.	63	.
2019	78	109,637	.	58	.
2020	76	108,634	.	58	.

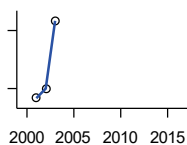
BEA EMPLOYMENT: MANAGEMENT OF COMPANIES AND ENTERPRISES

U.S. Bureau of Economic Analysis,
Regional Economic Information System
(REIS)

Year	County	State of Kansas	Non Metro Kansas	County Rank	Per 1000 or \$ Per Capita
2001	.	13,832	.	.	.
2002	.	12,576	.	.	.
2003	.	11,135	.	.	.
2004	.	10,614	.	.	.
2005	.	11,811	.	.	.
2006	.	13,061	.	.	.
2007	.	13,398	.	.	.
2008	.	15,234	.	.	.
2009	.	14,849	.	.	.
2010	.	16,579	.	.	.
2011	.	15,343	.	.	.
2012	.	15,075	.	.	.
2013	.	16,667	.	.	.
2014	.	20,441	.	.	.
2015	.	29,604	.	.	.
2016	.	27,824	.	.	.

County: county value. Kansas: state value. County Rank: highest county value ranked #1. (\$000): thousands of dollars. Nonmetro Kansas: Kansas total less Metropolitan Areas as defined by the Office of Management and Budget (OMB; released 3/6/2020). Per 1000: For nonmoney amounts, Per 1000=(county value / county population for the same year as the data) x 1000. \$ Per capita=(county value / county population for the same year as the data). Value= . indicates missing or suppressed data or value not calculated.

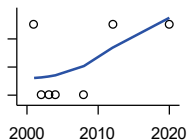
Employment



**BEA EMPLOYMENT:
ADMINISTRATIVE AND WASTE
SERVICES**

U.S. Bureau of Economic Analysis,
Regional Economic Information System
(REIS)

Year	County	State of Kansas	Non Metro Kansas	County Rank	Per 1000 or \$ Per Capita
2001	49	81,573	.	47	.
2002	50	82,992	.	46	.
2003	57	81,298	.	42	.
2004	.	85,721	.	.	.
2005	.	89,933	.	.	.
2006	.	93,688	.	.	.
2007	.	98,865	.	.	.
2008	.	97,440	.	.	.
2009	.	92,455	.	.	.
2010	.	93,675	.	.	.
2011	.	97,969	.	.	.
2012	.	100,490	.	.	.
2013	.	104,680	.	.	.
2014	.	107,218	18,836	.	.
2015	.	103,436	18,767	.	.
2016	.	103,233	18,428	.	.



**BEA EMPLOYMENT: EDUCATIONAL
SERVICES**

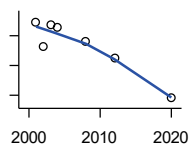
U.S. Bureau of Economic Analysis,
Regional Economic Information System
(REIS)

Year	County	State of Kansas	Non Metro Kansas	County Rank	Per 1000 or \$ Per Capita
2001	11	21,169	.	33	.
2002	10	22,173	.	36	.
2003	10	22,651	.	35	.
2004	10	21,601	.	40	.
2005	.	22,177	.	.	.
2006	.	22,438	.	.	.
2007	.	23,647	.	.	.
2008	10	24,653	.	32	.
2009	.	25,120	.	.	.
2010	.	26,071	.	.	.
2011	.	26,080	.	.	.
2012	11	26,625	.	29	.
2013	.	27,508	.	.	.
2014	.	28,708	.	.	.
2015	.	28,794	.	.	.
2016	.	27,996	.	.	.
2020	11	27,508	.	36	.

County: county value. Kansas: state value. County Rank: highest county value ranked #1. (\$000): thousands of dollars. Nonmetro Kansas: Kansas total less Metropolitan Areas as defined by the Office of Management and Budget (OMB; released 3/6/2020). Per 1000: For nonmoney amounts, Per 1000=(county value / county population for the same year as the data) x 1000. \$ Per capita=(county value / county population for the same year as the data). Value= . indicates missing or suppressed data or value not calculated.

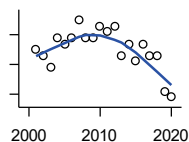
Employment

BEA EMPLOYMENT: HEALTH CARE AND SOCIAL ASSISTANCE



U.S. Bureau of Economic Analysis, Regional Economic Information System (REIS)

Year	County	State of Kansas	Non Metro Kansas	County Rank	Per 1000 or \$ Per Capita
2001	398	165,415	.	26	.
2002	357	168,198	.	28	.
2003	394	169,654	.	29	.
2004	390	172,796	.	31	.
2005	.	173,949	.	.	.
2006	.	176,919	.	.	.
2007	.	182,160	.	.	.
2008	366	186,051	.	31	.
2009	.	188,499	.	.	.
2010	.	188,383	.	.	.
2011	.	190,736	.	.	.
2012	338	192,991	.	29	.
2013	.	193,687	.	.	.
2014	.	194,632	.	.	.
2015	.	199,724	.	.	.
2016	.	201,830	.	.	.
2020	270	204,942	.	32	.



BEA EMPLOYMENT: ARTS, ENTERTAINMENT, AND RECREATION

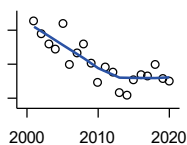
U.S. Bureau of Economic Analysis, Regional Economic Information System (REIS)

Year	County	State of Kansas	Non Metro Kansas	County Rank	Per 1000 or \$ Per Capita
2001	35	25,012	.	38	.
2002	34	25,668	.	42	.
2003	32	24,116	.	42	.
2004	37	25,355	.	44	.
2005	36	26,067	.	45	.
2006	37	26,505	.	48	.
2007	40	27,489	.	45	.
2008	37	27,501	.	44	.
2009	37	27,203	.	42	.
2010	39	27,479	.	40	.
2011	38	28,487	.	41	.
2012	39	30,729	.	41	.
2013	34	31,068	.	44	.
2014	36	32,154	.	42	.
2015	33	31,169	.	42	.
2016	36	32,373	.	39	.
2017	34	33,213	.	39	.
2018	34	33,837	.	35	.
2019	28	33,082	.	41	.
2020	27	26,644	.	37	.

County: county value. Kansas: state value. County Rank: highest county value ranked #1. (\$000): thousands of dollars. Nonmetro Kansas: Kansas total less Metropolitan Areas as defined by the Office of Management and Budget (OMB; released 3/6/2020). Per 1000: For nonmoney amounts, Per 1000=(county value / county population for the same year as the data) x 1000. \$ Per capita=(county value / county population for the same year as the data). Value= . indicates missing or suppressed data or value not calculated.

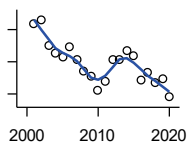
Employment

BEA EMPLOYMENT: GOVERNMENT AND GOVERNMENT ENTERPRISES



U.S. Bureau of Economic Analysis, Regional Economic Information System (REIS)

Year	County	State of Kansas	Non Metro Kansas	County Rank	Per 1000 or \$ Per Capita
2001	611	282,293	102,993	71	.
2002	596	281,427	103,581	71	.
2003	584	282,459	103,389	72	.
2004	578	283,877	103,946	74	.
2005	608	282,798	103,194	71	.
2006	560	288,372	104,103	73	.
2007	574	294,413	104,598	73	.
2008	584	298,580	104,718	73	.
2009	561	300,422	104,081	74	.
2010	539	303,875	103,382	74	.
2011	556	299,952	101,535	73	.
2012	551	298,068	101,180	73	.
2013	526	297,689	101,232	74	.
2014	523	296,956	100,634	75	.
2015	541	295,799	99,719	72	.
2016	548	291,536	98,520	72	.
2017	546	295,748	99,542	72	.
2018	559	298,105	99,499	71	.
2019	543	302,017	100,227	73	.
2020	540	292,583	96,477	73	.



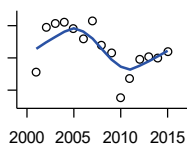
BEA EMPLOYMENT: ACCOMMODATION AND FOOD SERVICES

U.S. Bureau of Economic Analysis, Regional Economic Information System (REIS)

Year	County	State of Kansas	Non Metro Kansas	County Rank	Per 1000 or \$ Per Capita
2001	188	103,353	.	42	.
2002	192	103,692	.	44	.
2003	161	105,138	.	45	.
2004	150	106,694	.	49	.
2005	146	107,303	.	50	.
2006	158	109,888	.	50	.
2007	142	110,863	.	47	.
2008	128	111,092	.	50	.
2009	122	109,353	.	53	.
2010	104	108,628	.	48	.
2011	115	110,514	.	49	.
2012	142	112,574	.	47	.
2013	143	114,102	.	46	.
2014	154	115,768	.	45	.
2015	147	118,503	.	43	.
2016	117	119,764	.	46	.
2017	127	121,181	.	43	.
2018	114	121,900	.	42	.
2019	119	122,819	.	45	.
2020	96	106,561	.	45	.

County: county value. Kansas: state value. County Rank: highest county value ranked #1. (\$000): thousands of dollars. Nonmetro Kansas: Kansas total less Metropolitan Areas as defined by the Office of Management and Budget (OMB; released 3/6/2020). Per 1000: For nonmoney amounts, Per 1000=(county value / county population for the same year as the data) x 1000. \$ Per capita=(county value / county population for the same year as the data). Value= . indicates missing or suppressed data or value not calculated.

Employment

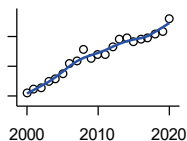


BEA EMPLOYMENT: OTHER SERVICES, EXCEPT PUBLIC ADMINISTRATION

U.S. Bureau of Economic Analysis, Regional Economic Information System (REIS)

Year	County	State of Kansas	Non Metro Kansas	County Rank	Per 1000 or \$ Per Capita
2001	191	92,176	.	60	.
2002	219	95,350	.	57	.
2003	221	95,821	32,629	58	.
2004	222	95,610	.	57	.
2005	218	95,930	32,555	59	.
2006	212	96,413	.	61	.
2007	223	98,444	.	59	.
2008	208	96,705	.	60	.
2009	203	95,534	.	58	.
2010	175	93,302	.	58	.
2011	187	94,865	.	57	.
2012	199	94,977	.	58	.
2013	201	95,471	.	58	.
2014	200	97,806	.	57	.
2015	204	98,041	.	54	.
2016	.	97,219	.	.	.

Income



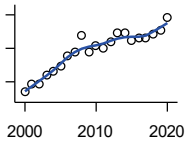
BEA PER CAPITA PERSONAL INCOME (\$)

U.S. Bureau of Economic Analysis, Regional Economic Information System (REIS)

Year	County	State of Kansas	Non Metro Kansas	County Rank	Per 1000 or \$ Per Capita
2000	20,853	28,253	23,116	95	.
2001	22,528	29,112	24,576	92	.
2002	22,740	29,248	24,314	82	.
2003	24,751	30,074	26,017	81	.
2004	25,811	30,843	26,583	67	.
2005	27,387	32,545	28,356	73	.
2006	30,756	35,690	29,782	43	.
2007	31,643	38,057	32,034	68	.
2008	35,757	41,257	35,211	61	.
2009	32,539	39,431	33,876	83	.
2010	34,147	39,960	35,795	75	.
2011	34,124	43,015	39,041	88	.
2012	36,654	45,294	39,660	79	.
2013	38,992	46,174	41,747	72	.
2014	39,406	47,013	41,042	69	.
2015	38,088	47,332	40,638	79	.
2016	39,258	47,326	40,797	70	.
2017	39,613	48,756	41,314	73	.
2018	40,959	50,811	43,283	82	.
2019	41,837	52,820	44,491	81	.
2020	46,032	55,677	48,415	79	.

County: county value. Kansas: state value. County Rank: highest county value ranked #1. (\$000): thousands of dollars. Nonmetro Kansas: Kansas total less Metropolitan Areas as defined by the Office of Management and Budget (OMB; released 3/6/2020). Per 1000: For nonmoney amounts, Per 1000=(county value / county population for the same year as the data) x 1000. \$ Per capita=(county value / county population for the same year as the data). Value= . indicates missing or suppressed data or value not calculated.

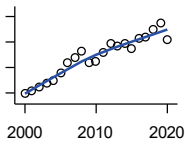
Income



**SOURCES OF PERSONAL INCOME:
TOTAL PERSONAL INCOME (\$000)**

U.S. Bureau of Economic Analysis,
Regional Economic Information System
(REIS)

Year	County	State of Kansas	Non Metro Kansas	County Rank	Per 1000 or \$ Per Capita
2000	159,464	76,105,125	22,273,838	58	20,782.5
2001	172,407	78,664,651	23,411,174	55	22,528.0
2002	172,074	79,365,190	23,000,314	53	22,740.1
2003	185,461	81,890,340	24,494,191	55	24,751.2
2004	191,391	84,335,940	24,924,467	51	25,811.3
2005	197,789	89,346,228	26,452,291	56	27,387.0
2006	213,570	98,610,188	27,661,596	54	30,756.0
2007	220,141	105,943,199	29,715,946	56	31,643.1
2008	243,753	115,852,478	32,614,565	57	35,756.6
2009	218,793	111,697,350	31,394,702	58	32,539.1
2010	228,103	114,239,828	33,291,419	62	34,101.2
2011	225,594	123,558,772	36,221,488	69	34,124.0
2012	235,575	130,948,127	36,696,759	67	36,659.7
2013	248,027	133,979,908	38,513,959	69	39,010.2
2014	247,862	136,878,718	37,680,598	65	39,418.3
2015	237,477	138,336,768	37,081,851	62	38,100.0
2016	239,628	138,533,890	36,930,885	62	39,206.2
2017	240,373	142,729,689	37,104,963	63	39,619.7
2018	246,080	148,955,739	38,589,364	64	40,938.3
2019	251,062	154,961,001	39,424,148	63	41,969.6
2020	270,118	163,462,179	42,618,591	64	44,899.9



**SOURCES OF PERSONAL INCOME:
WAGES AND SALARIES (\$000)**

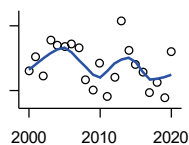
U.S. Bureau of Economic Analysis,
Regional Economic Information System
(REIS)

Year	County	State of Kansas	Non Metro Kansas	County Rank	Per 1000 or \$ Per Capita
2000	39,634	41,766,878	10,254,250	70	5,165.4
2001	40,596	43,269,734	10,518,206	70	5,304.6
2002	42,392	43,875,159	10,696,876	70	5,602.2
2003	43,733	44,488,560	10,894,971	70	5,836.5
2004	44,624	46,702,068	11,333,617	69	6,018.1
2005	47,955	48,537,956	11,614,130	68	6,640.1
2006	52,056	52,083,584	12,299,340	67	7,496.5
2007	54,109	55,442,368	13,093,908	68	7,777.6
2008	56,292	57,623,385	13,647,143	69	8,257.6
2009	52,105	55,605,578	13,199,674	69	7,749.1
2010	52,444	56,089,711	13,345,291	69	7,840.3
2011	55,798	58,104,706	13,856,458	69	8,440.2
2012	59,582	60,616,457	14,473,599	69	9,272.0
2013	58,606	61,872,023	14,781,792	69	9,217.7
2014	59,552	64,457,652	15,385,500	70	9,470.7
2015	57,314	66,729,598	15,454,485	70	9,195.3
2016	61,470	67,253,399	15,422,058	70	10,057.3
2017	61,836	68,830,861	15,731,853	70	10,192.2
2018	64,843	71,580,544	16,311,725	70	10,787.4
2019	67,522	74,404,771	16,882,299	68	11,287.5
2020	60,921	75,798,310	17,251,300	71	10,126.5

County: county value. Kansas: state value. County Rank: highest county value ranked #1. (\$000): thousands of dollars. Nonmetro Kansas: Kansas total less Metropolitan Areas as defined by the Office of Management and Budget (OMB; released 3/6/2020). Per 1000: For nonmoney amounts, Per 1000=(county value / county population for the same year as the data) x 1000. \$ Per capita=(county value / county population for the same year as the data). Value= . indicates missing or suppressed data or value not calculated.

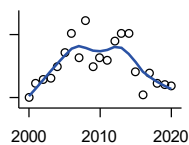
Income

**SOURCES OF PERSONAL INCOME:
PROPRIETORS-FARM (\$000)**



U.S. Bureau of Economic Analysis,
Regional Economic Information System
(REIS)

Year	County	State of Kansas	Non Metro Kansas	County Rank	Per 1000 or \$ Per Capita
2000	4,700	668,539	673,707	51	612.5
2001	7,856	779,473	769,336	44	1,026.5
2002	3,442	145,064	187,033	29	454.9
2003	11,591	1,281,076	1,195,298	53	1,546.9
2004	10,508	1,149,425	938,524	48	1,417.1
2005	10,180	1,609,604	1,469,139	62	1,409.6
2006	10,663	766,047	663,735	29	1,535.6
2007	10,047	1,131,607	1,040,350	57	1,444.2
2008	2,479	1,582,092	1,404,900	84	363.6
2009	1	1,585,995	1,390,349	97	0.1
2010	6,369	2,149,482	2,029,067	77	952.2
2011	-1,278	3,188,519	2,989,880	103	-193.3
2012	3,204	2,519,555	2,296,875	94	498.6
2013	16,147	4,499,190	4,158,419	82	2,539.6
2014	9,208	2,231,181	2,157,992	62	1,464.4
2015	6,175	1,300,733	1,294,370	51	990.7
2016	4,325	1,577,060	1,564,511	54	707.6
2017	-505	838,480	838,290	68	-83.2
2018	1,751	1,050,662	971,690	80	291.3
2019	-1,772	998,038	878,247	96	-296.2
2020	8,931	2,151,349	1,887,881	88	1,484.5



**SOURCES OF PERSONAL INCOME:
PROPRIETORS-NONFARM (\$000)**

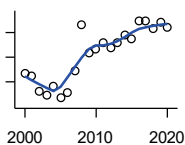
U.S. Bureau of Economic Analysis,
Regional Economic Information System
(REIS)

Year	County	State of Kansas	Non Metro Kansas	County Rank	Per 1000 or \$ Per Capita
2000	9,917	4,580,476	1,493,470	60	1,292.5
2001	13,527	4,510,530	1,855,621	56	1,767.5
2002	14,299	5,036,100	1,966,784	56	1,889.7
2003	14,672	4,719,377	1,916,735	55	1,958.1
2004	17,364	4,003,922	2,073,898	47	2,341.7
2005	20,702	4,455,294	2,200,971	45	2,866.5
2006	25,274	7,343,524	2,694,895	43	3,639.7
2007	19,384	7,280,197	2,436,574	49	2,786.3
2008	28,348	9,255,953	2,971,923	43	4,158.4
2009	17,304	9,323,551	2,858,848	61	2,573.5
2010	19,562	9,658,261	3,498,040	64	2,924.5
2011	18,979	12,196,566	4,186,007	73	2,870.8
2012	23,353	15,773,140	4,446,004	65	3,634.1
2013	25,418	16,441,660	4,492,127	62	3,997.8
2014	25,241	15,954,254	4,455,081	63	4,014.2
2015	16,213	15,536,116	4,386,172	83	2,601.2
2016	10,791	14,075,310	3,783,829	91	1,765.5
2017	15,863	15,371,957	3,908,254	81	2,614.6
2018	13,507	15,716,877	4,238,775	90	2,247.0
2019	13,071	16,705,488	3,921,051	86	2,185.1
2020	12,737	16,718,952	3,823,329	86	2,117.2

County: county value. Kansas: state value. County Rank: highest county value ranked #1. (\$000): thousands of dollars. Nonmetro Kansas: Kansas total less Metropolitan Areas as defined by the Office of Management and Budget (OMB; released 3/6/2020). Per 1000: For nonmoney amounts, Per 1000=(county value / county population for the same year as the data) x 1000. \$ Per capita=(county value / county population for the same year as the data). Value= . indicates missing or suppressed data or value not calculated.

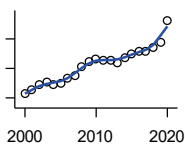
Income

**SOURCES OF PERSONAL INCOME:
DIVIDENDS,INTEREST,RENT(\$000)**



U.S. Bureau of Economic Analysis,
Regional Economic Information System
(REIS)

Year	County	State of Kansas	Non Metro Kansas	County Rank	Per 1000 or \$ Per Capita
2000	36,696	15,916,201	4,736,921	57	4,782.5
2001	36,245	15,770,830	4,699,417	59	4,736.1
2002	33,016	15,111,563	4,316,887	59	4,363.2
2003	32,413	15,370,764	4,360,311	61	4,325.8
2004	34,113	15,820,469	4,251,925	52	4,600.5
2005	31,678	17,147,069	4,485,387	59	4,386.3
2006	32,835	20,117,848	4,945,184	61	4,728.5
2007	37,120	22,269,186	5,526,219	60	5,335.6
2008	46,526	24,972,485	6,180,979	56	6,825.0
2009	40,965	21,453,879	5,308,474	55	6,092.4
2010	41,561	20,861,351	5,414,285	55	6,213.3
2011	43,030	23,387,567	5,781,075	58	6,508.8
2012	41,882	25,689,368	6,389,505	65	6,517.6
2013	42,993	24,832,212	5,984,811	60	6,762.0
2014	44,380	27,412,684	6,403,356	61	7,057.9
2015	43,663	27,244,414	6,423,685	61	7,005.1
2016	47,251	27,293,441	6,389,161	57	7,730.9
2017	47,375	28,385,472	6,700,156	61	7,808.6
2018	45,783	29,953,419	6,772,504	64	7,616.5
2019	47,112	30,820,276	6,957,987	64	7,875.6
2020	45,935	30,283,520	6,844,745	65	7,635.5



**SOURCES OF PERSONAL INCOME:
TRANSFER PAYMENTS (\$000)**

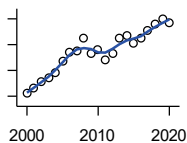
U.S. Bureau of Economic Analysis,
Regional Economic Information System
(REIS)

Year	County	State of Kansas	Non Metro Kansas	County Rank	Per 1000 or \$ Per Capita
2000	42,604	9,650,835	4,036,781	46	5,552.5
2001	45,231	10,549,124	4,355,457	47	5,910.2
2002	49,143	11,208,997	4,553,978	44	6,494.4
2003	50,985	11,709,049	4,702,911	43	6,804.4
2004	49,415	12,040,452	4,802,536	46	6,664.2
2005	50,072	12,696,735	5,059,314	48	6,933.3
2006	53,320	13,642,787	5,455,207	48	7,678.6
2007	55,233	14,686,821	5,775,024	49	7,939.2
2008	61,474	16,552,460	6,322,722	48	9,017.7
2009	64,704	18,025,603	6,790,962	48	9,622.8
2010	66,357	19,189,749	7,089,258	48	9,920.3
2011	65,767	19,625,770	7,255,825	50	9,948.1
2012	65,929	19,354,458	7,148,177	49	10,259.7
2013	64,054	19,639,358	7,185,636	49	10,074.6
2014	67,464	20,380,970	7,399,809	50	10,729.0
2015	69,967	21,116,856	7,623,577	49	11,225.3
2016	71,742	21,884,629	7,886,000	49	11,737.9
2017	71,712	22,559,744	8,062,517	50	11,820.0
2018	73,948	23,628,033	8,393,617	50	12,302.1
2019	77,351	25,050,174	8,845,371	50	12,930.6
2020	92,489	32,319,421	11,074,190	51	15,373.8

County: county value. Kansas: state value. County Rank: highest county value ranked #1. (\$000): thousands of dollars. Nonmetro Kansas: Kansas total less Metropolitan Areas as defined by the Office of Management and Budget (OMB; released 3/6/2020). Per 1000: For nonmoney amounts, Per 1000=(county value / county population for the same year as the data) x 1000. \$ Per capita=(county value / county population for the same year as the data). Value= . indicates missing or suppressed data or value not calculated.

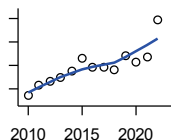
Income

**SOURCES OF PERSONAL INCOME:
LESS SOCIAL INSURANCE (\$000)**



U.S. Bureau of Economic Analysis,
Regional Economic Information System
(REIS)

Year	County	State of Kansas	Non Metro Kansas	County Rank	Per 1000 or \$ Per Capita
2000	7,280	6,655,813	1,663,044	67	948.8
2001	7,674	6,869,934	1,740,915	69	1,002.7
2002	8,093	7,008,361	1,778,636	66	1,069.5
2003	8,443	7,172,781	1,821,858	65	1,126.8
2004	8,798	7,556,560	1,904,014	64	1,186.5
2005	9,746	7,911,241	1,986,907	64	1,349.5
2006	10,416	8,406,937	2,090,313	63	1,500.0
2007	10,507	8,806,941	2,180,587	63	1,510.3
2008	11,455	9,207,010	2,299,399	64	1,680.4
2009	10,315	9,002,859	2,248,703	67	1,534.1
2010	10,610	9,235,760	2,321,191	67	1,586.2
2011	9,856	8,515,986	2,139,991	67	1,490.8
2012	10,336	8,816,128	2,195,919	66	1,608.5
2013	11,476	10,225,399	2,540,439	66	1,805.0
2014	11,692	10,609,601	2,635,009	66	1,859.4
2015	11,064	11,028,204	2,663,038	70	1,775.1
2016	11,471	10,915,915	2,604,579	70	1,876.8
2017	12,072	11,224,218	2,669,954	67	1,989.8
2018	12,547	11,749,229	2,797,106	65	2,087.3
2019	12,957	12,245,451	2,889,336	66	2,166.0
2020	12,658	12,715,152	3,027,656	71	2,104.1



HUD MEDIAN FAMILY INCOME

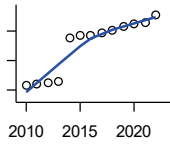
U.S. Department of Housing and Urban
Development (HUD)

Year	County	State of Kansas	Non Metro Kansas	County Rank	Per 1000 or \$ Per Capita
2010	48,500	63,100	.	89	.
2011	50,800	64,300	.	74	.
2012	51,500	65,200	.	74	.
2013	52,400	64,800	.	77	.
2014	53,900	64,400	.	73	.
2015	56,400	66,300	.	69	.
2016	54,700	66,700	.	73	.
2017	54,500	68,500	.	83	.
2018	54,100	73,100	.	91	.
2019	57,000	75,200	.	89	.
2020	55,700	76,500	.	101	.
2021	56,900	77,400	.	95	.
2022	64,700	87,800	.	86	.

County: county value. Kansas: state value. County Rank: highest county value ranked #1. (\$000): thousands of dollars. Nonmetro Kansas: Kansas total less Metropolitan Areas as defined by the Office of Management and Budget (OMB; released 3/6/2020). Per 1000: For nonmoney amounts, Per 1000=(county value / county population for the same year as the data) x 1000. \$ Per capita=(county value / county population for the same year as the data). Value= . indicates missing or suppressed data or value not calculated.

Income

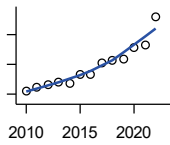
HUD 30% LOW-TO-MEDIUM INCOME (LMI) LIMIT - 4 PERSONS



U.S. Department of Housing and Urban Development (HUD)

Year	County	State of Kansas	Non Metro Kansas	County Rank	Per 1000 or \$ Per Capita
2010	15,850	.	.	105	.
2011	16,100	.	.	105	.
2012	16,300	.	.	105	.
2013	16,550	.	.	105	.
2014	23,850	.	.	105	.
2015	24,250	.	.	105	.
2016	24,300	.	.	105	.
2017	24,600	.	.	105	.
2018	25,100	21,950	.	105	.
2019	25,750	22,550	.	105	.
2020	26,200	22,950	.	105	.
2021	26,500	23,200	.	105	.
2022	27,750	25,950	.	105	.

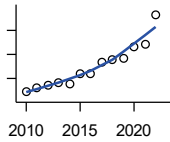
HUD 50% LOW-TO-MEDIUM INCOME (LMI) LIMIT - 4 PERSONS



U.S. Department of Housing and Urban Development (HUD)

Year	County	State of Kansas	Non Metro Kansas	County Rank	Per 1000 or \$ Per Capita
2010	26,400	.	.	105	.
2011	26,850	.	.	105	.
2012	27,200	.	.	105	.
2013	27,600	.	.	105	.
2014	27,400	.	.	105	.
2015	28,700	.	.	105	.
2016	28,650	.	.	105	.
2017	30,150	.	.	105	.
2018	30,550	36,550	.	105	.
2019	30,750	37,600	.	105	.
2020	32,300	38,250	.	104	.
2021	32,550	38,700	.	105	.
2022	36,400	43,300	.	105	.

HUD 80% LOW-TO-MEDIUM INCOME (LMI) LIMIT - 4 PERSONS



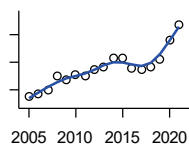
U.S. Department of Housing and Urban Development (HUD)

Year	County	State of Kansas	Non Metro Kansas	County Rank	Per 1000 or \$ Per Capita
2010	42,250	.	.	105	.
2011	42,950	.	.	105	.
2012	43,500	.	.	105	.
2013	44,150	.	.	105	.
2014	43,850	.	.	105	.
2015	45,900	.	.	105	.
2016	45,850	.	.	105	.
2017	48,250	.	.	105	.
2018	48,900	58,500	.	105	.
2019	49,200	60,150	.	105	.
2020	51,700	61,200	.	104	.
2021	52,100	61,900	.	105	.
2022	58,250	69,250	.	105	.

County: county value. Kansas: state value. County Rank: highest county value ranked #1. (\$000): thousands of dollars. Nonmetro Kansas: Kansas total less Metropolitan Areas as defined by the Office of Management and Budget (OMB; released 3/6/2020). Per 1000: For nonmoney amounts, Per 1000=(county value / county population for the same year as the data) x 1000. \$ Per capita=(county value / county population for the same year as the data). Value= . indicates missing or suppressed data or value not calculated.

Banking

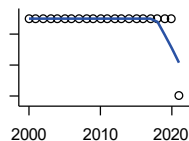
BANK DEPOSITS (1984-2004 in thousands; 2005- in millions)



Federal Deposit Insurance Corporation, Data Book, Operating Banks and Branches

Year	County	State of Kansas	Non Metro Kansas	County Rank	Per 1000 or \$ Per Capita
2005	115	48,304	17,000	68	15.9
2006	117	50,668	17,586	68	16.8
2007	120	54,057	18,517	71	17.2
2008	130	57,869	19,628	71	19.1
2009	127	57,763	20,031	73	18.9
2010	131	60,031	20,678	72	19.6
2011	130	61,094	21,347	75	19.7
2012	135	62,910	22,481	74	21.0
2013	137	64,547	22,795	76	21.5
2014	143	66,538	23,338	75	22.7
2015	143	68,160	23,367	75	22.9
2016	136	70,381	23,420	75	22.3
2017	135	73,329	23,928	76	22.3
2018	137	74,623	24,100	76	22.8
2019	142	76,436	24,488	75	23.7
2020	156	88,563	27,547	76	25.9
2021	167	97,055	30,122	77	28.1

NUMBER OF BANKS



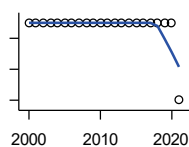
Federal Deposit Insurance Corporation, Data Book, Operating Banks and Branches

Year	County	State of Kansas	Non Metro Kansas	County Rank	Per 1000 or \$ Per Capita
2000	6	410	145	54	.
2001	6	410	136	53	.
2002	6	404	129	52	.
2003	6	397	121	52	.
2004	6	394	112	52	.
2005	6	388	101	51	.
2006	6	385	94	49	.
2007	6	382	91	47	.
2008	6	378	82	46	.
2009	6	374	79	46	.
2010	6	367	70	45	.
2011	6	359	61	44	.
2012	6	348	57	44	.
2013	6	332	45	45	.
2014	6	329	41	44	.
2015	6	320	31	43	.
2016	6	314	24	43	.
2017	6	301	13	43	.
2018	6	289	7	43	.
2019	6	279	3	43	.
2020	6	271	-1	42	.
2021	5	270	-6	55	.

County: county value. Kansas: state value. County Rank: highest county value ranked #1. (\$000): thousands of dollars. Nonmetro Kansas: Kansas total less Metropolitan Areas as defined by the Office of Management and Budget (OMB; released 3/6/2020). Per 1000: For nonmoney amounts, Per 1000=(county value / county population for the same year as the data) x 1000. \$ Per capita=(county value / county population for the same year as the data). Value= . indicates missing or suppressed data or value not calculated.

Banking

NUMBER OF BANKING OFFICES

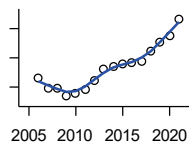


Federal Deposit Insurance Corporation, Data Book, Operating Banks and Branches

Year	County	State of Kansas	Non Metro Kansas	County Rank	Per 1000 or \$ Per Capita
2000	9	1,398	703	48	.
2001	9	1,424	708	49	.
2002	9	1,447	704	47	.
2003	9	1,461	708	47	.
2004	9	1,485	708	46	.
2005	9	1,505	711	46	.
2006	9	1,518	711	46	.
2007	9	1,543	717	48	.
2008	9	1,556	717	48	.
2009	9	1,569	716	45	.
2010	9	1,561	710	45	.
2011	9	1,559	707	46	.
2012	9	1,533	702	45	.
2013	9	1,518	696	44	.
2014	9	1,491	685	41	.
2015	9	1,472	675	40	.
2016	9	1,465	668	41	.
2017	9	1,452	666	41	.
2018	9	1,439	660	41	.
2019	9	1,439	663	41	.
2020	9	1,416	653	41	.
2021	8	1,392	641	48	.

Government

TANGIBLE ASSESSED VALUATION (KDoR, million\$; 2006-)



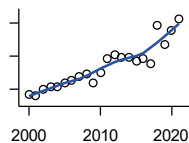
Kansas Department of Revenue, Division of Property Valuation, Statistical Report of Property Assessment and Taxation

Year	County	State of Kansas	Non Metro Kansas	County Rank	Per 1000 or \$ Per Capita
2006	57.9	28,964.3	10,316.9	71	8.3
2007	54.7	30,086.9	10,335.9	77	7.9
2008	54.5	31,000.3	10,856.9	78	8.0
2009	51.8	30,312.3	10,555.6	79	7.7
2010	53.0	29,450.2	10,158.7	78	7.9
2011	54.3	29,963.6	10,572.3	79	8.2
2012	57.3	30,382.9	10,876.2	80	8.9
2013	61.3	30,850.2	11,044.4	80	9.6
2014	62.1	31,783.0	11,388.9	81	9.9
2015	62.8	32,335.7	11,037.8	77	10.1
2016	63.2	33,156.3	10,889.6	76	10.3
2017	63.9	34,754.5	11,439.0	77	10.5
2018	67.1	36,566.1	11,907.1	78	11.2
2019	70.2	38,255.2	12,336.7	81	11.7
2020	72.8	39,333.9	12,219.3	76	12.1
2021	78.3	40,812.0	12,601.5	73	13.2

County: county value. Kansas: state value. County Rank: highest county value ranked #1. (\$000): thousands of dollars. Nonmetro Kansas: Kansas total less Metropolitan Areas as defined by the Office of Management and Budget (OMB; released 3/6/2020). Per 1000: For nonmoney amounts, Per 1000=(county value / county population for the same year as the data) x 1000. \$ Per capita=(county value / county population for the same year as the data). Value= . indicates missing or suppressed data or value not calculated.

Government

SALES TAX COLLECTIONS (\$)

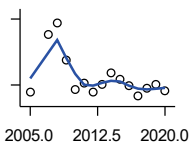


Kansas Department of Revenue. Use tax collections included beginning in calendar year 2018.

Year	County	State of Kansas	Non Metro Kansas	County Rank	Per 1000 or \$ Per Capita
2000	1,834,201	1,475,831,808	432,761,608	64	239,046.1
2001	1,787,865	1,481,026,688	426,316,284	65	233,616.2
2002	1,982,421	1,561,316,864	443,986,950	62	261,982.4
2003	2,059,069	1,626,782,976	461,658,700	62	274,799.0
2004	2,084,420	1,691,899,008	480,309,725	63	281,108.6
2005	2,171,297	1,744,980,352	497,494,867	64	300,650.4
2006	2,269,839	1,851,694,720	532,233,047	65	326,877.7
2007	2,366,055	1,917,546,752	559,319,583	67	340,097.0
2008	2,459,355	1,990,655,744	589,725,773	66	360,767.9
2009	2,197,993	1,866,223,078	548,627,132	68	326,887.7
2010	2,489,294	2,075,193,413	617,409,982	68	372,147.4
2011	2,925,209	2,347,193,367	702,671,534	67	442,476.0
2012	3,042,638	2,456,292,294	740,196,106	68	473,488.7
2013	2,961,187	2,489,204,048	746,226,565	68	465,741.9
2014	2,966,165	2,539,886,774	760,474,019	70	471,718.4
2015	2,858,668	2,642,374,740	750,090,163	70	458,634.3
2016	2,921,597	2,732,611,350	749,030,133	70	478,010.0
2017	2,758,263	2,726,104,521	744,246,491	69	454,633.8
2018	3,921,015	3,277,299,125	893,564,480	66	652,306.6
2019	3,347,713	3,395,631,405	939,607,762	72	559,631.1
2020	3,761,748	3,489,306,791	984,218,931	71	625,290.6
2021	4,126,772	3,981,293,227	1,098,391,422	73	694,859.7

Crime

CRIME INDEX OFFENSES



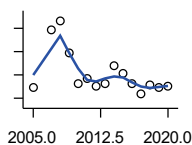
Kansas Bureau of Investigation, Note: Data are aggregated from reports by individual police departments and subject to be incomplete.

Year	County	State of Kansas	Non Metro Kansas	County Rank	Per 1000 or \$ Per Capita
2005	85	111,856	31,630	65	11.8
2007	216	111,035	29,921	43	31.0
2008	241	93,996	27,342	36	35.4
2009	157	98,757	27,620	45	23.3
2010	89	98,354	26,909	59	13.3
2011	105	96,638	25,765	56	15.9
2012	85	98,914	26,963	60	13.2
2013	100	93,054	24,488	58	15.7
2014	127	86,323	23,341	53	20.2
2015	113	88,590	21,580	51	18.1
2016	99	90,589	21,565	54	16.2
2017	74	93,091	22,622	60	12.2
2018	92	92,062	20,325	53	15.3
2019	101	87,008	18,547	49	16.9
2020	87	87,346	17,762	54	14.5

County: county value. Kansas: state value. County Rank: highest county value ranked #1. (\$000): thousands of dollars. Nonmetro Kansas: Kansas total less Metropolitan Areas as defined by the Office of Management and Budget (OMB; released 3/6/2020). Per 1000: For nonmoney amounts, Per 1000=(county value / county population for the same year as the data) x 1000. \$ Per capita=(county value / county population for the same year as the data). Value= . indicates missing or suppressed data or value not calculated.

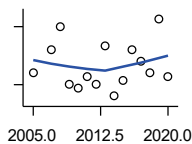
Crime

PROPERTY CRIMES



Kansas Bureau of Investigation, Note: Data are aggregated from reports by individual police departments and subject to be incomplete.

Year	County	State of Kansas	Non Metro Kansas	County Rank	Per 1000 or \$ Per Capita
2005	72	101,414	29,042	65	10.0
2007	197	99,632	26,856	42	28.3
2008	216	83,964	24,367	36	31.7
2009	147	87,658	24,825	44	21.9
2010	80	87,926	24,133	59	12.0
2011	93	86,547	23,274	56	14.1
2012	75	88,707	24,220	61	11.7
2013	80	83,551	22,028	59	12.6
2014	120	76,794	20,858	49	19.1
2015	102	77,997	19,138	50	16.4
2016	80	79,549	19,207	57	13.1
2017	58	81,349	19,981	62	9.6
2018	79	79,695	17,769	53	13.1
2019	74	74,314	15,892	53	12.4
2020	75	73,450	15,100	54	12.5



VIOLENT CRIMES

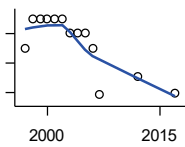
Kansas Bureau of Investigation, Note: Data are aggregated from reports by individual police departments and subject to be incomplete.

Year	County	State of Kansas	Non Metro Kansas	County Rank	Per 1000 or \$ Per Capita
2005	13	10,442	2,588	56	1.8
2007	19	11,403	3,065	48	2.7
2008	25	10,032	2,975	42	3.7
2009	10	11,099	2,795	63	1.5
2010	9	10,428	2,776	62	1.3
2011	12	10,091	2,491	55	1.8
2012	10	10,207	2,743	62	1.6
2013	20	9,503	2,460	46	3.1
2014	7	9,529	2,483	70	1.1
2015	11	10,593	2,442	59	1.8
2016	19	11,040	2,358	38	3.1
2017	16	11,742	2,641	47	2.6
2018	13	12,367	2,556	49	2.2
2019	27	12,694	2,655	36	4.5
2020	12	13,896	2,662	62	2.0

County: county value. Kansas: state value. County Rank: highest county value ranked #1. (\$000): thousands of dollars. Nonmetro Kansas: Kansas total less Metropolitan Areas as defined by the Office of Management and Budget (OMB; released 3/6/2020). Per 1000: For nonmoney amounts, Per 1000=(county value / county population for the same year as the data) x 1000. \$ Per capita=(county value / county population for the same year as the data). Value= . indicates missing or suppressed data or value not calculated.

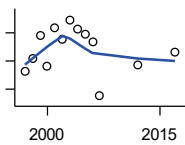
Agriculture

NUMBER OF FARMS



Kansas Agricultural Statistics, Kansas Farm Facts

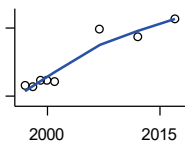
Year	County	State of Kansas	Non Metro Kansas	County Rank	Per 1000 or \$ Per Capita
1997	570	64,000	47,900	47	73.0
1998	590	65,000	48,850	46	75.2
1999	590	65,000	48,850	46	76.6
2000	590	64,000	48,030	44	76.9
2001	590	63,000	47,200	44	77.1
2002	590	63,000	47,200	44	78.0
2003	580	64,500	48,150	46	77.4
2004	580	64,500	48,150	46	78.2
2005	580	64,500	48,150	46	80.3
2006	570	64,000	47,650	46	82.1
2007	539	65,531	48,179	49	77.5
2012	551	61,773	45,655	43	85.7
2017	540	58,569	42,404	41	89.0



TOTAL ACRES HARVESTED

Kansas Agricultural Statistics, Kansas Farm Facts

Year	County	State of Kansas	Non Metro Kansas	County Rank	Per 1000 or \$ Per Capita
1997	81,110	22,846,000	19,430,580	99	10,392.1
1998	85,900	22,143,500	18,943,650	99	10,949.6
1999	94,270	21,708,900	18,581,750	98	12,239.7
2000	83,350	21,639,000	18,528,870	99	10,862.8
2001	96,750	21,847,900	18,689,750	97	12,642.1
2002	92,810	20,230,400	17,089,120	96	12,265.1
2003	99,630	21,827,700	18,661,920	95	13,296.4
2004	96,320	20,876,900	17,721,500	96	12,989.9
2005	94,400	21,936,500	18,807,930	97	13,071.2
2006	91,800	21,412,700	18,291,120	98	13,220.0
2007	72,526	19,886,655	17,164,743	99	10,424.9
2012	83,824	21,043,596	17,966,843	99	13,044.5
2017	88,255	21,837,465	18,543,057	98	14,546.7



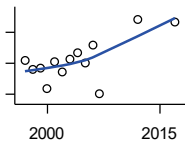
VALUE: LIVESTOCK AND POULTRY (\$000)

Kansas Agricultural Statistics, Kansas Farm Facts

Year	County	State of Kansas	Non Metro Kansas	County Rank	Per 1000 or \$ Per Capita
1997	28,893	2,806,445	2,500,305	28	3,701.9
1998	28,677	2,670,432	2,378,007	28	3,655.4
1999	33,876	2,849,061	2,554,528	24	4,398.3
2000	33,761	2,901,469	2,609,032	25	4,400.0
2001	33,225	2,693,274	2,437,187	19	4,341.4
2007	79,576	9,525,971	.	32	11,438.3
2012	71,867	11,476,571	10,883,216	38	11,183.8
2017	88,175	12,322,289	.	34	14,533.5

County: county value. Kansas: state value. County Rank: highest county value ranked #1. (\$000): thousands of dollars. Nonmetro Kansas: Kansas total less Metropolitan Areas as defined by the Office of Management and Budget (OMB; released 3/6/2020). Per 1000: For nonmoney amounts, Per 1000=(county value / county population for the same year as the data) x 1000. \$ Per capita=(county value / county population for the same year as the data). Value= . indicates missing or suppressed data or value not calculated.

Agriculture



VALUE:FIELD CROPS (\$000)
EXCLUDING GOVERNMENT
PROGRAM PAYMENTS

Kansas Agricultural Statistics, Kansas
Farm Facts

Year	County	State of Kansas	Non Metro Kansas	County Rank	Per 1000 or \$ Per Capita
1997	12,404	4,474,942	3,800,365	101	1,589.2
1998	11,177	3,594,319	3,124,409	99	1,424.7
1999	11,318	3,118,193	2,728,319	96	1,469.5
2000	8,747	2,915,660	2,540,052	99	1,140.0
2001	12,252	3,283,117	2,857,136	98	1,600.9
2002	10,891	3,011,855	2,560,580	96	1,439.3
2003	12,546	3,623,255	3,150,629	99	1,674.4
2004	13,327	3,445,688	2,896,603	94	1,797.3
2005	12,106	3,678,123	3,182,677	99	1,676.3
2006	14,348	4,308,716	3,684,132	95	2,066.2
2007	8,087	4,887,212	.	100	1,162.4
2012	17,687	6,983,993	6,044,551	96	2,752.4
2017	17,293	6,460,437	.	97	2,850.3

County: county value. Kansas: state value. County Rank: highest county value ranked #1. (\$000): thousands of dollars. Nonmetro Kansas: Kansas total less Metropolitan Areas as defined by the Office of Management and Budget (OMB; released 3/6/2020). Per 1000: For nonmoney amounts, Per 1000=(county value / county population for the same year as the data) x 1000. \$ Per capita=(county value / county population for the same year as the data). Value= . indicates missing or suppressed data or value not calculated.