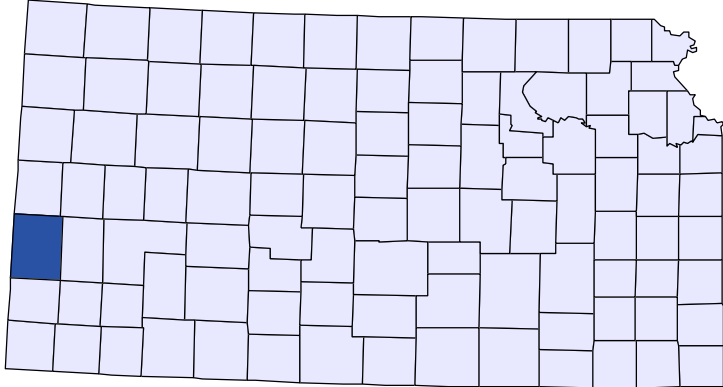




Kansas County Profiles

Hamilton County



The University
of Kansas

Institute for Policy
& Social Research

KU INSTITUTE FOR POLICY
& SOCIAL RESEARCH

The University of Kansas

1541 Lilac Lane, Rm. 607
Blake Hall
Lawrence, KS 66045-3129

Foreword

The Kansas County Profile Report is published by the Institute for Policy & Social Research (IPSR) at the University of Kansas with support from the KU University Center project.* Special thanks to Xanthippe Wedel, senior research data engineer, who compiles and updates the county profiles and Genna Hurd, associate researcher, who provides editorial review.

County reports can be generated for any county in Kansas by simply clicking on the county from the web site:

<https://ipsr.ku.edu/ksdata/kcced/profiles/>

The Kansas County Profile Report contains 12 categories of information: Population, Vital Statistics and Health, Housing, Education, Social Environment, Business, Employment, Income, Banking, Government, Crime, and Agriculture. For more information about Kansas, please refer to the Kansas Statistical Abstract, available online at:

<https://ipsr.ku.edu/ksdata/ksah/>

We are always looking for ways to improve the Kansas County Profile Report and we welcome your suggestions and comments. Please address any correspondence to the Institute for Policy & Social Research, The University of Kansas, 607 Blake Hall, 1541 Lilac Lane, Lawrence, Kansas 66045-3129, e-mail ipsr@ku.edu or call 785-864-3701.

**The KU University Center is a collaborative effort led by the Institute for Policy & Social Research at the University of Kansas. This project is supported by the Economic Development Administration, U.S. Department of Commerce, through its University Center Program.*

The mission of EDA is to lead the federal economic development agenda by promoting innovation and competitiveness, preparing American regions for growth and success in the worldwide economy.

Kansas County Profiles Table of Contents

Population	
Total Population (Decennial Census)	1
Estimated Population (Current Population Reports)	2
Urban Population	2
Rural Population	3
Net Migration (Decade Ending...)	3
Median Age	3
Population (Age Groups)	
Population Under 18 (Decennial Census)	3
Population Age 18 and Over (Decennial Census)	4
Population Age 65 and Over (Decennial Census)	4
Population Age 85 and Over (Decennial Census)	4
Vital Statistics and Health	
Live Births	5
Deaths	5
Marriages	6
Divorces and Annulments	6
Physicians: M.D. Physicians	7
Physicians: D.O. Physicians	7
Dentists	8
Number of Hospitals	8
Number of Hospital Beds	9
Housing	
Housing Units (Decennial Census)	9
Housing Units (Estimated)	10
Occupied Housing Units	10
Owner Occupied Housing Units	10
Renter Occupied Housing Units	11
Vacant Housing Units	11
Median Value (\$): Owner Occupied Housing Units	11
Median Contract Rent (\$)	12
Fair Market Rent: 2 Bedrooms	12
Education	
Population Age 25 and Over	13
Percent of Population 25+ with High School or Higher Education	13
Percent of Population 25+ with Bachelors Degree or Higher Education	14
Public School Enrollment (FTE- School Year Beginning...)	14
Pupil/Teacher Ratio (School Year Beginning...)	15

Kansas County Profiles Table of Contents

Social Environment

Total Child Care Facilities	15
Preschools	16
Food Stamp Beneficiaries	16
Percent of Population Receiving Food Stamps	17
Estimated Number of People in Poverty	17
Estimated Percent of People in Poverty	18
Estimated Number of Related Children Age 5 to 17 in Families in Poverty	18
Estimated Percent of Related Children Age 5 to 17 in Families in Poverty	19
Estimated Number Under 18 in Poverty	19
Estimated Percent Under 18 in Poverty	20

Business

Establishments: Total	21
Establishments: 1-19 Employees	22
Establishments: 20-99 Employees	22
Establishments: 100-499 Employees	23
Establishments: 500 or More Employees	23
Establishments: Forestry, Fishing, Hunting, and Ag Support	24
Establishments: Mining	24
Establishments: Utilities	25
Establishments: Construction	25
Establishments: Manufacturing	26
Establishments: Wholesale Trade	26
Establishments: Retail Trade	27
Establishments: Transportation and Warehousing	27
Establishments: Information	28
Establishments: Finance and Insurance	28
Establishments: Real Estate, Rental, and Leasing	29
Establishments: Professional, Scientific, and Technical Services	29
Establishments: Management of Companies and Enterprises	30
Establishments: Admin, Support, Waste Management, and Remediation	30
Establishments: Educational Services	31
Establishments: Health Care and Social Assistance	31
Establishments: Arts, Entertainment, and Recreation	32
Establishments: Accommodation and Food Services	32
Establishments: Other Services	33

Kansas County Profiles Table of Contents

Business	
Total Annual Payroll (\$000)	34
Total Annual Payroll (\$000): Forestry, Fishing, Hunting, and Ag Support	35
Total Annual Payroll (\$000): Mining	35
Total Annual Payroll (\$000): Utilities	36
Total Annual Payroll (\$000): Construction	36
Total Annual Payroll (\$000): Manufacturing	37
Total Annual Payroll (\$000): Wholesale Trade	37
Total Annual Payroll (\$000): Retail Trade	38
Total Annual Payroll (\$000): Transportation and Warehousing	38
Total Annual Payroll (\$000): Information	39
Total Annual Payroll (\$000): Finance and Insurance	39
Total Annual Payroll (\$000): Real Estate, Rental, and Leasing	40
Total Annual Payroll (\$000): Professional, Scientific, and Technical Services	40
Total Annual Payroll (\$000): Management of Companies and Enterprises	41
Total Annual Payroll (\$000): Admin, Support, Waste Management, and Remediation	41
Total Annual Payroll (\$000): Educational Services	42
Total Annual Payroll (\$000): Health Care and Social Assistance	42
Total Annual Payroll (\$000): Arts, Entertainment, and Recreation	43
Total Annual Payroll (\$000): Accommodation and Food Services	43
Total Annual Payroll (\$000): Other Services	44
Nominal Taxable Retail Sales (Million\$)	44
Retail Pull Factor	45
Employment	
Civilian Labor Force (BLS - Place of Residence)	46
Employed (BLS - Place of Residence)	47
Unemployed (BLS - Place of Residence)	48
Unemployment Rate (BLS - Place of Residence)	49
BEA Employment: Total (Place of Work)	49
BEA Employment: Farm	50
BEA Employment: Non-Farm	50
Average Wage per Job (\$)	51
BEA Employment: Forestry, Fishing, Hunting, and Ag Support	51
BEA Employment: Mining	52
BEA Employment: Utilities	52
BEA Employment: Construction	53
BEA Employment: Manufacturing	53
BEA Employment: Wholesale Trade	54
BEA Employment: Retail Trade	54
BEA Employment: Transportation and Warehousing	55
BEA Employment: Information	55
BEA Employment: Finance and Insurance	56
BEA Employment: Real Estate, Rental, and Leasing	56
BEA Employment: Professional and Technical Services	57
BEA Employment: Management of Companies and Enterprises	57
BEA Employment: Administrative and Waste Services	58
BEA Employment: Educational Services	58
BEA Employment: Health Care and Social Assistance	59
BEA Employment: Arts, Entertainment, and Recreation	59
BEA Employment: Government and Government Enterprises	60
BEA Employment: Accommodation and Food Services	60
BEA Employment: Other Services, Except Public Administration	61

Kansas County Profiles Table of Contents

Income

BEA Per Capita Personal Income (\$)	61
Sources of Personal Income: Total Personal Income (\$000)	62
Sources of Personal Income: Wages And Salaries (\$000)	62
Sources of Personal Income: Proprietors-Farm (\$000)	63
Sources of Personal Income: Proprietors-Nonfarm (\$000)	63
Sources of Personal Income: Dividends, Interest, Rent (\$000)	64
Sources of Personal Income: Transfer Payments (\$000)	64
Sources of Personal Income: Less Social Insurance (\$000)	65
HUD Median Family Income	65
HUD 30% Low-To-Medium Income (LMI) Limit - 4 Persons	66
HUD 50% Low-To-Medium Income (LMI) Limit - 4 Persons	66
HUD 80% Low-To-Medium Income (LMI) Limit - 4 Persons	66

Banking

Bank Deposits (\$000)	67
Number of Banks	67
Number of Banking Offices	68

Government

Tangible Assessed Valuation (million\$)	68
Sales Tax Collections	69

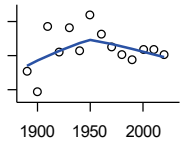
Crime

Crime Index Offenses	69
Property Crimes	70
Violent Crimes	70

Agriculture

Number of Farms	71
Total Acres Harvested	71
Value: Livestock and Poultry (\$000)	71
Value: Field Crops (\$000) Excluding Government Program Payments	72

Population



DECENNIAL CENSUS:TOTAL POPULATION

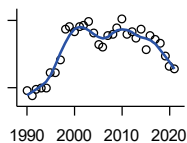
U.S. Census Bureau: Decennial Census

Year	County	State of Kansas	Non Metro Kansas	County Rank	Per 1000 or \$ Per Capita
1890	2,027	1,427,096	968,413	95	.
1900	1,426	1,470,495	981,206	93	.
1910	3,360	1,690,949	1,138,294	91	.
1920	2,586	1,769,257	1,153,525	99	.
1930	3,328	1,880,999	1,180,056	98	.
1940	2,645	1,801,028	1,097,216	97	.
1950	3,696	1,905,299	1,046,823	96	.
1960	3,144	2,178,611	1,021,510	97	.
1970	2,747	2,246,578	958,104	99	.
1980	2,514	2,363,679	980,085	100	.
1990	2,388	2,477,574	939,416	99	.
2000	2,670	2,688,418	959,507	97	.
2010	2,690	2,853,118	929,981	93	.
2020	2,518	2,937,880	892,006	93	.

County: county value. Kansas: state value. County Rank: highest county value ranked #1. (\$000): thousands of dollars. Nonmetro Kansas: Kansas total less Metropolitan Areas as defined by the Office of Management and Budget (OMB; released 3/6/2020). Per 1000: For nonmoney amounts, Per 1000=(county value / county population for the same year as the data) x 1000. \$ Per capita=(county value / county population for the same year as the data). Value= . indicates missing or suppressed data or value not calculated.

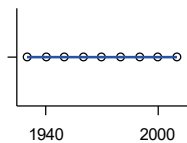
Population

ESTIMATED POPULATION



U.S. Census Bureau

Year	County	State of Kansas	Non Metro Kansas	County Rank	Per 1000 or \$ Per Capita
1990	2,389	2,481,349	938,607	99	.
1991	2,362	2,498,722	938,965	100	.
1992	2,393	2,532,394	942,759	99	.
1993	2,400	2,556,547	947,515	98	.
1994	2,398	2,580,513	952,178	99	.
1995	2,468	2,601,007	957,771	98	.
1996	2,466	2,614,554	959,455	98	.
1997	2,526	2,635,292	960,225	98	.
1998	2,659	2,660,598	960,569	97	.
1999	2,672	2,678,338	960,704	97	.
2000	2,651	2,693,681	959,230	97	.
2001	2,675	2,702,162	952,607	97	.
2002	2,676	2,713,535	945,985	96	.
2003	2,694	2,723,004	941,474	96	.
2004	2,642	2,734,373	937,623	96	.
2005	2,590	2,745,299	932,852	97	.
2006	2,583	2,762,931	928,809	97	.
2007	2,633	2,783,785	927,643	96	.
2008	2,638	2,808,076	926,248	94	.
2009	2,669	2,832,704	926,755	93	.
2010	2,707	2,858,190	930,028	92	.
2011	2,637	2,869,225	927,675	93	.
2012	2,651	2,885,257	925,152	93	.
2013	2,620	2,893,212	922,383	93	.
2014	2,659	2,900,475	917,854	92	.
2015	2,568	2,909,011	912,199	95	.
2016	2,634	2,910,844	905,099	90	.
2017	2,616	2,908,718	897,981	92	.
2018	2,600	2,911,359	892,656	92	.
2019	2,539	2,913,314	887,455	92	.
2020	2,494	2,935,880	889,750	93	.
2021	2,484	2,934,582	886,438	93	.



URBAN POPULATION

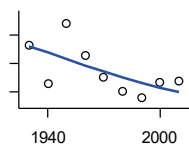
U.S. Census Bureau: Decennial Census

Year	County	State of Kansas	Non Metro Kansas	County Rank	Per 1000 or \$ Per Capita
1930	0	729,834	336,666	105	.
1940	0	753,941	349,228	105	.
1950	0	993,220	398,923	105	.
1960	0	1,328,741	457,447	105	.
1970	0	1,484,870	450,543	105	.
1980	0	1,575,899	474,769	105	.
1990	0	1,712,564	464,205	105	.
2000	0	1,920,081	488,011	105	.
2010	0	2,116,961	485,780	105	.

County: county value. Kansas: state value. County Rank: highest county value ranked #1. (\$000): thousands of dollars. Nonmetro Kansas: Kansas total less Metropolitan Areas as defined by the Office of Management and Budget (OMB; released 3/6/2020). Per 1000: For nonmoney amounts, Per 1000=(county value / county population for the same year as the data) x 1000. \$ Per capita=(county value / county population for the same year as the data). Value= . indicates missing or suppressed data or value not calculated.

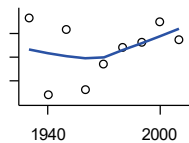
Population

RURAL POPULATION



U.S. Census Bureau

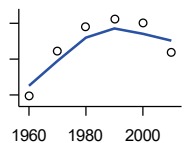
Year	County	State of Kansas	Non Metro Kansas	County Rank	Per 1000 or \$ Per Capita
1930	3,328	1,151,165	843,390	97	.
1940	2,645	1,047,087	747,988	96	.
1950	3,696	912,079	647,900	92	.
1960	3,144	849,870	564,063	91	.
1970	2,747	761,708	509,972	94	.
1980	2,514	787,780	505,873	94	.
1990	2,388	765,010	475,211	93	.
2000	2,670	768,337	471,900	91	.
2010	2,690	736,157	444,201	86	.



NET MIGRATION: DECADE ENDING...

calculated by the Institute for Policy and Social Research, The University of Kansas

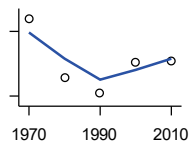
Year	County	State of Kansas	Non Metro Kansas	County Rank	Per 1000 or \$ Per Capita
1930	330	-66,132	-101,869	24	99.2
1940	-1,305	-192,649	-166,022	31	-493.4
1950	91	-84,329	-158,379	23	24.6
1960	-1,190	-38,999	-146,640	42	-378.5
1970	-656	-119,662	-105,116	44	-238.8
1980	-301	-21,983	-6,184	62	-119.7
1990	-174	-61,835	-79,274	17	-72.9
2000	246	68,960	4,247	36	92.1
2010	-129	5,578	-50,648	29	-48.0



MEDIAN AGE

U.S. Census Bureau: Decennial Census

Year	County	State of Kansas	Non Metro Kansas	County Rank	Per 1000 or \$ Per Capita
1960	27.3	26.9	.	86	.
1970	33.6	28.7	.	62	.
1980	37.0	30.1	.	31	.
1990	38.1	32.9	.	39	.
2000	37.6	35.2	.	71	.
2010	33.5	36.0	.	94	.



POPULATION UNDER 18 (DECENNIAL CENSUS)

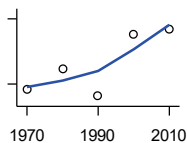
U.S. Census Bureau: Decennial Census

Year	County	State of Kansas	Non Metro Kansas	County Rank	Per 1000 or \$ Per Capita
1970	959	746,354	306,227	99	.
1980	685	649,035	263,919	100	.
1990	616	661,614	250,107	100	.
2000	757	712,993	250,757	91	.
2010	763	726,939	229,213	80	.

County: county value. Kansas: state value. County Rank: highest county value ranked #1. (\$000): thousands of dollars. Nonmetro Kansas: Kansas total less Metropolitan Areas as defined by the Office of Management and Budget (OMB; released 3/6/2020). Per 1000: For nonmoney amounts, Per 1000=(county value / county population for the same year as the data) x 1000. \$ Per capita=(county value / county population for the same year as the data). Value= . indicates missing or suppressed data or value not calculated.

Population

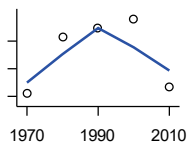
**POPULATION AGE 18 AND OVER
(DECENNIAL CENSUS)**



U.S. Census Bureau: Decennial Census

Year	County	State of Kansas	Non Metro Kansas	County Rank	Per 1000 or \$ Per Capita
1970	1,788	1,500,224	654,288	100	.
1980	1,834	1,714,282	716,684	100	.
1990	1,772	1,815,960	689,309	99	.
2000	1,913	1,975,425	709,154	97	.
2010	1,927	2,126,179	700,768	97	.

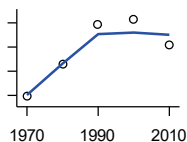
**POPULATION AGE 65 AND OVER
(DECENNIAL CENSUS)**



U.S. Census Bureau: Decennial Census

Year	County	State of Kansas	Non Metro Kansas	County Rank	Per 1000 or \$ Per Capita
1970	356	266,201	149,049	97	.
1980	458	306,263	164,932	96	.
1990	473	342,571	168,579	97	.
2000	490	356,229	161,769	97	.
2010	366	376,116	154,214	102	.

**POPULATION AGE 85 AND OVER
(DECENNIAL CENSUS)**



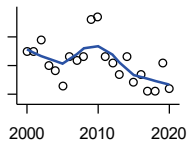
U.S. Census Bureau: Decennial Census

Year	County	State of Kansas	Non Metro Kansas	County Rank	Per 1000 or \$ Per Capita
1970	19	23,899	13,698	101	.
1980	46	33,455	18,804	96	.
1990	79	42,241	22,970	94	.
2000	83	51,770	26,644	97	.
2010	62	59,318	26,197	99	.

County: county value. Kansas: state value. County Rank: highest county value ranked #1. (\$000): thousands of dollars. Nonmetro Kansas: Kansas total less Metropolitan Areas as defined by the Office of Management and Budget (OMB; released 3/6/2020). Per 1000: For nonmoney amounts, Per 1000=(county value / county population for the same year as the data) x 1000. \$ Per capita=(county value / county population for the same year as the data). Value= . indicates missing or suppressed data or value not calculated.

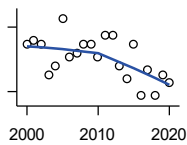
Vital Statistics and Health

BIRTHS (LIVE)



Kansas Department of Health and Environment

Year	County	State of Kansas	Non Metro Kansas	County Rank	Per 1000 or \$ Per Capita
2000	45	39,654	12,980	78	16.9
2001	45	38,832	12,527	77	16.8
2002	49	39,338	12,476	73	18.3
2003	40	39,353	12,342	76	14.8
2004	38	39,553	12,398	83	14.4
2005	33	39,701	12,382	88	12.7
2006	43	40,896	12,726	79	16.6
2007	42	41,951	12,990	80	16.0
2008	43	41,815	12,970	79	16.3
2009	56	41,388	12,949	73	21.0
2010	57	40,439	12,200	69	21.2
2011	43	39,628	12,098	76	16.3
2012	41	40,304	12,217	77	15.5
2013	37	38,805	11,877	80	14.1
2014	43	39,193	12,052	77	16.2
2015	34	39,126	11,836	87	13.2
2016	37	38,048	11,467	86	14.0
2017	31	36,464	10,968	87	11.9
2018	31	36,268	10,826	86	11.9
2019	41	35,395	10,506	77	16.1
2020	32	34,368	10,222	83	12.7



DEATHS

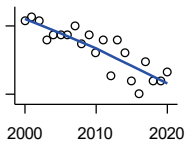
Kansas Department of Health and Environment

Year	County	State of Kansas	Non Metro Kansas	County Rank	Per 1000 or \$ Per Capita
2000	31	24,676	11,175	96	11.6
2001	32	24,590	10,807	95	12.0
2002	31	24,968	11,079	99	11.6
2003	24	24,417	10,615	100	8.9
2004	26	23,720	10,369	101	9.8
2005	37	24,632	10,599	91	14.3
2006	28	24,489	10,538	100	10.8
2007	29	24,413	10,601	97	11.0
2008	31	24,896	10,593	97	11.8
2009	31	23,997	9,938	94	11.6
2010	28	24,428	10,105	97	10.4
2011	33	25,114	10,520	93	12.5
2012	33	25,084	10,259	92	12.4
2013	26	25,347	10,249	98	9.9
2014	23	25,731	10,275	102	8.6
2015	31	26,611	10,539	96	12.1
2016	19	26,129	10,231	103	7.2
2017	25	26,725	10,452	99	9.6
2018	19	27,213	10,389	103	7.3
2019	24	27,312	10,569	100	9.5
2020	22	31,667	11,850	102	8.7

County: county value. Kansas: state value. County Rank: highest county value ranked #1. (\$000): thousands of dollars. Nonmetro Kansas: Kansas total less Metropolitan Areas as defined by the Office of Management and Budget (OMB; released 3/6/2020). Per 1000: For nonmoney amounts, Per 1000=(county value / county population for the same year as the data) x 1000. \$ Per capita=(county value / county population for the same year as the data). Value= . indicates missing or suppressed data or value not calculated.

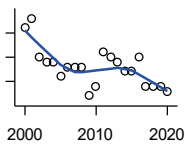
Vital Statistics and Health

MARRIAGES



Kansas Department of Health and Environment

Year	County	State of Kansas	Non Metro Kansas	County Rank	Per 1000 or \$ Per Capita
2000	21	20,426	7,333	91	7.9
2001	22	20,457	7,441	90	8.2
2002	21	19,783	6,794	90	7.8
2003	17	18,722	6,469	93	6.3
2004	18	19,174	6,756	93	6.8
2005	18	18,745	6,481	91	6.9
2006	18	18,836	6,433	87	7.0
2007	20	18,910	6,464	86	7.6
2008	16	18,717	6,283	92	6.1
2009	18	18,268	6,015	85	6.7
2010	14	18,150	5,925	91	5.2
2011	17	17,897	5,977	93	6.4
2012	9	18,154	5,752	102	3.4
2013	17	17,328	5,533	89	6.5
2014	14	17,655	5,535	91	5.3
2015	8	17,595	5,400	100	3.1
2016	5	17,948	5,340	105	1.9
2017	12	17,274	5,163	95	4.6
2018	8	16,362	4,999	101	3.1
2019	8	15,403	4,650	99	3.2
2020	10	14,038	4,066	93	4.0



DIVORCES AND ANNULMENTS

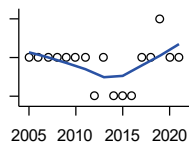
Kansas Department of Health and Environment

Year	County	State of Kansas	Non Metro Kansas	County Rank	Per 1000 or \$ Per Capita
2000	16	10,105	4,000	73	6.0
2001	18	9,885	3,818	68	6.7
2002	10	9,645	3,716	86	3.7
2003	9	8,644	3,464	88	3.3
2004	9	8,759	3,506	88	3.4
2005	6	8,476	3,311	95	2.3
2006	8	9,145	3,387	89	3.1
2007	8	9,347	3,402	90	3.0
2008	8	9,818	3,655	92	3.0
2009	2	10,333	3,463	104	0.7
2010	4	10,579	3,530	101	1.5
2011	11	10,445	3,347	80	4.2
2012	10	9,782	3,040	82	3.8
2013	9	9,085	2,973	84	3.4
2014	7	8,441	2,682	89	2.6
2015	7	8,036	2,704	88	2.7
2016	10	7,198	2,424	72	3.8
2017	4	6,494	2,315	101	1.5
2018	4	6,538	2,269	98	1.5
2019	4	6,398	2,357	99	1.6
2020	3	5,169	1,866	96	1.2

County: county value. Kansas: state value. County Rank: highest county value ranked #1. (\$000): thousands of dollars. Nonmetro Kansas: Kansas total less Metropolitan Areas as defined by the Office of Management and Budget (OMB; released 3/6/2020). Per 1000: For nonmoney amounts, Per 1000=(county value / county population for the same year as the data) x 1000. \$ Per capita=(county value / county population for the same year as the data). Value= . indicates missing or suppressed data or value not calculated.

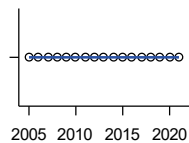
Vital Statistics and Health

PHYSICIANS: M.D. PHYSICIANS



Kansas Department of Health and Environment (1981-2005,2010-);Kansas Health Policy Authority (2006-2009)

Year	County	State of Kansas	Non Metro Kansas	County Rank	Per 1000 or \$ Per Capita
2005	1	4,241	912	96	0.4
2006	1	4,310	953	99	0.4
2007	1	5,309	1,046	99	0.4
2008	1	5,110	1,016	101	0.4
2009	1	5,249	996	98	0.4
2010	1	5,192	979	98	0.4
2011	1	5,243	983	96	0.4
2012	0	5,693	1,033	105	0.0
2013	1	6,106	1,071	100	0.4
2014	0	5,839	951	105	0.0
2015	0	5,703	855	105	0.0
2016	0	4,278	643	105	0.0
2017	1	6,332	1,047	99	0.4
2018	1	6,079	1,065	98	0.4
2019	2	6,435	1,036	86	0.8
2020	1	6,668	1,045	98	0.4
2021	1	6,745	1,042	99	0.4



PHYSICIANS: D.O. PHYSICIANS

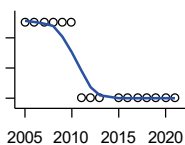
Kansas Department of Health and Environment (1981-2005,2010-);Kansas Health Policy Authority (2006-2009)

Year	County	State of Kansas	Non Metro Kansas	County Rank	Per 1000 or \$ Per Capita
2005	0	553	174	105	0.0
2006	0	508	171	105	0.0
2007	0	569	169	105	0.0
2008	0	558	166	105	0.0
2009	0	564	160	105	0.0
2010	0	583	169	105	0.0
2011	0	502	152	105	0.0
2012	0	718	200	105	0.0
2013	0	829	210	105	0.0
2014	0	817	189	105	0.0
2015	0	819	190	105	0.0
2016	0	632	136	105	0.0
2017	0	579	129	105	0.0
2018	0	871	164	105	0.0
2019	0	951	212	105	0.0
2020	0	1,018	204	105	0.0
2021	0	1,095	217	105	0.0

County: county value. Kansas: state value. County Rank: highest county value ranked #1. (\$000): thousands of dollars. Nonmetro Kansas: Kansas total less Metropolitan Areas as defined by the Office of Management and Budget (OMB; released 3/6/2020). Per 1000: For nonmoney amounts, Per 1000=(county value / county population for the same year as the data) x 1000. \$ Per capita=(county value / county population for the same year as the data). Value= . indicates missing or suppressed data or value not calculated.

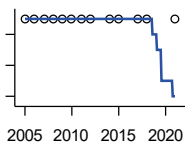
Vital Statistics and Health

DENTISTS



Kansas Department of Health and Environment (1981-2006,2010-); Kansas Health Policy Authority (2007-2009)

Year	County	State of Kansas	Non Metro Kansas	County Rank	Per 1000 or \$ Per Capita
2005	2	1,347	363	69	0.8
2006	2	1,381	361	68	0.8
2007	2	1,335	350	68	0.8
2008	2	1,392	353	67	0.8
2009	2	1,353	350	67	0.7
2010	2	1,401	365	70	0.7
2011	1	1,338	346	88	0.4
2012	1	1,434	392	86	0.4
2013	1	1,212	328	87	0.4
2015	1	1,240	327	89	0.4
2016	1	1,456	350	87	0.4
2017	1	1,467	350	87	0.4
2018	1	1,604	359	86	0.4
2019	1	1,646	355	86	0.4
2020	1	1,646	355	86	0.4
2021	1	1,688	362	85	0.4



NUMBER OF HOSPITALS

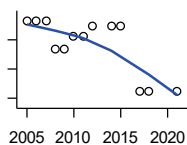
American Hospital Association, American Hospital Association Guide to the Health Care Field

Year	County	State of Kansas	Non Metro Kansas	County Rank	Per 1000 or \$ Per Capita
2005	1	158	105	96	.
2006	1	158	105	96	.
2007	1	159	104	95	.
2008	1	159	104	95	.
2009	1	158	105	96	.
2010	1	158	104	96	.
2011	1	158	103	96	.
2012	1	157	103	96	.
2014	1	156	.	96	.
2015	1	155	103	96	.
2017	1	157	102	96	.
2018	1	154	99	95	.
2021	1	151	.	95	.

County: county value. Kansas: state value. County Rank: highest county value ranked #1. (\$000): thousands of dollars. Nonmetro Kansas: Kansas total less Metropolitan Areas as defined by the Office of Management and Budget (OMB; released 3/6/2020). Per 1000: For nonmoney amounts, Per 1000=(county value / county population for the same year as the data) x 1000. \$ Per capita=(county value / county population for the same year as the data). Value= . indicates missing or suppressed data or value not calculated.

Vital Statistics and Health

NUMBER OF HOSPITAL BEDS

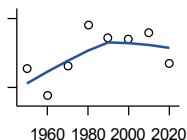


Kansas Department of Health and Environment

Year	County	State of Kansas	Non Metro Kansas	County Rank	Per 1000 or \$ Per Capita
2005	73	12,389	5,687	43	28.2
2006	73	11,992	5,514	40	28.3
2007	73	12,171	5,637	40	27.7
2008	54	12,332	5,700	52	20.5
2009	54	12,283	5,652	51	20.2
2010	62	12,218	5,521	46	23.0
2011	62	12,182	5,335	43	23.5
2012	69	12,002	5,355	41	26.0
2014	69	12,034	.	39	25.9
2015	69	11,926	5,330	35	26.9
2017	25	11,491	4,825	83	9.6
2018	25	11,448	4,583	82	9.6
2021	25	11,199	.	76	10.1

Housing

HOUSING UNITS (DECENNIAL)



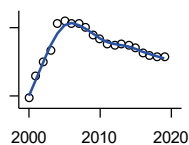
U.S. Census Bureau: Decennial Census

Year	County	State of Kansas	Non Metro Kansas	County Rank	Per 1000 or \$ Per Capita
1950	1,080	586,650	328,210	96	292.2
1960	963	672,899	329,380	97	306.3
1970	1,092	789,735	363,824	98	397.5
1980	1,273	955,207	416,877	99	506.4
1990	1,214	1,044,112	417,062	99	508.4
2000	1,211	1,131,395	422,218	97	453.6
2010	1,236	1,233,215	424,050	96	459.5
2020	1,106	1,275,689	413,120	97	439.2

County: county value. Kansas: state value. County Rank: highest county value ranked #1. (\$000): thousands of dollars. Nonmetro Kansas: Kansas total less Metropolitan Areas as defined by the Office of Management and Budget (OMB; released 3/6/2020). Per 1000: For nonmoney amounts, Per 1000=(county value / county population for the same year as the data) x 1000. \$ Per capita=(county value / county population for the same year as the data). Value= . indicates missing or suppressed data or value not calculated.

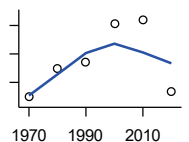
Housing

HOUSING UNITS (ESTIMATED)



U.S. Census Bureau

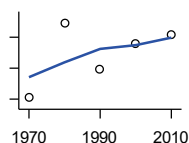
Year	County	State of Kansas	Non Metro Kansas	County Rank	Per 1000 or \$ Per Capita
2000	1,209	1,134,529	422,560	97	452.8
2001	1,219	1,146,858	423,876	97	455.7
2002	1,225	1,160,129	425,089	97	457.8
2003	1,230	1,171,620	425,936	97	456.6
2004	1,242	1,184,702	426,593	97	470.1
2005	1,243	1,195,791	426,964	97	479.9
2006	1,242	1,206,692	426,713	97	480.8
2007	1,242	1,217,608	426,090	96	471.7
2008	1,240	1,225,625	425,768	97	470.1
2009	1,237	1,230,552	424,776	96	463.5
2010	1,235	1,234,456	424,174	97	459.1
2011	1,233	1,238,052	424,549	97	467.6
2012	1,232	1,241,992	425,116	97	464.7
2013	1,233	1,246,675	425,699	97	470.6
2014	1,232	1,253,284	426,269	97	463.3
2015	1,231	1,258,999	426,844	97	479.4
2016	1,229	1,265,684	427,465	97	466.6
2017	1,228	1,273,536	427,746	97	469.4
2018	1,227	1,280,649	428,099	97	471.9
2019	1,227	1,288,401	428,495	97	483.3



OCCUPIED HOUSING UNITS

U.S. Census Bureau: Decennial Census

Year	County	State of Kansas	Non Metro Kansas	County Rank	Per 1000 or \$ Per Capita
1970	924	727,364	326,494	100	336.4
1980	974	872,239	371,693	100	387.4
1990	986	944,726	365,901	99	412.9
2000	1,054	1,037,891	375,313	97	394.8
2010	1,060	1,112,096	370,269	96	394.1
2020	933	1,151,360	356,330	97	370.5



OWNER OCCUPIED HOUSING UNITS

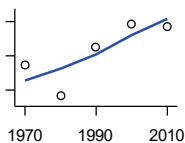
U.S. Census Bureau: Decennial Census

Year	County	State of Kansas	Non Metro Kansas	County Rank	Per 1000 or \$ Per Capita
1970	663	502,585	236,338	99	241.4
1980	758	612,433	277,096	99	301.5
1990	698	641,762	263,099	100	292.3
2000	732	718,703	271,350	98	274.2
2010	743	753,532	261,763	96	276.2

County: county value. Kansas: state value. County Rank: highest county value ranked #1. (\$000): thousands of dollars. Nonmetro Kansas: Kansas total less Metropolitan Areas as defined by the Office of Management and Budget (OMB; released 3/6/2020). Per 1000: For nonmoney amounts, Per 1000=(county value / county population for the same year as the data) x 1000. \$ Per capita=(county value / county population for the same year as the data). Value= . indicates missing or suppressed data or value not calculated.

Housing

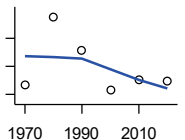
RENTER OCCUPIED HOUSING UNITS



U.S. Census Bureau: Decennial Census

Year	County	State of Kansas	Non Metro Kansas	County Rank	Per 1000 or \$ Per Capita
1970	261	224,779	90,156	99	95.0
1980	216	259,806	94,597	102	85.9
1990	288	302,964	102,802	95	120.6
2000	322	319,188	103,963	87	120.6
2010	317	358,564	108,506	82	117.8

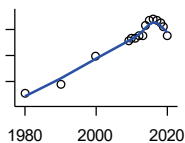
VACANT HOUSING UNITS



U.S. Census Bureau: Decennial Census

Year	County	State of Kansas	Non Metro Kansas	County Rank	Per 1000 or \$ Per Capita
1970	166	60,058	35,954	91	60.4
1980	288	77,912	41,584	73	114.6
1990	228	99,386	51,161	92	95.5
2000	157	93,309	46,904	95	58.8
2010	176	121,119	53,781	97	65.4
2020	173	124,329	56,790	97	68.7

MEDIAN VALUE (\$): OWNER OCCUPIED HOUSING UNITS



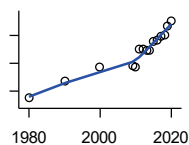
U.S. Census Bureau, Decennial Census (- 2000), (2009 -) American Community Survey five-year average ending in year shown.

Year	County	State of Kansas	Non Metro Kansas	County Rank	Per 1000 or \$ Per Capita
1980	30,700	37,800	.	39	.
1990	37,800	52,200	.	36	.
2000	59,400	83,500	.	38	.
2009	71,600	118,500	.	53	.
2010	73,300	122,600	.	59	.
2011	73,300	125,500	.	59	.
2012	75,700	127,400	.	57	.
2013	75,100	128,400	.	62	.
2014	82,900	129,400	.	55	.
2015	86,600	132,000	.	49	.
2016	88,100	135,300	.	51	.
2017	86,800	139,200	.	56	.
2018	84,600	145,400	.	67	.
2019	81,800	151,900	.	77	.
2020	75,000	157,600	.	89	.

County: county value. Kansas: state value. County Rank: highest county value ranked #1. (\$000): thousands of dollars. Nonmetro Kansas: Kansas total less Metropolitan Areas as defined by the Office of Management and Budget (OMB; released 3/6/2020). Per 1000: For nonmoney amounts, Per 1000=(county value / county population for the same year as the data) x 1000. \$ Per capita=(county value / county population for the same year as the data). Value= . indicates missing or suppressed data or value not calculated.

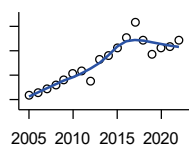
Housing

MEDIAN CONTRACT RENT (\$)



U.S. Census Bureau, Decennial Census (- 2000), (2009 -) American Community Survey five-year average ending in year shown.

Year	County	State of Kansas	Non Metro Kansas	County Rank	Per 1000 or \$ Per Capita
1980	149	219	.	78	.
1990	268	372	.	53	.
2000	373	498	.	57	.
2009	378	491	.	32	.
2010	373	507	.	39	.
2011	505	699	.	72	.
2012	498	715	.	82	.
2013	497	732	.	88	.
2014	495	748	.	94	.
2015	553	757	.	76	.
2016	563	775	.	75	.
2017	593	801	.	71	.
2018	602	831	.	75	.
2019	668	850	.	44	.
2020	705	863	.	30	.



FAIR MARKET RENT: 2 BEDROOMS

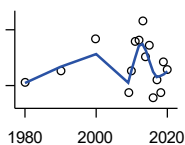
U.S. Department of Housing and Urban Development (HUD)

Year	County	State of Kansas	Non Metro Kansas	County Rank	Per 1000 or \$ Per Capita
2005	516	.	.	39	.
2006	527	.	.	41	.
2007	543	.	.	40	.
2008	558	628	.	41	.
2009	582	653	.	41	.
2010	606	678	.	43	.
2011	616	684	.	43	.
2012	577	660	.	41	.
2013	664	712	.	23	.
2014	679	746	.	25	.
2015	710	756	.	17	.
2016	753	781	.	13	.
2017	817	811	.	11	.
2018	745	815	.	30	.
2019	684	828	.	41	.
2020	714	855	.	105	.
2021	718	874	.	105	.
2022	742	879	.	105	.

County: county value. Kansas: state value. County Rank: highest county value ranked #1. (\$000): thousands of dollars. Nonmetro Kansas: Kansas total less Metropolitan Areas as defined by the Office of Management and Budget (OMB; released 3/6/2020). Per 1000: For nonmoney amounts, Per 1000=(county value / county population for the same year as the data) x 1000. \$ Per capita=(county value / county population for the same year as the data). Value= . indicates missing or suppressed data or value not calculated.

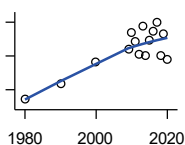
Education

POPULATION AGE 25+



U.S. Census Bureau, Decennial Census (- 2000), (2009 -) American Community Survey five-year average ending in year shown.

Year	County	State of Kansas	Non Metro Kansas	County Rank	Per 1000 or \$ Per Capita
1980	1,609	1,388,102	596,639	.	.
1990	1,639	1,565,936	608,745	.	.
2000	1,727	1,701,207	618,131	.	.
2009	1,580	1,775,427	600,188	.	.
2010	1,638	1,802,904	608,716	.	.
2011	1,718	1,822,400	610,386	.	.
2012	1,721	1,838,079	611,103	.	.
2013	1,774	1,850,010	610,374	.	.
2014	1,678	1,861,894	609,612	.	.
2015	1,710	1,869,698	606,967	.	.
2016	1,566	1,878,495	604,563	.	.
2017	1,615	1,886,741	601,076	.	.
2018	1,582	1,894,675	598,487	.	.
2019	1,665	1,902,279	595,501	.	.
2020	1,643	1,911,990	593,923	.	.



PERCENT HS GRADUATE OR HIGHER AGE 25+

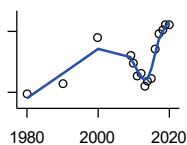
U.S. Census Bureau, Decennial Census (- 2000), (2009 -) American Community Survey five-year average ending in year shown.

Year	County	State of Kansas	Non Metro Kansas	County Rank	Per 1000 or \$ Per Capita
1980	71.2	73.3	.	40	.
1990	73.4	81.3	.	90	.
2000	76.7	86.0	.	97	.
2009	78.6	89.0	.	96	.
2010	80.9	89.2	.	94	.
2011	79.7	89.5	.	97	.
2012	77.7	89.7	.	98	.
2013	81.9	89.8	.	94	.
2014	77.5	90.0	.	99	.
2015	79.8	90.2	.	96	.
2016	81.2	90.3	.	95	.
2017	82.5	90.5	.	94	.
2018	77.6	90.7	.	98	.
2019	80.8	91.0	.	94	.
2020	76.9	91.4	.	101	.

County: county value. Kansas: state value. County Rank: highest county value ranked #1. (\$000): thousands of dollars. Nonmetro Kansas: Kansas total less Metropolitan Areas as defined by the Office of Management and Budget (OMB; released 3/6/2020). Per 1000: For nonmoney amounts, Per 1000=(county value / county population for the same year as the data) x 1000. \$ Per capita=(county value / county population for the same year as the data). Value= . indicates missing or suppressed data or value not calculated.

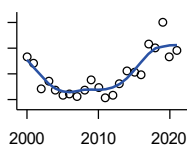
Education

PERCENT BACHELORS DEGREE OR HIGHER AGE 25+



U.S. Census Bureau, Decennial Census (- 2000), (2009 -) American Community Survey five-year average ending in year shown.

Year	County	State of Kansas	Non Metro Kansas	County Rank	Per 1000 or \$ Per Capita
1980	11.8	17.0	.	53	.
1990	12.9	21.1	.	62	.
2000	17.4	25.8	.	47	.
2009	15.6	28.8	.	86	.
2010	14.9	29.3	.	94	.
2011	13.6	29.7	.	99	.
2012	13.9	30.0	.	101	.
2013	12.6	30.3	.	105	.
2014	13.1	30.7	.	103	.
2015	13.3	31.0	.	104	.
2016	16.3	31.6	.	96	.
2017	17.8	32.3	.	86	.
2018	18.2	32.9	.	84	.
2019	18.7	33.4	.	85	.
2020	18.6	33.9	.	89	.



PUBLIC SCHOOL ENROLLMENT (FTE) SCHOOL YEAR BEGINNING...

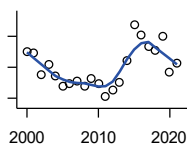
Kansas State Department of Education

Year	County	State of Kansas	Non Metro Kansas	County Rank	Per 1000 or \$ Per Capita
2000	533.7	448,150.8	166,722.5	90	199.9
2001	519.5	447,047.1	164,365.0	91	194.2
2002	471.0	444,860.3	161,555.4	92	176.0
2003	487.0	443,620.6	159,130.2	91	180.8
2004	468.0	441,957.2	156,566.3	91	177.1
2005	459.0	442,708.4	155,197.2	87	177.2
2006	461.0	444,878.7	153,842.3	86	178.5
2007	457.0	446,831.3	152,337.1	86	173.6
2008	469.5	447,730.0	150,572.7	84	178.0
2009	489.0	453,202.5	151,246.8	81	183.2
2010	473.5	455,405.0	151,023.8	82	176.0
2011	452.5	456,000.5	150,257.9	87	171.6
2012	457.5	458,496.4	150,463.0	83	172.6
2013	480.5	461,950.0	150,420.9	81	183.4
2014	505.0	464,395.4	150,499.4	80	189.9
2015	503.0	463,504.0	149,539.3	81	195.9
2016	497.0	459,920.3	147,293.5	80	188.7
2017	557.5	477,977.9	152,096.3	77	213.1
2018	550.5	476,481.7	150,456.8	77	211.7
2019	600.5	476,525.1	150,045.2	76	236.5
2020	534.0	462,088.0	146,369.6	77	212.1
2021	545.0	463,652.4	147,500.4	78	219.4

County: county value. Kansas: state value. County Rank: highest county value ranked #1. (\$000): thousands of dollars. Nonmetro Kansas: Kansas total less Metropolitan Areas as defined by the Office of Management and Budget (OMB; released 3/6/2020). Per 1000: For nonmoney amounts, Per 1000=(county value / county population for the same year as the data) x 1000. \$ Per capita=(county value / county population for the same year as the data). Value= . indicates missing or suppressed data or value not calculated.

Education

PUPIL/TEACHER RATIO SCHOOL YEAR BEGINNING...

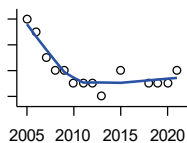


Kansas State Department of Education

Year	County	State of Kansas	Non Metro Kansas	County Rank	Per 1000 or \$ Per Capita
2000	14.0	15.4	13.9	36	.
2001	13.9	15.3	13.8	39	.
2002	12.5	15.4	13.9	65	.
2003	13.2	15.5	13.8	46	.
2004	12.4	15.3	13.6	61	.
2005	11.8	15.0	13.4	69	.
2006	11.9	14.7	13.2	62	.
2007	12.1	14.6	13.1	58	.
2008	11.8	14.4	12.9	60	.
2009	12.3	14.8	13.2	54	.
2010	11.9	15.2	13.6	77	.
2011	11.1	15.1	13.5	83	.
2012	11.5	15.1	13.5	78	.
2013	12.0	15.1	13.5	70	.
2014	13.5	15.0	13.6	37	.
2015	15.7	15.2	13.9	14	.
2016	15.1	15.1	13.7	16	.
2017	14.3	15.5	13.9	33	.
2018	14.1	15.3	13.8	32	.
2019	15.0	15.2	13.7	18	.
2020	12.7	14.7	13.4	45	.
2021	13.3	14.8	13.5	36	.

Social Environment

CHILD CARE FACILITIES: TOTAL CHILD CARE FACILITIES

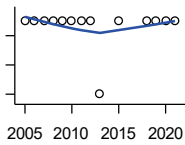


Kansas Department of Health and Environment, Bureau of Adult and Child Care

Year	County	State of Kansas	Non Metro Kansas	County Rank	Per 1000 or \$ Per Capita
2005	10	8,258	3,378	91	3.9
2006	9	8,442	3,429	91	3.5
2007	7	8,241	3,317	99	2.7
2008	6	8,011	3,150	101	2.3
2009	6	7,853	3,066	99	2.2
2010	5	7,354	2,858	102	1.9
2011	5	6,835	2,623	100	1.9
2012	5	6,346	2,409	98	1.9
2013	4	5,754	2,179	100	1.5
2015	6	5,289	2,146	92	2.3
2018	5	4,607	1,904	92	1.9
2019	5	4,287	1,774	92	2.0
2020	5	4,274	1,798	93	2.0
2021	6	4,002	1,700	86	2.4

County: county value. Kansas: state value. County Rank: highest county value ranked #1. (\$000): thousands of dollars. Nonmetro Kansas: Kansas total less Metropolitan Areas as defined by the Office of Management and Budget (OMB; released 3/6/2020). Per 1000: For nonmoney amounts, Per 1000=(county value / county population for the same year as the data) x 1000. \$ Per capita=(county value / county population for the same year as the data). Value= . indicates missing or suppressed data or value not calculated.

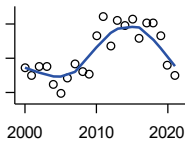
Social Environment



**CHILD CARE FACILITIES:
PRESCHOOLS**

Kansas Department of Health and Environment, Bureau of Adult and Child Care

Year	County	State of Kansas	Non Metro Kansas	County Rank	Per 1000 or \$ Per Capita
2005	1	243	140	79	0.4
2006	1	221	127	76	0.4
2007	1	208	119	76	0.4
2008	1	204	114	73	0.4
2009	1	194	107	72	0.4
2010	1	194	112	73	0.4
2011	1	209	123	76	0.4
2012	1	201	121	74	0.4
2013	0	140	84	105	0.0
2015	1	185	113	71	0.4
2018	1	150	94	60	0.4
2019	1	134	83	56	0.4
2020	1	126	78	55	0.4
2021	1	120	74	53	0.4



FOOD STAMP BENEFICIARIES

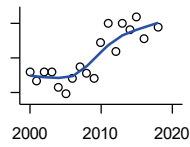
Kansas Social and Rehabilitation Services

Year	County	State of Kansas	Non Metro Kansas	County Rank	Per 1000 or \$ Per Capita
2000	112	110,619	44,825	81	41.9
2001	100	117,241	46,741	86	37.4
2002	113	131,726	52,342	85	42.2
2003	113	155,908	61,280	89	41.9
2004	87	167,971	65,852	94	32.9
2005	73	175,710	67,261	100	28.2
2006	96	182,821	67,487	95	37.2
2007	117	184,035	66,979	90	44.4
2008	105	187,377	67,160	92	39.8
2009	101	208,007	73,637	95	37.8
2010	157	259,609	90,919	88	58.4
2011	186	296,542	101,155	87	70.5
2012	143	303,257	102,478	94	53.9
2013	181	316,424	105,345	87	69.1
2014	172	301,377	100,761	88	64.7
2015	183	277,614	93,353	87	71.3
2016	155	258,412	88,343	90	58.8
2017	176	239,592	82,070	85	67.3
2018	176	219,738	75,208	82	67.7
2019	157	205,261	69,899	83	61.8
2020	115	198,457	66,721	90	45.7
2021	99	203,424	68,883	94	39.9

County: county value. Kansas: state value. County Rank: highest county value ranked #1. (\$000): thousands of dollars. Nonmetro Kansas: Kansas total less Metropolitan Areas as defined by the Office of Management and Budget (OMB; released 3/6/2020). Per 1000: For nonmoney amounts, Per 1000=(county value / county population for the same year as the data) x 1000. \$ Per capita=(county value / county population for the same year as the data). Value= . indicates missing or suppressed data or value not calculated.

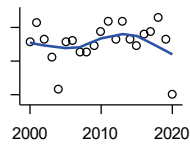
Social Environment

PERCENT OF POPULATION RECEIVING FOOD STAMPS



U.S. Dept. of Agriculture Food and Nutrition Service (1990-1997); Kansas Social and Rehabilitation Services (1998-)

Year	County	State of Kansas	Non Metro Kansas	County Rank	Per 1000 or \$ Per Capita
2000	4.2	4.1	.	35	.
2001	3.7	4.3	.	58	.
2002	4.2	4.9	.	52	.
2003	4.2	5.7	.	63	.
2004	3.3	6.2	.	90	.
2005	2.9	6.4	.	100	.
2006	3.8	6.6	.	90	.
2007	4.5	6.6	.	71	.
2008	4.1	6.7	.	77	.
2009	3.8	7.4	.	90	.
2010	5.9	9.1	.	76	.
2011	7.0	10.3	.	61	.
2012	5.4	10.5	.	86	.
2013	7.0	10.9	.	62	.
2014	6.6	10.4	.	64	.
2015	7.4	9.6	.	48	.
2016	6.1	8.9	.	66	.
2018	6.8	7.5	.	44	.



ESTIMATED NUMBER OF PEOPLE IN POVERTY

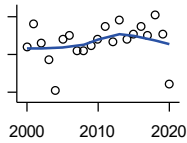
U.S. Census Bureau, Small Area Income and Poverty Estimates

Year	County	State of Kansas	Non Metro Kansas	County Rank	Per 1000 or \$ Per Capita
2000	329	235,087	98,984	88	123.2
2001	357	252,134	106,257	88	133.5
2002	333	265,673	107,542	90	124.4
2003	306	278,163	107,323	90	113.6
2004	259	297,733	111,534	97	98.0
2005	328	310,667	118,768	89	126.6
2006	331	327,102	123,700	94	128.1
2007	314	301,828	111,953	90	119.3
2008	314	307,804	113,015	87	119.0
2009	323	359,692	123,394	90	121.0
2010	344	374,677	131,502	88	127.9
2011	359	383,859	134,912	88	136.1
2012	333	392,095	133,800	88	125.6
2013	359	391,718	134,067	86	137.0
2014	333	381,506	130,213	87	125.2
2015	323	366,069	123,073	85	125.8
2016	341	343,773	121,314	86	129.5
2017	343	335,371	116,854	85	131.1
2018	365	336,892	114,490	85	140.4
2019	332	319,931	110,692	86	130.8
2020	251	300,931	100,998	95	99.7

County: county value. Kansas: state value. County Rank: highest county value ranked #1. (\$000): thousands of dollars. Nonmetro Kansas: Kansas total less Metropolitan Areas as defined by the Office of Management and Budget (OMB; released 3/6/2020). Per 1000: For nonmoney amounts, Per 1000=(county value / county population for the same year as the data) x 1000. \$ Per capita=(county value / county population for the same year as the data). Value= . indicates missing or suppressed data or value not calculated.

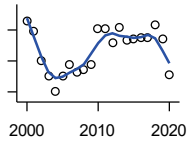
Social Environment

ESTIMATED % OF PEOPLE IN POVERTY



U.S. Census Bureau, Small Area Income and Poverty Estimates

Year	County	State of Kansas	Non Metro Kansas	County Rank	Per 1000 or \$ Per Capita
2000	12.4	8.9	.	15	.
2001	13.6	9.5	.	13	.
2002	12.6	10.0	.	24	.
2003	11.7	10.4	.	34	.
2004	10.1	11.1	.	73	.
2005	12.8	11.7	.	38	.
2006	13.0	12.2	.	42	.
2007	12.2	11.2	.	41	.
2008	12.2	11.3	.	45	.
2009	12.5	13.2	.	53	.
2010	12.8	13.5	.	52	.
2011	13.5	13.8	.	46	.
2012	12.7	14.0	.	55	.
2013	13.8	13.9	.	44	.
2014	12.8	13.5	.	52	.
2015	13.1	12.9	.	38	.
2016	13.5	12.2	.	35	.
2017	13.0	11.9	.	35	.
2018	14.1	11.9	.	26	.
2019	13.1	11.3	.	35	.
2020	10.4	10.6	.	60	.



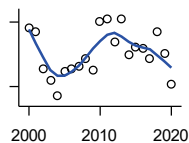
EST. NUMBER OF RELATED CHILDREN AGE 5 TO 17 IN FAMILIES IN POVERTY

U.S. Census Bureau, Small Area Income and Poverty Estimates

Year	County	State of Kansas	Non Metro Kansas	County Rank	Per 1000 or \$ Per Capita
2000	106	50,388	21,854	76	39.7
2001	99	53,755	23,094	78	37.0
2002	80	52,453	21,423	84	29.9
2003	70	55,419	21,809	84	26.0
2004	60	59,392	22,313	89	22.7
2005	70	60,203	24,244	89	27.0
2006	78	64,427	25,326	88	30.2
2007	73	61,149	23,639	84	27.7
2008	74	59,842	22,661	84	28.1
2009	78	71,850	26,251	85	29.2
2010	101	81,077	29,804	81	37.5
2011	101	82,311	29,306	81	38.3
2012	92	87,594	29,781	82	34.7
2013	102	84,325	29,253	79	38.9
2014	93	83,873	29,354	82	35.0
2015	94	78,192	27,482	79	36.6
2016	95	67,810	25,074	78	36.1
2017	95	67,873	25,032	81	36.3
2018	103	68,153	24,928	78	39.6
2019	94	64,613	23,117	77	37.0
2020	71	59,792	21,143	88	28.2

County: county value. Kansas: state value. County Rank: highest county value ranked #1. (\$000): thousands of dollars. Nonmetro Kansas: Kansas total less Metropolitan Areas as defined by the Office of Management and Budget (OMB; released 3/6/2020). Per 1000: For nonmoney amounts, Per 1000=(county value / county population for the same year as the data) x 1000. \$ Per capita=(county value / county population for the same year as the data). Value= . indicates missing or suppressed data or value not calculated.

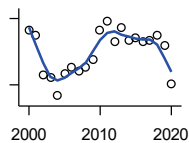
Social Environment



EST. % OF RELATED CHILDREN AGE 5 TO 17 IN FAMILIES IN POVERTY

U.S. Census Bureau, Small Area Income and Poverty Estimates

Year	County	State of Kansas	Non Metro Kansas	County Rank	Per 1000 or \$ Per Capita
2000	19.4	10.0	.	2	.
2001	19.1	10.8	.	3	.
2002	15.7	10.5	.	12	.
2003	14.6	11.3	.	23	.
2004	13.1	12.5	.	48	.
2005	15.4	12.8	.	39	.
2006	15.7	13.2	.	47	.
2007	15.9	12.6	.	31	.
2008	16.6	12.3	.	24	.
2009	15.5	14.7	.	52	.
2010	20.1	15.9	.	21	.
2011	20.3	16.2	.	19	.
2012	18.1	17.2	.	38	.
2013	20.3	16.5	.	23	.
2014	16.9	16.4	.	48	.
2015	17.7	15.3	.	33	.
2016	17.6	13.2	.	23	.
2017	16.6	13.4	.	40	.
2018	19.1	13.5	.	22	.
2019	17.1	12.9	.	28	.
2020	14.2	11.9	.	50	.



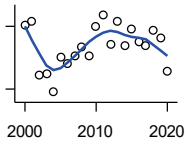
ESTIMATED NUMBER UNDER 18 IN POVERTY

U.S. Census Bureau, Small Area Income and Poverty Estimates

Year	County	State of Kansas	Non Metro Kansas	County Rank	Per 1000 or \$ Per Capita
2000	149	82,619	34,843	77	55.8
2001	145	87,487	36,724	81	54.2
2002	109	84,181	32,870	86	40.7
2003	107	93,896	36,004	87	39.7
2004	90	98,641	36,272	90	34.1
2005	110	100,254	39,118	89	42.5
2006	116	105,193	41,054	90	44.9
2007	112	100,242	37,881	83	42.5
2008	116	100,146	37,552	84	44.0
2009	123	118,187	42,682	85	46.1
2010	150	129,009	46,428	81	55.8
2011	158	133,478	46,832	80	59.9
2012	139	135,261	46,294	82	52.4
2013	152	131,251	44,952	80	58.0
2014	140	125,562	43,933	81	52.7
2015	143	119,994	41,828	79	55.7
2016	139	100,996	37,387	78	52.8
2017	140	102,858	37,955	81	53.5
2018	145	102,616	36,991	77	55.8
2019	136	97,920	34,797	78	53.6
2020	101	88,491	30,767	88	40.1

County: county value. Kansas: state value. County Rank: highest county value ranked #1. (\$000): thousands of dollars. Nonmetro Kansas: Kansas total less Metropolitan Areas as defined by the Office of Management and Budget (OMB; released 3/6/2020). Per 1000: For nonmoney amounts, Per 1000=(county value / county population for the same year as the data) x 1000. \$ Per capita=(county value / county population for the same year as the data). Value= . indicates missing or suppressed data or value not calculated.

Social Environment



ESTIMATED PERCENT UNDER 18 IN POVERTY

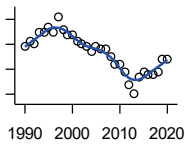
U.S. Census Bureau, Small Area Income and Poverty Estimates

Year	County	State of Kansas	Non Metro Kansas	County Rank	Per 1000 or \$ Per Capita
2000	20.1	11.9	.	4	.
2001	20.5	12.7	.	5	.
2002	15.3	12.1	.	27	.
2003	15.5	13.8	.	41	.
2004	13.7	14.6	.	71	.
2005	17.0	15.2	.	49	.
2006	16.5	15.4	.	56	.
2007	17.2	14.7	.	44	.
2008	18.0	14.6	.	38	.
2009	17.2	17.1	.	60	.
2010	20.0	18.1	.	37	.
2011	21.1	18.8	.	32	.
2012	18.3	19.0	.	49	.
2013	20.5	18.4	.	31	.
2014	18.2	17.6	.	50	.
2015	19.8	16.9	.	30	.
2016	18.5	14.3	.	26	.
2017	18.1	14.7	.	37	.
2018	19.6	14.8	.	26	.
2019	18.9	14.3	.	23	.
2020	15.7	13.0	.	40	.

County: county value. Kansas: state value. County Rank: highest county value ranked #1. (\$000): thousands of dollars. Nonmetro Kansas: Kansas total less Metropolitan Areas as defined by the Office of Management and Budget (OMB; released 3/6/2020). Per 1000: For nonmoney amounts, Per 1000=(county value / county population for the same year as the data) x 1000. \$ Per capita=(county value / county population for the same year as the data). Value= . indicates missing or suppressed data or value not calculated.

Business

ESTABLISHMENTS TOTAL COUNTY BUSINESS PATTERNS



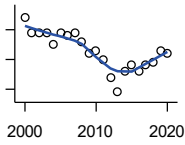
U.S. Census Bureau, County Business Patterns. Beginning with the 2017 data, any tabulation with fewer than 3 establishments were omitted from the release. Data for these establishments are included in the broader total.

Year	County	State of Kansas	Non Metro Kansas	County Rank	Per 1000 or \$ Per Capita
1990	79	65,858	26,802	98	33.1
1991	81	65,941	26,750	96	34.3
1992	80	67,630	27,229	97	33.4
1993	85	68,930	27,655	96	35.4
1994	85	69,822	27,763	96	35.4
1995	87	70,894	28,111	95	35.3
1996	85	72,017	28,353	96	34.5
1997	91	73,924	28,884	96	36.0
1998	86	74,019	28,749	97	32.3
1999	84	74,486	28,536	97	31.4
2000	84	74,939	28,475	97	31.5
2001	81	74,565	28,282	97	30.3
2002	80	75,077	28,183	97	29.9
2003	79	74,972	27,998	99	29.3
2004	77	75,827	28,009	99	29.1
2005	79	76,173	27,830	98	30.5
2006	78	76,446	27,653	97	30.2
2007	78	77,157	27,736	97	29.6
2008	75	76,096	27,314	97	28.4
2009	72	74,698	26,839	99	27.0
2010	72	74,301	26,739	100	26.8
2011	69	73,598	26,555	100	26.2
2012	64	73,944	26,534	100	24.1
2013	60	73,816	26,393	102	22.9
2014	67	74,055	26,292	99	25.2
2015	69	74,526	26,355	98	26.9
2016	68	74,884	26,172	96	25.8
2017	68	74,947	26,093	97	26.0
2018	69	74,559	25,802	96	26.5
2019	74	74,292	25,536	95	29.1
2020	74	73,982	25,178	94	29.4

County: county value. Kansas: state value. County Rank: highest county value ranked #1. (\$000): thousands of dollars. Nonmetro Kansas: Kansas total less Metropolitan Areas as defined by the Office of Management and Budget (OMB; released 3/6/2020). Per 1000: For nonmoney amounts, Per 1000=(county value / county population for the same year as the data) x 1000. \$ Per capita=(county value / county population for the same year as the data). Value= . indicates missing or suppressed data or value not calculated.

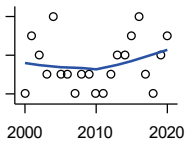
Business

**ESTABLISHMENTS: 1-19
EMPLOYEES**



U.S. Census Bureau, County Business Patterns. Beginning with the 2017 data, any tabulation with fewer than 3 establishments were omitted from the release. Data for these establishments are included in the broader total.

Year	County	State of Kansas	Non Metro Kansas	County Rank	Per 1000 or \$ Per Capita
2000	79	64,527	25,381	97	29.6
2001	74	64,176	25,248	99	27.7
2002	74	64,886	25,208	98	27.7
2003	74	64,714	25,020	100	27.5
2004	70	65,554	24,995	101	26.5
2005	74	65,796	24,839	98	28.6
2006	73	65,764	24,589	97	28.3
2007	74	66,446	24,701	97	28.1
2008	71	65,322	24,257	98	26.9
2009	67	64,128	23,851	100	25.1
2010	68	64,015	23,857	100	25.3
2011	65	63,251	23,571	100	24.6
2012	59	63,519	23,575	100	22.3
2013	54	63,197	23,396	103	20.6
2014	61	63,113	23,229	101	22.9
2015	63	63,280	23,227	99	24.5
2016	61	63,630	23,117	99	23.2
2017	63	63,619	23,022	98	24.1
2018	64	63,233	22,745	97	24.6
2019	68	62,904	22,489	94	26.8
2020	67	62,634	22,173	94	26.6



**ESTABLISHMENTS: 20-99
EMPLOYEES**

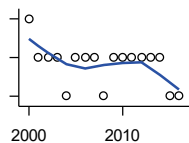
U.S. Census Bureau, County Business Patterns. Beginning with the 2017 data, any tabulation with fewer than 3 establishments were omitted from the release. Data for these establishments are included in the broader total.

Year	County	State of Kansas	Non Metro Kansas	County Rank	Per 1000 or \$ Per Capita
2000	3	8,714	2,653	101	1.1
2001	6	8,692	2,593	81	2.2
2002	5	8,582	2,554	88	1.9
2003	4	8,642	2,568	93	1.5
2004	7	8,658	2,590	80	2.6
2005	4	8,685	2,553	96	1.5
2006	4	8,922	2,612	96	1.5
2007	3	8,938	2,574	100	1.1
2008	4	8,939	2,587	95	1.5
2009	4	8,848	2,551	93	1.5
2010	3	8,612	2,454	101	1.1
2011	3	8,668	2,540	100	1.1
2012	4	8,700	2,500	98	1.5
2013	5	8,870	2,541	89	1.9
2014	5	9,121	2,590	89	1.9
2015	6	9,374	2,664	86	2.3
2016	7	9,412	2,596	80	2.7
2017	4	9,487	2,638	93	1.5
2018	3	9,485	2,621	95	1.2
2019	5	9,485	2,591	85	2.0
2020	6	9,471	2,545	78	2.4

County: county value. Kansas: state value. County Rank: highest county value ranked #1. (\$000): thousands of dollars. Nonmetro Kansas: Kansas total less Metropolitan Areas as defined by the Office of Management and Budget (OMB; released 3/6/2020). Per 1000: For nonmoney amounts, Per 1000=(county value / county population for the same year as the data) x 1000. \$ Per capita=(county value / county population for the same year as the data). Value= . indicates missing or suppressed data or value not calculated.

Business

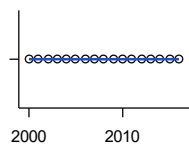
ESTABLISHMENTS: 100-499 EMPLOYEES



U.S. Census Bureau, County Business Patterns. Beginning with the 2017 data, any tabulation with fewer than 3 establishments were omitted from the release. Data for these establishments are included in the broader total.

Year	County	State of Kansas	Non Metro Kansas	County Rank	Per 1000 or \$ Per Capita
2000	2	1,555	409	62	0.7
2001	1	1,555	406	86	0.4
2002	1	1,464	386	81	0.4
2003	1	1,470	378	83	0.4
2004	0	1,463	388	105	0.0
2005	1	1,537	400	82	0.4
2006	1	1,598	407	83	0.4
2007	1	1,602	416	87	0.4
2008	0	1,653	421	105	0.0
2009	1	1,551	394	86	0.4
2010	1	1,513	382	85	0.4
2011	1	1,523	395	86	0.4
2012	1	1,567	410	85	0.4
2013	1	1,581	407	85	0.4
2014	1	1,641	421	86	0.4
2015	0	1,693	414	105	0.0
2016	0	1,671	406	105	0.0

ESTABLISHMENTS: 500 OR MORE EMPLOYEES

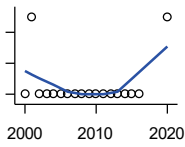


U.S. Census Bureau, County Business Patterns. Beginning with the 2017 data, any tabulation with fewer than 3 establishments were omitted from the release. Data for these establishments are included in the broader total.

Year	County	State of Kansas	Non Metro Kansas	County Rank	Per 1000 or \$ Per Capita
2000	0	143	32	105	0.0
2001	0	142	35	105	0.0
2002	0	145	35	105	0.0
2003	0	146	32	105	0.0
2004	0	152	36	105	0.0
2005	0	155	38	105	0.0
2006	0	162	45	105	0.0
2007	0	171	45	105	0.0
2008	0	182	49	105	0.0
2009	0	171	43	105	0.0
2010	0	161	46	105	0.0
2011	0	156	49	105	0.0
2012	0	158	49	105	0.0
2013	0	168	49	105	0.0
2014	0	180	52	105	0.0
2015	0	179	50	105	0.0
2016	0	171	53	105	0.0

County: county value. Kansas: state value. County Rank: highest county value ranked #1. (\$000): thousands of dollars. Nonmetro Kansas: Kansas total less Metropolitan Areas as defined by the Office of Management and Budget (OMB; released 3/6/2020). Per 1000: For nonmoney amounts, Per 1000=(county value / county population for the same year as the data) x 1000. \$ Per capita=(county value / county population for the same year as the data). Value= . indicates missing or suppressed data or value not calculated.

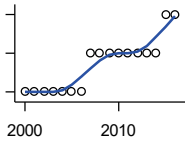
Business



ESTABLISHMENTS: FORESTRY, FISHING, HUNTING, AND AG SUPPORT

U.S. Census Bureau, County Business Patterns. Beginning with the 2017 data, any tabulation with fewer than 3 establishments were omitted from the release. Data for these establishments are included in the broader total.

Year	County	State of Kansas	Non Metro Kansas	County Rank	Per 1000 or \$ Per Capita
2000	2	190	149	43	0.7
2001	3	217	168	32	1.1
2002	2	224	176	56	0.7
2003	2	217	173	54	0.7
2004	2	211	165	53	0.8
2005	2	188	148	45	0.8
2006	2	193	158	48	0.8
2007	2	212	170	52	0.8
2008	2	197	158	50	0.8
2009	2	191	154	52	0.7
2010	2	192	161	50	0.7
2011	2	193	157	50	0.8
2012	2	204	164	50	0.8
2013	2	208	166	54	0.8
2014	2	194	152	55	0.8
2015	2	192	149	51	0.8
2016	2	181	142	48	0.8
2020	3	181	.	25	1.2



ESTABLISHMENTS: MINING

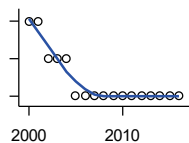
U.S. Census Bureau, County Business Patterns. Beginning with the 2017 data, any tabulation with fewer than 3 establishments were omitted from the release. Data for these establishments are included in the broader total.

Year	County	State of Kansas	Non Metro Kansas	County Rank	Per 1000 or \$ Per Capita
2000	0	868	619	105	0.0
2001	0	878	622	105	0.0
2002	0	847	615	105	0.0
2003	0	864	633	105	0.0
2004	0	880	647	105	0.0
2005	0	941	695	105	0.0
2006	0	991	734	105	0.0
2007	1	1,000	759	88	0.4
2008	1	1,047	799	90	0.4
2009	1	1,016	772	90	0.4
2010	1	1,009	762	91	0.4
2011	1	1,013	763	92	0.4
2012	1	1,048	789	91	0.4
2013	1	1,060	802	92	0.4
2014	1	1,102	828	93	0.4
2015	2	1,069	810	76	0.8
2016	2	990	747	77	0.8

County: county value. Kansas: state value. County Rank: highest county value ranked #1. (\$000): thousands of dollars. Nonmetro Kansas: Kansas total less Metropolitan Areas as defined by the Office of Management and Budget (OMB; released 3/6/2020). Per 1000: For nonmoney amounts, Per 1000=(county value / county population for the same year as the data) x 1000. \$ Per capita=(county value / county population for the same year as the data). Value= . indicates missing or suppressed data or value not calculated.

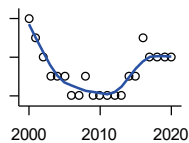
Business

ESTABLISHMENTS: UTILITIES



U.S. Census Bureau, County Business Patterns. Beginning with the 2017 data, any tabulation with fewer than 3 establishments were omitted from the release. Data for these establishments are included in the broader total.

Year	County	State of Kansas	Non Metro Kansas	County Rank	Per 1000 or \$ Per Capita
2000	3	274	192	37	1.1
2001	3	290	204	39	1.1
2002	2	278	195	64	0.7
2003	2	268	180	63	0.7
2004	2	247	164	59	0.8
2005	1	254	172	91	0.4
2006	1	248	169	92	0.4
2007	1	222	156	87	0.4
2008	1	244	166	87	0.4
2009	1	222	152	86	0.4
2010	1	197	129	82	0.4
2011	1	230	156	87	0.4
2012	1	232	156	86	0.4
2013	1	234	159	87	0.4
2014	1	232	160	89	0.4
2015	1	237	165	88	0.4
2016	1	245	171	90	0.4



ESTABLISHMENTS: CONSTRUCTION

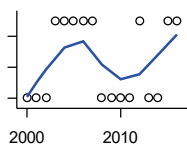
U.S. Census Bureau, County Business Patterns. Beginning with the 2017 data, any tabulation with fewer than 3 establishments were omitted from the release. Data for these establishments are included in the broader total.

Year	County	State of Kansas	Non Metro Kansas	County Rank	Per 1000 or \$ Per Capita
2000	6	7,703	2,616	97	2.2
2001	5	7,449	2,520	100	1.9
2002	4	7,519	2,482	99	1.5
2003	3	7,722	2,521	102	1.1
2004	3	7,887	2,518	102	1.1
2005	3	8,032	2,515	102	1.2
2006	2	8,031	2,494	103	0.8
2007	2	8,057	2,547	103	0.8
2008	3	7,831	2,522	103	1.1
2009	2	7,342	2,452	104	0.7
2010	2	7,064	2,394	104	0.7
2011	2	6,774	2,361	104	0.8
2012	2	6,741	2,393	104	0.8
2013	2	6,802	2,394	104	0.8
2014	3	6,920	2,383	103	1.1
2015	3	7,014	2,377	103	1.2
2016	5	6,988	2,343	97	1.9
2017	4	7,031	2,316	101	1.5
2018	4	7,124	2,285	99	1.5
2019	4	7,060	2,242	99	1.6
2020	4	7,089	2,249	98	1.6

County: county value. Kansas: state value. County Rank: highest county value ranked #1. (\$000): thousands of dollars. Nonmetro Kansas: Kansas total less Metropolitan Areas as defined by the Office of Management and Budget (OMB; released 3/6/2020). Per 1000: For nonmoney amounts, Per 1000=(county value / county population for the same year as the data) x 1000. \$ Per capita=(county value / county population for the same year as the data). Value= . indicates missing or suppressed data or value not calculated.

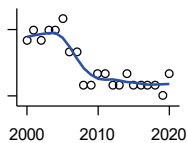
Business

**ESTABLISHMENTS:
MANUFACTURING**



U.S. Census Bureau, County Business Patterns. Beginning with the 2017 data, any tabulation with fewer than 3 establishments were omitted from the release. Data for these establishments are included in the broader total.

Year	County	State of Kansas	Non Metro Kansas	County Rank	Per 1000 or \$ Per Capita
2000	0	3,229	1,316	105	0.0
2001	0	3,240	1,323	105	0.0
2002	0	3,181	1,289	105	0.0
2003	1	3,159	1,291	104	0.4
2004	1	3,179	1,313	103	0.4
2005	1	3,128	1,278	104	0.4
2006	1	3,165	1,290	105	0.4
2007	1	3,184	1,316	103	0.4
2008	0	3,171	1,297	105	0.0
2009	0	3,026	1,240	105	0.0
2010	0	2,955	1,222	105	0.0
2011	0	2,877	1,193	105	0.0
2012	1	2,889	1,197	102	0.4
2013	0	2,836	1,165	105	0.0
2014	0	2,831	1,168	105	0.0
2015	1	2,817	1,161	101	0.4
2016	1	2,791	1,150	100	0.4



**ESTABLISHMENTS: WHOLESALE
TRADE**

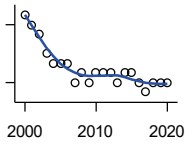
U.S. Census Bureau, County Business Patterns. Beginning with the 2017 data, any tabulation with fewer than 3 establishments were omitted from the release. Data for these establishments are included in the broader total.

Year	County	State of Kansas	Non Metro Kansas	County Rank	Per 1000 or \$ Per Capita
2000	11	4,876	1,776	72	4.1
2001	12	4,811	1,769	66	4.5
2002	11	4,719	1,750	71	4.1
2003	12	4,590	1,637	67	4.5
2004	12	4,553	1,634	64	4.5
2005	13	4,541	1,618	61	5.0
2006	10	4,517	1,596	77	3.9
2007	10	4,555	1,629	80	3.8
2008	7	4,501	1,622	88	2.7
2009	7	4,437	1,614	88	2.6
2010	8	4,432	1,612	87	3.0
2011	8	4,400	1,660	88	3.0
2012	7	4,563	1,755	92	2.6
2013	7	4,501	1,741	89	2.7
2014	8	4,497	1,746	88	3.0
2015	7	4,459	1,755	90	2.7
2016	7	4,457	1,732	90	2.7
2017	7	4,436	1,774	88	2.7
2018	7	4,330	1,727	88	2.7
2019	6	4,291	1,713	92	2.4
2020	8	4,191	1,677	84	3.2

County: county value. Kansas: state value. County Rank: highest county value ranked #1. (\$000): thousands of dollars. Nonmetro Kansas: Kansas total less Metropolitan Areas as defined by the Office of Management and Budget (OMB; released 3/6/2020). Per 1000: For nonmoney amounts, Per 1000=(county value / county population for the same year as the data) x 1000. \$ Per capita=(county value / county population for the same year as the data). Value= . indicates missing or suppressed data or value not calculated.

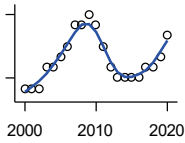
Business

ESTABLISHMENTS: RETAIL TRADE



U.S. Census Bureau, County Business Patterns. Beginning with the 2017 data, any tabulation with fewer than 3 establishments were omitted from the release. Data for these establishments are included in the broader total.

Year	County	State of Kansas	Non Metro Kansas	County Rank	Per 1000 or \$ Per Capita
2000	17	12,261	5,240	94	6.4
2001	16	12,206	5,207	95	6.0
2002	15	11,980	5,082	97	5.6
2003	13	11,834	5,049	99	4.8
2004	12	11,748	4,967	99	4.5
2005	12	11,562	4,834	97	4.6
2006	12	11,367	4,702	98	4.6
2007	10	11,306	4,653	100	3.8
2008	11	10,978	4,494	99	4.2
2009	10	10,760	4,372	102	3.7
2010	11	10,727	4,346	99	4.1
2011	11	10,655	4,289	99	4.2
2012	11	10,585	4,202	96	4.1
2013	10	10,433	4,147	99	3.8
2014	11	10,391	4,070	97	4.1
2015	11	10,327	4,061	96	4.3
2016	10	10,197	3,965	98	3.8
2017	9	10,074	3,885	100	3.4
2018	10	9,866	3,797	99	3.8
2019	10	9,762	3,750	98	3.9
2020	10	9,591	3,666	98	4.0



ESTABLISHMENTS: TRANSPORTATION & WAREHOUSING

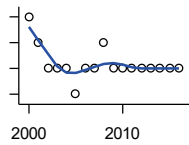
U.S. Census Bureau, County Business Patterns. Beginning with the 2017 data, any tabulation with fewer than 3 establishments were omitted from the release. Data for these establishments are included in the broader total.

Year	County	State of Kansas	Non Metro Kansas	County Rank	Per 1000 or \$ Per Capita
2000	3	2,474	1,293	101	1.1
2001	3	2,463	1,298	102	1.1
2002	3	2,461	1,278	101	1.1
2003	5	2,576	1,297	88	1.9
2004	5	2,651	1,324	90	1.9
2005	6	2,632	1,326	84	2.3
2006	7	2,626	1,295	78	2.7
2007	9	2,664	1,314	70	3.4
2008	9	2,675	1,329	70	3.4
2009	10	2,635	1,313	65	3.7
2010	9	2,615	1,313	67	3.3
2011	7	2,579	1,285	78	2.7
2012	5	2,519	1,243	89	1.9
2013	4	2,492	1,226	92	1.5
2014	4	2,518	1,240	92	1.5
2015	4	2,554	1,257	94	1.6
2016	4	2,567	1,241	93	1.5
2017	5	2,640	1,245	87	1.9
2018	5	2,627	1,238	86	1.9
2019	6	2,615	1,209	82	2.4
2020	8	2,589	1,179	66	3.2

County: county value. Kansas: state value. County Rank: highest county value ranked #1. (\$000): thousands of dollars. Nonmetro Kansas: Kansas total less Metropolitan Areas as defined by the Office of Management and Budget (OMB; released 3/6/2020). Per 1000: For nonmoney amounts, Per 1000=(county value / county population for the same year as the data) x 1000. \$ Per capita=(county value / county population for the same year as the data). Value= . indicates missing or suppressed data or value not calculated.

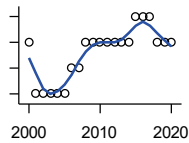
Business

ESTABLISHMENTS: INFORMATION



U.S. Census Bureau, County Business Patterns. Beginning with the 2017 data, any tabulation with fewer than 3 establishments were omitted from the release. Data for these establishments are included in the broader total.

Year	County	State of Kansas	Non Metro Kansas	County Rank	Per 1000 or \$ Per Capita
2000	3	1,542	578	85	1.1
2001	2	1,556	566	96	0.7
2002	1	1,517	551	100	0.4
2003	1	1,516	564	100	0.4
2004	1	1,518	556	101	0.4
2005	0	1,519	536	105	0.0
2006	1	1,549	559	102	0.4
2007	1	1,504	527	102	0.4
2008	2	1,468	522	87	0.8
2009	1	1,420	510	101	0.4
2010	1	1,437	527	102	0.4
2011	1	1,428	537	101	0.4
2012	1	1,387	515	102	0.4
2013	1	1,337	487	102	0.4
2014	1	1,335	496	103	0.4
2015	1	1,359	510	103	0.4
2016	1	1,431	537	103	0.4



ESTABLISHMENTS: FINANCE & INSURANCE

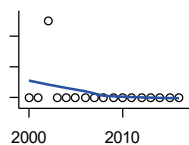
U.S. Census Bureau, County Business Patterns. Beginning with the 2017 data, any tabulation with fewer than 3 establishments were omitted from the release. Data for these establishments are included in the broader total.

Year	County	State of Kansas	Non Metro Kansas	County Rank	Per 1000 or \$ Per Capita
2000	6	5,209	1,848	95	2.2
2001	4	5,178	1,828	101	1.5
2002	4	5,496	1,911	99	1.5
2003	4	5,569	1,907	102	1.5
2004	4	5,572	1,913	102	1.5
2005	4	5,708	1,964	102	1.5
2006	5	5,877	1,976	100	1.9
2007	5	6,017	2,030	102	1.9
2008	6	6,010	2,023	98	2.3
2009	6	5,933	1,994	98	2.2
2010	6	5,872	1,975	100	2.2
2011	6	5,854	1,985	99	2.3
2012	6	5,993	2,024	100	2.3
2013	6	5,903	1,993	99	2.3
2014	6	5,894	2,000	99	2.3
2015	7	5,932	1,998	90	2.7
2016	7	6,022	2,021	90	2.7
2017	7	6,026	2,007	91	2.7
2018	6	6,023	1,997	97	2.3
2019	6	5,953	1,977	95	2.4
2020	6	5,926	1,969	97	2.4

County: county value. Kansas: state value. County Rank: highest county value ranked #1. (\$000): thousands of dollars. Nonmetro Kansas: Kansas total less Metropolitan Areas as defined by the Office of Management and Budget (OMB; released 3/6/2020). Per 1000: For nonmoney amounts, Per 1000=(county value / county population for the same year as the data) x 1000. \$ Per capita=(county value / county population for the same year as the data). Value= . indicates missing or suppressed data or value not calculated.

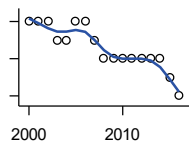
Business

ESTABLISHMENTS: REAL ESTATE, RENTAL, AND LEASING



U.S. Census Bureau, County Business Patterns. Beginning with the 2017 data, any tabulation with fewer than 3 establishments were omitted from the release. Data for these establishments are included in the broader total.

Year	County	State of Kansas	Non Metro Kansas	County Rank	Per 1000 or \$ Per Capita
2000	0	2,733	687	105	0.0
2001	0	2,849	724	105	0.0
2002	1	2,952	735	95	0.4
2003	0	3,007	727	105	0.0
2004	0	3,108	713	105	0.0
2005	0	3,203	727	105	0.0
2006	0	3,268	736	105	0.0
2007	0	3,286	721	105	0.0
2008	0	3,239	738	105	0.0
2009	0	3,122	723	105	0.0
2010	0	3,050	708	105	0.0
2011	0	3,002	692	105	0.0
2012	0	2,981	691	105	0.0
2013	0	3,046	717	105	0.0
2014	0	3,135	738	105	0.0
2015	0	3,179	744	105	0.0
2016	0	3,293	757	105	0.0



ESTABLISHMENTS: PROFESSIONAL, SCIENTIFIC, AND TECHNICAL SERVICES

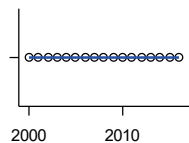
U.S. Census Bureau, County Business Patterns. Beginning with the 2017 data, any tabulation with fewer than 3 establishments were omitted from the release. Data for these establishments are included in the broader total.

Year	County	State of Kansas	Non Metro Kansas	County Rank	Per 1000 or \$ Per Capita
2000	5	6,424	1,690	95	1.9
2001	5	6,492	1,665	92	1.9
2002	5	6,719	1,704	93	1.9
2003	4	6,793	1,735	101	1.5
2004	4	7,025	1,730	100	1.5
2005	5	7,087	1,711	97	1.9
2006	5	7,231	1,736	97	1.9
2007	4	7,329	1,729	101	1.5
2008	3	7,133	1,671	103	1.1
2009	3	7,122	1,676	104	1.1
2010	3	7,172	1,680	104	1.1
2011	3	7,115	1,668	104	1.1
2012	3	7,122	1,681	105	1.1
2013	3	7,129	1,698	105	1.1
2014	3	7,206	1,682	103	1.1
2015	2	7,184	1,687	105	0.8
2016	1	7,146	1,659	105	0.4

County: county value. Kansas: state value. County Rank: highest county value ranked #1. (\$000): thousands of dollars. Nonmetro Kansas: Kansas total less Metropolitan Areas as defined by the Office of Management and Budget (OMB; released 3/6/2020). Per 1000: For nonmoney amounts, Per 1000=(county value / county population for the same year as the data) x 1000. \$ Per capita=(county value / county population for the same year as the data). Value= . indicates missing or suppressed data or value not calculated.

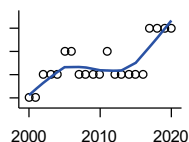
Business

ESTABLISHMENTS: MANAGEMENT OF COMPANIES AND ENTERPRISES



U.S. Census Bureau, County Business Patterns. Beginning with the 2017 data, any tabulation with fewer than 3 establishments were omitted from the release. Data for these establishments are included in the broader total.

Year	County	State of Kansas	Non Metro Kansas	County Rank	Per 1000 or \$ Per Capita
2000	0	622	145	105	0.0
2001	0	593	141	105	0.0
2002	0	597	152	105	0.0
2003	0	561	135	105	0.0
2004	0	569	133	105	0.0
2005	0	543	127	105	0.0
2006	0	542	131	105	0.0
2007	0	550	133	105	0.0
2008	0	553	139	105	0.0
2009	0	575	136	105	0.0
2010	0	567	131	105	0.0
2011	0	552	134	105	0.0
2012	0	593	135	105	0.0
2013	0	590	135	105	0.0
2014	0	603	136	105	0.0
2015	0	613	140	105	0.0
2016	0	655	171	105	0.0



ESTABLISHMENTS: ADMIN, SUPPORT, WASTE MGMT., AND REMEDIATION

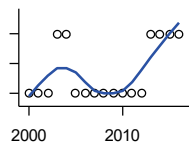
U.S. Census Bureau, County Business Patterns. Beginning with the 2017 data, any tabulation with fewer than 3 establishments were omitted from the release. Data for these establishments are included in the broader total.

Year	County	State of Kansas	Non Metro Kansas	County Rank	Per 1000 or \$ Per Capita
2000	0	3,307	871	105	0.0
2001	0	3,421	913	105	0.0
2002	1	3,232	882	99	0.4
2003	1	3,189	858	99	0.4
2004	1	3,301	891	101	0.4
2005	2	3,342	896	91	0.8
2006	2	3,395	886	93	0.8
2007	1	3,522	921	99	0.4
2008	1	3,587	932	100	0.4
2009	1	3,505	904	101	0.4
2010	1	3,494	897	99	0.4
2011	2	3,447	903	90	0.8
2012	1	3,462	891	99	0.4
2013	1	3,489	904	100	0.4
2014	1	3,569	933	98	0.4
2015	1	3,630	964	97	0.4
2016	1	3,705	987	99	0.4
2017	3	3,741	991	84	1.1
2018	3	3,740	983	84	1.2
2019	3	3,762	991	82	1.2
2020	3	3,807	989	80	1.2

County: county value. Kansas: state value. County Rank: highest county value ranked #1. (\$000): thousands of dollars. Nonmetro Kansas: Kansas total less Metropolitan Areas as defined by the Office of Management and Budget (OMB; released 3/6/2020). Per 1000: For nonmoney amounts, Per 1000=(county value / county population for the same year as the data) x 1000. \$ Per capita=(county value / county population for the same year as the data). Value= . indicates missing or suppressed data or value not calculated.

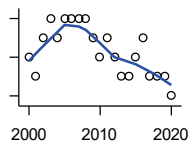
Business

ESTABLISHMENTS: EDUCATIONAL SERVICES



U.S. Census Bureau, County Business Patterns. Beginning with the 2017 data, any tabulation with fewer than 3 establishments were omitted from the release. Data for these establishments are included in the broader total.

Year	County	State of Kansas	Non Metro Kansas	County Rank	Per 1000 or \$ Per Capita
2000	0	604	155	105	0.0
2001	0	625	168	105	0.0
2002	0	666	165	105	0.0
2003	1	663	173	73	0.4
2004	1	690	173	72	0.4
2005	0	699	168	105	0.0
2006	0	698	175	105	0.0
2007	0	691	165	105	0.0
2008	0	692	158	105	0.0
2009	0	690	150	105	0.0
2010	0	700	149	105	0.0
2011	0	711	150	105	0.0
2012	0	724	145	105	0.0
2013	1	735	153	68	0.4
2014	1	722	152	66	0.4
2015	1	754	152	66	0.4
2016	1	728	150	66	0.4



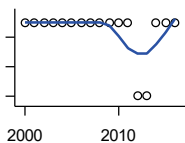
ESTABLISHMENTS: HEALTH CARE AND SOCIAL ASSISTANCE

U.S. Census Bureau, County Business Patterns. Beginning with the 2017 data, any tabulation with fewer than 3 establishments were omitted from the release. Data for these establishments are included in the broader total.

Year	County	State of Kansas	Non Metro Kansas	County Rank	Per 1000 or \$ Per Capita
2000	7	6,564	2,591	90	2.6
2001	6	6,636	2,590	95	2.2
2002	8	7,052	2,777	89	3.0
2003	9	7,129	2,792	82	3.3
2004	8	7,239	2,813	88	3.0
2005	9	7,412	2,855	85	3.5
2006	9	7,477	2,860	84	3.5
2007	9	7,661	2,864	83	3.4
2008	9	7,651	2,810	80	3.4
2009	8	7,696	2,787	84	3.0
2010	7	7,751	2,830	94	2.6
2011	8	7,804	2,817	85	3.0
2012	7	7,973	2,793	95	2.6
2013	6	7,877	2,729	99	2.3
2014	6	7,809	2,686	95	2.3
2015	7	8,103	2,692	88	2.7
2016	8	8,315	2,678	85	3.0
2017	6	8,136	2,646	91	2.3
2018	6	8,126	2,632	92	2.3
2019	6	8,184	2,587	94	2.4
2020	5	8,290	2,571	97	2.0

County: county value. Kansas: state value. County Rank: highest county value ranked #1. (\$000): thousands of dollars. Nonmetro Kansas: Kansas total less Metropolitan Areas as defined by the Office of Management and Budget (OMB; released 3/6/2020). Per 1000: For nonmoney amounts, Per 1000=(county value / county population for the same year as the data) x 1000. \$ Per capita=(county value / county population for the same year as the data). Value= . indicates missing or suppressed data or value not calculated.

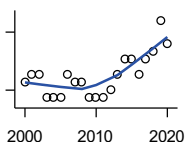
Business



ESTABLISHMENTS: ARTS, ENTERTAINMENT, AND RECREATION

U.S. Census Bureau, County Business Patterns. Beginning with the 2017 data, any tabulation with fewer than 3 establishments were omitted from the release. Data for these establishments are included in the broader total.

Year	County	State of Kansas	Non Metro Kansas	County Rank	Per 1000 or \$ Per Capita
2000	1	981	419	98	0.4
2001	1	1,009	433	97	0.4
2002	1	1,054	441	100	0.4
2003	1	1,045	443	101	0.4
2004	1	1,082	445	101	0.4
2005	1	1,109	446	100	0.4
2006	1	1,080	445	101	0.4
2007	1	1,092	444	100	0.4
2008	1	1,062	423	96	0.4
2009	1	1,063	421	98	0.4
2010	1	1,018	406	99	0.4
2011	1	997	387	100	0.4
2012	0	1,000	388	105	0.0
2013	0	1,009	377	105	0.0
2014	1	1,030	365	101	0.4
2015	1	1,031	357	101	0.4
2016	1	1,060	366	101	0.4



ESTABLISHMENTS: ACCOMMODATION AND FOOD SERVICES

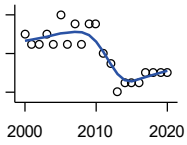
U.S. Census Bureau, County Business Patterns. Beginning with the 2017 data, any tabulation with fewer than 3 establishments were omitted from the release. Data for these establishments are included in the broader total.

Year	County	State of Kansas	Non Metro Kansas	County Rank	Per 1000 or \$ Per Capita
2000	6	5,536	2,213	97	2.2
2001	7	5,551	2,173	96	2.6
2002	7	5,610	2,174	95	2.6
2003	4	5,635	2,188	103	1.5
2004	4	5,681	2,160	101	1.5
2005	4	5,776	2,170	103	1.5
2006	7	5,745	2,132	92	2.7
2007	6	5,877	2,095	95	2.3
2008	6	5,843	2,052	93	2.3
2009	4	5,794	2,029	102	1.5
2010	4	5,898	2,046	101	1.5
2011	4	5,958	2,067	101	1.5
2012	5	5,951	2,046	99	1.9
2013	7	6,061	2,070	88	2.7
2014	9	5,985	2,024	74	3.4
2015	9	6,034	2,063	75	3.5
2016	7	6,126	2,094	86	2.7
2017	9	6,250	2,123	77	3.4
2018	10	6,256	2,128	75	3.8
2019	14	6,231	2,131	57	5.5
2020	11	6,206	2,131	67	4.4

County: county value. Kansas: state value. County Rank: highest county value ranked #1. (\$000): thousands of dollars. Nonmetro Kansas: Kansas total less Metropolitan Areas as defined by the Office of Management and Budget (OMB; released 3/6/2020). Per 1000: For nonmoney amounts, Per 1000=(county value / county population for the same year as the data) x 1000. \$ Per capita=(county value / county population for the same year as the data). Value= . indicates missing or suppressed data or value not calculated.

Business

ESTABLISHMENTS: OTHER SERVICES

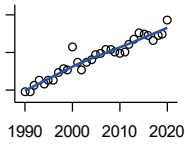


U.S. Census Bureau, County Business Patterns. Beginning with the 2017 data, any tabulation with fewer than 3 establishments were omitted from the release. Data for these establishments are included in the broader total.

Year	County	State of Kansas	Non Metro Kansas	County Rank	Per 1000 or \$ Per Capita
2000	14	8,423	3,636	90	5.2
2001	13	8,310	3,614	93	4.9
2002	13	8,552	3,658	92	4.9
2003	14	8,411	3,605	90	5.2
2004	13	8,343	3,597	92	4.9
2005	16	8,321	3,571	85	6.2
2006	13	8,225	3,490	90	5.0
2007	15	8,355	3,534	89	5.7
2008	13	8,104	3,406	92	4.9
2009	15	8,040	3,405	88	5.6
2010	15	7,998	3,379	89	5.6
2011	12	7,883	3,294	96	4.6
2012	11	7,913	3,303	95	4.1
2013	8	7,947	3,290	104	3.1
2014	9	7,943	3,285	102	3.4
2015	9	7,869	3,255	102	3.5
2016	9	7,839	3,204	100	3.4
2017	10	7,873	3,189	99	3.8
2018	10	7,853	3,176	97	3.8
2019	10	7,834	3,138	97	3.9
2020	10	7,787	3,073	93	4.0

County: county value. Kansas: state value. County Rank: highest county value ranked #1. (\$000): thousands of dollars. Nonmetro Kansas: Kansas total less Metropolitan Areas as defined by the Office of Management and Budget (OMB; released 3/6/2020). Per 1000: For nonmoney amounts, Per 1000=(county value / county population for the same year as the data) x 1000. \$ Per capita=(county value / county population for the same year as the data). Value= . indicates missing or suppressed data or value not calculated.

Business



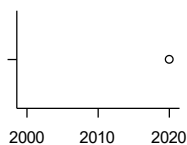
**TOTAL ANNUAL PAYROLL (\$000)
COUNTY BUSINESS PATTERNS**

U.S. Census Bureau, County Business Patterns. Beginning with the 2017 data, any tabulation with fewer than 3 establishments were omitted from the release. Data for these establishments are included in the broader total.

Year	County	State of Kansas	Non Metro Kansas	County Rank	Per 1000 or \$ Per Capita
1990	4,439	17,487,316	4,442,429	98	1,858.9
1991	4,715	18,162,326	4,612,616	98	1,996.2
1992	6,314	19,244,346	4,882,060	94	2,638.5
1993	7,613	20,087,190	5,182,780	92	3,172.1
1994	6,767	21,201,652	5,541,423	97	2,821.9
1995	7,732	22,825,920	5,875,310	95	3,132.9
1996	7,500	24,613,884	6,198,398	96	3,041.4
1997	9,659	26,787,098	6,599,061	89	3,823.8
1998	10,549	28,747,576	6,871,794	90	3,967.3
1999	10,214	30,600,434	7,121,961	90	3,822.6
2000	16,518	31,990,762	7,520,424	79	6,186.5
2001	12,346	33,303,992	7,598,165	88	4,615.3
2002	10,337	33,152,962	7,572,002	91	3,862.9
2003	12,358	34,040,944	7,726,561	87	4,587.2
2004	13,089	35,725,812	8,303,779	87	4,954.2
2005	14,584	36,646,064	8,586,986	85	5,630.9
2006	14,799	39,251,388	9,178,947	86	5,729.4
2007	15,639	42,022,753	.	87	5,939.6
2008	15,948	43,984,689	.	87	6,045.5
2009	15,199	42,146,866	.	90	5,694.6
2010	14,674	42,686,303	10,294,015	91	5,455.0
2011	15,270	43,733,944	.	88	5,790.7
2012	17,225	45,608,072	11,222,183	89	6,497.5
2013	18,422	47,715,601	11,446,751	89	7,031.3
2014	20,051	49,712,832	11,957,931	87	7,540.8
2015	19,914	51,259,676	11,975,718	89	7,754.7
2016	19,694	51,016,318	12,148,646	89	7,476.8
2017	18,253	52,754,605	12,448,592	92	6,977.4
2018	19,557	55,087,460	12,810,270	88	7,521.9
2019	19,996	57,272,387	13,123,288	89	7,875.5
2020	23,633	58,374,388	14,007,955	87	9,385.6

County: county value. Kansas: state value. County Rank: highest county value ranked #1. (\$000): thousands of dollars. Nonmetro Kansas: Kansas total less Metropolitan Areas as defined by the Office of Management and Budget (OMB; released 3/6/2020). Per 1000: For nonmoney amounts, Per 1000=(county value / county population for the same year as the data) x 1000. \$ Per capita=(county value / county population for the same year as the data). Value= . indicates missing or suppressed data or value not calculated.

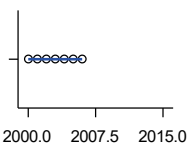
Business



**TOTAL ANNUAL PAYROLL(\$000):
FORESTRY, FISHING, HUNTING, AND
AG SUPPORT**

U.S. Census Bureau, County Business Patterns. Beginning with the 2017 data, any tabulation with fewer than 3 establishments were omitted from the release. Data for these establishments are included in the broader total.

Year	County	State of Kansas	Non Metro Kansas	County Rank	Per 1000 or \$ Per Capita
2000	.	13,551	.	.	.
2001
2002	.	16,528	.	.	.
2003	.	17,247	.	.	.
2004	.	17,552	.	.	.
2005	.	16,298	.	.	.
2006	.	17,908	.	.	.
2007	.	22,199	.	.	.
2008	.	21,359	.	.	.
2009	.	22,466	.	.	.
2010	.	22,753	.	.	.
2011	.	23,320	.	.	.
2012	.	27,492	.	.	.
2013	.	30,360	.	.	.
2014	.	34,862	.	.	.
2015	.	35,980	.	.	.
2020	397	44,008	.	.	157.7



**TOTAL ANNUAL PAYROLL(\$000):
MINING**

U.S. Census Bureau, County Business Patterns. Beginning with the 2017 data, any tabulation with fewer than 3 establishments were omitted from the release. Data for these establishments are included in the broader total.

Year	County	State of Kansas	Non Metro Kansas	County Rank	Per 1000 or \$ Per Capita
2000	0	240,079	.	.	0.0
2001	0	273,838	.	.	0.0
2002	0	262,277	.	.	0.0
2003	0	290,652	.	.	0.0
2004	0	326,997	.	.	0.0
2005	0	381,069	.	.	0.0
2006	0	482,102	.	.	0.0
2007	.	551,751	.	.	.
2008	.	620,446	.	.	.
2009	.	465,070	.	.	.
2010	.	485,841	.	.	.
2011	.	541,536	.	.	.
2012	.	600,402	.	.	.
2013	.	599,788	.	.	.
2014	.	678,673	.	.	.
2015	.	552,658	.	.	.

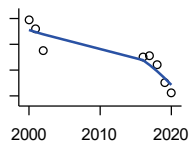
County: county value. Kansas: state value. County Rank: highest county value ranked #1. (\$000): thousands of dollars. Nonmetro Kansas: Kansas total less Metropolitan Areas as defined by the Office of Management and Budget (OMB; released 3/6/2020). Per 1000: For nonmoney amounts, Per 1000=(county value / county population for the same year as the data) x 1000. \$ Per capita=(county value / county population for the same year as the data). Value= . indicates missing or suppressed data or value not calculated.

Business

**TOTAL ANNUAL PAYROLL(\$000):
UTILITIES**

U.S. Census Bureau, County Business Patterns. Beginning with the 2017 data, any tabulation with fewer than 3 establishments were omitted from the release. Data for these establishments are included in the broader total.

Year	County	State of Kansas	Non Metro Kansas	County Rank	Per 1000 or \$ Per Capita
2000	.	410,313	.	.	.
2001	.	452,057	.	.	.
2002	.	377,559	.	.	.
2003	.	378,157	.	.	.
2004	.	377,809	.	.	.
2005	.	429,864	.	.	.
2006	.	443,999	.	.	.
2007	.	480,068	.	.	.
2008	.	541,066	.	.	.
2009	.	563,373	.	.	.
2010	.	512,628	.	.	.
2011	.	653,229	.	.	.
2012	.	625,451	.	.	.
2013	.	625,347	.	.	.
2014	.	610,960	.	.	.
2015	.	668,559	.	.	.



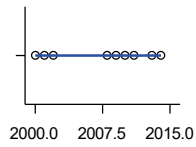
**TOTAL ANNUAL PAYROLL(\$000):
CONSTRUCTION**

U.S. Census Bureau, County Business Patterns. Beginning with the 2017 data, any tabulation with fewer than 3 establishments were omitted from the release. Data for these establishments are included in the broader total.

Year	County	State of Kansas	Non Metro Kansas	County Rank	Per 1000 or \$ Per Capita
2000	1,388	2,256,057	.	.	519.9
2001	1,241	2,320,652	.	.	463.9
2002	908	2,302,229	.	.	339.3
2003	.	2,282,021	.	.	.
2004	.	2,302,854	.	.	.
2005	.	2,465,977	.	.	.
2006	.	2,700,351	.	.	.
2007	.	2,772,168	.	.	.
2008	.	2,950,073	.	.	.
2009	.	2,709,864	.	.	.
2010	.	2,553,555	.	.	.
2011	.	2,550,355	.	.	.
2012	.	2,733,284	.	.	.
2013	.	2,866,801	.	.	.
2014	.	3,135,814	.	.	.
2015	.	3,270,952	.	.	.
2016	806	3,328,610	.	.	306.0
2017	821	3,568,505	.	.	313.8
2018	688	3,806,196	.	.	264.6
2019	396	3,879,912	.	.	156.0
2020	238	3,983,029	.	.	94.5

County: county value. Kansas: state value. County Rank: highest county value ranked #1. (\$000): thousands of dollars. Nonmetro Kansas: Kansas total less Metropolitan Areas as defined by the Office of Management and Budget (OMB; released 3/6/2020). Per 1000: For nonmoney amounts, Per 1000=(county value / county population for the same year as the data) x 1000. \$ Per capita=(county value / county population for the same year as the data). Value= . indicates missing or suppressed data or value not calculated.

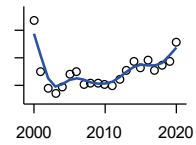
Business



**TOTAL ANNUAL PAYROLL(\$000):
MANUFACTURING**

U.S. Census Bureau, County Business Patterns. Beginning with the 2017 data, any tabulation with fewer than 3 establishments were omitted from the release. Data for these establishments are included in the broader total.

Year	County	State of Kansas	Non Metro Kansas	County Rank	Per 1000 or \$ Per Capita
2000	0	7,015,414	.	.	0.0
2001	0	7,301,706	.	.	0.0
2002	0	6,802,605	.	.	0.0
2003	.	6,691,611	.	.	.
2004	.	6,985,656	.	.	.
2005	.	7,221,614	.	.	.
2006	.	7,621,873	.	.	.
2007	.	7,873,359	.	.	.
2008	0	8,441,541	.	.	0.0
2009	0	7,477,838	.	.	0.0
2010	0	7,556,955	.	.	0.0
2011	0	7,747,934	.	.	0.0
2012	.	7,704,851	.	.	.
2013	0	8,365,542	.	.	0.0
2014	0	8,787,306	.	.	0.0
2015	.	9,052,105	.	.	.



**TOTAL ANNUAL PAYROLL(\$000):
WHOLESALE TRADE**

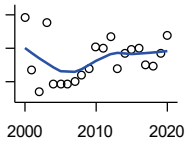
U.S. Census Bureau, County Business Patterns. Beginning with the 2017 data, any tabulation with fewer than 3 establishments were omitted from the release. Data for these establishments are included in the broader total.

Year	County	State of Kansas	Non Metro Kansas	County Rank	Per 1000 or \$ Per Capita
2000	7,734	2,332,755	.	.	2,896.6
2001	4,009	2,283,169	.	.	1,498.7
2002	2,815	2,107,653	.	.	1,051.9
2003	2,380	2,622,701	.	.	883.4
2004	2,834	2,663,196	.	.	1,072.7
2005	3,821	2,345,990	.	.	1,475.3
2006	4,020	2,592,211	.	.	1,556.3
2007	3,024	2,682,542	.	.	1,148.5
2008	3,179	3,078,655	.	.	1,205.1
2009	3,161	2,940,949	.	.	1,184.3
2010	3,110	3,097,628	.	.	1,156.1
2011	3,014	3,305,811	.	.	1,143.0
2012	3,401	3,339,997	.	.	1,282.9
2013	4,095	3,460,512	.	.	1,563.0
2014	4,725	3,712,075	.	.	1,777.0
2015	4,266	3,760,189	.	.	1,661.2
2016	4,870	3,738,207	.	.	1,848.9
2017	4,072	3,822,730	.	.	1,556.6
2018	4,432	3,814,353	.	.	1,704.6
2019	4,709	4,025,802	.	.	1,854.7
2020	6,144	4,224,666	.	.	2,440.0

County: county value. Kansas: state value. County Rank: highest county value ranked #1. (\$000): thousands of dollars. Nonmetro Kansas: Kansas total less Metropolitan Areas as defined by the Office of Management and Budget (OMB; released 3/6/2020). Per 1000: For nonmoney amounts, Per 1000=(county value / county population for the same year as the data) x 1000. \$ Per capita=(county value / county population for the same year as the data). Value= . indicates missing or suppressed data or value not calculated.

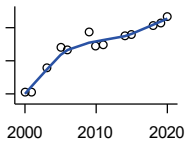
Business

**TOTAL ANNUAL PAYROLL(\$000):
RETAIL TRADE**



U.S. Census Bureau, County Business Patterns. Beginning with the 2017 data, any tabulation with fewer than 3 establishments were omitted from the release. Data for these establishments are included in the broader total.

Year	County	State of Kansas	Non Metro Kansas	County Rank	Per 1000 or \$ Per Capita
2000	2,175	2,747,001	.	.	814.6
2001	1,541	2,813,226	.	.	576.1
2002	1,274	2,854,231	.	.	476.1
2003	2,108	2,773,674	.	.	782.5
2004	1,368	2,847,826	.	.	517.8
2005	1,364	2,952,196	.	.	526.6
2006	1,368	3,126,495	.	.	529.6
2007	1,403	3,201,169	.	.	532.9
2008	1,474	3,261,054	.	.	558.8
2009	1,551	3,232,246	.	.	581.1
2010	1,809	3,321,838	.	.	672.5
2011	1,805	3,384,607	.	.	684.5
2012	1,936	3,409,755	.	.	730.3
2013	1,554	3,483,752	.	.	593.1
2014	1,733	3,617,933	.	.	651.7
2015	1,778	3,712,165	.	.	692.4
2016	1,798	3,826,889	.	.	682.6
2017	1,608	3,797,849	.	.	614.7
2018	1,593	3,818,988	.	.	612.7
2019	1,732	3,908,994	.	.	682.2
2020	1,961	3,984,443	.	.	778.8



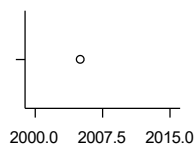
**TOTAL ANNUAL PAYROLL(\$000):
TRANSPORTATION &
WAREHOUSING**

U.S. Census Bureau, County Business Patterns. Beginning with the 2017 data, any tabulation with fewer than 3 establishments were omitted from the release. Data for these establishments are included in the broader total.

Year	County	State of Kansas	Non Metro Kansas	County Rank	Per 1000 or \$ Per Capita
2000	129	1,044,835	.	.	48.3
2001	138	1,089,405	.	.	51.6
2002	.	1,094,636	.	.	.
2003	1,580	1,316,655	.	.	586.5
2004	.	1,439,800	.	.	.
2005	2,810	1,393,651	.	.	1,084.9
2006	2,694	1,528,551	.	.	1,043.0
2007	.	1,788,267	.	.	.
2008	.	1,722,697	.	.	.
2009	3,752	1,618,598	.	.	1,405.8
2010	2,861	1,735,761	.	.	1,063.6
2011	2,979	1,739,165	.	.	1,129.7
2012	.	1,984,976	.	.	.
2013	.	2,006,261	.	.	.
2014	3,488	2,097,377	.	.	1,311.8
2015	3,601	2,190,072	.	.	1,402.3
2018	4,115	2,663,188	.	.	1,582.7
2019	4,273	2,879,406	.	.	1,682.9
2020	4,676	2,962,461	.	.	1,857.0

County: county value. Kansas: state value. County Rank: highest county value ranked #1. (\$000): thousands of dollars. Nonmetro Kansas: Kansas total less Metropolitan Areas as defined by the Office of Management and Budget (OMB; released 3/6/2020). Per 1000: For nonmoney amounts, Per 1000=(county value / county population for the same year as the data) x 1000. \$ Per capita=(county value / county population for the same year as the data). Value= . indicates missing or suppressed data or value not calculated.

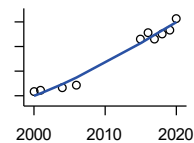
Business



**TOTAL ANNUAL PAYROLL(\$000):
INFORMATION**

U.S. Census Bureau, County Business Patterns. Beginning with the 2017 data, any tabulation with fewer than 3 establishments were omitted from the release. Data for these establishments are included in the broader total.

Year	County	State of Kansas	Non Metro Kansas	County Rank	Per 1000 or \$ Per Capita
2000	.	1,923,381	.	.	.
2001	.	2,218,610	.	.	.
2002	.	2,298,108	.	.	.
2003	.	2,378,673	.	.	.
2004	.	2,392,990	.	.	.
2005	0	2,395,081	.	.	0.0
2006	.	2,586,483	.	.	.
2007	.	2,594,138	.	.	.
2008	.	3,043,244	.	.	.
2009	.	3,045,570	.	.	.
2010	.	2,481,580	.	.	.
2011	.	2,513,805	.	.	.
2012	.	2,535,555	.	.	.
2013	.	2,805,017	.	.	.
2014	.	2,393,609	.	.	.
2015	.	2,406,323	.	.	.



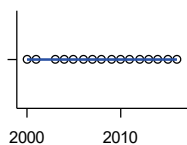
**TOTAL ANNUAL PAYROLL(\$000):
FINANCE & INSURANCE**

U.S. Census Bureau, County Business Patterns. Beginning with the 2017 data, any tabulation with fewer than 3 establishments were omitted from the release. Data for these establishments are included in the broader total.

Year	County	State of Kansas	Non Metro Kansas	County Rank	Per 1000 or \$ Per Capita
2000	1,150	2,083,565	.	.	430.7
2001	1,227	2,129,587	.	.	458.7
2002	.	2,414,120	.	.	.
2003	.	2,608,579	.	.	.
2004	1,305	2,676,910	.	.	493.9
2005	.	2,786,136	.	.	.
2006	1,414	2,928,931	.	.	547.4
2007	.	3,096,017	.	.	.
2008	.	3,322,977	.	.	.
2009	.	3,206,839	.	.	.
2010	.	3,211,300	.	.	.
2011	.	3,404,633	.	.	.
2012	.	3,611,165	.	.	.
2013	.	3,896,051	.	.	.
2014	.	4,044,315	.	.	.
2015	3,281	4,113,060	.	.	1,277.6
2016	3,587	4,180,740	.	.	1,361.8
2017	3,292	4,258,057	.	.	1,258.4
2018	3,511	4,682,552	.	.	1,350.4
2019	3,665	4,814,201	.	.	1,443.5
2020	4,138	5,288,529	.	.	1,643.4

County: county value. Kansas: state value. County Rank: highest county value ranked #1. (\$000): thousands of dollars. Nonmetro Kansas: Kansas total less Metropolitan Areas as defined by the Office of Management and Budget (OMB; released 3/6/2020). Per 1000: For nonmoney amounts, Per 1000=(county value / county population for the same year as the data) x 1000. \$ Per capita=(county value / county population for the same year as the data). Value= . indicates missing or suppressed data or value not calculated.

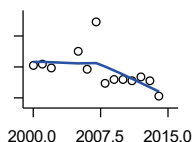
Business



**TOTAL ANNUAL PAYROLL(\$000):
REAL ESTATE, RENTAL, AND
LEASING**

U.S. Census Bureau, County Business Patterns. Beginning with the 2017 data, any tabulation with fewer than 3 establishments were omitted from the release. Data for these establishments are included in the broader total.

Year	County	State of Kansas	Non Metro Kansas	County Rank	Per 1000 or \$ Per Capita
2000	0	360,637	.	.	0.0
2001	0	397,371	.	.	0.0
2002	.	403,695	.	.	.
2003	0	437,786	.	.	0.0
2004	0	430,719	.	.	0.0
2005	0	465,149	.	.	0.0
2006	0	478,811	.	.	0.0
2007	0	452,969	.	.	0.0
2008	0	484,149	.	.	0.0
2009	0	450,884	.	.	0.0
2010	0	487,255	.	.	0.0
2011	0	535,120	.	.	0.0
2012	0	531,039	.	.	0.0
2013	0	538,796	.	.	0.0
2014	0	542,307	.	.	0.0
2015	0	595,030	.	.	0.0
2016	0	607,668	.	.	0.0



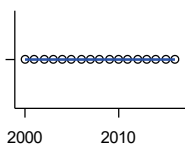
**TOTAL ANNUAL PAYROLL(\$000):
PROFESSIONAL, SCIENTIFIC, AND
TECHNICAL SERVICES**

U.S. Census Bureau, County Business Patterns. Beginning with the 2017 data, any tabulation with fewer than 3 establishments were omitted from the release. Data for these establishments are included in the broader total.

Year	County	State of Kansas	Non Metro Kansas	County Rank	Per 1000 or \$ Per Capita
2000	156	2,057,313	.	.	58.4
2001	159	2,152,937	.	.	59.4
2002	146	2,150,085	.	.	54.6
2003	.	2,052,712	.	.	.
2004	.	2,531,457	.	.	.
2005	201	2,418,500	.	.	77.6
2006	143	2,655,690	.	.	55.4
2007	294	2,901,544	.	.	111.7
2008	97	2,903,802	.	.	36.8
2009	111	3,071,611	.	.	41.6
2010	109	3,037,182	.	.	40.5
2011	107	3,132,082	.	.	40.6
2012	116	3,455,548	.	.	43.8
2013	105	3,777,729	.	.	40.1
2014	56	3,981,580	.	.	21.1
2015	.	4,039,074	.	.	.

County: county value. Kansas: state value. County Rank: highest county value ranked #1. (\$000): thousands of dollars. Nonmetro Kansas: Kansas total less Metropolitan Areas as defined by the Office of Management and Budget (OMB; released 3/6/2020). Per 1000: For nonmoney amounts, Per 1000=(county value / county population for the same year as the data) x 1000. \$ Per capita=(county value / county population for the same year as the data). Value= . indicates missing or suppressed data or value not calculated.

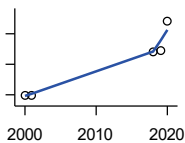
Business



**TOTAL ANNUAL PAYROLL(\$000):
MANAGEMENT OF COMPANIES AND
ENTERPRISES**

U.S. Census Bureau, County Business Patterns. Beginning with the 2017 data, any tabulation with fewer than 3 establishments were omitted from the release. Data for these establishments are included in the broader total.

Year	County	State of Kansas	Non Metro Kansas	County Rank	Per 1000 or \$ Per Capita
2000	0	1,362,735	.	.	0.0
2001	0	1,279,253	.	.	0.0
2002	0	1,311,368	.	.	0.0
2003	0	1,352,119	.	.	0.0
2004	0	1,378,891	.	.	0.0
2005	0	1,510,876	.	.	0.0
2006	0	1,626,320	.	.	0.0
2007	0	2,233,654	.	.	0.0
2008	0	1,848,656	.	.	0.0
2009	0	1,601,158	.	.	0.0
2010	0	2,003,048	.	.	0.0
2011	0	1,677,619	.	.	0.0
2012	0	1,834,430	.	.	0.0
2013	0	1,938,100	.	.	0.0
2014	0	2,117,232	.	.	0.0
2015	0	2,451,126	.	.	0.0
2016	0	2,167,620	.	.	0.0



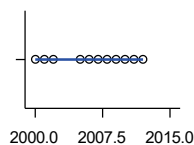
**TOTAL ANNUAL PAYROLL(\$000):
ADMIN, SUPPORT, WASTE MGMT.,
AND REMEDIATION**

U.S. Census Bureau, County Business Patterns. Beginning with the 2017 data, any tabulation with fewer than 3 establishments were omitted from the release. Data for these establishments are included in the broader total.

Year	County	State of Kansas	Non Metro Kansas	County Rank	Per 1000 or \$ Per Capita
2000	0	1,388,712	.	.	0.0
2001	0	1,416,480	.	.	0.0
2002	.	1,378,905	.	.	.
2003	.	1,387,061	.	.	.
2004	.	1,544,442	.	.	.
2005	.	1,694,687	.	.	.
2006	.	1,800,846	.	.	.
2007	.	1,978,025	.	.	.
2008	.	2,096,864	.	.	.
2009	.	1,832,540	.	.	.
2010	.	2,117,325	.	.	.
2011	.	2,114,970	.	.	.
2012	.	2,230,250	.	.	.
2013	.	2,214,320	.	.	.
2014	.	2,444,170	.	.	.
2015	.	2,577,592	.	.	.
2018	1,406	3,007,347	.	.	540.8
2019	1,455	3,075,485	.	.	573.1
2020	2,399	3,250,046	.	.	952.7

County: county value. Kansas: state value. County Rank: highest county value ranked #1. (\$000): thousands of dollars. Nonmetro Kansas: Kansas total less Metropolitan Areas as defined by the Office of Management and Budget (OMB; released 3/6/2020). Per 1000: For nonmoney amounts, Per 1000=(county value / county population for the same year as the data) x 1000. \$ Per capita=(county value / county population for the same year as the data). Value= . indicates missing or suppressed data or value not calculated.

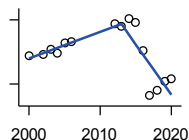
Business



**TOTAL ANNUAL PAYROLL(\$000):
EDUCATIONAL SERVICES**

U.S. Census Bureau, County Business Patterns. Beginning with the 2017 data, any tabulation with fewer than 3 establishments were omitted from the release. Data for these establishments are included in the broader total.

Year	County	State of Kansas	Non Metro Kansas	County Rank	Per 1000 or \$ Per Capita
2000	0	299,843	.	.	0.0
2001	0	320,606	.	.	0.0
2002	0	353,531	.	.	0.0
2003	.	350,814	.	.	.
2004	.	361,644	.	.	.
2005	0	375,781	.	.	0.0
2006	0	400,565	.	.	0.0
2007	0	414,233	.	.	0.0
2008	0	463,210	.	.	0.0
2009	0	468,856	.	.	0.0
2010	0	487,670	.	.	0.0
2011	0	504,964	.	.	0.0
2012	0	508,448	.	.	0.0
2013	.	553,995	.	.	.
2014	.	612,073	.	.	.
2015	.	579,794	.	.	.



**TOTAL ANNUAL PAYROLL(\$000):
HEALTH CARE AND SOCIAL ASSISTANCE**

U.S. Census Bureau, County Business Patterns. Beginning with the 2017 data, any tabulation with fewer than 3 establishments were omitted from the release. Data for these establishments are included in the broader total.

Year	County	State of Kansas	Non Metro Kansas	County Rank	Per 1000 or \$ Per Capita
2000	2,294	4,120,595	.	.	859.2
2001	.	4,445,027	.	.	.
2002	2,395	4,705,220	.	.	895.0
2003	2,595	4,939,323	.	.	963.3
2004	2,441	5,232,394	.	.	923.9
2005	2,931	5,487,089	.	.	1,131.7
2006	2,964	5,814,218	.	.	1,147.5
2007	.	6,186,471	.	.	.
2008	.	6,490,627	.	.	.
2009	.	6,749,962	.	.	.
2010	.	6,871,727	.	.	.
2011	.	7,129,655	.	.	.
2012	3,823	7,614,853	.	.	1,442.1
2013	3,709	7,541,515	.	.	1,415.6
2014	4,062	7,733,621	.	.	1,527.6
2015	3,850	7,969,650	.	.	1,499.2
2016	2,561	8,018,706	.	.	972.3
2017	444	8,384,998	.	.	169.7
2018	723	8,637,619	.	.	278.1
2019	1,129	8,854,414	.	.	444.7
2020	1,217	9,309,269	.	.	483.3

County: county value. Kansas: state value. County Rank: highest county value ranked #1. (\$000): thousands of dollars. Nonmetro Kansas: Kansas total less Metropolitan Areas as defined by the Office of Management and Budget (OMB; released 3/6/2020). Per 1000: For nonmoney amounts, Per 1000=(county value / county population for the same year as the data) x 1000. \$ Per capita=(county value / county population for the same year as the data). Value= . indicates missing or suppressed data or value not calculated.

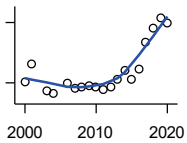
Business



**TOTAL ANNUAL PAYROLL(\$000):
ARTS, ENTERTAINMENT, AND
RECREATION**

U.S. Census Bureau, County Business Patterns. Beginning with the 2017 data, any tabulation with fewer than 3 establishments were omitted from the release. Data for these establishments are included in the broader total.

Year	County	State of Kansas	Non Metro Kansas	County Rank	Per 1000 or \$ Per Capita
2000	.	195,784	.	.	.
2001	.	203,511	.	.	.
2002	.	206,204	.	.	.
2003	.	185,049	.	.	.
2004	.	190,742	.	.	.
2005	.	196,594	.	.	.
2006	.	201,049	.	.	.
2007	.	220,435	.	.	.
2008	.	236,986	.	.	.
2009	.	237,116	.	.	.
2010	.	233,285	.	.	.
2011	.	234,351	.	.	.
2012	0	254,169	.	.	0.0
2013	0	278,474	.	.	0.0
2014	.	289,103	.	.	.
2015	.	300,253	.	.	.



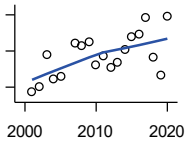
**TOTAL ANNUAL PAYROLL(\$000):
ACCOMMODATION AND FOOD
SERVICES**

U.S. Census Bureau, County Business Patterns. Beginning with the 2017 data, any tabulation with fewer than 3 establishments were omitted from the release. Data for these establishments are included in the broader total.

Year	County	State of Kansas	Non Metro Kansas	County Rank	Per 1000 or \$ Per Capita
2000	212	926,831	.	.	79.4
2001	383	960,196	.	.	143.2
2002	.	930,510	.	.	.
2003	119	992,313	.	.	44.2
2004	90	1,046,901	.	.	34.1
2005	.	1,101,854	.	.	.
2006	196	1,185,280	.	.	75.9
2007	150	1,431,100	.	.	57.0
2008	163	1,271,594	.	.	61.8
2009	173	1,283,065	.	.	64.8
2010	154	1,296,556	.	.	57.2
2011	135	1,364,281	.	.	51.2
2012	155	1,388,337	.	.	58.5
2013	235	1,476,335	.	.	89.7
2014	323	1,572,021	.	.	121.5
2015	239	1,640,144	.	.	93.1
2016	336	1,709,193	.	.	127.6
2017	609	1,824,791	.	.	232.8
2018	741	1,880,364	.	.	285.0
2019	846	1,958,603	.	.	333.2
2020	796	1,745,238	.	.	316.1

County: county value. Kansas: state value. County Rank: highest county value ranked #1. (\$000): thousands of dollars. Nonmetro Kansas: Kansas total less Metropolitan Areas as defined by the Office of Management and Budget (OMB; released 3/6/2020). Per 1000: For nonmoney amounts, Per 1000=(county value / county population for the same year as the data) x 1000. \$ Per capita=(county value / county population for the same year as the data). Value= . indicates missing or suppressed data or value not calculated.

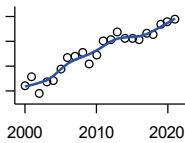
Business



**TOTAL ANNUAL PAYROLL(\$000):
OTHER SERVICES**

U.S. Census Bureau, County Business Patterns. Beginning with the 2017 data, any tabulation with fewer than 3 establishments were omitted from the release. Data for these establishments are included in the broader total.

Year	County	State of Kansas	Non Metro Kansas	County Rank	Per 1000 or \$ Per Capita
2000	.	965,540	.	.	.
2001	286	996,716	.	.	106.9
2002	300	1,007,464	.	.	112.1
2003	391	979,466	.	.	145.1
2004	324	970,383	.	.	122.6
2005	331	1,005,537	.	.	127.8
2006	.	1,055,932	.	.	.
2007	421	1,141,551	.	.	159.9
2008	415	1,184,016	.	.	157.3
2009	424	1,167,154	.	.	158.9
2010	362	1,170,201	.	.	134.6
2011	387	1,173,775	.	.	146.8
2012	356	1,217,210	.	.	134.3
2013	368	1,254,933	.	.	140.5
2014	403	1,305,563	.	.	151.6
2015	440	1,341,075	.	.	171.3
2016	445	1,351,375	.	.	168.9
2017	494	1,344,179	.	.	188.8
2018	383	1,382,801	.	.	147.3
2019	334	1,427,711	.	.	131.5
2020	497	1,420,859	.	.	197.4



**NOMINAL TAXABLE RETAIL SALES
(million\$)**

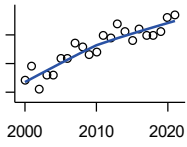
Kansas Department of Revenue

Year	County	State of Kansas	Non Metro Kansas	County Rank	Per 1000 or \$ Per Capita
2000	16.0	30,119.0	8,831.7	90	6.0
2001	17.8	30,202.2	8,700.3	86	6.7
2002	14.4	29,380.8	8,241.5	87	5.4
2003	16.9	30,694.0	8,710.6	86	6.3
2004	17.2	31,922.6	9,062.5	89	6.5
2005	19.4	32,924.2	9,386.6	85	7.5
2006	21.6	34,937.6	10,042.1	86	8.4
2007	22.0	36,180.1	10,553.2	86	8.4
2008	22.8	37,559.5	11,126.9	88	8.6
2009	20.4	35,211.8	10,351.5	88	7.6
2010	22.2	35,655.7	10,606.1	86	8.3
2011	25.0	37,257.0	11,153.5	87	9.5
2012	25.3	38,988.8	11,749.1	88	9.5
2013	27.0	40,009.0	11,993.8	88	10.3
2014	25.5	41,299.0	12,365.4	91	9.6
2015	25.5	41,635.8	11,747.6	89	9.9
2016	25.4	42,040.2	11,523.5	86	9.7
2017	26.5	41,940.1	11,449.9	85	10.1
2018	26.3	42,732.3	11,643.9	85	10.1
2019	28.4	43,732.5	12,062.7	85	11.2
2020	28.9	43,689.9	12,331.7	82	11.5
2021	29.4	48,532.8	13,413.0	84	11.9

County: county value. Kansas: state value. County Rank: highest county value ranked #1. (\$000): thousands of dollars. Nonmetro Kansas: Kansas total less Metropolitan Areas as defined by the Office of Management and Budget (OMB; released 3/6/2020). Per 1000: For nonmoney amounts, Per 1000=(county value / county population for the same year as the data) x 1000. \$ Per capita=(county value / county population for the same year as the data). Value= . indicates missing or suppressed data or value not calculated.

Business

RETAIL PULL FACTOR



Kansas Direct Program, Kansas State University Cooperative Extension Service (1980-1999); Kansas Department of Revenue (2000-)

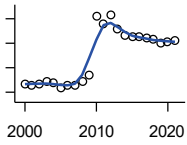
Year	County	State of Kansas	Non Metro Kansas	County Rank	Per 1000 or \$ Per Capita
2000	0.54	.	.	68	.
2001	0.59	.	.	53	.
2002	0.51	.	.	69	.
2003	0.56	.	.	65	.
2004	0.56	.	.	68	.
2005	0.62	.	.	61	.
2006	0.62	.	.	63	.
2007	0.67	.	.	56	.
2008	0.66	.	.	64	.
2009	0.63	.	.	77	.
2010	0.64	.	.	73	.
2011	0.70	.	.	62	.
2012	0.69	.	.	68	.
2013	0.74	.	.	62	.
2014	0.71	.	.	63	.
2015	0.68	.	.	69	.
2016	0.72	.	.	52	.
2017	0.70	.	.	56	.
2018	0.70	.	.	59	.
2019	0.71	.	.	57	.
2020	0.76	.	.	49	.
2021	0.77	.	.	43	.

County: county value. Kansas: state value. County Rank: highest county value ranked #1. (\$000): thousands of dollars. Nonmetro Kansas: Kansas total less Metropolitan Areas as defined by the Office of Management and Budget (OMB; released 3/6/2020). Per 1000: For nonmoney amounts, Per 1000=(county value / county population for the same year as the data) x 1000. \$ Per capita=(county value / county population for the same year as the data). Value= . indicates missing or suppressed data or value not calculated.

Employment

CIVILIAN LABOR FORCE (BLS-Place of Residence; 1990-)

U.S. Department of Labor, Bureau of Labor Statistics (BLS)



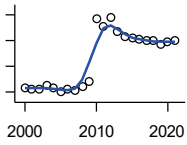
Year	County	State of Kansas	Non Metro Kansas	County Rank	Per 1000 or \$ Per Capita
2000	1,270	1,402,606	482,229	97	475.7
2001	1,261	1,398,521	475,280	97	471.4
2002	1,266	1,419,335	482,428	97	473.1
2003	1,288	1,441,065	490,161	98	478.1
2004	1,272	1,458,910	494,509	98	481.5
2005	1,239	1,458,767	490,047	98	478.4
2006	1,261	1,467,553	498,594	97	488.2
2007	1,252	1,485,414	497,048	96	475.5
2008	1,283	1,493,365	504,522	96	486.4
2009	1,339	1,512,572	516,311	96	501.7
2010	1,825	1,500,463	492,594	79	678.4
2011	1,756	1,498,000	492,563	81	665.9
2012	1,832	1,490,808	489,349	80	691.1
2013	1,719	1,489,395	485,484	81	656.1
2014	1,664	1,494,203	481,813	81	625.8
2015	1,657	1,493,782	477,546	82	645.2
2016	1,650	1,491,961	468,258	82	626.4
2017	1,639	1,488,346	461,063	81	626.5
2018	1,631	1,488,027	456,866	81	627.3
2019	1,602	1,497,517	455,858	82	631.0
2020	1,615	1,493,706	452,935	79	641.4
2021	1,620	1,495,665	453,398	81	652.2

County: county value. Kansas: state value. County Rank: highest county value ranked #1. (\$000): thousands of dollars. Nonmetro Kansas: Kansas total less Metropolitan Areas as defined by the Office of Management and Budget (OMB; released 3/6/2020). Per 1000: For nonmoney amounts, Per 1000=(county value / county population for the same year as the data) x 1000. \$ Per capita=(county value / county population for the same year as the data). Value= . indicates missing or suppressed data or value not calculated.

Employment

EMPLOYED (BLS-Place of Residence; 1990-)

U.S. Department of Labor, Bureau of Labor Statistics (BLS)



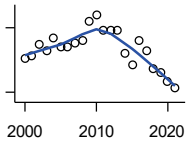
Year	County	State of Kansas	Non Metro Kansas	County Rank	Per 1000 or \$ Per Capita
2000	1,234	1,349,841	464,962	97	462.2
2001	1,224	1,338,775	455,154	97	457.6
2002	1,224	1,347,163	461,241	97	457.4
2003	1,249	1,361,115	467,622	98	463.6
2004	1,227	1,378,355	470,330	98	464.4
2005	1,198	1,384,654	467,722	98	462.5
2006	1,220	1,402,950	479,174	97	472.3
2007	1,209	1,422,109	477,983	96	459.2
2008	1,239	1,425,022	484,056	96	469.7
2009	1,286	1,408,142	485,797	96	481.8
2010	1,769	1,396,172	461,635	79	657.6
2011	1,707	1,402,198	463,723	81	647.3
2012	1,783	1,405,638	463,376	79	672.6
2013	1,670	1,410,470	461,405	81	637.4
2014	1,626	1,426,892	461,797	81	611.5
2015	1,624	1,431,533	457,899	82	632.4
2016	1,606	1,431,920	449,356	82	609.7
2017	1,600	1,434,516	445,003	81	611.6
2018	1,600	1,439,329	442,716	81	615.4
2019	1,573	1,450,705	442,108	81	619.5
2020	1,590	1,408,965	433,229	79	631.5
2021	1,598	1,447,323	441,159	81	643.3

County: county value. Kansas: state value. County Rank: highest county value ranked #1. (\$000): thousands of dollars. Nonmetro Kansas: Kansas total less Metropolitan Areas as defined by the Office of Management and Budget (OMB; released 3/6/2020). Per 1000: For nonmoney amounts, Per 1000=(county value / county population for the same year as the data) x 1000. \$ Per capita=(county value / county population for the same year as the data). Value= . indicates missing or suppressed data or value not calculated.

Employment

UNEMPLOYED (BLS-Place of Residence; 1990-)

U.S. Department of Labor, Bureau of Labor Statistics (BLS)

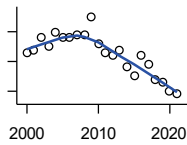


Year	County	State of Kansas	Non Metro Kansas	County Rank	Per 1000 or \$ Per Capita
2000	36	52,765	17,267	97	13.5
2001	37	59,746	20,126	99	13.8
2002	42	72,172	21,187	98	15.7
2003	39	79,950	22,539	101	14.5
2004	45	80,555	24,179	100	17.0
2005	41	74,113	22,325	99	15.8
2006	41	64,603	19,420	97	15.9
2007	43	63,305	19,065	97	16.3
2008	44	68,343	20,466	94	16.7
2009	53	104,430	30,514	95	19.9
2010	56	104,291	30,959	94	20.8
2011	49	95,802	28,840	97	18.6
2012	49	85,170	25,973	93	18.5
2013	49	78,925	24,079	93	18.7
2014	38	67,311	20,016	96	14.3
2015	33	62,249	19,647	99	12.9
2016	44	60,041	18,902	92	16.7
2017	39	53,830	16,060	90	14.9
2018	31	48,698	14,150	93	11.9
2019	29	46,812	13,750	97	11.4
2020	25	84,741	19,706	99	9.9
2021	22	48,342	12,239	98	8.9

County: county value. Kansas: state value. County Rank: highest county value ranked #1. (\$000): thousands of dollars. Nonmetro Kansas: Kansas total less Metropolitan Areas as defined by the Office of Management and Budget (OMB; released 3/6/2020). Per 1000: For nonmoney amounts, Per 1000=(county value / county population for the same year as the data) x 1000. \$ Per capita=(county value / county population for the same year as the data). Value= . indicates missing or suppressed data or value not calculated.

Employment

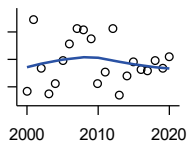
UNEMPLOYMENT RATE (BLS-Place of Residence; 1990-)



U.S. Department of Labor, Bureau of Labor Statistics (BLS)

Year	County	State of Kansas	Non Metro Kansas	County Rank	Per 1000 or \$ Per Capita
2000	2.8	3.8	3.6	86	.
2001	2.9	4.3	4.2	93	.
2002	3.3	5.1	4.4	81	.
2003	3.0	5.5	4.6	98	.
2004	3.5	5.5	4.9	95	.
2005	3.3	5.1	4.6	96	.
2006	3.3	4.4	3.9	78	.
2007	3.4	4.3	3.8	67	.
2008	3.4	4.6	4.1	70	.
2009	4.0	6.9	5.9	82	.
2010	3.1	7.0	6.3	105	.
2011	2.8	6.4	5.9	105	.
2012	2.7	5.7	5.3	105	.
2013	2.9	5.3	5.0	100	.
2014	2.3	4.5	4.2	103	.
2015	2.0	4.2	4.1	105	.
2016	2.7	4.0	4.0	94	.
2017	2.4	3.6	3.5	96	.
2018	1.9	3.3	3.1	105	.
2019	1.8	3.1	3.0	105	.
2020	1.5	5.7	4.4	105	.
2021	1.4	3.2	2.7	104	.

BEA EMPLOYMENT: TOTAL (Place of Work)



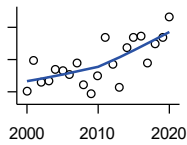
U.S. Bureau of Economic Analysis, Regional Economic Information System (REIS)

Year	County	State of Kansas	Non Metro Kansas	County Rank	Per 1000 or \$ Per Capita
2000	1,742	1,760,312	604,361	96	652.4
2001	1,872	1,767,601	592,672	93	699.8
2002	1,784	1,746,077	585,387	92	666.7
2003	1,737	1,733,694	577,860	93	644.8
2004	1,757	1,750,876	578,750	92	665.0
2005	1,799	1,765,650	577,562	92	694.6
2006	1,828	1,795,507	583,041	89	707.7
2007	1,857	1,844,355	591,924	90	705.3
2008	1,855	1,858,069	594,368	91	703.2
2009	1,838	1,813,184	580,972	91	688.6
2010	1,756	1,801,873	579,758	91	652.8
2011	1,777	1,819,044	583,725	91	673.9
2012	1,856	1,841,393	591,748	89	700.1
2013	1,734	1,869,054	597,236	92	661.8
2014	1,769	1,895,859	601,291	92	665.3
2015	1,796	1,910,954	598,589	91	699.4
2016	1,782	1,916,152	592,580	91	676.5
2017	1,779	1,914,179	584,337	89	680.0
2018	1,798	1,926,242	580,213	88	691.5
2019	1,785	1,925,204	574,496	87	703.0
2020	1,806	1,851,247	556,671	86	717.2

County: county value. Kansas: state value. County Rank: highest county value ranked #1. (\$000): thousands of dollars. Nonmetro Kansas: Kansas total less Metropolitan Areas as defined by the Office of Management and Budget (OMB; released 3/6/2020). Per 1000: For nonmoney amounts, Per 1000=(county value / county population for the same year as the data) x 1000. \$ Per capita=(county value / county population for the same year as the data). Value= . indicates missing or suppressed data or value not calculated.

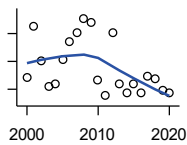
Employment

BEA EMPLOYMENT: FARM



U.S. Bureau of Economic Analysis,
Regional Economic Information System
(REIS)

Year	County	State of Kansas	Non Metro Kansas	County Rank	Per 1000 or \$ Per Capita
2000	521	77,477	59,088	80	195.1
2001	559	78,177	59,647	70	209.0
2002	532	70,532	53,893	65	198.8
2003	533	68,516	52,099	65	197.8
2004	547	67,586	51,246	53	207.0
2005	546	66,829	50,386	51	210.8
2006	542	64,910	48,728	48	209.8
2007	556	65,639	49,037	48	211.2
2008	528	63,820	47,682	50	200.2
2009	517	62,798	46,960	51	193.7
2010	540	63,882	47,984	51	200.7
2011	587	65,761	49,707	47	222.6
2012	554	63,753	48,167	50	209.0
2013	525	62,739	47,255	51	200.4
2014	575	64,308	48,722	48	216.2
2015	587	64,416	48,927	47	228.6
2016	589	63,840	48,539	45	223.6
2017	556	61,876	46,936	47	212.5
2018	580	63,233	48,069	46	223.1
2019	588	63,300	48,167	43	231.6
2020	613	64,281	49,038	42	243.4



BEA EMPLOYMENT: NON-FARM

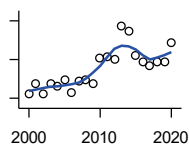
U.S. Bureau of Economic Analysis,
Regional Economic Information System
(REIS)

Year	County	State of Kansas	Non Metro Kansas	County Rank	Per 1000 or \$ Per Capita
2000	1,221	1,682,835	545,273	98	457.3
2001	1,313	1,689,424	533,025	94	490.8
2002	1,252	1,675,545	531,494	94	467.9
2003	1,204	1,665,178	525,761	95	446.9
2004	1,210	1,683,290	527,504	94	458.0
2005	1,253	1,698,821	527,176	93	483.8
2006	1,286	1,730,597	534,313	93	497.9
2007	1,301	1,778,716	542,887	92	494.1
2008	1,327	1,794,249	546,686	92	503.0
2009	1,321	1,750,386	534,012	92	494.9
2010	1,216	1,737,991	531,774	97	452.0
2011	1,190	1,753,283	534,018	97	451.3
2012	1,302	1,777,640	543,581	95	491.1
2013	1,209	1,806,315	549,981	97	461.5
2014	1,194	1,831,551	552,569	97	449.0
2015	1,209	1,846,538	549,662	98	470.8
2016	1,193	1,852,312	544,041	98	452.9
2017	1,223	1,852,303	537,401	96	467.5
2018	1,218	1,863,009	532,144	96	468.5
2019	1,197	1,861,904	526,329	97	471.4
2020	1,193	1,786,966	507,633	97	473.8

County: county value. Kansas: state value. County Rank: highest county value ranked #1. (\$000): thousands of dollars. Nonmetro Kansas: Kansas total less Metropolitan Areas as defined by the Office of Management and Budget (OMB; released 3/6/2020). Per 1000: For nonmoney amounts, Per 1000=(county value / county population for the same year as the data) x 1000. \$ Per capita=(county value / county population for the same year as the data). Value= . indicates missing or suppressed data or value not calculated.

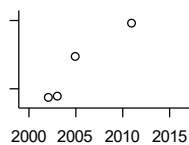
Employment

AVERAGE WAGE PER JOB (\$)



U.S. Bureau of Economic Analysis,
Regional Economic Information System
(REIS)

Year	County	State of Kansas	Non Metro Kansas	County Rank	Per 1000 or \$ Per Capita
2000	25,022	31,854	24,396	35	.
2001	35,503	32,859	26,379	9	.
2002	24,072	33,707	26,331	51	.
2003	34,467	35,078	28,911	14	.
2004	32,322	35,932	29,747	21	.
2005	38,906	37,467	31,646	14	.
2006	25,537	40,038	31,993	77	.
2007	37,123	41,500	33,484	20	.
2008	39,680	44,197	36,256	22	.
2009	35,603	43,860	35,739	34	.
2010	61,524	45,370	38,631	6	.
2011	62,927	48,280	42,324	10	.
2012	59,672	50,549	42,015	11	.
2013	94,168	52,629	46,073	4	.
2014	89,084	51,959	43,562	2	.
2015	63,794	52,250	42,320	6	.
2016	57,966	51,664	41,964	14	.
2017	54,002	53,007	42,137	14	.
2018	58,062	54,790	44,514	10	.
2019	57,415	56,956	45,336	12	.
2020	77,734	60,597	49,183	2	.



BEA EMPLOYMENT: FORESTRY, FISHING, HUNTING, AND AG SUPPORT

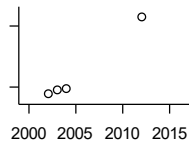
U.S. Bureau of Economic Analysis,
Regional Economic Information System
(REIS)

Year	County	State of Kansas	Non Metro Kansas	County Rank	Per 1000 or \$ Per Capita
2001	.	7,059	.	.	.
2002	36	8,045	.	21	.
2003	37	7,313	.	21	.
2004	.	7,623	.	.	.
2005	54	7,962	.	20	.
2006	.	7,748	.	.	.
2007	.	8,228	.	.	.
2008	.	8,646	.	.	.
2009	.	8,982	.	.	.
2010	.	9,251	.	.	.
2011	69	9,410	.	16	.
2012	.	9,691	.	.	.
2013	.	10,014	.	.	.
2014	.	10,708	.	.	.
2015	.	10,020	.	.	.
2016	.	10,383	.	.	.

County: county value. Kansas: state value. County Rank: highest county value ranked #1. (\$000): thousands of dollars. Nonmetro Kansas: Kansas total less Metropolitan Areas as defined by the Office of Management and Budget (OMB; released 3/6/2020). Per 1000: For nonmoney amounts, Per 1000=(county value / county population for the same year as the data) x 1000. \$ Per capita=(county value / county population for the same year as the data). Value= . indicates missing or suppressed data or value not calculated.

Employment

BEA EMPLOYMENT: MINING



U.S. Bureau of Economic Analysis,
Regional Economic Information System
(REIS)

Year	County	State of Kansas	Non Metro Kansas	County Rank	Per 1000 or \$ Per Capita
2001	.	19,592	.	.	.
2002	33	17,635	.	41	.
2003	37	19,869	.	43	.
2004	38	18,466	.	46	.
2005	.	19,489	.	.	.
2006	.	22,403	.	.	.
2007	.	24,043	.	.	.
2008	.	31,467	.	.	.
2009	.	29,941	.	.	.
2010	.	36,124	.	.	.
2011	.	31,658	.	.	.
2012	109	42,405	.	44	.
2013	.	46,585	.	.	.
2014	.	45,526	.	.	.
2015	.	46,460	.	.	.
2016	.	48,555	.	.	.

BEA EMPLOYMENT: UTILITIES

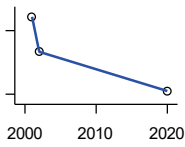
U.S. Bureau of Economic Analysis,
Regional Economic Information System
(REIS)

Year	County	State of Kansas	Non Metro Kansas	County Rank	Per 1000 or \$ Per Capita
2001	.	7,608	.	.	.
2002	.	7,087	.	.	.
2003	.	7,253	.	.	.
2004	.	7,356	.	.	.
2005	.	7,447	.	.	.
2006	.	7,478	.	.	.
2007	.	7,584	.	.	.
2008	.	7,855	.	.	.
2009	.	7,941	.	.	.
2010	.	8,028	.	.	.
2011	.	8,213	.	.	.
2012	.	8,155	.	.	.
2013	.	7,949	.	.	.
2014	.	7,985	.	.	.
2015	.	7,040	.	.	.
2016	.	7,133	.	.	.

County: county value. Kansas: state value. County Rank: highest county value ranked #1. (\$000): thousands of dollars. Nonmetro Kansas: Kansas total less Metropolitan Areas as defined by the Office of Management and Budget (OMB; released 3/6/2020). Per 1000: For nonmoney amounts, Per 1000=(county value / county population for the same year as the data) x 1000. \$ Per capita=(county value / county population for the same year as the data). Value= . indicates missing or suppressed data or value not calculated.

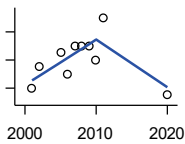
Employment

**BEA EMPLOYMENT:
CONSTRUCTION**



U.S. Bureau of Economic Analysis,
Regional Economic Information System
(REIS)

Year	County	State of Kansas	Non Metro Kansas	County Rank	Per 1000 or \$ Per Capita
2001	93	92,647	27,972	76	.
2002	60	90,370	.	83	.
2003	.	91,725	26,681	.	.
2004	.	93,271	.	.	.
2005	.	94,836	.	.	.
2006	.	97,449	.	.	.
2007	.	99,119	29,179	.	.
2008	.	97,741	.	.	.
2009	.	90,165	28,077	.	.
2010	.	84,708	26,402	.	.
2011	.	83,332	25,999	.	.
2012	.	85,966	.	.	.
2013	.	88,094	.	.	.
2014	.	91,143	.	.	.
2015	.	91,458	27,583	.	.
2016	.	93,539	27,151	.	.
2020	23	94,186	26,085	85	.



**BEA EMPLOYMENT:
MANUFACTURING**

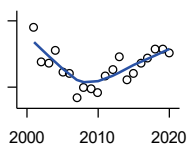
U.S. Bureau of Economic Analysis,
Regional Economic Information System
(REIS)

Year	County	State of Kansas	Non Metro Kansas	County Rank	Per 1000 or \$ Per Capita
2001	10	199,980	73,170	87	.
2002	13	188,905	70,691	87	.
2003	.	179,013	68,418	.	.
2004	.	181,738	69,669	.	.
2005	15	185,459	71,072	86	.
2006	12	188,047	71,704	84	.
2007	16	192,930	73,488	85	.
2008	16	193,116	72,235	92	.
2009	16	173,854	64,961	88	.
2010	14	166,000	62,884	89	.
2011	20	167,302	64,361	85	.
2012	.	169,308	65,944	.	.
2013	.	170,113	67,251	.	.
2014	.	169,307	68,299	.	.
2015	.	168,324	66,978	.	.
2016	.	167,723	65,796	.	.
2020	9	165,228	65,658	87	.

County: county value. Kansas: state value. County Rank: highest county value ranked #1. (\$000): thousands of dollars. Nonmetro Kansas: Kansas total less Metropolitan Areas as defined by the Office of Management and Budget (OMB; released 3/6/2020). Per 1000: For nonmoney amounts, Per 1000=(county value / county population for the same year as the data) x 1000. \$ Per capita=(county value / county population for the same year as the data). Value= . indicates missing or suppressed data or value not calculated.

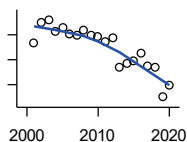
Employment

BEA EMPLOYMENT: WHOLESALE TRADE



U.S. Bureau of Economic Analysis,
Regional Economic Information System
(REIS)

Year	County	State of Kansas	Non Metro Kansas	County Rank	Per 1000 or \$ Per Capita
2001	154	65,698	.	47	.
2002	123	65,408	.	57	.
2003	122	63,504	.	52	.
2004	133	64,434	.	46	.
2005	114	64,587	.	53	.
2006	112	64,743	.	53	.
2007	90	65,993	.	58	.
2008	100	67,693	.	58	.
2009	98	65,954	.	61	.
2010	95	64,376	.	66	.
2011	110	64,712	.	58	.
2012	116	63,973	.	55	.
2013	128	64,999	.	52	.
2014	107	69,295	.	60	.
2015	112	68,444	.	61	.
2016	122	64,843	.	51	.
2017	126	65,014	.	48	.
2018	135	64,745	.	48	.
2019	134	63,324	.	47	.
2020	131	60,844	.	51	.



BEA EMPLOYMENT: RETAIL TRADE

U.S. Bureau of Economic Analysis,
Regional Economic Information System
(REIS)

Year	County	State of Kansas	Non Metro Kansas	County Rank	Per 1000 or \$ Per Capita
2001	133	198,069	.	92	.
2002	150	196,112	.	88	.
2003	152	194,545	64,173	89	.
2004	143	192,957	63,265	91	.
2005	146	191,656	62,506	91	.
2006	141	190,391	62,082	90	.
2007	140	190,643	61,716	89	.
2008	144	185,907	59,783	86	.
2009	140	181,262	58,714	90	.
2010	139	177,858	57,470	89	.
2011	135	180,548	57,734	90	.
2012	138	180,596	57,349	86	.
2013	114	183,245	57,556	94	.
2014	117	185,899	57,855	94	.
2015	119	188,421	58,516	93	.
2016	125	188,505	57,864	92	.
2017	115	186,633	56,715	96	.
2018	114	183,323	.	93	.
2019	90	177,240	53,427	99	.
2020	100	171,777	52,563	96	.

County: county value. Kansas: state value. County Rank: highest county value ranked #1. (\$000): thousands of dollars. Nonmetro Kansas: Kansas total less Metropolitan Areas as defined by the Office of Management and Budget (OMB; released 3/6/2020). Per 1000: For nonmoney amounts, Per 1000=(county value / county population for the same year as the data) x 1000. \$ Per capita=(county value / county population for the same year as the data). Value= . indicates missing or suppressed data or value not calculated.

Employment

**BEA EMPLOYMENT:
TRANSPORTATION AND
WAREHOUSING**

U.S. Bureau of Economic Analysis,
Regional Economic Information System
(REIS)

Year	County	State of Kansas	Non Metro Kansas	County Rank	Per 1000 or \$ Per Capita
2001	.	56,302	.	.	.
2002	.	55,319	.	.	.
2003	.	55,509	.	.	.
2004	.	55,479	.	.	.
2005	.	56,287	.	.	.
2006	.	57,506	.	.	.
2007	.	59,277	.	.	.
2008	.	58,725	.	.	.
2009	.	56,238	.	.	.
2010	.	55,179	.	.	.
2011	.	57,449	.	.	.
2012	.	59,756	.	.	.
2013	.	59,780	.	.	.
2014	.	60,565	.	.	.
2015	.	63,256	.	.	.
2016	.	65,705	.	.	.

BEA EMPLOYMENT: INFORMATION

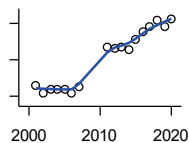
U.S. Bureau of Economic Analysis,
Regional Economic Information System
(REIS)

Year	County	State of Kansas	Non Metro Kansas	County Rank	Per 1000 or \$ Per Capita
2001	.	54,895	.	.	.
2002	.	50,728	.	.	.
2003	.	48,328	6,860	.	.
2004	.	45,617	.	.	.
2005	.	43,840	.	.	.
2006	.	43,925	.	.	.
2007	.	45,115	.	.	.
2008	.	42,958	.	.	.
2009	.	38,677	.	.	.
2010	.	33,432	.	.	.
2011	.	32,160	.	.	.
2012	.	31,829	.	.	.
2013	.	31,737	.	.	.
2014	.	32,316	.	.	.
2015	.	25,282	.	.	.
2016	.	24,998	.	.	.

County: county value. Kansas: state value. County Rank: highest county value ranked #1. (\$000): thousands of dollars. Nonmetro Kansas: Kansas total less Metropolitan Areas as defined by the Office of Management and Budget (OMB; released 3/6/2020). Per 1000: For nonmoney amounts, Per 1000=(county value / county population for the same year as the data) x 1000. \$ Per capita=(county value / county population for the same year as the data). Value= . indicates missing or suppressed data or value not calculated.

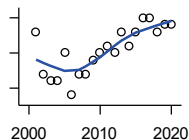
Employment

BEA EMPLOYMENT: FINANCE AND INSURANCE



U.S. Bureau of Economic Analysis,
Regional Economic Information System
(REIS)

Year	County	State of Kansas	Non Metro Kansas	County Rank	Per 1000 or \$ Per Capita
2001	72	76,118	.	69	.
2002	64	78,206	.	68	.
2003	68	78,441	.	67	.
2004	68	78,350	.	66	.
2005	68	78,952	.	62	.
2006	64	80,900	.	60	.
2007	70	86,094	.	62	.
2008	.	89,590	.	.	.
2009	.	93,573	.	.	.
2010	.	92,428	.	.	.
2011	114	99,495	.	57	.
2012	113	98,640	.	56	.
2013	114	99,998	.	59	.
2014	111	98,209	.	62	.
2015	123	100,534	.	57	.
2016	131	102,699	.	59	.
2017	137	101,563	.	55	.
2018	143	102,816	.	55	.
2019	137	100,276	.	56	.
2020	145	101,626	.	53	.



BEA EMPLOYMENT: REAL ESTATE, RENTAL, AND LEASING

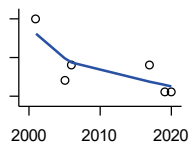
U.S. Bureau of Economic Analysis,
Regional Economic Information System
(REIS)

Year	County	State of Kansas	Non Metro Kansas	County Rank	Per 1000 or \$ Per Capita
2001	23	45,237	.	65	.
2002	17	44,970	.	68	.
2003	16	47,095	.	72	.
2004	16	50,181	.	70	.
2005	20	53,335	.	59	.
2006	14	55,342	.	70	.
2007	17	57,694	.	70	.
2008	17	57,933	.	66	.
2009	19	57,132	.	68	.
2010	20	59,578	.	68	.
2011	21	61,821	.	68	.
2012	20	60,432	.	66	.
2013	23	62,134	.	67	.
2014	21	64,705	.	75	.
2015	23	66,604	.	66	.
2016	25	68,395	.	62	.
2017	25	70,304	.	69	.
2018	23	72,631	.	72	.
2019	24	69,119	.	69	.
2020	24	68,452	.	69	.

County: county value. Kansas: state value. County Rank: highest county value ranked #1. (\$000): thousands of dollars. Nonmetro Kansas: Kansas total less Metropolitan Areas as defined by the Office of Management and Budget (OMB; released 3/6/2020). Per 1000: For nonmoney amounts, Per 1000=(county value / county population for the same year as the data) x 1000. \$ Per capita=(county value / county population for the same year as the data). Value= . indicates missing or suppressed data or value not calculated.

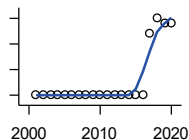
Employment

BEA EMPLOYMENT: PROFESSIONAL AND TECHNICAL SERVICES



U.S. Bureau of Economic Analysis, Regional Economic Information System (REIS)

Year	County	State of Kansas	Non Metro Kansas	County Rank	Per 1000 or \$ Per Capita
2001	45	81,396	.	66	.
2002	.	80,684	.	.	.
2003	.	80,311	.	.	.
2004	.	85,550	.	.	.
2005	29	85,003	.	69	.
2006	33	87,381	.	73	.
2007	.	92,717	.	.	.
2008	.	95,362	.	.	.
2009	.	93,232	.	.	.
2010	.	93,037	.	.	.
2011	.	93,237	.	.	.
2012	.	95,360	.	.	.
2013	.	100,795	.	.	.
2014	.	102,210	.	.	.
2015	.	105,625	.	.	.
2016	.	108,059	.	.	.
2017	33	109,041	.	73	.
2019	26	109,637	.	75	.
2020	26	108,634	.	74	.



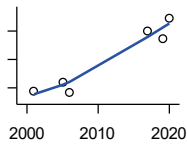
BEA EMPLOYMENT: MANAGEMENT OF COMPANIES AND ENTERPRISES

U.S. Bureau of Economic Analysis, Regional Economic Information System (REIS)

Year	County	State of Kansas	Non Metro Kansas	County Rank	Per 1000 or \$ Per Capita
2001	0	13,832	.	70	.
2002	0	12,576	.	69	.
2003	0	11,135	.	67	.
2004	0	10,614	.	67	.
2005	0	11,811	.	66	.
2006	0	13,061	.	66	.
2007	0	13,398	.	69	.
2008	0	15,234	.	72	.
2009	0	14,849	.	75	.
2010	0	16,579	.	75	.
2011	0	15,343	.	75	.
2012	0	15,075	.	82	.
2013	0	16,667	.	81	.
2014	0	20,441	.	79	.
2015	0	29,604	.	78	.
2016	0	27,824	.	77	.
2017	12	27,767	.	35	.
2018	15	28,862	.	32	.
2019	14	30,512	.	31	.
2020	14	25,648	.	32	.

County: county value. Kansas: state value. County Rank: highest county value ranked #1. (\$000): thousands of dollars. Nonmetro Kansas: Kansas total less Metropolitan Areas as defined by the Office of Management and Budget (OMB; released 3/6/2020). Per 1000: For nonmoney amounts, Per 1000=(county value / county population for the same year as the data) x 1000. \$ Per capita=(county value / county population for the same year as the data). Value= . indicates missing or suppressed data or value not calculated.

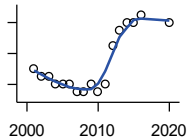
Employment



**BEA EMPLOYMENT:
ADMINISTRATIVE AND WASTE
SERVICES**

U.S. Bureau of Economic Analysis,
Regional Economic Information System
(REIS)

Year	County	State of Kansas	Non Metro Kansas	County Rank	Per 1000 or \$ Per Capita
2001	18	81,573	.	53	.
2002	.	82,992	.	.	.
2003	.	81,298	.	.	.
2004	.	85,721	.	.	.
2005	24	89,933	.	50	.
2006	17	93,688	.	57	.
2007	.	98,865	.	.	.
2008	.	97,440	.	.	.
2009	.	92,455	.	.	.
2010	.	93,675	.	.	.
2011	.	97,969	.	.	.
2012	.	100,490	.	.	.
2013	.	104,680	.	.	.
2014	.	107,218	18,836	.	.
2015	.	103,436	18,767	.	.
2016	.	103,233	18,428	.	.
2017	60	101,532	18,198	56	.
2019	55	100,897	.	51	.
2020	69	95,361	.	53	.



**BEA EMPLOYMENT: EDUCATIONAL
SERVICES**

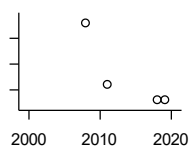
U.S. Bureau of Economic Analysis,
Regional Economic Information System
(REIS)

Year	County	State of Kansas	Non Metro Kansas	County Rank	Per 1000 or \$ Per Capita
2001	8	21,169	.	41	.
2002	7	22,173	.	51	.
2003	7	22,651	.	55	.
2004	6	21,601	.	74	.
2005	6	22,177	.	76	.
2006	6	22,438	.	74	.
2007	5	23,647	.	70	.
2008	5	24,653	.	70	.
2009	6	25,120	.	61	.
2010	5	26,071	.	67	.
2011	6	26,080	.	60	.
2012	11	26,625	.	29	.
2013	13	27,508	.	30	.
2014	14	28,708	.	35	.
2015	14	28,794	.	33	.
2016	15	27,996	.	32	.
2020	14	27,508	.	30	.

County: county value. Kansas: state value. County Rank: highest county value ranked #1. (\$000): thousands of dollars. Nonmetro Kansas: Kansas total less Metropolitan Areas as defined by the Office of Management and Budget (OMB; released 3/6/2020). Per 1000: For nonmoney amounts, Per 1000=(county value / county population for the same year as the data) x 1000. \$ Per capita=(county value / county population for the same year as the data). Value= . indicates missing or suppressed data or value not calculated.

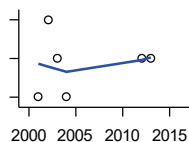
Employment

BEA EMPLOYMENT: HEALTH CARE AND SOCIAL ASSISTANCE



U.S. Bureau of Economic Analysis,
Regional Economic Information System
(REIS)

Year	County	State of Kansas	Non Metro Kansas	County Rank	Per 1000 or \$ Per Capita
2001	.	165,415	.	.	.
2002	.	168,198	.	.	.
2003	.	169,654	.	.	.
2004	.	172,796	.	.	.
2005	.	173,949	.	.	.
2006	.	176,919	.	.	.
2007	.	182,160	.	.	.
2008	38	186,051	.	55	.
2009	.	188,499	.	.	.
2010	.	188,383	.	.	.
2011	26	190,736	.	54	.
2012	.	192,991	.	.	.
2013	.	193,687	.	.	.
2014	.	194,632	.	.	.
2015	.	199,724	.	.	.
2016	.	201,830	.	.	.
2018	23	204,011	.	56	.
2019	23	206,646	.	57	.



BEA EMPLOYMENT: ARTS, ENTERTAINMENT, AND RECREATION

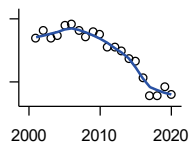
U.S. Bureau of Economic Analysis,
Regional Economic Information System
(REIS)

Year	County	State of Kansas	Non Metro Kansas	County Rank	Per 1000 or \$ Per Capita
2001	11	25,012	.	59	.
2002	13	25,668	.	57	.
2003	12	24,116	.	55	.
2004	11	25,355	.	66	.
2005	.	26,067	.	.	.
2006	.	26,505	.	.	.
2007	.	27,489	.	.	.
2008	.	27,501	.	.	.
2009	.	27,203	.	.	.
2010	.	27,479	.	.	.
2011	.	28,487	.	.	.
2012	12	30,729	.	64	.
2013	12	31,068	.	60	.
2014	.	32,154	.	.	.
2015	.	31,169	.	.	.
2016	.	32,373	.	.	.

County: county value. Kansas: state value. County Rank: highest county value ranked #1. (\$000): thousands of dollars. Nonmetro Kansas: Kansas total less Metropolitan Areas as defined by the Office of Management and Budget (OMB; released 3/6/2020). Per 1000: For nonmoney amounts, Per 1000=(county value / county population for the same year as the data) x 1000. \$ Per capita=(county value / county population for the same year as the data). Value= . indicates missing or suppressed data or value not calculated.

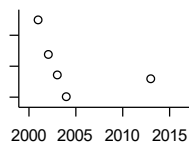
Employment

BEA EMPLOYMENT: GOVERNMENT AND GOVERNMENT ENTERPRISES



U.S. Bureau of Economic Analysis, Regional Economic Information System (REIS)

Year	County	State of Kansas	Non Metro Kansas	County Rank	Per 1000 or \$ Per Capita
2001	403	282,293	102,993	90	.
2002	423	281,427	103,581	89	.
2003	404	282,459	103,389	88	.
2004	409	283,877	103,946	89	.
2005	434	282,798	103,194	84	.
2006	439	288,372	104,103	84	.
2007	422	294,413	104,598	85	.
2008	408	298,580	104,718	87	.
2009	418	300,422	104,081	85	.
2010	412	303,875	103,382	83	.
2011	382	299,952	101,535	87	.
2012	384	298,068	101,180	87	.
2013	375	297,689	101,232	88	.
2014	354	296,956	100,634	90	.
2015	348	295,799	99,719	90	.
2016	309	291,536	98,520	93	.
2017	266	295,748	99,542	101	.
2018	267	298,105	99,499	99	.
2019	287	302,017	100,227	97	.
2020	271	292,583	96,477	96	.



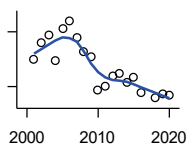
BEA EMPLOYMENT: ACCOMMODATION AND FOOD SERVICES

U.S. Bureau of Economic Analysis, Regional Economic Information System (REIS)

Year	County	State of Kansas	Non Metro Kansas	County Rank	Per 1000 or \$ Per Capita
2001	60	103,353	.	62	.
2002	49	103,692	.	63	.
2003	42	105,138	.	63	.
2004	35	106,694	.	66	.
2005	.	107,303	.	.	.
2006	.	109,888	.	.	.
2007	.	110,863	.	.	.
2008	.	111,092	.	.	.
2009	.	109,353	.	.	.
2010	.	108,628	.	.	.
2011	.	110,514	.	.	.
2012	.	112,574	.	.	.
2013	41	114,102	.	60	.
2014	.	115,768	.	.	.
2015	.	118,503	.	.	.
2016	.	119,764	.	.	.

County: county value. Kansas: state value. County Rank: highest county value ranked #1. (\$000): thousands of dollars. Nonmetro Kansas: Kansas total less Metropolitan Areas as defined by the Office of Management and Budget (OMB; released 3/6/2020). Per 1000: For nonmoney amounts, Per 1000=(county value / county population for the same year as the data) x 1000. \$ Per capita=(county value / county population for the same year as the data). Value= . indicates missing or suppressed data or value not calculated.

Employment

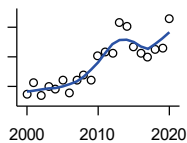


BEA EMPLOYMENT: OTHER SERVICES, EXCEPT PUBLIC ADMINISTRATION

U.S. Bureau of Economic Analysis, Regional Economic Information System (REIS)

Year	County	State of Kansas	Non Metro Kansas	County Rank	Per 1000 or \$ Per Capita
2001	95	92,176	.	85	.
2002	104	95,350	.	82	.
2003	108	95,821	32,629	83	.
2004	94	95,610	.	82	.
2005	112	95,930	32,555	80	.
2006	116	96,413	.	75	.
2007	107	98,444	.	78	.
2008	99	96,705	.	77	.
2009	96	95,534	.	76	.
2010	78	93,302	.	78	.
2011	80	94,865	.	77	.
2012	86	94,977	.	75	.
2013	87	95,471	.	78	.
2014	82	97,806	.	77	.
2015	85	98,041	.	74	.
2016	77	97,219	.	73	.
2018	74	98,645	.	80	.
2019	76	98,638	.	74	.
2020	75	92,245	.	72	.

Income



BEA PER CAPITA PERSONAL INCOME (\$)

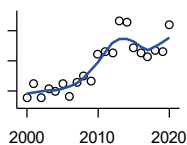
U.S. Bureau of Economic Analysis, Regional Economic Information System (REIS)

Year	County	State of Kansas	Non Metro Kansas	County Rank	Per 1000 or \$ Per Capita
2000	24,317	28,253	23,116	46	.
2001	32,696	29,112	24,576	4	.
2002	23,546	29,248	24,314	67	.
2003	29,520	30,074	26,017	18	.
2004	27,813	30,843	26,583	41	.
2005	33,887	32,545	28,356	12	.
2006	25,246	35,690	29,782	100	.
2007	33,962	38,057	32,034	44	.
2008	37,651	41,257	35,211	46	.
2009	34,267	39,431	33,876	62	.
2010	50,280	39,960	35,795	10	.
2011	53,088	43,015	39,041	16	.
2012	52,240	45,294	39,660	18	.
2013	73,162	46,174	41,747	8	.
2014	70,893	47,013	41,042	4	.
2015	57,158	47,332	40,638	10	.
2016	52,431	47,326	40,797	15	.
2017	50,229	48,756	41,314	17	.
2018	54,743	50,811	43,283	12	.
2019	55,843	52,820	44,491	13	.
2020	75,840	55,677	48,415	4	.

County: county value. Kansas: state value. County Rank: highest county value ranked #1. (\$000): thousands of dollars. Nonmetro Kansas: Kansas total less Metropolitan Areas as defined by the Office of Management and Budget (OMB; released 3/6/2020). Per 1000: For nonmoney amounts, Per 1000=(county value / county population for the same year as the data) x 1000. \$ Per capita=(county value / county population for the same year as the data). Value= . indicates missing or suppressed data or value not calculated.

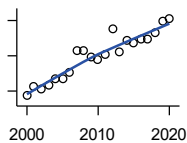
Income

**SOURCES OF PERSONAL INCOME:
TOTAL PERSONAL INCOME (\$000)**



U.S. Bureau of Economic Analysis,
Regional Economic Information System
(REIS)

Year	County	State of Kansas	Non Metro Kansas	County Rank	Per 1000 or \$ Per Capita
2000	64,464	76,105,125	22,273,838	98	24,143.8
2001	87,463	78,664,651	23,411,174	85	32,696.4
2002	63,010	79,365,190	23,000,314	98	23,546.3
2003	79,526	81,890,340	24,494,191	91	29,519.7
2004	73,481	84,335,940	24,924,467	91	27,812.6
2005	87,768	89,346,228	26,452,291	91	33,887.3
2006	65,210	98,610,188	27,661,596	98	25,245.8
2007	89,422	105,943,199	29,715,946	96	33,962.0
2008	99,324	115,852,478	32,614,565	94	37,651.3
2009	91,458	111,697,350	31,394,702	97	34,266.8
2010	136,007	114,239,828	33,291,419	81	50,560.2
2011	139,833	123,558,772	36,221,488	87	53,027.3
2012	138,332	130,948,127	36,696,759	85	52,181.1
2013	191,392	133,979,908	38,513,959	78	73,050.4
2014	188,151	136,878,718	37,680,598	76	70,760.1
2015	146,496	138,336,768	37,081,851	81	57,046.7
2016	137,788	138,533,890	36,930,885	81	52,311.3
2017	131,047	142,729,689	37,104,963	81	50,094.4
2018	141,457	148,955,739	38,589,364	80	54,406.5
2019	140,446	154,961,001	39,424,148	85	55,315.5
2020	183,911	163,462,179	42,618,591	77	73,038.5



**SOURCES OF PERSONAL INCOME:
WAGES AND SALARIES (\$000)**

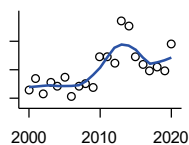
U.S. Bureau of Economic Analysis,
Regional Economic Information System
(REIS)

Year	County	State of Kansas	Non Metro Kansas	County Rank	Per 1000 or \$ Per Capita
2000	23,630	41,766,878	10,254,250	86	8,850.2
2001	26,462	43,269,734	10,518,206	85	9,892.3
2002	25,406	43,875,159	10,696,876	85	9,494.0
2003	26,662	44,488,560	10,894,971	84	9,896.8
2004	28,638	46,702,068	11,333,617	85	10,839.5
2005	28,431	48,537,956	11,614,130	84	10,977.2
2006	30,337	52,083,584	12,299,340	85	11,744.9
2007	36,330	55,442,368	13,093,908	78	13,797.9
2008	36,528	57,623,385	13,647,143	81	13,846.9
2009	34,579	55,605,578	13,199,674	83	12,955.8
2010	33,807	56,089,711	13,345,291	85	12,567.7
2011	35,271	58,104,706	13,856,458	86	13,375.4
2012	42,577	60,616,457	14,473,599	79	16,060.7
2013	35,990	61,872,023	14,781,792	88	13,736.6
2014	39,360	64,457,652	15,385,500	87	14,802.6
2015	38,596	66,729,598	15,454,485	87	15,029.6
2016	39,832	67,253,399	15,422,058	87	15,122.2
2017	39,723	68,830,861	15,731,853	86	15,184.6
2018	41,423	71,580,544	16,311,725	86	15,931.9
2019	44,836	74,404,771	16,882,299	85	17,658.9
2020	45,568	75,798,310	17,251,300	85	18,096.9

County: county value. Kansas: state value. County Rank: highest county value ranked #1. (\$000): thousands of dollars. Nonmetro Kansas: Kansas total less Metropolitan Areas as defined by the Office of Management and Budget (OMB; released 3/6/2020). Per 1000: For nonmoney amounts, Per 1000=(county value / county population for the same year as the data) x 1000. \$ Per capita=(county value / county population for the same year as the data). Value= . indicates missing or suppressed data or value not calculated.

Income

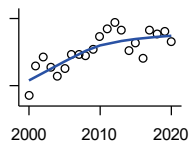
**SOURCES OF PERSONAL INCOME:
PROPRIETORS-FARM (\$000)**



U.S. Bureau of Economic Analysis,
Regional Economic Information System
(REIS)

Year	County	State of Kansas	Non Metro Kansas	County Rank	Per 1000 or \$ Per Capita
2000	11,852	668,539	673,707	22	4,439.0
2001	28,333	779,473	769,336	3	10,591.8
2002	5,306	145,064	187,033	17	1,982.8
2003	21,511	1,281,076	1,195,298	15	7,984.8
2004	16,788	1,149,425	938,524	21	6,354.3
2005	29,249	1,609,604	1,469,139	16	11,293.1
2006	2,763	766,047	663,735	60	1,069.7
2007	17,688	1,131,607	1,040,350	19	6,717.8
2008	21,137	1,582,092	1,404,900	31	8,012.5
2009	15,229	1,585,995	1,390,349	45	5,705.9
2010	57,540	2,149,482	2,029,067	7	21,390.3
2011	58,835	3,188,519	2,989,880	15	22,311.3
2012	48,374	2,519,555	2,296,875	14	18,247.5
2013	108,692	4,499,190	4,158,419	8	41,485.5
2014	100,824	2,231,181	2,157,992	4	37,918.0
2015	58,112	1,300,733	1,294,370	6	22,629.3
2016	47,205	1,577,060	1,564,511	12	17,921.4
2017	37,663	838,480	838,290	6	14,397.2
2018	44,621	1,050,662	971,690	3	17,161.9
2019	38,603	998,038	878,247	2	15,204.0
2020	75,678	2,151,349	1,887,881	1	30,054.8

**SOURCES OF PERSONAL INCOME:
PROPRIETORS-NONFARM (\$000)**



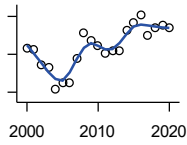
U.S. Bureau of Economic Analysis,
Regional Economic Information System
(REIS)

Year	County	State of Kansas	Non Metro Kansas	County Rank	Per 1000 or \$ Per Capita
2000	3,083	4,580,476	1,493,470	103	1,154.7
2001	5,789	4,510,530	1,855,621	93	2,164.1
2002	6,515	5,036,100	1,966,784	92	2,434.6
2003	5,691	4,719,377	1,916,735	94	2,112.5
2004	4,803	4,003,922	2,073,898	100	1,817.9
2005	5,552	4,455,294	2,200,971	97	2,143.6
2006	6,756	7,343,524	2,694,895	96	2,615.6
2007	6,742	7,280,197	2,436,574	92	2,560.6
2008	6,647	9,255,953	2,971,923	95	2,519.7
2009	7,263	9,323,551	2,858,848	96	2,721.2
2010	8,373	9,658,261	3,498,040	99	3,112.6
2011	9,095	12,196,566	4,186,007	101	3,449.0
2012	9,632	15,773,140	4,446,004	98	3,633.3
2013	8,979	16,441,660	4,492,127	98	3,427.1
2014	7,124	15,954,254	4,455,081	100	2,679.2
2015	7,865	15,536,116	4,386,172	100	3,062.7
2016	6,479	14,075,310	3,783,829	100	2,459.8
2017	8,989	15,371,957	3,908,254	100	3,436.2
2018	8,665	15,716,877	4,238,775	102	3,332.7
2019	8,791	16,705,488	3,921,051	98	3,462.4
2020	7,938	16,718,952	3,823,329	98	3,152.5

County: county value. Kansas: state value. County Rank: highest county value ranked #1. (\$000): thousands of dollars. Nonmetro Kansas: Kansas total less Metropolitan Areas as defined by the Office of Management and Budget (OMB; released 3/6/2020). Per 1000: For nonmoney amounts, Per 1000=(county value / county population for the same year as the data) x 1000. \$ Per capita=(county value / county population for the same year as the data). Value= . indicates missing or suppressed data or value not calculated.

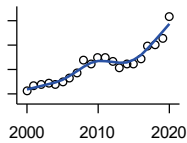
Income

**SOURCES OF PERSONAL INCOME:
DIVIDENDS,INTEREST,RENT(\$000)**



U.S. Bureau of Economic Analysis,
Regional Economic Information System
(REIS)

Year	County	State of Kansas	Non Metro Kansas	County Rank	Per 1000 or \$ Per Capita
2000	14,643	15,916,201	4,736,921	100	5,484.3
2001	14,535	15,770,830	4,699,417	99	5,433.6
2002	12,886	15,111,563	4,316,887	100	4,815.4
2003	12,630	15,370,764	4,360,311	100	4,688.2
2004	10,351	15,820,469	4,251,925	103	3,917.9
2005	10,932	17,147,069	4,485,387	102	4,220.8
2006	10,941	20,117,848	4,945,184	102	4,235.8
2007	13,608	22,269,186	5,526,219	101	5,168.2
2008	16,215	24,972,485	6,180,979	101	6,146.7
2009	15,424	21,453,879	5,308,474	99	5,778.9
2010	14,907	20,861,351	5,414,285	101	5,541.6
2011	14,036	23,387,567	5,781,075	103	5,322.7
2012	14,389	25,689,368	6,389,505	103	5,427.8
2013	14,335	24,832,212	5,984,811	103	5,471.4
2014	16,562	27,412,684	6,403,356	103	6,228.7
2015	17,396	27,244,414	6,423,685	100	6,774.1
2016	18,166	27,293,441	6,389,161	98	6,896.7
2017	16,060	28,385,472	6,700,156	102	6,139.1
2018	16,852	29,953,419	6,772,504	101	6,481.5
2019	17,137	30,820,276	6,957,987	101	6,749.5
2020	16,759	30,283,520	6,844,745	101	6,655.7



**SOURCES OF PERSONAL INCOME:
TRANSFER PAYMENTS (\$000)**

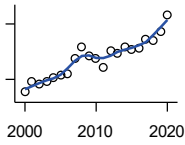
U.S. Bureau of Economic Analysis,
Regional Economic Information System
(REIS)

Year	County	State of Kansas	Non Metro Kansas	County Rank	Per 1000 or \$ Per Capita
2000	10,500	9,650,835	4,036,781	100	3,932.6
2001	11,564	10,549,124	4,355,457	100	4,323.0
2002	12,025	11,208,997	4,553,978	99	4,493.6
2003	12,071	11,709,049	4,702,911	99	4,480.7
2004	11,927	12,040,452	4,802,536	98	4,514.4
2005	12,353	12,696,735	5,059,314	99	4,769.5
2006	13,346	13,642,787	5,455,207	99	5,166.9
2007	14,311	14,686,821	5,775,024	99	5,435.2
2008	16,851	16,552,460	6,322,722	98	6,387.8
2009	16,049	18,025,603	6,790,962	99	6,013.1
2010	17,483	19,189,749	7,089,258	98	6,499.3
2011	17,492	19,625,770	7,255,825	98	6,633.3
2012	16,621	19,354,458	7,148,177	100	6,269.7
2013	15,289	19,639,358	7,185,636	100	5,835.5
2014	16,255	20,380,970	7,399,809	101	6,113.2
2015	16,195	21,116,856	7,623,577	100	6,306.5
2016	17,256	21,884,629	7,886,000	101	6,551.3
2017	19,822	22,559,744	8,062,517	100	7,577.2
2018	20,145	23,628,033	8,393,617	100	7,748.1
2019	21,463	25,050,174	8,845,371	100	8,453.3
2020	25,856	32,319,421	11,074,190	99	10,268.5

County: county value. Kansas: state value. County Rank: highest county value ranked #1. (\$000): thousands of dollars. Nonmetro Kansas: Kansas total less Metropolitan Areas as defined by the Office of Management and Budget (OMB; released 3/6/2020). Per 1000: For nonmoney amounts, Per 1000=(county value / county population for the same year as the data) x 1000. \$ Per capita=(county value / county population for the same year as the data). Value= . indicates missing or suppressed data or value not calculated.

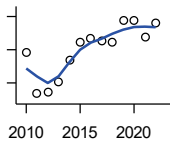
Income

**SOURCES OF PERSONAL INCOME:
LESS SOCIAL INSURANCE (\$000)**



U.S. Bureau of Economic Analysis,
Regional Economic Information System
(REIS)

Year	County	State of Kansas	Non Metro Kansas	County Rank	Per 1000 or \$ Per Capita
2000	3,305	6,655,813	1,663,044	96	1,237.8
2001	3,863	6,869,934	1,740,915	91	1,444.1
2002	3,781	7,008,361	1,778,636	94	1,412.9
2003	3,906	7,172,781	1,821,858	93	1,449.9
2004	4,070	7,556,560	1,904,014	90	1,540.5
2005	4,208	7,911,241	1,986,907	93	1,624.7
2006	4,276	8,406,937	2,090,313	93	1,655.4
2007	5,114	8,806,941	2,180,587	88	1,942.3
2008	5,782	9,207,010	2,299,399	87	2,191.8
2009	5,291	9,002,859	2,248,703	91	1,982.4
2010	5,128	9,235,760	2,321,191	92	1,906.3
2011	4,670	8,515,986	2,139,991	92	1,771.0
2012	5,557	8,816,128	2,195,919	87	2,096.2
2013	5,436	10,225,399	2,540,439	91	2,074.8
2014	5,752	10,609,601	2,635,009	90	2,163.2
2015	5,588	11,028,204	2,663,038	94	2,176.0
2016	5,708	10,915,915	2,604,579	93	2,167.0
2017	6,205	11,224,218	2,669,954	90	2,371.9
2018	6,075	11,749,229	2,797,106	94	2,336.5
2019	6,586	12,245,451	2,889,336	94	2,593.9
2020	7,493	12,715,152	3,027,656	90	2,975.8



HUD MEDIAN FAMILY INCOME

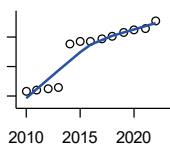
U.S. Department of Housing and Urban
Development (HUD)

Year	County	State of Kansas	Non Metro Kansas	County Rank	Per 1000 or \$ Per Capita
2010	49,000	63,100	.	84	.
2011	36,700	64,300	.	105	.
2012	37,200	65,200	.	105	.
2013	40,200	64,800	.	105	.
2014	46,800	64,400	.	104	.
2015	52,400	66,300	.	93	.
2016	53,300	66,700	.	85	.
2017	52,700	68,500	.	93	.
2018	52,200	73,100	.	100	.
2019	59,000	75,200	.	83	.
2020	58,700	76,500	.	93	.
2021	53,900	77,400	.	103	.
2022	58,100	87,800	.	104	.

County: county value. Kansas: state value. County Rank: highest county value ranked #1. (\$000): thousands of dollars. Nonmetro Kansas: Kansas total less Metropolitan Areas as defined by the Office of Management and Budget (OMB; released 3/6/2020). Per 1000: For nonmoney amounts, Per 1000=(county value / county population for the same year as the data) x 1000. \$ Per capita=(county value / county population for the same year as the data). Value= . indicates missing or suppressed data or value not calculated.

Income

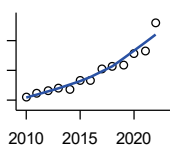
HUD 30% LOW-TO-MEDIUM INCOME (LMI) LIMIT - 4 PERSONS



U.S. Department of Housing and Urban Development (HUD)

Year	County	State of Kansas	Non Metro Kansas	County Rank	Per 1000 or \$ Per Capita
2010	15,850	.	.	105	.
2011	16,100	.	.	105	.
2012	16,300	.	.	105	.
2013	16,550	.	.	105	.
2014	23,850	.	.	105	.
2015	24,250	.	.	105	.
2016	24,300	.	.	105	.
2017	24,600	.	.	105	.
2018	25,100	21,950	.	105	.
2019	25,750	22,550	.	105	.
2020	26,200	22,950	.	105	.
2021	26,500	23,200	.	105	.
2022	27,750	25,950	.	105	.

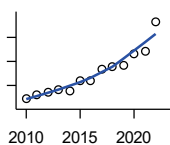
HUD 50% LOW-TO-MEDIUM INCOME (LMI) LIMIT - 4 PERSONS



U.S. Department of Housing and Urban Development (HUD)

Year	County	State of Kansas	Non Metro Kansas	County Rank	Per 1000 or \$ Per Capita
2010	26,400	.	.	105	.
2011	26,850	.	.	105	.
2012	27,200	.	.	105	.
2013	27,600	.	.	105	.
2014	27,400	.	.	105	.
2015	28,700	.	.	105	.
2016	28,650	.	.	105	.
2017	30,150	.	.	105	.
2018	30,550	36,550	.	105	.
2019	30,750	37,600	.	105	.
2020	32,300	38,250	.	104	.
2021	32,550	38,700	.	105	.
2022	36,400	43,300	.	105	.

HUD 80% LOW-TO-MEDIUM INCOME (LMI) LIMIT - 4 PERSONS



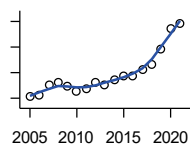
U.S. Department of Housing and Urban Development (HUD)

Year	County	State of Kansas	Non Metro Kansas	County Rank	Per 1000 or \$ Per Capita
2010	42,250	.	.	105	.
2011	42,950	.	.	105	.
2012	43,500	.	.	105	.
2013	44,150	.	.	105	.
2014	43,850	.	.	105	.
2015	45,900	.	.	105	.
2016	45,850	.	.	105	.
2017	48,250	.	.	105	.
2018	48,900	58,500	.	105	.
2019	49,200	60,150	.	105	.
2020	51,700	61,200	.	104	.
2021	52,100	61,900	.	105	.
2022	58,250	69,250	.	105	.

County: county value. Kansas: state value. County Rank: highest county value ranked #1. (\$000): thousands of dollars. Nonmetro Kansas: Kansas total less Metropolitan Areas as defined by the Office of Management and Budget (OMB; released 3/6/2020). Per 1000: For nonmoney amounts, Per 1000=(county value / county population for the same year as the data) x 1000. \$ Per capita=(county value / county population for the same year as the data). Value= . indicates missing or suppressed data or value not calculated.

Banking

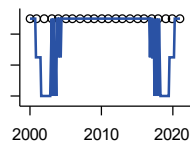
BANK DEPOSITS (1984-2004 in thousands; 2005- in millions)



Federal Deposit Insurance Corporation, Data Book, Operating Banks and Branches

Year	County	State of Kansas	Non Metro Kansas	County Rank	Per 1000 or \$ Per Capita
2005	103	48,304	17,000	73	39.8
2006	107	50,668	17,586	73	41.4
2007	126	54,057	18,517	68	47.9
2008	131	57,869	19,628	70	49.7
2009	124	57,763	20,031	74	46.5
2010	114	60,031	20,678	75	42.4
2011	119	61,094	21,347	77	45.1
2012	130	62,910	22,481	76	49.0
2013	126	64,547	22,795	79	48.1
2014	136	66,538	23,338	78	51.1
2015	143	68,160	23,367	75	55.7
2016	144	70,381	23,420	73	54.7
2017	156	73,329	23,928	69	59.6
2018	167	74,623	24,100	68	64.2
2019	196	76,436	24,488	63	77.2
2020	237	88,563	27,547	56	94.1
2021	247	97,055	30,122	60	99.4

NUMBER OF BANKS



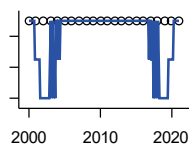
Federal Deposit Insurance Corporation, Data Book, Operating Banks and Branches

Year	County	State of Kansas	Non Metro Kansas	County Rank	Per 1000 or \$ Per Capita
2000	2	410	145	102	.
2001	2	410	136	102	.
2002	2	404	129	102	.
2003	2	397	121	102	.
2004	2	394	112	102	.
2005	2	388	101	102	.
2006	2	385	94	102	.
2007	2	382	91	102	.
2008	2	378	82	102	.
2009	2	374	79	102	.
2010	2	367	70	102	.
2011	2	359	61	102	.
2012	2	348	57	102	.
2013	2	332	45	101	.
2014	2	329	41	101	.
2015	2	320	31	101	.
2016	2	314	24	101	.
2017	2	301	13	102	.
2018	2	289	7	102	.
2019	2	279	3	102	.
2020	2	271	-1	102	.
2021	2	270	-6	102	.

County: county value. Kansas: state value. County Rank: highest county value ranked #1. (\$000): thousands of dollars. Nonmetro Kansas: Kansas total less Metropolitan Areas as defined by the Office of Management and Budget (OMB; released 3/6/2020). Per 1000: For nonmoney amounts, Per 1000=(county value / county population for the same year as the data) x 1000. \$ Per capita=(county value / county population for the same year as the data). Value= . indicates missing or suppressed data or value not calculated.

Banking

NUMBER OF BANKING OFFICES

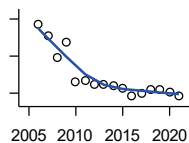


Federal Deposit Insurance Corporation, Data Book, Operating Banks and Branches

Year	County	State of Kansas	Non Metro Kansas	County Rank	Per 1000 or \$ Per Capita
2000	2	1,398	703	103	.
2001	2	1,424	708	103	.
2002	2	1,447	704	103	.
2003	2	1,461	708	103	.
2004	2	1,485	708	103	.
2005	2	1,505	711	103	.
2006	2	1,518	711	103	.
2007	2	1,543	717	103	.
2008	2	1,556	717	103	.
2009	2	1,569	716	103	.
2010	2	1,561	710	103	.
2011	2	1,559	707	103	.
2012	2	1,533	702	103	.
2013	2	1,518	696	103	.
2014	2	1,491	685	103	.
2015	2	1,472	675	103	.
2016	2	1,465	668	103	.
2017	2	1,452	666	104	.
2018	2	1,439	660	104	.
2019	2	1,439	663	104	.
2020	2	1,416	653	104	.
2021	2	1,392	641	104	.

Government

TANGIBLE ASSESSED VALUATION (KDoR, million\$; 2006-)



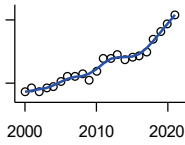
Kansas Department of Revenue, Division of Property Valuation, Statistical Report of Property Assessment and Taxation

Year	County	State of Kansas	Non Metro Kansas	County Rank	Per 1000 or \$ Per Capita
2006	77.0	28,964.3	10,316.9	59	29.8
2007	70.9	30,086.9	10,335.9	63	26.9
2008	59.4	31,000.3	10,856.9	75	22.5
2009	67.8	30,312.3	10,555.6	66	25.4
2010	46.0	29,450.2	10,158.7	85	17.1
2011	46.9	29,963.6	10,572.3	84	17.8
2012	44.8	30,382.9	10,876.2	87	16.9
2013	44.4	30,850.2	11,044.4	90	16.9
2014	43.9	31,783.0	11,388.9	91	16.5
2015	42.6	32,335.7	11,037.8	97	16.6
2016	38.8	33,156.3	10,889.6	99	14.7
2017	39.9	34,754.5	11,439.0	97	15.2
2018	42.0	36,566.1	11,907.1	98	16.1
2019	42.3	38,255.2	12,336.7	98	16.6
2020	40.3	39,333.9	12,219.3	99	16.0
2021	38.3	40,812.0	12,601.5	101	15.4

County: county value. Kansas: state value. County Rank: highest county value ranked #1. (\$000): thousands of dollars. Nonmetro Kansas: Kansas total less Metropolitan Areas as defined by the Office of Management and Budget (OMB; released 3/6/2020). Per 1000: For nonmoney amounts, Per 1000=(county value / county population for the same year as the data) x 1000. \$ Per capita=(county value / county population for the same year as the data). Value= . indicates missing or suppressed data or value not calculated.

Government

SALES TAX COLLECTIONS (\$)

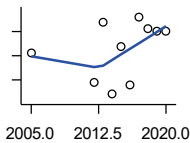


Kansas Department of Revenue. Use tax collections included beginning in calendar year 2018.

Year	County	State of Kansas	Non Metro Kansas	County Rank	Per 1000 or \$ Per Capita
2000	785,166	1,475,831,808	432,761,608	90	294,069.7
2001	874,326	1,481,026,688	426,316,284	86	326,850.8
2002	793,059	1,561,316,864	443,986,950	88	296,359.9
2003	897,504	1,626,782,976	461,658,700	86	333,149.2
2004	913,544	1,691,899,008	480,309,725	88	345,777.4
2005	1,026,738	1,744,980,352	497,494,867	85	396,423.9
2006	1,146,859	1,851,694,720	532,233,047	86	444,002.7
2007	1,167,310	1,917,546,752	559,319,583	86	443,338.4
2008	1,208,139	1,990,655,744	589,725,773	88	457,975.5
2009	1,081,006	1,866,223,078	548,627,132	88	405,022.9
2010	1,295,059	2,075,193,413	617,409,982	86	481,434.6
2011	1,573,118	2,347,193,367	702,671,534	87	596,555.9
2012	1,592,566	2,456,292,294	740,196,106	88	600,741.8
2013	1,680,393	2,489,204,048	746,226,565	88	641,371.4
2014	1,569,287	2,539,886,774	760,474,019	91	590,179.3
2015	1,614,206	2,642,374,740	750,090,163	89	628,585.0
2016	1,653,430	2,732,611,350	749,030,133	86	627,726.0
2017	1,725,702	2,726,104,521	744,246,491	85	659,671.9
2018	2,036,119	3,277,299,125	893,564,480	90	783,122.6
2019	2,235,304	3,395,631,405	939,607,762	86	880,387.6
2020	2,412,656	3,489,306,791	984,218,931	85	958,163.6
2021	2,609,246	3,981,293,227	1,098,391,422	88	1,050,421.1

Crime

CRIME INDEX OFFENSES



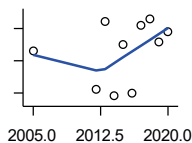
Kansas Bureau of Investigation, Note: Data are aggregated from reports by individual police departments and subject to be incomplete.

Year	County	State of Kansas	Non Metro Kansas	County Rank	Per 1000 or \$ Per Capita
2005	21	111,856	31,630	92	8.1
2012	9	98,914	26,963	100	3.4
2013	34	93,054	24,488	80	13.0
2014	4	86,323	23,341	101	1.5
2015	24	88,590	21,580	86	9.3
2016	8	90,589	21,565	99	3.0
2017	36	93,091	22,622	79	13.8
2018	31	92,062	20,325	78	11.9
2019	30	87,008	18,547	73	11.8
2020	30	87,346	17,762	80	11.9

County: county value. Kansas: state value. County Rank: highest county value ranked #1. (\$000): thousands of dollars. Nonmetro Kansas: Kansas total less Metropolitan Areas as defined by the Office of Management and Budget (OMB; released 3/6/2020). Per 1000: For nonmoney amounts, Per 1000=(county value / county population for the same year as the data) x 1000. \$ Per capita=(county value / county population for the same year as the data). Value= . indicates missing or suppressed data or value not calculated.

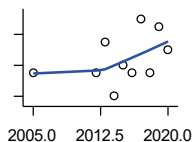
Crime

PROPERTY CRIMES



Kansas Bureau of Investigation, Note: Data are aggregated from reports by individual police departments and subject to be incomplete.

Year	County	State of Kansas	Non Metro Kansas	County Rank	Per 1000 or \$ Per Capita
2005	18	101,414	29,042	92	6.9
2012	6	88,707	24,220	100	2.3
2013	27	83,551	22,028	84	10.3
2014	4	76,794	20,858	101	1.5
2015	20	77,997	19,138	87	7.8
2016	5	79,549	19,207	101	1.9
2017	26	81,349	19,981	82	9.9
2018	28	79,695	17,769	76	10.8
2019	21	74,314	15,892	78	8.3
2020	24	73,450	15,100	78	9.5



VIOLENT CRIMES

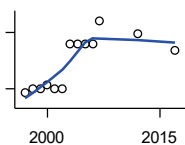
Kansas Bureau of Investigation, Note: Data are aggregated from reports by individual police departments and subject to be incomplete.

Year	County	State of Kansas	Non Metro Kansas	County Rank	Per 1000 or \$ Per Capita
2005	3	10,442	2,588	88	1.2
2012	3	10,207	2,743	92	1.1
2013	7	9,503	2,460	71	2.7
2014	0	9,529	2,483	102	0.0
2015	4	10,593	2,442	82	1.6
2016	3	11,040	2,358	82	1.1
2017	10	11,742	2,641	61	3.8
2018	3	12,367	2,556	89	1.2
2019	9	12,694	2,655	64	3.5
2020	6	13,896	2,662	79	2.4

County: county value. Kansas: state value. County Rank: highest county value ranked #1. (\$000): thousands of dollars. Nonmetro Kansas: Kansas total less Metropolitan Areas as defined by the Office of Management and Budget (OMB; released 3/6/2020). Per 1000: For nonmoney amounts, Per 1000=(county value / county population for the same year as the data) x 1000. \$ Per capita=(county value / county population for the same year as the data). Value= . indicates missing or suppressed data or value not calculated.

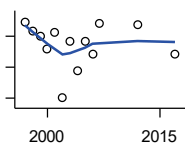
Agriculture

NUMBER OF FARMS



Kansas Agricultural Statistics, Kansas Farm Facts

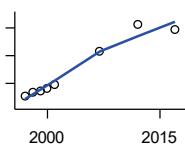
Year	County	State of Kansas	Non Metro Kansas	County Rank	Per 1000 or \$ Per Capita
1997	240	64,000	47,900	103	95.0
1998	250	65,000	48,850	101	94.0
1999	250	65,000	48,850	101	93.6
2000	260	64,000	48,030	100	97.4
2001	250	63,000	47,200	100	93.5
2002	250	63,000	47,200	100	93.4
2003	370	64,500	48,150	85	137.3
2004	370	64,500	48,150	85	140.0
2005	370	64,500	48,150	85	142.9
2006	370	64,000	47,650	83	143.2
2007	431	65,531	48,179	69	163.7
2012	397	61,773	45,655	74	149.8
2017	353	58,569	42,404	76	134.9



TOTAL ACRES HARVESTED

Kansas Agricultural Statistics, Kansas Farm Facts

Year	County	State of Kansas	Non Metro Kansas	County Rank	Per 1000 or \$ Per Capita
1997	217,600	22,846,000	19,430,580	52	86,144.1
1998	206,260	22,143,500	18,943,650	51	77,570.5
1999	199,550	21,708,900	18,581,750	54	74,681.9
2000	183,540	21,639,000	18,528,870	59	68,741.6
2001	205,330	21,847,900	18,689,750	51	76,758.9
2002	121,280	20,230,400	17,089,120	87	45,321.4
2003	192,930	21,827,700	18,661,920	57	71,614.7
2004	155,300	20,876,900	17,721,500	72	58,781.2
2005	192,700	21,936,500	18,807,930	55	74,401.5
2006	177,360	21,412,700	18,291,120	62	68,664.3
2007	217,281	19,886,655	17,164,743	39	82,522.2
2012	214,352	21,043,596	17,966,843	44	80,857.0
2017	176,596	21,837,465	18,543,057	65	67,506.1



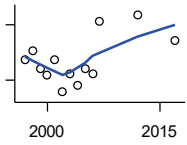
VALUE: LIVESTOCK AND POULTRY (\$000)

Kansas Agricultural Statistics, Kansas Farm Facts

Year	County	State of Kansas	Non Metro Kansas	County Rank	Per 1000 or \$ Per Capita
1997	54,118	2,806,445	2,500,305	10	21,424.4
1998	70,264	2,670,432	2,378,007	8	26,425.0
1999	73,926	2,849,061	2,554,528	9	27,666.9
2000	82,734	2,901,469	2,609,032	6	30,986.5
2001	94,608	2,693,274	2,437,187	5	35,367.5
2007	215,208	9,525,971	.	10	81,734.9
2012	311,856	11,476,571	10,883,216	8	117,637.1
2017	294,387	12,322,289	.	9	112,533.3

County: county value. Kansas: state value. County Rank: highest county value ranked #1. (\$000): thousands of dollars. Nonmetro Kansas: Kansas total less Metropolitan Areas as defined by the Office of Management and Budget (OMB; released 3/6/2020). Per 1000: For nonmoney amounts, Per 1000=(county value / county population for the same year as the data) x 1000. \$ Per capita=(county value / county population for the same year as the data). Value= . indicates missing or suppressed data or value not calculated.

Agriculture



VALUE:FIELD CROPS (\$000)
EXCLUDING GOVERNMENT
PROGRAM PAYMENTS

Kansas Agricultural Statistics, Kansas
Farm Facts

Year	County	State of Kansas	Non Metro Kansas	County Rank	Per 1000 or \$ Per Capita
1997	31,210	4,474,942	3,800,365	69	12,355.5
1998	35,939	3,594,319	3,124,409	43	13,516.0
1999	26,078	3,118,193	2,728,319	56	9,759.7
2000	22,871	2,915,660	2,540,052	53	8,565.9
2001	31,054	3,283,117	2,857,136	43	11,609.0
2002	13,457	3,011,855	2,560,580	90	5,028.8
2003	23,642	3,623,255	3,150,629	72	8,775.8
2004	17,430	3,445,688	2,896,603	85	6,597.3
2005	26,519	3,678,123	3,182,677	63	10,239.0
2006	23,103	4,308,716	3,684,132	77	8,944.3
2007	51,817	4,887,212	.	39	19,679.8
2012	55,383	6,983,993	6,044,551	55	20,891.4
2017	41,273	6,460,437	.	75	15,777.1

County: county value. Kansas: state value. County Rank: highest county value ranked #1. (\$000): thousands of dollars. Nonmetro Kansas: Kansas total less Metropolitan Areas as defined by the Office of Management and Budget (OMB; released 3/6/2020). Per 1000: For nonmoney amounts, Per 1000=(county value / county population for the same year as the data) x 1000. \$ Per capita=(county value / county population for the same year as the data). Value= . indicates missing or suppressed data or value not calculated.