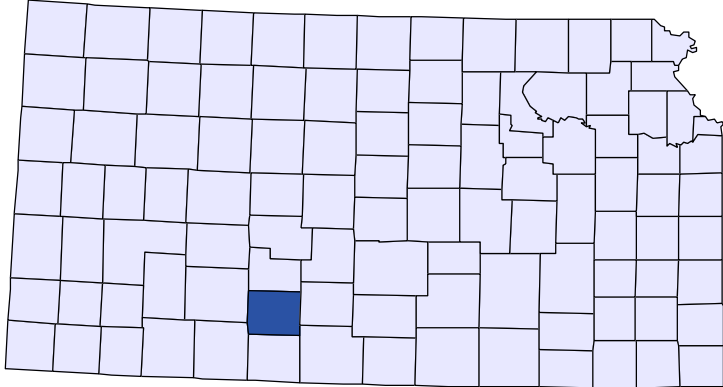




Kansas County Profiles

Kiowa County



The University
of Kansas

Institute for Policy
& Social Research

KU INSTITUTE FOR POLICY
& SOCIAL RESEARCH

The University of Kansas

1541 Lilac Lane, Rm. 607
Blake Hall
Lawrence, KS 66045-3129

Foreword

The Kansas County Profile Report is published by the Institute for Policy & Social Research (IPSR) at the University of Kansas with support from the KU University Center project.* Special thanks to Xanthippe Wedel, senior research data engineer, who compiles and updates the county profiles and Genna Hurd, associate researcher, who provides editorial review.

County reports can be generated for any county in Kansas by simply clicking on the county from the web site:

<https://ipsr.ku.edu/ksdata/kcced/profiles/>

The Kansas County Profile Report contains 12 categories of information: Population, Vital Statistics and Health, Housing, Education, Social Environment, Business, Employment, Income, Banking, Government, Crime, and Agriculture. For more information about Kansas, please refer to the Kansas Statistical Abstract, available online at:

<https://ipsr.ku.edu/ksdata/ksah/>

We are always looking for ways to improve the Kansas County Profile Report and we welcome your suggestions and comments. Please address any correspondence to the Institute for Policy & Social Research, The University of Kansas, 607 Blake Hall, 1541 Lilac Lane, Lawrence, Kansas 66045-3129, e-mail ipsr@ku.edu or call 785-864-3701.

**The KU University Center is a collaborative effort led by the Institute for Policy & Social Research at the University of Kansas. This project is supported by the Economic Development Administration, U.S. Department of Commerce, through its University Center Program.*

The mission of EDA is to lead the federal economic development agenda by promoting innovation and competitiveness, preparing American regions for growth and success in the worldwide economy.

Kansas County Profiles Table of Contents

Population	
Total Population (Decennial Census)	1
Estimated Population (Current Population Reports)	2
Urban Population	2
Rural Population	3
Net Migration (Decade Ending...)	3
Median Age	3
Population (Age Groups)	
Population Under 18 (Decennial Census)	3
Population Age 18 and Over (Decennial Census)	4
Population Age 65 and Over (Decennial Census)	4
Population Age 85 and Over (Decennial Census)	4
Vital Statistics and Health	
Live Births	5
Deaths	5
Marriages	6
Divorces and Annulments	6
Physicians: M.D. Physicians	7
Physicians: D.O. Physicians	7
Dentists	8
Number of Hospitals	8
Number of Hospital Beds	9
Housing	
Housing Units (Decennial Census)	9
Housing Units (Estimated)	10
Occupied Housing Units	10
Owner Occupied Housing Units	10
Renter Occupied Housing Units	11
Vacant Housing Units	11
Median Value (\$): Owner Occupied Housing Units	11
Median Contract Rent (\$)	12
Fair Market Rent: 2 Bedrooms	12
Education	
Population Age 25 and Over	13
Percent of Population 25+ with High School or Higher Education	13
Percent of Population 25+ with Bachelors Degree or Higher Education	14
Public School Enrollment (FTE- School Year Beginning...)	14
Pupil/Teacher Ratio (School Year Beginning...)	15

Kansas County Profiles Table of Contents

Social Environment

Total Child Care Facilities	15
Preschools	16
Food Stamp Beneficiaries	16
Percent of Population Receiving Food Stamps	17
Estimated Number of People in Poverty	17
Estimated Percent of People in Poverty	18
Estimated Number of Related Children Age 5 to 17 in Families in Poverty	18
Estimated Percent of Related Children Age 5 to 17 in Families in Poverty	19
Estimated Number Under 18 in Poverty	19
Estimated Percent Under 18 in Poverty	20

Business

Establishments: Total	21
Establishments: 1-19 Employees	22
Establishments: 20-99 Employees	22
Establishments: 100-499 Employees	23
Establishments: 500 or More Employees	23
Establishments: Forestry, Fishing, Hunting, and Ag Support	24
Establishments: Mining	24
Establishments: Utilities	25
Establishments: Construction	25
Establishments: Manufacturing	26
Establishments: Wholesale Trade	26
Establishments: Retail Trade	27
Establishments: Transportation and Warehousing	27
Establishments: Information	28
Establishments: Finance and Insurance	28
Establishments: Real Estate, Rental, and Leasing	29
Establishments: Professional, Scientific, and Technical Services	29
Establishments: Management of Companies and Enterprises	30
Establishments: Admin, Support, Waste Management, and Remediation	30
Establishments: Educational Services	31
Establishments: Health Care and Social Assistance	31
Establishments: Arts, Entertainment, and Recreation	32
Establishments: Accommodation and Food Services	32
Establishments: Other Services	33

Kansas County Profiles Table of Contents

Business	
Total Annual Payroll (\$000)	34
Total Annual Payroll (\$000): Forestry, Fishing, Hunting, and Ag Support	35
Total Annual Payroll (\$000): Mining	35
Total Annual Payroll (\$000): Utilities	36
Total Annual Payroll (\$000): Construction	36
Total Annual Payroll (\$000): Manufacturing	37
Total Annual Payroll (\$000): Wholesale Trade	37
Total Annual Payroll (\$000): Retail Trade	38
Total Annual Payroll (\$000): Transportation and Warehousing	38
Total Annual Payroll (\$000): Information	39
Total Annual Payroll (\$000): Finance and Insurance	39
Total Annual Payroll (\$000): Real Estate, Rental, and Leasing	40
Total Annual Payroll (\$000): Professional, Scientific, and Technical Services	40
Total Annual Payroll (\$000): Management of Companies and Enterprises	41
Total Annual Payroll (\$000): Admin, Support, Waste Management, and Remediation	41
Total Annual Payroll (\$000): Educational Services	42
Total Annual Payroll (\$000): Health Care and Social Assistance	42
Total Annual Payroll (\$000): Arts, Entertainment, and Recreation	43
Total Annual Payroll (\$000): Accommodation and Food Services	43
Total Annual Payroll (\$000): Other Services	44
Nominal Taxable Retail Sales (Million\$)	44
Retail Pull Factor	45
Employment	
Civilian Labor Force (BLS - Place of Residence)	46
Employed (BLS - Place of Residence)	47
Unemployed (BLS - Place of Residence)	48
Unemployment Rate (BLS - Place of Residence)	49
BEA Employment: Total (Place of Work)	49
BEA Employment: Farm	50
BEA Employment: Non-Farm	50
Average Wage per Job (\$)	51
BEA Employment: Forestry, Fishing, Hunting, and Ag Support	51
BEA Employment: Mining	52
BEA Employment: Utilities	52
BEA Employment: Construction	53
BEA Employment: Manufacturing	53
BEA Employment: Wholesale Trade	54
BEA Employment: Retail Trade	54
BEA Employment: Transportation and Warehousing	55
BEA Employment: Information	55
BEA Employment: Finance and Insurance	56
BEA Employment: Real Estate, Rental, and Leasing	56
BEA Employment: Professional and Technical Services	57
BEA Employment: Management of Companies and Enterprises	57
BEA Employment: Administrative and Waste Services	58
BEA Employment: Educational Services	58
BEA Employment: Health Care and Social Assistance	59
BEA Employment: Arts, Entertainment, and Recreation	59
BEA Employment: Government and Government Enterprises	60
BEA Employment: Accommodation and Food Services	60
BEA Employment: Other Services, Except Public Administration	61

Kansas County Profiles Table of Contents

Income

BEA Per Capita Personal Income (\$)	61
Sources of Personal Income: Total Personal Income (\$000)	62
Sources of Personal Income: Wages And Salaries (\$000)	62
Sources of Personal Income: Proprietors-Farm (\$000)	63
Sources of Personal Income: Proprietors-Nonfarm (\$000)	63
Sources of Personal Income: Dividends, Interest, Rent (\$000)	64
Sources of Personal Income: Transfer Payments (\$000)	64
Sources of Personal Income: Less Social Insurance (\$000)	65
HUD Median Family Income	65
HUD 30% Low-To-Medium Income (LMI) Limit - 4 Persons	66
HUD 50% Low-To-Medium Income (LMI) Limit - 4 Persons	66
HUD 80% Low-To-Medium Income (LMI) Limit - 4 Persons	66

Banking

Bank Deposits (\$000)	67
Number of Banks	67
Number of Banking Offices	68

Government

Tangible Assessed Valuation (million\$)	68
Sales Tax Collections	69

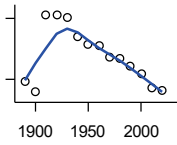
Crime

Crime Index Offenses	69
Property Crimes	70
Violent Crimes	70

Agriculture

Number of Farms	71
Total Acres Harvested	71
Value: Livestock and Poultry (\$000)	71
Value: Field Crops (\$000) Excluding Government Program Payments	72

Population



DECENNIAL CENSUS:TOTAL POPULATION

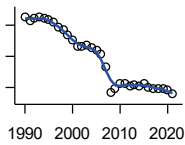
U.S. Census Bureau: Decennial Census

Year	County	State of Kansas	Non Metro Kansas	County Rank	Per 1000 or \$ Per Capita
1890	2,873	1,427,096	968,413	86	.
1900	2,365	1,470,495	981,206	86	.
1910	6,174	1,690,949	1,138,294	79	.
1920	6,164	1,769,257	1,153,525	81	.
1930	6,035	1,880,999	1,180,056	88	.
1940	5,112	1,801,028	1,097,216	87	.
1950	4,743	1,905,299	1,046,823	88	.
1960	4,626	2,178,611	1,021,510	87	.
1970	4,088	2,246,578	958,104	88	.
1980	4,046	2,363,679	980,085	86	.
1990	3,660	2,477,574	939,416	86	.
2000	3,278	2,688,418	959,507	88	.
2010	2,553	2,853,118	929,981	96	.
2020	2,460	2,937,880	892,006	95	.

County: county value. Kansas: state value. County Rank: highest county value ranked #1. (\$000): thousands of dollars. Nonmetro Kansas: Kansas total less Metropolitan Areas as defined by the Office of Management and Budget (OMB; released 3/6/2020). Per 1000: For nonmoney amounts, Per 1000=(county value / county population for the same year as the data) x 1000. \$ Per capita=(county value / county population for the same year as the data). Value= . indicates missing or suppressed data or value not calculated.

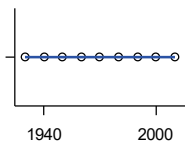
Population

ESTIMATED POPULATION



U.S. Census Bureau

Year	County	State of Kansas	Non Metro Kansas	County Rank	Per 1000 or \$ Per Capita
1990	3,634	2,481,349	938,607	87	.
1991	3,566	2,498,722	938,965	86	.
1992	3,607	2,532,394	942,759	85	.
1993	3,623	2,556,547	947,515	85	.
1994	3,611	2,580,513	952,178	85	.
1995	3,589	2,601,007	957,771	85	.
1996	3,552	2,614,554	959,455	85	.
1997	3,460	2,635,292	960,225	87	.
1998	3,421	2,660,598	960,569	87	.
1999	3,355	2,678,338	960,704	88	.
2000	3,264	2,693,681	959,230	88	.
2001	3,160	2,702,162	952,607	88	.
2002	3,150	2,713,535	945,985	87	.
2003	3,175	2,723,004	941,474	87	.
2004	3,130	2,734,373	937,623	87	.
2005	3,088	2,745,299	932,852	87	.
2006	3,039	2,762,931	928,809	87	.
2007	2,837	2,783,785	927,643	90	.
2008	2,418	2,808,076	926,248	97	.
2009	2,490	2,832,704	926,755	97	.
2010	2,569	2,858,190	930,028	95	.
2011	2,558	2,869,225	927,675	95	.
2012	2,513	2,885,257	925,152	95	.
2013	2,534	2,893,212	922,383	96	.
2014	2,532	2,900,475	917,854	96	.
2015	2,570	2,909,011	912,199	94	.
2016	2,507	2,910,844	905,099	95	.
2017	2,486	2,908,718	897,981	95	.
2018	2,489	2,911,359	892,656	95	.
2019	2,475	2,913,314	887,455	97	.
2020	2,452	2,935,880	889,750	95	.
2021	2,392	2,934,582	886,438	97	.



URBAN POPULATION

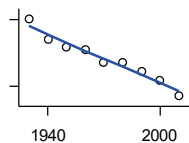
U.S. Census Bureau: Decennial Census

Year	County	State of Kansas	Non Metro Kansas	County Rank	Per 1000 or \$ Per Capita
1930	0	729,834	336,666	105	.
1940	0	753,941	349,228	105	.
1950	0	993,220	398,923	105	.
1960	0	1,328,741	457,447	105	.
1970	0	1,484,870	450,543	105	.
1980	0	1,575,899	474,769	105	.
1990	0	1,712,564	464,205	105	.
2000	0	1,920,081	488,011	105	.
2010	0	2,116,961	485,780	105	.

County: county value. Kansas: state value. County Rank: highest county value ranked #1. (\$000): thousands of dollars. Nonmetro Kansas: Kansas total less Metropolitan Areas as defined by the Office of Management and Budget (OMB; released 3/6/2020). Per 1000: For nonmoney amounts, Per 1000=(county value / county population for the same year as the data) x 1000. \$ Per capita=(county value / county population for the same year as the data). Value= . indicates missing or suppressed data or value not calculated.

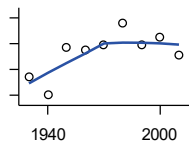
Population

RURAL POPULATION



U.S. Census Bureau

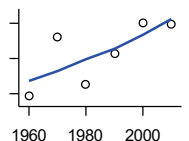
Year	County	State of Kansas	Non Metro Kansas	County Rank	Per 1000 or \$ Per Capita
1930	6,035	1,151,165	843,390	85	.
1940	5,112	1,047,087	747,988	84	.
1950	4,743	912,079	647,900	82	.
1960	4,626	849,870	564,063	79	.
1970	4,088	761,708	509,972	77	.
1980	4,046	787,780	505,873	74	.
1990	3,660	765,010	475,211	74	.
2000	3,278	768,337	471,900	78	.
2010	2,553	736,157	444,201	90	.



NET MIGRATION: DECADE ENDING...

calculated by the Institute for Policy and Social Research, The University of Kansas

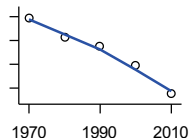
Year	County	State of Kansas	Non Metro Kansas	County Rank	Per 1000 or \$ Per Capita
1930	-1,147	-66,132	-101,869	55	-190.1
1940	-1,501	-192,649	-166,022	39	-293.6
1950	-570	-84,329	-158,379	32	-120.2
1960	-614	-38,999	-146,640	23	-132.7
1970	-521	-119,662	-105,116	32	-127.4
1980	-105	-21,983	-6,184	51	-26.0
1990	-515	-61,835	-79,274	42	-140.7
2000	-386	68,960	4,247	94	-117.8
2010	-733	5,578	-50,648	87	-287.1



MEDIAN AGE

U.S. Census Bureau: Decennial Census

Year	County	State of Kansas	Non Metro Kansas	County Rank	Per 1000 or \$ Per Capita
1960	33.7	26.9	.	52	.
1970	40.5	28.7	.	23	.
1980	35.1	30.1	.	45	.
1990	38.5	32.9	.	34	.
2000	42.1	35.2	.	25	.
2010	41.9	36.0	.	56	.



POPULATION UNDER 18 (DECENNIAL CENSUS)

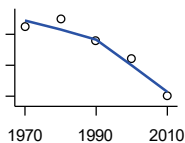
U.S. Census Bureau: Decennial Census

Year	County	State of Kansas	Non Metro Kansas	County Rank	Per 1000 or \$ Per Capita
1970	1,189	746,354	306,227	94	.
1980	1,024	649,035	263,919	91	.
1990	949	661,614	250,107	85	.
2000	787	712,993	250,757	88	.
2010	550	726,939	229,213	98	.

County: county value. Kansas: state value. County Rank: highest county value ranked #1. (\$000): thousands of dollars. Nonmetro Kansas: Kansas total less Metropolitan Areas as defined by the Office of Management and Budget (OMB; released 3/6/2020). Per 1000: For nonmoney amounts, Per 1000=(county value / county population for the same year as the data) x 1000. \$ Per capita=(county value / county population for the same year as the data). Value= . indicates missing or suppressed data or value not calculated.

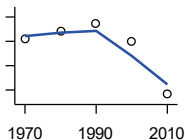
Population

**POPULATION AGE 18 AND OVER
(DECENNIAL CENSUS)**



U.S. Census Bureau: Decennial Census

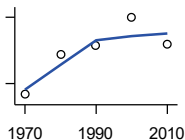
Year	County	State of Kansas	Non Metro Kansas	County Rank	Per 1000 or \$ Per Capita
1970	2,899	1,500,224	654,288	86	.
1980	3,000	1,714,282	716,684	85	.
1990	2,711	1,815,960	689,309	85	.
2000	2,491	1,975,425	709,154	88	.
2010	2,003	2,126,179	700,768	95	.



**POPULATION AGE 65 AND OVER
(DECENNIAL CENSUS)**

U.S. Census Bureau: Decennial Census

Year	County	State of Kansas	Non Metro Kansas	County Rank	Per 1000 or \$ Per Capita
1970	712	266,201	149,049	81	.
1980	742	306,263	164,932	84	.
1990	773	342,571	168,579	84	.
2000	699	356,229	161,769	88	.
2010	482	376,116	154,214	96	.



**POPULATION AGE 85 AND OVER
(DECENNIAL CENSUS)**

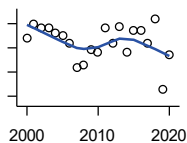
U.S. Census Bureau: Decennial Census

Year	County	State of Kansas	Non Metro Kansas	County Rank	Per 1000 or \$ Per Capita
1970	65	23,899	13,698	83	.
1980	83	33,455	18,804	83	.
1990	87	42,241	22,970	92	.
2000	100	51,770	26,644	89	.
2010	88	59,318	26,197	94	.

County: county value. Kansas: state value. County Rank: highest county value ranked #1. (\$000): thousands of dollars. Nonmetro Kansas: Kansas total less Metropolitan Areas as defined by the Office of Management and Budget (OMB; released 3/6/2020). Per 1000: For nonmoney amounts, Per 1000=(county value / county population for the same year as the data) x 1000. \$ Per capita=(county value / county population for the same year as the data). Value= . indicates missing or suppressed data or value not calculated.

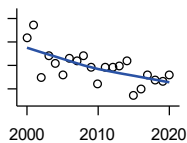
Vital Statistics and Health

BIRTHS (LIVE)



Kansas Department of Health and Environment

Year	County	State of Kansas	Non Metro Kansas	County Rank	Per 1000 or \$ Per Capita
2000	34	39,654	12,980	89	10.4
2001	40	38,832	12,527	79	12.7
2002	38	39,338	12,476	82	12.1
2003	38	39,353	12,342	82	12.0
2004	36	39,553	12,398	84	11.5
2005	35	39,701	12,382	86	11.3
2006	32	40,896	12,726	87	10.5
2007	22	41,951	12,990	99	7.8
2008	23	41,815	12,970	97	9.5
2009	29	41,388	12,949	92	11.6
2010	28	40,439	12,200	91	11.0
2011	38	39,628	12,098	81	14.9
2012	32	40,304	12,217	86	12.7
2013	39	38,805	11,877	77	15.4
2014	28	39,193	12,052	95	11.1
2015	37	39,126	11,836	85	14.4
2016	37	38,048	11,467	86	14.8
2017	32	36,464	10,968	83	12.9
2018	42	36,268	10,826	78	16.9
2019	13	35,395	10,506	104	5.3
2020	27	34,368	10,222	91	11.0



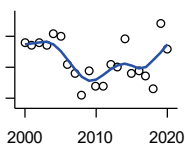
DEATHS

Kansas Department of Health and Environment

Year	County	State of Kansas	Non Metro Kansas	County Rank	Per 1000 or \$ Per Capita
2000	42	24,676	11,175	90	12.8
2001	47	24,590	10,807	81	14.9
2002	25	24,968	11,079	102	7.9
2003	34	24,417	10,615	95	10.7
2004	31	23,720	10,369	97	9.9
2005	26	24,632	10,599	99	8.4
2006	33	24,489	10,538	96	10.9
2007	32	24,413	10,601	95	11.3
2008	34	24,896	10,593	94	14.1
2009	29	23,997	9,938	97	11.6
2010	22	24,428	10,105	100	8.6
2011	29	25,114	10,520	100	11.3
2012	29	25,084	10,259	96	11.5
2013	30	25,347	10,249	95	11.8
2014	32	25,731	10,275	96	12.6
2015	17	26,611	10,539	105	6.6
2016	20	26,129	10,231	102	8.0
2017	26	26,725	10,452	97	10.5
2018	24	27,213	10,389	102	9.6
2019	23	27,312	10,569	101	9.3
2020	26	31,667	11,850	100	10.6

County: county value. Kansas: state value. County Rank: highest county value ranked #1. (\$000): thousands of dollars. Nonmetro Kansas: Kansas total less Metropolitan Areas as defined by the Office of Management and Budget (OMB; released 3/6/2020). Per 1000: For nonmoney amounts, Per 1000=(county value / county population for the same year as the data) x 1000. \$ Per capita=(county value / county population for the same year as the data). Value= . indicates missing or suppressed data or value not calculated.

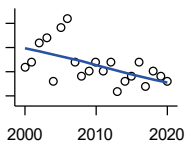
Vital Statistics and Health



MARRIAGES

Kansas Department of Health and Environment

Year	County	State of Kansas	Non Metro Kansas	County Rank	Per 1000 or \$ Per Capita
2000	23	20,426	7,333	87	7.0
2001	22	20,457	7,441	90	7.0
2002	23	19,783	6,794	87	7.3
2003	22	18,722	6,469	86	6.9
2004	26	19,174	6,756	80	8.3
2005	25	18,745	6,481	80	8.1
2006	16	18,836	6,433	93	5.3
2007	13	18,910	6,464	97	4.6
2008	6	18,717	6,283	103	2.5
2009	14	18,268	6,015	97	5.6
2010	9	18,150	5,925	103	3.5
2011	9	17,897	5,977	102	3.5
2012	16	18,154	5,752	89	6.4
2013	15	17,328	5,533	93	5.9
2014	24	17,655	5,535	70	9.5
2015	13	17,595	5,400	93	5.1
2016	14	17,948	5,340	91	5.6
2017	12	17,274	5,163	95	4.8
2018	8	16,362	4,999	101	3.2
2019	29	15,403	4,650	65	11.7
2020	21	14,038	4,066	68	8.5



DIVORCES AND ANNULMENTS

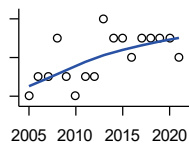
Kansas Department of Health and Environment

Year	County	State of Kansas	Non Metro Kansas	County Rank	Per 1000 or \$ Per Capita
2000	6	10,105	4,000	98	1.8
2001	7	9,885	3,818	91	2.2
2002	11	9,645	3,716	82	3.5
2003	12	8,644	3,464	76	3.8
2004	3	8,759	3,506	105	1.0
2005	14	8,476	3,311	71	4.5
2006	16	9,145	3,387	69	5.3
2007	7	9,347	3,402	93	2.5
2008	4	9,818	3,655	103	1.7
2009	5	10,333	3,463	98	2.0
2010	7	10,579	3,530	95	2.7
2011	5	10,445	3,347	98	2.0
2012	7	9,782	3,040	91	2.8
2013	1	9,085	2,973	105	0.4
2014	3	8,441	2,682	103	1.2
2015	4	8,036	2,704	102	1.6
2016	7	7,198	2,424	83	2.8
2017	2	6,494	2,315	103	0.8
2018	5	6,538	2,269	92	2.0
2019	4	6,398	2,357	99	1.6
2020	3	5,169	1,866	96	1.2

County: county value. Kansas: state value. County Rank: highest county value ranked #1. (\$000): thousands of dollars. Nonmetro Kansas: Kansas total less Metropolitan Areas as defined by the Office of Management and Budget (OMB; released 3/6/2020). Per 1000: For nonmoney amounts, Per 1000=(county value / county population for the same year as the data) x 1000. \$ Per capita=(county value / county population for the same year as the data). Value= . indicates missing or suppressed data or value not calculated.

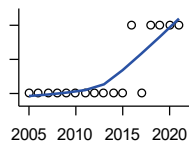
Vital Statistics and Health

PHYSICIANS: M.D. PHYSICIANS



Kansas Department of Health and Environment (1981-2005,2010-);Kansas Health Policy Authority (2006-2009)

Year	County	State of Kansas	Non Metro Kansas	County Rank	Per 1000 or \$ Per Capita
2005	0	4,241	912	105	0.0
2006	1	4,310	953	99	0.3
2007	1	5,309	1,046	99	0.4
2008	3	5,110	1,016	73	1.2
2009	1	5,249	996	98	0.4
2010	0	5,192	979	105	0.0
2011	1	5,243	983	96	0.4
2012	1	5,693	1,033	96	0.4
2013	4	6,106	1,071	65	1.6
2014	3	5,839	951	67	1.2
2015	3	5,703	855	61	1.2
2016	2	4,278	643	72	0.8
2017	3	6,332	1,047	69	1.2
2018	3	6,079	1,065	71	1.2
2019	3	6,435	1,036	70	1.2
2020	3	6,668	1,045	70	1.2
2021	2	6,745	1,042	87	0.8



PHYSICIANS: D.O. PHYSICIANS

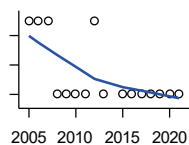
Kansas Department of Health and Environment (1981-2005,2010-);Kansas Health Policy Authority (2006-2009)

Year	County	State of Kansas	Non Metro Kansas	County Rank	Per 1000 or \$ Per Capita
2005	0	553	174	105	0.0
2006	0	508	171	105	0.0
2007	0	569	169	105	0.0
2008	0	558	166	105	0.0
2009	0	564	160	105	0.0
2010	0	583	169	105	0.0
2011	0	502	152	105	0.0
2012	0	718	200	105	0.0
2013	0	829	210	105	0.0
2014	0	817	189	105	0.0
2015	0	819	190	105	0.0
2016	1	632	136	58	0.4
2017	0	579	129	105	0.0
2018	1	871	164	64	0.4
2019	1	951	212	65	0.4
2020	1	1,018	204	66	0.4
2021	1	1,095	217	74	0.4

County: county value. Kansas: state value. County Rank: highest county value ranked #1. (\$000): thousands of dollars. Nonmetro Kansas: Kansas total less Metropolitan Areas as defined by the Office of Management and Budget (OMB; released 3/6/2020). Per 1000: For nonmoney amounts, Per 1000=(county value / county population for the same year as the data) x 1000. \$ Per capita=(county value / county population for the same year as the data). Value= . indicates missing or suppressed data or value not calculated.

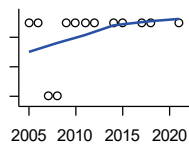
Vital Statistics and Health

DENTISTS



Kansas Department of Health and Environment (1981-2006,2010-);Kansas Health Policy Authority (2007-2009)

Year	County	State of Kansas	Non Metro Kansas	County Rank	Per 1000 or \$ Per Capita
2005	1	1,347	363	92	0.3
2006	1	1,381	361	92	0.3
2007	1	1,335	350	91	0.4
2008	0	1,392	353	105	0.0
2009	0	1,353	350	105	0.0
2010	0	1,401	365	105	0.0
2011	0	1,338	346	105	0.0
2012	1	1,434	392	86	0.4
2013	0	1,212	328	105	0.0
2015	0	1,240	327	105	0.0
2016	0	1,456	350	105	0.0
2017	0	1,467	350	105	0.0
2018	0	1,604	359	105	0.0
2019	0	1,646	355	105	0.0
2020	0	1,646	355	105	0.0
2021	0	1,688	362	105	0.0



NUMBER OF HOSPITALS

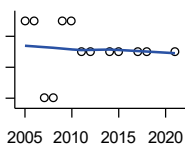
American Hospital Association, American Hospital Association Guide to the Health Care Field

Year	County	State of Kansas	Non Metro Kansas	County Rank	Per 1000 or \$ Per Capita
2005	1	158	105	96	.
2006	1	158	105	96	.
2007	0	159	104	105	.
2008	0	159	104	105	.
2009	1	158	105	96	.
2010	1	158	104	96	.
2011	1	158	103	96	.
2012	1	157	103	96	.
2014	1	156	.	96	.
2015	1	155	103	96	.
2017	1	157	102	96	.
2018	1	154	99	95	.
2021	1	151	.	95	.

County: county value. Kansas: state value. County Rank: highest county value ranked #1. (\$000): thousands of dollars. Nonmetro Kansas: Kansas total less Metropolitan Areas as defined by the Office of Management and Budget (OMB; released 3/6/2020). Per 1000: For nonmoney amounts, Per 1000=(county value / county population for the same year as the data) x 1000. \$ Per capita=(county value / county population for the same year as the data). Value= . indicates missing or suppressed data or value not calculated.

Vital Statistics and Health

NUMBER OF HOSPITAL BEDS

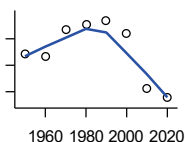


Kansas Department of Health and Environment

Year	County	State of Kansas	Non Metro Kansas	County Rank	Per 1000 or \$ Per Capita
2005	25	12,389	5,687	85	8.1
2006	25	11,992	5,514	85	8.2
2007	0	12,171	5,637	105	0.0
2008	0	12,332	5,700	105	0.0
2009	25	12,283	5,652	86	10.0
2010	25	12,218	5,521	86	9.8
2011	15	12,182	5,335	93	5.9
2012	15	12,002	5,355	93	6.0
2014	15	12,034	.	93	5.9
2015	15	11,926	5,330	93	5.8
2017	15	11,491	4,825	93	6.0
2018	15	11,448	4,583	91	6.0
2021	15	11,199	.	90	6.3

Housing

HOUSING UNITS (DECENNIAL)



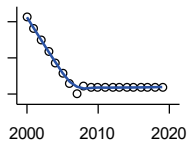
U.S. Census Bureau: Decennial Census

Year	County	State of Kansas	Non Metro Kansas	County Rank	Per 1000 or \$ Per Capita
1950	1,487	586,650	328,210	85	313.5
1960	1,469	672,899	329,380	86	317.6
1970	1,665	789,735	363,824	86	407.3
1980	1,712	955,207	416,877	89	423.1
1990	1,738	1,044,112	417,062	88	474.9
2000	1,643	1,131,395	422,218	87	501.2
2010	1,220	1,233,215	424,050	97	477.9
2020	1,153	1,275,689	413,120	95	468.7

County: county value. Kansas: state value. County Rank: highest county value ranked #1. (\$000): thousands of dollars. Nonmetro Kansas: Kansas total less Metropolitan Areas as defined by the Office of Management and Budget (OMB; released 3/6/2020). Per 1000: For nonmoney amounts, Per 1000=(county value / county population for the same year as the data) x 1000. \$ Per capita=(county value / county population for the same year as the data). Value= . indicates missing or suppressed data or value not calculated.

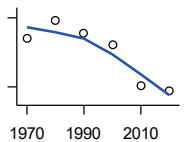
Housing

HOUSING UNITS (ESTIMATED)



U.S. Census Bureau

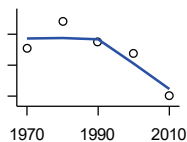
Year	County	State of Kansas	Non Metro Kansas	County Rank	Per 1000 or \$ Per Capita
2000	1,627	1,134,529	422,560	89	496.3
2001	1,560	1,146,858	423,876	89	493.7
2002	1,496	1,160,129	425,089	93	474.9
2003	1,435	1,171,620	425,936	94	452.0
2004	1,375	1,184,702	426,593	95	439.3
2005	1,317	1,195,791	426,964	95	426.5
2006	1,257	1,206,692	426,713	96	413.6
2007	1,199	1,217,608	426,090	97	422.6
2008	1,244	1,225,625	425,768	96	514.5
2009	1,235	1,230,552	424,776	97	496.0
2010	1,235	1,234,456	424,174	97	483.7
2011	1,235	1,238,052	424,549	96	482.8
2012	1,236	1,241,992	425,116	96	491.8
2013	1,236	1,246,675	425,699	96	487.8
2014	1,235	1,253,284	426,269	96	487.8
2015	1,237	1,258,999	426,844	96	481.3
2016	1,237	1,265,684	427,465	96	493.4
2017	1,236	1,273,536	427,746	96	497.2
2018	1,238	1,280,649	428,099	96	497.4
2019	1,239	1,288,401	428,495	96	500.6



OCCUPIED HOUSING UNITS

U.S. Census Bureau: Decennial Census

Year	County	State of Kansas	Non Metro Kansas	County Rank	Per 1000 or \$ Per Capita
1970	1,426	727,364	326,494	88	348.8
1980	1,577	872,239	371,693	86	389.8
1990	1,466	944,726	365,901	84	400.5
2000	1,365	1,037,891	375,313	88	416.4
2010	1,014	1,112,096	370,269	97	397.2
2020	965	1,151,360	356,330	96	392.3



OWNER OCCUPIED HOUSING UNITS

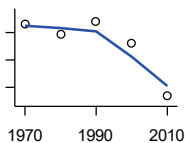
U.S. Census Bureau: Decennial Census

Year	County	State of Kansas	Non Metro Kansas	County Rank	Per 1000 or \$ Per Capita
1970	1,013	502,585	236,338	88	247.8
1980	1,180	612,433	277,096	88	291.6
1990	1,050	641,762	263,099	88	286.9
2000	980	718,703	271,350	91	299.0
2010	707	753,532	261,763	97	276.9

County: county value. Kansas: state value. County Rank: highest county value ranked #1. (\$000): thousands of dollars. Nonmetro Kansas: Kansas total less Metropolitan Areas as defined by the Office of Management and Budget (OMB; released 3/6/2020). Per 1000: For nonmoney amounts, Per 1000=(county value / county population for the same year as the data) x 1000. \$ Per capita=(county value / county population for the same year as the data). Value= . indicates missing or suppressed data or value not calculated.

Housing

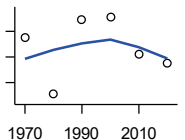
RENTER OCCUPIED HOUSING UNITS



U.S. Census Bureau: Decennial Census

Year	County	State of Kansas	Non Metro Kansas	County Rank	Per 1000 or \$ Per Capita
1970	413	224,779	90,156	76	101.0
1980	397	259,806	94,597	79	98.1
1990	416	302,964	102,802	77	113.7
2000	385	319,188	103,963	78	117.4
2010	307	358,564	108,506	86	120.3

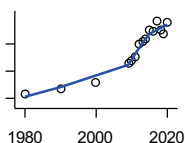
VACANT HOUSING UNITS



U.S. Census Bureau: Decennial Census

Year	County	State of Kansas	Non Metro Kansas	County Rank	Per 1000 or \$ Per Capita
1970	239	60,058	35,954	82	58.5
1980	127	77,912	41,584	104	31.4
1990	272	99,386	51,161	88	74.3
2000	278	93,309	46,904	85	84.8
2010	206	121,119	53,781	94	80.7
2020	188	124,329	56,790	96	76.4

MEDIAN VALUE (\$): OWNER OCCUPIED HOUSING UNITS



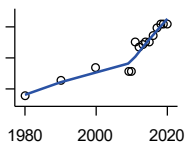
U.S. Census Bureau, Decennial Census (- 2000), (2009 -) American Community Survey five-year average ending in year shown.

Year	County	State of Kansas	Non Metro Kansas	County Rank	Per 1000 or \$ Per Capita
1980	25,700	37,800	.	62	.
1990	33,600	52,200	.	50	.
2000	44,200	83,500	.	75	.
2009	70,600	118,500	.	58	.
2010	75,000	122,600	.	55	.
2011	81,600	125,500	.	45	.
2012	100,300	127,400	.	23	.
2013	102,800	128,400	.	24	.
2014	107,700	129,400	.	22	.
2015	121,300	132,000	.	17	.
2016	118,400	135,300	.	19	.
2017	133,800	139,200	.	13	.
2018	119,900	145,400	.	24	.
2019	113,900	151,900	.	31	.
2020	132,500	157,600	.	23	.

County: county value. Kansas: state value. County Rank: highest county value ranked #1. (\$000): thousands of dollars. Nonmetro Kansas: Kansas total less Metropolitan Areas as defined by the Office of Management and Budget (OMB; released 3/6/2020). Per 1000: For nonmoney amounts, Per 1000=(county value / county population for the same year as the data) x 1000. \$ Per capita=(county value / county population for the same year as the data). Value= . indicates missing or suppressed data or value not calculated.

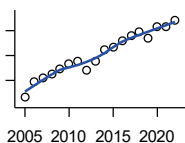
Housing

MEDIAN CONTRACT RENT (\$)



U.S. Census Bureau, Decennial Census (- 2000), (2009 -) American Community Survey five-year average ending in year shown.

Year	County	State of Kansas	Non Metro Kansas	County Rank	Per 1000 or \$ Per Capita
1980	153	219	.	74	.
1990	256	372	.	69	.
2000	336	498	.	79	.
2009	310	491	.	66	.
2010	309	507	.	74	.
2011	500	699	.	75	.
2012	472	715	.	92	.
2013	486	732	.	92	.
2014	503	748	.	91	.
2015	502	757	.	94	.
2016	542	775	.	82	.
2017	594	801	.	69	.
2018	617	831	.	67	.
2019	620	850	.	71	.
2020	619	863	.	72	.



FAIR MARKET RENT: 2 BEDROOMS

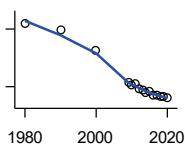
U.S. Department of Housing and Urban Development (HUD)

Year	County	State of Kansas	Non Metro Kansas	County Rank	Per 1000 or \$ Per Capita
2005	431	.	.	104	.
2006	497	.	.	105	.
2007	512	.	.	105	.
2008	525	628	.	105	.
2009	547	653	.	105	.
2010	566	678	.	105	.
2011	575	684	.	105	.
2012	540	660	.	105	.
2013	577	712	.	105	.
2014	622	746	.	105	.
2015	634	756	.	105	.
2016	658	781	.	105	.
2017	681	811	.	105	.
2018	697	815	.	105	.
2019	672	828	.	105	.
2020	714	855	.	105	.
2021	718	874	.	105	.
2022	742	879	.	105	.

County: county value. Kansas: state value. County Rank: highest county value ranked #1. (\$000): thousands of dollars. Nonmetro Kansas: Kansas total less Metropolitan Areas as defined by the Office of Management and Budget (OMB; released 3/6/2020). Per 1000: For nonmoney amounts, Per 1000=(county value / county population for the same year as the data) x 1000. \$ Per capita=(county value / county population for the same year as the data). Value= . indicates missing or suppressed data or value not calculated.

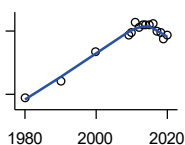
Education

POPULATION AGE 25+



U.S. Census Bureau, Decennial Census (- 2000), (2009 -) American Community Survey five-year average ending in year shown.

Year	County	State of Kansas	Non Metro Kansas	County Rank	Per 1000 or \$ Per Capita
1980	2,573	1,388,102	596,639	.	.
1990	2,481	1,565,936	608,745	.	.
2000	2,227	1,701,207	618,131	.	.
2009	1,802	1,775,427	600,188	.	.
2010	1,767	1,802,904	608,716	.	.
2011	1,790	1,822,400	610,386	.	.
2012	1,717	1,838,079	611,103	.	.
2013	1,703	1,850,010	610,374	.	.
2014	1,677	1,861,894	609,612	.	.
2015	1,690	1,869,698	606,967	.	.
2016	1,643	1,878,495	604,563	.	.
2017	1,642	1,886,741	601,076	.	.
2018	1,625	1,894,675	598,487	.	.
2019	1,617	1,902,279	595,501	.	.
2020	1,600	1,911,990	593,923	.	.



PERCENT HS GRADUATE OR HIGHER AGE 25+

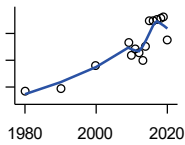
U.S. Census Bureau, Decennial Census (- 2000), (2009 -) American Community Survey five-year average ending in year shown.

Year	County	State of Kansas	Non Metro Kansas	County Rank	Per 1000 or \$ Per Capita
1980	74.3	73.3	.	13	.
1990	78.0	81.3	.	47	.
2000	85.2	86.0	.	43	.
2009	89.1	89.0	.	46	.
2010	89.7	89.2	.	47	.
2011	92.1	89.5	.	15	.
2012	90.8	89.7	.	33	.
2013	91.4	89.8	.	31	.
2014	91.5	90.0	.	38	.
2015	91.4	90.2	.	41	.
2016	91.7	90.3	.	37	.
2017	90.1	90.5	.	69	.
2018	89.7	90.7	.	73	.
2019	88.2	91.0	.	86	.
2020	88.9	91.4	.	82	.

County: county value. Kansas: state value. County Rank: highest county value ranked #1. (\$000): thousands of dollars. Nonmetro Kansas: Kansas total less Metropolitan Areas as defined by the Office of Management and Budget (OMB; released 3/6/2020). Per 1000: For nonmoney amounts, Per 1000=(county value / county population for the same year as the data) x 1000. \$ Per capita=(county value / county population for the same year as the data). Value= . indicates missing or suppressed data or value not calculated.

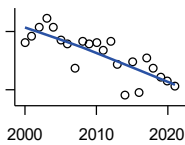
Education

PERCENT BACHELORS DEGREE OR HIGHER AGE 25+



U.S. Census Bureau, Decennial Census (- 2000), (2009 -) American Community Survey five-year average ending in year shown.

Year	County	State of Kansas	Non Metro Kansas	County Rank	Per 1000 or \$ Per Capita
1980	14.3	17.0	.	20	.
1990	14.6	21.1	.	35	.
2000	18.9	25.8	.	27	.
2009	23.4	28.8	.	14	.
2010	20.9	29.3	.	30	.
2011	22.1	29.7	.	25	.
2012	21.4	30.0	.	31	.
2013	20.0	30.3	.	53	.
2014	22.6	30.7	.	28	.
2015	27.3	31.0	.	14	.
2016	27.3	31.6	.	16	.
2017	27.6	32.3	.	15	.
2018	27.9	32.9	.	18	.
2019	28.1	33.4	.	17	.
2020	23.9	33.9	.	40	.



PUBLIC SCHOOL ENROLLMENT (FTE) SCHOOL YEAR BEGINNING...

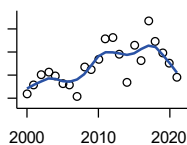
Kansas State Department of Education

Year	County	State of Kansas	Non Metro Kansas	County Rank	Per 1000 or \$ Per Capita
2000	571.6	448,150.8	166,722.5	87	174.4
2001	587.0	447,047.1	164,365.0	82	185.8
2002	611.2	444,860.3	161,555.4	81	194.0
2003	634.3	443,620.6	159,130.2	80	199.8
2004	612.2	441,957.2	156,566.3	80	195.6
2005	576.5	442,708.4	155,197.2	80	186.7
2006	567.4	444,878.7	153,842.3	79	186.7
2007	505.9	446,831.3	152,337.1	81	178.3
2008	576.1	447,730.0	150,572.7	77	238.3
2009	567.6	453,202.5	151,246.8	77	228.0
2010	570.7	455,405.0	151,023.8	78	223.5
2011	550.7	456,000.5	150,257.9	78	215.3
2012	576.2	458,496.4	150,463.0	78	229.3
2013	514.9	461,950.0	150,420.9	78	203.2
2014	435.0	464,395.4	150,499.4	87	171.8
2015	523.2	463,504.0	149,539.3	78	203.6
2016	442.9	459,920.3	147,293.5	83	176.7
2017	531.8	477,977.9	152,096.3	80	213.9
2018	504.1	476,481.7	150,456.8	80	202.5
2019	483.2	476,525.1	150,045.2	83	195.2
2020	473.3	462,088.0	146,369.6	83	192.4
2021	459.3	463,652.4	147,500.4	84	192.0

County: county value. Kansas: state value. County Rank: highest county value ranked #1. (\$000): thousands of dollars. Nonmetro Kansas: Kansas total less Metropolitan Areas as defined by the Office of Management and Budget (OMB; released 3/6/2020). Per 1000: For nonmoney amounts, Per 1000=(county value / county population for the same year as the data) x 1000. \$ Per capita=(county value / county population for the same year as the data). Value= . indicates missing or suppressed data or value not calculated.

Education

PUPIL/TEACHER RATIO SCHOOL YEAR BEGINNING...

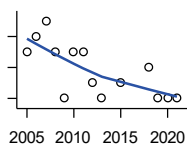


Kansas State Department of Education

Year	County	State of Kansas	Non Metro Kansas	County Rank	Per 1000 or \$ Per Capita
2000	10.4	15.4	13.9	96	.
2001	11.1	15.3	13.8	90	.
2002	12.0	15.4	13.9	81	.
2003	12.3	15.5	13.8	67	.
2004	11.9	15.3	13.6	76	.
2005	11.3	15.0	13.4	81	.
2006	11.2	14.7	13.2	78	.
2007	10.2	14.6	13.1	98	.
2008	12.7	14.4	12.9	42	.
2009	12.5	14.8	13.2	47	.
2010	13.4	15.2	13.6	41	.
2011	15.2	15.1	13.5	13	.
2012	15.3	15.1	13.5	15	.
2013	13.8	15.1	13.5	34	.
2014	11.4	15.0	13.6	77	.
2015	14.5	15.2	13.9	27	.
2016	13.3	15.1	13.7	43	.
2017	16.7	15.5	13.9	11	.
2018	14.9	15.3	13.8	21	.
2019	14.0	15.2	13.7	32	.
2020	13.0	14.7	13.4	38	.
2021	11.8	14.8	13.5	69	.

Social Environment

CHILD CARE FACILITIES: TOTAL CHILD CARE FACILITIES



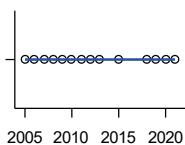
Kansas Department of Health and Environment, Bureau of Adult and Child Care

Year	County	State of Kansas	Non Metro Kansas	County Rank	Per 1000 or \$ Per Capita
2005	6	8,258	3,378	102	1.9
2006	7	8,442	3,429	100	2.3
2007	8	8,241	3,317	96	2.8
2008	6	8,011	3,150	101	2.5
2009	3	7,853	3,066	105	1.2
2010	6	7,354	2,858	98	2.4
2011	6	6,835	2,623	95	2.3
2012	4	6,346	2,409	102	1.6
2013	3	5,754	2,179	103	1.2
2015	4	5,289	2,146	99	1.6
2018	5	4,607	1,904	92	2.0
2019	3	4,287	1,774	101	1.2
2020	3	4,274	1,798	101	1.2
2021	3	4,002	1,700	99	1.3

County: county value. Kansas: state value. County Rank: highest county value ranked #1. (\$000): thousands of dollars. Nonmetro Kansas: Kansas total less Metropolitan Areas as defined by the Office of Management and Budget (OMB; released 3/6/2020). Per 1000: For nonmoney amounts, Per 1000=(county value / county population for the same year as the data) x 1000. \$ Per capita=(county value / county population for the same year as the data). Value= . indicates missing or suppressed data or value not calculated.

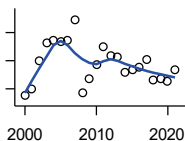
Social Environment

**CHILD CARE FACILITIES:
PRESCHOOLS**



Kansas Department of Health and Environment, Bureau of Adult and Child Care

Year	County	State of Kansas	Non Metro Kansas	County Rank	Per 1000 or \$ Per Capita
2005	0	243	140	105	0.0
2006	0	221	127	105	0.0
2007	0	208	119	105	0.0
2008	0	204	114	105	0.0
2009	0	194	107	105	0.0
2010	0	194	112	105	0.0
2011	0	209	123	105	0.0
2012	0	201	121	105	0.0
2013	0	140	84	105	0.0
2015	0	185	113	105	0.0
2018	0	150	94	105	0.0
2019	0	134	83	105	0.0
2020	0	126	78	105	0.0
2021	0	120	74	105	0.0



FOOD STAMP BENEFICIARIES

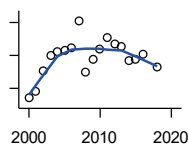
Kansas Social and Rehabilitation Services

Year	County	State of Kansas	Non Metro Kansas	County Rank	Per 1000 or \$ Per Capita
2000	110	110,619	44,825	82	33.6
2001	119	117,241	46,741	81	37.7
2002	159	131,726	52,342	76	50.5
2003	185	155,908	61,280	76	58.3
2004	189	167,971	65,852	79	60.4
2005	188	175,710	67,261	76	60.9
2006	189	182,821	67,487	77	62.2
2007	218	184,035	66,979	71	76.8
2008	115	187,377	67,160	88	47.6
2009	134	208,007	73,637	86	53.8
2010	155	259,609	90,919	90	60.7
2011	180	296,542	101,155	88	70.4
2012	168	303,257	102,478	88	66.9
2013	165	316,424	105,345	89	65.1
2014	143	301,377	100,761	93	56.5
2015	147	277,614	93,353	92	57.2
2016	151	258,412	88,343	92	60.2
2017	162	239,592	82,070	86	65.2
2018	133	219,738	75,208	89	53.4
2019	134	205,261	69,899	90	54.1
2020	131	198,457	66,721	86	53.3
2021	147	203,424	68,883	85	61.5

County: county value. Kansas: state value. County Rank: highest county value ranked #1. (\$000): thousands of dollars. Nonmetro Kansas: Kansas total less Metropolitan Areas as defined by the Office of Management and Budget (OMB; released 3/6/2020). Per 1000: For nonmoney amounts, Per 1000=(county value / county population for the same year as the data) x 1000. \$ Per capita=(county value / county population for the same year as the data). Value= . indicates missing or suppressed data or value not calculated.

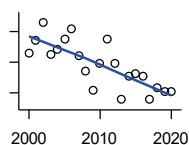
Social Environment

PERCENT OF POPULATION RECEIVING FOOD STAMPS



U.S. Dept. of Agriculture Food and Nutrition Service (1990-1997); Kansas Social and Rehabilitation Services (1998-)

Year	County	State of Kansas	Non Metro Kansas	County Rank	Per 1000 or \$ Per Capita
2000	3.4	4.1	.	55	.
2001	3.8	4.3	.	56	.
2002	5.1	4.9	.	36	.
2003	6.0	5.7	.	39	.
2004	6.2	6.2	.	40	.
2005	6.3	6.4	.	37	.
2006	6.5	6.6	.	37	.
2007	8.1	6.6	.	21	.
2008	5.0	6.7	.	57	.
2009	5.8	7.4	.	51	.
2010	6.4	9.1	.	56	.
2011	7.1	10.3	.	59	.
2012	6.7	10.5	.	66	.
2013	6.5	10.9	.	72	.
2014	5.7	10.4	.	82	.
2015	5.7	9.6	.	76	.
2016	6.1	8.9	.	67	.
2018	5.3	7.5	.	64	.



ESTIMATED NUMBER OF PEOPLE IN POVERTY

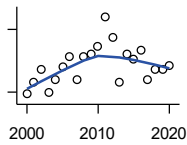
U.S. Census Bureau, Small Area Income and Poverty Estimates

Year	County	State of Kansas	Non Metro Kansas	County Rank	Per 1000 or \$ Per Capita
2000	332	235,087	98,984	87	101.3
2001	348	252,134	106,257	91	110.1
2002	372	265,673	107,542	87	118.1
2003	330	278,163	107,323	87	103.9
2004	336	297,733	111,534	84	107.3
2005	350	310,667	118,768	88	113.3
2006	363	327,102	123,700	89	119.4
2007	329	301,828	111,953	86	116.0
2008	309	307,804	113,015	89	127.8
2009	283	359,692	123,394	94	113.7
2010	318	374,677	131,502	94	124.6
2011	350	383,859	134,912	89	136.8
2012	318	392,095	133,800	91	126.5
2013	272	391,718	134,067	97	107.3
2014	302	381,506	130,213	91	119.3
2015	305	366,069	123,073	90	118.7
2016	302	343,773	121,314	92	120.5
2017	271	335,371	116,854	95	109.0
2018	286	336,892	114,490	95	114.9
2019	281	319,931	110,692	95	113.5
2020	282	300,931	100,998	89	114.6

County: county value. Kansas: state value. County Rank: highest county value ranked #1. (\$000): thousands of dollars. Nonmetro Kansas: Kansas total less Metropolitan Areas as defined by the Office of Management and Budget (OMB; released 3/6/2020). Per 1000: For nonmoney amounts, Per 1000=(county value / county population for the same year as the data) x 1000. \$ Per capita=(county value / county population for the same year as the data). Value= . indicates missing or suppressed data or value not calculated.

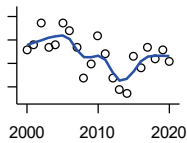
Social Environment

ESTIMATED % OF PEOPLE IN POVERTY



U.S. Census Bureau, Small Area Income and Poverty Estimates

Year	County	State of Kansas	Non Metro Kansas	County Rank	Per 1000 or \$ Per Capita
2000	10.9	8.9	.	43	.
2001	11.5	9.5	.	50	.
2002	12.1	10.0	.	35	.
2003	11.0	10.4	.	49	.
2004	11.6	11.1	.	40	.
2005	12.2	11.7	.	51	.
2006	12.7	12.2	.	51	.
2007	11.6	11.2	.	55	.
2008	12.7	11.3	.	31	.
2009	12.8	13.2	.	47	.
2010	13.2	13.5	.	44	.
2011	14.6	13.8	.	32	.
2012	13.6	14.0	.	40	.
2013	11.5	13.9	.	73	.
2014	12.8	13.5	.	52	.
2015	12.6	12.9	.	44	.
2016	13.0	12.2	.	40	.
2017	11.6	11.9	.	62	.
2018	12.1	11.9	.	55	.
2019	12.1	11.3	.	47	.
2020	12.3	10.6	.	36	.



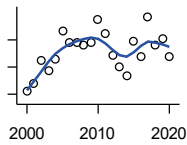
EST. NUMBER OF RELATED CHILDREN AGE 5 TO 17 IN FAMILIES IN POVERTY

U.S. Census Bureau, Small Area Income and Poverty Estimates

Year	County	State of Kansas	Non Metro Kansas	County Rank	Per 1000 or \$ Per Capita
2000	66	50,388	21,854	95	20.1
2001	68	53,755	23,094	96	21.5
2002	77	52,453	21,423	85	24.4
2003	67	55,419	21,809	87	21.1
2004	68	59,392	22,313	86	21.7
2005	77	60,203	24,244	86	24.9
2006	74	64,427	25,326	91	24.4
2007	67	61,149	23,639	88	23.6
2008	54	59,842	22,661	96	22.3
2009	60	71,850	26,251	95	24.1
2010	72	81,077	29,804	92	28.2
2011	64	82,311	29,306	95	25.0
2012	54	87,594	29,781	98	21.5
2013	49	84,325	29,253	100	19.3
2014	47	83,873	29,354	100	18.6
2015	63	78,192	27,482	90	24.5
2016	58	67,810	25,074	96	23.1
2017	67	67,873	25,032	91	27.0
2018	62	68,153	24,928	95	24.9
2019	66	64,613	23,117	93	26.7
2020	61	59,792	21,143	94	24.8

County: county value. Kansas: state value. County Rank: highest county value ranked #1. (\$000): thousands of dollars. Nonmetro Kansas: Kansas total less Metropolitan Areas as defined by the Office of Management and Budget (OMB; released 3/6/2020). Per 1000: For nonmoney amounts, Per 1000=(county value / county population for the same year as the data) x 1000. \$ Per capita=(county value / county population for the same year as the data). Value= . indicates missing or suppressed data or value not calculated.

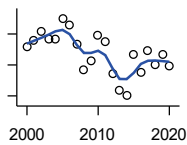
Social Environment



EST. % OF RELATED CHILDREN AGE 5 TO 17 IN FAMILIES IN POVERTY

U.S. Census Bureau, Small Area Income and Poverty Estimates

Year	County	State of Kansas	Non Metro Kansas	County Rank	Per 1000 or \$ Per Capita
2000	12.2	10.0	.	58	.
2001	12.8	10.8	.	60	.
2002	14.5	10.5	.	22	.
2003	13.7	11.3	.	32	.
2004	14.6	12.5	.	28	.
2005	16.7	12.8	.	24	.
2006	15.8	13.2	.	44	.
2007	15.8	12.6	.	33	.
2008	15.6	12.3	.	34	.
2009	15.8	14.7	.	50	.
2010	17.5	15.9	.	43	.
2011	16.5	16.2	.	50	.
2012	14.9	17.2	.	72	.
2013	14.0	16.5	.	75	.
2014	13.4	16.4	.	81	.
2015	15.9	15.3	.	47	.
2016	14.8	13.2	.	59	.
2017	17.7	13.4	.	28	.
2018	15.6	13.5	.	58	.
2019	16.1	12.9	.	39	.
2020	14.8	11.9	.	41	.



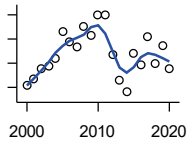
ESTIMATED NUMBER UNDER 18 IN POVERTY

U.S. Census Bureau, Small Area Income and Poverty Estimates

Year	County	State of Kansas	Non Metro Kansas	County Rank	Per 1000 or \$ Per Capita
2000	102	82,619	34,843	94	31.1
2001	106	87,487	36,724	95	33.5
2002	112	84,181	32,870	84	35.6
2003	107	93,896	36,004	87	33.7
2004	107	98,641	36,272	85	34.2
2005	120	100,254	39,118	83	38.9
2006	116	105,193	41,054	90	38.2
2007	103	100,242	37,881	88	36.3
2008	87	100,146	37,552	94	36.0
2009	93	118,187	42,682	95	37.3
2010	109	129,009	46,428	91	42.7
2011	105	133,478	46,832	92	41.0
2012	84	135,261	46,294	98	33.4
2013	74	131,251	44,952	100	29.2
2014	70	125,562	43,933	100	27.6
2015	97	119,994	41,828	90	37.7
2016	85	100,996	37,387	96	33.9
2017	99	102,858	37,955	91	39.8
2018	90	102,616	36,991	95	36.2
2019	97	97,920	34,797	93	39.2
2020	89	88,491	30,767	92	36.2

County: county value. Kansas: state value. County Rank: highest county value ranked #1. (\$000): thousands of dollars. Nonmetro Kansas: Kansas total less Metropolitan Areas as defined by the Office of Management and Budget (OMB; released 3/6/2020). Per 1000: For nonmoney amounts, Per 1000=(county value / county population for the same year as the data) x 1000. \$ Per capita=(county value / county population for the same year as the data). Value= . indicates missing or suppressed data or value not calculated.

Social Environment



ESTIMATED PERCENT UNDER 18 IN POVERTY

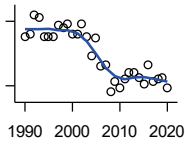
U.S. Census Bureau, Small Area Income and Poverty Estimates

Year	County	State of Kansas	Non Metro Kansas	County Rank	Per 1000 or \$ Per Capita
2000	14.2	11.9	.	58	.
2001	14.7	12.7	.	62	.
2002	15.5	12.1	.	26	.
2003	15.8	13.8	.	37	.
2004	16.4	14.6	.	35	.
2005	18.6	15.2	.	31	.
2006	17.8	15.4	.	43	.
2007	17.3	14.7	.	43	.
2008	19.0	14.6	.	26	.
2009	18.3	17.1	.	48	.
2010	20.0	18.1	.	37	.
2011	20.0	18.8	.	41	.
2012	16.7	19.0	.	66	.
2013	14.6	18.4	.	83	.
2014	13.6	17.6	.	89	.
2015	16.8	16.9	.	57	.
2016	15.9	14.3	.	61	.
2017	18.2	14.7	.	35	.
2018	16.0	14.8	.	65	.
2019	17.4	14.3	.	37	.
2020	15.5	13.0	.	43	.

County: county value. Kansas: state value. County Rank: highest county value ranked #1. (\$000): thousands of dollars. Nonmetro Kansas: Kansas total less Metropolitan Areas as defined by the Office of Management and Budget (OMB; released 3/6/2020). Per 1000: For nonmoney amounts, Per 1000=(county value / county population for the same year as the data) x 1000. \$ Per capita=(county value / county population for the same year as the data). Value= . indicates missing or suppressed data or value not calculated.

Business

ESTABLISHMENTS TOTAL COUNTY BUSINESS PATTERNS



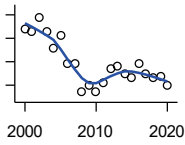
U.S. Census Bureau, County Business Patterns. Beginning with the 2017 data, any tabulation with fewer than 3 establishments were omitted from the release. Data for these establishments are included in the broader total.

Year	County	State of Kansas	Non Metro Kansas	County Rank	Per 1000 or \$ Per Capita
1990	113	65,858	26,802	82	30.9
1991	114	65,941	26,750	81	32.0
1992	123	67,630	27,229	79	34.1
1993	122	68,930	27,655	80	33.7
1994	113	69,822	27,763	83	31.3
1995	113	70,894	28,111	85	31.5
1996	113	72,017	28,353	85	31.8
1997	118	73,924	28,884	82	34.1
1998	117	74,019	28,749	84	34.2
1999	119	74,486	28,536	81	35.5
2000	114	74,939	28,475	84	34.8
2001	114	74,565	28,282	83	36.1
2002	119	75,077	28,183	80	37.8
2003	113	74,972	27,998	82	35.6
2004	104	75,827	28,009	89	33.2
2005	112	76,173	27,830	81	36.3
2006	99	76,446	27,653	88	32.6
2007	100	77,157	27,736	89	35.2
2008	87	76,096	27,314	92	36.0
2009	92	74,698	26,839	90	36.9
2010	89	74,301	26,739	93	34.9
2011	93	73,598	26,555	91	36.4
2012	96	73,944	26,534	89	38.2
2013	96	73,816	26,393	89	37.9
2014	94	74,055	26,292	88	37.1
2015	91	74,526	26,355	89	35.4
2016	100	74,884	26,172	85	39.9
2017	92	74,947	26,093	87	37.0
2018	93	74,559	25,802	86	37.4
2019	94	74,292	25,536	85	38.0
2020	89	73,982	25,178	86	36.2

County: county value. Kansas: state value. County Rank: highest county value ranked #1. (\$000): thousands of dollars. Nonmetro Kansas: Kansas total less Metropolitan Areas as defined by the Office of Management and Budget (OMB; released 3/6/2020). Per 1000: For nonmoney amounts, Per 1000=(county value / county population for the same year as the data) x 1000. \$ Per capita=(county value / county population for the same year as the data). Value= . indicates missing or suppressed data or value not calculated.

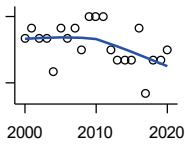
Business

**ESTABLISHMENTS: 1-19
EMPLOYEES**



U.S. Census Bureau, County Business Patterns. Beginning with the 2017 data, any tabulation with fewer than 3 establishments were omitted from the release. Data for these establishments are included in the broader total.

Year	County	State of Kansas	Non Metro Kansas	County Rank	Per 1000 or \$ Per Capita
2000	104	64,527	25,381	88	31.7
2001	103	64,176	25,248	86	32.6
2002	109	64,886	25,208	82	34.6
2003	103	64,714	25,020	84	32.4
2004	96	65,554	24,995	90	30.7
2005	101	65,796	24,839	85	32.7
2006	89	65,764	24,589	92	29.3
2007	89	66,446	24,701	89	31.4
2008	77	65,322	24,257	95	31.8
2009	80	64,128	23,851	94	32.1
2010	77	64,015	23,857	96	30.2
2011	81	63,251	23,571	92	31.7
2012	87	63,519	23,575	91	34.6
2013	88	63,197	23,396	88	34.7
2014	85	63,113	23,229	90	33.6
2015	83	63,280	23,227	90	32.3
2016	89	63,630	23,117	86	35.5
2017	85	63,619	23,022	86	34.2
2018	83	63,233	22,745	87	33.3
2019	84	62,904	22,489	85	33.9
2020	80	62,634	22,173	88	32.5



**ESTABLISHMENTS: 20-99
EMPLOYEES**

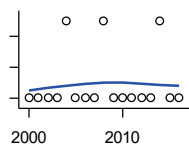
U.S. Census Bureau, County Business Patterns. Beginning with the 2017 data, any tabulation with fewer than 3 establishments were omitted from the release. Data for these establishments are included in the broader total.

Year	County	State of Kansas	Non Metro Kansas	County Rank	Per 1000 or \$ Per Capita
2000	10	8,714	2,653	69	3.1
2001	11	8,692	2,593	65	3.5
2002	10	8,582	2,554	69	3.2
2003	10	8,642	2,568	68	3.1
2004	7	8,658	2,590	80	2.2
2005	11	8,685	2,553	65	3.6
2006	10	8,922	2,612	70	3.3
2007	11	8,938	2,574	70	3.9
2008	9	8,939	2,587	75	3.7
2009	12	8,848	2,551	64	4.8
2010	12	8,612	2,454	63	4.7
2011	12	8,668	2,540	67	4.7
2012	9	8,700	2,500	74	3.6
2013	8	8,870	2,541	77	3.2
2014	8	9,121	2,590	78	3.2
2015	8	9,374	2,664	79	3.1
2016	11	9,412	2,596	67	4.4
2017	5	9,487	2,638	85	2.0
2018	8	9,485	2,621	71	3.2
2019	8	9,485	2,591	71	3.2
2020	9	9,471	2,545	69	3.7

County: county value. Kansas: state value. County Rank: highest county value ranked #1. (\$000): thousands of dollars. Nonmetro Kansas: Kansas total less Metropolitan Areas as defined by the Office of Management and Budget (OMB; released 3/6/2020). Per 1000: For nonmoney amounts, Per 1000=(county value / county population for the same year as the data) x 1000. \$ Per capita=(county value / county population for the same year as the data). Value= . indicates missing or suppressed data or value not calculated.

Business

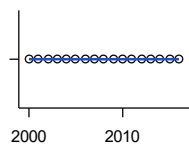
ESTABLISHMENTS: 100-499 EMPLOYEES



U.S. Census Bureau, County Business Patterns. Beginning with the 2017 data, any tabulation with fewer than 3 establishments were omitted from the release. Data for these establishments are included in the broader total.

Year	County	State of Kansas	Non Metro Kansas	County Rank	Per 1000 or \$ Per Capita
2000	0	1,555	409	105	0.0
2001	0	1,555	406	105	0.0
2002	0	1,464	386	105	0.0
2003	0	1,470	378	105	0.0
2004	1	1,463	388	82	0.3
2005	0	1,537	400	105	0.0
2006	0	1,598	407	105	0.0
2007	0	1,602	416	105	0.0
2008	1	1,653	421	86	0.4
2009	0	1,551	394	105	0.0
2010	0	1,513	382	105	0.0
2011	0	1,523	395	105	0.0
2012	0	1,567	410	105	0.0
2013	0	1,581	407	105	0.0
2014	1	1,641	421	86	0.4
2015	0	1,693	414	105	0.0
2016	0	1,671	406	105	0.0

ESTABLISHMENTS: 500 OR MORE EMPLOYEES

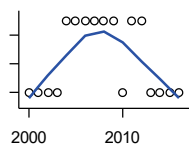


U.S. Census Bureau, County Business Patterns. Beginning with the 2017 data, any tabulation with fewer than 3 establishments were omitted from the release. Data for these establishments are included in the broader total.

Year	County	State of Kansas	Non Metro Kansas	County Rank	Per 1000 or \$ Per Capita
2000	0	143	32	105	0.0
2001	0	142	35	105	0.0
2002	0	145	35	105	0.0
2003	0	146	32	105	0.0
2004	0	152	36	105	0.0
2005	0	155	38	105	0.0
2006	0	162	45	105	0.0
2007	0	171	45	105	0.0
2008	0	182	49	105	0.0
2009	0	171	43	105	0.0
2010	0	161	46	105	0.0
2011	0	156	49	105	0.0
2012	0	158	49	105	0.0
2013	0	168	49	105	0.0
2014	0	180	52	105	0.0
2015	0	179	50	105	0.0
2016	0	171	53	105	0.0

County: county value. Kansas: state value. County Rank: highest county value ranked #1. (\$000): thousands of dollars. Nonmetro Kansas: Kansas total less Metropolitan Areas as defined by the Office of Management and Budget (OMB; released 3/6/2020). Per 1000: For nonmoney amounts, Per 1000=(county value / county population for the same year as the data) x 1000. \$ Per capita=(county value / county population for the same year as the data). Value= . indicates missing or suppressed data or value not calculated.

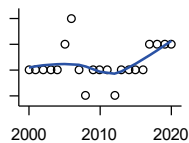
Business



ESTABLISHMENTS: FORESTRY, FISHING, HUNTING, AND AG SUPPORT

U.S. Census Bureau, County Business Patterns. Beginning with the 2017 data, any tabulation with fewer than 3 establishments were omitted from the release. Data for these establishments are included in the broader total.

Year	County	State of Kansas	Non Metro Kansas	County Rank	Per 1000 or \$ Per Capita
2000	1	190	149	74	0.3
2001	1	217	168	80	0.3
2002	1	224	176	84	0.3
2003	1	217	173	84	0.3
2004	2	211	165	53	0.6
2005	2	188	148	45	0.6
2006	2	193	158	48	0.7
2007	2	212	170	52	0.7
2008	2	197	158	50	0.8
2009	2	191	154	52	0.8
2010	1	192	161	79	0.4
2011	2	193	157	50	0.8
2012	2	204	164	50	0.8
2013	1	208	166	85	0.4
2014	1	194	152	83	0.4
2015	1	192	149	81	0.4
2016	1	181	142	80	0.4



ESTABLISHMENTS: MINING

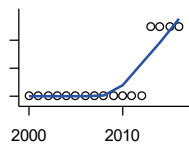
U.S. Census Bureau, County Business Patterns. Beginning with the 2017 data, any tabulation with fewer than 3 establishments were omitted from the release. Data for these establishments are included in the broader total.

Year	County	State of Kansas	Non Metro Kansas	County Rank	Per 1000 or \$ Per Capita
2000	2	868	619	70	0.6
2001	2	878	622	69	0.6
2002	2	847	615	68	0.6
2003	2	864	633	66	0.6
2004	2	880	647	67	0.6
2005	3	941	695	56	1.0
2006	4	991	734	48	1.3
2007	2	1,000	759	70	0.7
2008	1	1,047	799	90	0.4
2009	2	1,016	772	70	0.8
2010	2	1,009	762	72	0.8
2011	2	1,013	763	73	0.8
2012	1	1,048	789	91	0.4
2013	2	1,060	802	76	0.8
2014	2	1,102	828	76	0.8
2015	2	1,069	810	76	0.8
2016	2	990	747	77	0.8
2017	3	920	.	61	1.2
2018	3	900	.	57	1.2
2019	3	864	.	55	1.2
2020	3	825	.	54	1.2

County: county value. Kansas: state value. County Rank: highest county value ranked #1. (\$000): thousands of dollars. Nonmetro Kansas: Kansas total less Metropolitan Areas as defined by the Office of Management and Budget (OMB; released 3/6/2020). Per 1000: For nonmoney amounts, Per 1000=(county value / county population for the same year as the data) x 1000. \$ Per capita=(county value / county population for the same year as the data). Value= . indicates missing or suppressed data or value not calculated.

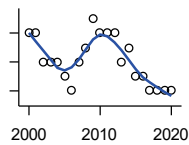
Business

ESTABLISHMENTS: UTILITIES



U.S. Census Bureau, County Business Patterns. Beginning with the 2017 data, any tabulation with fewer than 3 establishments were omitted from the release. Data for these establishments are included in the broader total.

Year	County	State of Kansas	Non Metro Kansas	County Rank	Per 1000 or \$ Per Capita
2000	0	274	192	105	0.0
2001	0	290	204	105	0.0
2002	0	278	195	105	0.0
2003	0	268	180	105	0.0
2004	0	247	164	105	0.0
2005	0	254	172	105	0.0
2006	0	248	169	105	0.0
2007	0	222	156	105	0.0
2008	0	244	166	105	0.0
2009	0	222	152	105	0.0
2010	0	197	129	105	0.0
2011	0	230	156	105	0.0
2012	0	232	156	105	0.0
2013	1	234	159	87	0.4
2014	1	232	160	89	0.4
2015	1	237	165	88	0.4
2016	1	245	171	90	0.4



ESTABLISHMENTS: CONSTRUCTION

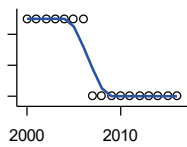
U.S. Census Bureau, County Business Patterns. Beginning with the 2017 data, any tabulation with fewer than 3 establishments were omitted from the release. Data for these establishments are included in the broader total.

Year	County	State of Kansas	Non Metro Kansas	County Rank	Per 1000 or \$ Per Capita
2000	11	7,703	2,616	79	3.4
2001	11	7,449	2,520	77	3.5
2002	9	7,519	2,482	86	2.9
2003	9	7,722	2,521	83	2.8
2004	9	7,887	2,518	85	2.9
2005	8	8,032	2,515	86	2.6
2006	7	8,031	2,494	89	2.3
2007	9	8,057	2,547	82	3.2
2008	10	7,831	2,522	80	4.1
2009	12	7,342	2,452	74	4.8
2010	11	7,064	2,394	77	4.3
2011	11	6,774	2,361	78	4.3
2012	11	6,741	2,393	76	4.4
2013	9	6,802	2,394	83	3.6
2014	10	6,920	2,383	84	3.9
2015	8	7,014	2,377	87	3.1
2016	8	6,988	2,343	88	3.2
2017	7	7,031	2,316	90	2.8
2018	7	7,124	2,285	88	2.8
2019	7	7,060	2,242	90	2.8
2020	7	7,089	2,249	88	2.8

County: county value. Kansas: state value. County Rank: highest county value ranked #1. (\$000): thousands of dollars. Nonmetro Kansas: Kansas total less Metropolitan Areas as defined by the Office of Management and Budget (OMB; released 3/6/2020). Per 1000: For nonmoney amounts, Per 1000=(county value / county population for the same year as the data) x 1000. \$ Per capita=(county value / county population for the same year as the data). Value= . indicates missing or suppressed data or value not calculated.

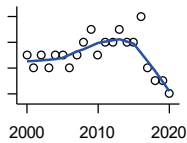
Business

**ESTABLISHMENTS:
MANUFACTURING**



U.S. Census Bureau, County Business Patterns. Beginning with the 2017 data, any tabulation with fewer than 3 establishments were omitted from the release. Data for these establishments are included in the broader total.

Year	County	State of Kansas	Non Metro Kansas	County Rank	Per 1000 or \$ Per Capita
2000	1	3,229	1,316	101	0.3
2001	1	3,240	1,323	102	0.3
2002	1	3,181	1,289	102	0.3
2003	1	3,159	1,291	104	0.3
2004	1	3,179	1,313	103	0.3
2005	1	3,128	1,278	104	0.3
2006	1	3,165	1,290	105	0.3
2007	0	3,184	1,316	105	0.0
2008	0	3,171	1,297	105	0.0
2009	0	3,026	1,240	105	0.0
2010	0	2,955	1,222	105	0.0
2011	0	2,877	1,193	105	0.0
2012	0	2,889	1,197	105	0.0
2013	0	2,836	1,165	105	0.0
2014	0	2,831	1,168	105	0.0
2015	0	2,817	1,161	105	0.0
2016	0	2,791	1,150	105	0.0



**ESTABLISHMENTS: WHOLESALE
TRADE**

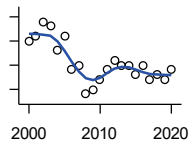
U.S. Census Bureau, County Business Patterns. Beginning with the 2017 data, any tabulation with fewer than 3 establishments were omitted from the release. Data for these establishments are included in the broader total.

Year	County	State of Kansas	Non Metro Kansas	County Rank	Per 1000 or \$ Per Capita
2000	7	4,876	1,776	98	2.1
2001	6	4,811	1,769	98	1.9
2002	7	4,719	1,750	91	2.2
2003	6	4,590	1,637	95	1.9
2004	7	4,553	1,634	90	2.2
2005	7	4,541	1,618	90	2.3
2006	6	4,517	1,596	90	2.0
2007	7	4,555	1,629	92	2.5
2008	8	4,501	1,622	85	3.3
2009	9	4,437	1,614	81	3.6
2010	7	4,432	1,612	92	2.7
2011	8	4,400	1,660	88	3.1
2012	8	4,563	1,755	88	3.2
2013	9	4,501	1,741	85	3.6
2014	8	4,497	1,746	88	3.2
2015	8	4,459	1,755	89	3.1
2016	10	4,457	1,732	78	4.0
2017	6	4,436	1,774	93	2.4
2018	5	4,330	1,727	95	2.0
2019	5	4,291	1,713	95	2.0
2020	4	4,191	1,677	97	1.6

County: county value. Kansas: state value. County Rank: highest county value ranked #1. (\$000): thousands of dollars. Nonmetro Kansas: Kansas total less Metropolitan Areas as defined by the Office of Management and Budget (OMB; released 3/6/2020). Per 1000: For nonmoney amounts, Per 1000=(county value / county population for the same year as the data) x 1000. \$ Per capita=(county value / county population for the same year as the data). Value= . indicates missing or suppressed data or value not calculated.

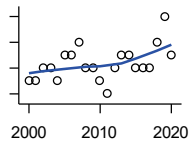
Business

ESTABLISHMENTS: RETAIL TRADE



U.S. Census Bureau, County Business Patterns. Beginning with the 2017 data, any tabulation with fewer than 3 establishments were omitted from the release. Data for these establishments are included in the broader total.

Year	County	State of Kansas	Non Metro Kansas	County Rank	Per 1000 or \$ Per Capita
2000	20	12,261	5,240	86	6.1
2001	21	12,206	5,207	87	6.6
2002	24	11,980	5,082	77	7.6
2003	23	11,834	5,049	79	7.2
2004	18	11,748	4,967	90	5.8
2005	21	11,562	4,834	81	6.8
2006	14	11,367	4,702	96	4.6
2007	15	11,306	4,653	91	5.3
2008	9	10,978	4,494	101	3.7
2009	10	10,760	4,372	102	4.0
2010	12	10,727	4,346	96	4.7
2011	14	10,655	4,289	89	5.5
2012	16	10,585	4,202	83	6.4
2013	15	10,433	4,147	86	5.9
2014	15	10,391	4,070	87	5.9
2015	13	10,327	4,061	91	5.1
2016	15	10,197	3,965	83	6.0
2017	12	10,074	3,885	92	4.8
2018	13	9,866	3,797	89	5.2
2019	12	9,762	3,750	91	4.8
2020	14	9,591	3,666	88	5.7



ESTABLISHMENTS: TRANSPORTATION & WAREHOUSING

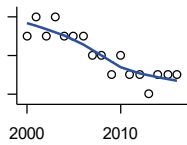
U.S. Census Bureau, County Business Patterns. Beginning with the 2017 data, any tabulation with fewer than 3 establishments were omitted from the release. Data for these establishments are included in the broader total.

Year	County	State of Kansas	Non Metro Kansas	County Rank	Per 1000 or \$ Per Capita
2000	5	2,474	1,293	91	1.5
2001	5	2,463	1,298	90	1.6
2002	6	2,461	1,278	82	1.9
2003	6	2,576	1,297	81	1.9
2004	5	2,651	1,324	90	1.6
2005	7	2,632	1,326	76	2.3
2006	7	2,626	1,295	78	2.3
2007	8	2,664	1,314	79	2.8
2008	6	2,675	1,329	83	2.5
2009	6	2,635	1,313	87	2.4
2010	5	2,615	1,313	90	2.0
2011	4	2,579	1,285	96	1.6
2012	6	2,519	1,243	84	2.4
2013	7	2,492	1,226	78	2.8
2014	7	2,518	1,240	76	2.8
2015	6	2,554	1,257	82	2.3
2016	6	2,567	1,241	78	2.4
2017	6	2,640	1,245	78	2.4
2018	8	2,627	1,238	66	3.2
2019	10	2,615	1,209	54	4.0
2020	7	2,589	1,179	72	2.8

County: county value. Kansas: state value. County Rank: highest county value ranked #1. (\$000): thousands of dollars. Nonmetro Kansas: Kansas total less Metropolitan Areas as defined by the Office of Management and Budget (OMB; released 3/6/2020). Per 1000: For nonmoney amounts, Per 1000=(county value / county population for the same year as the data) x 1000. \$ Per capita=(county value / county population for the same year as the data). Value= . indicates missing or suppressed data or value not calculated.

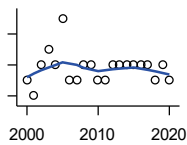
Business

ESTABLISHMENTS: INFORMATION



U.S. Census Bureau, County Business Patterns. Beginning with the 2017 data, any tabulation with fewer than 3 establishments were omitted from the release. Data for these establishments are included in the broader total.

Year	County	State of Kansas	Non Metro Kansas	County Rank	Per 1000 or \$ Per Capita
2000	4	1,542	578	75	1.2
2001	5	1,556	566	63	1.6
2002	4	1,517	551	67	1.3
2003	5	1,516	564	58	1.6
2004	4	1,518	556	65	1.3
2005	4	1,519	536	64	1.3
2006	4	1,549	559	68	1.3
2007	3	1,504	527	72	1.1
2008	3	1,468	522	71	1.2
2009	2	1,420	510	87	0.8
2010	3	1,437	527	75	1.2
2011	2	1,428	537	91	0.8
2012	2	1,387	515	90	0.8
2013	1	1,337	487	102	0.4
2014	2	1,335	496	85	0.8
2015	2	1,359	510	85	0.8
2016	2	1,431	537	85	0.8



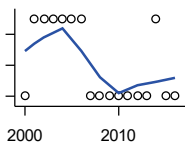
ESTABLISHMENTS: FINANCE & INSURANCE

U.S. Census Bureau, County Business Patterns. Beginning with the 2017 data, any tabulation with fewer than 3 establishments were omitted from the release. Data for these establishments are included in the broader total.

Year	County	State of Kansas	Non Metro Kansas	County Rank	Per 1000 or \$ Per Capita
2000	6	5,209	1,848	95	1.8
2001	5	5,178	1,828	97	1.6
2002	7	5,496	1,911	90	2.2
2003	8	5,569	1,907	90	2.5
2004	7	5,572	1,913	92	2.2
2005	10	5,708	1,964	81	3.2
2006	6	5,877	1,976	96	2.0
2007	6	6,017	2,030	100	2.1
2008	7	6,010	2,023	91	2.9
2009	7	5,933	1,994	93	2.8
2010	6	5,872	1,975	100	2.4
2011	6	5,854	1,985	99	2.3
2012	7	5,993	2,024	93	2.8
2013	7	5,903	1,993	92	2.8
2014	7	5,894	2,000	91	2.8
2015	7	5,932	1,998	90	2.7
2016	7	6,022	2,021	90	2.8
2017	7	6,026	2,007	91	2.8
2018	6	6,023	1,997	97	2.4
2019	7	5,953	1,977	91	2.8
2020	6	5,926	1,969	97	2.4

County: county value. Kansas: state value. County Rank: highest county value ranked #1. (\$000): thousands of dollars. Nonmetro Kansas: Kansas total less Metropolitan Areas as defined by the Office of Management and Budget (OMB; released 3/6/2020). Per 1000: For nonmoney amounts, Per 1000=(county value / county population for the same year as the data) x 1000. \$ Per capita=(county value / county population for the same year as the data). Value= . indicates missing or suppressed data or value not calculated.

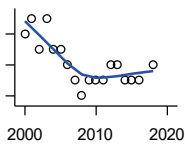
Business



ESTABLISHMENTS: REAL ESTATE, RENTAL, AND LEASING

U.S. Census Bureau, County Business Patterns. Beginning with the 2017 data, any tabulation with fewer than 3 establishments were omitted from the release. Data for these establishments are included in the broader total.

Year	County	State of Kansas	Non Metro Kansas	County Rank	Per 1000 or \$ Per Capita
2000	0	2,733	687	105	0.0
2001	1	2,849	724	92	0.3
2002	1	2,952	735	95	0.3
2003	1	3,007	727	93	0.3
2004	1	3,108	713	93	0.3
2005	1	3,203	727	90	0.3
2006	1	3,268	736	91	0.3
2007	0	3,286	721	105	0.0
2008	0	3,239	738	105	0.0
2009	0	3,122	723	105	0.0
2010	0	3,050	708	105	0.0
2011	0	3,002	692	105	0.0
2012	0	2,981	691	105	0.0
2013	0	3,046	717	105	0.0
2014	1	3,135	738	92	0.4
2015	0	3,179	744	105	0.0
2016	0	3,293	757	105	0.0



ESTABLISHMENTS: PROFESSIONAL, SCIENTIFIC, AND TECHNICAL SERVICES

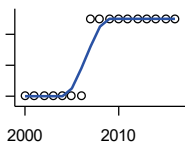
U.S. Census Bureau, County Business Patterns. Beginning with the 2017 data, any tabulation with fewer than 3 establishments were omitted from the release. Data for these establishments are included in the broader total.

Year	County	State of Kansas	Non Metro Kansas	County Rank	Per 1000 or \$ Per Capita
2000	5	6,424	1,690	95	1.5
2001	6	6,492	1,665	86	1.9
2002	4	6,719	1,704	100	1.3
2003	6	6,793	1,735	86	1.9
2004	4	7,025	1,730	100	1.3
2005	4	7,087	1,711	100	1.3
2006	3	7,231	1,736	104	1.0
2007	2	7,329	1,729	105	0.7
2008	1	7,133	1,671	105	0.4
2009	2	7,122	1,676	105	0.8
2010	2	7,172	1,680	105	0.8
2011	2	7,115	1,668	105	0.8
2012	3	7,122	1,681	105	1.2
2013	3	7,129	1,698	105	1.2
2014	2	7,206	1,682	105	0.8
2015	2	7,184	1,687	105	0.8
2016	2	7,146	1,659	104	0.8
2018	3	7,138	1,655	103	1.2

County: county value. Kansas: state value. County Rank: highest county value ranked #1. (\$000): thousands of dollars. Nonmetro Kansas: Kansas total less Metropolitan Areas as defined by the Office of Management and Budget (OMB; released 3/6/2020). Per 1000: For nonmoney amounts, Per 1000=(county value / county population for the same year as the data) x 1000. \$ Per capita=(county value / county population for the same year as the data). Value= . indicates missing or suppressed data or value not calculated.

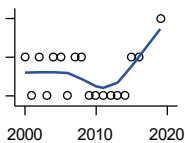
Business

ESTABLISHMENTS: MANAGEMENT OF COMPANIES AND ENTERPRISES



U.S. Census Bureau, County Business Patterns. Beginning with the 2017 data, any tabulation with fewer than 3 establishments were omitted from the release. Data for these establishments are included in the broader total.

Year	County	State of Kansas	Non Metro Kansas	County Rank	Per 1000 or \$ Per Capita
2000	0	622	145	105	0.0
2001	0	593	141	105	0.0
2002	0	597	152	105	0.0
2003	0	561	135	105	0.0
2004	0	569	133	105	0.0
2005	0	543	127	105	0.0
2006	0	542	131	105	0.0
2007	1	550	133	60	0.4
2008	1	553	139	60	0.4
2009	1	575	136	61	0.4
2010	1	567	131	61	0.4
2011	1	552	134	60	0.4
2012	1	593	135	56	0.4
2013	1	590	135	57	0.4
2014	1	603	136	57	0.4
2015	1	613	140	61	0.4
2016	1	655	171	60	0.4



ESTABLISHMENTS: ADMIN, SUPPORT, WASTE MGMT., AND REMEDIATION

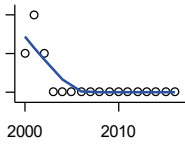
U.S. Census Bureau, County Business Patterns. Beginning with the 2017 data, any tabulation with fewer than 3 establishments were omitted from the release. Data for these establishments are included in the broader total.

Year	County	State of Kansas	Non Metro Kansas	County Rank	Per 1000 or \$ Per Capita
2000	2	3,307	871	90	0.6
2001	1	3,421	913	99	0.3
2002	2	3,232	882	89	0.6
2003	1	3,189	858	99	0.3
2004	2	3,301	891	92	0.6
2005	2	3,342	896	91	0.6
2006	1	3,395	886	100	0.3
2007	2	3,522	921	94	0.7
2008	2	3,587	932	95	0.8
2009	1	3,505	904	101	0.4
2010	1	3,494	897	99	0.4
2011	1	3,447	903	98	0.4
2012	1	3,462	891	99	0.4
2013	1	3,489	904	100	0.4
2014	1	3,569	933	98	0.4
2015	2	3,630	964	91	0.8
2016	2	3,705	987	90	0.8
2019	3	3,762	991	82	1.2

County: county value. Kansas: state value. County Rank: highest county value ranked #1. (\$000): thousands of dollars. Nonmetro Kansas: Kansas total less Metropolitan Areas as defined by the Office of Management and Budget (OMB; released 3/6/2020). Per 1000: For nonmoney amounts, Per 1000=(county value / county population for the same year as the data) x 1000. \$ Per capita=(county value / county population for the same year as the data). Value= . indicates missing or suppressed data or value not calculated.

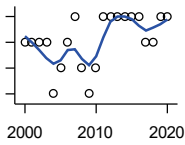
Business

ESTABLISHMENTS: EDUCATIONAL SERVICES



U.S. Census Bureau, County Business Patterns. Beginning with the 2017 data, any tabulation with fewer than 3 establishments were omitted from the release. Data for these establishments are included in the broader total.

Year	County	State of Kansas	Non Metro Kansas	County Rank	Per 1000 or \$ Per Capita
2000	3	604	155	37	0.9
2001	4	625	168	28	1.3
2002	3	666	165	36	1.0
2003	2	663	173	44	0.6
2004	2	690	173	44	0.6
2005	2	699	168	41	0.6
2006	2	698	175	46	0.7
2007	2	691	165	44	0.7
2008	2	692	158	44	0.8
2009	2	690	150	43	0.8
2010	2	700	149	44	0.8
2011	2	711	150	43	0.8
2012	2	724	145	44	0.8
2013	2	735	153	43	0.8
2014	2	722	152	45	0.8
2015	2	754	152	45	0.8
2016	2	728	150	40	0.8



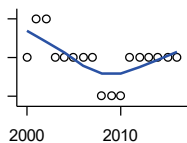
ESTABLISHMENTS: HEALTH CARE AND SOCIAL ASSISTANCE

U.S. Census Bureau, County Business Patterns. Beginning with the 2017 data, any tabulation with fewer than 3 establishments were omitted from the release. Data for these establishments are included in the broader total.

Year	County	State of Kansas	Non Metro Kansas	County Rank	Per 1000 or \$ Per Capita
2000	9	6,564	2,591	77	2.7
2001	9	6,636	2,590	77	2.8
2002	9	7,052	2,777	83	2.9
2003	9	7,129	2,792	82	2.8
2004	7	7,239	2,813	96	2.2
2005	8	7,412	2,855	91	2.6
2006	9	7,477	2,860	84	3.0
2007	10	7,661	2,864	77	3.5
2008	8	7,651	2,810	86	3.3
2009	7	7,696	2,787	93	2.8
2010	8	7,751	2,830	87	3.1
2011	10	7,804	2,817	75	3.9
2012	10	7,973	2,793	76	4.0
2013	10	7,877	2,729	77	3.9
2014	10	7,809	2,686	77	3.9
2015	10	8,103	2,692	80	3.9
2016	10	8,315	2,678	78	4.0
2017	9	8,136	2,646	79	3.6
2018	9	8,126	2,632	79	3.6
2019	10	8,184	2,587	75	4.0
2020	10	8,290	2,571	76	4.1

County: county value. Kansas: state value. County Rank: highest county value ranked #1. (\$000): thousands of dollars. Nonmetro Kansas: Kansas total less Metropolitan Areas as defined by the Office of Management and Budget (OMB; released 3/6/2020). Per 1000: For nonmoney amounts, Per 1000=(county value / county population for the same year as the data) x 1000. \$ Per capita=(county value / county population for the same year as the data). Value= . indicates missing or suppressed data or value not calculated.

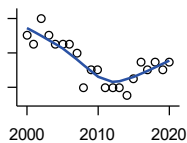
Business



ESTABLISHMENTS: ARTS, ENTERTAINMENT, AND RECREATION

U.S. Census Bureau, County Business Patterns. Beginning with the 2017 data, any tabulation with fewer than 3 establishments were omitted from the release. Data for these establishments are included in the broader total.

Year	County	State of Kansas	Non Metro Kansas	County Rank	Per 1000 or \$ Per Capita
2000	2	981	419	84	0.6
2001	3	1,009	433	71	0.9
2002	3	1,054	441	70	1.0
2003	2	1,045	443	89	0.6
2004	2	1,082	445	85	0.6
2005	2	1,109	446	86	0.6
2006	2	1,080	445	86	0.7
2007	2	1,092	444	86	0.7
2008	1	1,062	423	96	0.4
2009	1	1,063	421	98	0.4
2010	1	1,018	406	99	0.4
2011	2	997	387	89	0.8
2012	2	1,000	388	86	0.8
2013	2	1,009	377	84	0.8
2014	2	1,030	365	83	0.8
2015	2	1,031	357	83	0.8
2016	2	1,060	366	82	0.8



ESTABLISHMENTS: ACCOMMODATION AND FOOD SERVICES

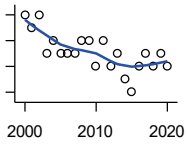
U.S. Census Bureau, County Business Patterns. Beginning with the 2017 data, any tabulation with fewer than 3 establishments were omitted from the release. Data for these establishments are included in the broader total.

Year	County	State of Kansas	Non Metro Kansas	County Rank	Per 1000 or \$ Per Capita
2000	12	5,536	2,213	69	3.7
2001	11	5,551	2,173	73	3.5
2002	14	5,610	2,174	64	4.4
2003	12	5,635	2,188	69	3.8
2004	11	5,681	2,160	71	3.5
2005	11	5,776	2,170	72	3.6
2006	11	5,745	2,132	70	3.6
2007	10	5,877	2,095	73	3.5
2008	6	5,843	2,052	93	2.5
2009	8	5,794	2,029	77	3.2
2010	8	5,898	2,046	79	3.1
2011	6	5,958	2,067	91	2.3
2012	6	5,951	2,046	93	2.4
2013	6	6,061	2,070	94	2.4
2014	5	5,985	2,024	95	2.0
2015	7	6,034	2,063	89	2.7
2016	9	6,126	2,094	77	3.6
2017	8	6,250	2,123	81	3.2
2018	9	6,256	2,128	79	3.6
2019	8	6,231	2,131	81	3.2
2020	9	6,206	2,131	77	3.7

County: county value. Kansas: state value. County Rank: highest county value ranked #1. (\$000): thousands of dollars. Nonmetro Kansas: Kansas total less Metropolitan Areas as defined by the Office of Management and Budget (OMB; released 3/6/2020). Per 1000: For nonmoney amounts, Per 1000=(county value / county population for the same year as the data) x 1000. \$ Per capita=(county value / county population for the same year as the data). Value= . indicates missing or suppressed data or value not calculated.

Business

ESTABLISHMENTS: OTHER SERVICES

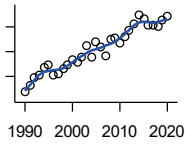


U.S. Census Bureau, County Business Patterns. Beginning with the 2017 data, any tabulation with fewer than 3 establishments were omitted from the release. Data for these establishments are included in the broader total.

Year	County	State of Kansas	Non Metro Kansas	County Rank	Per 1000 or \$ Per Capita
2000	22	8,423	3,636	72	6.7
2001	21	8,310	3,614	76	6.6
2002	22	8,552	3,658	72	7.0
2003	19	8,411	3,605	79	6.0
2004	20	8,343	3,597	77	6.4
2005	19	8,321	3,571	78	6.2
2006	19	8,225	3,490	78	6.3
2007	19	8,355	3,534	75	6.7
2008	20	8,104	3,406	74	8.3
2009	20	8,040	3,405	71	8.0
2010	18	7,998	3,379	76	7.1
2011	20	7,883	3,294	71	7.8
2012	18	7,913	3,303	77	7.2
2013	19	7,947	3,290	73	7.5
2014	17	7,943	3,285	79	6.7
2015	16	7,869	3,255	80	6.2
2016	18	7,839	3,204	78	7.2
2017	19	7,873	3,189	76	7.6
2018	18	7,853	3,176	80	7.2
2019	19	7,834	3,138	75	7.7
2020	18	7,787	3,073	76	7.3

County: county value. Kansas: state value. County Rank: highest county value ranked #1. (\$000): thousands of dollars. Nonmetro Kansas: Kansas total less Metropolitan Areas as defined by the Office of Management and Budget (OMB; released 3/6/2020). Per 1000: For nonmoney amounts, Per 1000=(county value / county population for the same year as the data) x 1000. \$ Per capita=(county value / county population for the same year as the data). Value= . indicates missing or suppressed data or value not calculated.

Business



**TOTAL ANNUAL PAYROLL (\$000)
COUNTY BUSINESS PATTERNS**

U.S. Census Bureau, County Business Patterns. Beginning with the 2017 data, any tabulation with fewer than 3 establishments were omitted from the release. Data for these establishments are included in the broader total.

Year	County	State of Kansas	Non Metro Kansas	County Rank	Per 1000 or \$ Per Capita
1990	11,808	17,487,316	4,442,429	71	3,226.2
1991	13,146	18,162,326	4,612,616	72	3,686.5
1992	14,740	19,244,346	4,882,060	72	4,086.5
1993	15,267	20,087,190	5,182,780	72	4,213.9
1994	16,826	21,201,652	5,541,423	73	4,659.7
1995	17,398	22,825,920	5,875,310	71	4,847.6
1996	15,260	24,613,884	6,198,398	76	4,296.2
1997	15,506	26,787,098	6,599,061	79	4,481.5
1998	16,557	28,747,576	6,871,794	74	4,839.8
1999	17,206	30,600,434	7,121,961	76	5,128.5
2000	18,443	31,990,762	7,520,424	74	5,626.3
2001	17,852	33,303,992	7,598,165	77	5,649.4
2002	18,769	33,152,962	7,572,002	73	5,958.4
2003	21,237	34,040,944	7,726,561	72	6,688.8
2004	18,907	35,725,812	8,303,779	76	6,040.6
2005	21,943	36,646,064	8,586,986	73	7,105.9
2006	20,939	39,251,388	9,178,947	79	6,890.1
2007	19,147	42,022,753	.	79	6,749.0
2008	22,528	43,984,689	.	76	9,316.8
2009	22,723	42,146,866	.	77	9,125.7
2010	21,791	42,686,303	10,294,015	81	8,535.4
2011	22,908	43,733,944	.	79	8,955.4
2012	24,274	45,608,072	11,222,183	79	9,659.4
2013	25,668	47,715,601	11,446,751	77	10,129.4
2014	27,430	49,712,832	11,957,931	77	10,833.3
2015	26,752	51,259,676	11,975,718	78	10,409.3
2016	25,252	51,016,318	12,148,646	79	10,072.6
2017	25,310	52,754,605	12,448,592	84	10,181.0
2018	25,140	55,087,460	12,810,270	84	10,100.4
2019	26,342	57,272,387	13,123,288	82	10,643.2
2020	27,215	58,374,388	14,007,955	84	11,063.0

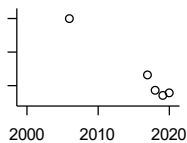
County: county value. Kansas: state value. County Rank: highest county value ranked #1. (\$000): thousands of dollars. Nonmetro Kansas: Kansas total less Metropolitan Areas as defined by the Office of Management and Budget (OMB; released 3/6/2020). Per 1000: For nonmoney amounts, Per 1000=(county value / county population for the same year as the data) x 1000. \$ Per capita=(county value / county population for the same year as the data). Value= . indicates missing or suppressed data or value not calculated.

Business

**TOTAL ANNUAL PAYROLL(\$000):
FORESTRY, FISHING, HUNTING, AND
AG SUPPORT**

U.S. Census Bureau, County Business Patterns. Beginning with the 2017 data, any tabulation with fewer than 3 establishments were omitted from the release. Data for these establishments are included in the broader total.

Year	County	State of Kansas	Non Metro Kansas	County Rank	Per 1000 or \$ Per Capita
2000	.	13,551	.	.	.
2001
2002	.	16,528	.	.	.
2003	.	17,247	.	.	.
2004	.	17,552	.	.	.
2005	.	16,298	.	.	.
2006	.	17,908	.	.	.
2007	.	22,199	.	.	.
2008	.	21,359	.	.	.
2009	.	22,466	.	.	.
2010	.	22,753	.	.	.
2011	.	23,320	.	.	.
2012	.	27,492	.	.	.
2013	.	30,360	.	.	.
2014	.	34,862	.	.	.
2015	.	35,980	.	.	.



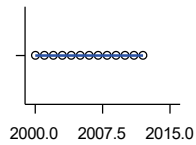
**TOTAL ANNUAL PAYROLL(\$000):
MINING**

U.S. Census Bureau, County Business Patterns. Beginning with the 2017 data, any tabulation with fewer than 3 establishments were omitted from the release. Data for these establishments are included in the broader total.

Year	County	State of Kansas	Non Metro Kansas	County Rank	Per 1000 or \$ Per Capita
2000	.	240,079	.	.	.
2001	.	273,838	.	.	.
2002	.	262,277	.	.	.
2003	.	290,652	.	.	.
2004	.	326,997	.	.	.
2005	.	381,069	.	.	.
2006	598	482,102	.	.	196.8
2007	.	551,751	.	.	.
2008	.	620,446	.	.	.
2009	.	465,070	.	.	.
2010	.	485,841	.	.	.
2011	.	541,536	.	.	.
2012	.	600,402	.	.	.
2013	.	599,788	.	.	.
2014	.	678,673	.	.	.
2015	.	552,658	.	.	.
2017	264	379,883	.	.	106.2
2018	173	431,367	.	.	69.5
2019	139	349,270	.	.	56.2
2020	160	302,795	.	.	65.0

County: county value. Kansas: state value. County Rank: highest county value ranked #1. (\$000): thousands of dollars. Nonmetro Kansas: Kansas total less Metropolitan Areas as defined by the Office of Management and Budget (OMB; released 3/6/2020). Per 1000: For nonmoney amounts, Per 1000=(county value / county population for the same year as the data) x 1000. \$ Per capita=(county value / county population for the same year as the data). Value= . indicates missing or suppressed data or value not calculated.

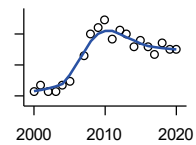
Business



**TOTAL ANNUAL PAYROLL(\$000):
UTILITIES**

U.S. Census Bureau, County Business Patterns. Beginning with the 2017 data, any tabulation with fewer than 3 establishments were omitted from the release. Data for these establishments are included in the broader total.

Year	County	State of Kansas	Non Metro Kansas	County Rank	Per 1000 or \$ Per Capita
2000	0	410,313	.	.	0.0
2001	0	452,057	.	.	0.0
2002	0	377,559	.	.	0.0
2003	0	378,157	.	.	0.0
2004	0	377,809	.	.	0.0
2005	0	429,864	.	.	0.0
2006	0	443,999	.	.	0.0
2007	0	480,068	.	.	0.0
2008	0	541,066	.	.	0.0
2009	0	563,373	.	.	0.0
2010	0	512,628	.	.	0.0
2011	0	653,229	.	.	0.0
2012	0	625,451	.	.	0.0
2013	.	625,347	.	.	.
2014	.	610,960	.	.	.
2015	.	668,559	.	.	.



**TOTAL ANNUAL PAYROLL(\$000):
CONSTRUCTION**

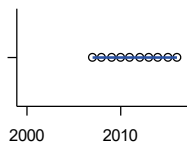
U.S. Census Bureau, County Business Patterns. Beginning with the 2017 data, any tabulation with fewer than 3 establishments were omitted from the release. Data for these establishments are included in the broader total.

Year	County	State of Kansas	Non Metro Kansas	County Rank	Per 1000 or \$ Per Capita
2000	577	2,256,057	.	.	176.0
2001	682	2,320,652	.	.	215.8
2002	562	2,302,229	.	.	178.4
2003	560	2,282,021	.	.	176.4
2004	675	2,302,854	.	.	215.7
2005	737	2,465,977	.	.	238.7
2006	.	2,700,351	.	.	.
2007	1,155	2,772,168	.	.	407.1
2008	1,496	2,950,073	.	.	618.7
2009	1,608	2,709,864	.	.	645.8
2010	1,733	2,553,555	.	.	678.8
2011	1,421	2,550,355	.	.	555.5
2012	1,554	2,733,284	.	.	618.4
2013	1,506	2,866,801	.	.	594.3
2014	1,301	3,135,814	.	.	513.8
2015	1,396	3,270,952	.	.	543.2
2016	1,300	3,328,610	.	.	518.5
2017	1,168	3,568,505	.	.	469.8
2018	1,346	3,806,196	.	.	540.8
2019	1,262	3,879,912	.	.	509.9
2020	1,244	3,983,029	.	.	505.7

County: county value. Kansas: state value. County Rank: highest county value ranked #1. (\$000): thousands of dollars. Nonmetro Kansas: Kansas total less Metropolitan Areas as defined by the Office of Management and Budget (OMB; released 3/6/2020). Per 1000: For nonmoney amounts, Per 1000=(county value / county population for the same year as the data) x 1000. \$ Per capita=(county value / county population for the same year as the data). Value= . indicates missing or suppressed data or value not calculated.

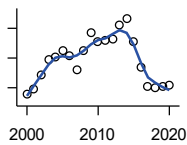
Business

**TOTAL ANNUAL PAYROLL(\$000):
MANUFACTURING**



U.S. Census Bureau, County Business Patterns. Beginning with the 2017 data, any tabulation with fewer than 3 establishments were omitted from the release. Data for these establishments are included in the broader total.

Year	County	State of Kansas	Non Metro Kansas	County Rank	Per 1000 or \$ Per Capita
2000	.	7,015,414	.	.	.
2001	.	7,301,706	.	.	.
2002	.	6,802,605	.	.	.
2003	.	6,691,611	.	.	.
2004	.	6,985,656	.	.	.
2005	.	7,221,614	.	.	.
2006	.	7,621,873	.	.	.
2007	0	7,873,359	.	.	0.0
2008	0	8,441,541	.	.	0.0
2009	0	7,477,838	.	.	0.0
2010	0	7,556,955	.	.	0.0
2011	0	7,747,934	.	.	0.0
2012	0	7,704,851	.	.	0.0
2013	0	8,365,542	.	.	0.0
2014	0	8,787,306	.	.	0.0
2015	0	9,052,105	.	.	0.0
2016	0	8,868,744	.	.	0.0



**TOTAL ANNUAL PAYROLL(\$000):
WHOLESALE TRADE**

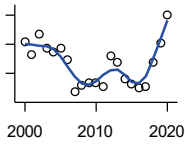
U.S. Census Bureau, County Business Patterns. Beginning with the 2017 data, any tabulation with fewer than 3 establishments were omitted from the release. Data for these establishments are included in the broader total.

Year	County	State of Kansas	Non Metro Kansas	County Rank	Per 1000 or \$ Per Capita
2000	1,569	2,332,755	.	.	478.6
2001	1,896	2,283,169	.	.	600.0
2002	2,888	2,107,653	.	.	916.8
2003	3,872	2,622,701	.	.	1,219.5
2004	4,090	2,663,196	.	.	1,306.7
2005	4,474	2,345,990	.	.	1,448.8
2006	4,196	2,592,211	.	.	1,380.7
2007	3,225	2,682,542	.	.	1,136.8
2008	4,513	3,078,655	.	.	1,866.4
2009	5,672	2,940,949	.	.	2,277.9
2010	5,072	3,097,628	.	.	1,986.7
2011	5,166	3,305,811	.	.	2,019.5
2012	5,254	3,339,997	.	.	2,090.7
2013	6,240	3,460,512	.	.	2,462.5
2014	6,659	3,712,075	.	.	2,629.9
2015	5,136	3,760,189	.	.	1,998.4
2016	3,386	3,738,207	.	.	1,350.6
2017	2,100	3,822,730	.	.	844.7
2018	1,969	3,814,353	.	.	791.1
2019	2,048	4,025,802	.	.	827.5
2020	2,139	4,224,666	.	.	869.5

County: county value. Kansas: state value. County Rank: highest county value ranked #1. (\$000): thousands of dollars. Nonmetro Kansas: Kansas total less Metropolitan Areas as defined by the Office of Management and Budget (OMB; released 3/6/2020). Per 1000: For nonmoney amounts, Per 1000=(county value / county population for the same year as the data) x 1000. \$ Per capita=(county value / county population for the same year as the data). Value= . indicates missing or suppressed data or value not calculated.

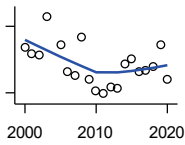
Business

**TOTAL ANNUAL PAYROLL(\$000):
RETAIL TRADE**



U.S. Census Bureau, County Business Patterns. Beginning with the 2017 data, any tabulation with fewer than 3 establishments were omitted from the release. Data for these establishments are included in the broader total.

Year	County	State of Kansas	Non Metro Kansas	County Rank	Per 1000 or \$ Per Capita
2000	2,044	2,747,001	.	.	623.6
2001	1,822	2,813,226	.	.	576.6
2002	2,178	2,854,231	.	.	691.4
2003	1,937	2,773,674	.	.	610.1
2004	1,865	2,847,826	.	.	595.8
2005	1,922	2,952,196	.	.	622.4
2006	1,744	3,126,495	.	.	573.9
2007	1,175	3,201,169	.	.	414.2
2008	1,299	3,261,054	.	.	537.2
2009	1,330	3,232,246	.	.	534.1
2010	1,348	3,321,838	.	.	528.0
2011	1,271	3,384,607	.	.	496.9
2012	1,804	3,409,755	.	.	717.9
2013	1,685	3,483,752	.	.	665.0
2014	1,398	3,617,933	.	.	552.1
2015	1,315	3,712,165	.	.	511.7
2016	1,243	3,826,889	.	.	495.8
2017	1,271	3,797,849	.	.	511.3
2018	1,695	3,818,988	.	.	681.0
2019	2,027	3,908,994	.	.	819.0
2020	2,506	3,984,443	.	.	1,018.7



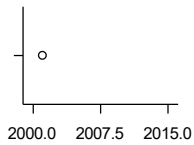
**TOTAL ANNUAL PAYROLL(\$000):
TRANSPORTATION &
WAREHOUSING**

U.S. Census Bureau, County Business Patterns. Beginning with the 2017 data, any tabulation with fewer than 3 establishments were omitted from the release. Data for these establishments are included in the broader total.

Year	County	State of Kansas	Non Metro Kansas	County Rank	Per 1000 or \$ Per Capita
2000	5,041	1,044,835	.	.	1,537.8
2001	4,743	1,089,405	.	.	1,500.9
2002	4,678	1,094,636	.	.	1,485.1
2003	6,442	1,316,655	.	.	2,029.0
2004	.	1,439,800	.	.	.
2005	5,191	1,393,651	.	.	1,681.0
2006	3,981	1,528,551	.	.	1,310.0
2007	3,771	1,788,267	.	.	1,329.2
2008	5,523	1,722,697	.	.	2,284.1
2009	3,597	1,618,598	.	.	1,444.6
2010	3,107	1,735,761	.	.	1,217.0
2011	2,951	1,739,165	.	.	1,153.6
2012	3,235	1,984,976	.	.	1,287.3
2013	3,198	2,006,261	.	.	1,262.0
2014	4,321	2,097,377	.	.	1,706.6
2015	4,547	2,190,072	.	.	1,769.3
2016	3,940	2,202,859	.	.	1,571.6
2017	4,009	2,546,061	.	.	1,612.6
2018	4,179	2,663,188	.	.	1,679.0
2019	5,157	2,879,406	.	.	2,083.6
2020	3,631	2,962,461	.	.	1,476.0

County: county value. Kansas: state value. County Rank: highest county value ranked #1. (\$000): thousands of dollars. Nonmetro Kansas: Kansas total less Metropolitan Areas as defined by the Office of Management and Budget (OMB; released 3/6/2020). Per 1000: For nonmoney amounts, Per 1000=(county value / county population for the same year as the data) x 1000. \$ Per capita=(county value / county population for the same year as the data). Value= . indicates missing or suppressed data or value not calculated.

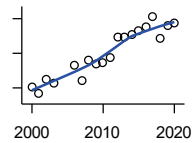
Business



**TOTAL ANNUAL PAYROLL(\$000):
INFORMATION**

U.S. Census Bureau, County Business Patterns. Beginning with the 2017 data, any tabulation with fewer than 3 establishments were omitted from the release. Data for these establishments are included in the broader total.

Year	County	State of Kansas	Non Metro Kansas	County Rank	Per 1000 or \$ Per Capita
2000	.	1,923,381	.	.	.
2001	854	2,218,610	.	.	270.3
2002	.	2,298,108	.	.	.
2003	.	2,378,673	.	.	.
2004	.	2,392,990	.	.	.
2005	.	2,395,081	.	.	.
2006	.	2,586,483	.	.	.
2007	.	2,594,138	.	.	.
2008	.	3,043,244	.	.	.
2009	.	3,045,570	.	.	.
2010	.	2,481,580	.	.	.
2011	.	2,513,805	.	.	.
2012	.	2,535,555	.	.	.
2013	.	2,805,017	.	.	.
2014	.	2,393,609	.	.	.
2015	.	2,406,323	.	.	.



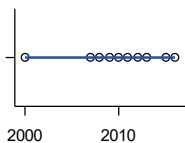
**TOTAL ANNUAL PAYROLL(\$000):
FINANCE & INSURANCE**

U.S. Census Bureau, County Business Patterns. Beginning with the 2017 data, any tabulation with fewer than 3 establishments were omitted from the release. Data for these establishments are included in the broader total.

Year	County	State of Kansas	Non Metro Kansas	County Rank	Per 1000 or \$ Per Capita
2000	813	2,083,565	.	.	248.0
2001	731	2,129,587	.	.	231.3
2002	902	2,414,120	.	.	286.3
2003	848	2,608,579	.	.	267.1
2004	.	2,676,910	.	.	.
2005	.	2,786,136	.	.	.
2006	1,069	2,928,931	.	.	351.8
2007	889	3,096,017	.	.	313.4
2008	1,126	3,322,977	.	.	465.7
2009	1,084	3,206,839	.	.	435.3
2010	1,093	3,211,300	.	.	428.1
2011	1,144	3,404,633	.	.	447.2
2012	1,386	3,611,165	.	.	551.5
2013	1,382	3,896,051	.	.	545.4
2014	1,411	4,044,315	.	.	557.3
2015	1,463	4,113,060	.	.	569.3
2016	1,507	4,180,740	.	.	601.1
2017	1,625	4,258,057	.	.	653.7
2018	1,376	4,682,552	.	.	552.8
2019	1,517	4,814,201	.	.	612.9
2020	1,554	5,288,529	.	.	631.7

County: county value. Kansas: state value. County Rank: highest county value ranked #1. (\$000): thousands of dollars. Nonmetro Kansas: Kansas total less Metropolitan Areas as defined by the Office of Management and Budget (OMB; released 3/6/2020). Per 1000: For nonmoney amounts, Per 1000=(county value / county population for the same year as the data) x 1000. \$ Per capita=(county value / county population for the same year as the data). Value= . indicates missing or suppressed data or value not calculated.

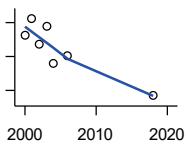
Business



**TOTAL ANNUAL PAYROLL(\$000):
REAL ESTATE, RENTAL, AND
LEASING**

U.S. Census Bureau, County Business Patterns. Beginning with the 2017 data, any tabulation with fewer than 3 establishments were omitted from the release. Data for these establishments are included in the broader total.

Year	County	State of Kansas	Non Metro Kansas	County Rank	Per 1000 or \$ Per Capita
2000	0	360,637	.	.	0.0
2001	.	397,371	.	.	.
2002	.	403,695	.	.	.
2003	.	437,786	.	.	.
2004	.	430,719	.	.	.
2005	.	465,149	.	.	.
2006	.	478,811	.	.	.
2007	0	452,969	.	.	0.0
2008	0	484,149	.	.	0.0
2009	0	450,884	.	.	0.0
2010	0	487,255	.	.	0.0
2011	0	535,120	.	.	0.0
2012	0	531,039	.	.	0.0
2013	0	538,796	.	.	0.0
2014	.	542,307	.	.	.
2015	0	595,030	.	.	0.0
2016	0	607,668	.	.	0.0



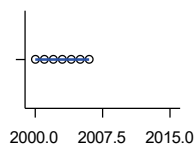
**TOTAL ANNUAL PAYROLL(\$000):
PROFESSIONAL, SCIENTIFIC, AND
TECHNICAL SERVICES**

U.S. Census Bureau, County Business Patterns. Beginning with the 2017 data, any tabulation with fewer than 3 establishments were omitted from the release. Data for these establishments are included in the broader total.

Year	County	State of Kansas	Non Metro Kansas	County Rank	Per 1000 or \$ Per Capita
2000	211	2,057,313	.	.	64.4
2001	262	2,152,937	.	.	82.9
2002	186	2,150,085	.	.	59.0
2003	238	2,052,712	.	.	75.0
2004	128	2,531,457	.	.	40.9
2005	.	2,418,500	.	.	.
2006	153	2,655,690	.	.	50.3
2007	.	2,901,544	.	.	.
2008	.	2,903,802	.	.	.
2009	.	3,071,611	.	.	.
2010	.	3,037,182	.	.	.
2011	.	3,132,082	.	.	.
2012	.	3,455,548	.	.	.
2013	.	3,777,729	.	.	.
2014	.	3,981,580	.	.	.
2015	.	4,039,074	.	.	.
2018	34	4,314,317	.	.	13.7

County: county value. Kansas: state value. County Rank: highest county value ranked #1. (\$000): thousands of dollars. Nonmetro Kansas: Kansas total less Metropolitan Areas as defined by the Office of Management and Budget (OMB; released 3/6/2020). Per 1000: For nonmoney amounts, Per 1000=(county value / county population for the same year as the data) x 1000. \$ Per capita=(county value / county population for the same year as the data). Value= . indicates missing or suppressed data or value not calculated.

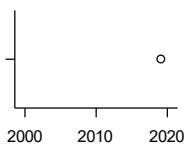
Business



**TOTAL ANNUAL PAYROLL(\$000):
MANAGEMENT OF COMPANIES AND
ENTERPRISES**

U.S. Census Bureau, County Business Patterns. Beginning with the 2017 data, any tabulation with fewer than 3 establishments were omitted from the release. Data for these establishments are included in the broader total.

Year	County	State of Kansas	Non Metro Kansas	County Rank	Per 1000 or \$ Per Capita
2000	0	1,362,735	.	.	0.0
2001	0	1,279,253	.	.	0.0
2002	0	1,311,368	.	.	0.0
2003	0	1,352,119	.	.	0.0
2004	0	1,378,891	.	.	0.0
2005	0	1,510,876	.	.	0.0
2006	0	1,626,320	.	.	0.0
2007	.	2,233,654	.	.	.
2008	.	1,848,656	.	.	.
2009	.	1,601,158	.	.	.
2010	.	2,003,048	.	.	.
2011	.	1,677,619	.	.	.
2012	.	1,834,430	.	.	.
2013	.	1,938,100	.	.	.
2014	.	2,117,232	.	.	.
2015	.	2,451,126	.	.	.



**TOTAL ANNUAL PAYROLL(\$000):
ADMIN, SUPPORT, WASTE MGMT.,
AND REMEDIATION**

U.S. Census Bureau, County Business Patterns. Beginning with the 2017 data, any tabulation with fewer than 3 establishments were omitted from the release. Data for these establishments are included in the broader total.

Year	County	State of Kansas	Non Metro Kansas	County Rank	Per 1000 or \$ Per Capita
2000	.	1,388,712	.	.	.
2001	.	1,416,480	.	.	.
2002	.	1,378,905	.	.	.
2003	.	1,387,061	.	.	.
2004	.	1,544,442	.	.	.
2005	.	1,694,687	.	.	.
2006	.	1,800,846	.	.	.
2007	.	1,978,025	.	.	.
2008	.	2,096,864	.	.	.
2009	.	1,832,540	.	.	.
2010	.	2,117,325	.	.	.
2011	.	2,114,970	.	.	.
2012	.	2,230,250	.	.	.
2013	.	2,214,320	.	.	.
2014	.	2,444,170	.	.	.
2015	.	2,577,592	.	.	.
2019	296	3,075,485	.	.	119.6

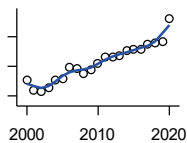
County: county value. Kansas: state value. County Rank: highest county value ranked #1. (\$000): thousands of dollars. Nonmetro Kansas: Kansas total less Metropolitan Areas as defined by the Office of Management and Budget (OMB; released 3/6/2020). Per 1000: For nonmoney amounts, Per 1000=(county value / county population for the same year as the data) x 1000. \$ Per capita=(county value / county population for the same year as the data). Value= . indicates missing or suppressed data or value not calculated.

Business

**TOTAL ANNUAL PAYROLL(\$000):
EDUCATIONAL SERVICES**

U.S. Census Bureau, County Business Patterns. Beginning with the 2017 data, any tabulation with fewer than 3 establishments were omitted from the release. Data for these establishments are included in the broader total.

Year	County	State of Kansas	Non Metro Kansas	County Rank	Per 1000 or \$ Per Capita
2000	.	299,843	.	.	.
2001	.	320,606	.	.	.
2002	.	353,531	.	.	.
2003	.	350,814	.	.	.
2004	.	361,644	.	.	.
2005	.	375,781	.	.	.
2006	.	400,565	.	.	.
2007	.	414,233	.	.	.
2008	.	463,210	.	.	.
2009	.	468,856	.	.	.
2010	.	487,670	.	.	.
2011	.	504,964	.	.	.
2012	.	508,448	.	.	.
2013	.	553,995	.	.	.
2014	.	612,073	.	.	.
2015	.	579,794	.	.	.



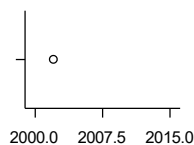
**TOTAL ANNUAL PAYROLL(\$000):
HEALTH CARE AND SOCIAL ASSISTANCE**

U.S. Census Bureau, County Business Patterns. Beginning with the 2017 data, any tabulation with fewer than 3 establishments were omitted from the release. Data for these establishments are included in the broader total.

Year	County	State of Kansas	Non Metro Kansas	County Rank	Per 1000 or \$ Per Capita
2000	4,100	4,120,595	.	.	1,250.8
2001	3,391	4,445,027	.	.	1,073.1
2002	3,266	4,705,220	.	.	1,036.8
2003	3,553	4,939,323	.	.	1,119.1
2004	4,063	5,232,394	.	.	1,298.1
2005	4,190	5,487,089	.	.	1,356.9
2006	4,951	5,814,218	.	.	1,629.2
2007	4,853	6,186,471	.	.	1,710.6
2008	4,544	6,490,627	.	.	1,879.2
2009	4,797	6,749,962	.	.	1,926.5
2010	5,174	6,871,727	.	.	2,026.6
2011	5,637	7,129,655	.	.	2,203.7
2012	5,650	7,614,853	.	.	2,248.3
2013	5,731	7,541,515	.	.	2,261.6
2014	6,024	7,733,621	.	.	2,379.1
2015	6,107	7,969,650	.	.	2,376.3
2016	6,161	8,018,706	.	.	2,457.5
2017	6,477	8,384,998	.	.	2,605.4
2018	6,557	8,637,619	.	.	2,634.4
2019	6,630	8,854,414	.	.	2,678.8
2020	8,232	9,309,269	.	.	3,346.3

County: county value. Kansas: state value. County Rank: highest county value ranked #1. (\$000): thousands of dollars. Nonmetro Kansas: Kansas total less Metropolitan Areas as defined by the Office of Management and Budget (OMB; released 3/6/2020). Per 1000: For nonmoney amounts, Per 1000=(county value / county population for the same year as the data) x 1000. \$ Per capita=(county value / county population for the same year as the data). Value= . indicates missing or suppressed data or value not calculated.

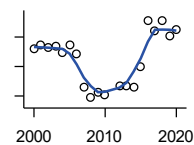
Business



**TOTAL ANNUAL PAYROLL(\$000):
ARTS, ENTERTAINMENT, AND
RECREATION**

U.S. Census Bureau, County Business Patterns. Beginning with the 2017 data, any tabulation with fewer than 3 establishments were omitted from the release. Data for these establishments are included in the broader total.

Year	County	State of Kansas	Non Metro Kansas	County Rank	Per 1000 or \$ Per Capita
2000	.	195,784	.	.	.
2001	.	203,511	.	.	.
2002	34	206,204	.	.	10.8
2003	.	185,049	.	.	.
2004	.	190,742	.	.	.
2005	.	196,594	.	.	.
2006	.	201,049	.	.	.
2007	.	220,435	.	.	.
2008	.	236,986	.	.	.
2009	.	237,116	.	.	.
2010	.	233,285	.	.	.
2011	.	234,351	.	.	.
2012	.	254,169	.	.	.
2013	.	278,474	.	.	.
2014	.	289,103	.	.	.
2015	.	300,253	.	.	.



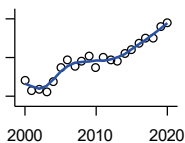
**TOTAL ANNUAL PAYROLL(\$000):
ACCOMMODATION AND FOOD
SERVICES**

U.S. Census Bureau, County Business Patterns. Beginning with the 2017 data, any tabulation with fewer than 3 establishments were omitted from the release. Data for these establishments are included in the broader total.

Year	County	State of Kansas	Non Metro Kansas	County Rank	Per 1000 or \$ Per Capita
2000	520	926,831	.	.	158.6
2001	546	960,196	.	.	172.8
2002	526	930,510	.	.	167.0
2003	534	992,313	.	.	168.2
2004	494	1,046,901	.	.	157.8
2005	543	1,101,854	.	.	175.8
2006	488	1,185,280	.	.	160.6
2007	260	1,431,100	.	.	91.6
2008	187	1,271,594	.	.	77.3
2009	225	1,283,065	.	.	90.4
2010	205	1,296,556	.	.	80.3
2011	.	1,364,281	.	.	.
2012	272	1,388,337	.	.	108.2
2013	270	1,476,335	.	.	106.6
2014	260	1,572,021	.	.	102.7
2015	399	1,640,144	.	.	155.3
2016	712	1,709,193	.	.	284.0
2017	642	1,824,791	.	.	258.2
2018	710	1,880,364	.	.	285.3
2019	605	1,958,603	.	.	244.4
2020	647	1,745,238	.	.	263.0

County: county value. Kansas: state value. County Rank: highest county value ranked #1. (\$000): thousands of dollars. Nonmetro Kansas: Kansas total less Metropolitan Areas as defined by the Office of Management and Budget (OMB; released 3/6/2020). Per 1000: For nonmoney amounts, Per 1000=(county value / county population for the same year as the data) x 1000. \$ Per capita=(county value / county population for the same year as the data). Value= . indicates missing or suppressed data or value not calculated.

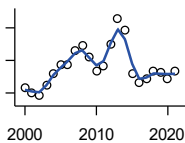
Business



**TOTAL ANNUAL PAYROLL(\$000):
OTHER SERVICES**

U.S. Census Bureau, County Business Patterns. Beginning with the 2017 data, any tabulation with fewer than 3 establishments were omitted from the release. Data for these establishments are included in the broader total.

Year	County	State of Kansas	Non Metro Kansas	County Rank	Per 1000 or \$ Per Capita
2000	763	965,540	.	.	232.8
2001	661	996,716	.	.	209.2
2002	667	1,007,464	.	.	211.7
2003	641	979,466	.	.	201.9
2004	757	970,383	.	.	241.9
2005	893	1,005,537	.	.	289.2
2006	969	1,055,932	.	.	318.9
2007	906	1,141,551	.	.	319.4
2008	959	1,184,016	.	.	396.6
2009	1,012	1,167,154	.	.	406.4
2010	902	1,170,201	.	.	353.3
2011	1,003	1,173,775	.	.	392.1
2012	978	1,217,210	.	.	389.2
2013	966	1,254,933	.	.	381.2
2014	1,040	1,305,563	.	.	410.7
2015	1,076	1,341,075	.	.	418.7
2016	1,148	1,351,375	.	.	457.9
2017	1,201	1,344,179	.	.	483.1
2018	1,200	1,382,801	.	.	482.1
2019	1,317	1,427,711	.	.	532.1
2020	1,355	1,420,859	.	.	550.8



**NOMINAL TAXABLE RETAIL SALES
(million\$)**

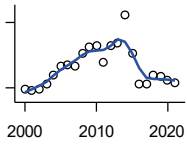
Kansas Department of Revenue

Year	County	State of Kansas	Non Metro Kansas	County Rank	Per 1000 or \$ Per Capita
2000	21.5	30,119.0	8,831.7	80	6.6
2001	19.9	30,202.2	8,700.3	82	6.3
2002	19.1	29,380.8	8,241.5	81	6.1
2003	22.2	30,694.0	8,710.6	82	7.0
2004	25.9	31,922.6	9,062.5	77	8.3
2005	28.5	32,924.2	9,386.6	75	9.2
2006	28.5	34,937.6	10,042.1	80	9.4
2007	33.1	36,180.1	10,553.2	75	11.7
2008	34.6	37,559.5	11,126.9	78	14.3
2009	31.0	35,211.8	10,351.5	79	12.5
2010	26.8	35,655.7	10,606.1	81	10.5
2011	28.4	37,257.0	11,153.5	81	11.1
2012	34.9	38,988.8	11,749.1	82	13.9
2013	42.9	40,009.0	11,993.8	73	16.9
2014	39.1	41,299.0	12,365.4	79	15.5
2015	26.1	41,635.8	11,747.6	86	10.2
2016	23.1	42,040.2	11,523.5	88	9.2
2017	24.4	41,940.1	11,449.9	87	9.8
2018	26.9	42,732.3	11,643.9	84	10.8
2019	26.2	43,732.5	12,062.7	86	10.6
2020	24.3	43,689.9	12,331.7	90	9.9
2021	26.7	48,532.8	13,413.0	87	11.2

County: county value. Kansas: state value. County Rank: highest county value ranked #1. (\$000): thousands of dollars. Nonmetro Kansas: Kansas total less Metropolitan Areas as defined by the Office of Management and Budget (OMB; released 3/6/2020). Per 1000: For nonmoney amounts, Per 1000=(county value / county population for the same year as the data) x 1000. \$ Per capita=(county value / county population for the same year as the data). Value= . indicates missing or suppressed data or value not calculated.

Business

RETAIL PULL FACTOR



Kansas Direct Program, Kansas State University Cooperative Extension Service (1980-1999); Kansas Department of Revenue (2000-)

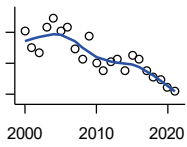
Year	County	State of Kansas	Non Metro Kansas	County Rank	Per 1000 or \$ Per Capita
2000	0.59	.	.	56	.
2001	0.57	.	.	59	.
2002	0.59	.	.	56	.
2003	0.63	.	.	52	.
2004	0.72	.	.	41	.
2005	0.80	.	.	33	.
2006	0.81	.	.	36	.
2007	0.80	.	.	40	.
2008	0.92	.	.	31	.
2009	0.98	.	.	26	.
2010	0.99	.	.	25	.
2011	0.84	.	.	40	.
2012	0.99	.	.	29	.
2013	1.01	.	.	27	.
2014	1.27	.	.	14	.
2015	0.92	.	.	28	.
2016	0.64	.	.	70	.
2017	0.63	.	.	74	.
2018	0.72	.	.	53	.
2019	0.71	.	.	57	.
2020	0.67	.	.	71	.
2021	0.65	.	.	75	.

County: county value. Kansas: state value. County Rank: highest county value ranked #1. (\$000): thousands of dollars. Nonmetro Kansas: Kansas total less Metropolitan Areas as defined by the Office of Management and Budget (OMB; released 3/6/2020). Per 1000: For nonmoney amounts, Per 1000=(county value / county population for the same year as the data) x 1000. \$ Per capita=(county value / county population for the same year as the data). Value= . indicates missing or suppressed data or value not calculated.

Employment

CIVILIAN LABOR FORCE (BLS-Place of Residence; 1990-)

U.S. Department of Labor, Bureau of Labor Statistics (BLS)



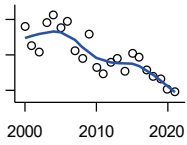
Year	County	State of Kansas	Non Metro Kansas	County Rank	Per 1000 or \$ Per Capita
2000	1,605	1,402,606	482,229	89	489.6
2001	1,497	1,398,521	475,280	92	473.7
2002	1,470	1,419,335	482,428	93	466.7
2003	1,632	1,441,065	490,161	89	514.0
2004	1,687	1,458,910	494,509	88	539.0
2005	1,607	1,458,767	490,047	89	520.4
2006	1,637	1,467,553	498,594	89	538.7
2007	1,495	1,485,414	497,048	92	527.0
2008	1,427	1,493,365	504,522	95	590.2
2009	1,574	1,512,572	516,311	91	632.1
2010	1,398	1,500,463	492,594	96	547.6
2011	1,351	1,498,000	492,563	96	528.1
2012	1,412	1,490,808	489,349	92	561.9
2013	1,426	1,489,395	485,484	91	562.7
2014	1,352	1,494,203	481,813	93	534.0
2015	1,452	1,493,782	477,546	90	565.0
2016	1,426	1,491,961	468,258	90	568.8
2017	1,351	1,488,346	461,063	91	543.4
2018	1,307	1,488,027	456,866	93	525.1
2019	1,292	1,497,517	455,858	94	522.0
2020	1,245	1,493,706	452,935	93	506.1
2021	1,220	1,495,665	453,398	93	510.0

County: county value. Kansas: state value. County Rank: highest county value ranked #1. (\$000): thousands of dollars. Nonmetro Kansas: Kansas total less Metropolitan Areas as defined by the Office of Management and Budget (OMB; released 3/6/2020). Per 1000: For nonmoney amounts, Per 1000=(county value / county population for the same year as the data) x 1000. \$ Per capita=(county value / county population for the same year as the data). Value= . indicates missing or suppressed data or value not calculated.

Employment

EMPLOYED (BLS-Place of Residence; 1990-)

U.S. Department of Labor, Bureau of Labor Statistics (BLS)



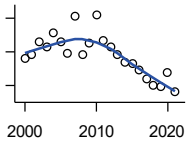
Year	County	State of Kansas	Non Metro Kansas	County Rank	Per 1000 or \$ Per Capita
2000	1,559	1,349,841	464,962	89	475.6
2001	1,449	1,338,775	455,154	92	458.5
2002	1,414	1,347,163	461,241	93	448.9
2003	1,579	1,361,115	467,622	89	497.3
2004	1,626	1,378,355	470,330	87	519.5
2005	1,551	1,384,654	467,722	89	502.3
2006	1,588	1,402,950	479,174	88	522.5
2007	1,424	1,422,109	477,983	93	501.9
2008	1,379	1,425,022	484,056	94	570.3
2009	1,519	1,408,142	485,797	91	610.0
2010	1,326	1,396,172	461,635	95	519.4
2011	1,294	1,402,198	463,723	95	505.9
2012	1,359	1,405,638	463,376	92	540.8
2013	1,378	1,410,470	461,405	91	543.8
2014	1,308	1,426,892	461,797	93	516.6
2015	1,409	1,431,533	457,899	90	548.2
2016	1,387	1,431,920	449,356	89	553.3
2017	1,317	1,434,516	445,003	91	529.8
2018	1,277	1,439,329	442,716	93	513.1
2019	1,263	1,450,705	442,108	94	510.3
2020	1,207	1,408,965	433,229	94	490.7
2021	1,194	1,447,323	441,159	93	499.2

County: county value. Kansas: state value. County Rank: highest county value ranked #1. (\$000): thousands of dollars. Nonmetro Kansas: Kansas total less Metropolitan Areas as defined by the Office of Management and Budget (OMB; released 3/6/2020). Per 1000: For nonmoney amounts, Per 1000=(county value / county population for the same year as the data) x 1000. \$ Per capita=(county value / county population for the same year as the data). Value= . indicates missing or suppressed data or value not calculated.

Employment

UNEMPLOYED (BLS-Place of Residence; 1990-)

U.S. Department of Labor, Bureau of Labor Statistics (BLS)

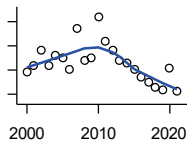


Year	County	State of Kansas	Non Metro Kansas	County Rank	Per 1000 or \$ Per Capita
2000	46	52,765	17,267	88	14.0
2001	48	59,746	20,126	90	15.2
2002	56	72,172	21,187	87	17.8
2003	53	79,950	22,539	89	16.7
2004	61	80,555	24,179	89	19.5
2005	56	74,113	22,325	92	18.1
2006	49	64,603	19,420	89	16.1
2007	71	63,305	19,065	78	25.0
2008	48	68,343	20,466	91	19.9
2009	55	104,430	30,514	93	22.1
2010	72	104,291	30,959	88	28.2
2011	57	95,802	28,840	92	22.3
2012	53	85,170	25,973	92	21.1
2013	48	78,925	24,079	94	18.9
2014	44	67,311	20,016	89	17.4
2015	43	62,249	19,647	92	16.7
2016	39	60,041	18,902	93	15.6
2017	34	53,830	16,060	94	13.7
2018	30	48,698	14,150	97	12.1
2019	29	46,812	13,750	97	11.7
2020	38	84,741	19,706	90	15.4
2021	26	48,342	12,239	95	10.9

County: county value. Kansas: state value. County Rank: highest county value ranked #1. (\$000): thousands of dollars. Nonmetro Kansas: Kansas total less Metropolitan Areas as defined by the Office of Management and Budget (OMB; released 3/6/2020). Per 1000: For nonmoney amounts, Per 1000=(county value / county population for the same year as the data) x 1000. \$ Per capita=(county value / county population for the same year as the data). Value= . indicates missing or suppressed data or value not calculated.

Employment

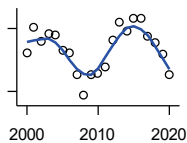
UNEMPLOYMENT RATE (BLS-Place of Residence; 1990-)



U.S. Department of Labor, Bureau of Labor Statistics (BLS)

Year	County	State of Kansas	Non Metro Kansas	County Rank	Per 1000 or \$ Per Capita
2000	2.9	3.8	3.6	79	.
2001	3.2	4.3	4.2	78	.
2002	3.8	5.1	4.4	60	.
2003	3.2	5.5	4.6	89	.
2004	3.6	5.5	4.9	92	.
2005	3.5	5.1	4.6	88	.
2006	3.0	4.4	3.9	92	.
2007	4.7	4.3	3.8	21	.
2008	3.4	4.6	4.1	70	.
2009	3.5	6.9	5.9	96	.
2010	5.2	7.0	6.3	58	.
2011	4.2	6.4	5.9	76	.
2012	3.8	5.7	5.3	81	.
2013	3.4	5.3	5.0	88	.
2014	3.3	4.5	4.2	70	.
2015	3.0	4.2	4.1	86	.
2016	2.7	4.0	4.0	94	.
2017	2.5	3.6	3.5	93	.
2018	2.3	3.3	3.1	91	.
2019	2.2	3.1	3.0	97	.
2020	3.1	5.7	4.4	73	.
2021	2.1	3.2	2.7	78	.

BEA EMPLOYMENT: TOTAL (Place of Work)



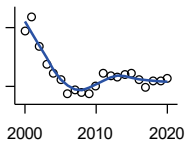
U.S. Bureau of Economic Analysis, Regional Economic Information System (REIS)

Year	County	State of Kansas	Non Metro Kansas	County Rank	Per 1000 or \$ Per Capita
2000	2,083	1,760,312	604,361	90	635.4
2001	2,203	1,767,601	592,672	81	697.2
2002	2,140	1,746,077	585,387	83	679.4
2003	2,178	1,733,694	577,860	79	686.0
2004	2,167	1,750,876	578,750	79	692.3
2005	2,097	1,765,650	577,562	82	679.1
2006	2,086	1,795,507	583,041	83	686.4
2007	1,983	1,844,355	591,924	85	699.0
2008	1,880	1,858,069	594,368	90	777.5
2009	1,983	1,813,184	580,972	85	796.4
2010	1,989	1,801,873	579,758	85	779.1
2011	2,016	1,819,044	583,725	85	788.1
2012	2,144	1,841,393	591,748	84	853.2
2013	2,228	1,869,054	597,236	83	879.2
2014	2,187	1,895,859	601,291	84	863.7
2015	2,249	1,910,954	598,589	83	875.1
2016	2,247	1,916,152	592,580	83	896.3
2017	2,161	1,914,179	584,337	83	869.3
2018	2,131	1,926,242	580,213	83	856.2
2019	2,076	1,925,204	574,496	84	838.8
2020	1,982	1,851,247	556,671	84	805.7

County: county value. Kansas: state value. County Rank: highest county value ranked #1. (\$000): thousands of dollars. Nonmetro Kansas: Kansas total less Metropolitan Areas as defined by the Office of Management and Budget (OMB; released 3/6/2020). Per 1000: For nonmoney amounts, Per 1000=(county value / county population for the same year as the data) x 1000. \$ Per capita=(county value / county population for the same year as the data). Value= . indicates missing or suppressed data or value not calculated.

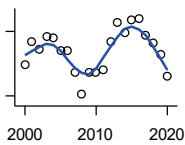
Employment

BEA EMPLOYMENT: FARM



U.S. Bureau of Economic Analysis,
Regional Economic Information System
(REIS)

Year	County	State of Kansas	Non Metro Kansas	County Rank	Per 1000 or \$ Per Capita
2000	436	77,477	59,088	95	133.0
2001	451	78,177	59,647	93	142.7
2002	421	70,532	53,893	91	133.7
2003	403	68,516	52,099	93	126.9
2004	394	67,586	51,246	93	125.9
2005	387	66,829	50,386	92	125.3
2006	373	64,910	48,728	89	122.7
2007	376	65,639	49,037	88	132.5
2008	374	63,820	47,682	85	154.7
2009	372	62,798	46,960	85	149.4
2010	380	63,882	47,984	86	148.8
2011	394	65,761	49,707	86	154.0
2012	391	63,753	48,167	86	155.6
2013	389	62,739	47,255	86	153.5
2014	392	64,308	48,722	85	154.8
2015	394	64,416	48,927	85	153.3
2016	387	63,840	48,539	86	154.4
2017	379	61,876	46,936	84	152.5
2018	385	63,233	48,069	85	154.7
2019	385	63,300	48,167	85	155.6
2020	388	64,281	49,038	87	157.7



BEA EMPLOYMENT: NON-FARM

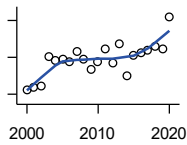
U.S. Bureau of Economic Analysis,
Regional Economic Information System
(REIS)

Year	County	State of Kansas	Non Metro Kansas	County Rank	Per 1000 or \$ Per Capita
2000	1,647	1,682,835	545,273	90	502.4
2001	1,752	1,689,424	533,025	80	554.4
2002	1,719	1,675,545	531,494	81	545.7
2003	1,775	1,665,178	525,761	79	559.1
2004	1,773	1,683,290	527,504	79	566.5
2005	1,710	1,698,821	527,176	80	553.8
2006	1,713	1,730,597	534,313	82	563.7
2007	1,607	1,778,716	542,887	85	566.4
2008	1,506	1,794,249	546,686	88	622.8
2009	1,611	1,750,386	534,012	85	647.0
2010	1,609	1,737,991	531,774	85	630.2
2011	1,622	1,753,283	534,018	85	634.1
2012	1,753	1,777,640	543,581	84	697.6
2013	1,839	1,806,315	549,981	82	725.7
2014	1,795	1,831,551	552,569	84	708.9
2015	1,855	1,846,538	549,662	82	721.8
2016	1,860	1,852,312	544,041	82	741.9
2017	1,782	1,852,303	537,401	83	716.8
2018	1,746	1,863,009	532,144	82	701.5
2019	1,691	1,861,904	526,329	82	683.2
2020	1,594	1,786,966	507,633	83	648.0

County: county value. Kansas: state value. County Rank: highest county value ranked #1. (\$000): thousands of dollars. Nonmetro Kansas: Kansas total less Metropolitan Areas as defined by the Office of Management and Budget (OMB; released 3/6/2020). Per 1000: For nonmoney amounts, Per 1000=(county value / county population for the same year as the data) x 1000. \$ Per capita=(county value / county population for the same year as the data). Value= . indicates missing or suppressed data or value not calculated.

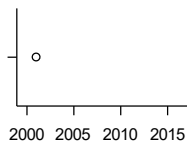
Employment

AVERAGE WAGE PER JOB (\$)



U.S. Bureau of Economic Analysis,
Regional Economic Information System
(REIS)

Year	County	State of Kansas	Non Metro Kansas	County Rank	Per 1000 or \$ Per Capita
2000	21,163	31,854	24,396	62	.
2001	21,710	32,859	26,379	78	.
2002	22,311	33,707	26,331	63	.
2003	30,263	35,078	28,911	29	.
2004	29,006	35,932	29,747	44	.
2005	29,488	37,467	31,646	55	.
2006	28,889	40,038	31,993	59	.
2007	31,443	41,500	33,484	60	.
2008	29,634	44,197	36,256	90	.
2009	26,570	43,860	35,739	96	.
2010	28,786	45,370	38,631	93	.
2011	32,208	48,280	42,324	92	.
2012	28,599	50,549	42,015	101	.
2013	33,623	52,629	46,073	96	.
2014	24,903	51,959	43,562	104	.
2015	30,439	52,250	42,320	94	.
2016	31,317	51,664	41,964	86	.
2017	31,828	53,007	42,137	83	.
2018	33,103	54,790	44,514	93	.
2019	32,172	56,956	45,336	93	.
2020	40,980	60,597	49,183	89	.



BEA EMPLOYMENT: FORESTRY, FISHING, HUNTING, AND AG SUPPORT

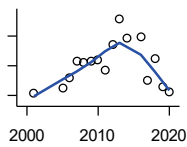
U.S. Bureau of Economic Analysis,
Regional Economic Information System
(REIS)

Year	County	State of Kansas	Non Metro Kansas	County Rank	Per 1000 or \$ Per Capita
2001	60	7,059	.	16	.
2002	.	8,045	.	.	.
2003	.	7,313	.	.	.
2004	.	7,623	.	.	.
2005	.	7,962	.	.	.
2006	.	7,748	.	.	.
2007	.	8,228	.	.	.
2008	.	8,646	.	.	.
2009	.	8,982	.	.	.
2010	.	9,251	.	.	.
2011	.	9,410	.	.	.
2012	.	9,691	.	.	.
2013	.	10,014	.	.	.
2014	.	10,708	.	.	.
2015	.	10,020	.	.	.
2016	.	10,383	.	.	.

County: county value. Kansas: state value. County Rank: highest county value ranked #1. (\$000): thousands of dollars. Nonmetro Kansas: Kansas total less Metropolitan Areas as defined by the Office of Management and Budget (OMB; released 3/6/2020). Per 1000: For nonmoney amounts, Per 1000=(county value / county population for the same year as the data) x 1000. \$ Per capita=(county value / county population for the same year as the data). Value= . indicates missing or suppressed data or value not calculated.

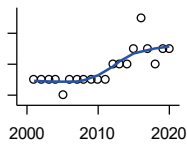
Employment

BEA EMPLOYMENT: MINING



U.S. Bureau of Economic Analysis,
Regional Economic Information System
(REIS)

Year	County	State of Kansas	Non Metro Kansas	County Rank	Per 1000 or \$ Per Capita
2001	53	19,592	.	40	.
2002	.	17,635	.	.	.
2003	.	19,869	.	.	.
2004	.	18,466	.	.	.
2005	62	19,489	.	38	.
2006	80	22,403	.	38	.
2007	107	24,043	.	34	.
2008	105	31,467	.	37	.
2009	107	29,941	.	37	.
2010	110	36,124	.	39	.
2011	93	31,658	.	40	.
2012	136	42,405	.	41	.
2013	179	46,585	.	39	.
2014	147	45,526	.	45	.
2015	.	46,460	.	.	.
2016	148	48,555	.	42	.
2017	75	40,710	.	47	.
2018	111	32,021	.	43	.
2019	64	29,101	.	51	.
2020	56	26,272	.	46	.



BEA EMPLOYMENT: UTILITIES

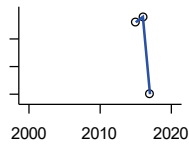
U.S. Bureau of Economic Analysis,
Regional Economic Information System
(REIS)

Year	County	State of Kansas	Non Metro Kansas	County Rank	Per 1000 or \$ Per Capita
2001	1	7,608	.	31	.
2002	1	7,087	.	33	.
2003	1	7,253	.	31	.
2004	1	7,356	.	31	.
2005	0	7,447	.	32	.
2006	1	7,478	.	31	.
2007	1	7,584	.	33	.
2008	1	7,855	.	33	.
2009	1	7,941	.	34	.
2010	1	8,028	.	30	.
2011	1	8,213	.	28	.
2012	2	8,155	.	17	.
2013	2	7,949	.	15	.
2014	2	7,985	.	20	.
2015	3	7,040	.	24	.
2016	5	7,133	.	21	.
2017	3	6,838	.	24	.
2018	2	6,639	.	23	.
2019	3	6,492	.	25	.
2020	3	6,573	.	34	.

County: county value. Kansas: state value. County Rank: highest county value ranked #1. (\$000): thousands of dollars. Nonmetro Kansas: Kansas total less Metropolitan Areas as defined by the Office of Management and Budget (OMB; released 3/6/2020). Per 1000: For nonmoney amounts, Per 1000=(county value / county population for the same year as the data) x 1000. \$ Per capita=(county value / county population for the same year as the data). Value= . indicates missing or suppressed data or value not calculated.

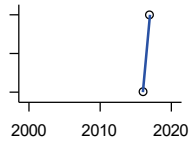
Employment

**BEA EMPLOYMENT:
CONSTRUCTION**



U.S. Bureau of Economic Analysis,
Regional Economic Information System
(REIS)

Year	County	State of Kansas	Non Metro Kansas	County Rank	Per 1000 or \$ Per Capita
2001	.	92,647	27,972	.	.
2002	.	90,370	.	.	.
2003	.	91,725	26,681	.	.
2004	.	93,271	.	.	.
2005	.	94,836	.	.	.
2006	.	97,449	.	.	.
2007	.	99,119	29,179	.	.
2008	.	97,741	.	.	.
2009	.	90,165	28,077	.	.
2010	.	84,708	26,402	.	.
2011	.	83,332	25,999	.	.
2012	.	85,966	.	.	.
2013	.	88,094	.	.	.
2014	.	91,143	.	.	.
2015	178	91,458	27,583	60	.
2016	179	93,539	27,151	62	.
2017	165	92,046	25,579	62	.



**BEA EMPLOYMENT:
MANUFACTURING**

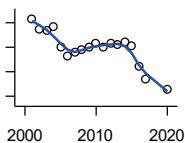
U.S. Bureau of Economic Analysis,
Regional Economic Information System
(REIS)

Year	County	State of Kansas	Non Metro Kansas	County Rank	Per 1000 or \$ Per Capita
2001	.	199,980	73,170	.	.
2002	.	188,905	70,691	.	.
2003	.	179,013	68,418	.	.
2004	.	181,738	69,669	.	.
2005	.	185,459	71,072	.	.
2006	.	188,047	71,704	.	.
2007	.	192,930	73,488	.	.
2008	.	193,116	72,235	.	.
2009	.	173,854	64,961	.	.
2010	.	166,000	62,884	.	.
2011	.	167,302	64,361	.	.
2012	.	169,308	65,944	.	.
2013	.	170,113	67,251	.	.
2014	.	169,307	68,299	.	.
2015	.	168,324	66,978	.	.
2016	27	167,723	65,796	85	.
2017	31	168,438	66,795	85	.

County: county value. Kansas: state value. County Rank: highest county value ranked #1. (\$000): thousands of dollars. Nonmetro Kansas: Kansas total less Metropolitan Areas as defined by the Office of Management and Budget (OMB; released 3/6/2020). Per 1000: For nonmoney amounts, Per 1000=(county value / county population for the same year as the data) x 1000. \$ Per capita=(county value / county population for the same year as the data). Value= . indicates missing or suppressed data or value not calculated.

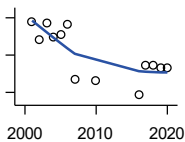
Employment

BEA EMPLOYMENT: WHOLESALE TRADE



U.S. Bureau of Economic Analysis,
Regional Economic Information System
(REIS)

Year	County	State of Kansas	Non Metro Kansas	County Rank	Per 1000 or \$ Per Capita
2001	208	65,698	.	37	.
2002	188	65,408	.	35	.
2003	185	63,504	.	33	.
2004	191	64,434	.	34	.
2005	149	64,587	.	39	.
2006	131	64,743	.	45	.
2007	139	65,993	.	42	.
2008	144	67,693	.	42	.
2009	149	65,954	.	43	.
2010	158	64,376	.	40	.
2011	150	64,712	.	46	.
2012	157	63,973	.	40	.
2013	156	64,999	.	45	.
2014	162	69,295	.	45	.
2015	153	68,444	.	45	.
2016	110	64,843	.	59	.
2017	85	65,014	.	68	.
2020	65	60,844	.	77	.



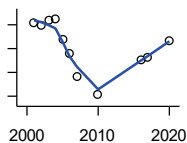
BEA EMPLOYMENT: RETAIL TRADE

U.S. Bureau of Economic Analysis,
Regional Economic Information System
(REIS)

Year	County	State of Kansas	Non Metro Kansas	County Rank	Per 1000 or \$ Per Capita
2001	176	198,069	.	85	.
2002	157	196,112	.	86	.
2003	174	194,545	64,173	84	.
2004	159	192,957	63,265	88	.
2005	162	191,656	62,506	85	.
2006	173	190,391	62,082	82	.
2007	114	190,643	61,716	94	.
2008	.	185,907	59,783	.	.
2009	.	181,262	58,714	.	.
2010	113	177,858	57,470	95	.
2011	.	180,548	57,734	.	.
2012	.	180,596	57,349	.	.
2013	.	183,245	57,556	.	.
2014	.	185,899	57,855	.	.
2015	.	188,421	58,516	.	.
2016	97	188,505	57,864	100	.
2017	129	186,633	56,715	90	.
2018	129	183,323	.	88	.
2019	126	177,240	53,427	88	.
2020	126	171,777	52,563	90	.

County: county value. Kansas: state value. County Rank: highest county value ranked #1. (\$000): thousands of dollars. Nonmetro Kansas: Kansas total less Metropolitan Areas as defined by the Office of Management and Budget (OMB; released 3/6/2020). Per 1000: For nonmoney amounts, Per 1000=(county value / county population for the same year as the data) x 1000. \$ Per capita=(county value / county population for the same year as the data). Value= . indicates missing or suppressed data or value not calculated.

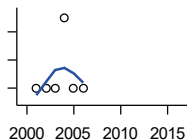
Employment



**BEA EMPLOYMENT:
TRANSPORTATION AND
WAREHOUSING**

U.S. Bureau of Economic Analysis,
Regional Economic Information System
(REIS)

Year	County	State of Kansas	Non Metro Kansas	County Rank	Per 1000 or \$ Per Capita
2001	102	56,302	.	28	.
2002	100	55,319	.	31	.
2003	104	55,509	.	31	.
2004	105	55,479	.	31	.
2005	88	56,287	.	38	.
2006	76	57,506	.	42	.
2007	56	59,277	.	46	.
2008	.	58,725	.	.	.
2009	.	56,238	.	.	.
2010	41	55,179	.	41	.
2011	.	57,449	.	.	.
2012	.	59,756	.	.	.
2013	.	59,780	.	.	.
2014	.	60,565	.	.	.
2015	.	63,256	.	.	.
2016	70	65,705	.	37	.
2017	73	70,641	.	39	.
2020	87	80,543	.	46	.



BEA EMPLOYMENT: INFORMATION

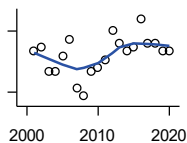
U.S. Bureau of Economic Analysis,
Regional Economic Information System
(REIS)

Year	County	State of Kansas	Non Metro Kansas	County Rank	Per 1000 or \$ Per Capita
2001	28	54,895	.	57	.
2002	28	50,728	.	57	.
2003	28	48,328	6,860	58	.
2004	29	45,617	.	56	.
2005	28	43,840	.	54	.
2006	28	43,925	.	51	.
2007	.	45,115	.	.	.
2008	.	42,958	.	.	.
2009	.	38,677	.	.	.
2010	.	33,432	.	.	.
2011	.	32,160	.	.	.
2012	.	31,829	.	.	.
2013	.	31,737	.	.	.
2014	.	32,316	.	.	.
2015	.	25,282	.	.	.
2016	.	24,998	.	.	.

County: county value. Kansas: state value. County Rank: highest county value ranked #1. (\$000): thousands of dollars. Nonmetro Kansas: Kansas total less Metropolitan Areas as defined by the Office of Management and Budget (OMB; released 3/6/2020). Per 1000: For nonmoney amounts, Per 1000=(county value / county population for the same year as the data) x 1000. \$ Per capita=(county value / county population for the same year as the data). Value= . indicates missing or suppressed data or value not calculated.

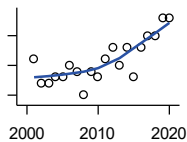
Employment

BEA EMPLOYMENT: FINANCE AND INSURANCE



U.S. Bureau of Economic Analysis,
Regional Economic Information System
(REIS)

Year	County	State of Kansas	Non Metro Kansas	County Rank	Per 1000 or \$ Per Capita
2001	60	76,118	.	72	.
2002	61	78,206	.	69	.
2003	55	78,441	.	69	.
2004	55	78,350	.	69	.
2005	59	78,952	.	65	.
2006	63	80,900	.	61	.
2007	51	86,094	.	70	.
2008	49	89,590	.	70	.
2009	55	93,573	.	71	.
2010	56	92,428	.	70	.
2011	58	99,495	.	68	.
2012	65	98,640	.	67	.
2013	62	99,998	.	71	.
2014	60	98,209	.	74	.
2015	61	100,534	.	69	.
2016	68	102,699	.	67	.
2017	62	101,563	.	71	.
2018	62	102,816	.	72	.
2019	60	100,276	.	73	.
2020	60	101,626	.	71	.



BEA EMPLOYMENT: REAL ESTATE, RENTAL, AND LEASING

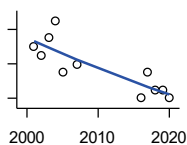
U.S. Bureau of Economic Analysis,
Regional Economic Information System
(REIS)

Year	County	State of Kansas	Non Metro Kansas	County Rank	Per 1000 or \$ Per Capita
2001	21	45,237	.	70	.
2002	17	44,970	.	68	.
2003	17	47,095	.	68	.
2004	18	50,181	.	66	.
2005	18	53,335	.	64	.
2006	20	55,342	.	61	.
2007	19	57,694	.	66	.
2008	15	57,933	.	70	.
2009	19	57,132	.	68	.
2010	18	59,578	.	73	.
2011	21	61,821	.	68	.
2012	23	60,432	.	63	.
2013	20	62,134	.	73	.
2014	23	64,705	.	69	.
2015	18	66,604	.	72	.
2016	23	68,395	.	67	.
2017	25	70,304	.	69	.
2018	25	72,631	.	68	.
2019	28	69,119	.	66	.
2020	28	68,452	.	66	.

County: county value. Kansas: state value. County Rank: highest county value ranked #1. (\$000): thousands of dollars. Nonmetro Kansas: Kansas total less Metropolitan Areas as defined by the Office of Management and Budget (OMB; released 3/6/2020). Per 1000: For nonmoney amounts, Per 1000=(county value / county population for the same year as the data) x 1000. \$ Per capita=(county value / county population for the same year as the data). Value= . indicates missing or suppressed data or value not calculated.

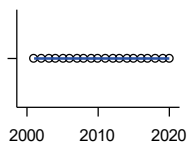
Employment

BEA EMPLOYMENT: PROFESSIONAL AND TECHNICAL SERVICES



U.S. Bureau of Economic Analysis, Regional Economic Information System (REIS)

Year	County	State of Kansas	Non Metro Kansas	County Rank	Per 1000 or \$ Per Capita
2001	24	81,396	.	77	.
2002	23	80,684	.	73	.
2003	25	80,311	.	70	.
2004	27	85,550	.	70	.
2005	21	85,003	.	76	.
2006	.	87,381	.	.	.
2007	22	92,717	.	75	.
2008	.	95,362	.	.	.
2009	.	93,232	.	.	.
2010	.	93,037	.	.	.
2011	.	93,237	.	.	.
2012	.	95,360	.	.	.
2013	.	100,795	.	.	.
2014	.	102,210	.	.	.
2015	.	105,625	.	.	.
2016	18	108,059	.	76	.
2017	21	109,041	.	77	.
2018	19	110,513	.	80	.
2019	19	109,637	.	78	.
2020	18	108,634	.	76	.



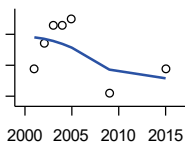
BEA EMPLOYMENT: MANAGEMENT OF COMPANIES AND ENTERPRISES

U.S. Bureau of Economic Analysis, Regional Economic Information System (REIS)

Year	County	State of Kansas	Non Metro Kansas	County Rank	Per 1000 or \$ Per Capita
2001	0	13,832	.	70	.
2002	0	12,576	.	69	.
2003	0	11,135	.	67	.
2004	0	10,614	.	67	.
2005	0	11,811	.	66	.
2006	0	13,061	.	66	.
2007	0	13,398	.	69	.
2008	0	15,234	.	72	.
2009	0	14,849	.	75	.
2010	0	16,579	.	75	.
2011	0	15,343	.	75	.
2012	0	15,075	.	82	.
2013	0	16,667	.	81	.
2014	0	20,441	.	79	.
2015	0	29,604	.	78	.
2016	0	27,824	.	77	.
2017	0	27,767	.	77	.
2018	0	28,862	.	75	.
2019	0	30,512	.	74	.
2020	0	25,648	.	74	.

County: county value. Kansas: state value. County Rank: highest county value ranked #1. (\$000): thousands of dollars. Nonmetro Kansas: Kansas total less Metropolitan Areas as defined by the Office of Management and Budget (OMB; released 3/6/2020). Per 1000: For nonmoney amounts, Per 1000=(county value / county population for the same year as the data) x 1000. \$ Per capita=(county value / county population for the same year as the data). Value= . indicates missing or suppressed data or value not calculated.

Employment



**BEA EMPLOYMENT:
ADMINISTRATIVE AND WASTE
SERVICES**

U.S. Bureau of Economic Analysis,
Regional Economic Information System
(REIS)

Year	County	State of Kansas	Non Metro Kansas	County Rank	Per 1000 or \$ Per Capita
2001	32	81,573	.	52	.
2002	36	82,992	.	50	.
2003	39	81,298	.	47	.
2004	39	85,721	.	50	.
2005	40	89,933	.	47	.
2006	.	93,688	.	.	.
2007	.	98,865	.	.	.
2008	.	97,440	.	.	.
2009	28	92,455	.	60	.
2010	.	93,675	.	.	.
2011	.	97,969	.	.	.
2012	.	100,490	.	.	.
2013	.	104,680	.	.	.
2014	.	107,218	18,836	.	.
2015	32	103,436	18,767	60	.
2016	.	103,233	18,428	.	.

**BEA EMPLOYMENT: EDUCATIONAL
SERVICES**

U.S. Bureau of Economic Analysis,
Regional Economic Information System
(REIS)

Year	County	State of Kansas	Non Metro Kansas	County Rank	Per 1000 or \$ Per Capita
2001	.	21,169	.	.	.
2002	.	22,173	.	.	.
2003	.	22,651	.	.	.
2004	.	21,601	.	.	.
2005	.	22,177	.	.	.
2006	.	22,438	.	.	.
2007	.	23,647	.	.	.
2008	.	24,653	.	.	.
2009	.	25,120	.	.	.
2010	.	26,071	.	.	.
2011	.	26,080	.	.	.
2012	.	26,625	.	.	.
2013	.	27,508	.	.	.
2014	.	28,708	.	.	.
2015	.	28,794	.	.	.
2016	.	27,996	.	.	.

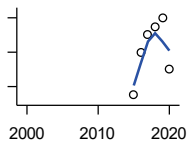
County: county value. Kansas: state value. County Rank: highest county value ranked #1. (\$000): thousands of dollars. Nonmetro Kansas: Kansas total less Metropolitan Areas as defined by the Office of Management and Budget (OMB; released 3/6/2020). Per 1000: For nonmoney amounts, Per 1000=(county value / county population for the same year as the data) x 1000. \$ Per capita=(county value / county population for the same year as the data). Value= . indicates missing or suppressed data or value not calculated.

Employment

BEA EMPLOYMENT: HEALTH CARE AND SOCIAL ASSISTANCE

U.S. Bureau of Economic Analysis, Regional Economic Information System (REIS)

Year	County	State of Kansas	Non Metro Kansas	County Rank	Per 1000 or \$ Per Capita
2001	.	165,415	.	.	.
2002	.	168,198	.	.	.
2003	.	169,654	.	.	.
2004	.	172,796	.	.	.
2005	.	173,949	.	.	.
2006	.	176,919	.	.	.
2007	.	182,160	.	.	.
2008	.	186,051	.	.	.
2009	.	188,499	.	.	.
2010	.	188,383	.	.	.
2011	.	190,736	.	.	.
2012	.	192,991	.	.	.
2013	.	193,687	.	.	.
2014	.	194,632	.	.	.
2015	.	199,724	.	.	.
2016	.	201,830	.	.	.



BEA EMPLOYMENT: ARTS, ENTERTAINMENT, AND RECREATION

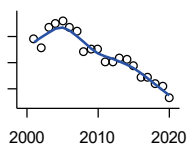
U.S. Bureau of Economic Analysis, Regional Economic Information System (REIS)

Year	County	State of Kansas	Non Metro Kansas	County Rank	Per 1000 or \$ Per Capita
2001	.	25,012	.	.	.
2002	.	25,668	.	.	.
2003	.	24,116	.	.	.
2004	.	25,355	.	.	.
2005	.	26,067	.	.	.
2006	.	26,505	.	.	.
2007	.	27,489	.	.	.
2008	.	27,501	.	.	.
2009	.	27,203	.	.	.
2010	.	27,479	.	.	.
2011	.	28,487	.	.	.
2012	.	30,729	.	.	.
2013	.	31,068	.	.	.
2014	.	32,154	.	.	.
2015	21	31,169	.	44	.
2016	26	32,373	.	42	.
2017	28	33,213	.	41	.
2018	29	33,837	.	38	.
2019	30	33,082	.	40	.
2020	24	26,644	.	39	.

County: county value. Kansas: state value. County Rank: highest county value ranked #1. (\$000): thousands of dollars. Nonmetro Kansas: Kansas total less Metropolitan Areas as defined by the Office of Management and Budget (OMB; released 3/6/2020). Per 1000: For nonmoney amounts, Per 1000=(county value / county population for the same year as the data) x 1000. \$ Per capita=(county value / county population for the same year as the data). Value= . indicates missing or suppressed data or value not calculated.

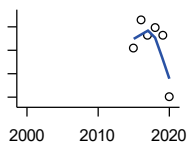
Employment

BEA EMPLOYMENT: GOVERNMENT AND GOVERNMENT ENTERPRISES



U.S. Bureau of Economic Analysis, Regional Economic Information System (REIS)

Year	County	State of Kansas	Non Metro Kansas	County Rank	Per 1000 or \$ Per Capita
2001	445	282,293	102,993	86	.
2002	428	281,427	103,581	85	.
2003	468	282,459	103,389	81	.
2004	476	283,877	103,946	80	.
2005	480	282,798	103,194	79	.
2006	467	288,372	104,103	82	.
2007	460	294,413	104,598	81	.
2008	421	298,580	104,718	84	.
2009	427	300,422	104,081	83	.
2010	426	303,875	103,382	82	.
2011	401	299,952	101,535	82	.
2012	401	298,068	101,180	84	.
2013	408	297,689	101,232	83	.
2014	406	296,956	100,634	83	.
2015	393	295,799	99,719	83	.
2016	371	291,536	98,520	86	.
2017	372	295,748	99,542	87	.
2018	360	298,105	99,499	87	.
2019	354	302,017	100,227	88	.
2020	332	292,583	96,477	90	.



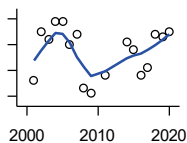
BEA EMPLOYMENT: ACCOMMODATION AND FOOD SERVICES

U.S. Bureau of Economic Analysis, Regional Economic Information System (REIS)

Year	County	State of Kansas	Non Metro Kansas	County Rank	Per 1000 or \$ Per Capita
2001	.	103,353	.	.	.
2002	.	103,692	.	.	.
2003	.	105,138	.	.	.
2004	.	106,694	.	.	.
2005	.	107,303	.	.	.
2006	.	109,888	.	.	.
2007	.	110,863	.	.	.
2008	.	111,092	.	.	.
2009	.	109,353	.	.	.
2010	.	108,628	.	.	.
2011	.	110,514	.	.	.
2012	.	112,574	.	.	.
2013	.	114,102	.	.	.
2014	.	115,768	.	.	.
2015	102	118,503	.	47	.
2016	126	119,764	.	45	.
2017	113	121,181	.	44	.
2018	119	121,900	.	41	.
2019	113	122,819	.	48	.
2020	60	106,561	.	49	.

County: county value. Kansas: state value. County Rank: highest county value ranked #1. (\$000): thousands of dollars. Nonmetro Kansas: Kansas total less Metropolitan Areas as defined by the Office of Management and Budget (OMB; released 3/6/2020). Per 1000: For nonmoney amounts, Per 1000=(county value / county population for the same year as the data) x 1000. \$ Per capita=(county value / county population for the same year as the data). Value= . indicates missing or suppressed data or value not calculated.

Employment

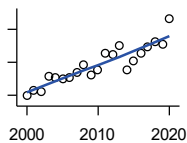


BEA EMPLOYMENT: OTHER SERVICES, EXCEPT PUBLIC ADMINISTRATION

U.S. Bureau of Economic Analysis, Regional Economic Information System (REIS)

Year	County	State of Kansas	Non Metro Kansas	County Rank	Per 1000 or \$ Per Capita
2001	106	92,176	.	79	.
2002	125	95,350	.	76	.
2003	122	95,821	32,629	78	.
2004	129	95,610	.	75	.
2005	129	95,930	32,555	76	.
2006	120	96,413	.	73	.
2007	124	98,444	.	73	.
2008	103	96,705	.	75	.
2009	101	95,534	.	75	.
2010	.	93,302	.	.	.
2011	108	94,865	.	71	.
2012	.	94,977	.	.	.
2013	.	95,471	.	.	.
2014	121	97,806	.	69	.
2015	118	98,041	.	66	.
2016	108	97,219	.	66	.
2017	111	96,568	.	68	.
2018	124	98,645	.	67	.
2019	123	98,638	.	66	.
2020	125	92,245	.	62	.

Income



BEA PER CAPITA PERSONAL INCOME (\$)

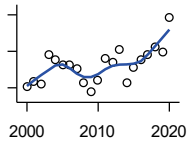
U.S. Bureau of Economic Analysis, Regional Economic Information System (REIS)

Year	County	State of Kansas	Non Metro Kansas	County Rank	Per 1000 or \$ Per Capita
2000	24,782	28,253	23,116	39	.
2001	26,381	29,112	24,576	33	.
2002	25,980	29,248	24,314	26	.
2003	30,850	30,074	26,017	12	.
2004	30,494	30,843	26,583	12	.
2005	29,970	32,545	28,356	49	.
2006	30,440	35,690	29,782	46	.
2007	31,959	38,057	32,034	65	.
2008	34,264	41,257	35,211	68	.
2009	31,155	39,431	33,876	89	.
2010	32,697	39,960	35,795	84	.
2011	37,600	43,015	39,041	69	.
2012	37,503	45,294	39,660	73	.
2013	39,884	46,174	41,747	67	.
2014	32,626	47,013	41,042	104	.
2015	35,439	47,332	40,638	92	.
2016	37,908	47,326	40,797	80	.
2017	39,495	48,756	41,314	74	.
2018	41,155	50,811	43,283	79	.
2019	40,295	52,820	44,491	92	.
2020	48,250	55,677	48,415	59	.

County: county value. Kansas: state value. County Rank: highest county value ranked #1. (\$000): thousands of dollars. Nonmetro Kansas: Kansas total less Metropolitan Areas as defined by the Office of Management and Budget (OMB; released 3/6/2020). Per 1000: For nonmoney amounts, Per 1000=(county value / county population for the same year as the data) x 1000. \$ Per capita=(county value / county population for the same year as the data). Value= . indicates missing or suppressed data or value not calculated.

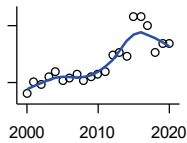
Income

**SOURCES OF PERSONAL INCOME:
TOTAL PERSONAL INCOME (\$000)**



U.S. Bureau of Economic Analysis,
Regional Economic Information System
(REIS)

Year	County	State of Kansas	Non Metro Kansas	County Rank	Per 1000 or \$ Per Capita
2000	80,888	76,105,125	22,273,838	85	24,676.0
2001	83,363	78,664,651	23,411,174	88	26,380.7
2002	81,836	79,365,190	23,000,314	84	25,979.7
2003	97,950	81,890,340	24,494,191	83	30,850.4
2004	95,445	84,335,940	24,924,467	82	30,493.6
2005	92,547	89,346,228	26,452,291	87	29,969.9
2006	92,507	98,610,188	27,661,596	86	30,439.9
2007	90,669	105,943,199	29,715,946	95	31,959.5
2008	82,851	115,852,478	32,614,565	100	34,264.3
2009	77,575	111,697,350	31,394,702	101	31,154.6
2010	83,999	114,239,828	33,291,419	102	32,902.1
2011	96,180	123,558,772	36,221,488	101	37,599.7
2012	94,208	130,948,127	36,696,759	101	37,488.3
2013	101,025	133,979,908	38,513,959	103	39,867.8
2014	82,545	136,878,718	37,680,598	102	32,600.7
2015	91,008	138,336,768	37,081,851	102	35,411.7
2016	95,112	138,533,890	36,930,885	101	37,938.6
2017	98,264	142,729,689	37,104,963	100	39,527.0
2018	102,476	148,955,739	38,589,364	100	41,171.6
2019	99,528	154,961,001	39,424,148	100	40,213.3
2020	118,501	163,462,179	42,618,591	99	48,171.1



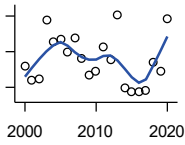
**SOURCES OF PERSONAL INCOME:
WAGES AND SALARIES (\$000)**

U.S. Bureau of Economic Analysis,
Regional Economic Information System
(REIS)

Year	County	State of Kansas	Non Metro Kansas	County Rank	Per 1000 or \$ Per Capita
2000	27,014	41,766,878	10,254,250	81	8,241.0
2001	30,037	43,269,734	10,518,206	79	9,505.4
2002	29,643	43,875,159	10,696,876	81	9,410.5
2003	31,377	44,488,560	10,894,971	78	9,882.5
2004	32,964	46,702,068	11,333,617	78	10,531.6
2005	30,656	48,537,956	11,614,130	82	9,927.5
2006	31,236	52,083,584	12,299,340	83	10,278.4
2007	32,158	55,442,368	13,093,908	86	11,335.2
2008	30,438	57,623,385	13,647,143	90	12,588.1
2009	31,494	55,605,578	13,199,674	87	12,648.2
2010	32,149	56,089,711	13,345,291	87	12,592.6
2011	32,785	58,104,706	13,856,458	88	12,816.7
2012	37,244	60,616,457	14,473,599	88	14,820.5
2013	38,050	61,872,023	14,781,792	85	15,015.8
2014	36,850	64,457,652	15,385,500	88	14,553.7
2015	47,262	66,729,598	15,454,485	77	18,389.9
2016	47,403	67,253,399	15,422,058	75	18,908.3
2017	44,871	68,830,861	15,731,853	80	18,049.5
2018	37,790	71,580,544	16,311,725	90	15,182.8
2019	40,314	74,404,771	16,882,299	90	16,288.5
2020	40,216	75,798,310	17,251,300	91	16,348.0

County: county value. Kansas: state value. County Rank: highest county value ranked #1. (\$000): thousands of dollars. Nonmetro Kansas: Kansas total less Metropolitan Areas as defined by the Office of Management and Budget (OMB; released 3/6/2020). Per 1000: For nonmoney amounts, Per 1000=(county value / county population for the same year as the data) x 1000. \$ Per capita=(county value / county population for the same year as the data). Value= . indicates missing or suppressed data or value not calculated.

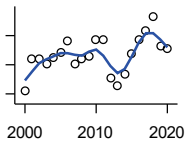
Income



**SOURCES OF PERSONAL INCOME:
PROPRIETORS-FARM (\$000)**

U.S. Bureau of Economic Analysis,
Regional Economic Information System
(REIS)

Year	County	State of Kansas	Non Metro Kansas	County Rank	Per 1000 or \$ Per Capita
2000	6,106	668,539	673,707	48	1,862.7
2001	2,136	779,473	769,336	82	675.9
2002	2,311	145,064	187,033	40	733.7
2003	18,875	1,281,076	1,195,298	20	5,944.9
2004	12,648	1,149,425	938,524	39	4,040.9
2005	13,390	1,609,604	1,469,139	51	4,336.1
2006	9,913	766,047	663,735	34	3,261.9
2007	13,775	1,131,607	1,040,350	38	4,855.5
2008	8,100	1,582,092	1,404,900	76	3,349.9
2009	3,517	1,585,995	1,390,349	88	1,412.4
2010	4,675	2,149,482	2,029,067	82	1,831.2
2011	11,345	3,188,519	2,989,880	75	4,435.1
2012	7,802	2,519,555	2,296,875	86	3,104.7
2013	20,337	4,499,190	4,158,419	71	8,025.7
2014	-302	2,231,181	2,157,992	94	-119.3
2015	-1,373	1,300,733	1,294,370	90	-534.2
2016	-1,222	1,577,060	1,564,511	86	-487.4
2017	-837	838,480	838,290	70	-336.7
2018	6,982	1,050,662	971,690	53	2,805.1
2019	4,413	998,038	878,247	72	1,783.0
2020	19,262	2,151,349	1,887,881	57	7,830.1



**SOURCES OF PERSONAL INCOME:
PROPRIETORS-NONFARM (\$000)**

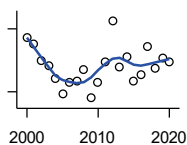
U.S. Bureau of Economic Analysis,
Regional Economic Information System
(REIS)

Year	County	State of Kansas	Non Metro Kansas	County Rank	Per 1000 or \$ Per Capita
2000	4,493	4,580,476	1,493,470	95	1,370.7
2001	8,749	4,510,530	1,855,621	82	2,768.7
2002	8,885	5,036,100	1,966,784	82	2,820.6
2003	8,091	4,719,377	1,916,735	83	2,548.3
2004	8,972	4,003,922	2,073,898	76	2,866.5
2005	9,727	4,455,294	2,200,971	75	3,149.9
2006	11,214	7,343,524	2,694,895	78	3,690.0
2007	8,187	7,280,197	2,436,574	88	2,885.8
2008	8,739	9,255,953	2,971,923	86	3,614.1
2009	9,244	9,323,551	2,858,848	85	3,712.4
2010	11,517	9,658,261	3,498,040	86	4,511.2
2011	11,376	12,196,566	4,186,007	95	4,447.2
2012	6,171	15,773,140	4,446,004	103	2,455.6
2013	5,183	16,441,660	4,492,127	103	2,045.4
2014	6,621	15,954,254	4,455,081	101	2,614.9
2015	9,471	15,536,116	4,386,172	99	3,685.2
2016	11,376	14,075,310	3,783,829	87	4,537.7
2017	12,732	15,371,957	3,908,254	87	5,121.5
2018	14,623	15,716,877	4,238,775	88	5,875.1
2019	10,570	16,705,488	3,921,051	94	4,270.7
2020	10,250	16,718,952	3,823,329	93	4,166.7

County: county value. Kansas: state value. County Rank: highest county value ranked #1. (\$000): thousands of dollars. Nonmetro Kansas: Kansas total less Metropolitan Areas as defined by the Office of Management and Budget (OMB; released 3/6/2020). Per 1000: For nonmoney amounts, Per 1000=(county value / county population for the same year as the data) x 1000. \$ Per capita=(county value / county population for the same year as the data). Value= . indicates missing or suppressed data or value not calculated.

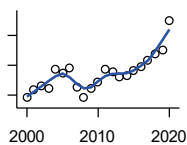
Income

**SOURCES OF PERSONAL INCOME:
DIVIDENDS,INTEREST,RENT(\$000)**



U.S. Bureau of Economic Analysis,
Regional Economic Information System
(REIS)

Year	County	State of Kansas	Non Metro Kansas	County Rank	Per 1000 or \$ Per Capita
2000	21,200	15,916,201	4,736,921	82	6,467.4
2001	20,523	15,770,830	4,699,417	84	6,494.6
2002	18,969	15,111,563	4,316,887	82	6,021.9
2003	18,475	15,370,764	4,360,311	83	5,818.9
2004	17,203	15,820,469	4,251,925	83	5,496.2
2005	15,806	17,147,069	4,485,387	87	5,118.5
2006	16,952	20,117,848	4,945,184	86	5,578.2
2007	17,037	22,269,186	5,526,219	94	6,005.3
2008	18,101	24,972,485	6,180,979	100	7,485.9
2009	15,386	21,453,879	5,308,474	100	6,179.1
2010	16,904	20,861,351	5,414,285	97	6,621.2
2011	18,803	23,387,567	5,781,075	97	7,350.7
2012	22,762	25,689,368	6,389,505	94	9,057.7
2013	18,362	24,832,212	5,984,811	99	7,246.3
2014	19,297	27,412,684	6,403,356	99	7,621.2
2015	16,984	27,244,414	6,423,685	101	6,608.6
2016	17,685	27,293,441	6,389,161	100	7,054.2
2017	20,300	28,385,472	6,700,156	95	8,165.7
2018	18,289	29,953,419	6,772,504	100	7,347.9
2019	19,167	30,820,276	6,957,987	99	7,744.2
2020	18,821	30,283,520	6,844,745	99	7,650.8



**SOURCES OF PERSONAL INCOME:
TRANSFER PAYMENTS (\$000)**

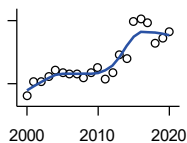
U.S. Bureau of Economic Analysis,
Regional Economic Information System
(REIS)

Year	County	State of Kansas	Non Metro Kansas	County Rank	Per 1000 or \$ Per Capita
2000	17,182	9,650,835	4,036,781	83	5,241.6
2001	18,352	10,549,124	4,355,457	83	5,807.6
2002	19,027	11,208,997	4,553,978	83	6,040.3
2003	18,690	11,709,049	4,702,911	86	5,886.6
2004	21,901	12,040,452	4,802,536	76	6,997.1
2005	21,277	12,696,735	5,059,314	80	6,890.2
2006	22,018	13,642,787	5,455,207	85	7,245.1
2007	18,742	14,686,821	5,775,024	92	6,606.3
2008	17,035	16,552,460	6,322,722	97	7,045.1
2009	18,626	18,025,603	6,790,962	95	7,480.3
2010	19,611	19,189,749	7,089,258	96	7,681.6
2011	21,838	19,625,770	7,255,825	94	8,537.1
2012	21,325	19,354,458	7,148,177	93	8,485.9
2013	20,638	19,639,358	7,185,636	94	8,144.4
2014	20,806	20,380,970	7,399,809	94	8,217.2
2015	21,658	21,116,856	7,623,577	94	8,427.2
2016	22,215	21,884,629	7,886,000	95	8,861.2
2017	23,231	22,559,744	8,062,517	94	9,344.7
2018	24,455	23,628,033	8,393,617	94	9,825.2
2019	24,980	25,050,174	8,845,371	94	10,092.9
2020	29,976	32,319,421	11,074,190	95	12,185.4

County: county value. Kansas: state value. County Rank: highest county value ranked #1. (\$000): thousands of dollars. Nonmetro Kansas: Kansas total less Metropolitan Areas as defined by the Office of Management and Budget (OMB; released 3/6/2020). Per 1000: For nonmoney amounts, Per 1000=(county value / county population for the same year as the data) x 1000. \$ Per capita=(county value / county population for the same year as the data). Value= . indicates missing or suppressed data or value not calculated.

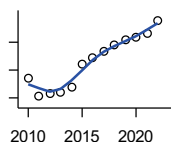
Income

**SOURCES OF PERSONAL INCOME:
LESS SOCIAL INSURANCE (\$000)**



U.S. Bureau of Economic Analysis,
Regional Economic Information System
(REIS)

Year	County	State of Kansas	Non Metro Kansas	County Rank	Per 1000 or \$ Per Capita
2000	4,404	6,655,813	1,663,044	81	1,343.5
2001	5,120	6,869,934	1,740,915	80	1,620.3
2002	5,095	7,008,361	1,778,636	81	1,617.5
2003	5,341	7,172,781	1,821,858	80	1,682.2
2004	5,646	7,556,560	1,904,014	79	1,803.8
2005	5,512	7,911,241	1,986,907	83	1,785.0
2006	5,442	8,406,937	2,090,313	84	1,790.7
2007	5,485	8,806,941	2,180,587	86	1,933.4
2008	5,308	9,207,010	2,299,399	91	2,195.2
2009	5,537	9,002,859	2,248,703	87	2,223.7
2010	5,745	9,235,760	2,321,191	86	2,250.3
2011	5,209	8,515,986	2,139,991	89	2,036.4
2012	5,507	8,816,128	2,195,919	89	2,191.4
2013	6,349	10,225,399	2,540,439	88	2,505.5
2014	6,193	10,609,601	2,635,009	88	2,445.9
2015	7,986	11,028,204	2,663,038	81	3,107.4
2016	8,085	10,915,915	2,604,579	79	3,225.0
2017	7,882	11,224,218	2,669,954	82	3,170.6
2018	6,900	11,749,229	2,797,106	89	2,772.2
2019	7,143	12,245,451	2,889,336	90	2,886.1
2020	7,499	12,715,152	3,027,656	89	3,048.4



HUD MEDIAN FAMILY INCOME

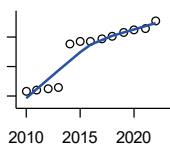
U.S. Department of Housing and Urban
Development (HUD)

Year	County	State of Kansas	Non Metro Kansas	County Rank	Per 1000 or \$ Per Capita
2010	52,000	63,100	.	56	.
2011	45,800	64,300	.	103	.
2012	46,500	65,200	.	103	.
2013	47,000	64,800	.	103	.
2014	48,800	64,400	.	100	.
2015	57,000	66,300	.	66	.
2016	59,200	66,700	.	45	.
2017	61,500	68,500	.	46	.
2018	64,200	73,100	.	47	.
2019	65,700	75,200	.	47	.
2020	66,600	76,500	.	50	.
2021	68,300	77,400	.	46	.
2022	72,800	87,800	.	53	.

County: county value. Kansas: state value. County Rank: highest county value ranked #1. (\$000): thousands of dollars. Nonmetro Kansas: Kansas total less Metropolitan Areas as defined by the Office of Management and Budget (OMB; released 3/6/2020). Per 1000: For nonmoney amounts, Per 1000=(county value / county population for the same year as the data) x 1000. \$ Per capita=(county value / county population for the same year as the data). Value= . indicates missing or suppressed data or value not calculated.

Income

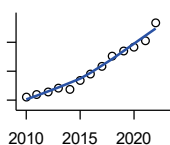
HUD 30% LOW-TO-MEDIUM INCOME (LMI) LIMIT - 4 PERSONS



U.S. Department of Housing and Urban Development (HUD)

Year	County	State of Kansas	Non Metro Kansas	County Rank	Per 1000 or \$ Per Capita
2010	15,850	.	.	105	.
2011	16,100	.	.	105	.
2012	16,300	.	.	105	.
2013	16,550	.	.	105	.
2014	23,850	.	.	105	.
2015	24,250	.	.	105	.
2016	24,300	.	.	105	.
2017	24,600	.	.	105	.
2018	25,100	21,950	.	105	.
2019	25,750	22,550	.	105	.
2020	26,200	22,950	.	105	.
2021	26,500	23,200	.	105	.
2022	27,750	25,950	.	105	.

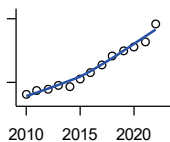
HUD 50% LOW-TO-MEDIUM INCOME (LMI) LIMIT - 4 PERSONS



U.S. Department of Housing and Urban Development (HUD)

Year	County	State of Kansas	Non Metro Kansas	County Rank	Per 1000 or \$ Per Capita
2010	26,400	.	.	105	.
2011	26,850	.	.	105	.
2012	27,200	.	.	105	.
2013	27,600	.	.	105	.
2014	27,400	.	.	105	.
2015	28,700	.	.	105	.
2016	29,600	.	.	46	.
2017	30,750	.	.	44	.
2018	32,100	36,550	.	47	.
2019	32,850	37,600	.	47	.
2020	33,300	38,250	.	50	.
2021	34,150	38,700	.	43	.
2022	36,700	43,300	.	57	.

HUD 80% LOW-TO-MEDIUM INCOME (LMI) LIMIT - 4 PERSONS



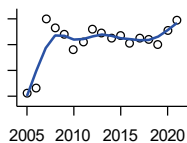
U.S. Department of Housing and Urban Development (HUD)

Year	County	State of Kansas	Non Metro Kansas	County Rank	Per 1000 or \$ Per Capita
2010	42,250	.	.	105	.
2011	42,950	.	.	105	.
2012	43,500	.	.	105	.
2013	44,150	.	.	105	.
2014	43,850	.	.	105	.
2015	45,900	.	.	105	.
2016	47,350	.	.	46	.
2017	49,200	.	.	44	.
2018	51,350	58,500	.	47	.
2019	52,550	60,150	.	47	.
2020	53,300	61,200	.	50	.
2021	54,650	61,900	.	43	.
2022	58,700	69,250	.	57	.

County: county value. Kansas: state value. County Rank: highest county value ranked #1. (\$000): thousands of dollars. Nonmetro Kansas: Kansas total less Metropolitan Areas as defined by the Office of Management and Budget (OMB; released 3/6/2020). Per 1000: For nonmoney amounts, Per 1000=(county value / county population for the same year as the data) x 1000. \$ Per capita=(county value / county population for the same year as the data). Value= . indicates missing or suppressed data or value not calculated.

Banking

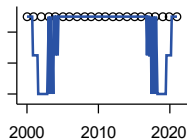
BANK DEPOSITS (1984-2004 in thousands; 2005- in millions)



Federal Deposit Insurance Corporation, Data Book, Operating Banks and Branches

Year	County	State of Kansas	Non Metro Kansas	County Rank	Per 1000 or \$ Per Capita
2005	62	48,304	17,000	94	20.1
2006	66	50,668	17,586	93	21.7
2007	120	54,057	18,517	71	42.3
2008	113	57,869	19,628	76	46.7
2009	108	57,763	20,031	79	43.4
2010	96	60,031	20,678	86	37.6
2011	102	61,094	21,347	84	39.9
2012	112	62,910	22,481	82	44.6
2013	109	64,547	22,795	84	43.0
2014	105	66,538	23,338	87	41.5
2015	107	68,160	23,367	85	41.6
2016	101	70,381	23,420	90	40.3
2017	105	73,329	23,928	87	42.2
2018	104	74,623	24,100	88	41.8
2019	100	76,436	24,488	90	40.4
2020	111	88,563	27,547	90	45.1
2021	119	97,055	30,122	89	49.7

NUMBER OF BANKS



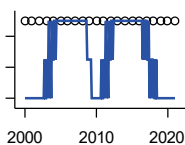
Federal Deposit Insurance Corporation, Data Book, Operating Banks and Branches

Year	County	State of Kansas	Non Metro Kansas	County Rank	Per 1000 or \$ Per Capita
2000	4	410	145	73	.
2001	4	410	136	76	.
2002	4	404	129	74	.
2003	4	397	121	75	.
2004	4	394	112	74	.
2005	4	388	101	73	.
2006	4	385	94	74	.
2007	4	382	91	75	.
2008	4	378	82	76	.
2009	4	374	79	75	.
2010	4	367	70	73	.
2011	4	359	61	74	.
2012	4	348	57	74	.
2013	4	332	45	73	.
2014	4	329	41	73	.
2015	4	320	31	72	.
2016	4	314	24	73	.
2017	4	301	13	73	.
2018	4	289	7	73	.
2019	4	279	3	72	.
2020	4	271	-1	72	.
2021	4	270	-6	71	.

County: county value. Kansas: state value. County Rank: highest county value ranked #1. (\$000): thousands of dollars. Nonmetro Kansas: Kansas total less Metropolitan Areas as defined by the Office of Management and Budget (OMB; released 3/6/2020). Per 1000: For nonmoney amounts, Per 1000=(county value / county population for the same year as the data) x 1000. \$ Per capita=(county value / county population for the same year as the data). Value= . indicates missing or suppressed data or value not calculated.

Banking

NUMBER OF BANKING OFFICES

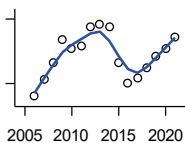


Federal Deposit Insurance Corporation, Data Book, Operating Banks and Branches

Year	County	State of Kansas	Non Metro Kansas	County Rank	Per 1000 or \$ Per Capita
2000	5	1,398	703	75	.
2001	5	1,424	708	77	.
2002	5	1,447	704	77	.
2003	5	1,461	708	76	.
2004	5	1,485	708	76	.
2005	5	1,505	711	76	.
2006	5	1,518	711	77	.
2007	5	1,543	717	76	.
2008	5	1,556	717	75	.
2009	5	1,569	716	76	.
2010	5	1,561	710	76	.
2011	5	1,559	707	77	.
2012	5	1,533	702	77	.
2013	5	1,518	696	77	.
2014	5	1,491	685	77	.
2015	5	1,472	675	77	.
2016	5	1,465	668	74	.
2017	5	1,452	666	74	.
2018	5	1,439	660	74	.
2019	5	1,439	663	74	.
2020	5	1,416	653	71	.
2021	5	1,392	641	71	.

Government

TANGIBLE ASSESSED VALUATION (KDoR, million\$; 2006-)



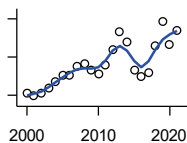
Kansas Department of Revenue, Division of Property Valuation, Statistical Report of Property Assessment and Taxation

Year	County	State of Kansas	Non Metro Kansas	County Rank	Per 1000 or \$ Per Capita
2006	77.0	28,964.3	10,316.9	59	25.3
2007	80.9	30,086.9	10,335.9	55	28.5
2008	85.0	31,000.3	10,856.9	57	35.1
2009	90.3	30,312.3	10,555.6	54	36.3
2010	88.0	29,450.2	10,158.7	55	34.5
2011	88.9	29,963.6	10,572.3	57	34.7
2012	93.1	30,382.9	10,876.2	58	37.0
2013	93.7	30,850.2	11,044.4	58	37.0
2014	93.3	31,783.0	11,388.9	60	36.9
2015	84.9	32,335.7	11,037.8	62	33.0
2016	80.1	33,156.3	10,889.6	66	31.9
2017	81.4	34,754.5	11,439.0	68	32.7
2018	83.7	36,566.1	11,907.1	69	33.6
2019	86.2	38,255.2	12,336.7	70	34.8
2020	88.0	39,333.9	12,219.3	67	35.8
2021	90.9	40,812.0	12,601.5	65	38.0

County: county value. Kansas: state value. County Rank: highest county value ranked #1. (\$000): thousands of dollars. Nonmetro Kansas: Kansas total less Metropolitan Areas as defined by the Office of Management and Budget (OMB; released 3/6/2020). Per 1000: For nonmoney amounts, Per 1000=(county value / county population for the same year as the data) x 1000. \$ Per capita=(county value / county population for the same year as the data). Value= . indicates missing or suppressed data or value not calculated.

Government

SALES TAX COLLECTIONS (\$)

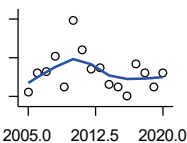


Kansas Department of Revenue. Use tax collections included beginning in calendar year 2018.

Year	County	State of Kansas	Non Metro Kansas	County Rank	Per 1000 or \$ Per Capita
2000	1,053,191	1,475,831,808	432,761,608	80	321,290.7
2001	973,810	1,481,026,688	426,316,284	82	308,167.7
2002	1,048,369	1,561,316,864	443,986,950	82	332,815.6
2003	1,175,643	1,626,782,976	461,658,700	82	370,281.3
2004	1,371,587	1,691,899,008	480,309,725	77	438,206.7
2005	1,512,365	1,744,980,352	497,494,867	75	489,755.5
2006	1,511,376	1,851,694,720	532,233,047	80	497,326.8
2007	1,752,404	1,917,546,752	559,319,583	75	617,696.2
2008	1,831,281	1,990,655,744	589,725,773	78	757,353.5
2009	1,643,370	1,866,223,078	548,627,132	79	659,988.0
2010	1,563,354	2,075,193,413	617,409,982	81	612,359.6
2011	1,788,840	2,347,193,367	702,671,534	81	699,312.0
2012	2,198,916	2,456,292,294	740,196,106	82	875,016.4
2013	2,663,001	2,489,204,048	746,226,565	73	1,050,907.9
2014	2,406,797	2,539,886,774	760,474,019	79	950,551.8
2015	1,649,121	2,642,374,740	750,090,163	86	641,681.4
2016	1,499,499	2,732,611,350	749,030,133	88	598,124.7
2017	1,586,602	2,726,104,521	744,246,491	87	638,214.7
2018	2,290,297	3,277,299,125	893,564,480	84	920,167.4
2019	2,936,661	3,395,631,405	939,607,762	76	1,186,529.9
2020	2,336,482	3,489,306,791	984,218,931	87	949,789.4
2021	2,697,542	3,981,293,227	1,098,391,422	84	1,127,734.9

Crime

CRIME INDEX OFFENSES



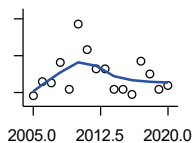
Kansas Bureau of Investigation, Note: Data are aggregated from reports by individual police departments and subject to be incomplete.

Year	County	State of Kansas	Non Metro Kansas	County Rank	Per 1000 or \$ Per Capita
2005	22	111,856	31,630	90	7.1
2006	32	110,032	.	85	10.5
2007	33	111,035	29,921	81	11.6
2008	41	93,996	27,342	74	17.0
2009	25	98,757	27,620	89	10.0
2010	59	98,354	26,909	66	23.1
2011	44	96,638	25,765	74	17.2
2012	34	98,914	26,963	84	13.5
2013	35	93,054	24,488	79	13.8
2014	26	86,323	23,341	86	10.3
2015	25	88,590	21,580	84	9.7
2016	20	90,589	21,565	86	8.0
2017	37	93,091	22,622	77	14.9
2018	32	92,062	20,325	77	12.9
2019	25	87,008	18,547	79	10.1
2020	32	87,346	17,762	79	13.0

County: county value. Kansas: state value. County Rank: highest county value ranked #1. (\$000): thousands of dollars. Nonmetro Kansas: Kansas total less Metropolitan Areas as defined by the Office of Management and Budget (OMB; released 3/6/2020). Per 1000: For nonmoney amounts, Per 1000=(county value / county population for the same year as the data) x 1000. \$ Per capita=(county value / county population for the same year as the data). Value= . indicates missing or suppressed data or value not calculated.

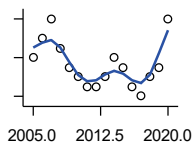
Crime

PROPERTY CRIMES



Kansas Bureau of Investigation, Note: Data are aggregated from reports by individual police departments and subject to be incomplete.

Year	County	State of Kansas	Non Metro Kansas	County Rank	Per 1000 or \$ Per Capita
2005	18	101,414	29,042	92	5.8
2006	26	99,110	.	86	8.6
2007	25	99,632	26,856	86	8.8
2008	36	83,964	24,367	76	14.9
2009	22	87,658	24,825	88	8.8
2010	57	87,926	24,133	65	22.3
2011	43	86,547	23,274	72	16.8
2012	33	88,707	24,220	80	13.1
2013	33	83,551	22,028	76	13.0
2014	22	76,794	20,858	87	8.7
2015	22	77,997	19,138	83	8.6
2016	19	79,549	19,207	85	7.6
2017	37	81,349	19,981	75	14.9
2018	30	79,695	17,769	74	12.1
2019	22	74,314	15,892	77	8.9
2020	24	73,450	15,100	78	9.8



VIOLENT CRIMES

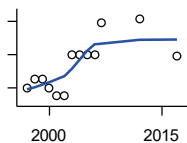
Kansas Bureau of Investigation, Note: Data are aggregated from reports by individual police departments and subject to be incomplete.

Year	County	State of Kansas	Non Metro Kansas	County Rank	Per 1000 or \$ Per Capita
2005	4	10,442	2,588	82	1.3
2006	6	10,922	.	67	2.0
2007	8	11,403	3,065	66	2.8
2008	5	10,032	2,975	76	2.1
2009	3	11,099	2,795	87	1.2
2010	2	10,428	2,776	93	0.8
2011	1	10,091	2,491	98	0.4
2012	1	10,207	2,743	100	0.4
2013	2	9,503	2,460	93	0.8
2014	4	9,529	2,483	82	1.6
2015	3	10,593	2,442	86	1.2
2016	1	11,040	2,358	97	0.4
2017	0	11,742	2,641	104	0.0
2018	2	12,367	2,556	94	0.8
2019	3	12,694	2,655	89	1.2
2020	8	13,896	2,662	71	3.3

County: county value. Kansas: state value. County Rank: highest county value ranked #1. (\$000): thousands of dollars. Nonmetro Kansas: Kansas total less Metropolitan Areas as defined by the Office of Management and Budget (OMB; released 3/6/2020). Per 1000: For nonmoney amounts, Per 1000=(county value / county population for the same year as the data) x 1000. \$ Per capita=(county value / county population for the same year as the data). Value= . indicates missing or suppressed data or value not calculated.

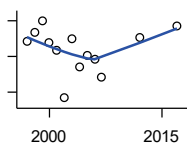
Agriculture

NUMBER OF FARMS



Kansas Agricultural Statistics, Kansas Farm Facts

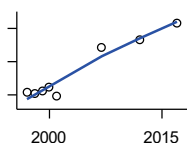
Year	County	State of Kansas	Non Metro Kansas	County Rank	Per 1000 or \$ Per Capita
1997	320	64,000	47,900	89	92.5
1998	330	65,000	48,850	88	96.5
1999	330	65,000	48,850	88	98.4
2000	320	64,000	48,030	88	97.6
2001	310	63,000	47,200	88	98.1
2002	310	63,000	47,200	88	98.4
2003	360	64,500	48,150	86	113.4
2004	360	64,500	48,150	86	115.0
2005	360	64,500	48,150	86	116.6
2006	360	64,000	47,650	86	118.5
2007	399	65,531	48,179	76	140.6
2012	403	61,773	45,655	71	160.4
2017	359	58,569	42,404	75	144.4



TOTAL ACRES HARVESTED

Kansas Agricultural Statistics, Kansas Farm Facts

Year	County	State of Kansas	Non Metro Kansas	County Rank	Per 1000 or \$ Per Capita
1997	148,170	22,846,000	19,430,580	83	42,823.7
1998	153,420	22,143,500	18,943,650	79	44,846.5
1999	159,760	21,708,900	18,581,750	72	47,618.5
2000	147,780	21,639,000	18,528,870	80	45,082.4
2001	143,170	21,847,900	18,689,750	85	45,307.0
2002	116,640	20,230,400	17,089,120	89	37,028.6
2003	150,230	21,827,700	18,661,920	82	47,316.5
2004	134,190	20,876,900	17,721,500	85	42,872.2
2005	140,530	21,936,500	18,807,930	83	45,508.4
2006	138,100	21,412,700	18,291,120	83	45,442.6
2007	128,037	19,886,655	17,164,743	82	45,131.1
2012	150,634	21,043,596	17,966,843	74	59,941.9
2017	156,813	21,837,465	18,543,057	77	63,078.4



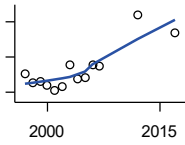
VALUE: LIVESTOCK AND POULTRY (\$000)

Kansas Agricultural Statistics, Kansas Farm Facts

Year	County	State of Kansas	Non Metro Kansas	County Rank	Per 1000 or \$ Per Capita
1997	10,266	2,806,445	2,500,305	93	2,967.1
1998	10,196	2,670,432	2,378,007	95	2,980.4
1999	10,521	2,849,061	2,554,528	92	3,135.9
2000	10,982	2,901,469	2,609,032	92	3,350.2
2001	9,848	2,693,274	2,437,187	90	3,116.5
2007	15,781	9,525,971	.	89	5,562.6
2012	16,621	11,476,571	10,883,216	89	6,614.0
2017	18,648	12,322,289	.	89	7,501.2

County: county value. Kansas: state value. County Rank: highest county value ranked #1. (\$000): thousands of dollars. Nonmetro Kansas: Kansas total less Metropolitan Areas as defined by the Office of Management and Budget (OMB; released 3/6/2020). Per 1000: For nonmoney amounts, Per 1000=(county value / county population for the same year as the data) x 1000. \$ Per capita=(county value / county population for the same year as the data). Value= . indicates missing or suppressed data or value not calculated.

Agriculture



VALUE:FIELD CROPS (\$000)
EXCLUDING GOVERNMENT
PROGRAM PAYMENTS

Kansas Agricultural Statistics, Kansas
Farm Facts

Year	County	State of Kansas	Non Metro Kansas	County Rank	Per 1000 or \$ Per Capita
1997	30,598	4,474,942	3,800,365	70	8,843.4
1998	25,544	3,594,319	3,124,409	65	7,466.8
1999	26,106	3,118,193	2,728,319	55	7,781.2
2000	23,575	2,915,660	2,540,052	46	7,191.9
2001	20,713	3,283,117	2,857,136	75	6,554.7
2002	22,991	3,011,855	2,560,580	54	7,298.7
2003	35,465	3,623,255	3,150,629	42	11,170.1
2004	27,451	3,445,688	2,896,603	55	8,770.3
2005	28,251	3,678,123	3,182,677	58	9,148.6
2006	35,580	4,308,716	3,684,132	50	11,707.8
2007	34,681	4,887,212	.	59	12,224.5
2012	63,956	6,983,993	6,044,551	47	25,450.1
2017	53,633	6,460,437	.	58	21,574.0

County: county value. Kansas: state value. County Rank: highest county value ranked #1. (\$000): thousands of dollars. Nonmetro Kansas: Kansas total less Metropolitan Areas as defined by the Office of Management and Budget (OMB; released 3/6/2020). Per 1000: For nonmoney amounts, Per 1000=(county value / county population for the same year as the data) x 1000. \$ Per capita=(county value / county population for the same year as the data). Value= . indicates missing or suppressed data or value not calculated.