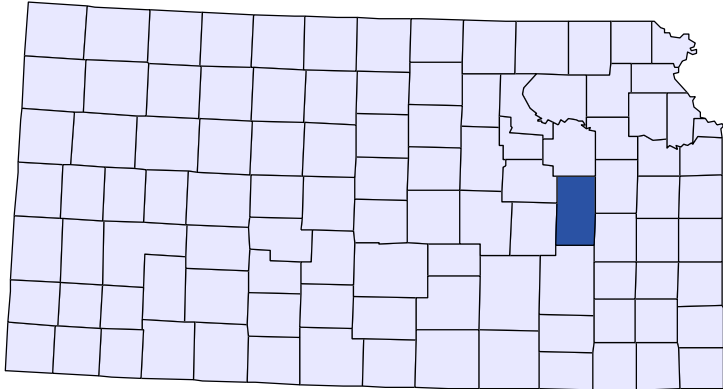




Kansas County Profiles

Lyon County



The University
of Kansas

Institute for Policy
& Social Research

KU INSTITUTE FOR POLICY
& SOCIAL RESEARCH

The University of Kansas

1541 Lilac Lane, Rm. 607
Blake Hall
Lawrence, KS 66045-3129

Foreword

The Kansas County Profile Report is published by the Institute for Policy & Social Research (IPSR) at the University of Kansas with support from the KU University Center project.* Special thanks to Xanthippe Wedel, senior research data engineer, who compiles and updates the county profiles and Genna Hurd, associate researcher, who provides editorial review.

County reports can be generated for any county in Kansas by simply clicking on the county from the web site:

<https://ipsr.ku.edu/ksdata/kcced/profiles/>

The Kansas County Profile Report contains 12 categories of information: Population, Vital Statistics and Health, Housing, Education, Social Environment, Business, Employment, Income, Banking, Government, Crime, and Agriculture. For more information about Kansas, please refer to the Kansas Statistical Abstract, available online at:

<https://ipsr.ku.edu/ksdata/ksah/>

We are always looking for ways to improve the Kansas County Profile Report and we welcome your suggestions and comments. Please address any correspondence to the Institute for Policy & Social Research, The University of Kansas, 607 Blake Hall, 1541 Lilac Lane, Lawrence, Kansas 66045-3129, e-mail ipsr@ku.edu or call 785-864-3701.

**The KU University Center is a collaborative effort led by the Institute for Policy & Social Research at the University of Kansas. This project is supported by the Economic Development Administration, U.S. Department of Commerce, through its University Center Program.*

The mission of EDA is to lead the federal economic development agenda by promoting innovation and competitiveness, preparing American regions for growth and success in the worldwide economy.

Kansas County Profiles Table of Contents

Population

Total Population (Decennial Census)	1
Estimated Population (Current Population Reports)	2
Urban Population	2
Rural Population	3
Net Migration (Decade Ending...)	3
Median Age	3

Population (Age Groups)

Population Under 18 (Decennial Census)	3
Population Age 18 and Over (Decennial Census)	4
Population Age 65 and Over (Decennial Census)	4
Population Age 85 and Over (Decennial Census)	4

Vital Statistics and Health

Live Births	5
Deaths	5
Marriages	6
Divorces and Annulments	6
Physicians: M.D. Physicians	7
Physicians: D.O. Physicians	7
Dentists	8
Number of Hospitals	8
Number of Hospital Beds	9

Housing

Housing Units (Decennial Census)	9
Housing Units (Estimated)	10
Occupied Housing Units	10
Owner Occupied Housing Units	10
Renter Occupied Housing Units	11
Vacant Housing Units	11
Median Value (\$): Owner Occupied Housing Units	11
Median Contract Rent (\$)	12
Fair Market Rent: 2 Bedrooms	12

Education

Population Age 25 and Over	13
Percent of Population 25+ with High School or Higher Education	13
Percent of Population 25+ with Bachelors Degree or Higher Education	14
Public School Enrollment (FTE- School Year Beginning...)	14
Pupil/Teacher Ratio (School Year Beginning...)	15

Kansas County Profiles Table of Contents

Social Environment

Total Child Care Facilities	15
Preschools	16
Food Stamp Beneficiaries	16
Percent of Population Receiving Food Stamps	17
Estimated Number of People in Poverty	17
Estimated Percent of People in Poverty	18
Estimated Number of Related Children Age 5 to 17 in Families in Poverty	18
Estimated Percent of Related Children Age 5 to 17 in Families in Poverty	19
Estimated Number Under 18 in Poverty	19
Estimated Percent Under 18 in Poverty	20

Business

Establishments: Total	21
Establishments: 1-19 Employees	22
Establishments: 20-99 Employees	22
Establishments: 100-499 Employees	23
Establishments: 500 or More Employees	23
Establishments: Forestry, Fishing, Hunting, and Ag Support	24
Establishments: Mining	24
Establishments: Utilities	25
Establishments: Construction	25
Establishments: Manufacturing	26
Establishments: Wholesale Trade	26
Establishments: Retail Trade	27
Establishments: Transportation and Warehousing	27
Establishments: Information	28
Establishments: Finance and Insurance	28
Establishments: Real Estate, Rental, and Leasing	29
Establishments: Professional, Scientific, and Technical Services	29
Establishments: Management of Companies and Enterprises	30
Establishments: Admin, Support, Waste Management, and Remediation	30
Establishments: Educational Services	31
Establishments: Health Care and Social Assistance	31
Establishments: Arts, Entertainment, and Recreation	32
Establishments: Accommodation and Food Services	32
Establishments: Other Services	33

Kansas County Profiles Table of Contents

Business	
Total Annual Payroll (\$000)	34
Total Annual Payroll (\$000): Forestry, Fishing, Hunting, and Ag Support	35
Total Annual Payroll (\$000): Mining	35
Total Annual Payroll (\$000): Utilities	36
Total Annual Payroll (\$000): Construction	36
Total Annual Payroll (\$000): Manufacturing	37
Total Annual Payroll (\$000): Wholesale Trade	37
Total Annual Payroll (\$000): Retail Trade	38
Total Annual Payroll (\$000): Transportation and Warehousing	38
Total Annual Payroll (\$000): Information	39
Total Annual Payroll (\$000): Finance and Insurance	39
Total Annual Payroll (\$000): Real Estate, Rental, and Leasing	40
Total Annual Payroll (\$000): Professional, Scientific, and Technical Services	40
Total Annual Payroll (\$000): Management of Companies and Enterprises	41
Total Annual Payroll (\$000): Admin, Support, Waste Management, and Remediation	41
Total Annual Payroll (\$000): Educational Services	42
Total Annual Payroll (\$000): Health Care and Social Assistance	42
Total Annual Payroll (\$000): Arts, Entertainment, and Recreation	43
Total Annual Payroll (\$000): Accommodation and Food Services	43
Total Annual Payroll (\$000): Other Services	44
Nominal Taxable Retail Sales (Million\$)	44
Retail Pull Factor	45
Employment	
Civilian Labor Force (BLS - Place of Residence)	46
Employed (BLS - Place of Residence)	47
Unemployed (BLS - Place of Residence)	48
Unemployment Rate (BLS - Place of Residence)	49
BEA Employment: Total (Place of Work)	49
BEA Employment: Farm	50
BEA Employment: Non-Farm	50
Average Wage per Job (\$)	51
BEA Employment: Forestry, Fishing, Hunting, and Ag Support	51
BEA Employment: Mining	52
BEA Employment: Utilities	52
BEA Employment: Construction	53
BEA Employment: Manufacturing	53
BEA Employment: Wholesale Trade	54
BEA Employment: Retail Trade	54
BEA Employment: Transportation and Warehousing	55
BEA Employment: Information	55
BEA Employment: Finance and Insurance	56
BEA Employment: Real Estate, Rental, and Leasing	56
BEA Employment: Professional and Technical Services	57
BEA Employment: Management of Companies and Enterprises	57
BEA Employment: Administrative and Waste Services	58
BEA Employment: Educational Services	58
BEA Employment: Health Care and Social Assistance	59
BEA Employment: Arts, Entertainment, and Recreation	59
BEA Employment: Government and Government Enterprises	60
BEA Employment: Accommodation and Food Services	60
BEA Employment: Other Services, Except Public Administration	61

Kansas County Profiles Table of Contents

Income

BEA Per Capita Personal Income (\$)	61
Sources of Personal Income: Total Personal Income (\$000)	62
Sources of Personal Income: Wages And Salaries (\$000)	62
Sources of Personal Income: Proprietors-Farm (\$000)	63
Sources of Personal Income: Proprietors-Nonfarm (\$000)	63
Sources of Personal Income: Dividends, Interest, Rent (\$000)	64
Sources of Personal Income: Transfer Payments (\$000)	64
Sources of Personal Income: Less Social Insurance (\$000)	65
HUD Median Family Income	65
HUD 30% Low-To-Medium Income (LMI) Limit - 4 Persons	66
HUD 50% Low-To-Medium Income (LMI) Limit - 4 Persons	66
HUD 80% Low-To-Medium Income (LMI) Limit - 4 Persons	66

Banking

Bank Deposits (\$000)	67
Number of Banks	67
Number of Banking Offices	68

Government

Tangible Assessed Valuation (million\$)	68
Sales Tax Collections	69

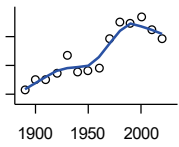
Crime

Crime Index Offenses	69
Property Crimes	70
Violent Crimes	70

Agriculture

Number of Farms	71
Total Acres Harvested	71
Value: Livestock and Poultry (\$000)	71
Value: Field Crops (\$000) Excluding Government Program Payments	72

Population



DECENNIAL CENSUS:TOTAL POPULATION

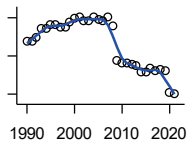
U.S. Census Bureau: Decennial Census

Year	County	State of Kansas	Non Metro Kansas	County Rank	Per 1000 or \$ Per Capita
1890	23,196	1,427,096	968,413	17	.
1900	25,074	1,470,495	981,206	14	.
1910	24,927	1,690,949	1,138,294	14	.
1920	26,154	1,769,257	1,153,525	13	.
1930	29,240	1,880,999	1,180,056	13	.
1940	26,424	1,801,028	1,097,216	14	.
1950	26,576	1,905,299	1,046,823	16	.
1960	26,928	2,178,611	1,021,510	16	.
1970	32,071	2,246,578	958,104	14	.
1980	35,108	2,363,679	980,085	14	.
1990	34,732	2,477,574	939,416	14	.
2000	35,935	2,688,418	959,507	15	.
2010	33,690	2,853,118	929,981	18	.
2020	32,179	2,937,880	892,006	18	.

County: county value. Kansas: state value. County Rank: highest county value ranked #1. (\$000): thousands of dollars. Nonmetro Kansas: Kansas total less Metropolitan Areas as defined by the Office of Management and Budget (OMB; released 3/6/2020). Per 1000: For nonmoney amounts, Per 1000=(county value / county population for the same year as the data) x 1000. \$ Per capita=(county value / county population for the same year as the data). Value= . indicates missing or suppressed data or value not calculated.

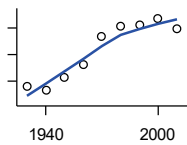
Population

ESTIMATED POPULATION



U.S. Census Bureau

Year	County	State of Kansas	Non Metro Kansas	County Rank	Per 1000 or \$ Per Capita
1990	34,775	2,481,349	938,607	14	.
1991	34,748	2,498,722	938,965	14	.
1992	34,950	2,532,394	942,759	14	.
1993	35,472	2,556,547	947,515	14	.
1994	35,465	2,580,513	952,178	15	.
1995	35,672	2,601,007	957,771	15	.
1996	35,632	2,614,554	959,455	15	.
1997	35,513	2,635,292	960,225	15	.
1998	35,524	2,660,598	960,569	15	.
1999	35,773	2,678,338	960,704	15	.
2000	35,967	2,693,681	959,230	15	.
2001	36,049	2,702,162	952,607	14	.
2002	35,826	2,713,535	945,985	14	.
2003	35,868	2,723,004	941,474	14	.
2004	36,034	2,734,373	937,623	14	.
2005	35,936	2,745,299	932,852	13	.
2006	35,832	2,762,931	928,809	13	.
2007	36,018	2,783,785	927,643	13	.
2008	35,591	2,808,076	926,248	13	.
2009	33,777	2,832,704	926,755	16	.
2010	33,649	2,858,190	930,028	18	.
2011	33,652	2,869,225	927,675	18	.
2012	33,550	2,885,257	925,152	18	.
2013	33,479	2,893,212	922,383	18	.
2014	33,143	2,900,475	917,854	18	.
2015	33,133	2,909,011	912,199	18	.
2016	33,369	2,910,844	905,099	17	.
2017	33,257	2,908,718	897,981	18	.
2018	33,300	2,911,359	892,656	17	.
2019	33,195	2,913,314	887,455	17	.
2020	32,100	2,935,880	889,750	18	.
2021	31,998	2,934,582	886,438	18	.



URBAN POPULATION

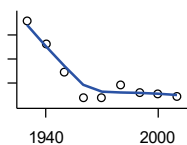
U.S. Census Bureau: Decennial Census

Year	County	State of Kansas	Non Metro Kansas	County Rank	Per 1000 or \$ Per Capita
1930	14,067	729,834	336,666	12	.
1940	13,188	753,941	349,228	13	.
1950	15,669	993,220	398,923	14	.
1960	18,190	1,328,741	457,447	16	.
1970	23,327	1,484,870	450,543	13	.
1980	25,287	1,575,899	474,769	11	.
1990	25,512	1,712,564	464,205	10	.
2000	26,798	1,920,081	488,011	12	.
2010	24,830	2,116,961	485,780	16	.

County: county value. Kansas: state value. County Rank: highest county value ranked #1. (\$000): thousands of dollars. Nonmetro Kansas: Kansas total less Metropolitan Areas as defined by the Office of Management and Budget (OMB; released 3/6/2020). Per 1000: For nonmoney amounts, Per 1000=(county value / county population for the same year as the data) x 1000. \$ Per capita=(county value / county population for the same year as the data). Value= . indicates missing or suppressed data or value not calculated.

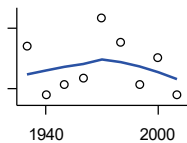
Population

RURAL POPULATION



U.S. Census Bureau

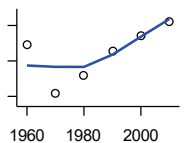
Year	County	State of Kansas	Non Metro Kansas	County Rank	Per 1000 or \$ Per Capita
1930	15,173	1,151,165	843,390	23	.
1940	13,236	1,047,087	747,988	22	.
1950	10,907	912,079	647,900	28	.
1960	8,738	849,870	564,063	34	.
1970	8,744	761,708	509,972	30	.
1980	9,821	787,780	505,873	24	.
1990	9,220	765,010	475,211	26	.
2000	9,137	768,337	471,900	28	.
2010	8,860	736,157	444,201	27	.



NET MIGRATION: DECADE ENDING...

calculated by the Institute for Policy and Social Research, The University of Kansas

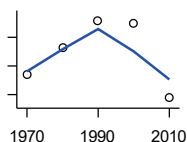
Year	County	State of Kansas	Non Metro Kansas	County Rank	Per 1000 or \$ Per Capita
1930	159	-66,132	-101,869	28	5.4
1940	-4,657	-192,649	-166,022	101	-176.2
1950	-3,533	-84,329	-158,379	91	-132.9
1960	-2,954	-38,999	-146,640	90	-109.7
1970	3,027	-119,662	-105,116	4	94.4
1980	578	-21,983	-6,184	24	16.5
1990	-3,623	-61,835	-79,274	98	-104.3
2000	-971	68,960	4,247	99	-27.0
2010	-4,570	5,578	-50,648	103	-135.6



MEDIAN AGE

U.S. Census Bureau: Decennial Census

Year	County	State of Kansas	Non Metro Kansas	County Rank	Per 1000 or \$ Per Capita
1960	29.9	26.9	.	70	.
1970	24.3	28.7	.	100	.
1980	26.3	30.1	.	100	.
1990	29.1	32.9	.	100	.
2000	30.9	35.2	.	98	.
2010	32.5	36.0	.	98	.



POPULATION UNDER 18 (DECENNIAL CENSUS)

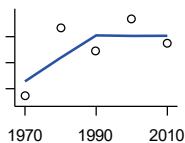
U.S. Census Bureau: Decennial Census

Year	County	State of Kansas	Non Metro Kansas	County Rank	Per 1000 or \$ Per Capita
1970	8,359	746,354	306,227	16	.
1980	8,823	649,035	263,919	14	.
1990	9,290	661,614	250,107	14	.
2000	9,250	712,993	250,757	14	.
2010	7,940	726,939	229,213	19	.

County: county value. Kansas: state value. County Rank: highest county value ranked #1. (\$000): thousands of dollars. Nonmetro Kansas: Kansas total less Metropolitan Areas as defined by the Office of Management and Budget (OMB; released 3/6/2020). Per 1000: For nonmoney amounts, Per 1000=(county value / county population for the same year as the data) x 1000. \$ Per capita=(county value / county population for the same year as the data). Value= . indicates missing or suppressed data or value not calculated.

Population

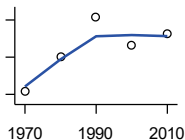
**POPULATION AGE 18 AND OVER
(DECENNIAL CENSUS)**



U.S. Census Bureau: Decennial Census

Year	County	State of Kansas	Non Metro Kansas	County Rank	Per 1000 or \$ Per Capita
1970	23,712	1,500,224	654,288	14	.
1980	26,319	1,714,282	716,684	14	.
1990	25,442	1,815,960	689,309	14	.
2000	26,685	1,975,425	709,154	14	.
2010	25,750	2,126,179	700,768	15	.

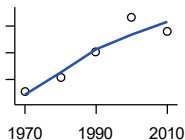
**POPULATION AGE 65 AND OVER
(DECENNIAL CENSUS)**



U.S. Census Bureau: Decennial Census

Year	County	State of Kansas	Non Metro Kansas	County Rank	Per 1000 or \$ Per Capita
1970	4,057	266,201	149,049	14	.
1980	4,152	306,263	164,932	18	.
1990	4,258	342,571	168,579	18	.
2000	4,183	356,229	161,769	17	.
2010	4,213	376,116	154,214	18	.

**POPULATION AGE 85 AND OVER
(DECENNIAL CENSUS)**



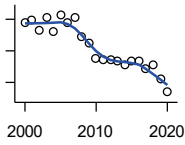
U.S. Census Bureau: Decennial Census

Year	County	State of Kansas	Non Metro Kansas	County Rank	Per 1000 or \$ Per Capita
1970	456	23,899	13,698	9	.
1980	508	33,455	18,804	16	.
1990	603	42,241	22,970	15	.
2000	733	51,770	26,644	16	.
2010	679	59,318	26,197	17	.

County: county value. Kansas: state value. County Rank: highest county value ranked #1. (\$000): thousands of dollars. Nonmetro Kansas: Kansas total less Metropolitan Areas as defined by the Office of Management and Budget (OMB; released 3/6/2020). Per 1000: For nonmoney amounts, Per 1000=(county value / county population for the same year as the data) x 1000. \$ Per capita=(county value / county population for the same year as the data). Value= . indicates missing or suppressed data or value not calculated.

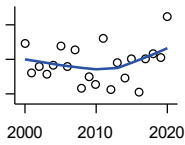
Vital Statistics and Health

BIRTHS (LIVE)



Kansas Department of Health and Environment

Year	County	State of Kansas	Non Metro Kansas	County Rank	Per 1000 or \$ Per Capita
2000	540	39,654	12,980	15	15.0
2001	546	38,832	12,527	14	15.1
2002	516	39,338	12,476	15	14.4
2003	557	39,353	12,342	14	15.5
2004	510	39,553	12,398	15	14.2
2005	564	39,701	12,382	13	15.7
2006	538	40,896	12,726	14	15.0
2007	556	41,951	12,990	15	15.4
2008	494	41,815	12,970	18	13.9
2009	474	41,388	12,949	18	14.0
2010	426	40,439	12,200	19	12.6
2011	420	39,628	12,098	19	12.5
2012	421	40,304	12,217	19	12.5
2013	419	38,805	11,877	19	12.5
2014	406	39,193	12,052	20	12.2
2015	416	39,126	11,836	18	12.6
2016	417	38,048	11,467	16	12.5
2017	393	36,464	10,968	17	11.8
2018	406	36,268	10,826	15	12.2
2019	362	35,395	10,506	18	10.9
2020	319	34,368	10,222	23	9.9



DEATHS

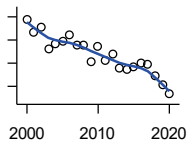
Kansas Department of Health and Environment

Year	County	State of Kansas	Non Metro Kansas	County Rank	Per 1000 or \$ Per Capita
2000	323	24,676	11,175	17	9.0
2001	280	24,590	10,807	19	7.8
2002	290	24,968	11,079	18	8.1
2003	278	24,417	10,615	19	7.8
2004	291	23,720	10,369	18	8.1
2005	320	24,632	10,599	15	8.9
2006	289	24,489	10,538	17	8.1
2007	313	24,413	10,601	15	8.7
2008	258	24,896	10,593	22	7.2
2009	274	23,997	9,938	17	8.1
2010	263	24,428	10,105	21	7.8
2011	330	25,114	10,520	17	9.8
2012	256	25,084	10,259	22	7.6
2013	295	25,347	10,249	16	8.8
2014	273	25,731	10,275	19	8.2
2015	300	26,611	10,539	17	9.1
2016	252	26,129	10,231	21	7.6
2017	300	26,725	10,452	17	9.0
2018	309	27,213	10,389	17	9.3
2019	302	27,312	10,569	17	9.1
2020	362	31,667	11,850	17	11.2

County: county value. Kansas: state value. County Rank: highest county value ranked #1. (\$000): thousands of dollars. Nonmetro Kansas: Kansas total less Metropolitan Areas as defined by the Office of Management and Budget (OMB; released 3/6/2020). Per 1000: For nonmoney amounts, Per 1000=(county value / county population for the same year as the data) x 1000. \$ Per capita=(county value / county population for the same year as the data). Value= . indicates missing or suppressed data or value not calculated.

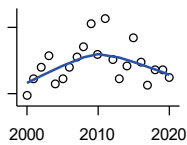
Vital Statistics and Health

MARRIAGES



Kansas Department of Health and Environment

Year	County	State of Kansas	Non Metro Kansas	County Rank	Per 1000 or \$ Per Capita
2000	295	20,426	7,333	15	8.2
2001	268	20,457	7,441	17	7.4
2002	279	19,783	6,794	13	7.8
2003	230	18,722	6,469	17	6.4
2004	242	19,174	6,756	16	6.7
2005	248	18,745	6,481	14	6.9
2006	261	18,836	6,433	12	7.3
2007	238	18,910	6,464	16	6.6
2008	238	18,717	6,283	17	6.7
2009	204	18,268	6,015	21	6.0
2010	237	18,150	5,925	14	7.0
2011	207	17,897	5,977	18	6.2
2012	220	18,154	5,752	17	6.6
2013	190	17,328	5,533	19	5.7
2014	186	17,655	5,535	22	5.6
2015	193	17,595	5,400	19	5.8
2016	199	17,948	5,340	19	6.0
2017	197	17,274	5,163	18	5.9
2018	172	16,362	4,999	20	5.2
2019	154	15,403	4,650	21	4.6
2020	133	14,038	4,066	20	4.1



DIVORCES AND ANNULMENTS

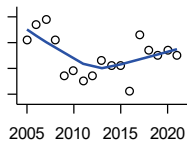
Kansas Department of Health and Environment

Year	County	State of Kansas	Non Metro Kansas	County Rank	Per 1000 or \$ Per Capita
2000	38	10,105	4,000	45	1.1
2001	53	9,885	3,818	35	1.5
2002	64	9,645	3,716	31	1.8
2003	74	8,644	3,464	23	2.1
2004	49	8,759	3,506	35	1.4
2005	54	8,476	3,311	30	1.5
2006	64	9,145	3,387	29	1.8
2007	73	9,347	3,402	28	2.0
2008	82	9,818	3,655	29	2.3
2009	103	10,333	3,463	20	3.0
2010	76	10,579	3,530	30	2.3
2011	108	10,445	3,347	18	3.2
2012	71	9,782	3,040	26	2.1
2013	53	9,085	2,973	32	1.6
2014	65	8,441	2,682	26	2.0
2015	91	8,036	2,704	18	2.7
2016	69	7,198	2,424	23	2.1
2017	48	6,494	2,315	28	1.4
2018	62	6,538	2,269	24	1.9
2019	62	6,398	2,357	24	1.9
2020	55	5,169	1,866	22	1.7

County: county value. Kansas: state value. County Rank: highest county value ranked #1. (\$000): thousands of dollars. Nonmetro Kansas: Kansas total less Metropolitan Areas as defined by the Office of Management and Budget (OMB; released 3/6/2020). Per 1000: For nonmoney amounts, Per 1000=(county value / county population for the same year as the data) x 1000. \$ Per capita=(county value / county population for the same year as the data). Value= . indicates missing or suppressed data or value not calculated.

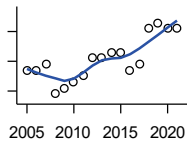
Vital Statistics and Health

PHYSICIANS: M.D. PHYSICIANS



Kansas Department of Health and Environment (1981-2005,2010-);Kansas Health Policy Authority (2006-2009)

Year	County	State of Kansas	Non Metro Kansas	County Rank	Per 1000 or \$ Per Capita
2005	33	4,241	912	15	0.9
2006	36	4,310	953	15	1.0
2007	37	5,309	1,046	17	1.0
2008	33	5,110	1,016	18	0.9
2009	26	5,249	996	22	0.8
2010	27	5,192	979	20	0.8
2011	25	5,243	983	23	0.7
2012	26	5,693	1,033	20	0.8
2013	29	6,106	1,071	21	0.9
2014	28	5,839	951	19	0.8
2015	28	5,703	855	17	0.8
2016	23	4,278	643	13	0.7
2017	34	6,332	1,047	15	1.0
2018	31	6,079	1,065	19	0.9
2019	30	6,435	1,036	20	0.9
2020	31	6,668	1,045	18	1.0
2021	30	6,745	1,042	19	0.9



PHYSICIANS: D.O. PHYSICIANS

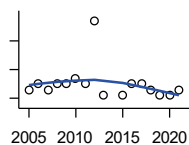
Kansas Department of Health and Environment (1981-2005,2010-);Kansas Health Policy Authority (2006-2009)

Year	County	State of Kansas	Non Metro Kansas	County Rank	Per 1000 or \$ Per Capita
2005	6	553	174	20	0.2
2006	6	508	171	19	0.2
2007	7	569	169	16	0.2
2008	2	558	166	48	0.1
2009	3	564	160	32	0.1
2010	4	583	169	24	0.1
2011	5	502	152	19	0.1
2012	8	718	200	16	0.2
2013	8	829	210	17	0.2
2014	9	817	189	13	0.3
2015	9	819	190	13	0.3
2016	6	632	136	13	0.2
2017	7	579	129	12	0.2
2018	13	871	164	11	0.4
2019	14	951	212	12	0.4
2020	13	1,018	204	12	0.4
2021	13	1,095	217	10	0.4

County: county value. Kansas: state value. County Rank: highest county value ranked #1. (\$000): thousands of dollars. Nonmetro Kansas: Kansas total less Metropolitan Areas as defined by the Office of Management and Budget (OMB; released 3/6/2020). Per 1000: For nonmoney amounts, Per 1000=(county value / county population for the same year as the data) x 1000. \$ Per capita=(county value / county population for the same year as the data). Value= . indicates missing or suppressed data or value not calculated.

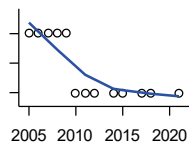
Vital Statistics and Health

DENTISTS



Kansas Department of Health and Environment (1981-2006,2010-); Kansas Health Policy Authority (2007-2009)

Year	County	State of Kansas	Non Metro Kansas	County Rank	Per 1000 or \$ Per Capita
2005	14	1,347	363	16	0.4
2006	15	1,381	361	16	0.4
2007	14	1,335	350	16	0.4
2008	15	1,392	353	17	0.4
2009	15	1,353	350	16	0.4
2010	16	1,401	365	16	0.5
2011	15	1,338	346	16	0.4
2012	26	1,434	392	10	0.8
2013	13	1,212	328	17	0.4
2015	13	1,240	327	18	0.4
2016	15	1,456	350	15	0.4
2017	15	1,467	350	15	0.5
2018	14	1,604	359	16	0.4
2019	13	1,646	355	20	0.4
2020	13	1,646	355	20	0.4
2021	14	1,688	362	18	0.4



NUMBER OF HOSPITALS

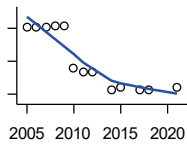
American Hospital Association, American Hospital Association Guide to the Health Care Field

Year	County	State of Kansas	Non Metro Kansas	County Rank	Per 1000 or \$ Per Capita
2005	2	158	105	31	.
2006	2	158	105	31	.
2007	2	159	104	32	.
2008	2	159	104	32	.
2009	2	158	105	32	.
2010	1	158	104	96	.
2011	1	158	103	96	.
2012	1	157	103	96	.
2014	1	156	.	96	.
2015	1	155	103	96	.
2017	1	157	102	96	.
2018	1	154	99	95	.
2021	1	151	.	95	.

County: county value. Kansas: state value. County Rank: highest county value ranked #1. (\$000): thousands of dollars. Nonmetro Kansas: Kansas total less Metropolitan Areas as defined by the Office of Management and Budget (OMB; released 3/6/2020). Per 1000: For nonmoney amounts, Per 1000=(county value / county population for the same year as the data) x 1000. \$ Per capita=(county value / county population for the same year as the data). Value= . indicates missing or suppressed data or value not calculated.

Vital Statistics and Health

NUMBER OF HOSPITAL BEDS

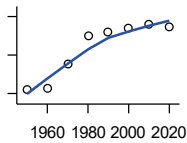


Kansas Department of Health and Environment

Year	County	State of Kansas	Non Metro Kansas	County Rank	Per 1000 or \$ Per Capita
2005	126	12,389	5,687	19	3.5
2006	126	11,992	5,514	17	3.5
2007	126	12,171	5,637	19	3.5
2008	128	12,332	5,700	19	3.6
2009	128	12,283	5,652	17	3.8
2010	65	12,218	5,521	42	1.9
2011	59	12,182	5,335	46	1.8
2012	59	12,002	5,355	47	1.8
2014	32	12,034	.	66	1.0
2015	35	11,926	5,330	66	1.1
2017	32	11,491	4,825	61	1.0
2018	32	11,448	4,583	55	1.0
2021	35	11,199	.	53	1.1

Housing

HOUSING UNITS (DECENNIAL)



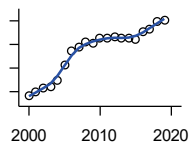
U.S. Census Bureau: Decennial Census

Year	County	State of Kansas	Non Metro Kansas	County Rank	Per 1000 or \$ Per Capita
1950	8,391	586,650	328,210	15	315.7
1960	8,492	672,899	329,380	16	315.4
1970	11,014	789,735	363,824	14	343.4
1980	13,980	955,207	416,877	14	398.2
1990	14,346	1,044,112	417,062	14	413.0
2000	14,757	1,131,395	422,218	14	410.7
2010	15,237	1,233,215	424,050	14	452.3
2020	14,957	1,275,689	413,120	15	464.8

County: county value. Kansas: state value. County Rank: highest county value ranked #1. (\$000): thousands of dollars. Nonmetro Kansas: Kansas total less Metropolitan Areas as defined by the Office of Management and Budget (OMB; released 3/6/2020). Per 1000: For nonmoney amounts, Per 1000=(county value / county population for the same year as the data) x 1000. \$ Per capita=(county value / county population for the same year as the data). Value= . indicates missing or suppressed data or value not calculated.

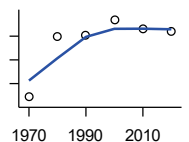
Housing

HOUSING UNITS (ESTIMATED)



U.S. Census Bureau

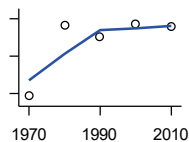
Year	County	State of Kansas	Non Metro Kansas	County Rank	Per 1000 or \$ Per Capita
2000	14,763	1,134,529	422,560	14	410.8
2001	14,799	1,146,858	423,876	14	410.5
2002	14,832	1,160,129	425,089	14	414.0
2003	14,840	1,171,620	425,936	14	413.7
2004	14,895	1,184,702	426,593	14	413.4
2005	15,029	1,195,791	426,964	14	418.2
2006	15,149	1,206,692	426,713	14	422.8
2007	15,178	1,217,608	426,090	14	421.4
2008	15,220	1,225,625	425,768	14	427.6
2009	15,215	1,230,552	424,776	14	450.5
2010	15,252	1,234,456	424,174	14	452.7
2011	15,256	1,238,052	424,549	14	453.3
2012	15,261	1,241,992	425,116	14	454.9
2013	15,256	1,246,675	425,699	14	455.7
2014	15,252	1,253,284	426,269	14	460.2
2015	15,245	1,258,999	426,844	15	460.1
2016	15,311	1,265,684	427,465	15	458.8
2017	15,330	1,273,536	427,746	15	461.0
2018	15,394	1,280,649	428,099	14	462.3
2019	15,409	1,288,401	428,495	14	464.2



OCCUPIED HOUSING UNITS

U.S. Census Bureau: Decennial Census

Year	County	State of Kansas	Non Metro Kansas	County Rank	Per 1000 or \$ Per Capita
1970	10,427	727,364	326,494	14	325.1
1980	13,009	872,239	371,693	14	370.5
1990	13,059	944,726	365,901	14	376.0
2000	13,691	1,037,891	375,313	14	381.0
2010	13,303	1,112,096	370,269	15	394.9
2020	13,183	1,151,360	356,330	15	409.7



OWNER OCCUPIED HOUSING UNITS

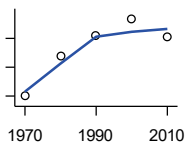
U.S. Census Bureau: Decennial Census

Year	County	State of Kansas	Non Metro Kansas	County Rank	Per 1000 or \$ Per Capita
1970	6,430	502,585	236,338	16	200.5
1980	8,319	612,433	277,096	15	237.0
1990	8,011	641,762	263,099	15	230.7
2000	8,352	718,703	271,350	16	232.4
2010	8,277	753,532	261,763	17	245.7

County: county value. Kansas: state value. County Rank: highest county value ranked #1. (\$000): thousands of dollars. Nonmetro Kansas: Kansas total less Metropolitan Areas as defined by the Office of Management and Budget (OMB; released 3/6/2020). Per 1000: For nonmoney amounts, Per 1000=(county value / county population for the same year as the data) x 1000. \$ Per capita=(county value / county population for the same year as the data). Value= . indicates missing or suppressed data or value not calculated.

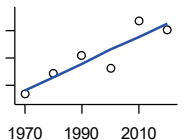
Housing

RENTER OCCUPIED HOUSING UNITS



U.S. Census Bureau: Decennial Census

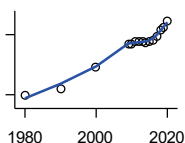
Year	County	State of Kansas	Non Metro Kansas	County Rank	Per 1000 or \$ Per Capita
1970	3,997	224,779	90,156	12	124.6
1980	4,690	259,806	94,597	11	133.6
1990	5,048	302,964	102,802	11	145.3
2000	5,339	319,188	103,963	11	148.6
2010	5,026	358,564	108,506	13	149.2



VACANT HOUSING UNITS

U.S. Census Bureau: Decennial Census

Year	County	State of Kansas	Non Metro Kansas	County Rank	Per 1000 or \$ Per Capita
1970	584	60,058	35,954	23	18.2
1980	961	77,912	41,584	18	27.4
1990	1,287	99,386	51,161	16	37.1
2000	1,066	93,309	46,904	18	29.7
2010	1,934	121,119	53,781	13	57.4
2020	1,774	124,329	56,790	15	55.1



MEDIAN VALUE (\$): OWNER OCCUPIED HOUSING UNITS

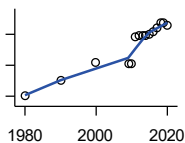
U.S. Census Bureau, Decennial Census (- 2000), (2009 -) American Community Survey five-year average ending in year shown.

Year	County	State of Kansas	Non Metro Kansas	County Rank	Per 1000 or \$ Per Capita
1980	39,000	37,800	.	11	.
1990	45,800	52,200	.	22	.
2000	67,900	83,500	.	29	.
2009	91,000	118,500	.	27	.
2010	91,200	122,600	.	27	.
2011	92,600	125,500	.	26	.
2012	92,700	127,400	.	29	.
2013	93,100	128,400	.	33	.
2014	92,500	129,400	.	34	.
2015	93,400	132,000	.	36	.
2016	94,500	135,300	.	36	.
2017	98,500	139,200	.	36	.
2018	104,100	145,400	.	34	.
2019	106,800	151,900	.	38	.
2020	113,700	157,600	.	31	.

County: county value. Kansas: state value. County Rank: highest county value ranked #1. (\$000): thousands of dollars. Nonmetro Kansas: Kansas total less Metropolitan Areas as defined by the Office of Management and Budget (OMB; released 3/6/2020). Per 1000: For nonmoney amounts, Per 1000=(county value / county population for the same year as the data) x 1000. \$ Per capita=(county value / county population for the same year as the data). Value= . indicates missing or suppressed data or value not calculated.

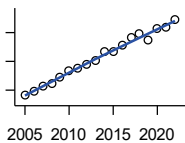
Housing

MEDIAN CONTRACT RENT (\$)



U.S. Census Bureau, Decennial Census (- 2000), (2009 -) American Community Survey five-year average ending in year shown.

Year	County	State of Kansas	Non Metro Kansas	County Rank	Per 1000 or \$ Per Capita
1980	205	219	.	16	.
1990	301	372	.	26	.
2000	420	498	.	28	.
2009	411	491	.	24	.
2010	411	507	.	27	.
2011	581	699	.	33	.
2012	588	715	.	41	.
2013	590	732	.	45	.
2014	594	748	.	52	.
2015	600	757	.	53	.
2016	619	775	.	49	.
2017	643	801	.	45	.
2018	671	831	.	40	.
2019	674	850	.	40	.
2020	654	863	.	56	.



FAIR MARKET RENT: 2 BEDROOMS

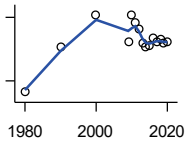
U.S. Department of Housing and Urban Development (HUD)

Year	County	State of Kansas	Non Metro Kansas	County Rank	Per 1000 or \$ Per Capita
2005	482	.	.	57	.
2006	497	.	.	105	.
2007	512	.	.	105	.
2008	525	628	.	105	.
2009	547	653	.	105	.
2010	566	678	.	105	.
2011	575	684	.	105	.
2012	590	660	.	37	.
2013	604	712	.	38	.
2014	633	746	.	40	.
2015	634	756	.	105	.
2016	658	781	.	105	.
2017	681	811	.	105	.
2018	697	815	.	105	.
2019	672	828	.	105	.
2020	714	855	.	105	.
2021	718	874	.	105	.
2022	745	879	.	37	.

County: county value. Kansas: state value. County Rank: highest county value ranked #1. (\$000): thousands of dollars. Nonmetro Kansas: Kansas total less Metropolitan Areas as defined by the Office of Management and Budget (OMB; released 3/6/2020). Per 1000: For nonmoney amounts, Per 1000=(county value / county population for the same year as the data) x 1000. \$ Per capita=(county value / county population for the same year as the data). Value= . indicates missing or suppressed data or value not calculated.

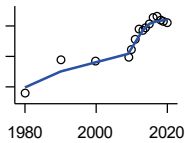
Education

POPULATION AGE 25+



U.S. Census Bureau, Decennial Census (- 2000), (2009 -) American Community Survey five-year average ending in year shown.

Year	County	State of Kansas	Non Metro Kansas	County Rank	Per 1000 or \$ Per Capita
1980	18,732	1,388,102	596,639	.	.
1990	19,815	1,565,936	608,745	.	.
2000	20,559	1,701,207	618,131	.	.
2009	19,934	1,775,427	600,188	.	.
2010	20,552	1,802,904	608,716	.	.
2011	20,373	1,822,400	610,386	.	.
2012	20,235	1,838,079	611,103	.	.
2013	19,886	1,850,010	610,374	.	.
2014	19,809	1,861,894	609,612	.	.
2015	19,821	1,869,698	606,967	.	.
2016	19,999	1,878,495	604,563	.	.
2017	19,909	1,886,741	601,076	.	.
2018	19,969	1,894,675	598,487	.	.
2019	19,903	1,902,279	595,501	.	.
2020	19,919	1,911,990	593,923	.	.



PERCENT HS GRADUATE OR HIGHER AGE 25+

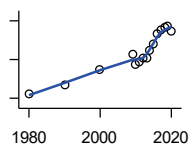
U.S. Census Bureau, Decennial Census (- 2000), (2009 -) American Community Survey five-year average ending in year shown.

Year	County	State of Kansas	Non Metro Kansas	County Rank	Per 1000 or \$ Per Capita
1980	76.4	73.3	.	8	.
1990	81.9	81.3	.	17	.
2000	81.8	86.0	.	82	.
2009	82.3	89.0	.	92	.
2010	83.6	89.2	.	91	.
2011	85.3	89.5	.	91	.
2012	87.0	89.7	.	83	.
2013	86.8	89.8	.	86	.
2014	87.1	90.0	.	86	.
2015	87.9	90.2	.	83	.
2016	88.9	90.3	.	78	.
2017	89.1	90.5	.	78	.
2018	88.4	90.7	.	81	.
2019	88.3	91.0	.	85	.
2020	88.0	91.4	.	88	.

County: county value. Kansas: state value. County Rank: highest county value ranked #1. (\$000): thousands of dollars. Nonmetro Kansas: Kansas total less Metropolitan Areas as defined by the Office of Management and Budget (OMB; released 3/6/2020). Per 1000: For nonmoney amounts, Per 1000=(county value / county population for the same year as the data) x 1000. \$ Per capita=(county value / county population for the same year as the data). Value= . indicates missing or suppressed data or value not calculated.

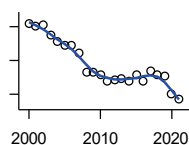
Education

PERCENT BACHELORS DEGREE OR HIGHER AGE 25+



U.S. Census Bureau, Decennial Census (- 2000), (2009 -) American Community Survey five-year average ending in year shown.

Year	County	State of Kansas	Non Metro Kansas	County Rank	Per 1000 or \$ Per Capita
1980	20.4	17.0	.	5	.
1990	21.4	21.1	.	8	.
2000	23.0	25.8	.	12	.
2009	24.6	28.8	.	11	.
2010	23.5	29.3	.	15	.
2011	23.7	29.7	.	15	.
2012	24.1	30.0	.	17	.
2013	24.1	30.3	.	15	.
2014	25.0	30.7	.	17	.
2015	25.6	31.0	.	20	.
2016	26.7	31.6	.	17	.
2017	27.1	32.3	.	17	.
2018	27.3	32.9	.	20	.
2019	27.5	33.4	.	19	.
2020	26.9	33.9	.	25	.



PUBLIC SCHOOL ENROLLMENT (FTE) SCHOOL YEAR BEGINNING...

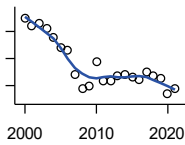
Kansas State Department of Education

Year	County	State of Kansas	Non Metro Kansas	County Rank	Per 1000 or \$ Per Capita
2000	6,050.2	448,150.8	166,722.5	14	168.4
2001	6,007.5	447,047.1	164,365.0	15	166.6
2002	6,030.7	444,860.3	161,555.4	14	168.3
2003	5,876.0	443,620.6	159,130.2	15	163.8
2004	5,773.1	441,957.2	156,566.3	15	160.2
2005	5,727.0	442,708.4	155,197.2	15	159.4
2006	5,731.5	444,878.7	153,842.3	17	160.0
2007	5,616.9	446,831.3	152,337.1	17	155.9
2008	5,331.4	447,730.0	150,572.7	17	149.8
2009	5,334.7	453,202.5	151,246.8	18	157.9
2010	5,284.6	455,405.0	151,023.8	18	156.9
2011	5,197.7	456,000.5	150,257.9	19	154.5
2012	5,209.7	458,496.4	150,463.0	19	155.3
2013	5,238.4	461,950.0	150,420.9	19	156.5
2014	5,188.4	464,395.4	150,499.4	19	156.5
2015	5,289.7	463,504.0	149,539.3	18	159.7
2016	5,193.5	459,920.3	147,293.5	18	155.6
2017	5,349.7	477,977.9	152,096.3	18	160.9
2018	5,286.8	476,481.7	150,456.8	19	158.8
2019	5,265.4	476,525.1	150,045.2	18	158.6
2020	4,999.0	462,088.0	146,369.6	19	155.3
2021	4,929.4	463,652.4	147,500.4	19	154.1

County: county value. Kansas: state value. County Rank: highest county value ranked #1. (\$000): thousands of dollars. Nonmetro Kansas: Kansas total less Metropolitan Areas as defined by the Office of Management and Budget (OMB; released 3/6/2020). Per 1000: For nonmoney amounts, Per 1000=(county value / county population for the same year as the data) x 1000. \$ Per capita=(county value / county population for the same year as the data). Value= . indicates missing or suppressed data or value not calculated.

Education

PUPIL/TEACHER RATIO SCHOOL YEAR BEGINNING...

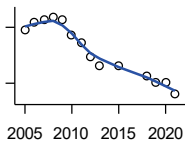


Kansas State Department of Education

Year	County	State of Kansas	Non Metro Kansas	County Rank	Per 1000 or \$ Per Capita
2000	15.5	15.4	13.9	17	.
2001	15.2	15.3	13.8	18	.
2002	15.3	15.4	13.9	21	.
2003	15.1	15.5	13.8	20	.
2004	14.8	15.3	13.6	21	.
2005	14.4	15.0	13.4	25	.
2006	14.3	14.7	13.2	24	.
2007	13.4	14.6	13.1	34	.
2008	12.9	14.4	12.9	36	.
2009	13.0	14.8	13.2	41	.
2010	13.9	15.2	13.6	34	.
2011	13.2	15.1	13.5	46	.
2012	13.2	15.1	13.5	45	.
2013	13.3	15.1	13.5	41	.
2014	13.4	15.0	13.6	39	.
2015	13.3	15.2	13.9	46	.
2016	13.2	15.1	13.7	44	.
2017	13.5	15.5	13.9	45	.
2018	13.4	15.3	13.8	43	.
2019	13.3	15.2	13.7	42	.
2020	12.7	14.7	13.4	46	.
2021	12.9	14.8	13.5	43	.

Social Environment

CHILD CARE FACILITIES: TOTAL CHILD CARE FACILITIES

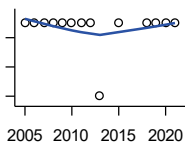


Kansas Department of Health and Environment, Bureau of Adult and Child Care

Year	County	State of Kansas	Non Metro Kansas	County Rank	Per 1000 or \$ Per Capita
2005	117	8,258	3,378	13	3.3
2006	126	8,442	3,429	13	3.5
2007	128	8,241	3,317	12	3.6
2008	131	8,011	3,150	12	3.7
2009	128	7,853	3,066	12	3.8
2010	111	7,354	2,858	12	3.3
2011	104	6,835	2,623	12	3.1
2012	89	6,346	2,409	12	2.7
2013	79	5,754	2,179	12	2.4
2015	79	5,289	2,146	12	2.4
2018	68	4,607	1,904	12	2.0
2019	61	4,287	1,774	15	1.8
2020	61	4,274	1,798	12	1.9
2021	48	4,002	1,700	19	1.5

County: county value. Kansas: state value. County Rank: highest county value ranked #1. (\$000): thousands of dollars. Nonmetro Kansas: Kansas total less Metropolitan Areas as defined by the Office of Management and Budget (OMB; released 3/6/2020). Per 1000: For nonmoney amounts, Per 1000=(county value / county population for the same year as the data) x 1000. \$ Per capita=(county value / county population for the same year as the data). Value= . indicates missing or suppressed data or value not calculated.

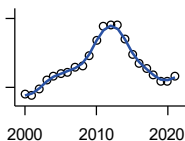
Social Environment



**CHILD CARE FACILITIES:
PRESCHOOLS**

Kansas Department of Health and Environment, Bureau of Adult and Child Care

Year	County	State of Kansas	Non Metro Kansas	County Rank	Per 1000 or \$ Per Capita
2005	3	243	140	31	0.1
2006	3	221	127	27	0.1
2007	3	208	119	27	0.1
2008	3	204	114	27	0.1
2009	3	194	107	27	0.1
2010	3	194	112	27	0.1
2011	3	209	123	29	0.1
2012	3	201	121	27	0.1
2013	2	140	84	35	0.1
2015	3	185	113	25	0.1
2018	3	150	94	19	0.1
2019	3	134	83	17	0.1
2020	3	126	78	13	0.1
2021	3	120	74	13	0.1



FOOD STAMP BENEFICIARIES

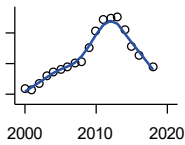
Kansas Social and Rehabilitation Services

Year	County	State of Kansas	Non Metro Kansas	County Rank	Per 1000 or \$ Per Capita
2000	1,689	110,619	44,825	15	47.0
2001	1,630	117,241	46,741	16	45.2
2002	1,940	131,726	52,342	17	54.2
2003	2,302	155,908	61,280	16	64.2
2004	2,472	167,971	65,852	15	68.6
2005	2,621	175,710	67,261	15	72.9
2006	2,660	182,821	67,487	15	74.2
2007	2,891	184,035	66,979	14	80.3
2008	2,921	187,377	67,160	14	82.1
2009	3,356	208,007	73,637	13	99.4
2010	4,070	259,609	90,919	14	120.8
2011	4,641	296,542	101,155	14	137.9
2012	4,690	303,257	102,478	14	139.8
2013	4,727	316,424	105,345	14	141.2
2014	4,116	301,377	100,761	14	124.2
2015	3,422	277,614	93,353	15	103.3
2016	3,066	258,412	88,343	15	91.9
2017	2,815	239,592	82,070	17	84.6
2018	2,521	219,738	75,208	19	75.7
2019	2,281	205,261	69,899	19	68.7
2020	2,241	198,457	66,721	18	69.6
2021	2,462	203,424	68,883	17	76.9

County: county value. Kansas: state value. County Rank: highest county value ranked #1. (\$000): thousands of dollars. Nonmetro Kansas: Kansas total less Metropolitan Areas as defined by the Office of Management and Budget (OMB; released 3/6/2020). Per 1000: For nonmoney amounts, Per 1000=(county value / county population for the same year as the data) x 1000. \$ Per capita=(county value / county population for the same year as the data). Value= . indicates missing or suppressed data or value not calculated.

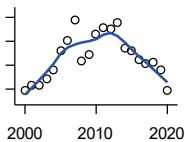
Social Environment

PERCENT OF POPULATION RECEIVING FOOD STAMPS



U.S. Dept. of Agriculture Food and Nutrition Service (1990-1997); Kansas Social and Rehabilitation Services (1998-)

Year	County	State of Kansas	Non Metro Kansas	County Rank	Per 1000 or \$ Per Capita
2000	4.7	4.1	.	29	.
2001	4.5	4.3	.	35	.
2002	5.4	4.9	.	34	.
2003	6.4	5.7	.	32	.
2004	6.9	6.2	.	30	.
2005	7.3	6.4	.	29	.
2006	7.5	6.6	.	27	.
2007	8.1	6.6	.	21	.
2008	8.3	6.7	.	21	.
2009	10.0	7.4	.	15	.
2010	12.2	9.1	.	16	.
2011	13.7	10.3	.	15	.
2012	13.9	10.5	.	15	.
2013	14.1	10.9	.	17	.
2014	12.4	10.4	.	21	.
2015	10.3	9.6	.	27	.
2016	9.1	8.9	.	30	.
2018	7.5	7.5	.	36	.



ESTIMATED NUMBER OF PEOPLE IN POVERTY

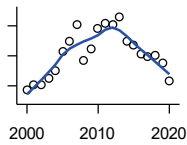
U.S. Census Bureau, Small Area Income and Poverty Estimates

Year	County	State of Kansas	Non Metro Kansas	County Rank	Per 1000 or \$ Per Capita
2000	3,932	235,087	98,984	14	109.4
2001	4,184	252,134	106,257	13	116.1
2002	4,181	265,673	107,542	15	116.7
2003	4,454	278,163	107,323	15	124.2
2004	4,817	297,733	111,534	15	133.7
2005	5,608	310,667	118,768	12	156.1
2006	6,054	327,102	123,700	12	169.0
2007	6,909	301,828	111,953	8	191.8
2008	5,174	307,804	113,015	13	145.4
2009	5,450	359,692	123,394	14	161.4
2010	6,287	374,677	131,502	12	186.6
2011	6,544	383,859	134,912	12	194.5
2012	6,517	392,095	133,800	12	194.2
2013	6,790	391,718	134,067	12	202.8
2014	5,721	381,506	130,213	14	172.6
2015	5,587	366,069	123,073	13	168.6
2016	5,212	343,773	121,314	13	156.2
2017	5,055	335,371	116,854	14	152.0
2018	5,142	336,892	114,490	13	154.4
2019	4,790	319,931	110,692	13	144.3
2020	3,964	300,931	100,998	16	123.2

County: county value. Kansas: state value. County Rank: highest county value ranked #1. (\$000): thousands of dollars. Nonmetro Kansas: Kansas total less Metropolitan Areas as defined by the Office of Management and Budget (OMB; released 3/6/2020). Per 1000: For nonmoney amounts, Per 1000=(county value / county population for the same year as the data) x 1000. \$ Per capita=(county value / county population for the same year as the data). Value= . indicates missing or suppressed data or value not calculated.

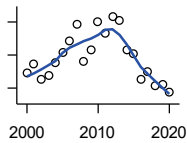
Social Environment

ESTIMATED % OF PEOPLE IN POVERTY



U.S. Census Bureau, Small Area Income and Poverty Estimates

Year	County	State of Kansas	Non Metro Kansas	County Rank	Per 1000 or \$ Per Capita
2000	11.4	8.9	.	32	.
2001	12.2	9.5	.	34	.
2002	12.1	10.0	.	35	.
2003	13.0	10.4	.	17	.
2004	14.1	11.1	.	12	.
2005	16.6	11.7	.	6	.
2006	18.0	12.2	.	8	.
2007	20.2	11.2	.	1	.
2008	15.3	11.3	.	13	.
2009	17.0	13.2	.	13	.
2010	19.6	13.5	.	4	.
2011	20.3	13.8	.	6	.
2012	20.2	14.0	.	6	.
2013	21.2	13.9	.	4	.
2014	18.0	13.5	.	11	.
2015	17.5	12.9	.	13	.
2016	16.3	12.2	.	13	.
2017	15.9	11.9	.	10	.
2018	16.1	11.9	.	11	.
2019	15.1	11.3	.	14	.
2020	12.6	10.6	.	30	.



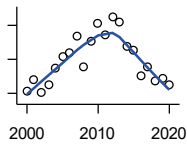
EST. NUMBER OF RELATED CHILDREN AGE 5 TO 17 IN FAMILIES IN POVERTY

U.S. Census Bureau, Small Area Income and Poverty Estimates

Year	County	State of Kansas	Non Metro Kansas	County Rank	Per 1000 or \$ Per Capita
2000	791	50,388	21,854	17	22.0
2001	844	53,755	23,094	17	23.4
2002	752	52,453	21,423	17	21.0
2003	774	55,419	21,809	17	21.6
2004	854	59,392	22,313	16	23.7
2005	916	60,203	24,244	16	25.5
2006	988	64,427	25,326	16	27.6
2007	1,087	61,149	23,639	11	30.2
2008	860	59,842	22,661	16	24.2
2009	934	71,850	26,251	17	27.7
2010	1,101	81,077	29,804	16	32.7
2011	1,030	82,311	29,306	17	30.6
2012	1,133	87,594	29,781	17	33.8
2013	1,112	84,325	29,253	18	33.2
2014	931	83,873	29,354	20	28.1
2015	905	78,192	27,482	18	27.3
2016	756	67,810	25,074	20	22.7
2017	796	67,873	25,032	18	23.9
2018	712	68,153	24,928	21	21.4
2019	723	64,613	23,117	18	21.8
2020	675	59,792	21,143	17	21.0

County: county value. Kansas: state value. County Rank: highest county value ranked #1. (\$000): thousands of dollars. Nonmetro Kansas: Kansas total less Metropolitan Areas as defined by the Office of Management and Budget (OMB; released 3/6/2020). Per 1000: For nonmoney amounts, Per 1000=(county value / county population for the same year as the data) x 1000. \$ Per capita=(county value / county population for the same year as the data). Value= . indicates missing or suppressed data or value not calculated.

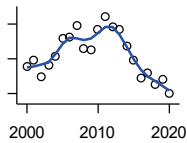
Social Environment



EST. % OF RELATED CHILDREN AGE 5 TO 17 IN FAMILIES IN POVERTY

U.S. Census Bureau, Small Area Income and Poverty Estimates

Year	County	State of Kansas	Non Metro Kansas	County Rank	Per 1000 or \$ Per Capita
2000	12.3	10.0	.	54	.
2001	13.6	10.8	.	50	.
2002	12.1	10.5	.	49	.
2003	13.0	11.3	.	43	.
2004	15.0	12.5	.	22	.
2005	16.3	12.8	.	29	.
2006	16.7	13.2	.	29	.
2007	18.8	12.6	.	11	.
2008	15.1	12.3	.	43	.
2009	18.2	14.7	.	25	.
2010	20.2	15.9	.	20	.
2011	18.9	16.2	.	27	.
2012	21.0	17.2	.	21	.
2013	20.4	16.5	.	22	.
2014	17.5	16.4	.	41	.
2015	17.0	15.3	.	39	.
2016	14.0	13.2	.	67	.
2017	15.1	13.4	.	59	.
2018	13.5	13.5	.	79	.
2019	13.7	12.9	.	67	.
2020	13.0	11.9	.	58	.



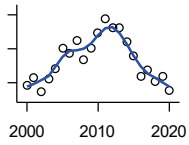
ESTIMATED NUMBER UNDER 18 IN POVERTY

U.S. Census Bureau, Small Area Income and Poverty Estimates

Year	County	State of Kansas	Non Metro Kansas	County Rank	Per 1000 or \$ Per Capita
2000	1,314	82,619	34,843	16	36.6
2001	1,389	87,487	36,724	17	38.5
2002	1,196	84,181	32,870	16	33.4
2003	1,328	93,896	36,004	16	37.0
2004	1,429	98,641	36,272	16	39.7
2005	1,639	100,254	39,118	15	45.6
2006	1,648	105,193	41,054	16	46.0
2007	1,776	100,242	37,881	12	49.3
2008	1,512	100,146	37,552	16	42.5
2009	1,510	118,187	42,682	17	44.7
2010	1,742	129,009	46,428	16	51.7
2011	1,887	133,478	46,832	17	56.1
2012	1,765	135,261	46,294	18	52.6
2013	1,744	131,251	44,952	18	52.1
2014	1,549	125,562	43,933	19	46.7
2015	1,384	119,994	41,828	17	41.8
2016	1,174	100,996	37,387	20	35.2
2017	1,236	102,858	37,955	18	37.2
2018	1,107	102,616	36,991	19	33.2
2019	1,157	97,920	34,797	18	34.9
2020	996	88,491	30,767	17	31.0

County: county value. Kansas: state value. County Rank: highest county value ranked #1. (\$000): thousands of dollars. Nonmetro Kansas: Kansas total less Metropolitan Areas as defined by the Office of Management and Budget (OMB; released 3/6/2020). Per 1000: For nonmoney amounts, Per 1000=(county value / county population for the same year as the data) x 1000. \$ Per capita=(county value / county population for the same year as the data). Value= . indicates missing or suppressed data or value not calculated.

Social Environment



ESTIMATED PERCENT UNDER 18 IN POVERTY

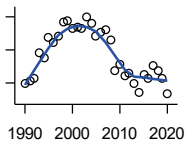
U.S. Census Bureau, Small Area Income and Poverty Estimates

Year	County	State of Kansas	Non Metro Kansas	County Rank	Per 1000 or \$ Per Capita
2000	14.6	11.9	.	53	.
2001	15.8	12.7	.	48	.
2002	13.6	12.1	.	50	.
2003	15.6	13.8	.	40	.
2004	17.1	14.6	.	26	.
2005	20.1	15.2	.	21	.
2006	19.4	15.4	.	29	.
2007	21.2	14.7	.	12	.
2008	18.3	14.6	.	31	.
2009	20.1	17.1	.	29	.
2010	22.4	18.1	.	20	.
2011	24.5	18.8	.	17	.
2012	23.1	19.0	.	21	.
2013	23.1	18.4	.	19	.
2014	21.1	17.6	.	25	.
2015	18.9	16.9	.	38	.
2016	15.9	14.3	.	61	.
2017	16.9	14.7	.	49	.
2018	15.2	14.8	.	74	.
2019	16.0	14.3	.	54	.
2020	13.9	13.0	.	62	.

County: county value. Kansas: state value. County Rank: highest county value ranked #1. (\$000): thousands of dollars. Nonmetro Kansas: Kansas total less Metropolitan Areas as defined by the Office of Management and Budget (OMB; released 3/6/2020). Per 1000: For nonmoney amounts, Per 1000=(county value / county population for the same year as the data) x 1000. \$ Per capita=(county value / county population for the same year as the data). Value= . indicates missing or suppressed data or value not calculated.

Business

ESTABLISHMENTS TOTAL COUNTY BUSINESS PATTERNS



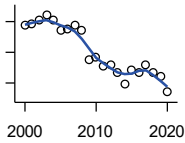
U.S. Census Bureau, County Business Patterns. Beginning with the 2017 data, any tabulation with fewer than 3 establishments were omitted from the release. Data for these establishments are included in the broader total.

Year	County	State of Kansas	Non Metro Kansas	County Rank	Per 1000 or \$ Per Capita
1990	825	65,858	26,802	17	23.8
1991	828	65,941	26,750	17	23.8
1992	832	67,630	27,229	17	23.8
1993	871	68,930	27,655	17	24.6
1994	862	69,822	27,763	17	24.3
1995	894	70,894	28,111	17	25.1
1996	887	72,017	28,353	17	24.9
1997	896	73,924	28,884	17	25.2
1998	917	74,019	28,749	17	25.8
1999	919	74,486	28,536	17	25.7
2000	908	74,939	28,475	17	25.3
2001	910	74,565	28,282	17	25.2
2002	908	75,077	28,183	17	25.3
2003	924	74,972	27,998	17	25.8
2004	915	75,827	28,009	17	25.4
2005	895	76,173	27,830	17	24.9
2006	901	76,446	27,653	17	25.1
2007	906	77,157	27,736	17	25.2
2008	890	76,096	27,314	17	25.0
2009	844	74,698	26,839	17	25.0
2010	854	74,301	26,739	17	25.3
2011	835	73,598	26,555	17	24.8
2012	839	73,944	26,534	17	25.0
2013	825	73,816	26,393	16	24.6
2014	810	74,055	26,292	17	24.4
2015	838	74,526	26,355	16	25.3
2016	832	74,884	26,172	16	24.9
2017	851	74,947	26,093	16	25.6
2018	844	74,559	25,802	16	25.3
2019	831	74,292	25,536	16	25.0
2020	808	73,982	25,178	16	25.1

County: county value. Kansas: state value. County Rank: highest county value ranked #1. (\$000): thousands of dollars. Nonmetro Kansas: Kansas total less Metropolitan Areas as defined by the Office of Management and Budget (OMB; released 3/6/2020). Per 1000: For nonmoney amounts, Per 1000=(county value / county population for the same year as the data) x 1000. \$ Per capita=(county value / county population for the same year as the data). Value= . indicates missing or suppressed data or value not calculated.

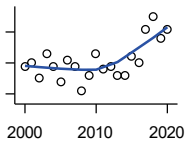
Business

**ESTABLISHMENTS: 1-19
EMPLOYEES**



U.S. Census Bureau, County Business Patterns. Beginning with the 2017 data, any tabulation with fewer than 3 establishments were omitted from the release. Data for these establishments are included in the broader total.

Year	County	State of Kansas	Non Metro Kansas	County Rank	Per 1000 or \$ Per Capita
2000	794	64,527	25,381	17	22.1
2001	796	64,176	25,248	17	22.1
2002	802	64,886	25,208	17	22.4
2003	811	64,714	25,020	17	22.6
2004	802	65,554	24,995	17	22.3
2005	786	65,796	24,839	17	21.9
2006	788	65,764	24,589	17	22.0
2007	794	66,446	24,701	17	22.0
2008	786	65,322	24,257	17	22.1
2009	738	64,128	23,851	17	21.8
2010	743	64,015	23,857	17	22.1
2011	728	63,251	23,571	17	21.6
2012	730	63,519	23,575	16	21.8
2013	717	63,197	23,396	16	21.4
2014	699	63,113	23,229	17	21.1
2015	722	63,280	23,227	16	21.8
2016	718	63,630	23,117	16	21.5
2017	729	63,619	23,022	16	21.9
2018	717	63,233	22,745	16	21.5
2019	711	62,904	22,489	16	21.4
2020	685	62,634	22,173	16	21.3



**ESTABLISHMENTS: 20-99
EMPLOYEES**

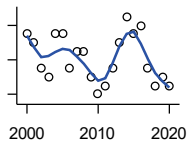
U.S. Census Bureau, County Business Patterns. Beginning with the 2017 data, any tabulation with fewer than 3 establishments were omitted from the release. Data for these establishments are included in the broader total.

Year	County	State of Kansas	Non Metro Kansas	County Rank	Per 1000 or \$ Per Capita
2000	94	8,714	2,653	16	2.6
2001	95	8,692	2,593	16	2.6
2002	90	8,582	2,554	17	2.5
2003	98	8,642	2,568	15	2.7
2004	94	8,658	2,590	15	2.6
2005	89	8,685	2,553	18	2.5
2006	96	8,922	2,612	17	2.7
2007	94	8,938	2,574	17	2.6
2008	86	8,939	2,587	19	2.4
2009	91	8,848	2,551	17	2.7
2010	98	8,612	2,454	15	2.9
2011	93	8,668	2,540	14	2.8
2012	94	8,700	2,500	16	2.8
2013	91	8,870	2,541	17	2.7
2014	91	9,121	2,590	18	2.7
2015	97	9,374	2,664	16	2.9
2016	95	9,412	2,596	16	2.8
2017	106	9,487	2,638	14	3.2
2018	110	9,485	2,621	14	3.3
2019	103	9,485	2,591	14	3.1
2020	106	9,471	2,545	14	3.3

County: county value. Kansas: state value. County Rank: highest county value ranked #1. (\$000): thousands of dollars. Nonmetro Kansas: Kansas total less Metropolitan Areas as defined by the Office of Management and Budget (OMB; released 3/6/2020). Per 1000: For nonmoney amounts, Per 1000=(county value / county population for the same year as the data) x 1000. \$ Per capita=(county value / county population for the same year as the data). Value= . indicates missing or suppressed data or value not calculated.

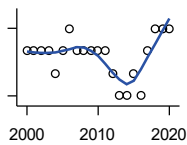
Business

**ESTABLISHMENTS: 100-499
EMPLOYEES**



U.S. Census Bureau, County Business Patterns. Beginning with the 2017 data, any tabulation with fewer than 3 establishments were omitted from the release. Data for these establishments are included in the broader total.

Year	County	State of Kansas	Non Metro Kansas	County Rank	Per 1000 or \$ Per Capita
2000	17	1,555	409	15	0.5
2001	16	1,555	406	15	0.4
2002	13	1,464	386	22	0.4
2003	12	1,470	378	21	0.3
2004	17	1,463	388	12	0.5
2005	17	1,537	400	14	0.5
2006	13	1,598	407	21	0.4
2007	15	1,602	416	17	0.4
2008	15	1,653	421	17	0.4
2009	12	1,551	394	21	0.4
2010	10	1,513	382	25	0.3
2011	11	1,523	395	24	0.3
2012	13	1,567	410	18	0.4
2013	16	1,581	407	14	0.5
2014	19	1,641	421	13	0.6
2015	17	1,693	414	15	0.5
2016	18	1,671	406	14	0.5
2017	13	1,653	.	18	0.4
2018	11	1,650	.	20	0.3
2019	12	1,718	.	18	0.4
2020	11	1,692	.	20	0.3



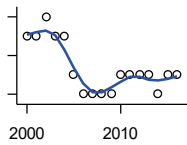
**ESTABLISHMENTS: 500 OR MORE
EMPLOYEES**

U.S. Census Bureau, County Business Patterns. Beginning with the 2017 data, any tabulation with fewer than 3 establishments were omitted from the release. Data for these establishments are included in the broader total.

Year	County	State of Kansas	Non Metro Kansas	County Rank	Per 1000 or \$ Per Capita
2000	3	143	32	9	0.1
2001	3	142	35	8	0.1
2002	3	145	35	10	0.1
2003	3	146	32	8	0.1
2004	2	152	36	19	0.1
2005	3	155	38	9	0.1
2006	4	162	45	8	0.1
2007	3	171	45	12	0.1
2008	3	182	49	13	0.1
2009	3	171	43	11	0.1
2010	3	161	46	14	0.1
2011	3	156	49	12	0.1
2012	2	158	49	19	0.1
2013	1	168	49	33	0.0
2014	1	180	52	34	0.0
2015	2	179	50	20	0.1
2016	1	171	53	33	0.0
2017	3	188	.	10	0.1
2018	4	191	.	8	0.1
2019	4	185	.	7	0.1
2020	4	185	.	8	0.1

County: county value. Kansas: state value. County Rank: highest county value ranked #1. (\$000): thousands of dollars. Nonmetro Kansas: Kansas total less Metropolitan Areas as defined by the Office of Management and Budget (OMB; released 3/6/2020). Per 1000: For nonmoney amounts, Per 1000=(county value / county population for the same year as the data) x 1000. \$ Per capita=(county value / county population for the same year as the data). Value= . indicates missing or suppressed data or value not calculated.

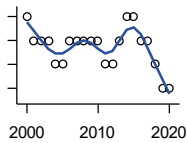
Business



ESTABLISHMENTS: FORESTRY, FISHING, HUNTING, AND AG SUPPORT

U.S. Census Bureau, County Business Patterns. Beginning with the 2017 data, any tabulation with fewer than 3 establishments were omitted from the release. Data for these establishments are included in the broader total.

Year	County	State of Kansas	Non Metro Kansas	County Rank	Per 1000 or \$ Per Capita
2000	3	190	149	25	0.1
2001	3	217	168	32	0.1
2002	4	224	176	21	0.1
2003	3	217	173	28	0.1
2004	3	211	165	29	0.1
2005	1	188	148	76	0.0
2006	0	193	158	105	0.0
2007	0	212	170	105	0.0
2008	0	197	158	105	0.0
2009	0	191	154	105	0.0
2010	1	192	161	79	0.0
2011	1	193	157	77	0.0
2012	1	204	164	85	0.0
2013	1	208	166	85	0.0
2014	0	194	152	105	0.0
2015	1	192	149	81	0.0
2016	1	181	142	80	0.0



ESTABLISHMENTS: MINING

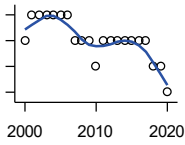
U.S. Census Bureau, County Business Patterns. Beginning with the 2017 data, any tabulation with fewer than 3 establishments were omitted from the release. Data for these establishments are included in the broader total.

Year	County	State of Kansas	Non Metro Kansas	County Rank	Per 1000 or \$ Per Capita
2000	6	868	619	35	0.2
2001	5	878	622	38	0.1
2002	5	847	615	39	0.1
2003	5	864	633	40	0.1
2004	4	880	647	47	0.1
2005	4	941	695	48	0.1
2006	5	991	734	43	0.1
2007	5	1,000	759	41	0.1
2008	5	1,047	799	41	0.1
2009	5	1,016	772	42	0.1
2010	5	1,009	762	42	0.1
2011	4	1,013	763	46	0.1
2012	4	1,048	789	48	0.1
2013	5	1,060	802	47	0.1
2014	6	1,102	828	44	0.2
2015	6	1,069	810	42	0.2
2016	5	990	747	44	0.1
2017	5	920	.	44	0.2
2018	4	900	.	47	0.1
2019	3	864	.	55	0.1
2020	3	825	.	54	0.1

County: county value. Kansas: state value. County Rank: highest county value ranked #1. (\$000): thousands of dollars. Nonmetro Kansas: Kansas total less Metropolitan Areas as defined by the Office of Management and Budget (OMB; released 3/6/2020). Per 1000: For nonmoney amounts, Per 1000=(county value / county population for the same year as the data) x 1000. \$ Per capita=(county value / county population for the same year as the data). Value= . indicates missing or suppressed data or value not calculated.

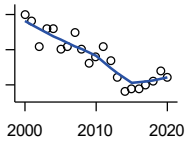
Business

ESTABLISHMENTS: UTILITIES



U.S. Census Bureau, County Business Patterns. Beginning with the 2017 data, any tabulation with fewer than 3 establishments were omitted from the release. Data for these establishments are included in the broader total.

Year	County	State of Kansas	Non Metro Kansas	County Rank	Per 1000 or \$ Per Capita
2000	6	274	192	10	0.2
2001	7	290	204	8	0.2
2002	7	278	195	8	0.2
2003	7	268	180	7	0.2
2004	7	247	164	5	0.2
2005	7	254	172	5	0.2
2006	7	248	169	5	0.2
2007	6	222	156	7	0.2
2008	6	244	166	7	0.2
2009	6	222	152	6	0.2
2010	5	197	129	7	0.1
2011	6	230	156	6	0.2
2012	6	232	156	6	0.2
2013	6	234	159	6	0.2
2014	6	232	160	6	0.2
2015	6	237	165	7	0.2
2016	6	245	171	7	0.2
2017	6	246	.	8	0.2
2018	5	252	.	13	0.2
2019	5	256	.	14	0.2
2020	4	255	.	18	0.1



ESTABLISHMENTS: CONSTRUCTION

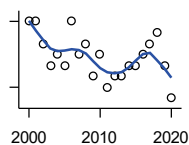
U.S. Census Bureau, County Business Patterns. Beginning with the 2017 data, any tabulation with fewer than 3 establishments were omitted from the release. Data for these establishments are included in the broader total.

Year	County	State of Kansas	Non Metro Kansas	County Rank	Per 1000 or \$ Per Capita
2000	80	7,703	2,616	20	2.2
2001	78	7,449	2,520	20	2.2
2002	71	7,519	2,482	21	2.0
2003	76	7,722	2,521	20	2.1
2004	76	7,887	2,518	21	2.1
2005	70	8,032	2,515	23	1.9
2006	71	8,031	2,494	21	2.0
2007	75	8,057	2,547	21	2.1
2008	70	7,831	2,522	21	2.0
2009	66	7,342	2,452	21	2.0
2010	68	7,064	2,394	21	2.0
2011	71	6,774	2,361	19	2.1
2012	67	6,741	2,393	19	2.0
2013	62	6,802	2,394	21	1.9
2014	58	6,920	2,383	21	1.7
2015	59	7,014	2,377	21	1.8
2016	59	6,988	2,343	21	1.8
2017	60	7,031	2,316	21	1.8
2018	61	7,124	2,285	21	1.8
2019	64	7,060	2,242	21	1.9
2020	62	7,089	2,249	21	1.9

County: county value. Kansas: state value. County Rank: highest county value ranked #1. (\$000): thousands of dollars. Nonmetro Kansas: Kansas total less Metropolitan Areas as defined by the Office of Management and Budget (OMB; released 3/6/2020). Per 1000: For nonmoney amounts, Per 1000=(county value / county population for the same year as the data) x 1000. \$ Per capita=(county value / county population for the same year as the data). Value= . indicates missing or suppressed data or value not calculated.

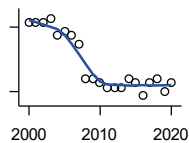
Business

**ESTABLISHMENTS:
MANUFACTURING**



U.S. Census Bureau, County Business Patterns. Beginning with the 2017 data, any tabulation with fewer than 3 establishments were omitted from the release. Data for these establishments are included in the broader total.

Year	County	State of Kansas	Non Metro Kansas	County Rank	Per 1000 or \$ Per Capita
2000	42	3,229	1,316	17	1.2
2001	42	3,240	1,323	17	1.2
2002	40	3,181	1,289	16	1.1
2003	38	3,159	1,291	16	1.1
2004	39	3,179	1,313	16	1.1
2005	38	3,128	1,278	17	1.1
2006	42	3,165	1,290	16	1.2
2007	39	3,184	1,316	16	1.1
2008	40	3,171	1,297	16	1.1
2009	37	3,026	1,240	17	1.1
2010	39	2,955	1,222	16	1.2
2011	36	2,877	1,193	17	1.1
2012	37	2,889	1,197	18	1.1
2013	37	2,836	1,165	17	1.1
2014	38	2,831	1,168	15	1.1
2015	38	2,817	1,161	15	1.1
2016	39	2,791	1,150	16	1.2
2017	40	2,760	1,147	13	1.2
2018	41	2,725	1,126	14	1.2
2019	38	2,695	1,111	14	1.1
2020	35	2,673	1,103	15	1.1



**ESTABLISHMENTS: WHOLESALE
TRADE**

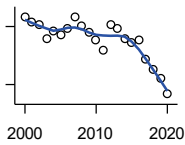
U.S. Census Bureau, County Business Patterns. Beginning with the 2017 data, any tabulation with fewer than 3 establishments were omitted from the release. Data for these establishments are included in the broader total.

Year	County	State of Kansas	Non Metro Kansas	County Rank	Per 1000 or \$ Per Capita
2000	41	4,876	1,776	19	1.1
2001	41	4,811	1,769	18	1.1
2002	41	4,719	1,750	17	1.1
2003	42	4,590	1,637	14	1.2
2004	38	4,553	1,634	16	1.1
2005	39	4,541	1,618	15	1.1
2006	38	4,517	1,596	16	1.1
2007	36	4,555	1,629	20	1.0
2008	28	4,501	1,622	23	0.8
2009	28	4,437	1,614	23	0.8
2010	27	4,432	1,612	24	0.8
2011	26	4,400	1,660	25	0.8
2012	26	4,563	1,755	26	0.8
2013	26	4,501	1,741	27	0.8
2014	28	4,497	1,746	25	0.8
2015	27	4,459	1,755	25	0.8
2016	24	4,457	1,732	31	0.7
2017	27	4,436	1,774	22	0.8
2018	28	4,330	1,727	23	0.8
2019	25	4,291	1,713	25	0.8
2020	27	4,191	1,677	23	0.8

County: county value. Kansas: state value. County Rank: highest county value ranked #1. (\$000): thousands of dollars. Nonmetro Kansas: Kansas total less Metropolitan Areas as defined by the Office of Management and Budget (OMB; released 3/6/2020). Per 1000: For nonmoney amounts, Per 1000=(county value / county population for the same year as the data) x 1000. \$ Per capita=(county value / county population for the same year as the data). Value= . indicates missing or suppressed data or value not calculated.

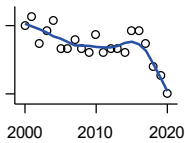
Business

ESTABLISHMENTS: RETAIL TRADE



U.S. Census Bureau, County Business Patterns. Beginning with the 2017 data, any tabulation with fewer than 3 establishments were omitted from the release. Data for these establishments are included in the broader total.

Year	County	State of Kansas	Non Metro Kansas	County Rank	Per 1000 or \$ Per Capita
2000	165	12,261	5,240	17	4.6
2001	162	12,206	5,207	17	4.5
2002	161	11,980	5,082	17	4.5
2003	154	11,834	5,049	18	4.3
2004	158	11,748	4,967	16	4.4
2005	156	11,562	4,834	16	4.3
2006	159	11,367	4,702	15	4.4
2007	165	11,306	4,653	15	4.6
2008	160	10,978	4,494	14	4.5
2009	157	10,760	4,372	14	4.6
2010	153	10,727	4,346	14	4.5
2011	148	10,655	4,289	14	4.4
2012	161	10,585	4,202	14	4.8
2013	159	10,433	4,147	13	4.7
2014	154	10,391	4,070	13	4.6
2015	152	10,327	4,061	13	4.6
2016	153	10,197	3,965	13	4.6
2017	143	10,074	3,885	13	4.3
2018	138	9,866	3,797	13	4.1
2019	133	9,762	3,750	14	4.0
2020	125	9,591	3,666	14	3.9



ESTABLISHMENTS: TRANSPORTATION & WAREHOUSING

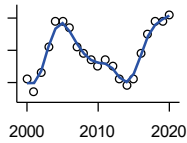
U.S. Census Bureau, County Business Patterns. Beginning with the 2017 data, any tabulation with fewer than 3 establishments were omitted from the release. Data for these establishments are included in the broader total.

Year	County	State of Kansas	Non Metro Kansas	County Rank	Per 1000 or \$ Per Capita
2000	40	2,474	1,293	14	1.1
2001	42	2,463	1,298	15	1.2
2002	36	2,461	1,278	18	1.0
2003	39	2,576	1,297	18	1.1
2004	41	2,651	1,324	17	1.1
2005	35	2,632	1,326	19	1.0
2006	35	2,626	1,295	19	1.0
2007	37	2,664	1,314	16	1.0
2008	35	2,675	1,329	19	1.0
2009	34	2,635	1,313	19	1.0
2010	38	2,615	1,313	14	1.1
2011	34	2,579	1,285	17	1.0
2012	35	2,519	1,243	15	1.0
2013	35	2,492	1,226	15	1.0
2014	34	2,518	1,240	18	1.0
2015	39	2,554	1,257	14	1.2
2016	39	2,567	1,241	14	1.2
2017	36	2,640	1,245	18	1.1
2018	31	2,627	1,238	20	0.9
2019	29	2,615	1,209	20	0.9
2020	25	2,589	1,179	24	0.8

County: county value. Kansas: state value. County Rank: highest county value ranked #1. (\$000): thousands of dollars. Nonmetro Kansas: Kansas total less Metropolitan Areas as defined by the Office of Management and Budget (OMB; released 3/6/2020). Per 1000: For nonmoney amounts, Per 1000=(county value / county population for the same year as the data) x 1000. \$ Per capita=(county value / county population for the same year as the data). Value= . indicates missing or suppressed data or value not calculated.

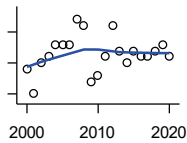
Business

ESTABLISHMENTS: INFORMATION



U.S. Census Bureau, County Business Patterns. Beginning with the 2017 data, any tabulation with fewer than 3 establishments were omitted from the release. Data for these establishments are included in the broader total.

Year	County	State of Kansas	Non Metro Kansas	County Rank	Per 1000 or \$ Per Capita
2000	13	1,542	578	21	0.4
2001	11	1,556	566	27	0.3
2002	14	1,517	551	20	0.4
2003	18	1,516	564	14	0.5
2004	22	1,518	556	10	0.6
2005	22	1,519	536	10	0.6
2006	21	1,549	559	10	0.6
2007	18	1,504	527	14	0.5
2008	17	1,468	522	16	0.5
2009	16	1,420	510	17	0.5
2010	15	1,437	527	21	0.4
2011	16	1,428	537	18	0.5
2012	15	1,387	515	18	0.4
2013	13	1,337	487	21	0.4
2014	12	1,335	496	21	0.4
2015	13	1,359	510	21	0.4
2016	17	1,431	537	14	0.5
2017	20	1,439	.	12	0.6
2018	22	1,407	.	9	0.7
2019	22	1,422	.	9	0.7
2020	23	1,424	.	7	0.7



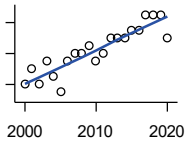
ESTABLISHMENTS: FINANCE & INSURANCE

U.S. Census Bureau, County Business Patterns. Beginning with the 2017 data, any tabulation with fewer than 3 establishments were omitted from the release. Data for these establishments are included in the broader total.

Year	County	State of Kansas	Non Metro Kansas	County Rank	Per 1000 or \$ Per Capita
2000	59	5,209	1,848	15	1.6
2001	55	5,178	1,828	17	1.5
2002	60	5,496	1,911	16	1.7
2003	61	5,569	1,907	14	1.7
2004	63	5,572	1,913	14	1.7
2005	63	5,708	1,964	14	1.8
2006	63	5,877	1,976	16	1.8
2007	67	6,017	2,030	16	1.9
2008	66	6,010	2,023	15	1.9
2009	57	5,933	1,994	18	1.7
2010	58	5,872	1,975	18	1.7
2011	61	5,854	1,985	17	1.8
2012	66	5,993	2,024	12	2.0
2013	62	5,903	1,993	14	1.9
2014	60	5,894	2,000	17	1.8
2015	62	5,932	1,998	17	1.9
2016	61	6,022	2,021	17	1.8
2017	61	6,026	2,007	16	1.8
2018	62	6,023	1,997	17	1.9
2019	63	5,953	1,977	14	1.9
2020	61	5,926	1,969	16	1.9

County: county value. Kansas: state value. County Rank: highest county value ranked #1. (\$000): thousands of dollars. Nonmetro Kansas: Kansas total less Metropolitan Areas as defined by the Office of Management and Budget (OMB; released 3/6/2020). Per 1000: For nonmoney amounts, Per 1000=(county value / county population for the same year as the data) x 1000. \$ Per capita=(county value / county population for the same year as the data). Value= . indicates missing or suppressed data or value not calculated.

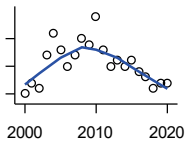
Business



ESTABLISHMENTS: REAL ESTATE, RENTAL, AND LEASING

U.S. Census Bureau, County Business Patterns. Beginning with the 2017 data, any tabulation with fewer than 3 establishments were omitted from the release. Data for these establishments are included in the broader total.

Year	County	State of Kansas	Non Metro Kansas	County Rank	Per 1000 or \$ Per Capita
2000	34	2,733	687	16	0.9
2001	36	2,849	724	15	1.0
2002	34	2,952	735	15	0.9
2003	37	3,007	727	15	1.0
2004	35	3,108	713	15	1.0
2005	33	3,203	727	16	0.9
2006	37	3,268	736	14	1.0
2007	38	3,286	721	14	1.1
2008	38	3,239	738	14	1.1
2009	39	3,122	723	13	1.2
2010	37	3,050	708	13	1.1
2011	38	3,002	692	14	1.1
2012	40	2,981	691	12	1.2
2013	40	3,046	717	14	1.2
2014	40	3,135	738	13	1.2
2015	41	3,179	744	13	1.2
2016	41	3,293	757	13	1.2
2017	43	3,389	.	13	1.3
2018	43	3,409	.	13	1.3
2019	43	3,464	.	13	1.3
2020	40	3,500	.	14	1.2



ESTABLISHMENTS: PROFESSIONAL, SCIENTIFIC, AND TECHNICAL SERVICES

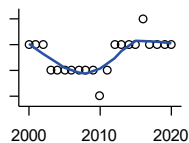
U.S. Census Bureau, County Business Patterns. Beginning with the 2017 data, any tabulation with fewer than 3 establishments were omitted from the release. Data for these establishments are included in the broader total.

Year	County	State of Kansas	Non Metro Kansas	County Rank	Per 1000 or \$ Per Capita
2000	40	6,424	1,690	22	1.1
2001	42	6,492	1,665	22	1.2
2002	41	6,719	1,704	21	1.1
2003	47	6,793	1,735	19	1.3
2004	51	7,025	1,730	17	1.4
2005	48	7,087	1,711	19	1.3
2006	45	7,231	1,736	21	1.3
2007	47	7,329	1,729	20	1.3
2008	50	7,133	1,671	17	1.4
2009	49	7,122	1,676	19	1.5
2010	54	7,172	1,680	16	1.6
2011	48	7,115	1,668	19	1.4
2012	45	7,122	1,681	22	1.3
2013	46	7,129	1,698	20	1.4
2014	45	7,206	1,682	23	1.4
2015	46	7,184	1,687	21	1.4
2016	44	7,146	1,659	20	1.3
2017	43	7,224	1,679	21	1.3
2018	41	7,138	1,655	21	1.2
2019	42	7,119	.	21	1.3
2020	42	7,117	.	22	1.3

County: county value. Kansas: state value. County Rank: highest county value ranked #1. (\$000): thousands of dollars. Nonmetro Kansas: Kansas total less Metropolitan Areas as defined by the Office of Management and Budget (OMB; released 3/6/2020). Per 1000: For nonmoney amounts, Per 1000=(county value / county population for the same year as the data) x 1000. \$ Per capita=(county value / county population for the same year as the data). Value= . indicates missing or suppressed data or value not calculated.

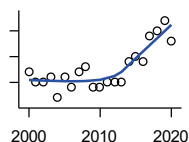
Business

ESTABLISHMENTS: MANAGEMENT OF COMPANIES AND ENTERPRISES



U.S. Census Bureau, County Business Patterns. Beginning with the 2017 data, any tabulation with fewer than 3 establishments were omitted from the release. Data for these establishments are included in the broader total.

Year	County	State of Kansas	Non Metro Kansas	County Rank	Per 1000 or \$ Per Capita
2000	4	622	145	20	0.1
2001	4	593	141	19	0.1
2002	4	597	152	18	0.1
2003	3	561	135	23	0.1
2004	3	569	133	25	0.1
2005	3	543	127	22	0.1
2006	3	542	131	26	0.1
2007	3	550	133	25	0.1
2008	3	553	139	27	0.1
2009	3	575	136	26	0.1
2010	2	567	131	40	0.1
2011	3	552	134	23	0.1
2012	4	593	135	19	0.1
2013	4	590	135	17	0.1
2014	4	603	136	21	0.1
2015	4	613	140	21	0.1
2016	5	655	171	16	0.1
2017	4	675	.	20	0.1
2018	4	647	.	20	0.1
2019	4	650	.	19	0.1
2020	4	627	.	19	0.1



ESTABLISHMENTS: ADMIN, SUPPORT, WASTE MGMT., AND REMEDIATION

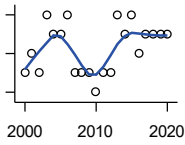
U.S. Census Bureau, County Business Patterns. Beginning with the 2017 data, any tabulation with fewer than 3 establishments were omitted from the release. Data for these establishments are included in the broader total.

Year	County	State of Kansas	Non Metro Kansas	County Rank	Per 1000 or \$ Per Capita
2000	37	3,307	871	13	1.0
2001	35	3,421	913	18	1.0
2002	35	3,232	882	17	1.0
2003	36	3,189	858	15	1.0
2004	32	3,301	891	19	0.9
2005	36	3,342	896	15	1.0
2006	34	3,395	886	16	0.9
2007	37	3,522	921	15	1.0
2008	38	3,587	932	17	1.1
2009	34	3,505	904	19	1.0
2010	34	3,494	897	16	1.0
2011	35	3,447	903	15	1.0
2012	35	3,462	891	16	1.0
2013	35	3,489	904	16	1.0
2014	39	3,569	933	14	1.2
2015	40	3,630	964	14	1.2
2016	39	3,705	987	14	1.2
2017	44	3,741	991	13	1.3
2018	45	3,740	983	13	1.4
2019	47	3,762	991	12	1.4
2020	43	3,807	989	14	1.3

County: county value. Kansas: state value. County Rank: highest county value ranked #1. (\$000): thousands of dollars. Nonmetro Kansas: Kansas total less Metropolitan Areas as defined by the Office of Management and Budget (OMB; released 3/6/2020). Per 1000: For nonmoney amounts, Per 1000=(county value / county population for the same year as the data) x 1000. \$ Per capita=(county value / county population for the same year as the data). Value= . indicates missing or suppressed data or value not calculated.

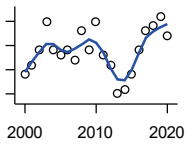
Business

ESTABLISHMENTS: EDUCATIONAL SERVICES



U.S. Census Bureau, County Business Patterns. Beginning with the 2017 data, any tabulation with fewer than 3 establishments were omitted from the release. Data for these establishments are included in the broader total.

Year	County	State of Kansas	Non Metro Kansas	County Rank	Per 1000 or \$ Per Capita
2000	7	604	155	14	0.2
2001	8	625	168	12	0.2
2002	7	666	165	17	0.2
2003	10	663	173	11	0.3
2004	9	690	173	13	0.2
2005	9	699	168	12	0.3
2006	10	698	175	13	0.3
2007	7	691	165	16	0.2
2008	7	692	158	14	0.2
2009	7	690	150	15	0.2
2010	6	700	149	17	0.2
2011	7	711	150	14	0.2
2012	7	724	145	14	0.2
2013	10	735	153	12	0.3
2014	9	722	152	12	0.3
2015	10	754	152	12	0.3
2016	8	728	150	13	0.2
2017	9	720	.	12	0.3
2018	9	744	.	12	0.3
2019	9	759	.	12	0.3
2020	9	736	.	12	0.3



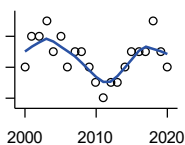
ESTABLISHMENTS: HEALTH CARE AND SOCIAL ASSISTANCE

U.S. Census Bureau, County Business Patterns. Beginning with the 2017 data, any tabulation with fewer than 3 establishments were omitted from the release. Data for these establishments are included in the broader total.

Year	County	State of Kansas	Non Metro Kansas	County Rank	Per 1000 or \$ Per Capita
2000	99	6,564	2,591	15	2.8
2001	101	6,636	2,590	15	2.8
2002	104	7,052	2,777	15	2.9
2003	110	7,129	2,792	14	3.1
2004	104	7,239	2,813	15	2.9
2005	103	7,412	2,855	15	2.9
2006	104	7,477	2,860	16	2.9
2007	102	7,661	2,864	16	2.8
2008	108	7,651	2,810	16	3.0
2009	104	7,696	2,787	16	3.1
2010	110	7,751	2,830	14	3.3
2011	103	7,804	2,817	17	3.1
2012	101	7,973	2,793	16	3.0
2013	95	7,877	2,729	18	2.8
2014	96	7,809	2,686	17	2.9
2015	99	8,103	2,692	16	3.0
2016	104	8,315	2,678	15	3.1
2017	108	8,136	2,646	14	3.2
2018	109	8,126	2,632	14	3.3
2019	111	8,184	2,587	14	3.3
2020	107	8,290	2,571	15	3.3

County: county value. Kansas: state value. County Rank: highest county value ranked #1. (\$000): thousands of dollars. Nonmetro Kansas: Kansas total less Metropolitan Areas as defined by the Office of Management and Budget (OMB; released 3/6/2020). Per 1000: For nonmoney amounts, Per 1000=(county value / county population for the same year as the data) x 1000. \$ Per capita=(county value / county population for the same year as the data). Value= . indicates missing or suppressed data or value not calculated.

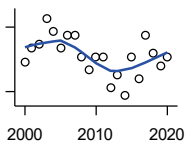
Business



ESTABLISHMENTS: ARTS, ENTERTAINMENT, AND RECREATION

U.S. Census Bureau, County Business Patterns. Beginning with the 2017 data, any tabulation with fewer than 3 establishments were omitted from the release. Data for these establishments are included in the broader total.

Year	County	State of Kansas	Non Metro Kansas	County Rank	Per 1000 or \$ Per Capita
2000	9	981	419	25	0.3
2001	11	1,009	433	20	0.3
2002	11	1,054	441	19	0.3
2003	12	1,045	443	19	0.3
2004	10	1,082	445	23	0.3
2005	11	1,109	446	21	0.3
2006	9	1,080	445	26	0.3
2007	10	1,092	444	21	0.3
2008	10	1,062	423	21	0.3
2009	9	1,063	421	24	0.3
2010	8	1,018	406	27	0.2
2011	7	997	387	28	0.2
2012	8	1,000	388	27	0.2
2013	8	1,009	377	27	0.2
2014	9	1,030	365	23	0.3
2015	10	1,031	357	21	0.3
2016	10	1,060	366	21	0.3
2017	10	1,096	.	22	0.3
2018	12	1,088	.	18	0.4
2019	10	1,087	.	22	0.3
2020	9	1,064	.	25	0.3



ESTABLISHMENTS: ACCOMMODATION AND FOOD SERVICES

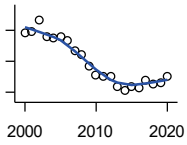
U.S. Census Bureau, County Business Patterns. Beginning with the 2017 data, any tabulation with fewer than 3 establishments were omitted from the release. Data for these establishments are included in the broader total.

Year	County	State of Kansas	Non Metro Kansas	County Rank	Per 1000 or \$ Per Capita
2000	97	5,536	2,213	10	2.7
2001	100	5,551	2,173	10	2.8
2002	101	5,610	2,174	10	2.8
2003	107	5,635	2,188	9	3.0
2004	104	5,681	2,160	10	2.9
2005	100	5,776	2,170	10	2.8
2006	103	5,745	2,132	9	2.9
2007	103	5,877	2,095	9	2.9
2008	98	5,843	2,052	10	2.8
2009	95	5,794	2,029	10	2.8
2010	98	5,898	2,046	11	2.9
2011	98	5,958	2,067	10	2.9
2012	91	5,951	2,046	12	2.7
2013	94	6,061	2,070	12	2.8
2014	89	5,985	2,024	12	2.7
2015	98	6,034	2,063	11	3.0
2016	93	6,126	2,094	12	2.8
2017	103	6,250	2,123	11	3.1
2018	99	6,256	2,128	11	3.0
2019	96	6,231	2,131	13	2.9
2020	98	6,206	2,131	12	3.0

County: county value. Kansas: state value. County Rank: highest county value ranked #1. (\$000): thousands of dollars. Nonmetro Kansas: Kansas total less Metropolitan Areas as defined by the Office of Management and Budget (OMB; released 3/6/2020). Per 1000: For nonmoney amounts, Per 1000=(county value / county population for the same year as the data) x 1000. \$ Per capita=(county value / county population for the same year as the data). Value= . indicates missing or suppressed data or value not calculated.

Business

ESTABLISHMENTS: OTHER SERVICES

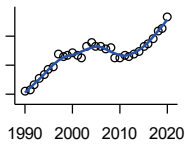


U.S. Census Bureau, County Business Patterns. Beginning with the 2017 data, any tabulation with fewer than 3 establishments were omitted from the release. Data for these establishments are included in the broader total.

Year	County	State of Kansas	Non Metro Kansas	County Rank	Per 1000 or \$ Per Capita
2000	118	8,423	3,636	16	3.3
2001	119	8,310	3,614	16	3.3
2002	127	8,552	3,658	14	3.5
2003	116	8,411	3,605	15	3.2
2004	115	8,343	3,597	16	3.2
2005	116	8,321	3,571	16	3.2
2006	113	8,225	3,490	17	3.2
2007	107	8,355	3,534	17	3.0
2008	104	8,104	3,406	17	2.9
2009	97	8,040	3,405	19	2.9
2010	91	7,998	3,379	19	2.7
2011	90	7,883	3,294	19	2.7
2012	90	7,913	3,303	19	2.7
2013	84	7,947	3,290	19	2.5
2014	81	7,943	3,285	21	2.4
2015	84	7,869	3,255	19	2.5
2016	83	7,839	3,204	19	2.5
2017	88	7,873	3,189	20	2.6
2018	85	7,853	3,176	20	2.6
2019	86	7,834	3,138	20	2.6
2020	90	7,787	3,073	19	2.8

County: county value. Kansas: state value. County Rank: highest county value ranked #1. (\$000): thousands of dollars. Nonmetro Kansas: Kansas total less Metropolitan Areas as defined by the Office of Management and Budget (OMB; released 3/6/2020). Per 1000: For nonmoney amounts, Per 1000=(county value / county population for the same year as the data) x 1000. \$ Per capita=(county value / county population for the same year as the data). Value= . indicates missing or suppressed data or value not calculated.

Business



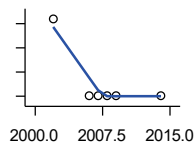
**TOTAL ANNUAL PAYROLL (\$000)
COUNTY BUSINESS PATTERNS**

U.S. Census Bureau, County Business Patterns. Beginning with the 2017 data, any tabulation with fewer than 3 establishments were omitted from the release. Data for these establishments are included in the broader total.

Year	County	State of Kansas	Non Metro Kansas	County Rank	Per 1000 or \$ Per Capita
1990	210,999	17,487,316	4,442,429	10	6,075.1
1991	216,205	18,162,326	4,612,616	10	6,222.1
1992	231,672	19,244,346	4,882,060	10	6,628.7
1993	254,281	20,087,190	5,182,780	9	7,168.5
1994	268,048	21,201,652	5,541,423	9	7,558.1
1995	284,209	22,825,920	5,875,310	9	7,967.3
1996	296,013	24,613,884	6,198,398	10	8,307.5
1997	336,365	26,787,098	6,599,061	9	9,471.6
1998	327,450	28,747,576	6,871,794	9	9,217.7
1999	332,243	30,600,434	7,121,961	11	9,287.5
2000	342,223	31,990,762	7,520,424	12	9,523.4
2001	334,992	33,303,992	7,598,165	12	9,292.7
2002	327,030	33,152,962	7,572,002	15	9,128.3
2003	364,244	34,040,944	7,726,561	11	10,155.1
2004	377,243	35,725,812	8,303,779	11	10,469.1
2005	366,215	36,646,064	8,586,986	14	10,190.8
2006	365,020	39,251,388	9,178,947	15	10,187.0
2007	354,984	42,022,753	.	17	9,855.7
2008	359,530	43,984,689	.	19	10,101.7
2009	327,010	42,146,866	.	19	9,681.4
2010	324,639	42,686,303	10,294,015	19	9,636.1
2011	334,983	43,733,944	.	21	9,954.3
2012	329,323	45,608,072	11,222,183	21	9,815.9
2013	337,436	47,715,601	11,446,751	21	10,079.0
2014	349,385	49,712,832	11,957,931	21	10,541.7
2015	366,808	51,259,676	11,975,718	19	11,070.8
2016	371,739	51,016,318	12,148,646	19	11,140.2
2017	391,479	52,754,605	12,448,592	19	11,771.3
2018	419,444	55,087,460	12,810,270	19	12,595.9
2019	428,140	57,272,387	13,123,288	19	12,897.7
2020	466,647	58,374,388	14,007,955	18	14,501.6

County: county value. Kansas: state value. County Rank: highest county value ranked #1. (\$000): thousands of dollars. Nonmetro Kansas: Kansas total less Metropolitan Areas as defined by the Office of Management and Budget (OMB; released 3/6/2020). Per 1000: For nonmoney amounts, Per 1000=(county value / county population for the same year as the data) x 1000. \$ Per capita=(county value / county population for the same year as the data). Value= . indicates missing or suppressed data or value not calculated.

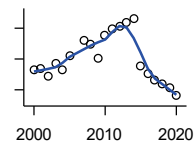
Business



**TOTAL ANNUAL PAYROLL(\$000):
FORESTRY, FISHING, HUNTING, AND
AG SUPPORT**

U.S. Census Bureau, County Business Patterns. Beginning with the 2017 data, any tabulation with fewer than 3 establishments were omitted from the release. Data for these establishments are included in the broader total.

Year	County	State of Kansas	Non Metro Kansas	County Rank	Per 1000 or \$ Per Capita
2000	.	13,551	.	.	.
2001
2002	64	16,528	.	.	1.8
2003	.	17,247	.	.	.
2004	.	17,552	.	.	.
2005	.	16,298	.	.	.
2006	0	17,908	.	.	0.0
2007	0	22,199	.	.	0.0
2008	0	21,359	.	.	0.0
2009	0	22,466	.	.	0.0
2010	.	22,753	.	.	.
2011	.	23,320	.	.	.
2012	.	27,492	.	.	.
2013	.	30,360	.	.	.
2014	0	34,862	.	.	0.0
2015	.	35,980	.	.	.



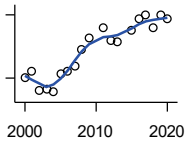
**TOTAL ANNUAL PAYROLL(\$000):
MINING**

U.S. Census Bureau, County Business Patterns. Beginning with the 2017 data, any tabulation with fewer than 3 establishments were omitted from the release. Data for these establishments are included in the broader total.

Year	County	State of Kansas	Non Metro Kansas	County Rank	Per 1000 or \$ Per Capita
2000	834	240,079	.	.	23.2
2001	840	273,838	.	.	23.3
2002	718	262,277	.	.	20.0
2003	926	290,652	.	.	25.8
2004	814	326,997	.	.	22.6
2005	1,054	381,069	.	.	29.3
2006	.	482,102	.	.	.
2007	1,308	551,751	.	.	36.3
2008	1,238	620,446	.	.	34.8
2009	1,002	465,070	.	.	29.7
2010	1,392	485,841	.	.	41.3
2011	1,486	541,536	.	.	44.2
2012	1,540	600,402	.	.	45.9
2013	1,586	599,788	.	.	47.4
2014	1,657	678,673	.	.	50.0
2015	882	552,658	.	.	26.6
2016	772	428,767	.	.	23.1
2017	653	379,883	.	.	19.6
2018	602	431,367	.	.	18.1
2019	531	349,270	.	.	16.0
2020	401	302,795	.	.	12.5

County: county value. Kansas: state value. County Rank: highest county value ranked #1. (\$000): thousands of dollars. Nonmetro Kansas: Kansas total less Metropolitan Areas as defined by the Office of Management and Budget (OMB; released 3/6/2020). Per 1000: For nonmoney amounts, Per 1000=(county value / county population for the same year as the data) x 1000. \$ Per capita=(county value / county population for the same year as the data). Value= . indicates missing or suppressed data or value not calculated.

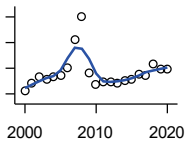
Business



**TOTAL ANNUAL PAYROLL(\$000):
UTILITIES**

U.S. Census Bureau, County Business Patterns. Beginning with the 2017 data, any tabulation with fewer than 3 establishments were omitted from the release. Data for these establishments are included in the broader total.

Year	County	State of Kansas	Non Metro Kansas	County Rank	Per 1000 or \$ Per Capita
2000	2,995	410,313	.	.	83.3
2001	3,300	452,057	.	.	91.5
2002	2,438	377,559	.	.	68.1
2003	2,449	378,157	.	.	68.3
2004	2,330	377,809	.	.	64.7
2005	3,222	429,864	.	.	89.7
2006	3,295	443,999	.	.	92.0
2007	3,565	480,068	.	.	99.0
2008	4,367	541,066	.	.	122.7
2009	4,899	563,373	.	.	145.0
2010	.	512,628	.	.	.
2011	5,363	653,229	.	.	159.4
2012	4,787	625,451	.	.	142.7
2013	4,740	625,347	.	.	141.6
2014	.	610,960	.	.	.
2015	5,266	668,559	.	.	158.9
2016	5,808	700,926	.	.	174.1
2017	5,972	705,199	.	.	179.6
2018	5,396	770,542	.	.	162.0
2019	5,984	733,878	.	.	180.3
2020	5,827	738,521	.	.	181.1



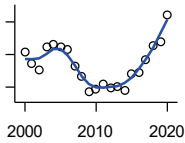
**TOTAL ANNUAL PAYROLL(\$000):
CONSTRUCTION**

U.S. Census Bureau, County Business Patterns. Beginning with the 2017 data, any tabulation with fewer than 3 establishments were omitted from the release. Data for these establishments are included in the broader total.

Year	County	State of Kansas	Non Metro Kansas	County Rank	Per 1000 or \$ Per Capita
2000	10,666	2,256,057	.	.	296.8
2001	12,042	2,320,652	.	.	334.0
2002	13,238	2,302,229	.	.	369.5
2003	12,738	2,282,021	.	.	355.1
2004	13,459	2,302,854	.	.	373.5
2005	13,666	2,465,977	.	.	380.3
2006	15,169	2,700,351	.	.	423.3
2007	20,559	2,772,168	.	.	570.8
2008	25,077	2,950,073	.	.	704.6
2009	14,072	2,709,864	.	.	416.6
2010	11,961	2,553,555	.	.	355.0
2011	12,368	2,550,355	.	.	367.5
2012	12,455	2,733,284	.	.	371.2
2013	12,188	2,866,801	.	.	364.0
2014	12,668	3,135,814	.	.	382.2
2015	12,822	3,270,952	.	.	387.0
2016	13,805	3,328,610	.	.	413.7
2017	13,583	3,568,505	.	.	408.4
2018	15,738	3,806,196	.	.	472.6
2019	14,788	3,879,912	.	.	445.5
2020	14,768	3,983,029	.	.	458.9

County: county value. Kansas: state value. County Rank: highest county value ranked #1. (\$000): thousands of dollars. Nonmetro Kansas: Kansas total less Metropolitan Areas as defined by the Office of Management and Budget (OMB; released 3/6/2020). Per 1000: For nonmoney amounts, Per 1000=(county value / county population for the same year as the data) x 1000. \$ Per capita=(county value / county population for the same year as the data). Value= . indicates missing or suppressed data or value not calculated.

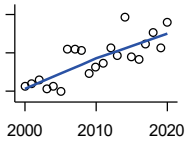
Business



**TOTAL ANNUAL PAYROLL(\$000):
MANUFACTURING**

U.S. Census Bureau, County Business Patterns. Beginning with the 2017 data, any tabulation with fewer than 3 establishments were omitted from the release. Data for these establishments are included in the broader total.

Year	County	State of Kansas	Non Metro Kansas	County Rank	Per 1000 or \$ Per Capita
2000	162,964	7,015,414	.	.	4,535.0
2001	148,439	7,301,706	.	.	4,117.7
2002	140,486	6,802,605	.	.	3,921.3
2003	169,464	6,691,611	.	.	4,724.7
2004	171,706	6,985,656	.	.	4,765.1
2005	169,612	7,221,614	.	.	4,719.8
2006	165,392	7,621,873	.	.	4,615.8
2007	145,879	7,873,359	.	.	4,050.2
2008	132,902	8,441,541	.	.	3,734.1
2009	113,745	7,477,838	.	.	3,367.5
2010	116,916	7,556,955	.	.	3,470.3
2011	123,164	7,747,934	.	.	3,659.9
2012	119,430	7,704,851	.	.	3,559.8
2013	121,280	8,365,542	.	.	3,622.6
2014	116,635	8,787,306	.	.	3,519.1
2015	135,713	9,052,105	.	.	4,096.0
2016	137,849	8,868,744	.	.	4,131.0
2017	153,668	9,075,793	.	.	4,620.6
2018	170,987	9,481,652	.	.	5,134.7
2019	176,123	10,171,575	.	.	5,305.7
2020	208,670	9,744,825	.	.	6,484.7



**TOTAL ANNUAL PAYROLL(\$000):
WHOLESALE TRADE**

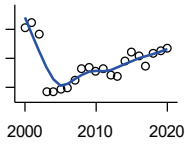
U.S. Census Bureau, County Business Patterns. Beginning with the 2017 data, any tabulation with fewer than 3 establishments were omitted from the release. Data for these establishments are included in the broader total.

Year	County	State of Kansas	Non Metro Kansas	County Rank	Per 1000 or \$ Per Capita
2000	14,474	2,332,755	.	.	402.8
2001	14,716	2,283,169	.	.	408.2
2002	15,217	2,107,653	.	.	424.7
2003	14,240	2,622,701	.	.	397.0
2004	14,508	2,663,196	.	.	402.6
2005	13,921	2,345,990	.	.	387.4
2006	18,406	2,592,211	.	.	513.7
2007	18,383	2,682,542	.	.	510.4
2008	18,194	3,078,655	.	.	511.2
2009	15,808	2,940,949	.	.	468.0
2010	16,510	3,097,628	.	.	490.1
2011	16,909	3,305,811	.	.	502.5
2012	18,456	3,339,997	.	.	550.1
2013	17,680	3,460,512	.	.	528.1
2014	21,784	3,712,075	.	.	657.3
2015	17,595	3,760,189	.	.	531.0
2016	17,349	3,738,207	.	.	519.9
2017	18,962	3,822,730	.	.	570.2
2018	20,166	3,814,353	.	.	605.6
2019	18,486	4,025,802	.	.	556.9
2020	21,253	4,224,666	.	.	660.5

County: county value. Kansas: state value. County Rank: highest county value ranked #1. (\$000): thousands of dollars. Nonmetro Kansas: Kansas total less Metropolitan Areas as defined by the Office of Management and Budget (OMB; released 3/6/2020). Per 1000: For nonmoney amounts, Per 1000=(county value / county population for the same year as the data) x 1000. \$ Per capita=(county value / county population for the same year as the data). Value= . indicates missing or suppressed data or value not calculated.

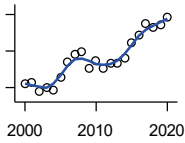
Business

**TOTAL ANNUAL PAYROLL(\$000):
RETAIL TRADE**



U.S. Census Bureau, County Business Patterns. Beginning with the 2017 data, any tabulation with fewer than 3 establishments were omitted from the release. Data for these establishments are included in the broader total.

Year	County	State of Kansas	Non Metro Kansas	County Rank	Per 1000 or \$ Per Capita
2000	45,293	2,747,001	.	.	1,260.4
2001	46,108	2,813,226	.	.	1,279.0
2002	44,076	2,854,231	.	.	1,230.3
2003	34,190	2,773,674	.	.	953.2
2004	34,158	2,847,826	.	.	947.9
2005	34,578	2,952,196	.	.	962.2
2006	34,846	3,126,495	.	.	972.5
2007	36,326	3,201,169	.	.	1,008.6
2008	38,238	3,261,054	.	.	1,074.4
2009	38,367	3,232,246	.	.	1,135.9
2010	37,725	3,321,838	.	.	1,119.8
2011	38,189	3,384,607	.	.	1,134.8
2012	37,072	3,409,755	.	.	1,105.0
2013	36,951	3,483,752	.	.	1,103.7
2014	39,532	3,617,933	.	.	1,192.8
2015	41,069	3,712,165	.	.	1,239.5
2016	40,438	3,826,889	.	.	1,211.8
2017	38,586	3,797,849	.	.	1,160.2
2018	40,914	3,818,988	.	.	1,228.6
2019	41,369	3,908,994	.	.	1,246.2
2020	41,822	3,984,443	.	.	1,299.7



**TOTAL ANNUAL PAYROLL(\$000):
TRANSPORTATION &
WAREHOUSING**

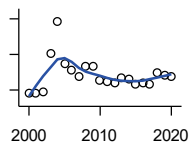
U.S. Census Bureau, County Business Patterns. Beginning with the 2017 data, any tabulation with fewer than 3 establishments were omitted from the release. Data for these establishments are included in the broader total.

Year	County	State of Kansas	Non Metro Kansas	County Rank	Per 1000 or \$ Per Capita
2000	8,480	1,044,835	.	.	236.0
2001	8,539	1,089,405	.	.	236.9
2002	7,525	1,094,636	.	.	210.0
2003	7,991	1,316,655	.	.	222.8
2004	7,714	1,439,800	.	.	214.1
2005	9,122	1,393,651	.	.	253.8
2006	10,827	1,528,551	.	.	302.2
2007	11,633	1,788,267	.	.	323.0
2008	11,949	1,722,697	.	.	335.7
2009	10,062	1,618,598	.	.	297.9
2010	10,910	1,735,761	.	.	323.8
2011	10,122	1,739,165	.	.	300.8
2012	10,603	1,984,976	.	.	316.0
2013	10,608	2,006,261	.	.	316.9
2014	11,251	2,097,377	.	.	339.5
2015	12,915	2,190,072	.	.	389.8
2016	13,690	2,202,859	.	.	410.3
2017	15,036	2,546,061	.	.	452.1
2018	14,578	2,663,188	.	.	437.8
2019	14,927	2,879,406	.	.	449.7
2020	15,671	2,962,461	.	.	487.0

County: county value. Kansas: state value. County Rank: highest county value ranked #1. (\$000): thousands of dollars. Nonmetro Kansas: Kansas total less Metropolitan Areas as defined by the Office of Management and Budget (OMB; released 3/6/2020). Per 1000: For nonmoney amounts, Per 1000=(county value / county population for the same year as the data) x 1000. \$ Per capita=(county value / county population for the same year as the data). Value= . indicates missing or suppressed data or value not calculated.

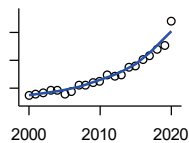
Business

**TOTAL ANNUAL PAYROLL(\$000):
INFORMATION**



U.S. Census Bureau, County Business Patterns. Beginning with the 2017 data, any tabulation with fewer than 3 establishments were omitted from the release. Data for these establishments are included in the broader total.

Year	County	State of Kansas	Non Metro Kansas	County Rank	Per 1000 or \$ Per Capita
2000	4,170	1,923,381	.	.	116.0
2001	4,125	2,218,610	.	.	114.4
2002	4,536	2,298,108	.	.	126.6
2003	15,275	2,378,673	.	.	425.9
2004	24,195	2,392,990	.	.	671.4
2005	12,364	2,395,081	.	.	344.1
2006	10,584	2,586,483	.	.	295.4
2007	8,705	2,594,138	.	.	241.7
2008	11,530	3,043,244	.	.	324.0
2009	11,563	3,045,570	.	.	342.3
2010	7,693	2,481,580	.	.	228.3
2011	7,514	2,513,805	.	.	223.3
2012	7,119	2,535,555	.	.	212.2
2013	8,436	2,805,017	.	.	252.0
2014	8,135	2,393,609	.	.	245.5
2015	6,569	2,406,323	.	.	198.3
2016	7,093	2,080,211	.	.	212.6
2017	6,764	2,090,021	.	.	203.4
2018	9,967	2,341,543	.	.	299.3
2019	9,328	2,133,891	.	.	281.0
2020	8,871	2,245,204	.	.	275.7



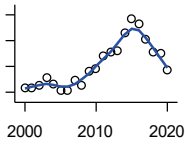
**TOTAL ANNUAL PAYROLL(\$000):
FINANCE & INSURANCE**

U.S. Census Bureau, County Business Patterns. Beginning with the 2017 data, any tabulation with fewer than 3 establishments were omitted from the release. Data for these establishments are included in the broader total.

Year	County	State of Kansas	Non Metro Kansas	County Rank	Per 1000 or \$ Per Capita
2000	8,614	2,083,565	.	.	239.7
2001	8,862	2,129,587	.	.	245.8
2002	9,111	2,414,120	.	.	254.3
2003	9,679	2,608,579	.	.	269.9
2004	9,717	2,676,910	.	.	269.7
2005	8,886	2,786,136	.	.	247.3
2006	9,470	2,928,931	.	.	264.3
2007	10,585	3,096,017	.	.	293.9
2008	10,645	3,322,977	.	.	299.1
2009	11,039	3,206,839	.	.	326.8
2010	11,334	3,211,300	.	.	336.4
2011	12,344	3,404,633	.	.	366.8
2012	12,073	3,611,165	.	.	359.9
2013	12,388	3,896,051	.	.	370.0
2014	13,735	4,044,315	.	.	414.4
2015	13,983	4,113,060	.	.	422.0
2016	15,187	4,180,740	.	.	455.1
2017	15,921	4,258,057	.	.	478.7
2018	17,075	4,682,552	.	.	512.8
2019	17,658	4,814,201	.	.	531.9
2020	21,971	5,288,529	.	.	682.8

County: county value. Kansas: state value. County Rank: highest county value ranked #1. (\$000): thousands of dollars. Nonmetro Kansas: Kansas total less Metropolitan Areas as defined by the Office of Management and Budget (OMB; released 3/6/2020). Per 1000: For nonmoney amounts, Per 1000=(county value / county population for the same year as the data) x 1000. \$ Per capita=(county value / county population for the same year as the data). Value= . indicates missing or suppressed data or value not calculated.

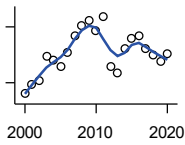
Business



**TOTAL ANNUAL PAYROLL(\$000):
REAL ESTATE, RENTAL, AND
LEASING**

U.S. Census Bureau, County Business Patterns. Beginning with the 2017 data, any tabulation with fewer than 3 establishments were omitted from the release. Data for these establishments are included in the broader total.

Year	County	State of Kansas	Non Metro Kansas	County Rank	Per 1000 or \$ Per Capita
2000	2,153	360,637	.	.	59.9
2001	2,152	397,371	.	.	59.7
2002	2,260	403,695	.	.	63.1
2003	2,556	437,786	.	.	71.3
2004	2,294	430,719	.	.	63.7
2005	2,071	465,149	.	.	57.6
2006	2,089	478,811	.	.	58.3
2007	2,464	452,969	.	.	68.4
2008	2,261	484,149	.	.	63.5
2009	2,828	450,884	.	.	83.7
2010	2,910	487,255	.	.	86.4
2011	3,412	535,120	.	.	101.4
2012	3,572	531,039	.	.	106.5
2013	3,631	538,796	.	.	108.5
2014	4,325	542,307	.	.	130.5
2015	4,860	595,030	.	.	146.7
2016	4,626	607,668	.	.	138.6
2017	4,055	590,373	.	.	121.9
2018	3,533	600,037	.	.	106.1
2019	3,525	622,881	.	.	106.2
2020	2,886	670,656	.	.	89.7



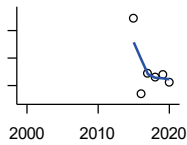
**TOTAL ANNUAL PAYROLL(\$000):
PROFESSIONAL, SCIENTIFIC, AND
TECHNICAL SERVICES**

U.S. Census Bureau, County Business Patterns. Beginning with the 2017 data, any tabulation with fewer than 3 establishments were omitted from the release. Data for these establishments are included in the broader total.

Year	County	State of Kansas	Non Metro Kansas	County Rank	Per 1000 or \$ Per Capita
2000	5,418	2,057,313	.	.	150.8
2001	5,873	2,152,937	.	.	162.9
2002	6,130	2,150,085	.	.	171.1
2003	7,389	2,052,712	.	.	206.0
2004	7,195	2,531,457	.	.	199.7
2005	6,881	2,418,500	.	.	191.5
2006	7,634	2,655,690	.	.	213.0
2007	8,535	2,901,544	.	.	237.0
2008	9,052	2,903,802	.	.	254.3
2009	9,329	3,071,611	.	.	276.2
2010	8,779	3,037,182	.	.	260.6
2011	9,556	3,132,082	.	.	284.0
2012	6,858	3,455,548	.	.	204.4
2013	6,539	3,777,729	.	.	195.3
2014	7,805	3,981,580	.	.	235.5
2015	8,392	4,039,074	.	.	253.3
2016	8,504	4,125,507	.	.	254.8
2017	7,861	4,158,858	.	.	236.4
2018	7,497	4,314,317	.	.	225.1
2019	7,158	4,646,644	.	.	215.6
2020	7,527	4,927,611	.	.	233.9

County: county value. Kansas: state value. County Rank: highest county value ranked #1. (\$000): thousands of dollars. Nonmetro Kansas: Kansas total less Metropolitan Areas as defined by the Office of Management and Budget (OMB; released 3/6/2020). Per 1000: For nonmoney amounts, Per 1000=(county value / county population for the same year as the data) x 1000. \$ Per capita=(county value / county population for the same year as the data). Value= . indicates missing or suppressed data or value not calculated.

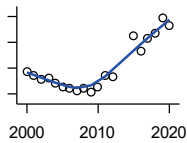
Business



**TOTAL ANNUAL PAYROLL(\$000):
MANAGEMENT OF COMPANIES AND
ENTERPRISES**

U.S. Census Bureau, County Business Patterns. Beginning with the 2017 data, any tabulation with fewer than 3 establishments were omitted from the release. Data for these establishments are included in the broader total.

Year	County	State of Kansas	Non Metro Kansas	County Rank	Per 1000 or \$ Per Capita
2000	.	1,362,735	.	.	.
2001	.	1,279,253	.	.	.
2002	.	1,311,368	.	.	.
2003	.	1,352,119	.	.	.
2004	.	1,378,891	.	.	.
2005	.	1,510,876	.	.	.
2006	.	1,626,320	.	.	.
2007	.	2,233,654	.	.	.
2008	.	1,848,656	.	.	.
2009	.	1,601,158	.	.	.
2010	.	2,003,048	.	.	.
2011	.	1,677,619	.	.	.
2012	.	1,834,430	.	.	.
2013	.	1,938,100	.	.	.
2014	.	2,117,232	.	.	.
2015	1,091	2,451,126	.	.	32.9
2016	537	2,167,620	.	.	16.1
2017	692	2,224,567	.	.	20.8
2018	660	2,470,094	.	.	19.8
2019	678	2,757,300	.	.	20.4
2020	623	2,578,116	.	.	19.4



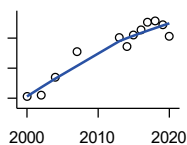
**TOTAL ANNUAL PAYROLL(\$000):
ADMIN, SUPPORT, WASTE MGMT.,
AND REMEDIATION**

U.S. Census Bureau, County Business Patterns. Beginning with the 2017 data, any tabulation with fewer than 3 establishments were omitted from the release. Data for these establishments are included in the broader total.

Year	County	State of Kansas	Non Metro Kansas	County Rank	Per 1000 or \$ Per Capita
2000	7,484	1,388,712	.	.	208.3
2001	6,822	1,416,480	.	.	189.2
2002	6,311	1,378,905	.	.	176.2
2003	6,474	1,387,061	.	.	180.5
2004	5,612	1,544,442	.	.	155.7
2005	5,127	1,694,687	.	.	142.7
2006	4,807	1,800,846	.	.	134.2
2007	4,509	1,978,025	.	.	125.2
2008	4,953	2,096,864	.	.	139.2
2009	4,359	1,832,540	.	.	129.1
2010	5,072	2,117,325	.	.	150.5
2011	6,774	2,114,970	.	.	201.3
2012	6,674	2,230,250	.	.	198.9
2013	.	2,214,320	.	.	.
2014	.	2,444,170	.	.	.
2015	12,972	2,577,592	.	.	391.5
2016	10,702	2,760,706	.	.	320.7
2017	12,670	3,026,927	.	.	381.0
2018	13,409	3,007,347	.	.	402.7
2019	15,706	3,075,485	.	.	473.1
2020	14,507	3,250,046	.	.	450.8

County: county value. Kansas: state value. County Rank: highest county value ranked #1. (\$000): thousands of dollars. Nonmetro Kansas: Kansas total less Metropolitan Areas as defined by the Office of Management and Budget (OMB; released 3/6/2020). Per 1000: For nonmoney amounts, Per 1000=(county value / county population for the same year as the data) x 1000. \$ Per capita=(county value / county population for the same year as the data). Value= . indicates missing or suppressed data or value not calculated.

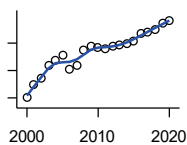
Business



**TOTAL ANNUAL PAYROLL(\$000):
EDUCATIONAL SERVICES**

U.S. Census Bureau, County Business Patterns. Beginning with the 2017 data, any tabulation with fewer than 3 establishments were omitted from the release. Data for these establishments are included in the broader total.

Year	County	State of Kansas	Non Metro Kansas	County Rank	Per 1000 or \$ Per Capita
2000	408	299,843	.	.	11.4
2001	.	320,606	.	.	.
2002	420	353,531	.	.	11.7
2003	.	350,814	.	.	.
2004	539	361,644	.	.	15.0
2005	.	375,781	.	.	.
2006	.	400,565	.	.	.
2007	709	414,233	.	.	19.7
2008	.	463,210	.	.	.
2009	.	468,856	.	.	.
2010	.	487,670	.	.	.
2011	.	504,964	.	.	.
2012	.	508,448	.	.	.
2013	805	553,995	.	.	24.0
2014	740	612,073	.	.	22.3
2015	821	579,794	.	.	24.8
2016	858	571,582	.	.	25.7
2017	902	597,320	.	.	27.1
2018	915	618,864	.	.	27.5
2019	892	654,965	.	.	26.9
2020	809	652,468	.	.	25.1



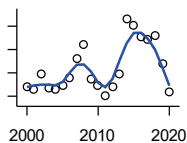
**TOTAL ANNUAL PAYROLL(\$000):
HEALTH CARE AND SOCIAL ASSISTANCE**

U.S. Census Bureau, County Business Patterns. Beginning with the 2017 data, any tabulation with fewer than 3 establishments were omitted from the release. Data for these establishments are included in the broader total.

Year	County	State of Kansas	Non Metro Kansas	County Rank	Per 1000 or \$ Per Capita
2000	45,234	4,120,595	.	.	1,258.8
2001	50,067	4,445,027	.	.	1,388.9
2002	52,025	4,705,220	.	.	1,452.2
2003	56,729	4,939,323	.	.	1,581.6
2004	58,773	5,232,394	.	.	1,631.0
2005	60,385	5,487,089	.	.	1,680.3
2006	55,491	5,814,218	.	.	1,548.6
2007	56,954	6,186,471	.	.	1,581.3
2008	62,666	6,490,627	.	.	1,760.7
2009	63,791	6,749,962	.	.	1,888.6
2010	63,259	6,871,727	.	.	1,877.7
2011	63,114	7,129,655	.	.	1,875.5
2012	63,874	7,614,853	.	.	1,903.8
2013	64,220	7,541,515	.	.	1,918.2
2014	64,917	7,733,621	.	.	1,958.7
2015	65,875	7,969,650	.	.	1,988.2
2016	68,581	8,018,706	.	.	2,055.2
2017	69,002	8,384,998	.	.	2,074.8
2018	70,049	8,637,619	.	.	2,103.6
2019	72,477	8,854,414	.	.	2,183.4
2020	73,097	9,309,269	.	.	2,271.6

County: county value. Kansas: state value. County Rank: highest county value ranked #1. (\$000): thousands of dollars. Nonmetro Kansas: Kansas total less Metropolitan Areas as defined by the Office of Management and Budget (OMB; released 3/6/2020). Per 1000: For nonmoney amounts, Per 1000=(county value / county population for the same year as the data) x 1000. \$ Per capita=(county value / county population for the same year as the data). Value= . indicates missing or suppressed data or value not calculated.

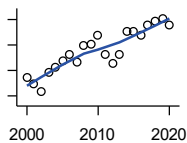
Business



**TOTAL ANNUAL PAYROLL(\$000):
ARTS, ENTERTAINMENT, AND
RECREATION**

U.S. Census Bureau, County Business Patterns. Beginning with the 2017 data, any tabulation with fewer than 3 establishments were omitted from the release. Data for these establishments are included in the broader total.

Year	County	State of Kansas	Non Metro Kansas	County Rank	Per 1000 or \$ Per Capita
2000	876	195,784	.	.	24.4
2001	855	203,511	.	.	23.7
2002	987	206,204	.	.	27.5
2003	872	185,049	.	.	24.3
2004	856	190,742	.	.	23.8
2005	897	196,594	.	.	25.0
2006	955	201,049	.	.	26.7
2007	1,122	220,435	.	.	31.2
2008	1,241	236,986	.	.	34.9
2009	949	237,116	.	.	28.1
2010	887	233,285	.	.	26.3
2011	802	234,351	.	.	23.8
2012	879	254,169	.	.	26.2
2013	992	278,474	.	.	29.6
2014	1,463	289,103	.	.	44.1
2015	1,408	300,253	.	.	42.5
2016	1,307	312,902	.	.	39.2
2017	1,284	323,153	.	.	38.6
2018	1,319	325,454	.	.	39.6
2019	1,075	335,362	.	.	32.4
2020	833	298,119	.	.	25.9



**TOTAL ANNUAL PAYROLL(\$000):
ACCOMMODATION AND FOOD
SERVICES**

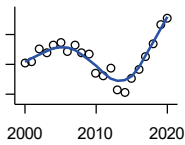
U.S. Census Bureau, County Business Patterns. Beginning with the 2017 data, any tabulation with fewer than 3 establishments were omitted from the release. Data for these establishments are included in the broader total.

Year	County	State of Kansas	Non Metro Kansas	County Rank	Per 1000 or \$ Per Capita
2000	13,437	926,831	.	.	373.9
2001	12,978	960,196	.	.	360.0
2002	12,385	930,510	.	.	345.7
2003	13,852	992,313	.	.	386.2
2004	14,290	1,046,901	.	.	396.6
2005	14,737	1,101,854	.	.	410.1
2006	15,211	1,185,280	.	.	424.5
2007	14,652	1,431,100	.	.	406.8
2008	15,940	1,271,594	.	.	447.9
2009	16,065	1,283,065	.	.	475.6
2010	16,747	1,296,556	.	.	497.1
2011	15,264	1,364,281	.	.	453.6
2012	14,556	1,388,337	.	.	433.9
2013	15,266	1,476,335	.	.	456.0
2014	17,039	1,572,021	.	.	514.1
2015	17,020	1,640,144	.	.	513.7
2016	16,774	1,709,193	.	.	502.7
2017	17,568	1,824,791	.	.	528.2
2018	17,848	1,880,364	.	.	536.0
2019	18,078	1,958,603	.	.	544.6
2020	17,519	1,745,238	.	.	544.4

County: county value. Kansas: state value. County Rank: highest county value ranked #1. (\$000): thousands of dollars. Nonmetro Kansas: Kansas total less Metropolitan Areas as defined by the Office of Management and Budget (OMB; released 3/6/2020). Per 1000: For nonmoney amounts, Per 1000=(county value / county population for the same year as the data) x 1000. \$ Per capita=(county value / county population for the same year as the data). Value= . indicates missing or suppressed data or value not calculated.

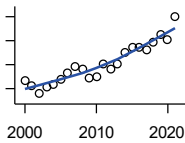
Business

**TOTAL ANNUAL PAYROLL(\$000):
OTHER SERVICES**



U.S. Census Bureau, County Business Patterns. Beginning with the 2017 data, any tabulation with fewer than 3 establishments were omitted from the release. Data for these establishments are included in the broader total.

Year	County	State of Kansas	Non Metro Kansas	County Rank	Per 1000 or \$ Per Capita
2000	8,059	965,540	.	.	224.3
2001	8,077	996,716	.	.	224.1
2002	8,535	1,007,464	.	.	238.2
2003	8,385	979,466	.	.	233.8
2004	8,654	970,383	.	.	240.2
2005	8,728	1,005,537	.	.	242.9
2006	8,438	1,055,932	.	.	235.5
2007	8,654	1,141,551	.	.	240.3
2008	8,402	1,184,016	.	.	236.1
2009	8,329	1,167,154	.	.	246.6
2010	7,685	1,170,201	.	.	228.1
2011	7,625	1,173,775	.	.	226.6
2012	7,855	1,217,210	.	.	234.1
2013	7,131	1,254,933	.	.	213.0
2014	7,069	1,305,563	.	.	213.3
2015	7,527	1,341,075	.	.	227.2
2016	7,819	1,351,375	.	.	234.3
2017	8,266	1,344,179	.	.	248.5
2018	8,672	1,382,801	.	.	260.4
2019	9,312	1,427,711	.	.	280.5
2020	9,551	1,420,859	.	.	296.8



**NOMINAL TAXABLE RETAIL SALES
(million\$)**

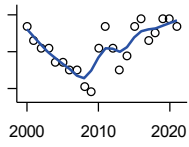
Kansas Department of Revenue

Year	County	State of Kansas	Non Metro Kansas	County Rank	Per 1000 or \$ Per Capita
2000	365.7	30,119.0	8,831.7	14	10.2
2001	356.2	30,202.2	8,700.3	14	9.9
2002	339.0	29,380.8	8,241.5	14	9.5
2003	354.4	30,694.0	8,710.6	14	9.9
2004	358.1	31,922.6	9,062.5	14	9.9
2005	368.4	32,924.2	9,386.6	14	10.3
2006	382.0	34,937.6	10,042.1	16	10.7
2007	395.4	36,180.1	10,553.2	16	11.0
2008	390.2	37,559.5	11,126.9	18	11.0
2009	371.4	35,211.8	10,351.5	18	11.0
2010	373.6	35,655.7	10,606.1	19	11.1
2011	402.3	37,257.0	11,153.5	17	12.0
2012	390.9	38,988.8	11,749.1	18	11.6
2013	401.0	40,009.0	11,993.8	19	12.0
2014	424.1	41,299.0	12,365.4	18	12.8
2015	436.6	41,635.8	11,747.6	17	13.2
2016	435.9	42,040.2	11,523.5	16	13.1
2017	430.6	41,940.1	11,449.9	16	12.9
2018	447.5	42,732.3	11,643.9	16	13.4
2019	461.8	43,732.5	12,062.7	17	13.9
2020	452.2	43,689.9	12,331.7	16	14.1
2021	500.4	48,532.8	13,413.0	16	15.6

County: county value. Kansas: state value. County Rank: highest county value ranked #1. (\$000): thousands of dollars. Nonmetro Kansas: Kansas total less Metropolitan Areas as defined by the Office of Management and Budget (OMB; released 3/6/2020). Per 1000: For nonmoney amounts, Per 1000=(county value / county population for the same year as the data) x 1000. \$ Per capita=(county value / county population for the same year as the data). Value= . indicates missing or suppressed data or value not calculated.

Business

RETAIL PULL FACTOR



Kansas Direct Program, Kansas State University Cooperative Extension Service (1980-1999); Kansas Department of Revenue (2000-)

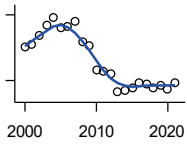
Year	County	State of Kansas	Non Metro Kansas	County Rank	Per 1000 or \$ Per Capita
2000	0.91	.	.	18	.
2001	0.89	.	.	18	.
2002	0.88	.	.	19	.
2003	0.88	.	.	20	.
2004	0.86	.	.	25	.
2005	0.86	.	.	26	.
2006	0.85	.	.	30	.
2007	0.85	.	.	33	.
2008	0.83	.	.	39	.
2009	0.82	.	.	41	.
2010	0.88	.	.	33	.
2011	0.91	.	.	33	.
2012	0.88	.	.	41	.
2013	0.85	.	.	39	.
2014	0.87	.	.	41	.
2015	0.91	.	.	33	.
2016	0.92	.	.	27	.
2017	0.89	.	.	26	.
2018	0.90	.	.	25	.
2019	0.92	.	.	28	.
2020	0.92	.	.	24	.
2021	0.91	.	.	25	.

County: county value. Kansas: state value. County Rank: highest county value ranked #1. (\$000): thousands of dollars. Nonmetro Kansas: Kansas total less Metropolitan Areas as defined by the Office of Management and Budget (OMB; released 3/6/2020). Per 1000: For nonmoney amounts, Per 1000=(county value / county population for the same year as the data) x 1000. \$ Per capita=(county value / county population for the same year as the data). Value= . indicates missing or suppressed data or value not calculated.

Employment

CIVILIAN LABOR FORCE (BLS-Place of Residence; 1990-)

U.S. Department of Labor, Bureau of Labor Statistics (BLS)



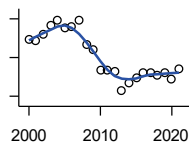
Year	County	State of Kansas	Non Metro Kansas	County Rank	Per 1000 or \$ Per Capita
2000	18,515	1,402,606	482,229	13	515.2
2001	18,656	1,398,521	475,280	12	517.5
2002	19,050	1,419,335	482,428	12	531.7
2003	19,530	1,441,065	490,161	11	544.5
2004	19,882	1,458,910	494,509	11	551.8
2005	19,416	1,458,767	490,047	11	540.3
2006	19,441	1,467,553	498,594	11	542.6
2007	19,721	1,485,414	497,048	12	547.5
2008	18,794	1,493,365	504,522	13	528.1
2009	18,575	1,512,572	516,311	15	549.9
2010	17,482	1,500,463	492,594	17	518.9
2011	17,415	1,498,000	492,563	17	517.5
2012	17,293	1,490,808	489,349	17	515.4
2013	16,466	1,489,395	485,484	20	491.8
2014	16,539	1,494,203	481,813	20	499.0
2015	16,682	1,493,782	477,546	19	503.5
2016	16,897	1,491,961	468,258	18	506.4
2017	16,864	1,488,346	461,063	18	507.1
2018	16,662	1,488,027	456,866	18	500.4
2019	16,797	1,497,517	455,858	18	506.0
2020	16,610	1,493,706	452,935	19	516.2
2021	16,921	1,495,665	453,398	17	528.8

County: county value. Kansas: state value. County Rank: highest county value ranked #1. (\$000): thousands of dollars. Nonmetro Kansas: Kansas total less Metropolitan Areas as defined by the Office of Management and Budget (OMB; released 3/6/2020). Per 1000: For nonmoney amounts, Per 1000=(county value / county population for the same year as the data) x 1000. \$ Per capita=(county value / county population for the same year as the data). Value= . indicates missing or suppressed data or value not calculated.

Employment

EMPLOYED (BLS-Place of Residence; 1990-)

U.S. Department of Labor, Bureau of Labor Statistics (BLS)



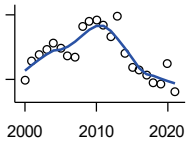
Year	County	State of Kansas	Non Metro Kansas	County Rank	Per 1000 or \$ Per Capita
2000	17,918	1,349,841	464,962	13	498.6
2001	17,889	1,338,775	455,154	12	496.2
2002	18,221	1,347,163	461,241	11	508.6
2003	18,656	1,361,115	467,622	11	520.1
2004	18,950	1,378,355	470,330	11	525.9
2005	18,522	1,384,654	467,722	11	515.4
2006	18,625	1,402,950	479,174	11	519.8
2007	18,910	1,422,109	477,983	12	525.0
2008	17,698	1,425,022	484,056	13	497.3
2009	17,431	1,408,142	485,797	14	516.1
2010	16,331	1,396,172	461,635	16	484.7
2011	16,316	1,402,198	463,723	17	484.8
2012	16,291	1,405,638	463,376	17	485.6
2013	15,283	1,410,470	461,405	20	456.5
2014	15,698	1,426,892	461,797	20	473.6
2015	15,966	1,431,533	457,899	19	481.9
2016	16,206	1,431,920	449,356	18	485.7
2017	16,228	1,434,516	445,003	18	488.0
2018	16,088	1,439,329	442,716	19	483.1
2019	16,235	1,450,705	442,108	18	489.1
2020	15,861	1,408,965	433,229	18	492.9
2021	16,440	1,447,323	441,159	17	513.8

County: county value. Kansas: state value. County Rank: highest county value ranked #1. (\$000): thousands of dollars. Nonmetro Kansas: Kansas total less Metropolitan Areas as defined by the Office of Management and Budget (OMB; released 3/6/2020). Per 1000: For nonmoney amounts, Per 1000=(county value / county population for the same year as the data) x 1000. \$ Per capita=(county value / county population for the same year as the data). Value= . indicates missing or suppressed data or value not calculated.

Employment

UNEMPLOYED (BLS-Place of Residence; 1990-)

U.S. Department of Labor, Bureau of Labor Statistics (BLS)

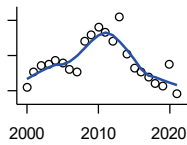


Year	County	State of Kansas	Non Metro Kansas	County Rank	Per 1000 or \$ Per Capita
2000	597	52,765	17,267	16	16.6
2001	767	59,746	20,126	14	21.3
2002	829	72,172	21,187	15	23.1
2003	874	79,950	22,539	16	24.4
2004	932	80,555	24,179	14	25.9
2005	894	74,113	22,325	14	24.9
2006	816	64,603	19,420	12	22.8
2007	811	63,305	19,065	13	22.5
2008	1,096	68,343	20,466	11	30.8
2009	1,144	104,430	30,514	17	33.9
2010	1,151	104,291	30,959	18	34.2
2011	1,099	95,802	28,840	17	32.7
2012	1,002	85,170	25,973	17	29.9
2013	1,183	78,925	24,079	12	35.3
2014	841	67,311	20,016	14	25.4
2015	716	62,249	19,647	16	21.6
2016	691	60,041	18,902	16	20.7
2017	636	53,830	16,060	16	19.1
2018	574	48,698	14,150	14	17.2
2019	562	46,812	13,750	14	16.9
2020	749	84,741	19,706	18	23.3
2021	481	48,342	12,239	17	15.0

County: county value. Kansas: state value. County Rank: highest county value ranked #1. (\$000): thousands of dollars. Nonmetro Kansas: Kansas total less Metropolitan Areas as defined by the Office of Management and Budget (OMB; released 3/6/2020). Per 1000: For nonmoney amounts, Per 1000=(county value / county population for the same year as the data) x 1000. \$ Per capita=(county value / county population for the same year as the data). Value= . indicates missing or suppressed data or value not calculated.

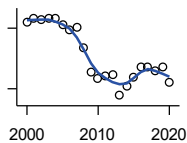
Employment

UNEMPLOYMENT RATE (BLS-Place of Residence; 1990-)



U.S. Department of Labor, Bureau of Labor Statistics (BLS)

Year	County	State of Kansas	Non Metro Kansas	County Rank	Per 1000 or \$ Per Capita
2000	3.2	3.8	3.6	55	.
2001	4.1	4.3	4.2	35	.
2002	4.4	5.1	4.4	37	.
2003	4.5	5.5	4.6	42	.
2004	4.7	5.5	4.9	46	.
2005	4.6	5.1	4.6	38	.
2006	4.2	4.4	3.9	31	.
2007	4.1	4.3	3.8	34	.
2008	5.8	4.6	4.1	5	.
2009	6.2	6.9	5.9	36	.
2010	6.6	7.0	6.3	34	.
2011	6.3	6.4	5.9	33	.
2012	5.8	5.7	5.3	32	.
2013	7.2	5.3	5.0	8	.
2014	5.1	4.5	4.2	19	.
2015	4.3	4.2	4.1	36	.
2016	4.1	4.0	4.0	40	.
2017	3.8	3.6	3.5	29	.
2018	3.4	3.3	3.1	30	.
2019	3.3	3.1	3.0	28	.
2020	4.5	5.7	4.4	40	.
2021	2.8	3.2	2.7	41	.



BEA EMPLOYMENT: TOTAL (Place of Work)

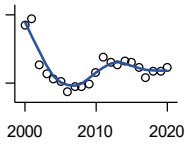
U.S. Bureau of Economic Analysis, Regional Economic Information System (REIS)

Year	County	State of Kansas	Non Metro Kansas	County Rank	Per 1000 or \$ Per Capita
2000	23,327	1,760,312	604,361	13	649.1
2001	23,492	1,767,601	592,672	13	651.7
2002	23,416	1,746,077	585,387	13	653.6
2003	23,465	1,733,694	577,860	12	654.2
2004	23,465	1,750,876	578,750	12	651.2
2005	23,147	1,765,650	577,562	13	644.1
2006	22,892	1,795,507	583,041	13	638.9
2007	23,058	1,844,355	591,924	13	640.2
2008	22,044	1,858,069	594,368	16	619.4
2009	20,838	1,813,184	580,972	17	616.9
2010	20,490	1,801,873	579,758	18	608.2
2011	20,614	1,819,044	583,725	18	612.6
2012	20,691	1,841,393	591,748	18	616.7
2013	19,660	1,869,054	597,236	21	587.2
2014	20,110	1,895,859	601,291	21	606.8
2015	20,551	1,910,954	598,589	18	620.3
2016	21,079	1,916,152	592,580	17	631.7
2017	21,086	1,914,179	584,337	17	634.0
2018	20,870	1,926,242	580,213	17	626.7
2019	21,079	1,925,204	574,496	17	635.0
2020	20,331	1,851,247	556,671	17	631.8

County: county value. Kansas: state value. County Rank: highest county value ranked #1. (\$000): thousands of dollars. Nonmetro Kansas: Kansas total less Metropolitan Areas as defined by the Office of Management and Budget (OMB; released 3/6/2020). Per 1000: For nonmoney amounts, Per 1000=(county value / county population for the same year as the data) x 1000. \$ Per capita=(county value / county population for the same year as the data). Value= . indicates missing or suppressed data or value not calculated.

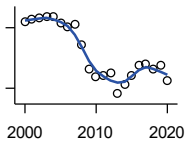
Employment

BEA EMPLOYMENT: FARM



U.S. Bureau of Economic Analysis,
Regional Economic Information System
(REIS)

Year	County	State of Kansas	Non Metro Kansas	County Rank	Per 1000 or \$ Per Capita
2000	1,027	77,477	59,088	17	28.6
2001	1,040	78,177	59,647	17	28.8
2002	939	70,532	53,893	19	26.2
2003	920	68,516	52,099	18	25.6
2004	909	67,586	51,246	18	25.2
2005	904	66,829	50,386	19	25.2
2006	880	64,910	48,728	19	24.6
2007	892	65,639	49,037	19	24.8
2008	893	63,820	47,682	19	25.1
2009	897	62,798	46,960	19	26.6
2010	923	63,882	47,984	19	27.4
2011	958	65,761	49,707	17	28.5
2012	947	63,753	48,167	15	28.2
2013	941	62,739	47,255	15	28.1
2014	949	64,308	48,722	15	28.6
2015	946	64,416	48,927	14	28.6
2016	934	63,840	48,539	14	28.0
2017	912	61,876	46,936	15	27.4
2018	927	63,233	48,069	14	27.8
2019	926	63,300	48,167	14	27.9
2020	934	64,281	49,038	15	29.0



BEA EMPLOYMENT: NON-FARM

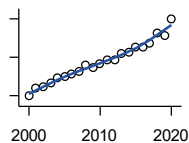
U.S. Bureau of Economic Analysis,
Regional Economic Information System
(REIS)

Year	County	State of Kansas	Non Metro Kansas	County Rank	Per 1000 or \$ Per Capita
2000	22,300	1,682,835	545,273	13	620.6
2001	22,452	1,689,424	533,025	13	622.8
2002	22,477	1,675,545	531,494	13	627.4
2003	22,545	1,665,178	525,761	12	628.6
2004	22,556	1,683,290	527,504	12	626.0
2005	22,243	1,698,821	527,176	13	619.0
2006	22,012	1,730,597	534,313	13	614.3
2007	22,166	1,778,716	542,887	13	615.4
2008	21,151	1,794,249	546,686	16	594.3
2009	19,941	1,750,386	534,012	17	590.4
2010	19,567	1,737,991	531,774	17	580.8
2011	19,656	1,753,283	534,018	18	584.1
2012	19,744	1,777,640	543,581	18	588.5
2013	18,719	1,806,315	549,981	21	559.1
2014	19,161	1,831,551	552,569	21	578.1
2015	19,605	1,846,538	549,662	19	591.7
2016	20,145	1,852,312	544,041	17	603.7
2017	20,174	1,852,303	537,401	17	606.6
2018	19,943	1,863,009	532,144	17	598.9
2019	20,153	1,861,904	526,329	17	607.1
2020	19,397	1,786,966	507,633	17	602.8

County: county value. Kansas: state value. County Rank: highest county value ranked #1. (\$000): thousands of dollars. Nonmetro Kansas: Kansas total less Metropolitan Areas as defined by the Office of Management and Budget (OMB; released 3/6/2020). Per 1000: For nonmoney amounts, Per 1000=(county value / county population for the same year as the data) x 1000. \$ Per capita=(county value / county population for the same year as the data). Value= . indicates missing or suppressed data or value not calculated.

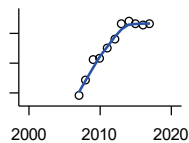
Employment

AVERAGE WAGE PER JOB (\$)



U.S. Bureau of Economic Analysis,
Regional Economic Information System
(REIS)

Year	County	State of Kansas	Non Metro Kansas	County Rank	Per 1000 or \$ Per Capita
2000	24,849	31,854	24,396	38	.
2001	27,030	32,859	26,379	34	.
2002	27,184	33,707	26,331	28	.
2003	28,250	35,078	28,911	45	.
2004	29,533	35,932	29,747	37	.
2005	29,951	37,467	31,646	54	.
2006	30,519	40,038	31,993	47	.
2007	31,327	41,500	33,484	63	.
2008	32,816	44,197	36,256	71	.
2009	32,230	43,860	35,739	66	.
2010	33,463	45,370	38,631	77	.
2011	34,300	48,280	42,324	82	.
2012	34,304	50,549	42,015	87	.
2013	35,817	52,629	46,073	90	.
2014	36,379	51,959	43,562	75	.
2015	37,611	52,250	42,320	62	.
2016	37,679	51,664	41,964	59	.
2017	38,674	53,007	42,137	59	.
2018	41,144	54,790	44,514	57	.
2019	40,642	56,956	45,336	66	.
2020	44,947	60,597	49,183	65	.



BEA EMPLOYMENT: FORESTRY, FISHING, HUNTING, AND AG SUPPORT

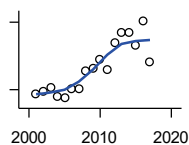
U.S. Bureau of Economic Analysis,
Regional Economic Information System
(REIS)

Year	County	State of Kansas	Non Metro Kansas	County Rank	Per 1000 or \$ Per Capita
2001	.	7,059	.	.	.
2002	.	8,045	.	.	.
2003	.	7,313	.	.	.
2004	.	7,623	.	.	.
2005	.	7,962	.	.	.
2006	.	7,748	.	.	.
2007	56	8,228	.	22	.
2008	78	8,646	.	17	.
2009	104	8,982	.	14	.
2010	107	9,251	.	13	.
2011	121	9,410	.	10	.
2012	133	9,691	.	10	.
2013	153	10,014	.	10	.
2014	156	10,708	.	13	.
2015	153	10,020	.	10	.
2016	152	10,383	.	11	.
2017	153	10,693	.	11	.

County: county value. Kansas: state value. County Rank: highest county value ranked #1. (\$000): thousands of dollars. Nonmetro Kansas: Kansas total less Metropolitan Areas as defined by the Office of Management and Budget (OMB; released 3/6/2020). Per 1000: For nonmoney amounts, Per 1000=(county value / county population for the same year as the data) x 1000. \$ Per capita=(county value / county population for the same year as the data). Value= . indicates missing or suppressed data or value not calculated.

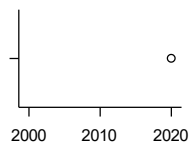
Employment

BEA EMPLOYMENT: MINING



U.S. Bureau of Economic Analysis,
Regional Economic Information System
(REIS)

Year	County	State of Kansas	Non Metro Kansas	County Rank	Per 1000 or \$ Per Capita
2001	91	19,592	.	36	.
2002	95	17,635	.	34	.
2003	104	19,869	.	34	.
2004	86	18,466	.	35	.
2005	81	19,489	.	34	.
2006	103	22,403	.	35	.
2007	103	24,043	.	35	.
2008	143	31,467	.	33	.
2009	148	29,941	.	32	.
2010	167	36,124	.	34	.
2011	146	31,658	.	32	.
2012	204	42,405	.	33	.
2013	226	46,585	.	34	.
2014	227	45,526	.	36	.
2015	198	46,460	.	39	.
2016	253	48,555	.	36	.
2017	163	40,710	.	37	.



BEA EMPLOYMENT: UTILITIES

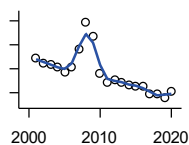
U.S. Bureau of Economic Analysis,
Regional Economic Information System
(REIS)

Year	County	State of Kansas	Non Metro Kansas	County Rank	Per 1000 or \$ Per Capita
2001	.	7,608	.	.	.
2002	.	7,087	.	.	.
2003	.	7,253	.	.	.
2004	.	7,356	.	.	.
2005	.	7,447	.	.	.
2006	.	7,478	.	.	.
2007	.	7,584	.	.	.
2008	.	7,855	.	.	.
2009	.	7,941	.	.	.
2010	.	8,028	.	.	.
2011	.	8,213	.	.	.
2012	.	8,155	.	.	.
2013	.	7,949	.	.	.
2014	.	7,985	.	.	.
2015	.	7,040	.	.	.
2016	.	7,133	.	.	.
2020	71	6,573	.	16	.

County: county value. Kansas: state value. County Rank: highest county value ranked #1. (\$000): thousands of dollars. Nonmetro Kansas: Kansas total less Metropolitan Areas as defined by the Office of Management and Budget (OMB; released 3/6/2020). Per 1000: For nonmoney amounts, Per 1000=(county value / county population for the same year as the data) x 1000. \$ Per capita=(county value / county population for the same year as the data). Value= . indicates missing or suppressed data or value not calculated.

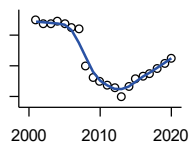
Employment

**BEA EMPLOYMENT:
CONSTRUCTION**



U.S. Bureau of Economic Analysis,
Regional Economic Information System
(REIS)

Year	County	State of Kansas	Non Metro Kansas	County Rank	Per 1000 or \$ Per Capita
2001	885	92,647	27,972	17	.
2002	846	90,370	.	21	.
2003	840	91,725	26,681	21	.
2004	819	93,271	.	21	.
2005	775	94,836	.	22	.
2006	814	97,449	.	22	.
2007	961	99,119	29,179	20	.
2008	1,186	97,741	.	16	.
2009	1,076	90,165	28,077	16	.
2010	762	84,708	26,402	23	.
2011	688	83,332	25,999	23	.
2012	712	85,966	.	24	.
2013	691	88,094	.	25	.
2014	660	91,143	.	24	.
2015	659	91,458	27,583	25	.
2016	656	93,539	27,151	25	.
2017	591	92,046	25,579	25	.
2018	585	92,985	25,530	25	.
2019	554	94,858	25,701	25	.
2020	607	94,186	26,085	26	.



**BEA EMPLOYMENT:
MANUFACTURING**

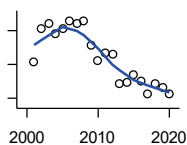
U.S. Bureau of Economic Analysis,
Regional Economic Information System
(REIS)

Year	County	State of Kansas	Non Metro Kansas	County Rank	Per 1000 or \$ Per Capita
2001	4,987	199,980	73,170	7	.
2002	4,857	188,905	70,691	7	.
2003	4,862	179,013	68,418	7	.
2004	4,970	181,738	69,669	7	.
2005	4,851	185,459	71,072	7	.
2006	4,751	188,047	71,704	7	.
2007	4,692	192,930	73,488	7	.
2008	3,478	193,116	72,235	15	.
2009	3,103	173,854	64,961	14	.
2010	2,987	166,000	62,884	14	.
2011	2,858	167,302	64,361	14	.
2012	2,796	169,308	65,944	14	.
2013	2,477	170,113	67,251	15	.
2014	2,806	169,307	68,299	14	.
2015	3,066	168,324	66,978	14	.
2016	3,150	167,723	65,796	13	.
2017	3,256	168,438	66,795	13	.
2018	3,410	171,778	68,181	12	.
2019	3,586	173,605	67,879	12	.
2020	3,764	165,228	65,658	11	.

County: county value. Kansas: state value. County Rank: highest county value ranked #1. (\$000): thousands of dollars. Nonmetro Kansas: Kansas total less Metropolitan Areas as defined by the Office of Management and Budget (OMB; released 3/6/2020). Per 1000: For nonmoney amounts, Per 1000=(county value / county population for the same year as the data) x 1000. \$ Per capita=(county value / county population for the same year as the data). Value= . indicates missing or suppressed data or value not calculated.

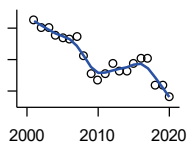
Employment

BEA EMPLOYMENT: WHOLESALE TRADE



U.S. Bureau of Economic Analysis, Regional Economic Information System (REIS)

Year	County	State of Kansas	Non Metro Kansas	County Rank	Per 1000 or \$ Per Capita
2001	606	65,698	.	13	.
2002	706	65,408	.	10	.
2003	723	63,504	.	9	.
2004	691	64,434	.	9	.
2005	707	64,587	.	7	.
2006	728	64,743	.	7	.
2007	720	65,993	.	10	.
2008	729	67,693	.	10	.
2009	658	65,954	.	11	.
2010	611	64,376	.	12	.
2011	634	64,712	.	12	.
2012	631	63,973	.	11	.
2013	543	64,999	.	10	.
2014	547	69,295	.	12	.
2015	568	68,444	.	12	.
2016	550	64,843	.	11	.
2017	513	65,014	.	13	.
2018	542	64,745	.	12	.
2019	531	63,324	.	12	.
2020	511	60,844	.	12	.



BEA EMPLOYMENT: RETAIL TRADE

U.S. Bureau of Economic Analysis, Regional Economic Information System (REIS)

Year	County	State of Kansas	Non Metro Kansas	County Rank	Per 1000 or \$ Per Capita
2001	2,553	198,069	.	12	.
2002	2,500	196,112	.	13	.
2003	2,506	194,545	64,173	13	.
2004	2,458	192,957	63,265	13	.
2005	2,437	191,656	62,506	13	.
2006	2,431	190,391	62,082	13	.
2007	2,450	190,643	61,716	13	.
2008	2,325	185,907	59,783	13	.
2009	2,209	181,262	58,714	13	.
2010	2,169	177,858	57,470	14	.
2011	2,208	180,548	57,734	14	.
2012	2,276	180,596	57,349	14	.
2013	2,228	183,245	57,556	14	.
2014	2,223	185,899	57,855	14	.
2015	2,272	188,421	58,516	14	.
2016	2,307	188,505	57,864	14	.
2017	2,310	186,633	56,715	14	.
2018	2,138	183,323	.	13	.
2019	2,139	177,240	53,427	14	.
2020	2,061	171,777	52,563	14	.

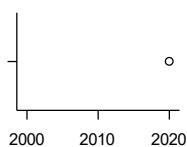
County: county value. Kansas: state value. County Rank: highest county value ranked #1. (\$000): thousands of dollars. Nonmetro Kansas: Kansas total less Metropolitan Areas as defined by the Office of Management and Budget (OMB; released 3/6/2020). Per 1000: For nonmoney amounts, Per 1000=(county value / county population for the same year as the data) x 1000. \$ Per capita=(county value / county population for the same year as the data). Value= . indicates missing or suppressed data or value not calculated.

Employment

**BEA EMPLOYMENT:
TRANSPORTATION AND
WAREHOUSING**

U.S. Bureau of Economic Analysis,
Regional Economic Information System
(REIS)

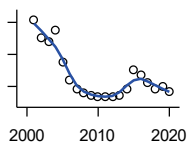
Year	County	State of Kansas	Non Metro Kansas	County Rank	Per 1000 or \$ Per Capita
2001	.	56,302	.	.	.
2002	.	55,319	.	.	.
2003	.	55,509	.	.	.
2004	.	55,479	.	.	.
2005	.	56,287	.	.	.
2006	.	57,506	.	.	.
2007	.	59,277	.	.	.
2008	.	58,725	.	.	.
2009	.	56,238	.	.	.
2010	.	55,179	.	.	.
2011	.	57,449	.	.	.
2012	.	59,756	.	.	.
2013	.	59,780	.	.	.
2014	.	60,565	.	.	.
2015	.	63,256	.	.	.
2016	.	65,705	.	.	.
2020	500	80,543	.	20	.



BEA EMPLOYMENT: INFORMATION

U.S. Bureau of Economic Analysis,
Regional Economic Information System
(REIS)

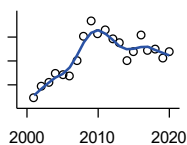
Year	County	State of Kansas	Non Metro Kansas	County Rank	Per 1000 or \$ Per Capita
2001	716	54,895	.	7	.
2002	600	50,728	.	7	.
2003	583	48,328	6,860	7	.
2004	653	45,617	.	7	.
2005	454	43,840	.	8	.
2006	339	43,925	.	8	.
2007	284	45,115	.	10	.
2008	263	42,958	.	11	.
2009	240	38,677	.	15	.
2010	237	33,432	.	12	.
2011	235	32,160	.	12	.
2012	233	31,829	.	13	.
2013	240	31,737	.	13	.
2014	281	32,316	.	12	.
2015	400	25,282	.	9	.
2016	372	24,998	.	10	.
2017	320	24,004	.	10	.
2018	284	23,165	.	11	.
2019	301	22,078	.	11	.
2020	268	20,810	.	10	.



County: county value. Kansas: state value. County Rank: highest county value ranked #1. (\$000): thousands of dollars. Nonmetro Kansas: Kansas total less Metropolitan Areas as defined by the Office of Management and Budget (OMB; released 3/6/2020). Per 1000: For nonmoney amounts, Per 1000=(county value / county population for the same year as the data) x 1000. \$ Per capita=(county value / county population for the same year as the data). Value= . indicates missing or suppressed data or value not calculated.

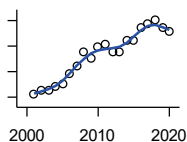
Employment

BEA EMPLOYMENT: FINANCE AND INSURANCE



U.S. Bureau of Economic Analysis, Regional Economic Information System (REIS)

Year	County	State of Kansas	Non Metro Kansas	County Rank	Per 1000 or \$ Per Capita
2001	472	76,118	.	21	.
2002	496	78,206	.	22	.
2003	505	78,441	.	21	.
2004	525	78,350	.	20	.
2005	521	78,952	.	19	.
2006	518	80,900	.	19	.
2007	551	86,094	.	19	.
2008	602	89,590	.	19	.
2009	634	93,573	.	19	.
2010	608	92,428	.	19	.
2011	614	99,495	.	19	.
2012	596	98,640	.	20	.
2013	587	99,998	.	22	.
2014	550	98,209	.	22	.
2015	570	100,534	.	20	.
2016	604	102,699	.	21	.
2017	573	101,563	.	22	.
2018	576	102,816	.	22	.
2019	555	100,276	.	22	.
2020	570	101,626	.	21	.



BEA EMPLOYMENT: REAL ESTATE, RENTAL, AND LEASING

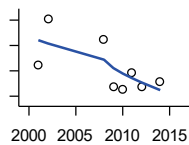
U.S. Bureau of Economic Analysis, Regional Economic Information System (REIS)

Year	County	State of Kansas	Non Metro Kansas	County Rank	Per 1000 or \$ Per Capita
2001	413	45,237	.	15	.
2002	427	44,970	.	14	.
2003	425	47,095	.	15	.
2004	441	50,181	.	16	.
2005	454	53,335	.	16	.
2006	490	55,342	.	16	.
2007	524	57,694	.	16	.
2008	575	57,933	.	14	.
2009	551	57,132	.	14	.
2010	597	59,578	.	14	.
2011	605	61,821	.	15	.
2012	579	60,432	.	15	.
2013	579	62,134	.	16	.
2014	623	64,705	.	15	.
2015	623	66,604	.	16	.
2016	672	68,395	.	14	.
2017	687	70,304	.	13	.
2018	703	72,631	.	13	.
2019	671	69,119	.	13	.
2020	659	68,452	.	13	.

County: county value. Kansas: state value. County Rank: highest county value ranked #1. (\$000): thousands of dollars. Nonmetro Kansas: Kansas total less Metropolitan Areas as defined by the Office of Management and Budget (OMB; released 3/6/2020). Per 1000: For nonmoney amounts, Per 1000=(county value / county population for the same year as the data) x 1000. \$ Per capita=(county value / county population for the same year as the data). Value= . indicates missing or suppressed data or value not calculated.

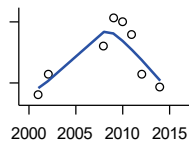
Employment

BEA EMPLOYMENT: PROFESSIONAL AND TECHNICAL SERVICES



U.S. Bureau of Economic Analysis,
Regional Economic Information System
(REIS)

Year	County	State of Kansas	Non Metro Kansas	County Rank	Per 1000 or \$ Per Capita
2001	485	81,396	.	16	.
2002	521	80,684	.	14	.
2003	.	80,311	.	.	.
2004	.	85,550	.	.	.
2005	.	85,003	.	.	.
2006	.	87,381	.	.	.
2007	.	92,717	.	.	.
2008	505	95,362	.	17	.
2009	467	93,232	.	20	.
2010	465	93,037	.	20	.
2011	479	93,237	.	19	.
2012	467	95,360	.	20	.
2013	.	100,795	.	.	.
2014	471	102,210	.	22	.
2015	.	105,625	.	.	.
2016	.	108,059	.	.	.



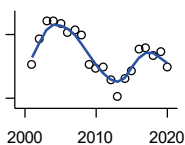
BEA EMPLOYMENT: MANAGEMENT OF COMPANIES AND ENTERPRISES

U.S. Bureau of Economic Analysis,
Regional Economic Information System
(REIS)

Year	County	State of Kansas	Non Metro Kansas	County Rank	Per 1000 or \$ Per Capita
2001	22	13,832	.	21	.
2002	27	12,576	.	17	.
2003	.	11,135	.	.	.
2004	.	10,614	.	.	.
2005	.	11,811	.	.	.
2006	.	13,061	.	.	.
2007	.	13,398	.	.	.
2008	34	15,234	.	23	.
2009	41	14,849	.	18	.
2010	40	16,579	.	19	.
2011	37	15,343	.	20	.
2012	27	15,075	.	23	.
2013	.	16,667	.	.	.
2014	24	20,441	.	24	.
2015	.	29,604	.	.	.
2016	.	27,824	.	.	.

County: county value. Kansas: state value. County Rank: highest county value ranked #1. (\$000): thousands of dollars. Nonmetro Kansas: Kansas total less Metropolitan Areas as defined by the Office of Management and Budget (OMB; released 3/6/2020). Per 1000: For nonmoney amounts, Per 1000=(county value / county population for the same year as the data) x 1000. \$ Per capita=(county value / county population for the same year as the data). Value= . indicates missing or suppressed data or value not calculated.

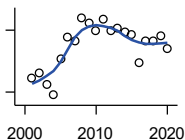
Employment



**BEA EMPLOYMENT:
ADMINISTRATIVE AND WASTE
SERVICES**

U.S. Bureau of Economic Analysis,
Regional Economic Information System
(REIS)

Year	County	State of Kansas	Non Metro Kansas	County Rank	Per 1000 or \$ Per Capita
2001	923	81,573	.	12	.
2002	1,163	82,992	.	8	.
2003	1,329	81,298	.	7	.
2004	1,323	85,721	.	8	.
2005	1,305	89,933	.	9	.
2006	1,218	93,688	.	11	.
2007	1,239	98,865	.	13	.
2008	1,195	97,440	.	13	.
2009	913	92,455	.	14	.
2010	883	93,675	.	13	.
2011	889	97,969	.	14	.
2012	777	100,490	.	15	.
2013	621	104,680	.	17	.
2014	789	107,218	18,836	13	.
2015	860	103,436	18,767	14	.
2016	1,060	103,233	18,428	12	.
2017	1,073	101,532	18,198	12	.
2018	1,007	102,062	.	12	.
2019	1,038	100,897	.	12	.
2020	895	95,361	.	15	.



**BEA EMPLOYMENT: EDUCATIONAL
SERVICES**

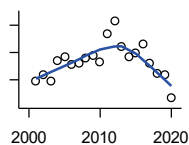
U.S. Bureau of Economic Analysis,
Regional Economic Information System
(REIS)

Year	County	State of Kansas	Non Metro Kansas	County Rank	Per 1000 or \$ Per Capita
2001	133	21,169	.	14	.
2002	139	22,173	.	14	.
2003	127	22,651	.	14	.
2004	117	21,601	.	18	.
2005	152	22,177	.	12	.
2006	173	22,438	.	12	.
2007	169	23,647	.	12	.
2008	192	24,653	.	13	.
2009	187	25,120	.	14	.
2010	180	26,071	.	15	.
2011	191	26,080	.	12	.
2012	179	26,625	.	13	.
2013	182	27,508	.	15	.
2014	178	28,708	.	15	.
2015	176	28,794	.	15	.
2016	148	27,996	.	18	.
2017	170	28,459	.	15	.
2018	169	28,560	.	15	.
2019	174	29,586	.	17	.
2020	162	27,508	.	16	.

County: county value. Kansas: state value. County Rank: highest county value ranked #1. (\$000): thousands of dollars. Nonmetro Kansas: Kansas total less Metropolitan Areas as defined by the Office of Management and Budget (OMB; released 3/6/2020). Per 1000: For nonmoney amounts, Per 1000=(county value / county population for the same year as the data) x 1000. \$ Per capita=(county value / county population for the same year as the data). Value= . indicates missing or suppressed data or value not calculated.

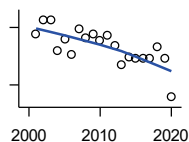
Employment

BEA EMPLOYMENT: HEALTH CARE AND SOCIAL ASSISTANCE



U.S. Bureau of Economic Analysis, Regional Economic Information System (REIS)

Year	County	State of Kansas	Non Metro Kansas	County Rank	Per 1000 or \$ Per Capita
2001	1,589	165,415	.	13	.
2002	1,642	168,198	.	14	.
2003	1,590	169,654	.	14	.
2004	1,736	172,796	.	16	.
2005	1,773	173,949	.	13	.
2006	1,714	176,919	.	12	.
2007	1,723	182,160	.	13	.
2008	1,756	186,051	.	14	.
2009	1,782	188,499	.	13	.
2010	1,733	188,383	.	15	.
2011	1,937	190,736	.	16	.
2012	2,032	192,991	.	17	.
2013	1,841	193,687	.	16	.
2014	1,773	194,632	.	18	.
2015	1,798	199,724	.	16	.
2016	1,866	201,830	.	17	.
2017	1,726	201,910	.	16	.
2018	1,647	204,011	.	16	.
2019	1,635	206,646	.	17	.
2020	1,465	204,942	.	17	.



BEA EMPLOYMENT: ARTS, ENTERTAINMENT, AND RECREATION

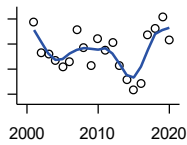
U.S. Bureau of Economic Analysis, Regional Economic Information System (REIS)

Year	County	State of Kansas	Non Metro Kansas	County Rank	Per 1000 or \$ Per Capita
2001	242	25,012	.	12	.
2002	260	25,668	.	12	.
2003	260	24,116	.	12	.
2004	219	25,355	.	17	.
2005	234	26,067	.	15	.
2006	215	26,505	.	17	.
2007	249	27,489	.	13	.
2008	237	27,501	.	15	.
2009	241	27,203	.	15	.
2010	233	27,479	.	15	.
2011	240	28,487	.	16	.
2012	226	30,729	.	18	.
2013	202	31,068	.	18	.
2014	212	32,154	.	19	.
2015	209	31,169	.	19	.
2016	210	32,373	.	19	.
2017	210	33,213	.	19	.
2018	224	33,837	.	18	.
2019	209	33,082	.	20	.
2020	159	26,644	.	21	.

County: county value. Kansas: state value. County Rank: highest county value ranked #1. (\$000): thousands of dollars. Nonmetro Kansas: Kansas total less Metropolitan Areas as defined by the Office of Management and Budget (OMB; released 3/6/2020). Per 1000: For nonmoney amounts, Per 1000=(county value / county population for the same year as the data) x 1000. \$ Per capita=(county value / county population for the same year as the data). Value= . indicates missing or suppressed data or value not calculated.

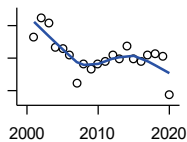
Employment

BEA EMPLOYMENT: GOVERNMENT AND GOVERNMENT ENTERPRISES



U.S. Bureau of Economic Analysis, Regional Economic Information System (REIS)

Year	County	State of Kansas	Non Metro Kansas	County Rank	Per 1000 or \$ Per Capita
2001	4,975	282,293	102,993	11	.
2002	4,726	281,427	103,581	12	.
2003	4,722	282,459	103,389	12	.
2004	4,670	283,877	103,946	12	.
2005	4,614	282,798	103,194	13	.
2006	4,657	288,372	104,103	13	.
2007	4,915	294,413	104,598	12	.
2008	4,772	298,580	104,718	13	.
2009	4,631	300,422	104,081	13	.
2010	4,841	303,875	103,382	12	.
2011	4,755	299,952	101,535	12	.
2012	4,812	298,068	101,180	12	.
2013	4,631	297,689	101,232	12	.
2014	4,519	296,956	100,634	13	.
2015	4,439	295,799	99,719	13	.
2016	4,483	291,536	98,520	13	.
2017	4,871	295,748	99,542	12	.
2018	4,921	298,105	99,499	12	.
2019	5,017	302,017	100,227	12	.
2020	4,836	292,583	96,477	12	.



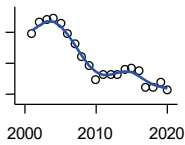
BEA EMPLOYMENT: ACCOMMODATION AND FOOD SERVICES

U.S. Bureau of Economic Analysis, Regional Economic Information System (REIS)

Year	County	State of Kansas	Non Metro Kansas	County Rank	Per 1000 or \$ Per Capita
2001	1,631	103,353	.	11	.
2002	1,748	103,692	.	10	.
2003	1,717	105,138	.	10	.
2004	1,563	106,694	.	12	.
2005	1,559	107,303	.	11	.
2006	1,522	109,888	.	11	.
2007	1,344	110,863	.	15	.
2008	1,466	111,092	.	13	.
2009	1,429	109,353	.	14	.
2010	1,461	108,628	.	13	.
2011	1,478	110,514	.	13	.
2012	1,522	112,574	.	13	.
2013	1,495	114,102	.	14	.
2014	1,571	115,768	.	14	.
2015	1,495	118,503	.	14	.
2016	1,483	119,764	.	15	.
2017	1,517	121,181	.	14	.
2018	1,529	121,900	.	14	.
2019	1,514	122,819	.	14	.
2020	1,272	106,561	.	15	.

County: county value. Kansas: state value. County Rank: highest county value ranked #1. (\$000): thousands of dollars. Nonmetro Kansas: Kansas total less Metropolitan Areas as defined by the Office of Management and Budget (OMB; released 3/6/2020). Per 1000: For nonmoney amounts, Per 1000=(county value / county population for the same year as the data) x 1000. \$ Per capita=(county value / county population for the same year as the data). Value= . indicates missing or suppressed data or value not calculated.

Employment

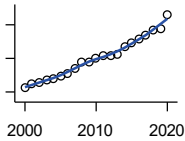


BEA EMPLOYMENT: OTHER SERVICES, EXCEPT PUBLIC ADMINISTRATION

U.S. Bureau of Economic Analysis, Regional Economic Information System (REIS)

Year	County	State of Kansas	Non Metro Kansas	County Rank	Per 1000 or \$ Per Capita
2001	1,095	92,176	.	15	.
2002	1,134	95,350	.	14	.
2003	1,142	95,821	32,629	16	.
2004	1,147	95,610	.	15	.
2005	1,130	95,930	32,555	15	.
2006	1,094	96,413	.	15	.
2007	1,061	98,444	.	19	.
2008	1,022	96,705	.	17	.
2009	992	95,534	.	18	.
2010	947	93,302	.	19	.
2011	963	94,865	.	16	.
2012	964	94,977	.	17	.
2013	962	95,471	.	17	.
2014	979	97,806	.	19	.
2015	983	98,041	.	19	.
2016	974	97,219	.	18	.
2017	922	96,568	.	18	.
2018	923	98,645	.	18	.
2019	939	98,638	.	17	.
2020	912	92,245	.	17	.

Income



BEA PER CAPITA PERSONAL INCOME (\$)

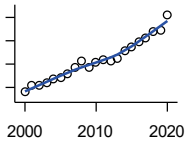
U.S. Bureau of Economic Analysis, Regional Economic Information System (REIS)

Year	County	State of Kansas	Non Metro Kansas	County Rank	Per 1000 or \$ Per Capita
2000	21,102	28,253	23,116	89	.
2001	22,596	29,112	24,576	91	.
2002	22,705	29,248	24,314	84	.
2003	23,517	30,074	26,017	95	.
2004	24,142	30,843	26,583	89	.
2005	24,639	32,545	28,356	99	.
2006	25,473	35,690	29,782	99	.
2007	27,092	38,057	32,034	103	.
2008	28,823	41,257	35,211	103	.
2009	28,867	39,431	33,876	102	.
2010	30,088	39,960	35,795	102	.
2011	30,686	43,015	39,041	105	.
2012	30,737	45,294	39,660	105	.
2013	31,217	46,174	41,747	105	.
2014	33,503	47,013	41,042	101	.
2015	34,561	47,332	40,638	100	.
2016	35,676	47,326	40,797	95	.
2017	36,769	48,756	41,314	95	.
2018	38,347	50,811	43,283	96	.
2019	38,840	52,820	44,491	101	.
2020	43,035	55,677	48,415	99	.

County: county value. Kansas: state value. County Rank: highest county value ranked #1. (\$000): thousands of dollars. Nonmetro Kansas: Kansas total less Metropolitan Areas as defined by the Office of Management and Budget (OMB; released 3/6/2020). Per 1000: For nonmoney amounts, Per 1000=(county value / county population for the same year as the data) x 1000. \$ Per capita=(county value / county population for the same year as the data). Value= . indicates missing or suppressed data or value not calculated.

Income

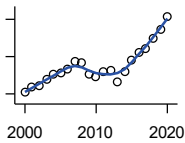
**SOURCES OF PERSONAL INCOME:
TOTAL PERSONAL INCOME (\$000)**



U.S. Bureau of Economic Analysis,
Regional Economic Information System
(REIS)

Year	County	State of Kansas	Non Metro Kansas	County Rank	Per 1000 or \$ Per Capita
2000	758,984	76,105,125	22,273,838	17	21,121.0
2001	814,554	78,664,651	23,411,174	15	22,595.7
2002	813,429	79,365,190	23,000,314	15	22,705.0
2003	843,518	81,890,340	24,494,191	16	23,517.3
2004	869,928	84,335,940	24,924,467	18	24,141.9
2005	885,437	89,346,228	26,452,291	19	24,639.3
2006	912,747	98,610,188	27,661,596	20	25,473.0
2007	975,812	105,943,199	29,715,946	20	27,092.3
2008	1,025,849	115,852,478	32,614,565	21	28,823.3
2009	975,054	111,697,350	31,394,702	22	28,867.4
2010	1,012,386	114,239,828	33,291,419	22	30,050.0
2011	1,032,605	123,558,772	36,221,488	23	30,684.8
2012	1,031,027	130,948,127	36,696,759	23	30,731.1
2013	1,045,079	133,979,908	38,513,959	23	31,216.0
2014	1,110,564	136,878,718	37,680,598	22	33,508.3
2015	1,145,425	138,336,768	37,081,851	23	34,570.5
2016	1,190,391	138,533,890	36,930,885	22	35,673.6
2017	1,222,411	142,729,689	37,104,963	21	36,756.5
2018	1,277,028	148,955,739	38,589,364	21	38,349.2
2019	1,290,411	154,961,001	39,424,148	21	38,873.7
2020	1,422,089	163,462,179	42,618,591	20	44,193.1

**SOURCES OF PERSONAL INCOME:
WAGES AND SALARIES (\$000)**



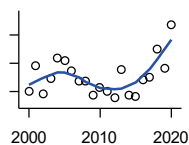
U.S. Bureau of Economic Analysis,
Regional Economic Information System
(REIS)

Year	County	State of Kansas	Non Metro Kansas	County Rank	Per 1000 or \$ Per Capita
2000	455,065	41,766,878	10,254,250	12	12,663.6
2001	468,538	43,269,734	10,518,206	12	12,997.3
2002	473,143	43,875,159	10,696,876	12	13,206.7
2003	487,637	44,488,560	10,894,971	12	13,595.3
2004	504,353	46,702,068	11,333,617	12	13,996.6
2005	506,230	48,537,956	11,614,130	12	14,087.0
2006	517,461	52,083,584	12,299,340	14	14,441.3
2007	538,189	55,442,368	13,093,908	16	14,942.2
2008	534,038	57,623,385	13,647,143	16	15,004.9
2009	501,134	55,605,578	13,199,674	18	14,836.5
2010	494,563	56,089,711	13,345,291	18	14,679.8
2011	508,187	58,104,706	13,856,458	18	15,101.2
2012	513,895	60,616,457	14,473,599	20	15,317.3
2013	483,240	61,872,023	14,781,792	21	14,434.1
2014	509,260	64,457,652	15,385,500	21	15,365.5
2015	540,145	66,729,598	15,454,485	20	16,302.3
2016	560,099	67,253,399	15,422,058	19	16,785.0
2017	572,179	68,830,861	15,731,853	19	17,204.8
2018	600,273	71,580,544	16,311,725	19	18,026.2
2019	621,714	74,404,771	16,882,299	18	18,729.1
2020	657,538	75,798,310	17,251,300	17	20,433.8

County: county value. Kansas: state value. County Rank: highest county value ranked #1. (\$000): thousands of dollars. Nonmetro Kansas: Kansas total less Metropolitan Areas as defined by the Office of Management and Budget (OMB; released 3/6/2020). Per 1000: For nonmoney amounts, Per 1000=(county value / county population for the same year as the data) x 1000. \$ Per capita=(county value / county population for the same year as the data). Value= . indicates missing or suppressed data or value not calculated.

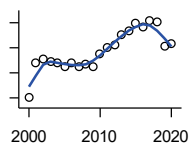
Income

**SOURCES OF PERSONAL INCOME:
PROPRIETORS-FARM (\$000)**



U.S. Bureau of Economic Analysis,
Regional Economic Information System
(REIS)

Year	County	State of Kansas	Non Metro Kansas	County Rank	Per 1000 or \$ Per Capita
2000	245	668,539	673,707	78	6.8
2001	9,098	779,473	769,336	34	252.4
2002	-869	145,064	187,033	70	-24.3
2003	4,718	1,281,076	1,195,298	80	131.5
2004	11,950	1,149,425	938,524	42	331.6
2005	10,934	1,609,604	1,469,139	57	304.3
2006	7,454	766,047	663,735	42	208.0
2007	3,573	1,131,607	1,040,350	79	99.2
2008	3,560	1,582,092	1,404,900	81	100.0
2009	-1,397	1,585,995	1,390,349	102	-41.4
2010	1,432	2,149,482	2,029,067	90	42.5
2011	4	3,188,519	2,989,880	101	0.1
2012	-2,358	2,519,555	2,296,875	103	-70.3
2013	7,675	4,499,190	4,158,419	95	229.2
2014	-1,240	2,231,181	2,157,992	97	-37.4
2015	-1,519	1,300,733	1,294,370	91	-45.8
2016	4,002	1,577,060	1,564,511	57	119.9
2017	5,039	838,480	838,290	42	151.5
2018	15,108	1,050,662	971,690	26	453.7
2019	8,079	998,038	878,247	53	243.4
2020	23,781	2,151,349	1,887,881	33	739.0



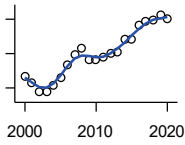
**SOURCES OF PERSONAL INCOME:
PROPRIETORS-NONFARM (\$000)**

U.S. Bureau of Economic Analysis,
Regional Economic Information System
(REIS)

Year	County	State of Kansas	Non Metro Kansas	County Rank	Per 1000 or \$ Per Capita
2000	20,617	4,580,476	1,493,470	31	573.7
2001	47,860	4,510,530	1,855,621	21	1,327.6
2002	51,043	5,036,100	1,966,784	21	1,424.7
2003	49,266	4,719,377	1,916,735	20	1,373.5
2004	48,391	4,003,922	2,073,898	21	1,342.9
2005	45,110	4,455,294	2,200,971	23	1,255.3
2006	47,734	7,343,524	2,694,895	26	1,332.2
2007	44,681	7,280,197	2,436,574	25	1,240.5
2008	47,029	9,255,953	2,971,923	28	1,321.4
2009	44,913	9,323,551	2,858,848	25	1,329.7
2010	55,569	9,658,261	3,498,040	26	1,649.4
2011	60,421	12,196,566	4,186,007	32	1,795.5
2012	62,522	15,773,140	4,446,004	33	1,863.5
2013	70,899	16,441,660	4,492,127	27	2,117.7
2014	73,333	15,954,254	4,455,081	26	2,212.6
2015	80,007	15,536,116	4,386,172	24	2,414.7
2016	76,518	14,075,310	3,783,829	25	2,293.1
2017	81,757	15,371,957	3,908,254	25	2,458.3
2018	80,254	15,716,877	4,238,775	27	2,410.0
2019	60,938	16,705,488	3,921,051	27	1,835.8
2020	63,318	16,718,952	3,823,329	26	1,967.7

County: county value. Kansas: state value. County Rank: highest county value ranked #1. (\$000): thousands of dollars. Nonmetro Kansas: Kansas total less Metropolitan Areas as defined by the Office of Management and Budget (OMB; released 3/6/2020). Per 1000: For nonmoney amounts, Per 1000=(county value / county population for the same year as the data) x 1000. \$ Per capita=(county value / county population for the same year as the data). Value= . indicates missing or suppressed data or value not calculated.

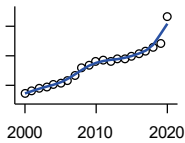
Income



**SOURCES OF PERSONAL INCOME:
DIVIDENDS,INTEREST,RENT(\$000)**

U.S. Bureau of Economic Analysis,
Regional Economic Information System
(REIS)

Year	County	State of Kansas	Non Metro Kansas	County Rank	Per 1000 or \$ Per Capita
2000	153,851	15,916,201	4,736,921	15	4,281.4
2001	146,715	15,770,830	4,699,417	17	4,069.9
2002	135,025	15,111,563	4,316,887	17	3,768.9
2003	136,144	15,370,764	4,360,311	16	3,795.7
2004	142,968	15,820,469	4,251,925	15	3,967.6
2005	152,371	17,147,069	4,485,387	15	4,240.1
2006	166,768	20,117,848	4,945,184	18	4,654.2
2007	178,094	22,269,186	5,526,219	20	4,944.6
2008	186,910	24,972,485	6,180,979	20	5,251.6
2009	173,267	21,453,879	5,308,474	17	5,129.7
2010	172,208	20,861,351	5,414,285	20	5,111.5
2011	175,462	23,387,567	5,781,075	20	5,214.0
2012	180,727	25,689,368	6,389,505	21	5,386.8
2013	181,050	24,832,212	5,984,811	20	5,407.9
2014	196,706	27,412,684	6,403,356	20	5,935.1
2015	196,734	27,244,414	6,423,685	19	5,937.7
2016	212,622	27,293,441	6,389,161	18	6,371.8
2017	217,249	28,385,472	6,700,156	18	6,532.4
2018	218,454	29,953,419	6,772,504	20	6,560.2
2019	225,087	30,820,276	6,957,987	19	6,780.8
2020	219,916	30,283,520	6,844,745	19	6,834.1



**SOURCES OF PERSONAL INCOME:
TRANSFER PAYMENTS (\$000)**

U.S. Bureau of Economic Analysis,
Regional Economic Information System
(REIS)

Year	County	State of Kansas	Non Metro Kansas	County Rank	Per 1000 or \$ Per Capita
2000	120,998	9,650,835	4,036,781	17	3,367.1
2001	132,395	10,549,124	4,355,457	16	3,672.6
2002	139,550	11,208,997	4,553,978	17	3,895.2
2003	145,331	11,709,049	4,702,911	17	4,051.8
2004	151,384	12,040,452	4,802,536	17	4,201.1
2005	157,635	12,696,735	5,059,314	17	4,386.5
2006	167,666	13,642,787	5,455,207	17	4,679.2
2007	185,069	14,686,821	5,775,024	15	5,138.2
2008	207,679	16,552,460	6,322,722	15	5,835.2
2009	215,997	18,025,603	6,790,962	15	6,394.8
2010	230,550	19,189,749	7,089,258	15	6,843.3
2011	236,209	19,625,770	7,255,825	15	7,019.2
2012	232,821	19,354,458	7,148,177	15	6,939.5
2013	241,112	19,639,358	7,185,636	15	7,201.9
2014	239,439	20,380,970	7,399,809	15	7,224.4
2015	247,667	21,116,856	7,623,577	15	7,474.9
2016	257,908	21,884,629	7,886,000	15	7,729.0
2017	266,192	22,559,744	8,062,517	15	8,004.1
2018	279,496	23,628,033	8,393,617	15	8,393.3
2019	290,766	25,050,174	8,845,371	16	8,759.3
2020	382,979	32,319,421	11,074,190	15	11,901.5

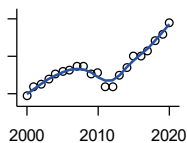
County: county value. Kansas: state value. County Rank: highest county value ranked #1. (\$000): thousands of dollars. Nonmetro Kansas: Kansas total less Metropolitan Areas as defined by the Office of Management and Budget (OMB; released 3/6/2020). Per 1000: For nonmoney amounts, Per 1000=(county value / county population for the same year as the data) x 1000. \$ Per capita=(county value / county population for the same year as the data). Value= . indicates missing or suppressed data or value not calculated.

Income

**SOURCES OF PERSONAL INCOME:
LESS SOCIAL INSURANCE (\$000)**

U.S. Bureau of Economic Analysis,
Regional Economic Information System
(REIS)

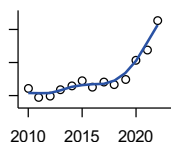
Year	County	State of Kansas	Non Metro Kansas	County Rank	Per 1000 or \$ Per Capita
2000	68,663	6,655,813	1,663,044	13	1,910.8
2001	74,035	6,869,934	1,740,915	13	2,053.7
2002	75,272	7,008,361	1,778,636	13	2,101.0
2003	77,777	7,172,781	1,821,858	13	2,168.4
2004	80,369	7,556,560	1,904,014	12	2,230.4
2005	81,680	7,911,241	1,986,907	15	2,272.9
2006	82,554	8,406,937	2,090,313	16	2,303.9
2007	84,343	8,806,941	2,180,587	17	2,341.7
2008	84,444	9,207,010	2,299,399	21	2,372.6
2009	80,390	9,002,859	2,248,703	20	2,380.0
2010	81,317	9,235,760	2,321,191	20	2,413.7
2011	73,918	8,515,986	2,139,991	21	2,196.5
2012	73,716	8,816,128	2,195,919	21	2,197.2
2013	79,956	10,225,399	2,540,439	21	2,388.2
2014	84,052	10,609,601	2,635,009	21	2,536.0
2015	89,899	11,028,204	2,663,038	20	2,713.3
2016	90,425	10,915,915	2,604,579	20	2,709.9
2017	93,005	11,224,218	2,669,954	20	2,796.6
2018	98,213	11,749,229	2,797,106	20	2,949.3
2019	101,738	12,245,451	2,889,336	20	3,064.9
2020	108,186	12,715,152	3,027,656	19	3,362.0



HUD MEDIAN FAMILY INCOME

U.S. Department of Housing and Urban
Development (HUD)

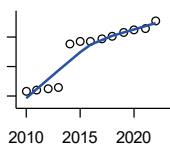
Year	County	State of Kansas	Non Metro Kansas	County Rank	Per 1000 or \$ Per Capita
2010	52,000	63,100	.	56	.
2011	49,300	64,300	.	88	.
2012	50,000	65,200	.	88	.
2013	51,800	64,800	.	82	.
2014	52,800	64,400	.	81	.
2015	54,300	66,300	.	80	.
2016	52,500	66,700	.	89	.
2017	53,900	68,500	.	86	.
2018	53,400	73,100	.	93	.
2019	54,800	75,200	.	97	.
2020	60,800	76,500	.	82	.
2021	63,900	77,400	.	66	.
2022	72,700	87,800	.	54	.



County: county value. Kansas: state value. County Rank: highest county value ranked #1. (\$000): thousands of dollars. Nonmetro Kansas: Kansas total less Metropolitan Areas as defined by the Office of Management and Budget (OMB; released 3/6/2020). Per 1000: For nonmoney amounts, Per 1000=(county value / county population for the same year as the data) x 1000. \$ Per capita=(county value / county population for the same year as the data). Value= . indicates missing or suppressed data or value not calculated.

Income

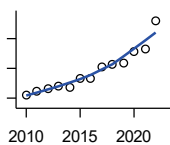
HUD 30% LOW-TO-MEDIUM INCOME (LMI) LIMIT - 4 PERSONS



U.S. Department of Housing and Urban Development (HUD)

Year	County	State of Kansas	Non Metro Kansas	County Rank	Per 1000 or \$ Per Capita
2010	15,850	.	.	105	.
2011	16,100	.	.	105	.
2012	16,300	.	.	105	.
2013	16,550	.	.	105	.
2014	23,850	.	.	105	.
2015	24,250	.	.	105	.
2016	24,300	.	.	105	.
2017	24,600	.	.	105	.
2018	25,100	21,950	.	105	.
2019	25,750	22,550	.	105	.
2020	26,200	22,950	.	105	.
2021	26,500	23,200	.	105	.
2022	27,750	25,950	.	105	.

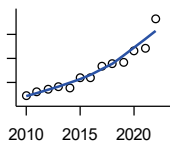
HUD 50% LOW-TO-MEDIUM INCOME (LMI) LIMIT - 4 PERSONS



U.S. Department of Housing and Urban Development (HUD)

Year	County	State of Kansas	Non Metro Kansas	County Rank	Per 1000 or \$ Per Capita
2010	26,400	.	.	105	.
2011	26,850	.	.	105	.
2012	27,200	.	.	105	.
2013	27,600	.	.	105	.
2014	27,400	.	.	105	.
2015	28,700	.	.	105	.
2016	28,650	.	.	105	.
2017	30,150	.	.	105	.
2018	30,550	36,550	.	105	.
2019	30,750	37,600	.	105	.
2020	32,300	38,250	.	104	.
2021	32,550	38,700	.	105	.
2022	36,400	43,300	.	105	.

HUD 80% LOW-TO-MEDIUM INCOME (LMI) LIMIT - 4 PERSONS



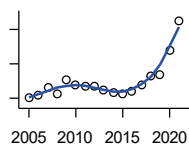
U.S. Department of Housing and Urban Development (HUD)

Year	County	State of Kansas	Non Metro Kansas	County Rank	Per 1000 or \$ Per Capita
2010	42,250	.	.	105	.
2011	42,950	.	.	105	.
2012	43,500	.	.	105	.
2013	44,150	.	.	105	.
2014	43,850	.	.	105	.
2015	45,900	.	.	105	.
2016	45,850	.	.	105	.
2017	48,250	.	.	105	.
2018	48,900	58,500	.	105	.
2019	49,200	60,150	.	105	.
2020	51,700	61,200	.	104	.
2021	52,100	61,900	.	105	.
2022	58,250	69,250	.	105	.

County: county value. Kansas: state value. County Rank: highest county value ranked #1. (\$000): thousands of dollars. Nonmetro Kansas: Kansas total less Metropolitan Areas as defined by the Office of Management and Budget (OMB; released 3/6/2020). Per 1000: For nonmoney amounts, Per 1000=(county value / county population for the same year as the data) x 1000. \$ Per capita=(county value / county population for the same year as the data). Value= . indicates missing or suppressed data or value not calculated.

Banking

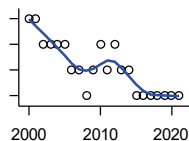
BANK DEPOSITS (1984-2004 in thousands; 2005- in millions)



Federal Deposit Insurance Corporation, Data Book, Operating Banks and Branches

Year	County	State of Kansas	Non Metro Kansas	County Rank	Per 1000 or \$ Per Capita
2005	501	48,304	17,000	17	13.9
2006	510	50,668	17,586	17	14.2
2007	533	54,057	18,517	17	14.8
2008	514	57,869	19,628	19	14.4
2009	554	57,763	20,031	17	16.4
2010	538	60,031	20,678	19	16.0
2011	534	61,094	21,347	19	15.9
2012	534	62,910	22,481	20	15.9
2013	524	64,547	22,795	20	15.7
2014	515	66,538	23,338	21	15.5
2015	513	68,160	23,367	21	15.5
2016	520	70,381	23,420	23	15.6
2017	539	73,329	23,928	23	16.2
2018	564	74,623	24,100	22	16.9
2019	570	76,436	24,488	22	17.2
2020	639	88,563	27,547	23	19.9
2021	725	97,055	30,122	22	22.7

NUMBER OF BANKS



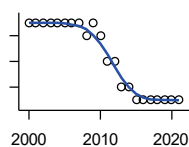
Federal Deposit Insurance Corporation, Data Book, Operating Banks and Branches

Year	County	State of Kansas	Non Metro Kansas	County Rank	Per 1000 or \$ Per Capita
2000	12	410	145	12	.
2001	12	410	136	12	.
2002	11	404	129	14	.
2003	11	397	121	16	.
2004	11	394	112	16	.
2005	11	388	101	15	.
2006	10	385	94	22	.
2007	10	382	91	22	.
2008	9	378	82	27	.
2009	10	374	79	20	.
2010	11	367	70	13	.
2011	10	359	61	20	.
2012	11	348	57	13	.
2013	10	332	45	17	.
2014	10	329	41	17	.
2015	9	320	31	22	.
2016	9	314	24	23	.
2017	9	301	13	23	.
2018	9	289	7	22	.
2019	9	279	3	23	.
2020	9	271	-1	23	.
2021	9	270	-6	23	.

County: county value. Kansas: state value. County Rank: highest county value ranked #1. (\$000): thousands of dollars. Nonmetro Kansas: Kansas total less Metropolitan Areas as defined by the Office of Management and Budget (OMB; released 3/6/2020). Per 1000: For nonmoney amounts, Per 1000=(county value / county population for the same year as the data) x 1000. \$ Per capita=(county value / county population for the same year as the data). Value= . indicates missing or suppressed data or value not calculated.

Banking

NUMBER OF BANKING OFFICES

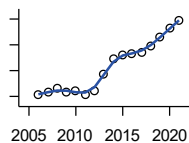


Federal Deposit Insurance Corporation, Data Book, Operating Banks and Branches

Year	County	State of Kansas	Non Metro Kansas	County Rank	Per 1000 or \$ Per Capita
2000	19	1,398	703	17	.
2001	19	1,424	708	17	.
2002	19	1,447	704	17	.
2003	19	1,461	708	17	.
2004	19	1,485	708	17	.
2005	19	1,505	711	17	.
2006	19	1,518	711	17	.
2007	19	1,543	717	17	.
2008	18	1,556	717	19	.
2009	19	1,569	716	17	.
2010	18	1,561	710	18	.
2011	16	1,559	707	25	.
2012	16	1,533	702	24	.
2013	14	1,518	696	27	.
2014	14	1,491	685	28	.
2015	13	1,472	675	30	.
2016	13	1,465	668	30	.
2017	13	1,452	666	30	.
2018	13	1,439	660	30	.
2019	13	1,439	663	29	.
2020	13	1,416	653	30	.
2021	13	1,392	641	29	.

Government

TANGIBLE ASSESSED VALUATION (KDoR, million\$; 2006-)



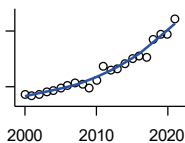
Kansas Department of Revenue, Division of Property Valuation, Statistical Report of Property Assessment and Taxation

Year	County	State of Kansas	Non Metro Kansas	County Rank	Per 1000 or \$ Per Capita
2006	228.3	28,964.3	10,316.9	23	6.4
2007	233.3	30,086.9	10,335.9	24	6.5
2008	240.0	31,000.3	10,856.9	26	6.7
2009	233.8	30,312.3	10,555.6	26	6.9
2010	235.5	29,450.2	10,158.7	24	7.0
2011	228.5	29,963.6	10,572.3	25	6.8
2012	235.2	30,382.9	10,876.2	24	7.0
2013	269.1	30,850.2	11,044.4	20	8.0
2014	297.6	31,783.0	11,388.9	17	9.0
2015	306.1	32,335.7	11,037.8	18	9.2
2016	308.3	33,156.3	10,889.6	18	9.2
2017	311.0	34,754.5	11,439.0	18	9.4
2018	323.9	36,566.1	11,907.1	17	9.7
2019	339.4	38,255.2	12,336.7	17	10.2
2020	356.4	39,333.9	12,219.3	17	11.1
2021	372.5	40,812.0	12,601.5	17	11.6

County: county value. Kansas: state value. County Rank: highest county value ranked #1. (\$000): thousands of dollars. Nonmetro Kansas: Kansas total less Metropolitan Areas as defined by the Office of Management and Budget (OMB; released 3/6/2020). Per 1000: For nonmoney amounts, Per 1000=(county value / county population for the same year as the data) x 1000. \$ Per capita=(county value / county population for the same year as the data). Value= . indicates missing or suppressed data or value not calculated.

Government

SALES TAX COLLECTIONS (\$)

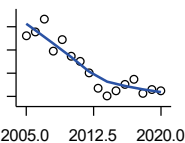


Kansas Department of Revenue. Use tax collections included beginning in calendar year 2018.

Year	County	State of Kansas	Non Metro Kansas	County Rank	Per 1000 or \$ Per Capita
2000	17,917,760	1,475,831,808	432,761,608	14	498,615.8
2001	17,454,994	1,481,026,688	426,316,284	14	484,201.9
2002	18,055,280	1,561,316,864	443,986,950	14	503,971.4
2003	18,784,260	1,626,782,976	461,658,700	14	523,705.3
2004	18,977,030	1,691,899,008	480,309,725	14	526,642.3
2005	19,526,520	1,744,980,352	497,494,867	14	543,369.3
2006	20,248,154	1,851,694,720	532,233,047	16	565,085.8
2007	20,954,830	1,917,546,752	559,319,583	16	581,787.7
2008	20,679,956	1,990,655,744	589,725,773	18	581,044.5
2009	19,686,542	1,866,223,078	548,627,132	18	582,838.7
2010	21,730,915	2,075,193,413	617,409,982	19	645,025.7
2011	25,344,971	2,347,193,367	702,671,534	17	753,149.0
2012	24,623,901	2,456,292,294	740,196,106	18	733,946.4
2013	24,951,018	2,489,204,048	746,226,565	19	745,273.7
2014	26,084,670	2,539,886,774	760,474,019	18	787,034.1
2015	27,635,474	2,642,374,740	750,090,163	17	834,077.0
2016	28,334,894	2,732,611,350	749,030,133	16	849,138.2
2017	27,987,774	2,726,104,521	744,246,491	16	841,560.4
2018	32,847,299	3,277,299,125	893,564,480	17	986,405.4
2019	34,276,798	3,395,631,405	939,607,762	17	1,032,589.2
2020	34,214,512	3,489,306,791	984,218,931	17	1,063,255.9
2021	38,276,799	3,981,293,227	1,098,391,422	17	1,196,224.7

Crime

CRIME INDEX OFFENSES



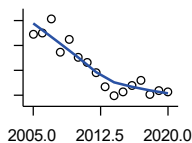
Kansas Bureau of Investigation, Note: Data are aggregated from reports by individual police departments and subject to be incomplete.

Year	County	State of Kansas	Non Metro Kansas	County Rank	Per 1000 or \$ Per Capita
2005	1,805	111,856	31,630	14	50.2
2006	1,877	110,032	.	12	52.4
2007	2,166	111,035	29,921	10	60.1
2008	1,472	93,996	27,342	12	41.4
2009	1,710	98,757	27,620	12	50.6
2010	1,363	98,354	26,909	13	40.5
2011	1,253	96,638	25,765	13	37.2
2012	1,012	98,914	26,963	18	30.2
2013	687	93,054	24,488	23	20.5
2014	521	86,323	23,341	28	15.7
2015	632	88,590	21,580	23	19.1
2016	769	90,589	21,565	18	23.0
2017	866	93,091	22,622	19	26.0
2018	555	92,062	20,325	22	16.7
2019	653	87,008	18,547	18	19.7
2020	628	87,346	17,762	19	19.5

County: county value. Kansas: state value. County Rank: highest county value ranked #1. (\$000): thousands of dollars. Nonmetro Kansas: Kansas total less Metropolitan Areas as defined by the Office of Management and Budget (OMB; released 3/6/2020). Per 1000: For nonmoney amounts, Per 1000=(county value / county population for the same year as the data) x 1000. \$ Per capita=(county value / county population for the same year as the data). Value= . indicates missing or suppressed data or value not calculated.

Crime

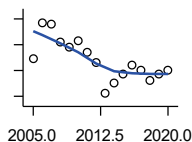
PROPERTY CRIMES



Kansas Bureau of Investigation, Note: Data are aggregated from reports by individual police departments and subject to be incomplete.

Year	County	State of Kansas	Non Metro Kansas	County Rank	Per 1000 or \$ Per Capita
2005	1,727	101,414	29,042	12	48.1
2006	1,743	99,110	.	12	48.6
2007	2,035	99,632	26,856	10	56.5
2008	1,368	83,964	24,367	12	38.4
2009	1,613	87,658	24,825	12	47.8
2010	1,256	87,926	24,133	13	37.3
2011	1,164	86,547	23,274	13	34.6
2012	940	88,707	24,220	17	28.0
2013	663	83,551	22,028	22	19.8
2014	480	76,794	20,858	27	14.5
2015	577	77,997	19,138	22	17.4
2016	701	79,549	19,207	18	21.0
2017	805	81,349	19,981	18	24.2
2018	510	79,695	17,769	20	15.3
2019	598	74,314	15,892	17	18.0
2020	568	73,450	15,100	17	17.7

VIOLENT CRIMES



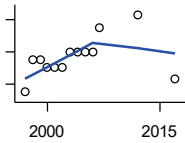
Kansas Bureau of Investigation, Note: Data are aggregated from reports by individual police departments and subject to be incomplete.

Year	County	State of Kansas	Non Metro Kansas	County Rank	Per 1000 or \$ Per Capita
2005	78	10,442	2,588	20	2.2
2006	134	10,922	.	15	3.7
2007	131	11,403	3,065	18	3.6
2008	104	10,032	2,975	20	2.9
2009	97	11,099	2,795	20	2.9
2010	107	10,428	2,776	20	3.2
2011	89	10,091	2,491	20	2.6
2012	72	10,207	2,743	21	2.1
2013	24	9,503	2,460	38	0.7
2014	41	9,529	2,483	29	1.2
2015	55	10,593	2,442	27	1.7
2016	68	11,040	2,358	22	2.0
2017	61	11,742	2,641	25	1.8
2018	45	12,367	2,556	31	1.4
2019	55	12,694	2,655	26	1.7
2020	60	13,896	2,662	26	1.9

County: county value. Kansas: state value. County Rank: highest county value ranked #1. (\$000): thousands of dollars. Nonmetro Kansas: Kansas total less Metropolitan Areas as defined by the Office of Management and Budget (OMB; released 3/6/2020). Per 1000: For nonmoney amounts, Per 1000=(county value / county population for the same year as the data) x 1000. \$ Per capita=(county value / county population for the same year as the data). Value= . indicates missing or suppressed data or value not calculated.

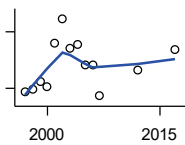
Agriculture

NUMBER OF FARMS



Kansas Agricultural Statistics, Kansas Farm Facts

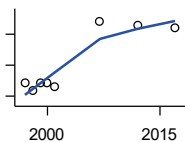
Year	County	State of Kansas	Non Metro Kansas	County Rank	Per 1000 or \$ Per Capita
1997	850	64,000	47,900	22	23.9
1998	890	65,000	48,850	19	25.1
1999	890	65,000	48,850	19	24.9
2000	880	64,000	48,030	19	24.5
2001	880	63,000	47,200	19	24.4
2002	880	63,000	47,200	19	24.6
2003	900	64,500	48,150	19	25.1
2004	900	64,500	48,150	19	25.0
2005	900	64,500	48,150	19	25.0
2006	900	64,000	47,650	19	25.1
2007	930	65,531	48,179	19	25.8
2012	946	61,773	45,655	17	28.2
2017	867	58,569	42,404	18	26.1



TOTAL ACRES HARVESTED

Kansas Agricultural Statistics, Kansas Farm Facts

Year	County	State of Kansas	Non Metro Kansas	County Rank	Per 1000 or \$ Per Capita
1997	176,750	22,846,000	19,430,580	70	4,977.1
1998	179,300	22,143,500	18,943,650	64	5,047.3
1999	186,510	21,708,900	18,581,750	57	5,213.7
2000	181,950	21,639,000	18,528,870	61	5,063.3
2001	227,850	21,847,900	18,689,750	40	6,320.6
2002	253,860	20,230,400	17,089,120	24	7,085.9
2003	221,840	21,827,700	18,661,920	43	6,184.9
2004	226,840	20,876,900	17,721,500	37	6,295.2
2005	205,030	21,936,500	18,807,930	51	5,705.4
2006	205,300	21,412,700	18,291,120	46	5,729.5
2007	171,703	19,886,655	17,164,743	61	4,767.1
2012	199,630	21,043,596	17,966,843	50	5,950.2
2017	220,473	21,837,465	18,543,057	44	6,629.4



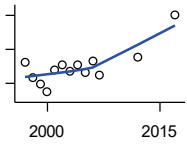
VALUE: LIVESTOCK AND POULTRY (\$000)

Kansas Agricultural Statistics, Kansas Farm Facts

Year	County	State of Kansas	Non Metro Kansas	County Rank	Per 1000 or \$ Per Capita
1997	38,198	2,806,445	2,500,305	19	1,075.6
1998	33,471	2,670,432	2,378,007	20	942.2
1999	38,590	2,849,061	2,554,528	19	1,078.7
2000	38,490	2,901,469	2,609,032	21	1,071.1
2001	35,961	2,693,274	2,437,187	16	997.6
2007	78,153	9,525,971	.	33	2,169.8
2012	76,137	11,476,571	10,883,216	34	2,269.4
2017	74,122	12,322,289	.	37	2,228.8

County: county value. Kansas: state value. County Rank: highest county value ranked #1. (\$000): thousands of dollars. Nonmetro Kansas: Kansas total less Metropolitan Areas as defined by the Office of Management and Budget (OMB; released 3/6/2020). Per 1000: For nonmoney amounts, Per 1000=(county value / county population for the same year as the data) x 1000. \$ Per capita=(county value / county population for the same year as the data). Value= . indicates missing or suppressed data or value not calculated.

Agriculture



VALUE:FIELD CROPS (\$000)
EXCLUDING GOVERNMENT
PROGRAM PAYMENTS

Kansas Agricultural Statistics, Kansas
Farm Facts

Year	County	State of Kansas	Non Metro Kansas	County Rank	Per 1000 or \$ Per Capita
1997	32,099	4,474,942	3,800,365	66	903.9
1998	23,428	3,594,319	3,124,409	76	659.5
1999	19,860	3,118,193	2,728,319	68	555.2
2000	14,792	2,915,660	2,540,052	82	411.6
2001	28,167	3,283,117	2,857,136	50	781.4
2002	30,592	3,011,855	2,560,580	41	853.9
2003	26,805	3,623,255	3,150,629	61	747.3
2004	30,932	3,445,688	2,896,603	47	858.4
2005	26,257	3,678,123	3,182,677	65	730.7
2006	32,840	4,308,716	3,684,132	54	916.5
2007	24,554	4,887,212	.	79	681.7
2012	35,233	6,983,993	6,044,551	80	1,050.2
2017	60,319	6,460,437	.	50	1,813.7

County: county value. Kansas: state value. County Rank: highest county value ranked #1. (\$000): thousands of dollars. Nonmetro Kansas: Kansas total less Metropolitan Areas as defined by the Office of Management and Budget (OMB; released 3/6/2020). Per 1000: For nonmoney amounts, Per 1000=(county value / county population for the same year as the data) x 1000. \$ Per capita=(county value / county population for the same year as the data). Value= . indicates missing or suppressed data or value not calculated.