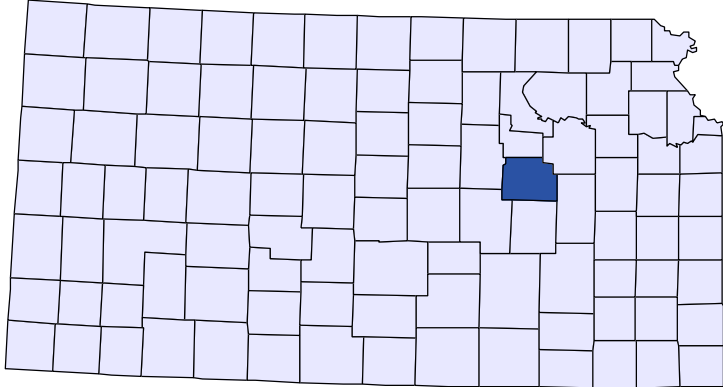




# Kansas County Profiles

## Morris County



The University  
of Kansas

Institute for Policy  
& Social Research

**KU** INSTITUTE FOR POLICY  
& SOCIAL RESEARCH  

---

The University of Kansas

1541 Lilac Lane, Rm. 607  
Blake Hall  
Lawrence, KS 66045-3129

## Foreword

The Kansas County Profile Report is published by the Institute for Policy & Social Research (IPSR) at the University of Kansas with support from the KU University Center project.\* Special thanks to Xanthippe Wedel, senior research data engineer, who compiles and updates the county profiles and Genna Hurd, associate researcher, who provides editorial review.

County reports can be generated for any county in Kansas by simply clicking on the county from the web site:

<https://ipsr.ku.edu/ksdata/kcced/profiles/>

The Kansas County Profile Report contains 12 categories of information: Population, Vital Statistics and Health, Housing, Education, Social Environment, Business, Employment, Income, Banking, Government, Crime, and Agriculture. For more information about Kansas, please refer to the Kansas Statistical Abstract, available online at:

<https://ipsr.ku.edu/ksdata/ksah/>

We are always looking for ways to improve the Kansas County Profile Report and we welcome your suggestions and comments. Please address any correspondence to the Institute for Policy & Social Research, The University of Kansas, 607 Blake Hall, 1541 Lilac Lane, Lawrence, Kansas 66045-3129, e-mail [ipsr@ku.edu](mailto:ipsr@ku.edu) or call 785-864-3701.

*\*The KU University Center is a collaborative effort led by the Institute for Policy & Social Research at the University of Kansas. This project is supported by the Economic Development Administration, U.S. Department of Commerce, through its University Center Program.*

*The mission of EDA is to lead the federal economic development agenda by promoting innovation and competitiveness, preparing American regions for growth and success in the worldwide economy.*

## Kansas County Profiles Table of Contents

<b>Population</b>	
Total Population (Decennial Census)	1
Estimated Population (Current Population Reports)	2
Urban Population	2
Rural Population	3
Net Migration (Decade Ending...)	3
Median Age	3
<b>Population (Age Groups)</b>	
Population Under 18 (Decennial Census)	3
Population Age 18 and Over (Decennial Census)	4
Population Age 65 and Over (Decennial Census)	4
Population Age 85 and Over (Decennial Census)	4
<b>Vital Statistics and Health</b>	
Live Births	5
Deaths	5
Marriages	6
Divorces and Annulments	6
Physicians: M.D. Physicians	7
Physicians: D.O. Physicians	7
Dentists	8
Number of Hospitals	8
Number of Hospital Beds	9
<b>Housing</b>	
Housing Units (Decennial Census)	9
Housing Units (Estimated)	10
Occupied Housing Units	10
Owner Occupied Housing Units	10
Renter Occupied Housing Units	11
Vacant Housing Units	11
Median Value (\$): Owner Occupied Housing Units	11
Median Contract Rent (\$)	12
Fair Market Rent: 2 Bedrooms	12
<b>Education</b>	
Population Age 25 and Over	13
Percent of Population 25+ with High School or Higher Education	13
Percent of Population 25+ with Bachelors Degree or Higher Education	14
Public School Enrollment (FTE- School Year Beginning...)	14
Pupil/Teacher Ratio (School Year Beginning...)	15

## Kansas County Profiles Table of Contents

### Social Environment

Total Child Care Facilities	15
Preschools	16
Food Stamp Beneficiaries	16
Percent of Population Receiving Food Stamps	17
Estimated Number of People in Poverty	17
Estimated Percent of People in Poverty	18
Estimated Number of Related Children Age 5 to 17 in Families in Poverty	18
Estimated Percent of Related Children Age 5 to 17 in Families in Poverty	19
Estimated Number Under 18 in Poverty	19
Estimated Percent Under 18 in Poverty	20

### Business

Establishments: Total	21
Establishments: 1-19 Employees	22
Establishments: 20-99 Employees	22
Establishments: 100-499 Employees	23
Establishments: 500 or More Employees	23
Establishments: Forestry, Fishing, Hunting, and Ag Support	24
Establishments: Mining	24
Establishments: Utilities	25
Establishments: Construction	25
Establishments: Manufacturing	26
Establishments: Wholesale Trade	26
Establishments: Retail Trade	27
Establishments: Transportation and Warehousing	27
Establishments: Information	28
Establishments: Finance and Insurance	28
Establishments: Real Estate, Rental, and Leasing	29
Establishments: Professional, Scientific, and Technical Services	29
Establishments: Management of Companies and Enterprises	30
Establishments: Admin, Support, Waste Management, and Remediation	30
Establishments: Educational Services	31
Establishments: Health Care and Social Assistance	31
Establishments: Arts, Entertainment, and Recreation	32
Establishments: Accommodation and Food Services	32
Establishments: Other Services	33

## Kansas County Profiles Table of Contents

<b>Business</b>	
Total Annual Payroll (\$000)	34
Total Annual Payroll (\$000): Forestry, Fishing, Hunting, and Ag Support	35
Total Annual Payroll (\$000): Mining	35
Total Annual Payroll (\$000): Utilities	36
Total Annual Payroll (\$000): Construction	36
Total Annual Payroll (\$000): Manufacturing	37
Total Annual Payroll (\$000): Wholesale Trade	37
Total Annual Payroll (\$000): Retail Trade	38
Total Annual Payroll (\$000): Transportation and Warehousing	38
Total Annual Payroll (\$000): Information	39
Total Annual Payroll (\$000): Finance and Insurance	39
Total Annual Payroll (\$000): Real Estate, Rental, and Leasing	40
Total Annual Payroll (\$000): Professional, Scientific, and Technical Services	40
Total Annual Payroll (\$000): Management of Companies and Enterprises	41
Total Annual Payroll (\$000): Admin, Support, Waste Management, and Remediation	41
Total Annual Payroll (\$000): Educational Services	42
Total Annual Payroll (\$000): Health Care and Social Assistance	42
Total Annual Payroll (\$000): Arts, Entertainment, and Recreation	43
Total Annual Payroll (\$000): Accommodation and Food Services	43
Total Annual Payroll (\$000): Other Services	44
Nominal Taxable Retail Sales (Million\$)	44
Retail Pull Factor	45
<b>Employment</b>	
Civilian Labor Force (BLS - Place of Residence)	46
Employed (BLS - Place of Residence)	47
Unemployed (BLS - Place of Residence)	48
Unemployment Rate (BLS - Place of Residence)	49
BEA Employment: Total (Place of Work)	49
BEA Employment: Farm	50
BEA Employment: Non-Farm	50
Average Wage per Job (\$)	51
BEA Employment: Forestry, Fishing, Hunting, and Ag Support	51
BEA Employment: Mining	52
BEA Employment: Utilities	52
BEA Employment: Construction	53
BEA Employment: Manufacturing	53
BEA Employment: Wholesale Trade	54
BEA Employment: Retail Trade	54
BEA Employment: Transportation and Warehousing	55
BEA Employment: Information	55
BEA Employment: Finance and Insurance	56
BEA Employment: Real Estate, Rental, and Leasing	56
BEA Employment: Professional and Technical Services	57
BEA Employment: Management of Companies and Enterprises	57
BEA Employment: Administrative and Waste Services	58
BEA Employment: Educational Services	58
BEA Employment: Health Care and Social Assistance	59
BEA Employment: Arts, Entertainment, and Recreation	59
BEA Employment: Government and Government Enterprises	60
BEA Employment: Accommodation and Food Services	60
BEA Employment: Other Services, Except Public Administration	61

## Kansas County Profiles Table of Contents

### Income

BEA Per Capita Personal Income (\$)	61
Sources of Personal Income: Total Personal Income (\$000)	62
Sources of Personal Income: Wages And Salaries (\$000)	62
Sources of Personal Income: Proprietors-Farm (\$000)	63
Sources of Personal Income: Proprietors-Nonfarm (\$000)	63
Sources of Personal Income: Dividends, Interest, Rent (\$000)	64
Sources of Personal Income: Transfer Payments (\$000)	64
Sources of Personal Income: Less Social Insurance (\$000)	65
HUD Median Family Income	65
HUD 30% Low-To-Medium Income (LMI) Limit - 4 Persons	66
HUD 50% Low-To-Medium Income (LMI) Limit - 4 Persons	66
HUD 80% Low-To-Medium Income (LMI) Limit - 4 Persons	66

### Banking

Bank Deposits (\$000)	67
Number of Banks	67
Number of Banking Offices	68

### Government

Tangible Assessed Valuation (million\$)	68
Sales Tax Collections	69

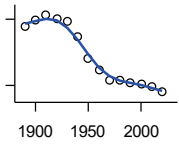
### Crime

Crime Index Offenses	69
Property Crimes	70
Violent Crimes	70

### Agriculture

Number of Farms	71
Total Acres Harvested	71
Value: Livestock and Poultry (\$000)	71
Value: Field Crops (\$000) Excluding Government Program Payments	72

**Population**



**DECENNIAL CENSUS:TOTAL POPULATION**

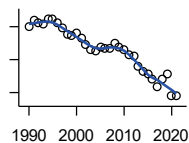
U.S. Census Bureau: Decennial Census

Year	County	State of Kansas	Non Metro Kansas	County Rank	Per 1000 or \$ Per Capita
1890	11,381	1,427,096	968,413	58	.
1900	11,967	1,470,495	981,206	52	.
1910	12,397	1,690,949	1,138,294	57	.
1920	12,005	1,769,257	1,153,525	58	.
1930	11,859	1,880,999	1,180,056	56	.
1940	10,363	1,801,028	1,097,216	59	.
1950	8,485	1,905,299	1,046,823	66	.
1960	7,392	2,178,611	1,021,510	66	.
1970	6,432	2,246,578	958,104	65	.
1980	6,419	2,363,679	980,085	67	.
1990	6,198	2,477,574	939,416	64	.
2000	6,104	2,688,418	959,507	63	.
2010	5,923	2,853,118	929,981	63	.
2020	5,386	2,937,880	892,006	65	.

County: county value. Kansas: state value. County Rank: highest county value ranked #1. (\$000): thousands of dollars. Nonmetro Kansas: Kansas total less Metropolitan Areas as defined by the Office of Management and Budget (OMB; released 3/6/2020). Per 1000: For nonmoney amounts, Per 1000=(county value / county population for the same year as the data) x 1000. \$ Per capita=(county value / county population for the same year as the data). Value= . indicates missing or suppressed data or value not calculated.

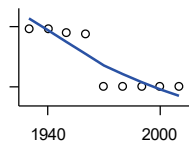
**Population**

**ESTIMATED POPULATION**



U.S. Census Bureau

Year	County	State of Kansas	Non Metro Kansas	County Rank	Per 1000 or \$ Per Capita
1990	6,203	2,481,349	938,607	64	.
1991	6,284	2,498,722	938,965	64	.
1992	6,245	2,532,394	942,759	64	.
1993	6,236	2,556,547	947,515	63	.
1994	6,295	2,580,513	952,178	63	.
1995	6,290	2,601,007	957,771	63	.
1996	6,252	2,614,554	959,455	62	.
1997	6,184	2,635,292	960,225	62	.
1998	6,103	2,660,598	960,569	63	.
1999	6,096	2,678,338	960,704	63	.
2000	6,120	2,693,681	959,230	63	.
2001	6,061	2,702,162	952,607	63	.
2002	5,981	2,713,535	945,985	63	.
2003	5,922	2,723,004	941,474	64	.
2004	5,904	2,734,373	937,623	64	.
2005	5,947	2,745,299	932,852	63	.
2006	5,929	2,762,931	928,809	63	.
2007	5,931	2,783,785	927,643	62	.
2008	5,999	2,808,076	926,248	62	.
2009	5,958	2,832,704	926,755	62	.
2010	5,918	2,858,190	930,028	63	.
2011	5,864	2,869,225	927,675	63	.
2012	5,849	2,885,257	925,152	63	.
2013	5,719	2,893,212	922,383	64	.
2014	5,664	2,900,475	917,854	64	.
2015	5,628	2,909,011	912,199	64	.
2016	5,558	2,910,844	905,099	65	.
2017	5,467	2,908,718	897,981	65	.
2018	5,557	2,911,359	892,656	62	.
2019	5,620	2,913,314	887,455	62	.
2020	5,360	2,935,880	889,750	65	.
2021	5,356	2,934,582	886,438	63	.



**URBAN POPULATION**

U.S. Census Bureau: Decennial Census

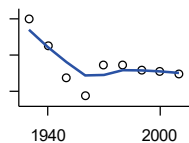
Year	County	State of Kansas	Non Metro Kansas	County Rank	Per 1000 or \$ Per Capita
1930	2,898	729,834	336,666	45	.
1940	2,875	753,941	349,228	47	.
1950	2,722	993,220	398,923	52	.
1960	2,664	1,328,741	457,447	59	.
1970	0	1,484,870	450,543	105	.
1980	0	1,575,899	474,769	105	.
1990	0	1,712,564	464,205	105	.
2000	0	1,920,081	488,011	105	.
2010	0	2,116,961	485,780	105	.

County: county value. Kansas: state value. County Rank: highest county value ranked #1. (\$000): thousands of dollars. Nonmetro Kansas: Kansas total less Metropolitan Areas as defined by the Office of Management and Budget (OMB; released 3/6/2020). Per 1000: For nonmoney amounts, Per 1000=(county value / county population for the same year as the data) x 1000. \$ Per capita=(county value / county population for the same year as the data). Value= . indicates missing or suppressed data or value not calculated.



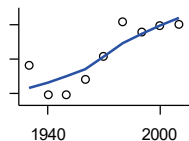
**Population**

**RURAL POPULATION**



U.S. Census Bureau

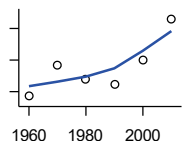
Year	County	State of Kansas	Non Metro Kansas	County Rank	Per 1000 or \$ Per Capita
1930	8,961	1,151,165	843,390	66	.
1940	7,488	1,047,087	747,988	68	.
1950	5,763	912,079	647,900	74	.
1960	4,728	849,870	564,063	76	.
1970	6,432	761,708	509,972	43	.
1980	6,419	787,780	505,873	46	.
1990	6,198	765,010	475,211	45	.
2000	6,104	768,337	471,900	47	.
2010	5,923	736,157	444,201	46	.



NET MIGRATION: DECADE ENDING...

calculated by the Institute for Policy and Social Research, The University of Kansas

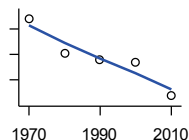
Year	County	State of Kansas	Non Metro Kansas	County Rank	Per 1000 or \$ Per Capita
1930	-1,171	-66,132	-101,869	59	-98.7
1940	-2,053	-192,649	-166,022	65	-198.1
1950	-2,033	-84,329	-158,379	61	-239.6
1960	-1,578	-38,999	-146,640	57	-213.5
1970	-932	-119,662	-105,116	57	-144.9
1980	76	-21,983	-6,184	36	11.8
1990	-217	-61,835	-79,274	21	-35.0
2000	-30	68,960	4,247	54	-4.9
2010	0	5,578	-50,648	19	0.0



MEDIAN AGE

U.S. Census Bureau: Decennial Census

Year	County	State of Kansas	Non Metro Kansas	County Rank	Per 1000 or \$ Per Capita
1960	37.4	26.9	.	24	.
1970	41.4	28.7	.	15	.
1980	39.6	30.1	.	18	.
1990	38.9	32.9	.	30	.
2000	42.0	35.2	.	26	.
2010	47.2	36.0	.	17	.



POPULATION UNDER 18 (DECENNIAL CENSUS)

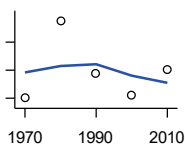
U.S. Census Bureau: Decennial Census

Year	County	State of Kansas	Non Metro Kansas	County Rank	Per 1000 or \$ Per Capita
1970	1,881	746,354	306,227	68	.
1980	1,606	649,035	263,919	67	.
1990	1,558	661,614	250,107	66	.
2000	1,541	712,993	250,757	64	.
2010	1,272	726,939	229,213	67	.

County: county value. Kansas: state value. County Rank: highest county value ranked #1. (\$000): thousands of dollars. Nonmetro Kansas: Kansas total less Metropolitan Areas as defined by the Office of Management and Budget (OMB; released 3/6/2020). Per 1000: For nonmoney amounts, Per 1000=(county value / county population for the same year as the data) x 1000. \$ Per capita=(county value / county population for the same year as the data). Value= . indicates missing or suppressed data or value not calculated.

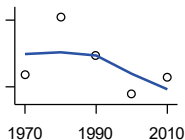
**Population**

**POPULATION AGE 18 AND OVER  
(DECENNIAL CENSUS)**



U.S. Census Bureau: Decennial Census

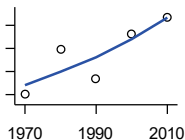
Year	County	State of Kansas	Non Metro Kansas	County Rank	Per 1000 or \$ Per Capita
1970	4,551	1,500,224	654,288	65	.
1980	4,826	1,714,282	716,684	66	.
1990	4,640	1,815,960	689,309	64	.
2000	4,563	1,975,425	709,154	64	.
2010	4,651	2,126,179	700,768	60	.



**POPULATION AGE 65 AND OVER  
(DECENNIAL CENSUS)**

U.S. Census Bureau: Decennial Census

Year	County	State of Kansas	Non Metro Kansas	County Rank	Per 1000 or \$ Per Capita
1970	1,326	266,201	149,049	59	.
1980	1,457	306,263	164,932	60	.
1990	1,371	342,571	168,579	61	.
2000	1,283	356,229	161,769	60	.
2010	1,322	376,116	154,214	55	.



**POPULATION AGE 85 AND OVER  
(DECENNIAL CENSUS)**

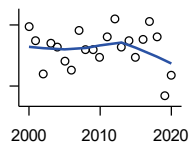
U.S. Census Bureau: Decennial Census

Year	County	State of Kansas	Non Metro Kansas	County Rank	Per 1000 or \$ Per Capita
1970	160	23,899	13,698	50	.
1980	199	33,455	18,804	55	.
1990	174	42,241	22,970	64	.
2000	213	51,770	26,644	64	.
2010	227	59,318	26,197	55	.

County: county value. Kansas: state value. County Rank: highest county value ranked #1. (\$000): thousands of dollars. Nonmetro Kansas: Kansas total less Metropolitan Areas as defined by the Office of Management and Budget (OMB; released 3/6/2020). Per 1000: For nonmoney amounts, Per 1000=(county value / county population for the same year as the data) x 1000. \$ Per capita=(county value / county population for the same year as the data). Value= . indicates missing or suppressed data or value not calculated.

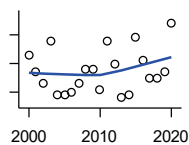
**Vital Statistics and Health**

**BIRTHS (LIVE)**



Kansas Department of Health and Environment

Year	County	State of Kansas	Non Metro Kansas	County Rank	Per 1000 or \$ Per Capita
2000	69	39,654	12,980	67	11.3
2001	62	38,832	12,527	65	10.2
2002	46	39,338	12,476	75	7.7
2003	61	39,353	12,342	67	10.3
2004	59	39,553	12,398	66	10.0
2005	52	39,701	12,382	73	8.7
2006	48	40,896	12,726	76	8.1
2007	67	41,951	12,990	65	11.3
2008	58	41,815	12,970	69	9.7
2009	58	41,388	12,949	70	9.7
2010	54	40,439	12,200	71	9.1
2011	64	39,628	12,098	66	10.9
2012	73	40,304	12,217	60	12.5
2013	59	38,805	11,877	69	10.3
2014	62	39,193	12,052	67	10.9
2015	54	39,126	11,836	72	9.6
2016	63	38,048	11,467	68	11.3
2017	72	36,464	10,968	59	13.2
2018	64	36,268	10,826	65	11.5
2019	35	35,395	10,506	81	6.2
2020	45	34,368	10,222	73	8.4



**DEATHS**

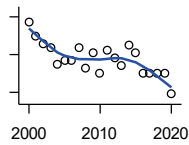
Kansas Department of Health and Environment

Year	County	State of Kansas	Non Metro Kansas	County Rank	Per 1000 or \$ Per Capita
2000	83	24,676	11,175	60	13.6
2001	77	24,590	10,807	64	12.7
2002	73	24,968	11,079	65	12.2
2003	88	24,417	10,615	58	14.9
2004	69	23,720	10,369	65	11.7
2005	69	24,632	10,599	63	11.6
2006	70	24,489	10,538	64	11.8
2007	73	24,413	10,601	61	12.3
2008	78	24,896	10,593	58	13.0
2009	78	23,997	9,938	60	13.1
2010	71	24,428	10,105	62	12.0
2011	88	25,114	10,520	55	15.0
2012	80	25,084	10,259	55	13.7
2013	68	25,347	10,249	65	11.9
2014	69	25,731	10,275	62	12.2
2015	89	26,611	10,539	53	15.8
2016	81	26,129	10,231	58	14.6
2017	75	26,725	10,452	59	13.7
2018	75	27,213	10,389	61	13.5
2019	77	27,312	10,569	60	13.7
2020	94	31,667	11,850	57	17.5

County: county value. Kansas: state value. County Rank: highest county value ranked #1. (\$000): thousands of dollars. Nonmetro Kansas: Kansas total less Metropolitan Areas as defined by the Office of Management and Budget (OMB; released 3/6/2020). Per 1000: For nonmoney amounts, Per 1000=(county value / county population for the same year as the data) x 1000. \$ Per capita=(county value / county population for the same year as the data). Value= . indicates missing or suppressed data or value not calculated.

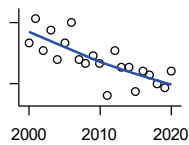
**Vital Statistics and Health**

**MARRIAGES**



Kansas Department of Health and Environment

Year	County	State of Kansas	Non Metro Kansas	County Rank	Per 1000 or \$ Per Capita
2000	57	20,426	7,333	55	9.3
2001	50	20,457	7,441	59	8.2
2002	46	19,783	6,794	57	7.7
2003	44	18,722	6,469	57	7.4
2004	35	19,174	6,756	69	5.9
2005	37	18,745	6,481	62	6.2
2006	37	18,836	6,433	65	6.2
2007	44	18,910	6,464	55	7.4
2008	33	18,717	6,283	68	5.5
2009	41	18,268	6,015	58	6.9
2010	30	18,150	5,925	71	5.1
2011	42	17,897	5,977	56	7.2
2012	38	18,154	5,752	61	6.5
2013	34	17,328	5,533	62	5.9
2014	45	17,655	5,535	49	7.9
2015	41	17,595	5,400	51	7.3
2016	30	17,948	5,340	61	5.4
2017	30	17,274	5,163	65	5.5
2018	30	16,362	4,999	61	5.4
2019	30	15,403	4,650	61	5.3
2020	19	14,038	4,066	70	3.5



**DIVORCES AND ANNULMENTS**

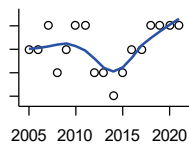
Kansas Department of Health and Environment

Year	County	State of Kansas	Non Metro Kansas	County Rank	Per 1000 or \$ Per Capita
2000	20	10,105	4,000	67	3.3
2001	26	9,885	3,818	60	4.3
2002	18	9,645	3,716	69	3.0
2003	23	8,644	3,464	57	3.9
2004	16	8,759	3,506	65	2.7
2005	20	8,476	3,311	59	3.4
2006	25	9,145	3,387	55	4.2
2007	16	9,347	3,402	66	2.7
2008	15	9,818	3,655	68	2.5
2009	17	10,333	3,463	67	2.9
2010	15	10,579	3,530	68	2.5
2011	7	10,445	3,347	94	1.2
2012	18	9,782	3,040	62	3.1
2013	14	9,085	2,973	71	2.4
2014	14	8,441	2,682	65	2.5
2015	8	8,036	2,704	85	1.4
2016	13	7,198	2,424	64	2.3
2017	12	6,494	2,315	61	2.2
2018	10	6,538	2,269	66	1.8
2019	9	6,398	2,357	74	1.6
2020	13	5,169	1,866	58	2.4

County: county value. Kansas: state value. County Rank: highest county value ranked #1. (\$000): thousands of dollars. Nonmetro Kansas: Kansas total less Metropolitan Areas as defined by the Office of Management and Budget (OMB; released 3/6/2020). Per 1000: For nonmoney amounts, Per 1000=(county value / county population for the same year as the data) x 1000. \$ Per capita=(county value / county population for the same year as the data). Value= . indicates missing or suppressed data or value not calculated.

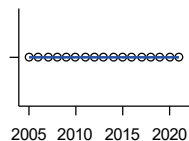
**Vital Statistics and Health**

**PHYSICIANS: M.D. PHYSICIANS**



Kansas Department of Health and Environment (1981-2005,2010-);Kansas Health Policy Authority (2006-2009)

Year	County	State of Kansas	Non Metro Kansas	County Rank	Per 1000 or \$ Per Capita
2005	3	4,241	912	65	0.5
2006	3	4,310	953	70	0.5
2007	4	5,309	1,046	63	0.7
2008	2	5,110	1,016	85	0.3
2009	3	5,249	996	70	0.5
2010	4	5,192	979	61	0.7
2011	4	5,243	983	63	0.7
2012	2	5,693	1,033	84	0.3
2013	2	6,106	1,071	83	0.3
2014	1	5,839	951	97	0.2
2015	2	5,703	855	77	0.4
2016	3	4,278	643	57	0.5
2017	3	6,332	1,047	69	0.5
2018	4	6,079	1,065	58	0.7
2019	4	6,435	1,036	59	0.7
2020	4	6,668	1,045	57	0.7
2021	4	6,745	1,042	58	0.7



**PHYSICIANS: D.O. PHYSICIANS**

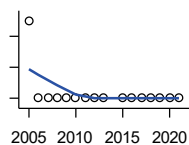
Kansas Department of Health and Environment (1981-2005,2010-);Kansas Health Policy Authority (2006-2009)

Year	County	State of Kansas	Non Metro Kansas	County Rank	Per 1000 or \$ Per Capita
2005	0	553	174	105	0.0
2006	0	508	171	105	0.0
2007	0	569	169	105	0.0
2008	0	558	166	105	0.0
2009	0	564	160	105	0.0
2010	0	583	169	105	0.0
2011	0	502	152	105	0.0
2012	0	718	200	105	0.0
2013	0	829	210	105	0.0
2014	0	817	189	105	0.0
2015	0	819	190	105	0.0
2016	0	632	136	105	0.0
2017	0	579	129	105	0.0
2018	0	871	164	105	0.0
2019	0	951	212	105	0.0
2020	0	1,018	204	105	0.0
2021	0	1,095	217	105	0.0

County: county value. Kansas: state value. County Rank: highest county value ranked #1. (\$000): thousands of dollars. Nonmetro Kansas: Kansas total less Metropolitan Areas as defined by the Office of Management and Budget (OMB; released 3/6/2020). Per 1000: For nonmoney amounts, Per 1000=(county value / county population for the same year as the data) x 1000. \$ Per capita=(county value / county population for the same year as the data). Value= . indicates missing or suppressed data or value not calculated.

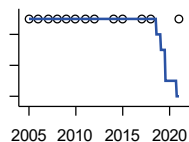
**Vital Statistics and Health**

**DENTISTS**



Kansas Department of Health and Environment (1981-2006,2010-);Kansas Health Policy Authority (2007-2009)

Year	County	State of Kansas	Non Metro Kansas	County Rank	Per 1000 or \$ Per Capita
2005	2	1,347	363	69	0.3
2006	1	1,381	361	92	0.2
2007	1	1,335	350	91	0.2
2008	1	1,392	353	90	0.2
2009	1	1,353	350	90	0.2
2010	1	1,401	365	91	0.2
2011	1	1,338	346	88	0.2
2012	1	1,434	392	86	0.2
2013	1	1,212	328	87	0.2
2015	1	1,240	327	89	0.2
2016	1	1,456	350	87	0.2
2017	1	1,467	350	87	0.2
2018	1	1,604	359	86	0.2
2019	1	1,646	355	86	0.2
2020	1	1,646	355	86	0.2
2021	1	1,688	362	85	0.2



**NUMBER OF HOSPITALS**

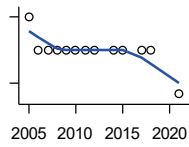
American Hospital Association, American Hospital Association Guide to the Health Care Field

Year	County	State of Kansas	Non Metro Kansas	County Rank	Per 1000 or \$ Per Capita
2005	1	158	105	96	.
2006	1	158	105	96	.
2007	1	159	104	95	.
2008	1	159	104	95	.
2009	1	158	105	96	.
2010	1	158	104	96	.
2011	1	158	103	96	.
2012	1	157	103	96	.
2014	1	156	.	96	.
2015	1	155	103	96	.
2017	1	157	102	96	.
2018	1	154	99	95	.
2021	1	151	.	95	.

County: county value. Kansas: state value. County Rank: highest county value ranked #1. (\$000): thousands of dollars. Nonmetro Kansas: Kansas total less Metropolitan Areas as defined by the Office of Management and Budget (OMB; released 3/6/2020). Per 1000: For nonmoney amounts, Per 1000=(county value / county population for the same year as the data) x 1000. \$ Per capita=(county value / county population for the same year as the data). Value= . indicates missing or suppressed data or value not calculated.

**Vital Statistics and Health**

**NUMBER OF HOSPITAL BEDS**

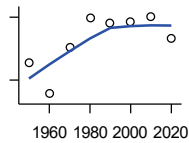


Kansas Department of Health and Environment

Year	County	State of Kansas	Non Metro Kansas	County Rank	Per 1000 or \$ Per Capita
2005	28	12,389	5,687	72	4.7
2006	25	11,992	5,514	85	4.2
2007	25	12,171	5,637	84	4.2
2008	25	12,332	5,700	85	4.2
2009	25	12,283	5,652	86	4.2
2010	25	12,218	5,521	86	4.2
2011	25	12,182	5,335	85	4.3
2012	25	12,002	5,355	85	4.3
2014	25	12,034	.	84	4.4
2015	25	11,926	5,330	85	4.4
2017	25	11,491	4,825	83	4.6
2018	25	11,448	4,583	82	4.5
2021	21	11,199	.	82	3.9

**Housing**

**HOUSING UNITS (DECENNIAL)**



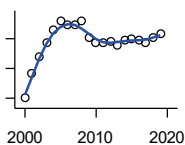
U.S. Census Bureau: Decennial Census

Year	County	State of Kansas	Non Metro Kansas	County Rank	Per 1000 or \$ Per Capita
1950	2,761	586,650	328,210	62	325.4
1960	2,468	672,899	329,380	67	333.9
1970	2,908	789,735	363,824	60	452.1
1980	3,187	955,207	416,877	62	496.5
1990	3,149	1,044,112	417,062	62	508.1
2000	3,160	1,131,395	422,218	58	517.7
2010	3,206	1,233,215	424,050	57	541.3
2020	2,996	1,275,689	413,120	59	556.3

County: county value. Kansas: state value. County Rank: highest county value ranked #1. (\$000): thousands of dollars. Nonmetro Kansas: Kansas total less Metropolitan Areas as defined by the Office of Management and Budget (OMB; released 3/6/2020). Per 1000: For nonmoney amounts, Per 1000=(county value / county population for the same year as the data) x 1000. \$ Per capita=(county value / county population for the same year as the data). Value= . indicates missing or suppressed data or value not calculated.

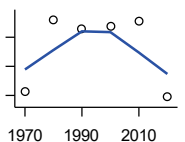
**Housing**

**HOUSING UNITS (ESTIMATED)**



U.S. Census Bureau

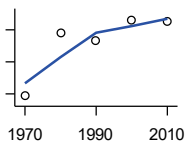
Year	County	State of Kansas	Non Metro Kansas	County Rank	Per 1000 or \$ Per Capita
2000	3,170	1,134,529	422,560	58	519.3
2001	3,187	1,146,858	423,876	58	525.8
2002	3,198	1,160,129	425,089	58	534.7
2003	3,207	1,171,620	425,936	58	541.5
2004	3,216	1,184,702	426,593	57	544.7
2005	3,222	1,195,791	426,964	56	541.8
2006	3,219	1,206,692	426,713	56	542.9
2007	3,219	1,217,608	426,090	56	542.7
2008	3,222	1,225,625	425,768	57	537.1
2009	3,211	1,230,552	424,776	57	538.9
2010	3,207	1,234,456	424,174	57	541.4
2011	3,207	1,238,052	424,549	57	546.9
2012	3,208	1,241,992	425,116	57	548.5
2013	3,206	1,246,675	425,699	57	560.6
2014	3,209	1,253,284	426,269	57	566.6
2015	3,210	1,258,999	426,844	57	570.4
2016	3,209	1,265,684	427,465	57	577.4
2017	3,207	1,273,536	427,746	57	586.6
2018	3,211	1,280,649	428,099	57	577.8
2019	3,213	1,288,401	428,495	57	571.7



**OCCUPIED HOUSING UNITS**

U.S. Census Bureau: Decennial Census

Year	County	State of Kansas	Non Metro Kansas	County Rank	Per 1000 or \$ Per Capita
1970	2,315	727,364	326,494	66	359.9
1980	2,560	872,239	371,693	65	398.8
1990	2,528	944,726	365,901	61	407.9
2000	2,539	1,037,891	375,313	62	416.0
2010	2,554	1,112,096	370,269	59	431.2
2020	2,294	1,151,360	356,330	63	425.9



**OWNER OCCUPIED HOUSING UNITS**

U.S. Census Bureau: Decennial Census

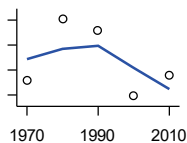
Year	County	State of Kansas	Non Metro Kansas	County Rank	Per 1000 or \$ Per Capita
1970	1,743	502,585	236,338	65	271.0
1980	1,939	612,433	277,096	67	302.1
1990	1,916	641,762	263,099	62	309.1
2000	1,980	718,703	271,350	62	324.4
2010	1,978	753,532	261,763	58	334.0

County: county value. Kansas: state value. County Rank: highest county value ranked #1. (\$000): thousands of dollars. Nonmetro Kansas: Kansas total less Metropolitan Areas as defined by the Office of Management and Budget (OMB; released 3/6/2020). Per 1000: For nonmoney amounts, Per 1000=(county value / county population for the same year as the data) x 1000. \$ Per capita=(county value / county population for the same year as the data). Value= . indicates missing or suppressed data or value not calculated.



**Housing**

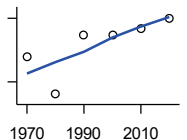
**RENTER OCCUPIED HOUSING UNITS**



U.S. Census Bureau: Decennial Census

Year	County	State of Kansas	Non Metro Kansas	County Rank	Per 1000 or \$ Per Capita
1970	572	224,779	90,156	64	88.9
1980	621	259,806	94,597	62	96.7
1990	612	302,964	102,802	61	98.7
2000	559	319,188	103,963	60	91.6
2010	576	358,564	108,506	61	97.2

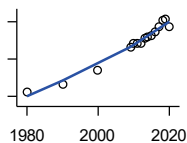
**VACANT HOUSING UNITS**



U.S. Census Bureau: Decennial Census

Year	County	State of Kansas	Non Metro Kansas	County Rank	Per 1000 or \$ Per Capita
1970	518	60,058	35,954	29	80.5
1980	341	77,912	41,584	64	53.1
1990	621	99,386	51,161	40	100.2
2000	621	93,309	46,904	39	101.7
2010	652	121,119	53,781	43	110.1
2020	702	124,329	56,790	44	130.3

**MEDIAN VALUE (\$): OWNER OCCUPIED HOUSING UNITS**



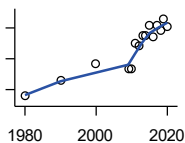
U.S. Census Bureau, Decennial Census (- 2000), (2009 -) American Community Survey five-year average ending in year shown.

Year	County	State of Kansas	Non Metro Kansas	County Rank	Per 1000 or \$ Per Capita
1980	24,000	37,800	.	76	.
1990	33,500	52,200	.	51	.
2000	48,400	83,500	.	63	.
2009	72,600	118,500	.	52	.
2010	76,400	122,600	.	54	.
2011	76,800	125,500	.	54	.
2012	76,800	127,400	.	55	.
2013	81,900	128,400	.	49	.
2014	83,100	129,400	.	52	.
2015	85,200	132,000	.	53	.
2016	89,500	135,300	.	48	.
2017	95,100	139,200	.	41	.
2018	101,200	145,400	.	36	.
2019	103,000	151,900	.	42	.
2020	94,400	157,600	.	59	.

County: county value. Kansas: state value. County Rank: highest county value ranked #1. (\$000): thousands of dollars. Nonmetro Kansas: Kansas total less Metropolitan Areas as defined by the Office of Management and Budget (OMB; released 3/6/2020). Per 1000: For nonmoney amounts, Per 1000=(county value / county population for the same year as the data) x 1000. \$ Per capita=(county value / county population for the same year as the data). Value= . indicates missing or suppressed data or value not calculated.

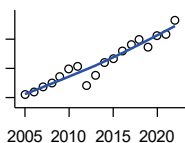
**Housing**

**MEDIAN CONTRACT RENT (\$)**



U.S. Census Bureau, Decennial Census (- 2000), (2009 -) American Community Survey five-year average ending in year shown.

Year	County	State of Kansas	Non Metro Kansas	County Rank	Per 1000 or \$ Per Capita
1980	157	219	.	69	.
1990	259	372	.	61	.
2000	368	498	.	59	.
2009	337	491	.	50	.
2010	333	507	.	56	.
2011	500	699	.	75	.
2012	483	715	.	87	.
2013	549	732	.	65	.
2014	553	748	.	71	.
2015	619	757	.	45	.
2016	543	775	.	80	.
2017	619	801	.	57	.
2018	585	831	.	81	.
2019	659	850	.	50	.
2020	606	863	.	78	.



**FAIR MARKET RENT: 2 BEDROOMS**

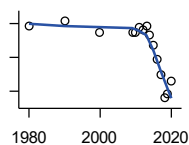
U.S. Department of Housing and Urban Development (HUD)

Year	County	State of Kansas	Non Metro Kansas	County Rank	Per 1000 or \$ Per Capita
2005	509	.	.	42	.
2006	520	.	.	44	.
2007	536	.	.	44	.
2008	550	628	.	45	.
2009	573	653	.	44	.
2010	596	678	.	46	.
2011	605	684	.	46	.
2012	540	660	.	105	.
2013	577	712	.	105	.
2014	622	746	.	105	.
2015	634	756	.	105	.
2016	658	781	.	105	.
2017	681	811	.	105	.
2018	697	815	.	105	.
2019	672	828	.	105	.
2020	714	855	.	105	.
2021	718	874	.	105	.
2022	765	879	.	30	.

County: county value. Kansas: state value. County Rank: highest county value ranked #1. (\$000): thousands of dollars. Nonmetro Kansas: Kansas total less Metropolitan Areas as defined by the Office of Management and Budget (OMB; released 3/6/2020). Per 1000: For nonmoney amounts, Per 1000=(county value / county population for the same year as the data) x 1000. \$ Per capita=(county value / county population for the same year as the data). Value= . indicates missing or suppressed data or value not calculated.

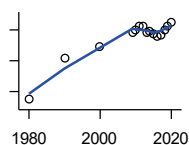
**Education**

**POPULATION AGE 25+**



U.S. Census Bureau, Decennial Census (- 2000), (2009 -) American Community Survey five-year average ending in year shown.

Year	County	State of Kansas	Non Metro Kansas	County Rank	Per 1000 or \$ Per Capita
1980	4,242	1,388,102	596,639	.	.
1990	4,258	1,565,936	608,745	.	.
2000	4,224	1,701,207	618,131	.	.
2009	4,222	1,775,427	600,188	.	.
2010	4,223	1,802,904	608,716	.	.
2011	4,240	1,822,400	610,386	.	.
2012	4,233	1,838,079	611,103	.	.
2013	4,243	1,850,010	610,374	.	.
2014	4,217	1,861,894	609,612	.	.
2015	4,186	1,869,698	606,967	.	.
2016	4,145	1,878,495	604,563	.	.
2017	4,097	1,886,741	601,076	.	.
2018	4,031	1,894,675	598,487	.	.
2019	4,041	1,902,279	595,501	.	.
2020	4,079	1,911,990	593,923	.	.



**PERCENT HS GRADUATE OR HIGHER AGE 25+**

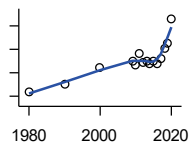
U.S. Census Bureau, Decennial Census (- 2000), (2009 -) American Community Survey five-year average ending in year shown.

Year	County	State of Kansas	Non Metro Kansas	County Rank	Per 1000 or \$ Per Capita
1980	67.4	73.3	.	67	.
1990	80.8	81.3	.	28	.
2000	84.7	86.0	.	54	.
2009	89.3	89.0	.	42	.
2010	90.1	89.2	.	42	.
2011	91.1	89.5	.	24	.
2012	91.2	89.7	.	29	.
2013	89.3	89.8	.	62	.
2014	89.6	90.0	.	60	.
2015	88.7	90.2	.	77	.
2016	87.8	90.3	.	83	.
2017	88.2	90.5	.	83	.
2018	90.0	90.7	.	69	.
2019	91.2	91.0	.	59	.
2020	92.5	91.4	.	46	.

County: county value. Kansas: state value. County Rank: highest county value ranked #1. (\$000): thousands of dollars. Nonmetro Kansas: Kansas total less Metropolitan Areas as defined by the Office of Management and Budget (OMB; released 3/6/2020). Per 1000: For nonmoney amounts, Per 1000=(county value / county population for the same year as the data) x 1000. \$ Per capita=(county value / county population for the same year as the data). Value= . indicates missing or suppressed data or value not calculated.

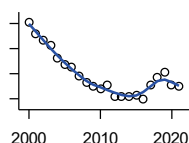
**Education**

**PERCENT BACHELORS DEGREE OR HIGHER AGE 25+**



U.S. Census Bureau, Decennial Census (- 2000), (2009 -) American Community Survey five-year average ending in year shown.

Year	County	State of Kansas	Non Metro Kansas	County Rank	Per 1000 or \$ Per Capita
1980	10.8	17.0	.	66	.
1990	12.5	21.1	.	72	.
2000	16.0	25.8	.	68	.
2009	17.5	28.8	.	67	.
2010	16.6	29.3	.	80	.
2011	19.2	29.7	.	58	.
2012	17.1	30.0	.	83	.
2013	17.4	30.3	.	83	.
2014	16.9	30.7	.	90	.
2015	17.6	31.0	.	81	.
2016	16.8	31.6	.	92	.
2017	18.1	32.3	.	85	.
2018	20.1	32.9	.	68	.
2019	21.4	33.4	.	59	.
2020	26.5	33.9	.	27	.



**PUBLIC SCHOOL ENROLLMENT (FTE) SCHOOL YEAR BEGINNING...**

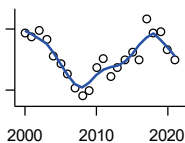
Kansas State Department of Education

Year	County	State of Kansas	Non Metro Kansas	County Rank	Per 1000 or \$ Per Capita
2000	1,005.2	448,150.8	166,722.5	70	164.7
2001	956.8	447,047.1	164,365.0	70	157.9
2002	932.0	444,860.3	161,555.4	70	155.8
2003	913.9	443,620.6	159,130.2	69	154.3
2004	860.2	441,957.2	156,566.3	73	145.7
2005	837.0	442,708.4	155,197.2	74	140.7
2006	827.8	444,878.7	153,842.3	73	139.6
2007	791.5	446,831.3	152,337.1	73	133.5
2008	764.4	447,730.0	150,572.7	73	127.4
2009	750.9	453,202.5	151,246.8	73	126.0
2010	740.5	455,405.0	151,023.8	73	125.0
2011	752.7	456,000.5	150,257.9	73	128.4
2012	711.4	458,496.4	150,463.0	73	121.6
2013	708.5	461,950.0	150,420.9	73	123.9
2014	710.8	464,395.4	150,499.4	73	125.5
2015	716.2	463,504.0	149,539.3	73	127.3
2016	696.8	459,920.3	147,293.5	74	125.4
2017	754.5	477,977.9	152,096.3	72	138.0
2018	785.7	476,481.7	150,456.8	71	141.4
2019	805.1	476,525.1	150,045.2	69	143.3
2020	754.5	462,088.0	146,369.6	70	140.1
2021	749.5	463,652.4	147,500.4	71	139.9

County: county value. Kansas: state value. County Rank: highest county value ranked #1. (\$000): thousands of dollars. Nonmetro Kansas: Kansas total less Metropolitan Areas as defined by the Office of Management and Budget (OMB; released 3/6/2020). Per 1000: For nonmoney amounts, Per 1000=(county value / county population for the same year as the data) x 1000. \$ Per capita=(county value / county population for the same year as the data). Value= . indicates missing or suppressed data or value not calculated.

**Education**

**PUPIL/TEACHER RATIO SCHOOL YEAR BEGINNING...**

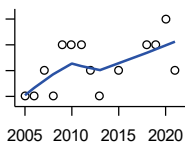


Kansas State Department of Education

Year	County	State of Kansas	Non Metro Kansas	County Rank	Per 1000 or \$ Per Capita
2000	13.8	15.4	13.9	43	.
2001	13.6	15.3	13.8	42	.
2002	13.9	15.4	13.9	36	.
2003	13.5	15.5	13.8	43	.
2004	12.7	15.3	13.6	54	.
2005	12.3	15.0	13.4	60	.
2006	11.8	14.7	13.2	63	.
2007	11.1	14.6	13.1	79	.
2008	10.7	14.4	12.9	87	.
2009	11.0	14.8	13.2	88	.
2010	12.1	15.2	13.6	70	.
2011	12.5	15.1	13.5	53	.
2012	11.7	15.1	13.5	75	.
2013	12.1	15.1	13.5	67	.
2014	12.5	15.0	13.6	58	.
2015	12.9	15.2	13.9	53	.
2016	12.5	15.1	13.7	60	.
2017	14.5	15.5	13.9	31	.
2018	13.8	15.3	13.8	37	.
2019	13.9	15.2	13.7	33	.
2020	13.0	14.7	13.4	37	.
2021	12.5	14.8	13.5	56	.

**Social Environment**

**CHILD CARE FACILITIES: TOTAL CHILD CARE FACILITIES**

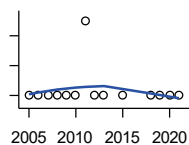


Kansas Department of Health and Environment, Bureau of Adult and Child Care

Year	County	State of Kansas	Non Metro Kansas	County Rank	Per 1000 or \$ Per Capita
2005	12	8,258	3,378	84	2.0
2006	12	8,442	3,429	81	2.0
2007	13	8,241	3,317	77	2.2
2008	12	8,011	3,150	80	2.0
2009	14	7,853	3,066	76	2.3
2010	14	7,354	2,858	72	2.4
2011	14	6,835	2,623	70	2.4
2012	13	6,346	2,409	70	2.2
2013	12	5,754	2,179	67	2.1
2015	13	5,289	2,146	67	2.3
2018	14	4,607	1,904	64	2.5
2019	14	4,287	1,774	63	2.5
2020	15	4,274	1,798	60	2.8
2021	13	4,002	1,700	60	2.4

County: county value. Kansas: state value. County Rank: highest county value ranked #1. (\$000): thousands of dollars. Nonmetro Kansas: Kansas total less Metropolitan Areas as defined by the Office of Management and Budget (OMB; released 3/6/2020). Per 1000: For nonmoney amounts, Per 1000=(county value / county population for the same year as the data) x 1000. \$ Per capita=(county value / county population for the same year as the data). Value= . indicates missing or suppressed data or value not calculated.

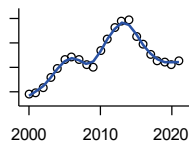
**Social Environment**



**CHILD CARE FACILITIES: PRESCHOOLS**

Kansas Department of Health and Environment, Bureau of Adult and Child Care

Year	County	State of Kansas	Non Metro Kansas	County Rank	Per 1000 or \$ Per Capita
2005	0	243	140	105	0.0
2006	0	221	127	105	0.0
2007	0	208	119	105	0.0
2008	0	204	114	105	0.0
2009	0	194	107	105	0.0
2010	0	194	112	105	0.0
2011	1	209	123	76	0.2
2012	0	201	121	105	0.0
2013	0	140	84	105	0.0
2015	0	185	113	105	0.0
2018	0	150	94	105	0.0
2019	0	134	83	105	0.0
2020	0	126	78	105	0.0
2021	0	120	74	105	0.0



**FOOD STAMP BENEFICIARIES**

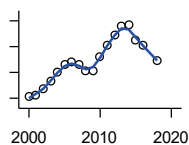
Kansas Social and Rehabilitation Services

Year	County	State of Kansas	Non Metro Kansas	County Rank	Per 1000 or \$ Per Capita
2000	188	110,619	44,825	66	30.8
2001	196	117,241	46,741	66	32.3
2002	219	131,726	52,342	64	36.6
2003	257	155,908	61,280	65	43.4
2004	294	167,971	65,852	62	49.8
2005	333	175,710	67,261	59	56.0
2006	344	182,821	67,487	56	58.0
2007	333	184,035	66,979	56	56.1
2008	309	187,377	67,160	56	51.5
2009	303	208,007	73,637	60	50.9
2010	370	259,609	90,919	60	62.5
2011	418	296,542	101,155	59	71.3
2012	462	303,257	102,478	55	79.0
2013	489	316,424	105,345	56	85.5
2014	495	301,377	100,761	54	87.4
2015	426	277,614	93,353	58	75.7
2016	394	258,412	88,343	58	70.9
2017	351	239,592	82,070	60	64.2
2018	328	219,738	75,208	59	59.0
2019	322	205,261	69,899	59	57.3
2020	313	198,457	66,721	59	58.1
2021	326	203,424	68,883	58	60.9

County: county value. Kansas: state value. County Rank: highest county value ranked #1. (\$000): thousands of dollars. Nonmetro Kansas: Kansas total less Metropolitan Areas as defined by the Office of Management and Budget (OMB; released 3/6/2020). Per 1000: For nonmoney amounts, Per 1000=(county value / county population for the same year as the data) x 1000. \$ Per capita=(county value / county population for the same year as the data). Value= . indicates missing or suppressed data or value not calculated.

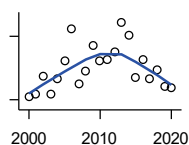
**Social Environment**

**PERCENT OF POPULATION RECEIVING FOOD STAMPS**



U.S. Dept. of Agriculture Food and Nutrition Service (1990-1997); Kansas Social and Rehabilitation Services (1998- )

Year	County	State of Kansas	Non Metro Kansas	County Rank	Per 1000 or \$ Per Capita
2000	3.1	4.1	.	66	.
2001	3.2	4.3	.	68	.
2002	3.7	4.9	.	63	.
2003	4.3	5.7	.	61	.
2004	5.0	6.2	.	58	.
2005	5.6	6.4	.	50	.
2006	5.8	6.6	.	47	.
2007	5.6	6.6	.	46	.
2008	5.1	6.7	.	53	.
2009	5.1	7.4	.	60	.
2010	6.2	9.1	.	62	.
2011	7.1	10.3	.	59	.
2012	7.9	10.5	.	48	.
2013	8.6	10.9	.	43	.
2014	8.7	10.4	.	41	.
2015	7.5	9.6	.	44	.
2016	7.1	8.9	.	50	.
2018	5.9	7.5	.	57	.



**ESTIMATED NUMBER OF PEOPLE IN POVERTY**

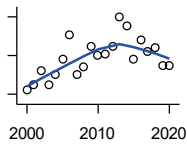
U.S. Census Bureau, Small Area Income and Poverty Estimates

Year	County	State of Kansas	Non Metro Kansas	County Rank	Per 1000 or \$ Per Capita
2000	558	235,087	98,984	66	91.4
2001	564	252,134	106,257	68	93.1
2002	606	265,673	107,542	63	101.3
2003	564	278,163	107,323	62	95.2
2004	599	297,733	111,534	60	101.5
2005	641	310,667	118,768	59	107.8
2006	719	327,102	123,700	58	121.3
2007	587	301,828	111,953	60	99.0
2008	619	307,804	113,015	59	103.2
2009	678	359,692	123,394	58	113.8
2010	643	374,677	131,502	61	108.6
2011	646	383,859	134,912	64	110.2
2012	663	392,095	133,800	60	113.4
2013	733	391,718	134,067	59	128.2
2014	703	381,506	130,213	58	124.1
2015	603	366,069	123,073	60	107.1
2016	646	343,773	121,314	60	116.2
2017	601	335,371	116,854	62	109.9
2018	620	336,892	114,490	63	111.6
2019	582	319,931	110,692	60	103.6
2020	577	300,931	100,998	59	107.1

County: county value. Kansas: state value. County Rank: highest county value ranked #1. (\$000): thousands of dollars. Nonmetro Kansas: Kansas total less Metropolitan Areas as defined by the Office of Management and Budget (OMB; released 3/6/2020). Per 1000: For nonmoney amounts, Per 1000=(county value / county population for the same year as the data) x 1000. \$ Per capita=(county value / county population for the same year as the data). Value= . indicates missing or suppressed data or value not calculated.

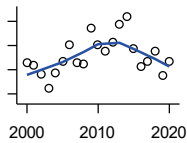
**Social Environment**

**ESTIMATED % OF PEOPLE IN POVERTY**



U.S. Census Bureau, Small Area Income and Poverty Estimates

Year	County	State of Kansas	Non Metro Kansas	County Rank	Per 1000 or \$ Per Capita
2000	9.2	8.9	.	76	.
2001	9.5	9.5	.	86	.
2002	10.2	10.0	.	73	.
2003	9.5	10.4	.	81	.
2004	10.0	11.1	.	76	.
2005	10.8	11.7	.	76	.
2006	12.1	12.2	.	60	.
2007	10.0	11.2	.	80	.
2008	10.4	11.3	.	74	.
2009	11.5	13.2	.	69	.
2010	11.0	13.5	.	79	.
2011	11.1	13.8	.	83	.
2012	11.5	14.0	.	71	.
2013	13.0	13.9	.	50	.
2014	12.5	13.5	.	55	.
2015	10.8	12.9	.	77	.
2016	11.8	12.2	.	58	.
2017	11.2	11.9	.	72	.
2018	11.4	11.9	.	67	.
2019	10.5	11.3	.	76	.
2020	10.5	10.6	.	58	.



**EST. NUMBER OF RELATED CHILDREN AGE 5 TO 17 IN FAMILIES IN POVERTY**

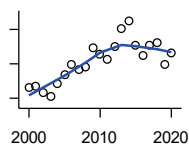
U.S. Census Bureau, Small Area Income and Poverty Estimates

Year	County	State of Kansas	Non Metro Kansas	County Rank	Per 1000 or \$ Per Capita
2000	126	50,388	21,854	67	20.6
2001	124	53,755	23,094	70	20.5
2002	116	52,453	21,423	64	19.4
2003	105	55,419	21,809	70	17.7
2004	117	59,392	22,313	62	19.8
2005	127	60,203	24,244	62	21.4
2006	141	64,427	25,326	59	23.8
2007	126	61,149	23,639	59	21.2
2008	125	59,842	22,661	58	20.8
2009	154	71,850	26,251	57	25.8
2010	141	81,077	29,804	66	23.8
2011	135	82,311	29,306	66	23.0
2012	143	87,594	29,781	63	24.4
2013	158	84,325	29,253	57	27.6
2014	164	83,873	29,354	59	29.0
2015	137	78,192	27,482	62	24.3
2016	123	67,810	25,074	64	22.1
2017	127	67,873	25,032	63	23.2
2018	135	68,153	24,928	64	24.3
2019	115	64,613	23,117	63	20.5
2020	127	59,792	21,143	58	23.6

County: county value. Kansas: state value. County Rank: highest county value ranked #1. (\$000): thousands of dollars. Nonmetro Kansas: Kansas total less Metropolitan Areas as defined by the Office of Management and Budget (OMB; released 3/6/2020). Per 1000: For nonmoney amounts, Per 1000=(county value / county population for the same year as the data) x 1000. \$ Per capita=(county value / county population for the same year as the data). Value= . indicates missing or suppressed data or value not calculated.



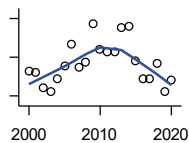
**Social Environment**



EST. % OF RELATED CHILDREN AGE 5 TO 17 IN FAMILIES IN POVERTY

U.S. Census Bureau, Small Area Income and Poverty Estimates

Year	County	State of Kansas	Non Metro Kansas	County Rank	Per 1000 or \$ Per Capita
2000	11.2	10.0	.	70	.
2001	11.4	10.8	.	70	.
2002	10.7	10.5	.	68	.
2003	10.2	11.3	.	83	.
2004	11.7	12.5	.	70	.
2005	12.8	12.8	.	69	.
2006	14.0	13.2	.	61	.
2007	13.3	12.6	.	67	.
2008	13.7	12.3	.	58	.
2009	15.9	14.7	.	47	.
2010	15.1	15.9	.	70	.
2011	14.5	16.2	.	74	.
2012	16.0	17.2	.	55	.
2013	18.1	16.5	.	33	.
2014	19.0	16.4	.	30	.
2015	16.1	15.3	.	45	.
2016	14.9	13.2	.	56	.
2017	16.2	13.4	.	43	.
2018	16.5	13.5	.	48	.
2019	14.0	12.9	.	65	.
2020	15.2	11.9	.	37	.



ESTIMATED NUMBER UNDER 18 IN POVERTY

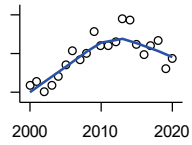
U.S. Census Bureau, Small Area Income and Poverty Estimates

Year	County	State of Kansas	Non Metro Kansas	County Rank	Per 1000 or \$ Per Capita
2000	186	82,619	34,843	71	30.5
2001	184	87,487	36,724	72	30.4
2002	169	84,181	32,870	66	28.3
2003	165	93,896	36,004	70	27.9
2004	178	98,641	36,272	65	30.1
2005	191	100,254	39,118	65	32.1
2006	213	105,193	41,054	63	35.9
2007	189	100,242	37,881	62	31.9
2008	195	100,146	37,552	59	32.5
2009	235	118,187	42,682	59	39.4
2010	208	129,009	46,428	67	35.1
2011	205	133,478	46,832	68	35.0
2012	206	135,261	46,294	69	35.2
2013	230	131,251	44,952	61	40.2
2014	232	125,562	43,933	60	41.0
2015	196	119,994	41,828	63	34.8
2016	178	100,996	37,387	65	32.0
2017	178	102,858	37,955	64	32.6
2018	193	102,616	36,991	64	34.7
2019	165	97,920	34,797	64	29.4
2020	176	88,491	30,767	59	32.7

County: county value. Kansas: state value. County Rank: highest county value ranked #1. (\$000): thousands of dollars. Nonmetro Kansas: Kansas total less Metropolitan Areas as defined by the Office of Management and Budget (OMB; released 3/6/2020). Per 1000: For nonmoney amounts, Per 1000=(county value / county population for the same year as the data) x 1000. \$ Per capita=(county value / county population for the same year as the data). Value= . indicates missing or suppressed data or value not calculated.

**Social Environment**

**ESTIMATED PERCENT UNDER 18 IN POVERTY**



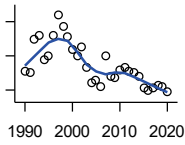
U.S. Census Bureau, Small Area Income and Poverty Estimates

Year	County	State of Kansas	Non Metro Kansas	County Rank	Per 1000 or \$ Per Capita
2000	12.7	11.9	.	73	.
2001	13.1	12.7	.	74	.
2002	12.1	12.1	.	70	.
2003	12.7	13.8	.	76	.
2004	13.6	14.6	.	74	.
2005	14.8	15.2	.	76	.
2006	16.3	15.4	.	59	.
2007	15.3	14.7	.	69	.
2008	16.0	14.6	.	62	.
2009	18.3	17.1	.	48	.
2010	16.8	18.1	.	67	.
2011	16.8	18.8	.	72	.
2012	17.2	19.0	.	59	.
2013	19.6	18.4	.	38	.
2014	19.5	17.6	.	34	.
2015	16.9	16.9	.	56	.
2016	15.9	14.3	.	61	.
2017	16.8	14.7	.	52	.
2018	17.4	14.8	.	50	.
2019	14.4	14.3	.	72	.
2020	15.5	13.0	.	43	.

County: county value. Kansas: state value. County Rank: highest county value ranked #1. (\$000): thousands of dollars. Nonmetro Kansas: Kansas total less Metropolitan Areas as defined by the Office of Management and Budget (OMB; released 3/6/2020). Per 1000: For nonmoney amounts, Per 1000=(county value / county population for the same year as the data) x 1000. \$ Per capita=(county value / county population for the same year as the data). Value= . indicates missing or suppressed data or value not calculated.

**Business**

**ESTABLISHMENTS TOTAL COUNTY BUSINESS PATTERNS**



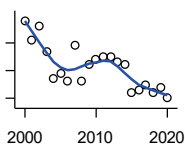
U.S. Census Bureau, County Business Patterns. Beginning with the 2017 data, any tabulation with fewer than 3 establishments were omitted from the release. Data for these establishments are included in the broader total.

Year	County	State of Kansas	Non Metro Kansas	County Rank	Per 1000 or \$ Per Capita
1990	141	65,858	26,802	73	22.7
1991	140	65,941	26,750	73	22.3
1992	160	67,630	27,229	70	25.6
1993	162	68,930	27,655	70	26.0
1994	148	69,822	27,763	74	23.5
1995	150	70,894	28,111	73	23.8
1996	162	72,017	28,353	71	25.9
1997	174	73,924	28,884	70	28.1
1998	167	74,019	28,749	70	27.4
1999	161	74,486	28,536	71	26.4
2000	154	74,939	28,475	72	25.2
2001	150	74,565	28,282	73	24.7
2002	155	75,077	28,183	72	25.9
2003	143	74,972	27,998	74	24.1
2004	134	75,827	28,009	78	22.7
2005	136	76,173	27,830	78	22.9
2006	132	76,446	27,653	77	22.3
2007	150	77,157	27,736	71	25.3
2008	138	76,096	27,314	72	23.0
2009	137	74,698	26,839	71	23.0
2010	142	74,301	26,739	70	24.0
2011	143	73,598	26,555	70	24.4
2012	141	73,944	26,534	71	24.1
2013	140	73,816	26,393	71	24.5
2014	138	74,055	26,292	72	24.4
2015	131	74,526	26,355	75	23.3
2016	130	74,884	26,172	75	23.4
2017	131	74,947	26,093	74	24.0
2018	133	74,559	25,802	73	23.9
2019	132	74,292	25,536	71	23.5
2020	129	73,982	25,178	71	24.0

County: county value. Kansas: state value. County Rank: highest county value ranked #1. (\$000): thousands of dollars. Nonmetro Kansas: Kansas total less Metropolitan Areas as defined by the Office of Management and Budget (OMB; released 3/6/2020). Per 1000: For nonmoney amounts, Per 1000=(county value / county population for the same year as the data) x 1000. \$ Per capita=(county value / county population for the same year as the data). Value= . indicates missing or suppressed data or value not calculated.

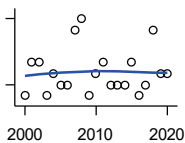
**Business**

**ESTABLISHMENTS: 1-19  
EMPLOYEES**



U.S. Census Bureau, County Business Patterns. Beginning with the 2017 data, any tabulation with fewer than 3 establishments were omitted from the release. Data for these establishments are included in the broader total.

Year	County	State of Kansas	Non Metro Kansas	County Rank	Per 1000 or \$ Per Capita
2000	138	64,527	25,381	74	22.6
2001	131	64,176	25,248	75	21.6
2002	136	64,886	25,208	74	22.7
2003	127	64,714	25,020	77	21.4
2004	117	65,554	24,995	78	19.8
2005	119	65,796	24,839	79	20.0
2006	116	65,764	24,589	79	19.6
2007	129	66,446	24,701	76	21.8
2008	116	65,322	24,257	79	19.3
2009	122	64,128	23,851	76	20.5
2010	124	64,015	23,857	76	20.9
2011	125	63,251	23,571	72	21.3
2012	125	63,519	23,575	75	21.4
2013	123	63,197	23,396	76	21.5
2014	122	63,113	23,229	77	21.5
2015	112	63,280	23,227	79	19.9
2016	113	63,630	23,117	77	20.3
2017	115	63,619	23,022	78	21.0
2018	112	63,233	22,745	78	20.2
2019	114	62,904	22,489	75	20.3
2020	110	62,634	22,173	78	20.4



**ESTABLISHMENTS: 20-99  
EMPLOYEES**

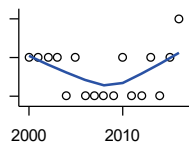
U.S. Census Bureau, County Business Patterns. Beginning with the 2017 data, any tabulation with fewer than 3 establishments were omitted from the release. Data for these establishments are included in the broader total.

Year	County	State of Kansas	Non Metro Kansas	County Rank	Per 1000 or \$ Per Capita
2000	15	8,714	2,653	58	2.5
2001	18	8,692	2,593	52	3.0
2002	18	8,582	2,554	50	3.0
2003	15	8,642	2,568	58	2.5
2004	17	8,658	2,590	52	2.9
2005	16	8,685	2,553	55	2.7
2006	16	8,922	2,612	56	2.7
2007	21	8,938	2,574	47	3.5
2008	22	8,939	2,587	44	3.7
2009	15	8,848	2,551	56	2.5
2010	17	8,612	2,454	50	2.9
2011	18	8,668	2,540	49	3.1
2012	16	8,700	2,500	54	2.7
2013	16	8,870	2,541	56	2.8
2014	16	9,121	2,590	55	2.8
2015	18	9,374	2,664	54	3.2
2016	15	9,412	2,596	56	2.7
2017	16	9,487	2,638	52	2.9
2018	21	9,485	2,621	44	3.8
2019	17	9,485	2,591	49	3.0
2020	17	9,471	2,545	51	3.2

County: county value. Kansas: state value. County Rank: highest county value ranked #1. (\$000): thousands of dollars. Nonmetro Kansas: Kansas total less Metropolitan Areas as defined by the Office of Management and Budget (OMB; released 3/6/2020). Per 1000: For nonmoney amounts, Per 1000=(county value / county population for the same year as the data) x 1000. \$ Per capita=(county value / county population for the same year as the data). Value= . indicates missing or suppressed data or value not calculated.

**Business**

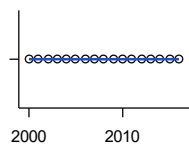
**ESTABLISHMENTS: 100-499 EMPLOYEES**



U.S. Census Bureau, County Business Patterns. Beginning with the 2017 data, any tabulation with fewer than 3 establishments were omitted from the release. Data for these establishments are included in the broader total.

Year	County	State of Kansas	Non Metro Kansas	County Rank	Per 1000 or \$ Per Capita
2000	1	1,555	409	82	0.2
2001	1	1,555	406	86	0.2
2002	1	1,464	386	81	0.2
2003	1	1,470	378	83	0.2
2004	0	1,463	388	105	0.0
2005	1	1,537	400	82	0.2
2006	0	1,598	407	105	0.0
2007	0	1,602	416	105	0.0
2008	0	1,653	421	105	0.0
2009	0	1,551	394	105	0.0
2010	1	1,513	382	85	0.2
2011	0	1,523	395	105	0.0
2012	0	1,567	410	105	0.0
2013	1	1,581	407	85	0.2
2014	0	1,641	421	105	0.0
2015	1	1,693	414	86	0.2
2016	2	1,671	406	60	0.4

**ESTABLISHMENTS: 500 OR MORE EMPLOYEES**

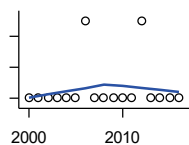


U.S. Census Bureau, County Business Patterns. Beginning with the 2017 data, any tabulation with fewer than 3 establishments were omitted from the release. Data for these establishments are included in the broader total.

Year	County	State of Kansas	Non Metro Kansas	County Rank	Per 1000 or \$ Per Capita
2000	0	143	32	105	0.0
2001	0	142	35	105	0.0
2002	0	145	35	105	0.0
2003	0	146	32	105	0.0
2004	0	152	36	105	0.0
2005	0	155	38	105	0.0
2006	0	162	45	105	0.0
2007	0	171	45	105	0.0
2008	0	182	49	105	0.0
2009	0	171	43	105	0.0
2010	0	161	46	105	0.0
2011	0	156	49	105	0.0
2012	0	158	49	105	0.0
2013	0	168	49	105	0.0
2014	0	180	52	105	0.0
2015	0	179	50	105	0.0
2016	0	171	53	105	0.0

County: county value. Kansas: state value. County Rank: highest county value ranked #1. (\$000): thousands of dollars. Nonmetro Kansas: Kansas total less Metropolitan Areas as defined by the Office of Management and Budget (OMB; released 3/6/2020). Per 1000: For nonmoney amounts, Per 1000=(county value / county population for the same year as the data) x 1000. \$ Per capita=(county value / county population for the same year as the data). Value= . indicates missing or suppressed data or value not calculated.

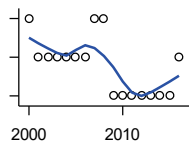
**Business**



**ESTABLISHMENTS: FORESTRY, FISHING, HUNTING, AND AG SUPPORT**

U.S. Census Bureau, County Business Patterns. Beginning with the 2017 data, any tabulation with fewer than 3 establishments were omitted from the release. Data for these establishments are included in the broader total.

Year	County	State of Kansas	Non Metro Kansas	County Rank	Per 1000 or \$ Per Capita
2000	0	190	149	105	0.0
2001	0	217	168	105	0.0
2002	0	224	176	105	0.0
2003	0	217	173	105	0.0
2004	0	211	165	105	0.0
2005	0	188	148	105	0.0
2006	1	193	158	76	0.2
2007	0	212	170	105	0.0
2008	0	197	158	105	0.0
2009	0	191	154	105	0.0
2010	0	192	161	105	0.0
2011	0	193	157	105	0.0
2012	1	204	164	85	0.2
2013	0	208	166	105	0.0
2014	0	194	152	105	0.0
2015	0	192	149	105	0.0
2016	0	181	142	105	0.0



**ESTABLISHMENTS: MINING**

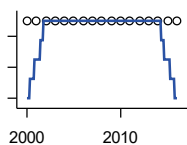
U.S. Census Bureau, County Business Patterns. Beginning with the 2017 data, any tabulation with fewer than 3 establishments were omitted from the release. Data for these establishments are included in the broader total.

Year	County	State of Kansas	Non Metro Kansas	County Rank	Per 1000 or \$ Per Capita
2000	3	868	619	53	0.5
2001	2	878	622	69	0.3
2002	2	847	615	68	0.3
2003	2	864	633	66	0.3
2004	2	880	647	67	0.3
2005	2	941	695	69	0.3
2006	2	991	734	71	0.3
2007	3	1,000	759	59	0.5
2008	3	1,047	799	60	0.5
2009	1	1,016	772	90	0.2
2010	1	1,009	762	91	0.2
2011	1	1,013	763	92	0.2
2012	1	1,048	789	91	0.2
2013	1	1,060	802	92	0.2
2014	1	1,102	828	93	0.2
2015	1	1,069	810	94	0.2
2016	2	990	747	77	0.4

County: county value. Kansas: state value. County Rank: highest county value ranked #1. (\$000): thousands of dollars. Nonmetro Kansas: Kansas total less Metropolitan Areas as defined by the Office of Management and Budget (OMB; released 3/6/2020). Per 1000: For nonmoney amounts, Per 1000=(county value / county population for the same year as the data) x 1000. \$ Per capita=(county value / county population for the same year as the data). Value= . indicates missing or suppressed data or value not calculated.

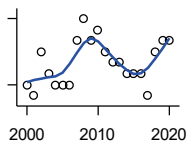
**Business**

**ESTABLISHMENTS: UTILITIES**



U.S. Census Bureau, County Business Patterns. Beginning with the 2017 data, any tabulation with fewer than 3 establishments were omitted from the release. Data for these establishments are included in the broader total.

Year	County	State of Kansas	Non Metro Kansas	County Rank	Per 1000 or \$ Per Capita
2000	1	274	192	96	0.2
2001	1	290	204	96	0.2
2002	1	278	195	93	0.2
2003	1	268	180	90	0.2
2004	1	247	164	90	0.2
2005	1	254	172	91	0.2
2006	1	248	169	92	0.2
2007	1	222	156	87	0.2
2008	1	244	166	87	0.2
2009	1	222	152	86	0.2
2010	1	197	129	82	0.2
2011	1	230	156	87	0.2
2012	1	232	156	86	0.2
2013	1	234	159	87	0.2
2014	1	232	160	89	0.2
2015	1	237	165	88	0.2
2016	1	245	171	90	0.2



**ESTABLISHMENTS: CONSTRUCTION**

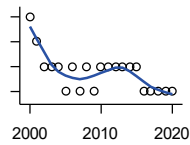
U.S. Census Bureau, County Business Patterns. Beginning with the 2017 data, any tabulation with fewer than 3 establishments were omitted from the release. Data for these establishments are included in the broader total.

Year	County	State of Kansas	Non Metro Kansas	County Rank	Per 1000 or \$ Per Capita
2000	8	7,703	2,616	89	1.3
2001	7	7,449	2,520	91	1.2
2002	11	7,519	2,482	74	1.8
2003	9	7,722	2,521	83	1.5
2004	8	7,887	2,518	88	1.4
2005	8	8,032	2,515	86	1.3
2006	8	8,031	2,494	86	1.3
2007	12	8,057	2,547	75	2.0
2008	14	7,831	2,522	70	2.3
2009	12	7,342	2,452	74	2.0
2010	13	7,064	2,394	72	2.2
2011	11	6,774	2,361	78	1.9
2012	10	6,741	2,393	83	1.7
2013	10	6,802	2,394	82	1.7
2014	9	6,920	2,383	85	1.6
2015	9	7,014	2,377	84	1.6
2016	9	6,988	2,343	85	1.6
2017	7	7,031	2,316	90	1.3
2018	11	7,124	2,285	75	2.0
2019	12	7,060	2,242	72	2.1
2020	12	7,089	2,249	72	2.2

County: county value. Kansas: state value. County Rank: highest county value ranked #1. (\$000): thousands of dollars. Nonmetro Kansas: Kansas total less Metropolitan Areas as defined by the Office of Management and Budget (OMB; released 3/6/2020). Per 1000: For nonmoney amounts, Per 1000=(county value / county population for the same year as the data) x 1000. \$ Per capita=(county value / county population for the same year as the data). Value= . indicates missing or suppressed data or value not calculated.

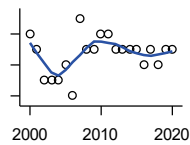
**Business**

**ESTABLISHMENTS:  
MANUFACTURING**



U.S. Census Bureau, County Business Patterns. Beginning with the 2017 data, any tabulation with fewer than 3 establishments were omitted from the release. Data for these establishments are included in the broader total.

Year	County	State of Kansas	Non Metro Kansas	County Rank	Per 1000 or \$ Per Capita
2000	9	3,229	1,316	56	1.5
2001	8	3,240	1,323	59	1.3
2002	7	3,181	1,289	66	1.2
2003	7	3,159	1,291	65	1.2
2004	7	3,179	1,313	68	1.2
2005	6	3,128	1,278	70	1.0
2006	7	3,165	1,290	67	1.2
2007	6	3,184	1,316	73	1.0
2008	7	3,171	1,297	70	1.2
2009	6	3,026	1,240	73	1.0
2010	7	2,955	1,222	65	1.2
2011	7	2,877	1,193	64	1.2
2012	7	2,889	1,197	65	1.2
2013	7	2,836	1,165	64	1.2
2014	7	2,831	1,168	63	1.2
2015	7	2,817	1,161	62	1.2
2016	6	2,791	1,150	69	1.1
2017	6	2,760	1,147	70	1.1
2018	6	2,725	1,126	72	1.1
2019	6	2,695	1,111	71	1.1
2020	6	2,673	1,103	70	1.1



**ESTABLISHMENTS: WHOLESALE  
TRADE**

U.S. Census Bureau, County Business Patterns. Beginning with the 2017 data, any tabulation with fewer than 3 establishments were omitted from the release. Data for these establishments are included in the broader total.

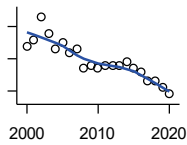
Year	County	State of Kansas	Non Metro Kansas	County Rank	Per 1000 or \$ Per Capita
2000	7	4,876	1,776	98	1.1
2001	6	4,811	1,769	98	1.0
2002	4	4,719	1,750	101	0.7
2003	4	4,590	1,637	98	0.7
2004	4	4,553	1,634	99	0.7
2005	5	4,541	1,618	97	0.8
2006	3	4,517	1,596	100	0.5
2007	8	4,555	1,629	87	1.3
2008	6	4,501	1,622	92	1.0
2009	6	4,437	1,614	91	1.0
2010	7	4,432	1,612	92	1.2
2011	7	4,400	1,660	93	1.2
2012	6	4,563	1,755	95	1.0
2013	6	4,501	1,741	93	1.0
2014	6	4,497	1,746	92	1.1
2015	6	4,459	1,755	94	1.1
2016	5	4,457	1,732	99	0.9
2017	6	4,436	1,774	93	1.1
2018	5	4,330	1,727	95	0.9
2019	6	4,291	1,713	92	1.1
2020	6	4,191	1,677	92	1.1

County: county value. Kansas: state value. County Rank: highest county value ranked #1. (\$000): thousands of dollars. Nonmetro Kansas: Kansas total less Metropolitan Areas as defined by the Office of Management and Budget (OMB; released 3/6/2020). Per 1000: For nonmoney amounts, Per 1000=(county value / county population for the same year as the data) x 1000. \$ Per capita=(county value / county population for the same year as the data). Value= . indicates missing or suppressed data or value not calculated.



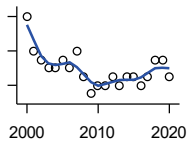
**Business**

**ESTABLISHMENTS: RETAIL TRADE**



U.S. Census Bureau, County Business Patterns. Beginning with the 2017 data, any tabulation with fewer than 3 establishments were omitted from the release. Data for these establishments are included in the broader total.

Year	County	State of Kansas	Non Metro Kansas	County Rank	Per 1000 or \$ Per Capita
2000	34	12,261	5,240	67	5.6
2001	36	12,206	5,207	65	5.9
2002	43	11,980	5,082	52	7.2
2003	38	11,834	5,049	61	6.4
2004	33	11,748	4,967	65	5.6
2005	35	11,562	4,834	61	5.9
2006	32	11,367	4,702	64	5.4
2007	33	11,306	4,653	62	5.6
2008	27	10,978	4,494	70	4.5
2009	28	10,760	4,372	69	4.7
2010	27	10,727	4,346	69	4.6
2011	28	10,655	4,289	68	4.8
2012	28	10,585	4,202	65	4.8
2013	28	10,433	4,147	66	4.9
2014	29	10,391	4,070	63	5.1
2015	27	10,327	4,061	66	4.8
2016	26	10,197	3,965	66	4.7
2017	23	10,074	3,885	68	4.2
2018	23	9,866	3,797	68	4.1
2019	21	9,762	3,750	71	3.7
2020	19	9,591	3,666	73	3.5



**ESTABLISHMENTS: TRANSPORTATION & WAREHOUSING**

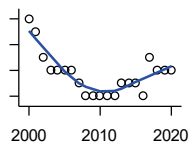
U.S. Census Bureau, County Business Patterns. Beginning with the 2017 data, any tabulation with fewer than 3 establishments were omitted from the release. Data for these establishments are included in the broader total.

Year	County	State of Kansas	Non Metro Kansas	County Rank	Per 1000 or \$ Per Capita
2000	10	2,474	1,293	69	1.6
2001	6	2,463	1,298	84	1.0
2002	5	2,461	1,278	91	0.8
2003	4	2,576	1,297	94	0.7
2004	4	2,651	1,324	95	0.7
2005	5	2,632	1,326	93	0.8
2006	4	2,626	1,295	95	0.7
2007	6	2,664	1,314	85	1.0
2008	3	2,675	1,329	97	0.5
2009	1	2,635	1,313	104	0.2
2010	2	2,615	1,313	101	0.3
2011	2	2,579	1,285	102	0.3
2012	3	2,519	1,243	99	0.5
2013	2	2,492	1,226	102	0.3
2014	3	2,518	1,240	99	0.5
2015	3	2,554	1,257	98	0.5
2016	2	2,567	1,241	101	0.4
2017	3	2,640	1,245	101	0.5
2018	5	2,627	1,238	86	0.9
2019	5	2,615	1,209	86	0.9
2020	3	2,589	1,179	99	0.6

County: county value. Kansas: state value. County Rank: highest county value ranked #1. (\$000): thousands of dollars. Nonmetro Kansas: Kansas total less Metropolitan Areas as defined by the Office of Management and Budget (OMB; released 3/6/2020). Per 1000: For nonmoney amounts, Per 1000=(county value / county population for the same year as the data) x 1000. \$ Per capita=(county value / county population for the same year as the data). Value= . indicates missing or suppressed data or value not calculated.

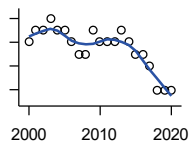
**Business**

**ESTABLISHMENTS: INFORMATION**



U.S. Census Bureau, County Business Patterns. Beginning with the 2017 data, any tabulation with fewer than 3 establishments were omitted from the release. Data for these establishments are included in the broader total.

Year	County	State of Kansas	Non Metro Kansas	County Rank	Per 1000 or \$ Per Capita
2000	9	1,542	578	38	1.5
2001	8	1,556	566	46	1.3
2002	6	1,517	551	52	1.0
2003	5	1,516	564	58	0.8
2004	5	1,518	556	59	0.8
2005	5	1,519	536	58	0.8
2006	5	1,549	559	54	0.8
2007	4	1,504	527	63	0.7
2008	3	1,468	522	71	0.5
2009	3	1,420	510	70	0.5
2010	3	1,437	527	75	0.5
2011	3	1,428	537	74	0.5
2012	3	1,387	515	71	0.5
2013	4	1,337	487	61	0.7
2014	4	1,335	496	61	0.7
2015	4	1,359	510	61	0.7
2016	3	1,431	537	70	0.5
2017	6	1,439	.	49	1.1
2018	5	1,407	.	54	0.9
2019	5	1,422	.	54	0.9
2020	5	1,424	.	55	0.9



**ESTABLISHMENTS: FINANCE & INSURANCE**

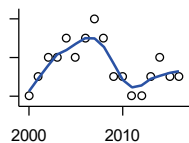
U.S. Census Bureau, County Business Patterns. Beginning with the 2017 data, any tabulation with fewer than 3 establishments were omitted from the release. Data for these establishments are included in the broader total.

Year	County	State of Kansas	Non Metro Kansas	County Rank	Per 1000 or \$ Per Capita
2000	12	5,209	1,848	70	2.0
2001	13	5,178	1,828	65	2.1
2002	13	5,496	1,911	67	2.2
2003	14	5,569	1,907	63	2.4
2004	13	5,572	1,913	69	2.2
2005	13	5,708	1,964	69	2.2
2006	12	5,877	1,976	72	2.0
2007	11	6,017	2,030	76	1.9
2008	11	6,010	2,023	74	1.8
2009	13	5,933	1,994	69	2.2
2010	12	5,872	1,975	70	2.0
2011	12	5,854	1,985	70	2.0
2012	12	5,993	2,024	72	2.1
2013	13	5,903	1,993	68	2.3
2014	12	5,894	2,000	70	2.1
2015	11	5,932	1,998	74	2.0
2016	11	6,022	2,021	73	2.0
2017	10	6,026	2,007	77	1.8
2018	8	6,023	1,997	85	1.4
2019	8	5,953	1,977	84	1.4
2020	8	5,926	1,969	85	1.5

County: county value. Kansas: state value. County Rank: highest county value ranked #1. (\$000): thousands of dollars. Nonmetro Kansas: Kansas total less Metropolitan Areas as defined by the Office of Management and Budget (OMB; released 3/6/2020). Per 1000: For nonmoney amounts, Per 1000=(county value / county population for the same year as the data) x 1000. \$ Per capita=(county value / county population for the same year as the data). Value= . indicates missing or suppressed data or value not calculated.

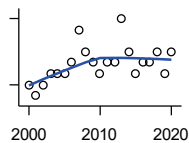
**Business**

**ESTABLISHMENTS: REAL ESTATE, RENTAL, AND LEASING**



U.S. Census Bureau, County Business Patterns. Beginning with the 2017 data, any tabulation with fewer than 3 establishments were omitted from the release. Data for these establishments are included in the broader total.

Year	County	State of Kansas	Non Metro Kansas	County Rank	Per 1000 or \$ Per Capita
2000	0	2,733	687	105	0.0
2001	1	2,849	724	92	0.2
2002	2	2,952	735	78	0.3
2003	2	3,007	727	71	0.3
2004	3	3,108	713	62	0.5
2005	2	3,203	727	69	0.3
2006	3	3,268	736	62	0.5
2007	4	3,286	721	54	0.7
2008	3	3,239	738	61	0.5
2009	1	3,122	723	89	0.2
2010	1	3,050	708	90	0.2
2011	0	3,002	692	105	0.0
2012	0	2,981	691	105	0.0
2013	1	3,046	717	87	0.2
2014	2	3,135	738	79	0.4
2015	1	3,179	744	91	0.2
2016	1	3,293	757	90	0.2



**ESTABLISHMENTS: PROFESSIONAL, SCIENTIFIC, AND TECHNICAL SERVICES**

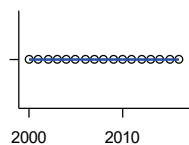
U.S. Census Bureau, County Business Patterns. Beginning with the 2017 data, any tabulation with fewer than 3 establishments were omitted from the release. Data for these establishments are included in the broader total.

Year	County	State of Kansas	Non Metro Kansas	County Rank	Per 1000 or \$ Per Capita
2000	8	6,424	1,690	77	1.3
2001	7	6,492	1,665	81	1.2
2002	8	6,719	1,704	76	1.3
2003	9	6,793	1,735	73	1.5
2004	9	7,025	1,730	70	1.5
2005	9	7,087	1,711	69	1.5
2006	10	7,231	1,736	67	1.7
2007	13	7,329	1,729	61	2.2
2008	11	7,133	1,671	64	1.8
2009	10	7,122	1,676	65	1.7
2010	9	7,172	1,680	71	1.5
2011	10	7,115	1,668	69	1.7
2012	10	7,122	1,681	67	1.7
2013	14	7,129	1,698	54	2.4
2014	11	7,206	1,682	66	1.9
2015	9	7,184	1,687	69	1.6
2016	10	7,146	1,659	67	1.8
2017	10	7,224	1,679	65	1.8
2018	11	7,138	1,655	64	2.0
2019	9	7,119	.	68	1.6
2020	11	7,117	.	60	2.0

County: county value. Kansas: state value. County Rank: highest county value ranked #1. (\$000): thousands of dollars. Nonmetro Kansas: Kansas total less Metropolitan Areas as defined by the Office of Management and Budget (OMB; released 3/6/2020). Per 1000: For nonmoney amounts, Per 1000=(county value / county population for the same year as the data) x 1000. \$ Per capita=(county value / county population for the same year as the data). Value= . indicates missing or suppressed data or value not calculated.

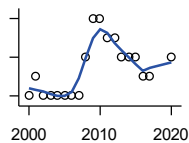
**Business**

**ESTABLISHMENTS: MANAGEMENT OF COMPANIES AND ENTERPRISES**



U.S. Census Bureau, County Business Patterns. Beginning with the 2017 data, any tabulation with fewer than 3 establishments were omitted from the release. Data for these establishments are included in the broader total.

Year	County	State of Kansas	Non Metro Kansas	County Rank	Per 1000 or \$ Per Capita
2000	0	622	145	105	0.0
2001	0	593	141	105	0.0
2002	0	597	152	105	0.0
2003	0	561	135	105	0.0
2004	0	569	133	105	0.0
2005	0	543	127	105	0.0
2006	0	542	131	105	0.0
2007	0	550	133	105	0.0
2008	0	553	139	105	0.0
2009	0	575	136	105	0.0
2010	0	567	131	105	0.0
2011	0	552	134	105	0.0
2012	0	593	135	105	0.0
2013	0	590	135	105	0.0
2014	0	603	136	105	0.0
2015	0	613	140	105	0.0
2016	0	655	171	105	0.0



**ESTABLISHMENTS: ADMIN, SUPPORT, WASTE MGMT., AND REMEDIATION**

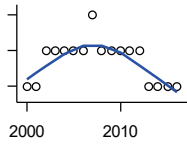
U.S. Census Bureau, County Business Patterns. Beginning with the 2017 data, any tabulation with fewer than 3 establishments were omitted from the release. Data for these establishments are included in the broader total.

Year	County	State of Kansas	Non Metro Kansas	County Rank	Per 1000 or \$ Per Capita
2000	2	3,307	871	90	0.3
2001	3	3,421	913	82	0.5
2002	2	3,232	882	89	0.3
2003	2	3,189	858	88	0.3
2004	2	3,301	891	92	0.3
2005	2	3,342	896	91	0.3
2006	2	3,395	886	93	0.3
2007	2	3,522	921	94	0.3
2008	4	3,587	932	75	0.7
2009	6	3,505	904	55	1.0
2010	6	3,494	897	59	1.0
2011	5	3,447	903	69	0.9
2012	5	3,462	891	65	0.9
2013	4	3,489	904	77	0.7
2014	4	3,569	933	75	0.7
2015	4	3,630	964	73	0.7
2016	3	3,705	987	81	0.5
2017	3	3,741	991	84	0.5
2018	4	3,807	989	74	0.7

County: county value. Kansas: state value. County Rank: highest county value ranked #1. (\$000): thousands of dollars. Nonmetro Kansas: Kansas total less Metropolitan Areas as defined by the Office of Management and Budget (OMB; released 3/6/2020). Per 1000: For nonmoney amounts, Per 1000=(county value / county population for the same year as the data) x 1000. \$ Per capita=(county value / county population for the same year as the data). Value= . indicates missing or suppressed data or value not calculated.

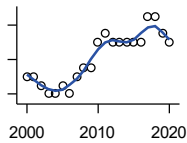
**Business**

**ESTABLISHMENTS: EDUCATIONAL SERVICES**



U.S. Census Bureau, County Business Patterns. Beginning with the 2017 data, any tabulation with fewer than 3 establishments were omitted from the release. Data for these establishments are included in the broader total.

Year	County	State of Kansas	Non Metro Kansas	County Rank	Per 1000 or \$ Per Capita
2000	0	604	155	105	0.0
2001	0	625	168	105	0.0
2002	1	666	165	70	0.2
2003	1	663	173	73	0.2
2004	1	690	173	72	0.2
2005	1	699	168	69	0.2
2006	1	698	175	68	0.2
2007	2	691	165	44	0.3
2008	1	692	158	67	0.2
2009	1	690	150	66	0.2
2010	1	700	149	68	0.2
2011	1	711	150	66	0.2
2012	1	724	145	67	0.2
2013	0	735	153	105	0.0
2014	0	722	152	105	0.0
2015	0	754	152	105	0.0
2016	0	728	150	105	0.0



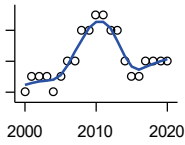
**ESTABLISHMENTS: HEALTH CARE AND SOCIAL ASSISTANCE**

U.S. Census Bureau, County Business Patterns. Beginning with the 2017 data, any tabulation with fewer than 3 establishments were omitted from the release. Data for these establishments are included in the broader total.

Year	County	State of Kansas	Non Metro Kansas	County Rank	Per 1000 or \$ Per Capita
2000	10	6,564	2,591	74	1.6
2001	10	6,636	2,590	74	1.6
2002	9	7,052	2,777	83	1.5
2003	8	7,129	2,792	88	1.4
2004	8	7,239	2,813	88	1.4
2005	9	7,412	2,855	85	1.5
2006	8	7,477	2,860	89	1.3
2007	10	7,661	2,864	77	1.7
2008	11	7,651	2,810	72	1.8
2009	11	7,696	2,787	72	1.8
2010	14	7,751	2,830	63	2.4
2011	15	7,804	2,817	62	2.6
2012	14	7,973	2,793	63	2.4
2013	14	7,877	2,729	65	2.4
2014	14	7,809	2,686	62	2.5
2015	14	8,103	2,692	65	2.5
2016	14	8,315	2,678	65	2.5
2017	17	8,136	2,646	59	3.1
2018	17	8,126	2,632	59	3.1
2019	15	8,184	2,587	59	2.7
2020	14	8,290	2,571	64	2.6

County: county value. Kansas: state value. County Rank: highest county value ranked #1. (\$000): thousands of dollars. Nonmetro Kansas: Kansas total less Metropolitan Areas as defined by the Office of Management and Budget (OMB; released 3/6/2020). Per 1000: For nonmoney amounts, Per 1000=(county value / county population for the same year as the data) x 1000. \$ Per capita=(county value / county population for the same year as the data). Value= . indicates missing or suppressed data or value not calculated.

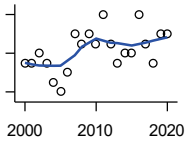
**Business**



**ESTABLISHMENTS: ARTS, ENTERTAINMENT, AND RECREATION**

U.S. Census Bureau, County Business Patterns. Beginning with the 2017 data, any tabulation with fewer than 3 establishments were omitted from the release. Data for these establishments are included in the broader total.

Year	County	State of Kansas	Non Metro Kansas	County Rank	Per 1000 or \$ Per Capita
2000	2	981	419	84	0.3
2001	3	1,009	433	71	0.5
2002	3	1,054	441	70	0.5
2003	3	1,045	443	70	0.5
2004	2	1,082	445	85	0.3
2005	3	1,109	446	71	0.5
2006	4	1,080	445	58	0.7
2007	4	1,092	444	57	0.7
2008	6	1,062	423	42	1.0
2009	6	1,063	421	40	1.0
2010	7	1,018	406	31	1.2
2011	7	997	387	28	1.2
2012	6	1,000	388	37	1.0
2013	6	1,009	377	37	1.0
2014	4	1,030	365	53	0.7
2015	3	1,031	357	62	0.5
2016	3	1,060	366	64	0.5
2017	4	1,096	.	49	0.7
2018	4	1,088	.	47	0.7
2019	4	1,087	.	48	0.7
2020	4	1,064	.	48	0.7



**ESTABLISHMENTS: ACCOMMODATION AND FOOD SERVICES**

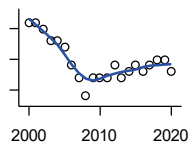
U.S. Census Bureau, County Business Patterns. Beginning with the 2017 data, any tabulation with fewer than 3 establishments were omitted from the release. Data for these establishments are included in the broader total.

Year	County	State of Kansas	Non Metro Kansas	County Rank	Per 1000 or \$ Per Capita
2000	11	5,536	2,213	75	1.8
2001	11	5,551	2,173	73	1.8
2002	12	5,610	2,174	69	2.0
2003	11	5,635	2,188	73	1.9
2004	9	5,681	2,160	83	1.5
2005	8	5,776	2,170	89	1.3
2006	10	5,745	2,132	75	1.7
2007	14	5,877	2,095	58	2.4
2008	13	5,843	2,052	62	2.2
2009	14	5,794	2,029	62	2.3
2010	13	5,898	2,046	62	2.2
2011	16	5,958	2,067	55	2.7
2012	13	5,951	2,046	61	2.2
2013	11	6,061	2,070	65	1.9
2014	12	5,985	2,024	65	2.1
2015	12	6,034	2,063	66	2.1
2016	16	6,126	2,094	53	2.9
2017	13	6,250	2,123	63	2.4
2018	11	6,256	2,128	70	2.0
2019	14	6,231	2,131	57	2.5
2020	14	6,206	2,131	57	2.6

County: county value. Kansas: state value. County Rank: highest county value ranked #1. (\$000): thousands of dollars. Nonmetro Kansas: Kansas total less Metropolitan Areas as defined by the Office of Management and Budget (OMB; released 3/6/2020). Per 1000: For nonmoney amounts, Per 1000=(county value / county population for the same year as the data) x 1000. \$ Per capita=(county value / county population for the same year as the data). Value= . indicates missing or suppressed data or value not calculated.

**Business**

**ESTABLISHMENTS: OTHER SERVICES**

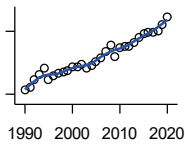


U.S. Census Bureau, County Business Patterns. Beginning with the 2017 data, any tabulation with fewer than 3 establishments were omitted from the release. Data for these establishments are included in the broader total.

Year	County	State of Kansas	Non Metro Kansas	County Rank	Per 1000 or \$ Per Capita
2000	26	8,423	3,636	63	4.3
2001	26	8,310	3,614	62	4.3
2002	25	8,552	3,658	66	4.2
2003	23	8,411	3,605	68	3.9
2004	23	8,343	3,597	67	3.9
2005	22	8,321	3,571	68	3.7
2006	19	8,225	3,490	78	3.2
2007	17	8,355	3,534	85	2.9
2008	14	8,104	3,406	90	2.3
2009	17	8,040	3,405	80	2.9
2010	17	7,998	3,379	81	2.9
2011	17	7,883	3,294	76	2.9
2012	19	7,913	3,303	74	3.2
2013	17	7,947	3,290	79	3.0
2014	18	7,943	3,285	76	3.2
2015	19	7,869	3,255	74	3.4
2016	18	7,839	3,204	78	3.2
2017	19	7,873	3,189	76	3.5
2018	20	7,853	3,176	71	3.6
2019	20	7,834	3,138	71	3.6
2020	18	7,787	3,073	76	3.3

County: county value. Kansas: state value. County Rank: highest county value ranked #1. (\$000): thousands of dollars. Nonmetro Kansas: Kansas total less Metropolitan Areas as defined by the Office of Management and Budget (OMB; released 3/6/2020). Per 1000: For nonmoney amounts, Per 1000=(county value / county population for the same year as the data) x 1000. \$ Per capita=(county value / county population for the same year as the data). Value= . indicates missing or suppressed data or value not calculated.

**Business**



**TOTAL ANNUAL PAYROLL (\$000)  
COUNTY BUSINESS PATTERNS**

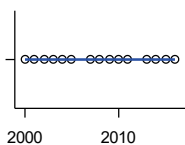
U.S. Census Bureau, County Business Patterns. Beginning with the 2017 data, any tabulation with fewer than 3 establishments were omitted from the release. Data for these establishments are included in the broader total.

Year	County	State of Kansas	Non Metro Kansas	County Rank	Per 1000 or \$ Per Capita
1990	11,867	17,487,316	4,442,429	70	1,914.6
1991	13,255	18,162,326	4,612,616	71	2,109.3
1992	17,123	19,244,346	4,882,060	67	2,741.9
1993	19,489	20,087,190	5,182,780	66	3,125.2
1994	22,327	21,201,652	5,541,423	65	3,546.8
1995	17,121	22,825,920	5,875,310	72	2,721.9
1996	18,512	24,613,884	6,198,398	70	2,961.0
1997	19,722	26,787,098	6,599,061	69	3,189.2
1998	20,739	28,747,576	6,871,794	69	3,398.2
1999	21,491	30,600,434	7,121,961	69	3,525.4
2000	23,291	31,990,762	7,520,424	68	3,815.7
2001	23,150	33,303,992	7,598,165	69	3,819.5
2002	24,027	33,152,962	7,572,002	68	4,017.2
2003	22,575	34,040,944	7,726,561	69	3,812.1
2004	23,874	35,725,812	8,303,779	69	4,043.7
2005	25,614	36,646,064	8,586,986	70	4,307.0
2006	27,075	39,251,388	9,178,947	69	4,566.5
2007	30,666	42,022,753	.	69	5,170.5
2008	33,288	43,984,689	.	66	5,548.9
2009	28,058	42,146,866	.	69	4,709.3
2010	32,332	42,686,303	10,294,015	70	5,458.7
2011	32,640	43,733,944	.	69	5,566.2
2012	33,010	45,608,072	11,222,183	70	5,643.7
2013	34,533	47,715,601	11,446,751	70	6,038.3
2014	37,307	49,712,832	11,957,931	69	6,586.7
2015	38,729	51,259,676	11,975,718	66	6,881.5
2016	39,350	51,016,318	12,148,646	68	7,079.9
2017	39,500	52,754,605	12,448,592	67	7,225.2
2018	40,221	55,087,460	12,810,270	67	7,237.9
2019	43,424	57,272,387	13,123,288	67	7,726.7
2020	46,887	58,374,388	14,007,955	65	8,705.3

County: county value. Kansas: state value. County Rank: highest county value ranked #1. (\$000): thousands of dollars. Nonmetro Kansas: Kansas total less Metropolitan Areas as defined by the Office of Management and Budget (OMB; released 3/6/2020). Per 1000: For nonmoney amounts, Per 1000=(county value / county population for the same year as the data) x 1000. \$ Per capita=(county value / county population for the same year as the data). Value= . indicates missing or suppressed data or value not calculated.



**Business**



**TOTAL ANNUAL PAYROLL(\$000):  
FORESTRY, FISHING, HUNTING, AND  
AG SUPPORT**

U.S. Census Bureau, County Business Patterns. Beginning with the 2017 data, any tabulation with fewer than 3 establishments were omitted from the release. Data for these establishments are included in the broader total.

Year	County	State of Kansas	Non Metro Kansas	County Rank	Per 1000 or \$ Per Capita
2000	0	13,551	.	.	0.0
2001	0	.	.	.	0.0
2002	0	16,528	.	.	0.0
2003	0	17,247	.	.	0.0
2004	0	17,552	.	.	0.0
2005	0	16,298	.	.	0.0
2006	.	17,908	.	.	.
2007	0	22,199	.	.	0.0
2008	0	21,359	.	.	0.0
2009	0	22,466	.	.	0.0
2010	0	22,753	.	.	0.0
2011	0	23,320	.	.	0.0
2012	.	27,492	.	.	.
2013	0	30,360	.	.	0.0
2014	0	34,862	.	.	0.0
2015	0	35,980	.	.	0.0
2016	0	31,488	.	.	0.0

**TOTAL ANNUAL PAYROLL(\$000):  
MINING**

U.S. Census Bureau, County Business Patterns. Beginning with the 2017 data, any tabulation with fewer than 3 establishments were omitted from the release. Data for these establishments are included in the broader total.

Year	County	State of Kansas	Non Metro Kansas	County Rank	Per 1000 or \$ Per Capita
2000	.	240,079	.	.	.
2001	.	273,838	.	.	.
2002	.	262,277	.	.	.
2003	.	290,652	.	.	.
2004	.	326,997	.	.	.
2005	.	381,069	.	.	.
2006	.	482,102	.	.	.
2007	.	551,751	.	.	.
2008	.	620,446	.	.	.
2009	.	465,070	.	.	.
2010	.	485,841	.	.	.
2011	.	541,536	.	.	.
2012	.	600,402	.	.	.
2013	.	599,788	.	.	.
2014	.	678,673	.	.	.
2015	.	552,658	.	.	.

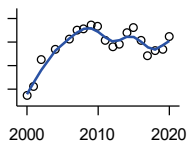
County: county value. Kansas: state value. County Rank: highest county value ranked #1. (\$000): thousands of dollars. Nonmetro Kansas: Kansas total less Metropolitan Areas as defined by the Office of Management and Budget (OMB; released 3/6/2020). Per 1000: For nonmoney amounts, Per 1000=(county value / county population for the same year as the data) x 1000. \$ Per capita=(county value / county population for the same year as the data). Value= . indicates missing or suppressed data or value not calculated.

**Business**

**TOTAL ANNUAL PAYROLL(\$000):  
UTILITIES**

U.S. Census Bureau, County Business Patterns. Beginning with the 2017 data, any tabulation with fewer than 3 establishments were omitted from the release. Data for these establishments are included in the broader total.

Year	County	State of Kansas	Non Metro Kansas	County Rank	Per 1000 or \$ Per Capita
2000	.	410,313	.	.	.
2001	.	452,057	.	.	.
2002	.	377,559	.	.	.
2003	.	378,157	.	.	.
2004	.	377,809	.	.	.
2005	.	429,864	.	.	.
2006	.	443,999	.	.	.
2007	.	480,068	.	.	.
2008	.	541,066	.	.	.
2009	.	563,373	.	.	.
2010	.	512,628	.	.	.
2011	.	653,229	.	.	.
2012	.	625,451	.	.	.
2013	.	625,347	.	.	.
2014	.	610,960	.	.	.
2015	.	668,559	.	.	.



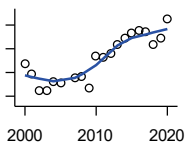
**TOTAL ANNUAL PAYROLL(\$000):  
CONSTRUCTION**

U.S. Census Bureau, County Business Patterns. Beginning with the 2017 data, any tabulation with fewer than 3 establishments were omitted from the release. Data for these establishments are included in the broader total.

Year	County	State of Kansas	Non Metro Kansas	County Rank	Per 1000 or \$ Per Capita
2000	857	2,256,057	.	.	140.4
2001	1,044	2,320,652	.	.	172.2
2002	1,639	2,302,229	.	.	274.0
2003	.	2,282,021	.	.	.
2004	1,843	2,302,854	.	.	312.2
2005	.	2,465,977	.	.	.
2006	2,058	2,700,351	.	.	347.1
2007	2,261	2,772,168	.	.	381.2
2008	2,285	2,950,073	.	.	380.9
2009	2,362	2,709,864	.	.	396.4
2010	2,338	2,553,555	.	.	394.7
2011	2,031	2,550,355	.	.	346.4
2012	1,896	2,733,284	.	.	324.2
2013	1,941	2,866,801	.	.	339.4
2014	2,190	3,135,814	.	.	386.7
2015	2,310	3,270,952	.	.	410.4
2016	2,023	3,328,610	.	.	364.0
2017	1,701	3,568,505	.	.	311.1
2018	1,814	3,806,196	.	.	326.4
2019	1,835	3,879,912	.	.	326.5
2020	2,105	3,983,029	.	.	390.8

County: county value. Kansas: state value. County Rank: highest county value ranked #1. (\$000): thousands of dollars. Nonmetro Kansas: Kansas total less Metropolitan Areas as defined by the Office of Management and Budget (OMB; released 3/6/2020). Per 1000: For nonmoney amounts, Per 1000=(county value / county population for the same year as the data) x 1000. \$ Per capita=(county value / county population for the same year as the data). Value= . indicates missing or suppressed data or value not calculated.

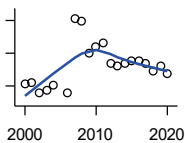
**Business**



**TOTAL ANNUAL PAYROLL(\$000):  
MANUFACTURING**

U.S. Census Bureau, County Business Patterns. Beginning with the 2017 data, any tabulation with fewer than 3 establishments were omitted from the release. Data for these establishments are included in the broader total.

Year	County	State of Kansas	Non Metro Kansas	County Rank	Per 1000 or \$ Per Capita
2000	6,775	7,015,414	.	.	1,109.9
2001	5,901	7,301,706	.	.	973.6
2002	4,491	6,802,605	.	.	750.9
2003	4,461	6,691,611	.	.	753.3
2004	5,256	6,985,656	.	.	890.2
2005	5,071	7,221,614	.	.	852.7
2006	.	7,621,873	.	.	.
2007	5,568	7,873,359	.	.	938.8
2008	5,635	8,441,541	.	.	939.3
2009	4,680	7,477,838	.	.	785.5
2010	7,348	7,556,955	.	.	1,240.6
2011	7,249	7,747,934	.	.	1,236.2
2012	7,573	7,704,851	.	.	1,294.8
2013	8,396	8,365,542	.	.	1,468.1
2014	8,933	8,787,306	.	.	1,577.2
2015	9,379	9,052,105	.	.	1,666.5
2016	9,529	8,868,744	.	.	1,714.5
2017	9,472	9,075,793	.	.	1,732.6
2018	8,356	9,481,652	.	.	1,503.7
2019	8,858	10,171,575	.	.	1,576.2
2020	10,524	9,744,825	.	.	1,954.0



**TOTAL ANNUAL PAYROLL(\$000):  
WHOLESALE TRADE**

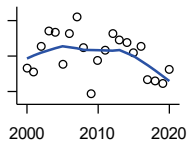
U.S. Census Bureau, County Business Patterns. Beginning with the 2017 data, any tabulation with fewer than 3 establishments were omitted from the release. Data for these establishments are included in the broader total.

Year	County	State of Kansas	Non Metro Kansas	County Rank	Per 1000 or \$ Per Capita
2000	522	2,332,755	.	.	85.5
2001	556	2,283,169	.	.	91.7
2002	388	2,107,653	.	.	64.9
2003	441	2,622,701	.	.	74.5
2004	521	2,663,196	.	.	88.2
2005	.	2,345,990	.	.	.
2006	398	2,592,211	.	.	67.1
2007	1,530	2,682,542	.	.	258.0
2008	1,491	3,078,655	.	.	248.5
2009	997	2,940,949	.	.	167.3
2010	1,094	3,097,628	.	.	184.7
2011	1,159	3,305,811	.	.	197.6
2012	835	3,339,997	.	.	142.8
2013	798	3,460,512	.	.	139.5
2014	854	3,712,075	.	.	150.8
2015	882	3,760,189	.	.	156.7
2016	884	3,738,207	.	.	159.1
2017	838	3,822,730	.	.	153.3
2018	734	3,814,353	.	.	132.1
2019	801	4,025,802	.	.	142.5
2020	696	4,224,666	.	.	129.2

County: county value. Kansas: state value. County Rank: highest county value ranked #1. (\$000): thousands of dollars. Nonmetro Kansas: Kansas total less Metropolitan Areas as defined by the Office of Management and Budget (OMB; released 3/6/2020). Per 1000: For nonmoney amounts, Per 1000=(county value / county population for the same year as the data) x 1000. \$ Per capita=(county value / county population for the same year as the data). Value= . indicates missing or suppressed data or value not calculated.

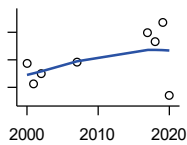
**Business**

**TOTAL ANNUAL PAYROLL(\$000):  
RETAIL TRADE**



U.S. Census Bureau, County Business Patterns. Beginning with the 2017 data, any tabulation with fewer than 3 establishments were omitted from the release. Data for these establishments are included in the broader total.

Year	County	State of Kansas	Non Metro Kansas	County Rank	Per 1000 or \$ Per Capita
2000	3,326	2,747,001	.	.	544.9
2001	3,283	2,813,226	.	.	541.7
2002	3,642	2,854,231	.	.	608.9
2003	3,858	2,773,674	.	.	651.5
2004	3,828	2,847,826	.	.	648.4
2005	3,384	2,952,196	.	.	569.0
2006	3,812	3,126,495	.	.	642.9
2007	4,053	3,201,169	.	.	683.4
2008	3,617	3,261,054	.	.	602.9
2009	2,962	3,232,246	.	.	497.1
2010	3,446	3,321,838	.	.	581.8
2011	3,578	3,384,607	.	.	610.2
2012	3,809	3,409,755	.	.	651.2
2013	3,735	3,483,752	.	.	653.1
2014	3,699	3,617,933	.	.	653.1
2015	3,554	3,712,165	.	.	631.5
2016	3,635	3,826,889	.	.	654.0
2017	3,166	3,797,849	.	.	579.1
2018	3,150	3,818,988	.	.	566.9
2019	3,119	3,908,994	.	.	555.0
2020	3,320	3,984,443	.	.	616.4



**TOTAL ANNUAL PAYROLL(\$000):  
TRANSPORTATION &  
WAREHOUSING**

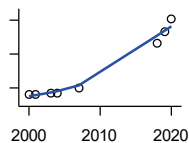
U.S. Census Bureau, County Business Patterns. Beginning with the 2017 data, any tabulation with fewer than 3 establishments were omitted from the release. Data for these establishments are included in the broader total.

Year	County	State of Kansas	Non Metro Kansas	County Rank	Per 1000 or \$ Per Capita
2000	387	1,044,835	.	.	63.4
2001	314	1,089,405	.	.	51.8
2002	350	1,094,636	.	.	58.5
2003	.	1,316,655	.	.	.
2004	.	1,439,800	.	.	.
2005	.	1,393,651	.	.	.
2006	.	1,528,551	.	.	.
2007	391	1,788,267	.	.	65.9
2008	.	1,722,697	.	.	.
2009	.	1,618,598	.	.	.
2010	.	1,735,761	.	.	.
2011	.	1,739,165	.	.	.
2012	.	1,984,976	.	.	.
2013	.	2,006,261	.	.	.
2014	.	2,097,377	.	.	.
2015	.	2,190,072	.	.	.
2017	497	2,546,061	.	.	90.9
2018	465	2,663,188	.	.	83.7
2019	537	2,879,406	.	.	95.6
2020	269	2,962,461	.	.	49.9

County: county value. Kansas: state value. County Rank: highest county value ranked #1. (\$000): thousands of dollars. Nonmetro Kansas: Kansas total less Metropolitan Areas as defined by the Office of Management and Budget (OMB; released 3/6/2020). Per 1000: For nonmoney amounts, Per 1000=(county value / county population for the same year as the data) x 1000. \$ Per capita=(county value / county population for the same year as the data). Value= . indicates missing or suppressed data or value not calculated.

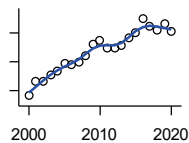
**Business**

**TOTAL ANNUAL PAYROLL(\$000):  
INFORMATION**



U.S. Census Bureau, County Business Patterns. Beginning with the 2017 data, any tabulation with fewer than 3 establishments were omitted from the release. Data for these establishments are included in the broader total.

Year	County	State of Kansas	Non Metro Kansas	County Rank	Per 1000 or \$ Per Capita
2000	1,262	1,923,381	.	.	206.7
2001	1,193	2,218,610	.	.	196.8
2002	.	2,298,108	.	.	.
2003	1,358	2,378,673	.	.	229.3
2004	1,423	2,392,990	.	.	241.0
2005	.	2,395,081	.	.	.
2006	.	2,586,483	.	.	.
2007	1,914	2,594,138	.	.	322.7
2008	.	3,043,244	.	.	.
2009	.	3,045,570	.	.	.
2010	.	2,481,580	.	.	.
2011	.	2,513,805	.	.	.
2012	.	2,535,555	.	.	.
2013	.	2,805,017	.	.	.
2014	.	2,393,609	.	.	.
2015	.	2,406,323	.	.	.
2018	7,315	2,341,543	.	.	1,316.4
2019	8,612	2,133,891	.	.	1,532.4
2020	10,156	2,245,204	.	.	1,885.6



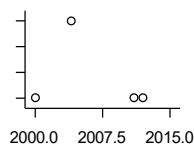
**TOTAL ANNUAL PAYROLL(\$000):  
FINANCE & INSURANCE**

U.S. Census Bureau, County Business Patterns. Beginning with the 2017 data, any tabulation with fewer than 3 establishments were omitted from the release. Data for these establishments are included in the broader total.

Year	County	State of Kansas	Non Metro Kansas	County Rank	Per 1000 or \$ Per Capita
2000	1,527	2,083,565	.	.	250.2
2001	1,721	2,129,587	.	.	283.9
2002	1,732	2,414,120	.	.	289.6
2003	1,819	2,608,579	.	.	307.2
2004	1,879	2,676,910	.	.	318.3
2005	1,970	2,786,136	.	.	331.3
2006	1,966	2,928,931	.	.	331.6
2007	2,000	3,096,017	.	.	337.2
2008	2,082	3,322,977	.	.	347.1
2009	2,246	3,206,839	.	.	377.0
2010	2,290	3,211,300	.	.	386.6
2011	2,194	3,404,633	.	.	374.1
2012	2,199	3,611,165	.	.	376.0
2013	2,231	3,896,051	.	.	390.1
2014	2,327	4,044,315	.	.	410.8
2015	2,412	4,113,060	.	.	428.6
2016	2,594	4,180,740	.	.	466.7
2017	2,496	4,258,057	.	.	456.6
2018	2,439	4,682,552	.	.	438.9
2019	2,519	4,814,201	.	.	448.2
2020	2,429	5,288,529	.	.	451.0

County: county value. Kansas: state value. County Rank: highest county value ranked #1. (\$000): thousands of dollars. Nonmetro Kansas: Kansas total less Metropolitan Areas as defined by the Office of Management and Budget (OMB; released 3/6/2020). Per 1000: For nonmoney amounts, Per 1000=(county value / county population for the same year as the data) x 1000. \$ Per capita=(county value / county population for the same year as the data). Value= . indicates missing or suppressed data or value not calculated.

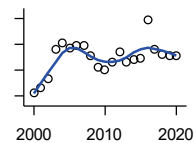
**Business**



**TOTAL ANNUAL PAYROLL(\$000):  
REAL ESTATE, RENTAL, AND  
LEASING**

U.S. Census Bureau, County Business Patterns. Beginning with the 2017 data, any tabulation with fewer than 3 establishments were omitted from the release. Data for these establishments are included in the broader total.

Year	County	State of Kansas	Non Metro Kansas	County Rank	Per 1000 or \$ Per Capita
2000	0	360,637	.	.	0.0
2001	.	397,371	.	.	.
2002	.	403,695	.	.	.
2003	.	437,786	.	.	.
2004	30	430,719	.	.	5.1
2005	.	465,149	.	.	.
2006	.	478,811	.	.	.
2007	.	452,969	.	.	.
2008	.	484,149	.	.	.
2009	.	450,884	.	.	.
2010	.	487,255	.	.	.
2011	0	535,120	.	.	0.0
2012	0	531,039	.	.	0.0
2013	.	538,796	.	.	.
2014	.	542,307	.	.	.
2015	.	595,030	.	.	.



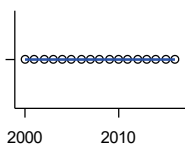
**TOTAL ANNUAL PAYROLL(\$000):  
PROFESSIONAL, SCIENTIFIC, AND  
TECHNICAL SERVICES**

U.S. Census Bureau, County Business Patterns. Beginning with the 2017 data, any tabulation with fewer than 3 establishments were omitted from the release. Data for these establishments are included in the broader total.

Year	County	State of Kansas	Non Metro Kansas	County Rank	Per 1000 or \$ Per Capita
2000	818	2,057,313	.	.	134.0
2001	909	2,152,937	.	.	150.0
2002	1,080	2,150,085	.	.	180.6
2003	1,645	2,052,712	.	.	277.8
2004	1,771	2,531,457	.	.	300.0
2005	1,685	2,418,500	.	.	283.3
2006	1,733	2,655,690	.	.	292.3
2007	1,721	2,901,544	.	.	290.2
2008	1,518	2,903,802	.	.	253.0
2009	1,314	3,071,611	.	.	220.5
2010	1,255	3,037,182	.	.	211.9
2011	1,396	3,132,082	.	.	238.1
2012	1,608	3,455,548	.	.	274.9
2013	1,414	3,777,729	.	.	247.2
2014	1,456	3,981,580	.	.	257.1
2015	1,480	4,039,074	.	.	263.0
2016	2,235	4,125,507	.	.	402.1
2017	1,647	4,158,858	.	.	301.3
2018	1,555	4,314,317	.	.	279.8
2019	1,520	4,646,644	.	.	270.5
2020	1,539	4,927,611	.	.	285.7

County: county value. Kansas: state value. County Rank: highest county value ranked #1. (\$000): thousands of dollars. Nonmetro Kansas: Kansas total less Metropolitan Areas as defined by the Office of Management and Budget (OMB; released 3/6/2020). Per 1000: For nonmoney amounts, Per 1000=(county value / county population for the same year as the data) x 1000. \$ Per capita=(county value / county population for the same year as the data). Value= . indicates missing or suppressed data or value not calculated.

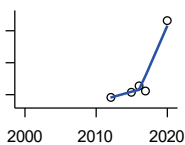
**Business**



**TOTAL ANNUAL PAYROLL(\$000):  
MANAGEMENT OF COMPANIES AND  
ENTERPRISES**

U.S. Census Bureau, County Business Patterns. Beginning with the 2017 data, any tabulation with fewer than 3 establishments were omitted from the release. Data for these establishments are included in the broader total.

Year	County	State of Kansas	Non Metro Kansas	County Rank	Per 1000 or \$ Per Capita
2000	0	1,362,735	.	.	0.0
2001	0	1,279,253	.	.	0.0
2002	0	1,311,368	.	.	0.0
2003	0	1,352,119	.	.	0.0
2004	0	1,378,891	.	.	0.0
2005	0	1,510,876	.	.	0.0
2006	0	1,626,320	.	.	0.0
2007	0	2,233,654	.	.	0.0
2008	0	1,848,656	.	.	0.0
2009	0	1,601,158	.	.	0.0
2010	0	2,003,048	.	.	0.0
2011	0	1,677,619	.	.	0.0
2012	0	1,834,430	.	.	0.0
2013	0	1,938,100	.	.	0.0
2014	0	2,117,232	.	.	0.0
2015	0	2,451,126	.	.	0.0
2016	0	2,167,620	.	.	0.0



**TOTAL ANNUAL PAYROLL(\$000):  
ADMIN, SUPPORT, WASTE MGMT.,  
AND REMEDIATION**

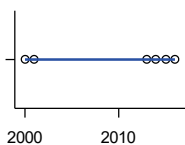
U.S. Census Bureau, County Business Patterns. Beginning with the 2017 data, any tabulation with fewer than 3 establishments were omitted from the release. Data for these establishments are included in the broader total.

Year	County	State of Kansas	Non Metro Kansas	County Rank	Per 1000 or \$ Per Capita
2000	.	1,388,712	.	.	.
2001	.	1,416,480	.	.	.
2002	.	1,378,905	.	.	.
2003	.	1,387,061	.	.	.
2004	.	1,544,442	.	.	.
2005	.	1,694,687	.	.	.
2006	.	1,800,846	.	.	.
2007	.	1,978,025	.	.	.
2008	.	2,096,864	.	.	.
2009	.	1,832,540	.	.	.
2010	.	2,117,325	.	.	.
2011	.	2,114,970	.	.	.
2012	140	2,230,250	.	.	23.9
2013	.	2,214,320	.	.	.
2014	.	2,444,170	.	.	.
2015	157	2,577,592	.	.	27.9
2016	178	2,760,706	.	.	32.0
2017	160	3,026,927	.	.	29.3
2020	382	3,250,046	.	.	70.9

County: county value. Kansas: state value. County Rank: highest county value ranked #1. (\$000): thousands of dollars. Nonmetro Kansas: Kansas total less Metropolitan Areas as defined by the Office of Management and Budget (OMB; released 3/6/2020). Per 1000: For nonmoney amounts, Per 1000=(county value / county population for the same year as the data) x 1000. \$ Per capita=(county value / county population for the same year as the data). Value= . indicates missing or suppressed data or value not calculated.

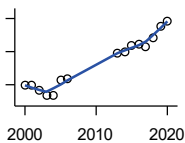
**Business**

**TOTAL ANNUAL PAYROLL(\$000):  
EDUCATIONAL SERVICES**



U.S. Census Bureau, County Business Patterns. Beginning with the 2017 data, any tabulation with fewer than 3 establishments were omitted from the release. Data for these establishments are included in the broader total.

Year	County	State of Kansas	Non Metro Kansas	County Rank	Per 1000 or \$ Per Capita
2000	0	299,843	.	.	0.0
2001	0	320,606	.	.	0.0
2002	.	353,531	.	.	.
2003	.	350,814	.	.	.
2004	.	361,644	.	.	.
2005	.	375,781	.	.	.
2006	.	400,565	.	.	.
2007	.	414,233	.	.	.
2008	.	463,210	.	.	.
2009	.	468,856	.	.	.
2010	.	487,670	.	.	.
2011	.	504,964	.	.	.
2012	.	508,448	.	.	.
2013	0	553,995	.	.	0.0
2014	0	612,073	.	.	0.0
2015	0	579,794	.	.	0.0
2016	0	571,582	.	.	0.0



**TOTAL ANNUAL PAYROLL(\$000):  
HEALTH CARE AND SOCIAL ASSISTANCE**

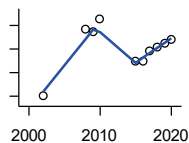
U.S. Census Bureau, County Business Patterns. Beginning with the 2017 data, any tabulation with fewer than 3 establishments were omitted from the release. Data for these establishments are included in the broader total.

Year	County	State of Kansas	Non Metro Kansas	County Rank	Per 1000 or \$ Per Capita
2000	3,870	4,120,595	.	.	634.0
2001	3,884	4,445,027	.	.	640.8
2002	3,324	4,705,220	.	.	555.8
2003	2,651	4,939,323	.	.	447.7
2004	2,720	5,232,394	.	.	460.7
2005	4,497	5,487,089	.	.	756.2
2006	4,673	5,814,218	.	.	788.2
2007	.	6,186,471	.	.	.
2008	.	6,490,627	.	.	.
2009	.	6,749,962	.	.	.
2010	.	6,871,727	.	.	.
2011	.	7,129,655	.	.	.
2012	.	7,614,853	.	.	.
2013	7,776	7,541,515	.	.	1,359.7
2014	8,040	7,733,621	.	.	1,419.5
2015	8,668	7,969,650	.	.	1,540.2
2016	8,936	8,018,706	.	.	1,607.8
2017	8,659	8,384,998	.	.	1,583.9
2018	9,672	8,637,619	.	.	1,740.5
2019	11,096	8,854,414	.	.	1,974.4
2020	11,701	9,309,269	.	.	2,172.5

County: county value. Kansas: state value. County Rank: highest county value ranked #1. (\$000): thousands of dollars. Nonmetro Kansas: Kansas total less Metropolitan Areas as defined by the Office of Management and Budget (OMB; released 3/6/2020). Per 1000: For nonmoney amounts, Per 1000=(county value / county population for the same year as the data) x 1000. \$ Per capita=(county value / county population for the same year as the data). Value= . indicates missing or suppressed data or value not calculated.



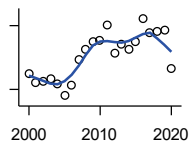
**Business**



**TOTAL ANNUAL PAYROLL(\$000):  
ARTS, ENTERTAINMENT, AND  
RECREATION**

U.S. Census Bureau, County Business Patterns. Beginning with the 2017 data, any tabulation with fewer than 3 establishments were omitted from the release. Data for these establishments are included in the broader total.

Year	County	State of Kansas	Non Metro Kansas	County Rank	Per 1000 or \$ Per Capita
2000	.	195,784	.	.	.
2001	.	203,511	.	.	.
2002	50	206,204	.	.	8.4
2003	.	185,049	.	.	.
2004	.	190,742	.	.	.
2005	.	196,594	.	.	.
2006	.	201,049	.	.	.
2007	.	220,435	.	.	.
2008	191	236,986	.	.	31.8
2009	186	237,116	.	.	31.2
2010	214	233,285	.	.	36.1
2011	.	234,351	.	.	.
2012	.	254,169	.	.	.
2013	.	278,474	.	.	.
2014	.	289,103	.	.	.
2015	124	300,253	.	.	22.0
2016	124	312,902	.	.	22.3
2017	147	323,153	.	.	26.9
2018	155	325,454	.	.	27.9
2019	162	335,362	.	.	28.8
2020	171	298,119	.	.	31.7



**TOTAL ANNUAL PAYROLL(\$000):  
ACCOMMODATION AND FOOD  
SERVICES**

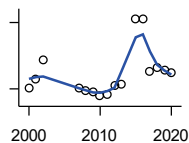
U.S. Census Bureau, County Business Patterns. Beginning with the 2017 data, any tabulation with fewer than 3 establishments were omitted from the release. Data for these establishments are included in the broader total.

Year	County	State of Kansas	Non Metro Kansas	County Rank	Per 1000 or \$ Per Capita
2000	1,350	926,831	.	.	221.2
2001	1,265	960,196	.	.	208.7
2002	1,279	930,510	.	.	213.8
2003	1,295	992,313	.	.	218.7
2004	1,246	1,046,901	.	.	211.0
2005	1,139	1,101,854	.	.	191.5
2006	1,240	1,185,280	.	.	209.1
2007	1,479	1,431,100	.	.	249.4
2008	1,577	1,271,594	.	.	262.9
2009	1,655	1,283,065	.	.	277.8
2010	1,657	1,296,556	.	.	279.8
2011	1,808	1,364,281	.	.	308.3
2012	1,540	1,388,337	.	.	263.3
2013	1,629	1,476,335	.	.	284.8
2014	1,581	1,572,021	.	.	279.1
2015	1,645	1,640,144	.	.	292.3
2016	1,867	1,709,193	.	.	335.9
2017	1,736	1,824,791	.	.	317.5
2018	1,742	1,880,364	.	.	313.5
2019	1,755	1,958,603	.	.	312.3
2020	1,398	1,745,238	.	.	259.6

County: county value. Kansas: state value. County Rank: highest county value ranked #1. (\$000): thousands of dollars. Nonmetro Kansas: Kansas total less Metropolitan Areas as defined by the Office of Management and Budget (OMB; released 3/6/2020). Per 1000: For nonmoney amounts, Per 1000=(county value / county population for the same year as the data) x 1000. \$ Per capita=(county value / county population for the same year as the data). Value= . indicates missing or suppressed data or value not calculated.

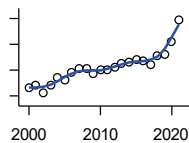
**Business**

**TOTAL ANNUAL PAYROLL(\$000):  
OTHER SERVICES**



U.S. Census Bureau, County Business Patterns. Beginning with the 2017 data, any tabulation with fewer than 3 establishments were omitted from the release. Data for these establishments are included in the broader total.

Year	County	State of Kansas	Non Metro Kansas	County Rank	Per 1000 or \$ Per Capita
2000	522	965,540	.	.	85.5
2001	724	996,716	.	.	119.5
2002	1,146	1,007,464	.	.	191.6
2003	.	979,466	.	.	.
2004	.	970,383	.	.	.
2005	.	1,005,537	.	.	.
2006	.	1,055,932	.	.	.
2007	520	1,141,551	.	.	87.7
2008	455	1,184,016	.	.	75.8
2009	441	1,167,154	.	.	74.0
2010	334	1,170,201	.	.	56.4
2011	385	1,173,775	.	.	65.7
2012	584	1,217,210	.	.	99.8
2013	592	1,254,933	.	.	103.5
2014	.	1,305,563	.	.	.
2015	2,083	1,341,075	.	.	370.1
2016	2,075	1,351,375	.	.	373.3
2017	901	1,344,179	.	.	164.8
2018	980	1,382,801	.	.	176.4
2019	931	1,427,711	.	.	165.7
2020	863	1,420,859	.	.	160.2



**NOMINAL TAXABLE RETAIL SALES  
(million\$)**

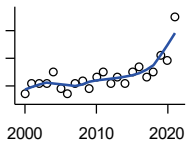
Kansas Department of Revenue

Year	County	State of Kansas	Non Metro Kansas	County Rank	Per 1000 or \$ Per Capita
2000	38.3	30,119.0	8,831.7	62	6.3
2001	39.3	30,202.2	8,700.3	62	6.5
2002	36.3	29,380.8	8,241.5	60	6.1
2003	39.0	30,694.0	8,710.6	61	6.6
2004	42.1	31,922.6	9,062.5	61	7.1
2005	41.0	32,924.2	9,386.6	64	6.9
2006	44.1	34,937.6	10,042.1	64	7.4
2007	45.8	36,180.1	10,553.2	65	7.7
2008	45.4	37,559.5	11,126.9	67	7.6
2009	43.5	35,211.8	10,351.5	65	7.3
2010	45.1	35,655.7	10,606.1	65	7.6
2011	45.2	37,257.0	11,153.5	69	7.7
2012	46.3	38,988.8	11,749.1	69	7.9
2013	47.5	40,009.0	11,993.8	69	8.3
2014	47.9	41,299.0	12,365.4	71	8.5
2015	48.9	41,635.8	11,747.6	67	8.7
2016	48.8	42,040.2	11,523.5	65	8.8
2017	47.0	41,940.1	11,449.9	66	8.6
2018	50.7	42,732.3	11,643.9	67	9.1
2019	51.0	43,732.5	12,062.7	65	9.1
2020	56.3	43,689.9	12,331.7	62	10.4
2021	64.5	48,532.8	13,413.0	59	12.0

County: county value. Kansas: state value. County Rank: highest county value ranked #1. (\$000): thousands of dollars. Nonmetro Kansas: Kansas total less Metropolitan Areas as defined by the Office of Management and Budget (OMB; released 3/6/2020). Per 1000: For nonmoney amounts, Per 1000=(county value / county population for the same year as the data) x 1000. \$ Per capita=(county value / county population for the same year as the data). Value= . indicates missing or suppressed data or value not calculated.

**Business**

RETAIL PULL FACTOR



Kansas Direct Program, Kansas State University Cooperative Extension Service (1980-1999); Kansas Department of Revenue (2000- )

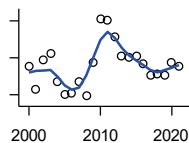
Year	County	State of Kansas	Non Metro Kansas	County Rank	Per 1000 or \$ Per Capita
2000	0.56	.	.	63	.
2001	0.58	.	.	56	.
2002	0.58	.	.	58	.
2003	0.58	.	.	60	.
2004	0.60	.	.	61	.
2005	0.57	.	.	68	.
2006	0.56	.	.	72	.
2007	0.58	.	.	71	.
2008	0.58	.	.	77	.
2009	0.57	.	.	83	.
2010	0.59	.	.	77	.
2011	0.60	.	.	79	.
2012	0.58	.	.	82	.
2013	0.59	.	.	82	.
2014	0.58	.	.	84	.
2015	0.60	.	.	82	.
2016	0.61	.	.	76	.
2017	0.59	.	.	77	.
2018	0.60	.	.	75	.
2019	0.63	.	.	76	.
2020	0.62	.	.	78	.
2021	0.70	.	.	69	.

County: county value. Kansas: state value. County Rank: highest county value ranked #1. (\$000): thousands of dollars. Nonmetro Kansas: Kansas total less Metropolitan Areas as defined by the Office of Management and Budget (OMB; released 3/6/2020). Per 1000: For nonmoney amounts, Per 1000=(county value / county population for the same year as the data) x 1000. \$ Per capita=(county value / county population for the same year as the data). Value= . indicates missing or suppressed data or value not calculated.

**Employment**

CIVILIAN LABOR FORCE (BLS-Place of Residence; 1990- )

U.S. Department of Labor, Bureau of Labor Statistics (BLS)

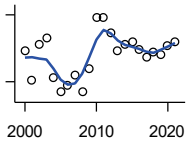


Year	County	State of Kansas	Non Metro Kansas	County Rank	Per 1000 or \$ Per Capita
2000	3,052	1,402,606	482,229	64	500.0
2001	2,930	1,398,521	475,280	66	483.4
2002	3,087	1,419,335	482,428	65	516.1
2003	3,126	1,441,065	490,161	65	527.9
2004	2,972	1,458,910	494,509	65	503.4
2005	2,900	1,458,767	490,047	65	487.6
2006	2,908	1,467,553	498,594	65	490.5
2007	2,973	1,485,414	497,048	65	501.3
2008	2,892	1,493,365	504,522	66	482.1
2009	3,074	1,512,572	516,311	65	515.9
2010	3,311	1,500,463	492,594	61	559.0
2011	3,304	1,498,000	492,563	61	563.4
2012	3,215	1,490,808	489,349	63	549.7
2013	3,107	1,489,395	485,484	65	543.3
2014	3,101	1,494,203	481,813	63	547.5
2015	3,112	1,493,782	477,546	62	552.9
2016	3,065	1,491,961	468,258	61	551.5
2017	3,007	1,488,346	461,063	60	550.0
2018	3,014	1,488,027	456,866	59	542.4
2019	3,004	1,497,517	455,858	59	534.5
2020	3,077	1,493,706	452,935	58	571.3
2021	3,053	1,495,665	453,398	57	570.0

County: county value. Kansas: state value. County Rank: highest county value ranked #1. (\$000): thousands of dollars. Nonmetro Kansas: Kansas total less Metropolitan Areas as defined by the Office of Management and Budget (OMB; released 3/6/2020). Per 1000: For nonmoney amounts, Per 1000=(county value / county population for the same year as the data) x 1000. \$ Per capita=(county value / county population for the same year as the data). Value= . indicates missing or suppressed data or value not calculated.

**Employment**

EMPLOYED (BLS-Place of Residence; 1990- )



U.S. Department of Labor, Bureau of Labor Statistics (BLS)

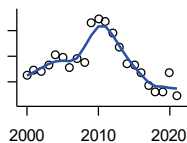
Year	County	State of Kansas	Non Metro Kansas	County Rank	Per 1000 or \$ Per Capita
2000	2,939	1,349,841	464,962	64	481.5
2001	2,807	1,338,775	455,154	66	463.1
2002	2,967	1,347,163	461,241	65	496.1
2003	2,994	1,361,115	467,622	65	505.6
2004	2,820	1,378,355	470,330	65	477.6
2005	2,753	1,384,654	467,722	65	462.9
2006	2,781	1,402,950	479,174	65	469.1
2007	2,828	1,422,109	477,983	65	476.8
2008	2,753	1,425,022	484,056	66	458.9
2009	2,859	1,408,142	485,797	65	479.9
2010	3,088	1,396,172	461,635	62	521.4
2011	3,087	1,402,198	463,723	63	526.4
2012	3,019	1,405,638	463,376	64	516.2
2013	2,938	1,410,470	461,405	66	513.7
2014	2,965	1,426,892	461,797	65	523.5
2015	2,979	1,431,533	457,899	63	529.3
2016	2,947	1,431,920	449,356	61	530.2
2017	2,913	1,434,516	445,003	60	532.8
2018	2,934	1,439,329	442,716	59	528.0
2019	2,923	1,450,705	442,108	59	520.1
2020	2,960	1,408,965	433,229	58	549.6
2021	2,981	1,447,323	441,159	57	556.6

County: county value. Kansas: state value. County Rank: highest county value ranked #1. (\$000): thousands of dollars. Nonmetro Kansas: Kansas total less Metropolitan Areas as defined by the Office of Management and Budget (OMB; released 3/6/2020). Per 1000: For nonmoney amounts, Per 1000=(county value / county population for the same year as the data) x 1000. \$ Per capita=(county value / county population for the same year as the data). Value= . indicates missing or suppressed data or value not calculated.

**Employment**

UNEMPLOYED (BLS-Place of Residence; 1990- )

U.S. Department of Labor, Bureau of Labor Statistics (BLS)

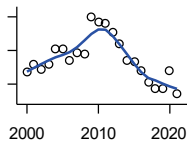


Year	County	State of Kansas	Non Metro Kansas	County Rank	Per 1000 or \$ Per Capita
2000	113	52,765	17,267	56	18.5
2001	123	59,746	20,126	56	20.3
2002	120	72,172	21,187	61	20.1
2003	132	79,950	22,539	63	22.3
2004	152	80,555	24,179	56	25.7
2005	147	74,113	22,325	56	24.7
2006	127	64,603	19,420	56	21.4
2007	145	63,305	19,065	53	24.4
2008	139	68,343	20,466	53	23.2
2009	215	104,430	30,514	53	36.1
2010	223	104,291	30,959	53	37.6
2011	217	95,802	28,840	53	37.0
2012	196	85,170	25,973	52	33.5
2013	169	78,925	24,079	53	29.6
2014	136	67,311	20,016	53	24.0
2015	133	62,249	19,647	55	23.6
2016	118	60,041	18,902	59	21.2
2017	94	53,830	16,060	61	17.2
2018	80	48,698	14,150	58	14.4
2019	81	46,812	13,750	58	14.4
2020	117	84,741	19,706	57	21.7
2021	72	48,342	12,239	59	13.4

County: county value. Kansas: state value. County Rank: highest county value ranked #1. (\$000): thousands of dollars. Nonmetro Kansas: Kansas total less Metropolitan Areas as defined by the Office of Management and Budget (OMB; released 3/6/2020). Per 1000: For nonmoney amounts, Per 1000=(county value / county population for the same year as the data) x 1000. \$ Per capita=(county value / county population for the same year as the data). Value= . indicates missing or suppressed data or value not calculated.

**Employment**

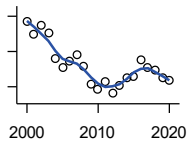
UNEMPLOYMENT RATE (BLS-Place of Residence; 1990- )



U.S. Department of Labor, Bureau of Labor Statistics (BLS)

Year	County	State of Kansas	Non Metro Kansas	County Rank	Per 1000 or \$ Per Capita
2000	3.7	3.8	3.6	38	.
2001	4.2	4.3	4.2	31	.
2002	3.9	5.1	4.4	53	.
2003	4.2	5.5	4.6	53	.
2004	5.1	5.5	4.9	33	.
2005	5.1	5.1	4.6	30	.
2006	4.4	4.4	3.9	29	.
2007	4.9	4.3	3.8	14	.
2008	4.8	4.6	4.1	23	.
2009	7.0	6.9	5.9	30	.
2010	6.7	7.0	6.3	32	.
2011	6.6	6.4	5.9	29	.
2012	6.1	5.7	5.3	29	.
2013	5.4	5.3	5.0	33	.
2014	4.4	4.5	4.2	34	.
2015	4.3	4.2	4.1	36	.
2016	3.8	4.0	4.0	53	.
2017	3.1	3.6	3.5	64	.
2018	2.7	3.3	3.1	65	.
2019	2.7	3.1	3.0	65	.
2020	3.8	5.7	4.4	57	.
2021	2.4	3.2	2.7	60	.

BEA EMPLOYMENT: TOTAL (Place of Work)



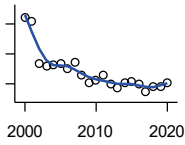
U.S. Bureau of Economic Analysis, Regional Economic Information System (REIS)

Year	County	State of Kansas	Non Metro Kansas	County Rank	Per 1000 or \$ Per Capita
2000	3,172	1,760,312	604,361	69	519.7
2001	3,098	1,767,601	592,672	69	511.1
2002	3,152	1,746,077	585,387	68	527.0
2003	3,108	1,733,694	577,860	68	524.8
2004	2,959	1,750,876	578,750	69	501.2
2005	2,912	1,765,650	577,562	69	489.7
2006	2,942	1,795,507	583,041	70	496.2
2007	2,982	1,844,355	591,924	69	502.8
2008	2,915	1,858,069	594,368	70	485.9
2009	2,818	1,813,184	580,972	70	473.0
2010	2,789	1,801,873	579,758	70	470.9
2011	2,832	1,819,044	583,725	70	482.9
2012	2,761	1,841,393	591,748	72	472.0
2013	2,805	1,869,054	597,236	73	490.5
2014	2,854	1,895,859	601,291	72	503.9
2015	2,859	1,910,954	598,589	72	508.0
2016	2,954	1,916,152	592,580	71	531.5
2017	2,908	1,914,179	584,337	69	531.9
2018	2,891	1,926,242	580,213	69	520.2
2019	2,853	1,925,204	574,496	71	507.7
2020	2,837	1,851,247	556,671	71	526.7

County: county value. Kansas: state value. County Rank: highest county value ranked #1. (\$000): thousands of dollars. Nonmetro Kansas: Kansas total less Metropolitan Areas as defined by the Office of Management and Budget (OMB; released 3/6/2020). Per 1000: For nonmoney amounts, Per 1000=(county value / county population for the same year as the data) x 1000. \$ Per capita=(county value / county population for the same year as the data). Value= . indicates missing or suppressed data or value not calculated.

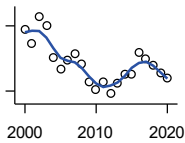
**Employment**

**BEA EMPLOYMENT: FARM**



U.S. Bureau of Economic Analysis,  
Regional Economic Information System  
(REIS)

Year	County	State of Kansas	Non Metro Kansas	County Rank	Per 1000 or \$ Per Capita
2000	586	77,477	59,088	66	96.0
2001	579	78,177	59,647	66	95.5
2002	509	70,532	53,893	72	85.1
2003	505	68,516	52,099	68	85.3
2004	507	67,586	51,246	67	85.9
2005	508	66,829	50,386	61	85.4
2006	500	64,910	48,728	59	84.3
2007	510	65,639	49,037	58	86.0
2008	490	63,820	47,682	58	81.7
2009	477	62,798	46,960	59	80.1
2010	482	63,882	47,984	59	81.4
2011	489	65,761	49,707	65	83.4
2012	474	63,753	48,167	65	81.0
2013	468	62,739	47,255	64	81.8
2014	477	64,308	48,722	65	84.2
2015	479	64,416	48,927	66	85.1
2016	475	63,840	48,539	66	85.5
2017	461	61,876	46,936	66	84.3
2018	471	63,233	48,069	66	84.8
2019	471	63,300	48,167	65	83.8
2020	477	64,281	49,038	67	88.6



**BEA EMPLOYMENT: NON-FARM**

U.S. Bureau of Economic Analysis,  
Regional Economic Information System  
(REIS)

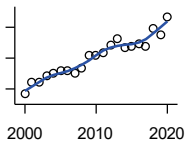
Year	County	State of Kansas	Non Metro Kansas	County Rank	Per 1000 or \$ Per Capita
2000	2,586	1,682,835	545,273	69	423.7
2001	2,519	1,689,424	533,025	68	415.6
2002	2,643	1,675,545	531,494	67	441.9
2003	2,603	1,665,178	525,761	68	439.5
2004	2,452	1,683,290	527,504	69	415.3
2005	2,404	1,698,821	527,176	69	404.2
2006	2,442	1,730,597	534,313	69	411.9
2007	2,472	1,778,716	542,887	69	416.8
2008	2,425	1,794,249	546,686	70	404.2
2009	2,341	1,750,386	534,012	70	392.9
2010	2,307	1,737,991	531,774	70	389.5
2011	2,343	1,753,283	534,018	70	399.6
2012	2,287	1,777,640	543,581	72	391.0
2013	2,337	1,806,315	549,981	70	408.6
2014	2,377	1,831,551	552,569	70	419.7
2015	2,380	1,846,538	549,662	69	422.9
2016	2,479	1,852,312	544,041	69	446.0
2017	2,447	1,852,303	537,401	69	447.6
2018	2,420	1,863,009	532,144	69	435.5
2019	2,382	1,861,904	526,329	69	423.8
2020	2,360	1,786,966	507,633	69	438.2

County: county value. Kansas: state value. County Rank: highest county value ranked #1. (\$000): thousands of dollars. Nonmetro Kansas: Kansas total less Metropolitan Areas as defined by the Office of Management and Budget (OMB; released 3/6/2020). Per 1000: For nonmoney amounts, Per 1000=(county value / county population for the same year as the data) x 1000. \$ Per capita=(county value / county population for the same year as the data). Value= . indicates missing or suppressed data or value not calculated.



**Employment**

**AVERAGE WAGE PER JOB (\$)**



U.S. Bureau of Economic Analysis,  
Regional Economic Information System  
(REIS)

Year	County	State of Kansas	Non Metro Kansas	County Rank	Per 1000 or \$ Per Capita
2000	18,296	31,854	24,396	81	.
2001	22,106	32,859	26,379	73	.
2002	21,997	33,707	26,331	68	.
2003	24,108	35,078	28,911	82	.
2004	24,981	35,932	29,747	71	.
2005	25,771	37,467	31,646	87	.
2006	25,785	40,038	31,993	75	.
2007	25,059	41,500	33,484	95	.
2008	26,663	44,197	36,256	99	.
2009	30,794	43,860	35,739	78	.
2010	31,097	45,370	38,631	84	.
2011	31,623	48,280	42,324	94	.
2012	34,303	50,549	42,015	88	.
2013	36,183	52,629	46,073	89	.
2014	33,523	51,959	43,562	88	.
2015	33,793	52,250	42,320	79	.
2016	34,529	51,664	41,964	79	.
2017	33,896	53,007	42,137	77	.
2018	39,787	54,790	44,514	64	.
2019	37,727	56,956	45,336	77	.
2020	43,383	60,597	49,183	80	.

**BEA EMPLOYMENT: FORESTRY, FISHING, HUNTING, AND AG SUPPORT**

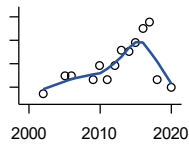
U.S. Bureau of Economic Analysis,  
Regional Economic Information System  
(REIS)

Year	County	State of Kansas	Non Metro Kansas	County Rank	Per 1000 or \$ Per Capita
2001	.	7,059	.	.	.
2002	.	8,045	.	.	.
2003	.	7,313	.	.	.
2004	.	7,623	.	.	.
2005	.	7,962	.	.	.
2006	.	7,748	.	.	.
2007	.	8,228	.	.	.
2008	.	8,646	.	.	.
2009	.	8,982	.	.	.
2010	.	9,251	.	.	.
2011	.	9,410	.	.	.
2012	.	9,691	.	.	.
2013	.	10,014	.	.	.
2014	.	10,708	.	.	.
2015	.	10,020	.	.	.
2016	.	10,383	.	.	.

County: county value. Kansas: state value. County Rank: highest county value ranked #1. (\$000): thousands of dollars. Nonmetro Kansas: Kansas total less Metropolitan Areas as defined by the Office of Management and Budget (OMB; released 3/6/2020). Per 1000: For nonmoney amounts, Per 1000=(county value / county population for the same year as the data) x 1000. \$ Per capita=(county value / county population for the same year as the data). Value= . indicates missing or suppressed data or value not calculated.

**Employment**

**BEA EMPLOYMENT: MINING**



U.S. Bureau of Economic Analysis,  
Regional Economic Information System  
(REIS)

Year	County	State of Kansas	Non Metro Kansas	County Rank	Per 1000 or \$ Per Capita
2001	.	19,592	.	.	.
2002	17	17,635	.	47	.
2003	.	19,869	.	.	.
2004	.	18,466	.	.	.
2005	25	19,489	.	46	.
2006	25	22,403	.	48	.
2007	.	24,043	.	.	.
2008	.	31,467	.	.	.
2009	23	29,941	.	49	.
2010	29	36,124	.	47	.
2011	23	31,658	.	47	.
2012	29	42,405	.	51	.
2013	36	46,585	.	54	.
2014	35	45,526	.	59	.
2015	39	46,460	.	54	.
2016	45	48,555	.	60	.
2017	48	40,710	.	53	.
2018	23	32,021	.	63	.
2020	20	26,272	.	61	.

**BEA EMPLOYMENT: UTILITIES**

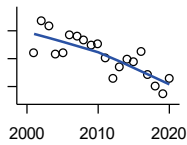
U.S. Bureau of Economic Analysis,  
Regional Economic Information System  
(REIS)

Year	County	State of Kansas	Non Metro Kansas	County Rank	Per 1000 or \$ Per Capita
2001	.	7,608	.	.	.
2002	.	7,087	.	.	.
2003	.	7,253	.	.	.
2004	.	7,356	.	.	.
2005	.	7,447	.	.	.
2006	.	7,478	.	.	.
2007	.	7,584	.	.	.
2008	.	7,855	.	.	.
2009	.	7,941	.	.	.
2010	.	8,028	.	.	.
2011	.	8,213	.	.	.
2012	.	8,155	.	.	.
2013	.	7,949	.	.	.
2014	.	7,985	.	.	.
2015	.	7,040	.	.	.
2016	.	7,133	.	.	.

County: county value. Kansas: state value. County Rank: highest county value ranked #1. (\$000): thousands of dollars. Nonmetro Kansas: Kansas total less Metropolitan Areas as defined by the Office of Management and Budget (OMB; released 3/6/2020). Per 1000: For nonmoney amounts, Per 1000=(county value / county population for the same year as the data) x 1000. \$ Per capita=(county value / county population for the same year as the data). Value= . indicates missing or suppressed data or value not calculated.

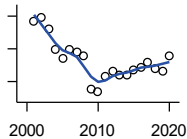
**Employment**

**BEA EMPLOYMENT:  
CONSTRUCTION**



U.S. Bureau of Economic Analysis,  
Regional Economic Information System  
(REIS)

Year	County	State of Kansas	Non Metro Kansas	County Rank	Per 1000 or \$ Per Capita
2001	208	92,647	27,972	53	.
2002	254	90,370	.	47	.
2003	247	91,725	26,681	47	.
2004	206	93,271	.	48	.
2005	208	94,836	.	49	.
2006	234	97,449	.	48	.
2007	232	99,119	29,179	51	.
2008	227	97,741	.	52	.
2009	219	90,165	28,077	51	.
2010	222	84,708	26,402	51	.
2011	202	83,332	25,999	55	.
2012	172	85,966	.	58	.
2013	189	88,094	.	58	.
2014	199	91,143	.	56	.
2015	195	91,458	27,583	57	.
2016	211	93,539	27,151	57	.
2017	178	92,046	25,579	60	.
2018	161	92,985	25,530	61	.
2019	149	94,858	25,701	61	.
2020	171	94,186	26,085	60	.



**BEA EMPLOYMENT:  
MANUFACTURING**

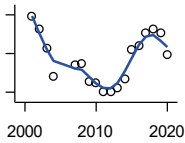
U.S. Bureau of Economic Analysis,  
Regional Economic Information System  
(REIS)

Year	County	State of Kansas	Non Metro Kansas	County Rank	Per 1000 or \$ Per Capita
2001	234	199,980	73,170	54	.
2002	239	188,905	70,691	54	.
2003	224	179,013	68,418	54	.
2004	200	181,738	69,669	57	.
2005	188	185,459	71,072	59	.
2006	199	188,047	71,704	57	.
2007	196	192,930	73,488	56	.
2008	191	193,116	72,235	58	.
2009	150	173,854	64,961	62	.
2010	147	166,000	62,884	61	.
2011	166	167,302	64,361	58	.
2012	172	169,308	65,944	57	.
2013	168	170,113	67,251	60	.
2014	168	169,307	68,299	61	.
2015	174	168,324	66,978	59	.
2016	178	167,723	65,796	57	.
2017	183	168,438	66,795	56	.
2018	176	171,778	68,181	57	.
2019	173	173,605	67,879	59	.
2020	191	165,228	65,658	57	.

County: county value. Kansas: state value. County Rank: highest county value ranked #1. (\$000): thousands of dollars. Nonmetro Kansas: Kansas total less Metropolitan Areas as defined by the Office of Management and Budget (OMB; released 3/6/2020). Per 1000: For nonmoney amounts, Per 1000=(county value / county population for the same year as the data) x 1000. \$ Per capita=(county value / county population for the same year as the data). Value= . indicates missing or suppressed data or value not calculated.

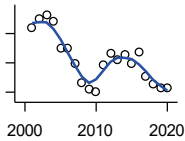
**Employment**

**BEA EMPLOYMENT: WHOLESALE TRADE**



U.S. Bureau of Economic Analysis,  
Regional Economic Information System  
(REIS)

Year	County	State of Kansas	Non Metro Kansas	County Rank	Per 1000 or \$ Per Capita
2001	98	65,698	.	67	.
2002	86	65,408	.	68	.
2003	66	63,504	.	75	.
2004	37	64,434	.	83	.
2005	.	64,587	.	.	.
2006	.	64,743	.	.	.
2007	48	65,993	.	75	.
2008	49	67,693	.	75	.
2009	31	65,954	.	79	.
2010	30	64,376	.	83	.
2011	21	64,712	.	86	.
2012	20	63,973	.	83	.
2013	25	64,999	.	80	.
2014	34	69,295	.	79	.
2015	64	68,444	.	76	.
2016	68	64,843	.	76	.
2017	82	65,014	.	69	.
2018	86	64,745	.	68	.
2019	81	63,324	.	70	.
2020	59	60,844	.	79	.



**BEA EMPLOYMENT: RETAIL TRADE**

U.S. Bureau of Economic Analysis,  
Regional Economic Information System  
(REIS)

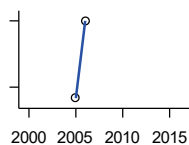
Year	County	State of Kansas	Non Metro Kansas	County Rank	Per 1000 or \$ Per Capita
2001	334	198,069	.	64	.
2002	350	196,112	.	62	.
2003	357	194,545	64,173	61	.
2004	345	192,957	63,265	62	.
2005	301	191,656	62,506	70	.
2006	301	190,391	62,082	68	.
2007	274	190,643	61,716	70	.
2008	241	185,907	59,783	73	.
2009	231	181,262	58,714	73	.
2010	226	177,858	57,470	73	.
2011	272	180,548	57,734	69	.
2012	291	180,596	57,349	67	.
2013	280	183,245	57,556	68	.
2014	289	185,899	57,855	67	.
2015	274	188,421	58,516	67	.
2016	294	188,505	57,864	66	.
2017	253	186,633	56,715	70	.
2018	240	183,323	.	69	.
2019	232	177,240	53,427	69	.
2020	233	171,777	52,563	69	.

County: county value. Kansas: state value. County Rank: highest county value ranked #1. (\$000): thousands of dollars. Nonmetro Kansas: Kansas total less Metropolitan Areas as defined by the Office of Management and Budget (OMB; released 3/6/2020). Per 1000: For nonmoney amounts, Per 1000=(county value / county population for the same year as the data) x 1000. \$ Per capita=(county value / county population for the same year as the data). Value= . indicates missing or suppressed data or value not calculated.

**Employment**

**BEA EMPLOYMENT:  
TRANSPORTATION AND  
WAREHOUSING**

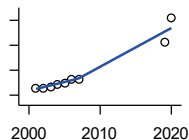
U.S. Bureau of Economic Analysis,  
Regional Economic Information System  
(REIS)



Year	County	State of Kansas	Non Metro Kansas	County Rank	Per 1000 or \$ Per Capita
2001	.	56,302	.	.	.
2002	.	55,319	.	.	.
2003	.	55,509	.	.	.
2004	.	55,479	.	.	.
2005	95	56,287	.	37	.
2006	102	57,506	.	38	.
2007	.	59,277	.	.	.
2008	.	58,725	.	.	.
2009	.	56,238	.	.	.
2010	.	55,179	.	.	.
2011	.	57,449	.	.	.
2012	.	59,756	.	.	.
2013	.	59,780	.	.	.
2014	.	60,565	.	.	.
2015	.	63,256	.	.	.
2016	.	65,705	.	.	.

**BEA EMPLOYMENT: INFORMATION**

U.S. Bureau of Economic Analysis,  
Regional Economic Information System  
(REIS)

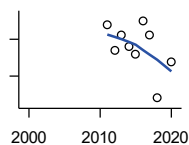


Year	County	State of Kansas	Non Metro Kansas	County Rank	Per 1000 or \$ Per Capita
2001	46	54,895	.	47	.
2002	46	50,728	.	45	.
2003	47	48,328	6,860	46	.
2004	49	45,617	.	48	.
2005	50	43,840	.	44	.
2006	53	43,925	.	40	.
2007	53	45,115	.	43	.
2008	.	42,958	.	.	.
2009	.	38,677	.	.	.
2010	.	33,432	.	.	.
2011	.	32,160	.	.	.
2012	.	31,829	.	.	.
2013	.	31,737	.	.	.
2014	.	32,316	.	.	.
2015	.	25,282	.	.	.
2016	.	24,998	.	.	.
2019	82	22,078	.	26	.
2020	102	20,810	.	20	.

County: county value. Kansas: state value. County Rank: highest county value ranked #1. (\$000): thousands of dollars. Nonmetro Kansas: Kansas total less Metropolitan Areas as defined by the Office of Management and Budget (OMB; released 3/6/2020). Per 1000: For nonmoney amounts, Per 1000=(county value / county population for the same year as the data) x 1000. \$ Per capita=(county value / county population for the same year as the data). Value= . indicates missing or suppressed data or value not calculated.

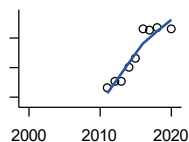
**Employment**

**BEA EMPLOYMENT: FINANCE AND INSURANCE**



U.S. Bureau of Economic Analysis,  
Regional Economic Information System  
(REIS)

Year	County	State of Kansas	Non Metro Kansas	County Rank	Per 1000 or \$ Per Capita
2001	.	76,118	.	.	.
2002	.	78,206	.	.	.
2003	.	78,441	.	.	.
2004	.	78,350	.	.	.
2005	.	78,952	.	.	.
2006	.	80,900	.	.	.
2007	.	86,094	.	.	.
2008	.	89,590	.	.	.
2009	.	93,573	.	.	.
2010	.	92,428	.	.	.
2011	124	99,495	.	54	.
2012	117	98,640	.	54	.
2013	121	99,998	.	58	.
2014	118	98,209	.	59	.
2015	116	100,534	.	58	.
2016	125	102,699	.	60	.
2017	121	101,563	.	59	.
2018	104	102,816	.	62	.
2020	114	101,626	.	59	.



**BEA EMPLOYMENT: REAL ESTATE, RENTAL, AND LEASING**

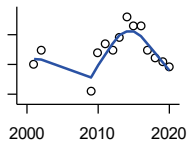
U.S. Bureau of Economic Analysis,  
Regional Economic Information System  
(REIS)

Year	County	State of Kansas	Non Metro Kansas	County Rank	Per 1000 or \$ Per Capita
2001	.	45,237	.	.	.
2002	.	44,970	.	.	.
2003	.	47,095	.	.	.
2004	.	50,181	.	.	.
2005	.	53,335	.	.	.
2006	.	55,342	.	.	.
2007	.	57,694	.	.	.
2008	.	57,933	.	.	.
2009	.	57,132	.	.	.
2010	.	59,578	.	.	.
2011	56	61,821	.	53	.
2012	61	60,432	.	51	.
2013	61	62,134	.	53	.
2014	70	64,705	.	56	.
2015	76	66,604	.	52	.
2016	96	68,395	.	49	.
2017	95	70,304	.	51	.
2018	97	72,631	.	53	.
2020	96	68,452	.	51	.

County: county value. Kansas: state value. County Rank: highest county value ranked #1. (\$000): thousands of dollars. Nonmetro Kansas: Kansas total less Metropolitan Areas as defined by the Office of Management and Budget (OMB; released 3/6/2020). Per 1000: For nonmoney amounts, Per 1000=(county value / county population for the same year as the data) x 1000. \$ Per capita=(county value / county population for the same year as the data). Value= . indicates missing or suppressed data or value not calculated.

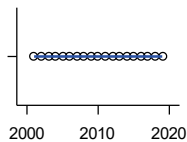
**Employment**

**BEA EMPLOYMENT: PROFESSIONAL AND TECHNICAL SERVICES**



U.S. Bureau of Economic Analysis, Regional Economic Information System (REIS)

Year	County	State of Kansas	Non Metro Kansas	County Rank	Per 1000 or \$ Per Capita
2001	100	81,396	.	51	.
2002	105	80,684	.	46	.
2003	.	80,311	.	.	.
2004	.	85,550	.	.	.
2005	.	85,003	.	.	.
2006	.	87,381	.	.	.
2007	.	92,717	.	.	.
2008	.	95,362	.	.	.
2009	91	93,232	.	51	.
2010	104	93,037	.	48	.
2011	107	93,237	.	50	.
2012	105	95,360	.	54	.
2013	109	100,795	.	52	.
2014	116	102,210	.	50	.
2015	113	105,625	.	54	.
2016	113	108,059	.	51	.
2017	105	109,041	.	52	.
2018	102	110,513	.	50	.
2019	101	109,637	.	51	.
2020	99	108,634	.	52	.



**BEA EMPLOYMENT: MANAGEMENT OF COMPANIES AND ENTERPRISES**

U.S. Bureau of Economic Analysis, Regional Economic Information System (REIS)

Year	County	State of Kansas	Non Metro Kansas	County Rank	Per 1000 or \$ Per Capita
2001	0	13,832	.	70	.
2002	0	12,576	.	69	.
2003	0	11,135	.	67	.
2004	0	10,614	.	67	.
2005	0	11,811	.	66	.
2006	0	13,061	.	66	.
2007	0	13,398	.	69	.
2008	0	15,234	.	72	.
2009	0	14,849	.	75	.
2010	0	16,579	.	75	.
2011	0	15,343	.	75	.
2012	0	15,075	.	82	.
2013	0	16,667	.	81	.
2014	0	20,441	.	79	.
2015	0	29,604	.	78	.
2016	0	27,824	.	77	.
2017	0	27,767	.	77	.
2018	0	28,862	.	75	.
2019	0	30,512	.	74	.

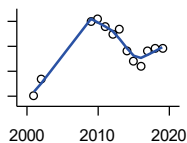
County: county value. Kansas: state value. County Rank: highest county value ranked #1. (\$000): thousands of dollars. Nonmetro Kansas: Kansas total less Metropolitan Areas as defined by the Office of Management and Budget (OMB; released 3/6/2020). Per 1000: For nonmoney amounts, Per 1000=(county value / county population for the same year as the data) x 1000. \$ Per capita=(county value / county population for the same year as the data). Value= . indicates missing or suppressed data or value not calculated.

**Employment**

**BEA EMPLOYMENT:  
ADMINISTRATIVE AND WASTE  
SERVICES**

U.S. Bureau of Economic Analysis,  
Regional Economic Information System  
(REIS)

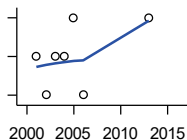
Year	County	State of Kansas	Non Metro Kansas	County Rank	Per 1000 or \$ Per Capita
2001	40	81,573	.	50	.
2002	47	82,992	.	48	.
2003	.	81,298	.	.	.
2004	.	85,721	.	.	.
2005	.	89,933	.	.	.
2006	.	93,688	.	.	.
2007	.	98,865	.	.	.
2008	.	97,440	.	.	.
2009	70	92,455	.	51	.
2010	71	93,675	.	49	.
2011	68	97,969	.	53	.
2012	65	100,490	.	55	.
2013	67	104,680	.	52	.
2014	58	107,218	18,836	55	.
2015	54	103,436	18,767	56	.
2016	52	103,233	18,428	57	.
2017	58	101,532	18,198	57	.
2018	59	102,062	.	52	.
2019	59	100,897	.	50	.



**BEA EMPLOYMENT: EDUCATIONAL  
SERVICES**

U.S. Bureau of Economic Analysis,  
Regional Economic Information System  
(REIS)

Year	County	State of Kansas	Non Metro Kansas	County Rank	Per 1000 or \$ Per Capita
2001	8	21,169	.	41	.
2002	7	22,173	.	51	.
2003	8	22,651	.	44	.
2004	8	21,601	.	47	.
2005	9	22,177	.	48	.
2006	7	22,438	.	60	.
2007	.	23,647	.	.	.
2008	.	24,653	.	.	.
2009	.	25,120	.	.	.
2010	.	26,071	.	.	.
2011	.	26,080	.	.	.
2012	.	26,625	.	.	.
2013	9	27,508	.	46	.
2014	.	28,708	.	.	.
2015	.	28,794	.	.	.
2016	.	27,996	.	.	.

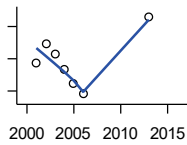


County: county value. Kansas: state value. County Rank: highest county value ranked #1. (\$000): thousands of dollars. Nonmetro Kansas: Kansas total less Metropolitan Areas as defined by the Office of Management and Budget (OMB; released 3/6/2020). Per 1000: For nonmoney amounts, Per 1000=(county value / county population for the same year as the data) x 1000. \$ Per capita=(county value / county population for the same year as the data). Value= . indicates missing or suppressed data or value not calculated.



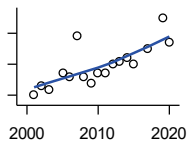
**Employment**

**BEA EMPLOYMENT: HEALTH CARE AND SOCIAL ASSISTANCE**



U.S. Bureau of Economic Analysis,  
Regional Economic Information System  
(REIS)

Year	County	State of Kansas	Non Metro Kansas	County Rank	Per 1000 or \$ Per Capita
2001	167	165,415	.	45	.
2002	179	168,198	.	42	.
2003	173	169,654	.	45	.
2004	163	172,796	.	50	.
2005	155	173,949	.	48	.
2006	148	176,919	.	44	.
2007	.	182,160	.	.	.
2008	.	186,051	.	.	.
2009	.	188,499	.	.	.
2010	.	188,383	.	.	.
2011	.	190,736	.	.	.
2012	.	192,991	.	.	.
2013	196	193,687	.	40	.
2014	.	194,632	.	.	.
2015	.	199,724	.	.	.
2016	.	201,830	.	.	.



**BEA EMPLOYMENT: ARTS, ENTERTAINMENT, AND RECREATION**

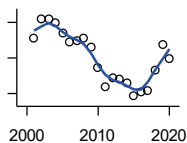
U.S. Bureau of Economic Analysis,  
Regional Economic Information System  
(REIS)

Year	County	State of Kansas	Non Metro Kansas	County Rank	Per 1000 or \$ Per Capita
2001	25	25,012	.	44	.
2002	28	25,668	.	44	.
2003	27	24,116	.	43	.
2004	.	25,355	.	.	.
2005	32	26,067	.	47	.
2006	31	26,505	.	51	.
2007	44	27,489	.	43	.
2008	31	27,501	.	45	.
2009	29	27,203	.	48	.
2010	32	27,479	.	43	.
2011	32	28,487	.	44	.
2012	35	30,729	.	44	.
2013	36	31,068	.	42	.
2014	37	32,154	.	41	.
2015	35	31,169	.	41	.
2016	.	32,373	.	.	.
2017	40	33,213	.	37	.
2019	50	33,082	.	37	.
2020	42	26,644	.	35	.

County: county value. Kansas: state value. County Rank: highest county value ranked #1. (\$000): thousands of dollars. Nonmetro Kansas: Kansas total less Metropolitan Areas as defined by the Office of Management and Budget (OMB; released 3/6/2020). Per 1000: For nonmoney amounts, Per 1000=(county value / county population for the same year as the data) x 1000. \$ Per capita=(county value / county population for the same year as the data). Value= . indicates missing or suppressed data or value not calculated.

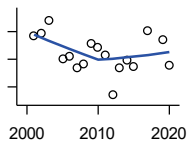
**Employment**

**BEA EMPLOYMENT: GOVERNMENT AND GOVERNMENT ENTERPRISES**



U.S. Bureau of Economic Analysis, Regional Economic Information System (REIS)

Year	County	State of Kansas	Non Metro Kansas	County Rank	Per 1000 or \$ Per Capita
2001	563	282,293	102,993	73	.
2002	584	281,427	103,581	72	.
2003	584	282,459	103,389	72	.
2004	580	283,877	103,946	72	.
2005	568	282,798	103,194	74	.
2006	558	288,372	104,103	74	.
2007	560	294,413	104,598	74	.
2008	563	298,580	104,718	74	.
2009	552	300,422	104,081	75	.
2010	529	303,875	103,382	75	.
2011	508	299,952	101,535	75	.
2012	518	298,068	101,180	75	.
2013	516	297,689	101,232	75	.
2014	512	296,956	100,634	76	.
2015	497	295,799	99,719	77	.
2016	502	291,536	98,520	76	.
2017	503	295,748	99,542	75	.
2018	526	298,105	99,499	74	.
2019	555	302,017	100,227	72	.
2020	539	292,583	96,477	74	.



**BEA EMPLOYMENT: ACCOMMODATION AND FOOD SERVICES**

U.S. Bureau of Economic Analysis, Regional Economic Information System (REIS)

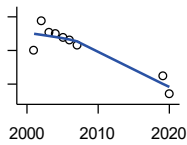
Year	County	State of Kansas	Non Metro Kansas	County Rank	Per 1000 or \$ Per Capita
2001	167	103,353	.	43	.
2002	169	103,692	.	45	.
2003	178	105,138	.	43	.
2004	.	106,694	.	.	.
2005	150	107,303	.	49	.
2006	152	109,888	.	51	.
2007	144	110,863	.	46	.
2008	147	111,092	.	48	.
2009	161	109,353	.	49	.
2010	159	108,628	.	41	.
2011	153	110,514	.	43	.
2012	124	112,574	.	50	.
2013	144	114,102	.	45	.
2014	149	115,768	.	47	.
2015	145	118,503	.	44	.
2016	.	119,764	.	.	.
2017	171	121,181	.	42	.
2019	164	122,819	.	43	.
2020	146	106,561	.	40	.

County: county value. Kansas: state value. County Rank: highest county value ranked #1. (\$000): thousands of dollars. Nonmetro Kansas: Kansas total less Metropolitan Areas as defined by the Office of Management and Budget (OMB; released 3/6/2020). Per 1000: For nonmoney amounts, Per 1000=(county value / county population for the same year as the data) x 1000. \$ Per capita=(county value / county population for the same year as the data). Value= . indicates missing or suppressed data or value not calculated.

**Employment**

BEA EMPLOYMENT: OTHER SERVICES, EXCEPT PUBLIC ADMINISTRATION

U.S. Bureau of Economic Analysis, Regional Economic Information System (REIS)

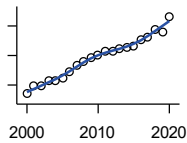


Year	County	State of Kansas	Non Metro Kansas	County Rank	Per 1000 or \$ Per Capita
2001	180	92,176	.	63	.
2002	198	95,350	.	62	.
2003	191	95,821	32,629	64	.
2004	190	95,610	.	62	.
2005	188	95,930	32,555	64	.
2006	186	96,413	.	63	.
2007	183	98,444	.	64	.
2008	.	96,705	.	.	.
2009	.	95,534	.	.	.
2010	.	93,302	.	.	.
2011	.	94,865	.	.	.
2012	.	94,977	.	.	.
2013	.	95,471	.	.	.
2014	.	97,806	.	.	.
2015	.	98,041	.	.	.
2016	.	97,219	.	.	.
2019	165	98,638	.	57	.
2020	154	92,245	.	57	.

**Income**

BEA PER CAPITA PERSONAL INCOME (\$)

U.S. Bureau of Economic Analysis, Regional Economic Information System (REIS)

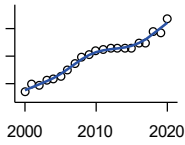


Year	County	State of Kansas	Non Metro Kansas	County Rank	Per 1000 or \$ Per Capita
2000	21,976	28,253	23,116	76	.
2001	24,580	29,112	24,576	63	.
2002	24,535	29,248	24,314	51	.
2003	26,311	30,074	26,017	61	.
2004	26,684	30,843	26,583	52	.
2005	27,366	32,545	28,356	74	.
2006	29,524	35,690	29,782	53	.
2007	31,627	38,057	32,034	69	.
2008	33,146	41,257	35,211	80	.
2009	34,180	39,431	33,876	65	.
2010	35,339	39,960	35,795	64	.
2011	36,341	43,015	39,041	77	.
2012	36,563	45,294	39,660	82	.
2013	37,303	46,174	41,747	82	.
2014	37,673	47,013	41,042	80	.
2015	38,273	47,332	40,638	77	.
2016	40,209	47,326	40,797	61	.
2017	41,088	48,756	41,314	58	.
2018	43,885	50,811	43,283	54	.
2019	42,993	52,820	44,491	71	.
2020	48,171	55,677	48,415	60	.

County: county value. Kansas: state value. County Rank: highest county value ranked #1. (\$000): thousands of dollars. Nonmetro Kansas: Kansas total less Metropolitan Areas as defined by the Office of Management and Budget (OMB; released 3/6/2020). Per 1000: For nonmoney amounts, Per 1000=(county value / county population for the same year as the data) x 1000. \$ Per capita=(county value / county population for the same year as the data). Value= . indicates missing or suppressed data or value not calculated.

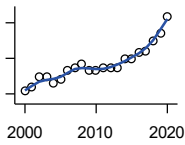
**Income**

**SOURCES OF PERSONAL INCOME:  
TOTAL PERSONAL INCOME (\$000)**



U.S. Bureau of Economic Analysis,  
Regional Economic Information System  
(REIS)

Year	County	State of Kansas	Non Metro Kansas	County Rank	Per 1000 or \$ Per Capita
2000	134,491	76,105,125	22,273,838	68	22,033.3
2001	148,977	78,664,651	23,411,174	65	24,579.6
2002	146,742	79,365,190	23,000,314	62	24,534.7
2003	155,814	81,890,340	24,494,191	64	26,311.0
2004	157,540	84,335,940	24,924,467	64	26,683.6
2005	162,746	89,346,228	26,452,291	67	27,366.1
2006	175,045	98,610,188	27,661,596	62	29,523.5
2007	187,581	105,943,199	29,715,946	64	31,627.2
2008	198,840	115,852,478	32,614,565	68	33,145.5
2009	203,647	111,697,350	31,394,702	62	34,180.4
2010	209,136	114,239,828	33,291,419	68	35,309.1
2011	213,102	123,558,772	36,221,488	74	36,340.7
2012	213,856	130,948,127	36,696,759	72	36,562.8
2013	213,372	133,979,908	38,513,959	75	37,309.3
2014	213,415	136,878,718	37,680,598	72	37,679.2
2015	215,477	138,336,768	37,081,851	70	38,286.6
2016	223,278	138,533,890	36,930,885	69	40,172.4
2017	224,794	142,729,689	37,104,963	69	41,118.3
2018	243,604	148,955,739	38,589,364	65	43,837.3
2019	241,752	154,961,001	39,424,148	66	43,016.4
2020	267,781	163,462,179	42,618,591	65	49,718.0



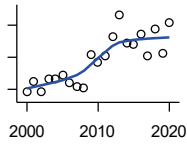
**SOURCES OF PERSONAL INCOME:  
WAGES AND SALARIES (\$000)**

U.S. Bureau of Economic Analysis,  
Regional Economic Information System  
(REIS)

Year	County	State of Kansas	Non Metro Kansas	County Rank	Per 1000 or \$ Per Capita
2000	40,707	41,766,878	10,254,250	69	6,668.9
2001	41,964	43,269,734	10,518,206	69	6,923.6
2002	44,736	43,875,159	10,696,876	69	7,479.7
2003	44,655	44,488,560	10,894,971	69	7,540.5
2004	43,040	46,702,068	11,333,617	70	7,290.0
2005	44,008	48,537,956	11,614,130	70	7,400.0
2006	46,489	52,083,584	12,299,340	70	7,841.0
2007	47,346	55,442,368	13,093,908	71	7,982.8
2008	48,452	57,623,385	13,647,143	72	8,076.7
2009	46,461	55,605,578	13,199,674	73	7,798.1
2010	46,492	56,089,711	13,345,291	72	7,849.4
2011	47,339	58,104,706	13,856,458	73	8,072.8
2012	47,398	60,616,457	14,473,599	74	8,103.6
2013	47,287	61,872,023	14,781,792	74	8,268.4
2014	49,959	64,457,652	15,385,500	73	8,820.4
2015	50,032	66,729,598	15,454,485	74	8,889.8
2016	51,525	67,253,399	15,422,058	72	9,270.4
2017	51,850	68,830,861	15,731,853	72	9,484.2
2018	55,058	71,580,544	16,311,725	72	9,907.9
2019	57,146	74,404,771	16,882,299	72	10,168.3
2020	61,764	75,798,310	17,251,300	70	11,467.5

County: county value. Kansas: state value. County Rank: highest county value ranked #1. (\$000): thousands of dollars. Nonmetro Kansas: Kansas total less Metropolitan Areas as defined by the Office of Management and Budget (OMB; released 3/6/2020). Per 1000: For nonmoney amounts, Per 1000=(county value / county population for the same year as the data) x 1000. \$ Per capita=(county value / county population for the same year as the data). Value= . indicates missing or suppressed data or value not calculated.

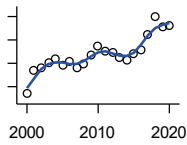
**Income**



**SOURCES OF PERSONAL INCOME:  
PROPRIETORS-FARM (\$000)**

U.S. Bureau of Economic Analysis,  
Regional Economic Information System  
(REIS)

Year	County	State of Kansas	Non Metro Kansas	County Rank	Per 1000 or \$ Per Capita
2000	-898	668,539	673,707	87	-147.1
2001	2,382	779,473	769,336	79	393.0
2002	-824	145,064	187,033	68	-137.8
2003	3,293	1,281,076	1,195,298	87	556.1
2004	3,371	1,149,425	938,524	82	571.0
2005	4,473	1,609,604	1,469,139	86	752.1
2006	2,029	766,047	663,735	66	342.2
2007	693	1,131,607	1,040,350	89	116.8
2008	582	1,582,092	1,404,900	90	97.0
2009	10,894	1,585,995	1,390,349	63	1,828.5
2010	8,337	2,149,482	2,029,067	72	1,407.6
2011	10,552	3,188,519	2,989,880	79	1,799.5
2012	16,476	2,519,555	2,296,875	62	2,816.9
2013	23,225	4,499,190	4,158,419	67	4,061.0
2014	14,428	2,231,181	2,157,992	51	2,547.3
2015	14,151	1,300,733	1,294,370	30	2,514.4
2016	17,399	1,577,060	1,564,511	29	3,130.4
2017	10,431	838,480	838,290	29	1,908.0
2018	18,713	1,050,662	971,690	18	3,367.5
2019	11,135	998,038	878,247	38	1,981.3
2020	20,756	2,151,349	1,887,881	47	3,853.7



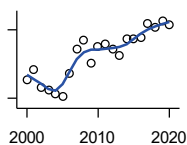
**SOURCES OF PERSONAL INCOME:  
PROPRIETORS-NONFARM (\$000)**

U.S. Bureau of Economic Analysis,  
Regional Economic Information System  
(REIS)

Year	County	State of Kansas	Non Metro Kansas	County Rank	Per 1000 or \$ Per Capita
2000	8,461	4,580,476	1,493,470	70	1,386.1
2001	13,442	4,510,530	1,855,621	57	2,217.8
2002	13,906	5,036,100	1,966,784	59	2,325.0
2003	15,211	4,719,377	1,916,735	52	2,568.6
2004	15,966	4,003,922	2,073,898	53	2,704.3
2005	14,623	4,455,294	2,200,971	60	2,458.9
2006	15,462	7,343,524	2,694,895	63	2,607.9
2007	13,947	7,280,197	2,436,574	62	2,351.5
2008	14,777	9,255,953	2,971,923	70	2,463.2
2009	16,649	9,323,551	2,858,848	64	2,794.4
2010	18,590	9,658,261	3,498,040	67	3,138.6
2011	17,605	12,196,566	4,186,007	74	3,002.2
2012	17,407	15,773,140	4,446,004	79	2,976.1
2013	16,230	16,441,660	4,492,127	83	2,837.9
2014	15,800	15,954,254	4,455,081	82	2,789.5
2015	17,049	15,536,116	4,386,172	81	3,029.3
2016	17,757	14,075,310	3,783,829	74	3,194.9
2017	21,088	15,371,957	3,908,254	71	3,857.3
2018	25,003	15,716,877	4,238,775	65	4,499.4
2019	22,796	16,705,488	3,921,051	62	4,056.2
2020	23,031	16,718,952	3,823,329	62	4,276.1

County: county value. Kansas: state value. County Rank: highest county value ranked #1. (\$000): thousands of dollars. Nonmetro Kansas: Kansas total less Metropolitan Areas as defined by the Office of Management and Budget (OMB; released 3/6/2020). Per 1000: For nonmoney amounts, Per 1000=(county value / county population for the same year as the data) x 1000. \$ Per capita=(county value / county population for the same year as the data). Value= . indicates missing or suppressed data or value not calculated.

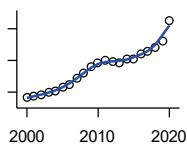
**Income**



**SOURCES OF PERSONAL INCOME:  
DIVIDENDS,INTEREST,RENT(\$000)**

U.S. Bureau of Economic Analysis,  
Regional Economic Information System  
(REIS)

Year	County	State of Kansas	Non Metro Kansas	County Rank	Per 1000 or \$ Per Capita
2000	33,937	15,916,201	4,736,921	62	5,559.8
2001	36,397	15,770,830	4,699,417	57	6,005.1
2002	32,222	15,111,563	4,316,887	61	5,387.4
2003	31,705	15,370,764	4,360,311	63	5,353.8
2004	31,073	15,820,469	4,251,925	58	5,263.0
2005	30,508	17,147,069	4,485,387	61	5,130.0
2006	35,468	20,117,848	4,945,184	54	5,982.1
2007	40,857	22,269,186	5,526,219	56	6,888.7
2008	42,628	24,972,485	6,180,979	62	7,105.9
2009	37,719	21,453,879	5,308,474	60	6,330.8
2010	41,337	20,861,351	5,414,285	57	6,979.1
2011	41,987	23,387,567	5,781,075	59	7,160.1
2012	40,819	25,689,368	6,389,505	68	6,978.8
2013	39,343	24,832,212	5,984,811	66	6,879.3
2014	42,889	27,412,684	6,403,356	67	7,572.2
2015	42,884	27,244,414	6,423,685	64	7,619.8
2016	43,389	27,293,441	6,389,161	66	7,806.6
2017	46,348	28,385,472	6,700,156	62	8,477.8
2018	45,502	29,953,419	6,772,504	65	8,188.2
2019	46,965	30,820,276	6,957,987	65	8,356.8
2020	46,077	30,283,520	6,844,745	64	8,555.0



**SOURCES OF PERSONAL INCOME:  
TRANSFER PAYMENTS (\$000)**

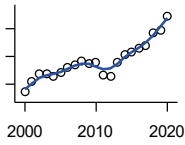
U.S. Bureau of Economic Analysis,  
Regional Economic Information System  
(REIS)

Year	County	State of Kansas	Non Metro Kansas	County Rank	Per 1000 or \$ Per Capita
2000	26,443	9,650,835	4,036,781	64	4,332.1
2001	27,382	10,549,124	4,355,457	65	4,517.7
2002	28,173	11,208,997	4,553,978	65	4,710.4
2003	29,730	11,709,049	4,702,911	64	5,020.3
2004	30,521	12,040,452	4,802,536	64	5,169.5
2005	32,784	12,696,735	5,059,314	61	5,512.7
2006	35,008	13,642,787	5,455,207	63	5,904.5
2007	38,647	14,686,821	5,775,024	60	6,516.1
2008	42,010	16,552,460	6,322,722	60	7,002.8
2009	45,977	18,025,603	6,790,962	60	7,716.9
2010	48,842	19,189,749	7,089,258	60	8,246.2
2011	50,446	19,625,770	7,255,825	59	8,602.7
2012	48,911	19,354,458	7,148,177	61	8,362.3
2013	48,592	19,639,358	7,185,636	62	8,496.6
2014	51,170	20,380,970	7,399,809	62	9,034.3
2015	51,165	21,116,856	7,623,577	62	9,091.2
2016	53,920	21,884,629	7,886,000	61	9,701.3
2017	55,634	22,559,744	8,062,517	61	10,176.3
2018	58,035	23,628,033	8,393,617	61	10,443.6
2019	62,219	25,050,174	8,845,371	61	11,071.0
2020	75,210	32,319,421	11,074,190	60	13,964.0

County: county value. Kansas: state value. County Rank: highest county value ranked #1. (\$000): thousands of dollars. Nonmetro Kansas: Kansas total less Metropolitan Areas as defined by the Office of Management and Budget (OMB; released 3/6/2020). Per 1000: For nonmoney amounts, Per 1000=(county value / county population for the same year as the data) x 1000. \$ Per capita=(county value / county population for the same year as the data). Value= . indicates missing or suppressed data or value not calculated.

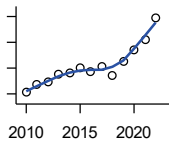
**Income**

**SOURCES OF PERSONAL INCOME:  
LESS SOCIAL INSURANCE (\$000)**



U.S. Bureau of Economic Analysis,  
Regional Economic Information System  
(REIS)

Year	County	State of Kansas	Non Metro Kansas	County Rank	Per 1000 or \$ Per Capita
2000	7,421	6,655,813	1,663,044	66	1,215.8
2001	8,226	6,869,934	1,740,915	65	1,357.2
2002	8,702	7,008,361	1,778,636	64	1,454.9
2003	8,737	7,172,781	1,821,858	63	1,475.3
2004	8,554	7,556,560	1,904,014	67	1,448.8
2005	8,797	7,911,241	1,986,907	66	1,479.2
2006	9,169	8,406,937	2,090,313	67	1,546.5
2007	9,358	8,806,941	2,180,587	69	1,577.8
2008	9,654	9,207,010	2,299,399	72	1,609.3
2009	9,475	9,002,859	2,248,703	70	1,590.3
2010	9,619	9,235,760	2,321,191	70	1,624.0
2011	8,694	8,515,986	2,139,991	71	1,482.6
2012	8,594	8,816,128	2,195,919	70	1,469.3
2013	9,620	10,225,399	2,540,439	72	1,682.1
2014	10,160	10,609,601	2,635,009	73	1,793.8
2015	10,326	11,028,204	2,663,038	71	1,834.8
2016	10,550	10,915,915	2,604,579	71	1,898.2
2017	10,808	11,224,218	2,669,954	71	1,977.0
2018	11,680	11,749,229	2,797,106	71	2,101.9
2019	11,888	12,245,451	2,889,336	71	2,115.3
2020	12,902	12,715,152	3,027,656	69	2,395.5



**HUD MEDIAN FAMILY INCOME**

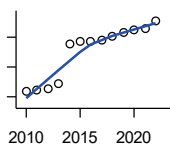
U.S. Department of Housing and Urban  
Development (HUD)

Year	County	State of Kansas	Non Metro Kansas	County Rank	Per 1000 or \$ Per Capita
2010	50,500	63,100	.	73	.
2011	53,800	64,300	.	56	.
2012	54,600	65,200	.	56	.
2013	57,600	64,800	.	53	.
2014	58,100	64,400	.	47	.
2015	60,200	66,300	.	49	.
2016	58,700	66,700	.	51	.
2017	60,500	68,500	.	53	.
2018	57,200	73,100	.	86	.
2019	62,400	75,200	.	67	.
2020	67,100	76,500	.	47	.
2021	70,800	77,400	.	37	.
2022	79,300	87,800	.	35	.

County: county value. Kansas: state value. County Rank: highest county value ranked #1. (\$000): thousands of dollars. Nonmetro Kansas: Kansas total less Metropolitan Areas as defined by the Office of Management and Budget (OMB; released 3/6/2020). Per 1000: For nonmoney amounts, Per 1000=(county value / county population for the same year as the data) x 1000. \$ Per capita=(county value / county population for the same year as the data). Value= . indicates missing or suppressed data or value not calculated.

**Income**

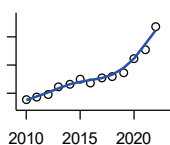
**HUD 30% LOW-TO-MEDIUM INCOME (LMI) LIMIT - 4 PERSONS**



U.S. Department of Housing and Urban Development (HUD)

Year	County	State of Kansas	Non Metro Kansas	County Rank	Per 1000 or \$ Per Capita
2010	15,850	.	.	105	.
2011	16,150	.	.	58	.
2012	16,400	.	.	56	.
2013	17,200	.	.	48	.
2014	23,850	.	.	105	.
2015	24,250	.	.	105	.
2016	24,300	.	.	105	.
2017	24,600	.	.	105	.
2018	25,100	21,950	.	105	.
2019	25,750	22,550	.	105	.
2020	26,200	22,950	.	105	.
2021	26,500	23,200	.	105	.
2022	27,750	25,950	.	105	.

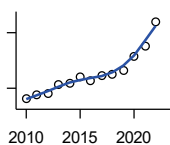
**HUD 50% LOW-TO-MEDIUM INCOME (LMI) LIMIT - 4 PERSONS**



U.S. Department of Housing and Urban Development (HUD)

Year	County	State of Kansas	Non Metro Kansas	County Rank	Per 1000 or \$ Per Capita
2010	26,400	.	.	105	.
2011	26,900	.	.	58	.
2012	27,300	.	.	56	.
2013	28,650	.	.	48	.
2014	29,050	.	.	44	.
2015	30,100	.	.	48	.
2016	29,350	.	.	53	.
2017	30,250	.	.	54	.
2018	30,550	36,550	.	105	.
2019	31,200	37,600	.	67	.
2020	33,550	38,250	.	47	.
2021	35,200	38,700	.	37	.
2022	39,350	43,300	.	32	.

**HUD 80% LOW-TO-MEDIUM INCOME (LMI) LIMIT - 4 PERSONS**



U.S. Department of Housing and Urban Development (HUD)

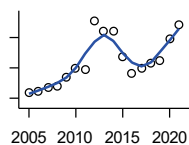
Year	County	State of Kansas	Non Metro Kansas	County Rank	Per 1000 or \$ Per Capita
2010	42,250	.	.	105	.
2011	43,050	.	.	58	.
2012	43,700	.	.	56	.
2013	45,850	.	.	48	.
2014	46,500	.	.	44	.
2015	48,150	.	.	48	.
2016	46,950	.	.	53	.
2017	48,400	.	.	54	.
2018	48,900	58,500	.	105	.
2019	49,900	60,150	.	67	.
2020	53,700	61,200	.	47	.
2021	56,300	61,900	.	37	.
2022	62,950	69,250	.	32	.

County: county value. Kansas: state value. County Rank: highest county value ranked #1. (\$000): thousands of dollars. Nonmetro Kansas: Kansas total less Metropolitan Areas as defined by the Office of Management and Budget (OMB; released 3/6/2020). Per 1000: For nonmoney amounts, Per 1000=(county value / county population for the same year as the data) x 1000. \$ Per capita=(county value / county population for the same year as the data). Value= . indicates missing or suppressed data or value not calculated.



**Banking**

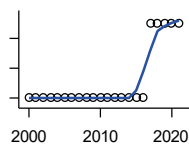
**BANK DEPOSITS** (1984-2004 in thousands; 2005- in millions)



Federal Deposit Insurance Corporation, Data Book, Operating Banks and Branches

Year	County	State of Kansas	Non Metro Kansas	County Rank	Per 1000 or \$ Per Capita
2005	108	48,304	17,000	72	18.2
2006	109	50,668	17,586	72	18.4
2007	114	54,057	18,517	73	19.2
2008	115	57,869	19,628	74	19.2
2009	128	57,763	20,031	71	21.5
2010	140	60,031	20,678	69	23.6
2011	138	61,094	21,347	70	23.5
2012	202	62,910	22,481	55	34.5
2013	188	64,547	22,795	60	32.9
2014	189	66,538	23,338	61	33.4
2015	154	68,160	23,367	72	27.4
2016	133	70,381	23,420	77	23.9
2017	139	73,329	23,928	74	25.4
2018	147	74,623	24,100	75	26.5
2019	149	76,436	24,488	73	26.5
2020	178	88,563	27,547	70	33.0
2021	196	97,055	30,122	70	36.6

**NUMBER OF BANKS**



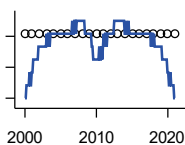
Federal Deposit Insurance Corporation, Data Book, Operating Banks and Branches

Year	County	State of Kansas	Non Metro Kansas	County Rank	Per 1000 or \$ Per Capita
2000	4	410	145	73	.
2001	4	410	136	76	.
2002	4	404	129	74	.
2003	4	397	121	75	.
2004	4	394	112	74	.
2005	4	388	101	73	.
2006	4	385	94	74	.
2007	4	382	91	75	.
2008	4	378	82	76	.
2009	4	374	79	75	.
2010	4	367	70	73	.
2011	4	359	61	74	.
2012	4	348	57	74	.
2013	4	332	45	73	.
2014	4	329	41	73	.
2015	4	320	31	72	.
2016	4	314	24	73	.
2017	5	301	13	55	.
2018	5	289	7	55	.
2019	5	279	3	55	.
2020	5	271	-1	55	.
2021	5	270	-6	55	.

County: county value. Kansas: state value. County Rank: highest county value ranked #1. (\$000): thousands of dollars. Nonmetro Kansas: Kansas total less Metropolitan Areas as defined by the Office of Management and Budget (OMB; released 3/6/2020). Per 1000: For nonmoney amounts, Per 1000=(county value / county population for the same year as the data) x 1000. \$ Per capita=(county value / county population for the same year as the data). Value= . indicates missing or suppressed data or value not calculated.

**Banking**

**NUMBER OF BANKING OFFICES**

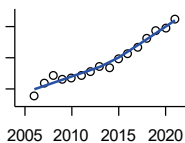


Federal Deposit Insurance Corporation, Data Book, Operating Banks and Branches

Year	County	State of Kansas	Non Metro Kansas	County Rank	Per 1000 or \$ Per Capita
2000	6	1,398	703	68	.
2001	6	1,424	708	68	.
2002	6	1,447	704	67	.
2003	6	1,461	708	67	.
2004	6	1,485	708	68	.
2005	6	1,505	711	67	.
2006	6	1,518	711	66	.
2007	6	1,543	717	66	.
2008	6	1,556	717	66	.
2009	6	1,569	716	66	.
2010	6	1,561	710	66	.
2011	6	1,559	707	66	.
2012	6	1,533	702	66	.
2013	6	1,518	696	66	.
2014	6	1,491	685	67	.
2015	6	1,472	675	67	.
2016	6	1,465	668	66	.
2017	6	1,452	666	66	.
2018	6	1,439	660	66	.
2019	6	1,439	663	64	.
2020	6	1,416	653	63	.
2021	6	1,392	641	62	.

**Government**

**TANGIBLE ASSESSED VALUATION (KDoR, million\$; 2006-)**



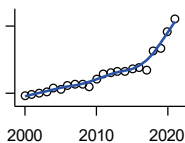
Kansas Department of Revenue, Division of Property Valuation, Statistical Report of Property Assessment and Taxation

Year	County	State of Kansas	Non Metro Kansas	County Rank	Per 1000 or \$ Per Capita
2006	57.6	28,964.3	10,316.9	74	9.7
2007	61.9	30,086.9	10,335.9	72	10.4
2008	64.2	31,000.3	10,856.9	72	10.7
2009	63.2	30,312.3	10,555.6	71	10.6
2010	63.7	29,450.2	10,158.7	70	10.8
2011	64.5	29,963.6	10,572.3	72	11.0
2012	65.6	30,382.9	10,876.2	76	11.2
2013	67.2	30,850.2	11,044.4	76	11.8
2014	66.6	31,783.0	11,388.9	78	11.8
2015	69.7	32,335.7	11,037.8	74	12.4
2016	71.4	33,156.3	10,889.6	71	12.8
2017	73.3	34,754.5	11,439.0	73	13.4
2018	76.1	36,566.1	11,907.1	74	13.7
2019	78.8	38,255.2	12,336.7	73	14.0
2020	79.6	39,333.9	12,219.3	72	14.8
2021	82.4	40,812.0	12,601.5	71	15.4

County: county value. Kansas: state value. County Rank: highest county value ranked #1. (\$000): thousands of dollars. Nonmetro Kansas: Kansas total less Metropolitan Areas as defined by the Office of Management and Budget (OMB; released 3/6/2020). Per 1000: For nonmoney amounts, Per 1000=(county value / county population for the same year as the data) x 1000. \$ Per capita=(county value / county population for the same year as the data). Value= . indicates missing or suppressed data or value not calculated.

**Government**

**SALES TAX COLLECTIONS (\$)**

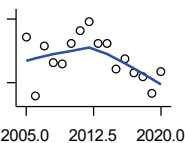


Kansas Department of Revenue. Use tax collections included beginning in calendar year 2018.

Year	County	State of Kansas	Non Metro Kansas	County Rank	Per 1000 or \$ Per Capita
2000	1,876,065	1,475,831,808	432,761,608	62	307,350.1
2001	1,927,372	1,481,026,688	426,316,284	62	317,995.7
2002	2,021,935	1,561,316,864	443,986,950	61	338,059.7
2003	2,065,730	1,626,782,976	461,658,700	61	348,823.0
2004	2,232,877	1,691,899,008	480,309,725	61	378,197.3
2005	2,174,409	1,744,980,352	497,494,867	63	365,631.2
2006	2,335,289	1,851,694,720	532,233,047	64	393,875.7
2007	2,426,521	1,917,546,752	559,319,583	65	409,125.1
2008	2,407,182	1,990,655,744	589,725,773	67	401,263.8
2009	2,307,709	1,866,223,078	548,627,132	65	387,329.5
2010	2,617,933	2,075,193,413	617,409,982	65	441,994.4
2011	2,846,343	2,347,193,367	702,671,534	69	485,392.7
2012	2,915,081	2,456,292,294	740,196,106	69	498,389.7
2013	2,958,035	2,489,204,048	746,226,565	69	517,229.4
2014	2,946,302	2,539,886,774	760,474,019	71	520,180.5
2015	3,094,493	2,642,374,740	750,090,163	67	549,838.9
2016	3,173,480	2,732,611,350	749,030,133	65	570,975.2
2017	3,057,290	2,726,104,521	744,246,491	66	559,226.3
2018	3,903,891	3,277,299,125	893,564,480	67	702,517.8
2019	4,012,387	3,395,631,405	939,607,762	66	713,947.8
2020	4,743,573	3,489,306,791	984,218,931	63	880,722.8
2021	5,323,316	3,981,293,227	1,098,391,422	62	993,897.7

**Crime**

**CRIME INDEX OFFENSES**



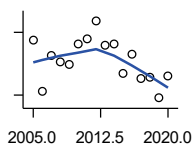
Kansas Bureau of Investigation, Note: Data are aggregated from reports by individual police departments and subject to be incomplete.

Year	County	State of Kansas	Non Metro Kansas	County Rank	Per 1000 or \$ Per Capita
2005	103	111,856	31,630	59	17.3
2006	47	110,032	.	72	7.9
2007	94	111,035	29,921	61	15.8
2008	79	93,996	27,342	64	13.2
2009	78	98,757	27,620	64	13.1
2010	97	98,354	26,909	57	16.4
2011	109	96,638	25,765	53	18.6
2012	117	98,914	26,963	51	20.0
2013	97	93,054	24,488	60	17.0
2014	97	86,323	23,341	58	17.1
2015	73	88,590	21,580	62	13.0
2016	82	90,589	21,565	60	14.8
2017	69	93,091	22,622	62	12.6
2018	66	92,062	20,325	63	11.9
2019	50	87,008	18,547	62	8.9
2020	70	87,346	17,762	61	13.0

County: county value. Kansas: state value. County Rank: highest county value ranked #1. (\$000): thousands of dollars. Nonmetro Kansas: Kansas total less Metropolitan Areas as defined by the Office of Management and Budget (OMB; released 3/6/2020). Per 1000: For nonmoney amounts, Per 1000=(county value / county population for the same year as the data) x 1000. \$ Per capita=(county value / county population for the same year as the data). Value= . indicates missing or suppressed data or value not calculated.

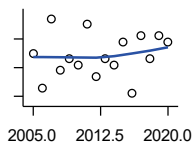
**Crime**

**PROPERTY CRIMES**



Kansas Bureau of Investigation, Note: Data are aggregated from reports by individual police departments and subject to be incomplete.

Year	County	State of Kansas	Non Metro Kansas	County Rank	Per 1000 or \$ Per Capita
2005	93	101,414	29,042	58	15.6
2006	43	99,110	.	72	7.3
2007	78	99,632	26,856	62	13.2
2008	72	83,964	24,367	62	12.0
2009	69	87,658	24,825	65	11.6
2010	89	87,926	24,133	56	15.0
2011	94	86,547	23,274	54	16.0
2012	111	88,707	24,220	50	19.0
2013	88	83,551	22,028	58	15.4
2014	89	76,794	20,858	58	15.7
2015	61	77,997	19,138	62	10.8
2016	79	79,549	19,207	60	14.2
2017	56	81,349	19,981	64	10.2
2018	57	79,695	17,769	64	10.3
2019	37	74,314	15,892	65	6.6
2020	58	73,450	15,100	59	10.8



**VIOLENT CRIMES**

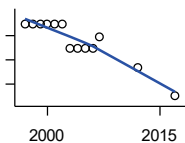
Kansas Bureau of Investigation, Note: Data are aggregated from reports by individual police departments and subject to be incomplete.

Year	County	State of Kansas	Non Metro Kansas	County Rank	Per 1000 or \$ Per Capita
2005	10	10,442	2,588	61	1.7
2006	4	10,922	.	74	0.7
2007	16	11,403	3,065	53	2.7
2008	7	10,032	2,975	69	1.2
2009	9	11,099	2,795	64	1.5
2010	8	10,428	2,776	66	1.4
2011	15	10,091	2,491	50	2.6
2012	6	10,207	2,743	75	1.0
2013	9	9,503	2,460	64	1.6
2014	8	9,529	2,483	68	1.4
2015	12	10,593	2,442	57	2.1
2016	3	11,040	2,358	82	0.5
2017	13	11,742	2,641	54	2.4
2018	9	12,367	2,556	58	1.6
2019	13	12,694	2,655	57	2.3
2020	12	13,896	2,662	62	2.2

County: county value. Kansas: state value. County Rank: highest county value ranked #1. (\$000): thousands of dollars. Nonmetro Kansas: Kansas total less Metropolitan Areas as defined by the Office of Management and Budget (OMB; released 3/6/2020). Per 1000: For nonmoney amounts, Per 1000=(county value / county population for the same year as the data) x 1000. \$ Per capita=(county value / county population for the same year as the data). Value= . indicates missing or suppressed data or value not calculated.

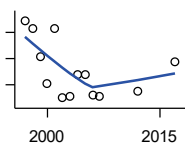
**Agriculture**

**NUMBER OF FARMS**



Kansas Agricultural Statistics, Kansas Farm Facts

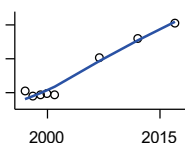
Year	County	State of Kansas	Non Metro Kansas	County Rank	Per 1000 or \$ Per Capita
1997	490	64,000	47,900	68	79.2
1998	490	65,000	48,850	68	80.3
1999	490	65,000	48,850	68	80.4
2000	490	64,000	48,030	67	80.3
2001	490	63,000	47,200	64	80.8
2002	490	63,000	47,200	64	81.9
2003	470	64,500	48,150	68	79.4
2004	470	64,500	48,150	68	79.6
2005	470	64,500	48,150	68	79.0
2006	470	64,000	47,650	66	79.3
2007	479	65,531	48,179	60	80.8
2012	454	61,773	45,655	58	77.6
2017	430	58,569	42,404	57	78.7



**TOTAL ACRES HARVESTED**

Kansas Agricultural Statistics, Kansas Farm Facts

Year	County	State of Kansas	Non Metro Kansas	County Rank	Per 1000 or \$ Per Capita
1997	147,220	22,846,000	19,430,580	84	23,806.6
1998	145,700	22,143,500	18,943,650	86	23,873.5
1999	140,400	21,708,900	18,581,750	84	23,031.5
2000	135,200	21,639,000	18,528,870	85	22,149.4
2001	145,700	21,847,900	18,689,750	84	24,038.9
2002	132,450	20,230,400	17,089,120	80	22,145.1
2003	132,710	21,827,700	18,661,920	87	22,409.7
2004	136,910	20,876,900	17,721,500	83	23,189.4
2005	137,010	21,936,500	18,807,930	85	23,038.5
2006	132,920	21,412,700	18,291,120	84	22,418.6
2007	132,720	19,886,655	17,164,743	79	22,377.3
2012	133,645	21,043,596	17,966,843	84	22,849.2
2017	139,424	21,837,465	18,543,057	84	25,502.8



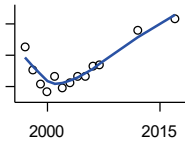
**VALUE: LIVESTOCK AND POULTRY (\$000)**

Kansas Agricultural Statistics, Kansas Farm Facts

Year	County	State of Kansas	Non Metro Kansas	County Rank	Per 1000 or \$ Per Capita
1997	21,783	2,806,445	2,500,305	42	3,522.5
1998	15,299	2,670,432	2,378,007	64	2,506.8
1999	17,676	2,849,061	2,554,528	52	2,899.6
2000	19,269	2,901,469	2,609,032	50	3,156.8
2001	17,099	2,693,274	2,437,187	48	2,821.2
2007	61,058	9,525,971	.	43	10,294.7
2012	83,992	11,476,571	10,883,216	30	14,360.1
2017	101,783	12,322,289	.	28	18,617.7

County: county value. Kansas: state value. County Rank: highest county value ranked #1. (\$000): thousands of dollars. Nonmetro Kansas: Kansas total less Metropolitan Areas as defined by the Office of Management and Budget (OMB; released 3/6/2020). Per 1000: For nonmoney amounts, Per 1000=(county value / county population for the same year as the data) x 1000. \$ Per capita=(county value / county population for the same year as the data). Value= . indicates missing or suppressed data or value not calculated.

**Agriculture**



VALUE:FIELD CROPS (\$000)  
EXCLUDING GOVERNMENT  
PROGRAM PAYMENTS

Kansas Agricultural Statistics, Kansas  
Farm Facts

Year	County	State of Kansas	Non Metro Kansas	County Rank	Per 1000 or \$ Per Capita
1997	27,751	4,474,942	3,800,365	81	4,487.5
1998	20,474	3,594,319	3,124,409	83	3,354.7
1999	15,886	3,118,193	2,728,319	81	2,606.0
2000	13,194	2,915,660	2,540,052	89	2,161.5
2001	18,155	3,283,117	2,857,136	87	2,995.4
2002	14,445	3,011,855	2,560,580	86	2,415.1
2003	16,212	3,623,255	3,150,629	91	2,737.6
2004	18,088	3,445,688	2,896,603	79	3,063.7
2005	18,366	3,678,123	3,182,677	90	3,088.3
2006	21,363	4,308,716	3,684,132	84	3,603.1
2007	21,783	4,887,212	.	84	3,672.7
2012	32,823	6,983,993	6,044,551	84	5,611.7
2017	36,832	6,460,437	.	84	6,737.2

County: county value. Kansas: state value. County Rank: highest county value ranked #1. (\$000): thousands of dollars. Nonmetro Kansas: Kansas total less Metropolitan Areas as defined by the Office of Management and Budget (OMB; released 3/6/2020). Per 1000: For nonmoney amounts, Per 1000=(county value / county population for the same year as the data) x 1000. \$ Per capita=(county value / county population for the same year as the data). Value= . indicates missing or suppressed data or value not calculated.