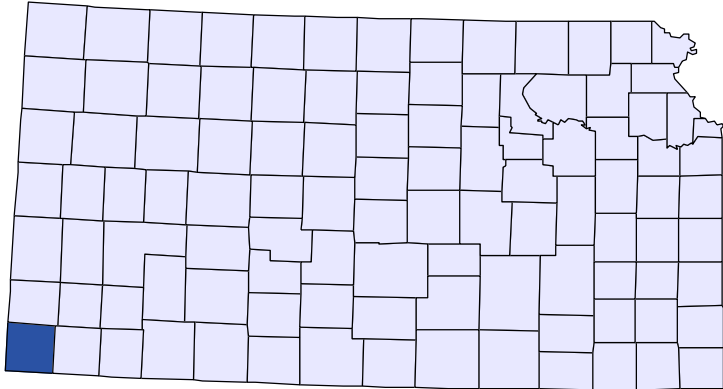




Kansas County Profiles

Morton County



The University
of Kansas

Institute for Policy
& Social Research

KU INSTITUTE FOR POLICY
& SOCIAL RESEARCH

The University of Kansas

1541 Lilac Lane, Rm. 607
Blake Hall
Lawrence, KS 66045-3129

Foreword

The Kansas County Profile Report is published by the Institute for Policy & Social Research (IPSR) at the University of Kansas with support from the KU University Center project.* Special thanks to Xanthippe Wedel, senior research data engineer, who compiles and updates the county profiles and Genna Hurd, associate researcher, who provides editorial review.

County reports can be generated for any county in Kansas by simply clicking on the county from the web site:

<https://ipsr.ku.edu/ksdata/kcced/profiles/>

The Kansas County Profile Report contains 12 categories of information: Population, Vital Statistics and Health, Housing, Education, Social Environment, Business, Employment, Income, Banking, Government, Crime, and Agriculture. For more information about Kansas, please refer to the Kansas Statistical Abstract, available online at:

<https://ipsr.ku.edu/ksdata/ksah/>

We are always looking for ways to improve the Kansas County Profile Report and we welcome your suggestions and comments. Please address any correspondence to the Institute for Policy & Social Research, The University of Kansas, 607 Blake Hall, 1541 Lilac Lane, Lawrence, Kansas 66045-3129, e-mail ipsr@ku.edu or call 785-864-3701.

**The KU University Center is a collaborative effort led by the Institute for Policy & Social Research at the University of Kansas. This project is supported by the Economic Development Administration, U.S. Department of Commerce, through its University Center Program.*

The mission of EDA is to lead the federal economic development agenda by promoting innovation and competitiveness, preparing American regions for growth and success in the worldwide economy.

Kansas County Profiles Table of Contents

Population

Total Population (Decennial Census)	1
Estimated Population (Current Population Reports)	2
Urban Population	2
Rural Population	3
Net Migration (Decade Ending...)	3
Median Age	3

Population (Age Groups)

Population Under 18 (Decennial Census)	3
Population Age 18 and Over (Decennial Census)	4
Population Age 65 and Over (Decennial Census)	4
Population Age 85 and Over (Decennial Census)	4

Vital Statistics and Health

Live Births	5
Deaths	5
Marriages	6
Divorces and Annulments	6
Physicians: M.D. Physicians	7
Physicians: D.O. Physicians	7
Dentists	8
Number of Hospitals	8
Number of Hospital Beds	9

Housing

Housing Units (Decennial Census)	9
Housing Units (Estimated)	10
Occupied Housing Units	10
Owner Occupied Housing Units	10
Renter Occupied Housing Units	11
Vacant Housing Units	11
Median Value (\$): Owner Occupied Housing Units	11
Median Contract Rent (\$)	12
Fair Market Rent: 2 Bedrooms	12

Education

Population Age 25 and Over	13
Percent of Population 25+ with High School or Higher Education	13
Percent of Population 25+ with Bachelors Degree or Higher Education	14
Public School Enrollment (FTE- School Year Beginning...)	14
Pupil/Teacher Ratio (School Year Beginning...)	15

Kansas County Profiles Table of Contents

Social Environment

Total Child Care Facilities	15
Preschools	16
Food Stamp Beneficiaries	16
Percent of Population Receiving Food Stamps	17
Estimated Number of People in Poverty	17
Estimated Percent of People in Poverty	18
Estimated Number of Related Children Age 5 to 17 in Families in Poverty	18
Estimated Percent of Related Children Age 5 to 17 in Families in Poverty	19
Estimated Number Under 18 in Poverty	19
Estimated Percent Under 18 in Poverty	20

Business

Establishments: Total	21
Establishments: 1-19 Employees	22
Establishments: 20-99 Employees	22
Establishments: 100-499 Employees	23
Establishments: 500 or More Employees	23
Establishments: Forestry, Fishing, Hunting, and Ag Support	24
Establishments: Mining	24
Establishments: Utilities	25
Establishments: Construction	25
Establishments: Manufacturing	26
Establishments: Wholesale Trade	26
Establishments: Retail Trade	27
Establishments: Transportation and Warehousing	27
Establishments: Information	28
Establishments: Finance and Insurance	28
Establishments: Real Estate, Rental, and Leasing	29
Establishments: Professional, Scientific, and Technical Services	29
Establishments: Management of Companies and Enterprises	30
Establishments: Admin, Support, Waste Management, and Remediation	30
Establishments: Educational Services	31
Establishments: Health Care and Social Assistance	31
Establishments: Arts, Entertainment, and Recreation	32
Establishments: Accommodation and Food Services	32
Establishments: Other Services	33

Kansas County Profiles Table of Contents

Business	
Total Annual Payroll (\$000)	34
Total Annual Payroll (\$000): Forestry, Fishing, Hunting, and Ag Support	35
Total Annual Payroll (\$000): Mining	35
Total Annual Payroll (\$000): Utilities	36
Total Annual Payroll (\$000): Construction	36
Total Annual Payroll (\$000): Manufacturing	37
Total Annual Payroll (\$000): Wholesale Trade	37
Total Annual Payroll (\$000): Retail Trade	38
Total Annual Payroll (\$000): Transportation and Warehousing	38
Total Annual Payroll (\$000): Information	39
Total Annual Payroll (\$000): Finance and Insurance	39
Total Annual Payroll (\$000): Real Estate, Rental, and Leasing	40
Total Annual Payroll (\$000): Professional, Scientific, and Technical Services	40
Total Annual Payroll (\$000): Management of Companies and Enterprises	41
Total Annual Payroll (\$000): Admin, Support, Waste Management, and Remediation	41
Total Annual Payroll (\$000): Educational Services	42
Total Annual Payroll (\$000): Health Care and Social Assistance	42
Total Annual Payroll (\$000): Arts, Entertainment, and Recreation	43
Total Annual Payroll (\$000): Accommodation and Food Services	43
Total Annual Payroll (\$000): Other Services	44
Nominal Taxable Retail Sales (Million\$)	44
Retail Pull Factor	45
Employment	
Civilian Labor Force (BLS - Place of Residence)	46
Employed (BLS - Place of Residence)	47
Unemployed (BLS - Place of Residence)	48
Unemployment Rate (BLS - Place of Residence)	49
BEA Employment: Total (Place of Work)	49
BEA Employment: Farm	50
BEA Employment: Non-Farm	50
Average Wage per Job (\$)	51
BEA Employment: Forestry, Fishing, Hunting, and Ag Support	51
BEA Employment: Mining	52
BEA Employment: Utilities	52
BEA Employment: Construction	53
BEA Employment: Manufacturing	53
BEA Employment: Wholesale Trade	54
BEA Employment: Retail Trade	54
BEA Employment: Transportation and Warehousing	55
BEA Employment: Information	55
BEA Employment: Finance and Insurance	56
BEA Employment: Real Estate, Rental, and Leasing	56
BEA Employment: Professional and Technical Services	57
BEA Employment: Management of Companies and Enterprises	57
BEA Employment: Administrative and Waste Services	58
BEA Employment: Educational Services	58
BEA Employment: Health Care and Social Assistance	59
BEA Employment: Arts, Entertainment, and Recreation	59
BEA Employment: Government and Government Enterprises	60
BEA Employment: Accommodation and Food Services	60
BEA Employment: Other Services, Except Public Administration	61

Kansas County Profiles Table of Contents

Income

BEA Per Capita Personal Income (\$)	61
Sources of Personal Income: Total Personal Income (\$000)	62
Sources of Personal Income: Wages And Salaries (\$000)	62
Sources of Personal Income: Proprietors-Farm (\$000)	63
Sources of Personal Income: Proprietors-Nonfarm (\$000)	63
Sources of Personal Income: Dividends, Interest, Rent (\$000)	64
Sources of Personal Income: Transfer Payments (\$000)	64
Sources of Personal Income: Less Social Insurance (\$000)	65
HUD Median Family Income	65
HUD 30% Low-To-Medium Income (LMI) Limit - 4 Persons	66
HUD 50% Low-To-Medium Income (LMI) Limit - 4 Persons	66
HUD 80% Low-To-Medium Income (LMI) Limit - 4 Persons	66

Banking

Bank Deposits (\$000)	67
Number of Banks	67
Number of Banking Offices	68

Government

Tangible Assessed Valuation (million\$)	68
Sales Tax Collections	69

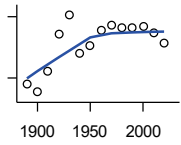
Crime

Crime Index Offenses	69
Property Crimes	70
Violent Crimes	70

Agriculture

Number of Farms	71
Total Acres Harvested	71
Value: Livestock and Poultry (\$000)	71
Value: Field Crops (\$000) Excluding Government Program Payments	72

Population



DECENNIAL CENSUS:TOTAL POPULATION

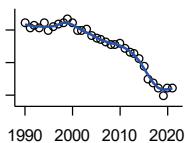
U.S. Census Bureau: Decennial Census

Year	County	State of Kansas	Non Metro Kansas	County Rank	Per 1000 or \$ Per Capita
1890	724	1,427,096	968,413	105	.
1900	304	1,470,495	981,206	105	.
1910	1,333	1,690,949	1,138,294	102	.
1920	3,177	1,769,257	1,153,525	95	.
1930	4,092	1,880,999	1,180,056	95	.
1940	2,186	1,801,028	1,097,216	100	.
1950	2,610	1,905,299	1,046,823	101	.
1960	3,354	2,178,611	1,021,510	95	.
1970	3,576	2,246,578	958,104	94	.
1980	3,454	2,363,679	980,085	94	.
1990	3,480	2,477,574	939,416	89	.
2000	3,496	2,688,418	959,507	83	.
2010	3,233	2,853,118	929,981	82	.
2020	2,701	2,937,880	892,006	88	.

County: county value. Kansas: state value. County Rank: highest county value ranked #1. (\$000): thousands of dollars. Nonmetro Kansas: Kansas total less Metropolitan Areas as defined by the Office of Management and Budget (OMB; released 3/6/2020). Per 1000: For nonmoney amounts, Per 1000=(county value / county population for the same year as the data) x 1000. \$ Per capita=(county value / county population for the same year as the data). Value= . indicates missing or suppressed data or value not calculated.

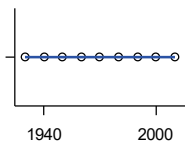
Population

ESTIMATED POPULATION



U.S. Census Bureau

Year	County	State of Kansas	Non Metro Kansas	County Rank	Per 1000 or \$ Per Capita
1990	3,482	2,481,349	938,607	89	.
1991	3,433	2,498,722	938,965	89	.
1992	3,453	2,532,394	942,759	88	.
1993	3,420	2,556,547	947,515	88	.
1994	3,487	2,580,513	952,178	88	.
1995	3,399	2,601,007	957,771	88	.
1996	3,440	2,614,554	959,455	88	.
1997	3,472	2,635,292	960,225	86	.
1998	3,483	2,660,598	960,569	85	.
1999	3,537	2,678,338	960,704	83	.
2000	3,482	2,693,681	959,230	83	.
2001	3,393	2,702,162	952,607	84	.
2002	3,387	2,713,535	945,985	83	.
2003	3,403	2,723,004	941,474	83	.
2004	3,326	2,734,373	937,623	83	.
2005	3,300	2,745,299	932,852	82	.
2006	3,285	2,762,931	928,809	82	.
2007	3,256	2,783,785	927,643	82	.
2008	3,227	2,808,076	926,248	82	.
2009	3,226	2,832,704	926,755	82	.
2010	3,240	2,858,190	930,028	82	.
2011	3,176	2,869,225	927,675	82	.
2012	3,127	2,885,257	925,152	82	.
2013	3,116	2,893,212	922,383	82	.
2014	3,041	2,900,475	917,854	84	.
2015	2,953	2,909,011	912,199	85	.
2016	2,790	2,910,844	905,099	88	.
2017	2,747	2,908,718	897,981	88	.
2018	2,693	2,911,359	892,656	88	.
2019	2,587	2,913,314	887,455	91	.
2020	2,695	2,935,880	889,750	87	.
2021	2,692	2,934,582	886,438	88	.



URBAN POPULATION

U.S. Census Bureau: Decennial Census

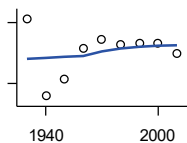
Year	County	State of Kansas	Non Metro Kansas	County Rank	Per 1000 or \$ Per Capita
1930	0	729,834	336,666	105	.
1940	0	753,941	349,228	105	.
1950	0	993,220	398,923	105	.
1960	0	1,328,741	457,447	105	.
1970	0	1,484,870	450,543	105	.
1980	0	1,575,899	474,769	105	.
1990	0	1,712,564	464,205	105	.
2000	0	1,920,081	488,011	105	.
2010	0	2,116,961	485,780	105	.

County: county value. Kansas: state value. County Rank: highest county value ranked #1. (\$000): thousands of dollars. Nonmetro Kansas: Kansas total less Metropolitan Areas as defined by the Office of Management and Budget (OMB; released 3/6/2020). Per 1000: For nonmoney amounts, Per 1000=(county value / county population for the same year as the data) x 1000. \$ Per capita=(county value / county population for the same year as the data). Value= . indicates missing or suppressed data or value not calculated.

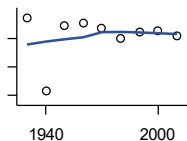
Population

RURAL POPULATION

Year	County	State of Kansas	Non Metro Kansas	County Rank	Per 1000 or \$ Per Capita
1930	4,092	1,151,165	843,390	93	.
1940	2,186	1,047,087	747,988	99	.
1950	2,610	912,079	647,900	99	.
1960	3,354	849,870	564,063	88	.
1970	3,576	761,708	509,972	87	.
1980	3,454	787,780	505,873	83	.
1990	3,480	765,010	475,211	77	.
2000	3,496	768,337	471,900	71	.
2010	3,233	736,157	444,201	70	.



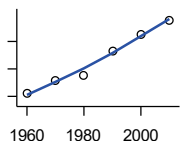
U.S. Census Bureau



NET MIGRATION: DECADE ENDING...

calculated by the Institute for Policy and Social Research, The University of Kansas

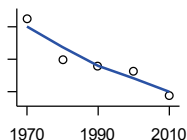
Year	County	State of Kansas	Non Metro Kansas	County Rank	Per 1000 or \$ Per Capita
1930	229	-66,132	-101,869	26	56.0
1940	-2,370	-192,649	-166,022	76	-1,084.2
1950	-45	-84,329	-158,379	25	-17.2
1960	39	-38,999	-146,640	11	11.6
1970	-144	-119,662	-105,116	17	-40.3
1980	-481	-21,983	-6,184	79	-139.3
1990	-268	-61,835	-79,274	24	-77.0
2000	-206	68,960	4,247	76	-58.9
2010	-406	5,578	-50,648	71	-125.6



MEDIAN AGE

U.S. Census Bureau: Decennial Census

Year	County	State of Kansas	Non Metro Kansas	County Rank	Per 1000 or \$ Per Capita
1960	25.5	26.9	.	97	.
1970	27.9	28.7	.	89	.
1980	28.8	30.1	.	91	.
1990	33.2	32.9	.	85	.
2000	36.2	35.2	.	80	.
2010	38.9	36.0	.	75	.



POPULATION UNDER 18 (DECENNIAL CENSUS)

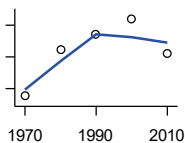
U.S. Census Bureau: Decennial Census

Year	County	State of Kansas	Non Metro Kansas	County Rank	Per 1000 or \$ Per Capita
1970	1,350	746,354	306,227	90	.
1980	1,094	649,035	263,919	87	.
1990	1,058	661,614	250,107	79	.
2000	1,026	712,993	250,757	77	.
2010	873	726,939	229,213	76	.

County: county value. Kansas: state value. County Rank: highest county value ranked #1. (\$000): thousands of dollars. Nonmetro Kansas: Kansas total less Metropolitan Areas as defined by the Office of Management and Budget (OMB; released 3/6/2020). Per 1000: For nonmoney amounts, Per 1000=(county value / county population for the same year as the data) x 1000. \$ Per capita=(county value / county population for the same year as the data). Value= . indicates missing or suppressed data or value not calculated.

Population

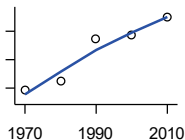
**POPULATION AGE 18 AND OVER
(DECENNIAL CENSUS)**



U.S. Census Bureau: Decennial Census

Year	County	State of Kansas	Non Metro Kansas	County Rank	Per 1000 or \$ Per Capita
1970	2,226	1,500,224	654,288	94	.
1980	2,371	1,714,282	716,684	95	.
1990	2,422	1,815,960	689,309	92	.
2000	2,470	1,975,425	709,154	89	.
2010	2,360	2,126,179	700,768	86	.

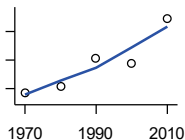
**POPULATION AGE 65 AND OVER
(DECENNIAL CENSUS)**



U.S. Census Bureau: Decennial Census

Year	County	State of Kansas	Non Metro Kansas	County Rank	Per 1000 or \$ Per Capita
1970	291	266,201	149,049	100	.
1980	324	306,263	164,932	102	.
1990	472	342,571	168,579	98	.
2000	487	356,229	161,769	98	.
2010	548	376,116	154,214	93	.

**POPULATION AGE 85 AND OVER
(DECENNIAL CENSUS)**



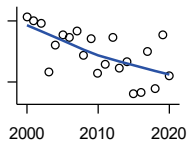
U.S. Census Bureau: Decennial Census

Year	County	State of Kansas	Non Metro Kansas	County Rank	Per 1000 or \$ Per Capita
1970	14	23,899	13,698	103	.
1980	23	33,455	18,804	103	.
1990	63	42,241	22,970	99	.
2000	55	51,770	26,644	101	.
2010	118	59,318	26,197	84	.

County: county value. Kansas: state value. County Rank: highest county value ranked #1. (\$000): thousands of dollars. Nonmetro Kansas: Kansas total less Metropolitan Areas as defined by the Office of Management and Budget (OMB; released 3/6/2020). Per 1000: For nonmoney amounts, Per 1000=(county value / county population for the same year as the data) x 1000. \$ Per capita=(county value / county population for the same year as the data). Value= . indicates missing or suppressed data or value not calculated.

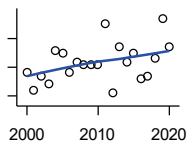
Vital Statistics and Health

BIRTHS (LIVE)



Kansas Department of Health and Environment

Year	County	State of Kansas	Non Metro Kansas	County Rank	Per 1000 or \$ Per Capita
2000	62	39,654	12,980	69	17.7
2001	60	38,832	12,527	68	17.7
2002	59	39,338	12,476	67	17.4
2003	35	39,353	12,342	87	10.3
2004	48	39,553	12,398	74	14.4
2005	53	39,701	12,382	71	16.1
2006	52	40,896	12,726	71	15.8
2007	55	41,951	12,990	73	16.9
2008	43	41,815	12,970	79	13.3
2009	51	41,388	12,949	76	15.8
2010	34	40,439	12,200	85	10.5
2011	39	39,628	12,098	78	12.3
2012	52	40,304	12,217	73	16.6
2013	37	38,805	11,877	80	11.9
2014	40	39,193	12,052	79	13.2
2015	24	39,126	11,836	97	8.1
2016	25	38,048	11,467	97	9.0
2017	45	36,464	10,968	75	16.4
2018	27	36,268	10,826	90	10.0
2019	53	35,395	10,506	69	20.5
2020	33	34,368	10,222	82	12.2



DEATHS

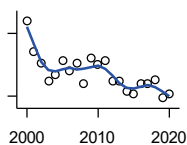
Kansas Department of Health and Environment

Year	County	State of Kansas	Non Metro Kansas	County Rank	Per 1000 or \$ Per Capita
2000	33	24,676	11,175	93	9.4
2001	27	24,590	10,807	97	8.0
2002	32	24,968	11,079	97	9.4
2003	29	24,417	10,615	97	8.5
2004	41	23,720	10,369	85	12.3
2005	40	24,632	10,599	89	12.1
2006	33	24,489	10,538	96	10.0
2007	37	24,413	10,601	91	11.4
2008	36	24,896	10,593	92	11.2
2009	36	23,997	9,938	89	11.2
2010	36	24,428	10,105	88	11.1
2011	50	25,114	10,520	78	15.7
2012	26	25,084	10,259	98	8.3
2013	42	25,347	10,249	84	13.5
2014	37	25,731	10,275	92	12.2
2015	40	26,611	10,539	84	13.5
2016	31	26,129	10,231	92	11.1
2017	32	26,725	10,452	88	11.6
2018	38	27,213	10,389	88	14.1
2019	52	27,312	10,569	74	20.1
2020	42	31,667	11,850	87	15.5

County: county value. Kansas: state value. County Rank: highest county value ranked #1. (\$000): thousands of dollars. Nonmetro Kansas: Kansas total less Metropolitan Areas as defined by the Office of Management and Budget (OMB; released 3/6/2020). Per 1000: For nonmoney amounts, Per 1000=(county value / county population for the same year as the data) x 1000. \$ Per capita=(county value / county population for the same year as the data). Value= . indicates missing or suppressed data or value not calculated.

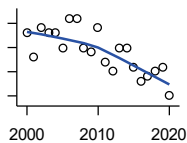
Vital Statistics and Health

MARRIAGES



Kansas Department of Health and Environment

Year	County	State of Kansas	Non Metro Kansas	County Rank	Per 1000 or \$ Per Capita
2000	46	20,426	7,333	64	13.2
2001	31	20,457	7,441	74	9.1
2002	26	19,783	6,794	80	7.7
2003	17	18,722	6,469	93	5.0
2004	20	19,174	6,756	90	6.0
2005	27	18,745	6,481	77	8.2
2006	22	18,836	6,433	83	6.7
2007	26	18,910	6,464	76	8.0
2008	16	18,717	6,283	92	5.0
2009	28	18,268	6,015	71	8.7
2010	25	18,150	5,925	78	7.7
2011	27	17,897	5,977	75	8.5
2012	17	18,154	5,752	87	5.4
2013	17	17,328	5,533	89	5.5
2014	12	17,655	5,535	95	3.9
2015	11	17,595	5,400	97	3.7
2016	16	17,948	5,340	87	5.7
2017	16	17,274	5,163	89	5.8
2018	18	16,362	4,999	80	6.7
2019	9	15,403	4,650	96	3.5
2020	11	14,038	4,066	89	4.1



DIVORCES AND ANNULMENTS

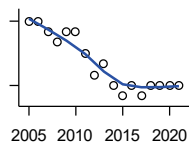
Kansas Department of Health and Environment

Year	County	State of Kansas	Non Metro Kansas	County Rank	Per 1000 or \$ Per Capita
2000	13	10,105	4,000	76	3.7
2001	8	9,885	3,818	90	2.4
2002	14	9,645	3,716	74	4.1
2003	13	8,644	3,464	74	3.8
2004	13	8,759	3,506	73	3.9
2005	10	8,476	3,311	83	3.0
2006	16	9,145	3,387	69	4.9
2007	16	9,347	3,402	66	4.9
2008	10	9,818	3,655	81	3.1
2009	9	10,333	3,463	82	2.8
2010	14	10,579	3,530	71	4.3
2011	7	10,445	3,347	94	2.2
2012	5	9,782	3,040	99	1.6
2013	10	9,085	2,973	78	3.2
2014	10	8,441	2,682	79	3.3
2015	6	8,036	2,704	92	2.0
2016	3	7,198	2,424	100	1.1
2017	4	6,494	2,315	101	1.5
2018	5	6,538	2,269	92	1.9
2019	6	6,398	2,357	87	2.3
2020	0	5,169	1,866	105	0.0

County: county value. Kansas: state value. County Rank: highest county value ranked #1. (\$000): thousands of dollars. Nonmetro Kansas: Kansas total less Metropolitan Areas as defined by the Office of Management and Budget (OMB; released 3/6/2020). Per 1000: For nonmoney amounts, Per 1000=(county value / county population for the same year as the data) x 1000. \$ Per capita=(county value / county population for the same year as the data). Value= . indicates missing or suppressed data or value not calculated.

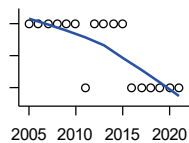
Vital Statistics and Health

PHYSICIANS: M.D. PHYSICIANS



Kansas Department of Health and Environment (1981-2005,2010-);Kansas Health Policy Authority (2006-2009)

Year	County	State of Kansas	Non Metro Kansas	County Rank	Per 1000 or \$ Per Capita
2005	8	4,241	912	42	2.4
2006	8	4,310	953	38	2.4
2007	7	5,309	1,046	47	2.1
2008	6	5,110	1,016	48	1.9
2009	7	5,249	996	44	2.2
2010	7	5,192	979	46	2.2
2011	5	5,243	983	52	1.6
2012	3	5,693	1,033	72	1.0
2013	4	6,106	1,071	65	1.3
2014	2	5,839	951	78	0.7
2015	1	5,703	855	96	0.3
2016	2	4,278	643	72	0.7
2017	1	6,332	1,047	99	0.4
2018	2	6,079	1,065	87	0.7
2019	2	6,435	1,036	86	0.8
2020	2	6,668	1,045	87	0.7
2021	2	6,745	1,042	87	0.7



PHYSICIANS: D.O. PHYSICIANS

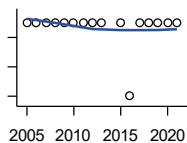
Kansas Department of Health and Environment (1981-2005,2010-);Kansas Health Policy Authority (2006-2009)

Year	County	State of Kansas	Non Metro Kansas	County Rank	Per 1000 or \$ Per Capita
2005	1	553	174	68	0.3
2006	1	508	171	66	0.3
2007	1	569	169	66	0.3
2008	1	558	166	66	0.3
2009	1	564	160	66	0.3
2010	1	583	169	66	0.3
2011	0	502	152	105	0.0
2012	1	718	200	67	0.3
2013	1	829	210	65	0.3
2014	1	817	189	62	0.3
2015	1	819	190	63	0.3
2016	0	632	136	105	0.0
2017	0	579	129	105	0.0
2018	0	871	164	105	0.0
2019	0	951	212	105	0.0
2020	0	1,018	204	105	0.0
2021	0	1,095	217	105	0.0

County: county value. Kansas: state value. County Rank: highest county value ranked #1. (\$000): thousands of dollars. Nonmetro Kansas: Kansas total less Metropolitan Areas as defined by the Office of Management and Budget (OMB; released 3/6/2020). Per 1000: For nonmoney amounts, Per 1000=(county value / county population for the same year as the data) x 1000. \$ Per capita=(county value / county population for the same year as the data). Value= . indicates missing or suppressed data or value not calculated.

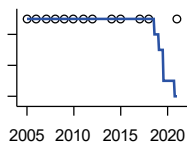
Vital Statistics and Health

DENTISTS



Kansas Department of Health and Environment (1981-2006,2010-); Kansas Health Policy Authority (2007-2009)

Year	County	State of Kansas	Non Metro Kansas	County Rank	Per 1000 or \$ Per Capita
2005	1	1,347	363	92	0.3
2006	1	1,381	361	92	0.3
2007	1	1,335	350	91	0.3
2008	1	1,392	353	90	0.3
2009	1	1,353	350	90	0.3
2010	1	1,401	365	91	0.3
2011	1	1,338	346	88	0.3
2012	1	1,434	392	86	0.3
2013	1	1,212	328	87	0.3
2015	1	1,240	327	89	0.3
2016	0	1,456	350	105	0.0
2017	1	1,467	350	87	0.4
2018	1	1,604	359	86	0.4
2019	1	1,646	355	86	0.4
2020	1	1,646	355	86	0.4
2021	1	1,688	362	85	0.4



NUMBER OF HOSPITALS

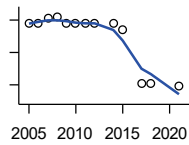
American Hospital Association, American Hospital Association Guide to the Health Care Field

Year	County	State of Kansas	Non Metro Kansas	County Rank	Per 1000 or \$ Per Capita
2005	1	158	105	96	.
2006	1	158	105	96	.
2007	1	159	104	95	.
2008	1	159	104	95	.
2009	1	158	105	96	.
2010	1	158	104	96	.
2011	1	158	103	96	.
2012	1	157	103	96	.
2014	1	156	.	96	.
2015	1	155	103	96	.
2017	1	157	102	96	.
2018	1	154	99	95	.
2021	1	151	.	95	.

County: county value. Kansas: state value. County Rank: highest county value ranked #1. (\$000): thousands of dollars. Nonmetro Kansas: Kansas total less Metropolitan Areas as defined by the Office of Management and Budget (OMB; released 3/6/2020). Per 1000: For nonmoney amounts, Per 1000=(county value / county population for the same year as the data) x 1000. \$ Per capita=(county value / county population for the same year as the data). Value= . indicates missing or suppressed data or value not calculated.

Vital Statistics and Health

NUMBER OF HOSPITAL BEDS

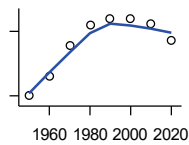


Kansas Department of Health and Environment

Year	County	State of Kansas	Non Metro Kansas	County Rank	Per 1000 or \$ Per Capita
2005	120	12,389	5,687	20	36.4
2006	120	11,992	5,514	20	36.5
2007	127	12,171	5,637	18	39.0
2008	130	12,332	5,700	17	40.3
2009	120	12,283	5,652	19	37.2
2010	120	12,218	5,521	19	37.1
2011	120	12,182	5,335	18	37.8
2012	120	12,002	5,355	18	38.4
2014	120	12,034	.	17	39.5
2015	110	11,926	5,330	20	37.3
2017	28	11,491	4,825	62	10.2
2018	28	11,448	4,583	56	10.4
2021	24	11,199	.	77	8.9

Housing

HOUSING UNITS (DECENNIAL)



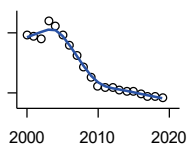
U.S. Census Bureau: Decennial Census

Year	County	State of Kansas	Non Metro Kansas	County Rank	Per 1000 or \$ Per Capita
1950	799	586,650	328,210	100	306.1
1960	987	672,899	329,380	96	294.3
1970	1,273	789,735	363,824	95	356.0
1980	1,454	955,207	416,877	94	421.0
1990	1,515	1,044,112	417,062	93	435.3
2000	1,519	1,131,395	422,218	93	434.5
2010	1,467	1,233,215	424,050	91	453.8
2020	1,316	1,275,689	413,120	94	487.2

County: county value. Kansas: state value. County Rank: highest county value ranked #1. (\$000): thousands of dollars. Nonmetro Kansas: Kansas total less Metropolitan Areas as defined by the Office of Management and Budget (OMB; released 3/6/2020). Per 1000: For nonmoney amounts, Per 1000=(county value / county population for the same year as the data) x 1000. \$ Per capita=(county value / county population for the same year as the data). Value= . indicates missing or suppressed data or value not calculated.

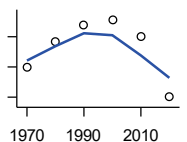
Housing

HOUSING UNITS (ESTIMATED)



U.S. Census Bureau

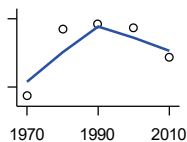
Year	County	State of Kansas	Non Metro Kansas	County Rank	Per 1000 or \$ Per Capita
2000	1,518	1,134,529	422,560	93	434.2
2001	1,517	1,146,858	423,876	93	447.1
2002	1,514	1,160,129	425,089	92	447.0
2003	1,532	1,171,620	425,936	92	450.2
2004	1,527	1,184,702	426,593	92	459.1
2005	1,518	1,195,791	426,964	92	460.0
2006	1,507	1,206,692	426,713	92	458.8
2007	1,498	1,217,608	426,090	91	460.1
2008	1,486	1,225,625	425,768	91	460.5
2009	1,475	1,230,552	424,776	91	457.2
2010	1,467	1,234,456	424,174	91	453.8
2011	1,466	1,238,052	424,549	91	461.6
2012	1,465	1,241,992	425,116	91	468.5
2013	1,463	1,246,675	425,699	91	469.5
2014	1,462	1,253,284	426,269	91	480.8
2015	1,461	1,258,999	426,844	91	494.8
2016	1,459	1,265,684	427,465	91	522.9
2017	1,457	1,273,536	427,746	92	530.4
2018	1,456	1,280,649	428,099	93	540.7
2019	1,455	1,288,401	428,495	93	562.4



OCCUPIED HOUSING UNITS

U.S. Census Bureau: Decennial Census

Year	County	State of Kansas	Non Metro Kansas	County Rank	Per 1000 or \$ Per Capita
1970	1,150	727,364	326,494	94	321.6
1980	1,233	872,239	371,693	95	357.0
1990	1,290	944,726	365,901	92	370.7
2000	1,306	1,037,891	375,313	90	373.6
2010	1,250	1,112,096	370,269	89	386.6
2020	1,053	1,151,360	356,330	94	389.9



OWNER OCCUPIED HOUSING UNITS

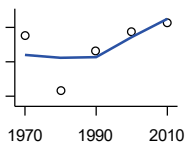
U.S. Census Bureau: Decennial Census

Year	County	State of Kansas	Non Metro Kansas	County Rank	Per 1000 or \$ Per Capita
1970	780	502,585	236,338	95	218.1
1980	927	612,433	277,096	94	268.4
1990	938	641,762	263,099	93	269.5
2000	931	718,703	271,350	94	266.3
2010	865	753,532	261,763	95	267.6

County: county value. Kansas: state value. County Rank: highest county value ranked #1. (\$000): thousands of dollars. Nonmetro Kansas: Kansas total less Metropolitan Areas as defined by the Office of Management and Budget (OMB; released 3/6/2020). Per 1000: For nonmoney amounts, Per 1000=(county value / county population for the same year as the data) x 1000. \$ Per capita=(county value / county population for the same year as the data). Value= . indicates missing or suppressed data or value not calculated.

Housing

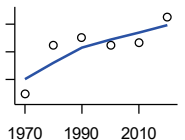
RENTER OCCUPIED HOUSING UNITS



U.S. Census Bureau: Decennial Census

Year	County	State of Kansas	Non Metro Kansas	County Rank	Per 1000 or \$ Per Capita
1970	370	224,779	90,156	86	103.5
1980	306	259,806	94,597	92	88.6
1990	352	302,964	102,802	84	101.1
2000	375	319,188	103,963	79	107.3
2010	385	358,564	108,506	76	119.1

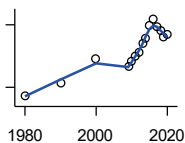
VACANT HOUSING UNITS



U.S. Census Bureau: Decennial Census

Year	County	State of Kansas	Non Metro Kansas	County Rank	Per 1000 or \$ Per Capita
1970	123	60,058	35,954	97	34.4
1980	212	77,912	41,584	92	61.4
1990	225	99,386	51,161	93	64.7
2000	213	93,309	46,904	91	60.9
2010	217	121,119	53,781	91	67.1
2020	263	124,329	56,790	87	97.4

MEDIAN VALUE (\$): OWNER OCCUPIED HOUSING UNITS



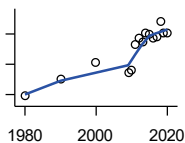
U.S. Census Bureau, Decennial Census (- 2000), (2009 -) American Community Survey five-year average ending in year shown.

Year	County	State of Kansas	Non Metro Kansas	County Rank	Per 1000 or \$ Per Capita
1980	32,400	37,800	.	33	.
1990	44,700	52,200	.	26	.
2000	67,700	83,500	.	30	.
2009	59,800	118,500	.	82	.
2010	64,600	122,600	.	74	.
2011	69,500	125,500	.	67	.
2012	73,400	127,400	.	61	.
2013	82,100	128,400	.	48	.
2014	87,200	129,400	.	42	.
2015	99,400	132,000	.	30	.
2016	105,600	135,300	.	28	.
2017	97,700	139,200	.	38	.
2018	94,700	145,400	.	49	.
2019	88,500	151,900	.	68	.
2020	90,300	157,600	.	64	.

County: county value. Kansas: state value. County Rank: highest county value ranked #1. (\$000): thousands of dollars. Nonmetro Kansas: Kansas total less Metropolitan Areas as defined by the Office of Management and Budget (OMB; released 3/6/2020). Per 1000: For nonmoney amounts, Per 1000=(county value / county population for the same year as the data) x 1000. \$ Per capita=(county value / county population for the same year as the data). Value= . indicates missing or suppressed data or value not calculated.

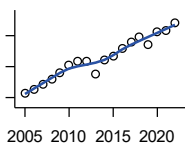
Housing

MEDIAN CONTRACT RENT (\$)



U.S. Census Bureau, Decennial Census (- 2000), (2009 -) American Community Survey five-year average ending in year shown.

Year	County	State of Kansas	Non Metro Kansas	County Rank	Per 1000 or \$ Per Capita
1980	189	219	.	26	.
1990	300	372	.	28	.
2000	413	498	.	34	.
2009	345	491	.	48	.
2010	364	507	.	45	.
2011	529	699	.	59	.
2012	574	715	.	48	.
2013	549	732	.	65	.
2014	603	748	.	48	.
2015	599	757	.	54	.
2016	573	775	.	70	.
2017	585	801	.	73	.
2018	686	831	.	31	.
2019	609	850	.	75	.
2020	603	863	.	81	.



FAIR MARKET RENT: 2 BEDROOMS

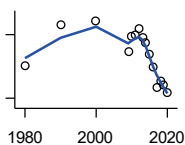
U.S. Department of Housing and Urban Development (HUD)

Year	County	State of Kansas	Non Metro Kansas	County Rank	Per 1000 or \$ Per Capita
2005	516	.	.	39	.
2006	527	.	.	41	.
2007	543	.	.	40	.
2008	558	628	.	41	.
2009	582	653	.	41	.
2010	606	678	.	43	.
2011	616	684	.	43	.
2012	616	660	.	28	.
2013	577	712	.	105	.
2014	622	746	.	105	.
2015	634	756	.	105	.
2016	658	781	.	105	.
2017	681	811	.	105	.
2018	697	815	.	105	.
2019	672	828	.	105	.
2020	714	855	.	105	.
2021	718	874	.	105	.
2022	742	879	.	105	.

County: county value. Kansas: state value. County Rank: highest county value ranked #1. (\$000): thousands of dollars. Nonmetro Kansas: Kansas total less Metropolitan Areas as defined by the Office of Management and Budget (OMB; released 3/6/2020). Per 1000: For nonmoney amounts, Per 1000=(county value / county population for the same year as the data) x 1000. \$ Per capita=(county value / county population for the same year as the data). Value= . indicates missing or suppressed data or value not calculated.

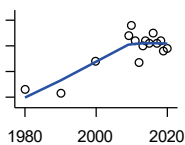
Education

POPULATION AGE 25+



U.S. Census Bureau, Decennial Census (- 2000), (2009 -) American Community Survey five-year average ending in year shown.

Year	County	State of Kansas	Non Metro Kansas	County Rank	Per 1000 or \$ Per Capita
1980	1,955	1,388,102	596,639	.	.
1990	2,148	1,565,936	608,745	.	.
2000	2,165	1,701,207	618,131	.	.
2009	2,020	1,775,427	600,188	.	.
2010	2,091	1,802,904	608,716	.	.
2011	2,101	1,822,400	610,386	.	.
2012	2,130	1,838,079	611,103	.	.
2013	2,084	1,850,010	610,374	.	.
2014	2,061	1,861,894	609,612	.	.
2015	2,005	1,869,698	606,967	.	.
2016	1,949	1,878,495	604,563	.	.
2017	1,852	1,886,741	601,076	.	.
2018	1,882	1,894,675	598,487	.	.
2019	1,862	1,902,279	595,501	.	.
2020	1,827	1,911,990	593,923	.	.



PERCENT HS GRADUATE OR HIGHER AGE 25+

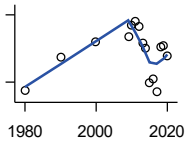
U.S. Census Bureau, Decennial Census (- 2000), (2009 -) American Community Survey five-year average ending in year shown.

Year	County	State of Kansas	Non Metro Kansas	County Rank	Per 1000 or \$ Per Capita
1980	76.4	73.3	.	8	.
1990	75.8	81.3	.	72	.
2000	81.9	86.0	.	81	.
2009	87.0	89.0	.	73	.
2010	89.0	89.2	.	54	.
2011	86.1	89.5	.	87	.
2012	81.8	89.7	.	93	.
2013	85.0	89.8	.	92	.
2014	86.0	90.0	.	89	.
2015	85.6	90.2	.	91	.
2016	87.6	90.3	.	84	.
2017	85.6	90.5	.	90	.
2018	85.9	90.7	.	91	.
2019	84.0	91.0	.	93	.
2020	84.4	91.4	.	92	.

County: county value. Kansas: state value. County Rank: highest county value ranked #1. (\$000): thousands of dollars. Nonmetro Kansas: Kansas total less Metropolitan Areas as defined by the Office of Management and Budget (OMB; released 3/6/2020). Per 1000: For nonmoney amounts, Per 1000=(county value / county population for the same year as the data) x 1000. \$ Per capita=(county value / county population for the same year as the data). Value= . indicates missing or suppressed data or value not calculated.

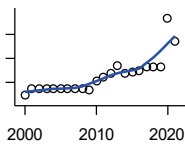
Education

PERCENT BACHELORS DEGREE OR HIGHER AGE 25+



U.S. Census Bureau, Decennial Census (- 2000), (2009 -) American Community Survey five-year average ending in year shown.

Year	County	State of Kansas	Non Metro Kansas	County Rank	Per 1000 or \$ Per Capita
1980	13.2	17.0	.	32	.
1990	16.2	21.1	.	25	.
2000	17.6	25.8	.	39	.
2009	18.1	28.8	.	61	.
2010	19.1	29.3	.	52	.
2011	19.4	29.7	.	57	.
2012	19.0	30.0	.	64	.
2013	17.5	30.3	.	82	.
2014	17.0	30.7	.	89	.
2015	13.9	31.0	.	103	.
2016	14.3	31.6	.	102	.
2017	13.1	32.3	.	104	.
2018	17.1	32.9	.	93	.
2019	17.3	33.4	.	91	.
2020	16.3	33.9	.	102	.



PUBLIC SCHOOL ENROLLMENT (FTE) SCHOOL YEAR BEGINNING...

Kansas State Department of Education

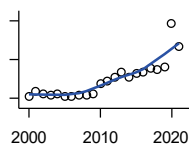
Year	County	State of Kansas	Non Metro Kansas	County Rank	Per 1000 or \$ Per Capita
2000	724.7	448,150.8	166,722.5	76	207.3
2001	865.4	447,047.1	164,365.0	75	255.1
2002	872.5	444,860.3	161,555.4	75	257.6
2003	860.5	443,620.6	159,130.2	74	252.9
2004	881.2	441,957.2	156,566.3	69	264.9
2005	860.3	442,708.4	155,197.2	72	260.7
2006	873.0	444,878.7	153,842.3	70	265.8
2007	864.5	446,831.3	152,337.1	69	265.5
2008	876.3	447,730.0	150,572.7	69	271.6
2009	833.4	453,202.5	151,246.8	70	258.3
2010	1,037.0	455,405.0	151,023.8	60	320.8
2011	1,115.3	456,000.5	150,257.9	56	351.2
2012	1,189.4	458,496.4	150,463.0	54	380.4
2013	1,342.4	461,950.0	150,420.9	48	430.8
2014	1,176.3	464,395.4	150,499.4	55	386.8
2015	1,216.6	463,504.0	149,539.3	50	412.0
2016	1,233.3	459,920.3	147,293.5	48	442.0
2017	1,315.3	477,977.9	152,096.3	47	478.8
2018	1,318.1	476,481.7	150,456.8	47	489.5
2019	1,326.3	476,525.1	150,045.2	47	512.7
2020	2,337.8	462,088.0	146,369.6	32	865.5
2021	1,859.1	463,652.4	147,500.4	38	690.6

County: county value. Kansas: state value. County Rank: highest county value ranked #1. (\$000): thousands of dollars. Nonmetro Kansas: Kansas total less Metropolitan Areas as defined by the Office of Management and Budget (OMB; released 3/6/2020). Per 1000: For nonmoney amounts, Per 1000=(county value / county population for the same year as the data) x 1000. \$ Per capita=(county value / county population for the same year as the data). Value= . indicates missing or suppressed data or value not calculated.

Education

PUPIL/TEACHER RATIO SCHOOL YEAR BEGINNING...

Kansas State Department of Education

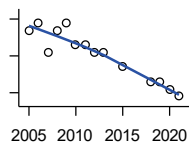


Year	County	State of Kansas	Non Metro Kansas	County Rank	Per 1000 or \$ Per Capita
2000	10.8	15.4	13.9	92	.
2001	13.3	15.3	13.8	48	.
2002	12.0	15.4	13.9	81	.
2003	11.8	15.5	13.8	79	.
2004	12.4	15.3	13.6	61	.
2005	10.8	15.0	13.4	93	.
2006	11.1	14.7	13.2	82	.
2007	11.4	14.6	13.1	69	.
2008	11.7	14.4	12.9	64	.
2009	12.0	14.8	13.2	65	.
2010	17.6	15.2	13.6	1	.
2011	19.0	15.1	13.5	1	.
2012	21.0	15.1	13.5	1	.
2013	23.7	15.1	13.5	1	.
2014	20.8	15.0	13.6	1	.
2015	23.1	15.2	13.9	1	.
2016	23.6	15.1	13.7	1	.
2017	25.4	15.5	13.9	1	.
2018	25.0	15.3	13.8	1	.
2019	26.3	15.2	13.7	1	.
2020	48.3	14.7	13.4	1	.
2021	36.6	14.8	13.5	1	.

Social Environment

CHILD CARE FACILITIES: TOTAL CHILD CARE FACILITIES

Kansas Department of Health and Environment, Bureau of Adult and Child Care

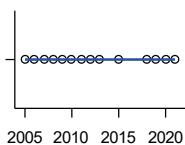


Year	County	State of Kansas	Non Metro Kansas	County Rank	Per 1000 or \$ Per Capita
2005	11	8,258	3,378	86	3.3
2006	12	8,442	3,429	81	3.7
2007	8	8,241	3,317	96	2.5
2008	11	8,011	3,150	83	3.4
2009	12	7,853	3,066	81	3.7
2010	9	7,354	2,858	88	2.8
2011	9	6,835	2,623	82	2.8
2012	8	6,346	2,409	84	2.6
2013	8	5,754	2,179	82	2.6
2015	6	5,289	2,146	92	2.0
2018	4	4,607	1,904	99	1.5
2019	4	4,287	1,774	95	1.5
2020	3	4,274	1,798	101	1.1
2021	2	4,002	1,700	105	0.7

County: county value. Kansas: state value. County Rank: highest county value ranked #1. (\$000): thousands of dollars. Nonmetro Kansas: Kansas total less Metropolitan Areas as defined by the Office of Management and Budget (OMB; released 3/6/2020). Per 1000: For nonmoney amounts, Per 1000=(county value / county population for the same year as the data) x 1000. \$ Per capita=(county value / county population for the same year as the data). Value= . indicates missing or suppressed data or value not calculated.

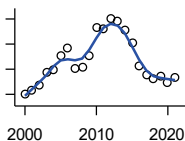
Social Environment

**CHILD CARE FACILITIES:
PRESCHOOLS**



Kansas Department of Health and Environment, Bureau of Adult and Child Care

Year	County	State of Kansas	Non Metro Kansas	County Rank	Per 1000 or \$ Per Capita
2005	0	243	140	105	0.0
2006	0	221	127	105	0.0
2007	0	208	119	105	0.0
2008	0	204	114	105	0.0
2009	0	194	107	105	0.0
2010	0	194	112	105	0.0
2011	0	209	123	105	0.0
2012	0	201	121	105	0.0
2013	0	140	84	105	0.0
2015	0	185	113	105	0.0
2018	0	150	94	105	0.0
2019	0	134	83	105	0.0
2020	0	126	78	105	0.0
2021	0	120	74	105	0.0



FOOD STAMP BENEFICIARIES

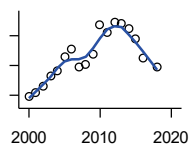
Kansas Social and Rehabilitation Services

Year	County	State of Kansas	Non Metro Kansas	County Rank	Per 1000 or \$ Per Capita
2000	101	110,619	44,825	84	28.9
2001	107	117,241	46,741	83	31.5
2002	119	131,726	52,342	82	35.1
2003	143	155,908	61,280	85	42.0
2004	148	167,971	65,852	84	44.5
2005	178	175,710	67,261	81	53.9
2006	191	182,821	67,487	76	58.1
2007	152	184,035	66,979	86	46.7
2008	155	187,377	67,160	83	48.0
2009	176	208,007	73,637	80	54.6
2010	234	259,609	90,919	79	72.4
2011	231	296,542	101,155	83	72.7
2012	251	303,257	102,478	82	80.3
2013	245	316,424	105,345	80	78.6
2014	228	301,377	100,761	81	75.0
2015	203	277,614	93,353	83	68.7
2016	156	258,412	88,343	89	55.9
2017	139	239,592	82,070	92	50.6
2018	130	219,738	75,208	90	48.3
2019	137	205,261	69,899	89	53.0
2020	123	198,457	66,721	89	45.5
2021	133	203,424	68,883	89	49.4

County: county value. Kansas: state value. County Rank: highest county value ranked #1. (\$000): thousands of dollars. Nonmetro Kansas: Kansas total less Metropolitan Areas as defined by the Office of Management and Budget (OMB; released 3/6/2020). Per 1000: For nonmoney amounts, Per 1000=(county value / county population for the same year as the data) x 1000. \$ Per capita=(county value / county population for the same year as the data). Value= . indicates missing or suppressed data or value not calculated.

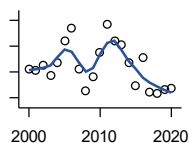
Social Environment

PERCENT OF POPULATION RECEIVING FOOD STAMPS



U.S. Dept. of Agriculture Food and Nutrition Service (1990-1997); Kansas Social and Rehabilitation Services (1998-)

Year	County	State of Kansas	Non Metro Kansas	County Rank	Per 1000 or \$ Per Capita
2000	2.9	4.1	.	75	.
2001	3.2	4.3	.	68	.
2002	3.6	4.9	.	67	.
2003	4.3	5.7	.	61	.
2004	4.6	6.2	.	63	.
2005	5.6	6.4	.	50	.
2006	6.1	6.6	.	42	.
2007	4.9	6.6	.	60	.
2008	5.1	6.7	.	53	.
2009	5.8	7.4	.	51	.
2010	7.7	9.1	.	43	.
2011	7.2	10.3	.	55	.
2012	7.9	10.5	.	48	.
2013	7.8	10.9	.	49	.
2014	7.5	10.4	.	53	.
2015	6.8	9.6	.	59	.
2016	5.5	8.9	.	74	.
2018	4.9	7.5	.	73	.



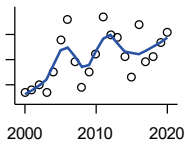
ESTIMATED NUMBER OF PEOPLE IN POVERTY

U.S. Census Bureau, Small Area Income and Poverty Estimates

Year	County	State of Kansas	Non Metro Kansas	County Rank	Per 1000 or \$ Per Capita
2000	325	235,087	98,984	89	93.0
2001	323	252,134	106,257	93	95.2
2002	330	265,673	107,542	91	97.4
2003	315	278,163	107,323	88	92.6
2004	334	297,733	111,534	85	100.4
2005	369	310,667	118,768	86	111.8
2006	387	327,102	123,700	86	117.8
2007	324	301,828	111,953	87	99.5
2008	290	307,804	113,015	91	89.9
2009	313	359,692	123,394	92	97.0
2010	351	374,677	131,502	86	108.6
2011	394	383,859	134,912	84	124.1
2012	368	392,095	133,800	84	117.7
2013	363	391,718	134,067	85	116.5
2014	335	381,506	130,213	85	110.2
2015	299	366,069	123,073	91	101.3
2016	342	343,773	121,314	85	122.6
2017	289	335,371	116,854	92	105.2
2018	286	336,892	114,490	95	106.2
2019	292	319,931	110,692	91	112.9
2020	295	300,931	100,998	86	109.2

County: county value. Kansas: state value. County Rank: highest county value ranked #1. (\$000): thousands of dollars. Nonmetro Kansas: Kansas total less Metropolitan Areas as defined by the Office of Management and Budget (OMB; released 3/6/2020). Per 1000: For nonmoney amounts, Per 1000=(county value / county population for the same year as the data) x 1000. \$ Per capita=(county value / county population for the same year as the data). Value= . indicates missing or suppressed data or value not calculated.

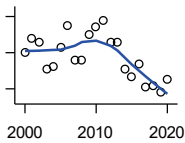
Social Environment



ESTIMATED % OF PEOPLE IN POVERTY

U.S. Census Bureau, Small Area Income and Poverty Estimates

Year	County	State of Kansas	Non Metro Kansas	County Rank	Per 1000 or \$ Per Capita
2000	9.7	8.9	.	65	.
2001	9.8	9.5	.	77	.
2002	10.0	10.0	.	79	.
2003	9.7	10.4	.	79	.
2004	10.5	11.1	.	64	.
2005	11.8	11.7	.	60	.
2006	12.6	12.2	.	55	.
2007	10.9	11.2	.	67	.
2008	9.9	11.3	.	82	.
2009	10.5	13.2	.	84	.
2010	11.2	13.5	.	77	.
2011	12.7	13.8	.	57	.
2012	12.0	14.0	.	64	.
2013	11.9	13.9	.	68	.
2014	11.1	13.5	.	77	.
2015	10.3	12.9	.	86	.
2016	12.4	12.2	.	48	.
2017	10.9	11.9	.	77	.
2018	11.1	11.9	.	74	.
2019	11.7	11.3	.	54	.
2020	12.1	10.6	.	39	.



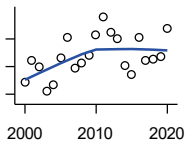
EST. NUMBER OF RELATED CHILDREN AGE 5 TO 17 IN FAMILIES IN POVERTY

U.S. Census Bureau, Small Area Income and Poverty Estimates

Year	County	State of Kansas	Non Metro Kansas	County Rank	Per 1000 or \$ Per Capita
2000	90	50,388	21,854	80	25.7
2001	98	53,755	23,094	79	28.9
2002	96	52,453	21,423	74	28.3
2003	81	55,419	21,809	77	23.8
2004	82	59,392	22,313	78	24.7
2005	93	60,203	24,244	77	28.2
2006	105	64,427	25,326	75	32.0
2007	86	61,149	23,639	79	26.4
2008	86	59,842	22,661	78	26.7
2009	100	71,850	26,251	78	31.0
2010	104	81,077	29,804	80	32.2
2011	108	82,311	29,306	77	34.0
2012	96	87,594	29,781	80	30.7
2013	96	84,325	29,253	81	30.8
2014	81	83,873	29,354	84	26.6
2015	77	78,192	27,482	85	26.1
2016	84	67,810	25,074	81	30.1
2017	71	67,873	25,032	90	25.8
2018	72	68,153	24,928	91	26.7
2019	68	64,613	23,117	89	26.3
2020	75	59,792	21,143	83	27.8

County: county value. Kansas: state value. County Rank: highest county value ranked #1. (\$000): thousands of dollars. Nonmetro Kansas: Kansas total less Metropolitan Areas as defined by the Office of Management and Budget (OMB; released 3/6/2020). Per 1000: For nonmoney amounts, Per 1000=(county value / county population for the same year as the data) x 1000. \$ Per capita=(county value / county population for the same year as the data). Value= . indicates missing or suppressed data or value not calculated.

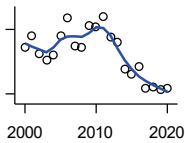
Social Environment



EST. % OF RELATED CHILDREN AGE 5 TO 17 IN FAMILIES IN POVERTY

U.S. Census Bureau, Small Area Income and Poverty Estimates

Year	County	State of Kansas	Non Metro Kansas	County Rank	Per 1000 or \$ Per Capita
2000	12.9	10.0	.	46	.
2001	14.4	10.8	.	40	.
2002	14.0	10.5	.	26	.
2003	12.2	11.3	.	59	.
2004	12.7	12.5	.	54	.
2005	14.6	12.8	.	49	.
2006	16.1	13.2	.	37	.
2007	13.9	12.6	.	57	.
2008	14.3	12.3	.	51	.
2009	14.8	14.7	.	62	.
2010	16.3	15.9	.	54	.
2011	17.6	16.2	.	39	.
2012	16.5	17.2	.	48	.
2013	16.0	16.5	.	56	.
2014	14.1	16.4	.	74	.
2015	13.4	15.3	.	77	.
2016	16.1	13.2	.	36	.
2017	14.4	13.4	.	66	.
2018	14.5	13.5	.	73	.
2019	14.7	12.9	.	56	.
2020	16.8	11.9	.	26	.



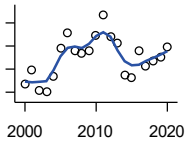
ESTIMATED NUMBER UNDER 18 IN POVERTY

U.S. Census Bureau, Small Area Income and Poverty Estimates

Year	County	State of Kansas	Non Metro Kansas	County Rank	Per 1000 or \$ Per Capita
2000	143	82,619	34,843	80	40.9
2001	154	87,487	36,724	77	45.4
2002	137	84,181	32,870	75	40.4
2003	132	93,896	36,004	76	38.8
2004	136	98,641	36,272	76	40.9
2005	154	100,254	39,118	76	46.7
2006	171	105,193	41,054	73	52.1
2007	144	100,242	37,881	74	44.2
2008	143	100,146	37,552	76	44.3
2009	163	118,187	42,682	77	50.5
2010	162	129,009	46,428	79	50.1
2011	172	133,478	46,832	77	54.2
2012	153	135,261	46,294	80	48.9
2013	148	131,251	44,952	81	47.5
2014	123	125,562	43,933	83	40.4
2015	118	119,994	41,828	83	40.0
2016	126	100,996	37,387	81	45.2
2017	105	102,858	37,955	90	38.2
2018	106	102,616	36,991	90	39.4
2019	104	97,920	34,797	88	40.2
2020	105	88,491	30,767	84	38.9

County: county value. Kansas: state value. County Rank: highest county value ranked #1. (\$000): thousands of dollars. Nonmetro Kansas: Kansas total less Metropolitan Areas as defined by the Office of Management and Budget (OMB; released 3/6/2020). Per 1000: For nonmoney amounts, Per 1000=(county value / county population for the same year as the data) x 1000. \$ Per capita=(county value / county population for the same year as the data). Value= . indicates missing or suppressed data or value not calculated.

Social Environment



ESTIMATED PERCENT UNDER 18 IN POVERTY

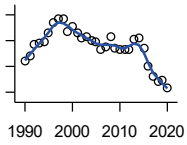
U.S. Census Bureau, Small Area Income and Poverty Estimates

Year	County	State of Kansas	Non Metro Kansas	County Rank	Per 1000 or \$ Per Capita
2000	14.7	11.9	.	51	.
2001	15.9	12.7	.	47	.
2002	14.1	12.1	.	41	.
2003	14.0	13.8	.	63	.
2004	15.4	14.6	.	48	.
2005	17.8	15.2	.	42	.
2006	19.1	15.4	.	32	.
2007	17.6	14.7	.	41	.
2008	17.4	14.6	.	46	.
2009	17.6	17.1	.	56	.
2010	18.9	18.1	.	45	.
2011	20.7	18.8	.	34	.
2012	18.8	19.0	.	43	.
2013	18.2	18.4	.	53	.
2014	15.5	17.6	.	72	.
2015	15.3	16.9	.	72	.
2016	17.6	14.3	.	35	.
2017	16.3	14.7	.	60	.
2018	16.7	14.8	.	59	.
2019	17.0	14.3	.	43	.
2020	17.9	13.0	.	24	.

County: county value. Kansas: state value. County Rank: highest county value ranked #1. (\$000): thousands of dollars. Nonmetro Kansas: Kansas total less Metropolitan Areas as defined by the Office of Management and Budget (OMB; released 3/6/2020). Per 1000: For nonmoney amounts, Per 1000=(county value / county population for the same year as the data) x 1000. \$ Per capita=(county value / county population for the same year as the data). Value= . indicates missing or suppressed data or value not calculated.

Business

ESTABLISHMENTS TOTAL COUNTY BUSINESS PATTERNS



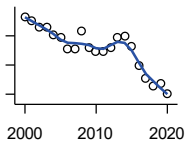
U.S. Census Bureau, County Business Patterns. Beginning with the 2017 data, any tabulation with fewer than 3 establishments were omitted from the release. Data for these establishments are included in the broader total.

Year	County	State of Kansas	Non Metro Kansas	County Rank	Per 1000 or \$ Per Capita
1990	94	65,858	26,802	93	27.0
1991	98	65,941	26,750	92	28.5
1992	107	67,630	27,229	85	31.0
1993	108	68,930	27,655	87	31.6
1994	109	69,822	27,763	87	31.3
1995	116	70,894	28,111	81	34.1
1996	124	72,017	28,353	79	36.0
1997	127	73,924	28,884	78	36.6
1998	127	74,019	28,749	80	36.5
1999	117	74,486	28,536	82	33.1
2000	121	74,939	28,475	81	34.6
2001	116	74,565	28,282	82	34.2
2002	112	75,077	28,183	84	33.1
2003	113	74,972	27,998	82	33.2
2004	110	75,827	28,009	82	33.1
2005	109	76,173	27,830	84	33.0
2006	103	76,446	27,653	86	31.4
2007	105	77,157	27,736	85	32.2
2008	113	76,096	27,314	82	35.0
2009	104	74,698	26,839	83	32.2
2010	103	74,301	26,739	85	31.9
2011	103	73,598	26,555	86	32.4
2012	103	73,944	26,534	86	32.9
2013	111	73,816	26,393	80	35.6
2014	112	74,055	26,292	81	36.8
2015	104	74,526	26,355	85	35.2
2016	90	74,884	26,172	88	32.3
2017	82	74,947	26,093	91	29.9
2018	78	74,559	25,802	93	29.0
2019	79	74,292	25,536	93	30.5
2020	73	73,982	25,178	95	27.0

County: county value. Kansas: state value. County Rank: highest county value ranked #1. (\$000): thousands of dollars. Nonmetro Kansas: Kansas total less Metropolitan Areas as defined by the Office of Management and Budget (OMB; released 3/6/2020). Per 1000: For nonmoney amounts, Per 1000=(county value / county population for the same year as the data) x 1000. \$ Per capita=(county value / county population for the same year as the data). Value= . indicates missing or suppressed data or value not calculated.

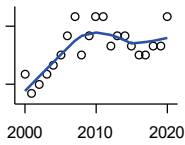
Business

**ESTABLISHMENTS: 1-19
EMPLOYEES**



U.S. Census Bureau, County Business Patterns. Beginning with the 2017 data, any tabulation with fewer than 3 establishments were omitted from the release. Data for these establishments are included in the broader total.

Year	County	State of Kansas	Non Metro Kansas	County Rank	Per 1000 or \$ Per Capita
2000	113	64,527	25,381	81	32.3
2001	110	64,176	25,248	82	32.4
2002	106	64,886	25,208	86	31.3
2003	106	64,714	25,020	82	31.1
2004	101	65,554	24,995	86	30.4
2005	99	65,796	24,839	86	30.0
2006	91	65,764	24,589	89	27.7
2007	91	66,446	24,701	88	27.9
2008	103	65,322	24,257	82	31.9
2009	92	64,128	23,851	88	28.5
2010	89	64,015	23,857	91	27.5
2011	89	63,251	23,571	89	28.0
2012	92	63,519	23,575	86	29.4
2013	99	63,197	23,396	84	31.8
2014	100	63,113	23,229	81	32.9
2015	93	63,280	23,227	85	31.5
2016	80	63,630	23,117	91	28.7
2017	71	63,619	23,022	94	25.8
2018	66	63,233	22,745	96	24.5
2019	67	62,904	22,489	95	25.9
2020	60	62,634	22,173	96	22.2



**ESTABLISHMENTS: 20-99
EMPLOYEES**

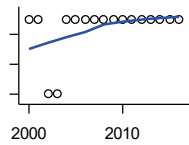
U.S. Census Bureau, County Business Patterns. Beginning with the 2017 data, any tabulation with fewer than 3 establishments were omitted from the release. Data for these establishments are included in the broader total.

Year	County	State of Kansas	Non Metro Kansas	County Rank	Per 1000 or \$ Per Capita
2000	7	8,714	2,653	79	2.0
2001	5	8,692	2,593	87	1.5
2002	6	8,582	2,554	82	1.8
2003	7	8,642	2,568	78	2.1
2004	8	8,658	2,590	73	2.4
2005	9	8,685	2,553	72	2.7
2006	11	8,922	2,612	68	3.3
2007	13	8,938	2,574	61	4.0
2008	9	8,939	2,587	75	2.8
2009	11	8,848	2,551	68	3.4
2010	13	8,612	2,454	60	4.0
2011	13	8,668	2,540	62	4.1
2012	10	8,700	2,500	69	3.2
2013	11	8,870	2,541	68	3.5
2014	11	9,121	2,590	67	3.6
2015	10	9,374	2,664	71	3.4
2016	9	9,412	2,596	71	3.2
2017	9	9,487	2,638	68	3.3
2018	10	9,485	2,621	67	3.7
2019	10	9,485	2,591	66	3.9
2020	13	9,471	2,545	55	4.8

County: county value. Kansas: state value. County Rank: highest county value ranked #1. (\$000): thousands of dollars. Nonmetro Kansas: Kansas total less Metropolitan Areas as defined by the Office of Management and Budget (OMB; released 3/6/2020). Per 1000: For nonmoney amounts, Per 1000=(county value / county population for the same year as the data) x 1000. \$ Per capita=(county value / county population for the same year as the data). Value= . indicates missing or suppressed data or value not calculated.

Business

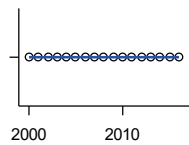
ESTABLISHMENTS: 100-499 EMPLOYEES



U.S. Census Bureau, County Business Patterns. Beginning with the 2017 data, any tabulation with fewer than 3 establishments were omitted from the release. Data for these establishments are included in the broader total.

Year	County	State of Kansas	Non Metro Kansas	County Rank	Per 1000 or \$ Per Capita
2000	1	1,555	409	82	0.3
2001	1	1,555	406	86	0.3
2002	0	1,464	386	105	0.0
2003	0	1,470	378	105	0.0
2004	1	1,463	388	82	0.3
2005	1	1,537	400	82	0.3
2006	1	1,598	407	83	0.3
2007	1	1,602	416	87	0.3
2008	1	1,653	421	86	0.3
2009	1	1,551	394	86	0.3
2010	1	1,513	382	85	0.3
2011	1	1,523	395	86	0.3
2012	1	1,567	410	85	0.3
2013	1	1,581	407	85	0.3
2014	1	1,641	421	86	0.3
2015	1	1,693	414	86	0.3
2016	1	1,671	406	84	0.4

ESTABLISHMENTS: 500 OR MORE EMPLOYEES

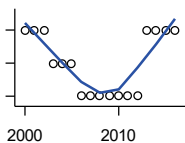


U.S. Census Bureau, County Business Patterns. Beginning with the 2017 data, any tabulation with fewer than 3 establishments were omitted from the release. Data for these establishments are included in the broader total.

Year	County	State of Kansas	Non Metro Kansas	County Rank	Per 1000 or \$ Per Capita
2000	0	143	32	105	0.0
2001	0	142	35	105	0.0
2002	0	145	35	105	0.0
2003	0	146	32	105	0.0
2004	0	152	36	105	0.0
2005	0	155	38	105	0.0
2006	0	162	45	105	0.0
2007	0	171	45	105	0.0
2008	0	182	49	105	0.0
2009	0	171	43	105	0.0
2010	0	161	46	105	0.0
2011	0	156	49	105	0.0
2012	0	158	49	105	0.0
2013	0	168	49	105	0.0
2014	0	180	52	105	0.0
2015	0	179	50	105	0.0
2016	0	171	53	105	0.0

County: county value. Kansas: state value. County Rank: highest county value ranked #1. (\$000): thousands of dollars. Nonmetro Kansas: Kansas total less Metropolitan Areas as defined by the Office of Management and Budget (OMB; released 3/6/2020). Per 1000: For nonmoney amounts, Per 1000=(county value / county population for the same year as the data) x 1000. \$ Per capita=(county value / county population for the same year as the data). Value= . indicates missing or suppressed data or value not calculated.

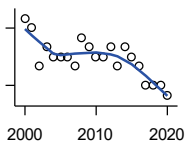
Business



ESTABLISHMENTS: FORESTRY, FISHING, HUNTING, AND AG SUPPORT

U.S. Census Bureau, County Business Patterns. Beginning with the 2017 data, any tabulation with fewer than 3 establishments were omitted from the release. Data for these establishments are included in the broader total.

Year	County	State of Kansas	Non Metro Kansas	County Rank	Per 1000 or \$ Per Capita
2000	2	190	149	43	0.6
2001	2	217	168	48	0.6
2002	2	224	176	56	0.6
2003	1	217	173	84	0.3
2004	1	211	165	77	0.3
2005	1	188	148	76	0.3
2006	0	193	158	105	0.0
2007	0	212	170	105	0.0
2008	0	197	158	105	0.0
2009	0	191	154	105	0.0
2010	0	192	161	105	0.0
2011	0	193	157	105	0.0
2012	0	204	164	105	0.0
2013	2	208	166	54	0.6
2014	2	194	152	55	0.7
2015	2	192	149	51	0.7
2016	2	181	142	48	0.7



ESTABLISHMENTS: MINING

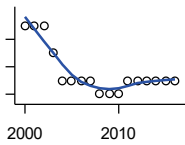
U.S. Census Bureau, County Business Patterns. Beginning with the 2017 data, any tabulation with fewer than 3 establishments were omitted from the release. Data for these establishments are included in the broader total.

Year	County	State of Kansas	Non Metro Kansas	County Rank	Per 1000 or \$ Per Capita
2000	13	868	619	18	3.7
2001	12	878	622	20	3.5
2002	8	847	615	29	2.4
2003	10	864	633	22	2.9
2004	9	880	647	27	2.7
2005	9	941	695	30	2.7
2006	9	991	734	30	2.7
2007	8	1,000	759	34	2.5
2008	11	1,047	799	29	3.4
2009	10	1,016	772	31	3.1
2010	9	1,009	762	32	2.8
2011	9	1,013	763	32	2.8
2012	10	1,048	789	27	3.2
2013	8	1,060	802	34	2.6
2014	10	1,102	828	29	3.3
2015	9	1,069	810	32	3.0
2016	8	990	747	31	2.9
2017	6	920	.	40	2.2
2018	6	900	.	39	2.2
2019	6	864	.	39	2.3
2020	5	825	.	40	1.9

County: county value. Kansas: state value. County Rank: highest county value ranked #1. (\$000): thousands of dollars. Nonmetro Kansas: Kansas total less Metropolitan Areas as defined by the Office of Management and Budget (OMB; released 3/6/2020). Per 1000: For nonmoney amounts, Per 1000=(county value / county population for the same year as the data) x 1000. \$ Per capita=(county value / county population for the same year as the data). Value= . indicates missing or suppressed data or value not calculated.

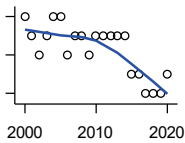
Business

ESTABLISHMENTS: UTILITIES



U.S. Census Bureau, County Business Patterns. Beginning with the 2017 data, any tabulation with fewer than 3 establishments were omitted from the release. Data for these establishments are included in the broader total.

Year	County	State of Kansas	Non Metro Kansas	County Rank	Per 1000 or \$ Per Capita
2000	5	274	192	17	1.4
2001	5	290	204	18	1.5
2002	5	278	195	19	1.5
2003	3	268	180	36	0.9
2004	1	247	164	90	0.3
2005	1	254	172	91	0.3
2006	1	248	169	92	0.3
2007	1	222	156	87	0.3
2008	0	244	166	105	0.0
2009	0	222	152	105	0.0
2010	0	197	129	105	0.0
2011	1	230	156	87	0.3
2012	1	232	156	86	0.3
2013	1	234	159	87	0.3
2014	1	232	160	89	0.3
2015	1	237	165	88	0.3
2016	1	245	171	90	0.4



ESTABLISHMENTS: CONSTRUCTION

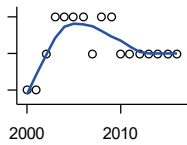
U.S. Census Bureau, County Business Patterns. Beginning with the 2017 data, any tabulation with fewer than 3 establishments were omitted from the release. Data for these establishments are included in the broader total.

Year	County	State of Kansas	Non Metro Kansas	County Rank	Per 1000 or \$ Per Capita
2000	8	7,703	2,616	89	2.3
2001	7	7,449	2,520	91	2.1
2002	6	7,519	2,482	97	1.8
2003	7	7,722	2,521	94	2.1
2004	8	7,887	2,518	88	2.4
2005	8	8,032	2,515	86	2.4
2006	6	8,031	2,494	94	1.8
2007	7	8,057	2,547	92	2.1
2008	7	7,831	2,522	92	2.2
2009	6	7,342	2,452	93	1.9
2010	7	7,064	2,394	90	2.2
2011	7	6,774	2,361	90	2.2
2012	7	6,741	2,393	91	2.2
2013	7	6,802	2,394	90	2.2
2014	7	6,920	2,383	90	2.3
2015	5	7,014	2,377	98	1.7
2016	5	6,988	2,343	97	1.8
2017	4	7,031	2,316	101	1.5
2018	4	7,124	2,285	99	1.5
2019	4	7,060	2,242	99	1.5
2020	5	7,089	2,249	93	1.9

County: county value. Kansas: state value. County Rank: highest county value ranked #1. (\$000): thousands of dollars. Nonmetro Kansas: Kansas total less Metropolitan Areas as defined by the Office of Management and Budget (OMB; released 3/6/2020). Per 1000: For nonmoney amounts, Per 1000=(county value / county population for the same year as the data) x 1000. \$ Per capita=(county value / county population for the same year as the data). Value= . indicates missing or suppressed data or value not calculated.

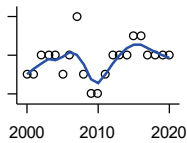
Business

**ESTABLISHMENTS:
MANUFACTURING**



U.S. Census Bureau, County Business Patterns. Beginning with the 2017 data, any tabulation with fewer than 3 establishments were omitted from the release. Data for these establishments are included in the broader total.

Year	County	State of Kansas	Non Metro Kansas	County Rank	Per 1000 or \$ Per Capita
2000	2	3,229	1,316	98	0.6
2001	2	3,240	1,323	99	0.6
2002	3	3,181	1,289	91	0.9
2003	4	3,159	1,291	88	1.2
2004	4	3,179	1,313	85	1.2
2005	4	3,128	1,278	86	1.2
2006	4	3,165	1,290	82	1.2
2007	3	3,184	1,316	93	0.9
2008	4	3,171	1,297	86	1.2
2009	4	3,026	1,240	83	1.2
2010	3	2,955	1,222	93	0.9
2011	3	2,877	1,193	90	0.9
2012	3	2,889	1,197	88	1.0
2013	3	2,836	1,165	85	1.0
2014	3	2,831	1,168	85	1.0
2015	3	2,817	1,161	87	1.0
2016	3	2,791	1,150	86	1.1



**ESTABLISHMENTS: WHOLESALE
TRADE**

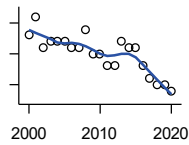
U.S. Census Bureau, County Business Patterns. Beginning with the 2017 data, any tabulation with fewer than 3 establishments were omitted from the release. Data for these establishments are included in the broader total.

Year	County	State of Kansas	Non Metro Kansas	County Rank	Per 1000 or \$ Per Capita
2000	9	4,876	1,776	83	2.6
2001	9	4,811	1,769	84	2.7
2002	10	4,719	1,750	77	3.0
2003	10	4,590	1,637	75	2.9
2004	10	4,553	1,634	75	3.0
2005	9	4,541	1,618	81	2.7
2006	10	4,517	1,596	77	3.0
2007	12	4,555	1,629	60	3.7
2008	9	4,501	1,622	81	2.8
2009	8	4,437	1,614	84	2.5
2010	8	4,432	1,612	87	2.5
2011	9	4,400	1,660	79	2.8
2012	10	4,563	1,755	79	3.2
2013	10	4,501	1,741	76	3.2
2014	10	4,497	1,746	79	3.3
2015	11	4,459	1,755	73	3.7
2016	11	4,457	1,732	69	3.9
2017	10	4,436	1,774	79	3.6
2018	10	4,330	1,727	80	3.7
2019	10	4,291	1,713	78	3.9
2020	10	4,191	1,677	78	3.7

County: county value. Kansas: state value. County Rank: highest county value ranked #1. (\$000): thousands of dollars. Nonmetro Kansas: Kansas total less Metropolitan Areas as defined by the Office of Management and Budget (OMB; released 3/6/2020). Per 1000: For nonmoney amounts, Per 1000=(county value / county population for the same year as the data) x 1000. \$ Per capita=(county value / county population for the same year as the data). Value= . indicates missing or suppressed data or value not calculated.

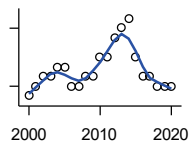
Business

ESTABLISHMENTS: RETAIL TRADE



U.S. Census Bureau, County Business Patterns. Beginning with the 2017 data, any tabulation with fewer than 3 establishments were omitted from the release. Data for these establishments are included in the broader total.

Year	County	State of Kansas	Non Metro Kansas	County Rank	Per 1000 or \$ Per Capita
2000	18	12,261	5,240	92	5.1
2001	21	12,206	5,207	87	6.2
2002	16	11,980	5,082	93	4.7
2003	17	11,834	5,049	93	5.0
2004	17	11,748	4,967	93	5.1
2005	17	11,562	4,834	91	5.2
2006	16	11,367	4,702	91	4.9
2007	16	11,306	4,653	88	4.9
2008	19	10,978	4,494	80	5.9
2009	15	10,760	4,372	91	4.6
2010	15	10,727	4,346	90	4.6
2011	13	10,655	4,289	96	4.1
2012	13	10,585	4,202	93	4.2
2013	17	10,433	4,147	81	5.5
2014	16	10,391	4,070	81	5.3
2015	16	10,327	4,061	83	5.4
2016	13	10,197	3,965	91	4.7
2017	11	10,074	3,885	95	4.0
2018	10	9,866	3,797	99	3.7
2019	10	9,762	3,750	98	3.9
2020	9	9,591	3,666	101	3.3



ESTABLISHMENTS: TRANSPORTATION & WAREHOUSING

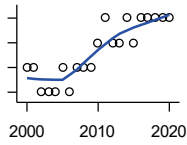
U.S. Census Bureau, County Business Patterns. Beginning with the 2017 data, any tabulation with fewer than 3 establishments were omitted from the release. Data for these establishments are included in the broader total.

Year	County	State of Kansas	Non Metro Kansas	County Rank	Per 1000 or \$ Per Capita
2000	3	2,474	1,293	101	0.9
2001	4	2,463	1,298	94	1.2
2002	5	2,461	1,278	91	1.5
2003	5	2,576	1,297	88	1.5
2004	6	2,651	1,324	82	1.8
2005	6	2,632	1,326	84	1.8
2006	4	2,626	1,295	95	1.2
2007	4	2,664	1,314	97	1.2
2008	5	2,675	1,329	88	1.5
2009	5	2,635	1,313	92	1.5
2010	7	2,615	1,313	80	2.2
2011	7	2,579	1,285	78	2.2
2012	9	2,519	1,243	64	2.9
2013	10	2,492	1,226	58	3.2
2014	11	2,518	1,240	54	3.6
2015	7	2,554	1,257	74	2.4
2016	5	2,567	1,241	84	1.8
2017	5	2,640	1,245	87	1.8
2018	4	2,627	1,238	94	1.5
2019	4	2,615	1,209	92	1.5
2020	4	2,589	1,179	89	1.5

County: county value. Kansas: state value. County Rank: highest county value ranked #1. (\$000): thousands of dollars. Nonmetro Kansas: Kansas total less Metropolitan Areas as defined by the Office of Management and Budget (OMB; released 3/6/2020). Per 1000: For nonmoney amounts, Per 1000=(county value / county population for the same year as the data) x 1000. \$ Per capita=(county value / county population for the same year as the data). Value= . indicates missing or suppressed data or value not calculated.

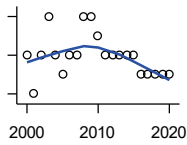
Business

ESTABLISHMENTS: INFORMATION



U.S. Census Bureau, County Business Patterns. Beginning with the 2017 data, any tabulation with fewer than 3 establishments were omitted from the release. Data for these establishments are included in the broader total.

Year	County	State of Kansas	Non Metro Kansas	County Rank	Per 1000 or \$ Per Capita
2000	5	1,542	578	62	1.4
2001	5	1,556	566	63	1.5
2002	4	1,517	551	67	1.2
2003	4	1,516	564	67	1.2
2004	4	1,518	556	65	1.2
2005	5	1,519	536	58	1.5
2006	4	1,549	559	68	1.2
2007	5	1,504	527	52	1.5
2008	5	1,468	522	51	1.5
2009	5	1,420	510	50	1.5
2010	6	1,437	527	48	1.9
2011	7	1,428	537	43	2.2
2012	6	1,387	515	46	1.9
2013	6	1,337	487	45	1.9
2014	7	1,335	496	39	2.3
2015	6	1,359	510	45	2.0
2016	7	1,431	537	42	2.5
2017	7	1,439	.	43	2.5
2018	7	1,407	.	41	2.6
2019	7	1,422	.	42	2.7
2020	7	1,424	.	41	2.6



ESTABLISHMENTS: FINANCE & INSURANCE

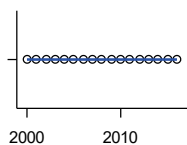
U.S. Census Bureau, County Business Patterns. Beginning with the 2017 data, any tabulation with fewer than 3 establishments were omitted from the release. Data for these establishments are included in the broader total.

Year	County	State of Kansas	Non Metro Kansas	County Rank	Per 1000 or \$ Per Capita
2000	8	5,209	1,848	87	2.3
2001	6	5,178	1,828	95	1.8
2002	8	5,496	1,911	87	2.4
2003	10	5,569	1,907	79	2.9
2004	8	5,572	1,913	86	2.4
2005	7	5,708	1,964	94	2.1
2006	8	5,877	1,976	87	2.4
2007	8	6,017	2,030	89	2.5
2008	10	6,010	2,023	77	3.1
2009	10	5,933	1,994	79	3.1
2010	9	5,872	1,975	86	2.8
2011	8	5,854	1,985	85	2.5
2012	8	5,993	2,024	88	2.6
2013	8	5,903	1,993	88	2.6
2014	8	5,894	2,000	86	2.6
2015	8	5,932	1,998	86	2.7
2016	7	6,022	2,021	90	2.5
2017	7	6,026	2,007	91	2.5
2018	7	6,023	1,997	91	2.6
2019	7	5,953	1,977	91	2.7
2020	7	5,926	1,969	87	2.6

County: county value. Kansas: state value. County Rank: highest county value ranked #1. (\$000): thousands of dollars. Nonmetro Kansas: Kansas total less Metropolitan Areas as defined by the Office of Management and Budget (OMB; released 3/6/2020). Per 1000: For nonmoney amounts, Per 1000=(county value / county population for the same year as the data) x 1000. \$ Per capita=(county value / county population for the same year as the data). Value= . indicates missing or suppressed data or value not calculated.

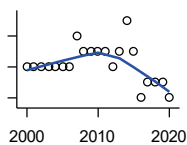
Business

ESTABLISHMENTS: REAL ESTATE, RENTAL, AND LEASING



U.S. Census Bureau, County Business Patterns. Beginning with the 2017 data, any tabulation with fewer than 3 establishments were omitted from the release. Data for these establishments are included in the broader total.

Year	County	State of Kansas	Non Metro Kansas	County Rank	Per 1000 or \$ Per Capita
2000	0	2,733	687	105	0.0
2001	0	2,849	724	105	0.0
2002	0	2,952	735	105	0.0
2003	0	3,007	727	105	0.0
2004	0	3,108	713	105	0.0
2005	0	3,203	727	105	0.0
2006	0	3,268	736	105	0.0
2007	0	3,286	721	105	0.0
2008	0	3,239	738	105	0.0
2009	0	3,122	723	105	0.0
2010	0	3,050	708	105	0.0
2011	0	3,002	692	105	0.0
2012	0	2,981	691	105	0.0
2013	0	3,046	717	105	0.0
2014	0	3,135	738	105	0.0
2015	0	3,179	744	105	0.0
2016	0	3,293	757	105	0.0



ESTABLISHMENTS: PROFESSIONAL, SCIENTIFIC, AND TECHNICAL SERVICES

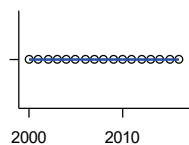
U.S. Census Bureau, County Business Patterns. Beginning with the 2017 data, any tabulation with fewer than 3 establishments were omitted from the release. Data for these establishments are included in the broader total.

Year	County	State of Kansas	Non Metro Kansas	County Rank	Per 1000 or \$ Per Capita
2000	5	6,424	1,690	95	1.4
2001	5	6,492	1,665	92	1.5
2002	5	6,719	1,704	93	1.5
2003	5	6,793	1,735	94	1.5
2004	5	7,025	1,730	94	1.5
2005	5	7,087	1,711	97	1.5
2006	5	7,231	1,736	97	1.5
2007	7	7,329	1,729	83	2.1
2008	6	7,133	1,671	89	1.9
2009	6	7,122	1,676	89	1.9
2010	6	7,172	1,680	88	1.9
2011	6	7,115	1,668	89	1.9
2012	5	7,122	1,681	96	1.6
2013	6	7,129	1,698	88	1.9
2014	8	7,206	1,682	79	2.6
2015	6	7,184	1,687	88	2.0
2016	3	7,146	1,659	101	1.1
2017	4	7,224	1,679	99	1.5
2018	4	7,138	1,655	95	1.5
2019	4	7,119	.	96	1.5
2020	3	7,117	.	100	1.1

County: county value. Kansas: state value. County Rank: highest county value ranked #1. (\$000): thousands of dollars. Nonmetro Kansas: Kansas total less Metropolitan Areas as defined by the Office of Management and Budget (OMB; released 3/6/2020). Per 1000: For nonmoney amounts, Per 1000=(county value / county population for the same year as the data) x 1000. \$ Per capita=(county value / county population for the same year as the data). Value= . indicates missing or suppressed data or value not calculated.

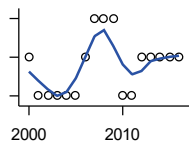
Business

ESTABLISHMENTS: MANAGEMENT OF COMPANIES AND ENTERPRISES



U.S. Census Bureau, County Business Patterns. Beginning with the 2017 data, any tabulation with fewer than 3 establishments were omitted from the release. Data for these establishments are included in the broader total.

Year	County	State of Kansas	Non Metro Kansas	County Rank	Per 1000 or \$ Per Capita
2000	0	622	145	105	0.0
2001	0	593	141	105	0.0
2002	0	597	152	105	0.0
2003	0	561	135	105	0.0
2004	0	569	133	105	0.0
2005	0	543	127	105	0.0
2006	0	542	131	105	0.0
2007	0	550	133	105	0.0
2008	0	553	139	105	0.0
2009	0	575	136	105	0.0
2010	0	567	131	105	0.0
2011	0	552	134	105	0.0
2012	0	593	135	105	0.0
2013	0	590	135	105	0.0
2014	0	603	136	105	0.0
2015	0	613	140	105	0.0
2016	0	655	171	105	0.0



ESTABLISHMENTS: ADMIN, SUPPORT, WASTE MGMT., AND REMEDIATION

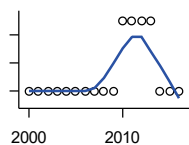
U.S. Census Bureau, County Business Patterns. Beginning with the 2017 data, any tabulation with fewer than 3 establishments were omitted from the release. Data for these establishments are included in the broader total.

Year	County	State of Kansas	Non Metro Kansas	County Rank	Per 1000 or \$ Per Capita
2000	1	3,307	871	101	0.3
2001	0	3,421	913	105	0.0
2002	0	3,232	882	105	0.0
2003	0	3,189	858	105	0.0
2004	0	3,301	891	105	0.0
2005	0	3,342	896	105	0.0
2006	1	3,395	886	100	0.3
2007	2	3,522	921	94	0.6
2008	2	3,587	932	95	0.6
2009	2	3,505	904	89	0.6
2010	0	3,494	897	105	0.0
2011	0	3,447	903	105	0.0
2012	1	3,462	891	99	0.3
2013	1	3,489	904	100	0.3
2014	1	3,569	933	98	0.3
2015	1	3,630	964	97	0.3
2016	1	3,705	987	99	0.4

County: county value. Kansas: state value. County Rank: highest county value ranked #1. (\$000): thousands of dollars. Nonmetro Kansas: Kansas total less Metropolitan Areas as defined by the Office of Management and Budget (OMB; released 3/6/2020). Per 1000: For nonmoney amounts, Per 1000=(county value / county population for the same year as the data) x 1000. \$ Per capita=(county value / county population for the same year as the data). Value= . indicates missing or suppressed data or value not calculated.

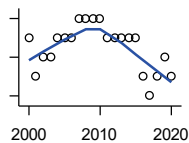
Business

ESTABLISHMENTS: EDUCATIONAL SERVICES



U.S. Census Bureau, County Business Patterns. Beginning with the 2017 data, any tabulation with fewer than 3 establishments were omitted from the release. Data for these establishments are included in the broader total.

Year	County	State of Kansas	Non Metro Kansas	County Rank	Per 1000 or \$ Per Capita
2000	0	604	155	105	0.0
2001	0	625	168	105	0.0
2002	0	666	165	105	0.0
2003	0	663	173	105	0.0
2004	0	690	173	105	0.0
2005	0	699	168	105	0.0
2006	0	698	175	105	0.0
2007	0	691	165	105	0.0
2008	0	692	158	105	0.0
2009	0	690	150	105	0.0
2010	1	700	149	68	0.3
2011	1	711	150	66	0.3
2012	1	724	145	67	0.3
2013	1	735	153	68	0.3
2014	0	722	152	105	0.0
2015	0	754	152	105	0.0
2016	0	728	150	105	0.0



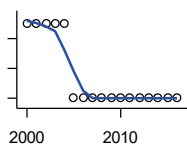
ESTABLISHMENTS: HEALTH CARE AND SOCIAL ASSISTANCE

U.S. Census Bureau, County Business Patterns. Beginning with the 2017 data, any tabulation with fewer than 3 establishments were omitted from the release. Data for these establishments are included in the broader total.

Year	County	State of Kansas	Non Metro Kansas	County Rank	Per 1000 or \$ Per Capita
2000	7	6,564	2,591	90	2.0
2001	5	6,636	2,590	98	1.5
2002	6	7,052	2,777	97	1.8
2003	6	7,129	2,792	97	1.8
2004	7	7,239	2,813	96	2.1
2005	7	7,412	2,855	94	2.1
2006	7	7,477	2,860	95	2.1
2007	8	7,661	2,864	86	2.5
2008	8	7,651	2,810	86	2.5
2009	8	7,696	2,787	84	2.5
2010	8	7,751	2,830	87	2.5
2011	7	7,804	2,817	94	2.2
2012	7	7,973	2,793	95	2.2
2013	7	7,877	2,729	89	2.2
2014	7	7,809	2,686	91	2.3
2015	7	8,103	2,692	88	2.4
2016	5	8,315	2,678	100	1.8
2017	4	8,136	2,646	102	1.5
2018	5	8,126	2,632	97	1.9
2019	6	8,184	2,587	94	2.3
2020	5	8,290	2,571	97	1.9

County: county value. Kansas: state value. County Rank: highest county value ranked #1. (\$000): thousands of dollars. Nonmetro Kansas: Kansas total less Metropolitan Areas as defined by the Office of Management and Budget (OMB; released 3/6/2020). Per 1000: For nonmoney amounts, Per 1000=(county value / county population for the same year as the data) x 1000. \$ Per capita=(county value / county population for the same year as the data). Value= . indicates missing or suppressed data or value not calculated.

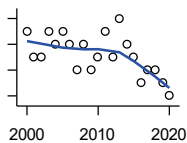
Business



ESTABLISHMENTS: ARTS, ENTERTAINMENT, AND RECREATION

U.S. Census Bureau, County Business Patterns. Beginning with the 2017 data, any tabulation with fewer than 3 establishments were omitted from the release. Data for these establishments are included in the broader total.

Year	County	State of Kansas	Non Metro Kansas	County Rank	Per 1000 or \$ Per Capita
2000	2	981	419	84	0.6
2001	2	1,009	433	87	0.6
2002	2	1,054	441	89	0.6
2003	2	1,045	443	89	0.6
2004	2	1,082	445	85	0.6
2005	1	1,109	446	100	0.3
2006	1	1,080	445	101	0.3
2007	1	1,092	444	100	0.3
2008	1	1,062	423	96	0.3
2009	1	1,063	421	98	0.3
2010	1	1,018	406	99	0.3
2011	1	997	387	100	0.3
2012	1	1,000	388	100	0.3
2013	1	1,009	377	100	0.3
2014	1	1,030	365	101	0.3
2015	1	1,031	357	101	0.3
2016	1	1,060	366	101	0.4



ESTABLISHMENTS: ACCOMMODATION AND FOOD SERVICES

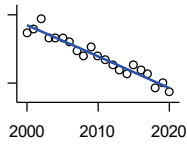
U.S. Census Bureau, County Business Patterns. Beginning with the 2017 data, any tabulation with fewer than 3 establishments were omitted from the release. Data for these establishments are included in the broader total.

Year	County	State of Kansas	Non Metro Kansas	County Rank	Per 1000 or \$ Per Capita
2000	9	5,536	2,213	83	2.6
2001	7	5,551	2,173	96	2.1
2002	7	5,610	2,174	95	2.1
2003	9	5,635	2,188	87	2.6
2004	8	5,681	2,160	87	2.4
2005	9	5,776	2,170	84	2.7
2006	8	5,745	2,132	87	2.4
2007	6	5,877	2,095	95	1.8
2008	8	5,843	2,052	83	2.5
2009	6	5,794	2,029	90	1.9
2010	7	5,898	2,046	85	2.2
2011	9	5,958	2,067	75	2.8
2012	7	5,951	2,046	87	2.2
2013	10	6,061	2,070	71	3.2
2014	8	5,985	2,024	78	2.6
2015	7	6,034	2,063	89	2.4
2016	5	6,126	2,094	96	1.8
2017	6	6,250	2,123	91	2.2
2018	6	6,256	2,128	92	2.2
2019	5	6,231	2,131	94	1.9
2020	4	6,206	2,131	98	1.5

County: county value. Kansas: state value. County Rank: highest county value ranked #1. (\$000): thousands of dollars. Nonmetro Kansas: Kansas total less Metropolitan Areas as defined by the Office of Management and Budget (OMB; released 3/6/2020). Per 1000: For nonmoney amounts, Per 1000=(county value / county population for the same year as the data) x 1000. \$ Per capita=(county value / county population for the same year as the data). Value= . indicates missing or suppressed data or value not calculated.

Business

ESTABLISHMENTS: OTHER SERVICES

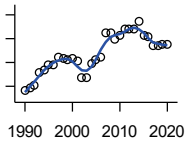


U.S. Census Bureau, County Business Patterns. Beginning with the 2017 data, any tabulation with fewer than 3 establishments were omitted from the release. Data for these establishments are included in the broader total.

Year	County	State of Kansas	Non Metro Kansas	County Rank	Per 1000 or \$ Per Capita
2000	21	8,423	3,636	76	6.0
2001	22	8,310	3,614	74	6.5
2002	24	8,552	3,658	70	7.1
2003	20	8,411	3,605	77	5.9
2004	20	8,343	3,597	77	6.0
2005	20	8,321	3,571	75	6.1
2006	19	8,225	3,490	78	5.8
2007	17	8,355	3,534	85	5.2
2008	16	8,104	3,406	82	5.0
2009	18	8,040	3,405	77	5.6
2010	16	7,998	3,379	85	4.9
2011	15	7,883	3,294	88	4.7
2012	14	7,913	3,303	88	4.5
2013	13	7,947	3,290	91	4.2
2014	12	7,943	3,285	91	3.9
2015	14	7,869	3,255	89	4.7
2016	13	7,839	3,204	90	4.7
2017	12	7,873	3,189	92	4.4
2018	9	7,853	3,176	101	3.3
2019	10	7,834	3,138	97	3.9
2020	8	7,787	3,073	101	3.0

County: county value. Kansas: state value. County Rank: highest county value ranked #1. (\$000): thousands of dollars. Nonmetro Kansas: Kansas total less Metropolitan Areas as defined by the Office of Management and Budget (OMB; released 3/6/2020). Per 1000: For nonmoney amounts, Per 1000=(county value / county population for the same year as the data) x 1000. \$ Per capita=(county value / county population for the same year as the data). Value= . indicates missing or suppressed data or value not calculated.

Business



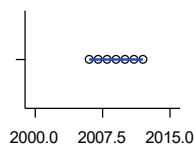
**TOTAL ANNUAL PAYROLL (\$000)
COUNTY BUSINESS PATTERNS**

U.S. Census Bureau, County Business Patterns. Beginning with the 2017 data, any tabulation with fewer than 3 establishments were omitted from the release. Data for these establishments are included in the broader total.

Year	County	State of Kansas	Non Metro Kansas	County Rank	Per 1000 or \$ Per Capita
1990	8,472	17,487,316	4,442,429	82	2,434.5
1991	9,057	18,162,326	4,612,616	82	2,638.2
1992	10,558	19,244,346	4,882,060	78	3,057.6
1993	15,528	20,087,190	5,182,780	71	4,540.4
1994	17,041	21,201,652	5,541,423	72	4,887.0
1995	18,986	22,825,920	5,875,310	68	5,585.8
1996	18,919	24,613,884	6,198,398	69	5,499.7
1997	22,269	26,787,098	6,599,061	68	6,413.9
1998	21,724	28,747,576	6,871,794	68	6,237.2
1999	21,069	30,600,434	7,121,961	70	5,956.7
2000	21,761	31,990,762	7,520,424	70	6,224.5
2001	20,442	33,303,992	7,598,165	73	6,024.8
2002	13,576	33,152,962	7,572,002	83	4,008.3
2003	13,396	34,040,944	7,726,561	83	3,936.5
2004	19,532	35,725,812	8,303,779	74	5,872.5
2005	21,298	36,646,064	8,586,986	75	6,453.9
2006	22,480	39,251,388	9,178,947	74	6,843.2
2007	32,540	42,022,753	.	66	9,993.9
2008	32,436	43,984,689	.	68	10,051.4
2009	29,749	42,146,866	.	67	9,221.6
2010	31,166	42,686,303	10,294,015	72	9,640.0
2011	34,081	43,733,944	.	67	10,730.8
2012	34,112	45,608,072	11,222,183	69	10,908.9
2013	34,145	47,715,601	11,446,751	71	10,958.0
2014	37,016	49,712,832	11,957,931	70	12,172.3
2015	31,483	51,259,676	11,975,718	75	10,661.4
2016	30,563	51,016,318	12,148,646	75	10,954.5
2017	26,956	52,754,605	12,448,592	80	9,812.9
2018	26,812	55,087,460	12,810,270	80	9,956.2
2019	27,613	57,272,387	13,123,288	79	10,673.8
2020	27,824	58,374,388	14,007,955	81	10,301.4

County: county value. Kansas: state value. County Rank: highest county value ranked #1. (\$000): thousands of dollars. Nonmetro Kansas: Kansas total less Metropolitan Areas as defined by the Office of Management and Budget (OMB; released 3/6/2020). Per 1000: For nonmoney amounts, Per 1000=(county value / county population for the same year as the data) x 1000. \$ Per capita=(county value / county population for the same year as the data). Value= . indicates missing or suppressed data or value not calculated.

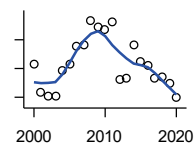
Business



**TOTAL ANNUAL PAYROLL(\$000):
FORESTRY, FISHING, HUNTING, AND
AG SUPPORT**

U.S. Census Bureau, County Business Patterns. Beginning with the 2017 data, any tabulation with fewer than 3 establishments were omitted from the release. Data for these establishments are included in the broader total.

Year	County	State of Kansas	Non Metro Kansas	County Rank	Per 1000 or \$ Per Capita
2000	.	13,551	.	.	.
2001
2002	.	16,528	.	.	.
2003	.	17,247	.	.	.
2004	.	17,552	.	.	.
2005	.	16,298	.	.	.
2006	0	17,908	.	.	0.0
2007	0	22,199	.	.	0.0
2008	0	21,359	.	.	0.0
2009	0	22,466	.	.	0.0
2010	0	22,753	.	.	0.0
2011	0	23,320	.	.	0.0
2012	0	27,492	.	.	0.0
2013	.	30,360	.	.	.
2014	.	34,862	.	.	.
2015	.	35,980	.	.	.



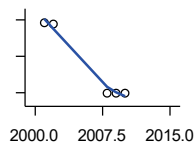
**TOTAL ANNUAL PAYROLL(\$000):
MINING**

U.S. Census Bureau, County Business Patterns. Beginning with the 2017 data, any tabulation with fewer than 3 establishments were omitted from the release. Data for these establishments are included in the broader total.

Year	County	State of Kansas	Non Metro Kansas	County Rank	Per 1000 or \$ Per Capita
2000	3,151	240,079	.	.	901.3
2001	2,186	273,838	.	.	644.3
2002	2,037	262,277	.	.	601.4
2003	2,023	290,652	.	.	594.5
2004	2,951	326,997	.	.	887.3
2005	3,167	381,069	.	.	959.7
2006	3,787	482,102	.	.	1,152.8
2007	3,822	551,751	.	.	1,173.8
2008	4,670	620,446	.	.	1,447.2
2009	4,442	465,070	.	.	1,376.9
2010	4,339	485,841	.	.	1,342.1
2011	4,617	541,536	.	.	1,453.7
2012	2,632	600,402	.	.	841.7
2013	2,674	599,788	.	.	858.2
2014	3,808	678,673	.	.	1,252.2
2015	3,243	552,658	.	.	1,098.2
2016	3,097	428,767	.	.	1,110.0
2017	2,680	379,883	.	.	975.6
2018	2,697	431,367	.	.	1,001.5
2019	2,466	349,270	.	.	953.2
2020	1,977	302,795	.	.	732.0

County: county value. Kansas: state value. County Rank: highest county value ranked #1. (\$000): thousands of dollars. Nonmetro Kansas: Kansas total less Metropolitan Areas as defined by the Office of Management and Budget (OMB; released 3/6/2020). Per 1000: For nonmoney amounts, Per 1000=(county value / county population for the same year as the data) x 1000. \$ Per capita=(county value / county population for the same year as the data). Value= . indicates missing or suppressed data or value not calculated.

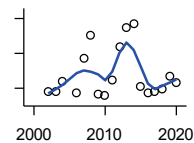
Business



**TOTAL ANNUAL PAYROLL(\$000):
UTILITIES**

U.S. Census Bureau, County Business Patterns. Beginning with the 2017 data, any tabulation with fewer than 3 establishments were omitted from the release. Data for these establishments are included in the broader total.

Year	County	State of Kansas	Non Metro Kansas	County Rank	Per 1000 or \$ Per Capita
2000	.	410,313	.	.	.
2001	768	452,057	.	.	226.3
2002	755	377,559	.	.	222.9
2003	.	378,157	.	.	.
2004	.	377,809	.	.	.
2005	.	429,864	.	.	.
2006	.	443,999	.	.	.
2007	.	480,068	.	.	.
2008	0	541,066	.	.	0.0
2009	0	563,373	.	.	0.0
2010	0	512,628	.	.	0.0
2011	.	653,229	.	.	.
2012	.	625,451	.	.	.
2013	.	625,347	.	.	.
2014	.	610,960	.	.	.
2015	.	668,559	.	.	.



**TOTAL ANNUAL PAYROLL(\$000):
CONSTRUCTION**

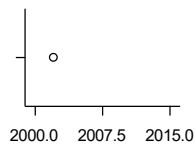
U.S. Census Bureau, County Business Patterns. Beginning with the 2017 data, any tabulation with fewer than 3 establishments were omitted from the release. Data for these establishments are included in the broader total.

Year	County	State of Kansas	Non Metro Kansas	County Rank	Per 1000 or \$ Per Capita
2000	.	2,256,057	.	.	.
2001	.	2,320,652	.	.	.
2002	190	2,302,229	.	.	56.1
2003	191	2,282,021	.	.	56.1
2004	219	2,302,854	.	.	65.8
2005	.	2,465,977	.	.	.
2006	188	2,700,351	.	.	57.2
2007	287	2,772,168	.	.	88.1
2008	352	2,950,073	.	.	109.1
2009	184	2,709,864	.	.	57.0
2010	178	2,553,555	.	.	55.1
2011	224	2,550,355	.	.	70.5
2012	320	2,733,284	.	.	102.3
2013	373	2,866,801	.	.	119.7
2014	386	3,135,814	.	.	126.9
2015	206	3,270,952	.	.	69.8
2016	185	3,328,610	.	.	66.3
2017	192	3,568,505	.	.	69.9
2018	197	3,806,196	.	.	73.2
2019	234	3,879,912	.	.	90.5
2020	217	3,983,029	.	.	80.3

County: county value. Kansas: state value. County Rank: highest county value ranked #1. (\$000): thousands of dollars. Nonmetro Kansas: Kansas total less Metropolitan Areas as defined by the Office of Management and Budget (OMB; released 3/6/2020). Per 1000: For nonmoney amounts, Per 1000=(county value / county population for the same year as the data) x 1000. \$ Per capita=(county value / county population for the same year as the data). Value= . indicates missing or suppressed data or value not calculated.

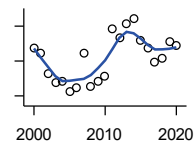
Business

**TOTAL ANNUAL PAYROLL(\$000):
MANUFACTURING**



U.S. Census Bureau, County Business Patterns. Beginning with the 2017 data, any tabulation with fewer than 3 establishments were omitted from the release. Data for these establishments are included in the broader total.

Year	County	State of Kansas	Non Metro Kansas	County Rank	Per 1000 or \$ Per Capita
2000	.	7,015,414	.	.	.
2001	.	7,301,706	.	.	.
2002	822	6,802,605	.	.	242.7
2003	.	6,691,611	.	.	.
2004	.	6,985,656	.	.	.
2005	.	7,221,614	.	.	.
2006	.	7,621,873	.	.	.
2007	.	7,873,359	.	.	.
2008	.	8,441,541	.	.	.
2009	.	7,477,838	.	.	.
2010	.	7,556,955	.	.	.
2011	.	7,747,934	.	.	.
2012	.	7,704,851	.	.	.
2013	.	8,365,542	.	.	.
2014	.	8,787,306	.	.	.
2015	.	9,052,105	.	.	.



**TOTAL ANNUAL PAYROLL(\$000):
WHOLESALE TRADE**

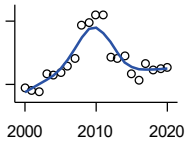
U.S. Census Bureau, County Business Patterns. Beginning with the 2017 data, any tabulation with fewer than 3 establishments were omitted from the release. Data for these establishments are included in the broader total.

Year	County	State of Kansas	Non Metro Kansas	County Rank	Per 1000 or \$ Per Capita
2000	3,889	2,332,755	.	.	1,112.4
2001	3,741	2,283,169	.	.	1,102.6
2002	3,128	2,107,653	.	.	923.5
2003	2,893	2,622,701	.	.	850.1
2004	2,929	2,663,196	.	.	880.6
2005	2,607	2,345,990	.	.	790.0
2006	2,750	2,592,211	.	.	837.1
2007	3,714	2,682,542	.	.	1,140.7
2008	2,782	3,078,655	.	.	862.1
2009	2,910	2,940,949	.	.	902.0
2010	3,073	3,097,628	.	.	950.5
2011	4,424	3,305,811	.	.	1,392.9
2012	4,160	3,339,997	.	.	1,330.3
2013	4,567	3,460,512	.	.	1,465.7
2014	4,719	3,712,075	.	.	1,551.8
2015	4,104	3,760,189	.	.	1,389.8
2016	3,888	3,738,207	.	.	1,393.5
2017	3,467	3,822,730	.	.	1,262.1
2018	3,594	3,814,353	.	.	1,334.6
2019	4,073	4,025,802	.	.	1,574.4
2020	3,962	4,224,666	.	.	1,466.9

County: county value. Kansas: state value. County Rank: highest county value ranked #1. (\$000): thousands of dollars. Nonmetro Kansas: Kansas total less Metropolitan Areas as defined by the Office of Management and Budget (OMB; released 3/6/2020). Per 1000: For nonmoney amounts, Per 1000=(county value / county population for the same year as the data) x 1000. \$ Per capita=(county value / county population for the same year as the data). Value= . indicates missing or suppressed data or value not calculated.

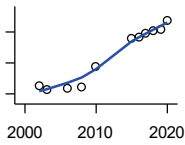
Business

**TOTAL ANNUAL PAYROLL(\$000):
RETAIL TRADE**



U.S. Census Bureau, County Business Patterns. Beginning with the 2017 data, any tabulation with fewer than 3 establishments were omitted from the release. Data for these establishments are included in the broader total.

Year	County	State of Kansas	Non Metro Kansas	County Rank	Per 1000 or \$ Per Capita
2000	1,415	2,747,001	.	.	404.7
2001	1,363	2,813,226	.	.	401.7
2002	1,323	2,854,231	.	.	390.6
2003	1,754	2,773,674	.	.	515.4
2004	1,708	2,847,826	.	.	513.5
2005	1,779	2,952,196	.	.	539.1
2006	1,938	3,126,495	.	.	590.0
2007	2,114	3,201,169	.	.	649.3
2008	2,910	3,261,054	.	.	901.8
2009	2,972	3,232,246	.	.	921.3
2010	3,141	3,321,838	.	.	971.5
2011	3,149	3,384,607	.	.	991.5
2012	2,142	3,409,755	.	.	685.0
2013	2,116	3,483,752	.	.	679.1
2014	2,173	3,617,933	.	.	714.6
2015	1,746	3,712,165	.	.	591.3
2016	1,597	3,826,889	.	.	572.4
2017	1,999	3,797,849	.	.	727.7
2018	1,828	3,818,988	.	.	678.8
2019	1,866	3,908,994	.	.	721.3
2020	1,890	3,984,443	.	.	699.7



**TOTAL ANNUAL PAYROLL(\$000):
TRANSPORTATION &
WAREHOUSING**

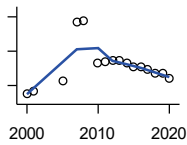
U.S. Census Bureau, County Business Patterns. Beginning with the 2017 data, any tabulation with fewer than 3 establishments were omitted from the release. Data for these establishments are included in the broader total.

Year	County	State of Kansas	Non Metro Kansas	County Rank	Per 1000 or \$ Per Capita
2000	.	1,044,835	.	.	.
2001	.	1,089,405	.	.	.
2002	488	1,094,636	.	.	144.1
2003	306	1,316,655	.	.	89.9
2004	.	1,439,800	.	.	.
2005	.	1,393,651	.	.	.
2006	360	1,528,551	.	.	109.6
2007	.	1,788,267	.	.	.
2008	464	1,722,697	.	.	143.8
2009	.	1,618,598	.	.	.
2010	1,783	1,735,761	.	.	551.5
2011	.	1,739,165	.	.	.
2012	.	1,984,976	.	.	.
2013	.	2,006,261	.	.	.
2014	.	2,097,377	.	.	.
2015	3,574	2,190,072	.	.	1,210.3
2016	3,688	2,202,859	.	.	1,321.9
2017	3,958	2,546,061	.	.	1,440.8
2018	4,085	2,663,188	.	.	1,516.9
2019	4,146	2,879,406	.	.	1,602.6
2020	4,769	2,962,461	.	.	1,765.6

County: county value. Kansas: state value. County Rank: highest county value ranked #1. (\$000): thousands of dollars. Nonmetro Kansas: Kansas total less Metropolitan Areas as defined by the Office of Management and Budget (OMB; released 3/6/2020). Per 1000: For nonmoney amounts, Per 1000=(county value / county population for the same year as the data) x 1000. \$ Per capita=(county value / county population for the same year as the data). Value= . indicates missing or suppressed data or value not calculated.

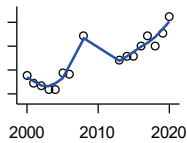
Business

**TOTAL ANNUAL PAYROLL(\$000):
INFORMATION**



U.S. Census Bureau, County Business Patterns. Beginning with the 2017 data, any tabulation with fewer than 3 establishments were omitted from the release. Data for these establishments are included in the broader total.

Year	County	State of Kansas	Non Metro Kansas	County Rank	Per 1000 or \$ Per Capita
2000	1,538	1,923,381	.	.	439.9
2001	1,685	2,218,610	.	.	496.6
2002	.	2,298,108	.	.	.
2003	.	2,378,673	.	.	.
2004	.	2,392,990	.	.	.
2005	2,291	2,395,081	.	.	694.2
2006	.	2,586,483	.	.	.
2007	5,669	2,594,138	.	.	1,741.1
2008	5,802	3,043,244	.	.	1,798.0
2009	.	3,045,570	.	.	.
2010	3,338	2,481,580	.	.	1,032.5
2011	3,398	2,513,805	.	.	1,069.9
2012	3,462	2,535,555	.	.	1,107.1
2013	3,426	2,805,017	.	.	1,099.5
2014	3,309	2,393,609	.	.	1,088.1
2015	3,053	2,406,323	.	.	1,033.9
2016	3,078	2,080,211	.	.	1,103.2
2017	2,918	2,090,021	.	.	1,062.2
2018	2,736	2,341,543	.	.	1,016.0
2019	2,742	2,133,891	.	.	1,059.9
2020	2,388	2,245,204	.	.	884.1



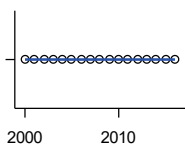
**TOTAL ANNUAL PAYROLL(\$000):
FINANCE & INSURANCE**

U.S. Census Bureau, County Business Patterns. Beginning with the 2017 data, any tabulation with fewer than 3 establishments were omitted from the release. Data for these establishments are included in the broader total.

Year	County	State of Kansas	Non Metro Kansas	County Rank	Per 1000 or \$ Per Capita
2000	1,382	2,083,565	.	.	395.3
2001	1,215	2,129,587	.	.	358.1
2002	1,168	2,414,120	.	.	344.8
2003	1,095	2,608,579	.	.	321.8
2004	1,100	2,676,910	.	.	330.7
2005	1,436	2,786,136	.	.	435.2
2006	1,412	2,928,931	.	.	429.8
2007	.	3,096,017	.	.	.
2008	2,214	3,322,977	.	.	686.1
2009	.	3,206,839	.	.	.
2010	.	3,211,300	.	.	.
2011	.	3,404,633	.	.	.
2012	.	3,611,165	.	.	.
2013	1,719	3,896,051	.	.	551.7
2014	1,784	4,044,315	.	.	586.6
2015	1,800	4,113,060	.	.	609.5
2016	2,011	4,180,740	.	.	720.8
2017	2,217	4,258,057	.	.	807.1
2018	2,010	4,682,552	.	.	746.4
2019	2,271	4,814,201	.	.	877.9
2020	2,621	5,288,529	.	.	970.4

County: county value. Kansas: state value. County Rank: highest county value ranked #1. (\$000): thousands of dollars. Nonmetro Kansas: Kansas total less Metropolitan Areas as defined by the Office of Management and Budget (OMB; released 3/6/2020). Per 1000: For nonmoney amounts, Per 1000=(county value / county population for the same year as the data) x 1000. \$ Per capita=(county value / county population for the same year as the data). Value= . indicates missing or suppressed data or value not calculated.

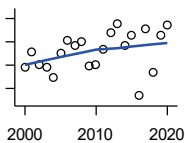
Business



**TOTAL ANNUAL PAYROLL(\$000):
REAL ESTATE, RENTAL, AND
LEASING**

U.S. Census Bureau, County Business Patterns. Beginning with the 2017 data, any tabulation with fewer than 3 establishments were omitted from the release. Data for these establishments are included in the broader total.

Year	County	State of Kansas	Non Metro Kansas	County Rank	Per 1000 or \$ Per Capita
2000	0	360,637	.	.	0.0
2001	0	397,371	.	.	0.0
2002	0	403,695	.	.	0.0
2003	0	437,786	.	.	0.0
2004	0	430,719	.	.	0.0
2005	0	465,149	.	.	0.0
2006	0	478,811	.	.	0.0
2007	0	452,969	.	.	0.0
2008	0	484,149	.	.	0.0
2009	0	450,884	.	.	0.0
2010	0	487,255	.	.	0.0
2011	0	535,120	.	.	0.0
2012	0	531,039	.	.	0.0
2013	0	538,796	.	.	0.0
2014	0	542,307	.	.	0.0
2015	0	595,030	.	.	0.0
2016	0	607,668	.	.	0.0



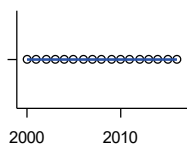
**TOTAL ANNUAL PAYROLL(\$000):
PROFESSIONAL, SCIENTIFIC, AND
TECHNICAL SERVICES**

U.S. Census Bureau, County Business Patterns. Beginning with the 2017 data, any tabulation with fewer than 3 establishments were omitted from the release. Data for these establishments are included in the broader total.

Year	County	State of Kansas	Non Metro Kansas	County Rank	Per 1000 or \$ Per Capita
2000	245	2,057,313	.	.	70.1
2001	279	2,152,937	.	.	82.2
2002	251	2,150,085	.	.	74.1
2003	245	2,052,712	.	.	72.0
2004	223	2,531,457	.	.	67.0
2005	276	2,418,500	.	.	83.6
2006	304	2,655,690	.	.	92.5
2007	292	2,901,544	.	.	89.7
2008	299	2,903,802	.	.	92.7
2009	249	3,071,611	.	.	77.2
2010	250	3,037,182	.	.	77.3
2011	284	3,132,082	.	.	89.4
2012	320	3,455,548	.	.	102.3
2013	338	3,777,729	.	.	108.5
2014	293	3,981,580	.	.	96.3
2015	315	4,039,074	.	.	106.7
2016	184	4,125,507	.	.	65.9
2017	329	4,158,858	.	.	119.8
2018	234	4,314,317	.	.	86.9
2019	313	4,646,644	.	.	121.0
2020	336	4,927,611	.	.	124.4

County: county value. Kansas: state value. County Rank: highest county value ranked #1. (\$000): thousands of dollars. Nonmetro Kansas: Kansas total less Metropolitan Areas as defined by the Office of Management and Budget (OMB; released 3/6/2020). Per 1000: For nonmoney amounts, Per 1000=(county value / county population for the same year as the data) x 1000. \$ Per capita=(county value / county population for the same year as the data). Value= . indicates missing or suppressed data or value not calculated.

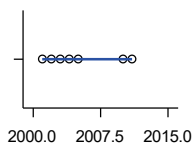
Business



**TOTAL ANNUAL PAYROLL(\$000):
MANAGEMENT OF COMPANIES AND
ENTERPRISES**

U.S. Census Bureau, County Business Patterns. Beginning with the 2017 data, any tabulation with fewer than 3 establishments were omitted from the release. Data for these establishments are included in the broader total.

Year	County	State of Kansas	Non Metro Kansas	County Rank	Per 1000 or \$ Per Capita
2000	0	1,362,735	.	.	0.0
2001	0	1,279,253	.	.	0.0
2002	0	1,311,368	.	.	0.0
2003	0	1,352,119	.	.	0.0
2004	0	1,378,891	.	.	0.0
2005	0	1,510,876	.	.	0.0
2006	0	1,626,320	.	.	0.0
2007	0	2,233,654	.	.	0.0
2008	0	1,848,656	.	.	0.0
2009	0	1,601,158	.	.	0.0
2010	0	2,003,048	.	.	0.0
2011	0	1,677,619	.	.	0.0
2012	0	1,834,430	.	.	0.0
2013	0	1,938,100	.	.	0.0
2014	0	2,117,232	.	.	0.0
2015	0	2,451,126	.	.	0.0
2016	0	2,167,620	.	.	0.0



**TOTAL ANNUAL PAYROLL(\$000):
ADMIN, SUPPORT, WASTE MGMT.,
AND REMEDIATION**

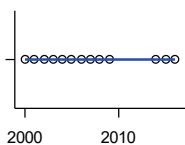
U.S. Census Bureau, County Business Patterns. Beginning with the 2017 data, any tabulation with fewer than 3 establishments were omitted from the release. Data for these establishments are included in the broader total.

Year	County	State of Kansas	Non Metro Kansas	County Rank	Per 1000 or \$ Per Capita
2000	.	1,388,712	.	.	.
2001	0	1,416,480	.	.	0.0
2002	0	1,378,905	.	.	0.0
2003	0	1,387,061	.	.	0.0
2004	0	1,544,442	.	.	0.0
2005	0	1,694,687	.	.	0.0
2006	.	1,800,846	.	.	.
2007	.	1,978,025	.	.	.
2008	.	2,096,864	.	.	.
2009	.	1,832,540	.	.	.
2010	0	2,117,325	.	.	0.0
2011	0	2,114,970	.	.	0.0
2012	.	2,230,250	.	.	.
2013	.	2,214,320	.	.	.
2014	.	2,444,170	.	.	.
2015	.	2,577,592	.	.	.

County: county value. Kansas: state value. County Rank: highest county value ranked #1. (\$000): thousands of dollars. Nonmetro Kansas: Kansas total less Metropolitan Areas as defined by the Office of Management and Budget (OMB; released 3/6/2020). Per 1000: For nonmoney amounts, Per 1000=(county value / county population for the same year as the data) x 1000. \$ Per capita=(county value / county population for the same year as the data). Value= . indicates missing or suppressed data or value not calculated.

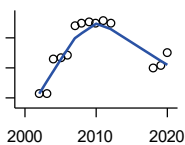
Business

**TOTAL ANNUAL PAYROLL(\$000):
EDUCATIONAL SERVICES**



U.S. Census Bureau, County Business Patterns. Beginning with the 2017 data, any tabulation with fewer than 3 establishments were omitted from the release. Data for these establishments are included in the broader total.

Year	County	State of Kansas	Non Metro Kansas	County Rank	Per 1000 or \$ Per Capita
2000	0	299,843	.	.	0.0
2001	0	320,606	.	.	0.0
2002	0	353,531	.	.	0.0
2003	0	350,814	.	.	0.0
2004	0	361,644	.	.	0.0
2005	0	375,781	.	.	0.0
2006	0	400,565	.	.	0.0
2007	0	414,233	.	.	0.0
2008	0	463,210	.	.	0.0
2009	0	468,856	.	.	0.0
2010	.	487,670	.	.	.
2011	.	504,964	.	.	.
2012	.	508,448	.	.	.
2013	.	553,995	.	.	.
2014	0	612,073	.	.	0.0
2015	0	579,794	.	.	0.0
2016	0	571,582	.	.	0.0



**TOTAL ANNUAL PAYROLL(\$000):
HEALTH CARE AND SOCIAL ASSISTANCE**

U.S. Census Bureau, County Business Patterns. Beginning with the 2017 data, any tabulation with fewer than 3 establishments were omitted from the release. Data for these establishments are included in the broader total.

Year	County	State of Kansas	Non Metro Kansas	County Rank	Per 1000 or \$ Per Capita
2000	.	4,120,595	.	.	.
2001	.	4,445,027	.	.	.
2002	529	4,705,220	.	.	156.2
2003	555	4,939,323	.	.	163.1
2004	5,190	5,232,394	.	.	1,560.4
2005	5,312	5,487,089	.	.	1,609.7
2006	5,685	5,814,218	.	.	1,730.6
2007	9,548	6,186,471	.	.	2,932.4
2008	9,964	6,490,627	.	.	3,087.7
2009	10,042	6,749,962	.	.	3,112.8
2010	9,965	6,871,727	.	.	3,082.3
2011	10,309	7,129,655	.	.	3,245.9
2012	9,912	7,614,853	.	.	3,169.8
2013	.	7,541,515	.	.	.
2014	.	7,733,621	.	.	.
2015	.	7,969,650	.	.	.
2018	4,007	8,637,619	.	.	1,487.9
2019	4,310	8,854,414	.	.	1,666.0
2020	5,952	9,309,269	.	.	2,203.6

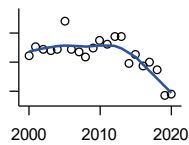
County: county value. Kansas: state value. County Rank: highest county value ranked #1. (\$000): thousands of dollars. Nonmetro Kansas: Kansas total less Metropolitan Areas as defined by the Office of Management and Budget (OMB; released 3/6/2020). Per 1000: For nonmoney amounts, Per 1000=(county value / county population for the same year as the data) x 1000. \$ Per capita=(county value / county population for the same year as the data). Value= . indicates missing or suppressed data or value not calculated.

Business

**TOTAL ANNUAL PAYROLL(\$000):
ARTS, ENTERTAINMENT, AND
RECREATION**

U.S. Census Bureau, County Business Patterns. Beginning with the 2017 data, any tabulation with fewer than 3 establishments were omitted from the release. Data for these establishments are included in the broader total.

Year	County	State of Kansas	Non Metro Kansas	County Rank	Per 1000 or \$ Per Capita
2000	.	195,784	.	.	.
2001	.	203,511	.	.	.
2002	.	206,204	.	.	.
2003	.	185,049	.	.	.
2004	.	190,742	.	.	.
2005	.	196,594	.	.	.
2006	.	201,049	.	.	.
2007	.	220,435	.	.	.
2008	.	236,986	.	.	.
2009	.	237,116	.	.	.
2010	.	233,285	.	.	.
2011	.	234,351	.	.	.
2012	.	254,169	.	.	.
2013	.	278,474	.	.	.
2014	.	289,103	.	.	.
2015	.	300,253	.	.	.



**TOTAL ANNUAL PAYROLL(\$000):
ACCOMMODATION AND FOOD
SERVICES**

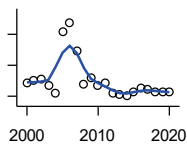
U.S. Census Bureau, County Business Patterns. Beginning with the 2017 data, any tabulation with fewer than 3 establishments were omitted from the release. Data for these establishments are included in the broader total.

Year	County	State of Kansas	Non Metro Kansas	County Rank	Per 1000 or \$ Per Capita
2000	546	926,831	.	.	156.2
2001	609	960,196	.	.	179.5
2002	586	930,510	.	.	173.0
2003	580	992,313	.	.	170.4
2004	592	1,046,901	.	.	178.0
2005	778	1,101,854	.	.	235.8
2006	587	1,185,280	.	.	178.7
2007	573	1,431,100	.	.	176.0
2008	536	1,271,594	.	.	166.1
2009	594	1,283,065	.	.	184.1
2010	649	1,296,556	.	.	200.7
2011	625	1,364,281	.	.	196.8
2012	676	1,388,337	.	.	216.2
2013	672	1,476,335	.	.	215.7
2014	489	1,572,021	.	.	160.8
2015	549	1,640,144	.	.	185.9
2016	476	1,709,193	.	.	170.6
2017	497	1,824,791	.	.	180.9
2018	443	1,880,364	.	.	164.5
2019	268	1,958,603	.	.	103.6
2020	283	1,745,238	.	.	104.8

County: county value. Kansas: state value. County Rank: highest county value ranked #1. (\$000): thousands of dollars. Nonmetro Kansas: Kansas total less Metropolitan Areas as defined by the Office of Management and Budget (OMB; released 3/6/2020). Per 1000: For nonmoney amounts, Per 1000=(county value / county population for the same year as the data) x 1000. \$ Per capita=(county value / county population for the same year as the data). Value= . indicates missing or suppressed data or value not calculated.

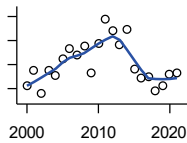
Business

**TOTAL ANNUAL PAYROLL(\$000):
OTHER SERVICES**



U.S. Census Bureau, County Business Patterns. Beginning with the 2017 data, any tabulation with fewer than 3 establishments were omitted from the release. Data for these establishments are included in the broader total.

Year	County	State of Kansas	Non Metro Kansas	County Rank	Per 1000 or \$ Per Capita
2000	574	965,540	.	.	164.2
2001	597	996,716	.	.	176.0
2002	624	1,007,464	.	.	184.2
2003	538	979,466	.	.	158.1
2004	440	970,383	.	.	132.3
2005	1,227	1,005,537	.	.	371.8
2006	1,345	1,055,932	.	.	409.4
2007	977	1,141,551	.	.	300.1
2008	562	1,184,016	.	.	174.2
2009	642	1,167,154	.	.	199.0
2010	544	1,170,201	.	.	168.3
2011	579	1,173,775	.	.	182.3
2012	436	1,217,210	.	.	139.4
2013	428	1,254,933	.	.	137.4
2014	401	1,305,563	.	.	131.9
2015	449	1,341,075	.	.	152.0
2016	508	1,351,375	.	.	182.1
2017	482	1,344,179	.	.	175.5
2018	452	1,382,801	.	.	167.8
2019	464	1,427,711	.	.	179.4
2020	455	1,420,859	.	.	168.5



**NOMINAL TAXABLE RETAIL SALES
(million\$)**

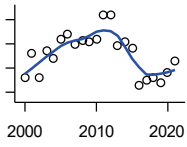
Kansas Department of Revenue

Year	County	State of Kansas	Non Metro Kansas	County Rank	Per 1000 or \$ Per Capita
2000	25.7	30,119.0	8,831.7	75	7.4
2001	28.8	30,202.2	8,700.3	70	8.5
2002	23.9	29,380.8	8,241.5	72	7.1
2003	28.8	30,694.0	8,710.6	70	8.5
2004	27.7	31,922.6	9,062.5	73	8.3
2005	31.2	32,924.2	9,386.6	71	9.5
2006	33.2	34,937.6	10,042.1	71	10.1
2007	31.9	36,180.1	10,553.2	78	9.8
2008	33.7	37,559.5	11,126.9	80	10.5
2009	28.2	35,211.8	10,351.5	82	8.7
2010	34.4	35,655.7	10,606.1	78	10.6
2011	39.5	37,257.0	11,153.5	75	12.4
2012	37.1	38,988.8	11,749.1	80	11.9
2013	34.1	40,009.0	11,993.8	82	10.9
2014	37.2	41,299.0	12,365.4	82	12.2
2015	29.0	41,635.8	11,747.6	83	9.8
2016	27.1	42,040.2	11,523.5	85	9.7
2017	27.6	41,940.1	11,449.9	83	10.0
2018	24.4	42,732.3	11,643.9	87	9.1
2019	25.6	43,732.5	12,062.7	87	9.9
2020	27.9	43,689.9	12,331.7	84	10.3
2021	28.4	48,532.8	13,413.0	86	10.5

County: county value. Kansas: state value. County Rank: highest county value ranked #1. (\$000): thousands of dollars. Nonmetro Kansas: Kansas total less Metropolitan Areas as defined by the Office of Management and Budget (OMB; released 3/6/2020). Per 1000: For nonmoney amounts, Per 1000=(county value / county population for the same year as the data) x 1000. \$ Per capita=(county value / county population for the same year as the data). Value= . indicates missing or suppressed data or value not calculated.

Business

RETAIL PULL FACTOR



Kansas Direct Program, Kansas State University Cooperative Extension Service (1980-1999); Kansas Department of Revenue (2000-)

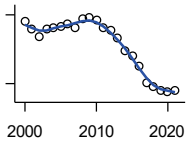
Year	County	State of Kansas	Non Metro Kansas	County Rank	Per 1000 or \$ Per Capita
2000	0.66	.	.	44	.
2001	0.76	.	.	28	.
2002	0.66	.	.	43	.
2003	0.77	.	.	30	.
2004	0.74	.	.	38	.
2005	0.82	.	.	31	.
2006	0.84	.	.	31	.
2007	0.80	.	.	40	.
2008	0.81	.	.	40	.
2009	0.81	.	.	44	.
2010	0.82	.	.	44	.
2011	0.92	.	.	30	.
2012	0.92	.	.	33	.
2013	0.79	.	.	50	.
2014	0.81	.	.	47	.
2015	0.78	.	.	49	.
2016	0.63	.	.	72	.
2017	0.65	.	.	70	.
2018	0.66	.	.	67	.
2019	0.64	.	.	74	.
2020	0.68	.	.	66	.
2021	0.73	.	.	58	.

County: county value. Kansas: state value. County Rank: highest county value ranked #1. (\$000): thousands of dollars. Nonmetro Kansas: Kansas total less Metropolitan Areas as defined by the Office of Management and Budget (OMB; released 3/6/2020). Per 1000: For nonmoney amounts, Per 1000=(county value / county population for the same year as the data) x 1000. \$ Per capita=(county value / county population for the same year as the data). Value= . indicates missing or suppressed data or value not calculated.

Employment

CIVILIAN LABOR FORCE (BLS-Place of Residence; 1990-)

U.S. Department of Labor, Bureau of Labor Statistics (BLS)

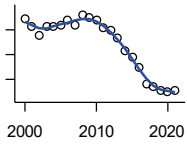


Year	County	State of Kansas	Non Metro Kansas	County Rank	Per 1000 or \$ Per Capita
2000	1,740	1,402,606	482,229	82	497.7
2001	1,673	1,398,521	475,280	86	493.1
2002	1,604	1,419,335	482,428	88	473.6
2003	1,680	1,441,065	490,161	87	493.7
2004	1,684	1,458,910	494,509	89	506.3
2005	1,700	1,458,767	490,047	83	515.2
2006	1,725	1,467,553	498,594	82	525.1
2007	1,686	1,485,414	497,048	84	517.8
2008	1,770	1,493,365	504,522	84	548.5
2009	1,776	1,512,572	516,311	86	550.5
2010	1,757	1,500,463	492,594	81	543.5
2011	1,683	1,498,000	492,563	84	529.9
2012	1,663	1,490,808	489,349	83	531.8
2013	1,597	1,489,395	485,484	86	512.5
2014	1,490	1,494,203	481,813	88	490.0
2015	1,439	1,493,782	477,546	91	487.3
2016	1,350	1,491,961	468,258	93	483.9
2017	1,203	1,488,346	461,063	95	437.9
2018	1,174	1,488,027	456,866	97	435.9
2019	1,140	1,497,517	455,858	97	440.7
2020	1,129	1,493,706	452,935	99	418.0
2021	1,135	1,495,665	453,398	98	421.6

County: county value. Kansas: state value. County Rank: highest county value ranked #1. (\$000): thousands of dollars. Nonmetro Kansas: Kansas total less Metropolitan Areas as defined by the Office of Management and Budget (OMB; released 3/6/2020). Per 1000: For nonmoney amounts, Per 1000=(county value / county population for the same year as the data) x 1000. \$ Per capita=(county value / county population for the same year as the data). Value= . indicates missing or suppressed data or value not calculated.

Employment

EMPLOYED (BLS-Place of Residence; 1990-)



U.S. Department of Labor, Bureau of Labor Statistics (BLS)

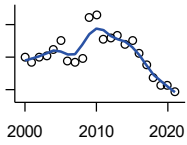
Year	County	State of Kansas	Non Metro Kansas	County Rank	Per 1000 or \$ Per Capita
2000	1,690	1,349,841	464,962	82	483.4
2001	1,626	1,338,775	455,154	84	479.2
2002	1,554	1,347,163	461,241	88	458.8
2003	1,629	1,361,115	467,622	85	478.7
2004	1,629	1,378,355	470,330	85	489.8
2005	1,640	1,384,654	467,722	83	497.0
2006	1,677	1,402,950	479,174	82	510.5
2007	1,639	1,422,109	477,983	83	503.4
2008	1,721	1,425,022	484,056	84	533.3
2009	1,702	1,408,142	485,797	84	527.6
2010	1,681	1,396,172	461,635	81	520.0
2011	1,622	1,402,198	463,723	82	510.7
2012	1,601	1,405,638	463,376	82	512.0
2013	1,534	1,410,470	461,405	84	492.3
2014	1,432	1,426,892	461,797	89	470.9
2015	1,379	1,431,533	457,899	91	467.0
2016	1,298	1,431,920	449,356	93	465.2
2017	1,158	1,434,516	445,003	95	421.6
2018	1,137	1,439,329	442,716	96	422.2
2019	1,107	1,450,705	442,108	97	427.9
2020	1,096	1,408,965	433,229	98	405.8
2021	1,106	1,447,323	441,159	98	410.8

County: county value. Kansas: state value. County Rank: highest county value ranked #1. (\$000): thousands of dollars. Nonmetro Kansas: Kansas total less Metropolitan Areas as defined by the Office of Management and Budget (OMB; released 3/6/2020). Per 1000: For nonmoney amounts, Per 1000=(county value / county population for the same year as the data) x 1000. \$ Per capita=(county value / county population for the same year as the data). Value= . indicates missing or suppressed data or value not calculated.

Employment

UNEMPLOYED (BLS-Place of Residence; 1990-)

U.S. Department of Labor, Bureau of Labor Statistics (BLS)

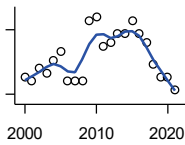


Year	County	State of Kansas	Non Metro Kansas	County Rank	Per 1000 or \$ Per Capita
2000	50	52,765	17,267	84	14.3
2001	47	59,746	20,126	91	13.9
2002	50	72,172	21,187	92	14.8
2003	51	79,950	22,539	92	15.0
2004	55	80,555	24,179	94	16.5
2005	60	74,113	22,325	87	18.2
2006	48	64,603	19,420	92	14.6
2007	47	63,305	19,065	92	14.4
2008	49	68,343	20,466	90	15.2
2009	74	104,430	30,514	86	22.9
2010	76	104,291	30,959	86	23.5
2011	61	95,802	28,840	88	19.2
2012	62	85,170	25,973	89	19.8
2013	63	78,925	24,079	84	20.2
2014	58	67,311	20,016	83	19.1
2015	60	62,249	19,647	83	20.3
2016	52	60,041	18,902	86	18.6
2017	45	53,830	16,060	86	16.4
2018	37	48,698	14,150	85	13.7
2019	33	46,812	13,750	92	12.8
2020	33	84,741	19,706	95	12.2
2021	29	48,342	12,239	89	10.8

County: county value. Kansas: state value. County Rank: highest county value ranked #1. (\$000): thousands of dollars. Nonmetro Kansas: Kansas total less Metropolitan Areas as defined by the Office of Management and Budget (OMB; released 3/6/2020). Per 1000: For nonmoney amounts, Per 1000=(county value / county population for the same year as the data) x 1000. \$ Per capita=(county value / county population for the same year as the data). Value= . indicates missing or suppressed data or value not calculated.

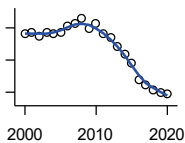
Employment

UNEMPLOYMENT RATE (BLS-Place of Residence; 1990-)



U.S. Department of Labor, Bureau of Labor Statistics (BLS)

Year	County	State of Kansas	Non Metro Kansas	County Rank	Per 1000 or \$ Per Capita
2000	2.9	3.8	3.6	79	.
2001	2.8	4.3	4.2	98	.
2002	3.1	5.1	4.4	92	.
2003	3.0	5.5	4.6	98	.
2004	3.3	5.5	4.9	101	.
2005	3.5	5.1	4.6	88	.
2006	2.8	4.4	3.9	105	.
2007	2.8	4.3	3.8	104	.
2008	2.8	4.6	4.1	101	.
2009	4.2	6.9	5.9	77	.
2010	4.3	7.0	6.3	83	.
2011	3.6	6.4	5.9	94	.
2012	3.7	5.7	5.3	82	.
2013	3.9	5.3	5.0	69	.
2014	3.9	4.5	4.2	48	.
2015	4.2	4.2	4.1	41	.
2016	3.9	4.0	4.0	50	.
2017	3.7	3.6	3.5	36	.
2018	3.2	3.3	3.1	35	.
2019	2.9	3.1	3.0	49	.
2020	2.9	5.7	4.4	78	.
2021	2.6	3.2	2.7	49	.



BEA EMPLOYMENT: TOTAL (Place of Work)

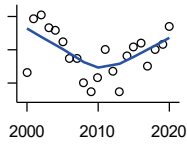
U.S. Bureau of Economic Analysis, Regional Economic Information System (REIS)

Year	County	State of Kansas	Non Metro Kansas	County Rank	Per 1000 or \$ Per Capita
2000	2,166	1,760,312	604,361	88	619.6
2001	2,169	1,767,601	592,672	84	639.3
2002	2,150	1,746,077	585,387	82	634.8
2003	2,173	1,733,694	577,860	80	638.6
2004	2,164	1,750,876	578,750	80	650.6
2005	2,172	1,765,650	577,562	78	658.2
2006	2,208	1,795,507	583,041	78	672.1
2007	2,225	1,844,355	591,924	79	683.4
2008	2,260	1,858,069	594,368	78	700.3
2009	2,194	1,813,184	580,972	79	680.1
2010	2,224	1,801,873	579,758	81	687.9
2011	2,162	1,819,044	583,725	83	680.7
2012	2,138	1,841,393	591,748	85	683.7
2013	2,081	1,869,054	597,236	86	667.8
2014	2,039	1,895,859	601,291	86	670.5
2015	1,980	1,910,954	598,589	87	670.5
2016	1,878	1,916,152	592,580	88	673.1
2017	1,846	1,914,179	584,337	86	672.0
2018	1,815	1,926,242	580,213	86	674.0
2019	1,801	1,925,204	574,496	86	696.2
2020	1,788	1,851,247	556,671	87	662.0

County: county value. Kansas: state value. County Rank: highest county value ranked #1. (\$000): thousands of dollars. Nonmetro Kansas: Kansas total less Metropolitan Areas as defined by the Office of Management and Budget (OMB; released 3/6/2020). Per 1000: For nonmoney amounts, Per 1000=(county value / county population for the same year as the data) x 1000. \$ Per capita=(county value / county population for the same year as the data). Value= . indicates missing or suppressed data or value not calculated.

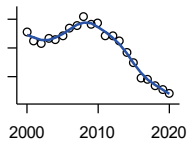
Employment

BEA EMPLOYMENT: FARM



U.S. Bureau of Economic Analysis,
Regional Economic Information System
(REIS)

Year	County	State of Kansas	Non Metro Kansas	County Rank	Per 1000 or \$ Per Capita
2000	453	77,477	59,088	92	129.6
2001	517	78,177	59,647	81	152.4
2002	522	70,532	53,893	66	154.1
2003	507	68,516	52,099	67	149.0
2004	504	67,586	51,246	68	151.5
2005	489	66,829	50,386	68	148.2
2006	469	64,910	48,728	69	142.8
2007	469	65,639	49,037	67	144.0
2008	441	63,820	47,682	70	136.7
2009	429	62,798	46,960	71	133.0
2010	447	63,882	47,984	69	138.3
2011	481	65,761	49,707	66	151.4
2012	454	63,753	48,167	68	145.2
2013	429	62,739	47,255	71	137.7
2014	472	64,308	48,722	67	155.2
2015	484	64,416	48,927	65	163.9
2016	488	63,840	48,539	64	174.9
2017	461	61,876	46,936	66	167.8
2018	481	63,233	48,069	64	178.6
2019	487	63,300	48,167	63	188.2
2020	508	64,281	49,038	60	188.1



BEA EMPLOYMENT: NON-FARM

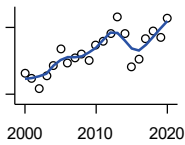
U.S. Bureau of Economic Analysis,
Regional Economic Information System
(REIS)

Year	County	State of Kansas	Non Metro Kansas	County Rank	Per 1000 or \$ Per Capita
2000	1,713	1,682,835	545,273	86	490.0
2001	1,652	1,689,424	533,025	84	486.9
2002	1,628	1,675,545	531,494	84	480.7
2003	1,666	1,665,178	525,761	81	489.6
2004	1,660	1,683,290	527,504	81	499.1
2005	1,683	1,698,821	527,176	82	510.0
2006	1,739	1,730,597	534,313	81	529.4
2007	1,756	1,778,716	542,887	81	539.3
2008	1,819	1,794,249	546,686	81	563.7
2009	1,765	1,750,386	534,012	80	547.1
2010	1,777	1,737,991	531,774	81	549.6
2011	1,681	1,753,283	534,018	84	529.3
2012	1,684	1,777,640	543,581	85	538.5
2013	1,652	1,806,315	549,981	86	530.2
2014	1,567	1,831,551	552,569	86	515.3
2015	1,496	1,846,538	549,662	87	506.6
2016	1,390	1,852,312	544,041	92	498.2
2017	1,385	1,852,303	537,401	91	504.2
2018	1,334	1,863,009	532,144	93	495.4
2019	1,314	1,861,904	526,329	93	507.9
2020	1,280	1,786,966	507,633	91	473.9

County: county value. Kansas: state value. County Rank: highest county value ranked #1. (\$000): thousands of dollars. Nonmetro Kansas: Kansas total less Metropolitan Areas as defined by the Office of Management and Budget (OMB; released 3/6/2020). Per 1000: For nonmoney amounts, Per 1000=(county value / county population for the same year as the data) x 1000. \$ Per capita=(county value / county population for the same year as the data). Value= . indicates missing or suppressed data or value not calculated.

Employment

AVERAGE WAGE PER JOB (\$)



U.S. Bureau of Economic Analysis,
Regional Economic Information System
(REIS)

Year	County	State of Kansas	Non Metro Kansas	County Rank	Per 1000 or \$ Per Capita
2000	29,520	31,854	24,396	13	.
2001	27,397	32,859	26,379	31	.
2002	22,583	33,707	26,331	60	.
2003	28,422	35,078	28,911	43	.
2004	32,897	35,932	29,747	19	.
2005	40,621	37,467	31,646	9	.
2006	34,224	40,038	31,993	21	.
2007	36,264	41,500	33,484	25	.
2008	38,280	44,197	36,256	30	.
2009	35,449	43,860	35,739	35	.
2010	42,168	45,370	38,631	30	.
2011	43,611	48,280	42,324	48	.
2012	47,138	50,549	42,015	29	.
2013	54,754	52,629	46,073	30	.
2014	47,109	51,959	43,562	30	.
2015	32,556	52,250	42,320	87	.
2016	35,619	51,664	41,964	73	.
2017	44,897	53,007	42,137	29	.
2018	48,386	54,790	44,514	28	.
2019	45,360	56,956	45,336	38	.
2020	54,242	60,597	49,183	29	.

BEA EMPLOYMENT: FORESTRY, FISHING, HUNTING, AND AG SUPPORT

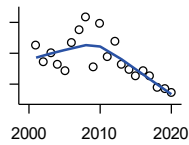
U.S. Bureau of Economic Analysis,
Regional Economic Information System
(REIS)

Year	County	State of Kansas	Non Metro Kansas	County Rank	Per 1000 or \$ Per Capita
2001	.	7,059	.	.	.
2002	.	8,045	.	.	.
2003	.	7,313	.	.	.
2004	.	7,623	.	.	.
2005	.	7,962	.	.	.
2006	.	7,748	.	.	.
2007	.	8,228	.	.	.
2008	.	8,646	.	.	.
2009	.	8,982	.	.	.
2010	.	9,251	.	.	.
2011	.	9,410	.	.	.
2012	.	9,691	.	.	.
2013	.	10,014	.	.	.
2014	.	10,708	.	.	.
2015	.	10,020	.	.	.
2016	.	10,383	.	.	.

County: county value. Kansas: state value. County Rank: highest county value ranked #1. (\$000): thousands of dollars. Nonmetro Kansas: Kansas total less Metropolitan Areas as defined by the Office of Management and Budget (OMB; released 3/6/2020). Per 1000: For nonmoney amounts, Per 1000=(county value / county population for the same year as the data) x 1000. \$ Per capita=(county value / county population for the same year as the data). Value= . indicates missing or suppressed data or value not calculated.

Employment

BEA EMPLOYMENT: MINING



U.S. Bureau of Economic Analysis,
Regional Economic Information System
(REIS)

Year	County	State of Kansas	Non Metro Kansas	County Rank	Per 1000 or \$ Per Capita
2001	138	19,592	.	32	.
2002	112	17,635	.	31	.
2003	125	19,869	.	30	.
2004	108	18,466	.	32	.
2005	97	19,489	.	33	.
2006	142	22,403	.	32	.
2007	164	24,043	.	27	.
2008	184	31,467	.	28	.
2009	104	29,941	.	38	.
2010	173	36,124	.	33	.
2011	120	31,658	.	35	.
2012	145	42,405	.	39	.
2013	108	46,585	.	45	.
2014	98	45,526	.	50	.
2015	88	46,460	.	48	.
2016	97	48,555	.	48	.
2017	88	40,710	.	45	.
2018	69	32,021	.	49	.
2019	68	29,101	.	49	.
2020	62	26,272	.	44	.

BEA EMPLOYMENT: UTILITIES

U.S. Bureau of Economic Analysis,
Regional Economic Information System
(REIS)

Year	County	State of Kansas	Non Metro Kansas	County Rank	Per 1000 or \$ Per Capita
2001	.	7,608	.	.	.
2002	.	7,087	.	.	.
2003	.	7,253	.	.	.
2004	.	7,356	.	.	.
2005	.	7,447	.	.	.
2006	.	7,478	.	.	.
2007	.	7,584	.	.	.
2008	.	7,855	.	.	.
2009	.	7,941	.	.	.
2010	.	8,028	.	.	.
2011	.	8,213	.	.	.
2012	.	8,155	.	.	.
2013	.	7,949	.	.	.
2014	.	7,985	.	.	.
2015	.	7,040	.	.	.
2016	.	7,133	.	.	.

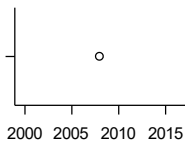
County: county value. Kansas: state value. County Rank: highest county value ranked #1. (\$000): thousands of dollars. Nonmetro Kansas: Kansas total less Metropolitan Areas as defined by the Office of Management and Budget (OMB; released 3/6/2020). Per 1000: For nonmoney amounts, Per 1000=(county value / county population for the same year as the data) x 1000. \$ Per capita=(county value / county population for the same year as the data). Value= . indicates missing or suppressed data or value not calculated.

Employment

**BEA EMPLOYMENT:
CONSTRUCTION**

U.S. Bureau of Economic Analysis,
Regional Economic Information System
(REIS)

Year	County	State of Kansas	Non Metro Kansas	County Rank	Per 1000 or \$ Per Capita
2001	.	92,647	27,972	.	.
2002	.	90,370	.	.	.
2003	.	91,725	26,681	.	.
2004	.	93,271	.	.	.
2005	.	94,836	.	.	.
2006	.	97,449	.	.	.
2007	.	99,119	29,179	.	.
2008	.	97,741	.	.	.
2009	.	90,165	28,077	.	.
2010	.	84,708	26,402	.	.
2011	.	83,332	25,999	.	.
2012	.	85,966	.	.	.
2013	.	88,094	.	.	.
2014	.	91,143	.	.	.
2015	.	91,458	27,583	.	.
2016	.	93,539	27,151	.	.



**BEA EMPLOYMENT:
MANUFACTURING**

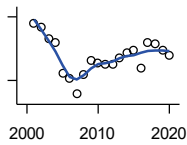
U.S. Bureau of Economic Analysis,
Regional Economic Information System
(REIS)

Year	County	State of Kansas	Non Metro Kansas	County Rank	Per 1000 or \$ Per Capita
2001	.	199,980	73,170	.	.
2002	.	188,905	70,691	.	.
2003	.	179,013	68,418	.	.
2004	.	181,738	69,669	.	.
2005	.	185,459	71,072	.	.
2006	.	188,047	71,704	.	.
2007	.	192,930	73,488	.	.
2008	71	193,116	72,235	78	.
2009	.	173,854	64,961	.	.
2010	.	166,000	62,884	.	.
2011	.	167,302	64,361	.	.
2012	.	169,308	65,944	.	.
2013	.	170,113	67,251	.	.
2014	.	169,307	68,299	.	.
2015	.	168,324	66,978	.	.
2016	.	167,723	65,796	.	.

County: county value. Kansas: state value. County Rank: highest county value ranked #1. (\$000): thousands of dollars. Nonmetro Kansas: Kansas total less Metropolitan Areas as defined by the Office of Management and Budget (OMB; released 3/6/2020). Per 1000: For nonmoney amounts, Per 1000=(county value / county population for the same year as the data) x 1000. \$ Per capita=(county value / county population for the same year as the data). Value= . indicates missing or suppressed data or value not calculated.

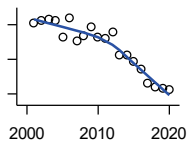
Employment

BEA EMPLOYMENT: WHOLESALE TRADE



U.S. Bureau of Economic Analysis,
Regional Economic Information System
(REIS)

Year	County	State of Kansas	Non Metro Kansas	County Rank	Per 1000 or \$ Per Capita
2001	114	65,698	.	62	.
2002	110	65,408	.	62	.
2003	99	63,504	.	63	.
2004	96	64,434	.	65	.
2005	67	64,587	.	71	.
2006	62	64,743	.	76	.
2007	47	65,993	.	76	.
2008	66	67,693	.	71	.
2009	79	65,954	.	71	.
2010	76	64,376	.	74	.
2011	75	64,712	.	76	.
2012	75	63,973	.	73	.
2013	81	64,999	.	67	.
2014	86	69,295	.	67	.
2015	89	68,444	.	69	.
2016	72	64,843	.	73	.
2017	96	65,014	.	63	.
2018	94	64,745	.	64	.
2019	88	63,324	.	65	.
2020	84	60,844	.	69	.



BEA EMPLOYMENT: RETAIL TRADE

U.S. Bureau of Economic Analysis,
Regional Economic Information System
(REIS)

Year	County	State of Kansas	Non Metro Kansas	County Rank	Per 1000 or \$ Per Capita
2001	202	198,069	.	78	.
2002	207	196,112	.	76	.
2003	208	194,545	64,173	77	.
2004	206	192,957	63,265	78	.
2005	183	191,656	62,506	81	.
2006	210	190,391	62,082	77	.
2007	176	190,643	61,716	82	.
2008	184	185,907	59,783	78	.
2009	196	181,262	58,714	76	.
2010	183	177,858	57,470	78	.
2011	180	180,548	57,734	77	.
2012	189	180,596	57,349	77	.
2013	157	183,245	57,556	82	.
2014	157	185,899	57,855	81	.
2015	147	188,421	58,516	83	.
2016	135	188,505	57,864	87	.
2017	115	186,633	56,715	96	.
2018	110	183,323	.	94	.
2019	109	177,240	53,427	94	.
2020	107	171,777	52,563	94	.

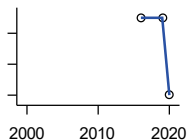
County: county value. Kansas: state value. County Rank: highest county value ranked #1. (\$000): thousands of dollars. Nonmetro Kansas: Kansas total less Metropolitan Areas as defined by the Office of Management and Budget (OMB; released 3/6/2020). Per 1000: For nonmoney amounts, Per 1000=(county value / county population for the same year as the data) x 1000. \$ Per capita=(county value / county population for the same year as the data). Value= . indicates missing or suppressed data or value not calculated.

Employment

**BEA EMPLOYMENT:
TRANSPORTATION AND
WAREHOUSING**

U.S. Bureau of Economic Analysis,
Regional Economic Information System
(REIS)

Year	County	State of Kansas	Non Metro Kansas	County Rank	Per 1000 or \$ Per Capita
2001	.	56,302	.	.	.
2002	.	55,319	.	.	.
2003	.	55,509	.	.	.
2004	.	55,479	.	.	.
2005	.	56,287	.	.	.
2006	.	57,506	.	.	.
2007	.	59,277	.	.	.
2008	.	58,725	.	.	.
2009	.	56,238	.	.	.
2010	.	55,179	.	.	.
2011	.	57,449	.	.	.
2012	.	59,756	.	.	.
2013	.	59,780	.	.	.
2014	.	60,565	.	.	.
2015	.	63,256	.	.	.
2016	.	65,705	.	.	.



BEA EMPLOYMENT: INFORMATION

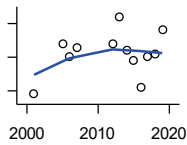
U.S. Bureau of Economic Analysis,
Regional Economic Information System
(REIS)

Year	County	State of Kansas	Non Metro Kansas	County Rank	Per 1000 or \$ Per Capita
2001	.	54,895	.	.	.
2002	.	50,728	.	.	.
2003	.	48,328	6,860	.	.
2004	.	45,617	.	.	.
2005	.	43,840	.	.	.
2006	.	43,925	.	.	.
2007	.	45,115	.	.	.
2008	.	42,958	.	.	.
2009	.	38,677	.	.	.
2010	.	33,432	.	.	.
2011	.	32,160	.	.	.
2012	.	31,829	.	.	.
2013	.	31,737	.	.	.
2014	.	32,316	.	.	.
2015	.	25,282	.	.	.
2016	45	24,998	.	42	.
2019	45	22,078	.	39	.
2020	44	20,810	.	40	.

County: county value. Kansas: state value. County Rank: highest county value ranked #1. (\$000): thousands of dollars. Nonmetro Kansas: Kansas total less Metropolitan Areas as defined by the Office of Management and Budget (OMB; released 3/6/2020). Per 1000: For nonmoney amounts, Per 1000=(county value / county population for the same year as the data) x 1000. \$ Per capita=(county value / county population for the same year as the data). Value= . indicates missing or suppressed data or value not calculated.

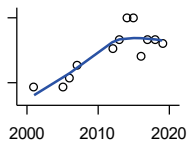
Employment

BEA EMPLOYMENT: FINANCE AND INSURANCE



U.S. Bureau of Economic Analysis,
Regional Economic Information System
(REIS)

Year	County	State of Kansas	Non Metro Kansas	County Rank	Per 1000 or \$ Per Capita
2001	59	76,118	.	73	.
2002	.	78,206	.	.	.
2003	.	78,441	.	.	.
2004	.	78,350	.	.	.
2005	74	78,952	.	60	.
2006	70	80,900	.	59	.
2007	73	86,094	.	61	.
2008	.	89,590	.	.	.
2009	.	93,573	.	.	.
2010	.	92,428	.	.	.
2011	.	99,495	.	.	.
2012	74	98,640	.	62	.
2013	82	99,998	.	63	.
2014	72	98,209	.	69	.
2015	69	100,534	.	67	.
2016	61	102,699	.	70	.
2017	70	101,563	.	70	.
2018	71	102,816	.	68	.
2019	78	100,276	.	68	.



BEA EMPLOYMENT: REAL ESTATE, RENTAL, AND LEASING

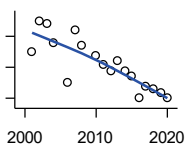
U.S. Bureau of Economic Analysis,
Regional Economic Information System
(REIS)

Year	County	State of Kansas	Non Metro Kansas	County Rank	Per 1000 or \$ Per Capita
2001	14	45,237	.	79	.
2002	.	44,970	.	.	.
2003	.	47,095	.	.	.
2004	.	50,181	.	.	.
2005	14	53,335	.	70	.
2006	16	55,342	.	69	.
2007	19	57,694	.	66	.
2008	.	57,933	.	.	.
2009	.	57,132	.	.	.
2010	.	59,578	.	.	.
2011	.	61,821	.	.	.
2012	23	60,432	.	63	.
2013	25	62,134	.	61	.
2014	30	64,705	.	63	.
2015	30	66,604	.	60	.
2016	21	68,395	.	70	.
2017	25	70,304	.	69	.
2018	25	72,631	.	68	.
2019	24	69,119	.	69	.

County: county value. Kansas: state value. County Rank: highest county value ranked #1. (\$000): thousands of dollars. Nonmetro Kansas: Kansas total less Metropolitan Areas as defined by the Office of Management and Budget (OMB; released 3/6/2020). Per 1000: For nonmoney amounts, Per 1000=(county value / county population for the same year as the data) x 1000. \$ Per capita=(county value / county population for the same year as the data). Value= . indicates missing or suppressed data or value not calculated.

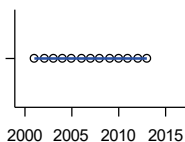
Employment

BEA EMPLOYMENT: PROFESSIONAL AND TECHNICAL SERVICES



U.S. Bureau of Economic Analysis, Regional Economic Information System (REIS)

Year	County	State of Kansas	Non Metro Kansas	County Rank	Per 1000 or \$ Per Capita
2001	40	81,396	.	70	.
2002	50	80,684	.	62	.
2003	49	80,311	.	59	.
2004	43	85,550	.	62	.
2005	.	85,003	.	.	.
2006	30	87,381	.	74	.
2007	47	92,717	.	68	.
2008	42	95,362	.	69	.
2009	.	93,232	.	.	.
2010	39	93,037	.	69	.
2011	36	93,237	.	74	.
2012	34	95,360	.	74	.
2013	37	100,795	.	75	.
2014	34	102,210	.	77	.
2015	32	105,625	.	78	.
2016	25	108,059	.	74	.
2017	29	109,041	.	75	.
2018	28	110,513	.	77	.
2019	27	109,637	.	74	.
2020	25	108,634	.	75	.



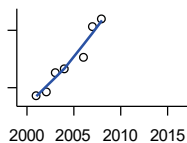
BEA EMPLOYMENT: MANAGEMENT OF COMPANIES AND ENTERPRISES

U.S. Bureau of Economic Analysis, Regional Economic Information System (REIS)

Year	County	State of Kansas	Non Metro Kansas	County Rank	Per 1000 or \$ Per Capita
2001	0	13,832	.	70	.
2002	0	12,576	.	69	.
2003	0	11,135	.	67	.
2004	0	10,614	.	67	.
2005	0	11,811	.	66	.
2006	0	13,061	.	66	.
2007	0	13,398	.	69	.
2008	0	15,234	.	72	.
2009	0	14,849	.	75	.
2010	0	16,579	.	75	.
2011	0	15,343	.	75	.
2012	0	15,075	.	82	.
2013	0	16,667	.	81	.
2014	.	20,441	.	.	.
2015	.	29,604	.	.	.
2016	.	27,824	.	.	.

County: county value. Kansas: state value. County Rank: highest county value ranked #1. (\$000): thousands of dollars. Nonmetro Kansas: Kansas total less Metropolitan Areas as defined by the Office of Management and Budget (OMB; released 3/6/2020). Per 1000: For nonmoney amounts, Per 1000=(county value / county population for the same year as the data) x 1000. \$ Per capita=(county value / county population for the same year as the data). Value= . indicates missing or suppressed data or value not calculated.

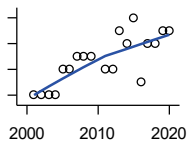
Employment



**BEA EMPLOYMENT:
ADMINISTRATIVE AND WASTE
SERVICES**

U.S. Bureau of Economic Analysis,
Regional Economic Information System
(REIS)

Year	County	State of Kansas	Non Metro Kansas	County Rank	Per 1000 or \$ Per Capita
2001	38	81,573	.	51	.
2002	39	82,992	.	49	.
2003	44	81,298	.	46	.
2004	45	85,721	.	49	.
2005	.	89,933	.	.	.
2006	48	93,688	.	51	.
2007	56	98,865	.	50	.
2008	58	97,440	.	48	.
2009	.	92,455	.	.	.
2010	.	93,675	.	.	.
2011	.	97,969	.	.	.
2012	.	100,490	.	.	.
2013	.	104,680	.	.	.
2014	.	107,218	18,836	.	.
2015	.	103,436	18,767	.	.
2016	.	103,233	18,428	.	.



**BEA EMPLOYMENT: EDUCATIONAL
SERVICES**

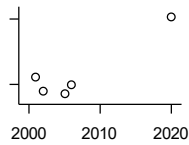
U.S. Bureau of Economic Analysis,
Regional Economic Information System
(REIS)

Year	County	State of Kansas	Non Metro Kansas	County Rank	Per 1000 or \$ Per Capita
2001	4	21,169	.	74	.
2002	4	22,173	.	75	.
2003	4	22,651	.	77	.
2004	4	21,601	.	80	.
2005	6	22,177	.	76	.
2006	6	22,438	.	74	.
2007	7	23,647	.	59	.
2008	7	24,653	.	59	.
2009	7	25,120	.	46	.
2010	.	26,071	.	.	.
2011	6	26,080	.	60	.
2012	6	26,625	.	56	.
2013	9	27,508	.	46	.
2014	8	28,708	.	65	.
2015	10	28,794	.	47	.
2016	5	27,996	.	65	.
2017	8	28,459	.	53	.
2018	8	28,560	.	56	.
2019	9	29,586	.	58	.
2020	9	27,508	.	58	.

County: county value. Kansas: state value. County Rank: highest county value ranked #1. (\$000): thousands of dollars. Nonmetro Kansas: Kansas total less Metropolitan Areas as defined by the Office of Management and Budget (OMB; released 3/6/2020). Per 1000: For nonmoney amounts, Per 1000=(county value / county population for the same year as the data) x 1000. \$ Per capita=(county value / county population for the same year as the data). Value= . indicates missing or suppressed data or value not calculated.

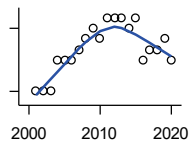
Employment

BEA EMPLOYMENT: HEALTH CARE AND SOCIAL ASSISTANCE



U.S. Bureau of Economic Analysis,
Regional Economic Information System
(REIS)

Year	County	State of Kansas	Non Metro Kansas	County Rank	Per 1000 or \$ Per Capita
2001	47	165,415	.	56	.
2002	34	168,198	.	61	.
2003	.	169,654	.	.	.
2004	.	172,796	.	.	.
2005	31	173,949	.	63	.
2006	40	176,919	.	58	.
2007	.	182,160	.	.	.
2008	.	186,051	.	.	.
2009	.	188,499	.	.	.
2010	.	188,383	.	.	.
2011	.	190,736	.	.	.
2012	.	192,991	.	.	.
2013	.	193,687	.	.	.
2014	.	194,632	.	.	.
2015	.	199,724	.	.	.
2016	.	201,830	.	.	.
2020	102	204,942	.	49	.



BEA EMPLOYMENT: ARTS, ENTERTAINMENT, AND RECREATION

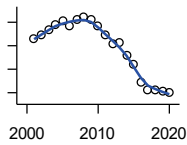
U.S. Bureau of Economic Analysis,
Regional Economic Information System
(REIS)

Year	County	State of Kansas	Non Metro Kansas	County Rank	Per 1000 or \$ Per Capita
2001	8	25,012	.	67	.
2002	8	25,668	.	67	.
2003	8	24,116	.	67	.
2004	11	25,355	.	66	.
2005	11	26,067	.	65	.
2006	11	26,505	.	68	.
2007	12	27,489	.	60	.
2008	13	27,501	.	62	.
2009	14	27,203	.	58	.
2010	13	27,479	.	61	.
2011	15	28,487	.	57	.
2012	15	30,729	.	58	.
2013	15	31,068	.	51	.
2014	14	32,154	.	56	.
2015	15	31,169	.	50	.
2016	11	32,373	.	60	.
2017	12	33,213	.	55	.
2018	12	33,837	.	56	.
2019	13	33,082	.	54	.
2020	11	26,644	.	50	.

County: county value. Kansas: state value. County Rank: highest county value ranked #1. (\$000): thousands of dollars. Nonmetro Kansas: Kansas total less Metropolitan Areas as defined by the Office of Management and Budget (OMB; released 3/6/2020). Per 1000: For nonmoney amounts, Per 1000=(county value / county population for the same year as the data) x 1000. \$ Per capita=(county value / county population for the same year as the data). Value= . indicates missing or suppressed data or value not calculated.

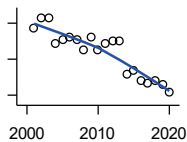
Employment

BEA EMPLOYMENT: GOVERNMENT AND GOVERNMENT ENTERPRISES



U.S. Bureau of Economic Analysis, Regional Economic Information System (REIS)

Year	County	State of Kansas	Non Metro Kansas	County Rank	Per 1000 or \$ Per Capita
2001	628	282,293	102,993	70	.
2002	644	281,427	103,581	69	.
2003	667	282,459	103,389	68	.
2004	689	283,877	103,946	67	.
2005	708	282,798	103,194	63	.
2006	687	288,372	104,103	66	.
2007	710	294,413	104,598	64	.
2008	723	298,580	104,718	62	.
2009	713	300,422	104,081	63	.
2010	684	303,875	103,382	69	.
2011	646	299,952	101,535	69	.
2012	606	298,068	101,180	70	.
2013	616	297,689	101,232	70	.
2014	560	296,956	100,634	72	.
2015	519	295,799	99,719	75	.
2016	445	291,536	98,520	80	.
2017	410	295,748	99,542	81	.
2018	413	298,105	99,499	83	.
2019	404	302,017	100,227	83	.
2020	399	292,583	96,477	83	.



BEA EMPLOYMENT: ACCOMMODATION AND FOOD SERVICES

U.S. Bureau of Economic Analysis, Regional Economic Information System (REIS)

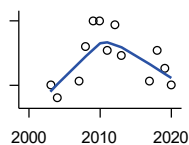
Year	County	State of Kansas	Non Metro Kansas	County Rank	Per 1000 or \$ Per Capita
2001	87	103,353	.	59	.
2002	93	103,692	.	55	.
2003	93	105,138	.	53	.
2004	79	106,694	.	57	.
2005	81	107,303	.	57	.
2006	82	109,888	.	57	.
2007	81	110,863	.	53	.
2008	75	111,092	.	57	.
2009	82	109,353	.	58	.
2010	75	108,628	.	55	.
2011	79	110,514	.	54	.
2012	80	112,574	.	53	.
2013	80	114,102	.	50	.
2014	62	115,768	.	56	.
2015	64	118,503	.	53	.
2016	58	119,764	.	53	.
2017	57	121,181	.	51	.
2018	58	121,900	.	52	.
2019	56	122,819	.	56	.
2020	52	106,561	.	55	.

County: county value. Kansas: state value. County Rank: highest county value ranked #1. (\$000): thousands of dollars. Nonmetro Kansas: Kansas total less Metropolitan Areas as defined by the Office of Management and Budget (OMB; released 3/6/2020). Per 1000: For nonmoney amounts, Per 1000=(county value / county population for the same year as the data) x 1000. \$ Per capita=(county value / county population for the same year as the data). Value= . indicates missing or suppressed data or value not calculated.

Employment

BEA EMPLOYMENT: OTHER SERVICES, EXCEPT PUBLIC ADMINISTRATION

U.S. Bureau of Economic Analysis, Regional Economic Information System (REIS)

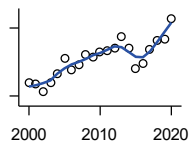


Year	County	State of Kansas	Non Metro Kansas	County Rank	Per 1000 or \$ Per Capita
2001	.	92,176	.	.	.
2002	.	95,350	.	.	.
2003	90	95,821	32,629	89	.
2004	87	95,610	.	86	.
2005	.	95,930	32,555	.	.
2006	.	96,413	.	.	.
2007	91	98,444	.	82	.
2008	99	96,705	.	77	.
2009	105	95,534	.	72	.
2010	105	93,302	.	72	.
2011	98	94,865	.	74	.
2012	104	94,977	.	70	.
2013	97	95,471	.	73	.
2014	.	97,806	.	.	.
2015	.	98,041	.	.	.
2016	.	97,219	.	.	.
2017	91	96,568	.	72	.
2018	98	98,645	.	72	.
2019	94	98,638	.	69	.
2020	90	92,245	.	69	.

Income

BEA PER CAPITA PERSONAL INCOME (\$)

U.S. Bureau of Economic Analysis, Regional Economic Information System (REIS)

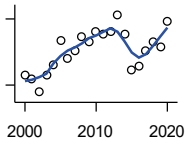


Year	County	State of Kansas	Non Metro Kansas	County Rank	Per 1000 or \$ Per Capita
2000	25,719	28,253	23,116	21	.
2001	25,335	29,112	24,576	48	.
2002	21,709	29,248	24,314	94	.
2003	26,026	30,074	26,017	64	.
2004	29,727	30,843	26,583	21	.
2005	36,395	32,545	28,356	6	.
2006	31,628	35,690	29,782	35	.
2007	34,034	38,057	32,034	42	.
2008	38,342	41,257	35,211	43	.
2009	37,005	39,431	33,876	36	.
2010	39,591	39,960	35,795	39	.
2011	39,731	43,015	39,041	57	.
2012	40,991	45,294	39,660	53	.
2013	46,151	46,174	41,747	50	.
2014	41,386	47,013	41,042	58	.
2015	31,815	47,332	40,638	105	.
2016	34,579	47,326	40,797	100	.
2017	40,530	48,756	41,314	63	.
2018	44,732	50,811	43,283	51	.
2019	44,985	52,820	44,491	52	.
2020	54,151	55,677	48,415	37	.

County: county value. Kansas: state value. County Rank: highest county value ranked #1. (\$000): thousands of dollars. Nonmetro Kansas: Kansas total less Metropolitan Areas as defined by the Office of Management and Budget (OMB; released 3/6/2020). Per 1000: For nonmoney amounts, Per 1000=(county value / county population for the same year as the data) x 1000. \$ Per capita=(county value / county population for the same year as the data). Value= . indicates missing or suppressed data or value not calculated.

Income

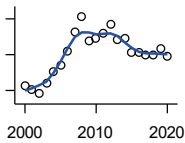
**SOURCES OF PERSONAL INCOME:
TOTAL PERSONAL INCOME (\$000)**



U.S. Bureau of Economic Analysis,
Regional Economic Information System
(REIS)

Year	County	State of Kansas	Non Metro Kansas	County Rank	Per 1000 or \$ Per Capita
2000	89,553	76,105,125	22,273,838	79	25,615.8
2001	85,961	78,664,651	23,411,174	87	25,334.8
2002	73,528	79,365,190	23,000,314	87	21,708.9
2003	88,565	81,890,340	24,494,191	85	26,025.6
2004	98,873	84,335,940	24,924,467	80	29,727.3
2005	120,105	89,346,228	26,452,291	76	36,395.5
2006	103,898	98,610,188	27,661,596	81	31,628.0
2007	110,816	105,943,199	29,715,946	83	34,034.4
2008	123,731	115,852,478	32,614,565	84	38,342.4
2009	119,377	111,697,350	31,394,702	83	37,004.6
2010	128,315	114,239,828	33,291,419	84	39,689.1
2011	126,186	123,558,772	36,221,488	93	39,731.1
2012	128,137	130,948,127	36,696,759	93	40,977.6
2013	143,715	133,979,908	38,513,959	92	46,121.6
2014	125,773	136,878,718	37,680,598	93	41,359.1
2015	93,855	138,336,768	37,081,851	101	31,782.9
2016	96,889	138,533,890	36,930,885	100	34,727.2
2017	111,174	142,729,689	37,104,963	94	40,471.1
2018	119,076	148,955,739	38,589,364	95	44,216.9
2019	114,083	154,961,001	39,424,148	96	44,098.6
2020	137,435	163,462,179	42,618,591	93	50,883.0

**SOURCES OF PERSONAL INCOME:
WAGES AND SALARIES (\$000)**



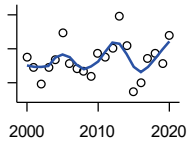
U.S. Bureau of Economic Analysis,
Regional Economic Information System
(REIS)

Year	County	State of Kansas	Non Metro Kansas	County Rank	Per 1000 or \$ Per Capita
2000	36,370	41,766,878	10,254,250	71	10,403.3
2001	35,304	43,269,734	10,518,206	72	10,405.0
2002	34,042	43,875,159	10,696,876	71	10,050.8
2003	37,080	44,488,560	10,894,971	71	10,896.3
2004	40,261	46,702,068	11,333,617	71	12,104.9
2005	42,213	48,537,956	11,614,130	71	12,791.8
2006	45,949	52,083,584	12,299,340	71	13,987.5
2007	51,395	55,442,368	13,093,908	70	15,784.7
2008	55,655	57,623,385	13,647,143	71	17,246.7
2009	48,876	55,605,578	13,199,674	70	15,150.7
2010	49,409	56,089,711	13,345,291	71	15,282.7
2011	50,853	58,104,706	13,856,458	71	16,011.6
2012	53,632	60,616,457	14,473,599	71	17,151.3
2013	49,183	61,872,023	14,781,792	73	15,784.0
2014	49,468	64,457,652	15,385,500	74	16,267.0
2015	45,555	66,729,598	15,454,485	80	15,426.7
2016	45,692	67,253,399	15,422,058	79	16,377.1
2017	45,022	68,830,861	15,731,853	79	16,389.5
2018	44,872	71,580,544	16,311,725	83	16,662.5
2019	46,574	74,404,771	16,882,299	83	18,003.1
2020	44,369	75,798,310	17,251,300	86	16,426.9

County: county value. Kansas: state value. County Rank: highest county value ranked #1. (\$000): thousands of dollars. Nonmetro Kansas: Kansas total less Metropolitan Areas as defined by the Office of Management and Budget (OMB; released 3/6/2020). Per 1000: For nonmoney amounts, Per 1000=(county value / county population for the same year as the data) x 1000. \$ Per capita=(county value / county population for the same year as the data). Value= . indicates missing or suppressed data or value not calculated.

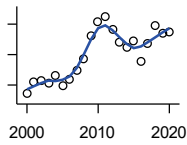
Income

**SOURCES OF PERSONAL INCOME:
PROPRIETORS-FARM (\$000)**



U.S. Bureau of Economic Analysis,
Regional Economic Information System
(REIS)

Year	County	State of Kansas	Non Metro Kansas	County Rank	Per 1000 or \$ Per Capita
2000	14,964	668,539	673,707	14	4,280.3
2001	9,255	779,473	769,336	32	2,727.7
2002	-426	145,064	187,033	62	-125.8
2003	9,305	1,281,076	1,195,298	64	2,734.4
2004	13,467	1,149,425	938,524	31	4,049.0
2005	29,324	1,609,604	1,469,139	15	8,886.1
2006	11,509	766,047	663,735	23	3,503.5
2007	8,627	1,131,607	1,040,350	65	2,649.6
2008	6,787	1,582,092	1,404,900	78	2,103.2
2009	3,697	1,585,995	1,390,349	87	1,146.0
2010	17,200	2,149,482	2,029,067	51	5,320.1
2011	15,243	3,188,519	2,989,880	65	4,799.4
2012	20,279	2,519,555	2,296,875	49	6,485.1
2013	39,101	4,499,190	4,158,419	47	12,548.5
2014	21,678	2,231,181	2,157,992	34	7,128.6
2015	-5,584	1,300,733	1,294,370	102	-1,891.0
2016	105	1,577,060	1,564,511	73	37.6
2017	14,607	838,480	838,290	24	5,317.4
2018	17,613	1,050,662	971,690	20	6,540.3
2019	11,053	998,038	878,247	39	4,272.5
2020	28,107	2,151,349	1,887,881	23	10,406.1



**SOURCES OF PERSONAL INCOME:
PROPRIETORS-NONFARM (\$000)**

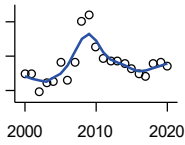
U.S. Bureau of Economic Analysis,
Regional Economic Information System
(REIS)

Year	County	State of Kansas	Non Metro Kansas	County Rank	Per 1000 or \$ Per Capita
2000	4,834	4,580,476	1,493,470	93	1,382.7
2001	6,477	4,510,530	1,855,621	91	1,908.9
2002	6,645	5,036,100	1,966,784	91	1,961.9
2003	6,197	4,719,377	1,916,735	90	1,821.0
2004	7,254	4,003,922	2,073,898	87	2,181.0
2005	5,873	4,455,294	2,200,971	95	1,779.7
2006	6,778	7,343,524	2,694,895	95	2,063.3
2007	7,865	7,280,197	2,436,574	91	2,415.5
2008	9,419	9,255,953	2,971,923	82	2,918.8
2009	12,540	9,323,551	2,858,848	75	3,887.2
2010	14,402	9,658,261	3,498,040	78	4,454.7
2011	15,004	12,196,566	4,186,007	81	4,724.2
2012	13,333	15,773,140	4,446,004	89	4,263.8
2013	11,677	16,441,660	4,492,127	89	3,747.4
2014	11,011	15,954,254	4,455,081	95	3,620.8
2015	11,736	15,536,116	4,386,172	93	3,974.3
2016	9,123	14,075,310	3,783,829	98	3,269.9
2017	11,508	15,371,957	3,908,254	92	4,189.3
2018	13,864	15,716,877	4,238,775	89	5,148.2
2019	12,732	16,705,488	3,921,051	89	4,921.5
2020	12,901	16,718,952	3,823,329	85	4,776.4

County: county value. Kansas: state value. County Rank: highest county value ranked #1. (\$000): thousands of dollars. Nonmetro Kansas: Kansas total less Metropolitan Areas as defined by the Office of Management and Budget (OMB; released 3/6/2020). Per 1000: For nonmoney amounts, Per 1000=(county value / county population for the same year as the data) x 1000. \$ Per capita=(county value / county population for the same year as the data). Value= . indicates missing or suppressed data or value not calculated.

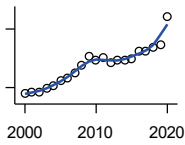
Income

**SOURCES OF PERSONAL INCOME:
DIVIDENDS,INTEREST,RENT(\$000)**



U.S. Bureau of Economic Analysis,
Regional Economic Information System
(REIS)

Year	County	State of Kansas	Non Metro Kansas	County Rank	Per 1000 or \$ Per Capita
2000	19,884	15,916,201	4,736,921	87	5,687.6
2001	19,912	15,770,830	4,699,417	88	5,868.6
2002	17,250	15,111,563	4,316,887	91	5,093.0
2003	18,645	15,370,764	4,360,311	82	5,479.0
2004	18,850	15,820,469	4,251,925	82	5,667.5
2005	21,696	17,147,069	4,485,387	80	6,574.5
2006	18,960	20,117,848	4,945,184	82	5,771.7
2007	21,523	22,269,186	5,526,219	83	6,610.3
2008	27,548	24,972,485	6,180,979	81	8,536.7
2009	28,513	21,453,879	5,308,474	77	8,838.5
2010	23,840	20,861,351	5,414,285	79	7,374.0
2011	22,094	23,387,567	5,781,075	88	6,956.5
2012	21,712	25,689,368	6,389,505	95	6,943.4
2013	21,827	24,832,212	5,984,811	90	7,004.8
2014	21,337	27,412,684	6,403,356	95	7,016.4
2015	20,617	27,244,414	6,423,685	94	6,981.7
2016	19,945	27,293,441	6,389,161	94	7,148.7
2017	19,557	28,385,472	6,700,156	98	7,119.4
2018	21,339	29,953,419	6,772,504	96	7,923.9
2019	21,539	30,820,276	6,957,987	96	8,325.9
2020	20,980	30,283,520	6,844,745	96	7,767.5



**SOURCES OF PERSONAL INCOME:
TRANSFER PAYMENTS (\$000)**

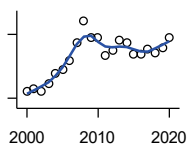
U.S. Bureau of Economic Analysis,
Regional Economic Information System
(REIS)

Year	County	State of Kansas	Non Metro Kansas	County Rank	Per 1000 or \$ Per Capita
2000	13,507	9,650,835	4,036,781	93	3,863.6
2001	13,716	10,549,124	4,355,457	93	4,042.4
2002	13,818	11,208,997	4,553,978	94	4,079.7
2003	14,718	11,709,049	4,702,911	93	4,325.0
2004	15,403	12,040,452	4,802,536	92	4,631.1
2005	16,821	12,696,735	5,059,314	92	5,097.3
2006	17,430	13,642,787	5,455,207	94	5,305.9
2007	18,727	14,686,821	5,775,024	93	5,751.5
2008	20,780	16,552,460	6,322,722	91	6,439.4
2009	22,887	18,025,603	6,790,962	90	7,094.5
2010	22,020	19,189,749	7,089,258	93	6,811.0
2011	22,553	19,625,770	7,255,825	91	7,101.1
2012	21,268	19,354,458	7,148,177	94	6,801.4
2013	22,021	19,639,358	7,185,636	92	7,067.1
2014	22,178	20,380,970	7,399,809	93	7,293.0
2015	22,302	21,116,856	7,623,577	93	7,552.3
2016	24,376	21,884,629	7,886,000	93	8,736.9
2017	24,340	22,559,744	8,062,517	93	8,860.6
2018	25,192	23,628,033	8,393,617	93	9,354.6
2019	25,931	25,050,174	8,845,371	93	10,023.6
2020	33,201	32,319,421	11,074,190	93	12,292.1

County: county value. Kansas: state value. County Rank: highest county value ranked #1. (\$000): thousands of dollars. Nonmetro Kansas: Kansas total less Metropolitan Areas as defined by the Office of Management and Budget (OMB; released 3/6/2020). Per 1000: For nonmoney amounts, Per 1000=(county value / county population for the same year as the data) x 1000. \$ Per capita=(county value / county population for the same year as the data). Value= . indicates missing or suppressed data or value not calculated.

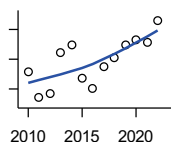
Income

**SOURCES OF PERSONAL INCOME:
LESS SOCIAL INSURANCE (\$000)**



U.S. Bureau of Economic Analysis,
Regional Economic Information System
(REIS)

Year	County	State of Kansas	Non Metro Kansas	County Rank	Per 1000 or \$ Per Capita
2000	5,295	6,655,813	1,663,044	76	1,514.6
2001	5,430	6,869,934	1,740,915	78	1,600.4
2002	5,294	7,008,361	1,778,636	79	1,563.0
2003	5,689	7,172,781	1,821,858	78	1,671.8
2004	6,139	7,556,560	1,904,014	75	1,845.8
2005	6,332	7,911,241	1,986,907	76	1,918.8
2006	6,754	8,406,937	2,090,313	75	2,056.0
2007	7,583	8,806,941	2,180,587	74	2,328.9
2008	8,636	9,207,010	2,299,399	73	2,676.2
2009	7,838	9,002,859	2,248,703	75	2,429.6
2010	7,848	9,235,760	2,321,191	77	2,427.5
2011	6,993	8,515,986	2,139,991	79	2,201.8
2012	7,234	8,816,128	2,195,919	78	2,313.4
2013	7,706	10,225,399	2,540,439	81	2,473.0
2014	7,617	10,609,601	2,635,009	84	2,504.8
2015	7,060	11,028,204	2,663,038	88	2,390.8
2016	7,073	10,915,915	2,604,579	87	2,535.1
2017	7,327	11,224,218	2,669,954	83	2,667.3
2018	7,131	11,749,229	2,797,106	86	2,648.0
2019	7,389	12,245,451	2,889,336	88	2,856.2
2020	7,839	12,715,152	3,027,656	88	2,902.3



HUD MEDIAN FAMILY INCOME

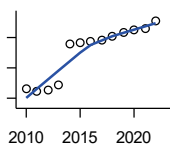
U.S. Department of Housing and Urban
Development (HUD)

Year	County	State of Kansas	Non Metro Kansas	County Rank	Per 1000 or \$ Per Capita
2010	55,300	63,100	.	38	.
2011	51,000	64,300	.	72	.
2012	51,700	65,200	.	72	.
2013	58,600	64,800	.	47	.
2014	60,000	64,400	.	37	.
2015	54,400	66,300	.	79	.
2016	52,600	66,700	.	88	.
2017	56,300	68,500	.	78	.
2018	57,700	73,100	.	79	.
2019	59,900	75,200	.	79	.
2020	60,800	76,500	.	82	.
2021	60,300	77,400	.	85	.
2022	64,000	87,800	.	92	.

County: county value. Kansas: state value. County Rank: highest county value ranked #1. (\$000): thousands of dollars. Nonmetro Kansas: Kansas total less Metropolitan Areas as defined by the Office of Management and Budget (OMB; released 3/6/2020). Per 1000: For nonmoney amounts, Per 1000=(county value / county population for the same year as the data) x 1000. \$ Per capita=(county value / county population for the same year as the data). Value= . indicates missing or suppressed data or value not calculated.

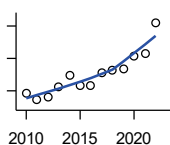
Income

HUD 30% LOW-TO-MEDIUM INCOME (LMI) LIMIT - 4 PERSONS



U.S. Department of Housing and Urban Development (HUD)

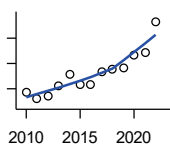
Year	County	State of Kansas	Non Metro Kansas	County Rank	Per 1000 or \$ Per Capita
2010	16,600	.	.	38	.
2011	16,100	.	.	105	.
2012	16,300	.	.	105	.
2013	17,150	.	.	54	.
2014	23,850	.	.	105	.
2015	24,250	.	.	105	.
2016	24,300	.	.	105	.
2017	24,600	.	.	105	.
2018	25,100	21,950	.	105	.
2019	25,750	22,550	.	105	.
2020	26,200	22,950	.	105	.
2021	26,500	23,200	.	105	.
2022	27,750	25,950	.	105	.



HUD 50% LOW-TO-MEDIUM INCOME (LMI) LIMIT - 4 PERSONS

U.S. Department of Housing and Urban Development (HUD)

Year	County	State of Kansas	Non Metro Kansas	County Rank	Per 1000 or \$ Per Capita
2010	27,650	.	.	38	.
2011	26,850	.	.	105	.
2012	27,200	.	.	105	.
2013	28,550	.	.	54	.
2014	29,950	.	.	35	.
2015	28,700	.	.	105	.
2016	28,650	.	.	105	.
2017	30,150	.	.	105	.
2018	30,550	36,550	.	105	.
2019	30,750	37,600	.	105	.
2020	32,300	38,250	.	104	.
2021	32,550	38,700	.	105	.
2022	36,400	43,300	.	105	.



HUD 80% LOW-TO-MEDIUM INCOME (LMI) LIMIT - 4 PERSONS

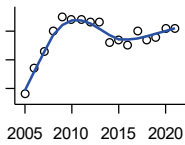
U.S. Department of Housing and Urban Development (HUD)

Year	County	State of Kansas	Non Metro Kansas	County Rank	Per 1000 or \$ Per Capita
2010	44,250	.	.	38	.
2011	42,950	.	.	105	.
2012	43,500	.	.	105	.
2013	45,650	.	.	54	.
2014	47,900	.	.	35	.
2015	45,900	.	.	105	.
2016	45,850	.	.	105	.
2017	48,250	.	.	105	.
2018	48,900	58,500	.	105	.
2019	49,200	60,150	.	105	.
2020	51,700	61,200	.	104	.
2021	52,100	61,900	.	105	.
2022	58,250	69,250	.	105	.

County: county value. Kansas: state value. County Rank: highest county value ranked #1. (\$000): thousands of dollars. Nonmetro Kansas: Kansas total less Metropolitan Areas as defined by the Office of Management and Budget (OMB; released 3/6/2020). Per 1000: For nonmoney amounts, Per 1000=(county value / county population for the same year as the data) x 1000. \$ Per capita=(county value / county population for the same year as the data). Value= . indicates missing or suppressed data or value not calculated.

Banking

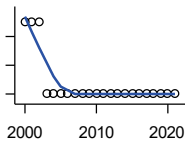
BANK DEPOSITS (1984-2004 in thousands; 2005- in millions)



Federal Deposit Insurance Corporation, Data Book, Operating Banks and Branches

Year	County	State of Kansas	Non Metro Kansas	County Rank	Per 1000 or \$ Per Capita
2005	73	48,304	17,000	88	22.1
2006	82	50,668	17,586	82	25.0
2007	88	54,057	18,517	83	27.0
2008	95	57,869	19,628	82	29.4
2009	100	57,763	20,031	82	31.0
2010	99	60,031	20,678	83	30.6
2011	99	61,094	21,347	86	31.2
2012	98	62,910	22,481	89	31.3
2013	98	64,547	22,795	90	31.5
2014	91	66,538	23,338	94	29.9
2015	92	68,160	23,367	93	31.2
2016	90	70,381	23,420	92	32.3
2017	95	73,329	23,928	91	34.6
2018	92	74,623	24,100	93	34.2
2019	93	76,436	24,488	92	35.9
2020	96	88,563	27,547	94	35.5
2021	96	97,055	30,122	95	35.7

NUMBER OF BANKS



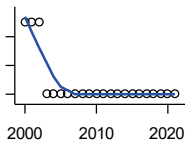
Federal Deposit Insurance Corporation, Data Book, Operating Banks and Branches

Year	County	State of Kansas	Non Metro Kansas	County Rank	Per 1000 or \$ Per Capita
2000	3	410	145	92	.
2001	3	410	136	93	.
2002	3	404	129	92	.
2003	2	397	121	102	.
2004	2	394	112	102	.
2005	2	388	101	102	.
2006	2	385	94	102	.
2007	2	382	91	102	.
2008	2	378	82	102	.
2009	2	374	79	102	.
2010	2	367	70	102	.
2011	2	359	61	102	.
2012	2	348	57	102	.
2013	2	332	45	101	.
2014	2	329	41	101	.
2015	2	320	31	101	.
2016	2	314	24	101	.
2017	2	301	13	102	.
2018	2	289	7	102	.
2019	2	279	3	102	.
2020	2	271	-1	102	.
2021	2	270	-6	102	.

County: county value. Kansas: state value. County Rank: highest county value ranked #1. (\$000): thousands of dollars. Nonmetro Kansas: Kansas total less Metropolitan Areas as defined by the Office of Management and Budget (OMB; released 3/6/2020). Per 1000: For nonmoney amounts, Per 1000=(county value / county population for the same year as the data) x 1000. \$ Per capita=(county value / county population for the same year as the data). Value= . indicates missing or suppressed data or value not calculated.

Banking

NUMBER OF BANKING OFFICES

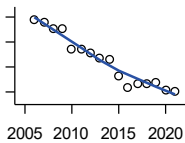


Federal Deposit Insurance Corporation, Data Book, Operating Banks and Branches

Year	County	State of Kansas	Non Metro Kansas	County Rank	Per 1000 or \$ Per Capita
2000	4	1,398	703	85	.
2001	4	1,424	708	86	.
2002	4	1,447	704	86	.
2003	3	1,461	708	98	.
2004	3	1,485	708	96	.
2005	3	1,505	711	97	.
2006	3	1,518	711	97	.
2007	3	1,543	717	97	.
2008	3	1,556	717	97	.
2009	3	1,569	716	97	.
2010	3	1,561	710	96	.
2011	3	1,559	707	97	.
2012	3	1,533	702	97	.
2013	3	1,518	696	97	.
2014	3	1,491	685	97	.
2015	3	1,472	675	97	.
2016	3	1,465	668	95	.
2017	3	1,452	666	95	.
2018	3	1,439	660	95	.
2019	3	1,439	663	95	.
2020	3	1,416	653	95	.
2021	3	1,392	641	95	.

Government

TANGIBLE ASSESSED VALUATION (KDoR, million\$; 2006-)



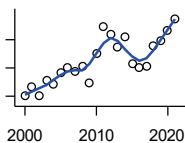
Kansas Department of Revenue, Division of Property Valuation, Statistical Report of Property Assessment and Taxation

Year	County	State of Kansas	Non Metro Kansas	County Rank	Per 1000 or \$ Per Capita
2006	195.1	28,964.3	10,316.9	30	59.4
2007	188.5	30,086.9	10,335.9	30	57.9
2008	176.9	31,000.3	10,856.9	32	54.8
2009	177.2	30,312.3	10,555.6	31	54.9
2010	135.1	29,450.2	10,158.7	36	41.8
2011	134.9	29,963.6	10,572.3	37	42.5
2012	126.8	30,382.9	10,876.2	40	40.6
2013	118.0	30,850.2	11,044.4	47	37.9
2014	115.7	31,783.0	11,388.9	49	38.0
2015	82.1	32,335.7	11,037.8	66	27.8
2016	59.7	33,156.3	10,889.6	78	21.4
2017	67.6	34,754.5	11,439.0	76	24.6
2018	66.1	36,566.1	11,907.1	80	24.6
2019	70.0	38,255.2	12,336.7	82	27.1
2020	54.0	39,333.9	12,219.3	92	20.0
2021	51.9	40,812.0	12,601.5	92	19.3

County: county value. Kansas: state value. County Rank: highest county value ranked #1. (\$000): thousands of dollars. Nonmetro Kansas: Kansas total less Metropolitan Areas as defined by the Office of Management and Budget (OMB; released 3/6/2020). Per 1000: For nonmoney amounts, Per 1000=(county value / county population for the same year as the data) x 1000. \$ Per capita=(county value / county population for the same year as the data). Value= . indicates missing or suppressed data or value not calculated.

Government

SALES TAX COLLECTIONS (\$)

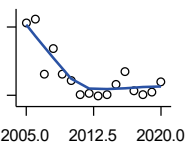


Kansas Department of Revenue. Use tax collections included beginning in calendar year 2018.

Year	County	State of Kansas	Non Metro Kansas	County Rank	Per 1000 or \$ Per Capita
2000	1,260,873	1,475,831,808	432,761,608	75	360,661.6
2001	1,412,668	1,481,026,688	426,316,284	70	416,347.8
2002	1,267,805	1,561,316,864	443,986,950	73	374,315.0
2003	1,528,015	1,626,782,976	461,658,700	70	449,020.0
2004	1,469,509	1,691,899,008	480,309,725	73	441,824.7
2005	1,655,308	1,744,980,352	497,494,867	71	501,608.5
2006	1,759,826	1,851,694,720	532,233,047	71	535,715.7
2007	1,691,646	1,917,546,752	559,319,583	78	519,547.3
2008	1,788,044	1,990,655,744	589,725,773	80	554,088.6
2009	1,494,153	1,866,223,078	548,627,132	82	463,159.6
2010	2,001,467	2,075,193,413	617,409,982	78	619,074.2
2011	2,490,444	2,347,193,367	702,671,534	75	784,144.8
2012	2,336,190	2,456,292,294	740,196,106	80	747,102.6
2013	2,118,739	2,489,204,048	746,226,565	82	679,954.6
2014	2,290,535	2,539,886,774	760,474,019	82	753,217.6
2015	1,829,245	2,642,374,740	750,090,163	83	619,452.9
2016	1,759,908	2,732,611,350	749,030,133	85	630,791.4
2017	1,790,805	2,726,104,521	744,246,491	83	651,912.9
2018	2,145,288	3,277,299,125	893,564,480	86	796,616.3
2019	2,226,750	3,395,631,405	939,607,762	87	860,746.0
2020	2,424,688	3,489,306,791	984,218,931	84	897,700.1
2021	2,619,929	3,981,293,227	1,098,391,422	87	973,227.7

Crime

CRIME INDEX OFFENSES



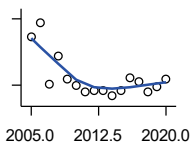
Kansas Bureau of Investigation, Note: Data are aggregated from reports by individual police departments and subject to be incomplete.

Year	County	State of Kansas	Non Metro Kansas	County Rank	Per 1000 or \$ Per Capita
2005	104	111,856	31,630	58	31.5
2006	107	110,032	.	56	32.6
2007	59	111,035	29,921	70	18.1
2008	81	93,996	27,342	62	25.1
2009	59	98,757	27,620	69	18.3
2010	53	98,354	26,909	69	16.4
2011	41	96,638	25,765	76	12.9
2012	42	98,914	26,963	75	13.4
2013	39	93,054	24,488	76	12.5
2014	41	86,323	23,341	78	13.5
2015	49	88,590	21,580	69	16.6
2016	61	90,589	21,565	67	21.9
2017	44	93,091	22,622	74	16.0
2018	41	92,062	20,325	71	15.2
2019	43	87,008	18,547	68	16.6
2020	52	87,346	17,762	65	19.3

County: county value. Kansas: state value. County Rank: highest county value ranked #1. (\$000): thousands of dollars. Nonmetro Kansas: Kansas total less Metropolitan Areas as defined by the Office of Management and Budget (OMB; released 3/6/2020). Per 1000: For nonmoney amounts, Per 1000=(county value / county population for the same year as the data) x 1000. \$ Per capita=(county value / county population for the same year as the data). Value= . indicates missing or suppressed data or value not calculated.

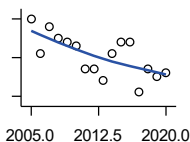
Crime

PROPERTY CRIMES



Kansas Bureau of Investigation, Note: Data are aggregated from reports by individual police departments and subject to be incomplete.

Year	County	State of Kansas	Non Metro Kansas	County Rank	Per 1000 or \$ Per Capita
2005	84	101,414	29,042	63	25.5
2006	96	99,110	.	56	29.2
2007	41	99,632	26,856	76	12.6
2008	66	83,964	24,367	67	20.5
2009	45	87,658	24,825	70	13.9
2010	40	87,926	24,133	71	12.4
2011	34	86,547	23,274	77	10.7
2012	35	88,707	24,220	78	11.2
2013	35	83,551	22,028	75	11.2
2014	30	76,794	20,858	81	9.9
2015	35	77,997	19,138	72	11.9
2016	47	79,549	19,207	68	16.8
2017	43	81,349	19,981	72	15.7
2018	34	79,695	17,769	72	12.6
2019	38	74,314	15,892	64	14.7
2020	46	73,450	15,100	64	17.0



VIOLENT CRIMES

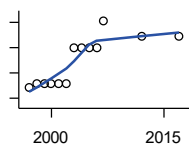
Kansas Bureau of Investigation, Note: Data are aggregated from reports by individual police departments and subject to be incomplete.

Year	County	State of Kansas	Non Metro Kansas	County Rank	Per 1000 or \$ Per Capita
2005	20	10,442	2,588	44	6.1
2006	11	10,922	.	57	3.3
2007	18	11,403	3,065	50	5.5
2008	15	10,032	2,975	55	4.6
2009	14	11,099	2,795	53	4.3
2010	13	10,428	2,776	52	4.0
2011	7	10,091	2,491	67	2.2
2012	7	10,207	2,743	70	2.2
2013	4	9,503	2,460	83	1.3
2014	11	9,529	2,483	60	3.6
2015	14	10,593	2,442	54	4.7
2016	14	11,040	2,358	44	5.0
2017	1	11,742	2,641	99	0.4
2018	7	12,367	2,556	64	2.6
2019	5	12,694	2,655	74	1.9
2020	6	13,896	2,662	79	2.2

County: county value. Kansas: state value. County Rank: highest county value ranked #1. (\$000): thousands of dollars. Nonmetro Kansas: Kansas total less Metropolitan Areas as defined by the Office of Management and Budget (OMB; released 3/6/2020). Per 1000: For nonmoney amounts, Per 1000=(county value / county population for the same year as the data) x 1000. \$ Per capita=(county value / county population for the same year as the data). Value= . indicates missing or suppressed data or value not calculated.

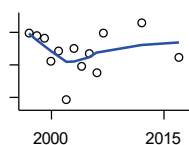
Agriculture

NUMBER OF FARMS



Kansas Agricultural Statistics, Kansas Farm Facts

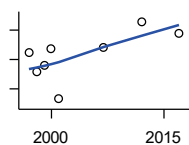
Year	County	State of Kansas	Non Metro Kansas	County Rank	Per 1000 or \$ Per Capita
1997	220	64,000	47,900	104	63.4
1998	230	65,000	48,850	104	66.0
1999	230	65,000	48,850	104	65.0
2000	230	64,000	48,030	104	65.8
2001	230	63,000	47,200	104	67.8
2002	230	63,000	47,200	104	67.9
2003	300	64,500	48,150	98	88.2
2004	300	64,500	48,150	98	90.2
2005	300	64,500	48,150	98	90.9
2006	300	64,000	47,650	97	91.3
2007	353	65,531	48,179	86	108.4
2012	323	61,773	45,655	86	103.3
2017	323	58,569	42,404	82	117.6



TOTAL ACRES HARVESTED

Kansas Agricultural Statistics, Kansas Farm Facts

Year	County	State of Kansas	Non Metro Kansas	County Rank	Per 1000 or \$ Per Capita
1997	179,070	22,846,000	19,430,580	66	51,575.5
1998	176,110	22,143,500	18,943,650	68	50,562.7
1999	172,270	21,708,900	18,581,750	66	48,705.1
2000	144,860	21,639,000	18,528,870	82	41,435.9
2001	157,440	21,847,900	18,689,750	78	46,401.4
2002	96,640	20,230,400	17,089,120	93	28,532.6
2003	160,550	21,827,700	18,661,920	75	47,179.0
2004	138,170	20,876,900	17,721,500	82	41,542.4
2005	154,230	21,936,500	18,807,930	78	46,736.4
2006	129,980	21,412,700	18,291,120	87	39,567.7
2007	178,875	19,886,655	17,164,743	57	54,937.0
2012	191,813	21,043,596	17,966,843	53	61,340.9
2017	149,693	21,837,465	18,543,057	80	54,493.3



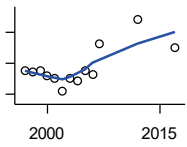
VALUE: LIVESTOCK AND POULTRY (\$000)

Kansas Agricultural Statistics, Kansas Farm Facts

Year	County	State of Kansas	Non Metro Kansas	County Rank	Per 1000 or \$ Per Capita
1997	70,031	2,806,445	2,500,305	7	20,170.2
1998	43,130	2,670,432	2,378,007	14	12,383.0
1999	51,335	2,849,061	2,554,528	12	14,513.7
2000	74,583	2,901,469	2,609,032	9	21,333.8
2001	6,004	2,693,274	2,437,187	103	1,769.5
2007	76,500	9,525,971	.	34	23,495.1
2012	111,369	11,476,571	10,883,216	23	35,615.3
2017	94,760	12,322,289	.	32	34,495.8

County: county value. Kansas: state value. County Rank: highest county value ranked #1. (\$000): thousands of dollars. Nonmetro Kansas: Kansas total less Metropolitan Areas as defined by the Office of Management and Budget (OMB; released 3/6/2020). Per 1000: For nonmoney amounts, Per 1000=(county value / county population for the same year as the data) x 1000. \$ Per capita=(county value / county population for the same year as the data). Value= . indicates missing or suppressed data or value not calculated.

Agriculture



VALUE:FIELD CROPS (\$000)
EXCLUDING GOVERNMENT
PROGRAM PAYMENTS

Kansas Agricultural Statistics, Kansas
Farm Facts

Year	County	State of Kansas	Non Metro Kansas	County Rank	Per 1000 or \$ Per Capita
1997	24,788	4,474,942	3,800,365	88	7,139.4
1998	24,066	3,594,319	3,124,409	70	6,909.6
1999	25,130	3,118,193	2,728,319	57	7,104.9
2000	21,669	2,915,660	2,540,052	56	6,198.2
2001	20,558	3,283,117	2,857,136	76	6,058.9
2002	11,817	3,011,855	2,560,580	95	3,488.9
2003	19,910	3,623,255	3,150,629	84	5,850.7
2004	18,229	3,445,688	2,896,603	77	5,480.8
2005	24,992	3,678,123	3,182,677	69	7,573.3
2006	22,773	4,308,716	3,684,132	79	6,932.4
2007	42,645	4,887,212	.	49	13,097.4
2012	58,361	6,983,993	6,044,551	53	18,663.6
2017	40,054	6,460,437	.	78	14,581.0

County: county value. Kansas: state value. County Rank: highest county value ranked #1. (\$000): thousands of dollars. Nonmetro Kansas: Kansas total less Metropolitan Areas as defined by the Office of Management and Budget (OMB; released 3/6/2020). Per 1000: For nonmoney amounts, Per 1000=(county value / county population for the same year as the data) x 1000. \$ Per capita=(county value / county population for the same year as the data). Value= . indicates missing or suppressed data or value not calculated.