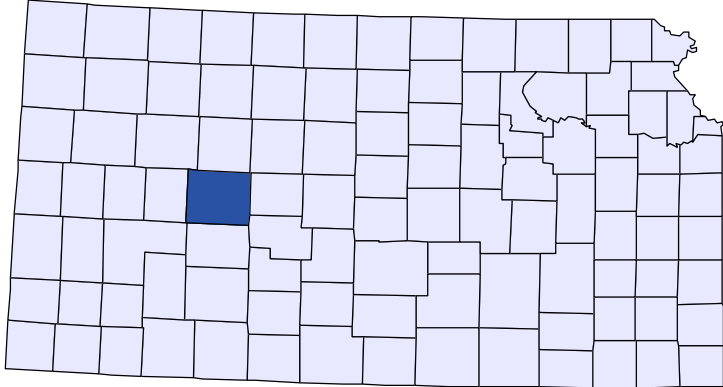




Kansas County Profiles

Ness County



The University
of Kansas

Institute for Policy
& Social Research

KU INSTITUTE FOR POLICY
& SOCIAL RESEARCH

The University of Kansas

1541 Lilac Lane, Rm. 607
Blake Hall
Lawrence, KS 66045-3129

Foreword

The Kansas County Profile Report is published by the Institute for Policy & Social Research (IPSR) at the University of Kansas with support from the KU University Center project.* Special thanks to Xanthippe Wedel, senior research data engineer, who compiles and updates the county profiles and Genna Hurd, associate researcher, who provides editorial review.

County reports can be generated for any county in Kansas by simply clicking on the county from the web site:

<https://ipsr.ku.edu/ksdata/kcced/profiles/>

The Kansas County Profile Report contains 12 categories of information: Population, Vital Statistics and Health, Housing, Education, Social Environment, Business, Employment, Income, Banking, Government, Crime, and Agriculture. For more information about Kansas, please refer to the Kansas Statistical Abstract, available online at:

<https://ipsr.ku.edu/ksdata/ksah/>

We are always looking for ways to improve the Kansas County Profile Report and we welcome your suggestions and comments. Please address any correspondence to the Institute for Policy & Social Research, The University of Kansas, 607 Blake Hall, 1541 Lilac Lane, Lawrence, Kansas 66045-3129, e-mail ipsr@ku.edu or call 785-864-3701.

**The KU University Center is a collaborative effort led by the Institute for Policy & Social Research at the University of Kansas. This project is supported by the Economic Development Administration, U.S. Department of Commerce, through its University Center Program.*

The mission of EDA is to lead the federal economic development agenda by promoting innovation and competitiveness, preparing American regions for growth and success in the worldwide economy.

Kansas County Profiles Table of Contents

Population

Total Population (Decennial Census)	1
Estimated Population (Current Population Reports)	2
Urban Population	2
Rural Population	3
Net Migration (Decade Ending...)	3
Median Age	3

Population (Age Groups)

Population Under 18 (Decennial Census)	3
Population Age 18 and Over (Decennial Census)	4
Population Age 65 and Over (Decennial Census)	4
Population Age 85 and Over (Decennial Census)	4

Vital Statistics and Health

Live Births	5
Deaths	5
Marriages	6
Divorces and Annulments	6
Physicians: M.D. Physicians	7
Physicians: D.O. Physicians	7
Dentists	8
Number of Hospitals	8
Number of Hospital Beds	9

Housing

Housing Units (Decennial Census)	9
Housing Units (Estimated)	10
Occupied Housing Units	10
Owner Occupied Housing Units	10
Renter Occupied Housing Units	11
Vacant Housing Units	11
Median Value (\$): Owner Occupied Housing Units	11
Median Contract Rent (\$)	12
Fair Market Rent: 2 Bedrooms	12

Education

Population Age 25 and Over	13
Percent of Population 25+ with High School or Higher Education	13
Percent of Population 25+ with Bachelors Degree or Higher Education	14
Public School Enrollment (FTE- School Year Beginning...)	14
Pupil/Teacher Ratio (School Year Beginning...)	15

Kansas County Profiles Table of Contents

Social Environment

Total Child Care Facilities	15
Preschools	16
Food Stamp Beneficiaries	16
Percent of Population Receiving Food Stamps	17
Estimated Number of People in Poverty	17
Estimated Percent of People in Poverty	18
Estimated Number of Related Children Age 5 to 17 in Families in Poverty	18
Estimated Percent of Related Children Age 5 to 17 in Families in Poverty	19
Estimated Number Under 18 in Poverty	19
Estimated Percent Under 18 in Poverty	20

Business

Establishments: Total	21
Establishments: 1-19 Employees	22
Establishments: 20-99 Employees	22
Establishments: 100-499 Employees	23
Establishments: 500 or More Employees	23
Establishments: Forestry, Fishing, Hunting, and Ag Support	24
Establishments: Mining	24
Establishments: Utilities	25
Establishments: Construction	25
Establishments: Manufacturing	26
Establishments: Wholesale Trade	26
Establishments: Retail Trade	27
Establishments: Transportation and Warehousing	27
Establishments: Information	28
Establishments: Finance and Insurance	28
Establishments: Real Estate, Rental, and Leasing	29
Establishments: Professional, Scientific, and Technical Services	29
Establishments: Management of Companies and Enterprises	30
Establishments: Admin, Support, Waste Management, and Remediation	30
Establishments: Educational Services	31
Establishments: Health Care and Social Assistance	31
Establishments: Arts, Entertainment, and Recreation	32
Establishments: Accommodation and Food Services	32
Establishments: Other Services	33

Kansas County Profiles Table of Contents

Business	
Total Annual Payroll (\$000)	34
Total Annual Payroll (\$000): Forestry, Fishing, Hunting, and Ag Support	35
Total Annual Payroll (\$000): Mining	35
Total Annual Payroll (\$000): Utilities	36
Total Annual Payroll (\$000): Construction	36
Total Annual Payroll (\$000): Manufacturing	37
Total Annual Payroll (\$000): Wholesale Trade	37
Total Annual Payroll (\$000): Retail Trade	38
Total Annual Payroll (\$000): Transportation and Warehousing	38
Total Annual Payroll (\$000): Information	39
Total Annual Payroll (\$000): Finance and Insurance	39
Total Annual Payroll (\$000): Real Estate, Rental, and Leasing	40
Total Annual Payroll (\$000): Professional, Scientific, and Technical Services	40
Total Annual Payroll (\$000): Management of Companies and Enterprises	41
Total Annual Payroll (\$000): Admin, Support, Waste Management, and Remediation	41
Total Annual Payroll (\$000): Educational Services	42
Total Annual Payroll (\$000): Health Care and Social Assistance	42
Total Annual Payroll (\$000): Arts, Entertainment, and Recreation	43
Total Annual Payroll (\$000): Accommodation and Food Services	43
Total Annual Payroll (\$000): Other Services	44
Nominal Taxable Retail Sales (Million\$)	44
Retail Pull Factor	45
Employment	
Civilian Labor Force (BLS - Place of Residence)	46
Employed (BLS - Place of Residence)	47
Unemployed (BLS - Place of Residence)	48
Unemployment Rate (BLS - Place of Residence)	49
BEA Employment: Total (Place of Work)	49
BEA Employment: Farm	50
BEA Employment: Non-Farm	50
Average Wage per Job (\$)	51
BEA Employment: Forestry, Fishing, Hunting, and Ag Support	51
BEA Employment: Mining	52
BEA Employment: Utilities	52
BEA Employment: Construction	53
BEA Employment: Manufacturing	53
BEA Employment: Wholesale Trade	54
BEA Employment: Retail Trade	54
BEA Employment: Transportation and Warehousing	55
BEA Employment: Information	55
BEA Employment: Finance and Insurance	56
BEA Employment: Real Estate, Rental, and Leasing	56
BEA Employment: Professional and Technical Services	57
BEA Employment: Management of Companies and Enterprises	57
BEA Employment: Administrative and Waste Services	58
BEA Employment: Educational Services	58
BEA Employment: Health Care and Social Assistance	59
BEA Employment: Arts, Entertainment, and Recreation	59
BEA Employment: Government and Government Enterprises	60
BEA Employment: Accommodation and Food Services	60
BEA Employment: Other Services, Except Public Administration	61

Kansas County Profiles Table of Contents

Income

BEA Per Capita Personal Income (\$)	61
Sources of Personal Income: Total Personal Income (\$000)	62
Sources of Personal Income: Wages And Salaries (\$000)	62
Sources of Personal Income: Proprietors-Farm (\$000)	63
Sources of Personal Income: Proprietors-Nonfarm (\$000)	63
Sources of Personal Income: Dividends, Interest, Rent (\$000)	64
Sources of Personal Income: Transfer Payments (\$000)	64
Sources of Personal Income: Less Social Insurance (\$000)	65
HUD Median Family Income	65
HUD 30% Low-To-Medium Income (LMI) Limit - 4 Persons	66
HUD 50% Low-To-Medium Income (LMI) Limit - 4 Persons	66
HUD 80% Low-To-Medium Income (LMI) Limit - 4 Persons	66

Banking

Bank Deposits (\$000)	67
Number of Banks	67
Number of Banking Offices	68

Government

Tangible Assessed Valuation (million\$)	68
Sales Tax Collections	69

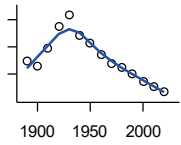
Crime

Crime Index Offenses	69
Property Crimes	70
Violent Crimes	70

Agriculture

Number of Farms	71
Total Acres Harvested	71
Value: Livestock and Poultry (\$000)	71
Value: Field Crops (\$000) Excluding Government Program Payments	72

Population



DECENNIAL CENSUS:TOTAL POPULATION

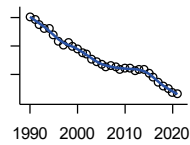
U.S. Census Bureau: Decennial Census

Year	County	State of Kansas	Non Metro Kansas	County Rank	Per 1000 or \$ Per Capita
1890	4,944	1,427,096	968,413	79	.
1900	4,535	1,470,495	981,206	77	.
1910	5,883	1,690,949	1,138,294	81	.
1920	7,490	1,769,257	1,153,525	76	.
1930	8,358	1,880,999	1,180,056	75	.
1940	6,864	1,801,028	1,097,216	75	.
1950	6,322	1,905,299	1,046,823	77	.
1960	5,470	2,178,611	1,021,510	79	.
1970	4,791	2,246,578	958,104	77	.
1980	4,498	2,363,679	980,085	81	.
1990	4,033	2,477,574	939,416	79	.
2000	3,454	2,688,418	959,507	85	.
2010	3,107	2,853,118	929,981	83	.
2020	2,687	2,937,880	892,006	89	.

County: county value. Kansas: state value. County Rank: highest county value ranked #1. (\$000): thousands of dollars. Nonmetro Kansas: Kansas total less Metropolitan Areas as defined by the Office of Management and Budget (OMB; released 3/6/2020). Per 1000: For nonmoney amounts, Per 1000=(county value / county population for the same year as the data) x 1000. \$ Per capita=(county value / county population for the same year as the data). Value= . indicates missing or suppressed data or value not calculated.

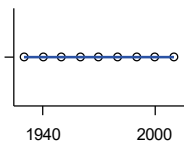
Population

ESTIMATED POPULATION



U.S. Census Bureau

Year	County	State of Kansas	Non Metro Kansas	County Rank	Per 1000 or \$ Per Capita
1990	4,006	2,481,349	938,607	81	.
1991	3,973	2,498,722	938,965	80	.
1992	3,885	2,532,394	942,759	81	.
1993	3,816	2,556,547	947,515	81	.
1994	3,813	2,580,513	952,178	81	.
1995	3,697	2,601,007	957,771	81	.
1996	3,583	2,614,554	959,455	84	.
1997	3,518	2,635,292	960,225	85	.
1998	3,557	2,660,598	960,569	83	.
1999	3,485	2,678,338	960,704	86	.
2000	3,448	2,693,681	959,230	85	.
2001	3,391	2,702,162	952,607	85	.
2002	3,352	2,713,535	945,985	85	.
2003	3,274	2,723,004	941,474	85	.
2004	3,219	2,734,373	937,623	86	.
2005	3,177	2,745,299	932,852	85	.
2006	3,135	2,762,931	928,809	84	.
2007	3,150	2,783,785	927,643	84	.
2008	3,127	2,808,076	926,248	84	.
2009	3,085	2,832,704	926,755	83	.
2010	3,104	2,858,190	930,028	83	.
2011	3,118	2,869,225	927,675	83	.
2012	3,077	2,885,257	925,152	83	.
2013	3,087	2,893,212	922,383	83	.
2014	3,089	2,900,475	917,854	82	.
2015	3,020	2,909,011	912,199	82	.
2016	2,957	2,910,844	905,099	82	.
2017	2,856	2,908,718	897,981	85	.
2018	2,796	2,911,359	892,656	87	.
2019	2,750	2,913,314	887,455	87	.
2020	2,678	2,935,880	889,750	89	.
2021	2,672	2,934,582	886,438	89	.



URBAN POPULATION

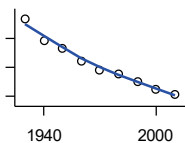
U.S. Census Bureau: Decennial Census

Year	County	State of Kansas	Non Metro Kansas	County Rank	Per 1000 or \$ Per Capita
1930	0	729,834	336,666	105	.
1940	0	753,941	349,228	105	.
1950	0	993,220	398,923	105	.
1960	0	1,328,741	457,447	105	.
1970	0	1,484,870	450,543	105	.
1980	0	1,575,899	474,769	105	.
1990	0	1,712,564	464,205	105	.
2000	0	1,920,081	488,011	105	.
2010	0	2,116,961	485,780	105	.

County: county value. Kansas: state value. County Rank: highest county value ranked #1. (\$000): thousands of dollars. Nonmetro Kansas: Kansas total less Metropolitan Areas as defined by the Office of Management and Budget (OMB; released 3/6/2020). Per 1000: For nonmoney amounts, Per 1000=(county value / county population for the same year as the data) x 1000. \$ Per capita=(county value / county population for the same year as the data). Value= . indicates missing or suppressed data or value not calculated.

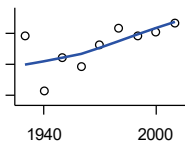
Population

RURAL POPULATION



U.S. Census Bureau

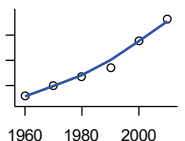
Year	County	State of Kansas	Non Metro Kansas	County Rank	Per 1000 or \$ Per Capita
1930	8,358	1,151,165	843,390	71	.
1940	6,864	1,047,087	747,988	71	.
1950	6,322	912,079	647,900	69	.
1960	5,470	849,870	564,063	68	.
1970	4,791	761,708	509,972	63	.
1980	4,498	787,780	505,873	68	.
1990	4,033	765,010	475,211	65	.
2000	3,454	768,337	471,900	73	.
2010	3,107	736,157	444,201	72	.



NET MIGRATION: DECADE ENDING...

calculated by the Institute for Policy and Social Research, The University of Kansas

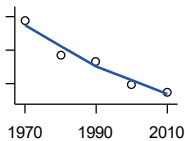
Year	County	State of Kansas	Non Metro Kansas	County Rank	Per 1000 or \$ Per Capita
1930	-595	-66,132	-101,869	44	-71.2
1940	-2,376	-192,649	-166,022	77	-346.2
1950	-1,287	-84,329	-158,379	42	-203.6
1960	-1,556	-38,999	-146,640	56	-284.5
1970	-869	-119,662	-105,116	53	-181.4
1980	-329	-21,983	-6,184	65	-73.1
1990	-587	-61,835	-79,274	48	-145.5
2000	-444	68,960	4,247	96	-128.5
2010	-167	5,578	-50,648	35	-53.7



MEDIAN AGE

U.S. Census Bureau: Decennial Census

Year	County	State of Kansas	Non Metro Kansas	County Rank	Per 1000 or \$ Per Capita
1960	33.0	26.9	.	56	.
1970	35.0	28.7	.	49	.
1980	36.7	30.1	.	32	.
1990	38.5	32.9	.	34	.
2000	43.9	35.2	.	15	.
2010	48.2	36.0	.	15	.



POPULATION UNDER 18 (DECENNIAL CENSUS)

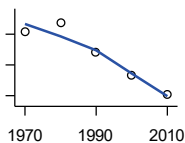
U.S. Census Bureau: Decennial Census

Year	County	State of Kansas	Non Metro Kansas	County Rank	Per 1000 or \$ Per Capita
1970	1,557	746,354	306,227	78	.
1980	1,136	649,035	263,919	82	.
1990	1,060	661,614	250,107	78	.
2000	791	712,993	250,757	87	.
2010	696	726,939	229,213	83	.

County: county value. Kansas: state value. County Rank: highest county value ranked #1. (\$000): thousands of dollars. Nonmetro Kansas: Kansas total less Metropolitan Areas as defined by the Office of Management and Budget (OMB; released 3/6/2020). Per 1000: For nonmoney amounts, Per 1000=(county value / county population for the same year as the data) x 1000. \$ Per capita=(county value / county population for the same year as the data). Value= . indicates missing or suppressed data or value not calculated.

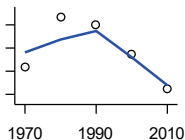
Population

**POPULATION AGE 18 AND OVER
(DECENNIAL CENSUS)**



U.S. Census Bureau: Decennial Census

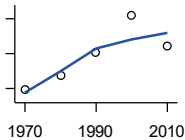
Year	County	State of Kansas	Non Metro Kansas	County Rank	Per 1000 or \$ Per Capita
1970	3,234	1,500,224	654,288	79	.
1980	3,343	1,714,282	716,684	80	.
1990	2,973	1,815,960	689,309	80	.
2000	2,663	1,975,425	709,154	83	.
2010	2,411	2,126,179	700,768	83	.



**POPULATION AGE 65 AND OVER
(DECENNIAL CENSUS)**

U.S. Census Bureau: Decennial Census

Year	County	State of Kansas	Non Metro Kansas	County Rank	Per 1000 or \$ Per Capita
1970	809	266,201	149,049	78	.
1980	917	306,263	164,932	78	.
1990	900	342,571	168,579	78	.
2000	837	356,229	161,769	79	.
2010	763	376,116	154,214	78	.



**POPULATION AGE 85 AND OVER
(DECENNIAL CENSUS)**

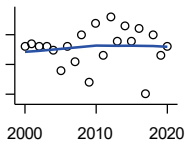
U.S. Census Bureau: Decennial Census

Year	County	State of Kansas	Non Metro Kansas	County Rank	Per 1000 or \$ Per Capita
1970	79	23,899	13,698	77	.
1980	95	33,455	18,804	81	.
1990	121	42,241	22,970	79	.
2000	164	51,770	26,644	70	.
2010	128	59,318	26,197	78	.

County: county value. Kansas: state value. County Rank: highest county value ranked #1. (\$000): thousands of dollars. Nonmetro Kansas: Kansas total less Metropolitan Areas as defined by the Office of Management and Budget (OMB; released 3/6/2020). Per 1000: For nonmoney amounts, Per 1000=(county value / county population for the same year as the data) x 1000. \$ Per capita=(county value / county population for the same year as the data). Value= . indicates missing or suppressed data or value not calculated.

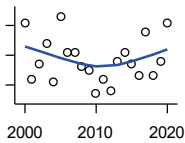
Vital Statistics and Health

BIRTHS (LIVE)



Kansas Department of Health and Environment

Year	County	State of Kansas	Non Metro Kansas	County Rank	Per 1000 or \$ Per Capita
2000	31	39,654	12,980	93	9.0
2001	32	38,832	12,527	87	9.4
2002	31	39,338	12,476	91	9.2
2003	31	39,353	12,342	93	9.5
2004	30	39,553	12,398	92	9.3
2005	23	39,701	12,382	96	7.2
2006	31	40,896	12,726	89	9.9
2007	26	41,951	12,990	95	8.3
2008	35	41,815	12,970	83	11.2
2009	19	41,388	12,949	104	6.2
2010	39	40,439	12,200	79	12.6
2011	28	39,628	12,098	91	9.0
2012	41	40,304	12,217	77	13.3
2013	33	38,805	11,877	85	10.7
2014	38	39,193	12,052	81	12.3
2015	33	39,126	11,836	88	10.9
2016	37	38,048	11,467	86	12.5
2017	15	36,464	10,968	105	5.3
2018	35	36,268	10,826	82	12.5
2019	28	35,395	10,506	90	10.2
2020	31	34,368	10,222	84	11.5



DEATHS

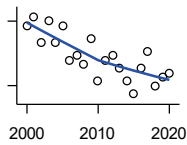
Kansas Department of Health and Environment

Year	County	State of Kansas	Non Metro Kansas	County Rank	Per 1000 or \$ Per Capita
2000	61	24,676	11,175	75	17.7
2001	42	24,590	10,807	87	12.4
2002	47	24,968	11,079	85	14.0
2003	54	24,417	10,615	78	16.5
2004	41	23,720	10,369	85	12.7
2005	63	24,632	10,599	70	19.8
2006	51	24,489	10,538	79	16.3
2007	51	24,413	10,601	78	16.2
2008	46	24,896	10,593	81	14.7
2009	45	23,997	9,938	79	14.6
2010	37	24,428	10,105	87	11.9
2011	42	25,114	10,520	86	13.5
2012	38	25,084	10,259	87	12.3
2013	48	25,347	10,249	77	15.5
2014	51	25,731	10,275	74	16.5
2015	47	26,611	10,539	79	15.6
2016	43	26,129	10,231	81	14.5
2017	58	26,725	10,452	71	20.3
2018	43	27,213	10,389	83	15.4
2019	48	27,312	10,569	77	17.5
2020	61	31,667	11,850	73	22.7

County: county value. Kansas: state value. County Rank: highest county value ranked #1. (\$000): thousands of dollars. Nonmetro Kansas: Kansas total less Metropolitan Areas as defined by the Office of Management and Budget (OMB; released 3/6/2020). Per 1000: For nonmoney amounts, Per 1000=(county value / county population for the same year as the data) x 1000. \$ Per capita=(county value / county population for the same year as the data). Value= . indicates missing or suppressed data or value not calculated.

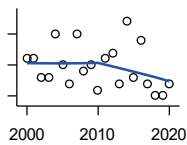
Vital Statistics and Health

MARRIAGES



Kansas Department of Health and Environment

Year	County	State of Kansas	Non Metro Kansas	County Rank	Per 1000 or \$ Per Capita
2000	24	20,426	7,333	85	6.9
2001	26	20,457	7,441	82	7.7
2002	20	19,783	6,794	91	6.0
2003	25	18,722	6,469	81	7.6
2004	20	19,174	6,756	90	6.2
2005	24	18,745	6,481	82	7.6
2006	16	18,836	6,433	93	5.1
2007	17	18,910	6,464	90	5.4
2008	15	18,717	6,283	94	4.8
2009	21	18,268	6,015	80	6.8
2010	11	18,150	5,925	100	3.5
2011	16	17,897	5,977	94	5.1
2012	17	18,154	5,752	87	5.5
2013	14	17,328	5,533	94	4.5
2014	11	17,655	5,535	97	3.6
2015	8	17,595	5,400	100	2.6
2016	14	17,948	5,340	91	4.7
2017	18	17,274	5,163	82	6.3
2018	10	16,362	4,999	97	3.6
2019	12	15,403	4,650	90	4.4
2020	13	14,038	4,066	85	4.8



DIVORCES AND ANNULMENTS

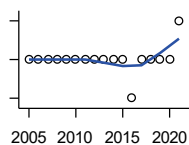
Kansas Department of Health and Environment

Year	County	State of Kansas	Non Metro Kansas	County Rank	Per 1000 or \$ Per Capita
2000	11	10,105	4,000	85	3.2
2001	11	9,885	3,818	80	3.2
2002	8	9,645	3,716	92	2.4
2003	8	8,644	3,464	91	2.4
2004	15	8,759	3,506	70	4.7
2005	10	8,476	3,311	83	3.1
2006	7	9,145	3,387	92	2.2
2007	15	9,347	3,402	68	4.8
2008	9	9,818	3,655	87	2.9
2009	10	10,333	3,463	78	3.2
2010	6	10,579	3,530	98	1.9
2011	11	10,445	3,347	80	3.5
2012	12	9,782	3,040	73	3.9
2013	7	9,085	2,973	91	2.3
2014	17	8,441	2,682	59	5.5
2015	8	8,036	2,704	85	2.6
2016	14	7,198	2,424	62	4.7
2017	7	6,494	2,315	86	2.5
2018	5	6,538	2,269	92	1.8
2019	5	6,398	2,357	94	1.8
2020	7	5,169	1,866	76	2.6

County: county value. Kansas: state value. County Rank: highest county value ranked #1. (\$000): thousands of dollars. Nonmetro Kansas: Kansas total less Metropolitan Areas as defined by the Office of Management and Budget (OMB; released 3/6/2020). Per 1000: For nonmoney amounts, Per 1000=(county value / county population for the same year as the data) x 1000. \$ Per capita=(county value / county population for the same year as the data). Value= . indicates missing or suppressed data or value not calculated.

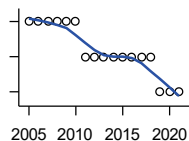
Vital Statistics and Health

PHYSICIANS: M.D. PHYSICIANS



Kansas Department of Health and Environment (1981-2005,2010-);Kansas Health Policy Authority (2006-2009)

Year	County	State of Kansas	Non Metro Kansas	County Rank	Per 1000 or \$ Per Capita
2005	1	4,241	912	96	0.3
2006	1	4,310	953	99	0.3
2007	1	5,309	1,046	99	0.3
2008	1	5,110	1,016	101	0.3
2009	1	5,249	996	98	0.3
2010	1	5,192	979	98	0.3
2011	1	5,243	983	96	0.3
2012	1	5,693	1,033	96	0.3
2013	1	6,106	1,071	100	0.3
2014	1	5,839	951	97	0.3
2015	1	5,703	855	96	0.3
2016	0	4,278	643	105	0.0
2017	1	6,332	1,047	99	0.4
2018	1	6,079	1,065	98	0.4
2019	1	6,435	1,036	97	0.4
2020	1	6,668	1,045	98	0.4
2021	2	6,745	1,042	87	0.7



PHYSICIANS: D.O. PHYSICIANS

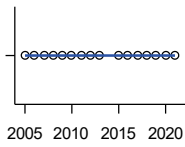
Kansas Department of Health and Environment (1981-2005,2010-);Kansas Health Policy Authority (2006-2009)

Year	County	State of Kansas	Non Metro Kansas	County Rank	Per 1000 or \$ Per Capita
2005	2	553	174	48	0.6
2006	2	508	171	45	0.6
2007	2	569	169	48	0.6
2008	2	558	166	48	0.6
2009	2	564	160	48	0.6
2010	2	583	169	45	0.6
2011	1	502	152	62	0.3
2012	1	718	200	67	0.3
2013	1	829	210	65	0.3
2014	1	817	189	62	0.3
2015	1	819	190	63	0.3
2016	1	632	136	58	0.3
2017	1	579	129	57	0.4
2018	1	871	164	64	0.4
2019	0	951	212	105	0.0
2020	0	1,018	204	105	0.0
2021	0	1,095	217	105	0.0

County: county value. Kansas: state value. County Rank: highest county value ranked #1. (\$000): thousands of dollars. Nonmetro Kansas: Kansas total less Metropolitan Areas as defined by the Office of Management and Budget (OMB; released 3/6/2020). Per 1000: For nonmoney amounts, Per 1000=(county value / county population for the same year as the data) x 1000. \$ Per capita=(county value / county population for the same year as the data). Value= . indicates missing or suppressed data or value not calculated.

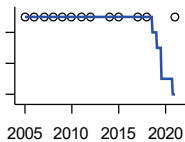
Vital Statistics and Health

DENTISTS



Kansas Department of Health and Environment (1981-2006,2010-); Kansas Health Policy Authority (2007-2009)

Year	County	State of Kansas	Non Metro Kansas	County Rank	Per 1000 or \$ Per Capita
2005	0	1,347	363	105	0.0
2006	0	1,381	361	105	0.0
2007	0	1,335	350	105	0.0
2008	0	1,392	353	105	0.0
2009	0	1,353	350	105	0.0
2010	0	1,401	365	105	0.0
2011	0	1,338	346	105	0.0
2012	0	1,434	392	105	0.0
2013	0	1,212	328	105	0.0
2015	0	1,240	327	105	0.0
2016	0	1,456	350	105	0.0
2017	0	1,467	350	105	0.0
2018	0	1,604	359	105	0.0
2019	0	1,646	355	105	0.0
2020	0	1,646	355	105	0.0
2021	0	1,688	362	105	0.0



NUMBER OF HOSPITALS

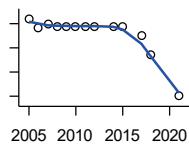
American Hospital Association, American Hospital Association Guide to the Health Care Field

Year	County	State of Kansas	Non Metro Kansas	County Rank	Per 1000 or \$ Per Capita
2005	2	158	105	31	.
2006	2	158	105	31	.
2007	2	159	104	32	.
2008	2	159	104	32	.
2009	2	158	105	32	.
2010	2	158	104	31	.
2011	2	158	103	31	.
2012	2	157	103	31	.
2014	2	156	.	31	.
2015	2	155	103	32	.
2017	2	157	102	30	.
2018	2	154	99	29	.
2021	2	151	.	27	.

County: county value. Kansas: state value. County Rank: highest county value ranked #1. (\$000): thousands of dollars. Nonmetro Kansas: Kansas total less Metropolitan Areas as defined by the Office of Management and Budget (OMB; released 3/6/2020). Per 1000: For nonmoney amounts, Per 1000=(county value / county population for the same year as the data) x 1000. \$ Per capita=(county value / county population for the same year as the data). Value= . indicates missing or suppressed data or value not calculated.

Vital Statistics and Health

NUMBER OF HOSPITAL BEDS

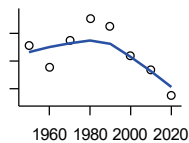


Kansas Department of Health and Environment

Year	County	State of Kansas	Non Metro Kansas	County Rank	Per 1000 or \$ Per Capita
2005	112	12,389	5,687	23	35.3
2006	108	11,992	5,514	23	34.4
2007	110	12,171	5,637	24	34.9
2008	109	12,332	5,700	24	34.9
2009	109	12,283	5,652	23	35.3
2010	109	12,218	5,521	22	35.1
2011	109	12,182	5,335	22	35.0
2012	109	12,002	5,355	23	35.4
2014	109	12,034	.	21	35.3
2015	109	11,926	5,330	21	36.1
2017	105	11,491	4,825	17	36.8
2018	97	11,448	4,583	21	34.7
2021	80	11,199	.	25	29.9

Housing

HOUSING UNITS (DECENNIAL)



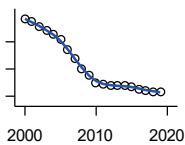
U.S. Census Bureau: Decennial Census

Year	County	State of Kansas	Non Metro Kansas	County Rank	Per 1000 or \$ Per Capita
1950	1,915	586,650	328,210	78	302.9
1960	1,751	672,899	329,380	79	320.1
1970	1,950	789,735	363,824	78	407.0
1980	2,107	955,207	416,877	78	468.4
1990	2,048	1,044,112	417,062	80	507.8
2000	1,835	1,131,395	422,218	82	531.3
2010	1,740	1,233,215	424,050	83	560.0
2020	1,548	1,275,689	413,120	85	576.1

County: county value. Kansas: state value. County Rank: highest county value ranked #1. (\$000): thousands of dollars. Nonmetro Kansas: Kansas total less Metropolitan Areas as defined by the Office of Management and Budget (OMB; released 3/6/2020). Per 1000: For nonmoney amounts, Per 1000=(county value / county population for the same year as the data) x 1000. \$ Per capita=(county value / county population for the same year as the data). Value= . indicates missing or suppressed data or value not calculated.

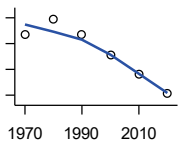
Housing

HOUSING UNITS (ESTIMATED)



U.S. Census Bureau

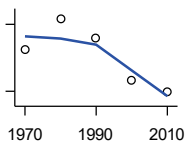
Year	County	State of Kansas	Non Metro Kansas	County Rank	Per 1000 or \$ Per Capita
2000	1,833	1,134,529	422,560	82	530.7
2001	1,830	1,146,858	423,876	82	539.7
2002	1,823	1,160,129	425,089	83	543.9
2003	1,817	1,171,620	425,936	83	555.0
2004	1,811	1,184,702	426,593	83	562.6
2005	1,803	1,195,791	426,964	83	567.5
2006	1,789	1,206,692	426,713	83	570.7
2007	1,775	1,217,608	426,090	83	563.5
2008	1,761	1,225,625	425,768	83	563.2
2009	1,750	1,230,552	424,776	83	567.3
2010	1,740	1,234,456	424,174	83	560.0
2011	1,738	1,238,052	424,549	83	557.4
2012	1,736	1,241,992	425,116	83	564.2
2013	1,735	1,246,675	425,699	83	562.0
2014	1,735	1,253,284	426,269	83	561.7
2015	1,734	1,258,999	426,844	83	574.2
2016	1,731	1,265,684	427,465	83	585.4
2017	1,729	1,273,536	427,746	83	605.4
2018	1,727	1,280,649	428,099	83	617.7
2019	1,726	1,288,401	428,495	83	627.6



OCCUPIED HOUSING UNITS

U.S. Census Bureau: Decennial Census

Year	County	State of Kansas	Non Metro Kansas	County Rank	Per 1000 or \$ Per Capita
1970	1,668	727,364	326,494	79	348.2
1980	1,789	872,239	371,693	79	397.7
1990	1,670	944,726	365,901	78	414.1
2000	1,516	1,037,891	375,313	82	438.9
2010	1,365	1,112,096	370,269	84	439.3
2020	1,216	1,151,360	356,330	86	452.5



OWNER OCCUPIED HOUSING UNITS

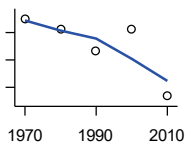
U.S. Census Bureau: Decennial Census

Year	County	State of Kansas	Non Metro Kansas	County Rank	Per 1000 or \$ Per Capita
1970	1,288	502,585	236,338	77	268.8
1980	1,425	612,433	277,096	77	316.8
1990	1,336	641,762	263,099	77	331.3
2000	1,152	718,703	271,350	81	333.5
2010	1,098	753,532	261,763	81	353.4

County: county value. Kansas: state value. County Rank: highest county value ranked #1. (\$000): thousands of dollars. Nonmetro Kansas: Kansas total less Metropolitan Areas as defined by the Office of Management and Budget (OMB; released 3/6/2020). Per 1000: For nonmoney amounts, Per 1000=(county value / county population for the same year as the data) x 1000. \$ Per capita=(county value / county population for the same year as the data). Value= . indicates missing or suppressed data or value not calculated.

Housing

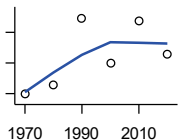
RENTER OCCUPIED HOUSING UNITS



U.S. Census Bureau: Decennial Census

Year	County	State of Kansas	Non Metro Kansas	County Rank	Per 1000 or \$ Per Capita
1970	380	224,779	90,156	82	79.3
1980	364	259,806	94,597	84	80.9
1990	334	302,964	102,802	86	82.8
2000	364	319,188	103,963	80	105.4
2010	267	358,564	108,506	92	85.9

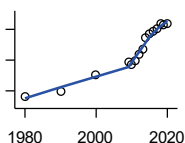
VACANT HOUSING UNITS



U.S. Census Bureau: Decennial Census

Year	County	State of Kansas	Non Metro Kansas	County Rank	Per 1000 or \$ Per Capita
1970	279	60,058	35,954	74	58.2
1980	292	77,912	41,584	72	64.9
1990	378	99,386	51,161	73	93.7
2000	319	93,309	46,904	77	92.4
2010	375	121,119	53,781	75	120.7
2020	332	124,329	56,790	80	123.6

MEDIAN VALUE (\$): OWNER OCCUPIED HOUSING UNITS



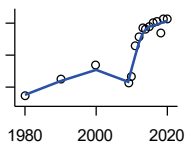
U.S. Census Bureau, Decennial Census (- 2000), (2009 -) American Community Survey five-year average ending in year shown.

Year	County	State of Kansas	Non Metro Kansas	County Rank	Per 1000 or \$ Per Capita
1980	26,500	37,800	.	55	.
1990	29,900	52,200	.	60	.
2000	40,600	83,500	.	86	.
2009	48,800	118,500	.	95	.
2010	47,100	122,600	.	102	.
2011	49,700	125,500	.	100	.
2012	53,800	127,400	.	98	.
2013	57,200	128,400	.	95	.
2014	64,200	129,400	.	87	.
2015	67,100	132,000	.	87	.
2016	68,800	135,300	.	89	.
2017	70,500	139,200	.	89	.
2018	73,400	145,400	.	88	.
2019	73,300	151,900	.	90	.
2020	74,100	157,600	.	92	.

County: county value. Kansas: state value. County Rank: highest county value ranked #1. (\$000): thousands of dollars. Nonmetro Kansas: Kansas total less Metropolitan Areas as defined by the Office of Management and Budget (OMB; released 3/6/2020). Per 1000: For nonmoney amounts, Per 1000=(county value / county population for the same year as the data) x 1000. \$ Per capita=(county value / county population for the same year as the data). Value= . indicates missing or suppressed data or value not calculated.

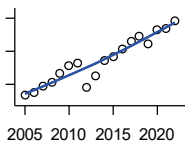
Housing

MEDIAN CONTRACT RENT (\$)



U.S. Census Bureau, Decennial Census (- 2000), (2009 -) American Community Survey five-year average ending in year shown.

Year	County	State of Kansas	Non Metro Kansas	County Rank	Per 1000 or \$ Per Capita
1980	143	219	.	90	.
1990	249	372	.	78	.
2000	340	498	.	77	.
2009	227	491	.	102	.
2010	265	507	.	96	.
2011	459	699	.	94	.
2012	513	715	.	75	.
2013	574	732	.	52	.
2014	562	748	.	66	.
2015	575	757	.	65	.
2016	605	775	.	54	.
2017	610	801	.	63	.
2018	539	831	.	92	.
2019	627	850	.	68	.
2020	624	863	.	69	.



FAIR MARKET RENT: 2 BEDROOMS

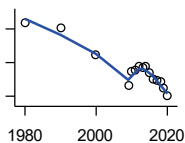
U.S. Department of Housing and Urban Development (HUD)

Year	County	State of Kansas	Non Metro Kansas	County Rank	Per 1000 or \$ Per Capita
2005	516	.	.	39	.
2006	527	.	.	41	.
2007	543	.	.	40	.
2008	558	628	.	41	.
2009	582	653	.	41	.
2010	606	678	.	43	.
2011	616	684	.	43	.
2012	540	660	.	105	.
2013	577	712	.	105	.
2014	622	746	.	105	.
2015	634	756	.	105	.
2016	658	781	.	105	.
2017	681	811	.	105	.
2018	697	815	.	105	.
2019	672	828	.	105	.
2020	714	855	.	105	.
2021	718	874	.	105	.
2022	742	879	.	105	.

County: county value. Kansas: state value. County Rank: highest county value ranked #1. (\$000): thousands of dollars. Nonmetro Kansas: Kansas total less Metropolitan Areas as defined by the Office of Management and Budget (OMB; released 3/6/2020). Per 1000: For nonmoney amounts, Per 1000=(county value / county population for the same year as the data) x 1000. \$ Per capita=(county value / county population for the same year as the data). Value= . indicates missing or suppressed data or value not calculated.

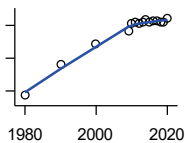
Education

POPULATION AGE 25+



U.S. Census Bureau, Decennial Census (- 2000), (2009 -) American Community Survey five-year average ending in year shown.

Year	County	State of Kansas	Non Metro Kansas	County Rank	Per 1000 or \$ Per Capita
1980	2,881	1,388,102	596,639	.	.
1990	2,808	1,565,936	608,745	.	.
2000	2,498	1,701,207	618,131	.	.
2009	2,125	1,775,427	600,188	.	.
2010	2,289	1,802,904	608,716	.	.
2011	2,316	1,822,400	610,386	.	.
2012	2,357	1,838,079	611,103	.	.
2013	2,334	1,850,010	610,374	.	.
2014	2,356	1,861,894	609,612	.	.
2015	2,285	1,869,698	606,967	.	.
2016	2,204	1,878,495	604,563	.	.
2017	2,184	1,886,741	601,076	.	.
2018	2,168	1,894,675	598,487	.	.
2019	2,102	1,902,279	595,501	.	.
2020	2,000	1,911,990	593,923	.	.



PERCENT HS GRADUATE OR HIGHER AGE 25+

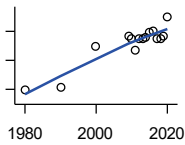
U.S. Census Bureau, Decennial Census (- 2000), (2009 -) American Community Survey five-year average ending in year shown.

Year	County	State of Kansas	Non Metro Kansas	County Rank	Per 1000 or \$ Per Capita
1980	68.6	73.3	.	57	.
1990	78.0	81.3	.	47	.
2000	84.4	86.0	.	62	.
2009	88.4	89.0	.	56	.
2010	90.8	89.2	.	28	.
2011	91.1	89.5	.	24	.
2012	90.6	89.7	.	38	.
2013	91.0	89.8	.	33	.
2014	91.6	90.0	.	37	.
2015	91.0	90.2	.	44	.
2016	91.5	90.3	.	41	.
2017	91.2	90.5	.	56	.
2018	90.9	90.7	.	60	.
2019	90.9	91.0	.	64	.
2020	92.2	91.4	.	53	.

County: county value. Kansas: state value. County Rank: highest county value ranked #1. (\$000): thousands of dollars. Nonmetro Kansas: Kansas total less Metropolitan Areas as defined by the Office of Management and Budget (OMB; released 3/6/2020). Per 1000: For nonmoney amounts, Per 1000=(county value / county population for the same year as the data) x 1000. \$ Per capita=(county value / county population for the same year as the data). Value= . indicates missing or suppressed data or value not calculated.

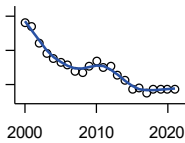
Education

PERCENT BACHELORS DEGREE OR HIGHER AGE 25+



U.S. Census Bureau, Decennial Census (- 2000), (2009 -) American Community Survey five-year average ending in year shown.

Year	County	State of Kansas	Non Metro Kansas	County Rank	Per 1000 or \$ Per Capita
1980	11.9	17.0	.	52	.
1990	12.3	21.1	.	75	.
2000	17.9	25.8	.	36	.
2009	19.3	28.8	.	49	.
2010	18.9	29.3	.	55	.
2011	17.4	29.7	.	76	.
2012	19.0	30.0	.	64	.
2013	19.0	30.3	.	65	.
2014	19.1	30.7	.	64	.
2015	19.8	31.0	.	64	.
2016	20.1	31.6	.	60	.
2017	19.0	32.3	.	75	.
2018	18.9	32.9	.	76	.
2019	19.4	33.4	.	78	.
2020	21.9	33.9	.	55	.



PUBLIC SCHOOL ENROLLMENT (FTE) SCHOOL YEAR BEGINNING...

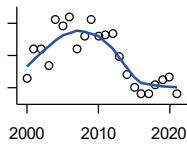
Kansas State Department of Education

Year	County	State of Kansas	Non Metro Kansas	County Rank	Per 1000 or \$ Per Capita
2000	580.1	448,150.8	166,722.5	85	168.0
2001	570.4	447,047.1	164,365.0	86	168.2
2002	522.3	444,860.3	161,555.4	89	155.8
2003	492.9	443,620.6	159,130.2	90	150.5
2004	476.5	441,957.2	156,566.3	90	148.0
2005	464.1	442,708.4	155,197.2	86	146.1
2006	458.7	444,878.7	153,842.3	88	146.3
2007	439.6	446,831.3	152,337.1	89	139.6
2008	434.7	447,730.0	150,572.7	88	139.0
2009	455.0	453,202.5	151,246.8	87	147.5
2010	468.4	455,405.0	151,023.8	86	150.8
2011	450.6	456,000.5	150,257.9	88	144.5
2012	453.6	458,496.4	150,463.0	85	147.4
2013	428.4	461,950.0	150,420.9	88	138.8
2014	411.9	464,395.4	150,499.4	90	133.3
2015	385.1	463,504.0	149,539.3	91	127.5
2016	389.8	459,920.3	147,293.5	90	131.8
2017	373.6	477,977.9	152,096.3	95	130.8
2018	386.0	476,481.7	150,456.8	93	138.1
2019	388.0	476,525.1	150,045.2	93	141.1
2020	385.3	462,088.0	146,369.6	93	143.4
2021	388.0	463,652.4	147,500.4	92	145.2

County: county value. Kansas: state value. County Rank: highest county value ranked #1. (\$000): thousands of dollars. Nonmetro Kansas: Kansas total less Metropolitan Areas as defined by the Office of Management and Budget (OMB; released 3/6/2020). Per 1000: For nonmoney amounts, Per 1000=(county value / county population for the same year as the data) x 1000. \$ Per capita=(county value / county population for the same year as the data). Value= . indicates missing or suppressed data or value not calculated.

Education

PUPIL/TEACHER RATIO SCHOOL YEAR BEGINNING...

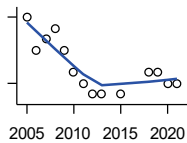


Kansas State Department of Education

Year	County	State of Kansas	Non Metro Kansas	County Rank	Per 1000 or \$ Per Capita
2000	9.3	15.4	13.9	105	.
2001	10.2	15.3	13.8	99	.
2002	10.2	15.4	13.9	99	.
2003	9.7	15.5	13.8	101	.
2004	11.1	15.3	13.6	87	.
2005	10.9	15.0	13.4	87	.
2006	11.2	14.7	13.2	78	.
2007	10.2	14.6	13.1	98	.
2008	10.6	14.4	12.9	89	.
2009	11.1	14.8	13.2	86	.
2010	10.6	15.2	13.6	95	.
2011	10.6	15.1	13.5	90	.
2012	10.7	15.1	13.5	89	.
2013	10.0	15.1	13.5	99	.
2014	9.4	15.0	13.6	102	.
2015	9.0	15.2	13.9	102	.
2016	8.8	15.1	13.7	103	.
2017	8.8	15.5	13.9	104	.
2018	9.1	15.3	13.8	102	.
2019	9.2	15.2	13.7	103	.
2020	9.3	14.7	13.4	103	.
2021	8.8	14.8	13.5	103	.

Social Environment

CHILD CARE FACILITIES: TOTAL CHILD CARE FACILITIES



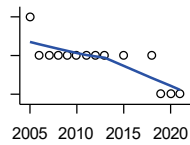
Kansas Department of Health and Environment, Bureau of Adult and Child Care

Year	County	State of Kansas	Non Metro Kansas	County Rank	Per 1000 or \$ Per Capita
2005	14	8,258	3,378	77	4.4
2006	11	8,442	3,429	86	3.5
2007	12	8,241	3,317	80	3.8
2008	13	8,011	3,150	79	4.2
2009	11	7,853	3,066	82	3.6
2010	9	7,354	2,858	88	2.9
2011	8	6,835	2,623	89	2.6
2012	7	6,346	2,409	89	2.3
2013	7	5,754	2,179	87	2.3
2015	7	5,289	2,146	87	2.3
2018	9	4,607	1,904	77	3.2
2019	9	4,287	1,774	75	3.3
2020	8	4,274	1,798	75	3.0
2021	8	4,002	1,700	78	3.0

County: county value. Kansas: state value. County Rank: highest county value ranked #1. (\$000): thousands of dollars. Nonmetro Kansas: Kansas total less Metropolitan Areas as defined by the Office of Management and Budget (OMB; released 3/6/2020). Per 1000: For nonmoney amounts, Per 1000=(county value / county population for the same year as the data) x 1000. \$ Per capita=(county value / county population for the same year as the data). Value= . indicates missing or suppressed data or value not calculated.

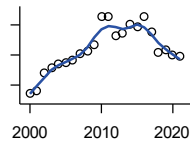
Social Environment

**CHILD CARE FACILITIES:
PRESCHOOLS**



Kansas Department of Health and Environment, Bureau of Adult and Child Care

Year	County	State of Kansas	Non Metro Kansas	County Rank	Per 1000 or \$ Per Capita
2005	2	243	140	46	0.6
2006	1	221	127	76	0.3
2007	1	208	119	76	0.3
2008	1	204	114	73	0.3
2009	1	194	107	72	0.3
2010	1	194	112	73	0.3
2011	1	209	123	76	0.3
2012	1	201	121	74	0.3
2013	1	140	84	64	0.3
2015	1	185	113	71	0.3
2018	1	150	94	60	0.4
2019	0	134	83	105	0.0
2020	0	126	78	105	0.0
2021	0	120	74	105	0.0



FOOD STAMP BENEFICIARIES

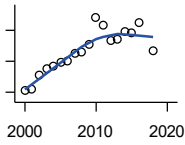
Kansas Social and Rehabilitation Services

Year	County	State of Kansas	Non Metro Kansas	County Rank	Per 1000 or \$ Per Capita
2000	37	110,619	44,825	102	10.7
2001	41	117,241	46,741	103	12.1
2002	70	131,726	52,342	97	20.9
2003	79	155,908	61,280	98	24.1
2004	85	167,971	65,852	95	26.4
2005	87	175,710	67,261	97	27.4
2006	91	182,821	67,487	96	29.0
2007	103	184,035	66,979	94	32.7
2008	106	187,377	67,160	90	33.9
2009	116	208,007	73,637	89	37.6
2010	164	259,609	90,919	87	52.8
2011	164	296,542	101,155	92	52.6
2012	131	303,257	102,478	96	42.6
2013	137	316,424	105,345	94	44.4
2014	152	301,377	100,761	91	49.2
2015	147	277,614	93,353	92	48.7
2016	164	258,412	88,343	88	55.5
2017	138	239,592	82,070	93	48.3
2018	105	219,738	75,208	96	37.6
2019	109	205,261	69,899	95	39.6
2020	99	198,457	66,721	95	36.8
2021	97	203,424	68,883	95	36.3

County: county value. Kansas: state value. County Rank: highest county value ranked #1. (\$000): thousands of dollars. Nonmetro Kansas: Kansas total less Metropolitan Areas as defined by the Office of Management and Budget (OMB; released 3/6/2020). Per 1000: For nonmoney amounts, Per 1000=(county value / county population for the same year as the data) x 1000. \$ Per capita=(county value / county population for the same year as the data). Value= . indicates missing or suppressed data or value not calculated.

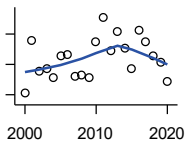
Social Environment

PERCENT OF POPULATION RECEIVING FOOD STAMPS



U.S. Dept. of Agriculture Food and Nutrition Service (1990-1997); Kansas Social and Rehabilitation Services (1998-)

Year	County	State of Kansas	Non Metro Kansas	County Rank	Per 1000 or \$ Per Capita
2000	1.1	4.1	.	104	.
2001	1.2	4.3	.	104	.
2002	2.1	4.9	.	101	.
2003	2.5	5.7	.	100	.
2004	2.7	6.2	.	99	.
2005	2.9	6.4	.	100	.
2006	3.0	6.6	.	101	.
2007	3.5	6.6	.	91	.
2008	3.6	6.7	.	90	.
2009	4.1	7.4	.	84	.
2010	5.8	9.1	.	78	.
2011	5.3	10.3	.	89	.
2012	4.3	10.5	.	100	.
2013	4.4	10.9	.	95	.
2014	4.9	10.4	.	93	.
2015	4.9	9.6	.	89	.
2016	5.5	8.9	.	72	.
2018	3.7	7.5	.	99	.



ESTIMATED NUMBER OF PEOPLE IN POVERTY

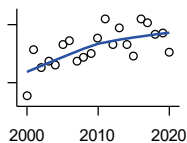
U.S. Census Bureau, Small Area Income and Poverty Estimates

Year	County	State of Kansas	Non Metro Kansas	County Rank	Per 1000 or \$ Per Capita
2000	242	235,087	98,984	99	70.1
2001	311	252,134	106,257	95	91.7
2002	271	265,673	107,542	98	80.8
2003	275	278,163	107,323	95	84.0
2004	263	297,733	111,534	95	81.7
2005	291	310,667	118,768	96	91.6
2006	293	327,102	123,700	97	93.5
2007	265	301,828	111,953	95	84.1
2008	266	307,804	113,015	95	85.1
2009	262	359,692	123,394	97	84.9
2010	310	374,677	131,502	95	99.8
2011	342	383,859	134,912	90	109.7
2012	298	392,095	133,800	93	96.8
2013	324	391,718	134,067	90	105.0
2014	301	381,506	130,213	92	97.4
2015	275	366,069	123,073	94	91.1
2016	325	343,773	121,314	88	109.9
2017	309	335,371	116,854	90	108.2
2018	291	336,892	114,490	93	104.1
2019	283	319,931	110,692	94	102.9
2020	257	300,931	100,998	94	95.6

County: county value. Kansas: state value. County Rank: highest county value ranked #1. (\$000): thousands of dollars. Nonmetro Kansas: Kansas total less Metropolitan Areas as defined by the Office of Management and Budget (OMB; released 3/6/2020). Per 1000: For nonmoney amounts, Per 1000=(county value / county population for the same year as the data) x 1000. \$ Per capita=(county value / county population for the same year as the data). Value= . indicates missing or suppressed data or value not calculated.

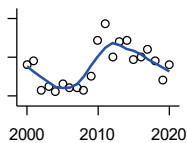
Social Environment

ESTIMATED % OF PEOPLE IN POVERTY



U.S. Census Bureau, Small Area Income and Poverty Estimates

Year	County	State of Kansas	Non Metro Kansas	County Rank	Per 1000 or \$ Per Capita
2000	7.3	8.9	.	98	.
2001	9.7	9.5	.	80	.
2002	8.8	10.0	.	93	.
2003	9.1	10.4	.	90	.
2004	8.9	11.1	.	93	.
2005	10.0	11.7	.	87	.
2006	10.2	12.2	.	90	.
2007	9.1	11.2	.	91	.
2008	9.3	11.3	.	92	.
2009	9.5	13.2	.	96	.
2010	10.3	13.5	.	88	.
2011	11.3	13.8	.	78	.
2012	10.0	14.0	.	90	.
2013	10.8	13.9	.	85	.
2014	10.0	13.5	.	93	.
2015	9.4	12.9	.	96	.
2016	11.3	12.2	.	69	.
2017	11.1	11.9	.	73	.
2018	10.5	11.9	.	86	.
2019	10.6	11.3	.	73	.
2020	9.6	10.6	.	85	.



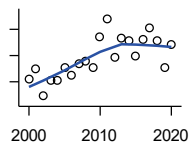
EST. NUMBER OF RELATED CHILDREN AGE 5 TO 17 IN FAMILIES IN POVERTY

U.S. Census Bureau, Small Area Income and Poverty Estimates

Year	County	State of Kansas	Non Metro Kansas	County Rank	Per 1000 or \$ Per Capita
2000	56	50,388	21,854	101	16.2
2001	58	53,755	23,094	100	17.1
2002	43	52,453	21,423	101	12.8
2003	45	55,419	21,809	101	13.7
2004	42	59,392	22,313	100	13.0
2005	46	60,203	24,244	100	14.5
2006	44	64,427	25,326	101	14.0
2007	44	61,149	23,639	101	14.0
2008	43	59,842	22,661	100	13.8
2009	50	71,850	26,251	98	16.2
2010	69	81,077	29,804	95	22.2
2011	77	82,311	29,306	87	24.7
2012	60	87,594	29,781	94	19.5
2013	68	84,325	29,253	90	22.0
2014	69	83,873	29,354	89	22.3
2015	59	78,192	27,482	96	19.5
2016	60	67,810	25,074	92	20.3
2017	64	67,873	25,032	93	22.4
2018	58	68,153	24,928	97	20.7
2019	48	64,613	23,117	99	17.5
2020	56	59,792	21,143	96	20.8

County: county value. Kansas: state value. County Rank: highest county value ranked #1. (\$000): thousands of dollars. Nonmetro Kansas: Kansas total less Metropolitan Areas as defined by the Office of Management and Budget (OMB; released 3/6/2020). Per 1000: For nonmoney amounts, Per 1000=(county value / county population for the same year as the data) x 1000. \$ Per capita=(county value / county population for the same year as the data). Value= . indicates missing or suppressed data or value not calculated.

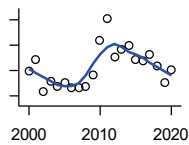
Social Environment



EST. % OF RELATED CHILDREN AGE 5 TO 17 IN FAMILIES IN POVERTY

U.S. Census Bureau, Small Area Income and Poverty Estimates

Year	County	State of Kansas	Non Metro Kansas	County Rank	Per 1000 or \$ Per Capita
2000	10.2	10.0	.	82	.
2001	11.0	10.8	.	77	.
2002	8.9	10.5	.	91	.
2003	10.1	11.3	.	86	.
2004	10.1	12.5	.	88	.
2005	11.1	12.8	.	86	.
2006	10.5	13.2	.	92	.
2007	11.4	12.6	.	81	.
2008	11.6	12.3	.	78	.
2009	11.1	14.7	.	92	.
2010	13.4	15.9	.	82	.
2011	14.8	16.2	.	69	.
2012	11.9	17.2	.	97	.
2013	13.3	16.5	.	83	.
2014	13.1	16.4	.	84	.
2015	12.0	15.3	.	85	.
2016	13.2	13.2	.	74	.
2017	14.1	13.4	.	69	.
2018	13.1	13.5	.	82	.
2019	11.1	12.9	.	88	.
2020	12.8	11.9	.	63	.



ESTIMATED NUMBER UNDER 18 IN POVERTY

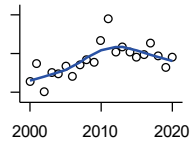
U.S. Census Bureau, Small Area Income and Poverty Estimates

Year	County	State of Kansas	Non Metro Kansas	County Rank	Per 1000 or \$ Per Capita
2000	80	82,619	34,843	101	23.2
2001	89	87,487	36,724	100	26.2
2002	63	84,181	32,870	101	18.8
2003	71	93,896	36,004	101	21.7
2004	67	98,641	36,272	101	20.8
2005	70	100,254	39,118	101	22.0
2006	66	105,193	41,054	101	21.1
2007	66	100,242	37,881	101	21.0
2008	67	100,146	37,552	100	21.4
2009	77	118,187	42,682	99	25.0
2010	104	129,009	46,428	95	33.5
2011	121	133,478	46,832	87	38.8
2012	91	135,261	46,294	94	29.6
2013	97	131,251	44,952	94	31.4
2014	100	125,562	43,933	90	32.4
2015	89	119,994	41,828	97	29.5
2016	88	100,996	37,387	93	29.8
2017	93	102,858	37,955	93	32.6
2018	84	102,616	36,991	97	30.0
2019	70	97,920	34,797	99	25.5
2020	81	88,491	30,767	96	30.1

County: county value. Kansas: state value. County Rank: highest county value ranked #1. (\$000): thousands of dollars. Nonmetro Kansas: Kansas total less Metropolitan Areas as defined by the Office of Management and Budget (OMB; released 3/6/2020). Per 1000: For nonmoney amounts, Per 1000=(county value / county population for the same year as the data) x 1000. \$ Per capita=(county value / county population for the same year as the data). Value= . indicates missing or suppressed data or value not calculated.

Social Environment

ESTIMATED PERCENT UNDER 18 IN POVERTY



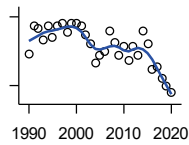
U.S. Census Bureau, Small Area Income and Poverty Estimates

Year	County	State of Kansas	Non Metro Kansas	County Rank	Per 1000 or \$ Per Capita
2000	11.1	11.9	.	89	.
2001	12.9	12.7	.	78	.
2002	10.0	12.1	.	93	.
2003	12.1	13.8	.	84	.
2004	11.9	14.6	.	90	.
2005	12.7	15.2	.	88	.
2006	11.6	15.4	.	96	.
2007	12.8	14.7	.	85	.
2008	13.3	14.6	.	85	.
2009	13.1	17.1	.	92	.
2010	15.4	18.1	.	79	.
2011	17.6	18.8	.	61	.
2012	14.2	19.0	.	88	.
2013	14.7	18.4	.	82	.
2014	14.1	17.6	.	83	.
2015	13.6	16.9	.	85	.
2016	13.9	14.3	.	79	.
2017	15.1	14.7	.	71	.
2018	13.8	14.8	.	83	.
2019	12.5	14.3	.	86	.
2020	13.6	13.0	.	64	.

County: county value. Kansas: state value. County Rank: highest county value ranked #1. (\$000): thousands of dollars. Nonmetro Kansas: Kansas total less Metropolitan Areas as defined by the Office of Management and Budget (OMB; released 3/6/2020). Per 1000: For nonmoney amounts, Per 1000=(county value / county population for the same year as the data) x 1000. \$ Per capita=(county value / county population for the same year as the data). Value= . indicates missing or suppressed data or value not calculated.

Business

ESTABLISHMENTS TOTAL COUNTY BUSINESS PATTERNS



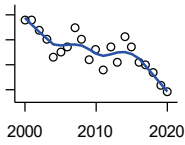
U.S. Census Bureau, County Business Patterns. Beginning with the 2017 data, any tabulation with fewer than 3 establishments were omitted from the release. Data for these establishments are included in the broader total.

Year	County	State of Kansas	Non Metro Kansas	County Rank	Per 1000 or \$ Per Capita
1990	144	65,858	26,802	71	35.7
1991	156	65,941	26,750	70	39.3
1992	155	67,630	27,229	71	39.9
1993	150	68,930	27,655	73	39.3
1994	156	69,822	27,763	71	40.9
1995	151	70,894	28,111	72	40.8
1996	156	72,017	28,353	73	43.5
1997	157	73,924	28,884	73	44.6
1998	153	74,019	28,749	73	43.0
1999	157	74,486	28,536	72	45.1
2000	157	74,939	28,475	71	45.5
2001	156	74,565	28,282	71	46.0
2002	152	75,077	28,183	73	45.3
2003	148	74,972	27,998	72	45.2
2004	140	75,827	28,009	73	43.5
2005	143	76,173	27,830	72	45.0
2006	145	76,446	27,653	72	46.3
2007	154	77,157	27,736	69	48.9
2008	149	76,096	27,314	68	47.6
2009	143	74,698	26,839	69	46.4
2010	147	74,301	26,739	69	47.3
2011	141	73,598	26,555	71	45.2
2012	147	73,944	26,534	70	47.8
2013	143	73,816	26,393	70	46.3
2014	154	74,055	26,292	68	49.9
2015	148	74,526	26,355	68	49.0
2016	137	74,884	26,172	72	46.3
2017	138	74,947	26,093	70	48.3
2018	133	74,559	25,802	73	47.6
2019	130	74,292	25,536	73	47.3
2020	127	73,982	25,178	74	47.3

County: county value. Kansas: state value. County Rank: highest county value ranked #1. (\$000): thousands of dollars. Nonmetro Kansas: Kansas total less Metropolitan Areas as defined by the Office of Management and Budget (OMB; released 3/6/2020). Per 1000: For nonmoney amounts, Per 1000=(county value / county population for the same year as the data) x 1000. \$ Per capita=(county value / county population for the same year as the data). Value= . indicates missing or suppressed data or value not calculated.

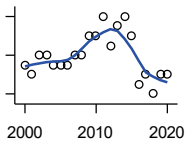
Business

**ESTABLISHMENTS: 1-19
EMPLOYEES**



U.S. Census Bureau, County Business Patterns. Beginning with the 2017 data, any tabulation with fewer than 3 establishments were omitted from the release. Data for these establishments are included in the broader total.

Year	County	State of Kansas	Non Metro Kansas	County Rank	Per 1000 or \$ Per Capita
2000	148	64,527	25,381	71	42.8
2001	148	64,176	25,248	71	43.6
2002	144	64,886	25,208	72	43.0
2003	140	64,714	25,020	72	42.8
2004	133	65,554	24,995	73	41.3
2005	135	65,796	24,839	72	42.5
2006	137	65,764	24,589	71	43.7
2007	145	66,446	24,701	69	46.0
2008	140	65,322	24,257	68	44.8
2009	132	64,128	23,851	69	42.8
2010	136	64,015	23,857	69	43.8
2011	128	63,251	23,571	70	41.1
2012	137	63,519	23,575	70	44.5
2013	131	63,197	23,396	70	42.4
2014	141	63,113	23,229	67	45.6
2015	137	63,280	23,227	68	45.4
2016	131	63,630	23,117	71	44.3
2017	130	63,619	23,022	70	45.5
2018	127	63,233	22,745	71	45.4
2019	122	62,904	22,489	71	44.4
2020	119	62,634	22,173	73	44.3



**ESTABLISHMENTS: 20-99
EMPLOYEES**

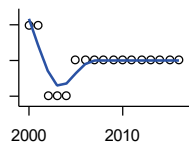
U.S. Census Bureau, County Business Patterns. Beginning with the 2017 data, any tabulation with fewer than 3 establishments were omitted from the release. Data for these establishments are included in the broader total.

Year	County	State of Kansas	Non Metro Kansas	County Rank	Per 1000 or \$ Per Capita
2000	7	8,714	2,653	79	2.0
2001	6	8,692	2,593	81	1.8
2002	8	8,582	2,554	74	2.4
2003	8	8,642	2,568	74	2.4
2004	7	8,658	2,590	80	2.2
2005	7	8,685	2,553	77	2.2
2006	7	8,922	2,612	79	2.2
2007	8	8,938	2,574	75	2.5
2008	8	8,939	2,587	77	2.6
2009	10	8,848	2,551	70	3.2
2010	10	8,612	2,454	71	3.2
2011	12	8,668	2,540	67	3.8
2012	9	8,700	2,500	74	2.9
2013	11	8,870	2,541	68	3.6
2014	12	9,121	2,590	66	3.9
2015	10	9,374	2,664	71	3.3
2016	5	9,412	2,596	90	1.7
2017	6	9,487	2,638	77	2.1
2018	4	9,485	2,621	92	1.4
2019	6	9,485	2,591	78	2.2
2020	6	9,471	2,545	78	2.2

County: county value. Kansas: state value. County Rank: highest county value ranked #1. (\$000): thousands of dollars. Nonmetro Kansas: Kansas total less Metropolitan Areas as defined by the Office of Management and Budget (OMB; released 3/6/2020). Per 1000: For nonmoney amounts, Per 1000=(county value / county population for the same year as the data) x 1000. \$ Per capita=(county value / county population for the same year as the data). Value= . indicates missing or suppressed data or value not calculated.

Business

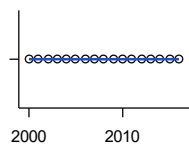
ESTABLISHMENTS: 100-499 EMPLOYEES



U.S. Census Bureau, County Business Patterns. Beginning with the 2017 data, any tabulation with fewer than 3 establishments were omitted from the release. Data for these establishments are included in the broader total.

Year	County	State of Kansas	Non Metro Kansas	County Rank	Per 1000 or \$ Per Capita
2000	2	1,555	409	62	0.6
2001	2	1,555	406	59	0.6
2002	0	1,464	386	105	0.0
2003	0	1,470	378	105	0.0
2004	0	1,463	388	105	0.0
2005	1	1,537	400	82	0.3
2006	1	1,598	407	83	0.3
2007	1	1,602	416	87	0.3
2008	1	1,653	421	86	0.3
2009	1	1,551	394	86	0.3
2010	1	1,513	382	85	0.3
2011	1	1,523	395	86	0.3
2012	1	1,567	410	85	0.3
2013	1	1,581	407	85	0.3
2014	1	1,641	421	86	0.3
2015	1	1,693	414	86	0.3
2016	1	1,671	406	84	0.3

ESTABLISHMENTS: 500 OR MORE EMPLOYEES

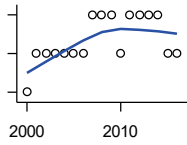


U.S. Census Bureau, County Business Patterns. Beginning with the 2017 data, any tabulation with fewer than 3 establishments were omitted from the release. Data for these establishments are included in the broader total.

Year	County	State of Kansas	Non Metro Kansas	County Rank	Per 1000 or \$ Per Capita
2000	0	143	32	105	0.0
2001	0	142	35	105	0.0
2002	0	145	35	105	0.0
2003	0	146	32	105	0.0
2004	0	152	36	105	0.0
2005	0	155	38	105	0.0
2006	0	162	45	105	0.0
2007	0	171	45	105	0.0
2008	0	182	49	105	0.0
2009	0	171	43	105	0.0
2010	0	161	46	105	0.0
2011	0	156	49	105	0.0
2012	0	158	49	105	0.0
2013	0	168	49	105	0.0
2014	0	180	52	105	0.0
2015	0	179	50	105	0.0
2016	0	171	53	105	0.0

County: county value. Kansas: state value. County Rank: highest county value ranked #1. (\$000): thousands of dollars. Nonmetro Kansas: Kansas total less Metropolitan Areas as defined by the Office of Management and Budget (OMB; released 3/6/2020). Per 1000: For nonmoney amounts, Per 1000=(county value / county population for the same year as the data) x 1000. \$ Per capita=(county value / county population for the same year as the data). Value= . indicates missing or suppressed data or value not calculated.

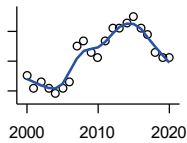
Business



ESTABLISHMENTS: FORESTRY, FISHING, HUNTING, AND AG SUPPORT

U.S. Census Bureau, County Business Patterns. Beginning with the 2017 data, any tabulation with fewer than 3 establishments were omitted from the release. Data for these establishments are included in the broader total.

Year	County	State of Kansas	Non Metro Kansas	County Rank	Per 1000 or \$ Per Capita
2000	0	190	149	105	0.0
2001	1	217	168	80	0.3
2002	1	224	176	84	0.3
2003	1	217	173	84	0.3
2004	1	211	165	77	0.3
2005	1	188	148	76	0.3
2006	1	193	158	76	0.3
2007	2	212	170	52	0.6
2008	2	197	158	50	0.6
2009	2	191	154	52	0.6
2010	1	192	161	79	0.3
2011	2	193	157	50	0.6
2012	2	204	164	50	0.6
2013	2	208	166	54	0.6
2014	2	194	152	55	0.6
2015	1	192	149	81	0.3
2016	1	181	142	80	0.3



ESTABLISHMENTS: MINING

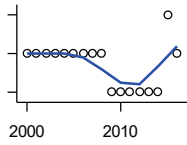
U.S. Census Bureau, County Business Patterns. Beginning with the 2017 data, any tabulation with fewer than 3 establishments were omitted from the release. Data for these establishments are included in the broader total.

Year	County	State of Kansas	Non Metro Kansas	County Rank	Per 1000 or \$ Per Capita
2000	20	868	619	8	5.8
2001	18	878	622	12	5.3
2002	19	847	615	9	5.7
2003	18	864	633	14	5.5
2004	17	880	647	14	5.3
2005	18	941	695	15	5.7
2006	19	991	734	13	6.1
2007	25	1,000	759	8	7.9
2008	26	1,047	799	8	8.3
2009	24	1,016	772	9	7.8
2010	23	1,009	762	11	7.4
2011	26	1,013	763	7	8.3
2012	28	1,048	789	8	9.1
2013	28	1,060	802	8	9.1
2014	29	1,102	828	8	9.4
2015	30	1,069	810	8	9.9
2016	28	990	747	8	9.5
2017	27	920	.	8	9.5
2018	24	900	.	8	8.6
2019	23	864	.	8	8.4
2020	23	825	.	7	8.6

County: county value. Kansas: state value. County Rank: highest county value ranked #1. (\$000): thousands of dollars. Nonmetro Kansas: Kansas total less Metropolitan Areas as defined by the Office of Management and Budget (OMB; released 3/6/2020). Per 1000: For nonmoney amounts, Per 1000=(county value / county population for the same year as the data) x 1000. \$ Per capita=(county value / county population for the same year as the data). Value= . indicates missing or suppressed data or value not calculated.

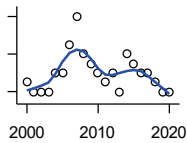
Business

ESTABLISHMENTS: UTILITIES



U.S. Census Bureau, County Business Patterns. Beginning with the 2017 data, any tabulation with fewer than 3 establishments were omitted from the release. Data for these establishments are included in the broader total.

Year	County	State of Kansas	Non Metro Kansas	County Rank	Per 1000 or \$ Per Capita
2000	2	274	192	68	0.6
2001	2	290	204	70	0.6
2002	2	278	195	64	0.6
2003	2	268	180	63	0.6
2004	2	247	164	59	0.6
2005	2	254	172	57	0.6
2006	2	248	169	58	0.6
2007	2	222	156	56	0.6
2008	2	244	166	61	0.6
2009	1	222	152	86	0.3
2010	1	197	129	82	0.3
2011	1	230	156	87	0.3
2012	1	232	156	86	0.3
2013	1	234	159	87	0.3
2014	1	232	160	89	0.3
2015	3	237	165	30	1.0
2016	2	245	171	60	0.7



ESTABLISHMENTS: CONSTRUCTION

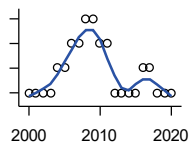
U.S. Census Bureau, County Business Patterns. Beginning with the 2017 data, any tabulation with fewer than 3 establishments were omitted from the release. Data for these establishments are included in the broader total.

Year	County	State of Kansas	Non Metro Kansas	County Rank	Per 1000 or \$ Per Capita
2000	9	7,703	2,616	83	2.6
2001	8	7,449	2,520	86	2.4
2002	8	7,519	2,482	88	2.4
2003	8	7,722	2,521	86	2.4
2004	10	7,887	2,518	80	3.1
2005	10	8,032	2,515	79	3.1
2006	13	8,031	2,494	72	4.1
2007	16	8,057	2,547	67	5.1
2008	12	7,831	2,522	74	3.8
2009	11	7,342	2,452	75	3.6
2010	10	7,064	2,394	80	3.2
2011	9	6,774	2,361	81	2.9
2012	10	6,741	2,393	83	3.2
2013	8	6,802	2,394	85	2.6
2014	12	6,920	2,383	79	3.9
2015	11	7,014	2,377	82	3.6
2016	10	6,988	2,343	83	3.4
2017	10	7,031	2,316	81	3.5
2018	9	7,124	2,285	83	3.2
2019	8	7,060	2,242	87	2.9
2020	8	7,089	2,249	85	3.0

County: county value. Kansas: state value. County Rank: highest county value ranked #1. (\$000): thousands of dollars. Nonmetro Kansas: Kansas total less Metropolitan Areas as defined by the Office of Management and Budget (OMB; released 3/6/2020). Per 1000: For nonmoney amounts, Per 1000=(county value / county population for the same year as the data) x 1000. \$ Per capita=(county value / county population for the same year as the data). Value= . indicates missing or suppressed data or value not calculated.

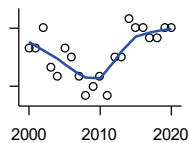
Business

**ESTABLISHMENTS:
MANUFACTURING**



U.S. Census Bureau, County Business Patterns. Beginning with the 2017 data, any tabulation with fewer than 3 establishments were omitted from the release. Data for these establishments are included in the broader total.

Year	County	State of Kansas	Non Metro Kansas	County Rank	Per 1000 or \$ Per Capita
2000	4	3,229	1,316	79	1.2
2001	4	3,240	1,323	82	1.2
2002	4	3,181	1,289	87	1.2
2003	4	3,159	1,291	88	1.2
2004	5	3,179	1,313	83	1.6
2005	5	3,128	1,278	79	1.6
2006	6	3,165	1,290	73	1.9
2007	6	3,184	1,316	73	1.9
2008	7	3,171	1,297	70	2.2
2009	7	3,026	1,240	66	2.3
2010	6	2,955	1,222	73	1.9
2011	6	2,877	1,193	74	1.9
2012	4	2,889	1,197	81	1.3
2013	4	2,836	1,165	80	1.3
2014	4	2,831	1,168	81	1.3
2015	4	2,817	1,161	82	1.3
2016	5	2,791	1,150	77	1.7
2017	5	2,760	1,147	76	1.8
2018	4	2,725	1,126	84	1.4
2019	4	2,695	1,111	84	1.5
2020	4	2,673	1,103	84	1.5



ESTABLISHMENTS: WHOLESALE TRADE

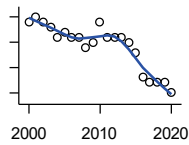
U.S. Census Bureau, County Business Patterns. Beginning with the 2017 data, any tabulation with fewer than 3 establishments were omitted from the release. Data for these establishments are included in the broader total.

Year	County	State of Kansas	Non Metro Kansas	County Rank	Per 1000 or \$ Per Capita
2000	16	4,876	1,776	54	4.6
2001	16	4,811	1,769	54	4.7
2002	18	4,719	1,750	46	5.4
2003	14	4,590	1,637	58	4.3
2004	13	4,553	1,634	60	4.0
2005	16	4,541	1,618	49	5.0
2006	15	4,517	1,596	53	4.8
2007	13	4,555	1,629	58	4.1
2008	11	4,501	1,622	67	3.5
2009	12	4,437	1,614	63	3.9
2010	13	4,432	1,612	58	4.2
2011	11	4,400	1,660	65	3.5
2012	15	4,563	1,755	58	4.9
2013	15	4,501	1,741	54	4.9
2014	19	4,497	1,746	41	6.2
2015	18	4,459	1,755	43	6.0
2016	18	4,457	1,732	47	6.1
2017	17	4,436	1,774	49	6.0
2018	17	4,330	1,727	46	6.1
2019	18	4,291	1,713	44	6.5
2020	18	4,191	1,677	39	6.7

County: county value. Kansas: state value. County Rank: highest county value ranked #1. (\$000): thousands of dollars. Nonmetro Kansas: Kansas total less Metropolitan Areas as defined by the Office of Management and Budget (OMB; released 3/6/2020). Per 1000: For nonmoney amounts, Per 1000=(county value / county population for the same year as the data) x 1000. \$ Per capita=(county value / county population for the same year as the data). Value= . indicates missing or suppressed data or value not calculated.

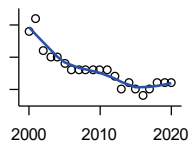
Business

ESTABLISHMENTS: RETAIL TRADE



U.S. Census Bureau, County Business Patterns. Beginning with the 2017 data, any tabulation with fewer than 3 establishments were omitted from the release. Data for these establishments are included in the broader total.

Year	County	State of Kansas	Non Metro Kansas	County Rank	Per 1000 or \$ Per Capita
2000	24	12,261	5,240	79	6.9
2001	25	12,206	5,207	75	7.4
2002	24	11,980	5,082	77	7.2
2003	23	11,834	5,049	79	7.0
2004	21	11,748	4,967	83	6.5
2005	22	11,562	4,834	77	6.9
2006	21	11,367	4,702	81	6.7
2007	21	11,306	4,653	78	6.7
2008	19	10,978	4,494	80	6.1
2009	20	10,760	4,372	78	6.5
2010	24	10,727	4,346	72	7.7
2011	21	10,655	4,289	76	6.7
2012	21	10,585	4,202	75	6.8
2013	21	10,433	4,147	73	6.8
2014	20	10,391	4,070	75	6.5
2015	18	10,327	4,061	77	6.0
2016	13	10,197	3,965	91	4.4
2017	12	10,074	3,885	92	4.2
2018	12	9,866	3,797	92	4.3
2019	12	9,762	3,750	91	4.4
2020	10	9,591	3,666	98	3.7



ESTABLISHMENTS: TRANSPORTATION & WAREHOUSING

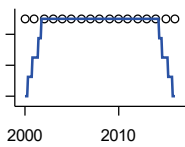
U.S. Census Bureau, County Business Patterns. Beginning with the 2017 data, any tabulation with fewer than 3 establishments were omitted from the release. Data for these establishments are included in the broader total.

Year	County	State of Kansas	Non Metro Kansas	County Rank	Per 1000 or \$ Per Capita
2000	14	2,474	1,293	47	4.1
2001	16	2,463	1,298	36	4.7
2002	11	2,461	1,278	61	3.3
2003	10	2,576	1,297	65	3.1
2004	10	2,651	1,324	66	3.1
2005	9	2,632	1,326	70	2.8
2006	8	2,626	1,295	74	2.6
2007	8	2,664	1,314	79	2.5
2008	8	2,675	1,329	76	2.6
2009	8	2,635	1,313	73	2.6
2010	8	2,615	1,313	72	2.6
2011	8	2,579	1,285	71	2.6
2012	7	2,519	1,243	75	2.3
2013	5	2,492	1,226	87	1.6
2014	6	2,518	1,240	84	1.9
2015	5	2,554	1,257	89	1.7
2016	4	2,567	1,241	93	1.4
2017	5	2,640	1,245	87	1.8
2018	6	2,627	1,238	78	2.1
2019	6	2,615	1,209	82	2.2
2020	6	2,589	1,179	77	2.2

County: county value. Kansas: state value. County Rank: highest county value ranked #1. (\$000): thousands of dollars. Nonmetro Kansas: Kansas total less Metropolitan Areas as defined by the Office of Management and Budget (OMB; released 3/6/2020). Per 1000: For nonmoney amounts, Per 1000=(county value / county population for the same year as the data) x 1000. \$ Per capita=(county value / county population for the same year as the data). Value= . indicates missing or suppressed data or value not calculated.

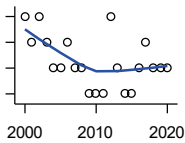
Business

ESTABLISHMENTS: INFORMATION



U.S. Census Bureau, County Business Patterns. Beginning with the 2017 data, any tabulation with fewer than 3 establishments were omitted from the release. Data for these establishments are included in the broader total.

Year	County	State of Kansas	Non Metro Kansas	County Rank	Per 1000 or \$ Per Capita
2000	2	1,542	578	98	0.6
2001	2	1,556	566	96	0.6
2002	2	1,517	551	91	0.6
2003	2	1,516	564	91	0.6
2004	2	1,518	556	92	0.6
2005	2	1,519	536	88	0.6
2006	2	1,549	559	93	0.6
2007	2	1,504	527	87	0.6
2008	2	1,468	522	87	0.6
2009	2	1,420	510	87	0.6
2010	2	1,437	527	91	0.6
2011	2	1,428	537	91	0.6
2012	2	1,387	515	90	0.6
2013	2	1,337	487	84	0.6
2014	2	1,335	496	85	0.6
2015	2	1,359	510	85	0.7
2016	2	1,431	537	85	0.7



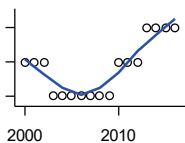
ESTABLISHMENTS: FINANCE & INSURANCE

U.S. Census Bureau, County Business Patterns. Beginning with the 2017 data, any tabulation with fewer than 3 establishments were omitted from the release. Data for these establishments are included in the broader total.

Year	County	State of Kansas	Non Metro Kansas	County Rank	Per 1000 or \$ Per Capita
2000	13	5,209	1,848	63	3.8
2001	12	5,178	1,828	69	3.5
2002	13	5,496	1,911	67	3.9
2003	12	5,569	1,907	74	3.7
2004	11	5,572	1,913	73	3.4
2005	11	5,708	1,964	73	3.5
2006	12	5,877	1,976	72	3.8
2007	11	6,017	2,030	76	3.5
2008	11	6,010	2,023	74	3.5
2009	10	5,933	1,994	79	3.2
2010	10	5,872	1,975	80	3.2
2011	10	5,854	1,985	79	3.2
2012	13	5,993	2,024	67	4.2
2013	11	5,903	1,993	75	3.6
2014	10	5,894	2,000	80	3.2
2015	10	5,932	1,998	79	3.3
2016	11	6,022	2,021	73	3.7
2017	12	6,026	2,007	69	4.2
2018	11	6,023	1,997	71	3.9
2019	11	5,953	1,977	70	4.0
2020	11	5,926	1,969	70	4.1

County: county value. Kansas: state value. County Rank: highest county value ranked #1. (\$000): thousands of dollars. Nonmetro Kansas: Kansas total less Metropolitan Areas as defined by the Office of Management and Budget (OMB; released 3/6/2020). Per 1000: For nonmoney amounts, Per 1000=(county value / county population for the same year as the data) x 1000. \$ Per capita=(county value / county population for the same year as the data). Value= . indicates missing or suppressed data or value not calculated.

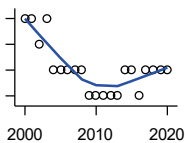
Business



ESTABLISHMENTS: REAL ESTATE, RENTAL, AND LEASING

U.S. Census Bureau, County Business Patterns. Beginning with the 2017 data, any tabulation with fewer than 3 establishments were omitted from the release. Data for these establishments are included in the broader total.

Year	County	State of Kansas	Non Metro Kansas	County Rank	Per 1000 or \$ Per Capita
2000	1	2,733	687	91	0.3
2001	1	2,849	724	92	0.3
2002	1	2,952	735	95	0.3
2003	0	3,007	727	105	0.0
2004	0	3,108	713	105	0.0
2005	0	3,203	727	105	0.0
2006	0	3,268	736	105	0.0
2007	0	3,286	721	105	0.0
2008	0	3,239	738	105	0.0
2009	0	3,122	723	105	0.0
2010	1	3,050	708	90	0.3
2011	1	3,002	692	89	0.3
2012	1	2,981	691	88	0.3
2013	2	3,046	717	76	0.6
2014	2	3,135	738	79	0.6
2015	2	3,179	744	79	0.7
2016	2	3,293	757	77	0.7



ESTABLISHMENTS: PROFESSIONAL, SCIENTIFIC, AND TECHNICAL SERVICES

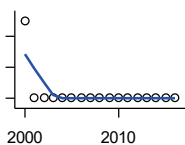
U.S. Census Bureau, County Business Patterns. Beginning with the 2017 data, any tabulation with fewer than 3 establishments were omitted from the release. Data for these establishments are included in the broader total.

Year	County	State of Kansas	Non Metro Kansas	County Rank	Per 1000 or \$ Per Capita
2000	8	6,424	1,690	77	2.3
2001	8	6,492	1,665	74	2.4
2002	7	6,719	1,704	80	2.1
2003	8	6,793	1,735	78	2.4
2004	6	7,025	1,730	89	1.9
2005	6	7,087	1,711	88	1.9
2006	6	7,231	1,736	90	1.9
2007	6	7,329	1,729	89	1.9
2008	6	7,133	1,671	89	1.9
2009	5	7,122	1,676	94	1.6
2010	5	7,172	1,680	96	1.6
2011	5	7,115	1,668	95	1.6
2012	5	7,122	1,681	96	1.6
2013	5	7,129	1,698	93	1.6
2014	6	7,206	1,682	87	1.9
2015	6	7,184	1,687	88	2.0
2016	5	7,146	1,659	90	1.7
2017	6	7,224	1,679	87	2.1
2018	6	7,138	1,655	87	2.1
2019	6	7,119	.	86	2.2
2020	6	7,117	.	85	2.2

County: county value. Kansas: state value. County Rank: highest county value ranked #1. (\$000): thousands of dollars. Nonmetro Kansas: Kansas total less Metropolitan Areas as defined by the Office of Management and Budget (OMB; released 3/6/2020). Per 1000: For nonmoney amounts, Per 1000=(county value / county population for the same year as the data) x 1000. \$ Per capita=(county value / county population for the same year as the data). Value= . indicates missing or suppressed data or value not calculated.

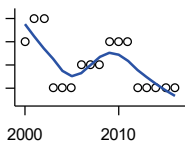
Business

ESTABLISHMENTS: MANAGEMENT OF COMPANIES AND ENTERPRISES



U.S. Census Bureau, County Business Patterns. Beginning with the 2017 data, any tabulation with fewer than 3 establishments were omitted from the release. Data for these establishments are included in the broader total.

Year	County	State of Kansas	Non Metro Kansas	County Rank	Per 1000 or \$ Per Capita
2000	1	622	145	68	0.3
2001	0	593	141	105	0.0
2002	0	597	152	105	0.0
2003	0	561	135	105	0.0
2004	0	569	133	105	0.0
2005	0	543	127	105	0.0
2006	0	542	131	105	0.0
2007	0	550	133	105	0.0
2008	0	553	139	105	0.0
2009	0	575	136	105	0.0
2010	0	567	131	105	0.0
2011	0	552	134	105	0.0
2012	0	593	135	105	0.0
2013	0	590	135	105	0.0
2014	0	603	136	105	0.0
2015	0	613	140	105	0.0
2016	0	655	171	105	0.0



ESTABLISHMENTS: ADMIN, SUPPORT, WASTE MGMT., AND REMEDIATION

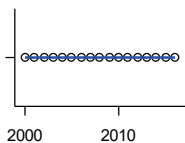
U.S. Census Bureau, County Business Patterns. Beginning with the 2017 data, any tabulation with fewer than 3 establishments were omitted from the release. Data for these establishments are included in the broader total.

Year	County	State of Kansas	Non Metro Kansas	County Rank	Per 1000 or \$ Per Capita
2000	3	3,307	871	81	0.9
2001	4	3,421	913	72	1.2
2002	4	3,232	882	74	1.2
2003	1	3,189	858	99	0.3
2004	1	3,301	891	101	0.3
2005	1	3,342	896	100	0.3
2006	2	3,395	886	93	0.6
2007	2	3,522	921	94	0.6
2008	2	3,587	932	95	0.6
2009	3	3,505	904	85	1.0
2010	3	3,494	897	83	1.0
2011	3	3,447	903	81	1.0
2012	1	3,462	891	99	0.3
2013	1	3,489	904	100	0.3
2014	1	3,569	933	98	0.3
2015	1	3,630	964	97	0.3
2016	1	3,705	987	99	0.3

County: county value. Kansas: state value. County Rank: highest county value ranked #1. (\$000): thousands of dollars. Nonmetro Kansas: Kansas total less Metropolitan Areas as defined by the Office of Management and Budget (OMB; released 3/6/2020). Per 1000: For nonmoney amounts, Per 1000=(county value / county population for the same year as the data) x 1000. \$ Per capita=(county value / county population for the same year as the data). Value= . indicates missing or suppressed data or value not calculated.

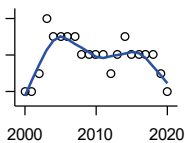
Business

ESTABLISHMENTS: EDUCATIONAL SERVICES



U.S. Census Bureau, County Business Patterns. Beginning with the 2017 data, any tabulation with fewer than 3 establishments were omitted from the release. Data for these establishments are included in the broader total.

Year	County	State of Kansas	Non Metro Kansas	County Rank	Per 1000 or \$ Per Capita
2000	0	604	155	105	0.0
2001	0	625	168	105	0.0
2002	0	666	165	105	0.0
2003	0	663	173	105	0.0
2004	0	690	173	105	0.0
2005	0	699	168	105	0.0
2006	0	698	175	105	0.0
2007	0	691	165	105	0.0
2008	0	692	158	105	0.0
2009	0	690	150	105	0.0
2010	0	700	149	105	0.0
2011	0	711	150	105	0.0
2012	0	724	145	105	0.0
2013	0	735	153	105	0.0
2014	0	722	152	105	0.0
2015	0	754	152	105	0.0
2016	0	728	150	105	0.0



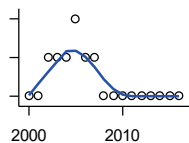
ESTABLISHMENTS: HEALTH CARE AND SOCIAL ASSISTANCE

U.S. Census Bureau, County Business Patterns. Beginning with the 2017 data, any tabulation with fewer than 3 establishments were omitted from the release. Data for these establishments are included in the broader total.

Year	County	State of Kansas	Non Metro Kansas	County Rank	Per 1000 or \$ Per Capita
2000	8	6,564	2,591	86	2.3
2001	8	6,636	2,590	84	2.4
2002	9	7,052	2,777	83	2.7
2003	12	7,129	2,792	73	3.7
2004	11	7,239	2,813	75	3.4
2005	11	7,412	2,855	74	3.5
2006	11	7,477	2,860	74	3.5
2007	11	7,661	2,864	74	3.5
2008	10	7,651	2,810	75	3.2
2009	10	7,696	2,787	76	3.2
2010	10	7,751	2,830	74	3.2
2011	10	7,804	2,817	75	3.2
2012	9	7,973	2,793	80	2.9
2013	10	7,877	2,729	77	3.2
2014	11	7,809	2,686	71	3.6
2015	10	8,103	2,692	80	3.3
2016	10	8,315	2,678	78	3.4
2017	10	8,136	2,646	75	3.5
2018	10	8,126	2,632	75	3.6
2019	9	8,184	2,587	78	3.3
2020	8	8,290	2,571	80	3.0

County: county value. Kansas: state value. County Rank: highest county value ranked #1. (\$000): thousands of dollars. Nonmetro Kansas: Kansas total less Metropolitan Areas as defined by the Office of Management and Budget (OMB; released 3/6/2020). Per 1000: For nonmoney amounts, Per 1000=(county value / county population for the same year as the data) x 1000. \$ Per capita=(county value / county population for the same year as the data). Value= . indicates missing or suppressed data or value not calculated.

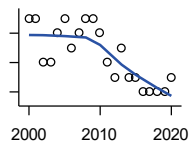
Business



ESTABLISHMENTS: ARTS, ENTERTAINMENT, AND RECREATION

U.S. Census Bureau, County Business Patterns. Beginning with the 2017 data, any tabulation with fewer than 3 establishments were omitted from the release. Data for these establishments are included in the broader total.

Year	County	State of Kansas	Non Metro Kansas	County Rank	Per 1000 or \$ Per Capita
2000	0	981	419	105	0.0
2001	0	1,009	433	105	0.0
2002	1	1,054	441	100	0.3
2003	1	1,045	443	101	0.3
2004	1	1,082	445	101	0.3
2005	2	1,109	446	86	0.6
2006	1	1,080	445	101	0.3
2007	1	1,092	444	100	0.3
2008	0	1,062	423	105	0.0
2009	0	1,063	421	105	0.0
2010	0	1,018	406	105	0.0
2011	0	997	387	105	0.0
2012	0	1,000	388	105	0.0
2013	0	1,009	377	105	0.0
2014	0	1,030	365	105	0.0
2015	0	1,031	357	105	0.0
2016	0	1,060	366	105	0.0



ESTABLISHMENTS: ACCOMMODATION AND FOOD SERVICES

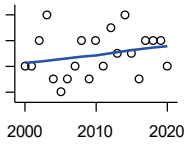
U.S. Census Bureau, County Business Patterns. Beginning with the 2017 data, any tabulation with fewer than 3 establishments were omitted from the release. Data for these establishments are included in the broader total.

Year	County	State of Kansas	Non Metro Kansas	County Rank	Per 1000 or \$ Per Capita
2000	11	5,536	2,213	75	3.2
2001	11	5,551	2,173	73	3.2
2002	8	5,610	2,174	88	2.4
2003	8	5,635	2,188	90	2.4
2004	10	5,681	2,160	78	3.1
2005	11	5,776	2,170	72	3.5
2006	9	5,745	2,132	81	2.9
2007	10	5,877	2,095	73	3.2
2008	11	5,843	2,052	68	3.5
2009	11	5,794	2,029	68	3.6
2010	10	5,898	2,046	72	3.2
2011	8	5,958	2,067	80	2.6
2012	7	5,951	2,046	87	2.3
2013	9	6,061	2,070	77	2.9
2014	7	5,985	2,024	83	2.3
2015	7	6,034	2,063	89	2.3
2016	6	6,126	2,094	95	2.0
2017	6	6,250	2,123	91	2.1
2018	6	6,256	2,128	92	2.1
2019	6	6,231	2,131	90	2.2
2020	7	6,206	2,131	86	2.6

County: county value. Kansas: state value. County Rank: highest county value ranked #1. (\$000): thousands of dollars. Nonmetro Kansas: Kansas total less Metropolitan Areas as defined by the Office of Management and Budget (OMB; released 3/6/2020). Per 1000: For nonmoney amounts, Per 1000=(county value / county population for the same year as the data) x 1000. \$ Per capita=(county value / county population for the same year as the data). Value= . indicates missing or suppressed data or value not calculated.

Business

ESTABLISHMENTS: OTHER SERVICES

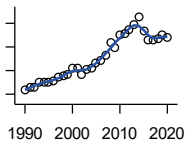


U.S. Census Bureau, County Business Patterns. Beginning with the 2017 data, any tabulation with fewer than 3 establishments were omitted from the release. Data for these establishments are included in the broader total.

Year	County	State of Kansas	Non Metro Kansas	County Rank	Per 1000 or \$ Per Capita
2000	18	8,423	3,636	80	5.2
2001	18	8,310	3,614	80	5.3
2002	20	8,552	3,658	76	6.0
2003	22	8,411	3,605	72	6.7
2004	17	8,343	3,597	83	5.3
2005	16	8,321	3,571	85	5.0
2006	17	8,225	3,490	82	5.4
2007	18	8,355	3,534	78	5.7
2008	20	8,104	3,406	74	6.4
2009	17	8,040	3,405	80	5.5
2010	20	7,998	3,379	70	6.4
2011	18	7,883	3,294	73	5.8
2012	21	7,913	3,303	69	6.8
2013	19	7,947	3,290	73	6.2
2014	22	7,943	3,285	68	7.1
2015	19	7,869	3,255	74	6.3
2016	17	7,839	3,204	81	5.7
2017	20	7,873	3,189	73	7.0
2018	20	7,853	3,176	71	7.2
2019	20	7,834	3,138	71	7.3
2020	18	7,787	3,073	76	6.7

County: county value. Kansas: state value. County Rank: highest county value ranked #1. (\$000): thousands of dollars. Nonmetro Kansas: Kansas total less Metropolitan Areas as defined by the Office of Management and Budget (OMB; released 3/6/2020). Per 1000: For nonmoney amounts, Per 1000=(county value / county population for the same year as the data) x 1000. \$ Per capita=(county value / county population for the same year as the data). Value= . indicates missing or suppressed data or value not calculated.

Business



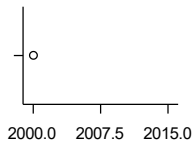
**TOTAL ANNUAL PAYROLL (\$000)
COUNTY BUSINESS PATTERNS**

U.S. Census Bureau, County Business Patterns. Beginning with the 2017 data, any tabulation with fewer than 3 establishments were omitted from the release. Data for these establishments are included in the broader total.

Year	County	State of Kansas	Non Metro Kansas	County Rank	Per 1000 or \$ Per Capita
1990	11,735	17,487,316	4,442,429	72	2,909.7
1991	12,968	18,162,326	4,612,616	73	3,264.0
1992	13,175	19,244,346	4,882,060	73	3,391.2
1993	14,859	20,087,190	5,182,780	73	3,893.9
1994	15,299	21,201,652	5,541,423	74	4,012.3
1995	15,141	22,825,920	5,875,310	75	4,095.5
1996	15,641	24,613,884	6,198,398	75	4,365.3
1997	17,098	26,787,098	6,599,061	73	4,860.1
1998	17,529	28,747,576	6,871,794	73	4,928.0
1999	18,078	30,600,434	7,121,961	73	5,187.4
2000	21,119	31,990,762	7,520,424	71	6,114.4
2001	21,138	33,303,992	7,598,165	71	6,233.6
2002	18,222	33,152,962	7,572,002	76	5,436.2
2003	20,578	34,040,944	7,726,561	74	6,285.3
2004	21,265	35,725,812	8,303,779	72	6,606.1
2005	23,307	36,646,064	8,586,986	71	7,336.2
2006	24,515	39,251,388	9,178,947	72	7,819.8
2007	26,345	42,022,753	.	70	8,363.5
2008	31,658	43,984,689	.	69	10,124.1
2009	29,538	42,146,866	.	68	9,574.7
2010	35,234	42,686,303	10,294,015	66	11,340.2
2011	35,792	43,733,944	.	65	11,479.2
2012	37,354	45,608,072	11,222,183	66	12,139.7
2013	39,606	47,715,601	11,446,751	65	12,829.9
2014	42,733	49,712,832	11,957,931	64	13,833.9
2015	36,768	51,259,676	11,975,718	70	12,174.8
2016	32,693	51,016,318	12,148,646	72	11,056.1
2017	33,022	52,754,605	12,448,592	72	11,562.3
2018	33,660	55,087,460	12,810,270	72	12,038.6
2019	35,011	57,272,387	13,123,288	70	12,731.3
2020	33,966	58,374,388	14,007,955	71	12,640.9

County: county value. Kansas: state value. County Rank: highest county value ranked #1. (\$000): thousands of dollars. Nonmetro Kansas: Kansas total less Metropolitan Areas as defined by the Office of Management and Budget (OMB; released 3/6/2020). Per 1000: For nonmoney amounts, Per 1000=(county value / county population for the same year as the data) x 1000. \$ Per capita=(county value / county population for the same year as the data). Value= . indicates missing or suppressed data or value not calculated.

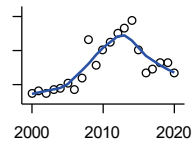
Business



**TOTAL ANNUAL PAYROLL(\$000):
FORESTRY, FISHING, HUNTING, AND
AG SUPPORT**

U.S. Census Bureau, County Business Patterns. Beginning with the 2017 data, any tabulation with fewer than 3 establishments were omitted from the release. Data for these establishments are included in the broader total.

Year	County	State of Kansas	Non Metro Kansas	County Rank	Per 1000 or \$ Per Capita
2000	0	13,551	.	.	0.0
2001
2002	.	16,528	.	.	.
2003	.	17,247	.	.	.
2004	.	17,552	.	.	.
2005	.	16,298	.	.	.
2006	.	17,908	.	.	.
2007	.	22,199	.	.	.
2008	.	21,359	.	.	.
2009	.	22,466	.	.	.
2010	.	22,753	.	.	.
2011	.	23,320	.	.	.
2012	.	27,492	.	.	.
2013	.	30,360	.	.	.
2014	.	34,862	.	.	.
2015	.	35,980	.	.	.



**TOTAL ANNUAL PAYROLL(\$000):
MINING**

U.S. Census Bureau, County Business Patterns. Beginning with the 2017 data, any tabulation with fewer than 3 establishments were omitted from the release. Data for these establishments are included in the broader total.

Year	County	State of Kansas	Non Metro Kansas	County Rank	Per 1000 or \$ Per Capita
2000	3,643	240,079	.	.	1,054.7
2001	4,139	273,838	.	.	1,220.6
2002	3,640	262,277	.	.	1,085.9
2003	4,308	290,652	.	.	1,315.8
2004	4,494	326,997	.	.	1,396.1
2005	5,266	381,069	.	.	1,657.5
2006	4,316	482,102	.	.	1,376.7
2007	5,932	551,751	.	.	1,883.2
2008	11,563	620,446	.	.	3,697.8
2009	7,912	465,070	.	.	2,564.7
2010	10,135	485,841	.	.	3,262.0
2011	11,269	541,536	.	.	3,614.2
2012	12,584	600,402	.	.	4,089.7
2013	13,270	599,788	.	.	4,298.7
2014	14,415	678,673	.	.	4,666.6
2015	10,137	552,658	.	.	3,356.6
2016	6,764	428,767	.	.	2,287.5
2017	7,315	379,883	.	.	2,561.3
2018	8,234	431,367	.	.	2,944.9
2019	8,292	349,270	.	.	3,015.3
2020	6,667	302,795	.	.	2,481.2

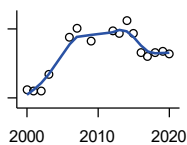
County: county value. Kansas: state value. County Rank: highest county value ranked #1. (\$000): thousands of dollars. Nonmetro Kansas: Kansas total less Metropolitan Areas as defined by the Office of Management and Budget (OMB; released 3/6/2020). Per 1000: For nonmoney amounts, Per 1000=(county value / county population for the same year as the data) x 1000. \$ Per capita=(county value / county population for the same year as the data). Value= . indicates missing or suppressed data or value not calculated.

Business

**TOTAL ANNUAL PAYROLL(\$000):
UTILITIES**

U.S. Census Bureau, County Business Patterns. Beginning with the 2017 data, any tabulation with fewer than 3 establishments were omitted from the release. Data for these establishments are included in the broader total.

Year	County	State of Kansas	Non Metro Kansas	County Rank	Per 1000 or \$ Per Capita
2000	.	410,313	.	.	.
2001	.	452,057	.	.	.
2002	.	377,559	.	.	.
2003	.	378,157	.	.	.
2004	.	377,809	.	.	.
2005	.	429,864	.	.	.
2006	.	443,999	.	.	.
2007	.	480,068	.	.	.
2008	.	541,066	.	.	.
2009	.	563,373	.	.	.
2010	.	512,628	.	.	.
2011	.	653,229	.	.	.
2012	.	625,451	.	.	.
2013	.	625,347	.	.	.
2014	.	610,960	.	.	.
2015	.	668,559	.	.	.



**TOTAL ANNUAL PAYROLL(\$000):
CONSTRUCTION**

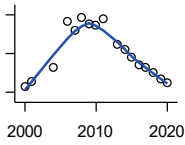
U.S. Census Bureau, County Business Patterns. Beginning with the 2017 data, any tabulation with fewer than 3 establishments were omitted from the release. Data for these establishments are included in the broader total.

Year	County	State of Kansas	Non Metro Kansas	County Rank	Per 1000 or \$ Per Capita
2000	270	2,256,057	.	.	78.2
2001	258	2,320,652	.	.	76.1
2002	258	2,302,229	.	.	77.0
2003	404	2,282,021	.	.	123.4
2004	.	2,302,854	.	.	.
2005	.	2,465,977	.	.	.
2006	728	2,700,351	.	.	232.2
2007	801	2,772,168	.	.	254.3
2008	.	2,950,073	.	.	.
2009	697	2,709,864	.	.	225.9
2010	.	2,553,555	.	.	.
2011	.	2,550,355	.	.	.
2012	779	2,733,284	.	.	253.2
2013	762	2,866,801	.	.	246.8
2014	873	3,135,814	.	.	282.6
2015	765	3,270,952	.	.	253.3
2016	590	3,328,610	.	.	199.5
2017	561	3,568,505	.	.	196.4
2018	597	3,806,196	.	.	213.5
2019	608	3,879,912	.	.	221.1
2020	579	3,983,029	.	.	215.5

County: county value. Kansas: state value. County Rank: highest county value ranked #1. (\$000): thousands of dollars. Nonmetro Kansas: Kansas total less Metropolitan Areas as defined by the Office of Management and Budget (OMB; released 3/6/2020). Per 1000: For nonmoney amounts, Per 1000=(county value / county population for the same year as the data) x 1000. \$ Per capita=(county value / county population for the same year as the data). Value= . indicates missing or suppressed data or value not calculated.

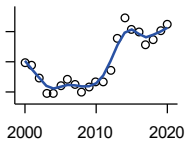
Business

**TOTAL ANNUAL PAYROLL(\$000):
MANUFACTURING**



U.S. Census Bureau, County Business Patterns. Beginning with the 2017 data, any tabulation with fewer than 3 establishments were omitted from the release. Data for these establishments are included in the broader total.

Year	County	State of Kansas	Non Metro Kansas	County Rank	Per 1000 or \$ Per Capita
2000	853	7,015,414	.	.	247.0
2001	911	7,301,706	.	.	268.7
2002	.	6,802,605	.	.	.
2003	.	6,691,611	.	.	.
2004	1,063	6,985,656	.	.	330.2
2005	.	7,221,614	.	.	.
2006	1,531	7,621,873	.	.	488.4
2007	1,446	7,873,359	.	.	459.0
2008	1,577	8,441,541	.	.	504.3
2009	1,512	7,477,838	.	.	490.1
2010	1,488	7,556,955	.	.	478.9
2011	1,564	7,747,934	.	.	501.6
2012	.	7,704,851	.	.	.
2013	1,291	8,365,542	.	.	418.2
2014	1,236	8,787,306	.	.	400.1
2015	1,156	9,052,105	.	.	382.8
2016	1,080	8,868,744	.	.	365.2
2017	1,056	9,075,793	.	.	369.7
2018	998	9,481,652	.	.	356.9
2019	931	10,171,575	.	.	338.5
2020	900	9,744,825	.	.	334.9



**TOTAL ANNUAL PAYROLL(\$000):
WHOLESALE TRADE**

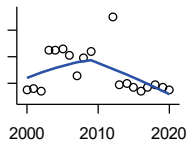
U.S. Census Bureau, County Business Patterns. Beginning with the 2017 data, any tabulation with fewer than 3 establishments were omitted from the release. Data for these establishments are included in the broader total.

Year	County	State of Kansas	Non Metro Kansas	County Rank	Per 1000 or \$ Per Capita
2000	3,933	2,332,755	.	.	1,138.7
2001	3,801	2,283,169	.	.	1,120.9
2002	2,931	2,107,653	.	.	874.4
2003	1,919	2,622,701	.	.	586.1
2004	1,872	2,663,196	.	.	581.5
2005	2,426	2,345,990	.	.	763.6
2006	2,818	2,592,211	.	.	898.9
2007	2,519	2,682,542	.	.	799.7
2008	2,023	3,078,655	.	.	646.9
2009	2,310	2,940,949	.	.	748.8
2010	2,665	3,097,628	.	.	857.7
2011	2,631	3,305,811	.	.	843.8
2012	3,389	3,339,997	.	.	1,101.4
2013	5,569	3,460,512	.	.	1,804.0
2014	6,885	3,712,075	.	.	2,228.9
2015	6,180	3,760,189	.	.	2,046.4
2016	5,987	3,738,207	.	.	2,024.7
2017	5,091	3,822,730	.	.	1,782.6
2018	5,483	3,814,353	.	.	1,961.0
2019	6,037	4,025,802	.	.	2,195.3
2020	6,458	4,224,666	.	.	2,403.4

County: county value. Kansas: state value. County Rank: highest county value ranked #1. (\$000): thousands of dollars. Nonmetro Kansas: Kansas total less Metropolitan Areas as defined by the Office of Management and Budget (OMB; released 3/6/2020). Per 1000: For nonmoney amounts, Per 1000=(county value / county population for the same year as the data) x 1000. \$ Per capita=(county value / county population for the same year as the data). Value= . indicates missing or suppressed data or value not calculated.

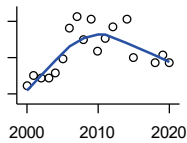
Business

**TOTAL ANNUAL PAYROLL(\$000):
RETAIL TRADE**



U.S. Census Bureau, County Business Patterns. Beginning with the 2017 data, any tabulation with fewer than 3 establishments were omitted from the release. Data for these establishments are included in the broader total.

Year	County	State of Kansas	Non Metro Kansas	County Rank	Per 1000 or \$ Per Capita
2000	1,387	2,747,001	.	.	401.6
2001	1,401	2,813,226	.	.	413.2
2002	1,348	2,854,231	.	.	402.1
2003	2,134	2,773,674	.	.	651.8
2004	2,112	2,847,826	.	.	656.1
2005	2,140	2,952,196	.	.	673.6
2006	2,024	3,126,495	.	.	645.6
2007	1,647	3,201,169	.	.	522.9
2008	1,967	3,261,054	.	.	629.0
2009	2,102	3,232,246	.	.	681.4
2010	.	3,321,838	.	.	.
2011	.	3,384,607	.	.	.
2012	2,751	3,409,755	.	.	894.1
2013	1,464	3,483,752	.	.	474.2
2014	1,488	3,617,933	.	.	481.7
2015	1,436	3,712,165	.	.	475.5
2016	1,349	3,826,889	.	.	456.2
2017	1,425	3,797,849	.	.	498.9
2018	1,462	3,818,988	.	.	522.9
2019	1,430	3,908,994	.	.	520.0
2020	1,367	3,984,443	.	.	508.7



**TOTAL ANNUAL PAYROLL(\$000):
TRANSPORTATION &
WAREHOUSING**

U.S. Census Bureau, County Business Patterns. Beginning with the 2017 data, any tabulation with fewer than 3 establishments were omitted from the release. Data for these establishments are included in the broader total.

Year	County	State of Kansas	Non Metro Kansas	County Rank	Per 1000 or \$ Per Capita
2000	1,718	1,044,835	.	.	497.4
2001	1,998	1,089,405	.	.	589.2
2002	1,919	1,094,636	.	.	572.5
2003	1,944	1,316,655	.	.	593.8
2004	2,064	1,439,800	.	.	641.2
2005	2,474	1,393,651	.	.	778.7
2006	3,312	1,528,551	.	.	1,056.5
2007	3,633	1,788,267	.	.	1,153.3
2008	2,996	1,722,697	.	.	958.1
2009	3,577	1,618,598	.	.	1,159.5
2010	2,678	1,735,761	.	.	861.9
2011	3,020	1,739,165	.	.	968.6
2012	3,354	1,984,976	.	.	1,090.0
2013	.	2,006,261	.	.	.
2014	3,558	2,097,377	.	.	1,151.8
2015	2,500	2,190,072	.	.	827.8
2018	2,357	2,663,188	.	.	843.0
2019	2,566	2,879,406	.	.	933.1
2020	2,353	2,962,461	.	.	875.7

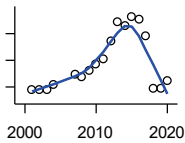
County: county value. Kansas: state value. County Rank: highest county value ranked #1. (\$000): thousands of dollars. Nonmetro Kansas: Kansas total less Metropolitan Areas as defined by the Office of Management and Budget (OMB; released 3/6/2020). Per 1000: For nonmoney amounts, Per 1000=(county value / county population for the same year as the data) x 1000. \$ Per capita=(county value / county population for the same year as the data). Value= . indicates missing or suppressed data or value not calculated.

Business

**TOTAL ANNUAL PAYROLL(\$000):
INFORMATION**

U.S. Census Bureau, County Business Patterns. Beginning with the 2017 data, any tabulation with fewer than 3 establishments were omitted from the release. Data for these establishments are included in the broader total.

Year	County	State of Kansas	Non Metro Kansas	County Rank	Per 1000 or \$ Per Capita
2000	.	1,923,381	.	.	.
2001	.	2,218,610	.	.	.
2002	.	2,298,108	.	.	.
2003	.	2,378,673	.	.	.
2004	.	2,392,990	.	.	.
2005	.	2,395,081	.	.	.
2006	.	2,586,483	.	.	.
2007	.	2,594,138	.	.	.
2008	.	3,043,244	.	.	.
2009	.	3,045,570	.	.	.
2010	.	2,481,580	.	.	.
2011	.	2,513,805	.	.	.
2012	.	2,535,555	.	.	.
2013	.	2,805,017	.	.	.
2014	.	2,393,609	.	.	.
2015	.	2,406,323	.	.	.



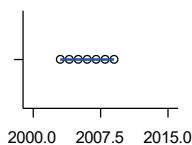
**TOTAL ANNUAL PAYROLL(\$000):
FINANCE & INSURANCE**

U.S. Census Bureau, County Business Patterns. Beginning with the 2017 data, any tabulation with fewer than 3 establishments were omitted from the release. Data for these establishments are included in the broader total.

Year	County	State of Kansas	Non Metro Kansas	County Rank	Per 1000 or \$ Per Capita
2000	.	2,083,565	.	.	.
2001	1,949	2,129,587	.	.	574.8
2002	1,962	2,414,120	.	.	585.3
2003	1,958	2,608,579	.	.	598.0
2004	2,041	2,676,910	.	.	634.0
2005	.	2,786,136	.	.	.
2006	.	2,928,931	.	.	.
2007	2,228	3,096,017	.	.	707.3
2008	2,200	3,322,977	.	.	703.5
2009	2,301	3,206,839	.	.	745.9
2010	2,428	3,211,300	.	.	781.5
2011	2,531	3,404,633	.	.	811.7
2012	2,861	3,611,165	.	.	929.8
2013	3,221	3,896,051	.	.	1,043.4
2014	3,147	4,044,315	.	.	1,018.8
2015	3,321	4,113,060	.	.	1,099.7
2016	3,264	4,180,740	.	.	1,103.8
2017	2,969	4,258,057	.	.	1,039.6
2018	1,976	4,682,552	.	.	706.7
2019	1,975	4,814,201	.	.	718.2
2020	2,109	5,288,529	.	.	784.9

County: county value. Kansas: state value. County Rank: highest county value ranked #1. (\$000): thousands of dollars. Nonmetro Kansas: Kansas total less Metropolitan Areas as defined by the Office of Management and Budget (OMB; released 3/6/2020). Per 1000: For nonmoney amounts, Per 1000=(county value / county population for the same year as the data) x 1000. \$ Per capita=(county value / county population for the same year as the data). Value= . indicates missing or suppressed data or value not calculated.

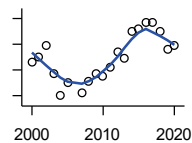
Business



**TOTAL ANNUAL PAYROLL(\$000):
REAL ESTATE, RENTAL, AND
LEASING**

U.S. Census Bureau, County Business Patterns. Beginning with the 2017 data, any tabulation with fewer than 3 establishments were omitted from the release. Data for these establishments are included in the broader total.

Year	County	State of Kansas	Non Metro Kansas	County Rank	Per 1000 or \$ Per Capita
2000	.	360,637	.	.	.
2001	.	397,371	.	.	.
2002	.	403,695	.	.	.
2003	0	437,786	.	.	0.0
2004	0	430,719	.	.	0.0
2005	0	465,149	.	.	0.0
2006	0	478,811	.	.	0.0
2007	0	452,969	.	.	0.0
2008	0	484,149	.	.	0.0
2009	0	450,884	.	.	0.0
2010	.	487,255	.	.	.
2011	.	535,120	.	.	.
2012	.	531,039	.	.	.
2013	.	538,796	.	.	.
2014	.	542,307	.	.	.
2015	.	595,030	.	.	.



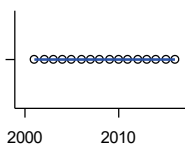
**TOTAL ANNUAL PAYROLL(\$000):
PROFESSIONAL, SCIENTIFIC, AND
TECHNICAL SERVICES**

U.S. Census Bureau, County Business Patterns. Beginning with the 2017 data, any tabulation with fewer than 3 establishments were omitted from the release. Data for these establishments are included in the broader total.

Year	County	State of Kansas	Non Metro Kansas	County Rank	Per 1000 or \$ Per Capita
2000	430	2,057,313	.	.	124.5
2001	450	2,152,937	.	.	132.7
2002	497	2,150,085	.	.	148.3
2003	387	2,052,712	.	.	118.2
2004	299	2,531,457	.	.	92.9
2005	349	2,418,500	.	.	109.9
2006	.	2,655,690	.	.	.
2007	310	2,901,544	.	.	98.4
2008	356	2,903,802	.	.	113.8
2009	384	3,071,611	.	.	124.5
2010	375	3,037,182	.	.	120.7
2011	412	3,132,082	.	.	132.1
2012	468	3,455,548	.	.	152.1
2013	444	3,777,729	.	.	143.8
2014	551	3,981,580	.	.	178.4
2015	561	4,039,074	.	.	185.8
2016	586	4,125,507	.	.	198.2
2017	583	4,158,858	.	.	204.1
2018	550	4,314,317	.	.	196.7
2019	478	4,646,644	.	.	173.8
2020	497	4,927,611	.	.	185.0

County: county value. Kansas: state value. County Rank: highest county value ranked #1. (\$000): thousands of dollars. Nonmetro Kansas: Kansas total less Metropolitan Areas as defined by the Office of Management and Budget (OMB; released 3/6/2020). Per 1000: For nonmoney amounts, Per 1000=(county value / county population for the same year as the data) x 1000. \$ Per capita=(county value / county population for the same year as the data). Value= . indicates missing or suppressed data or value not calculated.

Business



**TOTAL ANNUAL PAYROLL(\$000):
MANAGEMENT OF COMPANIES AND
ENTERPRISES**

U.S. Census Bureau, County Business Patterns. Beginning with the 2017 data, any tabulation with fewer than 3 establishments were omitted from the release. Data for these establishments are included in the broader total.

Year	County	State of Kansas	Non Metro Kansas	County Rank	Per 1000 or \$ Per Capita
2000	.	1,362,735	.	.	.
2001	0	1,279,253	.	.	0.0
2002	0	1,311,368	.	.	0.0
2003	0	1,352,119	.	.	0.0
2004	0	1,378,891	.	.	0.0
2005	0	1,510,876	.	.	0.0
2006	0	1,626,320	.	.	0.0
2007	0	2,233,654	.	.	0.0
2008	0	1,848,656	.	.	0.0
2009	0	1,601,158	.	.	0.0
2010	0	2,003,048	.	.	0.0
2011	0	1,677,619	.	.	0.0
2012	0	1,834,430	.	.	0.0
2013	0	1,938,100	.	.	0.0
2014	0	2,117,232	.	.	0.0
2015	0	2,451,126	.	.	0.0
2016	0	2,167,620	.	.	0.0

**TOTAL ANNUAL PAYROLL(\$000):
ADMIN, SUPPORT, WASTE MGMT.,
AND REMEDIATION**

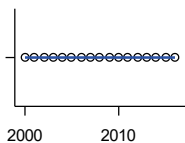
U.S. Census Bureau, County Business Patterns. Beginning with the 2017 data, any tabulation with fewer than 3 establishments were omitted from the release. Data for these establishments are included in the broader total.

Year	County	State of Kansas	Non Metro Kansas	County Rank	Per 1000 or \$ Per Capita
2000	.	1,388,712	.	.	.
2001	.	1,416,480	.	.	.
2002	.	1,378,905	.	.	.
2003	.	1,387,061	.	.	.
2004	.	1,544,442	.	.	.
2005	.	1,694,687	.	.	.
2006	.	1,800,846	.	.	.
2007	.	1,978,025	.	.	.
2008	.	2,096,864	.	.	.
2009	.	1,832,540	.	.	.
2010	.	2,117,325	.	.	.
2011	.	2,114,970	.	.	.
2012	.	2,230,250	.	.	.
2013	.	2,214,320	.	.	.
2014	.	2,444,170	.	.	.
2015	.	2,577,592	.	.	.

County: county value. Kansas: state value. County Rank: highest county value ranked #1. (\$000): thousands of dollars. Nonmetro Kansas: Kansas total less Metropolitan Areas as defined by the Office of Management and Budget (OMB; released 3/6/2020). Per 1000: For nonmoney amounts, Per 1000=(county value / county population for the same year as the data) x 1000. \$ Per capita=(county value / county population for the same year as the data). Value= . indicates missing or suppressed data or value not calculated.

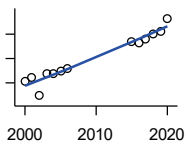
Business

**TOTAL ANNUAL PAYROLL(\$000):
EDUCATIONAL SERVICES**



U.S. Census Bureau, County Business Patterns. Beginning with the 2017 data, any tabulation with fewer than 3 establishments were omitted from the release. Data for these establishments are included in the broader total.

Year	County	State of Kansas	Non Metro Kansas	County Rank	Per 1000 or \$ Per Capita
2000	0	299,843	.	.	0.0
2001	0	320,606	.	.	0.0
2002	0	353,531	.	.	0.0
2003	0	350,814	.	.	0.0
2004	0	361,644	.	.	0.0
2005	0	375,781	.	.	0.0
2006	0	400,565	.	.	0.0
2007	0	414,233	.	.	0.0
2008	0	463,210	.	.	0.0
2009	0	468,856	.	.	0.0
2010	0	487,670	.	.	0.0
2011	0	504,964	.	.	0.0
2012	0	508,448	.	.	0.0
2013	0	553,995	.	.	0.0
2014	0	612,073	.	.	0.0
2015	0	579,794	.	.	0.0
2016	0	571,582	.	.	0.0



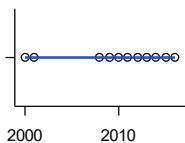
**TOTAL ANNUAL PAYROLL(\$000):
HEALTH CARE AND SOCIAL ASSISTANCE**

U.S. Census Bureau, County Business Patterns. Beginning with the 2017 data, any tabulation with fewer than 3 establishments were omitted from the release. Data for these establishments are included in the broader total.

Year	County	State of Kansas	Non Metro Kansas	County Rank	Per 1000 or \$ Per Capita
2000	4,100	4,120,595	.	.	1,187.0
2001	4,396	4,445,027	.	.	1,296.4
2002	2,931	4,705,220	.	.	874.4
2003	4,794	4,939,323	.	.	1,464.3
2004	4,717	5,232,394	.	.	1,465.4
2005	4,997	5,487,089	.	.	1,572.9
2006	5,210	5,814,218	.	.	1,661.9
2007	.	6,186,471	.	.	.
2008	.	6,490,627	.	.	.
2009	.	6,749,962	.	.	.
2010	.	6,871,727	.	.	.
2011	.	7,129,655	.	.	.
2012	.	7,614,853	.	.	.
2013	.	7,541,515	.	.	.
2014	.	7,733,621	.	.	.
2015	7,348	7,969,650	.	.	2,433.1
2016	7,289	8,018,706	.	.	2,465.0
2017	7,588	8,384,998	.	.	2,656.9
2018	8,030	8,637,619	.	.	2,872.0
2019	8,276	8,854,414	.	.	3,009.5
2020	9,287	9,309,269	.	.	3,456.3

County: county value. Kansas: state value. County Rank: highest county value ranked #1. (\$000): thousands of dollars. Nonmetro Kansas: Kansas total less Metropolitan Areas as defined by the Office of Management and Budget (OMB; released 3/6/2020). Per 1000: For nonmoney amounts, Per 1000=(county value / county population for the same year as the data) x 1000. \$ Per capita=(county value / county population for the same year as the data). Value= . indicates missing or suppressed data or value not calculated.

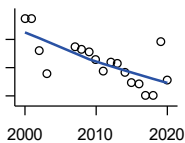
Business



**TOTAL ANNUAL PAYROLL(\$000):
ARTS, ENTERTAINMENT, AND
RECREATION**

U.S. Census Bureau, County Business Patterns. Beginning with the 2017 data, any tabulation with fewer than 3 establishments were omitted from the release. Data for these establishments are included in the broader total.

Year	County	State of Kansas	Non Metro Kansas	County Rank	Per 1000 or \$ Per Capita
2000	0	195,784	.	.	0.0
2001	0	203,511	.	.	0.0
2002	.	206,204	.	.	.
2003	.	185,049	.	.	.
2004	.	190,742	.	.	.
2005	.	196,594	.	.	.
2006	.	201,049	.	.	.
2007	.	220,435	.	.	.
2008	0	236,986	.	.	0.0
2009	0	237,116	.	.	0.0
2010	0	233,285	.	.	0.0
2011	0	234,351	.	.	0.0
2012	0	254,169	.	.	0.0
2013	0	278,474	.	.	0.0
2014	0	289,103	.	.	0.0
2015	0	300,253	.	.	0.0
2016	0	312,902	.	.	0.0



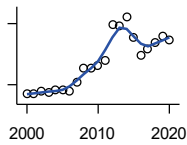
**TOTAL ANNUAL PAYROLL(\$000):
ACCOMMODATION AND FOOD
SERVICES**

U.S. Census Bureau, County Business Patterns. Beginning with the 2017 data, any tabulation with fewer than 3 establishments were omitted from the release. Data for these establishments are included in the broader total.

Year	County	State of Kansas	Non Metro Kansas	County Rank	Per 1000 or \$ Per Capita
2000	474	926,831	.	.	137.2
2001	473	960,196	.	.	139.5
2002	362	930,510	.	.	108.0
2003	277	992,313	.	.	84.6
2004	.	1,046,901	.	.	.
2005	.	1,101,854	.	.	.
2006	.	1,185,280	.	.	.
2007	372	1,431,100	.	.	118.1
2008	367	1,271,594	.	.	117.4
2009	354	1,283,065	.	.	114.7
2010	328	1,296,556	.	.	105.6
2011	288	1,364,281	.	.	92.4
2012	321	1,388,337	.	.	104.3
2013	316	1,476,335	.	.	102.4
2014	283	1,572,021	.	.	91.6
2015	248	1,640,144	.	.	82.1
2016	241	1,709,193	.	.	81.5
2017	200	1,824,791	.	.	70.0
2018	201	1,880,364	.	.	71.9
2019	391	1,958,603	.	.	142.2
2020	255	1,745,238	.	.	94.9

County: county value. Kansas: state value. County Rank: highest county value ranked #1. (\$000): thousands of dollars. Nonmetro Kansas: Kansas total less Metropolitan Areas as defined by the Office of Management and Budget (OMB; released 3/6/2020). Per 1000: For nonmoney amounts, Per 1000=(county value / county population for the same year as the data) x 1000. \$ Per capita=(county value / county population for the same year as the data). Value= . indicates missing or suppressed data or value not calculated.

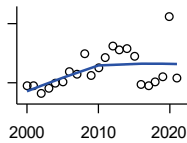
Business



**TOTAL ANNUAL PAYROLL(\$000):
OTHER SERVICES**

U.S. Census Bureau, County Business Patterns. Beginning with the 2017 data, any tabulation with fewer than 3 establishments were omitted from the release. Data for these establishments are included in the broader total.

Year	County	State of Kansas	Non Metro Kansas	County Rank	Per 1000 or \$ Per Capita
2000	767	965,540	.	.	222.1
2001	780	996,716	.	.	230.0
2002	836	1,007,464	.	.	249.4
2003	798	979,466	.	.	243.7
2004	869	970,383	.	.	270.0
2005	867	1,005,537	.	.	272.9
2006	844	1,055,932	.	.	269.2
2007	1,060	1,141,551	.	.	336.5
2008	1,394	1,184,016	.	.	445.8
2009	1,408	1,167,154	.	.	456.4
2010	1,467	1,170,201	.	.	472.2
2011	1,604	1,173,775	.	.	514.4
2012	2,478	1,217,210	.	.	805.3
2013	2,443	1,254,933	.	.	791.4
2014	2,666	1,305,563	.	.	863.1
2015	2,173	1,341,075	.	.	719.5
2016	1,724	1,351,375	.	.	583.0
2017	1,891	1,344,179	.	.	662.1
2018	2,032	1,382,801	.	.	726.8
2019	2,187	1,427,711	.	.	795.3
2020	2,091	1,420,859	.	.	778.2



**NOMINAL TAXABLE RETAIL SALES
(million\$)**

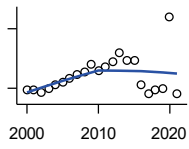
Kansas Department of Revenue

Year	County	State of Kansas	Non Metro Kansas	County Rank	Per 1000 or \$ Per Capita
2000	37.0	30,119.0	8,831.7	68	10.7
2001	36.6	30,202.2	8,700.3	64	10.8
2002	28.7	29,380.8	8,241.5	68	8.6
2003	34.9	30,694.0	8,710.6	65	10.7
2004	39.2	31,922.6	9,062.5	65	12.2
2005	41.1	32,924.2	9,386.6	62	12.9
2006	51.1	34,937.6	10,042.1	58	16.3
2007	48.1	36,180.1	10,553.2	62	15.3
2008	69.7	37,559.5	11,126.9	55	22.3
2009	47.5	35,211.8	10,351.5	63	15.4
2010	55.8	35,655.7	10,606.1	60	18.0
2011	65.1	37,257.0	11,153.5	57	20.9
2012	76.6	38,988.8	11,749.1	54	24.9
2013	73.8	40,009.0	11,993.8	57	23.9
2014	75.2	41,299.0	12,365.4	58	24.3
2015	66.3	41,635.8	11,747.6	58	21.9
2016	37.8	42,040.2	11,523.5	74	12.8
2017	37.5	41,940.1	11,449.9	74	13.1
2018	41.5	42,732.3	11,643.9	73	14.8
2019	46.5	43,732.5	12,062.7	69	16.9
2020	107.2	43,689.9	12,331.7	44	39.9
2021	45.4	48,532.8	13,413.0	72	17.0

County: county value. Kansas: state value. County Rank: highest county value ranked #1. (\$000): thousands of dollars. Nonmetro Kansas: Kansas total less Metropolitan Areas as defined by the Office of Management and Budget (OMB; released 3/6/2020). Per 1000: For nonmoney amounts, Per 1000=(county value / county population for the same year as the data) x 1000. \$ Per capita=(county value / county population for the same year as the data). Value= . indicates missing or suppressed data or value not calculated.

Business

RETAIL PULL FACTOR



Kansas Direct Program, Kansas State University Cooperative Extension Service (1980-1999); Kansas Department of Revenue (2000-)

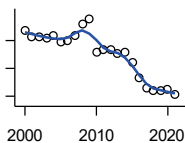
Year	County	State of Kansas	Non Metro Kansas	County Rank	Per 1000 or \$ Per Capita
2000	0.96	.	.	16	.
2001	0.97	.	.	16	.
2002	0.88	.	.	19	.
2003	0.98	.	.	14	.
2004	1.10	.	.	11	.
2005	1.14	.	.	10	.
2006	1.25	.	.	6	.
2007	1.35	.	.	5	.
2008	1.43	.	.	4	.
2009	1.59	.	.	3	.
2010	1.45	.	.	4	.
2011	1.55	.	.	3	.
2012	1.68	.	.	2	.
2013	1.90	.	.	2	.
2014	1.70	.	.	3	.
2015	1.70	.	.	1	.
2016	1.08	.	.	15	.
2017	0.86	.	.	28	.
2018	0.95	.	.	21	.
2019	1.00	.	.	17	.
2020	2.80	.	.	1	.
2021	0.85	.	.	33	.

County: county value. Kansas: state value. County Rank: highest county value ranked #1. (\$000): thousands of dollars. Nonmetro Kansas: Kansas total less Metropolitan Areas as defined by the Office of Management and Budget (OMB; released 3/6/2020). Per 1000: For nonmoney amounts, Per 1000=(county value / county population for the same year as the data) x 1000. \$ Per capita=(county value / county population for the same year as the data). Value= . indicates missing or suppressed data or value not calculated.

Employment

CIVILIAN LABOR FORCE (BLS-Place of Residence; 1990-)

U.S. Department of Labor, Bureau of Labor Statistics (BLS)

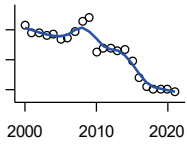


Year	County	State of Kansas	Non Metro Kansas	County Rank	Per 1000 or \$ Per Capita
2000	1,777	1,402,606	482,229	81	514.5
2001	1,726	1,398,521	475,280	82	509.0
2002	1,728	1,419,335	482,428	82	515.5
2003	1,719	1,441,065	490,161	84	525.0
2004	1,732	1,458,910	494,509	82	538.1
2005	1,693	1,458,767	490,047	84	532.9
2006	1,695	1,467,553	498,594	85	540.7
2007	1,737	1,485,414	497,048	82	551.4
2008	1,814	1,493,365	504,522	82	580.1
2009	1,856	1,512,572	516,311	82	601.6
2010	1,618	1,500,463	492,594	86	520.8
2011	1,631	1,498,000	492,563	86	523.1
2012	1,632	1,490,808	489,349	86	530.4
2013	1,605	1,489,395	485,484	85	519.9
2014	1,615	1,494,203	481,813	83	522.8
2015	1,542	1,493,782	477,546	85	510.6
2016	1,429	1,491,961	468,258	89	483.3
2017	1,363	1,488,346	461,063	90	477.2
2018	1,339	1,488,027	456,866	90	478.9
2019	1,340	1,497,517	455,858	91	487.3
2020	1,348	1,493,706	452,935	90	501.7
2021	1,312	1,495,665	453,398	90	491.0

County: county value. Kansas: state value. County Rank: highest county value ranked #1. (\$000): thousands of dollars. Nonmetro Kansas: Kansas total less Metropolitan Areas as defined by the Office of Management and Budget (OMB; released 3/6/2020). Per 1000: For nonmoney amounts, Per 1000=(county value / county population for the same year as the data) x 1000. \$ Per capita=(county value / county population for the same year as the data). Value= . indicates missing or suppressed data or value not calculated.

Employment

EMPLOYED (BLS-Place of Residence; 1990-)



U.S. Department of Labor, Bureau of Labor Statistics (BLS)

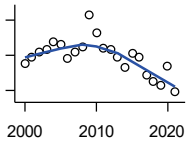
Year	County	State of Kansas	Non Metro Kansas	County Rank	Per 1000 or \$ Per Capita
2000	1,732	1,349,841	464,962	81	501.4
2001	1,677	1,338,775	455,154	82	494.5
2002	1,676	1,347,163	461,241	82	500.0
2003	1,666	1,361,115	467,622	82	508.9
2004	1,674	1,378,355	470,330	82	520.0
2005	1,637	1,384,654	467,722	84	515.3
2006	1,647	1,402,950	479,174	84	525.4
2007	1,685	1,422,109	477,983	82	534.9
2008	1,759	1,425,022	484,056	82	562.5
2009	1,783	1,408,142	485,797	81	578.0
2010	1,555	1,396,172	461,635	86	500.5
2011	1,577	1,402,198	463,723	85	505.8
2012	1,579	1,405,638	463,376	85	513.2
2013	1,556	1,410,470	461,405	82	504.0
2014	1,572	1,426,892	461,797	82	508.9
2015	1,491	1,431,533	457,899	85	493.7
2016	1,380	1,431,920	449,356	90	466.7
2017	1,324	1,434,516	445,003	90	463.6
2018	1,304	1,439,329	442,716	90	466.4
2019	1,307	1,450,705	442,108	91	475.3
2020	1,304	1,408,965	433,229	90	485.3
2021	1,283	1,447,323	441,159	90	480.2

County: county value. Kansas: state value. County Rank: highest county value ranked #1. (\$000): thousands of dollars. Nonmetro Kansas: Kansas total less Metropolitan Areas as defined by the Office of Management and Budget (OMB; released 3/6/2020). Per 1000: For nonmoney amounts, Per 1000=(county value / county population for the same year as the data) x 1000. \$ Per capita=(county value / county population for the same year as the data). Value= . indicates missing or suppressed data or value not calculated.

Employment

UNEMPLOYED (BLS-Place of Residence; 1990-)

U.S. Department of Labor, Bureau of Labor Statistics (BLS)

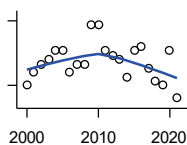


Year	County	State of Kansas	Non Metro Kansas	County Rank	Per 1000 or \$ Per Capita
2000	45	52,765	17,267	90	13.0
2001	49	59,746	20,126	87	14.5
2002	52	72,172	21,187	90	15.5
2003	53	79,950	22,539	89	16.2
2004	58	80,555	24,179	91	18.0
2005	56	74,113	22,325	92	17.6
2006	48	64,603	19,420	92	15.3
2007	52	63,305	19,065	89	16.5
2008	55	68,343	20,466	87	17.6
2009	73	104,430	30,514	87	23.7
2010	63	104,291	30,959	91	20.3
2011	54	95,802	28,840	93	17.3
2012	53	85,170	25,973	92	17.2
2013	49	78,925	24,079	93	15.9
2014	43	67,311	20,016	90	13.9
2015	51	62,249	19,647	88	16.9
2016	49	60,041	18,902	90	16.6
2017	39	53,830	16,060	90	13.7
2018	35	48,698	14,150	90	12.5
2019	33	46,812	13,750	92	12.0
2020	44	84,741	19,706	86	16.4
2021	29	48,342	12,239	89	10.9

County: county value. Kansas: state value. County Rank: highest county value ranked #1. (\$000): thousands of dollars. Nonmetro Kansas: Kansas total less Metropolitan Areas as defined by the Office of Management and Budget (OMB; released 3/6/2020). Per 1000: For nonmoney amounts, Per 1000=(county value / county population for the same year as the data) x 1000. \$ Per capita=(county value / county population for the same year as the data). Value= . indicates missing or suppressed data or value not calculated.

Employment

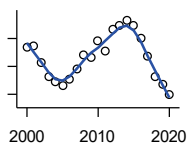
UNEMPLOYMENT RATE (BLS-Place of Residence; 1990-)



U.S. Department of Labor, Bureau of Labor Statistics (BLS)

Year	County	State of Kansas	Non Metro Kansas	County Rank	Per 1000 or \$ Per Capita
2000	2.5	3.8	3.6	99	.
2001	2.8	4.3	4.2	98	.
2002	3.0	5.1	4.4	98	.
2003	3.1	5.5	4.6	93	.
2004	3.3	5.5	4.9	101	.
2005	3.3	5.1	4.6	96	.
2006	2.8	4.4	3.9	105	.
2007	3.0	4.3	3.8	93	.
2008	3.0	4.6	4.1	95	.
2009	3.9	6.9	5.9	86	.
2010	3.9	7.0	6.3	93	.
2011	3.3	6.4	5.9	100	.
2012	3.2	5.7	5.3	95	.
2013	3.1	5.3	5.0	94	.
2014	2.7	4.5	4.2	94	.
2015	3.3	4.2	4.1	76	.
2016	3.4	4.0	4.0	68	.
2017	2.9	3.6	3.5	72	.
2018	2.6	3.3	3.1	71	.
2019	2.5	3.1	3.0	80	.
2020	3.3	5.7	4.4	65	.
2021	2.2	3.2	2.7	69	.

BEA EMPLOYMENT: TOTAL (Place of Work)



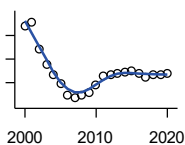
U.S. Bureau of Economic Analysis, Regional Economic Information System (REIS)

Year	County	State of Kansas	Non Metro Kansas	County Rank	Per 1000 or \$ Per Capita
2000	2,735	1,760,312	604,361	74	791.8
2001	2,749	1,767,601	592,672	74	810.7
2002	2,631	1,746,077	585,387	75	784.9
2003	2,531	1,733,694	577,860	76	773.1
2004	2,487	1,750,876	578,750	76	772.6
2005	2,462	1,765,650	577,562	76	774.9
2006	2,505	1,795,507	583,041	76	799.0
2007	2,577	1,844,355	591,924	75	818.1
2008	2,684	1,858,069	594,368	73	858.3
2009	2,667	1,813,184	580,972	74	864.5
2010	2,788	1,801,873	579,758	71	897.3
2011	2,710	1,819,044	583,725	75	869.1
2012	2,867	1,841,393	591,748	70	931.8
2013	2,893	1,869,054	597,236	69	937.2
2014	2,931	1,895,859	601,291	69	948.9
2015	2,893	1,910,954	598,589	71	957.9
2016	2,800	1,916,152	592,580	74	946.9
2017	2,675	1,914,179	584,337	74	936.6
2018	2,523	1,926,242	580,213	76	902.4
2019	2,468	1,925,204	574,496	77	897.5
2020	2,399	1,851,247	556,671	77	892.8

County: county value. Kansas: state value. County Rank: highest county value ranked #1. (\$000): thousands of dollars. Nonmetro Kansas: Kansas total less Metropolitan Areas as defined by the Office of Management and Budget (OMB; released 3/6/2020). Per 1000: For nonmoney amounts, Per 1000=(county value / county population for the same year as the data) x 1000. \$ Per capita=(county value / county population for the same year as the data). Value= . indicates missing or suppressed data or value not calculated.

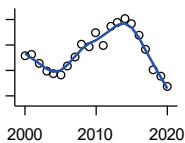
Employment

BEA EMPLOYMENT: FARM



U.S. Bureau of Economic Analysis, Regional Economic Information System (REIS)

Year	County	State of Kansas	Non Metro Kansas	County Rank	Per 1000 or \$ Per Capita
2000	619	77,477	59,088	61	179.2
2001	628	78,177	59,647	62	185.2
2002	572	70,532	53,893	61	170.6
2003	539	68,516	52,099	63	164.6
2004	517	67,586	51,246	65	160.6
2005	498	66,829	50,386	66	156.8
2006	474	64,910	48,728	66	151.2
2007	467	65,639	49,037	69	148.3
2008	474	63,820	47,682	61	151.6
2009	480	62,798	46,960	57	155.6
2010	496	63,882	47,984	57	159.6
2011	514	65,761	49,707	57	164.8
2012	518	63,753	48,167	55	168.3
2013	520	62,739	47,255	53	168.4
2014	523	64,308	48,722	56	169.3
2015	525	64,416	48,927	55	173.8
2016	520	63,840	48,539	55	175.9
2017	511	61,876	46,936	54	178.9
2018	518	63,233	48,069	55	185.3
2019	517	63,300	48,167	56	188.0
2020	520	64,281	49,038	56	193.5



BEA EMPLOYMENT: NON-FARM

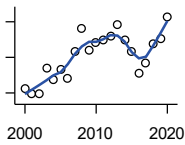
U.S. Bureau of Economic Analysis, Regional Economic Information System (REIS)

Year	County	State of Kansas	Non Metro Kansas	County Rank	Per 1000 or \$ Per Capita
2000	2,116	1,682,835	545,273	76	612.6
2001	2,121	1,689,424	533,025	75	625.5
2002	2,059	1,675,545	531,494	75	614.3
2003	1,992	1,665,178	525,761	76	608.4
2004	1,970	1,683,290	527,504	76	612.0
2005	1,964	1,698,821	527,176	76	618.2
2006	2,031	1,730,597	534,313	76	647.8
2007	2,110	1,778,716	542,887	73	669.8
2008	2,210	1,794,249	546,686	73	706.7
2009	2,187	1,750,386	534,012	73	708.9
2010	2,292	1,737,991	531,774	71	737.7
2011	2,196	1,753,283	534,018	73	704.3
2012	2,349	1,777,640	543,581	70	763.4
2013	2,373	1,806,315	549,981	69	768.7
2014	2,408	1,831,551	552,569	69	779.5
2015	2,368	1,846,538	549,662	70	784.1
2016	2,280	1,852,312	544,041	75	771.1
2017	2,164	1,852,303	537,401	75	757.7
2018	2,005	1,863,009	532,144	77	717.1
2019	1,951	1,861,904	526,329	77	709.5
2020	1,879	1,786,966	507,633	77	699.3

County: county value. Kansas: state value. County Rank: highest county value ranked #1. (\$000): thousands of dollars. Nonmetro Kansas: Kansas total less Metropolitan Areas as defined by the Office of Management and Budget (OMB; released 3/6/2020). Per 1000: For nonmoney amounts, Per 1000=(county value / county population for the same year as the data) x 1000. \$ Per capita=(county value / county population for the same year as the data). Value= . indicates missing or suppressed data or value not calculated.

Employment

AVERAGE WAGE PER JOB (\$)



U.S. Bureau of Economic Analysis,
Regional Economic Information System
(REIS)

Year	County	State of Kansas	Non Metro Kansas	County Rank	Per 1000 or \$ Per Capita
2000	21,137	31,854	24,396	64	.
2001	19,752	32,859	26,379	90	.
2002	19,643	33,707	26,331	85	.
2003	27,066	35,078	28,911	57	.
2004	23,739	35,932	29,747	77	.
2005	26,530	37,467	31,646	78	.
2006	24,268	40,038	31,993	84	.
2007	31,560	41,500	33,484	58	.
2008	38,162	44,197	36,256	31	.
2009	32,007	43,860	35,739	67	.
2010	34,023	45,370	38,631	71	.
2011	35,058	48,280	42,324	77	.
2012	35,792	50,549	42,015	78	.
2013	39,254	52,629	46,073	75	.
2014	35,018	51,959	43,562	82	.
2015	31,769	52,250	42,320	91	.
2016	25,640	51,664	41,964	102	.
2017	28,580	53,007	42,137	91	.
2018	33,894	54,790	44,514	89	.
2019	35,247	56,956	45,336	89	.
2020	41,386	60,597	49,183	86	.

BEA EMPLOYMENT: FORESTRY, FISHING, HUNTING, AND AG SUPPORT

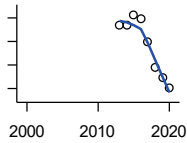
U.S. Bureau of Economic Analysis,
Regional Economic Information System
(REIS)

Year	County	State of Kansas	Non Metro Kansas	County Rank	Per 1000 or \$ Per Capita
2001	.	7,059	.	.	.
2002	.	8,045	.	.	.
2003	.	7,313	.	.	.
2004	.	7,623	.	.	.
2005	.	7,962	.	.	.
2006	.	7,748	.	.	.
2007	.	8,228	.	.	.
2008	.	8,646	.	.	.
2009	.	8,982	.	.	.
2010	.	9,251	.	.	.
2011	.	9,410	.	.	.
2012	.	9,691	.	.	.
2013	.	10,014	.	.	.
2014	.	10,708	.	.	.
2015	.	10,020	.	.	.
2016	.	10,383	.	.	.

County: county value. Kansas: state value. County Rank: highest county value ranked #1. (\$000): thousands of dollars. Nonmetro Kansas: Kansas total less Metropolitan Areas as defined by the Office of Management and Budget (OMB; released 3/6/2020). Per 1000: For nonmoney amounts, Per 1000=(county value / county population for the same year as the data) x 1000. \$ Per capita=(county value / county population for the same year as the data). Value= . indicates missing or suppressed data or value not calculated.

Employment

BEA EMPLOYMENT: MINING



U.S. Bureau of Economic Analysis,
Regional Economic Information System
(REIS)

Year	County	State of Kansas	Non Metro Kansas	County Rank	Per 1000 or \$ Per Capita
2001	.	19,592	.	.	.
2002	.	17,635	.	.	.
2003	.	19,869	.	.	.
2004	.	18,466	.	.	.
2005	.	19,489	.	.	.
2006	.	22,403	.	.	.
2007	.	24,043	.	.	.
2008	.	31,467	.	.	.
2009	.	29,941	.	.	.
2010	.	36,124	.	.	.
2011	.	31,658	.	.	.
2012	.	42,405	.	.	.
2013	667	46,585	.	15	.
2014	670	45,526	.	15	.
2015	713	46,460	.	15	.
2016	698	48,555	.	14	.
2017	599	40,710	.	13	.
2018	488	32,021	.	14	.
2019	444	29,101	.	15	.
2020	404	26,272	.	13	.

BEA EMPLOYMENT: UTILITIES

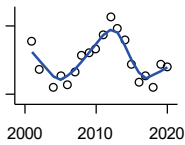
U.S. Bureau of Economic Analysis,
Regional Economic Information System
(REIS)

Year	County	State of Kansas	Non Metro Kansas	County Rank	Per 1000 or \$ Per Capita
2001	.	7,608	.	.	.
2002	.	7,087	.	.	.
2003	.	7,253	.	.	.
2004	.	7,356	.	.	.
2005	.	7,447	.	.	.
2006	.	7,478	.	.	.
2007	.	7,584	.	.	.
2008	.	7,855	.	.	.
2009	.	7,941	.	.	.
2010	.	8,028	.	.	.
2011	.	8,213	.	.	.
2012	.	8,155	.	.	.
2013	.	7,949	.	.	.
2014	.	7,985	.	.	.
2015	.	7,040	.	.	.
2016	.	7,133	.	.	.

County: county value. Kansas: state value. County Rank: highest county value ranked #1. (\$000): thousands of dollars. Nonmetro Kansas: Kansas total less Metropolitan Areas as defined by the Office of Management and Budget (OMB; released 3/6/2020). Per 1000: For nonmoney amounts, Per 1000=(county value / county population for the same year as the data) x 1000. \$ Per capita=(county value / county population for the same year as the data). Value= . indicates missing or suppressed data or value not calculated.

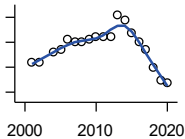
Employment

**BEA EMPLOYMENT:
CONSTRUCTION**



U.S. Bureau of Economic Analysis,
Regional Economic Information System
(REIS)

Year	County	State of Kansas	Non Metro Kansas	County Rank	Per 1000 or \$ Per Capita
2001	103	92,647	27,972	70	.
2002	91	90,370	.	72	.
2003	.	91,725	26,681	.	.
2004	83	93,271	.	72	.
2005	88	94,836	.	73	.
2006	84	97,449	.	73	.
2007	90	99,119	29,179	77	.
2008	97	97,741	.	74	.
2009	98	90,165	28,077	73	.
2010	100	84,708	26,402	75	.
2011	106	83,332	25,999	72	.
2012	114	85,966	.	70	.
2013	109	88,094	.	71	.
2014	104	91,143	.	73	.
2015	93	91,458	27,583	78	.
2016	85	93,539	27,151	78	.
2017	88	92,046	25,579	76	.
2018	83	92,985	25,530	76	.
2019	93	94,858	25,701	75	.
2020	92	94,186	26,085	75	.



**BEA EMPLOYMENT:
MANUFACTURING**

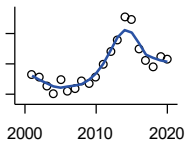
U.S. Bureau of Economic Analysis,
Regional Economic Information System
(REIS)

Year	County	State of Kansas	Non Metro Kansas	County Rank	Per 1000 or \$ Per Capita
2001	42	199,980	73,170	79	.
2002	42	188,905	70,691	79	.
2003	.	179,013	68,418	.	.
2004	46	181,738	69,669	77	.
2005	47	185,459	71,072	78	.
2006	51	188,047	71,704	78	.
2007	50	192,930	73,488	79	.
2008	50	193,116	72,235	83	.
2009	51	173,854	64,961	80	.
2010	52	166,000	62,884	79	.
2011	52	167,302	64,361	77	.
2012	52	169,308	65,944	80	.
2013	61	170,113	67,251	80	.
2014	59	169,307	68,299	81	.
2015	54	168,324	66,978	81	.
2016	50	167,723	65,796	82	.
2017	47	168,438	66,795	83	.
2018	40	171,778	68,181	85	.
2019	35	173,605	67,879	84	.
2020	34	165,228	65,658	83	.

County: county value. Kansas: state value. County Rank: highest county value ranked #1. (\$000): thousands of dollars. Nonmetro Kansas: Kansas total less Metropolitan Areas as defined by the Office of Management and Budget (OMB; released 3/6/2020). Per 1000: For nonmoney amounts, Per 1000=(county value / county population for the same year as the data) x 1000. \$ Per capita=(county value / county population for the same year as the data). Value= . indicates missing or suppressed data or value not calculated.

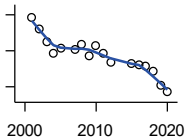
Employment

BEA EMPLOYMENT: WHOLESALE TRADE



U.S. Bureau of Economic Analysis,
Regional Economic Information System
(REIS)

Year	County	State of Kansas	Non Metro Kansas	County Rank	Per 1000 or \$ Per Capita
2001	133	65,698	.	58	.
2002	131	65,408	.	50	.
2003	125	63,504	.	51	.
2004	120	64,434	.	53	.
2005	130	64,587	.	46	.
2006	122	64,743	.	48	.
2007	124	65,993	.	47	.
2008	129	67,693	.	45	.
2009	127	65,954	.	52	.
2010	131	64,376	.	52	.
2011	140	64,712	.	52	.
2012	148	63,973	.	45	.
2013	156	64,999	.	45	.
2014	171	69,295	.	41	.
2015	169	68,444	.	40	.
2016	150	64,843	.	43	.
2017	142	65,014	.	42	.
2018	138	64,745	.	47	.
2019	145	63,324	.	43	.
2020	143	60,844	.	49	.



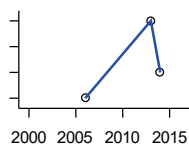
BEA EMPLOYMENT: RETAIL TRADE

U.S. Bureau of Economic Analysis,
Regional Economic Information System
(REIS)

Year	County	State of Kansas	Non Metro Kansas	County Rank	Per 1000 or \$ Per Capita
2001	217	198,069	.	74	.
2002	204	196,112	.	77	.
2003	190	194,545	64,173	82	.
2004	177	192,957	63,265	82	.
2005	183	191,656	62,506	81	.
2006	.	190,391	62,082	.	.
2007	182	190,643	61,716	81	.
2008	187	185,907	59,783	77	.
2009	175	181,262	58,714	79	.
2010	186	177,858	57,470	77	.
2011	177	180,548	57,734	78	.
2012	167	180,596	57,349	80	.
2013	.	183,245	57,556	.	.
2014	.	185,899	57,855	.	.
2015	166	188,421	58,516	81	.
2016	165	188,505	57,864	80	.
2017	163	186,633	56,715	81	.
2018	157	183,323	.	80	.
2019	142	177,240	53,427	83	.
2020	134	171,777	52,563	85	.

County: county value. Kansas: state value. County Rank: highest county value ranked #1. (\$000): thousands of dollars. Nonmetro Kansas: Kansas total less Metropolitan Areas as defined by the Office of Management and Budget (OMB; released 3/6/2020). Per 1000: For nonmoney amounts, Per 1000=(county value / county population for the same year as the data) x 1000. \$ Per capita=(county value / county population for the same year as the data). Value= . indicates missing or suppressed data or value not calculated.

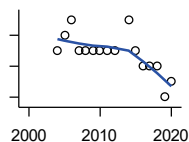
Employment



**BEA EMPLOYMENT:
TRANSPORTATION AND
WAREHOUSING**

U.S. Bureau of Economic Analysis,
Regional Economic Information System
(REIS)

Year	County	State of Kansas	Non Metro Kansas	County Rank	Per 1000 or \$ Per Capita
2001	.	56,302	.	.	.
2002	.	55,319	.	.	.
2003	.	55,509	.	.	.
2004	.	55,479	.	.	.
2005	.	56,287	.	.	.
2006	120	57,506	.	33	.
2007	.	59,277	.	.	.
2008	.	58,725	.	.	.
2009	.	56,238	.	.	.
2010	.	55,179	.	.	.
2011	.	57,449	.	.	.
2012	.	59,756	.	.	.
2013	123	59,780	.	30	.
2014	121	60,565	.	33	.
2015	.	63,256	.	.	.
2016	.	65,705	.	.	.



BEA EMPLOYMENT: INFORMATION

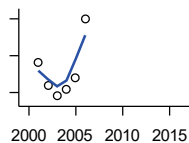
U.S. Bureau of Economic Analysis,
Regional Economic Information System
(REIS)

Year	County	State of Kansas	Non Metro Kansas	County Rank	Per 1000 or \$ Per Capita
2001	.	54,895	.	.	.
2002	.	50,728	.	.	.
2003	.	48,328	6,860	.	.
2004	14	45,617	.	71	.
2005	15	43,840	.	69	.
2006	16	43,925	.	65	.
2007	14	45,115	.	64	.
2008	14	42,958	.	59	.
2009	14	38,677	.	62	.
2010	14	33,432	.	64	.
2011	14	32,160	.	60	.
2012	14	31,829	.	59	.
2013	.	31,737	.	.	.
2014	16	32,316	.	60	.
2015	14	25,282	.	56	.
2016	13	24,998	.	57	.
2017	13	24,004	.	57	.
2018	13	23,165	.	59	.
2019	11	22,078	.	62	.
2020	12	20,810	.	63	.

County: county value. Kansas: state value. County Rank: highest county value ranked #1. (\$000): thousands of dollars. Nonmetro Kansas: Kansas total less Metropolitan Areas as defined by the Office of Management and Budget (OMB; released 3/6/2020). Per 1000: For nonmoney amounts, Per 1000=(county value / county population for the same year as the data) x 1000. \$ Per capita=(county value / county population for the same year as the data). Value= . indicates missing or suppressed data or value not calculated.

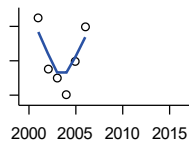
Employment

BEA EMPLOYMENT: FINANCE AND INSURANCE



U.S. Bureau of Economic Analysis,
Regional Economic Information System
(REIS)

Year	County	State of Kansas	Non Metro Kansas	County Rank	Per 1000 or \$ Per Capita
2001	108	76,118	.	60	.
2002	102	78,206	.	63	.
2003	99	78,441	.	64	.
2004	101	78,350	.	60	.
2005	104	78,952	.	57	.
2006	120	80,900	.	55	.
2007	.	86,094	.	.	.
2008	.	89,590	.	.	.
2009	.	93,573	.	.	.
2010	.	92,428	.	.	.
2011	.	99,495	.	.	.
2012	.	98,640	.	.	.
2013	.	99,998	.	.	.
2014	.	98,209	.	.	.
2015	.	100,534	.	.	.
2016	.	102,699	.	.	.



BEA EMPLOYMENT: REAL ESTATE, RENTAL, AND LEASING

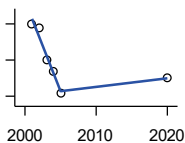
U.S. Bureau of Economic Analysis,
Regional Economic Information System
(REIS)

Year	County	State of Kansas	Non Metro Kansas	County Rank	Per 1000 or \$ Per Capita
2001	23	45,237	.	65	.
2002	17	44,970	.	68	.
2003	16	47,095	.	72	.
2004	14	50,181	.	76	.
2005	18	53,335	.	64	.
2006	22	55,342	.	59	.
2007	.	57,694	.	.	.
2008	.	57,933	.	.	.
2009	.	57,132	.	.	.
2010	.	59,578	.	.	.
2011	.	61,821	.	.	.
2012	.	60,432	.	.	.
2013	.	62,134	.	.	.
2014	.	64,705	.	.	.
2015	.	66,604	.	.	.
2016	.	68,395	.	.	.

County: county value. Kansas: state value. County Rank: highest county value ranked #1. (\$000): thousands of dollars. Nonmetro Kansas: Kansas total less Metropolitan Areas as defined by the Office of Management and Budget (OMB; released 3/6/2020). Per 1000: For nonmoney amounts, Per 1000=(county value / county population for the same year as the data) x 1000. \$ Per capita=(county value / county population for the same year as the data). Value= . indicates missing or suppressed data or value not calculated.

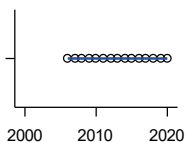
Employment

BEA EMPLOYMENT: PROFESSIONAL AND TECHNICAL SERVICES



U.S. Bureau of Economic Analysis, Regional Economic Information System (REIS)

Year	County	State of Kansas	Non Metro Kansas	County Rank	Per 1000 or \$ Per Capita
2001	80	81,396	.	56	.
2002	79	80,684	.	53	.
2003	70	80,311	.	50	.
2004	67	85,550	.	54	.
2005	61	85,003	.	59	.
2006	.	87,381	.	.	.
2007	.	92,717	.	.	.
2008	.	95,362	.	.	.
2009	.	93,232	.	.	.
2010	.	93,037	.	.	.
2011	.	93,237	.	.	.
2012	.	95,360	.	.	.
2013	.	100,795	.	.	.
2014	.	102,210	.	.	.
2015	.	105,625	.	.	.
2016	.	108,059	.	.	.
2020	65	108,634	.	60	.



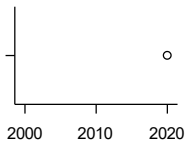
BEA EMPLOYMENT: MANAGEMENT OF COMPANIES AND ENTERPRISES

U.S. Bureau of Economic Analysis, Regional Economic Information System (REIS)

Year	County	State of Kansas	Non Metro Kansas	County Rank	Per 1000 or \$ Per Capita
2001	.	13,832	.	.	.
2002	.	12,576	.	.	.
2003	.	11,135	.	.	.
2004	.	10,614	.	.	.
2005	.	11,811	.	.	.
2006	0	13,061	.	66	.
2007	0	13,398	.	69	.
2008	0	15,234	.	72	.
2009	0	14,849	.	75	.
2010	0	16,579	.	75	.
2011	0	15,343	.	75	.
2012	0	15,075	.	82	.
2013	0	16,667	.	81	.
2014	0	20,441	.	79	.
2015	0	29,604	.	78	.
2016	0	27,824	.	77	.
2017	0	27,767	.	77	.
2018	0	28,862	.	75	.
2019	0	30,512	.	74	.
2020	0	25,648	.	74	.

County: county value. Kansas: state value. County Rank: highest county value ranked #1. (\$000): thousands of dollars. Nonmetro Kansas: Kansas total less Metropolitan Areas as defined by the Office of Management and Budget (OMB; released 3/6/2020). Per 1000: For nonmoney amounts, Per 1000=(county value / county population for the same year as the data) x 1000. \$ Per capita=(county value / county population for the same year as the data). Value= . indicates missing or suppressed data or value not calculated.

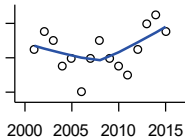
Employment



**BEA EMPLOYMENT:
ADMINISTRATIVE AND WASTE
SERVICES**

U.S. Bureau of Economic Analysis,
Regional Economic Information System
(REIS)

Year	County	State of Kansas	Non Metro Kansas	County Rank	Per 1000 or \$ Per Capita
2001	.	81,573	.	.	.
2002	.	82,992	.	.	.
2003	.	81,298	.	.	.
2004	.	85,721	.	.	.
2005	.	89,933	.	.	.
2006	.	93,688	.	.	.
2007	.	98,865	.	.	.
2008	.	97,440	.	.	.
2009	.	92,455	.	.	.
2010	.	93,675	.	.	.
2011	.	97,969	.	.	.
2012	.	100,490	.	.	.
2013	.	104,680	.	.	.
2014	.	107,218	18,836	.	.
2015	.	103,436	18,767	.	.
2016	.	103,233	18,428	.	.
2020	38	95,361	.	61	.



**BEA EMPLOYMENT: EDUCATIONAL
SERVICES**

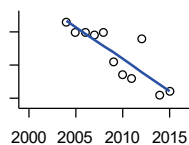
U.S. Bureau of Economic Analysis,
Regional Economic Information System
(REIS)

Year	County	State of Kansas	Non Metro Kansas	County Rank	Per 1000 or \$ Per Capita
2001	19	21,169	.	29	.
2002	21	22,173	.	30	.
2003	20	22,651	.	30	.
2004	17	21,601	.	33	.
2005	18	22,177	.	29	.
2006	14	22,438	.	29	.
2007	18	23,647	.	25	.
2008	20	24,653	.	26	.
2009	18	25,120	.	24	.
2010	17	26,071	.	26	.
2011	16	26,080	.	27	.
2012	19	26,625	.	26	.
2013	22	27,508	.	26	.
2014	23	28,708	.	28	.
2015	21	28,794	.	27	.
2016	.	27,996	.	.	.

County: county value. Kansas: state value. County Rank: highest county value ranked #1. (\$000): thousands of dollars. Nonmetro Kansas: Kansas total less Metropolitan Areas as defined by the Office of Management and Budget (OMB; released 3/6/2020). Per 1000: For nonmoney amounts, Per 1000=(county value / county population for the same year as the data) x 1000. \$ Per capita=(county value / county population for the same year as the data). Value= . indicates missing or suppressed data or value not calculated.

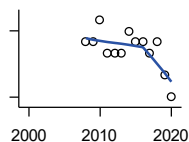
Employment

BEA EMPLOYMENT: HEALTH CARE AND SOCIAL ASSISTANCE



U.S. Bureau of Economic Analysis, Regional Economic Information System (REIS)

Year	County	State of Kansas	Non Metro Kansas	County Rank	Per 1000 or \$ Per Capita
2001	.	165,415	.	.	.
2002	.	168,198	.	.	.
2003	.	169,654	.	.	.
2004	48	172,796	.	65	.
2005	45	173,949	.	60	.
2006	45	176,919	.	57	.
2007	44	182,160	.	53	.
2008	45	186,051	.	54	.
2009	36	188,499	.	51	.
2010	32	188,383	.	53	.
2011	31	190,736	.	52	.
2012	43	192,991	.	51	.
2013	.	193,687	.	.	.
2014	26	194,632	.	54	.
2015	27	199,724	.	52	.
2016	.	201,830	.	.	.



BEA EMPLOYMENT: ARTS, ENTERTAINMENT, AND RECREATION

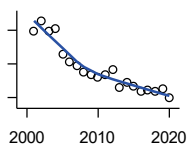
U.S. Bureau of Economic Analysis, Regional Economic Information System (REIS)

Year	County	State of Kansas	Non Metro Kansas	County Rank	Per 1000 or \$ Per Capita
2001	.	25,012	.	.	.
2002	.	25,668	.	.	.
2003	.	24,116	.	.	.
2004	.	25,355	.	.	.
2005	.	26,067	.	.	.
2006	.	26,505	.	.	.
2007	.	27,489	.	.	.
2008	13	27,501	.	62	.
2009	13	27,203	.	64	.
2010	15	27,479	.	56	.
2011	12	28,487	.	63	.
2012	12	30,729	.	64	.
2013	12	31,068	.	60	.
2014	14	32,154	.	56	.
2015	13	31,169	.	55	.
2016	13	32,373	.	52	.
2017	12	33,213	.	55	.
2018	13	33,837	.	50	.
2019	10	33,082	.	62	.
2020	8	26,644	.	58	.

County: county value. Kansas: state value. County Rank: highest county value ranked #1. (\$000): thousands of dollars. Nonmetro Kansas: Kansas total less Metropolitan Areas as defined by the Office of Management and Budget (OMB; released 3/6/2020). Per 1000: For nonmoney amounts, Per 1000=(county value / county population for the same year as the data) x 1000. \$ Per capita=(county value / county population for the same year as the data). Value= . indicates missing or suppressed data or value not calculated.

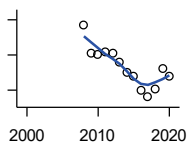
Employment

BEA EMPLOYMENT: GOVERNMENT AND GOVERNMENT ENTERPRISES



U.S. Bureau of Economic Analysis, Regional Economic Information System (REIS)

Year	County	State of Kansas	Non Metro Kansas	County Rank	Per 1000 or \$ Per Capita
2001	549	282,293	102,993	75	.
2002	564	281,427	103,581	75	.
2003	548	282,459	103,389	75	.
2004	553	283,877	103,946	75	.
2005	515	282,798	103,194	76	.
2006	503	288,372	104,103	77	.
2007	497	294,413	104,598	77	.
2008	487	298,580	104,718	80	.
2009	484	300,422	104,081	79	.
2010	480	303,875	103,382	78	.
2011	484	299,952	101,535	78	.
2012	491	298,068	101,180	77	.
2013	464	297,689	101,232	78	.
2014	473	296,956	100,634	79	.
2015	466	295,799	99,719	79	.
2016	460	291,536	98,520	78	.
2017	461	295,748	99,542	78	.
2018	459	298,105	99,499	78	.
2019	463	302,017	100,227	78	.
2020	449	292,583	96,477	78	.



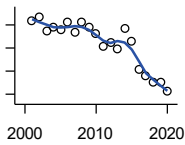
BEA EMPLOYMENT: ACCOMMODATION AND FOOD SERVICES

U.S. Bureau of Economic Analysis, Regional Economic Information System (REIS)

Year	County	State of Kansas	Non Metro Kansas	County Rank	Per 1000 or \$ Per Capita
2001	.	103,353	.	.	.
2002	.	103,692	.	.	.
2003	.	105,138	.	.	.
2004	.	106,694	.	.	.
2005	.	107,303	.	.	.
2006	.	109,888	.	.	.
2007	.	110,863	.	.	.
2008	77	111,092	.	56	.
2009	61	109,353	.	65	.
2010	60	108,628	.	60	.
2011	62	110,514	.	59	.
2012	61	112,574	.	59	.
2013	56	114,102	.	56	.
2014	50	115,768	.	62	.
2015	48	118,503	.	58	.
2016	40	119,764	.	58	.
2017	36	121,181	.	57	.
2018	41	121,900	.	57	.
2019	52	122,819	.	57	.
2020	48	106,561	.	58	.

County: county value. Kansas: state value. County Rank: highest county value ranked #1. (\$000): thousands of dollars. Nonmetro Kansas: Kansas total less Metropolitan Areas as defined by the Office of Management and Budget (OMB; released 3/6/2020). Per 1000: For nonmoney amounts, Per 1000=(county value / county population for the same year as the data) x 1000. \$ Per capita=(county value / county population for the same year as the data). Value= . indicates missing or suppressed data or value not calculated.

Employment

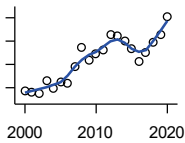


BEA EMPLOYMENT: OTHER SERVICES, EXCEPT PUBLIC ADMINISTRATION

U.S. Bureau of Economic Analysis, Regional Economic Information System (REIS)

Year	County	State of Kansas	Non Metro Kansas	County Rank	Per 1000 or \$ Per Capita
2001	164	92,176	.	70	.
2002	167	95,350	.	69	.
2003	155	95,821	32,629	72	.
2004	158	95,610	.	71	.
2005	156	95,930	32,555	73	.
2006	162	96,413	.	67	.
2007	154	98,444	.	70	.
2008	163	96,705	.	65	.
2009	158	95,534	.	63	.
2010	152	93,302	.	62	.
2011	141	94,865	.	64	.
2012	145	94,977	.	63	.
2013	139	95,471	.	67	.
2014	157	97,806	.	64	.
2015	146	98,041	.	62	.
2016	121	97,219	.	64	.
2017	116	96,568	.	66	.
2018	110	98,645	.	69	.
2019	110	98,638	.	67	.
2020	103	92,245	.	67	.

Income



BEA PER CAPITA PERSONAL INCOME (\$)

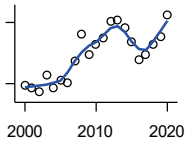
U.S. Bureau of Economic Analysis, Regional Economic Information System (REIS)

Year	County	State of Kansas	Non Metro Kansas	County Rank	Per 1000 or \$ Per Capita
2000	28,650	28,253	23,116	6	.
2001	28,297	29,112	24,576	17	.
2002	27,324	29,248	24,314	14	.
2003	32,991	30,074	26,017	6	.
2004	29,816	30,843	26,583	19	.
2005	32,370	32,545	28,356	23	.
2006	32,042	35,690	29,782	30	.
2007	38,895	38,057	32,034	9	.
2008	47,563	41,257	35,211	6	.
2009	41,768	39,431	33,876	13	.
2010	44,507	39,960	35,795	17	.
2011	46,334	43,015	39,041	32	.
2012	52,534	45,294	39,660	16	.
2013	52,429	46,174	41,747	27	.
2014	50,286	47,013	41,042	27	.
2015	46,761	47,332	40,638	25	.
2016	41,509	47,326	40,797	53	.
2017	44,872	48,756	41,314	30	.
2018	49,497	50,811	43,283	28	.
2019	52,570	52,820	44,491	23	.
2020	60,508	55,677	48,415	16	.

County: county value. Kansas: state value. County Rank: highest county value ranked #1. (\$000): thousands of dollars. Nonmetro Kansas: Kansas total less Metropolitan Areas as defined by the Office of Management and Budget (OMB; released 3/6/2020). Per 1000: For nonmoney amounts, Per 1000=(county value / county population for the same year as the data) x 1000. \$ Per capita=(county value / county population for the same year as the data). Value= . indicates missing or suppressed data or value not calculated.

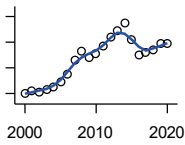
Income

**SOURCES OF PERSONAL INCOME:
TOTAL PERSONAL INCOME (\$000)**



U.S. Bureau of Economic Analysis,
Regional Economic Information System
(REIS)

Year	County	State of Kansas	Non Metro Kansas	County Rank	Per 1000 or \$ Per Capita
2000	98,784	76,105,125	22,273,838	76	28,599.9
2001	95,954	78,664,651	23,411,174	82	28,296.7
2002	91,591	79,365,190	23,000,314	81	27,324.3
2003	108,014	81,890,340	24,494,191	79	32,991.4
2004	95,978	84,335,940	24,924,467	81	29,816.1
2005	102,840	89,346,228	26,452,291	82	32,370.2
2006	100,452	98,610,188	27,661,596	83	32,042.1
2007	122,518	105,943,199	29,715,946	79	38,894.6
2008	148,731	115,852,478	32,614,565	76	47,563.5
2009	128,855	111,697,350	31,394,702	80	41,768.2
2010	138,105	114,239,828	33,291,419	80	44,449.6
2011	144,469	123,558,772	36,221,488	84	46,333.9
2012	161,648	130,948,127	36,696,759	78	52,534.3
2013	161,847	133,979,908	38,513,959	87	52,428.6
2014	155,383	136,878,718	37,680,598	80	50,302.0
2015	141,312	138,336,768	37,081,851	83	46,792.1
2016	123,116	138,533,890	36,930,885	90	41,635.4
2017	128,512	142,729,689	37,104,963	82	44,997.2
2018	139,136	148,955,739	38,589,364	83	49,762.5
2019	146,250	154,961,001	39,424,148	82	53,181.8
2020	167,485	163,462,179	42,618,591	82	62,331.6



**SOURCES OF PERSONAL INCOME:
WAGES AND SALARIES (\$000)**

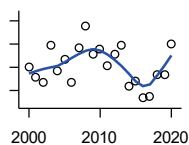
U.S. Bureau of Economic Analysis,
Regional Economic Information System
(REIS)

Year	County	State of Kansas	Non Metro Kansas	County Rank	Per 1000 or \$ Per Capita
2000	29,838	41,766,878	10,254,250	76	8,638.7
2001	31,011	43,269,734	10,518,206	76	9,145.1
2002	30,571	43,875,159	10,696,876	77	9,120.2
2003	31,507	44,488,560	10,894,971	77	9,623.4
2004	32,566	46,702,068	11,333,617	79	10,116.8
2005	34,353	48,537,956	11,614,130	77	10,813.0
2006	37,490	52,083,584	12,299,340	75	11,958.5
2007	43,085	55,442,368	13,093,908	75	13,677.8
2008	46,708	57,623,385	13,647,143	74	14,937.0
2009	44,219	55,605,578	13,199,674	74	14,333.5
2010	45,652	56,089,711	13,345,291	73	14,693.3
2011	48,574	58,104,706	13,856,458	72	15,578.6
2012	51,750	60,616,457	14,473,599	72	16,818.3
2013	54,640	61,872,023	14,781,792	71	17,700.0
2014	57,696	64,457,652	15,385,500	71	18,677.9
2015	50,836	66,729,598	15,454,485	73	16,833.1
2016	45,105	67,253,399	15,422,058	80	15,253.6
2017	45,754	68,830,861	15,731,853	77	16,020.3
2018	46,795	71,580,544	16,311,725	78	16,736.4
2019	49,482	74,404,771	16,882,299	80	17,993.5
2020	49,524	75,798,310	17,251,300	80	18,431.0

County: county value. Kansas: state value. County Rank: highest county value ranked #1. (\$000): thousands of dollars. Nonmetro Kansas: Kansas total less Metropolitan Areas as defined by the Office of Management and Budget (OMB; released 3/6/2020). Per 1000: For nonmoney amounts, Per 1000=(county value / county population for the same year as the data) x 1000. \$ Per capita=(county value / county population for the same year as the data). Value= . indicates missing or suppressed data or value not calculated.

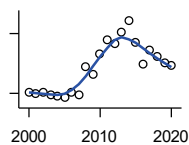
Income

**SOURCES OF PERSONAL INCOME:
PROPRIETORS-FARM (\$000)**



U.S. Bureau of Economic Analysis,
Regional Economic Information System
(REIS)

Year	County	State of Kansas	Non Metro Kansas	County Rank	Per 1000 or \$ Per Capita
2000	10,159	668,539	673,707	28	2,941.2
2001	5,620	779,473	769,336	50	1,657.3
2002	3,251	145,064	187,033	31	969.9
2003	19,417	1,281,076	1,195,298	19	5,930.7
2004	8,512	1,149,425	938,524	54	2,644.3
2005	13,271	1,609,604	1,469,139	52	4,177.2
2006	3,714	766,047	663,735	54	1,184.7
2007	18,339	1,131,607	1,040,350	18	5,821.9
2008	27,802	1,582,092	1,404,900	11	8,890.9
2009	15,611	1,585,995	1,390,349	44	5,060.3
2010	18,022	2,149,482	2,029,067	49	5,800.5
2011	10,705	3,188,519	2,989,880	78	3,433.3
2012	15,901	2,519,555	2,296,875	64	5,167.7
2013	19,295	4,499,190	4,158,419	75	6,250.4
2014	1,631	2,231,181	2,157,992	90	528.0
2015	4,244	1,300,733	1,294,370	61	1,405.3
2016	-3,319	1,577,060	1,564,511	95	-1,122.4
2017	-2,756	838,480	838,290	83	-965.0
2018	6,699	1,050,662	971,690	56	2,395.9
2019	6,928	998,038	878,247	59	2,519.3
2020	19,823	2,151,349	1,887,881	53	7,377.4



**SOURCES OF PERSONAL INCOME:
PROPRIETORS-NONFARM (\$000)**

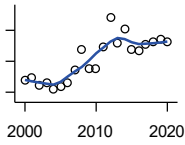
U.S. Bureau of Economic Analysis,
Regional Economic Information System
(REIS)

Year	County	State of Kansas	Non Metro Kansas	County Rank	Per 1000 or \$ Per Capita
2000	10,352	4,580,476	1,493,470	57	2,997.1
2001	9,850	4,510,530	1,855,621	74	2,904.7
2002	10,180	5,036,100	1,966,784	74	3,037.0
2003	9,567	4,719,377	1,916,735	74	2,922.1
2004	9,360	4,003,922	2,073,898	74	2,907.7
2005	8,857	4,455,294	2,200,971	82	2,787.9
2006	10,397	7,343,524	2,694,895	82	3,316.4
2007	9,712	7,280,197	2,436,574	78	3,083.2
2008	16,688	9,255,953	2,971,923	65	5,336.7
2009	14,694	9,323,551	2,858,848	68	4,763.0
2010	19,760	9,658,261	3,498,040	63	6,359.8
2011	23,449	12,196,566	4,186,007	64	7,520.5
2012	22,335	15,773,140	4,446,004	69	7,258.7
2013	25,208	16,441,660	4,492,127	63	8,165.9
2014	28,269	15,954,254	4,455,081	58	9,151.5
2015	22,742	15,536,116	4,386,172	69	7,530.5
2016	17,406	14,075,310	3,783,829	76	5,886.4
2017	20,715	15,371,957	3,908,254	72	7,253.2
2018	19,131	15,716,877	4,238,775	77	6,842.3
2019	17,552	16,705,488	3,921,051	75	6,382.5
2020	16,945	16,718,952	3,823,329	74	6,306.3

County: county value. Kansas: state value. County Rank: highest county value ranked #1. (\$000): thousands of dollars. Nonmetro Kansas: Kansas total less Metropolitan Areas as defined by the Office of Management and Budget (OMB; released 3/6/2020). Per 1000: For nonmoney amounts, Per 1000=(county value / county population for the same year as the data) x 1000. \$ Per capita=(county value / county population for the same year as the data). Value= . indicates missing or suppressed data or value not calculated.

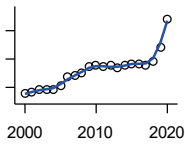
Income

**SOURCES OF PERSONAL INCOME:
DIVIDENDS,INTEREST,RENT(\$000)**



U.S. Bureau of Economic Analysis,
Regional Economic Information System
(REIS)

Year	County	State of Kansas	Non Metro Kansas	County Rank	Per 1000 or \$ Per Capita
2000	23,824	15,916,201	4,736,921	79	6,897.5
2001	24,691	15,770,830	4,699,417	78	7,281.3
2002	22,146	15,111,563	4,316,887	78	6,606.8
2003	22,914	15,370,764	4,360,311	76	6,998.8
2004	21,164	15,820,469	4,251,925	77	6,574.7
2005	21,788	17,147,069	4,485,387	79	6,858.0
2006	22,930	20,117,848	4,945,184	77	7,314.2
2007	27,052	22,269,186	5,526,219	77	8,587.9
2008	33,902	24,972,485	6,180,979	75	10,841.7
2009	27,491	21,453,879	5,308,474	78	8,911.2
2010	27,562	20,861,351	5,414,285	76	8,870.9
2011	34,435	23,387,567	5,781,075	72	11,043.9
2012	43,947	25,689,368	6,389,505	62	14,282.4
2013	35,949	24,832,212	5,984,811	71	11,645.3
2014	40,285	27,412,684	6,403,356	72	13,041.4
2015	33,806	27,244,414	6,423,685	76	11,194.0
2016	33,596	27,293,441	6,389,161	75	11,361.5
2017	35,301	28,385,472	6,700,156	74	12,360.3
2018	36,118	29,953,419	6,772,504	73	12,917.7
2019	36,958	30,820,276	6,957,987	73	13,439.3
2020	36,082	30,283,520	6,844,745	74	13,428.4



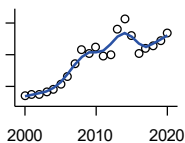
**SOURCES OF PERSONAL INCOME:
TRANSFER PAYMENTS (\$000)**

U.S. Bureau of Economic Analysis,
Regional Economic Information System
(REIS)

Year	County	State of Kansas	Non Metro Kansas	County Rank	Per 1000 or \$ Per Capita
2000	17,798	9,650,835	4,036,781	81	5,152.9
2001	18,168	10,549,124	4,355,457	84	5,357.7
2002	19,369	11,208,997	4,553,978	81	5,778.3
2003	19,261	11,709,049	4,702,911	84	5,883.0
2004	19,431	12,040,452	4,802,536	83	6,036.3
2005	20,757	12,696,735	5,059,314	83	6,533.5
2006	23,542	13,642,787	5,455,207	80	7,509.4
2007	23,974	14,686,821	5,775,024	80	7,610.8
2008	25,139	16,552,460	6,322,722	82	8,039.3
2009	27,530	18,025,603	6,790,962	81	8,923.8
2010	27,714	19,189,749	7,089,258	81	8,919.9
2011	27,133	19,625,770	7,255,825	85	8,702.1
2012	27,649	19,354,458	7,148,177	82	8,985.7
2013	26,722	19,639,358	7,185,636	85	8,656.3
2014	27,805	20,380,970	7,399,809	84	9,001.3
2015	28,401	21,116,856	7,623,577	84	9,404.3
2016	28,480	21,884,629	7,886,000	86	9,631.4
2017	28,016	22,559,744	8,062,517	88	9,809.5
2018	29,169	23,628,033	8,393,617	88	10,432.4
2019	34,197	25,050,174	8,845,371	83	12,435.3
2020	44,128	32,319,421	11,074,190	78	16,422.8

County: county value. Kansas: state value. County Rank: highest county value ranked #1. (\$000): thousands of dollars. Nonmetro Kansas: Kansas total less Metropolitan Areas as defined by the Office of Management and Budget (OMB; released 3/6/2020). Per 1000: For nonmoney amounts, Per 1000=(county value / county population for the same year as the data) x 1000. \$ Per capita=(county value / county population for the same year as the data). Value= . indicates missing or suppressed data or value not calculated.

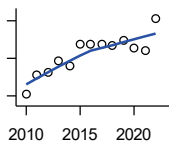
Income



**SOURCES OF PERSONAL INCOME:
LESS SOCIAL INSURANCE (\$000)**

U.S. Bureau of Economic Analysis,
Regional Economic Information System
(REIS)

Year	County	State of Kansas	Non Metro Kansas	County Rank	Per 1000 or \$ Per Capita
2000	5,431	6,655,813	1,663,044	74	1,572.4
2001	5,480	6,869,934	1,740,915	77	1,616.0
2002	5,472	7,008,361	1,778,636	78	1,632.5
2003	5,647	7,172,781	1,821,858	79	1,724.8
2004	5,828	7,556,560	1,904,014	78	1,810.5
2005	6,147	7,911,241	1,986,907	78	1,934.8
2006	6,615	8,406,937	2,090,313	78	2,110.0
2007	7,407	8,806,941	2,180,587	75	2,351.4
2008	8,328	9,207,010	2,299,399	74	2,663.3
2009	8,048	9,002,859	2,248,703	73	2,608.8
2010	8,466	9,235,760	2,321,191	72	2,724.8
2011	7,912	8,515,986	2,139,991	73	2,537.5
2012	7,984	8,816,128	2,195,919	74	2,594.7
2013	9,594	10,225,399	2,540,439	73	3,107.9
2014	10,264	10,609,601	2,635,009	72	3,322.8
2015	9,175	11,028,204	2,663,038	75	3,038.1
2016	8,076	10,915,915	2,604,579	80	2,731.1
2017	8,377	11,224,218	2,669,954	79	2,933.1
2018	8,583	11,749,229	2,797,106	80	3,069.7
2019	8,914	12,245,451	2,889,336	79	3,241.5
2020	9,335	12,715,152	3,027,656	79	3,474.1



HUD MEDIAN FAMILY INCOME

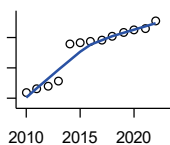
U.S. Department of Housing and Urban
Development (HUD)

Year	County	State of Kansas	Non Metro Kansas	County Rank	Per 1000 or \$ Per Capita
2010	50,600	63,100	.	71	.
2011	55,500	64,300	.	50	.
2012	56,300	65,200	.	49	.
2013	59,400	64,800	.	44	.
2014	58,000	64,400	.	49	.
2015	63,600	66,300	.	28	.
2016	63,600	66,700	.	22	.
2017	63,600	68,500	.	35	.
2018	63,400	73,100	.	50	.
2019	64,900	75,200	.	51	.
2020	62,600	76,500	.	71	.
2021	62,200	77,400	.	76	.
2022	70,600	87,800	.	61	.

County: county value. Kansas: state value. County Rank: highest county value ranked #1. (\$000): thousands of dollars. Nonmetro Kansas: Kansas total less Metropolitan Areas as defined by the Office of Management and Budget (OMB; released 3/6/2020). Per 1000: For nonmoney amounts, Per 1000=(county value / county population for the same year as the data) x 1000. \$ Per capita=(county value / county population for the same year as the data). Value= . indicates missing or suppressed data or value not calculated.

Income

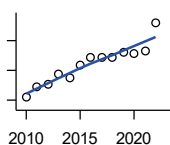
HUD 30% LOW-TO-MEDIUM INCOME (LMI) LIMIT - 4 PERSONS



U.S. Department of Housing and Urban Development (HUD)

Year	County	State of Kansas	Non Metro Kansas	County Rank	Per 1000 or \$ Per Capita
2010	15,850	.	.	105	.
2011	16,600	.	.	52	.
2012	16,900	.	.	49	.
2013	17,750	.	.	41	.
2014	23,850	.	.	105	.
2015	24,250	.	.	105	.
2016	24,300	.	.	105	.
2017	24,600	.	.	105	.
2018	25,100	21,950	.	105	.
2019	25,750	22,550	.	105	.
2020	26,200	22,950	.	105	.
2021	26,500	23,200	.	105	.
2022	27,750	25,950	.	105	.

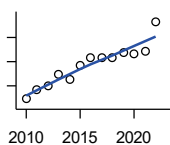
HUD 50% LOW-TO-MEDIUM INCOME (LMI) LIMIT - 4 PERSONS



U.S. Department of Housing and Urban Development (HUD)

Year	County	State of Kansas	Non Metro Kansas	County Rank	Per 1000 or \$ Per Capita
2010	26,400	.	.	105	.
2011	27,700	.	.	52	.
2012	28,150	.	.	49	.
2013	29,550	.	.	41	.
2014	29,000	.	.	46	.
2015	30,700	.	.	37	.
2016	31,800	.	.	23	.
2017	31,800	.	.	34	.
2018	31,700	36,550	.	50	.
2019	32,450	37,600	.	51	.
2020	32,300	38,250	.	104	.
2021	32,550	38,700	.	105	.
2022	36,400	43,300	.	105	.

HUD 80% LOW-TO-MEDIUM INCOME (LMI) LIMIT - 4 PERSONS



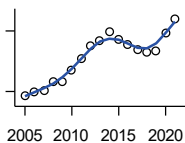
U.S. Department of Housing and Urban Development (HUD)

Year	County	State of Kansas	Non Metro Kansas	County Rank	Per 1000 or \$ Per Capita
2010	42,250	.	.	105	.
2011	44,300	.	.	52	.
2012	45,050	.	.	49	.
2013	47,300	.	.	41	.
2014	46,400	.	.	46	.
2015	49,100	.	.	37	.
2016	50,900	.	.	23	.
2017	50,900	.	.	34	.
2018	50,700	58,500	.	50	.
2019	51,900	60,150	.	51	.
2020	51,700	61,200	.	104	.
2021	52,100	61,900	.	105	.
2022	58,250	69,250	.	105	.

County: county value. Kansas: state value. County Rank: highest county value ranked #1. (\$000): thousands of dollars. Nonmetro Kansas: Kansas total less Metropolitan Areas as defined by the Office of Management and Budget (OMB; released 3/6/2020). Per 1000: For nonmoney amounts, Per 1000=(county value / county population for the same year as the data) x 1000. \$ Per capita=(county value / county population for the same year as the data). Value= . indicates missing or suppressed data or value not calculated.

Banking

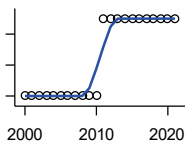
BANK DEPOSITS (1984-2004 in thousands; 2005- in millions)



Federal Deposit Insurance Corporation, Data Book, Operating Banks and Branches

Year	County	State of Kansas	Non Metro Kansas	County Rank	Per 1000 or \$ Per Capita
2005	76	48,304	17,000	85	23.9
2006	79	50,668	17,586	85	25.2
2007	81	54,057	18,517	86	25.7
2008	90	57,869	19,628	86	28.8
2009	90	57,763	20,031	87	29.2
2010	101	60,031	20,678	81	32.5
2011	113	61,094	21,347	79	36.2
2012	125	62,910	22,481	79	40.6
2013	130	64,547	22,795	78	42.1
2014	139	66,538	23,338	76	45.0
2015	132	68,160	23,367	78	43.7
2016	127	70,381	23,420	78	42.9
2017	122	73,329	23,928	79	42.7
2018	119	74,623	24,100	81	42.6
2019	120	76,436	24,488	79	43.6
2020	138	88,563	27,547	80	51.4
2021	152	97,055	30,122	79	56.9

NUMBER OF BANKS



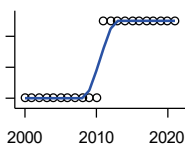
Federal Deposit Insurance Corporation, Data Book, Operating Banks and Branches

Year	County	State of Kansas	Non Metro Kansas	County Rank	Per 1000 or \$ Per Capita
2000	3	410	145	92	.
2001	3	410	136	93	.
2002	3	404	129	92	.
2003	3	397	121	91	.
2004	3	394	112	89	.
2005	3	388	101	91	.
2006	3	385	94	91	.
2007	3	382	91	91	.
2008	3	378	82	92	.
2009	3	374	79	92	.
2010	3	367	70	92	.
2011	4	359	61	74	.
2012	4	348	57	74	.
2013	4	332	45	73	.
2014	4	329	41	73	.
2015	4	320	31	72	.
2016	4	314	24	73	.
2017	4	301	13	73	.
2018	4	289	7	73	.
2019	4	279	3	72	.
2020	4	271	-1	72	.
2021	4	270	-6	71	.

County: county value. Kansas: state value. County Rank: highest county value ranked #1. (\$000): thousands of dollars. Nonmetro Kansas: Kansas total less Metropolitan Areas as defined by the Office of Management and Budget (OMB; released 3/6/2020). Per 1000: For nonmoney amounts, Per 1000=(county value / county population for the same year as the data) x 1000. \$ Per capita=(county value / county population for the same year as the data). Value= . indicates missing or suppressed data or value not calculated.

Banking

NUMBER OF BANKING OFFICES

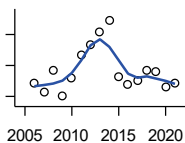


Federal Deposit Insurance Corporation, Data Book, Operating Banks and Branches

Year	County	State of Kansas	Non Metro Kansas	County Rank	Per 1000 or \$ Per Capita
2000	4	1,398	703	85	.
2001	4	1,424	708	86	.
2002	4	1,447	704	86	.
2003	4	1,461	708	86	.
2004	4	1,485	708	86	.
2005	4	1,505	711	86	.
2006	4	1,518	711	86	.
2007	4	1,543	717	87	.
2008	4	1,556	717	88	.
2009	4	1,569	716	88	.
2010	4	1,561	710	88	.
2011	5	1,559	707	77	.
2012	5	1,533	702	77	.
2013	5	1,518	696	77	.
2014	5	1,491	685	77	.
2015	5	1,472	675	77	.
2016	5	1,465	668	74	.
2017	5	1,452	666	74	.
2018	5	1,439	660	74	.
2019	5	1,439	663	74	.
2020	5	1,416	653	71	.
2021	5	1,392	641	71	.

Government

TANGIBLE ASSESSED VALUATION (KDoR, million\$; 2006-)



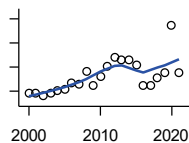
Kansas Department of Revenue, Division of Property Valuation, Statistical Report of Property Assessment and Taxation

Year	County	State of Kansas	Non Metro Kansas	County Rank	Per 1000 or \$ Per Capita
2006	68.4	28,964.3	10,316.9	65	21.8
2007	62.4	30,086.9	10,335.9	71	19.8
2008	76.6	31,000.3	10,856.9	62	24.5
2009	60.3	30,312.3	10,555.6	74	19.5
2010	71.5	29,450.2	10,158.7	64	23.0
2011	86.6	29,963.6	10,572.3	59	27.8
2012	93.3	30,382.9	10,876.2	57	30.3
2013	101.4	30,850.2	11,044.4	55	32.9
2014	108.8	31,783.0	11,388.9	53	35.2
2015	72.9	32,335.7	11,037.8	72	24.2
2016	67.4	33,156.3	10,889.6	74	22.8
2017	70.5	34,754.5	11,439.0	74	24.7
2018	76.4	36,566.1	11,907.1	73	27.3
2019	76.4	38,255.2	12,336.7	75	27.8
2020	65.8	39,333.9	12,219.3	83	24.5
2021	68.3	40,812.0	12,601.5	83	25.6

County: county value. Kansas: state value. County Rank: highest county value ranked #1. (\$000): thousands of dollars. Nonmetro Kansas: Kansas total less Metropolitan Areas as defined by the Office of Management and Budget (OMB; released 3/6/2020). Per 1000: For nonmoney amounts, Per 1000=(county value / county population for the same year as the data) x 1000. \$ Per capita=(county value / county population for the same year as the data). Value= . indicates missing or suppressed data or value not calculated.

Government

SALES TAX COLLECTIONS (\$)

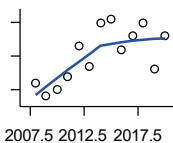


Kansas Department of Revenue. Use tax collections included beginning in calendar year 2018.

Year	County	State of Kansas	Non Metro Kansas	County Rank	Per 1000 or \$ Per Capita
2000	1,812,029	1,475,831,808	432,761,608	68	524,617.5
2001	1,792,708	1,481,026,688	426,316,284	64	528,666.5
2002	1,652,036	1,561,316,864	443,986,950	68	492,850.8
2003	1,848,772	1,626,782,976	461,658,700	65	564,683.0
2004	2,077,803	1,691,899,008	480,309,725	65	645,480.9
2005	2,180,334	1,744,980,352	497,494,867	62	686,287.1
2006	2,706,686	1,851,694,720	532,233,047	58	863,376.7
2007	2,546,760	1,917,546,752	559,319,583	62	808,495.3
2008	3,691,723	1,990,655,744	589,725,773	55	1,180,595.7
2009	2,515,273	1,866,223,078	548,627,132	63	815,323.5
2010	3,263,346	2,075,193,413	617,409,982	60	1,050,320.6
2011	4,101,864	2,347,193,367	702,671,534	57	1,315,543.3
2012	4,827,716	2,456,292,294	740,196,106	54	1,568,968.3
2013	4,594,614	2,489,204,048	746,226,565	57	1,488,375.3
2014	4,624,559	2,539,886,774	760,474,019	58	1,497,105.5
2015	4,174,899	2,642,374,740	750,090,163	58	1,382,416.9
2016	2,456,480	2,732,611,350	749,030,133	74	830,733.8
2017	2,437,382	2,726,104,521	744,246,491	74	853,425.2
2018	3,056,163	3,277,299,125	893,564,480	73	1,093,048.2
2019	3,507,319	3,395,631,405	939,607,762	71	1,275,388.6
2020	7,495,684	3,489,306,791	984,218,931	49	2,789,610.7
2021	3,544,917	3,981,293,227	1,098,391,422	75	1,326,690.5

Crime

CRIME INDEX OFFENSES



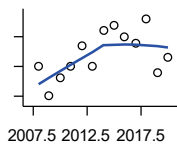
Kansas Bureau of Investigation, Note: Data are aggregated from reports by individual police departments and subject to be incomplete.

Year	County	State of Kansas	Non Metro Kansas	County Rank	Per 1000 or \$ Per Capita
2008	22	93,996	27,342	90	7.0
2009	18	98,757	27,620	95	5.8
2010	20	98,354	26,909	90	6.4
2011	24	96,638	25,765	85	7.7
2012	33	98,914	26,963	85	10.7
2013	27	93,054	24,488	87	8.7
2014	40	86,323	23,341	80	12.9
2015	41	88,590	21,580	73	13.6
2016	32	90,589	21,565	78	10.8
2017	36	93,091	22,622	79	12.6
2018	40	92,062	20,325	72	14.3
2019	26	87,008	18,547	78	9.5
2020	36	87,346	17,762	75	13.4

County: county value. Kansas: state value. County Rank: highest county value ranked #1. (\$000): thousands of dollars. Nonmetro Kansas: Kansas total less Metropolitan Areas as defined by the Office of Management and Budget (OMB; released 3/6/2020). Per 1000: For nonmoney amounts, Per 1000=(county value / county population for the same year as the data) x 1000. \$ Per capita=(county value / county population for the same year as the data). Value= . indicates missing or suppressed data or value not calculated.

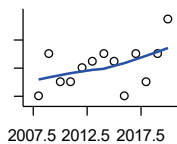
Crime

PROPERTY CRIMES



Kansas Bureau of Investigation, Note: Data are aggregated from reports by individual police departments and subject to be incomplete.

Year	County	State of Kansas	Non Metro Kansas	County Rank	Per 1000 or \$ Per Capita
2008	20	83,964	24,367	90	6.4
2009	10	87,658	24,825	97	3.2
2010	16	87,926	24,133	92	5.1
2011	20	86,547	23,274	85	6.4
2012	27	88,707	24,220	85	8.8
2013	20	83,551	22,028	91	6.5
2014	32	76,794	20,858	80	10.4
2015	34	77,997	19,138	73	11.3
2016	30	79,549	19,207	76	10.1
2017	28	81,349	19,981	80	9.8
2018	36	79,695	17,769	70	12.9
2019	18	74,314	15,892	82	6.5
2020	23	73,450	15,100	79	8.6



VIOLENT CRIMES

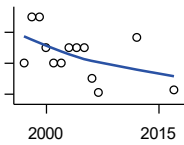
Kansas Bureau of Investigation, Note: Data are aggregated from reports by individual police departments and subject to be incomplete.

Year	County	State of Kansas	Non Metro Kansas	County Rank	Per 1000 or \$ Per Capita
2008	2	10,032	2,975	95	0.6
2009	8	11,099	2,795	68	2.6
2010	4	10,428	2,776	79	1.3
2011	4	10,091	2,491	79	1.3
2012	6	10,207	2,743	75	1.9
2013	7	9,503	2,460	71	2.3
2014	8	9,529	2,483	68	2.6
2015	7	10,593	2,442	70	2.3
2016	2	11,040	2,358	89	0.7
2017	8	11,742	2,641	64	2.8
2018	4	12,367	2,556	79	1.4
2019	8	12,694	2,655	67	2.9
2020	13	13,896	2,662	56	4.8

County: county value. Kansas: state value. County Rank: highest county value ranked #1. (\$000): thousands of dollars. Nonmetro Kansas: Kansas total less Metropolitan Areas as defined by the Office of Management and Budget (OMB; released 3/6/2020). Per 1000: For nonmoney amounts, Per 1000=(county value / county population for the same year as the data) x 1000. \$ Per capita=(county value / county population for the same year as the data). Value= . indicates missing or suppressed data or value not calculated.

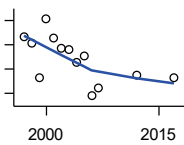
Agriculture

NUMBER OF FARMS



Kansas Agricultural Statistics, Kansas Farm Facts

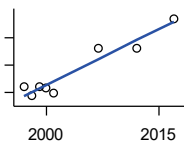
Year	County	State of Kansas	Non Metro Kansas	County Rank	Per 1000 or \$ Per Capita
1997	540	64,000	47,900	53	153.5
1998	570	65,000	48,850	49	160.2
1999	570	65,000	48,850	49	163.6
2000	550	64,000	48,030	50	159.2
2001	540	63,000	47,200	50	159.2
2002	540	63,000	47,200	50	161.1
2003	550	64,500	48,150	50	168.0
2004	550	64,500	48,150	50	170.9
2005	550	64,500	48,150	50	173.1
2006	530	64,000	47,650	53	169.1
2007	521	65,531	48,179	54	165.4
2012	557	61,773	45,655	42	181.0
2017	523	58,569	42,404	42	183.1



TOTAL ACRES HARVESTED

Kansas Agricultural Statistics, Kansas Farm Facts

Year	County	State of Kansas	Non Metro Kansas	County Rank	Per 1000 or \$ Per Capita
1997	226,600	22,846,000	19,430,580	42	64,411.6
1998	221,460	22,143,500	18,943,650	47	62,260.3
1999	192,720	21,708,900	18,581,750	55	55,299.9
2000	241,440	21,639,000	18,528,870	32	69,901.6
2001	225,200	21,847,900	18,689,750	42	66,411.1
2002	216,600	20,230,400	17,089,120	36	64,618.1
2003	215,690	21,827,700	18,661,920	46	65,879.7
2004	205,170	20,876,900	17,721,500	43	63,737.2
2005	211,220	21,936,500	18,807,930	48	66,484.1
2006	177,670	21,412,700	18,291,120	61	56,673.0
2007	183,892	19,886,655	17,164,743	54	58,378.4
2012	195,196	21,043,596	17,966,843	51	63,437.1
2017	192,785	21,837,465	18,543,057	57	67,501.8



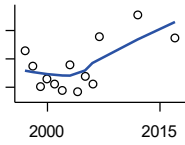
VALUE: LIVESTOCK AND POULTRY (\$000)

Kansas Agricultural Statistics, Kansas Farm Facts

Year	County	State of Kansas	Non Metro Kansas	County Rank	Per 1000 or \$ Per Capita
1997	11,001	2,806,445	2,500,305	90	3,127.1
1998	9,448	2,670,432	2,378,007	99	2,656.2
1999	10,951	2,849,061	2,554,528	91	3,142.3
2000	10,857	2,901,469	2,609,032	94	3,143.3
2001	9,993	2,693,274	2,437,187	88	2,946.9
2007	18,154	9,525,971	.	85	5,763.2
2012	18,008	11,476,571	10,883,216	86	5,852.5
2017	23,480	12,322,289	.	79	8,221.3

County: county value. Kansas: state value. County Rank: highest county value ranked #1. (\$000): thousands of dollars. Nonmetro Kansas: Kansas total less Metropolitan Areas as defined by the Office of Management and Budget (OMB; released 3/6/2020). Per 1000: For nonmoney amounts, Per 1000=(county value / county population for the same year as the data) x 1000. \$ Per capita=(county value / county population for the same year as the data). Value= . indicates missing or suppressed data or value not calculated.

Agriculture



VALUE:FIELD CROPS (\$000)
EXCLUDING GOVERNMENT
PROGRAM PAYMENTS

Kansas Agricultural Statistics, Kansas
Farm Facts

Year	County	State of Kansas	Non Metro Kansas	County Rank	Per 1000 or \$ Per Capita
1997	32,746	4,474,942	3,800,365	63	9,308.1
1998	27,654	3,594,319	3,124,409	59	7,774.5
1999	20,287	3,118,193	2,728,319	66	5,821.2
2000	22,970	2,915,660	2,540,052	51	6,650.3
2001	21,049	3,283,117	2,857,136	73	6,207.3
2002	19,086	3,011,855	2,560,580	68	5,693.9
2003	27,783	3,623,255	3,150,629	58	8,485.9
2004	18,249	3,445,688	2,896,603	76	5,669.2
2005	23,910	3,678,123	3,182,677	71	7,526.0
2006	21,098	4,308,716	3,684,132	88	6,729.8
2007	37,636	4,887,212	.	57	11,947.9
2012	45,534	6,983,993	6,044,551	68	14,798.2
2017	37,301	6,460,437	.	83	13,060.6

County: county value. Kansas: state value. County Rank: highest county value ranked #1. (\$000): thousands of dollars. Nonmetro Kansas: Kansas total less Metropolitan Areas as defined by the Office of Management and Budget (OMB; released 3/6/2020). Per 1000: For nonmoney amounts, Per 1000=(county value / county population for the same year as the data) x 1000. \$ Per capita=(county value / county population for the same year as the data). Value= . indicates missing or suppressed data or value not calculated.