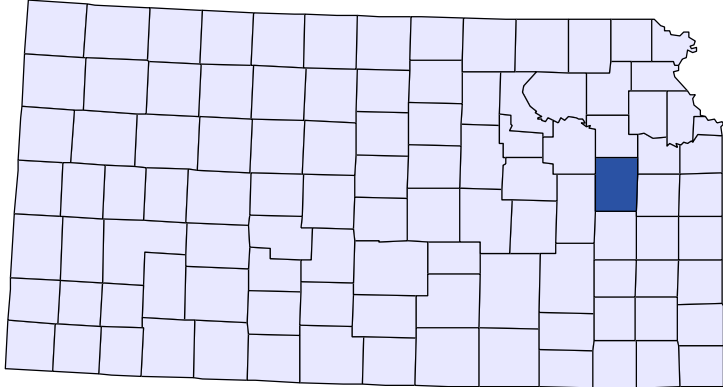




# Kansas County Profiles

## Osage County



The University  
of Kansas

Institute for Policy  
& Social Research

**KU** INSTITUTE FOR POLICY  
& SOCIAL RESEARCH  

---

The University of Kansas

1541 Lilac Lane, Rm. 607  
Blake Hall  
Lawrence, KS 66045-3129

## Foreword

The Kansas County Profile Report is published by the Institute for Policy & Social Research (IPSR) at the University of Kansas with support from the KU University Center project.\* Special thanks to Xanthippe Wedel, senior research data engineer, who compiles and updates the county profiles and Genna Hurd, associate researcher, who provides editorial review.

County reports can be generated for any county in Kansas by simply clicking on the county from the web site:

<https://ipsr.ku.edu/ksdata/kcced/profiles/>

The Kansas County Profile Report contains 12 categories of information: Population, Vital Statistics and Health, Housing, Education, Social Environment, Business, Employment, Income, Banking, Government, Crime, and Agriculture. For more information about Kansas, please refer to the Kansas Statistical Abstract, available online at:

<https://ipsr.ku.edu/ksdata/ksah/>

We are always looking for ways to improve the Kansas County Profile Report and we welcome your suggestions and comments. Please address any correspondence to the Institute for Policy & Social Research, The University of Kansas, 607 Blake Hall, 1541 Lilac Lane, Lawrence, Kansas 66045-3129, e-mail [ipsr@ku.edu](mailto:ipsr@ku.edu) or call 785-864-3701.

*\*The KU University Center is a collaborative effort led by the Institute for Policy & Social Research at the University of Kansas. This project is supported by the Economic Development Administration, U.S. Department of Commerce, through its University Center Program.*

*The mission of EDA is to lead the federal economic development agenda by promoting innovation and competitiveness, preparing American regions for growth and success in the worldwide economy.*

## Kansas County Profiles Table of Contents

### Population

Total Population (Decennial Census)	1
Estimated Population (Current Population Reports)	2
Urban Population	2
Rural Population	3
Net Migration (Decade Ending...)	3
Median Age	3

### Population (Age Groups)

Population Under 18 (Decennial Census)	3
Population Age 18 and Over (Decennial Census)	4
Population Age 65 and Over (Decennial Census)	4
Population Age 85 and Over (Decennial Census)	4

### Vital Statistics and Health

Live Births	5
Deaths	5
Marriages	6
Divorces and Annulments	6
Physicians: M.D. Physicians	7
Physicians: D.O. Physicians	7
Dentists	8
Number of Hospitals	8
Number of Hospital Beds	9

### Housing

Housing Units (Decennial Census)	9
Housing Units (Estimated)	10
Occupied Housing Units	10
Owner Occupied Housing Units	10
Renter Occupied Housing Units	11
Vacant Housing Units	11
Median Value (\$): Owner Occupied Housing Units	11
Median Contract Rent (\$)	12
Fair Market Rent: 2 Bedrooms	12

### Education

Population Age 25 and Over	13
Percent of Population 25+ with High School or Higher Education	13
Percent of Population 25+ with Bachelors Degree or Higher Education	14
Public School Enrollment (FTE- School Year Beginning...)	14
Pupil/Teacher Ratio (School Year Beginning...)	15

## Kansas County Profiles Table of Contents

### Social Environment

Total Child Care Facilities	15
Preschools	16
Food Stamp Beneficiaries	16
Percent of Population Receiving Food Stamps	17
Estimated Number of People in Poverty	17
Estimated Percent of People in Poverty	18
Estimated Number of Related Children Age 5 to 17 in Families in Poverty	18
Estimated Percent of Related Children Age 5 to 17 in Families in Poverty	19
Estimated Number Under 18 in Poverty	19
Estimated Percent Under 18 in Poverty	20

### Business

Establishments: Total	21
Establishments: 1-19 Employees	22
Establishments: 20-99 Employees	22
Establishments: 100-499 Employees	23
Establishments: 500 or More Employees	23
Establishments: Forestry, Fishing, Hunting, and Ag Support	24
Establishments: Mining	24
Establishments: Utilities	25
Establishments: Construction	25
Establishments: Manufacturing	26
Establishments: Wholesale Trade	26
Establishments: Retail Trade	27
Establishments: Transportation and Warehousing	27
Establishments: Information	28
Establishments: Finance and Insurance	28
Establishments: Real Estate, Rental, and Leasing	29
Establishments: Professional, Scientific, and Technical Services	29
Establishments: Management of Companies and Enterprises	30
Establishments: Admin, Support, Waste Management, and Remediation	30
Establishments: Educational Services	31
Establishments: Health Care and Social Assistance	31
Establishments: Arts, Entertainment, and Recreation	32
Establishments: Accommodation and Food Services	32
Establishments: Other Services	33

## Kansas County Profiles Table of Contents

<b>Business</b>	
Total Annual Payroll (\$000)	34
Total Annual Payroll (\$000): Forestry, Fishing, Hunting, and Ag Support	35
Total Annual Payroll (\$000): Mining	35
Total Annual Payroll (\$000): Utilities	36
Total Annual Payroll (\$000): Construction	36
Total Annual Payroll (\$000): Manufacturing	37
Total Annual Payroll (\$000): Wholesale Trade	37
Total Annual Payroll (\$000): Retail Trade	38
Total Annual Payroll (\$000): Transportation and Warehousing	38
Total Annual Payroll (\$000): Information	39
Total Annual Payroll (\$000): Finance and Insurance	39
Total Annual Payroll (\$000): Real Estate, Rental, and Leasing	40
Total Annual Payroll (\$000): Professional, Scientific, and Technical Services	40
Total Annual Payroll (\$000): Management of Companies and Enterprises	41
Total Annual Payroll (\$000): Admin, Support, Waste Management, and Remediation	41
Total Annual Payroll (\$000): Educational Services	42
Total Annual Payroll (\$000): Health Care and Social Assistance	42
Total Annual Payroll (\$000): Arts, Entertainment, and Recreation	43
Total Annual Payroll (\$000): Accommodation and Food Services	43
Total Annual Payroll (\$000): Other Services	44
Nominal Taxable Retail Sales (Million\$)	44
Retail Pull Factor	45
<b>Employment</b>	
Civilian Labor Force (BLS - Place of Residence)	46
Employed (BLS - Place of Residence)	47
Unemployed (BLS - Place of Residence)	48
Unemployment Rate (BLS - Place of Residence)	49
BEA Employment: Total (Place of Work)	49
BEA Employment: Farm	50
BEA Employment: Non-Farm	50
Average Wage per Job (\$)	51
BEA Employment: Forestry, Fishing, Hunting, and Ag Support	51
BEA Employment: Mining	52
BEA Employment: Utilities	52
BEA Employment: Construction	53
BEA Employment: Manufacturing	53
BEA Employment: Wholesale Trade	54
BEA Employment: Retail Trade	54
BEA Employment: Transportation and Warehousing	55
BEA Employment: Information	55
BEA Employment: Finance and Insurance	56
BEA Employment: Real Estate, Rental, and Leasing	56
BEA Employment: Professional and Technical Services	57
BEA Employment: Management of Companies and Enterprises	57
BEA Employment: Administrative and Waste Services	58
BEA Employment: Educational Services	58
BEA Employment: Health Care and Social Assistance	59
BEA Employment: Arts, Entertainment, and Recreation	59
BEA Employment: Government and Government Enterprises	60
BEA Employment: Accommodation and Food Services	60
BEA Employment: Other Services, Except Public Administration	61

## Kansas County Profiles Table of Contents

### Income

BEA Per Capita Personal Income (\$)	61
Sources of Personal Income: Total Personal Income (\$000)	62
Sources of Personal Income: Wages And Salaries (\$000)	62
Sources of Personal Income: Proprietors-Farm (\$000)	63
Sources of Personal Income: Proprietors-Nonfarm (\$000)	63
Sources of Personal Income: Dividends, Interest, Rent (\$000)	64
Sources of Personal Income: Transfer Payments (\$000)	64
Sources of Personal Income: Less Social Insurance (\$000)	65
HUD Median Family Income	65
HUD 30% Low-To-Medium Income (LMI) Limit - 4 Persons	66
HUD 50% Low-To-Medium Income (LMI) Limit - 4 Persons	66
HUD 80% Low-To-Medium Income (LMI) Limit - 4 Persons	66

### Banking

Bank Deposits (\$000)	67
Number of Banks	67
Number of Banking Offices	68

### Government

Tangible Assessed Valuation (million\$)	68
Sales Tax Collections	69

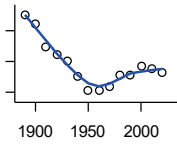
### Crime

Crime Index Offenses	69
Property Crimes	70
Violent Crimes	70

### Agriculture

Number of Farms	71
Total Acres Harvested	71
Value: Livestock and Poultry (\$000)	71
Value: Field Crops (\$000) Excluding Government Program Payments	72

**Population**



**DECENNIAL CENSUS:TOTAL POPULATION**

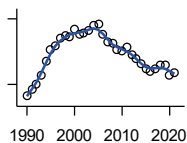
U.S. Census Bureau: Decennial Census

Year	County	State of Kansas	Non Metro Kansas	County Rank	Per 1000 or \$ Per Capita
1890	25,062	1,427,096	968,413	13	.
1900	23,659	1,470,495	981,206	17	.
1910	19,905	1,690,949	1,138,294	28	.
1920	18,621	1,769,257	1,153,525	30	.
1930	17,538	1,880,999	1,180,056	36	.
1940	15,118	1,801,028	1,097,216	40	.
1950	12,811	1,905,299	1,046,823	42	.
1960	12,886	2,178,611	1,021,510	40	.
1970	13,352	2,246,578	958,104	35	.
1980	15,319	2,363,679	980,085	33	.
1990	15,248	2,477,574	939,416	33	.
2000	16,712	2,688,418	959,507	33	.
2010	16,295	2,853,118	929,981	33	.
2020	15,766	2,937,880	892,006	33	.

County: county value. Kansas: state value. County Rank: highest county value ranked #1. (\$000): thousands of dollars. Nonmetro Kansas: Kansas total less Metropolitan Areas as defined by the Office of Management and Budget (OMB; released 3/6/2020). Per 1000: For nonmoney amounts, Per 1000=(county value / county population for the same year as the data) x 1000. \$ Per capita=(county value / county population for the same year as the data). Value= . indicates missing or suppressed data or value not calculated.

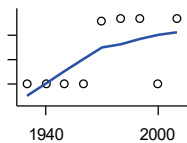
**Population**

**ESTIMATED POPULATION**



U.S. Census Bureau

Year	County	State of Kansas	Non Metro Kansas	County Rank	Per 1000 or \$ Per Capita
1990	15,253	2,481,349	938,607	33	.
1991	15,385	2,498,722	938,965	33	.
1992	15,491	2,532,394	942,759	33	.
1993	15,713	2,556,547	947,515	33	.
1994	16,025	2,580,513	952,178	33	.
1995	16,290	2,601,007	957,771	33	.
1996	16,372	2,614,554	959,455	33	.
1997	16,546	2,635,292	960,225	33	.
1998	16,614	2,660,598	960,569	33	.
1999	16,590	2,678,338	960,704	33	.
2000	16,756	2,693,681	959,230	33	.
2001	16,657	2,702,162	952,607	33	.
2002	16,689	2,713,535	945,985	33	.
2003	16,722	2,723,004	941,474	32	.
2004	16,843	2,734,373	937,623	32	.
2005	16,869	2,745,299	932,852	31	.
2006	16,633	2,762,931	928,809	32	.
2007	16,468	2,783,785	927,643	33	.
2008	16,439	2,808,076	926,248	33	.
2009	16,297	2,832,704	926,755	33	.
2010	16,275	2,858,190	930,028	33	.
2011	16,341	2,869,225	927,675	33	.
2012	16,176	2,885,257	925,152	33	.
2013	16,080	2,893,212	922,383	33	.
2014	15,970	2,900,475	917,854	33	.
2015	15,865	2,909,011	912,199	33	.
2016	15,811	2,910,844	905,099	33	.
2017	15,842	2,908,718	897,981	33	.
2018	15,938	2,911,359	892,656	33	.
2019	15,949	2,913,314	887,455	33	.
2020	15,724	2,935,880	889,750	33	.
2021	15,768	2,934,582	886,438	33	.



**URBAN POPULATION**

U.S. Census Bureau: Decennial Census

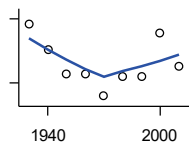
Year	County	State of Kansas	Non Metro Kansas	County Rank	Per 1000 or \$ Per Capita
1930	0	729,834	336,666	105	.
1940	0	753,941	349,228	105	.
1950	0	993,220	398,923	105	.
1960	0	1,328,741	457,447	105	.
1970	2,600	1,484,870	450,543	59	.
1980	2,667	1,575,899	474,769	58	.
1990	2,689	1,712,564	464,205	57	.
2000	0	1,920,081	488,011	105	.
2010	2,683	2,116,961	485,780	54	.

County: county value. Kansas: state value. County Rank: highest county value ranked #1. (\$000): thousands of dollars. Nonmetro Kansas: Kansas total less Metropolitan Areas as defined by the Office of Management and Budget (OMB; released 3/6/2020). Per 1000: For nonmoney amounts, Per 1000=(county value / county population for the same year as the data) x 1000. \$ Per capita=(county value / county population for the same year as the data). Value= . indicates missing or suppressed data or value not calculated.



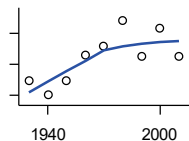
**Population**

**RURAL POPULATION**



U.S. Census Bureau

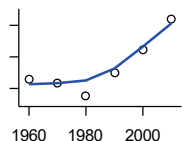
Year	County	State of Kansas	Non Metro Kansas	County Rank	Per 1000 or \$ Per Capita
1930	17,538	1,151,165	843,390	15	.
1940	15,118	1,047,087	747,988	18	.
1950	12,811	912,079	647,900	19	.
1960	12,886	849,870	564,063	13	.
1970	10,752	761,708	509,972	19	.
1980	12,652	787,780	505,873	14	.
1990	12,559	765,010	475,211	12	.
2000	16,712	768,337	471,900	8	.
2010	13,612	736,157	444,201	12	.



**NET MIGRATION: DECADE ENDING...**

calculated by the Institute for Policy and Social Research, The University of Kansas

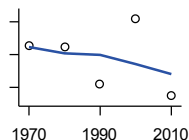
Year	County	State of Kansas	Non Metro Kansas	County Rank	Per 1000 or \$ Per Capita
1930	-2,063	-66,132	-101,869	78	-117.6
1940	-2,949	-192,649	-166,022	89	-195.1
1950	-2,034	-84,329	-158,379	62	-158.8
1960	-371	-38,999	-146,640	17	-28.8
1970	175	-119,662	-105,116	10	13.1
1980	1,823	-21,983	-6,184	9	119.0
1990	-477	-61,835	-79,274	38	-31.3
2000	1,312	68,960	4,247	14	78.5
2010	-448	5,578	-50,648	75	-27.5



**MEDIAN AGE**

U.S. Census Bureau: Decennial Census

Year	County	State of Kansas	Non Metro Kansas	County Rank	Per 1000 or \$ Per Capita
1960	35.2	26.9	.	38	.
1970	34.7	28.7	.	52	.
1980	33.0	30.1	.	62	.
1990	36.0	32.9	.	59	.
2000	38.9	35.2	.	57	.
2010	42.8	36.0	.	47	.



**POPULATION UNDER 18 (DECENNIAL CENSUS)**

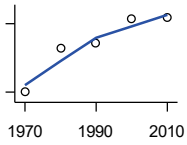
U.S. Census Bureau: Decennial Census

Year	County	State of Kansas	Non Metro Kansas	County Rank	Per 1000 or \$ Per Capita
1970	4,357	746,354	306,227	32	.
1980	4,343	649,035	263,919	32	.
1990	4,120	661,614	250,107	33	.
2000	4,519	712,993	250,757	31	.
2010	4,047	726,939	229,213	33	.

County: county value. Kansas: state value. County Rank: highest county value ranked #1. (\$000): thousands of dollars. Nonmetro Kansas: Kansas total less Metropolitan Areas as defined by the Office of Management and Budget (OMB; released 3/6/2020). Per 1000: For nonmoney amounts, Per 1000=(county value / county population for the same year as the data) x 1000. \$ Per capita=(county value / county population for the same year as the data). Value= . indicates missing or suppressed data or value not calculated.

**Population**

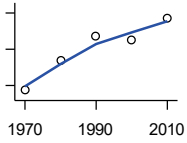
**POPULATION AGE 18 AND OVER  
(DECENNIAL CENSUS)**



U.S. Census Bureau: Decennial Census

Year	County	State of Kansas	Non Metro Kansas	County Rank	Per 1000 or \$ Per Capita
1970	8,995	1,500,224	654,288	36	.
1980	10,952	1,714,282	716,684	33	.
1990	11,128	1,815,960	689,309	33	.
2000	12,193	1,975,425	709,154	33	.
2010	12,248	2,126,179	700,768	33	.

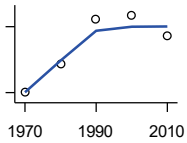
**POPULATION AGE 65 AND OVER  
(DECENNIAL CENSUS)**



U.S. Census Bureau: Decennial Census

Year	County	State of Kansas	Non Metro Kansas	County Rank	Per 1000 or \$ Per Capita
1970	2,373	266,201	149,049	33	.
1980	2,541	306,263	164,932	34	.
1990	2,675	342,571	168,579	33	.
2000	2,648	356,229	161,769	31	.
2010	2,773	376,116	154,214	29	.

**POPULATION AGE 85 AND OVER  
(DECENNIAL CENSUS)**



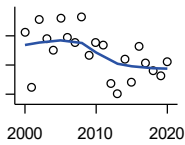
U.S. Census Bureau: Decennial Census

Year	County	State of Kansas	Non Metro Kansas	County Rank	Per 1000 or \$ Per Capita
1970	250	23,899	13,698	29	.
1980	316	33,455	18,804	31	.
1990	417	42,241	22,970	26	.
2000	426	51,770	26,644	31	.
2010	380	59,318	26,197	36	.

County: county value. Kansas: state value. County Rank: highest county value ranked #1. (\$000): thousands of dollars. Nonmetro Kansas: Kansas total less Metropolitan Areas as defined by the Office of Management and Budget (OMB; released 3/6/2020). Per 1000: For nonmoney amounts, Per 1000=(county value / county population for the same year as the data) x 1000. \$ Per capita=(county value / county population for the same year as the data). Value= . indicates missing or suppressed data or value not calculated.

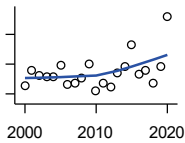
**Vital Statistics and Health**

**BIRTHS (LIVE)**



Kansas Department of Health and Environment

Year	County	State of Kansas	Non Metro Kansas	County Rank	Per 1000 or \$ Per Capita
2000	192	39,654	12,980	35	11.5
2001	155	38,832	12,527	37	9.3
2002	201	39,338	12,476	32	12.0
2003	188	39,353	12,342	35	11.2
2004	180	39,553	12,398	34	10.7
2005	202	39,701	12,382	32	12.0
2006	189	40,896	12,726	35	11.4
2007	185	41,951	12,990	35	11.2
2008	203	41,815	12,970	33	12.3
2009	177	41,388	12,949	34	10.9
2010	185	40,439	12,200	34	11.4
2011	184	39,628	12,098	33	11.3
2012	157	40,304	12,217	35	9.7
2013	150	38,805	11,877	36	9.3
2014	174	39,193	12,052	34	10.9
2015	158	39,126	11,836	35	10.0
2016	183	38,048	11,467	34	11.6
2017	171	36,464	10,968	35	10.8
2018	166	36,268	10,826	34	10.4
2019	163	35,395	10,506	35	10.2
2020	172	34,368	10,222	32	10.9



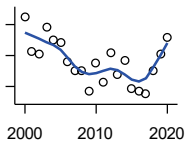
**DEATHS**

Kansas Department of Health and Environment

Year	County	State of Kansas	Non Metro Kansas	County Rank	Per 1000 or \$ Per Capita
2000	171	24,676	11,175	34	10.2
2001	191	24,590	10,807	30	11.5
2002	184	24,968	11,079	32	11.0
2003	183	24,417	10,615	30	10.9
2004	183	23,720	10,369	29	10.9
2005	199	24,632	10,599	26	11.8
2006	173	24,489	10,538	35	10.4
2007	175	24,413	10,601	30	10.6
2008	182	24,896	10,593	30	11.1
2009	200	23,997	9,938	27	12.3
2010	164	24,428	10,105	33	10.1
2011	175	25,114	10,520	34	10.7
2012	169	25,084	10,259	32	10.4
2013	189	25,347	10,249	31	11.8
2014	196	25,731	10,275	29	12.3
2015	226	26,611	10,539	27	14.2
2016	187	26,129	10,231	31	11.8
2017	191	26,725	10,452	31	12.1
2018	174	27,213	10,389	32	10.9
2019	197	27,312	10,569	29	12.4
2020	264	31,667	11,850	26	16.7

County: county value. Kansas: state value. County Rank: highest county value ranked #1. (\$000): thousands of dollars. Nonmetro Kansas: Kansas total less Metropolitan Areas as defined by the Office of Management and Budget (OMB; released 3/6/2020). Per 1000: For nonmoney amounts, Per 1000=(county value / county population for the same year as the data) x 1000. \$ Per capita=(county value / county population for the same year as the data). Value= . indicates missing or suppressed data or value not calculated.

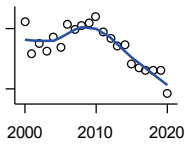
**Vital Statistics and Health**



**MARRIAGES**

Kansas Department of Health and Environment

Year	County	State of Kansas	Non Metro Kansas	County Rank	Per 1000 or \$ Per Capita
2000	115	20,426	7,333	32	6.9
2001	93	20,457	7,441	33	5.6
2002	91	19,783	6,794	34	5.5
2003	108	18,722	6,469	32	6.5
2004	100	19,174	6,756	34	5.9
2005	98	18,745	6,481	34	5.8
2006	86	18,836	6,433	35	5.2
2007	80	18,910	6,464	35	4.9
2008	80	18,717	6,283	35	4.9
2009	67	18,268	6,015	39	4.1
2010	85	18,150	5,925	34	5.2
2011	73	17,897	5,977	36	4.5
2012	92	18,154	5,752	32	5.7
2013	78	17,328	5,533	34	4.9
2014	87	17,655	5,535	33	5.4
2015	69	17,595	5,400	35	4.3
2016	67	17,948	5,340	36	4.2
2017	65	17,274	5,163	35	4.1
2018	80	16,362	4,999	33	5.0
2019	91	15,403	4,650	29	5.7
2020	102	14,038	4,066	26	6.5



**DIVORCES AND ANNULMENTS**

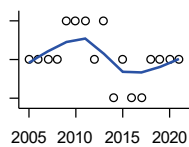
Kansas Department of Health and Environment

Year	County	State of Kansas	Non Metro Kansas	County Rank	Per 1000 or \$ Per Capita
2000	87	10,105	4,000	25	5.2
2001	55	9,885	3,818	33	3.3
2002	65	9,645	3,716	30	3.9
2003	57	8,644	3,464	29	3.4
2004	71	8,759	3,506	26	4.2
2005	61	8,476	3,311	29	3.6
2006	84	9,145	3,387	21	5.1
2007	79	9,347	3,402	27	4.8
2008	83	9,818	3,655	26	5.0
2009	86	10,333	3,463	27	5.3
2010	92	10,579	3,530	23	5.6
2011	77	10,445	3,347	27	4.7
2012	70	9,782	3,040	27	4.3
2013	62	9,085	2,973	28	3.9
2014	64	8,441	2,682	27	4.0
2015	45	8,036	2,704	31	2.8
2016	41	7,198	2,424	33	2.6
2017	39	6,494	2,315	35	2.5
2018	39	6,538	2,269	31	2.4
2019	39	6,398	2,357	31	2.4
2020	15	5,169	1,866	52	1.0

County: county value. Kansas: state value. County Rank: highest county value ranked #1. (\$000): thousands of dollars. Nonmetro Kansas: Kansas total less Metropolitan Areas as defined by the Office of Management and Budget (OMB; released 3/6/2020). Per 1000: For nonmoney amounts, Per 1000=(county value / county population for the same year as the data) x 1000. \$ Per capita=(county value / county population for the same year as the data). Value= . indicates missing or suppressed data or value not calculated.

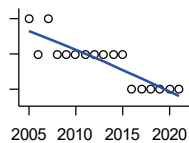
**Vital Statistics and Health**

**PHYSICIANS: M.D. PHYSICIANS**



Kansas Department of Health and Environment (1981-2005,2010-);Kansas Health Policy Authority (2006-2009)

Year	County	State of Kansas	Non Metro Kansas	County Rank	Per 1000 or \$ Per Capita
2005	3	4,241	912	65	0.2
2006	3	4,310	953	70	0.2
2007	3	5,309	1,046	74	0.2
2008	3	5,110	1,016	73	0.2
2009	4	5,249	996	62	0.2
2010	4	5,192	979	61	0.2
2011	4	5,243	983	63	0.2
2012	3	5,693	1,033	72	0.2
2013	4	6,106	1,071	65	0.2
2014	2	5,839	951	78	0.1
2015	3	5,703	855	61	0.2
2016	2	4,278	643	72	0.1
2017	2	6,332	1,047	81	0.1
2018	3	6,079	1,065	71	0.2
2019	3	6,435	1,036	70	0.2
2020	3	6,668	1,045	70	0.2
2021	3	6,745	1,042	72	0.2



**PHYSICIANS: D.O. PHYSICIANS**

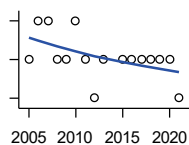
Kansas Department of Health and Environment (1981-2005,2010-);Kansas Health Policy Authority (2006-2009)

Year	County	State of Kansas	Non Metro Kansas	County Rank	Per 1000 or \$ Per Capita
2005	2	553	174	48	0.1
2006	1	508	171	66	0.1
2007	2	569	169	48	0.1
2008	1	558	166	66	0.1
2009	1	564	160	66	0.1
2010	1	583	169	66	0.1
2011	1	502	152	62	0.1
2012	1	718	200	67	0.1
2013	1	829	210	65	0.1
2014	1	817	189	62	0.1
2015	1	819	190	63	0.1
2016	0	632	136	105	0.0
2017	0	579	129	105	0.0
2018	0	871	164	105	0.0
2019	0	951	212	105	0.0
2020	0	1,018	204	105	0.0
2021	0	1,095	217	105	0.0

County: county value. Kansas: state value. County Rank: highest county value ranked #1. (\$000): thousands of dollars. Nonmetro Kansas: Kansas total less Metropolitan Areas as defined by the Office of Management and Budget (OMB; released 3/6/2020). Per 1000: For nonmoney amounts, Per 1000=(county value / county population for the same year as the data) x 1000. \$ Per capita=(county value / county population for the same year as the data). Value= . indicates missing or suppressed data or value not calculated.

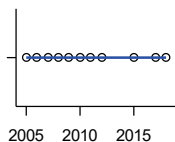
**Vital Statistics and Health**

**DENTISTS**



Kansas Department of Health and Environment (1981-2006,2010-); Kansas Health Policy Authority (2007-2009)

Year	County	State of Kansas	Non Metro Kansas	County Rank	Per 1000 or \$ Per Capita
2005	3	1,347	363	48	0.2
2006	4	1,381	361	43	0.2
2007	4	1,335	350	42	0.2
2008	3	1,392	353	46	0.2
2009	3	1,353	350	46	0.2
2010	4	1,401	365	42	0.2
2011	3	1,338	346	50	0.2
2012	2	1,434	392	69	0.1
2013	3	1,212	328	52	0.2
2015	3	1,240	327	50	0.2
2016	3	1,456	350	52	0.2
2017	3	1,467	350	48	0.2
2018	3	1,604	359	47	0.2
2019	3	1,646	355	48	0.2
2020	3	1,646	355	48	0.2
2021	2	1,688	362	66	0.1



**NUMBER OF HOSPITALS**

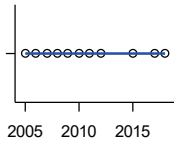
American Hospital Association, American Hospital Association Guide to the Health Care Field

Year	County	State of Kansas	Non Metro Kansas	County Rank	Per 1000 or \$ Per Capita
2005	0	158	105	105	.
2006	0	158	105	105	.
2007	0	159	104	105	.
2008	0	159	104	105	.
2009	0	158	105	105	.
2010	0	158	104	105	.
2011	0	158	103	105	.
2012	0	157	103	105	.
2015	0	155	103	105	.
2017	0	157	102	105	.
2018	0	154	99	105	.

County: county value. Kansas: state value. County Rank: highest county value ranked #1. (\$000): thousands of dollars. Nonmetro Kansas: Kansas total less Metropolitan Areas as defined by the Office of Management and Budget (OMB; released 3/6/2020). Per 1000: For nonmoney amounts, Per 1000=(county value / county population for the same year as the data) x 1000. \$ Per capita=(county value / county population for the same year as the data). Value= . indicates missing or suppressed data or value not calculated.

**Vital Statistics and Health**

**NUMBER OF HOSPITAL BEDS**

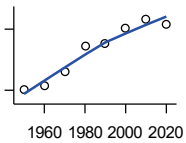


Kansas Department of Health and Environment

Year	County	State of Kansas	Non Metro Kansas	County Rank	Per 1000 or \$ Per Capita
2005	0	12,389	5,687	105	0.0
2006	0	11,992	5,514	105	0.0
2007	0	12,171	5,637	105	0.0
2008	0	12,332	5,700	105	0.0
2009	0	12,283	5,652	105	0.0
2010	0	12,218	5,521	105	0.0
2011	0	12,182	5,335	105	0.0
2012	0	12,002	5,355	105	0.0
2015	0	11,926	5,330	105	0.0
2017	0	11,491	4,825	105	0.0
2018	0	11,448	4,583	105	0.0

**Housing**

**HOUSING UNITS (DECENNIAL)**



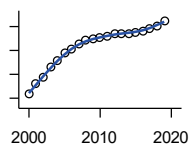
U.S. Census Bureau: Decennial Census

Year	County	State of Kansas	Non Metro Kansas	County Rank	Per 1000 or \$ Per Capita
1950	4,006	586,650	328,210	42	312.7
1960	4,227	672,899	329,380	39	328.0
1970	4,918	789,735	363,824	36	368.3
1980	6,152	955,207	416,877	33	401.6
1990	6,324	1,044,112	417,062	34	414.7
2000	7,018	1,131,395	422,218	33	419.9
2010	7,503	1,233,215	424,050	32	460.4
2020	7,233	1,275,689	413,120	31	458.8

County: county value. Kansas: state value. County Rank: highest county value ranked #1. (\$000): thousands of dollars. Nonmetro Kansas: Kansas total less Metropolitan Areas as defined by the Office of Management and Budget (OMB; released 3/6/2020). Per 1000: For nonmoney amounts, Per 1000=(county value / county population for the same year as the data) x 1000. \$ Per capita=(county value / county population for the same year as the data). Value= . indicates missing or suppressed data or value not calculated.

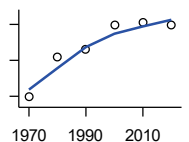
Housing

HOUSING UNITS (ESTIMATED)



U.S. Census Bureau

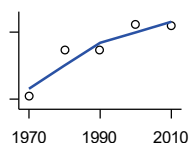
Year	County	State of Kansas	Non Metro Kansas	County Rank	Per 1000 or \$ Per Capita
2000	7,038	1,134,529	422,560	33	421.1
2001	7,121	1,146,858	423,876	33	427.5
2002	7,179	1,160,129	425,089	33	430.2
2003	7,257	1,171,620	425,936	33	434.0
2004	7,312	1,184,702	426,593	32	434.1
2005	7,380	1,195,791	426,964	32	437.5
2006	7,415	1,206,692	426,713	32	445.8
2007	7,458	1,217,608	426,090	32	452.9
2008	7,485	1,225,625	425,768	32	455.3
2009	7,500	1,230,552	424,776	31	460.2
2010	7,507	1,234,456	424,174	32	460.7
2011	7,522	1,238,052	424,549	32	460.3
2012	7,537	1,241,992	425,116	32	465.9
2013	7,545	1,246,675	425,699	32	469.2
2014	7,545	1,253,284	426,269	32	472.4
2015	7,552	1,258,999	426,844	32	476.0
2016	7,566	1,265,684	427,465	32	478.5
2017	7,585	1,273,536	427,746	32	478.8
2018	7,604	1,280,649	428,099	32	477.1
2019	7,648	1,288,401	428,495	32	479.5



OCCUPIED HOUSING UNITS

U.S. Census Bureau: Decennial Census

Year	County	State of Kansas	Non Metro Kansas	County Rank	Per 1000 or \$ Per Capita
1970	4,475	727,364	326,494	36	335.2
1980	5,600	872,239	371,693	33	365.6
1990	5,806	944,726	365,901	33	380.8
2000	6,490	1,037,891	375,313	32	388.3
2010	6,552	1,112,096	370,269	32	402.1
2020	6,480	1,151,360	356,330	31	411.0



OWNER OCCUPIED HOUSING UNITS

U.S. Census Bureau: Decennial Census

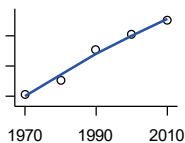
Year	County	State of Kansas	Non Metro Kansas	County Rank	Per 1000 or \$ Per Capita
1970	3,560	502,585	236,338	34	266.6
1980	4,591	612,433	277,096	31	299.7
1990	4,596	641,762	263,099	30	301.4
2000	5,179	718,703	271,350	30	309.9
2010	5,151	753,532	261,763	30	316.1

County: county value. Kansas: state value. County Rank: highest county value ranked #1. (\$000): thousands of dollars. Nonmetro Kansas: Kansas total less Metropolitan Areas as defined by the Office of Management and Budget (OMB; released 3/6/2020). Per 1000: For nonmoney amounts, Per 1000=(county value / county population for the same year as the data) x 1000. \$ Per capita=(county value / county population for the same year as the data). Value= . indicates missing or suppressed data or value not calculated.



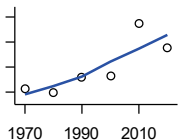
**Housing**

**RENTER OCCUPIED HOUSING UNITS**



U.S. Census Bureau: Decennial Census

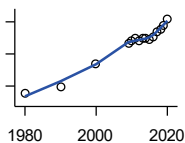
Year	County	State of Kansas	Non Metro Kansas	County Rank	Per 1000 or \$ Per Capita
1970	915	224,779	90,156	42	68.5
1980	1,009	259,806	94,597	40	65.9
1990	1,210	302,964	102,802	36	79.4
2000	1,311	319,188	103,963	34	78.4
2010	1,401	358,564	108,506	34	86.0



**VACANT HOUSING UNITS**

U.S. Census Bureau: Decennial Census

Year	County	State of Kansas	Non Metro Kansas	County Rank	Per 1000 or \$ Per Capita
1970	428	60,058	35,954	44	32.1
1980	397	77,912	41,584	52	25.9
1990	518	99,386	51,161	51	34.0
2000	528	93,309	46,904	48	31.6
2010	951	121,119	53,781	28	58.4
2020	753	124,329	56,790	38	47.8



**MEDIAN VALUE (\$): OWNER OCCUPIED HOUSING UNITS**

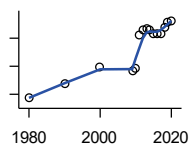
U.S. Census Bureau, Decennial Census (- 2000), (2009 -) American Community Survey five-year average ending in year shown.

Year	County	State of Kansas	Non Metro Kansas	County Rank	Per 1000 or \$ Per Capita
1980	31,300	37,800	.	35	.
1990	38,300	52,200	.	33	.
2000	67,600	83,500	.	31	.
2009	92,900	118,500	.	22	.
2010	96,400	122,600	.	26	.
2011	99,000	125,500	.	21	.
2012	96,200	127,400	.	26	.
2013	99,000	128,400	.	25	.
2014	99,100	129,400	.	28	.
2015	98,300	132,000	.	31	.
2016	101,800	135,300	.	30	.
2017	107,200	139,200	.	29	.
2018	110,700	145,400	.	27	.
2019	115,700	151,900	.	27	.
2020	123,600	157,600	.	27	.

County: county value. Kansas: state value. County Rank: highest county value ranked #1. (\$000): thousands of dollars. Nonmetro Kansas: Kansas total less Metropolitan Areas as defined by the Office of Management and Budget (OMB; released 3/6/2020). Per 1000: For nonmoney amounts, Per 1000=(county value / county population for the same year as the data) x 1000. \$ Per capita=(county value / county population for the same year as the data). Value= . indicates missing or suppressed data or value not calculated.

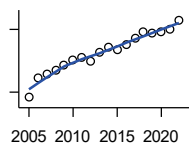
**Housing**

**MEDIAN CONTRACT RENT (\$)**



U.S. Census Bureau, Decennial Census (- 2000), (2009 -) American Community Survey five-year average ending in year shown.

Year	County	State of Kansas	Non Metro Kansas	County Rank	Per 1000 or \$ Per Capita
1980	172	219	.	40	.
1990	280	372	.	47	.
2000	398	498	.	39	.
2009	370	491	.	33	.
2010	382	507	.	38	.
2011	624	699	.	20	.
2012	656	715	.	21	.
2013	671	732	.	23	.
2014	661	748	.	30	.
2015	628	757	.	40	.
2016	632	775	.	44	.
2017	633	801	.	50	.
2018	674	831	.	37	.
2019	716	850	.	26	.
2020	722	863	.	29	.



**FAIR MARKET RENT: 2 BEDROOMS**

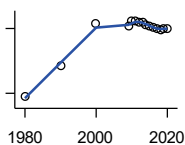
U.S. Department of Housing and Urban Development (HUD)

Year	County	State of Kansas	Non Metro Kansas	County Rank	Per 1000 or \$ Per Capita
2005	474	.	.	63	.
2006	568	.	.	14	.
2007	585	.	.	14	.
2008	605	628	.	14	.
2009	630	653	.	15	.
2010	655	678	.	12	.
2011	666	684	.	12	.
2012	649	660	.	17	.
2013	692	712	.	20	.
2014	713	746	.	22	.
2015	701	756	.	23	.
2016	727	781	.	25	.
2017	760	811	.	25	.
2018	786	815	.	21	.
2019	785	828	.	19	.
2020	788	855	.	23	.
2021	801	874	.	22	.
2022	844	879	.	16	.

County: county value. Kansas: state value. County Rank: highest county value ranked #1. (\$000): thousands of dollars. Nonmetro Kansas: Kansas total less Metropolitan Areas as defined by the Office of Management and Budget (OMB; released 3/6/2020). Per 1000: For nonmoney amounts, Per 1000=(county value / county population for the same year as the data) x 1000. \$ Per capita=(county value / county population for the same year as the data). Value= . indicates missing or suppressed data or value not calculated.

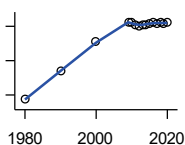
**Education**

**POPULATION AGE 25+**



U.S. Census Bureau, Decennial Census (- 2000), (2009 -) American Community Survey five-year average ending in year shown.

Year	County	State of Kansas	Non Metro Kansas	County Rank	Per 1000 or \$ Per Capita
1980	9,414	1,388,102	596,639	.	.
1990	10,137	1,565,936	608,745	.	.
2000	11,117	1,701,207	618,131	.	.
2009	11,047	1,775,427	600,188	.	.
2010	11,161	1,802,904	608,716	.	.
2011	11,177	1,822,400	610,386	.	.
2012	11,157	1,838,079	611,103	.	.
2013	11,145	1,850,010	610,374	.	.
2014	11,096	1,861,894	609,612	.	.
2015	11,069	1,869,698	606,967	.	.
2016	11,016	1,878,495	604,563	.	.
2017	10,988	1,886,741	601,076	.	.
2018	10,969	1,894,675	598,487	.	.
2019	10,992	1,902,279	595,501	.	.
2020	11,004	1,911,990	593,923	.	.



**PERCENT HS GRADUATE OR HIGHER AGE 25+**

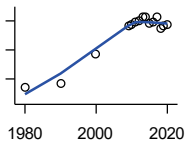
U.S. Census Bureau, Decennial Census (- 2000), (2009 -) American Community Survey five-year average ending in year shown.

Year	County	State of Kansas	Non Metro Kansas	County Rank	Per 1000 or \$ Per Capita
1980	68.7	73.3	.	55	.
1990	76.9	81.3	.	65	.
2000	85.5	86.0	.	39	.
2009	91.1	89.0	.	24	.
2010	91.1	89.2	.	26	.
2011	90.4	89.5	.	38	.
2012	90.0	89.7	.	46	.
2013	90.6	89.8	.	46	.
2014	90.6	90.0	.	46	.
2015	90.8	90.2	.	47	.
2016	91.0	90.3	.	53	.
2017	90.9	90.5	.	58	.
2018	91.2	90.7	.	55	.
2019	90.8	91.0	.	66	.
2020	91.0	91.4	.	68	.

County: county value. Kansas: state value. County Rank: highest county value ranked #1. (\$000): thousands of dollars. Nonmetro Kansas: Kansas total less Metropolitan Areas as defined by the Office of Management and Budget (OMB; released 3/6/2020). Per 1000: For nonmoney amounts, Per 1000=(county value / county population for the same year as the data) x 1000. \$ Per capita=(county value / county population for the same year as the data). Value= . indicates missing or suppressed data or value not calculated.

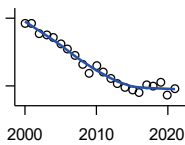
**Education**

**PERCENT BACHELORS DEGREE OR HIGHER AGE 25+**



U.S. Census Bureau, Decennial Census (- 2000), (2009 -) American Community Survey five-year average ending in year shown.

Year	County	State of Kansas	Non Metro Kansas	County Rank	Per 1000 or \$ Per Capita
1980	8.5	17.0	.	97	.
1990	9.3	21.1	.	103	.
2000	14.3	25.8	.	92	.
2009	19.1	28.8	.	53	.
2010	19.4	29.3	.	50	.
2011	19.8	29.7	.	46	.
2012	20.1	30.0	.	44	.
2013	20.6	30.3	.	47	.
2014	20.7	30.7	.	49	.
2015	19.5	31.0	.	68	.
2016	19.9	31.6	.	63	.
2017	20.7	32.3	.	59	.
2018	18.6	32.9	.	80	.
2019	19.2	33.4	.	80	.
2020	19.4	33.9	.	84	.



**PUBLIC SCHOOL ENROLLMENT (FTE) SCHOOL YEAR BEGINNING...**

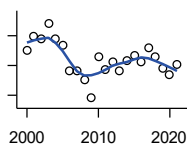
Kansas State Department of Education

Year	County	State of Kansas	Non Metro Kansas	County Rank	Per 1000 or \$ Per Capita
2000	3,156.4	448,150.8	166,722.5	31	188.9
2001	3,152.6	447,047.1	164,365.0	31	189.3
2002	3,059.6	444,860.3	161,555.4	31	183.3
2003	3,052.1	443,620.6	159,130.2	31	182.5
2004	3,026.6	441,957.2	156,566.3	31	179.7
2005	2,970.0	442,708.4	155,197.2	31	176.1
2006	2,923.8	444,878.7	153,842.3	31	175.8
2007	2,873.0	446,831.3	152,337.1	31	174.5
2008	2,787.6	447,730.0	150,572.7	31	169.6
2009	2,715.1	453,202.5	151,246.8	31	166.6
2010	2,778.1	455,405.0	151,023.8	31	170.5
2011	2,724.2	456,000.5	150,257.9	31	166.7
2012	2,660.8	458,496.4	150,463.0	31	164.5
2013	2,625.2	461,950.0	150,420.9	31	163.3
2014	2,587.2	464,395.4	150,499.4	31	162.0
2015	2,566.9	463,504.0	149,539.3	31	161.8
2016	2,536.7	459,920.3	147,293.5	31	160.4
2017	2,606.4	477,977.9	152,096.3	31	164.5
2018	2,601.6	476,481.7	150,456.8	31	163.2
2019	2,629.8	476,525.1	150,045.2	31	164.9
2020	2,514.3	462,088.0	146,369.6	31	159.5
2021	2,577.7	463,652.4	147,500.4	31	163.5

County: county value. Kansas: state value. County Rank: highest county value ranked #1. (\$000): thousands of dollars. Nonmetro Kansas: Kansas total less Metropolitan Areas as defined by the Office of Management and Budget (OMB; released 3/6/2020). Per 1000: For nonmoney amounts, Per 1000=(county value / county population for the same year as the data) x 1000. \$ Per capita=(county value / county population for the same year as the data). Value= . indicates missing or suppressed data or value not calculated.

**Education**

**PUPIL/TEACHER RATIO SCHOOL YEAR BEGINNING...**

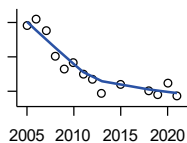


Kansas State Department of Education

Year	County	State of Kansas	Non Metro Kansas	County Rank	Per 1000 or \$ Per Capita
2000	13.0	15.4	13.9	58	.
2001	13.5	15.3	13.8	46	.
2002	13.4	15.4	13.9	45	.
2003	13.9	15.5	13.8	33	.
2004	13.4	15.3	13.6	40	.
2005	13.2	15.0	13.4	43	.
2006	12.3	14.7	13.2	50	.
2007	12.3	14.6	13.1	52	.
2008	12.0	14.4	12.9	53	.
2009	11.4	14.8	13.2	78	.
2010	12.8	15.2	13.6	51	.
2011	12.4	15.1	13.5	56	.
2012	12.6	15.1	13.5	54	.
2013	12.3	15.1	13.5	60	.
2014	12.7	15.0	13.6	55	.
2015	12.9	15.2	13.9	54	.
2016	12.6	15.1	13.7	57	.
2017	13.1	15.5	13.9	49	.
2018	12.8	15.3	13.8	55	.
2019	12.4	15.2	13.7	56	.
2020	12.2	14.7	13.4	55	.
2021	12.5	14.8	13.5	55	.

**Social Environment**

**CHILD CARE FACILITIES: TOTAL CHILD CARE FACILITIES**

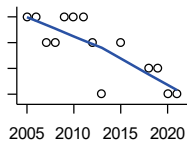


Kansas Department of Health and Environment, Bureau of Adult and Child Care

Year	County	State of Kansas	Non Metro Kansas	County Rank	Per 1000 or \$ Per Capita
2005	68	8,258	3,378	29	4.0
2006	72	8,442	3,429	29	4.3
2007	65	8,241	3,317	29	3.9
2008	50	8,011	3,150	34	3.0
2009	43	7,853	3,066	36	2.6
2010	47	7,354	2,858	34	2.9
2011	40	6,835	2,623	36	2.4
2012	37	6,346	2,409	34	2.3
2013	29	5,754	2,179	39	1.8
2015	34	5,289	2,146	34	2.1
2018	30	4,607	1,904	34	1.9
2019	28	4,287	1,774	34	1.8
2020	35	4,274	1,798	30	2.2
2021	27	4,002	1,700	35	1.7

County: county value. Kansas: state value. County Rank: highest county value ranked #1. (\$000): thousands of dollars. Nonmetro Kansas: Kansas total less Metropolitan Areas as defined by the Office of Management and Budget (OMB; released 3/6/2020). Per 1000: For nonmoney amounts, Per 1000=(county value / county population for the same year as the data) x 1000. \$ Per capita=(county value / county population for the same year as the data). Value= . indicates missing or suppressed data or value not calculated.

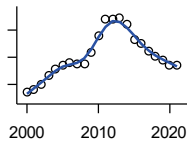
**Social Environment**



**CHILD CARE FACILITIES: PRESCHOOLS**

Kansas Department of Health and Environment, Bureau of Adult and Child Care

Year	County	State of Kansas	Non Metro Kansas	County Rank	Per 1000 or \$ Per Capita
2005	4	243	140	22	0.2
2006	4	221	127	17	0.2
2007	3	208	119	27	0.2
2008	3	204	114	27	0.2
2009	4	194	107	14	0.2
2010	4	194	112	13	0.2
2011	4	209	123	17	0.2
2012	3	201	121	27	0.2
2013	1	140	84	64	0.1
2015	3	185	113	25	0.2
2018	2	150	94	41	0.1
2019	2	134	83	35	0.1
2020	1	126	78	55	0.1
2021	1	120	74	53	0.1



**FOOD STAMP BENEFICIARIES**

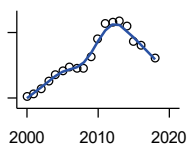
Kansas Social and Rehabilitation Services

Year	County	State of Kansas	Non Metro Kansas	County Rank	Per 1000 or \$ Per Capita
2000	686	110,619	44,825	32	41.0
2001	724	117,241	46,741	33	43.5
2002	803	131,726	52,342	34	48.1
2003	927	155,908	61,280	33	55.4
2004	1,020	167,971	65,852	33	60.6
2005	1,086	175,710	67,261	32	64.4
2006	1,114	182,821	67,487	32	67.0
2007	1,100	184,035	66,979	32	66.8
2008	1,094	187,377	67,160	33	66.5
2009	1,263	208,007	73,637	32	77.5
2010	1,508	259,609	90,919	32	92.5
2011	1,767	296,542	101,155	32	108.1
2012	1,752	303,257	102,478	32	108.3
2013	1,781	316,424	105,345	32	110.8
2014	1,692	301,377	100,761	32	105.9
2015	1,465	277,614	93,353	33	92.3
2016	1,403	258,412	88,343	33	88.7
2017	1,283	239,592	82,070	33	81.0
2018	1,212	219,738	75,208	33	76.0
2019	1,164	205,261	69,899	33	73.0
2020	1,086	198,457	66,721	33	68.9
2021	1,091	203,424	68,883	33	69.2

County: county value. Kansas: state value. County Rank: highest county value ranked #1. (\$000): thousands of dollars. Nonmetro Kansas: Kansas total less Metropolitan Areas as defined by the Office of Management and Budget (OMB; released 3/6/2020). Per 1000: For nonmoney amounts, Per 1000=(county value / county population for the same year as the data) x 1000. \$ Per capita=(county value / county population for the same year as the data). Value= . indicates missing or suppressed data or value not calculated.

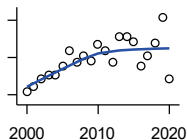
**Social Environment**

**PERCENT OF POPULATION RECEIVING FOOD STAMPS**



U.S. Dept. of Agriculture Food and Nutrition Service (1990-1997); Kansas Social and Rehabilitation Services (1998- )

Year	County	State of Kansas	Non Metro Kansas	County Rank	Per 1000 or \$ Per Capita
2000	4.1	4.1	.	40	.
2001	4.4	4.3	.	38	.
2002	4.8	4.9	.	40	.
2003	5.6	5.7	.	43	.
2004	6.1	6.2	.	42	.
2005	6.5	6.4	.	35	.
2006	6.8	6.6	.	34	.
2007	6.7	6.6	.	33	.
2008	6.7	6.7	.	32	.
2009	7.8	7.4	.	28	.
2010	9.4	9.1	.	30	.
2011	10.8	10.3	.	28	.
2012	10.9	10.5	.	28	.
2013	11.1	10.9	.	30	.
2014	10.6	10.4	.	30	.
2015	9.2	9.6	.	31	.
2016	8.9	8.9	.	33	.
2018	7.6	7.5	.	34	.



**ESTIMATED NUMBER OF PEOPLE IN POVERTY**

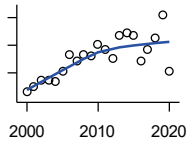
U.S. Census Bureau, Small Area Income and Poverty Estimates

Year	County	State of Kansas	Non Metro Kansas	County Rank	Per 1000 or \$ Per Capita
2000	1,430	235,087	98,984	33	85.6
2001	1,484	252,134	106,257	33	89.1
2002	1,574	265,673	107,542	33	94.3
2003	1,610	278,163	107,323	34	96.3
2004	1,605	297,733	111,534	34	95.3
2005	1,702	310,667	118,768	33	100.9
2006	1,879	327,102	123,700	33	113.0
2007	1,752	301,828	111,953	32	106.4
2008	1,816	307,804	113,015	32	110.5
2009	1,766	359,692	123,394	34	108.4
2010	1,945	374,677	131,502	33	119.4
2011	1,879	383,859	134,912	34	115.0
2012	1,749	392,095	133,800	35	108.1
2013	2,021	391,718	134,067	34	125.7
2014	2,021	381,506	130,213	34	126.5
2015	1,975	366,069	123,073	33	124.5
2016	1,707	343,773	121,314	35	108.0
2017	1,812	335,371	116,854	34	114.4
2018	1,953	336,892	114,490	33	122.5
2019	2,231	319,931	110,692	28	139.9
2020	1,569	300,931	100,998	34	99.5

County: county value. Kansas: state value. County Rank: highest county value ranked #1. (\$000): thousands of dollars. Nonmetro Kansas: Kansas total less Metropolitan Areas as defined by the Office of Management and Budget (OMB; released 3/6/2020). Per 1000: For nonmoney amounts, Per 1000=(county value / county population for the same year as the data) x 1000. \$ Per capita=(county value / county population for the same year as the data). Value= . indicates missing or suppressed data or value not calculated.

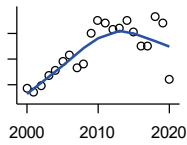
**Social Environment**

**ESTIMATED % OF PEOPLE IN POVERTY**



U.S. Census Bureau, Small Area Income and Poverty Estimates

Year	County	State of Kansas	Non Metro Kansas	County Rank	Per 1000 or \$ Per Capita
2000	8.6	8.9	.	87	.
2001	9.0	9.5	.	92	.
2002	9.5	10.0	.	87	.
2003	9.5	10.4	.	81	.
2004	9.4	11.1	.	87	.
2005	10.1	11.7	.	86	.
2006	11.3	12.2	.	76	.
2007	10.9	11.2	.	67	.
2008	11.3	11.3	.	57	.
2009	11.2	13.2	.	77	.
2010	12.1	13.5	.	63	.
2011	11.7	13.8	.	74	.
2012	11.0	14.0	.	77	.
2013	12.7	13.9	.	55	.
2014	12.9	13.5	.	49	.
2015	12.7	12.9	.	43	.
2016	10.9	12.2	.	78	.
2017	11.7	11.9	.	58	.
2018	12.5	11.9	.	48	.
2019	14.2	11.3	.	21	.
2020	10.1	10.6	.	70	.



**EST. NUMBER OF RELATED CHILDREN AGE 5 TO 17 IN FAMILIES IN POVERTY**

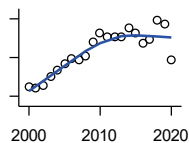
U.S. Census Bureau, Small Area Income and Poverty Estimates

Year	County	State of Kansas	Non Metro Kansas	County Rank	Per 1000 or \$ Per Capita
2000	294	50,388	21,854	34	17.6
2001	285	53,755	23,094	35	17.1
2002	297	52,453	21,423	34	17.8
2003	317	55,419	21,809	34	19.0
2004	327	59,392	22,313	34	19.4
2005	345	60,203	24,244	33	20.5
2006	357	64,427	25,326	33	21.5
2007	334	61,149	23,639	34	20.3
2008	340	59,842	22,661	33	20.7
2009	400	71,850	26,251	34	24.5
2010	425	81,077	29,804	34	26.1
2011	420	82,311	29,306	34	25.7
2012	407	87,594	29,781	35	25.2
2013	410	84,325	29,253	35	25.5
2014	426	83,873	29,354	35	26.7
2015	402	78,192	27,482	35	25.3
2016	375	67,810	25,074	34	23.7
2017	375	67,873	25,032	34	23.7
2018	433	68,153	24,928	33	27.2
2019	421	64,613	23,117	29	26.4
2020	310	59,792	21,143	34	19.7

County: county value. Kansas: state value. County Rank: highest county value ranked #1. (\$000): thousands of dollars. Nonmetro Kansas: Kansas total less Metropolitan Areas as defined by the Office of Management and Budget (OMB; released 3/6/2020). Per 1000: For nonmoney amounts, Per 1000=(county value / county population for the same year as the data) x 1000. \$ Per capita=(county value / county population for the same year as the data). Value= . indicates missing or suppressed data or value not calculated.



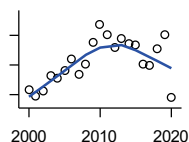
**Social Environment**



EST. % OF RELATED CHILDREN AGE 5 TO 17 IN FAMILIES IN POVERTY

U.S. Census Bureau, Small Area Income and Poverty Estimates

Year	County	State of Kansas	Non Metro Kansas	County Rank	Per 1000 or \$ Per Capita
2000	9.0	10.0	.	90	.
2001	8.8	10.8	.	96	.
2002	9.1	10.5	.	90	.
2003	10.1	11.3	.	86	.
2004	10.7	12.5	.	82	.
2005	11.4	12.8	.	81	.
2006	11.9	13.2	.	80	.
2007	11.8	12.6	.	79	.
2008	12.2	12.3	.	72	.
2009	13.6	14.7	.	71	.
2010	14.5	15.9	.	72	.
2011	14.2	16.2	.	77	.
2012	14.1	17.2	.	78	.
2013	14.1	16.5	.	73	.
2014	15.1	16.4	.	69	.
2015	14.6	15.3	.	62	.
2016	13.5	13.2	.	72	.
2017	13.9	13.4	.	72	.
2018	15.9	13.5	.	55	.
2019	15.4	12.9	.	44	.
2020	11.8	11.9	.	78	.



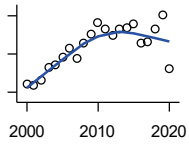
ESTIMATED NUMBER UNDER 18 IN POVERTY

U.S. Census Bureau, Small Area Income and Poverty Estimates

Year	County	State of Kansas	Non Metro Kansas	County Rank	Per 1000 or \$ Per Capita
2000	465	82,619	34,843	34	27.8
2001	444	87,487	36,724	35	26.7
2002	461	84,181	32,870	34	27.6
2003	516	93,896	36,004	34	30.9
2004	505	98,641	36,272	34	30.0
2005	533	100,254	39,118	34	31.6
2006	569	105,193	41,054	34	34.2
2007	517	100,242	37,881	33	31.4
2008	553	100,146	37,552	34	33.6
2009	627	118,187	42,682	34	38.5
2010	686	129,009	46,428	34	42.1
2011	651	133,478	46,832	34	39.8
2012	610	135,261	46,294	36	37.7
2013	640	131,251	44,952	34	39.8
2014	621	125,562	43,933	35	38.9
2015	619	119,994	41,828	34	39.0
2016	552	100,996	37,387	34	34.9
2017	547	102,858	37,955	34	34.5
2018	604	102,616	36,991	34	37.9
2019	652	97,920	34,797	29	40.9
2020	439	88,491	30,767	34	27.8

County: county value. Kansas: state value. County Rank: highest county value ranked #1. (\$000): thousands of dollars. Nonmetro Kansas: Kansas total less Metropolitan Areas as defined by the Office of Management and Budget (OMB; released 3/6/2020). Per 1000: For nonmoney amounts, Per 1000=(county value / county population for the same year as the data) x 1000. \$ Per capita=(county value / county population for the same year as the data). Value= . indicates missing or suppressed data or value not calculated.

**Social Environment**



**ESTIMATED PERCENT UNDER 18 IN POVERTY**

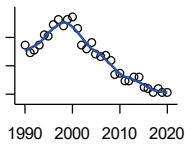
U.S. Census Bureau, Small Area Income and Poverty Estimates

Year	County	State of Kansas	Non Metro Kansas	County Rank	Per 1000 or \$ Per Capita
2000	10.8	11.9	.	90	.
2001	10.7	12.7	.	94	.
2002	11.2	12.1	.	79	.
2003	12.6	13.8	.	77	.
2004	12.8	14.6	.	82	.
2005	13.7	15.2	.	79	.
2006	14.6	15.4	.	78	.
2007	13.6	14.7	.	80	.
2008	15.1	14.6	.	66	.
2009	16.1	17.1	.	71	.
2010	17.3	18.1	.	63	.
2011	16.6	18.8	.	75	.
2012	15.9	19.0	.	76	.
2013	16.6	18.4	.	67	.
2014	16.7	17.6	.	60	.
2015	17.1	16.9	.	51	.
2016	15.1	14.3	.	69	.
2017	15.3	14.7	.	70	.
2018	16.6	14.8	.	61	.
2019	18.1	14.3	.	31	.
2020	12.5	13.0	.	79	.

County: county value. Kansas: state value. County Rank: highest county value ranked #1. (\$000): thousands of dollars. Nonmetro Kansas: Kansas total less Metropolitan Areas as defined by the Office of Management and Budget (OMB; released 3/6/2020). Per 1000: For nonmoney amounts, Per 1000=(county value / county population for the same year as the data) x 1000. \$ Per capita=(county value / county population for the same year as the data). Value= . indicates missing or suppressed data or value not calculated.

**Business**

**ESTABLISHMENTS TOTAL COUNTY BUSINESS PATTERNS**



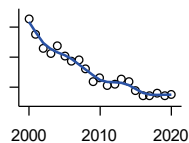
U.S. Census Bureau, County Business Patterns. Beginning with the 2017 data, any tabulation with fewer than 3 establishments were omitted from the release. Data for these establishments are included in the broader total.

Year	County	State of Kansas	Non Metro Kansas	County Rank	Per 1000 or \$ Per Capita
1990	310	65,858	26,802	39	20.3
1991	298	65,941	26,750	39	19.4
1992	302	67,630	27,229	40	19.5
1993	309	68,930	27,655	40	19.7
1994	323	69,822	27,763	40	20.2
1995	322	70,894	28,111	40	19.8
1996	338	72,017	28,353	40	20.6
1997	345	73,924	28,884	40	20.9
1998	336	74,019	28,749	41	20.2
1999	345	74,486	28,536	40	20.8
2000	349	74,939	28,475	41	20.9
2001	332	74,565	28,282	41	19.9
2002	309	75,077	28,183	41	18.5
2003	303	74,972	27,998	41	18.1
2004	313	75,827	28,009	41	18.6
2005	297	76,173	27,830	41	17.6
2006	293	76,446	27,653	42	17.6
2007	295	77,157	27,736	42	17.9
2008	287	76,096	27,314	42	17.5
2009	267	74,698	26,839	44	16.4
2010	270	74,301	26,739	45	16.6
2011	259	73,598	26,555	46	15.8
2012	259	73,944	26,534	45	16.0
2013	265	73,816	26,393	44	16.5
2014	265	74,055	26,292	43	16.6
2015	249	74,526	26,355	48	15.7
2016	247	74,884	26,172	48	15.6
2017	242	74,947	26,093	48	15.3
2018	247	74,559	25,802	47	15.5
2019	242	74,292	25,536	47	15.2
2020	243	73,982	25,178	46	15.4

County: county value. Kansas: state value. County Rank: highest county value ranked #1. (\$000): thousands of dollars. Nonmetro Kansas: Kansas total less Metropolitan Areas as defined by the Office of Management and Budget (OMB; released 3/6/2020). Per 1000: For nonmoney amounts, Per 1000=(county value / county population for the same year as the data) x 1000. \$ Per capita=(county value / county population for the same year as the data). Value= . indicates missing or suppressed data or value not calculated.

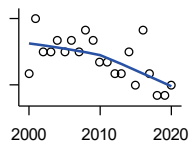
**Business**

**ESTABLISHMENTS: 1-19  
EMPLOYEES**



U.S. Census Bureau, County Business Patterns. Beginning with the 2017 data, any tabulation with fewer than 3 establishments were omitted from the release. Data for these establishments are included in the broader total.

Year	County	State of Kansas	Non Metro Kansas	County Rank	Per 1000 or \$ Per Capita
2000	331	64,527	25,381	38	19.8
2001	311	64,176	25,248	39	18.7
2002	291	64,886	25,208	41	17.4
2003	285	64,714	25,020	41	17.0
2004	295	65,554	24,995	41	17.5
2005	281	65,796	24,839	41	16.7
2006	274	65,764	24,589	41	16.5
2007	276	66,446	24,701	42	16.8
2008	265	65,322	24,257	42	16.1
2009	248	64,128	23,851	44	15.2
2010	253	64,015	23,857	42	15.5
2011	243	63,251	23,571	44	14.9
2012	244	63,519	23,575	42	15.1
2013	250	63,197	23,396	42	15.5
2014	248	63,113	23,229	42	15.5
2015	235	63,280	23,227	45	14.8
2016	229	63,630	23,117	47	14.5
2017	228	63,619	23,022	47	14.4
2018	232	63,233	22,745	44	14.6
2019	229	62,904	22,489	45	14.4
2020	230	62,634	22,173	46	14.6



**ESTABLISHMENTS: 20-99  
EMPLOYEES**

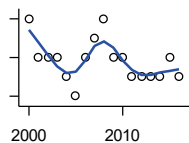
U.S. Census Bureau, County Business Patterns. Beginning with the 2017 data, any tabulation with fewer than 3 establishments were omitted from the release. Data for these establishments are included in the broader total.

Year	County	State of Kansas	Non Metro Kansas	County Rank	Per 1000 or \$ Per Capita
2000	13	8,714	2,653	60	0.8
2001	18	8,692	2,593	52	1.1
2002	15	8,582	2,554	57	0.9
2003	15	8,642	2,568	58	0.9
2004	16	8,658	2,590	55	0.9
2005	15	8,685	2,553	56	0.9
2006	16	8,922	2,612	56	1.0
2007	15	8,938	2,574	56	0.9
2008	17	8,939	2,587	54	1.0
2009	16	8,848	2,551	54	1.0
2010	14	8,612	2,454	56	0.9
2011	14	8,668	2,540	58	0.9
2012	13	8,700	2,500	59	0.8
2013	13	8,870	2,541	61	0.8
2014	15	9,121	2,590	58	0.9
2015	12	9,374	2,664	64	0.8
2016	17	9,412	2,596	53	1.1
2017	13	9,487	2,638	61	0.8
2018	11	9,485	2,621	62	0.7
2019	11	9,485	2,591	61	0.7
2020	12	9,471	2,545	59	0.8

County: county value. Kansas: state value. County Rank: highest county value ranked #1. (\$000): thousands of dollars. Nonmetro Kansas: Kansas total less Metropolitan Areas as defined by the Office of Management and Budget (OMB; released 3/6/2020). Per 1000: For nonmoney amounts, Per 1000=(county value / county population for the same year as the data) x 1000. \$ Per capita=(county value / county population for the same year as the data). Value= . indicates missing or suppressed data or value not calculated.

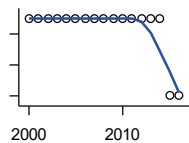
**Business**

**ESTABLISHMENTS: 100-499  
EMPLOYEES**



U.S. Census Bureau, County Business Patterns. Beginning with the 2017 data, any tabulation with fewer than 3 establishments were omitted from the release. Data for these establishments are included in the broader total.

Year	County	State of Kansas	Non Metro Kansas	County Rank	Per 1000 or \$ Per Capita
2000	4	1,555	409	40	0.2
2001	2	1,555	406	59	0.1
2002	2	1,464	386	57	0.1
2003	2	1,470	378	59	0.1
2004	1	1,463	388	82	0.1
2005	0	1,537	400	105	0.0
2006	2	1,598	407	64	0.1
2007	3	1,602	416	46	0.2
2008	4	1,653	421	42	0.2
2009	2	1,551	394	60	0.1
2010	2	1,513	382	58	0.1
2011	1	1,523	395	86	0.1
2012	1	1,567	410	85	0.1
2013	1	1,581	407	85	0.1
2014	1	1,641	421	86	0.1
2015	2	1,693	414	61	0.1
2016	1	1,671	406	84	0.1



**ESTABLISHMENTS: 500 OR MORE  
EMPLOYEES**

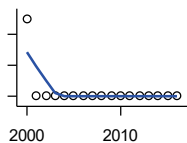
U.S. Census Bureau, County Business Patterns. Beginning with the 2017 data, any tabulation with fewer than 3 establishments were omitted from the release. Data for these establishments are included in the broader total.

Year	County	State of Kansas	Non Metro Kansas	County Rank	Per 1000 or \$ Per Capita
2000	1	143	32	31	0.1
2001	1	142	35	32	0.1
2002	1	145	35	29	0.1
2003	1	146	32	29	0.1
2004	1	152	36	29	0.1
2005	1	155	38	31	0.1
2006	1	162	45	31	0.1
2007	1	171	45	32	0.1
2008	1	182	49	33	0.1
2009	1	171	43	33	0.1
2010	1	161	46	33	0.1
2011	1	156	49	33	0.1
2012	1	158	49	34	0.1
2013	1	168	49	33	0.1
2014	1	180	52	34	0.1
2015	0	179	50	105	0.0
2016	0	171	53	105	0.0

County: county value. Kansas: state value. County Rank: highest county value ranked #1. (\$000): thousands of dollars. Nonmetro Kansas: Kansas total less Metropolitan Areas as defined by the Office of Management and Budget (OMB; released 3/6/2020). Per 1000: For nonmoney amounts, Per 1000=(county value / county population for the same year as the data) x 1000. \$ Per capita=(county value / county population for the same year as the data). Value= . indicates missing or suppressed data or value not calculated.

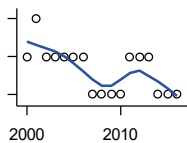
**Business**

**ESTABLISHMENTS: FORESTRY, FISHING, HUNTING, AND AG SUPPORT**



U.S. Census Bureau, County Business Patterns. Beginning with the 2017 data, any tabulation with fewer than 3 establishments were omitted from the release. Data for these establishments are included in the broader total.

Year	County	State of Kansas	Non Metro Kansas	County Rank	Per 1000 or \$ Per Capita
2000	1	190	149	74	0.1
2001	0	217	168	105	0.0
2002	0	224	176	105	0.0
2003	0	217	173	105	0.0
2004	0	211	165	105	0.0
2005	0	188	148	105	0.0
2006	0	193	158	105	0.0
2007	0	212	170	105	0.0
2008	0	197	158	105	0.0
2009	0	191	154	105	0.0
2010	0	192	161	105	0.0
2011	0	193	157	105	0.0
2012	0	204	164	105	0.0
2013	0	208	166	105	0.0
2014	0	194	152	105	0.0
2015	0	192	149	105	0.0
2016	0	181	142	105	0.0



**ESTABLISHMENTS: MINING**

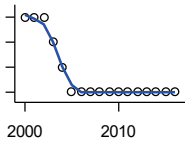
U.S. Census Bureau, County Business Patterns. Beginning with the 2017 data, any tabulation with fewer than 3 establishments were omitted from the release. Data for these establishments are included in the broader total.

Year	County	State of Kansas	Non Metro Kansas	County Rank	Per 1000 or \$ Per Capita
2000	2	868	619	70	0.1
2001	3	878	622	53	0.2
2002	2	847	615	68	0.1
2003	2	864	633	66	0.1
2004	2	880	647	67	0.1
2005	2	941	695	69	0.1
2006	2	991	734	71	0.1
2007	1	1,000	759	88	0.1
2008	1	1,047	799	90	0.1
2009	1	1,016	772	90	0.1
2010	1	1,009	762	91	0.1
2011	2	1,013	763	73	0.1
2012	2	1,048	789	74	0.1
2013	2	1,060	802	76	0.1
2014	1	1,102	828	93	0.1
2015	1	1,069	810	94	0.1
2016	1	990	747	93	0.1

County: county value. Kansas: state value. County Rank: highest county value ranked #1. (\$000): thousands of dollars. Nonmetro Kansas: Kansas total less Metropolitan Areas as defined by the Office of Management and Budget (OMB; released 3/6/2020). Per 1000: For nonmoney amounts, Per 1000=(county value / county population for the same year as the data) x 1000. \$ Per capita=(county value / county population for the same year as the data). Value= . indicates missing or suppressed data or value not calculated.

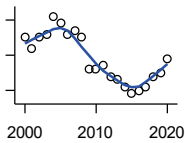
**Business**

**ESTABLISHMENTS: UTILITIES**



U.S. Census Bureau, County Business Patterns. Beginning with the 2017 data, any tabulation with fewer than 3 establishments were omitted from the release. Data for these establishments are included in the broader total.

Year	County	State of Kansas	Non Metro Kansas	County Rank	Per 1000 or \$ Per Capita
2000	3	274	192	37	0.2
2001	3	290	204	39	0.2
2002	3	278	195	38	0.2
2003	2	268	180	63	0.1
2004	1	247	164	90	0.1
2005	0	254	172	105	0.0
2006	0	248	169	105	0.0
2007	0	222	156	105	0.0
2008	0	244	166	105	0.0
2009	0	222	152	105	0.0
2010	0	197	129	105	0.0
2011	0	230	156	105	0.0
2012	0	232	156	105	0.0
2013	0	234	159	105	0.0
2014	0	232	160	105	0.0
2015	0	237	165	105	0.0
2016	0	245	171	105	0.0



**ESTABLISHMENTS: CONSTRUCTION**

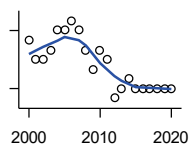
U.S. Census Bureau, County Business Patterns. Beginning with the 2017 data, any tabulation with fewer than 3 establishments were omitted from the release. Data for these establishments are included in the broader total.

Year	County	State of Kansas	Non Metro Kansas	County Rank	Per 1000 or \$ Per Capita
2000	40	7,703	2,616	29	2.4
2001	37	7,449	2,520	32	2.2
2002	40	7,519	2,482	29	2.4
2003	41	7,722	2,521	31	2.5
2004	46	7,887	2,518	29	2.7
2005	44	8,032	2,515	31	2.6
2006	41	8,031	2,494	32	2.5
2007	42	8,057	2,547	32	2.6
2008	40	7,831	2,522	35	2.4
2009	31	7,342	2,452	42	1.9
2010	31	7,064	2,394	40	1.9
2011	32	6,774	2,361	39	2.0
2012	29	6,741	2,393	41	1.8
2013	28	6,802	2,394	43	1.7
2014	26	6,920	2,383	47	1.6
2015	24	7,014	2,377	48	1.5
2016	25	6,988	2,343	48	1.6
2017	26	7,031	2,316	45	1.6
2018	29	7,124	2,285	38	1.8
2019	30	7,060	2,242	36	1.9
2020	34	7,089	2,249	32	2.2

County: county value. Kansas: state value. County Rank: highest county value ranked #1. (\$000): thousands of dollars. Nonmetro Kansas: Kansas total less Metropolitan Areas as defined by the Office of Management and Budget (OMB; released 3/6/2020). Per 1000: For nonmoney amounts, Per 1000=(county value / county population for the same year as the data) x 1000. \$ Per capita=(county value / county population for the same year as the data). Value= . indicates missing or suppressed data or value not calculated.

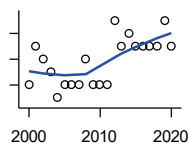
**Business**

**ESTABLISHMENTS:  
MANUFACTURING**



U.S. Census Bureau, County Business Patterns. Beginning with the 2017 data, any tabulation with fewer than 3 establishments were omitted from the release. Data for these establishments are included in the broader total.

Year	County	State of Kansas	Non Metro Kansas	County Rank	Per 1000 or \$ Per Capita
2000	9	3,229	1,316	56	0.5
2001	7	3,240	1,323	66	0.4
2002	7	3,181	1,289	66	0.4
2003	8	3,159	1,291	59	0.5
2004	10	3,179	1,313	51	0.6
2005	10	3,128	1,278	52	0.6
2006	11	3,165	1,290	46	0.7
2007	10	3,184	1,316	49	0.6
2008	8	3,171	1,297	62	0.5
2009	6	3,026	1,240	73	0.4
2010	8	2,955	1,222	56	0.5
2011	7	2,877	1,193	64	0.4
2012	3	2,889	1,197	88	0.2
2013	4	2,836	1,165	80	0.2
2014	5	2,831	1,168	77	0.3
2015	4	2,817	1,161	82	0.3
2016	4	2,791	1,150	82	0.3
2017	4	2,760	1,147	83	0.3
2018	4	2,725	1,126	84	0.3
2019	4	2,695	1,111	84	0.3
2020	4	2,673	1,103	84	0.3



**ESTABLISHMENTS: WHOLESALE  
TRADE**

U.S. Census Bureau, County Business Patterns. Beginning with the 2017 data, any tabulation with fewer than 3 establishments were omitted from the release. Data for these establishments are included in the broader total.

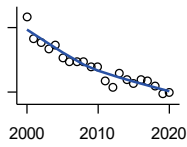
Year	County	State of Kansas	Non Metro Kansas	County Rank	Per 1000 or \$ Per Capita
2000	10	4,876	1,776	79	0.6
2001	13	4,811	1,769	61	0.8
2002	12	4,719	1,750	64	0.7
2003	11	4,590	1,637	73	0.7
2004	9	4,553	1,634	78	0.5
2005	10	4,541	1,618	75	0.6
2006	10	4,517	1,596	77	0.6
2007	10	4,555	1,629	80	0.6
2008	12	4,501	1,622	62	0.7
2009	10	4,437	1,614	77	0.6
2010	10	4,432	1,612	74	0.6
2011	10	4,400	1,660	71	0.6
2012	15	4,563	1,755	58	0.9
2013	13	4,501	1,741	60	0.8
2014	14	4,497	1,746	56	0.9
2015	13	4,459	1,755	61	0.8
2016	13	4,457	1,732	60	0.8
2017	13	4,436	1,774	64	0.8
2018	13	4,330	1,727	64	0.8
2019	15	4,291	1,713	51	0.9
2020	13	4,191	1,677	62	0.8

County: county value. Kansas: state value. County Rank: highest county value ranked #1. (\$000): thousands of dollars. Nonmetro Kansas: Kansas total less Metropolitan Areas as defined by the Office of Management and Budget (OMB; released 3/6/2020). Per 1000: For nonmoney amounts, Per 1000=(county value / county population for the same year as the data) x 1000. \$ Per capita=(county value / county population for the same year as the data). Value= . indicates missing or suppressed data or value not calculated.



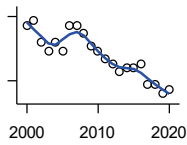
**Business**

**ESTABLISHMENTS: RETAIL TRADE**



U.S. Census Bureau, County Business Patterns. Beginning with the 2017 data, any tabulation with fewer than 3 establishments were omitted from the release. Data for these establishments are included in the broader total.

Year	County	State of Kansas	Non Metro Kansas	County Rank	Per 1000 or \$ Per Capita
2000	75	12,261	5,240	34	4.5
2001	65	12,206	5,207	38	3.9
2002	63	11,980	5,082	37	3.8
2003	60	11,834	5,049	39	3.6
2004	62	11,748	4,967	37	3.7
2005	56	11,562	4,834	41	3.3
2006	54	11,367	4,702	41	3.2
2007	54	11,306	4,653	41	3.3
2008	54	10,978	4,494	39	3.3
2009	52	10,760	4,372	39	3.2
2010	52	10,727	4,346	39	3.2
2011	45	10,655	4,289	42	2.8
2012	42	10,585	4,202	44	2.6
2013	49	10,433	4,147	39	3.0
2014	46	10,391	4,070	40	2.9
2015	44	10,327	4,061	42	2.8
2016	46	10,197	3,965	40	2.9
2017	45	10,074	3,885	41	2.8
2018	43	9,866	3,797	40	2.7
2019	39	9,762	3,750	45	2.4
2020	40	9,591	3,666	44	2.5



**ESTABLISHMENTS: TRANSPORTATION & WAREHOUSING**

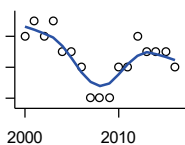
U.S. Census Bureau, County Business Patterns. Beginning with the 2017 data, any tabulation with fewer than 3 establishments were omitted from the release. Data for these establishments are included in the broader total.

Year	County	State of Kansas	Non Metro Kansas	County Rank	Per 1000 or \$ Per Capita
2000	23	2,474	1,293	25	1.4
2001	24	2,463	1,298	24	1.4
2002	19	2,461	1,278	29	1.1
2003	17	2,576	1,297	35	1.0
2004	19	2,651	1,324	32	1.1
2005	17	2,632	1,326	38	1.0
2006	23	2,626	1,295	28	1.4
2007	23	2,664	1,314	30	1.4
2008	21	2,675	1,329	31	1.3
2009	18	2,635	1,313	37	1.1
2010	17	2,615	1,313	41	1.0
2011	15	2,579	1,285	43	0.9
2012	14	2,519	1,243	44	0.9
2013	12	2,492	1,226	51	0.7
2014	13	2,518	1,240	48	0.8
2015	13	2,554	1,257	47	0.8
2016	14	2,567	1,241	46	0.9
2017	9	2,640	1,245	61	0.6
2018	9	2,627	1,238	63	0.6
2019	7	2,615	1,209	75	0.4
2020	8	2,589	1,179	66	0.5

County: county value. Kansas: state value. County Rank: highest county value ranked #1. (\$000): thousands of dollars. Nonmetro Kansas: Kansas total less Metropolitan Areas as defined by the Office of Management and Budget (OMB; released 3/6/2020). Per 1000: For nonmoney amounts, Per 1000=(county value / county population for the same year as the data) x 1000. \$ Per capita=(county value / county population for the same year as the data). Value= . indicates missing or suppressed data or value not calculated.

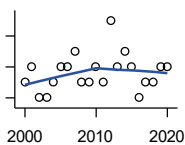
**Business**

**ESTABLISHMENTS: INFORMATION**



U.S. Census Bureau, County Business Patterns. Beginning with the 2017 data, any tabulation with fewer than 3 establishments were omitted from the release. Data for these establishments are included in the broader total.

Year	County	State of Kansas	Non Metro Kansas	County Rank	Per 1000 or \$ Per Capita
2000	6	1,542	578	58	0.4
2001	7	1,556	566	49	0.4
2002	6	1,517	551	52	0.4
2003	7	1,516	564	46	0.4
2004	5	1,518	556	59	0.3
2005	5	1,519	536	58	0.3
2006	4	1,549	559	68	0.2
2007	2	1,504	527	87	0.1
2008	2	1,468	522	87	0.1
2009	2	1,420	510	87	0.1
2010	4	1,437	527	61	0.2
2011	4	1,428	537	63	0.2
2012	6	1,387	515	46	0.4
2013	5	1,337	487	50	0.3
2014	5	1,335	496	48	0.3
2015	5	1,359	510	51	0.3
2016	4	1,431	537	60	0.3



**ESTABLISHMENTS: FINANCE & INSURANCE**

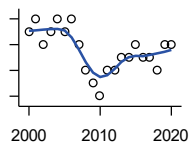
U.S. Census Bureau, County Business Patterns. Beginning with the 2017 data, any tabulation with fewer than 3 establishments were omitted from the release. Data for these establishments are included in the broader total.

Year	County	State of Kansas	Non Metro Kansas	County Rank	Per 1000 or \$ Per Capita
2000	21	5,209	1,848	46	1.3
2001	22	5,178	1,828	41	1.3
2002	20	5,496	1,911	44	1.2
2003	20	5,569	1,907	47	1.2
2004	21	5,572	1,913	44	1.2
2005	22	5,708	1,964	44	1.3
2006	22	5,877	1,976	41	1.3
2007	23	6,017	2,030	41	1.4
2008	21	6,010	2,023	46	1.3
2009	21	5,933	1,994	45	1.3
2010	22	5,872	1,975	42	1.4
2011	21	5,854	1,985	45	1.3
2012	25	5,993	2,024	35	1.5
2013	22	5,903	1,993	43	1.4
2014	23	5,894	2,000	42	1.4
2015	22	5,932	1,998	41	1.4
2016	20	6,022	2,021	45	1.3
2017	21	6,026	2,007	42	1.3
2018	21	6,023	1,997	42	1.3
2019	22	5,953	1,977	41	1.4
2020	22	5,926	1,969	41	1.4

County: county value. Kansas: state value. County Rank: highest county value ranked #1. (\$000): thousands of dollars. Nonmetro Kansas: Kansas total less Metropolitan Areas as defined by the Office of Management and Budget (OMB; released 3/6/2020). Per 1000: For nonmoney amounts, Per 1000=(county value / county population for the same year as the data) x 1000. \$ Per capita=(county value / county population for the same year as the data). Value= . indicates missing or suppressed data or value not calculated.

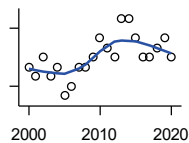
**Business**

**ESTABLISHMENTS: REAL ESTATE, RENTAL, AND LEASING**



U.S. Census Bureau, County Business Patterns. Beginning with the 2017 data, any tabulation with fewer than 3 establishments were omitted from the release. Data for these establishments are included in the broader total.

Year	County	State of Kansas	Non Metro Kansas	County Rank	Per 1000 or \$ Per Capita
2000	8	2,733	687	39	0.5
2001	9	2,849	724	36	0.5
2002	7	2,952	735	41	0.4
2003	8	3,007	727	40	0.5
2004	9	3,108	713	37	0.5
2005	8	3,203	727	40	0.5
2006	9	3,268	736	35	0.5
2007	7	3,286	721	40	0.4
2008	5	3,239	738	45	0.3
2009	4	3,122	723	50	0.2
2010	3	3,050	708	59	0.2
2011	5	3,002	692	44	0.3
2012	5	2,981	691	48	0.3
2013	6	3,046	717	43	0.4
2014	6	3,135	738	44	0.4
2015	7	3,179	744	39	0.4
2016	6	3,293	757	43	0.4
2017	6	3,389	.	41	0.4
2018	5	3,409	.	49	0.3
2019	7	3,464	.	41	0.4
2020	7	3,500	.	40	0.4



**ESTABLISHMENTS: PROFESSIONAL, SCIENTIFIC, AND TECHNICAL SERVICES**

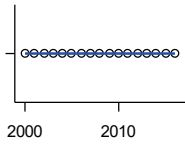
U.S. Census Bureau, County Business Patterns. Beginning with the 2017 data, any tabulation with fewer than 3 establishments were omitted from the release. Data for these establishments are included in the broader total.

Year	County	State of Kansas	Non Metro Kansas	County Rank	Per 1000 or \$ Per Capita
2000	16	6,424	1,690	48	1.0
2001	15	6,492	1,665	49	0.9
2002	17	6,719	1,704	48	1.0
2003	15	6,793	1,735	55	0.9
2004	16	7,025	1,730	48	0.9
2005	13	7,087	1,711	60	0.8
2006	14	7,231	1,736	58	0.8
2007	16	7,329	1,729	48	1.0
2008	16	7,133	1,671	45	1.0
2009	17	7,122	1,676	43	1.0
2010	19	7,172	1,680	42	1.2
2011	18	7,115	1,668	41	1.1
2012	17	7,122	1,681	43	1.1
2013	21	7,129	1,698	39	1.3
2014	21	7,206	1,682	38	1.3
2015	19	7,184	1,687	40	1.2
2016	17	7,146	1,659	43	1.1
2017	17	7,224	1,679	43	1.1
2018	18	7,138	1,655	42	1.1
2019	19	7,119	.	39	1.2
2020	17	7,117	.	42	1.1

County: county value. Kansas: state value. County Rank: highest county value ranked #1. (\$000): thousands of dollars. Nonmetro Kansas: Kansas total less Metropolitan Areas as defined by the Office of Management and Budget (OMB; released 3/6/2020). Per 1000: For nonmoney amounts, Per 1000=(county value / county population for the same year as the data) x 1000. \$ Per capita=(county value / county population for the same year as the data). Value= . indicates missing or suppressed data or value not calculated.

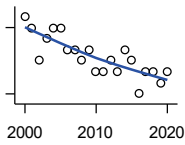
**Business**

**ESTABLISHMENTS: MANAGEMENT OF COMPANIES AND ENTERPRISES**



U.S. Census Bureau, County Business Patterns. Beginning with the 2017 data, any tabulation with fewer than 3 establishments were omitted from the release. Data for these establishments are included in the broader total.

Year	County	State of Kansas	Non Metro Kansas	County Rank	Per 1000 or \$ Per Capita
2000	0	622	145	105	0.0
2001	0	593	141	105	0.0
2002	0	597	152	105	0.0
2003	0	561	135	105	0.0
2004	0	569	133	105	0.0
2005	0	543	127	105	0.0
2006	0	542	131	105	0.0
2007	0	550	133	105	0.0
2008	0	553	139	105	0.0
2009	0	575	136	105	0.0
2010	0	567	131	105	0.0
2011	0	552	134	105	0.0
2012	0	593	135	105	0.0
2013	0	590	135	105	0.0
2014	0	603	136	105	0.0
2015	0	613	140	105	0.0
2016	0	655	171	105	0.0



**ESTABLISHMENTS: ADMIN, SUPPORT, WASTE MGMT., AND REMEDIATION**

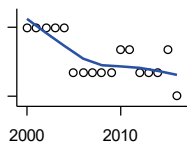
U.S. Census Bureau, County Business Patterns. Beginning with the 2017 data, any tabulation with fewer than 3 establishments were omitted from the release. Data for these establishments are included in the broader total.

Year	County	State of Kansas	Non Metro Kansas	County Rank	Per 1000 or \$ Per Capita
2000	15	3,307	871	27	0.9
2001	14	3,421	913	30	0.8
2002	11	3,232	882	33	0.7
2003	13	3,189	858	30	0.8
2004	14	3,301	891	29	0.8
2005	14	3,342	896	29	0.8
2006	12	3,395	886	33	0.7
2007	12	3,522	921	33	0.7
2008	11	3,587	932	36	0.7
2009	12	3,505	904	34	0.7
2010	10	3,494	897	37	0.6
2011	10	3,447	903	37	0.6
2012	11	3,462	891	34	0.7
2013	10	3,489	904	37	0.6
2014	12	3,569	933	35	0.8
2015	11	3,630	964	36	0.7
2016	8	3,705	987	44	0.5
2017	10	3,741	991	41	0.6
2018	10	3,740	983	40	0.6
2019	9	3,762	991	44	0.6
2020	10	3,807	989	43	0.6

County: county value. Kansas: state value. County Rank: highest county value ranked #1. (\$000): thousands of dollars. Nonmetro Kansas: Kansas total less Metropolitan Areas as defined by the Office of Management and Budget (OMB; released 3/6/2020). Per 1000: For nonmoney amounts, Per 1000=(county value / county population for the same year as the data) x 1000. \$ Per capita=(county value / county population for the same year as the data). Value= . indicates missing or suppressed data or value not calculated.

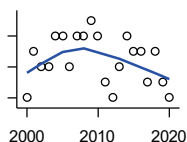
**Business**

**ESTABLISHMENTS: EDUCATIONAL SERVICES**



U.S. Census Bureau, County Business Patterns. Beginning with the 2017 data, any tabulation with fewer than 3 establishments were omitted from the release. Data for these establishments are included in the broader total.

Year	County	State of Kansas	Non Metro Kansas	County Rank	Per 1000 or \$ Per Capita
2000	3	604	155	37	0.2
2001	3	625	168	37	0.2
2002	3	666	165	36	0.2
2003	3	663	173	35	0.2
2004	3	690	173	35	0.2
2005	1	699	168	69	0.1
2006	1	698	175	68	0.1
2007	1	691	165	68	0.1
2008	1	692	158	67	0.1
2009	1	690	150	66	0.1
2010	2	700	149	44	0.1
2011	2	711	150	43	0.1
2012	1	724	145	67	0.1
2013	1	735	153	68	0.1
2014	1	722	152	66	0.1
2015	2	754	152	45	0.1
2016	0	728	150	105	0.0



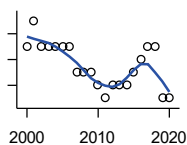
**ESTABLISHMENTS: HEALTH CARE AND SOCIAL ASSISTANCE**

U.S. Census Bureau, County Business Patterns. Beginning with the 2017 data, any tabulation with fewer than 3 establishments were omitted from the release. Data for these establishments are included in the broader total.

Year	County	State of Kansas	Non Metro Kansas	County Rank	Per 1000 or \$ Per Capita
2000	27	6,564	2,591	41	1.6
2001	30	6,636	2,590	40	1.8
2002	29	7,052	2,777	43	1.7
2003	29	7,129	2,792	43	1.7
2004	31	7,239	2,813	41	1.8
2005	31	7,412	2,855	43	1.8
2006	29	7,477	2,860	44	1.7
2007	31	7,661	2,864	41	1.9
2008	31	7,651	2,810	43	1.9
2009	32	7,696	2,787	41	2.0
2010	31	7,751	2,830	43	1.9
2011	28	7,804	2,817	47	1.7
2012	27	7,973	2,793	45	1.7
2013	29	7,877	2,729	43	1.8
2014	31	7,809	2,686	42	1.9
2015	30	8,103	2,692	42	1.9
2016	30	8,315	2,678	43	1.9
2017	28	8,136	2,646	44	1.8
2018	30	8,126	2,632	41	1.9
2019	28	8,184	2,587	42	1.8
2020	27	8,290	2,571	42	1.7

County: county value. Kansas: state value. County Rank: highest county value ranked #1. (\$000): thousands of dollars. Nonmetro Kansas: Kansas total less Metropolitan Areas as defined by the Office of Management and Budget (OMB; released 3/6/2020). Per 1000: For nonmoney amounts, Per 1000=(county value / county population for the same year as the data) x 1000. \$ Per capita=(county value / county population for the same year as the data). Value= . indicates missing or suppressed data or value not calculated.

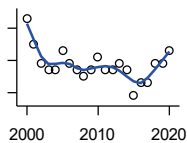
**Business**



**ESTABLISHMENTS: ARTS, ENTERTAINMENT, AND RECREATION**

U.S. Census Bureau, County Business Patterns. Beginning with the 2017 data, any tabulation with fewer than 3 establishments were omitted from the release. Data for these establishments are included in the broader total.

Year	County	State of Kansas	Non Metro Kansas	County Rank	Per 1000 or \$ Per Capita
2000	9	981	419	25	0.5
2001	11	1,009	433	20	0.7
2002	9	1,054	441	25	0.5
2003	9	1,045	443	25	0.5
2004	9	1,082	445	25	0.5
2005	9	1,109	446	24	0.5
2006	9	1,080	445	26	0.5
2007	7	1,092	444	36	0.4
2008	7	1,062	423	31	0.4
2009	7	1,063	421	33	0.4
2010	6	1,018	406	38	0.4
2011	5	997	387	40	0.3
2012	6	1,000	388	37	0.4
2013	6	1,009	377	37	0.4
2014	6	1,030	365	34	0.4
2015	7	1,031	357	30	0.4
2016	8	1,060	366	28	0.5
2017	9	1,096	.	27	0.6
2018	9	1,088	.	27	0.6
2019	5	1,087	.	39	0.3
2020	5	1,064	.	40	0.3



**ESTABLISHMENTS: ACCOMMODATION AND FOOD SERVICES**

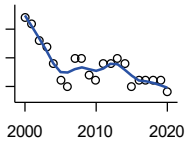
U.S. Census Bureau, County Business Patterns. Beginning with the 2017 data, any tabulation with fewer than 3 establishments were omitted from the release. Data for these establishments are included in the broader total.

Year	County	State of Kansas	Non Metro Kansas	County Rank	Per 1000 or \$ Per Capita
2000	29	5,536	2,213	39	1.7
2001	25	5,551	2,173	42	1.5
2002	22	5,610	2,174	45	1.3
2003	21	5,635	2,188	44	1.3
2004	21	5,681	2,160	42	1.2
2005	24	5,776	2,170	39	1.4
2006	22	5,745	2,132	42	1.3
2007	21	5,877	2,095	42	1.3
2008	20	5,843	2,052	44	1.2
2009	21	5,794	2,029	46	1.3
2010	23	5,898	2,046	39	1.4
2011	21	5,958	2,067	44	1.3
2012	21	5,951	2,046	46	1.3
2013	22	6,061	2,070	44	1.4
2014	21	5,985	2,024	43	1.3
2015	17	6,034	2,063	50	1.1
2016	19	6,126	2,094	47	1.2
2017	19	6,250	2,123	46	1.2
2018	22	6,256	2,128	43	1.4
2019	22	6,231	2,131	42	1.4
2020	24	6,206	2,131	40	1.5

County: county value. Kansas: state value. County Rank: highest county value ranked #1. (\$000): thousands of dollars. Nonmetro Kansas: Kansas total less Metropolitan Areas as defined by the Office of Management and Budget (OMB; released 3/6/2020). Per 1000: For nonmoney amounts, Per 1000=(county value / county population for the same year as the data) x 1000. \$ Per capita=(county value / county population for the same year as the data). Value= . indicates missing or suppressed data or value not calculated.

**Business**

**ESTABLISHMENTS: OTHER SERVICES**

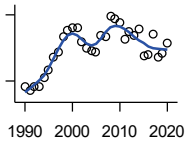


U.S. Census Bureau, County Business Patterns. Beginning with the 2017 data, any tabulation with fewer than 3 establishments were omitted from the release. Data for these establishments are included in the broader total.

Year	County	State of Kansas	Non Metro Kansas	County Rank	Per 1000 or \$ Per Capita
2000	42	8,423	3,636	42	2.5
2001	41	8,310	3,614	41	2.5
2002	38	8,552	3,658	47	2.3
2003	37	8,411	3,605	47	2.2
2004	34	8,343	3,597	50	2.0
2005	31	8,321	3,571	50	1.8
2006	30	8,225	3,490	53	1.8
2007	35	8,355	3,534	49	2.1
2008	35	8,104	3,406	47	2.1
2009	32	8,040	3,405	50	2.0
2010	31	7,998	3,379	53	1.9
2011	34	7,883	3,294	46	2.1
2012	34	7,913	3,303	48	2.1
2013	35	7,947	3,290	48	2.2
2014	34	7,943	3,285	48	2.1
2015	30	7,869	3,255	51	1.9
2016	31	7,839	3,204	50	2.0
2017	31	7,873	3,189	50	2.0
2018	31	7,853	3,176	49	1.9
2019	31	7,834	3,138	49	1.9
2020	29	7,787	3,073	53	1.8

County: county value. Kansas: state value. County Rank: highest county value ranked #1. (\$000): thousands of dollars. Nonmetro Kansas: Kansas total less Metropolitan Areas as defined by the Office of Management and Budget (OMB; released 3/6/2020). Per 1000: For nonmoney amounts, Per 1000=(county value / county population for the same year as the data) x 1000. \$ Per capita=(county value / county population for the same year as the data). Value= . indicates missing or suppressed data or value not calculated.

**Business**



**TOTAL ANNUAL PAYROLL (\$000)  
COUNTY BUSINESS PATTERNS**

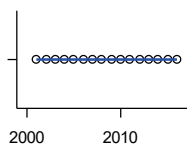
U.S. Census Bureau, County Business Patterns. Beginning with the 2017 data, any tabulation with fewer than 3 establishments were omitted from the release. Data for these establishments are included in the broader total.

Year	County	State of Kansas	Non Metro Kansas	County Rank	Per 1000 or \$ Per Capita
1990	27,342	17,487,316	4,442,429	49	1,793.2
1991	25,936	18,162,326	4,612,616	50	1,685.8
1992	27,508	19,244,346	4,882,060	51	1,775.7
1993	27,247	20,087,190	5,182,780	55	1,734.0
1994	31,649	21,201,652	5,541,423	50	1,975.0
1995	34,914	22,825,920	5,875,310	48	2,143.3
1996	40,959	24,613,884	6,198,398	48	2,501.8
1997	43,343	26,787,098	6,599,061	46	2,619.5
1998	50,026	28,747,576	6,871,794	45	3,011.1
1999	52,904	30,600,434	7,121,961	44	3,188.9
2000	54,186	31,990,762	7,520,424	44	3,242.3
2001	54,364	33,303,992	7,598,165	47	3,263.7
2002	47,502	33,152,962	7,572,002	49	2,846.3
2003	45,016	34,040,944	7,726,561	50	2,692.0
2004	43,568	35,725,812	8,303,779	51	2,586.7
2005	43,345	36,646,064	8,586,986	52	2,569.5
2006	50,426	39,251,388	9,178,947	50	3,031.7
2007	49,902	42,022,753	.	53	3,030.2
2008	59,121	43,984,689	.	49	3,596.4
2009	58,404	42,146,866	.	49	3,583.7
2010	56,421	42,686,303	10,294,015	50	3,462.5
2011	49,164	43,733,944	.	56	3,008.6
2012	52,571	45,608,072	11,222,183	57	3,249.9
2013	50,883	47,715,601	11,446,751	59	3,164.4
2014	53,782	49,712,832	11,957,931	60	3,367.7
2015	41,190	51,259,676	11,975,718	65	2,596.3
2016	42,081	51,016,318	12,148,646	66	2,661.5
2017	51,219	52,754,605	12,448,592	61	3,233.1
2018	40,551	55,087,460	12,810,270	66	2,544.3
2019	42,290	57,272,387	13,123,288	68	2,651.6
2020	46,923	58,374,388	14,007,955	64	2,976.2

County: county value. Kansas: state value. County Rank: highest county value ranked #1. (\$000): thousands of dollars. Nonmetro Kansas: Kansas total less Metropolitan Areas as defined by the Office of Management and Budget (OMB; released 3/6/2020). Per 1000: For nonmoney amounts, Per 1000=(county value / county population for the same year as the data) x 1000. \$ Per capita=(county value / county population for the same year as the data). Value= . indicates missing or suppressed data or value not calculated.



**Business**



**TOTAL ANNUAL PAYROLL(\$000):  
FORESTRY, FISHING, HUNTING, AND  
AG SUPPORT**

U.S. Census Bureau, County Business Patterns. Beginning with the 2017 data, any tabulation with fewer than 3 establishments were omitted from the release. Data for these establishments are included in the broader total.

Year	County	State of Kansas	Non Metro Kansas	County Rank	Per 1000 or \$ Per Capita
2000	.	13,551	.	.	.
2001	0	.	.	.	0.0
2002	0	16,528	.	.	0.0
2003	0	17,247	.	.	0.0
2004	0	17,552	.	.	0.0
2005	0	16,298	.	.	0.0
2006	0	17,908	.	.	0.0
2007	0	22,199	.	.	0.0
2008	0	21,359	.	.	0.0
2009	0	22,466	.	.	0.0
2010	0	22,753	.	.	0.0
2011	0	23,320	.	.	0.0
2012	0	27,492	.	.	0.0
2013	0	30,360	.	.	0.0
2014	0	34,862	.	.	0.0
2015	0	35,980	.	.	0.0
2016	0	31,488	.	.	0.0

**TOTAL ANNUAL PAYROLL(\$000):  
MINING**

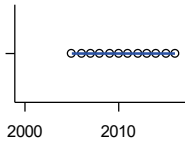
U.S. Census Bureau, County Business Patterns. Beginning with the 2017 data, any tabulation with fewer than 3 establishments were omitted from the release. Data for these establishments are included in the broader total.

Year	County	State of Kansas	Non Metro Kansas	County Rank	Per 1000 or \$ Per Capita
2000	.	240,079	.	.	.
2001	.	273,838	.	.	.
2002	.	262,277	.	.	.
2003	.	290,652	.	.	.
2004	.	326,997	.	.	.
2005	.	381,069	.	.	.
2006	.	482,102	.	.	.
2007	.	551,751	.	.	.
2008	.	620,446	.	.	.
2009	.	465,070	.	.	.
2010	.	485,841	.	.	.
2011	.	541,536	.	.	.
2012	.	600,402	.	.	.
2013	.	599,788	.	.	.
2014	.	678,673	.	.	.
2015	.	552,658	.	.	.

County: county value. Kansas: state value. County Rank: highest county value ranked #1. (\$000): thousands of dollars. Nonmetro Kansas: Kansas total less Metropolitan Areas as defined by the Office of Management and Budget (OMB; released 3/6/2020). Per 1000: For nonmoney amounts, Per 1000=(county value / county population for the same year as the data) x 1000. \$ Per capita=(county value / county population for the same year as the data). Value= . indicates missing or suppressed data or value not calculated.

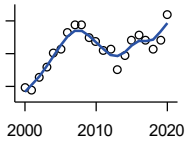
**Business**

**TOTAL ANNUAL PAYROLL(\$000):  
UTILITIES**



U.S. Census Bureau, County Business Patterns. Beginning with the 2017 data, any tabulation with fewer than 3 establishments were omitted from the release. Data for these establishments are included in the broader total.

Year	County	State of Kansas	Non Metro Kansas	County Rank	Per 1000 or \$ Per Capita
2000	.	410,313	.	.	.
2001	.	452,057	.	.	.
2002	.	377,559	.	.	.
2003	.	378,157	.	.	.
2004	.	377,809	.	.	.
2005	0	429,864	.	.	0.0
2006	0	443,999	.	.	0.0
2007	0	480,068	.	.	0.0
2008	0	541,066	.	.	0.0
2009	0	563,373	.	.	0.0
2010	0	512,628	.	.	0.0
2011	0	653,229	.	.	0.0
2012	0	625,451	.	.	0.0
2013	0	625,347	.	.	0.0
2014	0	610,960	.	.	0.0
2015	0	668,559	.	.	0.0
2016	0	700,926	.	.	0.0



**TOTAL ANNUAL PAYROLL(\$000):  
CONSTRUCTION**

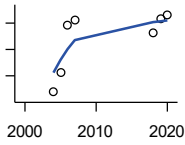
U.S. Census Bureau, County Business Patterns. Beginning with the 2017 data, any tabulation with fewer than 3 establishments were omitted from the release. Data for these establishments are included in the broader total.

Year	County	State of Kansas	Non Metro Kansas	County Rank	Per 1000 or \$ Per Capita
2000	2,471	2,256,057	.	.	147.9
2001	2,374	2,320,652	.	.	142.5
2002	2,779	2,302,229	.	.	166.5
2003	3,099	2,282,021	.	.	185.3
2004	3,509	2,302,854	.	.	208.3
2005	3,621	2,465,977	.	.	214.7
2006	4,140	2,700,351	.	.	248.9
2007	4,380	2,772,168	.	.	266.0
2008	4,363	2,950,073	.	.	265.4
2009	3,972	2,709,864	.	.	243.7
2010	3,852	2,553,555	.	.	236.4
2011	3,593	2,550,355	.	.	219.9
2012	3,623	2,733,284	.	.	224.0
2013	2,995	2,866,801	.	.	186.3
2014	3,459	3,135,814	.	.	216.6
2015	3,925	3,270,952	.	.	247.4
2016	4,085	3,328,610	.	.	258.4
2017	3,898	3,568,505	.	.	246.1
2018	3,639	3,806,196	.	.	228.3
2019	3,923	3,879,912	.	.	246.0
2020	4,695	3,983,029	.	.	297.8

County: county value. Kansas: state value. County Rank: highest county value ranked #1. (\$000): thousands of dollars. Nonmetro Kansas: Kansas total less Metropolitan Areas as defined by the Office of Management and Budget (OMB; released 3/6/2020). Per 1000: For nonmoney amounts, Per 1000=(county value / county population for the same year as the data) x 1000. \$ Per capita=(county value / county population for the same year as the data). Value= . indicates missing or suppressed data or value not calculated.

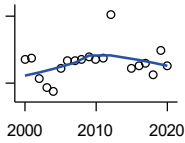
**Business**

**TOTAL ANNUAL PAYROLL(\$000):  
MANUFACTURING**



U.S. Census Bureau, County Business Patterns. Beginning with the 2017 data, any tabulation with fewer than 3 establishments were omitted from the release. Data for these establishments are included in the broader total.

Year	County	State of Kansas	Non Metro Kansas	County Rank	Per 1000 or \$ Per Capita
2000	.	7,015,414	.	.	.
2001	.	7,301,706	.	.	.
2002	.	6,802,605	.	.	.
2003	.	6,691,611	.	.	.
2004	755	6,985,656	.	.	44.8
2005	2,215	7,221,614	.	.	131.3
2006	5,859	7,621,873	.	.	352.3
2007	6,209	7,873,359	.	.	377.0
2008	.	8,441,541	.	.	.
2009	.	7,477,838	.	.	.
2010	.	7,556,955	.	.	.
2011	.	7,747,934	.	.	.
2012	.	7,704,851	.	.	.
2013	.	8,365,542	.	.	.
2014	.	8,787,306	.	.	.
2015	.	9,052,105	.	.	.
2018	5,295	9,481,652	.	.	332.2
2019	6,375	10,171,575	.	.	399.7
2020	6,627	9,744,825	.	.	420.3



**TOTAL ANNUAL PAYROLL(\$000):  
WHOLESALE TRADE**

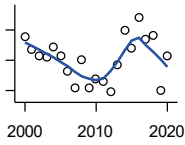
U.S. Census Bureau, County Business Patterns. Beginning with the 2017 data, any tabulation with fewer than 3 establishments were omitted from the release. Data for these establishments are included in the broader total.

Year	County	State of Kansas	Non Metro Kansas	County Rank	Per 1000 or \$ Per Capita
2000	2,025	2,332,755	.	.	121.2
2001	2,060	2,283,169	.	.	123.7
2002	1,601	2,107,653	.	.	95.9
2003	1,403	2,622,701	.	.	83.9
2004	1,304	2,663,196	.	.	77.4
2005	1,827	2,345,990	.	.	108.3
2006	1,994	2,592,211	.	.	119.9
2007	1,993	2,682,542	.	.	121.0
2008	2,039	3,078,655	.	.	124.0
2009	2,088	2,940,949	.	.	128.1
2010	2,045	3,097,628	.	.	125.5
2011	2,058	3,305,811	.	.	125.9
2012	3,037	3,339,997	.	.	187.7
2013	.	3,460,512	.	.	.
2014	.	3,712,075	.	.	.
2015	1,827	3,760,189	.	.	115.2
2016	1,887	3,738,207	.	.	119.3
2017	1,959	3,822,730	.	.	123.7
2018	1,690	3,814,353	.	.	106.0
2019	2,222	4,025,802	.	.	139.3
2020	1,876	4,224,666	.	.	119.0

County: county value. Kansas: state value. County Rank: highest county value ranked #1. (\$000): thousands of dollars. Nonmetro Kansas: Kansas total less Metropolitan Areas as defined by the Office of Management and Budget (OMB; released 3/6/2020). Per 1000: For nonmoney amounts, Per 1000=(county value / county population for the same year as the data) x 1000. \$ Per capita=(county value / county population for the same year as the data). Value= . indicates missing or suppressed data or value not calculated.

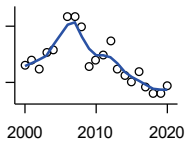
**Business**

**TOTAL ANNUAL PAYROLL(\$000):  
RETAIL TRADE**



U.S. Census Bureau, County Business Patterns. Beginning with the 2017 data, any tabulation with fewer than 3 establishments were omitted from the release. Data for these establishments are included in the broader total.

Year	County	State of Kansas	Non Metro Kansas	County Rank	Per 1000 or \$ Per Capita
2000	6,641	2,747,001	.	.	397.4
2001	6,429	2,813,226	.	.	386.0
2002	6,313	2,854,231	.	.	378.3
2003	6,302	2,773,674	.	.	376.9
2004	6,475	2,847,826	.	.	384.4
2005	6,329	2,952,196	.	.	375.2
2006	6,074	3,126,495	.	.	365.2
2007	5,796	3,201,169	.	.	352.0
2008	6,263	3,261,054	.	.	381.0
2009	5,786	3,232,246	.	.	355.0
2010	5,943	3,321,838	.	.	364.7
2011	5,907	3,384,607	.	.	361.5
2012	5,722	3,409,755	.	.	353.7
2013	6,179	3,483,752	.	.	384.3
2014	6,751	3,617,933	.	.	422.7
2015	6,453	3,712,165	.	.	406.7
2016	6,952	3,826,889	.	.	439.7
2017	6,597	3,797,849	.	.	416.4
2018	6,654	3,818,988	.	.	417.5
2019	5,750	3,908,994	.	.	360.5
2020	6,312	3,984,443	.	.	400.4



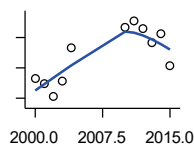
**TOTAL ANNUAL PAYROLL(\$000):  
TRANSPORTATION &  
WAREHOUSING**

U.S. Census Bureau, County Business Patterns. Beginning with the 2017 data, any tabulation with fewer than 3 establishments were omitted from the release. Data for these establishments are included in the broader total.

Year	County	State of Kansas	Non Metro Kansas	County Rank	Per 1000 or \$ Per Capita
2000	985	1,044,835	.	.	58.9
2001	1,047	1,089,405	.	.	62.9
2002	933	1,094,636	.	.	55.9
2003	1,150	1,316,655	.	.	68.8
2004	1,183	1,439,800	.	.	70.2
2005	.	1,393,651	.	.	.
2006	1,629	1,528,551	.	.	97.9
2007	1,626	1,788,267	.	.	98.7
2008	1,487	1,722,697	.	.	90.5
2009	961	1,618,598	.	.	59.0
2010	1,048	1,735,761	.	.	64.3
2011	1,111	1,739,165	.	.	68.0
2012	1,308	1,984,976	.	.	80.9
2013	924	2,006,261	.	.	57.5
2014	835	2,097,377	.	.	52.3
2015	763	2,190,072	.	.	48.1
2016	886	2,202,859	.	.	56.0
2017	694	2,546,061	.	.	43.8
2018	607	2,663,188	.	.	38.1
2019	597	2,879,406	.	.	37.4
2020	713	2,962,461	.	.	45.2

County: county value. Kansas: state value. County Rank: highest county value ranked #1. (\$000): thousands of dollars. Nonmetro Kansas: Kansas total less Metropolitan Areas as defined by the Office of Management and Budget (OMB; released 3/6/2020). Per 1000: For nonmoney amounts, Per 1000=(county value / county population for the same year as the data) x 1000. \$ Per capita=(county value / county population for the same year as the data). Value= . indicates missing or suppressed data or value not calculated.

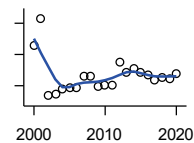
**Business**



**TOTAL ANNUAL PAYROLL(\$000):  
INFORMATION**

U.S. Census Bureau, County Business Patterns. Beginning with the 2017 data, any tabulation with fewer than 3 establishments were omitted from the release. Data for these establishments are included in the broader total.

Year	County	State of Kansas	Non Metro Kansas	County Rank	Per 1000 or \$ Per Capita
2000	563	1,923,381	.	.	33.7
2001	546	2,218,610	.	.	32.8
2002	504	2,298,108	.	.	30.2
2003	558	2,378,673	.	.	33.4
2004	666	2,392,990	.	.	39.5
2005	.	2,395,081	.	.	.
2006	.	2,586,483	.	.	.
2007	.	2,594,138	.	.	.
2008	.	3,043,244	.	.	.
2009	.	3,045,570	.	.	.
2010	732	2,481,580	.	.	44.9
2011	755	2,513,805	.	.	46.2
2012	731	2,535,555	.	.	45.2
2013	684	2,805,017	.	.	42.5
2014	714	2,393,609	.	.	44.7
2015	605	2,406,323	.	.	38.1



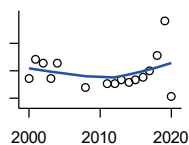
**TOTAL ANNUAL PAYROLL(\$000):  
FINANCE & INSURANCE**

U.S. Census Bureau, County Business Patterns. Beginning with the 2017 data, any tabulation with fewer than 3 establishments were omitted from the release. Data for these establishments are included in the broader total.

Year	County	State of Kansas	Non Metro Kansas	County Rank	Per 1000 or \$ Per Capita
2000	6,567	2,083,565	.	.	393.0
2001	8,302	2,129,587	.	.	498.4
2002	3,348	2,414,120	.	.	200.6
2003	3,424	2,608,579	.	.	204.8
2004	3,797	2,676,910	.	.	225.4
2005	3,890	2,786,136	.	.	230.6
2006	3,868	2,928,931	.	.	232.5
2007	4,608	3,096,017	.	.	279.8
2008	4,619	3,322,977	.	.	281.0
2009	3,912	3,206,839	.	.	240.0
2010	4,036	3,211,300	.	.	247.7
2011	4,022	3,404,633	.	.	246.1
2012	5,471	3,611,165	.	.	338.2
2013	4,844	3,896,051	.	.	301.2
2014	5,059	4,044,315	.	.	316.8
2015	4,873	4,113,060	.	.	307.2
2016	4,668	4,180,740	.	.	295.2
2017	4,358	4,258,057	.	.	275.1
2018	4,549	4,682,552	.	.	285.4
2019	4,464	4,814,201	.	.	279.9
2020	4,803	5,288,529	.	.	304.6

County: county value. Kansas: state value. County Rank: highest county value ranked #1. (\$000): thousands of dollars. Nonmetro Kansas: Kansas total less Metropolitan Areas as defined by the Office of Management and Budget (OMB; released 3/6/2020). Per 1000: For nonmoney amounts, Per 1000=(county value / county population for the same year as the data) x 1000. \$ Per capita=(county value / county population for the same year as the data). Value= . indicates missing or suppressed data or value not calculated.

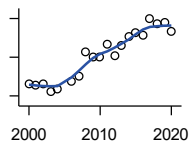
**Business**



**TOTAL ANNUAL PAYROLL(\$000):  
REAL ESTATE, RENTAL, AND  
LEASING**

U.S. Census Bureau, County Business Patterns. Beginning with the 2017 data, any tabulation with fewer than 3 establishments were omitted from the release. Data for these establishments are included in the broader total.

Year	County	State of Kansas	Non Metro Kansas	County Rank	Per 1000 or \$ Per Capita
2000	270	360,637	.	.	16.2
2001	342	397,371	.	.	20.5
2002	326	403,695	.	.	19.5
2003	270	437,786	.	.	16.1
2004	327	430,719	.	.	19.4
2005	.	465,149	.	.	.
2006	.	478,811	.	.	.
2007	.	452,969	.	.	.
2008	239	484,149	.	.	14.5
2009	.	450,884	.	.	.
2010	.	487,255	.	.	.
2011	253	535,120	.	.	15.5
2012	252	531,039	.	.	15.6
2013	268	538,796	.	.	16.7
2014	260	542,307	.	.	16.3
2015	268	595,030	.	.	16.9
2016	277	607,668	.	.	17.5
2017	298	590,373	.	.	18.8
2018	356	600,037	.	.	22.3
2019	482	622,881	.	.	30.2
2020	207	670,656	.	.	13.1



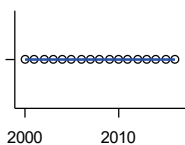
**TOTAL ANNUAL PAYROLL(\$000):  
PROFESSIONAL, SCIENTIFIC, AND  
TECHNICAL SERVICES**

U.S. Census Bureau, County Business Patterns. Beginning with the 2017 data, any tabulation with fewer than 3 establishments were omitted from the release. Data for these establishments are included in the broader total.

Year	County	State of Kansas	Non Metro Kansas	County Rank	Per 1000 or \$ Per Capita
2000	814	2,057,313	.	.	48.7
2001	782	2,152,937	.	.	46.9
2002	796	2,150,085	.	.	47.7
2003	627	2,052,712	.	.	37.5
2004	676	2,531,457	.	.	40.1
2005	.	2,418,500	.	.	.
2006	877	2,655,690	.	.	52.7
2007	996	2,901,544	.	.	60.5
2008	1,637	2,903,802	.	.	99.6
2009	1,500	3,071,611	.	.	92.0
2010	1,506	3,037,182	.	.	92.4
2011	1,825	3,132,082	.	.	111.7
2012	1,547	3,455,548	.	.	95.6
2013	1,794	3,777,729	.	.	111.6
2014	2,050	3,981,580	.	.	128.4
2015	2,140	4,039,074	.	.	134.9
2016	2,070	4,125,507	.	.	130.9
2017	2,498	4,158,858	.	.	157.7
2018	2,369	4,314,317	.	.	148.6
2019	2,385	4,646,644	.	.	149.5
2020	2,176	4,927,611	.	.	138.0

County: county value. Kansas: state value. County Rank: highest county value ranked #1. (\$000): thousands of dollars. Nonmetro Kansas: Kansas total less Metropolitan Areas as defined by the Office of Management and Budget (OMB; released 3/6/2020). Per 1000: For nonmoney amounts, Per 1000=(county value / county population for the same year as the data) x 1000. \$ Per capita=(county value / county population for the same year as the data). Value= . indicates missing or suppressed data or value not calculated.

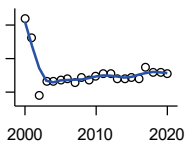
**Business**



**TOTAL ANNUAL PAYROLL(\$000):  
MANAGEMENT OF COMPANIES AND  
ENTERPRISES**

U.S. Census Bureau, County Business Patterns. Beginning with the 2017 data, any tabulation with fewer than 3 establishments were omitted from the release. Data for these establishments are included in the broader total.

Year	County	State of Kansas	Non Metro Kansas	County Rank	Per 1000 or \$ Per Capita
2000	0	1,362,735	.	.	0.0
2001	0	1,279,253	.	.	0.0
2002	0	1,311,368	.	.	0.0
2003	0	1,352,119	.	.	0.0
2004	0	1,378,891	.	.	0.0
2005	0	1,510,876	.	.	0.0
2006	0	1,626,320	.	.	0.0
2007	0	2,233,654	.	.	0.0
2008	0	1,848,656	.	.	0.0
2009	0	1,601,158	.	.	0.0
2010	0	2,003,048	.	.	0.0
2011	0	1,677,619	.	.	0.0
2012	0	1,834,430	.	.	0.0
2013	0	1,938,100	.	.	0.0
2014	0	2,117,232	.	.	0.0
2015	0	2,451,126	.	.	0.0
2016	0	2,167,620	.	.	0.0



**TOTAL ANNUAL PAYROLL(\$000):  
ADMIN, SUPPORT, WASTE MGMT.,  
AND REMEDIATION**

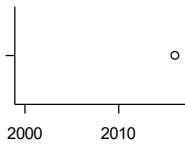
U.S. Census Bureau, County Business Patterns. Beginning with the 2017 data, any tabulation with fewer than 3 establishments were omitted from the release. Data for these establishments are included in the broader total.

Year	County	State of Kansas	Non Metro Kansas	County Rank	Per 1000 or \$ Per Capita
2000	1,278	1,388,712	.	.	76.5
2001	1,050	1,416,480	.	.	63.0
2002	355	1,378,905	.	.	21.3
2003	526	1,387,061	.	.	31.5
2004	523	1,544,442	.	.	31.1
2005	545	1,694,687	.	.	32.3
2006	566	1,800,846	.	.	34.0
2007	518	1,978,025	.	.	31.5
2008	568	2,096,864	.	.	34.6
2009	544	1,832,540	.	.	33.4
2010	595	2,117,325	.	.	36.5
2011	615	2,114,970	.	.	37.6
2012	624	2,230,250	.	.	38.6
2013	559	2,214,320	.	.	34.8
2014	565	2,444,170	.	.	35.4
2015	582	2,577,592	.	.	36.7
2016	565	2,760,706	.	.	35.7
2017	696	3,026,927	.	.	43.9
2018	629	3,007,347	.	.	39.5
2019	635	3,075,485	.	.	39.8
2020	627	3,250,046	.	.	39.8

County: county value. Kansas: state value. County Rank: highest county value ranked #1. (\$000): thousands of dollars. Nonmetro Kansas: Kansas total less Metropolitan Areas as defined by the Office of Management and Budget (OMB; released 3/6/2020). Per 1000: For nonmoney amounts, Per 1000=(county value / county population for the same year as the data) x 1000. \$ Per capita=(county value / county population for the same year as the data). Value= . indicates missing or suppressed data or value not calculated.

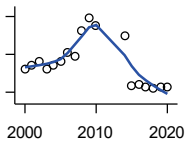
**Business**

**TOTAL ANNUAL PAYROLL(\$000):  
EDUCATIONAL SERVICES**



U.S. Census Bureau, County Business Patterns. Beginning with the 2017 data, any tabulation with fewer than 3 establishments were omitted from the release. Data for these establishments are included in the broader total.

Year	County	State of Kansas	Non Metro Kansas	County Rank	Per 1000 or \$ Per Capita
2000	.	299,843	.	.	.
2001	.	320,606	.	.	.
2002	.	353,531	.	.	.
2003	.	350,814	.	.	.
2004	.	361,644	.	.	.
2005	.	375,781	.	.	.
2006	.	400,565	.	.	.
2007	.	414,233	.	.	.
2008	.	463,210	.	.	.
2009	.	468,856	.	.	.
2010	.	487,670	.	.	.
2011	.	504,964	.	.	.
2012	.	508,448	.	.	.
2013	.	553,995	.	.	.
2014	.	612,073	.	.	.
2015	.	579,794	.	.	.
2016	0	571,582	.	.	0.0



**TOTAL ANNUAL PAYROLL(\$000):  
HEALTH CARE AND SOCIAL ASSISTANCE**

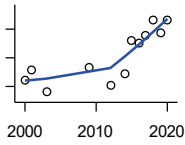
U.S. Census Bureau, County Business Patterns. Beginning with the 2017 data, any tabulation with fewer than 3 establishments were omitted from the release. Data for these establishments are included in the broader total.

Year	County	State of Kansas	Non Metro Kansas	County Rank	Per 1000 or \$ Per Capita
2000	16,064	4,120,595	.	.	961.2
2001	17,270	4,445,027	.	.	1,036.8
2002	18,252	4,705,220	.	.	1,093.7
2003	16,256	4,939,323	.	.	972.1
2004	17,290	5,232,394	.	.	1,026.5
2005	18,274	5,487,089	.	.	1,083.3
2006	20,469	5,814,218	.	.	1,230.6
2007	19,466	6,186,471	.	.	1,182.1
2008	26,214	6,490,627	.	.	1,594.6
2009	29,550	6,749,962	.	.	1,813.2
2010	27,592	6,871,727	.	.	1,693.3
2011	.	7,129,655	.	.	.
2012	.	7,614,853	.	.	.
2013	.	7,541,515	.	.	.
2014	24,778	7,733,621	.	.	1,551.5
2015	11,725	7,969,650	.	.	739.0
2016	12,101	8,018,706	.	.	765.4
2017	11,439	8,384,998	.	.	722.1
2018	10,994	8,637,619	.	.	689.8
2019	11,415	8,854,414	.	.	715.7
2020	11,214	9,309,269	.	.	711.3

County: county value. Kansas: state value. County Rank: highest county value ranked #1. (\$000): thousands of dollars. Nonmetro Kansas: Kansas total less Metropolitan Areas as defined by the Office of Management and Budget (OMB; released 3/6/2020). Per 1000: For nonmoney amounts, Per 1000=(county value / county population for the same year as the data) x 1000. \$ Per capita=(county value / county population for the same year as the data). Value= . indicates missing or suppressed data or value not calculated.



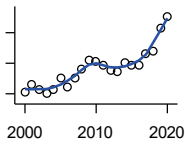
**Business**



**TOTAL ANNUAL PAYROLL(\$000):  
ARTS, ENTERTAINMENT, AND  
RECREATION**

U.S. Census Bureau, County Business Patterns. Beginning with the 2017 data, any tabulation with fewer than 3 establishments were omitted from the release. Data for these establishments are included in the broader total.

Year	County	State of Kansas	Non Metro Kansas	County Rank	Per 1000 or \$ Per Capita
2000	187	195,784	.	.	11.2
2001	203	203,511	.	.	12.2
2002	.	206,204	.	.	.
2003	165	185,049	.	.	9.9
2004	.	190,742	.	.	.
2005	.	196,594	.	.	.
2006	.	201,049	.	.	.
2007	.	220,435	.	.	.
2008	.	236,986	.	.	.
2009	208	237,116	.	.	12.8
2010	.	233,285	.	.	.
2011	.	234,351	.	.	.
2012	176	254,169	.	.	10.9
2013	.	278,474	.	.	.
2014	197	289,103	.	.	12.3
2015	255	300,253	.	.	16.1
2016	251	312,902	.	.	15.9
2017	264	323,153	.	.	16.7
2018	291	325,454	.	.	18.3
2019	269	335,362	.	.	16.9
2020	290	298,119	.	.	18.4



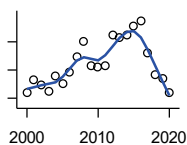
**TOTAL ANNUAL PAYROLL(\$000):  
ACCOMMODATION AND FOOD  
SERVICES**

U.S. Census Bureau, County Business Patterns. Beginning with the 2017 data, any tabulation with fewer than 3 establishments were omitted from the release. Data for these establishments are included in the broader total.

Year	County	State of Kansas	Non Metro Kansas	County Rank	Per 1000 or \$ Per Capita
2000	1,036	926,831	.	.	62.0
2001	1,153	960,196	.	.	69.2
2002	1,069	930,510	.	.	64.1
2003	998	992,313	.	.	59.7
2004	1,078	1,046,901	.	.	64.0
2005	1,252	1,101,854	.	.	74.2
2006	1,119	1,185,280	.	.	67.3
2007	1,267	1,431,100	.	.	76.9
2008	1,404	1,271,594	.	.	85.4
2009	1,561	1,283,065	.	.	95.8
2010	1,540	1,296,556	.	.	94.5
2011	1,468	1,364,281	.	.	89.8
2012	1,391	1,388,337	.	.	86.0
2013	1,370	1,476,335	.	.	85.2
2014	1,513	1,572,021	.	.	94.7
2015	1,467	1,640,144	.	.	92.5
2016	1,477	1,709,193	.	.	93.4
2017	1,648	1,824,791	.	.	104.0
2018	1,707	1,880,364	.	.	107.1
2019	2,077	1,958,603	.	.	130.2
2020	2,265	1,745,238	.	.	143.7

County: county value. Kansas: state value. County Rank: highest county value ranked #1. (\$000): thousands of dollars. Nonmetro Kansas: Kansas total less Metropolitan Areas as defined by the Office of Management and Budget (OMB; released 3/6/2020). Per 1000: For nonmoney amounts, Per 1000=(county value / county population for the same year as the data) x 1000. \$ Per capita=(county value / county population for the same year as the data). Value= . indicates missing or suppressed data or value not calculated.

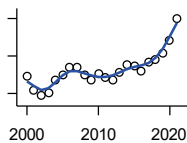
**Business**



**TOTAL ANNUAL PAYROLL(\$000):  
OTHER SERVICES**

U.S. Census Bureau, County Business Patterns. Beginning with the 2017 data, any tabulation with fewer than 3 establishments were omitted from the release. Data for these establishments are included in the broader total.

Year	County	State of Kansas	Non Metro Kansas	County Rank	Per 1000 or \$ Per Capita
2000	1,346	965,540	.	.	80.5
2001	1,566	996,716	.	.	94.0
2002	1,476	1,007,464	.	.	88.4
2003	1,379	979,466	.	.	82.5
2004	1,652	970,383	.	.	98.1
2005	1,504	1,005,537	.	.	89.2
2006	1,705	1,055,932	.	.	102.5
2007	1,979	1,141,551	.	.	120.2
2008	2,254	1,184,016	.	.	137.1
2009	1,835	1,167,154	.	.	112.6
2010	1,804	1,170,201	.	.	110.7
2011	1,829	1,173,775	.	.	111.9
2012	2,377	1,217,210	.	.	146.9
2013	2,320	1,254,933	.	.	144.3
2014	2,373	1,305,563	.	.	148.6
2015	2,520	1,341,075	.	.	158.8
2016	2,622	1,351,375	.	.	165.8
2017	2,045	1,344,179	.	.	129.1
2018	1,671	1,382,801	.	.	104.8
2019	1,589	1,427,711	.	.	99.6
2020	1,352	1,420,859	.	.	85.8



**NOMINAL TAXABLE RETAIL SALES  
(million\$)**

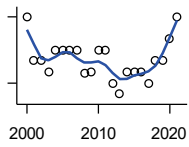
Kansas Department of Revenue

Year	County	State of Kansas	Non Metro Kansas	County Rank	Per 1000 or \$ Per Capita
2000	79.2	30,119.0	8,831.7	41	4.7
2001	71.6	30,202.2	8,700.3	41	4.3
2002	68.7	29,380.8	8,241.5	41	4.1
2003	70.6	30,694.0	8,710.6	41	4.2
2004	77.1	31,922.6	9,062.5	41	4.6
2005	79.9	32,924.2	9,386.6	43	4.7
2006	83.9	34,937.6	10,042.1	42	5.0
2007	84.2	36,180.1	10,553.2	43	5.1
2008	80.1	37,559.5	11,126.9	48	4.9
2009	77.1	35,211.8	10,351.5	48	4.7
2010	80.6	35,655.7	10,606.1	46	4.9
2011	78.7	37,257.0	11,153.5	50	4.8
2012	77.1	38,988.8	11,749.1	53	4.8
2013	81.0	40,009.0	11,993.8	52	5.0
2014	85.5	41,299.0	12,365.4	53	5.4
2015	84.9	41,635.8	11,747.6	47	5.4
2016	82.0	42,040.2	11,523.5	48	5.2
2017	87.0	41,940.1	11,449.9	46	5.5
2018	88.0	42,732.3	11,643.9	48	5.5
2019	91.4	43,732.5	12,062.7	48	5.7
2020	98.6	43,689.9	12,331.7	49	6.3
2021	110.0	48,532.8	13,413.0	46	7.0

County: county value. Kansas: state value. County Rank: highest county value ranked #1. (\$000): thousands of dollars. Nonmetro Kansas: Kansas total less Metropolitan Areas as defined by the Office of Management and Budget (OMB; released 3/6/2020). Per 1000: For nonmoney amounts, Per 1000=(county value / county population for the same year as the data) x 1000. \$ Per capita=(county value / county population for the same year as the data). Value= . indicates missing or suppressed data or value not calculated.

**Business**

RETAIL PULL FACTOR



Kansas Direct Program, Kansas State University Cooperative Extension Service (1980-1999); Kansas Department of Revenue (2000- )

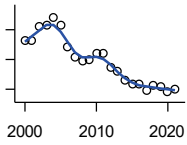
Year	County	State of Kansas	Non Metro Kansas	County Rank	Per 1000 or \$ Per Capita
2000	0.42	.	.	90	.
2001	0.38	.	.	91	.
2002	0.38	.	.	91	.
2003	0.37	.	.	95	.
2004	0.39	.	.	95	.
2005	0.39	.	.	95	.
2006	0.39	.	.	97	.
2007	0.39	.	.	98	.
2008	0.37	.	.	102	.
2009	0.37	.	.	102	.
2010	0.39	.	.	102	.
2011	0.39	.	.	101	.
2012	0.36	.	.	102	.
2013	0.35	.	.	102	.
2014	0.37	.	.	103	.
2015	0.37	.	.	102	.
2016	0.37	.	.	105	.
2017	0.36	.	.	105	.
2018	0.38	.	.	102	.
2019	0.38	.	.	102	.
2020	0.40	.	.	100	.
2021	0.42	.	.	102	.

County: county value. Kansas: state value. County Rank: highest county value ranked #1. (\$000): thousands of dollars. Nonmetro Kansas: Kansas total less Metropolitan Areas as defined by the Office of Management and Budget (OMB; released 3/6/2020). Per 1000: For nonmoney amounts, Per 1000=(county value / county population for the same year as the data) x 1000. \$ Per capita=(county value / county population for the same year as the data). Value= . indicates missing or suppressed data or value not calculated.

**Employment**

CIVILIAN LABOR FORCE (BLS-Place of Residence; 1990- )

U.S. Department of Labor, Bureau of Labor Statistics (BLS)



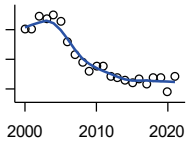
Year	County	State of Kansas	Non Metro Kansas	County Rank	Per 1000 or \$ Per Capita
2000	8,821	1,402,606	482,229	31	527.8
2001	8,820	1,398,521	475,280	31	529.5
2002	9,048	1,419,335	482,428	31	542.2
2003	9,086	1,441,065	490,161	31	543.4
2004	9,209	1,458,910	494,509	31	546.8
2005	9,081	1,458,767	490,047	31	538.3
2006	8,716	1,467,553	498,594	34	524.0
2007	8,537	1,485,414	497,048	34	518.4
2008	8,473	1,493,365	504,522	34	515.4
2009	8,506	1,512,572	516,311	34	521.9
2010	8,613	1,500,463	492,594	31	528.6
2011	8,602	1,498,000	492,563	31	526.4
2012	8,371	1,490,808	489,349	31	517.5
2013	8,294	1,489,395	485,484	31	515.8
2014	8,150	1,494,203	481,813	31	510.3
2015	8,078	1,493,782	477,546	31	509.2
2016	8,094	1,491,961	468,258	31	511.9
2017	7,988	1,488,346	461,063	31	504.2
2018	8,057	1,488,027	456,866	31	505.5
2019	8,044	1,497,517	455,858	31	504.4
2020	7,950	1,493,706	452,935	31	504.2
2021	8,001	1,495,665	453,398	31	507.4

County: county value. Kansas: state value. County Rank: highest county value ranked #1. (\$000): thousands of dollars. Nonmetro Kansas: Kansas total less Metropolitan Areas as defined by the Office of Management and Budget (OMB; released 3/6/2020). Per 1000: For nonmoney amounts, Per 1000=(county value / county population for the same year as the data) x 1000. \$ Per capita=(county value / county population for the same year as the data). Value= . indicates missing or suppressed data or value not calculated.

**Employment**

EMPLOYED (BLS-Place of Residence; 1990- )

U.S. Department of Labor, Bureau of Labor Statistics (BLS)

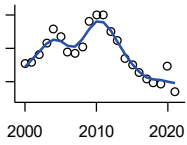


Year	County	State of Kansas	Non Metro Kansas	County Rank	Per 1000 or \$ Per Capita
2000	8,416	1,349,841	464,962	31	503.6
2001	8,401	1,338,775	455,154	32	504.4
2002	8,584	1,347,163	461,241	31	514.4
2003	8,554	1,361,115	467,622	31	511.5
2004	8,596	1,378,355	470,330	31	510.4
2005	8,514	1,384,654	467,722	31	504.7
2006	8,236	1,402,950	479,174	34	495.2
2007	8,069	1,422,109	477,983	34	490.0
2008	7,968	1,425,022	484,056	34	484.7
2009	7,843	1,408,142	485,797	34	481.3
2010	7,912	1,396,172	461,635	31	485.5
2011	7,903	1,402,198	463,723	31	483.6
2012	7,769	1,405,638	463,376	31	480.3
2013	7,744	1,410,470	461,405	31	481.6
2014	7,710	1,426,892	461,797	31	482.8
2015	7,676	1,431,533	457,899	31	483.8
2016	7,738	1,431,920	449,356	31	489.4
2017	7,674	1,434,516	445,003	31	484.4
2018	7,760	1,439,329	442,716	31	486.9
2019	7,761	1,450,705	442,108	31	486.6
2020	7,556	1,408,965	433,229	31	479.3
2021	7,764	1,447,323	441,159	31	492.4

County: county value. Kansas: state value. County Rank: highest county value ranked #1. (\$000): thousands of dollars. Nonmetro Kansas: Kansas total less Metropolitan Areas as defined by the Office of Management and Budget (OMB; released 3/6/2020). Per 1000: For nonmoney amounts, Per 1000=(county value / county population for the same year as the data) x 1000. \$ Per capita=(county value / county population for the same year as the data). Value= . indicates missing or suppressed data or value not calculated.

**Employment**

UNEMPLOYED (BLS-Place of Residence; 1990- )



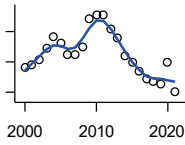
U.S. Department of Labor, Bureau of Labor Statistics (BLS)

Year	County	State of Kansas	Non Metro Kansas	County Rank	Per 1000 or \$ Per Capita
2000	405	52,765	17,267	27	24.2
2001	419	59,746	20,126	29	25.2
2002	464	72,172	21,187	28	27.8
2003	532	79,950	22,539	26	31.8
2004	613	80,555	24,179	27	36.4
2005	567	74,113	22,325	26	33.6
2006	480	64,603	19,420	26	28.9
2007	468	63,305	19,065	28	28.4
2008	505	68,343	20,466	27	30.7
2009	663	104,430	30,514	29	40.7
2010	701	104,291	30,959	29	43.0
2011	699	95,802	28,840	28	42.8
2012	602	85,170	25,973	31	37.2
2013	550	78,925	24,079	32	34.2
2014	440	67,311	20,016	32	27.6
2015	402	62,249	19,647	33	25.3
2016	356	60,041	18,902	34	22.5
2017	314	53,830	16,060	33	19.8
2018	297	48,698	14,150	32	18.6
2019	283	46,812	13,750	32	17.7
2020	394	84,741	19,706	32	25.0
2021	237	48,342	12,239	34	15.0

County: county value. Kansas: state value. County Rank: highest county value ranked #1. (\$000): thousands of dollars. Nonmetro Kansas: Kansas total less Metropolitan Areas as defined by the Office of Management and Budget (OMB; released 3/6/2020). Per 1000: For nonmoney amounts, Per 1000=(county value / county population for the same year as the data) x 1000. \$ Per capita=(county value / county population for the same year as the data). Value= . indicates missing or suppressed data or value not calculated.

**Employment**

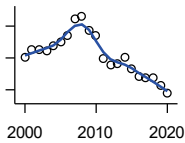
UNEMPLOYMENT RATE (BLS-Place of Residence; 1990- )



U.S. Department of Labor, Bureau of Labor Statistics (BLS)

Year	County	State of Kansas	Non Metro Kansas	County Rank	Per 1000 or \$ Per Capita
2000	4.6	3.8	3.6	15	.
2001	4.8	4.3	4.2	24	.
2002	5.1	5.1	4.4	24	.
2003	5.9	5.5	4.6	18	.
2004	6.7	5.5	4.9	8	.
2005	6.2	5.1	4.6	8	.
2006	5.5	4.4	3.9	4	.
2007	5.5	4.3	3.8	5	.
2008	6.0	4.6	4.1	3	.
2009	7.8	6.9	5.9	20	.
2010	8.1	7.0	6.3	19	.
2011	8.1	6.4	5.9	12	.
2012	7.2	5.7	5.3	12	.
2013	6.6	5.3	5.0	10	.
2014	5.4	4.5	4.2	11	.
2015	5.0	4.2	4.1	15	.
2016	4.4	4.0	4.0	26	.
2017	3.9	3.6	3.5	24	.
2018	3.7	3.3	3.1	16	.
2019	3.5	3.1	3.0	18	.
2020	5.0	5.7	4.4	31	.
2021	3.0	3.2	2.7	29	.

BEA EMPLOYMENT: TOTAL (Place of Work)



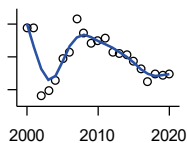
U.S. Bureau of Economic Analysis, Regional Economic Information System (REIS)

Year	County	State of Kansas	Non Metro Kansas	County Rank	Per 1000 or \$ Per Capita
2000	6,001	1,760,312	604,361	43	359.1
2001	6,133	1,767,601	592,672	42	368.2
2002	6,125	1,746,077	585,387	41	367.0
2003	6,114	1,733,694	577,860	42	365.6
2004	6,194	1,750,876	578,750	41	367.7
2005	6,252	1,765,650	577,562	41	370.6
2006	6,353	1,795,507	583,041	41	382.0
2007	6,616	1,844,355	591,924	41	401.7
2008	6,655	1,858,069	594,368	41	404.8
2009	6,431	1,813,184	580,972	41	394.6
2010	6,346	1,801,873	579,758	42	389.4
2011	5,989	1,819,044	583,725	43	366.5
2012	5,894	1,841,393	591,748	43	364.4
2013	5,917	1,869,054	597,236	44	368.0
2014	6,002	1,895,859	601,291	43	375.8
2015	5,829	1,910,954	598,589	45	367.4
2016	5,714	1,916,152	592,580	45	361.4
2017	5,693	1,914,179	584,337	45	359.4
2018	5,679	1,926,242	580,213	44	356.3
2019	5,572	1,925,204	574,496	44	349.4
2020	5,440	1,851,247	556,671	44	345.0

County: county value. Kansas: state value. County Rank: highest county value ranked #1. (\$000): thousands of dollars. Nonmetro Kansas: Kansas total less Metropolitan Areas as defined by the Office of Management and Budget (OMB; released 3/6/2020). Per 1000: For nonmoney amounts, Per 1000=(county value / county population for the same year as the data) x 1000. \$ Per capita=(county value / county population for the same year as the data). Value= . indicates missing or suppressed data or value not calculated.

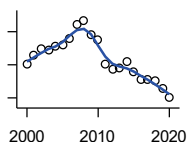
**Employment**

**BEA EMPLOYMENT: FARM**



U.S. Bureau of Economic Analysis,  
Regional Economic Information System  
(REIS)

Year	County	State of Kansas	Non Metro Kansas	County Rank	Per 1000 or \$ Per Capita
2000	994	77,477	59,088	21	59.5
2001	994	78,177	59,647	23	59.7
2002	890	70,532	53,893	24	53.3
2003	898	68,516	52,099	22	53.7
2004	915	67,586	51,246	17	54.3
2005	948	66,829	50,386	17	56.2
2006	957	64,910	48,728	14	57.5
2007	1,008	65,639	49,037	13	61.2
2008	986	63,820	47,682	13	60.0
2009	971	62,798	46,960	12	59.6
2010	974	63,882	47,984	13	59.8
2011	979	65,761	49,707	13	59.9
2012	958	63,753	48,167	13	59.2
2013	956	62,739	47,255	13	59.5
2014	954	64,308	48,722	13	59.7
2015	944	64,416	48,927	15	59.5
2016	931	63,840	48,539	15	58.9
2017	912	61,876	46,936	15	57.6
2018	924	63,233	48,069	15	58.0
2019	921	63,300	48,167	16	57.7
2020	924	64,281	49,038	16	58.6



**BEA EMPLOYMENT: NON-FARM**

U.S. Bureau of Economic Analysis,  
Regional Economic Information System  
(REIS)

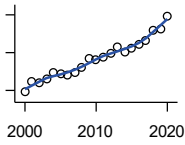
Year	County	State of Kansas	Non Metro Kansas	County Rank	Per 1000 or \$ Per Capita
2000	5,007	1,682,835	545,273	45	299.6
2001	5,139	1,689,424	533,025	45	308.5
2002	5,235	1,675,545	531,494	43	313.7
2003	5,216	1,665,178	525,761	43	311.9
2004	5,279	1,683,290	527,504	44	313.4
2005	5,304	1,698,821	527,176	45	314.4
2006	5,396	1,730,597	534,313	44	324.4
2007	5,608	1,778,716	542,887	43	340.5
2008	5,669	1,794,249	546,686	42	344.9
2009	5,460	1,750,386	534,012	43	335.0
2010	5,372	1,737,991	531,774	43	329.7
2011	5,010	1,753,283	534,018	45	306.6
2012	4,936	1,777,640	543,581	46	305.1
2013	4,961	1,806,315	549,981	46	308.5
2014	5,048	1,831,551	552,569	45	316.1
2015	4,885	1,846,538	549,662	46	307.9
2016	4,783	1,852,312	544,041	47	302.5
2017	4,781	1,852,303	537,401	46	301.8
2018	4,755	1,863,009	532,144	45	298.3
2019	4,651	1,861,904	526,329	45	291.6
2020	4,516	1,786,966	507,633	45	286.4

County: county value. Kansas: state value. County Rank: highest county value ranked #1. (\$000): thousands of dollars. Nonmetro Kansas: Kansas total less Metropolitan Areas as defined by the Office of Management and Budget (OMB; released 3/6/2020). Per 1000: For nonmoney amounts, Per 1000=(county value / county population for the same year as the data) x 1000. \$ Per capita=(county value / county population for the same year as the data). Value= . indicates missing or suppressed data or value not calculated.



**Employment**

**AVERAGE WAGE PER JOB (\$)**



U.S. Bureau of Economic Analysis,  
Regional Economic Information System  
(REIS)

Year	County	State of Kansas	Non Metro Kansas	County Rank	Per 1000 or \$ Per Capita
2000	14,527	31,854	24,396	101	.
2001	17,391	32,859	26,379	103	.
2002	17,095	33,707	26,331	99	.
2003	18,156	35,078	28,911	104	.
2004	19,827	35,932	29,747	100	.
2005	19,454	37,467	31,646	105	.
2006	19,037	40,038	31,993	102	.
2007	19,577	41,500	33,484	105	.
2008	21,129	44,197	36,256	105	.
2009	23,438	43,860	35,739	103	.
2010	22,991	45,370	38,631	105	.
2011	23,819	48,280	42,324	105	.
2012	24,683	50,549	42,015	105	.
2013	26,563	52,629	46,073	105	.
2014	25,286	51,959	43,562	103	.
2015	26,247	52,250	42,320	102	.
2016	27,127	51,664	41,964	96	.
2017	28,057	53,007	42,137	93	.
2018	30,925	54,790	44,514	100	.
2019	31,257	56,956	45,336	97	.
2020	34,625	60,597	49,183	97	.

**BEA EMPLOYMENT: FORESTRY, FISHING, HUNTING, AND AG SUPPORT**

U.S. Bureau of Economic Analysis,  
Regional Economic Information System  
(REIS)

Year	County	State of Kansas	Non Metro Kansas	County Rank	Per 1000 or \$ Per Capita
2001	.	7,059	.	.	.
2002	.	8,045	.	.	.
2003	.	7,313	.	.	.
2004	.	7,623	.	.	.
2005	.	7,962	.	.	.
2006	.	7,748	.	.	.
2007	.	8,228	.	.	.
2008	.	8,646	.	.	.
2009	.	8,982	.	.	.
2010	.	9,251	.	.	.
2011	.	9,410	.	.	.
2012	.	9,691	.	.	.
2013	.	10,014	.	.	.
2014	.	10,708	.	.	.
2015	.	10,020	.	.	.
2016	.	10,383	.	.	.

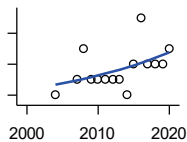
County: county value. Kansas: state value. County Rank: highest county value ranked #1. (\$000): thousands of dollars. Nonmetro Kansas: Kansas total less Metropolitan Areas as defined by the Office of Management and Budget (OMB; released 3/6/2020). Per 1000: For nonmoney amounts, Per 1000=(county value / county population for the same year as the data) x 1000. \$ Per capita=(county value / county population for the same year as the data). Value= . indicates missing or suppressed data or value not calculated.

**Employment**

**BEA EMPLOYMENT: MINING**

U.S. Bureau of Economic Analysis,  
Regional Economic Information System  
(REIS)

Year	County	State of Kansas	Non Metro Kansas	County Rank	Per 1000 or \$ Per Capita
2001	.	19,592	.	.	.
2002	.	17,635	.	.	.
2003	.	19,869	.	.	.
2004	.	18,466	.	.	.
2005	.	19,489	.	.	.
2006	.	22,403	.	.	.
2007	.	24,043	.	.	.
2008	.	31,467	.	.	.
2009	.	29,941	.	.	.
2010	.	36,124	.	.	.
2011	.	31,658	.	.	.
2012	.	42,405	.	.	.
2013	.	46,585	.	.	.
2014	.	45,526	.	.	.
2015	.	46,460	.	.	.
2016	.	48,555	.	.	.



**BEA EMPLOYMENT: UTILITIES**

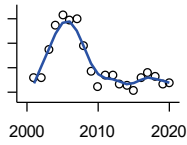
U.S. Bureau of Economic Analysis,  
Regional Economic Information System  
(REIS)

Year	County	State of Kansas	Non Metro Kansas	County Rank	Per 1000 or \$ Per Capita
2001	.	7,608	.	.	.
2002	.	7,087	.	.	.
2003	.	7,253	.	.	.
2004	1	7,356	.	31	.
2005	.	7,447	.	.	.
2006	.	7,478	.	.	.
2007	2	7,584	.	24	.
2008	4	7,855	.	19	.
2009	2	7,941	.	26	.
2010	2	8,028	.	23	.
2011	2	8,213	.	22	.
2012	2	8,155	.	17	.
2013	2	7,949	.	15	.
2014	1	7,985	.	26	.
2015	3	7,040	.	24	.
2016	6	7,133	.	12	.
2017	3	6,838	.	24	.
2018	3	6,639	.	15	.
2019	3	6,492	.	25	.
2020	4	6,573	.	26	.

County: county value. Kansas: state value. County Rank: highest county value ranked #1. (\$000): thousands of dollars. Nonmetro Kansas: Kansas total less Metropolitan Areas as defined by the Office of Management and Budget (OMB; released 3/6/2020). Per 1000: For nonmoney amounts, Per 1000=(county value / county population for the same year as the data) x 1000. \$ Per capita=(county value / county population for the same year as the data). Value= . indicates missing or suppressed data or value not calculated.

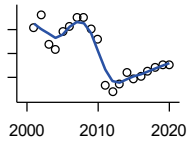
**Employment**

**BEA EMPLOYMENT:  
CONSTRUCTION**



U.S. Bureau of Economic Analysis,  
Regional Economic Information System  
(REIS)

Year	County	State of Kansas	Non Metro Kansas	County Rank	Per 1000 or \$ Per Capita
2001	381	92,647	27,972	34	.
2002	380	90,370	.	31	.
2003	436	91,725	26,681	31	.
2004	486	93,271	.	30	.
2005	508	94,836	.	30	.
2006	498	97,449	.	29	.
2007	499	99,119	29,179	31	.
2008	446	97,741	.	34	.
2009	393	90,165	28,077	35	.
2010	362	84,708	26,402	34	.
2011	386	83,332	25,999	33	.
2012	386	85,966	.	33	.
2013	367	88,094	.	35	.
2014	365	91,143	.	38	.
2015	354	91,458	27,583	36	.
2016	381	93,539	27,151	37	.
2017	391	92,046	25,579	35	.
2018	382	92,985	25,530	32	.
2019	367	94,858	25,701	34	.
2020	370	94,186	26,085	38	.



**BEA EMPLOYMENT:  
MANUFACTURING**

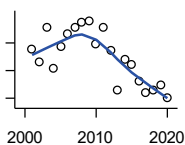
U.S. Bureau of Economic Analysis,  
Regional Economic Information System  
(REIS)

Year	County	State of Kansas	Non Metro Kansas	County Rank	Per 1000 or \$ Per Capita
2001	255	199,980	73,170	52	.
2002	281	188,905	70,691	49	.
2003	219	179,013	68,418	55	.
2004	208	181,738	69,669	56	.
2005	245	185,459	71,072	53	.
2006	258	188,047	71,704	52	.
2007	276	192,930	73,488	50	.
2008	276	193,116	72,235	50	.
2009	252	173,854	64,961	49	.
2010	229	166,000	62,884	50	.
2011	133	167,302	64,361	65	.
2012	119	169,308	65,944	67	.
2013	137	170,113	67,251	67	.
2014	160	169,307	68,299	65	.
2015	147	168,324	66,978	64	.
2016	152	167,723	65,796	62	.
2017	163	168,438	66,795	61	.
2018	172	171,778	68,181	59	.
2019	177	173,605	67,879	58	.
2020	176	165,228	65,658	59	.

County: county value. Kansas: state value. County Rank: highest county value ranked #1. (\$000): thousands of dollars. Nonmetro Kansas: Kansas total less Metropolitan Areas as defined by the Office of Management and Budget (OMB; released 3/6/2020). Per 1000: For nonmoney amounts, Per 1000=(county value / county population for the same year as the data) x 1000. \$ Per capita=(county value / county population for the same year as the data). Value= . indicates missing or suppressed data or value not calculated.

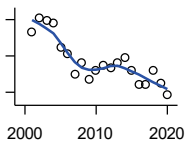
**Employment**

**BEA EMPLOYMENT: WHOLESALE TRADE**



U.S. Bureau of Economic Analysis,  
Regional Economic Information System  
(REIS)

Year	County	State of Kansas	Non Metro Kansas	County Rank	Per 1000 or \$ Per Capita
2001	136	65,698	.	56	.
2002	126	65,408	.	55	.
2003	151	63,504	.	39	.
2004	122	64,434	.	52	.
2005	137	64,587	.	43	.
2006	147	64,743	.	40	.
2007	151	65,993	.	40	.
2008	155	67,693	.	38	.
2009	156	65,954	.	39	.
2010	139	64,376	.	47	.
2011	151	64,712	.	44	.
2012	135	63,973	.	50	.
2013	106	64,999	.	58	.
2014	128	69,295	.	53	.
2015	124	68,444	.	57	.
2016	112	64,843	.	58	.
2017	104	65,014	.	59	.
2018	106	64,745	.	58	.
2019	110	63,324	.	55	.
2020	100	60,844	.	63	.



**BEA EMPLOYMENT: RETAIL TRADE**

U.S. Bureau of Economic Analysis,  
Regional Economic Information System  
(REIS)

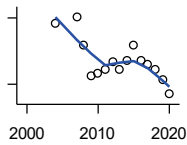
Year	County	State of Kansas	Non Metro Kansas	County Rank	Per 1000 or \$ Per Capita
2001	765	198,069	.	36	.
2002	805	196,112	.	35	.
2003	799	194,545	64,173	38	.
2004	792	192,957	63,265	37	.
2005	725	191,656	62,506	39	.
2006	707	190,391	62,082	40	.
2007	648	190,643	61,716	42	.
2008	681	185,907	59,783	41	.
2009	637	181,262	58,714	39	.
2010	660	177,858	57,470	39	.
2011	673	180,548	57,734	38	.
2012	666	180,596	57,349	39	.
2013	680	183,245	57,556	38	.
2014	694	185,899	57,855	37	.
2015	661	188,421	58,516	38	.
2016	623	188,505	57,864	41	.
2017	622	186,633	56,715	39	.
2018	661	183,323	.	37	.
2019	625	177,240	53,427	38	.
2020	592	171,777	52,563	39	.

County: county value. Kansas: state value. County Rank: highest county value ranked #1. (\$000): thousands of dollars. Nonmetro Kansas: Kansas total less Metropolitan Areas as defined by the Office of Management and Budget (OMB; released 3/6/2020). Per 1000: For nonmoney amounts, Per 1000=(county value / county population for the same year as the data) x 1000. \$ Per capita=(county value / county population for the same year as the data). Value= . indicates missing or suppressed data or value not calculated.

**Employment**

**BEA EMPLOYMENT:  
TRANSPORTATION AND  
WAREHOUSING**

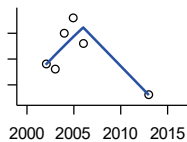
U.S. Bureau of Economic Analysis,  
Regional Economic Information System  
(REIS)



Year	County	State of Kansas	Non Metro Kansas	County Rank	Per 1000 or \$ Per Capita
2001	.	56,302	.	.	.
2002	.	55,319	.	.	.
2003	.	55,509	.	.	.
2004	175	55,479	.	25	.
2005	.	56,287	.	.	.
2006	.	57,506	.	.	.
2007	181	59,277	.	27	.
2008	155	58,725	.	30	.
2009	128	56,238	.	33	.
2010	130	55,179	.	28	.
2011	134	57,449	.	24	.
2012	140	59,756	.	24	.
2013	134	59,780	.	29	.
2014	141	60,565	.	29	.
2015	156	63,256	.	27	.
2016	141	65,705	.	25	.
2017	138	70,641	.	30	.
2018	133	75,308	.	29	.
2019	124	81,209	.	33	.
2020	111	80,543	.	40	.

**BEA EMPLOYMENT: INFORMATION**

U.S. Bureau of Economic Analysis,  
Regional Economic Information System  
(REIS)

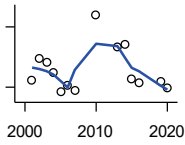


Year	County	State of Kansas	Non Metro Kansas	County Rank	Per 1000 or \$ Per Capita
2001	.	54,895	.	.	.
2002	24	50,728	.	64	.
2003	23	48,328	6,860	65	.
2004	30	45,617	.	55	.
2005	33	43,840	.	50	.
2006	28	43,925	.	51	.
2007	.	45,115	.	.	.
2008	.	42,958	.	.	.
2009	.	38,677	.	.	.
2010	.	33,432	.	.	.
2011	.	32,160	.	.	.
2012	.	31,829	.	.	.
2013	18	31,737	.	58	.
2014	.	32,316	.	.	.
2015	.	25,282	.	.	.
2016	.	24,998	.	.	.

County: county value. Kansas: state value. County Rank: highest county value ranked #1. (\$000): thousands of dollars. Nonmetro Kansas: Kansas total less Metropolitan Areas as defined by the Office of Management and Budget (OMB; released 3/6/2020). Per 1000: For nonmoney amounts, Per 1000=(county value / county population for the same year as the data) x 1000. \$ Per capita=(county value / county population for the same year as the data). Value= . indicates missing or suppressed data or value not calculated.

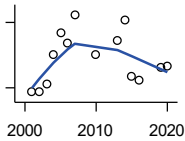
**Employment**

**BEA EMPLOYMENT: FINANCE AND INSURANCE**



U.S. Bureau of Economic Analysis,  
Regional Economic Information System  
(REIS)

Year	County	State of Kansas	Non Metro Kansas	County Rank	Per 1000 or \$ Per Capita
2001	227	76,118	.	35	.
2002	249	78,206	.	33	.
2003	245	78,441	.	37	.
2004	235	78,350	.	34	.
2005	215	78,952	.	38	.
2006	222	80,900	.	37	.
2007	217	86,094	.	39	.
2008	.	89,590	.	.	.
2009	.	93,573	.	.	.
2010	292	92,428	.	33	.
2011	.	99,495	.	.	.
2012	.	98,640	.	.	.
2013	260	99,998	.	37	.
2014	262	98,209	.	36	.
2015	228	100,534	.	38	.
2016	225	102,699	.	41	.
2019	226	100,276	.	42	.
2020	219	101,626	.	41	.



**BEA EMPLOYMENT: REAL ESTATE, RENTAL, AND LEASING**

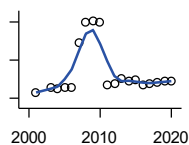
U.S. Bureau of Economic Analysis,  
Regional Economic Information System  
(REIS)

Year	County	State of Kansas	Non Metro Kansas	County Rank	Per 1000 or \$ Per Capita
2001	137	45,237	.	30	.
2002	136	44,970	.	30	.
2003	144	47,095	.	30	.
2004	170	50,181	.	28	.
2005	190	53,335	.	26	.
2006	181	55,342	.	29	.
2007	207	57,694	.	27	.
2008	.	57,933	.	.	.
2009	.	57,132	.	.	.
2010	171	59,578	.	33	.
2011	.	61,821	.	.	.
2012	.	60,432	.	.	.
2013	184	62,134	.	33	.
2014	202	64,705	.	31	.
2015	151	66,604	.	38	.
2016	147	68,395	.	40	.
2019	159	69,119	.	37	.
2020	160	68,452	.	38	.

County: county value. Kansas: state value. County Rank: highest county value ranked #1. (\$000): thousands of dollars. Nonmetro Kansas: Kansas total less Metropolitan Areas as defined by the Office of Management and Budget (OMB; released 3/6/2020). Per 1000: For nonmoney amounts, Per 1000=(county value / county population for the same year as the data) x 1000. \$ Per capita=(county value / county population for the same year as the data). Value= . indicates missing or suppressed data or value not calculated.

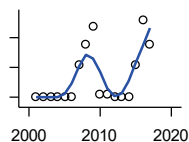
**Employment**

**BEA EMPLOYMENT: PROFESSIONAL AND TECHNICAL SERVICES**



U.S. Bureau of Economic Analysis, Regional Economic Information System (REIS)

Year	County	State of Kansas	Non Metro Kansas	County Rank	Per 1000 or \$ Per Capita
2001	131	81,396	.	39	.
2002	.	80,684	.	.	.
2003	159	80,311	.	28	.
2004	151	85,550	.	29	.
2005	158	85,003	.	32	.
2006	155	87,381	.	32	.
2007	394	92,717	.	21	.
2008	497	95,362	.	19	.
2009	506	93,232	.	17	.
2010	499	93,037	.	19	.
2011	173	93,237	.	34	.
2012	178	95,360	.	36	.
2013	202	100,795	.	36	.
2014	191	102,210	.	37	.
2015	195	105,625	.	36	.
2016	172	108,059	.	34	.
2017	176	109,041	.	33	.
2018	180	110,513	.	34	.
2019	191	109,637	.	35	.
2020	188	108,634	.	34	.



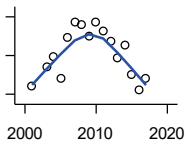
**BEA EMPLOYMENT: MANAGEMENT OF COMPANIES AND ENTERPRISES**

U.S. Bureau of Economic Analysis, Regional Economic Information System (REIS)

Year	County	State of Kansas	Non Metro Kansas	County Rank	Per 1000 or \$ Per Capita
2001	0	13,832	.	70	.
2002	0	12,576	.	69	.
2003	0	11,135	.	67	.
2004	0	10,614	.	67	.
2005	0	11,811	.	66	.
2006	0	13,061	.	66	.
2007	11	13,398	.	22	.
2008	18	15,234	.	26	.
2009	24	14,849	.	22	.
2010	1	16,579	.	30	.
2011	1	15,343	.	31	.
2012	0	15,075	.	82	.
2013	0	16,667	.	81	.
2014	0	20,441	.	79	.
2015	11	29,604	.	36	.
2016	26	27,824	.	28	.
2017	18	27,767	.	26	.

County: county value. Kansas: state value. County Rank: highest county value ranked #1. (\$000): thousands of dollars. Nonmetro Kansas: Kansas total less Metropolitan Areas as defined by the Office of Management and Budget (OMB; released 3/6/2020). Per 1000: For nonmoney amounts, Per 1000=(county value / county population for the same year as the data) x 1000. \$ Per capita=(county value / county population for the same year as the data). Value= . indicates missing or suppressed data or value not calculated.

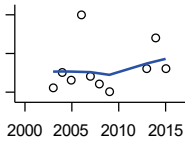
**Employment**



**BEA EMPLOYMENT:  
ADMINISTRATIVE AND WASTE  
SERVICES**

U.S. Bureau of Economic Analysis,  
Regional Economic Information System  
(REIS)

Year	County	State of Kansas	Non Metro Kansas	County Rank	Per 1000 or \$ Per Capita
2001	148	81,573	.	29	.
2002	.	82,992	.	.	.
2003	168	81,298	.	28	.
2004	179	85,721	.	29	.
2005	157	89,933	.	30	.
2006	199	93,688	.	29	.
2007	214	98,865	.	29	.
2008	212	97,440	.	30	.
2009	200	92,455	.	34	.
2010	214	93,675	.	29	.
2011	205	97,969	.	32	.
2012	195	100,490	.	33	.
2013	178	104,680	.	35	.
2014	191	107,218	18,836	35	.
2015	160	103,436	18,767	39	.
2016	145	103,233	18,428	41	.
2017	156	101,532	18,198	39	.



**BEA EMPLOYMENT: EDUCATIONAL  
SERVICES**

U.S. Bureau of Economic Analysis,  
Regional Economic Information System  
(REIS)

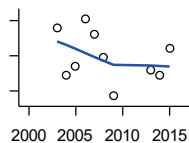
Year	County	State of Kansas	Non Metro Kansas	County Rank	Per 1000 or \$ Per Capita
2001	.	21,169	.	.	.
2002	.	22,173	.	.	.
2003	11	22,651	.	33	.
2004	15	21,601	.	35	.
2005	13	22,177	.	32	.
2006	30	22,438	.	19	.
2007	14	23,647	.	27	.
2008	12	24,653	.	31	.
2009	10	25,120	.	27	.
2010	.	26,071	.	.	.
2011	.	26,080	.	.	.
2012	.	26,625	.	.	.
2013	16	27,508	.	29	.
2014	24	28,708	.	26	.
2015	16	28,794	.	29	.
2016	.	27,996	.	.	.

County: county value. Kansas: state value. County Rank: highest county value ranked #1. (\$000): thousands of dollars. Nonmetro Kansas: Kansas total less Metropolitan Areas as defined by the Office of Management and Budget (OMB; released 3/6/2020). Per 1000: For nonmoney amounts, Per 1000=(county value / county population for the same year as the data) x 1000. \$ Per capita=(county value / county population for the same year as the data). Value= . indicates missing or suppressed data or value not calculated.



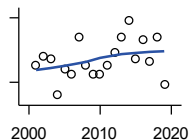
**Employment**

**BEA EMPLOYMENT: HEALTH CARE AND SOCIAL ASSISTANCE**



U.S. Bureau of Economic Analysis, Regional Economic Information System (REIS)

Year	County	State of Kansas	Non Metro Kansas	County Rank	Per 1000 or \$ Per Capita
2001	.	165,415	.	.	.
2002	.	168,198	.	.	.
2003	476	169,654	.	27	.
2004	449	172,796	.	30	.
2005	454	173,949	.	26	.
2006	481	176,919	.	23	.
2007	472	182,160	.	24	.
2008	459	186,051	.	27	.
2009	437	188,499	.	24	.
2010	.	188,383	.	.	.
2011	.	190,736	.	.	.
2012	.	192,991	.	.	.
2013	452	193,687	.	29	.
2014	449	194,632	.	28	.
2015	464	199,724	.	26	.
2016	.	201,830	.	.	.



**BEA EMPLOYMENT: ARTS, ENTERTAINMENT, AND RECREATION**

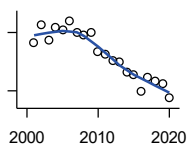
U.S. Bureau of Economic Analysis, Regional Economic Information System (REIS)

Year	County	State of Kansas	Non Metro Kansas	County Rank	Per 1000 or \$ Per Capita
2001	78	25,012	.	30	.
2002	82	25,668	.	29	.
2003	81	24,116	.	28	.
2004	64	25,355	.	36	.
2005	76	26,067	.	35	.
2006	74	26,505	.	35	.
2007	91	27,489	.	29	.
2008	78	27,501	.	33	.
2009	74	27,203	.	32	.
2010	74	27,479	.	33	.
2011	78	28,487	.	31	.
2012	84	30,729	.	31	.
2013	91	31,068	.	28	.
2014	99	32,154	.	27	.
2015	81	31,169	.	30	.
2016	90	32,373	.	28	.
2017	80	33,213	.	30	.
2018	91	33,837	.	27	.
2019	69	33,082	.	34	.

County: county value. Kansas: state value. County Rank: highest county value ranked #1. (\$000): thousands of dollars. Nonmetro Kansas: Kansas total less Metropolitan Areas as defined by the Office of Management and Budget (OMB; released 3/6/2020). Per 1000: For nonmoney amounts, Per 1000=(county value / county population for the same year as the data) x 1000. \$ Per capita=(county value / county population for the same year as the data). Value= . indicates missing or suppressed data or value not calculated.

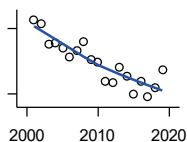
**Employment**

**BEA EMPLOYMENT: GOVERNMENT AND GOVERNMENT ENTERPRISES**



U.S. Bureau of Economic Analysis, Regional Economic Information System (REIS)

Year	County	State of Kansas	Non Metro Kansas	County Rank	Per 1000 or \$ Per Capita
2001	1,375	282,293	102,993	35	.
2002	1,419	281,427	103,581	34	.
2003	1,380	282,459	103,389	34	.
2004	1,413	283,877	103,946	33	.
2005	1,408	282,798	103,194	34	.
2006	1,430	288,372	104,103	34	.
2007	1,399	294,413	104,598	35	.
2008	1,394	298,580	104,718	35	.
2009	1,401	300,422	104,081	35	.
2010	1,351	303,875	103,382	35	.
2011	1,345	299,952	101,535	35	.
2012	1,328	298,068	101,180	35	.
2013	1,325	297,689	101,232	35	.
2014	1,298	296,956	100,634	35	.
2015	1,291	295,799	99,719	35	.
2016	1,250	291,536	98,520	35	.
2017	1,285	295,748	99,542	35	.
2018	1,275	298,105	99,499	35	.
2019	1,268	302,017	100,227	36	.
2020	1,231	292,583	96,477	36	.



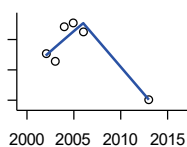
**BEA EMPLOYMENT: ACCOMMODATION AND FOOD SERVICES**

U.S. Bureau of Economic Analysis, Regional Economic Information System (REIS)

Year	County	State of Kansas	Non Metro Kansas	County Rank	Per 1000 or \$ Per Capita
2001	248	103,353	.	38	.
2002	244	103,692	.	42	.
2003	226	105,138	.	39	.
2004	227	106,694	.	41	.
2005	222	107,303	.	42	.
2006	214	109,888	.	47	.
2007	220	110,863	.	41	.
2008	228	111,092	.	38	.
2009	211	109,353	.	42	.
2010	209	108,628	.	38	.
2011	192	110,514	.	39	.
2012	190	112,574	.	41	.
2013	204	114,102	.	41	.
2014	196	115,768	.	42	.
2015	180	118,503	.	40	.
2016	192	119,764	.	41	.
2017	177	121,181	.	41	.
2018	186	121,900	.	39	.
2019	202	122,819	.	39	.

County: county value. Kansas: state value. County Rank: highest county value ranked #1. (\$000): thousands of dollars. Nonmetro Kansas: Kansas total less Metropolitan Areas as defined by the Office of Management and Budget (OMB; released 3/6/2020). Per 1000: For nonmoney amounts, Per 1000=(county value / county population for the same year as the data) x 1000. \$ Per capita=(county value / county population for the same year as the data). Value= . indicates missing or suppressed data or value not calculated.

**Employment**

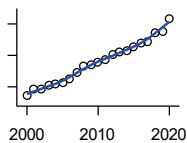


BEA EMPLOYMENT: OTHER SERVICES, EXCEPT PUBLIC ADMINISTRATION

U.S. Bureau of Economic Analysis, Regional Economic Information System (REIS)

Year	County	State of Kansas	Non Metro Kansas	County Rank	Per 1000 or \$ Per Capita
2001	.	92,176	.	.	.
2002	461	95,350	.	33	.
2003	456	95,821	32,629	34	.
2004	478	95,610	.	33	.
2005	481	95,930	32,555	31	.
2006	475	96,413	.	31	.
2007	.	98,444	.	.	.
2008	.	96,705	.	.	.
2009	.	95,534	.	.	.
2010	.	93,302	.	.	.
2011	.	94,865	.	.	.
2012	.	94,977	.	.	.
2013	430	95,471	.	34	.
2014	.	97,806	.	.	.
2015	.	98,041	.	.	.
2016	.	97,219	.	.	.

**Income**



BEA PER CAPITA PERSONAL INCOME (\$)

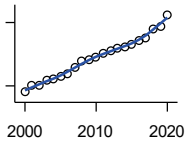
U.S. Bureau of Economic Analysis, Regional Economic Information System (REIS)

Year	County	State of Kansas	Non Metro Kansas	County Rank	Per 1000 or \$ Per Capita
2000	22,083	28,253	23,116	73	.
2001	24,288	29,112	24,576	73	.
2002	24,228	29,248	24,314	59	.
2003	25,477	30,074	26,017	73	.
2004	25,798	30,843	26,583	69	.
2005	26,231	32,545	28,356	85	.
2006	27,467	35,690	29,782	76	.
2007	29,612	38,057	32,034	90	.
2008	31,515	41,257	35,211	93	.
2009	32,208	39,431	33,876	84	.
2010	32,762	39,960	35,795	83	.
2011	33,815	43,015	39,041	91	.
2012	35,070	45,294	39,660	90	.
2013	35,954	46,174	41,747	92	.
2014	36,638	47,013	41,042	86	.
2015	37,565	47,332	40,638	83	.
2016	38,890	47,326	40,797	74	.
2017	39,487	48,756	41,314	75	.
2018	42,142	50,811	43,283	69	.
2019	42,799	52,820	44,491	75	.
2020	46,698	55,677	48,415	72	.

County: county value. Kansas: state value. County Rank: highest county value ranked #1. (\$000): thousands of dollars. Nonmetro Kansas: Kansas total less Metropolitan Areas as defined by the Office of Management and Budget (OMB; released 3/6/2020). Per 1000: For nonmoney amounts, Per 1000=(county value / county population for the same year as the data) x 1000. \$ Per capita=(county value / county population for the same year as the data). Value= . indicates missing or suppressed data or value not calculated.

**Income**

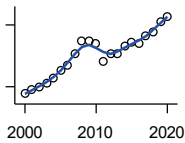
**SOURCES OF PERSONAL INCOME:  
TOTAL PERSONAL INCOME (\$000)**



U.S. Bureau of Economic Analysis,  
Regional Economic Information System  
(REIS)

Year	County	State of Kansas	Non Metro Kansas	County Rank	Per 1000 or \$ Per Capita
2000	370,019	76,105,125	22,273,838	31	22,140.9
2001	404,569	78,664,651	23,411,174	31	24,288.2
2002	404,339	79,365,190	23,000,314	31	24,227.9
2003	426,028	81,890,340	24,494,191	31	25,477.1
2004	434,523	84,335,940	24,924,467	32	25,798.4
2005	442,497	89,346,228	26,452,291	32	26,231.4
2006	456,861	98,610,188	27,661,596	33	27,467.1
2007	487,657	105,943,199	29,715,946	31	29,612.4
2008	518,080	115,852,478	32,614,565	31	31,515.3
2009	524,893	111,697,350	31,394,702	31	32,208.0
2010	533,170	114,239,828	33,291,419	31	32,719.9
2011	552,597	123,558,772	36,221,488	31	33,816.6
2012	567,393	130,948,127	36,696,759	32	35,076.2
2013	578,287	133,979,908	38,513,959	32	35,963.1
2014	585,214	136,878,718	37,680,598	32	36,644.6
2015	596,043	138,336,768	37,081,851	31	37,569.7
2016	615,855	138,533,890	36,930,885	31	38,951.0
2017	625,555	142,729,689	37,104,963	31	39,487.1
2018	670,945	148,955,739	38,589,364	31	42,097.2
2019	680,763	154,961,001	39,424,148	31	42,683.7
2020	736,420	163,462,179	42,618,591	31	46,709.4

**SOURCES OF PERSONAL INCOME:  
WAGES AND SALARIES (\$000)**

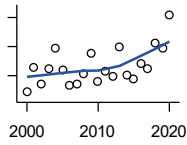


U.S. Bureau of Economic Analysis,  
Regional Economic Information System  
(REIS)

Year	County	State of Kansas	Non Metro Kansas	County Rank	Per 1000 or \$ Per Capita
2000	66,640	41,766,878	10,254,250	51	3,987.6
2001	68,512	43,269,734	10,518,206	50	4,113.1
2002	70,038	43,875,159	10,696,876	49	4,196.7
2003	71,422	44,488,560	10,894,971	49	4,271.1
2004	74,350	46,702,068	11,333,617	49	4,414.3
2005	77,971	48,537,956	11,614,130	50	4,622.1
2006	80,306	52,083,584	12,299,340	51	4,828.1
2007	85,819	55,442,368	13,093,908	51	5,211.3
2008	92,170	57,623,385	13,647,143	51	5,606.8
2009	92,300	55,605,578	13,199,674	51	5,663.6
2010	91,130	56,089,711	13,345,291	51	5,592.5
2011	82,485	58,104,706	13,856,458	56	5,047.7
2012	85,806	60,616,457	14,473,599	57	5,304.5
2013	86,007	61,872,023	14,781,792	59	5,348.7
2014	89,688	64,457,652	15,385,500	58	5,616.0
2015	91,511	66,729,598	15,454,485	58	5,768.1
2016	91,206	67,253,399	15,422,058	59	5,768.5
2017	94,459	68,830,861	15,731,853	56	5,962.6
2018	96,579	71,580,544	16,311,725	54	6,059.7
2019	101,399	74,404,771	16,882,299	53	6,357.7
2020	104,094	75,798,310	17,251,300	54	6,602.4

County: county value. Kansas: state value. County Rank: highest county value ranked #1. (\$000): thousands of dollars. Nonmetro Kansas: Kansas total less Metropolitan Areas as defined by the Office of Management and Budget (OMB; released 3/6/2020). Per 1000: For nonmoney amounts, Per 1000=(county value / county population for the same year as the data) x 1000. \$ Per capita=(county value / county population for the same year as the data). Value= . indicates missing or suppressed data or value not calculated.

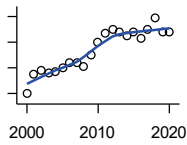
**Income**



**SOURCES OF PERSONAL INCOME:  
PROPRIETORS-FARM (\$000)**

U.S. Bureau of Economic Analysis,  
Regional Economic Information System  
(REIS)

Year	County	State of Kansas	Non Metro Kansas	County Rank	Per 1000 or \$ Per Capita
2000	-5,685	668,539	673,707	101	-340.2
2001	2,823	779,473	769,336	75	169.5
2002	-2,707	145,064	187,033	88	-162.2
2003	2,567	1,281,076	1,195,298	90	153.5
2004	9,568	1,149,425	938,524	49	568.1
2005	1,799	1,609,604	1,469,139	97	106.6
2006	-3,224	766,047	663,735	96	-193.8
2007	-2,667	1,131,607	1,040,350	101	-162.0
2008	806	1,582,092	1,404,900	89	49.0
2009	7,711	1,585,995	1,390,349	77	473.2
2010	-1,806	2,149,482	2,029,067	101	-110.8
2011	1,703	3,188,519	2,989,880	95	104.2
2012	-256	2,519,555	2,296,875	100	-15.8
2013	9,691	4,499,190	4,158,419	92	602.7
2014	286	2,231,181	2,157,992	92	17.9
2015	-1,167	1,300,733	1,294,370	89	-73.6
2016	4,292	1,577,060	1,564,511	56	271.5
2017	2,315	838,480	838,290	54	146.1
2018	11,267	1,050,662	971,690	38	706.9
2019	9,391	998,038	878,247	46	588.8
2020	20,914	2,151,349	1,887,881	45	1,326.5



**SOURCES OF PERSONAL INCOME:  
PROPRIETORS-NONFARM (\$000)**

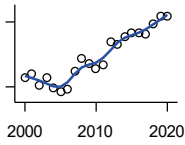
U.S. Bureau of Economic Analysis,  
Regional Economic Information System  
(REIS)

Year	County	State of Kansas	Non Metro Kansas	County Rank	Per 1000 or \$ Per Capita
2000	9,832	4,580,476	1,493,470	61	588.3
2001	17,712	4,510,530	1,855,621	43	1,063.3
2002	18,927	5,036,100	1,966,784	42	1,134.1
2003	17,839	4,719,377	1,916,735	44	1,066.8
2004	18,390	4,003,922	2,073,898	43	1,091.8
2005	19,844	4,455,294	2,200,971	47	1,176.4
2006	22,031	7,343,524	2,694,895	49	1,324.5
2007	22,030	7,280,197	2,436,574	45	1,337.7
2008	20,269	9,255,953	2,971,923	54	1,233.0
2009	24,902	9,323,551	2,858,848	46	1,528.0
2010	29,918	9,658,261	3,498,040	48	1,836.0
2011	33,513	12,196,566	4,186,007	52	2,050.9
2012	35,018	15,773,140	4,446,004	53	2,164.8
2013	33,841	16,441,660	4,492,127	56	2,104.5
2014	32,680	15,954,254	4,455,081	53	2,046.3
2015	33,813	15,536,116	4,386,172	52	2,131.3
2016	31,431	14,075,310	3,783,829	50	1,987.9
2017	34,732	15,371,957	3,908,254	45	2,192.4
2018	39,280	15,716,877	4,238,775	42	2,464.6
2019	34,194	16,705,488	3,921,051	48	2,144.0
2020	33,962	16,718,952	3,823,329	47	2,154.1

County: county value. Kansas: state value. County Rank: highest county value ranked #1. (\$000): thousands of dollars. Nonmetro Kansas: Kansas total less Metropolitan Areas as defined by the Office of Management and Budget (OMB; released 3/6/2020). Per 1000: For nonmoney amounts, Per 1000=(county value / county population for the same year as the data) x 1000. \$ Per capita=(county value / county population for the same year as the data). Value= . indicates missing or suppressed data or value not calculated.

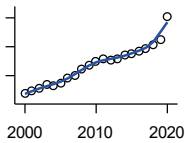
**Income**

**SOURCES OF PERSONAL INCOME:  
DIVIDENDS,INTEREST,RENT(\$000)**



U.S. Bureau of Economic Analysis,  
Regional Economic Information System  
(REIS)

Year	County	State of Kansas	Non Metro Kansas	County Rank	Per 1000 or \$ Per Capita
2000	74,110	15,916,201	4,736,921	30	4,434.5
2001	76,152	15,770,830	4,699,417	29	4,571.8
2002	70,613	15,111,563	4,316,887	28	4,231.1
2003	74,190	15,370,764	4,360,311	28	4,436.7
2004	69,356	15,820,469	4,251,925	31	4,117.8
2005	67,527	17,147,069	4,485,387	32	4,003.0
2006	69,094	20,117,848	4,945,184	34	4,154.0
2007	77,200	22,269,186	5,526,219	34	4,687.9
2008	83,058	24,972,485	6,180,979	37	5,052.5
2009	80,491	21,453,879	5,308,474	33	4,939.0
2010	78,433	20,861,351	5,414,285	35	4,813.3
2011	80,463	23,387,567	5,781,075	36	4,924.0
2012	90,774	25,689,368	6,389,505	32	5,611.6
2013	89,646	24,832,212	5,984,811	32	5,575.0
2014	93,189	27,412,684	6,403,356	33	5,835.3
2015	95,014	27,244,414	6,423,685	32	5,988.9
2016	94,680	27,293,441	6,389,161	33	5,988.2
2017	94,541	28,385,472	6,700,156	35	5,967.7
2018	99,379	29,953,419	6,772,504	33	6,235.3
2019	102,489	30,820,276	6,957,987	34	6,426.0
2020	102,361	30,283,520	6,844,745	33	6,492.5



**SOURCES OF PERSONAL INCOME:  
TRANSFER PAYMENTS (\$000)**

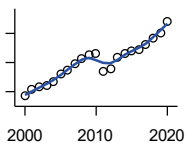
U.S. Bureau of Economic Analysis,  
Regional Economic Information System  
(REIS)

Year	County	State of Kansas	Non Metro Kansas	County Rank	Per 1000 or \$ Per Capita
2000	68,384	9,650,835	4,036,781	31	4,091.9
2001	73,033	10,549,124	4,355,457	31	4,384.5
2002	77,508	11,208,997	4,553,978	30	4,644.3
2003	84,462	11,709,049	4,702,911	30	5,051.0
2004	83,079	12,040,452	4,802,536	30	4,932.6
2005	87,241	12,696,735	5,059,314	30	5,171.7
2006	96,041	13,642,787	5,455,207	30	5,774.1
2007	100,458	14,686,821	5,775,024	30	6,100.2
2008	111,222	16,552,460	6,322,722	30	6,765.7
2009	117,967	18,025,603	6,790,962	32	7,238.6
2010	125,639	19,189,749	7,089,258	31	7,710.3
2011	128,427	19,625,770	7,255,825	31	7,859.2
2012	127,700	19,354,458	7,148,177	31	7,894.4
2013	129,331	19,639,358	7,185,636	30	8,043.0
2014	135,708	20,380,970	7,399,809	31	8,497.7
2015	138,031	21,116,856	7,623,577	31	8,700.3
2016	142,767	21,884,629	7,886,000	31	9,029.6
2017	147,184	22,559,744	8,062,517	31	9,290.7
2018	153,677	23,628,033	8,393,617	31	9,642.2
2019	163,090	25,050,174	8,845,371	31	10,225.7
2020	202,322	32,319,421	11,074,190	31	12,832.8

County: county value. Kansas: state value. County Rank: highest county value ranked #1. (\$000): thousands of dollars. Nonmetro Kansas: Kansas total less Metropolitan Areas as defined by the Office of Management and Budget (OMB; released 3/6/2020). Per 1000: For nonmoney amounts, Per 1000=(county value / county population for the same year as the data) x 1000. \$ Per capita=(county value / county population for the same year as the data). Value= . indicates missing or suppressed data or value not calculated.

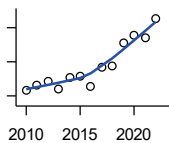
**Income**

**SOURCES OF PERSONAL INCOME:  
LESS SOCIAL INSURANCE (\$000)**



U.S. Bureau of Economic Analysis,  
Regional Economic Information System  
(REIS)

Year	County	State of Kansas	Non Metro Kansas	County Rank	Per 1000 or \$ Per Capita
2000	11,716	6,655,813	1,663,044	52	701.1
2001	12,859	6,869,934	1,740,915	48	772.0
2002	13,261	7,008,361	1,778,636	48	794.6
2003	13,593	7,172,781	1,821,858	48	812.9
2004	14,325	7,556,560	1,904,014	48	850.5
2005	15,462	7,911,241	1,986,907	48	916.6
2006	16,143	8,406,937	2,090,313	48	970.5
2007	17,277	8,806,941	2,180,587	47	1,049.1
2008	18,222	9,207,010	2,299,399	47	1,108.5
2009	18,784	9,002,859	2,248,703	46	1,152.6
2010	19,124	9,235,760	2,321,191	48	1,173.6
2011	16,070	8,515,986	2,139,991	49	983.4
2012	16,380	8,816,128	2,195,919	50	1,012.6
2013	18,416	10,225,399	2,540,439	49	1,145.3
2014	19,136	10,609,601	2,635,009	51	1,198.2
2015	19,513	11,028,204	2,663,038	49	1,229.9
2016	19,649	10,915,915	2,604,579	49	1,242.7
2017	20,656	11,224,218	2,669,954	48	1,303.9
2018	21,767	11,749,229	2,797,106	47	1,365.7
2019	22,634	12,245,451	2,889,336	47	1,419.1
2020	24,512	12,715,152	3,027,656	47	1,554.7



**HUD MEDIAN FAMILY INCOME**

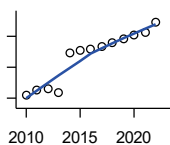
U.S. Department of Housing and Urban  
Development (HUD)

Year	County	State of Kansas	Non Metro Kansas	County Rank	Per 1000 or \$ Per Capita
2010	61,500	63,100	.	17	.
2011	63,300	64,300	.	21	.
2012	64,200	65,200	.	21	.
2013	62,100	64,800	.	27	.
2014	65,400	64,400	.	23	.
2015	65,600	66,300	.	23	.
2016	62,600	66,700	.	30	.
2017	68,300	68,500	.	19	.
2018	68,600	73,100	.	26	.
2019	75,400	75,200	.	16	.
2020	77,700	76,500	.	12	.
2021	77,000	77,400	.	19	.
2022	82,700	87,800	.	27	.

County: county value. Kansas: state value. County Rank: highest county value ranked #1. (\$000): thousands of dollars. Nonmetro Kansas: Kansas total less Metropolitan Areas as defined by the Office of Management and Budget (OMB; released 3/6/2020). Per 1000: For nonmoney amounts, Per 1000=(county value / county population for the same year as the data) x 1000. \$ Per capita=(county value / county population for the same year as the data). Value= . indicates missing or suppressed data or value not calculated.

**Income**

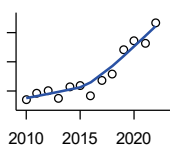
**HUD 30% LOW-TO-MEDIUM INCOME (LMI) LIMIT - 4 PERSONS**



U.S. Department of Housing and Urban Development (HUD)

Year	County	State of Kansas	Non Metro Kansas	County Rank	Per 1000 or \$ Per Capita
2010	18,450	.	.	17	.
2011	19,000	.	.	16	.
2012	19,250	.	.	18	.
2013	18,650	.	.	25	.
2014	23,850	.	.	105	.
2015	24,250	.	.	105	.
2016	24,300	.	.	105	.
2017	24,600	.	.	105	.
2018	25,100	21,950	.	105	.
2019	25,750	22,550	.	105	.
2020	26,200	22,950	.	105	.
2021	26,500	23,200	.	105	.
2022	27,750	25,950	.	105	.

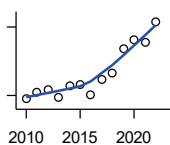
**HUD 50% LOW-TO-MEDIUM INCOME (LMI) LIMIT - 4 PERSONS**



U.S. Department of Housing and Urban Development (HUD)

Year	County	State of Kansas	Non Metro Kansas	County Rank	Per 1000 or \$ Per Capita
2010	30,750	.	.	17	.
2011	31,650	.	.	16	.
2012	32,100	.	.	18	.
2013	31,050	.	.	25	.
2014	32,600	.	.	21	.
2015	32,800	.	.	19	.
2016	31,300	.	.	31	.
2017	33,450	.	.	20	.
2018	34,300	36,550	.	25	.
2019	37,700	37,600	.	15	.
2020	38,850	38,250	.	12	.
2021	38,500	38,700	.	17	.
2022	41,350	43,300	.	23	.

**HUD 80% LOW-TO-MEDIUM INCOME (LMI) LIMIT - 4 PERSONS**



U.S. Department of Housing and Urban Development (HUD)

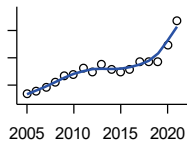
Year	County	State of Kansas	Non Metro Kansas	County Rank	Per 1000 or \$ Per Capita
2010	49,200	.	.	17	.
2011	50,650	.	.	16	.
2012	51,350	.	.	18	.
2013	49,700	.	.	25	.
2014	52,150	.	.	21	.
2015	52,500	.	.	19	.
2016	50,100	.	.	31	.
2017	53,500	.	.	20	.
2018	54,900	58,500	.	25	.
2019	60,300	60,150	.	15	.
2020	62,150	61,200	.	12	.
2021	61,600	61,900	.	17	.
2022	66,150	69,250	.	23	.

County: county value. Kansas: state value. County Rank: highest county value ranked #1. (\$000): thousands of dollars. Nonmetro Kansas: Kansas total less Metropolitan Areas as defined by the Office of Management and Budget (OMB; released 3/6/2020). Per 1000: For nonmoney amounts, Per 1000=(county value / county population for the same year as the data) x 1000. \$ Per capita=(county value / county population for the same year as the data). Value= . indicates missing or suppressed data or value not calculated.



**Banking**

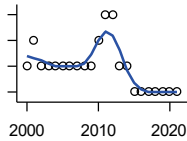
**BANK DEPOSITS** (1984-2004 in thousands; 2005- in millions)



Federal Deposit Insurance Corporation, Data Book, Operating Banks and Branches

Year	County	State of Kansas	Non Metro Kansas	County Rank	Per 1000 or \$ Per Capita
2005	210	48,304	17,000	39	12.4
2006	214	50,668	17,586	39	12.9
2007	220	54,057	18,517	40	13.4
2008	231	57,869	19,628	41	14.1
2009	241	57,763	20,031	37	14.8
2010	244	60,031	20,678	39	15.0
2011	257	61,094	21,347	37	15.7
2012	249	62,910	22,481	40	15.4
2013	262	64,547	22,795	40	16.3
2014	254	66,538	23,338	40	15.9
2015	250	68,160	23,367	43	15.8
2016	254	70,381	23,420	43	16.1
2017	268	73,329	23,928	42	16.9
2018	268	74,623	24,100	43	16.8
2019	268	76,436	24,488	44	16.8
2020	298	88,563	27,547	44	18.9
2021	343	97,055	30,122	43	21.8

**NUMBER OF BANKS**



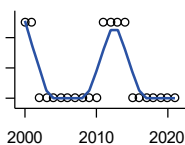
Federal Deposit Insurance Corporation, Data Book, Operating Banks and Branches

Year	County	State of Kansas	Non Metro Kansas	County Rank	Per 1000 or \$ Per Capita
2000	8	410	145	31	.
2001	9	410	136	28	.
2002	8	404	129	30	.
2003	8	397	121	31	.
2004	8	394	112	31	.
2005	8	388	101	31	.
2006	8	385	94	31	.
2007	8	382	91	32	.
2008	8	378	82	32	.
2009	8	374	79	31	.
2010	9	367	70	27	.
2011	10	359	61	20	.
2012	10	348	57	18	.
2013	8	332	45	30	.
2014	8	329	41	31	.
2015	7	320	31	35	.
2016	7	314	24	35	.
2017	7	301	13	35	.
2018	7	289	7	35	.
2019	7	279	3	35	.
2020	7	271	-1	35	.
2021	7	270	-6	35	.

County: county value. Kansas: state value. County Rank: highest county value ranked #1. (\$000): thousands of dollars. Nonmetro Kansas: Kansas total less Metropolitan Areas as defined by the Office of Management and Budget (OMB; released 3/6/2020). Per 1000: For nonmoney amounts, Per 1000=(county value / county population for the same year as the data) x 1000. \$ Per capita=(county value / county population for the same year as the data). Value= . indicates missing or suppressed data or value not calculated.

**Banking**

**NUMBER OF BANKING OFFICES**

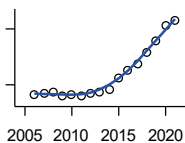


Federal Deposit Insurance Corporation, Data Book, Operating Banks and Branches

Year	County	State of Kansas	Non Metro Kansas	County Rank	Per 1000 or \$ Per Capita
2000	12	1,398	703	32	.
2001	12	1,424	708	32	.
2002	11	1,447	704	37	.
2003	11	1,461	708	37	.
2004	11	1,485	708	39	.
2005	11	1,505	711	37	.
2006	11	1,518	711	36	.
2007	11	1,543	717	37	.
2008	11	1,556	717	37	.
2009	11	1,569	716	35	.
2010	11	1,561	710	34	.
2011	12	1,559	707	32	.
2012	12	1,533	702	32	.
2013	12	1,518	696	32	.
2014	12	1,491	685	32	.
2015	11	1,472	675	34	.
2016	11	1,465	668	34	.
2017	11	1,452	666	34	.
2018	11	1,439	660	34	.
2019	11	1,439	663	34	.
2020	11	1,416	653	34	.
2021	11	1,392	641	33	.

**Government**

**TANGIBLE ASSESSED VALUATION (KDoR, million\$; 2006-)**



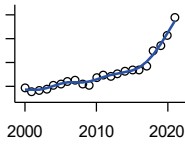
Kansas Department of Revenue, Division of Property Valuation, Statistical Report of Property Assessment and Taxation

Year	County	State of Kansas	Non Metro Kansas	County Rank	Per 1000 or \$ Per Capita
2006	125.0	28,964.3	10,316.9	38	7.5
2007	125.1	30,086.9	10,335.9	38	7.6
2008	126.1	31,000.3	10,856.9	38	7.7
2009	123.8	30,312.3	10,555.6	40	7.6
2010	124.4	29,450.2	10,158.7	39	7.6
2011	123.8	29,963.6	10,572.3	40	7.6
2012	125.7	30,382.9	10,876.2	41	7.8
2013	126.4	30,850.2	11,044.4	42	7.9
2014	127.7	31,783.0	11,388.9	45	8.0
2015	133.5	32,335.7	11,037.8	41	8.4
2016	137.5	33,156.3	10,889.6	39	8.7
2017	141.1	34,754.5	11,439.0	40	8.9
2018	147.6	36,566.1	11,907.1	39	9.3
2019	153.6	38,255.2	12,336.7	39	9.6
2020	161.8	39,333.9	12,219.3	38	10.3
2021	164.3	40,812.0	12,601.5	38	10.4

County: county value. Kansas: state value. County Rank: highest county value ranked #1. (\$000): thousands of dollars. Nonmetro Kansas: Kansas total less Metropolitan Areas as defined by the Office of Management and Budget (OMB; released 3/6/2020). Per 1000: For nonmoney amounts, Per 1000=(county value / county population for the same year as the data) x 1000. \$ Per capita=(county value / county population for the same year as the data). Value= . indicates missing or suppressed data or value not calculated.

**Government**

**SALES TAX COLLECTIONS (\$)**

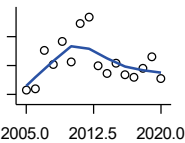


Kansas Department of Revenue. Use tax collections included beginning in calendar year 2018.

Year	County	State of Kansas	Non Metro Kansas	County Rank	Per 1000 or \$ Per Capita
2000	3,879,037	1,475,831,808	432,761,608	41	232,110.9
2001	3,506,498	1,481,026,688	426,316,284	41	210,512.0
2002	3,699,128	1,561,316,864	443,986,950	41	221,650.7
2003	3,744,289	1,626,782,976	461,658,700	41	223,913.9
2004	4,087,735	1,691,899,008	480,309,725	41	242,696.4
2005	4,232,142	1,744,980,352	497,494,867	43	250,882.8
2006	4,449,272	1,851,694,720	532,233,047	42	267,496.7
2007	4,460,077	1,917,546,752	559,319,583	43	270,832.9
2008	4,244,792	1,990,655,744	589,725,773	48	258,214.7
2009	4,084,572	1,866,223,078	548,627,132	48	250,633.4
2010	4,690,933	2,075,193,413	617,409,982	46	287,875.6
2011	4,957,919	2,347,193,367	702,671,534	50	303,403.6
2012	4,855,163	2,456,292,294	740,196,106	53	300,146.1
2013	5,037,956	2,489,204,048	746,226,565	52	313,305.7
2014	5,256,159	2,539,886,774	760,474,019	53	329,127.0
2015	5,378,074	2,642,374,740	750,090,163	47	338,989.8
2016	5,331,679	2,732,611,350	749,030,133	48	337,213.3
2017	5,653,960	2,726,104,521	744,246,491	46	356,896.9
2018	6,943,402	3,277,299,125	893,564,480	46	435,650.8
2019	7,367,839	3,395,631,405	939,607,762	47	461,962.4
2020	8,231,486	3,489,306,791	984,218,931	46	522,103.6
2021	9,746,938	3,981,293,227	1,098,391,422	44	618,146.8

**Crime**

**CRIME INDEX OFFENSES**



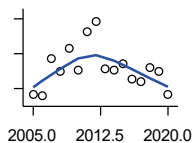
Kansas Bureau of Investigation, Note: Data are aggregated from reports by individual police departments and subject to be incomplete.

Year	County	State of Kansas	Non Metro Kansas	County Rank	Per 1000 or \$ Per Capita
2005	157	111,856	31,630	48	9.3
2006	159	110,032	.	47	9.6
2007	227	111,035	29,921	42	13.8
2008	201	93,996	27,342	39	12.2
2009	242	98,757	27,620	38	14.8
2010	206	98,354	26,909	38	12.6
2011	272	96,638	25,765	36	16.6
2012	284	98,914	26,963	37	17.6
2013	199	93,054	24,488	38	12.4
2014	187	86,323	23,341	40	11.7
2015	204	88,590	21,580	38	12.9
2016	185	90,589	21,565	39	11.7
2017	180	93,091	22,622	39	11.4
2018	195	92,062	20,325	36	12.2
2019	215	87,008	18,547	33	13.5
2020	178	87,346	17,762	35	11.3

County: county value. Kansas: state value. County Rank: highest county value ranked #1. (\$000): thousands of dollars. Nonmetro Kansas: Kansas total less Metropolitan Areas as defined by the Office of Management and Budget (OMB; released 3/6/2020). Per 1000: For nonmoney amounts, Per 1000=(county value / county population for the same year as the data) x 1000. \$ Per capita=(county value / county population for the same year as the data). Value= . indicates missing or suppressed data or value not calculated.

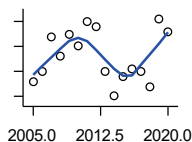
**Crime**

**PROPERTY CRIMES**



Kansas Bureau of Investigation, Note: Data are aggregated from reports by individual police departments and subject to be incomplete.

Year	County	State of Kansas	Non Metro Kansas	County Rank	Per 1000 or \$ Per Capita
2005	141	101,414	29,042	49	8.4
2006	139	99,110	.	47	8.4
2007	193	99,632	26,856	43	11.7
2008	175	83,964	24,367	40	10.6
2009	207	87,658	24,825	38	12.7
2010	176	87,926	24,133	38	10.8
2011	232	86,547	23,274	36	14.2
2012	246	88,707	24,220	37	15.2
2013	179	83,551	22,028	39	11.1
2014	177	76,794	20,858	39	11.1
2015	186	77,997	19,138	38	11.7
2016	164	79,549	19,207	39	10.4
2017	160	81,349	19,981	39	10.1
2018	181	79,695	17,769	35	11.4
2019	174	74,314	15,892	33	10.9
2020	142	73,450	15,100	36	9.0



**VIOLENT CRIMES**

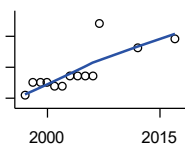
Kansas Bureau of Investigation, Note: Data are aggregated from reports by individual police departments and subject to be incomplete.

Year	County	State of Kansas	Non Metro Kansas	County Rank	Per 1000 or \$ Per Capita
2005	16	10,442	2,588	49	0.9
2006	20	10,922	.	40	1.2
2007	34	11,403	3,065	34	2.1
2008	26	10,032	2,975	39	1.6
2009	35	11,099	2,795	37	2.1
2010	30	10,428	2,776	38	1.8
2011	40	10,091	2,491	33	2.4
2012	38	10,207	2,743	34	2.3
2013	20	9,503	2,460	46	1.2
2014	10	9,529	2,483	65	0.6
2015	18	10,593	2,442	43	1.1
2016	21	11,040	2,358	36	1.3
2017	20	11,742	2,641	41	1.3
2018	14	12,367	2,556	48	0.9
2019	41	12,694	2,655	32	2.6
2020	36	13,896	2,662	33	2.3

County: county value. Kansas: state value. County Rank: highest county value ranked #1. (\$000): thousands of dollars. Nonmetro Kansas: Kansas total less Metropolitan Areas as defined by the Office of Management and Budget (OMB; released 3/6/2020). Per 1000: For nonmoney amounts, Per 1000=(county value / county population for the same year as the data) x 1000. \$ Per capita=(county value / county population for the same year as the data). Value= . indicates missing or suppressed data or value not calculated.

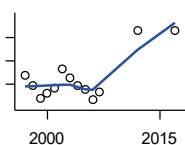
**Agriculture**

**NUMBER OF FARMS**



Kansas Agricultural Statistics, Kansas Farm Facts

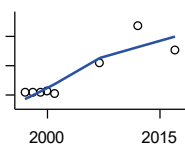
Year	County	State of Kansas	Non Metro Kansas	County Rank	Per 1000 or \$ Per Capita
1997	860	64,000	47,900	21	52.0
1998	900	65,000	48,850	18	54.2
1999	900	65,000	48,850	18	54.2
2000	900	64,000	48,030	18	53.9
2001	890	63,000	47,200	18	53.4
2002	890	63,000	47,200	18	53.3
2003	920	64,500	48,150	17	55.0
2004	920	64,500	48,150	17	54.6
2005	920	64,500	48,150	17	54.5
2006	920	64,000	47,650	17	55.3
2007	1,092	65,531	48,179	10	66.3
2012	1,014	61,773	45,655	10	62.7
2017	1,042	58,569	42,404	6	65.8



**TOTAL ACRES HARVESTED**

Kansas Agricultural Statistics, Kansas Farm Facts

Year	County	State of Kansas	Non Metro Kansas	County Rank	Per 1000 or \$ Per Capita
1997	187,200	22,846,000	19,430,580	62	11,313.9
1998	178,820	22,143,500	18,943,650	65	10,763.2
1999	167,500	21,708,900	18,581,750	68	10,096.4
2000	172,590	21,639,000	18,528,870	66	10,327.3
2001	176,180	21,847,900	18,689,750	63	10,576.9
2002	192,840	20,230,400	17,089,120	49	11,554.9
2003	185,100	21,827,700	18,661,920	62	11,069.3
2004	178,800	20,876,900	17,721,500	57	10,615.7
2005	175,200	21,936,500	18,807,930	67	10,385.9
2006	166,300	21,412,700	18,291,120	67	9,998.2
2007	173,529	19,886,655	17,164,743	60	10,537.3
2012	226,578	21,043,596	17,966,843	37	14,007.0
2017	225,544	21,837,465	18,543,057	39	14,237.1



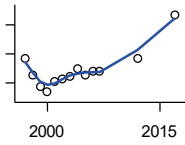
**VALUE: LIVESTOCK AND POULTRY (\$000)**

Kansas Agricultural Statistics, Kansas Farm Facts

Year	County	State of Kansas	Non Metro Kansas	County Rank	Per 1000 or \$ Per Capita
1997	10,781	2,806,445	2,500,305	91	651.6
1998	10,983	2,670,432	2,378,007	89	661.1
1999	10,987	2,849,061	2,554,528	90	662.3
2000	11,446	2,901,469	2,609,032	86	684.9
2001	10,588	2,693,274	2,437,187	83	635.6
2007	20,830	9,525,971	.	82	1,264.9
2012	33,767	11,476,571	10,883,216	59	2,087.5
2017	25,488	12,322,289	.	74	1,608.9

County: county value. Kansas: state value. County Rank: highest county value ranked #1. (\$000): thousands of dollars. Nonmetro Kansas: Kansas total less Metropolitan Areas as defined by the Office of Management and Budget (OMB; released 3/6/2020). Per 1000: For nonmoney amounts, Per 1000=(county value / county population for the same year as the data) x 1000. \$ Per capita=(county value / county population for the same year as the data). Value= . indicates missing or suppressed data or value not calculated.

**Agriculture**



VALUE:FIELD CROPS (\$000)  
EXCLUDING GOVERNMENT  
PROGRAM PAYMENTS

Kansas Agricultural Statistics, Kansas  
Farm Facts

Year	County	State of Kansas	Non Metro Kansas	County Rank	Per 1000 or \$ Per Capita
1997	37,217	4,474,942	3,800,365	51	2,249.3
1998	25,531	3,594,319	3,124,409	66	1,536.7
1999	17,850	3,118,193	2,728,319	75	1,075.9
2000	13,602	2,915,660	2,540,052	86	813.9
2001	21,049	3,283,117	2,857,136	73	1,263.7
2002	22,927	3,011,855	2,560,580	55	1,373.8
2003	24,743	3,623,255	3,150,629	67	1,479.7
2004	29,485	3,445,688	2,896,603	48	1,750.6
2005	25,179	3,678,123	3,182,677	67	1,492.6
2006	28,005	4,308,716	3,684,132	70	1,683.7
2007	27,618	4,887,212	.	74	1,677.1
2012	37,234	6,983,993	6,044,551	76	2,301.8
2017	66,913	6,460,437	.	45	4,223.8

County: county value. Kansas: state value. County Rank: highest county value ranked #1. (\$000): thousands of dollars. Nonmetro Kansas: Kansas total less Metropolitan Areas as defined by the Office of Management and Budget (OMB; released 3/6/2020). Per 1000: For nonmoney amounts, Per 1000=(county value / county population for the same year as the data) x 1000. \$ Per capita=(county value / county population for the same year as the data). Value= . indicates missing or suppressed data or value not calculated.