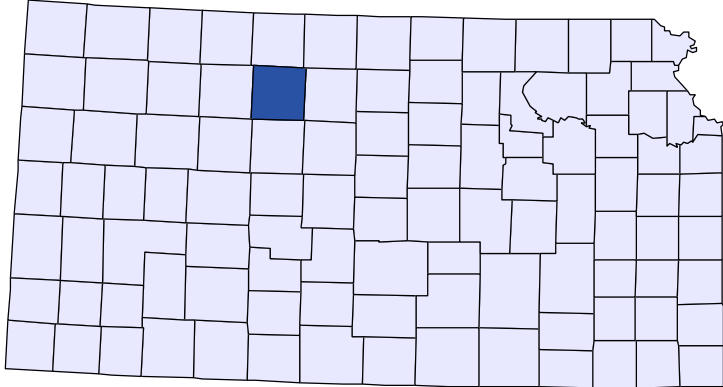




Kansas County Profiles

Rooks County



The University
of Kansas

Institute for Policy
& Social Research

KU INSTITUTE FOR POLICY
& SOCIAL RESEARCH

The University of Kansas

1541 Lilac Lane, Rm. 607
Blake Hall
Lawrence, KS 66045-3129

Foreword

The Kansas County Profile Report is published by the Institute for Policy & Social Research (IPSR) at the University of Kansas with support from the KU University Center project.* Special thanks to Xanthippe Wedel, senior research data engineer, who compiles and updates the county profiles and Genna Hurd, associate researcher, who provides editorial review.

County reports can be generated for any county in Kansas by simply clicking on the county from the web site:

<https://ipsr.ku.edu/ksdata/kcced/profiles/>

The Kansas County Profile Report contains 12 categories of information: Population, Vital Statistics and Health, Housing, Education, Social Environment, Business, Employment, Income, Banking, Government, Crime, and Agriculture. For more information about Kansas, please refer to the Kansas Statistical Abstract, available online at:

<https://ipsr.ku.edu/ksdata/ksah/>

We are always looking for ways to improve the Kansas County Profile Report and we welcome your suggestions and comments. Please address any correspondence to the Institute for Policy & Social Research, The University of Kansas, 607 Blake Hall, 1541 Lilac Lane, Lawrence, Kansas 66045-3129, e-mail ipsr@ku.edu or call 785-864-3701.

**The KU University Center is a collaborative effort led by the Institute for Policy & Social Research at the University of Kansas. This project is supported by the Economic Development Administration, U.S. Department of Commerce, through its University Center Program.*

The mission of EDA is to lead the federal economic development agenda by promoting innovation and competitiveness, preparing American regions for growth and success in the worldwide economy.

Kansas County Profiles Table of Contents

Population	
Total Population (Decennial Census)	1
Estimated Population (Current Population Reports)	2
Urban Population	2
Rural Population	3
Net Migration (Decade Ending...)	3
Median Age	3
Population (Age Groups)	
Population Under 18 (Decennial Census)	3
Population Age 18 and Over (Decennial Census)	4
Population Age 65 and Over (Decennial Census)	4
Population Age 85 and Over (Decennial Census)	4
Vital Statistics and Health	
Live Births	5
Deaths	5
Marriages	6
Divorces and Annulments	6
Physicians: M.D. Physicians	7
Physicians: D.O. Physicians	7
Dentists	8
Number of Hospitals	8
Number of Hospital Beds	9
Housing	
Housing Units (Decennial Census)	9
Housing Units (Estimated)	10
Occupied Housing Units	10
Owner Occupied Housing Units	10
Renter Occupied Housing Units	11
Vacant Housing Units	11
Median Value (\$): Owner Occupied Housing Units	11
Median Contract Rent (\$)	12
Fair Market Rent: 2 Bedrooms	12
Education	
Population Age 25 and Over	13
Percent of Population 25+ with High School or Higher Education	13
Percent of Population 25+ with Bachelors Degree or Higher Education	14
Public School Enrollment (FTE- School Year Beginning...)	14
Pupil/Teacher Ratio (School Year Beginning...)	15

Kansas County Profiles Table of Contents

Social Environment

Total Child Care Facilities	15
Preschools	16
Food Stamp Beneficiaries	16
Percent of Population Receiving Food Stamps	17
Estimated Number of People in Poverty	17
Estimated Percent of People in Poverty	18
Estimated Number of Related Children Age 5 to 17 in Families in Poverty	18
Estimated Percent of Related Children Age 5 to 17 in Families in Poverty	19
Estimated Number Under 18 in Poverty	19
Estimated Percent Under 18 in Poverty	20

Business

Establishments: Total	21
Establishments: 1-19 Employees	22
Establishments: 20-99 Employees	22
Establishments: 100-499 Employees	23
Establishments: 500 or More Employees	23
Establishments: Forestry, Fishing, Hunting, and Ag Support	24
Establishments: Mining	24
Establishments: Utilities	25
Establishments: Construction	25
Establishments: Manufacturing	26
Establishments: Wholesale Trade	26
Establishments: Retail Trade	27
Establishments: Transportation and Warehousing	27
Establishments: Information	28
Establishments: Finance and Insurance	28
Establishments: Real Estate, Rental, and Leasing	29
Establishments: Professional, Scientific, and Technical Services	29
Establishments: Management of Companies and Enterprises	30
Establishments: Admin, Support, Waste Management, and Remediation	30
Establishments: Educational Services	31
Establishments: Health Care and Social Assistance	31
Establishments: Arts, Entertainment, and Recreation	32
Establishments: Accommodation and Food Services	32
Establishments: Other Services	33

Kansas County Profiles Table of Contents

Business	
Total Annual Payroll (\$000)	34
Total Annual Payroll (\$000): Forestry, Fishing, Hunting, and Ag Support	35
Total Annual Payroll (\$000): Mining	35
Total Annual Payroll (\$000): Utilities	36
Total Annual Payroll (\$000): Construction	36
Total Annual Payroll (\$000): Manufacturing	37
Total Annual Payroll (\$000): Wholesale Trade	37
Total Annual Payroll (\$000): Retail Trade	38
Total Annual Payroll (\$000): Transportation and Warehousing	38
Total Annual Payroll (\$000): Information	39
Total Annual Payroll (\$000): Finance and Insurance	39
Total Annual Payroll (\$000): Real Estate, Rental, and Leasing	40
Total Annual Payroll (\$000): Professional, Scientific, and Technical Services	40
Total Annual Payroll (\$000): Management of Companies and Enterprises	41
Total Annual Payroll (\$000): Admin, Support, Waste Management, and Remediation	41
Total Annual Payroll (\$000): Educational Services	42
Total Annual Payroll (\$000): Health Care and Social Assistance	42
Total Annual Payroll (\$000): Arts, Entertainment, and Recreation	43
Total Annual Payroll (\$000): Accommodation and Food Services	43
Total Annual Payroll (\$000): Other Services	44
Nominal Taxable Retail Sales (Million\$)	44
Retail Pull Factor	45
Employment	
Civilian Labor Force (BLS - Place of Residence)	46
Employed (BLS - Place of Residence)	47
Unemployed (BLS - Place of Residence)	48
Unemployment Rate (BLS - Place of Residence)	49
BEA Employment: Total (Place of Work)	49
BEA Employment: Farm	50
BEA Employment: Non-Farm	50
Average Wage per Job (\$)	51
BEA Employment: Forestry, Fishing, Hunting, and Ag Support	51
BEA Employment: Mining	52
BEA Employment: Utilities	52
BEA Employment: Construction	53
BEA Employment: Manufacturing	53
BEA Employment: Wholesale Trade	54
BEA Employment: Retail Trade	54
BEA Employment: Transportation and Warehousing	55
BEA Employment: Information	55
BEA Employment: Finance and Insurance	56
BEA Employment: Real Estate, Rental, and Leasing	56
BEA Employment: Professional and Technical Services	57
BEA Employment: Management of Companies and Enterprises	57
BEA Employment: Administrative and Waste Services	58
BEA Employment: Educational Services	58
BEA Employment: Health Care and Social Assistance	59
BEA Employment: Arts, Entertainment, and Recreation	59
BEA Employment: Government and Government Enterprises	60
BEA Employment: Accommodation and Food Services	60
BEA Employment: Other Services, Except Public Administration	61

Kansas County Profiles Table of Contents

Income

BEA Per Capita Personal Income (\$)	61
Sources of Personal Income: Total Personal Income (\$000)	62
Sources of Personal Income: Wages And Salaries (\$000)	62
Sources of Personal Income: Proprietors-Farm (\$000)	63
Sources of Personal Income: Proprietors-Nonfarm (\$000)	63
Sources of Personal Income: Dividends, Interest, Rent (\$000)	64
Sources of Personal Income: Transfer Payments (\$000)	64
Sources of Personal Income: Less Social Insurance (\$000)	65
HUD Median Family Income	65
HUD 30% Low-To-Medium Income (LMI) Limit - 4 Persons	66
HUD 50% Low-To-Medium Income (LMI) Limit - 4 Persons	66
HUD 80% Low-To-Medium Income (LMI) Limit - 4 Persons	66

Banking

Bank Deposits (\$000)	67
Number of Banks	67
Number of Banking Offices	68

Government

Tangible Assessed Valuation (million\$)	68
Sales Tax Collections	69

Crime

Crime Index Offenses	69
Property Crimes	70
Violent Crimes	70

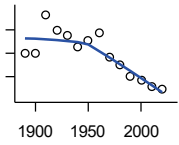
Agriculture

Number of Farms	71
Total Acres Harvested	71
Value: Livestock and Poultry (\$000)	71
Value: Field Crops (\$000) Excluding Government Program Payments	72

Population

DECENNIAL CENSUS:TOTAL POPULATION

U.S. Census Bureau: Decennial Census

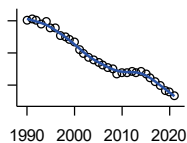


Year	County	State of Kansas	Non Metro Kansas	County Rank	Per 1000 or \$ Per Capita
1890	8,018	1,427,096	968,413	68	.
1900	7,960	1,470,495	981,206	69	.
1910	11,282	1,690,949	1,138,294	63	.
1920	9,966	1,769,257	1,153,525	66	.
1930	9,534	1,880,999	1,180,056	70	.
1940	8,497	1,801,028	1,097,216	69	.
1950	9,043	1,905,299	1,046,823	60	.
1960	9,734	2,178,611	1,021,510	52	.
1970	7,628	2,246,578	958,104	59	.
1980	7,006	2,363,679	980,085	61	.
1990	6,039	2,477,574	939,416	65	.
2000	5,685	2,688,418	959,507	68	.
2010	5,181	2,853,118	929,981	68	.
2020	4,919	2,937,880	892,006	69	.

County: county value. Kansas: state value. County Rank: highest county value ranked #1. (\$000): thousands of dollars. Nonmetro Kansas: Kansas total less Metropolitan Areas as defined by the Office of Management and Budget (OMB; released 3/6/2020). Per 1000: For nonmoney amounts, Per 1000=(county value / county population for the same year as the data) x 1000. \$ Per capita=(county value / county population for the same year as the data). Value= . indicates missing or suppressed data or value not calculated.

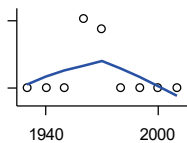
Population

ESTIMATED POPULATION



U.S. Census Bureau

Year	County	State of Kansas	Non Metro Kansas	County Rank	Per 1000 or \$ Per Capita
1990	6,002	2,481,349	938,607	65	.
1991	6,023	2,498,722	938,965	65	.
1992	6,013	2,532,394	942,759	65	.
1993	5,951	2,556,547	947,515	65	.
1994	5,987	2,580,513	952,178	65	.
1995	5,884	2,601,007	957,771	66	.
1996	5,883	2,614,554	959,455	67	.
1997	5,769	2,635,292	960,225	67	.
1998	5,749	2,660,598	960,569	68	.
1999	5,708	2,678,338	960,704	68	.
2000	5,665	2,693,681	959,230	68	.
2001	5,560	2,702,162	952,607	68	.
2002	5,482	2,713,535	945,985	68	.
2003	5,430	2,723,004	941,474	68	.
2004	5,400	2,734,373	937,623	68	.
2005	5,352	2,745,299	932,852	68	.
2006	5,322	2,762,931	928,809	68	.
2007	5,275	2,783,785	927,643	68	.
2008	5,254	2,808,076	926,248	68	.
2009	5,179	2,832,704	926,755	68	.
2010	5,194	2,858,190	930,028	68	.
2011	5,200	2,869,225	927,675	68	.
2012	5,221	2,885,257	925,152	68	.
2013	5,195	2,893,212	922,383	68	.
2014	5,204	2,900,475	917,854	68	.
2015	5,179	2,909,011	912,199	68	.
2016	5,118	2,910,844	905,099	68	.
2017	5,055	2,908,718	897,981	68	.
2018	4,995	2,911,359	892,656	68	.
2019	4,920	2,913,314	887,455	68	.
2020	4,894	2,935,880	889,750	69	.
2021	4,831	2,934,582	886,438	68	.



URBAN POPULATION

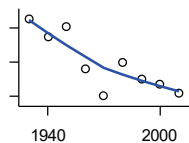
U.S. Census Bureau: Decennial Census

Year	County	State of Kansas	Non Metro Kansas	County Rank	Per 1000 or \$ Per Capita
1930	0	729,834	336,666	105	.
1940	0	753,941	349,228	105	.
1950	0	993,220	398,923	105	.
1960	3,104	1,328,741	457,447	51	.
1970	2,627	1,484,870	450,543	58	.
1980	0	1,575,899	474,769	105	.
1990	0	1,712,564	464,205	105	.
2000	0	1,920,081	488,011	105	.
2010	0	2,116,961	485,780	105	.

County: county value. Kansas: state value. County Rank: highest county value ranked #1. (\$000): thousands of dollars. Nonmetro Kansas: Kansas total less Metropolitan Areas as defined by the Office of Management and Budget (OMB; released 3/6/2020). Per 1000: For nonmoney amounts, Per 1000=(county value / county population for the same year as the data) x 1000. \$ Per capita=(county value / county population for the same year as the data). Value= . indicates missing or suppressed data or value not calculated.

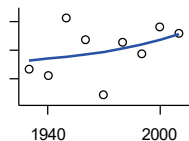
Population

RURAL POPULATION



U.S. Census Bureau

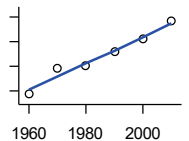
Year	County	State of Kansas	Non Metro Kansas	County Rank	Per 1000 or \$ Per Capita
1930	9,534	1,151,165	843,390	61	.
1940	8,497	1,047,087	747,988	61	.
1950	9,043	912,079	647,900	39	.
1960	6,630	849,870	564,063	55	.
1970	5,001	761,708	509,972	58	.
1980	7,006	787,780	505,873	40	.
1990	6,039	765,010	475,211	46	.
2000	5,685	768,337	471,900	50	.
2010	5,181	736,157	444,201	50	.



NET MIGRATION: DECADE ENDING...

calculated by the Institute for Policy and Social Research, The University of Kansas

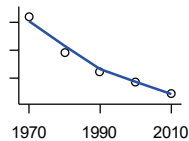
Year	County	State of Kansas	Non Metro Kansas	County Rank	Per 1000 or \$ Per Capita
1930	-1,651	-66,132	-101,869	70	-173.2
1940	-1,877	-192,649	-166,022	50	-220.9
1950	131	-84,329	-158,379	22	14.5
1960	-651	-38,999	-146,640	25	-66.9
1970	-2,577	-119,662	-105,116	94	-337.8
1980	-706	-21,983	-6,184	91	-100.8
1990	-1,116	-61,835	-79,274	78	-184.8
2000	-198	68,960	4,247	73	-34.8
2010	-427	5,578	-50,648	74	-82.4



MEDIAN AGE

U.S. Census Bureau: Decennial Census

Year	County	State of Kansas	Non Metro Kansas	County Rank	Per 1000 or \$ Per Capita
1960	29.3	26.9	.	75	.
1970	34.6	28.7	.	56	.
1980	35.0	30.1	.	46	.
1990	37.9	32.9	.	42	.
2000	40.5	35.2	.	41	.
2010	44.1	36.0	.	41	.



POPULATION UNDER 18 (DECENNIAL CENSUS)

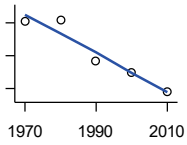
U.S. Census Bureau: Decennial Census

Year	County	State of Kansas	Non Metro Kansas	County Rank	Per 1000 or \$ Per Capita
1970	2,601	746,354	306,227	52	.
1980	1,962	649,035	263,919	59	.
1990	1,612	661,614	250,107	63	.
2000	1,433	712,993	250,757	67	.
2010	1,224	726,939	229,213	69	.

County: county value. Kansas: state value. County Rank: highest county value ranked #1. (\$000): thousands of dollars. Nonmetro Kansas: Kansas total less Metropolitan Areas as defined by the Office of Management and Budget (OMB; released 3/6/2020). Per 1000: For nonmoney amounts, Per 1000=(county value / county population for the same year as the data) x 1000. \$ Per capita=(county value / county population for the same year as the data). Value= . indicates missing or suppressed data or value not calculated.

Population

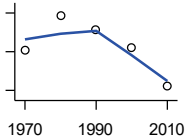
**POPULATION AGE 18 AND OVER
(DECENNIAL CENSUS)**



U.S. Census Bureau: Decennial Census

Year	County	State of Kansas	Non Metro Kansas	County Rank	Per 1000 or \$ Per Capita
1970	5,027	1,500,224	654,288	60	.
1980	5,033	1,714,282	716,684	62	.
1990	4,427	1,815,960	689,309	66	.
2000	4,252	1,975,425	709,154	67	.
2010	3,957	2,126,179	700,768	69	.

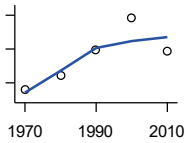
**POPULATION AGE 65 AND OVER
(DECENNIAL CENSUS)**



U.S. Census Bureau: Decennial Census

Year	County	State of Kansas	Non Metro Kansas	County Rank	Per 1000 or \$ Per Capita
1970	1,206	266,201	149,049	65	.
1980	1,387	306,263	164,932	63	.
1990	1,313	342,571	168,579	64	.
2000	1,220	356,229	161,769	62	.
2010	1,024	376,116	154,214	66	.

**POPULATION AGE 85 AND OVER
(DECENNIAL CENSUS)**



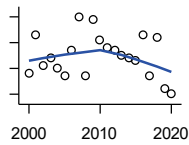
U.S. Census Bureau: Decennial Census

Year	County	State of Kansas	Non Metro Kansas	County Rank	Per 1000 or \$ Per Capita
1970	132	23,899	13,698	57	.
1980	149	33,455	18,804	66	.
1990	179	42,241	22,970	61	.
2000	217	51,770	26,644	63	.
2010	178	59,318	26,197	65	.

County: county value. Kansas: state value. County Rank: highest county value ranked #1. (\$000): thousands of dollars. Nonmetro Kansas: Kansas total less Metropolitan Areas as defined by the Office of Management and Budget (OMB; released 3/6/2020). Per 1000: For nonmoney amounts, Per 1000=(county value / county population for the same year as the data) x 1000. \$ Per capita=(county value / county population for the same year as the data). Value= . indicates missing or suppressed data or value not calculated.

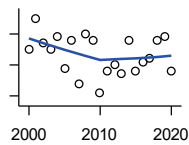
Vital Statistics and Health

BIRTHS (LIVE)



Kansas Department of Health and Environment

Year	County	State of Kansas	Non Metro Kansas	County Rank	Per 1000 or \$ Per Capita
2000	53	39,654	12,980	73	9.3
2001	68	38,832	12,527	61	12.2
2002	56	39,338	12,476	70	10.2
2003	59	39,353	12,342	69	10.9
2004	55	39,553	12,398	69	10.2
2005	52	39,701	12,382	73	9.7
2006	62	40,896	12,726	65	11.6
2007	75	41,951	12,990	62	14.2
2008	52	41,815	12,970	72	9.9
2009	74	41,388	12,949	62	14.3
2010	66	40,439	12,200	63	12.7
2011	63	39,628	12,098	67	12.1
2012	62	40,304	12,217	68	11.9
2013	60	38,805	11,877	68	11.5
2014	59	39,193	12,052	68	11.3
2015	58	39,126	11,836	69	11.2
2016	68	38,048	11,467	59	13.3
2017	52	36,464	10,968	70	10.3
2018	67	36,268	10,826	62	13.4
2019	47	35,395	10,506	74	9.6
2020	45	34,368	10,222	73	9.1



DEATHS

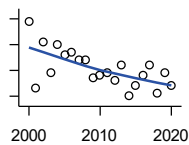
Kansas Department of Health and Environment

Year	County	State of Kansas	Non Metro Kansas	County Rank	Per 1000 or \$ Per Capita
2000	70	24,676	11,175	70	12.3
2001	80	24,590	10,807	61	14.4
2002	72	24,968	11,079	66	13.1
2003	70	24,417	10,615	63	12.9
2004	74	23,720	10,369	64	13.7
2005	64	24,632	10,599	68	12.0
2006	73	24,489	10,538	61	13.7
2007	59	24,413	10,601	73	11.2
2008	75	24,896	10,593	63	14.3
2009	73	23,997	9,938	61	14.1
2010	56	24,428	10,105	70	10.8
2011	63	25,114	10,520	69	12.1
2012	65	25,084	10,259	67	12.4
2013	62	25,347	10,249	68	11.9
2014	73	25,731	10,275	61	14.0
2015	63	26,611	10,539	68	12.2
2016	66	26,129	10,231	68	12.9
2017	67	26,725	10,452	65	13.3
2018	73	27,213	10,389	63	14.6
2019	74	27,312	10,569	61	15.0
2020	63	31,667	11,850	71	12.8

County: county value. Kansas: state value. County Rank: highest county value ranked #1. (\$000): thousands of dollars. Nonmetro Kansas: Kansas total less Metropolitan Areas as defined by the Office of Management and Budget (OMB; released 3/6/2020). Per 1000: For nonmoney amounts, Per 1000=(county value / county population for the same year as the data) x 1000. \$ Per capita=(county value / county population for the same year as the data). Value= . indicates missing or suppressed data or value not calculated.

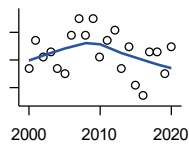
Vital Statistics and Health

MARRIAGES



Kansas Department of Health and Environment

Year	County	State of Kansas	Non Metro Kansas	County Rank	Per 1000 or \$ Per Capita
2000	49	20,426	7,333	61	8.6
2001	23	20,457	7,441	88	4.1
2002	41	19,783	6,794	65	7.5
2003	29	18,722	6,469	72	5.3
2004	40	19,174	6,756	63	7.4
2005	36	18,745	6,481	63	6.7
2006	37	18,836	6,433	65	7.0
2007	34	18,910	6,464	69	6.4
2008	34	18,717	6,283	67	6.5
2009	27	18,268	6,015	73	5.2
2010	28	18,150	5,925	73	5.4
2011	29	17,897	5,977	72	5.6
2012	26	18,154	5,752	73	5.0
2013	32	17,328	5,533	64	6.2
2014	20	17,655	5,535	78	3.8
2015	24	17,595	5,400	74	4.6
2016	28	17,948	5,340	65	5.5
2017	32	17,274	5,163	61	6.3
2018	21	16,362	4,999	73	4.2
2019	29	15,403	4,650	65	5.9
2020	24	14,038	4,066	63	4.9



DIVORCES AND ANNULMENTS

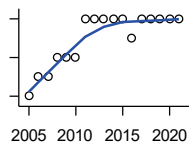
Kansas Department of Health and Environment

Year	County	State of Kansas	Non Metro Kansas	County Rank	Per 1000 or \$ Per Capita
2000	11	10,105	4,000	85	1.9
2001	16	9,885	3,818	70	2.9
2002	13	9,645	3,716	76	2.4
2003	14	8,644	3,464	71	2.6
2004	11	8,759	3,506	82	2.0
2005	10	8,476	3,311	83	1.9
2006	17	9,145	3,387	67	3.2
2007	20	9,347	3,402	60	3.8
2008	17	9,818	3,655	66	3.2
2009	20	10,333	3,463	61	3.9
2010	13	10,579	3,530	74	2.5
2011	16	10,445	3,347	68	3.1
2012	18	9,782	3,040	62	3.4
2013	11	9,085	2,973	75	2.1
2014	15	8,441	2,682	63	2.9
2015	8	8,036	2,704	85	1.5
2016	6	7,198	2,424	89	1.2
2017	14	6,494	2,315	56	2.8
2018	14	6,538	2,269	57	2.8
2019	10	6,398	2,357	70	2.0
2020	15	5,169	1,866	52	3.0

County: county value. Kansas: state value. County Rank: highest county value ranked #1. (\$000): thousands of dollars. Nonmetro Kansas: Kansas total less Metropolitan Areas as defined by the Office of Management and Budget (OMB; released 3/6/2020). Per 1000: For nonmoney amounts, Per 1000=(county value / county population for the same year as the data) x 1000. \$ Per capita=(county value / county population for the same year as the data). Value= . indicates missing or suppressed data or value not calculated.

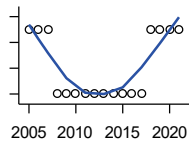
Vital Statistics and Health

PHYSICIANS: M.D. PHYSICIANS



Kansas Department of Health and Environment (1981-2005,2010-);Kansas Health Policy Authority (2006-2009)

Year	County	State of Kansas	Non Metro Kansas	County Rank	Per 1000 or \$ Per Capita
2005	1	4,241	912	96	0.2
2006	2	4,310	953	86	0.4
2007	2	5,309	1,046	86	0.4
2008	3	5,110	1,016	73	0.6
2009	3	5,249	996	70	0.6
2010	3	5,192	979	73	0.6
2011	5	5,243	983	52	1.0
2012	5	5,693	1,033	54	1.0
2013	5	6,106	1,071	56	1.0
2014	5	5,839	951	53	1.0
2015	5	5,703	855	46	1.0
2016	4	4,278	643	49	0.8
2017	5	6,332	1,047	55	1.0
2018	5	6,079	1,065	53	1.0
2019	5	6,435	1,036	55	1.0
2020	5	6,668	1,045	52	1.0
2021	5	6,745	1,042	54	1.0



PHYSICIANS: D.O. PHYSICIANS

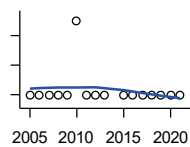
Kansas Department of Health and Environment (1981-2005,2010-);Kansas Health Policy Authority (2006-2009)

Year	County	State of Kansas	Non Metro Kansas	County Rank	Per 1000 or \$ Per Capita
2005	1	553	174	68	0.2
2006	1	508	171	66	0.2
2007	1	569	169	66	0.2
2008	0	558	166	105	0.0
2009	0	564	160	105	0.0
2010	0	583	169	105	0.0
2011	0	502	152	105	0.0
2012	0	718	200	105	0.0
2013	0	829	210	105	0.0
2014	0	817	189	105	0.0
2015	0	819	190	105	0.0
2016	0	632	136	105	0.0
2017	0	579	129	105	0.0
2018	1	871	164	64	0.2
2019	1	951	212	65	0.2
2020	1	1,018	204	66	0.2
2021	1	1,095	217	74	0.2

County: county value. Kansas: state value. County Rank: highest county value ranked #1. (\$000): thousands of dollars. Nonmetro Kansas: Kansas total less Metropolitan Areas as defined by the Office of Management and Budget (OMB; released 3/6/2020). Per 1000: For nonmoney amounts, Per 1000=(county value / county population for the same year as the data) x 1000. \$ Per capita=(county value / county population for the same year as the data). Value= . indicates missing or suppressed data or value not calculated.

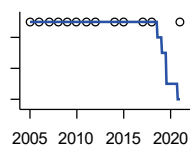
Vital Statistics and Health

DENTISTS



Kansas Department of Health and Environment (1981-2006,2010-); Kansas Health Policy Authority (2007-2009)

Year	County	State of Kansas	Non Metro Kansas	County Rank	Per 1000 or \$ Per Capita
2005	2	1,347	363	69	0.4
2006	2	1,381	361	68	0.4
2007	2	1,335	350	68	0.4
2008	2	1,392	353	67	0.4
2009	2	1,353	350	67	0.4
2010	3	1,401	365	53	0.6
2011	2	1,338	346	70	0.4
2012	2	1,434	392	69	0.4
2013	2	1,212	328	68	0.4
2015	2	1,240	327	69	0.4
2016	2	1,456	350	68	0.4
2017	2	1,467	350	65	0.4
2018	2	1,604	359	64	0.4
2019	2	1,646	355	66	0.4
2020	2	1,646	355	66	0.4
2021	2	1,688	362	66	0.4



NUMBER OF HOSPITALS

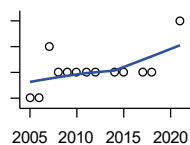
American Hospital Association, American Hospital Association Guide to the Health Care Field

Year	County	State of Kansas	Non Metro Kansas	County Rank	Per 1000 or \$ Per Capita
2005	1	158	105	96	.
2006	1	158	105	96	.
2007	1	159	104	95	.
2008	1	159	104	95	.
2009	1	158	105	96	.
2010	1	158	104	96	.
2011	1	158	103	96	.
2012	1	157	103	96	.
2014	1	156	.	96	.
2015	1	155	103	96	.
2017	1	157	102	96	.
2018	1	154	99	95	.
2021	1	151	.	95	.

County: county value. Kansas: state value. County Rank: highest county value ranked #1. (\$000): thousands of dollars. Nonmetro Kansas: Kansas total less Metropolitan Areas as defined by the Office of Management and Budget (OMB; released 3/6/2020). Per 1000: For nonmoney amounts, Per 1000=(county value / county population for the same year as the data) x 1000. \$ Per capita=(county value / county population for the same year as the data). Value= . indicates missing or suppressed data or value not calculated.

Vital Statistics and Health

NUMBER OF HOSPITAL BEDS

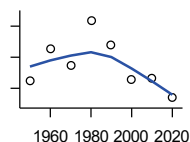


Kansas Department of Health and Environment

Year	County	State of Kansas	Non Metro Kansas	County Rank	Per 1000 or \$ Per Capita
2005	19	12,389	5,687	89	3.6
2006	19	11,992	5,514	89	3.6
2007	21	12,171	5,637	87	4.0
2008	20	12,332	5,700	89	3.8
2009	20	12,283	5,652	90	3.9
2010	20	12,218	5,521	91	3.9
2011	20	12,182	5,335	90	3.8
2012	20	12,002	5,355	90	3.8
2014	20	12,034	.	90	3.8
2015	20	11,926	5,330	91	3.9
2017	20	11,491	4,825	91	4.0
2018	20	11,448	4,583	87	4.0
2021	22	11,199	.	81	4.6

Housing

HOUSING UNITS (DECENNIAL)



U.S. Census Bureau: Decennial Census

Year	County	State of Kansas	Non Metro Kansas	County Rank	Per 1000 or \$ Per Capita
1950	2,746	586,650	328,210	64	303.7
1960	2,958	672,899	329,380	55	303.9
1970	2,847	789,735	363,824	61	373.2
1980	3,136	955,207	416,877	63	447.6
1990	2,979	1,044,112	417,062	64	493.3
2000	2,758	1,131,395	422,218	65	485.1
2010	2,768	1,233,215	424,050	66	534.3
2020	2,638	1,275,689	413,120	66	536.3

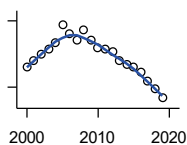
County: county value. Kansas: state value. County Rank: highest county value ranked #1. (\$000): thousands of dollars. Nonmetro Kansas: Kansas total less Metropolitan Areas as defined by the Office of Management and Budget (OMB; released 3/6/2020). Per 1000: For nonmoney amounts, Per 1000=(county value / county population for the same year as the data) x 1000. \$ Per capita=(county value / county population for the same year as the data). Value= . indicates missing or suppressed data or value not calculated.

Housing

HOUSING UNITS (ESTIMATED)

Year	County	State of Kansas	Non Metro Kansas	County Rank	Per 1000 or \$ Per Capita
2000	2,759	1,134,529	422,560	65	485.3
2001	2,762	1,146,858	423,876	65	496.8
2002	2,765	1,160,129	425,089	65	504.4
2003	2,767	1,171,620	425,936	67	509.6
2004	2,770	1,184,702	426,593	67	513.0
2005	2,778	1,195,791	426,964	67	519.1
2006	2,774	1,206,692	426,713	67	521.2
2007	2,771	1,217,608	426,090	67	525.3
2008	2,776	1,225,625	425,768	66	528.4
2009	2,771	1,230,552	424,776	66	535.0
2010	2,768	1,234,456	424,174	66	534.3
2011	2,767	1,238,052	424,549	66	532.1
2012	2,766	1,241,992	425,116	66	529.8
2013	2,762	1,246,675	425,699	66	531.7
2014	2,760	1,253,284	426,269	66	530.4
2015	2,759	1,258,999	426,844	66	532.7
2016	2,757	1,265,684	427,465	66	538.7
2017	2,753	1,273,536	427,746	66	544.6
2018	2,749	1,280,649	428,099	66	550.4
2019	2,745	1,288,401	428,495	66	557.9

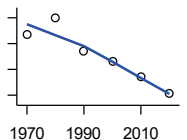
U.S. Census Bureau



OCCUPIED HOUSING UNITS

Year	County	State of Kansas	Non Metro Kansas	County Rank	Per 1000 or \$ Per Capita
1970	2,570	727,364	326,494	59	336.9
1980	2,698	872,239	371,693	61	385.1
1990	2,444	944,726	365,901	64	404.7
2000	2,362	1,037,891	375,313	66	415.5
2010	2,238	1,112,096	370,269	66	432.0
2020	2,109	1,151,360	356,330	66	428.7

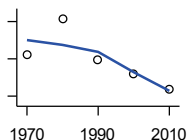
U.S. Census Bureau: Decennial Census



OWNER OCCUPIED HOUSING UNITS

Year	County	State of Kansas	Non Metro Kansas	County Rank	Per 1000 or \$ Per Capita
1970	1,924	502,585	236,338	61	252.2
1980	2,115	612,433	277,096	61	301.9
1990	1,896	641,762	263,099	64	314.0
2000	1,821	718,703	271,350	66	320.3
2010	1,740	753,532	261,763	66	335.8

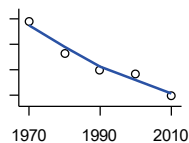
U.S. Census Bureau: Decennial Census



County: county value. Kansas: state value. County Rank: highest county value ranked #1. (\$000): thousands of dollars. Nonmetro Kansas: Kansas total less Metropolitan Areas as defined by the Office of Management and Budget (OMB; released 3/6/2020). Per 1000: For nonmoney amounts, Per 1000=(county value / county population for the same year as the data) x 1000. \$ Per capita=(county value / county population for the same year as the data). Value= . indicates missing or suppressed data or value not calculated.

Housing

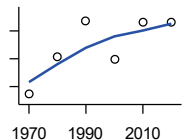
RENTER OCCUPIED HOUSING UNITS



U.S. Census Bureau: Decennial Census

Year	County	State of Kansas	Non Metro Kansas	County Rank	Per 1000 or \$ Per Capita
1970	646	224,779	90,156	60	84.7
1980	583	259,806	94,597	64	83.2
1990	548	302,964	102,802	66	90.7
2000	541	319,188	103,963	64	95.2
2010	498	358,564	108,506	69	96.1

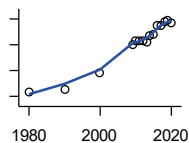
VACANT HOUSING UNITS



U.S. Census Bureau: Decennial Census

Year	County	State of Kansas	Non Metro Kansas	County Rank	Per 1000 or \$ Per Capita
1970	272	60,058	35,954	75	35.7
1980	406	77,912	41,584	50	58.0
1990	535	99,386	51,161	49	88.6
2000	396	93,309	46,904	64	69.7
2010	530	121,119	53,781	57	102.3
2020	529	124,329	56,790	57	107.5

MEDIAN VALUE (\$): OWNER OCCUPIED HOUSING UNITS



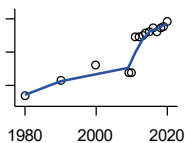
U.S. Census Bureau, Decennial Census (- 2000), (2009 -) American Community Survey five-year average ending in year shown.

Year	County	State of Kansas	Non Metro Kansas	County Rank	Per 1000 or \$ Per Capita
1980	23,800	37,800	.	78	.
1990	25,800	52,200	.	86	.
2000	38,300	83,500	.	89	.
2009	60,100	118,500	.	80	.
2010	62,900	122,600	.	81	.
2011	63,500	125,500	.	81	.
2012	63,400	127,400	.	83	.
2013	62,500	128,400	.	86	.
2014	67,500	129,400	.	80	.
2015	67,900	132,000	.	86	.
2016	74,600	135,300	.	79	.
2017	75,400	139,200	.	80	.
2018	78,000	145,400	.	80	.
2019	78,800	151,900	.	80	.
2020	77,300	157,600	.	83	.

County: county value. Kansas: state value. County Rank: highest county value ranked #1. (\$000): thousands of dollars. Nonmetro Kansas: Kansas total less Metropolitan Areas as defined by the Office of Management and Budget (OMB; released 3/6/2020). Per 1000: For nonmoney amounts, Per 1000=(county value / county population for the same year as the data) x 1000. \$ Per capita=(county value / county population for the same year as the data). Value= . indicates missing or suppressed data or value not calculated.

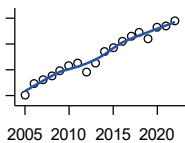
Housing

MEDIAN CONTRACT RENT (\$)



U.S. Census Bureau, Decennial Census (- 2000), (2009 -) American Community Survey five-year average ending in year shown.

Year	County	State of Kansas	Non Metro Kansas	County Rank	Per 1000 or \$ Per Capita
1980	135	219	.	98	.
1990	233	372	.	93	.
2000	325	498	.	88	.
2009	279	491	.	83	.
2010	280	507	.	88	.
2011	488	699	.	80	.
2012	491	715	.	85	.
2013	500	732	.	85	.
2014	514	748	.	85	.
2015	525	757	.	86	.
2016	548	775	.	79	.
2017	526	801	.	94	.
2018	545	831	.	91	.
2019	550	850	.	96	.
2020	585	863	.	89	.



FAIR MARKET RENT: 2 BEDROOMS

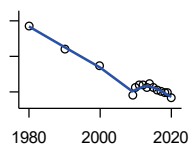
U.S. Department of Housing and Urban Development (HUD)

Year	County	State of Kansas	Non Metro Kansas	County Rank	Per 1000 or \$ Per Capita
2005	454	.	.	83	.
2006	497	.	.	105	.
2007	512	.	.	105	.
2008	525	628	.	105	.
2009	547	653	.	105	.
2010	566	678	.	105	.
2011	575	684	.	105	.
2012	540	660	.	105	.
2013	577	712	.	105	.
2014	622	746	.	105	.
2015	634	756	.	105	.
2016	658	781	.	105	.
2017	681	811	.	105	.
2018	697	815	.	105	.
2019	672	828	.	105	.
2020	714	855	.	105	.
2021	718	874	.	105	.
2022	742	879	.	105	.

County: county value. Kansas: state value. County Rank: highest county value ranked #1. (\$000): thousands of dollars. Nonmetro Kansas: Kansas total less Metropolitan Areas as defined by the Office of Management and Budget (OMB; released 3/6/2020). Per 1000: For nonmoney amounts, Per 1000=(county value / county population for the same year as the data) x 1000. \$ Per capita=(county value / county population for the same year as the data). Value= . indicates missing or suppressed data or value not calculated.

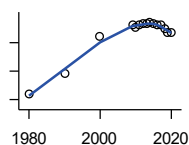
Education

POPULATION AGE 25+



U.S. Census Bureau, Decennial Census (- 2000), (2009 -) American Community Survey five-year average ending in year shown.

Year	County	State of Kansas	Non Metro Kansas	County Rank	Per 1000 or \$ Per Capita
1980	4,344	1,388,102	596,639	.	.
1990	4,084	1,565,936	608,745	.	.
2000	3,901	1,701,207	618,131	.	.
2009	3,561	1,775,427	600,188	.	.
2010	3,643	1,802,904	608,716	.	.
2011	3,682	1,822,400	610,386	.	.
2012	3,676	1,838,079	611,103	.	.
2013	3,656	1,850,010	610,374	.	.
2014	3,691	1,861,894	609,612	.	.
2015	3,651	1,869,698	606,967	.	.
2016	3,627	1,878,495	604,563	.	.
2017	3,608	1,886,741	601,076	.	.
2018	3,592	1,894,675	598,487	.	.
2019	3,586	1,902,279	595,501	.	.
2020	3,529	1,911,990	593,923	.	.



PERCENT HS GRADUATE OR HIGHER AGE 25+

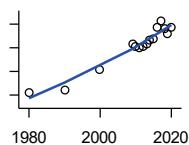
U.S. Census Bureau, Decennial Census (- 2000), (2009 -) American Community Survey five-year average ending in year shown.

Year	County	State of Kansas	Non Metro Kansas	County Rank	Per 1000 or \$ Per Capita
1980	67.0	73.3	.	72	.
1990	74.1	81.3	.	83	.
2000	87.1	86.0	.	21	.
2009	91.2	89.0	.	21	.
2010	90.4	89.2	.	36	.
2011	91.4	89.5	.	21	.
2012	91.5	89.7	.	24	.
2013	91.5	89.8	.	29	.
2014	92.2	90.0	.	25	.
2015	91.9	90.2	.	35	.
2016	91.3	90.3	.	49	.
2017	91.2	90.5	.	56	.
2018	90.0	90.7	.	69	.
2019	88.7	91.0	.	81	.
2020	88.6	91.4	.	85	.

County: county value. Kansas: state value. County Rank: highest county value ranked #1. (\$000): thousands of dollars. Nonmetro Kansas: Kansas total less Metropolitan Areas as defined by the Office of Management and Budget (OMB; released 3/6/2020). Per 1000: For nonmoney amounts, Per 1000=(county value / county population for the same year as the data) x 1000. \$ Per capita=(county value / county population for the same year as the data). Value= . indicates missing or suppressed data or value not calculated.

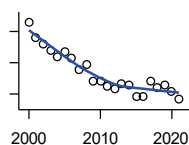
Education

PERCENT BACHELORS DEGREE OR HIGHER AGE 25+



U.S. Census Bureau, Decennial Census (- 2000), (2009 -) American Community Survey five-year average ending in year shown.

Year	County	State of Kansas	Non Metro Kansas	County Rank	Per 1000 or \$ Per Capita
1980	10.6	17.0	.	69	.
1990	11.0	21.1	.	89	.
2000	15.4	25.8	.	78	.
2009	20.8	28.8	.	30	.
2010	20.4	29.3	.	37	.
2011	20.1	29.7	.	40	.
2012	20.2	30.0	.	43	.
2013	20.9	30.3	.	41	.
2014	21.6	30.7	.	37	.
2015	22.0	31.0	.	39	.
2016	24.3	31.6	.	31	.
2017	25.7	32.3	.	25	.
2018	24.0	32.9	.	34	.
2019	23.1	33.4	.	46	.
2020	24.3	33.9	.	36	.



PUBLIC SCHOOL ENROLLMENT (FTE) SCHOOL YEAR BEGINNING...

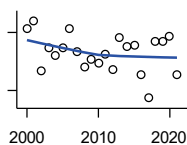
Kansas State Department of Education

Year	County	State of Kansas	Non Metro Kansas	County Rank	Per 1000 or \$ Per Capita
2000	979.7	448,150.8	166,722.5	72	172.3
2001	928.7	447,047.1	164,365.0	73	167.0
2002	910.5	444,860.3	161,555.4	73	166.1
2003	891.2	443,620.6	159,130.2	71	164.1
2004	867.3	441,957.2	156,566.3	71	160.6
2005	883.3	442,708.4	155,197.2	70	165.0
2006	864.3	444,878.7	153,842.3	71	162.4
2007	828.0	446,831.3	152,337.1	72	157.0
2008	843.0	447,730.0	150,572.7	71	160.4
2009	792.4	453,202.5	151,246.8	72	153.0
2010	789.2	455,405.0	151,023.8	72	152.3
2011	775.5	456,000.5	150,257.9	71	149.1
2012	767.0	458,496.4	150,463.0	71	146.9
2013	784.3	461,950.0	150,420.9	71	151.0
2014	777.0	464,395.4	150,499.4	72	149.3
2015	742.4	463,504.0	149,539.3	71	143.3
2016	741.5	459,920.3	147,293.5	70	144.9
2017	792.6	477,977.9	152,096.3	70	156.8
2018	769.0	476,481.7	150,456.8	72	154.0
2019	780.4	476,525.1	150,045.2	71	158.6
2020	756.9	462,088.0	146,369.6	69	153.9
2021	732.0	463,652.4	147,500.4	72	151.5

County: county value. Kansas: state value. County Rank: highest county value ranked #1. (\$000): thousands of dollars. Nonmetro Kansas: Kansas total less Metropolitan Areas as defined by the Office of Management and Budget (OMB; released 3/6/2020). Per 1000: For nonmoney amounts, Per 1000=(county value / county population for the same year as the data) x 1000. \$ Per capita=(county value / county population for the same year as the data). Value= . indicates missing or suppressed data or value not calculated.

Education

PUPIL/TEACHER RATIO SCHOOL YEAR BEGINNING...

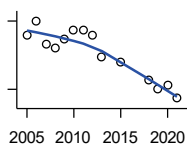


Kansas State Department of Education

Year	County	State of Kansas	Non Metro Kansas	County Rank	Per 1000 or \$ Per Capita
2000	11.1	15.4	13.9	87	.
2001	11.3	15.3	13.8	88	.
2002	10.0	15.4	13.9	101	.
2003	10.6	15.5	13.8	96	.
2004	10.4	15.3	13.6	96	.
2005	10.6	15.0	13.4	96	.
2006	11.1	14.7	13.2	82	.
2007	10.5	14.6	13.1	90	.
2008	10.1	14.4	12.9	97	.
2009	10.3	14.8	13.2	96	.
2010	10.2	15.2	13.6	99	.
2011	10.4	15.1	13.5	94	.
2012	10.0	15.1	13.5	97	.
2013	10.9	15.1	13.5	88	.
2014	10.6	15.0	13.6	93	.
2015	10.7	15.2	13.9	93	.
2016	9.9	15.1	13.7	99	.
2017	9.3	15.5	13.9	101	.
2018	10.8	15.3	13.8	91	.
2019	10.8	15.2	13.7	86	.
2020	10.9	14.7	13.4	82	.
2021	9.9	14.8	13.5	98	.

Social Environment

CHILD CARE FACILITIES: TOTAL CHILD CARE FACILITIES

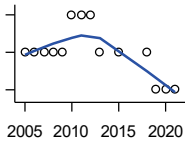


Kansas Department of Health and Environment, Bureau of Adult and Child Care

Year	County	State of Kansas	Non Metro Kansas	County Rank	Per 1000 or \$ Per Capita
2005	27	8,258	3,378	58	5.0
2006	30	8,442	3,429	54	5.6
2007	25	8,241	3,317	59	4.7
2008	24	8,011	3,150	58	4.6
2009	26	7,853	3,066	52	5.0
2010	28	7,354	2,858	47	5.4
2011	28	6,835	2,623	45	5.4
2012	27	6,346	2,409	44	5.2
2013	22	5,754	2,179	48	4.2
2015	21	5,289	2,146	51	4.1
2018	17	4,607	1,904	58	3.4
2019	15	4,287	1,774	56	3.0
2020	16	4,274	1,798	53	3.3
2021	13	4,002	1,700	60	2.7

County: county value. Kansas: state value. County Rank: highest county value ranked #1. (\$000): thousands of dollars. Nonmetro Kansas: Kansas total less Metropolitan Areas as defined by the Office of Management and Budget (OMB; released 3/6/2020). Per 1000: For nonmoney amounts, Per 1000=(county value / county population for the same year as the data) x 1000. \$ Per capita=(county value / county population for the same year as the data). Value= . indicates missing or suppressed data or value not calculated.

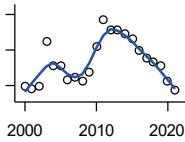
Social Environment



**CHILD CARE FACILITIES:
PRESCHOOLS**

Kansas Department of Health and Environment, Bureau of Adult and Child Care

Year	County	State of Kansas	Non Metro Kansas	County Rank	Per 1000 or \$ Per Capita
2005	1	243	140	79	0.2
2006	1	221	127	76	0.2
2007	1	208	119	76	0.2
2008	1	204	114	73	0.2
2009	1	194	107	72	0.2
2010	2	194	112	44	0.4
2011	2	209	123	47	0.4
2012	2	201	121	47	0.4
2013	1	140	84	64	0.2
2015	1	185	113	71	0.2
2018	1	150	94	60	0.2
2019	0	134	83	105	0.0
2020	0	126	78	105	0.0
2021	0	120	74	105	0.0



FOOD STAMP BENEFICIARIES

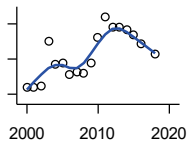
Kansas Social and Rehabilitation Services

Year	County	State of Kansas	Non Metro Kansas	County Rank	Per 1000 or \$ Per Capita
2000	247	110,619	44,825	59	43.4
2001	242	117,241	46,741	60	43.5
2002	247	131,726	52,342	61	45.1
2003	374	155,908	61,280	55	68.9
2004	306	167,971	65,852	61	56.7
2005	306	175,710	67,261	61	57.2
2006	266	182,821	67,487	64	50.0
2007	272	184,035	66,979	62	51.6
2008	263	187,377	67,160	63	50.1
2009	287	208,007	73,637	61	55.4
2010	360	259,609	90,919	61	69.5
2011	437	296,542	101,155	57	84.0
2012	408	303,257	102,478	61	78.1
2013	405	316,424	105,345	62	78.0
2014	395	301,377	100,761	63	75.9
2015	382	277,614	93,353	63	73.8
2016	349	258,412	88,343	63	68.2
2017	326	239,592	82,070	63	64.5
2018	315	219,738	75,208	60	63.1
2019	305	205,261	69,899	60	62.0
2020	262	198,457	66,721	63	53.3
2021	236	203,424	68,883	67	48.9

County: county value. Kansas: state value. County Rank: highest county value ranked #1. (\$000): thousands of dollars. Nonmetro Kansas: Kansas total less Metropolitan Areas as defined by the Office of Management and Budget (OMB; released 3/6/2020). Per 1000: For nonmoney amounts, Per 1000=(county value / county population for the same year as the data) x 1000. \$ Per capita=(county value / county population for the same year as the data). Value= . indicates missing or suppressed data or value not calculated.

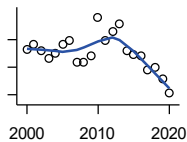
Social Environment

PERCENT OF POPULATION RECEIVING FOOD STAMPS



U.S. Dept. of Agriculture Food and Nutrition Service (1990-1997); Kansas Social and Rehabilitation Services (1998-)

Year	County	State of Kansas	Non Metro Kansas	County Rank	Per 1000 or \$ Per Capita
2000	4.4	4.1	.	33	.
2001	4.4	4.3	.	38	.
2002	4.5	4.9	.	47	.
2003	7.0	5.7	.	26	.
2004	5.7	6.2	.	47	.
2005	5.8	6.4	.	47	.
2006	5.1	6.6	.	56	.
2007	5.3	6.6	.	51	.
2008	5.2	6.7	.	50	.
2009	5.8	7.4	.	51	.
2010	7.2	9.1	.	51	.
2011	8.4	10.3	.	41	.
2012	7.8	10.5	.	49	.
2013	7.8	10.9	.	50	.
2014	7.6	10.4	.	52	.
2015	7.4	9.6	.	47	.
2016	6.9	8.9	.	52	.
2018	6.3	7.5	.	50	.



ESTIMATED NUMBER OF PEOPLE IN POVERTY

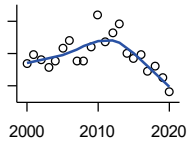
U.S. Census Bureau, Small Area Income and Poverty Estimates

Year	County	State of Kansas	Non Metro Kansas	County Rank	Per 1000 or \$ Per Capita
2000	616	235,087	98,984	60	108.4
2001	631	252,134	106,257	62	113.5
2002	610	265,673	107,542	61	111.3
2003	582	278,163	107,323	61	107.2
2004	599	297,733	111,534	60	110.9
2005	635	310,667	118,768	60	118.6
2006	649	327,102	123,700	61	121.9
2007	568	301,828	111,953	62	107.7
2008	568	307,804	113,015	62	108.1
2009	592	359,692	123,394	64	114.3
2010	731	374,677	131,502	58	141.1
2011	649	383,859	134,912	63	124.8
2012	681	392,095	133,800	59	130.4
2013	706	391,718	134,067	60	135.9
2014	608	381,506	130,213	65	116.8
2015	596	366,069	123,073	63	115.1
2016	592	343,773	121,314	63	115.7
2017	539	335,371	116,854	68	106.6
2018	550	336,892	114,490	68	110.1
2019	509	319,931	110,692	68	103.5
2020	457	300,931	100,998	69	92.9

County: county value. Kansas: state value. County Rank: highest county value ranked #1. (\$000): thousands of dollars. Nonmetro Kansas: Kansas total less Metropolitan Areas as defined by the Office of Management and Budget (OMB; released 3/6/2020). Per 1000: For nonmoney amounts, Per 1000=(county value / county population for the same year as the data) x 1000. \$ Per capita=(county value / county population for the same year as the data). Value= . indicates missing or suppressed data or value not calculated.

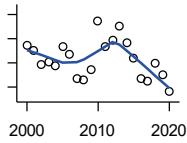
Social Environment

ESTIMATED % OF PEOPLE IN POVERTY



U.S. Census Bureau, Small Area Income and Poverty Estimates

Year	County	State of Kansas	Non Metro Kansas	County Rank	Per 1000 or \$ Per Capita
2000	11.4	8.9	.	32	.
2001	11.9	9.5	.	39	.
2002	11.6	10.0	.	43	.
2003	11.1	10.4	.	44	.
2004	11.5	11.1	.	42	.
2005	12.3	11.7	.	47	.
2006	12.8	12.2	.	47	.
2007	11.5	11.2	.	56	.
2008	11.5	11.3	.	53	.
2009	12.4	13.2	.	55	.
2010	14.4	13.5	.	32	.
2011	12.7	13.8	.	57	.
2012	13.3	14.0	.	45	.
2013	13.8	13.9	.	44	.
2014	12.0	13.5	.	62	.
2015	11.7	12.9	.	58	.
2016	11.9	12.2	.	57	.
2017	10.9	11.9	.	77	.
2018	11.2	11.9	.	72	.
2019	10.5	11.3	.	76	.
2020	9.6	10.6	.	85	.



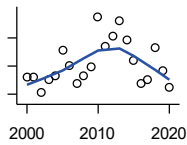
EST. NUMBER OF RELATED CHILDREN AGE 5 TO 17 IN FAMILIES IN POVERTY

U.S. Census Bureau, Small Area Income and Poverty Estimates

Year	County	State of Kansas	Non Metro Kansas	County Rank	Per 1000 or \$ Per Capita
2000	135	50,388	21,854	59	23.7
2001	130	53,755	23,094	64	23.4
2002	119	52,453	21,423	63	21.7
2003	121	55,419	21,809	61	22.3
2004	118	59,392	22,313	61	21.9
2005	133	60,203	24,244	60	24.9
2006	127	64,427	25,326	63	23.9
2007	107	61,149	23,639	66	20.3
2008	106	59,842	22,661	66	20.2
2009	114	71,850	26,251	72	22.0
2010	155	81,077	29,804	57	29.9
2011	133	82,311	29,306	69	25.6
2012	139	87,594	29,781	67	26.6
2013	150	84,325	29,253	60	28.9
2014	137	83,873	29,354	63	26.3
2015	124	78,192	27,482	65	23.9
2016	107	67,810	25,074	72	20.9
2017	105	67,873	25,032	75	20.8
2018	120	68,153	24,928	69	24.0
2019	110	64,613	23,117	66	22.4
2020	96	59,792	21,143	71	19.5

County: county value. Kansas: state value. County Rank: highest county value ranked #1. (\$000): thousands of dollars. Nonmetro Kansas: Kansas total less Metropolitan Areas as defined by the Office of Management and Budget (OMB; released 3/6/2020). Per 1000: For nonmoney amounts, Per 1000=(county value / county population for the same year as the data) x 1000. \$ Per capita=(county value / county population for the same year as the data). Value= . indicates missing or suppressed data or value not calculated.

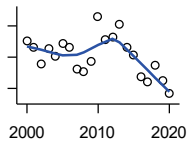
Social Environment



EST. % OF RELATED CHILDREN AGE 5 TO 17 IN FAMILIES IN POVERTY

U.S. Census Bureau, Small Area Income and Poverty Estimates

Year	County	State of Kansas	Non Metro Kansas	County Rank	Per 1000 or \$ Per Capita
2000	13.2	10.0	.	42	.
2001	13.2	10.8	.	55	.
2002	12.1	10.5	.	49	.
2003	13.0	11.3	.	43	.
2004	13.3	12.5	.	45	.
2005	15.1	12.8	.	42	.
2006	14.0	13.2	.	61	.
2007	12.8	12.6	.	73	.
2008	13.3	12.3	.	62	.
2009	13.9	14.7	.	70	.
2010	17.5	15.9	.	43	.
2011	15.4	16.2	.	61	.
2012	16.1	17.2	.	53	.
2013	17.2	16.5	.	46	.
2014	15.9	16.4	.	58	.
2015	14.4	15.3	.	68	.
2016	12.8	13.2	.	78	.
2017	13.0	13.4	.	82	.
2018	15.3	13.5	.	63	.
2019	13.7	12.9	.	67	.
2020	12.5	11.9	.	68	.



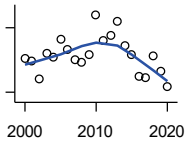
ESTIMATED NUMBER UNDER 18 IN POVERTY

U.S. Census Bureau, Small Area Income and Poverty Estimates

Year	County	State of Kansas	Non Metro Kansas	County Rank	Per 1000 or \$ Per Capita
2000	201	82,619	34,843	63	35.4
2001	193	87,487	36,724	67	34.7
2002	171	84,181	32,870	65	31.2
2003	191	93,896	36,004	62	35.2
2004	181	98,641	36,272	64	33.5
2005	197	100,254	39,118	63	36.8
2006	192	105,193	41,054	65	36.1
2007	164	100,242	37,881	69	31.1
2008	162	100,146	37,552	70	30.8
2009	175	118,187	42,682	73	33.8
2010	232	129,009	46,428	59	44.8
2011	202	133,478	46,832	69	38.8
2012	206	135,261	46,294	69	39.5
2013	222	131,251	44,952	63	42.7
2014	193	125,562	43,933	66	37.1
2015	183	119,994	41,828	70	35.3
2016	155	100,996	37,387	74	30.3
2017	149	102,858	37,955	76	29.5
2018	169	102,616	36,991	70	33.8
2019	150	97,920	34,797	72	30.5
2020	133	88,491	30,767	73	27.0

County: county value. Kansas: state value. County Rank: highest county value ranked #1. (\$000): thousands of dollars. Nonmetro Kansas: Kansas total less Metropolitan Areas as defined by the Office of Management and Budget (OMB; released 3/6/2020). Per 1000: For nonmoney amounts, Per 1000=(county value / county population for the same year as the data) x 1000. \$ Per capita=(county value / county population for the same year as the data). Value= . indicates missing or suppressed data or value not calculated.

Social Environment



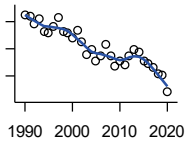
ESTIMATED PERCENT UNDER 18 IN POVERTY

U.S. Census Bureau, Small Area Income and Poverty Estimates

Year	County	State of Kansas	Non Metro Kansas	County Rank	Per 1000 or \$ Per Capita
2000	15.2	11.9	.	42	.
2001	14.9	12.7	.	60	.
2002	13.2	12.1	.	52	.
2003	15.6	13.8	.	40	.
2004	15.3	14.6	.	49	.
2005	16.9	15.2	.	51	.
2006	16.0	15.4	.	63	.
2007	15.0	14.7	.	72	.
2008	14.8	14.6	.	67	.
2009	15.5	17.1	.	76	.
2010	19.2	18.1	.	42	.
2011	16.8	18.8	.	72	.
2012	17.3	19.0	.	58	.
2013	18.6	18.4	.	47	.
2014	16.3	17.6	.	65	.
2015	15.5	16.9	.	71	.
2016	13.5	14.3	.	81	.
2017	13.4	14.7	.	88	.
2018	15.4	14.8	.	71	.
2019	14.0	14.3	.	73	.
2020	12.5	13.0	.	79	.

County: county value. Kansas: state value. County Rank: highest county value ranked #1. (\$000): thousands of dollars. Nonmetro Kansas: Kansas total less Metropolitan Areas as defined by the Office of Management and Budget (OMB; released 3/6/2020). Per 1000: For nonmoney amounts, Per 1000=(county value / county population for the same year as the data) x 1000. \$ Per capita=(county value / county population for the same year as the data). Value= . indicates missing or suppressed data or value not calculated.

Business



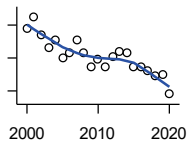
ESTABLISHMENTS TOTAL COUNTY BUSINESS PATTERNS

U.S. Census Bureau, County Business Patterns. Beginning with the 2017 data, any tabulation with fewer than 3 establishments were omitted from the release. Data for these establishments are included in the broader total.

Year	County	State of Kansas	Non Metro Kansas	County Rank	Per 1000 or \$ Per Capita
1990	225	65,858	26,802	52	37.3
1991	224	65,941	26,750	54	37.2
1992	218	67,630	27,229	57	36.3
1993	222	68,930	27,655	57	37.3
1994	213	69,822	27,763	58	35.6
1995	212	70,894	28,111	58	36.0
1996	216	72,017	28,353	57	36.7
1997	223	73,924	28,884	57	38.7
1998	213	74,019	28,749	61	37.0
1999	212	74,486	28,536	61	37.1
2000	208	74,939	28,475	62	36.6
2001	214	74,565	28,282	59	38.5
2002	205	75,077	28,183	60	37.4
2003	196	74,972	27,998	62	36.1
2004	199	75,827	28,009	60	36.9
2005	191	76,173	27,830	61	35.7
2006	195	76,446	27,653	61	36.6
2007	203	77,157	27,736	60	38.5
2008	195	76,096	27,314	61	37.1
2009	187	74,698	26,839	62	36.1
2010	191	74,301	26,739	61	36.9
2011	188	73,598	26,555	61	36.2
2012	195	73,944	26,534	59	37.3
2013	199	73,816	26,393	59	38.3
2014	198	74,055	26,292	60	38.0
2015	191	74,526	26,355	60	36.9
2016	189	74,884	26,172	61	36.9
2017	186	74,947	26,093	61	36.8
2018	182	74,559	25,802	62	36.4
2019	181	74,292	25,536	60	36.8
2020	168	73,982	25,178	62	34.2

County: county value. Kansas: state value. County Rank: highest county value ranked #1. (\$000): thousands of dollars. Nonmetro Kansas: Kansas total less Metropolitan Areas as defined by the Office of Management and Budget (OMB; released 3/6/2020). Per 1000: For nonmoney amounts, Per 1000=(county value / county population for the same year as the data) x 1000. \$ Per capita=(county value / county population for the same year as the data). Value= . indicates missing or suppressed data or value not calculated.

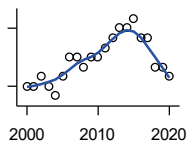
Business



ESTABLISHMENTS: 1-19 EMPLOYEES

U.S. Census Bureau, County Business Patterns. Beginning with the 2017 data, any tabulation with fewer than 3 establishments were omitted from the release. Data for these establishments are included in the broader total.

Year	County	State of Kansas	Non Metro Kansas	County Rank	Per 1000 or \$ Per Capita
2000	198	64,527	25,381	59	34.8
2001	205	64,176	25,248	57	36.9
2002	194	64,886	25,208	59	35.4
2003	186	64,714	25,020	61	34.3
2004	191	65,554	24,995	60	35.4
2005	180	65,796	24,839	61	33.6
2006	183	65,764	24,589	61	34.4
2007	191	66,446	24,701	60	36.2
2008	183	65,322	24,257	61	34.8
2009	175	64,128	23,851	62	33.8
2010	179	64,015	23,857	62	34.5
2011	175	63,251	23,571	61	33.7
2012	181	63,519	23,575	60	34.7
2013	184	63,197	23,396	59	35.4
2014	183	63,113	23,229	61	35.2
2015	175	63,280	23,227	62	33.8
2016	175	63,630	23,117	61	34.2
2017	172	63,619	23,022	62	34.0
2018	169	63,233	22,745	61	33.8
2019	170	62,904	22,489	60	34.6
2020	158	62,634	22,173	61	32.1



ESTABLISHMENTS: 20-99 EMPLOYEES

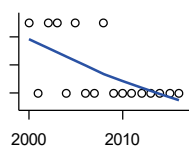
U.S. Census Bureau, County Business Patterns. Beginning with the 2017 data, any tabulation with fewer than 3 establishments were omitted from the release. Data for these establishments are included in the broader total.

Year	County	State of Kansas	Non Metro Kansas	County Rank	Per 1000 or \$ Per Capita
2000	8	8,714	2,653	75	1.4
2001	8	8,692	2,593	73	1.4
2002	9	8,582	2,554	73	1.6
2003	8	8,642	2,568	74	1.5
2004	7	8,658	2,590	80	1.3
2005	9	8,685	2,553	72	1.7
2006	11	8,922	2,612	68	2.1
2007	11	8,938	2,574	70	2.1
2008	10	8,939	2,587	68	1.9
2009	11	8,848	2,551	68	2.1
2010	11	8,612	2,454	66	2.1
2011	12	8,668	2,540	67	2.3
2012	13	8,700	2,500	59	2.5
2013	14	8,870	2,541	60	2.7
2014	14	9,121	2,590	61	2.7
2015	15	9,374	2,664	57	2.9
2016	13	9,412	2,596	63	2.5
2017	13	9,487	2,638	61	2.6
2018	10	9,485	2,621	67	2.0
2019	10	9,485	2,591	66	2.0
2020	9	9,471	2,545	69	1.8

County: county value. Kansas: state value. County Rank: highest county value ranked #1. (\$000): thousands of dollars. Nonmetro Kansas: Kansas total less Metropolitan Areas as defined by the Office of Management and Budget (OMB; released 3/6/2020). Per 1000: For nonmoney amounts, Per 1000=(county value / county population for the same year as the data) x 1000. \$ Per capita=(county value / county population for the same year as the data). Value= . indicates missing or suppressed data or value not calculated.

Business

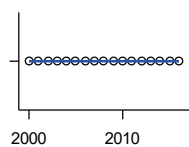
ESTABLISHMENTS: 100-499 EMPLOYEES



U.S. Census Bureau, County Business Patterns. Beginning with the 2017 data, any tabulation with fewer than 3 establishments were omitted from the release. Data for these establishments are included in the broader total.

Year	County	State of Kansas	Non Metro Kansas	County Rank	Per 1000 or \$ Per Capita
2000	2	1,555	409	62	0.4
2001	1	1,555	406	86	0.2
2002	2	1,464	386	57	0.4
2003	2	1,470	378	59	0.4
2004	1	1,463	388	82	0.2
2005	2	1,537	400	59	0.4
2006	1	1,598	407	83	0.2
2007	1	1,602	416	87	0.2
2008	2	1,653	421	63	0.4
2009	1	1,551	394	86	0.2
2010	1	1,513	382	85	0.2
2011	1	1,523	395	86	0.2
2012	1	1,567	410	85	0.2
2013	1	1,581	407	85	0.2
2014	1	1,641	421	86	0.2
2015	1	1,693	414	86	0.2
2016	1	1,671	406	84	0.2

ESTABLISHMENTS: 500 OR MORE EMPLOYEES

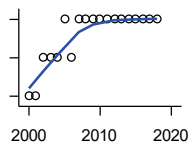


U.S. Census Bureau, County Business Patterns. Beginning with the 2017 data, any tabulation with fewer than 3 establishments were omitted from the release. Data for these establishments are included in the broader total.

Year	County	State of Kansas	Non Metro Kansas	County Rank	Per 1000 or \$ Per Capita
2000	0	143	32	105	0.0
2001	0	142	35	105	0.0
2002	0	145	35	105	0.0
2003	0	146	32	105	0.0
2004	0	152	36	105	0.0
2005	0	155	38	105	0.0
2006	0	162	45	105	0.0
2007	0	171	45	105	0.0
2008	0	182	49	105	0.0
2009	0	171	43	105	0.0
2010	0	161	46	105	0.0
2011	0	156	49	105	0.0
2012	0	158	49	105	0.0
2013	0	168	49	105	0.0
2014	0	180	52	105	0.0
2015	0	179	50	105	0.0
2016	0	171	53	105	0.0

County: county value. Kansas: state value. County Rank: highest county value ranked #1. (\$000): thousands of dollars. Nonmetro Kansas: Kansas total less Metropolitan Areas as defined by the Office of Management and Budget (OMB; released 3/6/2020). Per 1000: For nonmoney amounts, Per 1000=(county value / county population for the same year as the data) x 1000. \$ Per capita=(county value / county population for the same year as the data). Value= . indicates missing or suppressed data or value not calculated.

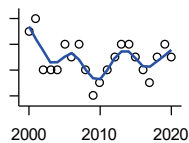
Business



ESTABLISHMENTS: FORESTRY, FISHING, HUNTING, AND AG SUPPORT

U.S. Census Bureau, County Business Patterns. Beginning with the 2017 data, any tabulation with fewer than 3 establishments were omitted from the release. Data for these establishments are included in the broader total.

Year	County	State of Kansas	Non Metro Kansas	County Rank	Per 1000 or \$ Per Capita
2000	1	190	149	74	0.2
2001	1	217	168	80	0.2
2002	2	224	176	56	0.4
2003	2	217	173	54	0.4
2004	2	211	165	53	0.4
2005	3	188	148	28	0.6
2006	2	193	158	48	0.4
2007	3	212	170	29	0.6
2008	3	197	158	29	0.6
2009	3	191	154	28	0.6
2010	3	192	161	26	0.6
2011	3	193	157	26	0.6
2012	3	204	164	28	0.6
2013	3	208	166	27	0.6
2014	3	194	152	22	0.6
2015	3	192	149	26	0.6
2016	3	181	142	23	0.6
2017	3	194	.	26	0.6
2018	3	195	.	26	0.6



ESTABLISHMENTS: MINING

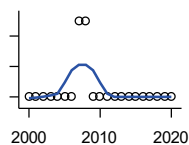
U.S. Census Bureau, County Business Patterns. Beginning with the 2017 data, any tabulation with fewer than 3 establishments were omitted from the release. Data for these establishments are included in the broader total.

Year	County	State of Kansas	Non Metro Kansas	County Rank	Per 1000 or \$ Per Capita
2000	17	868	619	13	3.0
2001	18	878	622	12	3.2
2002	14	847	615	16	2.6
2003	14	864	633	18	2.6
2004	14	880	647	18	2.6
2005	16	941	695	16	3.0
2006	15	991	734	20	2.8
2007	16	1,000	759	18	3.0
2008	14	1,047	799	24	2.7
2009	12	1,016	772	26	2.3
2010	13	1,009	762	24	2.5
2011	14	1,013	763	21	2.7
2012	15	1,048	789	19	2.9
2013	16	1,060	802	18	3.1
2014	16	1,102	828	18	3.1
2015	15	1,069	810	20	2.9
2016	14	990	747	21	2.7
2017	13	920	.	23	2.6
2018	15	900	.	18	3.0
2019	16	864	.	14	3.3
2020	15	825	.	14	3.0

County: county value. Kansas: state value. County Rank: highest county value ranked #1. (\$000): thousands of dollars. Nonmetro Kansas: Kansas total less Metropolitan Areas as defined by the Office of Management and Budget (OMB; released 3/6/2020). Per 1000: For nonmoney amounts, Per 1000=(county value / county population for the same year as the data) x 1000. \$ Per capita=(county value / county population for the same year as the data). Value= . indicates missing or suppressed data or value not calculated.

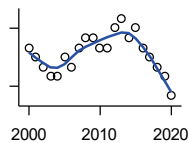
Business

ESTABLISHMENTS: UTILITIES



U.S. Census Bureau, County Business Patterns. Beginning with the 2017 data, any tabulation with fewer than 3 establishments were omitted from the release. Data for these establishments are included in the broader total.

Year	County	State of Kansas	Non Metro Kansas	County Rank	Per 1000 or \$ Per Capita
2000	3	274	192	37	0.5
2001	3	290	204	39	0.5
2002	3	278	195	38	0.5
2003	3	268	180	36	0.6
2004	3	247	164	32	0.6
2005	3	254	172	34	0.6
2006	3	248	169	32	0.6
2007	4	222	156	15	0.8
2008	4	244	166	20	0.8
2009	3	222	152	32	0.6
2010	3	197	129	25	0.6
2011	3	230	156	31	0.6
2012	3	232	156	30	0.6
2013	3	234	159	29	0.6
2014	3	232	160	28	0.6
2015	3	237	165	30	0.6
2016	3	245	171	28	0.6
2017	3	246	.	29	0.6
2018	3	252	.	30	0.6
2019	3	256	.	31	0.6
2020	3	255	.	33	0.6



ESTABLISHMENTS: CONSTRUCTION

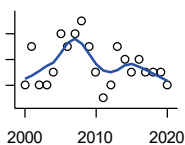
U.S. Census Bureau, County Business Patterns. Beginning with the 2017 data, any tabulation with fewer than 3 establishments were omitted from the release. Data for these establishments are included in the broader total.

Year	County	State of Kansas	Non Metro Kansas	County Rank	Per 1000 or \$ Per Capita
2000	20	7,703	2,616	62	3.5
2001	19	7,449	2,520	62	3.4
2002	18	7,519	2,482	63	3.3
2003	17	7,722	2,521	64	3.1
2004	17	7,887	2,518	64	3.1
2005	19	8,032	2,515	61	3.6
2006	18	8,031	2,494	62	3.4
2007	20	8,057	2,547	60	3.8
2008	21	7,831	2,522	57	4.0
2009	21	7,342	2,452	56	4.1
2010	20	7,064	2,394	59	3.9
2011	20	6,774	2,361	58	3.8
2012	22	6,741	2,393	57	4.2
2013	23	6,802	2,394	53	4.4
2014	21	6,920	2,383	56	4.0
2015	22	7,014	2,377	52	4.2
2016	20	6,988	2,343	58	3.9
2017	19	7,031	2,316	58	3.8
2018	18	7,124	2,285	58	3.6
2019	17	7,060	2,242	60	3.5
2020	15	7,089	2,249	62	3.0

County: county value. Kansas: state value. County Rank: highest county value ranked #1. (\$000): thousands of dollars. Nonmetro Kansas: Kansas total less Metropolitan Areas as defined by the Office of Management and Budget (OMB; released 3/6/2020). Per 1000: For nonmoney amounts, Per 1000=(county value / county population for the same year as the data) x 1000. \$ Per capita=(county value / county population for the same year as the data). Value= . indicates missing or suppressed data or value not calculated.

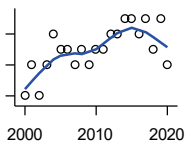
Business

**ESTABLISHMENTS:
MANUFACTURING**



U.S. Census Bureau, County Business Patterns. Beginning with the 2017 data, any tabulation with fewer than 3 establishments were omitted from the release. Data for these establishments are included in the broader total.

Year	County	State of Kansas	Non Metro Kansas	County Rank	Per 1000 or \$ Per Capita
2000	6	3,229	1,316	70	1.1
2001	9	3,240	1,323	56	1.6
2002	6	3,181	1,289	69	1.1
2003	6	3,159	1,291	69	1.1
2004	7	3,179	1,313	68	1.3
2005	10	3,128	1,278	52	1.9
2006	9	3,165	1,290	54	1.7
2007	10	3,184	1,316	49	1.9
2008	11	3,171	1,297	47	2.1
2009	9	3,026	1,240	54	1.7
2010	7	2,955	1,222	65	1.4
2011	5	2,877	1,193	78	1.0
2012	6	2,889	1,197	74	1.1
2013	9	2,836	1,165	52	1.7
2014	8	2,831	1,168	54	1.5
2015	7	2,817	1,161	62	1.4
2016	8	2,791	1,150	56	1.6
2017	7	2,760	1,147	60	1.4
2018	7	2,725	1,126	62	1.4
2019	7	2,695	1,111	63	1.4
2020	6	2,673	1,103	70	1.2



**ESTABLISHMENTS: WHOLESALE
TRADE**

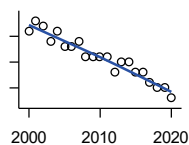
U.S. Census Bureau, County Business Patterns. Beginning with the 2017 data, any tabulation with fewer than 3 establishments were omitted from the release. Data for these establishments are included in the broader total.

Year	County	State of Kansas	Non Metro Kansas	County Rank	Per 1000 or \$ Per Capita
2000	14	4,876	1,776	58	2.5
2001	16	4,811	1,769	54	2.9
2002	14	4,719	1,750	61	2.6
2003	16	4,590	1,637	49	2.9
2004	18	4,553	1,634	44	3.3
2005	17	4,541	1,618	46	3.2
2006	17	4,517	1,596	48	3.2
2007	16	4,555	1,629	51	3.0
2008	17	4,501	1,622	47	3.2
2009	16	4,437	1,614	46	3.1
2010	17	4,432	1,612	46	3.3
2011	17	4,400	1,660	45	3.3
2012	18	4,563	1,755	45	3.4
2013	18	4,501	1,741	42	3.5
2014	19	4,497	1,746	41	3.7
2015	19	4,459	1,755	41	3.7
2016	18	4,457	1,732	47	3.5
2017	19	4,436	1,774	42	3.8
2018	17	4,330	1,727	46	3.4
2019	19	4,291	1,713	39	3.9
2020	16	4,191	1,677	46	3.3

County: county value. Kansas: state value. County Rank: highest county value ranked #1. (\$000): thousands of dollars. Nonmetro Kansas: Kansas total less Metropolitan Areas as defined by the Office of Management and Budget (OMB; released 3/6/2020). Per 1000: For nonmoney amounts, Per 1000=(county value / county population for the same year as the data) x 1000. \$ Per capita=(county value / county population for the same year as the data). Value= . indicates missing or suppressed data or value not calculated.

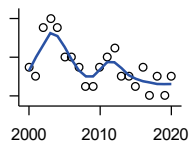
Business

ESTABLISHMENTS: RETAIL TRADE



U.S. Census Bureau, County Business Patterns. Beginning with the 2017 data, any tabulation with fewer than 3 establishments were omitted from the release. Data for these establishments are included in the broader total.

Year	County	State of Kansas	Non Metro Kansas	County Rank	Per 1000 or \$ Per Capita
2000	36	12,261	5,240	63	6.3
2001	38	12,206	5,207	60	6.8
2002	37	11,980	5,082	62	6.7
2003	34	11,834	5,049	64	6.3
2004	36	11,748	4,967	59	6.7
2005	33	11,562	4,834	64	6.2
2006	33	11,367	4,702	62	6.2
2007	34	11,306	4,653	60	6.4
2008	31	10,978	4,494	63	5.9
2009	31	10,760	4,372	63	6.0
2010	31	10,727	4,346	62	6.0
2011	31	10,655	4,289	61	6.0
2012	28	10,585	4,202	65	5.4
2013	30	10,433	4,147	62	5.8
2014	30	10,391	4,070	62	5.8
2015	28	10,327	4,061	63	5.4
2016	28	10,197	3,965	63	5.5
2017	26	10,074	3,885	64	5.1
2018	25	9,866	3,797	66	5.0
2019	25	9,762	3,750	64	5.1
2020	23	9,591	3,666	66	4.7



ESTABLISHMENTS: TRANSPORTATION & WAREHOUSING

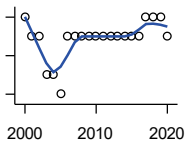
U.S. Census Bureau, County Business Patterns. Beginning with the 2017 data, any tabulation with fewer than 3 establishments were omitted from the release. Data for these establishments are included in the broader total.

Year	County	State of Kansas	Non Metro Kansas	County Rank	Per 1000 or \$ Per Capita
2000	11	2,474	1,293	64	1.9
2001	10	2,463	1,298	67	1.8
2002	15	2,461	1,278	42	2.7
2003	16	2,576	1,297	39	2.9
2004	15	2,651	1,324	46	2.8
2005	12	2,632	1,326	55	2.2
2006	12	2,626	1,295	58	2.3
2007	11	2,664	1,314	62	2.1
2008	9	2,675	1,329	70	1.7
2009	9	2,635	1,313	70	1.7
2010	11	2,615	1,313	56	2.1
2011	12	2,579	1,285	51	2.3
2012	13	2,519	1,243	46	2.5
2013	10	2,492	1,226	58	1.9
2014	10	2,518	1,240	55	1.9
2015	9	2,554	1,257	63	1.7
2016	11	2,567	1,241	53	2.1
2017	8	2,640	1,245	65	1.6
2018	10	2,627	1,238	58	2.0
2019	8	2,615	1,209	65	1.6
2020	10	2,589	1,179	56	2.0

County: county value. Kansas: state value. County Rank: highest county value ranked #1. (\$000): thousands of dollars. Nonmetro Kansas: Kansas total less Metropolitan Areas as defined by the Office of Management and Budget (OMB; released 3/6/2020). Per 1000: For nonmoney amounts, Per 1000=(county value / county population for the same year as the data) x 1000. \$ Per capita=(county value / county population for the same year as the data). Value= . indicates missing or suppressed data or value not calculated.

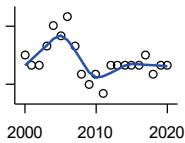
Business

ESTABLISHMENTS: INFORMATION



U.S. Census Bureau, County Business Patterns. Beginning with the 2017 data, any tabulation with fewer than 3 establishments were omitted from the release. Data for these establishments are included in the broader total.

Year	County	State of Kansas	Non Metro Kansas	County Rank	Per 1000 or \$ Per Capita
2000	5	1,542	578	62	0.9
2001	4	1,556	566	73	0.7
2002	4	1,517	551	67	0.7
2003	2	1,516	564	91	0.4
2004	2	1,518	556	92	0.4
2005	1	1,519	536	100	0.2
2006	4	1,549	559	68	0.8
2007	4	1,504	527	63	0.8
2008	4	1,468	522	61	0.8
2009	4	1,420	510	59	0.8
2010	4	1,437	527	61	0.8
2011	4	1,428	537	63	0.8
2012	4	1,387	515	61	0.8
2013	4	1,337	487	61	0.8
2014	4	1,335	496	61	0.8
2015	4	1,359	510	61	0.8
2016	4	1,431	537	60	0.8
2017	5	1,439	.	55	1.0
2018	5	1,407	.	54	1.0
2019	5	1,422	.	54	1.0
2020	4	1,424	.	64	0.8



ESTABLISHMENTS: FINANCE & INSURANCE

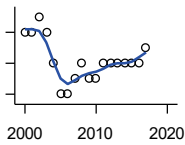
U.S. Census Bureau, County Business Patterns. Beginning with the 2017 data, any tabulation with fewer than 3 establishments were omitted from the release. Data for these establishments are included in the broader total.

Year	County	State of Kansas	Non Metro Kansas	County Rank	Per 1000 or \$ Per Capita
2000	11	5,209	1,848	74	1.9
2001	10	5,178	1,828	77	1.8
2002	10	5,496	1,911	77	1.8
2003	12	5,569	1,907	74	2.2
2004	14	5,572	1,913	64	2.6
2005	13	5,708	1,964	69	2.4
2006	15	5,877	1,976	63	2.8
2007	12	6,017	2,030	71	2.3
2008	9	6,010	2,023	83	1.7
2009	8	5,933	1,994	89	1.5
2010	9	5,872	1,975	86	1.7
2011	7	5,854	1,985	93	1.3
2012	10	5,993	2,024	81	1.9
2013	10	5,903	1,993	79	1.9
2014	10	5,894	2,000	80	1.9
2015	10	5,932	1,998	79	1.9
2016	10	6,022	2,021	77	2.0
2017	11	6,026	2,007	72	2.2
2018	9	6,023	1,997	79	1.8
2019	10	5,953	1,977	73	2.0
2020	10	5,926	1,969	73	2.0

County: county value. Kansas: state value. County Rank: highest county value ranked #1. (\$000): thousands of dollars. Nonmetro Kansas: Kansas total less Metropolitan Areas as defined by the Office of Management and Budget (OMB; released 3/6/2020). Per 1000: For nonmoney amounts, Per 1000=(county value / county population for the same year as the data) x 1000. \$ Per capita=(county value / county population for the same year as the data). Value= . indicates missing or suppressed data or value not calculated.

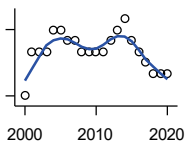
Business

ESTABLISHMENTS: REAL ESTATE, RENTAL, AND LEASING



U.S. Census Bureau, County Business Patterns. Beginning with the 2017 data, any tabulation with fewer than 3 establishments were omitted from the release. Data for these establishments are included in the broader total.

Year	County	State of Kansas	Non Metro Kansas	County Rank	Per 1000 or \$ Per Capita
2000	4	2,733	687	57	0.7
2001	4	2,849	724	58	0.7
2002	5	2,952	735	52	0.9
2003	4	3,007	727	56	0.7
2004	2	3,108	713	69	0.4
2005	0	3,203	727	105	0.0
2006	0	3,268	736	105	0.0
2007	1	3,286	721	91	0.2
2008	2	3,239	738	73	0.4
2009	1	3,122	723	89	0.2
2010	1	3,050	708	90	0.2
2011	2	3,002	692	74	0.4
2012	2	2,981	691	74	0.4
2013	2	3,046	717	76	0.4
2014	2	3,135	738	79	0.4
2015	2	3,179	744	79	0.4
2016	2	3,293	757	77	0.4
2017	3	3,389	.	67	0.6



ESTABLISHMENTS: PROFESSIONAL, SCIENTIFIC, AND TECHNICAL SERVICES

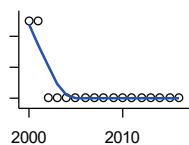
U.S. Census Bureau, County Business Patterns. Beginning with the 2017 data, any tabulation with fewer than 3 establishments were omitted from the release. Data for these establishments are included in the broader total.

Year	County	State of Kansas	Non Metro Kansas	County Rank	Per 1000 or \$ Per Capita
2000	8	6,424	1,690	77	1.4
2001	12	6,492	1,665	61	2.2
2002	12	6,719	1,704	62	2.2
2003	12	6,793	1,735	63	2.2
2004	14	7,025	1,730	58	2.6
2005	14	7,087	1,711	58	2.6
2006	13	7,231	1,736	60	2.4
2007	13	7,329	1,729	61	2.5
2008	12	7,133	1,671	61	2.3
2009	12	7,122	1,676	60	2.3
2010	12	7,172	1,680	62	2.3
2011	12	7,115	1,668	62	2.3
2012	13	7,122	1,681	58	2.5
2013	14	7,129	1,698	54	2.7
2014	15	7,206	1,682	51	2.9
2015	13	7,184	1,687	59	2.5
2016	12	7,146	1,659	61	2.3
2017	11	7,224	1,679	63	2.2
2018	10	7,138	1,655	65	2.0
2019	10	7,119	.	65	2.0
2020	10	7,117	.	66	2.0

County: county value. Kansas: state value. County Rank: highest county value ranked #1. (\$000): thousands of dollars. Nonmetro Kansas: Kansas total less Metropolitan Areas as defined by the Office of Management and Budget (OMB; released 3/6/2020). Per 1000: For nonmoney amounts, Per 1000=(county value / county population for the same year as the data) x 1000. \$ Per capita=(county value / county population for the same year as the data). Value= . indicates missing or suppressed data or value not calculated.

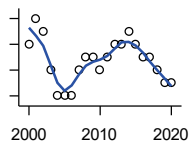
Business

ESTABLISHMENTS: MANAGEMENT OF COMPANIES AND ENTERPRISES



U.S. Census Bureau, County Business Patterns. Beginning with the 2017 data, any tabulation with fewer than 3 establishments were omitted from the release. Data for these establishments are included in the broader total.

Year	County	State of Kansas	Non Metro Kansas	County Rank	Per 1000 or \$ Per Capita
2000	2	622	145	37	0.4
2001	2	593	141	38	0.4
2002	1	597	152	63	0.2
2003	1	561	135	59	0.2
2004	1	569	133	57	0.2
2005	1	543	127	56	0.2
2006	1	542	131	57	0.2
2007	1	550	133	60	0.2
2008	1	553	139	60	0.2
2009	1	575	136	61	0.2
2010	1	567	131	61	0.2
2011	1	552	134	60	0.2
2012	1	593	135	56	0.2
2013	1	590	135	57	0.2
2014	1	603	136	57	0.2
2015	1	613	140	61	0.2
2016	1	655	171	60	0.2



ESTABLISHMENTS: ADMIN, SUPPORT, WASTE MGMT., AND REMEDIATION

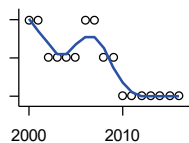
U.S. Census Bureau, County Business Patterns. Beginning with the 2017 data, any tabulation with fewer than 3 establishments were omitted from the release. Data for these establishments are included in the broader total.

Year	County	State of Kansas	Non Metro Kansas	County Rank	Per 1000 or \$ Per Capita
2000	7	3,307	871	49	1.2
2001	9	3,421	913	42	1.6
2002	8	3,232	882	47	1.5
2003	5	3,189	858	68	0.9
2004	3	3,301	891	79	0.6
2005	3	3,342	896	79	0.6
2006	3	3,395	886	83	0.6
2007	5	3,522	921	67	0.9
2008	6	3,587	932	57	1.1
2009	6	3,505	904	55	1.2
2010	5	3,494	897	68	1.0
2011	6	3,447	903	57	1.2
2012	7	3,462	891	45	1.3
2013	7	3,489	904	46	1.3
2014	8	3,569	933	44	1.5
2015	7	3,630	964	47	1.4
2016	6	3,705	987	60	1.2
2017	6	3,741	991	64	1.2
2018	5	3,740	983	67	1.0
2019	4	3,762	991	72	0.8
2020	4	3,807	989	74	0.8

County: county value. Kansas: state value. County Rank: highest county value ranked #1. (\$000): thousands of dollars. Nonmetro Kansas: Kansas total less Metropolitan Areas as defined by the Office of Management and Budget (OMB; released 3/6/2020). Per 1000: For nonmoney amounts, Per 1000=(county value / county population for the same year as the data) x 1000. \$ Per capita=(county value / county population for the same year as the data). Value= . indicates missing or suppressed data or value not calculated.

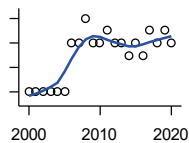
Business

ESTABLISHMENTS: EDUCATIONAL SERVICES



U.S. Census Bureau, County Business Patterns. Beginning with the 2017 data, any tabulation with fewer than 3 establishments were omitted from the release. Data for these establishments are included in the broader total.

Year	County	State of Kansas	Non Metro Kansas	County Rank	Per 1000 or \$ Per Capita
2000	2	604	155	45	0.4
2001	2	625	168	49	0.4
2002	1	666	165	70	0.2
2003	1	663	173	73	0.2
2004	1	690	173	72	0.2
2005	1	699	168	69	0.2
2006	2	698	175	46	0.4
2007	2	691	165	44	0.4
2008	1	692	158	67	0.2
2009	1	690	150	66	0.2
2010	0	700	149	105	0.0
2011	0	711	150	105	0.0
2012	0	724	145	105	0.0
2013	0	735	153	105	0.0
2014	0	722	152	105	0.0
2015	0	754	152	105	0.0
2016	0	728	150	105	0.0



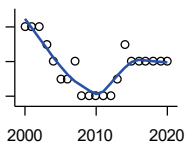
ESTABLISHMENTS: HEALTH CARE AND SOCIAL ASSISTANCE

U.S. Census Bureau, County Business Patterns. Beginning with the 2017 data, any tabulation with fewer than 3 establishments were omitted from the release. Data for these establishments are included in the broader total.

Year	County	State of Kansas	Non Metro Kansas	County Rank	Per 1000 or \$ Per Capita
2000	8	6,564	2,591	86	1.4
2001	8	6,636	2,590	84	1.4
2002	8	7,052	2,777	89	1.5
2003	8	7,129	2,792	88	1.5
2004	8	7,239	2,813	88	1.5
2005	8	7,412	2,855	91	1.5
2006	12	7,477	2,860	71	2.3
2007	12	7,661	2,864	71	2.3
2008	14	7,651	2,810	62	2.7
2009	12	7,696	2,787	69	2.3
2010	12	7,751	2,830	70	2.3
2011	13	7,804	2,817	67	2.5
2012	12	7,973	2,793	68	2.3
2013	12	7,877	2,729	67	2.3
2014	11	7,809	2,686	71	2.1
2015	12	8,103	2,692	69	2.3
2016	11	8,315	2,678	73	2.1
2017	13	8,136	2,646	69	2.6
2018	12	8,126	2,632	71	2.4
2019	13	8,184	2,587	68	2.6
2020	12	8,290	2,571	70	2.4

County: county value. Kansas: state value. County Rank: highest county value ranked #1. (\$000): thousands of dollars. Nonmetro Kansas: Kansas total less Metropolitan Areas as defined by the Office of Management and Budget (OMB; released 3/6/2020). Per 1000: For nonmoney amounts, Per 1000=(county value / county population for the same year as the data) x 1000. \$ Per capita=(county value / county population for the same year as the data). Value= . indicates missing or suppressed data or value not calculated.

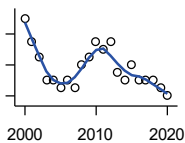
Business



ESTABLISHMENTS: ARTS, ENTERTAINMENT, AND RECREATION

U.S. Census Bureau, County Business Patterns. Beginning with the 2017 data, any tabulation with fewer than 3 establishments were omitted from the release. Data for these establishments are included in the broader total.

Year	County	State of Kansas	Non Metro Kansas	County Rank	Per 1000 or \$ Per Capita
2000	5	981	419	41	0.9
2001	5	1,009	433	40	0.9
2002	5	1,054	441	47	0.9
2003	4	1,045	443	55	0.7
2004	3	1,082	445	67	0.6
2005	2	1,109	446	86	0.4
2006	2	1,080	445	86	0.4
2007	3	1,092	444	71	0.6
2008	1	1,062	423	96	0.2
2009	1	1,063	421	98	0.2
2010	1	1,018	406	99	0.2
2011	1	997	387	100	0.2
2012	1	1,000	388	100	0.2
2013	2	1,009	377	84	0.4
2014	4	1,030	365	53	0.8
2015	3	1,031	357	62	0.6
2016	3	1,060	366	64	0.6
2017	3	1,096	.	62	0.6
2018	3	1,088	.	61	0.6
2019	3	1,087	.	60	0.6
2020	3	1,064	.	61	0.6



ESTABLISHMENTS: ACCOMMODATION AND FOOD SERVICES

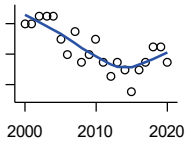
U.S. Census Bureau, County Business Patterns. Beginning with the 2017 data, any tabulation with fewer than 3 establishments were omitted from the release. Data for these establishments are included in the broader total.

Year	County	State of Kansas	Non Metro Kansas	County Rank	Per 1000 or \$ Per Capita
2000	20	5,536	2,213	53	3.5
2001	17	5,551	2,173	56	3.1
2002	15	5,610	2,174	59	2.7
2003	12	5,635	2,188	69	2.2
2004	12	5,681	2,160	66	2.2
2005	11	5,776	2,170	72	2.1
2006	12	5,745	2,132	66	2.3
2007	11	5,877	2,095	69	2.1
2008	14	5,843	2,052	61	2.7
2009	15	5,794	2,029	57	2.9
2010	17	5,898	2,046	52	3.3
2011	16	5,958	2,067	55	3.1
2012	17	5,951	2,046	53	3.3
2013	13	6,061	2,070	62	2.5
2014	12	5,985	2,024	65	2.3
2015	14	6,034	2,063	60	2.7
2016	12	6,126	2,094	67	2.3
2017	12	6,250	2,123	68	2.4
2018	12	6,256	2,128	63	2.4
2019	11	6,231	2,131	68	2.2
2020	10	6,206	2,131	73	2.0

County: county value. Kansas: state value. County Rank: highest county value ranked #1. (\$000): thousands of dollars. Nonmetro Kansas: Kansas total less Metropolitan Areas as defined by the Office of Management and Budget (OMB; released 3/6/2020). Per 1000: For nonmoney amounts, Per 1000=(county value / county population for the same year as the data) x 1000. \$ Per capita=(county value / county population for the same year as the data). Value= . indicates missing or suppressed data or value not calculated.

Business

ESTABLISHMENTS: OTHER SERVICES

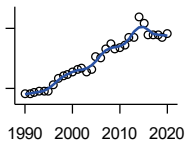


U.S. Census Bureau, County Business Patterns. Beginning with the 2017 data, any tabulation with fewer than 3 establishments were omitted from the release. Data for these establishments are included in the broader total.

Year	County	State of Kansas	Non Metro Kansas	County Rank	Per 1000 or \$ Per Capita
2000	26	8,423	3,636	63	4.6
2001	26	8,310	3,614	62	4.7
2002	27	8,552	3,658	60	4.9
2003	27	8,411	3,605	60	5.0
2004	27	8,343	3,597	59	5.0
2005	24	8,321	3,571	64	4.5
2006	22	8,225	3,490	69	4.1
2007	25	8,355	3,534	63	4.7
2008	21	8,104	3,406	71	4.0
2009	22	8,040	3,405	68	4.2
2010	24	7,998	3,379	63	4.6
2011	21	7,883	3,294	68	4.0
2012	19	7,913	3,303	74	3.6
2013	21	7,947	3,290	68	4.0
2014	20	7,943	3,285	72	3.8
2015	17	7,869	3,255	79	3.3
2016	20	7,839	3,204	73	3.9
2017	21	7,873	3,189	69	4.2
2018	23	7,853	3,176	65	4.6
2019	23	7,834	3,138	62	4.7
2020	21	7,787	3,073	67	4.3

County: county value. Kansas: state value. County Rank: highest county value ranked #1. (\$000): thousands of dollars. Nonmetro Kansas: Kansas total less Metropolitan Areas as defined by the Office of Management and Budget (OMB; released 3/6/2020). Per 1000: For nonmoney amounts, Per 1000=(county value / county population for the same year as the data) x 1000. \$ Per capita=(county value / county population for the same year as the data). Value= . indicates missing or suppressed data or value not calculated.

Business



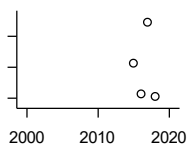
**TOTAL ANNUAL PAYROLL (\$000)
COUNTY BUSINESS PATTERNS**

U.S. Census Bureau, County Business Patterns. Beginning with the 2017 data, any tabulation with fewer than 3 establishments were omitted from the release. Data for these establishments are included in the broader total.

Year	County	State of Kansas	Non Metro Kansas	County Rank	Per 1000 or \$ Per Capita
1990	17,106	17,487,316	4,442,429	63	2,832.6
1991	17,391	18,162,326	4,612,616	63	2,887.4
1992	17,992	19,244,346	4,882,060	66	2,992.2
1993	18,517	20,087,190	5,182,780	67	3,111.6
1994	18,503	21,201,652	5,541,423	69	3,090.5
1995	18,599	22,825,920	5,875,310	69	3,160.9
1996	21,769	24,613,884	6,198,398	67	3,700.3
1997	25,136	26,787,098	6,599,061	64	4,357.1
1998	26,312	28,747,576	6,871,794	65	4,576.8
1999	26,738	30,600,434	7,121,961	63	4,684.3
2000	28,245	31,990,762	7,520,424	63	4,968.3
2001	29,633	33,303,992	7,598,165	62	5,329.7
2002	30,220	33,152,962	7,572,002	62	5,512.6
2003	28,504	34,040,944	7,726,561	63	5,249.4
2004	29,387	35,725,812	8,303,779	63	5,442.0
2005	35,691	36,646,064	8,586,986	60	6,668.7
2006	35,492	39,251,388	9,178,947	61	6,668.9
2007	39,879	42,022,753	.	59	7,560.0
2008	42,527	43,984,689	.	58	8,094.2
2009	39,497	42,146,866	.	60	7,626.4
2010	40,136	42,686,303	10,294,015	61	7,746.8
2011	41,442	43,733,944	.	60	7,969.6
2012	45,518	45,608,072	11,222,183	61	8,718.3
2013	45,458	47,715,601	11,446,751	61	8,750.3
2014	55,759	49,712,832	11,957,931	59	10,714.6
2015	52,803	51,259,676	11,975,718	60	10,195.6
2016	46,996	51,016,318	12,148,646	64	9,182.5
2017	46,509	52,754,605	12,448,592	63	9,200.6
2018	46,884	55,087,460	12,810,270	63	9,386.2
2019	45,730	57,272,387	13,123,288	64	9,294.7
2020	47,190	58,374,388	14,007,955	63	9,593.4

County: county value. Kansas: state value. County Rank: highest county value ranked #1. (\$000): thousands of dollars. Nonmetro Kansas: Kansas total less Metropolitan Areas as defined by the Office of Management and Budget (OMB; released 3/6/2020). Per 1000: For nonmoney amounts, Per 1000=(county value / county population for the same year as the data) x 1000. \$ Per capita=(county value / county population for the same year as the data). Value= . indicates missing or suppressed data or value not calculated.

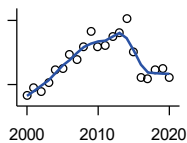
Business



**TOTAL ANNUAL PAYROLL(\$000):
FORESTRY, FISHING, HUNTING, AND
AG SUPPORT**

U.S. Census Bureau, County Business Patterns. Beginning with the 2017 data, any tabulation with fewer than 3 establishments were omitted from the release. Data for these establishments are included in the broader total.

Year	County	State of Kansas	Non Metro Kansas	County Rank	Per 1000 or \$ Per Capita
2000	.	13,551	.	.	.
2001
2002	.	16,528	.	.	.
2003	.	17,247	.	.	.
2004	.	17,552	.	.	.
2005	.	16,298	.	.	.
2006	.	17,908	.	.	.
2007	.	22,199	.	.	.
2008	.	21,359	.	.	.
2009	.	22,466	.	.	.
2010	.	22,753	.	.	.
2011	.	23,320	.	.	.
2012	.	27,492	.	.	.
2013	.	30,360	.	.	.
2014	.	34,862	.	.	.
2015	873	35,980	.	.	168.6
2016	853	31,488	.	.	166.7
2017	899	34,117	.	.	177.8
2018	851	37,960	.	.	170.4



**TOTAL ANNUAL PAYROLL(\$000):
MINING**

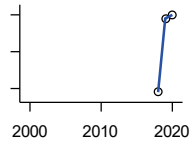
U.S. Census Bureau, County Business Patterns. Beginning with the 2017 data, any tabulation with fewer than 3 establishments were omitted from the release. Data for these establishments are included in the broader total.

Year	County	State of Kansas	Non Metro Kansas	County Rank	Per 1000 or \$ Per Capita
2000	1,485	240,079	.	.	261.2
2001	1,868	273,838	.	.	336.0
2002	1,662	262,277	.	.	303.2
2003	2,102	290,652	.	.	387.1
2004	2,708	326,997	.	.	501.5
2005	2,769	381,069	.	.	517.4
2006	3,389	482,102	.	.	636.8
2007	3,178	551,751	.	.	602.5
2008	3,757	620,446	.	.	715.1
2009	4,489	465,070	.	.	866.8
2010	3,739	485,841	.	.	721.7
2011	3,855	541,536	.	.	741.3
2012	4,261	600,402	.	.	816.1
2013	4,447	599,788	.	.	856.0
2014	5,088	678,673	.	.	977.7
2015	3,539	552,658	.	.	683.3
2016	2,341	428,767	.	.	457.4
2017	2,257	379,883	.	.	446.5
2018	2,665	431,367	.	.	533.5
2019	2,755	349,270	.	.	560.0
2020	2,326	302,795	.	.	472.9

County: county value. Kansas: state value. County Rank: highest county value ranked #1. (\$000): thousands of dollars. Nonmetro Kansas: Kansas total less Metropolitan Areas as defined by the Office of Management and Budget (OMB; released 3/6/2020). Per 1000: For nonmoney amounts, Per 1000=(county value / county population for the same year as the data) x 1000. \$ Per capita=(county value / county population for the same year as the data). Value= . indicates missing or suppressed data or value not calculated.

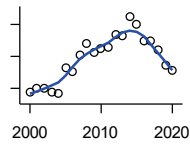
Business

**TOTAL ANNUAL PAYROLL(\$000):
UTILITIES**



U.S. Census Bureau, County Business Patterns. Beginning with the 2017 data, any tabulation with fewer than 3 establishments were omitted from the release. Data for these establishments are included in the broader total.

Year	County	State of Kansas	Non Metro Kansas	County Rank	Per 1000 or \$ Per Capita
2000	.	410,313	.	.	.
2001	.	452,057	.	.	.
2002	.	377,559	.	.	.
2003	.	378,157	.	.	.
2004	.	377,809	.	.	.
2005	.	429,864	.	.	.
2006	.	443,999	.	.	.
2007	.	480,068	.	.	.
2008	.	541,066	.	.	.
2009	.	563,373	.	.	.
2010	.	512,628	.	.	.
2011	.	653,229	.	.	.
2012	.	625,451	.	.	.
2013	.	625,347	.	.	.
2014	.	610,960	.	.	.
2015	.	668,559	.	.	.
2018	989	770,542	.	.	198.0
2019	1,009	733,878	.	.	205.1
2020	1,010	738,521	.	.	205.3



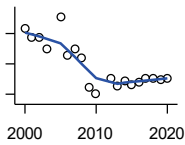
**TOTAL ANNUAL PAYROLL(\$000):
CONSTRUCTION**

U.S. Census Bureau, County Business Patterns. Beginning with the 2017 data, any tabulation with fewer than 3 establishments were omitted from the release. Data for these establishments are included in the broader total.

Year	County	State of Kansas	Non Metro Kansas	County Rank	Per 1000 or \$ Per Capita
2000	1,385	2,256,057	.	.	243.6
2001	1,510	2,320,652	.	.	271.6
2002	1,486	2,302,229	.	.	271.1
2003	1,384	2,282,021	.	.	254.9
2004	1,326	2,302,854	.	.	245.6
2005	2,138	2,465,977	.	.	399.5
2006	2,019	2,700,351	.	.	379.4
2007	2,528	2,772,168	.	.	479.2
2008	2,914	2,950,073	.	.	554.6
2009	2,624	2,709,864	.	.	506.7
2010	2,732	2,553,555	.	.	527.3
2011	2,794	2,550,355	.	.	537.3
2012	3,171	2,733,284	.	.	607.4
2013	3,141	2,866,801	.	.	604.6
2014	3,748	3,135,814	.	.	720.2
2015	3,491	3,270,952	.	.	674.1
2016	2,980	3,328,610	.	.	582.3
2017	2,982	3,568,505	.	.	589.9
2018	2,692	3,806,196	.	.	538.9
2019	2,218	3,879,912	.	.	450.8
2020	2,078	3,983,029	.	.	422.4

County: county value. Kansas: state value. County Rank: highest county value ranked #1. (\$000): thousands of dollars. Nonmetro Kansas: Kansas total less Metropolitan Areas as defined by the Office of Management and Budget (OMB; released 3/6/2020). Per 1000: For nonmoney amounts, Per 1000=(county value / county population for the same year as the data) x 1000. \$ Per capita=(county value / county population for the same year as the data). Value= . indicates missing or suppressed data or value not calculated.

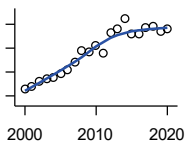
Business



**TOTAL ANNUAL PAYROLL(\$000):
MANUFACTURING**

U.S. Census Bureau, County Business Patterns. Beginning with the 2017 data, any tabulation with fewer than 3 establishments were omitted from the release. Data for these establishments are included in the broader total.

Year	County	State of Kansas	Non Metro Kansas	County Rank	Per 1000 or \$ Per Capita
2000	10,649	7,015,414	.	.	1,873.2
2001	9,415	7,301,706	.	.	1,693.3
2002	9,573	6,802,605	.	.	1,746.3
2003	7,983	6,691,611	.	.	1,470.2
2004	.	6,985,656	.	.	.
2005	12,202	7,221,614	.	.	2,279.9
2006	7,099	7,621,873	.	.	1,333.9
2007	7,898	7,873,359	.	.	1,497.3
2008	6,789	8,441,541	.	.	1,292.2
2009	2,895	7,477,838	.	.	559.0
2010	2,111	7,556,955	.	.	407.5
2011	.	7,747,934	.	.	.
2012	4,076	7,704,851	.	.	780.7
2013	3,075	8,365,542	.	.	591.9
2014	3,729	8,787,306	.	.	716.6
2015	3,298	9,052,105	.	.	636.8
2016	3,522	8,868,744	.	.	688.2
2017	4,014	9,075,793	.	.	794.1
2018	4,055	9,481,652	.	.	811.8
2019	3,925	10,171,575	.	.	797.8
2020	4,044	9,744,825	.	.	822.1



**TOTAL ANNUAL PAYROLL(\$000):
WHOLESALE TRADE**

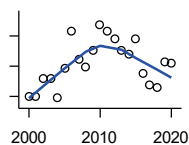
U.S. Census Bureau, County Business Patterns. Beginning with the 2017 data, any tabulation with fewer than 3 establishments were omitted from the release. Data for these establishments are included in the broader total.

Year	County	State of Kansas	Non Metro Kansas	County Rank	Per 1000 or \$ Per Capita
2000	2,577	2,332,755	.	.	453.3
2001	2,774	2,283,169	.	.	498.9
2002	3,219	2,107,653	.	.	587.2
2003	3,449	2,622,701	.	.	635.2
2004	3,494	2,663,196	.	.	647.0
2005	3,823	2,345,990	.	.	714.3
2006	4,203	2,592,211	.	.	789.7
2007	4,856	2,682,542	.	.	920.6
2008	5,798	3,078,655	.	.	1,103.5
2009	5,722	2,940,949	.	.	1,104.8
2010	6,246	3,097,628	.	.	1,205.6
2011	5,614	3,305,811	.	.	1,079.6
2012	7,324	3,339,997	.	.	1,402.8
2013	7,590	3,460,512	.	.	1,461.0
2014	8,483	3,712,075	.	.	1,630.1
2015	7,160	3,760,189	.	.	1,382.5
2016	7,203	3,738,207	.	.	1,407.4
2017	7,703	3,822,730	.	.	1,523.8
2018	7,839	3,814,353	.	.	1,569.4
2019	7,433	4,025,802	.	.	1,510.8
2020	7,601	4,224,666	.	.	1,545.2

County: county value. Kansas: state value. County Rank: highest county value ranked #1. (\$000): thousands of dollars. Nonmetro Kansas: Kansas total less Metropolitan Areas as defined by the Office of Management and Budget (OMB; released 3/6/2020). Per 1000: For nonmoney amounts, Per 1000=(county value / county population for the same year as the data) x 1000. \$ Per capita=(county value / county population for the same year as the data). Value= . indicates missing or suppressed data or value not calculated.

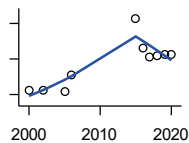
Business

**TOTAL ANNUAL PAYROLL(\$000):
RETAIL TRADE**



U.S. Census Bureau, County Business Patterns. Beginning with the 2017 data, any tabulation with fewer than 3 establishments were omitted from the release. Data for these establishments are included in the broader total.

Year	County	State of Kansas	Non Metro Kansas	County Rank	Per 1000 or \$ Per Capita
2000	2,996	2,747,001	.	.	527.0
2001	3,002	2,813,226	.	.	539.9
2002	3,238	2,854,231	.	.	590.7
2003	3,245	2,773,674	.	.	597.6
2004	2,978	2,847,826	.	.	551.5
2005	3,373	2,952,196	.	.	630.2
2006	3,869	3,126,495	.	.	727.0
2007	3,490	3,201,169	.	.	661.6
2008	3,396	3,261,054	.	.	646.4
2009	3,608	3,232,246	.	.	696.7
2010	3,945	3,321,838	.	.	761.4
2011	3,858	3,384,607	.	.	741.9
2012	3,768	3,409,755	.	.	721.7
2013	3,616	3,483,752	.	.	696.1
2014	3,561	3,617,933	.	.	684.3
2015	3,765	3,712,165	.	.	727.0
2016	3,300	3,826,889	.	.	644.8
2017	3,147	3,797,849	.	.	622.6
2018	3,116	3,818,988	.	.	623.8
2019	3,450	3,908,994	.	.	701.2
2020	3,437	3,984,443	.	.	698.7



**TOTAL ANNUAL PAYROLL(\$000):
TRANSPORTATION &
WAREHOUSING**

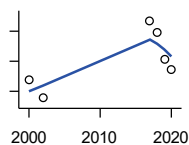
U.S. Census Bureau, County Business Patterns. Beginning with the 2017 data, any tabulation with fewer than 3 establishments were omitted from the release. Data for these establishments are included in the broader total.

Year	County	State of Kansas	Non Metro Kansas	County Rank	Per 1000 or \$ Per Capita
2000	554	1,044,835	.	.	97.4
2001	.	1,089,405	.	.	.
2002	624	1,094,636	.	.	113.8
2003	.	1,316,655	.	.	.
2004	.	1,439,800	.	.	.
2005	414	1,393,651	.	.	77.4
2006	2,761	1,528,551	.	.	518.8
2007	.	1,788,267	.	.	.
2008	.	1,722,697	.	.	.
2009	.	1,618,598	.	.	.
2010	.	1,735,761	.	.	.
2011	.	1,739,165	.	.	.
2012	.	1,984,976	.	.	.
2013	.	2,006,261	.	.	.
2014	.	2,097,377	.	.	.
2015	10,695	2,190,072	.	.	2,065.1
2016	6,494	2,202,859	.	.	1,268.9
2017	5,312	2,546,061	.	.	1,050.8
2018	5,521	2,663,188	.	.	1,105.3
2019	5,705	2,879,406	.	.	1,159.6
2020	5,727	2,962,461	.	.	1,164.3

County: county value. Kansas: state value. County Rank: highest county value ranked #1. (\$000): thousands of dollars. Nonmetro Kansas: Kansas total less Metropolitan Areas as defined by the Office of Management and Budget (OMB; released 3/6/2020). Per 1000: For nonmoney amounts, Per 1000=(county value / county population for the same year as the data) x 1000. \$ Per capita=(county value / county population for the same year as the data). Value= . indicates missing or suppressed data or value not calculated.

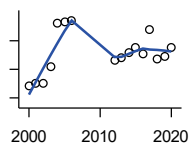
Business

**TOTAL ANNUAL PAYROLL(\$000):
INFORMATION**



U.S. Census Bureau, County Business Patterns. Beginning with the 2017 data, any tabulation with fewer than 3 establishments were omitted from the release. Data for these establishments are included in the broader total.

Year	County	State of Kansas	Non Metro Kansas	County Rank	Per 1000 or \$ Per Capita
2000	273	1,923,381	.	.	48.0
2001	.	2,218,610	.	.	.
2002	154	2,298,108	.	.	28.1
2003	.	2,378,673	.	.	.
2004	.	2,392,990	.	.	.
2005	.	2,395,081	.	.	.
2006	.	2,586,483	.	.	.
2007	.	2,594,138	.	.	.
2008	.	3,043,244	.	.	.
2009	.	3,045,570	.	.	.
2010	.	2,481,580	.	.	.
2011	.	2,513,805	.	.	.
2012	.	2,535,555	.	.	.
2013	.	2,805,017	.	.	.
2014	.	2,393,609	.	.	.
2015	.	2,406,323	.	.	.
2017	669	2,090,021	.	.	132.3
2018	594	2,341,543	.	.	118.9
2019	414	2,133,891	.	.	84.1
2020	342	2,245,204	.	.	69.5



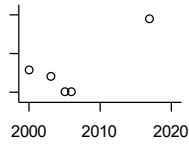
**TOTAL ANNUAL PAYROLL(\$000):
FINANCE & INSURANCE**

U.S. Census Bureau, County Business Patterns. Beginning with the 2017 data, any tabulation with fewer than 3 establishments were omitted from the release. Data for these establishments are included in the broader total.

Year	County	State of Kansas	Non Metro Kansas	County Rank	Per 1000 or \$ Per Capita
2000	2,216	2,083,565	.	.	389.8
2001	2,245	2,129,587	.	.	403.8
2002	2,259	2,414,120	.	.	412.1
2003	2,546	2,608,579	.	.	468.9
2004	3,297	2,676,910	.	.	610.6
2005	3,336	2,786,136	.	.	623.3
2006	3,342	2,928,931	.	.	628.0
2007	.	3,096,017	.	.	.
2008	.	3,322,977	.	.	.
2009	.	3,206,839	.	.	.
2010	.	3,211,300	.	.	.
2011	.	3,404,633	.	.	.
2012	2,648	3,611,165	.	.	507.2
2013	2,694	3,896,051	.	.	518.6
2014	2,794	4,044,315	.	.	536.9
2015	2,879	4,113,060	.	.	555.9
2016	2,760	4,180,740	.	.	539.3
2017	3,191	4,258,057	.	.	631.3
2018	2,687	4,682,552	.	.	537.9
2019	2,724	4,814,201	.	.	553.7
2020	2,872	5,288,529	.	.	583.9

County: county value. Kansas: state value. County Rank: highest county value ranked #1. (\$000): thousands of dollars. Nonmetro Kansas: Kansas total less Metropolitan Areas as defined by the Office of Management and Budget (OMB; released 3/6/2020). Per 1000: For nonmoney amounts, Per 1000=(county value / county population for the same year as the data) x 1000. \$ Per capita=(county value / county population for the same year as the data). Value= . indicates missing or suppressed data or value not calculated.

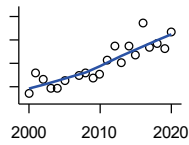
Business



**TOTAL ANNUAL PAYROLL(\$000):
REAL ESTATE, RENTAL, AND
LEASING**

U.S. Census Bureau, County Business Patterns. Beginning with the 2017 data, any tabulation with fewer than 3 establishments were omitted from the release. Data for these establishments are included in the broader total.

Year	County	State of Kansas	Non Metro Kansas	County Rank	Per 1000 or \$ Per Capita
2000	23	360,637	.	.	4.0
2001	.	397,371	.	.	.
2002	.	403,695	.	.	.
2003	16	437,786	.	.	2.9
2004	.	430,719	.	.	.
2005	0	465,149	.	.	0.0
2006	0	478,811	.	.	0.0
2007	.	452,969	.	.	.
2008	.	484,149	.	.	.
2009	.	450,884	.	.	.
2010	.	487,255	.	.	.
2011	.	535,120	.	.	.
2012	.	531,039	.	.	.
2013	.	538,796	.	.	.
2014	.	542,307	.	.	.
2015	.	595,030	.	.	.
2017	76	590,373	.	.	15.0



**TOTAL ANNUAL PAYROLL(\$000):
PROFESSIONAL, SCIENTIFIC, AND
TECHNICAL SERVICES**

U.S. Census Bureau, County Business Patterns. Beginning with the 2017 data, any tabulation with fewer than 3 establishments were omitted from the release. Data for these establishments are included in the broader total.

Year	County	State of Kansas	Non Metro Kansas	County Rank	Per 1000 or \$ Per Capita
2000	847	2,057,313	.	.	149.0
2001	1,308	2,152,937	.	.	235.3
2002	1,156	2,150,085	.	.	210.9
2003	979	2,052,712	.	.	180.3
2004	961	2,531,457	.	.	178.0
2005	1,134	2,418,500	.	.	211.9
2006	.	2,655,690	.	.	.
2007	1,238	2,901,544	.	.	234.7
2008	1,285	2,903,802	.	.	244.6
2009	1,173	3,071,611	.	.	226.5
2010	1,273	3,037,182	.	.	245.7
2011	1,563	3,132,082	.	.	300.6
2012	1,857	3,455,548	.	.	355.7
2013	1,523	3,777,729	.	.	293.2
2014	1,858	3,981,580	.	.	357.0
2015	1,673	4,039,074	.	.	323.0
2016	2,352	4,125,507	.	.	459.6
2017	1,849	4,158,858	.	.	365.8
2018	1,914	4,314,317	.	.	383.2
2019	1,807	4,646,644	.	.	367.3
2020	2,162	4,927,611	.	.	439.5

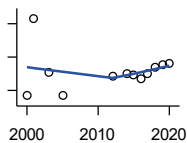
County: county value. Kansas: state value. County Rank: highest county value ranked #1. (\$000): thousands of dollars. Nonmetro Kansas: Kansas total less Metropolitan Areas as defined by the Office of Management and Budget (OMB; released 3/6/2020). Per 1000: For nonmoney amounts, Per 1000=(county value / county population for the same year as the data) x 1000. \$ Per capita=(county value / county population for the same year as the data). Value= . indicates missing or suppressed data or value not calculated.

Business

**TOTAL ANNUAL PAYROLL(\$000):
MANAGEMENT OF COMPANIES AND
ENTERPRISES**

U.S. Census Bureau, County Business Patterns. Beginning with the 2017 data, any tabulation with fewer than 3 establishments were omitted from the release. Data for these establishments are included in the broader total.

Year	County	State of Kansas	Non Metro Kansas	County Rank	Per 1000 or \$ Per Capita
2000	.	1,362,735	.	.	.
2001	.	1,279,253	.	.	.
2002	.	1,311,368	.	.	.
2003	.	1,352,119	.	.	.
2004	.	1,378,891	.	.	.
2005	.	1,510,876	.	.	.
2006	.	1,626,320	.	.	.
2007	.	2,233,654	.	.	.
2008	.	1,848,656	.	.	.
2009	.	1,601,158	.	.	.
2010	.	2,003,048	.	.	.
2011	.	1,677,619	.	.	.
2012	.	1,834,430	.	.	.
2013	.	1,938,100	.	.	.
2014	.	2,117,232	.	.	.
2015	.	2,451,126	.	.	.



**TOTAL ANNUAL PAYROLL(\$000):
ADMIN, SUPPORT, WASTE MGMT.,
AND REMEDIATION**

U.S. Census Bureau, County Business Patterns. Beginning with the 2017 data, any tabulation with fewer than 3 establishments were omitted from the release. Data for these establishments are included in the broader total.

Year	County	State of Kansas	Non Metro Kansas	County Rank	Per 1000 or \$ Per Capita
2000	168	1,388,712	.	.	29.6
2001	1,328	1,416,480	.	.	238.8
2002	.	1,378,905	.	.	.
2003	516	1,387,061	.	.	95.0
2004	.	1,544,442	.	.	.
2005	169	1,694,687	.	.	31.6
2006	.	1,800,846	.	.	.
2007	.	1,978,025	.	.	.
2008	.	2,096,864	.	.	.
2009	.	1,832,540	.	.	.
2010	.	2,117,325	.	.	.
2011	.	2,114,970	.	.	.
2012	457	2,230,250	.	.	87.5
2013	.	2,214,320	.	.	.
2014	501	2,444,170	.	.	96.3
2015	487	2,577,592	.	.	94.0
2016	416	2,760,706	.	.	81.3
2017	502	3,026,927	.	.	99.3
2018	594	3,007,347	.	.	118.9
2019	627	3,075,485	.	.	127.4
2020	664	3,250,046	.	.	135.0

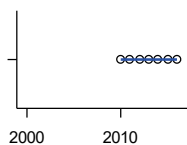
County: county value. Kansas: state value. County Rank: highest county value ranked #1. (\$000): thousands of dollars. Nonmetro Kansas: Kansas total less Metropolitan Areas as defined by the Office of Management and Budget (OMB; released 3/6/2020). Per 1000: For nonmoney amounts, Per 1000=(county value / county population for the same year as the data) x 1000. \$ Per capita=(county value / county population for the same year as the data). Value= . indicates missing or suppressed data or value not calculated.

Business

**TOTAL ANNUAL PAYROLL(\$000):
EDUCATIONAL SERVICES**

Year	County	State of Kansas	Non Metro Kansas	County Rank	Per 1000 or \$ Per Capita
2000	.	299,843	.	.	.
2001	.	320,606	.	.	.
2002	.	353,531	.	.	.
2003	.	350,814	.	.	.
2004	.	361,644	.	.	.
2005	.	375,781	.	.	.
2006	.	400,565	.	.	.
2007	.	414,233	.	.	.
2008	.	463,210	.	.	.
2009	.	468,856	.	.	.
2010	0	487,670	.	.	0.0
2011	0	504,964	.	.	0.0
2012	0	508,448	.	.	0.0
2013	0	553,995	.	.	0.0
2014	0	612,073	.	.	0.0
2015	0	579,794	.	.	0.0
2016	0	571,582	.	.	0.0

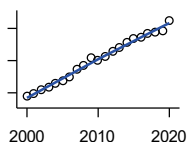
U.S. Census Bureau, County Business Patterns. Beginning with the 2017 data, any tabulation with fewer than 3 establishments were omitted from the release. Data for these establishments are included in the broader total.



**TOTAL ANNUAL PAYROLL(\$000):
HEALTH CARE AND SOCIAL ASSISTANCE**

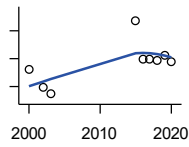
Year	County	State of Kansas	Non Metro Kansas	County Rank	Per 1000 or \$ Per Capita
2000	1,587	4,120,595	.	.	279.2
2001	1,886	4,445,027	.	.	339.2
2002	2,327	4,705,220	.	.	424.5
2003	2,769	4,939,323	.	.	509.9
2004	3,127	5,232,394	.	.	579.1
2005	3,514	5,487,089	.	.	656.6
2006	3,951	5,814,218	.	.	742.4
2007	4,852	6,186,471	.	.	919.8
2008	5,376	6,490,627	.	.	1,023.2
2009	6,319	6,749,962	.	.	1,220.1
2010	5,964	6,871,727	.	.	1,151.1
2011	6,449	7,129,655	.	.	1,240.2
2012	7,177	7,614,853	.	.	1,374.6
2013	7,610	7,541,515	.	.	1,464.9
2014	8,240	7,733,621	.	.	1,583.4
2015	8,679	7,969,650	.	.	1,675.8
2016	8,939	8,018,706	.	.	1,746.6
2017	9,366	8,384,998	.	.	1,852.8
2018	9,499	8,637,619	.	.	1,901.7
2019	9,680	8,854,414	.	.	1,967.5
2020	10,979	9,309,269	.	.	2,232.0

U.S. Census Bureau, County Business Patterns. Beginning with the 2017 data, any tabulation with fewer than 3 establishments were omitted from the release. Data for these establishments are included in the broader total.



County: county value. Kansas: state value. County Rank: highest county value ranked #1. (\$000): thousands of dollars. Nonmetro Kansas: Kansas total less Metropolitan Areas as defined by the Office of Management and Budget (OMB; released 3/6/2020). Per 1000: For nonmoney amounts, Per 1000=(county value / county population for the same year as the data) x 1000. \$ Per capita=(county value / county population for the same year as the data). Value= . indicates missing or suppressed data or value not calculated.

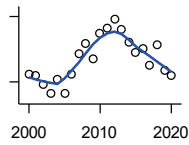
Business



**TOTAL ANNUAL PAYROLL(\$000):
ARTS, ENTERTAINMENT, AND
RECREATION**

U.S. Census Bureau, County Business Patterns. Beginning with the 2017 data, any tabulation with fewer than 3 establishments were omitted from the release. Data for these establishments are included in the broader total.

Year	County	State of Kansas	Non Metro Kansas	County Rank	Per 1000 or \$ Per Capita
2000	84	195,784	.	.	14.8
2001	.	203,511	.	.	.
2002	59	206,204	.	.	10.8
2003	49	185,049	.	.	9.0
2004	.	190,742	.	.	.
2005	.	196,594	.	.	.
2006	.	201,049	.	.	.
2007	.	220,435	.	.	.
2008	.	236,986	.	.	.
2009	.	237,116	.	.	.
2010	.	233,285	.	.	.
2011	.	234,351	.	.	.
2012	.	254,169	.	.	.
2013	.	278,474	.	.	.
2014	.	289,103	.	.	.
2015	155	300,253	.	.	29.9
2016	100	312,902	.	.	19.5
2017	99	323,153	.	.	19.6
2018	98	325,454	.	.	19.6
2019	104	335,362	.	.	21.1
2020	96	298,119	.	.	19.5



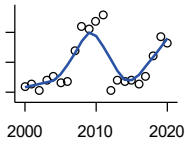
**TOTAL ANNUAL PAYROLL(\$000):
ACCOMMODATION AND FOOD
SERVICES**

U.S. Census Bureau, County Business Patterns. Beginning with the 2017 data, any tabulation with fewer than 3 establishments were omitted from the release. Data for these establishments are included in the broader total.

Year	County	State of Kansas	Non Metro Kansas	County Rank	Per 1000 or \$ Per Capita
2000	533	926,831	.	.	93.8
2001	531	960,196	.	.	95.5
2002	487	930,510	.	.	88.8
2003	447	992,313	.	.	82.3
2004	512	1,046,901	.	.	94.8
2005	445	1,101,854	.	.	83.1
2006	538	1,185,280	.	.	101.1
2007	627	1,431,100	.	.	118.9
2008	678	1,271,594	.	.	129.0
2009	608	1,283,065	.	.	117.4
2010	721	1,296,556	.	.	139.2
2011	745	1,364,281	.	.	143.3
2012	787	1,388,337	.	.	150.7
2013	739	1,476,335	.	.	142.3
2014	685	1,572,021	.	.	131.6
2015	637	1,640,144	.	.	123.0
2016	650	1,709,193	.	.	127.0
2017	576	1,824,791	.	.	113.9
2018	668	1,880,364	.	.	133.7
2019	555	1,958,603	.	.	112.8
2020	527	1,745,238	.	.	107.1

County: county value. Kansas: state value. County Rank: highest county value ranked #1. (\$000): thousands of dollars. Nonmetro Kansas: Kansas total less Metropolitan Areas as defined by the Office of Management and Budget (OMB; released 3/6/2020). Per 1000: For nonmoney amounts, Per 1000=(county value / county population for the same year as the data) x 1000. \$ Per capita=(county value / county population for the same year as the data). Value= . indicates missing or suppressed data or value not calculated.

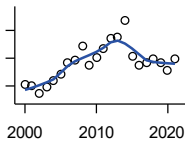
Business



**TOTAL ANNUAL PAYROLL(\$000):
OTHER SERVICES**

U.S. Census Bureau, County Business Patterns. Beginning with the 2017 data, any tabulation with fewer than 3 establishments were omitted from the release. Data for these establishments are included in the broader total.

Year	County	State of Kansas	Non Metro Kansas	County Rank	Per 1000 or \$ Per Capita
2000	1,279	965,540	.	.	225.0
2001	1,312	996,716	.	.	236.0
2002	1,232	1,007,464	.	.	224.7
2003	1,358	979,466	.	.	250.1
2004	1,411	970,383	.	.	261.3
2005	1,322	1,005,537	.	.	247.0
2006	1,338	1,055,932	.	.	251.4
2007	1,756	1,141,551	.	.	332.9
2008	2,081	1,184,016	.	.	396.1
2009	2,042	1,167,154	.	.	394.3
2010	2,153	1,170,201	.	.	415.6
2011	2,234	1,173,775	.	.	429.6
2012	1,215	1,217,210	.	.	232.7
2013	1,357	1,254,933	.	.	261.2
2014	1,347	1,305,563	.	.	258.8
2015	1,352	1,341,075	.	.	261.1
2016	1,314	1,351,375	.	.	256.7
2017	1,420	1,344,179	.	.	280.9
2018	1,686	1,382,801	.	.	337.5
2019	1,938	1,427,711	.	.	393.9
2020	1,863	1,420,859	.	.	378.7



**NOMINAL TAXABLE RETAIL SALES
(million\$)**

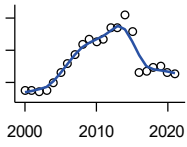
Kansas Department of Revenue

Year	County	State of Kansas	Non Metro Kansas	County Rank	Per 1000 or \$ Per Capita
2000	41.0	30,119.0	8,831.7	61	7.2
2001	40.5	30,202.2	8,700.3	59	7.3
2002	34.3	29,380.8	8,241.5	63	6.3
2003	39.5	30,694.0	8,710.6	60	7.3
2004	43.8	31,922.6	9,062.5	59	8.1
2005	48.6	32,924.2	9,386.6	57	9.1
2006	56.5	34,937.6	10,042.1	56	10.6
2007	58.2	36,180.1	10,553.2	56	11.0
2008	68.9	37,559.5	11,126.9	56	13.1
2009	55.3	35,211.8	10,351.5	58	10.7
2010	60.9	35,655.7	10,606.1	56	11.8
2011	67.1	37,257.0	11,153.5	56	12.9
2012	74.0	38,988.8	11,749.1	55	14.2
2013	74.7	40,009.0	11,993.8	55	14.4
2014	87.2	41,299.0	12,365.4	52	16.8
2015	61.0	41,635.8	11,747.6	61	11.8
2016	54.7	42,040.2	11,523.5	62	10.7
2017	56.6	41,940.1	11,449.9	62	11.2
2018	59.2	42,732.3	11,643.9	61	11.9
2019	56.8	43,732.5	12,062.7	60	11.5
2020	51.6	43,689.9	12,331.7	66	10.5
2021	59.9	48,532.8	13,413.0	63	12.4

County: county value. Kansas: state value. County Rank: highest county value ranked #1. (\$000): thousands of dollars. Nonmetro Kansas: Kansas total less Metropolitan Areas as defined by the Office of Management and Budget (OMB; released 3/6/2020). Per 1000: For nonmoney amounts, Per 1000=(county value / county population for the same year as the data) x 1000. \$ Per capita=(county value / county population for the same year as the data). Value= . indicates missing or suppressed data or value not calculated.

Business

RETAIL PULL FACTOR



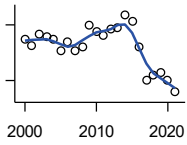
Kansas Direct Program, Kansas State University Cooperative Extension Service (1980-1999); Kansas Department of Revenue (2000-)

Year	County	State of Kansas	Non Metro Kansas	County Rank	Per 1000 or \$ Per Capita
2000	0.65	.	.	45	.
2001	0.65	.	.	44	.
2002	0.64	.	.	47	.
2003	0.65	.	.	45	.
2004	0.70	.	.	44	.
2005	0.76	.	.	40	.
2006	0.82	.	.	33	.
2007	0.87	.	.	31	.
2008	0.94	.	.	26	.
2009	0.97	.	.	27	.
2010	0.95	.	.	30	.
2011	0.97	.	.	25	.
2012	1.04	.	.	23	.
2013	1.04	.	.	23	.
2014	1.12	.	.	20	.
2015	1.02	.	.	24	.
2016	0.76	.	.	46	.
2017	0.77	.	.	42	.
2018	0.79	.	.	36	.
2019	0.80	.	.	39	.
2020	0.76	.	.	49	.
2021	0.75	.	.	45	.

County: county value. Kansas: state value. County Rank: highest county value ranked #1. (\$000): thousands of dollars. Nonmetro Kansas: Kansas total less Metropolitan Areas as defined by the Office of Management and Budget (OMB; released 3/6/2020). Per 1000: For nonmoney amounts, Per 1000=(county value / county population for the same year as the data) x 1000. \$ Per capita=(county value / county population for the same year as the data). Value= . indicates missing or suppressed data or value not calculated.

Employment

CIVILIAN LABOR FORCE (BLS-Place of Residence; 1990-)



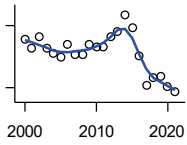
U.S. Department of Labor, Bureau of Labor Statistics (BLS)

Year	County	State of Kansas	Non Metro Kansas	County Rank	Per 1000 or \$ Per Capita
2000	2,724	1,402,606	482,229	68	479.2
2001	2,686	1,398,521	475,280	68	483.1
2002	2,747	1,419,335	482,428	68	501.1
2003	2,739	1,441,065	490,161	68	504.4
2004	2,720	1,458,910	494,509	68	503.7
2005	2,659	1,458,767	490,047	69	496.8
2006	2,710	1,467,553	498,594	68	509.2
2007	2,658	1,485,414	497,048	68	503.9
2008	2,681	1,493,365	504,522	70	510.3
2009	2,795	1,512,572	516,311	70	539.7
2010	2,767	1,500,463	492,594	70	534.1
2011	2,740	1,498,000	492,563	69	526.9
2012	2,778	1,490,808	489,349	69	532.1
2013	2,785	1,489,395	485,484	69	536.1
2014	2,854	1,494,203	481,813	69	548.4
2015	2,817	1,493,782	477,546	69	543.9
2016	2,681	1,491,961	468,258	69	523.8
2017	2,504	1,488,346	461,063	69	495.4
2018	2,529	1,488,027	456,866	69	506.3
2019	2,542	1,497,517	455,858	69	516.7
2020	2,501	1,493,706	452,935	69	508.4
2021	2,437	1,495,665	453,398	69	504.5

County: county value. Kansas: state value. County Rank: highest county value ranked #1. (\$000): thousands of dollars. Nonmetro Kansas: Kansas total less Metropolitan Areas as defined by the Office of Management and Budget (OMB; released 3/6/2020). Per 1000: For nonmoney amounts, Per 1000=(county value / county population for the same year as the data) x 1000. \$ Per capita=(county value / county population for the same year as the data). Value= . indicates missing or suppressed data or value not calculated.

Employment

EMPLOYED (BLS-Place of Residence; 1990-)



U.S. Department of Labor, Bureau of Labor Statistics (BLS)

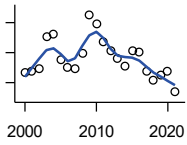
Year	County	State of Kansas	Non Metro Kansas	County Rank	Per 1000 or \$ Per Capita
2000	2,632	1,349,841	464,962	68	463.0
2001	2,592	1,338,775	455,154	68	466.2
2002	2,648	1,347,163	461,241	68	483.0
2003	2,588	1,361,115	467,622	68	476.6
2004	2,565	1,378,355	470,330	69	475.0
2005	2,546	1,384,654	467,722	69	475.7
2006	2,610	1,402,950	479,174	69	490.4
2007	2,560	1,422,109	477,983	68	485.3
2008	2,558	1,425,022	484,056	70	486.9
2009	2,607	1,408,142	485,797	70	503.4
2010	2,595	1,396,172	461,635	71	500.9
2011	2,596	1,402,198	463,723	70	499.2
2012	2,649	1,405,638	463,376	69	507.4
2013	2,669	1,410,470	461,405	69	513.8
2014	2,752	1,426,892	461,797	69	528.8
2015	2,688	1,431,533	457,899	69	519.0
2016	2,555	1,431,920	449,356	69	499.2
2017	2,409	1,434,516	445,003	69	476.6
2018	2,450	1,439,329	442,716	69	490.5
2019	2,454	1,450,705	442,108	69	498.8
2020	2,406	1,408,965	433,229	69	489.1
2021	2,378	1,447,323	441,159	69	492.2

County: county value. Kansas: state value. County Rank: highest county value ranked #1. (\$000): thousands of dollars. Nonmetro Kansas: Kansas total less Metropolitan Areas as defined by the Office of Management and Budget (OMB; released 3/6/2020). Per 1000: For nonmoney amounts, Per 1000=(county value / county population for the same year as the data) x 1000. \$ Per capita=(county value / county population for the same year as the data). Value= . indicates missing or suppressed data or value not calculated.

Employment

UNEMPLOYED (BLS-Place of Residence; 1990-)

U.S. Department of Labor, Bureau of Labor Statistics (BLS)

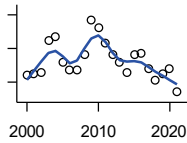


Year	County	State of Kansas	Non Metro Kansas	County Rank	Per 1000 or \$ Per Capita
2000	92	52,765	17,267	64	16.2
2001	94	59,746	20,126	67	16.9
2002	99	72,172	21,187	67	18.1
2003	151	79,950	22,539	53	27.8
2004	155	80,555	24,179	55	28.7
2005	113	74,113	22,325	65	21.1
2006	100	64,603	19,420	64	18.8
2007	98	63,305	19,065	64	18.6
2008	123	68,343	20,466	59	23.4
2009	188	104,430	30,514	56	36.3
2010	172	104,291	30,959	60	33.2
2011	144	95,802	28,840	62	27.7
2012	129	85,170	25,973	62	24.7
2013	116	78,925	24,079	63	22.3
2014	102	67,311	20,016	61	19.6
2015	129	62,249	19,647	56	24.9
2016	126	60,041	18,902	55	24.6
2017	95	53,830	16,060	59	18.8
2018	79	48,698	14,150	60	15.8
2019	88	46,812	13,750	56	17.9
2020	95	84,741	19,706	60	19.3
2021	59	48,342	12,239	65	12.2

County: county value. Kansas: state value. County Rank: highest county value ranked #1. (\$000): thousands of dollars. Nonmetro Kansas: Kansas total less Metropolitan Areas as defined by the Office of Management and Budget (OMB; released 3/6/2020). Per 1000: For nonmoney amounts, Per 1000=(county value / county population for the same year as the data) x 1000. \$ Per capita=(county value / county population for the same year as the data). Value= . indicates missing or suppressed data or value not calculated.

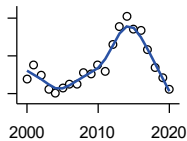
Employment

UNEMPLOYMENT RATE (BLS-Place of Residence; 1990-)



U.S. Department of Labor, Bureau of Labor Statistics (BLS)

Year	County	State of Kansas	Non Metro Kansas	County Rank	Per 1000 or \$ Per Capita
2000	3.4	3.8	3.6	50	.
2001	3.5	4.3	4.2	64	.
2002	3.6	5.1	4.4	68	.
2003	5.5	5.5	4.6	23	.
2004	5.7	5.5	4.9	26	.
2005	4.2	5.1	4.6	51	.
2006	3.7	4.4	3.9	47	.
2007	3.7	4.3	3.8	51	.
2008	4.6	4.6	4.1	30	.
2009	6.7	6.9	5.9	32	.
2010	6.2	7.0	6.3	39	.
2011	5.3	6.4	5.9	49	.
2012	4.6	5.7	5.3	53	.
2013	4.2	5.3	5.0	58	.
2014	3.6	4.5	4.2	57	.
2015	4.6	4.2	4.1	23	.
2016	4.7	4.0	4.0	17	.
2017	3.8	3.6	3.5	29	.
2018	3.1	3.3	3.1	43	.
2019	3.5	3.1	3.0	18	.
2020	3.8	5.7	4.4	57	.
2021	2.4	3.2	2.7	60	.



BEA EMPLOYMENT: TOTAL (Place of Work)

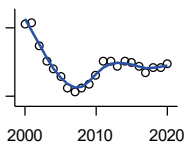
U.S. Bureau of Economic Analysis, Regional Economic Information System (REIS)

Year	County	State of Kansas	Non Metro Kansas	County Rank	Per 1000 or \$ Per Capita
2000	3,554	1,760,312	604,361	65	625.2
2001	3,708	1,767,601	592,672	63	666.9
2002	3,591	1,746,077	585,387	63	655.1
2003	3,450	1,733,694	577,860	65	635.4
2004	3,401	1,750,876	578,750	65	629.8
2005	3,457	1,765,650	577,562	65	645.9
2006	3,496	1,795,507	583,041	64	656.9
2007	3,495	1,844,355	591,924	64	662.6
2008	3,623	1,858,069	594,368	63	689.6
2009	3,607	1,813,184	580,972	63	696.5
2010	3,703	1,801,873	579,758	62	714.7
2011	3,629	1,819,044	583,725	63	697.9
2012	3,916	1,841,393	591,748	60	750.0
2013	4,107	1,869,054	597,236	57	790.6
2014	4,220	1,895,859	601,291	56	810.9
2015	4,088	1,910,954	598,589	56	789.3
2016	4,066	1,916,152	592,580	56	794.5
2017	3,869	1,914,179	584,337	58	765.4
2018	3,682	1,926,242	580,213	60	737.1
2019	3,567	1,925,204	574,496	62	725.0
2020	3,441	1,851,247	556,671	62	699.5

County: county value. Kansas: state value. County Rank: highest county value ranked #1. (\$000): thousands of dollars. Nonmetro Kansas: Kansas total less Metropolitan Areas as defined by the Office of Management and Budget (OMB; released 3/6/2020). Per 1000: For nonmoney amounts, Per 1000=(county value / county population for the same year as the data) x 1000. \$ Per capita=(county value / county population for the same year as the data). Value= . indicates missing or suppressed data or value not calculated.

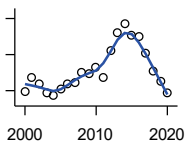
Employment

BEA EMPLOYMENT: FARM



U.S. Bureau of Economic Analysis,
Regional Economic Information System
(REIS)

Year	County	State of Kansas	Non Metro Kansas	County Rank	Per 1000 or \$ Per Capita
2000	559	77,477	59,088	68	98.3
2001	561	78,177	59,647	69	100.9
2002	510	70,532	53,893	71	93.0
2003	477	68,516	52,099	74	87.8
2004	459	67,586	51,246	77	85.0
2005	443	66,829	50,386	79	82.8
2006	419	64,910	48,728	79	78.7
2007	410	65,639	49,037	82	77.7
2008	418	63,820	47,682	76	79.6
2009	425	62,798	46,960	72	82.1
2010	447	63,882	47,984	69	86.3
2011	476	65,761	49,707	68	91.5
2012	477	63,753	48,167	64	91.4
2013	466	62,739	47,255	65	89.7
2014	476	64,308	48,722	66	91.5
2015	474	64,416	48,927	67	91.5
2016	466	63,840	48,539	67	91.1
2017	452	61,876	46,936	67	89.4
2018	462	63,233	48,069	67	92.5
2019	462	63,300	48,167	69	93.9
2020	471	64,281	49,038	71	95.8



BEA EMPLOYMENT: NON-FARM

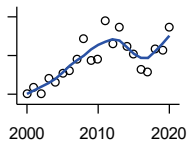
U.S. Bureau of Economic Analysis,
Regional Economic Information System
(REIS)

Year	County	State of Kansas	Non Metro Kansas	County Rank	Per 1000 or \$ Per Capita
2000	2,995	1,682,835	545,273	65	526.8
2001	3,147	1,689,424	533,025	61	566.0
2002	3,081	1,675,545	531,494	62	562.0
2003	2,973	1,665,178	525,761	63	547.5
2004	2,942	1,683,290	527,504	63	544.8
2005	3,014	1,698,821	527,176	62	563.2
2006	3,077	1,730,597	534,313	62	578.2
2007	3,085	1,778,716	542,887	62	584.8
2008	3,205	1,794,249	546,686	62	610.0
2009	3,182	1,750,386	534,012	62	614.4
2010	3,256	1,737,991	531,774	61	628.5
2011	3,153	1,753,283	534,018	62	606.3
2012	3,439	1,777,640	543,581	59	658.7
2013	3,641	1,806,315	549,981	56	700.9
2014	3,744	1,831,551	552,569	56	719.4
2015	3,614	1,846,538	549,662	55	697.8
2016	3,600	1,852,312	544,041	55	703.4
2017	3,417	1,852,303	537,401	57	676.0
2018	3,220	1,863,009	532,144	61	644.6
2019	3,105	1,861,904	526,329	62	631.1
2020	2,970	1,786,966	507,633	62	603.8

County: county value. Kansas: state value. County Rank: highest county value ranked #1. (\$000): thousands of dollars. Nonmetro Kansas: Kansas total less Metropolitan Areas as defined by the Office of Management and Budget (OMB; released 3/6/2020). Per 1000: For nonmoney amounts, Per 1000=(county value / county population for the same year as the data) x 1000. \$ Per capita=(county value / county population for the same year as the data). Value= . indicates missing or suppressed data or value not calculated.

Employment

AVERAGE WAGE PER JOB (\$)



U.S. Bureau of Economic Analysis,
Regional Economic Information System
(REIS)

Year	County	State of Kansas	Non Metro Kansas	County Rank	Per 1000 or \$ Per Capita
2000	20,196	31,854	24,396	69	.
2001	21,689	32,859	26,379	79	.
2002	20,149	33,707	26,331	78	.
2003	24,126	35,078	28,911	81	.
2004	23,018	35,932	29,747	85	.
2005	25,497	37,467	31,646	89	.
2006	26,080	40,038	31,993	74	.
2007	29,088	41,500	33,484	77	.
2008	34,333	44,197	36,256	53	.
2009	28,779	43,860	35,739	87	.
2010	29,062	45,370	38,631	91	.
2011	39,079	48,280	42,324	63	.
2012	33,039	50,549	42,015	90	.
2013	37,358	52,629	46,073	85	.
2014	32,209	51,959	43,562	92	.
2015	30,531	52,250	42,320	93	.
2016	26,350	51,664	41,964	100	.
2017	25,894	53,007	42,137	101	.
2018	31,620	54,790	44,514	94	.
2019	31,363	56,956	45,336	96	.
2020	37,379	60,597	49,183	95	.

BEA EMPLOYMENT: FORESTRY, FISHING, HUNTING, AND AG SUPPORT

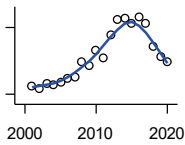
U.S. Bureau of Economic Analysis,
Regional Economic Information System
(REIS)

Year	County	State of Kansas	Non Metro Kansas	County Rank	Per 1000 or \$ Per Capita
2001	.	7,059	.	.	.
2002	.	8,045	.	.	.
2003	.	7,313	.	.	.
2004	.	7,623	.	.	.
2005	.	7,962	.	.	.
2006	.	7,748	.	.	.
2007	.	8,228	.	.	.
2008	.	8,646	.	.	.
2009	.	8,982	.	.	.
2010	.	9,251	.	.	.
2011	.	9,410	.	.	.
2012	.	9,691	.	.	.
2013	.	10,014	.	.	.
2014	.	10,708	.	.	.
2015	.	10,020	.	.	.
2016	.	10,383	.	.	.

County: county value. Kansas: state value. County Rank: highest county value ranked #1. (\$000): thousands of dollars. Nonmetro Kansas: Kansas total less Metropolitan Areas as defined by the Office of Management and Budget (OMB; released 3/6/2020). Per 1000: For nonmoney amounts, Per 1000=(county value / county population for the same year as the data) x 1000. \$ Per capita=(county value / county population for the same year as the data). Value= . indicates missing or suppressed data or value not calculated.

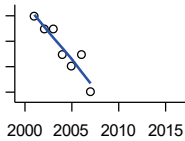
Employment

BEA EMPLOYMENT: MINING



U.S. Bureau of Economic Analysis,
Regional Economic Information System
(REIS)

Year	County	State of Kansas	Non Metro Kansas	County Rank	Per 1000 or \$ Per Capita
2001	279	19,592	.	15	.
2002	250	17,635	.	14	.
2003	300	19,869	.	14	.
2004	281	18,466	.	14	.
2005	304	19,489	.	17	.
2006	343	22,403	.	16	.
2007	351	24,043	.	15	.
2008	497	31,467	.	12	.
2009	456	29,941	.	13	.
2010	595	36,124	.	12	.
2011	530	31,658	.	13	.
2012	732	42,405	.	13	.
2013	871	46,585	.	11	.
2014	880	45,526	.	12	.
2015	841	46,460	.	12	.
2016	896	48,555	.	10	.
2017	836	40,710	.	8	.
2018	633	32,021	.	10	.
2019	543	29,101	.	10	.
2020	490	26,272	.	10	.



BEA EMPLOYMENT: UTILITIES

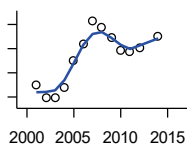
U.S. Bureau of Economic Analysis,
Regional Economic Information System
(REIS)

Year	County	State of Kansas	Non Metro Kansas	County Rank	Per 1000 or \$ Per Capita
2001	14	7,608	.	12	.
2002	13	7,087	.	13	.
2003	13	7,253	.	11	.
2004	11	7,356	.	12	.
2005	10	7,447	.	14	.
2006	11	7,478	.	14	.
2007	8	7,584	.	14	.
2008	.	7,855	.	.	.
2009	.	7,941	.	.	.
2010	.	8,028	.	.	.
2011	.	8,213	.	.	.
2012	.	8,155	.	.	.
2013	.	7,949	.	.	.
2014	.	7,985	.	.	.
2015	.	7,040	.	.	.
2016	.	7,133	.	.	.

County: county value. Kansas: state value. County Rank: highest county value ranked #1. (\$000): thousands of dollars. Nonmetro Kansas: Kansas total less Metropolitan Areas as defined by the Office of Management and Budget (OMB; released 3/6/2020). Per 1000: For nonmoney amounts, Per 1000=(county value / county population for the same year as the data) x 1000. \$ Per capita=(county value / county population for the same year as the data). Value= . indicates missing or suppressed data or value not calculated.

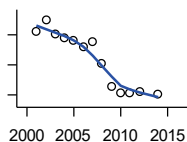
Employment

**BEA EMPLOYMENT:
CONSTRUCTION**



U.S. Bureau of Economic Analysis,
Regional Economic Information System
(REIS)

Year	County	State of Kansas	Non Metro Kansas	County Rank	Per 1000 or \$ Per Capita
2001	130	92,647	27,972	67	.
2002	119	90,370	.	67	.
2003	119	91,725	26,681	69	.
2004	128	93,271	.	65	.
2005	150	94,836	.	60	.
2006	164	97,449	.	58	.
2007	183	99,119	29,179	57	.
2008	178	97,741	.	56	.
2009	169	90,165	28,077	57	.
2010	159	84,708	26,402	59	.
2011	157	83,332	25,999	59	.
2012	161	85,966	.	63	.
2013	.	88,094	.	.	.
2014	170	91,143	.	62	.
2015	.	91,458	27,583	.	.
2016	.	93,539	27,151	.	.



**BEA EMPLOYMENT:
MANUFACTURING**

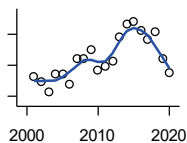
U.S. Bureau of Economic Analysis,
Regional Economic Information System
(REIS)

Year	County	State of Kansas	Non Metro Kansas	County Rank	Per 1000 or \$ Per Capita
2001	311	199,980	73,170	48	.
2002	349	188,905	70,691	46	.
2003	303	179,013	68,418	46	.
2004	291	181,738	69,669	48	.
2005	283	185,459	71,072	51	.
2006	259	188,047	71,704	51	.
2007	277	192,930	73,488	49	.
2008	205	193,116	72,235	55	.
2009	127	173,854	64,961	67	.
2010	106	166,000	62,884	70	.
2011	105	167,302	64,361	71	.
2012	113	169,308	65,944	68	.
2013	.	170,113	67,251	.	.
2014	102	169,307	68,299	72	.
2015	.	168,324	66,978	.	.
2016	.	167,723	65,796	.	.

County: county value. Kansas: state value. County Rank: highest county value ranked #1. (\$000): thousands of dollars. Nonmetro Kansas: Kansas total less Metropolitan Areas as defined by the Office of Management and Budget (OMB; released 3/6/2020). Per 1000: For nonmoney amounts, Per 1000=(county value / county population for the same year as the data) x 1000. \$ Per capita=(county value / county population for the same year as the data). Value= . indicates missing or suppressed data or value not calculated.

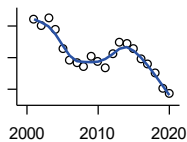
Employment

BEA EMPLOYMENT: WHOLESALE TRADE



U.S. Bureau of Economic Analysis,
Regional Economic Information System
(REIS)

Year	County	State of Kansas	Non Metro Kansas	County Rank	Per 1000 or \$ Per Capita
2001	185	65,698	.	38	.
2002	179	65,408	.	37	.
2003	166	63,504	.	36	.
2004	188	64,434	.	35	.
2005	188	64,587	.	35	.
2006	176	64,743	.	38	.
2007	208	65,993	.	31	.
2008	209	67,693	.	34	.
2009	220	65,954	.	33	.
2010	193	64,376	.	34	.
2011	199	64,712	.	35	.
2012	205	63,973	.	33	.
2013	237	64,999	.	31	.
2014	253	69,295	.	29	.
2015	256	68,444	.	29	.
2016	245	64,843	.	28	.
2017	233	65,014	.	32	.
2018	243	64,745	.	33	.
2019	209	63,324	.	34	.
2020	190	60,844	.	39	.



BEA EMPLOYMENT: RETAIL TRADE

U.S. Bureau of Economic Analysis,
Regional Economic Information System
(REIS)

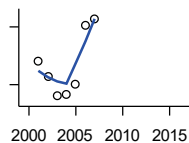
Year	County	State of Kansas	Non Metro Kansas	County Rank	Per 1000 or \$ Per Capita
2001	360	198,069	.	60	.
2002	350	196,112	.	62	.
2003	363	194,545	64,173	59	.
2004	344	192,957	63,265	63	.
2005	314	191,656	62,506	66	.
2006	296	190,391	62,082	69	.
2007	291	190,643	61,716	68	.
2008	286	185,907	59,783	68	.
2009	302	181,262	58,714	64	.
2010	294	177,858	57,470	65	.
2011	283	180,548	57,734	67	.
2012	306	180,596	57,349	64	.
2013	325	183,245	57,556	61	.
2014	322	185,899	57,855	62	.
2015	314	188,421	58,516	61	.
2016	298	188,505	57,864	63	.
2017	290	186,633	56,715	65	.
2018	276	183,323	.	66	.
2019	251	177,240	53,427	67	.
2020	243	171,777	52,563	67	.

County: county value. Kansas: state value. County Rank: highest county value ranked #1. (\$000): thousands of dollars. Nonmetro Kansas: Kansas total less Metropolitan Areas as defined by the Office of Management and Budget (OMB; released 3/6/2020). Per 1000: For nonmoney amounts, Per 1000=(county value / county population for the same year as the data) x 1000. \$ Per capita=(county value / county population for the same year as the data). Value= . indicates missing or suppressed data or value not calculated.

Employment

**BEA EMPLOYMENT:
TRANSPORTATION AND
WAREHOUSING**

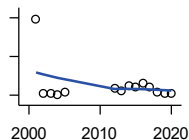
U.S. Bureau of Economic Analysis,
Regional Economic Information System
(REIS)



Year	County	State of Kansas	Non Metro Kansas	County Rank	Per 1000 or \$ Per Capita
2001	112	56,302	.	27	.
2002	104	55,319	.	30	.
2003	94	55,509	.	33	.
2004	95	55,479	.	33	.
2005	100	56,287	.	35	.
2006	131	57,506	.	32	.
2007	134	59,277	.	33	.
2008	.	58,725	.	.	.
2009	.	56,238	.	.	.
2010	.	55,179	.	.	.
2011	.	57,449	.	.	.
2012	.	59,756	.	.	.
2013	.	59,780	.	.	.
2014	.	60,565	.	.	.
2015	.	63,256	.	.	.
2016	.	65,705	.	.	.

BEA EMPLOYMENT: INFORMATION

U.S. Bureau of Economic Analysis,
Regional Economic Information System
(REIS)

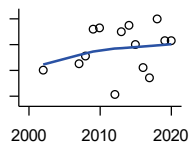


Year	County	State of Kansas	Non Metro Kansas	County Rank	Per 1000 or \$ Per Capita
2001	99	54,895	.	31	.
2002	22	50,728	.	65	.
2003	22	48,328	6,860	66	.
2004	21	45,617	.	68	.
2005	23	43,840	.	62	.
2006	.	43,925	.	.	.
2007	.	45,115	.	.	.
2008	.	42,958	.	.	.
2009	.	38,677	.	.	.
2010	.	33,432	.	.	.
2011	.	32,160	.	.	.
2012	27	31,829	.	52	.
2013	25	31,737	.	52	.
2014	30	32,316	.	50	.
2015	29	25,282	.	49	.
2016	32	24,998	.	47	.
2017	28	24,004	.	45	.
2018	23	23,165	.	52	.
2019	22	22,078	.	53	.
2020	22	20,810	.	53	.

County: county value. Kansas: state value. County Rank: highest county value ranked #1. (\$000): thousands of dollars. Nonmetro Kansas: Kansas total less Metropolitan Areas as defined by the Office of Management and Budget (OMB; released 3/6/2020). Per 1000: For nonmoney amounts, Per 1000=(county value / county population for the same year as the data) x 1000. \$ Per capita=(county value / county population for the same year as the data). Value= . indicates missing or suppressed data or value not calculated.

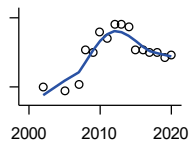
Employment

BEA EMPLOYMENT: FINANCE AND INSURANCE



U.S. Bureau of Economic Analysis, Regional Economic Information System (REIS)

Year	County	State of Kansas	Non Metro Kansas	County Rank	Per 1000 or \$ Per Capita
2001	.	76,118	.	.	.
2002	130	78,206	.	56	.
2003	.	78,441	.	.	.
2004	.	78,350	.	.	.
2005	.	78,952	.	.	.
2006	.	80,900	.	.	.
2007	135	86,094	.	53	.
2008	141	89,590	.	52	.
2009	162	93,573	.	53	.
2010	163	92,428	.	50	.
2011	.	99,495	.	.	.
2012	111	98,640	.	57	.
2013	160	99,998	.	54	.
2014	165	98,209	.	51	.
2015	150	100,534	.	52	.
2016	132	102,699	.	56	.
2017	124	101,563	.	57	.
2018	170	102,816	.	52	.
2019	153	100,276	.	54	.
2020	153	101,626	.	51	.



BEA EMPLOYMENT: REAL ESTATE, RENTAL, AND LEASING

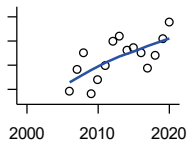
U.S. Bureau of Economic Analysis, Regional Economic Information System (REIS)

Year	County	State of Kansas	Non Metro Kansas	County Rank	Per 1000 or \$ Per Capita
2001	.	45,237	.	.	.
2002	30	44,970	.	56	.
2003	.	47,095	.	.	.
2004	.	50,181	.	.	.
2005	28	53,335	.	55	.
2006	.	55,342	.	.	.
2007	31	57,694	.	56	.
2008	46	57,933	.	52	.
2009	45	57,132	.	51	.
2010	54	59,578	.	55	.
2011	51	61,821	.	55	.
2012	57	60,432	.	52	.
2013	57	62,134	.	55	.
2014	56	64,705	.	61	.
2015	46	66,604	.	59	.
2016	46	68,395	.	57	.
2017	45	70,304	.	60	.
2018	45	72,631	.	62	.
2019	43	69,119	.	63	.
2020	44	68,452	.	65	.

County: county value. Kansas: state value. County Rank: highest county value ranked #1. (\$000): thousands of dollars. Nonmetro Kansas: Kansas total less Metropolitan Areas as defined by the Office of Management and Budget (OMB; released 3/6/2020). Per 1000: For nonmoney amounts, Per 1000=(county value / county population for the same year as the data) x 1000. \$ Per capita=(county value / county population for the same year as the data). Value= . indicates missing or suppressed data or value not calculated.

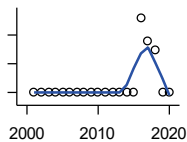
Employment

BEA EMPLOYMENT: PROFESSIONAL AND TECHNICAL SERVICES



U.S. Bureau of Economic Analysis,
Regional Economic Information System
(REIS)

Year	County	State of Kansas	Non Metro Kansas	County Rank	Per 1000 or \$ Per Capita
2001	.	81,396	.	.	.
2002	.	80,684	.	.	.
2003	.	80,311	.	.	.
2004	.	85,550	.	.	.
2005	.	85,003	.	.	.
2006	79	87,381	.	55	.
2007	88	92,717	.	52	.
2008	95	95,362	.	54	.
2009	78	93,232	.	58	.
2010	84	93,037	.	57	.
2011	90	93,237	.	57	.
2012	100	95,360	.	56	.
2013	102	100,795	.	56	.
2014	96	102,210	.	59	.
2015	97	105,625	.	61	.
2016	95	108,059	.	59	.
2017	89	109,041	.	57	.
2018	94	110,513	.	53	.
2019	101	109,637	.	51	.
2020	108	108,634	.	47	.



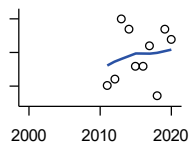
BEA EMPLOYMENT: MANAGEMENT OF COMPANIES AND ENTERPRISES

U.S. Bureau of Economic Analysis,
Regional Economic Information System
(REIS)

Year	County	State of Kansas	Non Metro Kansas	County Rank	Per 1000 or \$ Per Capita
2001	0	13,832	.	70	.
2002	0	12,576	.	69	.
2003	0	11,135	.	67	.
2004	0	10,614	.	67	.
2005	0	11,811	.	66	.
2006	0	13,061	.	66	.
2007	0	13,398	.	69	.
2008	0	15,234	.	72	.
2009	0	14,849	.	75	.
2010	0	16,579	.	75	.
2011	0	15,343	.	75	.
2012	0	15,075	.	82	.
2013	0	16,667	.	81	.
2014	0	20,441	.	79	.
2015	0	29,604	.	78	.
2016	26	27,824	.	28	.
2017	18	27,767	.	26	.
2018	15	28,862	.	32	.
2019	0	30,512	.	74	.
2020	0	25,648	.	74	.

County: county value. Kansas: state value. County Rank: highest county value ranked #1. (\$000): thousands of dollars. Nonmetro Kansas: Kansas total less Metropolitan Areas as defined by the Office of Management and Budget (OMB; released 3/6/2020). Per 1000: For nonmoney amounts, Per 1000=(county value / county population for the same year as the data) x 1000. \$ Per capita=(county value / county population for the same year as the data). Value= . indicates missing or suppressed data or value not calculated.

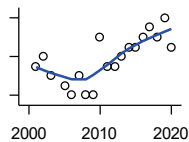
Employment



**BEA EMPLOYMENT:
ADMINISTRATIVE AND WASTE
SERVICES**

U.S. Bureau of Economic Analysis,
Regional Economic Information System
(REIS)

Year	County	State of Kansas	Non Metro Kansas	County Rank	Per 1000 or \$ Per Capita
2001	.	81,573	.	.	.
2002	.	82,992	.	.	.
2003	.	81,298	.	.	.
2004	.	85,721	.	.	.
2005	.	89,933	.	.	.
2006	.	93,688	.	.	.
2007	.	98,865	.	.	.
2008	.	97,440	.	.	.
2009	.	92,455	.	.	.
2010	.	93,675	.	.	.
2011	65	97,969	.	54	.
2012	67	100,490	.	54	.
2013	85	104,680	.	48	.
2014	82	107,218	18,836	50	.
2015	71	103,436	18,767	49	.
2016	71	103,233	18,428	53	.
2017	77	101,532	18,198	49	.
2018	62	102,062	.	51	.
2019	82	100,897	.	45	.
2020	79	95,361	.	50	.



**BEA EMPLOYMENT: EDUCATIONAL
SERVICES**

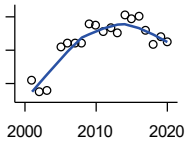
U.S. Bureau of Economic Analysis,
Regional Economic Information System
(REIS)

Year	County	State of Kansas	Non Metro Kansas	County Rank	Per 1000 or \$ Per Capita
2001	21	21,169	.	25	.
2002	22	22,173	.	28	.
2003	20	22,651	.	30	.
2004	.	21,601	.	.	.
2005	19	22,177	.	27	.
2006	18	22,438	.	26	.
2007	20	23,647	.	23	.
2008	18	24,653	.	28	.
2009	18	25,120	.	24	.
2010	24	26,071	.	23	.
2011	21	26,080	.	24	.
2012	21	26,625	.	24	.
2013	22	27,508	.	26	.
2014	23	28,708	.	28	.
2015	23	28,794	.	25	.
2016	24	27,996	.	27	.
2017	25	28,459	.	25	.
2018	24	28,560	.	29	.
2019	26	29,586	.	30	.
2020	23	27,508	.	26	.

County: county value. Kansas: state value. County Rank: highest county value ranked #1. (\$000): thousands of dollars. Nonmetro Kansas: Kansas total less Metropolitan Areas as defined by the Office of Management and Budget (OMB; released 3/6/2020). Per 1000: For nonmoney amounts, Per 1000=(county value / county population for the same year as the data) x 1000. \$ Per capita=(county value / county population for the same year as the data). Value= . indicates missing or suppressed data or value not calculated.

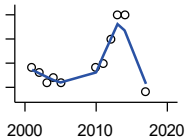
Employment

BEA EMPLOYMENT: HEALTH CARE AND SOCIAL ASSISTANCE



U.S. Bureau of Economic Analysis, Regional Economic Information System (REIS)

Year	County	State of Kansas	Non Metro Kansas	County Rank	Per 1000 or \$ Per Capita
2001	105	165,415	.	52	.
2002	87	168,198	.	55	.
2003	90	169,654	.	58	.
2004	.	172,796	.	.	.
2005	155	173,949	.	48	.
2006	160	176,919	.	43	.
2007	160	182,160	.	41	.
2008	161	186,051	.	42	.
2009	189	188,499	.	37	.
2010	188	188,383	.	37	.
2011	178	190,736	.	38	.
2012	183	192,991	.	40	.
2013	176	193,687	.	41	.
2014	203	194,632	.	41	.
2015	197	199,724	.	40	.
2016	200	201,830	.	41	.
2017	180	201,910	.	38	.
2018	158	204,011	.	45	.
2019	170	206,646	.	44	.
2020	162	204,942	.	41	.



BEA EMPLOYMENT: ARTS, ENTERTAINMENT, AND RECREATION

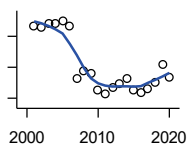
U.S. Bureau of Economic Analysis, Regional Economic Information System (REIS)

Year	County	State of Kansas	Non Metro Kansas	County Rank	Per 1000 or \$ Per Capita
2001	24	25,012	.	45	.
2002	23	25,668	.	46	.
2003	21	24,116	.	47	.
2004	22	25,355	.	50	.
2005	21	26,067	.	53	.
2006	.	26,505	.	.	.
2007	.	27,489	.	.	.
2008	.	27,501	.	.	.
2009	.	27,203	.	.	.
2010	24	27,479	.	47	.
2011	25	28,487	.	47	.
2012	30	30,729	.	45	.
2013	35	31,068	.	43	.
2014	35	32,154	.	43	.
2015	.	31,169	.	.	.
2016	.	32,373	.	.	.
2017	19	33,213	.	45	.

County: county value. Kansas: state value. County Rank: highest county value ranked #1. (\$000): thousands of dollars. Nonmetro Kansas: Kansas total less Metropolitan Areas as defined by the Office of Management and Budget (OMB; released 3/6/2020). Per 1000: For nonmoney amounts, Per 1000=(county value / county population for the same year as the data) x 1000. \$ Per capita=(county value / county population for the same year as the data). Value= . indicates missing or suppressed data or value not calculated.

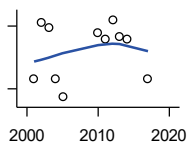
Employment

BEA EMPLOYMENT: GOVERNMENT AND GOVERNMENT ENTERPRISES



U.S. Bureau of Economic Analysis, Regional Economic Information System (REIS)

Year	County	State of Kansas	Non Metro Kansas	County Rank	Per 1000 or \$ Per Capita
2001	774	282,293	102,993	62	.
2002	772	281,427	103,581	61	.
2003	777	282,459	103,389	60	.
2004	776	283,877	103,946	61	.
2005	780	282,798	103,194	60	.
2006	774	288,372	104,103	60	.
2007	705	294,413	104,598	65	.
2008	716	298,580	104,718	65	.
2009	712	300,422	104,081	64	.
2010	691	303,875	103,382	67	.
2011	686	299,952	101,535	66	.
2012	694	298,068	101,180	64	.
2013	698	297,689	101,232	65	.
2014	706	296,956	100,634	64	.
2015	691	295,799	99,719	64	.
2016	687	291,536	98,520	64	.
2017	692	295,748	99,542	64	.
2018	701	298,105	99,499	63	.
2019	723	302,017	100,227	61	.
2020	707	292,583	96,477	60	.



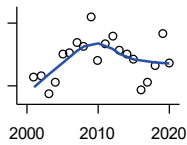
BEA EMPLOYMENT: ACCOMMODATION AND FOOD SERVICES

U.S. Bureau of Economic Analysis, Regional Economic Information System (REIS)

Year	County	State of Kansas	Non Metro Kansas	County Rank	Per 1000 or \$ Per Capita
2001	105	103,353	.	51	.
2002	132	103,692	.	48	.
2003	129	105,138	.	48	.
2004	105	106,694	.	53	.
2005	96	107,303	.	55	.
2006	.	109,888	.	.	.
2007	.	110,863	.	.	.
2008	.	111,092	.	.	.
2009	.	109,353	.	.	.
2010	127	108,628	.	47	.
2011	124	110,514	.	48	.
2012	133	112,574	.	49	.
2013	125	114,102	.	47	.
2014	124	115,768	.	48	.
2015	.	118,503	.	.	.
2016	.	119,764	.	.	.
2017	105	121,181	.	45	.

County: county value. Kansas: state value. County Rank: highest county value ranked #1. (\$000): thousands of dollars. Nonmetro Kansas: Kansas total less Metropolitan Areas as defined by the Office of Management and Budget (OMB; released 3/6/2020). Per 1000: For nonmoney amounts, Per 1000=(county value / county population for the same year as the data) x 1000. \$ Per capita=(county value / county population for the same year as the data). Value= . indicates missing or suppressed data or value not calculated.

Employment

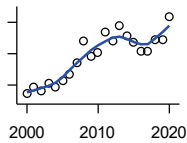


BEA EMPLOYMENT: OTHER SERVICES, EXCEPT PUBLIC ADMINISTRATION

U.S. Bureau of Economic Analysis, Regional Economic Information System (REIS)

Year	County	State of Kansas	Non Metro Kansas	County Rank	Per 1000 or \$ Per Capita
2001	204	92,176	.	58	.
2002	205	95,350	.	60	.
2003	196	95,821	32,629	62	.
2004	202	95,610	.	61	.
2005	215	95,930	32,555	60	.
2006	216	96,413	.	59	.
2007	221	98,444	.	60	.
2008	219	96,705	.	58	.
2009	233	95,534	.	53	.
2010	212	93,302	.	52	.
2011	220	94,865	.	51	.
2012	224	94,977	.	52	.
2013	217	95,471	.	56	.
2014	215	97,806	.	55	.
2015	213	98,041	.	52	.
2016	198	97,219	.	53	.
2017	202	96,568	.	50	.
2018	210	98,645	.	51	.
2019	225	98,638	.	49	.
2020	211	92,245	.	48	.

Income



BEA PER CAPITA PERSONAL INCOME (\$)

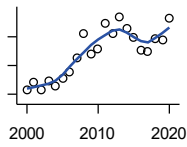
U.S. Bureau of Economic Analysis, Regional Economic Information System (REIS)

Year	County	State of Kansas	Non Metro Kansas	County Rank	Per 1000 or \$ Per Capita
2000	22,160	28,253	23,116	71	.
2001	24,533	29,112	24,576	66	.
2002	22,986	29,248	24,314	74	.
2003	25,524	30,074	26,017	72	.
2004	24,221	30,843	26,583	85	.
2005	26,506	32,545	28,356	83	.
2006	28,447	35,690	29,782	65	.
2007	32,178	38,057	32,034	62	.
2008	38,851	41,257	35,211	36	.
2009	33,969	39,431	33,876	69	.
2010	35,229	39,960	35,795	65	.
2011	41,973	43,015	39,041	49	.
2012	39,119	45,294	39,660	65	.
2013	43,845	46,174	41,747	57	.
2014	40,508	47,013	41,042	62	.
2015	38,479	47,332	40,638	73	.
2016	35,592	47,326	40,797	96	.
2017	35,665	48,756	41,314	101	.
2018	39,438	50,811	43,283	89	.
2019	39,555	52,820	44,491	98	.
2020	46,817	55,677	48,415	70	.

County: county value. Kansas: state value. County Rank: highest county value ranked #1. (\$000): thousands of dollars. Nonmetro Kansas: Kansas total less Metropolitan Areas as defined by the Office of Management and Budget (OMB; released 3/6/2020). Per 1000: For nonmoney amounts, Per 1000=(county value / county population for the same year as the data) x 1000. \$ Per capita=(county value / county population for the same year as the data). Value= . indicates missing or suppressed data or value not calculated.

Income

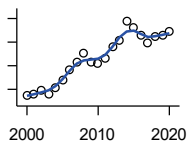
**SOURCES OF PERSONAL INCOME:
TOTAL PERSONAL INCOME (\$000)**



U.S. Bureau of Economic Analysis,
Regional Economic Information System
(REIS)

Year	County	State of Kansas	Non Metro Kansas	County Rank	Per 1000 or \$ Per Capita
2000	125,538	76,105,125	22,273,838	70	22,082.3
2001	136,405	78,664,651	23,411,174	70	24,533.3
2002	126,011	79,365,190	23,000,314	71	22,986.3
2003	138,598	81,890,340	24,494,191	72	25,524.5
2004	130,791	84,335,940	24,924,467	72	24,220.6
2005	141,861	89,346,228	26,452,291	73	26,506.2
2006	151,394	98,610,188	27,661,596	69	28,446.8
2007	169,739	105,943,199	29,715,946	68	32,178.0
2008	204,121	115,852,478	32,614,565	65	38,850.6
2009	175,924	111,697,350	31,394,702	70	33,968.7
2010	183,051	114,239,828	33,291,419	74	35,331.2
2011	218,301	123,558,772	36,221,488	72	41,981.0
2012	204,238	130,948,127	36,696,759	74	39,118.6
2013	227,776	133,979,908	38,513,959	73	43,845.2
2014	210,761	136,878,718	37,680,598	73	40,499.8
2015	199,283	138,336,768	37,081,851	72	38,479.1
2016	182,160	138,533,890	36,930,885	76	35,592.0
2017	180,286	142,729,689	37,104,963	74	35,664.9
2018	196,756	148,955,739	38,589,364	72	39,390.6
2019	195,282	154,961,001	39,424,148	73	39,691.5
2020	225,987	163,462,179	42,618,591	71	45,941.7

**SOURCES OF PERSONAL INCOME:
WAGES AND SALARIES (\$000)**



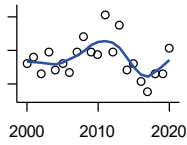
U.S. Bureau of Economic Analysis,
Regional Economic Information System
(REIS)

Year	County	State of Kansas	Non Metro Kansas	County Rank	Per 1000 or \$ Per Capita
2000	47,215	41,766,878	10,254,250	64	8,305.2
2001	47,972	43,269,734	10,518,206	64	8,628.1
2002	49,342	43,875,159	10,696,876	63	9,000.7
2003	48,008	44,488,560	10,894,971	64	8,841.3
2004	50,431	46,702,068	11,333,617	64	9,339.1
2005	53,722	48,537,956	11,614,130	63	10,037.7
2006	58,527	52,083,584	12,299,340	62	10,997.2
2007	61,379	55,442,368	13,093,908	64	11,635.8
2008	65,250	57,623,385	13,647,143	64	12,419.1
2009	61,674	55,605,578	13,199,674	64	11,908.5
2010	61,175	56,089,711	13,345,291	65	11,807.6
2011	63,362	58,104,706	13,856,458	65	12,185.0
2012	68,245	60,616,457	14,473,599	64	13,071.3
2013	70,766	61,872,023	14,781,792	63	13,621.9
2014	79,028	64,457,652	15,385,500	63	15,186.0
2015	76,151	66,729,598	15,454,485	63	14,703.8
2016	72,994	67,253,399	15,422,058	65	14,262.2
2017	69,461	68,830,861	15,731,853	66	13,741.0
2018	72,534	71,580,544	16,311,725	66	14,521.3
2019	72,957	74,404,771	16,882,299	65	14,828.7
2020	74,336	75,798,310	17,251,300	66	15,112.0

County: county value. Kansas: state value. County Rank: highest county value ranked #1. (\$000): thousands of dollars. Nonmetro Kansas: Kansas total less Metropolitan Areas as defined by the Office of Management and Budget (OMB; released 3/6/2020). Per 1000: For nonmoney amounts, Per 1000=(county value / county population for the same year as the data) x 1000. \$ Per capita=(county value / county population for the same year as the data). Value= . indicates missing or suppressed data or value not calculated.

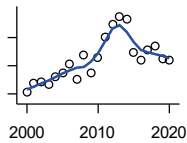
Income

**SOURCES OF PERSONAL INCOME:
PROPRIETORS-FARM (\$000)**



U.S. Bureau of Economic Analysis,
Regional Economic Information System
(REIS)

Year	County	State of Kansas	Non Metro Kansas	County Rank	Per 1000 or \$ Per Capita
2000	2,481	668,539	673,707	66	436.4
2001	6,323	779,473	769,336	46	1,137.2
2002	-3,917	145,064	187,033	95	-714.5
2003	9,263	1,281,076	1,195,298	65	1,705.9
2004	-1,631	1,149,425	938,524	100	-302.0
2005	2,386	1,609,604	1,469,139	94	445.8
2006	-3,208	766,047	663,735	95	-602.8
2007	9,239	1,131,607	1,040,350	62	1,751.5
2008	17,866	1,582,092	1,404,900	42	3,400.5
2009	8,747	1,585,995	1,390,349	73	1,688.9
2010	7,225	2,149,482	2,029,067	74	1,394.5
2011	31,207	3,188,519	2,989,880	44	6,001.3
2012	8,649	2,519,555	2,296,875	83	1,656.6
2013	24,890	4,499,190	4,158,419	64	4,791.1
2014	-1,707	2,231,181	2,157,992	98	-328.0
2015	2,295	1,300,733	1,294,370	66	443.1
2016	-8,507	1,577,060	1,564,511	102	-1,662.2
2017	-14,913	838,480	838,290	105	-2,950.1
2018	-3,866	1,050,662	971,690	101	-774.0
2019	-4,321	998,038	878,247	102	-878.3
2020	11,647	2,151,349	1,887,881	85	2,367.8



**SOURCES OF PERSONAL INCOME:
PROPRIETORS-NONFARM (\$000)**

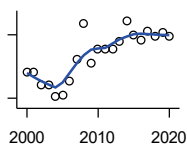
U.S. Bureau of Economic Analysis,
Regional Economic Information System
(REIS)

Year	County	State of Kansas	Non Metro Kansas	County Rank	Per 1000 or \$ Per Capita
2000	10,560	4,580,476	1,493,470	53	1,857.5
2001	13,797	4,510,530	1,855,621	54	2,481.5
2002	14,454	5,036,100	1,966,784	54	2,636.6
2003	13,338	4,719,377	1,916,735	61	2,456.4
2004	15,861	4,003,922	2,073,898	54	2,937.2
2005	17,438	4,455,294	2,200,971	50	3,258.2
2006	20,830	7,343,524	2,694,895	50	3,913.9
2007	15,136	7,280,197	2,436,574	60	2,869.4
2008	23,958	9,255,953	2,971,923	46	4,560.0
2009	17,289	9,323,551	2,858,848	63	3,338.3
2010	22,830	9,658,261	3,498,040	58	4,406.5
2011	29,944	12,196,566	4,186,007	56	5,758.5
2012	34,601	15,773,140	4,446,004	54	6,627.3
2013	37,473	16,441,660	4,492,127	53	7,213.3
2014	36,425	15,954,254	4,455,081	50	6,999.4
2015	24,548	15,536,116	4,386,172	65	4,739.9
2016	22,117	14,075,310	3,783,829	64	4,321.4
2017	25,759	15,371,957	3,908,254	63	5,095.7
2018	27,089	15,716,877	4,238,775	61	5,423.2
2019	22,570	16,705,488	3,921,051	64	4,587.4
2020	21,819	16,718,952	3,823,329	65	4,435.7

County: county value. Kansas: state value. County Rank: highest county value ranked #1. (\$000): thousands of dollars. Nonmetro Kansas: Kansas total less Metropolitan Areas as defined by the Office of Management and Budget (OMB; released 3/6/2020). Per 1000: For nonmoney amounts, Per 1000=(county value / county population for the same year as the data) x 1000. \$ Per capita=(county value / county population for the same year as the data). Value= . indicates missing or suppressed data or value not calculated.

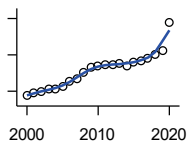
Income

**SOURCES OF PERSONAL INCOME:
DIVIDENDS,INTEREST,RENT(\$000)**



U.S. Bureau of Economic Analysis,
Regional Economic Information System
(REIS)

Year	County	State of Kansas	Non Metro Kansas	County Rank	Per 1000 or \$ Per Capita
2000	31,165	15,916,201	4,736,921	69	5,482.0
2001	31,104	15,770,830	4,699,417	69	5,594.2
2002	28,165	15,111,563	4,316,887	69	5,137.7
2003	28,069	15,370,764	4,360,311	69	5,169.2
2004	25,375	15,820,469	4,251,925	67	4,699.1
2005	25,791	17,147,069	4,485,387	71	4,818.9
2006	28,929	20,117,848	4,945,184	67	5,435.7
2007	34,264	22,269,186	5,526,219	65	6,495.5
2008	42,664	24,972,485	6,180,979	61	8,120.3
2009	33,403	21,453,879	5,308,474	68	6,449.7
2010	36,485	20,861,351	5,414,285	66	7,042.1
2011	36,604	23,387,567	5,781,075	69	7,039.2
2012	36,550	25,689,368	6,389,505	72	7,000.6
2013	38,458	24,832,212	5,984,811	69	7,402.9
2014	43,300	27,412,684	6,403,356	65	8,320.5
2015	39,864	27,244,414	6,423,685	70	7,697.2
2016	38,675	27,293,441	6,389,161	70	7,556.7
2017	40,978	28,385,472	6,700,156	68	8,106.4
2018	39,642	29,953,419	6,772,504	69	7,936.3
2019	40,517	30,820,276	6,957,987	69	8,235.2
2020	39,747	30,283,520	6,844,745	70	8,080.3



**SOURCES OF PERSONAL INCOME:
TRANSFER PAYMENTS (\$000)**

U.S. Bureau of Economic Analysis,
Regional Economic Information System
(REIS)

Year	County	State of Kansas	Non Metro Kansas	County Rank	Per 1000 or \$ Per Capita
2000	27,419	9,650,835	4,036,781	62	4,823.0
2001	29,232	10,549,124	4,355,457	62	5,257.6
2002	29,881	11,208,997	4,553,978	64	5,450.7
2003	31,034	11,709,049	4,702,911	62	5,715.3
2004	31,222	12,040,452	4,802,536	62	5,781.9
2005	32,379	12,696,735	5,059,314	64	6,049.9
2006	35,319	13,642,787	5,455,207	62	6,636.4
2007	37,013	14,686,821	5,775,024	64	7,016.7
2008	40,431	16,552,460	6,322,722	64	7,695.3
2009	43,027	18,025,603	6,790,962	64	8,308.0
2010	44,050	19,189,749	7,089,258	64	8,502.2
2011	44,445	19,625,770	7,255,825	63	8,547.1
2012	44,484	19,354,458	7,148,177	64	8,520.2
2013	45,605	19,639,358	7,185,636	64	8,778.6
2014	44,190	20,380,970	7,399,809	65	8,491.5
2015	46,275	21,116,856	7,623,577	65	8,935.1
2016	46,651	21,884,629	7,886,000	65	9,115.1
2017	48,118	22,559,744	8,062,517	65	9,518.9
2018	50,209	23,628,033	8,393,617	65	10,051.9
2019	52,187	25,050,174	8,845,371	66	10,607.1
2020	67,607	32,319,421	11,074,190	65	13,744.1

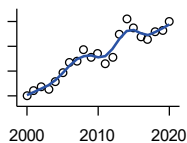
County: county value. Kansas: state value. County Rank: highest county value ranked #1. (\$000): thousands of dollars. Nonmetro Kansas: Kansas total less Metropolitan Areas as defined by the Office of Management and Budget (OMB; released 3/6/2020). Per 1000: For nonmoney amounts, Per 1000=(county value / county population for the same year as the data) x 1000. \$ Per capita=(county value / county population for the same year as the data). Value= . indicates missing or suppressed data or value not calculated.

Income

**SOURCES OF PERSONAL INCOME:
LESS SOCIAL INSURANCE (\$000)**

U.S. Bureau of Economic Analysis,
Regional Economic Information System
(REIS)

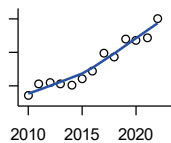
Year	County	State of Kansas	Non Metro Kansas	County Rank	Per 1000 or \$ Per Capita
2000	7,971	6,655,813	1,663,044	64	1,402.1
2001	8,425	6,869,934	1,740,915	63	1,515.3
2002	8,730	7,008,361	1,778,636	63	1,592.5
2003	8,535	7,172,781	1,821,858	64	1,571.8
2004	9,102	7,556,560	1,904,014	63	1,685.6
2005	9,854	7,911,241	1,986,907	62	1,841.2
2006	10,653	8,406,937	2,090,313	62	2,001.7
2007	10,825	8,806,941	2,180,587	62	2,052.1
2008	11,776	9,207,010	2,299,399	63	2,241.3
2009	11,071	9,002,859	2,248,703	64	2,137.7
2010	11,402	9,235,760	2,321,191	62	2,200.7
2011	10,573	8,515,986	2,139,991	64	2,033.3
2012	11,081	8,816,128	2,195,919	63	2,122.4
2013	12,965	10,225,399	2,540,439	65	2,495.7
2014	14,216	10,609,601	2,635,009	63	2,731.7
2015	13,435	11,028,204	2,663,038	64	2,594.1
2016	12,719	10,915,915	2,604,579	63	2,485.2
2017	12,538	11,224,218	2,669,954	63	2,480.3
2018	13,168	11,749,229	2,797,106	63	2,636.2
2019	13,245	12,245,451	2,889,336	64	2,692.1
2020	13,978	12,715,152	3,027,656	65	2,841.6



HUD MEDIAN FAMILY INCOME

U.S. Department of Housing and Urban
Development (HUD)

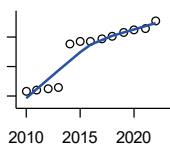
Year	County	State of Kansas	Non Metro Kansas	County Rank	Per 1000 or \$ Per Capita
2010	47,000	63,100	.	97	.
2011	50,400	64,300	.	78	.
2012	51,100	65,200	.	78	.
2013	50,600	64,800	.	90	.
2014	50,100	64,400	.	98	.
2015	52,200	66,300	.	94	.
2016	54,400	66,700	.	75	.
2017	59,600	68,500	.	60	.
2018	58,600	73,100	.	74	.
2019	63,800	75,200	.	59	.
2020	63,500	76,500	.	67	.
2021	64,400	77,400	.	63	.
2022	70,100	87,800	.	64	.



County: county value. Kansas: state value. County Rank: highest county value ranked #1. (\$000): thousands of dollars. Nonmetro Kansas: Kansas total less Metropolitan Areas as defined by the Office of Management and Budget (OMB; released 3/6/2020). Per 1000: For nonmoney amounts, Per 1000=(county value / county population for the same year as the data) x 1000. \$ Per capita=(county value / county population for the same year as the data). Value= . indicates missing or suppressed data or value not calculated.

Income

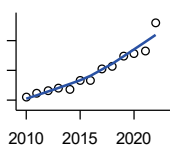
HUD 30% LOW-TO-MEDIUM INCOME (LMI) LIMIT - 4 PERSONS



U.S. Department of Housing and Urban Development (HUD)

Year	County	State of Kansas	Non Metro Kansas	County Rank	Per 1000 or \$ Per Capita
2010	15,850	.	.	105	.
2011	16,100	.	.	105	.
2012	16,300	.	.	105	.
2013	16,550	.	.	105	.
2014	23,850	.	.	105	.
2015	24,250	.	.	105	.
2016	24,300	.	.	105	.
2017	24,600	.	.	105	.
2018	25,100	21,950	.	105	.
2019	25,750	22,550	.	105	.
2020	26,200	22,950	.	105	.
2021	26,500	23,200	.	105	.
2022	27,750	25,950	.	105	.

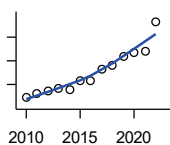
HUD 50% LOW-TO-MEDIUM INCOME (LMI) LIMIT - 4 PERSONS



U.S. Department of Housing and Urban Development (HUD)

Year	County	State of Kansas	Non Metro Kansas	County Rank	Per 1000 or \$ Per Capita
2010	26,400	.	.	105	.
2011	26,850	.	.	105	.
2012	27,200	.	.	105	.
2013	27,600	.	.	105	.
2014	27,400	.	.	105	.
2015	28,700	.	.	105	.
2016	28,650	.	.	105	.
2017	30,150	.	.	105	.
2018	30,550	36,550	.	105	.
2019	31,900	37,600	.	59	.
2020	32,300	38,250	.	104	.
2021	32,550	38,700	.	105	.
2022	36,400	43,300	.	105	.

HUD 80% LOW-TO-MEDIUM INCOME (LMI) LIMIT - 4 PERSONS



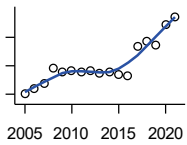
U.S. Department of Housing and Urban Development (HUD)

Year	County	State of Kansas	Non Metro Kansas	County Rank	Per 1000 or \$ Per Capita
2010	42,250	.	.	105	.
2011	42,950	.	.	105	.
2012	43,500	.	.	105	.
2013	44,150	.	.	105	.
2014	43,850	.	.	105	.
2015	45,900	.	.	105	.
2016	45,850	.	.	105	.
2017	48,250	.	.	105	.
2018	48,900	58,500	.	105	.
2019	51,050	60,150	.	59	.
2020	51,700	61,200	.	104	.
2021	52,100	61,900	.	105	.
2022	58,250	69,250	.	105	.

County: county value. Kansas: state value. County Rank: highest county value ranked #1. (\$000): thousands of dollars. Nonmetro Kansas: Kansas total less Metropolitan Areas as defined by the Office of Management and Budget (OMB; released 3/6/2020). Per 1000: For nonmoney amounts, Per 1000=(county value / county population for the same year as the data) x 1000. \$ Per capita=(county value / county population for the same year as the data). Value= . indicates missing or suppressed data or value not calculated.

Banking

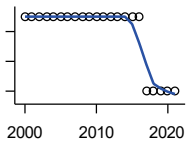
BANK DEPOSITS (1984-2004 in thousands; 2005- in millions)



Federal Deposit Insurance Corporation, Data Book, Operating Banks and Branches

Year	County	State of Kansas	Non Metro Kansas	County Rank	Per 1000 or \$ Per Capita
2005	126	48,304	17,000	64	23.5
2006	134	50,668	17,586	61	25.2
2007	144	54,057	18,517	59	27.3
2008	171	57,869	19,628	53	32.5
2009	165	57,763	20,031	60	31.9
2010	166	60,031	20,678	60	32.0
2011	165	61,094	21,347	62	31.7
2012	167	62,910	22,481	68	32.0
2013	162	64,547	22,795	68	31.2
2014	163	66,538	23,338	68	31.3
2015	160	68,160	23,367	69	30.9
2016	157	70,381	23,420	68	30.7
2017	208	73,329	23,928	55	41.1
2018	219	74,623	24,100	52	43.8
2019	212	76,436	24,488	56	43.1
2020	248	88,563	27,547	50	50.4
2021	261	97,055	30,122	54	54.0

NUMBER OF BANKS



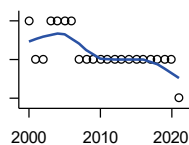
Federal Deposit Insurance Corporation, Data Book, Operating Banks and Branches

Year	County	State of Kansas	Non Metro Kansas	County Rank	Per 1000 or \$ Per Capita
2000	5	410	145	65	.
2001	5	410	136	66	.
2002	5	404	129	65	.
2003	5	397	121	63	.
2004	5	394	112	62	.
2005	5	388	101	60	.
2006	5	385	94	60	.
2007	5	382	91	60	.
2008	5	378	82	60	.
2009	5	374	79	60	.
2010	5	367	70	59	.
2011	5	359	61	59	.
2012	5	348	57	58	.
2013	5	332	45	58	.
2014	5	329	41	58	.
2015	5	320	31	55	.
2016	5	314	24	55	.
2017	4	301	13	73	.
2018	4	289	7	73	.
2019	4	279	3	72	.
2020	4	271	-1	72	.
2021	4	270	-6	71	.

County: county value. Kansas: state value. County Rank: highest county value ranked #1. (\$000): thousands of dollars. Nonmetro Kansas: Kansas total less Metropolitan Areas as defined by the Office of Management and Budget (OMB; released 3/6/2020). Per 1000: For nonmoney amounts, Per 1000=(county value / county population for the same year as the data) x 1000. \$ Per capita=(county value / county population for the same year as the data). Value= . indicates missing or suppressed data or value not calculated.

Banking

NUMBER OF BANKING OFFICES

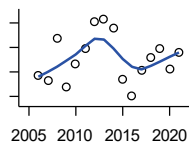


Federal Deposit Insurance Corporation, Data Book, Operating Banks and Branches

Year	County	State of Kansas	Non Metro Kansas	County Rank	Per 1000 or \$ Per Capita
2000	7	1,398	703	61	.
2001	6	1,424	708	68	.
2002	6	1,447	704	67	.
2003	7	1,461	708	60	.
2004	7	1,485	708	60	.
2005	7	1,505	711	59	.
2006	7	1,518	711	59	.
2007	6	1,543	717	66	.
2008	6	1,556	717	66	.
2009	6	1,569	716	66	.
2010	6	1,561	710	66	.
2011	6	1,559	707	66	.
2012	6	1,533	702	66	.
2013	6	1,518	696	66	.
2014	6	1,491	685	67	.
2015	6	1,472	675	67	.
2016	6	1,465	668	66	.
2017	6	1,452	666	66	.
2018	6	1,439	660	66	.
2019	6	1,439	663	64	.
2020	6	1,416	653	63	.
2021	5	1,392	641	71	.

Government

TANGIBLE ASSESSED VALUATION (KDoR, million\$; 2006-)



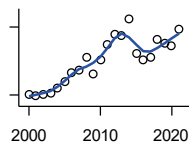
Kansas Department of Revenue, Division of Property Valuation, Statistical Report of Property Assessment and Taxation

Year	County	State of Kansas	Non Metro Kansas	County Rank	Per 1000 or \$ Per Capita
2006	78.7	28,964.3	10,316.9	56	14.8
2007	76.7	30,086.9	10,335.9	58	14.5
2008	93.6	31,000.3	10,856.9	53	17.8
2009	74.0	30,312.3	10,555.6	61	14.3
2010	83.4	29,450.2	10,158.7	57	16.1
2011	89.6	29,963.6	10,572.3	56	17.2
2012	100.5	30,382.9	10,876.2	52	19.3
2013	101.6	30,850.2	11,044.4	54	19.6
2014	97.8	31,783.0	11,388.9	58	18.8
2015	76.8	32,335.7	11,037.8	69	14.8
2016	70.4	33,156.3	10,889.6	72	13.7
2017	80.5	34,754.5	11,439.0	69	15.9
2018	85.8	36,566.1	11,907.1	68	17.2
2019	89.5	38,255.2	12,336.7	67	18.2
2020	81.4	39,333.9	12,219.3	70	16.5
2021	88.0	40,812.0	12,601.5	69	18.2

County: county value. Kansas: state value. County Rank: highest county value ranked #1. (\$000): thousands of dollars. Nonmetro Kansas: Kansas total less Metropolitan Areas as defined by the Office of Management and Budget (OMB; released 3/6/2020). Per 1000: For nonmoney amounts, Per 1000=(county value / county population for the same year as the data) x 1000. \$ Per capita=(county value / county population for the same year as the data). Value= . indicates missing or suppressed data or value not calculated.

Government

SALES TAX COLLECTIONS (\$)

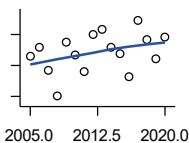


Kansas Department of Revenue. Use tax collections included beginning in calendar year 2018.

Year	County	State of Kansas	Non Metro Kansas	County Rank	Per 1000 or \$ Per Capita
2000	2,006,591	1,475,831,808	432,761,608	61	352,962.4
2001	1,985,458	1,481,026,688	426,316,284	59	357,096.8
2002	2,025,950	1,561,316,864	443,986,950	60	369,564.0
2003	2,091,050	1,626,782,976	461,658,700	60	385,092.1
2004	2,319,868	1,691,899,008	480,309,725	59	429,605.2
2005	2,574,859	1,744,980,352	497,494,867	57	481,102.2
2006	2,995,999	1,851,694,720	532,233,047	56	562,946.1
2007	3,084,446	1,917,546,752	559,319,583	56	584,729.1
2008	3,652,101	1,990,655,744	589,725,773	56	695,108.6
2009	2,932,993	1,866,223,078	548,627,132	58	566,324.2
2010	3,550,988	2,075,193,413	617,409,982	56	685,386.6
2011	4,227,635	2,347,193,367	702,671,534	56	813,006.7
2012	4,660,701	2,456,292,294	740,196,106	55	892,683.6
2013	4,650,443	2,489,204,048	746,226,565	55	895,176.6
2014	5,362,026	2,539,886,774	760,474,019	52	1,030,366.2
2015	3,857,097	2,642,374,740	750,090,163	61	744,757.1
2016	3,556,619	2,732,611,350	749,030,133	62	694,923.6
2017	3,678,703	2,726,104,521	744,246,491	62	727,735.5
2018	4,427,064	3,277,299,125	893,564,480	64	886,299.0
2019	4,269,734	3,395,631,405	939,607,762	65	867,832.2
2020	4,170,296	3,489,306,791	984,218,931	68	847,793.5
2021	4,908,604	3,981,293,227	1,098,391,422	67	1,016,063.8

Crime

CRIME INDEX OFFENSES



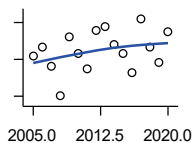
Kansas Bureau of Investigation, Note: Data are aggregated from reports by individual police departments and subject to be incomplete.

Year	County	State of Kansas	Non Metro Kansas	County Rank	Per 1000 or \$ Per Capita
2005	26	111,856	31,630	88	4.9
2006	32	110,032	.	85	6.0
2007	17	111,035	29,921	92	3.2
2008	0	93,996	27,342	100	0.0
2009	35	98,757	27,620	79	6.8
2010	27	98,354	26,909	84	5.2
2011	16	96,638	25,765	91	3.1
2012	40	98,914	26,963	77	7.7
2013	43	93,054	24,488	73	8.3
2014	32	86,323	23,341	82	6.1
2015	28	88,590	21,580	81	5.4
2016	13	90,589	21,565	92	2.5
2017	49	93,091	22,622	72	9.7
2018	37	92,062	20,325	73	7.4
2019	24	87,008	18,547	80	4.9
2020	38	87,346	17,762	74	7.7

County: county value. Kansas: state value. County Rank: highest county value ranked #1. (\$000): thousands of dollars. Nonmetro Kansas: Kansas total less Metropolitan Areas as defined by the Office of Management and Budget (OMB; released 3/6/2020). Per 1000: For nonmoney amounts, Per 1000=(county value / county population for the same year as the data) x 1000. \$ Per capita=(county value / county population for the same year as the data). Value= . indicates missing or suppressed data or value not calculated.

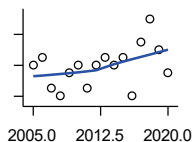
Crime

PROPERTY CRIMES



Kansas Bureau of Investigation, Note: Data are aggregated from reports by individual police departments and subject to be incomplete.

Year	County	State of Kansas	Non Metro Kansas	County Rank	Per 1000 or \$ Per Capita
2005	22	101,414	29,042	88	4.1
2006	27	99,110	.	85	5.1
2007	16	99,632	26,856	91	3.0
2008	0	83,964	24,367	100	0.0
2009	32	87,658	24,825	79	6.2
2010	23	87,926	24,133	84	4.4
2011	15	86,547	23,274	89	2.9
2012	36	88,707	24,220	77	6.9
2013	38	83,551	22,028	72	7.3
2014	28	76,794	20,858	84	5.4
2015	23	77,997	19,138	82	4.4
2016	13	79,549	19,207	91	2.5
2017	42	81,349	19,981	73	8.3
2018	27	79,695	17,769	78	5.4
2019	18	74,314	15,892	82	3.7
2020	35	73,450	15,100	70	7.1



VIOLENT CRIMES

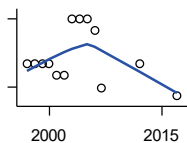
Kansas Bureau of Investigation, Note: Data are aggregated from reports by individual police departments and subject to be incomplete.

Year	County	State of Kansas	Non Metro Kansas	County Rank	Per 1000 or \$ Per Capita
2005	4	10,442	2,588	82	0.7
2006	5	10,922	.	70	0.9
2007	1	11,403	3,065	96	0.2
2008	0	10,032	2,975	100	0.0
2009	3	11,099	2,795	87	0.6
2010	4	10,428	2,776	79	0.8
2011	1	10,091	2,491	98	0.2
2012	4	10,207	2,743	85	0.8
2013	5	9,503	2,460	79	1.0
2014	4	9,529	2,483	82	0.8
2015	5	10,593	2,442	76	1.0
2016	0	11,040	2,358	102	0.0
2017	7	11,742	2,641	66	1.4
2018	10	12,367	2,556	57	2.0
2019	6	12,694	2,655	72	1.2
2020	3	13,896	2,662	89	0.6

County: county value. Kansas: state value. County Rank: highest county value ranked #1. (\$000): thousands of dollars. Nonmetro Kansas: Kansas total less Metropolitan Areas as defined by the Office of Management and Budget (OMB; released 3/6/2020). Per 1000: For nonmoney amounts, Per 1000=(county value / county population for the same year as the data) x 1000. \$ Per capita=(county value / county population for the same year as the data). Value= . indicates missing or suppressed data or value not calculated.

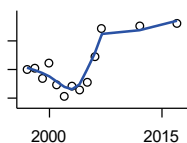
Agriculture

NUMBER OF FARMS



Kansas Agricultural Statistics, Kansas Farm Facts

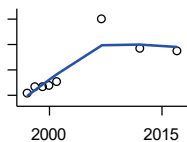
Year	County	State of Kansas	Non Metro Kansas	County Rank	Per 1000 or \$ Per Capita
1997	440	64,000	47,900	74	76.3
1998	440	65,000	48,850	77	76.5
1999	440	65,000	48,850	77	77.1
2000	440	64,000	48,030	75	77.4
2001	430	63,000	47,200	75	77.3
2002	430	63,000	47,200	75	78.4
2003	480	64,500	48,150	63	88.4
2004	480	64,500	48,150	63	88.9
2005	480	64,500	48,150	63	89.7
2006	470	64,000	47,650	66	88.3
2007	419	65,531	48,179	73	79.4
2012	440	61,773	45,655	61	84.3
2017	412	58,569	42,404	64	81.5



TOTAL ACRES HARVESTED

Kansas Agricultural Statistics, Kansas Farm Facts

Year	County	State of Kansas	Non Metro Kansas	County Rank	Per 1000 or \$ Per Capita
1997	190,400	22,846,000	19,430,580	59	33,004.0
1998	190,870	22,143,500	18,943,650	57	33,200.6
1999	183,790	21,708,900	18,581,750	59	32,198.7
2000	194,290	21,639,000	18,528,870	54	34,175.9
2001	179,470	21,847,900	18,689,750	62	32,278.8
2002	171,170	20,230,400	17,089,120	55	31,224.0
2003	178,070	21,827,700	18,661,920	65	32,793.7
2004	175,810	20,876,900	17,721,500	58	32,557.4
2005	181,170	21,936,500	18,807,930	61	33,850.9
2006	199,160	21,412,700	18,291,120	48	37,422.0
2007	218,507	19,886,655	17,164,743	38	41,423.1
2012	220,705	21,043,596	17,966,843	40	42,272.6
2017	222,145	21,837,465	18,543,057	42	43,945.6



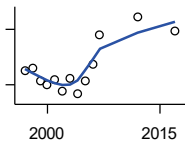
VALUE: LIVESTOCK AND POULTRY (\$000)

Kansas Agricultural Statistics, Kansas Farm Facts

Year	County	State of Kansas	Non Metro Kansas	County Rank	Per 1000 or \$ Per Capita
1997	11,047	2,806,445	2,500,305	89	1,914.9
1998	13,233	2,670,432	2,378,007	77	2,301.8
1999	13,368	2,849,061	2,554,528	73	2,342.0
2000	13,741	2,901,469	2,609,032	73	2,417.1
2001	15,357	2,693,274	2,437,187	57	2,762.1
2007	40,151	9,525,971	.	53	7,611.6
2012	28,521	11,476,571	10,883,216	65	5,462.7
2017	27,465	12,322,289	.	70	5,433.2

County: county value. Kansas: state value. County Rank: highest county value ranked #1. (\$000): thousands of dollars. Nonmetro Kansas: Kansas total less Metropolitan Areas as defined by the Office of Management and Budget (OMB; released 3/6/2020). Per 1000: For nonmoney amounts, Per 1000=(county value / county population for the same year as the data) x 1000. \$ Per capita=(county value / county population for the same year as the data). Value= . indicates missing or suppressed data or value not calculated.

Agriculture



VALUE:FIELD CROPS (\$000)
EXCLUDING GOVERNMENT
PROGRAM PAYMENTS

Kansas Agricultural Statistics, Kansas
Farm Facts

Year	County	State of Kansas	Non Metro Kansas	County Rank	Per 1000 or \$ Per Capita
1997	27,952	4,474,942	3,800,365	78	4,845.2
1998	29,043	3,594,319	3,124,409	55	5,051.8
1999	22,383	3,118,193	2,728,319	63	3,921.3
2000	20,024	2,915,660	2,540,052	65	3,522.3
2001	22,489	3,283,117	2,857,136	68	4,044.8
2002	16,681	3,011,855	2,560,580	80	3,042.9
2003	23,123	3,623,255	3,150,629	75	4,258.4
2004	14,889	3,445,688	2,896,603	91	2,757.2
2005	22,359	3,678,123	3,182,677	76	4,177.7
2006	30,805	4,308,716	3,684,132	59	5,788.2
2007	46,688	4,887,212	.	47	8,850.8
2012	56,769	6,983,993	6,044,551	54	10,873.2
2017	49,140	6,460,437	.	64	9,721.1

County: county value. Kansas: state value. County Rank: highest county value ranked #1. (\$000): thousands of dollars. Nonmetro Kansas: Kansas total less Metropolitan Areas as defined by the Office of Management and Budget (OMB; released 3/6/2020). Per 1000: For nonmoney amounts, Per 1000=(county value / county population for the same year as the data) x 1000. \$ Per capita=(county value / county population for the same year as the data). Value= . indicates missing or suppressed data or value not calculated.