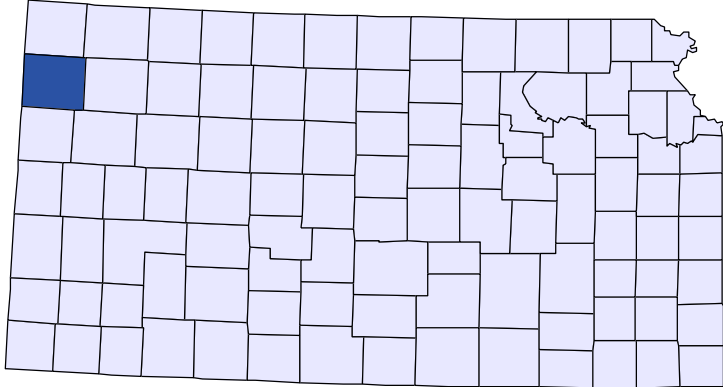




# Kansas County Profiles

## Sherman County



The University  
of Kansas

Institute for Policy  
& Social Research

**KU** INSTITUTE FOR POLICY  
& SOCIAL RESEARCH  

---

The University of Kansas

1541 Lilac Lane, Rm. 607  
Blake Hall  
Lawrence, KS 66045-3129

## Foreword

The Kansas County Profile Report is published by the Institute for Policy & Social Research (IPSR) at the University of Kansas with support from the KU University Center project.\* Special thanks to Xanthippe Wedel, senior research data engineer, who compiles and updates the county profiles and Genna Hurd, associate researcher, who provides editorial review.

County reports can be generated for any county in Kansas by simply clicking on the county from the web site:

<https://ipsr.ku.edu/ksdata/kcced/profiles/>

The Kansas County Profile Report contains 12 categories of information: Population, Vital Statistics and Health, Housing, Education, Social Environment, Business, Employment, Income, Banking, Government, Crime, and Agriculture. For more information about Kansas, please refer to the Kansas Statistical Abstract, available online at:

<https://ipsr.ku.edu/ksdata/ksah/>

We are always looking for ways to improve the Kansas County Profile Report and we welcome your suggestions and comments. Please address any correspondence to the Institute for Policy & Social Research, The University of Kansas, 607 Blake Hall, 1541 Lilac Lane, Lawrence, Kansas 66045-3129, e-mail [ipsr@ku.edu](mailto:ipsr@ku.edu) or call 785-864-3701.

*\*The KU University Center is a collaborative effort led by the Institute for Policy & Social Research at the University of Kansas. This project is supported by the Economic Development Administration, U.S. Department of Commerce, through its University Center Program.*

*The mission of EDA is to lead the federal economic development agenda by promoting innovation and competitiveness, preparing American regions for growth and success in the worldwide economy.*

## Kansas County Profiles Table of Contents

### Population

Total Population (Decennial Census)	1
Estimated Population (Current Population Reports)	2
Urban Population	2
Rural Population	3
Net Migration (Decade Ending...)	3
Median Age	3

### Population (Age Groups)

Population Under 18 (Decennial Census)	3
Population Age 18 and Over (Decennial Census)	4
Population Age 65 and Over (Decennial Census)	4
Population Age 85 and Over (Decennial Census)	4

### Vital Statistics and Health

Live Births	5
Deaths	5
Marriages	6
Divorces and Annulments	6
Physicians: M.D. Physicians	7
Physicians: D.O. Physicians	7
Dentists	8
Number of Hospitals	8
Number of Hospital Beds	9

### Housing

Housing Units (Decennial Census)	9
Housing Units (Estimated)	10
Occupied Housing Units	10
Owner Occupied Housing Units	10
Renter Occupied Housing Units	11
Vacant Housing Units	11
Median Value (\$): Owner Occupied Housing Units	11
Median Contract Rent (\$)	12
Fair Market Rent: 2 Bedrooms	12

### Education

Population Age 25 and Over	13
Percent of Population 25+ with High School or Higher Education	13
Percent of Population 25+ with Bachelors Degree or Higher Education	14
Public School Enrollment (FTE- School Year Beginning...)	14
Pupil/Teacher Ratio (School Year Beginning...)	15

## Kansas County Profiles Table of Contents

### Social Environment

Total Child Care Facilities	15
Preschools	16
Food Stamp Beneficiaries	16
Percent of Population Receiving Food Stamps	17
Estimated Number of People in Poverty	17
Estimated Percent of People in Poverty	18
Estimated Number of Related Children Age 5 to 17 in Families in Poverty	18
Estimated Percent of Related Children Age 5 to 17 in Families in Poverty	19
Estimated Number Under 18 in Poverty	19
Estimated Percent Under 18 in Poverty	20

### Business

Establishments: Total	21
Establishments: 1-19 Employees	22
Establishments: 20-99 Employees	22
Establishments: 100-499 Employees	23
Establishments: 500 or More Employees	23
Establishments: Forestry, Fishing, Hunting, and Ag Support	24
Establishments: Mining	24
Establishments: Utilities	25
Establishments: Construction	25
Establishments: Manufacturing	26
Establishments: Wholesale Trade	26
Establishments: Retail Trade	27
Establishments: Transportation and Warehousing	27
Establishments: Information	28
Establishments: Finance and Insurance	28
Establishments: Real Estate, Rental, and Leasing	29
Establishments: Professional, Scientific, and Technical Services	29
Establishments: Management of Companies and Enterprises	30
Establishments: Admin, Support, Waste Management, and Remediation	30
Establishments: Educational Services	31
Establishments: Health Care and Social Assistance	31
Establishments: Arts, Entertainment, and Recreation	32
Establishments: Accommodation and Food Services	32
Establishments: Other Services	33

## Kansas County Profiles Table of Contents

<b>Business</b>	
Total Annual Payroll (\$000)	34
Total Annual Payroll (\$000): Forestry, Fishing, Hunting, and Ag Support	35
Total Annual Payroll (\$000): Mining	35
Total Annual Payroll (\$000): Utilities	36
Total Annual Payroll (\$000): Construction	36
Total Annual Payroll (\$000): Manufacturing	37
Total Annual Payroll (\$000): Wholesale Trade	37
Total Annual Payroll (\$000): Retail Trade	38
Total Annual Payroll (\$000): Transportation and Warehousing	38
Total Annual Payroll (\$000): Information	39
Total Annual Payroll (\$000): Finance and Insurance	39
Total Annual Payroll (\$000): Real Estate, Rental, and Leasing	40
Total Annual Payroll (\$000): Professional, Scientific, and Technical Services	40
Total Annual Payroll (\$000): Management of Companies and Enterprises	41
Total Annual Payroll (\$000): Admin, Support, Waste Management, and Remediation	41
Total Annual Payroll (\$000): Educational Services	42
Total Annual Payroll (\$000): Health Care and Social Assistance	42
Total Annual Payroll (\$000): Arts, Entertainment, and Recreation	43
Total Annual Payroll (\$000): Accommodation and Food Services	43
Total Annual Payroll (\$000): Other Services	44
Nominal Taxable Retail Sales (Million\$)	44
Retail Pull Factor	45
<b>Employment</b>	
Civilian Labor Force (BLS - Place of Residence)	46
Employed (BLS - Place of Residence)	47
Unemployed (BLS - Place of Residence)	48
Unemployment Rate (BLS - Place of Residence)	49
BEA Employment: Total (Place of Work)	49
BEA Employment: Farm	50
BEA Employment: Non-Farm	50
Average Wage per Job (\$)	51
BEA Employment: Forestry, Fishing, Hunting, and Ag Support	51
BEA Employment: Mining	52
BEA Employment: Utilities	52
BEA Employment: Construction	53
BEA Employment: Manufacturing	53
BEA Employment: Wholesale Trade	54
BEA Employment: Retail Trade	54
BEA Employment: Transportation and Warehousing	55
BEA Employment: Information	55
BEA Employment: Finance and Insurance	56
BEA Employment: Real Estate, Rental, and Leasing	56
BEA Employment: Professional and Technical Services	57
BEA Employment: Management of Companies and Enterprises	57
BEA Employment: Administrative and Waste Services	58
BEA Employment: Educational Services	58
BEA Employment: Health Care and Social Assistance	59
BEA Employment: Arts, Entertainment, and Recreation	59
BEA Employment: Government and Government Enterprises	60
BEA Employment: Accommodation and Food Services	60
BEA Employment: Other Services, Except Public Administration	61

## Kansas County Profiles Table of Contents

### Income

BEA Per Capita Personal Income (\$)	61
Sources of Personal Income: Total Personal Income (\$000)	62
Sources of Personal Income: Wages And Salaries (\$000)	62
Sources of Personal Income: Proprietors-Farm (\$000)	63
Sources of Personal Income: Proprietors-Nonfarm (\$000)	63
Sources of Personal Income: Dividends, Interest, Rent (\$000)	64
Sources of Personal Income: Transfer Payments (\$000)	64
Sources of Personal Income: Less Social Insurance (\$000)	65
HUD Median Family Income	65
HUD 30% Low-To-Medium Income (LMI) Limit - 4 Persons	66
HUD 50% Low-To-Medium Income (LMI) Limit - 4 Persons	66
HUD 80% Low-To-Medium Income (LMI) Limit - 4 Persons	66

### Banking

Bank Deposits (\$000)	67
Number of Banks	67
Number of Banking Offices	68

### Government

Tangible Assessed Valuation (million\$)	68
Sales Tax Collections	69

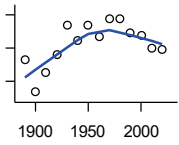
### Crime

Crime Index Offenses	69
Property Crimes	70
Violent Crimes	70

### Agriculture

Number of Farms	71
Total Acres Harvested	71
Value: Livestock and Poultry (\$000)	71
Value: Field Crops (\$000) Excluding Government Program Payments	72

**Population**



**DECENNIAL CENSUS:TOTAL POPULATION**

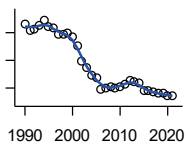
U.S. Census Bureau: Decennial Census

Year	County	State of Kansas	Non Metro Kansas	County Rank	Per 1000 or \$ Per Capita
1890	5,261	1,427,096	968,413	75	.
1900	3,341	1,470,495	981,206	82	.
1910	4,549	1,690,949	1,138,294	86	.
1920	5,592	1,769,257	1,153,525	83	.
1930	7,400	1,880,999	1,180,056	78	.
1940	6,421	1,801,028	1,097,216	79	.
1950	7,373	1,905,299	1,046,823	70	.
1960	6,682	2,178,611	1,021,510	70	.
1970	7,792	2,246,578	958,104	57	.
1980	7,759	2,363,679	980,085	58	.
1990	6,926	2,477,574	939,416	59	.
2000	6,760	2,688,418	959,507	58	.
2010	6,010	2,853,118	929,981	61	.
2020	5,927	2,937,880	892,006	58	.

County: county value. Kansas: state value. County Rank: highest county value ranked #1. (\$000): thousands of dollars. Nonmetro Kansas: Kansas total less Metropolitan Areas as defined by the Office of Management and Budget (OMB; released 3/6/2020). Per 1000: For nonmoney amounts, Per 1000=(county value / county population for the same year as the data) x 1000. \$ Per capita=(county value / county population for the same year as the data). Value= . indicates missing or suppressed data or value not calculated.

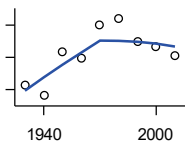
Population

ESTIMATED POPULATION



U.S. Census Bureau

Year	County	State of Kansas	Non Metro Kansas	County Rank	Per 1000 or \$ Per Capita
1990	6,929	2,481,349	938,607	59	.
1991	6,841	2,498,722	938,965	59	.
1992	6,844	2,532,394	942,759	58	.
1993	6,912	2,556,547	947,515	57	.
1994	6,974	2,580,513	952,178	57	.
1995	6,895	2,601,007	957,771	57	.
1996	6,865	2,614,554	959,455	57	.
1997	6,782	2,635,292	960,225	58	.
1998	6,781	2,660,598	960,569	58	.
1999	6,790	2,678,338	960,704	58	.
2000	6,746	2,693,681	959,230	58	.
2001	6,606	2,702,162	952,607	58	.
2002	6,396	2,713,535	945,985	59	.
2003	6,293	2,723,004	941,474	60	.
2004	6,186	2,734,373	937,623	60	.
2005	6,155	2,745,299	932,852	60	.
2006	5,979	2,762,931	928,809	61	.
2007	6,004	2,783,785	927,643	60	.
2008	6,017	2,808,076	926,248	61	.
2009	6,004	2,832,704	926,755	61	.
2010	6,018	2,858,190	930,028	61	.
2011	6,053	2,869,225	927,675	61	.
2012	6,120	2,885,257	925,152	59	.
2013	6,090	2,893,212	922,383	59	.
2014	6,067	2,900,475	917,854	59	.
2015	5,964	2,909,011	912,199	60	.
2016	5,955	2,910,844	905,099	60	.
2017	5,936	2,908,718	897,981	60	.
2018	5,917	2,911,359	892,656	60	.
2019	5,917	2,913,314	887,455	60	.
2020	5,882	2,935,880	889,750	58	.
2021	5,895	2,934,582	886,438	58	.



URBAN POPULATION

U.S. Census Bureau: Decennial Census

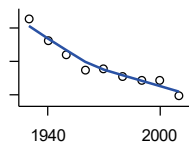
Year	County	State of Kansas	Non Metro Kansas	County Rank	Per 1000 or \$ Per Capita
1930	3,626	729,834	336,666	40	.
1940	3,306	753,941	349,228	44	.
1950	4,690	993,220	398,923	37	.
1960	4,459	1,328,741	457,447	40	.
1970	5,510	1,484,870	450,543	36	.
1980	5,708	1,575,899	474,769	36	.
1990	4,983	1,712,564	464,205	38	.
2000	4,838	1,920,081	488,011	39	.
2010	4,553	2,116,961	485,780	39	.

County: county value. Kansas: state value. County Rank: highest county value ranked #1. (\$000): thousands of dollars. Nonmetro Kansas: Kansas total less Metropolitan Areas as defined by the Office of Management and Budget (OMB; released 3/6/2020). Per 1000: For nonmoney amounts, Per 1000=(county value / county population for the same year as the data) x 1000. \$ Per capita=(county value / county population for the same year as the data). Value= . indicates missing or suppressed data or value not calculated.



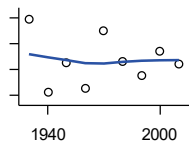
**Population**

**RURAL POPULATION**



U.S. Census Bureau

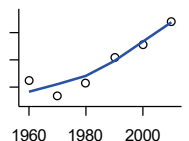
Year	County	State of Kansas	Non Metro Kansas	County Rank	Per 1000 or \$ Per Capita
1930	3,774	1,151,165	843,390	95	.
1940	3,115	1,047,087	747,988	94	.
1950	2,683	912,079	647,900	97	.
1960	2,223	849,870	564,063	98	.
1970	2,282	761,708	509,972	99	.
1980	2,051	787,780	505,873	100	.
1990	1,943	765,010	475,211	99	.
2000	1,922	768,337	471,900	100	.
2010	1,457	736,157	444,201	103	.



**NET MIGRATION: DECADE ENDING...**

calculated by the Institute for Policy and Social Research, The University of Kansas

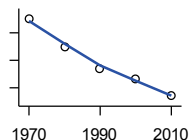
Year	County	State of Kansas	Non Metro Kansas	County Rank	Per 1000 or \$ Per Capita
1930	935	-66,132	-101,869	16	126.4
1940	-1,897	-192,649	-166,022	53	-295.4
1950	-763	-84,329	-158,379	34	-103.5
1960	-1,734	-38,999	-146,640	64	-259.5
1970	519	-119,662	-105,116	7	66.6
1980	-706	-21,983	-6,184	91	-91.0
1990	-1,229	-61,835	-79,274	83	-177.4
2000	-296	68,960	4,247	84	-43.8
2010	-776	5,578	-50,648	89	-129.1



**MEDIAN AGE**

U.S. Census Bureau: Decennial Census

Year	County	State of Kansas	Non Metro Kansas	County Rank	Per 1000 or \$ Per Capita
1960	31.1	26.9	.	64	.
1970	28.3	28.7	.	86	.
1980	30.7	30.1	.	78	.
1990	35.5	32.9	.	63	.
2000	37.8	35.2	.	67	.
2010	42.1	36.0	.	54	.



**POPULATION UNDER 18 (DECENNIAL CENSUS)**

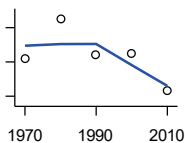
U.S. Census Bureau: Decennial Census

Year	County	State of Kansas	Non Metro Kansas	County Rank	Per 1000 or \$ Per Capita
1970	2,757	746,354	306,227	51	.
1980	2,253	649,035	263,919	53	.
1990	1,839	661,614	250,107	56	.
2000	1,660	712,993	250,757	59	.
2010	1,350	726,939	229,213	63	.

County: county value. Kansas: state value. County Rank: highest county value ranked #1. (\$000): thousands of dollars. Nonmetro Kansas: Kansas total less Metropolitan Areas as defined by the Office of Management and Budget (OMB; released 3/6/2020). Per 1000: For nonmoney amounts, Per 1000=(county value / county population for the same year as the data) x 1000. \$ Per capita=(county value / county population for the same year as the data). Value= . indicates missing or suppressed data or value not calculated.

**Population**

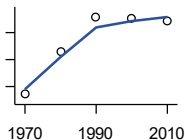
**POPULATION AGE 18 AND OVER  
(DECENNIAL CENSUS)**



U.S. Census Bureau: Decennial Census

Year	County	State of Kansas	Non Metro Kansas	County Rank	Per 1000 or \$ Per Capita
1970	5,035	1,500,224	654,288	59	.
1980	5,503	1,714,282	716,684	59	.
1990	5,087	1,815,960	689,309	58	.
2000	5,100	1,975,425	709,154	58	.
2010	4,660	2,126,179	700,768	59	.

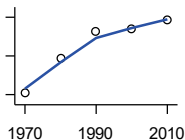
**POPULATION AGE 65 AND OVER  
(DECENNIAL CENSUS)**



U.S. Census Bureau: Decennial Census

Year	County	State of Kansas	Non Metro Kansas	County Rank	Per 1000 or \$ Per Capita
1970	871	266,201	149,049	77	.
1980	1,030	306,263	164,932	75	.
1990	1,156	342,571	168,579	71	.
2000	1,153	356,229	161,769	65	.
2010	1,145	376,116	154,214	61	.

**POPULATION AGE 85 AND OVER  
(DECENNIAL CENSUS)**



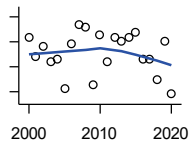
U.S. Census Bureau: Decennial Census

Year	County	State of Kansas	Non Metro Kansas	County Rank	Per 1000 or \$ Per Capita
1970	82	23,899	13,698	76	.
1980	118	33,455	18,804	75	.
1990	146	42,241	22,970	71	.
2000	148	51,770	26,644	78	.
2010	157	59,318	26,197	69	.

County: county value. Kansas: state value. County Rank: highest county value ranked #1. (\$000): thousands of dollars. Nonmetro Kansas: Kansas total less Metropolitan Areas as defined by the Office of Management and Budget (OMB; released 3/6/2020). Per 1000: For nonmoney amounts, Per 1000=(county value / county population for the same year as the data) x 1000. \$ Per capita=(county value / county population for the same year as the data). Value= . indicates missing or suppressed data or value not calculated.

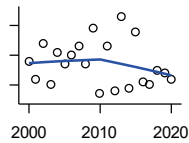
**Vital Statistics and Health**

**BIRTHS (LIVE)**



Kansas Department of Health and Environment

Year	County	State of Kansas	Non Metro Kansas	County Rank	Per 1000 or \$ Per Capita
2000	82	39,654	12,980	57	12.1
2001	74	38,832	12,527	60	11.2
2002	78	39,338	12,476	56	12.2
2003	72	39,353	12,342	59	11.4
2004	73	39,553	12,398	59	11.8
2005	61	39,701	12,382	66	9.9
2006	79	40,896	12,726	57	13.2
2007	87	41,951	12,990	57	14.5
2008	86	41,815	12,970	55	14.3
2009	63	41,388	12,949	66	10.5
2010	83	40,439	12,200	55	13.8
2011	72	39,628	12,098	60	11.9
2012	82	40,304	12,217	56	13.4
2013	80	38,805	11,877	58	13.1
2014	82	39,193	12,052	54	13.5
2015	84	39,126	11,836	54	14.1
2016	73	38,048	11,467	57	12.3
2017	73	36,464	10,968	57	12.3
2018	65	36,268	10,826	64	11.0
2019	80	35,395	10,506	52	13.5
2020	59	34,368	10,222	61	10.0



**DEATHS**

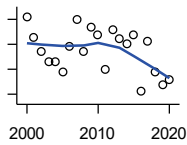
Kansas Department of Health and Environment

Year	County	State of Kansas	Non Metro Kansas	County Rank	Per 1000 or \$ Per Capita
2000	73	24,676	11,175	68	10.8
2001	67	24,590	10,807	70	10.1
2002	79	24,968	11,079	61	12.4
2003	65	24,417	10,615	68	10.3
2004	76	23,720	10,369	62	12.3
2005	72	24,632	10,599	62	11.7
2006	75	24,489	10,538	60	12.5
2007	78	24,413	10,601	56	13.0
2008	72	24,896	10,593	64	12.0
2009	84	23,997	9,938	53	14.0
2010	62	24,428	10,105	67	10.3
2011	78	25,114	10,520	58	12.9
2012	63	25,084	10,259	70	10.3
2013	88	25,347	10,249	54	14.4
2014	64	25,731	10,275	64	10.5
2015	83	26,611	10,539	59	13.9
2016	66	26,129	10,231	68	11.1
2017	65	26,725	10,452	66	11.0
2018	70	27,213	10,389	64	11.8
2019	69	27,312	10,569	64	11.7
2020	67	31,667	11,850	66	11.3

County: county value. Kansas: state value. County Rank: highest county value ranked #1. (\$000): thousands of dollars. Nonmetro Kansas: Kansas total less Metropolitan Areas as defined by the Office of Management and Budget (OMB; released 3/6/2020). Per 1000: For nonmoney amounts, Per 1000=(county value / county population for the same year as the data) x 1000. \$ Per capita=(county value / county population for the same year as the data). Value= . indicates missing or suppressed data or value not calculated.

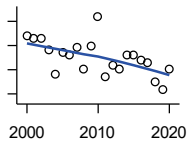
**Vital Statistics and Health**

**MARRIAGES**



Kansas Department of Health and Environment

Year	County	State of Kansas	Non Metro Kansas	County Rank	Per 1000 or \$ Per Capita
2000	51	20,426	7,333	59	7.5
2001	43	20,457	7,441	66	6.5
2002	37	19,783	6,794	68	5.8
2003	33	18,722	6,469	70	5.2
2004	33	19,174	6,756	72	5.3
2005	29	18,745	6,481	75	4.7
2006	39	18,836	6,433	60	6.5
2007	50	18,910	6,464	52	8.3
2008	37	18,717	6,283	62	6.1
2009	47	18,268	6,015	52	7.8
2010	44	18,150	5,925	53	7.3
2011	30	17,897	5,977	68	5.0
2012	46	18,154	5,752	52	7.5
2013	42	17,328	5,533	53	6.9
2014	40	17,655	5,535	55	6.6
2015	44	17,595	5,400	49	7.4
2016	21	17,948	5,340	73	3.5
2017	41	17,274	5,163	52	6.9
2018	29	16,362	4,999	62	4.9
2019	24	15,403	4,650	72	4.1
2020	26	14,038	4,066	59	4.4



**DIVORCES AND ANNULMENTS**

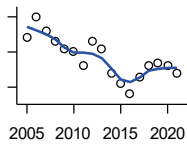
Kansas Department of Health and Environment

Year	County	State of Kansas	Non Metro Kansas	County Rank	Per 1000 or \$ Per Capita
2000	34	10,105	4,000	49	5.0
2001	33	9,885	3,818	51	5.0
2002	33	9,645	3,716	45	5.2
2003	28	8,644	3,464	50	4.4
2004	18	8,759	3,506	63	2.9
2005	27	8,476	3,311	50	4.4
2006	26	9,145	3,387	53	4.3
2007	29	9,347	3,402	47	4.8
2008	20	9,818	3,655	59	3.3
2009	30	10,333	3,463	48	5.0
2010	42	10,579	3,530	38	7.0
2011	17	10,445	3,347	65	2.8
2012	22	9,782	3,040	54	3.6
2013	20	9,085	2,973	57	3.3
2014	26	8,441	2,682	45	4.3
2015	26	8,036	2,704	45	4.4
2016	24	7,198	2,424	44	4.0
2017	23	6,494	2,315	42	3.9
2018	15	6,538	2,269	54	2.5
2019	12	6,398	2,357	64	2.0
2020	20	5,169	1,866	43	3.4

County: county value. Kansas: state value. County Rank: highest county value ranked #1. (\$000): thousands of dollars. Nonmetro Kansas: Kansas total less Metropolitan Areas as defined by the Office of Management and Budget (OMB; released 3/6/2020). Per 1000: For nonmoney amounts, Per 1000=(county value / county population for the same year as the data) x 1000. \$ Per capita=(county value / county population for the same year as the data). Value= . indicates missing or suppressed data or value not calculated.

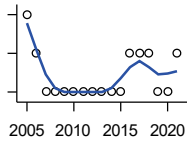
**Vital Statistics and Health**

**PHYSICIANS: M.D. PHYSICIANS**



Kansas Department of Health and Environment (1981-2005,2010-);Kansas Health Policy Authority (2006-2009)

Year	County	State of Kansas	Non Metro Kansas	County Rank	Per 1000 or \$ Per Capita
2005	19	4,241	912	24	3.1
2006	25	4,310	953	23	4.2
2007	21	5,309	1,046	24	3.5
2008	18	5,110	1,016	28	3.0
2009	16	5,249	996	29	2.7
2010	15	5,192	979	29	2.5
2011	11	5,243	983	34	1.8
2012	18	5,693	1,033	29	2.9
2013	16	6,106	1,071	32	2.6
2014	9	5,839	951	36	1.5
2015	6	5,703	855	43	1.0
2016	3	4,278	643	57	0.5
2017	8	6,332	1,047	42	1.3
2018	11	6,079	1,065	35	1.9
2019	12	6,435	1,036	33	2.0
2020	11	6,668	1,045	34	1.9
2021	9	6,745	1,042	38	1.5



**PHYSICIANS: D.O. PHYSICIANS**

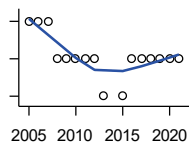
Kansas Department of Health and Environment (1981-2005,2010-);Kansas Health Policy Authority (2006-2009)

Year	County	State of Kansas	Non Metro Kansas	County Rank	Per 1000 or \$ Per Capita
2005	2	553	174	48	0.3
2006	1	508	171	66	0.2
2007	0	569	169	105	0.0
2008	0	558	166	105	0.0
2009	0	564	160	105	0.0
2010	0	583	169	105	0.0
2011	0	502	152	105	0.0
2012	0	718	200	105	0.0
2013	0	829	210	105	0.0
2014	0	817	189	105	0.0
2015	0	819	190	105	0.0
2016	1	632	136	58	0.2
2017	1	579	129	57	0.2
2018	1	871	164	64	0.2
2019	0	951	212	105	0.0
2020	0	1,018	204	105	0.0
2021	1	1,095	217	74	0.2

County: county value. Kansas: state value. County Rank: highest county value ranked #1. (\$000): thousands of dollars. Nonmetro Kansas: Kansas total less Metropolitan Areas as defined by the Office of Management and Budget (OMB; released 3/6/2020). Per 1000: For nonmoney amounts, Per 1000=(county value / county population for the same year as the data) x 1000. \$ Per capita=(county value / county population for the same year as the data). Value= . indicates missing or suppressed data or value not calculated.

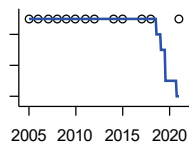
**Vital Statistics and Health**

**DENTISTS**



Kansas Department of Health and Environment (1981-2006,2010-);Kansas Health Policy Authority (2007-2009)

Year	County	State of Kansas	Non Metro Kansas	County Rank	Per 1000 or \$ Per Capita
2005	4	1,347	363	41	0.6
2006	4	1,381	361	43	0.7
2007	4	1,335	350	42	0.7
2008	3	1,392	353	46	0.5
2009	3	1,353	350	46	0.5
2010	3	1,401	365	53	0.5
2011	3	1,338	346	50	0.5
2012	3	1,434	392	53	0.5
2013	2	1,212	328	68	0.3
2015	2	1,240	327	69	0.3
2016	3	1,456	350	52	0.5
2017	3	1,467	350	48	0.5
2018	3	1,604	359	47	0.5
2019	3	1,646	355	48	0.5
2020	3	1,646	355	48	0.5
2021	3	1,688	362	49	0.5



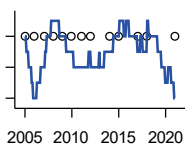
**NUMBER OF HOSPITALS**

American Hospital Association, American Hospital Association Guide to the Health Care Field

Year	County	State of Kansas	Non Metro Kansas	County Rank	Per 1000 or \$ Per Capita
2005	1	158	105	96	.
2006	1	158	105	96	.
2007	1	159	104	95	.
2008	1	159	104	95	.
2009	1	158	105	96	.
2010	1	158	104	96	.
2011	1	158	103	96	.
2012	1	157	103	96	.
2014	1	156	.	96	.
2015	1	155	103	96	.
2017	1	157	102	96	.
2018	1	154	99	95	.
2021	1	151	.	95	.

County: county value. Kansas: state value. County Rank: highest county value ranked #1. (\$000): thousands of dollars. Nonmetro Kansas: Kansas total less Metropolitan Areas as defined by the Office of Management and Budget (OMB; released 3/6/2020). Per 1000: For nonmoney amounts, Per 1000=(county value / county population for the same year as the data) x 1000. \$ Per capita=(county value / county population for the same year as the data). Value= . indicates missing or suppressed data or value not calculated.

**Vital Statistics and Health**

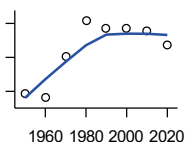


**NUMBER OF HOSPITAL BEDS**

Kansas Department of Health and Environment

Year	County	State of Kansas	Non Metro Kansas	County Rank	Per 1000 or \$ Per Capita
2005	25	12,389	5,687	85	4.1
2006	25	11,992	5,514	85	4.2
2007	25	12,171	5,637	84	4.2
2008	25	12,332	5,700	85	4.2
2009	25	12,283	5,652	86	4.2
2010	25	12,218	5,521	86	4.2
2011	25	12,182	5,335	85	4.1
2012	25	12,002	5,355	85	4.1
2014	25	12,034	.	84	4.1
2015	25	11,926	5,330	85	4.2
2017	25	11,491	4,825	83	4.2
2018	25	11,448	4,583	82	4.2
2021	25	11,199	.	76	4.2

**Housing**



**HOUSING UNITS (DECENNIAL)**

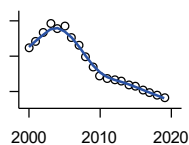
U.S. Census Bureau: Decennial Census

Year	County	State of Kansas	Non Metro Kansas	County Rank	Per 1000 or \$ Per Capita
1950	2,215	586,650	328,210	74	300.4
1960	2,154	672,899	329,380	72	322.4
1970	2,763	789,735	363,824	63	354.6
1980	3,292	955,207	416,877	60	424.3
1990	3,177	1,044,112	417,062	61	458.7
2000	3,184	1,131,395	422,218	57	471.0
2010	3,148	1,233,215	424,050	59	523.8
2020	2,934	1,275,689	413,120	60	495.0

County: county value. Kansas: state value. County Rank: highest county value ranked #1. (\$000): thousands of dollars. Nonmetro Kansas: Kansas total less Metropolitan Areas as defined by the Office of Management and Budget (OMB; released 3/6/2020). Per 1000: For nonmoney amounts, Per 1000=(county value / county population for the same year as the data) x 1000. \$ Per capita=(county value / county population for the same year as the data). Value= . indicates missing or suppressed data or value not calculated.

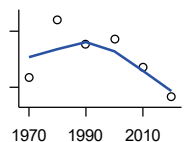
**Housing**

**HOUSING UNITS (ESTIMATED)**



U.S. Census Bureau

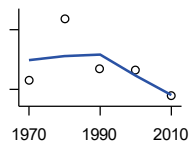
Year	County	State of Kansas	Non Metro Kansas	County Rank	Per 1000 or \$ Per Capita
2000	3,186	1,134,529	422,560	57	471.3
2001	3,196	1,146,858	423,876	57	483.8
2002	3,208	1,160,129	425,089	57	501.6
2003	3,221	1,171,620	425,936	57	511.8
2004	3,214	1,184,702	426,593	58	519.6
2005	3,217	1,195,791	426,964	57	522.7
2006	3,202	1,206,692	426,713	58	535.5
2007	3,190	1,217,608	426,090	58	531.3
2008	3,175	1,225,625	425,768	58	527.7
2009	3,160	1,230,552	424,776	58	526.3
2010	3,147	1,234,456	424,174	59	523.6
2011	3,144	1,238,052	424,549	59	519.4
2012	3,142	1,241,992	425,116	59	513.4
2013	3,139	1,246,675	425,699	60	515.4
2014	3,135	1,253,284	426,269	60	516.7
2015	3,132	1,258,999	426,844	60	525.2
2016	3,127	1,265,684	427,465	60	525.1
2017	3,123	1,273,536	427,746	60	526.1
2018	3,119	1,280,649	428,099	60	527.1
2019	3,116	1,288,401	428,495	60	526.6



**OCCUPIED HOUSING UNITS**

U.S. Census Bureau: Decennial Census

Year	County	State of Kansas	Non Metro Kansas	County Rank	Per 1000 or \$ Per Capita
1970	2,552	727,364	326,494	60	327.5
1980	2,861	872,239	371,693	60	368.7
1990	2,733	944,726	365,901	59	394.6
2000	2,758	1,037,891	375,313	56	408.0
2010	2,608	1,112,096	370,269	58	433.9
2020	2,447	1,151,360	356,330	58	412.9



**OWNER OCCUPIED HOUSING UNITS**

U.S. Census Bureau: Decennial Census

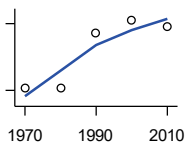
Year	County	State of Kansas	Non Metro Kansas	County Rank	Per 1000 or \$ Per Capita
1970	1,847	502,585	236,338	63	237.0
1980	2,155	612,433	277,096	60	277.7
1990	1,905	641,762	263,099	63	275.1
2000	1,899	718,703	271,350	65	280.9
2010	1,766	753,532	261,763	65	293.8

County: county value. Kansas: state value. County Rank: highest county value ranked #1. (\$000): thousands of dollars. Nonmetro Kansas: Kansas total less Metropolitan Areas as defined by the Office of Management and Budget (OMB; released 3/6/2020). Per 1000: For nonmoney amounts, Per 1000=(county value / county population for the same year as the data) x 1000. \$ Per capita=(county value / county population for the same year as the data). Value= . indicates missing or suppressed data or value not calculated.



**Housing**

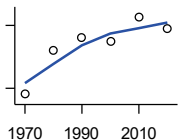
**RENTER OCCUPIED HOUSING UNITS**



U.S. Census Bureau: Decennial Census

Year	County	State of Kansas	Non Metro Kansas	County Rank	Per 1000 or \$ Per Capita
1970	705	224,779	90,156	55	90.5
1980	706	259,806	94,597	56	91.0
1990	828	302,964	102,802	47	119.5
2000	859	319,188	103,963	45	127.1
2010	842	358,564	108,506	47	140.1

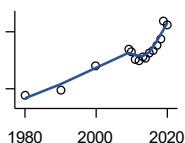
**VACANT HOUSING UNITS**



U.S. Census Bureau: Decennial Census

Year	County	State of Kansas	Non Metro Kansas	County Rank	Per 1000 or \$ Per Capita
1970	171	60,058	35,954	89	21.9
1980	379	77,912	41,584	56	48.8
1990	444	99,386	51,161	64	64.1
2000	426	93,309	46,904	60	63.0
2010	540	121,119	53,781	55	89.9
2020	487	124,329	56,790	59	82.2

**MEDIAN VALUE (\$): OWNER OCCUPIED HOUSING UNITS**



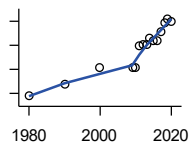
U.S. Census Bureau, Decennial Census (- 2000), (2009 -) American Community Survey five-year average ending in year shown.

Year	County	State of Kansas	Non Metro Kansas	County Rank	Per 1000 or \$ Per Capita
1980	33,400	37,800	.	31	.
1990	37,900	52,200	.	35	.
2000	63,900	83,500	.	33	.
2009	81,400	118,500	.	43	.
2010	79,300	122,600	.	47	.
2011	71,300	125,500	.	63	.
2012	69,000	127,400	.	72	.
2013	74,200	128,400	.	66	.
2014	71,600	129,400	.	74	.
2015	77,000	132,000	.	68	.
2016	80,400	135,300	.	70	.
2017	86,300	139,200	.	59	.
2018	92,700	145,400	.	55	.
2019	111,400	151,900	.	33	.
2020	107,500	157,600	.	39	.

County: county value. Kansas: state value. County Rank: highest county value ranked #1. (\$000): thousands of dollars. Nonmetro Kansas: Kansas total less Metropolitan Areas as defined by the Office of Management and Budget (OMB; released 3/6/2020). Per 1000: For nonmoney amounts, Per 1000=(county value / county population for the same year as the data) x 1000. \$ Per capita=(county value / county population for the same year as the data). Value= . indicates missing or suppressed data or value not calculated.

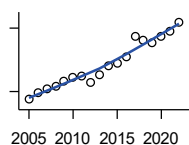
**Housing**

**MEDIAN CONTRACT RENT (\$)**



U.S. Census Bureau, Decennial Census (- 2000), (2009 -) American Community Survey five-year average ending in year shown.

Year	County	State of Kansas	Non Metro Kansas	County Rank	Per 1000 or \$ Per Capita
1980	178	219	.	33	.
1990	276	372	.	50	.
2000	414	498	.	33	.
2009	410	491	.	25	.
2010	420	507	.	25	.
2011	594	699	.	28	.
2012	610	715	.	33	.
2013	611	732	.	38	.
2014	662	748	.	28	.
2015	643	757	.	32	.
2016	637	775	.	42	.
2017	708	801	.	22	.
2018	784	831	.	12	.
2019	819	850	.	12	.
2020	803	863	.	14	.



**FAIR MARKET RENT: 2 BEDROOMS**

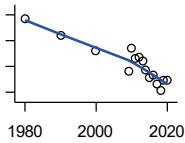
U.S. Department of Housing and Urban Development (HUD)

Year	County	State of Kansas	Non Metro Kansas	County Rank	Per 1000 or \$ Per Capita
2005	462	.	.	66	.
2006	497	.	.	105	.
2007	512	.	.	105	.
2008	525	628	.	105	.
2009	547	653	.	105	.
2010	566	678	.	105	.
2011	575	684	.	105	.
2012	540	660	.	105	.
2013	577	712	.	105	.
2014	622	746	.	105	.
2015	634	756	.	105	.
2016	663	781	.	41	.
2017	759	811	.	26	.
2018	744	815	.	31	.
2019	733	828	.	27	.
2020	761	855	.	27	.
2021	784	874	.	26	.
2022	828	879	.	20	.

County: county value. Kansas: state value. County Rank: highest county value ranked #1. (\$000): thousands of dollars. Nonmetro Kansas: Kansas total less Metropolitan Areas as defined by the Office of Management and Budget (OMB; released 3/6/2020). Per 1000: For nonmoney amounts, Per 1000=(county value / county population for the same year as the data) x 1000. \$ Per capita=(county value / county population for the same year as the data). Value= . indicates missing or suppressed data or value not calculated.

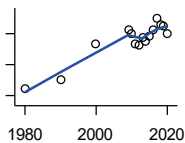
**Education**

**POPULATION AGE 25+**



U.S. Census Bureau, Decennial Census (- 2000), (2009 -) American Community Survey five-year average ending in year shown.

Year	County	State of Kansas	Non Metro Kansas	County Rank	Per 1000 or \$ Per Capita
1980	4,570	1,388,102	596,639	.	.
1990	4,442	1,565,936	608,745	.	.
2000	4,319	1,701,207	618,131	.	.
2009	4,164	1,775,427	600,188	.	.
2010	4,342	1,802,904	608,716	.	.
2011	4,265	1,822,400	610,386	.	.
2012	4,269	1,838,079	611,103	.	.
2013	4,243	1,850,010	610,374	.	.
2014	4,171	1,861,894	609,612	.	.
2015	4,113	1,869,698	606,967	.	.
2016	4,132	1,878,495	604,563	.	.
2017	4,064	1,886,741	601,076	.	.
2018	4,017	1,894,675	598,487	.	.
2019	4,095	1,902,279	595,501	.	.
2020	4,091	1,911,990	593,923	.	.



**PERCENT HS GRADUATE OR HIGHER AGE 25+**

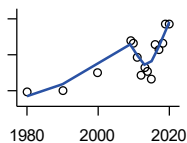
U.S. Census Bureau, Decennial Census (- 2000), (2009 -) American Community Survey five-year average ending in year shown.

Year	County	State of Kansas	Non Metro Kansas	County Rank	Per 1000 or \$ Per Capita
1980	72.2	73.3	.	30	.
1990	75.0	81.3	.	76	.
2000	86.6	86.0	.	27	.
2009	91.3	89.0	.	19	.
2010	90.1	89.2	.	42	.
2011	86.9	89.5	.	83	.
2012	86.4	89.7	.	86	.
2013	88.9	89.8	.	69	.
2014	87.7	90.0	.	84	.
2015	89.3	90.2	.	70	.
2016	91.4	90.3	.	45	.
2017	94.8	90.5	.	11	.
2018	92.7	90.7	.	31	.
2019	92.3	91.0	.	40	.
2020	90.1	91.4	.	74	.

County: county value. Kansas: state value. County Rank: highest county value ranked #1. (\$000): thousands of dollars. Nonmetro Kansas: Kansas total less Metropolitan Areas as defined by the Office of Management and Budget (OMB; released 3/6/2020). Per 1000: For nonmoney amounts, Per 1000=(county value / county population for the same year as the data) x 1000. \$ Per capita=(county value / county population for the same year as the data). Value= . indicates missing or suppressed data or value not calculated.

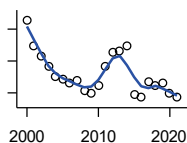
**Education**

**PERCENT BACHELORS DEGREE OR HIGHER AGE 25+**



U.S. Census Bureau, Decennial Census (- 2000), (2009 -) American Community Survey five-year average ending in year shown.

Year	County	State of Kansas	Non Metro Kansas	County Rank	Per 1000 or \$ Per Capita
1980	12.3	17.0	.	44	.
1990	12.5	21.1	.	72	.
2000	15.0	25.8	.	86	.
2009	19.5	28.8	.	44	.
2010	19.1	29.3	.	52	.
2011	17.2	29.7	.	80	.
2012	14.7	30.0	.	99	.
2013	15.7	30.3	.	95	.
2014	15.2	30.7	.	100	.
2015	14.1	31.0	.	102	.
2016	19.0	31.6	.	73	.
2017	18.2	32.3	.	84	.
2018	19.1	32.9	.	75	.
2019	21.8	33.4	.	57	.
2020	21.8	33.9	.	57	.



**PUBLIC SCHOOL ENROLLMENT (FTE) SCHOOL YEAR BEGINNING...**

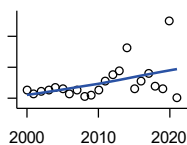
Kansas State Department of Education

Year	County	State of Kansas	Non Metro Kansas	County Rank	Per 1000 or \$ Per Capita
2000	1,128.0	448,150.8	166,722.5	62	166.9
2001	1,046.4	447,047.1	164,365.0	65	158.4
2002	1,013.5	444,860.3	161,555.4	65	158.5
2003	981.8	443,620.6	159,130.2	65	156.0
2004	950.4	441,957.2	156,566.3	66	153.6
2005	944.0	442,708.4	155,197.2	67	153.4
2006	932.3	444,878.7	153,842.3	66	155.9
2007	939.7	446,831.3	152,337.1	64	156.5
2008	906.4	447,730.0	150,572.7	68	150.6
2009	899.5	453,202.5	151,246.8	66	149.8
2010	923.5	455,405.0	151,023.8	67	153.7
2011	981.7	456,000.5	150,257.9	62	162.2
2012	1,025.5	458,496.4	150,463.0	61	167.6
2013	1,033.0	461,950.0	150,420.9	60	169.6
2014	1,048.0	464,395.4	150,499.4	60	172.7
2015	895.0	463,504.0	149,539.3	66	150.1
2016	885.2	459,920.3	147,293.5	67	148.6
2017	934.8	477,977.9	152,096.3	65	157.5
2018	923.8	476,481.7	150,456.8	65	156.1
2019	931.2	476,525.1	150,045.2	64	157.4
2020	898.2	462,088.0	146,369.6	64	151.5
2021	885.8	463,652.4	147,500.4	64	150.3

County: county value. Kansas: state value. County Rank: highest county value ranked #1. (\$000): thousands of dollars. Nonmetro Kansas: Kansas total less Metropolitan Areas as defined by the Office of Management and Budget (OMB; released 3/6/2020). Per 1000: For nonmoney amounts, Per 1000=(county value / county population for the same year as the data) x 1000. \$ Per capita=(county value / county population for the same year as the data). Value= . indicates missing or suppressed data or value not calculated.

**Education**

**PUPIL/TEACHER RATIO SCHOOL YEAR BEGINNING...**

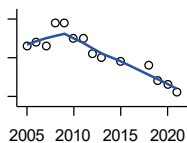


Kansas State Department of Education

Year	County	State of Kansas	Non Metro Kansas	County Rank	Per 1000 or \$ Per Capita
2000	13.9	15.4	13.9	40	.
2001	13.2	15.3	13.8	51	.
2002	13.7	15.4	13.9	39	.
2003	13.8	15.5	13.8	35	.
2004	14.2	15.3	13.6	30	.
2005	14.0	15.0	13.4	27	.
2006	13.2	14.7	13.2	37	.
2007	13.8	14.6	13.1	27	.
2008	12.8	14.4	12.9	39	.
2009	13.0	14.8	13.2	41	.
2010	13.9	15.2	13.6	34	.
2011	15.2	15.1	13.5	12	.
2012	16.3	15.1	13.5	5	.
2013	16.8	15.1	13.5	4	.
2014	20.5	15.0	13.6	2	.
2015	14.0	15.2	13.9	34	.
2016	15.2	15.1	13.7	15	.
2017	16.6	15.5	13.9	13	.
2018	14.4	15.3	13.8	28	.
2019	14.0	15.2	13.7	31	.
2020	25.0	14.7	13.4	2	.
2021	12.7	14.8	13.5	51	.

**Social Environment**

**CHILD CARE FACILITIES: TOTAL CHILD CARE FACILITIES**

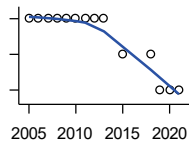


Kansas Department of Health and Environment, Bureau of Adult and Child Care

Year	County	State of Kansas	Non Metro Kansas	County Rank	Per 1000 or \$ Per Capita
2005	23	8,258	3,378	62	3.7
2006	24	8,442	3,429	62	4.0
2007	23	8,241	3,317	63	3.8
2008	29	8,011	3,150	48	4.8
2009	29	7,853	3,066	48	4.8
2010	25	7,354	2,858	54	4.2
2011	25	6,835	2,623	50	4.1
2012	21	6,346	2,409	52	3.4
2013	20	5,754	2,179	51	3.3
2015	19	5,289	2,146	53	3.2
2018	18	4,607	1,904	52	3.0
2019	14	4,287	1,774	63	2.4
2020	13	4,274	1,798	65	2.2
2021	11	4,002	1,700	68	1.9

County: county value. Kansas: state value. County Rank: highest county value ranked #1. (\$000): thousands of dollars. Nonmetro Kansas: Kansas total less Metropolitan Areas as defined by the Office of Management and Budget (OMB; released 3/6/2020). Per 1000: For nonmoney amounts, Per 1000=(county value / county population for the same year as the data) x 1000. \$ Per capita=(county value / county population for the same year as the data). Value= . indicates missing or suppressed data or value not calculated.

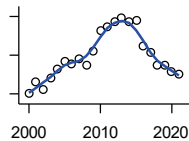
**Social Environment**



**CHILD CARE FACILITIES:  
PRESCHOOLS**

Kansas Department of Health and Environment, Bureau of Adult and Child Care

Year	County	State of Kansas	Non Metro Kansas	County Rank	Per 1000 or \$ Per Capita
2005	2	243	140	46	0.3
2006	2	221	127	42	0.3
2007	2	208	119	42	0.3
2008	2	204	114	46	0.3
2009	2	194	107	42	0.3
2010	2	194	112	44	0.3
2011	2	209	123	47	0.3
2012	2	201	121	47	0.3
2013	2	140	84	35	0.3
2015	1	185	113	71	0.2
2018	1	150	94	60	0.2
2019	0	134	83	105	0.0
2020	0	126	78	105	0.0
2021	0	120	74	105	0.0



**FOOD STAMP BENEFICIARIES**

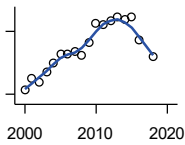
Kansas Social and Rehabilitation Services

Year	County	State of Kansas	Non Metro Kansas	County Rank	Per 1000 or \$ Per Capita
2000	300	110,619	44,825	54	44.4
2001	360	117,241	46,741	50	54.5
2002	325	131,726	52,342	54	50.8
2003	383	155,908	61,280	54	60.9
2004	428	167,971	65,852	51	69.2
2005	470	175,710	67,261	48	76.4
2006	457	182,821	67,487	50	76.4
2007	478	184,035	66,979	48	79.6
2008	451	187,377	67,160	49	75.0
2009	524	208,007	73,637	48	87.3
2010	629	259,609	90,919	48	104.7
2011	649	296,542	101,155	51	107.2
2012	672	303,257	102,478	49	109.8
2013	692	316,424	105,345	49	113.6
2014	675	301,377	100,761	50	111.3
2015	679	277,614	93,353	48	113.8
2016	546	258,412	88,343	50	91.7
2017	513	239,592	82,070	50	86.4
2018	447	219,738	75,208	52	75.5
2019	447	205,261	69,899	53	75.5
2020	414	198,457	66,721	53	69.8
2021	401	203,424	68,883	53	68.0

County: county value. Kansas: state value. County Rank: highest county value ranked #1. (\$000): thousands of dollars. Nonmetro Kansas: Kansas total less Metropolitan Areas as defined by the Office of Management and Budget (OMB; released 3/6/2020). Per 1000: For nonmoney amounts, Per 1000=(county value / county population for the same year as the data) x 1000. \$ Per capita=(county value / county population for the same year as the data). Value= . indicates missing or suppressed data or value not calculated.

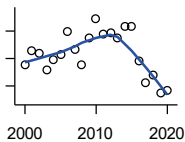
**Social Environment**

**PERCENT OF POPULATION RECEIVING FOOD STAMPS**



U.S. Dept. of Agriculture Food and Nutrition Service (1990-1997); Kansas Social and Rehabilitation Services (1998- )

Year	County	State of Kansas	Non Metro Kansas	County Rank	Per 1000 or \$ Per Capita
2000	4.4	4.1	.	33	.
2001	5.5	4.3	.	23	.
2002	5.1	4.9	.	36	.
2003	6.1	5.7	.	37	.
2004	7.0	6.2	.	29	.
2005	7.8	6.4	.	23	.
2006	7.8	6.6	.	24	.
2007	8.1	6.6	.	21	.
2008	7.7	6.7	.	23	.
2009	8.9	7.4	.	22	.
2010	10.8	9.1	.	24	.
2011	10.7	10.3	.	29	.
2012	11.0	10.5	.	27	.
2013	11.4	10.9	.	26	.
2014	11.1	10.4	.	27	.
2015	11.4	9.6	.	22	.
2016	9.2	8.9	.	29	.
2018	7.6	7.5	.	35	.



**ESTIMATED NUMBER OF PEOPLE IN POVERTY**

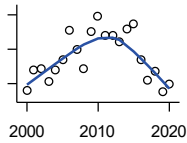
U.S. Census Bureau, Small Area Income and Poverty Estimates

Year	County	State of Kansas	Non Metro Kansas	County Rank	Per 1000 or \$ Per Capita
2000	825	235,087	98,984	49	122.0
2001	877	252,134	106,257	49	132.8
2002	868	265,673	107,542	49	135.7
2003	809	278,163	107,323	51	128.6
2004	846	297,733	111,534	51	136.8
2005	866	310,667	118,768	53	140.7
2006	948	327,102	123,700	50	158.6
2007	882	301,828	111,953	49	146.9
2008	825	307,804	113,015	51	137.1
2009	924	359,692	123,394	51	153.9
2010	996	374,677	131,502	48	165.7
2011	937	383,859	134,912	51	154.8
2012	943	392,095	133,800	49	154.1
2013	924	391,718	134,067	52	151.7
2014	968	381,506	130,213	49	159.6
2015	969	366,069	123,073	46	162.5
2016	841	343,773	121,314	52	141.2
2017	764	335,371	116,854	56	128.7
2018	790	336,892	114,490	52	133.5
2019	725	319,931	110,692	56	122.5
2020	733	300,931	100,998	52	123.7

County: county value. Kansas: state value. County Rank: highest county value ranked #1. (\$000): thousands of dollars. Nonmetro Kansas: Kansas total less Metropolitan Areas as defined by the Office of Management and Budget (OMB; released 3/6/2020). Per 1000: For nonmoney amounts, Per 1000=(county value / county population for the same year as the data) x 1000. \$ Per capita=(county value / county population for the same year as the data). Value= . indicates missing or suppressed data or value not calculated.

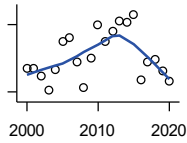
**Social Environment**

**ESTIMATED % OF PEOPLE IN POVERTY**



U.S. Census Bureau, Small Area Income and Poverty Estimates

Year	County	State of Kansas	Non Metro Kansas	County Rank	Per 1000 or \$ Per Capita
2000	12.6	8.9	.	11	.
2001	13.8	9.5	.	9	.
2002	13.9	10.0	.	10	.
2003	13.1	10.4	.	14	.
2004	13.8	11.1	.	17	.
2005	14.4	11.7	.	22	.
2006	16.1	12.2	.	15	.
2007	15.0	11.2	.	10	.
2008	13.9	11.3	.	19	.
2009	16.0	13.2	.	17	.
2010	16.9	13.5	.	16	.
2011	15.8	13.8	.	23	.
2012	15.8	14.0	.	23	.
2013	15.4	13.9	.	26	.
2014	16.2	13.5	.	21	.
2015	16.5	12.9	.	16	.
2016	14.4	12.2	.	25	.
2017	13.2	11.9	.	33	.
2018	13.7	11.9	.	31	.
2019	12.5	11.3	.	40	.
2020	13.0	10.6	.	22	.



**EST. NUMBER OF RELATED CHILDREN AGE 5 TO 17 IN FAMILIES IN POVERTY**

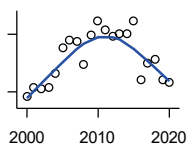
U.S. Census Bureau, Small Area Income and Poverty Estimates

Year	County	State of Kansas	Non Metro Kansas	County Rank	Per 1000 or \$ Per Capita
2000	181	50,388	21,854	51	26.8
2001	181	53,755	23,094	51	27.4
2002	174	52,453	21,423	50	27.2
2003	162	55,419	21,809	52	25.7
2004	180	59,392	22,313	48	29.1
2005	205	60,203	24,244	46	33.3
2006	208	64,427	25,326	45	34.8
2007	187	61,149	23,639	45	31.1
2008	164	59,842	22,661	50	27.3
2009	190	71,850	26,251	50	31.6
2010	220	81,077	29,804	50	36.6
2011	205	82,311	29,306	51	33.9
2012	214	87,594	29,781	50	35.0
2013	223	84,325	29,253	47	36.6
2014	222	83,873	29,354	48	36.6
2015	229	78,192	27,482	46	38.4
2016	171	67,810	25,074	54	28.7
2017	187	67,873	25,032	53	31.5
2018	189	68,153	24,928	52	31.9
2019	179	64,613	23,117	52	30.3
2020	169	59,792	21,143	49	28.5

County: county value. Kansas: state value. County Rank: highest county value ranked #1. (\$000): thousands of dollars. Nonmetro Kansas: Kansas total less Metropolitan Areas as defined by the Office of Management and Budget (OMB; released 3/6/2020). Per 1000: For nonmoney amounts, Per 1000=(county value / county population for the same year as the data) x 1000. \$ Per capita=(county value / county population for the same year as the data). Value= . indicates missing or suppressed data or value not calculated.



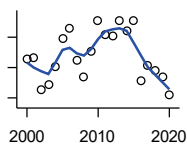
**Social Environment**



EST. % OF RELATED CHILDREN AGE 5 TO 17 IN FAMILIES IN POVERTY

U.S. Census Bureau, Small Area Income and Poverty Estimates

Year	County	State of Kansas	Non Metro Kansas	County Rank	Per 1000 or \$ Per Capita
2000	15.5	10.0	.	13	.
2001	16.5	10.8	.	15	.
2002	16.3	10.5	.	7	.
2003	16.4	11.3	.	9	.
2004	17.9	12.5	.	7	.
2005	20.6	12.8	.	7	.
2006	21.4	13.2	.	5	.
2007	21.3	12.6	.	6	.
2008	18.9	12.3	.	9	.
2009	21.9	14.7	.	8	.
2010	23.4	15.9	.	11	.
2011	22.5	16.2	.	13	.
2012	21.8	17.2	.	15	.
2013	22.1	16.5	.	15	.
2014	22.1	16.4	.	16	.
2015	23.4	15.3	.	11	.
2016	17.2	13.2	.	25	.
2017	19.0	13.4	.	24	.
2018	19.4	13.5	.	19	.
2019	17.2	12.9	.	26	.
2020	17.0	11.9	.	23	.



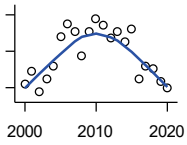
ESTIMATED NUMBER UNDER 18 IN POVERTY

U.S. Census Bureau, Small Area Income and Poverty Estimates

Year	County	State of Kansas	Non Metro Kansas	County Rank	Per 1000 or \$ Per Capita
2000	291	82,619	34,843	50	43.0
2001	293	87,487	36,724	50	44.4
2002	250	84,181	32,870	51	39.1
2003	258	93,896	36,004	52	41.0
2004	281	98,641	36,272	48	45.4
2005	319	100,254	39,118	46	51.8
2006	331	105,193	41,054	46	55.4
2007	290	100,242	37,881	47	48.3
2008	267	100,146	37,552	51	44.4
2009	302	118,187	42,682	51	50.3
2010	342	129,009	46,428	49	56.9
2011	324	133,478	46,832	51	53.5
2012	322	135,261	46,294	50	52.6
2013	342	131,251	44,952	47	56.2
2014	329	125,562	43,933	48	54.2
2015	342	119,994	41,828	46	57.3
2016	263	100,996	37,387	53	44.2
2017	282	102,858	37,955	52	47.5
2018	276	102,616	36,991	52	46.6
2019	268	97,920	34,797	50	45.3
2020	244	88,491	30,767	49	41.2

County: county value. Kansas: state value. County Rank: highest county value ranked #1. (\$000): thousands of dollars. Nonmetro Kansas: Kansas total less Metropolitan Areas as defined by the Office of Management and Budget (OMB; released 3/6/2020). Per 1000: For nonmoney amounts, Per 1000=(county value / county population for the same year as the data) x 1000. \$ Per capita=(county value / county population for the same year as the data). Value= . indicates missing or suppressed data or value not calculated.

**Social Environment**



**ESTIMATED PERCENT UNDER 18 IN POVERTY**

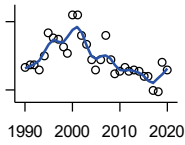
U.S. Census Bureau, Small Area Income and Poverty Estimates

Year	County	State of Kansas	Non Metro Kansas	County Rank	Per 1000 or \$ Per Capita
2000	18.4	11.9	.	9	.
2001	19.8	12.7	.	10	.
2002	17.5	12.1	.	10	.
2003	18.9	13.8	.	14	.
2004	20.4	14.6	.	8	.
2005	23.6	15.2	.	7	.
2006	25.0	15.4	.	6	.
2007	24.1	14.7	.	7	.
2008	21.5	14.6	.	14	.
2009	24.1	17.1	.	15	.
2010	25.6	18.1	.	13	.
2011	24.9	18.8	.	13	.
2012	23.5	19.0	.	18	.
2013	24.1	18.4	.	15	.
2014	23.0	17.6	.	16	.
2015	24.4	16.9	.	13	.
2016	18.9	14.3	.	23	.
2017	20.3	14.7	.	22	.
2018	20.1	14.8	.	21	.
2019	18.7	14.3	.	24	.
2020	18.0	13.0	.	22	.

County: county value. Kansas: state value. County Rank: highest county value ranked #1. (\$000): thousands of dollars. Nonmetro Kansas: Kansas total less Metropolitan Areas as defined by the Office of Management and Budget (OMB; released 3/6/2020). Per 1000: For nonmoney amounts, Per 1000=(county value / county population for the same year as the data) x 1000. \$ Per capita=(county value / county population for the same year as the data). Value= . indicates missing or suppressed data or value not calculated.

**Business**

**ESTABLISHMENTS TOTAL COUNTY BUSINESS PATTERNS**



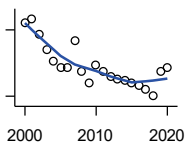
U.S. Census Bureau, County Business Patterns. Beginning with the 2017 data, any tabulation with fewer than 3 establishments were omitted from the release. Data for these establishments are included in the broader total.

Year	County	State of Kansas	Non Metro Kansas	County Rank	Per 1000 or \$ Per Capita
1990	260	65,858	26,802	45	37.5
1991	261	65,941	26,750	45	38.2
1992	261	67,630	27,229	47	38.1
1993	259	68,930	27,655	47	37.5
1994	265	69,822	27,763	47	38.0
1995	275	70,894	28,111	47	39.9
1996	273	72,017	28,353	47	39.8
1997	272	73,924	28,884	48	40.1
1998	269	74,019	28,749	48	39.7
1999	266	74,486	28,536	48	39.2
2000	283	74,939	28,475	46	41.9
2001	283	74,565	28,282	44	42.8
2002	274	75,077	28,183	46	42.8
2003	270	74,972	27,998	46	42.9
2004	263	75,827	28,009	47	42.5
2005	259	76,173	27,830	48	42.1
2006	263	76,446	27,653	47	44.0
2007	274	77,157	27,736	46	45.6
2008	263	76,096	27,314	46	43.7
2009	257	74,698	26,839	46	42.8
2010	258	74,301	26,739	47	42.9
2011	260	73,598	26,555	45	43.0
2012	258	73,944	26,534	47	42.2
2013	259	73,816	26,393	46	42.5
2014	258	74,055	26,292	46	42.5
2015	256	74,526	26,355	47	42.9
2016	256	74,884	26,172	47	43.0
2017	250	74,947	26,093	46	42.1
2018	249	74,559	25,802	46	42.1
2019	262	74,292	25,536	42	44.3
2020	259	73,982	25,178	43	43.7

County: county value. Kansas: state value. County Rank: highest county value ranked #1. (\$000): thousands of dollars. Nonmetro Kansas: Kansas total less Metropolitan Areas as defined by the Office of Management and Budget (OMB; released 3/6/2020). Per 1000: For nonmoney amounts, Per 1000=(county value / county population for the same year as the data) x 1000. \$ Per capita=(county value / county population for the same year as the data). Value= . indicates missing or suppressed data or value not calculated.

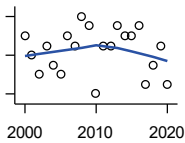
**Business**

**ESTABLISHMENTS: 1-19  
EMPLOYEES**



U.S. Census Bureau, County Business Patterns. Beginning with the 2017 data, any tabulation with fewer than 3 establishments were omitted from the release. Data for these establishments are included in the broader total.

Year	County	State of Kansas	Non Metro Kansas	County Rank	Per 1000 or \$ Per Capita
2000	263	64,527	25,381	44	38.9
2001	265	64,176	25,248	43	40.1
2002	258	64,886	25,208	43	40.3
2003	251	64,714	25,020	46	39.9
2004	246	65,554	24,995	47	39.8
2005	243	65,796	24,839	47	39.5
2006	243	65,764	24,589	46	40.6
2007	255	66,446	24,701	45	42.5
2008	241	65,322	24,257	47	40.1
2009	236	64,128	23,851	46	39.3
2010	244	64,015	23,857	46	40.6
2011	241	63,251	23,571	45	39.8
2012	239	63,519	23,575	44	39.1
2013	238	63,197	23,396	44	39.1
2014	237	63,113	23,229	44	39.1
2015	236	63,280	23,227	44	39.6
2016	235	63,630	23,117	44	39.5
2017	233	63,619	23,022	44	39.3
2018	230	63,233	22,745	45	38.9
2019	241	62,904	22,489	42	40.7
2020	243	62,634	22,173	41	41.0



**ESTABLISHMENTS: 20-99  
EMPLOYEES**

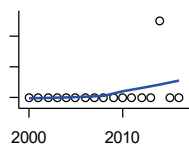
U.S. Census Bureau, County Business Patterns. Beginning with the 2017 data, any tabulation with fewer than 3 establishments were omitted from the release. Data for these establishments are included in the broader total.

Year	County	State of Kansas	Non Metro Kansas	County Rank	Per 1000 or \$ Per Capita
2000	18	8,714	2,653	51	2.7
2001	16	8,692	2,593	56	2.4
2002	14	8,582	2,554	59	2.2
2003	17	8,642	2,568	53	2.7
2004	15	8,658	2,590	59	2.4
2005	14	8,685	2,553	59	2.3
2006	18	8,922	2,612	52	3.0
2007	17	8,938	2,574	52	2.8
2008	20	8,939	2,587	51	3.3
2009	19	8,848	2,551	50	3.2
2010	12	8,612	2,454	63	2.0
2011	17	8,668	2,540	53	2.8
2012	17	8,700	2,500	51	2.8
2013	19	8,870	2,541	50	3.1
2014	18	9,121	2,590	51	3.0
2015	18	9,374	2,664	54	3.0
2016	19	9,412	2,596	50	3.2
2017	13	9,487	2,638	61	2.2
2018	15	9,485	2,621	55	2.5
2019	17	9,485	2,591	49	2.9
2020	13	9,471	2,545	55	2.2

County: county value. Kansas: state value. County Rank: highest county value ranked #1. (\$000): thousands of dollars. Nonmetro Kansas: Kansas total less Metropolitan Areas as defined by the Office of Management and Budget (OMB; released 3/6/2020). Per 1000: For nonmoney amounts, Per 1000=(county value / county population for the same year as the data) x 1000. \$ Per capita=(county value / county population for the same year as the data). Value= . indicates missing or suppressed data or value not calculated.

**Business**

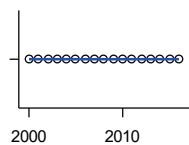
**ESTABLISHMENTS: 100-499 EMPLOYEES**



U.S. Census Bureau, County Business Patterns. Beginning with the 2017 data, any tabulation with fewer than 3 establishments were omitted from the release. Data for these establishments are included in the broader total.

Year	County	State of Kansas	Non Metro Kansas	County Rank	Per 1000 or \$ Per Capita
2000	2	1,555	409	62	0.3
2001	2	1,555	406	59	0.3
2002	2	1,464	386	57	0.3
2003	2	1,470	378	59	0.3
2004	2	1,463	388	57	0.3
2005	2	1,537	400	59	0.3
2006	2	1,598	407	64	0.3
2007	2	1,602	416	63	0.3
2008	2	1,653	421	63	0.3
2009	2	1,551	394	60	0.3
2010	2	1,513	382	58	0.3
2011	2	1,523	395	58	0.3
2012	2	1,567	410	56	0.3
2013	2	1,581	407	59	0.3
2014	3	1,641	421	52	0.5
2015	2	1,693	414	61	0.3
2016	2	1,671	406	60	0.3

**ESTABLISHMENTS: 500 OR MORE EMPLOYEES**

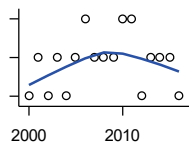


U.S. Census Bureau, County Business Patterns. Beginning with the 2017 data, any tabulation with fewer than 3 establishments were omitted from the release. Data for these establishments are included in the broader total.

Year	County	State of Kansas	Non Metro Kansas	County Rank	Per 1000 or \$ Per Capita
2000	0	143	32	105	0.0
2001	0	142	35	105	0.0
2002	0	145	35	105	0.0
2003	0	146	32	105	0.0
2004	0	152	36	105	0.0
2005	0	155	38	105	0.0
2006	0	162	45	105	0.0
2007	0	171	45	105	0.0
2008	0	182	49	105	0.0
2009	0	171	43	105	0.0
2010	0	161	46	105	0.0
2011	0	156	49	105	0.0
2012	0	158	49	105	0.0
2013	0	168	49	105	0.0
2014	0	180	52	105	0.0
2015	0	179	50	105	0.0
2016	0	171	53	105	0.0

County: county value. Kansas: state value. County Rank: highest county value ranked #1. (\$000): thousands of dollars. Nonmetro Kansas: Kansas total less Metropolitan Areas as defined by the Office of Management and Budget (OMB; released 3/6/2020). Per 1000: For nonmoney amounts, Per 1000=(county value / county population for the same year as the data) x 1000. \$ Per capita=(county value / county population for the same year as the data). Value= . indicates missing or suppressed data or value not calculated.

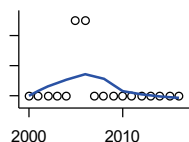
**Business**



**ESTABLISHMENTS: FORESTRY, FISHING, HUNTING, AND AG SUPPORT**

U.S. Census Bureau, County Business Patterns. Beginning with the 2017 data, any tabulation with fewer than 3 establishments were omitted from the release. Data for these establishments are included in the broader total.

Year	County	State of Kansas	Non Metro Kansas	County Rank	Per 1000 or \$ Per Capita
2000	2	190	149	43	0.3
2001	3	217	168	32	0.5
2002	2	224	176	56	0.3
2003	3	217	173	28	0.5
2004	2	211	165	53	0.3
2005	3	188	148	28	0.5
2006	4	193	158	19	0.7
2007	3	212	170	29	0.5
2008	3	197	158	29	0.5
2009	3	191	154	28	0.5
2010	4	192	161	16	0.7
2011	4	193	157	17	0.7
2012	2	204	164	50	0.3
2013	3	208	166	27	0.5
2014	3	194	152	22	0.5
2015	3	192	149	26	0.5
2016	2	181	142	48	0.3



**ESTABLISHMENTS: MINING**

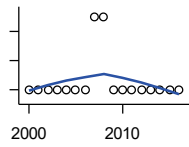
U.S. Census Bureau, County Business Patterns. Beginning with the 2017 data, any tabulation with fewer than 3 establishments were omitted from the release. Data for these establishments are included in the broader total.

Year	County	State of Kansas	Non Metro Kansas	County Rank	Per 1000 or \$ Per Capita
2000	1	868	619	88	0.1
2001	1	878	622	88	0.2
2002	1	847	615	89	0.2
2003	1	864	633	88	0.2
2004	1	880	647	87	0.2
2005	2	941	695	69	0.3
2006	2	991	734	71	0.3
2007	1	1,000	759	88	0.2
2008	1	1,047	799	90	0.2
2009	1	1,016	772	90	0.2
2010	1	1,009	762	91	0.2
2011	1	1,013	763	92	0.2
2012	1	1,048	789	91	0.2
2013	1	1,060	802	92	0.2
2014	1	1,102	828	93	0.2
2015	1	1,069	810	94	0.2
2016	1	990	747	93	0.2

County: county value. Kansas: state value. County Rank: highest county value ranked #1. (\$000): thousands of dollars. Nonmetro Kansas: Kansas total less Metropolitan Areas as defined by the Office of Management and Budget (OMB; released 3/6/2020). Per 1000: For nonmoney amounts, Per 1000=(county value / county population for the same year as the data) x 1000. \$ Per capita=(county value / county population for the same year as the data). Value= . indicates missing or suppressed data or value not calculated.

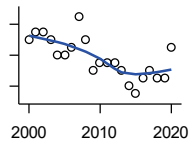
**Business**

**ESTABLISHMENTS: UTILITIES**



U.S. Census Bureau, County Business Patterns. Beginning with the 2017 data, any tabulation with fewer than 3 establishments were omitted from the release. Data for these establishments are included in the broader total.

Year	County	State of Kansas	Non Metro Kansas	County Rank	Per 1000 or \$ Per Capita
2000	2	274	192	68	0.3
2001	2	290	204	70	0.3
2002	2	278	195	64	0.3
2003	2	268	180	63	0.3
2004	2	247	164	59	0.3
2005	2	254	172	57	0.3
2006	2	248	169	58	0.3
2007	3	222	156	33	0.5
2008	3	244	166	35	0.5
2009	2	222	152	57	0.3
2010	2	197	129	49	0.3
2011	2	230	156	57	0.3
2012	2	232	156	57	0.3
2013	2	234	159	58	0.3
2014	2	232	160	58	0.3
2015	2	237	165	59	0.3
2016	2	245	171	60	0.3



**ESTABLISHMENTS: CONSTRUCTION**

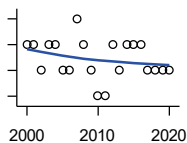
U.S. Census Bureau, County Business Patterns. Beginning with the 2017 data, any tabulation with fewer than 3 establishments were omitted from the release. Data for these establishments are included in the broader total.

Year	County	State of Kansas	Non Metro Kansas	County Rank	Per 1000 or \$ Per Capita
2000	24	7,703	2,616	58	3.6
2001	25	7,449	2,520	54	3.8
2002	25	7,519	2,482	53	3.9
2003	24	7,722	2,521	53	3.8
2004	22	7,887	2,518	57	3.6
2005	22	8,032	2,515	57	3.6
2006	23	8,031	2,494	56	3.8
2007	27	8,057	2,547	48	4.5
2008	24	7,831	2,522	54	4.0
2009	20	7,342	2,452	58	3.3
2010	21	7,064	2,394	57	3.5
2011	21	6,774	2,361	56	3.5
2012	21	6,741	2,393	59	3.4
2013	20	6,802	2,394	60	3.3
2014	18	6,920	2,383	63	3.0
2015	17	7,014	2,377	65	2.9
2016	19	6,988	2,343	59	3.2
2017	20	7,031	2,316	55	3.4
2018	19	7,124	2,285	57	3.2
2019	19	7,060	2,242	57	3.2
2020	23	7,089	2,249	50	3.9

County: county value. Kansas: state value. County Rank: highest county value ranked #1. (\$000): thousands of dollars. Nonmetro Kansas: Kansas total less Metropolitan Areas as defined by the Office of Management and Budget (OMB; released 3/6/2020). Per 1000: For nonmoney amounts, Per 1000=(county value / county population for the same year as the data) x 1000. \$ Per capita=(county value / county population for the same year as the data). Value= . indicates missing or suppressed data or value not calculated.

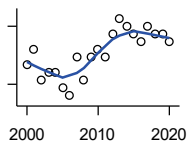
**Business**

**ESTABLISHMENTS:  
MANUFACTURING**



U.S. Census Bureau, County Business Patterns. Beginning with the 2017 data, any tabulation with fewer than 3 establishments were omitted from the release. Data for these establishments are included in the broader total.

Year	County	State of Kansas	Non Metro Kansas	County Rank	Per 1000 or \$ Per Capita
2000	5	3,229	1,316	77	0.7
2001	5	3,240	1,323	75	0.8
2002	4	3,181	1,289	87	0.6
2003	5	3,159	1,291	80	0.8
2004	5	3,179	1,313	83	0.8
2005	4	3,128	1,278	86	0.6
2006	4	3,165	1,290	82	0.7
2007	6	3,184	1,316	73	1.0
2008	5	3,171	1,297	80	0.8
2009	4	3,026	1,240	83	0.7
2010	3	2,955	1,222	93	0.5
2011	3	2,877	1,193	90	0.5
2012	5	2,889	1,197	77	0.8
2013	4	2,836	1,165	80	0.7
2014	5	2,831	1,168	77	0.8
2015	5	2,817	1,161	77	0.8
2016	5	2,791	1,150	77	0.8
2017	4	2,760	1,147	83	0.7
2018	4	2,725	1,126	84	0.7
2019	4	2,695	1,111	84	0.7
2020	4	2,673	1,103	84	0.7



**ESTABLISHMENTS: WHOLESALE  
TRADE**

U.S. Census Bureau, County Business Patterns. Beginning with the 2017 data, any tabulation with fewer than 3 establishments were omitted from the release. Data for these establishments are included in the broader total.

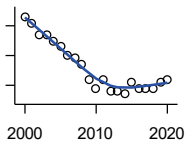
Year	County	State of Kansas	Non Metro Kansas	County Rank	Per 1000 or \$ Per Capita
2000	20	4,876	1,776	38	3.0
2001	22	4,811	1,769	37	3.3
2002	18	4,719	1,750	46	2.8
2003	19	4,590	1,637	44	3.0
2004	19	4,553	1,634	42	3.1
2005	17	4,541	1,618	46	2.8
2006	16	4,517	1,596	51	2.7
2007	21	4,555	1,629	37	3.5
2008	18	4,501	1,622	44	3.0
2009	21	4,437	1,614	34	3.5
2010	22	4,432	1,612	30	3.7
2011	21	4,400	1,660	32	3.5
2012	24	4,563	1,755	31	3.9
2013	26	4,501	1,741	27	4.3
2014	25	4,497	1,746	28	4.1
2015	24	4,459	1,755	31	4.0
2016	23	4,457	1,732	34	3.9
2017	25	4,436	1,774	27	4.2
2018	24	4,330	1,727	27	4.1
2019	24	4,291	1,713	28	4.1
2020	23	4,191	1,677	30	3.9

County: county value. Kansas: state value. County Rank: highest county value ranked #1. (\$000): thousands of dollars. Nonmetro Kansas: Kansas total less Metropolitan Areas as defined by the Office of Management and Budget (OMB; released 3/6/2020). Per 1000: For nonmoney amounts, Per 1000=(county value / county population for the same year as the data) x 1000. \$ Per capita=(county value / county population for the same year as the data). Value= . indicates missing or suppressed data or value not calculated.



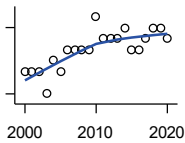
**Business**

**ESTABLISHMENTS: RETAIL TRADE**



U.S. Census Bureau, County Business Patterns. Beginning with the 2017 data, any tabulation with fewer than 3 establishments were omitted from the release. Data for these establishments are included in the broader total.

Year	County	State of Kansas	Non Metro Kansas	County Rank	Per 1000 or \$ Per Capita
2000	58	12,261	5,240	43	8.6
2001	56	12,206	5,207	44	8.5
2002	52	11,980	5,082	44	8.1
2003	52	11,834	5,049	45	8.3
2004	50	11,748	4,967	44	8.1
2005	48	11,562	4,834	46	7.8
2006	45	11,367	4,702	46	7.5
2007	44	11,306	4,653	47	7.3
2008	42	10,978	4,494	46	7.0
2009	37	10,760	4,372	53	6.2
2010	34	10,727	4,346	58	5.7
2011	37	10,655	4,289	52	6.1
2012	33	10,585	4,202	58	5.4
2013	33	10,433	4,147	57	5.4
2014	32	10,391	4,070	59	5.3
2015	36	10,327	4,061	51	6.0
2016	34	10,197	3,965	53	5.7
2017	34	10,074	3,885	50	5.7
2018	34	9,866	3,797	52	5.7
2019	36	9,762	3,750	47	6.1
2020	37	9,591	3,666	46	6.2



**ESTABLISHMENTS: TRANSPORTATION & WAREHOUSING**

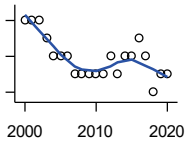
U.S. Census Bureau, County Business Patterns. Beginning with the 2017 data, any tabulation with fewer than 3 establishments were omitted from the release. Data for these establishments are included in the broader total.

Year	County	State of Kansas	Non Metro Kansas	County Rank	Per 1000 or \$ Per Capita
2000	12	2,474	1,293	57	1.8
2001	12	2,463	1,298	58	1.8
2002	12	2,461	1,278	56	1.9
2003	10	2,576	1,297	65	1.6
2004	13	2,651	1,324	52	2.1
2005	12	2,632	1,326	55	1.9
2006	14	2,626	1,295	51	2.3
2007	14	2,664	1,314	48	2.3
2008	14	2,675	1,329	48	2.3
2009	14	2,635	1,313	48	2.3
2010	17	2,615	1,313	41	2.8
2011	15	2,579	1,285	43	2.5
2012	15	2,519	1,243	41	2.5
2013	15	2,492	1,226	42	2.5
2014	16	2,518	1,240	40	2.6
2015	14	2,554	1,257	44	2.3
2016	14	2,567	1,241	46	2.4
2017	15	2,640	1,245	41	2.5
2018	16	2,627	1,238	38	2.7
2019	16	2,615	1,209	36	2.7
2020	15	2,589	1,179	40	2.5

County: county value. Kansas: state value. County Rank: highest county value ranked #1. (\$000): thousands of dollars. Nonmetro Kansas: Kansas total less Metropolitan Areas as defined by the Office of Management and Budget (OMB; released 3/6/2020). Per 1000: For nonmoney amounts, Per 1000=(county value / county population for the same year as the data) x 1000. \$ Per capita=(county value / county population for the same year as the data). Value= . indicates missing or suppressed data or value not calculated.

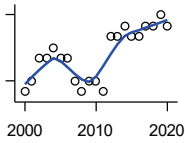
**Business**

**ESTABLISHMENTS: INFORMATION**



U.S. Census Bureau, County Business Patterns. Beginning with the 2017 data, any tabulation with fewer than 3 establishments were omitted from the release. Data for these establishments are included in the broader total.

Year	County	State of Kansas	Non Metro Kansas	County Rank	Per 1000 or \$ Per Capita
2000	10	1,542	578	32	1.5
2001	10	1,556	566	31	1.5
2002	10	1,517	551	31	1.6
2003	9	1,516	564	32	1.4
2004	8	1,518	556	36	1.3
2005	8	1,519	536	36	1.3
2006	8	1,549	559	33	1.3
2007	7	1,504	527	39	1.2
2008	7	1,468	522	40	1.2
2009	7	1,420	510	38	1.2
2010	7	1,437	527	41	1.2
2011	7	1,428	537	43	1.2
2012	8	1,387	515	34	1.3
2013	7	1,337	487	37	1.1
2014	8	1,335	496	31	1.3
2015	8	1,359	510	33	1.3
2016	9	1,431	537	31	1.5
2017	8	1,439	.	34	1.3
2018	6	1,407	.	48	1.0
2019	7	1,422	.	42	1.2
2020	7	1,424	.	41	1.2



**ESTABLISHMENTS: FINANCE & INSURANCE**

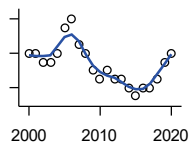
U.S. Census Bureau, County Business Patterns. Beginning with the 2017 data, any tabulation with fewer than 3 establishments were omitted from the release. Data for these establishments are included in the broader total.

Year	County	State of Kansas	Non Metro Kansas	County Rank	Per 1000 or \$ Per Capita
2000	13	5,209	1,848	63	1.9
2001	14	5,178	1,828	60	2.1
2002	16	5,496	1,911	57	2.5
2003	16	5,569	1,907	54	2.5
2004	17	5,572	1,913	50	2.7
2005	16	5,708	1,964	59	2.6
2006	16	5,877	1,976	55	2.7
2007	14	6,017	2,030	65	2.3
2008	13	6,010	2,023	68	2.2
2009	14	5,933	1,994	64	2.3
2010	14	5,872	1,975	65	2.3
2011	13	5,854	1,985	67	2.1
2012	18	5,993	2,024	50	2.9
2013	18	5,903	1,993	51	3.0
2014	19	5,894	2,000	47	3.1
2015	18	5,932	1,998	49	3.0
2016	18	6,022	2,021	51	3.0
2017	19	6,026	2,007	46	3.2
2018	19	6,023	1,997	47	3.2
2019	20	5,953	1,977	45	3.4
2020	19	5,926	1,969	45	3.2

County: county value. Kansas: state value. County Rank: highest county value ranked #1. (\$000): thousands of dollars. Nonmetro Kansas: Kansas total less Metropolitan Areas as defined by the Office of Management and Budget (OMB; released 3/6/2020). Per 1000: For nonmoney amounts, Per 1000=(county value / county population for the same year as the data) x 1000. \$ Per capita=(county value / county population for the same year as the data). Value= . indicates missing or suppressed data or value not calculated.

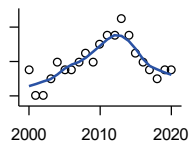
**Business**

**ESTABLISHMENTS: REAL ESTATE, RENTAL, AND LEASING**



U.S. Census Bureau, County Business Patterns. Beginning with the 2017 data, any tabulation with fewer than 3 establishments were omitted from the release. Data for these establishments are included in the broader total.

Year	County	State of Kansas	Non Metro Kansas	County Rank	Per 1000 or \$ Per Capita
2000	8	2,733	687	39	1.2
2001	8	2,849	724	38	1.2
2002	7	2,952	735	41	1.1
2003	7	3,007	727	41	1.1
2004	8	3,108	713	40	1.3
2005	11	3,203	727	34	1.8
2006	12	3,268	736	32	2.0
2007	9	3,286	721	34	1.5
2008	8	3,239	738	36	1.3
2009	6	3,122	723	41	1.0
2010	5	3,050	708	43	0.8
2011	6	3,002	692	39	1.0
2012	5	2,981	691	48	0.8
2013	5	3,046	717	48	0.8
2014	4	3,135	738	56	0.7
2015	3	3,179	744	65	0.5
2016	4	3,293	757	56	0.7
2017	4	3,389	.	57	0.7
2018	5	3,409	.	49	0.8
2019	7	3,464	.	41	1.2
2020	8	3,500	.	35	1.3



**ESTABLISHMENTS: PROFESSIONAL, SCIENTIFIC, AND TECHNICAL SERVICES**

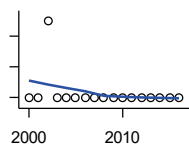
U.S. Census Bureau, County Business Patterns. Beginning with the 2017 data, any tabulation with fewer than 3 establishments were omitted from the release. Data for these establishments are included in the broader total.

Year	County	State of Kansas	Non Metro Kansas	County Rank	Per 1000 or \$ Per Capita
2000	17	6,424	1,690	44	2.5
2001	14	6,492	1,665	55	2.1
2002	14	6,719	1,704	57	2.2
2003	16	6,793	1,735	48	2.5
2004	18	7,025	1,730	43	2.9
2005	17	7,087	1,711	46	2.8
2006	17	7,231	1,736	46	2.8
2007	18	7,329	1,729	43	3.0
2008	19	7,133	1,671	39	3.2
2009	18	7,122	1,676	40	3.0
2010	20	7,172	1,680	40	3.3
2011	21	7,115	1,668	38	3.5
2012	21	7,122	1,681	39	3.4
2013	23	7,129	1,698	36	3.8
2014	21	7,206	1,682	38	3.5
2015	19	7,184	1,687	40	3.2
2016	18	7,146	1,659	41	3.0
2017	17	7,224	1,679	43	2.9
2018	16	7,138	1,655	46	2.7
2019	17	7,119	.	42	2.9
2020	17	7,117	.	42	2.9

County: county value. Kansas: state value. County Rank: highest county value ranked #1. (\$000): thousands of dollars. Nonmetro Kansas: Kansas total less Metropolitan Areas as defined by the Office of Management and Budget (OMB; released 3/6/2020). Per 1000: For nonmoney amounts, Per 1000=(county value / county population for the same year as the data) x 1000. \$ Per capita=(county value / county population for the same year as the data). Value= . indicates missing or suppressed data or value not calculated.

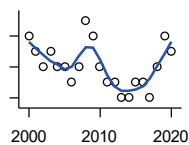
**Business**

**ESTABLISHMENTS: MANAGEMENT OF COMPANIES AND ENTERPRISES**



U.S. Census Bureau, County Business Patterns. Beginning with the 2017 data, any tabulation with fewer than 3 establishments were omitted from the release. Data for these establishments are included in the broader total.

Year	County	State of Kansas	Non Metro Kansas	County Rank	Per 1000 or \$ Per Capita
2000	0	622	145	105	0.0
2001	0	593	141	105	0.0
2002	1	597	152	63	0.2
2003	0	561	135	105	0.0
2004	0	569	133	105	0.0
2005	0	543	127	105	0.0
2006	0	542	131	105	0.0
2007	0	550	133	105	0.0
2008	0	553	139	105	0.0
2009	0	575	136	105	0.0
2010	0	567	131	105	0.0
2011	0	552	134	105	0.0
2012	0	593	135	105	0.0
2013	0	590	135	105	0.0
2014	0	603	136	105	0.0
2015	0	613	140	105	0.0
2016	0	655	171	105	0.0



**ESTABLISHMENTS: ADMIN, SUPPORT, WASTE MGMT., AND REMEDIATION**

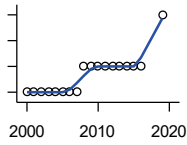
U.S. Census Bureau, County Business Patterns. Beginning with the 2017 data, any tabulation with fewer than 3 establishments were omitted from the release. Data for these establishments are included in the broader total.

Year	County	State of Kansas	Non Metro Kansas	County Rank	Per 1000 or \$ Per Capita
2000	11	3,307	871	35	1.6
2001	10	3,421	913	39	1.5
2002	9	3,232	882	41	1.4
2003	10	3,189	858	37	1.6
2004	9	3,301	891	41	1.5
2005	9	3,342	896	41	1.5
2006	8	3,395	886	41	1.3
2007	9	3,522	921	42	1.5
2008	12	3,587	932	33	2.0
2009	11	3,505	904	37	1.8
2010	9	3,494	897	39	1.5
2011	8	3,447	903	42	1.3
2012	8	3,462	891	40	1.3
2013	7	3,489	904	46	1.1
2014	7	3,569	933	51	1.2
2015	8	3,630	964	44	1.3
2016	8	3,705	987	44	1.3
2017	7	3,741	991	53	1.2
2018	9	3,740	983	43	1.5
2019	11	3,762	991	37	1.9
2020	10	3,807	989	43	1.7

County: county value. Kansas: state value. County Rank: highest county value ranked #1. (\$000): thousands of dollars. Nonmetro Kansas: Kansas total less Metropolitan Areas as defined by the Office of Management and Budget (OMB; released 3/6/2020). Per 1000: For nonmoney amounts, Per 1000=(county value / county population for the same year as the data) x 1000. \$ Per capita=(county value / county population for the same year as the data). Value= . indicates missing or suppressed data or value not calculated.

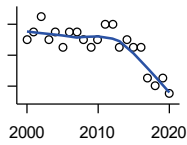
**Business**

**ESTABLISHMENTS: EDUCATIONAL SERVICES**



U.S. Census Bureau, County Business Patterns. Beginning with the 2017 data, any tabulation with fewer than 3 establishments were omitted from the release. Data for these establishments are included in the broader total.

Year	County	State of Kansas	Non Metro Kansas	County Rank	Per 1000 or \$ Per Capita
2000	0	604	155	105	0.0
2001	0	625	168	105	0.0
2002	0	666	165	105	0.0
2003	0	663	173	105	0.0
2004	0	690	173	105	0.0
2005	0	699	168	105	0.0
2006	0	698	175	105	0.0
2007	0	691	165	105	0.0
2008	1	692	158	67	0.2
2009	1	690	150	66	0.2
2010	1	700	149	68	0.2
2011	1	711	150	66	0.2
2012	1	724	145	67	0.2
2013	1	735	153	68	0.2
2014	1	722	152	66	0.2
2015	1	754	152	66	0.2
2016	1	728	150	66	0.2
2019	3	759	.	32	0.5



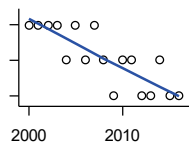
**ESTABLISHMENTS: HEALTH CARE AND SOCIAL ASSISTANCE**

U.S. Census Bureau, County Business Patterns. Beginning with the 2017 data, any tabulation with fewer than 3 establishments were omitted from the release. Data for these establishments are included in the broader total.

Year	County	State of Kansas	Non Metro Kansas	County Rank	Per 1000 or \$ Per Capita
2000	36	6,564	2,591	38	5.3
2001	37	6,636	2,590	35	5.6
2002	39	7,052	2,777	35	6.1
2003	36	7,129	2,792	36	5.7
2004	37	7,239	2,813	37	6.0
2005	35	7,412	2,855	38	5.7
2006	37	7,477	2,860	35	6.2
2007	37	7,661	2,864	38	6.2
2008	36	7,651	2,810	40	6.0
2009	35	7,696	2,787	40	5.8
2010	36	7,751	2,830	40	6.0
2011	38	7,804	2,817	37	6.3
2012	38	7,973	2,793	35	6.2
2013	35	7,877	2,729	37	5.7
2014	36	7,809	2,686	36	5.9
2015	35	8,103	2,692	36	5.9
2016	35	8,315	2,678	37	5.9
2017	31	8,136	2,646	41	5.2
2018	30	8,126	2,632	41	5.1
2019	31	8,184	2,587	39	5.2
2020	29	8,290	2,571	40	4.9

County: county value. Kansas: state value. County Rank: highest county value ranked #1. (\$000): thousands of dollars. Nonmetro Kansas: Kansas total less Metropolitan Areas as defined by the Office of Management and Budget (OMB; released 3/6/2020). Per 1000: For nonmoney amounts, Per 1000=(county value / county population for the same year as the data) x 1000. \$ Per capita=(county value / county population for the same year as the data). Value= . indicates missing or suppressed data or value not calculated.

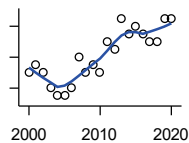
**Business**



**ESTABLISHMENTS: ARTS, ENTERTAINMENT, AND RECREATION**

U.S. Census Bureau, County Business Patterns. Beginning with the 2017 data, any tabulation with fewer than 3 establishments were omitted from the release. Data for these establishments are included in the broader total.

Year	County	State of Kansas	Non Metro Kansas	County Rank	Per 1000 or \$ Per Capita
2000	4	981	419	53	0.6
2001	4	1,009	433	52	0.6
2002	4	1,054	441	55	0.6
2003	4	1,045	443	55	0.6
2004	3	1,082	445	67	0.5
2005	4	1,109	446	61	0.6
2006	3	1,080	445	72	0.5
2007	4	1,092	444	57	0.7
2008	3	1,062	423	68	0.5
2009	2	1,063	421	83	0.3
2010	3	1,018	406	65	0.5
2011	3	997	387	67	0.5
2012	2	1,000	388	86	0.3
2013	2	1,009	377	84	0.3
2014	3	1,030	365	60	0.5
2015	2	1,031	357	83	0.3
2016	2	1,060	366	82	0.3



**ESTABLISHMENTS: ACCOMMODATION AND FOOD SERVICES**

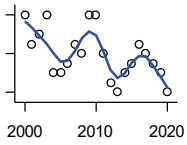
U.S. Census Bureau, County Business Patterns. Beginning with the 2017 data, any tabulation with fewer than 3 establishments were omitted from the release. Data for these establishments are included in the broader total.

Year	County	State of Kansas	Non Metro Kansas	County Rank	Per 1000 or \$ Per Capita
2000	22	5,536	2,213	49	3.3
2001	23	5,551	2,173	44	3.5
2002	22	5,610	2,174	45	3.4
2003	20	5,635	2,188	48	3.2
2004	19	5,681	2,160	50	3.1
2005	19	5,776	2,170	49	3.1
2006	20	5,745	2,132	45	3.3
2007	24	5,877	2,095	39	4.0
2008	22	5,843	2,052	41	3.7
2009	23	5,794	2,029	39	3.8
2010	22	5,898	2,046	42	3.7
2011	26	5,958	2,067	36	4.3
2012	25	5,951	2,046	38	4.1
2013	29	6,061	2,070	35	4.8
2014	27	5,985	2,024	35	4.5
2015	28	6,034	2,063	35	4.7
2016	27	6,126	2,094	36	4.5
2017	26	6,250	2,123	37	4.4
2018	26	6,256	2,128	38	4.4
2019	29	6,231	2,131	35	4.9
2020	29	6,206	2,131	33	4.9

County: county value. Kansas: state value. County Rank: highest county value ranked #1. (\$000): thousands of dollars. Nonmetro Kansas: Kansas total less Metropolitan Areas as defined by the Office of Management and Budget (OMB; released 3/6/2020). Per 1000: For nonmoney amounts, Per 1000=(county value / county population for the same year as the data) x 1000. \$ Per capita=(county value / county population for the same year as the data). Value= . indicates missing or suppressed data or value not calculated.

**Business**

**ESTABLISHMENTS: OTHER SERVICES**

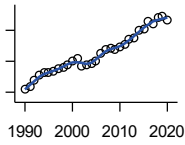


U.S. Census Bureau, County Business Patterns. Beginning with the 2017 data, any tabulation with fewer than 3 establishments were omitted from the release. Data for these establishments are included in the broader total.

Year	County	State of Kansas	Non Metro Kansas	County Rank	Per 1000 or \$ Per Capita
2000	36	8,423	3,636	49	5.3
2001	33	8,310	3,614	51	5.0
2002	34	8,552	3,658	48	5.3
2003	36	8,411	3,605	48	5.7
2004	30	8,343	3,597	55	4.8
2005	30	8,321	3,571	54	4.9
2006	31	8,225	3,490	52	5.2
2007	33	8,355	3,534	50	5.5
2008	32	8,104	3,406	49	5.3
2009	36	8,040	3,405	45	6.0
2010	36	7,998	3,379	45	6.0
2011	32	7,883	3,294	49	5.3
2012	29	7,913	3,303	55	4.7
2013	28	7,947	3,290	54	4.6
2014	30	7,943	3,285	51	4.9
2015	31	7,869	3,255	50	5.2
2016	33	7,839	3,204	48	5.5
2017	32	7,873	3,189	48	5.4
2018	31	7,853	3,176	49	5.2
2019	30	7,834	3,138	51	5.1
2020	28	7,787	3,073	55	4.7

County: county value. Kansas: state value. County Rank: highest county value ranked #1. (\$000): thousands of dollars. Nonmetro Kansas: Kansas total less Metropolitan Areas as defined by the Office of Management and Budget (OMB; released 3/6/2020). Per 1000: For nonmoney amounts, Per 1000=(county value / county population for the same year as the data) x 1000. \$ Per capita=(county value / county population for the same year as the data). Value= . indicates missing or suppressed data or value not calculated.

**Business**



**TOTAL ANNUAL PAYROLL (\$000)  
COUNTY BUSINESS PATTERNS**

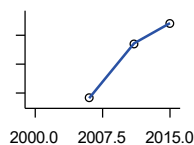
U.S. Census Bureau, County Business Patterns. Beginning with the 2017 data, any tabulation with fewer than 3 establishments were omitted from the release. Data for these establishments are included in the broader total.

Year	County	State of Kansas	Non Metro Kansas	County Rank	Per 1000 or \$ Per Capita
1990	22,163	17,487,316	4,442,429	55	3,200.0
1991	23,571	18,162,326	4,612,616	54	3,445.5
1992	27,443	19,244,346	4,882,060	52	4,009.8
1993	31,204	20,087,190	5,182,780	49	4,514.5
1994	32,376	21,201,652	5,541,423	48	4,642.4
1995	32,435	22,825,920	5,875,310	53	4,704.1
1996	33,278	24,613,884	6,198,398	53	4,847.5
1997	35,325	26,787,098	6,599,061	53	5,208.6
1998	36,294	28,747,576	6,871,794	54	5,352.3
1999	37,746	30,600,434	7,121,961	54	5,559.1
2000	39,815	31,990,762	7,520,424	54	5,889.8
2001	42,111	33,303,992	7,598,165	53	6,374.7
2002	37,178	33,152,962	7,572,002	54	5,812.7
2003	37,502	34,040,944	7,726,561	56	5,959.3
2004	38,244	35,725,812	8,303,779	57	6,182.3
2005	39,749	36,646,064	8,586,986	58	6,458.0
2006	45,412	39,251,388	9,178,947	55	7,595.3
2007	47,267	42,022,753	.	58	7,872.6
2008	48,578	43,984,689	.	56	8,073.5
2009	47,901	42,146,866	.	56	7,978.2
2010	49,147	42,686,303	10,294,015	56	8,177.5
2011	50,950	43,733,944	.	54	8,417.3
2012	54,330	45,608,072	11,222,183	55	8,877.5
2013	55,306	47,715,601	11,446,751	55	9,081.4
2014	59,815	49,712,832	11,957,931	55	9,859.1
2015	60,805	51,259,676	11,975,718	54	10,195.3
2016	65,785	51,016,318	12,148,646	52	11,047.0
2017	64,109	52,754,605	12,448,592	54	10,800.0
2018	68,353	55,087,460	12,810,270	51	11,552.0
2019	69,092	57,272,387	13,123,288	51	11,676.9
2020	66,559	58,374,388	14,007,955	58	11,229.8

County: county value. Kansas: state value. County Rank: highest county value ranked #1. (\$000): thousands of dollars. Nonmetro Kansas: Kansas total less Metropolitan Areas as defined by the Office of Management and Budget (OMB; released 3/6/2020). Per 1000: For nonmoney amounts, Per 1000=(county value / county population for the same year as the data) x 1000. \$ Per capita=(county value / county population for the same year as the data). Value= . indicates missing or suppressed data or value not calculated.



**Business**



**TOTAL ANNUAL PAYROLL(\$000):  
FORESTRY, FISHING, HUNTING, AND  
AG SUPPORT**

U.S. Census Bureau, County Business Patterns. Beginning with the 2017 data, any tabulation with fewer than 3 establishments were omitted from the release. Data for these establishments are included in the broader total.

Year	County	State of Kansas	Non Metro Kansas	County Rank	Per 1000 or \$ Per Capita
2000	.	13,551	.	.	.
2001	.	.	.	.	.
2002	.	16,528	.	.	.
2003	.	17,247	.	.	.
2004	.	17,552	.	.	.
2005	.	16,298	.	.	.
2006	66	17,908	.	.	11.0
2007	.	22,199	.	.	.
2008	.	21,359	.	.	.
2009	.	22,466	.	.	.
2010	.	22,753	.	.	.
2011	161	23,320	.	.	26.6
2012	.	27,492	.	.	.
2013	.	30,360	.	.	.
2014	.	34,862	.	.	.
2015	196	35,980	.	.	32.9

**TOTAL ANNUAL PAYROLL(\$000):  
MINING**

U.S. Census Bureau, County Business Patterns. Beginning with the 2017 data, any tabulation with fewer than 3 establishments were omitted from the release. Data for these establishments are included in the broader total.

Year	County	State of Kansas	Non Metro Kansas	County Rank	Per 1000 or \$ Per Capita
2000	.	240,079	.	.	.
2001	.	273,838	.	.	.
2002	.	262,277	.	.	.
2003	.	290,652	.	.	.
2004	.	326,997	.	.	.
2005	.	381,069	.	.	.
2006	.	482,102	.	.	.
2007	.	551,751	.	.	.
2008	.	620,446	.	.	.
2009	.	465,070	.	.	.
2010	.	485,841	.	.	.
2011	.	541,536	.	.	.
2012	.	600,402	.	.	.
2013	.	599,788	.	.	.
2014	.	678,673	.	.	.
2015	.	552,658	.	.	.

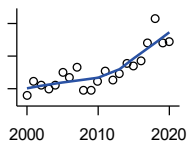
County: county value. Kansas: state value. County Rank: highest county value ranked #1. (\$000): thousands of dollars. Nonmetro Kansas: Kansas total less Metropolitan Areas as defined by the Office of Management and Budget (OMB; released 3/6/2020). Per 1000: For nonmoney amounts, Per 1000=(county value / county population for the same year as the data) x 1000. \$ Per capita=(county value / county population for the same year as the data). Value= . indicates missing or suppressed data or value not calculated.

**Business**

**TOTAL ANNUAL PAYROLL(\$000):  
UTILITIES**

U.S. Census Bureau, County Business Patterns. Beginning with the 2017 data, any tabulation with fewer than 3 establishments were omitted from the release. Data for these establishments are included in the broader total.

Year	County	State of Kansas	Non Metro Kansas	County Rank	Per 1000 or \$ Per Capita
2000	.	410,313	.	.	.
2001	.	452,057	.	.	.
2002	.	377,559	.	.	.
2003	.	378,157	.	.	.
2004	.	377,809	.	.	.
2005	.	429,864	.	.	.
2006	.	443,999	.	.	.
2007	.	480,068	.	.	.
2008	.	541,066	.	.	.
2009	.	563,373	.	.	.
2010	.	512,628	.	.	.
2011	.	653,229	.	.	.
2012	.	625,451	.	.	.
2013	.	625,347	.	.	.
2014	.	610,960	.	.	.
2015	.	668,559	.	.	.



**TOTAL ANNUAL PAYROLL(\$000):  
CONSTRUCTION**

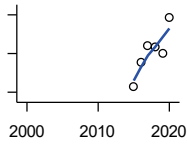
U.S. Census Bureau, County Business Patterns. Beginning with the 2017 data, any tabulation with fewer than 3 establishments were omitted from the release. Data for these establishments are included in the broader total.

Year	County	State of Kansas	Non Metro Kansas	County Rank	Per 1000 or \$ Per Capita
2000	1,312	2,256,057	.	.	194.1
2001	1,492	2,320,652	.	.	225.9
2002	1,437	2,302,229	.	.	224.7
2003	1,392	2,282,021	.	.	221.2
2004	1,447	2,302,854	.	.	233.9
2005	1,596	2,465,977	.	.	259.3
2006	1,530	2,700,351	.	.	255.9
2007	1,658	2,772,168	.	.	276.1
2008	1,384	2,950,073	.	.	230.0
2009	1,387	2,709,864	.	.	231.0
2010	1,496	2,553,555	.	.	248.9
2011	1,609	2,550,355	.	.	265.8
2012	1,508	2,733,284	.	.	246.4
2013	1,582	2,866,801	.	.	259.8
2014	1,705	3,135,814	.	.	281.0
2015	1,674	3,270,952	.	.	280.7
2016	1,742	3,328,610	.	.	292.5
2017	1,958	3,568,505	.	.	329.9
2018	2,261	3,806,196	.	.	382.1
2019	1,957	3,879,912	.	.	330.7
2020	1,985	3,983,029	.	.	334.9

County: county value. Kansas: state value. County Rank: highest county value ranked #1. (\$000): thousands of dollars. Nonmetro Kansas: Kansas total less Metropolitan Areas as defined by the Office of Management and Budget (OMB; released 3/6/2020). Per 1000: For nonmoney amounts, Per 1000=(county value / county population for the same year as the data) x 1000. \$ Per capita=(county value / county population for the same year as the data). Value= . indicates missing or suppressed data or value not calculated.

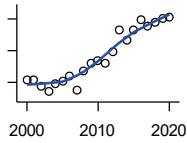
**Business**

**TOTAL ANNUAL PAYROLL(\$000):  
MANUFACTURING**



U.S. Census Bureau, County Business Patterns. Beginning with the 2017 data, any tabulation with fewer than 3 establishments were omitted from the release. Data for these establishments are included in the broader total.

Year	County	State of Kansas	Non Metro Kansas	County Rank	Per 1000 or \$ Per Capita
2000	.	7,015,414	.	.	.
2001	.	7,301,706	.	.	.
2002	.	6,802,605	.	.	.
2003	.	6,691,611	.	.	.
2004	.	6,985,656	.	.	.
2005	.	7,221,614	.	.	.
2006	.	7,621,873	.	.	.
2007	.	7,873,359	.	.	.
2008	.	8,441,541	.	.	.
2009	.	7,477,838	.	.	.
2010	.	7,556,955	.	.	.
2011	.	7,747,934	.	.	.
2012	.	7,704,851	.	.	.
2013	.	8,365,542	.	.	.
2014	.	8,787,306	.	.	.
2015	2,630	9,052,105	.	.	441.0
2016	3,258	8,868,744	.	.	547.1
2017	3,710	9,075,793	.	.	625.0
2018	3,659	9,481,652	.	.	618.4
2019	3,506	10,171,575	.	.	592.5
2020	4,419	9,744,825	.	.	745.6



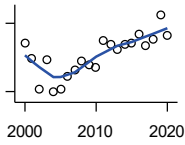
**TOTAL ANNUAL PAYROLL(\$000):  
WHOLESALE TRADE**

U.S. Census Bureau, County Business Patterns. Beginning with the 2017 data, any tabulation with fewer than 3 establishments were omitted from the release. Data for these establishments are included in the broader total.

Year	County	State of Kansas	Non Metro Kansas	County Rank	Per 1000 or \$ Per Capita
2000	5,350	2,332,755	.	.	791.4
2001	5,325	2,283,169	.	.	806.1
2002	4,285	2,107,653	.	.	669.9
2003	3,496	2,622,701	.	.	555.5
2004	4,843	2,663,196	.	.	782.9
2005	5,154	2,345,990	.	.	837.4
2006	5,895	2,592,211	.	.	986.0
2007	3,870	2,682,542	.	.	644.6
2008	6,898	3,078,655	.	.	1,146.4
2009	7,923	2,940,949	.	.	1,319.6
2010	8,399	3,097,628	.	.	1,397.5
2011	8,004	3,305,811	.	.	1,322.3
2012	9,888	3,339,997	.	.	1,615.7
2013	13,253	3,460,512	.	.	2,176.2
2014	11,722	3,712,075	.	.	1,932.1
2015	13,172	3,760,189	.	.	2,208.6
2016	14,903	3,738,207	.	.	2,502.6
2017	13,834	3,822,730	.	.	2,330.5
2018	14,408	3,814,353	.	.	2,435.0
2019	15,142	4,025,802	.	.	2,559.1
2020	15,378	4,224,666	.	.	2,594.6

County: county value. Kansas: state value. County Rank: highest county value ranked #1. (\$000): thousands of dollars. Nonmetro Kansas: Kansas total less Metropolitan Areas as defined by the Office of Management and Budget (OMB; released 3/6/2020). Per 1000: For nonmoney amounts, Per 1000=(county value / county population for the same year as the data) x 1000. \$ Per capita=(county value / county population for the same year as the data). Value= . indicates missing or suppressed data or value not calculated.

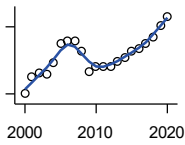
**Business**



**TOTAL ANNUAL PAYROLL(\$000):  
RETAIL TRADE**

U.S. Census Bureau, County Business Patterns. Beginning with the 2017 data, any tabulation with fewer than 3 establishments were omitted from the release. Data for these establishments are included in the broader total.

Year	County	State of Kansas	Non Metro Kansas	County Rank	Per 1000 or \$ Per Capita
2000	9,105	2,747,001	.	.	1,346.9
2001	8,436	2,813,226	.	.	1,277.0
2002	7,120	2,854,231	.	.	1,113.2
2003	8,426	2,773,674	.	.	1,338.9
2004	6,972	2,847,826	.	.	1,127.1
2005	7,120	2,952,196	.	.	1,156.8
2006	7,677	3,126,495	.	.	1,284.0
2007	7,949	3,201,169	.	.	1,324.0
2008	8,336	3,261,054	.	.	1,385.4
2009	8,158	3,232,246	.	.	1,358.8
2010	8,072	3,321,838	.	.	1,343.1
2011	9,240	3,384,607	.	.	1,526.5
2012	9,090	3,409,755	.	.	1,485.3
2013	8,873	3,483,752	.	.	1,457.0
2014	9,102	3,617,933	.	.	1,500.2
2015	9,135	3,712,165	.	.	1,531.7
2016	9,547	3,826,889	.	.	1,603.2
2017	9,019	3,797,849	.	.	1,519.4
2018	9,281	3,818,988	.	.	1,568.5
2019	10,372	3,908,994	.	.	1,752.9
2020	9,474	3,984,443	.	.	1,598.4



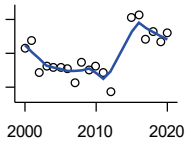
**TOTAL ANNUAL PAYROLL(\$000):  
TRANSPORTATION &  
WAREHOUSING**

U.S. Census Bureau, County Business Patterns. Beginning with the 2017 data, any tabulation with fewer than 3 establishments were omitted from the release. Data for these establishments are included in the broader total.

Year	County	State of Kansas	Non Metro Kansas	County Rank	Per 1000 or \$ Per Capita
2000	1,020	1,044,835	.	.	150.9
2001	1,773	1,089,405	.	.	268.4
2002	1,944	1,094,636	.	.	303.9
2003	1,895	1,316,655	.	.	301.1
2004	2,402	1,439,800	.	.	388.3
2005	3,233	1,393,651	.	.	525.3
2006	3,396	1,528,551	.	.	568.0
2007	3,384	1,788,267	.	.	563.6
2008	2,914	1,722,697	.	.	484.3
2009	2,012	1,618,598	.	.	335.1
2010	2,195	1,735,761	.	.	365.2
2011	2,195	1,739,165	.	.	362.6
2012	2,231	1,984,976	.	.	364.5
2013	2,468	2,006,261	.	.	405.3
2014	2,636	2,097,377	.	.	434.5
2015	2,904	2,190,072	.	.	486.9
2016	3,005	2,202,859	.	.	504.6
2017	3,243	2,546,061	.	.	546.3
2018	3,563	2,663,188	.	.	602.2
2019	4,042	2,879,406	.	.	683.1
2020	4,460	2,962,461	.	.	752.5

County: county value. Kansas: state value. County Rank: highest county value ranked #1. (\$000): thousands of dollars. Nonmetro Kansas: Kansas total less Metropolitan Areas as defined by the Office of Management and Budget (OMB; released 3/6/2020). Per 1000: For nonmoney amounts, Per 1000=(county value / county population for the same year as the data) x 1000. \$ Per capita=(county value / county population for the same year as the data). Value= . indicates missing or suppressed data or value not calculated.

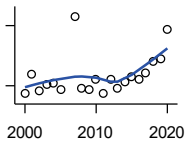
**Business**



**TOTAL ANNUAL PAYROLL(\$000):  
INFORMATION**

U.S. Census Bureau, County Business Patterns. Beginning with the 2017 data, any tabulation with fewer than 3 establishments were omitted from the release. Data for these establishments are included in the broader total.

Year	County	State of Kansas	Non Metro Kansas	County Rank	Per 1000 or \$ Per Capita
2000	1,334	1,923,381	.	.	197.3
2001	1,445	2,218,610	.	.	218.7
2002	962	2,298,108	.	.	150.4
2003	1,065	2,378,673	.	.	169.2
2004	1,044	2,392,990	.	.	168.8
2005	1,048	2,395,081	.	.	170.3
2006	1,023	2,586,483	.	.	171.1
2007	821	2,594,138	.	.	136.7
2008	1,118	3,043,244	.	.	185.8
2009	1,010	3,045,570	.	.	168.2
2010	1,057	2,481,580	.	.	175.9
2011	957	2,513,805	.	.	158.1
2012	676	2,535,555	.	.	110.5
2013	.	2,805,017	.	.	.
2014	.	2,393,609	.	.	.
2015	1,772	2,406,323	.	.	297.1
2016	1,818	2,080,211	.	.	305.3
2017	1,460	2,090,021	.	.	246.0
2018	1,564	2,341,543	.	.	264.3
2019	1,429	2,133,891	.	.	241.5
2020	1,552	2,245,204	.	.	261.9



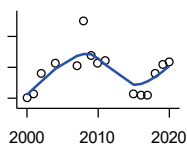
**TOTAL ANNUAL PAYROLL(\$000):  
FINANCE & INSURANCE**

U.S. Census Bureau, County Business Patterns. Beginning with the 2017 data, any tabulation with fewer than 3 establishments were omitted from the release. Data for these establishments are included in the broader total.

Year	County	State of Kansas	Non Metro Kansas	County Rank	Per 1000 or \$ Per Capita
2000	4,297	2,083,565	.	.	635.7
2001	4,787	2,129,587	.	.	724.6
2002	4,386	2,414,120	.	.	685.7
2003	4,544	2,608,579	.	.	722.1
2004	4,550	2,676,910	.	.	735.5
2005	4,417	2,786,136	.	.	717.6
2006	.	2,928,931	.	.	.
2007	6,227	3,096,017	.	.	1,037.1
2008	4,433	3,322,977	.	.	736.7
2009	4,403	3,206,839	.	.	733.3
2010	4,652	3,211,300	.	.	774.0
2011	4,314	3,404,633	.	.	712.7
2012	4,655	3,611,165	.	.	760.6
2013	4,449	3,896,051	.	.	730.5
2014	4,583	4,044,315	.	.	755.4
2015	4,709	4,113,060	.	.	789.6
2016	4,648	4,180,740	.	.	780.5
2017	4,818	4,258,057	.	.	811.7
2018	5,117	4,682,552	.	.	864.8
2019	5,183	4,814,201	.	.	876.0
2020	5,890	5,288,529	.	.	993.8

County: county value. Kansas: state value. County Rank: highest county value ranked #1. (\$000): thousands of dollars. Nonmetro Kansas: Kansas total less Metropolitan Areas as defined by the Office of Management and Budget (OMB; released 3/6/2020). Per 1000: For nonmoney amounts, Per 1000=(county value / county population for the same year as the data) x 1000. \$ Per capita=(county value / county population for the same year as the data). Value= . indicates missing or suppressed data or value not calculated.

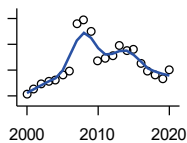
**Business**



**TOTAL ANNUAL PAYROLL(\$000):  
REAL ESTATE, RENTAL, AND  
LEASING**

U.S. Census Bureau, County Business Patterns. Beginning with the 2017 data, any tabulation with fewer than 3 establishments were omitted from the release. Data for these establishments are included in the broader total.

Year	County	State of Kansas	Non Metro Kansas	County Rank	Per 1000 or \$ Per Capita
2000	200	360,637	.	.	29.6
2001	229	397,371	.	.	34.7
2002	363	403,695	.	.	56.8
2003	.	437,786	.	.	.
2004	430	430,719	.	.	69.5
2005	.	465,149	.	.	.
2006	.	478,811	.	.	.
2007	409	452,969	.	.	68.1
2008	701	484,149	.	.	116.5
2009	475	450,884	.	.	79.1
2010	425	487,255	.	.	70.7
2011	444	535,120	.	.	73.4
2012	.	531,039	.	.	.
2013	.	538,796	.	.	.
2014	.	542,307	.	.	.
2015	232	595,030	.	.	38.9
2016	217	607,668	.	.	36.4
2017	220	590,373	.	.	37.1
2018	357	600,037	.	.	60.3
2019	419	622,881	.	.	70.8
2020	435	670,656	.	.	73.4



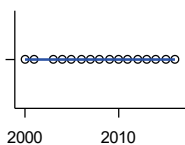
**TOTAL ANNUAL PAYROLL(\$000):  
PROFESSIONAL, SCIENTIFIC, AND  
TECHNICAL SERVICES**

U.S. Census Bureau, County Business Patterns. Beginning with the 2017 data, any tabulation with fewer than 3 establishments were omitted from the release. Data for these establishments are included in the broader total.

Year	County	State of Kansas	Non Metro Kansas	County Rank	Per 1000 or \$ Per Capita
2000	1,045	2,057,313	.	.	154.6
2001	1,122	2,152,937	.	.	169.8
2002	1,240	2,150,085	.	.	193.9
2003	1,292	2,052,712	.	.	205.3
2004	1,314	2,531,457	.	.	212.4
2005	1,404	2,418,500	.	.	228.1
2006	1,487	2,655,690	.	.	248.7
2007	2,399	2,901,544	.	.	399.6
2008	2,481	2,903,802	.	.	412.3
2009	2,257	3,071,611	.	.	375.9
2010	1,671	3,037,182	.	.	278.0
2011	1,722	3,132,082	.	.	284.5
2012	1,779	3,455,548	.	.	290.7
2013	1,988	3,777,729	.	.	326.4
2014	1,869	3,981,580	.	.	308.1
2015	1,907	4,039,074	.	.	319.8
2016	1,636	4,125,507	.	.	274.7
2017	1,484	4,158,858	.	.	250.0
2018	1,409	4,314,317	.	.	238.1
2019	1,343	4,646,644	.	.	227.0
2020	1,498	4,927,611	.	.	252.7

County: county value. Kansas: state value. County Rank: highest county value ranked #1. (\$000): thousands of dollars. Nonmetro Kansas: Kansas total less Metropolitan Areas as defined by the Office of Management and Budget (OMB; released 3/6/2020). Per 1000: For nonmoney amounts, Per 1000=(county value / county population for the same year as the data) x 1000. \$ Per capita=(county value / county population for the same year as the data). Value= . indicates missing or suppressed data or value not calculated.

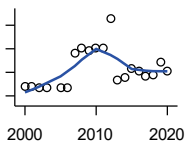
**Business**



**TOTAL ANNUAL PAYROLL(\$000):  
MANAGEMENT OF COMPANIES AND  
ENTERPRISES**

U.S. Census Bureau, County Business Patterns. Beginning with the 2017 data, any tabulation with fewer than 3 establishments were omitted from the release. Data for these establishments are included in the broader total.

Year	County	State of Kansas	Non Metro Kansas	County Rank	Per 1000 or \$ Per Capita
2000	0	1,362,735	.	.	0.0
2001	0	1,279,253	.	.	0.0
2002	.	1,311,368	.	.	.
2003	0	1,352,119	.	.	0.0
2004	0	1,378,891	.	.	0.0
2005	0	1,510,876	.	.	0.0
2006	0	1,626,320	.	.	0.0
2007	0	2,233,654	.	.	0.0
2008	0	1,848,656	.	.	0.0
2009	0	1,601,158	.	.	0.0
2010	0	2,003,048	.	.	0.0
2011	0	1,677,619	.	.	0.0
2012	0	1,834,430	.	.	0.0
2013	0	1,938,100	.	.	0.0
2014	0	2,117,232	.	.	0.0
2015	0	2,451,126	.	.	0.0
2016	0	2,167,620	.	.	0.0



**TOTAL ANNUAL PAYROLL(\$000):  
ADMIN, SUPPORT, WASTE MGMT.,  
AND REMEDIATION**

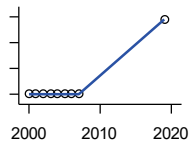
U.S. Census Bureau, County Business Patterns. Beginning with the 2017 data, any tabulation with fewer than 3 establishments were omitted from the release. Data for these establishments are included in the broader total.

Year	County	State of Kansas	Non Metro Kansas	County Rank	Per 1000 or \$ Per Capita
2000	375	1,388,712	.	.	55.5
2001	407	1,416,480	.	.	61.6
2002	350	1,378,905	.	.	54.7
2003	355	1,387,061	.	.	56.4
2004	.	1,544,442	.	.	.
2005	334	1,694,687	.	.	54.3
2006	335	1,800,846	.	.	56.0
2007	1,814	1,978,025	.	.	302.1
2008	2,014	2,096,864	.	.	334.7
2009	1,909	1,832,540	.	.	318.0
2010	2,011	2,117,325	.	.	334.6
2011	2,024	2,114,970	.	.	334.4
2012	3,285	2,230,250	.	.	536.8
2013	694	2,214,320	.	.	114.0
2014	790	2,444,170	.	.	130.2
2015	1,155	2,577,592	.	.	193.7
2016	1,049	2,760,706	.	.	176.2
2017	829	3,026,927	.	.	139.7
2018	879	3,007,347	.	.	148.6
2019	1,422	3,075,485	.	.	240.3
2020	1,038	3,250,046	.	.	175.1

County: county value. Kansas: state value. County Rank: highest county value ranked #1. (\$000): thousands of dollars. Nonmetro Kansas: Kansas total less Metropolitan Areas as defined by the Office of Management and Budget (OMB; released 3/6/2020). Per 1000: For nonmoney amounts, Per 1000=(county value / county population for the same year as the data) x 1000. \$ Per capita=(county value / county population for the same year as the data). Value= . indicates missing or suppressed data or value not calculated.

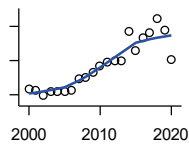
**Business**

**TOTAL ANNUAL PAYROLL(\$000):  
EDUCATIONAL SERVICES**



U.S. Census Bureau, County Business Patterns. Beginning with the 2017 data, any tabulation with fewer than 3 establishments were omitted from the release. Data for these establishments are included in the broader total.

Year	County	State of Kansas	Non Metro Kansas	County Rank	Per 1000 or \$ Per Capita
2000	0	299,843	.	.	0.0
2001	0	320,606	.	.	0.0
2002	0	353,531	.	.	0.0
2003	0	350,814	.	.	0.0
2004	0	361,644	.	.	0.0
2005	0	375,781	.	.	0.0
2006	0	400,565	.	.	0.0
2007	0	414,233	.	.	0.0
2008	.	463,210	.	.	.
2009	.	468,856	.	.	.
2010	.	487,670	.	.	.
2011	.	504,964	.	.	.
2012	.	508,448	.	.	.
2013	.	553,995	.	.	.
2014	.	612,073	.	.	.
2015	.	579,794	.	.	.
2019	58	654,965	.	.	9.8



**TOTAL ANNUAL PAYROLL(\$000):  
HEALTH CARE AND SOCIAL ASSISTANCE**

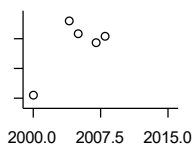
U.S. Census Bureau, County Business Patterns. Beginning with the 2017 data, any tabulation with fewer than 3 establishments were omitted from the release. Data for these establishments are included in the broader total.

Year	County	State of Kansas	Non Metro Kansas	County Rank	Per 1000 or \$ Per Capita
2000	8,721	4,120,595	.	.	1,290.1
2001	8,494	4,445,027	.	.	1,285.8
2002	7,868	4,705,220	.	.	1,230.1
2003	8,391	4,939,323	.	.	1,333.4
2004	8,439	5,232,394	.	.	1,364.2
2005	8,426	5,487,089	.	.	1,369.0
2006	8,543	5,814,218	.	.	1,428.8
2007	9,823	6,186,471	.	.	1,636.1
2008	10,086	6,490,627	.	.	1,676.3
2009	10,654	6,749,962	.	.	1,774.5
2010	11,319	6,871,727	.	.	1,883.4
2011	11,832	7,129,655	.	.	1,954.7
2012	11,960	7,614,853	.	.	1,954.2
2013	12,010	7,541,515	.	.	1,972.1
2014	15,409	7,733,621	.	.	2,539.8
2015	13,169	7,969,650	.	.	2,208.1
2016	14,684	8,018,706	.	.	2,465.8
2017	15,216	8,384,998	.	.	2,563.3
2018	16,922	8,637,619	.	.	2,859.9
2019	15,601	8,854,414	.	.	2,636.6
2020	12,080	9,309,269	.	.	2,038.1

County: county value. Kansas: state value. County Rank: highest county value ranked #1. (\$000): thousands of dollars. Nonmetro Kansas: Kansas total less Metropolitan Areas as defined by the Office of Management and Budget (OMB; released 3/6/2020). Per 1000: For nonmoney amounts, Per 1000=(county value / county population for the same year as the data) x 1000. \$ Per capita=(county value / county population for the same year as the data). Value= . indicates missing or suppressed data or value not calculated.



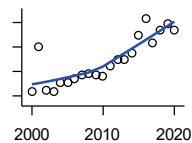
**Business**



**TOTAL ANNUAL PAYROLL(\$000):  
ARTS, ENTERTAINMENT, AND  
RECREATION**

U.S. Census Bureau, County Business Patterns. Beginning with the 2017 data, any tabulation with fewer than 3 establishments were omitted from the release. Data for these establishments are included in the broader total.

Year	County	State of Kansas	Non Metro Kansas	County Rank	Per 1000 or \$ Per Capita
2000	272	195,784	.	.	40.2
2001	.	203,511	.	.	.
2002	.	206,204	.	.	.
2003	.	185,049	.	.	.
2004	322	190,742	.	.	52.1
2005	313	196,594	.	.	50.9
2006	.	201,049	.	.	.
2007	307	220,435	.	.	51.1
2008	312	236,986	.	.	51.9
2009	.	237,116	.	.	.
2010	.	233,285	.	.	.
2011	.	234,351	.	.	.
2012	.	254,169	.	.	.
2013	.	278,474	.	.	.
2014	.	289,103	.	.	.
2015	.	300,253	.	.	.



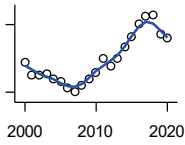
**TOTAL ANNUAL PAYROLL(\$000):  
ACCOMMODATION AND FOOD  
SERVICES**

U.S. Census Bureau, County Business Patterns. Beginning with the 2017 data, any tabulation with fewer than 3 establishments were omitted from the release. Data for these establishments are included in the broader total.

Year	County	State of Kansas	Non Metro Kansas	County Rank	Per 1000 or \$ Per Capita
2000	2,154	926,831	.	.	318.6
2001	4,023	960,196	.	.	609.0
2002	2,222	930,510	.	.	347.4
2003	2,179	992,313	.	.	346.3
2004	2,561	1,046,901	.	.	414.0
2005	2,531	1,101,854	.	.	411.2
2006	2,688	1,185,280	.	.	449.6
2007	2,853	1,431,100	.	.	475.2
2008	2,902	1,271,594	.	.	482.3
2009	2,845	1,283,065	.	.	473.9
2010	2,792	1,296,556	.	.	464.6
2011	3,248	1,364,281	.	.	536.6
2012	3,462	1,388,337	.	.	565.7
2013	3,497	1,476,335	.	.	574.2
2014	3,724	1,572,021	.	.	613.8
2015	4,498	1,640,144	.	.	754.2
2016	5,163	1,709,193	.	.	867.0
2017	4,162	1,824,791	.	.	701.1
2018	4,675	1,880,364	.	.	790.1
2019	4,945	1,958,603	.	.	835.7
2020	4,682	1,745,238	.	.	789.9

County: county value. Kansas: state value. County Rank: highest county value ranked #1. (\$000): thousands of dollars. Nonmetro Kansas: Kansas total less Metropolitan Areas as defined by the Office of Management and Budget (OMB; released 3/6/2020). Per 1000: For nonmoney amounts, Per 1000=(county value / county population for the same year as the data) x 1000. \$ Per capita=(county value / county population for the same year as the data). Value= . indicates missing or suppressed data or value not calculated.

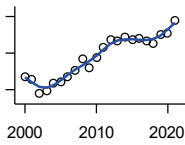
**Business**



**TOTAL ANNUAL PAYROLL(\$000):  
OTHER SERVICES**

U.S. Census Bureau, County Business Patterns. Beginning with the 2017 data, any tabulation with fewer than 3 establishments were omitted from the release. Data for these establishments are included in the broader total.

Year	County	State of Kansas	Non Metro Kansas	County Rank	Per 1000 or \$ Per Capita
2000	2,174	965,540	.	.	321.6
2001	1,885	996,716	.	.	285.3
2002	1,888	1,007,464	.	.	295.2
2003	1,899	979,466	.	.	301.8
2004	1,787	970,383	.	.	288.9
2005	1,724	1,005,537	.	.	280.1
2006	1,585	1,055,932	.	.	265.1
2007	1,520	1,141,551	.	.	253.2
2008	1,666	1,184,016	.	.	276.9
2009	1,797	1,167,154	.	.	299.3
2010	1,948	1,170,201	.	.	324.1
2011	2,259	1,173,775	.	.	373.2
2012	2,077	1,217,210	.	.	339.4
2013	2,250	1,254,933	.	.	369.5
2014	2,514	1,305,563	.	.	414.4
2015	2,730	1,341,075	.	.	457.7
2016	3,027	1,351,375	.	.	508.3
2017	3,174	1,344,179	.	.	534.7
2018	3,216	1,382,801	.	.	543.5
2019	2,775	1,427,711	.	.	469.0
2020	2,709	1,420,859	.	.	457.1



**NOMINAL TAXABLE RETAIL SALES  
(million\$)**

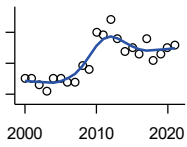
Kansas Department of Revenue

Year	County	State of Kansas	Non Metro Kansas	County Rank	Per 1000 or \$ Per Capita
2000	87.0	30,119.0	8,831.7	37	12.9
2001	85.5	30,202.2	8,700.3	39	12.9
2002	77.7	29,380.8	8,241.5	39	12.1
2003	79.2	30,694.0	8,710.6	40	12.6
2004	83.3	31,922.6	9,062.5	40	13.5
2005	84.6	32,924.2	9,386.6	39	13.7
2006	87.4	34,937.6	10,042.1	41	14.6
2007	90.7	36,180.1	10,553.2	41	15.1
2008	96.8	37,559.5	11,126.9	40	16.1
2009	92.0	35,211.8	10,351.5	40	15.3
2010	97.5	35,655.7	10,606.1	39	16.2
2011	103.2	37,257.0	11,153.5	38	17.0
2012	107.2	38,988.8	11,749.1	42	17.5
2013	106.6	40,009.0	11,993.8	42	17.5
2014	108.5	41,299.0	12,365.4	40	17.9
2015	107.3	41,635.8	11,747.6	39	18.0
2016	107.8	42,040.2	11,523.5	40	18.1
2017	106.9	41,940.1	11,449.9	41	18.0
2018	105.4	42,732.3	11,643.9	41	17.8
2019	110.2	43,732.5	12,062.7	42	18.6
2020	111.0	43,689.9	12,331.7	43	18.7
2021	117.9	48,532.8	13,413.0	43	20.0

County: county value. Kansas: state value. County Rank: highest county value ranked #1. (\$000): thousands of dollars. Nonmetro Kansas: Kansas total less Metropolitan Areas as defined by the Office of Management and Budget (OMB; released 3/6/2020). Per 1000: For nonmoney amounts, Per 1000=(county value / county population for the same year as the data) x 1000. \$ Per capita=(county value / county population for the same year as the data). Value= . indicates missing or suppressed data or value not calculated.

**Business**

RETAIL PULL FACTOR



Kansas Direct Program, Kansas State University Cooperative Extension Service (1980-1999); Kansas Department of Revenue (2000- )

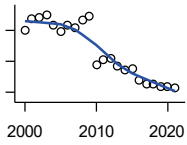
Year	County	State of Kansas	Non Metro Kansas	County Rank	Per 1000 or \$ Per Capita
2000	1.15	.	.	8	.
2001	1.15	.	.	8	.
2002	1.13	.	.	8	.
2003	1.11	.	.	10	.
2004	1.15	.	.	9	.
2005	1.15	.	.	8	.
2006	1.14	.	.	11	.
2007	1.14	.	.	12	.
2008	1.19	.	.	11	.
2009	1.18	.	.	10	.
2010	1.30	.	.	7	.
2011	1.29	.	.	8	.
2012	1.34	.	.	6	.
2013	1.28	.	.	13	.
2014	1.24	.	.	15	.
2015	1.25	.	.	11	.
2016	1.23	.	.	8	.
2017	1.28	.	.	7	.
2018	1.21	.	.	7	.
2019	1.23	.	.	9	.
2020	1.25	.	.	9	.
2021	1.26	.	.	8	.

County: county value. Kansas: state value. County Rank: highest county value ranked #1. (\$000): thousands of dollars. Nonmetro Kansas: Kansas total less Metropolitan Areas as defined by the Office of Management and Budget (OMB; released 3/6/2020). Per 1000: For nonmoney amounts, Per 1000=(county value / county population for the same year as the data) x 1000. \$ Per capita=(county value / county population for the same year as the data). Value= . indicates missing or suppressed data or value not calculated.

**Employment**

CIVILIAN LABOR FORCE (BLS-Place of Residence; 1990- )

U.S. Department of Labor, Bureau of Labor Statistics (BLS)



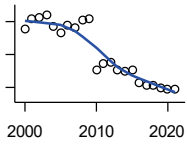
Year	County	State of Kansas	Non Metro Kansas	County Rank	Per 1000 or \$ Per Capita
2000	3,609	1,402,606	482,229	55	533.9
2001	3,747	1,398,521	475,280	52	567.2
2002	3,760	1,419,335	482,428	52	587.9
2003	3,801	1,441,065	490,161	53	604.0
2004	3,675	1,458,910	494,509	55	594.1
2005	3,588	1,458,767	490,047	56	582.9
2006	3,672	1,467,553	498,594	54	614.1
2007	3,637	1,485,414	497,048	56	605.8
2008	3,731	1,493,365	504,522	55	620.1
2009	3,784	1,512,572	516,311	56	630.2
2010	3,154	1,500,463	492,594	63	524.8
2011	3,221	1,498,000	492,563	63	532.1
2012	3,229	1,490,808	489,349	62	527.6
2013	3,136	1,489,395	485,484	62	514.9
2014	3,095	1,494,203	481,813	64	510.1
2015	3,099	1,493,782	477,546	63	519.6
2016	2,954	1,491,961	468,258	62	496.1
2017	2,906	1,488,346	461,063	62	489.6
2018	2,907	1,488,027	456,866	62	491.3
2019	2,874	1,497,517	455,858	61	485.7
2020	2,870	1,493,706	452,935	61	484.2
2021	2,856	1,495,665	453,398	62	484.5

County: county value. Kansas: state value. County Rank: highest county value ranked #1. (\$000): thousands of dollars. Nonmetro Kansas: Kansas total less Metropolitan Areas as defined by the Office of Management and Budget (OMB; released 3/6/2020). Per 1000: For nonmoney amounts, Per 1000=(county value / county population for the same year as the data) x 1000. \$ Per capita=(county value / county population for the same year as the data). Value= . indicates missing or suppressed data or value not calculated.

**Employment**

EMPLOYED (BLS-Place of Residence; 1990- )

U.S. Department of Labor, Bureau of Labor Statistics (BLS)

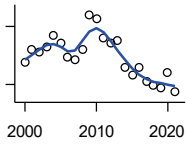


Year	County	State of Kansas	Non Metro Kansas	County Rank	Per 1000 or \$ Per Capita
2000	3,506	1,349,841	464,962	55	518.6
2001	3,631	1,338,775	455,154	52	549.7
2002	3,647	1,347,163	461,241	52	570.2
2003	3,682	1,361,115	467,622	52	585.1
2004	3,544	1,378,355	470,330	55	572.9
2005	3,465	1,384,654	467,722	55	563.0
2006	3,564	1,402,950	479,174	54	596.1
2007	3,532	1,422,109	477,983	55	588.3
2008	3,615	1,425,022	484,056	55	600.8
2009	3,632	1,408,142	485,797	55	604.9
2010	3,006	1,396,172	461,635	63	500.2
2011	3,093	1,402,198	463,723	62	511.0
2012	3,106	1,405,638	463,376	61	507.5
2013	3,010	1,410,470	461,405	63	494.3
2014	2,997	1,426,892	461,797	63	494.0
2015	3,009	1,431,533	457,899	62	504.5
2016	2,857	1,431,920	449,356	62	479.8
2017	2,823	1,434,516	445,003	62	475.6
2018	2,828	1,439,329	442,716	62	477.9
2019	2,797	1,450,705	442,108	62	472.7
2020	2,778	1,408,965	433,229	61	468.7
2021	2,784	1,447,323	441,159	63	472.3

County: county value. Kansas: state value. County Rank: highest county value ranked #1. (\$000): thousands of dollars. Nonmetro Kansas: Kansas total less Metropolitan Areas as defined by the Office of Management and Budget (OMB; released 3/6/2020). Per 1000: For nonmoney amounts, Per 1000=(county value / county population for the same year as the data) x 1000. \$ Per capita=(county value / county population for the same year as the data). Value= . indicates missing or suppressed data or value not calculated.

**Employment**

UNEMPLOYED (BLS-Place of Residence; 1990- )



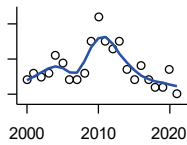
U.S. Department of Labor, Bureau of Labor Statistics (BLS)

Year	County	State of Kansas	Non Metro Kansas	County Rank	Per 1000 or \$ Per Capita
2000	103	52,765	17,267	61	15.2
2001	116	59,746	20,126	59	17.6
2002	113	72,172	21,187	63	17.7
2003	119	79,950	22,539	65	18.9
2004	131	80,555	24,179	66	21.2
2005	123	74,113	22,325	63	20.0
2006	108	64,603	19,420	63	18.1
2007	105	63,305	19,065	62	17.5
2008	116	68,343	20,466	63	19.3
2009	152	104,430	30,514	67	25.3
2010	148	104,291	30,959	66	24.6
2011	128	95,802	28,840	66	21.1
2012	123	85,170	25,973	63	20.1
2013	126	78,925	24,079	60	20.7
2014	98	67,311	20,016	66	16.2
2015	90	62,249	19,647	67	15.1
2016	97	60,041	18,902	65	16.3
2017	83	53,830	16,060	66	14.0
2018	79	48,698	14,150	60	13.4
2019	77	46,812	13,750	62	13.0
2020	92	84,741	19,706	61	15.5
2021	72	48,342	12,239	59	12.2

County: county value. Kansas: state value. County Rank: highest county value ranked #1. (\$000): thousands of dollars. Nonmetro Kansas: Kansas total less Metropolitan Areas as defined by the Office of Management and Budget (OMB; released 3/6/2020). Per 1000: For nonmoney amounts, Per 1000=(county value / county population for the same year as the data) x 1000. \$ Per capita=(county value / county population for the same year as the data). Value= . indicates missing or suppressed data or value not calculated.

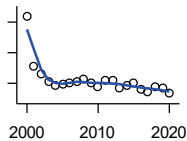
**Employment**

UNEMPLOYMENT RATE (BLS-Place of Residence; 1990- )



U.S. Department of Labor, Bureau of Labor Statistics (BLS)

Year	County	State of Kansas	Non Metro Kansas	County Rank	Per 1000 or \$ Per Capita
2000	2.9	3.8	3.6	79	.
2001	3.1	4.3	4.2	82	.
2002	3.0	5.1	4.4	98	.
2003	3.1	5.5	4.6	93	.
2004	3.6	5.5	4.9	92	.
2005	3.4	5.1	4.6	94	.
2006	2.9	4.4	3.9	99	.
2007	2.9	4.3	3.8	99	.
2008	3.1	4.6	4.1	91	.
2009	4.0	6.9	5.9	82	.
2010	4.7	7.0	6.3	72	.
2011	4.0	6.4	5.9	82	.
2012	3.8	5.7	5.3	81	.
2013	4.0	5.3	5.0	67	.
2014	3.2	4.5	4.2	78	.
2015	2.9	4.2	4.1	89	.
2016	3.3	4.0	4.0	72	.
2017	2.9	3.6	3.5	72	.
2018	2.7	3.3	3.1	65	.
2019	2.7	3.1	3.0	65	.
2020	3.2	5.7	4.4	70	.
2021	2.5	3.2	2.7	53	.



BEA EMPLOYMENT: TOTAL (Place of Work)

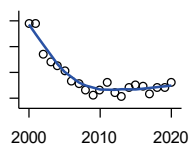
U.S. Bureau of Economic Analysis, Regional Economic Information System (REIS)

Year	County	State of Kansas	Non Metro Kansas	County Rank	Per 1000 or \$ Per Capita
2000	5,096	1,760,312	604,361	49	753.8
2001	4,272	1,767,601	592,672	53	646.7
2002	4,144	1,746,077	585,387	55	647.9
2003	4,026	1,733,694	577,860	55	639.8
2004	3,961	1,750,876	578,750	57	640.3
2005	3,976	1,765,650	577,562	55	646.0
2006	4,014	1,795,507	583,041	56	671.3
2007	4,023	1,844,355	591,924	58	670.1
2008	4,065	1,858,069	594,368	57	675.6
2009	3,998	1,813,184	580,972	56	665.9
2010	3,938	1,801,873	579,758	57	655.2
2011	4,055	1,819,044	583,725	54	669.9
2012	4,038	1,841,393	591,748	56	659.8
2013	3,924	1,869,054	597,236	61	644.3
2014	3,970	1,895,859	601,291	60	654.4
2015	4,005	1,910,954	598,589	58	671.5
2016	3,898	1,916,152	592,580	59	654.6
2017	3,868	1,914,179	584,337	59	651.6
2018	3,948	1,926,242	580,213	56	667.2
2019	3,915	1,925,204	574,496	57	661.7
2020	3,831	1,851,247	556,671	57	646.4

County: county value. Kansas: state value. County Rank: highest county value ranked #1. (\$000): thousands of dollars. Nonmetro Kansas: Kansas total less Metropolitan Areas as defined by the Office of Management and Budget (OMB; released 3/6/2020). Per 1000: For nonmoney amounts, Per 1000=(county value / county population for the same year as the data) x 1000. \$ Per capita=(county value / county population for the same year as the data). Value= . indicates missing or suppressed data or value not calculated.

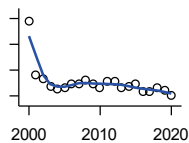
**Employment**

**BEA EMPLOYMENT: FARM**



U.S. Bureau of Economic Analysis,  
Regional Economic Information System  
(REIS)

Year	County	State of Kansas	Non Metro Kansas	County Rank	Per 1000 or \$ Per Capita
2000	545	77,477	59,088	73	80.6
2001	544	78,177	59,647	76	82.3
2002	486	70,532	53,893	78	76.0
2003	470	68,516	52,099	75	74.7
2004	464	67,586	51,246	76	75.0
2005	452	66,829	50,386	75	73.4
2006	434	64,910	48,728	75	72.6
2007	429	65,639	49,037	76	71.5
2008	417	63,820	47,682	77	69.3
2009	407	62,798	46,960	77	67.8
2010	415	63,882	47,984	82	69.1
2011	431	65,761	49,707	79	71.2
2012	412	63,753	48,167	77	67.3
2013	403	62,739	47,255	80	66.2
2014	420	64,308	48,722	78	69.2
2015	425	64,416	48,927	78	71.3
2016	424	63,840	48,539	78	71.2
2017	408	61,876	46,936	78	68.7
2018	420	63,233	48,069	78	71.0
2019	421	63,300	48,167	78	71.2
2020	430	64,281	49,038	78	72.5



**BEA EMPLOYMENT: NON-FARM**

U.S. Bureau of Economic Analysis,  
Regional Economic Information System  
(REIS)

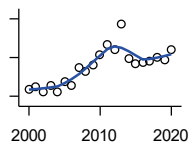
Year	County	State of Kansas	Non Metro Kansas	County Rank	Per 1000 or \$ Per Capita
2000	4,551	1,682,835	545,273	47	673.2
2001	3,728	1,689,424	533,025	53	564.3
2002	3,658	1,675,545	531,494	53	571.9
2003	3,556	1,665,178	525,761	53	565.1
2004	3,497	1,683,290	527,504	53	565.3
2005	3,524	1,698,821	527,176	53	572.5
2006	3,580	1,730,597	534,313	55	598.8
2007	3,594	1,778,716	542,887	55	598.6
2008	3,648	1,794,249	546,686	55	606.3
2009	3,591	1,750,386	534,012	54	598.1
2010	3,523	1,737,991	531,774	55	586.2
2011	3,624	1,753,283	534,018	54	598.7
2012	3,626	1,777,640	543,581	56	592.5
2013	3,521	1,806,315	549,981	59	578.2
2014	3,550	1,831,551	552,569	58	585.1
2015	3,580	1,846,538	549,662	56	600.3
2016	3,474	1,852,312	544,041	57	583.4
2017	3,460	1,852,303	537,401	56	582.9
2018	3,528	1,863,009	532,144	55	596.2
2019	3,494	1,861,904	526,329	55	590.5
2020	3,401	1,786,966	507,633	54	573.8

County: county value. Kansas: state value. County Rank: highest county value ranked #1. (\$000): thousands of dollars. Nonmetro Kansas: Kansas total less Metropolitan Areas as defined by the Office of Management and Budget (OMB; released 3/6/2020). Per 1000: For nonmoney amounts, Per 1000=(county value / county population for the same year as the data) x 1000. \$ Per capita=(county value / county population for the same year as the data). Value= . indicates missing or suppressed data or value not calculated.



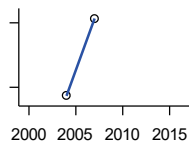
**Employment**

**AVERAGE WAGE PER JOB (\$)**



U.S. Bureau of Economic Analysis,  
Regional Economic Information System  
(REIS)

Year	County	State of Kansas	Non Metro Kansas	County Rank	Per 1000 or \$ Per Capita
2000	23,723	31,854	24,396	44	.
2001	25,065	32,859	26,379	50	.
2002	22,004	33,707	26,331	67	.
2003	25,257	35,078	28,911	74	.
2004	22,303	35,932	29,747	89	.
2005	27,715	37,467	31,646	73	.
2006	25,345	40,038	31,993	79	.
2007	34,795	41,500	33,484	29	.
2008	32,796	44,197	36,256	72	.
2009	36,173	43,860	35,739	30	.
2010	41,474	45,370	38,631	32	.
2011	46,909	48,280	42,324	31	.
2012	44,185	50,549	42,015	39	.
2013	57,430	52,629	46,073	24	.
2014	39,332	51,959	43,562	61	.
2015	37,006	52,250	42,320	64	.
2016	37,363	51,664	41,964	62	.
2017	37,938	53,007	42,137	62	.
2018	40,008	54,790	44,514	60	.
2019	38,823	56,956	45,336	73	.
2020	44,284	60,597	49,183	74	.



**BEA EMPLOYMENT: FORESTRY, FISHING, HUNTING, AND AG SUPPORT**

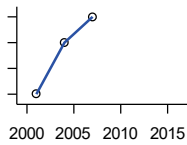
U.S. Bureau of Economic Analysis,  
Regional Economic Information System  
(REIS)

Year	County	State of Kansas	Non Metro Kansas	County Rank	Per 1000 or \$ Per Capita
2001	.	7,059	.	.	.
2002	.	8,045	.	.	.
2003	.	7,313	.	.	.
2004	73	7,623	.	12	.
2005	.	7,962	.	.	.
2006	.	7,748	.	.	.
2007	91	8,228	.	14	.
2008	.	8,646	.	.	.
2009	.	8,982	.	.	.
2010	.	9,251	.	.	.
2011	.	9,410	.	.	.
2012	.	9,691	.	.	.
2013	.	10,014	.	.	.
2014	.	10,708	.	.	.
2015	.	10,020	.	.	.
2016	.	10,383	.	.	.

County: county value. Kansas: state value. County Rank: highest county value ranked #1. (\$000): thousands of dollars. Nonmetro Kansas: Kansas total less Metropolitan Areas as defined by the Office of Management and Budget (OMB; released 3/6/2020). Per 1000: For nonmoney amounts, Per 1000=(county value / county population for the same year as the data) x 1000. \$ Per capita=(county value / county population for the same year as the data). Value= . indicates missing or suppressed data or value not calculated.

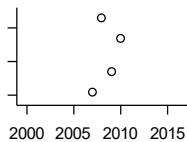
**Employment**

**BEA EMPLOYMENT: MINING**



U.S. Bureau of Economic Analysis,  
Regional Economic Information System  
(REIS)

Year	County	State of Kansas	Non Metro Kansas	County Rank	Per 1000 or \$ Per Capita
2001	22	19,592	.	46	.
2002	.	17,635	.	.	.
2003	.	19,869	.	.	.
2004	26	18,466	.	47	.
2005	.	19,489	.	.	.
2006	.	22,403	.	.	.
2007	28	24,043	.	47	.
2008	.	31,467	.	.	.
2009	.	29,941	.	.	.
2010	.	36,124	.	.	.
2011	.	31,658	.	.	.
2012	.	42,405	.	.	.
2013	.	46,585	.	.	.
2014	.	45,526	.	.	.
2015	.	46,460	.	.	.
2016	.	48,555	.	.	.



**BEA EMPLOYMENT: UTILITIES**

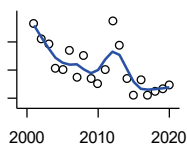
U.S. Bureau of Economic Analysis,  
Regional Economic Information System  
(REIS)

Year	County	State of Kansas	Non Metro Kansas	County Rank	Per 1000 or \$ Per Capita
2001	.	7,608	.	.	.
2002	.	7,087	.	.	.
2003	.	7,253	.	.	.
2004	.	7,356	.	.	.
2005	.	7,447	.	.	.
2006	.	7,478	.	.	.
2007	8	7,584	.	14	.
2008	19	7,855	.	12	.
2009	11	7,941	.	14	.
2010	16	8,028	.	13	.
2011	.	8,213	.	.	.
2012	.	8,155	.	.	.
2013	.	7,949	.	.	.
2014	.	7,985	.	.	.
2015	.	7,040	.	.	.
2016	.	7,133	.	.	.

County: county value. Kansas: state value. County Rank: highest county value ranked #1. (\$000): thousands of dollars. Nonmetro Kansas: Kansas total less Metropolitan Areas as defined by the Office of Management and Budget (OMB; released 3/6/2020). Per 1000: For nonmoney amounts, Per 1000=(county value / county population for the same year as the data) x 1000. \$ Per capita=(county value / county population for the same year as the data). Value= . indicates missing or suppressed data or value not calculated.

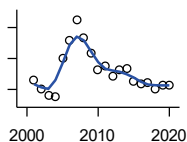
**Employment**

**BEA EMPLOYMENT:  
CONSTRUCTION**



U.S. Bureau of Economic Analysis,  
Regional Economic Information System  
(REIS)

Year	County	State of Kansas	Non Metro Kansas	County Rank	Per 1000 or \$ Per Capita
2001	163	92,647	27,972	63	.
2002	152	90,370	.	61	.
2003	149	91,725	26,681	61	.
2004	131	93,271	.	64	.
2005	130	94,836	.	65	.
2006	144	97,449	.	61	.
2007	125	99,119	29,179	69	.
2008	140	97,741	.	64	.
2009	124	90,165	28,077	68	.
2010	120	84,708	26,402	72	.
2011	130	83,332	25,999	68	.
2012	165	85,966	.	61	.
2013	148	88,094	.	66	.
2014	124	91,143	.	69	.
2015	112	91,458	27,583	71	.
2016	123	93,539	27,151	71	.
2017	112	92,046	25,579	69	.
2018	115	92,985	25,530	68	.
2019	117	94,858	25,701	67	.
2020	119	94,186	26,085	65	.



**BEA EMPLOYMENT:  
MANUFACTURING**

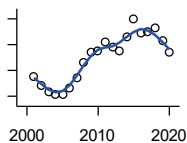
U.S. Bureau of Economic Analysis,  
Regional Economic Information System  
(REIS)

Year	County	State of Kansas	Non Metro Kansas	County Rank	Per 1000 or \$ Per Capita
2001	92	199,980	73,170	71	.
2002	81	188,905	70,691	73	.
2003	72	179,013	68,418	71	.
2004	70	181,738	69,669	73	.
2005	121	185,459	71,072	68	.
2006	144	188,047	71,704	65	.
2007	170	192,930	73,488	63	.
2008	147	193,116	72,235	67	.
2009	127	173,854	64,961	67	.
2010	105	166,000	62,884	71	.
2011	110	167,302	64,361	70	.
2012	97	169,308	65,944	71	.
2013	106	170,113	67,251	73	.
2014	107	169,307	68,299	70	.
2015	91	168,324	66,978	71	.
2016	87	167,723	65,796	71	.
2017	89	168,438	66,795	73	.
2018	81	171,778	68,181	74	.
2019	86	173,605	67,879	73	.
2020	86	165,228	65,658	73	.

County: county value. Kansas: state value. County Rank: highest county value ranked #1. (\$000): thousands of dollars. Nonmetro Kansas: Kansas total less Metropolitan Areas as defined by the Office of Management and Budget (OMB; released 3/6/2020). Per 1000: For nonmoney amounts, Per 1000=(county value / county population for the same year as the data) x 1000. \$ Per capita=(county value / county population for the same year as the data). Value= . indicates missing or suppressed data or value not calculated.

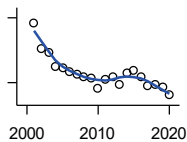
**Employment**

**BEA EMPLOYMENT: WHOLESALE TRADE**



U.S. Bureau of Economic Analysis,  
Regional Economic Information System  
(REIS)

Year	County	State of Kansas	Non Metro Kansas	County Rank	Per 1000 or \$ Per Capita
2001	214	65,698	.	35	.
2002	196	65,408	.	34	.
2003	184	63,504	.	34	.
2004	178	64,434	.	36	.
2005	178	64,587	.	37	.
2006	190	64,743	.	34	.
2007	211	65,993	.	30	.
2008	241	67,693	.	30	.
2009	260	65,954	.	27	.
2010	264	64,376	.	29	.
2011	280	64,712	.	30	.
2012	270	63,973	.	28	.
2013	262	64,999	.	28	.
2014	289	69,295	.	25	.
2015	324	68,444	.	21	.
2016	297	64,843	.	24	.
2017	301	65,014	.	23	.
2018	308	64,745	.	23	.
2019	282	63,324	.	25	.
2020	260	60,844	.	30	.



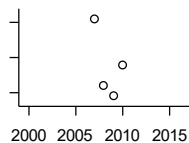
**BEA EMPLOYMENT: RETAIL TRADE**

U.S. Bureau of Economic Analysis,  
Regional Economic Information System  
(REIS)

Year	County	State of Kansas	Non Metro Kansas	County Rank	Per 1000 or \$ Per Capita
2001	639	198,069	.	42	.
2002	580	196,112	.	43	.
2003	570	194,545	64,173	45	.
2004	538	192,957	63,265	46	.
2005	533	191,656	62,506	46	.
2006	526	190,391	62,082	47	.
2007	519	190,643	61,716	47	.
2008	515	185,907	59,783	47	.
2009	512	181,262	58,714	47	.
2010	487	177,858	57,470	48	.
2011	509	180,548	57,734	48	.
2012	513	180,596	57,349	47	.
2013	497	183,245	57,556	49	.
2014	523	185,899	57,855	46	.
2015	528	188,421	58,516	47	.
2016	514	188,505	57,864	48	.
2017	494	186,633	56,715	47	.
2018	496	183,323	.	47	.
2019	489	177,240	53,427	48	.
2020	471	171,777	52,563	48	.

County: county value. Kansas: state value. County Rank: highest county value ranked #1. (\$000): thousands of dollars. Nonmetro Kansas: Kansas total less Metropolitan Areas as defined by the Office of Management and Budget (OMB; released 3/6/2020). Per 1000: For nonmoney amounts, Per 1000=(county value / county population for the same year as the data) x 1000. \$ Per capita=(county value / county population for the same year as the data). Value= . indicates missing or suppressed data or value not calculated.

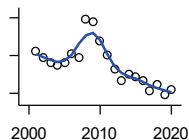
**Employment**



**BEA EMPLOYMENT:  
TRANSPORTATION AND  
WAREHOUSING**

U.S. Bureau of Economic Analysis,  
Regional Economic Information System  
(REIS)

Year	County	State of Kansas	Non Metro Kansas	County Rank	Per 1000 or \$ Per Capita
2001	.	56,302	.	.	.
2002	.	55,319	.	.	.
2003	.	55,509	.	.	.
2004	.	55,479	.	.	.
2005	.	56,287	.	.	.
2006	.	57,506	.	.	.
2007	161	59,277	.	30	.
2008	142	58,725	.	32	.
2009	139	56,238	.	29	.
2010	148	55,179	.	26	.
2011	.	57,449	.	.	.
2012	.	59,756	.	.	.
2013	.	59,780	.	.	.
2014	.	60,565	.	.	.
2015	.	63,256	.	.	.
2016	.	65,705	.	.	.



**BEA EMPLOYMENT: INFORMATION**

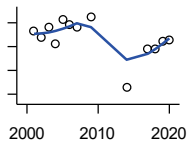
U.S. Bureau of Economic Analysis,  
Regional Economic Information System  
(REIS)

Year	County	State of Kansas	Non Metro Kansas	County Rank	Per 1000 or \$ Per Capita
2001	62	54,895	.	40	.
2002	59	50,728	.	40	.
2003	56	48,328	6,860	43	.
2004	55	45,617	.	45	.
2005	56	43,840	.	42	.
2006	61	43,925	.	37	.
2007	59	45,115	.	37	.
2008	79	42,958	.	32	.
2009	78	38,677	.	34	.
2010	68	33,432	.	35	.
2011	60	32,160	.	37	.
2012	53	31,829	.	39	.
2013	47	31,737	.	41	.
2014	50	32,316	.	39	.
2015	49	25,282	.	36	.
2016	47	24,998	.	37	.
2017	41	24,004	.	40	.
2018	45	23,165	.	38	.
2019	39	22,078	.	42	.
2020	42	20,810	.	41	.

County: county value. Kansas: state value. County Rank: highest county value ranked #1. (\$000): thousands of dollars. Nonmetro Kansas: Kansas total less Metropolitan Areas as defined by the Office of Management and Budget (OMB; released 3/6/2020). Per 1000: For nonmoney amounts, Per 1000=(county value / county population for the same year as the data) x 1000. \$ Per capita=(county value / county population for the same year as the data). Value= . indicates missing or suppressed data or value not calculated.

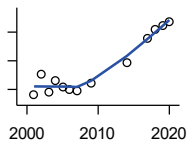
**Employment**

**BEA EMPLOYMENT: FINANCE AND INSURANCE**



U.S. Bureau of Economic Analysis,  
Regional Economic Information System  
(REIS)

Year	County	State of Kansas	Non Metro Kansas	County Rank	Per 1000 or \$ Per Capita
2001	213	76,118	.	39	.
2002	208	78,206	.	41	.
2003	216	78,441	.	43	.
2004	202	78,350	.	43	.
2005	223	78,952	.	36	.
2006	218	80,900	.	38	.
2007	216	86,094	.	40	.
2008	.	89,590	.	.	.
2009	225	93,573	.	43	.
2010	.	92,428	.	.	.
2011	.	99,495	.	.	.
2012	.	98,640	.	.	.
2013	.	99,998	.	.	.
2014	166	98,209	.	50	.
2015	.	100,534	.	.	.
2016	.	102,699	.	.	.
2017	198	101,563	.	44	.
2018	198	102,816	.	47	.
2019	205	100,276	.	46	.
2020	206	101,626	.	45	.



**BEA EMPLOYMENT: REAL ESTATE, RENTAL, AND LEASING**

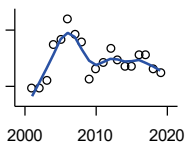
U.S. Bureau of Economic Analysis,  
Regional Economic Information System  
(REIS)

Year	County	State of Kansas	Non Metro Kansas	County Rank	Per 1000 or \$ Per Capita
2001	66	45,237	.	47	.
2002	81	44,970	.	44	.
2003	68	47,095	.	50	.
2004	76	50,181	.	48	.
2005	72	53,335	.	47	.
2006	70	55,342	.	48	.
2007	69	57,694	.	48	.
2008	.	57,933	.	.	.
2009	74	57,132	.	44	.
2010	.	59,578	.	.	.
2011	.	61,821	.	.	.
2012	.	60,432	.	.	.
2013	.	62,134	.	.	.
2014	89	64,705	.	49	.
2015	.	66,604	.	.	.
2016	.	68,395	.	.	.
2017	106	70,304	.	48	.
2018	112	72,631	.	49	.
2019	115	69,119	.	48	.
2020	117	68,452	.	47	.

County: county value. Kansas: state value. County Rank: highest county value ranked #1. (\$000): thousands of dollars. Nonmetro Kansas: Kansas total less Metropolitan Areas as defined by the Office of Management and Budget (OMB; released 3/6/2020). Per 1000: For nonmoney amounts, Per 1000=(county value / county population for the same year as the data) x 1000. \$ Per capita=(county value / county population for the same year as the data). Value= . indicates missing or suppressed data or value not calculated.

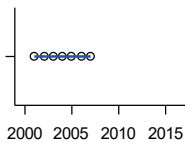
**Employment**

**BEA EMPLOYMENT: PROFESSIONAL AND TECHNICAL SERVICES**



U.S. Bureau of Economic Analysis, Regional Economic Information System (REIS)

Year	County	State of Kansas	Non Metro Kansas	County Rank	Per 1000 or \$ Per Capita
2001	99	81,396	.	52	.
2002	99	80,684	.	49	.
2003	103	80,311	.	41	.
2004	122	85,550	.	37	.
2005	125	85,003	.	38	.
2006	136	87,381	.	36	.
2007	128	92,717	.	40	.
2008	124	95,362	.	44	.
2009	104	93,232	.	47	.
2010	109	93,037	.	47	.
2011	113	93,237	.	45	.
2012	120	95,360	.	48	.
2013	114	100,795	.	50	.
2014	111	102,210	.	52	.
2015	111	105,625	.	55	.
2016	117	108,059	.	50	.
2017	117	109,041	.	46	.
2018	109	110,513	.	47	.
2019	107	109,637	.	46	.



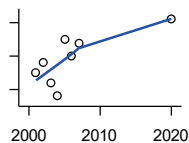
**BEA EMPLOYMENT: MANAGEMENT OF COMPANIES AND ENTERPRISES**

U.S. Bureau of Economic Analysis, Regional Economic Information System (REIS)

Year	County	State of Kansas	Non Metro Kansas	County Rank	Per 1000 or \$ Per Capita
2001	0	13,832	.	70	.
2002	0	12,576	.	69	.
2003	0	11,135	.	67	.
2004	0	10,614	.	67	.
2005	0	11,811	.	66	.
2006	0	13,061	.	66	.
2007	0	13,398	.	69	.
2008	.	15,234	.	.	.
2009	.	14,849	.	.	.
2010	.	16,579	.	.	.
2011	.	15,343	.	.	.
2012	.	15,075	.	.	.
2013	.	16,667	.	.	.
2014	.	20,441	.	.	.
2015	.	29,604	.	.	.
2016	.	27,824	.	.	.

County: county value. Kansas: state value. County Rank: highest county value ranked #1. (\$000): thousands of dollars. Nonmetro Kansas: Kansas total less Metropolitan Areas as defined by the Office of Management and Budget (OMB; released 3/6/2020). Per 1000: For nonmoney amounts, Per 1000=(county value / county population for the same year as the data) x 1000. \$ Per capita=(county value / county population for the same year as the data). Value= . indicates missing or suppressed data or value not calculated.

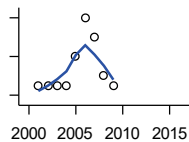
**Employment**



**BEA EMPLOYMENT:  
ADMINISTRATIVE AND WASTE  
SERVICES**

U.S. Bureau of Economic Analysis,  
Regional Economic Information System  
(REIS)

Year	County	State of Kansas	Non Metro Kansas	County Rank	Per 1000 or \$ Per Capita
2001	65	81,573	.	40	.
2002	68	82,992	.	40	.
2003	62	81,298	.	39	.
2004	58	85,721	.	47	.
2005	75	89,933	.	40	.
2006	70	93,688	.	44	.
2007	74	98,865	.	46	.
2008	.	97,440	.	.	.
2009	.	92,455	.	.	.
2010	.	93,675	.	.	.
2011	.	97,969	.	.	.
2012	.	100,490	.	.	.
2013	.	104,680	.	.	.
2014	.	107,218	18,836	.	.
2015	.	103,436	18,767	.	.
2016	.	103,233	18,428	.	.
2020	81	95,361	.	49	.



**BEA EMPLOYMENT: EDUCATIONAL  
SERVICES**

U.S. Bureau of Economic Analysis,  
Regional Economic Information System  
(REIS)

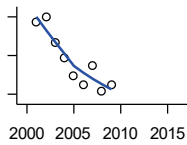
Year	County	State of Kansas	Non Metro Kansas	County Rank	Per 1000 or \$ Per Capita
2001	7	21,169	.	48	.
2002	7	22,173	.	51	.
2003	7	22,651	.	55	.
2004	7	21,601	.	54	.
2005	10	22,177	.	36	.
2006	14	22,438	.	29	.
2007	12	23,647	.	28	.
2008	8	24,653	.	43	.
2009	7	25,120	.	46	.
2010	.	26,071	.	.	.
2011	.	26,080	.	.	.
2012	.	26,625	.	.	.
2013	.	27,508	.	.	.
2014	.	28,708	.	.	.
2015	.	28,794	.	.	.
2016	.	27,996	.	.	.

County: county value. Kansas: state value. County Rank: highest county value ranked #1. (\$000): thousands of dollars. Nonmetro Kansas: Kansas total less Metropolitan Areas as defined by the Office of Management and Budget (OMB; released 3/6/2020). Per 1000: For nonmoney amounts, Per 1000=(county value / county population for the same year as the data) x 1000. \$ Per capita=(county value / county population for the same year as the data). Value= . indicates missing or suppressed data or value not calculated.



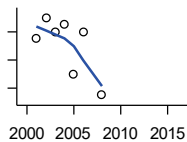
**Employment**

**BEA EMPLOYMENT: HEALTH CARE AND SOCIAL ASSISTANCE**



U.S. Bureau of Economic Analysis,  
Regional Economic Information System  
(REIS)

Year	County	State of Kansas	Non Metro Kansas	County Rank	Per 1000 or \$ Per Capita
2001	354	165,415	.	28	.
2002	360	168,198	.	27	.
2003	333	169,654	.	32	.
2004	318	172,796	.	37	.
2005	299	173,949	.	33	.
2006	290	176,919	.	30	.
2007	309	182,160	.	31	.
2008	283	186,051	.	35	.
2009	290	188,499	.	31	.
2010	.	188,383	.	.	.
2011	.	190,736	.	.	.
2012	.	192,991	.	.	.
2013	.	193,687	.	.	.
2014	.	194,632	.	.	.
2015	.	199,724	.	.	.
2016	.	201,830	.	.	.



**BEA EMPLOYMENT: ARTS, ENTERTAINMENT, AND RECREATION**

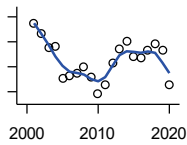
U.S. Bureau of Economic Analysis,  
Regional Economic Information System  
(REIS)

Year	County	State of Kansas	Non Metro Kansas	County Rank	Per 1000 or \$ Per Capita
2001	55	25,012	.	35	.
2002	58	25,668	.	34	.
2003	56	24,116	.	34	.
2004	57	25,355	.	37	.
2005	50	26,067	.	39	.
2006	56	26,505	.	39	.
2007	.	27,489	.	.	.
2008	47	27,501	.	38	.
2009	.	27,203	.	.	.
2010	.	27,479	.	.	.
2011	.	28,487	.	.	.
2012	.	30,729	.	.	.
2013	.	31,068	.	.	.
2014	.	32,154	.	.	.
2015	.	31,169	.	.	.
2016	.	32,373	.	.	.

County: county value. Kansas: state value. County Rank: highest county value ranked #1. (\$000): thousands of dollars. Nonmetro Kansas: Kansas total less Metropolitan Areas as defined by the Office of Management and Budget (OMB; released 3/6/2020). Per 1000: For nonmoney amounts, Per 1000=(county value / county population for the same year as the data) x 1000. \$ Per capita=(county value / county population for the same year as the data). Value= . indicates missing or suppressed data or value not calculated.

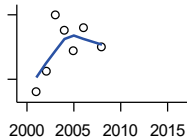
**Employment**

**BEA EMPLOYMENT: GOVERNMENT AND GOVERNMENT ENTERPRISES**



U.S. Bureau of Economic Analysis, Regional Economic Information System (REIS)

Year	County	State of Kansas	Non Metro Kansas	County Rank	Per 1000 or \$ Per Capita
2001	815	282,293	102,993	58	.
2002	807	281,427	103,581	59	.
2003	795	282,459	103,389	59	.
2004	796	283,877	103,946	59	.
2005	771	282,798	103,194	61	.
2006	773	288,372	104,103	61	.
2007	775	294,413	104,598	60	.
2008	780	298,580	104,718	60	.
2009	772	300,422	104,081	60	.
2010	758	303,875	103,382	60	.
2011	766	299,952	101,535	59	.
2012	783	298,068	101,180	58	.
2013	794	297,689	101,232	57	.
2014	800	296,956	100,634	57	.
2015	788	295,799	99,719	57	.
2016	787	291,536	98,520	57	.
2017	793	295,748	99,542	57	.
2018	798	298,105	99,499	57	.
2019	793	302,017	100,227	56	.
2020	766	292,583	96,477	56	.



**BEA EMPLOYMENT: ACCOMMODATION AND FOOD SERVICES**

U.S. Bureau of Economic Analysis, Regional Economic Information System (REIS)

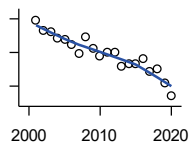
Year	County	State of Kansas	Non Metro Kansas	County Rank	Per 1000 or \$ Per Capita
2001	304	103,353	.	35	.
2002	314	103,692	.	37	.
2003	340	105,138	.	33	.
2004	333	106,694	.	37	.
2005	323	107,303	.	37	.
2006	334	109,888	.	40	.
2007	.	110,863	.	.	.
2008	325	111,092	.	34	.
2009	.	109,353	.	.	.
2010	.	108,628	.	.	.
2011	.	110,514	.	.	.
2012	.	112,574	.	.	.
2013	.	114,102	.	.	.
2014	.	115,768	.	.	.
2015	.	118,503	.	.	.
2016	.	119,764	.	.	.

County: county value. Kansas: state value. County Rank: highest county value ranked #1. (\$000): thousands of dollars. Nonmetro Kansas: Kansas total less Metropolitan Areas as defined by the Office of Management and Budget (OMB; released 3/6/2020). Per 1000: For nonmoney amounts, Per 1000=(county value / county population for the same year as the data) x 1000. \$ Per capita=(county value / county population for the same year as the data). Value= . indicates missing or suppressed data or value not calculated.

**Employment**

BEA EMPLOYMENT: OTHER SERVICES, EXCEPT PUBLIC ADMINISTRATION

U.S. Bureau of Economic Analysis, Regional Economic Information System (REIS)

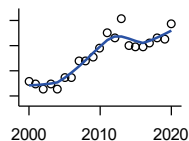


Year	County	State of Kansas	Non Metro Kansas	County Rank	Per 1000 or \$ Per Capita
2001	318	92,176	.	42	.
2002	306	95,350	.	44	.
2003	304	95,821	32,629	45	.
2004	297	95,610	.	46	.
2005	295	95,930	32,555	47	.
2006	290	96,413	.	44	.
2007	279	98,444	.	44	.
2008	299	96,705	.	42	.
2009	285	95,534	.	41	.
2010	275	93,302	.	41	.
2011	281	94,865	.	41	.
2012	280	94,977	.	44	.
2013	263	95,471	.	47	.
2014	266	97,806	.	46	.
2015	266	98,041	.	45	.
2016	272	97,219	.	43	.
2017	258	96,568	.	43	.
2018	261	98,645	.	42	.
2019	244	98,638	.	45	.
2020	228	92,245	.	45	.

**Income**

BEA PER CAPITA PERSONAL INCOME (\$)

U.S. Bureau of Economic Analysis, Regional Economic Information System (REIS)

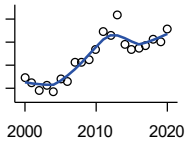


Year	County	State of Kansas	Non Metro Kansas	County Rank	Per 1000 or \$ Per Capita
2000	25,660	28,253	23,116	22	.
2001	24,555	29,112	24,576	65	.
2002	22,691	29,248	24,314	85	.
2003	24,928	30,074	26,017	79	.
2004	22,861	30,843	26,583	99	.
2005	27,430	32,545	28,356	72	.
2006	27,432	35,690	29,782	78	.
2007	34,146	38,057	32,034	39	.
2008	34,146	41,257	35,211	70	.
2009	35,438	39,431	33,876	51	.
2010	38,904	39,960	35,795	44	.
2011	45,024	43,015	39,041	37	.
2012	43,288	45,294	39,660	45	.
2013	50,738	46,174	41,747	33	.
2014	40,173	47,013	41,042	64	.
2015	39,454	47,332	40,638	65	.
2016	39,680	47,326	40,797	67	.
2017	41,037	48,756	41,314	60	.
2018	43,189	50,811	43,283	60	.
2019	42,422	52,820	44,491	79	.
2020	48,439	55,677	48,415	56	.

County: county value. Kansas: state value. County Rank: highest county value ranked #1. (\$000): thousands of dollars. Nonmetro Kansas: Kansas total less Metropolitan Areas as defined by the Office of Management and Budget (OMB; released 3/6/2020). Per 1000: For nonmoney amounts, Per 1000=(county value / county population for the same year as the data) x 1000. \$ Per capita=(county value / county population for the same year as the data). Value= . indicates missing or suppressed data or value not calculated.

**Income**

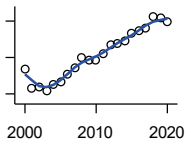
**SOURCES OF PERSONAL INCOME:  
TOTAL PERSONAL INCOME (\$000)**



U.S. Bureau of Economic Analysis,  
Regional Economic Information System  
(REIS)

Year	County	State of Kansas	Non Metro Kansas	County Rank	Per 1000 or \$ Per Capita
2000	173,102	76,105,125	22,273,838	53	25,606.8
2001	162,208	78,664,651	23,411,174	60	24,554.6
2002	145,129	79,365,190	23,000,314	63	22,690.6
2003	156,869	81,890,340	24,494,191	63	24,927.5
2004	141,416	84,335,940	24,924,467	67	22,860.7
2005	168,832	89,346,228	26,452,291	64	27,430.1
2006	164,013	98,610,188	27,661,596	66	27,431.5
2007	205,013	105,943,199	29,715,946	58	34,146.1
2008	205,459	115,852,478	32,614,565	63	34,146.4
2009	212,770	111,697,350	31,394,702	60	35,438.0
2010	234,122	114,239,828	33,291,419	60	38,955.4
2011	272,618	123,558,772	36,221,488	58	45,038.5
2012	265,007	130,948,127	36,696,759	61	43,301.8
2013	309,197	133,979,908	38,513,959	58	50,771.3
2014	243,808	136,878,718	37,680,598	68	40,185.9
2015	235,343	138,336,768	37,081,851	63	39,460.6
2016	236,490	138,533,890	36,930,885	63	39,712.8
2017	243,553	142,729,689	37,104,963	62	41,029.8
2018	255,463	148,955,739	38,589,364	62	43,174.4
2019	251,647	154,961,001	39,424,148	62	42,529.5
2020	279,831	163,462,179	42,618,591	63	47,212.9

**SOURCES OF PERSONAL INCOME:  
WAGES AND SALARIES (\$000)**



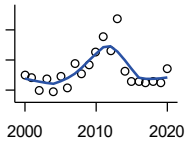
U.S. Bureau of Economic Analysis,  
Regional Economic Information System  
(REIS)

Year	County	State of Kansas	Non Metro Kansas	County Rank	Per 1000 or \$ Per Capita
2000	73,842	41,766,878	10,254,250	50	10,923.4
2001	63,402	43,269,734	10,518,206	53	9,597.6
2002	63,680	43,875,159	10,696,876	52	9,956.2
2003	61,720	44,488,560	10,894,971	57	9,807.7
2004	65,105	46,702,068	11,333,617	57	10,524.6
2005	66,388	48,537,956	11,614,130	57	10,786.0
2006	70,770	52,083,584	12,299,340	56	11,836.4
2007	74,480	55,442,368	13,093,908	57	12,405.1
2008	80,040	57,623,385	13,647,143	56	13,302.3
2009	78,804	55,605,578	13,199,674	57	13,125.2
2010	78,479	56,089,711	13,345,291	58	13,058.1
2011	82,333	58,104,706	13,856,458	57	13,602.0
2012	87,067	60,616,457	14,473,599	56	14,226.6
2013	87,657	61,872,023	14,781,792	58	14,393.6
2014	89,197	64,457,652	15,385,500	59	14,702.0
2015	93,057	66,729,598	15,454,485	57	15,603.1
2016	94,647	67,253,399	15,422,058	56	15,893.7
2017	96,363	68,830,861	15,731,853	55	16,233.7
2018	102,507	71,580,544	16,311,725	51	17,324.2
2019	101,494	74,404,771	16,882,299	52	17,152.9
2020	99,826	75,798,310	17,251,300	58	16,842.6

County: county value. Kansas: state value. County Rank: highest county value ranked #1. (\$000): thousands of dollars. Nonmetro Kansas: Kansas total less Metropolitan Areas as defined by the Office of Management and Budget (OMB; released 3/6/2020). Per 1000: For nonmoney amounts, Per 1000=(county value / county population for the same year as the data) x 1000. \$ Per capita=(county value / county population for the same year as the data). Value= . indicates missing or suppressed data or value not calculated.

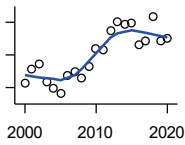
**Income**

**SOURCES OF PERSONAL INCOME:  
PROPRIETORS-FARM (\$000)**



U.S. Bureau of Economic Analysis,  
Regional Economic Information System  
(REIS)

Year	County	State of Kansas	Non Metro Kansas	County Rank	Per 1000 or \$ Per Capita
2000	19,546	668,539	673,707	8	2,891.4
2001	16,700	779,473	769,336	16	2,528.0
2002	-560	145,064	187,033	63	-87.6
2003	14,187	1,281,076	1,195,298	39	2,254.4
2004	-2,828	1,149,425	938,524	101	-457.2
2005	17,702	1,609,604	1,469,139	35	2,876.0
2006	2,484	766,047	663,735	64	415.5
2007	34,841	1,131,607	1,040,350	1	5,803.0
2008	21,245	1,582,092	1,404,900	30	3,530.8
2009	33,627	1,585,995	1,390,349	8	5,600.8
2010	49,705	2,149,482	2,029,067	10	8,270.4
2011	71,323	3,188,519	2,989,880	8	11,783.1
2012	52,528	2,519,555	2,296,875	12	8,583.0
2013	95,421	4,499,190	4,158,419	9	15,668.5
2014	24,313	2,231,181	2,157,992	31	4,007.4
2015	12,168	1,300,733	1,294,370	33	2,040.2
2016	11,238	1,577,060	1,564,511	37	1,887.2
2017	10,005	838,480	838,290	31	1,685.5
2018	10,988	1,050,662	971,690	39	1,857.0
2019	9,154	998,038	878,247	48	1,547.1
2020	28,244	2,151,349	1,887,881	22	4,765.3



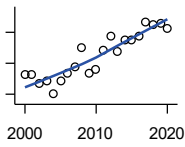
**SOURCES OF PERSONAL INCOME:  
PROPRIETORS-NONFARM (\$000)**

U.S. Bureau of Economic Analysis,  
Regional Economic Information System  
(REIS)

Year	County	State of Kansas	Non Metro Kansas	County Rank	Per 1000 or \$ Per Capita
2000	10,484	4,580,476	1,493,470	55	1,550.9
2001	12,292	4,510,530	1,855,621	65	1,860.7
2002	12,965	5,036,100	1,966,784	65	2,027.0
2003	10,650	4,719,377	1,916,735	70	1,692.4
2004	9,891	4,003,922	2,073,898	73	1,598.9
2005	9,223	4,455,294	2,200,971	77	1,498.5
2006	11,413	7,343,524	2,694,895	77	1,908.8
2007	11,962	7,280,197	2,436,574	69	1,992.3
2008	11,146	9,255,953	2,971,923	76	1,852.4
2009	12,592	9,323,551	2,858,848	74	2,097.3
2010	14,747	9,658,261	3,498,040	77	2,453.7
2011	14,683	12,196,566	4,186,007	83	2,425.7
2012	16,945	15,773,140	4,446,004	81	2,768.8
2013	18,022	16,441,660	4,492,127	77	2,959.3
2014	17,777	15,954,254	4,455,081	78	2,930.1
2015	17,899	15,536,116	4,386,172	78	3,001.2
2016	15,219	14,075,310	3,783,829	81	2,555.7
2017	15,770	15,371,957	3,908,254	82	2,656.7
2018	18,706	15,716,877	4,238,775	79	3,161.4
2019	15,699	16,705,488	3,921,051	79	2,653.2
2020	15,991	16,718,952	3,823,329	77	2,698.0

County: county value. Kansas: state value. County Rank: highest county value ranked #1. (\$000): thousands of dollars. Nonmetro Kansas: Kansas total less Metropolitan Areas as defined by the Office of Management and Budget (OMB; released 3/6/2020). Per 1000: For nonmoney amounts, Per 1000=(county value / county population for the same year as the data) x 1000. \$ Per capita=(county value / county population for the same year as the data). Value= . indicates missing or suppressed data or value not calculated.

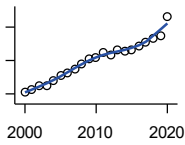
**Income**



**SOURCES OF PERSONAL INCOME:  
DIVIDENDS,INTEREST,RENT(\$000)**

U.S. Bureau of Economic Analysis,  
Regional Economic Information System  
(REIS)

Year	County	State of Kansas	Non Metro Kansas	County Rank	Per 1000 or \$ Per Capita
2000	31,206	15,916,201	4,736,921	68	4,616.3
2001	31,265	15,770,830	4,699,417	68	4,732.8
2002	28,612	15,111,563	4,316,887	67	4,473.4
2003	29,232	15,370,764	4,360,311	67	4,645.2
2004	25,203	15,820,469	4,251,925	68	4,074.2
2005	29,165	17,147,069	4,485,387	64	4,738.4
2006	31,935	20,117,848	4,945,184	62	5,341.2
2007	33,660	22,269,186	5,526,219	66	5,606.3
2008	39,935	24,972,485	6,180,979	66	6,637.0
2009	31,566	21,453,879	5,308,474	71	5,257.5
2010	32,808	20,861,351	5,414,285	68	5,458.9
2011	39,137	23,387,567	5,781,075	65	6,465.7
2012	43,694	25,689,368	6,389,505	63	7,139.5
2013	38,942	24,832,212	5,984,811	68	6,394.4
2014	42,578	27,412,684	6,403,356	68	7,018.0
2015	42,345	27,244,414	6,423,685	69	7,100.1
2016	43,952	27,293,441	6,389,161	65	7,380.7
2017	48,445	28,385,472	6,700,156	60	8,161.2
2018	47,669	29,953,419	6,772,504	61	8,056.3
2019	48,104	30,820,276	6,957,987	63	8,129.8
2020	46,310	30,283,520	6,844,745	63	7,813.4



**SOURCES OF PERSONAL INCOME:  
TRANSFER PAYMENTS (\$000)**

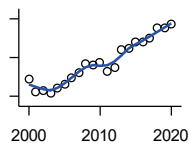
U.S. Bureau of Economic Analysis,  
Regional Economic Information System  
(REIS)

Year	County	State of Kansas	Non Metro Kansas	County Rank	Per 1000 or \$ Per Capita
2000	31,262	9,650,835	4,036,781	55	4,624.6
2001	32,453	10,549,124	4,355,457	56	4,912.7
2002	34,548	11,208,997	4,553,978	55	5,401.5
2003	35,124	11,709,049	4,702,911	56	5,581.4
2004	38,159	12,040,452	4,802,536	53	6,168.6
2005	40,756	12,696,735	5,059,314	53	6,621.6
2006	42,871	13,642,787	5,455,207	54	7,170.3
2007	45,213	14,686,821	5,775,024	53	7,530.5
2008	47,955	16,552,460	6,322,722	54	7,969.9
2009	51,075	18,025,603	6,790,962	54	8,506.8
2010	51,580	19,189,749	7,089,258	55	8,582.4
2011	55,047	19,625,770	7,255,825	54	9,094.2
2012	53,374	19,354,458	7,148,177	55	8,721.2
2013	56,662	19,639,358	7,185,636	53	9,304.1
2014	55,552	20,380,970	7,399,809	55	9,156.4
2015	56,710	21,116,856	7,623,577	55	9,508.7
2016	58,672	21,884,629	7,886,000	55	9,852.6
2017	60,879	22,559,744	8,062,517	55	10,255.9
2018	63,320	23,628,033	8,393,617	55	10,701.4
2019	64,457	25,050,174	8,845,371	57	10,893.5
2020	76,333	32,319,421	11,074,190	58	12,878.9

County: county value. Kansas: state value. County Rank: highest county value ranked #1. (\$000): thousands of dollars. Nonmetro Kansas: Kansas total less Metropolitan Areas as defined by the Office of Management and Budget (OMB; released 3/6/2020). Per 1000: For nonmoney amounts, Per 1000=(county value / county population for the same year as the data) x 1000. \$ Per capita=(county value / county population for the same year as the data). Value= . indicates missing or suppressed data or value not calculated.

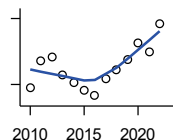
**Income**

**SOURCES OF PERSONAL INCOME:  
LESS SOCIAL INSURANCE (\$000)**



U.S. Bureau of Economic Analysis,  
Regional Economic Information System  
(REIS)

Year	County	State of Kansas	Non Metro Kansas	County Rank	Per 1000 or \$ Per Capita
2000	11,764	6,655,813	1,663,044	51	1,740.2
2001	10,398	6,869,934	1,740,915	54	1,574.0
2002	10,557	7,008,361	1,778,636	54	1,650.6
2003	10,273	7,172,781	1,821,858	58	1,632.4
2004	10,831	7,556,560	1,904,014	60	1,750.9
2005	11,191	7,911,241	1,986,907	58	1,818.2
2006	11,943	8,406,937	2,090,313	56	1,997.5
2007	12,497	8,806,941	2,180,587	59	2,081.4
2008	13,398	9,207,010	2,299,399	60	2,226.7
2009	13,284	9,002,859	2,248,703	59	2,212.5
2010	13,537	9,235,760	2,321,191	59	2,252.4
2011	12,520	8,515,986	2,139,991	59	2,068.4
2012	12,952	8,816,128	2,195,919	59	2,116.3
2013	14,829	10,225,399	2,540,439	60	2,435.0
2014	14,969	10,609,601	2,635,009	60	2,467.3
2015	15,554	11,028,204	2,663,038	59	2,608.0
2016	15,563	10,915,915	2,604,579	59	2,613.4
2017	15,965	11,224,218	2,669,954	58	2,689.5
2018	17,034	11,749,229	2,797,106	56	2,878.8
2019	17,016	12,245,451	2,889,336	58	2,875.8
2020	17,454	12,715,152	3,027,656	59	2,944.8



**HUD MEDIAN FAMILY INCOME**

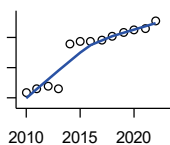
U.S. Department of Housing and Urban  
Development (HUD)

Year	County	State of Kansas	Non Metro Kansas	County Rank	Per 1000 or \$ Per Capita
2010	49,400	63,100	.	82	.
2011	55,500	64,300	.	50	.
2012	56,200	65,200	.	50	.
2013	52,200	64,800	.	78	.
2014	50,500	64,400	.	95	.
2015	48,600	66,300	.	100	.
2016	47,400	66,700	.	101	.
2017	51,300	68,500	.	98	.
2018	53,200	73,100	.	94	.
2019	55,700	75,200	.	93	.
2020	59,400	76,500	.	90	.
2021	57,400	77,400	.	94	.
2022	63,900	87,800	.	94	.

County: county value. Kansas: state value. County Rank: highest county value ranked #1. (\$000): thousands of dollars. Nonmetro Kansas: Kansas total less Metropolitan Areas as defined by the Office of Management and Budget (OMB; released 3/6/2020). Per 1000: For nonmoney amounts, Per 1000=(county value / county population for the same year as the data) x 1000. \$ Per capita=(county value / county population for the same year as the data). Value= . indicates missing or suppressed data or value not calculated.

**Income**

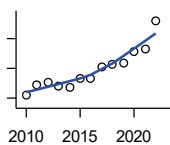
**HUD 30% LOW-TO-MEDIUM INCOME (LMI) LIMIT - 4 PERSONS**



U.S. Department of Housing and Urban Development (HUD)

Year	County	State of Kansas	Non Metro Kansas	County Rank	Per 1000 or \$ Per Capita
2010	15,850	.	.	105	.
2011	16,600	.	.	52	.
2012	16,850	.	.	51	.
2013	16,550	.	.	105	.
2014	23,850	.	.	105	.
2015	24,250	.	.	105	.
2016	24,300	.	.	105	.
2017	24,600	.	.	105	.
2018	25,100	21,950	.	105	.
2019	25,750	22,550	.	105	.
2020	26,200	22,950	.	105	.
2021	26,500	23,200	.	105	.
2022	27,750	25,950	.	105	.

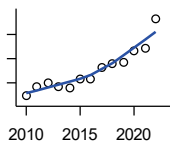
**HUD 50% LOW-TO-MEDIUM INCOME (LMI) LIMIT - 4 PERSONS**



U.S. Department of Housing and Urban Development (HUD)

Year	County	State of Kansas	Non Metro Kansas	County Rank	Per 1000 or \$ Per Capita
2010	26,400	.	.	105	.
2011	27,700	.	.	52	.
2012	28,100	.	.	50	.
2013	27,600	.	.	105	.
2014	27,400	.	.	105	.
2015	28,700	.	.	105	.
2016	28,650	.	.	105	.
2017	30,150	.	.	105	.
2018	30,550	36,550	.	105	.
2019	30,750	37,600	.	105	.
2020	32,300	38,250	.	104	.
2021	32,550	38,700	.	105	.
2022	36,400	43,300	.	105	.

**HUD 80% LOW-TO-MEDIUM INCOME (LMI) LIMIT - 4 PERSONS**



U.S. Department of Housing and Urban Development (HUD)

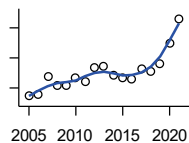
Year	County	State of Kansas	Non Metro Kansas	County Rank	Per 1000 or \$ Per Capita
2010	42,250	.	.	105	.
2011	44,300	.	.	52	.
2012	44,950	.	.	50	.
2013	44,150	.	.	105	.
2014	43,850	.	.	105	.
2015	45,900	.	.	105	.
2016	45,850	.	.	105	.
2017	48,250	.	.	105	.
2018	48,900	58,500	.	105	.
2019	49,200	60,150	.	105	.
2020	51,700	61,200	.	104	.
2021	52,100	61,900	.	105	.
2022	58,250	69,250	.	105	.

County: county value. Kansas: state value. County Rank: highest county value ranked #1. (\$000): thousands of dollars. Nonmetro Kansas: Kansas total less Metropolitan Areas as defined by the Office of Management and Budget (OMB; released 3/6/2020). Per 1000: For nonmoney amounts, Per 1000=(county value / county population for the same year as the data) x 1000. \$ Per capita=(county value / county population for the same year as the data). Value= . indicates missing or suppressed data or value not calculated.



**Banking**

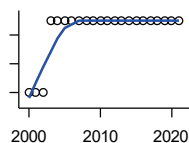
**BANK DEPOSITS** (1984-2004 in thousands; 2005- in millions)



Federal Deposit Insurance Corporation, Data Book, Operating Banks and Branches

Year	County	State of Kansas	Non Metro Kansas	County Rank	Per 1000 or \$ Per Capita
2005	169	48,304	17,000	48	27.5
2006	171	50,668	17,586	48	28.6
2007	195	54,057	18,517	45	32.5
2008	184	57,869	19,628	50	30.6
2009	184	57,763	20,031	51	30.6
2010	193	60,031	20,678	50	32.1
2011	188	61,094	21,347	54	31.1
2012	207	62,910	22,481	52	33.8
2013	208	64,547	22,795	55	34.2
2014	197	66,538	23,338	56	32.5
2015	194	68,160	23,367	58	32.5
2016	191	70,381	23,420	58	32.1
2017	206	73,329	23,928	56	34.7
2018	202	74,623	24,100	60	34.1
2019	212	76,436	24,488	56	35.8
2020	240	88,563	27,547	55	40.5
2021	272	97,055	30,122	50	46.1

**NUMBER OF BANKS**



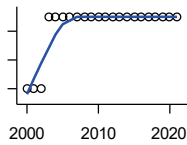
Federal Deposit Insurance Corporation, Data Book, Operating Banks and Branches

Year	County	State of Kansas	Non Metro Kansas	County Rank	Per 1000 or \$ Per Capita
2000	3	410	145	92	.
2001	3	410	136	93	.
2002	3	404	129	92	.
2003	4	397	121	75	.
2004	4	394	112	74	.
2005	4	388	101	73	.
2006	4	385	94	74	.
2007	4	382	91	75	.
2008	4	378	82	76	.
2009	4	374	79	75	.
2010	4	367	70	73	.
2011	4	359	61	74	.
2012	4	348	57	74	.
2013	4	332	45	73	.
2014	4	329	41	73	.
2015	4	320	31	72	.
2016	4	314	24	73	.
2017	4	301	13	73	.
2018	4	289	7	73	.
2019	4	279	3	72	.
2020	4	271	-1	72	.
2021	4	270	-6	71	.

County: county value. Kansas: state value. County Rank: highest county value ranked #1. (\$000): thousands of dollars. Nonmetro Kansas: Kansas total less Metropolitan Areas as defined by the Office of Management and Budget (OMB; released 3/6/2020). Per 1000: For nonmoney amounts, Per 1000=(county value / county population for the same year as the data) x 1000. \$ Per capita=(county value / county population for the same year as the data). Value= . indicates missing or suppressed data or value not calculated.

**Banking**

**NUMBER OF BANKING OFFICES**

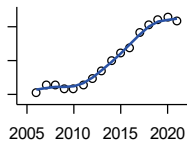


Federal Deposit Insurance Corporation, Data Book, Operating Banks and Branches

Year	County	State of Kansas	Non Metro Kansas	County Rank	Per 1000 or \$ Per Capita
2000	3	1,398	703	96	.
2001	3	1,424	708	98	.
2002	3	1,447	704	98	.
2003	4	1,461	708	86	.
2004	4	1,485	708	86	.
2005	4	1,505	711	86	.
2006	4	1,518	711	86	.
2007	4	1,543	717	87	.
2008	4	1,556	717	88	.
2009	4	1,569	716	88	.
2010	4	1,561	710	88	.
2011	4	1,559	707	88	.
2012	4	1,533	702	88	.
2013	4	1,518	696	87	.
2014	4	1,491	685	86	.
2015	4	1,472	675	86	.
2016	4	1,465	668	86	.
2017	4	1,452	666	87	.
2018	4	1,439	660	86	.
2019	4	1,439	663	86	.
2020	4	1,416	653	85	.
2021	4	1,392	641	85	.

**Government**

**TANGIBLE ASSESSED VALUATION (KDoR, million\$; 2006-)**



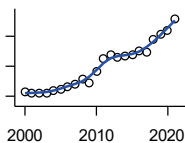
Kansas Department of Revenue, Division of Property Valuation, Statistical Report of Property Assessment and Taxation

Year	County	State of Kansas	Non Metro Kansas	County Rank	Per 1000 or \$ Per Capita
2006	61.1	28,964.3	10,316.9	70	10.2
2007	65.7	30,086.9	10,335.9	68	10.9
2008	65.7	31,000.3	10,856.9	69	10.9
2009	63.4	30,312.3	10,555.6	70	10.6
2010	63.4	29,450.2	10,158.7	71	10.5
2011	65.6	29,963.6	10,572.3	71	10.8
2012	69.5	30,382.9	10,876.2	72	11.4
2013	73.7	30,850.2	11,044.4	71	12.1
2014	79.7	31,783.0	11,388.9	68	13.1
2015	84.1	32,335.7	11,037.8	64	14.1
2016	87.9	33,156.3	10,889.6	61	14.8
2017	96.9	34,754.5	11,439.0	58	16.3
2018	101.5	36,566.1	11,907.1	58	17.2
2019	104.3	38,255.2	12,336.7	58	17.6
2020	105.7	39,333.9	12,219.3	54	17.8
2021	103.2	40,812.0	12,601.5	56	17.5

County: county value. Kansas: state value. County Rank: highest county value ranked #1. (\$000): thousands of dollars. Nonmetro Kansas: Kansas total less Metropolitan Areas as defined by the Office of Management and Budget (OMB; released 3/6/2020). Per 1000: For nonmoney amounts, Per 1000=(county value / county population for the same year as the data) x 1000. \$ Per capita=(county value / county population for the same year as the data). Value= . indicates missing or suppressed data or value not calculated.

**Government**

**SALES TAX COLLECTIONS (\$)**

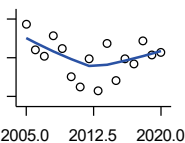


Kansas Department of Revenue. Use tax collections included beginning in calendar year 2018.

Year	County	State of Kansas	Non Metro Kansas	County Rank	Per 1000 or \$ Per Capita
2000	4,263,776	1,475,831,808	432,761,608	37	630,736.1
2001	4,191,142	1,481,026,688	426,316,284	39	634,444.7
2002	4,190,825	1,561,316,864	443,986,950	40	655,225.9
2003	4,195,182	1,626,782,976	461,658,700	40	666,642.6
2004	4,415,628	1,691,899,008	480,309,725	40	713,809.9
2005	4,485,706	1,744,980,352	497,494,867	39	728,790.6
2006	4,633,257	1,851,694,720	532,233,047	41	774,921.7
2007	4,808,329	1,917,546,752	559,319,583	41	800,854.3
2008	5,131,343	1,990,655,744	589,725,773	40	852,807.5
2009	4,877,229	1,866,223,078	548,627,132	40	812,329.9
2010	5,689,522	2,075,193,413	617,409,982	39	946,675.9
2011	6,502,913	2,347,193,367	702,671,534	38	1,074,328.9
2012	6,754,789	2,456,292,294	740,196,106	42	1,103,723.7
2013	6,629,867	2,489,204,048	746,226,565	42	1,088,648.1
2014	6,669,968	2,539,886,774	760,474,019	40	1,099,384.8
2015	6,794,694	2,642,374,740	750,090,163	39	1,139,284.7
2016	7,005,218	2,732,611,350	749,030,133	40	1,176,359.0
2017	6,947,979	2,726,104,521	744,246,491	41	1,170,481.6
2018	7,771,829	3,277,299,125	893,564,480	42	1,313,474.6
2019	8,155,228	3,395,631,405	939,607,762	44	1,378,270.7
2020	8,377,085	3,489,306,791	984,218,931	45	1,413,376.9
2021	9,160,698	3,981,293,227	1,098,391,422	47	1,553,977.6

**Crime**

**CRIME INDEX OFFENSES**



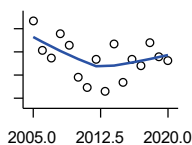
Kansas Bureau of Investigation, Note: Data are aggregated from reports by individual police departments and subject to be incomplete.

Year	County	State of Kansas	Non Metro Kansas	County Rank	Per 1000 or \$ Per Capita
2005	188	111,856	31,630	45	30.5
2006	120	110,032	.	52	20.1
2007	105	111,035	29,921	57	17.5
2008	157	93,996	27,342	47	26.1
2009	125	98,757	27,620	51	20.8
2010	50	98,354	26,909	70	8.3
2011	25	96,638	25,765	84	4.1
2012	96	98,914	26,963	59	15.7
2013	15	93,054	24,488	97	2.5
2014	136	86,323	23,341	50	22.4
2015	42	88,590	21,580	72	7.0
2016	96	90,589	21,565	56	16.1
2017	84	93,091	22,622	57	14.2
2018	142	92,062	20,325	43	24.0
2019	107	87,008	18,547	48	18.1
2020	114	87,346	17,762	48	19.2

County: county value. Kansas: state value. County Rank: highest county value ranked #1. (\$000): thousands of dollars. Nonmetro Kansas: Kansas total less Metropolitan Areas as defined by the Office of Management and Budget (OMB; released 3/6/2020). Per 1000: For nonmoney amounts, Per 1000=(county value / county population for the same year as the data) x 1000. \$ Per capita=(county value / county population for the same year as the data). Value= . indicates missing or suppressed data or value not calculated.

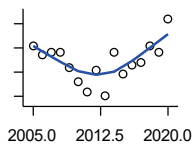
**Crime**

**PROPERTY CRIMES**



Kansas Bureau of Investigation, Note: Data are aggregated from reports by individual police departments and subject to be incomplete.

Year	County	State of Kansas	Non Metro Kansas	County Rank	Per 1000 or \$ Per Capita
2005	167	101,414	29,042	46	27.1
2006	103	99,110	.	53	17.2
2007	87	99,632	26,856	60	14.5
2008	139	83,964	24,367	46	23.1
2009	113	87,658	24,825	50	18.8
2010	44	87,926	24,133	69	7.3
2011	23	86,547	23,274	82	3.8
2012	85	88,707	24,220	59	13.9
2013	15	83,551	22,028	97	2.5
2014	118	76,794	20,858	51	19.4
2015	33	77,997	19,138	74	5.5
2016	83	79,549	19,207	56	13.9
2017	70	81,349	19,981	59	11.8
2018	121	79,695	17,769	44	20.4
2019	89	74,314	15,892	48	15.0
2020	82	73,450	15,100	51	13.8



**VIOLENT CRIMES**

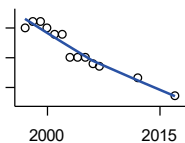
Kansas Bureau of Investigation, Note: Data are aggregated from reports by individual police departments and subject to be incomplete.

Year	County	State of Kansas	Non Metro Kansas	County Rank	Per 1000 or \$ Per Capita
2005	21	10,442	2,588	43	3.4
2006	17	10,922	.	49	2.8
2007	18	11,403	3,065	50	3.0
2008	18	10,032	2,975	49	3.0
2009	12	11,099	2,795	57	2.0
2010	6	10,428	2,776	72	1.0
2011	2	10,091	2,491	92	0.3
2012	11	10,207	2,743	57	1.8
2013	0	9,503	2,460	104	0.0
2014	18	9,529	2,483	46	3.0
2015	9	10,593	2,442	64	1.5
2016	13	11,040	2,358	46	2.2
2017	14	11,742	2,641	51	2.4
2018	21	12,367	2,556	42	3.5
2019	18	12,694	2,655	45	3.0
2020	32	13,896	2,662	35	5.4

County: county value. Kansas: state value. County Rank: highest county value ranked #1. (\$000): thousands of dollars. Nonmetro Kansas: Kansas total less Metropolitan Areas as defined by the Office of Management and Budget (OMB; released 3/6/2020). Per 1000: For nonmoney amounts, Per 1000=(county value / county population for the same year as the data) x 1000. \$ Per capita=(county value / county population for the same year as the data). Value= . indicates missing or suppressed data or value not calculated.

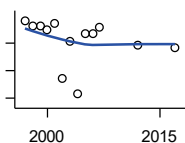
**Agriculture**

**NUMBER OF FARMS**



Kansas Agricultural Statistics, Kansas Farm Facts

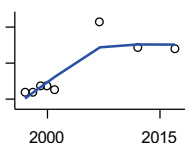
Year	County	State of Kansas	Non Metro Kansas	County Rank	Per 1000 or \$ Per Capita
1997	500	64,000	47,900	64	73.7
1998	510	65,000	48,850	64	75.2
1999	510	65,000	48,850	64	75.1
2000	500	64,000	48,030	64	74.0
2001	490	63,000	47,200	64	74.2
2002	490	63,000	47,200	64	76.6
2003	450	64,500	48,150	72	71.5
2004	450	64,500	48,150	72	72.7
2005	450	64,500	48,150	72	73.1
2006	440	64,000	47,650	73	73.6
2007	436	65,531	48,179	68	72.6
2012	416	61,773	45,655	69	68.0
2017	386	58,569	42,404	68	65.0



**TOTAL ACRES HARVESTED**

Kansas Agricultural Statistics, Kansas Farm Facts

Year	County	State of Kansas	Non Metro Kansas	County Rank	Per 1000 or \$ Per Capita
1997	332,520	22,846,000	19,430,580	12	49,029.8
1998	325,150	22,143,500	18,943,650	13	47,950.2
1999	325,450	21,708,900	18,581,750	9	47,930.8
2000	318,450	21,639,000	18,528,870	11	47,108.0
2001	328,240	21,847,900	18,689,750	10	49,688.2
2002	249,180	20,230,400	17,089,120	26	38,958.7
2003	302,500	21,827,700	18,661,920	13	48,069.3
2004	225,380	20,876,900	17,721,500	38	36,433.9
2005	313,060	21,936,500	18,807,930	13	50,862.7
2006	313,670	21,412,700	18,291,120	10	52,462.0
2007	323,248	19,886,655	17,164,743	6	53,838.8
2012	296,651	21,043,596	17,966,843	12	48,472.4
2017	293,319	21,837,465	18,543,057	18	49,413.6



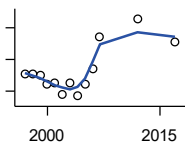
**VALUE: LIVESTOCK AND POULTRY (\$000)**

Kansas Agricultural Statistics, Kansas Farm Facts

Year	County	State of Kansas	Non Metro Kansas	County Rank	Per 1000 or \$ Per Capita
1997	13,676	2,806,445	2,500,305	75	2,016.5
1998	13,513	2,670,432	2,378,007	76	1,992.8
1999	17,393	2,849,061	2,554,528	54	2,561.6
2000	17,194	2,901,469	2,609,032	58	2,543.5
2001	14,937	2,693,274	2,437,187	60	2,261.1
2007	52,960	9,525,971	.	46	8,820.8
2012	38,874	11,476,571	10,883,216	52	6,352.0
2017	37,817	12,322,289	.	57	6,370.8

County: county value. Kansas: state value. County Rank: highest county value ranked #1. (\$000): thousands of dollars. Nonmetro Kansas: Kansas total less Metropolitan Areas as defined by the Office of Management and Budget (OMB; released 3/6/2020). Per 1000: For nonmoney amounts, Per 1000=(county value / county population for the same year as the data) x 1000. \$ Per capita=(county value / county population for the same year as the data). Value= . indicates missing or suppressed data or value not calculated.

**Agriculture**



VALUE:FIELD CROPS (\$000)  
EXCLUDING GOVERNMENT  
PROGRAM PAYMENTS

Kansas Agricultural Statistics, Kansas  
Farm Facts

Year	County	State of Kansas	Non Metro Kansas	County Rank	Per 1000 or \$ Per Capita
1997	60,985	4,474,942	3,800,365	22	8,992.2
1998	61,290	3,594,319	3,124,409	8	9,038.5
1999	59,389	3,118,193	2,728,319	7	8,746.5
2000	48,705	2,915,660	2,540,052	15	7,204.9
2001	50,921	3,283,117	2,857,136	13	7,708.3
2002	36,066	3,011,855	2,560,580	29	5,638.8
2003	50,245	3,623,255	3,150,629	20	7,984.3
2004	33,577	3,445,688	2,896,603	42	5,427.9
2005	48,642	3,678,123	3,182,677	26	7,902.8
2006	67,722	4,308,716	3,684,132	17	11,326.6
2007	108,370	4,887,212	.	6	18,049.6
2012	131,288	6,983,993	6,044,551	8	21,452.3
2017	101,362	6,460,437	.	10	17,075.8

County: county value. Kansas: state value. County Rank: highest county value ranked #1. (\$000): thousands of dollars. Nonmetro Kansas: Kansas total less Metropolitan Areas as defined by the Office of Management and Budget (OMB; released 3/6/2020). Per 1000: For nonmoney amounts, Per 1000=(county value / county population for the same year as the data) x 1000. \$ Per capita=(county value / county population for the same year as the data). Value= . indicates missing or suppressed data or value not calculated.