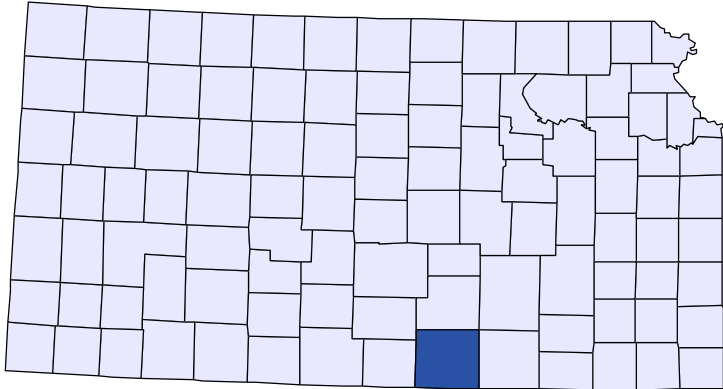




Kansas County Profiles

Sumner County



The University
of Kansas

Institute for Policy
& Social Research

KU INSTITUTE FOR POLICY
& SOCIAL RESEARCH

The University of Kansas

1541 Lilac Lane, Rm. 607
Blake Hall
Lawrence, KS 66045-3129

Foreword

The Kansas County Profile Report is published by the Institute for Policy & Social Research (IPSR) at the University of Kansas with support from the KU University Center project.* Special thanks to Xanthippe Wedel, senior research data engineer, who compiles and updates the county profiles and Genna Hurd, associate researcher, who provides editorial review.

County reports can be generated for any county in Kansas by simply clicking on the county from the web site:

<https://ipsr.ku.edu/ksdata/kcced/profiles/>

The Kansas County Profile Report contains 12 categories of information: Population, Vital Statistics and Health, Housing, Education, Social Environment, Business, Employment, Income, Banking, Government, Crime, and Agriculture. For more information about Kansas, please refer to the Kansas Statistical Abstract, available online at:

<https://ipsr.ku.edu/ksdata/ksah/>

We are always looking for ways to improve the Kansas County Profile Report and we welcome your suggestions and comments. Please address any correspondence to the Institute for Policy & Social Research, The University of Kansas, 607 Blake Hall, 1541 Lilac Lane, Lawrence, Kansas 66045-3129, e-mail ipsr@ku.edu or call 785-864-3701.

**The KU University Center is a collaborative effort led by the Institute for Policy & Social Research at the University of Kansas. This project is supported by the Economic Development Administration, U.S. Department of Commerce, through its University Center Program.*

The mission of EDA is to lead the federal economic development agenda by promoting innovation and competitiveness, preparing American regions for growth and success in the worldwide economy.

Kansas County Profiles Table of Contents

Population

Total Population (Decennial Census)	1
Estimated Population (Current Population Reports)	2
Urban Population	2
Rural Population	3
Net Migration (Decade Ending...)	3
Median Age	3

Population (Age Groups)

Population Under 18 (Decennial Census)	3
Population Age 18 and Over (Decennial Census)	4
Population Age 65 and Over (Decennial Census)	4
Population Age 85 and Over (Decennial Census)	4

Vital Statistics and Health

Live Births	5
Deaths	5
Marriages	6
Divorces and Annulments	6
Physicians: M.D. Physicians	7
Physicians: D.O. Physicians	7
Dentists	8
Number of Hospitals	8
Number of Hospital Beds	9

Housing

Housing Units (Decennial Census)	9
Housing Units (Estimated)	10
Occupied Housing Units	10
Owner Occupied Housing Units	10
Renter Occupied Housing Units	11
Vacant Housing Units	11
Median Value (\$): Owner Occupied Housing Units	11
Median Contract Rent (\$)	12
Fair Market Rent: 2 Bedrooms	12

Education

Population Age 25 and Over	13
Percent of Population 25+ with High School or Higher Education	13
Percent of Population 25+ with Bachelors Degree or Higher Education	14
Public School Enrollment (FTE- School Year Beginning...)	14
Pupil/Teacher Ratio (School Year Beginning...)	15

Kansas County Profiles Table of Contents

Social Environment

Total Child Care Facilities	15
Preschools	16
Food Stamp Beneficiaries	16
Percent of Population Receiving Food Stamps	17
Estimated Number of People in Poverty	17
Estimated Percent of People in Poverty	18
Estimated Number of Related Children Age 5 to 17 in Families in Poverty	18
Estimated Percent of Related Children Age 5 to 17 in Families in Poverty	19
Estimated Number Under 18 in Poverty	19
Estimated Percent Under 18 in Poverty	20

Business

Establishments: Total	21
Establishments: 1-19 Employees	22
Establishments: 20-99 Employees	22
Establishments: 100-499 Employees	23
Establishments: 500 or More Employees	23
Establishments: Forestry, Fishing, Hunting, and Ag Support	24
Establishments: Mining	24
Establishments: Utilities	25
Establishments: Construction	25
Establishments: Manufacturing	26
Establishments: Wholesale Trade	26
Establishments: Retail Trade	27
Establishments: Transportation and Warehousing	27
Establishments: Information	28
Establishments: Finance and Insurance	28
Establishments: Real Estate, Rental, and Leasing	29
Establishments: Professional, Scientific, and Technical Services	29
Establishments: Management of Companies and Enterprises	30
Establishments: Admin, Support, Waste Management, and Remediation	30
Establishments: Educational Services	31
Establishments: Health Care and Social Assistance	31
Establishments: Arts, Entertainment, and Recreation	32
Establishments: Accommodation and Food Services	32
Establishments: Other Services	33

Kansas County Profiles Table of Contents

Business	
Total Annual Payroll (\$000)	34
Total Annual Payroll (\$000): Forestry, Fishing, Hunting, and Ag Support	35
Total Annual Payroll (\$000): Mining	35
Total Annual Payroll (\$000): Utilities	36
Total Annual Payroll (\$000): Construction	36
Total Annual Payroll (\$000): Manufacturing	37
Total Annual Payroll (\$000): Wholesale Trade	37
Total Annual Payroll (\$000): Retail Trade	38
Total Annual Payroll (\$000): Transportation and Warehousing	38
Total Annual Payroll (\$000): Information	39
Total Annual Payroll (\$000): Finance and Insurance	39
Total Annual Payroll (\$000): Real Estate, Rental, and Leasing	40
Total Annual Payroll (\$000): Professional, Scientific, and Technical Services	40
Total Annual Payroll (\$000): Management of Companies and Enterprises	41
Total Annual Payroll (\$000): Admin, Support, Waste Management, and Remediation	41
Total Annual Payroll (\$000): Educational Services	42
Total Annual Payroll (\$000): Health Care and Social Assistance	42
Total Annual Payroll (\$000): Arts, Entertainment, and Recreation	43
Total Annual Payroll (\$000): Accommodation and Food Services	43
Total Annual Payroll (\$000): Other Services	44
Nominal Taxable Retail Sales (Million\$)	44
Retail Pull Factor	45
Employment	
Civilian Labor Force (BLS - Place of Residence)	46
Employed (BLS - Place of Residence)	47
Unemployed (BLS - Place of Residence)	48
Unemployment Rate (BLS - Place of Residence)	49
BEA Employment: Total (Place of Work)	49
BEA Employment: Farm	50
BEA Employment: Non-Farm	50
Average Wage per Job (\$)	51
BEA Employment: Forestry, Fishing, Hunting, and Ag Support	51
BEA Employment: Mining	52
BEA Employment: Utilities	52
BEA Employment: Construction	53
BEA Employment: Manufacturing	53
BEA Employment: Wholesale Trade	54
BEA Employment: Retail Trade	54
BEA Employment: Transportation and Warehousing	55
BEA Employment: Information	55
BEA Employment: Finance and Insurance	56
BEA Employment: Real Estate, Rental, and Leasing	56
BEA Employment: Professional and Technical Services	57
BEA Employment: Management of Companies and Enterprises	57
BEA Employment: Administrative and Waste Services	58
BEA Employment: Educational Services	58
BEA Employment: Health Care and Social Assistance	59
BEA Employment: Arts, Entertainment, and Recreation	59
BEA Employment: Government and Government Enterprises	60
BEA Employment: Accommodation and Food Services	60
BEA Employment: Other Services, Except Public Administration	61

Kansas County Profiles Table of Contents

Income

BEA Per Capita Personal Income (\$)	61
Sources of Personal Income: Total Personal Income (\$000)	62
Sources of Personal Income: Wages And Salaries (\$000)	62
Sources of Personal Income: Proprietors-Farm (\$000)	63
Sources of Personal Income: Proprietors-Nonfarm (\$000)	63
Sources of Personal Income: Dividends, Interest, Rent (\$000)	64
Sources of Personal Income: Transfer Payments (\$000)	64
Sources of Personal Income: Less Social Insurance (\$000)	65
HUD Median Family Income	65
HUD 30% Low-To-Medium Income (LMI) Limit - 4 Persons	66
HUD 50% Low-To-Medium Income (LMI) Limit - 4 Persons	66
HUD 80% Low-To-Medium Income (LMI) Limit - 4 Persons	66

Banking

Bank Deposits (\$000)	67
Number of Banks	67
Number of Banking Offices	68

Government

Tangible Assessed Valuation (million\$)	68
Sales Tax Collections	69

Crime

Crime Index Offenses	69
Property Crimes	70
Violent Crimes	70

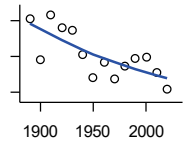
Agriculture

Number of Farms	71
Total Acres Harvested	71
Value: Livestock and Poultry (\$000)	71
Value: Field Crops (\$000) Excluding Government Program Payments	72

Population

DECENNIAL CENSUS:TOTAL POPULATION

U.S. Census Bureau: Decennial Census

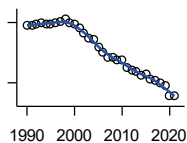


Year	County	State of Kansas	Non Metro Kansas	County Rank	Per 1000 or \$ Per Capita
1890	30,271	1,427,096	968,413	7	.
1900	25,631	1,470,495	981,206	12	.
1910	30,654	1,690,949	1,138,294	11	.
1920	29,213	1,769,257	1,153,525	12	.
1930	28,960	1,880,999	1,180,056	14	.
1940	26,163	1,801,028	1,097,216	15	.
1950	23,646	1,905,299	1,046,823	19	.
1960	25,316	2,178,611	1,021,510	19	.
1970	23,553	2,246,578	958,104	21	.
1980	24,928	2,363,679	980,085	21	.
1990	25,841	2,477,574	939,416	22	.
2000	25,946	2,688,418	959,507	23	.
2010	24,132	2,853,118	929,981	24	.
2020	22,382	2,937,880	892,006	25	.

County: county value. Kansas: state value. County Rank: highest county value ranked #1. (\$000): thousands of dollars. Nonmetro Kansas: Kansas total less Metropolitan Areas as defined by the Office of Management and Budget (OMB; released 3/6/2020). Per 1000: For nonmoney amounts, Per 1000=(county value / county population for the same year as the data) x 1000. \$ Per capita=(county value / county population for the same year as the data). Value= . indicates missing or suppressed data or value not calculated.

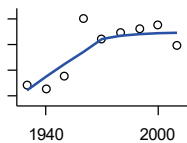
Population

ESTIMATED POPULATION



U.S. Census Bureau

Year	County	State of Kansas	Non Metro Kansas	County Rank	Per 1000 or \$ Per Capita
1990	25,845	2,481,349	938,607	22	.
1991	25,883	2,498,722	938,965	22	.
1992	25,907	2,532,394	942,759	22	.
1993	25,973	2,556,547	947,515	22	.
1994	25,951	2,580,513	952,178	22	.
1995	25,900	2,601,007	957,771	22	.
1996	26,019	2,614,554	959,455	23	.
1997	26,041	2,635,292	960,225	23	.
1998	26,183	2,660,598	960,569	23	.
1999	25,974	2,678,338	960,704	23	.
2000	25,946	2,693,681	959,230	23	.
2001	25,704	2,702,162	952,607	23	.
2002	25,500	2,713,535	945,985	23	.
2003	25,248	2,723,004	941,474	24	.
2004	25,146	2,734,373	937,623	24	.
2005	24,795	2,745,299	932,852	24	.
2006	24,493	2,762,931	928,809	24	.
2007	24,290	2,783,785	927,643	24	.
2008	24,238	2,808,076	926,248	24	.
2009	24,160	2,832,704	926,755	24	.
2010	24,117	2,858,190	930,028	24	.
2011	23,787	2,869,225	927,675	24	.
2012	23,635	2,885,257	925,152	24	.
2013	23,537	2,893,212	922,383	24	.
2014	23,384	2,900,475	917,854	24	.
2015	23,417	2,909,011	912,199	24	.
2016	23,183	2,910,844	905,099	25	.
2017	23,117	2,908,718	897,981	25	.
2018	23,019	2,911,359	892,656	25	.
2019	22,836	2,913,314	887,455	25	.
2020	22,332	2,935,880	889,750	25	.
2021	22,385	2,934,582	886,438	25	.



URBAN POPULATION

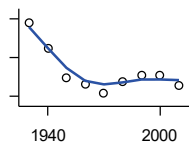
U.S. Census Bureau: Decennial Census

Year	County	State of Kansas	Non Metro Kansas	County Rank	Per 1000 or \$ Per Capita
1930	7,405	729,834	336,666	27	.
1940	7,246	753,941	349,228	26	.
1950	7,747	993,220	398,923	30	.
1960	10,019	1,328,741	457,447	29	.
1970	9,194	1,484,870	450,543	29	.
1980	9,472	1,575,899	474,769	29	.
1990	9,619	1,712,564	464,205	27	.
2000	9,751	1,920,081	488,011	28	.
2010	8,964	2,116,961	485,780	29	.

County: county value. Kansas: state value. County Rank: highest county value ranked #1. (\$000): thousands of dollars. Nonmetro Kansas: Kansas total less Metropolitan Areas as defined by the Office of Management and Budget (OMB; released 3/6/2020). Per 1000: For nonmoney amounts, Per 1000=(county value / county population for the same year as the data) x 1000. \$ Per capita=(county value / county population for the same year as the data). Value= . indicates missing or suppressed data or value not calculated.

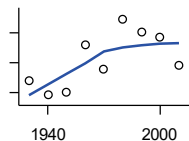
Population

RURAL POPULATION



U.S. Census Bureau

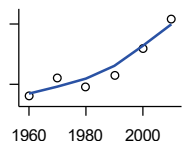
Year	County	State of Kansas	Non Metro Kansas	County Rank	Per 1000 or \$ Per Capita
1930	21,555	1,151,165	843,390	6	.
1940	18,917	1,047,087	747,988	9	.
1950	15,899	912,079	647,900	9	.
1960	15,297	849,870	564,063	10	.
1970	14,359	761,708	509,972	10	.
1980	15,456	787,780	505,873	8	.
1990	16,222	765,010	475,211	8	.
2000	16,195	768,337	471,900	9	.
2010	15,168	736,157	444,201	10	.



NET MIGRATION: DECADE ENDING...

calculated by the Institute for Policy and Social Research, The University of Kansas

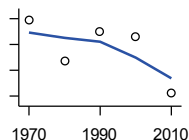
Year	County	State of Kansas	Non Metro Kansas	County Rank	Per 1000 or \$ Per Capita
1930	-3,200	-66,132	-101,869	96	-110.5
1940	-4,179	-192,649	-166,022	99	-159.7
1950	-3,933	-84,329	-158,379	96	-166.3
1960	-820	-38,999	-146,640	28	-32.4
1970	-2,409	-119,662	-105,116	92	-102.3
1980	949	-21,983	-6,184	18	38.1
1990	18	-61,835	-79,274	12	0.7
2000	-297	68,960	4,247	85	-11.4
2010	-2,178	5,578	-50,648	100	-90.3



MEDIAN AGE

U.S. Census Bureau: Decennial Census

Year	County	State of Kansas	Non Metro Kansas	County Rank	Per 1000 or \$ Per Capita
1960	32.8	26.9	.	58	.
1970	34.6	28.7	.	56	.
1980	33.8	30.1	.	53	.
1990	34.9	32.9	.	70	.
2000	37.6	35.2	.	71	.
2010	40.5	36.0	.	65	.



POPULATION UNDER 18 (DECENNIAL CENSUS)

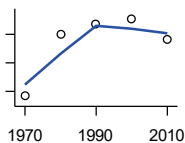
U.S. Census Bureau: Decennial Census

Year	County	State of Kansas	Non Metro Kansas	County Rank	Per 1000 or \$ Per Capita
1970	7,723	746,354	306,227	21	.
1980	6,917	649,035	263,919	21	.
1990	7,494	661,614	250,107	20	.
2000	7,403	712,993	250,757	21	.
2010	6,314	726,939	229,213	25	.

County: county value. Kansas: state value. County Rank: highest county value ranked #1. (\$000): thousands of dollars. Nonmetro Kansas: Kansas total less Metropolitan Areas as defined by the Office of Management and Budget (OMB; released 3/6/2020). Per 1000: For nonmoney amounts, Per 1000=(county value / county population for the same year as the data) x 1000. \$ Per capita=(county value / county population for the same year as the data). Value= . indicates missing or suppressed data or value not calculated.

Population

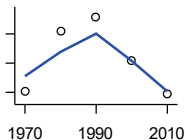
**POPULATION AGE 18 AND OVER
(DECENNIAL CENSUS)**



U.S. Census Bureau: Decennial Census

Year	County	State of Kansas	Non Metro Kansas	County Rank	Per 1000 or \$ Per Capita
1970	15,830	1,500,224	654,288	21	.
1980	17,979	1,714,282	716,684	21	.
1990	18,347	1,815,960	689,309	22	.
2000	18,543	1,975,425	709,154	23	.
2010	17,818	2,126,179	700,768	24	.

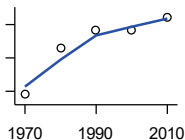
**POPULATION AGE 65 AND OVER
(DECENNIAL CENSUS)**



U.S. Census Bureau: Decennial Census

Year	County	State of Kansas	Non Metro Kansas	County Rank	Per 1000 or \$ Per Capita
1970	3,804	266,201	149,049	15	.
1980	4,220	306,263	164,932	17	.
1990	4,316	342,571	168,579	17	.
2000	4,014	356,229	161,769	18	.
2010	3,786	376,116	154,214	20	.

**POPULATION AGE 85 AND OVER
(DECENNIAL CENSUS)**



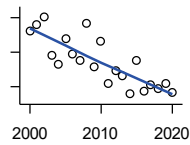
U.S. Census Bureau: Decennial Census

Year	County	State of Kansas	Non Metro Kansas	County Rank	Per 1000 or \$ Per Capita
1970	390	23,899	13,698	15	.
1980	530	33,455	18,804	15	.
1990	583	42,241	22,970	16	.
2000	582	51,770	26,644	21	.
2010	622	59,318	26,197	20	.

County: county value. Kansas: state value. County Rank: highest county value ranked #1. (\$000): thousands of dollars. Nonmetro Kansas: Kansas total less Metropolitan Areas as defined by the Office of Management and Budget (OMB; released 3/6/2020). Per 1000: For nonmoney amounts, Per 1000=(county value / county population for the same year as the data) x 1000. \$ Per capita=(county value / county population for the same year as the data). Value= . indicates missing or suppressed data or value not calculated.

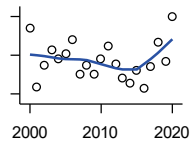
Vital Statistics and Health

BIRTHS (LIVE)



Kansas Department of Health and Environment

Year	County	State of Kansas	Non Metro Kansas	County Rank	Per 1000 or \$ Per Capita
2000	324	39,654	12,980	25	12.5
2001	332	38,832	12,527	24	12.9
2002	341	39,338	12,476	25	13.4
2003	297	39,353	12,342	25	11.8
2004	286	39,553	12,398	26	11.4
2005	315	39,701	12,382	25	12.7
2006	298	40,896	12,726	27	12.2
2007	291	41,951	12,990	27	12.0
2008	333	41,815	12,970	26	13.7
2009	283	41,388	12,949	27	11.7
2010	312	40,439	12,200	25	12.9
2011	263	39,628	12,098	26	11.1
2012	279	40,304	12,217	27	11.8
2013	272	38,805	11,877	26	11.6
2014	252	39,193	12,052	27	10.8
2015	290	39,126	11,836	26	12.4
2016	255	38,048	11,467	27	11.0
2017	262	36,464	10,968	26	11.3
2018	258	36,268	10,826	27	11.2
2019	263	35,395	10,506	25	11.5
2020	253	34,368	10,222	26	11.3



DEATHS

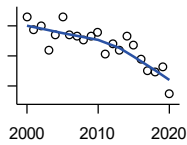
Kansas Department of Health and Environment

Year	County	State of Kansas	Non Metro Kansas	County Rank	Per 1000 or \$ Per Capita
2000	308	24,676	11,175	18	11.9
2001	247	24,590	10,807	23	9.6
2002	270	24,968	11,079	21	10.6
2003	286	24,417	10,615	17	11.3
2004	276	23,720	10,369	19	11.0
2005	282	24,632	10,599	18	11.4
2006	296	24,489	10,538	16	12.1
2007	261	24,413	10,601	20	10.7
2008	270	24,896	10,593	19	11.1
2009	260	23,997	9,938	19	10.8
2010	276	24,428	10,105	19	11.4
2011	290	25,114	10,520	18	12.2
2012	271	25,084	10,259	18	11.5
2013	257	25,347	10,249	19	10.9
2014	251	25,731	10,275	22	10.7
2015	264	26,611	10,539	20	11.3
2016	246	26,129	10,231	23	10.6
2017	268	26,725	10,452	21	11.6
2018	294	27,213	10,389	18	12.8
2019	273	27,312	10,569	22	12.0
2020	320	31,667	11,850	19	14.3

County: county value. Kansas: state value. County Rank: highest county value ranked #1. (\$000): thousands of dollars. Nonmetro Kansas: Kansas total less Metropolitan Areas as defined by the Office of Management and Budget (OMB; released 3/6/2020). Per 1000: For nonmoney amounts, Per 1000=(county value / county population for the same year as the data) x 1000. \$ Per capita=(county value / county population for the same year as the data). Value= . indicates missing or suppressed data or value not calculated.

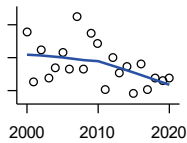
Vital Statistics and Health

MARRIAGES



Kansas Department of Health and Environment

Year	County	State of Kansas	Non Metro Kansas	County Rank	Per 1000 or \$ Per Capita
2000	212	20,426	7,333	21	8.2
2001	194	20,457	7,441	25	7.5
2002	200	19,783	6,794	24	7.8
2003	168	18,722	6,469	24	6.7
2004	188	19,174	6,756	24	7.5
2005	212	18,745	6,481	20	8.6
2006	188	18,836	6,433	23	7.7
2007	187	18,910	6,464	24	7.7
2008	182	18,717	6,283	24	7.5
2009	187	18,268	6,015	23	7.7
2010	192	18,150	5,925	22	8.0
2011	163	17,897	5,977	25	6.9
2012	176	18,154	5,752	22	7.4
2013	168	17,328	5,533	24	7.1
2014	186	17,655	5,535	22	8.0
2015	175	17,595	5,400	23	7.5
2016	156	17,948	5,340	25	6.7
2017	140	17,274	5,163	25	6.1
2018	139	16,362	4,999	25	6.0
2019	145	15,403	4,650	23	6.3
2020	109	14,038	4,066	25	4.9



DIVORCES AND ANNULMENTS

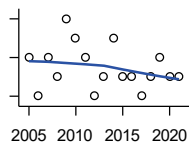
Kansas Department of Health and Environment

Year	County	State of Kansas	Non Metro Kansas	County Rank	Per 1000 or \$ Per Capita
2000	96	10,105	4,000	22	3.7
2001	65	9,885	3,818	27	2.5
2002	85	9,645	3,716	25	3.3
2003	68	8,644	3,464	26	2.7
2004	74	8,759	3,506	23	2.9
2005	83	8,476	3,311	21	3.3
2006	73	9,145	3,387	27	3.0
2007	105	9,347	3,402	20	4.3
2008	73	9,818	3,655	31	3.0
2009	95	10,333	3,463	23	3.9
2010	89	10,579	3,530	26	3.7
2011	61	10,445	3,347	31	2.6
2012	80	9,782	3,040	22	3.4
2013	71	9,085	2,973	24	3.0
2014	75	8,441	2,682	22	3.2
2015	58	8,036	2,704	28	2.5
2016	76	7,198	2,424	20	3.3
2017	61	6,494	2,315	23	2.6
2018	68	6,538	2,269	21	3.0
2019	66	6,398	2,357	22	2.9
2020	68	5,169	1,866	18	3.0

County: county value. Kansas: state value. County Rank: highest county value ranked #1. (\$000): thousands of dollars. Nonmetro Kansas: Kansas total less Metropolitan Areas as defined by the Office of Management and Budget (OMB; released 3/6/2020). Per 1000: For nonmoney amounts, Per 1000=(county value / county population for the same year as the data) x 1000. \$ Per capita=(county value / county population for the same year as the data). Value= . indicates missing or suppressed data or value not calculated.

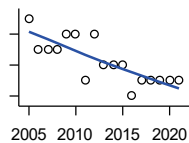
Vital Statistics and Health

PHYSICIANS: M.D. PHYSICIANS



Kansas Department of Health and Environment (1981-2005,2010-);Kansas Health Policy Authority (2006-2009)

Year	County	State of Kansas	Non Metro Kansas	County Rank	Per 1000 or \$ Per Capita
2005	7	4,241	912	45	0.3
2006	5	4,310	953	53	0.2
2007	7	5,309	1,046	47	0.3
2008	6	5,110	1,016	48	0.2
2009	9	5,249	996	38	0.4
2010	8	5,192	979	42	0.3
2011	7	5,243	983	44	0.3
2012	5	5,693	1,033	54	0.2
2013	6	6,106	1,071	49	0.3
2014	8	5,839	951	39	0.3
2015	6	5,703	855	43	0.3
2016	6	4,278	643	42	0.3
2017	5	6,332	1,047	55	0.2
2018	6	6,079	1,065	48	0.3
2019	7	6,435	1,036	44	0.3
2020	6	6,668	1,045	47	0.3
2021	6	6,745	1,042	49	0.3



PHYSICIANS: D.O. PHYSICIANS

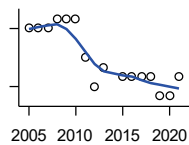
Kansas Department of Health and Environment (1981-2005,2010-);Kansas Health Policy Authority (2006-2009)

Year	County	State of Kansas	Non Metro Kansas	County Rank	Per 1000 or \$ Per Capita
2005	7	553	174	15	0.3
2006	5	508	171	23	0.2
2007	5	569	169	22	0.2
2008	5	558	166	22	0.2
2009	6	564	160	17	0.2
2010	6	583	169	20	0.2
2011	3	502	152	30	0.1
2012	6	718	200	20	0.3
2013	4	829	210	28	0.2
2014	4	817	189	28	0.2
2015	4	819	190	28	0.2
2016	2	632	136	34	0.1
2017	3	579	129	30	0.1
2018	3	871	164	30	0.1
2019	3	951	212	26	0.1
2020	3	1,018	204	26	0.1
2021	3	1,095	217	32	0.1

County: county value. Kansas: state value. County Rank: highest county value ranked #1. (\$000): thousands of dollars. Nonmetro Kansas: Kansas total less Metropolitan Areas as defined by the Office of Management and Budget (OMB; released 3/6/2020). Per 1000: For nonmoney amounts, Per 1000=(county value / county population for the same year as the data) x 1000. \$ Per capita=(county value / county population for the same year as the data). Value= . indicates missing or suppressed data or value not calculated.

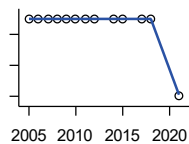
Vital Statistics and Health

DENTISTS



Kansas Department of Health and Environment (1981-2006,2010-);Kansas Health Policy Authority (2007-2009)

Year	County	State of Kansas	Non Metro Kansas	County Rank	Per 1000 or \$ Per Capita
2005	12	1,347	363	21	0.5
2006	12	1,381	361	21	0.5
2007	12	1,335	350	21	0.5
2008	13	1,392	353	19	0.5
2009	13	1,353	350	19	0.5
2010	13	1,401	365	19	0.5
2011	9	1,338	346	22	0.4
2012	6	1,434	392	33	0.3
2013	8	1,212	328	23	0.3
2015	7	1,240	327	25	0.3
2016	7	1,456	350	27	0.3
2017	7	1,467	350	26	0.3
2018	7	1,604	359	30	0.3
2019	5	1,646	355	31	0.2
2020	5	1,646	355	31	0.2
2021	7	1,688	362	29	0.3



NUMBER OF HOSPITALS

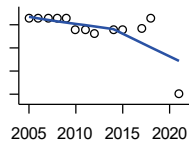
American Hospital Association, American Hospital Association Guide to the Health Care Field

Year	County	State of Kansas	Non Metro Kansas	County Rank	Per 1000 or \$ Per Capita
2005	2	158	105	31	.
2006	2	158	105	31	.
2007	2	159	104	32	.
2008	2	159	104	32	.
2009	2	158	105	32	.
2010	2	158	104	31	.
2011	2	158	103	31	.
2012	2	157	103	31	.
2014	2	156	.	31	.
2015	2	155	103	32	.
2017	2	157	102	30	.
2018	2	154	99	29	.
2021	1	151	.	95	.

County: county value. Kansas: state value. County Rank: highest county value ranked #1. (\$000): thousands of dollars. Nonmetro Kansas: Kansas total less Metropolitan Areas as defined by the Office of Management and Budget (OMB; released 3/6/2020). Per 1000: For nonmoney amounts, Per 1000=(county value / county population for the same year as the data) x 1000. \$ Per capita=(county value / county population for the same year as the data). Value= . indicates missing or suppressed data or value not calculated.

Vital Statistics and Health

NUMBER OF HOSPITAL BEDS

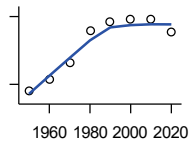


Kansas Department of Health and Environment

Year	County	State of Kansas	Non Metro Kansas	County Rank	Per 1000 or \$ Per Capita
2005	86	12,389	5,687	35	3.5
2006	86	11,992	5,514	35	3.5
2007	86	12,171	5,637	34	3.5
2008	86	12,332	5,700	34	3.5
2009	86	12,283	5,652	34	3.6
2010	76	12,218	5,521	34	3.1
2011	76	12,182	5,335	36	3.2
2012	72	12,002	5,355	38	3.0
2014	76	12,034	.	36	3.3
2015	76	11,926	5,330	32	3.2
2017	77	11,491	4,825	29	3.3
2018	86	11,448	4,583	25	3.7
2021	20	11,199	.	84	0.9

Housing

HOUSING UNITS (DECENNIAL)



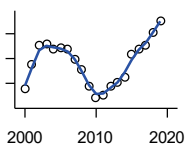
U.S. Census Bureau: Decennial Census

Year	County	State of Kansas	Non Metro Kansas	County Rank	Per 1000 or \$ Per Capita
1950	7,701	586,650	328,210	18	325.7
1960	8,222	672,899	329,380	17	324.8
1970	8,977	789,735	363,824	18	381.1
1980	10,356	955,207	416,877	20	415.4
1990	10,769	1,044,112	417,062	22	416.7
2000	10,877	1,131,395	422,218	23	419.2
2010	10,865	1,233,215	424,050	24	450.2
2020	10,324	1,275,689	413,120	24	461.3

County: county value. Kansas: state value. County Rank: highest county value ranked #1. (\$000): thousands of dollars. Nonmetro Kansas: Kansas total less Metropolitan Areas as defined by the Office of Management and Budget (OMB; released 3/6/2020). Per 1000: For nonmoney amounts, Per 1000=(county value / county population for the same year as the data) x 1000. \$ Per capita=(county value / county population for the same year as the data). Value= . indicates missing or suppressed data or value not calculated.

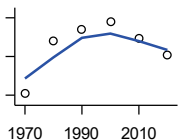
Housing

HOUSING UNITS (ESTIMATED)



U.S. Census Bureau

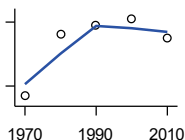
Year	County	State of Kansas	Non Metro Kansas	County Rank	Per 1000 or \$ Per Capita
2000	10,890	1,134,529	422,560	23	419.7
2001	10,938	1,146,858	423,876	23	425.5
2002	10,977	1,160,129	425,089	23	430.5
2003	10,980	1,171,620	425,936	23	434.9
2004	10,968	1,184,702	426,593	23	436.2
2005	10,972	1,195,791	426,964	23	442.5
2006	10,969	1,206,692	426,713	24	447.8
2007	10,949	1,217,608	426,090	24	450.8
2008	10,927	1,225,625	425,768	24	450.8
2009	10,893	1,230,552	424,776	24	450.9
2010	10,870	1,234,456	424,174	24	450.4
2011	10,877	1,238,052	424,549	24	457.3
2012	10,893	1,241,992	425,116	24	460.9
2013	10,901	1,246,675	425,699	24	463.1
2014	10,912	1,253,284	426,269	24	466.6
2015	10,958	1,258,999	426,844	24	468.0
2016	10,968	1,265,684	427,465	24	473.1
2017	10,978	1,273,536	427,746	24	474.9
2018	11,003	1,280,649	428,099	24	478.0
2019	11,026	1,288,401	428,495	24	482.8



OCCUPIED HOUSING UNITS

U.S. Census Bureau: Decennial Census

Year	County	State of Kansas	Non Metro Kansas	County Rank	Per 1000 or \$ Per Capita
1970	8,046	727,364	326,494	19	341.6
1980	9,413	872,239	371,693	20	377.6
1990	9,689	944,726	365,901	22	374.9
2000	9,888	1,037,891	375,313	23	381.1
2010	9,454	1,112,096	370,269	24	391.8
2020	9,028	1,151,360	356,330	25	403.4



OWNER OCCUPIED HOUSING UNITS

U.S. Census Bureau: Decennial Census

Year	County	State of Kansas	Non Metro Kansas	County Rank	Per 1000 or \$ Per Capita
1970	5,763	502,585	236,338	20	244.7
1980	7,225	612,433	277,096	19	289.8
1990	7,420	641,762	263,099	18	287.1
2000	7,578	718,703	271,350	20	292.1
2010	7,134	753,532	261,763	23	295.6

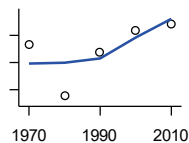
County: county value. Kansas: state value. County Rank: highest county value ranked #1. (\$000): thousands of dollars. Nonmetro Kansas: Kansas total less Metropolitan Areas as defined by the Office of Management and Budget (OMB; released 3/6/2020). Per 1000: For nonmoney amounts, Per 1000=(county value / county population for the same year as the data) x 1000. \$ Per capita=(county value / county population for the same year as the data). Value= . indicates missing or suppressed data or value not calculated.

Housing

RENTER OCCUPIED HOUSING UNITS

Year	County	State of Kansas	Non Metro Kansas	County Rank	Per 1000 or \$ Per Capita
1970	2,283	224,779	90,156	20	96.9
1980	2,188	259,806	94,597	23	87.8
1990	2,269	302,964	102,802	25	87.8
2000	2,310	319,188	103,963	25	89.0
2010	2,320	358,564	108,506	26	96.1

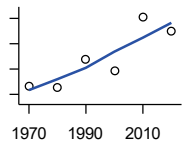
U.S. Census Bureau: Decennial Census



VACANT HOUSING UNITS

Year	County	State of Kansas	Non Metro Kansas	County Rank	Per 1000 or \$ Per Capita
1970	869	60,058	35,954	12	36.9
1980	851	77,912	41,584	22	34.1
1990	1,080	99,386	51,161	19	41.8
2000	989	93,309	46,904	20	38.1
2010	1,411	121,119	53,781	18	58.5
2020	1,296	124,329	56,790	19	57.9

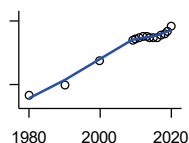
U.S. Census Bureau: Decennial Census



MEDIAN VALUE (\$): OWNER OCCUPIED HOUSING UNITS

Year	County	State of Kansas	Non Metro Kansas	County Rank	Per 1000 or \$ Per Capita
1980	30,000	37,800	.	41	.
1990	39,300	52,200	.	32	.
2000	62,100	83,500	.	36	.
2009	81,400	118,500	.	43	.
2010	82,400	122,600	.	42	.
2011	84,700	125,500	.	38	.
2012	85,600	127,400	.	41	.
2013	85,500	128,400	.	44	.
2014	84,000	129,400	.	49	.
2015	83,900	132,000	.	56	.
2016	84,200	135,300	.	59	.
2017	86,800	139,200	.	56	.
2018	87,400	145,400	.	62	.
2019	89,800	151,900	.	61	.
2020	94,800	157,600	.	58	.

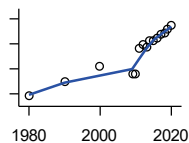
U.S. Census Bureau, Decennial Census (- 2000), (2009 -) American Community Survey five-year average ending in year shown.



County: county value. Kansas: state value. County Rank: highest county value ranked #1. (\$000): thousands of dollars. Nonmetro Kansas: Kansas total less Metropolitan Areas as defined by the Office of Management and Budget (OMB; released 3/6/2020). Per 1000: For nonmoney amounts, Per 1000=(county value / county population for the same year as the data) x 1000. \$ Per capita=(county value / county population for the same year as the data). Value= . indicates missing or suppressed data or value not calculated.

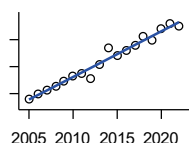
Housing

MEDIAN CONTRACT RENT (\$)



U.S. Census Bureau, Decennial Census (- 2000), (2009 -) American Community Survey five-year average ending in year shown.

Year	County	State of Kansas	Non Metro Kansas	County Rank	Per 1000 or \$ Per Capita
1980	181	219	.	31	.
1990	299	372	.	31	.
2000	416	498	.	32	.
2009	359	491	.	41	.
2010	357	507	.	47	.
2011	559	699	.	45	.
2012	592	715	.	39	.
2013	576	732	.	51	.
2014	626	748	.	38	.
2015	630	757	.	39	.
2016	647	775	.	37	.
2017	672	801	.	32	.
2018	691	831	.	28	.
2019	716	850	.	26	.
2020	744	863	.	23	.



FAIR MARKET RENT: 2 BEDROOMS

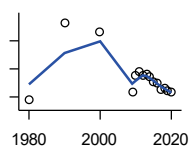
U.S. Department of Housing and Urban Development (HUD)

Year	County	State of Kansas	Non Metro Kansas	County Rank	Per 1000 or \$ Per Capita
2005	482	.	.	57	.
2006	497	.	.	105	.
2007	512	.	.	105	.
2008	525	628	.	105	.
2009	547	653	.	105	.
2010	567	678	.	58	.
2011	576	684	.	58	.
2012	557	660	.	42	.
2013	610	712	.	36	.
2014	670	746	.	28	.
2015	639	756	.	41	.
2016	658	781	.	105	.
2017	681	811	.	105	.
2018	712	815	.	37	.
2019	697	828	.	36	.
2020	739	855	.	31	.
2021	759	874	.	27	.
2022	749	879	.	34	.

County: county value. Kansas: state value. County Rank: highest county value ranked #1. (\$000): thousands of dollars. Nonmetro Kansas: Kansas total less Metropolitan Areas as defined by the Office of Management and Budget (OMB; released 3/6/2020). Per 1000: For nonmoney amounts, Per 1000=(county value / county population for the same year as the data) x 1000. \$ Per capita=(county value / county population for the same year as the data). Value= . indicates missing or suppressed data or value not calculated.

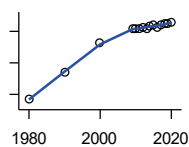
Education

POPULATION AGE 25+



U.S. Census Bureau, Decennial Census (- 2000), (2009 -) American Community Survey five-year average ending in year shown.

Year	County	State of Kansas	Non Metro Kansas	County Rank	Per 1000 or \$ Per Capita
1980	15,442	1,388,102	596,639	.	.
1990	16,820	1,565,936	608,745	.	.
2000	16,662	1,701,207	618,131	.	.
2009	15,586	1,775,427	600,188	.	.
2010	15,892	1,802,904	608,716	.	.
2011	15,962	1,822,400	610,386	.	.
2012	15,874	1,838,079	611,103	.	.
2013	15,917	1,850,010	610,374	.	.
2014	15,851	1,861,894	609,612	.	.
2015	15,769	1,869,698	606,967	.	.
2016	15,758	1,878,495	604,563	.	.
2017	15,641	1,886,741	601,076	.	.
2018	15,664	1,894,675	598,487	.	.
2019	15,616	1,902,279	595,501	.	.
2020	15,581	1,911,990	593,923	.	.



PERCENT HS GRADUATE OR HIGHER AGE 25+

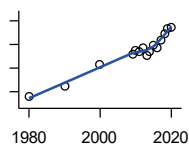
U.S. Census Bureau, Decennial Census (- 2000), (2009 -) American Community Survey five-year average ending in year shown.

Year	County	State of Kansas	Non Metro Kansas	County Rank	Per 1000 or \$ Per Capita
1980	68.4	73.3	.	62	.
1990	77.1	81.3	.	60	.
2000	86.3	86.0	.	32	.
2009	90.7	89.0	.	29	.
2010	90.7	89.2	.	31	.
2011	91.0	89.5	.	27	.
2012	91.4	89.7	.	27	.
2013	90.9	89.8	.	38	.
2014	91.7	90.0	.	35	.
2015	92.0	90.2	.	33	.
2016	91.3	90.3	.	49	.
2017	92.1	90.5	.	39	.
2018	92.3	90.7	.	38	.
2019	92.3	91.0	.	40	.
2020	92.9	91.4	.	43	.

County: county value. Kansas: state value. County Rank: highest county value ranked #1. (\$000): thousands of dollars. Nonmetro Kansas: Kansas total less Metropolitan Areas as defined by the Office of Management and Budget (OMB; released 3/6/2020). Per 1000: For nonmoney amounts, Per 1000=(county value / county population for the same year as the data) x 1000. \$ Per capita=(county value / county population for the same year as the data). Value= . indicates missing or suppressed data or value not calculated.

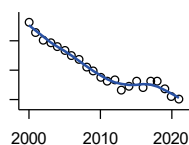
Education

PERCENT BACHELORS DEGREE OR HIGHER AGE 25+



U.S. Census Bureau, Decennial Census (- 2000), (2009 -) American Community Survey five-year average ending in year shown.

Year	County	State of Kansas	Non Metro Kansas	County Rank	Per 1000 or \$ Per Capita
1980	8.9	17.0	.	93	.
1990	11.3	21.1	.	86	.
2000	15.7	25.8	.	72	.
2009	17.9	28.8	.	62	.
2010	18.7	29.3	.	59	.
2011	18.4	29.7	.	67	.
2012	19.2	30.0	.	60	.
2013	17.8	30.3	.	77	.
2014	18.4	30.7	.	77	.
2015	19.9	31.0	.	62	.
2016	19.4	31.6	.	68	.
2017	20.9	32.3	.	55	.
2018	22.2	32.9	.	48	.
2019	23.3	33.4	.	41	.
2020	23.6	33.9	.	46	.



PUBLIC SCHOOL ENROLLMENT (FTE) SCHOOL YEAR BEGINNING...

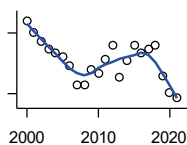
Kansas State Department of Education

Year	County	State of Kansas	Non Metro Kansas	County Rank	Per 1000 or \$ Per Capita
2000	4,452.8	448,150.8	166,722.5	24	171.6
2001	4,318.6	447,047.1	164,365.0	24	168.0
2002	4,203.2	444,860.3	161,555.4	24	164.8
2003	4,178.1	443,620.6	159,130.2	24	165.5
2004	4,128.7	441,957.2	156,566.3	24	164.2
2005	4,060.9	442,708.4	155,197.2	25	163.8
2006	4,005.3	444,878.7	153,842.3	25	163.5
2007	3,943.9	446,831.3	152,337.1	24	162.4
2008	3,836.2	447,730.0	150,572.7	25	158.3
2009	3,791.6	453,202.5	151,246.8	26	156.9
2010	3,708.6	455,405.0	151,023.8	25	153.7
2011	3,653.1	456,000.5	150,257.9	26	153.6
2012	3,671.9	458,496.4	150,463.0	26	155.4
2013	3,526.0	461,950.0	150,420.9	28	149.8
2014	3,581.9	464,395.4	150,499.4	27	153.2
2015	3,644.1	463,504.0	149,539.3	27	155.6
2016	3,562.3	459,920.3	147,293.5	28	153.7
2017	3,652.6	477,977.9	152,096.3	27	158.0
2018	3,644.4	476,481.7	150,456.8	27	158.3
2019	3,546.2	476,525.1	150,045.2	27	155.3
2020	3,448.6	462,088.0	146,369.6	28	154.1
2021	3,413.6	463,652.4	147,500.4	28	152.5

County: county value. Kansas: state value. County Rank: highest county value ranked #1. (\$000): thousands of dollars. Nonmetro Kansas: Kansas total less Metropolitan Areas as defined by the Office of Management and Budget (OMB; released 3/6/2020). Per 1000: For nonmoney amounts, Per 1000=(county value / county population for the same year as the data) x 1000. \$ Per capita=(county value / county population for the same year as the data). Value= . indicates missing or suppressed data or value not calculated.

Education

PUPIL/TEACHER RATIO SCHOOL YEAR BEGINNING...

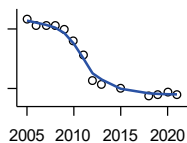


Kansas State Department of Education

Year	County	State of Kansas	Non Metro Kansas	County Rank	Per 1000 or \$ Per Capita
2000	14.3	15.4	13.9	32	.
2001	14.0	15.3	13.8	35	.
2002	13.8	15.4	13.9	37	.
2003	13.6	15.5	13.8	40	.
2004	13.5	15.3	13.6	39	.
2005	13.4	15.0	13.4	39	.
2006	13.2	14.7	13.2	37	.
2007	12.7	14.6	13.1	45	.
2008	12.7	14.4	12.9	42	.
2009	13.1	14.8	13.2	37	.
2010	13.0	15.2	13.6	48	.
2011	13.4	15.1	13.5	42	.
2012	13.7	15.1	13.5	35	.
2013	12.9	15.1	13.5	46	.
2014	13.3	15.0	13.6	41	.
2015	13.7	15.2	13.9	38	.
2016	13.5	15.1	13.7	38	.
2017	13.6	15.5	13.9	43	.
2018	13.7	15.3	13.8	38	.
2019	12.9	15.2	13.7	49	.
2020	12.5	14.7	13.4	48	.
2021	12.4	14.8	13.5	60	.

Social Environment

CHILD CARE FACILITIES: TOTAL CHILD CARE FACILITIES

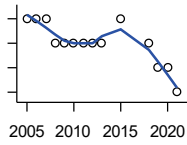


Kansas Department of Health and Environment, Bureau of Adult and Child Care

Year	County	State of Kansas	Non Metro Kansas	County Rank	Per 1000 or \$ Per Capita
2005	75	8,258	3,378	28	3.0
2006	72	8,442	3,429	29	2.9
2007	72	8,241	3,317	28	3.0
2008	72	8,011	3,150	26	3.0
2009	70	7,853	3,066	25	2.9
2010	64	7,354	2,858	24	2.7
2011	57	6,835	2,623	27	2.4
2012	44	6,346	2,409	30	1.9
2013	42	5,754	2,179	29	1.8
2015	40	5,289	2,146	31	1.7
2018	36	4,607	1,904	31	1.6
2019	37	4,287	1,774	27	1.6
2020	38	4,274	1,798	29	1.7
2021	37	4,002	1,700	26	1.7

County: county value. Kansas: state value. County Rank: highest county value ranked #1. (\$000): thousands of dollars. Nonmetro Kansas: Kansas total less Metropolitan Areas as defined by the Office of Management and Budget (OMB; released 3/6/2020). Per 1000: For nonmoney amounts, Per 1000=(county value / county population for the same year as the data) x 1000. \$ Per capita=(county value / county population for the same year as the data). Value= . indicates missing or suppressed data or value not calculated.

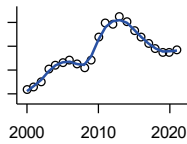
Social Environment



**CHILD CARE FACILITIES:
PRESCHOOLS**

Kansas Department of Health and Environment, Bureau of Adult and Child Care

Year	County	State of Kansas	Non Metro Kansas	County Rank	Per 1000 or \$ Per Capita
2005	4	243	140	22	0.2
2006	4	221	127	17	0.2
2007	4	208	119	16	0.2
2008	3	204	114	27	0.1
2009	3	194	107	27	0.1
2010	3	194	112	27	0.1
2011	3	209	123	29	0.1
2012	3	201	121	27	0.1
2013	3	140	84	16	0.1
2015	4	185	113	14	0.2
2018	3	150	94	19	0.1
2019	2	134	83	35	0.1
2020	2	126	78	34	0.1
2021	1	120	74	53	0.0



FOOD STAMP BENEFICIARIES

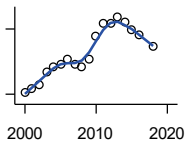
Kansas Social and Rehabilitation Services

Year	County	State of Kansas	Non Metro Kansas	County Rank	Per 1000 or \$ Per Capita
2000	1,082	110,619	44,825	25	41.7
2001	1,142	117,241	46,741	25	44.4
2002	1,244	131,726	52,342	27	48.8
2003	1,525	155,908	61,280	25	60.4
2004	1,607	167,971	65,852	25	63.9
2005	1,662	175,710	67,261	25	67.0
2006	1,721	182,821	67,487	24	70.3
2007	1,620	184,035	66,979	25	66.7
2008	1,539	187,377	67,160	29	63.5
2009	1,701	208,007	73,637	29	70.4
2010	2,185	259,609	90,919	28	90.5
2011	2,500	296,542	101,155	26	105.1
2012	2,475	303,257	102,478	28	104.7
2013	2,625	316,424	105,345	24	111.5
2014	2,509	301,377	100,761	25	107.3
2015	2,336	277,614	93,353	24	99.8
2016	2,196	258,412	88,343	24	94.7
2017	2,046	239,592	82,070	24	88.5
2018	1,943	219,738	75,208	24	84.4
2019	1,875	205,261	69,899	23	82.1
2020	1,860	198,457	66,721	22	83.1
2021	1,933	203,424	68,883	23	86.4

County: county value. Kansas: state value. County Rank: highest county value ranked #1. (\$000): thousands of dollars. Nonmetro Kansas: Kansas total less Metropolitan Areas as defined by the Office of Management and Budget (OMB; released 3/6/2020). Per 1000: For nonmoney amounts, Per 1000=(county value / county population for the same year as the data) x 1000. \$ Per capita=(county value / county population for the same year as the data). Value= . indicates missing or suppressed data or value not calculated.

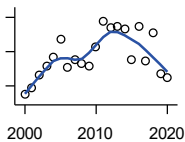
Social Environment

PERCENT OF POPULATION RECEIVING FOOD STAMPS



U.S. Dept. of Agriculture Food and Nutrition Service (1990-1997); Kansas Social and Rehabilitation Services (1998-)

Year	County	State of Kansas	Non Metro Kansas	County Rank	Per 1000 or \$ Per Capita
2000	4.2	4.1	.	35	.
2001	4.5	4.3	.	35	.
2002	4.9	4.9	.	39	.
2003	6.1	5.7	.	37	.
2004	6.5	6.2	.	37	.
2005	6.8	6.4	.	32	.
2006	7.2	6.6	.	29	.
2007	6.8	6.6	.	32	.
2008	6.5	6.7	.	34	.
2009	7.2	7.4	.	34	.
2010	9.3	9.1	.	31	.
2011	10.5	10.3	.	31	.
2012	10.5	10.5	.	31	.
2013	11.1	10.9	.	29	.
2014	10.7	10.4	.	28	.
2015	9.9	9.6	.	30	.
2016	9.4	8.9	.	27	.
2018	8.4	7.5	.	27	.



ESTIMATED NUMBER OF PEOPLE IN POVERTY

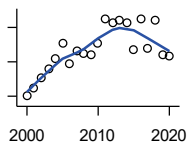
U.S. Census Bureau, Small Area Income and Poverty Estimates

Year	County	State of Kansas	Non Metro Kansas	County Rank	Per 1000 or \$ Per Capita
2000	2,297	235,087	98,984	24	88.5
2001	2,373	252,134	106,257	24	92.3
2002	2,523	265,673	107,542	24	98.9
2003	2,637	278,163	107,323	24	104.4
2004	2,733	297,733	111,534	23	108.7
2005	2,940	310,667	118,768	23	118.6
2006	2,609	327,102	123,700	25	106.5
2007	2,701	301,828	111,953	23	111.2
2008	2,654	307,804	113,015	24	109.5
2009	2,631	359,692	123,394	27	108.9
2010	2,861	374,677	131,502	25	118.6
2011	3,155	383,859	134,912	25	132.6
2012	3,079	392,095	133,800	26	130.3
2013	3,098	391,718	134,067	25	131.6
2014	3,064	381,506	130,213	25	131.0
2015	2,701	366,069	123,073	27	115.3
2016	3,091	343,773	121,314	23	133.3
2017	2,687	335,371	116,854	24	116.2
2018	3,016	336,892	114,490	24	131.0
2019	2,542	319,931	110,692	25	111.3
2020	2,502	300,931	100,998	24	111.8

County: county value. Kansas: state value. County Rank: highest county value ranked #1. (\$000): thousands of dollars. Nonmetro Kansas: Kansas total less Metropolitan Areas as defined by the Office of Management and Budget (OMB; released 3/6/2020). Per 1000: For nonmoney amounts, Per 1000=(county value / county population for the same year as the data) x 1000. \$ Per capita=(county value / county population for the same year as the data). Value= . indicates missing or suppressed data or value not calculated.

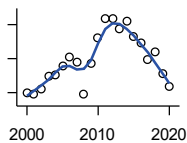
Social Environment

ESTIMATED % OF PEOPLE IN POVERTY



U.S. Census Bureau, Small Area Income and Poverty Estimates

Year	County	State of Kansas	Non Metro Kansas	County Rank	Per 1000 or \$ Per Capita
2000	9.0	8.9	.	79	.
2001	9.5	9.5	.	86	.
2002	10.1	10.0	.	76	.
2003	10.6	10.4	.	58	.
2004	11.2	11.1	.	44	.
2005	12.1	11.7	.	52	.
2006	10.9	12.2	.	81	.
2007	11.6	11.2	.	55	.
2008	11.5	11.3	.	53	.
2009	11.4	13.2	.	72	.
2010	12.1	13.5	.	63	.
2011	13.5	13.8	.	46	.
2012	13.3	14.0	.	45	.
2013	13.4	13.9	.	47	.
2014	13.3	13.5	.	42	.
2015	11.7	12.9	.	58	.
2016	13.5	12.2	.	35	.
2017	11.8	11.9	.	55	.
2018	13.4	11.9	.	35	.
2019	11.4	11.3	.	61	.
2020	11.3	10.6	.	45	.



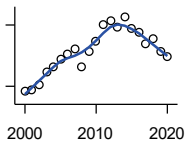
EST. NUMBER OF RELATED CHILDREN AGE 5 TO 17 IN FAMILIES IN POVERTY

U.S. Census Bureau, Small Area Income and Poverty Estimates

Year	County	State of Kansas	Non Metro Kansas	County Rank	Per 1000 or \$ Per Capita
2000	500	50,388	21,854	22	19.3
2001	497	53,755	23,094	24	19.3
2002	510	52,453	21,423	23	20.0
2003	549	55,419	21,809	23	21.7
2004	551	59,392	22,313	23	21.9
2005	580	60,203	24,244	22	23.4
2006	605	64,427	25,326	22	24.7
2007	590	61,149	23,639	23	24.3
2008	495	59,842	22,661	25	20.4
2009	585	71,850	26,251	26	24.2
2010	662	81,077	29,804	25	27.4
2011	718	82,311	29,306	24	30.2
2012	717	87,594	29,781	26	30.3
2013	688	84,325	29,253	27	29.2
2014	711	83,873	29,354	26	30.4
2015	664	78,192	27,482	25	28.4
2016	648	67,810	25,074	23	28.0
2017	596	67,873	25,032	24	25.8
2018	620	68,153	24,928	23	26.9
2019	554	64,613	23,117	23	24.3
2020	519	59,792	21,143	23	23.2

County: county value. Kansas: state value. County Rank: highest county value ranked #1. (\$000): thousands of dollars. Nonmetro Kansas: Kansas total less Metropolitan Areas as defined by the Office of Management and Budget (OMB; released 3/6/2020). Per 1000: For nonmoney amounts, Per 1000=(county value / county population for the same year as the data) x 1000. \$ Per capita=(county value / county population for the same year as the data). Value= . indicates missing or suppressed data or value not calculated.

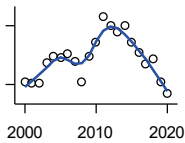
Social Environment



EST. % OF RELATED CHILDREN AGE 5 TO 17 IN FAMILIES IN POVERTY

U.S. Census Bureau, Small Area Income and Poverty Estimates

Year	County	State of Kansas	Non Metro Kansas	County Rank	Per 1000 or \$ Per Capita
2000	9.5	10.0	.	87	.
2001	9.7	10.8	.	90	.
2002	10.2	10.5	.	79	.
2003	11.4	11.3	.	65	.
2004	11.9	12.5	.	66	.
2005	12.7	12.8	.	70	.
2006	13.2	13.2	.	70	.
2007	13.7	12.6	.	59	.
2008	11.9	12.3	.	74	.
2009	13.4	14.7	.	75	.
2010	14.4	15.9	.	74	.
2011	16.0	16.2	.	57	.
2012	16.4	17.2	.	49	.
2013	15.8	16.5	.	59	.
2014	16.8	16.4	.	51	.
2015	15.6	15.3	.	49	.
2016	15.3	13.2	.	50	.
2017	14.2	13.4	.	67	.
2018	14.6	13.5	.	70	.
2019	13.4	12.9	.	70	.
2020	12.9	11.9	.	61	.



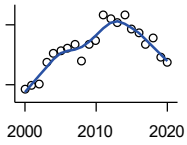
ESTIMATED NUMBER UNDER 18 IN POVERTY

U.S. Census Bureau, Small Area Income and Poverty Estimates

Year	County	State of Kansas	Non Metro Kansas	County Rank	Per 1000 or \$ Per Capita
2000	814	82,619	34,843	22	31.4
2001	804	87,487	36,724	24	31.3
2002	805	84,181	32,870	23	31.6
2003	913	93,896	36,004	24	36.2
2004	943	98,641	36,272	23	37.5
2005	936	100,254	39,118	22	37.7
2006	954	105,193	41,054	23	38.9
2007	921	100,242	37,881	23	37.9
2008	812	100,146	37,552	25	33.5
2009	945	118,187	42,682	26	39.1
2010	1,019	129,009	46,428	25	42.2
2011	1,147	133,478	46,832	24	48.2
2012	1,101	135,261	46,294	26	46.6
2013	1,067	131,251	44,952	26	45.3
2014	1,100	125,562	43,933	24	47.0
2015	1,016	119,994	41,828	25	43.4
2016	964	100,996	37,387	23	41.6
2017	905	102,858	37,955	24	39.1
2018	930	102,616	36,991	23	40.4
2019	810	97,920	34,797	24	35.5
2020	752	88,491	30,767	25	33.6

County: county value. Kansas: state value. County Rank: highest county value ranked #1. (\$000): thousands of dollars. Nonmetro Kansas: Kansas total less Metropolitan Areas as defined by the Office of Management and Budget (OMB; released 3/6/2020). Per 1000: For nonmoney amounts, Per 1000=(county value / county population for the same year as the data) x 1000. \$ Per capita=(county value / county population for the same year as the data). Value= . indicates missing or suppressed data or value not calculated.

Social Environment



ESTIMATED PERCENT UNDER 18 IN POVERTY

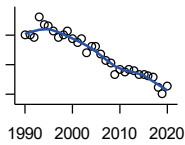
U.S. Census Bureau, Small Area Income and Poverty Estimates

Year	County	State of Kansas	Non Metro Kansas	County Rank	Per 1000 or \$ Per Capita
2000	11.6	11.9	.	83	.
2001	11.9	12.7	.	87	.
2002	12.1	12.1	.	70	.
2003	14.2	13.8	.	61	.
2004	15.2	14.6	.	50	.
2005	15.4	15.2	.	71	.
2006	15.7	15.4	.	69	.
2007	16.0	14.7	.	58	.
2008	14.4	14.6	.	73	.
2009	16.1	17.1	.	71	.
2010	16.4	18.1	.	72	.
2011	19.0	18.8	.	51	.
2012	18.6	19.0	.	48	.
2013	18.2	18.4	.	53	.
2014	19.0	17.6	.	38	.
2015	17.6	16.9	.	44	.
2016	17.2	14.3	.	41	.
2017	16.1	14.7	.	65	.
2018	16.7	14.8	.	59	.
2019	14.8	14.3	.	68	.
2020	14.2	13.0	.	60	.

County: county value. Kansas: state value. County Rank: highest county value ranked #1. (\$000): thousands of dollars. Nonmetro Kansas: Kansas total less Metropolitan Areas as defined by the Office of Management and Budget (OMB; released 3/6/2020). Per 1000: For nonmoney amounts, Per 1000=(county value / county population for the same year as the data) x 1000. \$ Per capita=(county value / county population for the same year as the data). Value= . indicates missing or suppressed data or value not calculated.

Business

ESTABLISHMENTS TOTAL COUNTY BUSINESS PATTERNS



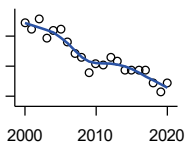
U.S. Census Bureau, County Business Patterns. Beginning with the 2017 data, any tabulation with fewer than 3 establishments were omitted from the release. Data for these establishments are included in the broader total.

Year	County	State of Kansas	Non Metro Kansas	County Rank	Per 1000 or \$ Per Capita
1990	551	65,858	26,802	24	21.3
1991	550	65,941	26,750	23	21.2
1992	546	67,630	27,229	23	21.1
1993	581	68,930	27,655	23	22.4
1994	567	69,822	27,763	23	21.8
1995	565	70,894	28,111	24	21.8
1996	557	72,017	28,353	25	21.4
1997	547	73,924	28,884	26	21.0
1998	551	74,019	28,749	25	21.0
1999	556	74,486	28,536	25	21.4
2000	545	74,939	28,475	26	21.0
2001	538	74,565	28,282	26	20.9
2002	543	75,077	28,183	25	21.3
2003	521	74,972	27,998	26	20.6
2004	531	75,827	28,009	26	21.1
2005	530	76,173	27,830	25	21.4
2006	518	76,446	27,653	27	21.1
2007	508	77,157	27,736	27	20.9
2008	503	76,096	27,314	28	20.8
2009	484	74,698	26,839	29	20.0
2010	492	74,301	26,739	26	20.4
2011	488	73,598	26,555	26	20.5
2012	493	73,944	26,534	26	20.9
2013	490	73,816	26,393	26	20.8
2014	483	74,055	26,292	26	20.7
2015	484	74,526	26,355	26	20.7
2016	481	74,884	26,172	26	20.7
2017	478	74,947	26,093	26	20.7
2018	462	74,559	25,802	26	20.1
2019	451	74,292	25,536	27	19.7
2020	464	73,982	25,178	26	20.7

County: county value. Kansas: state value. County Rank: highest county value ranked #1. (\$000): thousands of dollars. Nonmetro Kansas: Kansas total less Metropolitan Areas as defined by the Office of Management and Budget (OMB; released 3/6/2020). Per 1000: For nonmoney amounts, Per 1000=(county value / county population for the same year as the data) x 1000. \$ Per capita=(county value / county population for the same year as the data). Value= . indicates missing or suppressed data or value not calculated.

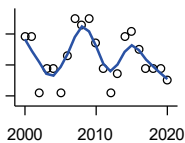
Business

**ESTABLISHMENTS: 1-19
EMPLOYEES**



U.S. Census Bureau, County Business Patterns. Beginning with the 2017 data, any tabulation with fewer than 3 establishments were omitted from the release. Data for these establishments are included in the broader total.

Year	County	State of Kansas	Non Metro Kansas	County Rank	Per 1000 or \$ Per Capita
2000	497	64,527	25,381	26	19.2
2001	490	64,176	25,248	26	19.1
2002	503	64,886	25,208	24	19.7
2003	478	64,714	25,020	25	18.9
2004	487	65,554	24,995	25	19.4
2005	490	65,796	24,839	25	19.8
2006	472	65,764	24,589	26	19.3
2007	457	66,446	24,701	27	18.8
2008	452	65,322	24,257	26	18.6
2009	432	64,128	23,851	28	17.9
2010	444	64,015	23,857	27	18.4
2011	442	63,251	23,571	26	18.6
2012	452	63,519	23,575	26	19.1
2013	446	63,197	23,396	26	18.9
2014	434	63,113	23,229	26	18.6
2015	435	63,280	23,227	26	18.6
2016	435	63,630	23,117	26	18.8
2017	434	63,619	23,022	26	18.8
2018	418	63,233	22,745	26	18.2
2019	406	62,904	22,489	27	17.8
2020	418	62,634	22,173	26	18.7



**ESTABLISHMENTS: 20-99
EMPLOYEES**

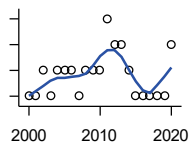
U.S. Census Bureau, County Business Patterns. Beginning with the 2017 data, any tabulation with fewer than 3 establishments were omitted from the release. Data for these establishments are included in the broader total.

Year	County	State of Kansas	Non Metro Kansas	County Rank	Per 1000 or \$ Per Capita
2000	42	8,714	2,653	32	1.6
2001	42	8,692	2,593	32	1.6
2002	33	8,582	2,554	34	1.3
2003	37	8,642	2,568	33	1.5
2004	37	8,658	2,590	35	1.5
2005	33	8,685	2,553	35	1.3
2006	39	8,922	2,612	33	1.6
2007	45	8,938	2,574	28	1.9
2008	44	8,939	2,587	29	1.8
2009	45	8,848	2,551	29	1.9
2010	41	8,612	2,454	30	1.7
2011	37	8,668	2,540	31	1.6
2012	33	8,700	2,500	35	1.4
2013	36	8,870	2,541	32	1.5
2014	42	9,121	2,590	29	1.8
2015	43	9,374	2,664	31	1.8
2016	40	9,412	2,596	31	1.7
2017	37	9,487	2,638	32	1.6
2018	37	9,485	2,621	32	1.6
2019	37	9,485	2,591	31	1.6
2020	35	9,471	2,545	33	1.6

County: county value. Kansas: state value. County Rank: highest county value ranked #1. (\$000): thousands of dollars. Nonmetro Kansas: Kansas total less Metropolitan Areas as defined by the Office of Management and Budget (OMB; released 3/6/2020). Per 1000: For nonmoney amounts, Per 1000=(county value / county population for the same year as the data) x 1000. \$ Per capita=(county value / county population for the same year as the data). Value= . indicates missing or suppressed data or value not calculated.

Business

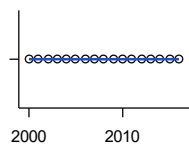
ESTABLISHMENTS: 100-499 EMPLOYEES



U.S. Census Bureau, County Business Patterns. Beginning with the 2017 data, any tabulation with fewer than 3 establishments were omitted from the release. Data for these establishments are included in the broader total.

Year	County	State of Kansas	Non Metro Kansas	County Rank	Per 1000 or \$ Per Capita
2000	6	1,555	409	35	0.2
2001	6	1,555	406	35	0.2
2002	7	1,464	386	31	0.3
2003	6	1,470	378	34	0.2
2004	7	1,463	388	31	0.3
2005	7	1,537	400	31	0.3
2006	7	1,598	407	31	0.3
2007	6	1,602	416	36	0.2
2008	7	1,653	421	32	0.3
2009	7	1,551	394	34	0.3
2010	7	1,513	382	30	0.3
2011	9	1,523	395	26	0.4
2012	8	1,567	410	30	0.3
2013	8	1,581	407	28	0.3
2014	7	1,641	421	31	0.3
2015	6	1,693	414	31	0.3
2016	6	1,671	406	32	0.3
2017	6	1,653	.	29	0.3
2018	6	1,650	.	29	0.3
2019	6	1,718	.	30	0.3
2020	8	1,692	.	26	0.4

ESTABLISHMENTS: 500 OR MORE EMPLOYEES

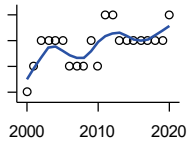


U.S. Census Bureau, County Business Patterns. Beginning with the 2017 data, any tabulation with fewer than 3 establishments were omitted from the release. Data for these establishments are included in the broader total.

Year	County	State of Kansas	Non Metro Kansas	County Rank	Per 1000 or \$ Per Capita
2000	0	143	32	105	0.0
2001	0	142	35	105	0.0
2002	0	145	35	105	0.0
2003	0	146	32	105	0.0
2004	0	152	36	105	0.0
2005	0	155	38	105	0.0
2006	0	162	45	105	0.0
2007	0	171	45	105	0.0
2008	0	182	49	105	0.0
2009	0	171	43	105	0.0
2010	0	161	46	105	0.0
2011	0	156	49	105	0.0
2012	0	158	49	105	0.0
2013	0	168	49	105	0.0
2014	0	180	52	105	0.0
2015	0	179	50	105	0.0
2016	0	171	53	105	0.0

County: county value. Kansas: state value. County Rank: highest county value ranked #1. (\$000): thousands of dollars. Nonmetro Kansas: Kansas total less Metropolitan Areas as defined by the Office of Management and Budget (OMB; released 3/6/2020). Per 1000: For nonmoney amounts, Per 1000=(county value / county population for the same year as the data) x 1000. \$ Per capita=(county value / county population for the same year as the data). Value= . indicates missing or suppressed data or value not calculated.

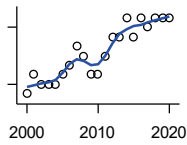
Business



ESTABLISHMENTS: FORESTRY, FISHING, HUNTING, AND AG SUPPORT

U.S. Census Bureau, County Business Patterns. Beginning with the 2017 data, any tabulation with fewer than 3 establishments were omitted from the release. Data for these establishments are included in the broader total.

Year	County	State of Kansas	Non Metro Kansas	County Rank	Per 1000 or \$ Per Capita
2000	1	190	149	74	0.0
2001	2	217	168	48	0.1
2002	3	224	176	30	0.1
2003	3	217	173	28	0.1
2004	3	211	165	29	0.1
2005	3	188	148	28	0.1
2006	2	193	158	48	0.1
2007	2	212	170	52	0.1
2008	2	197	158	50	0.1
2009	3	191	154	28	0.1
2010	2	192	161	50	0.1
2011	4	193	157	17	0.2
2012	4	204	164	18	0.2
2013	3	208	166	27	0.1
2014	3	194	152	22	0.1
2015	3	192	149	26	0.1
2016	3	181	142	23	0.1
2017	3	194	.	26	0.1
2018	3	195	.	26	0.1
2019	3	185	.	26	0.1
2020	4	181	.	16	0.2



ESTABLISHMENTS: MINING

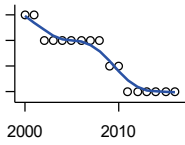
U.S. Census Bureau, County Business Patterns. Beginning with the 2017 data, any tabulation with fewer than 3 establishments were omitted from the release. Data for these establishments are included in the broader total.

Year	County	State of Kansas	Non Metro Kansas	County Rank	Per 1000 or \$ Per Capita
2000	3	868	619	53	0.1
2001	5	878	622	38	0.2
2002	4	847	615	44	0.2
2003	4	864	633	44	0.2
2004	4	880	647	47	0.2
2005	5	941	695	41	0.2
2006	6	991	734	38	0.2
2007	8	1,000	759	34	0.3
2008	7	1,047	799	35	0.3
2009	5	1,016	772	42	0.2
2010	5	1,009	762	42	0.2
2011	7	1,013	763	35	0.3
2012	9	1,048	789	30	0.4
2013	9	1,060	802	31	0.4
2014	11	1,102	828	27	0.5
2015	9	1,069	810	32	0.4
2016	11	990	747	25	0.5
2017	10	920	.	26	0.4
2018	11	900	.	25	0.5
2019	11	864	.	23	0.5
2020	11	825	.	23	0.5

County: county value. Kansas: state value. County Rank: highest county value ranked #1. (\$000): thousands of dollars. Nonmetro Kansas: Kansas total less Metropolitan Areas as defined by the Office of Management and Budget (OMB; released 3/6/2020). Per 1000: For nonmoney amounts, Per 1000=(county value / county population for the same year as the data) x 1000. \$ Per capita=(county value / county population for the same year as the data). Value= . indicates missing or suppressed data or value not calculated.

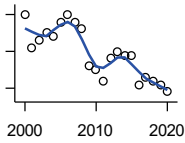
Business

ESTABLISHMENTS: UTILITIES



U.S. Census Bureau, County Business Patterns. Beginning with the 2017 data, any tabulation with fewer than 3 establishments were omitted from the release. Data for these establishments are included in the broader total.

Year	County	State of Kansas	Non Metro Kansas	County Rank	Per 1000 or \$ Per Capita
2000	4	274	192	24	0.2
2001	4	290	204	27	0.2
2002	3	278	195	38	0.1
2003	3	268	180	36	0.1
2004	3	247	164	32	0.1
2005	3	254	172	34	0.1
2006	3	248	169	32	0.1
2007	3	222	156	33	0.1
2008	3	244	166	35	0.1
2009	2	222	152	57	0.1
2010	2	197	129	49	0.1
2011	1	230	156	87	0.0
2012	1	232	156	86	0.0
2013	1	234	159	87	0.0
2014	1	232	160	89	0.0
2015	1	237	165	88	0.0
2016	1	245	171	90	0.0



ESTABLISHMENTS: CONSTRUCTION

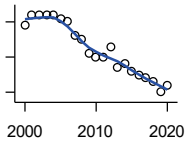
U.S. Census Bureau, County Business Patterns. Beginning with the 2017 data, any tabulation with fewer than 3 establishments were omitted from the release. Data for these establishments are included in the broader total.

Year	County	State of Kansas	Non Metro Kansas	County Rank	Per 1000 or \$ Per Capita
2000	55	7,703	2,616	27	2.1
2001	46	7,449	2,520	28	1.8
2002	48	7,519	2,482	26	1.9
2003	50	7,722	2,521	28	2.0
2004	49	7,887	2,518	28	1.9
2005	53	8,032	2,515	26	2.1
2006	55	8,031	2,494	25	2.2
2007	53	8,057	2,547	27	2.2
2008	51	7,831	2,522	27	2.1
2009	41	7,342	2,452	30	1.7
2010	40	7,064	2,394	28	1.7
2011	37	6,774	2,361	29	1.6
2012	43	6,741	2,393	27	1.8
2013	45	6,802	2,394	27	1.9
2014	44	6,920	2,383	27	1.9
2015	44	7,014	2,377	28	1.9
2016	36	6,988	2,343	31	1.6
2017	38	7,031	2,316	30	1.6
2018	37	7,124	2,285	29	1.6
2019	36	7,060	2,242	30	1.6
2020	34	7,089	2,249	32	1.5

County: county value. Kansas: state value. County Rank: highest county value ranked #1. (\$000): thousands of dollars. Nonmetro Kansas: Kansas total less Metropolitan Areas as defined by the Office of Management and Budget (OMB; released 3/6/2020). Per 1000: For nonmoney amounts, Per 1000=(county value / county population for the same year as the data) x 1000. \$ Per capita=(county value / county population for the same year as the data). Value= . indicates missing or suppressed data or value not calculated.

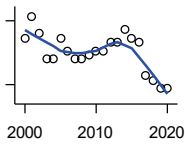
Business

**ESTABLISHMENTS:
MANUFACTURING**



U.S. Census Bureau, County Business Patterns. Beginning with the 2017 data, any tabulation with fewer than 3 establishments were omitted from the release. Data for these establishments are included in the broader total.

Year	County	State of Kansas	Non Metro Kansas	County Rank	Per 1000 or \$ Per Capita
2000	44	3,229	1,316	15	1.7
2001	47	3,240	1,323	14	1.8
2002	47	3,181	1,289	15	1.8
2003	47	3,159	1,291	14	1.9
2004	47	3,179	1,313	15	1.9
2005	46	3,128	1,278	14	1.9
2006	45	3,165	1,290	14	1.8
2007	41	3,184	1,316	15	1.7
2008	40	3,171	1,297	16	1.7
2009	36	3,026	1,240	19	1.5
2010	35	2,955	1,222	20	1.5
2011	35	2,877	1,193	18	1.5
2012	38	2,889	1,197	16	1.6
2013	32	2,836	1,165	22	1.4
2014	33	2,831	1,168	20	1.4
2015	31	2,817	1,161	21	1.3
2016	30	2,791	1,150	21	1.3
2017	29	2,760	1,147	23	1.3
2018	28	2,725	1,126	23	1.2
2019	25	2,695	1,111	24	1.1
2020	27	2,673	1,103	24	1.2



**ESTABLISHMENTS: WHOLESALE
TRADE**

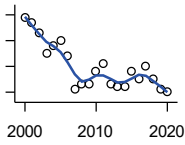
U.S. Census Bureau, County Business Patterns. Beginning with the 2017 data, any tabulation with fewer than 3 establishments were omitted from the release. Data for these establishments are included in the broader total.

Year	County	State of Kansas	Non Metro Kansas	County Rank	Per 1000 or \$ Per Capita
2000	31	4,876	1,776	21	1.2
2001	36	4,811	1,769	21	1.4
2002	32	4,719	1,750	23	1.3
2003	26	4,590	1,637	24	1.0
2004	26	4,553	1,634	24	1.0
2005	31	4,541	1,618	22	1.3
2006	28	4,517	1,596	23	1.1
2007	26	4,555	1,629	25	1.1
2008	26	4,501	1,622	24	1.1
2009	27	4,437	1,614	24	1.1
2010	28	4,432	1,612	23	1.2
2011	28	4,400	1,660	22	1.2
2012	30	4,563	1,755	23	1.3
2013	30	4,501	1,741	21	1.3
2014	33	4,497	1,746	17	1.4
2015	31	4,459	1,755	20	1.3
2016	30	4,457	1,732	21	1.3
2017	22	4,436	1,774	35	1.0
2018	21	4,330	1,727	34	0.9
2019	19	4,291	1,713	39	0.8
2020	19	4,191	1,677	37	0.8

County: county value. Kansas: state value. County Rank: highest county value ranked #1. (\$000): thousands of dollars. Nonmetro Kansas: Kansas total less Metropolitan Areas as defined by the Office of Management and Budget (OMB; released 3/6/2020). Per 1000: For nonmoney amounts, Per 1000=(county value / county population for the same year as the data) x 1000. \$ Per capita=(county value / county population for the same year as the data). Value= . indicates missing or suppressed data or value not calculated.

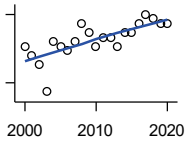
Business

ESTABLISHMENTS: RETAIL TRADE



U.S. Census Bureau, County Business Patterns. Beginning with the 2017 data, any tabulation with fewer than 3 establishments were omitted from the release. Data for these establishments are included in the broader total.

Year	County	State of Kansas	Non Metro Kansas	County Rank	Per 1000 or \$ Per Capita
2000	89	12,261	5,240	28	3.4
2001	87	12,206	5,207	29	3.4
2002	83	11,980	5,082	28	3.3
2003	75	11,834	5,049	32	3.0
2004	78	11,748	4,967	30	3.1
2005	80	11,562	4,834	28	3.2
2006	74	11,367	4,702	30	3.0
2007	61	11,306	4,653	36	2.5
2008	63	10,978	4,494	32	2.6
2009	63	10,760	4,372	32	2.6
2010	68	10,727	4,346	31	2.8
2011	71	10,655	4,289	29	3.0
2012	63	10,585	4,202	31	2.7
2013	62	10,433	4,147	32	2.6
2014	62	10,391	4,070	32	2.7
2015	68	10,327	4,061	31	2.9
2016	65	10,197	3,965	31	2.8
2017	70	10,074	3,885	29	3.0
2018	65	9,866	3,797	30	2.8
2019	61	9,762	3,750	31	2.7
2020	60	9,591	3,666	29	2.7



ESTABLISHMENTS: TRANSPORTATION & WAREHOUSING

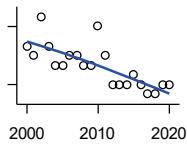
U.S. Census Bureau, County Business Patterns. Beginning with the 2017 data, any tabulation with fewer than 3 establishments were omitted from the release. Data for these establishments are included in the broader total.

Year	County	State of Kansas	Non Metro Kansas	County Rank	Per 1000 or \$ Per Capita
2000	23	2,474	1,293	25	0.9
2001	21	2,463	1,298	28	0.8
2002	19	2,461	1,278	29	0.7
2003	13	2,576	1,297	50	0.5
2004	24	2,651	1,324	27	1.0
2005	23	2,632	1,326	28	0.9
2006	22	2,626	1,295	30	0.9
2007	24	2,664	1,314	27	1.0
2008	28	2,675	1,329	23	1.2
2009	26	2,635	1,313	24	1.1
2010	23	2,615	1,313	30	1.0
2011	25	2,579	1,285	26	1.1
2012	25	2,519	1,243	27	1.1
2013	23	2,492	1,226	27	1.0
2014	26	2,518	1,240	24	1.1
2015	26	2,554	1,257	23	1.1
2016	28	2,567	1,241	21	1.2
2017	30	2,640	1,245	21	1.3
2018	29	2,627	1,238	21	1.3
2019	28	2,615	1,209	21	1.2
2020	28	2,589	1,179	20	1.3

County: county value. Kansas: state value. County Rank: highest county value ranked #1. (\$000): thousands of dollars. Nonmetro Kansas: Kansas total less Metropolitan Areas as defined by the Office of Management and Budget (OMB; released 3/6/2020). Per 1000: For nonmoney amounts, Per 1000=(county value / county population for the same year as the data) x 1000. \$ Per capita=(county value / county population for the same year as the data). Value= . indicates missing or suppressed data or value not calculated.

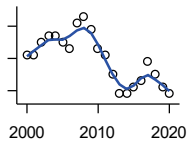
Business

ESTABLISHMENTS: INFORMATION



U.S. Census Bureau, County Business Patterns. Beginning with the 2017 data, any tabulation with fewer than 3 establishments were omitted from the release. Data for these establishments are included in the broader total.

Year	County	State of Kansas	Non Metro Kansas	County Rank	Per 1000 or \$ Per Capita
2000	14	1,542	578	17	0.5
2001	13	1,556	566	23	0.5
2002	17	1,517	551	17	0.7
2003	14	1,516	564	24	0.6
2004	12	1,518	556	24	0.5
2005	12	1,519	536	25	0.5
2006	13	1,549	559	23	0.5
2007	13	1,504	527	24	0.5
2008	12	1,468	522	25	0.5
2009	12	1,420	510	26	0.5
2010	16	1,437	527	17	0.7
2011	13	1,428	537	23	0.5
2012	10	1,387	515	27	0.4
2013	10	1,337	487	27	0.4
2014	10	1,335	496	26	0.4
2015	11	1,359	510	25	0.5
2016	10	1,431	537	28	0.4
2017	9	1,439	.	28	0.4
2018	9	1,407	.	29	0.4
2019	10	1,422	.	26	0.4
2020	10	1,424	.	26	0.4



ESTABLISHMENTS: FINANCE & INSURANCE

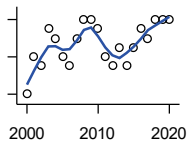
U.S. Census Bureau, County Business Patterns. Beginning with the 2017 data, any tabulation with fewer than 3 establishments were omitted from the release. Data for these establishments are included in the broader total.

Year	County	State of Kansas	Non Metro Kansas	County Rank	Per 1000 or \$ Per Capita
2000	38	5,209	1,848	24	1.5
2001	38	5,178	1,828	22	1.5
2002	40	5,496	1,911	22	1.6
2003	41	5,569	1,907	21	1.6
2004	41	5,572	1,913	21	1.6
2005	40	5,708	1,964	22	1.6
2006	39	5,877	1,976	25	1.6
2007	43	6,017	2,030	22	1.8
2008	44	6,010	2,023	22	1.8
2009	42	5,933	1,994	22	1.7
2010	39	5,872	1,975	24	1.6
2011	38	5,854	1,985	24	1.6
2012	35	5,993	2,024	26	1.5
2013	32	5,903	1,993	28	1.4
2014	32	5,894	2,000	28	1.4
2015	33	5,932	1,998	27	1.4
2016	34	6,022	2,021	26	1.5
2017	37	6,026	2,007	24	1.6
2018	35	6,023	1,997	27	1.5
2019	33	5,953	1,977	27	1.4
2020	32	5,926	1,969	28	1.4

County: county value. Kansas: state value. County Rank: highest county value ranked #1. (\$000): thousands of dollars. Nonmetro Kansas: Kansas total less Metropolitan Areas as defined by the Office of Management and Budget (OMB; released 3/6/2020). Per 1000: For nonmoney amounts, Per 1000=(county value / county population for the same year as the data) x 1000. \$ Per capita=(county value / county population for the same year as the data). Value= . indicates missing or suppressed data or value not calculated.

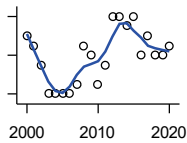
Business

ESTABLISHMENTS: REAL ESTATE, RENTAL, AND LEASING



U.S. Census Bureau, County Business Patterns. Beginning with the 2017 data, any tabulation with fewer than 3 establishments were omitted from the release. Data for these establishments are included in the broader total.

Year	County	State of Kansas	Non Metro Kansas	County Rank	Per 1000 or \$ Per Capita
2000	10	2,733	687	33	0.4
2001	14	2,849	724	28	0.5
2002	13	2,952	735	29	0.5
2003	17	3,007	727	26	0.7
2004	16	3,108	713	26	0.6
2005	14	3,203	727	30	0.6
2006	13	3,268	736	31	0.5
2007	16	3,286	721	27	0.7
2008	18	3,239	738	26	0.7
2009	18	3,122	723	27	0.7
2010	17	3,050	708	26	0.7
2011	14	3,002	692	28	0.6
2012	13	2,981	691	29	0.6
2013	15	3,046	717	27	0.6
2014	13	3,135	738	30	0.6
2015	15	3,179	744	28	0.6
2016	17	3,293	757	28	0.7
2017	16	3,389	.	28	0.7
2018	18	3,409	.	28	0.8
2019	18	3,464	.	27	0.8
2020	18	3,500	.	27	0.8



ESTABLISHMENTS: PROFESSIONAL, SCIENTIFIC, AND TECHNICAL SERVICES

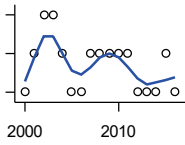
U.S. Census Bureau, County Business Patterns. Beginning with the 2017 data, any tabulation with fewer than 3 establishments were omitted from the release. Data for these establishments are included in the broader total.

Year	County	State of Kansas	Non Metro Kansas	County Rank	Per 1000 or \$ Per Capita
2000	30	6,424	1,690	29	1.2
2001	29	6,492	1,665	30	1.1
2002	27	6,719	1,704	31	1.1
2003	24	6,793	1,735	35	1.0
2004	24	7,025	1,730	37	1.0
2005	24	7,087	1,711	34	1.0
2006	24	7,231	1,736	35	1.0
2007	25	7,329	1,729	35	1.0
2008	29	7,133	1,671	30	1.2
2009	28	7,122	1,676	32	1.2
2010	25	7,172	1,680	37	1.0
2011	27	7,115	1,668	30	1.1
2012	32	7,122	1,681	26	1.4
2013	32	7,129	1,698	27	1.4
2014	31	7,206	1,682	26	1.3
2015	32	7,184	1,687	25	1.4
2016	28	7,146	1,659	28	1.2
2017	30	7,224	1,679	26	1.3
2018	28	7,138	1,655	27	1.2
2019	28	7,119	.	29	1.2
2020	29	7,117	.	27	1.3

County: county value. Kansas: state value. County Rank: highest county value ranked #1. (\$000): thousands of dollars. Nonmetro Kansas: Kansas total less Metropolitan Areas as defined by the Office of Management and Budget (OMB; released 3/6/2020). Per 1000: For nonmoney amounts, Per 1000=(county value / county population for the same year as the data) x 1000. \$ Per capita=(county value / county population for the same year as the data). Value= . indicates missing or suppressed data or value not calculated.

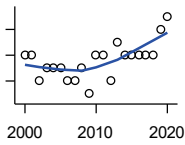
Business

ESTABLISHMENTS: MANAGEMENT OF COMPANIES AND ENTERPRISES



U.S. Census Bureau, County Business Patterns. Beginning with the 2017 data, any tabulation with fewer than 3 establishments were omitted from the release. Data for these establishments are included in the broader total.

Year	County	State of Kansas	Non Metro Kansas	County Rank	Per 1000 or \$ Per Capita
2000	1	622	145	68	0.0
2001	2	593	141	38	0.1
2002	3	597	152	24	0.1
2003	3	561	135	23	0.1
2004	2	569	133	35	0.1
2005	1	543	127	56	0.0
2006	1	542	131	57	0.0
2007	2	550	133	39	0.1
2008	2	553	139	42	0.1
2009	2	575	136	41	0.1
2010	2	567	131	40	0.1
2011	2	552	134	39	0.1
2012	1	593	135	56	0.0
2013	1	590	135	57	0.0
2014	1	603	136	57	0.0
2015	2	613	140	39	0.1
2016	1	655	171	60	0.0



ESTABLISHMENTS: ADMIN, SUPPORT, WASTE MGMT., AND REMEDIATION

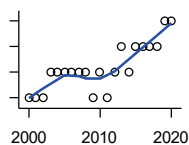
U.S. Census Bureau, County Business Patterns. Beginning with the 2017 data, any tabulation with fewer than 3 establishments were omitted from the release. Data for these establishments are included in the broader total.

Year	County	State of Kansas	Non Metro Kansas	County Rank	Per 1000 or \$ Per Capita
2000	8	3,307	871	46	0.3
2001	8	3,421	913	49	0.3
2002	6	3,232	882	58	0.2
2003	7	3,189	858	50	0.3
2004	7	3,301	891	48	0.3
2005	7	3,342	896	51	0.3
2006	6	3,395	886	54	0.2
2007	6	3,522	921	58	0.2
2008	7	3,587	932	49	0.3
2009	5	3,505	904	67	0.2
2010	8	3,494	897	43	0.3
2011	8	3,447	903	42	0.3
2012	6	3,462	891	54	0.3
2013	9	3,489	904	39	0.4
2014	8	3,569	933	44	0.3
2015	8	3,630	964	44	0.3
2016	8	3,705	987	44	0.3
2017	8	3,741	991	45	0.3
2018	8	3,740	983	48	0.3
2019	10	3,762	991	39	0.4
2020	11	3,807	989	38	0.5

County: county value. Kansas: state value. County Rank: highest county value ranked #1. (\$000): thousands of dollars. Nonmetro Kansas: Kansas total less Metropolitan Areas as defined by the Office of Management and Budget (OMB; released 3/6/2020). Per 1000: For nonmoney amounts, Per 1000=(county value / county population for the same year as the data) x 1000. \$ Per capita=(county value / county population for the same year as the data). Value= . indicates missing or suppressed data or value not calculated.

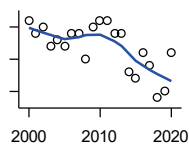
Business

ESTABLISHMENTS: EDUCATIONAL SERVICES



U.S. Census Bureau, County Business Patterns. Beginning with the 2017 data, any tabulation with fewer than 3 establishments were omitted from the release. Data for these establishments are included in the broader total.

Year	County	State of Kansas	Non Metro Kansas	County Rank	Per 1000 or \$ Per Capita
2000	1	604	155	70	0.0
2001	1	625	168	71	0.0
2002	1	666	165	70	0.0
2003	2	663	173	44	0.1
2004	2	690	173	44	0.1
2005	2	699	168	41	0.1
2006	2	698	175	46	0.1
2007	2	691	165	44	0.1
2008	2	692	158	44	0.1
2009	1	690	150	66	0.0
2010	2	700	149	44	0.1
2011	1	711	150	66	0.0
2012	2	724	145	44	0.1
2013	3	735	153	33	0.1
2014	2	722	152	45	0.1
2015	3	754	152	33	0.1
2016	3	728	150	31	0.1
2017	3	720	.	30	0.1
2018	3	744	.	31	0.1
2019	4	759	.	27	0.2
2020	4	736	.	27	0.2



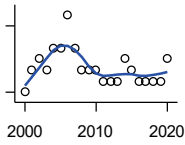
ESTABLISHMENTS: HEALTH CARE AND SOCIAL ASSISTANCE

U.S. Census Bureau, County Business Patterns. Beginning with the 2017 data, any tabulation with fewer than 3 establishments were omitted from the release. Data for these establishments are included in the broader total.

Year	County	State of Kansas	Non Metro Kansas	County Rank	Per 1000 or \$ Per Capita
2000	61	6,564	2,591	24	2.4
2001	59	6,636	2,590	24	2.3
2002	60	7,052	2,777	25	2.4
2003	57	7,129	2,792	26	2.3
2004	58	7,239	2,813	26	2.3
2005	57	7,412	2,855	26	2.3
2006	59	7,477	2,860	25	2.4
2007	59	7,661	2,864	24	2.4
2008	55	7,651	2,810	25	2.3
2009	60	7,696	2,787	24	2.5
2010	61	7,751	2,830	25	2.5
2011	61	7,804	2,817	24	2.6
2012	59	7,973	2,793	25	2.5
2013	59	7,877	2,729	25	2.5
2014	53	7,809	2,686	26	2.3
2015	52	8,103	2,692	26	2.2
2016	56	8,315	2,678	25	2.4
2017	54	8,136	2,646	26	2.3
2018	49	8,126	2,632	26	2.1
2019	50	8,184	2,587	26	2.2
2020	56	8,290	2,571	26	2.5

County: county value. Kansas: state value. County Rank: highest county value ranked #1. (\$000): thousands of dollars. Nonmetro Kansas: Kansas total less Metropolitan Areas as defined by the Office of Management and Budget (OMB; released 3/6/2020). Per 1000: For nonmoney amounts, Per 1000=(county value / county population for the same year as the data) x 1000. \$ Per capita=(county value / county population for the same year as the data). Value= . indicates missing or suppressed data or value not calculated.

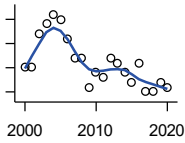
Business



ESTABLISHMENTS: ARTS, ENTERTAINMENT, AND RECREATION

U.S. Census Bureau, County Business Patterns. Beginning with the 2017 data, any tabulation with fewer than 3 establishments were omitted from the release. Data for these establishments are included in the broader total.

Year	County	State of Kansas	Non Metro Kansas	County Rank	Per 1000 or \$ Per Capita
2000	4	981	419	53	0.2
2001	6	1,009	433	38	0.2
2002	7	1,054	441	36	0.3
2003	6	1,045	443	42	0.2
2004	8	1,082	445	29	0.3
2005	8	1,109	446	30	0.3
2006	11	1,080	445	21	0.4
2007	8	1,092	444	29	0.3
2008	6	1,062	423	42	0.2
2009	6	1,063	421	40	0.2
2010	6	1,018	406	38	0.2
2011	5	997	387	40	0.2
2012	5	1,000	388	44	0.2
2013	5	1,009	377	42	0.2
2014	7	1,030	365	30	0.3
2015	6	1,031	357	35	0.3
2016	5	1,060	366	42	0.2
2017	5	1,096	.	40	0.2
2018	5	1,088	.	39	0.2
2019	5	1,087	.	39	0.2
2020	7	1,064	.	34	0.3



ESTABLISHMENTS: ACCOMMODATION AND FOOD SERVICES

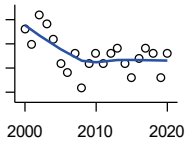
U.S. Census Bureau, County Business Patterns. Beginning with the 2017 data, any tabulation with fewer than 3 establishments were omitted from the release. Data for these establishments are included in the broader total.

Year	County	State of Kansas	Non Metro Kansas	County Rank	Per 1000 or \$ Per Capita
2000	40	5,536	2,213	27	1.5
2001	40	5,551	2,173	27	1.6
2002	47	5,610	2,174	23	1.8
2003	49	5,635	2,188	23	1.9
2004	51	5,681	2,160	24	2.0
2005	50	5,776	2,170	24	2.0
2006	46	5,745	2,132	25	1.9
2007	42	5,877	2,095	25	1.7
2008	42	5,843	2,052	25	1.7
2009	36	5,794	2,029	26	1.5
2010	39	5,898	2,046	26	1.6
2011	38	5,958	2,067	26	1.6
2012	42	5,951	2,046	25	1.8
2013	41	6,061	2,070	26	1.7
2014	39	5,985	2,024	27	1.7
2015	37	6,034	2,063	29	1.6
2016	41	6,126	2,094	26	1.8
2017	35	6,250	2,123	29	1.5
2018	35	6,256	2,128	30	1.5
2019	37	6,231	2,131	28	1.6
2020	36	6,206	2,131	29	1.6

County: county value. Kansas: state value. County Rank: highest county value ranked #1. (\$000): thousands of dollars. Nonmetro Kansas: Kansas total less Metropolitan Areas as defined by the Office of Management and Budget (OMB; released 3/6/2020). Per 1000: For nonmoney amounts, Per 1000=(county value / county population for the same year as the data) x 1000. \$ Per capita=(county value / county population for the same year as the data). Value= . indicates missing or suppressed data or value not calculated.

Business

ESTABLISHMENTS: OTHER SERVICES

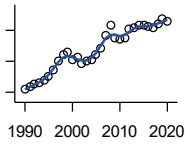


U.S. Census Bureau, County Business Patterns. Beginning with the 2017 data, any tabulation with fewer than 3 establishments were omitted from the release. Data for these establishments are included in the broader total.

Year	County	State of Kansas	Non Metro Kansas	County Rank	Per 1000 or \$ Per Capita
2000	78	8,423	3,636	24	3.0
2001	75	8,310	3,614	23	2.9
2002	81	8,552	3,658	22	3.2
2003	79	8,411	3,605	22	3.1
2004	76	8,343	3,597	23	3.0
2005	71	8,321	3,571	24	2.9
2006	69	8,225	3,490	24	2.8
2007	73	8,355	3,534	25	3.0
2008	66	8,104	3,406	26	2.7
2009	71	8,040	3,405	26	2.9
2010	73	7,998	3,379	25	3.0
2011	71	7,883	3,294	24	3.0
2012	73	7,913	3,303	23	3.1
2013	74	7,947	3,290	23	3.1
2014	71	7,943	3,285	24	3.0
2015	68	7,869	3,255	26	2.9
2016	72	7,839	3,204	22	3.1
2017	74	7,873	3,189	22	3.2
2018	73	7,853	3,176	23	3.2
2019	68	7,834	3,138	26	3.0
2020	73	7,787	3,073	22	3.3

County: county value. Kansas: state value. County Rank: highest county value ranked #1. (\$000): thousands of dollars. Nonmetro Kansas: Kansas total less Metropolitan Areas as defined by the Office of Management and Budget (OMB; released 3/6/2020). Per 1000: For nonmoney amounts, Per 1000=(county value / county population for the same year as the data) x 1000. \$ Per capita=(county value / county population for the same year as the data). Value= . indicates missing or suppressed data or value not calculated.

Business



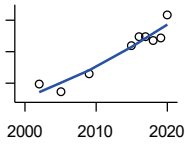
**TOTAL ANNUAL PAYROLL (\$000)
COUNTY BUSINESS PATTERNS**

U.S. Census Bureau, County Business Patterns. Beginning with the 2017 data, any tabulation with fewer than 3 establishments were omitted from the release. Data for these establishments are included in the broader total.

Year	County	State of Kansas	Non Metro Kansas	County Rank	Per 1000 or \$ Per Capita
1990	63,446	17,487,316	4,442,429	31	2,455.2
1991	67,099	18,162,326	4,612,616	31	2,592.4
1992	70,103	19,244,346	4,882,060	31	2,705.9
1993	72,262	20,087,190	5,182,780	32	2,782.2
1994	75,398	21,201,652	5,541,423	34	2,905.4
1995	81,228	22,825,920	5,875,310	33	3,136.2
1996	88,982	24,613,884	6,198,398	32	3,419.9
1997	99,984	26,787,098	6,599,061	31	3,839.5
1998	109,100	28,747,576	6,871,794	31	4,166.8
1999	111,305	30,600,434	7,121,961	31	4,285.2
2000	102,358	31,990,762	7,520,424	33	3,945.0
2001	104,513	33,303,992	7,598,165	33	4,066.0
2002	97,622	33,152,962	7,572,002	34	3,828.3
2003	100,052	34,040,944	7,726,561	34	3,962.8
2004	101,688	35,725,812	8,303,779	35	4,043.9
2005	109,360	36,646,064	8,586,986	35	4,410.6
2006	117,142	39,251,388	9,178,947	35	4,782.7
2007	133,141	42,022,753	.	34	5,481.3
2008	146,172	43,984,689	.	31	6,030.7
2009	130,351	42,146,866	.	33	5,395.3
2010	127,681	42,686,303	10,294,015	33	5,290.9
2011	130,501	43,733,944	.	34	5,486.2
2012	141,850	45,608,072	11,222,183	33	6,001.7
2013	142,592	47,715,601	11,446,751	34	6,058.2
2014	146,281	49,712,832	11,957,931	33	6,255.6
2015	146,019	51,259,676	11,975,718	36	6,235.6
2016	145,334	51,016,318	12,148,646	37	6,269.0
2017	142,661	52,754,605	12,448,592	38	6,171.3
2018	148,731	55,087,460	12,810,270	37	6,461.2
2019	154,898	57,272,387	13,123,288	36	6,783.1
2020	151,771	58,374,388	14,007,955	34	6,780.9

County: county value. Kansas: state value. County Rank: highest county value ranked #1. (\$000): thousands of dollars. Nonmetro Kansas: Kansas total less Metropolitan Areas as defined by the Office of Management and Budget (OMB; released 3/6/2020). Per 1000: For nonmoney amounts, Per 1000=(county value / county population for the same year as the data) x 1000. \$ Per capita=(county value / county population for the same year as the data). Value= . indicates missing or suppressed data or value not calculated.

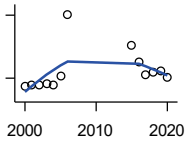
Business



**TOTAL ANNUAL PAYROLL(\$000):
FORESTRY, FISHING, HUNTING, AND
AG SUPPORT**

U.S. Census Bureau, County Business Patterns. Beginning with the 2017 data, any tabulation with fewer than 3 establishments were omitted from the release. Data for these establishments are included in the broader total.

Year	County	State of Kansas	Non Metro Kansas	County Rank	Per 1000 or \$ Per Capita
2000	.	13,551	.	.	.
2001
2002	99	16,528	.	.	3.9
2003	.	17,247	.	.	.
2004	.	17,552	.	.	.
2005	72	16,298	.	.	2.9
2006	.	17,908	.	.	.
2007	.	22,199	.	.	.
2008	.	21,359	.	.	.
2009	129	22,466	.	.	5.3
2010	.	22,753	.	.	.
2011	.	23,320	.	.	.
2012	.	27,492	.	.	.
2013	.	30,360	.	.	.
2014	.	34,862	.	.	.
2015	218	35,980	.	.	9.3
2016	247	31,488	.	.	10.7
2017	248	34,117	.	.	10.7
2018	234	37,960	.	.	10.2
2019	243	39,558	.	.	10.6
2020	317	44,008	.	.	14.2



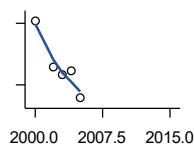
**TOTAL ANNUAL PAYROLL(\$000):
MINING**

U.S. Census Bureau, County Business Patterns. Beginning with the 2017 data, any tabulation with fewer than 3 establishments were omitted from the release. Data for these establishments are included in the broader total.

Year	County	State of Kansas	Non Metro Kansas	County Rank	Per 1000 or \$ Per Capita
2000	642	240,079	.	.	24.7
2001	647	273,838	.	.	25.2
2002	672	262,277	.	.	26.4
2003	759	290,652	.	.	30.1
2004	675	326,997	.	.	26.8
2005	1,079	381,069	.	.	43.5
2006	4,032	482,102	.	.	164.6
2007	.	551,751	.	.	.
2008	.	620,446	.	.	.
2009	.	465,070	.	.	.
2010	.	485,841	.	.	.
2011	.	541,536	.	.	.
2012	.	600,402	.	.	.
2013	.	599,788	.	.	.
2014	.	678,673	.	.	.
2015	2,559	552,658	.	.	109.3
2016	1,767	428,767	.	.	76.2
2017	1,137	379,883	.	.	49.2
2018	1,276	431,367	.	.	55.4
2019	1,317	349,270	.	.	57.7
2020	1,051	302,795	.	.	47.0

County: county value. Kansas: state value. County Rank: highest county value ranked #1. (\$000): thousands of dollars. Nonmetro Kansas: Kansas total less Metropolitan Areas as defined by the Office of Management and Budget (OMB; released 3/6/2020). Per 1000: For nonmoney amounts, Per 1000=(county value / county population for the same year as the data) x 1000. \$ Per capita=(county value / county population for the same year as the data). Value= . indicates missing or suppressed data or value not calculated.

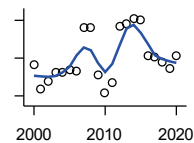
Business



**TOTAL ANNUAL PAYROLL(\$000):
UTILITIES**

U.S. Census Bureau, County Business Patterns. Beginning with the 2017 data, any tabulation with fewer than 3 establishments were omitted from the release. Data for these establishments are included in the broader total.

Year	County	State of Kansas	Non Metro Kansas	County Rank	Per 1000 or \$ Per Capita
2000	1,312	410,313	.	.	50.6
2001	.	452,057	.	.	.
2002	1,088	377,559	.	.	42.7
2003	1,047	378,157	.	.	41.5
2004	1,071	377,809	.	.	42.6
2005	935	429,864	.	.	37.7
2006	.	443,999	.	.	.
2007	.	480,068	.	.	.
2008	.	541,066	.	.	.
2009	.	563,373	.	.	.
2010	.	512,628	.	.	.
2011	.	653,229	.	.	.
2012	.	625,451	.	.	.
2013	.	625,347	.	.	.
2014	.	610,960	.	.	.
2015	.	668,559	.	.	.



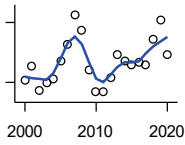
**TOTAL ANNUAL PAYROLL(\$000):
CONSTRUCTION**

U.S. Census Bureau, County Business Patterns. Beginning with the 2017 data, any tabulation with fewer than 3 establishments were omitted from the release. Data for these establishments are included in the broader total.

Year	County	State of Kansas	Non Metro Kansas	County Rank	Per 1000 or \$ Per Capita
2000	3,309	2,256,057	.	.	127.5
2001	2,691	2,320,652	.	.	104.7
2002	2,900	2,302,229	.	.	113.7
2003	3,114	2,282,021	.	.	123.3
2004	3,117	2,302,854	.	.	124.0
2005	3,198	2,465,977	.	.	129.0
2006	3,156	2,700,351	.	.	128.9
2007	4,324	2,772,168	.	.	178.0
2008	4,303	2,950,073	.	.	177.5
2009	3,070	2,709,864	.	.	127.1
2010	2,591	2,553,555	.	.	107.4
2011	2,863	2,550,355	.	.	120.4
2012	4,346	2,733,284	.	.	183.9
2013	4,402	2,866,801	.	.	187.0
2014	4,548	3,135,814	.	.	194.5
2015	4,507	3,270,952	.	.	192.5
2016	3,574	3,328,610	.	.	154.2
2017	3,518	3,568,505	.	.	152.2
2018	3,400	3,806,196	.	.	147.7
2019	3,235	3,879,912	.	.	141.7
2020	3,564	3,983,029	.	.	159.2

County: county value. Kansas: state value. County Rank: highest county value ranked #1. (\$000): thousands of dollars. Nonmetro Kansas: Kansas total less Metropolitan Areas as defined by the Office of Management and Budget (OMB; released 3/6/2020). Per 1000: For nonmoney amounts, Per 1000=(county value / county population for the same year as the data) x 1000. \$ Per capita=(county value / county population for the same year as the data). Value= . indicates missing or suppressed data or value not calculated.

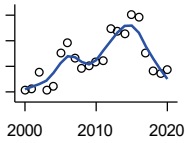
Business



**TOTAL ANNUAL PAYROLL(\$000):
MANUFACTURING**

U.S. Census Bureau, County Business Patterns. Beginning with the 2017 data, any tabulation with fewer than 3 establishments were omitted from the release. Data for these establishments are included in the broader total.

Year	County	State of Kansas	Non Metro Kansas	County Rank	Per 1000 or \$ Per Capita
2000	35,571	7,015,414	.	.	1,371.0
2001	39,202	7,301,706	.	.	1,525.1
2002	32,910	6,802,605	.	.	1,290.6
2003	35,022	6,691,611	.	.	1,387.1
2004	35,747	6,985,656	.	.	1,421.6
2005	40,380	7,221,614	.	.	1,628.6
2006	44,618	7,621,873	.	.	1,821.7
2007	51,910	7,873,359	.	.	2,137.1
2008	47,940	8,441,541	.	.	1,977.9
2009	37,976	7,477,838	.	.	1,571.9
2010	32,538	7,556,955	.	.	1,348.3
2011	32,816	7,747,934	.	.	1,379.6
2012	36,285	7,704,851	.	.	1,535.2
2013	41,946	8,365,542	.	.	1,782.1
2014	40,279	8,787,306	.	.	1,722.5
2015	39,332	9,052,105	.	.	1,679.6
2016	39,931	8,868,744	.	.	1,722.4
2017	39,347	9,075,793	.	.	1,702.1
2018	45,935	9,481,652	.	.	1,995.5
2019	50,668	10,171,575	.	.	2,218.8
2020	41,929	9,744,825	.	.	1,873.3



**TOTAL ANNUAL PAYROLL(\$000):
WHOLESALE TRADE**

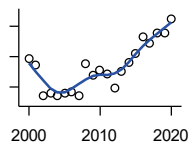
U.S. Census Bureau, County Business Patterns. Beginning with the 2017 data, any tabulation with fewer than 3 establishments were omitted from the release. Data for these establishments are included in the broader total.

Year	County	State of Kansas	Non Metro Kansas	County Rank	Per 1000 or \$ Per Capita
2000	5,046	2,332,755	.	.	194.5
2001	5,109	2,283,169	.	.	198.8
2002	5,757	2,107,653	.	.	225.8
2003	5,085	2,622,701	.	.	201.4
2004	5,211	2,663,196	.	.	207.2
2005	6,531	2,345,990	.	.	263.4
2006	6,905	2,592,211	.	.	281.9
2007	6,335	2,682,542	.	.	260.8
2008	5,908	3,078,655	.	.	243.7
2009	6,003	2,940,949	.	.	248.5
2010	6,176	3,097,628	.	.	255.9
2011	6,202	3,305,811	.	.	260.7
2012	7,461	3,339,997	.	.	315.7
2013	7,388	3,460,512	.	.	313.9
2014	7,279	3,712,075	.	.	311.3
2015	8,026	3,760,189	.	.	342.7
2016	7,920	3,738,207	.	.	341.6
2017	6,523	3,822,730	.	.	282.2
2018	5,803	3,814,353	.	.	252.1
2019	5,735	4,025,802	.	.	251.1
2020	5,885	4,224,666	.	.	262.9

County: county value. Kansas: state value. County Rank: highest county value ranked #1. (\$000): thousands of dollars. Nonmetro Kansas: Kansas total less Metropolitan Areas as defined by the Office of Management and Budget (OMB; released 3/6/2020). Per 1000: For nonmoney amounts, Per 1000=(county value / county population for the same year as the data) x 1000. \$ Per capita=(county value / county population for the same year as the data). Value= . indicates missing or suppressed data or value not calculated.

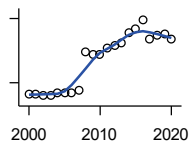
Business

**TOTAL ANNUAL PAYROLL(\$000):
RETAIL TRADE**



U.S. Census Bureau, County Business Patterns. Beginning with the 2017 data, any tabulation with fewer than 3 establishments were omitted from the release. Data for these establishments are included in the broader total.

Year	County	State of Kansas	Non Metro Kansas	County Rank	Per 1000 or \$ Per Capita
2000	12,829	2,747,001	.	.	494.5
2001	12,460	2,813,226	.	.	484.7
2002	10,444	2,854,231	.	.	409.6
2003	10,635	2,773,674	.	.	421.2
2004	10,444	2,847,826	.	.	415.3
2005	10,622	2,952,196	.	.	428.4
2006	10,715	3,126,495	.	.	437.5
2007	10,393	3,201,169	.	.	427.9
2008	12,514	3,261,054	.	.	516.3
2009	11,779	3,232,246	.	.	487.5
2010	12,094	3,321,838	.	.	501.2
2011	11,870	3,384,607	.	.	499.0
2012	10,965	3,409,755	.	.	463.9
2013	12,005	3,483,752	.	.	510.0
2014	12,576	3,617,933	.	.	537.8
2015	13,186	3,712,165	.	.	563.1
2016	14,282	3,826,889	.	.	616.1
2017	13,918	3,797,849	.	.	602.1
2018	14,557	3,818,988	.	.	632.4
2019	14,577	3,908,994	.	.	638.3
2020	15,488	3,984,443	.	.	692.0



**TOTAL ANNUAL PAYROLL(\$000):
TRANSPORTATION &
WAREHOUSING**

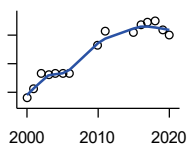
U.S. Census Bureau, County Business Patterns. Beginning with the 2017 data, any tabulation with fewer than 3 establishments were omitted from the release. Data for these establishments are included in the broader total.

Year	County	State of Kansas	Non Metro Kansas	County Rank	Per 1000 or \$ Per Capita
2000	2,391	1,044,835	.	.	92.2
2001	2,294	1,089,405	.	.	89.2
2002	2,160	1,094,636	.	.	84.7
2003	1,929	1,316,655	.	.	76.4
2004	2,506	1,439,800	.	.	99.7
2005	2,715	1,393,651	.	.	109.5
2006	2,583	1,528,551	.	.	105.5
2007	3,349	1,788,267	.	.	137.9
2008	12,224	1,722,697	.	.	504.3
2009	11,468	1,618,598	.	.	474.7
2010	11,542	1,735,761	.	.	478.3
2011	13,029	1,739,165	.	.	547.7
2012	13,741	1,984,976	.	.	581.4
2013	14,174	2,006,261	.	.	602.2
2014	16,806	2,097,377	.	.	718.7
2015	17,520	2,190,072	.	.	748.2
2016	19,625	2,202,859	.	.	846.5
2017	15,332	2,546,061	.	.	663.2
2018	16,161	2,663,188	.	.	702.1
2019	16,502	2,879,406	.	.	722.6
2020	15,157	2,962,461	.	.	677.2

County: county value. Kansas: state value. County Rank: highest county value ranked #1. (\$000): thousands of dollars. Nonmetro Kansas: Kansas total less Metropolitan Areas as defined by the Office of Management and Budget (OMB; released 3/6/2020). Per 1000: For nonmoney amounts, Per 1000=(county value / county population for the same year as the data) x 1000. \$ Per capita=(county value / county population for the same year as the data). Value= . indicates missing or suppressed data or value not calculated.

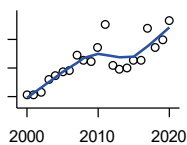
Business

**TOTAL ANNUAL PAYROLL(\$000):
INFORMATION**



U.S. Census Bureau, County Business Patterns. Beginning with the 2017 data, any tabulation with fewer than 3 establishments were omitted from the release. Data for these establishments are included in the broader total.

Year	County	State of Kansas	Non Metro Kansas	County Rank	Per 1000 or \$ Per Capita
2000	2,792	1,923,381	.	.	107.6
2001	3,116	2,218,610	.	.	121.2
2002	3,657	2,298,108	.	.	143.4
2003	3,609	2,378,673	.	.	142.9
2004	3,657	2,392,990	.	.	145.4
2005	3,661	2,395,081	.	.	147.7
2006	3,673	2,586,483	.	.	150.0
2007	.	2,594,138	.	.	.
2008	.	3,043,244	.	.	.
2009	.	3,045,570	.	.	.
2010	4,645	2,481,580	.	.	192.5
2011	5,127	2,513,805	.	.	215.5
2012	.	2,535,555	.	.	.
2013	.	2,805,017	.	.	.
2014	.	2,393,609	.	.	.
2015	5,108	2,406,323	.	.	218.1
2016	5,378	2,080,211	.	.	232.0
2017	5,434	2,090,021	.	.	235.1
2018	5,497	2,341,543	.	.	238.8
2019	5,202	2,133,891	.	.	227.8
2020	5,017	2,245,204	.	.	224.2



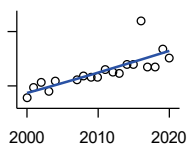
**TOTAL ANNUAL PAYROLL(\$000):
FINANCE & INSURANCE**

U.S. Census Bureau, County Business Patterns. Beginning with the 2017 data, any tabulation with fewer than 3 establishments were omitted from the release. Data for these establishments are included in the broader total.

Year	County	State of Kansas	Non Metro Kansas	County Rank	Per 1000 or \$ Per Capita
2000	8,061	2,083,565	.	.	310.7
2001	8,064	2,129,587	.	.	313.7
2002	8,136	2,414,120	.	.	319.1
2003	8,619	2,608,579	.	.	341.4
2004	8,735	2,676,910	.	.	347.4
2005	8,860	2,786,136	.	.	357.3
2006	8,912	2,928,931	.	.	363.9
2007	9,453	3,096,017	.	.	389.2
2008	9,252	3,322,977	.	.	381.7
2009	9,203	3,206,839	.	.	380.9
2010	9,706	3,211,300	.	.	402.2
2011	10,522	3,404,633	.	.	442.3
2012	9,103	3,611,165	.	.	385.1
2013	8,946	3,896,051	.	.	380.1
2014	9,009	4,044,315	.	.	385.3
2015	9,263	4,113,060	.	.	395.6
2016	9,260	4,180,740	.	.	399.4
2017	10,384	4,258,057	.	.	449.2
2018	9,697	4,682,552	.	.	421.3
2019	9,966	4,814,201	.	.	436.4
2020	10,661	5,288,529	.	.	476.3

County: county value. Kansas: state value. County Rank: highest county value ranked #1. (\$000): thousands of dollars. Nonmetro Kansas: Kansas total less Metropolitan Areas as defined by the Office of Management and Budget (OMB; released 3/6/2020). Per 1000: For nonmoney amounts, Per 1000=(county value / county population for the same year as the data) x 1000. \$ Per capita=(county value / county population for the same year as the data). Value= . indicates missing or suppressed data or value not calculated.

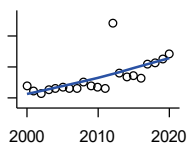
Business



**TOTAL ANNUAL PAYROLL(\$000):
REAL ESTATE, RENTAL, AND
LEASING**

U.S. Census Bureau, County Business Patterns. Beginning with the 2017 data, any tabulation with fewer than 3 establishments were omitted from the release. Data for these establishments are included in the broader total.

Year	County	State of Kansas	Non Metro Kansas	County Rank	Per 1000 or \$ Per Capita
2000	580	360,637	.	.	22.4
2001	722	397,371	.	.	28.1
2002	790	403,695	.	.	31.0
2003	678	437,786	.	.	26.9
2004	816	430,719	.	.	32.5
2005	.	465,149	.	.	.
2006	.	478,811	.	.	.
2007	828	452,969	.	.	34.1
2008	893	484,149	.	.	36.8
2009	876	450,884	.	.	36.3
2010	872	487,255	.	.	36.1
2011	967	535,120	.	.	40.7
2012	935	531,039	.	.	39.6
2013	928	538,796	.	.	39.4
2014	1,050	542,307	.	.	44.9
2015	1,052	595,030	.	.	44.9
2016	1,648	607,668	.	.	71.1
2017	1,019	590,373	.	.	44.1
2018	1,017	600,037	.	.	44.2
2019	1,257	622,881	.	.	55.0
2020	1,133	670,656	.	.	50.6



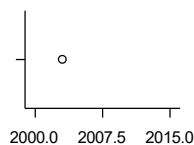
**TOTAL ANNUAL PAYROLL(\$000):
PROFESSIONAL, SCIENTIFIC, AND
TECHNICAL SERVICES**

U.S. Census Bureau, County Business Patterns. Beginning with the 2017 data, any tabulation with fewer than 3 establishments were omitted from the release. Data for these establishments are included in the broader total.

Year	County	State of Kansas	Non Metro Kansas	County Rank	Per 1000 or \$ Per Capita
2000	1,814	2,057,313	.	.	69.9
2001	1,470	2,152,937	.	.	57.2
2002	1,255	2,150,085	.	.	49.2
2003	1,556	2,052,712	.	.	61.6
2004	1,579	2,531,457	.	.	62.8
2005	1,661	2,418,500	.	.	67.0
2006	1,613	2,655,690	.	.	65.9
2007	1,648	2,901,544	.	.	67.8
2008	2,039	2,903,802	.	.	84.1
2009	1,805	3,071,611	.	.	74.7
2010	1,695	3,037,182	.	.	70.2
2011	1,637	3,132,082	.	.	68.8
2012	5,805	3,455,548	.	.	245.6
2013	2,642	3,777,729	.	.	112.2
2014	2,377	3,981,580	.	.	101.7
2015	2,446	4,039,074	.	.	104.5
2016	2,294	4,125,507	.	.	99.0
2017	3,166	4,158,858	.	.	137.0
2018	3,284	4,314,317	.	.	142.7
2019	3,477	4,646,644	.	.	152.3
2020	3,884	4,927,611	.	.	173.5

County: county value. Kansas: state value. County Rank: highest county value ranked #1. (\$000): thousands of dollars. Nonmetro Kansas: Kansas total less Metropolitan Areas as defined by the Office of Management and Budget (OMB; released 3/6/2020). Per 1000: For nonmoney amounts, Per 1000=(county value / county population for the same year as the data) x 1000. \$ Per capita=(county value / county population for the same year as the data). Value= . indicates missing or suppressed data or value not calculated.

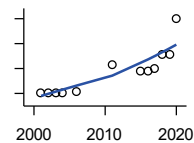
Business



**TOTAL ANNUAL PAYROLL(\$000):
MANAGEMENT OF COMPANIES AND
ENTERPRISES**

U.S. Census Bureau, County Business Patterns. Beginning with the 2017 data, any tabulation with fewer than 3 establishments were omitted from the release. Data for these establishments are included in the broader total.

Year	County	State of Kansas	Non Metro Kansas	County Rank	Per 1000 or \$ Per Capita
2000	.	1,362,735	.	.	.
2001	.	1,279,253	.	.	.
2002	.	1,311,368	.	.	.
2003	725	1,352,119	.	.	28.7
2004	.	1,378,891	.	.	.
2005	.	1,510,876	.	.	.
2006	.	1,626,320	.	.	.
2007	.	2,233,654	.	.	.
2008	.	1,848,656	.	.	.
2009	.	1,601,158	.	.	.
2010	.	2,003,048	.	.	.
2011	.	1,677,619	.	.	.
2012	.	1,834,430	.	.	.
2013	.	1,938,100	.	.	.
2014	.	2,117,232	.	.	.
2015	.	2,451,126	.	.	.



**TOTAL ANNUAL PAYROLL(\$000):
ADMIN, SUPPORT, WASTE MGMT.,
AND REMEDIATION**

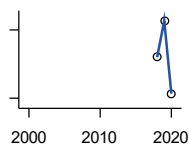
U.S. Census Bureau, County Business Patterns. Beginning with the 2017 data, any tabulation with fewer than 3 establishments were omitted from the release. Data for these establishments are included in the broader total.

Year	County	State of Kansas	Non Metro Kansas	County Rank	Per 1000 or \$ Per Capita
2000	.	1,388,712	.	.	.
2001	94	1,416,480	.	.	3.7
2002	65	1,378,905	.	.	2.5
2003	64	1,387,061	.	.	2.5
2004	77	1,544,442	.	.	3.1
2005	.	1,694,687	.	.	.
2006	124	1,800,846	.	.	5.1
2007	.	1,978,025	.	.	.
2008	.	2,096,864	.	.	.
2009	.	1,832,540	.	.	.
2010	.	2,117,325	.	.	.
2011	2,331	2,114,970	.	.	98.0
2012	.	2,230,250	.	.	.
2013	.	2,214,320	.	.	.
2014	.	2,444,170	.	.	.
2015	1,788	2,577,592	.	.	76.4
2016	1,744	2,760,706	.	.	75.2
2017	2,047	3,026,927	.	.	88.5
2018	3,116	3,007,347	.	.	135.4
2019	3,176	3,075,485	.	.	139.1
2020	6,016	3,250,046	.	.	268.8

County: county value. Kansas: state value. County Rank: highest county value ranked #1. (\$000): thousands of dollars. Nonmetro Kansas: Kansas total less Metropolitan Areas as defined by the Office of Management and Budget (OMB; released 3/6/2020). Per 1000: For nonmoney amounts, Per 1000=(county value / county population for the same year as the data) x 1000. \$ Per capita=(county value / county population for the same year as the data). Value= . indicates missing or suppressed data or value not calculated.

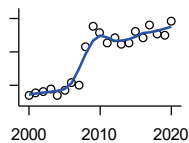
Business

**TOTAL ANNUAL PAYROLL(\$000):
EDUCATIONAL SERVICES**



U.S. Census Bureau, County Business Patterns. Beginning with the 2017 data, any tabulation with fewer than 3 establishments were omitted from the release. Data for these establishments are included in the broader total.

Year	County	State of Kansas	Non Metro Kansas	County Rank	Per 1000 or \$ Per Capita
2000	.	299,843	.	.	.
2001	.	320,606	.	.	.
2002	.	353,531	.	.	.
2003	.	350,814	.	.	.
2004	.	361,644	.	.	.
2005	.	375,781	.	.	.
2006	.	400,565	.	.	.
2007	.	414,233	.	.	.
2008	.	463,210	.	.	.
2009	.	468,856	.	.	.
2010	.	487,670	.	.	.
2011	.	504,964	.	.	.
2012	.	508,448	.	.	.
2013	.	553,995	.	.	.
2014	.	612,073	.	.	.
2015	.	579,794	.	.	.
2018	684	618,864	.	.	29.7
2019	692	654,965	.	.	30.3
2020	676	652,468	.	.	30.2



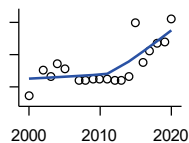
**TOTAL ANNUAL PAYROLL(\$000):
HEALTH CARE AND SOCIAL ASSISTANCE**

U.S. Census Bureau, County Business Patterns. Beginning with the 2017 data, any tabulation with fewer than 3 establishments were omitted from the release. Data for these establishments are included in the broader total.

Year	County	State of Kansas	Non Metro Kansas	County Rank	Per 1000 or \$ Per Capita
2000	18,731	4,120,595	.	.	721.9
2001	19,069	4,445,027	.	.	741.9
2002	19,232	4,705,220	.	.	754.2
2003	19,628	4,939,323	.	.	777.4
2004	18,755	5,232,394	.	.	745.8
2005	19,355	5,487,089	.	.	780.6
2006	20,333	5,814,218	.	.	830.2
2007	20,039	6,186,471	.	.	825.0
2008	24,645	6,490,627	.	.	1,016.8
2009	27,118	6,749,962	.	.	1,122.4
2010	26,246	6,871,727	.	.	1,087.6
2011	25,028	7,129,655	.	.	1,052.2
2012	25,755	7,614,853	.	.	1,089.7
2013	24,896	7,541,515	.	.	1,057.7
2014	25,130	7,733,621	.	.	1,074.7
2015	26,423	7,969,650	.	.	1,128.4
2016	25,628	8,018,706	.	.	1,105.5
2017	27,263	8,384,998	.	.	1,179.3
2018	26,195	8,637,619	.	.	1,138.0
2019	25,932	8,854,414	.	.	1,135.6
2020	27,646	9,309,269	.	.	1,235.2

County: county value. Kansas: state value. County Rank: highest county value ranked #1. (\$000): thousands of dollars. Nonmetro Kansas: Kansas total less Metropolitan Areas as defined by the Office of Management and Budget (OMB; released 3/6/2020). Per 1000: For nonmoney amounts, Per 1000=(county value / county population for the same year as the data) x 1000. \$ Per capita=(county value / county population for the same year as the data). Value= . indicates missing or suppressed data or value not calculated.

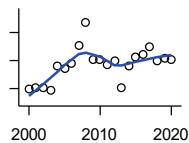
Business



**TOTAL ANNUAL PAYROLL(\$000):
ARTS, ENTERTAINMENT, AND
RECREATION**

U.S. Census Bureau, County Business Patterns. Beginning with the 2017 data, any tabulation with fewer than 3 establishments were omitted from the release. Data for these establishments are included in the broader total.

Year	County	State of Kansas	Non Metro Kansas	County Rank	Per 1000 or \$ Per Capita
2000	21	195,784	.	.	0.8
2001	.	203,511	.	.	.
2002	103	206,204	.	.	4.0
2003	84	185,049	.	.	3.3
2004	121	190,742	.	.	4.8
2005	106	196,594	.	.	4.3
2006	.	201,049	.	.	.
2007	72	220,435	.	.	3.0
2008	71	236,986	.	.	2.9
2009	73	237,116	.	.	3.0
2010	74	233,285	.	.	3.1
2011	75	234,351	.	.	3.2
2012	71	254,169	.	.	3.0
2013	70	278,474	.	.	3.0
2014	82	289,103	.	.	3.5
2015	250	300,253	.	.	10.7
2016	126	312,902	.	.	5.4
2017	163	323,153	.	.	7.1
2018	185	325,454	.	.	8.0
2019	191	335,362	.	.	8.4
2020	261	298,119	.	.	11.7



**TOTAL ANNUAL PAYROLL(\$000):
ACCOMMODATION AND FOOD
SERVICES**

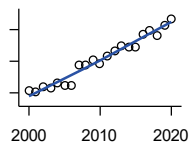
U.S. Census Bureau, County Business Patterns. Beginning with the 2017 data, any tabulation with fewer than 3 establishments were omitted from the release. Data for these establishments are included in the broader total.

Year	County	State of Kansas	Non Metro Kansas	County Rank	Per 1000 or \$ Per Capita
2000	3,970	926,831	.	.	153.0
2001	4,028	960,196	.	.	156.7
2002	4,009	930,510	.	.	157.2
2003	3,939	992,313	.	.	156.0
2004	4,817	1,046,901	.	.	191.6
2005	4,712	1,101,854	.	.	190.0
2006	4,882	1,185,280	.	.	199.3
2007	5,534	1,431,100	.	.	227.8
2008	6,373	1,271,594	.	.	262.9
2009	5,021	1,283,065	.	.	207.8
2010	5,049	1,296,556	.	.	209.2
2011	4,834	1,364,281	.	.	203.2
2012	4,992	1,388,337	.	.	211.2
2013	4,043	1,476,335	.	.	171.8
2014	4,803	1,572,021	.	.	205.4
2015	5,112	1,640,144	.	.	218.3
2016	5,235	1,709,193	.	.	225.8
2017	5,491	1,824,791	.	.	237.5
2018	4,976	1,880,364	.	.	216.2
2019	5,090	1,958,603	.	.	222.9
2020	5,041	1,745,238	.	.	225.2

County: county value. Kansas: state value. County Rank: highest county value ranked #1. (\$000): thousands of dollars. Nonmetro Kansas: Kansas total less Metropolitan Areas as defined by the Office of Management and Budget (OMB; released 3/6/2020). Per 1000: For nonmoney amounts, Per 1000=(county value / county population for the same year as the data) x 1000. \$ Per capita=(county value / county population for the same year as the data). Value= . indicates missing or suppressed data or value not calculated.

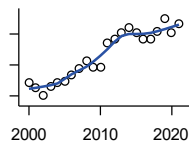
Business

**TOTAL ANNUAL PAYROLL(\$000):
OTHER SERVICES**



U.S. Census Bureau, County Business Patterns. Beginning with the 2017 data, any tabulation with fewer than 3 establishments were omitted from the release. Data for these establishments are included in the broader total.

Year	County	State of Kansas	Non Metro Kansas	County Rank	Per 1000 or \$ Per Capita
2000	3,087	965,540	.	.	119.0
2001	3,028	996,716	.	.	117.8
2002	3,179	1,007,464	.	.	124.7
2003	3,144	979,466	.	.	124.5
2004	3,318	970,383	.	.	131.9
2005	3,226	1,005,537	.	.	130.1
2006	3,230	1,055,932	.	.	131.9
2007	3,877	1,141,551	.	.	159.6
2008	3,883	1,184,016	.	.	160.2
2009	4,052	1,167,154	.	.	167.7
2010	3,913	1,170,201	.	.	162.1
2011	4,147	1,173,775	.	.	174.3
2012	4,318	1,217,210	.	.	182.7
2013	4,497	1,254,933	.	.	191.1
2014	4,462	1,305,563	.	.	190.8
2015	4,447	1,341,075	.	.	189.9
2016	4,870	1,351,375	.	.	210.1
2017	4,973	1,344,179	.	.	215.1
2018	4,795	1,382,801	.	.	208.3
2019	5,126	1,427,711	.	.	224.5
2020	5,341	1,420,859	.	.	238.6



**NOMINAL TAXABLE RETAIL SALES
(million\$)**

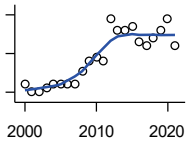
Kansas Department of Revenue

Year	County	State of Kansas	Non Metro Kansas	County Rank	Per 1000 or \$ Per Capita
2000	136.4	30,119.0	8,831.7	29	5.3
2001	131.0	30,202.2	8,700.3	29	5.1
2002	120.8	29,380.8	8,241.5	29	4.7
2003	131.4	30,694.0	8,710.6	29	5.2
2004	137.8	31,922.6	9,062.5	30	5.5
2005	139.6	32,924.2	9,386.6	30	5.6
2006	146.9	34,937.6	10,042.1	29	6.0
2007	154.6	36,180.1	10,553.2	30	6.4
2008	165.8	37,559.5	11,126.9	30	6.8
2009	156.2	35,211.8	10,351.5	29	6.5
2010	157.7	35,655.7	10,606.1	29	6.5
2011	189.3	37,257.0	11,153.5	28	8.0
2012	193.9	38,988.8	11,749.1	26	8.2
2013	201.2	40,009.0	11,993.8	26	8.5
2014	209.0	41,299.0	12,365.4	26	8.9
2015	202.4	41,635.8	11,747.6	27	8.6
2016	193.0	42,040.2	11,523.5	27	8.3
2017	193.5	41,940.1	11,449.9	27	8.4
2018	203.1	42,732.3	11,643.9	26	8.8
2019	220.0	43,732.5	12,062.7	27	9.6
2020	200.9	43,689.9	12,331.7	29	9.0
2021	212.6	48,532.8	13,413.0	29	9.5

County: county value. Kansas: state value. County Rank: highest county value ranked #1. (\$000): thousands of dollars. Nonmetro Kansas: Kansas total less Metropolitan Areas as defined by the Office of Management and Budget (OMB; released 3/6/2020). Per 1000: For nonmoney amounts, Per 1000=(county value / county population for the same year as the data) x 1000. \$ Per capita=(county value / county population for the same year as the data). Value= . indicates missing or suppressed data or value not calculated.

Business

RETAIL PULL FACTOR



Kansas Direct Program, Kansas State University Cooperative Extension Service (1980-1999); Kansas Department of Revenue (2000-)

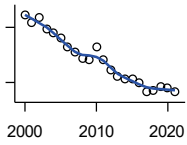
Year	County	State of Kansas	Non Metro Kansas	County Rank	Per 1000 or \$ Per Capita
2000	0.47	.	.	81	.
2001	0.45	.	.	79	.
2002	0.45	.	.	79	.
2003	0.46	.	.	82	.
2004	0.47	.	.	82	.
2005	0.47	.	.	87	.
2006	0.47	.	.	84	.
2007	0.47	.	.	86	.
2008	0.50	.	.	85	.
2009	0.53	.	.	87	.
2010	0.54	.	.	84	.
2011	0.53	.	.	91	.
2012	0.64	.	.	75	.
2013	0.61	.	.	81	.
2014	0.61	.	.	81	.
2015	0.62	.	.	79	.
2016	0.58	.	.	84	.
2017	0.57	.	.	81	.
2018	0.59	.	.	79	.
2019	0.61	.	.	78	.
2020	0.64	.	.	76	.
2021	0.57	.	.	87	.

County: county value. Kansas: state value. County Rank: highest county value ranked #1. (\$000): thousands of dollars. Nonmetro Kansas: Kansas total less Metropolitan Areas as defined by the Office of Management and Budget (OMB; released 3/6/2020). Per 1000: For nonmoney amounts, Per 1000=(county value / county population for the same year as the data) x 1000. \$ Per capita=(county value / county population for the same year as the data). Value= . indicates missing or suppressed data or value not calculated.

Employment

CIVILIAN LABOR FORCE (BLS-Place of Residence; 1990-)

U.S. Department of Labor, Bureau of Labor Statistics (BLS)



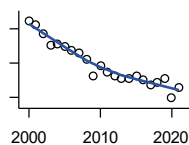
Year	County	State of Kansas	Non Metro Kansas	County Rank	Per 1000 or \$ Per Capita
2000	12,838	1,402,606	482,229	23	494.8
2001	12,645	1,398,521	475,280	23	491.9
2002	12,775	1,419,335	482,428	23	501.0
2003	12,471	1,441,065	490,161	23	493.9
2004	12,333	1,458,910	494,509	23	490.5
2005	12,215	1,458,767	490,047	23	492.6
2006	11,951	1,467,553	498,594	23	487.9
2007	11,832	1,485,414	497,048	24	487.1
2008	11,646	1,493,365	504,522	24	480.5
2009	11,628	1,512,572	516,311	24	481.3
2010	11,953	1,500,463	492,594	24	495.3
2011	11,624	1,498,000	492,563	24	488.7
2012	11,341	1,490,808	489,349	25	479.8
2013	11,171	1,489,395	485,484	25	474.6
2014	11,083	1,494,203	481,813	26	474.0
2015	11,109	1,493,782	477,546	25	474.4
2016	10,981	1,491,961	468,258	25	473.7
2017	10,755	1,488,346	461,063	25	465.2
2018	10,792	1,488,027	456,866	25	468.8
2019	10,897	1,497,517	455,858	25	477.2
2020	10,841	1,493,706	452,935	25	484.4
2021	10,735	1,495,665	453,398	25	479.6

County: county value. Kansas: state value. County Rank: highest county value ranked #1. (\$000): thousands of dollars. Nonmetro Kansas: Kansas total less Metropolitan Areas as defined by the Office of Management and Budget (OMB; released 3/6/2020). Per 1000: For nonmoney amounts, Per 1000=(county value / county population for the same year as the data) x 1000. \$ Per capita=(county value / county population for the same year as the data). Value= . indicates missing or suppressed data or value not calculated.

Employment

EMPLOYED (BLS-Place of Residence; 1990-)

U.S. Department of Labor, Bureau of Labor Statistics (BLS)

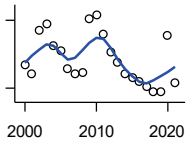


Year	County	State of Kansas	Non Metro Kansas	County Rank	Per 1000 or \$ Per Capita
2000	12,233	1,349,841	464,962	23	471.5
2001	12,116	1,338,775	455,154	23	471.4
2002	11,864	1,347,163	461,241	23	465.3
2003	11,505	1,361,115	467,622	23	455.7
2004	11,553	1,378,355	470,330	23	459.4
2005	11,489	1,384,654	467,722	23	463.4
2006	11,384	1,402,950	479,174	23	464.8
2007	11,309	1,422,109	477,983	24	465.6
2008	11,110	1,425,022	484,056	24	458.4
2009	10,614	1,408,142	485,797	25	439.3
2010	10,905	1,396,172	461,635	25	451.9
2011	10,749	1,402,198	463,723	25	451.9
2012	10,620	1,405,638	463,376	25	449.3
2013	10,541	1,410,470	461,405	26	447.8
2014	10,558	1,426,892	461,797	26	451.5
2015	10,615	1,431,533	457,899	25	453.3
2016	10,517	1,431,920	449,356	25	453.7
2017	10,347	1,434,516	445,003	25	447.6
2018	10,422	1,439,329	442,716	25	452.8
2019	10,533	1,450,705	442,108	25	461.2
2020	9,975	1,408,965	433,229	25	445.7
2021	10,293	1,447,323	441,159	25	459.8

County: county value. Kansas: state value. County Rank: highest county value ranked #1. (\$000): thousands of dollars. Nonmetro Kansas: Kansas total less Metropolitan Areas as defined by the Office of Management and Budget (OMB; released 3/6/2020). Per 1000: For nonmoney amounts, Per 1000=(county value / county population for the same year as the data) x 1000. \$ Per capita=(county value / county population for the same year as the data). Value= . indicates missing or suppressed data or value not calculated.

Employment

UNEMPLOYED (BLS-Place of Residence; 1990-)



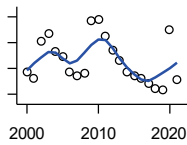
U.S. Department of Labor, Bureau of Labor Statistics (BLS)

Year	County	State of Kansas	Non Metro Kansas	County Rank	Per 1000 or \$ Per Capita
2000	605	52,765	17,267	15	23.3
2001	529	59,746	20,126	23	20.6
2002	911	72,172	21,187	14	35.7
2003	966	79,950	22,539	14	38.3
2004	780	80,555	24,179	18	31.0
2005	726	74,113	22,325	19	29.3
2006	567	64,603	19,420	22	23.1
2007	523	63,305	19,065	24	21.5
2008	536	68,343	20,466	24	22.1
2009	1,014	104,430	30,514	19	42.0
2010	1,048	104,291	30,959	20	43.4
2011	875	95,802	28,840	21	36.8
2012	721	85,170	25,973	23	30.5
2013	630	78,925	24,079	25	26.8
2014	525	67,311	20,016	24	22.5
2015	494	62,249	19,647	25	21.1
2016	464	60,041	18,902	25	20.0
2017	408	53,830	16,060	25	17.6
2018	370	48,698	14,150	25	16.1
2019	364	46,812	13,750	25	15.9
2020	866	84,741	19,706	15	38.7
2021	442	48,342	12,239	19	19.7

County: county value. Kansas: state value. County Rank: highest county value ranked #1. (\$000): thousands of dollars. Nonmetro Kansas: Kansas total less Metropolitan Areas as defined by the Office of Management and Budget (OMB; released 3/6/2020). Per 1000: For nonmoney amounts, Per 1000=(county value / county population for the same year as the data) x 1000. \$ Per capita=(county value / county population for the same year as the data). Value= . indicates missing or suppressed data or value not calculated.

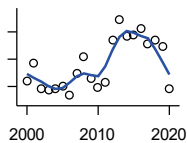
Employment

UNEMPLOYMENT RATE (BLS-Place of Residence; 1990-)



U.S. Department of Labor, Bureau of Labor Statistics (BLS)

Year	County	State of Kansas	Non Metro Kansas	County Rank	Per 1000 or \$ Per Capita
2000	4.7	3.8	3.6	14	.
2001	4.2	4.3	4.2	31	.
2002	7.1	5.1	4.4	3	.
2003	7.7	5.5	4.6	2	.
2004	6.3	5.5	4.9	13	.
2005	5.9	5.1	4.6	12	.
2006	4.7	4.4	3.9	20	.
2007	4.4	4.3	3.8	26	.
2008	4.6	4.6	4.1	30	.
2009	8.7	6.9	5.9	9	.
2010	8.8	7.0	6.3	13	.
2011	7.5	6.4	5.9	21	.
2012	6.4	5.7	5.3	21	.
2013	5.6	5.3	5.0	29	.
2014	4.7	4.5	4.2	28	.
2015	4.4	4.2	4.1	27	.
2016	4.2	4.0	4.0	35	.
2017	3.8	3.6	3.5	29	.
2018	3.4	3.3	3.1	30	.
2019	3.3	3.1	3.0	28	.
2020	8.0	5.7	4.4	2	.
2021	4.1	3.2	2.7	6	.



BEA EMPLOYMENT: TOTAL (Place of Work)

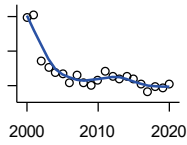
U.S. Bureau of Economic Analysis, Regional Economic Information System (REIS)

Year	County	State of Kansas	Non Metro Kansas	County Rank	Per 1000 or \$ Per Capita
2000	10,277	1,760,312	604,361	30	396.1
2001	10,542	1,767,601	592,672	28	410.1
2002	10,175	1,746,077	585,387	29	399.0
2003	10,139	1,733,694	577,860	29	401.6
2004	10,176	1,750,876	578,750	29	404.7
2005	10,212	1,765,650	577,562	29	411.9
2006	10,066	1,795,507	583,041	29	411.0
2007	10,399	1,844,355	591,924	29	428.1
2008	10,640	1,858,069	594,368	27	439.0
2009	10,312	1,813,184	580,972	27	426.8
2010	10,184	1,801,873	579,758	28	422.0
2011	10,256	1,819,044	583,725	27	431.2
2012	10,876	1,841,393	591,748	27	460.2
2013	11,183	1,869,054	597,236	27	475.1
2014	10,944	1,895,859	601,291	27	468.0
2015	10,955	1,910,954	598,589	27	467.8
2016	11,055	1,916,152	592,580	27	476.9
2017	10,820	1,914,179	584,337	27	468.1
2018	10,880	1,926,242	580,213	27	472.7
2019	10,787	1,925,204	574,496	27	472.4
2020	10,163	1,851,247	556,671	27	454.1

County: county value. Kansas: state value. County Rank: highest county value ranked #1. (\$000): thousands of dollars. Nonmetro Kansas: Kansas total less Metropolitan Areas as defined by the Office of Management and Budget (OMB; released 3/6/2020). Per 1000: For nonmoney amounts, Per 1000=(county value / county population for the same year as the data) x 1000. \$ Per capita=(county value / county population for the same year as the data). Value= . indicates missing or suppressed data or value not calculated.

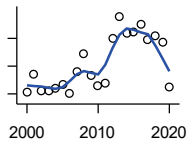
Employment

BEA EMPLOYMENT: FARM



U.S. Bureau of Economic Analysis,
Regional Economic Information System
(REIS)

Year	County	State of Kansas	Non Metro Kansas	County Rank	Per 1000 or \$ Per Capita
2000	1,249	77,477	59,088	7	48.1
2001	1,255	78,177	59,647	6	48.8
2002	1,123	70,532	53,893	6	44.0
2003	1,102	68,516	52,099	6	43.6
2004	1,088	67,586	51,246	6	43.3
2005	1,085	66,829	50,386	7	43.8
2006	1,059	64,910	48,728	7	43.2
2007	1,079	65,639	49,037	6	44.4
2008	1,057	63,820	47,682	7	43.6
2009	1,050	62,798	46,960	7	43.5
2010	1,067	63,882	47,984	7	44.2
2011	1,093	65,761	49,707	7	45.9
2012	1,076	63,753	48,167	7	45.5
2013	1,068	62,739	47,255	7	45.4
2014	1,075	64,308	48,722	7	46.0
2015	1,071	64,416	48,927	7	45.7
2016	1,056	63,840	48,539	7	45.6
2017	1,031	61,876	46,936	7	44.6
2018	1,047	63,233	48,069	7	45.5
2019	1,045	63,300	48,167	7	45.8
2020	1,055	64,281	49,038	7	47.1



BEA EMPLOYMENT: NON-FARM

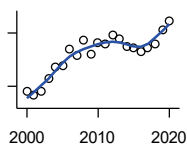
U.S. Bureau of Economic Analysis,
Regional Economic Information System
(REIS)

Year	County	State of Kansas	Non Metro Kansas	County Rank	Per 1000 or \$ Per Capita
2000	9,028	1,682,835	545,273	30	348.0
2001	9,287	1,689,424	533,025	29	361.3
2002	9,052	1,675,545	531,494	29	355.0
2003	9,037	1,665,178	525,761	29	357.9
2004	9,088	1,683,290	527,504	29	361.4
2005	9,127	1,698,821	527,176	29	368.1
2006	9,007	1,730,597	534,313	29	367.7
2007	9,320	1,778,716	542,887	29	383.7
2008	9,583	1,794,249	546,686	28	395.4
2009	9,262	1,750,386	534,012	27	383.4
2010	9,117	1,737,991	531,774	28	377.8
2011	9,163	1,753,283	534,018	28	385.2
2012	9,800	1,777,640	543,581	27	414.6
2013	10,115	1,806,315	549,981	27	429.7
2014	9,869	1,831,551	552,569	27	422.0
2015	9,884	1,846,538	549,662	27	422.1
2016	9,999	1,852,312	544,041	27	431.3
2017	9,789	1,852,303	537,401	27	423.5
2018	9,833	1,863,009	532,144	27	427.2
2019	9,742	1,861,904	526,329	27	426.6
2020	9,108	1,786,966	507,633	27	406.9

County: county value. Kansas: state value. County Rank: highest county value ranked #1. (\$000): thousands of dollars. Nonmetro Kansas: Kansas total less Metropolitan Areas as defined by the Office of Management and Budget (OMB; released 3/6/2020). Per 1000: For nonmoney amounts, Per 1000=(county value / county population for the same year as the data) x 1000. \$ Per capita=(county value / county population for the same year as the data). Value= . indicates missing or suppressed data or value not calculated.

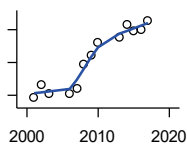
Employment

AVERAGE WAGE PER JOB (\$)



U.S. Bureau of Economic Analysis,
Regional Economic Information System
(REIS)

Year	County	State of Kansas	Non Metro Kansas	County Rank	Per 1000 or \$ Per Capita
2000	23,409	31,854	24,396	45	.
2001	22,335	32,859	26,379	70	.
2002	23,414	33,707	26,331	52	.
2003	27,168	35,078	28,911	55	.
2004	30,352	35,932	29,747	32	.
2005	30,951	37,467	31,646	44	.
2006	35,370	40,038	31,993	18	.
2007	33,730	41,500	33,484	35	.
2008	38,049	44,197	36,256	33	.
2009	34,118	43,860	35,739	53	.
2010	37,301	45,370	38,631	48	.
2011	36,891	48,280	42,324	71	.
2012	39,548	50,549	42,015	56	.
2013	38,261	52,629	46,073	81	.
2014	36,215	51,959	43,562	76	.
2015	35,702	52,250	42,320	73	.
2016	34,710	51,664	41,964	78	.
2017	35,869	53,007	42,137	73	.
2018	37,074	54,790	44,514	76	.
2019	41,017	56,956	45,336	62	.
2020	43,422	60,597	49,183	79	.



BEA EMPLOYMENT: FORESTRY, FISHING, HUNTING, AND AG SUPPORT

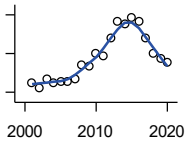
U.S. Bureau of Economic Analysis,
Regional Economic Information System
(REIS)

Year	County	State of Kansas	Non Metro Kansas	County Rank	Per 1000 or \$ Per Capita
2001	71	7,059	.	13	.
2002	91	8,045	.	10	.
2003	78	7,313	.	14	.
2004	.	7,623	.	.	.
2005	.	7,962	.	.	.
2006	77	7,748	.	15	.
2007	86	8,228	.	17	.
2008	122	8,646	.	10	.
2009	137	8,982	.	9	.
2010	156	9,251	.	7	.
2011	.	9,410	.	.	.
2012	.	9,691	.	.	.
2013	164	10,014	.	7	.
2014	183	10,708	.	8	.
2015	174	10,020	.	5	.
2016	175	10,383	.	7	.
2017	189	10,693	.	7	.

County: county value. Kansas: state value. County Rank: highest county value ranked #1. (\$000): thousands of dollars. Nonmetro Kansas: Kansas total less Metropolitan Areas as defined by the Office of Management and Budget (OMB; released 3/6/2020). Per 1000: For nonmoney amounts, Per 1000=(county value / county population for the same year as the data) x 1000. \$ Per capita=(county value / county population for the same year as the data). Value= . indicates missing or suppressed data or value not calculated.

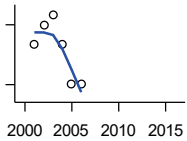
Employment

BEA EMPLOYMENT: MINING



U.S. Bureau of Economic Analysis,
Regional Economic Information System
(REIS)

Year	County	State of Kansas	Non Metro Kansas	County Rank	Per 1000 or \$ Per Capita
2001	149	19,592	.	29	.
2002	125	17,635	.	30	.
2003	169	19,869	.	27	.
2004	150	18,466	.	27	.
2005	154	19,489	.	25	.
2006	158	22,403	.	26	.
2007	168	24,043	.	25	.
2008	240	31,467	.	23	.
2009	232	29,941	.	24	.
2010	300	36,124	.	24	.
2011	285	31,658	.	22	.
2012	379	42,405	.	23	.
2013	467	46,585	.	23	.
2014	452	45,526	.	24	.
2015	486	46,460	.	22	.
2016	468	48,555	.	22	.
2017	381	40,710	.	22	.
2018	299	32,021	.	22	.
2019	275	29,101	.	23	.
2020	254	26,272	.	21	.



BEA EMPLOYMENT: UTILITIES

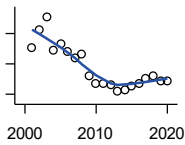
U.S. Bureau of Economic Analysis,
Regional Economic Information System
(REIS)

Year	County	State of Kansas	Non Metro Kansas	County Rank	Per 1000 or \$ Per Capita
2001	26	7,608	.	10	.
2002	28	7,087	.	9	.
2003	29	7,253	.	9	.
2004	26	7,356	.	11	.
2005	22	7,447	.	12	.
2006	22	7,478	.	13	.
2007	.	7,584	.	.	.
2008	.	7,855	.	.	.
2009	.	7,941	.	.	.
2010	.	8,028	.	.	.
2011	.	8,213	.	.	.
2012	.	8,155	.	.	.
2013	.	7,949	.	.	.
2014	.	7,985	.	.	.
2015	.	7,040	.	.	.
2016	.	7,133	.	.	.

County: county value. Kansas: state value. County Rank: highest county value ranked #1. (\$000): thousands of dollars. Nonmetro Kansas: Kansas total less Metropolitan Areas as defined by the Office of Management and Budget (OMB; released 3/6/2020). Per 1000: For nonmoney amounts, Per 1000=(county value / county population for the same year as the data) x 1000. \$ Per capita=(county value / county population for the same year as the data). Value= . indicates missing or suppressed data or value not calculated.

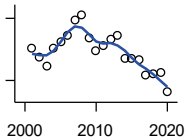
Employment

**BEA EMPLOYMENT:
CONSTRUCTION**



U.S. Bureau of Economic Analysis,
Regional Economic Information System
(REIS)

Year	County	State of Kansas	Non Metro Kansas	County Rank	Per 1000 or \$ Per Capita
2001	503	92,647	27,972	28	.
2002	562	90,370	.	28	.
2003	605	91,725	26,681	27	.
2004	497	93,271	.	29	.
2005	516	94,836	.	28	.
2006	489	97,449	.	30	.
2007	469	99,119	29,179	34	.
2008	483	97,741	.	32	.
2009	411	90,165	28,077	33	.
2010	387	84,708	26,402	33	.
2011	384	83,332	25,999	34	.
2012	379	85,966	.	34	.
2013	362	88,094	.	36	.
2014	366	91,143	.	37	.
2015	375	91,458	27,583	34	.
2016	386	93,539	27,151	35	.
2017	404	92,046	25,579	32	.
2018	412	92,985	25,530	30	.
2019	392	94,858	25,701	32	.
2020	393	94,186	26,085	33	.



**BEA EMPLOYMENT:
MANUFACTURING**

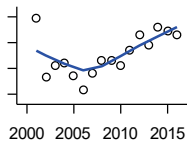
U.S. Bureau of Economic Analysis,
Regional Economic Information System
(REIS)

Year	County	State of Kansas	Non Metro Kansas	County Rank	Per 1000 or \$ Per Capita
2001	1,107	199,980	73,170	27	.
2002	1,023	188,905	70,691	29	.
2003	933	179,013	68,418	30	.
2004	1,107	181,738	69,669	28	.
2005	1,175	185,459	71,072	28	.
2006	1,240	188,047	71,704	28	.
2007	1,385	192,930	73,488	27	.
2008	1,434	193,116	72,235	26	.
2009	1,207	173,854	64,961	24	.
2010	1,090	166,000	62,884	24	.
2011	1,131	167,302	64,361	25	.
2012	1,200	169,308	65,944	25	.
2013	1,235	170,113	67,251	25	.
2014	1,018	169,307	68,299	32	.
2015	1,015	168,324	66,978	31	.
2016	1,004	167,723	65,796	31	.
2017	855	168,438	66,795	33	.
2018	862	171,778	68,181	32	.
2019	877	173,605	67,879	33	.
2020	687	165,228	65,658	34	.

County: county value. Kansas: state value. County Rank: highest county value ranked #1. (\$000): thousands of dollars. Nonmetro Kansas: Kansas total less Metropolitan Areas as defined by the Office of Management and Budget (OMB; released 3/6/2020). Per 1000: For nonmoney amounts, Per 1000=(county value / county population for the same year as the data) x 1000. \$ Per capita=(county value / county population for the same year as the data). Value= . indicates missing or suppressed data or value not calculated.

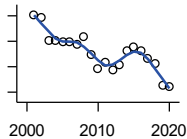
Employment

BEA EMPLOYMENT: WHOLESALE TRADE



U.S. Bureau of Economic Analysis,
Regional Economic Information System
(REIS)

Year	County	State of Kansas	Non Metro Kansas	County Rank	Per 1000 or \$ Per Capita
2001	249	65,698	.	29	.
2002	203	65,408	.	33	.
2003	212	63,504	.	31	.
2004	214	64,434	.	32	.
2005	204	64,587	.	31	.
2006	193	64,743	.	33	.
2007	206	65,993	.	32	.
2008	216	67,693	.	32	.
2009	216	65,954	.	34	.
2010	212	64,376	.	32	.
2011	224	64,712	.	34	.
2012	236	63,973	.	30	.
2013	228	64,999	.	32	.
2014	242	69,295	.	31	.
2015	239	68,444	.	32	.
2016	236	64,843	.	31	.



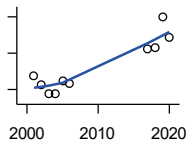
BEA EMPLOYMENT: RETAIL TRADE

U.S. Bureau of Economic Analysis,
Regional Economic Information System
(REIS)

Year	County	State of Kansas	Non Metro Kansas	County Rank	Per 1000 or \$ Per Capita
2001	1,104	198,069	.	28	.
2002	1,093	196,112	.	27	.
2003	1,003	194,545	64,173	31	.
2004	1,003	192,957	63,265	30	.
2005	1,000	191,656	62,506	30	.
2006	997	190,391	62,082	29	.
2007	989	190,643	61,716	30	.
2008	1,019	185,907	59,783	29	.
2009	949	181,262	58,714	30	.
2010	890	177,858	57,470	30	.
2011	917	180,548	57,734	29	.
2012	887	180,596	57,349	29	.
2013	909	183,245	57,556	29	.
2014	962	185,899	57,855	29	.
2015	979	188,421	58,516	29	.
2016	965	188,505	57,864	29	.
2017	933	186,633	56,715	29	.
2018	912	183,323	.	28	.
2019	829	177,240	53,427	29	.
2020	823	171,777	52,563	29	.

County: county value. Kansas: state value. County Rank: highest county value ranked #1. (\$000): thousands of dollars. Nonmetro Kansas: Kansas total less Metropolitan Areas as defined by the Office of Management and Budget (OMB; released 3/6/2020). Per 1000: For nonmoney amounts, Per 1000=(county value / county population for the same year as the data) x 1000. \$ Per capita=(county value / county population for the same year as the data). Value= . indicates missing or suppressed data or value not calculated.

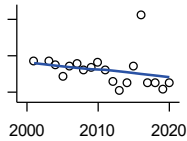
Employment



**BEA EMPLOYMENT:
TRANSPORTATION AND
WAREHOUSING**

U.S. Bureau of Economic Analysis,
Regional Economic Information System
(REIS)

Year	County	State of Kansas	Non Metro Kansas	County Rank	Per 1000 or \$ Per Capita
2001	336	56,302	.	17	.
2002	314	55,319	.	18	.
2003	287	55,509	.	19	.
2004	287	55,479	.	19	.
2005	324	56,287	.	19	.
2006	318	57,506	.	20	.
2007	.	59,277	.	.	.
2008	.	58,725	.	.	.
2009	.	56,238	.	.	.
2010	.	55,179	.	.	.
2011	.	57,449	.	.	.
2012	.	59,756	.	.	.
2013	.	59,780	.	.	.
2014	.	60,565	.	.	.
2015	.	63,256	.	.	.
2016	.	65,705	.	.	.
2017	410	70,641	.	19	.
2018	416	75,308	.	19	.
2019	499	81,209	.	19	.
2020	444	80,543	.	21	.



BEA EMPLOYMENT: INFORMATION

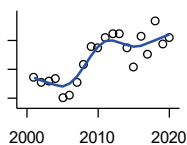
U.S. Bureau of Economic Analysis,
Regional Economic Information System
(REIS)

Year	County	State of Kansas	Non Metro Kansas	County Rank	Per 1000 or \$ Per Capita
2001	134	54,895	.	23	.
2002	.	50,728	.	.	.
2003	134	48,328	6,860	25	.
2004	130	45,617	.	24	.
2005	117	43,840	.	28	.
2006	128	43,925	.	22	.
2007	132	45,115	.	24	.
2008	124	42,958	.	25	.
2009	127	38,677	.	23	.
2010	133	33,432	.	22	.
2011	125	32,160	.	21	.
2012	112	31,829	.	24	.
2013	102	31,737	.	25	.
2014	110	32,316	.	23	.
2015	128	25,282	.	18	.
2016	185	24,998	.	15	.
2017	110	24,004	.	19	.
2018	111	23,165	.	19	.
2019	104	22,078	.	20	.
2020	110	20,810	.	16	.

County: county value. Kansas: state value. County Rank: highest county value ranked #1. (\$000): thousands of dollars. Nonmetro Kansas: Kansas total less Metropolitan Areas as defined by the Office of Management and Budget (OMB; released 3/6/2020). Per 1000: For nonmoney amounts, Per 1000=(county value / county population for the same year as the data) x 1000. \$ Per capita=(county value / county population for the same year as the data). Value= . indicates missing or suppressed data or value not calculated.

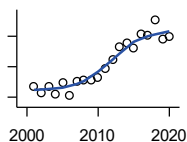
Employment

BEA EMPLOYMENT: FINANCE AND INSURANCE



U.S. Bureau of Economic Analysis,
Regional Economic Information System
(REIS)

Year	County	State of Kansas	Non Metro Kansas	County Rank	Per 1000 or \$ Per Capita
2001	436	76,118	.	22	.
2002	428	78,206	.	24	.
2003	429	78,441	.	24	.
2004	435	78,350	.	23	.
2005	401	78,952	.	24	.
2006	405	80,900	.	23	.
2007	428	86,094	.	24	.
2008	458	89,590	.	24	.
2009	490	93,573	.	23	.
2010	487	92,428	.	24	.
2011	506	99,495	.	23	.
2012	512	98,640	.	23	.
2013	511	99,998	.	24	.
2014	487	98,209	.	23	.
2015	455	100,534	.	24	.
2016	508	102,699	.	23	.
2017	476	101,563	.	24	.
2018	534	102,816	.	24	.
2019	493	100,276	.	25	.
2020	506	101,626	.	23	.



BEA EMPLOYMENT: REAL ESTATE, RENTAL, AND LEASING

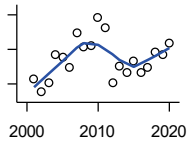
U.S. Bureau of Economic Analysis,
Regional Economic Information System
(REIS)

Year	County	State of Kansas	Non Metro Kansas	County Rank	Per 1000 or \$ Per Capita
2001	217	45,237	.	25	.
2002	208	44,970	.	25	.
2003	217	47,095	.	25	.
2004	206	50,181	.	25	.
2005	223	53,335	.	25	.
2006	202	55,342	.	26	.
2007	227	57,694	.	26	.
2008	229	57,933	.	26	.
2009	228	57,132	.	26	.
2010	232	59,578	.	27	.
2011	248	61,821	.	26	.
2012	261	60,432	.	26	.
2013	282	62,134	.	26	.
2014	289	64,705	.	26	.
2015	280	66,604	.	26	.
2016	304	68,395	.	26	.
2017	302	70,304	.	26	.
2018	327	72,631	.	26	.
2019	296	69,119	.	25	.
2020	299	68,452	.	26	.

County: county value. Kansas: state value. County Rank: highest county value ranked #1. (\$000): thousands of dollars. Nonmetro Kansas: Kansas total less Metropolitan Areas as defined by the Office of Management and Budget (OMB; released 3/6/2020). Per 1000: For nonmoney amounts, Per 1000=(county value / county population for the same year as the data) x 1000. \$ Per capita=(county value / county population for the same year as the data). Value= . indicates missing or suppressed data or value not calculated.

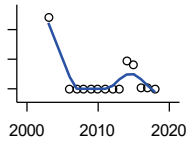
Employment

BEA EMPLOYMENT: PROFESSIONAL AND TECHNICAL SERVICES



U.S. Bureau of Economic Analysis,
Regional Economic Information System
(REIS)

Year	County	State of Kansas	Non Metro Kansas	County Rank	Per 1000 or \$ Per Capita
2001	258	81,396	.	24	.
2002	238	80,684	.	23	.
2003	252	80,311	.	21	.
2004	293	85,550	.	20	.
2005	289	85,003	.	21	.
2006	274	87,381	.	20	.
2007	324	92,717	.	22	.
2008	303	95,362	.	25	.
2009	305	93,232	.	24	.
2010	347	93,037	.	25	.
2011	332	93,237	.	24	.
2012	251	95,360	.	29	.
2013	275	100,795	.	25	.
2014	266	102,210	.	25	.
2015	284	105,625	.	25	.
2016	266	108,059	.	22	.
2017	274	109,041	.	22	.
2018	297	110,513	.	21	.
2019	292	109,637	.	22	.
2020	310	108,634	.	22	.



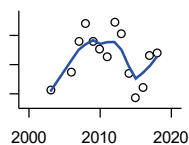
BEA EMPLOYMENT: MANAGEMENT OF COMPANIES AND ENTERPRISES

U.S. Bureau of Economic Analysis,
Regional Economic Information System
(REIS)

Year	County	State of Kansas	Non Metro Kansas	County Rank	Per 1000 or \$ Per Capita
2001	.	13,832	.	.	.
2002	.	12,576	.	.	.
2003	48	11,135	.	15	.
2004	.	10,614	.	.	.
2005	.	11,811	.	.	.
2006	0	13,061	.	66	.
2007	0	13,398	.	69	.
2008	0	15,234	.	72	.
2009	0	14,849	.	75	.
2010	0	16,579	.	75	.
2011	0	15,343	.	75	.
2012	0	15,075	.	82	.
2013	0	16,667	.	81	.
2014	19	20,441	.	26	.
2015	16	29,604	.	27	.
2016	1	27,824	.	40	.
2017	1	27,767	.	38	.
2018	0	28,862	.	75	.

County: county value. Kansas: state value. County Rank: highest county value ranked #1. (\$000): thousands of dollars. Nonmetro Kansas: Kansas total less Metropolitan Areas as defined by the Office of Management and Budget (OMB; released 3/6/2020). Per 1000: For nonmoney amounts, Per 1000=(county value / county population for the same year as the data) x 1000. \$ Per capita=(county value / county population for the same year as the data). Value= . indicates missing or suppressed data or value not calculated.

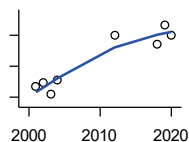
Employment



**BEA EMPLOYMENT:
ADMINISTRATIVE AND WASTE
SERVICES**

U.S. Bureau of Economic Analysis,
Regional Economic Information System
(REIS)

Year	County	State of Kansas	Non Metro Kansas	County Rank	Per 1000 or \$ Per Capita
2001	.	81,573	.	.	.
2002	.	82,992	.	.	.
2003	183	81,298	.	26	.
2004	.	85,721	.	.	.
2005	.	89,933	.	.	.
2006	195	93,688	.	30	.
2007	216	98,865	.	28	.
2008	228	97,440	.	28	.
2009	216	92,455	.	33	.
2010	211	93,675	.	30	.
2011	205	97,969	.	32	.
2012	229	100,490	.	32	.
2013	221	104,680	.	32	.
2014	194	107,218	18,836	33	.
2015	177	103,436	18,767	36	.
2016	184	103,233	18,428	36	.
2017	206	101,532	18,198	33	.
2018	208	102,062	.	30	.



**BEA EMPLOYMENT: EDUCATIONAL
SERVICES**

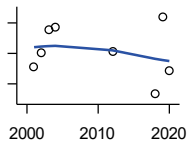
U.S. Bureau of Economic Analysis,
Regional Economic Information System
(REIS)

Year	County	State of Kansas	Non Metro Kansas	County Rank	Per 1000 or \$ Per Capita
2001	37	21,169	.	22	.
2002	39	22,173	.	22	.
2003	32	22,651	.	23	.
2004	41	21,601	.	23	.
2005	.	22,177	.	.	.
2006	.	22,438	.	.	.
2007	.	23,647	.	.	.
2008	.	24,653	.	.	.
2009	.	25,120	.	.	.
2010	.	26,071	.	.	.
2011	.	26,080	.	.	.
2012	70	26,625	.	18	.
2013	.	27,508	.	.	.
2014	.	28,708	.	.	.
2015	.	28,794	.	.	.
2016	.	27,996	.	.	.
2018	64	28,560	.	19	.
2019	77	29,586	.	19	.
2020	70	27,508	.	18	.

County: county value. Kansas: state value. County Rank: highest county value ranked #1. (\$000): thousands of dollars. Nonmetro Kansas: Kansas total less Metropolitan Areas as defined by the Office of Management and Budget (OMB; released 3/6/2020). Per 1000: For nonmoney amounts, Per 1000=(county value / county population for the same year as the data) x 1000. \$ Per capita=(county value / county population for the same year as the data). Value= . indicates missing or suppressed data or value not calculated.

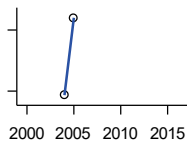
Employment

BEA EMPLOYMENT: HEALTH CARE AND SOCIAL ASSISTANCE



U.S. Bureau of Economic Analysis, Regional Economic Information System (REIS)

Year	County	State of Kansas	Non Metro Kansas	County Rank	Per 1000 or \$ Per Capita
2001	852	165,415	.	17	.
2002	875	168,198	.	18	.
2003	913	169,654	.	18	.
2004	917	172,796	.	20	.
2005	.	173,949	.	.	.
2006	.	176,919	.	.	.
2007	.	182,160	.	.	.
2008	.	186,051	.	.	.
2009	.	188,499	.	.	.
2010	.	188,383	.	.	.
2011	.	190,736	.	.	.
2012	879	192,991	.	20	.
2013	.	193,687	.	.	.
2014	.	194,632	.	.	.
2015	.	199,724	.	.	.
2016	.	201,830	.	.	.
2018	808	204,011	.	20	.
2019	935	206,646	.	20	.
2020	846	204,942	.	20	.



BEA EMPLOYMENT: ARTS, ENTERTAINMENT, AND RECREATION

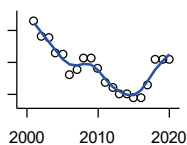
U.S. Bureau of Economic Analysis, Regional Economic Information System (REIS)

Year	County	State of Kansas	Non Metro Kansas	County Rank	Per 1000 or \$ Per Capita
2001	.	25,012	.	.	.
2002	.	25,668	.	.	.
2003	.	24,116	.	.	.
2004	69	25,355	.	33	.
2005	88	26,067	.	28	.
2006	.	26,505	.	.	.
2007	.	27,489	.	.	.
2008	.	27,501	.	.	.
2009	.	27,203	.	.	.
2010	.	27,479	.	.	.
2011	.	28,487	.	.	.
2012	.	30,729	.	.	.
2013	.	31,068	.	.	.
2014	.	32,154	.	.	.
2015	.	31,169	.	.	.
2016	.	32,373	.	.	.

County: county value. Kansas: state value. County Rank: highest county value ranked #1. (\$000): thousands of dollars. Nonmetro Kansas: Kansas total less Metropolitan Areas as defined by the Office of Management and Budget (OMB; released 3/6/2020). Per 1000: For nonmoney amounts, Per 1000=(county value / county population for the same year as the data) x 1000. \$ Per capita=(county value / county population for the same year as the data). Value= . indicates missing or suppressed data or value not calculated.

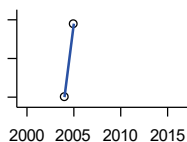
Employment

BEA EMPLOYMENT: GOVERNMENT AND GOVERNMENT ENTERPRISES



U.S. Bureau of Economic Analysis, Regional Economic Information System (REIS)

Year	County	State of Kansas	Non Metro Kansas	County Rank	Per 1000 or \$ Per Capita
2001	2,180	282,293	102,993	23	.
2002	2,130	281,427	103,581	24	.
2003	2,127	282,459	103,389	25	.
2004	2,080	283,877	103,946	26	.
2005	2,074	282,798	103,194	26	.
2006	2,013	288,372	104,103	27	.
2007	2,026	294,413	104,598	28	.
2008	2,062	298,580	104,718	28	.
2009	2,064	300,422	104,081	27	.
2010	2,030	303,875	103,382	28	.
2011	1,986	299,952	101,535	28	.
2012	1,973	298,068	101,180	28	.
2013	1,950	297,689	101,232	28	.
2014	1,953	296,956	100,634	27	.
2015	1,938	295,799	99,719	27	.
2016	1,939	291,536	98,520	27	.
2017	1,980	295,748	99,542	27	.
2018	2,059	298,105	99,499	26	.
2019	2,060	302,017	100,227	27	.
2020	2,060	292,583	96,477	24	.



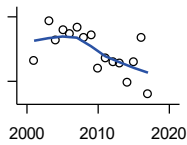
BEA EMPLOYMENT: ACCOMMODATION AND FOOD SERVICES

U.S. Bureau of Economic Analysis, Regional Economic Information System (REIS)

Year	County	State of Kansas	Non Metro Kansas	County Rank	Per 1000 or \$ Per Capita
2001	.	103,353	.	.	.
2002	.	103,692	.	.	.
2003	.	105,138	.	.	.
2004	680	106,694	.	25	.
2005	699	107,303	.	24	.
2006	.	109,888	.	.	.
2007	.	110,863	.	.	.
2008	.	111,092	.	.	.
2009	.	109,353	.	.	.
2010	.	108,628	.	.	.
2011	.	110,514	.	.	.
2012	.	112,574	.	.	.
2013	.	114,102	.	.	.
2014	.	115,768	.	.	.
2015	.	118,503	.	.	.
2016	.	119,764	.	.	.

County: county value. Kansas: state value. County Rank: highest county value ranked #1. (\$000): thousands of dollars. Nonmetro Kansas: Kansas total less Metropolitan Areas as defined by the Office of Management and Budget (OMB; released 3/6/2020). Per 1000: For nonmoney amounts, Per 1000=(county value / county population for the same year as the data) x 1000. \$ Per capita=(county value / county population for the same year as the data). Value= . indicates missing or suppressed data or value not calculated.

Employment

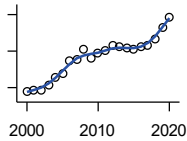


BEA EMPLOYMENT: OTHER SERVICES, EXCEPT PUBLIC ADMINISTRATION

U.S. Bureau of Economic Analysis, Regional Economic Information System (REIS)

Year	County	State of Kansas	Non Metro Kansas	County Rank	Per 1000 or \$ Per Capita
2001	640	92,176	.	27	.
2002	.	95,350	.	.	.
2003	676	95,821	32,629	26	.
2004	659	95,610	.	27	.
2005	668	95,930	32,555	27	.
2006	664	96,413	.	25	.
2007	670	98,444	.	27	.
2008	661	96,705	.	25	.
2009	663	95,534	.	27	.
2010	632	93,302	.	27	.
2011	642	94,865	.	26	.
2012	638	94,977	.	27	.
2013	637	95,471	.	28	.
2014	619	97,806	.	28	.
2015	638	98,041	.	28	.
2016	661	97,219	.	26	.
2017	608	96,568	.	28	.

Income



BEA PER CAPITA PERSONAL INCOME (\$)

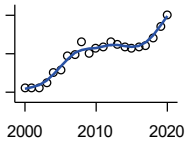
U.S. Bureau of Economic Analysis, Regional Economic Information System (REIS)

Year	County	State of Kansas	Non Metro Kansas	County Rank	Per 1000 or \$ Per Capita
2000	24,079	28,253	23,116	51	.
2001	24,306	29,112	24,576	72	.
2002	24,356	29,248	24,314	55	.
2003	25,643	30,074	26,017	70	.
2004	27,900	30,843	26,583	38	.
2005	28,982	32,545	28,356	58	.
2006	32,199	35,690	29,782	29	.
2007	32,844	38,057	32,034	56	.
2008	35,620	41,257	35,211	62	.
2009	33,176	39,431	33,876	72	.
2010	34,309	39,960	35,795	74	.
2011	35,049	43,015	39,041	84	.
2012	36,572	45,294	39,660	81	.
2013	36,044	46,174	41,747	91	.
2014	35,712	47,013	41,042	94	.
2015	35,408	47,332	40,638	93	.
2016	36,091	47,326	40,797	92	.
2017	36,511	48,756	41,314	97	.
2018	38,422	50,811	43,283	95	.
2019	41,335	52,820	44,491	87	.
2020	44,392	55,677	48,415	92	.

County: county value. Kansas: state value. County Rank: highest county value ranked #1. (\$000): thousands of dollars. Nonmetro Kansas: Kansas total less Metropolitan Areas as defined by the Office of Management and Budget (OMB; released 3/6/2020). Per 1000: For nonmoney amounts, Per 1000=(county value / county population for the same year as the data) x 1000. \$ Per capita=(county value / county population for the same year as the data). Value= . indicates missing or suppressed data or value not calculated.

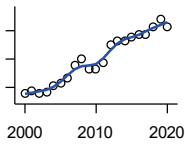
Income

**SOURCES OF PERSONAL INCOME:
TOTAL PERSONAL INCOME (\$000)**



U.S. Bureau of Economic Analysis,
Regional Economic Information System
(REIS)

Year	County	State of Kansas	Non Metro Kansas	County Rank	Per 1000 or \$ Per Capita
2000	624,757	76,105,125	22,273,838	23	24,079.1
2001	624,756	78,664,651	23,411,174	24	24,305.8
2002	621,084	79,365,190	23,000,314	24	24,356.2
2003	647,426	81,890,340	24,494,191	24	25,642.7
2004	701,577	84,335,940	24,924,467	23	27,900.1
2005	718,610	89,346,228	26,452,291	23	28,982.1
2006	788,649	98,610,188	27,661,596	23	32,199.0
2007	797,790	105,943,199	29,715,946	23	32,844.4
2008	863,363	115,852,478	32,614,565	24	35,620.2
2009	801,539	111,697,350	31,394,702	25	33,176.3
2010	827,491	114,239,828	33,291,419	25	34,290.2
2011	833,734	123,558,772	36,221,488	25	35,050.0
2012	864,273	130,948,127	36,696,759	25	36,567.5
2013	848,263	133,979,908	38,513,959	26	36,039.6
2014	834,975	136,878,718	37,680,598	26	35,707.1
2015	829,051	138,336,768	37,081,851	26	35,403.8
2016	836,045	138,533,890	36,930,885	26	36,062.8
2017	843,517	142,729,689	37,104,963	25	36,489.0
2018	883,025	148,955,739	38,589,364	25	38,360.7
2019	942,853	154,961,001	39,424,148	25	41,288.0
2020	1,002,292	163,462,179	42,618,591	25	44,781.2



**SOURCES OF PERSONAL INCOME:
WAGES AND SALARIES (\$000)**

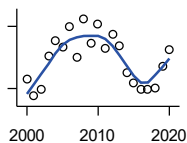
U.S. Bureau of Economic Analysis,
Regional Economic Information System
(REIS)

Year	County	State of Kansas	Non Metro Kansas	County Rank	Per 1000 or \$ Per Capita
2000	163,562	41,766,878	10,254,250	31	6,303.9
2001	168,912	43,269,734	10,518,206	30	6,571.4
2002	164,463	43,875,159	10,696,876	32	6,449.5
2003	166,614	44,488,560	10,894,971	32	6,599.1
2004	177,008	46,702,068	11,333,617	32	7,039.2
2005	181,907	48,537,956	11,614,130	31	7,336.4
2006	191,854	52,083,584	12,299,340	31	7,833.0
2007	213,309	55,442,368	13,093,908	29	8,781.8
2008	225,055	57,623,385	13,647,143	29	9,285.2
2009	207,775	55,605,578	13,199,674	29	8,600.0
2010	207,337	56,089,711	13,345,291	31	8,591.8
2011	217,810	58,104,706	13,856,458	31	9,156.7
2012	250,319	60,616,457	14,473,599	27	10,591.0
2013	257,602	61,872,023	14,781,792	28	10,944.6
2014	258,059	64,457,652	15,385,500	28	11,035.7
2015	264,643	66,729,598	15,454,485	27	11,301.3
2016	268,310	67,253,399	15,422,058	27	11,573.6
2017	268,978	68,830,861	15,731,853	27	11,635.5
2018	280,715	71,580,544	16,311,725	27	12,194.9
2019	295,980	74,404,771	16,882,299	27	12,961.1
2020	282,435	75,798,310	17,251,300	28	12,618.8

County: county value. Kansas: state value. County Rank: highest county value ranked #1. (\$000): thousands of dollars. Nonmetro Kansas: Kansas total less Metropolitan Areas as defined by the Office of Management and Budget (OMB; released 3/6/2020). Per 1000: For nonmoney amounts, Per 1000=(county value / county population for the same year as the data) x 1000. \$ Per capita=(county value / county population for the same year as the data). Value= . indicates missing or suppressed data or value not calculated.

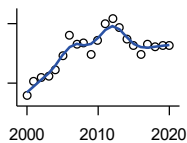
Income

**SOURCES OF PERSONAL INCOME:
PROPRIETORS-FARM (\$000)**



U.S. Bureau of Economic Analysis,
Regional Economic Information System
(REIS)

Year	County	State of Kansas	Non Metro Kansas	County Rank	Per 1000 or \$ Per Capita
2000	9,436	668,539	673,707	32	363.7
2001	-7,413	779,473	769,336	105	-288.4
2002	-1,332	145,064	187,033	79	-52.2
2003	31,195	1,281,076	1,195,298	5	1,235.5
2004	45,872	1,149,425	938,524	2	1,824.2
2005	39,915	1,609,604	1,469,139	5	1,609.8
2006	60,147	766,047	663,735	1	2,455.7
2007	30,694	1,131,607	1,040,350	3	1,263.6
2008	67,262	1,582,092	1,404,900	1	2,775.1
2009	43,284	1,585,995	1,390,349	3	1,791.6
2010	62,305	2,149,482	2,029,067	5	2,581.8
2011	39,197	3,188,519	2,989,880	31	1,647.8
2012	52,731	2,519,555	2,296,875	11	2,231.1
2013	41,573	4,499,190	4,158,419	43	1,766.3
2014	15,577	2,231,181	2,157,992	45	666.1
2015	5,376	1,300,733	1,294,370	55	229.6
2016	-876	1,577,060	1,564,511	81	-37.8
2017	-1,041	838,480	838,290	72	-45.0
2018	537	1,050,662	971,690	85	23.3
2019	21,806	998,038	878,247	13	954.9
2020	37,227	2,151,349	1,887,881	8	1,663.3



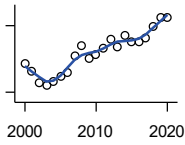
**SOURCES OF PERSONAL INCOME:
PROPRIETORS-NONFARM (\$000)**

U.S. Bureau of Economic Analysis,
Regional Economic Information System
(REIS)

Year	County	State of Kansas	Non Metro Kansas	County Rank	Per 1000 or \$ Per Capita
2000	23,568	4,580,476	1,493,470	28	908.3
2001	30,710	4,510,530	1,855,621	29	1,194.8
2002	32,664	5,036,100	1,966,784	29	1,280.9
2003	33,331	4,719,377	1,916,735	28	1,320.1
2004	36,704	4,003,922	2,073,898	26	1,459.6
2005	43,608	4,455,294	2,200,971	25	1,758.7
2006	54,258	7,343,524	2,694,895	23	2,215.2
2007	49,739	7,280,197	2,436,574	24	2,047.7
2008	50,106	9,255,953	2,971,923	27	2,067.2
2009	44,142	9,323,551	2,858,848	28	1,827.1
2010	51,709	9,658,261	3,498,040	30	2,142.8
2011	60,192	12,196,566	4,186,007	33	2,530.5
2012	62,582	15,773,140	4,446,004	32	2,647.9
2013	58,208	16,441,660	4,492,127	33	2,473.0
2014	52,473	15,954,254	4,455,081	37	2,244.0
2015	48,921	15,536,116	4,386,172	38	2,089.1
2016	44,761	14,075,310	3,783,829	37	1,930.8
2017	49,540	15,371,957	3,908,254	34	2,143.0
2018	48,311	15,716,877	4,238,775	36	2,098.7
2019	48,927	16,705,488	3,921,051	32	2,142.5
2020	48,939	16,718,952	3,823,329	32	2,186.5

County: county value. Kansas: state value. County Rank: highest county value ranked #1. (\$000): thousands of dollars. Nonmetro Kansas: Kansas total less Metropolitan Areas as defined by the Office of Management and Budget (OMB; released 3/6/2020). Per 1000: For nonmoney amounts, Per 1000=(county value / county population for the same year as the data) x 1000. \$ Per capita=(county value / county population for the same year as the data). Value= . indicates missing or suppressed data or value not calculated.

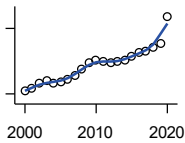
Income



**SOURCES OF PERSONAL INCOME:
DIVIDENDS,INTEREST,RENT(\$000)**

U.S. Bureau of Economic Analysis,
Regional Economic Information System
(REIS)

Year	County	State of Kansas	Non Metro Kansas	County Rank	Per 1000 or \$ Per Capita
2000	106,203	15,916,201	4,736,921	23	4,093.2
2001	99,092	15,770,830	4,699,417	25	3,855.1
2002	88,358	15,111,563	4,316,887	25	3,465.0
2003	85,647	15,370,764	4,360,311	25	3,392.2
2004	89,968	15,820,469	4,251,925	24	3,577.8
2005	93,756	17,147,069	4,485,387	24	3,781.2
2006	97,946	20,117,848	4,945,184	26	3,998.9
2007	113,072	22,269,186	5,526,219	26	4,655.1
2008	122,225	24,972,485	6,180,979	26	5,042.7
2009	110,380	21,453,879	5,308,474	26	4,568.7
2010	113,521	20,861,351	5,414,285	27	4,704.2
2011	119,590	23,387,567	5,781,075	25	5,027.5
2012	128,091	25,689,368	6,389,505	26	5,419.5
2013	120,806	24,832,212	5,984,811	26	5,132.6
2014	131,266	27,412,684	6,403,356	26	5,613.5
2015	125,221	27,244,414	6,423,685	27	5,347.4
2016	125,508	27,293,441	6,389,161	27	5,413.8
2017	128,890	28,385,472	6,700,156	28	5,575.6
2018	139,363	29,953,419	6,772,504	27	6,054.3
2019	147,541	30,820,276	6,957,987	26	6,460.9
2020	147,112	30,283,520	6,844,745	26	6,572.8



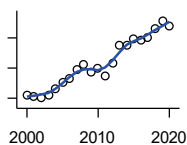
**SOURCES OF PERSONAL INCOME:
TRANSFER PAYMENTS (\$000)**

U.S. Bureau of Economic Analysis,
Regional Economic Information System
(REIS)

Year	County	State of Kansas	Non Metro Kansas	County Rank	Per 1000 or \$ Per Capita
2000	106,365	9,650,835	4,036,781	19	4,099.5
2001	113,196	10,549,124	4,355,457	19	4,403.8
2002	124,062	11,208,997	4,553,978	19	4,865.2
2003	129,337	11,709,049	4,702,911	19	5,122.7
2004	124,176	12,040,452	4,802,536	21	4,938.2
2005	128,409	12,696,735	5,059,314	22	5,178.8
2006	134,414	13,642,787	5,455,207	23	5,487.9
2007	141,810	14,686,821	5,775,024	24	5,838.2
2008	156,346	16,552,460	6,322,722	26	6,450.4
2009	171,001	18,025,603	6,790,962	24	7,077.9
2010	177,438	19,189,749	7,089,258	25	7,352.8
2011	175,037	19,625,770	7,255,825	26	7,358.5
2012	171,685	19,354,458	7,148,177	26	7,264.0
2013	173,486	19,639,358	7,185,636	26	7,370.8
2014	176,704	20,380,970	7,399,809	26	7,556.6
2015	186,312	21,116,856	7,623,577	26	7,956.3
2016	194,063	21,884,629	7,886,000	26	8,370.9
2017	198,597	22,559,744	8,062,517	25	8,591.0
2018	207,293	23,628,033	8,393,617	25	9,005.3
2019	216,078	25,050,174	8,845,371	24	9,462.2
2020	277,217	32,319,421	11,074,190	25	12,385.7

County: county value. Kansas: state value. County Rank: highest county value ranked #1. (\$000): thousands of dollars. Nonmetro Kansas: Kansas total less Metropolitan Areas as defined by the Office of Management and Budget (OMB; released 3/6/2020). Per 1000: For nonmoney amounts, Per 1000=(county value / county population for the same year as the data) x 1000. \$ Per capita=(county value / county population for the same year as the data). Value= . indicates missing or suppressed data or value not calculated.

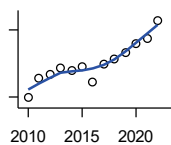
Income



**SOURCES OF PERSONAL INCOME:
LESS SOCIAL INSURANCE (\$000)**

U.S. Bureau of Economic Analysis,
Regional Economic Information System
(REIS)

Year	County	State of Kansas	Non Metro Kansas	County Rank	Per 1000 or \$ Per Capita
2000	31,125	6,655,813	1,663,044	27	1,199.6
2001	30,774	6,869,934	1,740,915	28	1,197.2
2002	30,353	7,008,361	1,778,636	30	1,190.3
2003	31,053	7,172,781	1,821,858	30	1,229.9
2004	32,985	7,556,560	1,904,014	30	1,311.7
2005	35,079	7,911,241	1,986,907	29	1,414.8
2006	36,654	8,406,937	2,090,313	30	1,496.5
2007	39,517	8,806,941	2,180,587	28	1,626.9
2008	41,208	9,207,010	2,299,399	27	1,700.1
2009	38,797	9,002,859	2,248,703	27	1,605.8
2010	39,793	9,235,760	2,321,191	29	1,649.0
2011	37,542	8,515,986	2,139,991	27	1,578.3
2012	41,430	8,816,128	2,195,919	27	1,752.9
2013	47,625	10,225,399	2,540,439	27	2,023.4
2014	47,764	10,609,601	2,635,009	27	2,042.6
2015	49,489	11,028,204	2,663,038	27	2,113.4
2016	49,390	10,915,915	2,604,579	27	2,130.4
2017	50,228	11,224,218	2,669,954	27	2,172.8
2018	52,901	11,749,229	2,797,106	27	2,298.1
2019	55,661	12,245,451	2,889,336	27	2,437.4
2020	54,117	12,715,152	3,027,656	27	2,417.9



HUD MEDIAN FAMILY INCOME

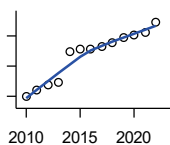
U.S. Department of Housing and Urban
Development (HUD)

Year	County	State of Kansas	Non Metro Kansas	County Rank	Per 1000 or \$ Per Capita
2010	59,800	63,100	.	19	.
2011	64,300	64,300	.	11	.
2012	65,200	65,200	.	11	.
2013	66,400	64,800	.	12	.
2014	66,000	64,400	.	15	.
2015	66,800	66,300	.	13	.
2016	63,300	66,700	.	24	.
2017	67,400	68,500	.	21	.
2018	68,400	73,100	.	28	.
2019	70,000	75,200	.	29	.
2020	71,900	76,500	.	28	.
2021	73,100	77,400	.	29	.
2022	77,100	87,800	.	39	.

County: county value. Kansas: state value. County Rank: highest county value ranked #1. (\$000): thousands of dollars. Nonmetro Kansas: Kansas total less Metropolitan Areas as defined by the Office of Management and Budget (OMB; released 3/6/2020). Per 1000: For nonmoney amounts, Per 1000=(county value / county population for the same year as the data) x 1000. \$ Per capita=(county value / county population for the same year as the data). Value= . indicates missing or suppressed data or value not calculated.

Income

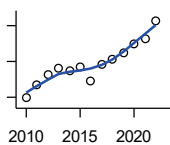
HUD 30% LOW-TO-MEDIUM INCOME (LMI) LIMIT - 4 PERSONS



U.S. Department of Housing and Urban Development (HUD)

Year	County	State of Kansas	Non Metro Kansas	County Rank	Per 1000 or \$ Per Capita
2010	17,950	.	.	19	.
2011	18,800	.	.	17	.
2012	19,550	.	.	9	.
2013	19,900	.	.	10	.
2014	23,850	.	.	105	.
2015	24,250	.	.	105	.
2016	24,300	.	.	105	.
2017	24,600	.	.	105	.
2018	25,100	21,950	.	105	.
2019	25,750	22,550	.	105	.
2020	26,200	22,950	.	105	.
2021	26,500	23,200	.	105	.
2022	27,750	25,950	.	105	.

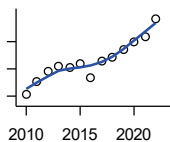
HUD 50% LOW-TO-MEDIUM INCOME (LMI) LIMIT - 4 PERSONS



U.S. Department of Housing and Urban Development (HUD)

Year	County	State of Kansas	Non Metro Kansas	County Rank	Per 1000 or \$ Per Capita
2010	29,900	.	.	19	.
2011	31,350	.	.	17	.
2012	32,600	.	.	9	.
2013	33,200	.	.	10	.
2014	33,000	.	.	13	.
2015	33,400	.	.	11	.
2016	31,750	.	.	25	.
2017	33,700	.	.	14	.
2018	34,200	36,550	.	27	.
2019	35,000	37,600	.	29	.
2020	35,950	38,250	.	29	.
2021	36,550	38,700	.	28	.
2022	38,550	43,300	.	37	.

HUD 80% LOW-TO-MEDIUM INCOME (LMI) LIMIT - 4 PERSONS



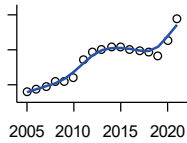
U.S. Department of Housing and Urban Development (HUD)

Year	County	State of Kansas	Non Metro Kansas	County Rank	Per 1000 or \$ Per Capita
2010	47,850	.	.	19	.
2011	50,150	.	.	17	.
2012	52,150	.	.	9	.
2013	53,100	.	.	10	.
2014	52,800	.	.	13	.
2015	53,450	.	.	11	.
2016	50,800	.	.	25	.
2017	53,900	.	.	14	.
2018	54,700	58,500	.	27	.
2019	56,000	60,150	.	29	.
2020	57,500	61,200	.	29	.
2021	58,500	61,900	.	28	.
2022	61,700	69,250	.	37	.

County: county value. Kansas: state value. County Rank: highest county value ranked #1. (\$000): thousands of dollars. Nonmetro Kansas: Kansas total less Metropolitan Areas as defined by the Office of Management and Budget (OMB; released 3/6/2020). Per 1000: For nonmoney amounts, Per 1000=(county value / county population for the same year as the data) x 1000. \$ Per capita=(county value / county population for the same year as the data). Value= . indicates missing or suppressed data or value not calculated.

Banking

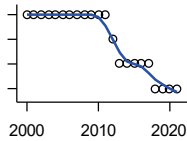
BANK DEPOSITS (1984-2004 in thousands; 2005- in millions)



Federal Deposit Insurance Corporation, Data Book, Operating Banks and Branches

Year	County	State of Kansas	Non Metro Kansas	County Rank	Per 1000 or \$ Per Capita
2005	380	48,304	17,000	21	15.3
2006	386	50,668	17,586	22	15.8
2007	393	54,057	18,517	24	16.2
2008	409	57,869	19,628	24	16.9
2009	409	57,763	20,031	24	16.9
2010	422	60,031	20,678	26	17.5
2011	471	61,094	21,347	23	19.8
2012	493	62,910	22,481	23	20.9
2013	502	64,547	22,795	22	21.3
2014	509	66,538	23,338	22	21.8
2015	508	68,160	23,367	23	21.7
2016	502	70,381	23,420	25	21.7
2017	499	73,329	23,928	25	21.6
2018	494	74,623	24,100	25	21.5
2019	483	76,436	24,488	26	21.2
2020	526	88,563	27,547	27	23.5
2021	589	97,055	30,122	25	26.3

NUMBER OF BANKS



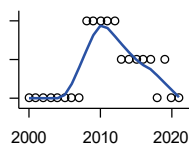
Federal Deposit Insurance Corporation, Data Book, Operating Banks and Branches

Year	County	State of Kansas	Non Metro Kansas	County Rank	Per 1000 or \$ Per Capita
2000	13	410	145	10	.
2001	13	410	136	10	.
2002	13	404	129	10	.
2003	13	397	121	10	.
2004	13	394	112	10	.
2005	13	388	101	10	.
2006	13	385	94	10	.
2007	13	382	91	10	.
2008	13	378	82	10	.
2009	13	374	79	10	.
2010	13	367	70	10	.
2011	13	359	61	10	.
2012	12	348	57	10	.
2013	11	332	45	12	.
2014	11	329	41	12	.
2015	11	320	31	11	.
2016	11	314	24	11	.
2017	11	301	13	12	.
2018	10	289	7	16	.
2019	10	279	3	17	.
2020	10	271	-1	16	.
2021	10	270	-6	18	.

County: county value. Kansas: state value. County Rank: highest county value ranked #1. (\$000): thousands of dollars. Nonmetro Kansas: Kansas total less Metropolitan Areas as defined by the Office of Management and Budget (OMB; released 3/6/2020). Per 1000: For nonmoney amounts, Per 1000=(county value / county population for the same year as the data) x 1000. \$ Per capita=(county value / county population for the same year as the data). Value= . indicates missing or suppressed data or value not calculated.

Banking

NUMBER OF BANKING OFFICES

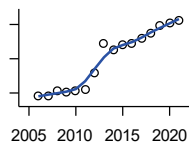


Federal Deposit Insurance Corporation, Data Book, Operating Banks and Branches

Year	County	State of Kansas	Non Metro Kansas	County Rank	Per 1000 or \$ Per Capita
2000	15	1,398	703	24	.
2001	15	1,424	708	25	.
2002	15	1,447	704	24	.
2003	15	1,461	708	24	.
2004	15	1,485	708	24	.
2005	15	1,505	711	25	.
2006	15	1,518	711	25	.
2007	15	1,543	717	25	.
2008	17	1,556	717	22	.
2009	17	1,569	716	22	.
2010	17	1,561	710	21	.
2011	17	1,559	707	19	.
2012	17	1,533	702	18	.
2013	16	1,518	696	23	.
2014	16	1,491	685	21	.
2015	16	1,472	675	20	.
2016	16	1,465	668	20	.
2017	16	1,452	666	19	.
2018	15	1,439	660	21	.
2019	16	1,439	663	19	.
2020	15	1,416	653	20	.
2021	15	1,392	641	20	.

Government

TANGIBLE ASSESSED VALUATION (KDoR, million\$; 2006-)



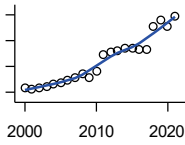
Kansas Department of Revenue, Division of Property Valuation, Statistical Report of Property Assessment and Taxation

Year	County	State of Kansas	Non Metro Kansas	County Rank	Per 1000 or \$ Per Capita
2006	170.3	28,964.3	10,316.9	31	7.0
2007	170.0	30,086.9	10,335.9	32	7.0
2008	178.9	31,000.3	10,856.9	31	7.4
2009	175.5	30,312.3	10,555.6	32	7.3
2010	178.3	29,450.2	10,158.7	31	7.4
2011	179.9	29,963.6	10,572.3	31	7.6
2012	205.2	30,382.9	10,876.2	30	8.7
2013	247.4	30,850.2	11,044.4	24	10.5
2014	237.8	31,783.0	11,388.9	25	10.2
2015	245.2	32,335.7	11,037.8	22	10.5
2016	247.1	33,156.3	10,889.6	24	10.7
2017	255.7	34,754.5	11,439.0	25	11.1
2018	261.7	36,566.1	11,907.1	25	11.4
2019	274.2	38,255.2	12,336.7	24	12.0
2020	277.7	39,333.9	12,219.3	23	12.4
2021	280.7	40,812.0	12,601.5	25	12.5

County: county value. Kansas: state value. County Rank: highest county value ranked #1. (\$000): thousands of dollars. Nonmetro Kansas: Kansas total less Metropolitan Areas as defined by the Office of Management and Budget (OMB; released 3/6/2020). Per 1000: For nonmoney amounts, Per 1000=(county value / county population for the same year as the data) x 1000. \$ Per capita=(county value / county population for the same year as the data). Value= . indicates missing or suppressed data or value not calculated.

Government

SALES TAX COLLECTIONS (\$)

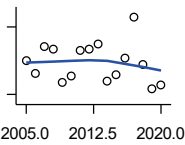


Kansas Department of Revenue. Use tax collections included beginning in calendar year 2018.

Year	County	State of Kansas	Non Metro Kansas	County Rank	Per 1000 or \$ Per Capita
2000	6,681,310	1,475,831,808	432,761,608	29	257,508.3
2001	6,418,621	1,481,026,688	426,316,284	29	249,712.9
2002	6,624,649	1,561,316,864	443,986,950	29	259,790.2
2003	6,963,577	1,626,782,976	461,658,700	29	275,807.1
2004	7,303,235	1,691,899,008	480,309,725	30	290,433.3
2005	7,396,250	1,744,980,352	497,494,867	30	298,296.0
2006	7,786,335	1,851,694,720	532,233,047	29	317,900.4
2007	8,192,637	1,917,546,752	559,319,583	30	337,284.3
2008	8,789,160	1,990,655,744	589,725,773	30	362,619.0
2009	8,280,945	1,866,223,078	548,627,132	29	342,754.3
2010	9,160,380	2,075,193,413	617,409,982	29	379,594.7
2011	11,924,482	2,347,193,367	702,671,534	28	501,302.5
2012	12,213,659	2,456,292,294	740,196,106	26	516,761.5
2013	12,519,624	2,489,204,048	746,226,565	26	531,912.5
2014	12,850,540	2,539,886,774	760,474,019	26	549,544.1
2015	12,809,422	2,642,374,740	750,090,163	27	547,013.8
2016	12,542,248	2,732,611,350	749,030,133	27	541,010.6
2017	12,579,594	2,726,104,521	744,246,491	27	544,170.7
2018	16,132,990	3,277,299,125	893,564,480	26	700,855.4
2019	17,094,185	3,395,631,405	939,607,762	27	748,563.0
2020	16,138,199	3,489,306,791	984,218,931	29	721,034.7
2021	17,824,432	3,981,293,227	1,098,391,422	29	796,266.8

Crime

CRIME INDEX OFFENSES



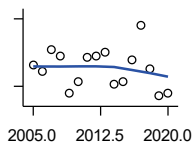
Kansas Bureau of Investigation, Note: Data are aggregated from reports by individual police departments and subject to be incomplete.

Year	County	State of Kansas	Non Metro Kansas	County Rank	Per 1000 or \$ Per Capita
2005	752	111,856	31,630	23	30.3
2006	694	110,032	.	22	28.3
2007	813	111,035	29,921	23	33.5
2008	800	93,996	27,342	21	33.0
2009	656	98,757	27,620	24	27.2
2010	679	98,354	26,909	24	28.1
2011	793	96,638	25,765	19	33.3
2012	803	98,914	26,963	21	34.0
2013	824	93,054	24,488	19	35.0
2014	661	86,323	23,341	21	28.3
2015	690	88,590	21,580	20	29.5
2016	760	90,589	21,565	19	32.8
2017	944	93,091	22,622	17	40.8
2018	733	92,062	20,325	18	31.8
2019	627	87,008	18,547	20	27.5
2020	640	87,346	17,762	18	28.6

County: county value. Kansas: state value. County Rank: highest county value ranked #1. (\$000): thousands of dollars. Nonmetro Kansas: Kansas total less Metropolitan Areas as defined by the Office of Management and Budget (OMB; released 3/6/2020). Per 1000: For nonmoney amounts, Per 1000=(county value / county population for the same year as the data) x 1000. \$ Per capita=(county value / county population for the same year as the data). Value= . indicates missing or suppressed data or value not calculated.

Crime

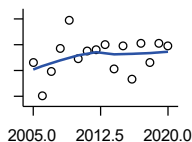
PROPERTY CRIMES



Kansas Bureau of Investigation, Note: Data are aggregated from reports by individual police departments and subject to be incomplete.

Year	County	State of Kansas	Non Metro Kansas	County Rank	Per 1000 or \$ Per Capita
2005	696	101,414	29,042	23	28.1
2006	664	99,110	.	22	27.1
2007	764	99,632	26,856	22	31.5
2008	733	83,964	24,367	21	30.2
2009	567	87,658	24,825	24	23.5
2010	620	87,926	24,133	23	25.7
2011	728	86,547	23,274	18	30.6
2012	737	88,707	24,220	20	31.2
2013	754	83,551	22,028	18	32.0
2014	610	76,794	20,858	20	26.1
2015	621	77,997	19,138	20	26.5
2016	717	79,549	19,207	17	30.9
2017	873	81,349	19,981	17	37.8
2018	677	79,695	17,769	18	29.4
2019	556	74,314	15,892	19	24.3
2020	571	73,450	15,100	16	25.5

VIOLENT CRIMES



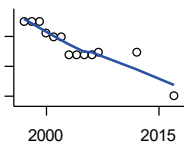
Kansas Bureau of Investigation, Note: Data are aggregated from reports by individual police departments and subject to be incomplete.

Year	County	State of Kansas	Non Metro Kansas	County Rank	Per 1000 or \$ Per Capita
2005	56	10,442	2,588	25	2.3
2006	30	10,922	.	32	1.2
2007	49	11,403	3,065	28	2.0
2008	67	10,032	2,975	24	2.8
2009	89	11,099	2,795	21	3.7
2010	59	10,428	2,776	25	2.4
2011	65	10,091	2,491	23	2.7
2012	66	10,207	2,743	25	2.8
2013	70	9,503	2,460	23	3.0
2014	51	9,529	2,483	27	2.2
2015	69	10,593	2,442	22	2.9
2016	43	11,040	2,358	30	1.9
2017	71	11,742	2,641	23	3.1
2018	56	12,367	2,556	27	2.4
2019	71	12,694	2,655	23	3.1
2020	69	13,896	2,662	23	3.1

County: county value. Kansas: state value. County Rank: highest county value ranked #1. (\$000): thousands of dollars. Nonmetro Kansas: Kansas total less Metropolitan Areas as defined by the Office of Management and Budget (OMB; released 3/6/2020). Per 1000: For nonmoney amounts, Per 1000=(county value / county population for the same year as the data) x 1000. \$ Per capita=(county value / county population for the same year as the data). Value= . indicates missing or suppressed data or value not calculated.

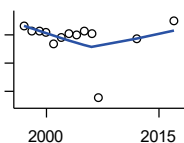
Agriculture

NUMBER OF FARMS



Kansas Agricultural Statistics, Kansas Farm Facts

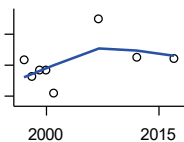
Year	County	State of Kansas	Non Metro Kansas	County Rank	Per 1000 or \$ Per Capita
1997	1,200	64,000	47,900	6	46.1
1998	1,200	65,000	48,850	6	45.8
1999	1,200	65,000	48,850	6	46.2
2000	1,160	64,000	48,030	6	44.7
2001	1,150	63,000	47,200	6	44.7
2002	1,150	63,000	47,200	6	45.1
2003	1,090	64,500	48,150	8	43.2
2004	1,090	64,500	48,150	8	43.3
2005	1,090	64,500	48,150	8	44.0
2006	1,090	64,000	47,650	8	44.5
2007	1,099	65,531	48,179	9	45.2
2012	1,096	61,773	45,655	7	46.4
2017	953	58,569	42,404	14	41.2



TOTAL ACRES HARVESTED

Kansas Agricultural Statistics, Kansas Farm Facts

Year	County	State of Kansas	Non Metro Kansas	County Rank	Per 1000 or \$ Per Capita
1997	581,680	22,846,000	19,430,580	1	22,337.1
1998	564,070	22,143,500	18,943,650	1	21,543.4
1999	565,370	21,708,900	18,581,750	1	21,766.8
2000	559,640	21,639,000	18,528,870	1	21,569.4
2001	517,740	21,847,900	18,689,750	1	20,142.4
2002	542,060	20,230,400	17,089,120	1	21,257.3
2003	556,450	21,827,700	18,661,920	1	22,039.4
2004	550,570	20,876,900	17,721,500	1	21,894.9
2005	562,160	21,936,500	18,807,930	1	22,672.3
2006	552,060	21,412,700	18,291,120	1	22,539.5
2007	325,862	19,886,655	17,164,743	5	13,415.5
2012	537,636	21,043,596	17,966,843	1	22,747.5
2017	597,446	21,837,465	18,543,057	1	25,844.4



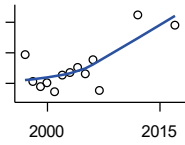
VALUE: LIVESTOCK AND POULTRY (\$000)

Kansas Agricultural Statistics, Kansas Farm Facts

Year	County	State of Kansas	Non Metro Kansas	County Rank	Per 1000 or \$ Per Capita
1997	18,622	2,806,445	2,500,305	55	715.1
1998	16,478	2,670,432	2,378,007	56	629.3
1999	17,376	2,849,061	2,554,528	55	669.0
2000	17,309	2,901,469	2,609,032	57	667.1
2001	14,355	2,693,274	2,437,187	65	558.5
2007	23,972	9,525,971	.	72	986.9
2012	18,951	11,476,571	10,883,216	83	801.8
2017	18,918	12,322,289	.	87	818.4

County: county value. Kansas: state value. County Rank: highest county value ranked #1. (\$000): thousands of dollars. Nonmetro Kansas: Kansas total less Metropolitan Areas as defined by the Office of Management and Budget (OMB; released 3/6/2020). Per 1000: For nonmoney amounts, Per 1000=(county value / county population for the same year as the data) x 1000. \$ Per capita=(county value / county population for the same year as the data). Value= . indicates missing or suppressed data or value not calculated.

Agriculture



VALUE:FIELD CROPS (\$000)
EXCLUDING GOVERNMENT
PROGRAM PAYMENTS

Kansas Agricultural Statistics, Kansas
Farm Facts

Year	County	State of Kansas	Non Metro Kansas	County Rank	Per 1000 or \$ Per Capita
1997	97,883	4,474,942	3,800,365	3	3,758.8
1998	61,665	3,594,319	3,124,409	7	2,355.2
1999	56,188	3,118,193	2,728,319	8	2,163.2
2000	60,304	2,915,660	2,540,052	5	2,324.2
2001	48,406	3,283,117	2,857,136	15	1,883.2
2002	70,988	3,011,855	2,560,580	2	2,783.8
2003	73,451	3,623,255	3,150,629	4	2,909.2
2004	81,287	3,445,688	2,896,603	2	3,232.6
2005	72,005	3,678,123	3,182,677	4	2,904.0
2006	90,204	4,308,716	3,684,132	2	3,682.8
2007	50,711	4,887,212	.	40	2,087.7
2012	149,762	6,983,993	6,044,551	3	6,336.5
2017	136,753	6,460,437	.	2	5,915.7

County: county value. Kansas: state value. County Rank: highest county value ranked #1. (\$000): thousands of dollars. Nonmetro Kansas: Kansas total less Metropolitan Areas as defined by the Office of Management and Budget (OMB; released 3/6/2020). Per 1000: For nonmoney amounts, Per 1000=(county value / county population for the same year as the data) x 1000. \$ Per capita=(county value / county population for the same year as the data). Value= . indicates missing or suppressed data or value not calculated.