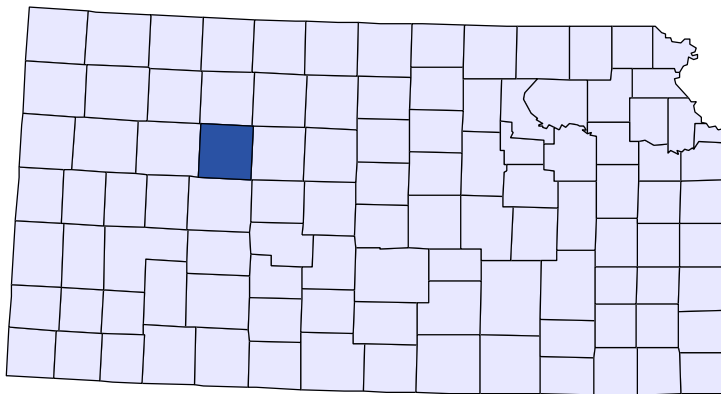




Kansas County Profiles

Trego County



The University
of Kansas

Institute for Policy
& Social Research

KU INSTITUTE FOR POLICY
& SOCIAL RESEARCH
The University of Kansas

1541 Lilac Lane, Rm. 607
Blake Hall
Lawrence, KS 66045-3129

Foreword

The Kansas County Profile Report is published by the Institute for Policy & Social Research (IPSR) at the University of Kansas with support from the KU University Center project.* Special thanks to Xanthippe Wedel, senior research data engineer, who compiles and updates the county profiles and Genna Hurd, associate researcher, who provides editorial review.

County reports can be generated for any county in Kansas by simply clicking on the county from the web site:

<https://ipsr.ku.edu/ksdata/kcced/profiles/>

The Kansas County Profile Report contains 12 categories of information: Population, Vital Statistics and Health, Housing, Education, Social Environment, Business, Employment, Income, Banking, Government, Crime, and Agriculture. For more information about Kansas, please refer to the Kansas Statistical Abstract, available online at:

<https://ipsr.ku.edu/ksdata/ksah/>

We are always looking for ways to improve the Kansas County Profile Report and we welcome your suggestions and comments. Please address any correspondence to the Institute for Policy & Social Research, The University of Kansas, 607 Blake Hall, 1541 Lilac Lane, Lawrence, Kansas 66045-3129, e-mail ipsr@ku.edu or call 785-864-3701.

**The KU University Center is a collaborative effort led by the Institute for Policy & Social Research at the University of Kansas. This project is supported by the Economic Development Administration, U.S. Department of Commerce, through its University Center Program.*

The mission of EDA is to lead the federal economic development agenda by promoting innovation and competitiveness, preparing American regions for growth and success in the worldwide economy.

Kansas County Profiles Table of Contents

Population

Total Population (Decennial Census)	1
Estimated Population (Current Population Reports)	2
Urban Population	2
Rural Population	3
Net Migration (Decade Ending...)	3
Median Age	3

Population (Age Groups)

Population Under 18 (Decennial Census)	3
Population Age 18 and Over (Decennial Census)	4
Population Age 65 and Over (Decennial Census)	4
Population Age 85 and Over (Decennial Census)	4

Vital Statistics and Health

Live Births	5
Deaths	5
Marriages	6
Divorces and Annulments	6
Physicians: M.D. Physicians	7
Physicians: D.O. Physicians	7
Dentists	8
Number of Hospitals	8
Number of Hospital Beds	9

Housing

Housing Units (Decennial Census)	9
Housing Units (Estimated)	10
Occupied Housing Units	10
Owner Occupied Housing Units	10
Renter Occupied Housing Units	11
Vacant Housing Units	11
Median Value (\$): Owner Occupied Housing Units	11
Median Contract Rent (\$)	12
Fair Market Rent: 2 Bedrooms	12

Education

Population Age 25 and Over	13
Percent of Population 25+ with High School or Higher Education	13
Percent of Population 25+ with Bachelors Degree or Higher Education	14
Public School Enrollment (FTE- School Year Beginning...)	14
Pupil/Teacher Ratio (School Year Beginning...)	15

Kansas County Profiles Table of Contents

Social Environment

Total Child Care Facilities	15
Preschools	16
Food Stamp Beneficiaries	16
Percent of Population Receiving Food Stamps	17
Estimated Number of People in Poverty	17
Estimated Percent of People in Poverty	18
Estimated Number of Related Children Age 5 to 17 in Families in Poverty	18
Estimated Percent of Related Children Age 5 to 17 in Families in Poverty	19
Estimated Number Under 18 in Poverty	19
Estimated Percent Under 18 in Poverty	20

Business

Establishments: Total	21
Establishments: 1-19 Employees	22
Establishments: 20-99 Employees	22
Establishments: 100-499 Employees	23
Establishments: 500 or More Employees	23
Establishments: Forestry, Fishing, Hunting, and Ag Support	24
Establishments: Mining	24
Establishments: Utilities	25
Establishments: Construction	25
Establishments: Manufacturing	26
Establishments: Wholesale Trade	26
Establishments: Retail Trade	27
Establishments: Transportation and Warehousing	27
Establishments: Information	28
Establishments: Finance and Insurance	28
Establishments: Real Estate, Rental, and Leasing	29
Establishments: Professional, Scientific, and Technical Services	29
Establishments: Management of Companies and Enterprises	30
Establishments: Admin, Support, Waste Management, and Remediation	30
Establishments: Educational Services	31
Establishments: Health Care and Social Assistance	31
Establishments: Arts, Entertainment, and Recreation	32
Establishments: Accommodation and Food Services	32
Establishments: Other Services	33

Kansas County Profiles Table of Contents

Business	
Total Annual Payroll (\$000)	34
Total Annual Payroll (\$000): Forestry, Fishing, Hunting, and Ag Support	35
Total Annual Payroll (\$000): Mining	35
Total Annual Payroll (\$000): Utilities	36
Total Annual Payroll (\$000): Construction	36
Total Annual Payroll (\$000): Manufacturing	37
Total Annual Payroll (\$000): Wholesale Trade	37
Total Annual Payroll (\$000): Retail Trade	38
Total Annual Payroll (\$000): Transportation and Warehousing	38
Total Annual Payroll (\$000): Information	39
Total Annual Payroll (\$000): Finance and Insurance	39
Total Annual Payroll (\$000): Real Estate, Rental, and Leasing	40
Total Annual Payroll (\$000): Professional, Scientific, and Technical Services	40
Total Annual Payroll (\$000): Management of Companies and Enterprises	41
Total Annual Payroll (\$000): Admin, Support, Waste Management, and Remediation	41
Total Annual Payroll (\$000): Educational Services	42
Total Annual Payroll (\$000): Health Care and Social Assistance	42
Total Annual Payroll (\$000): Arts, Entertainment, and Recreation	43
Total Annual Payroll (\$000): Accommodation and Food Services	43
Total Annual Payroll (\$000): Other Services	44
Nominal Taxable Retail Sales (Million\$)	44
Retail Pull Factor	45
Employment	
Civilian Labor Force (BLS - Place of Residence)	46
Employed (BLS - Place of Residence)	47
Unemployed (BLS - Place of Residence)	48
Unemployment Rate (BLS - Place of Residence)	49
BEA Employment: Total (Place of Work)	49
BEA Employment: Farm	50
BEA Employment: Non-Farm	50
Average Wage per Job (\$)	51
BEA Employment: Forestry, Fishing, Hunting, and Ag Support	51
BEA Employment: Mining	52
BEA Employment: Utilities	52
BEA Employment: Construction	53
BEA Employment: Manufacturing	53
BEA Employment: Wholesale Trade	54
BEA Employment: Retail Trade	54
BEA Employment: Transportation and Warehousing	55
BEA Employment: Information	55
BEA Employment: Finance and Insurance	56
BEA Employment: Real Estate, Rental, and Leasing	56
BEA Employment: Professional and Technical Services	57
BEA Employment: Management of Companies and Enterprises	57
BEA Employment: Administrative and Waste Services	58
BEA Employment: Educational Services	58
BEA Employment: Health Care and Social Assistance	59
BEA Employment: Arts, Entertainment, and Recreation	59
BEA Employment: Government and Government Enterprises	60
BEA Employment: Accommodation and Food Services	60
BEA Employment: Other Services, Except Public Administration	61

Kansas County Profiles Table of Contents

Income

BEA Per Capita Personal Income (\$)	61
Sources of Personal Income: Total Personal Income (\$000)	62
Sources of Personal Income: Wages And Salaries (\$000)	62
Sources of Personal Income: Proprietors-Farm (\$000)	63
Sources of Personal Income: Proprietors-Nonfarm (\$000)	63
Sources of Personal Income: Dividends, Interest, Rent (\$000)	64
Sources of Personal Income: Transfer Payments (\$000)	64
Sources of Personal Income: Less Social Insurance (\$000)	65
HUD Median Family Income	65
HUD 30% Low-To-Medium Income (LMI) Limit - 4 Persons	66
HUD 50% Low-To-Medium Income (LMI) Limit - 4 Persons	66
HUD 80% Low-To-Medium Income (LMI) Limit - 4 Persons	66

Banking

Bank Deposits (\$000)	67
Number of Banks	67
Number of Banking Offices	68

Government

Tangible Assessed Valuation (million\$)	68
Sales Tax Collections	69

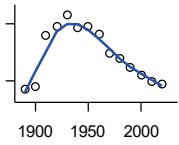
Crime

Crime Index Offenses	69
Property Crimes	70
Violent Crimes	70

Agriculture

Number of Farms	71
Total Acres Harvested	71
Value: Livestock and Poultry (\$000)	71
Value: Field Crops (\$000) Excluding Government Program Payments	72

Population



DECENNIAL CENSUS:TOTAL POPULATION

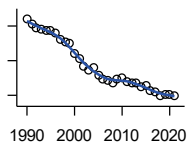
U.S. Census Bureau: Decennial Census

Year	County	State of Kansas	Non Metro Kansas	County Rank	Per 1000 or \$ Per Capita
1890	2,535	1,427,096	968,413	89	.
1900	2,722	1,470,495	981,206	83	.
1910	5,398	1,690,949	1,138,294	84	.
1920	5,880	1,769,257	1,153,525	82	.
1930	6,470	1,880,999	1,180,056	85	.
1940	5,822	1,801,028	1,097,216	84	.
1950	5,868	1,905,299	1,046,823	80	.
1960	5,473	2,178,611	1,021,510	78	.
1970	4,436	2,246,578	958,104	84	.
1980	4,165	2,363,679	980,085	83	.
1990	3,694	2,477,574	939,416	85	.
2000	3,319	2,688,418	959,507	87	.
2010	3,001	2,853,118	929,981	86	.
2020	2,808	2,937,880	892,006	84	.

County: county value. Kansas: state value. County Rank: highest county value ranked #1. (\$000): thousands of dollars. Nonmetro Kansas: Kansas total less Metropolitan Areas as defined by the Office of Management and Budget (OMB; released 3/6/2020). Per 1000: For nonmoney amounts, Per 1000=(county value / county population for the same year as the data) x 1000. \$ Per capita=(county value / county population for the same year as the data). Value= . indicates missing or suppressed data or value not calculated.

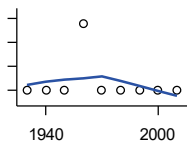
Population

ESTIMATED POPULATION



U.S. Census Bureau

Year	County	State of Kansas	Non Metro Kansas	County Rank	Per 1000 or \$ Per Capita
1990	3,683	2,481,349	938,607	85	.
1991	3,618	2,498,722	938,965	85	.
1992	3,573	2,532,394	942,759	86	.
1993	3,570	2,556,547	947,515	86	.
1994	3,553	2,580,513	952,178	87	.
1995	3,549	2,601,007	957,771	87	.
1996	3,522	2,614,554	959,455	87	.
1997	3,442	2,635,292	960,225	88	.
1998	3,411	2,660,598	960,569	88	.
1999	3,400	2,678,338	960,704	87	.
2000	3,280	2,693,681	959,230	87	.
2001	3,225	2,702,162	952,607	87	.
2002	3,137	2,713,535	945,985	89	.
2003	3,097	2,723,004	941,474	88	.
2004	3,120	2,734,373	937,623	88	.
2005	3,025	2,745,299	932,852	89	.
2006	2,991	2,762,931	928,809	88	.
2007	2,971	2,783,785	927,643	87	.
2008	2,943	2,808,076	926,248	88	.
2009	2,985	2,832,704	926,755	86	.
2010	3,006	2,858,190	930,028	86	.
2011	2,954	2,869,225	927,675	86	.
2012	2,941	2,885,257	925,152	86	.
2013	2,945	2,893,212	922,383	86	.
2014	2,895	2,900,475	917,854	87	.
2015	2,907	2,909,011	912,199	87	.
2016	2,852	2,910,844	905,099	85	.
2017	2,843	2,908,718	897,981	86	.
2018	2,797	2,911,359	892,656	86	.
2019	2,803	2,913,314	887,455	84	.
2020	2,808	2,935,880	889,750	84	.
2021	2,793	2,934,582	886,438	84	.



URBAN POPULATION

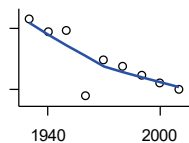
U.S. Census Bureau: Decennial Census

Year	County	State of Kansas	Non Metro Kansas	County Rank	Per 1000 or \$ Per Capita
1930	0	729,834	336,666	105	.
1940	0	753,941	349,228	105	.
1950	0	993,220	398,923	105	.
1960	2,808	1,328,741	457,447	57	.
1970	0	1,484,870	450,543	105	.
1980	0	1,575,899	474,769	105	.
1990	0	1,712,564	464,205	105	.
2000	0	1,920,081	488,011	105	.
2010	0	2,116,961	485,780	105	.

County: county value. Kansas: state value. County Rank: highest county value ranked #1. (\$000): thousands of dollars. Nonmetro Kansas: Kansas total less Metropolitan Areas as defined by the Office of Management and Budget (OMB; released 3/6/2020). Per 1000: For nonmoney amounts, Per 1000=(county value / county population for the same year as the data) x 1000. \$ Per capita=(county value / county population for the same year as the data). Value= . indicates missing or suppressed data or value not calculated.

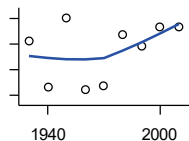
Population

RURAL POPULATION



U.S. Census Bureau

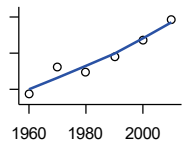
Year	County	State of Kansas	Non Metro Kansas	County Rank	Per 1000 or \$ Per Capita
1930	6,470	1,151,165	843,390	82	.
1940	5,822	1,047,087	747,988	80	.
1950	5,868	912,079	647,900	73	.
1960	2,665	849,870	564,063	97	.
1970	4,436	761,708	509,972	73	.
1980	4,165	787,780	505,873	71	.
1990	3,694	765,010	475,211	73	.
2000	3,319	768,337	471,900	77	.
2010	3,001	736,157	444,201	77	.



NET MIGRATION: DECADE ENDING...

calculated by the Institute for Policy and Social Research, The University of Kansas

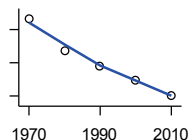
Year	County	State of Kansas	Non Metro Kansas	County Rank	Per 1000 or \$ Per Capita
1930	-435	-66,132	-101,869	37	-67.2
1940	-1,348	-192,649	-166,022	32	-231.5
1950	12	-84,329	-158,379	24	2.0
1960	-1,403	-38,999	-146,640	47	-256.3
1970	-1,312	-119,662	-105,116	72	-295.8
1980	-311	-21,983	-6,184	64	-74.7
1990	-537	-61,835	-79,274	43	-145.4
2000	-157	68,960	4,247	68	-47.3
2010	-167	5,578	-50,648	35	-55.6



MEDIAN AGE

U.S. Census Bureau: Decennial Census

Year	County	State of Kansas	Non Metro Kansas	County Rank	Per 1000 or \$ Per Capita
1960	28.6	26.9	.	80	.
1970	36.0	28.7	.	44	.
1980	34.9	30.1	.	47	.
1990	39.1	32.9	.	27	.
2000	43.5	35.2	.	18	.
2010	49.3	36.0	.	8	.



POPULATION UNDER 18 (DECENNIAL CENSUS)

U.S. Census Bureau: Decennial Census

Year	County	State of Kansas	Non Metro Kansas	County Rank	Per 1000 or \$ Per Capita
1970	1,531	746,354	306,227	81	.
1980	1,143	649,035	263,919	81	.
1990	966	661,614	250,107	84	.
2000	792	712,993	250,757	86	.
2010	599	726,939	229,213	93	.

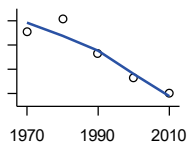
County: county value. Kansas: state value. County Rank: highest county value ranked #1. (\$000): thousands of dollars. Nonmetro Kansas: Kansas total less Metropolitan Areas as defined by the Office of Management and Budget (OMB; released 3/6/2020). Per 1000: For nonmoney amounts, Per 1000=(county value / county population for the same year as the data) x 1000. \$ Per capita=(county value / county population for the same year as the data). Value= . indicates missing or suppressed data or value not calculated.

Population

**POPULATION AGE 18 AND OVER
(DECENNIAL CENSUS)**

U.S. Census Bureau: Decennial Census

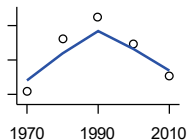
Year	County	State of Kansas	Non Metro Kansas	County Rank	Per 1000 or \$ Per Capita
1970	2,905	1,500,224	654,288	84	.
1980	3,016	1,714,282	716,684	84	.
1990	2,728	1,815,960	689,309	84	.
2000	2,527	1,975,425	709,154	87	.
2010	2,402	2,126,179	700,768	85	.



**POPULATION AGE 65 AND OVER
(DECENNIAL CENSUS)**

U.S. Census Bureau: Decennial Census

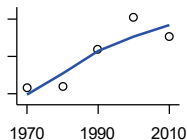
Year	County	State of Kansas	Non Metro Kansas	County Rank	Per 1000 or \$ Per Capita
1970	658	266,201	149,049	85	.
1980	811	306,263	164,932	81	.
1990	875	342,571	168,579	80	.
2000	796	356,229	161,769	82	.
2010	703	376,116	154,214	83	.



**POPULATION AGE 85 AND OVER
(DECENNIAL CENSUS)**

U.S. Census Bureau: Decennial Census

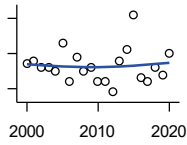
Year	County	State of Kansas	Non Metro Kansas	County Rank	Per 1000 or \$ Per Capita
1970	67	23,899	13,698	81	.
1980	68	33,455	18,804	91	.
1990	107	42,241	22,970	84	.
2000	142	51,770	26,644	80	.
2010	121	59,318	26,197	82	.



County: county value. Kansas: state value. County Rank: highest county value ranked #1. (\$000): thousands of dollars. Nonmetro Kansas: Kansas total less Metropolitan Areas as defined by the Office of Management and Budget (OMB; released 3/6/2020). Per 1000: For nonmoney amounts, Per 1000=(county value / county population for the same year as the data) x 1000. \$ Per capita=(county value / county population for the same year as the data). Value= . indicates missing or suppressed data or value not calculated.

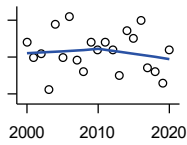
Vital Statistics and Health

BIRTHS (LIVE)



Kansas Department of Health and Environment

Year	County	State of Kansas	Non Metro Kansas	County Rank	Per 1000 or \$ Per Capita
2000	32	39,654	12,980	91	9.6
2001	33	38,832	12,527	85	10.2
2002	31	39,338	12,476	91	9.9
2003	31	39,353	12,342	93	10.0
2004	30	39,553	12,398	92	9.6
2005	38	39,701	12,382	82	12.6
2006	27	40,896	12,726	94	9.0
2007	34	41,951	12,990	86	11.4
2008	30	41,815	12,970	88	10.2
2009	31	41,388	12,949	88	10.4
2010	27	40,439	12,200	93	9.0
2011	27	39,628	12,098	93	9.1
2012	24	40,304	12,217	101	8.2
2013	33	38,805	11,877	85	11.2
2014	36	39,193	12,052	84	12.4
2015	46	39,126	11,836	78	15.8
2016	28	38,048	11,467	95	9.8
2017	27	36,464	10,968	93	9.5
2018	31	36,268	10,826	86	11.1
2019	29	35,395	10,506	88	10.3
2020	35	34,368	10,222	79	12.5



DEATHS

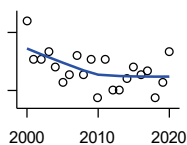
Kansas Department of Health and Environment

Year	County	State of Kansas	Non Metro Kansas	County Rank	Per 1000 or \$ Per Capita
2000	49	24,676	11,175	84	14.8
2001	45	24,590	10,807	83	14.0
2002	46	24,968	11,079	86	14.7
2003	36	24,417	10,615	92	11.6
2004	54	23,720	10,369	73	17.3
2005	45	24,632	10,599	83	14.9
2006	56	24,489	10,538	75	18.7
2007	44	24,413	10,601	85	14.8
2008	41	24,896	10,593	86	13.9
2009	49	23,997	9,938	78	16.4
2010	47	24,428	10,105	78	15.7
2011	49	25,114	10,520	80	16.6
2012	47	25,084	10,259	79	16.0
2013	40	25,347	10,249	87	13.6
2014	52	25,731	10,275	73	18.0
2015	50	26,611	10,539	77	17.2
2016	55	26,129	10,231	73	19.3
2017	42	26,725	10,452	81	14.8
2018	41	27,213	10,389	86	14.7
2019	38	27,312	10,569	88	13.6
2020	47	31,667	11,850	83	16.7

County: county value. Kansas: state value. County Rank: highest county value ranked #1. (\$000): thousands of dollars. Nonmetro Kansas: Kansas total less Metropolitan Areas as defined by the Office of Management and Budget (OMB; released 3/6/2020). Per 1000: For nonmoney amounts, Per 1000=(county value / county population for the same year as the data) x 1000. \$ Per capita=(county value / county population for the same year as the data). Value= . indicates missing or suppressed data or value not calculated.

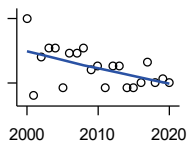
Vital Statistics and Health

MARRIAGES



Kansas Department of Health and Environment

Year	County	State of Kansas	Non Metro Kansas	County Rank	Per 1000 or \$ Per Capita
2000	33	20,426	7,333	77	9.9
2001	23	20,457	7,441	88	7.1
2002	23	19,783	6,794	87	7.3
2003	25	18,722	6,469	81	8.1
2004	21	19,174	6,756	86	6.7
2005	17	18,745	6,481	96	5.6
2006	19	18,836	6,433	86	6.4
2007	24	18,910	6,464	81	8.1
2008	19	18,717	6,283	86	6.5
2009	23	18,268	6,015	76	7.7
2010	13	18,150	5,925	96	4.3
2011	23	17,897	5,977	80	7.8
2012	15	18,154	5,752	91	5.1
2013	15	17,328	5,533	93	5.1
2014	18	17,655	5,535	83	6.2
2015	21	17,595	5,400	76	7.2
2016	19	17,948	5,340	81	6.7
2017	20	17,274	5,163	78	7.0
2018	13	16,362	4,999	90	4.6
2019	17	15,403	4,650	81	6.1
2020	25	14,038	4,066	60	8.9



DIVORCES AND ANNULMENTS

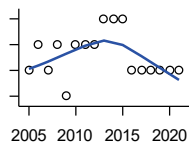
Kansas Department of Health and Environment

Year	County	State of Kansas	Non Metro Kansas	County Rank	Per 1000 or \$ Per Capita
2000	20	10,105	4,000	67	6.0
2001	2	9,885	3,818	103	0.6
2002	11	9,645	3,716	82	3.5
2003	13	8,644	3,464	74	4.2
2004	13	8,759	3,506	73	4.2
2005	4	8,476	3,311	103	1.3
2006	12	9,145	3,387	75	4.0
2007	12	9,347	3,402	80	4.0
2008	13	9,818	3,655	73	4.4
2009	8	10,333	3,463	88	2.7
2010	9	10,579	3,530	88	3.0
2011	4	10,445	3,347	102	1.4
2012	9	9,782	3,040	85	3.1
2013	9	9,085	2,973	84	3.1
2014	4	8,441	2,682	100	1.4
2015	4	8,036	2,704	102	1.4
2016	5	7,198	2,424	93	1.8
2017	10	6,494	2,315	67	3.5
2018	5	6,538	2,269	92	1.8
2019	6	6,398	2,357	87	2.1
2020	5	5,169	1,866	84	1.8

County: county value. Kansas: state value. County Rank: highest county value ranked #1. (\$000): thousands of dollars. Nonmetro Kansas: Kansas total less Metropolitan Areas as defined by the Office of Management and Budget (OMB; released 3/6/2020). Per 1000: For nonmoney amounts, Per 1000=(county value / county population for the same year as the data) x 1000. \$ Per capita=(county value / county population for the same year as the data). Value= . indicates missing or suppressed data or value not calculated.

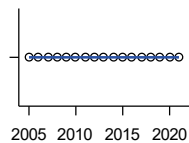
Vital Statistics and Health

PHYSICIANS: M.D. PHYSICIANS



Kansas Department of Health and Environment (1981-2005,2010-);Kansas Health Policy Authority (2006-2009)

Year	County	State of Kansas	Non Metro Kansas	County Rank	Per 1000 or \$ Per Capita
2005	2	4,241	912	81	0.7
2006	3	4,310	953	70	1.0
2007	2	5,309	1,046	86	0.7
2008	3	5,110	1,016	73	1.0
2009	1	5,249	996	98	0.3
2010	3	5,192	979	73	1.0
2011	3	5,243	983	73	1.0
2012	3	5,693	1,033	72	1.0
2013	4	6,106	1,071	65	1.4
2014	4	5,839	951	57	1.4
2015	4	5,703	855	54	1.4
2016	2	4,278	643	72	0.7
2017	2	6,332	1,047	81	0.7
2018	2	6,079	1,065	87	0.7
2019	2	6,435	1,036	86	0.7
2020	2	6,668	1,045	87	0.7
2021	2	6,745	1,042	87	0.7



PHYSICIANS: D.O. PHYSICIANS

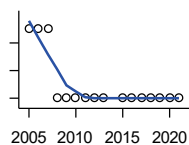
Kansas Department of Health and Environment (1981-2005,2010-);Kansas Health Policy Authority (2006-2009)

Year	County	State of Kansas	Non Metro Kansas	County Rank	Per 1000 or \$ Per Capita
2005	0	553	174	105	0.0
2006	0	508	171	105	0.0
2007	0	569	169	105	0.0
2008	0	558	166	105	0.0
2009	0	564	160	105	0.0
2010	0	583	169	105	0.0
2011	0	502	152	105	0.0
2012	0	718	200	105	0.0
2013	0	829	210	105	0.0
2014	0	817	189	105	0.0
2015	0	819	190	105	0.0
2016	0	632	136	105	0.0
2017	0	579	129	105	0.0
2018	0	871	164	105	0.0
2019	0	951	212	105	0.0
2020	0	1,018	204	105	0.0
2021	0	1,095	217	105	0.0

County: county value. Kansas: state value. County Rank: highest county value ranked #1. (\$000): thousands of dollars. Nonmetro Kansas: Kansas total less Metropolitan Areas as defined by the Office of Management and Budget (OMB; released 3/6/2020). Per 1000: For nonmoney amounts, Per 1000=(county value / county population for the same year as the data) x 1000. \$ Per capita=(county value / county population for the same year as the data). Value= . indicates missing or suppressed data or value not calculated.

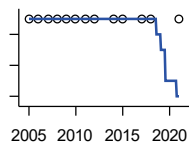
Vital Statistics and Health

DENTISTS



Kansas Department of Health and Environment (1981-2006,2010-);Kansas Health Policy Authority (2007-2009)

Year	County	State of Kansas	Non Metro Kansas	County Rank	Per 1000 or \$ Per Capita
2005	1	1,347	363	92	0.3
2006	1	1,381	361	92	0.3
2007	1	1,335	350	91	0.3
2008	0	1,392	353	105	0.0
2009	0	1,353	350	105	0.0
2010	0	1,401	365	105	0.0
2011	0	1,338	346	105	0.0
2012	0	1,434	392	105	0.0
2013	0	1,212	328	105	0.0
2015	0	1,240	327	105	0.0
2016	0	1,456	350	105	0.0
2017	0	1,467	350	105	0.0
2018	0	1,604	359	105	0.0
2019	0	1,646	355	105	0.0
2020	0	1,646	355	105	0.0
2021	0	1,688	362	105	0.0



NUMBER OF HOSPITALS

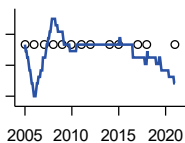
American Hospital Association, American Hospital Association Guide to the Health Care Field

Year	County	State of Kansas	Non Metro Kansas	County Rank	Per 1000 or \$ Per Capita
2005	1	158	105	96	.
2006	1	158	105	96	.
2007	1	159	104	95	.
2008	1	159	104	95	.
2009	1	158	105	96	.
2010	1	158	104	96	.
2011	1	158	103	96	.
2012	1	157	103	96	.
2014	1	156	.	96	.
2015	1	155	103	96	.
2017	1	157	102	96	.
2018	1	154	99	95	.
2021	1	151	.	95	.

County: county value. Kansas: state value. County Rank: highest county value ranked #1. (\$000): thousands of dollars. Nonmetro Kansas: Kansas total less Metropolitan Areas as defined by the Office of Management and Budget (OMB; released 3/6/2020). Per 1000: For nonmoney amounts, Per 1000=(county value / county population for the same year as the data) x 1000. \$ Per capita=(county value / county population for the same year as the data). Value= . indicates missing or suppressed data or value not calculated.

Vital Statistics and Health

NUMBER OF HOSPITAL BEDS

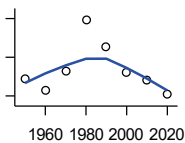


Kansas Department of Health and Environment

Year	County	State of Kansas	Non Metro Kansas	County Rank	Per 1000 or \$ Per Capita
2005	62	12,389	5,687	47	20.5
2006	62	11,992	5,514	46	20.7
2007	62	12,171	5,637	46	20.9
2008	62	12,332	5,700	47	21.1
2009	62	12,283	5,652	47	20.8
2010	62	12,218	5,521	46	20.7
2011	62	12,182	5,335	43	21.0
2012	62	12,002	5,355	44	21.1
2014	62	12,034	.	43	21.4
2015	62	11,926	5,330	42	21.3
2017	62	11,491	4,825	39	21.8
2018	62	11,448	4,583	38	22.2
2021	62	11,199	.	34	22.2

Housing

HOUSING UNITS (DECENNIAL)



U.S. Census Bureau: Decennial Census

Year	County	State of Kansas	Non Metro Kansas	County Rank	Per 1000 or \$ Per Capita
1950	1,687	586,650	328,210	81	287.5
1960	1,630	672,899	329,380	83	297.8
1970	1,731	789,735	363,824	83	390.2
1980	1,991	955,207	416,877	82	478.0
1990	1,851	1,044,112	417,062	84	501.1
2000	1,723	1,131,395	422,218	85	519.1
2010	1,682	1,233,215	424,050	84	560.5
2020	1,611	1,275,689	413,120	82	573.7

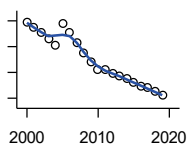
County: county value. Kansas: state value. County Rank: highest county value ranked #1. (\$000): thousands of dollars. Nonmetro Kansas: Kansas total less Metropolitan Areas as defined by the Office of Management and Budget (OMB; released 3/6/2020). Per 1000: For nonmoney amounts, Per 1000=(county value / county population for the same year as the data) x 1000. \$ Per capita=(county value / county population for the same year as the data). Value= . indicates missing or suppressed data or value not calculated.

Housing

HOUSING UNITS (ESTIMATED)

Year	County	State of Kansas	Non Metro Kansas	County Rank	Per 1000 or \$ Per Capita
2000	1,719	1,134,529	422,560	85	517.9
2001	1,715	1,146,858	423,876	85	531.8
2002	1,711	1,160,129	425,089	85	545.4
2003	1,706	1,171,620	425,936	85	550.9
2004	1,701	1,184,702	426,593	85	545.2
2005	1,718	1,195,791	426,964	84	567.9
2006	1,711	1,206,692	426,713	84	572.0
2007	1,703	1,217,608	426,090	84	573.2
2008	1,695	1,225,625	425,768	84	575.9
2009	1,688	1,230,552	424,776	84	565.5
2010	1,682	1,234,456	424,174	84	560.5
2011	1,682	1,238,052	424,549	84	569.4
2012	1,679	1,241,992	425,116	85	570.9
2013	1,677	1,246,675	425,699	85	569.4
2014	1,675	1,253,284	426,269	85	578.6
2015	1,672	1,258,999	426,844	85	575.2
2016	1,669	1,265,684	427,465	85	585.2
2017	1,668	1,273,536	427,746	85	586.7
2018	1,665	1,280,649	428,099	85	595.3
2019	1,662	1,288,401	428,495	85	592.9

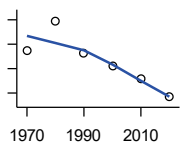
U.S. Census Bureau



OCCUPIED HOUSING UNITS

Year	County	State of Kansas	Non Metro Kansas	County Rank	Per 1000 or \$ Per Capita
1970	1,475	727,364	326,494	84	332.5
1980	1,596	872,239	371,693	85	383.2
1990	1,464	944,726	365,901	85	396.3
2000	1,412	1,037,891	375,313	87	425.4
2010	1,358	1,112,096	370,269	85	452.5
2020	1,283	1,151,360	356,330	84	456.9

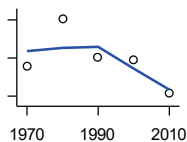
U.S. Census Bureau: Decennial Census



OWNER OCCUPIED HOUSING UNITS

Year	County	State of Kansas	Non Metro Kansas	County Rank	Per 1000 or \$ Per Capita
1970	1,127	502,585	236,338	83	254.1
1980	1,253	612,433	277,096	85	300.8
1990	1,153	641,762	263,099	84	312.1
2000	1,145	718,703	271,350	83	345.0
2010	1,058	753,532	261,763	84	352.5

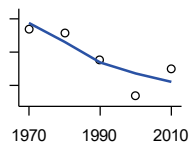
U.S. Census Bureau: Decennial Census



County: county value. Kansas: state value. County Rank: highest county value ranked #1. (\$000): thousands of dollars. Nonmetro Kansas: Kansas total less Metropolitan Areas as defined by the Office of Management and Budget (OMB; released 3/6/2020). Per 1000: For nonmoney amounts, Per 1000=(county value / county population for the same year as the data) x 1000. \$ Per capita=(county value / county population for the same year as the data). Value= . indicates missing or suppressed data or value not calculated.

Housing

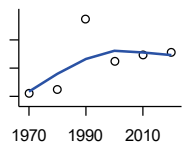
RENTER OCCUPIED HOUSING UNITS



U.S. Census Bureau: Decennial Census

Year	County	State of Kansas	Non Metro Kansas	County Rank	Per 1000 or \$ Per Capita
1970	348	224,779	90,156	88	78.4
1980	343	259,806	94,597	86	82.4
1990	311	302,964	102,802	91	84.2
2000	267	319,188	103,963	95	80.4
2010	300	358,564	108,506	87	100.0

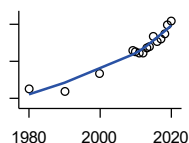
VACANT HOUSING UNITS



U.S. Census Bureau: Decennial Census

Year	County	State of Kansas	Non Metro Kansas	County Rank	Per 1000 or \$ Per Capita
1970	255	60,058	35,954	80	57.5
1980	263	77,912	41,584	83	63.1
1990	387	99,386	51,161	70	104.8
2000	311	93,309	46,904	79	93.7
2010	324	121,119	53,781	80	108.0
2020	328	124,329	56,790	81	116.8

MEDIAN VALUE (\$): OWNER OCCUPIED HOUSING UNITS



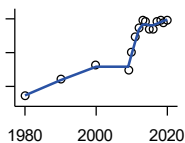
U.S. Census Bureau, Decennial Census (- 2000), (2009 -) American Community Survey five-year average ending in year shown.

Year	County	State of Kansas	Non Metro Kansas	County Rank	Per 1000 or \$ Per Capita
1980	30,800	37,800	.	38	.
1990	27,900	52,200	.	74	.
2000	47,400	83,500	.	66	.
2009	71,000	118,500	.	57	.
2010	69,700	122,600	.	63	.
2011	69,600	125,500	.	66	.
2012	69,100	127,400	.	71	.
2013	74,500	128,400	.	64	.
2014	75,400	129,400	.	68	.
2015	86,900	132,000	.	47	.
2016	82,000	135,300	.	66	.
2017	84,400	139,200	.	64	.
2018	90,100	145,400	.	58	.
2019	99,300	151,900	.	48	.
2020	103,600	157,600	.	44	.

County: county value. Kansas: state value. County Rank: highest county value ranked #1. (\$000): thousands of dollars. Nonmetro Kansas: Kansas total less Metropolitan Areas as defined by the Office of Management and Budget (OMB; released 3/6/2020). Per 1000: For nonmoney amounts, Per 1000=(county value / county population for the same year as the data) x 1000. \$ Per capita=(county value / county population for the same year as the data). Value= . indicates missing or suppressed data or value not calculated.

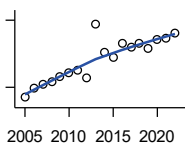
Housing

MEDIAN CONTRACT RENT (\$)



U.S. Census Bureau, Decennial Census (- 2000), (2009 -) American Community Survey five-year average ending in year shown.

Year	County	State of Kansas	Non Metro Kansas	County Rank	Per 1000 or \$ Per Capita
1980	142	219	.	91	.
1990	246	372	.	82	.
2000	326	498	.	86	.
2009	293	491	.	75	.
2010	402	507	.	31	.
2011	497	699	.	77	.
2012	550	715	.	56	.
2013	593	732	.	44	.
2014	584	748	.	58	.
2015	542	757	.	78	.
2016	540	775	.	83	.
2017	587	801	.	72	.
2018	591	831	.	78	.
2019	580	850	.	89	.
2020	594	863	.	85	.



FAIR MARKET RENT: 2 BEDROOMS

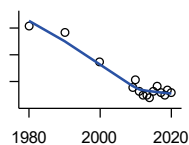
U.S. Department of Housing and Urban Development (HUD)

Year	County	State of Kansas	Non Metro Kansas	County Rank	Per 1000 or \$ Per Capita
2005	454	.	.	83	.
2006	497	.	.	105	.
2007	512	.	.	105	.
2008	525	628	.	105	.
2009	547	653	.	105	.
2010	566	678	.	105	.
2011	575	684	.	105	.
2012	540	660	.	105	.
2013	780	712	.	10	.
2014	654	746	.	34	.
2015	636	756	.	42	.
2016	694	781	.	33	.
2017	681	811	.	105	.
2018	697	815	.	105	.
2019	672	828	.	105	.
2020	714	855	.	105	.
2021	718	874	.	105	.
2022	742	879	.	105	.

County: county value. Kansas: state value. County Rank: highest county value ranked #1. (\$000): thousands of dollars. Nonmetro Kansas: Kansas total less Metropolitan Areas as defined by the Office of Management and Budget (OMB; released 3/6/2020). Per 1000: For nonmoney amounts, Per 1000=(county value / county population for the same year as the data) x 1000. \$ Per capita=(county value / county population for the same year as the data). Value= . indicates missing or suppressed data or value not calculated.

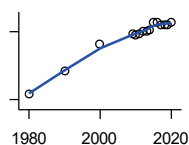
Education

POPULATION AGE 25+



U.S. Census Bureau, Decennial Census (- 2000), (2009 -) American Community Survey five-year average ending in year shown.

Year	County	State of Kansas	Non Metro Kansas	County Rank	Per 1000 or \$ Per Capita
1980	2,614	1,388,102	596,639	.	.
1990	2,564	1,565,936	608,745	.	.
2000	2,342	1,701,207	618,131	.	.
2009	2,159	1,775,427	600,188	.	.
2010	2,210	1,802,904	608,716	.	.
2011	2,129	1,822,400	610,386	.	.
2012	2,096	1,838,079	611,103	.	.
2013	2,098	1,850,010	610,374	.	.
2014	2,075	1,861,894	609,612	.	.
2015	2,122	1,869,698	606,967	.	.
2016	2,163	1,878,495	604,563	.	.
2017	2,121	1,886,741	601,076	.	.
2018	2,099	1,894,675	598,487	.	.
2019	2,133	1,902,279	595,501	.	.
2020	2,115	1,911,990	593,923	.	.



PERCENT HS GRADUATE OR HIGHER AGE 25+

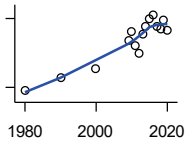
U.S. Census Bureau, Decennial Census (- 2000), (2009 -) American Community Survey five-year average ending in year shown.

Year	County	State of Kansas	Non Metro Kansas	County Rank	Per 1000 or \$ Per Capita
1980	62.5	73.3	.	96	.
1990	72.9	81.3	.	93	.
2000	84.3	86.0	.	63	.
2009	89.3	89.0	.	42	.
2010	88.7	89.2	.	57	.
2011	89.3	89.5	.	52	.
2012	90.3	89.7	.	40	.
2013	90.2	89.8	.	51	.
2014	91.0	90.0	.	41	.
2015	94.0	90.2	.	12	.
2016	94.2	90.3	.	13	.
2017	93.2	90.5	.	24	.
2018	93.3	90.7	.	26	.
2019	93.2	91.0	.	28	.
2020	94.1	91.4	.	22	.

County: county value. Kansas: state value. County Rank: highest county value ranked #1. (\$000): thousands of dollars. Nonmetro Kansas: Kansas total less Metropolitan Areas as defined by the Office of Management and Budget (OMB; released 3/6/2020). Per 1000: For nonmoney amounts, Per 1000=(county value / county population for the same year as the data) x 1000. \$ Per capita=(county value / county population for the same year as the data). Value= . indicates missing or suppressed data or value not calculated.

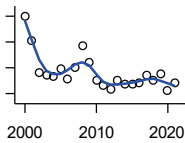
Education

PERCENT BACHELORS DEGREE OR HIGHER AGE 25+



U.S. Census Bureau, Decennial Census (- 2000), (2009 -) American Community Survey five-year average ending in year shown.

Year	County	State of Kansas	Non Metro Kansas	County Rank	Per 1000 or \$ Per Capita
1980	9.2	17.0	.	91	.
1990	12.1	21.1	.	77	.
2000	14.0	25.8	.	94	.
2009	20.2	28.8	.	37	.
2010	22.2	29.3	.	24	.
2011	19.1	29.7	.	62	.
2012	17.3	30.0	.	82	.
2013	21.5	30.3	.	37	.
2014	23.2	30.7	.	26	.
2015	25.0	31.0	.	24	.
2016	25.8	31.6	.	20	.
2017	23.3	32.3	.	38	.
2018	22.8	32.9	.	43	.
2019	24.8	33.4	.	31	.
2020	22.4	33.9	.	53	.



PUBLIC SCHOOL ENROLLMENT (FTE) SCHOOL YEAR BEGINNING...

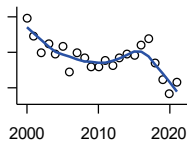
Kansas State Department of Education

Year	County	State of Kansas	Non Metro Kansas	County Rank	Per 1000 or \$ Per Capita
2000	499.3	448,150.8	166,722.5	93	150.4
2001	452.0	447,047.1	164,365.0	99	140.2
2002	390.0	444,860.3	161,555.4	100	124.3
2003	386.5	443,620.6	159,130.2	100	124.8
2004	382.0	441,957.2	156,566.3	99	122.4
2005	398.0	442,708.4	155,197.2	96	131.6
2006	378.5	444,878.7	153,842.3	97	126.5
2007	400.0	446,831.3	152,337.1	94	134.6
2008	443.0	447,730.0	150,572.7	87	150.5
2009	411.2	453,202.5	151,246.8	92	137.8
2010	376.0	455,405.0	151,023.8	94	125.3
2011	365.3	456,000.5	150,257.9	94	123.7
2012	359.5	458,496.4	150,463.0	94	122.2
2013	375.0	461,950.0	150,420.9	93	127.3
2014	368.2	464,395.4	150,499.4	94	127.2
2015	367.5	463,504.0	149,539.3	93	126.4
2016	371.5	459,920.3	147,293.5	94	130.3
2017	385.3	477,977.9	152,096.3	93	135.5
2018	375.5	476,481.7	150,456.8	95	134.3
2019	387.5	476,525.1	150,045.2	95	138.2
2020	356.6	462,088.0	146,369.6	95	127.0
2021	369.8	463,652.4	147,500.4	96	132.4

County: county value. Kansas: state value. County Rank: highest county value ranked #1. (\$000): thousands of dollars. Nonmetro Kansas: Kansas total less Metropolitan Areas as defined by the Office of Management and Budget (OMB; released 3/6/2020). Per 1000: For nonmoney amounts, Per 1000=(county value / county population for the same year as the data) x 1000. \$ Per capita=(county value / county population for the same year as the data). Value= . indicates missing or suppressed data or value not calculated.

Education

PUPIL/TEACHER RATIO SCHOOL YEAR BEGINNING...

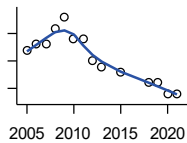


Kansas State Department of Education

Year	County	State of Kansas	Non Metro Kansas	County Rank	Per 1000 or \$ Per Capita
2000	13.9	15.4	13.9	40	.
2001	12.9	15.3	13.8	58	.
2002	12.0	15.4	13.9	81	.
2003	12.5	15.5	13.8	60	.
2004	11.9	15.3	13.6	76	.
2005	12.3	15.0	13.4	60	.
2006	10.9	14.7	13.2	88	.
2007	12.0	14.6	13.1	60	.
2008	11.7	14.4	12.9	64	.
2009	11.2	14.8	13.2	84	.
2010	11.2	15.2	13.6	85	.
2011	11.6	15.1	13.5	73	.
2012	11.3	15.1	13.5	83	.
2013	11.7	15.1	13.5	76	.
2014	11.9	15.0	13.6	70	.
2015	11.9	15.2	13.9	73	.
2016	12.4	15.1	13.7	64	.
2017	12.8	15.5	13.9	58	.
2018	11.4	15.3	13.8	80	.
2019	10.4	15.2	13.7	93	.
2020	9.6	14.7	13.4	100	.
2021	10.3	14.8	13.5	96	.

Social Environment

CHILD CARE FACILITIES: TOTAL CHILD CARE FACILITIES

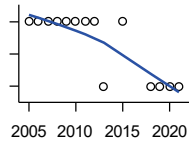


Kansas Department of Health and Environment, Bureau of Adult and Child Care

Year	County	State of Kansas	Non Metro Kansas	County Rank	Per 1000 or \$ Per Capita
2005	12	8,258	3,378	84	4.0
2006	13	8,442	3,429	78	4.3
2007	13	8,241	3,317	77	4.4
2008	16	8,011	3,150	74	5.4
2009	18	7,853	3,066	68	6.0
2010	14	7,354	2,858	72	4.7
2011	14	6,835	2,623	70	4.7
2012	10	6,346	2,409	76	3.4
2013	9	5,754	2,179	76	3.1
2015	8	5,289	2,146	82	2.8
2018	6	4,607	1,904	90	2.1
2019	6	4,287	1,774	85	2.1
2020	4	4,274	1,798	96	1.4
2021	4	4,002	1,700	93	1.4

County: county value. Kansas: state value. County Rank: highest county value ranked #1. (\$000): thousands of dollars. Nonmetro Kansas: Kansas total less Metropolitan Areas as defined by the Office of Management and Budget (OMB; released 3/6/2020). Per 1000: For nonmoney amounts, Per 1000=(county value / county population for the same year as the data) x 1000. \$ Per capita=(county value / county population for the same year as the data). Value= . indicates missing or suppressed data or value not calculated.

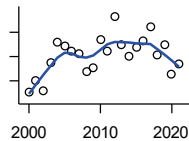
Social Environment



**CHILD CARE FACILITIES:
PRESCHOOLS**

Kansas Department of Health and Environment, Bureau of Adult and Child Care

Year	County	State of Kansas	Non Metro Kansas	County Rank	Per 1000 or \$ Per Capita
2005	1	243	140	79	0.3
2006	1	221	127	76	0.3
2007	1	208	119	76	0.3
2008	1	204	114	73	0.3
2009	1	194	107	72	0.3
2010	1	194	112	73	0.3
2011	1	209	123	76	0.3
2012	1	201	121	74	0.3
2013	0	140	84	105	0.0
2015	1	185	113	71	0.3
2018	0	150	94	105	0.0
2019	0	134	83	105	0.0
2020	0	126	78	105	0.0
2021	0	120	74	105	0.0



FOOD STAMP BENEFICIARIES

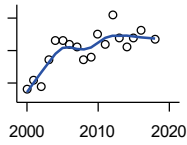
Kansas Social and Rehabilitation Services

Year	County	State of Kansas	Non Metro Kansas	County Rank	Per 1000 or \$ Per Capita
2000	91	110,619	44,825	87	27.4
2001	100	117,241	46,741	86	31.0
2002	92	131,726	52,342	91	29.3
2003	115	155,908	61,280	88	37.1
2004	132	167,971	65,852	88	42.3
2005	129	175,710	67,261	89	42.6
2006	124	182,821	67,487	89	41.5
2007	122	184,035	66,979	88	41.1
2008	108	187,377	67,160	89	36.7
2009	111	208,007	73,637	93	37.2
2010	134	259,609	90,919	94	44.7
2011	124	296,542	101,155	96	42.0
2012	153	303,257	102,478	91	52.0
2013	130	316,424	105,345	97	44.1
2014	120	301,377	100,761	98	41.5
2015	128	277,614	93,353	96	44.0
2016	133	258,412	88,343	95	46.6
2017	145	239,592	82,070	91	51.0
2018	121	219,738	75,208	93	43.3
2019	130	205,261	69,899	91	46.4
2020	106	198,457	66,721	94	37.7
2021	114	203,424	68,883	92	40.8

County: county value. Kansas: state value. County Rank: highest county value ranked #1. (\$000): thousands of dollars. Nonmetro Kansas: Kansas total less Metropolitan Areas as defined by the Office of Management and Budget (OMB; released 3/6/2020). Per 1000: For nonmoney amounts, Per 1000=(county value / county population for the same year as the data) x 1000. \$ Per capita=(county value / county population for the same year as the data). Value= . indicates missing or suppressed data or value not calculated.

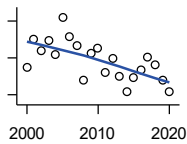
Social Environment

PERCENT OF POPULATION RECEIVING FOOD STAMPS



U.S. Dept. of Agriculture Food and Nutrition Service (1990-1997); Kansas Social and Rehabilitation Services (1998-)

Year	County	State of Kansas	Non Metro Kansas	County Rank	Per 1000 or \$ Per Capita
2000	2.8	4.1	.	79	.
2001	3.1	4.3	.	75	.
2002	2.9	4.9	.	84	.
2003	3.7	5.7	.	78	.
2004	4.3	6.2	.	69	.
2005	4.3	6.4	.	73	.
2006	4.2	6.6	.	77	.
2007	4.1	6.6	.	83	.
2008	3.7	6.7	.	86	.
2009	3.8	7.4	.	90	.
2010	4.5	9.1	.	93	.
2011	4.2	10.3	.	100	.
2012	5.1	10.5	.	91	.
2013	4.4	10.9	.	98	.
2014	4.1	10.4	.	99	.
2015	4.4	9.6	.	99	.
2016	4.6	8.9	.	89	.
2018	4.3	7.5	.	86	.



ESTIMATED NUMBER OF PEOPLE IN POVERTY

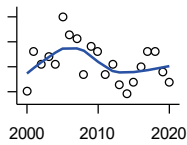
U.S. Census Bureau, Small Area Income and Poverty Estimates

Year	County	State of Kansas	Non Metro Kansas	County Rank	Per 1000 or \$ Per Capita
2000	312	235,087	98,984	91	94.0
2001	351	252,134	106,257	89	108.8
2002	335	265,673	107,542	89	106.8
2003	349	278,163	107,323	84	112.7
2004	330	297,733	111,534	87	105.8
2005	380	310,667	118,768	84	125.6
2006	353	327,102	123,700	91	118.0
2007	341	301,828	111,953	85	114.8
2008	295	307,804	113,015	90	100.2
2009	331	359,692	123,394	88	110.9
2010	339	374,677	131,502	89	113.0
2011	306	383,859	134,912	94	103.6
2012	324	392,095	133,800	90	110.2
2013	300	391,718	134,067	92	101.9
2014	279	381,506	130,213	94	96.4
2015	298	366,069	123,073	92	102.5
2016	309	343,773	121,314	91	108.3
2017	326	335,371	116,854	87	114.7
2018	316	336,892	114,490	89	113.0
2019	295	319,931	110,692	89	105.2
2020	279	300,931	100,998	90	99.4

County: county value. Kansas: state value. County Rank: highest county value ranked #1. (\$000): thousands of dollars. Nonmetro Kansas: Kansas total less Metropolitan Areas as defined by the Office of Management and Budget (OMB; released 3/6/2020). Per 1000: For nonmoney amounts, Per 1000=(county value / county population for the same year as the data) x 1000. \$ Per capita=(county value / county population for the same year as the data). Value= . indicates missing or suppressed data or value not calculated.

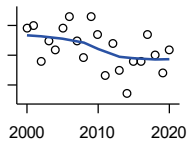
Social Environment

ESTIMATED % OF PEOPLE IN POVERTY



U.S. Census Bureau, Small Area Income and Poverty Estimates

Year	County	State of Kansas	Non Metro Kansas	County Rank	Per 1000 or \$ Per Capita
2000	10.0	8.9	.	59	.
2001	11.6	9.5	.	47	.
2002	11.1	10.0	.	56	.
2003	11.4	10.4	.	42	.
2004	11.1	11.1	.	47	.
2005	13.0	11.7	.	37	.
2006	12.3	12.2	.	59	.
2007	12.1	11.2	.	45	.
2008	10.7	11.3	.	66	.
2009	11.8	13.2	.	65	.
2010	11.6	13.5	.	69	.
2011	10.7	13.8	.	89	.
2012	11.1	14.0	.	76	.
2013	10.3	13.9	.	91	.
2014	9.9	13.5	.	95	.
2015	10.4	12.9	.	85	.
2016	11.0	12.2	.	74	.
2017	11.6	11.9	.	62	.
2018	11.6	11.9	.	63	.
2019	10.8	11.3	.	70	.
2020	10.4	10.6	.	60	.



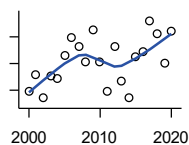
EST. NUMBER OF RELATED CHILDREN AGE 5 TO 17 IN FAMILIES IN POVERTY

U.S. Census Bureau, Small Area Income and Poverty Estimates

Year	County	State of Kansas	Non Metro Kansas	County Rank	Per 1000 or \$ Per Capita
2000	64	50,388	21,854	96	19.3
2001	65	53,755	23,094	98	20.2
2002	53	52,453	21,423	97	16.9
2003	60	55,419	21,809	92	19.4
2004	57	59,392	22,313	90	18.3
2005	64	60,203	24,244	92	21.2
2006	68	64,427	25,326	93	22.7
2007	60	61,149	23,639	93	20.2
2008	54	59,842	22,661	96	18.3
2009	68	71,850	26,251	90	22.8
2010	62	81,077	29,804	96	20.7
2011	48	82,311	29,306	99	16.2
2012	59	87,594	29,781	95	20.1
2013	50	84,325	29,253	99	17.0
2014	42	83,873	29,354	102	14.5
2015	53	78,192	27,482	100	18.2
2016	53	67,810	25,074	100	18.6
2017	62	67,873	25,032	94	21.8
2018	55	68,153	24,928	99	19.7
2019	49	64,613	23,117	98	17.5
2020	57	59,792	21,143	95	20.3

County: county value. Kansas: state value. County Rank: highest county value ranked #1. (\$000): thousands of dollars. Nonmetro Kansas: Kansas total less Metropolitan Areas as defined by the Office of Management and Budget (OMB; released 3/6/2020). Per 1000: For nonmoney amounts, Per 1000=(county value / county population for the same year as the data) x 1000. \$ Per capita=(county value / county population for the same year as the data). Value= . indicates missing or suppressed data or value not calculated.

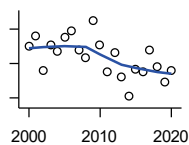
Social Environment



EST. % OF RELATED CHILDREN AGE 5 TO 17 IN FAMILIES IN POVERTY

U.S. Census Bureau, Small Area Income and Poverty Estimates

Year	County	State of Kansas	Non Metro Kansas	County Rank	Per 1000 or \$ Per Capita
2000	11.9	10.0	.	63	.
2001	13.2	10.8	.	55	.
2002	11.4	10.5	.	59	.
2003	13.1	11.3	.	36	.
2004	12.9	12.5	.	51	.
2005	14.6	12.8	.	49	.
2006	15.9	13.2	.	41	.
2007	15.3	12.6	.	39	.
2008	14.1	12.3	.	54	.
2009	16.5	14.7	.	38	.
2010	14.1	15.9	.	79	.
2011	11.9	16.2	.	94	.
2012	15.3	17.2	.	66	.
2013	12.7	16.5	.	89	.
2014	11.4	16.4	.	97	.
2015	14.5	15.3	.	64	.
2016	14.9	13.2	.	56	.
2017	17.2	13.4	.	35	.
2018	16.2	13.5	.	53	.
2019	14.0	12.9	.	65	.
2020	16.4	11.9	.	27	.



ESTIMATED NUMBER UNDER 18 IN POVERTY

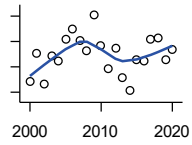
U.S. Census Bureau, Small Area Income and Poverty Estimates

Year	County	State of Kansas	Non Metro Kansas	County Rank	Per 1000 or \$ Per Capita
2000	90	82,619	34,843	99	27.1
2001	96	87,487	36,724	98	29.8
2002	76	84,181	32,870	99	24.2
2003	91	93,896	36,004	92	29.4
2004	87	98,641	36,272	93	27.9
2005	95	100,254	39,118	97	31.4
2006	99	105,193	41,054	96	33.1
2007	88	100,242	37,881	95	29.6
2008	83	100,146	37,552	97	28.2
2009	105	118,187	42,682	90	35.2
2010	91	129,009	46,428	97	30.3
2011	75	133,478	46,832	99	25.4
2012	86	135,261	46,294	97	29.2
2013	72	131,251	44,952	101	24.4
2014	61	125,562	43,933	102	21.1
2015	77	119,994	41,828	100	26.5
2016	75	100,996	37,387	101	26.3
2017	88	102,858	37,955	95	31.0
2018	78	102,616	36,991	99	27.9
2019	69	97,920	34,797	100	24.6
2020	76	88,491	30,767	98	27.1

County: county value. Kansas: state value. County Rank: highest county value ranked #1. (\$000): thousands of dollars. Nonmetro Kansas: Kansas total less Metropolitan Areas as defined by the Office of Management and Budget (OMB; released 3/6/2020). Per 1000: For nonmoney amounts, Per 1000=(county value / county population for the same year as the data) x 1000. \$ Per capita=(county value / county population for the same year as the data). Value= . indicates missing or suppressed data or value not calculated.

Social Environment

ESTIMATED PERCENT UNDER 18 IN POVERTY



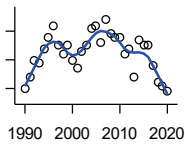
U.S. Census Bureau, Small Area Income and Poverty Estimates

Year	County	State of Kansas	Non Metro Kansas	County Rank	Per 1000 or \$ Per Capita
2000	12.8	11.9	.	72	.
2001	15.1	12.7	.	57	.
2002	12.6	12.1	.	64	.
2003	14.9	13.8	.	50	.
2004	14.5	14.6	.	60	.
2005	16.2	15.2	.	59	.
2006	17.0	15.4	.	53	.
2007	16.1	14.7	.	56	.
2008	15.3	14.6	.	64	.
2009	18.1	17.1	.	51	.
2010	15.7	18.1	.	78	.
2011	13.9	18.8	.	94	.
2012	15.5	19.0	.	78	.
2013	13.1	18.4	.	98	.
2014	12.1	17.6	.	99	.
2015	14.6	16.9	.	78	.
2016	14.5	14.3	.	72	.
2017	16.2	14.7	.	63	.
2018	16.3	14.8	.	63	.
2019	14.6	14.3	.	69	.
2020	15.4	13.0	.	44	.

County: county value. Kansas: state value. County Rank: highest county value ranked #1. (\$000): thousands of dollars. Nonmetro Kansas: Kansas total less Metropolitan Areas as defined by the Office of Management and Budget (OMB; released 3/6/2020). Per 1000: For nonmoney amounts, Per 1000=(county value / county population for the same year as the data) x 1000. \$ Per capita=(county value / county population for the same year as the data). Value= . indicates missing or suppressed data or value not calculated.

Business

ESTABLISHMENTS TOTAL COUNTY BUSINESS PATTERNS



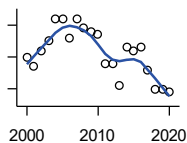
U.S. Census Bureau, County Business Patterns. Beginning with the 2017 data, any tabulation with fewer than 3 establishments were omitted from the release. Data for these establishments are included in the broader total.

Year	County	State of Kansas	Non Metro Kansas	County Rank	Per 1000 or \$ Per Capita
1990	115	65,858	26,802	79	31.1
1991	119	65,941	26,750	78	32.9
1992	125	67,630	27,229	78	35.0
1993	124	68,930	27,655	79	34.7
1994	129	69,822	27,763	78	36.3
1995	133	70,894	28,111	78	37.5
1996	137	72,017	28,353	77	38.9
1997	130	73,924	28,884	77	37.8
1998	127	74,019	28,749	80	37.2
1999	130	74,486	28,536	78	38.2
2000	125	74,939	28,475	79	37.7
2001	122	74,565	28,282	79	37.8
2002	128	75,077	28,183	79	40.8
2003	130	74,972	27,998	78	42.0
2004	136	75,827	28,009	76	43.6
2005	137	76,173	27,830	76	45.3
2006	131	76,446	27,653	78	43.8
2007	139	77,157	27,736	75	46.8
2008	134	76,096	27,314	74	45.5
2009	133	74,698	26,839	75	44.6
2010	133	74,301	26,739	74	44.3
2011	127	73,598	26,555	77	43.0
2012	129	73,944	26,534	78	43.9
2013	119	73,816	26,393	79	40.4
2014	132	74,055	26,292	74	45.6
2015	130	74,526	26,355	76	44.7
2016	130	74,884	26,172	75	45.6
2017	123	74,947	26,093	78	43.3
2018	117	74,559	25,802	79	41.8
2019	116	74,292	25,536	79	41.4
2020	114	73,982	25,178	79	40.6

County: county value. Kansas: state value. County Rank: highest county value ranked #1. (\$000): thousands of dollars. Nonmetro Kansas: Kansas total less Metropolitan Areas as defined by the Office of Management and Budget (OMB; released 3/6/2020). Per 1000: For nonmoney amounts, Per 1000=(county value / county population for the same year as the data) x 1000. \$ Per capita=(county value / county population for the same year as the data). Value= . indicates missing or suppressed data or value not calculated.

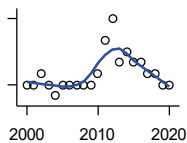
Business

**ESTABLISHMENTS: 1-19
EMPLOYEES**



U.S. Census Bureau, County Business Patterns. Beginning with the 2017 data, any tabulation with fewer than 3 establishments were omitted from the release. Data for these establishments are included in the broader total.

Year	County	State of Kansas	Non Metro Kansas	County Rank	Per 1000 or \$ Per Capita
2000	120	64,527	25,381	79	36.2
2001	117	64,176	25,248	78	36.3
2002	122	64,886	25,208	79	38.9
2003	125	64,714	25,020	78	40.4
2004	132	65,554	24,995	74	42.3
2005	132	65,796	24,839	74	43.6
2006	126	65,764	24,589	77	42.1
2007	132	66,446	24,701	74	44.4
2008	129	65,322	24,257	73	43.8
2009	128	64,128	23,851	71	42.9
2010	127	64,015	23,857	73	42.3
2011	118	63,251	23,571	77	39.9
2012	118	63,519	23,575	78	40.1
2013	111	63,197	23,396	79	37.7
2014	123	63,113	23,229	74	42.5
2015	122	63,280	23,227	76	42.0
2016	123	63,630	23,117	74	43.1
2017	116	63,619	23,022	77	40.8
2018	110	63,233	22,745	80	39.3
2019	110	62,904	22,489	79	39.2
2020	109	62,634	22,173	79	38.8



**ESTABLISHMENTS: 20-99
EMPLOYEES**

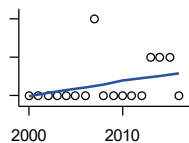
U.S. Census Bureau, County Business Patterns. Beginning with the 2017 data, any tabulation with fewer than 3 establishments were omitted from the release. Data for these establishments are included in the broader total.

Year	County	State of Kansas	Non Metro Kansas	County Rank	Per 1000 or \$ Per Capita
2000	4	8,714	2,653	94	1.2
2001	4	8,692	2,593	95	1.2
2002	5	8,582	2,554	88	1.6
2003	4	8,642	2,568	93	1.3
2004	3	8,658	2,590	100	1.0
2005	4	8,685	2,553	96	1.3
2006	4	8,922	2,612	96	1.3
2007	4	8,938	2,574	94	1.3
2008	4	8,939	2,587	95	1.4
2009	4	8,848	2,551	93	1.3
2010	5	8,612	2,454	89	1.7
2011	8	8,668	2,540	74	2.7
2012	10	8,700	2,500	69	3.4
2013	6	8,870	2,541	84	2.0
2014	7	9,121	2,590	80	2.4
2015	6	9,374	2,664	86	2.1
2016	6	9,412	2,596	84	2.1
2017	5	9,487	2,638	85	1.8
2018	5	9,485	2,621	79	1.8
2019	4	9,485	2,591	91	1.4
2020	4	9,471	2,545	87	1.4

County: county value. Kansas: state value. County Rank: highest county value ranked #1. (\$000): thousands of dollars. Nonmetro Kansas: Kansas total less Metropolitan Areas as defined by the Office of Management and Budget (OMB; released 3/6/2020). Per 1000: For nonmoney amounts, Per 1000=(county value / county population for the same year as the data) x 1000. \$ Per capita=(county value / county population for the same year as the data). Value= . indicates missing or suppressed data or value not calculated.

Business

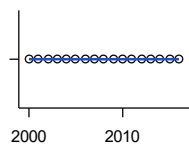
ESTABLISHMENTS: 100-499 EMPLOYEES



U.S. Census Bureau, County Business Patterns. Beginning with the 2017 data, any tabulation with fewer than 3 establishments were omitted from the release. Data for these establishments are included in the broader total.

Year	County	State of Kansas	Non Metro Kansas	County Rank	Per 1000 or \$ Per Capita
2000	1	1,555	409	82	0.3
2001	1	1,555	406	86	0.3
2002	1	1,464	386	81	0.3
2003	1	1,470	378	83	0.3
2004	1	1,463	388	82	0.3
2005	1	1,537	400	82	0.3
2006	1	1,598	407	83	0.3
2007	3	1,602	416	46	1.0
2008	1	1,653	421	86	0.3
2009	1	1,551	394	86	0.3
2010	1	1,513	382	85	0.3
2011	1	1,523	395	86	0.3
2012	1	1,567	410	85	0.3
2013	2	1,581	407	59	0.7
2014	2	1,641	421	62	0.7
2015	2	1,693	414	61	0.7
2016	1	1,671	406	84	0.4

ESTABLISHMENTS: 500 OR MORE EMPLOYEES



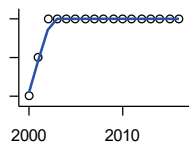
U.S. Census Bureau, County Business Patterns. Beginning with the 2017 data, any tabulation with fewer than 3 establishments were omitted from the release. Data for these establishments are included in the broader total.

Year	County	State of Kansas	Non Metro Kansas	County Rank	Per 1000 or \$ Per Capita
2000	0	143	32	105	0.0
2001	0	142	35	105	0.0
2002	0	145	35	105	0.0
2003	0	146	32	105	0.0
2004	0	152	36	105	0.0
2005	0	155	38	105	0.0
2006	0	162	45	105	0.0
2007	0	171	45	105	0.0
2008	0	182	49	105	0.0
2009	0	171	43	105	0.0
2010	0	161	46	105	0.0
2011	0	156	49	105	0.0
2012	0	158	49	105	0.0
2013	0	168	49	105	0.0
2014	0	180	52	105	0.0
2015	0	179	50	105	0.0
2016	0	171	53	105	0.0

County: county value. Kansas: state value. County Rank: highest county value ranked #1. (\$000): thousands of dollars. Nonmetro Kansas: Kansas total less Metropolitan Areas as defined by the Office of Management and Budget (OMB; released 3/6/2020). Per 1000: For nonmoney amounts, Per 1000=(county value / county population for the same year as the data) x 1000. \$ Per capita=(county value / county population for the same year as the data). Value= . indicates missing or suppressed data or value not calculated.

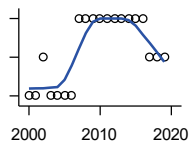
Business

ESTABLISHMENTS: FORESTRY, FISHING, HUNTING, AND AG SUPPORT



U.S. Census Bureau, County Business Patterns. Beginning with the 2017 data, any tabulation with fewer than 3 establishments were omitted from the release. Data for these establishments are included in the broader total.

Year	County	State of Kansas	Non Metro Kansas	County Rank	Per 1000 or \$ Per Capita
2000	0	190	149	105	0.0
2001	1	217	168	80	0.3
2002	2	224	176	56	0.6
2003	2	217	173	54	0.6
2004	2	211	165	53	0.6
2005	2	188	148	45	0.7
2006	2	193	158	48	0.7
2007	2	212	170	52	0.7
2008	2	197	158	50	0.7
2009	2	191	154	52	0.7
2010	2	192	161	50	0.7
2011	2	193	157	50	0.7
2012	2	204	164	50	0.7
2013	2	208	166	54	0.7
2014	2	194	152	55	0.7
2015	2	192	149	51	0.7
2016	2	181	142	48	0.7



ESTABLISHMENTS: MINING

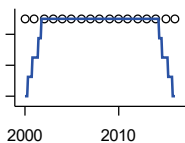
U.S. Census Bureau, County Business Patterns. Beginning with the 2017 data, any tabulation with fewer than 3 establishments were omitted from the release. Data for these establishments are included in the broader total.

Year	County	State of Kansas	Non Metro Kansas	County Rank	Per 1000 or \$ Per Capita
2000	2	868	619	70	0.6
2001	2	878	622	69	0.6
2002	3	847	615	52	1.0
2003	2	864	633	66	0.6
2004	2	880	647	67	0.6
2005	2	941	695	69	0.7
2006	2	991	734	71	0.7
2007	4	1,000	759	48	1.3
2008	4	1,047	799	49	1.4
2009	4	1,016	772	48	1.3
2010	4	1,009	762	45	1.3
2011	4	1,013	763	46	1.4
2012	4	1,048	789	48	1.4
2013	4	1,060	802	51	1.4
2014	4	1,102	828	51	1.4
2015	4	1,069	810	52	1.4
2016	4	990	747	52	1.4
2017	3	920	.	61	1.1
2018	3	900	.	57	1.1
2019	3	864	.	55	1.1

County: county value. Kansas: state value. County Rank: highest county value ranked #1. (\$000): thousands of dollars. Nonmetro Kansas: Kansas total less Metropolitan Areas as defined by the Office of Management and Budget (OMB; released 3/6/2020). Per 1000: For nonmoney amounts, Per 1000=(county value / county population for the same year as the data) x 1000. \$ Per capita=(county value / county population for the same year as the data). Value= . indicates missing or suppressed data or value not calculated.

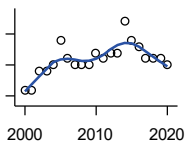
Business

ESTABLISHMENTS: UTILITIES



U.S. Census Bureau, County Business Patterns. Beginning with the 2017 data, any tabulation with fewer than 3 establishments were omitted from the release. Data for these establishments are included in the broader total.

Year	County	State of Kansas	Non Metro Kansas	County Rank	Per 1000 or \$ Per Capita
2000	2	274	192	68	0.6
2001	2	290	204	70	0.6
2002	2	278	195	64	0.6
2003	2	268	180	63	0.6
2004	2	247	164	59	0.6
2005	2	254	172	57	0.7
2006	2	248	169	58	0.7
2007	2	222	156	56	0.7
2008	2	244	166	61	0.7
2009	2	222	152	57	0.7
2010	2	197	129	49	0.7
2011	2	230	156	57	0.7
2012	2	232	156	57	0.7
2013	2	234	159	58	0.7
2014	2	232	160	58	0.7
2015	2	237	165	59	0.7
2016	2	245	171	60	0.7



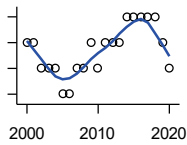
ESTABLISHMENTS: CONSTRUCTION

U.S. Census Bureau, County Business Patterns. Beginning with the 2017 data, any tabulation with fewer than 3 establishments were omitted from the release. Data for these establishments are included in the broader total.

Year	County	State of Kansas	Non Metro Kansas	County Rank	Per 1000 or \$ Per Capita
2000	6	7,703	2,616	97	1.8
2001	6	7,449	2,520	94	1.9
2002	9	7,519	2,482	86	2.9
2003	9	7,722	2,521	83	2.9
2004	10	7,887	2,518	80	3.2
2005	14	8,032	2,515	72	4.6
2006	11	8,031	2,494	75	3.7
2007	10	8,057	2,547	80	3.4
2008	10	7,831	2,522	80	3.4
2009	10	7,342	2,452	77	3.4
2010	12	7,064	2,394	73	4.0
2011	11	6,774	2,361	78	3.7
2012	12	6,741	2,393	75	4.1
2013	12	6,802	2,394	77	4.1
2014	17	6,920	2,383	65	5.9
2015	14	7,014	2,377	72	4.8
2016	13	6,988	2,343	73	4.6
2017	11	7,031	2,316	79	3.9
2018	11	7,124	2,285	75	3.9
2019	11	7,060	2,242	75	3.9
2020	10	7,089	2,249	76	3.6

County: county value. Kansas: state value. County Rank: highest county value ranked #1. (\$000): thousands of dollars. Nonmetro Kansas: Kansas total less Metropolitan Areas as defined by the Office of Management and Budget (OMB; released 3/6/2020). Per 1000: For nonmoney amounts, Per 1000=(county value / county population for the same year as the data) x 1000. \$ Per capita=(county value / county population for the same year as the data). Value= . indicates missing or suppressed data or value not calculated.

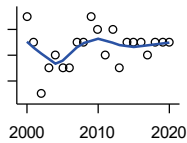
Business



**ESTABLISHMENTS:
MANUFACTURING**

U.S. Census Bureau, County Business Patterns. Beginning with the 2017 data, any tabulation with fewer than 3 establishments were omitted from the release. Data for these establishments are included in the broader total.

Year	County	State of Kansas	Non Metro Kansas	County Rank	Per 1000 or \$ Per Capita
2000	6	3,229	1,316	70	1.8
2001	6	3,240	1,323	70	1.9
2002	5	3,181	1,289	79	1.6
2003	5	3,159	1,291	80	1.6
2004	5	3,179	1,313	83	1.6
2005	4	3,128	1,278	86	1.3
2006	4	3,165	1,290	82	1.3
2007	5	3,184	1,316	83	1.7
2008	5	3,171	1,297	80	1.7
2009	6	3,026	1,240	73	2.0
2010	5	2,955	1,222	78	1.7
2011	6	2,877	1,193	74	2.0
2012	6	2,889	1,197	74	2.0
2013	6	2,836	1,165	72	2.0
2014	7	2,831	1,168	63	2.4
2015	7	2,817	1,161	62	2.4
2016	7	2,791	1,150	60	2.5
2017	7	2,760	1,147	60	2.5
2018	7	2,725	1,126	62	2.5
2019	6	2,695	1,111	71	2.1
2020	5	2,673	1,103	77	1.8



**ESTABLISHMENTS: WHOLESALE
TRADE**

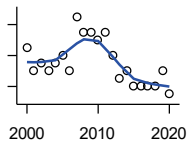
U.S. Census Bureau, County Business Patterns. Beginning with the 2017 data, any tabulation with fewer than 3 establishments were omitted from the release. Data for these establishments are included in the broader total.

Year	County	State of Kansas	Non Metro Kansas	County Rank	Per 1000 or \$ Per Capita
2000	11	4,876	1,776	72	3.3
2001	9	4,811	1,769	84	2.8
2002	5	4,719	1,750	97	1.6
2003	7	4,590	1,637	90	2.3
2004	8	4,553	1,634	88	2.6
2005	7	4,541	1,618	90	2.3
2006	7	4,517	1,596	85	2.3
2007	9	4,555	1,629	83	3.0
2008	9	4,501	1,622	81	3.1
2009	11	4,437	1,614	68	3.7
2010	10	4,432	1,612	74	3.3
2011	8	4,400	1,660	88	2.7
2012	10	4,563	1,755	79	3.4
2013	7	4,501	1,741	89	2.4
2014	9	4,497	1,746	83	3.1
2015	9	4,459	1,755	84	3.1
2016	9	4,457	1,732	84	3.2
2017	8	4,436	1,774	87	2.8
2018	9	4,330	1,727	83	3.2
2019	9	4,291	1,713	82	3.2
2020	9	4,191	1,677	83	3.2

County: county value. Kansas: state value. County Rank: highest county value ranked #1. (\$000): thousands of dollars. Nonmetro Kansas: Kansas total less Metropolitan Areas as defined by the Office of Management and Budget (OMB; released 3/6/2020). Per 1000: For nonmoney amounts, Per 1000=(county value / county population for the same year as the data) x 1000. \$ Per capita=(county value / county population for the same year as the data). Value= . indicates missing or suppressed data or value not calculated.

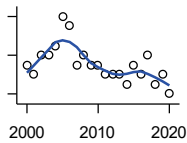
Business

ESTABLISHMENTS: RETAIL TRADE



U.S. Census Bureau, County Business Patterns. Beginning with the 2017 data, any tabulation with fewer than 3 establishments were omitted from the release. Data for these establishments are included in the broader total.

Year	County	State of Kansas	Non Metro Kansas	County Rank	Per 1000 or \$ Per Capita
2000	25	12,261	5,240	74	7.5
2001	22	12,206	5,207	83	6.8
2002	23	11,980	5,082	81	7.3
2003	22	11,834	5,049	80	7.1
2004	23	11,748	4,967	76	7.4
2005	24	11,562	4,834	73	7.9
2006	22	11,367	4,702	75	7.4
2007	29	11,306	4,653	68	9.8
2008	27	10,978	4,494	70	9.2
2009	27	10,760	4,372	70	9.0
2010	26	10,727	4,346	70	8.7
2011	27	10,655	4,289	70	9.1
2012	24	10,585	4,202	70	8.2
2013	21	10,433	4,147	73	7.1
2014	22	10,391	4,070	71	7.6
2015	20	10,327	4,061	75	6.9
2016	20	10,197	3,965	74	7.0
2017	20	10,074	3,885	74	7.0
2018	20	9,866	3,797	73	7.2
2019	22	9,762	3,750	69	7.8
2020	19	9,591	3,666	73	6.8



ESTABLISHMENTS: TRANSPORTATION & WAREHOUSING

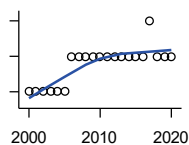
U.S. Census Bureau, County Business Patterns. Beginning with the 2017 data, any tabulation with fewer than 3 establishments were omitted from the release. Data for these establishments are included in the broader total.

Year	County	State of Kansas	Non Metro Kansas	County Rank	Per 1000 or \$ Per Capita
2000	11	2,474	1,293	64	3.3
2001	10	2,463	1,298	67	3.1
2002	12	2,461	1,278	56	3.8
2003	12	2,576	1,297	57	3.9
2004	13	2,651	1,324	52	4.2
2005	16	2,632	1,326	41	5.3
2006	15	2,626	1,295	44	5.0
2007	11	2,664	1,314	62	3.7
2008	12	2,675	1,329	54	4.1
2009	11	2,635	1,313	57	3.7
2010	11	2,615	1,313	56	3.7
2011	10	2,579	1,285	55	3.4
2012	10	2,519	1,243	59	3.4
2013	10	2,492	1,226	58	3.4
2014	9	2,518	1,240	63	3.1
2015	11	2,554	1,257	52	3.8
2016	10	2,567	1,241	56	3.5
2017	12	2,640	1,245	51	4.2
2018	9	2,627	1,238	63	3.2
2019	10	2,615	1,209	54	3.6
2020	8	2,589	1,179	66	2.8

County: county value. Kansas: state value. County Rank: highest county value ranked #1. (\$000): thousands of dollars. Nonmetro Kansas: Kansas total less Metropolitan Areas as defined by the Office of Management and Budget (OMB; released 3/6/2020). Per 1000: For nonmoney amounts, Per 1000=(county value / county population for the same year as the data) x 1000. \$ Per capita=(county value / county population for the same year as the data). Value= . indicates missing or suppressed data or value not calculated.

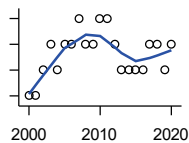
Business

ESTABLISHMENTS: INFORMATION



U.S. Census Bureau, County Business Patterns. Beginning with the 2017 data, any tabulation with fewer than 3 establishments were omitted from the release. Data for these establishments are included in the broader total.

Year	County	State of Kansas	Non Metro Kansas	County Rank	Per 1000 or \$ Per Capita
2000	2	1,542	578	98	0.6
2001	2	1,556	566	96	0.6
2002	2	1,517	551	91	0.6
2003	2	1,516	564	91	0.6
2004	2	1,518	556	92	0.6
2005	2	1,519	536	88	0.7
2006	3	1,549	559	78	1.0
2007	3	1,504	527	72	1.0
2008	3	1,468	522	71	1.0
2009	3	1,420	510	70	1.0
2010	3	1,437	527	75	1.0
2011	3	1,428	537	74	1.0
2012	3	1,387	515	71	1.0
2013	3	1,337	487	69	1.0
2014	3	1,335	496	69	1.0
2015	3	1,359	510	69	1.0
2016	3	1,431	537	70	1.1
2017	4	1,439	.	65	1.4
2018	3	1,407	.	70	1.1
2019	3	1,422	.	71	1.1
2020	3	1,424	.	73	1.1



ESTABLISHMENTS: FINANCE & INSURANCE

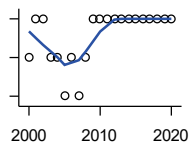
U.S. Census Bureau, County Business Patterns. Beginning with the 2017 data, any tabulation with fewer than 3 establishments were omitted from the release. Data for these establishments are included in the broader total.

Year	County	State of Kansas	Non Metro Kansas	County Rank	Per 1000 or \$ Per Capita
2000	6	5,209	1,848	95	1.8
2001	6	5,178	1,828	95	1.9
2002	7	5,496	1,911	90	2.2
2003	8	5,569	1,907	90	2.6
2004	7	5,572	1,913	92	2.2
2005	8	5,708	1,964	86	2.6
2006	8	5,877	1,976	87	2.7
2007	9	6,017	2,030	84	3.0
2008	8	6,010	2,023	89	2.7
2009	8	5,933	1,994	89	2.7
2010	9	5,872	1,975	86	3.0
2011	9	5,854	1,985	81	3.0
2012	8	5,993	2,024	88	2.7
2013	7	5,903	1,993	92	2.4
2014	7	5,894	2,000	91	2.4
2015	7	5,932	1,998	90	2.4
2016	7	6,022	2,021	90	2.5
2017	8	6,026	2,007	85	2.8
2018	8	6,023	1,997	85	2.9
2019	7	5,953	1,977	91	2.5
2020	8	5,926	1,969	85	2.8

County: county value. Kansas: state value. County Rank: highest county value ranked #1. (\$000): thousands of dollars. Nonmetro Kansas: Kansas total less Metropolitan Areas as defined by the Office of Management and Budget (OMB; released 3/6/2020). Per 1000: For nonmoney amounts, Per 1000=(county value / county population for the same year as the data) x 1000. \$ Per capita=(county value / county population for the same year as the data). Value= . indicates missing or suppressed data or value not calculated.

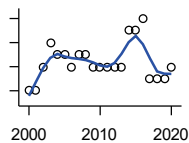
Business

ESTABLISHMENTS: REAL ESTATE, RENTAL, AND LEASING



U.S. Census Bureau, County Business Patterns. Beginning with the 2017 data, any tabulation with fewer than 3 establishments were omitted from the release. Data for these establishments are included in the broader total.

Year	County	State of Kansas	Non Metro Kansas	County Rank	Per 1000 or \$ Per Capita
2000	2	2,733	687	78	0.6
2001	3	2,849	724	67	0.9
2002	3	2,952	735	65	1.0
2003	2	3,007	727	71	0.6
2004	2	3,108	713	69	0.6
2005	1	3,203	727	90	0.3
2006	2	3,268	736	69	0.7
2007	1	3,286	721	91	0.3
2008	2	3,239	738	73	0.7
2009	3	3,122	723	58	1.0
2010	3	3,050	708	59	1.0
2011	3	3,002	692	58	1.0
2012	3	2,981	691	63	1.0
2013	3	3,046	717	64	1.0
2014	3	3,135	738	65	1.0
2015	3	3,179	744	65	1.0
2016	3	3,293	757	64	1.1
2017	3	3,389	.	67	1.1
2018	3	3,409	.	67	1.1
2019	3	3,464	.	65	1.1
2020	3	3,500	.	63	1.1



ESTABLISHMENTS: PROFESSIONAL, SCIENTIFIC, AND TECHNICAL SERVICES

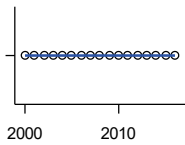
U.S. Census Bureau, County Business Patterns. Beginning with the 2017 data, any tabulation with fewer than 3 establishments were omitted from the release. Data for these establishments are included in the broader total.

Year	County	State of Kansas	Non Metro Kansas	County Rank	Per 1000 or \$ Per Capita
2000	6	6,424	1,690	85	1.8
2001	6	6,492	1,665	86	1.9
2002	8	6,719	1,704	76	2.6
2003	10	6,793	1,735	66	3.2
2004	9	7,025	1,730	70	2.9
2005	9	7,087	1,711	69	3.0
2006	8	7,231	1,736	77	2.7
2007	9	7,329	1,729	71	3.0
2008	9	7,133	1,671	70	3.1
2009	8	7,122	1,676	76	2.7
2010	8	7,172	1,680	76	2.7
2011	8	7,115	1,668	76	2.7
2012	8	7,122	1,681	77	2.7
2013	8	7,129	1,698	77	2.7
2014	11	7,206	1,682	66	3.8
2015	11	7,184	1,687	64	3.8
2016	12	7,146	1,659	61	4.2
2017	7	7,224	1,679	84	2.5
2018	7	7,138	1,655	81	2.5
2019	7	7,119	.	80	2.5
2020	8	7,117	.	73	2.8

County: county value. Kansas: state value. County Rank: highest county value ranked #1. (\$000): thousands of dollars. Nonmetro Kansas: Kansas total less Metropolitan Areas as defined by the Office of Management and Budget (OMB; released 3/6/2020). Per 1000: For nonmoney amounts, Per 1000=(county value / county population for the same year as the data) x 1000. \$ Per capita=(county value / county population for the same year as the data). Value= . indicates missing or suppressed data or value not calculated.

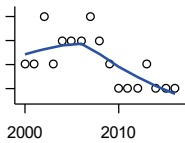
Business

ESTABLISHMENTS: MANAGEMENT OF COMPANIES AND ENTERPRISES



U.S. Census Bureau, County Business Patterns. Beginning with the 2017 data, any tabulation with fewer than 3 establishments were omitted from the release. Data for these establishments are included in the broader total.

Year	County	State of Kansas	Non Metro Kansas	County Rank	Per 1000 or \$ Per Capita
2000	0	622	145	105	0.0
2001	0	593	141	105	0.0
2002	0	597	152	105	0.0
2003	0	561	135	105	0.0
2004	0	569	133	105	0.0
2005	0	543	127	105	0.0
2006	0	542	131	105	0.0
2007	0	550	133	105	0.0
2008	0	553	139	105	0.0
2009	0	575	136	105	0.0
2010	0	567	131	105	0.0
2011	0	552	134	105	0.0
2012	0	593	135	105	0.0
2013	0	590	135	105	0.0
2014	0	603	136	105	0.0
2015	0	613	140	105	0.0
2016	0	655	171	105	0.0



ESTABLISHMENTS: ADMIN, SUPPORT, WASTE MGMT., AND REMEDIATION

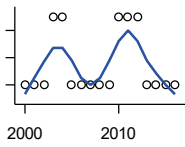
U.S. Census Bureau, County Business Patterns. Beginning with the 2017 data, any tabulation with fewer than 3 establishments were omitted from the release. Data for these establishments are included in the broader total.

Year	County	State of Kansas	Non Metro Kansas	County Rank	Per 1000 or \$ Per Capita
2000	1	3,307	871	101	0.3
2001	1	3,421	913	99	0.3
2002	3	3,232	882	80	1.0
2003	1	3,189	858	99	0.3
2004	2	3,301	891	92	0.6
2005	2	3,342	896	91	0.7
2006	2	3,395	886	93	0.7
2007	3	3,522	921	85	1.0
2008	2	3,587	932	95	0.7
2009	1	3,505	904	101	0.3
2010	0	3,494	897	105	0.0
2011	0	3,447	903	105	0.0
2012	0	3,462	891	105	0.0
2013	1	3,489	904	100	0.3
2014	0	3,569	933	105	0.0
2015	0	3,630	964	105	0.0
2016	0	3,705	987	105	0.0

County: county value. Kansas: state value. County Rank: highest county value ranked #1. (\$000): thousands of dollars. Nonmetro Kansas: Kansas total less Metropolitan Areas as defined by the Office of Management and Budget (OMB; released 3/6/2020). Per 1000: For nonmoney amounts, Per 1000=(county value / county population for the same year as the data) x 1000. \$ Per capita=(county value / county population for the same year as the data). Value= . indicates missing or suppressed data or value not calculated.

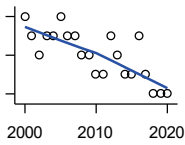
Business

ESTABLISHMENTS: EDUCATIONAL SERVICES



U.S. Census Bureau, County Business Patterns. Beginning with the 2017 data, any tabulation with fewer than 3 establishments were omitted from the release. Data for these establishments are included in the broader total.

Year	County	State of Kansas	Non Metro Kansas	County Rank	Per 1000 or \$ Per Capita
2000	0	604	155	105	0.0
2001	0	625	168	105	0.0
2002	0	666	165	105	0.0
2003	1	663	173	73	0.3
2004	1	690	173	72	0.3
2005	0	699	168	105	0.0
2006	0	698	175	105	0.0
2007	0	691	165	105	0.0
2008	0	692	158	105	0.0
2009	0	690	150	105	0.0
2010	1	700	149	68	0.3
2011	1	711	150	66	0.3
2012	1	724	145	67	0.3
2013	0	735	153	105	0.0
2014	0	722	152	105	0.0
2015	0	754	152	105	0.0
2016	0	728	150	105	0.0



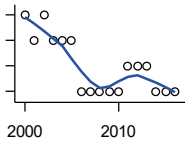
ESTABLISHMENTS: HEALTH CARE AND SOCIAL ASSISTANCE

U.S. Census Bureau, County Business Patterns. Beginning with the 2017 data, any tabulation with fewer than 3 establishments were omitted from the release. Data for these establishments are included in the broader total.

Year	County	State of Kansas	Non Metro Kansas	County Rank	Per 1000 or \$ Per Capita
2000	8	6,564	2,591	86	2.4
2001	7	6,636	2,590	89	2.2
2002	6	7,052	2,777	97	1.9
2003	7	7,129	2,792	93	2.3
2004	7	7,239	2,813	96	2.2
2005	8	7,412	2,855	91	2.6
2006	7	7,477	2,860	95	2.3
2007	7	7,661	2,864	93	2.4
2008	6	7,651	2,810	97	2.0
2009	6	7,696	2,787	96	2.0
2010	5	7,751	2,830	101	1.7
2011	5	7,804	2,817	100	1.7
2012	7	7,973	2,793	95	2.4
2013	6	7,877	2,729	99	2.0
2014	5	7,809	2,686	98	1.7
2015	5	8,103	2,692	99	1.7
2016	7	8,315	2,678	90	2.5
2017	5	8,136	2,646	97	1.8
2018	4	8,126	2,632	102	1.4
2019	4	8,184	2,587	99	1.4
2020	4	8,290	2,571	99	1.4

County: county value. Kansas: state value. County Rank: highest county value ranked #1. (\$000): thousands of dollars. Nonmetro Kansas: Kansas total less Metropolitan Areas as defined by the Office of Management and Budget (OMB; released 3/6/2020). Per 1000: For nonmoney amounts, Per 1000=(county value / county population for the same year as the data) x 1000. \$ Per capita=(county value / county population for the same year as the data). Value= . indicates missing or suppressed data or value not calculated.

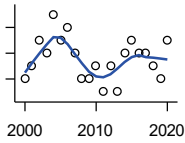
Business



ESTABLISHMENTS: ARTS, ENTERTAINMENT, AND RECREATION

U.S. Census Bureau, County Business Patterns. Beginning with the 2017 data, any tabulation with fewer than 3 establishments were omitted from the release. Data for these establishments are included in the broader total.

Year	County	State of Kansas	Non Metro Kansas	County Rank	Per 1000 or \$ Per Capita
2000	5	981	419	41	1.5
2001	4	1,009	433	52	1.2
2002	5	1,054	441	47	1.6
2003	4	1,045	443	55	1.3
2004	4	1,082	445	57	1.3
2005	4	1,109	446	61	1.3
2006	2	1,080	445	86	0.7
2007	2	1,092	444	86	0.7
2008	2	1,062	423	83	0.7
2009	2	1,063	421	83	0.7
2010	2	1,018	406	87	0.7
2011	3	997	387	67	1.0
2012	3	1,000	388	65	1.0
2013	3	1,009	377	64	1.0
2014	2	1,030	365	83	0.7
2015	2	1,031	357	83	0.7
2016	2	1,060	366	82	0.7



ESTABLISHMENTS: ACCOMMODATION AND FOOD SERVICES

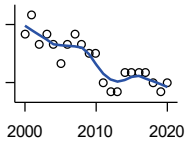
U.S. Census Bureau, County Business Patterns. Beginning with the 2017 data, any tabulation with fewer than 3 establishments were omitted from the release. Data for these establishments are included in the broader total.

Year	County	State of Kansas	Non Metro Kansas	County Rank	Per 1000 or \$ Per Capita
2000	10	5,536	2,213	80	3.0
2001	11	5,551	2,173	73	3.4
2002	13	5,610	2,174	67	4.1
2003	12	5,635	2,188	69	3.9
2004	15	5,681	2,160	59	4.8
2005	13	5,776	2,170	64	4.3
2006	14	5,745	2,132	62	4.7
2007	12	5,877	2,095	65	4.0
2008	10	5,843	2,052	72	3.4
2009	10	5,794	2,029	73	3.4
2010	11	5,898	2,046	69	3.7
2011	9	5,958	2,067	75	3.0
2012	11	5,951	2,046	70	3.7
2013	9	6,061	2,070	77	3.1
2014	12	5,985	2,024	65	4.1
2015	13	6,034	2,063	63	4.5
2016	12	6,126	2,094	67	4.2
2017	12	6,250	2,123	68	4.2
2018	11	6,256	2,128	70	3.9
2019	10	6,231	2,131	74	3.6
2020	13	6,206	2,131	62	4.6

County: county value. Kansas: state value. County Rank: highest county value ranked #1. (\$000): thousands of dollars. Nonmetro Kansas: Kansas total less Metropolitan Areas as defined by the Office of Management and Budget (OMB; released 3/6/2020). Per 1000: For nonmoney amounts, Per 1000=(county value / county population for the same year as the data) x 1000. \$ Per capita=(county value / county population for the same year as the data). Value= . indicates missing or suppressed data or value not calculated.

Business

ESTABLISHMENTS: OTHER SERVICES

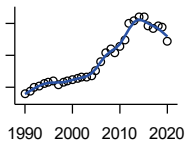


U.S. Census Bureau, County Business Patterns. Beginning with the 2017 data, any tabulation with fewer than 3 establishments were omitted from the release. Data for these establishments are included in the broader total.

Year	County	State of Kansas	Non Metro Kansas	County Rank	Per 1000 or \$ Per Capita
2000	21	8,423	3,636	76	6.3
2001	23	8,310	3,614	72	7.1
2002	20	8,552	3,658	76	6.4
2003	21	8,411	3,605	75	6.8
2004	20	8,343	3,597	77	6.4
2005	18	8,321	3,571	79	6.0
2006	20	8,225	3,490	74	6.7
2007	21	8,355	3,534	69	7.1
2008	20	8,104	3,406	74	6.8
2009	19	8,040	3,405	74	6.4
2010	19	7,998	3,379	72	6.3
2011	16	7,883	3,294	83	5.4
2012	15	7,913	3,303	86	5.1
2013	15	7,947	3,290	85	5.1
2014	17	7,943	3,285	79	5.9
2015	17	7,869	3,255	79	5.8
2016	17	7,839	3,204	81	6.0
2017	17	7,873	3,189	81	6.0
2018	16	7,853	3,176	84	5.7
2019	15	7,834	3,138	85	5.4
2020	16	7,787	3,073	83	5.7

County: county value. Kansas: state value. County Rank: highest county value ranked #1. (\$000): thousands of dollars. Nonmetro Kansas: Kansas total less Metropolitan Areas as defined by the Office of Management and Budget (OMB; released 3/6/2020). Per 1000: For nonmoney amounts, Per 1000=(county value / county population for the same year as the data) x 1000. \$ Per capita=(county value / county population for the same year as the data). Value= . indicates missing or suppressed data or value not calculated.

Business



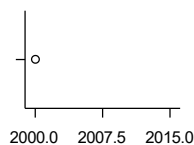
**TOTAL ANNUAL PAYROLL (\$000)
COUNTY BUSINESS PATTERNS**

U.S. Census Bureau, County Business Patterns. Beginning with the 2017 data, any tabulation with fewer than 3 establishments were omitted from the release. Data for these establishments are included in the broader total.

Year	County	State of Kansas	Non Metro Kansas	County Rank	Per 1000 or \$ Per Capita
1990	7,812	17,487,316	4,442,429	84	2,114.8
1991	8,770	18,162,326	4,612,616	83	2,424.0
1992	9,868	19,244,346	4,882,060	80	2,761.8
1993	10,465	20,087,190	5,182,780	82	2,931.4
1994	11,168	21,201,652	5,541,423	83	3,143.3
1995	11,502	22,825,920	5,875,310	84	3,240.9
1996	12,059	24,613,884	6,198,398	82	3,423.9
1997	10,778	26,787,098	6,599,061	85	3,131.3
1998	11,610	28,747,576	6,871,794	85	3,403.7
1999	11,859	30,600,434	7,121,961	85	3,487.9
2000	12,286	31,990,762	7,520,424	87	3,701.7
2001	12,626	33,303,992	7,598,165	87	3,915.0
2002	13,209	33,152,962	7,572,002	84	4,210.7
2003	13,281	34,040,944	7,726,561	84	4,288.3
2004	13,392	35,725,812	8,303,779	85	4,292.3
2005	15,338	36,646,064	8,586,986	84	5,070.4
2006	18,192	39,251,388	9,178,947	81	6,082.2
2007	20,760	42,022,753	.	78	6,987.5
2008	22,157	43,984,689	.	78	7,528.7
2009	20,830	42,146,866	.	79	6,978.2
2010	22,958	42,686,303	10,294,015	78	7,650.1
2011	24,733	43,733,944	.	75	8,372.7
2012	30,142	45,608,072	11,222,183	74	10,248.9
2013	30,873	47,715,601	11,446,751	74	10,483.2
2014	32,066	49,712,832	11,957,931	73	11,076.3
2015	31,895	51,259,676	11,975,718	74	10,971.8
2016	29,239	51,016,318	12,148,646	77	10,252.1
2017	28,265	52,754,605	12,448,592	77	9,942.0
2018	29,329	55,087,460	12,810,270	77	10,485.9
2019	28,864	57,272,387	13,123,288	76	10,297.5
2020	24,517	58,374,388	14,007,955	85	8,731.1

County: county value. Kansas: state value. County Rank: highest county value ranked #1. (\$000): thousands of dollars. Nonmetro Kansas: Kansas total less Metropolitan Areas as defined by the Office of Management and Budget (OMB; released 3/6/2020). Per 1000: For nonmoney amounts, Per 1000=(county value / county population for the same year as the data) x 1000. \$ Per capita=(county value / county population for the same year as the data). Value= . indicates missing or suppressed data or value not calculated.

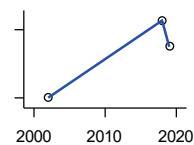
Business



**TOTAL ANNUAL PAYROLL(\$000):
FORESTRY, FISHING, HUNTING, AND
AG SUPPORT**

U.S. Census Bureau, County Business Patterns. Beginning with the 2017 data, any tabulation with fewer than 3 establishments were omitted from the release. Data for these establishments are included in the broader total.

Year	County	State of Kansas	Non Metro Kansas	County Rank	Per 1000 or \$ Per Capita
2000	0	13,551	.	.	0.0
2001
2002	.	16,528	.	.	.
2003	.	17,247	.	.	.
2004	.	17,552	.	.	.
2005	.	16,298	.	.	.
2006	.	17,908	.	.	.
2007	.	22,199	.	.	.
2008	.	21,359	.	.	.
2009	.	22,466	.	.	.
2010	.	22,753	.	.	.
2011	.	23,320	.	.	.
2012	.	27,492	.	.	.
2013	.	30,360	.	.	.
2014	.	34,862	.	.	.
2015	.	35,980	.	.	.



**TOTAL ANNUAL PAYROLL(\$000):
MINING**

U.S. Census Bureau, County Business Patterns. Beginning with the 2017 data, any tabulation with fewer than 3 establishments were omitted from the release. Data for these establishments are included in the broader total.

Year	County	State of Kansas	Non Metro Kansas	County Rank	Per 1000 or \$ Per Capita
2000	.	240,079	.	.	.
2001	.	273,838	.	.	.
2002	18	262,277	.	.	5.7
2003	.	290,652	.	.	.
2004	.	326,997	.	.	.
2005	.	381,069	.	.	.
2006	.	482,102	.	.	.
2007	.	551,751	.	.	.
2008	.	620,446	.	.	.
2009	.	465,070	.	.	.
2010	.	485,841	.	.	.
2011	.	541,536	.	.	.
2012	.	600,402	.	.	.
2013	.	599,788	.	.	.
2014	.	678,673	.	.	.
2015	.	552,658	.	.	.
2018	6,809	431,367	.	.	2,434.4
2019	4,495	349,270	.	.	1,603.6

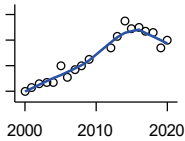
County: county value. Kansas: state value. County Rank: highest county value ranked #1. (\$000): thousands of dollars. Nonmetro Kansas: Kansas total less Metropolitan Areas as defined by the Office of Management and Budget (OMB; released 3/6/2020). Per 1000: For nonmoney amounts, Per 1000=(county value / county population for the same year as the data) x 1000. \$ Per capita=(county value / county population for the same year as the data). Value= . indicates missing or suppressed data or value not calculated.

Business

**TOTAL ANNUAL PAYROLL(\$000):
UTILITIES**

U.S. Census Bureau, County Business Patterns. Beginning with the 2017 data, any tabulation with fewer than 3 establishments were omitted from the release. Data for these establishments are included in the broader total.

Year	County	State of Kansas	Non Metro Kansas	County Rank	Per 1000 or \$ Per Capita
2000	.	410,313	.	.	.
2001	.	452,057	.	.	.
2002	.	377,559	.	.	.
2003	.	378,157	.	.	.
2004	.	377,809	.	.	.
2005	.	429,864	.	.	.
2006	.	443,999	.	.	.
2007	.	480,068	.	.	.
2008	.	541,066	.	.	.
2009	.	563,373	.	.	.
2010	.	512,628	.	.	.
2011	.	653,229	.	.	.
2012	.	625,451	.	.	.
2013	.	625,347	.	.	.
2014	.	610,960	.	.	.
2015	.	668,559	.	.	.



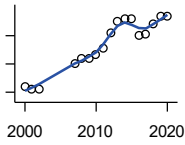
**TOTAL ANNUAL PAYROLL(\$000):
CONSTRUCTION**

U.S. Census Bureau, County Business Patterns. Beginning with the 2017 data, any tabulation with fewer than 3 establishments were omitted from the release. Data for these establishments are included in the broader total.

Year	County	State of Kansas	Non Metro Kansas	County Rank	Per 1000 or \$ Per Capita
2000	395	2,256,057	.	.	119.0
2001	426	2,320,652	.	.	132.1
2002	462	2,302,229	.	.	147.3
2003	470	2,282,021	.	.	151.8
2004	469	2,302,854	.	.	150.3
2005	597	2,465,977	.	.	197.4
2006	512	2,700,351	.	.	171.2
2007	570	2,772,168	.	.	191.9
2008	597	2,950,073	.	.	202.9
2009	644	2,709,864	.	.	215.7
2010	.	2,553,555	.	.	.
2011	.	2,550,355	.	.	.
2012	741	2,733,284	.	.	252.0
2013	831	2,866,801	.	.	282.2
2014	948	3,135,814	.	.	327.5
2015	885	3,270,952	.	.	304.4
2016	896	3,328,610	.	.	314.2
2017	874	3,568,505	.	.	307.4
2018	856	3,806,196	.	.	306.0
2019	738	3,879,912	.	.	263.3
2020	797	3,983,029	.	.	283.8

County: county value. Kansas: state value. County Rank: highest county value ranked #1. (\$000): thousands of dollars. Nonmetro Kansas: Kansas total less Metropolitan Areas as defined by the Office of Management and Budget (OMB; released 3/6/2020). Per 1000: For nonmoney amounts, Per 1000=(county value / county population for the same year as the data) x 1000. \$ Per capita=(county value / county population for the same year as the data). Value= . indicates missing or suppressed data or value not calculated.

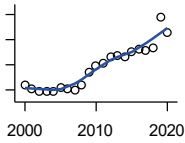
Business



**TOTAL ANNUAL PAYROLL(\$000):
MANUFACTURING**

U.S. Census Bureau, County Business Patterns. Beginning with the 2017 data, any tabulation with fewer than 3 establishments were omitted from the release. Data for these establishments are included in the broader total.

Year	County	State of Kansas	Non Metro Kansas	County Rank	Per 1000 or \$ Per Capita
2000	360	7,015,414	.	.	108.5
2001	314	7,301,706	.	.	97.4
2002	295	6,802,605	.	.	94.0
2003	.	6,691,611	.	.	.
2004	.	6,985,656	.	.	.
2005	.	7,221,614	.	.	.
2006	.	7,621,873	.	.	.
2007	746	7,873,359	.	.	251.1
2008	844	8,441,541	.	.	286.8
2009	842	7,477,838	.	.	282.1
2010	906	7,556,955	.	.	301.9
2011	1,037	7,747,934	.	.	351.0
2012	1,301	7,704,851	.	.	442.4
2013	1,515	8,365,542	.	.	514.4
2014	1,541	8,787,306	.	.	532.3
2015	1,553	9,052,105	.	.	534.2
2016	1,246	8,868,744	.	.	436.9
2017	1,286	9,075,793	.	.	452.3
2018	1,461	9,481,652	.	.	522.3
2019	1,600	10,171,575	.	.	570.8
2020	1,587	9,744,825	.	.	565.2



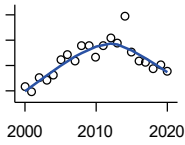
**TOTAL ANNUAL PAYROLL(\$000):
WHOLESALE TRADE**

U.S. Census Bureau, County Business Patterns. Beginning with the 2017 data, any tabulation with fewer than 3 establishments were omitted from the release. Data for these establishments are included in the broader total.

Year	County	State of Kansas	Non Metro Kansas	County Rank	Per 1000 or \$ Per Capita
2000	1,183	2,332,755	.	.	356.4
2001	1,051	2,283,169	.	.	325.9
2002	943	2,107,653	.	.	300.6
2003	963	2,622,701	.	.	310.9
2004	921	2,663,196	.	.	295.2
2005	1,076	2,345,990	.	.	355.7
2006	1,040	2,592,211	.	.	347.7
2007	1,005	2,682,542	.	.	338.3
2008	1,184	3,078,655	.	.	402.3
2009	1,729	2,940,949	.	.	579.2
2010	1,981	3,097,628	.	.	660.1
2011	2,061	3,305,811	.	.	697.7
2012	2,301	3,339,997	.	.	782.4
2013	2,379	3,460,512	.	.	807.8
2014	2,318	3,712,075	.	.	800.7
2015	2,515	3,760,189	.	.	865.2
2016	2,633	3,738,207	.	.	923.2
2017	2,581	3,822,730	.	.	907.8
2018	2,687	3,814,353	.	.	960.7
2019	3,896	4,025,802	.	.	1,389.9
2020	3,299	4,224,666	.	.	1,174.9

County: county value. Kansas: state value. County Rank: highest county value ranked #1. (\$000): thousands of dollars. Nonmetro Kansas: Kansas total less Metropolitan Areas as defined by the Office of Management and Budget (OMB; released 3/6/2020). Per 1000: For nonmoney amounts, Per 1000=(county value / county population for the same year as the data) x 1000. \$ Per capita=(county value / county population for the same year as the data). Value= . indicates missing or suppressed data or value not calculated.

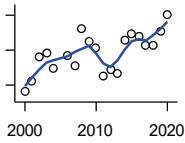
Business



**TOTAL ANNUAL PAYROLL(\$000):
RETAIL TRADE**

U.S. Census Bureau, County Business Patterns. Beginning with the 2017 data, any tabulation with fewer than 3 establishments were omitted from the release. Data for these establishments are included in the broader total.

Year	County	State of Kansas	Non Metro Kansas	County Rank	Per 1000 or \$ Per Capita
2000	2,071	2,747,001	.	.	624.0
2001	1,973	2,813,226	.	.	611.8
2002	2,269	2,854,231	.	.	723.3
2003	2,216	2,773,674	.	.	715.5
2004	2,307	2,847,826	.	.	739.4
2005	2,625	2,952,196	.	.	867.8
2006	2,722	3,126,495	.	.	910.1
2007	2,599	3,201,169	.	.	874.8
2008	2,890	3,261,054	.	.	982.0
2009	2,890	3,232,246	.	.	968.2
2010	2,677	3,321,838	.	.	892.0
2011	2,899	3,384,607	.	.	981.4
2012	3,052	3,409,755	.	.	1,037.7
2013	2,930	3,483,752	.	.	994.9
2014	3,464	3,617,933	.	.	1,196.5
2015	2,763	3,712,165	.	.	950.5
2016	2,588	3,826,889	.	.	907.4
2017	2,558	3,797,849	.	.	899.8
2018	2,446	3,818,988	.	.	874.5
2019	2,516	3,908,994	.	.	897.6
2020	2,398	3,984,443	.	.	854.0



**TOTAL ANNUAL PAYROLL(\$000):
TRANSPORTATION &
WAREHOUSING**

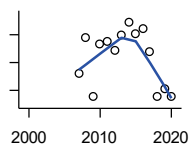
U.S. Census Bureau, County Business Patterns. Beginning with the 2017 data, any tabulation with fewer than 3 establishments were omitted from the release. Data for these establishments are included in the broader total.

Year	County	State of Kansas	Non Metro Kansas	County Rank	Per 1000 or \$ Per Capita
2000	661	1,044,835	.	.	199.2
2001	724	1,089,405	.	.	224.5
2002	864	1,094,636	.	.	275.4
2003	887	1,316,655	.	.	286.4
2004	796	1,439,800	.	.	255.1
2005	.	1,393,651	.	.	.
2006	868	1,528,551	.	.	290.2
2007	808	1,788,267	.	.	272.0
2008	1,023	1,722,697	.	.	347.6
2009	949	1,618,598	.	.	317.9
2010	912	1,735,761	.	.	303.9
2011	755	1,739,165	.	.	255.6
2012	789	1,984,976	.	.	268.3
2013	766	2,006,261	.	.	260.1
2014	954	2,097,377	.	.	329.5
2015	995	2,190,072	.	.	342.3
2016	982	2,202,859	.	.	344.3
2017	925	2,546,061	.	.	325.4
2018	925	2,663,188	.	.	330.7
2019	1,011	2,879,406	.	.	360.7
2020	1,104	2,962,461	.	.	393.2

County: county value. Kansas: state value. County Rank: highest county value ranked #1. (\$000): thousands of dollars. Nonmetro Kansas: Kansas total less Metropolitan Areas as defined by the Office of Management and Budget (OMB; released 3/6/2020). Per 1000: For nonmoney amounts, Per 1000=(county value / county population for the same year as the data) x 1000. \$ Per capita=(county value / county population for the same year as the data). Value= . indicates missing or suppressed data or value not calculated.

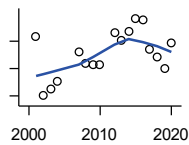
Business

**TOTAL ANNUAL PAYROLL(\$000):
INFORMATION**



U.S. Census Bureau, County Business Patterns. Beginning with the 2017 data, any tabulation with fewer than 3 establishments were omitted from the release. Data for these establishments are included in the broader total.

Year	County	State of Kansas	Non Metro Kansas	County Rank	Per 1000 or \$ Per Capita
2000	.	1,923,381	.	.	.
2001	.	2,218,610	.	.	.
2002	.	2,298,108	.	.	.
2003	.	2,378,673	.	.	.
2004	.	2,392,990	.	.	.
2005	.	2,395,081	.	.	.
2006	.	2,586,483	.	.	.
2007	609	2,594,138	.	.	205.0
2008	741	3,043,244	.	.	251.8
2009	529	3,045,570	.	.	177.2
2010	718	2,481,580	.	.	239.3
2011	727	2,513,805	.	.	246.1
2012	694	2,535,555	.	.	236.0
2013	747	2,805,017	.	.	253.7
2014	797	2,393,609	.	.	275.3
2015	755	2,406,323	.	.	259.7
2016	772	2,080,211	.	.	270.7
2017	691	2,090,021	.	.	243.1
2018	530	2,341,543	.	.	189.5
2019	554	2,133,891	.	.	197.6
2020	526	2,245,204	.	.	187.3



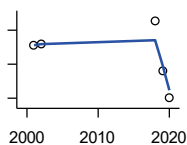
**TOTAL ANNUAL PAYROLL(\$000):
FINANCE & INSURANCE**

U.S. Census Bureau, County Business Patterns. Beginning with the 2017 data, any tabulation with fewer than 3 establishments were omitted from the release. Data for these establishments are included in the broader total.

Year	County	State of Kansas	Non Metro Kansas	County Rank	Per 1000 or \$ Per Capita
2000	.	2,083,565	.	.	.
2001	1,430	2,129,587	.	.	443.4
2002	1,000	2,414,120	.	.	318.8
2003	1,052	2,608,579	.	.	339.7
2004	1,106	2,676,910	.	.	354.5
2005	.	2,786,136	.	.	.
2006	.	2,928,931	.	.	.
2007	1,318	3,096,017	.	.	443.6
2008	1,240	3,322,977	.	.	421.3
2009	1,224	3,206,839	.	.	410.1
2010	1,232	3,211,300	.	.	410.5
2011	.	3,404,633	.	.	.
2012	1,458	3,611,165	.	.	495.7
2013	1,404	3,896,051	.	.	476.7
2014	1,467	4,044,315	.	.	506.7
2015	1,566	4,113,060	.	.	538.7
2016	1,559	4,180,740	.	.	546.6
2017	1,337	4,258,057	.	.	470.3
2018	1,281	4,682,552	.	.	458.0
2019	1,200	4,814,201	.	.	428.1
2020	1,383	5,288,529	.	.	492.5

County: county value. Kansas: state value. County Rank: highest county value ranked #1. (\$000): thousands of dollars. Nonmetro Kansas: Kansas total less Metropolitan Areas as defined by the Office of Management and Budget (OMB; released 3/6/2020). Per 1000: For nonmoney amounts, Per 1000=(county value / county population for the same year as the data) x 1000. \$ Per capita=(county value / county population for the same year as the data). Value= . indicates missing or suppressed data or value not calculated.

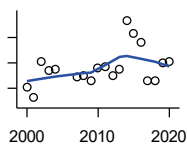
Business



**TOTAL ANNUAL PAYROLL(\$000):
REAL ESTATE, RENTAL, AND
LEASING**

U.S. Census Bureau, County Business Patterns. Beginning with the 2017 data, any tabulation with fewer than 3 establishments were omitted from the release. Data for these establishments are included in the broader total.

Year	County	State of Kansas	Non Metro Kansas	County Rank	Per 1000 or \$ Per Capita
2000	.	360,637	.	.	.
2001	122	397,371	.	.	37.8
2002	124	403,695	.	.	39.5
2003	.	437,786	.	.	.
2004	.	430,719	.	.	.
2005	.	465,149	.	.	.
2006	.	478,811	.	.	.
2007	.	452,969	.	.	.
2008	.	484,149	.	.	.
2009	.	450,884	.	.	.
2010	.	487,255	.	.	.
2011	.	535,120	.	.	.
2012	.	531,039	.	.	.
2013	.	538,796	.	.	.
2014	.	542,307	.	.	.
2015	.	595,030	.	.	.
2018	151	600,037	.	.	54.0
2019	92	622,881	.	.	32.8
2020	60	670,656	.	.	21.4



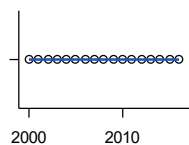
**TOTAL ANNUAL PAYROLL(\$000):
PROFESSIONAL, SCIENTIFIC, AND
TECHNICAL SERVICES**

U.S. Census Bureau, County Business Patterns. Beginning with the 2017 data, any tabulation with fewer than 3 establishments were omitted from the release. Data for these establishments are included in the broader total.

Year	County	State of Kansas	Non Metro Kansas	County Rank	Per 1000 or \$ Per Capita
2000	305	2,057,313	.	.	91.9
2001	262	2,152,937	.	.	81.2
2002	406	2,150,085	.	.	129.4
2003	372	2,052,712	.	.	120.1
2004	376	2,531,457	.	.	120.5
2005	.	2,418,500	.	.	.
2006	.	2,655,690	.	.	.
2007	345	2,901,544	.	.	116.1
2008	350	2,903,802	.	.	118.9
2009	327	3,071,611	.	.	109.5
2010	382	3,037,182	.	.	127.3
2011	386	3,132,082	.	.	130.7
2012	350	3,455,548	.	.	119.0
2013	373	3,777,729	.	.	126.7
2014	567	3,981,580	.	.	195.9
2015	516	4,039,074	.	.	177.5
2016	480	4,125,507	.	.	168.3
2017	330	4,158,858	.	.	116.1
2018	330	4,314,317	.	.	118.0
2019	402	4,646,644	.	.	143.4
2020	404	4,927,611	.	.	143.9

County: county value. Kansas: state value. County Rank: highest county value ranked #1. (\$000): thousands of dollars. Nonmetro Kansas: Kansas total less Metropolitan Areas as defined by the Office of Management and Budget (OMB; released 3/6/2020). Per 1000: For nonmoney amounts, Per 1000=(county value / county population for the same year as the data) x 1000. \$ Per capita=(county value / county population for the same year as the data). Value= . indicates missing or suppressed data or value not calculated.

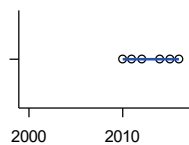
Business



**TOTAL ANNUAL PAYROLL(\$000):
MANAGEMENT OF COMPANIES AND
ENTERPRISES**

U.S. Census Bureau, County Business Patterns. Beginning with the 2017 data, any tabulation with fewer than 3 establishments were omitted from the release. Data for these establishments are included in the broader total.

Year	County	State of Kansas	Non Metro Kansas	County Rank	Per 1000 or \$ Per Capita
2000	0	1,362,735	.	.	0.0
2001	0	1,279,253	.	.	0.0
2002	0	1,311,368	.	.	0.0
2003	0	1,352,119	.	.	0.0
2004	0	1,378,891	.	.	0.0
2005	0	1,510,876	.	.	0.0
2006	0	1,626,320	.	.	0.0
2007	0	2,233,654	.	.	0.0
2008	0	1,848,656	.	.	0.0
2009	0	1,601,158	.	.	0.0
2010	0	2,003,048	.	.	0.0
2011	0	1,677,619	.	.	0.0
2012	0	1,834,430	.	.	0.0
2013	0	1,938,100	.	.	0.0
2014	0	2,117,232	.	.	0.0
2015	0	2,451,126	.	.	0.0
2016	0	2,167,620	.	.	0.0



**TOTAL ANNUAL PAYROLL(\$000):
ADMIN, SUPPORT, WASTE MGMT.,
AND REMEDIATION**

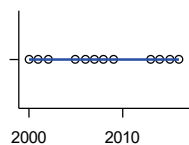
U.S. Census Bureau, County Business Patterns. Beginning with the 2017 data, any tabulation with fewer than 3 establishments were omitted from the release. Data for these establishments are included in the broader total.

Year	County	State of Kansas	Non Metro Kansas	County Rank	Per 1000 or \$ Per Capita
2000	.	1,388,712	.	.	.
2001	.	1,416,480	.	.	.
2002	.	1,378,905	.	.	.
2003	.	1,387,061	.	.	.
2004	.	1,544,442	.	.	.
2005	.	1,694,687	.	.	.
2006	.	1,800,846	.	.	.
2007	.	1,978,025	.	.	.
2008	.	2,096,864	.	.	.
2009	.	1,832,540	.	.	.
2010	0	2,117,325	.	.	0.0
2011	0	2,114,970	.	.	0.0
2012	0	2,230,250	.	.	0.0
2013	.	2,214,320	.	.	.
2014	0	2,444,170	.	.	0.0
2015	0	2,577,592	.	.	0.0
2016	0	2,760,706	.	.	0.0

County: county value. Kansas: state value. County Rank: highest county value ranked #1. (\$000): thousands of dollars. Nonmetro Kansas: Kansas total less Metropolitan Areas as defined by the Office of Management and Budget (OMB; released 3/6/2020). Per 1000: For nonmoney amounts, Per 1000=(county value / county population for the same year as the data) x 1000. \$ Per capita=(county value / county population for the same year as the data). Value= . indicates missing or suppressed data or value not calculated.

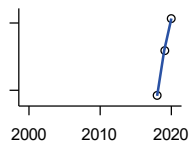
Business

**TOTAL ANNUAL PAYROLL(\$000):
EDUCATIONAL SERVICES**



U.S. Census Bureau, County Business Patterns. Beginning with the 2017 data, any tabulation with fewer than 3 establishments were omitted from the release. Data for these establishments are included in the broader total.

Year	County	State of Kansas	Non Metro Kansas	County Rank	Per 1000 or \$ Per Capita
2000	0	299,843	.	.	0.0
2001	0	320,606	.	.	0.0
2002	0	353,531	.	.	0.0
2003	.	350,814	.	.	.
2004	.	361,644	.	.	.
2005	0	375,781	.	.	0.0
2006	0	400,565	.	.	0.0
2007	0	414,233	.	.	0.0
2008	0	463,210	.	.	0.0
2009	0	468,856	.	.	0.0
2010	.	487,670	.	.	.
2011	.	504,964	.	.	.
2012	.	508,448	.	.	.
2013	0	553,995	.	.	0.0
2014	0	612,073	.	.	0.0
2015	0	579,794	.	.	0.0
2016	0	571,582	.	.	0.0



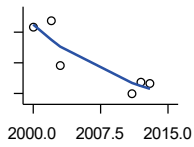
**TOTAL ANNUAL PAYROLL(\$000):
HEALTH CARE AND SOCIAL ASSISTANCE**

U.S. Census Bureau, County Business Patterns. Beginning with the 2017 data, any tabulation with fewer than 3 establishments were omitted from the release. Data for these establishments are included in the broader total.

Year	County	State of Kansas	Non Metro Kansas	County Rank	Per 1000 or \$ Per Capita
2000	.	4,120,595	.	.	.
2001	.	4,445,027	.	.	.
2002	.	4,705,220	.	.	.
2003	.	4,939,323	.	.	.
2004	.	5,232,394	.	.	.
2005	.	5,487,089	.	.	.
2006	.	5,814,218	.	.	.
2007	.	6,186,471	.	.	.
2008	.	6,490,627	.	.	.
2009	.	6,749,962	.	.	.
2010	.	6,871,727	.	.	.
2011	.	7,129,655	.	.	.
2012	.	7,614,853	.	.	.
2013	.	7,541,515	.	.	.
2014	.	7,733,621	.	.	.
2015	.	7,969,650	.	.	.
2018	7,075	8,637,619	.	.	2,529.5
2019	7,278	8,854,414	.	.	2,596.5
2020	7,420	9,309,269	.	.	2,642.5

County: county value. Kansas: state value. County Rank: highest county value ranked #1. (\$000): thousands of dollars. Nonmetro Kansas: Kansas total less Metropolitan Areas as defined by the Office of Management and Budget (OMB; released 3/6/2020). Per 1000: For nonmoney amounts, Per 1000=(county value / county population for the same year as the data) x 1000. \$ Per capita=(county value / county population for the same year as the data). Value= . indicates missing or suppressed data or value not calculated.

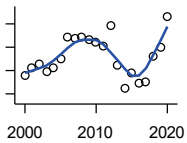
Business



**TOTAL ANNUAL PAYROLL(\$000):
ARTS, ENTERTAINMENT, AND
RECREATION**

U.S. Census Bureau, County Business Patterns. Beginning with the 2017 data, any tabulation with fewer than 3 establishments were omitted from the release. Data for these establishments are included in the broader total.

Year	County	State of Kansas	Non Metro Kansas	County Rank	Per 1000 or \$ Per Capita
2000	146	195,784	.	.	44.0
2001	.	203,511	.	.	.
2002	155	206,204	.	.	49.4
2003	97	185,049	.	.	31.3
2004	.	190,742	.	.	.
2005	.	196,594	.	.	.
2006	.	201,049	.	.	.
2007	.	220,435	.	.	.
2008	.	236,986	.	.	.
2009	.	237,116	.	.	.
2010	.	233,285	.	.	.
2011	59	234,351	.	.	20.0
2012	75	254,169	.	.	25.5
2013	73	278,474	.	.	24.8
2014	.	289,103	.	.	.
2015	.	300,253	.	.	.



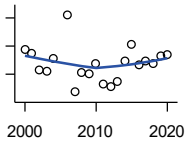
**TOTAL ANNUAL PAYROLL(\$000):
ACCOMMODATION AND FOOD
SERVICES**

U.S. Census Bureau, County Business Patterns. Beginning with the 2017 data, any tabulation with fewer than 3 establishments were omitted from the release. Data for these establishments are included in the broader total.

Year	County	State of Kansas	Non Metro Kansas	County Rank	Per 1000 or \$ Per Capita
2000	758	926,831	.	.	228.4
2001	827	960,196	.	.	256.4
2002	857	930,510	.	.	273.2
2003	791	992,313	.	.	255.4
2004	825	1,046,901	.	.	264.4
2005	895	1,101,854	.	.	295.9
2006	1,085	1,185,280	.	.	362.8
2007	1,074	1,431,100	.	.	361.5
2008	1,089	1,271,594	.	.	370.0
2009	1,068	1,283,065	.	.	357.8
2010	1,042	1,296,556	.	.	347.2
2011	1,006	1,364,281	.	.	340.6
2012	1,189	1,388,337	.	.	404.3
2013	840	1,476,335	.	.	285.2
2014	648	1,572,021	.	.	223.8
2015	776	1,640,144	.	.	266.9
2016	694	1,709,193	.	.	243.3
2017	702	1,824,791	.	.	246.9
2018	918	1,880,364	.	.	328.2
2019	1,001	1,958,603	.	.	357.1
2020	1,263	1,745,238	.	.	449.8

County: county value. Kansas: state value. County Rank: highest county value ranked #1. (\$000): thousands of dollars. Nonmetro Kansas: Kansas total less Metropolitan Areas as defined by the Office of Management and Budget (OMB; released 3/6/2020). Per 1000: For nonmoney amounts, Per 1000=(county value / county population for the same year as the data) x 1000. \$ Per capita=(county value / county population for the same year as the data). Value= . indicates missing or suppressed data or value not calculated.

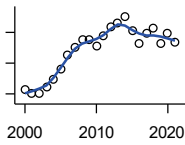
Business



**TOTAL ANNUAL PAYROLL(\$000):
OTHER SERVICES**

U.S. Census Bureau, County Business Patterns. Beginning with the 2017 data, any tabulation with fewer than 3 establishments were omitted from the release. Data for these establishments are included in the broader total.

Year	County	State of Kansas	Non Metro Kansas	County Rank	Per 1000 or \$ Per Capita
2000	786	965,540	.	.	236.8
2001	772	996,716	.	.	239.4
2002	716	1,007,464	.	.	228.2
2003	711	979,466	.	.	229.6
2004	758	970,383	.	.	242.9
2005	.	1,005,537	.	.	.
2006	911	1,055,932	.	.	304.6
2007	636	1,141,551	.	.	214.1
2008	706	1,184,016	.	.	239.9
2009	703	1,167,154	.	.	235.5
2010	738	1,170,201	.	.	245.9
2011	663	1,173,775	.	.	224.4
2012	654	1,217,210	.	.	222.4
2013	676	1,254,933	.	.	229.5
2014	747	1,305,563	.	.	258.0
2015	806	1,341,075	.	.	277.3
2016	731	1,351,375	.	.	256.3
2017	745	1,344,179	.	.	262.0
2018	736	1,382,801	.	.	263.1
2019	767	1,427,711	.	.	273.6
2020	771	1,420,859	.	.	274.6



**NOMINAL TAXABLE RETAIL SALES
(million\$)**

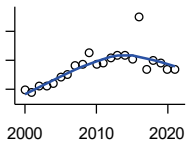
Kansas Department of Revenue

Year	County	State of Kansas	Non Metro Kansas	County Rank	Per 1000 or \$ Per Capita
2000	21.5	30,119.0	8,831.7	80	6.5
2001	20.3	30,202.2	8,700.3	80	6.3
2002	20.0	29,380.8	8,241.5	79	6.4
2003	22.3	30,694.0	8,710.6	81	7.2
2004	24.9	31,922.6	9,062.5	80	8.0
2005	27.9	32,924.2	9,386.6	76	9.2
2006	32.5	34,937.6	10,042.1	75	10.9
2007	35.2	36,180.1	10,553.2	73	11.9
2008	37.7	37,559.5	11,126.9	72	12.8
2009	37.8	35,211.8	10,351.5	71	12.7
2010	35.7	35,655.7	10,606.1	76	11.9
2011	39.0	37,257.0	11,153.5	77	13.2
2012	41.7	38,988.8	11,749.1	77	14.2
2013	43.1	40,009.0	11,993.8	72	14.6
2014	45.2	41,299.0	12,365.4	74	15.6
2015	40.6	41,635.8	11,747.6	74	13.9
2016	36.2	42,040.2	11,523.5	77	12.7
2017	39.5	41,940.1	11,449.9	72	13.9
2018	41.5	42,732.3	11,643.9	73	14.8
2019	36.5	43,732.5	12,062.7	75	13.0
2020	39.6	43,689.9	12,331.7	74	14.1
2021	36.6	48,532.8	13,413.0	79	13.1

County: county value. Kansas: state value. County Rank: highest county value ranked #1. (\$000): thousands of dollars. Nonmetro Kansas: Kansas total less Metropolitan Areas as defined by the Office of Management and Budget (OMB; released 3/6/2020). Per 1000: For nonmoney amounts, Per 1000=(county value / county population for the same year as the data) x 1000. \$ Per capita=(county value / county population for the same year as the data). Value= . indicates missing or suppressed data or value not calculated.

Business

RETAIL PULL FACTOR



Kansas Direct Program, Kansas State University Cooperative Extension Service (1980-1999); Kansas Department of Revenue (2000-)

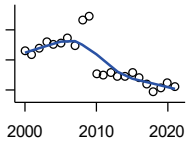
Year	County	State of Kansas	Non Metro Kansas	County Rank	Per 1000 or \$ Per Capita
2000	0.59	.	.	56	.
2001	0.56	.	.	61	.
2002	0.64	.	.	47	.
2003	0.64	.	.	50	.
2004	0.68	.	.	46	.
2005	0.76	.	.	40	.
2006	0.81	.	.	36	.
2007	0.92	.	.	26	.
2008	0.95	.	.	24	.
2009	1.10	.	.	16	.
2010	0.95	.	.	30	.
2011	0.96	.	.	26	.
2012	1.04	.	.	23	.
2013	1.06	.	.	21	.
2014	1.07	.	.	22	.
2015	1.01	.	.	25	.
2016	1.59	.	.	1	.
2017	0.88	.	.	27	.
2018	1.00	.	.	16	.
2019	0.96	.	.	24	.
2020	0.87	.	.	29	.
2021	0.88	.	.	29	.

County: county value. Kansas: state value. County Rank: highest county value ranked #1. (\$000): thousands of dollars. Nonmetro Kansas: Kansas total less Metropolitan Areas as defined by the Office of Management and Budget (OMB; released 3/6/2020). Per 1000: For nonmoney amounts, Per 1000=(county value / county population for the same year as the data) x 1000. \$ Per capita=(county value / county population for the same year as the data). Value= . indicates missing or suppressed data or value not calculated.

Employment

CIVILIAN LABOR FORCE (BLS-Place of Residence; 1990-)

U.S. Department of Labor, Bureau of Labor Statistics (BLS)



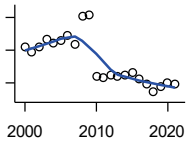
Year	County	State of Kansas	Non Metro Kansas	County Rank	Per 1000 or \$ Per Capita
2000	1,661	1,402,606	482,229	87	500.5
2001	1,634	1,398,521	475,280	87	506.7
2002	1,674	1,419,335	482,428	86	533.6
2003	1,721	1,441,065	490,161	83	555.7
2004	1,705	1,458,910	494,509	84	546.5
2005	1,714	1,458,767	490,047	82	566.6
2006	1,744	1,467,553	498,594	81	583.1
2007	1,692	1,485,414	497,048	83	569.5
2008	1,864	1,493,365	504,522	80	633.4
2009	1,887	1,512,572	516,311	80	632.2
2010	1,510	1,500,463	492,594	90	503.2
2011	1,501	1,498,000	492,563	91	508.1
2012	1,515	1,490,808	489,349	90	515.1
2013	1,494	1,489,395	485,484	89	507.3
2014	1,491	1,494,203	481,813	87	515.0
2015	1,513	1,493,782	477,546	87	520.5
2016	1,483	1,491,961	468,258	86	520.0
2017	1,442	1,488,346	461,063	86	507.2
2018	1,385	1,488,027	456,866	89	495.2
2019	1,416	1,497,517	455,858	89	505.2
2020	1,447	1,493,706	452,935	89	515.3
2021	1,419	1,495,665	453,398	88	508.1

County: county value. Kansas: state value. County Rank: highest county value ranked #1. (\$000): thousands of dollars. Nonmetro Kansas: Kansas total less Metropolitan Areas as defined by the Office of Management and Budget (OMB; released 3/6/2020). Per 1000: For nonmoney amounts, Per 1000=(county value / county population for the same year as the data) x 1000. \$ Per capita=(county value / county population for the same year as the data). Value= . indicates missing or suppressed data or value not calculated.

Employment

EMPLOYED (BLS-Place of Residence; 1990-)

U.S. Department of Labor, Bureau of Labor Statistics (BLS)



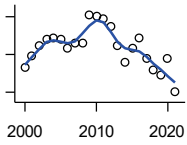
Year	County	State of Kansas	Non Metro Kansas	County Rank	Per 1000 or \$ Per Capita
2000	1,618	1,349,841	464,962	86	487.5
2001	1,585	1,338,775	455,154	87	491.5
2002	1,619	1,347,163	461,241	85	516.1
2003	1,663	1,361,115	467,622	83	537.0
2004	1,646	1,378,355	470,330	83	527.6
2005	1,656	1,384,654	467,722	82	547.4
2006	1,691	1,402,950	479,174	81	565.4
2007	1,636	1,422,109	477,983	84	550.7
2008	1,808	1,425,022	484,056	80	614.3
2009	1,816	1,408,142	485,797	80	608.4
2010	1,440	1,396,172	461,635	91	479.8
2011	1,432	1,402,198	463,723	91	484.8
2012	1,450	1,405,638	463,376	90	493.0
2013	1,439	1,410,470	461,405	90	488.6
2014	1,445	1,426,892	461,797	88	499.1
2015	1,460	1,431,533	457,899	87	502.2
2016	1,424	1,431,920	449,356	86	499.3
2017	1,394	1,434,516	445,003	87	490.3
2018	1,343	1,439,329	442,716	89	480.2
2019	1,377	1,450,705	442,108	89	491.3
2020	1,399	1,408,965	433,229	87	498.2
2021	1,389	1,447,323	441,159	88	497.3

County: county value. Kansas: state value. County Rank: highest county value ranked #1. (\$000): thousands of dollars. Nonmetro Kansas: Kansas total less Metropolitan Areas as defined by the Office of Management and Budget (OMB; released 3/6/2020). Per 1000: For nonmoney amounts, Per 1000=(county value / county population for the same year as the data) x 1000. \$ Per capita=(county value / county population for the same year as the data). Value= . indicates missing or suppressed data or value not calculated.

Employment

UNEMPLOYED (BLS-Place of Residence; 1990-)

U.S. Department of Labor, Bureau of Labor Statistics (BLS)

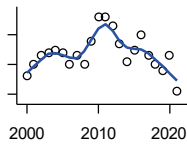


Year	County	State of Kansas	Non Metro Kansas	County Rank	Per 1000 or \$ Per Capita
2000	43	52,765	17,267	93	13.0
2001	49	59,746	20,126	87	15.2
2002	55	72,172	21,187	88	17.5
2003	58	79,950	22,539	87	18.7
2004	59	80,555	24,179	90	18.9
2005	58	74,113	22,325	89	19.2
2006	53	64,603	19,420	86	17.7
2007	56	63,305	19,065	86	18.8
2008	56	68,343	20,466	85	19.0
2009	71	104,430	30,514	88	23.8
2010	70	104,291	30,959	89	23.3
2011	69	95,802	28,840	86	23.4
2012	65	85,170	25,973	86	22.1
2013	55	78,925	24,079	87	18.7
2014	46	67,311	20,016	88	15.9
2015	53	62,249	19,647	86	18.2
2016	59	60,041	18,902	83	20.7
2017	48	53,830	16,060	83	16.9
2018	42	48,698	14,150	81	15.0
2019	39	46,812	13,750	83	13.9
2020	48	84,741	19,706	85	17.1
2021	30	48,342	12,239	87	10.7

County: county value. Kansas: state value. County Rank: highest county value ranked #1. (\$000): thousands of dollars. Nonmetro Kansas: Kansas total less Metropolitan Areas as defined by the Office of Management and Budget (OMB; released 3/6/2020). Per 1000: For nonmoney amounts, Per 1000=(county value / county population for the same year as the data) x 1000. \$ Per capita=(county value / county population for the same year as the data). Value= . indicates missing or suppressed data or value not calculated.

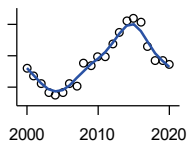
Employment

UNEMPLOYMENT RATE (BLS-Place of Residence; 1990-)



U.S. Department of Labor, Bureau of Labor Statistics (BLS)

Year	County	State of Kansas	Non Metro Kansas	County Rank	Per 1000 or \$ Per Capita
2000	2.6	3.8	3.6	96	.
2001	3.0	4.3	4.2	85	.
2002	3.3	5.1	4.4	81	.
2003	3.4	5.5	4.6	82	.
2004	3.5	5.5	4.9	95	.
2005	3.4	5.1	4.6	94	.
2006	3.0	4.4	3.9	92	.
2007	3.3	4.3	3.8	73	.
2008	3.0	4.6	4.1	95	.
2009	3.8	6.9	5.9	90	.
2010	4.6	7.0	6.3	74	.
2011	4.6	6.4	5.9	63	.
2012	4.3	5.7	5.3	64	.
2013	3.7	5.3	5.0	75	.
2014	3.1	4.5	4.2	84	.
2015	3.5	4.2	4.1	68	.
2016	4.0	4.0	4.0	44	.
2017	3.3	3.6	3.5	49	.
2018	3.0	3.3	3.1	48	.
2019	2.8	3.1	3.0	57	.
2020	3.3	5.7	4.4	65	.
2021	2.1	3.2	2.7	78	.



BEA EMPLOYMENT: TOTAL (Place of Work)

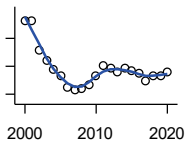
U.S. Bureau of Economic Analysis, Regional Economic Information System (REIS)

Year	County	State of Kansas	Non Metro Kansas	County Rank	Per 1000 or \$ Per Capita
2000	2,222	1,760,312	604,361	86	669.5
2001	2,173	1,767,601	592,672	83	673.8
2002	2,123	1,746,077	585,387	84	676.8
2003	2,069	1,733,694	577,860	84	668.1
2004	2,046	1,750,876	578,750	84	655.8
2005	2,067	1,765,650	577,562	85	683.3
2006	2,126	1,795,507	583,041	82	710.8
2007	2,109	1,844,355	591,924	84	709.9
2008	2,256	1,858,069	594,368	79	766.6
2009	2,234	1,813,184	580,972	78	748.4
2010	2,291	1,801,873	579,758	78	763.4
2011	2,294	1,819,044	583,725	79	776.6
2012	2,376	1,841,393	591,748	79	807.9
2013	2,451	1,869,054	597,236	78	832.3
2014	2,519	1,895,859	601,291	78	870.1
2015	2,539	1,910,954	598,589	77	873.4
2016	2,512	1,916,152	592,580	78	880.8
2017	2,363	1,914,179	584,337	78	831.2
2018	2,268	1,926,242	580,213	81	810.9
2019	2,273	1,925,204	574,496	80	810.9
2020	2,243	1,851,247	556,671	80	798.8

County: county value. Kansas: state value. County Rank: highest county value ranked #1. (\$000): thousands of dollars. Nonmetro Kansas: Kansas total less Metropolitan Areas as defined by the Office of Management and Budget (OMB; released 3/6/2020). Per 1000: For nonmoney amounts, Per 1000=(county value / county population for the same year as the data) x 1000. \$ Per capita=(county value / county population for the same year as the data). Value= . indicates missing or suppressed data or value not calculated.

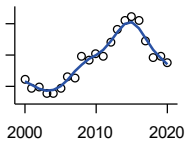
Employment

BEA EMPLOYMENT: FARM



U.S. Bureau of Economic Analysis,
Regional Economic Information System
(REIS)

Year	County	State of Kansas	Non Metro Kansas	County Rank	Per 1000 or \$ Per Capita
2000	481	77,477	59,088	88	144.9
2001	482	78,177	59,647	89	149.5
2002	429	70,532	53,893	89	136.8
2003	410	68,516	52,099	90	132.4
2004	394	67,586	51,246	93	126.3
2005	382	66,829	50,386	93	126.3
2006	363	64,910	48,728	93	121.4
2007	357	65,639	49,037	92	120.2
2008	361	63,820	47,682	90	122.7
2009	367	62,798	46,960	86	122.9
2010	382	63,882	47,984	85	127.3
2011	401	65,761	49,707	85	135.7
2012	397	63,753	48,167	84	135.0
2013	390	62,739	47,255	85	132.4
2014	396	64,308	48,722	84	136.8
2015	393	64,416	48,927	86	135.2
2016	388	63,840	48,539	85	136.0
2017	374	61,876	46,936	86	131.6
2018	383	63,233	48,069	86	136.9
2019	383	63,300	48,167	87	136.6
2020	389	64,281	49,038	86	138.5



BEA EMPLOYMENT: NON-FARM

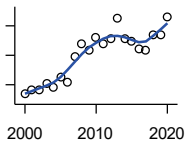
U.S. Bureau of Economic Analysis,
Regional Economic Information System
(REIS)

Year	County	State of Kansas	Non Metro Kansas	County Rank	Per 1000 or \$ Per Capita
2000	1,741	1,682,835	545,273	84	524.6
2001	1,691	1,689,424	533,025	82	524.3
2002	1,694	1,675,545	531,494	82	540.0
2003	1,659	1,665,178	525,761	82	535.7
2004	1,652	1,683,290	527,504	83	529.5
2005	1,685	1,698,821	527,176	81	557.0
2006	1,763	1,730,597	534,313	79	589.4
2007	1,752	1,778,716	542,887	82	589.7
2008	1,895	1,794,249	546,686	78	643.9
2009	1,867	1,750,386	534,012	79	625.5
2010	1,909	1,737,991	531,774	78	636.1
2011	1,893	1,753,283	534,018	79	640.8
2012	1,979	1,777,640	543,581	79	672.9
2013	2,061	1,806,315	549,981	78	699.8
2014	2,123	1,831,551	552,569	77	733.3
2015	2,146	1,846,538	549,662	77	738.2
2016	2,124	1,852,312	544,041	77	744.7
2017	1,989	1,852,303	537,401	78	699.6
2018	1,885	1,863,009	532,144	79	673.9
2019	1,890	1,861,904	526,329	79	674.3
2020	1,854	1,786,966	507,633	78	660.3

County: county value. Kansas: state value. County Rank: highest county value ranked #1. (\$000): thousands of dollars. Nonmetro Kansas: Kansas total less Metropolitan Areas as defined by the Office of Management and Budget (OMB; released 3/6/2020). Per 1000: For nonmoney amounts, Per 1000=(county value / county population for the same year as the data) x 1000. \$ Per capita=(county value / county population for the same year as the data). Value= . indicates missing or suppressed data or value not calculated.

Employment

AVERAGE WAGE PER JOB (\$)



U.S. Bureau of Economic Analysis,
Regional Economic Information System
(REIS)

Year	County	State of Kansas	Non Metro Kansas	County Rank	Per 1000 or \$ Per Capita
2000	16,781	31,854	24,396	93	.
2001	18,129	32,859	26,379	100	.
2002	18,425	33,707	26,331	94	.
2003	20,621	35,078	28,911	100	.
2004	19,214	35,932	29,747	102	.
2005	22,758	37,467	31,646	98	.
2006	20,991	40,038	31,993	96	.
2007	29,355	41,500	33,484	75	.
2008	33,769	44,197	36,256	60	.
2009	31,777	43,860	35,739	69	.
2010	35,917	45,370	38,631	56	.
2011	33,689	48,280	42,324	86	.
2012	35,590	50,549	42,015	80	.
2013	42,514	52,629	46,073	59	.
2014	35,733	51,959	43,562	79	.
2015	34,814	52,250	42,320	77	.
2016	32,000	51,664	41,964	85	.
2017	31,866	53,007	42,137	82	.
2018	36,832	54,790	44,514	77	.
2019	37,035	56,956	45,336	84	.
2020	43,054	60,597	49,183	82	.

BEA EMPLOYMENT: FORESTRY, FISHING, HUNTING, AND AG SUPPORT

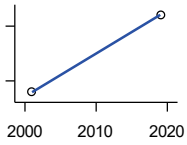
U.S. Bureau of Economic Analysis,
Regional Economic Information System
(REIS)

Year	County	State of Kansas	Non Metro Kansas	County Rank	Per 1000 or \$ Per Capita
2001	.	7,059	.	.	.
2002	.	8,045	.	.	.
2003	.	7,313	.	.	.
2004	.	7,623	.	.	.
2005	.	7,962	.	.	.
2006	.	7,748	.	.	.
2007	.	8,228	.	.	.
2008	.	8,646	.	.	.
2009	.	8,982	.	.	.
2010	.	9,251	.	.	.
2011	.	9,410	.	.	.
2012	.	9,691	.	.	.
2013	.	10,014	.	.	.
2014	.	10,708	.	.	.
2015	.	10,020	.	.	.
2016	.	10,383	.	.	.

County: county value. Kansas: state value. County Rank: highest county value ranked #1. (\$000): thousands of dollars. Nonmetro Kansas: Kansas total less Metropolitan Areas as defined by the Office of Management and Budget (OMB; released 3/6/2020). Per 1000: For nonmoney amounts, Per 1000=(county value / county population for the same year as the data) x 1000. \$ Per capita=(county value / county population for the same year as the data). Value= . indicates missing or suppressed data or value not calculated.

Employment

BEA EMPLOYMENT: MINING



U.S. Bureau of Economic Analysis,
Regional Economic Information System
(REIS)

Year	County	State of Kansas	Non Metro Kansas	County Rank	Per 1000 or \$ Per Capita
2001	19	19,592	.	50	.
2002	.	17,635	.	.	.
2003	.	19,869	.	.	.
2004	.	18,466	.	.	.
2005	.	19,489	.	.	.
2006	.	22,403	.	.	.
2007	.	24,043	.	.	.
2008	.	31,467	.	.	.
2009	.	29,941	.	.	.
2010	.	36,124	.	.	.
2011	.	31,658	.	.	.
2012	.	42,405	.	.	.
2013	.	46,585	.	.	.
2014	.	45,526	.	.	.
2015	.	46,460	.	.	.
2016	.	48,555	.	.	.
2019	231	29,101	.	31	.

BEA EMPLOYMENT: UTILITIES

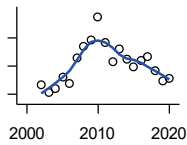
U.S. Bureau of Economic Analysis,
Regional Economic Information System
(REIS)

Year	County	State of Kansas	Non Metro Kansas	County Rank	Per 1000 or \$ Per Capita
2001	.	7,608	.	.	.
2002	.	7,087	.	.	.
2003	.	7,253	.	.	.
2004	.	7,356	.	.	.
2005	.	7,447	.	.	.
2006	.	7,478	.	.	.
2007	.	7,584	.	.	.
2008	.	7,855	.	.	.
2009	.	7,941	.	.	.
2010	.	8,028	.	.	.
2011	.	8,213	.	.	.
2012	.	8,155	.	.	.
2013	.	7,949	.	.	.
2014	.	7,985	.	.	.
2015	.	7,040	.	.	.
2016	.	7,133	.	.	.

County: county value. Kansas: state value. County Rank: highest county value ranked #1. (\$000): thousands of dollars. Nonmetro Kansas: Kansas total less Metropolitan Areas as defined by the Office of Management and Budget (OMB; released 3/6/2020). Per 1000: For nonmoney amounts, Per 1000=(county value / county population for the same year as the data) x 1000. \$ Per capita=(county value / county population for the same year as the data). Value= . indicates missing or suppressed data or value not calculated.

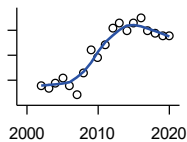
Employment

**BEA EMPLOYMENT:
CONSTRUCTION**



U.S. Bureau of Economic Analysis,
Regional Economic Information System
(REIS)

Year	County	State of Kansas	Non Metro Kansas	County Rank	Per 1000 or \$ Per Capita
2001	.	92,647	27,972	.	.
2002	67	90,370	.	81	.
2003	61	91,725	26,681	83	.
2004	64	93,271	.	76	.
2005	72	94,836	.	75	.
2006	68	97,449	.	75	.
2007	86	99,119	29,179	78	.
2008	94	97,741	.	75	.
2009	99	90,165	28,077	72	.
2010	115	84,708	26,402	73	.
2011	97	83,332	25,999	73	.
2012	83	85,966	.	77	.
2013	92	88,094	.	76	.
2014	85	91,143	.	76	.
2015	79	91,458	27,583	81	.
2016	84	93,539	27,151	79	.
2017	87	92,046	25,579	77	.
2018	77	92,985	25,530	78	.
2019	69	94,858	25,701	81	.
2020	71	94,186	26,085	80	.



**BEA EMPLOYMENT:
MANUFACTURING**

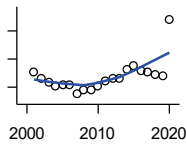
U.S. Bureau of Economic Analysis,
Regional Economic Information System
(REIS)

Year	County	State of Kansas	Non Metro Kansas	County Rank	Per 1000 or \$ Per Capita
2001	.	199,980	73,170	.	.
2002	38	188,905	70,691	81	.
2003	37	179,013	68,418	80	.
2004	39	181,738	69,669	78	.
2005	41	185,459	71,072	82	.
2006	38	188,047	71,704	80	.
2007	34	192,930	73,488	82	.
2008	43	193,116	72,235	85	.
2009	52	173,854	64,961	79	.
2010	49	166,000	62,884	80	.
2011	54	167,302	64,361	75	.
2012	61	169,308	65,944	77	.
2013	63	170,113	67,251	79	.
2014	60	169,307	68,299	80	.
2015	63	168,324	66,978	79	.
2016	65	167,723	65,796	78	.
2017	60	168,438	66,795	78	.
2018	59	171,778	68,181	80	.
2019	58	173,605	67,879	79	.
2020	58	165,228	65,658	80	.

County: county value. Kansas: state value. County Rank: highest county value ranked #1. (\$000): thousands of dollars. Nonmetro Kansas: Kansas total less Metropolitan Areas as defined by the Office of Management and Budget (OMB; released 3/6/2020). Per 1000: For nonmoney amounts, Per 1000=(county value / county population for the same year as the data) x 1000. \$ Per capita=(county value / county population for the same year as the data). Value= . indicates missing or suppressed data or value not calculated.

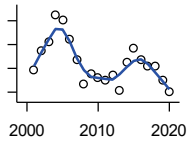
Employment

BEA EMPLOYMENT: WHOLESALE TRADE



U.S. Bureau of Economic Analysis,
Regional Economic Information System
(REIS)

Year	County	State of Kansas	Non Metro Kansas	County Rank	Per 1000 or \$ Per Capita
2001	82	65,698	.	71	.
2002	72	65,408	.	76	.
2003	67	63,504	.	73	.
2004	61	64,434	.	78	.
2005	64	64,587	.	74	.
2006	63	64,743	.	75	.
2007	50	65,993	.	74	.
2008	56	67,693	.	73	.
2009	57	65,954	.	75	.
2010	61	64,376	.	77	.
2011	69	64,712	.	77	.
2012	73	63,973	.	74	.
2013	73	64,999	.	71	.
2014	86	69,295	.	67	.
2015	90	68,444	.	67	.
2016	84	64,843	.	70	.
2017	81	65,014	.	70	.
2018	78	64,745	.	72	.
2019	77	63,324	.	71	.
2020	157	60,844	.	45	.



BEA EMPLOYMENT: RETAIL TRADE

U.S. Bureau of Economic Analysis,
Regional Economic Information System
(REIS)

Year	County	State of Kansas	Non Metro Kansas	County Rank	Per 1000 or \$ Per Capita
2001	179	198,069	.	83	.
2002	195	196,112	.	78	.
2003	202	194,545	64,173	78	.
2004	225	192,957	63,265	76	.
2005	221	191,656	62,506	74	.
2006	205	190,391	62,082	78	.
2007	187	190,643	61,716	78	.
2008	167	185,907	59,783	81	.
2009	175	181,262	58,714	79	.
2010	172	177,858	57,470	79	.
2011	170	180,548	57,734	80	.
2012	174	180,596	57,349	78	.
2013	161	183,245	57,556	79	.
2014	185	185,899	57,855	78	.
2015	197	188,421	58,516	76	.
2016	187	188,505	57,864	78	.
2017	182	186,633	56,715	78	.
2018	182	183,323	.	77	.
2019	170	177,240	53,427	77	.
2020	160	171,777	52,563	79	.

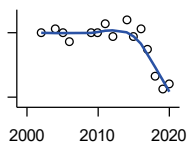
County: county value. Kansas: state value. County Rank: highest county value ranked #1. (\$000): thousands of dollars. Nonmetro Kansas: Kansas total less Metropolitan Areas as defined by the Office of Management and Budget (OMB; released 3/6/2020). Per 1000: For nonmoney amounts, Per 1000=(county value / county population for the same year as the data) x 1000. \$ Per capita=(county value / county population for the same year as the data). Value= . indicates missing or suppressed data or value not calculated.

Employment

**BEA EMPLOYMENT:
TRANSPORTATION AND
WAREHOUSING**

U.S. Bureau of Economic Analysis,
Regional Economic Information System
(REIS)

Year	County	State of Kansas	Non Metro Kansas	County Rank	Per 1000 or \$ Per Capita
2001	.	56,302	.	.	.
2002	.	55,319	.	.	.
2003	.	55,509	.	.	.
2004	.	55,479	.	.	.
2005	.	56,287	.	.	.
2006	.	57,506	.	.	.
2007	.	59,277	.	.	.
2008	.	58,725	.	.	.
2009	.	56,238	.	.	.
2010	.	55,179	.	.	.
2011	.	57,449	.	.	.
2012	.	59,756	.	.	.
2013	.	59,780	.	.	.
2014	.	60,565	.	.	.
2015	.	63,256	.	.	.
2016	.	65,705	.	.	.



BEA EMPLOYMENT: INFORMATION

U.S. Bureau of Economic Analysis,
Regional Economic Information System
(REIS)

Year	County	State of Kansas	Non Metro Kansas	County Rank	Per 1000 or \$ Per Capita
2001	.	54,895	.	.	.
2002	25	50,728	.	62	.
2003	.	48,328	6,860	.	.
2004	26	45,617	.	61	.
2005	25	43,840	.	58	.
2006	23	43,925	.	58	.
2007	.	45,115	.	.	.
2008	.	42,958	.	.	.
2009	25	38,677	.	55	.
2010	25	33,432	.	57	.
2011	27	32,160	.	52	.
2012	24	31,829	.	53	.
2013	.	31,737	.	.	.
2014	28	32,316	.	51	.
2015	24	25,282	.	50	.
2016	26	24,998	.	51	.
2017	21	24,004	.	51	.
2018	15	23,165	.	56	.
2019	12	22,078	.	61	.
2020	13	20,810	.	62	.

County: county value. Kansas: state value. County Rank: highest county value ranked #1. (\$000): thousands of dollars. Nonmetro Kansas: Kansas total less Metropolitan Areas as defined by the Office of Management and Budget (OMB; released 3/6/2020). Per 1000: For nonmoney amounts, Per 1000=(county value / county population for the same year as the data) x 1000. \$ Per capita=(county value / county population for the same year as the data). Value= . indicates missing or suppressed data or value not calculated.

Employment

BEA EMPLOYMENT: FINANCE AND INSURANCE

U.S. Bureau of Economic Analysis,
Regional Economic Information System
(REIS)

Year	County	State of Kansas	Non Metro Kansas	County Rank	Per 1000 or \$ Per Capita
2001	.	76,118	.	.	.
2002	.	78,206	.	.	.
2003	.	78,441	.	.	.
2004	.	78,350	.	.	.
2005	.	78,952	.	.	.
2006	.	80,900	.	.	.
2007	.	86,094	.	.	.
2008	.	89,590	.	.	.
2009	.	93,573	.	.	.
2010	.	92,428	.	.	.
2011	.	99,495	.	.	.
2012	.	98,640	.	.	.
2013	.	99,998	.	.	.
2014	.	98,209	.	.	.
2015	.	100,534	.	.	.
2016	.	102,699	.	.	.

BEA EMPLOYMENT: REAL ESTATE, RENTAL, AND LEASING

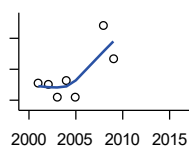
U.S. Bureau of Economic Analysis,
Regional Economic Information System
(REIS)

Year	County	State of Kansas	Non Metro Kansas	County Rank	Per 1000 or \$ Per Capita
2001	.	45,237	.	.	.
2002	.	44,970	.	.	.
2003	.	47,095	.	.	.
2004	.	50,181	.	.	.
2005	.	53,335	.	.	.
2006	.	55,342	.	.	.
2007	.	57,694	.	.	.
2008	.	57,933	.	.	.
2009	.	57,132	.	.	.
2010	.	59,578	.	.	.
2011	.	61,821	.	.	.
2012	.	60,432	.	.	.
2013	.	62,134	.	.	.
2014	.	64,705	.	.	.
2015	.	66,604	.	.	.
2016	.	68,395	.	.	.

County: county value. Kansas: state value. County Rank: highest county value ranked #1. (\$000): thousands of dollars. Nonmetro Kansas: Kansas total less Metropolitan Areas as defined by the Office of Management and Budget (OMB; released 3/6/2020). Per 1000: For nonmoney amounts, Per 1000=(county value / county population for the same year as the data) x 1000. \$ Per capita=(county value / county population for the same year as the data). Value= . indicates missing or suppressed data or value not calculated.

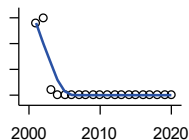
Employment

BEA EMPLOYMENT: PROFESSIONAL AND TECHNICAL SERVICES



U.S. Bureau of Economic Analysis,
Regional Economic Information System
(REIS)

Year	County	State of Kansas	Non Metro Kansas	County Rank	Per 1000 or \$ Per Capita
2001	61	81,396	.	63	.
2002	60	80,684	.	59	.
2003	52	80,311	.	55	.
2004	63	85,550	.	56	.
2005	52	85,003	.	63	.
2006	.	87,381	.	.	.
2007	.	92,717	.	.	.
2008	98	95,362	.	52	.
2009	77	93,232	.	59	.
2010	.	93,037	.	.	.
2011	.	93,237	.	.	.
2012	.	95,360	.	.	.
2013	.	100,795	.	.	.
2014	.	102,210	.	.	.
2015	.	105,625	.	.	.
2016	.	108,059	.	.	.



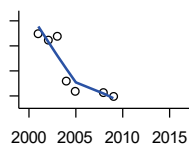
BEA EMPLOYMENT: MANAGEMENT OF COMPANIES AND ENTERPRISES

U.S. Bureau of Economic Analysis,
Regional Economic Information System
(REIS)

Year	County	State of Kansas	Non Metro Kansas	County Rank	Per 1000 or \$ Per Capita
2001	14	13,832	.	26	.
2002	15	12,576	.	26	.
2003	1	11,135	.	26	.
2004	0	10,614	.	67	.
2005	0	11,811	.	66	.
2006	0	13,061	.	66	.
2007	0	13,398	.	69	.
2008	0	15,234	.	72	.
2009	0	14,849	.	75	.
2010	0	16,579	.	75	.
2011	0	15,343	.	75	.
2012	0	15,075	.	82	.
2013	0	16,667	.	81	.
2014	0	20,441	.	79	.
2015	0	29,604	.	78	.
2016	0	27,824	.	77	.
2017	0	27,767	.	77	.
2018	0	28,862	.	75	.
2019	0	30,512	.	74	.
2020	0	25,648	.	74	.

County: county value. Kansas: state value. County Rank: highest county value ranked #1. (\$000): thousands of dollars. Nonmetro Kansas: Kansas total less Metropolitan Areas as defined by the Office of Management and Budget (OMB; released 3/6/2020). Per 1000: For nonmoney amounts, Per 1000=(county value / county population for the same year as the data) x 1000. \$ Per capita=(county value / county population for the same year as the data). Value= . indicates missing or suppressed data or value not calculated.

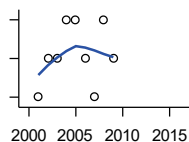
Employment



**BEA EMPLOYMENT:
ADMINISTRATIVE AND WASTE
SERVICES**

U.S. Bureau of Economic Analysis,
Regional Economic Information System
(REIS)

Year	County	State of Kansas	Non Metro Kansas	County Rank	Per 1000 or \$ Per Capita
2001	110	81,573	.	33	.
2002	105	82,992	.	35	.
2003	108	81,298	.	34	.
2004	72	85,721	.	42	.
2005	64	89,933	.	42	.
2006	.	93,688	.	.	.
2007	.	98,865	.	.	.
2008	63	97,440	.	47	.
2009	60	92,455	.	53	.
2010	.	93,675	.	.	.
2011	.	97,969	.	.	.
2012	.	100,490	.	.	.
2013	.	104,680	.	.	.
2014	.	107,218	18,836	.	.
2015	.	103,436	18,767	.	.
2016	.	103,233	18,428	.	.



**BEA EMPLOYMENT: EDUCATIONAL
SERVICES**

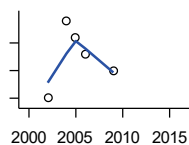
U.S. Bureau of Economic Analysis,
Regional Economic Information System
(REIS)

Year	County	State of Kansas	Non Metro Kansas	County Rank	Per 1000 or \$ Per Capita
2001	5	21,169	.	66	.
2002	6	22,173	.	69	.
2003	6	22,651	.	75	.
2004	7	21,601	.	54	.
2005	7	22,177	.	68	.
2006	6	22,438	.	74	.
2007	5	23,647	.	70	.
2008	7	24,653	.	59	.
2009	6	25,120	.	61	.
2010	.	26,071	.	.	.
2011	.	26,080	.	.	.
2012	.	26,625	.	.	.
2013	.	27,508	.	.	.
2014	.	28,708	.	.	.
2015	.	28,794	.	.	.
2016	.	27,996	.	.	.

County: county value. Kansas: state value. County Rank: highest county value ranked #1. (\$000): thousands of dollars. Nonmetro Kansas: Kansas total less Metropolitan Areas as defined by the Office of Management and Budget (OMB; released 3/6/2020). Per 1000: For nonmoney amounts, Per 1000=(county value / county population for the same year as the data) x 1000. \$ Per capita=(county value / county population for the same year as the data). Value= . indicates missing or suppressed data or value not calculated.

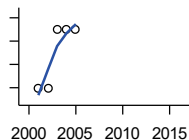
Employment

BEA EMPLOYMENT: HEALTH CARE AND SOCIAL ASSISTANCE



U.S. Bureau of Economic Analysis, Regional Economic Information System (REIS)

Year	County	State of Kansas	Non Metro Kansas	County Rank	Per 1000 or \$ Per Capita
2001	.	165,415	.	.	.
2002	95	168,198	.	54	.
2003	.	169,654	.	.	.
2004	109	172,796	.	55	.
2005	106	173,949	.	52	.
2006	103	176,919	.	48	.
2007	.	182,160	.	.	.
2008	.	186,051	.	.	.
2009	100	188,499	.	45	.
2010	.	188,383	.	.	.
2011	.	190,736	.	.	.
2012	.	192,991	.	.	.
2013	.	193,687	.	.	.
2014	.	194,632	.	.	.
2015	.	199,724	.	.	.
2016	.	201,830	.	.	.



BEA EMPLOYMENT: ARTS, ENTERTAINMENT, AND RECREATION

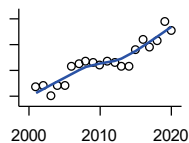
U.S. Bureau of Economic Analysis, Regional Economic Information System (REIS)

Year	County	State of Kansas	Non Metro Kansas	County Rank	Per 1000 or \$ Per Capita
2001	20	25,012	.	46	.
2002	20	25,668	.	47	.
2003	25	24,116	.	44	.
2004	25	25,355	.	48	.
2005	25	26,067	.	52	.
2006	.	26,505	.	.	.
2007	.	27,489	.	.	.
2008	.	27,501	.	.	.
2009	.	27,203	.	.	.
2010	.	27,479	.	.	.
2011	.	28,487	.	.	.
2012	.	30,729	.	.	.
2013	.	31,068	.	.	.
2014	.	32,154	.	.	.
2015	.	31,169	.	.	.
2016	.	32,373	.	.	.

County: county value. Kansas: state value. County Rank: highest county value ranked #1. (\$000): thousands of dollars. Nonmetro Kansas: Kansas total less Metropolitan Areas as defined by the Office of Management and Budget (OMB; released 3/6/2020). Per 1000: For nonmoney amounts, Per 1000=(county value / county population for the same year as the data) x 1000. \$ Per capita=(county value / county population for the same year as the data). Value= . indicates missing or suppressed data or value not calculated.

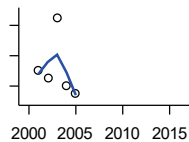
Employment

BEA EMPLOYMENT: GOVERNMENT AND GOVERNMENT ENTERPRISES



U.S. Bureau of Economic Analysis, Regional Economic Information System (REIS)

Year	County	State of Kansas	Non Metro Kansas	County Rank	Per 1000 or \$ Per Capita
2001	454	282,293	102,993	84	.
2002	457	281,427	103,581	82	.
2003	441	282,459	103,389	84	.
2004	457	283,877	103,946	82	.
2005	457	282,798	103,194	81	.
2006	487	288,372	104,103	79	.
2007	490	294,413	104,598	79	.
2008	494	298,580	104,718	78	.
2009	492	300,422	104,081	78	.
2010	488	303,875	103,382	77	.
2011	495	299,952	101,535	77	.
2012	493	298,068	101,180	76	.
2013	486	297,689	101,232	77	.
2014	487	296,956	100,634	78	.
2015	512	295,799	99,719	76	.
2016	529	291,536	98,520	74	.
2017	517	295,748	99,542	74	.
2018	526	298,105	99,499	74	.
2019	556	302,017	100,227	71	.
2020	541	292,583	96,477	72	.



BEA EMPLOYMENT: ACCOMMODATION AND FOOD SERVICES

U.S. Bureau of Economic Analysis, Regional Economic Information System (REIS)

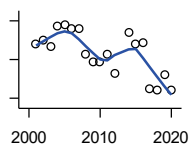
Year	County	State of Kansas	Non Metro Kansas	County Rank	Per 1000 or \$ Per Capita
2001	136	103,353	.	46	.
2002	135	103,692	.	47	.
2003	143	105,138	.	47	.
2004	134	106,694	.	51	.
2005	133	107,303	.	52	.
2006	.	109,888	.	.	.
2007	.	110,863	.	.	.
2008	.	111,092	.	.	.
2009	.	109,353	.	.	.
2010	.	108,628	.	.	.
2011	.	110,514	.	.	.
2012	.	112,574	.	.	.
2013	.	114,102	.	.	.
2014	.	115,768	.	.	.
2015	.	118,503	.	.	.
2016	.	119,764	.	.	.

County: county value. Kansas: state value. County Rank: highest county value ranked #1. (\$000): thousands of dollars. Nonmetro Kansas: Kansas total less Metropolitan Areas as defined by the Office of Management and Budget (OMB; released 3/6/2020). Per 1000: For nonmoney amounts, Per 1000=(county value / county population for the same year as the data) x 1000. \$ Per capita=(county value / county population for the same year as the data). Value= . indicates missing or suppressed data or value not calculated.

Employment

BEA EMPLOYMENT: OTHER SERVICES, EXCEPT PUBLIC ADMINISTRATION

U.S. Bureau of Economic Analysis, Regional Economic Information System (REIS)

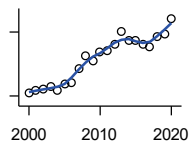


Year	County	State of Kansas	Non Metro Kansas	County Rank	Per 1000 or \$ Per Capita
2001	148	92,176	.	74	.
2002	150	95,350	.	74	.
2003	147	95,821	32,629	75	.
2004	157	95,610	.	72	.
2005	158	95,930	32,555	70	.
2006	156	96,413	.	68	.
2007	156	98,444	.	68	.
2008	143	96,705	.	68	.
2009	139	95,534	.	67	.
2010	139	93,302	.	66	.
2011	143	94,865	.	63	.
2012	133	94,977	.	65	.
2013	.	95,471	.	.	.
2014	154	97,806	.	66	.
2015	148	98,041	.	61	.
2016	149	97,219	.	61	.
2017	125	96,568	.	63	.
2018	124	98,645	.	67	.
2019	132	98,638	.	63	.
2020	124	92,245	.	63	.

Income

BEA PER CAPITA PERSONAL INCOME (\$)

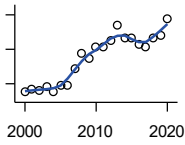
U.S. Bureau of Economic Analysis, Regional Economic Information System (REIS)



Year	County	State of Kansas	Non Metro Kansas	County Rank	Per 1000 or \$ Per Capita
2000	21,391	28,253	23,116	84	.
2001	22,875	29,112	24,576	89	.
2002	23,099	29,248	24,314	72	.
2003	24,624	30,074	26,017	82	.
2004	22,580	30,843	26,583	101	.
2005	25,649	32,545	28,356	91	.
2006	26,259	35,690	29,782	89	.
2007	32,940	38,057	32,034	54	.
2008	39,055	41,257	35,211	34	.
2009	36,707	39,431	33,876	41	.
2010	40,948	39,960	35,795	30	.
2011	41,315	43,015	39,041	52	.
2012	44,356	45,294	39,660	42	.
2013	50,275	46,174	41,747	34	.
2014	46,154	47,013	41,042	40	.
2015	45,784	47,332	40,638	33	.
2016	44,144	47,326	40,797	40	.
2017	43,221	48,756	41,314	41	.
2018	47,748	50,811	43,283	33	.
2019	48,982	52,820	44,491	36	.
2020	56,311	55,677	48,415	29	.

County: county value. Kansas: state value. County Rank: highest county value ranked #1. (\$000): thousands of dollars. Nonmetro Kansas: Kansas total less Metropolitan Areas as defined by the Office of Management and Budget (OMB; released 3/6/2020). Per 1000: For nonmoney amounts, Per 1000=(county value / county population for the same year as the data) x 1000. \$ Per capita=(county value / county population for the same year as the data). Value= . indicates missing or suppressed data or value not calculated.

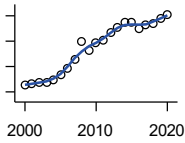
Income



**SOURCES OF PERSONAL INCOME:
TOTAL PERSONAL INCOME (\$000)**

U.S. Bureau of Economic Analysis,
Regional Economic Information System
(REIS)

Year	County	State of Kansas	Non Metro Kansas	County Rank	Per 1000 or \$ Per Capita
2000	70,161	76,105,125	22,273,838	92	21,139.2
2001	73,772	78,664,651	23,411,174	97	22,875.0
2002	72,460	79,365,190	23,000,314	89	23,098.5
2003	76,259	81,890,340	24,494,191	94	24,623.5
2004	70,451	84,335,940	24,924,467	92	22,580.4
2005	77,587	89,346,228	26,452,291	97	25,648.6
2006	78,542	98,610,188	27,661,596	92	26,259.4
2007	97,864	105,943,199	29,715,946	91	32,939.8
2008	114,938	115,852,478	32,614,565	87	39,054.7
2009	109,569	111,697,350	31,394,702	87	36,706.5
2010	123,091	114,239,828	33,291,419	88	41,016.7
2011	122,003	123,558,772	36,221,488	95	41,300.9
2012	130,362	130,948,127	36,696,759	92	44,325.7
2013	147,958	133,979,908	38,513,959	91	50,240.4
2014	133,523	136,878,718	37,680,598	90	46,121.9
2015	132,957	138,336,768	37,081,851	86	45,736.8
2016	125,722	138,533,890	36,930,885	87	44,082.0
2017	122,835	142,729,689	37,104,963	87	43,206.1
2018	132,836	148,955,739	38,589,364	85	47,492.3
2019	136,121	154,961,001	39,424,148	86	48,562.6
2020	155,305	163,462,179	42,618,591	88	55,308.0



**SOURCES OF PERSONAL INCOME:
WAGES AND SALARIES (\$000)**

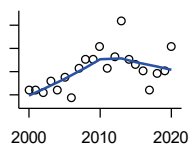
U.S. Bureau of Economic Analysis,
Regional Economic Information System
(REIS)

Year	County	State of Kansas	Non Metro Kansas	County Rank	Per 1000 or \$ Per Capita
2000	22,837	41,766,878	10,254,250	89	6,880.7
2001	23,318	43,269,734	10,518,206	89	7,230.4
2002	23,546	43,875,159	10,696,876	89	7,505.9
2003	23,790	44,488,560	10,894,971	88	7,681.6
2004	24,509	46,702,068	11,333,617	90	7,855.4
2005	26,528	48,537,956	11,614,130	88	8,769.6
2006	29,436	52,083,584	12,299,340	86	9,841.5
2007	32,612	55,442,368	13,093,908	85	10,976.8
2008	39,674	57,623,385	13,647,143	78	13,480.8
2009	36,490	55,605,578	13,199,674	81	12,224.5
2010	39,272	56,089,711	13,345,291	79	13,086.3
2011	40,574	58,104,706	13,856,458	79	13,735.3
2012	43,535	60,616,457	14,473,599	76	14,802.8
2013	45,357	61,872,023	14,781,792	75	15,401.4
2014	47,667	64,457,652	15,385,500	75	16,465.3
2015	47,612	66,729,598	15,454,485	75	16,378.4
2016	44,760	67,253,399	15,422,058	82	15,694.2
2017	46,651	68,830,861	15,731,853	76	16,409.1
2018	47,184	71,580,544	16,311,725	77	16,869.5
2019	48,866	74,404,771	16,882,299	81	17,433.5
2020	50,504	75,798,310	17,251,300	78	17,985.8

County: county value. Kansas: state value. County Rank: highest county value ranked #1. (\$000): thousands of dollars. Nonmetro Kansas: Kansas total less Metropolitan Areas as defined by the Office of Management and Budget (OMB; released 3/6/2020). Per 1000: For nonmoney amounts, Per 1000=(county value / county population for the same year as the data) x 1000. \$ Per capita=(county value / county population for the same year as the data). Value= . indicates missing or suppressed data or value not calculated.

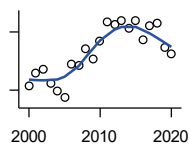
Income

**SOURCES OF PERSONAL INCOME:
PROPRIETORS-FARM (\$000)**



U.S. Bureau of Economic Analysis,
Regional Economic Information System
(REIS)

Year	County	State of Kansas	Non Metro Kansas	County Rank	Per 1000 or \$ Per Capita
2000	2,083	668,539	673,707	71	627.6
2001	2,284	779,473	769,336	81	708.2
2002	1,222	145,064	187,033	48	389.5
2003	5,662	1,281,076	1,195,298	77	1,828.2
2004	1,911	1,149,425	938,524	91	612.5
2005	7,821	1,609,604	1,469,139	75	2,585.5
2006	-1,452	766,047	663,735	91	-485.5
2007	11,709	1,131,607	1,040,350	51	3,941.1
2008	15,252	1,582,092	1,404,900	54	5,182.5
2009	15,027	1,585,995	1,390,349	47	5,034.2
2010	20,850	2,149,482	2,029,067	40	6,947.7
2011	11,662	3,188,519	2,989,880	73	3,947.9
2012	16,286	2,519,555	2,296,875	63	5,537.6
2013	31,879	4,499,190	4,158,419	54	10,824.8
2014	15,470	2,231,181	2,157,992	47	5,343.7
2015	12,922	1,300,733	1,294,370	31	4,445.1
2016	10,087	1,577,060	1,564,511	39	3,536.8
2017	2,008	838,480	838,290	58	706.3
2018	9,157	1,050,662	971,690	48	3,273.9
2019	10,258	998,038	878,247	43	3,659.7
2020	20,968	2,151,349	1,887,881	44	7,467.2



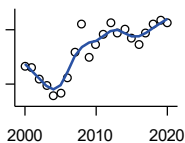
**SOURCES OF PERSONAL INCOME:
PROPRIETORS-NONFARM (\$000)**

U.S. Bureau of Economic Analysis,
Regional Economic Information System
(REIS)

Year	County	State of Kansas	Non Metro Kansas	County Rank	Per 1000 or \$ Per Capita
2000	6,422	4,580,476	1,493,470	80	1,934.9
2001	7,757	4,510,530	1,855,621	87	2,405.3
2002	8,120	5,036,100	1,966,784	87	2,588.5
2003	6,730	4,719,377	1,916,735	88	2,173.1
2004	5,935	4,003,922	2,073,898	92	1,902.2
2005	5,200	4,455,294	2,200,971	100	1,719.0
2006	8,658	7,343,524	2,694,895	89	2,894.7
2007	8,498	7,280,197	2,436,574	87	2,860.3
2008	10,219	9,255,953	2,971,923	78	3,472.3
2009	9,167	9,323,551	2,858,848	86	3,071.0
2010	10,999	9,658,261	3,498,040	90	3,665.1
2011	13,094	12,196,566	4,186,007	89	4,432.6
2012	12,735	15,773,140	4,446,004	91	4,330.2
2013	13,180	16,441,660	4,492,127	87	4,475.4
2014	12,379	15,954,254	4,455,081	87	4,276.0
2015	13,147	15,536,116	4,386,172	91	4,522.5
2016	11,224	14,075,310	3,783,829	88	3,935.5
2017	12,630	15,371,957	3,908,254	88	4,442.5
2018	12,971	15,716,877	4,238,775	93	4,637.5
2019	10,387	16,705,488	3,921,051	95	3,705.7
2020	9,735	16,718,952	3,823,329	95	3,466.9

County: county value. Kansas: state value. County Rank: highest county value ranked #1. (\$000): thousands of dollars. Nonmetro Kansas: Kansas total less Metropolitan Areas as defined by the Office of Management and Budget (OMB; released 3/6/2020). Per 1000: For nonmoney amounts, Per 1000=(county value / county population for the same year as the data) x 1000. \$ Per capita=(county value / county population for the same year as the data). Value= . indicates missing or suppressed data or value not calculated.

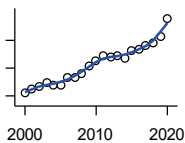
Income



**SOURCES OF PERSONAL INCOME:
DIVIDENDS,INTEREST,RENT(\$000)**

U.S. Bureau of Economic Analysis,
Regional Economic Information System
(REIS)

Year	County	State of Kansas	Non Metro Kansas	County Rank	Per 1000 or \$ Per Capita
2000	17,493	15,916,201	4,736,921	92	5,270.6
2001	17,256	15,770,830	4,699,417	93	5,350.7
2002	15,665	15,111,563	4,316,887	93	4,993.6
2003	14,720	15,370,764	4,360,311	94	4,753.0
2004	13,326	15,820,469	4,251,925	94	4,271.2
2005	13,697	17,147,069	4,485,387	94	4,527.9
2006	15,931	20,117,848	4,945,184	91	5,326.3
2007	19,387	22,269,186	5,526,219	89	6,525.4
2008	23,305	24,972,485	6,180,979	89	7,918.8
2009	18,764	21,453,879	5,308,474	91	6,286.1
2010	20,451	20,861,351	5,414,285	85	6,814.7
2011	21,799	23,387,567	5,781,075	89	7,379.5
2012	23,543	25,689,368	6,389,505	91	8,005.1
2013	22,064	24,832,212	5,984,811	89	7,492.0
2014	22,581	27,412,684	6,403,356	91	7,800.0
2015	21,403	27,244,414	6,423,685	93	7,362.6
2016	20,404	27,293,441	6,389,161	93	7,154.3
2017	22,070	28,385,472	6,700,156	92	7,762.9
2018	23,315	29,953,419	6,772,504	91	8,335.7
2019	23,825	30,820,276	6,957,987	91	8,499.8
2020	23,444	30,283,520	6,844,745	91	8,349.0



**SOURCES OF PERSONAL INCOME:
TRANSFER PAYMENTS (\$000)**

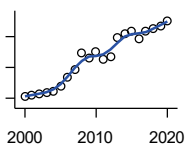
U.S. Bureau of Economic Analysis,
Regional Economic Information System
(REIS)

Year	County	State of Kansas	Non Metro Kansas	County Rank	Per 1000 or \$ Per Capita
2000	16,131	9,650,835	4,036,781	87	4,860.2
2001	17,602	10,549,124	4,355,457	87	5,458.0
2002	18,431	11,208,997	4,553,978	86	5,875.4
2003	19,801	11,709,049	4,702,911	82	6,393.6
2004	18,966	12,040,452	4,802,536	84	6,078.8
2005	18,900	12,696,735	5,059,314	89	6,247.9
2006	21,791	13,642,787	5,455,207	87	7,285.5
2007	21,793	14,686,821	5,775,024	87	7,335.2
2008	23,103	16,552,460	6,322,722	88	7,850.2
2009	25,865	18,025,603	6,790,962	84	8,665.0
2010	27,473	19,189,749	7,089,258	82	9,154.6
2011	29,270	19,625,770	7,255,825	80	9,908.6
2012	28,927	19,354,458	7,148,177	78	9,835.8
2013	29,558	19,639,358	7,185,636	77	10,036.7
2014	28,714	20,380,970	7,399,809	81	9,918.5
2015	31,250	21,116,856	7,623,577	77	10,749.9
2016	31,670	21,884,629	7,886,000	77	11,104.5
2017	32,924	22,559,744	8,062,517	77	11,580.7
2018	33,887	23,628,033	8,393,617	77	12,115.5
2019	36,164	25,050,174	8,845,371	78	12,901.9
2020	42,864	32,319,421	11,074,190	81	15,265.0

County: county value. Kansas: state value. County Rank: highest county value ranked #1. (\$000): thousands of dollars. Nonmetro Kansas: Kansas total less Metropolitan Areas as defined by the Office of Management and Budget (OMB; released 3/6/2020). Per 1000: For nonmoney amounts, Per 1000=(county value / county population for the same year as the data) x 1000. \$ Per capita=(county value / county population for the same year as the data). Value= . indicates missing or suppressed data or value not calculated.

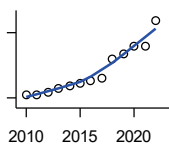
Income

**SOURCES OF PERSONAL INCOME:
LESS SOCIAL INSURANCE (\$000)**



U.S. Bureau of Economic Analysis,
Regional Economic Information System
(REIS)

Year	County	State of Kansas	Non Metro Kansas	County Rank	Per 1000 or \$ Per Capita
2000	4,131	6,655,813	1,663,044	85	1,244.7
2001	4,204	6,869,934	1,740,915	86	1,303.6
2002	4,308	7,008,361	1,778,636	86	1,373.3
2003	4,340	7,172,781	1,821,858	86	1,401.4
2004	4,445	7,556,560	1,904,014	87	1,424.7
2005	4,751	7,911,241	1,986,907	86	1,570.6
2006	5,397	8,406,937	2,090,313	85	1,804.4
2007	5,881	8,806,941	2,180,587	83	1,979.5
2008	6,903	9,207,010	2,299,399	81	2,345.6
2009	6,587	9,002,859	2,248,703	81	2,206.7
2010	7,051	9,235,760	2,321,191	80	2,349.6
2011	6,511	8,515,986	2,139,991	80	2,204.1
2012	6,710	8,816,128	2,195,919	82	2,281.5
2013	7,941	10,225,399	2,540,439	80	2,696.4
2014	8,218	10,609,601	2,635,009	79	2,838.7
2015	8,390	11,028,204	2,663,038	80	2,886.1
2016	7,863	10,915,915	2,604,579	83	2,757.0
2017	8,329	11,224,218	2,669,954	80	2,929.7
2018	8,507	11,749,229	2,797,106	81	3,041.5
2019	8,695	12,245,451	2,889,336	81	3,102.0
2020	9,026	12,715,152	3,027,656	82	3,214.4



HUD MEDIAN FAMILY INCOME

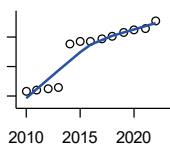
U.S. Department of Housing and Urban
Development (HUD)

Year	County	State of Kansas	Non Metro Kansas	County Rank	Per 1000 or \$ Per Capita
2010	51,500	63,100	.	60	.
2011	51,500	64,300	.	69	.
2012	52,300	65,200	.	68	.
2013	54,500	64,800	.	66	.
2014	55,600	64,400	.	66	.
2015	56,600	66,300	.	68	.
2016	57,600	66,700	.	58	.
2017	58,800	68,500	.	64	.
2018	68,000	73,100	.	30	.
2019	70,300	75,200	.	26	.
2020	73,800	76,500	.	19	.
2021	73,700	77,400	.	27	.
2022	85,600	87,800	.	15	.

County: county value. Kansas: state value. County Rank: highest county value ranked #1. (\$000): thousands of dollars. Nonmetro Kansas: Kansas total less Metropolitan Areas as defined by the Office of Management and Budget (OMB; released 3/6/2020). Per 1000: For nonmoney amounts, Per 1000=(county value / county population for the same year as the data) x 1000. \$ Per capita=(county value / county population for the same year as the data). Value= . indicates missing or suppressed data or value not calculated.

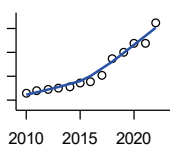
Income

HUD 30% LOW-TO-MEDIUM INCOME (LMI) LIMIT - 4 PERSONS



U.S. Department of Housing and Urban Development (HUD)

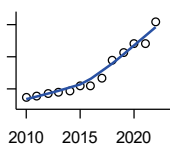
Year	County	State of Kansas	Non Metro Kansas	County Rank	Per 1000 or \$ Per Capita
2010	15,850	.	.	105	.
2011	16,100	.	.	105	.
2012	16,300	.	.	105	.
2013	16,550	.	.	105	.
2014	23,850	.	.	105	.
2015	24,250	.	.	105	.
2016	24,300	.	.	105	.
2017	24,600	.	.	105	.
2018	25,100	21,950	.	105	.
2019	25,750	22,550	.	105	.
2020	26,200	22,950	.	105	.
2021	26,500	23,200	.	105	.
2022	27,750	25,950	.	105	.



HUD 50% LOW-TO-MEDIUM INCOME (LMI) LIMIT - 4 PERSONS

U.S. Department of Housing and Urban Development (HUD)

Year	County	State of Kansas	Non Metro Kansas	County Rank	Per 1000 or \$ Per Capita
2010	26,400	.	.	105	.
2011	26,850	.	.	105	.
2012	27,200	.	.	105	.
2013	27,600	.	.	105	.
2014	27,800	.	.	67	.
2015	28,700	.	.	105	.
2016	28,800	.	.	61	.
2017	30,150	.	.	105	.
2018	33,600	36,550	.	32	.
2019	35,150	37,600	.	26	.
2020	36,900	38,250	.	19	.
2021	36,850	38,700	.	26	.
2022	41,200	43,300	.	24	.



HUD 80% LOW-TO-MEDIUM INCOME (LMI) LIMIT - 4 PERSONS

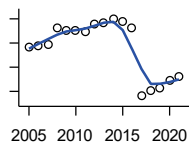
U.S. Department of Housing and Urban Development (HUD)

Year	County	State of Kansas	Non Metro Kansas	County Rank	Per 1000 or \$ Per Capita
2010	42,250	.	.	105	.
2011	42,950	.	.	105	.
2012	43,500	.	.	105	.
2013	44,150	.	.	105	.
2014	44,500	.	.	67	.
2015	45,900	.	.	105	.
2016	46,100	.	.	61	.
2017	48,250	.	.	105	.
2018	53,750	58,500	.	32	.
2019	56,250	60,150	.	26	.
2020	59,050	61,200	.	19	.
2021	58,950	61,900	.	26	.
2022	65,900	69,250	.	24	.

County: county value. Kansas: state value. County Rank: highest county value ranked #1. (\$000): thousands of dollars. Nonmetro Kansas: Kansas total less Metropolitan Areas as defined by the Office of Management and Budget (OMB; released 3/6/2020). Per 1000: For nonmoney amounts, Per 1000=(county value / county population for the same year as the data) x 1000. \$ Per capita=(county value / county population for the same year as the data). Value= . indicates missing or suppressed data or value not calculated.

Banking

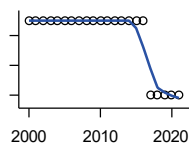
BANK DEPOSITS (1984-2004 in thousands; 2005- in millions)



Federal Deposit Insurance Corporation, Data Book, Operating Banks and Branches

Year	County	State of Kansas	Non Metro Kansas	County Rank	Per 1000 or \$ Per Capita
2005	77	48,304	17,000	83	25.5
2006	78	50,668	17,586	86	26.1
2007	79	54,057	18,517	87	26.6
2008	93	57,869	19,628	83	31.6
2009	90	57,763	20,031	87	30.2
2010	90	60,031	20,678	90	30.0
2011	89	61,094	21,347	92	30.1
2012	96	62,910	22,481	91	32.6
2013	97	64,547	22,795	91	32.9
2014	100	66,538	23,338	90	34.5
2015	98	68,160	23,367	90	33.7
2016	92	70,381	23,420	91	32.3
2017	36	73,329	23,928	105	12.7
2018	41	74,623	24,100	105	14.7
2019	43	76,436	24,488	105	15.3
2020	49	88,563	27,547	104	17.5
2021	52	97,055	30,122	104	18.6

NUMBER OF BANKS



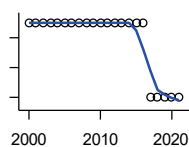
Federal Deposit Insurance Corporation, Data Book, Operating Banks and Branches

Year	County	State of Kansas	Non Metro Kansas	County Rank	Per 1000 or \$ Per Capita
2000	3	410	145	92	.
2001	3	410	136	93	.
2002	3	404	129	92	.
2003	3	397	121	91	.
2004	3	394	112	89	.
2005	3	388	101	91	.
2006	3	385	94	91	.
2007	3	382	91	91	.
2008	3	378	82	92	.
2009	3	374	79	92	.
2010	3	367	70	92	.
2011	3	359	61	92	.
2012	3	348	57	92	.
2013	3	332	45	92	.
2014	3	329	41	91	.
2015	3	320	31	90	.
2016	3	314	24	88	.
2017	2	301	13	102	.
2018	2	289	7	102	.
2019	2	279	3	102	.
2020	2	271	-1	102	.
2021	2	270	-6	102	.

County: county value. Kansas: state value. County Rank: highest county value ranked #1. (\$000): thousands of dollars. Nonmetro Kansas: Kansas total less Metropolitan Areas as defined by the Office of Management and Budget (OMB; released 3/6/2020). Per 1000: For nonmoney amounts, Per 1000=(county value / county population for the same year as the data) x 1000. \$ Per capita=(county value / county population for the same year as the data). Value= . indicates missing or suppressed data or value not calculated.

Banking

NUMBER OF BANKING OFFICES

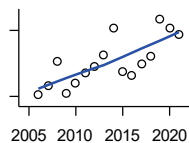


Federal Deposit Insurance Corporation, Data Book, Operating Banks and Branches

Year	County	State of Kansas	Non Metro Kansas	County Rank	Per 1000 or \$ Per Capita
2000	3	1,398	703	96	.
2001	3	1,424	708	98	.
2002	3	1,447	704	98	.
2003	3	1,461	708	98	.
2004	3	1,485	708	96	.
2005	3	1,505	711	97	.
2006	3	1,518	711	97	.
2007	3	1,543	717	97	.
2008	3	1,556	717	97	.
2009	3	1,569	716	97	.
2010	3	1,561	710	96	.
2011	3	1,559	707	97	.
2012	3	1,533	702	97	.
2013	3	1,518	696	97	.
2014	3	1,491	685	97	.
2015	3	1,472	675	97	.
2016	3	1,465	668	95	.
2017	2	1,452	666	104	.
2018	2	1,439	660	104	.
2019	2	1,439	663	104	.
2020	2	1,416	653	104	.
2021	2	1,392	641	104	.

Government

TANGIBLE ASSESSED VALUATION (KDoR, million\$; 2006-)



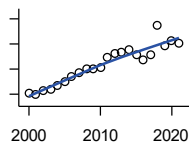
Kansas Department of Revenue, Division of Property Valuation, Statistical Report of Property Assessment and Taxation

Year	County	State of Kansas	Non Metro Kansas	County Rank	Per 1000 or \$ Per Capita
2006	40.8	28,964.3	10,316.9	86	13.6
2007	44.9	30,086.9	10,335.9	85	15.1
2008	55.9	31,000.3	10,856.9	77	19.0
2009	41.5	30,312.3	10,555.6	87	13.9
2010	46.0	29,450.2	10,158.7	85	15.3
2011	50.7	29,963.6	10,572.3	81	17.2
2012	53.8	30,382.9	10,876.2	81	18.3
2013	58.6	30,850.2	11,044.4	81	19.9
2014	71.3	31,783.0	11,388.9	74	24.6
2015	51.3	32,335.7	11,037.8	83	17.7
2016	49.3	33,156.3	10,889.6	89	17.3
2017	54.7	34,754.5	11,439.0	89	19.2
2018	58.5	36,566.1	11,907.1	89	20.9
2019	75.2	38,255.2	12,336.7	77	26.8
2020	71.3	39,333.9	12,219.3	80	25.4
2021	68.4	40,812.0	12,601.5	82	24.5

County: county value. Kansas: state value. County Rank: highest county value ranked #1. (\$000): thousands of dollars. Nonmetro Kansas: Kansas total less Metropolitan Areas as defined by the Office of Management and Budget (OMB; released 3/6/2020). Per 1000: For nonmoney amounts, Per 1000=(county value / county population for the same year as the data) x 1000. \$ Per capita=(county value / county population for the same year as the data). Value= . indicates missing or suppressed data or value not calculated.

Government

SALES TAX COLLECTIONS (\$)

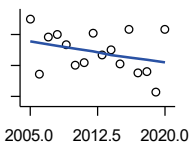


Kansas Department of Revenue. Use tax collections included beginning in calendar year 2018.

Year	County	State of Kansas	Non Metro Kansas	County Rank	Per 1000 or \$ Per Capita
2000	1,054,434	1,475,831,808	432,761,608	79	317,696.3
2001	994,510	1,481,026,688	426,316,284	80	308,375.2
2002	1,155,749	1,561,316,864	443,986,950	79	368,424.9
2003	1,182,982	1,626,782,976	461,658,700	81	381,976.8
2004	1,322,343	1,691,899,008	480,309,725	80	423,827.9
2005	1,477,241	1,744,980,352	497,494,867	76	488,344.1
2006	1,721,480	1,851,694,720	532,233,047	75	575,553.3
2007	1,867,567	1,917,546,752	559,319,583	73	628,598.9
2008	1,996,086	1,990,655,744	589,725,773	72	678,248.6
2009	2,001,706	1,866,223,078	548,627,132	71	670,588.3
2010	2,082,272	2,075,193,413	617,409,982	76	693,859.4
2011	2,458,616	2,347,193,367	702,671,534	77	832,300.6
2012	2,624,859	2,456,292,294	740,196,106	77	892,505.8
2013	2,683,222	2,489,204,048	746,226,565	72	911,111.1
2014	2,777,268	2,539,886,774	760,474,019	74	959,332.7
2015	2,567,186	2,642,374,740	750,090,163	74	883,104.8
2016	2,354,120	2,732,611,350	749,030,133	77	825,427.7
2017	2,570,539	2,726,104,521	744,246,491	72	904,164.4
2018	3,721,929	3,277,299,125	893,564,480	68	1,330,686.2
2019	2,907,775	3,395,631,405	939,607,762	77	1,037,379.7
2020	3,127,080	3,489,306,791	984,218,931	77	1,113,632.5
2021	3,036,698	3,981,293,227	1,098,391,422	80	1,087,253.1

Crime

CRIME INDEX OFFENSES



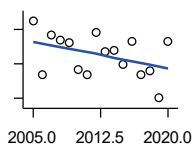
Kansas Bureau of Investigation, Note: Data are aggregated from reports by individual police departments and subject to be incomplete.

Year	County	State of Kansas	Non Metro Kansas	County Rank	Per 1000 or \$ Per Capita
2005	50	111,856	31,630	76	16.5
2006	14	110,032	.	95	4.7
2007	38	111,035	29,921	80	12.8
2008	40	93,996	27,342	76	13.6
2009	33	98,757	27,620	81	11.1
2010	20	98,354	26,909	90	6.7
2011	22	96,638	25,765	86	7.4
2012	41	98,914	26,963	76	13.9
2013	27	93,054	24,488	87	9.2
2014	30	86,323	23,341	85	10.4
2015	21	88,590	21,580	89	7.2
2016	43	90,589	21,565	73	15.1
2017	15	93,091	22,622	95	5.3
2018	16	92,062	20,325	85	5.7
2019	3	87,008	18,547	103	1.1
2020	43	87,346	17,762	70	15.3

County: county value. Kansas: state value. County Rank: highest county value ranked #1. (\$000): thousands of dollars. Nonmetro Kansas: Kansas total less Metropolitan Areas as defined by the Office of Management and Budget (OMB; released 3/6/2020). Per 1000: For nonmoney amounts, Per 1000=(county value / county population for the same year as the data) x 1000. \$ Per capita=(county value / county population for the same year as the data). Value= . indicates missing or suppressed data or value not calculated.

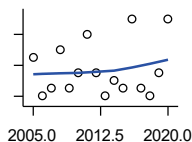
Crime

PROPERTY CRIMES



Kansas Bureau of Investigation, Note: Data are aggregated from reports by individual police departments and subject to be incomplete.

Year	County	State of Kansas	Non Metro Kansas	County Rank	Per 1000 or \$ Per Capita
2005	45	101,414	29,042	74	14.9
2006	14	99,110	.	93	4.7
2007	37	99,632	26,856	79	12.5
2008	34	83,964	24,367	78	11.6
2009	32	87,658	24,825	79	10.7
2010	17	87,926	24,133	89	5.7
2011	14	86,547	23,274	92	4.7
2012	38	88,707	24,220	75	12.9
2013	27	83,551	22,028	84	9.2
2014	28	76,794	20,858	84	9.7
2015	20	77,997	19,138	87	6.9
2016	33	79,549	19,207	74	11.6
2017	14	81,349	19,981	93	4.9
2018	16	79,695	17,769	84	5.7
2019	0	74,314	15,892	105	0.0
2020	33	73,450	15,100	72	11.8



VIOLENT CRIMES

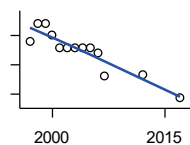
Kansas Bureau of Investigation, Note: Data are aggregated from reports by individual police departments and subject to be incomplete.

Year	County	State of Kansas	Non Metro Kansas	County Rank	Per 1000 or \$ Per Capita
2005	5	10,442	2,588	76	1.7
2006	0	10,922	.	99	0.0
2007	1	11,403	3,065	96	0.3
2008	6	10,032	2,975	74	2.0
2009	1	11,099	2,795	96	0.3
2010	3	10,428	2,776	82	1.0
2011	8	10,091	2,491	64	2.7
2012	3	10,207	2,743	92	1.0
2013	0	9,503	2,460	104	0.0
2014	2	9,529	2,483	98	0.7
2015	1	10,593	2,442	95	0.3
2016	10	11,040	2,358	57	3.5
2017	1	11,742	2,641	99	0.4
2018	0	12,367	2,556	104	0.0
2019	3	12,694	2,655	89	1.1
2020	10	13,896	2,662	66	3.6

County: county value. Kansas: state value. County Rank: highest county value ranked #1. (\$000): thousands of dollars. Nonmetro Kansas: Kansas total less Metropolitan Areas as defined by the Office of Management and Budget (OMB; released 3/6/2020). Per 1000: For nonmoney amounts, Per 1000=(county value / county population for the same year as the data) x 1000. \$ Per capita=(county value / county population for the same year as the data). Value= . indicates missing or suppressed data or value not calculated.

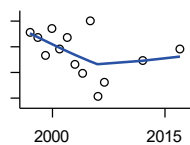
Agriculture

NUMBER OF FARMS



Kansas Agricultural Statistics, Kansas Farm Facts

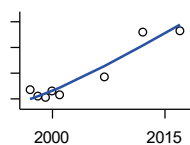
Year	County	State of Kansas	Non Metro Kansas	County Rank	Per 1000 or \$ Per Capita
1997	440	64,000	47,900	74	127.8
1998	470	65,000	48,850	70	137.8
1999	470	65,000	48,850	70	138.2
2000	450	64,000	48,030	72	135.6
2001	430	63,000	47,200	75	133.3
2002	430	63,000	47,200	75	137.1
2003	430	64,500	48,150	76	138.8
2004	430	64,500	48,150	76	137.8
2005	430	64,500	48,150	76	142.1
2006	420	64,000	47,650	76	140.4
2007	380	65,531	48,179	80	127.9
2012	384	61,773	45,655	78	130.6
2017	343	58,569	42,404	80	120.6



TOTAL ACRES HARVESTED

Kansas Agricultural Statistics, Kansas Farm Facts

Year	County	State of Kansas	Non Metro Kansas	County Rank	Per 1000 or \$ Per Capita
1997	165,510	22,846,000	19,430,580	72	48,085.4
1998	163,450	22,143,500	18,943,650	72	47,918.5
1999	156,660	21,708,900	18,581,750	75	46,076.5
2000	167,220	21,639,000	18,528,870	67	50,382.6
2001	159,220	21,847,900	18,689,750	75	49,370.5
2002	163,510	20,230,400	17,089,120	63	52,123.0
2003	153,130	21,827,700	18,661,920	81	49,444.6
2004	149,800	20,876,900	17,721,500	76	48,012.8
2005	170,140	21,936,500	18,807,930	70	56,244.6
2006	140,910	21,412,700	18,291,120	81	47,111.3
2007	146,014	19,886,655	17,164,743	69	49,146.4
2012	154,433	21,043,596	17,966,843	73	52,510.4
2017	159,125	21,837,465	18,543,057	75	55,970.8



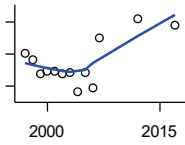
VALUE: LIVESTOCK AND POULTRY (\$000)

Kansas Agricultural Statistics, Kansas Farm Facts

Year	County	State of Kansas	Non Metro Kansas	County Rank	Per 1000 or \$ Per Capita
1997	11,842	2,806,445	2,500,305	86	3,440.4
1998	10,426	2,670,432	2,378,007	92	3,056.6
1999	10,413	2,849,061	2,554,528	96	3,062.6
2000	11,435	2,901,469	2,609,032	87	3,445.3
2001	10,898	2,693,274	2,437,187	79	3,379.2
2007	14,343	9,525,971	.	94	4,827.7
2012	23,089	11,476,571	10,883,216	74	7,850.7
2017	23,144	12,322,289	.	81	8,140.7

County: county value. Kansas: state value. County Rank: highest county value ranked #1. (\$000): thousands of dollars. Nonmetro Kansas: Kansas total less Metropolitan Areas as defined by the Office of Management and Budget (OMB; released 3/6/2020). Per 1000: For nonmoney amounts, Per 1000=(county value / county population for the same year as the data) x 1000. \$ Per capita=(county value / county population for the same year as the data). Value= . indicates missing or suppressed data or value not calculated.

Agriculture



VALUE:FIELD CROPS (\$000)
EXCLUDING GOVERNMENT
PROGRAM PAYMENTS

Kansas Agricultural Statistics, Kansas
Farm Facts

Year	County	State of Kansas	Non Metro Kansas	County Rank	Per 1000 or \$ Per Capita
1997	25,134	4,474,942	3,800,365	87	7,302.1
1998	23,363	3,594,319	3,124,409	77	6,849.3
1999	18,698	3,118,193	2,728,319	71	5,499.4
2000	19,507	2,915,660	2,540,052	68	5,877.4
2001	19,740	3,283,117	2,857,136	78	6,120.9
2002	18,982	3,011,855	2,560,580	69	6,051.0
2003	19,371	3,623,255	3,150,629	86	6,254.8
2004	13,104	3,445,688	2,896,603	95	4,200.0
2005	19,104	3,678,123	3,182,677	87	6,315.4
2006	14,632	4,308,716	3,684,132	94	4,892.0
2007	30,057	4,887,212	.	69	10,116.8
2012	35,826	6,983,993	6,044,551	79	12,181.6
2017	34,036	6,460,437	.	85	11,971.9

County: county value. Kansas: state value. County Rank: highest county value ranked #1. (\$000): thousands of dollars. Nonmetro Kansas: Kansas total less Metropolitan Areas as defined by the Office of Management and Budget (OMB; released 3/6/2020). Per 1000: For nonmoney amounts, Per 1000=(county value / county population for the same year as the data) x 1000. \$ Per capita=(county value / county population for the same year as the data). Value= . indicates missing or suppressed data or value not calculated.