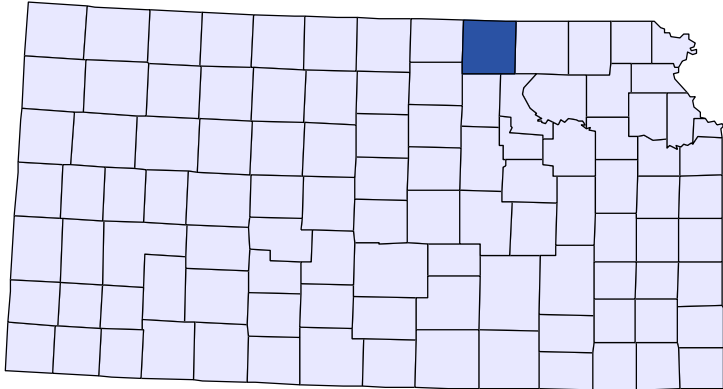




Kansas County Profiles

Washington County



The University
of Kansas

Institute for Policy
& Social Research

KU INSTITUTE FOR POLICY
& SOCIAL RESEARCH

The University of Kansas

1541 Lilac Lane, Rm. 607
Blake Hall
Lawrence, KS 66045-3129

Foreword

The Kansas County Profile Report is published by the Institute for Policy & Social Research (IPSR) at the University of Kansas with support from the KU University Center project.* Special thanks to Xanthippe Wedel, senior research data engineer, who compiles and updates the county profiles and Genna Hurd, associate researcher, who provides editorial review.

County reports can be generated for any county in Kansas by simply clicking on the county from the web site:

<https://ipsr.ku.edu/ksdata/kcced/profiles/>

The Kansas County Profile Report contains 12 categories of information: Population, Vital Statistics and Health, Housing, Education, Social Environment, Business, Employment, Income, Banking, Government, Crime, and Agriculture. For more information about Kansas, please refer to the Kansas Statistical Abstract, available online at:

<https://ipsr.ku.edu/ksdata/ksah/>

We are always looking for ways to improve the Kansas County Profile Report and we welcome your suggestions and comments. Please address any correspondence to the Institute for Policy & Social Research, The University of Kansas, 607 Blake Hall, 1541 Lilac Lane, Lawrence, Kansas 66045-3129, e-mail ipsr@ku.edu or call 785-864-3701.

**The KU University Center is a collaborative effort led by the Institute for Policy & Social Research at the University of Kansas. This project is supported by the Economic Development Administration, U.S. Department of Commerce, through its University Center Program.*

The mission of EDA is to lead the federal economic development agenda by promoting innovation and competitiveness, preparing American regions for growth and success in the worldwide economy.

Kansas County Profiles Table of Contents

Population

Total Population (Decennial Census)	1
Estimated Population (Current Population Reports)	2
Urban Population	2
Rural Population	3
Net Migration (Decade Ending...)	3
Median Age	3

Population (Age Groups)

Population Under 18 (Decennial Census)	3
Population Age 18 and Over (Decennial Census)	4
Population Age 65 and Over (Decennial Census)	4
Population Age 85 and Over (Decennial Census)	4

Vital Statistics and Health

Live Births	5
Deaths	5
Marriages	6
Divorces and Annulments	6
Physicians: M.D. Physicians	7
Physicians: D.O. Physicians	7
Dentists	8
Number of Hospitals	8
Number of Hospital Beds	9

Housing

Housing Units (Decennial Census)	9
Housing Units (Estimated)	10
Occupied Housing Units	10
Owner Occupied Housing Units	10
Renter Occupied Housing Units	11
Vacant Housing Units	11
Median Value (\$): Owner Occupied Housing Units	11
Median Contract Rent (\$)	12
Fair Market Rent: 2 Bedrooms	12

Education

Population Age 25 and Over	13
Percent of Population 25+ with High School or Higher Education	13
Percent of Population 25+ with Bachelors Degree or Higher Education	14
Public School Enrollment (FTE- School Year Beginning...)	14
Pupil/Teacher Ratio (School Year Beginning...)	15

Kansas County Profiles Table of Contents

Social Environment

Total Child Care Facilities	15
Preschools	16
Food Stamp Beneficiaries	16
Percent of Population Receiving Food Stamps	17
Estimated Number of People in Poverty	17
Estimated Percent of People in Poverty	18
Estimated Number of Related Children Age 5 to 17 in Families in Poverty	18
Estimated Percent of Related Children Age 5 to 17 in Families in Poverty	19
Estimated Number Under 18 in Poverty	19
Estimated Percent Under 18 in Poverty	20

Business

Establishments: Total	21
Establishments: 1-19 Employees	22
Establishments: 20-99 Employees	22
Establishments: 100-499 Employees	23
Establishments: 500 or More Employees	23
Establishments: Forestry, Fishing, Hunting, and Ag Support	24
Establishments: Mining	24
Establishments: Utilities	25
Establishments: Construction	25
Establishments: Manufacturing	26
Establishments: Wholesale Trade	26
Establishments: Retail Trade	27
Establishments: Transportation and Warehousing	27
Establishments: Information	28
Establishments: Finance and Insurance	28
Establishments: Real Estate, Rental, and Leasing	29
Establishments: Professional, Scientific, and Technical Services	29
Establishments: Management of Companies and Enterprises	30
Establishments: Admin, Support, Waste Management, and Remediation	30
Establishments: Educational Services	31
Establishments: Health Care and Social Assistance	31
Establishments: Arts, Entertainment, and Recreation	32
Establishments: Accommodation and Food Services	32
Establishments: Other Services	33

Kansas County Profiles Table of Contents

Business	
Total Annual Payroll (\$000)	34
Total Annual Payroll (\$000): Forestry, Fishing, Hunting, and Ag Support	35
Total Annual Payroll (\$000): Mining	35
Total Annual Payroll (\$000): Utilities	36
Total Annual Payroll (\$000): Construction	36
Total Annual Payroll (\$000): Manufacturing	37
Total Annual Payroll (\$000): Wholesale Trade	37
Total Annual Payroll (\$000): Retail Trade	38
Total Annual Payroll (\$000): Transportation and Warehousing	38
Total Annual Payroll (\$000): Information	39
Total Annual Payroll (\$000): Finance and Insurance	39
Total Annual Payroll (\$000): Real Estate, Rental, and Leasing	40
Total Annual Payroll (\$000): Professional, Scientific, and Technical Services	40
Total Annual Payroll (\$000): Management of Companies and Enterprises	41
Total Annual Payroll (\$000): Admin, Support, Waste Management, and Remediation	41
Total Annual Payroll (\$000): Educational Services	42
Total Annual Payroll (\$000): Health Care and Social Assistance	42
Total Annual Payroll (\$000): Arts, Entertainment, and Recreation	43
Total Annual Payroll (\$000): Accommodation and Food Services	43
Total Annual Payroll (\$000): Other Services	44
Nominal Taxable Retail Sales (Million\$)	44
Retail Pull Factor	45
Employment	
Civilian Labor Force (BLS - Place of Residence)	46
Employed (BLS - Place of Residence)	47
Unemployed (BLS - Place of Residence)	48
Unemployment Rate (BLS - Place of Residence)	49
BEA Employment: Total (Place of Work)	49
BEA Employment: Farm	50
BEA Employment: Non-Farm	50
Average Wage per Job (\$)	51
BEA Employment: Forestry, Fishing, Hunting, and Ag Support	51
BEA Employment: Mining	52
BEA Employment: Utilities	52
BEA Employment: Construction	53
BEA Employment: Manufacturing	53
BEA Employment: Wholesale Trade	54
BEA Employment: Retail Trade	54
BEA Employment: Transportation and Warehousing	55
BEA Employment: Information	55
BEA Employment: Finance and Insurance	56
BEA Employment: Real Estate, Rental, and Leasing	56
BEA Employment: Professional and Technical Services	57
BEA Employment: Management of Companies and Enterprises	57
BEA Employment: Administrative and Waste Services	58
BEA Employment: Educational Services	58
BEA Employment: Health Care and Social Assistance	59
BEA Employment: Arts, Entertainment, and Recreation	59
BEA Employment: Government and Government Enterprises	60
BEA Employment: Accommodation and Food Services	60
BEA Employment: Other Services, Except Public Administration	61

Kansas County Profiles Table of Contents

Income

BEA Per Capita Personal Income (\$)	61
Sources of Personal Income: Total Personal Income (\$000)	62
Sources of Personal Income: Wages And Salaries (\$000)	62
Sources of Personal Income: Proprietors-Farm (\$000)	63
Sources of Personal Income: Proprietors-Nonfarm (\$000)	63
Sources of Personal Income: Dividends, Interest, Rent (\$000)	64
Sources of Personal Income: Transfer Payments (\$000)	64
Sources of Personal Income: Less Social Insurance (\$000)	65
HUD Median Family Income	65
HUD 30% Low-To-Medium Income (LMI) Limit - 4 Persons	66
HUD 50% Low-To-Medium Income (LMI) Limit - 4 Persons	66
HUD 80% Low-To-Medium Income (LMI) Limit - 4 Persons	66

Banking

Bank Deposits (\$000)	67
Number of Banks	67
Number of Banking Offices	68

Government

Tangible Assessed Valuation (million\$)	68
Sales Tax Collections	69

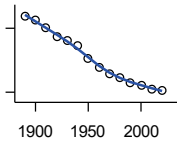
Crime

Crime Index Offenses	69
Property Crimes	70
Violent Crimes	70

Agriculture

Number of Farms	71
Total Acres Harvested	71
Value: Livestock and Poultry (\$000)	71
Value: Field Crops (\$000) Excluding Government Program Payments	72

Population



DECENNIAL CENSUS:TOTAL POPULATION

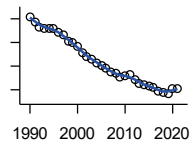
U.S. Census Bureau: Decennial Census

Year	County	State of Kansas	Non Metro Kansas	County Rank	Per 1000 or \$ Per Capita
1890	22,894	1,427,096	968,413	19	.
1900	21,963	1,470,495	981,206	20	.
1910	20,229	1,690,949	1,138,294	26	.
1920	17,984	1,769,257	1,153,525	34	.
1930	17,112	1,880,999	1,180,056	37	.
1940	15,921	1,801,028	1,097,216	38	.
1950	12,977	1,905,299	1,046,823	41	.
1960	10,739	2,178,611	1,021,510	46	.
1970	9,249	2,246,578	958,104	47	.
1980	8,543	2,363,679	980,085	52	.
1990	7,073	2,477,574	939,416	58	.
2000	6,483	2,688,418	959,507	61	.
2010	5,799	2,853,118	929,981	64	.
2020	5,530	2,937,880	892,006	62	.

County: county value. Kansas: state value. County Rank: highest county value ranked #1. (\$000): thousands of dollars. Nonmetro Kansas: Kansas total less Metropolitan Areas as defined by the Office of Management and Budget (OMB; released 3/6/2020). Per 1000: For nonmoney amounts, Per 1000=(county value / county population for the same year as the data) x 1000. \$ Per capita=(county value / county population for the same year as the data). Value= . indicates missing or suppressed data or value not calculated.

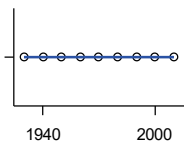
Population

ESTIMATED POPULATION



U.S. Census Bureau

Year	County	State of Kansas	Non Metro Kansas	County Rank	Per 1000 or \$ Per Capita
1990	7,042	2,481,349	938,607	58	.
1991	6,945	2,498,722	938,965	58	.
1992	6,835	2,532,394	942,759	59	.
1993	6,808	2,556,547	947,515	58	.
1994	6,801	2,580,513	952,178	58	.
1995	6,809	2,601,007	957,771	58	.
1996	6,713	2,614,554	959,455	59	.
1997	6,651	2,635,292	960,225	60	.
1998	6,533	2,660,598	960,569	60	.
1999	6,505	2,678,338	960,704	60	.
2000	6,413	2,693,681	959,230	61	.
2001	6,281	2,702,162	952,607	61	.
2002	6,201	2,713,535	945,985	61	.
2003	6,156	2,723,004	941,474	61	.
2004	6,072	2,734,373	937,623	62	.
2005	6,022	2,745,299	932,852	62	.
2006	5,950	2,762,931	928,809	62	.
2007	5,880	2,783,785	927,643	63	.
2008	5,848	2,808,076	926,248	63	.
2009	5,779	2,832,704	926,755	64	.
2010	5,784	2,858,190	930,028	64	.
2011	5,820	2,869,225	927,675	64	.
2012	5,727	2,885,257	925,152	65	.
2013	5,626	2,893,212	922,383	65	.
2014	5,610	2,900,475	917,854	65	.
2015	5,568	2,909,011	912,199	65	.
2016	5,564	2,910,844	905,099	64	.
2017	5,479	2,908,718	897,981	64	.
2018	5,450	2,911,359	892,656	65	.
2019	5,406	2,913,314	887,455	65	.
2020	5,526	2,935,880	889,750	62	.
2021	5,511	2,934,582	886,438	62	.



URBAN POPULATION

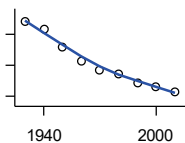
U.S. Census Bureau: Decennial Census

Year	County	State of Kansas	Non Metro Kansas	County Rank	Per 1000 or \$ Per Capita
1930	0	729,834	336,666	105	.
1940	0	753,941	349,228	105	.
1950	0	993,220	398,923	105	.
1960	0	1,328,741	457,447	105	.
1970	0	1,484,870	450,543	105	.
1980	0	1,575,899	474,769	105	.
1990	0	1,712,564	464,205	105	.
2000	0	1,920,081	488,011	105	.
2010	0	2,116,961	485,780	105	.

County: county value. Kansas: state value. County Rank: highest county value ranked #1. (\$000): thousands of dollars. Nonmetro Kansas: Kansas total less Metropolitan Areas as defined by the Office of Management and Budget (OMB; released 3/6/2020). Per 1000: For nonmoney amounts, Per 1000=(county value / county population for the same year as the data) x 1000. \$ Per capita=(county value / county population for the same year as the data). Value= . indicates missing or suppressed data or value not calculated.

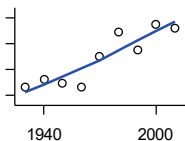
Population

RURAL POPULATION



U.S. Census Bureau

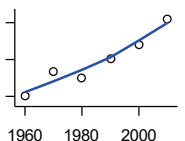
Year	County	State of Kansas	Non Metro Kansas	County Rank	Per 1000 or \$ Per Capita
1930	17,112	1,151,165	843,390	17	.
1940	15,921	1,047,087	747,988	16	.
1950	12,977	912,079	647,900	18	.
1960	10,739	849,870	564,063	25	.
1970	9,249	761,708	509,972	27	.
1980	8,543	787,780	505,873	31	.
1990	7,073	765,010	475,211	36	.
2000	6,483	768,337	471,900	43	.
2010	5,799	736,157	444,201	47	.



NET MIGRATION: DECADE ENDING...

calculated by the Institute for Policy and Social Research, The University of Kansas

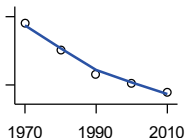
Year	County	State of Kansas	Non Metro Kansas	County Rank	Per 1000 or \$ Per Capita
1930	-2,667	-66,132	-101,869	92	-155.9
1940	-2,395	-192,649	-166,022	78	-150.4
1950	-2,531	-84,329	-158,379	75	-195.0
1960	-2,676	-38,999	-146,640	87	-249.2
1970	-1,500	-119,662	-105,116	80	-162.2
1980	-563	-21,983	-6,184	87	-65.9
1990	-1,245	-61,835	-79,274	84	-176.0
2000	-228	68,960	4,247	80	-35.2
2010	-413	5,578	-50,648	72	-71.2



MEDIAN AGE

U.S. Census Bureau: Decennial Census

Year	County	State of Kansas	Non Metro Kansas	County Rank	Per 1000 or \$ Per Capita
1960	38.0	26.9	.	17	.
1970	40.7	28.7	.	22	.
1980	40.0	30.1	.	16	.
1990	42.1	32.9	.	9	.
2000	43.6	35.2	.	17	.
2010	46.4	36.0	.	23	.



POPULATION UNDER 18 (DECENNIAL CENSUS)

U.S. Census Bureau: Decennial Census

Year	County	State of Kansas	Non Metro Kansas	County Rank	Per 1000 or \$ Per Capita
1970	2,853	746,354	306,227	49	.
1980	2,259	649,035	263,919	52	.
1990	1,737	661,614	250,107	60	.
2000	1,535	712,993	250,757	65	.
2010	1,328	726,939	229,213	65	.

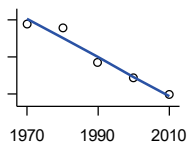
County: county value. Kansas: state value. County Rank: highest county value ranked #1. (\$000): thousands of dollars. Nonmetro Kansas: Kansas total less Metropolitan Areas as defined by the Office of Management and Budget (OMB; released 3/6/2020). Per 1000: For nonmoney amounts, Per 1000=(county value / county population for the same year as the data) x 1000. \$ Per capita=(county value / county population for the same year as the data). Value= . indicates missing or suppressed data or value not calculated.

Population

**POPULATION AGE 18 AND OVER
(DECENNIAL CENSUS)**

U.S. Census Bureau: Decennial Census

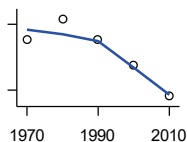
Year	County	State of Kansas	Non Metro Kansas	County Rank	Per 1000 or \$ Per Capita
1970	6,396	1,500,224	654,288	48	.
1980	6,282	1,714,282	716,684	52	.
1990	5,336	1,815,960	689,309	55	.
2000	4,948	1,975,425	709,154	60	.
2010	4,471	2,126,179	700,768	64	.



**POPULATION AGE 65 AND OVER
(DECENNIAL CENSUS)**

U.S. Census Bureau: Decennial Census

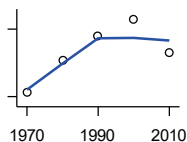
Year	County	State of Kansas	Non Metro Kansas	County Rank	Per 1000 or \$ Per Capita
1970	1,865	266,201	149,049	41	.
1980	2,048	306,263	164,932	42	.
1990	1,859	342,571	168,579	46	.
2000	1,625	356,229	161,769	51	.
2010	1,343	376,116	154,214	53	.



**POPULATION AGE 85 AND OVER
(DECENNIAL CENSUS)**

U.S. Census Bureau: Decennial Census

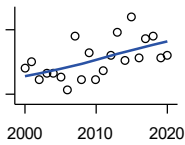
Year	County	State of Kansas	Non Metro Kansas	County Rank	Per 1000 or \$ Per Capita
1970	160	23,899	13,698	50	.
1980	231	33,455	18,804	42	.
1990	284	42,241	22,970	42	.
2000	322	51,770	26,644	40	.
2010	249	59,318	26,197	51	.



County: county value. Kansas: state value. County Rank: highest county value ranked #1. (\$000): thousands of dollars. Nonmetro Kansas: Kansas total less Metropolitan Areas as defined by the Office of Management and Budget (OMB; released 3/6/2020). Per 1000: For nonmoney amounts, Per 1000=(county value / county population for the same year as the data) x 1000. \$ Per capita=(county value / county population for the same year as the data). Value= . indicates missing or suppressed data or value not calculated.

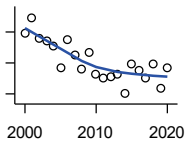
Vital Statistics and Health

BIRTHS (LIVE)



Kansas Department of Health and Environment

Year	County	State of Kansas	Non Metro Kansas	County Rank	Per 1000 or \$ Per Capita
2000	62	39,654	12,980	69	9.6
2001	65	38,832	12,527	64	10.3
2002	57	39,338	12,476	69	9.2
2003	60	39,353	12,342	68	9.7
2004	60	39,553	12,398	65	9.9
2005	58	39,701	12,382	67	9.6
2006	52	40,896	12,726	71	8.7
2007	77	41,951	12,990	60	13.1
2008	57	41,815	12,970	70	9.7
2009	69	41,388	12,949	64	11.9
2010	57	40,439	12,200	69	9.8
2011	61	39,628	12,098	69	10.5
2012	68	40,304	12,217	63	11.9
2013	79	38,805	11,877	59	14.0
2014	66	39,193	12,052	62	11.8
2015	86	39,126	11,836	52	15.4
2016	67	38,048	11,467	62	12.0
2017	76	36,464	10,968	54	13.9
2018	77	36,268	10,826	53	14.1
2019	67	35,395	10,506	61	12.4
2020	68	34,368	10,222	55	12.3



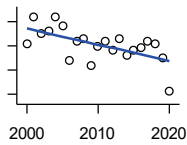
DEATHS

Kansas Department of Health and Environment

Year	County	State of Kansas	Non Metro Kansas	County Rank	Per 1000 or \$ Per Capita
2000	99	24,676	11,175	57	15.3
2001	109	24,590	10,807	50	17.4
2002	96	24,968	11,079	54	15.5
2003	94	24,417	10,615	54	15.3
2004	91	23,720	10,369	54	15.0
2005	77	24,632	10,599	59	12.8
2006	95	24,489	10,538	52	16.0
2007	85	24,413	10,601	53	14.5
2008	76	24,896	10,593	59	13.0
2009	87	23,997	9,938	51	15.1
2010	73	24,428	10,105	60	12.6
2011	70	25,114	10,520	62	12.0
2012	71	25,084	10,259	59	12.4
2013	73	25,347	10,249	61	13.0
2014	60	25,731	10,275	69	10.7
2015	79	26,611	10,539	61	14.2
2016	75	26,129	10,231	60	13.5
2017	70	26,725	10,452	62	12.8
2018	79	27,213	10,389	59	14.5
2019	64	27,312	10,569	66	11.8
2020	77	31,667	11,850	62	13.9

County: county value. Kansas: state value. County Rank: highest county value ranked #1. (\$000): thousands of dollars. Nonmetro Kansas: Kansas total less Metropolitan Areas as defined by the Office of Management and Budget (OMB; released 3/6/2020). Per 1000: For nonmoney amounts, Per 1000=(county value / county population for the same year as the data) x 1000. \$ Per capita=(county value / county population for the same year as the data). Value= . indicates missing or suppressed data or value not calculated.

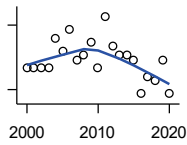
Vital Statistics and Health



MARRIAGES

Kansas Department of Health and Environment

Year	County	State of Kansas	Non Metro Kansas	County Rank	Per 1000 or \$ Per Capita
2000	41	20,426	7,333	67	6.3
2001	52	20,457	7,441	57	8.3
2002	45	19,783	6,794	59	7.3
2003	46	18,722	6,469	53	7.5
2004	52	19,174	6,756	55	8.6
2005	48	18,745	6,481	53	8.0
2006	34	18,836	6,433	66	5.7
2007	42	18,910	6,464	61	7.1
2008	43	18,717	6,283	57	7.4
2009	32	18,268	6,015	66	5.5
2010	40	18,150	5,925	57	6.9
2011	42	17,897	5,977	56	7.2
2012	38	18,154	5,752	61	6.6
2013	43	17,328	5,533	50	7.6
2014	36	17,655	5,535	62	6.4
2015	38	17,595	5,400	54	6.8
2016	39	17,948	5,340	52	7.0
2017	42	17,274	5,163	49	7.7
2018	41	16,362	4,999	49	7.5
2019	35	15,403	4,650	52	6.5
2020	21	14,038	4,066	68	3.8



DIVORCES AND ANNULMENTS

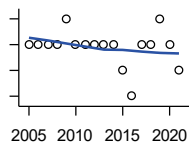
Kansas Department of Health and Environment

Year	County	State of Kansas	Non Metro Kansas	County Rank	Per 1000 or \$ Per Capita
2000	10	10,105	4,000	87	1.5
2001	10	9,885	3,818	83	1.6
2002	10	9,645	3,716	86	1.6
2003	10	8,644	3,464	84	1.6
2004	17	8,759	3,506	64	2.8
2005	14	8,476	3,311	71	2.3
2006	19	9,145	3,387	64	3.2
2007	12	9,347	3,402	80	2.0
2008	13	9,818	3,655	73	2.2
2009	16	10,333	3,463	69	2.8
2010	10	10,579	3,530	87	1.7
2011	22	10,445	3,347	56	3.8
2012	15	9,782	3,040	69	2.6
2013	13	9,085	2,973	72	2.3
2014	13	8,441	2,682	70	2.3
2015	12	8,036	2,704	66	2.2
2016	4	7,198	2,424	97	0.7
2017	8	6,494	2,315	79	1.5
2018	7	6,538	2,269	78	1.3
2019	12	6,398	2,357	64	2.2
2020	4	5,169	1,866	89	0.7

County: county value. Kansas: state value. County Rank: highest county value ranked #1. (\$000): thousands of dollars. Nonmetro Kansas: Kansas total less Metropolitan Areas as defined by the Office of Management and Budget (OMB; released 3/6/2020). Per 1000: For nonmoney amounts, Per 1000=(county value / county population for the same year as the data) x 1000. \$ Per capita=(county value / county population for the same year as the data). Value= . indicates missing or suppressed data or value not calculated.

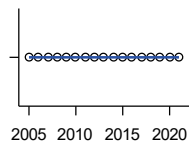
Vital Statistics and Health

PHYSICIANS: M.D. PHYSICIANS



Kansas Department of Health and Environment (1981-2005,2010-);Kansas Health Policy Authority (2006-2009)

Year	County	State of Kansas	Non Metro Kansas	County Rank	Per 1000 or \$ Per Capita
2005	5	4,241	912	55	0.8
2006	5	4,310	953	53	0.8
2007	5	5,309	1,046	53	0.9
2008	5	5,110	1,016	55	0.9
2009	6	5,249	996	49	1.0
2010	5	5,192	979	54	0.9
2011	5	5,243	983	52	0.9
2012	5	5,693	1,033	54	0.9
2013	5	6,106	1,071	56	0.9
2014	5	5,839	951	53	0.9
2015	4	5,703	855	54	0.7
2016	3	4,278	643	57	0.5
2017	5	6,332	1,047	55	0.9
2018	5	6,079	1,065	53	0.9
2019	6	6,435	1,036	47	1.1
2020	5	6,668	1,045	52	0.9
2021	4	6,745	1,042	58	0.7



PHYSICIANS: D.O. PHYSICIANS

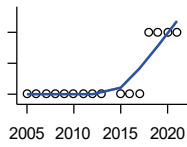
Kansas Department of Health and Environment (1981-2005,2010-);Kansas Health Policy Authority (2006-2009)

Year	County	State of Kansas	Non Metro Kansas	County Rank	Per 1000 or \$ Per Capita
2005	0	553	174	105	0.0
2006	0	508	171	105	0.0
2007	0	569	169	105	0.0
2008	0	558	166	105	0.0
2009	0	564	160	105	0.0
2010	0	583	169	105	0.0
2011	0	502	152	105	0.0
2012	0	718	200	105	0.0
2013	0	829	210	105	0.0
2014	0	817	189	105	0.0
2015	0	819	190	105	0.0
2016	0	632	136	105	0.0
2017	0	579	129	105	0.0
2018	0	871	164	105	0.0
2019	0	951	212	105	0.0
2020	0	1,018	204	105	0.0
2021	0	1,095	217	105	0.0

County: county value. Kansas: state value. County Rank: highest county value ranked #1. (\$000): thousands of dollars. Nonmetro Kansas: Kansas total less Metropolitan Areas as defined by the Office of Management and Budget (OMB; released 3/6/2020). Per 1000: For nonmoney amounts, Per 1000=(county value / county population for the same year as the data) x 1000. \$ Per capita=(county value / county population for the same year as the data). Value= . indicates missing or suppressed data or value not calculated.

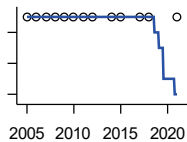
Vital Statistics and Health

DENTISTS



Kansas Department of Health and Environment (1981-2006,2010-); Kansas Health Policy Authority (2007-2009)

Year	County	State of Kansas	Non Metro Kansas	County Rank	Per 1000 or \$ Per Capita
2005	1	1,347	363	92	0.2
2006	1	1,381	361	92	0.2
2007	1	1,335	350	91	0.2
2008	1	1,392	353	90	0.2
2009	1	1,353	350	90	0.2
2010	1	1,401	365	91	0.2
2011	1	1,338	346	88	0.2
2012	1	1,434	392	86	0.2
2013	1	1,212	328	87	0.2
2015	1	1,240	327	89	0.2
2016	1	1,456	350	87	0.2
2017	1	1,467	350	87	0.2
2018	3	1,604	359	47	0.6
2019	3	1,646	355	48	0.6
2020	3	1,646	355	48	0.5
2021	3	1,688	362	49	0.5



NUMBER OF HOSPITALS

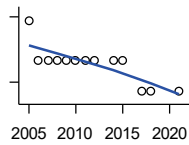
American Hospital Association, American Hospital Association Guide to the Health Care Field

Year	County	State of Kansas	Non Metro Kansas	County Rank	Per 1000 or \$ Per Capita
2005	2	158	105	31	.
2006	2	158	105	31	.
2007	2	159	104	32	.
2008	2	159	104	32	.
2009	2	158	105	32	.
2010	2	158	104	31	.
2011	2	158	103	31	.
2012	2	157	103	31	.
2014	2	156	.	31	.
2015	2	155	103	32	.
2017	2	157	102	30	.
2018	2	154	99	29	.
2021	2	151	.	27	.

County: county value. Kansas: state value. County Rank: highest county value ranked #1. (\$000): thousands of dollars. Nonmetro Kansas: Kansas total less Metropolitan Areas as defined by the Office of Management and Budget (OMB; released 3/6/2020). Per 1000: For nonmoney amounts, Per 1000=(county value / county population for the same year as the data) x 1000. \$ Per capita=(county value / county population for the same year as the data). Value= . indicates missing or suppressed data or value not calculated.

Vital Statistics and Health

NUMBER OF HOSPITAL BEDS

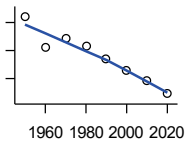


Kansas Department of Health and Environment

Year	County	State of Kansas	Non Metro Kansas	County Rank	Per 1000 or \$ Per Capita
2005	59	12,389	5,687	52	9.8
2006	50	11,992	5,514	59	8.4
2007	50	12,171	5,637	58	8.5
2008	50	12,332	5,700	59	8.5
2009	50	12,283	5,652	58	8.7
2010	50	12,218	5,521	58	8.6
2011	50	12,182	5,335	56	8.6
2012	50	12,002	5,355	56	8.7
2014	50	12,034	.	53	8.9
2015	50	11,926	5,330	52	9.0
2017	43	11,491	4,825	57	7.8
2018	43	11,448	4,583	50	7.9
2021	43	11,199	.	46	7.8

Housing

HOUSING UNITS (DECENNIAL)



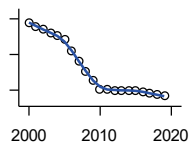
U.S. Census Bureau: Decennial Census

Year	County	State of Kansas	Non Metro Kansas	County Rank	Per 1000 or \$ Per Capita
1950	4,106	586,650	328,210	41	316.4
1960	3,552	672,899	329,380	46	330.8
1970	3,705	789,735	363,824	48	400.6
1980	3,579	955,207	416,877	54	418.9
1990	3,355	1,044,112	417,062	56	474.3
2000	3,142	1,131,395	422,218	59	484.7
2010	2,955	1,233,215	424,050	62	509.6
2020	2,726	1,275,689	413,120	63	492.9

County: county value. Kansas: state value. County Rank: highest county value ranked #1. (\$000): thousands of dollars. Nonmetro Kansas: Kansas total less Metropolitan Areas as defined by the Office of Management and Budget (OMB; released 3/6/2020). Per 1000: For nonmoney amounts, Per 1000=(county value / county population for the same year as the data) x 1000. \$ Per capita=(county value / county population for the same year as the data). Value= . indicates missing or suppressed data or value not calculated.

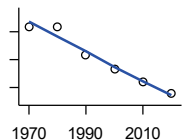
Housing

HOUSING UNITS (ESTIMATED)



U.S. Census Bureau

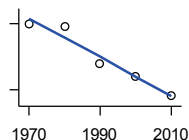
Year	County	State of Kansas	Non Metro Kansas	County Rank	Per 1000 or \$ Per Capita
2000	3,140	1,134,529	422,560	59	484.3
2001	3,129	1,146,858	423,876	59	498.2
2002	3,120	1,160,129	425,089	60	503.1
2003	3,111	1,171,620	425,936	61	505.4
2004	3,103	1,184,702	426,593	62	511.0
2005	3,091	1,195,791	426,964	62	513.3
2006	3,061	1,206,692	426,713	62	514.5
2007	3,030	1,217,608	426,090	62	515.3
2008	3,003	1,225,625	425,768	62	513.5
2009	2,976	1,230,552	424,776	62	515.0
2010	2,953	1,234,456	424,174	62	509.2
2011	2,952	1,238,052	424,549	62	507.2
2012	2,950	1,241,992	425,116	63	515.1
2013	2,950	1,246,675	425,699	63	524.4
2014	2,948	1,253,284	426,269	63	525.5
2015	2,950	1,258,999	426,844	63	529.8
2016	2,945	1,265,684	427,465	63	529.3
2017	2,941	1,273,536	427,746	63	536.8
2018	2,937	1,280,649	428,099	63	538.9
2019	2,933	1,288,401	428,495	63	542.5



OCCUPIED HOUSING UNITS

U.S. Census Bureau: Decennial Census

Year	County	State of Kansas	Non Metro Kansas	County Rank	Per 1000 or \$ Per Capita
1970	3,269	727,364	326,494	48	353.4
1980	3,270	872,239	371,693	52	382.8
1990	2,862	944,726	365,901	56	404.6
2000	2,673	1,037,891	375,313	59	412.3
2010	2,474	1,112,096	370,269	61	426.6
2020	2,312	1,151,360	356,330	62	418.1



OWNER OCCUPIED HOUSING UNITS

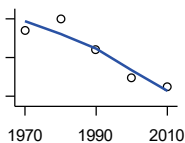
U.S. Census Bureau: Decennial Census

Year	County	State of Kansas	Non Metro Kansas	County Rank	Per 1000 or \$ Per Capita
1970	2,598	502,585	236,338	45	280.9
1980	2,570	612,433	277,096	50	300.8
1990	2,241	641,762	263,099	53	316.8
2000	2,124	718,703	271,350	56	327.6
2010	1,949	753,532	261,763	59	336.1

County: county value. Kansas: state value. County Rank: highest county value ranked #1. (\$000): thousands of dollars. Nonmetro Kansas: Kansas total less Metropolitan Areas as defined by the Office of Management and Budget (OMB; released 3/6/2020). Per 1000: For nonmoney amounts, Per 1000=(county value / county population for the same year as the data) x 1000. \$ Per capita=(county value / county population for the same year as the data). Value= . indicates missing or suppressed data or value not calculated.

Housing

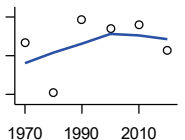
RENTER OCCUPIED HOUSING UNITS



U.S. Census Bureau: Decennial Census

Year	County	State of Kansas	Non Metro Kansas	County Rank	Per 1000 or \$ Per Capita
1970	671	224,779	90,156	59	72.5
1980	700	259,806	94,597	57	81.9
1990	621	302,964	102,802	60	87.8
2000	549	319,188	103,963	63	84.7
2010	525	358,564	108,506	67	90.5

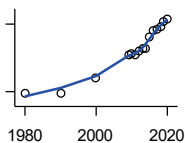
VACANT HOUSING UNITS



U.S. Census Bureau: Decennial Census

Year	County	State of Kansas	Non Metro Kansas	County Rank	Per 1000 or \$ Per Capita
1970	432	60,058	35,954	43	46.7
1980	304	77,912	41,584	71	35.6
1990	493	99,386	51,161	56	69.7
2000	469	93,309	46,904	55	72.3
2010	481	121,119	53,781	64	82.9
2020	414	124,329	56,790	69	74.9

MEDIAN VALUE (\$): OWNER OCCUPIED HOUSING UNITS



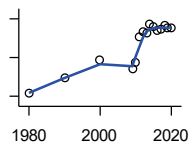
U.S. Census Bureau, Decennial Census (- 2000), (2009 -) American Community Survey five-year average ending in year shown.

Year	County	State of Kansas	Non Metro Kansas	County Rank	Per 1000 or \$ Per Capita
1980	18,400	37,800	.	99	.
1990	18,500	52,200	.	101	.
2000	32,200	83,500	.	100	.
2009	52,700	118,500	.	91	.
2010	53,600	122,600	.	92	.
2011	52,500	125,500	.	95	.
2012	55,800	127,400	.	93	.
2013	58,300	128,400	.	92	.
2014	58,300	129,400	.	96	.
2015	68,800	132,000	.	83	.
2016	73,900	135,300	.	82	.
2017	75,300	139,200	.	81	.
2018	78,200	145,400	.	79	.
2019	82,000	151,900	.	76	.
2020	84,100	157,600	.	70	.

County: county value. Kansas: state value. County Rank: highest county value ranked #1. (\$000): thousands of dollars. Nonmetro Kansas: Kansas total less Metropolitan Areas as defined by the Office of Management and Budget (OMB; released 3/6/2020). Per 1000: For nonmoney amounts, Per 1000=(county value / county population for the same year as the data) x 1000. \$ Per capita=(county value / county population for the same year as the data). Value= . indicates missing or suppressed data or value not calculated.

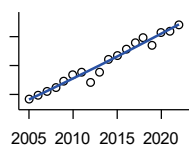
Housing

MEDIAN CONTRACT RENT (\$)



U.S. Census Bureau, Decennial Census (- 2000), (2009 -) American Community Survey five-year average ending in year shown.

Year	County	State of Kansas	Non Metro Kansas	County Rank	Per 1000 or \$ Per Capita
1980	116	219	.	105	.
1990	193	372	.	104	.
2000	286	498	.	103	.
2009	243	491	.	96	.
2010	277	507	.	90	.
2011	404	699	.	104	.
2012	434	715	.	103	.
2013	430	732	.	103	.
2014	470	748	.	101	.
2015	460	757	.	101	.
2016	440	775	.	104	.
2017	448	801	.	104	.
2018	467	831	.	105	.
2019	456	850	.	104	.
2020	450	863	.	105	.



FAIR MARKET RENT: 2 BEDROOMS

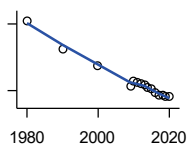
U.S. Department of Housing and Urban Development (HUD)

Year	County	State of Kansas	Non Metro Kansas	County Rank	Per 1000 or \$ Per Capita
2005	486	.	.	53	.
2006	497	.	.	105	.
2007	512	.	.	105	.
2008	525	628	.	105	.
2009	547	653	.	105	.
2010	569	678	.	56	.
2011	578	684	.	56	.
2012	540	660	.	105	.
2013	577	712	.	105	.
2014	622	746	.	105	.
2015	634	756	.	105	.
2016	658	781	.	105	.
2017	681	811	.	105	.
2018	697	815	.	105	.
2019	672	828	.	105	.
2020	714	855	.	105	.
2021	718	874	.	105	.
2022	742	879	.	105	.

County: county value. Kansas: state value. County Rank: highest county value ranked #1. (\$000): thousands of dollars. Nonmetro Kansas: Kansas total less Metropolitan Areas as defined by the Office of Management and Budget (OMB; released 3/6/2020). Per 1000: For nonmoney amounts, Per 1000=(county value / county population for the same year as the data) x 1000. \$ Per capita=(county value / county population for the same year as the data). Value= . indicates missing or suppressed data or value not calculated.

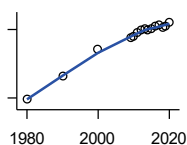
Education

POPULATION AGE 25+



U.S. Census Bureau, Decennial Census (- 2000), (2009 -) American Community Survey five-year average ending in year shown.

Year	County	State of Kansas	Non Metro Kansas	County Rank	Per 1000 or \$ Per Capita
1980	5,570	1,388,102	596,639	.	.
1990	4,939	1,565,936	608,745	.	.
2000	4,572	1,701,207	618,131	.	.
2009	4,097	1,775,427	600,188	.	.
2010	4,206	1,802,904	608,716	.	.
2011	4,193	1,822,400	610,386	.	.
2012	4,163	1,838,079	611,103	.	.
2013	4,128	1,850,010	610,374	.	.
2014	4,065	1,861,894	609,612	.	.
2015	4,032	1,869,698	606,967	.	.
2016	3,951	1,878,495	604,563	.	.
2017	3,911	1,886,741	601,076	.	.
2018	3,884	1,894,675	598,487	.	.
2019	3,857	1,902,279	595,501	.	.
2020	3,861	1,911,990	593,923	.	.



PERCENT HS GRADUATE OR HIGHER AGE 25+

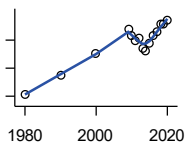
U.S. Census Bureau, Decennial Census (- 2000), (2009 -) American Community Survey five-year average ending in year shown.

Year	County	State of Kansas	Non Metro Kansas	County Rank	Per 1000 or \$ Per Capita
1980	59.3	73.3	.	104	.
1990	69.6	81.3	.	103	.
2000	81.2	86.0	.	85	.
2009	86.7	89.0	.	78	.
2010	87.0	89.2	.	78	.
2011	88.6	89.5	.	65	.
2012	89.6	89.7	.	55	.
2013	90.3	89.8	.	48	.
2014	89.8	90.0	.	57	.
2015	90.1	90.2	.	60	.
2016	91.2	90.3	.	50	.
2017	91.9	90.5	.	45	.
2018	90.7	90.7	.	62	.
2019	91.6	91.0	.	54	.
2020	93.2	91.4	.	35	.

County: county value. Kansas: state value. County Rank: highest county value ranked #1. (\$000): thousands of dollars. Nonmetro Kansas: Kansas total less Metropolitan Areas as defined by the Office of Management and Budget (OMB; released 3/6/2020). Per 1000: For nonmoney amounts, Per 1000=(county value / county population for the same year as the data) x 1000. \$ Per capita=(county value / county population for the same year as the data). Value= . indicates missing or suppressed data or value not calculated.

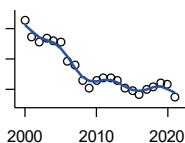
Education

PERCENT BACHELORS DEGREE OR HIGHER AGE 25+



U.S. Census Bureau, Decennial Census (- 2000), (2009 -) American Community Survey five-year average ending in year shown.

Year	County	State of Kansas	Non Metro Kansas	County Rank	Per 1000 or \$ Per Capita
1980	7.9	17.0	.	102	.
1990	11.2	21.1	.	87	.
2000	15.2	25.8	.	82	.
2009	19.4	28.8	.	47	.
2010	18.2	29.3	.	63	.
2011	17.3	29.7	.	78	.
2012	17.8	30.0	.	75	.
2013	16.1	30.3	.	94	.
2014	15.5	30.7	.	98	.
2015	17.0	31.0	.	89	.
2016	18.4	31.6	.	78	.
2017	19.1	32.3	.	73	.
2018	20.3	32.9	.	65	.
2019	20.3	33.4	.	69	.
2020	21.0	33.9	.	65	.



PUBLIC SCHOOL ENROLLMENT (FTE) SCHOOL YEAR BEGINNING...

Kansas State Department of Education

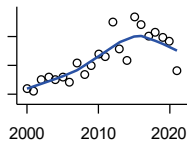
Year	County	State of Kansas	Non Metro Kansas	County Rank	Per 1000 or \$ Per Capita
2000	1,227.7	448,150.8	166,722.5	56	189.4
2001	1,174.3	447,047.1	164,365.0	58	187.0
2002	1,156.3	444,860.3	161,555.4	57	186.5
2003	1,167.0	443,620.6	159,130.2	56	189.6
2004	1,161.6	441,957.2	156,566.3	56	191.3
2005	1,156.7	442,708.4	155,197.2	56	192.1
2006	1,093.0	444,878.7	153,842.3	58	183.7
2007	1,078.5	446,831.3	152,337.1	58	183.4
2008	1,029.6	447,730.0	150,572.7	60	176.1
2009	1,004.7	453,202.5	151,246.8	61	173.9
2010	1,027.8	455,405.0	151,023.8	61	177.2
2011	1,038.8	456,000.5	150,257.9	60	178.5
2012	1,035.7	458,496.4	150,463.0	60	180.8
2013	1,028.8	461,950.0	150,420.9	61	182.9
2014	1,004.0	464,395.4	150,499.4	62	179.0
2015	995.4	463,504.0	149,539.3	60	178.8
2016	982.9	459,920.3	147,293.5	60	176.7
2017	999.5	477,977.9	152,096.3	60	182.4
2018	1,007.8	476,481.7	150,456.8	59	184.9
2019	1,020.3	476,525.1	150,045.2	59	188.7
2020	1,018.0	462,088.0	146,369.6	58	184.1
2021	972.8	463,652.4	147,500.4	59	176.5

County: county value. Kansas: state value. County Rank: highest county value ranked #1. (\$000): thousands of dollars. Nonmetro Kansas: Kansas total less Metropolitan Areas as defined by the Office of Management and Budget (OMB; released 3/6/2020). Per 1000: For nonmoney amounts, Per 1000=(county value / county population for the same year as the data) x 1000. \$ Per capita=(county value / county population for the same year as the data). Value= . indicates missing or suppressed data or value not calculated.

Education

PUPIL/TEACHER RATIO SCHOOL YEAR BEGINNING...

Kansas State Department of Education

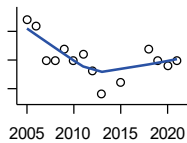


Year	County	State of Kansas	Non Metro Kansas	County Rank	Per 1000 or \$ Per Capita
2000	9.7	15.4	13.9	104	.
2001	9.6	15.3	13.8	103	.
2002	10.0	15.4	13.9	101	.
2003	10.1	15.5	13.8	99	.
2004	10.0	15.3	13.6	100	.
2005	10.1	15.0	13.4	98	.
2006	9.9	14.7	13.2	98	.
2007	10.6	14.6	13.1	88	.
2008	10.2	14.4	12.9	96	.
2009	10.5	14.8	13.2	94	.
2010	10.9	15.2	13.6	93	.
2011	10.8	15.1	13.5	87	.
2012	12.0	15.1	13.5	70	.
2013	11.1	15.1	13.5	83	.
2014	10.7	15.0	13.6	91	.
2015	12.2	15.2	13.9	65	.
2016	11.9	15.1	13.7	71	.
2017	11.5	15.5	13.9	81	.
2018	11.7	15.3	13.8	74	.
2019	11.5	15.2	13.7	73	.
2020	11.3	14.7	13.4	72	.
2021	10.3	14.8	13.5	95	.

Social Environment

CHILD CARE FACILITIES: TOTAL CHILD CARE FACILITIES

Kansas Department of Health and Environment, Bureau of Adult and Child Care

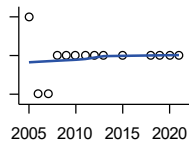


Year	County	State of Kansas	Non Metro Kansas	County Rank	Per 1000 or \$ Per Capita
2005	32	8,258	3,378	48	5.3
2006	31	8,442	3,429	51	5.2
2007	25	8,241	3,317	59	4.3
2008	25	8,011	3,150	56	4.3
2009	27	7,853	3,066	51	4.7
2010	25	7,354	2,858	54	4.3
2011	26	6,835	2,623	48	4.5
2012	23	6,346	2,409	51	4.0
2013	19	5,754	2,179	54	3.4
2015	21	5,289	2,146	51	3.8
2018	27	4,607	1,904	38	5.0
2019	25	4,287	1,774	38	4.6
2020	24	4,274	1,798	43	4.3
2021	25	4,002	1,700	38	4.5

County: county value. Kansas: state value. County Rank: highest county value ranked #1. (\$000): thousands of dollars. Nonmetro Kansas: Kansas total less Metropolitan Areas as defined by the Office of Management and Budget (OMB; released 3/6/2020). Per 1000: For nonmoney amounts, Per 1000=(county value / county population for the same year as the data) x 1000. \$ Per capita=(county value / county population for the same year as the data). Value= . indicates missing or suppressed data or value not calculated.

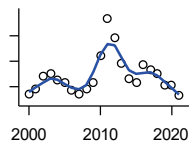
Social Environment

**CHILD CARE FACILITIES:
PRESCHOOLS**



Kansas Department of Health and Environment, Bureau of Adult and Child Care

Year	County	State of Kansas	Non Metro Kansas	County Rank	Per 1000 or \$ Per Capita
2005	3	243	140	31	0.5
2006	1	221	127	76	0.2
2007	1	208	119	76	0.2
2008	2	204	114	46	0.3
2009	2	194	107	42	0.3
2010	2	194	112	44	0.3
2011	2	209	123	47	0.3
2012	2	201	121	47	0.3
2013	2	140	84	35	0.4
2015	2	185	113	42	0.4
2018	2	150	94	41	0.4
2019	2	134	83	35	0.4
2020	2	126	78	34	0.4
2021	2	120	74	29	0.4



FOOD STAMP BENEFICIARIES

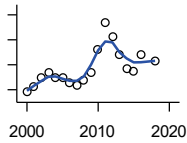
Kansas Social and Rehabilitation Services

Year	County	State of Kansas	Non Metro Kansas	County Rank	Per 1000 or \$ Per Capita
2000	185	110,619	44,825	67	28.5
2001	196	117,241	46,741	66	31.2
2002	220	131,726	52,342	63	35.5
2003	225	155,908	61,280	70	36.5
2004	213	167,971	65,852	72	35.1
2005	208	175,710	67,261	72	34.5
2006	194	182,821	67,487	75	32.6
2007	186	184,035	66,979	78	31.6
2008	196	187,377	67,160	71	33.5
2009	208	208,007	73,637	74	36.0
2010	260	259,609	90,919	76	44.8
2011	334	296,542	101,155	69	57.4
2012	295	303,257	102,478	74	51.5
2013	247	316,424	105,345	79	43.9
2014	216	301,377	100,761	83	38.5
2015	207	277,614	93,353	81	37.2
2016	243	258,412	88,343	74	43.7
2017	234	239,592	82,070	74	42.7
2018	225	219,738	75,208	72	41.3
2019	204	205,261	69,899	77	37.7
2020	203	198,457	66,721	73	36.7
2021	182	203,424	68,883	79	33.0

County: county value. Kansas: state value. County Rank: highest county value ranked #1. (\$000): thousands of dollars. Nonmetro Kansas: Kansas total less Metropolitan Areas as defined by the Office of Management and Budget (OMB; released 3/6/2020). Per 1000: For nonmoney amounts, Per 1000=(county value / county population for the same year as the data) x 1000. \$ Per capita=(county value / county population for the same year as the data). Value= . indicates missing or suppressed data or value not calculated.

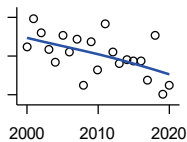
Social Environment

PERCENT OF POPULATION RECEIVING FOOD STAMPS



U.S. Dept. of Agriculture Food and Nutrition Service (1990-1997); Kansas Social and Rehabilitation Services (1998-)

Year	County	State of Kansas	Non Metro Kansas	County Rank	Per 1000 or \$ Per Capita
2000	2.9	4.1	.	75	.
2001	3.1	4.3	.	75	.
2002	3.5	4.9	.	69	.
2003	3.7	5.7	.	78	.
2004	3.5	6.2	.	86	.
2005	3.5	6.4	.	87	.
2006	3.3	6.6	.	95	.
2007	3.2	6.6	.	96	.
2008	3.4	6.7	.	94	.
2009	3.7	7.4	.	92	.
2010	4.6	9.1	.	90	.
2011	5.7	10.3	.	82	.
2012	5.1	10.5	.	91	.
2013	4.4	10.9	.	97	.
2014	3.9	10.4	.	103	.
2015	3.7	9.6	.	101	.
2016	4.4	8.9	.	93	.
2018	4.2	7.5	.	91	.



ESTIMATED NUMBER OF PEOPLE IN POVERTY

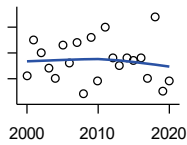
U.S. Census Bureau, Small Area Income and Poverty Estimates

Year	County	State of Kansas	Non Metro Kansas	County Rank	Per 1000 or \$ Per Capita
2000	624	235,087	98,984	58	96.3
2001	695	252,134	106,257	57	110.7
2002	660	265,673	107,542	58	106.4
2003	618	278,163	107,323	59	100.4
2004	585	297,733	111,534	62	96.3
2005	652	310,667	118,768	58	108.3
2006	609	327,102	123,700	65	102.4
2007	642	301,828	111,953	59	109.2
2008	526	307,804	113,015	67	89.9
2009	638	359,692	123,394	60	110.4
2010	563	374,677	131,502	70	97.1
2011	684	383,859	134,912	61	117.5
2012	609	392,095	133,800	64	106.3
2013	580	391,718	134,067	69	103.1
2014	590	381,506	130,213	69	105.2
2015	587	366,069	123,073	66	105.4
2016	588	343,773	121,314	64	105.7
2017	536	335,371	116,854	69	97.8
2018	655	336,892	114,490	60	120.2
2019	502	319,931	110,692	69	92.9
2020	524	300,931	100,998	66	94.8

County: county value. Kansas: state value. County Rank: highest county value ranked #1. (\$000): thousands of dollars. Nonmetro Kansas: Kansas total less Metropolitan Areas as defined by the Office of Management and Budget (OMB; released 3/6/2020). Per 1000: For nonmoney amounts, Per 1000=(county value / county population for the same year as the data) x 1000. \$ Per capita=(county value / county population for the same year as the data). Value= . indicates missing or suppressed data or value not calculated.

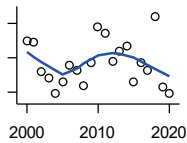
Social Environment

ESTIMATED % OF PEOPLE IN POVERTY



U.S. Census Bureau, Small Area Income and Poverty Estimates

Year	County	State of Kansas	Non Metro Kansas	County Rank	Per 1000 or \$ Per Capita
2000	10.1	8.9	.	56	.
2001	11.5	9.5	.	50	.
2002	11.0	10.0	.	58	.
2003	10.4	10.4	.	64	.
2004	10.0	11.1	.	76	.
2005	11.3	11.7	.	67	.
2006	10.6	12.2	.	85	.
2007	11.4	11.2	.	58	.
2008	9.4	11.3	.	89	.
2009	11.6	13.2	.	67	.
2010	9.9	13.5	.	93	.
2011	12.0	13.8	.	70	.
2012	10.8	14.0	.	82	.
2013	10.5	13.9	.	88	.
2014	10.8	13.5	.	85	.
2015	10.7	12.9	.	80	.
2016	10.8	12.2	.	79	.
2017	10.0	11.9	.	90	.
2018	12.4	11.9	.	52	.
2019	9.5	11.3	.	91	.
2020	9.9	10.6	.	75	.



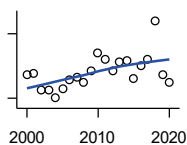
EST. NUMBER OF RELATED CHILDREN AGE 5 TO 17 IN FAMILIES IN POVERTY

U.S. Census Bureau, Small Area Income and Poverty Estimates

Year	County	State of Kansas	Non Metro Kansas	County Rank	Per 1000 or \$ Per Capita
2000	130	50,388	21,854	63	20.1
2001	129	53,755	23,094	66	20.5
2002	112	52,453	21,423	69	18.1
2003	108	55,419	21,809	67	17.5
2004	99	59,392	22,313	70	16.3
2005	106	60,203	24,244	72	17.6
2006	116	64,427	25,326	68	19.5
2007	113	61,149	23,639	63	19.2
2008	104	59,842	22,661	68	17.8
2009	117	71,850	26,251	70	20.2
2010	138	81,077	29,804	68	23.8
2011	134	82,311	29,306	67	23.0
2012	118	87,594	29,781	73	20.6
2013	124	84,325	29,253	71	22.0
2014	127	83,873	29,354	68	22.6
2015	106	78,192	27,482	75	19.0
2016	117	67,810	25,074	68	21.0
2017	113	67,873	25,032	68	20.6
2018	144	68,153	24,928	59	26.4
2019	103	64,613	23,117	69	19.1
2020	99	59,792	21,143	69	17.9

County: county value. Kansas: state value. County Rank: highest county value ranked #1. (\$000): thousands of dollars. Nonmetro Kansas: Kansas total less Metropolitan Areas as defined by the Office of Management and Budget (OMB; released 3/6/2020). Per 1000: For nonmoney amounts, Per 1000=(county value / county population for the same year as the data) x 1000. \$ Per capita=(county value / county population for the same year as the data). Value= . indicates missing or suppressed data or value not calculated.

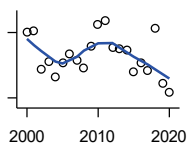
Social Environment



EST. % OF RELATED CHILDREN AGE 5 TO 17 IN FAMILIES IN POVERTY

U.S. Census Bureau, Small Area Income and Poverty Estimates

Year	County	State of Kansas	Non Metro Kansas	County Rank	Per 1000 or \$ Per Capita
2000	12.2	10.0	.	58	.
2001	12.3	10.8	.	63	.
2002	10.7	10.5	.	68	.
2003	10.7	11.3	.	74	.
2004	10.0	12.5	.	91	.
2005	10.9	12.8	.	89	.
2006	11.7	13.2	.	85	.
2007	12.0	12.6	.	76	.
2008	11.5	12.3	.	82	.
2009	12.5	14.7	.	82	.
2010	14.2	15.9	.	76	.
2011	13.6	16.2	.	81	.
2012	12.6	17.2	.	88	.
2013	13.4	16.5	.	81	.
2014	13.5	16.4	.	78	.
2015	11.8	15.3	.	90	.
2016	13.0	13.2	.	77	.
2017	13.6	13.4	.	76	.
2018	17.2	13.5	.	41	.
2019	12.2	12.9	.	77	.
2020	11.5	11.9	.	83	.



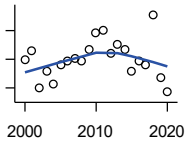
ESTIMATED NUMBER UNDER 18 IN POVERTY

U.S. Census Bureau, Small Area Income and Poverty Estimates

Year	County	State of Kansas	Non Metro Kansas	County Rank	Per 1000 or \$ Per Capita
2000	200	82,619	34,843	64	30.8
2001	202	87,487	36,724	63	32.2
2002	166	84,181	32,870	67	26.8
2003	173	93,896	36,004	68	28.1
2004	159	98,641	36,272	70	26.2
2005	172	100,254	39,118	69	28.6
2006	180	105,193	41,054	70	30.3
2007	174	100,242	37,881	66	29.6
2008	167	100,146	37,552	66	28.6
2009	187	118,187	42,682	68	32.4
2010	207	129,009	46,428	68	35.7
2011	211	133,478	46,832	66	36.3
2012	186	135,261	46,294	71	32.5
2013	185	131,251	44,952	71	32.9
2014	184	125,562	43,933	70	32.8
2015	164	119,994	41,828	73	29.5
2016	172	100,996	37,387	69	30.9
2017	165	102,858	37,955	69	30.1
2018	204	102,616	36,991	60	37.4
2019	153	97,920	34,797	71	28.3
2020	145	88,491	30,767	69	26.2

County: county value. Kansas: state value. County Rank: highest county value ranked #1. (\$000): thousands of dollars. Nonmetro Kansas: Kansas total less Metropolitan Areas as defined by the Office of Management and Budget (OMB; released 3/6/2020). Per 1000: For nonmoney amounts, Per 1000=(county value / county population for the same year as the data) x 1000. \$ Per capita=(county value / county population for the same year as the data). Value= . indicates missing or suppressed data or value not calculated.

Social Environment



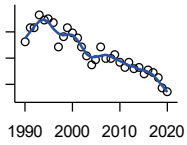
ESTIMATED PERCENT UNDER 18 IN POVERTY

U.S. Census Bureau, Small Area Income and Poverty Estimates

Year	County	State of Kansas	Non Metro Kansas	County Rank	Per 1000 or \$ Per Capita
2000	14.0	11.9	.	60	.
2001	14.6	12.7	.	63	.
2002	12.0	12.1	.	73	.
2003	13.2	13.8	.	73	.
2004	12.3	14.6	.	87	.
2005	13.6	15.2	.	81	.
2006	13.9	15.4	.	82	.
2007	14.1	14.7	.	78	.
2008	13.9	14.6	.	78	.
2009	14.7	17.1	.	82	.
2010	15.8	18.1	.	76	.
2011	16.0	18.8	.	80	.
2012	14.4	19.0	.	85	.
2013	15.0	18.4	.	79	.
2014	14.7	17.6	.	79	.
2015	13.2	16.9	.	88	.
2016	13.9	14.3	.	79	.
2017	13.6	14.7	.	86	.
2018	17.1	14.8	.	53	.
2019	12.7	14.3	.	84	.
2020	11.7	13.0	.	86	.

County: county value. Kansas: state value. County Rank: highest county value ranked #1. (\$000): thousands of dollars. Nonmetro Kansas: Kansas total less Metropolitan Areas as defined by the Office of Management and Budget (OMB; released 3/6/2020). Per 1000: For nonmoney amounts, Per 1000=(county value / county population for the same year as the data) x 1000. \$ Per capita=(county value / county population for the same year as the data). Value= . indicates missing or suppressed data or value not calculated.

Business



ESTABLISHMENTS TOTAL COUNTY BUSINESS PATTERNS

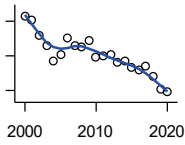
U.S. Census Bureau, County Business Patterns. Beginning with the 2017 data, any tabulation with fewer than 3 establishments were omitted from the release. Data for these establishments are included in the broader total.

Year	County	State of Kansas	Non Metro Kansas	County Rank	Per 1000 or \$ Per Capita
1990	232	65,858	26,802	51	32.8
1991	243	65,941	26,750	49	35.0
1992	243	67,630	27,229	48	35.6
1993	253	68,930	27,655	49	37.2
1994	249	69,822	27,763	50	36.6
1995	250	70,894	28,111	49	36.7
1996	247	72,017	28,353	51	36.8
1997	229	73,924	28,884	56	34.4
1998	236	74,019	28,749	54	36.1
1999	243	74,486	28,536	52	37.4
2000	239	74,939	28,475	52	36.9
2001	235	74,565	28,282	54	37.4
2002	229	75,077	28,183	56	36.9
2003	222	74,972	27,998	56	36.1
2004	215	75,827	28,009	57	35.4
2005	219	76,173	27,830	56	36.4
2006	229	76,446	27,653	52	38.5
2007	220	77,157	27,736	56	37.4
2008	220	76,096	27,314	53	37.6
2009	223	74,698	26,839	51	38.6
2010	217	74,301	26,739	55	37.4
2011	213	73,598	26,555	55	36.6
2012	217	73,944	26,534	56	37.9
2013	212	73,816	26,393	56	37.7
2014	213	74,055	26,292	54	38.0
2015	208	74,526	26,355	57	37.4
2016	211	74,884	26,172	55	37.9
2017	209	74,947	26,093	55	38.1
2018	205	74,559	25,802	55	37.6
2019	197	74,292	25,536	56	36.4
2020	194	73,982	25,178	56	35.1

County: county value. Kansas: state value. County Rank: highest county value ranked #1. (\$000): thousands of dollars. Nonmetro Kansas: Kansas total less Metropolitan Areas as defined by the Office of Management and Budget (OMB; released 3/6/2020). Per 1000: For nonmoney amounts, Per 1000=(county value / county population for the same year as the data) x 1000. \$ Per capita=(county value / county population for the same year as the data). Value= . indicates missing or suppressed data or value not calculated.

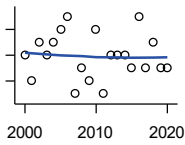
Business

**ESTABLISHMENTS: 1-19
EMPLOYEES**



U.S. Census Bureau, County Business Patterns. Beginning with the 2017 data, any tabulation with fewer than 3 establishments were omitted from the release. Data for these establishments are included in the broader total.

Year	County	State of Kansas	Non Metro Kansas	County Rank	Per 1000 or \$ Per Capita
2000	223	64,527	25,381	53	34.4
2001	221	64,176	25,248	53	35.2
2002	212	64,886	25,208	57	34.2
2003	206	64,714	25,020	56	33.5
2004	197	65,554	24,995	58	32.4
2005	201	65,796	24,839	57	33.4
2006	210	65,764	24,589	52	35.3
2007	206	66,446	24,701	55	35.0
2008	205	65,322	24,257	52	35.1
2009	209	64,128	23,851	51	36.2
2010	199	64,015	23,857	55	34.3
2011	200	63,251	23,571	54	34.4
2012	201	63,519	23,575	56	35.1
2013	196	63,197	23,396	56	34.8
2014	197	63,113	23,229	53	35.1
2015	193	63,280	23,227	55	34.7
2016	192	63,630	23,117	53	34.5
2017	194	63,619	23,022	55	35.4
2018	188	63,233	22,745	56	34.5
2019	181	62,904	22,489	58	33.5
2020	179	62,634	22,173	56	32.4



**ESTABLISHMENTS: 20-99
EMPLOYEES**

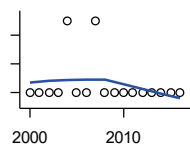
U.S. Census Bureau, County Business Patterns. Beginning with the 2017 data, any tabulation with fewer than 3 establishments were omitted from the release. Data for these establishments are included in the broader total.

Year	County	State of Kansas	Non Metro Kansas	County Rank	Per 1000 or \$ Per Capita
2000	16	8,714	2,653	54	2.5
2001	14	8,692	2,593	58	2.2
2002	17	8,582	2,554	52	2.7
2003	16	8,642	2,568	54	2.6
2004	17	8,658	2,590	52	2.8
2005	18	8,685	2,553	52	3.0
2006	19	8,922	2,612	51	3.2
2007	13	8,938	2,574	61	2.2
2008	15	8,939	2,587	57	2.6
2009	14	8,848	2,551	58	2.4
2010	18	8,612	2,454	45	3.1
2011	13	8,668	2,540	62	2.2
2012	16	8,700	2,500	54	2.8
2013	16	8,870	2,541	56	2.8
2014	16	9,121	2,590	55	2.9
2015	15	9,374	2,664	57	2.7
2016	19	9,412	2,596	50	3.4
2017	15	9,487	2,638	55	2.7
2018	17	9,485	2,621	51	3.1
2019	15	9,485	2,591	55	2.8
2020	15	9,471	2,545	53	2.7

County: county value. Kansas: state value. County Rank: highest county value ranked #1. (\$000): thousands of dollars. Nonmetro Kansas: Kansas total less Metropolitan Areas as defined by the Office of Management and Budget (OMB; released 3/6/2020). Per 1000: For nonmoney amounts, Per 1000=(county value / county population for the same year as the data) x 1000. \$ Per capita=(county value / county population for the same year as the data). Value= . indicates missing or suppressed data or value not calculated.

Business

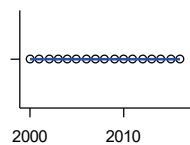
ESTABLISHMENTS: 100-499 EMPLOYEES



U.S. Census Bureau, County Business Patterns. Beginning with the 2017 data, any tabulation with fewer than 3 establishments were omitted from the release. Data for these establishments are included in the broader total.

Year	County	State of Kansas	Non Metro Kansas	County Rank	Per 1000 or \$ Per Capita
2000	0	1,555	409	105	0.0
2001	0	1,555	406	105	0.0
2002	0	1,464	386	105	0.0
2003	0	1,470	378	105	0.0
2004	1	1,463	388	82	0.2
2005	0	1,537	400	105	0.0
2006	0	1,598	407	105	0.0
2007	1	1,602	416	87	0.2
2008	0	1,653	421	105	0.0
2009	0	1,551	394	105	0.0
2010	0	1,513	382	105	0.0
2011	0	1,523	395	105	0.0
2012	0	1,567	410	105	0.0
2013	0	1,581	407	105	0.0
2014	0	1,641	421	105	0.0
2015	0	1,693	414	105	0.0
2016	0	1,671	406	105	0.0

ESTABLISHMENTS: 500 OR MORE EMPLOYEES



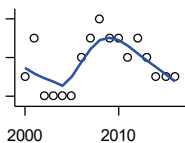
U.S. Census Bureau, County Business Patterns. Beginning with the 2017 data, any tabulation with fewer than 3 establishments were omitted from the release. Data for these establishments are included in the broader total.

Year	County	State of Kansas	Non Metro Kansas	County Rank	Per 1000 or \$ Per Capita
2000	0	143	32	105	0.0
2001	0	142	35	105	0.0
2002	0	145	35	105	0.0
2003	0	146	32	105	0.0
2004	0	152	36	105	0.0
2005	0	155	38	105	0.0
2006	0	162	45	105	0.0
2007	0	171	45	105	0.0
2008	0	182	49	105	0.0
2009	0	171	43	105	0.0
2010	0	161	46	105	0.0
2011	0	156	49	105	0.0
2012	0	158	49	105	0.0
2013	0	168	49	105	0.0
2014	0	180	52	105	0.0
2015	0	179	50	105	0.0
2016	0	171	53	105	0.0

County: county value. Kansas: state value. County Rank: highest county value ranked #1. (\$000): thousands of dollars. Nonmetro Kansas: Kansas total less Metropolitan Areas as defined by the Office of Management and Budget (OMB; released 3/6/2020). Per 1000: For nonmoney amounts, Per 1000=(county value / county population for the same year as the data) x 1000. \$ Per capita=(county value / county population for the same year as the data). Value= . indicates missing or suppressed data or value not calculated.

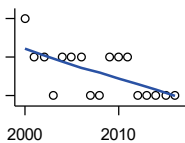
Business

ESTABLISHMENTS: FORESTRY, FISHING, HUNTING, AND AG SUPPORT



U.S. Census Bureau, County Business Patterns. Beginning with the 2017 data, any tabulation with fewer than 3 establishments were omitted from the release. Data for these establishments are included in the broader total.

Year	County	State of Kansas	Non Metro Kansas	County Rank	Per 1000 or \$ Per Capita
2000	2	190	149	43	0.3
2001	4	217	168	19	0.6
2002	1	224	176	84	0.2
2003	1	217	173	84	0.2
2004	1	211	165	77	0.2
2005	1	188	148	76	0.2
2006	3	193	158	24	0.5
2007	4	212	170	20	0.7
2008	5	197	158	9	0.9
2009	4	191	154	14	0.7
2010	4	192	161	16	0.7
2011	3	193	157	26	0.5
2012	4	204	164	18	0.7
2013	3	208	166	27	0.5
2014	2	194	152	55	0.4
2015	2	192	149	51	0.4
2016	2	181	142	48	0.4



ESTABLISHMENTS: MINING

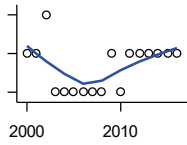
U.S. Census Bureau, County Business Patterns. Beginning with the 2017 data, any tabulation with fewer than 3 establishments were omitted from the release. Data for these establishments are included in the broader total.

Year	County	State of Kansas	Non Metro Kansas	County Rank	Per 1000 or \$ Per Capita
2000	3	868	619	53	0.5
2001	2	878	622	69	0.3
2002	2	847	615	68	0.3
2003	1	864	633	88	0.2
2004	2	880	647	67	0.3
2005	2	941	695	69	0.3
2006	2	991	734	71	0.3
2007	1	1,000	759	88	0.2
2008	1	1,047	799	90	0.2
2009	2	1,016	772	70	0.3
2010	2	1,009	762	72	0.3
2011	2	1,013	763	73	0.3
2012	1	1,048	789	91	0.2
2013	1	1,060	802	92	0.2
2014	1	1,102	828	93	0.2
2015	1	1,069	810	94	0.2
2016	1	990	747	93	0.2

County: county value. Kansas: state value. County Rank: highest county value ranked #1. (\$000): thousands of dollars. Nonmetro Kansas: Kansas total less Metropolitan Areas as defined by the Office of Management and Budget (OMB; released 3/6/2020). Per 1000: For nonmoney amounts, Per 1000=(county value / county population for the same year as the data) x 1000. \$ Per capita=(county value / county population for the same year as the data). Value= . indicates missing or suppressed data or value not calculated.

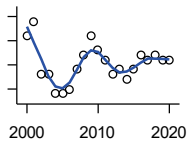
Business

ESTABLISHMENTS: UTILITIES



U.S. Census Bureau, County Business Patterns. Beginning with the 2017 data, any tabulation with fewer than 3 establishments were omitted from the release. Data for these establishments are included in the broader total.

Year	County	State of Kansas	Non Metro Kansas	County Rank	Per 1000 or \$ Per Capita
2000	2	274	192	68	0.3
2001	2	290	204	70	0.3
2002	3	278	195	38	0.5
2003	1	268	180	90	0.2
2004	1	247	164	90	0.2
2005	1	254	172	91	0.2
2006	1	248	169	92	0.2
2007	1	222	156	87	0.2
2008	1	244	166	87	0.2
2009	2	222	152	57	0.3
2010	1	197	129	82	0.2
2011	2	230	156	57	0.3
2012	2	232	156	57	0.3
2013	2	234	159	58	0.4
2014	2	232	160	58	0.4
2015	2	237	165	59	0.4
2016	2	245	171	60	0.4



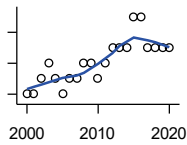
ESTABLISHMENTS: CONSTRUCTION

U.S. Census Bureau, County Business Patterns. Beginning with the 2017 data, any tabulation with fewer than 3 establishments were omitted from the release. Data for these establishments are included in the broader total.

Year	County	State of Kansas	Non Metro Kansas	County Rank	Per 1000 or \$ Per Capita
2000	31	7,703	2,616	45	4.8
2001	34	7,449	2,520	38	5.4
2002	23	7,519	2,482	58	3.7
2003	23	7,722	2,521	57	3.7
2004	19	7,887	2,518	59	3.1
2005	19	8,032	2,515	61	3.2
2006	20	8,031	2,494	60	3.4
2007	24	8,057	2,547	54	4.1
2008	27	7,831	2,522	48	4.6
2009	31	7,342	2,452	42	5.4
2010	28	7,064	2,394	43	4.8
2011	26	6,774	2,361	46	4.5
2012	23	6,741	2,393	52	4.0
2013	24	6,802	2,394	49	4.3
2014	22	6,920	2,383	54	3.9
2015	24	7,014	2,377	48	4.3
2016	27	6,988	2,343	43	4.9
2017	26	7,031	2,316	45	4.7
2018	27	7,124	2,285	41	5.0
2019	26	7,060	2,242	44	4.8
2020	26	7,089	2,249	44	4.7

County: county value. Kansas: state value. County Rank: highest county value ranked #1. (\$000): thousands of dollars. Nonmetro Kansas: Kansas total less Metropolitan Areas as defined by the Office of Management and Budget (OMB; released 3/6/2020). Per 1000: For nonmoney amounts, Per 1000=(county value / county population for the same year as the data) x 1000. \$ Per capita=(county value / county population for the same year as the data). Value= . indicates missing or suppressed data or value not calculated.

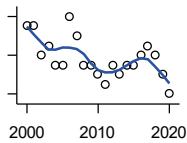
Business



**ESTABLISHMENTS:
MANUFACTURING**

U.S. Census Bureau, County Business Patterns. Beginning with the 2017 data, any tabulation with fewer than 3 establishments were omitted from the release. Data for these establishments are included in the broader total.

Year	County	State of Kansas	Non Metro Kansas	County Rank	Per 1000 or \$ Per Capita
2000	5	3,229	1,316	77	0.8
2001	5	3,240	1,323	75	0.8
2002	6	3,181	1,289	69	1.0
2003	7	3,159	1,291	65	1.1
2004	6	3,179	1,313	73	1.0
2005	5	3,128	1,278	79	0.8
2006	6	3,165	1,290	73	1.0
2007	6	3,184	1,316	73	1.0
2008	7	3,171	1,297	70	1.2
2009	7	3,026	1,240	66	1.2
2010	6	2,955	1,222	73	1.0
2011	7	2,877	1,193	64	1.2
2012	8	2,889	1,197	55	1.4
2013	8	2,836	1,165	55	1.4
2014	8	2,831	1,168	54	1.4
2015	10	2,817	1,161	49	1.8
2016	10	2,791	1,150	51	1.8
2017	8	2,760	1,147	55	1.5
2018	8	2,725	1,126	54	1.5
2019	8	2,695	1,111	56	1.5
2020	8	2,673	1,103	57	1.4



**ESTABLISHMENTS: WHOLESALE
TRADE**

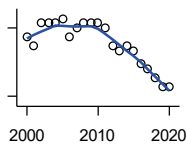
U.S. Census Bureau, County Business Patterns. Beginning with the 2017 data, any tabulation with fewer than 3 establishments were omitted from the release. Data for these establishments are included in the broader total.

Year	County	State of Kansas	Non Metro Kansas	County Rank	Per 1000 or \$ Per Capita
2000	19	4,876	1,776	47	2.9
2001	19	4,811	1,769	46	3.0
2002	16	4,719	1,750	55	2.6
2003	17	4,590	1,637	47	2.8
2004	15	4,553	1,634	54	2.5
2005	15	4,541	1,618	52	2.5
2006	20	4,517	1,596	37	3.4
2007	18	4,555	1,629	45	3.1
2008	15	4,501	1,622	52	2.6
2009	15	4,437	1,614	51	2.6
2010	14	4,432	1,612	56	2.4
2011	13	4,400	1,660	59	2.2
2012	15	4,563	1,755	58	2.6
2013	14	4,501	1,741	56	2.5
2014	15	4,497	1,746	54	2.7
2015	15	4,459	1,755	52	2.7
2016	16	4,457	1,732	51	2.9
2017	17	4,436	1,774	49	3.1
2018	16	4,330	1,727	49	2.9
2019	14	4,291	1,713	58	2.6
2020	12	4,191	1,677	66	2.2

County: county value. Kansas: state value. County Rank: highest county value ranked #1. (\$000): thousands of dollars. Nonmetro Kansas: Kansas total less Metropolitan Areas as defined by the Office of Management and Budget (OMB; released 3/6/2020). Per 1000: For nonmoney amounts, Per 1000=(county value / county population for the same year as the data) x 1000. \$ Per capita=(county value / county population for the same year as the data). Value= . indicates missing or suppressed data or value not calculated.

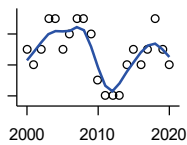
Business

ESTABLISHMENTS: RETAIL TRADE



U.S. Census Bureau, County Business Patterns. Beginning with the 2017 data, any tabulation with fewer than 3 establishments were omitted from the release. Data for these establishments are included in the broader total.

Year	County	State of Kansas	Non Metro Kansas	County Rank	Per 1000 or \$ Per Capita
2000	38	12,261	5,240	58	5.9
2001	36	12,206	5,207	65	5.7
2002	41	11,980	5,082	54	6.6
2003	41	11,834	5,049	55	6.7
2004	41	11,748	4,967	52	6.8
2005	42	11,562	4,834	49	7.0
2006	38	11,367	4,702	54	6.4
2007	40	11,306	4,653	51	6.8
2008	41	10,978	4,494	49	7.0
2009	41	10,760	4,372	47	7.1
2010	41	10,727	4,346	45	7.1
2011	40	10,655	4,289	49	6.9
2012	36	10,585	4,202	52	6.3
2013	35	10,433	4,147	54	6.2
2014	36	10,391	4,070	51	6.4
2015	35	10,327	4,061	54	6.3
2016	32	10,197	3,965	57	5.8
2017	31	10,074	3,885	58	5.7
2018	29	9,866	3,797	59	5.3
2019	27	9,762	3,750	61	5.0
2020	27	9,591	3,666	61	4.9



ESTABLISHMENTS: TRANSPORTATION & WAREHOUSING

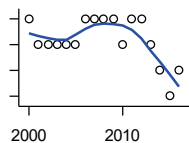
U.S. Census Bureau, County Business Patterns. Beginning with the 2017 data, any tabulation with fewer than 3 establishments were omitted from the release. Data for these establishments are included in the broader total.

Year	County	State of Kansas	Non Metro Kansas	County Rank	Per 1000 or \$ Per Capita
2000	9	2,474	1,293	72	1.4
2001	8	2,463	1,298	77	1.3
2002	9	2,461	1,278	72	1.5
2003	11	2,576	1,297	59	1.8
2004	11	2,651	1,324	62	1.8
2005	9	2,632	1,326	70	1.5
2006	10	2,626	1,295	65	1.7
2007	11	2,664	1,314	62	1.9
2008	11	2,675	1,329	57	1.9
2009	10	2,635	1,313	65	1.7
2010	7	2,615	1,313	80	1.2
2011	6	2,579	1,285	85	1.0
2012	6	2,519	1,243	84	1.0
2013	6	2,492	1,226	83	1.1
2014	8	2,518	1,240	71	1.4
2015	9	2,554	1,257	63	1.6
2016	8	2,567	1,241	66	1.4
2017	9	2,640	1,245	61	1.6
2018	11	2,627	1,238	55	2.0
2019	9	2,615	1,209	60	1.7
2020	8	2,589	1,179	66	1.4

County: county value. Kansas: state value. County Rank: highest county value ranked #1. (\$000): thousands of dollars. Nonmetro Kansas: Kansas total less Metropolitan Areas as defined by the Office of Management and Budget (OMB; released 3/6/2020). Per 1000: For nonmoney amounts, Per 1000=(county value / county population for the same year as the data) x 1000. \$ Per capita=(county value / county population for the same year as the data). Value= . indicates missing or suppressed data or value not calculated.

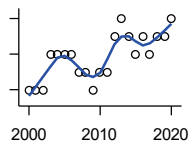
Business

ESTABLISHMENTS: INFORMATION



U.S. Census Bureau, County Business Patterns. Beginning with the 2017 data, any tabulation with fewer than 3 establishments were omitted from the release. Data for these establishments are included in the broader total.

Year	County	State of Kansas	Non Metro Kansas	County Rank	Per 1000 or \$ Per Capita
2000	4	1,542	578	75	0.6
2001	3	1,556	566	85	0.5
2002	3	1,517	551	80	0.5
2003	3	1,516	564	79	0.5
2004	3	1,518	556	74	0.5
2005	3	1,519	536	73	0.5
2006	4	1,549	559	68	0.7
2007	4	1,504	527	63	0.7
2008	4	1,468	522	61	0.7
2009	4	1,420	510	59	0.7
2010	3	1,437	527	75	0.5
2011	4	1,428	537	63	0.7
2012	4	1,387	515	61	0.7
2013	3	1,337	487	69	0.5
2014	2	1,335	496	85	0.4
2015	1	1,359	510	103	0.2
2016	2	1,431	537	85	0.4



ESTABLISHMENTS: FINANCE & INSURANCE

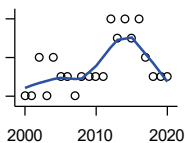
U.S. Census Bureau, County Business Patterns. Beginning with the 2017 data, any tabulation with fewer than 3 establishments were omitted from the release. Data for these establishments are included in the broader total.

Year	County	State of Kansas	Non Metro Kansas	County Rank	Per 1000 or \$ Per Capita
2000	14	5,209	1,848	60	2.2
2001	14	5,178	1,828	60	2.2
2002	14	5,496	1,911	62	2.3
2003	16	5,569	1,907	54	2.6
2004	16	5,572	1,913	56	2.6
2005	16	5,708	1,964	59	2.7
2006	16	5,877	1,976	55	2.7
2007	15	6,017	2,030	58	2.6
2008	15	6,010	2,023	60	2.6
2009	14	5,933	1,994	64	2.4
2010	15	5,872	1,975	57	2.6
2011	15	5,854	1,985	59	2.6
2012	17	5,993	2,024	51	3.0
2013	18	5,903	1,993	51	3.2
2014	17	5,894	2,000	51	3.0
2015	16	5,932	1,998	55	2.9
2016	17	6,022	2,021	54	3.1
2017	16	6,026	2,007	58	2.9
2018	17	6,023	1,997	52	3.1
2019	17	5,953	1,977	50	3.1
2020	18	5,926	1,969	47	3.3

County: county value. Kansas: state value. County Rank: highest county value ranked #1. (\$000): thousands of dollars. Nonmetro Kansas: Kansas total less Metropolitan Areas as defined by the Office of Management and Budget (OMB; released 3/6/2020). Per 1000: For nonmoney amounts, Per 1000=(county value / county population for the same year as the data) x 1000. \$ Per capita=(county value / county population for the same year as the data). Value= . indicates missing or suppressed data or value not calculated.

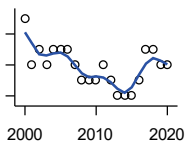
Business

ESTABLISHMENTS: REAL ESTATE, RENTAL, AND LEASING



U.S. Census Bureau, County Business Patterns. Beginning with the 2017 data, any tabulation with fewer than 3 establishments were omitted from the release. Data for these establishments are included in the broader total.

Year	County	State of Kansas	Non Metro Kansas	County Rank	Per 1000 or \$ Per Capita
2000	2	2,733	687	78	0.3
2001	2	2,849	724	73	0.3
2002	4	2,952	735	55	0.6
2003	2	3,007	727	71	0.3
2004	4	3,108	713	56	0.7
2005	3	3,203	727	61	0.5
2006	3	3,268	736	62	0.5
2007	2	3,286	721	71	0.3
2008	3	3,239	738	61	0.5
2009	3	3,122	723	58	0.5
2010	3	3,050	708	59	0.5
2011	3	3,002	692	58	0.5
2012	6	2,981	691	42	1.0
2013	5	3,046	717	48	0.9
2014	6	3,135	738	44	1.1
2015	5	3,179	744	48	0.9
2016	6	3,293	757	43	1.1
2017	4	3,389	.	57	0.7
2018	3	3,409	.	67	0.6
2019	3	3,464	.	65	0.6
2020	3	3,500	.	63	0.5



ESTABLISHMENTS: PROFESSIONAL, SCIENTIFIC, AND TECHNICAL SERVICES

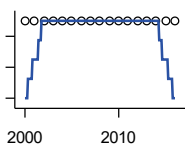
U.S. Census Bureau, County Business Patterns. Beginning with the 2017 data, any tabulation with fewer than 3 establishments were omitted from the release. Data for these establishments are included in the broader total.

Year	County	State of Kansas	Non Metro Kansas	County Rank	Per 1000 or \$ Per Capita
2000	13	6,424	1,690	59	2.0
2001	10	6,492	1,665	68	1.6
2002	11	6,719	1,704	67	1.8
2003	10	6,793	1,735	66	1.6
2004	11	7,025	1,730	66	1.8
2005	11	7,087	1,711	64	1.8
2006	11	7,231	1,736	64	1.8
2007	10	7,329	1,729	66	1.7
2008	9	7,133	1,671	70	1.5
2009	9	7,122	1,676	67	1.6
2010	9	7,172	1,680	71	1.6
2011	10	7,115	1,668	69	1.7
2012	9	7,122	1,681	71	1.6
2013	8	7,129	1,698	77	1.4
2014	8	7,206	1,682	79	1.4
2015	8	7,184	1,687	75	1.4
2016	9	7,146	1,659	69	1.6
2017	11	7,224	1,679	63	2.0
2018	11	7,138	1,655	64	2.0
2019	10	7,119	.	65	1.8
2020	10	7,117	.	66	1.8

County: county value. Kansas: state value. County Rank: highest county value ranked #1. (\$000): thousands of dollars. Nonmetro Kansas: Kansas total less Metropolitan Areas as defined by the Office of Management and Budget (OMB; released 3/6/2020). Per 1000: For nonmoney amounts, Per 1000=(county value / county population for the same year as the data) x 1000. \$ Per capita=(county value / county population for the same year as the data). Value= . indicates missing or suppressed data or value not calculated.

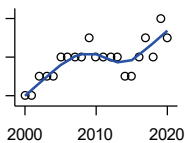
Business

ESTABLISHMENTS: MANAGEMENT OF COMPANIES AND ENTERPRISES



U.S. Census Bureau, County Business Patterns. Beginning with the 2017 data, any tabulation with fewer than 3 establishments were omitted from the release. Data for these establishments are included in the broader total.

Year	County	State of Kansas	Non Metro Kansas	County Rank	Per 1000 or \$ Per Capita
2000	1	622	145	68	0.2
2001	1	593	141	62	0.2
2002	1	597	152	63	0.2
2003	1	561	135	59	0.2
2004	1	569	133	57	0.2
2005	1	543	127	56	0.2
2006	1	542	131	57	0.2
2007	1	550	133	60	0.2
2008	1	553	139	60	0.2
2009	1	575	136	61	0.2
2010	1	567	131	61	0.2
2011	1	552	134	60	0.2
2012	1	593	135	56	0.2
2013	1	590	135	57	0.2
2014	1	603	136	57	0.2
2015	1	613	140	61	0.2
2016	1	655	171	60	0.2



ESTABLISHMENTS: ADMIN, SUPPORT, WASTE MGMT., AND REMEDIATION

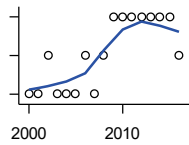
U.S. Census Bureau, County Business Patterns. Beginning with the 2017 data, any tabulation with fewer than 3 establishments were omitted from the release. Data for these establishments are included in the broader total.

Year	County	State of Kansas	Non Metro Kansas	County Rank	Per 1000 or \$ Per Capita
2000	3	3,307	871	81	0.5
2001	3	3,421	913	82	0.5
2002	4	3,232	882	74	0.6
2003	4	3,189	858	75	0.6
2004	4	3,301	891	73	0.7
2005	5	3,342	896	62	0.8
2006	5	3,395	886	64	0.8
2007	5	3,522	921	67	0.9
2008	5	3,587	932	64	0.9
2009	6	3,505	904	55	1.0
2010	5	3,494	897	68	0.9
2011	5	3,447	903	69	0.9
2012	5	3,462	891	65	0.9
2013	5	3,489	904	65	0.9
2014	4	3,569	933	75	0.7
2015	4	3,630	964	73	0.7
2016	5	3,705	987	66	0.9
2017	6	3,741	991	64	1.1
2018	5	3,740	983	67	0.9
2019	7	3,762	991	52	1.3
2020	6	3,807	989	59	1.1

County: county value. Kansas: state value. County Rank: highest county value ranked #1. (\$000): thousands of dollars. Nonmetro Kansas: Kansas total less Metropolitan Areas as defined by the Office of Management and Budget (OMB; released 3/6/2020). Per 1000: For nonmoney amounts, Per 1000=(county value / county population for the same year as the data) x 1000. \$ Per capita=(county value / county population for the same year as the data). Value= . indicates missing or suppressed data or value not calculated.

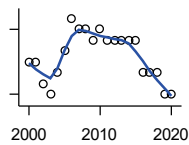
Business

ESTABLISHMENTS: EDUCATIONAL SERVICES



U.S. Census Bureau, County Business Patterns. Beginning with the 2017 data, any tabulation with fewer than 3 establishments were omitted from the release. Data for these establishments are included in the broader total.

Year	County	State of Kansas	Non Metro Kansas	County Rank	Per 1000 or \$ Per Capita
2000	1	604	155	70	0.2
2001	1	625	168	71	0.2
2002	2	666	165	46	0.3
2003	1	663	173	73	0.2
2004	1	690	173	72	0.2
2005	1	699	168	69	0.2
2006	2	698	175	46	0.3
2007	1	691	165	68	0.2
2008	2	692	158	44	0.3
2009	3	690	150	35	0.5
2010	3	700	149	35	0.5
2011	3	711	150	35	0.5
2012	3	724	145	33	0.5
2013	3	735	153	33	0.5
2014	3	722	152	32	0.5
2015	3	754	152	33	0.5
2016	2	728	150	40	0.4



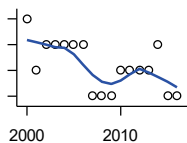
ESTABLISHMENTS: HEALTH CARE AND SOCIAL ASSISTANCE

U.S. Census Bureau, County Business Patterns. Beginning with the 2017 data, any tabulation with fewer than 3 establishments were omitted from the release. Data for these establishments are included in the broader total.

Year	County	State of Kansas	Non Metro Kansas	County Rank	Per 1000 or \$ Per Capita
2000	23	6,564	2,591	49	3.5
2001	23	6,636	2,590	50	3.7
2002	21	7,052	2,777	54	3.4
2003	20	7,129	2,792	55	3.2
2004	22	7,239	2,813	52	3.6
2005	24	7,412	2,855	51	4.0
2006	27	7,477	2,860	48	4.5
2007	26	7,661	2,864	48	4.4
2008	26	7,651	2,810	47	4.4
2009	25	7,696	2,787	50	4.3
2010	26	7,751	2,830	49	4.5
2011	25	7,804	2,817	51	4.3
2012	25	7,973	2,793	48	4.4
2013	25	7,877	2,729	46	4.4
2014	25	7,809	2,686	46	4.5
2015	25	8,103	2,692	46	4.5
2016	22	8,315	2,678	50	4.0
2017	22	8,136	2,646	50	4.0
2018	22	8,126	2,632	49	4.0
2019	20	8,184	2,587	52	3.7
2020	20	8,290	2,571	50	3.6

County: county value. Kansas: state value. County Rank: highest county value ranked #1. (\$000): thousands of dollars. Nonmetro Kansas: Kansas total less Metropolitan Areas as defined by the Office of Management and Budget (OMB; released 3/6/2020). Per 1000: For nonmoney amounts, Per 1000=(county value / county population for the same year as the data) x 1000. \$ Per capita=(county value / county population for the same year as the data). Value= . indicates missing or suppressed data or value not calculated.

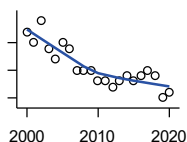
Business



ESTABLISHMENTS: ARTS, ENTERTAINMENT, AND RECREATION

U.S. Census Bureau, County Business Patterns. Beginning with the 2017 data, any tabulation with fewer than 3 establishments were omitted from the release. Data for these establishments are included in the broader total.

Year	County	State of Kansas	Non Metro Kansas	County Rank	Per 1000 or \$ Per Capita
2000	4	981	419	53	0.6
2001	2	1,009	433	87	0.3
2002	3	1,054	441	70	0.5
2003	3	1,045	443	70	0.5
2004	3	1,082	445	67	0.5
2005	3	1,109	446	71	0.5
2006	3	1,080	445	72	0.5
2007	1	1,092	444	100	0.2
2008	1	1,062	423	96	0.2
2009	1	1,063	421	98	0.2
2010	2	1,018	406	87	0.3
2011	2	997	387	89	0.3
2012	2	1,000	388	86	0.3
2013	2	1,009	377	84	0.4
2014	3	1,030	365	60	0.5
2015	1	1,031	357	101	0.2
2016	1	1,060	366	101	0.2



ESTABLISHMENTS: ACCOMMODATION AND FOOD SERVICES

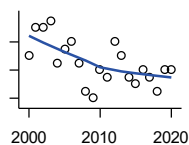
U.S. Census Bureau, County Business Patterns. Beginning with the 2017 data, any tabulation with fewer than 3 establishments were omitted from the release. Data for these establishments are included in the broader total.

Year	County	State of Kansas	Non Metro Kansas	County Rank	Per 1000 or \$ Per Capita
2000	22	5,536	2,213	49	3.4
2001	20	5,551	2,173	46	3.2
2002	24	5,610	2,174	40	3.9
2003	19	5,635	2,188	51	3.1
2004	17	5,681	2,160	54	2.8
2005	20	5,776	2,170	44	3.3
2006	19	5,745	2,132	48	3.2
2007	15	5,877	2,095	56	2.6
2008	15	5,843	2,052	57	2.6
2009	15	5,794	2,029	57	2.6
2010	13	5,898	2,046	62	2.2
2011	13	5,958	2,067	63	2.2
2012	12	5,951	2,046	66	2.1
2013	13	6,061	2,070	62	2.3
2014	14	5,985	2,024	58	2.5
2015	13	6,034	2,063	63	2.3
2016	14	6,126	2,094	62	2.5
2017	15	6,250	2,123	60	2.7
2018	14	6,256	2,128	60	2.6
2019	10	6,231	2,131	74	1.8
2020	11	6,206	2,131	67	2.0

County: county value. Kansas: state value. County Rank: highest county value ranked #1. (\$000): thousands of dollars. Nonmetro Kansas: Kansas total less Metropolitan Areas as defined by the Office of Management and Budget (OMB; released 3/6/2020). Per 1000: For nonmoney amounts, Per 1000=(county value / county population for the same year as the data) x 1000. \$ Per capita=(county value / county population for the same year as the data). Value= . indicates missing or suppressed data or value not calculated.

Business

ESTABLISHMENTS: OTHER SERVICES

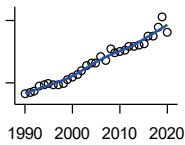


U.S. Census Bureau, County Business Patterns. Beginning with the 2017 data, any tabulation with fewer than 3 establishments were omitted from the release. Data for these establishments are included in the broader total.

Year	County	State of Kansas	Non Metro Kansas	County Rank	Per 1000 or \$ Per Capita
2000	36	8,423	3,636	49	5.6
2001	40	8,310	3,614	42	6.4
2002	40	8,552	3,658	43	6.5
2003	41	8,411	3,605	42	6.7
2004	35	8,343	3,597	47	5.8
2005	37	8,321	3,571	46	6.1
2006	38	8,225	3,490	46	6.4
2007	35	8,355	3,534	49	6.0
2008	31	8,104	3,406	53	5.3
2009	30	8,040	3,405	53	5.2
2010	34	7,998	3,379	46	5.9
2011	33	7,883	3,294	47	5.7
2012	38	7,913	3,303	44	6.6
2013	36	7,947	3,290	47	6.4
2014	33	7,943	3,285	49	5.9
2015	32	7,869	3,255	49	5.7
2016	34	7,839	3,204	47	6.1
2017	33	7,873	3,189	47	6.0
2018	31	7,853	3,176	49	5.7
2019	34	7,834	3,138	45	6.3
2020	34	7,787	3,073	45	6.1

County: county value. Kansas: state value. County Rank: highest county value ranked #1. (\$000): thousands of dollars. Nonmetro Kansas: Kansas total less Metropolitan Areas as defined by the Office of Management and Budget (OMB; released 3/6/2020). Per 1000: For nonmoney amounts, Per 1000=(county value / county population for the same year as the data) x 1000. \$ Per capita=(county value / county population for the same year as the data). Value= . indicates missing or suppressed data or value not calculated.

Business



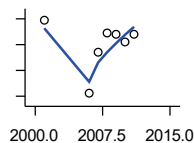
**TOTAL ANNUAL PAYROLL (\$000)
COUNTY BUSINESS PATTERNS**

U.S. Census Bureau, County Business Patterns. Beginning with the 2017 data, any tabulation with fewer than 3 establishments were omitted from the release. Data for these establishments are included in the broader total.

Year	County	State of Kansas	Non Metro Kansas	County Rank	Per 1000 or \$ Per Capita
1990	14,550	17,487,316	4,442,429	67	2,057.1
1991	15,239	18,162,326	4,612,616	68	2,194.2
1992	16,223	19,244,346	4,882,060	68	2,373.5
1993	18,460	20,087,190	5,182,780	68	2,711.5
1994	19,396	21,201,652	5,541,423	67	2,851.9
1995	19,504	22,825,920	5,875,310	66	2,864.4
1996	19,043	24,613,884	6,198,398	68	2,836.7
1997	19,314	26,787,098	6,599,061	70	2,903.9
1998	19,995	28,747,576	6,871,794	70	3,060.6
1999	21,531	30,600,434	7,121,961	68	3,309.9
2000	22,598	31,990,762	7,520,424	69	3,485.7
2001	24,033	33,303,992	7,598,165	67	3,826.3
2002	25,927	33,152,962	7,572,002	67	4,181.1
2003	28,036	34,040,944	7,726,561	66	4,554.3
2004	29,344	35,725,812	8,303,779	64	4,832.7
2005	29,274	36,646,064	8,586,986	65	4,861.2
2006	32,625	39,251,388	9,178,947	64	5,483.2
2007	30,982	42,022,753	.	68	5,269.0
2008	36,387	43,984,689	.	63	6,222.1
2009	34,293	42,146,866	.	64	5,934.1
2010	35,097	42,686,303	10,294,015	67	6,052.3
2011	35,847	43,733,944	.	64	6,159.3
2012	37,843	45,608,072	11,222,183	64	6,607.8
2013	37,320	47,715,601	11,446,751	66	6,633.5
2014	37,936	49,712,832	11,957,931	67	6,762.2
2015	38,677	51,259,676	11,975,718	67	6,946.3
2016	42,309	51,016,318	12,148,646	65	7,604.1
2017	42,563	52,754,605	12,448,592	66	7,768.4
2018	46,746	55,087,460	12,810,270	64	8,577.2
2019	51,759	57,272,387	13,123,288	62	9,574.4
2020	44,273	58,374,388	14,007,955	67	8,006.0

County: county value. Kansas: state value. County Rank: highest county value ranked #1. (\$000): thousands of dollars. Nonmetro Kansas: Kansas total less Metropolitan Areas as defined by the Office of Management and Budget (OMB; released 3/6/2020). Per 1000: For nonmoney amounts, Per 1000=(county value / county population for the same year as the data) x 1000. \$ Per capita=(county value / county population for the same year as the data). Value= . indicates missing or suppressed data or value not calculated.

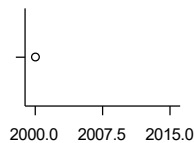
Business



**TOTAL ANNUAL PAYROLL(\$000):
FORESTRY, FISHING, HUNTING, AND
AG SUPPORT**

U.S. Census Bureau, County Business Patterns. Beginning with the 2017 data, any tabulation with fewer than 3 establishments were omitted from the release. Data for these establishments are included in the broader total.

Year	County	State of Kansas	Non Metro Kansas	County Rank	Per 1000 or \$ Per Capita
2000	.	13,551	.	.	.
2001	343	.	.	.	54.6
2002	.	16,528	.	.	.
2003	.	17,247	.	.	.
2004	.	17,552	.	.	.
2005	.	16,298	.	.	.
2006	62	17,908	.	.	10.4
2007	220	22,199	.	.	37.4
2008	293	21,359	.	.	50.1
2009	291	22,466	.	.	50.4
2010	261	22,753	.	.	45.0
2011	289	23,320	.	.	49.7
2012	.	27,492	.	.	.
2013	.	30,360	.	.	.
2014	.	34,862	.	.	.
2015	.	35,980	.	.	.



**TOTAL ANNUAL PAYROLL(\$000):
MINING**

U.S. Census Bureau, County Business Patterns. Beginning with the 2017 data, any tabulation with fewer than 3 establishments were omitted from the release. Data for these establishments are included in the broader total.

Year	County	State of Kansas	Non Metro Kansas	County Rank	Per 1000 or \$ Per Capita
2000	403	240,079	.	.	62.2
2001	.	273,838	.	.	.
2002	.	262,277	.	.	.
2003	.	290,652	.	.	.
2004	.	326,997	.	.	.
2005	.	381,069	.	.	.
2006	.	482,102	.	.	.
2007	.	551,751	.	.	.
2008	.	620,446	.	.	.
2009	.	465,070	.	.	.
2010	.	485,841	.	.	.
2011	.	541,536	.	.	.
2012	.	600,402	.	.	.
2013	.	599,788	.	.	.
2014	.	678,673	.	.	.
2015	.	552,658	.	.	.

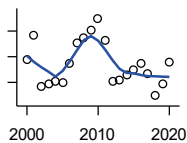
County: county value. Kansas: state value. County Rank: highest county value ranked #1. (\$000): thousands of dollars. Nonmetro Kansas: Kansas total less Metropolitan Areas as defined by the Office of Management and Budget (OMB; released 3/6/2020). Per 1000: For nonmoney amounts, Per 1000=(county value / county population for the same year as the data) x 1000. \$ Per capita=(county value / county population for the same year as the data). Value= . indicates missing or suppressed data or value not calculated.

Business

**TOTAL ANNUAL PAYROLL(\$000):
UTILITIES**

U.S. Census Bureau, County Business Patterns. Beginning with the 2017 data, any tabulation with fewer than 3 establishments were omitted from the release. Data for these establishments are included in the broader total.

Year	County	State of Kansas	Non Metro Kansas	County Rank	Per 1000 or \$ Per Capita
2000	.	410,313	.	.	.
2001	.	452,057	.	.	.
2002	.	377,559	.	.	.
2003	.	378,157	.	.	.
2004	.	377,809	.	.	.
2005	.	429,864	.	.	.
2006	.	443,999	.	.	.
2007	.	480,068	.	.	.
2008	.	541,066	.	.	.
2009	.	563,373	.	.	.
2010	.	512,628	.	.	.
2011	.	653,229	.	.	.
2012	.	625,451	.	.	.
2013	.	625,347	.	.	.
2014	.	610,960	.	.	.
2015	.	668,559	.	.	.



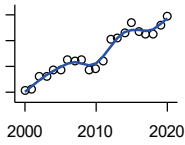
**TOTAL ANNUAL PAYROLL(\$000):
CONSTRUCTION**

U.S. Census Bureau, County Business Patterns. Beginning with the 2017 data, any tabulation with fewer than 3 establishments were omitted from the release. Data for these establishments are included in the broader total.

Year	County	State of Kansas	Non Metro Kansas	County Rank	Per 1000 or \$ Per Capita
2000	2,433	2,256,057	.	.	375.3
2001	2,930	2,320,652	.	.	466.5
2002	1,913	2,302,229	.	.	308.5
2003	1,978	2,282,021	.	.	321.3
2004	2,026	2,302,854	.	.	333.7
2005	2,001	2,465,977	.	.	332.3
2006	2,371	2,700,351	.	.	398.5
2007	2,768	2,772,168	.	.	470.7
2008	2,866	2,950,073	.	.	490.1
2009	3,023	2,709,864	.	.	523.1
2010	3,244	2,553,555	.	.	559.4
2011	2,826	2,550,355	.	.	485.6
2012	2,017	2,733,284	.	.	352.2
2013	2,046	2,866,801	.	.	363.7
2014	2,140	3,135,814	.	.	381.5
2015	2,241	3,270,952	.	.	402.5
2016	2,364	3,328,610	.	.	424.9
2017	2,161	3,568,505	.	.	394.4
2018	1,737	3,806,196	.	.	318.7
2019	1,979	3,879,912	.	.	366.1
2020	2,390	3,983,029	.	.	432.2

County: county value. Kansas: state value. County Rank: highest county value ranked #1. (\$000): thousands of dollars. Nonmetro Kansas: Kansas total less Metropolitan Areas as defined by the Office of Management and Budget (OMB; released 3/6/2020). Per 1000: For nonmoney amounts, Per 1000=(county value / county population for the same year as the data) x 1000. \$ Per capita=(county value / county population for the same year as the data). Value= . indicates missing or suppressed data or value not calculated.

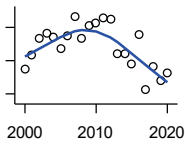
Business



**TOTAL ANNUAL PAYROLL(\$000):
MANUFACTURING**

U.S. Census Bureau, County Business Patterns. Beginning with the 2017 data, any tabulation with fewer than 3 establishments were omitted from the release. Data for these establishments are included in the broader total.

Year	County	State of Kansas	Non Metro Kansas	County Rank	Per 1000 or \$ Per Capita
2000	1,096	7,015,414	.	.	169.1
2001	1,238	7,301,706	.	.	197.1
2002	2,244	6,802,605	.	.	361.9
2003	2,271	6,691,611	.	.	368.9
2004	2,728	6,985,656	.	.	449.3
2005	2,749	7,221,614	.	.	456.5
2006	3,495	7,621,873	.	.	587.4
2007	3,468	7,873,359	.	.	589.8
2008	3,488	8,441,541	.	.	596.4
2009	2,727	7,477,838	.	.	471.9
2010	2,796	7,556,955	.	.	482.2
2011	3,408	7,747,934	.	.	585.6
2012	5,102	7,704,851	.	.	890.9
2013	5,185	8,365,542	.	.	921.6
2014	5,577	8,787,306	.	.	994.1
2015	6,434	9,052,105	.	.	1,155.5
2016	5,734	8,868,744	.	.	1,030.6
2017	5,545	9,075,793	.	.	1,012.0
2018	5,540	9,481,652	.	.	1,016.5
2019	6,203	10,171,575	.	.	1,147.4
2020	6,894	9,744,825	.	.	1,246.7



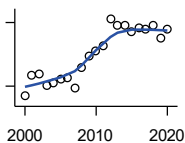
**TOTAL ANNUAL PAYROLL(\$000):
WHOLESALE TRADE**

U.S. Census Bureau, County Business Patterns. Beginning with the 2017 data, any tabulation with fewer than 3 establishments were omitted from the release. Data for these establishments are included in the broader total.

Year	County	State of Kansas	Non Metro Kansas	County Rank	Per 1000 or \$ Per Capita
2000	5,248	2,332,755	.	.	809.5
2001	5,673	2,283,169	.	.	903.2
2002	6,162	2,107,653	.	.	993.7
2003	6,334	2,622,701	.	.	1,028.9
2004	6,212	2,663,196	.	.	1,023.1
2005	5,864	2,345,990	.	.	973.8
2006	6,258	2,592,211	.	.	1,051.8
2007	6,827	2,682,542	.	.	1,161.1
2008	6,172	3,078,655	.	.	1,055.4
2009	6,559	2,940,949	.	.	1,135.0
2010	6,637	3,097,628	.	.	1,144.5
2011	6,785	3,305,811	.	.	1,165.8
2012	6,751	3,339,997	.	.	1,178.8
2013	5,701	3,460,512	.	.	1,013.3
2014	5,707	3,712,075	.	.	1,017.3
2015	5,391	3,760,189	.	.	968.2
2016	6,277	3,738,207	.	.	1,128.1
2017	4,635	3,822,730	.	.	846.0
2018	5,321	3,814,353	.	.	976.3
2019	4,898	4,025,802	.	.	906.0
2020	5,127	4,224,666	.	.	927.1

County: county value. Kansas: state value. County Rank: highest county value ranked #1. (\$000): thousands of dollars. Nonmetro Kansas: Kansas total less Metropolitan Areas as defined by the Office of Management and Budget (OMB; released 3/6/2020). Per 1000: For nonmoney amounts, Per 1000=(county value / county population for the same year as the data) x 1000. \$ Per capita=(county value / county population for the same year as the data). Value= . indicates missing or suppressed data or value not calculated.

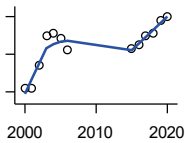
Business



**TOTAL ANNUAL PAYROLL(\$000):
RETAIL TRADE**

U.S. Census Bureau, County Business Patterns. Beginning with the 2017 data, any tabulation with fewer than 3 establishments were omitted from the release. Data for these establishments are included in the broader total.

Year	County	State of Kansas	Non Metro Kansas	County Rank	Per 1000 or \$ Per Capita
2000	2,263	2,747,001	.	.	349.1
2001	2,763	2,813,226	.	.	439.9
2002	2,797	2,854,231	.	.	451.1
2003	2,506	2,773,674	.	.	407.1
2004	2,571	2,847,826	.	.	423.4
2005	2,661	2,952,196	.	.	441.9
2006	2,692	3,126,495	.	.	452.4
2007	2,451	3,201,169	.	.	416.8
2008	2,952	3,261,054	.	.	504.8
2009	3,205	3,232,246	.	.	554.6
2010	3,344	3,321,838	.	.	576.7
2011	3,463	3,384,607	.	.	595.0
2012	4,087	3,409,755	.	.	713.6
2013	3,943	3,483,752	.	.	700.9
2014	3,925	3,617,933	.	.	699.6
2015	3,773	3,712,165	.	.	677.6
2016	3,870	3,826,889	.	.	695.5
2017	3,848	3,797,849	.	.	702.3
2018	3,927	3,818,988	.	.	720.6
2019	3,622	3,908,994	.	.	670.0
2020	3,858	3,984,443	.	.	697.6



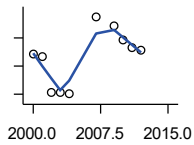
**TOTAL ANNUAL PAYROLL(\$000):
TRANSPORTATION &
WAREHOUSING**

U.S. Census Bureau, County Business Patterns. Beginning with the 2017 data, any tabulation with fewer than 3 establishments were omitted from the release. Data for these establishments are included in the broader total.

Year	County	State of Kansas	Non Metro Kansas	County Rank	Per 1000 or \$ Per Capita
2000	215	1,044,835	.	.	33.2
2001	177	1,089,405	.	.	28.2
2002	1,405	1,094,636	.	.	226.6
2003	2,993	1,316,655	.	.	486.2
2004	3,113	1,439,800	.	.	512.7
2005	2,813	1,393,651	.	.	467.1
2006	2,209	1,528,551	.	.	371.3
2007	.	1,788,267	.	.	.
2008	.	1,722,697	.	.	.
2009	.	1,618,598	.	.	.
2010	.	1,735,761	.	.	.
2011	.	1,739,165	.	.	.
2012	.	1,984,976	.	.	.
2013	.	2,006,261	.	.	.
2014	.	2,097,377	.	.	.
2015	2,309	2,190,072	.	.	414.7
2016	2,471	2,202,859	.	.	444.1
2017	2,957	2,546,061	.	.	539.7
2018	3,102	2,663,188	.	.	569.2
2019	3,823	2,879,406	.	.	707.2
2020	3,975	2,962,461	.	.	718.8

County: county value. Kansas: state value. County Rank: highest county value ranked #1. (\$000): thousands of dollars. Nonmetro Kansas: Kansas total less Metropolitan Areas as defined by the Office of Management and Budget (OMB; released 3/6/2020). Per 1000: For nonmoney amounts, Per 1000=(county value / county population for the same year as the data) x 1000. \$ Per capita=(county value / county population for the same year as the data). Value= . indicates missing or suppressed data or value not calculated.

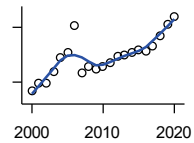
Business



**TOTAL ANNUAL PAYROLL(\$000):
INFORMATION**

U.S. Census Bureau, County Business Patterns. Beginning with the 2017 data, any tabulation with fewer than 3 establishments were omitted from the release. Data for these establishments are included in the broader total.

Year	County	State of Kansas	Non Metro Kansas	County Rank	Per 1000 or \$ Per Capita
2000	78	1,923,381	.	.	12.0
2001	74	2,218,610	.	.	11.8
2002	22	2,298,108	.	.	3.5
2003	22	2,378,673	.	.	3.6
2004	20	2,392,990	.	.	3.3
2005	.	2,395,081	.	.	.
2006	.	2,586,483	.	.	.
2007	130	2,594,138	.	.	22.1
2008	.	3,043,244	.	.	.
2009	118	3,045,570	.	.	20.4
2010	98	2,481,580	.	.	16.9
2011	86	2,513,805	.	.	14.8
2012	82	2,535,555	.	.	14.3
2013	.	2,805,017	.	.	.
2014	.	2,393,609	.	.	.
2015	.	2,406,323	.	.	.



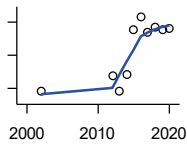
**TOTAL ANNUAL PAYROLL(\$000):
FINANCE & INSURANCE**

U.S. Census Bureau, County Business Patterns. Beginning with the 2017 data, any tabulation with fewer than 3 establishments were omitted from the release. Data for these establishments are included in the broader total.

Year	County	State of Kansas	Non Metro Kansas	County Rank	Per 1000 or \$ Per Capita
2000	1,758	2,083,565	.	.	271.2
2001	1,955	2,129,587	.	.	311.3
2002	1,974	2,414,120	.	.	318.3
2003	2,270	2,608,579	.	.	368.7
2004	2,661	2,676,910	.	.	438.2
2005	2,818	2,786,136	.	.	468.0
2006	3,546	2,928,931	.	.	596.0
2007	2,264	3,096,017	.	.	385.0
2008	2,430	3,322,977	.	.	415.5
2009	2,346	3,206,839	.	.	406.0
2010	2,431	3,211,300	.	.	419.2
2011	2,532	3,404,633	.	.	435.1
2012	2,690	3,611,165	.	.	469.7
2013	2,727	3,896,051	.	.	484.7
2014	2,798	4,044,315	.	.	498.8
2015	2,869	4,113,060	.	.	515.3
2016	2,845	4,180,740	.	.	511.3
2017	2,994	4,258,057	.	.	546.5
2018	3,255	4,682,552	.	.	597.2
2019	3,587	4,814,201	.	.	663.5
2020	3,796	5,288,529	.	.	686.4

County: county value. Kansas: state value. County Rank: highest county value ranked #1. (\$000): thousands of dollars. Nonmetro Kansas: Kansas total less Metropolitan Areas as defined by the Office of Management and Budget (OMB; released 3/6/2020). Per 1000: For nonmoney amounts, Per 1000=(county value / county population for the same year as the data) x 1000. \$ Per capita=(county value / county population for the same year as the data). Value= . indicates missing or suppressed data or value not calculated.

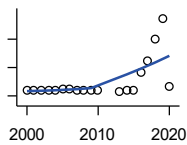
Business



**TOTAL ANNUAL PAYROLL(\$000):
REAL ESTATE, RENTAL, AND
LEASING**

U.S. Census Bureau, County Business Patterns. Beginning with the 2017 data, any tabulation with fewer than 3 establishments were omitted from the release. Data for these establishments are included in the broader total.

Year	County	State of Kansas	Non Metro Kansas	County Rank	Per 1000 or \$ Per Capita
2000	.	360,637	.	.	.
2001	.	397,371	.	.	.
2002	20	403,695	.	.	3.2
2003	.	437,786	.	.	.
2004	.	430,719	.	.	.
2005	.	465,149	.	.	.
2006	.	478,811	.	.	.
2007	.	452,969	.	.	.
2008	.	484,149	.	.	.
2009	.	450,884	.	.	.
2010	.	487,255	.	.	.
2011	.	535,120	.	.	.
2012	43	531,039	.	.	7.5
2013	20	538,796	.	.	3.6
2014	45	542,307	.	.	8.0
2015	113	595,030	.	.	20.3
2016	133	607,668	.	.	23.9
2017	110	590,373	.	.	20.1
2018	117	600,037	.	.	21.5
2019	113	622,881	.	.	20.9
2020	115	670,656	.	.	20.8



**TOTAL ANNUAL PAYROLL(\$000):
PROFESSIONAL, SCIENTIFIC, AND
TECHNICAL SERVICES**

U.S. Census Bureau, County Business Patterns. Beginning with the 2017 data, any tabulation with fewer than 3 establishments were omitted from the release. Data for these establishments are included in the broader total.

Year	County	State of Kansas	Non Metro Kansas	County Rank	Per 1000 or \$ Per Capita
2000	838	2,057,313	.	.	129.3
2001	782	2,152,937	.	.	124.5
2002	856	2,150,085	.	.	138.0
2003	739	2,052,712	.	.	120.0
2004	774	2,531,457	.	.	127.5
2005	908	2,418,500	.	.	150.8
2006	1,010	2,655,690	.	.	169.7
2007	827	2,901,544	.	.	140.6
2008	777	2,903,802	.	.	132.9
2009	749	3,071,611	.	.	129.6
2010	700	3,037,182	.	.	120.7
2011	.	3,132,082	.	.	.
2012	.	3,455,548	.	.	.
2013	553	3,777,729	.	.	98.3
2014	736	3,981,580	.	.	131.2
2015	811	4,039,074	.	.	145.7
2016	3,357	4,125,507	.	.	603.3
2017	5,021	4,158,858	.	.	916.4
2018	7,935	4,314,317	.	.	1,456.0
2019	10,914	4,646,644	.	.	2,018.9
2020	1,245	4,927,611	.	.	225.1

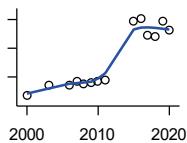
County: county value. Kansas: state value. County Rank: highest county value ranked #1. (\$000): thousands of dollars. Nonmetro Kansas: Kansas total less Metropolitan Areas as defined by the Office of Management and Budget (OMB; released 3/6/2020). Per 1000: For nonmoney amounts, Per 1000=(county value / county population for the same year as the data) x 1000. \$ Per capita=(county value / county population for the same year as the data). Value= . indicates missing or suppressed data or value not calculated.

Business

**TOTAL ANNUAL PAYROLL(\$000):
MANAGEMENT OF COMPANIES AND
ENTERPRISES**

U.S. Census Bureau, County Business Patterns. Beginning with the 2017 data, any tabulation with fewer than 3 establishments were omitted from the release. Data for these establishments are included in the broader total.

Year	County	State of Kansas	Non Metro Kansas	County Rank	Per 1000 or \$ Per Capita
2000	.	1,362,735	.	.	.
2001	.	1,279,253	.	.	.
2002	.	1,311,368	.	.	.
2003	.	1,352,119	.	.	.
2004	.	1,378,891	.	.	.
2005	.	1,510,876	.	.	.
2006	.	1,626,320	.	.	.
2007	.	2,233,654	.	.	.
2008	.	1,848,656	.	.	.
2009	.	1,601,158	.	.	.
2010	.	2,003,048	.	.	.
2011	.	1,677,619	.	.	.
2012	.	1,834,430	.	.	.
2013	.	1,938,100	.	.	.
2014	.	2,117,232	.	.	.
2015	.	2,451,126	.	.	.



**TOTAL ANNUAL PAYROLL(\$000):
ADMIN, SUPPORT, WASTE MGMT.,
AND REMEDIATION**

U.S. Census Bureau, County Business Patterns. Beginning with the 2017 data, any tabulation with fewer than 3 establishments were omitted from the release. Data for these establishments are included in the broader total.

Year	County	State of Kansas	Non Metro Kansas	County Rank	Per 1000 or \$ Per Capita
2000	68	1,388,712	.	.	10.5
2001	.	1,416,480	.	.	.
2002	.	1,378,905	.	.	.
2003	147	1,387,061	.	.	23.9
2004	.	1,544,442	.	.	.
2005	.	1,694,687	.	.	.
2006	139	1,800,846	.	.	23.4
2007	172	1,978,025	.	.	29.3
2008	153	2,096,864	.	.	26.2
2009	164	1,832,540	.	.	28.4
2010	173	2,117,325	.	.	29.8
2011	179	2,114,970	.	.	30.8
2012	.	2,230,250	.	.	.
2013	.	2,214,320	.	.	.
2014	.	2,444,170	.	.	.
2015	589	2,577,592	.	.	105.8
2016	607	2,760,706	.	.	109.1
2017	491	3,026,927	.	.	89.6
2018	484	3,007,347	.	.	88.8
2019	589	3,075,485	.	.	109.0
2020	526	3,250,046	.	.	95.1

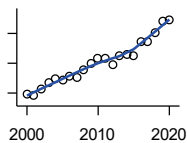
County: county value. Kansas: state value. County Rank: highest county value ranked #1. (\$000): thousands of dollars. Nonmetro Kansas: Kansas total less Metropolitan Areas as defined by the Office of Management and Budget (OMB; released 3/6/2020). Per 1000: For nonmoney amounts, Per 1000=(county value / county population for the same year as the data) x 1000. \$ Per capita=(county value / county population for the same year as the data). Value= . indicates missing or suppressed data or value not calculated.

Business

**TOTAL ANNUAL PAYROLL(\$000):
EDUCATIONAL SERVICES**

U.S. Census Bureau, County Business Patterns. Beginning with the 2017 data, any tabulation with fewer than 3 establishments were omitted from the release. Data for these establishments are included in the broader total.

Year	County	State of Kansas	Non Metro Kansas	County Rank	Per 1000 or \$ Per Capita
2000	.	299,843	.	.	.
2001	.	320,606	.	.	.
2002	.	353,531	.	.	.
2003	.	350,814	.	.	.
2004	.	361,644	.	.	.
2005	.	375,781	.	.	.
2006	.	400,565	.	.	.
2007	.	414,233	.	.	.
2008	.	463,210	.	.	.
2009	.	468,856	.	.	.
2010	.	487,670	.	.	.
2011	.	504,964	.	.	.
2012	.	508,448	.	.	.
2013	.	553,995	.	.	.
2014	.	612,073	.	.	.
2015	.	579,794	.	.	.



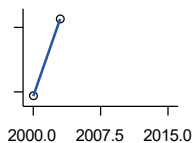
**TOTAL ANNUAL PAYROLL(\$000):
HEALTH CARE AND SOCIAL ASSISTANCE**

U.S. Census Bureau, County Business Patterns. Beginning with the 2017 data, any tabulation with fewer than 3 establishments were omitted from the release. Data for these establishments are included in the broader total.

Year	County	State of Kansas	Non Metro Kansas	County Rank	Per 1000 or \$ Per Capita
2000	5,885	4,120,595	.	.	907.8
2001	5,810	4,445,027	.	.	925.0
2002	6,232	4,705,220	.	.	1,005.0
2003	6,735	4,939,323	.	.	1,094.1
2004	6,996	5,232,394	.	.	1,152.2
2005	6,879	5,487,089	.	.	1,142.3
2006	7,168	5,814,218	.	.	1,204.7
2007	7,045	6,186,471	.	.	1,198.1
2008	7,601	6,490,627	.	.	1,299.8
2009	7,978	6,749,962	.	.	1,380.5
2010	8,372	6,871,727	.	.	1,443.7
2011	8,361	7,129,655	.	.	1,436.6
2012	7,873	7,614,853	.	.	1,374.7
2013	8,541	7,541,515	.	.	1,518.1
2014	8,612	7,733,621	.	.	1,535.1
2015	8,477	7,969,650	.	.	1,522.4
2016	9,486	8,018,706	.	.	1,704.9
2017	9,479	8,384,998	.	.	1,730.1
2018	10,047	8,637,619	.	.	1,843.5
2019	10,800	8,854,414	.	.	1,997.8
2020	10,918	9,309,269	.	.	1,974.3

County: county value. Kansas: state value. County Rank: highest county value ranked #1. (\$000): thousands of dollars. Nonmetro Kansas: Kansas total less Metropolitan Areas as defined by the Office of Management and Budget (OMB; released 3/6/2020). Per 1000: For nonmoney amounts, Per 1000=(county value / county population for the same year as the data) x 1000. \$ Per capita=(county value / county population for the same year as the data). Value= . indicates missing or suppressed data or value not calculated.

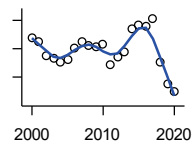
Business



**TOTAL ANNUAL PAYROLL(\$000):
ARTS, ENTERTAINMENT, AND
RECREATION**

U.S. Census Bureau, County Business Patterns. Beginning with the 2017 data, any tabulation with fewer than 3 establishments were omitted from the release. Data for these establishments are included in the broader total.

Year	County	State of Kansas	Non Metro Kansas	County Rank	Per 1000 or \$ Per Capita
2000	58	195,784	.	.	8.9
2001	.	203,511	.	.	.
2002	.	206,204	.	.	.
2003	94	185,049	.	.	15.3
2004	.	190,742	.	.	.
2005	.	196,594	.	.	.
2006	.	201,049	.	.	.
2007	.	220,435	.	.	.
2008	.	236,986	.	.	.
2009	.	237,116	.	.	.
2010	.	233,285	.	.	.
2011	.	234,351	.	.	.
2012	.	254,169	.	.	.
2013	.	278,474	.	.	.
2014	.	289,103	.	.	.
2015	.	300,253	.	.	.



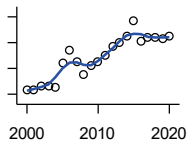
**TOTAL ANNUAL PAYROLL(\$000):
ACCOMMODATION AND FOOD
SERVICES**

U.S. Census Bureau, County Business Patterns. Beginning with the 2017 data, any tabulation with fewer than 3 establishments were omitted from the release. Data for these establishments are included in the broader total.

Year	County	State of Kansas	Non Metro Kansas	County Rank	Per 1000 or \$ Per Capita
2000	876	926,831	.	.	135.1
2001	850	960,196	.	.	135.3
2002	754	930,510	.	.	121.6
2003	735	992,313	.	.	119.4
2004	709	1,046,901	.	.	116.8
2005	725	1,101,854	.	.	120.4
2006	809	1,185,280	.	.	136.0
2007	854	1,431,100	.	.	145.2
2008	824	1,271,594	.	.	140.9
2009	816	1,283,065	.	.	141.2
2010	832	1,296,556	.	.	143.5
2011	687	1,364,281	.	.	118.0
2012	740	1,388,337	.	.	129.2
2013	781	1,476,335	.	.	138.8
2014	938	1,572,021	.	.	167.2
2015	967	1,640,144	.	.	173.7
2016	959	1,709,193	.	.	172.4
2017	1,013	1,824,791	.	.	184.9
2018	705	1,880,364	.	.	129.4
2019	553	1,958,603	.	.	102.3
2020	496	1,745,238	.	.	89.7

County: county value. Kansas: state value. County Rank: highest county value ranked #1. (\$000): thousands of dollars. Nonmetro Kansas: Kansas total less Metropolitan Areas as defined by the Office of Management and Budget (OMB; released 3/6/2020). Per 1000: For nonmoney amounts, Per 1000=(county value / county population for the same year as the data) x 1000. \$ Per capita=(county value / county population for the same year as the data). Value= . indicates missing or suppressed data or value not calculated.

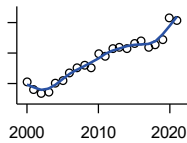
Business



**TOTAL ANNUAL PAYROLL(\$000):
OTHER SERVICES**

U.S. Census Bureau, County Business Patterns. Beginning with the 2017 data, any tabulation with fewer than 3 establishments were omitted from the release. Data for these establishments are included in the broader total.

Year	County	State of Kansas	Non Metro Kansas	County Rank	Per 1000 or \$ Per Capita
2000	1,061	965,540	.	.	163.7
2001	1,069	996,716	.	.	170.2
2002	1,136	1,007,464	.	.	183.2
2003	1,124	979,466	.	.	182.6
2004	1,098	970,383	.	.	180.8
2005	1,481	1,005,537	.	.	245.9
2006	1,685	1,055,932	.	.	283.2
2007	1,505	1,141,551	.	.	256.0
2008	1,315	1,184,016	.	.	224.9
2009	1,447	1,167,154	.	.	250.4
2010	1,507	1,170,201	.	.	259.9
2011	1,595	1,173,775	.	.	274.1
2012	1,734	1,217,210	.	.	302.8
2013	1,800	1,254,933	.	.	319.9
2014	1,896	1,305,563	.	.	338.0
2015	2,141	1,341,075	.	.	384.5
2016	1,827	1,351,375	.	.	328.4
2017	1,872	1,344,179	.	.	341.7
2018	1,883	1,382,801	.	.	345.5
2019	1,854	1,427,711	.	.	343.0
2020	1,909	1,420,859	.	.	345.2



**NOMINAL TAXABLE RETAIL SALES
(million\$)**

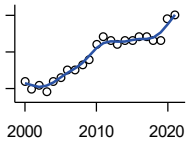
Kansas Department of Revenue

Year	County	State of Kansas	Non Metro Kansas	County Rank	Per 1000 or \$ Per Capita
2000	30.5	30,119.0	8,831.7	70	4.7
2001	28.2	30,202.2	8,700.3	71	4.5
2002	26.6	29,380.8	8,241.5	70	4.3
2003	27.3	30,694.0	8,710.6	72	4.4
2004	30.1	31,922.6	9,062.5	71	5.0
2005	31.1	32,924.2	9,386.6	72	5.2
2006	33.4	34,937.6	10,042.1	70	5.6
2007	35.3	36,180.1	10,553.2	72	6.0
2008	35.9	37,559.5	11,126.9	76	6.1
2009	35.1	35,211.8	10,351.5	74	6.1
2010	39.9	35,655.7	10,606.1	70	6.9
2011	39.1	37,257.0	11,153.5	76	6.7
2012	41.5	38,988.8	11,749.1	78	7.2
2013	41.9	40,009.0	11,993.8	76	7.4
2014	41.6	41,299.0	12,365.4	76	7.4
2015	43.1	41,635.8	11,747.6	73	7.7
2016	44.0	42,040.2	11,523.5	71	7.9
2017	41.8	41,940.1	11,449.9	70	7.6
2018	42.7	42,732.3	11,643.9	71	7.8
2019	44.3	43,732.5	12,062.7	71	8.2
2020	51.6	43,689.9	12,331.7	65	9.3
2021	50.8	48,532.8	13,413.0	69	9.2

County: county value. Kansas: state value. County Rank: highest county value ranked #1. (\$000): thousands of dollars. Nonmetro Kansas: Kansas total less Metropolitan Areas as defined by the Office of Management and Budget (OMB; released 3/6/2020). Per 1000: For nonmoney amounts, Per 1000=(county value / county population for the same year as the data) x 1000. \$ Per capita=(county value / county population for the same year as the data). Value= . indicates missing or suppressed data or value not calculated.

Business

RETAIL PULL FACTOR



Kansas Direct Program, Kansas State University Cooperative Extension Service (1980-1999); Kansas Department of Revenue (2000-)

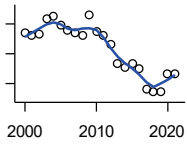
Year	County	State of Kansas	Non Metro Kansas	County Rank	Per 1000 or \$ Per Capita
2000	0.42	.	.	90	.
2001	0.40	.	.	87	.
2002	0.41	.	.	84	.
2003	0.39	.	.	92	.
2004	0.42	.	.	90	.
2005	0.43	.	.	90	.
2006	0.45	.	.	89	.
2007	0.45	.	.	90	.
2008	0.47	.	.	89	.
2009	0.48	.	.	92	.
2010	0.52	.	.	89	.
2011	0.54	.	.	89	.
2012	0.53	.	.	90	.
2013	0.52	.	.	92	.
2014	0.53	.	.	93	.
2015	0.53	.	.	89	.
2016	0.54	.	.	86	.
2017	0.54	.	.	86	.
2018	0.53	.	.	86	.
2019	0.53	.	.	88	.
2020	0.59	.	.	84	.
2021	0.60	.	.	82	.

County: county value. Kansas: state value. County Rank: highest county value ranked #1. (\$000): thousands of dollars. Nonmetro Kansas: Kansas total less Metropolitan Areas as defined by the Office of Management and Budget (OMB; released 3/6/2020). Per 1000: For nonmoney amounts, Per 1000=(county value / county population for the same year as the data) x 1000. \$ Per capita=(county value / county population for the same year as the data). Value= . indicates missing or suppressed data or value not calculated.

Employment

CIVILIAN LABOR FORCE (BLS-Place of Residence; 1990-)

U.S. Department of Labor, Bureau of Labor Statistics (BLS)



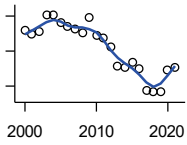
Year	County	State of Kansas	Non Metro Kansas	County Rank	Per 1000 or \$ Per Capita
2000	3,338	1,402,606	482,229	60	514.9
2001	3,321	1,398,521	475,280	57	528.7
2002	3,330	1,419,335	482,428	59	537.0
2003	3,437	1,441,065	490,161	57	558.3
2004	3,448	1,458,910	494,509	58	567.9
2005	3,393	1,458,767	490,047	60	563.4
2006	3,359	1,467,553	498,594	62	564.5
2007	3,338	1,485,414	497,048	61	567.7
2008	3,326	1,493,365	504,522	62	568.7
2009	3,461	1,512,572	516,311	61	598.9
2010	3,347	1,500,463	492,594	60	577.2
2011	3,325	1,498,000	492,563	60	571.3
2012	3,260	1,490,808	489,349	60	569.2
2013	3,134	1,489,395	485,484	63	557.1
2014	3,109	1,494,203	481,813	62	554.2
2015	3,137	1,493,782	477,546	61	563.4
2016	3,097	1,491,961	468,258	60	556.6
2017	2,966	1,488,346	461,063	61	541.3
2018	2,946	1,488,027	456,866	60	540.6
2019	2,942	1,497,517	455,858	60	544.2
2020	3,064	1,493,706	452,935	59	554.1
2021	3,063	1,495,665	453,398	56	555.8

County: county value. Kansas: state value. County Rank: highest county value ranked #1. (\$000): thousands of dollars. Nonmetro Kansas: Kansas total less Metropolitan Areas as defined by the Office of Management and Budget (OMB; released 3/6/2020). Per 1000: For nonmoney amounts, Per 1000=(county value / county population for the same year as the data) x 1000. \$ Per capita=(county value / county population for the same year as the data). Value= . indicates missing or suppressed data or value not calculated.

Employment

EMPLOYED (BLS-Place of Residence; 1990-)

U.S. Department of Labor, Bureau of Labor Statistics (BLS)

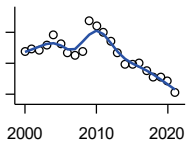


Year	County	State of Kansas	Non Metro Kansas	County Rank	Per 1000 or \$ Per Capita
2000	3,218	1,349,841	464,962	60	496.4
2001	3,198	1,338,775	455,154	57	509.2
2002	3,208	1,347,163	461,241	59	517.3
2003	3,307	1,361,115	467,622	57	537.2
2004	3,303	1,378,355	470,330	57	544.0
2005	3,262	1,384,654	467,722	60	541.7
2006	3,243	1,402,950	479,174	62	545.0
2007	3,225	1,422,109	477,983	60	548.5
2008	3,206	1,425,022	484,056	63	548.2
2009	3,293	1,408,142	485,797	61	569.8
2010	3,187	1,396,172	461,635	59	549.6
2011	3,176	1,402,198	463,723	60	545.7
2012	3,125	1,405,638	463,376	60	545.7
2013	3,017	1,410,470	461,405	62	536.3
2014	3,010	1,426,892	461,797	62	536.5
2015	3,039	1,431,533	457,899	61	545.8
2016	2,996	1,431,920	449,356	60	538.5
2017	2,878	1,434,516	445,003	61	525.3
2018	2,869	1,439,329	442,716	60	526.4
2019	2,865	1,450,705	442,108	60	530.0
2020	2,993	1,408,965	433,229	56	541.2
2021	3,010	1,447,323	441,159	56	546.2

County: county value. Kansas: state value. County Rank: highest county value ranked #1. (\$000): thousands of dollars. Nonmetro Kansas: Kansas total less Metropolitan Areas as defined by the Office of Management and Budget (OMB; released 3/6/2020). Per 1000: For nonmoney amounts, Per 1000=(county value / county population for the same year as the data) x 1000. \$ Per capita=(county value / county population for the same year as the data). Value= . indicates missing or suppressed data or value not calculated.

Employment

UNEMPLOYED (BLS-Place of Residence; 1990-)



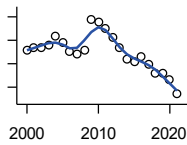
U.S. Department of Labor, Bureau of Labor Statistics (BLS)

Year	County	State of Kansas	Non Metro Kansas	County Rank	Per 1000 or \$ Per Capita
2000	120	52,765	17,267	55	18.5
2001	123	59,746	20,126	56	19.6
2002	122	72,172	21,187	60	19.7
2003	130	79,950	22,539	64	21.1
2004	145	80,555	24,179	60	23.9
2005	131	74,113	22,325	60	21.8
2006	116	64,603	19,420	60	19.5
2007	113	63,305	19,065	60	19.2
2008	120	68,343	20,466	61	20.5
2009	168	104,430	30,514	60	29.1
2010	160	104,291	30,959	62	27.6
2011	149	95,802	28,840	61	25.6
2012	135	85,170	25,973	61	23.6
2013	117	78,925	24,079	62	20.8
2014	99	67,311	20,016	65	17.6
2015	98	62,249	19,647	65	17.6
2016	101	60,041	18,902	64	18.2
2017	88	53,830	16,060	62	16.1
2018	77	48,698	14,150	61	14.1
2019	77	46,812	13,750	62	14.2
2020	71	84,741	19,706	72	12.8
2021	53	48,342	12,239	70	9.6

County: county value. Kansas: state value. County Rank: highest county value ranked #1. (\$000): thousands of dollars. Nonmetro Kansas: Kansas total less Metropolitan Areas as defined by the Office of Management and Budget (OMB; released 3/6/2020). Per 1000: For nonmoney amounts, Per 1000=(county value / county population for the same year as the data) x 1000. \$ Per capita=(county value / county population for the same year as the data). Value= . indicates missing or suppressed data or value not calculated.

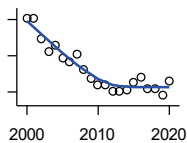
Employment

UNEMPLOYMENT RATE (BLS-Place of Residence; 1990-)



U.S. Department of Labor, Bureau of Labor Statistics (BLS)

Year	County	State of Kansas	Non Metro Kansas	County Rank	Per 1000 or \$ Per Capita
2000	3.6	3.8	3.6	41	.
2001	3.7	4.3	4.2	49	.
2002	3.7	5.1	4.4	64	.
2003	3.8	5.5	4.6	66	.
2004	4.2	5.5	4.9	67	.
2005	3.9	5.1	4.6	65	.
2006	3.5	4.4	3.9	61	.
2007	3.4	4.3	3.8	67	.
2008	3.6	4.6	4.1	59	.
2009	4.9	6.9	5.9	60	.
2010	4.8	7.0	6.3	68	.
2011	4.5	6.4	5.9	67	.
2012	4.1	5.7	5.3	71	.
2013	3.7	5.3	5.0	75	.
2014	3.2	4.5	4.2	78	.
2015	3.1	4.2	4.1	80	.
2016	3.3	4.0	4.0	72	.
2017	3.0	3.6	3.5	68	.
2018	2.6	3.3	3.1	71	.
2019	2.6	3.1	3.0	71	.
2020	2.3	5.7	4.4	96	.
2021	1.7	3.2	2.7	99	.



BEA EMPLOYMENT: TOTAL (Place of Work)

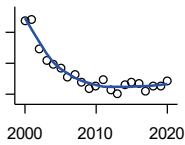
U.S. Bureau of Economic Analysis, Regional Economic Information System (REIS)

Year	County	State of Kansas	Non Metro Kansas	County Rank	Per 1000 or \$ Per Capita
2000	4,007	1,760,312	604,361	58	618.1
2001	4,004	1,767,601	592,672	59	637.5
2002	3,896	1,746,077	585,387	58	628.3
2003	3,824	1,733,694	577,860	59	621.2
2004	3,858	1,750,876	578,750	59	635.4
2005	3,790	1,765,650	577,562	60	629.4
2006	3,764	1,795,507	583,041	60	632.6
2007	3,811	1,844,355	591,924	60	648.1
2008	3,722	1,858,069	594,368	61	636.5
2009	3,677	1,813,184	580,972	62	636.3
2010	3,641	1,801,873	579,758	63	627.9
2011	3,642	1,819,044	583,725	62	625.8
2012	3,607	1,841,393	591,748	64	629.8
2013	3,602	1,869,054	597,236	65	640.2
2014	3,611	1,895,859	601,291	66	643.7
2015	3,653	1,910,954	598,589	64	656.1
2016	3,679	1,916,152	592,580	64	661.2
2017	3,616	1,914,179	584,337	63	660.0
2018	3,615	1,926,242	580,213	63	663.3
2019	3,580	1,925,204	574,496	61	662.2
2020	3,657	1,851,247	556,671	58	661.3

County: county value. Kansas: state value. County Rank: highest county value ranked #1. (\$000): thousands of dollars. Nonmetro Kansas: Kansas total less Metropolitan Areas as defined by the Office of Management and Budget (OMB; released 3/6/2020). Per 1000: For nonmoney amounts, Per 1000=(county value / county population for the same year as the data) x 1000. \$ Per capita=(county value / county population for the same year as the data). Value= . indicates missing or suppressed data or value not calculated.

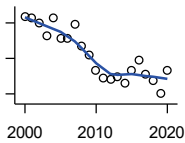
Employment

BEA EMPLOYMENT: FARM



U.S. Bureau of Economic Analysis,
Regional Economic Information System
(REIS)

Year	County	State of Kansas	Non Metro Kansas	County Rank	Per 1000 or \$ Per Capita
2000	989	77,477	59,088	22	152.6
2001	990	78,177	59,647	24	157.6
2002	898	70,532	53,893	22	144.8
2003	859	68,516	52,099	25	139.5
2004	845	67,586	51,246	26	139.2
2005	833	66,829	50,386	29	138.3
2006	807	64,910	48,728	28	135.6
2007	815	65,639	49,037	28	138.6
2008	787	63,820	47,682	28	134.6
2009	769	62,798	46,960	27	133.1
2010	776	63,882	47,984	28	133.8
2011	797	65,761	49,707	26	136.9
2012	765	63,753	48,167	25	133.6
2013	752	62,739	47,255	27	133.7
2014	779	64,308	48,722	25	138.9
2015	787	64,416	48,927	25	141.3
2016	783	63,840	48,539	25	140.7
2017	759	61,876	46,936	25	138.5
2018	776	63,233	48,069	25	142.4
2019	777	63,300	48,167	25	143.7
2020	791	64,281	49,038	25	143.0



BEA EMPLOYMENT: NON-FARM

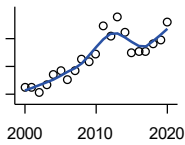
U.S. Bureau of Economic Analysis,
Regional Economic Information System
(REIS)

Year	County	State of Kansas	Non Metro Kansas	County Rank	Per 1000 or \$ Per Capita
2000	3,018	1,682,835	545,273	64	465.5
2001	3,014	1,689,424	533,025	64	479.9
2002	2,998	1,675,545	531,494	64	483.5
2003	2,965	1,665,178	525,761	64	481.6
2004	3,013	1,683,290	527,504	62	496.2
2005	2,957	1,698,821	527,176	64	491.0
2006	2,957	1,730,597	534,313	63	497.0
2007	2,996	1,778,716	542,887	63	509.5
2008	2,935	1,794,249	546,686	65	501.9
2009	2,908	1,750,386	534,012	64	503.2
2010	2,865	1,737,991	531,774	64	494.1
2011	2,845	1,753,283	534,018	65	488.8
2012	2,842	1,777,640	543,581	65	496.2
2013	2,850	1,806,315	549,981	66	506.6
2014	2,832	1,831,551	552,569	66	504.8
2015	2,866	1,846,538	549,662	67	514.7
2016	2,896	1,852,312	544,041	66	520.5
2017	2,857	1,852,303	537,401	65	521.4
2018	2,839	1,863,009	532,144	66	520.9
2019	2,803	1,861,904	526,329	66	518.5
2020	2,866	1,786,966	507,633	63	518.3

County: county value. Kansas: state value. County Rank: highest county value ranked #1. (\$000): thousands of dollars. Nonmetro Kansas: Kansas total less Metropolitan Areas as defined by the Office of Management and Budget (OMB; released 3/6/2020). Per 1000: For nonmoney amounts, Per 1000=(county value / county population for the same year as the data) x 1000. \$ Per capita=(county value / county population for the same year as the data). Value= . indicates missing or suppressed data or value not calculated.

Employment

AVERAGE WAGE PER JOB (\$)



U.S. Bureau of Economic Analysis,
Regional Economic Information System
(REIS)

Year	County	State of Kansas	Non Metro Kansas	County Rank	Per 1000 or \$ Per Capita
2000	17,595	31,854	24,396	86	.
2001	17,508	32,859	26,379	102	.
2002	15,831	33,707	26,331	104	.
2003	18,353	35,078	28,911	103	.
2004	21,996	35,932	29,747	90	.
2005	23,380	37,467	31,646	95	.
2006	20,315	40,038	31,993	100	.
2007	23,622	41,500	33,484	101	.
2008	27,495	44,197	36,256	96	.
2009	26,921	43,860	35,739	94	.
2010	29,272	45,370	38,631	90	.
2011	39,689	48,280	42,324	60	.
2012	35,876	50,549	42,015	76	.
2013	42,857	52,629	46,073	57	.
2014	37,336	51,959	43,562	73	.
2015	29,999	52,250	42,320	95	.
2016	30,158	51,664	41,964	88	.
2017	30,259	53,007	42,137	88	.
2018	33,278	54,790	44,514	92	.
2019	34,675	56,956	45,336	90	.
2020	41,011	60,597	49,183	88	.

BEA EMPLOYMENT: FORESTRY, FISHING, HUNTING, AND AG SUPPORT

U.S. Bureau of Economic Analysis,
Regional Economic Information System
(REIS)

Year	County	State of Kansas	Non Metro Kansas	County Rank	Per 1000 or \$ Per Capita
2001	.	7,059	.	.	.
2002	.	8,045	.	.	.
2003	.	7,313	.	.	.
2004	.	7,623	.	.	.
2005	.	7,962	.	.	.
2006	.	7,748	.	.	.
2007	.	8,228	.	.	.
2008	.	8,646	.	.	.
2009	.	8,982	.	.	.
2010	.	9,251	.	.	.
2011	.	9,410	.	.	.
2012	.	9,691	.	.	.
2013	.	10,014	.	.	.
2014	.	10,708	.	.	.
2015	.	10,020	.	.	.
2016	.	10,383	.	.	.

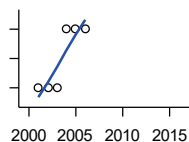
County: county value. Kansas: state value. County Rank: highest county value ranked #1. (\$000): thousands of dollars. Nonmetro Kansas: Kansas total less Metropolitan Areas as defined by the Office of Management and Budget (OMB; released 3/6/2020). Per 1000: For nonmoney amounts, Per 1000=(county value / county population for the same year as the data) x 1000. \$ Per capita=(county value / county population for the same year as the data). Value= . indicates missing or suppressed data or value not calculated.

Employment

BEA EMPLOYMENT: MINING

U.S. Bureau of Economic Analysis,
Regional Economic Information System
(REIS)

Year	County	State of Kansas	Non Metro Kansas	County Rank	Per 1000 or \$ Per Capita
2001	.	19,592	.	.	.
2002	.	17,635	.	.	.
2003	.	19,869	.	.	.
2004	.	18,466	.	.	.
2005	.	19,489	.	.	.
2006	.	22,403	.	.	.
2007	.	24,043	.	.	.
2008	.	31,467	.	.	.
2009	.	29,941	.	.	.
2010	.	36,124	.	.	.
2011	.	31,658	.	.	.
2012	.	42,405	.	.	.
2013	.	46,585	.	.	.
2014	.	45,526	.	.	.
2015	.	46,460	.	.	.
2016	.	48,555	.	.	.



BEA EMPLOYMENT: UTILITIES

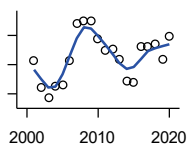
U.S. Bureau of Economic Analysis,
Regional Economic Information System
(REIS)

Year	County	State of Kansas	Non Metro Kansas	County Rank	Per 1000 or \$ Per Capita
2001	1	7,608	.	31	.
2002	1	7,087	.	33	.
2003	1	7,253	.	31	.
2004	2	7,356	.	18	.
2005	2	7,447	.	20	.
2006	2	7,478	.	21	.
2007	.	7,584	.	.	.
2008	.	7,855	.	.	.
2009	.	7,941	.	.	.
2010	.	8,028	.	.	.
2011	.	8,213	.	.	.
2012	.	8,155	.	.	.
2013	.	7,949	.	.	.
2014	.	7,985	.	.	.
2015	.	7,040	.	.	.
2016	.	7,133	.	.	.

County: county value. Kansas: state value. County Rank: highest county value ranked #1. (\$000): thousands of dollars. Nonmetro Kansas: Kansas total less Metropolitan Areas as defined by the Office of Management and Budget (OMB; released 3/6/2020). Per 1000: For nonmoney amounts, Per 1000=(county value / county population for the same year as the data) x 1000. \$ Per capita=(county value / county population for the same year as the data). Value= . indicates missing or suppressed data or value not calculated.

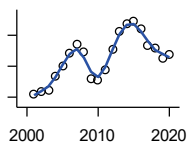
Employment

**BEA EMPLOYMENT:
CONSTRUCTION**



U.S. Bureau of Economic Analysis,
Regional Economic Information System
(REIS)

Year	County	State of Kansas	Non Metro Kansas	County Rank	Per 1000 or \$ Per Capita
2001	183	92,647	27,972	58	.
2002	164	90,370	.	56	.
2003	157	91,725	26,681	57	.
2004	165	93,271	.	56	.
2005	166	94,836	.	56	.
2006	183	97,449	.	53	.
2007	208	99,119	29,179	54	.
2008	210	97,741	.	53	.
2009	210	90,165	28,077	53	.
2010	198	84,708	26,402	55	.
2011	190	83,332	25,999	57	.
2012	191	85,966	.	55	.
2013	184	88,094	.	59	.
2014	169	91,143	.	63	.
2015	168	91,458	27,583	63	.
2016	192	93,539	27,151	59	.
2017	192	92,046	25,579	56	.
2018	194	92,985	25,530	54	.
2019	184	94,858	25,701	59	.
2020	199	94,186	26,085	53	.



**BEA EMPLOYMENT:
MANUFACTURING**

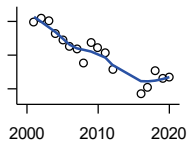
U.S. Bureau of Economic Analysis,
Regional Economic Information System
(REIS)

Year	County	State of Kansas	Non Metro Kansas	County Rank	Per 1000 or \$ Per Capita
2001	129	199,980	73,170	65	.
2002	135	188,905	70,691	65	.
2003	136	179,013	68,418	64	.
2004	159	181,738	69,669	63	.
2005	176	185,459	71,072	62	.
2006	197	188,047	71,704	58	.
2007	210	192,930	73,488	53	.
2008	198	193,116	72,235	57	.
2009	154	173,854	64,961	61	.
2010	152	166,000	62,884	59	.
2011	169	167,302	64,361	56	.
2012	202	169,308	65,944	54	.
2013	232	170,113	67,251	54	.
2014	244	169,307	68,299	52	.
2015	248	168,324	66,978	53	.
2016	235	167,723	65,796	52	.
2017	209	168,438	66,795	53	.
2018	205	171,778	68,181	54	.
2019	188	173,605	67,879	56	.
2020	193	165,228	65,658	56	.

County: county value. Kansas: state value. County Rank: highest county value ranked #1. (\$000): thousands of dollars. Nonmetro Kansas: Kansas total less Metropolitan Areas as defined by the Office of Management and Budget (OMB; released 3/6/2020). Per 1000: For nonmoney amounts, Per 1000=(county value / county population for the same year as the data) x 1000. \$ Per capita=(county value / county population for the same year as the data). Value= . indicates missing or suppressed data or value not calculated.

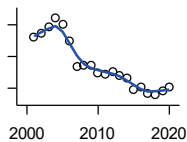
Employment

BEA EMPLOYMENT: WHOLESALE TRADE



U.S. Bureau of Economic Analysis,
Regional Economic Information System
(REIS)

Year	County	State of Kansas	Non Metro Kansas	County Rank	Per 1000 or \$ Per Capita
2001	224	65,698	.	32	.
2002	229	65,408	.	30	.
2003	226	63,504	.	28	.
2004	207	64,434	.	33	.
2005	198	64,587	.	32	.
2006	188	64,743	.	35	.
2007	185	65,993	.	36	.
2008	163	67,693	.	36	.
2009	193	65,954	.	36	.
2010	186	64,376	.	35	.
2011	179	64,712	.	40	.
2012	153	63,973	.	41	.
2013	.	64,999	.	.	.
2014	.	69,295	.	.	.
2015	.	68,444	.	.	.
2016	117	64,843	.	55	.
2017	128	65,014	.	47	.
2018	151	64,745	.	43	.
2019	140	63,324	.	44	.
2020	142	60,844	.	50	.



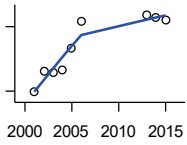
BEA EMPLOYMENT: RETAIL TRADE

U.S. Bureau of Economic Analysis,
Regional Economic Information System
(REIS)

Year	County	State of Kansas	Non Metro Kansas	County Rank	Per 1000 or \$ Per Capita
2001	355	198,069	.	61	.
2002	361	196,112	.	60	.
2003	371	194,545	64,173	57	.
2004	386	192,957	63,265	54	.
2005	375	191,656	62,506	58	.
2006	349	190,391	62,082	60	.
2007	309	190,643	61,716	65	.
2008	311	185,907	59,783	64	.
2009	311	181,262	58,714	62	.
2010	300	177,858	57,470	64	.
2011	298	180,548	57,734	66	.
2012	301	180,596	57,349	65	.
2013	296	183,245	57,556	67	.
2014	291	185,899	57,855	66	.
2015	273	188,421	58,516	68	.
2016	277	188,505	57,864	68	.
2017	267	186,633	56,715	68	.
2018	264	183,323	.	68	.
2019	270	177,240	53,427	63	.
2020	277	171,777	52,563	60	.

County: county value. Kansas: state value. County Rank: highest county value ranked #1. (\$000): thousands of dollars. Nonmetro Kansas: Kansas total less Metropolitan Areas as defined by the Office of Management and Budget (OMB; released 3/6/2020). Per 1000: For nonmoney amounts, Per 1000=(county value / county population for the same year as the data) x 1000. \$ Per capita=(county value / county population for the same year as the data). Value= . indicates missing or suppressed data or value not calculated.

Employment



**BEA EMPLOYMENT:
TRANSPORTATION AND
WAREHOUSING**

U.S. Bureau of Economic Analysis,
Regional Economic Information System
(REIS)

Year	County	State of Kansas	Non Metro Kansas	County Rank	Per 1000 or \$ Per Capita
2001	79	56,302	.	32	.
2002	99	55,319	.	32	.
2003	97	55,509	.	32	.
2004	100	55,479	.	32	.
2005	120	56,287	.	33	.
2006	145	57,506	.	30	.
2007	.	59,277	.	.	.
2008	.	58,725	.	.	.
2009	.	56,238	.	.	.
2010	.	55,179	.	.	.
2011	.	57,449	.	.	.
2012	.	59,756	.	.	.
2013	151	59,780	.	27	.
2014	149	60,565	.	28	.
2015	146	63,256	.	28	.
2016	.	65,705	.	.	.

BEA EMPLOYMENT: INFORMATION

U.S. Bureau of Economic Analysis,
Regional Economic Information System
(REIS)

Year	County	State of Kansas	Non Metro Kansas	County Rank	Per 1000 or \$ Per Capita
2001	.	54,895	.	.	.
2002	.	50,728	.	.	.
2003	.	48,328	6,860	.	.
2004	.	45,617	.	.	.
2005	.	43,840	.	.	.
2006	.	43,925	.	.	.
2007	.	45,115	.	.	.
2008	.	42,958	.	.	.
2009	.	38,677	.	.	.
2010	.	33,432	.	.	.
2011	.	32,160	.	.	.
2012	.	31,829	.	.	.
2013	.	31,737	.	.	.
2014	.	32,316	.	.	.
2015	.	25,282	.	.	.
2016	.	24,998	.	.	.

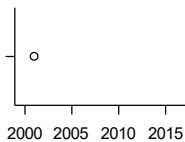
County: county value. Kansas: state value. County Rank: highest county value ranked #1. (\$000): thousands of dollars. Nonmetro Kansas: Kansas total less Metropolitan Areas as defined by the Office of Management and Budget (OMB; released 3/6/2020). Per 1000: For nonmoney amounts, Per 1000=(county value / county population for the same year as the data) x 1000. \$ Per capita=(county value / county population for the same year as the data). Value= . indicates missing or suppressed data or value not calculated.

Employment

BEA EMPLOYMENT: FINANCE AND INSURANCE

U.S. Bureau of Economic Analysis,
Regional Economic Information System
(REIS)

Year	County	State of Kansas	Non Metro Kansas	County Rank	Per 1000 or \$ Per Capita
2001	.	76,118	.	.	.
2002	.	78,206	.	.	.
2003	.	78,441	.	.	.
2004	.	78,350	.	.	.
2005	.	78,952	.	.	.
2006	.	80,900	.	.	.
2007	.	86,094	.	.	.
2008	.	89,590	.	.	.
2009	.	93,573	.	.	.
2010	.	92,428	.	.	.
2011	.	99,495	.	.	.
2012	.	98,640	.	.	.
2013	.	99,998	.	.	.
2014	.	98,209	.	.	.
2015	.	100,534	.	.	.
2016	.	102,699	.	.	.



BEA EMPLOYMENT: REAL ESTATE, RENTAL, AND LEASING

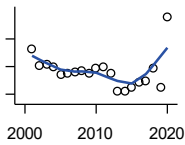
U.S. Bureau of Economic Analysis,
Regional Economic Information System
(REIS)

Year	County	State of Kansas	Non Metro Kansas	County Rank	Per 1000 or \$ Per Capita
2001	22	45,237	.	66	.
2002	.	44,970	.	.	.
2003	.	47,095	.	.	.
2004	.	50,181	.	.	.
2005	.	53,335	.	.	.
2006	.	55,342	.	.	.
2007	.	57,694	.	.	.
2008	.	57,933	.	.	.
2009	.	57,132	.	.	.
2010	.	59,578	.	.	.
2011	.	61,821	.	.	.
2012	.	60,432	.	.	.
2013	.	62,134	.	.	.
2014	.	64,705	.	.	.
2015	.	66,604	.	.	.
2016	.	68,395	.	.	.

County: county value. Kansas: state value. County Rank: highest county value ranked #1. (\$000): thousands of dollars. Nonmetro Kansas: Kansas total less Metropolitan Areas as defined by the Office of Management and Budget (OMB; released 3/6/2020). Per 1000: For nonmoney amounts, Per 1000=(county value / county population for the same year as the data) x 1000. \$ Per capita=(county value / county population for the same year as the data). Value= . indicates missing or suppressed data or value not calculated.

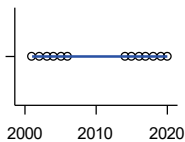
Employment

BEA EMPLOYMENT: PROFESSIONAL AND TECHNICAL SERVICES



U.S. Bureau of Economic Analysis,
Regional Economic Information System
(REIS)

Year	County	State of Kansas	Non Metro Kansas	County Rank	Per 1000 or \$ Per Capita
2001	103	81,396	.	46	.
2002	91	80,684	.	50	.
2003	92	80,311	.	44	.
2004	90	85,550	.	47	.
2005	84	85,003	.	49	.
2006	85	87,381	.	50	.
2007	86	92,717	.	54	.
2008	87	95,362	.	58	.
2009	85	93,232	.	54	.
2010	89	93,037	.	55	.
2011	90	93,237	.	57	.
2012	85	95,360	.	61	.
2013	72	100,795	.	63	.
2014	72	102,210	.	62	.
2015	75	105,625	.	63	.
2016	79	108,059	.	63	.
2017	80	109,041	.	62	.
2018	89	110,513	.	58	.
2019	75	109,637	.	61	.
2020	126	108,634	.	42	.



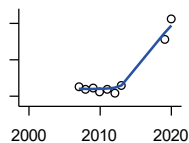
BEA EMPLOYMENT: MANAGEMENT OF COMPANIES AND ENTERPRISES

U.S. Bureau of Economic Analysis,
Regional Economic Information System
(REIS)

Year	County	State of Kansas	Non Metro Kansas	County Rank	Per 1000 or \$ Per Capita
2001	0	13,832	.	70	.
2002	0	12,576	.	69	.
2003	0	11,135	.	67	.
2004	0	10,614	.	67	.
2005	0	11,811	.	66	.
2006	0	13,061	.	66	.
2007	.	13,398	.	.	.
2008	.	15,234	.	.	.
2009	.	14,849	.	.	.
2010	.	16,579	.	.	.
2011	.	15,343	.	.	.
2012	.	15,075	.	.	.
2013	.	16,667	.	.	.
2014	0	20,441	.	79	.
2015	0	29,604	.	78	.
2016	0	27,824	.	77	.
2017	0	27,767	.	77	.
2018	0	28,862	.	75	.
2019	0	30,512	.	74	.
2020	0	25,648	.	74	.

County: county value. Kansas: state value. County Rank: highest county value ranked #1. (\$000): thousands of dollars. Nonmetro Kansas: Kansas total less Metropolitan Areas as defined by the Office of Management and Budget (OMB; released 3/6/2020). Per 1000: For nonmoney amounts, Per 1000=(county value / county population for the same year as the data) x 1000. \$ Per capita=(county value / county population for the same year as the data). Value= . indicates missing or suppressed data or value not calculated.

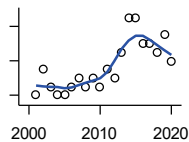
Employment



**BEA EMPLOYMENT:
ADMINISTRATIVE AND WASTE
SERVICES**

U.S. Bureau of Economic Analysis,
Regional Economic Information System
(REIS)

Year	County	State of Kansas	Non Metro Kansas	County Rank	Per 1000 or \$ Per Capita
2001	.	81,573	.	.	.
2002	.	82,992	.	.	.
2003	.	81,298	.	.	.
2004	.	85,721	.	.	.
2005	.	89,933	.	.	.
2006	.	93,688	.	.	.
2007	31	98,865	.	54	.
2008	27	97,440	.	53	.
2009	29	92,455	.	59	.
2010	25	93,675	.	58	.
2011	28	97,969	.	63	.
2012	24	100,490	.	64	.
2013	32	104,680	.	63	.
2014	.	107,218	18,836	.	.
2015	.	103,436	18,767	.	.
2016	.	103,233	18,428	.	.
2019	83	100,897	.	44	.
2020	105	95,361	.	41	.



**BEA EMPLOYMENT: EDUCATIONAL
SERVICES**

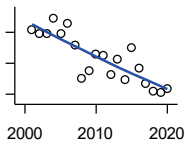
U.S. Bureau of Economic Analysis,
Regional Economic Information System
(REIS)

Year	County	State of Kansas	Non Metro Kansas	County Rank	Per 1000 or \$ Per Capita
2001	24	21,169	.	24	.
2002	27	22,173	.	25	.
2003	25	22,651	.	26	.
2004	24	21,601	.	29	.
2005	24	22,177	.	23	.
2006	25	22,438	.	22	.
2007	26	23,647	.	22	.
2008	25	24,653	.	23	.
2009	26	25,120	.	20	.
2010	25	26,071	.	22	.
2011	27	26,080	.	22	.
2012	26	26,625	.	23	.
2013	29	27,508	.	22	.
2014	33	28,708	.	23	.
2015	33	28,794	.	22	.
2016	30	27,996	.	25	.
2017	30	28,459	.	22	.
2018	29	28,560	.	25	.
2019	31	29,586	.	27	.
2020	28	27,508	.	24	.

County: county value. Kansas: state value. County Rank: highest county value ranked #1. (\$000): thousands of dollars. Nonmetro Kansas: Kansas total less Metropolitan Areas as defined by the Office of Management and Budget (OMB; released 3/6/2020). Per 1000: For nonmoney amounts, Per 1000=(county value / county population for the same year as the data) x 1000. \$ Per capita=(county value / county population for the same year as the data). Value= . indicates missing or suppressed data or value not calculated.

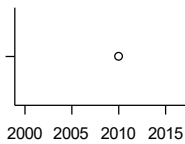
Employment

BEA EMPLOYMENT: HEALTH CARE AND SOCIAL ASSISTANCE



U.S. Bureau of Economic Analysis, Regional Economic Information System (REIS)

Year	County	State of Kansas	Non Metro Kansas	County Rank	Per 1000 or \$ Per Capita
2001	262	165,415	.	38	.
2002	259	168,198	.	38	.
2003	259	169,654	.	40	.
2004	269	172,796	.	42	.
2005	259	173,949	.	36	.
2006	266	176,919	.	32	.
2007	252	182,160	.	35	.
2008	230	186,051	.	38	.
2009	235	188,499	.	35	.
2010	246	188,383	.	34	.
2011	245	190,736	.	35	.
2012	233	192,991	.	36	.
2013	243	193,687	.	35	.
2014	229	194,632	.	36	.
2015	250	199,724	.	35	.
2016	237	201,830	.	38	.
2017	227	201,910	.	34	.
2018	222	204,011	.	41	.
2019	221	206,646	.	40	.
2020	224	204,942	.	38	.



BEA EMPLOYMENT: ARTS, ENTERTAINMENT, AND RECREATION

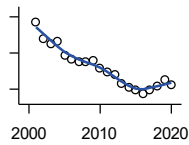
U.S. Bureau of Economic Analysis, Regional Economic Information System (REIS)

Year	County	State of Kansas	Non Metro Kansas	County Rank	Per 1000 or \$ Per Capita
2001	.	25,012	.	.	.
2002	.	25,668	.	.	.
2003	.	24,116	.	.	.
2004	.	25,355	.	.	.
2005	.	26,067	.	.	.
2006	.	26,505	.	.	.
2007	.	27,489	.	.	.
2008	.	27,501	.	.	.
2009	.	27,203	.	.	.
2010	19	27,479	.	50	.
2011	.	28,487	.	.	.
2012	.	30,729	.	.	.
2013	.	31,068	.	.	.
2014	.	32,154	.	.	.
2015	.	31,169	.	.	.
2016	.	32,373	.	.	.

County: county value. Kansas: state value. County Rank: highest county value ranked #1. (\$000): thousands of dollars. Nonmetro Kansas: Kansas total less Metropolitan Areas as defined by the Office of Management and Budget (OMB; released 3/6/2020). Per 1000: For nonmoney amounts, Per 1000=(county value / county population for the same year as the data) x 1000. \$ Per capita=(county value / county population for the same year as the data). Value= . indicates missing or suppressed data or value not calculated.

Employment

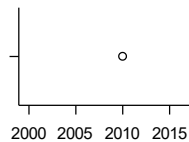
BEA EMPLOYMENT: GOVERNMENT AND GOVERNMENT ENTERPRISES



U.S. Bureau of Economic Analysis, Regional Economic Information System (REIS)

Year	County	State of Kansas	Non Metro Kansas	County Rank	Per 1000 or \$ Per Capita
2001	936	282,293	102,993	49	.
2002	889	281,427	103,581	54	.
2003	875	282,459	103,389	55	.
2004	884	283,877	103,946	54	.
2005	843	282,798	103,194	57	.
2006	833	288,372	104,103	57	.
2007	826	294,413	104,598	58	.
2008	826	298,580	104,718	57	.
2009	829	300,422	104,081	57	.
2010	809	303,875	103,382	57	.
2011	797	299,952	101,535	56	.
2012	792	298,068	101,180	56	.
2013	765	297,689	101,232	61	.
2014	755	296,956	100,634	62	.
2015	747	295,799	99,719	61	.
2016	736	291,536	98,520	61	.
2017	747	295,748	99,542	60	.
2018	759	298,105	99,499	59	.
2019	776	302,017	100,227	58	.
2020	762	292,583	96,477	58	.

BEA EMPLOYMENT: ACCOMMODATION AND FOOD SERVICES

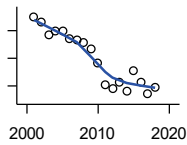


U.S. Bureau of Economic Analysis, Regional Economic Information System (REIS)

Year	County	State of Kansas	Non Metro Kansas	County Rank	Per 1000 or \$ Per Capita
2001	.	103,353	.	.	.
2002	.	103,692	.	.	.
2003	.	105,138	.	.	.
2004	.	106,694	.	.	.
2005	.	107,303	.	.	.
2006	.	109,888	.	.	.
2007	.	110,863	.	.	.
2008	.	111,092	.	.	.
2009	.	109,353	.	.	.
2010	130	108,628	.	46	.
2011	.	110,514	.	.	.
2012	.	112,574	.	.	.
2013	.	114,102	.	.	.
2014	.	115,768	.	.	.
2015	.	118,503	.	.	.
2016	.	119,764	.	.	.

County: county value. Kansas: state value. County Rank: highest county value ranked #1. (\$000): thousands of dollars. Nonmetro Kansas: Kansas total less Metropolitan Areas as defined by the Office of Management and Budget (OMB; released 3/6/2020). Per 1000: For nonmoney amounts, Per 1000=(county value / county population for the same year as the data) x 1000. \$ Per capita=(county value / county population for the same year as the data). Value= . indicates missing or suppressed data or value not calculated.

Employment

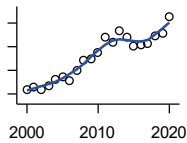


BEA EMPLOYMENT: OTHER SERVICES, EXCEPT PUBLIC ADMINISTRATION

U.S. Bureau of Economic Analysis, Regional Economic Information System (REIS)

Year	County	State of Kansas	Non Metro Kansas	County Rank	Per 1000 or \$ Per Capita
2001	270	92,176	.	47	.
2002	266	95,350	.	53	.
2003	257	95,821	32,629	53	.
2004	260	95,610	.	52	.
2005	260	95,930	32,555	52	.
2006	254	96,413	.	51	.
2007	253	98,444	.	49	.
2008	251	96,705	.	50	.
2009	247	95,534	.	49	.
2010	237	93,302	.	48	.
2011	221	94,865	.	49	.
2012	218	94,977	.	55	.
2013	223	95,471	.	54	.
2014	216	97,806	.	54	.
2015	231	98,041	.	49	.
2016	223	97,219	.	49	.
2017	214	96,568	.	48	.
2018	219	98,645	.	50	.

Income



BEA PER CAPITA PERSONAL INCOME (\$)

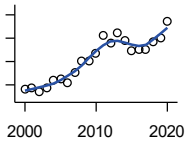
U.S. Bureau of Economic Analysis, Regional Economic Information System (REIS)

Year	County	State of Kansas	Non Metro Kansas	County Rank	Per 1000 or \$ Per Capita
2000	22,054	28,253	23,116	74	.
2001	22,980	29,112	24,576	86	.
2002	21,652	29,248	24,314	95	.
2003	23,314	30,074	26,017	96	.
2004	26,358	30,843	26,583	61	.
2005	27,173	32,545	28,356	78	.
2006	25,791	35,690	29,782	95	.
2007	30,003	38,057	32,034	85	.
2008	34,174	41,257	35,211	69	.
2009	34,665	39,431	33,876	60	.
2010	37,691	39,960	35,795	51	.
2011	43,943	43,015	39,041	42	.
2012	41,843	45,294	39,660	50	.
2013	46,594	46,174	41,747	49	.
2014	43,886	47,013	41,042	46	.
2015	40,117	47,332	40,638	59	.
2016	40,754	47,326	40,797	58	.
2017	41,259	48,756	41,314	56	.
2018	44,312	50,811	43,283	52	.
2019	45,852	52,820	44,491	48	.
2020	52,731	55,677	48,415	41	.

County: county value. Kansas: state value. County Rank: highest county value ranked #1. (\$000): thousands of dollars. Nonmetro Kansas: Kansas total less Metropolitan Areas as defined by the Office of Management and Budget (OMB; released 3/6/2020). Per 1000: For nonmoney amounts, Per 1000=(county value / county population for the same year as the data) x 1000. \$ Per capita=(county value / county population for the same year as the data). Value= . indicates missing or suppressed data or value not calculated.

Income

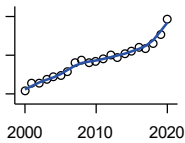
**SOURCES OF PERSONAL INCOME:
TOTAL PERSONAL INCOME (\$000)**



U.S. Bureau of Economic Analysis,
Regional Economic Information System
(REIS)

Year	County	State of Kansas	Non Metro Kansas	County Rank	Per 1000 or \$ Per Capita
2000	141,431	76,105,125	22,273,838	67	21,815.7
2001	144,335	78,664,651	23,411,174	66	22,979.6
2002	134,261	79,365,190	23,000,314	67	21,651.5
2003	143,522	81,890,340	24,494,191	68	23,314.2
2004	160,045	84,335,940	24,924,467	62	26,357.9
2005	163,635	89,346,228	26,452,291	66	27,172.9
2006	153,457	98,610,188	27,661,596	68	25,791.1
2007	176,416	105,943,199	29,715,946	66	30,002.7
2008	199,849	115,852,478	32,614,565	67	34,173.9
2009	200,327	111,697,350	31,394,702	65	34,664.6
2010	218,041	114,239,828	33,291,419	64	37,599.8
2011	255,750	123,558,772	36,221,488	63	43,943.3
2012	239,637	130,948,127	36,696,759	64	41,843.4
2013	262,136	133,979,908	38,513,959	66	46,593.7
2014	246,199	136,878,718	37,680,598	67	43,885.7
2015	223,372	138,336,768	37,081,851	67	40,117.1
2016	226,634	138,533,890	36,930,885	67	40,732.2
2017	225,893	142,729,689	37,104,963	66	41,228.9
2018	241,810	148,955,739	38,589,364	66	44,368.8
2019	249,849	154,961,001	39,424,148	64	46,217.0
2020	286,169	163,462,179	42,618,591	60	51,748.5

**SOURCES OF PERSONAL INCOME:
WAGES AND SALARIES (\$000)**



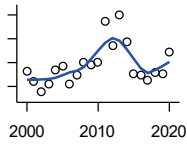
U.S. Bureau of Economic Analysis,
Regional Economic Information System
(REIS)

Year	County	State of Kansas	Non Metro Kansas	County Rank	Per 1000 or \$ Per Capita
2000	41,484	41,766,878	10,254,250	67	6,398.9
2001	45,452	43,269,734	10,518,206	66	7,236.4
2002	45,617	43,875,159	10,696,876	67	7,356.4
2003	47,329	44,488,560	10,894,971	66	7,688.3
2004	48,772	46,702,068	11,333,617	65	8,032.3
2005	49,457	48,537,956	11,614,130	67	8,212.7
2006	51,517	52,083,584	12,299,340	68	8,658.3
2007	55,860	55,442,368	13,093,908	67	9,500.0
2008	57,441	57,623,385	13,647,143	68	9,822.3
2009	56,011	55,605,578	13,199,674	68	9,692.2
2010	56,558	56,089,711	13,345,291	67	9,753.1
2011	58,186	58,104,706	13,856,458	68	9,997.6
2012	60,168	60,616,457	14,473,599	68	10,506.0
2013	58,525	61,872,023	14,781,792	70	10,402.6
2014	60,988	64,457,652	15,385,500	69	10,871.3
2015	61,779	66,729,598	15,454,485	69	11,095.4
2016	64,005	67,253,399	15,422,058	68	11,503.4
2017	63,691	68,830,861	15,731,853	69	11,624.6
2018	66,125	71,580,544	16,311,725	67	12,133.0
2019	70,926	74,404,771	16,882,299	67	13,119.9
2020	78,350	75,798,310	17,251,300	65	14,168.2

County: county value. Kansas: state value. County Rank: highest county value ranked #1. (\$000): thousands of dollars. Nonmetro Kansas: Kansas total less Metropolitan Areas as defined by the Office of Management and Budget (OMB; released 3/6/2020). Per 1000: For nonmoney amounts, Per 1000=(county value / county population for the same year as the data) x 1000. \$ Per capita=(county value / county population for the same year as the data). Value= . indicates missing or suppressed data or value not calculated.

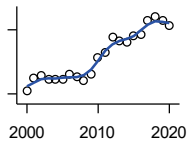
Income

**SOURCES OF PERSONAL INCOME:
PROPRIETORS-FARM (\$000)**



U.S. Bureau of Economic Analysis,
Regional Economic Information System
(REIS)

Year	County	State of Kansas	Non Metro Kansas	County Rank	Per 1000 or \$ Per Capita
2000	13,043	668,539	673,707	19	2,011.9
2001	4,238	779,473	769,336	64	674.7
2002	-4,853	145,064	187,033	97	-782.6
2003	2,245	1,281,076	1,195,298	92	364.7
2004	14,341	1,149,425	938,524	29	2,361.8
2005	17,069	1,609,604	1,469,139	37	2,834.4
2006	1,783	766,047	663,735	68	299.7
2007	9,983	1,131,607	1,040,350	58	1,697.8
2008	20,148	1,582,092	1,404,900	36	3,445.3
2009	17,958	1,585,995	1,390,349	35	3,107.5
2010	20,338	2,149,482	2,029,067	43	3,507.2
2011	54,590	3,188,519	2,989,880	17	9,379.7
2012	34,049	2,519,555	2,296,875	26	5,945.3
2013	60,068	4,499,190	4,158,419	25	10,676.9
2014	37,785	2,231,181	2,157,992	17	6,735.3
2015	10,210	1,300,733	1,294,370	36	1,833.7
2016	9,015	1,577,060	1,564,511	41	1,620.2
2017	4,825	838,480	838,290	44	880.6
2018	11,722	1,050,662	971,690	37	2,150.8
2019	10,993	998,038	878,247	40	2,033.5
2020	28,720	2,151,349	1,887,881	21	5,193.5



**SOURCES OF PERSONAL INCOME:
PROPRIETORS-NONFARM (\$000)**

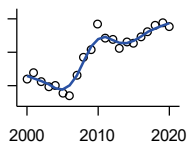
U.S. Bureau of Economic Analysis,
Regional Economic Information System
(REIS)

Year	County	State of Kansas	Non Metro Kansas	County Rank	Per 1000 or \$ Per Capita
2000	5,735	4,580,476	1,493,470	85	884.6
2001	8,811	4,510,530	1,855,621	81	1,402.8
2002	9,200	5,036,100	1,966,784	81	1,483.6
2003	8,265	4,719,377	1,916,735	81	1,342.6
2004	8,534	4,003,922	2,073,898	79	1,405.5
2005	8,347	4,455,294	2,200,971	86	1,386.1
2006	9,661	7,343,524	2,694,895	87	1,623.7
2007	9,025	7,280,197	2,436,574	82	1,534.9
2008	8,078	9,255,953	2,971,923	90	1,381.3
2009	9,553	9,323,551	2,858,848	84	1,653.1
2010	13,573	9,658,261	3,498,040	80	2,340.6
2011	14,800	12,196,566	4,186,007	82	2,543.0
2012	18,250	15,773,140	4,446,004	77	3,186.7
2013	17,489	16,441,660	4,492,127	82	3,108.6
2014	17,046	15,954,254	4,455,081	79	3,038.5
2015	18,557	15,536,116	4,386,172	75	3,332.8
2016	18,964	14,075,310	3,783,829	70	3,408.3
2017	22,213	15,371,957	3,908,254	69	4,054.2
2018	23,111	15,716,877	4,238,775	70	4,240.6
2019	22,095	16,705,488	3,921,051	65	4,087.1
2020	20,983	16,718,952	3,823,329	66	3,794.4

County: county value. Kansas: state value. County Rank: highest county value ranked #1. (\$000): thousands of dollars. Nonmetro Kansas: Kansas total less Metropolitan Areas as defined by the Office of Management and Budget (OMB; released 3/6/2020). Per 1000: For nonmoney amounts, Per 1000=(county value / county population for the same year as the data) x 1000. \$ Per capita=(county value / county population for the same year as the data). Value= . indicates missing or suppressed data or value not calculated.

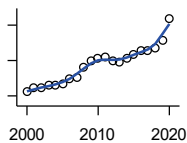
Income

**SOURCES OF PERSONAL INCOME:
DIVIDENDS,INTEREST,RENT(\$000)**



U.S. Bureau of Economic Analysis,
Regional Economic Information System
(REIS)

Year	County	State of Kansas	Non Metro Kansas	County Rank	Per 1000 or \$ Per Capita
2000	31,871	15,916,201	4,736,921	66	4,916.1
2001	33,717	15,770,830	4,699,417	64	5,368.1
2002	31,328	15,111,563	4,316,887	63	5,052.1
2003	29,836	15,370,764	4,360,311	65	4,846.7
2004	30,192	15,820,469	4,251,925	60	4,972.3
2005	27,645	17,147,069	4,485,387	66	4,590.7
2006	26,849	20,117,848	4,945,184	71	4,512.4
2007	33,001	22,269,186	5,526,219	68	5,612.4
2008	38,293	24,972,485	6,180,979	69	6,548.1
2009	40,687	21,453,879	5,308,474	56	7,040.5
2010	48,504	20,861,351	5,414,285	49	8,364.2
2011	44,272	23,387,567	5,781,075	55	7,606.9
2012	43,949	25,689,368	6,389,505	61	7,674.0
2013	41,199	24,832,212	5,984,811	62	7,323.0
2014	42,952	27,412,684	6,403,356	66	7,656.3
2015	42,821	27,244,414	6,423,685	65	7,690.6
2016	44,524	27,293,441	6,389,161	63	8,002.2
2017	46,028	28,385,472	6,700,156	63	8,400.8
2018	48,151	29,953,419	6,772,504	59	8,835.0
2019	48,729	30,820,276	6,957,987	60	9,013.9
2020	47,659	30,283,520	6,844,745	61	8,618.3



**SOURCES OF PERSONAL INCOME:
TRANSFER PAYMENTS (\$000)**

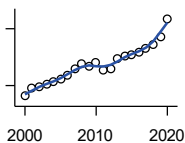
U.S. Bureau of Economic Analysis,
Regional Economic Information System
(REIS)

Year	County	State of Kansas	Non Metro Kansas	County Rank	Per 1000 or \$ Per Capita
2000	32,181	9,650,835	4,036,781	53	4,963.9
2001	34,348	10,549,124	4,355,457	54	5,468.6
2002	34,344	11,208,997	4,553,978	57	5,538.5
2003	36,040	11,709,049	4,702,911	55	5,854.5
2004	35,882	12,040,452	4,802,536	56	5,909.4
2005	37,133	12,696,735	5,059,314	57	6,166.2
2006	39,992	13,642,787	5,455,207	57	6,721.3
2007	40,738	14,686,821	5,775,024	59	6,928.2
2008	46,251	16,552,460	6,322,722	58	7,908.9
2009	49,502	18,025,603	6,790,962	57	8,565.8
2010	50,920	19,189,749	7,089,258	56	8,780.8
2011	51,690	19,625,770	7,255,825	58	8,881.4
2012	49,532	19,354,458	7,148,177	59	8,648.9
2013	49,333	19,639,358	7,185,636	61	8,768.8
2014	51,379	20,380,970	7,399,809	61	9,158.5
2015	53,626	21,116,856	7,623,577	60	9,631.1
2016	55,390	21,884,629	7,886,000	60	9,955.1
2017	55,252	22,559,744	8,062,517	62	10,084.3
2018	57,396	23,628,033	8,393,617	62	10,531.4
2019	61,406	25,050,174	8,845,371	62	11,358.9
2020	73,739	32,319,421	11,074,190	62	13,334.4

County: county value. Kansas: state value. County Rank: highest county value ranked #1. (\$000): thousands of dollars. Nonmetro Kansas: Kansas total less Metropolitan Areas as defined by the Office of Management and Budget (OMB; released 3/6/2020). Per 1000: For nonmoney amounts, Per 1000=(county value / county population for the same year as the data) x 1000. \$ Per capita=(county value / county population for the same year as the data). Value= . indicates missing or suppressed data or value not calculated.

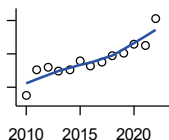
Income

**SOURCES OF PERSONAL INCOME:
LESS SOCIAL INSURANCE (\$000)**



U.S. Bureau of Economic Analysis,
Regional Economic Information System
(REIS)

Year	County	State of Kansas	Non Metro Kansas	County Rank	Per 1000 or \$ Per Capita
2000	6,874	6,655,813	1,663,044	69	1,060.3
2001	7,740	6,869,934	1,740,915	68	1,232.3
2002	7,865	7,008,361	1,778,636	68	1,268.3
2003	8,130	7,172,781	1,821,858	68	1,320.7
2004	8,433	7,556,560	1,904,014	68	1,388.8
2005	8,723	7,911,241	1,986,907	68	1,448.5
2006	9,071	8,406,937	2,090,313	68	1,524.5
2007	9,731	8,806,941	2,180,587	67	1,654.9
2008	10,257	9,207,010	2,299,399	69	1,753.9
2009	10,093	9,002,859	2,248,703	68	1,746.5
2010	10,420	9,235,760	2,321,191	68	1,796.9
2011	9,582	8,515,986	2,139,991	68	1,646.4
2012	9,744	8,816,128	2,195,919	68	1,701.4
2013	10,801	10,225,399	2,540,439	69	1,919.8
2014	11,112	10,609,601	2,635,009	69	1,980.7
2015	11,305	11,028,204	2,663,038	69	2,030.4
2016	11,554	10,915,915	2,604,579	69	2,076.6
2017	11,896	11,224,218	2,669,954	69	2,171.2
2018	12,393	11,749,229	2,797,106	66	2,273.9
2019	13,204	12,245,451	2,889,336	65	2,442.5
2020	15,046	12,715,152	3,027,656	64	2,720.8



HUD MEDIAN FAMILY INCOME

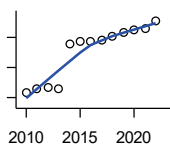
U.S. Department of Housing and Urban
Development (HUD)

Year	County	State of Kansas	Non Metro Kansas	County Rank	Per 1000 or \$ Per Capita
2010	47,400	63,100	.	92	.
2011	55,200	64,300	.	52	.
2012	55,900	65,200	.	52	.
2013	54,900	64,800	.	62	.
2014	55,200	64,400	.	69	.
2015	58,000	66,300	.	60	.
2016	56,500	66,700	.	66	.
2017	57,500	68,500	.	72	.
2018	59,300	73,100	.	70	.
2019	60,100	75,200	.	77	.
2020	62,800	76,500	.	69	.
2021	62,400	77,400	.	74	.
2022	70,600	87,800	.	61	.

County: county value. Kansas: state value. County Rank: highest county value ranked #1. (\$000): thousands of dollars. Nonmetro Kansas: Kansas total less Metropolitan Areas as defined by the Office of Management and Budget (OMB; released 3/6/2020). Per 1000: For nonmoney amounts, Per 1000=(county value / county population for the same year as the data) x 1000. \$ Per capita=(county value / county population for the same year as the data). Value= . indicates missing or suppressed data or value not calculated.

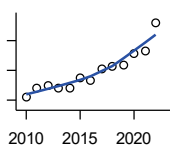
Income

HUD 30% LOW-TO-MEDIUM INCOME (LMI) LIMIT - 4 PERSONS



U.S. Department of Housing and Urban Development (HUD)

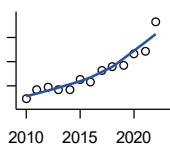
Year	County	State of Kansas	Non Metro Kansas	County Rank	Per 1000 or \$ Per Capita
2010	15,850	.	.	105	.
2011	16,550	.	.	54	.
2012	16,750	.	.	52	.
2013	16,550	.	.	105	.
2014	23,850	.	.	105	.
2015	24,250	.	.	105	.
2016	24,300	.	.	105	.
2017	24,600	.	.	105	.
2018	25,100	21,950	.	105	.
2019	25,750	22,550	.	105	.
2020	26,200	22,950	.	105	.
2021	26,500	23,200	.	105	.
2022	27,750	25,950	.	105	.



HUD 50% LOW-TO-MEDIUM INCOME (LMI) LIMIT - 4 PERSONS

U.S. Department of Housing and Urban Development (HUD)

Year	County	State of Kansas	Non Metro Kansas	County Rank	Per 1000 or \$ Per Capita
2010	26,400	.	.	105	.
2011	27,600	.	.	53	.
2012	27,950	.	.	52	.
2013	27,600	.	.	105	.
2014	27,600	.	.	70	.
2015	29,000	.	.	60	.
2016	28,650	.	.	105	.
2017	30,150	.	.	105	.
2018	30,550	36,550	.	105	.
2019	30,750	37,600	.	105	.
2020	32,300	38,250	.	104	.
2021	32,550	38,700	.	105	.
2022	36,400	43,300	.	105	.



HUD 80% LOW-TO-MEDIUM INCOME (LMI) LIMIT - 4 PERSONS

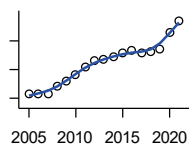
U.S. Department of Housing and Urban Development (HUD)

Year	County	State of Kansas	Non Metro Kansas	County Rank	Per 1000 or \$ Per Capita
2010	42,250	.	.	105	.
2011	44,150	.	.	53	.
2012	44,700	.	.	52	.
2013	44,150	.	.	105	.
2014	44,150	.	.	70	.
2015	46,400	.	.	60	.
2016	45,850	.	.	105	.
2017	48,250	.	.	105	.
2018	48,900	58,500	.	105	.
2019	49,200	60,150	.	105	.
2020	51,700	61,200	.	104	.
2021	52,100	61,900	.	105	.
2022	58,250	69,250	.	105	.

County: county value. Kansas: state value. County Rank: highest county value ranked #1. (\$000): thousands of dollars. Nonmetro Kansas: Kansas total less Metropolitan Areas as defined by the Office of Management and Budget (OMB; released 3/6/2020). Per 1000: For nonmoney amounts, Per 1000=(county value / county population for the same year as the data) x 1000. \$ Per capita=(county value / county population for the same year as the data). Value= . indicates missing or suppressed data or value not calculated.

Banking

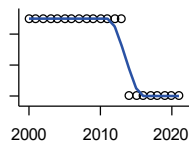
BANK DEPOSITS (1984-2004 in thousands; 2005- in millions)



Federal Deposit Insurance Corporation, Data Book, Operating Banks and Branches

Year	County	State of Kansas	Non Metro Kansas	County Rank	Per 1000 or \$ Per Capita
2005	132	48,304	17,000	61	21.9
2006	132	50,668	17,586	62	22.2
2007	133	54,057	18,517	63	22.6
2008	145	57,869	19,628	63	24.8
2009	155	57,763	20,031	61	26.8
2010	167	60,031	20,678	59	28.8
2011	180	61,094	21,347	59	30.9
2012	191	62,910	22,481	58	33.4
2013	192	64,547	22,795	59	34.1
2014	197	66,538	23,338	56	35.1
2015	203	68,160	23,367	56	36.5
2016	208	70,381	23,420	55	37.4
2017	204	73,329	23,928	58	37.2
2018	207	74,623	24,100	58	38.0
2019	210	76,436	24,488	58	38.8
2020	240	88,563	27,547	55	43.4
2021	260	97,055	30,122	56	47.2

NUMBER OF BANKS



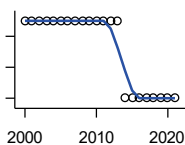
Federal Deposit Insurance Corporation, Data Book, Operating Banks and Branches

Year	County	State of Kansas	Non Metro Kansas	County Rank	Per 1000 or \$ Per Capita
2000	7	410	145	40	.
2001	7	410	136	39	.
2002	7	404	129	39	.
2003	7	397	121	37	.
2004	7	394	112	36	.
2005	7	388	101	38	.
2006	7	385	94	37	.
2007	7	382	91	37	.
2008	7	378	82	36	.
2009	7	374	79	36	.
2010	7	367	70	36	.
2011	7	359	61	36	.
2012	7	348	57	37	.
2013	7	332	45	36	.
2014	6	329	41	44	.
2015	6	320	31	43	.
2016	6	314	24	43	.
2017	6	301	13	43	.
2018	6	289	7	43	.
2019	6	279	3	43	.
2020	6	271	-1	42	.
2021	6	270	-6	41	.

County: county value. Kansas: state value. County Rank: highest county value ranked #1. (\$000): thousands of dollars. Nonmetro Kansas: Kansas total less Metropolitan Areas as defined by the Office of Management and Budget (OMB; released 3/6/2020). Per 1000: For nonmoney amounts, Per 1000=(county value / county population for the same year as the data) x 1000. \$ Per capita=(county value / county population for the same year as the data). Value= . indicates missing or suppressed data or value not calculated.

Banking

NUMBER OF BANKING OFFICES

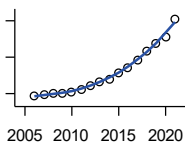


Federal Deposit Insurance Corporation, Data Book, Operating Banks and Branches

Year	County	State of Kansas	Non Metro Kansas	County Rank	Per 1000 or \$ Per Capita
2000	9	1,398	703	48	.
2001	9	1,424	708	49	.
2002	9	1,447	704	47	.
2003	9	1,461	708	47	.
2004	9	1,485	708	46	.
2005	9	1,505	711	46	.
2006	9	1,518	711	46	.
2007	9	1,543	717	48	.
2008	9	1,556	717	48	.
2009	9	1,569	716	45	.
2010	9	1,561	710	45	.
2011	9	1,559	707	46	.
2012	9	1,533	702	45	.
2013	9	1,518	696	44	.
2014	8	1,491	685	50	.
2015	8	1,472	675	49	.
2016	8	1,465	668	49	.
2017	8	1,452	666	49	.
2018	8	1,439	660	49	.
2019	8	1,439	663	48	.
2020	8	1,416	653	48	.
2021	8	1,392	641	48	.

Government

TANGIBLE ASSESSED VALUATION (KDoR, million\$; 2006-)



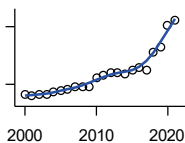
Kansas Department of Revenue, Division of Property Valuation, Statistical Report of Property Assessment and Taxation

Year	County	State of Kansas	Non Metro Kansas	County Rank	Per 1000 or \$ Per Capita
2006	56.9	28,964.3	10,316.9	76	9.6
2007	58.6	30,086.9	10,335.9	74	10.0
2008	59.6	31,000.3	10,856.9	74	10.2
2009	60.9	30,312.3	10,555.6	73	10.5
2010	61.8	29,450.2	10,158.7	72	10.7
2011	64.4	29,963.6	10,572.3	73	11.1
2012	68.9	30,382.9	10,876.2	74	12.0
2013	73.4	30,850.2	11,044.4	72	13.1
2014	75.7	31,783.0	11,388.9	71	13.5
2015	83.4	32,335.7	11,037.8	65	15.0
2016	88.7	33,156.3	10,889.6	60	15.9
2017	96.3	34,754.5	11,439.0	59	17.6
2018	106.4	36,566.1	11,907.1	53	19.5
2019	115.0	38,255.2	12,336.7	50	21.3
2020	122.4	39,333.9	12,219.3	47	22.1
2021	141.9	40,812.0	12,601.5	44	25.7

County: county value. Kansas: state value. County Rank: highest county value ranked #1. (\$000): thousands of dollars. Nonmetro Kansas: Kansas total less Metropolitan Areas as defined by the Office of Management and Budget (OMB; released 3/6/2020). Per 1000: For nonmoney amounts, Per 1000=(county value / county population for the same year as the data) x 1000. \$ Per capita=(county value / county population for the same year as the data). Value= . indicates missing or suppressed data or value not calculated.

Government

SALES TAX COLLECTIONS (\$)

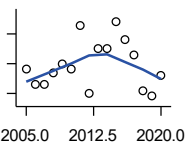


Kansas Department of Revenue. Use tax collections included beginning in calendar year 2018.

Year	County	State of Kansas	Non Metro Kansas	County Rank	Per 1000 or \$ Per Capita
2000	1,492,572	1,475,831,808	432,761,608	70	230,228.6
2001	1,380,502	1,481,026,688	426,316,284	71	219,790.2
2002	1,452,255	1,561,316,864	443,986,950	70	234,196.9
2003	1,445,373	1,626,782,976	461,658,700	72	234,790.9
2004	1,597,829	1,691,899,008	480,309,725	71	263,147.1
2005	1,647,201	1,744,980,352	497,494,867	72	273,530.6
2006	1,768,974	1,851,694,720	532,233,047	70	297,306.6
2007	1,870,765	1,917,546,752	559,319,583	72	318,157.3
2008	1,904,050	1,990,655,744	589,725,773	76	325,589.9
2009	1,859,387	1,866,223,078	548,627,132	74	321,748.9
2010	2,335,162	2,075,193,413	617,409,982	70	402,683.6
2011	2,464,555	2,347,193,367	702,671,534	76	423,463.1
2012	2,612,081	2,456,292,294	740,196,106	78	456,099.3
2013	2,605,883	2,489,204,048	746,226,565	76	463,185.8
2014	2,556,282	2,539,886,774	760,474,019	76	455,665.2
2015	2,730,716	2,642,374,740	750,090,163	73	490,430.4
2016	2,860,104	2,732,611,350	749,030,133	71	514,037.4
2017	2,719,302	2,726,104,521	744,246,491	70	496,313.5
2018	3,688,013	3,277,299,125	893,564,480	69	676,699.7
2019	3,969,015	3,395,631,405	939,607,762	67	734,187.0
2020	5,079,140	3,489,306,791	984,218,931	61	918,470.2
2021	5,369,307	3,981,293,227	1,098,391,422	60	974,289.1

Crime

CRIME INDEX OFFENSES



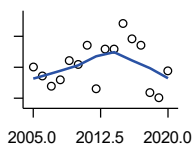
Kansas Bureau of Investigation, Note: Data are aggregated from reports by individual police departments and subject to be incomplete.

Year	County	State of Kansas	Non Metro Kansas	County Rank	Per 1000 or \$ Per Capita
2005	18	111,856	31,630	93	3.0
2006	13	110,032	.	96	2.2
2007	13	111,035	29,921	94	2.2
2008	17	93,996	27,342	96	2.9
2009	20	98,757	27,620	93	3.5
2010	18	98,354	26,909	91	3.1
2011	33	96,638	25,765	79	5.7
2012	10	98,914	26,963	99	1.7
2013	25	93,054	24,488	88	4.4
2014	25	86,323	23,341	87	4.5
2015	34	88,590	21,580	77	6.1
2016	28	90,589	21,565	81	5.0
2017	23	93,091	22,622	86	4.2
2018	11	92,062	20,325	94	2.0
2019	9	87,008	18,547	99	1.7
2020	16	87,346	17,762	88	2.9

County: county value. Kansas: state value. County Rank: highest county value ranked #1. (\$000): thousands of dollars. Nonmetro Kansas: Kansas total less Metropolitan Areas as defined by the Office of Management and Budget (OMB; released 3/6/2020). Per 1000: For nonmoney amounts, Per 1000=(county value / county population for the same year as the data) x 1000. \$ Per capita=(county value / county population for the same year as the data). Value= . indicates missing or suppressed data or value not calculated.

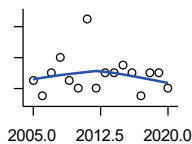
Crime

PROPERTY CRIMES



Kansas Bureau of Investigation, Note: Data are aggregated from reports by individual police departments and subject to be incomplete.

Year	County	State of Kansas	Non Metro Kansas	County Rank	Per 1000 or \$ Per Capita
2005	15	101,414	29,042	94	2.5
2006	12	99,110	.	94	2.0
2007	9	99,632	26,856	95	1.5
2008	11	83,964	24,367	96	1.9
2009	17	87,658	24,825	94	2.9
2010	16	87,926	24,133	92	2.8
2011	22	86,547	23,274	83	3.8
2012	8	88,707	24,220	99	1.4
2013	21	83,551	22,028	88	3.7
2014	21	76,794	20,858	89	3.7
2015	29	77,997	19,138	78	5.2
2016	24	79,549	19,207	81	4.3
2017	22	81,349	19,981	86	4.0
2018	7	79,695	17,769	95	1.3
2019	5	74,314	15,892	100	0.9
2020	14	73,450	15,100	86	2.5



VIOLENT CRIMES

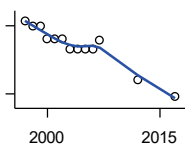
Kansas Bureau of Investigation, Note: Data are aggregated from reports by individual police departments and subject to be incomplete.

Year	County	State of Kansas	Non Metro Kansas	County Rank	Per 1000 or \$ Per Capita
2005	3	10,442	2,588	88	0.5
2006	1	10,922	.	96	0.2
2007	4	11,403	3,065	77	0.7
2008	6	10,032	2,975	74	1.0
2009	3	11,099	2,795	87	0.5
2010	2	10,428	2,776	93	0.3
2011	11	10,091	2,491	58	1.9
2012	2	10,207	2,743	95	0.3
2013	4	9,503	2,460	83	0.7
2014	4	9,529	2,483	82	0.7
2015	5	10,593	2,442	76	0.9
2016	4	11,040	2,358	78	0.7
2017	1	11,742	2,641	99	0.2
2018	4	12,367	2,556	79	0.7
2019	4	12,694	2,655	80	0.7
2020	2	13,896	2,662	94	0.4

County: county value. Kansas: state value. County Rank: highest county value ranked #1. (\$000): thousands of dollars. Nonmetro Kansas: Kansas total less Metropolitan Areas as defined by the Office of Management and Budget (OMB; released 3/6/2020). Per 1000: For nonmoney amounts, Per 1000=(county value / county population for the same year as the data) x 1000. \$ Per capita=(county value / county population for the same year as the data). Value= . indicates missing or suppressed data or value not calculated.

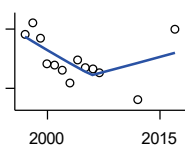
Agriculture

NUMBER OF FARMS



Kansas Agricultural Statistics, Kansas Farm Facts

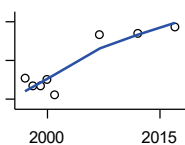
Year	County	State of Kansas	Non Metro Kansas	County Rank	Per 1000 or \$ Per Capita
1997	860	64,000	47,900	21	129.3
1998	850	65,000	48,850	22	130.1
1999	850	65,000	48,850	22	130.7
2000	820	64,000	48,030	22	126.5
2001	820	63,000	47,200	22	130.6
2002	820	63,000	47,200	22	132.2
2003	800	64,500	48,150	28	130.0
2004	800	64,500	48,150	28	131.8
2005	800	64,500	48,150	28	132.8
2006	800	64,000	47,650	28	134.5
2007	817	65,531	48,179	28	138.9
2012	732	61,773	45,655	28	127.8
2017	694	58,569	42,404	30	126.7



TOTAL ACRES HARVESTED

Kansas Agricultural Statistics, Kansas Farm Facts

Year	County	State of Kansas	Non Metro Kansas	County Rank	Per 1000 or \$ Per Capita
1997	307,270	22,846,000	19,430,580	17	46,199.1
1998	313,200	22,143,500	18,943,650	14	47,941.2
1999	305,150	21,708,900	18,581,750	14	46,910.1
2000	292,500	21,639,000	18,528,870	14	45,118.0
2001	291,800	21,847,900	18,689,750	16	46,457.6
2002	289,500	20,230,400	17,089,120	10	46,686.0
2003	282,820	21,827,700	18,661,920	18	45,942.2
2004	294,330	20,876,900	17,721,500	14	48,473.3
2005	290,500	21,936,500	18,807,930	16	48,239.8
2006	289,560	21,412,700	18,291,120	16	48,665.5
2007	288,083	19,886,655	17,164,743	13	48,993.7
2012	274,030	21,043,596	17,966,843	17	47,848.8
2017	310,086	21,837,465	18,543,057	13	56,595.4



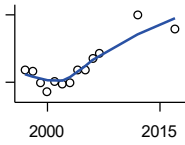
VALUE: LIVESTOCK AND POULTRY (\$000)

Kansas Agricultural Statistics, Kansas Farm Facts

Year	County	State of Kansas	Non Metro Kansas	County Rank	Per 1000 or \$ Per Capita
1997	41,561	2,806,445	2,500,305	18	6,248.8
1998	33,163	2,670,432	2,378,007	21	5,076.2
1999	34,182	2,849,061	2,554,528	23	5,254.7
2000	40,514	2,901,469	2,609,032	18	6,249.3
2001	24,628	2,693,274	2,437,187	34	3,921.0
2007	86,084	9,525,971	.	27	14,640.1
2012	87,650	11,476,571	10,883,216	27	15,304.7
2017	94,892	12,322,289	.	31	17,319.2

County: county value. Kansas: state value. County Rank: highest county value ranked #1. (\$000): thousands of dollars. Nonmetro Kansas: Kansas total less Metropolitan Areas as defined by the Office of Management and Budget (OMB; released 3/6/2020). Per 1000: For nonmoney amounts, Per 1000=(county value / county population for the same year as the data) x 1000. \$ Per capita=(county value / county population for the same year as the data). Value= . indicates missing or suppressed data or value not calculated.

Agriculture



VALUE:FIELD CROPS (\$000)
EXCLUDING GOVERNMENT
PROGRAM PAYMENTS

Kansas Agricultural Statistics, Kansas
Farm Facts

Year	County	State of Kansas	Non Metro Kansas	County Rank	Per 1000 or \$ Per Capita
1997	51,079	4,474,942	3,800,365	31	7,679.9
1998	49,290	3,594,319	3,124,409	22	7,544.8
1999	39,877	3,118,193	2,728,319	27	6,130.2
2000	31,125	2,915,660	2,540,052	34	4,801.0
2001	40,780	3,283,117	2,857,136	29	6,492.6
2002	37,947	3,011,855	2,560,580	26	6,119.5
2003	39,452	3,623,255	3,150,629	37	6,408.7
2004	50,983	3,445,688	2,896,603	19	8,396.4
2005	50,501	3,678,123	3,182,677	23	8,386.1
2006	61,488	4,308,716	3,684,132	22	10,334.1
2007	65,762	4,887,212	.	23	11,184.0
2012	99,499	6,983,993	6,044,551	22	17,373.7
2017	87,087	6,460,437	.	19	15,894.7

County: county value. Kansas: state value. County Rank: highest county value ranked #1. (\$000): thousands of dollars. Nonmetro Kansas: Kansas total less Metropolitan Areas as defined by the Office of Management and Budget (OMB; released 3/6/2020). Per 1000: For nonmoney amounts, Per 1000=(county value / county population for the same year as the data) x 1000. \$ Per capita=(county value / county population for the same year as the data). Value= . indicates missing or suppressed data or value not calculated.