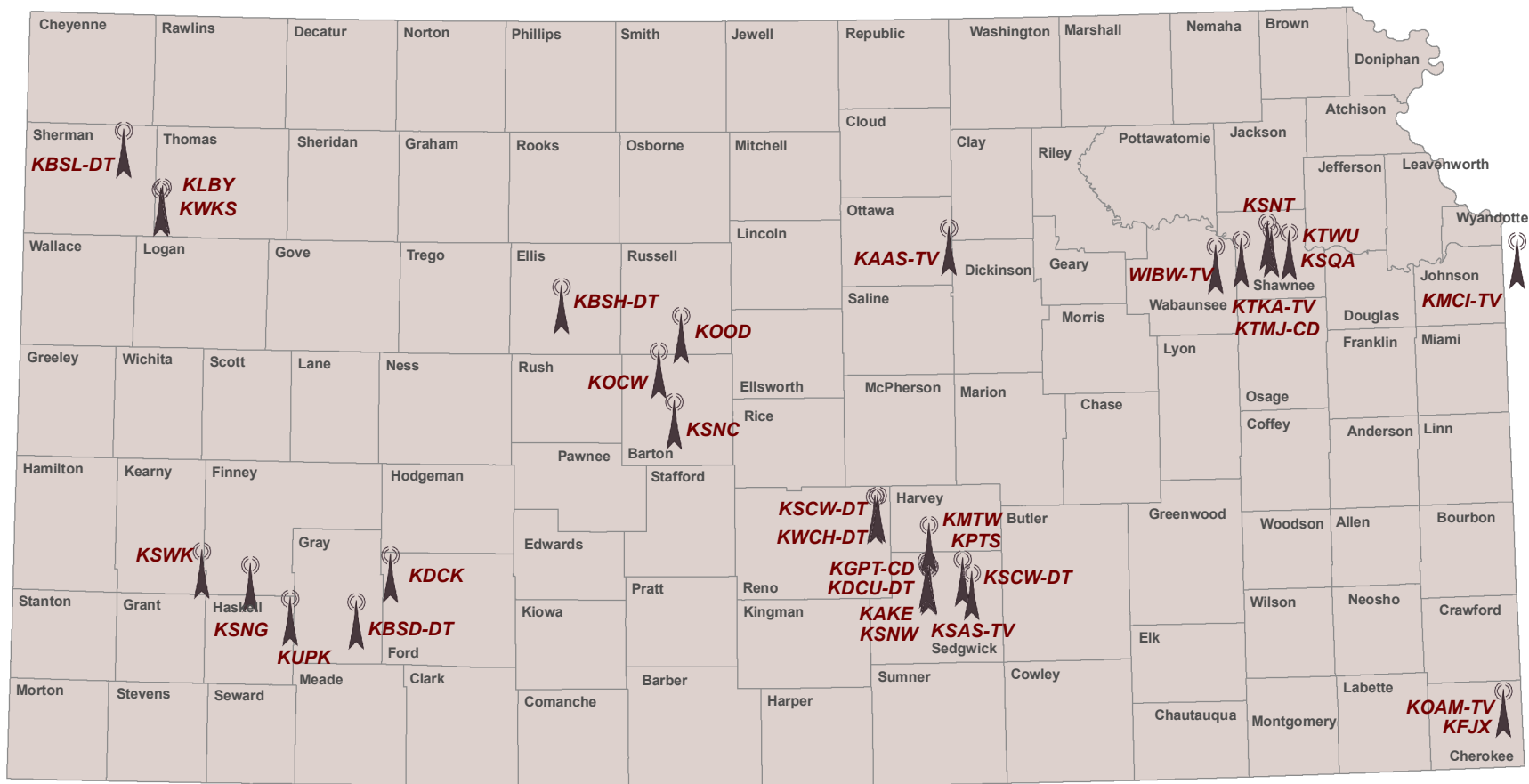




# COMMUNICATIONS AND INFORMATION


**Kansas Statistical Abstract 2023**  
Institute for Policy & Social Research  
[ksdata.ku.edu](http://ksdata.ku.edu)  
September 2024

## Digital TV Licensees in Kansas with Tower Locations



Source: Institute for Policy & Social Research, The University of Kansas; data from Federal Communications Commission (FCC).

Tower symbol represents the approximate location of one or more towers.

 DigitalTV  
(as of August 8, 2023)

**Radio and Television Stations in Kansas, 1974-2024**

Year	Radio Stations			Television Stations
	AM	FM	Total	
1974	61	42	103	14
1975	62	46	108	14
1976	61	49	110	14
1977	61	57	118	14
1978	62	58	120	14
1979	61	64	125	14
1980	63	70	133	14
1981	64	72	136	16
1982	61	73	134	16
1983	63	78	141	19
1984	62	79	141	24
1985	63	90	153	24
1986	67	79	146	22
1987	62	87	149	21
1988	62	89	151	21
1989	61	94	155	20
1990	61	97	158	22
1991	61	101	162	22
1992	61	104	165	23
1993	62	107	169	22
1994	60	115	175	22
1995	61	118	179	22
1996	61	124	185	22
1997	61	128	189	22
1998	62	131	193	22
1999	63	141	204	24
2000	59	136	195	24
2001	70	157	227	36
2002	69	159	228	36
2003	72	166	238	36
2004	72	167	239	38
2005	72	179	251	39
2006	72	183	255	40
2007	72	183	255	40
2008	72	183	255	40
2009	72	185	257	40
2010	73	181	254	39
2011	73	181	254	39
2012	73	181	254	39
2013	73	183	256	39
2014	71	197	268	39
2015	71	197	268	39
2016	71	193	264	39
2017	65	185	250	39
2018	75	175	250	43
2019	75	175	250	43
2020	76	176	252	43
2021	76	176	252	43
2024	61	160	221	68

Source: Associated Press Broadcast Services, *Broadcasting Yearbook*, various issues; R.R. Bowker, *Broadcasting and Cable Yearbook*, 1996-2000; Kansas Association of Broadcasters, 2001-2021; Federal Communications Commission, 2024.

Data for some years may include out-of-state stations that broadcast in Kansas.

**Newspapers in Kansas  
2015, 2017, and 2019**

City	Newspaper	Established	Issued*	Circulation		
				2015	2017	2019
Abilene	<i>Abilene Reflector-Chronicle</i>	1873	Mon. - Fri.	3,935	3,935	3,925
Alma	<i>The Wabaunsee County Signal Enterprise</i>	1884	Thur.	1,112	1,112	1,300
Andale	<i>The Clarion (The Mount Hope Clarion)</i>	1885	Thur.	1,650	1,500	1,500
Andover	<i>Andover American</i>	2011	Wed.	-	-	--
Anthony	<i>Anthony Republican &amp; 4 County News</i>	1878	Wed.	1,900	1,900	1,900
Arkansas City	<i>Arkansas City Traveler</i>	1870	Tues. - Sat.	4,832	4,832	4,832
Ashland	<i>The Clark County Clipper</i>	1884	Thur.	1,260	603	--
Atchison	<i>Atchison Globe</i>	1877	Wed., Sat.	3,293	3,293	3,293
Attica	<i>Attica Independent</i>	1895	Thur.	659	659	-
Augusta	<i>The Butler County Times-Gazette</i>	1882	Tues., Thurs., Sat.	2,247	2,247	2,247
Basehor	<i>Kansas City Record</i>	1888	Thur.	6,000	6,000	-
Belle Plaine	<i>The Belle Plaine News</i>	1879	Thur.	1,048	1,048	548
Belleville	<i>The Belleview Telescope</i>	1870	Wed.	3,500	3,500	3,500
Beloit	<i>Beloit Call</i>	1901	Mon., Wed., Fri.	1,620	1,620	-
Bird City	<i>Bird City Times</i>	1926	Thur.	568	568	568
Blue Rapids	<i>Blue Rapids Free Press</i>	2009	Thur.	1,900	1,900	-
Bucklin	<i>Bucklin Banner</i>	1901	Wed.	287	247	200
Burlington	<i>The Coffey County Republican</i>	1856	Tues., Fri.	3,000	3,000	3,000
Caldwell	<i>Caldwell Messenger</i>	1887	Wed.	1,350	1,350	1,350
Caney	<i>Montgomery County Chronicle</i>	1885	Thur.	1,963	2,020	-
Cawker City	<i>Cawker City Ledger</i>	1899	Thur.	-	764	--
Cedar Vale	<i>Cedar Vale Lookout</i>	-	Thur.	256	300	--
Chanute	<i>The Chanute Tribune</i>	1892	Tues. - Sat.	4,359	4,359	4,359
Chapman	<i>Chapman &amp; Enterprise News-Times</i>	-	Thur.	750	750	-
Cheney	<i>Times Sentinel</i>	1894	Thur.	3,000	3,000	3,000
Cherryvale	<i>Cherryvale Chronicle</i>	1885	Thur.	3,100	3,100	3,100
Cimarron	<i>Jacksonian</i>	1885	Wed.	1,200	1,200	905
Clay Center	<i>The Clay Center Dispatch</i>	1873	Mon. - Fri.	2,300	1,500	1,500
Clyde	<i>Clyde Republican</i>	1900	Thur.	1,000	1,000	1,000
Coffeyville	<i>Coffeyville Journal Addition</i>	1875	Mon., Wed., Fri.	10,000	14,103	14,103
Colby	<i>Colby Free Press</i>	1888	Mon., Wed. - Fri.	1,954	1,954	1,954
Coldwater	<i>The Western Star</i>	1884	Thur.	939	830	780
Columbus	<i>Columbus News Report</i>	2010	Mon., Wed., Fri.	1,191	1,191	1,191
	<i>The Cherokee County News Advocate</i>	1882	Tues., Fri.	3,300	3,300	3,300
Concordia	<i>Concordia Blade-Empire</i>	1902	Mon. - Fri.	2,357	2,357	2,357
Conway Springs	<i>Conway Springs Star and The Argonia Argosy</i>	1884	Thur.	-	740	--
Cottonwood Falls	<i>Chase County Leader-News</i>	1871	Thur.	1,215	1,215	1,215
Council Grove	<i>Council Grove Republican</i>	1872	Mon. - Fri.	2,150	1,400	1,400
Courtland	<i>Courtland Journal</i>	1903	Thur.	720	720	720
Cunningham	<i>Cunningham Courier</i>	1886	Thur.	604	542	-
Derby	<i>Derby Informer</i>	1998	Wed.	1,750	2,789	2,789
Dighton	<i>The Dighton Herald</i>	1885	Wed.	1,000	1,000	1,000
Dodge City	<i>Dodge City Daily Globe</i>	1878	Tues. - Sat.	9,700	9,700	9,700
	<i>High Plains Journal</i>	1949	Mon.	46,814	44,232	44,232
Downs	<i>The Downs News and Times</i>	1879	Thur.	1,155	1,155	1,155
Effingham	<i>Newsleaf</i>	-	Tues.	210	210	-
Elkhart	<i>Elkhart Tri-State News</i>	1886	Thur.	-	933	--
Ellinwood	<i>Ellinwood Leader</i>	1894	Fri.	1,666	1,666	1,666
Ellis	<i>The Ellis Review</i>	1880	Thur.	1,162	1,162	1,162
Ellsworth	<i>The Ellsworth County Independent-Reporter</i>	1871	Thur.	2,745	2,745	2,745
Emporia	<i>The Emporia Gazette</i>	1890	Mon. - Sat.	5,746	5,746	5,746
Erie	<i>The Erie Record</i>	1876	Thur.	987	987	-
Eureka	<i>The Eureka Herald</i>	1868	Wed.	2,340	2,340	2,340

**Newspapers in Kansas  
2015, 2017, and 2019**

City	Newspaper	Established	Issued*	Circulation		
				2015	2017	2019
Fairview	<i>Fairview Enterprise</i>	1888	Wed.	325	325	325
Fort Scott	<i>The Fort Scott Tribune</i>	1884	Tues. - Sat.	3,289	3,289	3,289
Frankfort	<i>Frankfort Area News</i>	1991	Thur.	700	700	700
Fredonia	<i>Wilson County Citizen</i>	1870	Mon., Thur.	4,069	3,069	3,069
Galena	<i>Galena Sentinel-Times</i>	1880	Wed.	1,159	1,159	-
Garden City	<i>The Garden City Telegram</i>	1906	Mon. - Fri.	7,432	7,432	7,432
			Sat.	7,966	7,966	7,966
Gardner	<i>Spring Hill New Era</i>	-	Wed.	2,010	2,010	2,010
Garnett	<i>Anderson County Advocate</i>	-	Fri.	1,022	965	-
	<i>The Anderson County Review</i>	1865	Tues.	2,117	2,117	2,362
Glasco	<i>The Delphos Republican</i>	1883	Thur.	400	400	--
Goodland	<i>Goodland Star-News</i>	1993	Tues., Fri.	2,004	2,004	2,004
Great Bend	<i>Great Bend Tribune</i>	1876	Tues. - Fri., Sun.	5,977	5,977	5,977
Greensburg	<i>Kiowa County Signal</i>	1886	Wed.	900	900	900
Halstead	<i>Harvey County Independent</i>	1881	Thur.	1,700	1,709	-
Hanover	<i>Hanover News</i>	1948	Fri.	-	805	--
Harper	<i>Harper Advocate</i>	1881	Wed.	-	-	1,200
Haven	<i>Rural Messenger</i>	2008	Tues.	18,000	18,000	18,000
Hays	<i>The Hays Daily News</i>	1929	Tues. - Fri.	9,500	9,000	6,000
			Sun.	9,500	9,500	6,500
Haysville	<i>Haysville Sun-Times</i>	-	Thur.	1,100	1,100	1,100
Herington	<i>The Herington Times</i>	1889	Thur.	2,058	1,100	850
Hesston	<i>Hesston Record</i>	-	Thur.	1,204	1,204	1,204
	<i>The Ledger</i>	-	Thur.	-	-	1,300
Hiawatha	<i>Hiawatha World</i>	1908	Tues., Fri.	2,300	2,300	2,300
Hill City	<i>The Hill City Times</i>	1886	Wed.	2,260	2,260	1,810
Hillsboro	<i>Hillsboro Free Press</i>	1998	Wed.	7,238	7,260	7,260
	<i>Hillsboro Star-Journal</i>	1908	Wed.	1,300	1,300	1,300
Holton	<i>The Holton Recorder</i>	1867	Mon., Wed.	6,900	6,900	6,900
Horton	<i>The Horton Headlight</i>	1886	Thur.	1,300	1,300	1,300
Hoxie	<i>The Sheridan Sentinel</i>	1884	Thur.	1,801	1,801	850
Hugoton	<i>The Hugoton Hermes</i>	1887	Thur.	2,300	2,300	2,300
Hutchinson	<i>The Hutchinson News</i>	1872	Mon. - Sat.	21,050	18,507	17,605
			Sun.	23,502	21,015	21,393
Independence	<i>Independence Daily Reporter</i>	1881	Tues. - Fri.; Sun.	6,654	6,654	6,654
Iola	<i>Iola Register</i>	1875	Mon. - Thur.; Sat.	3,750	3,750	3,750
Jetmore	<i>Jetmore Republican</i>	1878	Wed.	470	403	-
Johnson	<i>Johnson Pioneer</i>	1914	Thur.	-	703	--
Junction City	<i>The Daily Union</i>	1861	Tues. - Fri.	2,604	3,092	3,092
			Sat.	2,770	3,092	3,092
Kansas City	<i>Wyandotte County Business News</i>	-	Mon.	-	-	-
	<i>Wyandotte Daily News Weekly Print Edition</i>	1968	Thur.	11,500	11,500	11,500
	<i>Wyandotte Echo</i>	-	Thur.	1,027	1,027	-
Kingman	<i>Kingman Leader-Courier</i>	1878	Thur.	2,450	2,450	2,450
Kinsley	<i>Edwards County Sentinel</i>	-	Wed.	1,200	1,200	1,200
Kiowa	<i>The Kiowa News</i>	1893	Wed.	1,284	1,284	1,284
La Crosse	<i>Rush County News</i>	1941	Thur.	1,317	1,197	-
Lakin	<i>The Lakin Independent</i>	1885	Thur.	1,450	1,450	1,450
Larned	<i>The Tiller &amp; Toiler</i>	1892	Tues., Fri.	1,434	1,434	1,434
Lawrence	<i>Lawrence Journal-World</i>	1891	Mon. - Sat.	19,356	21,305	8,751
			Sun.	21,055	24,730	9,728
Leavenworth	<i>The Leavenworth Times</i>	1857	Tues. - Fri.	4,020	4,020	4,020
			Sat.	4,100	4,100	4,100

**Newspapers in Kansas  
2015, 2017, and 2019**

City	Newspaper	Established	Issued*	Circulation		
				2015	2017	2019
Leoti	<i>The Leoti Standard</i>	1885	Wed.	1,030	1,030	1,030
Liberal	<i>The Leader &amp; Times</i>	1987	Mon. - Fri.	4,250	4,250	4,250
			Sun.	4,500	4,500	4,500
			Thur.	8,500	8,500	8,500
Lincoln	<i>Lincoln Sentinel-Republican</i>	1886	Thur.	3,500	3,500	3,500
Lindsborg	<i>The Lindsborg News-Record</i>	1881	Thur.	2,899	2,899	2,899
Linn	<i>Linn-Palmer Record</i>	1891	Thur.	1,133	713	713
Little River	<i>Monitor-Journal</i>	1886	Wed.	400	400	400
Logan	<i>The Logan Republican</i>	1886	Thur.	1,000	1,000	1,000
Louisburg	<i>Louisburg Herald</i>	1876	Wed.	2,350	-	--
Lucas	<i>Lucas-Sylvan News</i>	1896	Thur.	950	950	675
Lyons	<i>The Lyons News</i>	1906	Tues., Fri.	2,321	2,321	2,321
McPherson	<i>McPherson Sentinel</i>	1887	Tues. - Sat.	3,600	3,600	3,600
Madison	<i>The Madison News</i>	1909	Wed.	865	865	865
Manhattan	<i>Grass &amp; Grain</i>	1953	Tues.	14,000	14,000	14,000
			Thur.	2,000	2,000	-
			Mon. - Fri.	8,021	8,340	8,340
	<i>The Manhattan Mercury</i>	1884	Sun.	9,048	9,136	9,136
Mankato	<i>Jewell County Record</i>	1890	Thur.	1,005	1,005	700
Marion	<i>Marion County Record</i>	1869	Wed.	2,800	2,800	2,800
Marquette	<i>Marquette Tribune</i>	1887	Wed.	600	600	600
Marysville	<i>Marysville Advocate</i>	1885	Thur.	4,350	4,150	3,700
Meade	<i>Meade County News</i>	1885	Wed.	1,300	1,300	1,300
Medicine Lodge	<i>Gyp Hill Premiere</i>	1991	Mon.	1,200	1,200	1,200
Miltonvale	<i>Miltonvale Record</i>	1898	Thur.	621	621	411
Minneapolis	<i>Minneapolis Messenger</i>	1875	Thur.	2,333	2,333	2,333
Minneola	<i>Clark County Gazette</i>	-	Wed.	760	760	-
Montezuma	<i>Montezuma Press</i>	1914	Thur.	1,018	1,018	--
Moundridge	<i>The Ledger</i>	1887	Thur.	1,203	1,026	-
Mulberry	<i>The Mulberry Advance</i>	-	Fri.	-	56	--
Mullinville	<i>Merchant's Directory</i>	1969	Wed.	320	320	400
Mulvane	<i>The Mulvane News</i>	1903	Thur.	1,712	1,712	--
Natoma	<i>Natoma Luray Independent</i>	1909	Wed., Fri.	6,054	6,054	6,054
Neodesha	<i>Neodesha Derrick</i>	1883	Thur.	1,899	1,899	1,899
Ness City	<i>Ness County News</i>	1884	Thur.	2,248	2,248	2,248
Newton	<i>The Newton Kansan</i>	1872	Mon. - Sun.	7,513	7,513	7,513
Norton	<i>The Norton Telegram</i>	1906	Tues., Fri.	2,704	2,704	2,704
Norwich	<i>The Norwich News</i>	1987	Tues.	246	254	-
Oakley	<i>The Oakley Graphic</i>	1888	Wed.	1,200	1,200	1,200
Oberlin	<i>The Oberlin Herald</i>	1879	Wed.	1,815	1,815	1,815
Olathe	<i>Legal Record</i>	-	Tues.	-	-	-
			Wed., Sat.	-	-	25,000
Onaga	<i>Onaga Herald</i>	1879	Thur.	970	970	-
Osage City	<i>The Osage County Herald-Chronicle</i>	1869	Thur.	4,000	4,000	4,000
Osawatimie	<i>Osawatimie Graphic</i>	1888	Wed.	3,500	-	--
Osborne	<i>Osborne County Farmer</i>	1872	Thur.	2,600	2,600	2,600
Oskaloosa	<i>Oskaloosa Independent</i>	1860	Thur.	1,752	1,752	1,559
Oswego	<i>Labette Avenue</i>	1879	Wed.	1,889	1,889	1,889
Ottawa	<i>The Ottawa Herald</i>	1869	Tues., Thurs., Sat.	-	4,800	4,800
Oxford	<i>The Oxford Register</i>	1889	Thur.	524	524	524
Paola	<i>The Miami County Republic</i>	1866	Wed.	5,150	5,150	5,150
Parsons	<i>Farm Talk</i>	1974	Wed.	-	-	-
			Mon. - Sun.	5,420	5,420	5,420
	<i>Parsons Sun</i>	1871	Mon. - Sun.	5,420	5,420	5,420

**Newspapers in Kansas  
2015, 2017, and 2019**

City	Newspaper	Established	Issued*	Circulation		
				2015	2017	2019
Peabody	<i>The Gazette-Bulletin</i>	1873	Wed.	1,409	1,409	1,409
Phillipsburg	<i>Advocate of Phillips County</i>	-	Thur.	1,838	1,838	-
	<i>Phillips County Review</i>	1869	Wed.	2,000	2,000	2,000
Pittsburg	<i>The Morning Sun</i>	1887	Tues. - Fri.	5,500	5,500	5,500
			Sat.	5,900	5,900	5,900
			Sun.	6,000	6,000	6,000
Plainville	<i>Plainville Times</i>	1904	Thur.	2,440	2,440	1,240
Pleasanton	<i>The Linn County News</i>	-	Wed.	2,600	2,600	2,600
Pratt	<i>The Pratt Tribune</i>	1917	Tues., Thur., Sat.	2,000	2,000	2,000
Pretty Prairie	<i>Ninnescah Valley News</i>	-	Fri.	750	750	-
Protection	<i>Protection Press</i>	1986	Thur.	784	784	784
Quinter	<i>Gove County Advocate</i>	1894	Wed.	1,900	1,900	1,900
Riley	<i>Riley Countian</i>	-	Wed.	1,200	1,200	1,200
Russell	<i>The Russell County News</i>	1930, 1960	Wed., Fri.	2,300	2,300	2,300
Sabetha	<i>The Sabetha Herald</i>	1884	Wed.	2,592	2,592	2,592
St. Francis	<i>The Saint Francis Herald</i>	1912	Thur.	1,292	1,292	1,292
St. John	<i>St. John News</i>	1878	Wed.	714	714	714
St. Marys	<i>St. Marys Star</i>	1884	Tues.	1,850	1,850	1,850
Salina	<i>The Salina Journal</i>	1871	Mon. - Fri.	20,978	18,808	18,365
			Sat.	20,978	21,266	18,365
			Sun.	21,986	19,863	19,317
Sedan	<i>Prairie Star</i>	1870	Wed.	1,350	1,350	1,350
Seneca	<i>The Courier-Tribune</i>	1863	Wed.	4,900	4,900	4,900
Sharon Springs	<i>The Western Times</i>	1874	Thur.	-	5,209	--
Shawnee	<i>Shawnee Dispatch</i>	2003	Wed.	22,743	22,953	20,108
Smith Center	<i>Smith County Pioneer</i>	1872	Thur.	-	1,535	--
South Haven	<i>The South Haven New Era</i>	-	Tues.	365	365	365
Spearville	<i>Spearville News</i>	1899	Thur.	700	700	595
Stafford	<i>The Stafford Courier</i>	1903	Wed.	1,000	1,000	1,000
Sterling	<i>Sterling Bulletin</i>	1876	Thur.	1,147	1,147	1,047
Stockton	<i>Stockton Sentinel</i>	1989	Thur.	1,851	1,851	1,851
Sublette	<i>The Haskell County Monitor-Chief</i>	1891	Wed.	800	800	800
Syracuse	<i>The Syracuse Journal</i>	1885	Wed.	767	767	667
Tonganoxie	<i>The Mirror</i>	1882	Wed.	2,555	2,555	2,555
Topeka	<i>The Topeka Capital-Journal</i>	1879	Mon. - Fri.	21,689	25,747	20,273
			Sat.	22,462	28,345	20,273
			Sun.	27,882	31,176	25,480
	<i>The Topeka Metro News</i>	-	Mon.	-	-	-
Tribune	<i>Greeley County Republican</i>	1886	Wed.	914	914	914
Turon	<i>The Record</i>	1921	Thur.	576	576	576
Ulysses	<i>The Ulysses News</i>	1892	Thur.	2,616	2,216	2,216
Valley Center	<i>Ark Valley News</i>	-	Thur.	3,093	3,093	3,093
Valley Falls	<i>Valley Falls Vindicator</i>	1890	Thur.	1,997	1,997	1,900
WaKeeney	<i>Western Kansas World</i>	1879	Thur.	2,100	2,100	2,100
Wamego	<i>The Wamego Times</i>	1889	Thur.	1,300	1,300	950
	<i>Wamego Smoke Signal</i>	1974	Wed.	9,823	9,823	9,823
Washington	<i>The Washington County News</i>	1869	Thur.	2,816	2,501	2,310
Waterville	<i>Telegraph</i>	1870	Sat.	755	755	755
Wathena	<i>The Kansas Chief</i>	1857	Thur.	2,225	2,225	2,075
Wellington	<i>Wellington Daily News</i>	1901	Wed.	2,000	2,000	2,000
Westmoreland	<i>Westmoreland Recorder</i>	1885	Thur.	844	--	--
White City	<i>The Prairie Post</i>	1993	Thur.	900	815	765

**Newspapers in Kansas  
2015, 2017, and 2019**

City	Newspaper	Established	Issued*	Circulation		
				2015	2017	2019
Wichita	<i>Wichita Business Journal</i>	1986	Fri.	6,209	6,209	-
	<i>The Wichita Eagle</i>	1872	Mon. - Fri.	46,899	55,920	38,968
			Sat.	49,437	57,802	37,947
			Sun.	71,768	78,427	55,259
Winfield	<i>Cowley Courier Traveler</i>	-	Tues. - Sat.	-	-	-
	<i>Winfield Daily Courier</i>	1871	Tues. - Sat.	4,522	4,522	4,522
Yates Center	<i>Yates Center News</i>	1878	Thur.	2,190	2,190	1,540

Source: Editor & Publisher, *E & P Newspaper Data Book*, U.S. Daily Newspapers and Community Newspapers in the U.S., various editions; Kansas Press Association, <http://kspress.com/> (accessed July 22, 2020); *History of Kansas Newspapers*, Kansas State Historical Society, 1916.

\* Refers to the day(s) of the week published in the most recent published year.

Single dash (-) indicates not reported.

Double dash (-) indicates not published/not applicable.



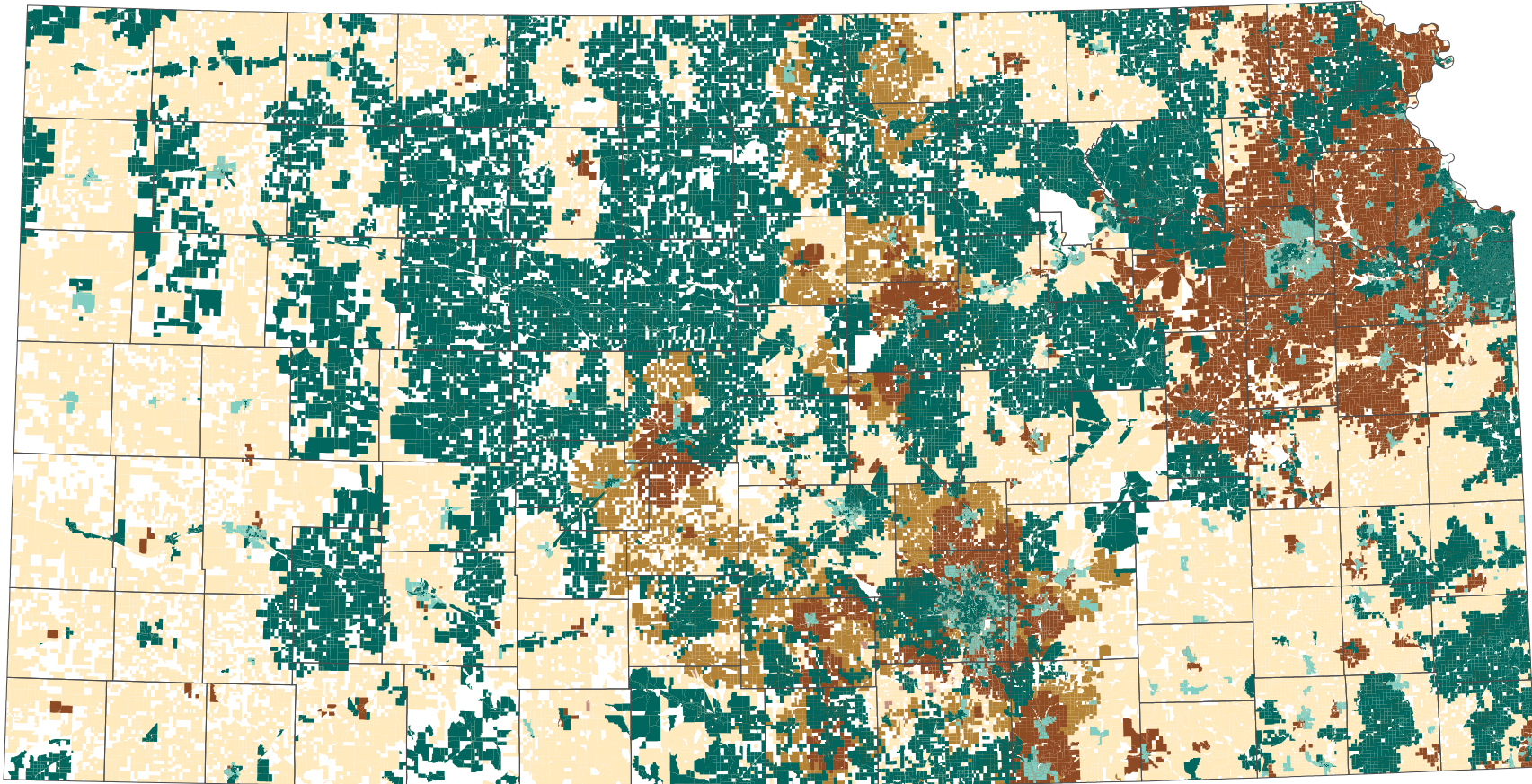
**Persons Using the Internet by Type of Connection and State, 2022**

State	Population in Households (thousands)	Percent with a Computer* with:				No Computer (percent)
		Dial-Up Internet Only	Fixed Broadband	Mobile Broadband	No Internet Subscription	
Alabama	4,933	0.2	79.9	74.5	6.4	3.8
Alaska	704	0.2	77.2	73.4	4.5	1.5
Arizona	7,204	0.1	85.0	78.5	5.1	2.4
Arkansas	2,963	0.1	79.3	74.9	6.8	3.9
California	38,154	0.1	86.4	82.7	3.4	1.8
Colorado	5,718	0.1	88.0	83.5	3.9	1.8
Connecticut	3,506	0.1	87.2	81.7	3.1	2.7
Delaware	996	0.1	87.8	83.1	3.2	2.6
District of Columbia	634	0.1	86.2	80.7	4.7	2.1
Florida	21,768	0.1	84.9	80.7	4.8	2.1
Georgia	10,663	0.1	85.3	81.0	4.8	2.5
Hawaii	1,399	0.0	85.8	81.3	4.4	2.1
Idaho	1,889	0.1	85.8	81.2	4.1	2.0
Illinois	12,307	0.1	84.5	80.0	4.3	2.8
Indiana	6,655	0.1	82.2	77.5	4.4	3.6
Iowa	3,102	0.2	83.6	79.5	4.8	3.1
<b>Kansas</b>	<b>2,851</b>	<b>0.1</b>	<b>84.4</b>	<b>79.4</b>	<b>4.7</b>	<b>2.2</b>
Kentucky	4,392	0.1	83.0	78.1	4.9	4.1
Louisiana	4,466	0.1	77.5	73.8	7.8	4.4
Maine	1,348	0.3	86.6	80.1	3.9	3.1
Maryland	6,039	0.1	87.0	82.2	4.0	2.0
Massachusetts	6,744	0.1	87.8	83.4	3.0	2.4
Michigan	9,821	0.1	83.5	78.7	4.4	3.0
Minnesota	5,581	0.1	86.3	82.2	3.5	2.3
Mississippi	2,846	0.1	75.5	70.3	8.6	4.1
Missouri	6,014	0.1	82.2	77.9	5.2	3.3
Montana	1,094	0.2	84.4	75.8	4.8	3.8
Nebraska	1,921	0.1	86.0	79.8	4.7	2.6
Nevada	3,143	0.0	83.5	79.6	5.2	1.7
New Hampshire	1,358	0.1	89.8	82.5	2.7	1.9
New Jersey	9,092	0.1	86.9	83.3	3.3	2.3
New Mexico	2,070	0.2	81.3	73.9	7.2	4.4
New York	19,063	0.1	84.2	79.2	4.4	3.7
North Carolina	10,418	0.1	85.1	80.6	4.8	3.0
North Dakota	750	0.1	85.8	81.0	5.3	2.9
Ohio	11,472	0.1	86.1	81.2	4.0	3.9
Oklahoma	3,902	0.1	79.9	74.5	6.0	3.2
Oregon	4,143	0.1	87.4	82.8	3.8	1.9
Pennsylvania	12,540	0.2	85.3	80.4	3.9	4.1
Rhode Island	1,049	0.0	86.2	81.4	3.4	3.1
South Carolina	5,143	0.1	82.9	77.9	5.5	3.6
South Dakota	878	0.2	85.6	78.0	4.0	4.4
Tennessee	6,904	0.1	83.3	77.7	5.3	3.4
Texas	29,420	0.1	83.0	78.4	4.9	2.3
Utah	3,328	0.1	89.3	86.6	3.6	1.0
Vermont	622	0.5	87.2	77.2	4.3	2.7
Virginia	8,447	0.1	84.8	80.6	4.4	2.8
Washington	7,632	0.1	88.1	83.3	3.1	1.6
West Virginia	1,723	0.3	83.1	74.6	5.4	5.4
Wisconsin	5,755	0.2	85.5	80.1	3.7	3.5
Wyoming	568	0.3	83.6	75.7	5.2	2.6
<b>United States</b>	<b>325,135</b>	<b>0.1</b>	<b>84.7</b>	<b>80.1</b>	<b>4.4</b>	<b>2.8</b>

Source: U.S. Census Bureau, 2022 American Community Survey (B28008).

\* Includes those who said "yes" to at least one of the following types of computers: desktop, laptop, netbook or notebook computer, handheld computer including smart mobile phones or other handheld wireless computer, or some other type of computer which may include tablets or other devices. Respondents were instructed to exclude GPS devices, digital music players, and devices with only limited computing devices such as household appliances. Respondents were able to select more than one type of computer and more than one type of internet subscription.

## Broadband Availability in Kansas, 2023



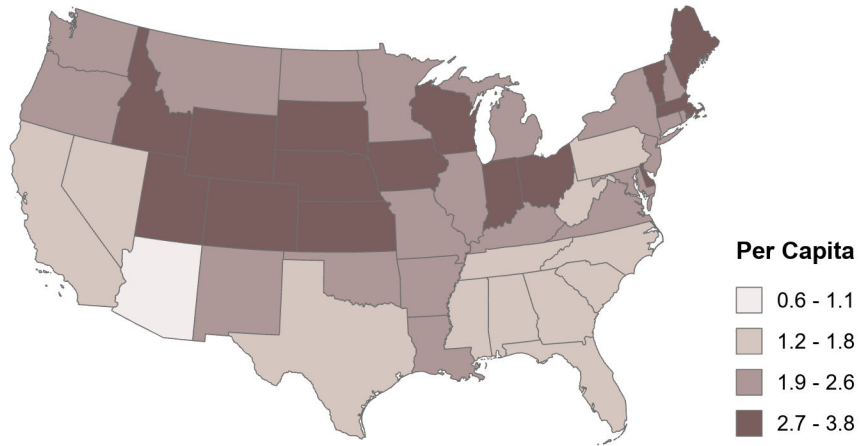
Source: Institute for Policy & Social Research, The University of Kansas;  
data from Federal Communications Commission (June 2023).

Broadband providers offering 100 Mbps download and 20 Mbps upload or higher speeds.

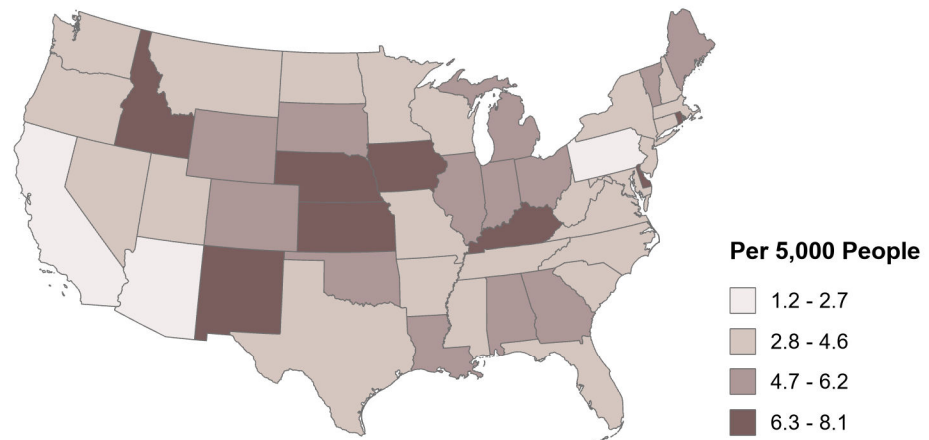
### Technology Type

- Optical Carrier/Fiber
- Coaxial Cable
- Licensed Terrestrial Fixed Wireless
- Unlicensed Terrestrial Fixed Wireless
- Copper Wire
- Non-geostationary Satellite

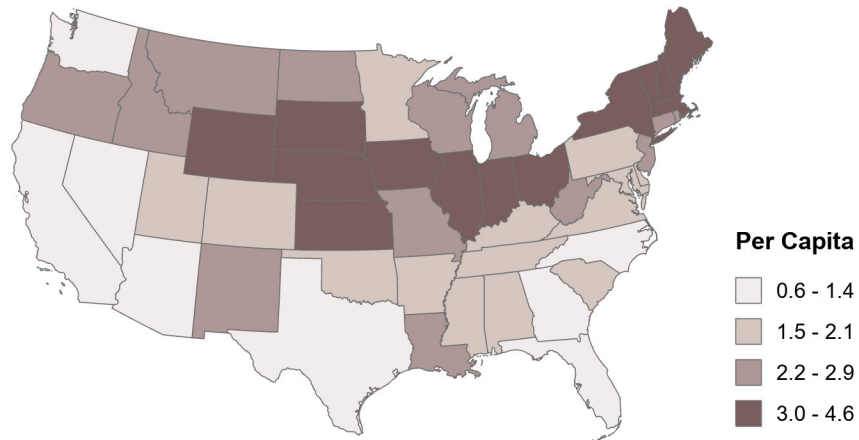
### Library Visits per Capita by State, FY2022



### Public-Use Internet Computers in Public Libraries per 5,000 People by State, FY2022



### Printed Library Materials per Capita by State, FY2022



**Public Library Materials by State, Fiscal Year 2022**

State	Number of Public Libraries	Printed Materials		Electronic Books		Audio		Video	
		Number (thousands)	Per Capita	Number (thousands)	Per 1,000 Population	Number (thousands)	Per 1,000 Population	Number (thousands)	Per 1,000 Population
Alabama	224	8,341	1.7	19,583	3,979.0	8,447	1,716.5	2,226	452.3
Alaska	76	1,997	3.1	1,915	2,972.2	1,861	2,887.5	497	771.7
Arizona	84	7,031	0.6	16,996	1,451.3	11,518	983.6	1,996	170.5
Arkansas	59	5,593	1.9	9,901	3,372.8	3,841	1,308.3	842	286.8
California	198	53,057	1.4	61,410	1,567.7	34,486	880.4	9,751	248.9
Colorado	96	9,268	1.6	11,532	2,003.8	8,154	1,416.9	2,688	467.2
Connecticut	190	12,351	2.8	9,811	2,231.6	7,244	1,647.7	1,661	377.8
Delaware	1	1,235	1.8	96	142.8	62	92.7	231	343.8
District of Columbia	19	1,507	1.5	788	790.2	414	415.3	197	197.7
Florida	58	23,008	1.0	17,026	762.3	11,708	524.2	4,440	198.8
Georgia	59	13,614	1.2	3,884	355.6	3,205	293.5	1,180	108.1
Hawaii	1	2,418	1.7	107	74.4	154	106.9	147	101.8
Idaho	100	4,184	2.6	3,753	2,307.2	1,372	843.4	452	277.6
Illinois	623	35,984	3.1	65,917	5,624.6	33,270	2,838.9	7,460	636.5
Indiana	235	20,794	3.1	99,047	14,958.3	38,166	5,764.0	2,698	407.5
Iowa	543	11,322	3.5	47,670	14,881.2	20,429	6,377.3	1,534	478.9
<b>Kansas</b>	<b>323</b>	<b>8,340</b>	<b>3.3</b>	<b>225,231</b>	<b>88,449.8</b>	<b>74,626</b>	<b>29,306.3</b>	<b>4,754</b>	<b>1,867.1</b>
Kentucky	120	8,780	2.0	21,709	4,853.2	7,453	1,666.1	1,398	312.6
Louisiana	66	10,536	2.3	9,688	2,139.0	5,331	1,177.0	2,266	500.2
Maine	248	5,982	4.6	10,104	7,742.2	4,280	3,279.3	979	749.8
Maryland	14	9,750	1.6	2,372	392.4	2,068	342.1	1,569	259.6
Massachusetts	368	27,788	4.0	28,948	4,118.5	14,368	2,044.2	2,626	373.6
Michigan	393	25,087	2.5	32,712	3,252.8	17,037	1,694.2	4,992	496.4
Minnesota	129	12,857	2.1	6,679	1,088.7	2,391	389.8	1,035	168.6
Mississippi	53	5,064	1.7	244	82.2	297	100.1	428	144.2
Missouri	138	14,360	2.6	8,205	1,458.1	17,609	3,129.2	1,931	343.2
Montana	78	2,386	2.2	3,809	3,517.2	3,437	3,173.6	430	397.2
Nebraska	246	5,534	3.4	7,527	4,616.6	5,185	3,180.1	501	307.1
Nevada	19	2,869	0.9	986	312.6	800	253.8	663	210.2
New Hampshire	223	5,294	3.5	11,154	7,404.1	9,282	6,161.3	1,598	1,060.4
New Jersey	295	23,611	2.4	47,926	4,844.4	29,396	2,971.3	7,562	764.4
New Mexico	77	3,813	2.6	4,524	3,040.3	1,749	1,175.2	688	462.1
New York	756	64,627	3.2	57,167	2,797.2	39,198	1,918.0	6,722	328.9
North Carolina	72	14,777	1.4	22,304	2,112.8	6,538	619.4	1,341	127.0
North Dakota	79	2,030	2.9	3,683	5,195.0	2,427	3,423.8	247	347.8
Ohio	239	36,432	3.1	172,668	14,822.9	106,156	9,113.1	10,454	897.4

**Public Library Materials by State, Fiscal Year 2022**

State	Number of Public Libraries	Printed Materials		Electronic Books		Audio		Video	
		Number (thousands)	Per Capita	Number (thousands)	Per 1,000 Population	Number (thousands)	Per 1,000 Population	Number (thousands)	Per 1,000 Population
Oklahoma	120	5,756	1.8	11,777	3,600.3	4,498	1,375.2	936	286.0
Oregon	134	8,611	2.3	15,427	4,058.1	7,904	2,079.3	2,744	721.7
Pennsylvania	441	22,828	1.8	16,637	1,307.8	8,666	681.2	2,590	203.6
Rhode Island	47	3,000	2.7	5,839	5,321.1	2,715	2,474.4	378	344.5
South Carolina	42	7,980	1.5	9,388	1,821.4	5,422	1,052.0	1,247	241.9
South Dakota	106	2,635	3.2	3,453	4,243.9	1,459	1,793.4	182	223.5
Tennessee	179	10,077	1.5	31,766	4,669.3	34,886	5,128.0	1,468	215.8
Texas	537	34,060	1.3	29,018	1,080.2	14,279	531.6	4,491	167.2
Utah	62	6,301	2.0	9,624	2,979.6	16,663	5,159.0	1,178	364.8
Vermont	183	2,933	4.6	2,424	3,811.6	2,270	3,569.7	262	412.6
Virginia	82	14,444	1.7	36,062	4,229.2	19,601	2,298.7	5,282	619.5
Washington	52	10,517	1.4	5,275	680.5	4,636	598.1	1,925	248.3
West Virginia	96	4,476	2.4	21,312	11,501.2	6,081	3,281.7	2,260	1,219.5
Wisconsin	380	17,149	2.9	67,999	11,430.0	29,393	4,940.8	2,460	413.6
Wyoming	23	2,051	3.6	4,656	8,066.4	1,394	2,415.2	386	667.9
<b>United States</b>	<b>8,986</b>	<b>654,440</b>	<b>2.0</b>	<b>1,317,733</b>	<b>3,981.8</b>	<b>693,828</b>	<b>2,096.6</b>	<b>117,971</b>	<b>356.5</b>

Source: Institute of Museum and Library Services, Public Libraries Survey FY2022, <https://www.ims.gov/research-evaluation/data-collection/public-libraries-survey> (accessed August 8, 2024).

Data may not sum to totals due to rounding.

Audio and Video include physical and downloadable titles.

**Public Library Service by State, Fiscal Year 2022**

State	Number of Public Libraries	Library Visits		Children's Circulation		Total Circulation	
		Total (thousands)	Per Capita	Total (thousands)	Percent of Total	Total (thousands)	Per Capita
Alabama	224	8,984	1.8	6,595	37.2	17,735	3.6
Alaska	76	1,501	2.3	918	25.7	3,573	5.5
Arizona	84	12,430	1.1	12,158	31.9	38,071	3.3
Arkansas	59	5,816	2.0	3,585	29.4	12,180	4.1
California	198	59,149	1.5	71,973	38.3	188,029	4.8
Colorado	96	18,083	3.1	18,317	33.8	54,258	9.4
Connecticut	190	10,596	2.4	8,031	38.0	21,151	4.8
Delaware	1	2,537	3.8	2,146	34.0	6,305	9.4
District of Columbia	19	1,800	1.8	1,265	31.1	4,067	4.1
Florida	58	37,060	1.7	28,976	33.7	85,972	3.8
Georgia	59	14,199	1.3	13,451	44.9	29,972	2.7
Hawaii	1	863	0.6	1,064	24.4	4,367	3.0
Idaho	100	4,974	3.1	5,989	41.3	14,515	8.9
Illinois	623	29,074	2.5	34,708	39.9	87,094	7.4
Indiana	235	18,527	2.8	18,669	37.8	49,363	7.5
Iowa	543	9,958	3.1	7,589	38.0	19,971	6.2
<b>Kansas</b>	<b>323</b>	<b>8,459</b>	<b>3.3</b>	<b>8,191</b>	<b>40.3</b>	<b>20,331</b>	<b>8.0</b>
Kentucky	120	8,721	1.9	7,742	37.5	20,654	4.6
Louisiana	66	9,430	2.1	4,210	20.6	20,459	4.5
Maine	248	3,708	2.8	2,645	40.7	6,496	5.0
Maryland	14	12,432	2.1	16,668	35.8	46,508	7.7
Massachusetts	368	22,209	3.2	19,939	37.8	52,688	7.5
Michigan	393	21,020	2.1	21,057	34.1	61,831	6.1
Minnesota	129	13,572	2.2	19,486	40.3	48,388	7.9
Mississippi	53	3,793	1.3	1,648	34.3	4,801	1.6
Missouri	138	12,557	2.2	15,898	34.6	45,994	8.2
Montana	78	2,506	2.3	1,844	35.9	5,133	4.7
Nebraska	246	4,632	2.8	5,788	47.0	12,320	7.6
Nevada	19	5,237	1.7	4,520	35.9	12,585	4.0
New Hampshire	223	3,692	2.5	2,738	33.9	8,077	5.4
New Jersey	295	21,829	2.2	17,323	40.3	43,015	4.3
New Mexico	77	3,290	2.2	1,814	24.2	7,484	5.0
New York	756	51,362	2.5	27,704	30.7	90,230	4.4
North Carolina	72	15,776	1.5	19,613	44.1	44,461	4.2
North Dakota	79	1,455	2.1	1,332	38.7	3,443	4.9
Ohio	239	39,646	3.4	45,780	32.3	141,620	12.2
Oklahoma	120	7,480	2.3	8,103	37.3	21,697	6.6
Oregon	134	9,308	2.4	16,590	36.2	45,865	12.1
Pennsylvania	441	21,854	1.7	20,330	37.1	54,782	4.3
Rhode Island	47	2,832	2.6	2,043	34.1	5,994	5.5
South Carolina	42	7,779	1.5	7,378	35.4	20,822	4.0
South Dakota	106	2,488	3.1	2,173	41.3	5,264	6.5
Tennessee	179	9,522	1.4	9,211	37.6	24,473	3.6
Texas	537	36,354	1.4	45,704	45.2	101,084	3.8
Utah	62	9,910	3.1	14,519	43.3	33,557	10.4
Vermont	183	1,894	3.0	1,409	37.7	3,736	5.9
Virginia	82	17,964	2.1	19,146	37.0	51,712	6.1
Washington	52	18,873	2.4	24,436	33.2	73,516	9.5
West Virginia	96	2,236	1.2	1,048	23.0	4,567	2.5
Wisconsin	380	19,274	3.2	17,011	38.1	44,701	7.5
Wyoming	23	2,203	3.8	1,640	39.1	4,194	7.3
<b>United States</b>	<b>8,986</b>	<b>670,848</b>	<b>2.0</b>	<b>672,116</b>	<b>36.7</b>	<b>1,829,104</b>	<b>5.5</b>

Source: Institute of Museum and Library Services, Public Libraries Survey FY2022, <https://www.ims.gov/research-evaluation/data-collection/public-libraries-survey> (accessed August 8, 2024).

Data may not sum to totals due to rounding.

**Number of Public Libraries Providing Public-Use Internet Terminals  
and Use of Electronic Resources by State, Fiscal Year 2022**

State	Number of Public Libraries	Number of Public-Use Internet Terminals		Circulation of Electronic Materials		Wireless Internet Sessions	
		Total	Per Capita	Total (thousands)	Per Capita	Total (thousands)	Per Capita
Alabama	224	4,907	5.0	12,215	2.5	6,854	1.4
Alaska	76	712	5.5	1,901	2.9	612	0.9
Arizona	84	5,518	2.4	18,139	1.5	7,543	0.6
Arkansas	59	2,530	4.3	4,924	1.7	2,389	0.8
California	198	21,186	2.7	96,457	2.5	27,688	0.7
Colorado	96	6,270	5.4	23,837	4.1	4,198	0.7
Connecticut	190	3,583	4.1	5,872	1.3	2,107	0.5
Delaware	1	1,000	7.4	4,142	6.2	419	0.6
District of Columbia	19	1,092	5.5	883	0.9	209	0.2
Florida	58	18,188	4.1	48,922	2.2	12,538	0.6
Georgia	59	10,529	4.8	9,471	0.9	5,518	0.5
Hawaii	1	344	1.2	2,225	1.5	121	0.1
Idaho	100	2,628	8.1	3,356	2.1	2,254	1.4
Illinois	623	14,453	6.2	34,856	3.0	18,605	1.6
Indiana	235	7,112	5.4	138,582	20.9	16,369	2.5
Iowa	543	4,440	6.9	6,575	2.1	3,084	1.0
<b>Kansas</b>	<b>323</b>	<b>3,675</b>	<b>7.2</b>	<b>12,373</b>	<b>4.9</b>	<b>3,217</b>	<b>1.3</b>
Kentucky	120	6,831	7.6	12,402	2.8	4,823	1.1
Louisiana	66	5,311	5.9	35,118	7.8	4,733	1.0
Maine	248	1,515	5.8	1,402	1.1	1,183	0.9
Maryland	14	5,092	4.2	20,027	3.3	12,559	2.1
Massachusetts	368	6,082	4.3	12,460	1.8	6,312	0.9
Michigan	393	10,555	5.2	21,148	2.1	9,683	1.0
Minnesota	129	5,073	4.1	16,672	2.7	8,856	1.4
Mississippi	53	2,496	4.2	2,329	0.8	2,707	0.9
Missouri	138	4,516	4.0	23,084	4.1	4,870	0.9
Montana	78	840	3.9	1,597	1.5	1,491	1.4
Nebraska	246	2,312	7.1	3,972	2.4	7,965	4.9
Nevada	19	1,988	3.2	7,408	2.3	1,103	0.3
New Hampshire	223	1,105	3.7	2,823	1.9	361	0.2
New Jersey	295	7,619	3.9	14,816	1.5	5,750	0.6
New Mexico	77	1,918	6.4	5,446	3.7	2,042	1.4
New York	756	17,174	4.2	34,998	1.7	15,322	0.7
North Carolina	72	7,302	3.5	31,041	2.9	3,616	0.3
North Dakota	79	607	4.3	1,171	1.7	1,635	2.3
Ohio	239	12,089	5.2	60,616	5.2	55,517	4.8
Oklahoma	120	3,191	4.9	11,273	3.4	4,112	1.3
Oregon	134	2,928	3.9	15,160	4.0	6,459	1.7
Pennsylvania	441	6,535	2.6	20,901	1.6	5,564	0.4
Rhode Island	47	1,422	6.5	6,105	5.6	578	0.5
South Carolina	42	3,746	3.6	16,600	3.2	3,804	0.7
South Dakota	106	994	6.1	1,408	1.7	1,177	1.4
Tennessee	179	5,369	3.9	11,795	1.7	4,170	0.6
Texas	537	17,135	3.2	48,149	1.8	23,683	0.9
Utah	62	2,163	3.3	9,984	3.1	4,828	1.5
Vermont	183	753	5.9	958	1.5	748	1.2
Virginia	82	7,117	4.2	22,729	2.7	10,629	1.2
Washington	52	5,844	3.8	36,682	4.7	8,125	1.0
West Virginia	96	1,215	3.3	2,121	1.1	85	0.0
Wisconsin	380	5,445	4.6	11,325	1.9	15,495	2.6
Wyoming	23	711	6.2	4,156	7.2	253	0.4
<b>United States</b>	<b>8,986</b>	<b>273,160</b>	<b>4.1</b>	<b>952,606</b>	<b>2.9</b>	<b>353,963</b>	<b>1.1</b>

Source: Institute of Museum and Library Services, Public Libraries Survey FY2022, <https://www.ims.gov/research-evaluation/data-collection/public-libraries-survey> (accessed August 8, 2024).

Data may not sum to totals due to rounding.