



# EMPLOYMENT AND EARNINGS

**Kansas Statistical Abstract 2023**

Institute for Policy & Social Research

[ksdata.ku.edu](http://ksdata.ku.edu)

September 2024

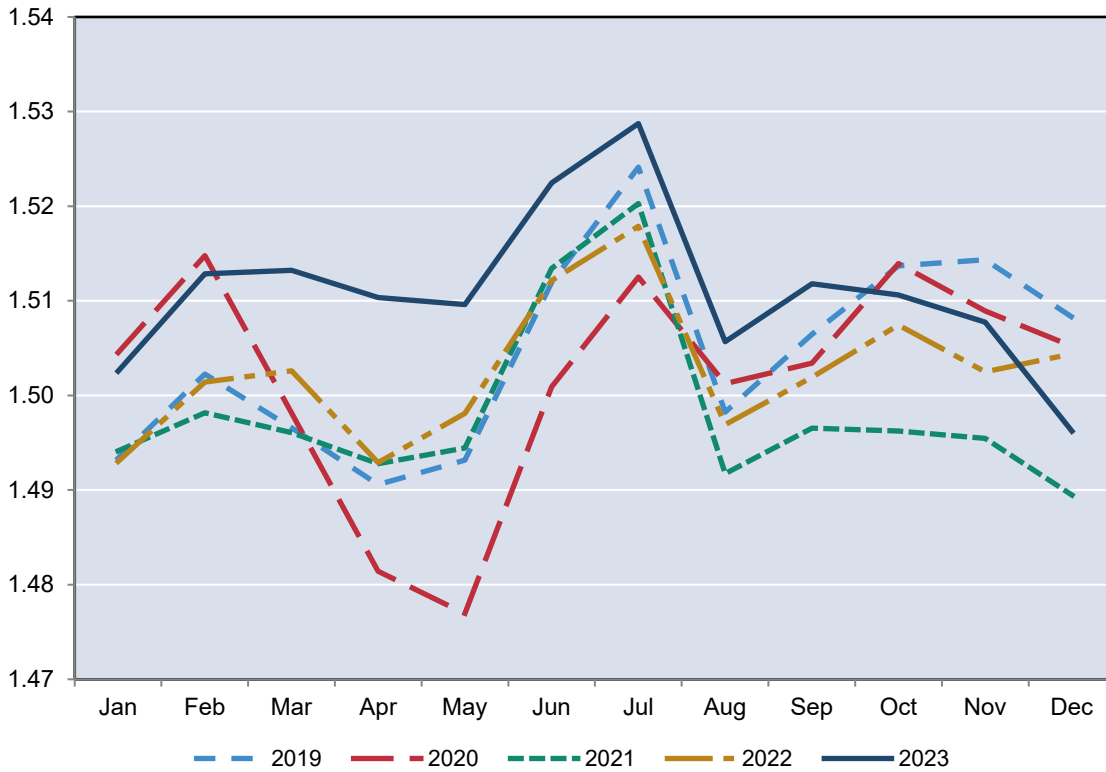
**Civilian Labor Force Estimates for the U.S., by State  
2023 Annual Averages**

County	Labor Force	Employed	Unemployed	Unemployment Rate
Alabama	2,308,131	2,250,472	57,659	2.5
Alaska	357,094	342,005	15,089	4.2
Arizona	3,690,974	3,546,508	144,466	3.9
Arkansas	1,377,657	1,332,876	44,781	3.3
California	19,308,287	18,388,329	919,958	4.8
Colorado	3,230,482	3,128,115	102,367	3.2
Connecticut	1,893,200	1,822,088	71,112	3.8
Delaware	506,529	486,404	20,125	4.0
District of Columbia	398,251	378,714	19,537	4.9
Florida	10,988,566	10,668,886	319,680	2.9
Georgia	5,305,623	5,135,833	169,790	3.2
Hawaii	676,355	656,336	20,019	3.0
Idaho	961,506	931,748	29,758	3.1
Illinois	6,437,855	6,150,672	287,183	4.5
Indiana	3,401,387	3,288,017	113,370	3.3
Iowa	1,709,402	1,659,106	50,296	2.9
<b>Kansas</b>	<b>1,510,988</b>	<b>1,470,936</b>	<b>40,052</b>	<b>2.7</b>
Kentucky	2,026,263	1,941,994	84,269	4.2
Louisiana	2,076,760	2,000,152	76,608	3.7
Maine	687,322	667,619	19,703	2.9
Maryland	3,184,868	3,117,270	67,598	2.1
Massachusetts	3,751,662	3,625,293	126,369	3.4
Michigan	5,007,904	4,812,421	195,483	3.9
Minnesota	3,099,923	3,012,707	87,216	2.8
Mississippi	1,231,104	1,192,015	39,089	3.2
Missouri	3,087,759	2,993,587	94,172	3.0
Montana	574,096	557,509	16,587	2.9
Nebraska	1,054,681	1,030,880	23,801	2.3
Nevada	1,602,652	1,520,260	82,392	5.1
New Hampshire	759,604	742,886	16,718	2.2
New Jersey	4,829,671	4,615,722	213,949	4.4
New Mexico	965,244	928,983	36,261	3.8
New York	9,717,791	9,306,973	410,818	4.2
North Carolina	5,231,638	5,050,870	180,768	3.5
North Dakota	416,722	408,909	7,813	1.9
Ohio	5,786,996	5,582,438	204,558	3.5
Oklahoma	1,963,240	1,899,949	63,291	3.2
Oregon	2,162,127	2,081,652	80,475	3.7
Pennsylvania	6,518,343	6,295,653	222,690	3.4
Rhode Island	573,848	556,609	17,239	3.0
South Carolina	2,453,060	2,380,392	72,668	3.0
South Dakota	480,238	470,715	9,523	2.0
Tennessee	3,379,605	3,267,935	111,670	3.3
Texas	15,067,153	14,472,524	594,629	3.9
Utah	1,790,381	1,743,223	47,158	2.6
Vermont	350,886	343,840	7,046	2.0
Virginia	4,555,208	4,424,155	131,053	2.9
Washington	4,025,762	3,860,883	164,879	4.1
West Virginia	785,642	754,986	30,656	3.9
Wisconsin	3,133,909	3,038,960	94,949	3.0
Wyoming	295,207	286,669	8,538	2.9
<b>United States</b>	<b>166,689,556</b>	<b>160,623,678</b>	<b>6,065,878</b>	<b>3.6</b>

Source: U.S. Department of Labor, Bureau of Labor Statistics, <https://www.bls.gov/lau/>  
(accessed August 15, 2024).

## Total Civilian Labor Force Estimates for Kansas 2019-2023

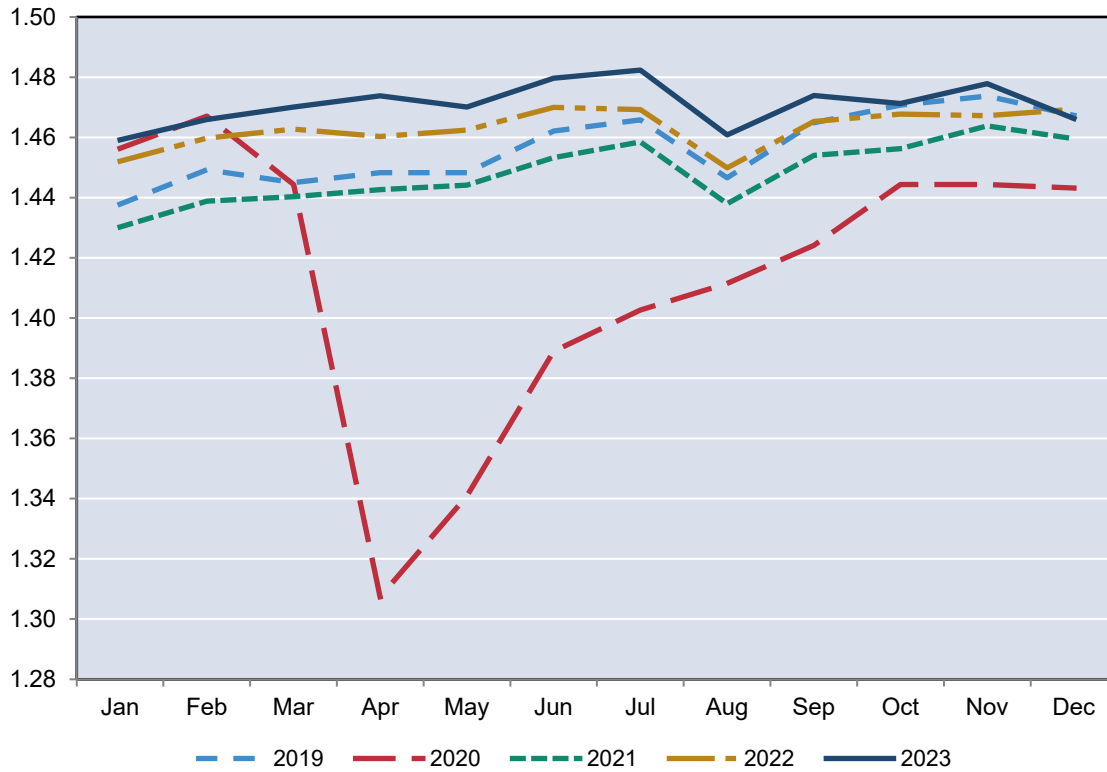
Millions of Persons



Source: Institute for Policy & Social Research, The University of Kansas; data from the U.S. Bureau of Labor Statistics. Data revised annually.

## Employed Civilian Labor Force Estimates for Kansas 2019-2023

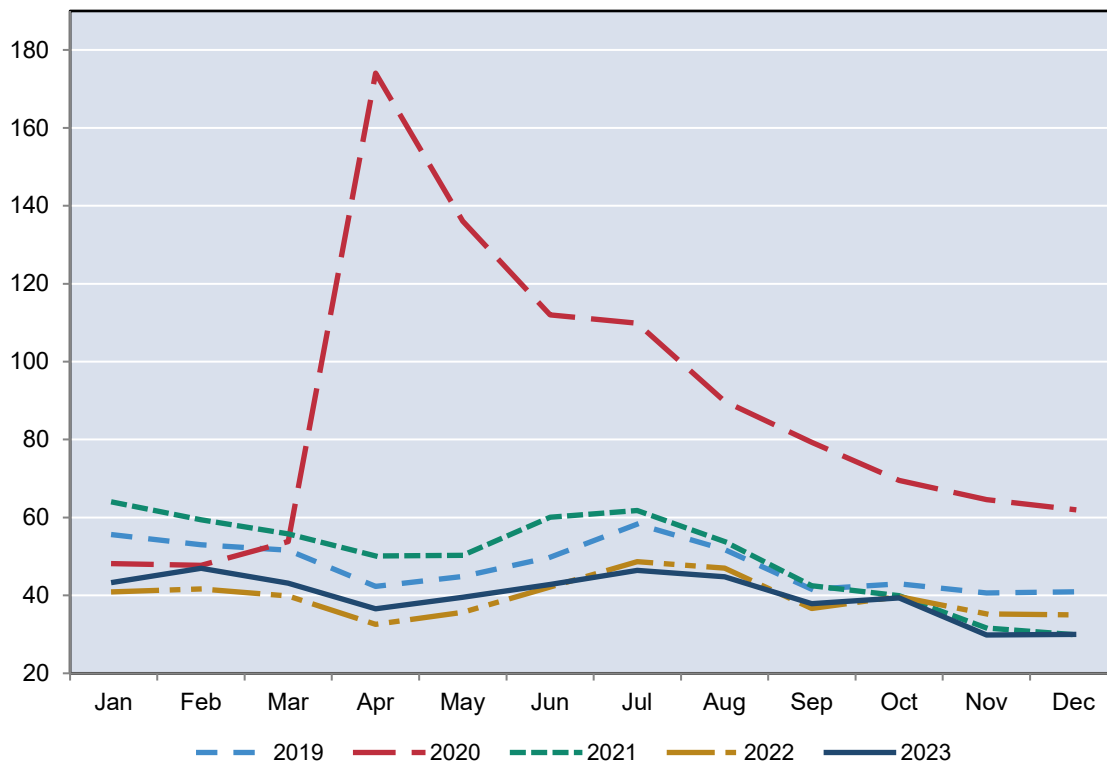
Millions of Persons



Source: Institute for Policy & Social Research, The University of Kansas; data from the U.S. Bureau of Labor Statistics. Data revised annually.

## Unemployed Civilian Labor Force Estimates for Kansas 2019-2023

Thousands of Persons



Source: Institute for Policy & Social Research, The University of Kansas; data from the U.S. Bureau of Labor Statistics. Data revised annually.

### Civilian Labor Force in Kansas, 1973-2023

Year	Labor Force	Number Employed	Number Unemployed	Unemployment Rate
1973	1,014,100	982,600	31,500	3.1
1974	1,043,900	1,007,500	36,400	3.5
1975*	1,067,900	1,017,000	50,900	4.8
1976	1,076,433	1,031,811	44,622	4.1
1977	1,109,756	1,066,824	42,932	3.9
1978	1,135,822	1,101,149	34,673	3.1
1979	1,161,492	1,125,486	36,006	3.1
1980	1,179,558	1,127,524	52,034	4.4
1981	1,181,689	1,130,646	51,043	4.3
1982	1,193,636	1,118,398	75,238	6.3
1983	1,194,270	1,123,813	70,457	5.9
1984	1,204,362	1,144,575	59,787	5.0
1985	1,230,529	1,167,067	63,462	5.2
1986	1,249,332	1,182,678	66,654	5.3
1987	1,264,347	1,203,518	60,829	4.8
1988	1,275,408	1,218,029	57,379	4.5
1989	1,279,617	1,226,451	53,166	4.2
1990	1,272,578	1,218,561	54,017	4.2
1991	1,285,549	1,228,183	57,366	4.5
1992	1,310,475	1,250,711	59,764	4.6
1993	1,328,417	1,262,698	65,719	4.9
1994	1,346,332	1,281,897	64,435	4.8
1995	1,354,129	1,295,252	58,877	4.3
1996	1,367,812	1,309,635	58,177	4.3
1997	1,380,868	1,328,415	52,453	3.8
1998	1,399,168	1,347,503	51,665	3.7
1999	1,406,631	1,357,493	49,138	3.5
2000	1,402,606	1,349,841	52,765	3.8
2001	1,398,521	1,338,775	59,746	4.3
2002	1,419,335	1,347,163	72,172	5.1
2003	1,441,065	1,361,115	79,950	5.5
2004	1,458,910	1,378,355	80,555	5.5
2005*	1,458,767	1,384,654	74,113	5.1
2006	1,467,553	1,402,950	64,603	4.4
2007	1,485,414	1,422,109	63,305	4.3
2008	1,493,365	1,425,022	68,343	4.6
2009	1,512,572	1,408,142	104,430	6.9
2010	1,500,463	1,396,172	104,291	7.0
2011	1,498,000	1,402,198	95,802	6.4
2012	1,490,808	1,405,638	85,170	5.7
2013	1,489,395	1,410,470	78,925	5.3
2014	1,494,203	1,426,892	67,311	4.5
2015	1,493,782	1,431,533	62,249	4.2
2016	1,491,961	1,431,920	60,041	4.0
2017	1,488,346	1,434,516	53,830	3.6
2018	1,493,360	1,443,204	50,156	3.4
2019	1,504,415	1,456,662	47,753	3.2
2020	1,501,827	1,414,596	87,231	5.8
2021	1,498,226	1,448,294	49,932	3.3
2022	1,502,603	1,463,010	39,593	2.6
2023	1,510,988	1,470,936	40,052	2.7

Source: Kansas Department of Labor, Labor Market Information Center in conjunction with U.S. Department of Labor, Bureau of Labor Statistics, <https://www.bls.gov/lau/> (accessed August 15, 2024).

Data refer to place of residence.

Data revised annually.

\* Data forward not comparable to prior years due to revised model.

**Civilian Labor Force Estimates for Kansas, by County, 2022 and 2023**

County	2022				2023			
	Labor Force	Employed	Unemployed	Unemployment Rate	Labor Force	Employed	Unemployed	Unemployment Rate
Allen	6,306	6,127	179	2.8	6,114	5,942	172	2.8
Anderson	4,358	4,260	98	2.2	4,409	4,316	93	2.1
Atchison	6,789	6,555	234	3.4	6,752	6,525	227	3.4
Barber	2,281	2,235	46	2.0	2,259	2,204	55	2.4
Barton	13,116	12,775	341	2.6	12,792	12,451	341	2.7
Bourbon	6,255	6,039	216	3.5	6,204	5,993	211	3.4
Brown	5,059	4,941	118	2.3	4,577	4,448	129	2.8
Butler	32,661	31,763	898	2.7	33,100	32,218	882	2.7
Chase	1,396	1,366	30	2.1	1,238	1,209	29	2.3
Chautauqua	1,424	1,384	40	2.8	1,385	1,346	39	2.8
Cherokee	9,905	9,650	255	2.6	10,012	9,743	269	2.7
Cheyenne	1,259	1,229	30	2.4	1,219	1,188	31	2.5
Clark	1,109	1,088	21	1.9	1,104	1,082	22	2.0
Clay	3,735	3,639	96	2.6	3,691	3,597	94	2.5
Cloud	3,810	3,709	101	2.7	3,712	3,609	103	2.8
Coffey	3,792	3,663	129	3.4	3,672	3,551	121	3.3
Comanche	868	849	19	2.2	857	835	22	2.6
Cowley	16,415	15,935	480	2.9	16,200	15,715	485	3.0
Crawford	19,116	18,569	547	2.9	19,102	18,559	543	2.8
Decatur	1,189	1,156	33	2.8	1,178	1,144	34	2.9
Dickinson	8,669	8,431	238	2.7	8,619	8,374	245	2.8
Doniphan	4,023	3,921	102	2.5	4,027	3,926	101	2.5
Douglas	65,477	63,789	1,688	2.6	66,580	64,860	1,720	2.6
Edwards	1,390	1,359	31	2.2	1,365	1,333	32	2.3
Elk	1,176	1,145	31	2.6	1,169	1,140	29	2.5
Ellis	17,065	16,733	332	1.9	17,173	16,842	331	1.9
Ellsworth	2,630	2,570	60	2.3	2,551	2,491	60	2.4
Finney	20,521	20,102	419	2.0	20,564	20,139	425	2.1
Ford	17,849	17,482	367	2.1	17,709	17,331	378	2.1
Franklin	14,824	14,465	359	2.4	14,998	14,621	377	2.5
Geary	11,342	10,921	421	3.7	11,099	10,673	426	3.8
Gove	1,370	1,341	29	2.1	1,306	1,276	30	2.3
Graham	1,191	1,164	27	2.3	1,153	1,123	30	2.6
Grant	2,806	2,726	80	2.9	2,798	2,722	76	2.7
Gray	3,174	3,113	61	1.9	3,172	3,109	63	2.0
Greeley	789	777	12	1.5	765	751	14	1.8
Greenwood	3,040	2,968	72	2.4	3,021	2,938	83	2.7

**Civilian Labor Force Estimates for Kansas, by County, 2022 and 2023**

County	2022				2023			
	Labor Force	Employed	Unemployed	Unemployment Rate	Labor Force	Employed	Unemployed	Unemployment Rate
Hamilton	1,630	1,603	27	1.7	1,619	1,590	29	1.8
Harper	2,782	2,724	58	2.1	2,797	2,732	65	2.3
Harvey	17,066	16,638	428	2.5	17,372	16,866	506	2.9
Haskell	2,167	2,126	41	1.9	2,115	2,073	42	2.0
Hodgeman	1,021	1,000	21	2.1	988	966	22	2.2
Jackson	7,280	7,111	169	2.3	7,361	7,189	172	2.3
Jefferson	10,373	10,098	275	2.7	10,454	10,195	259	2.5
Jewell	1,194	1,164	30	2.5	1,143	1,111	32	2.8
Johnson	349,354	341,423	7,931	2.3	352,969	344,449	8,520	2.4
Kearny	2,004	1,966	38	1.9	1,952	1,913	39	2.0
Kingman	3,267	3,188	79	2.4	3,304	3,215	89	2.7
Kiowa	1,207	1,181	26	2.2	1,185	1,155	30	2.5
Labette	9,441	9,157	284	3.0	9,384	9,108	276	2.9
Lane	725	704	21	2.9	704	685	19	2.7
Leavenworth	37,437	36,362	1,075	2.9	37,723	36,702	1,021	2.7
Lincoln	1,683	1,644	39	2.3	1,641	1,606	35	2.1
Linn	4,370	4,201	169	3.9	4,394	4,224	170	3.9
Logan	1,624	1,595	29	1.8	1,636	1,607	29	1.8
Lyon	17,072	16,647	425	2.5	16,840	16,400	440	2.6
McPherson	17,407	17,078	329	1.9	17,596	17,250	346	2.0
Marion	5,978	5,835	143	2.4	5,945	5,799	146	2.5
Marshall	5,330	5,226	104	2.0	5,300	5,187	113	2.1
Meade	2,123	2,083	40	1.9	2,095	2,051	44	2.1
Miami	18,029	17,574	455	2.5	18,198	17,730	468	2.6
Mitchell	3,358	3,293	65	1.9	3,321	3,256	65	2.0
Montgomery	14,585	14,141	444	3.0	14,732	14,293	439	3.0
Morris	3,007	2,938	69	2.3	2,930	2,857	73	2.5
Morton	1,130	1,101	29	2.6	1,104	1,075	29	2.6
Nemaha	5,625	5,523	102	1.8	5,896	5,795	101	1.7
Neosho	6,070	5,855	215	3.5	6,169	5,951	218	3.5
Ness	1,324	1,296	28	2.1	1,289	1,258	31	2.4
Norton	2,613	2,564	49	1.9	2,602	2,550	52	2.0
Osage	8,025	7,803	222	2.8	8,082	7,868	214	2.6
Osborne	1,899	1,860	39	2.1	1,769	1,730	39	2.2
Ottawa	3,009	2,934	75	2.5	3,000	2,931	69	2.3
Pawnee	2,712	2,648	64	2.4	2,660	2,592	68	2.6
Phillips	2,644	2,585	59	2.2	2,579	2,523	56	2.2
Pottawatomie	12,484	12,186	298	2.4	12,676	12,382	294	2.3



**Civilian Labor Force Estimates for Kansas, by County, 2022 and 2023**

County	2022				2023			
	Labor Force	Employed	Unemployed	Unemployment Rate	Labor Force	Employed	Unemployed	Unemployment Rate
Pratt	4,888	4,785	103	2.1	4,876	4,773	103	2.1
Rawlins	1,530	1,502	28	1.8	1,510	1,481	29	1.9
Reno	29,161	28,347	814	2.8	28,928	28,095	833	2.9
Republic	2,385	2,335	50	2.1	2,358	2,309	49	2.1
Rice	5,444	5,322	122	2.2	5,136	5,006	130	2.5
Riley	34,527	33,610	917	2.7	35,130	34,229	901	2.6
Rooks	2,407	2,346	61	2.5	2,338	2,278	60	2.6
Rush	1,616	1,581	35	2.2	1,620	1,584	36	2.2
Russell	3,295	3,221	74	2.2	3,289	3,212	77	2.3
Saline	30,133	29,412	721	2.4	30,115	29,383	732	2.4
Scott	2,740	2,690	50	1.8	2,613	2,562	51	2.0
Sedgwick	255,008	247,091	7,917	3.1	258,378	250,765	7,613	2.9
Seward	9,805	9,558	247	2.5	9,687	9,444	243	2.5
Shawnee	91,821	89,329	2,492	2.7	92,894	90,376	2,518	2.7
Sheridan	1,448	1,421	27	1.9	1,393	1,364	29	2.1
Sherman	2,784	2,721	63	2.3	2,750	2,685	65	2.4
Smith	1,960	1,921	39	2.0	2,012	1,971	41	2.0
Stafford	1,921	1,876	45	2.3	1,890	1,846	44	2.3
Stanton	1,088	1,067	21	1.9	1,049	1,027	22	2.1
Stevens	2,949	2,892	57	1.9	2,745	2,686	59	2.1
Sumner	10,742	10,425	317	3.0	10,861	10,566	295	2.7
Thomas	4,234	4,154	80	1.9	4,216	4,137	79	1.9
Trego	1,364	1,331	33	2.4	1,285	1,247	38	3.0
Wabaunsee	3,733	3,642	91	2.4	3,774	3,676	98	2.6
Wallace	850	833	17	2.0	862	843	19	2.2
Washington	3,002	2,944	58	1.9	2,985	2,921	64	2.1
Wichita	1,120	1,098	22	2.0	1,088	1,064	24	2.2
Wilson	3,729	3,613	116	3.1	3,686	3,572	114	3.1
Woodson	1,523	1,470	53	3.5	1,492	1,442	50	3.4
Wyandotte	78,170	75,480	2,690	3.4	78,869	76,210	2,659	3.4
<b>Kansas</b>	<b>1,502,605</b>	<b>1,463,011</b>	<b>39,594</b>	<b>2.6</b>	<b>1,510,999</b>	<b>1,470,942</b>	<b>40,057</b>	<b>2.7</b>

Source: U.S. Department of Labor, Bureau of Labor Statistics, <https://www.bls.gov/lau/> (accessed August 15, 2024).

Data refer to place of residence.

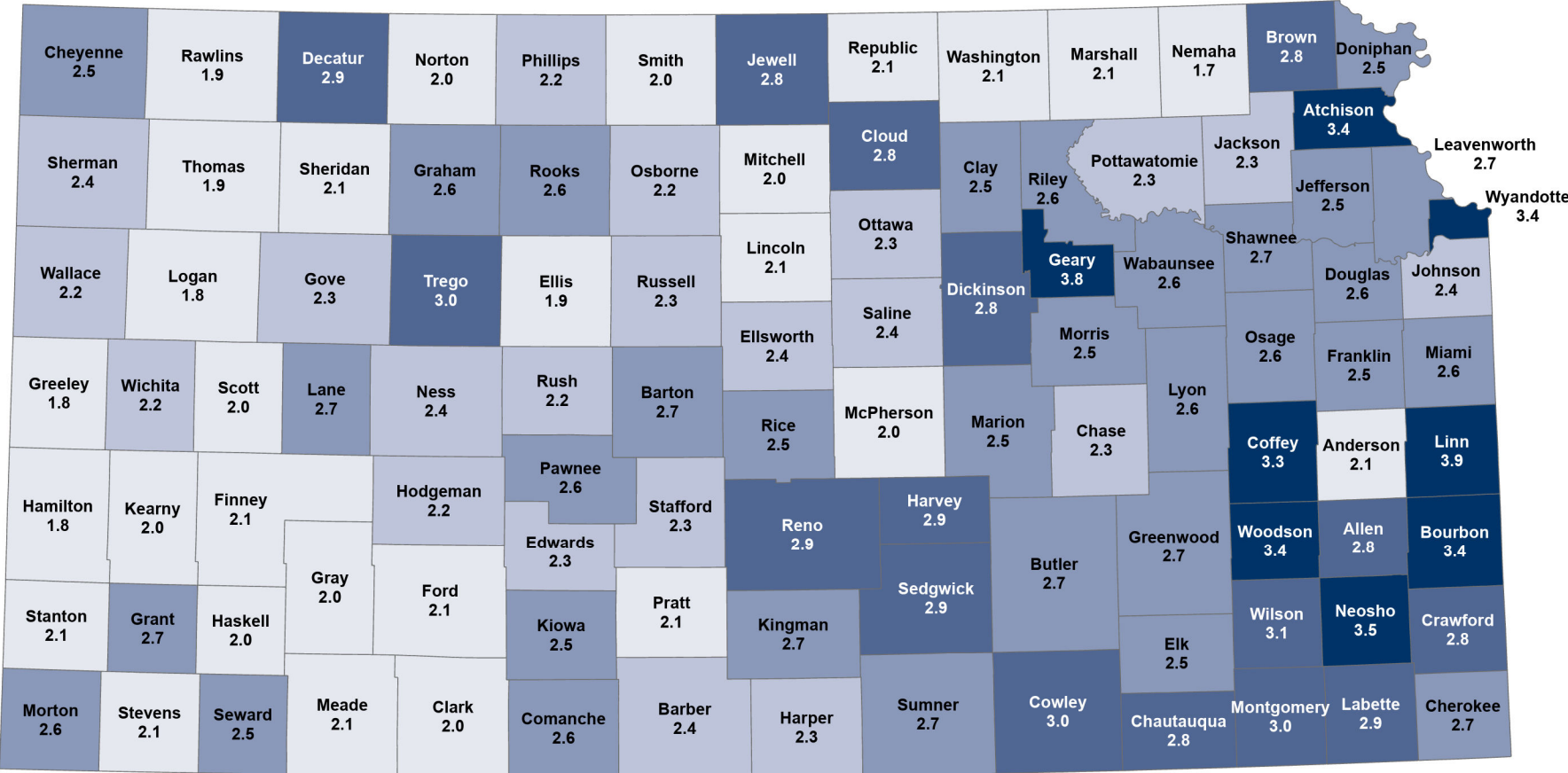
Data revised annually.

**Civilian Labor Force Estimates for Kansas, by Metropolitan Statistical Area,  
Micropolitan Area, and City, 2023**

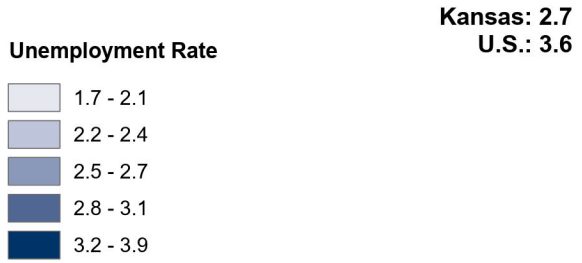
<b>Area</b>	<b>Labor Force</b>	<b>Employed</b>	<b>Unemployed</b>	<b>Unemployment Rate</b>
<b>Metropolitan Statistical Area</b>				
Kansas City, Kansas MSA	492,154	479,315	12,839	2.6
Lawrence MSA	66,580	64,860	1,720	2.6
Manhattan MSA	47,806	46,611	1,195	2.5
St. Joseph, Kansas MSA	4,027	3,926	101	2.5
Topeka MSA	122,565	119,304	3,261	2.7
Wichita MSA	323,015	313,630	9,385	2.9
<b>Micropolitan Area</b>				
Arkansas City-Winfield Micropolitan	16,200	15,715	485	3.0
Atchison Micropolitan	6,752	6,525	227	3.4
Coffeyville Micropolitan	14,732	14,293	439	3.0
Dodge City Micropolitan	17,709	17,331	378	2.1
Emporia Micropolitan	16,840	16,400	440	2.6
Garden City Micropolitan	22,516	22,052	464	2.1
Great Bend Micropolitan	12,792	12,451	341	2.7
Hays Micropolitan	17,173	16,842	331	1.9
Hutchinson Micropolitan	28,928	28,095	833	2.9
Junction City Micropolitan	11,099	10,673	426	3.8
Liberal Micropolitan	9,687	9,444	243	2.5
McPherson Micropolitan	17,596	17,250	346	2.0
Ottawa Micropolitan	14,998	14,621	377	2.5
Parsons Micropolitan	9,384	9,108	276	2.9
Pittsburg Micropolitan	19,102	18,559	543	2.8
Salina Micropolitan	33,114	32,313	801	2.4
<b>City</b>				
Derby	13,172	12,833	339	2.6
Dodge City	14,090	13,779	311	2.2
Emporia	12,549	12,219	330	2.6
Garden City	14,949	14,631	318	2.1
Hutchinson	18,305	17,754	551	3.0
Junction City	8,407	8,098	309	3.7
Kansas City	72,086	69,619	2,467	3.4
Lawrence	53,805	52,407	1,398	2.6
Leavenworth	14,153	13,724	429	3.0
Leawood	18,000	17,562	438	2.4
Lenexa	33,657	32,838	819	2.4
Manhattan	29,343	28,650	693	2.4
Olathe	82,797	80,919	1,878	2.3
Overland Park	115,525	112,660	2,865	2.5
Salina	25,559	24,926	633	2.5
Shawnee	37,690	36,764	926	2.5
Topeka	64,144	62,275	1,869	2.9
Wichita	193,809	187,874	5,935	3.1

Source: Kansas Department of Labor, Kansas Labor Information Center in conjunction with U.S. Department of Labor, Bureau of Labor Statistics, <https://klic.dol.ks.gov> (accessed August 16, 2024).

# Unemployment Rates in Kansas, by County 2023 Average



Source: Institute for Policy & Social Research, The University of Kansas; data from U.S. Department of Labor, Bureau of Labor Statistics.



**Unemployment Rates in Kansas, by County  
2018-2023, Annual Averages**

<b>County</b>	<b>2018</b>	<b>2019</b>	<b>2020</b>	<b>2021</b>	<b>2022</b>	<b>2023</b>
Allen	4.0	3.5	5.3	3.2	2.8	2.8
Anderson	3.5	3.3	4.0	2.6	2.2	2.1
Atchison	4.6	5.2	6.7	3.9	3.4	3.4
Barber	2.5	2.5	3.2	2.0	2.0	2.4
Barton	3.2	3.1	4.6	3.0	2.6	2.7
Bourbon	4.2	4.3	5.7	3.9	3.5	3.4
Brown	3.0	3.1	4.4	2.8	2.3	2.8
Butler	3.4	3.2	6.5	3.6	2.7	2.7
Chase	2.6	2.8	5.4	2.5	2.1	2.3
Chautauqua	4.0	3.8	6.1	4.1	2.8	2.8
Cherokee	3.7	3.4	5.2	3.0	2.6	2.7
Cheyenne	2.3	2.4	2.1	1.9	2.4	2.5
Clark	2.4	2.3	2.0	1.9	1.9	2.0
Clay	3.2	3.2	4.4	2.7	2.6	2.5
Cloud	3.5	3.2	4.0	2.9	2.7	2.8
Coffey	4.7	4.5	5.1	3.3	3.4	3.3
Comanche	2.5	2.6	3.3	2.2	2.2	2.6
Cowley	3.4	3.3	6.5	3.6	2.9	3.0
Crawford	4.0	3.9	5.5	3.3	2.9	2.8
Decatur	2.9	3.0	3.6	2.7	2.8	2.9
Dickinson	3.5	3.5	4.8	3.1	2.7	2.8
Doniphan	3.6	3.3	4.6	2.9	2.5	2.5
Douglas	3.1	2.9	5.9	3.2	2.6	2.6
Edwards	2.4	2.6	2.9	2.2	2.2	2.3
Elk	3.4	3.8	4.9	3.0	2.6	2.5
Ellis	2.4	2.3	3.4	2.0	1.9	1.9
Ellsworth	2.8	2.8	3.1	2.3	2.3	2.4
Finney	2.5	2.3	3.3	2.2	2.0	2.1
Ford	2.5	2.5	3.3	2.2	2.1	2.1
Franklin	3.6	3.3	5.3	3.2	2.4	2.5
Geary	4.7	4.3	7.0	4.4	3.7	3.8
Gove	2.2	2.1	2.6	2.0	2.1	2.3
Graham	3.1	3.0	4.5	3.0	2.3	2.6
Grant	2.8	2.8	4.0	3.2	2.9	2.7
Gray	2.0	2.0	2.2	1.8	1.9	2.0
Greeley	2.0	2.2	1.7	1.3	1.5	1.8
Greenwood	3.5	3.2	5.2	2.9	2.4	2.7
Hamilton	2.0	1.9	1.6	1.4	1.7	1.8
Harper	2.9	2.5	4.4	2.7	2.1	2.3
Harvey	3.2	2.9	5.3	3.0	2.5	2.9
Haskell	2.2	2.3	2.3	1.9	1.9	2.0
Hodgeman	2.4	2.5	2.5	1.8	2.1	2.2
Jackson	3.0	2.9	5.3	2.7	2.3	2.3
Jefferson	3.2	3.1	4.8	3.1	2.7	2.5
Jewell	2.8	2.8	2.9	2.3	2.5	2.8
Johnson	2.9	2.8	5.0	2.8	2.3	2.4
Kearny	2.3	2.3	2.5	1.7	1.9	2.0
Kingman	3.2	3.2	5.3	3.1	2.4	2.7
Kiowa	2.4	2.3	3.1	2.1	2.2	2.5
Labette	4.0	4.0	5.6	3.5	3.0	2.9
Lane	2.8	2.6	2.9	2.1	2.9	2.7
Leavenworth	3.7	3.4	5.8	3.4	2.9	2.7
Lincoln	2.5	2.3	2.9	2.3	2.3	2.1
Linn	5.9	6.0	7.1	4.4	3.9	3.9
Logan	2.1	2.0	2.4	1.7	1.8	1.8
Lyon	3.5	3.4	4.6	3.0	2.5	2.6

**Unemployment Rates in Kansas, by County  
2018-2023, Annual Averages**

<b>County</b>	<b>2018</b>	<b>2019</b>	<b>2020</b>	<b>2021</b>	<b>2022</b>	<b>2023</b>
McPherson	2.5	2.2	3.4	2.2	1.9	2.0
Marion	3.1	2.9	4.0	2.5	2.4	2.5
Marshall	2.6	2.9	3.0	2.0	2.0	2.1
Meade	2.0	2.3	2.7	2.3	1.9	2.1
Miami	3.6	3.3	4.9	3.0	2.5	2.6
Mitchell	2.2	2.4	2.6	2.1	1.9	2.0
Montgomery	4.3	4.1	7.3	4.0	3.0	3.0
Morris	2.7	2.7	3.9	2.4	2.3	2.5
Morton	3.2	2.9	3.0	2.6	2.6	2.6
Nemaha	2.3	2.8	2.8	1.9	1.8	1.7
Neosho	4.9	4.6	6.3	4.4	3.5	3.5
Ness	2.7	2.5	3.3	2.3	2.1	2.4
Norton	2.1	2.2	2.6	1.8	1.9	2.0
Osage	3.8	3.6	5.1	3.1	2.8	2.6
Osborne	2.5	2.0	2.7	1.9	2.1	2.2
Ottawa	2.8	2.7	4.1	2.9	2.5	2.3
Pawnee	3.2	2.9	3.6	2.3	2.4	2.6
Phillips	2.5	2.6	3.3	2.2	2.2	2.2
Pottawatomie	2.8	2.8	4.1	2.6	2.4	2.3
Pratt	2.7	2.5	3.5	2.3	2.1	2.1
Rawlins	2.1	2.3	2.5	1.6	1.8	1.9
Reno	3.6	3.2	5.4	3.3	2.8	2.9
Republic	2.7	2.5	3.2	2.4	2.1	2.1
Rice	2.9	2.8	4.1	2.5	2.2	2.5
Riley	2.9	2.8	4.8	2.9	2.7	2.6
Rooks	3.2	3.5	3.9	2.5	2.5	2.6
Rush	2.8	2.8	4.6	2.5	2.2	2.2
Russell	2.9	2.9	4.1	2.5	2.2	2.3
Saline	3.1	3.0	5.4	3.1	2.4	2.4
Scott	1.9	1.9	2.4	1.6	1.8	2.0
Sedgwick	3.8	3.5	8.7	4.7	3.1	2.9
Seward	3.2	3.1	4.2	2.9	2.5	2.5
Shawnee	3.5	3.3	5.8	3.2	2.7	2.7
Sheridan	2.2	2.2	2.3	1.9	1.9	2.1
Sherman	2.8	2.7	3.3	2.6	2.3	2.4
Smith	2.5	2.5	2.6	1.8	2.0	2.0
Stafford	2.7	2.7	3.6	2.3	2.3	2.3
Stanton	2.6	2.5	2.2	2.0	1.9	2.1
Stevens	2.9	2.6	2.7	2.2	1.9	2.1
Sumner	3.5	3.4	8.2	4.2	3.0	2.7
Thomas	2.5	2.3	2.7	2.0	1.9	1.9
Trego	3.1	2.8	3.4	2.3	2.4	3.0
Wabaunsee	3.1	3.2	4.1	2.5	2.4	2.6
Wallace	2.5	2.7	2.0	1.8	2.0	2.2
Washington	2.7	2.6	2.3	1.8	1.9	2.1
Wichita	2.1	1.9	1.9	2.0	2.0	2.2
Wilson	4.4	3.9	7.7	4.1	3.1	3.1
Woodson	4.4	4.2	6.0	3.6	3.5	3.4
Wyandotte	4.9	4.4	7.9	4.8	3.4	3.4
<b>Kansas</b>	<b>3.4</b>	<b>3.2</b>	<b>5.8</b>	<b>3.3</b>	<b>2.6</b>	<b>2.7</b>

Source: Kansas Department of Labor, Kansas Labor Market Information Services in conjunction with U.S. Department of Labor, Bureau of Labor Statistics, <https://klic.dol.ks.gov> (accessed August 15, 2024).

Data revised annually.

**Unemployment Rates in Kansas, by Metropolitan Statistical Area,  
Micropolitan Area, and City, 2018-2023, Annual Averages**

Area	2018	2019	2020	2021	2022	2023
<b>Metropolitan Statistical Area</b>						
Kansas City, Kansas MSA	3.3	3.1	5.6	3.2	2.5	2.6
Lawrence MSA	3.1	2.9	5.9	3.2	2.6	2.6
Manhattan MSA	2.8	2.8	4.7	2.8	2.6	2.5
St. Joseph, Kansas MSA	3.6	3.3	4.6	2.9	2.5	2.5
Topeka MSA	3.5	3.3	5.6	3.1	2.7	2.7
Wichita MSA	3.7	3.4	8.3	4.4	3.0	2.9
<b>Micropolitan Area</b>						
Arkansas City-Winfield Micropolitan	3.4	3.3	6.5	3.6	2.9	3.0
Atchison Micropolitan	4.6	5.2	6.7	3.9	3.4	3.4
Coffeyville Micropolitan	4.3	4.1	7.3	4.0	3.0	3.0
Dodge City Micropolitan	2.5	2.5	3.3	2.2	2.1	2.1
Emporia Micropolitan	3.5	3.4	4.6	3.0	2.5	2.6
Garden City Micropolitan	2.5	2.3	3.2	2.2	2.0	2.1
Great Bend Micropolitan	3.2	3.1	4.6	3.0	2.6	2.7
Hays Micropolitan	2.4	2.3	3.4	2.0	1.9	1.9
Hutchinson Micropolitan	3.6	3.2	5.4	3.3	2.8	2.9
Junction City Micropolitan	4.7	4.3	7.0	4.4	3.7	3.8
Liberal Micropolitan	3.2	3.1	4.2	2.9	2.5	2.5
McPherson Micropolitan	2.5	2.2	3.4	2.2	1.9	2.0
Ottawa Micropolitan	3.6	3.3	5.3	3.2	2.4	2.5
Parsons Micropolitan	4.0	4.0	5.6	3.5	3.0	2.9
Pittsburg Micropolitan	4.0	3.9	5.5	3.3	2.9	2.8
Salina Micropolitan	3.0	3.0	5.3	3.1	2.4	2.4
<b>City</b>						
Derby	-	-	7.0	3.8	2.8	2.6
Dodge City	2.6	2.5	3.4	2.3	2.1	2.2
Emporia	3.5	3.4	4.7	3.0	2.5	2.6
Garden City	2.5	2.4	3.4	2.2	2.1	2.1
Hutchinson	3.9	3.5	6.0	3.6	3.0	3.0
Junction City	4.6	4.1	7.0	4.3	3.6	3.7
Kansas City	4.9	4.4	7.9	4.8	3.5	3.4
Lawrence	3.0	2.9	6.0	3.3	2.6	2.6
Leavenworth	4.2	3.9	6.7	3.8	3.2	3.0
Leawood	2.7	2.6	4.1	2.5	2.2	2.4
Lenexa	2.9	2.8	5.3	2.8	2.3	2.4
Manhattan	2.6	2.6	4.6	2.7	2.5	2.4
Olathe	2.8	2.6	4.9	2.6	2.1	2.3
Overland Park	2.9	2.8	5.1	2.8	2.3	2.5
Salina	3.2	3.1	5.6	3.2	2.5	2.5
Shawnee	3.1	3.0	5.3	3.0	2.3	2.5
Topeka	3.7	3.5	6.4	3.5	2.9	2.9
Wichita	3.9	3.6	9.2	4.9	3.2	3.1

Source: Kansas Department of Labor, Kansas Labor Market Information Services in conjunction with U.S. Department of Labor, Bureau of Labor Statistics, <https://klic.dol.ks.gov> (accessed August 16, 2024).

Data revised annually.

Single dash (-) indicates not available.

**Kansas Labor Market Summary, 2021 and 2022**

<b>Labor Market Category</b>	<b>2021 Average (thousands)</b>	<b>2022 Average (thousands)</b>	<b>Percent Change 2021-2022</b>
<b>Place of Residence Data</b>			
Civilian Labor Force	1,500.7	1,504.9	0.3
Employment	1,451.2	1,464.8	0.9
Unemployment	49.5	40.1	-19.0
Unemployment Rate	3.3	2.7	-18.2
<b>Place of Work Data by Industry</b>			
Total Nonfarm	1,379.8	1,418.6	2.8
Total Private	1,129.0	1,167.3	3.4
Goods Producing	231.0	240.4	4.1
Natural Resources and Mining	5.9	6.2	5.1
Construction	63.9	64.8	1.4
Construction of Buildings	13.3	13.5	1.5
Heavy and Civil Engineering Construction	10.0	10.0	0.0
Specialty Trade Contractors	40.7	41.3	1.5
Manufacturing	161.2	169.4	5.1
Durable Goods	91.9	98.3	7.0
Machinery Manufacturing	19.4	20.6	6.2
Transportation Equipment Manufacturing	31.0	34.7	11.9
Aerospace Product and Parts Manufacturing	24.6	27.9	13.4
Non-Durable Goods	69.3	71.1	2.6
Food Manufacturing	36.3	36.9	1.7
Animal Slaughtering and Processing	19.3	19.7	2.1
Service-Providing	1,148.8	1,178.2	2.6
Private Service-Providing	898.0	926.9	3.2
Trade, Transportation, and Utilities	267.3	272.7	2.0
Wholesale Trade	55.8	58.2	4.3
Retail Trade	139.3	139.7	0.3
Motor Vehicle and Parts Dealers	18.0	18.2	1.1
Grocery Stores	23.3	22.5	-3.4
General Merchandise Stores	29.7	30.0	1.0
Transportation, Warehousing, and Utilities	72.2	74.9	3.7
Utilities	6.1	6.0	-1.6
Electric Power Generation, Transmission, Distribution	4.3	4.2	-2.3
Transportation and Warehousing	66.1	68.9	4.2
Truck Transportation	16.6	16.9	1.8
Information	16.9	18.2	7.7
Telecommunications	6.9	6.7	-2.9
Financial Activities	76.3	75.8	-0.7
Finance and Insurance	61.3	60.6	-1.1
Credit Intermediation and Related Activities	26.3	25.9	-1.5
Insurance Carriers	28.7	28.1	-2.1
Real Estate and Rental and Leasing	15.0	15.3	2.0

**Kansas Labor Market Summary, 2021 and 2022**

<b>Labor Market Category</b>	<b>2021 Average (thousands)</b>	<b>2022 Average (thousands)</b>	<b>Percent Change 2021-2022</b>
Professional and Business Services	171.2	181.6	6.1
Professional, Scientific, and Technical Services	72.4	77.5	7.0
Management of Companies and Enterprises	21.0	22.5	7.1
Administrative and Waste Services	77.9	81.6	4.7
Education and Health Services	197.7	200.0	1.2
Educational Services	17.0	15.9	-6.5
Health Care and Social Assistance	180.7	184.1	1.9
Hospitals	50.8	51.9	2.2
Leisure and Hospitality	120.3	128.5	6.8
Arts, Entertainment, and Recreation	15.1	16.6	9.9
Amusement, Gambling, and Recreation Industries	12.7	13.6	7.1
Accommodation and Food Services	105.3	111.9	6.3
Food Services and Drinking Places	96.6	102.2	5.8
Other Services	48.3	50.0	3.5
Government	250.8	251.3	0.2
Federal Government	25.7	25.7	0.0
State Government	48.8	48.4	-0.8
Local Government	176.4	177.2	0.5

Source: Kansas Department of Labor, Labor Market Information Services in conjunction with U.S. Department of Labor, Bureau of Labor Statistics, <https://klic.dol.ks.gov/> (accessed August 2, 2023).

Employment estimates by industry based on the North American Industry Classification System.

Average employment statistics are actual, not seasonally adjusted.

Data revised annually.



**Kansas Labor Market Summary, by Metropolitan Area, 2021 and 2022**

<b>Metropolitan Area and Labor Market Category</b>	<b>2021 Average</b>	<b>2022 Average</b>	<b>Percent Change 2021-2022</b>
<b>Kansas City MSA</b>			
<b>Civilian Labor Force - Place of Work Data</b>			
Civilian Labor Force	482,921	487,571	1.0
Employment	467,742	475,096	1.6
Unemployment	15,179	12,475	-17.8
Unemployment Rate	3.1	2.6	-16.1
<b>Nonfarm Employment by Industry</b>			
Total Nonfarm	474,600	490,600	3.4
Total Private	417,900	433,400	3.7
Goods Producing	57,100	58,100	1.8
Manufacturing	34,600	34,800	0.6
Durable Goods	19,800	20,400	3.0
Non-Durable Goods	14,800	14,400	-2.7
Service-Providing	417,500	432,500	3.6
Private Service-Providing	360,800	375,300	4.0
Trade, Transportation, and Utilities	107,000	108,800	1.7
Wholesale Trade	24,500	25,400	3.7
Retail Trade	46,300	46,600	0.6
Transportation, Warehousing, Utilities	36,300	36,800	1.4
Information	7,000	7,700	10.0
Telecommunications	2,000	1,800	-10.0
Financial Activities	36,800	34,400	-6.5
Finance and Insurance	30,100	27,700	-8.0
Professional and Business Services	84,300	91,700	8.8
Professional and Technical Services	38,200	41,200	7.9
Management of Companies and Enterprises	10,500	11,800	12.4
Administrative and Waste Services	35,700	38,800	8.7
Education and Health Services	70,000	72,300	3.3
Health Care and Social Assistance	64,500	67,300	4.3
Hospitals	21,800	22,900	5.0
Leisure and Hospitality	38,800	42,600	9.8
Accommodations and Food Services	33,300	36,000	8.1
Other Services	16,900	17,700	4.7
Government	56,700	57,200	0.9
Federal Government	8,200	8,400	2.4
State Government	7,000	7,000	0.0
Local Government	41,500	41,900	1.0
<b>Lawrence MSA</b>			
<b>Civilian Labor Force - Place of Work Data</b>			
Civilian Labor Force	64,798	66,297	2.3
Employment	62,717	64,587	3.0
Unemployment	2,081	1,710	-17.8
Unemployment Rate	3.2	2.6	-18.8
<b>Nonfarm Employment by Industry</b>			
Total Nonfarm	50,100	52,800	5.4
Total Private	35,000	36,800	5.1
Goods Producing	6,200	6,600	6.5
Service-Providing	43,900	46,200	5.2
Private Service-Providing	28,800	30,200	4.9
Trade, Transportation, and Utilities	7,400	7,500	1.4
Retail Trade	5,600	5,700	1.8
Professional and Business Services	5,000	4,900	-2.0
Education and Health Services	5,400	5,500	1.9
Leisure and Hospitality	6,300	7,500	19.0
Government	15,100	16,000	6.0

**Kansas Labor Market Summary, by Metropolitan Area, 2021 and 2022**

<b>Metropolitan Area and Labor Market Category</b>	<b>2021 Average</b>	<b>2022 Average</b>	<b>Percent Change 2021-2022</b>
<b>Manhattan MSA</b>			
<b>Civilian Labor Force - Place of Work Data</b>			
Civilian Labor Force	46,185	47,140	2.1
Employment	44,893	45,908	2.3
Unemployment	1,292	1,232	-4.6
Unemployment Rate	2.8	2.6	-7.1
<b>Nonfarm Employment by Industry</b>			
Total Nonfarm	39,600	41,200	4.0
Total Private	27,600	28,900	4.7
Goods Producing	5,200	5,200	0.0
Service-Providing	34,400	36,000	4.7
Private Service-Providing	22,400	23,700	5.8
Government	12,000	12,300	2.5
<b>Topeka MSA</b>			
<b>Civilian Labor Force - Place of Work Data</b>			
Civilian Labor Force	121,284	121,323	0.0
Employment	117,525	118,034	0.4
Unemployment	3,759	3,289	-12.5
Unemployment Rate	3.1	3.0	-3.2
<b>Nonfarm Employment by Industry</b>			
Total Nonfarm	109,400	111,700	2.1
Total Private	83,400	86,000	3.1
Goods Producing	13,800	14,200	2.9
Manufacturing	8,200	8,600	4.9
Non-Durable Goods	6,400	6,700	4.7
Service-Providing	95,700	97,500	1.9
Private Service-Providing	69,700	71,800	3.0
Trade, Transportation, and Utilities	17,600	18,300	4.0
Wholesale Trade	2,800	3,000	7.1
Retail Trade	9,800	9,800	0.0
Transportation, Warehousing, Utilities	5,000	5,600	12.0
Information	900	1,000	11.1
Financial Activities	6,900	7,000	1.4
Finance and Insurance	6,000	6,100	1.7
Professional and Business Services	13,300	13,600	2.3
Education and Health Services	18,600	18,800	1.1
Health Care and Social Assistance	18,000	18,100	0.6
Hospitals	7,100	7,000	-1.4
Leisure and Hospitality	7,900	8,400	6.3
Accommodations and Food Services	7,200	7,500	4.2
Other Services	4,500	4,800	6.7
Government	26,000	25,800	-0.8
Federal Government	3,200	3,100	-3.1
State Government	8,700	8,600	-1.1
Local Government	14,100	14,100	0.0

**Kansas Labor Market Summary, by Metropolitan Area, 2021 and 2022**

<b>Metropolitan Area and Labor Market Category</b>	<b>2021 Average</b>	<b>2022 Average</b>	<b>Percent Change 2021-2022</b>
<b>Wichita MSA</b>			
<b>Civilian Labor Force - Place of Work Data</b>			
Civilian Labor Force	318,474	319,753	0.4
Employment	305,434	310,002	1.5
Unemployment	14,040	9,751	-30.5
Unemployment Rate	4.4	3.0	-31.8
<b>Nonfarm Employment by Industry</b>			
Total Nonfarm	294,100	303,800	3.3
Total Private	252,800	260,900	3.2
Goods Producing	63,100	67,800	7.4
Manufacturing	46,100	50,600	9.8
Durable Goods	38,300	42,200	10.2
Machinery Manufacturing	6,500	6,900	6.2
Transportation Equipment Manufacturing	22,900	26,000	13.5
Aerospace Product and Parts Manufacturing	22,500	25,500	13.3
Nondurable Goods	7,800	8,400	7.7
Service-Providing	231,000	236,000	2.2
Private Service-Providing	189,700	193,000	1.7
Trade, Transportation, and Utilities	50,500	52,100	3.2
Wholesale Trade	8,600	9,100	5.8
Retail Trade	31,200	31,100	-0.3
Transportation, Warehousing, Utilities	10,600	11,800	11.3
Information	3,400	3,700	8.8
Financial Activities	11,800	12,000	1.7
Professional and Business Services	34,600	35,200	1.7
Professional and Technical Services	11,900	12,800	7.6
Administrative and Waste Services	18,000	18,000	0.0
Education and Health Services	46,500	45,700	-1.7
Educational Services	5,100	4,600	-9.8
Health Care and Social Assistance	41,400	41,100	-0.7
Hospitals	9,800	9,500	-3.1
Leisure and Hospitality	31,400	32,700	4.1
Accommodations and Food Services	26,200	27,800	6.1
Other Services	11,500	11,600	0.9
Government	41,300	43,000	4.1
Federal Government	5,100	5,100	0.0
State Government	6,400	6,600	3.1
Local Government	29,900	31,300	4.7

Source: Kansas Department of Labor, Labor Market Information Services in conjunction with U.S. Department of Labor, Bureau of Labor Statistics, <https://klic.dol.ks.gov> (accessed August 2, 2023).

Employment estimates by industry based on the North American Industry Classification System.

Average employment statistics are actual, not seasonally adjusted.

Data revised annually.

**Mid-March Employment in Kansas, by Industry and County, 2022 (Part 1 of 2)**

<b>County</b>	<b>Total</b>	<b>AFFH</b>	<b>Mining</b>	<b>Utilities</b>	<b>Construction</b>	<b>Manufacturing</b>	<b>Wholesale Trade</b>	<b>Retail Trade</b>	<b>Transportation</b>	<b>Information</b>	<b>Finance and Insurance</b>
Allen	3,893	-	129	14	95	1,372	184	525	86	138	97
Anderson	1,386	-	28	-	117	112	81	268	41	12	74
Atchison	5,169	-	-	-	255	810	244	532	79	23	169
Barber	1,115	-	80	-	28	165	71	197	22	33	39
Barton	9,506	10	354	181	708	1,058	600	1,483	238	97	473
Bourbon	4,204	-	7	-	169	1,150	400	684	66	41	196
Brown	3,223	-	-	-	86	809	194	343	127	72	116
Butler	13,356	-	101	90	1,061	1,831	528	1,974	456	49	439
Chase	460	-	-	-	33	137	-	47	40	-	12
Chautauqua	439	-	40	-	24	46	-	65	5	-	25
Cherokee	4,845	-	109	46	684	1,538	110	409	97	26	123
Cheyenne	555	-	-	-	22	18	82	71	-	-	32
Clark	464	-	5	-	-	-	-	38	-	-	34
Clay	2,144	-	-	-	109	262	172	404	54	38	101
Cloud	2,647	-	-	22	97	249	221	498	55	72	85
Coffey	2,628	-	39	963	78	163	84	305	127	38	95
Comanche	392	-	6	-	8	43	-	69	-	-	21
Cowley	11,188	-	43	-	242	4,447	167	1,439	110	84	331
Crawford	15,240	-	29	89	992	3,242	816	1,854	176	382	334
Decatur	536	-	-	-	15	-	84	77	13	-	33
Dickinson	4,780	-	-	70	169	1,353	306	787	162	25	196
Doniphan	1,654	12	-	-	118	490	64	132	152	-	65
Douglas	37,284	-	102	134	2,115	4,430	908	6,205	638	400	1,295
Edwards	575	-	-	-	3	129	136	58	9	-	20
Elk	313	-	5	-	-	-	-	45	6	-	19
Ellis	12,623	7	458	191	636	1,086	554	2,049	412	332	426
Ellsworth	1,633	-	-	-	67	392	104	182	204	41	87
Finney	14,584	95	156	280	785	3,686	809	2,673	449	143	476
Ford	14,826	-	13	178	595	6,017	712	1,613	599	84	285
Franklin	8,868	-	41	-	579	806	194	1,259	2,150	42	139
Geary	8,138	-	-	71	191	769	74	1,286	855	63	245
Gove	806	-	16	-	45	102	63	83	22	7	38
Graham	563	-	25	-	41	-	34	72	4	20	30
Grant	1,850	-	67	86	143	129	129	178	66	72	353
Gray	1,422	12	-	29	315	113	158	124	53	13	72
Greeley	325	-	-	-	12	-	-	86	-	-	22
Greenwood	1,023	-	84	-	53	39	52	171	167	19	41
Hamilton	559	-	-	-	5	-	150	70	73	-	66

**Mid-March Employment in Kansas, by Industry and County, 2022 (Part 1 of 2)**

<b>County</b>	<b>Total</b>	<b>AFFH</b>	<b>Mining</b>	<b>Utilities</b>	<b>Construction</b>	<b>Manufacturing</b>	<b>Wholesale Trade</b>	<b>Retail Trade</b>	<b>Transportation</b>	<b>Information</b>	<b>Finance and Insurance</b>
Harper	1,795	-	33	-	26	555	80	286	167	-	81
Harvey	12,138	-	38	-	644	3,703	245	1,216	108	32	315
Haskell	815	-	-	-	64	104	133	86	30	-	33
Hodgeman	287	-	-	-	-	-	63	28	41	-	24
Jackson	3,012	-	-	-	125	245	106	385	24	45	97
Jefferson	2,527	-	-	-	519	251	34	255	50	11	73
Jewell	440	-	-	-	6	-	67	55	38	-	26
Johnson	348,734	17	188	552	21,221	24,697	21,749	38,094	23,945	11,593	31,951
Kearny	703	50	3	-	36	-	6	88	64	-	65
Kingman	1,884	-	36	31	182	360	247	188	30	10	123
Kiowa	735	-	-	-	29	-	40	51	45	-	23
Labette	6,975	-	-	45	90	1,914	195	783	381	116	262
Lane	294	-	-	-	-	-	37	35	8	-	22
Leavenworth	13,392	23	6	45	1,272	1,087	177	2,235	381	102	656
Lincoln	503	-	-	-	45	-	73	66	-	-	35
Linn	1,519	-	49	389	149	164	23	267	25	29	82
Logan	863	4	-	-	76	-	91	200	5	8	54
Lyon	12,621	-	12	56	298	4,333	453	1,636	359	131	277
McPherson	14,545	-	80	-	734	5,395	306	1,211	201	83	643
Marion	2,646	-	11	-	97	447	152	238	24	37	89
Marshall	3,973	-	-	44	185	1,318	279	670	80	96	177
Meade	839	6	16	-	143	13	165	120	6	-	37
Miami	6,901	8	36	-	793	470	137	1,260	216	41	217
Mitchell	2,385	-	-	-	139	290	288	375	75	73	135
Montgomery	11,643	-	16	-	398	3,682	284	1,325	479	74	324
Morris	1,215	-	-	-	56	223	46	151	14	109	52
Morton	572	-	29	-	14	-	89	45	63	104	52
Nemaha	4,899	115	-	-	243	1,252	401	434	424	21	163
Neosho	4,526	16	59	-	196	908	231	732	82	47	236
Ness	831	-	146	-	17	29	141	57	49	-	41
Norton	1,690	-	17	-	48	263	91	185	14	56	72
Osage	1,713	-	-	-	115	147	80	343	60	-	114
Osborne	924	-	20	-	14	101	134	123	65	8	49
Ottawa	813	7	-	-	19	63	189	80	13	-	60
Pawnee	1,642	-	-	-	70	55	62	158	-	-	68
Phillips	1,464	-	14	-	52	186	57	193	80	24	120
Pottawatomie	9,635	28	-	257	844	1,718	717	1,613	277	69	273
Pratt	3,462	9	244	51	166	90	305	680	50	22	125

**Mid-March Employment in Kansas, by Industry and County, 2022 (Part 1 of 2)**

County	Total	AFFH	Mining	Utilities	Construction	Manufacturing	Wholesale Trade	Retail Trade	Transportation	Information	Finance and Insurance
Rawlins	719	-	-	-	52	52	177	121	5	7	29
Reno	21,386	10	17	95	822	3,439	1,023	2,999	1,091	581	876
Republic	1,262	-	-	-	16	176	162	209	18	12	57
Rice	2,437	-	141	-	89	413	183	218	112	43	128
Riley	20,204	-	172	107	1,310	519	371	3,853	176	1,065	801
Rooks	1,198	-	45	7	51	106	137	172	79	11	44
Rush	817	-	-	-	24	224	99	97	53	45	48
Russell	1,781	-	146	-	80	275	88	185	74	64	78
Saline	26,387	-	-	73	1,051	5,660	985	3,597	1,422	160	789
Scott	1,491	10	-	-	72	54	132	130	40	16	92
Sedgwick	230,643	15	611	1,115	14,866	40,390	9,523	27,849	10,206	4,737	7,212
Seward	9,230	-	190	62	221	3,243	318	1,208	834	66	155
Shawnee	76,363	21	-	1,132	5,421	7,935	2,114	8,937	3,176	1,240	5,892
Sheridan	738	-	-	-	60	-	154	87	39	-	50
Sherman	1,777	3	-	-	47	17	236	337	89	55	97
Smith	834	-	-	-	34	57	120	190	-	16	45
Stafford	539	14	23	-	32	-	37	75	29	-	39
Stanton	687	-	-	-	-	-	211	59	43	-	51
Stevens	1,213	28	-	-	50	76	100	122	128	-	84
Sumner	4,489	11	23	-	114	498	203	585	252	116	178
Thomas	2,849	1	-	32	129	120	329	649	124	51	155
Trego	768	-	8	-	21	36	63	98	19	10	29
Wabaunsee	809	-	75	-	109	217	29	105	26	-	37
Wallace	333	-	-	-	-	-	39	51	10	-	13
Washington	1,398	-	-	-	80	187	118	177	54	-	67
Wichita	457	-	-	15	24	45	75	59	21	-	27
Wilson	3,573	-	34	-	1,082	1,031	40	237	38	5	75
Woodson	415	-	55	-	24	-	79	47	5	-	22
Wyandotte	75,422	-	-	-	4,713	11,204	7,949	7,252	11,013	593	1,060
<b>Kansas</b>	<b>1,225,232</b>	<b>855</b>	<b>5,556</b>	<b>7,517</b>	<b>70,546</b>	<b>167,278</b>	<b>62,760</b>	<b>144,030</b>	<b>69,878</b>	<b>25,316</b>	<b>66,881</b>

Source: U.S. Census Bureau, County Business Patterns, <https://www.census.gov/programs-surveys/cbp.html> (accessed June 28, 2024).

Single dash (-) indicates not available or represents zero. Beginning with the 2017 data, any tabulation with fewer than 3 establishments were omitted from the release. Data for these establishments are included in the broader total.

Industry Description: AFFH=Agriculture, forestry, fishing and hunting; Mining=Mining, quarrying, and oil and gas extraction; and Transportation=Transportation and warehousing.

**Mid-March Employment in Kansas, by Industry and County, 2022 (Part 2 of 2)**

<b>County</b>	<b>Real Estate</b>	<b>Prof. Services</b>	<b>Management</b>	<b>Admin. Support</b>	<b>Educational Services</b>	<b>Health Care</b>	<b>Arts and Recreation</b>	<b>Accommod. and Food Service</b>	<b>Other Services</b>	<b>Unclassified</b>
Allen	47	88	-	53	-	587	31	348	97	-
Anderson	11	31	-	-	-	343	-	197	60	-
Atchison	22	100	-	60	1,035	921	93	501	247	-
Barber	11	20	-	8	-	276	3	61	68	-
Barton	126	415	-	342	37	2,147	68	753	416	-
Bourbon	24	91	-	24	-	568	15	442	175	-
Brown	8	87	-	19	-	725	265	224	113	-
Butler	205	537	28	545	120	2,570	366	1,734	711	-
Chase	-	21	-	-	-	-	-	19	17	-
Chautauqua	-	-	-	-	-	122	-	61	23	-
Cherokee	11	124	327	179	-	563	48	333	118	-
Cheyenne	-	22	-	-	-	210	-	50	35	-
Clark	-	22	20	-	-	221	7	18	19	-
Clay	3	49	-	37	13	497	34	200	161	-
Cloud	5	80	-	106	-	619	11	321	195	-
Coffey	-	45	-	23	-	380	-	132	140	-
Comanche	-	10	-	-	-	148	-	19	18	-
Cowley	44	232	-	305	478	1,734	43	1,095	360	-
Crawford	95	329	583	410	708	2,717	156	1,858	469	-
Decatur	17	43	-	-	-	166	-	38	21	-
Dickinson	18	116	-	106	-	741	55	402	228	-
Doniphan	23	11	-	86	-	185	-	88	53	-
Douglas	696	2,400	355	1,117	979	6,386	708	6,599	1,814	2
Edwards	-	11	-	-	-	112	-	41	25	-
Elk	-	5	-	-	-	31	-	109	29	-
Ellis	149	369	73	218	115	2,900	86	1,956	606	-
Ellsworth	-	88	-	31	-	194	32	80	65	-
Finney	155	240	-	610	30	1,557	237	1,643	552	-
Ford	106	516	101	701	44	1,139	205	1,422	495	-
Franklin	53	118	-	67	785	1,524	18	760	309	-
Geary	222	274	263	552	17	1,344	85	1,346	480	-
Gove	-	13	-	55	-	228	-	75	48	-
Graham	-	3	-	-	-	182	-	36	45	-
Grant	16	37	-	64	-	121	-	255	83	-
Gray	19	48	-	71	33	171	-	78	85	-
Greeley	-	12	-	-	-	145	-	-	13	-
Greenwood	-	44	-	-	-	203	-	95	37	-
Hamilton	-	-	-	-	-	25	-	67	30	-

**Mid-March Employment in Kansas, by Industry and County, 2022 (Part 2 of 2)**

<b>County</b>	<b>Real Estate</b>	<b>Prof. Services</b>	<b>Management</b>	<b>Admin. Support</b>	<b>Educational Services</b>	<b>Health Care</b>	<b>Arts and Recreation</b>	<b>Accommod. and Food Service</b>	<b>Other Services</b>	<b>Unclassified</b>
Harper	13	40	-	27	-	269	-	102	52	-
Harvey	52	256	-	704	633	2,498	108	1,005	543	-
Haskell	-	15	-	-	-	186	13	34	53	-
Hodgeman	-	-	-	-	-	71	-	-	18	-
Jackson	37	82	-	356	-	487	-	837	139	-
Jefferson	12	91	-	286	12	407	37	153	122	-
Jewell	-	8	-	6	-	84	-	40	23	-
Johnson	5,793	38,604	9,577	24,535	5,192	43,065	5,340	29,004	13,603	14
Kearny	6	12	-	-	-	252	-	72	27	-
Kingman	7	26	-	16	-	340	10	167	71	-
Kiowa	-	-	-	9	-	187	-	28	106	-
Labette	19	94	58	49	-	2,239	19	438	210	-
Lane	4	22	-	4	-	64	-	22	11	-
Leavenworth	252	989	52	386	622	2,347	165	1,707	884	-
Lincoln	-	13	-	28	-	127	7	24	29	-
Linn	10	19	-	28	-	109	18	78	78	-
Logan	-	17	-	-	-	175	26	125	68	-
Lyon	123	259	12	621	53	1,986	118	1,426	467	-
McPherson	72	369	167	322	994	2,052	157	1,013	645	-
Marion	11	89	8	26	382	574	-	231	223	-
Marshall	5	120	46	83	27	484	11	225	116	-
Meade	-	26	-	-	-	160	-	35	48	-
Miami	156	360	-	262	33	1,668	47	708	466	-
Mitchell	16	74	-	21	-	472	89	164	118	-
Montgomery	53	207	73	388	-	2,906	48	961	346	-
Morris	-	45	-	9	-	307	13	122	49	-
Morton	-	14	-	-	-	91	-	36	24	-
Nemaha	-	129	32	164	221	834	-	239	188	-
Neosho	30	133	-	102	-	1,092	30	362	263	-
Ness	-	24	-	-	-	218	-	15	67	-
Norton	-	29	-	3	-	516	-	130	61	-
Osage	10	71	-	27	-	359	10	247	78	-
Osborne	-	44	-	50	-	204	-	26	58	-
Ottawa	8	47	-	16	-	223	2	48	38	-
Pawnee	11	56	-	53	-	855	-	185	40	-
Phillips	-	106	-	81	-	275	5	98	97	-
Pottawatomie	85	266	-	257	67	1,702	75	822	544	-
Pratt	20	106	74	52	-	644	33	643	146	-



**Mid-March Employment in Kansas, by Industry and County, 2022 (Part 2 of 2)**

County	Real Estate	Prof. Services	Management	Admin. Support	Educational Services	Health Care	Arts and Recreation	Accommod. and Food Service	Other Services	Unclassified
Rawlins	-	12	-	-	-	190	-	28	31	-
Reno	224	612	578	1,229	185	3,832	429	2,403	940	-
Republic	-	39	-	8	-	340	21	97	73	-
Rice	8	139	-	36	-	253	5	260	122	-
Riley	789	911	178	671	391	3,469	317	3,693	1,408	-
Rooks	-	50	-	12	-	284	17	72	101	-
Rush	-	23	-	-	-	129	-	21	22	-
Russell	11	39	-	65	-	318	11	291	55	-
Saline	193	756	348	1,008	317	5,489	541	2,952	1,039	-
Scott	8	49	-	37	12	527	3	164	110	-
Sedgwick	3,195	11,438	7,428	13,111	4,751	35,895	3,094	25,549	9,645	13
Seward	66	109	-	444	-	1,124	49	852	213	-
Shawnee	989	3,503	581	4,518	740	18,542	791	7,023	3,803	4
Sheridan	-	30	-	-	-	171	-	72	43	-
Sherman	10	39	-	51	4	358	-	326	81	-
Smith	-	15	-	14	-	231	-	39	54	-
Stafford	-	12	-	15	-	135	-	54	35	-
Stanton	-	11	-	-	-	-	-	33	38	-
Stevens	-	42	-	16	-	257	6	113	82	-
Sumner	25	85	26	265	25	670	555	550	276	-
Thomas	26	90	-	53	-	551	-	364	145	-
Trego	-	13	-	-	-	225	-	156	38	-
Wabaunsee	6	4	-	26	-	73	4	48	42	-
Wallace	6	13	-	-	-	59	-	22	19	-
Washington	5	44	-	7	-	294	-	69	140	-
Wichita	-	4	-	-	-	111	-	22	29	-
Wilson	5	38	-	51	-	655	-	184	65	-
Woodson	-	4	-	-	-	83	-	39	25	-
Wyandotte	1,138	1,092	719	4,746	356	14,475	864	5,563	2,675	2
<b>Kansas</b>	<b>15,698</b>	<b>72,590</b>	<b>22,491</b>	<b>97,256</b>	<b>20,659</b>	<b>192,702</b>	<b>15,845</b>	<b>117,287</b>	<b>50,002</b>	<b>85</b>

Source: U.S. Census Bureau, County Business Patterns, <https://www.census.gov/programs-surveys/cbp.html> (accessed June 28, 2024).

Single dash (-) indicates not available or represents zero. Beginning with the 2017 data, any tabulation with fewer than 3 establishments were omitted from the release. Data for these establishments are included in the broader total.

Industry Description: Real Estate=Real estate and rental and leasing; Prof. Services=Professional, scientific, and technical services; Management=Management of companies and enterprises; Admin. Support=Administrative and support and waste management and remediation services; Health Care=Health care and social assistance; Arts and Recreation=Arts, entertainment, and recreation; Accommod. and Food Service=Accommodation and food service; and Other Services=Other services (except public administration).

**Farm and Nonfarm Employment in Kansas, by County, 2020-2022**

County	2020		2021		2022	
	Farm	Nonfarm	Farm	Nonfarm	Farm	Nonfarm
Allen	554	7,332	561	7,570	543	7,560
Anderson	642	3,377	650	3,735	627	3,558
Atchison	587	7,245	599	7,411	571	7,643
Barber	412	2,880	421	2,923	394	3,021
Barton	754	17,541	774	17,425	720	17,824
Bourbon	812	8,127	821	8,060	794	8,071
Brown	510	6,069	522	6,175	490	6,251
Butler	1,256	28,460	1,276	29,367	1,219	30,207
Chase	261	1,346	267	1,291	250	1,354
Chautauqua	305	1,421	311	1,428	295	1,473
Cherokee	709	7,823	721	7,698	687	7,609
Cheyenne	439	1,281	449	1,324	418	1,348
Clark	318	1,133	326	1,137	303	1,169
Clay	551	4,199	563	4,265	531	4,351
Cloud	440	4,588	446	4,682	427	4,748
Coffey	616	4,985	623	5,045	601	5,025
Comanche	270	904	275	926	257	940
Cowley	957	17,810	973	18,205	931	18,455
Crawford	814	22,227	828	22,665	792	23,408
Decatur	303	1,292	312	1,280	288	1,307
Dickinson	977	8,360	994	8,721	947	8,837
Doniphan	402	3,232	410	3,348	388	3,424
Douglas	878	70,111	891	71,366	855	74,359
Edwards	339	1,331	348	1,345	321	1,355
Elk	306	1,072	311	1,064	296	1,121
Ellis	633	24,013	644	24,362	614	24,947
Ellsworth	395	3,247	402	3,233	384	3,299
Finney	762	23,479	798	23,525	700	24,357
Ford	744	20,654	766	21,292	708	21,896
Franklin	989	12,777	1,007	13,318	959	13,958
Geary	224	32,702	229	32,681	218	32,669
Gove	456	1,849	469	1,846	433	1,808
Graham	400	1,496	406	1,521	386	1,640
Grant	472	3,551	492	3,444	439	3,417
Gray	734	3,901	770	3,880	673	3,998
Greeley	340	872	352	862	317	868
Greenwood	577	2,666	590	2,673	557	2,818
Hamilton	603	1,216	630	1,271	558	1,355
Harper	492	3,508	501	3,537	474	3,637
Harvey	707	18,826	719	19,361	687	19,892
Haskell	762	2,175	813	2,151	675	2,183
Hodgeman	461	890	474	910	437	929
Jackson	942	5,658	953	5,787	925	5,774
Jefferson	888	5,864	897	5,994	871	6,295
Jewell	491	1,222	504	1,218	471	1,232
Johnson	605	463,249	620	478,343	578	498,797
Kearny	572	1,736	597	1,761	529	1,774
Kingman	784	4,307	797	4,251	762	4,065
Kiowa	384	1,628	390	1,617	370	1,663
Labette	885	12,006	898	11,852	866	12,046
Lane	348	896	358	878	331	884
Leavenworth	1,061	32,474	1,075	32,905	1,035	33,701
Lincoln	387	1,391	392	1,351	378	1,392
Linn	808	3,262	819	3,314	791	3,460
Logan	312	1,839	319	1,886	301	1,949

**Farm and Nonfarm Employment in Kansas, by County, 2020-2022**

County	2020		2021		2022	
	Farm	Nonfarm	Farm	Nonfarm	Farm	Nonfarm
Lyon	925	19,767	941	20,199	898	20,778
McPherson	1,081	20,543	1,099	20,842	1,050	21,658
Marion	927	5,435	940	5,525	904	5,645
Marshall	745	6,405	756	6,364	725	6,462
Meade	592	2,089	615	2,139	553	2,164
Miami	1,223	13,279	1,242	13,521	1,195	13,940
Mitchell	453	4,430	464	4,468	432	4,543
Montgomery	969	17,637	984	18,024	944	18,555
Morris	472	2,432	482	2,471	455	2,527
Morton	500	1,340	520	1,317	462	1,339
Nemaha	927	6,659	950	6,680	890	6,944
Neosho	629	8,392	637	8,336	616	8,603
Ness	514	1,943	520	1,902	501	1,989
Norton	391	3,084	401	3,110	372	3,169
Osage	917	4,660	929	4,808	898	5,218
Osborne	326	2,146	332	2,171	318	2,193
Ottawa	509	2,014	518	2,014	491	2,117
Pawnee	466	3,376	479	3,360	442	3,340
Phillips	506	3,186	521	3,205	484	3,345
Pottawatomie	842	13,550	856	13,913	817	14,452
Pratt	585	6,219	602	6,213	557	6,360
Rawlins	329	1,500	337	1,552	312	1,525
Reno	1,558	34,086	1,595	34,818	1,502	35,497
Republic	637	2,634	654	2,614	608	2,743
Rice	688	4,901	711	5,229	647	5,384
Riley	528	41,253	541	41,680	505	43,568
Rooks	466	3,070	477	3,102	446	3,214
Rush	470	1,601	478	1,637	457	1,681
Russell	493	4,570	500	4,645	478	4,797
Saline	625	35,894	635	36,715	609	38,344
Scott	537	2,863	567	2,869	485	2,871
Sedgwick	1,335	327,286	1,361	338,062	1,295	352,457
Seward	470	13,331	487	13,585	440	13,737
Shawnee	730	116,970	739	119,911	715	124,210
Sheridan	449	1,671	464	1,680	422	1,735
Sherman	424	3,472	436	3,460	403	3,484
Smith	497	1,980	508	1,998	476	2,042
Stafford	555	2,088	570	2,097	530	2,125
Stanton	388	1,231	401	1,250	363	1,296
Stevens	467	2,673	483	2,706	435	2,857
Sumner	1,044	9,184	1,062	9,155	1,014	9,397
Thomas	569	5,453	590	5,496	535	5,637
Trego	386	1,900	395	1,895	373	1,902
Wabaunsee	587	2,293	596	2,215	572	2,268
Wallace	282	910	287	927	269	942
Washington	782	2,935	799	2,885	748	2,914
Wichita	352	1,058	366	1,008	328	986
Wilson	372	4,472	376	4,522	361	4,600
Woodson	294	1,308	298	1,307	286	1,371
Wyandotte	142	106,629	144	106,845	139	111,083
<b>Kansas</b>	<b>63,585</b>	<b>1,815,302</b>	<b>64,998</b>	<b>1,855,927</b>	<b>61,129</b>	<b>1,921,129</b>

Source: U.S. Bureau of Economic Analysis, Regional Economic Accounts, Local Area Personal Income, Table CA25N, <https://www.bea.gov/itable/> (accessed August 16, 2024).

Based on North American Industry Classification System (NAICS) codes.

Number of jobs includes full-time and part-time employment.

Data revised annually.

### Average Annual Wages, by State, 2020-2023

State	2020	2021	2022	2023	Percent Change 2022-2023
Alabama	\$52,210	\$54,358	\$57,309	\$59,795	4.3
Alaska	61,730	62,681	65,316	68,778	5.3
Arizona	58,426	61,750	64,733	67,195	3.8
Arkansas	48,672	51,519	54,034	55,697	3.1
California	79,480	85,741	84,436	87,531	3.7
Colorado	66,649	70,563	74,432	77,097	3.6
Connecticut	75,317	77,840	81,237	83,782	3.1
Delaware	62,462	64,484	67,816	69,306	2.2
District of Columbia	107,075	112,148	113,915	117,915	3.5
Florida	55,868	60,276	63,771	66,422	4.2
Georgia	58,884	62,242	65,646	67,634	3.0
Hawaii	57,934	59,644	61,483	64,201	4.4
Idaho	47,685	50,744	54,236	56,277	3.8
Illinois	66,279	70,127	72,756	74,663	2.6
Indiana	51,957	54,968	58,052	59,664	2.8
Iowa	52,333	54,293	57,377	59,371	3.5
<b>Kansas</b>	<b>51,490</b>	<b>53,422</b>	<b>56,178</b>	<b>58,364</b>	<b>3.9</b>
Kentucky	50,794	52,862	55,802	58,203	4.3
Louisiana	51,964	53,838	56,576	59,058	4.4
Maine	51,952	54,651	58,134	60,384	3.9
Maryland	68,879	71,688	73,667	76,132	3.3
Massachusetts	83,738	87,752	89,800	91,504	1.9
Michigan	59,432	61,683	63,881	65,889	3.1
Minnesota	64,191	67,009	69,724	71,526	2.6
Mississippi	43,222	44,958	47,427	49,130	3.6
Missouri	54,046	56,456	59,224	61,711	4.2
Montana	48,443	51,319	54,514	57,230	5.0
Nebraska	51,488	53,853	57,276	59,184	3.3
Nevada	55,996	59,463	61,970	63,782	2.9
New Hampshire	64,888	72,063	72,249	74,439	3.0
New Jersey	73,974	76,340	78,567	80,552	2.5
New Mexico	50,369	52,522	55,262	58,109	5.2
New York	83,122	88,035	89,552	91,352	2.0
North Carolina	56,214	59,594	63,218	65,602	3.8
North Dakota	55,465	56,851	60,215	63,320	5.2
Ohio	55,872	58,350	60,994	63,080	3.4
Oklahoma	49,566	51,317	53,992	56,352	4.4
Oregon	59,938	63,989	66,312	68,306	3.0
Pennsylvania	62,049	64,697	67,281	69,249	2.9
Rhode Island	60,508	62,280	64,499	66,133	2.5
South Carolina	49,554	52,295	55,551	57,943	4.3
South Dakota	49,167	51,254	54,055	56,060	3.7
Tennessee	55,137	59,147	62,103	64,450	3.8
Texas	62,872	65,970	69,614	72,320	3.9
Utah	54,890	57,837	61,173	63,851	4.4
Vermont	54,084	56,296	59,603	61,805	3.7
Virginia	65,159	67,990	71,134	74,255	4.4
Washington	76,791	82,477	84,010	88,482	5.3
West Virginia	48,741	50,498	53,159	56,045	5.4
Wisconsin	53,809	56,350	59,203	61,076	3.2
Wyoming	50,986	53,022	56,320	59,064	4.9
<b>United States</b>	<b>\$64,021</b>	<b>\$67,610</b>	<b>\$69,986</b>	<b>\$72,357</b>	<b>3.4</b>

Source: U.S. Bureau of Labor Statistics, Quarterly Census of Employment and Wages (QCEW), <https://www.bls.gov/cew/> (accessed August 16, 2024).

Includes workers covered by Unemployment Insurance and Unemployment Compensation for Federal Employees programs.

**Average Annual Wages by Industry, Kansas and the U.S., 2020-2023**

<b>Area and Industry</b>	<b>2020</b>	<b>2021</b>	<b>2022</b>	<b>2023</b>	<b>Percent Change 2022-2023</b>
<b>Kansas</b>					
Private Industry*	\$52,749	\$54,784	\$57,640	\$59,733	3.6
Agriculture, Forestry, Fishing, and Hunting	43,754	45,527	48,187	49,467	2.7
Mining, Quarrying, and Oil and Gas Extraction	56,406	60,094	67,386	67,934	0.8
Utilities	104,225	103,121	106,927	109,594	2.5
Construction	59,126	60,815	63,820	68,256	7.0
Manufacturing	62,958	64,603	68,582	70,911	3.4
Wholesale Trade	75,220	79,506	83,776	86,497	3.2
Retail Trade	30,129	32,001	34,218	35,088	2.5
Transportation and Warehousing	48,996	49,824	53,442	55,885	4.6
Information	73,749	81,217	86,174	86,748	0.7
Finance and Insurance	83,456	90,524	88,869	92,554	4.1
Real Estate and Rental and Leasing	46,845	49,482	52,662	54,449	3.4
Professional and Technical Services	76,403	81,935	86,170	88,959	3.2
Management of Companies and Enterprises	133,003	124,363	134,840	135,674	0.6
Administrative and Waste Services	42,952	47,057	50,433	52,841	4.8
Educational Services	39,110	40,348	39,762	41,208	3.6
Health Care and Social Assistance	49,188	51,763	54,622	56,588	3.6
Arts, Entertainment, and Recreation	22,185	23,133	24,708	25,780	4.3
Accommodation and Food Services	17,536	19,540	20,681	21,620	4.5
Other Services, except Public Administration	38,965	41,079	43,256	45,507	5.2
Government	45,704	47,065	49,143	51,745	5.3
Federal	71,190	73,822	77,738	83,200	7.0
State	52,822	54,281	57,644	60,684	5.3
Local	40,153	41,485	43,042	44,959	4.5
<b>United States</b>					
Private Industry*	\$64,247	\$68,029	\$70,346	\$72,609	3.2
Agriculture, Forestry, Fishing, and Hunting	39,777	41,740	43,560	45,426	4.3
Mining, Quarrying, and Oil and Gas Extraction	110,284	109,498	118,244	123,502	4.4
Utilities	117,180	119,705	124,053	128,448	3.5
Construction	67,357	69,855	73,445	77,179	5.1
Manufacturing	73,397	76,580	79,483	82,556	3.9
Wholesale Trade	84,221	90,348	94,885	98,579	3.9
Retail Trade	36,759	39,741	40,471	41,137	1.6
Transportation and Warehousing	55,337	57,956	60,443	63,984	5.9
Information	136,324	152,651	145,214	154,926	6.7
Finance and Insurance	121,538	131,621	132,851	135,757	2.2
Real Estate and Rental and Leasing	65,183	69,893	73,925	74,505	0.8
Professional and Technical Services	107,153	114,364	117,093	121,244	3.5
Management of Companies and Enterprises	132,370	141,628	144,653	146,882	1.5
Administrative and Waste Services	46,481	50,166	54,563	56,275	3.1
Educational Services	57,189	58,442	59,915	61,785	3.1
Health Care and Social Assistance	55,077	58,073	61,086	62,852	2.9
Arts, Entertainment, and Recreation	45,676	46,244	48,616	49,078	1.0
Accommodation and Food Services	22,784	25,659	27,452	28,663	4.4
Other Services, except Public Administration	44,084	46,122	48,549	50,701	4.4
Government	62,765	65,170	67,811	70,842	4.5
Federal	85,467	89,205	92,771	97,874	5.5
State	65,762	68,835	72,813	76,359	4.9
Local	56,884	58,870	61,036	63,486	4.0

Source: U.S. Bureau of Labor Statistics, Quarterly Census of Employment and Wages (QCEW), <https://www.bls.gov/cew/> (accessed August 16, 2024).

Includes workers covered by Unemployment Insurance and Unemployment Compensation for Federal Employees programs.

\* Includes other industries, not shown separately.

**Workers with Earnings at or below the Federal Minimum Wage, by State  
2023 Annual Averages**

State	Number of Workers, 16 Years and Over (thousands)				Percent of Hourly Workers At or Below Minimum Wage		Rank
	Total Paid Hourly Rates	At Minimum Wage	Below Minimum Wage	Total At or Below Minimum Wage	At or Below Minimum Wage	Rank	
Alabama	1,173	1	14	15	1.3	19	
Alaska	210	0	0	1	0.2	51	
Arizona	1,839	0	6	6	0.3	50	
Arkansas	762	1	15	16	2.1	3	
California	9,455	4	44	48	0.5	45	
Colorado	1,336	0	11	11	0.8	38	
Connecticut	903	0	9	9	1.0	31	
Delaware	269	0	4	4	1.5	8	
District of Columbia	84	0	2	2	2.2	2	
Florida	4,975	0	44	44	0.9	35	
Georgia	2,390	4	46	50	2.1	3	
Hawaii	359	0	2	2	0.5	45	
Idaho	504	2	7	8	1.6	7	
Illinois	3,026	1	19	20	0.7	40	
Indiana	1,838	1	26	27	1.5	8	
Iowa	924	1	12	13	1.5	8	
<b>Kansas</b>	<b>777</b>	<b>3</b>	<b>3</b>	<b>6</b>	<b>0.7</b>	<b>40</b>	
Kentucky	1,097	2	12	14	1.3	19	
Louisiana	1,033	3	16	19	1.8	6	
Maine	360	1	3	4	1.1	26	
Maryland	1,323	0	19	19	1.4	14	
Massachusetts	1,604	1	19	21	1.3	19	
Michigan	2,649	3	26	29	1.1	26	
Minnesota	1,510	0	6	6	0.4	48	
Mississippi	686	2	7	9	1.4	14	
Missouri	1,687	2	17	18	1.1	26	
Montana	308	0	2	2	0.6	43	
Nebraska	586	1	7	7	1.3	19	
Nevada	927	0	5	5	0.5	45	
New Hampshire	370	0	4	5	1.3	19	
New Jersey	1,921	0	16	16	0.8	38	
New Mexico	443	0	6	6	1.4	14	
New York	4,255	5	24	29	0.7	40	
North Carolina	2,598	4	34	39	1.5	8	
North Dakota	222	0	2	2	1.0	31	
Ohio	3,114	0	28	28	0.9	35	
Oklahoma	1,002	2	12	14	1.4	14	
Oregon	1,056	2	4	6	0.6	43	
Pennsylvania	3,232	12	56	67	2.1	3	
Rhode Island	302	1	8	9	2.9	1	
South Carolina	1,222	5	12	17	1.4	14	
South Dakota	277	0	2	2	0.9	35	
Tennessee	1,712	4	21	25	1.5	8	
Texas	6,931	6	95	101	1.5	8	
Utah	940	2	8	9	1.0	31	
Vermont	164	0	2	2	1.0	31	
Virginia	1,872	2	19	20	1.1	26	
Washington	2,002	0	8	8	0.4	48	
West Virginia	429	1	5	6	1.3	19	
Wisconsin	1,713	1	20	21	1.2	25	
Wyoming	170	0	2	2	1.1	26	
<b>United States</b>	<b>80,538</b>	<b>81</b>	<b>789</b>	<b>869</b>	<b>1.1</b>		

Source: U.S. Department of Labor, Bureau of Labor Statistics, Characteristics of Minimum Wage Workers, 2023, <https://www.bls.gov/opub/reports/minimum-wage/2023/home.htm> (accessed August 17, 2024).

Data exclude all self-employed persons whether or not their businesses are incorporated.

Rank based on percent of hourly workers at or below minimum wage.

Data may not sum to totals due to rounding.

**Average Wage per Job in Kansas, by County  
Full- and Part-Time by Place of Work, 2013-2022**

<b>County</b>	<b>2013</b>	<b>2014</b>	<b>2015</b>	<b>2016</b>	<b>2017</b>	<b>2018</b>	<b>2019</b>	<b>2020</b>	<b>2021</b>	<b>2022</b>
Allen	\$36,227	\$35,579	\$36,196	\$35,381	\$37,103	\$38,939	\$41,672	\$43,677	\$46,369	\$46,095
Anderson	37,749	34,359	36,193	34,874	37,739	37,635	38,247	44,609	55,708	43,558
Atchison	38,091	38,125	39,235	40,548	44,312	45,442	47,851	48,148	51,274	48,058
Barber	42,009	39,181	29,326	26,879	27,238	31,373	30,403	34,889	36,659	32,562
Barton	45,904	47,606	40,963	38,626	39,033	40,653	43,709	43,469	44,318	47,342
Bourbon	37,771	38,365	39,539	40,418	42,095	46,511	43,192	45,264	48,060	53,386
Brown	45,725	41,590	41,631	42,764	43,956	46,913	47,694	49,709	53,450	48,052
Butler	40,132	39,536	39,927	39,977	41,113	42,846	45,524	46,388	45,813	46,807
Chase	38,207	37,797	36,674	38,143	39,813	40,989	40,944	50,045	56,245	52,086
Chautauqua	32,242	31,767	24,962	20,634	22,919	24,988	23,979	26,684	28,070	25,269
Cherokee	42,376	41,307	42,344	43,648	46,757	52,230	52,896	62,263	66,797	70,485
Cheyenne	64,552	47,665	41,852	39,184	33,040	39,874	40,668	51,960	64,333	46,909
Clark	48,211	47,738	39,308	44,012	41,706	38,218	41,593	45,167	43,505	47,210
Clay	37,644	33,781	33,416	33,184	33,588	35,570	37,664	41,932	44,912	37,683
Cloud	34,652	32,878	32,932	33,665	33,386	37,184	40,153	44,313	47,085	43,060
Coffey	66,094	63,284	58,928	58,253	56,177	63,975	62,673	69,097	67,669	62,352
Comanche	35,041	27,725	25,494	24,996	23,989	29,934	27,377	32,137	36,246	28,991
Cowley	40,683	41,656	44,146	41,282	42,445	43,993	45,099	47,669	48,953	48,919
Crawford	43,988	41,200	40,422	43,116	47,245	50,578	47,686	49,918	50,612	51,086
Decatur	49,178	45,272	43,512	44,852	33,148	35,106	35,799	48,907	52,519	55,185
Dickinson	35,947	34,414	35,861	37,124	37,316	39,054	41,064	44,034	46,457	43,804
Doniphan	41,055	35,384	35,490	37,890	38,722	39,465	44,662	47,720	53,603	45,916
Douglas	38,071	38,712	40,429	41,303	41,726	42,671	44,496	47,268	49,529	50,304
Edwards	75,501	56,425	59,669	63,222	49,891	51,814	51,684	63,754	70,324	52,482
Elk	32,115	31,388	25,621	20,062	21,648	23,920	22,636	25,115	27,384	22,219
Ellis	40,674	41,514	38,004	35,693	35,583	38,940	40,645	42,780	45,453	47,663
Ellsworth	40,664	42,072	36,912	35,828	36,518	39,657	41,166	44,875	47,334	44,064
Finney	51,585	49,278	49,693	49,984	49,399	51,303	52,308	56,167	58,765	61,058
Ford	45,647	43,281	44,154	47,540	47,558	49,699	52,096	58,610	60,042	60,804
Franklin	39,293	39,019	39,537	40,154	41,552	42,699	44,045	46,300	49,349	48,215
Geary	66,447	66,039	67,107	67,740	69,122	69,964	68,368	71,732	74,578	76,267
Gove	57,973	50,025	59,340	61,140	43,436	47,723	48,984	55,889	74,383	67,919
Graham	44,589	37,769	32,374	27,366	29,207	34,728	37,323	39,803	46,715	34,076
Grant	75,708	71,269	61,362	68,933	57,733	61,303	55,491	58,176	58,703	51,330
Gray	77,330	66,525	59,073	70,594	58,390	51,585	53,521	59,397	58,182	59,413
Greeley	71,653	45,964	36,325	50,371	59,315	61,376	55,032	74,393	89,763	74,857
Greenwood	30,875	32,401	27,978	26,319	27,443	28,280	28,646	31,486	32,814	24,669

**Average Wage per Job in Kansas, by County  
Full- and Part-Time by Place of Work, 2013-2022**

<b>County</b>	<b>2013</b>	<b>2014</b>	<b>2015</b>	<b>2016</b>	<b>2017</b>	<b>2018</b>	<b>2019</b>	<b>2020</b>	<b>2021</b>	<b>2022</b>
Hamilton	\$100,093	\$93,797	\$54,682	\$55,455	\$55,357	\$61,610	\$58,907	\$79,800	\$70,144	\$78,293
Harper	48,016	45,921	39,669	37,368	35,890	40,978	47,970	53,018	56,215	53,707
Harvey	42,202	40,773	40,762	40,943	42,518	44,322	46,390	48,877	50,209	49,995
Haskell	110,992	85,667	71,373	71,523	70,242	64,740	52,453	63,755	71,135	54,902
Hodgeman	51,026	43,909	42,270	44,772	40,528	41,257	40,561	47,748	46,571	40,128
Jackson	30,659	29,640	30,217	30,356	31,737	33,669	34,747	38,238	40,160	37,477
Jefferson	31,789	31,344	32,933	34,577	35,920	37,077	38,499	39,678	43,085	39,548
Jewell	52,611	35,394	35,966	30,946	28,101	35,199	37,333	45,921	55,398	28,381
Johnson	56,297	58,345	61,473	62,884	65,933	67,769	70,823	72,754	72,988	79,968
Kearny	77,357	60,655	53,994	56,261	51,624	51,022	50,220	63,311	67,548	56,603
Kingman	36,520	34,164	31,263	29,909	28,092	31,504	32,082	46,181	42,365	35,016
Kiowa	34,524	27,139	30,590	31,401	31,640	33,737	32,671	42,066	45,021	31,560
Labette	38,557	38,197	38,047	38,480	39,554	41,995	43,028	45,987	48,428	49,229
Lane	76,406	59,828	52,691	63,722	49,282	52,953	50,095	57,894	64,678	54,230
Leavenworth	59,039	59,276	59,755	59,359	60,177	61,305	62,738	65,794	68,136	68,764
Lincoln	32,287	30,742	27,064	27,294	27,305	33,376	34,241	45,695	44,929	36,599
Linn	35,251	33,519	34,968	36,361	39,300	38,735	40,152	46,011	44,530	39,874
Logan	49,312	38,200	33,695	33,750	31,803	35,163	38,988	48,977	53,197	45,221
Lyon	35,557	36,187	37,212	37,344	38,386	40,795	40,721	44,267	45,546	46,318
McPherson	49,983	49,744	49,797	46,574	47,337	51,804	58,039	59,367	59,283	59,094
Marion	33,378	31,938	32,657	32,104	33,305	35,407	35,365	39,926	40,120	34,901
Marshall	42,125	38,176	38,787	36,797	38,418	40,927	41,752	46,050	49,274	43,323
Meade	81,107	61,290	53,448	54,998	49,647	52,303	56,403	65,649	75,770	64,968
Miami	34,151	34,135	35,267	36,725	38,201	39,439	41,034	44,560	47,974	48,686
Mitchell	48,772	45,874	44,246	44,152	46,466	55,103	59,906	65,186	62,296	57,410
Montgomery	42,559	42,491	41,799	39,722	41,921	43,989	43,578	45,752	47,693	49,656
Morris	35,683	34,599	33,018	33,886	33,322	38,718	37,445	43,096	44,061	40,745
Morton	59,088	49,086	34,261	37,939	44,020	47,434	44,103	50,587	62,770	40,543
Nemaha	42,600	40,109	34,754	35,919	40,700	42,099	41,056	47,840	47,907	44,091
Neosho	37,317	37,053	36,004	36,347	36,798	39,286	40,874	43,169	45,326	44,162
Ness	41,209	36,994	31,871	26,459	27,908	33,350	35,438	40,121	45,825	37,569
Norton	51,180	46,148	39,621	43,176	41,203	40,780	43,991	53,403	58,047	56,052
Osage	25,387	24,285	25,154	25,802	27,596	30,264	31,282	34,468	37,711	32,024
Osborne	41,027	33,446	31,078	27,360	27,018	36,513	37,713	41,333	44,993	35,140
Ottawa	32,153	28,637	29,181	28,572	27,070	30,437	29,649	35,122	41,298	32,170
Pawnee	53,019	46,519	46,028	49,866	44,634	46,448	48,314	53,200	56,605	49,857
Phillips	50,685	46,622	47,059	39,178	37,262	38,685	42,233	43,755	50,167	41,920



**Average Wage per Job in Kansas, by County  
Full- and Part-Time by Place of Work, 2013-2022**

<b>County</b>	<b>2013</b>	<b>2014</b>	<b>2015</b>	<b>2016</b>	<b>2017</b>	<b>2018</b>	<b>2019</b>	<b>2020</b>	<b>2021</b>	<b>2022</b>
Pottawatomie	\$38,970	\$39,231	\$40,949	\$41,608	\$41,822	\$43,701	\$43,550	\$46,621	\$48,999	\$50,072
Pratt	49,187	45,551	42,388	43,044	41,932	44,843	45,882	48,575	54,145	49,408
Rawlins	65,406	41,788	39,658	38,345	35,161	38,316	46,714	61,423	74,889	71,555
Reno	39,421	38,686	39,308	39,781	41,784	43,218	44,810	47,629	49,009	50,327
Republic	45,355	37,051	37,959	38,329	33,750	33,585	35,698	37,503	42,572	33,618
Rice	49,022	47,347	46,291	43,088	42,772	43,717	47,364	45,105	45,670	45,052
Riley	40,507	41,546	42,853	43,919	41,518	42,038	42,701	46,397	49,172	51,265
Rooks	36,705	32,617	30,644	26,228	25,501	31,351	31,531	35,662	37,767	29,064
Rush	38,080	32,899	31,796	27,840	27,876	33,572	39,085	44,787	50,638	37,118
Russell	42,067	39,824	32,348	26,095	25,815	29,339	31,692	32,626	36,110	33,286
Saline	45,715	45,647	47,263	48,307	50,515	51,871	52,929	54,173	56,843	59,125
Scott	84,201	69,617	66,559	71,902	60,551	51,943	51,286	59,230	61,978	60,076
Sedgwick	56,903	57,092	56,259	55,286	57,332	57,313	60,143	61,136	60,455	63,686
Seward	49,388	49,450	49,802	49,106	49,676	50,550	51,816	57,544	61,403	65,264
Shawnee	49,312	50,330	51,328	52,639	53,685	56,277	57,498	60,966	62,817	65,310
Sheridan	71,013	46,461	42,798	48,069	38,750	36,678	36,545	43,766	43,404	41,595
Sherman	58,414	39,278	38,798	38,010	37,735	39,797	39,211	45,417	52,546	47,462
Smith	41,999	31,148	32,312	29,659	30,390	34,090	36,787	46,318	52,783	38,592
Stafford	66,020	58,121	39,135	37,132	35,852	36,248	36,944	39,636	40,126	34,692
Stanton	97,247	62,320	54,835	52,535	53,716	56,588	73,333	88,328	96,929	78,386
Stevens	72,784	57,883	50,092	48,413	51,047	48,913	51,187	59,253	67,197	58,864
Sumner	38,630	35,894	35,945	35,077	35,642	37,460	40,765	42,923	46,976	42,907
Thomas	51,861	38,668	37,342	40,292	40,420	42,770	43,777	46,498	50,547	50,221
Trego	39,780	34,750	31,808	29,613	31,400	36,661	37,300	42,751	47,462	39,365
Wabaunsee	28,443	28,284	27,416	26,475	28,131	30,558	30,022	31,013	34,825	30,343
Wallace	71,788	41,619	29,993	33,477	30,534	37,980	40,366	47,706	51,202	37,903
Washington	41,585	35,206	31,157	30,145	29,807	32,931	34,611	40,497	44,387	32,924
Wichita	117,743	91,496	75,428	97,278	72,703	57,288	57,490	61,678	59,563	55,855
Wilson	45,712	44,778	46,415	42,783	43,781	42,344	43,442	45,653	50,156	49,395
Woodson	29,618	25,179	21,894	20,078	21,955	26,206	26,314	28,528	33,201	23,410
Wyandotte	86,027	75,900	74,102	60,876	62,517	64,378	66,987	68,106	68,383	69,790
<b>Kansas</b>	<b>\$52,287</b>	<b>\$51,458</b>	<b>\$51,810</b>	<b>\$51,440</b>	<b>\$52,915</b>	<b>\$54,605</b>	<b>\$56,682</b>	<b>\$59,199</b>	<b>\$60,425</b>	<b>\$62,646</b>

Source: U.S. Bureau of Economic Analysis, Regional Economic Information System, Table CAINC30, <https://www.bea.gov/itable/> (accessed August 17, 2024).

The employment measure is the number of jobs, full-time plus part-time.

Data revised annually.

**Average Wage per Job in Kansas, by Metropolitan and Micropolitan Area  
Full- and Part-Time by Place of Work, 2014-2022**

<b>Area</b>	<b>2014</b>	<b>2015</b>	<b>2016</b>	<b>2017</b>	<b>2018</b>	<b>2019</b>	<b>2020</b>	<b>2021</b>	<b>2022</b>
<b>Metropolitan Area</b>									
Kansas City, MO-KS	\$57,765	\$59,297	\$58,844	\$60,664	\$62,068	\$64,439	\$66,863	\$68,012	\$71,538
Lawrence, KS	38,712	40,429	41,303	41,726	42,671	44,496	47,268	49,529	50,304
Manhattan, KS	50,675	51,901	52,492	51,563	52,308	52,090	55,795	58,444	59,983
St. Joseph, MO-KS	46,057	45,611	46,311	48,271	49,022	51,523	54,067	55,989	57,149
Topeka, KS	46,927	47,929	49,123	50,262	52,738	53,937	57,183	59,237	60,749
Wichita, KS	54,292	53,630	52,810	54,747	55,019	57,854	58,910	58,476	61,215
<b>Micropolitan Area</b>									
Atchison, KS	38,125	39,235	40,548	44,312	45,442	47,851	48,148	51,274	48,058
Coffeyville, KS	42,491	41,799	39,722	41,921	43,989	43,578	45,752	47,693	49,656
Dodge City, KS	43,281	44,154	47,540	47,558	49,699	52,096	58,610	60,042	60,804
Emporia, KS	36,306	37,173	37,400	38,487	40,810	40,738	44,683	46,280	46,716
Garden City, KS	50,297	50,081	50,528	49,593	51,279	52,129	56,788	59,541	60,683
Great Bend, KS	47,606	40,963	38,626	39,033	40,653	43,709	43,469	44,318	47,342
Hays, KS	41,514	38,004	35,693	35,583	38,940	40,645	42,780	45,453	47,663
Hutchinson, KS	38,686	39,308	39,781	41,784	43,218	44,810	47,629	49,009	50,327
Liberal, KS	49,450	49,802	49,106	49,676	50,550	51,816	57,544	61,403	65,264
McPherson, KS	49,744	49,797	46,574	47,337	51,804	58,039	59,367	59,283	59,094
Ottawa, KS	39,019	39,537	40,154	41,552	42,699	44,045	46,300	49,349	48,215
Parsons, KS	38,197	38,047	38,480	39,554	41,995	43,028	45,987	48,428	49,229
Pittsburg, KS	41,200	40,422	43,116	47,245	50,578	47,686	49,918	50,612	51,086
Salina, KS	44,508	46,064	46,986	49,001	50,520	51,439	52,942	55,856	57,433
Winfield, KS	41,656	44,146	41,282	42,445	43,993	45,099	47,669	48,953	48,919
<b>Combined Statistical Area</b>									
Kansas City-Overland Park-									
Kansas City, MO-KS	55,804	57,221	56,951	58,705	60,072	62,392	64,849	66,136	69,349
Wichita-Winfield, KS	53,661	53,167	52,251	54,156	54,499	57,281	58,392	58,041	60,667
Metropolitan	55,341	56,419	55,818	57,730	59,055	61,453	63,467	64,090	67,815
Nonmetropolitan	43,099	41,705	41,662	41,960	44,285	45,461	49,270	51,802	50,222
<b>Kansas</b>	<b>\$51,458</b>	<b>\$51,810</b>	<b>\$51,440</b>	<b>\$52,915</b>	<b>\$54,605</b>	<b>\$56,682</b>	<b>\$59,199</b>	<b>\$60,425</b>	<b>\$62,646</b>

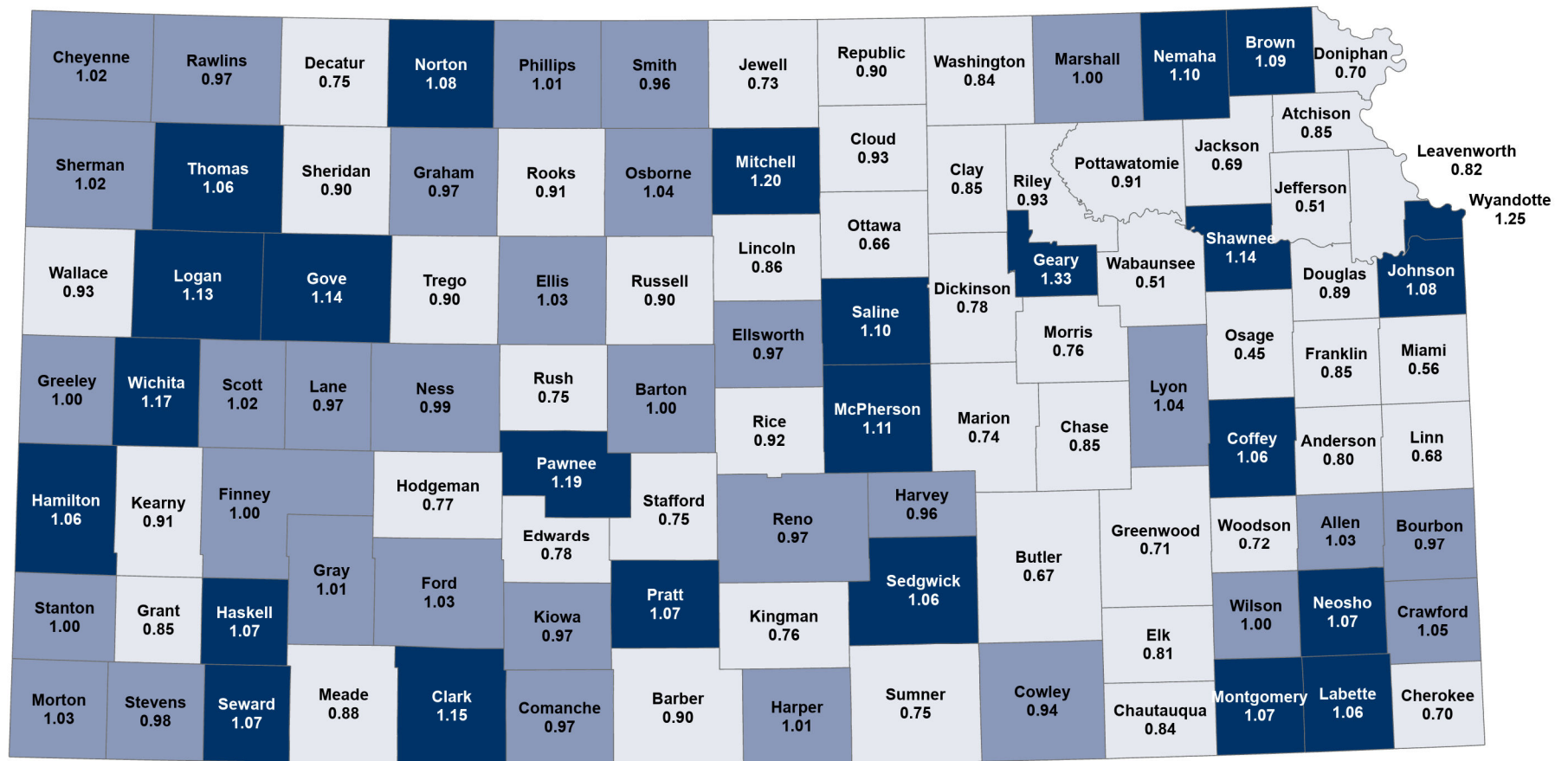
Source: U.S. Bureau of Economic Analysis, Regional Economic Information System, Table CAINC30, <https://www.bea.gov/itable/> (accessed August 17, 2024).

The employment measure is the number of jobs, full-time plus part-time.

Statistical areas are post-2010 Census areas as defined in Office of Management and Budget bulletin 20-01 issued March 6, 2020

Data revised annually.

## County Employment Residence Ratio Five-Year Average 2018-22



Source: Institute for Policy & Social Research, The University of Kansas;  
data from U.S. Census Bureau, 2018-2022 American Community Survey.

Employment residence ratio is defined as the total number of workers in an area divided by the total number of workers living in the same area. A ratio higher than 1.0 indicates a county is attracting workers from other counties.

### Employment Residence Ratio

State: 1.01

